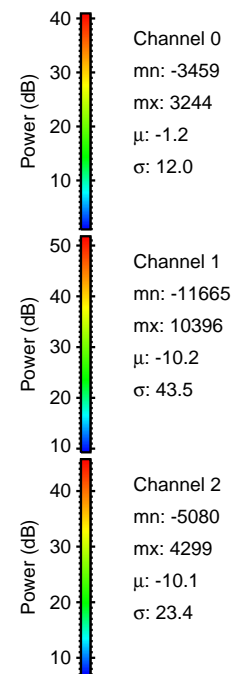
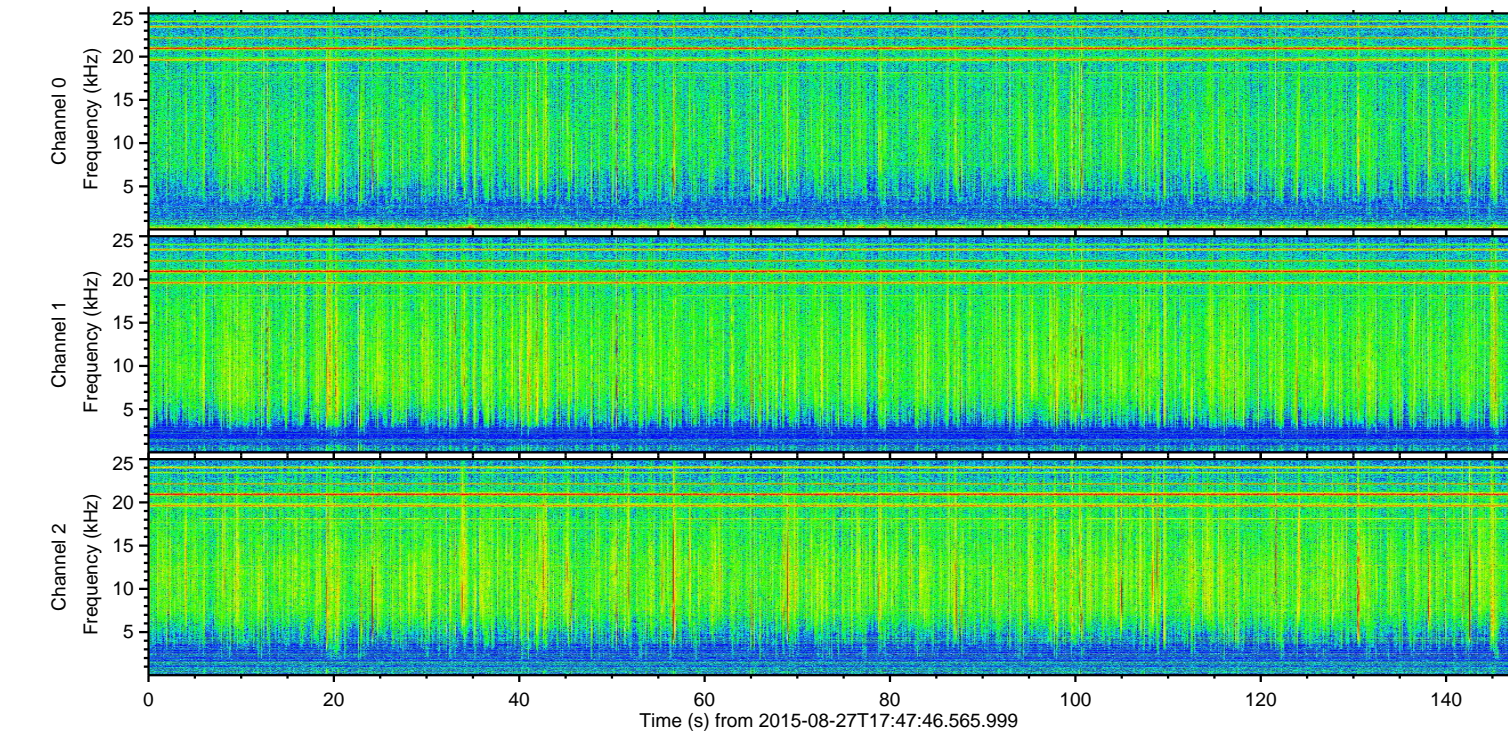
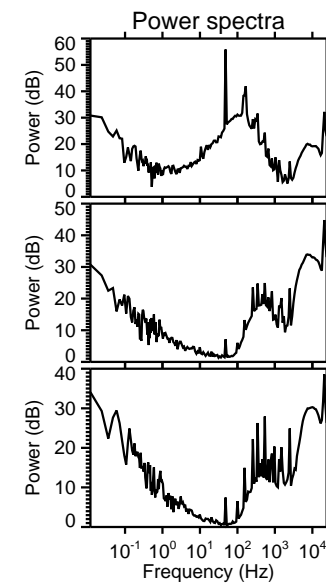
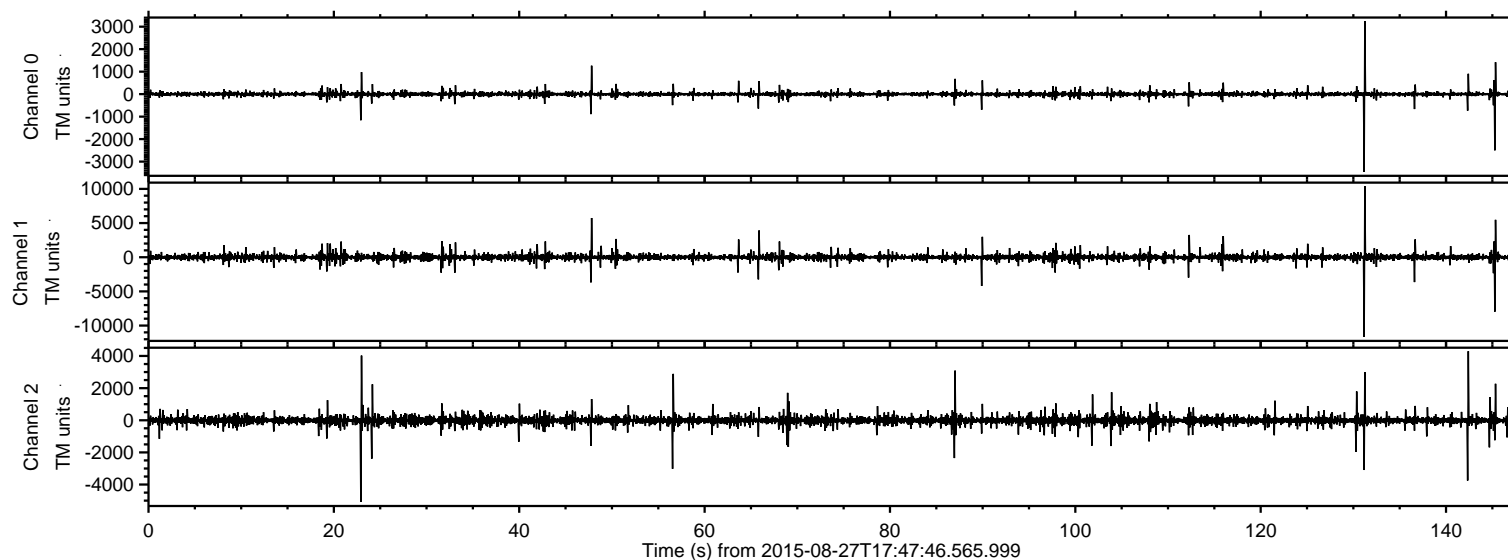


# ELMAVAN 3D WAVEFORMS (Measured data sampled at 50 kHz) 51000 packets of 144 samples from 2015-08-27T17:47:46.565.999.

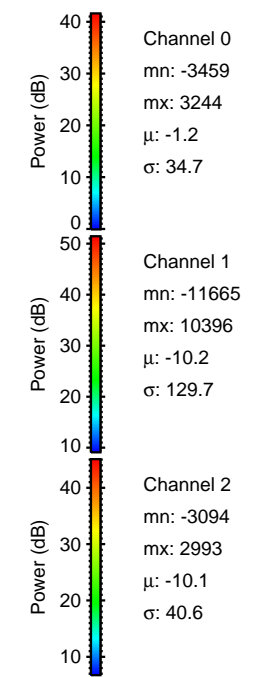
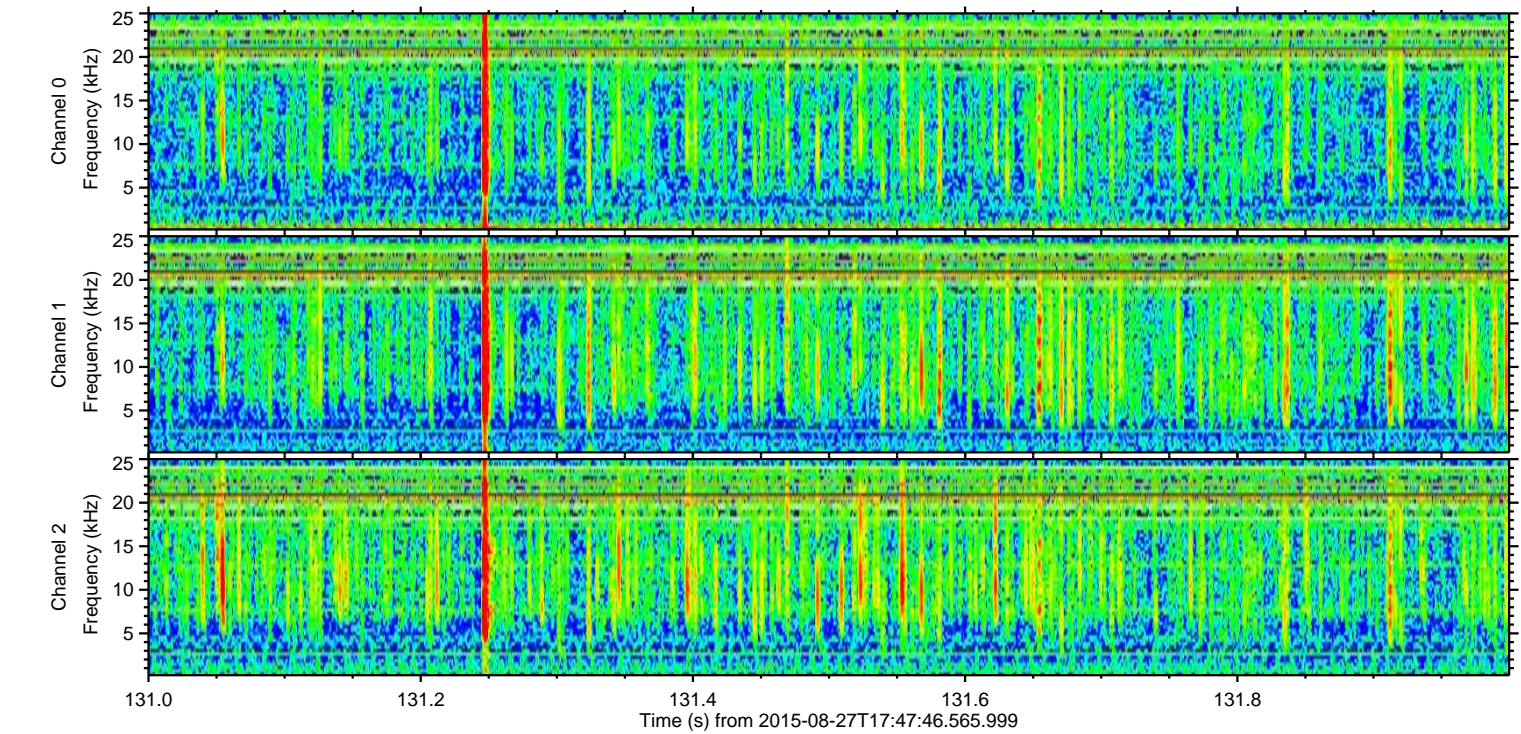
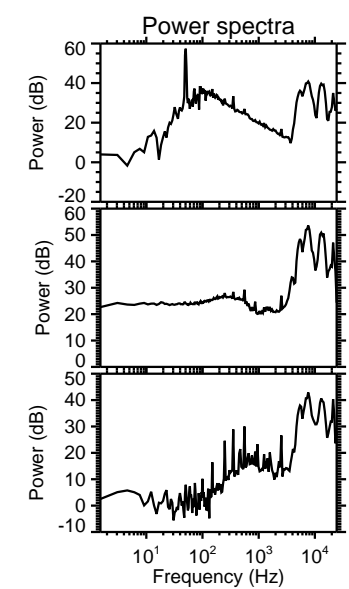
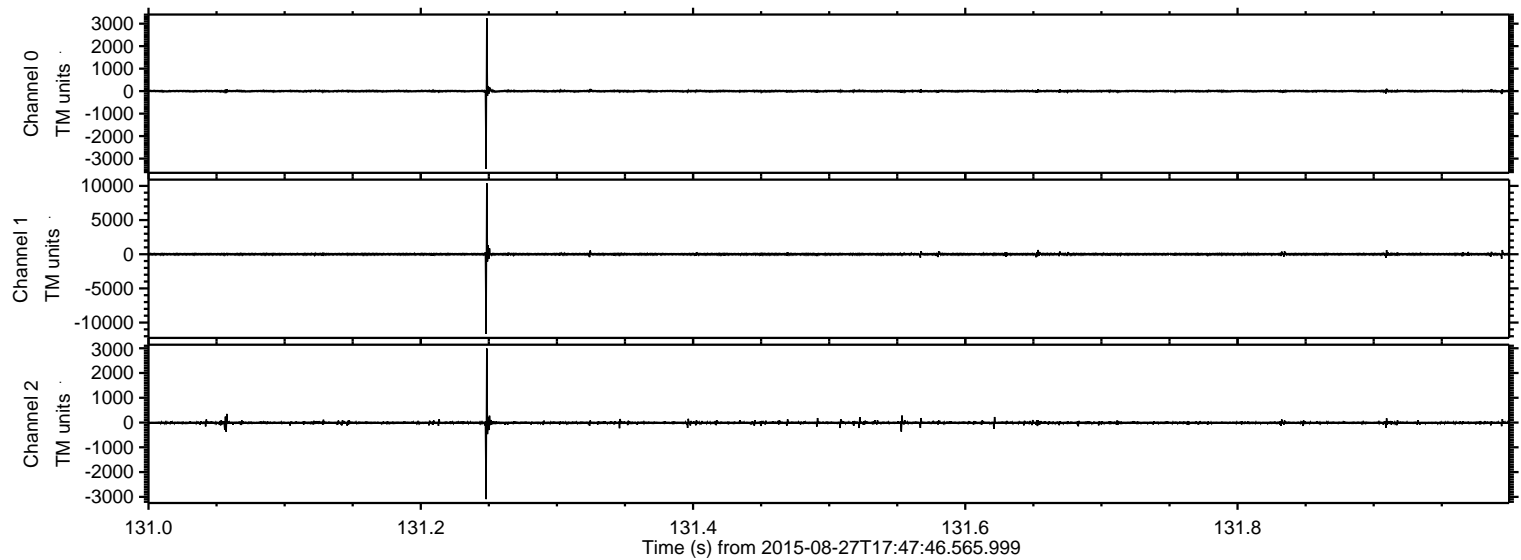
Processed Wed Oct 7 12:01:57 2015 by ELM ver.2012-10-06 from 001\_\_elm20150827\_174745\_\_dat00.bin





ELMAVAN 3D WAVEFORMS (Measured data sampled at 50 kHz) 51000 packets of 144 samples from 2015-08-27T17:47:46.565.999. Part 132/147

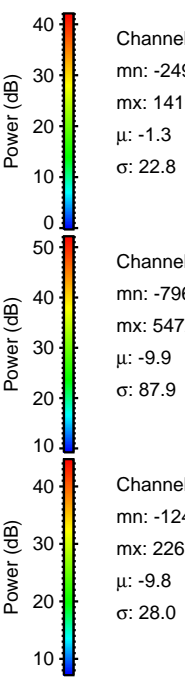
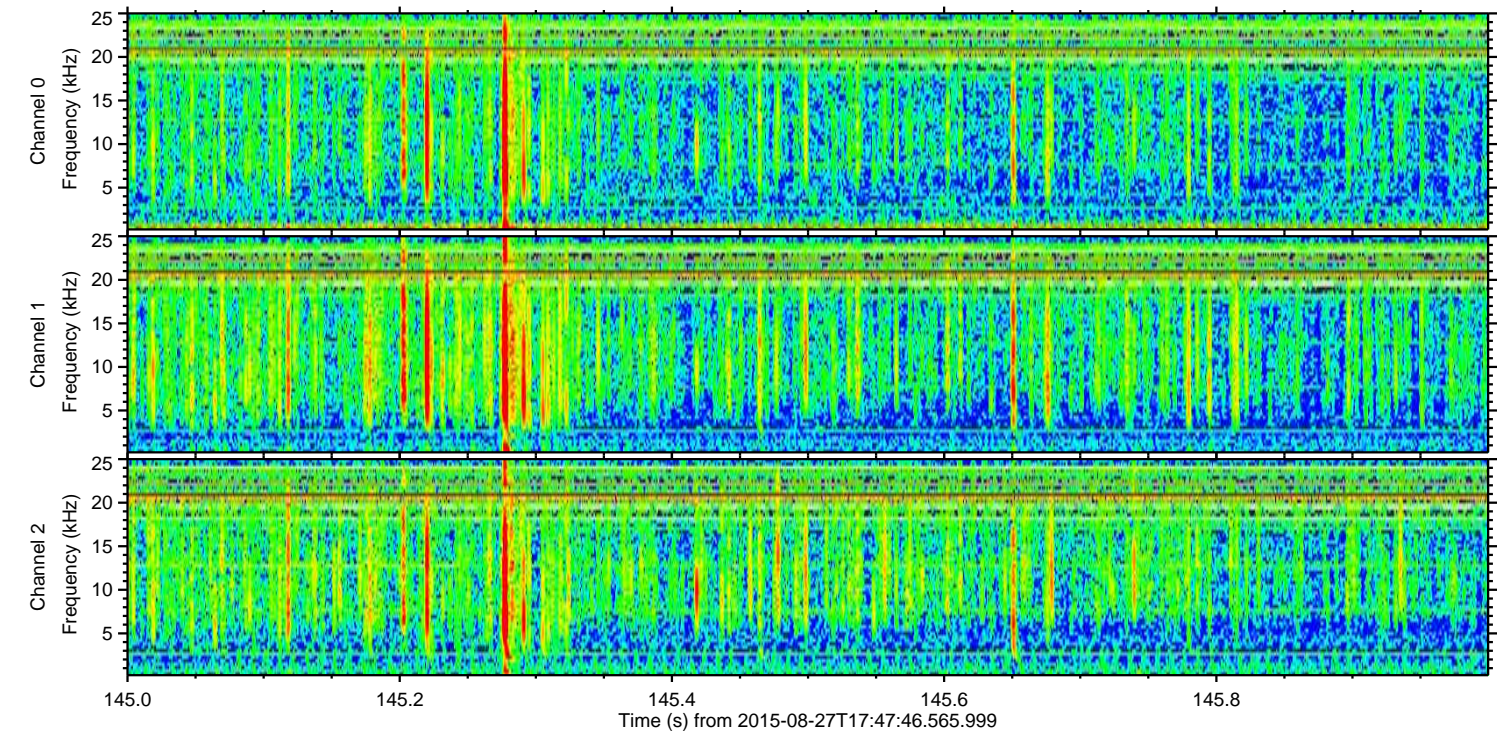
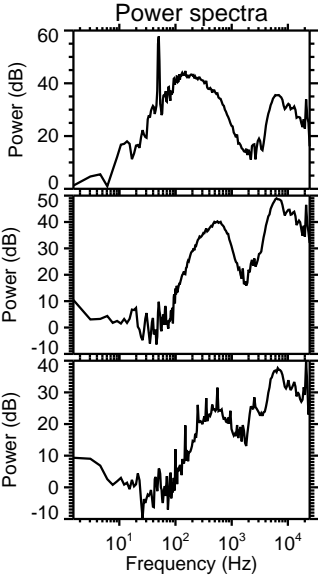
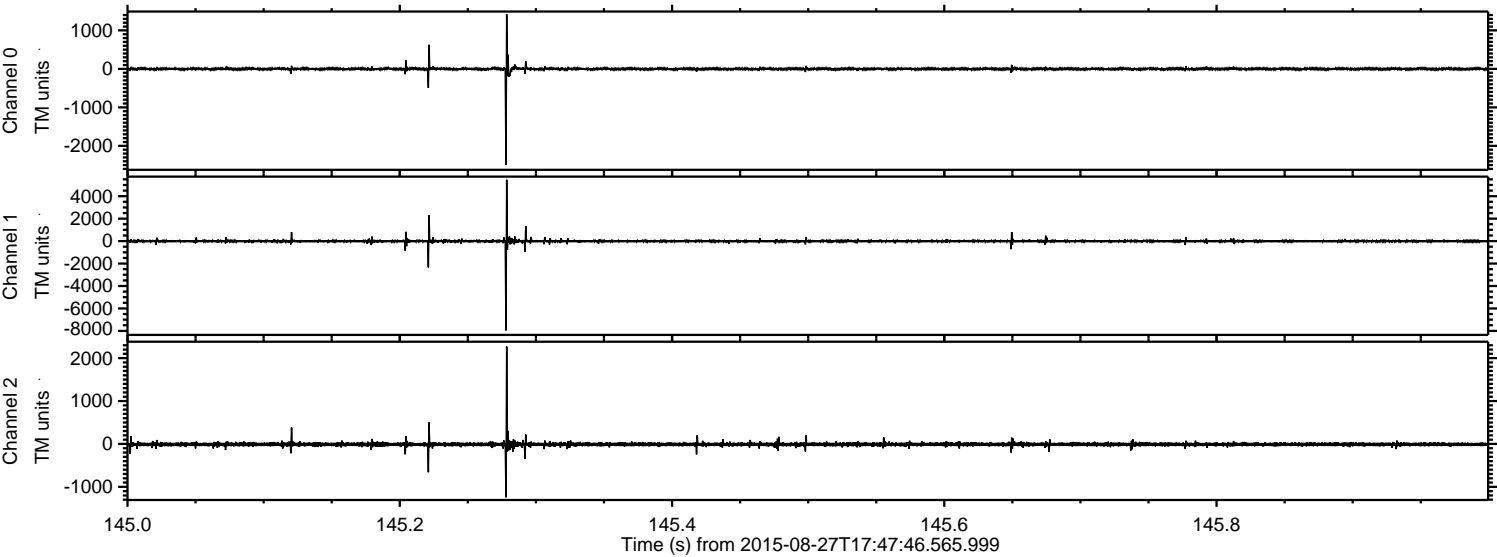
Processed Wed Oct 7 12:02:12 2015 by ELM ver.2012-10-06 from 001\_\_elm20150827\_174745\_\_dat00.bin





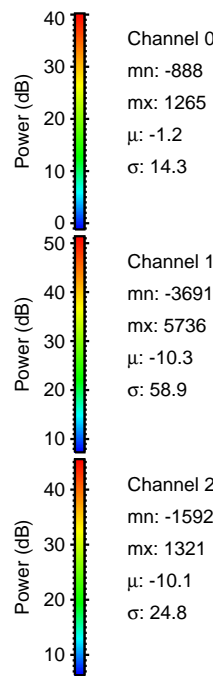
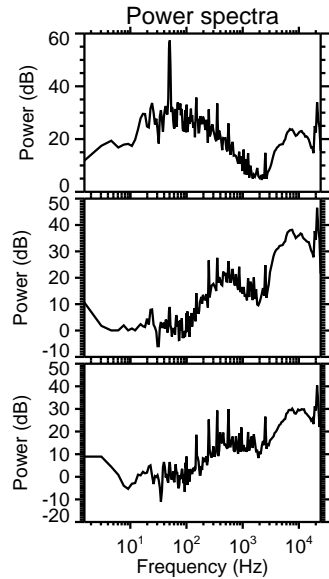
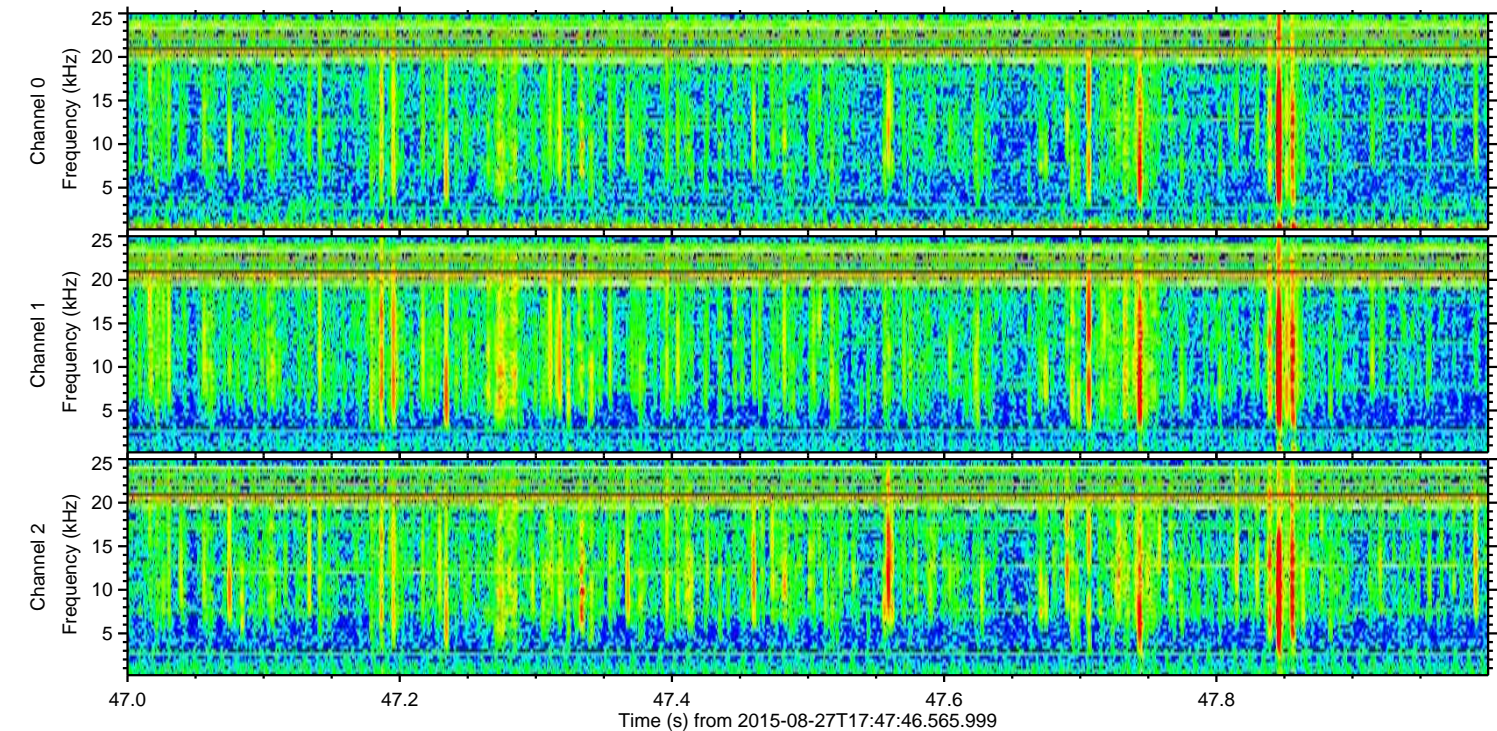
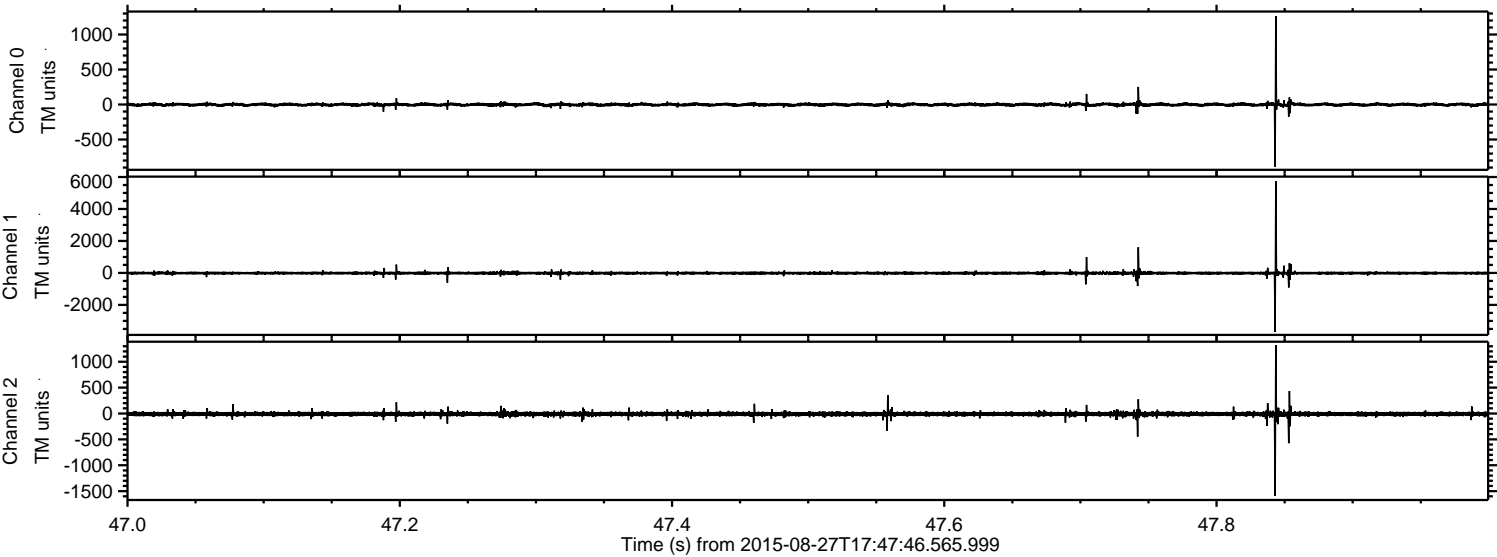
ELMAVAN 3D WAVEFORMS (Measured data sampled at 50 kHz) 51000 packets of 144 samples from 2015-08-27T17:47:46.565.999. Part 146/147

Processed Wed Oct 7 12:02:13 2015 by ELM ver.2012-10-06 from 001\_\_elm20150827\_174745\_\_dat00.bin





Processed Wed Oct 7 12:02:15 2015 by ELM ver.2012-10-06 from 001\_\_elm20150827\_174745\_\_dat00.bin



Channel 0  
mn: -888  
mx: 1265  
 $\mu$ : -1.2  
 $\sigma$ : 14.3

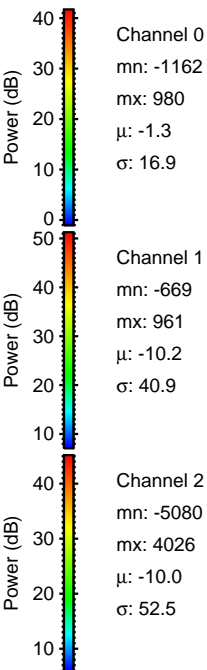
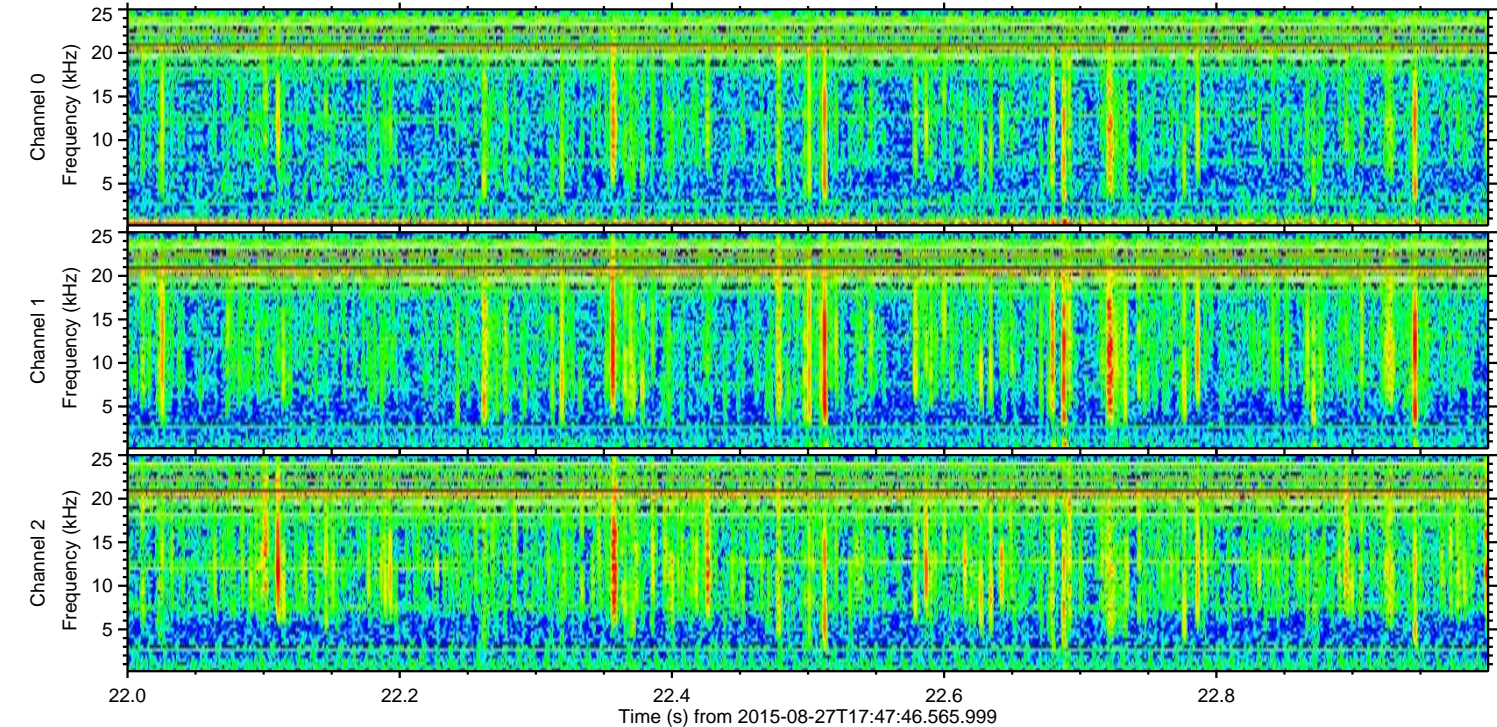
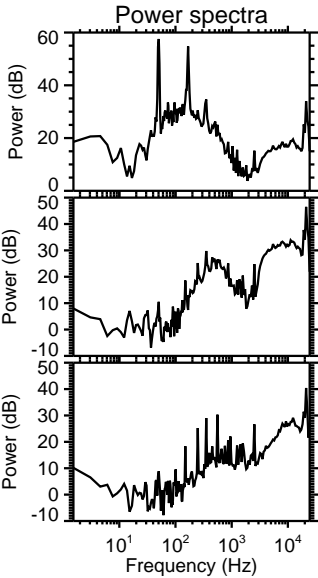
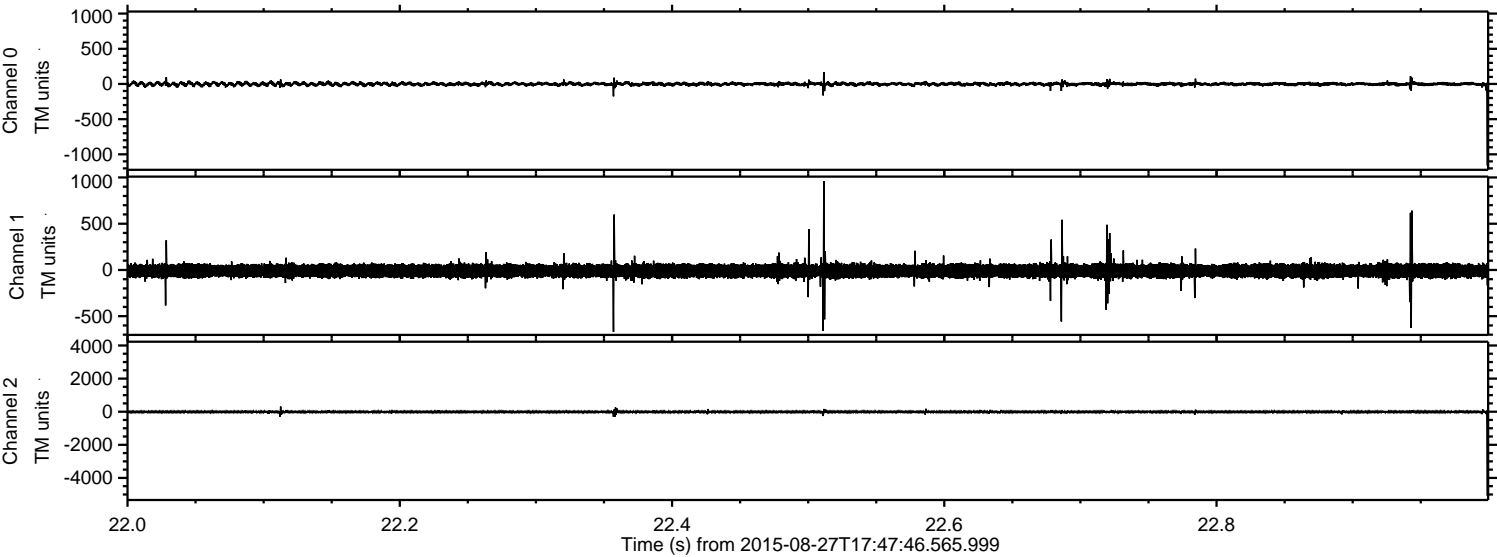
Channel 1  
mn: -3691  
mx: 5736  
 $\mu$ : -10.3  
 $\sigma$ : 58.9

Channel 2  
mn: -1592  
mx: 1321  
 $\mu$ : -10.1  
 $\sigma$ : 24.8



ELMAVAN 3D WAVEFORMS (Measured data sampled at 50 kHz) 51000 packets of 144 samples from 2015-08-27T17:47:46.565.999. Part 23/147

Processed Wed Oct 7 12:02:16 2015 by ELM ver.2012-10-06 from 001\_\_elm20150827\_174745\_\_dat00.bin



Channel 0  
mn: -1162  
mx: 980  
 $\mu$ : -1.3  
 $\sigma$ : 16.9

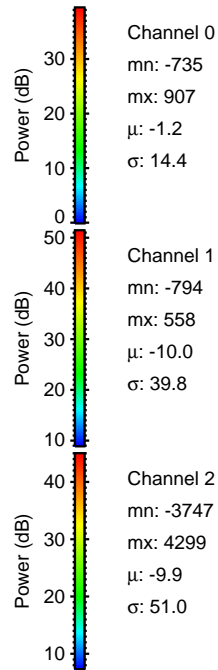
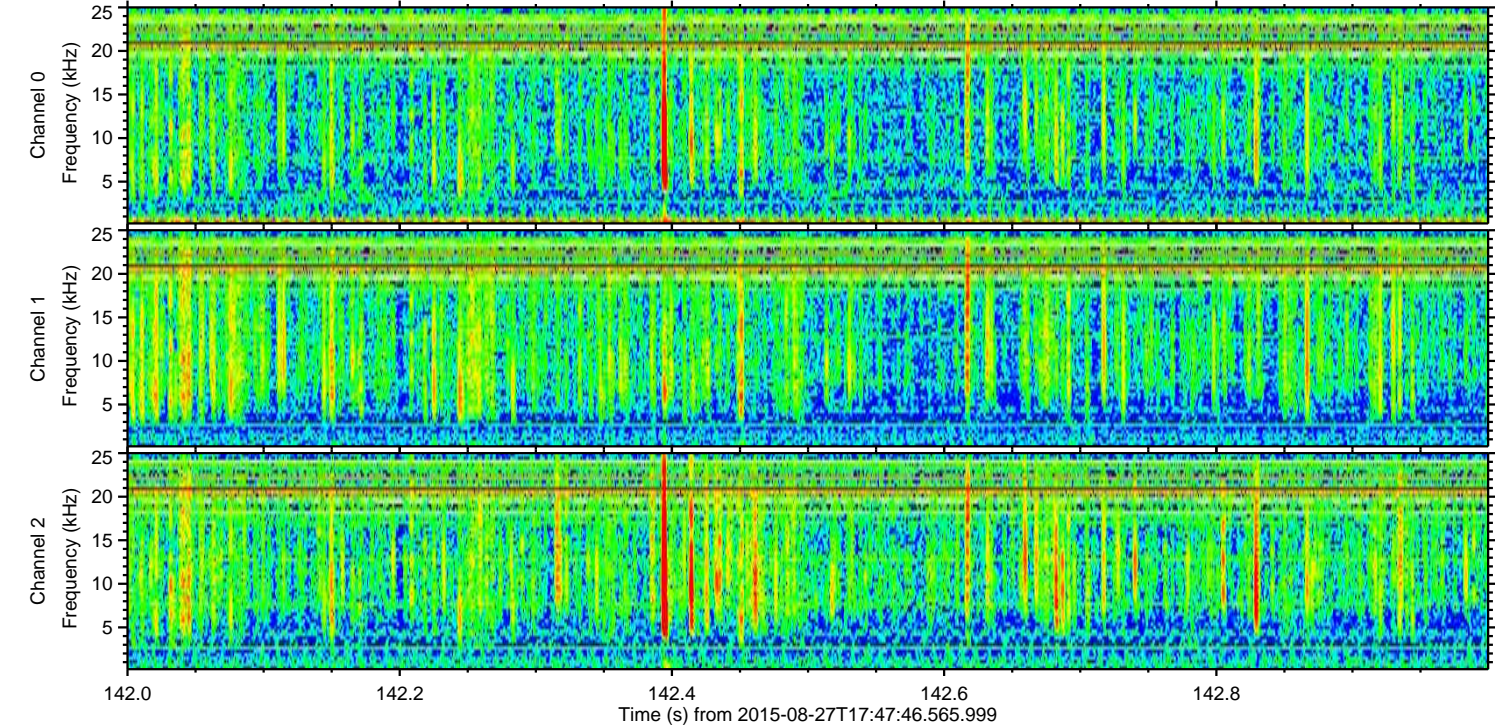
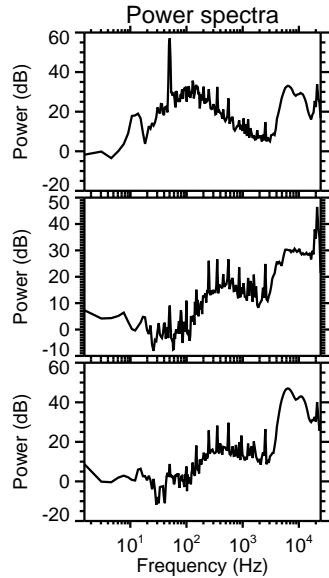
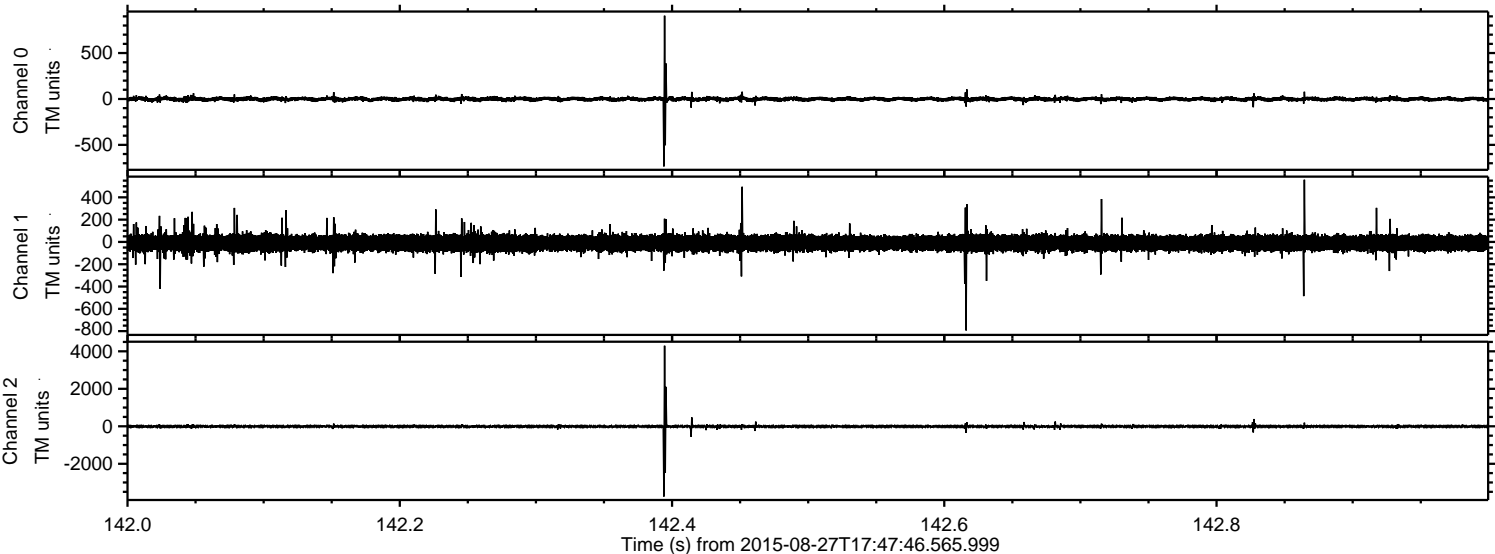
Channel 1  
mn: -669  
mx: 961  
 $\mu$ : -10.2  
 $\sigma$ : 40.9

Channel 2  
mn: -5080  
mx: 4026  
 $\mu$ : -10.0  
 $\sigma$ : 52.5



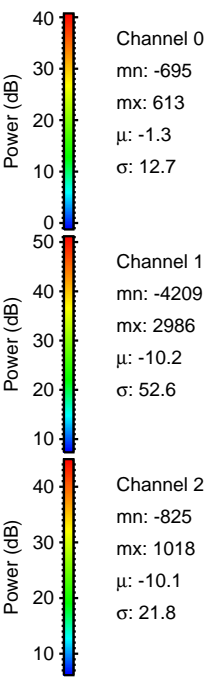
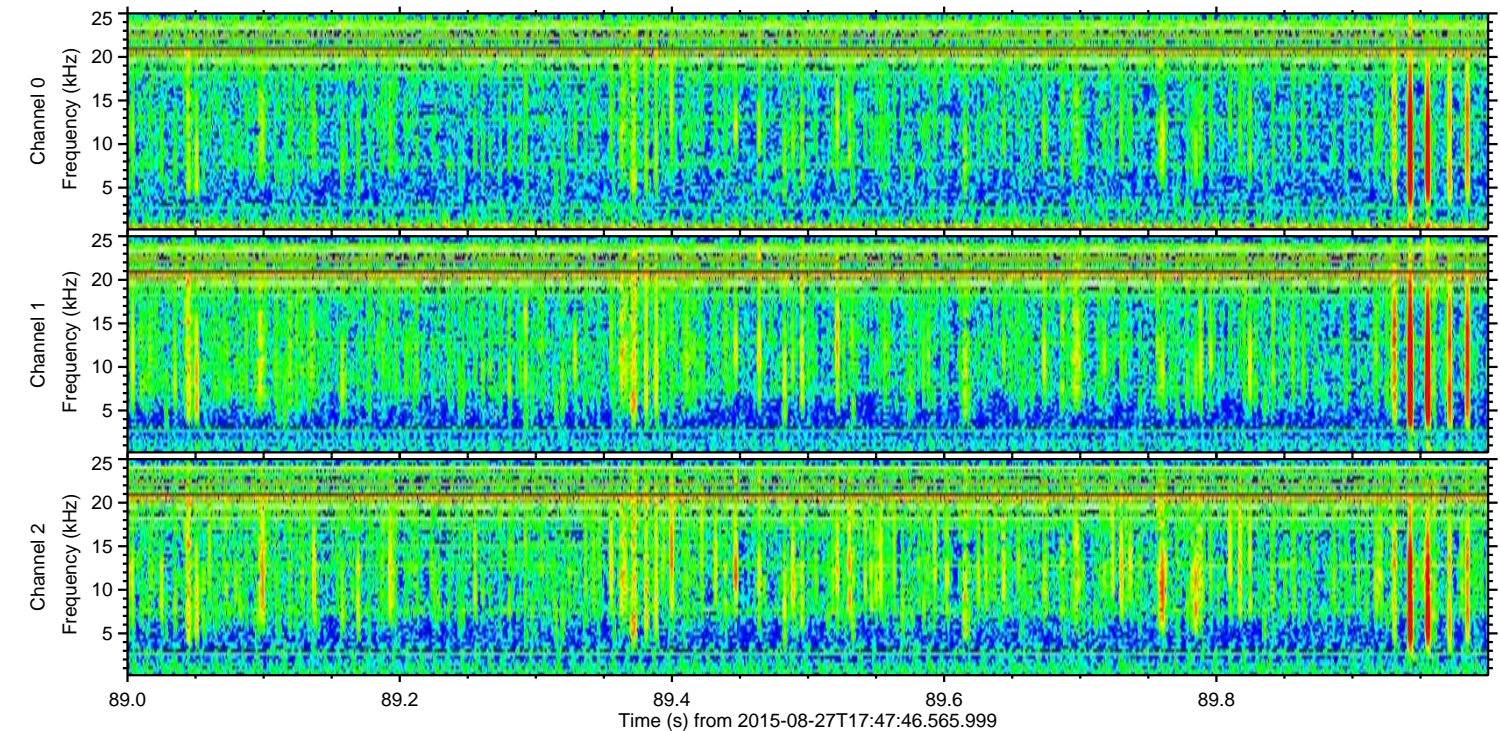
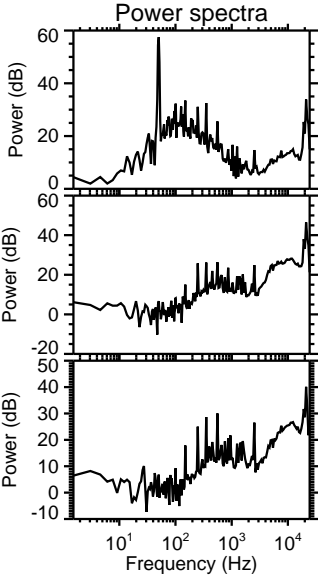
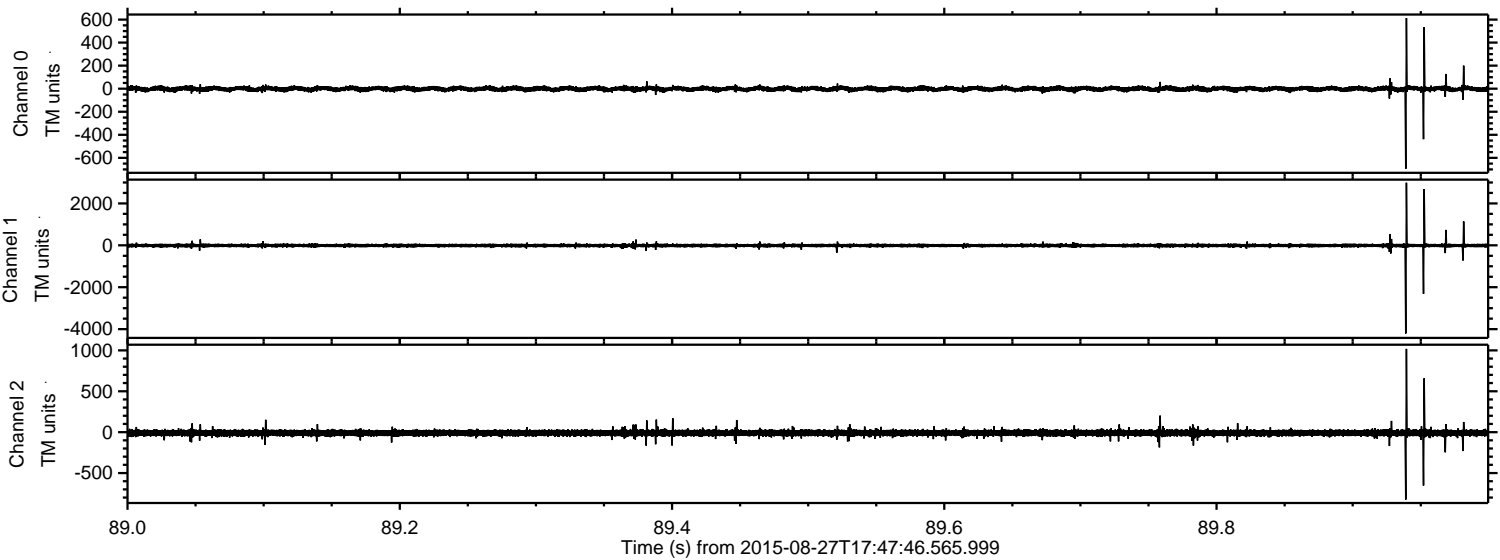
ELMAVAN 3D WAVEFORMS (Measured data sampled at 50 kHz) 51000 packets of 144 samples from 2015-08-27T17:47:46.565.999. Part 143/147

Processed Wed Oct 7 12:02:17 2015 by ELM ver.2012-10-06 from 001\_\_elm20150827\_174745\_\_dat00.bin





Processed Wed Oct 7 12:02:18 2015 by ELM ver.2012-10-06 from 001\_\_elm20150827\_174745\_\_dat00.bin



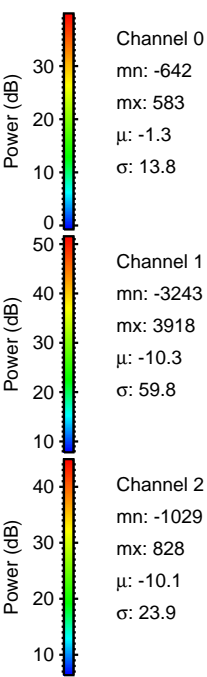
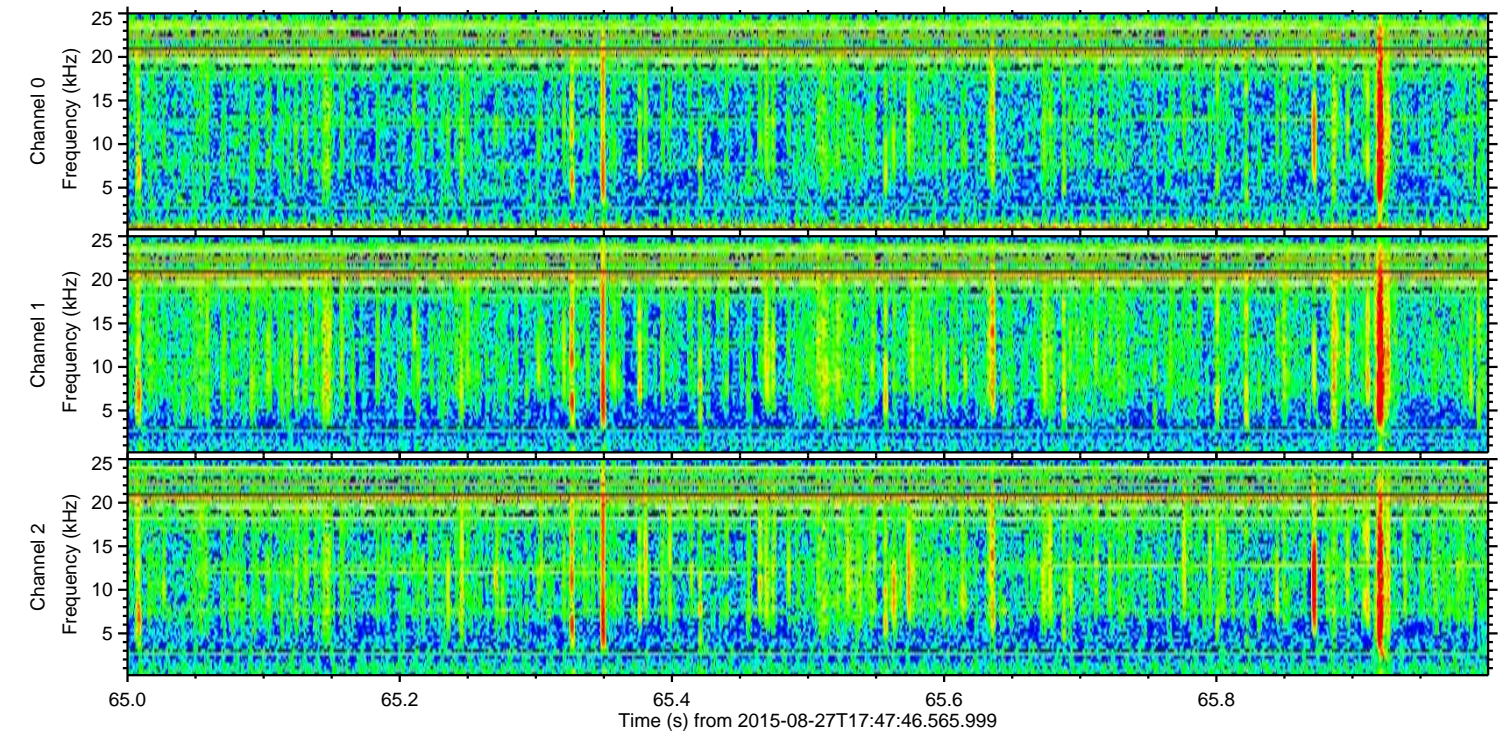
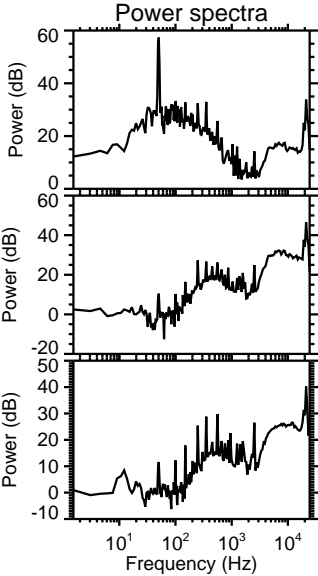
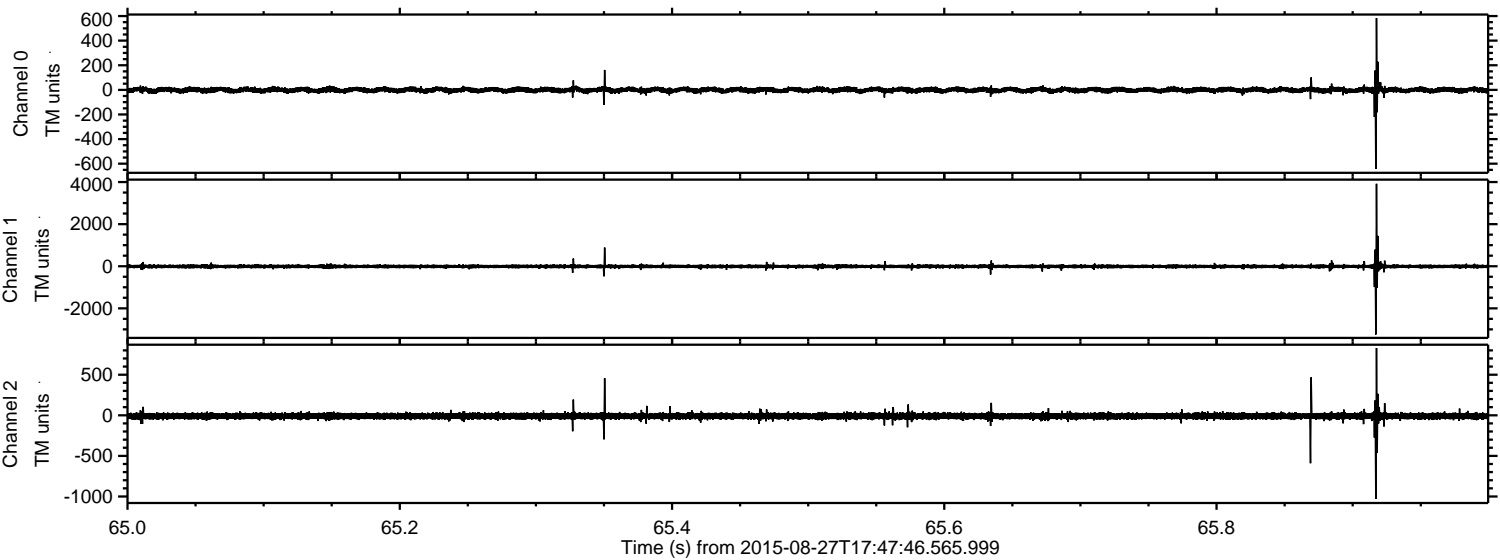
Channel 0  
mn: -695  
mx: 613  
 $\mu$ : -1.3  
 $\sigma$ : 12.7

Channel 1  
mn: -4209  
mx: 2986  
 $\mu$ : -10.2  
 $\sigma$ : 52.6

Channel 2  
mn: -825  
mx: 1018  
 $\mu$ : -10.1  
 $\sigma$ : 21.8



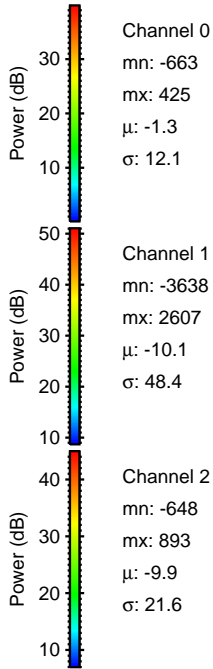
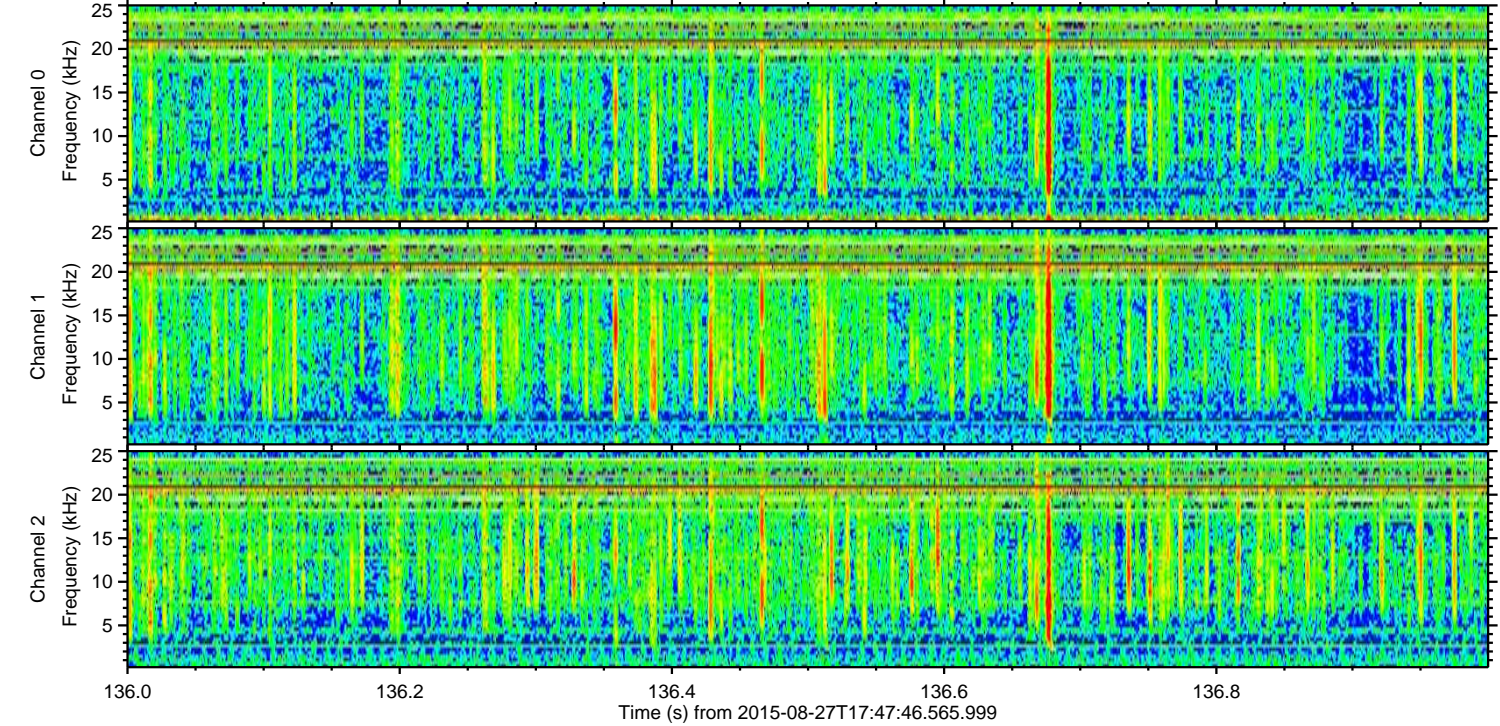
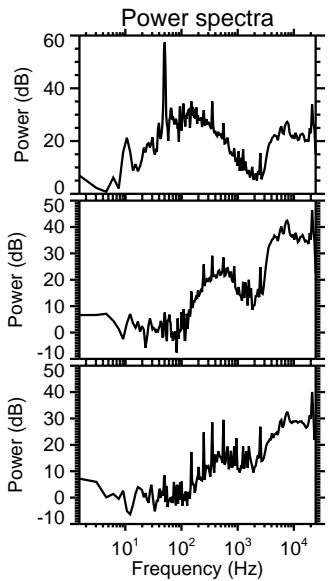
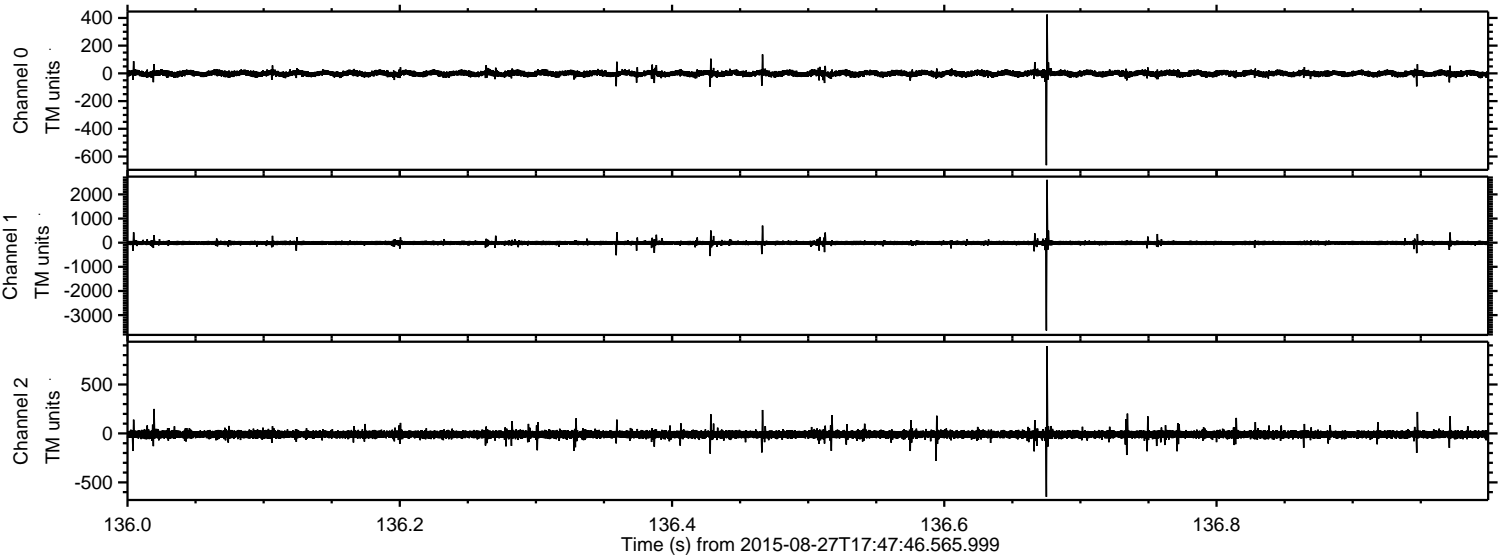
Processed Wed Oct 7 12:02:19 2015 by ELM ver.2012-10-06 from 001\_\_elm20150827\_174745\_\_dat00.bin





ELMAVAN 3D WAVEFORMS (Measured data sampled at 50 kHz) 51000 packets of 144 samples from 2015-08-27T17:47:46.565.999. Part 137/147

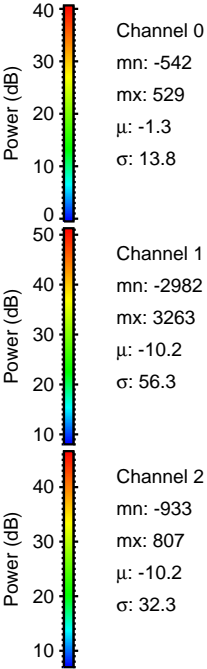
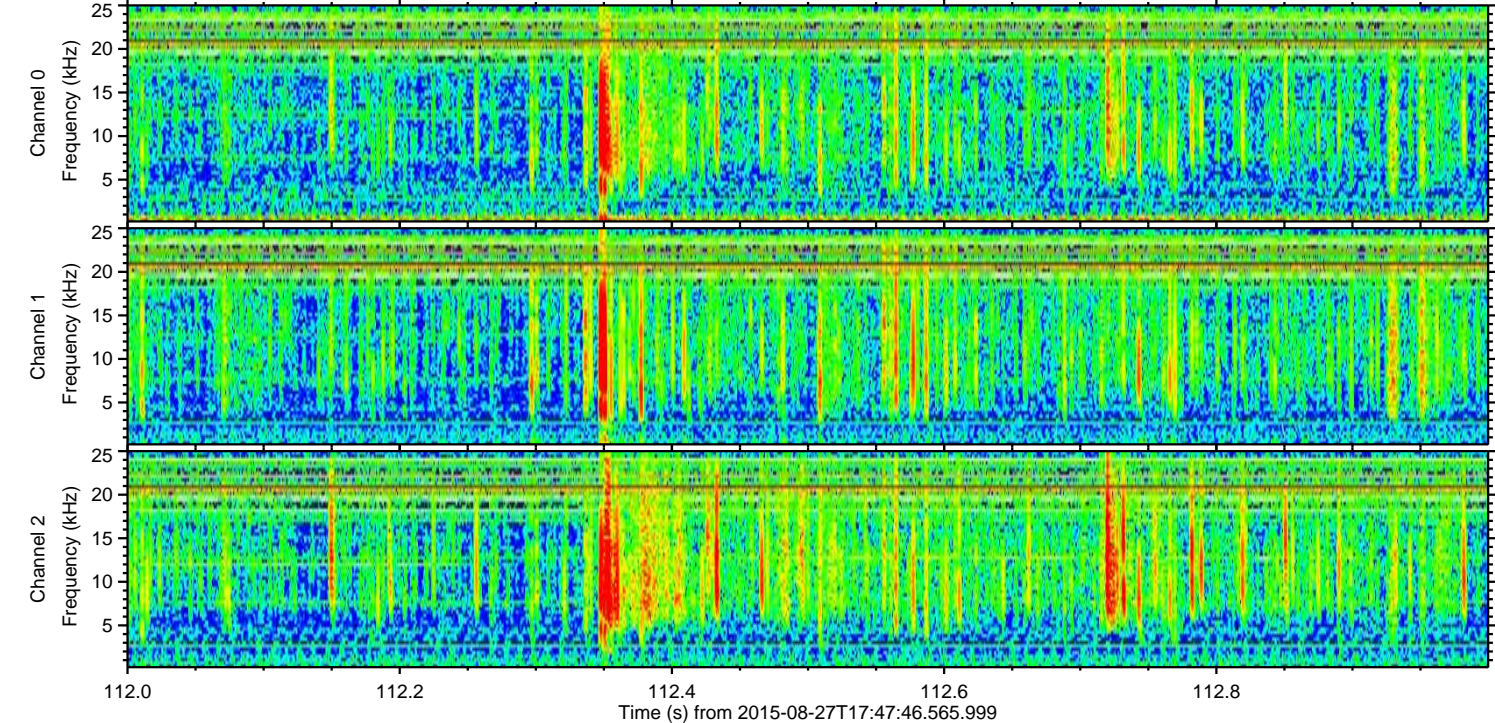
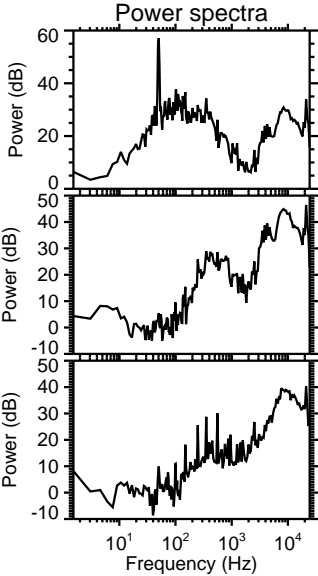
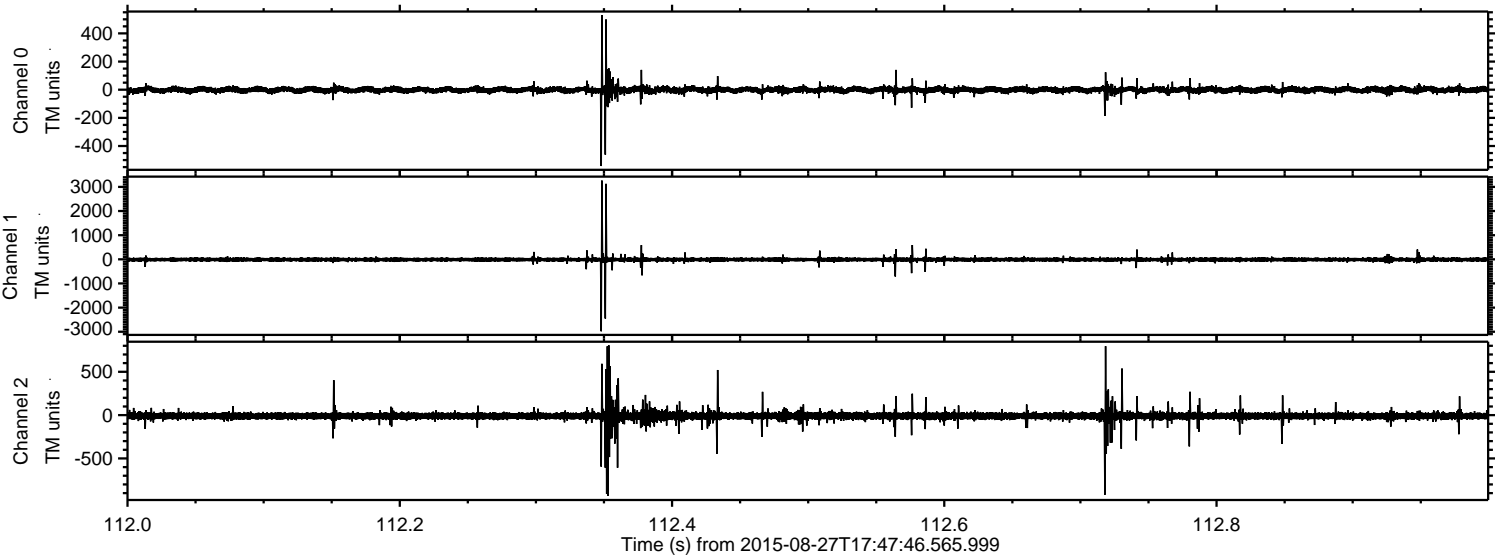
Processed Wed Oct 7 12:02:20 2015 by ELM ver.2012-10-06 from 001\_\_elm20150827\_174745\_\_dat00.bin





ELMAVAN 3D WAVEFORMS (Measured data sampled at 50 kHz) 51000 packets of 144 samples from 2015-08-27T17:47:46.565.999. Part 113/147

Processed Wed Oct 7 12:02:21 2015 by ELM ver.2012-10-06 from 001\_\_elm20150827\_174745\_\_dat00.bin





Processed Wed Oct 7 12:02:22 2015 by ELM ver.2012-10-06 from 001\_\_elm20150827\_174745\_\_dat00.bin

