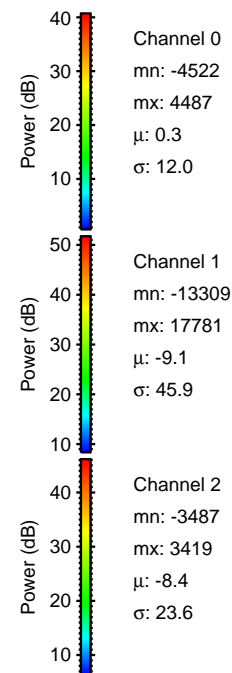
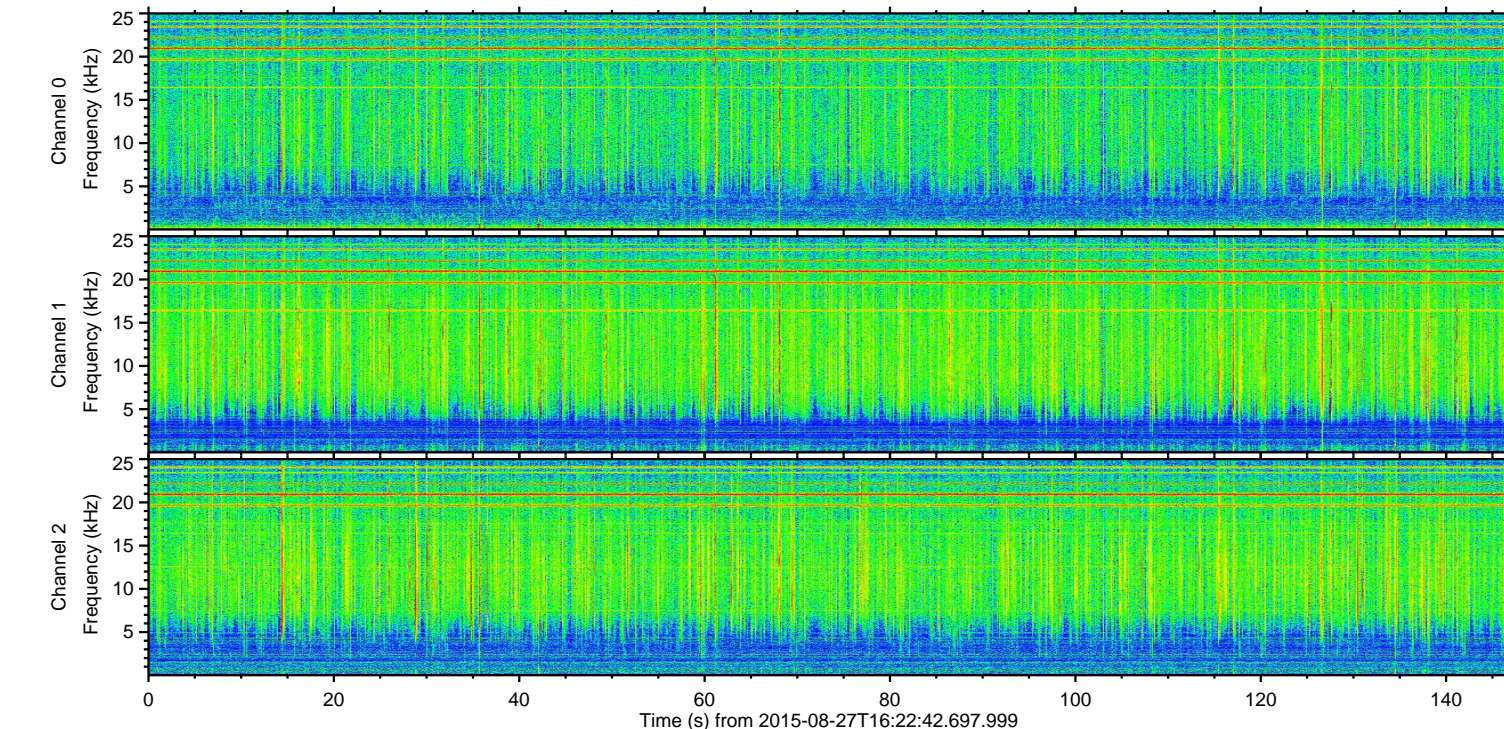
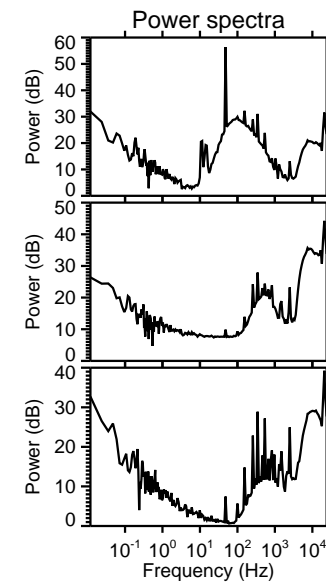
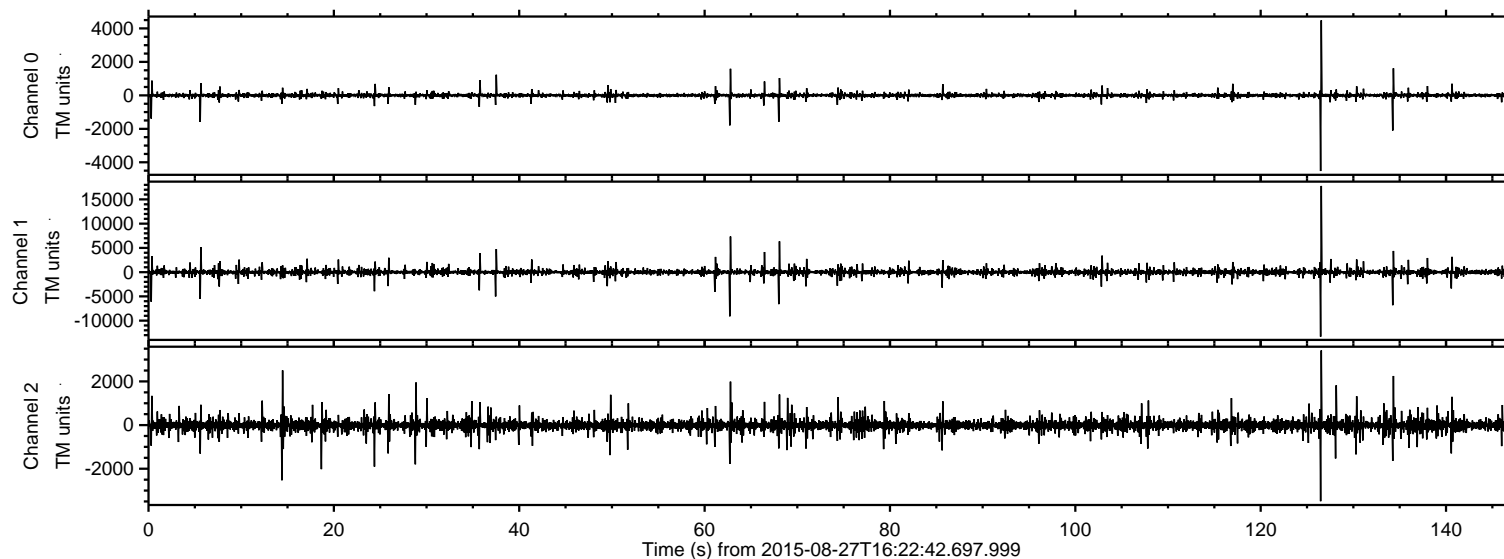


# ELMAVAN 3D WAVEFORMS (Measured data sampled at 50 kHz) 51000 packets of 144 samples from 2015-08-27T16:22:42.697.999.

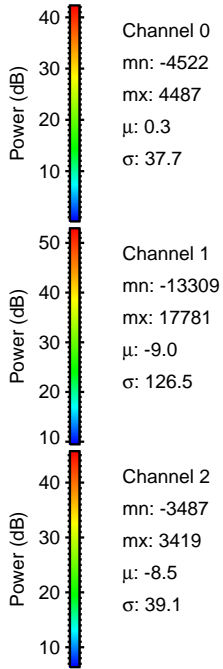
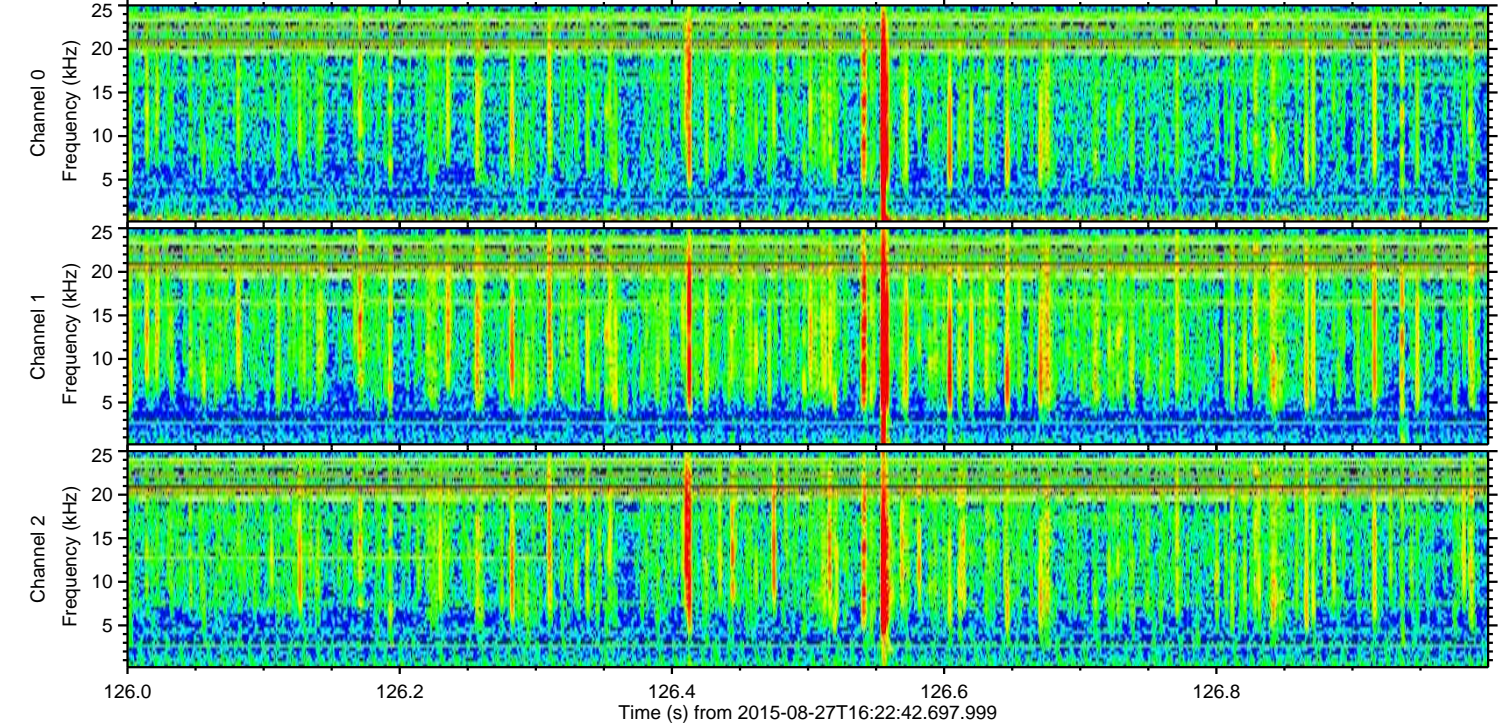
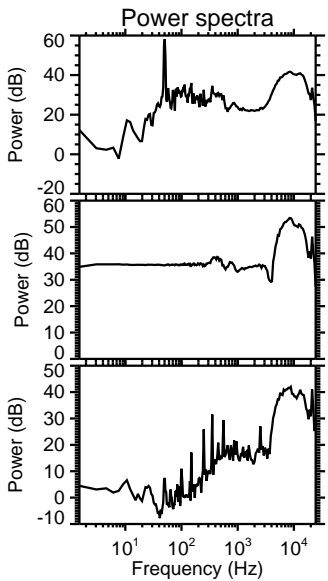
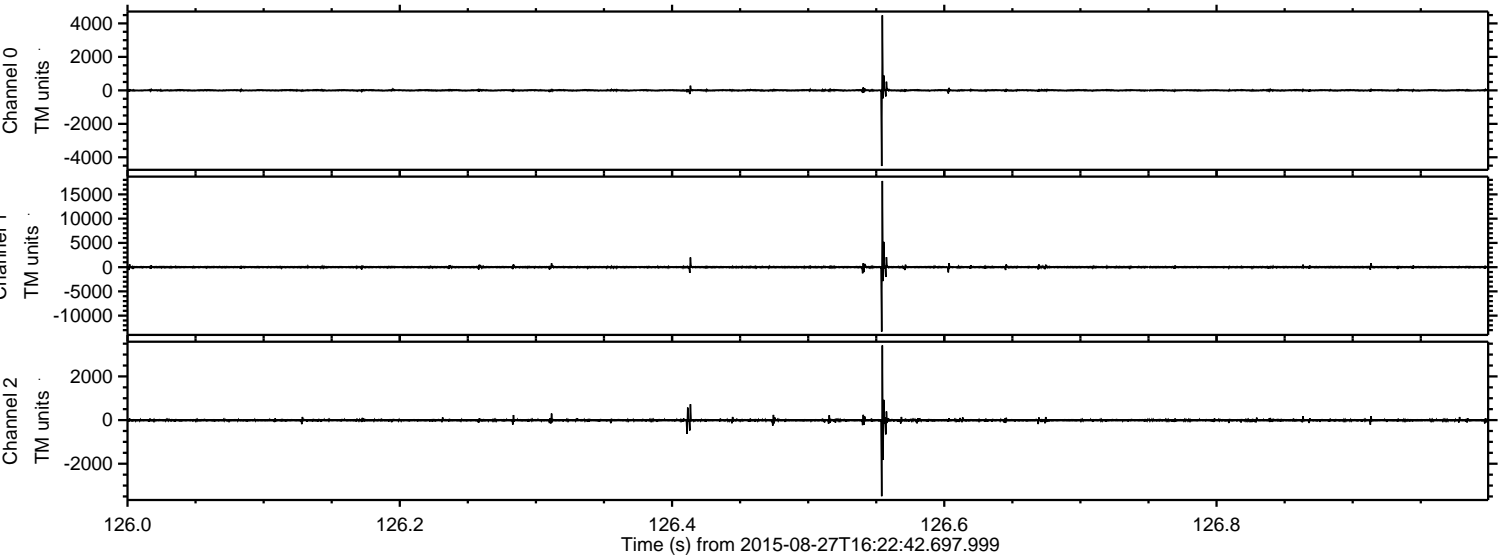
Processed Wed Oct 7 11:38:27 2015 by ELM ver.2012-10-06 from 001\_\_elm20150827\_162241\_\_dat00.bin





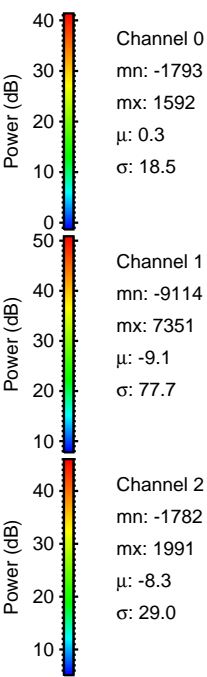
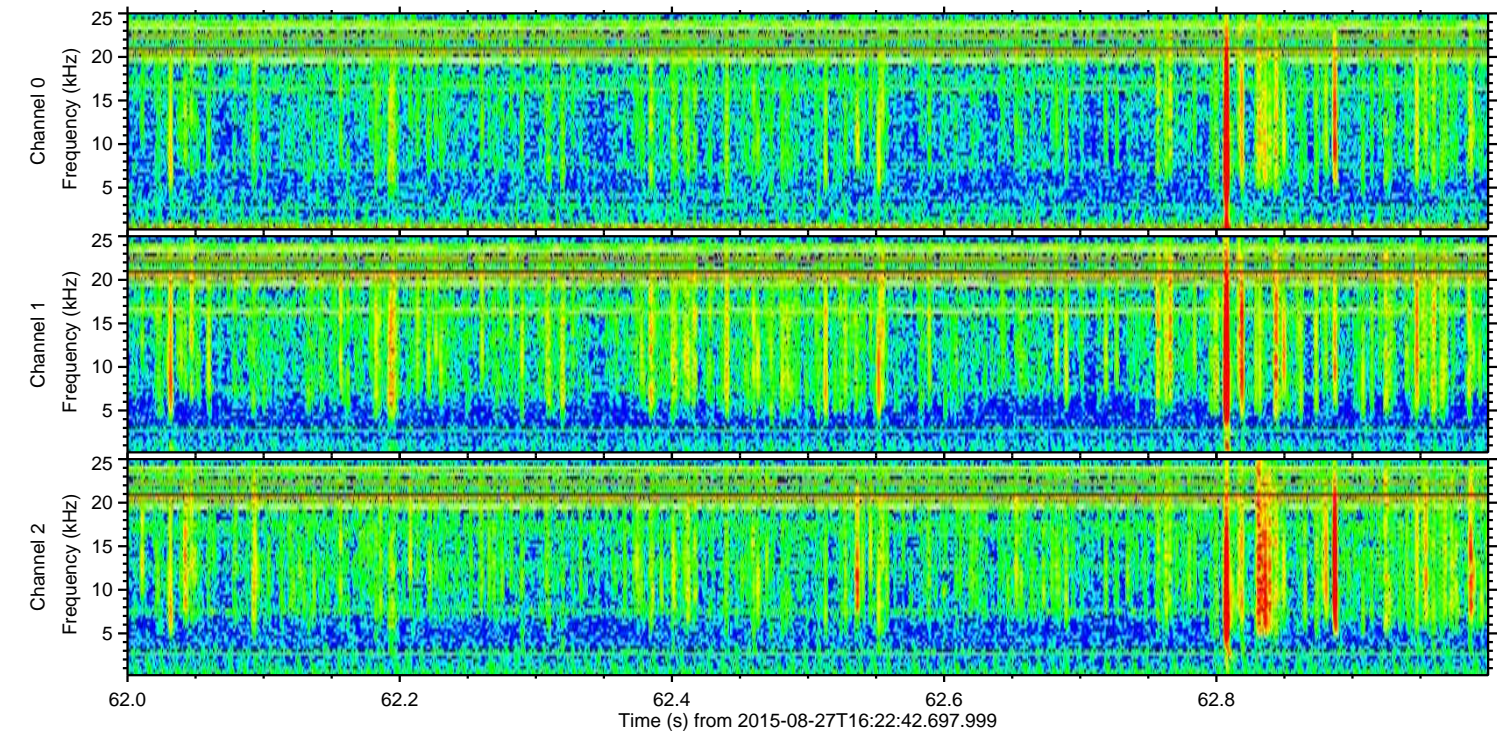
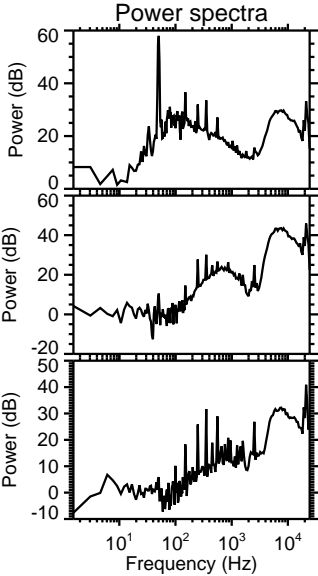
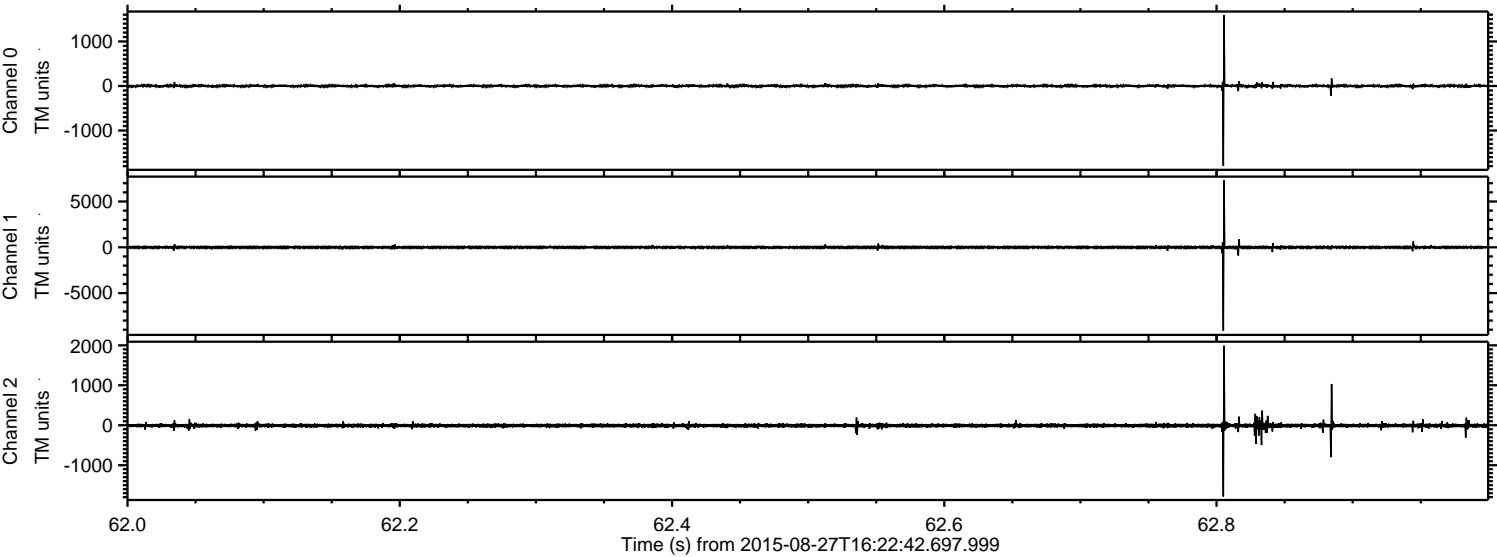
ELMAVAN 3D WAVEFORMS (Measured data sampled at 50 kHz) 51000 packets of 144 samples from 2015-08-27T16:22:42.697.999. Part 127/147

Processed Wed Oct 7 11:38:43 2015 by ELM ver.2012-10-06 from 001\_\_elm20150827\_162241\_\_dat00.bin





Processed Wed Oct 7 11:38:44 2015 by ELM ver.2012-10-06 from 001\_\_elm20150827\_162241\_\_dat00.bin



Channel 0  
mn: -1793  
mx: 1592  
 $\mu$ : 0.3  
 $\sigma$ : 18.5

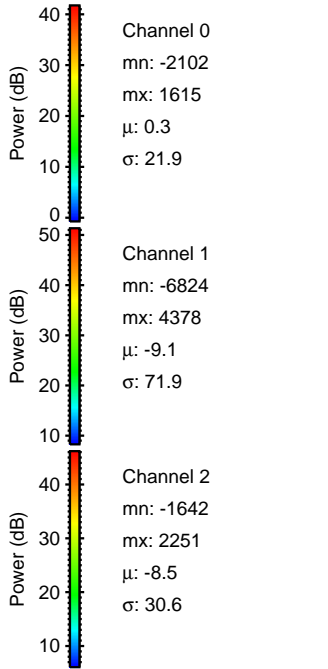
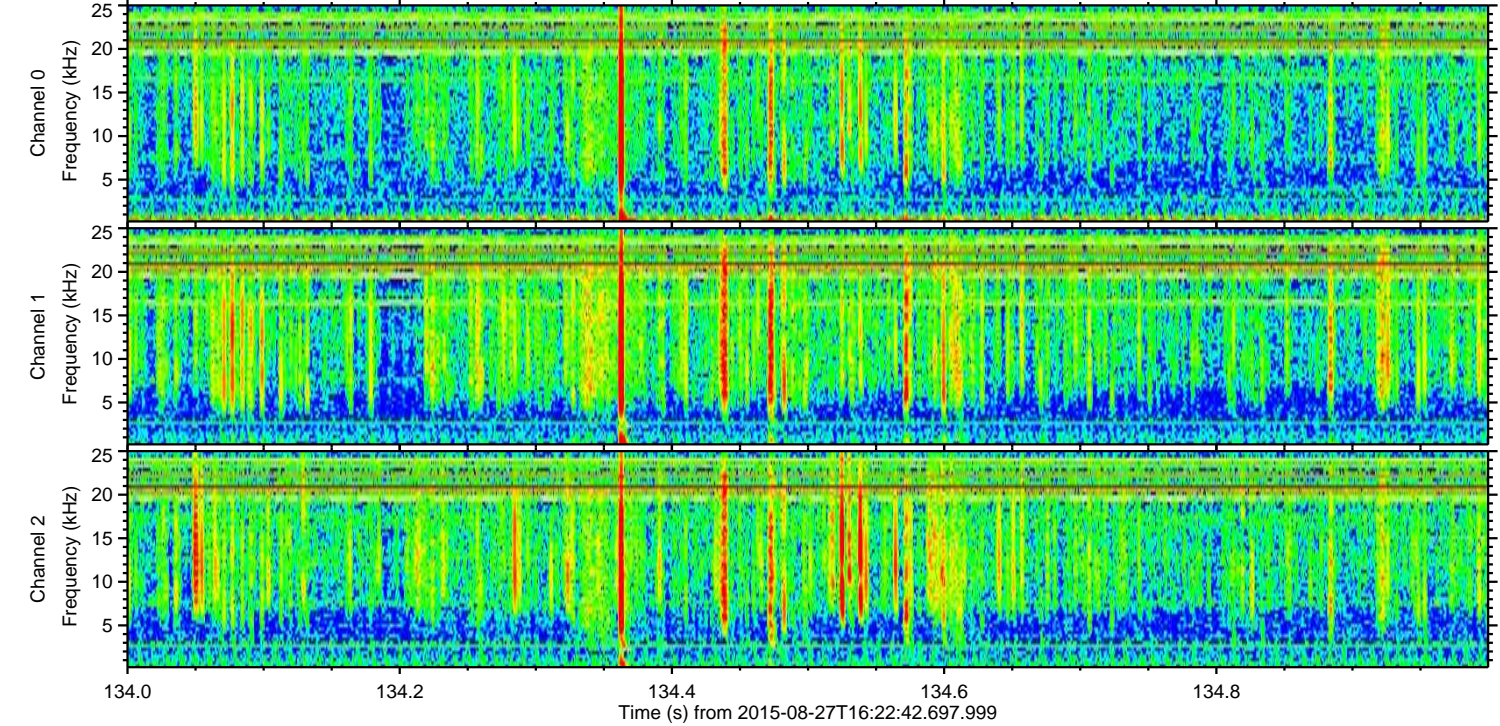
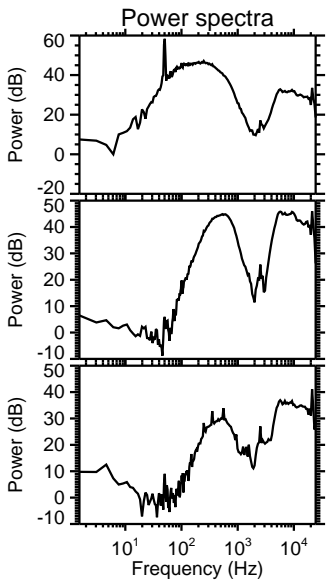
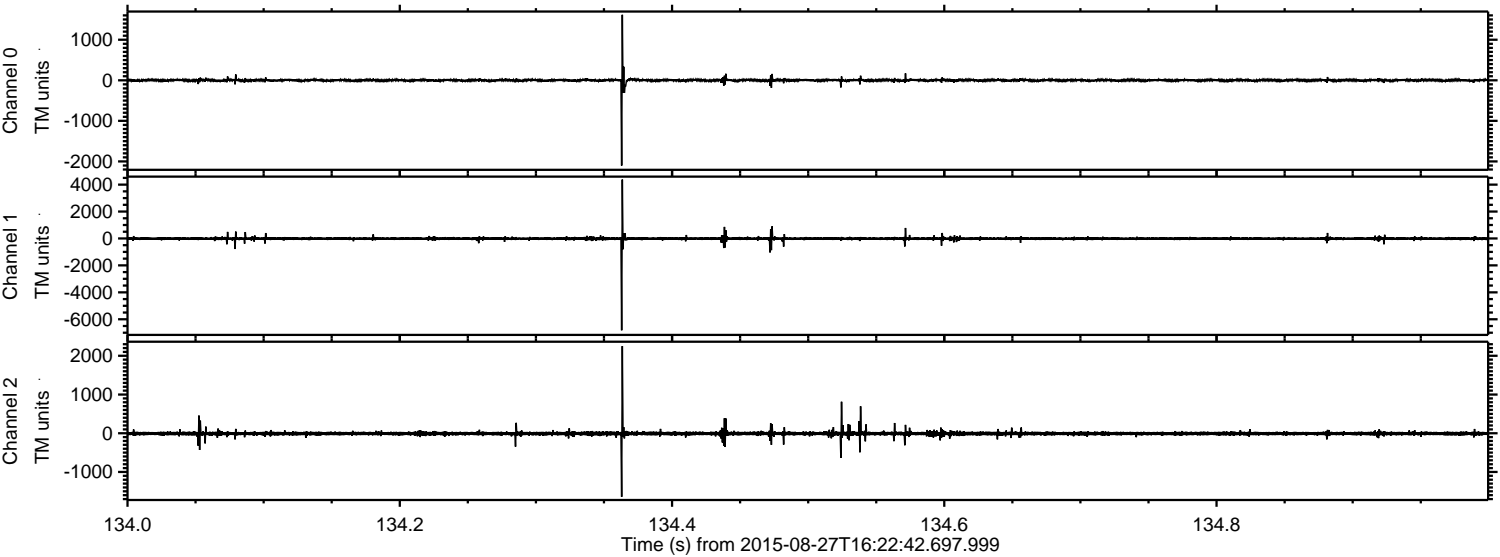
Channel 1  
mn: -9114  
mx: 7351  
 $\mu$ : -9.1  
 $\sigma$ : 77.7

Channel 2  
mn: -1782  
mx: 1991  
 $\mu$ : -8.3  
 $\sigma$ : 29.0



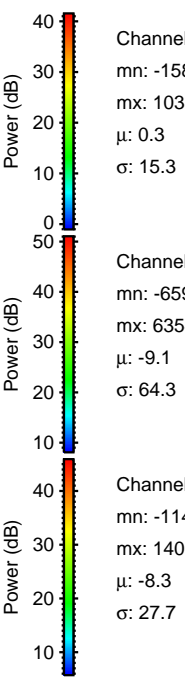
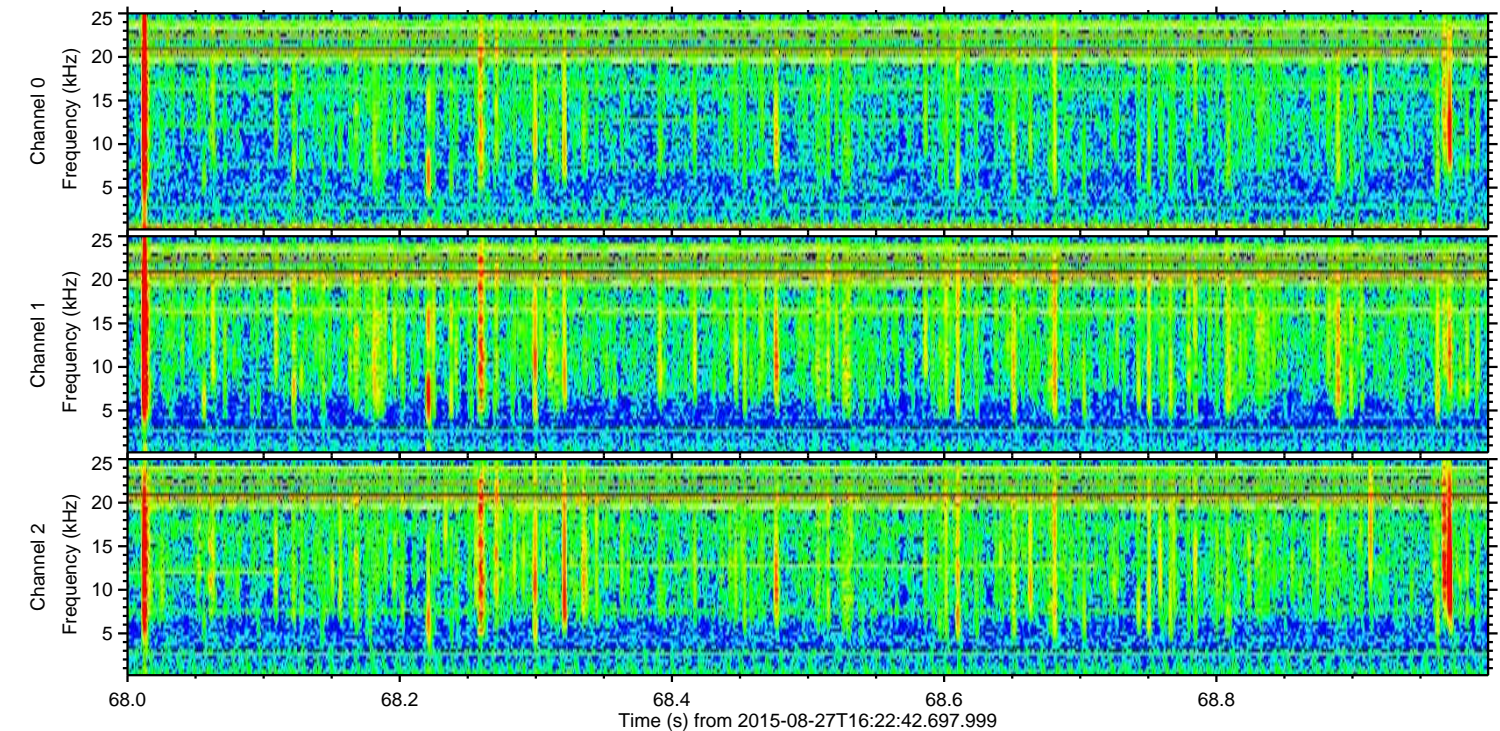
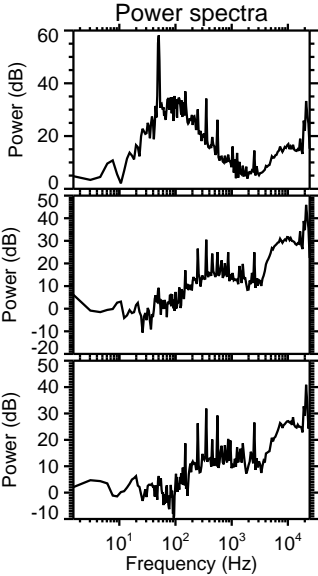
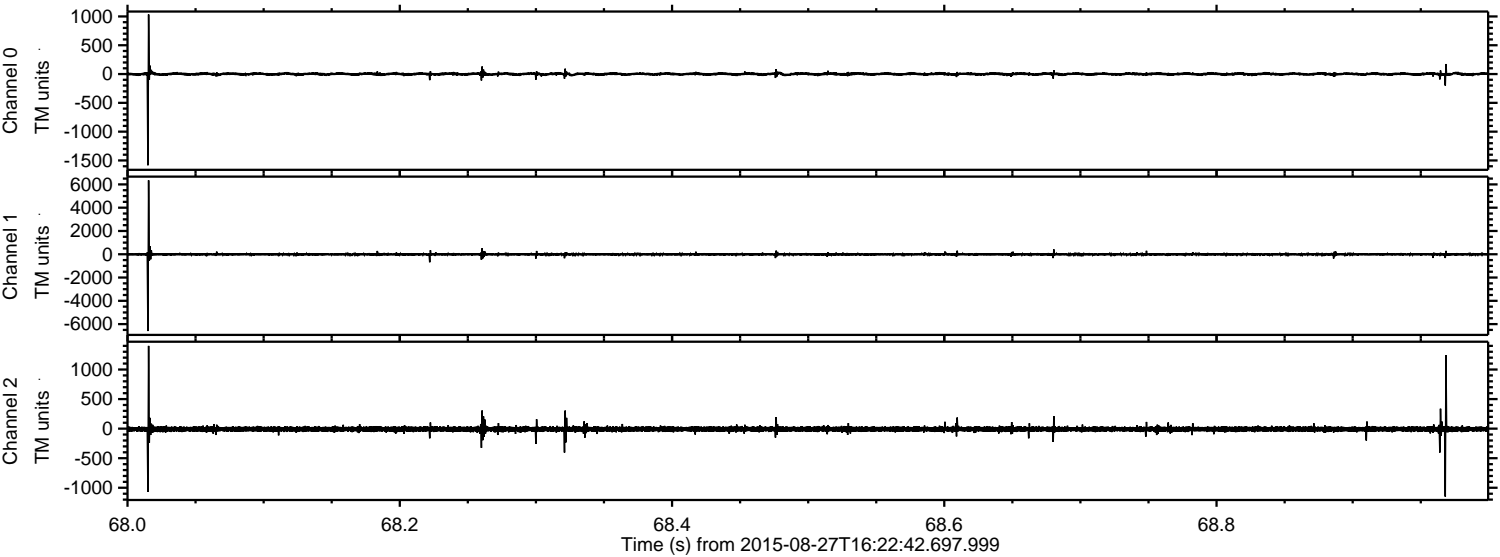
ELMAVAN 3D WAVEFORMS (Measured data sampled at 50 kHz) 51000 packets of 144 samples from 2015-08-27T16:22:42.697.999. Part 135/147

Processed Wed Oct 7 11:38:45 2015 by ELM ver.2012-10-06 from 001\_\_elm20150827\_162241\_\_dat00.bin





Processed Wed Oct 7 11:38:46 2015 by ELM ver.2012-10-06 from 001\_\_elm20150827\_162241\_\_dat00.bin



Channel 0  
mn: -1583  
mx: 1033  
 $\mu$ : 0.3  
 $\sigma$ : 15.3

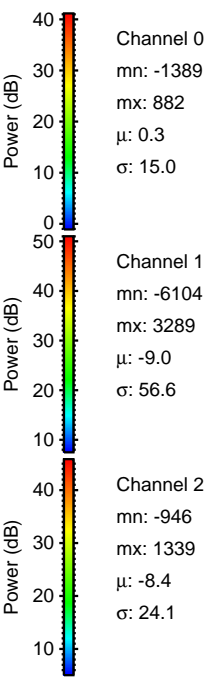
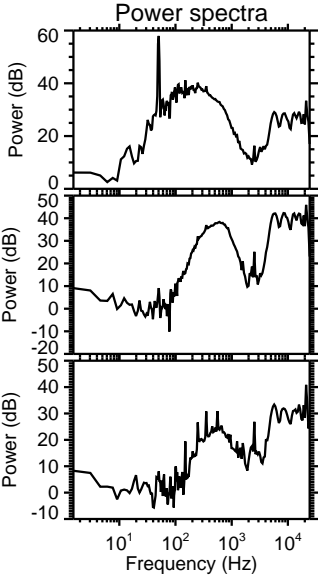
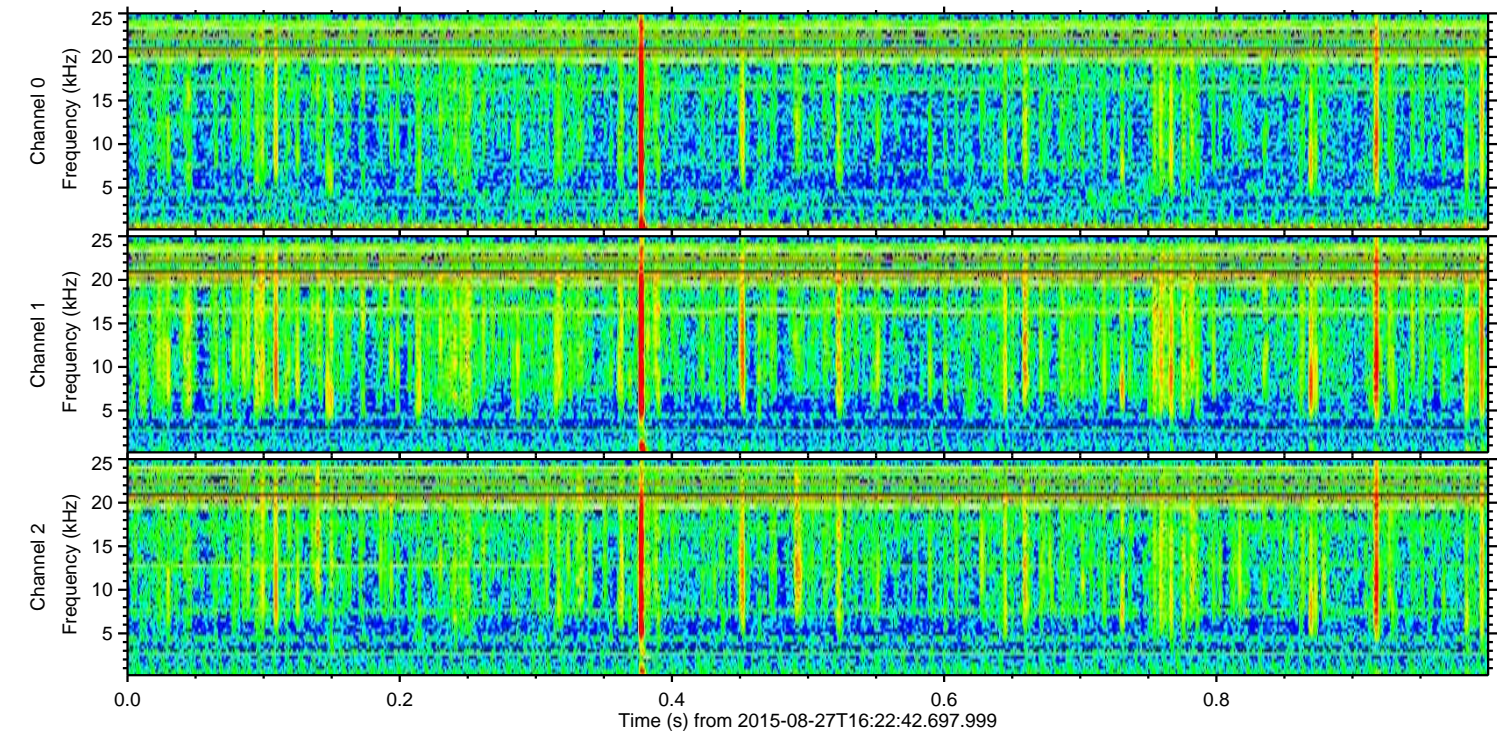
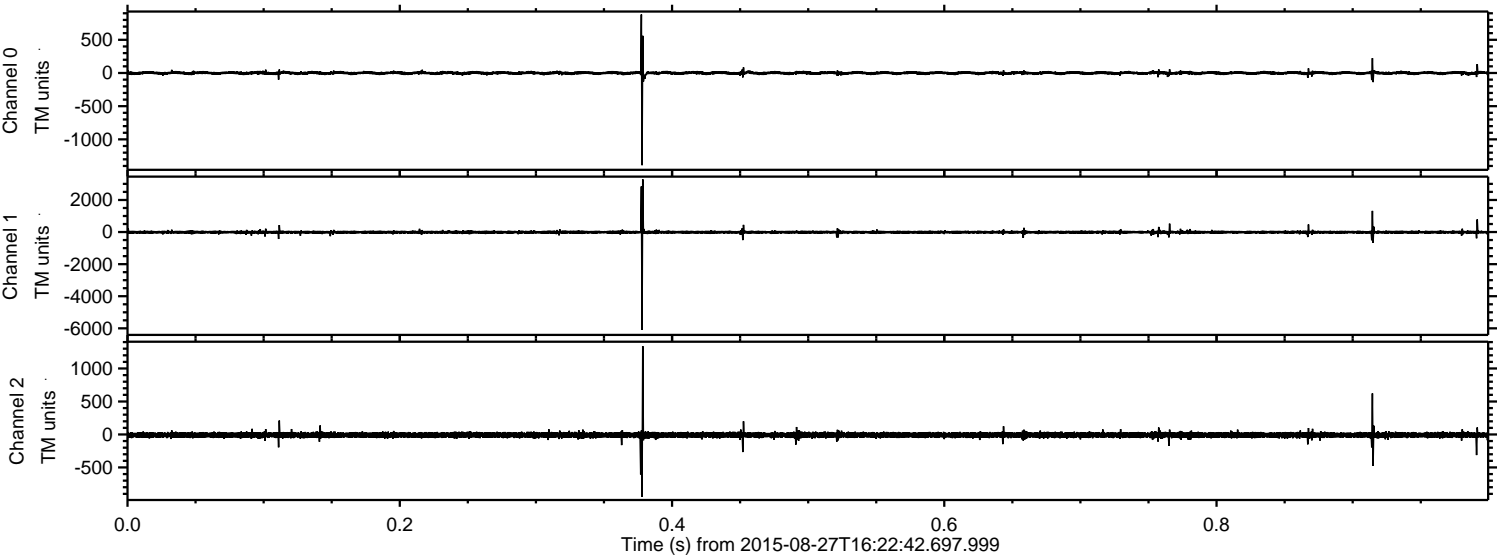
Channel 1  
mn: -6599  
mx: 6354  
 $\mu$ : -9.1  
 $\sigma$ : 64.3

Channel 2  
mn: -1149  
mx: 1400  
 $\mu$ : -8.3  
 $\sigma$ : 27.7



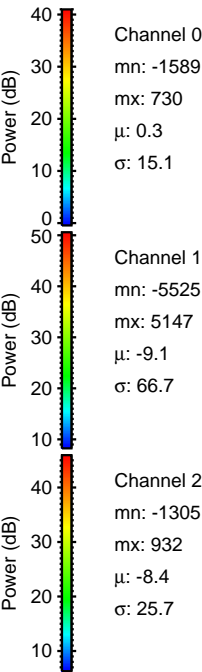
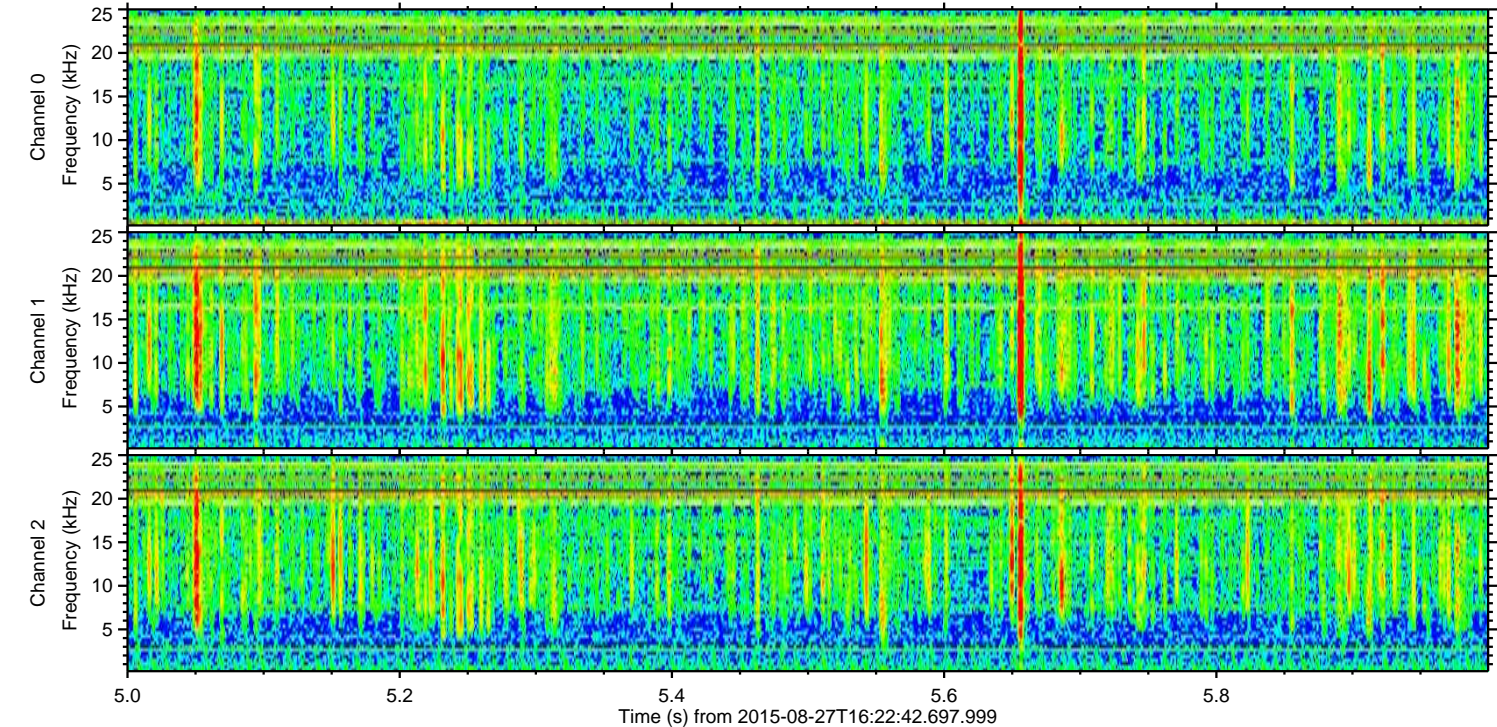
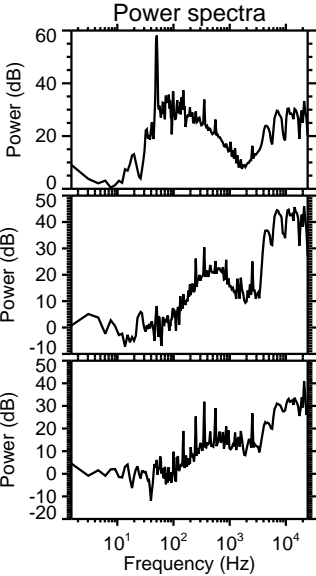
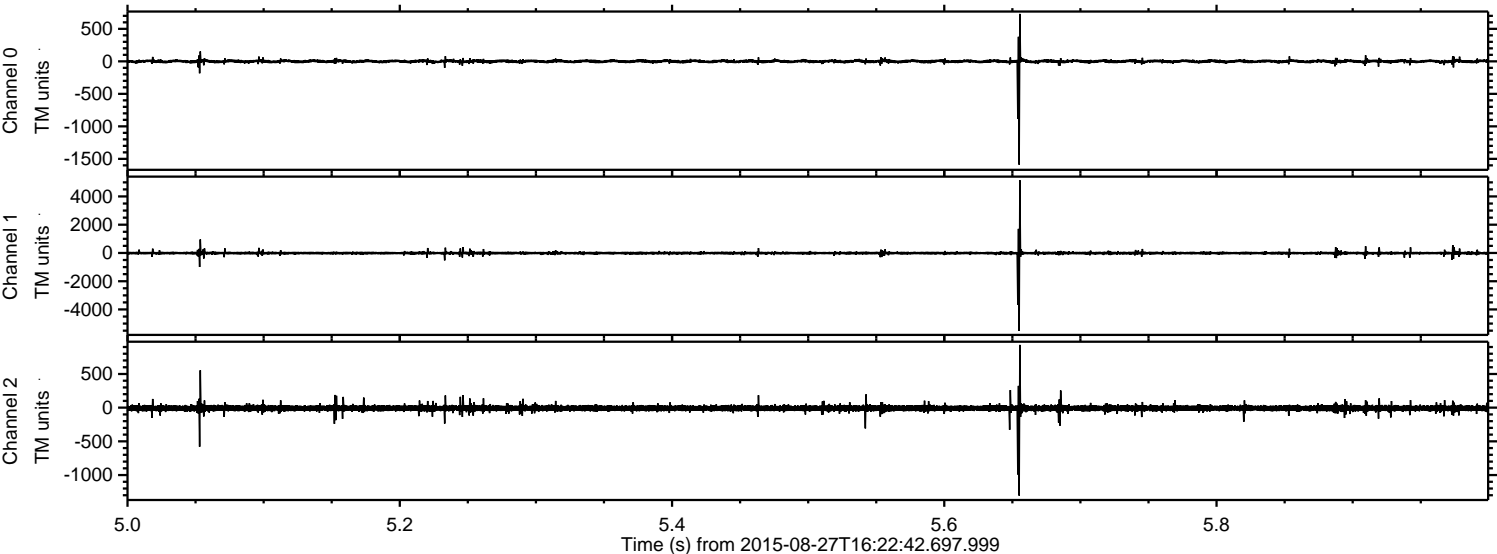
ELMAVAN 3D WAVEFORMS (Measured data sampled at 50 kHz) 51000 packets of 144 samples from 2015-08-27T16:22:42.697.999. Part 1/147

Processed Wed Oct 7 11:38:47 2015 by ELM ver.2012-10-06 from 001\_\_elm20150827\_162241\_\_dat00.bin



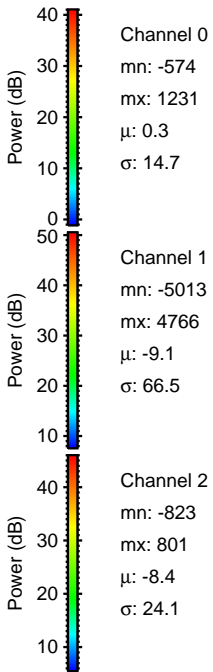
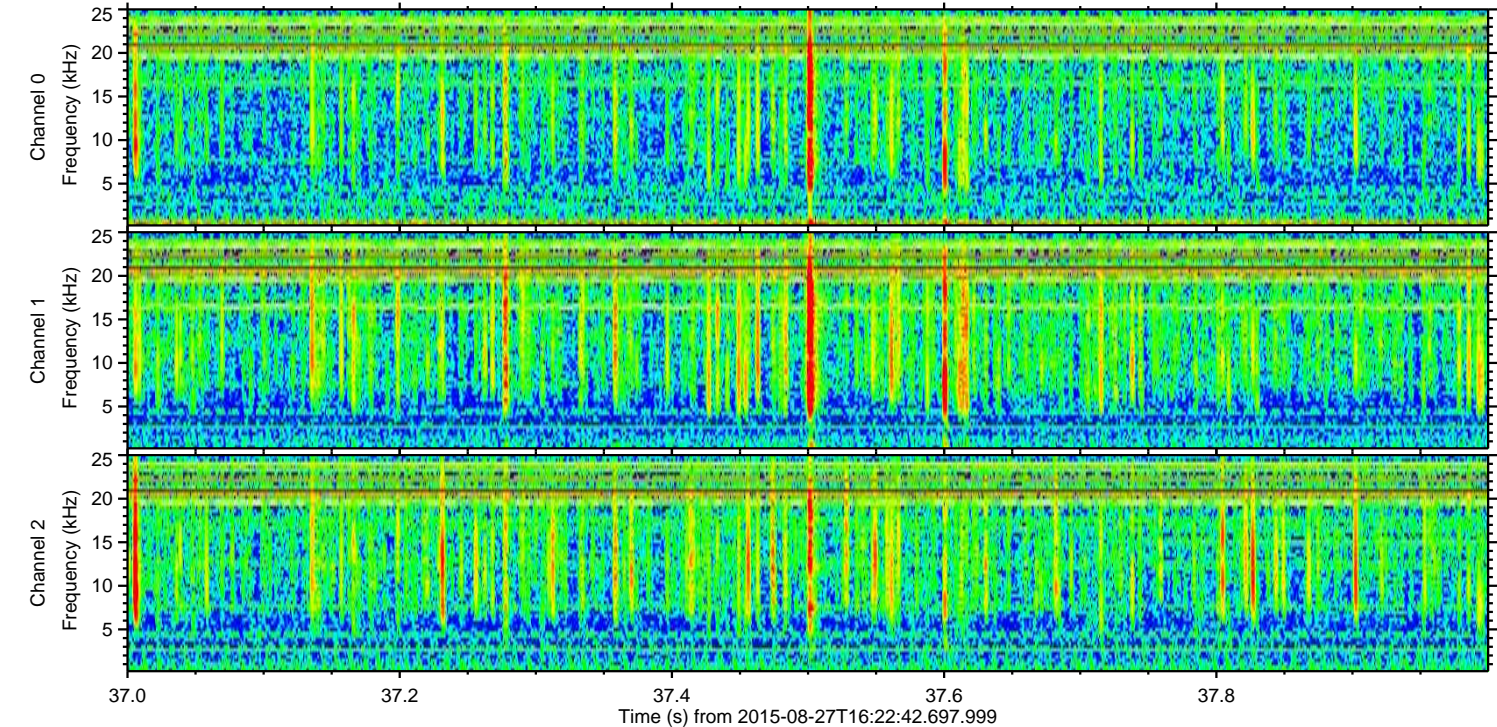
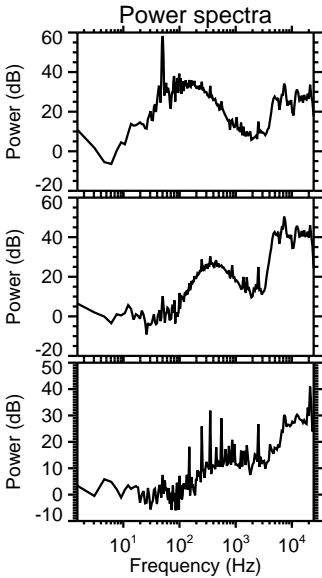
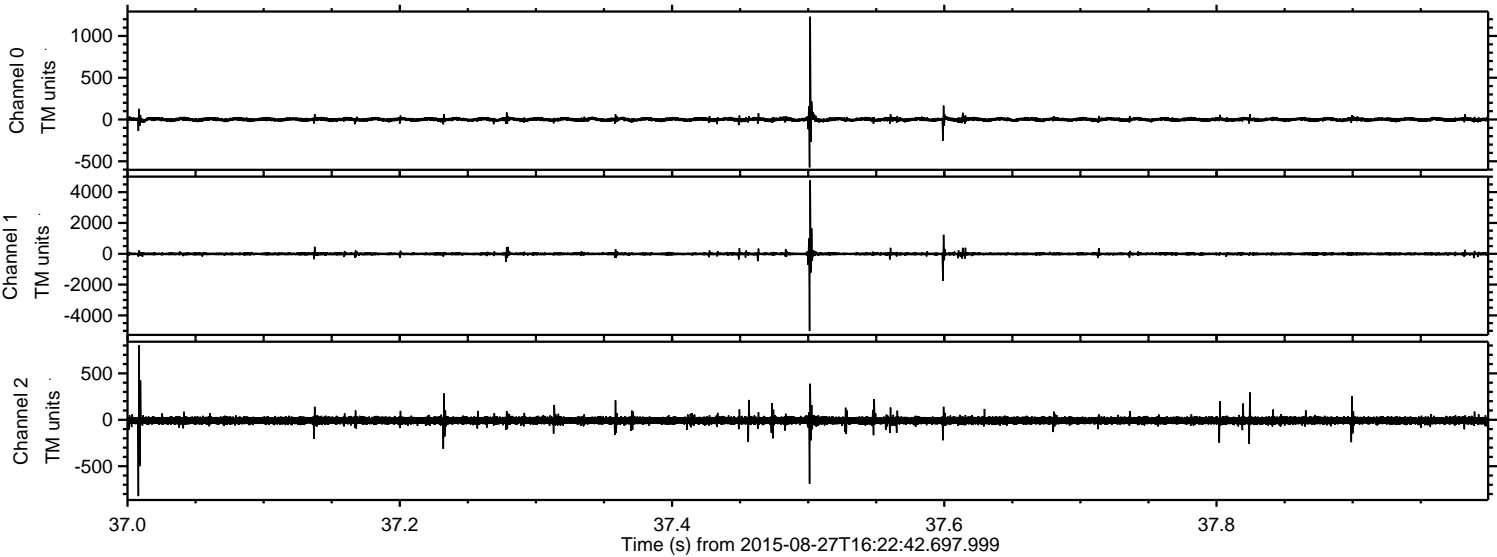


Processed Wed Oct 7 11:38:48 2015 by ELM ver.2012-10-06 from 001\_\_elm20150827\_162241\_\_dat00.bin



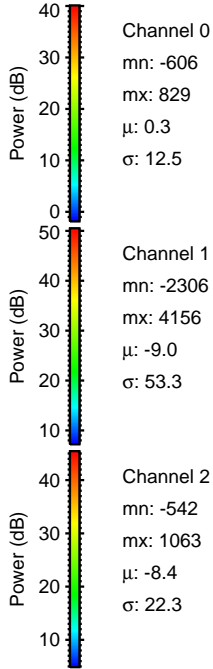
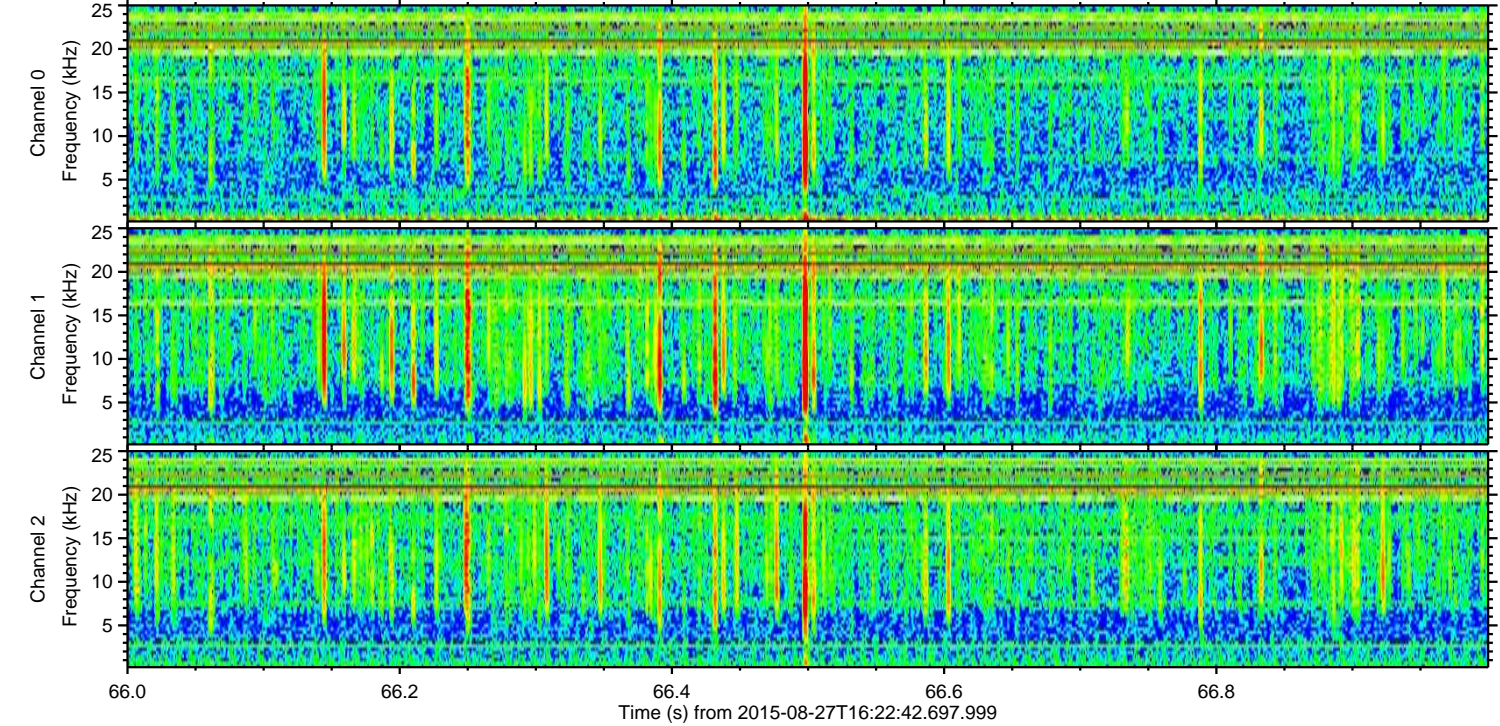
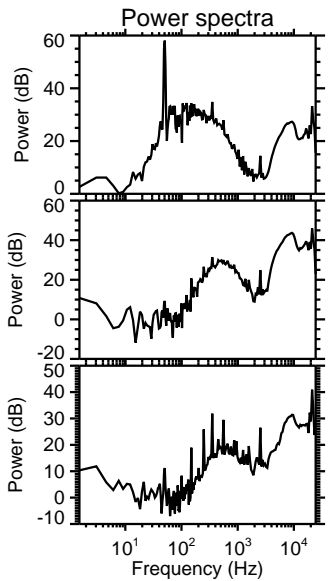
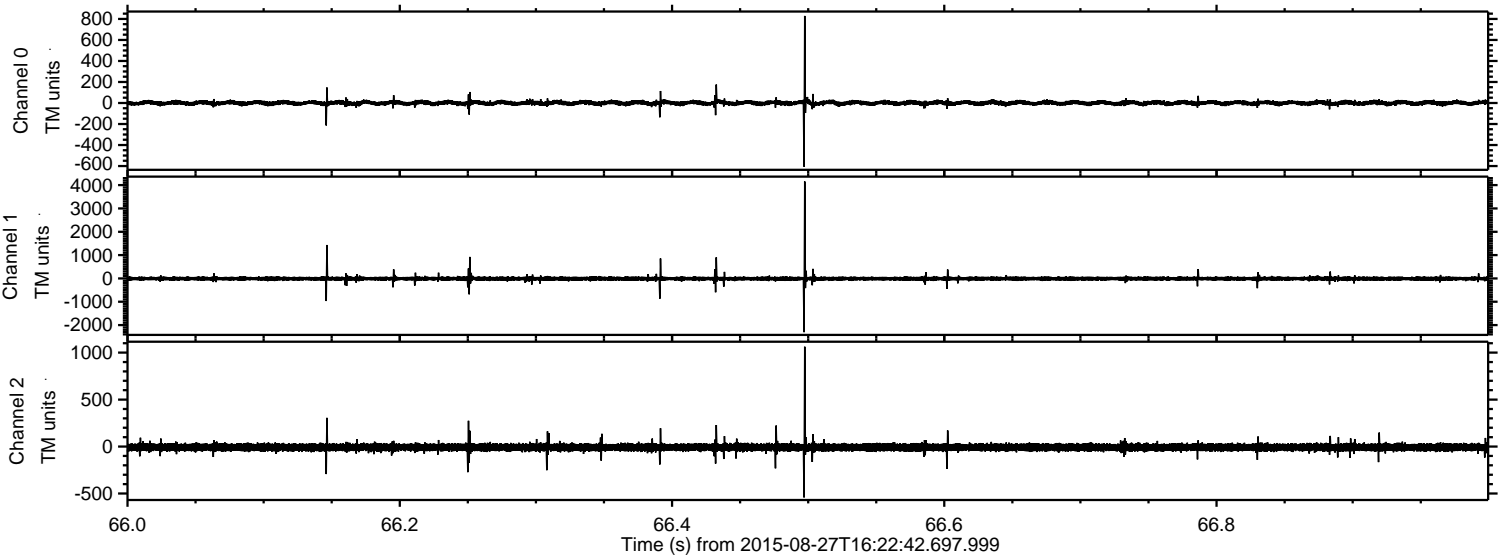


Processed Wed Oct 7 11:38:49 2015 by ELM ver.2012-10-06 from 001\_\_elm20150827\_162241\_\_dat00.bin





Processed Wed Oct 7 11:38:50 2015 by ELM ver.2012-10-06 from 001\_\_elm20150827\_162241\_\_dat00.bin



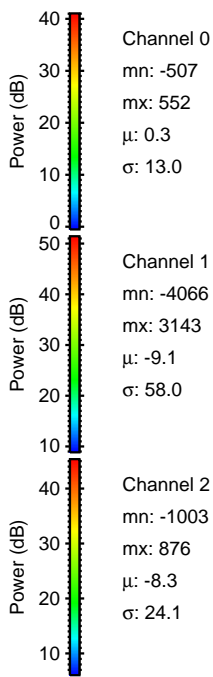
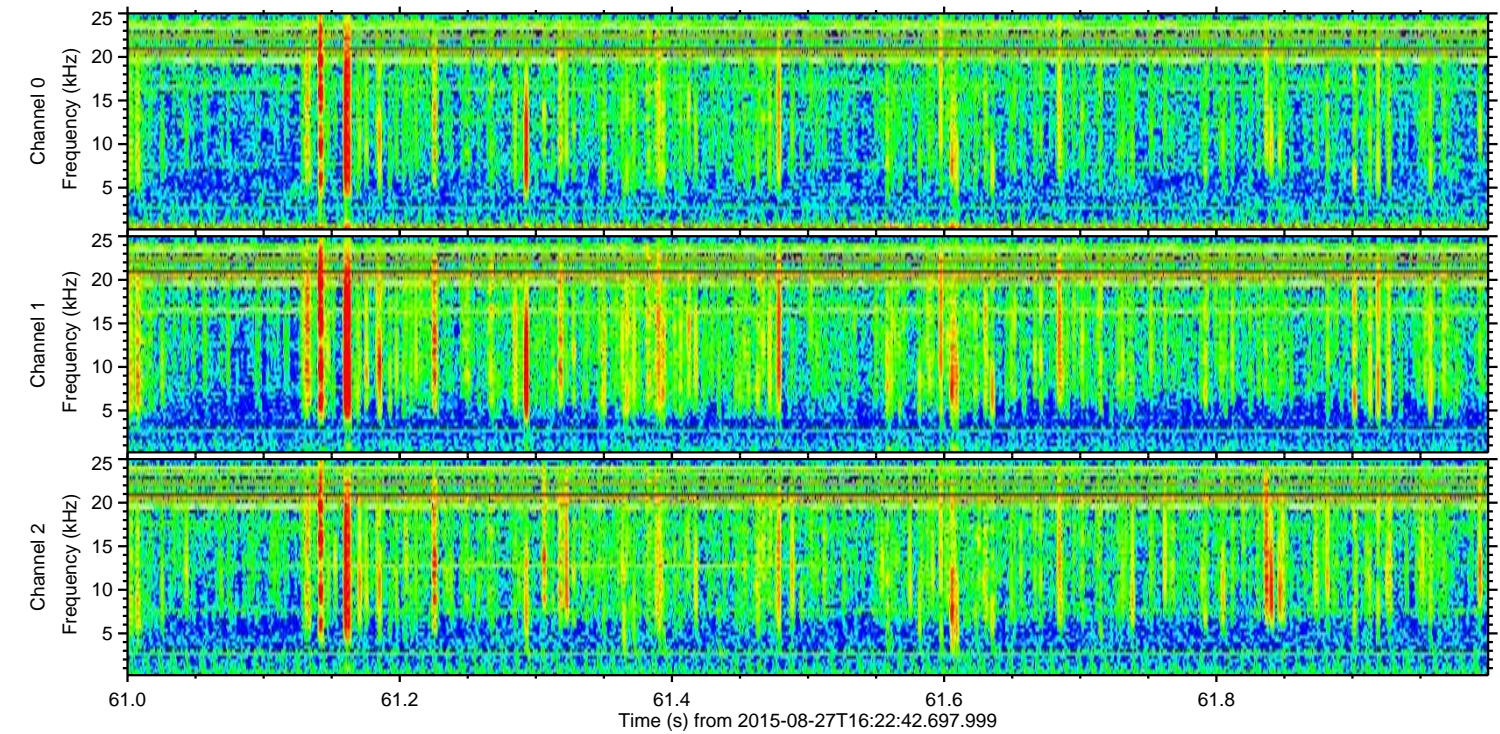
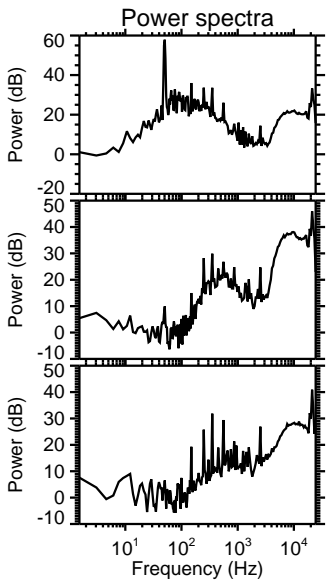
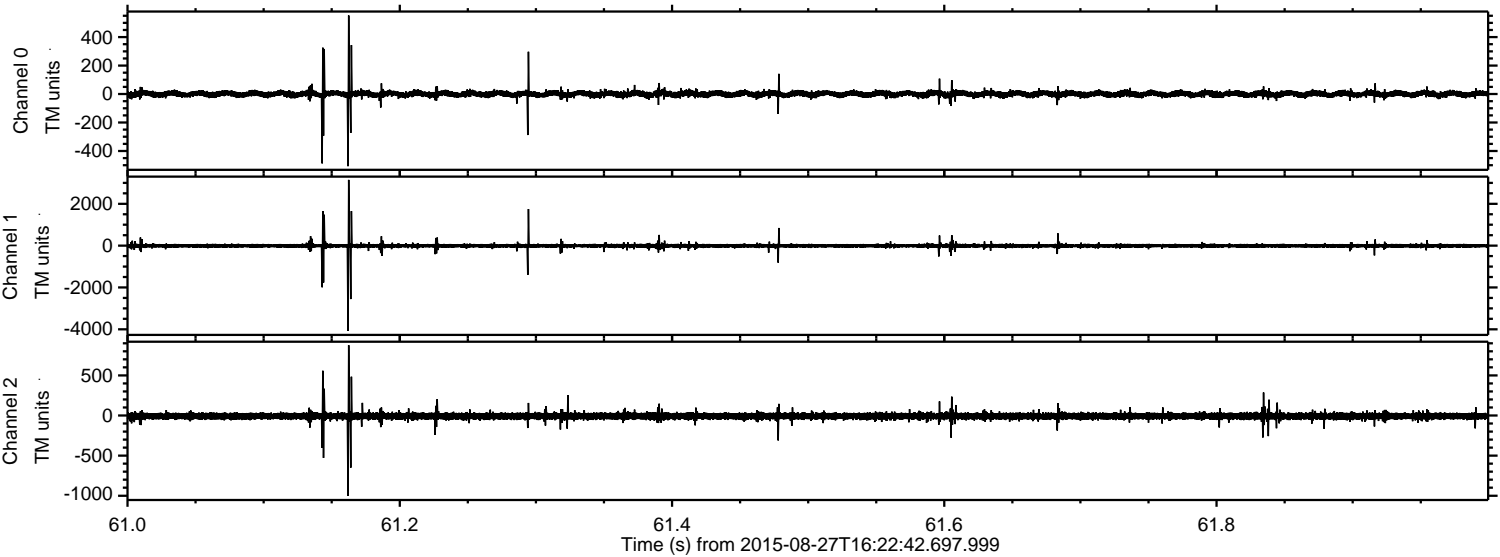
Channel 0  
mn: -606  
mx: 829  
 $\mu$ : 0.3  
 $\sigma$ : 12.5

Channel 1  
mn: -2306  
mx: 4156  
 $\mu$ : -9.0  
 $\sigma$ : 53.3

Channel 2  
mn: -542  
mx: 1063  
 $\mu$ : -8.4  
 $\sigma$ : 22.3



Processed Wed Oct 7 11:38:51 2015 by ELM ver.2012-10-06 from 001\_\_elm20150827\_162241\_\_dat00.bin



Channel 0  
mn: -507  
mx: 552  
 $\mu$ : 0.3  
 $\sigma$ : 13.0

Channel 1  
mn: -4066  
mx: 3143  
 $\mu$ : -9.1  
 $\sigma$ : 58.0

Channel 2  
mn: -1003  
mx: 876  
 $\mu$ : -8.3  
 $\sigma$ : 24.1



