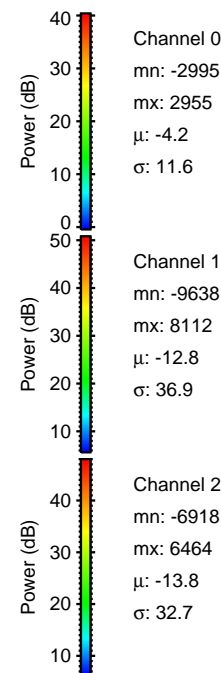
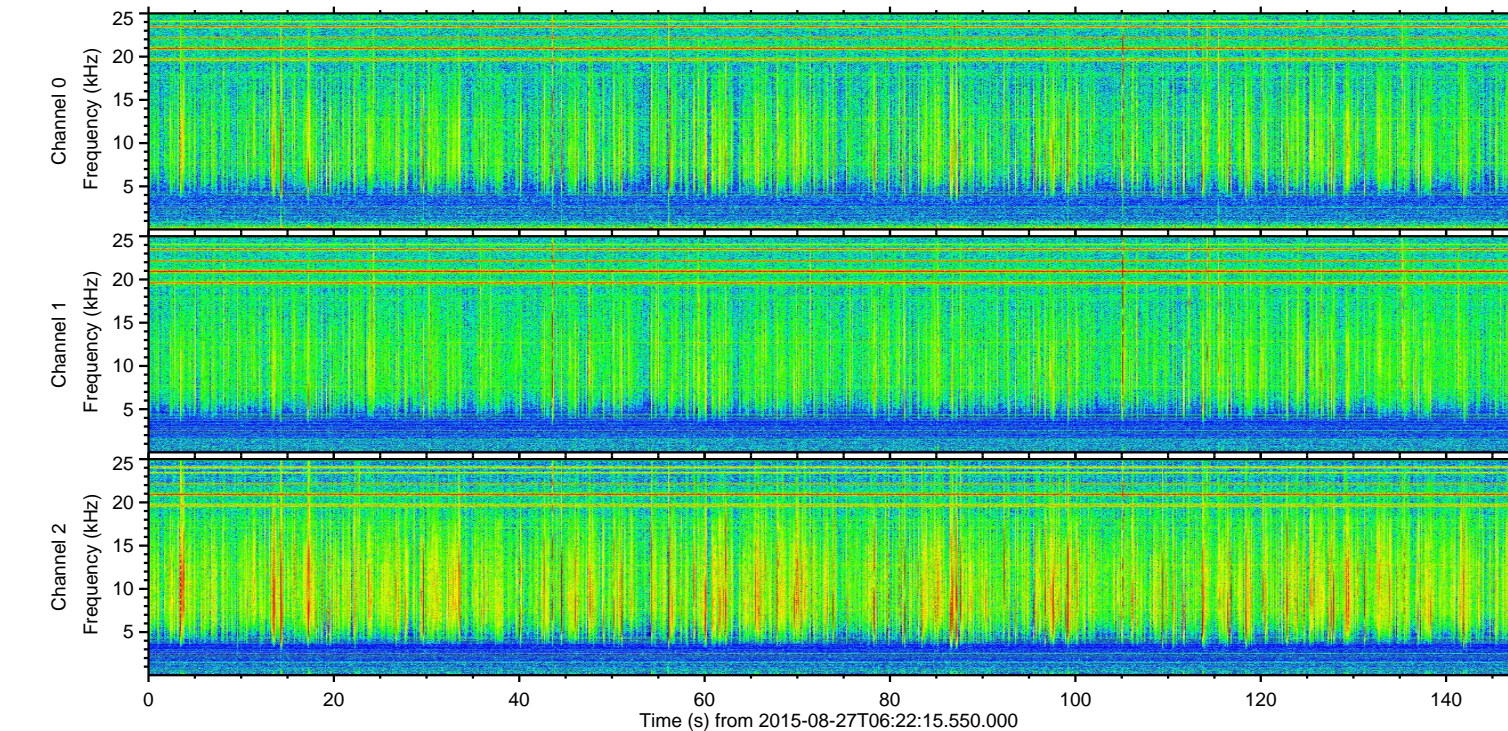
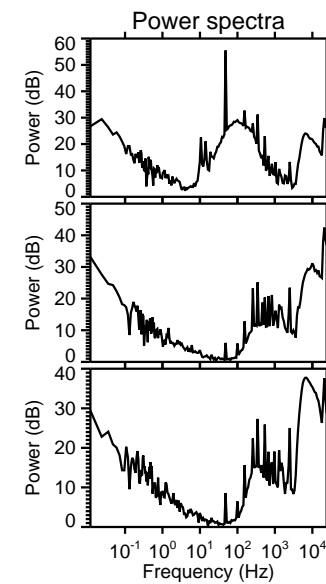
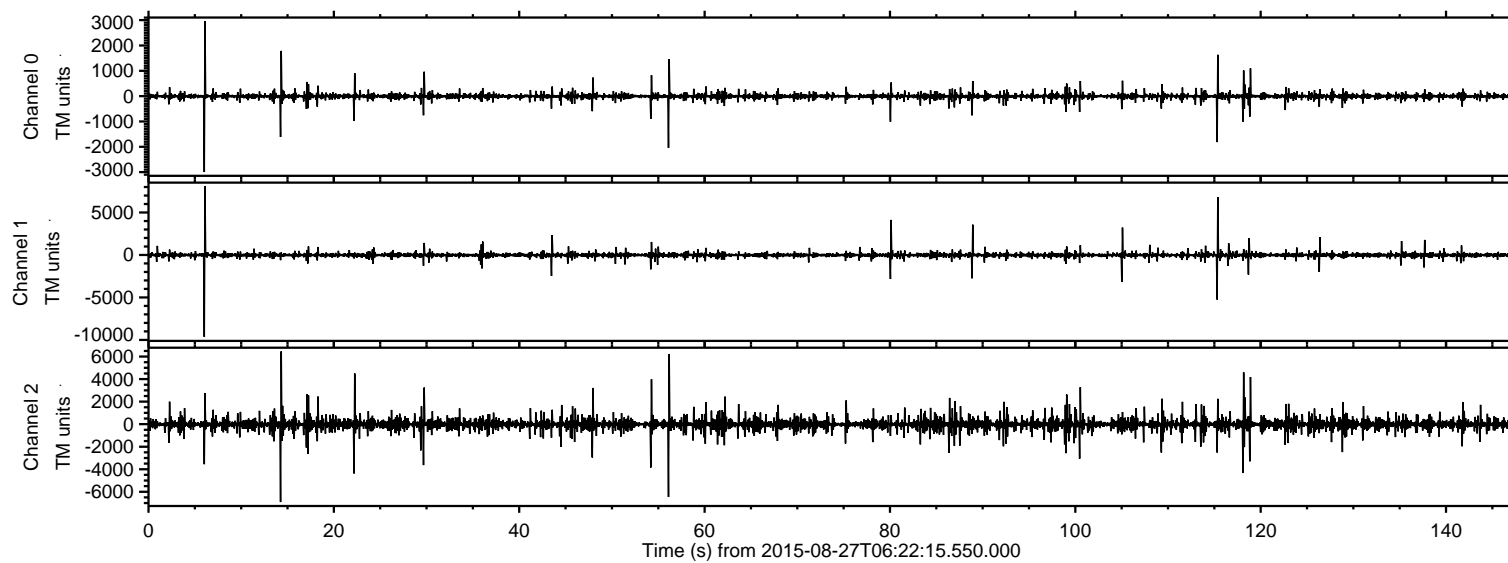


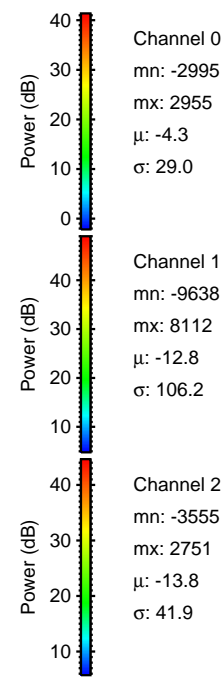
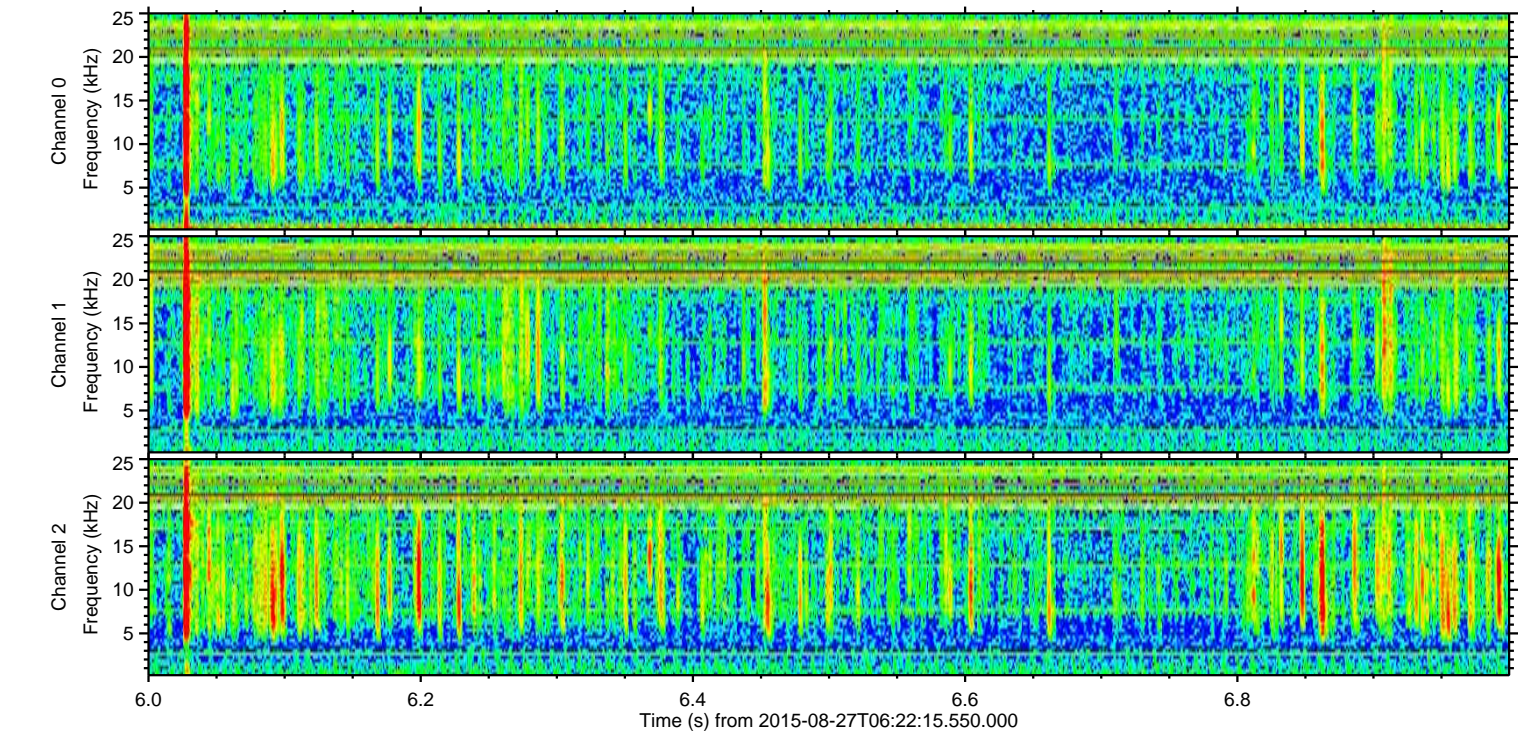
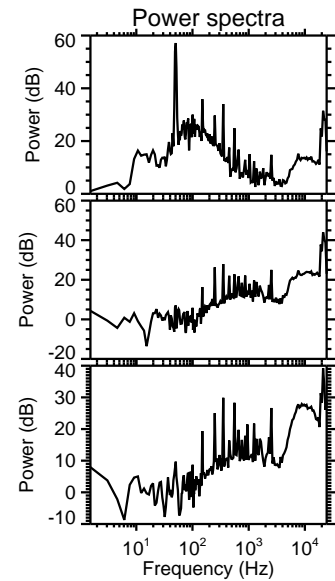
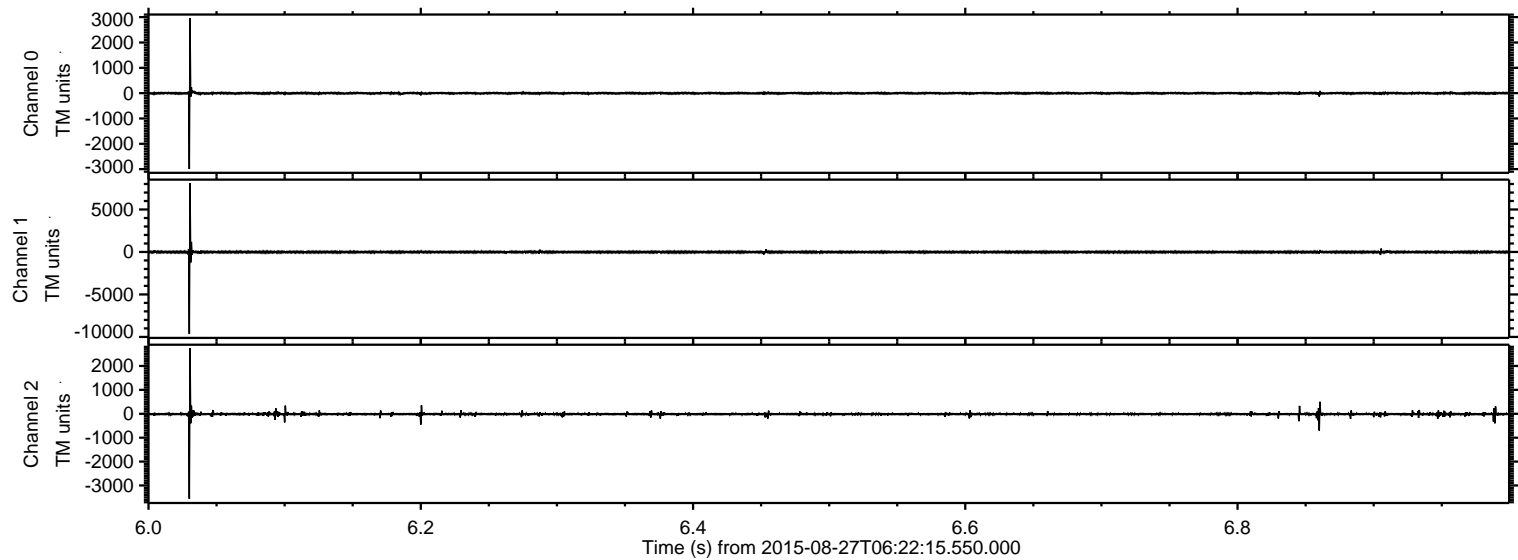
ELMAVAN 3D WAVEFORMS (Measured data sampled at 50 kHz) 51000 packets of 144 samples from 2015-08-27T06:22:15.550.000.

Processed Wed Oct 7 08:54:12 2015 by ELM ver.2012-10-06 from 001__elm20150827_062214__dat00.bin

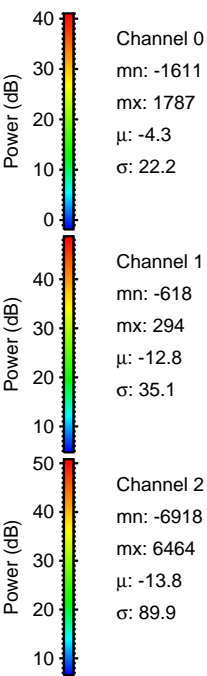
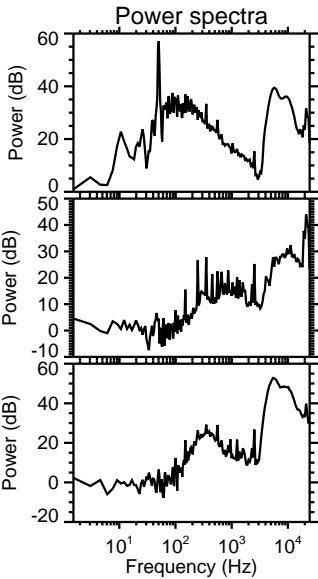
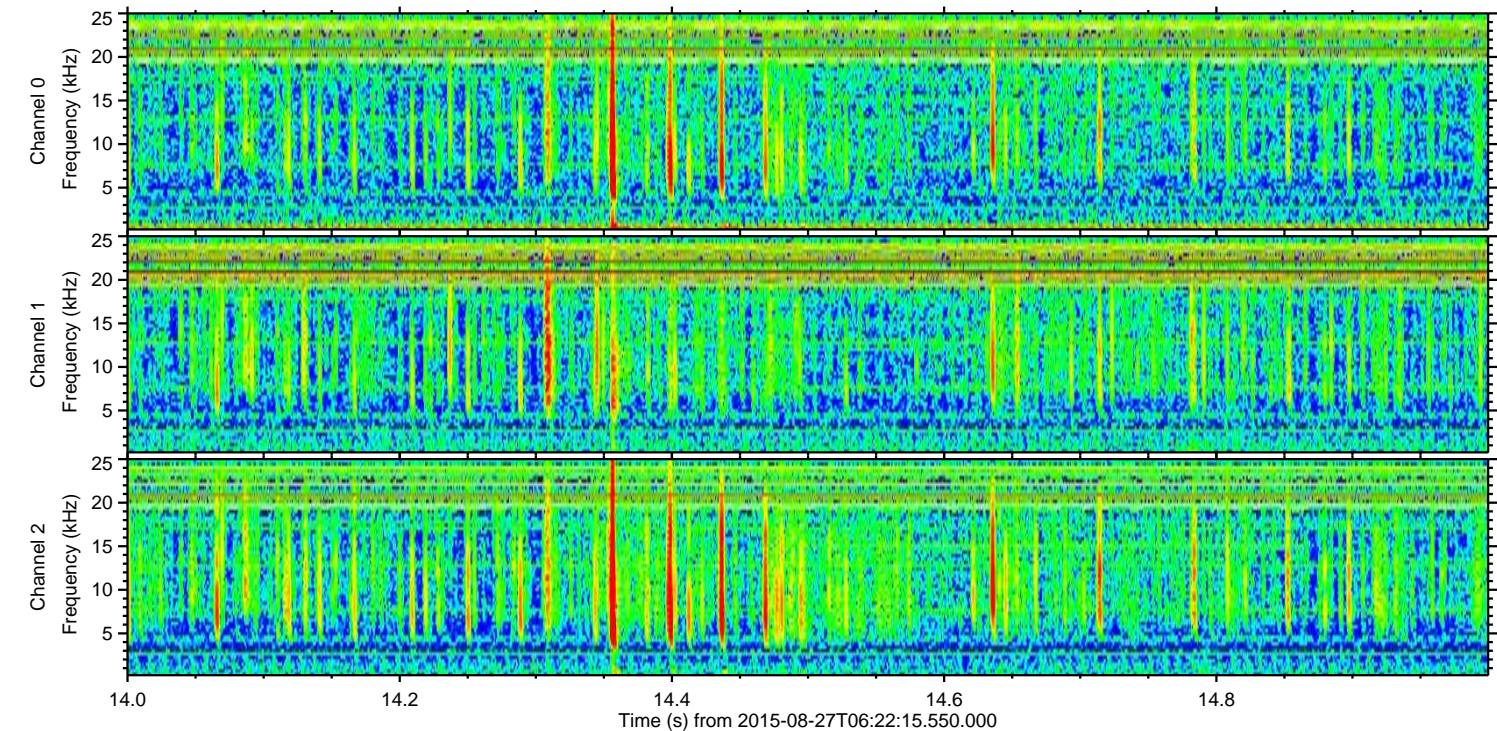
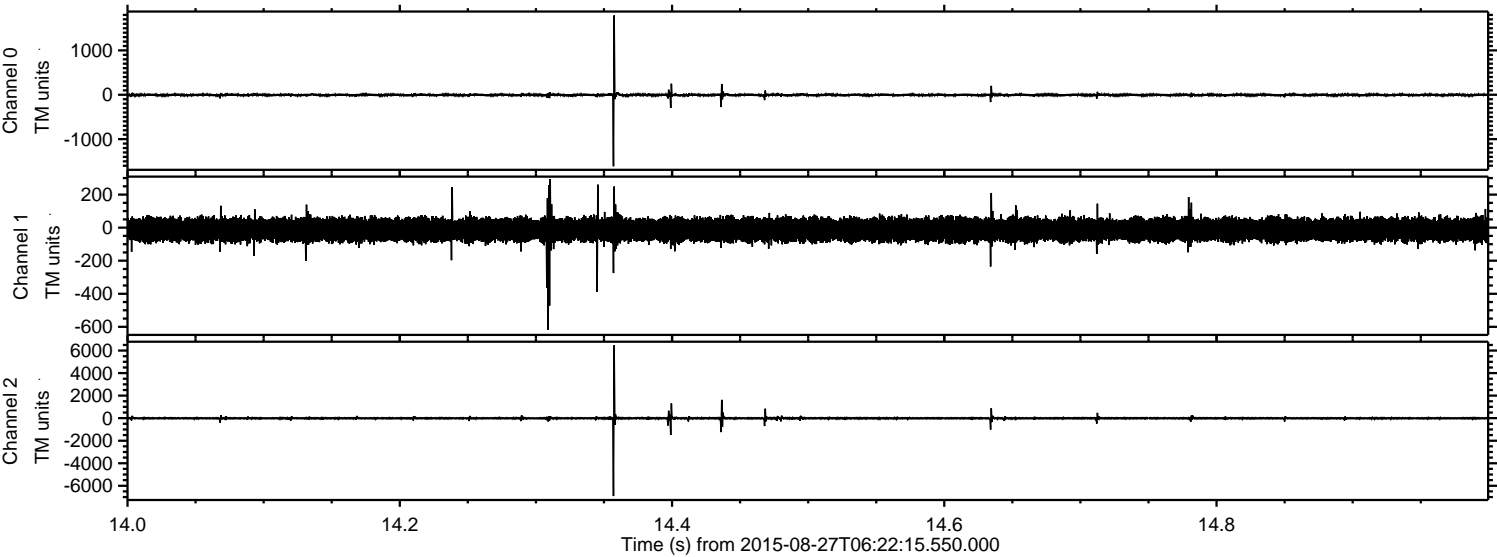


ELMAVAN 3D WAVEFORMS (Measured data sampled at 50 kHz) 51000 packets of 144 samples from 2015-08-27T06:22:15.550.000. Part 7/147

Processed Wed Oct 7 08:54:27 2015 by ELM ver.2012-10-06 from 001__elm20150827_062214__dat00.bin

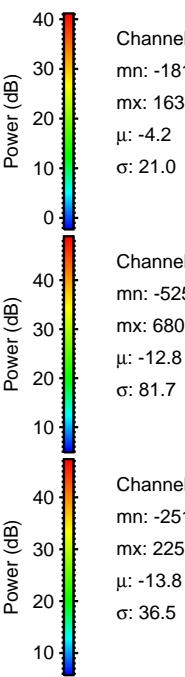
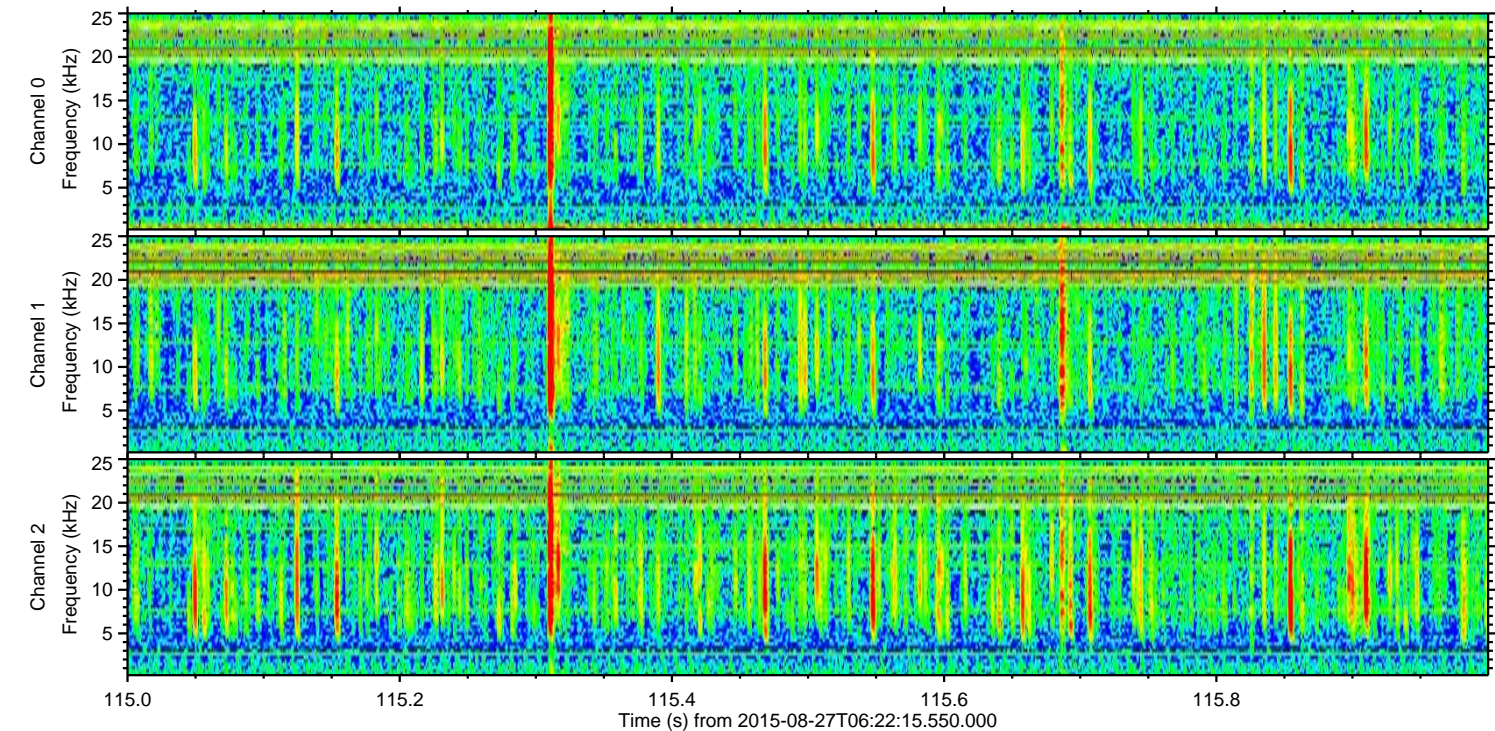
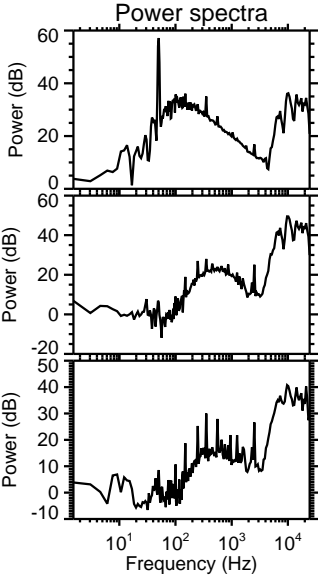
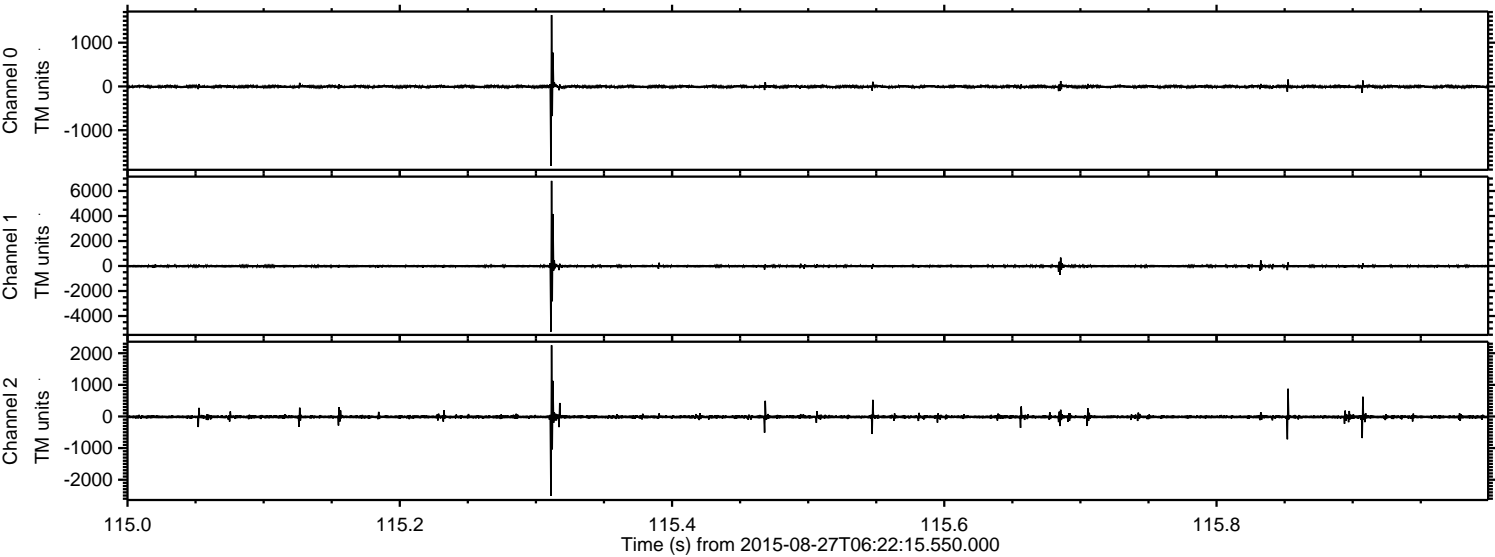


Processed Wed Oct 7 08:54:28 2015 by ELM ver.2012-10-06 from 001__elm20150827_062214__dat00.bin



ELMAVAN 3D WAVEFORMS (Measured data sampled at 50 kHz) 51000 packets of 144 samples from 2015-08-27T06:22:15.550.000. Part 116/147

Processed Wed Oct 7 08:54:29 2015 by ELM ver.2012-10-06 from 001__elm20150827_062214__dat00.bin



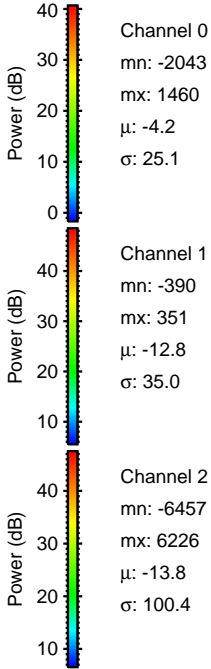
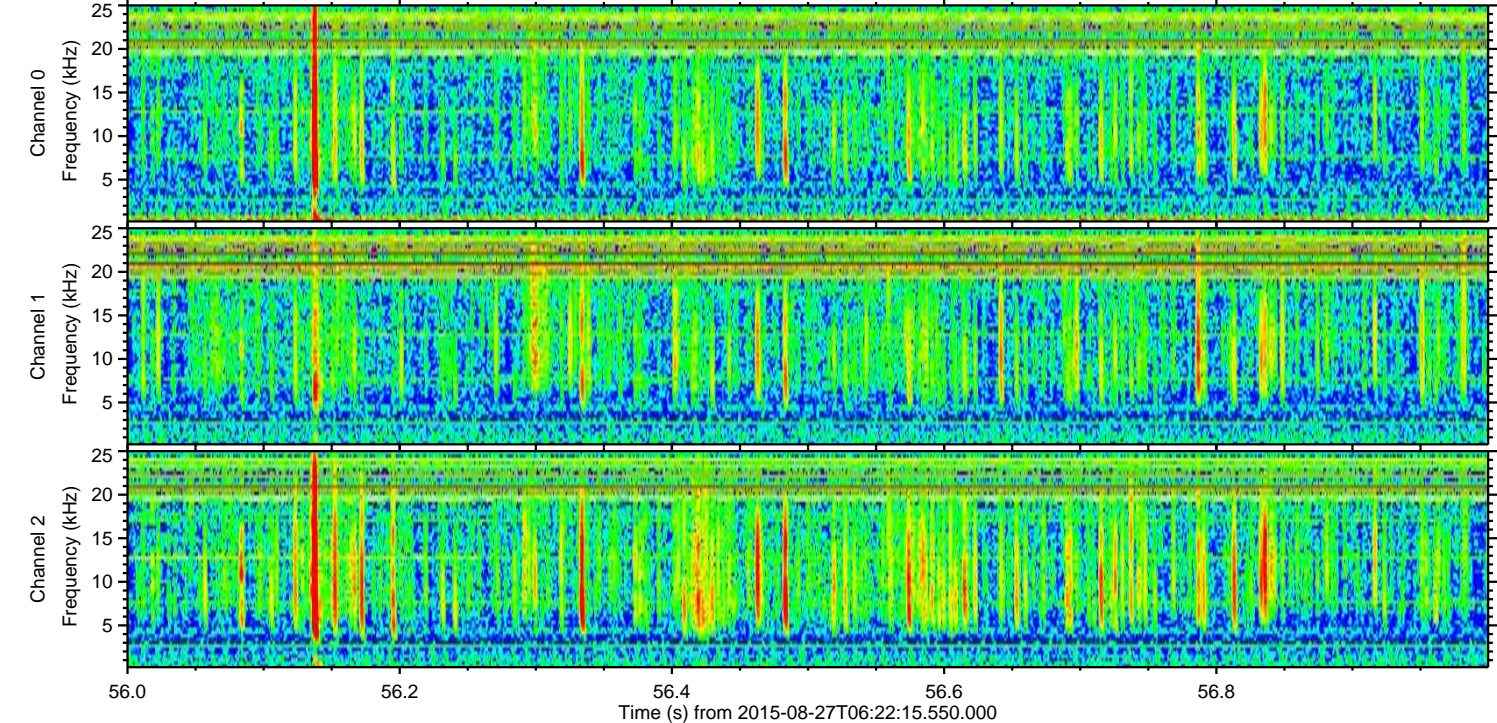
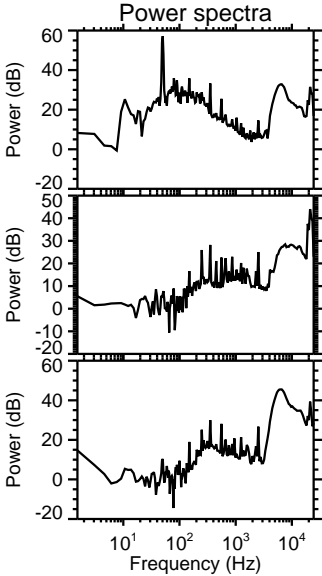
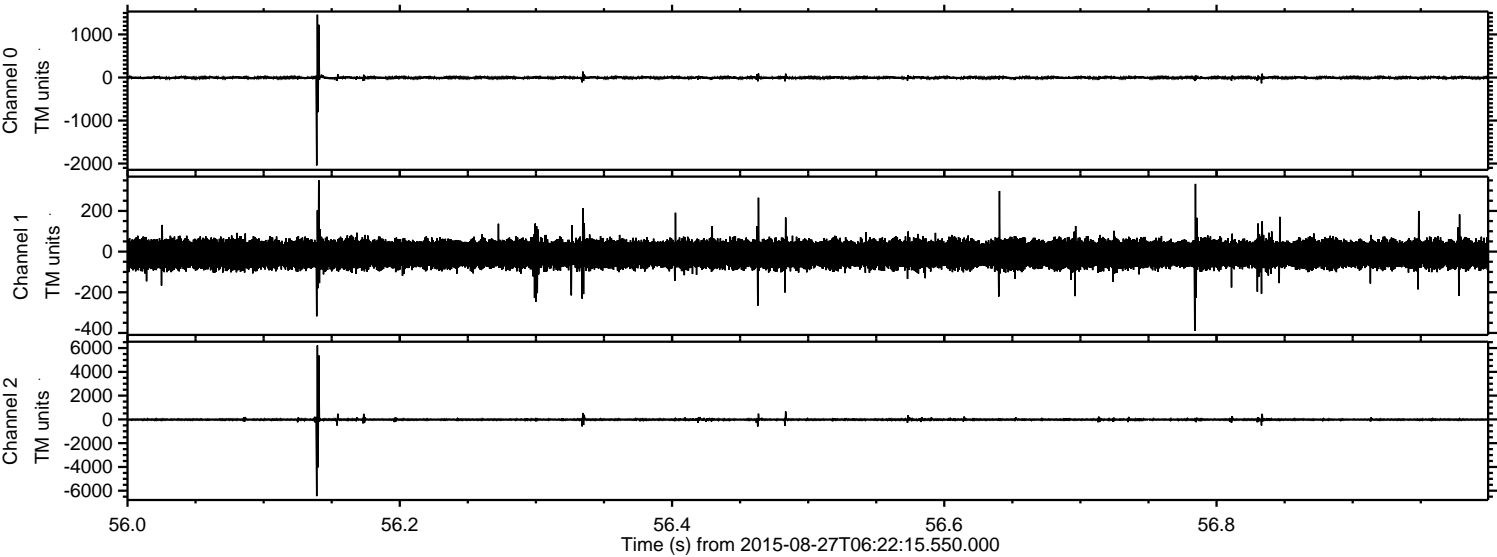
Channel 0
mn: -1815
mx: 1631
 μ : -4.2
 σ : 21.0

Channel 1
mn: -5251
mx: 6809
 μ : -12.8
 σ : 81.7

Channel 2
mn: -2516
mx: 2252
 μ : -13.8
 σ : 36.5

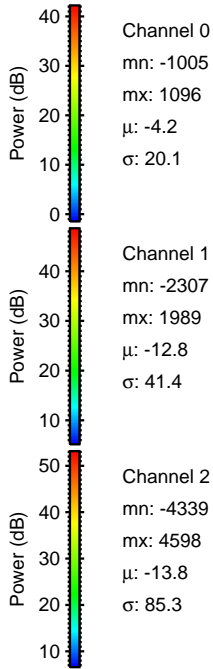
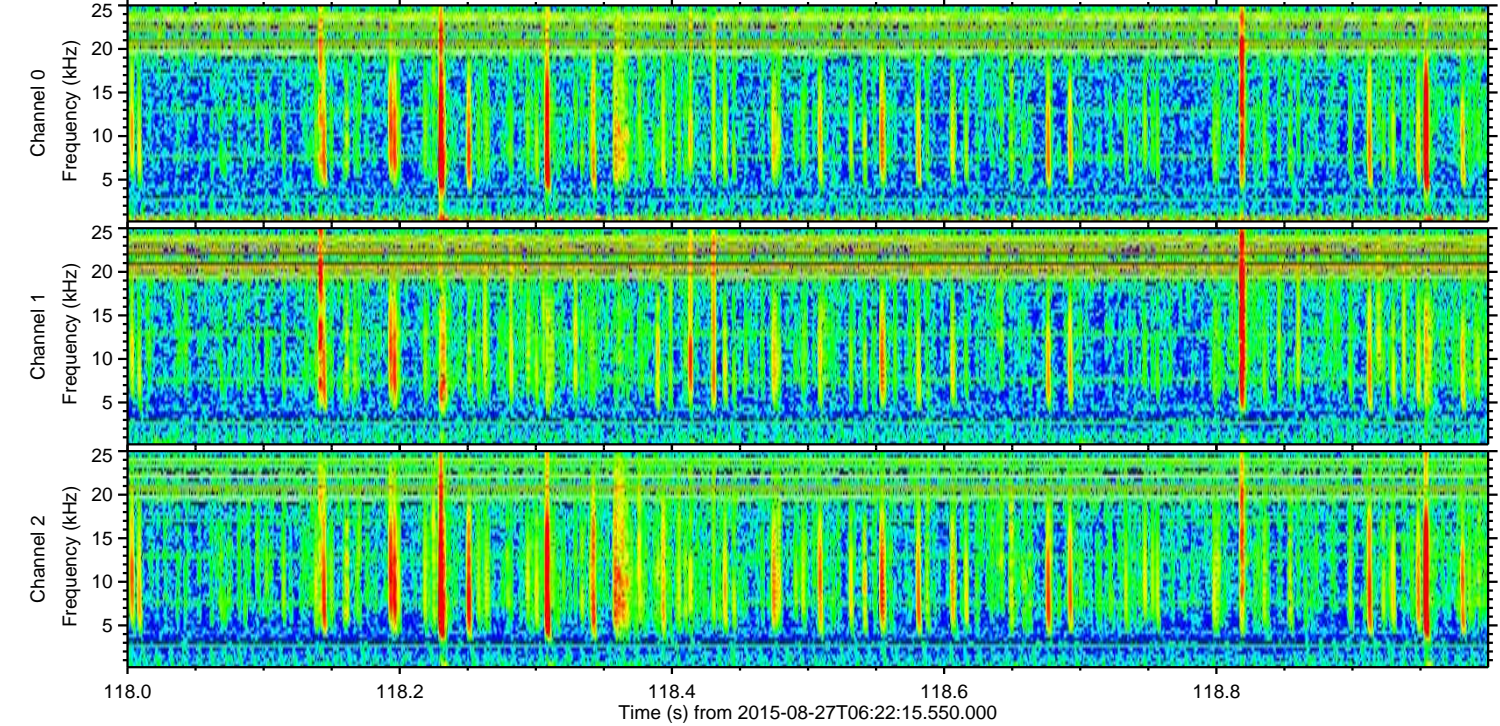
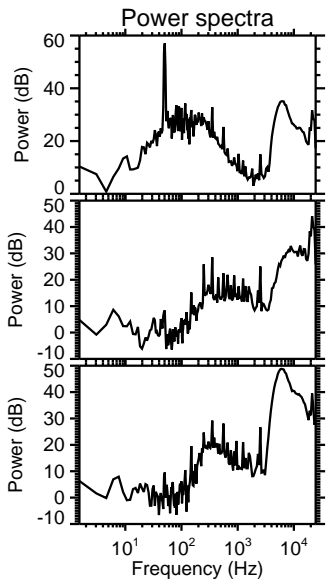
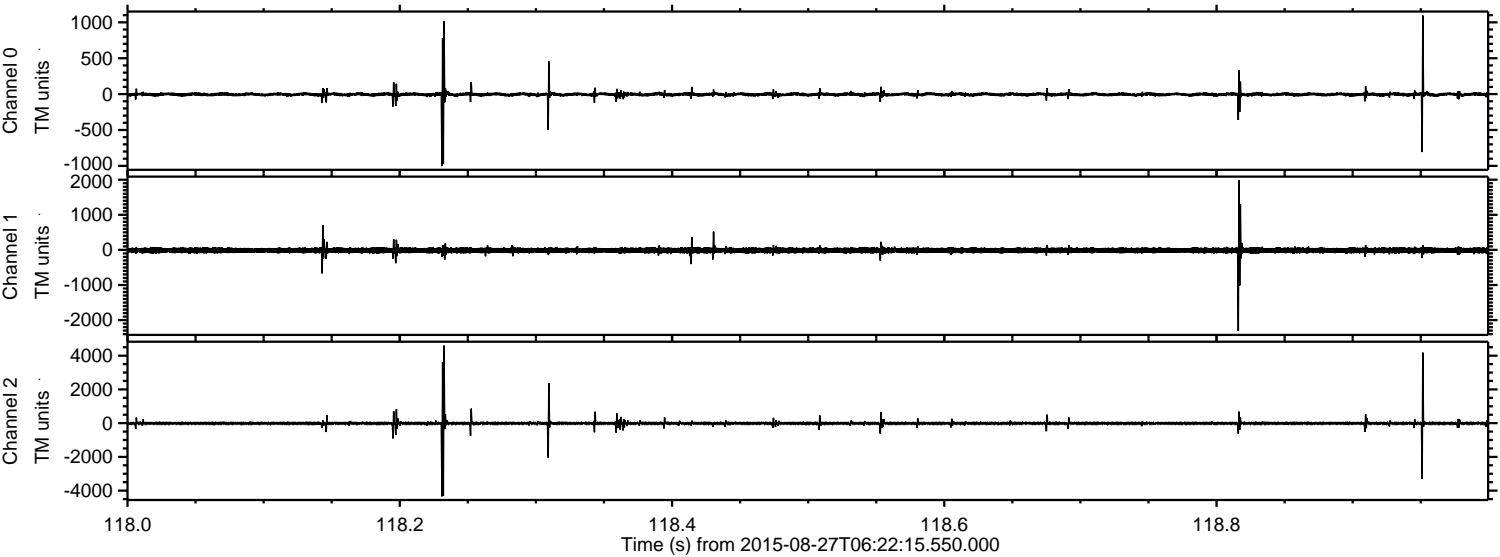
ELMAVAN 3D WAVEFORMS (Measured data sampled at 50 kHz) 51000 packets of 144 samples from 2015-08-27T06:22:15.550.000. Part 57/147

Processed Wed Oct 7 08:54:30 2015 by ELM ver.2012-10-06 from 001__elm20150827_062214__dat00.bin

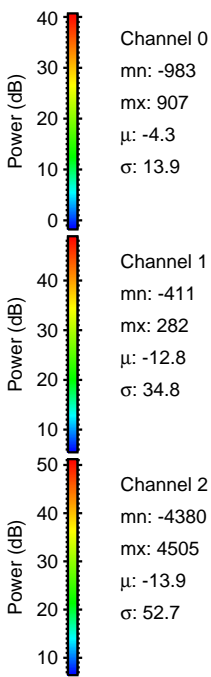
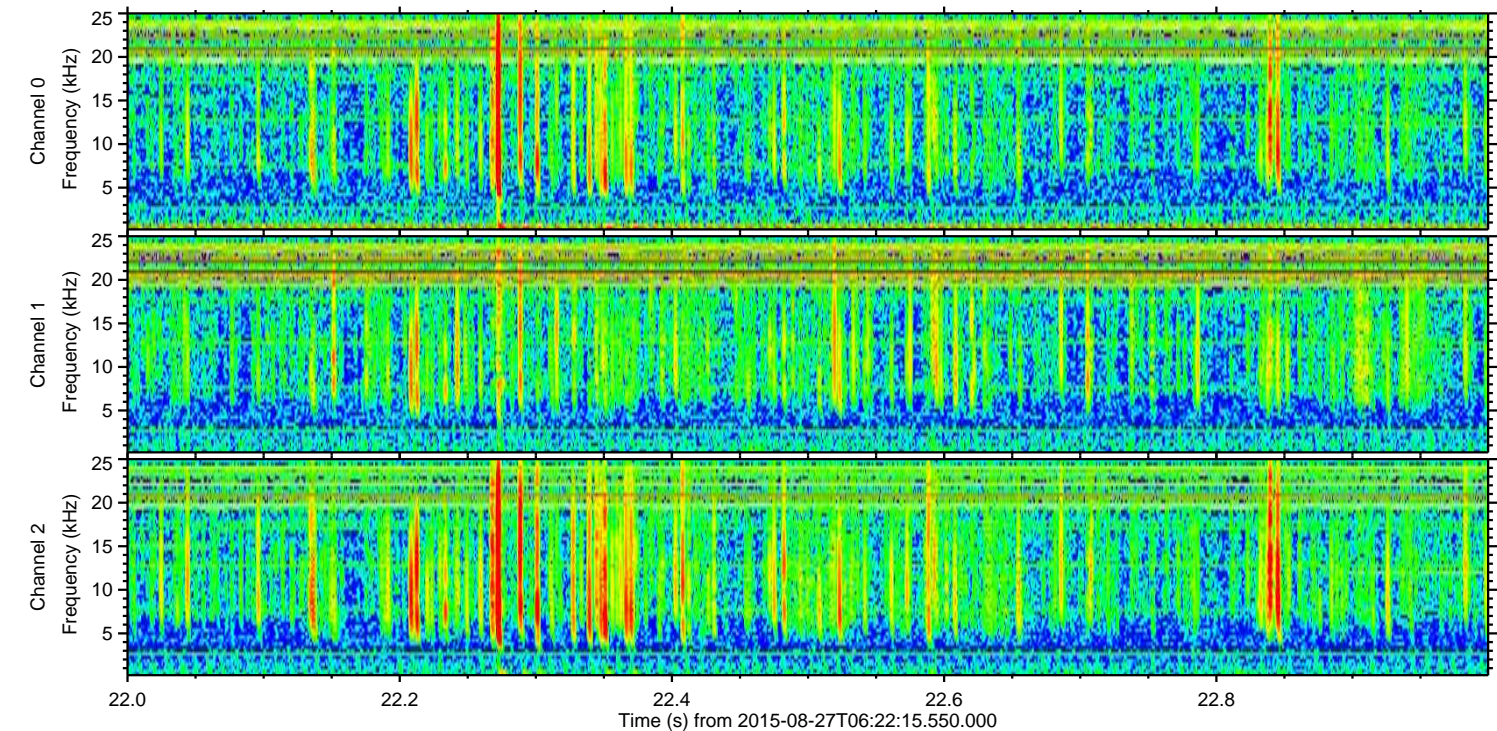
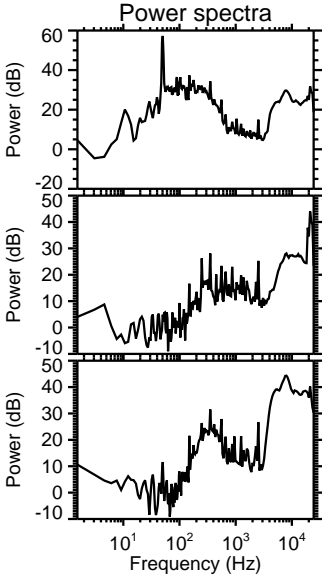
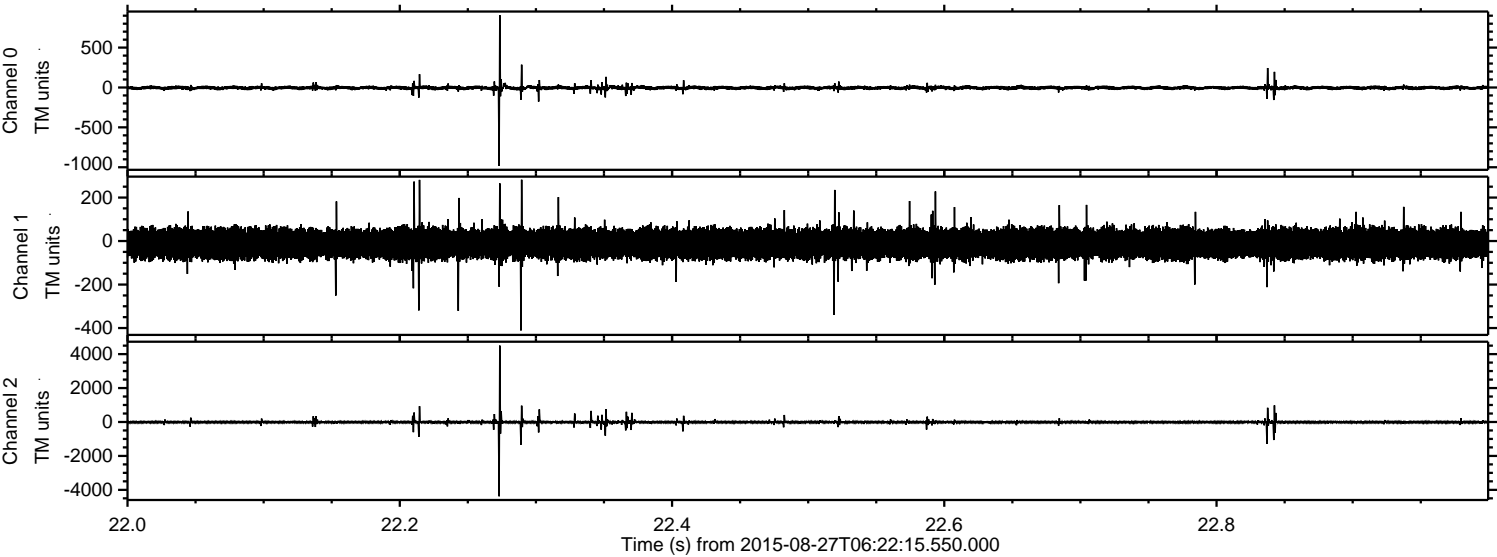


ELMAVAN 3D WAVEFORMS (Measured data sampled at 50 kHz) 51000 packets of 144 samples from 2015-08-27T06:22:15.550.000. Part 119/147

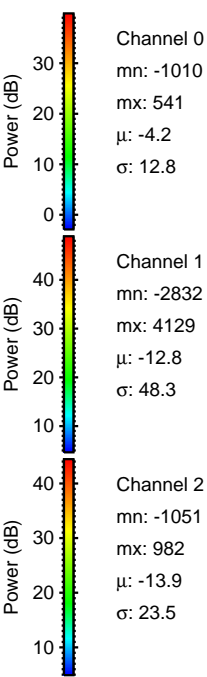
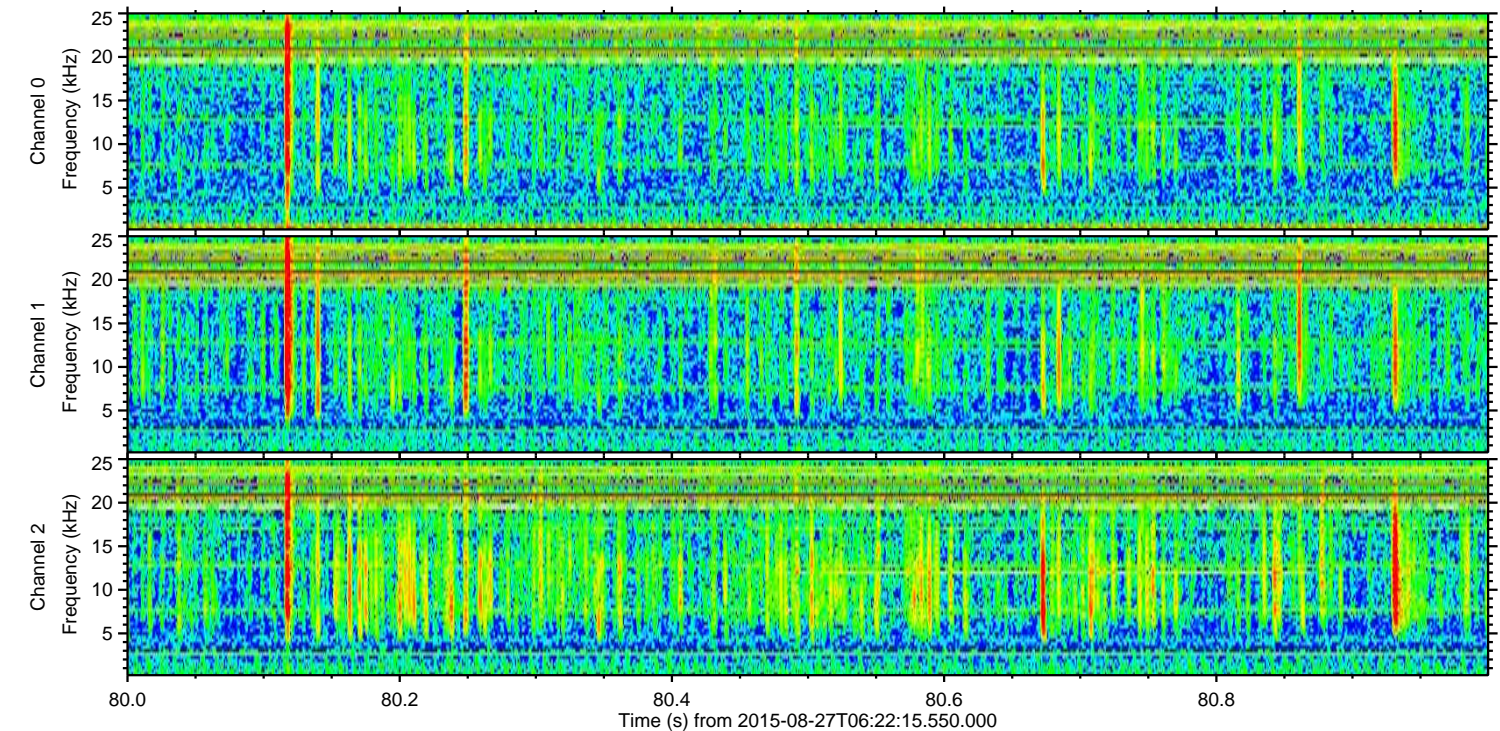
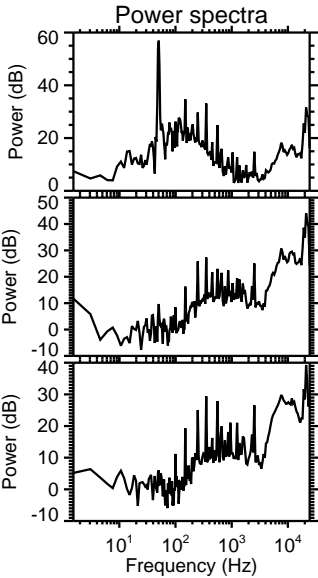
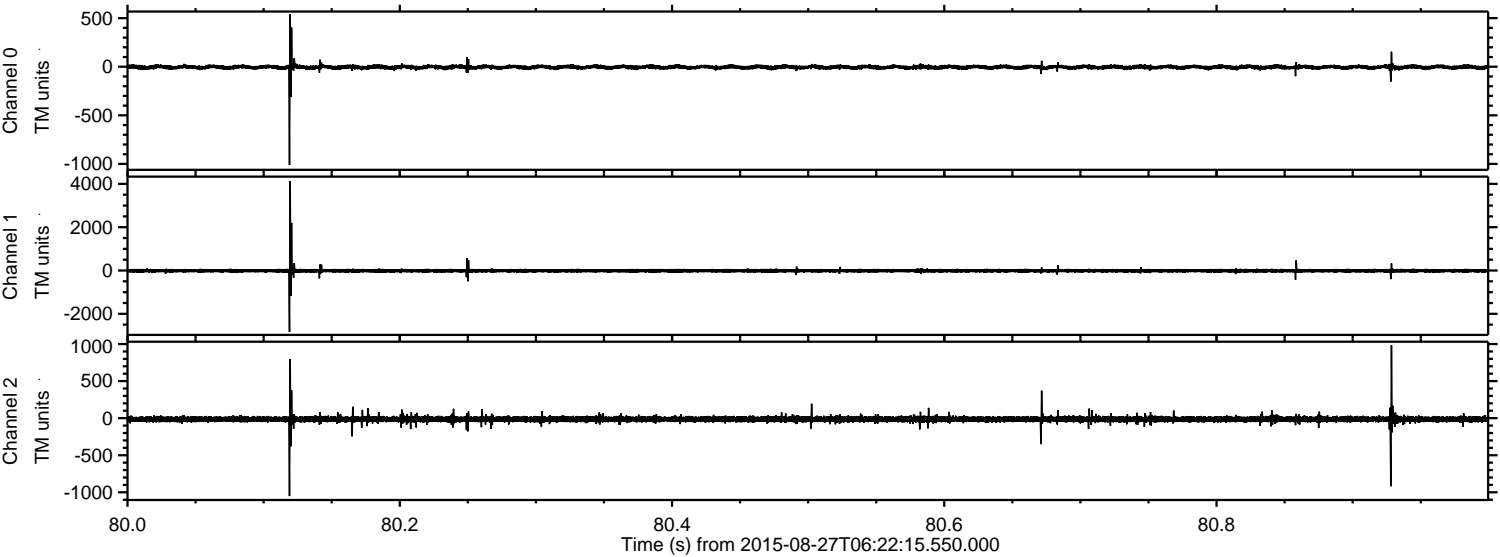
Processed Wed Oct 7 08:54:32 2015 by ELM ver.2012-10-06 from 001__elm20150827_062214__dat00.bin



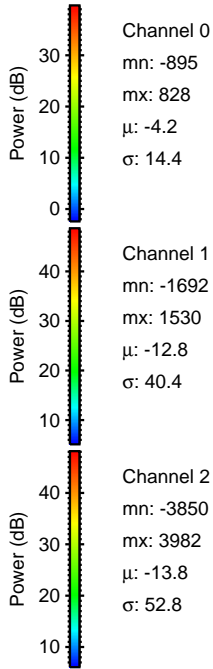
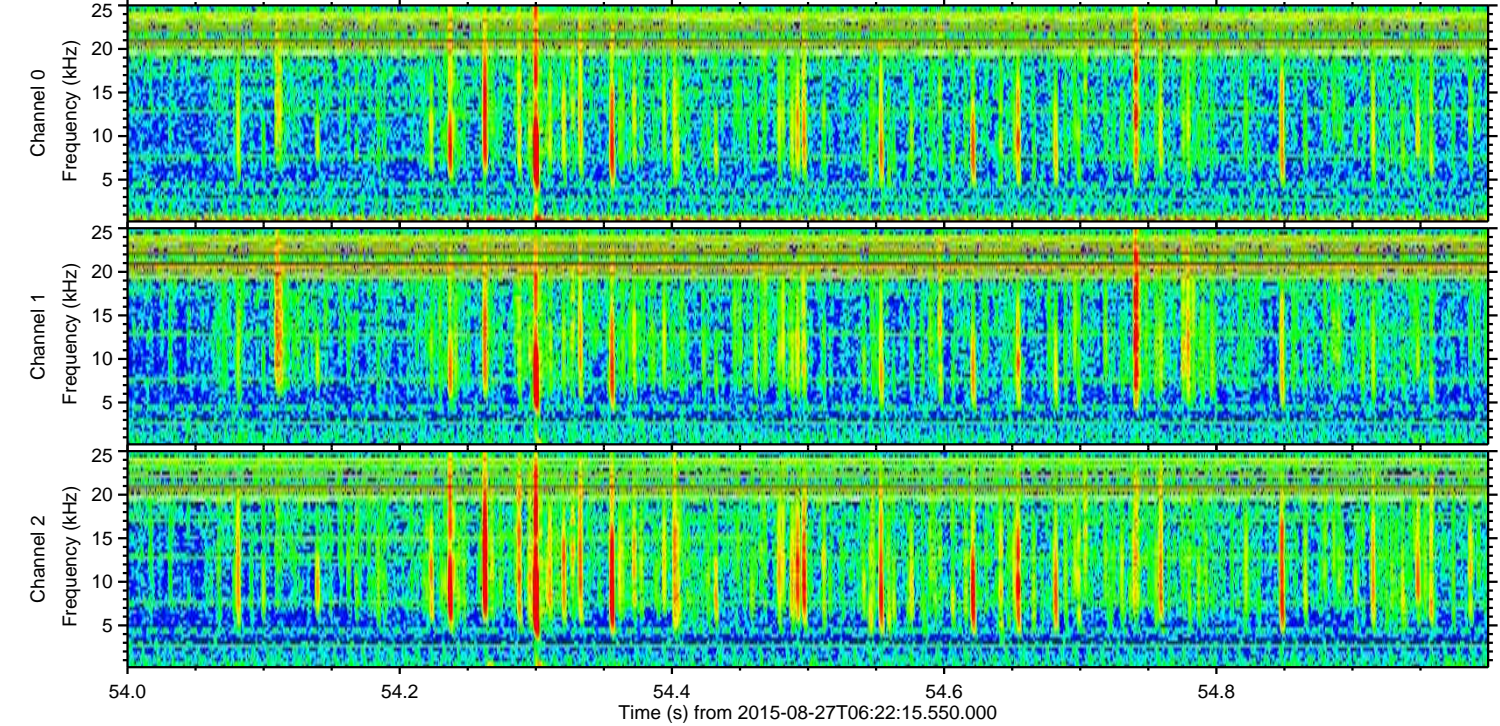
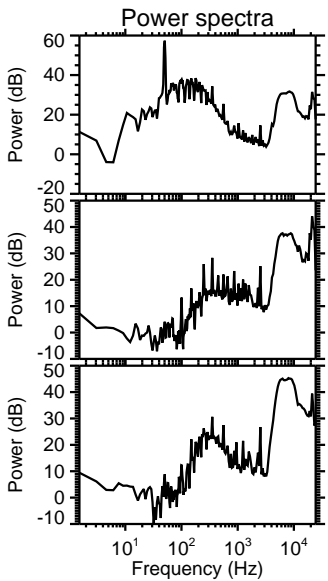
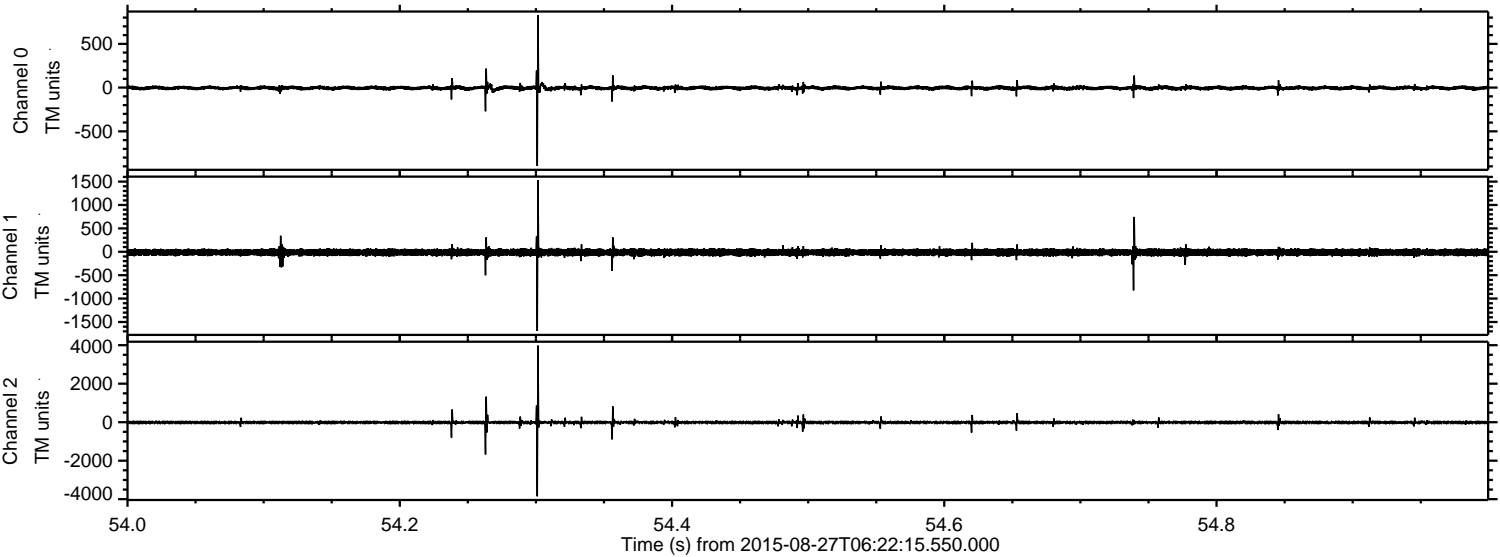
Processed Wed Oct 7 08:54:33 2015 by ELM ver.2012-10-06 from 001__elm20150827_062214__dat00.bin



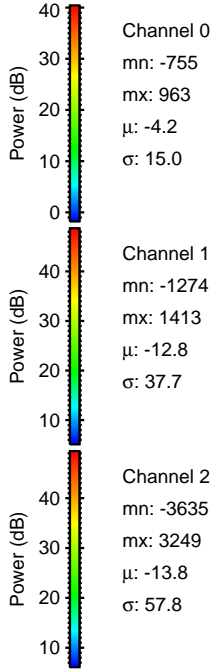
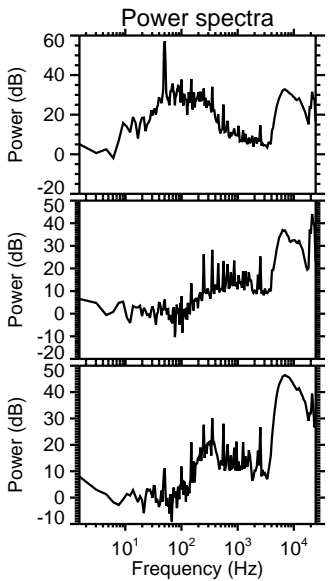
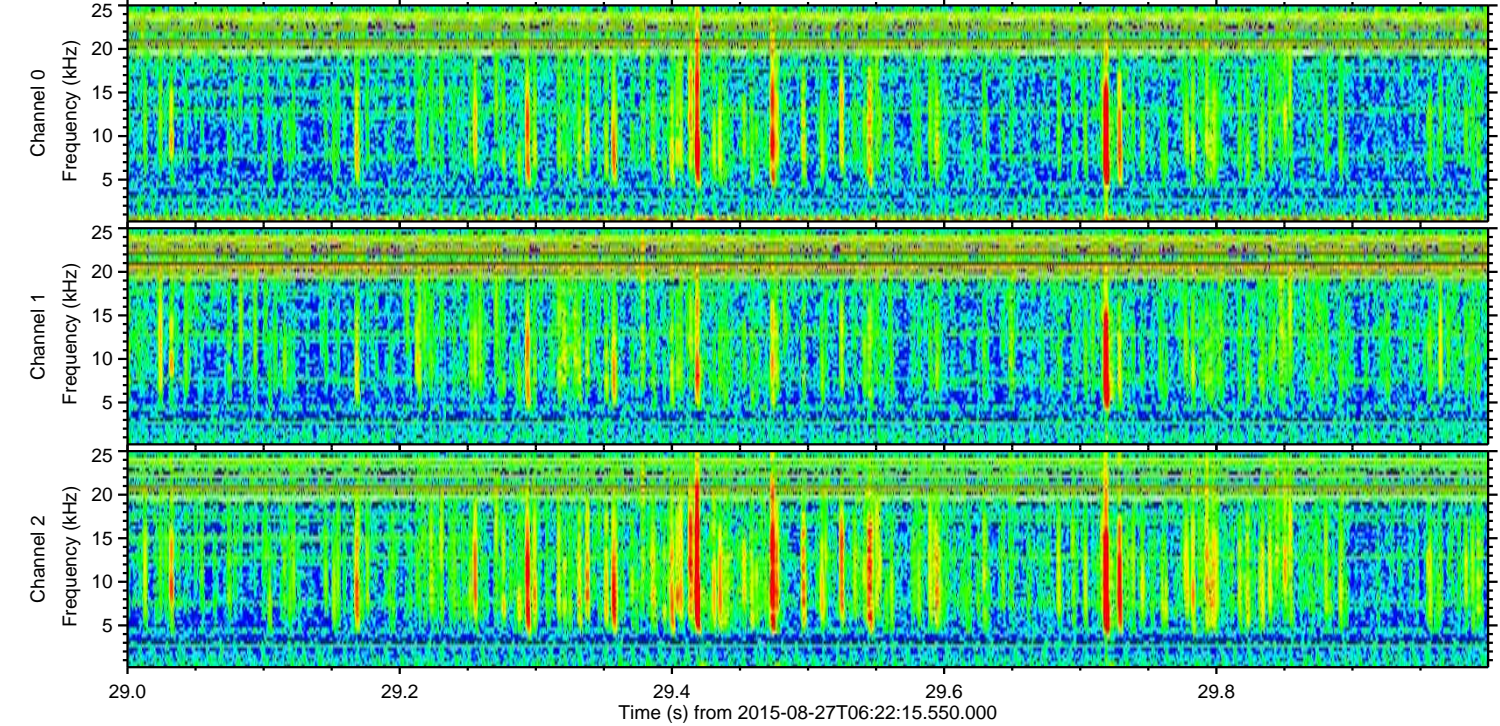
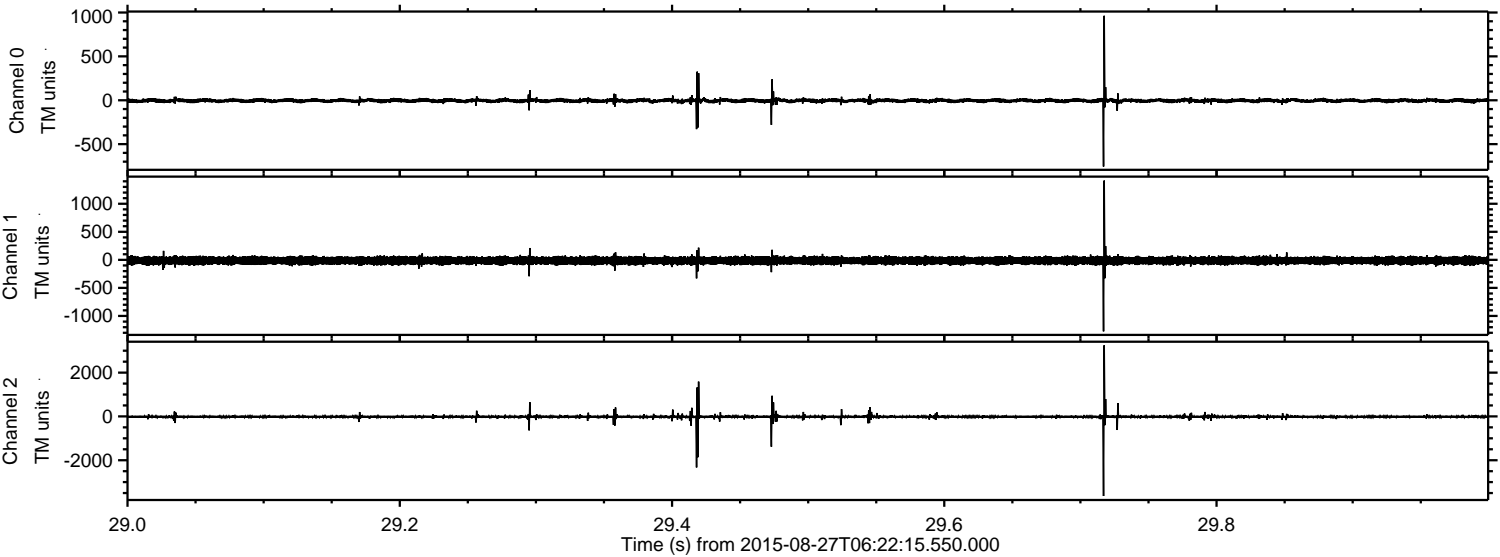
Processed Wed Oct 7 08:54:34 2015 by ELM ver.2012-10-06 from 001__elm20150827_062214__dat00.bin



Processed Wed Oct 7 08:54:36 2015 by ELM ver.2012-10-06 from 001__elm20150827_062214__dat00.bin



Processed Wed Oct 7 08:54:37 2015 by ELM ver.2012-10-06 from 001__elm20150827_062214__dat00.bin



Processed Wed Oct 7 08:54:38 2015 by ELM ver.2012-10-06 from 001__elm20150827_062214__dat00.bin

