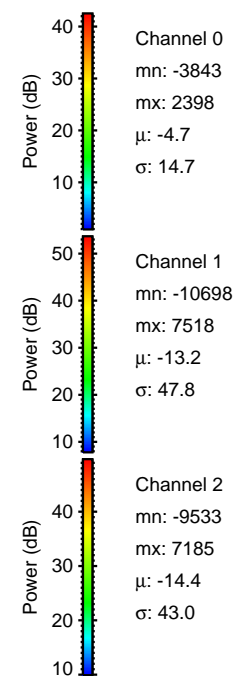
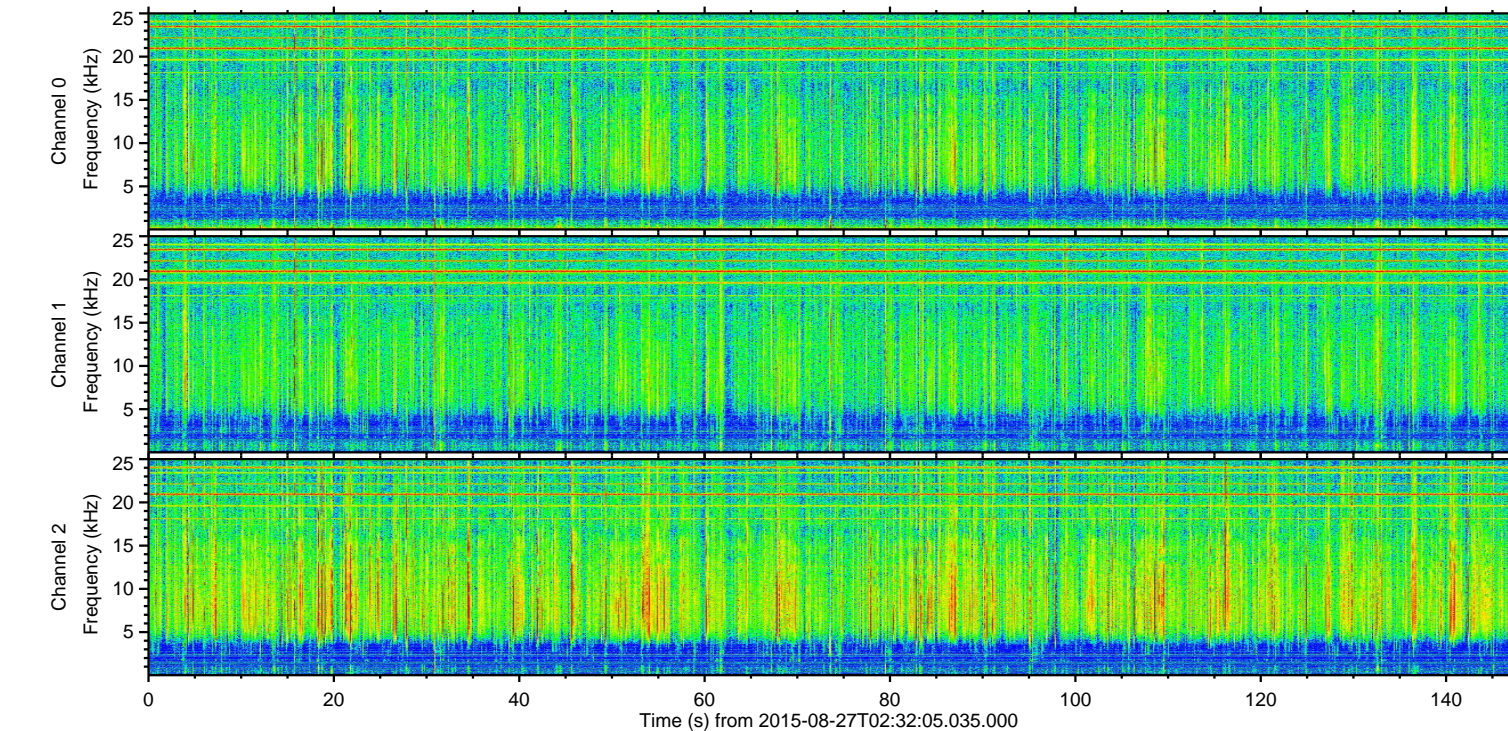
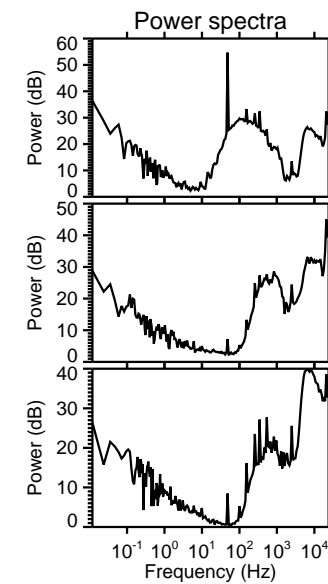
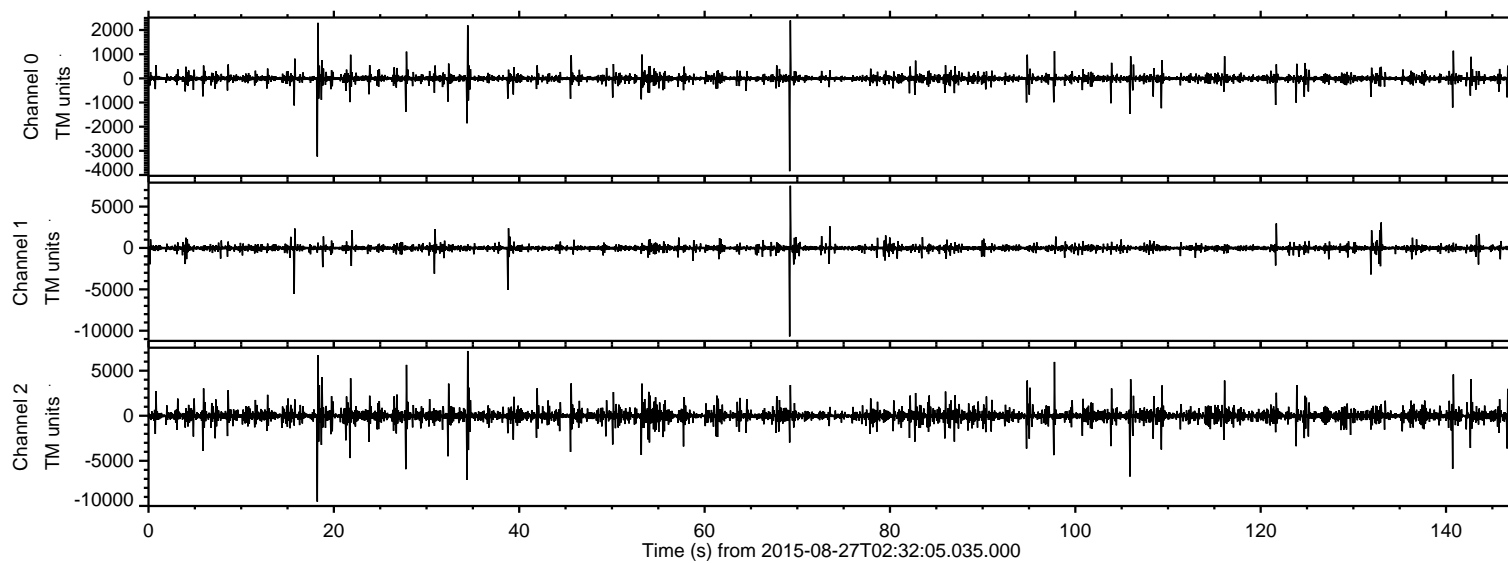


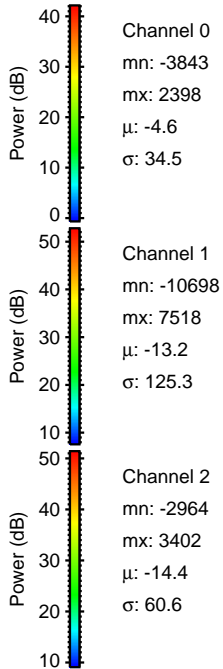
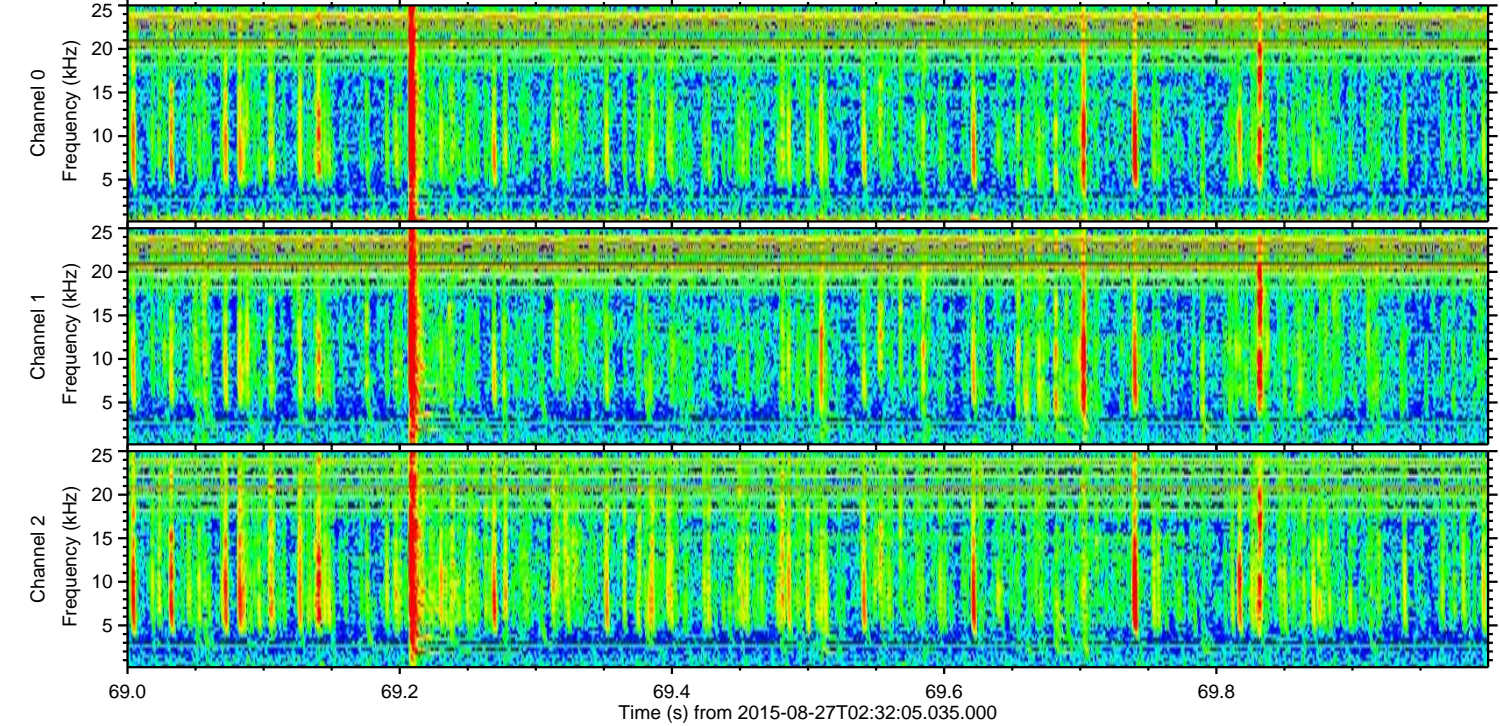
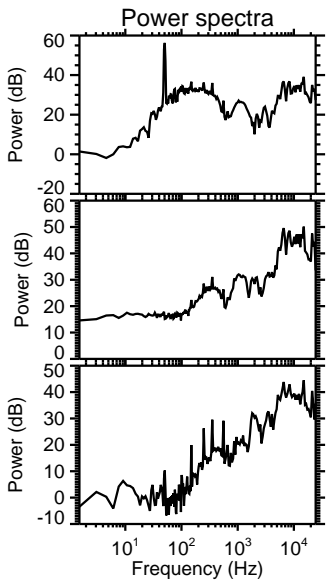
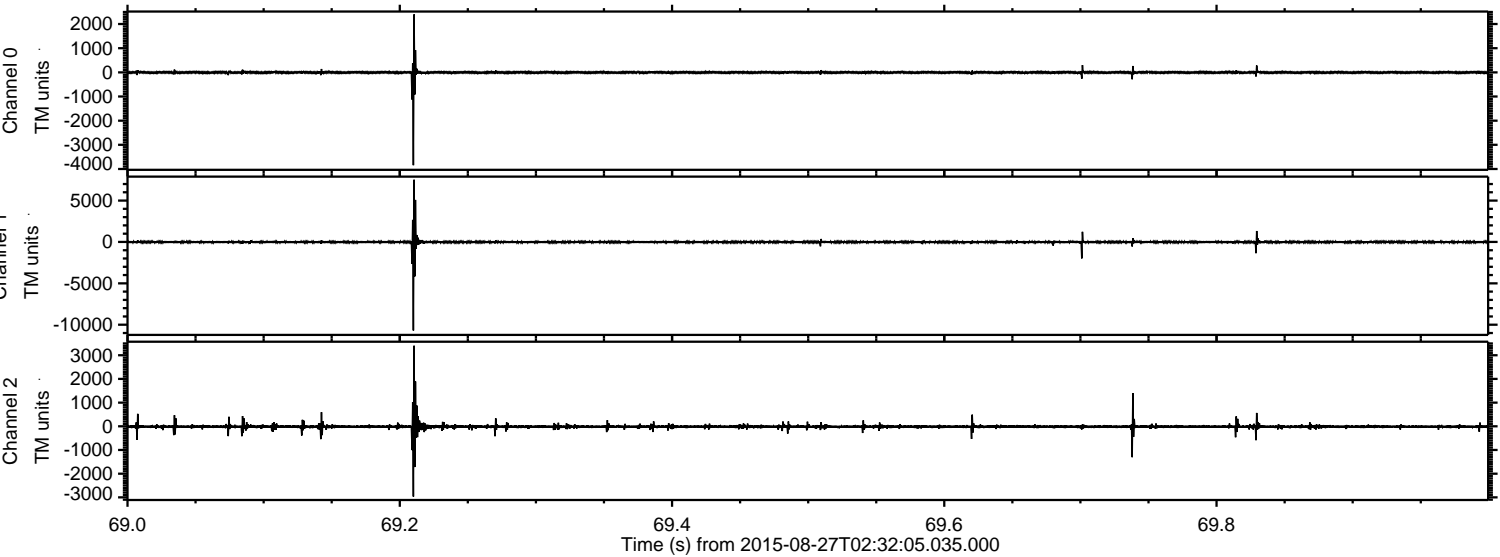
ELMAVAN 3D WAVEFORMS (Measured data sampled at 50 kHz) 51000 packets of 144 samples from 2015-08-27T02:32:05.035.000.

Processed Wed Oct 7 07:51:02 2015 by ELM ver.2012-10-06 from 001__elm20150827_023204__dat00.bin



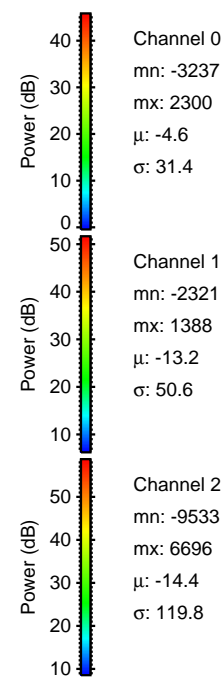
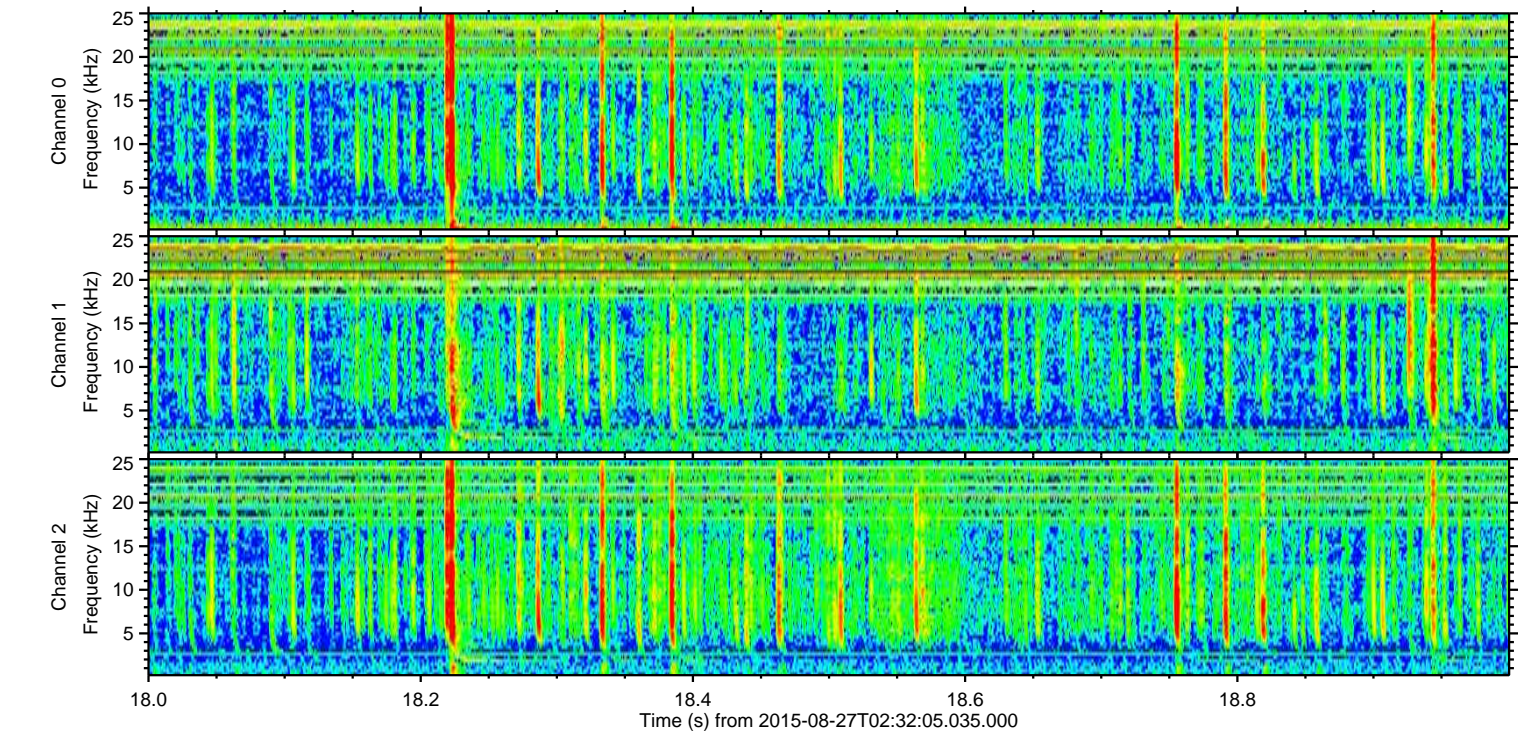
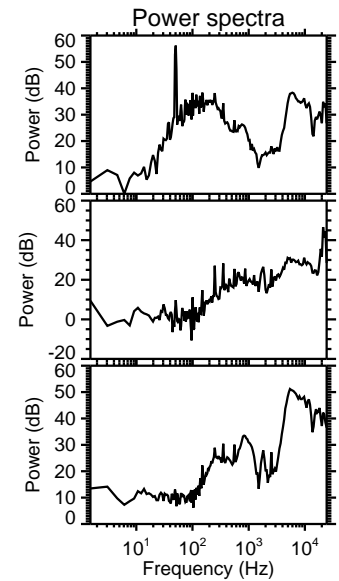
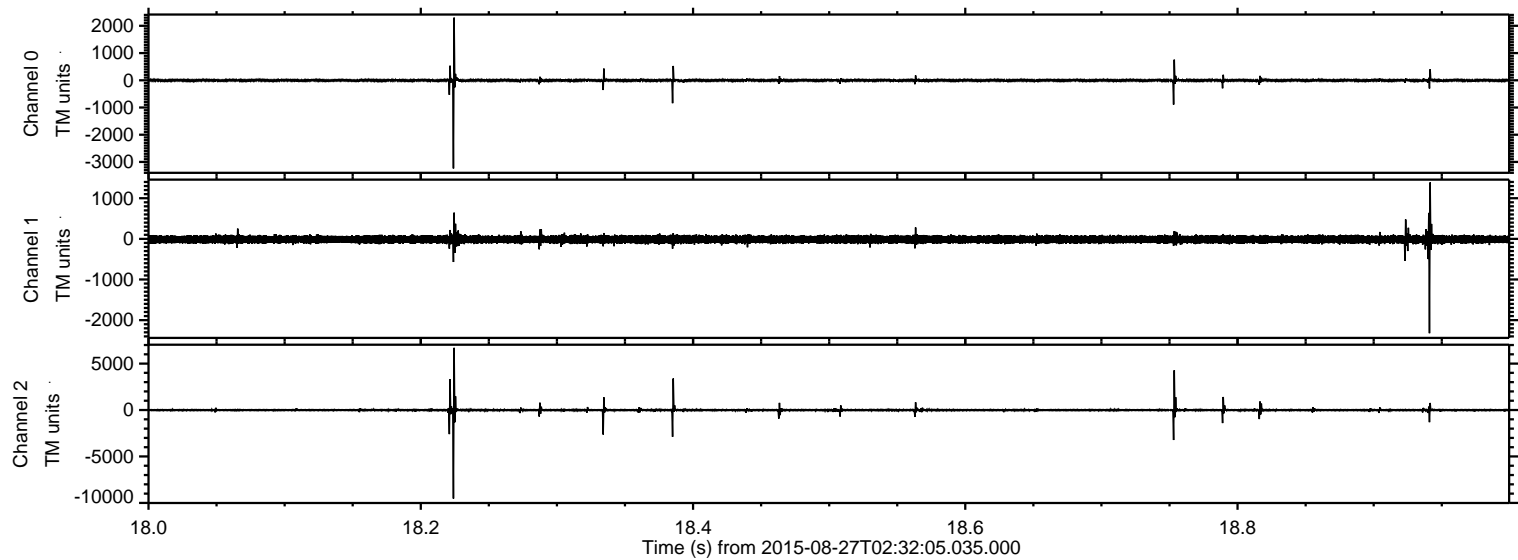
ELMAVAN 3D WAVEFORMS (Measured data sampled at 50 kHz) 51000 packets of 144 samples from 2015-08-27T02:32:05.035.000. Part 70/147

Processed Wed Oct 7 07:51:18 2015 by ELM ver.2012-10-06 from 001__elm20150827_023204__dat00.bin



ELMAVAN 3D WAVEFORMS (Measured data sampled at 50 kHz) 51000 packets of 144 samples from 2015-08-27T02:32:05.035.000. Part 19/147

Processed Wed Oct 7 07:51:19 2015 by ELM ver.2012-10-06 from 001__elm20150827_023204__dat00.bin

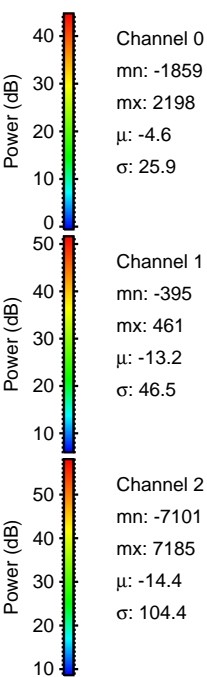
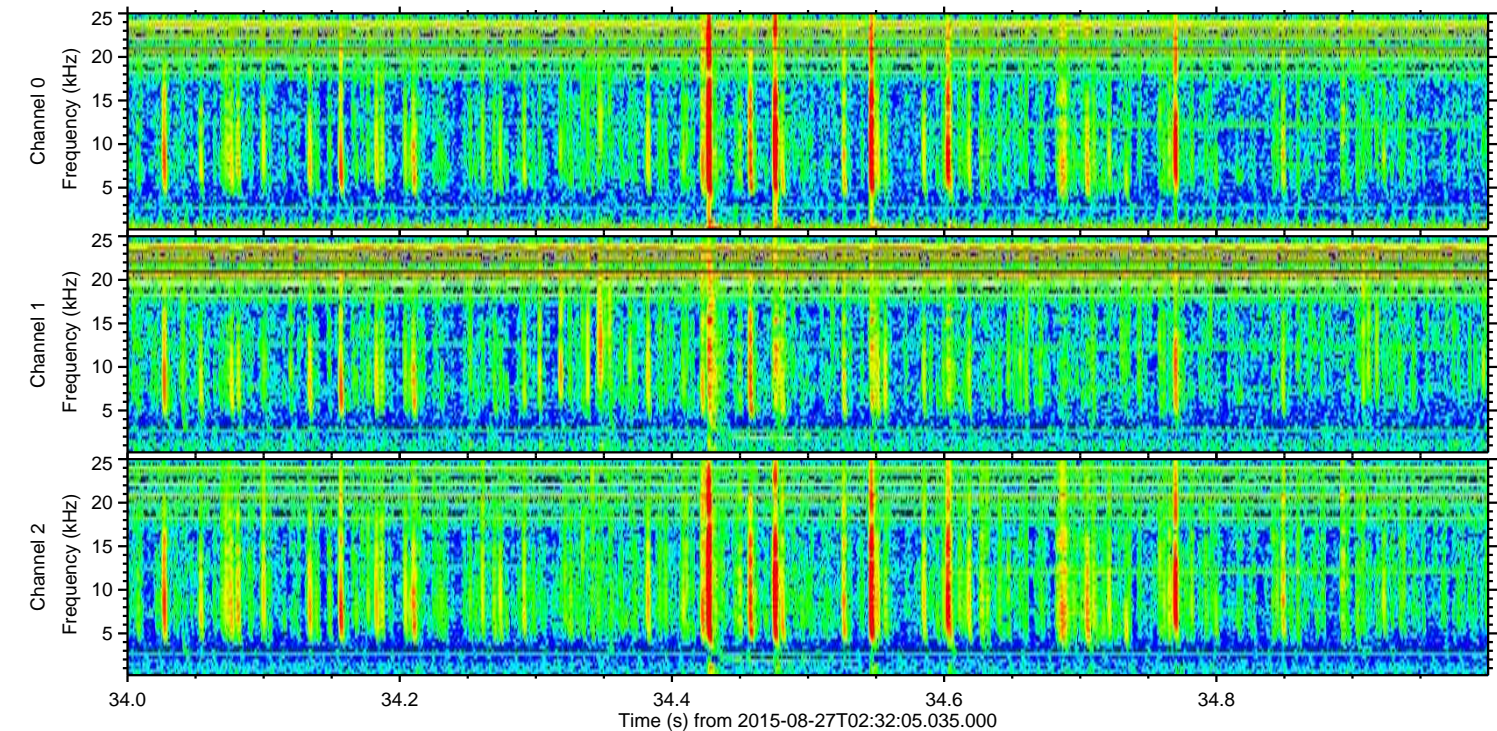
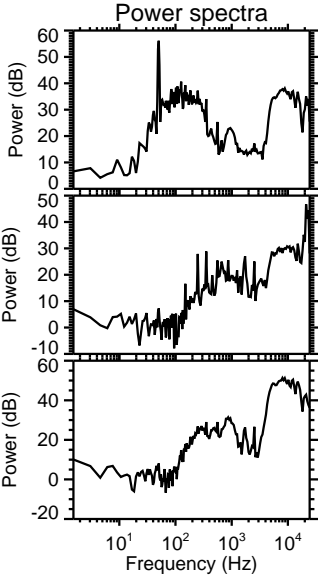
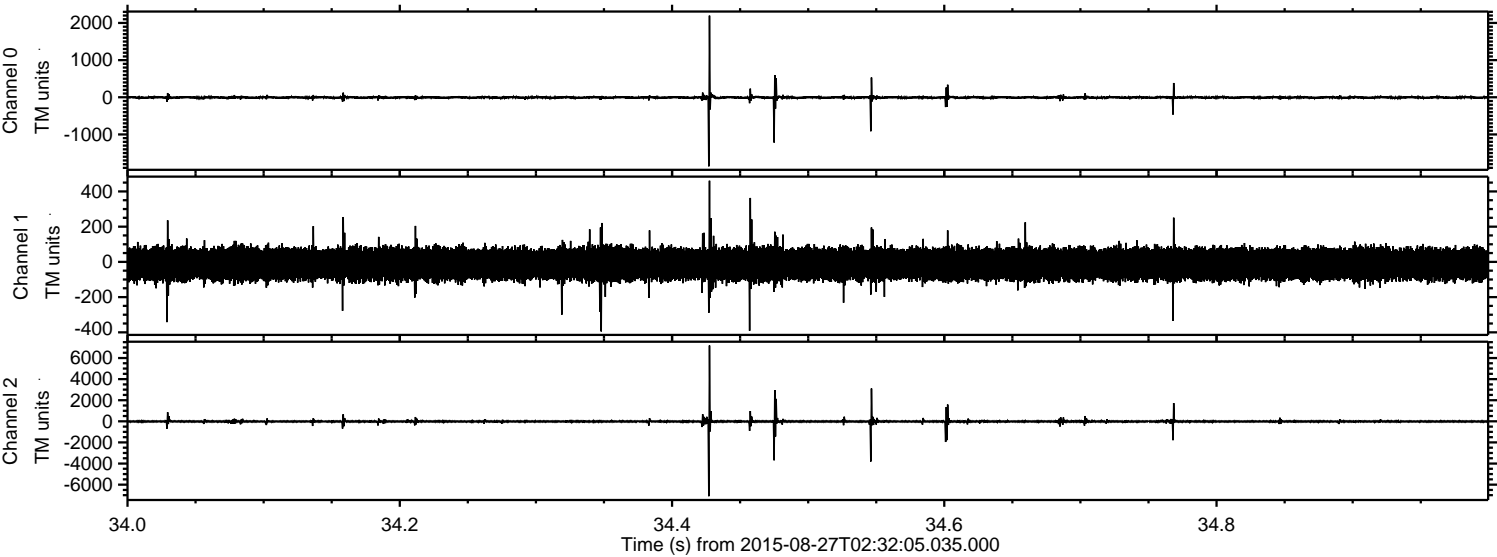


Channel 0
mn: -3237
mx: 2300
 μ : -4.6
 σ : 31.4

Channel 1
mn: -2321
mx: 1388
 μ : -13.2
 σ : 50.6

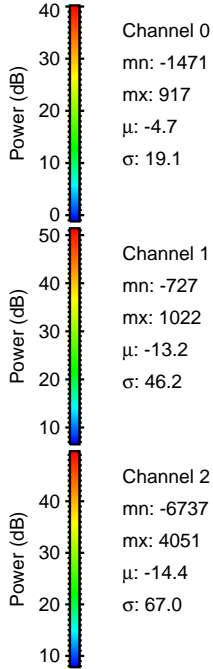
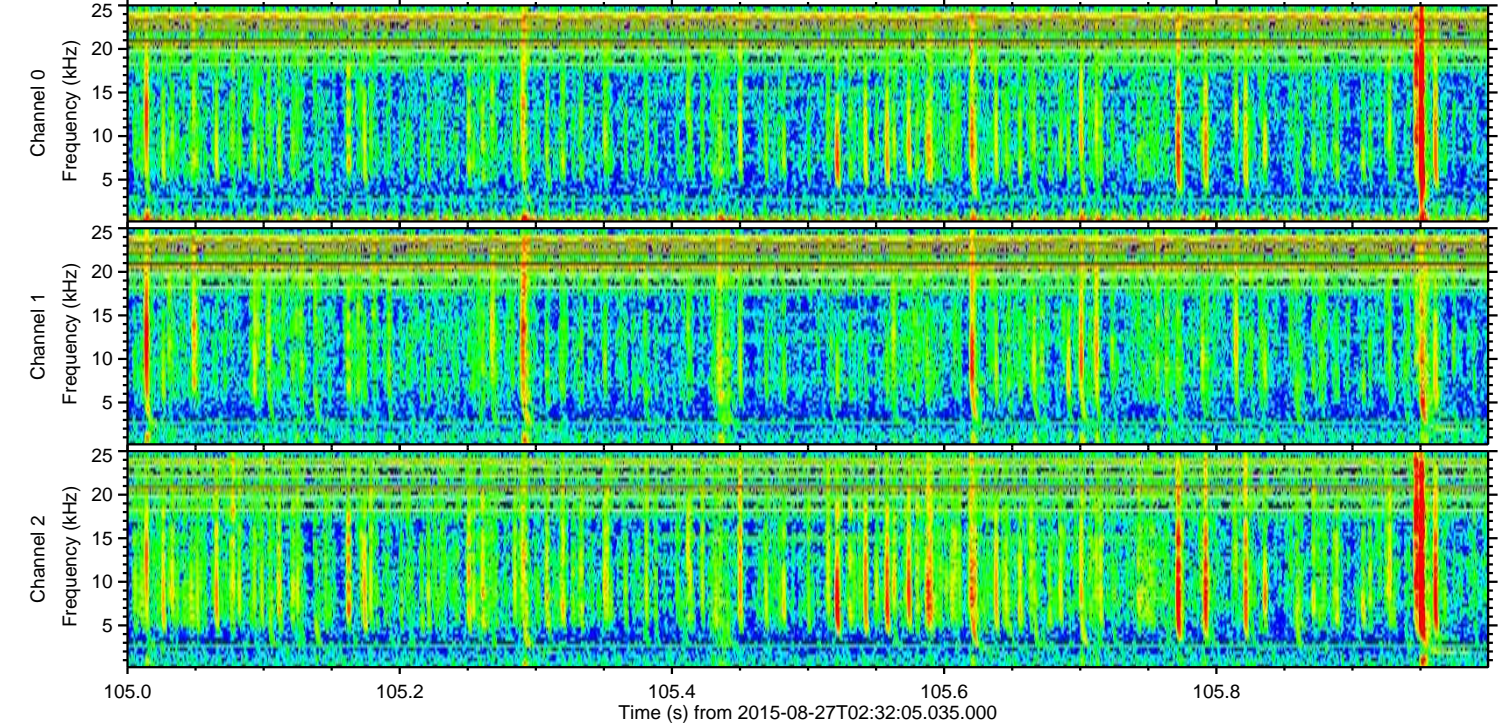
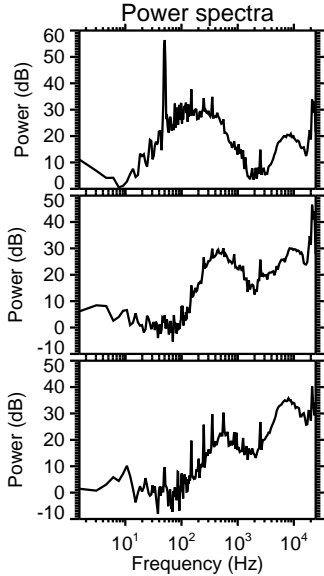
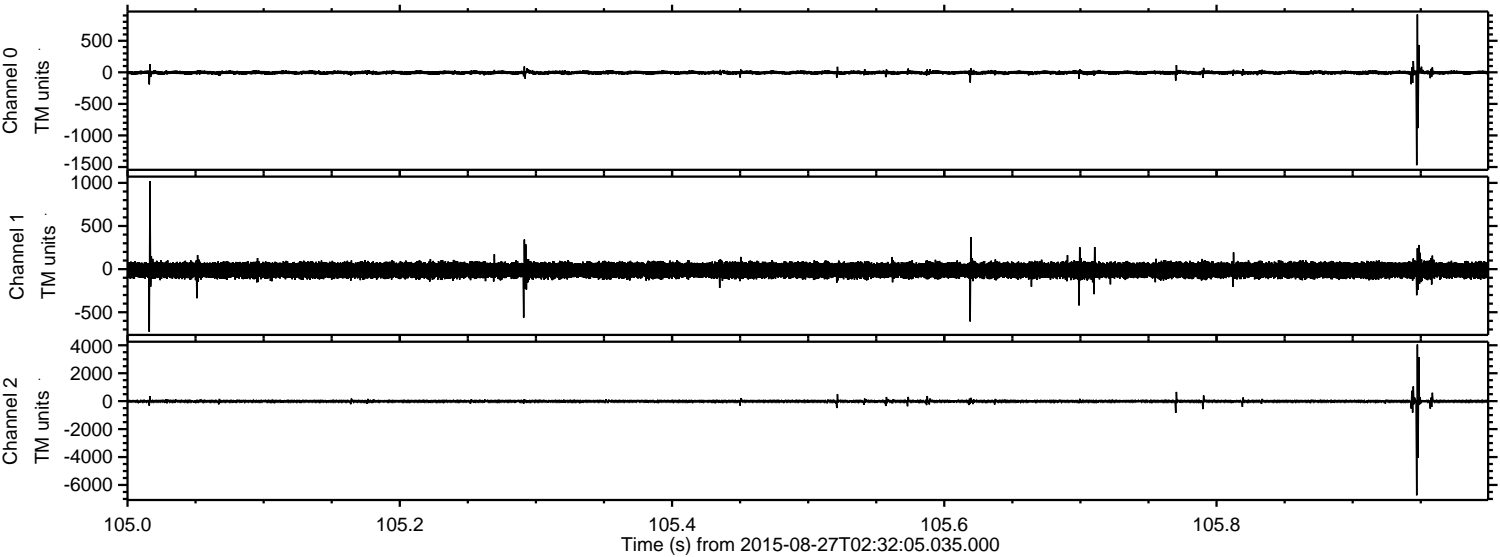
Channel 2
mn: -9533
mx: 6696
 μ : -14.4
 σ : 119.8

Processed Wed Oct 7 07:51:20 2015 by ELM ver.2012-10-06 from 001__elm20150827_023204__dat00.bin

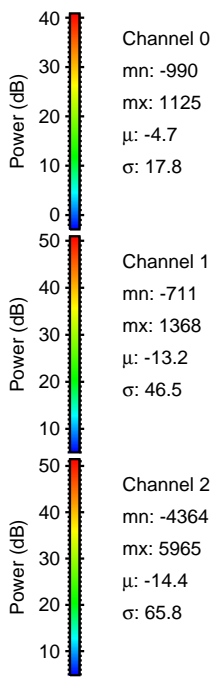
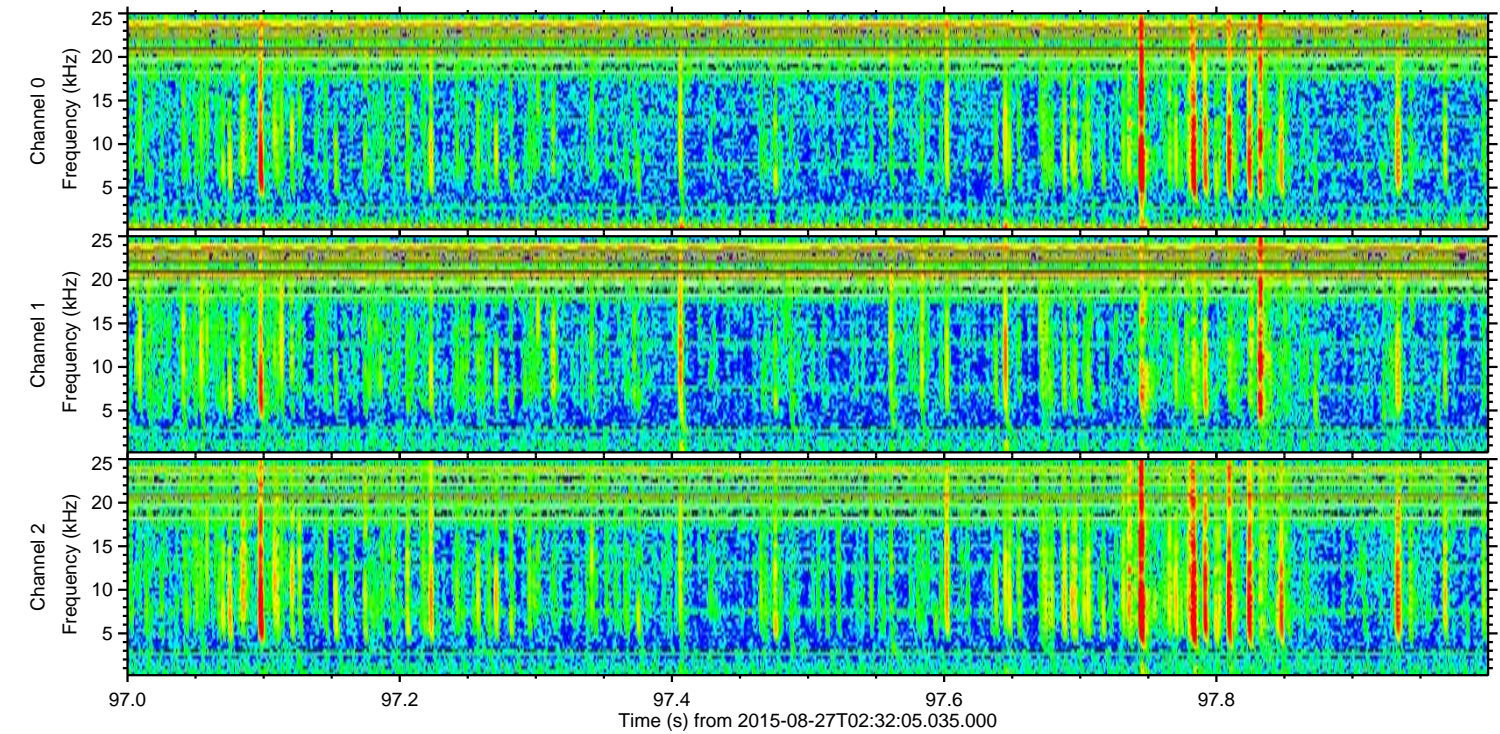
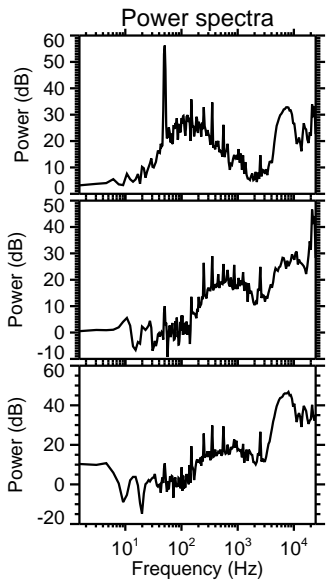
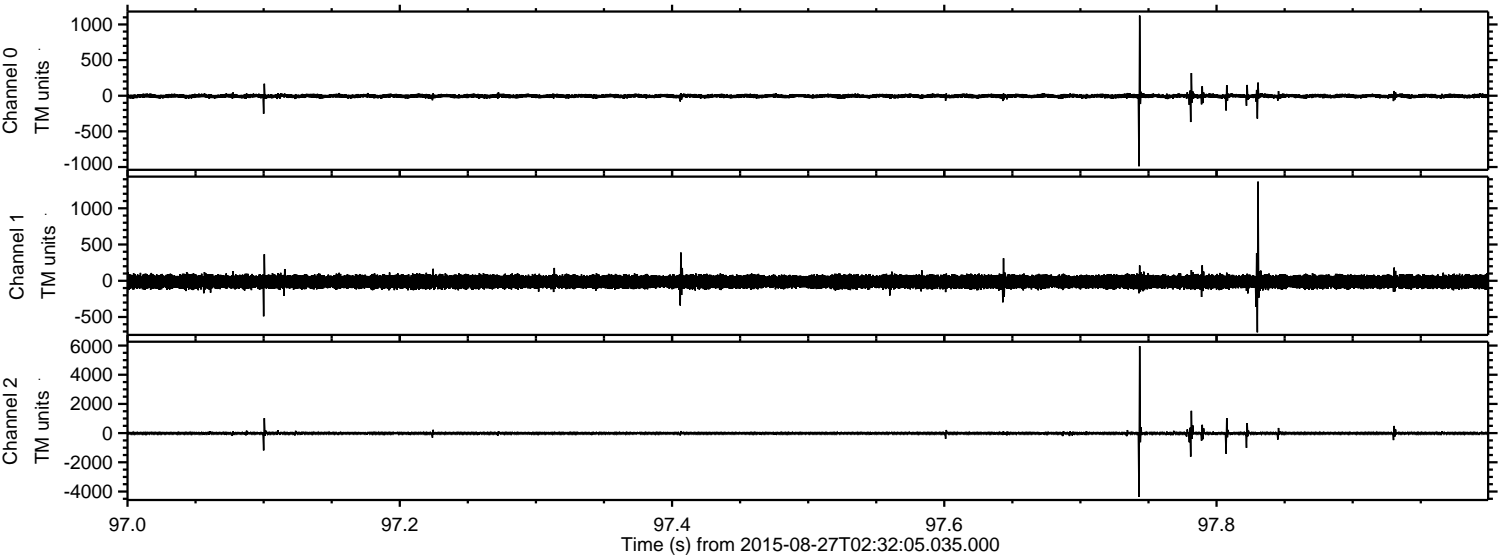


ELMAVAN 3D WAVEFORMS (Measured data sampled at 50 kHz) 51000 packets of 144 samples from 2015-08-27T02:32:05.035.000. Part 106/147

Processed Wed Oct 7 07:51:21 2015 by ELM ver.2012-10-06 from 001__elm20150827_023204__dat00.bin



Processed Wed Oct 7 07:51:22 2015 by ELM ver.2012-10-06 from 001__elm20150827_023204__dat00.bin



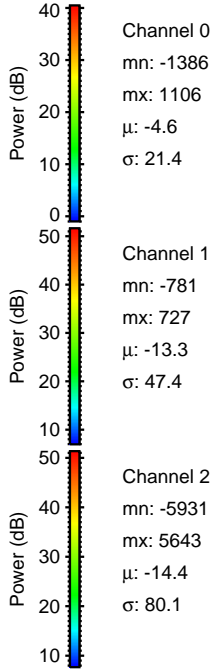
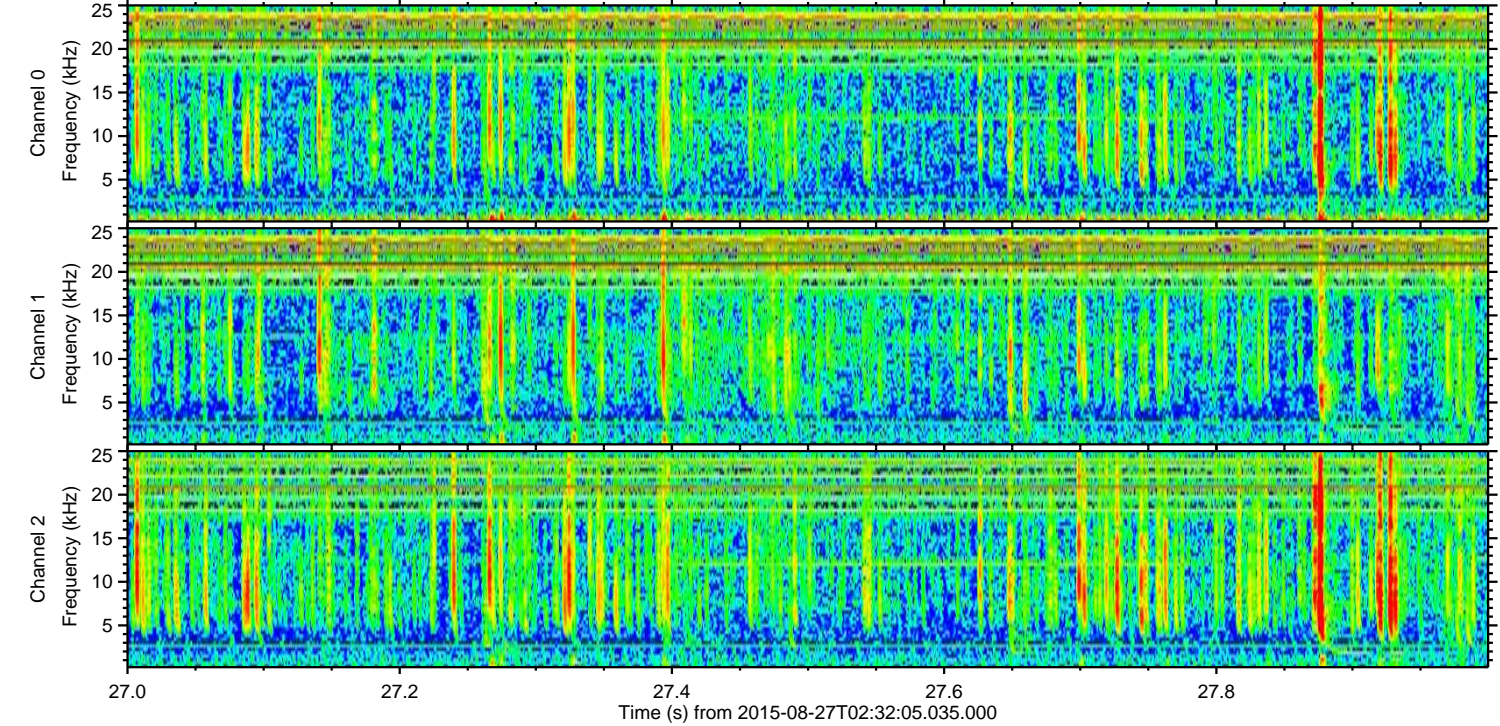
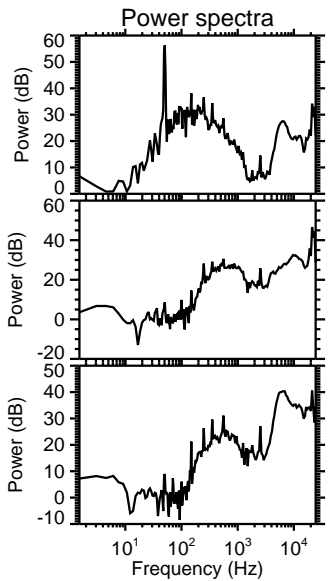
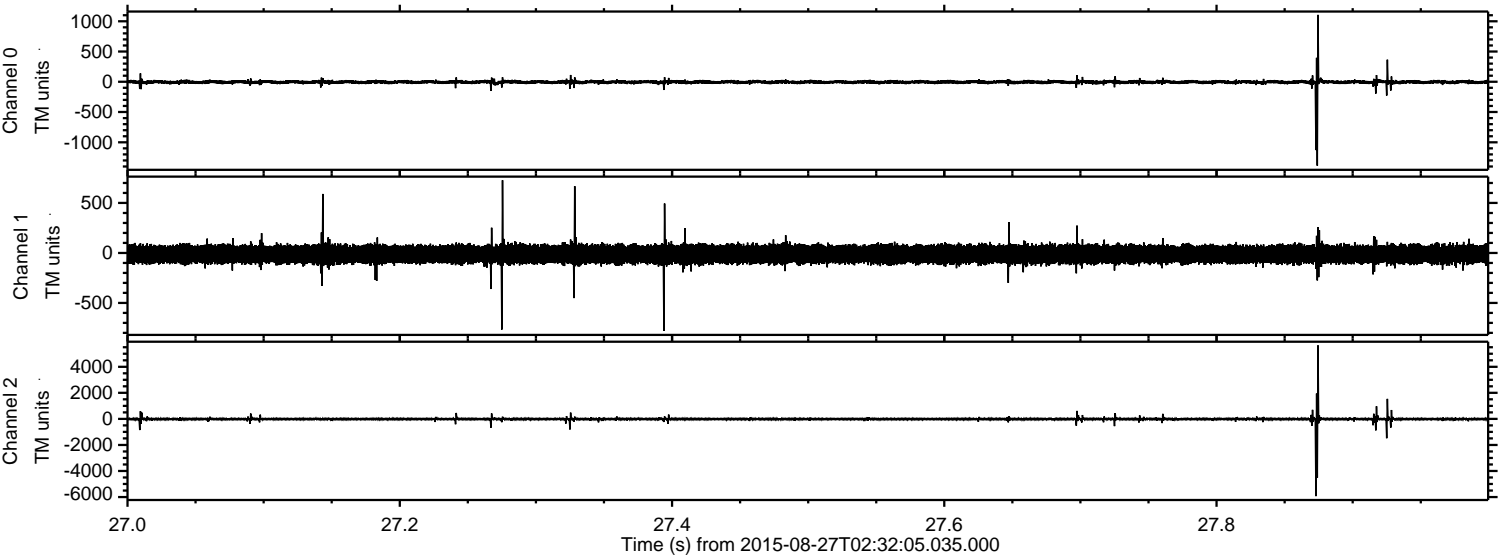
Channel 0
mn: -990
mx: 1125
 μ : -4.7
 σ : 17.8

Channel 1
mn: -711
mx: 1368
 μ : -13.2
 σ : 46.5

Channel 2
mn: -4364
mx: 5965
 μ : -14.4
 σ : 65.8

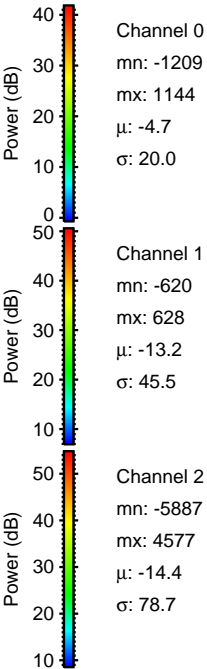
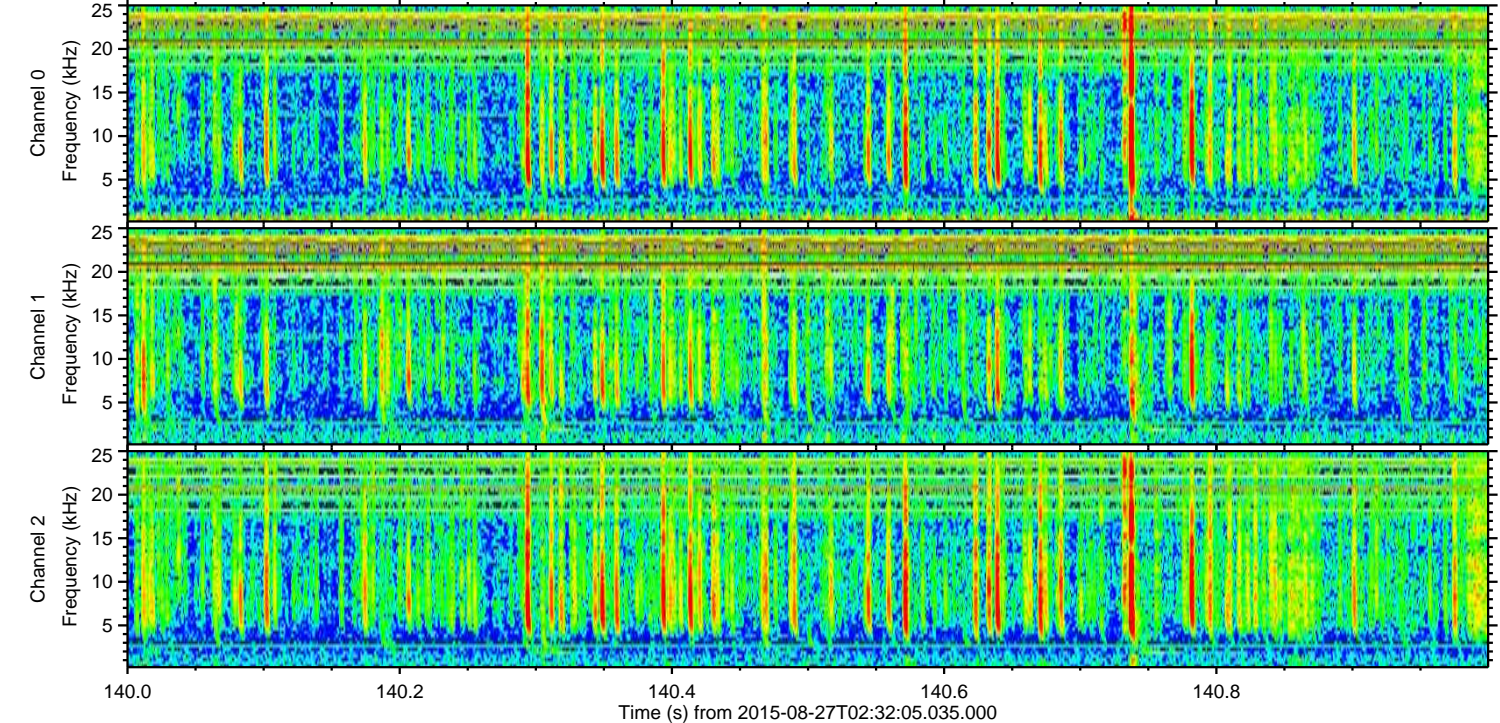
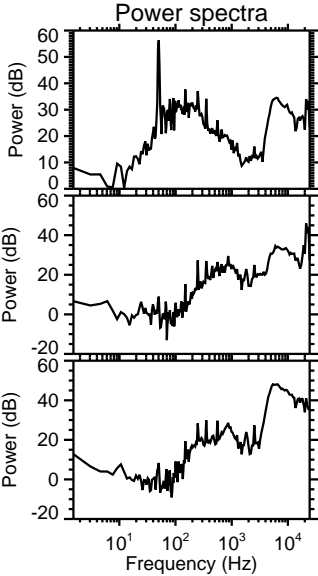
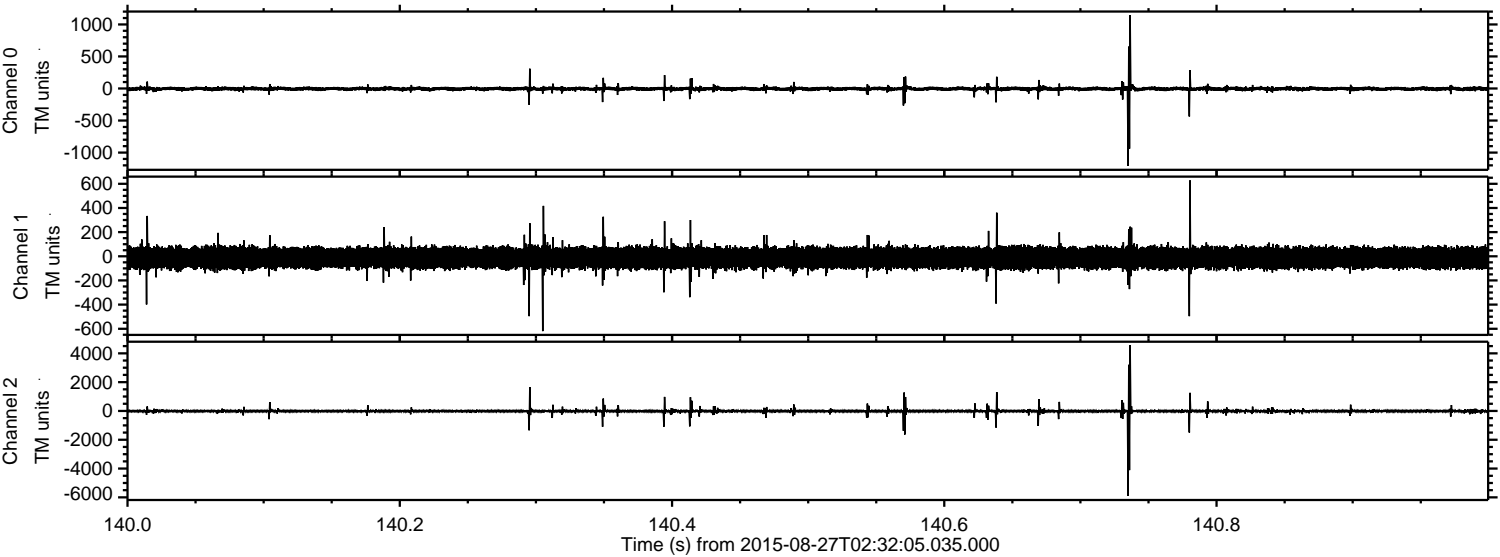
ELMAVAN 3D WAVEFORMS (Measured data sampled at 50 kHz) 51000 packets of 144 samples from 2015-08-27T02:32:05.035.000. Part 28/147

Processed Wed Oct 7 07:51:23 2015 by ELM ver.2012-10-06 from 001__elm20150827_023204__dat00.bin



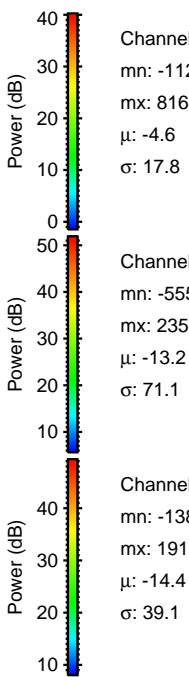
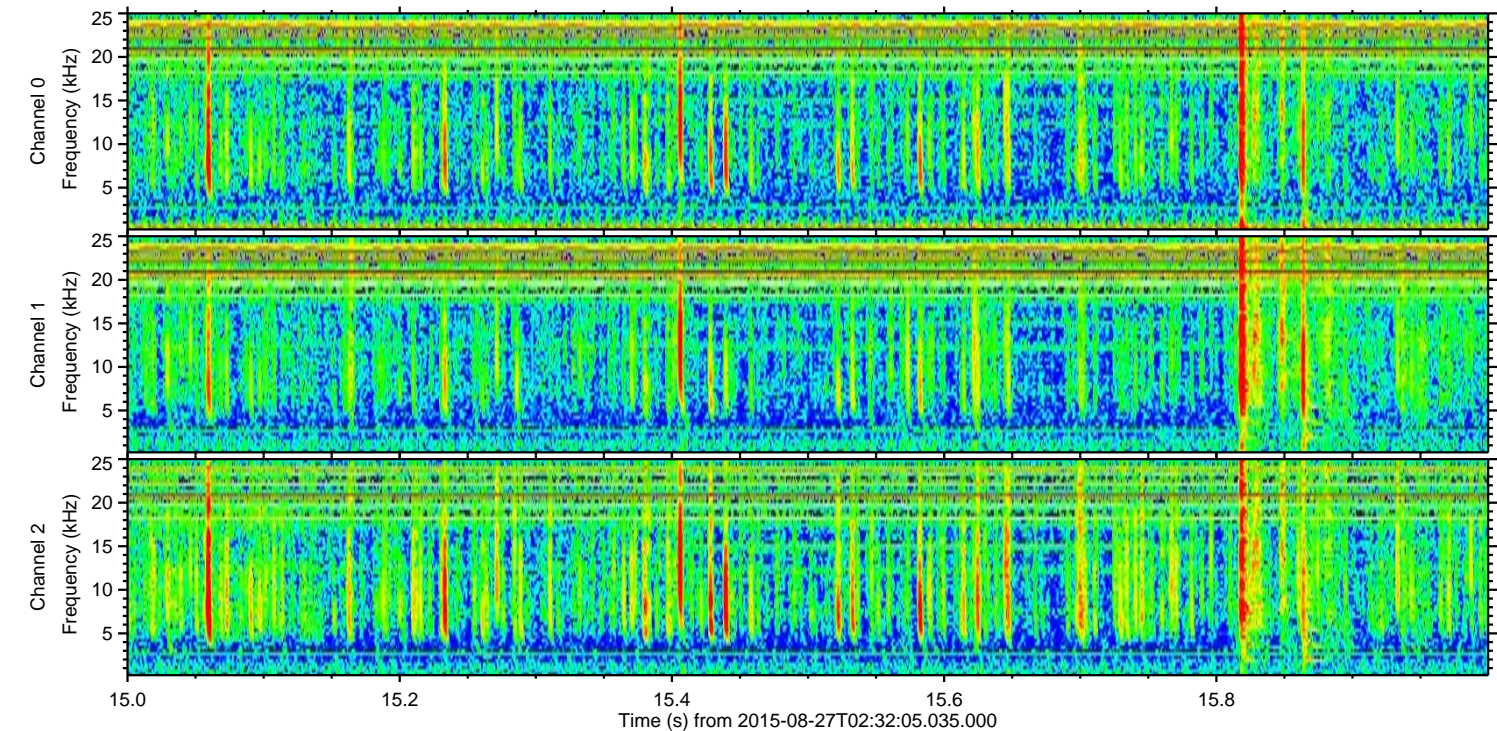
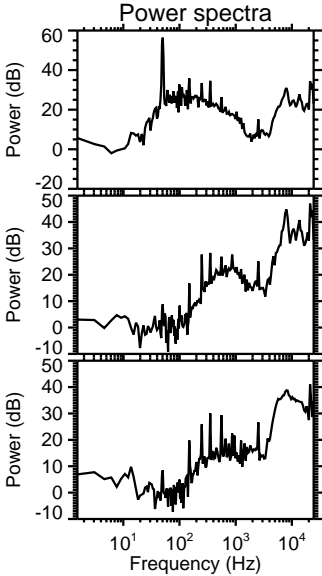
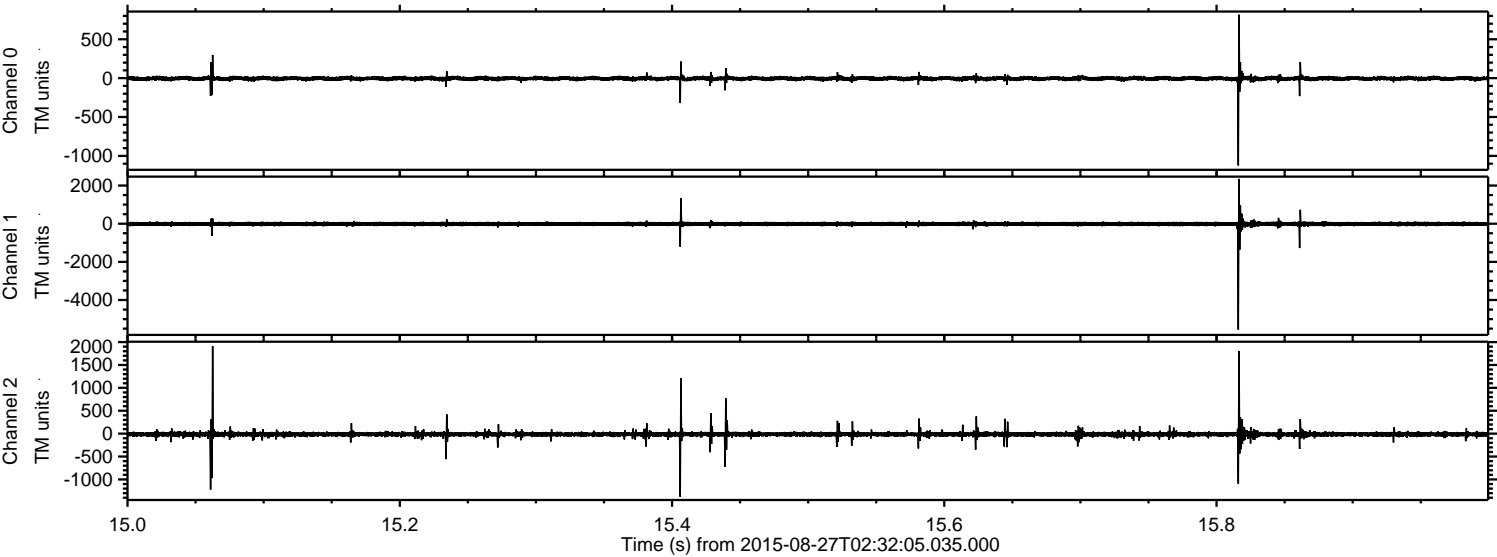
ELMAVAN 3D WAVEFORMS (Measured data sampled at 50 kHz) 51000 packets of 144 samples from 2015-08-27T02:32:05.035.000. Part 141/147

Processed Wed Oct 7 07:51:24 2015 by ELM ver.2012-10-06 from 001__elm20150827_023204__dat00.bin



ELMAVAN 3D WAVEFORMS (Measured data sampled at 50 kHz) 51000 packets of 144 samples from 2015-08-27T02:32:05.035.000. Part 16/147

Processed Wed Oct 7 07:51:25 2015 by ELM ver.2012-10-06 from 001__elm20150827_023204__dat00.bin

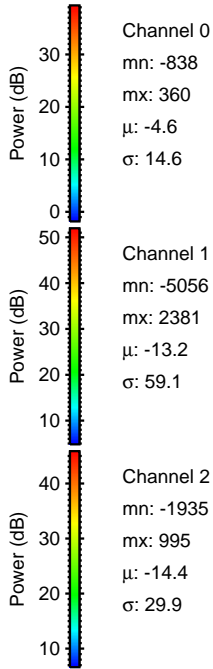
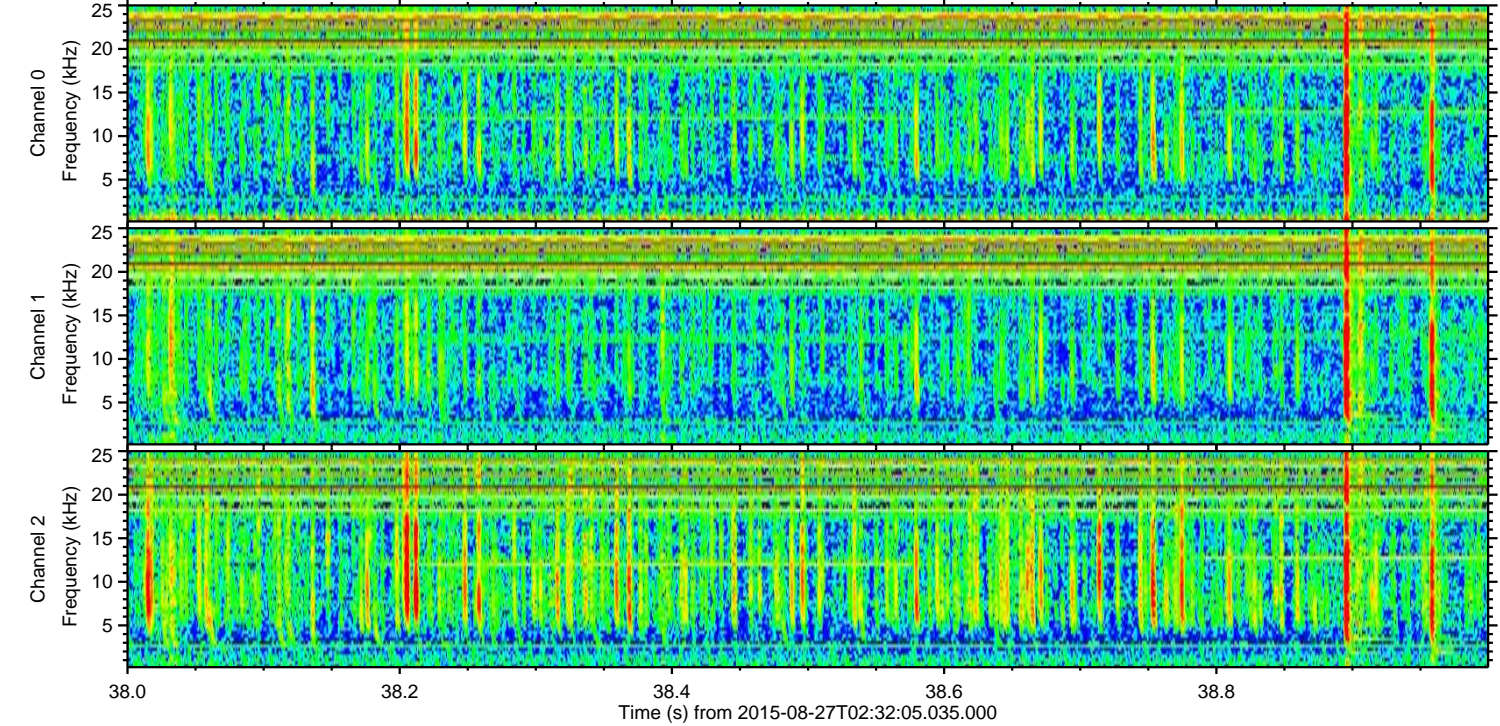
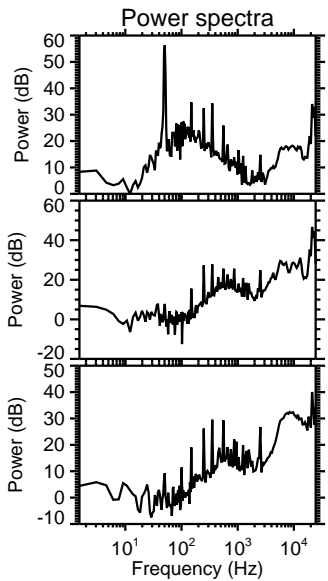
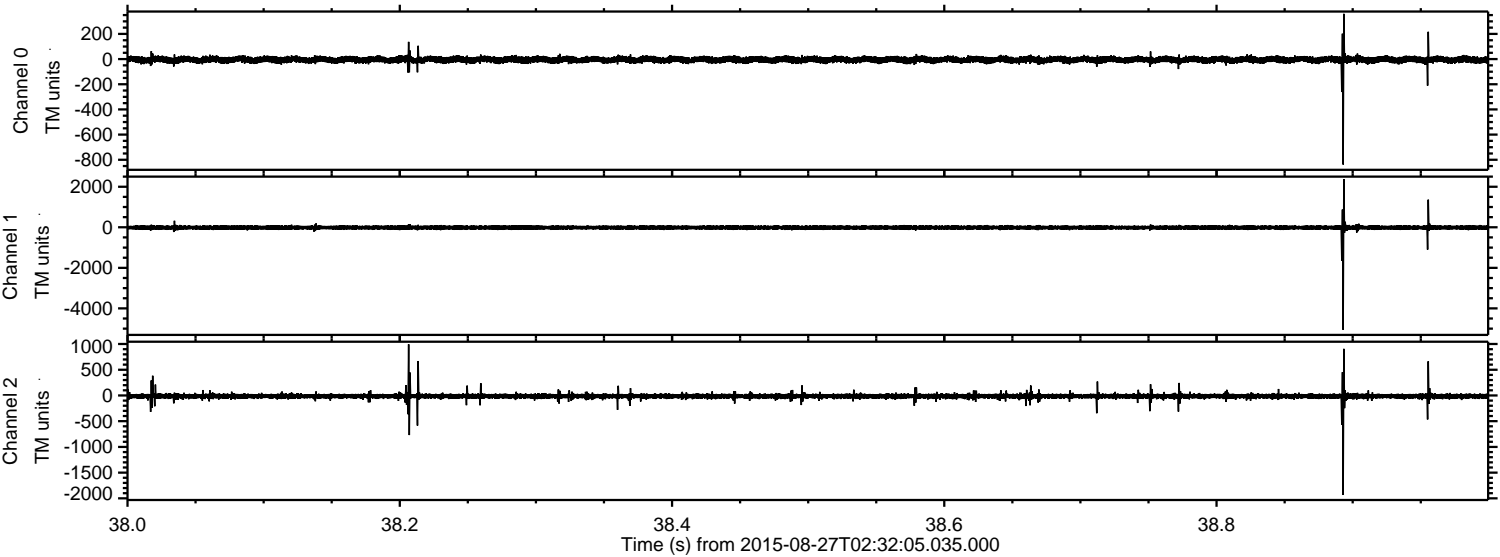


Channel 0
mn: -1123
mx: 816
 μ : -4.6
 σ : 17.8

Channel 1
mn: -5551
mx: 2350
 μ : -13.2
 σ : 71.1

Channel 2
mn: -1380
mx: 1912
 μ : -14.4
 σ : 39.1

Processed Wed Oct 7 07:51:26 2015 by ELM ver.2012-10-06 from 001__elm20150827_023204__dat00.bin



Channel 0
mn: -838
mx: 360
 μ : -4.6
 σ : 14.6

Channel 1
mn: -5056
mx: 2381
 μ : -13.2
 σ : 59.1

Channel 2
mn: -1935
mx: 995
 μ : -14.4
 σ : 29.9

Processed Wed Oct 7 07:51:28 2015 by ELM ver.2012-10-06 from 001__elm20150827_023204__dat00.bin

