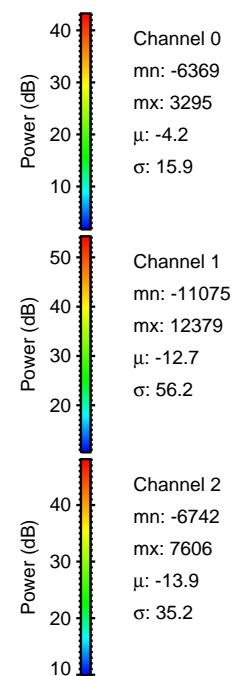
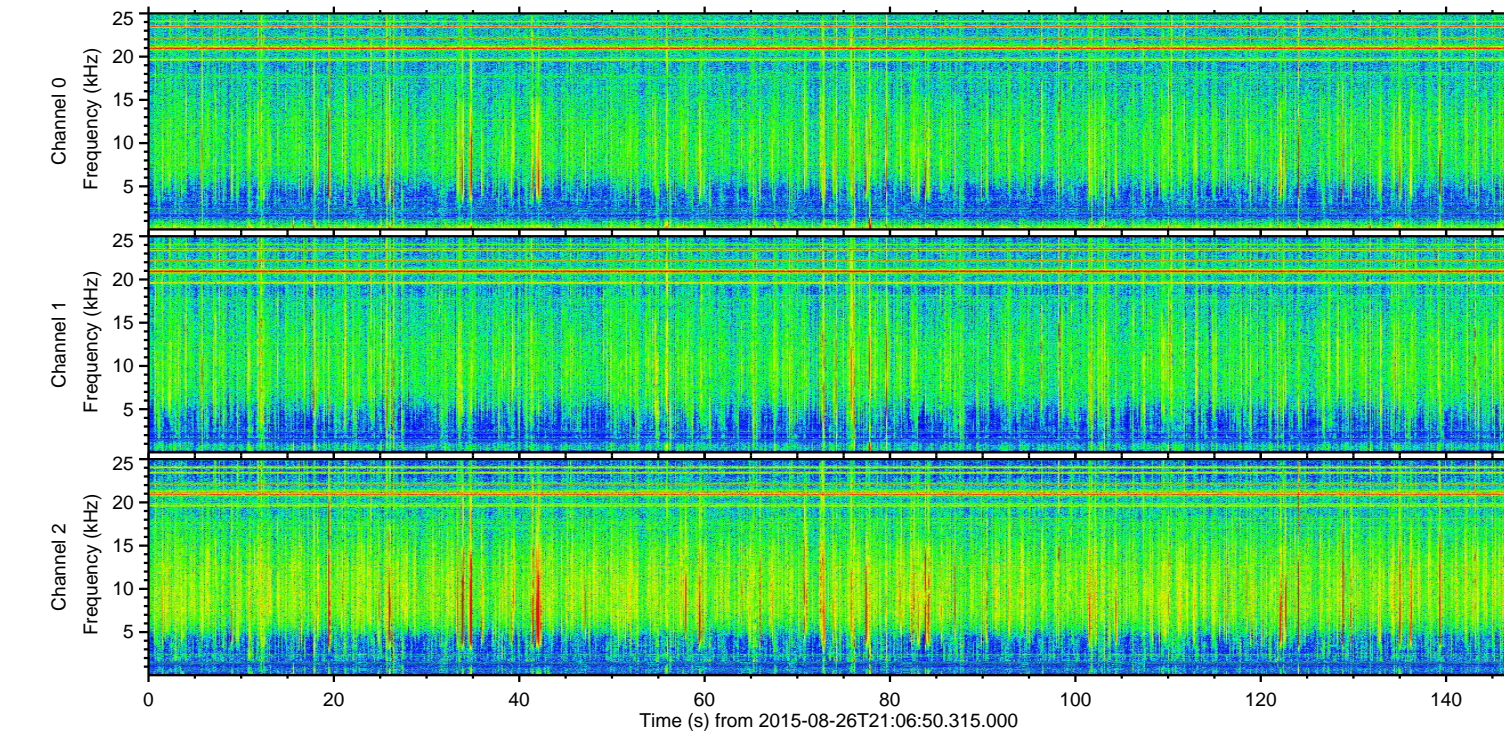
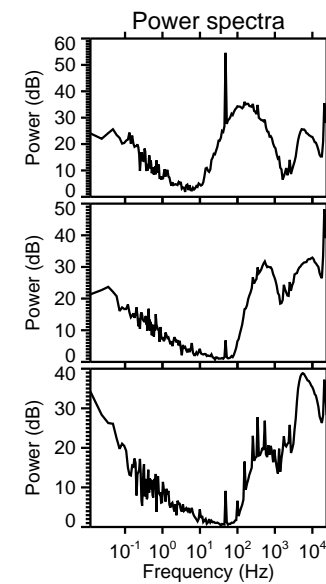
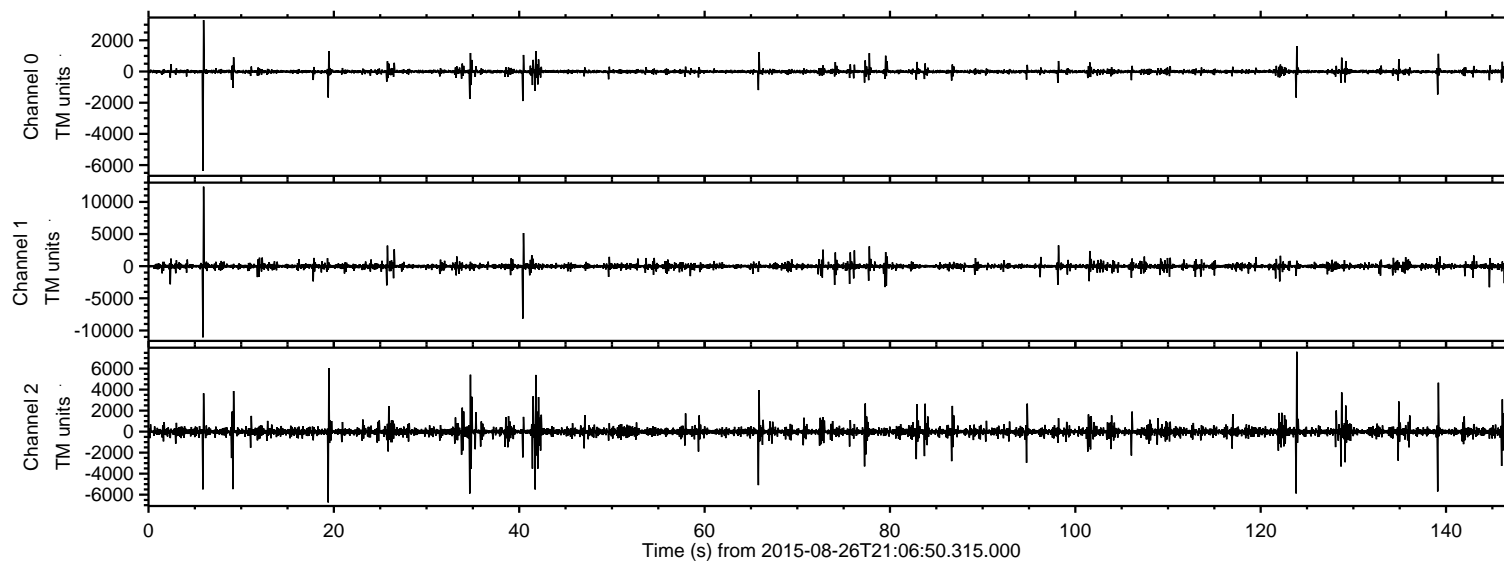
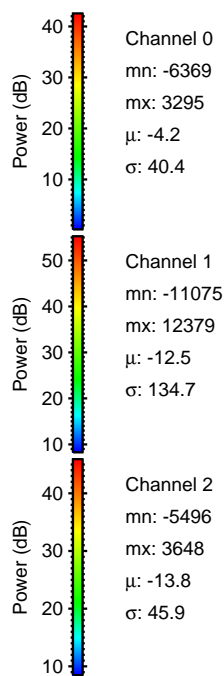
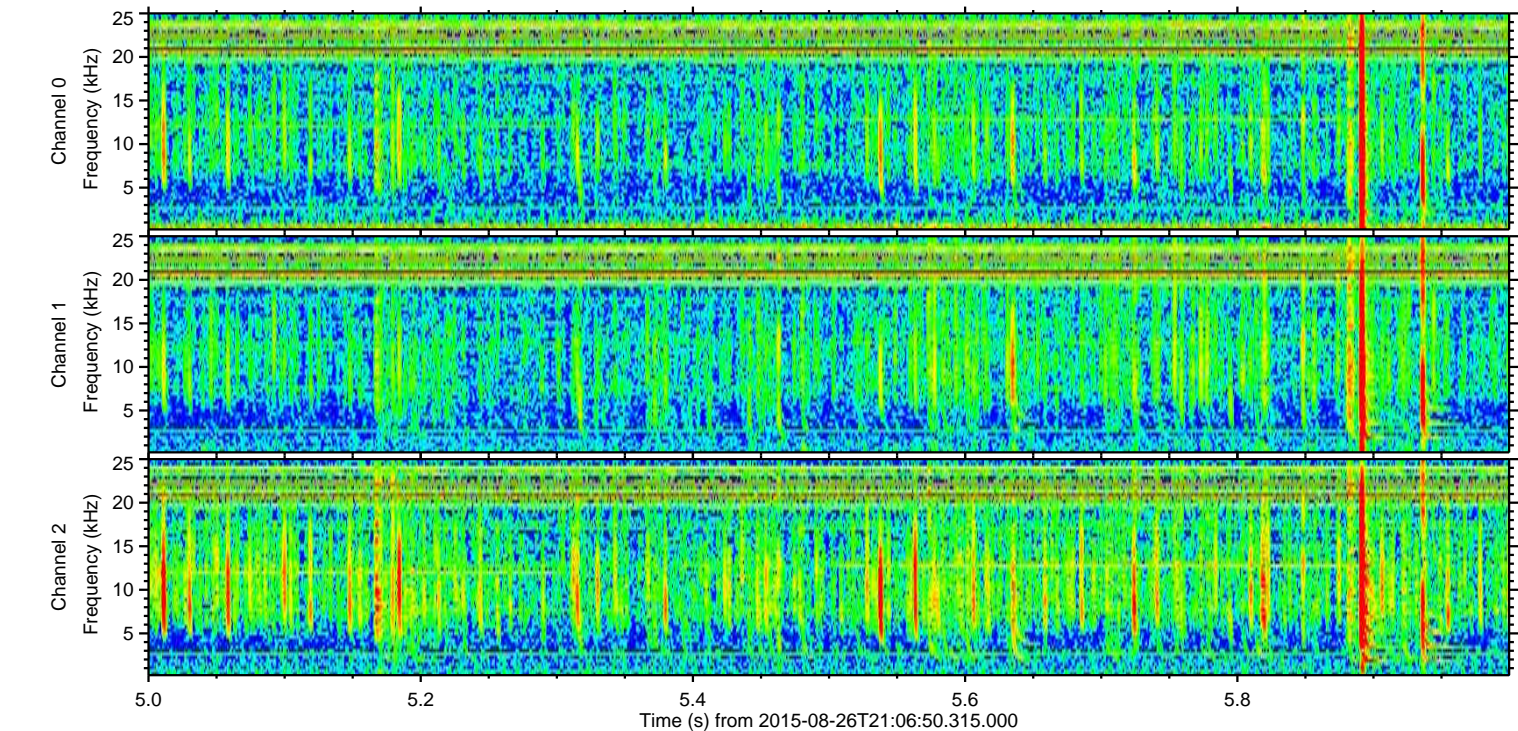
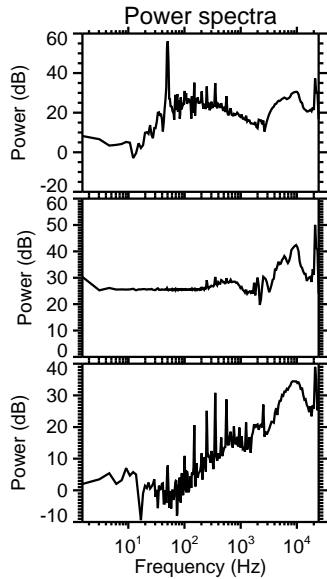
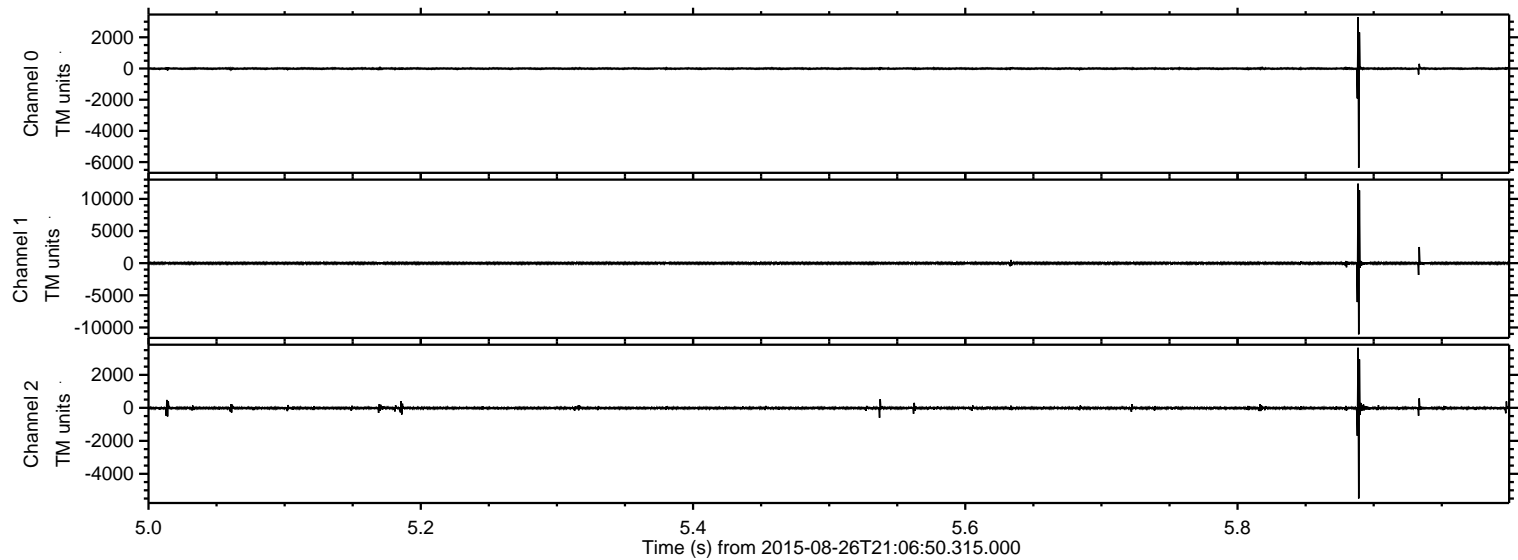


ELMAVAN 3D WAVEFORMS (Measured data sampled at 50 kHz) 51000 packets of 144 samples from 2015-08-26T21:06:50.315.000.

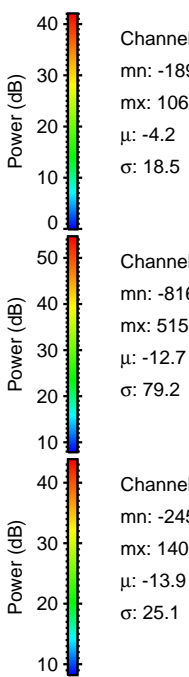
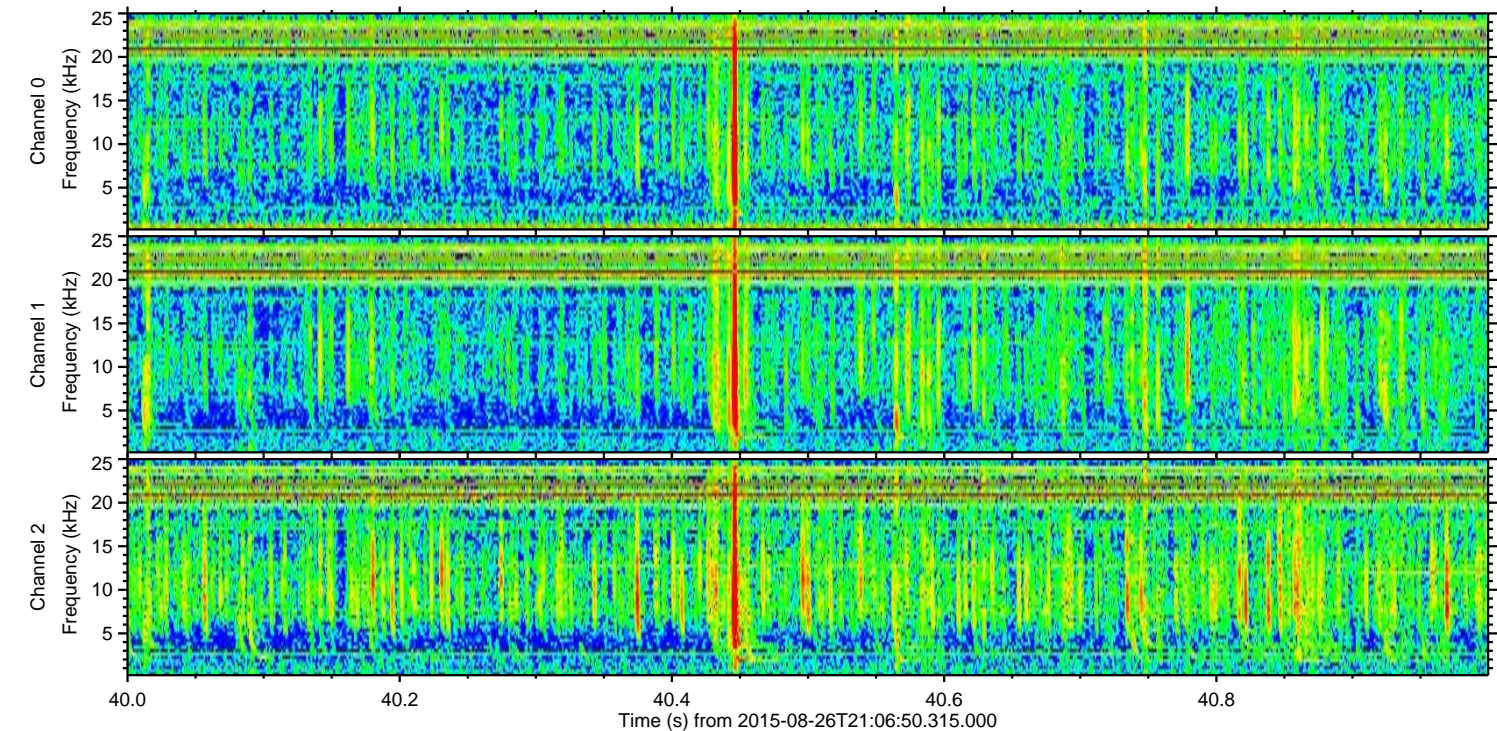
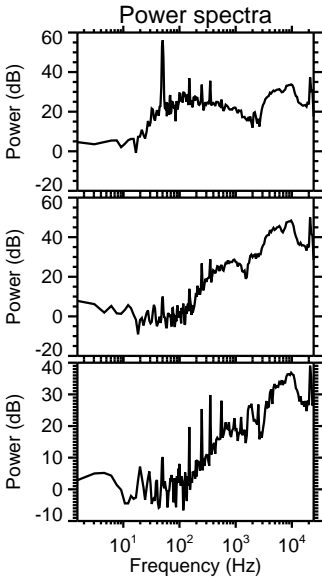
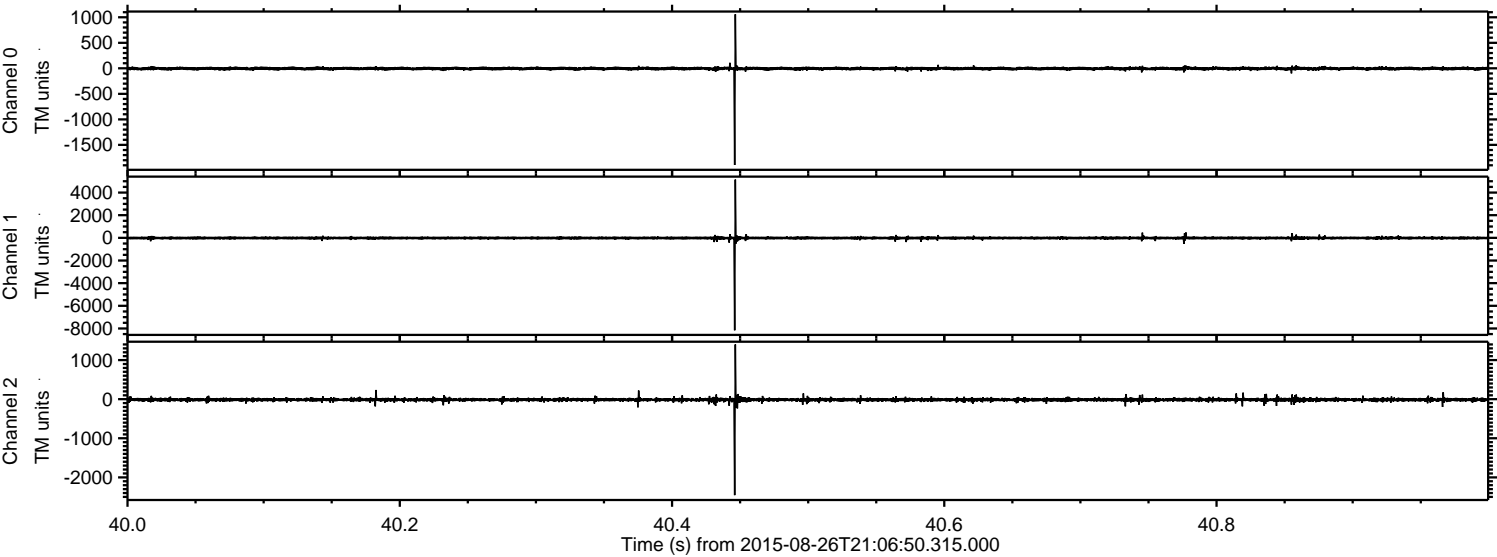
Processed Wed Oct 7 06:21:08 2015 by ELM ver.2012-10-06 from 001__elm20150826_210649__dat00.bin



Processed Wed Oct 7 06:21:24 2015 by ELM ver.2012-10-06 from 001__elm20150826_210649__dat00.bin

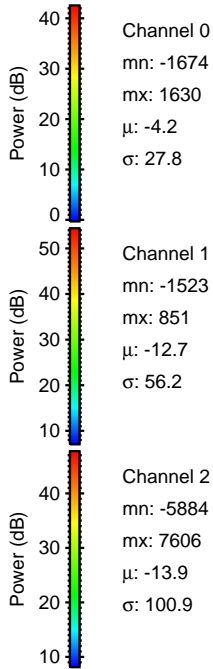
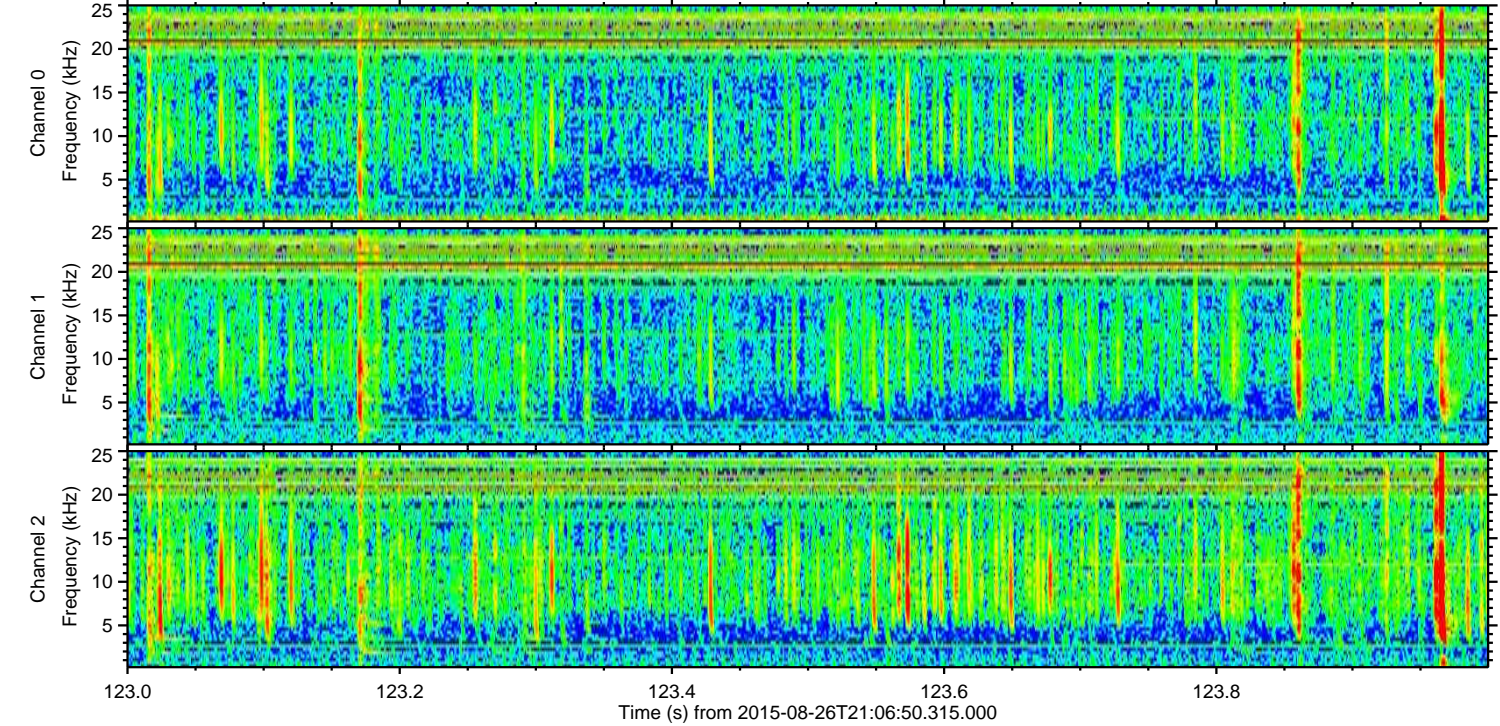
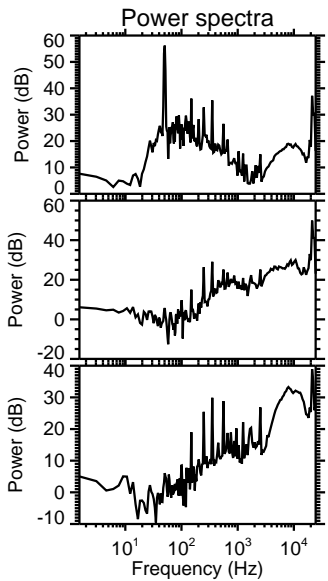
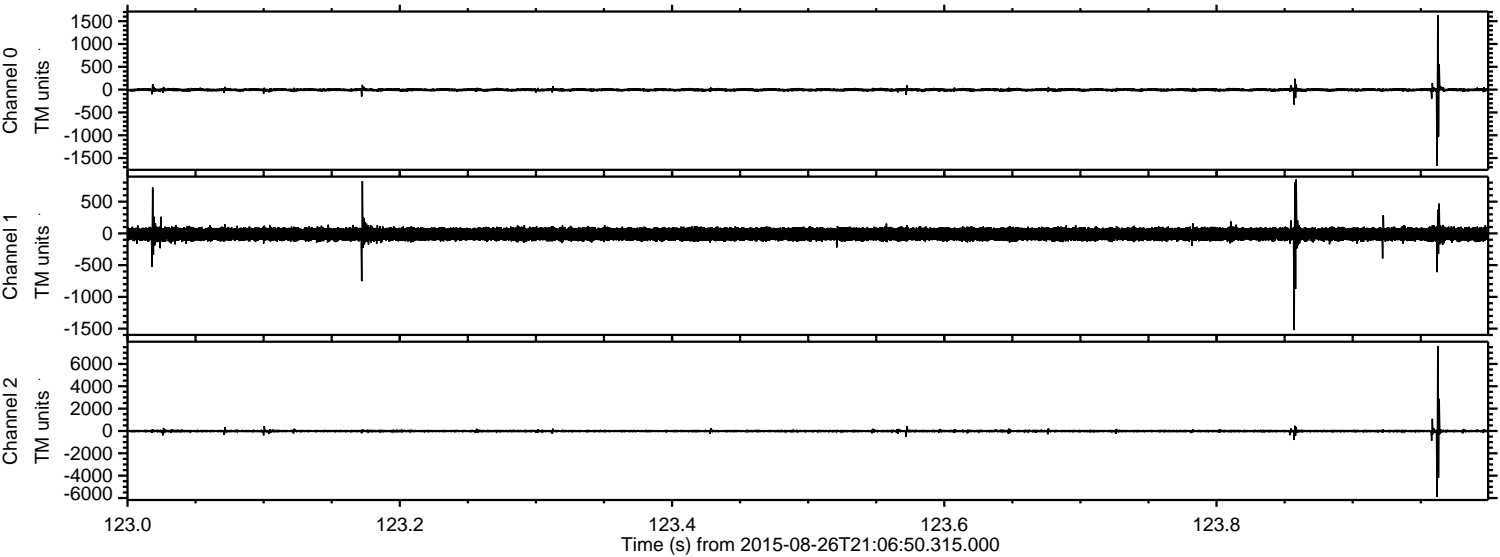


Processed Wed Oct 7 06:21:25 2015 by ELM ver.2012-10-06 from 001__elm20150826_210649__dat00.bin

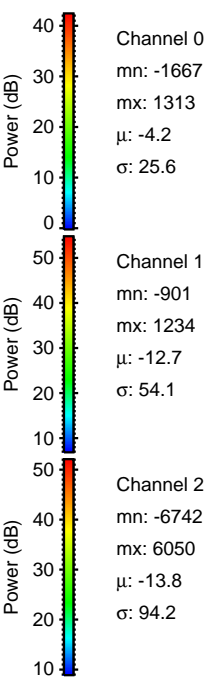
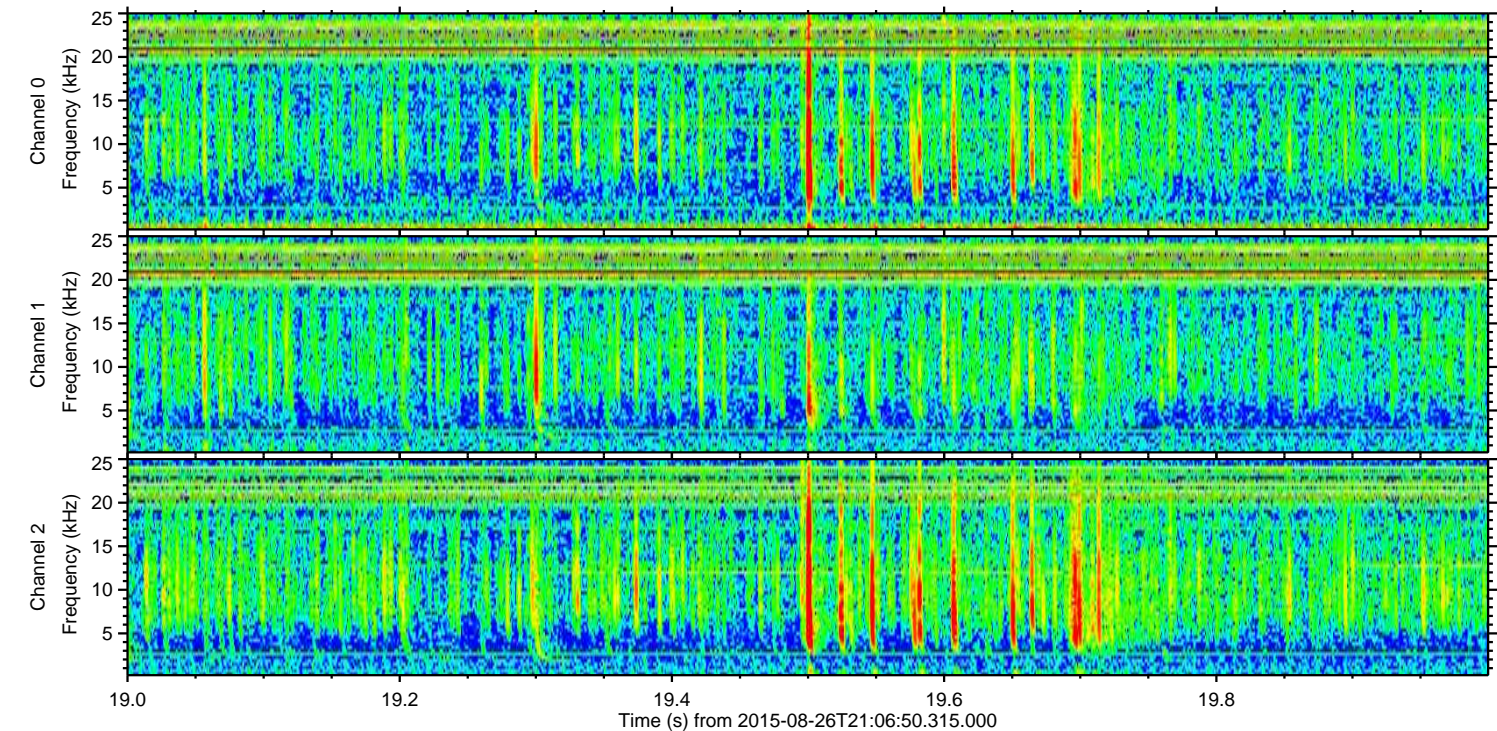
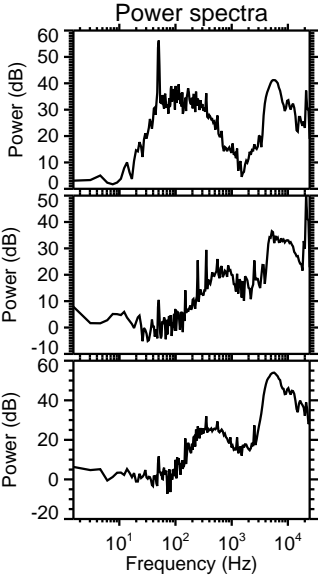
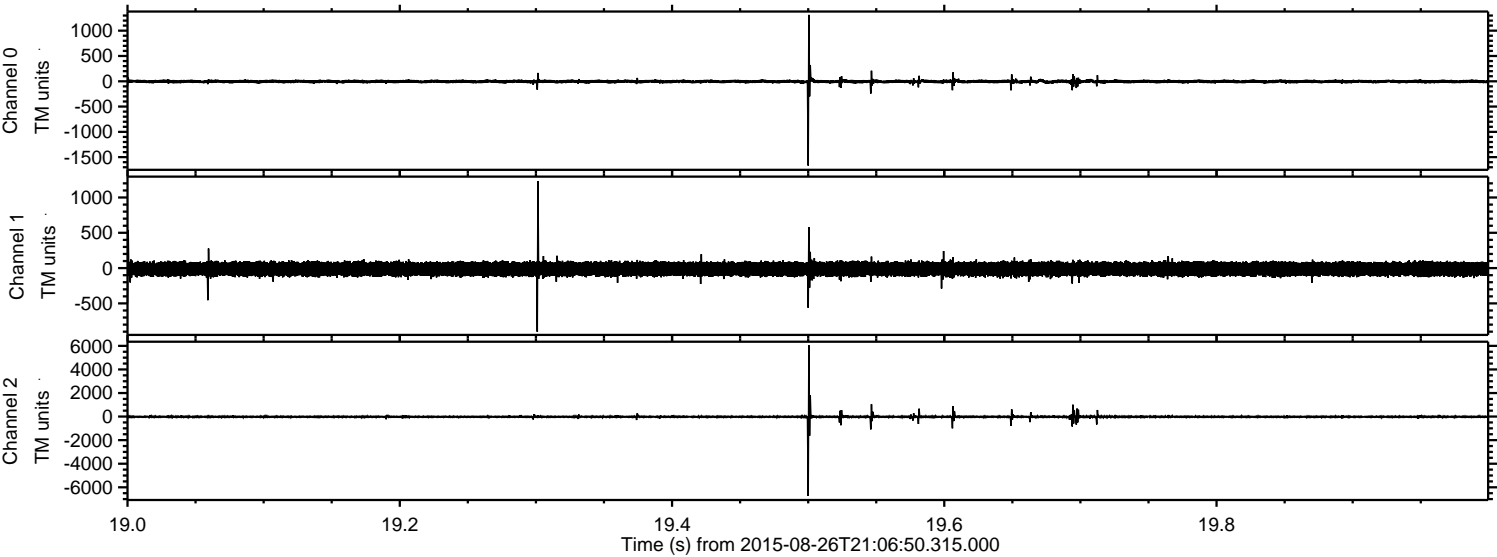


ELMAVAN 3D WAVEFORMS (Measured data sampled at 50 kHz) 51000 packets of 144 samples from 2015-08-26T21:06:50.315.000. Part 124/147

Processed Wed Oct 7 06:21:26 2015 by ELM ver.2012-10-06 from 001__elm20150826_210649__dat00.bin



Processed Wed Oct 7 06:21:27 2015 by ELM ver.2012-10-06 from 001__elm20150826_210649__dat00.bin

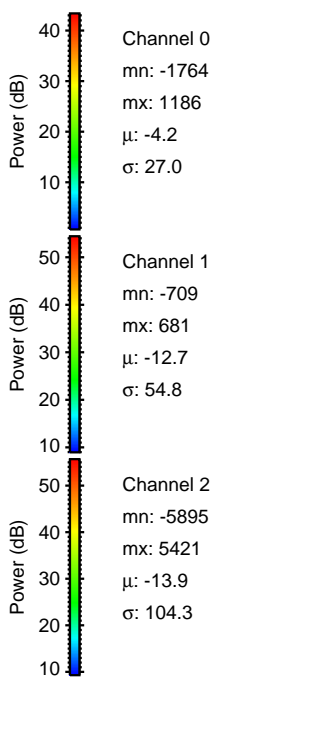
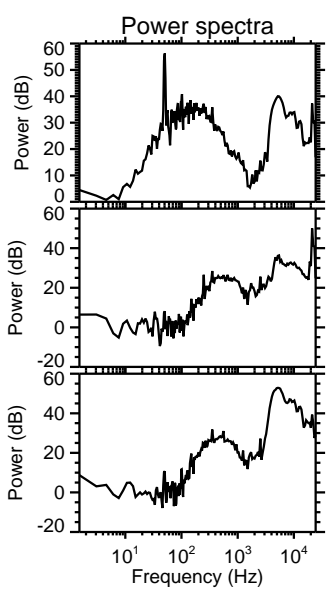
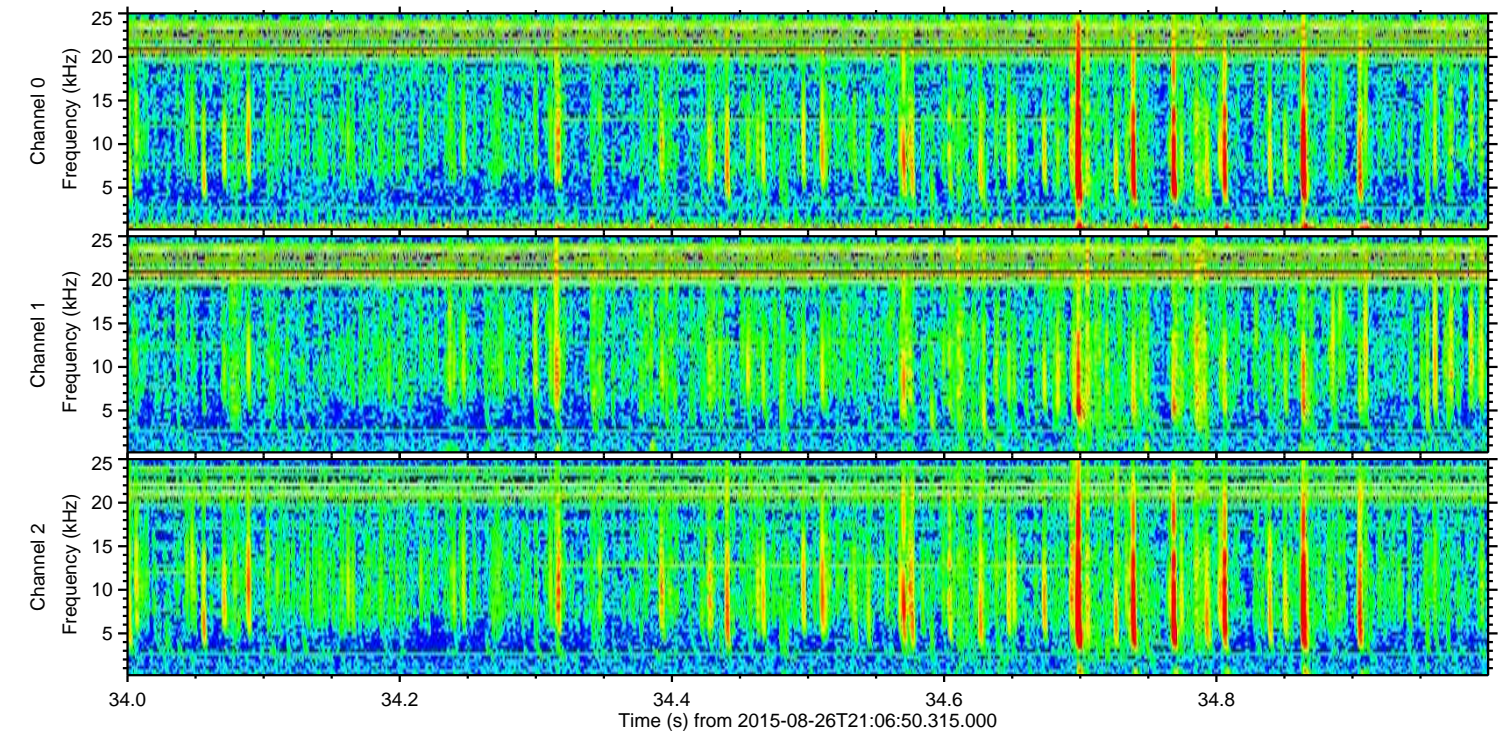
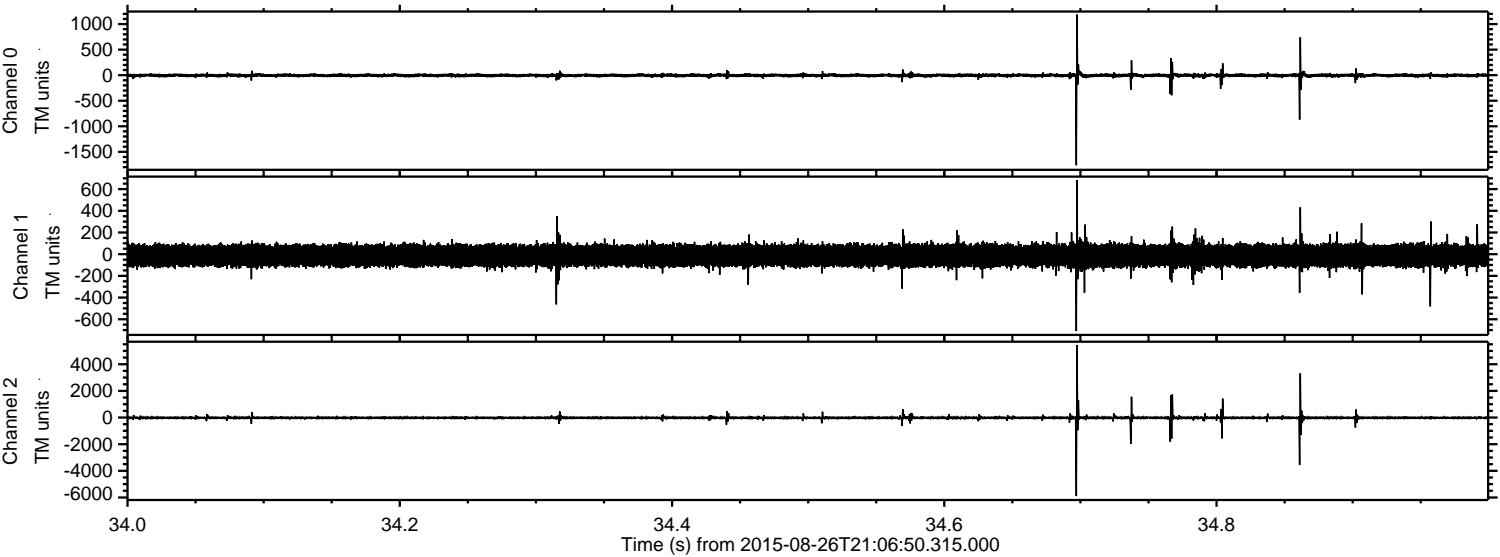


Channel 0
mn: -1667
mx: 1313
 μ : -4.2
 σ : 25.6

Channel 1
mn: -901
mx: 1234
 μ : -12.7
 σ : 54.1

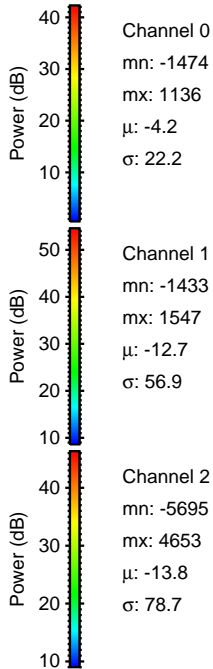
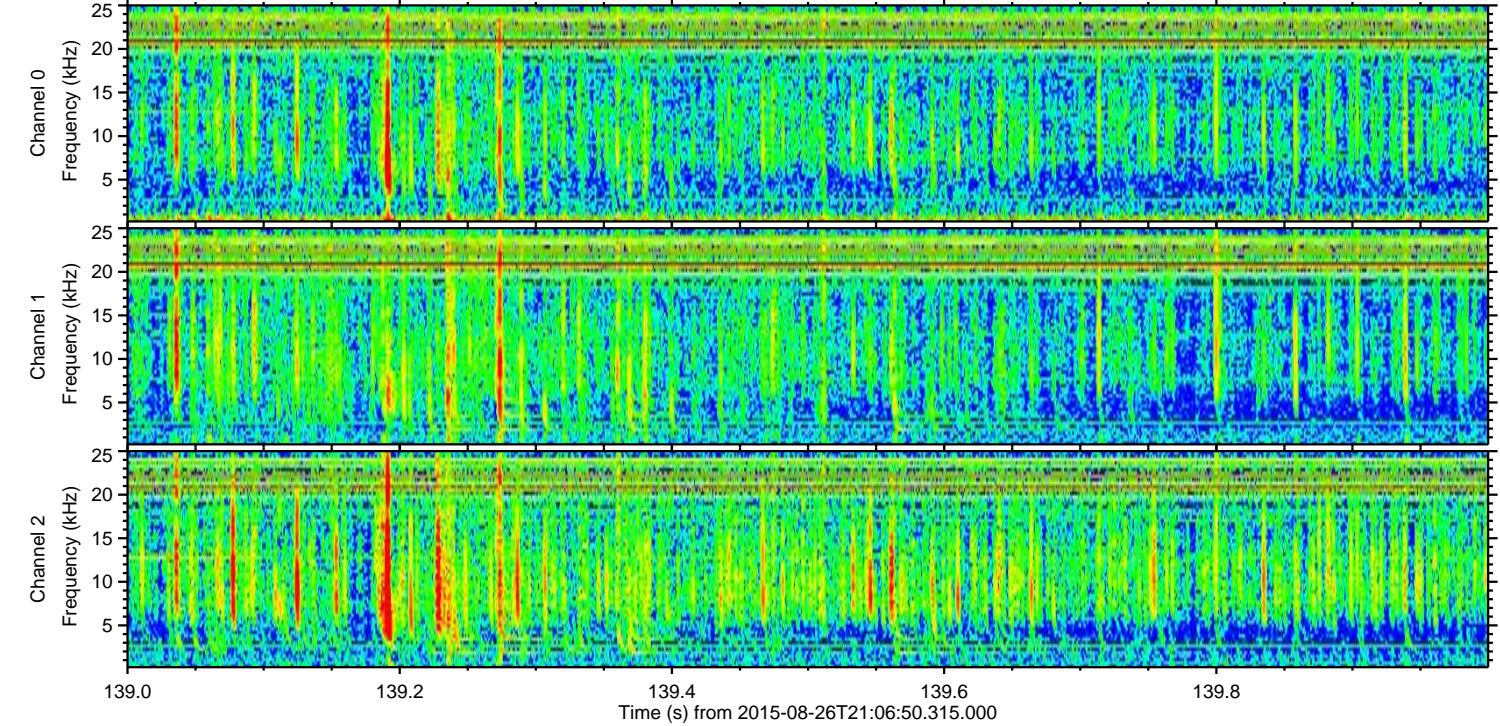
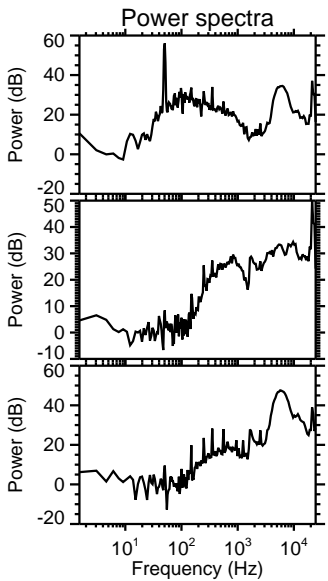
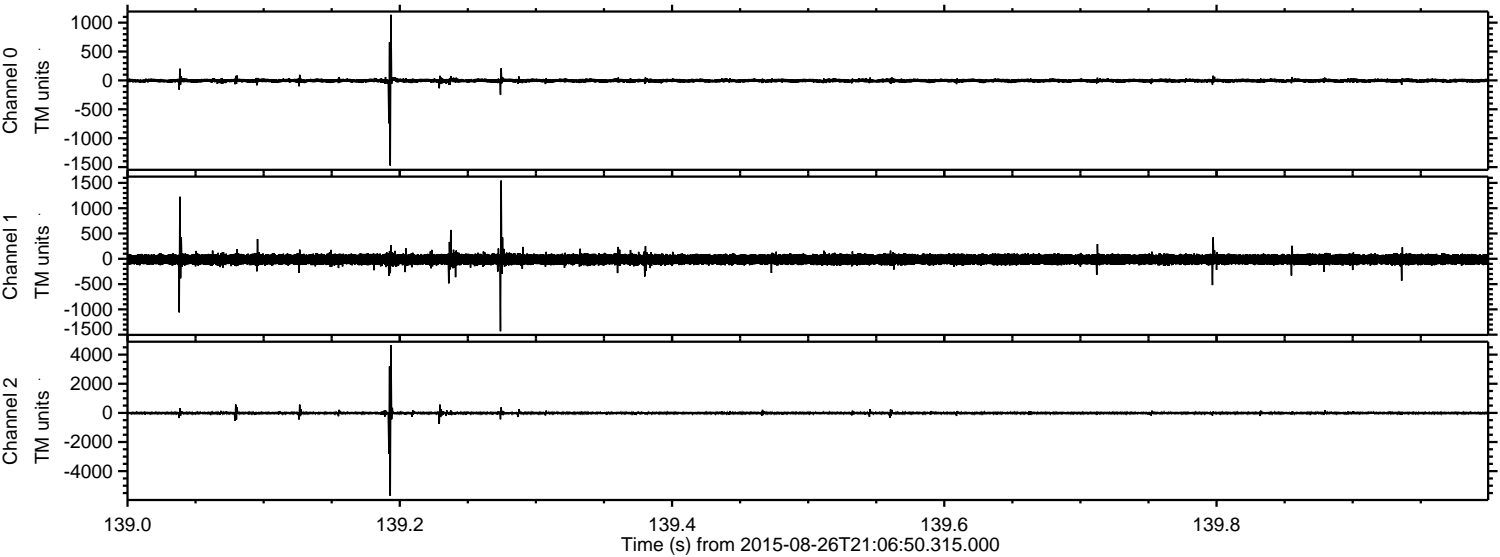
Channel 2
mn: -6742
mx: 6050
 μ : -13.8
 σ : 94.2

Processed Wed Oct 7 06:21:29 2015 by ELM ver.2012-10-06 from 001__elm20150826_210649__dat00.bin

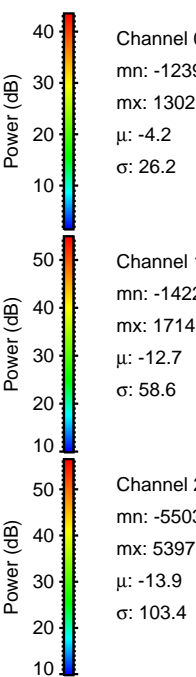
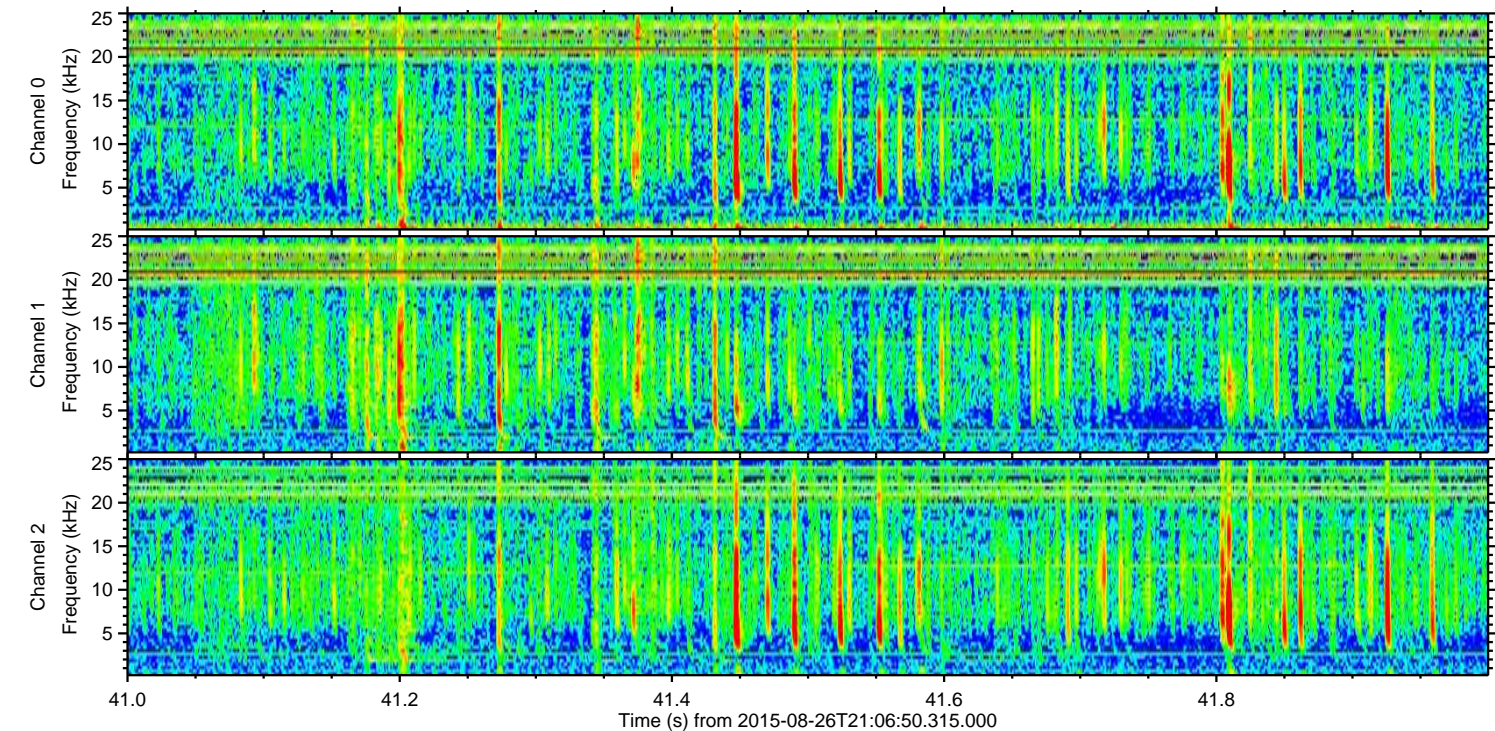
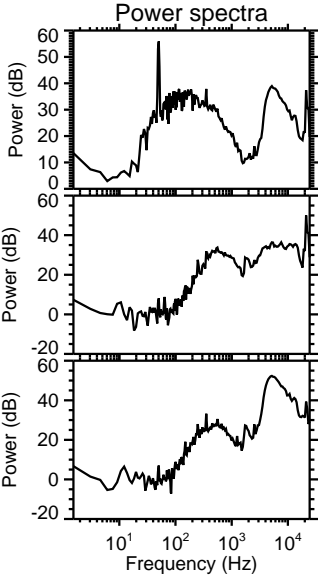
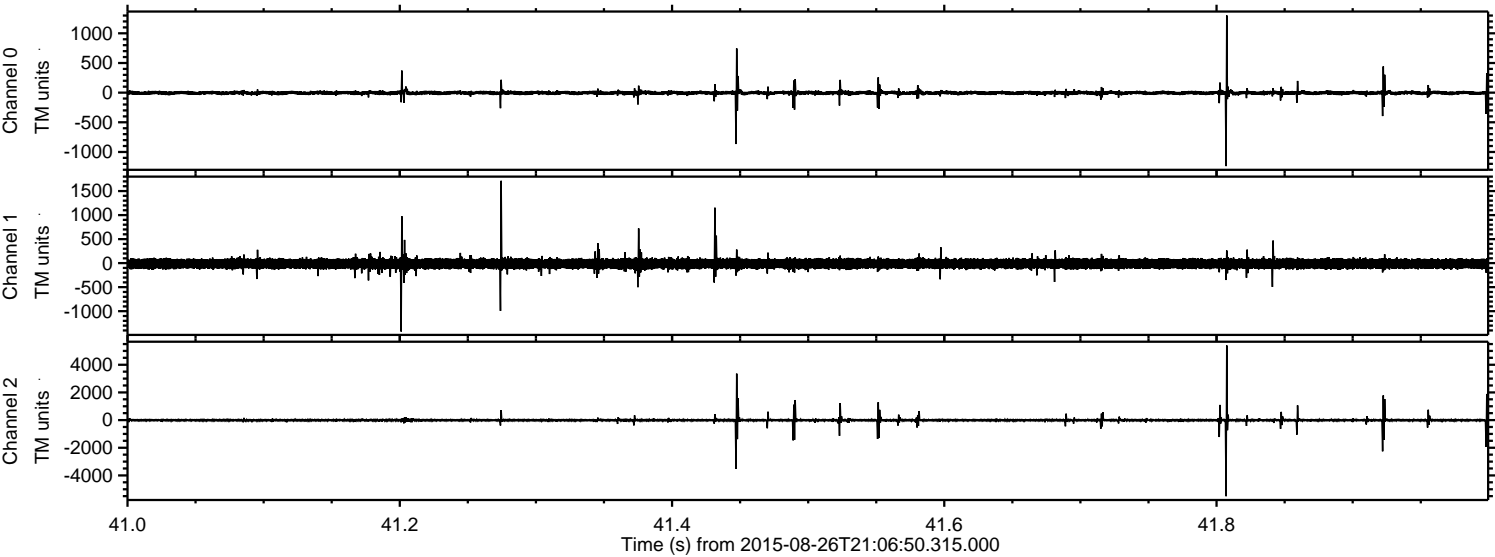


ELMAVAN 3D WAVEFORMS (Measured data sampled at 50 kHz) 51000 packets of 144 samples from 2015-08-26T21:06:50.315.000. Part 140/147

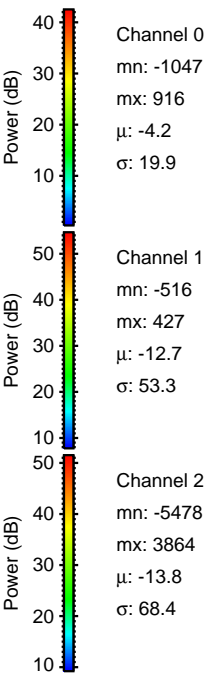
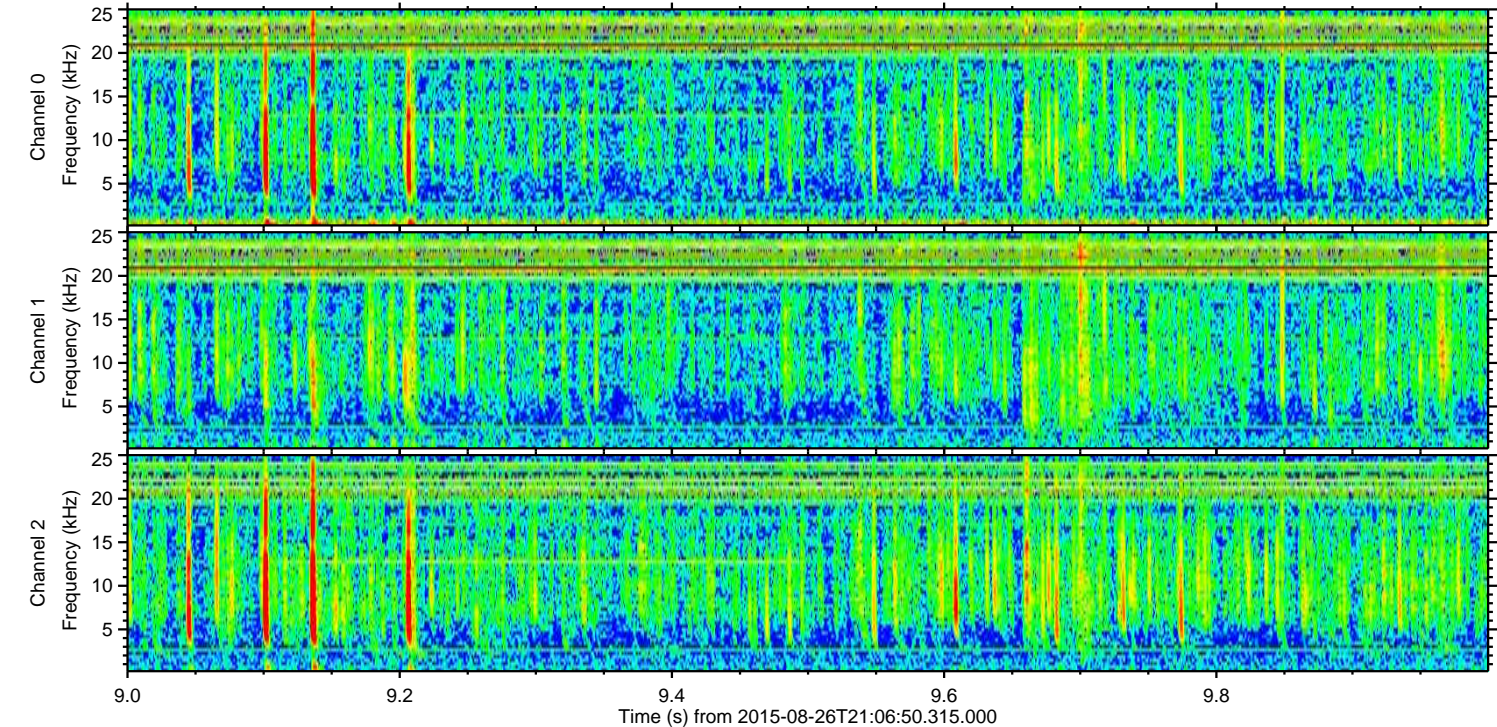
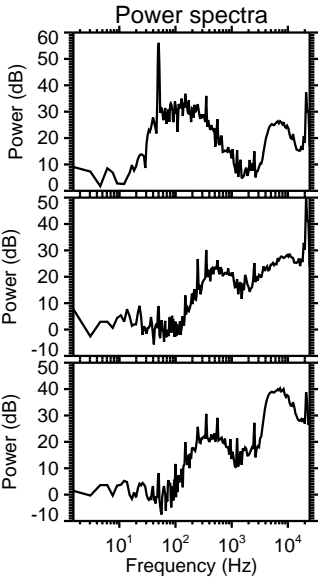
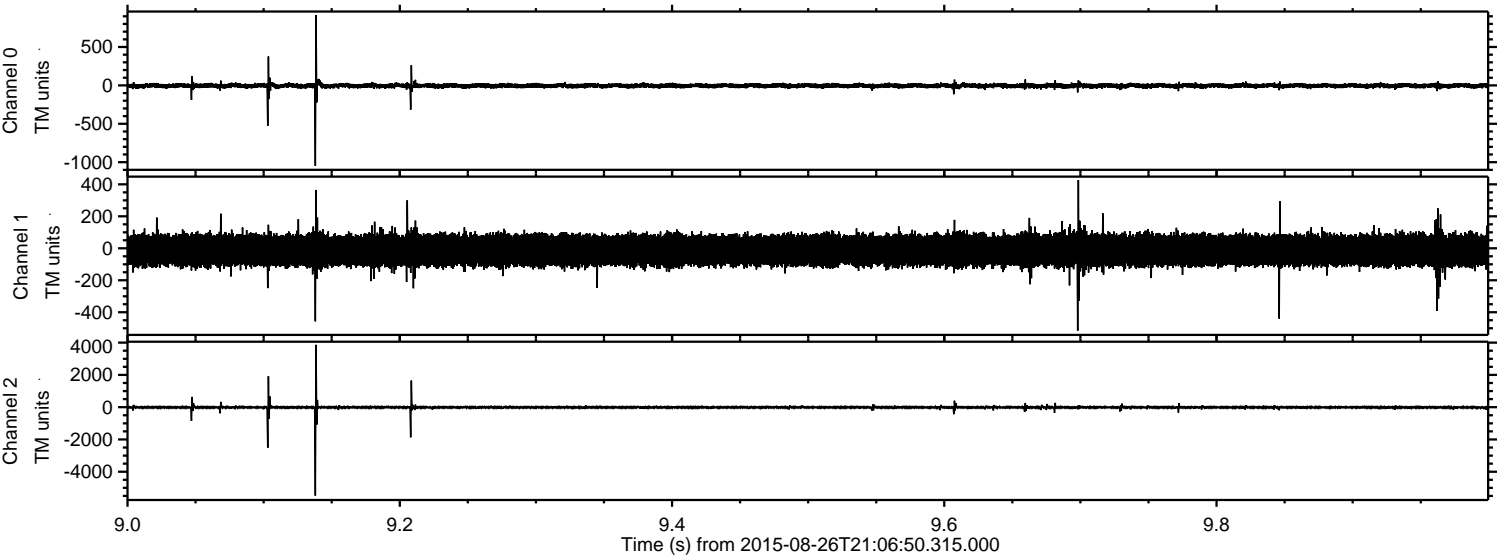
Processed Wed Oct 7 06:21:30 2015 by ELM ver.2012-10-06 from 001__elm20150826_210649__dat00.bin



Processed Wed Oct 7 06:21:31 2015 by ELM ver.2012-10-06 from 001__elm20150826_210649__dat00.bin



Processed Wed Oct 7 06:21:32 2015 by ELM ver.2012-10-06 from 001__elm20150826_210649__dat00.bin

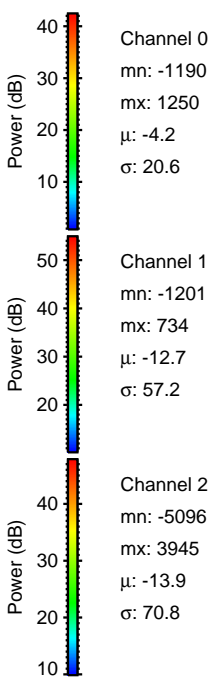
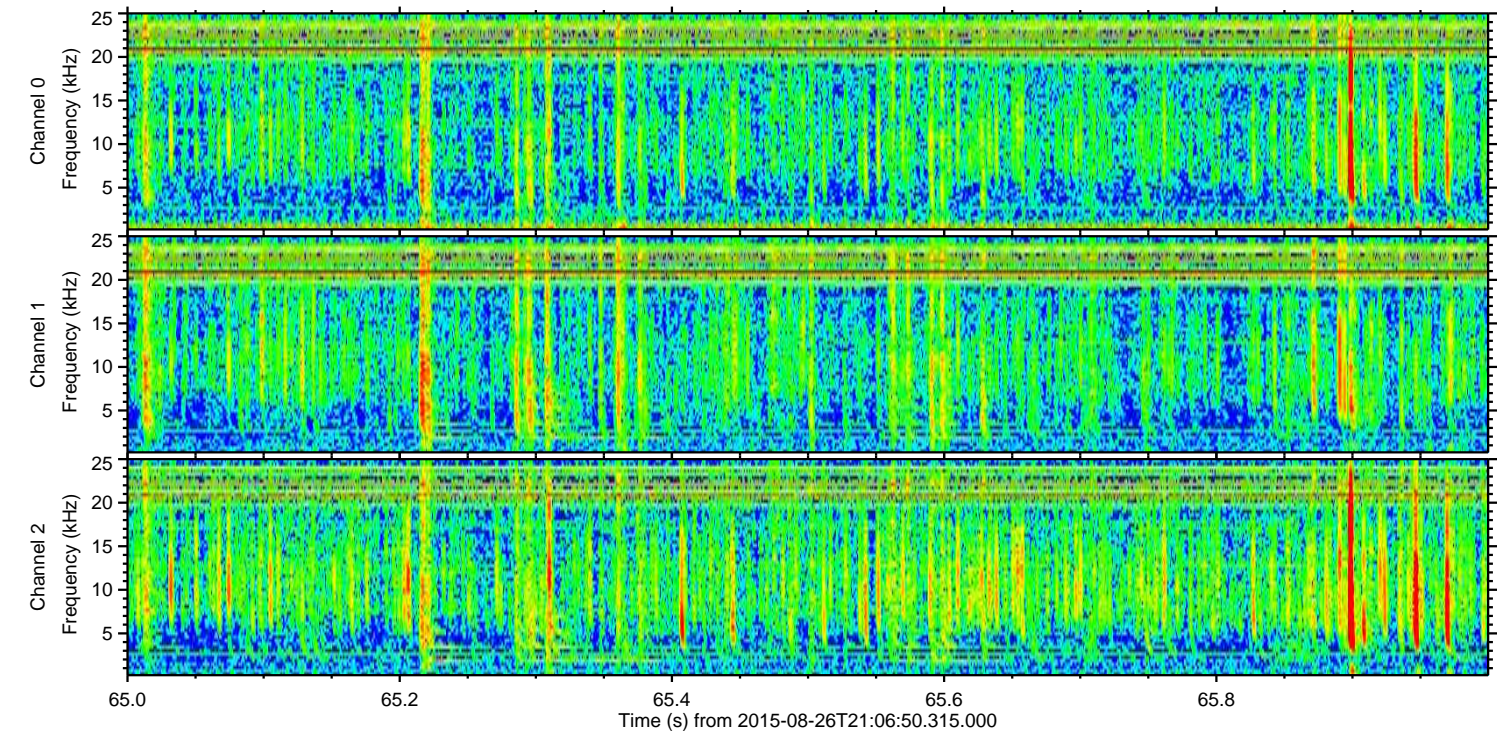
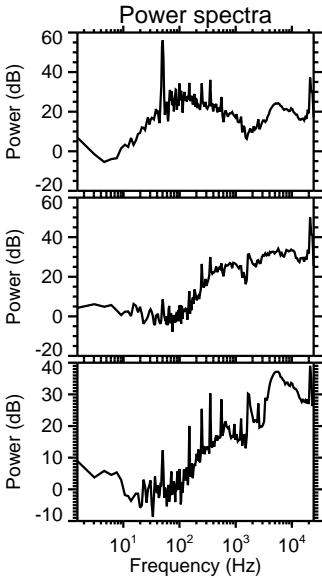
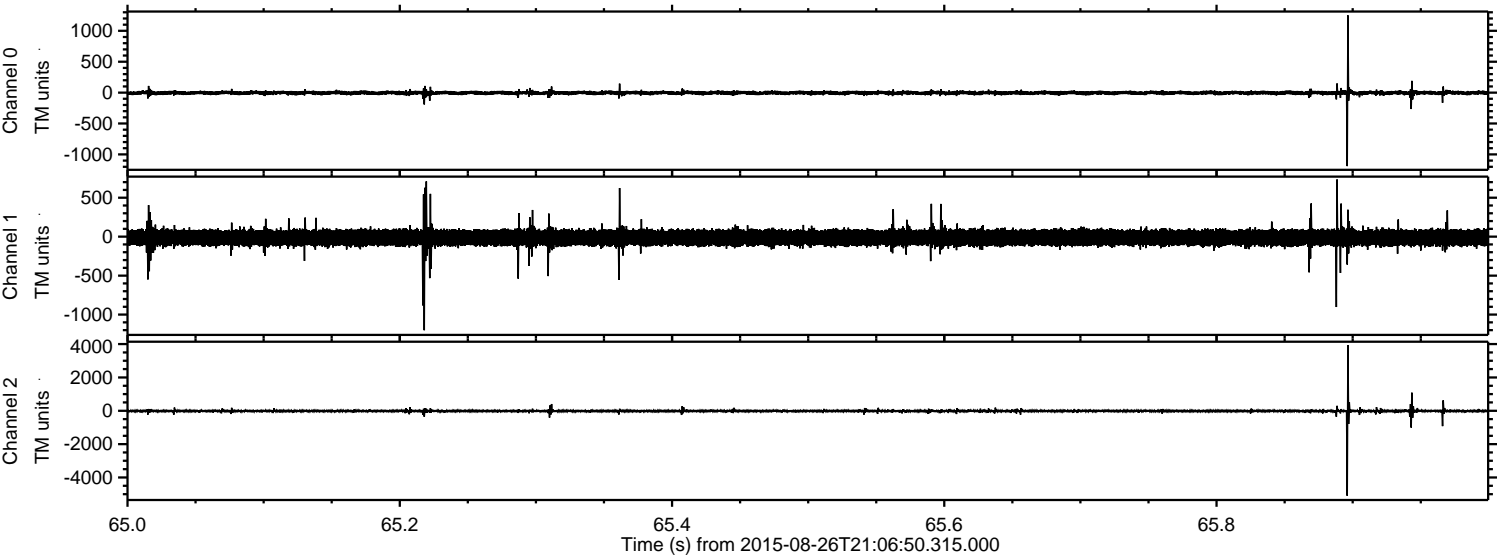


Channel 0
mn: -1047
mx: 916
 μ : -4.2
 σ : 19.9

Channel 1
mn: -516
mx: 427
 μ : -12.7
 σ : 53.3

Channel 2
mn: -5478
mx: 3864
 μ : -13.8
 σ : 68.4

Processed Wed Oct 7 06:21:33 2015 by ELM ver.2012-10-06 from 001__elm20150826_210649__dat00.bin



Processed Wed Oct 7 06:21:34 2015 by ELM ver.2012-10-06 from 001__elm20150826_210649__dat00.bin

