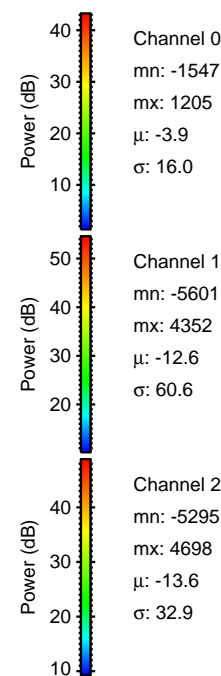
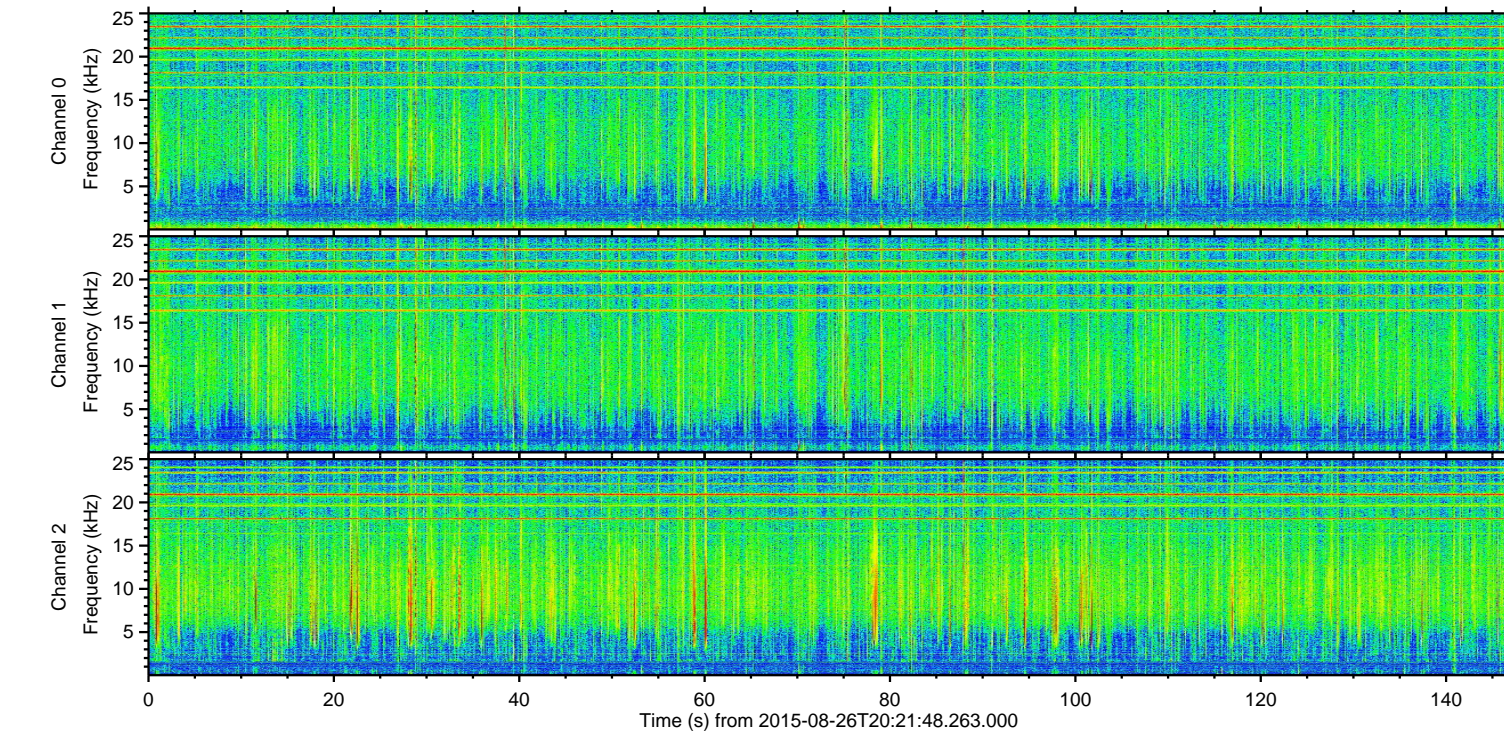
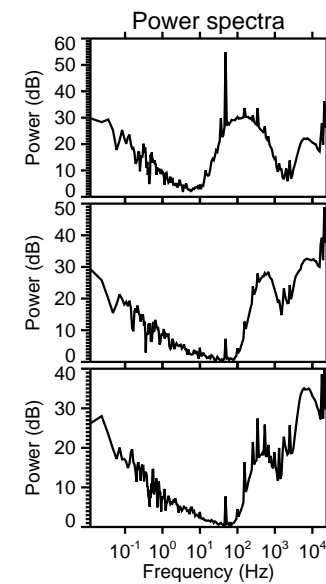
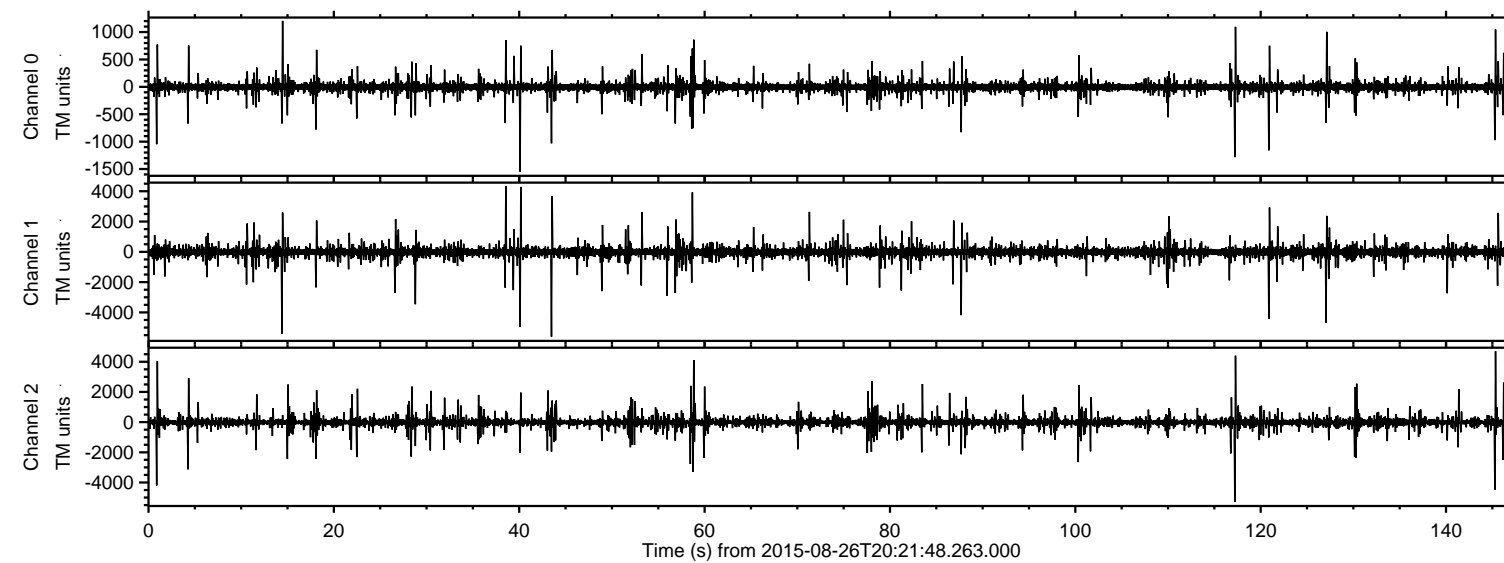
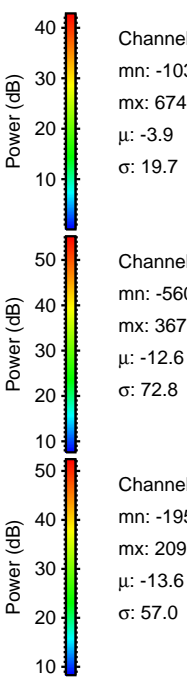
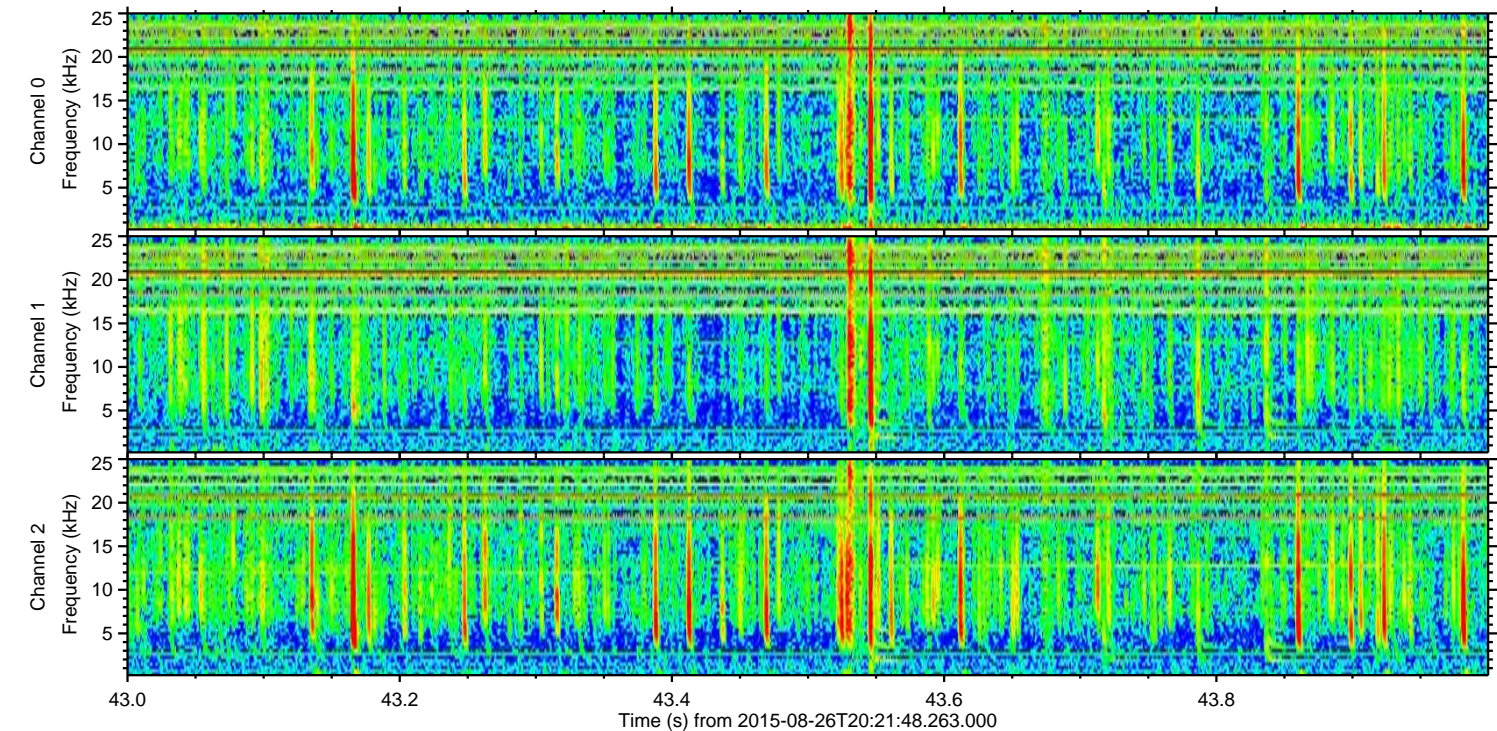
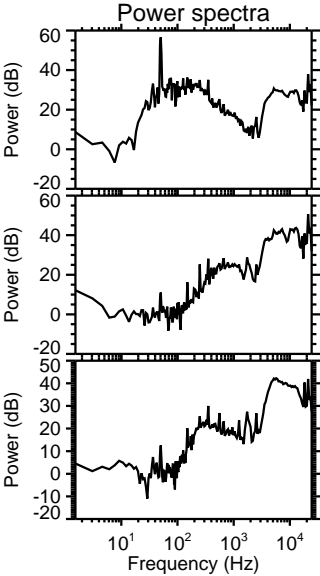
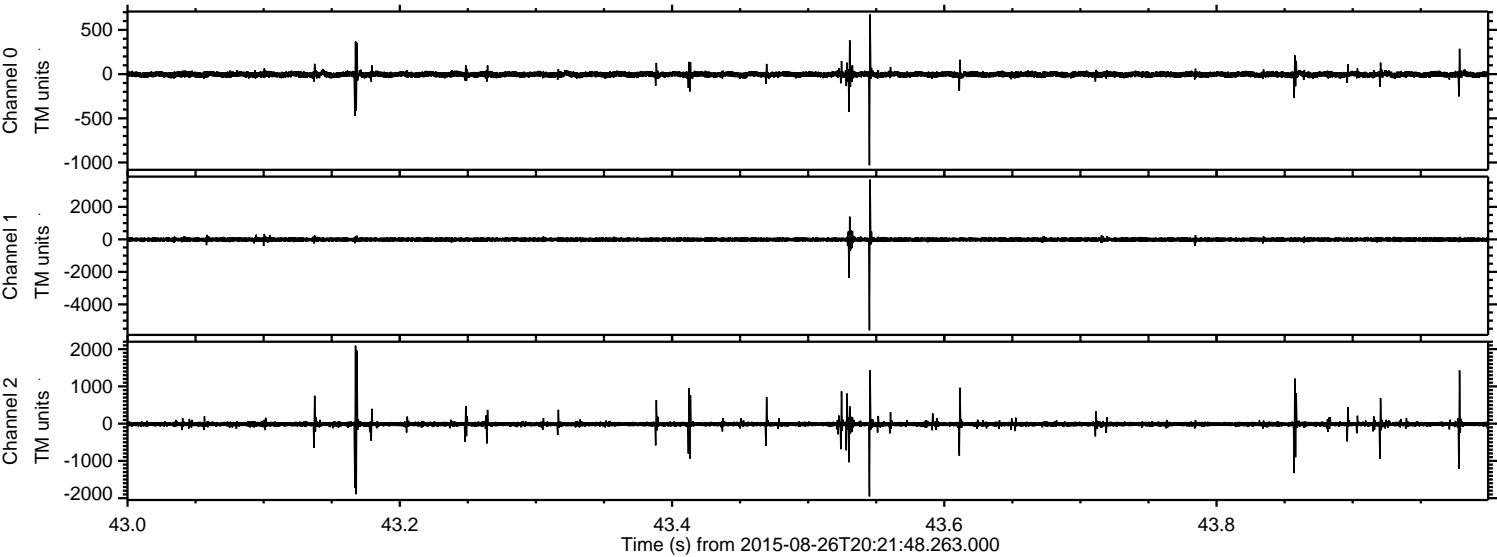


ELMAVAN 3D WAVEFORMS (Measured data sampled at 50 kHz) 51000 packets of 144 samples from 2015-08-26T20:21:48.263.000.

Processed Wed Oct 7 06:08:46 2015 by ELM ver.2012-10-06 from 001__elm20150826_202147__dat00.bin



Processed Wed Oct 7 06:09:02 2015 by ELM ver.2012-10-06 from 001__elm20150826_202147__dat00.bin



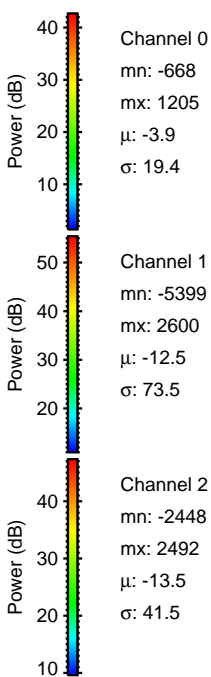
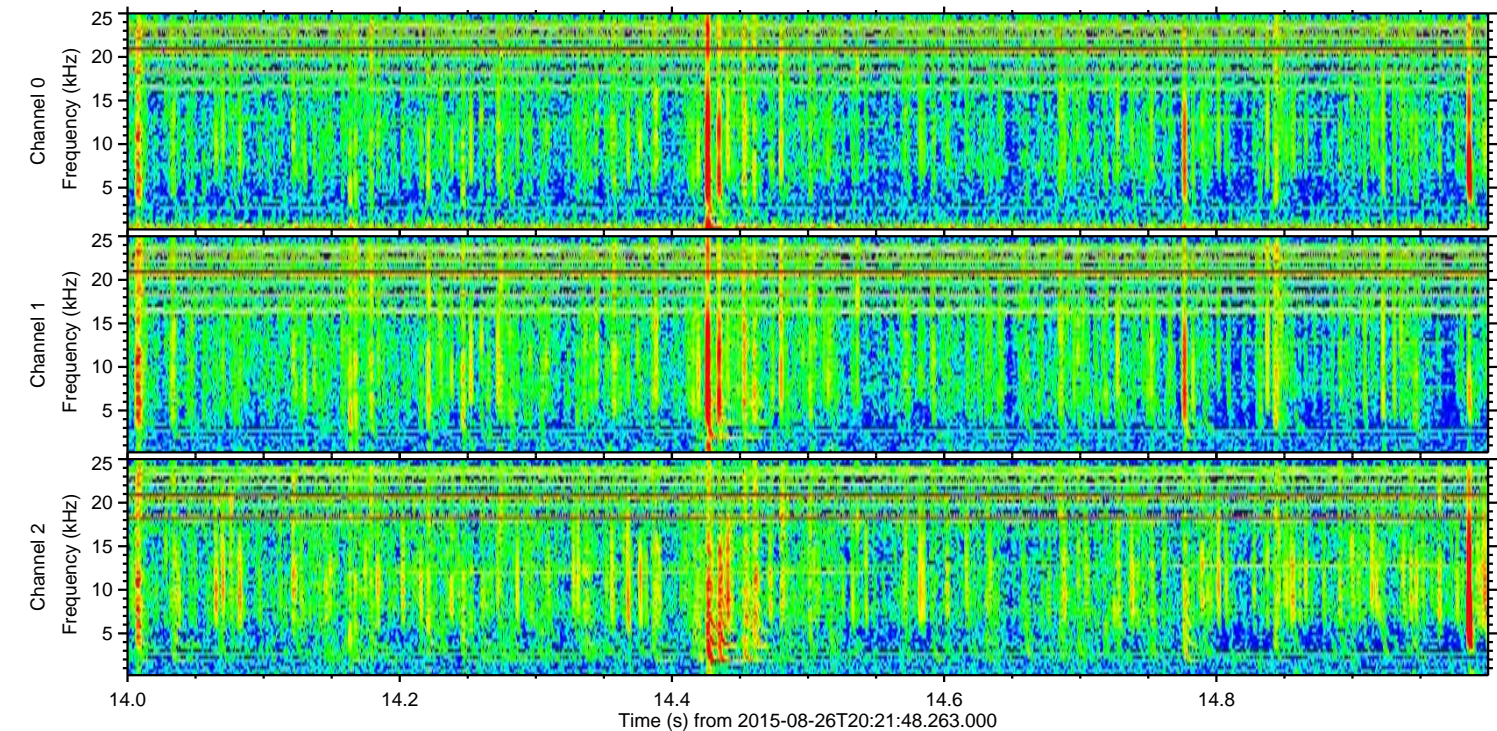
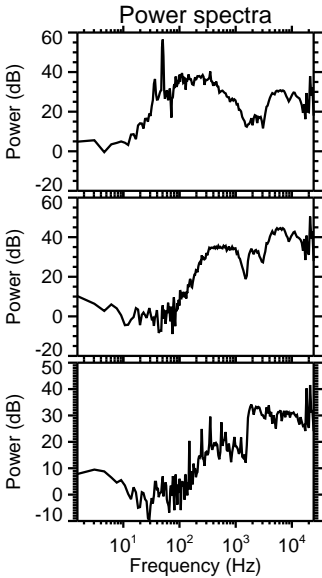
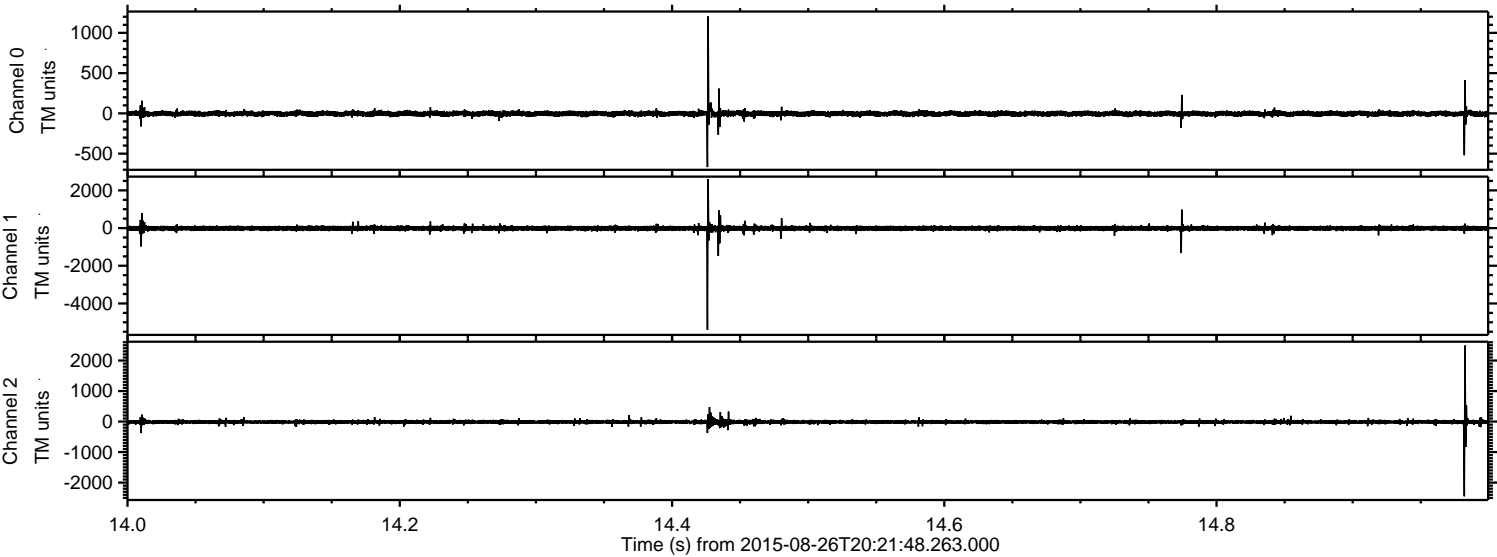
Channel 0
mn: -1031
mx: 674
 μ : -3.9
 σ : 19.7

Channel 1
mn: -5601
mx: 3677
 μ : -12.6
 σ : 72.8

Channel 2
mn: -1952
mx: 2095
 μ : -13.6
 σ : 57.0

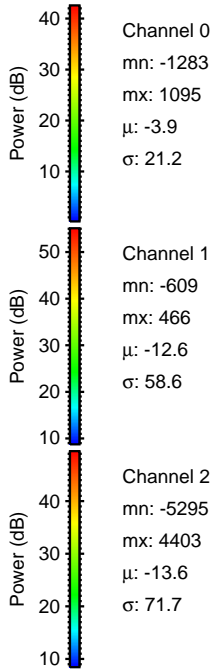
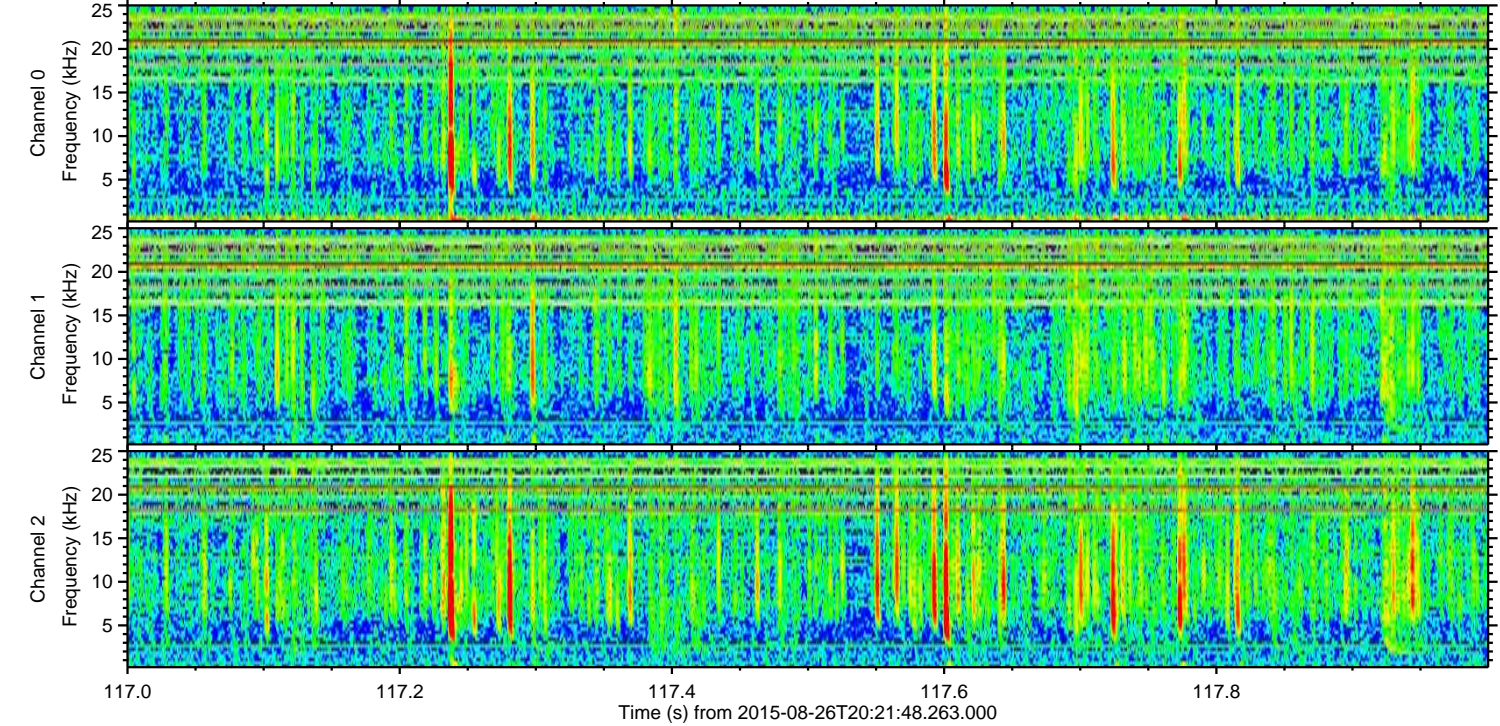
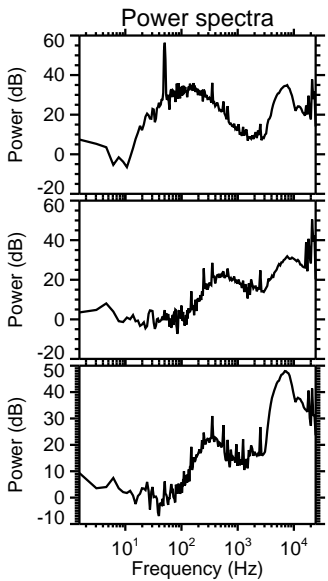
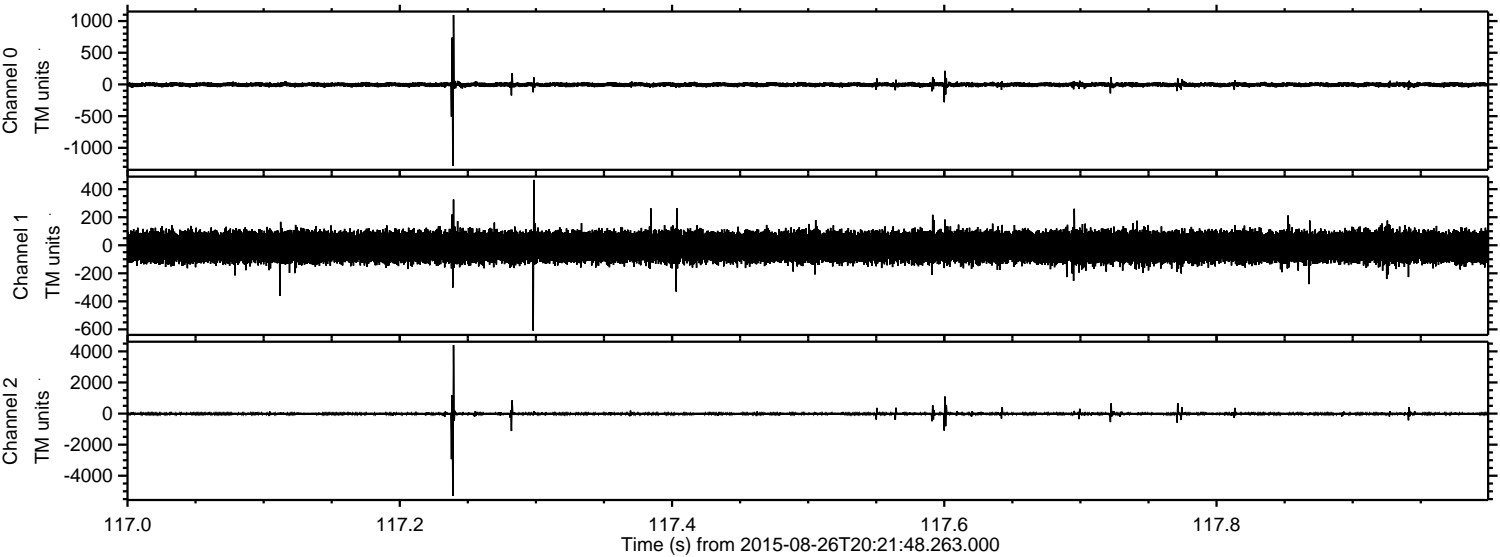
ELMAVAN 3D WAVEFORMS (Measured data sampled at 50 kHz) 51000 packets of 144 samples from 2015-08-26T20:21:48.263.000. Part 15/147

Processed Wed Oct 7 06:09:03 2015 by ELM ver.2012-10-06 from 001__elm20150826_202147__dat00.bin



ELMAVAN 3D WAVEFORMS (Measured data sampled at 50 kHz) 51000 packets of 144 samples from 2015-08-26T20:21:48.263.000. Part 118/147

Processed Wed Oct 7 06:09:04 2015 by ELM ver.2012-10-06 from 001__elm20150826_202147__dat00.bin

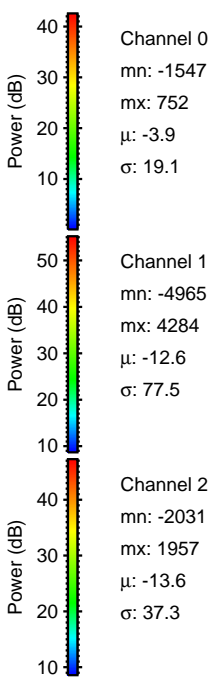
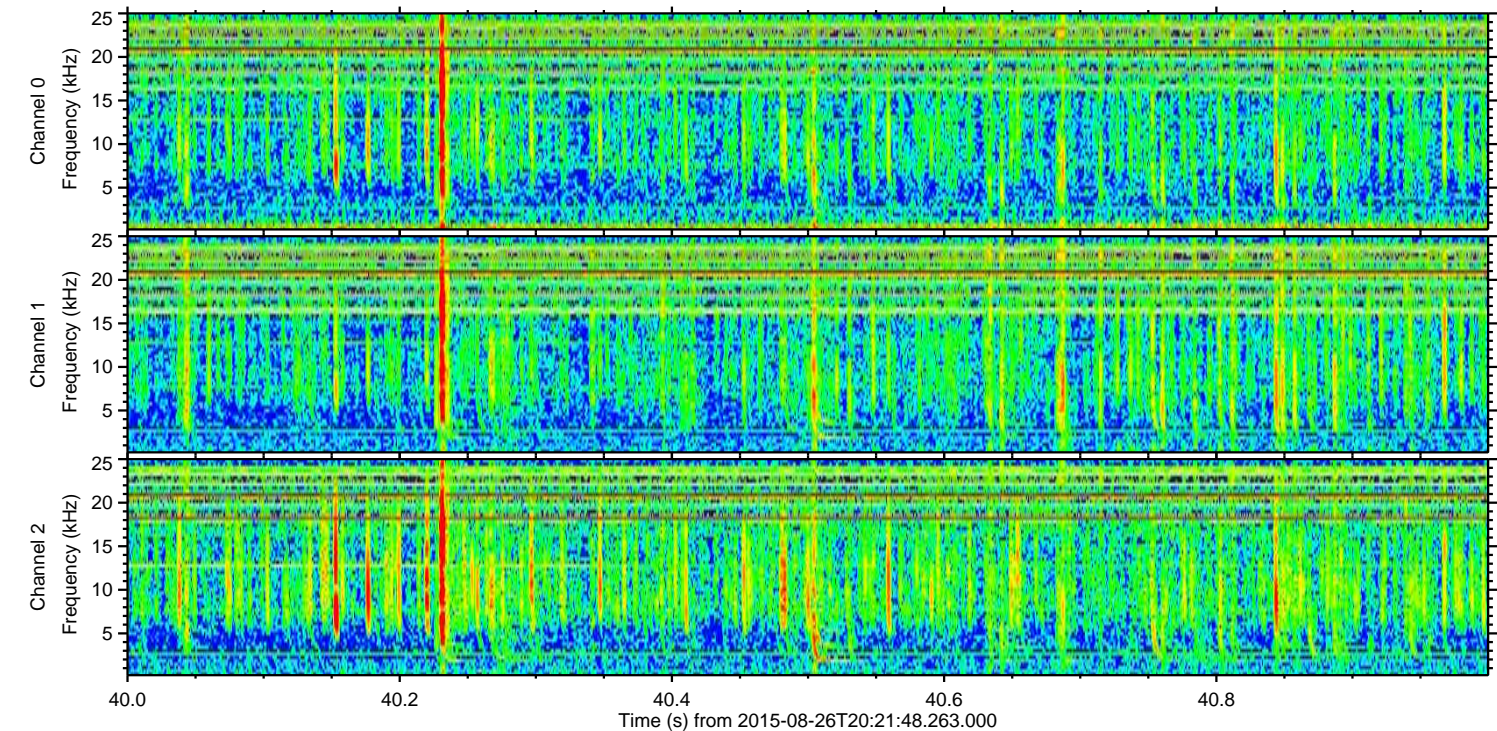
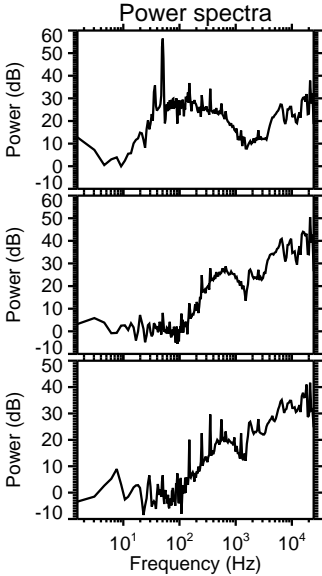
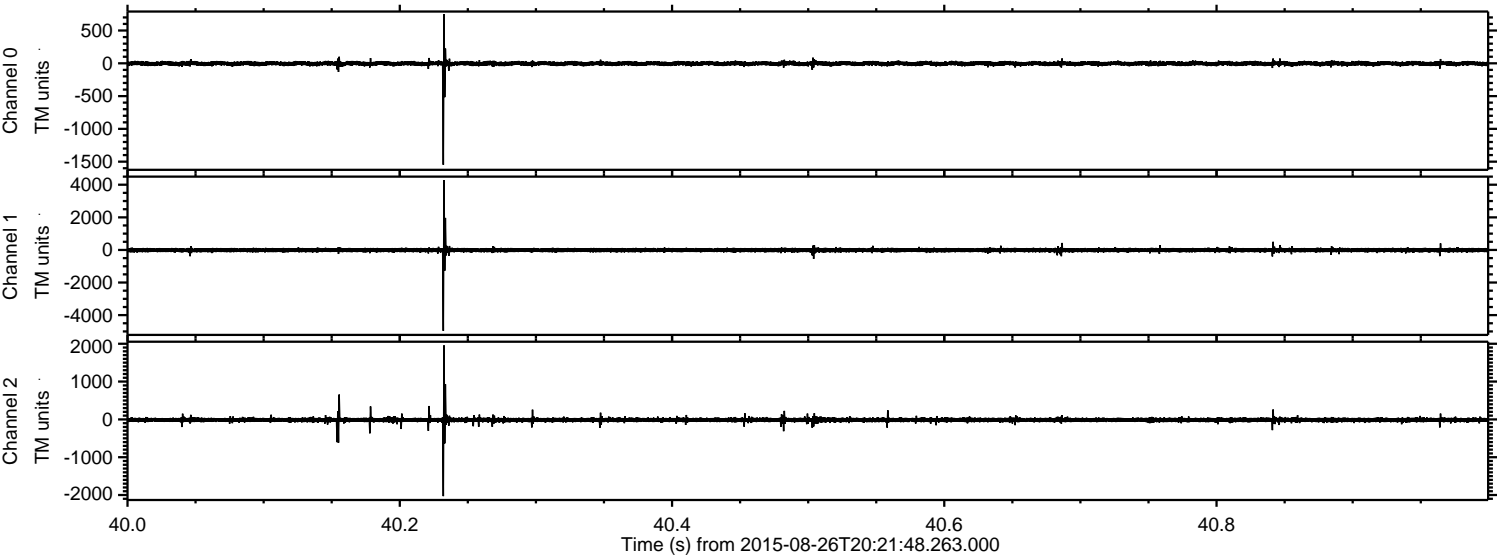


Channel 0
mn: -1283
mx: 1095
 μ : -3.9
 σ : 21.2

Channel 1
mn: -609
mx: 466
 μ : -12.6
 σ : 58.6

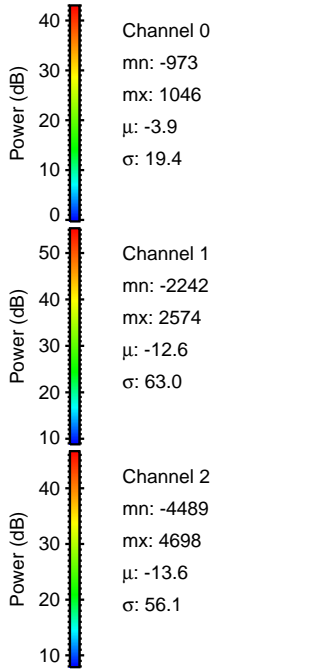
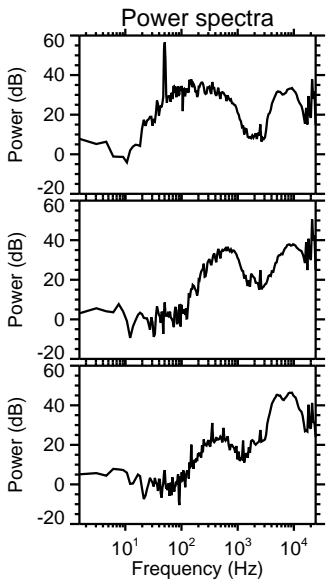
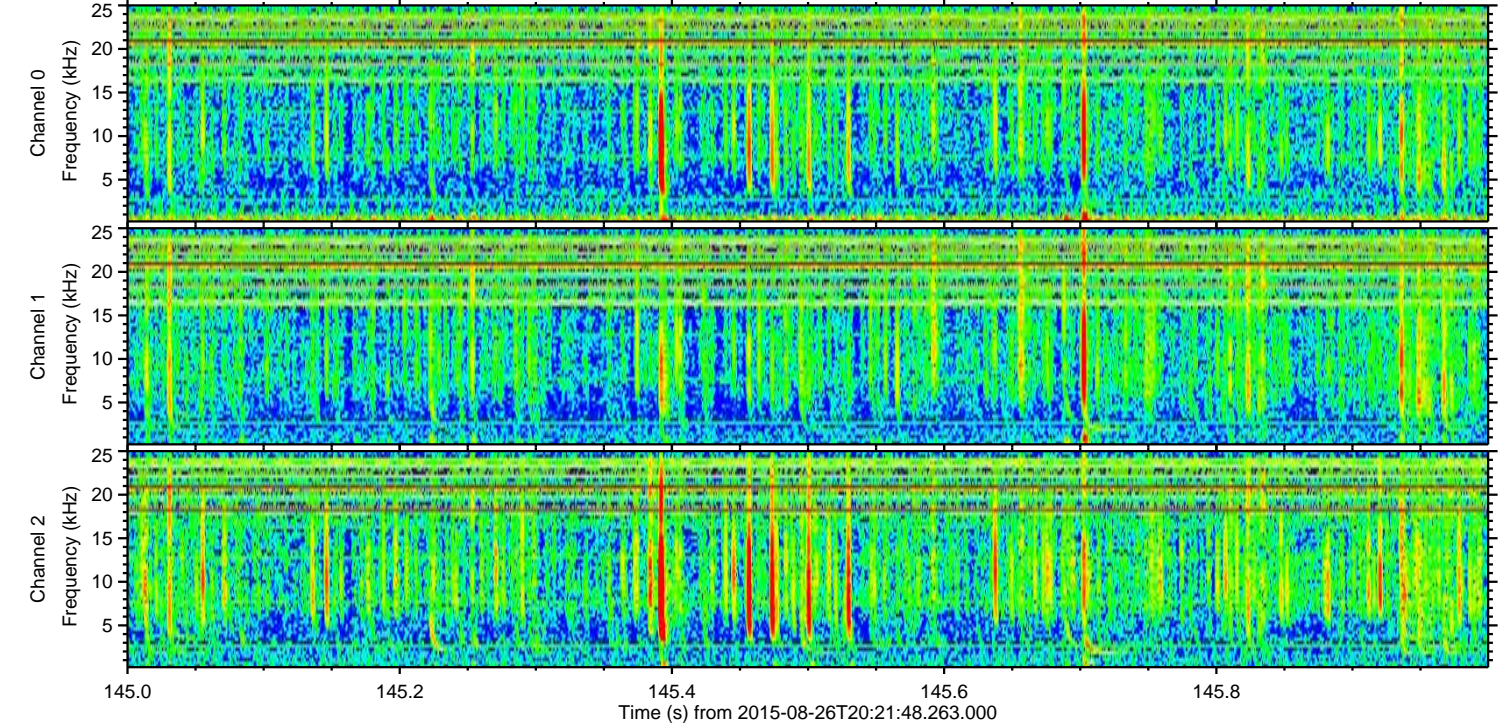
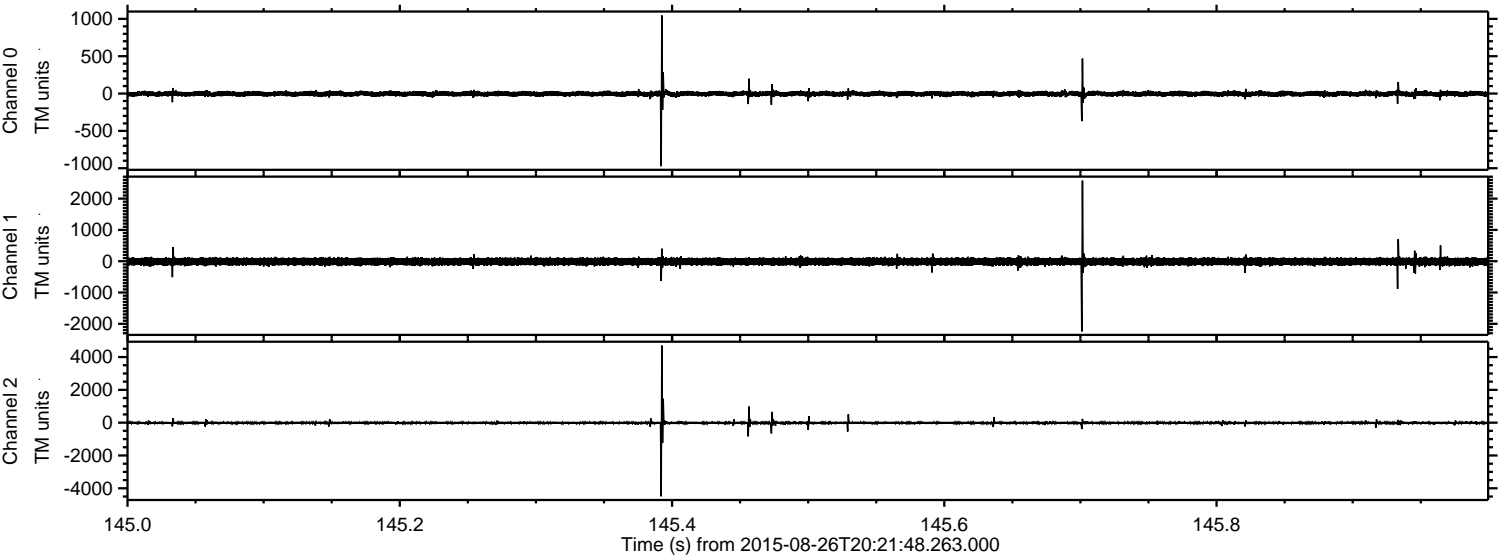
Channel 2
mn: -5295
mx: 4403
 μ : -13.6
 σ : 71.7

Processed Wed Oct 7 06:09:05 2015 by ELM ver.2012-10-06 from 001__elm20150826_202147__dat00.bin



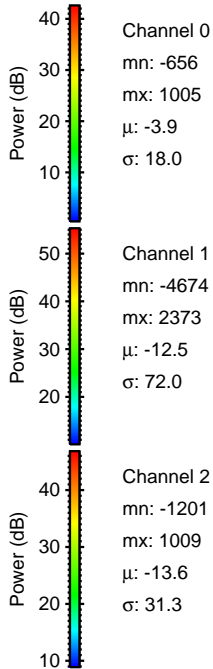
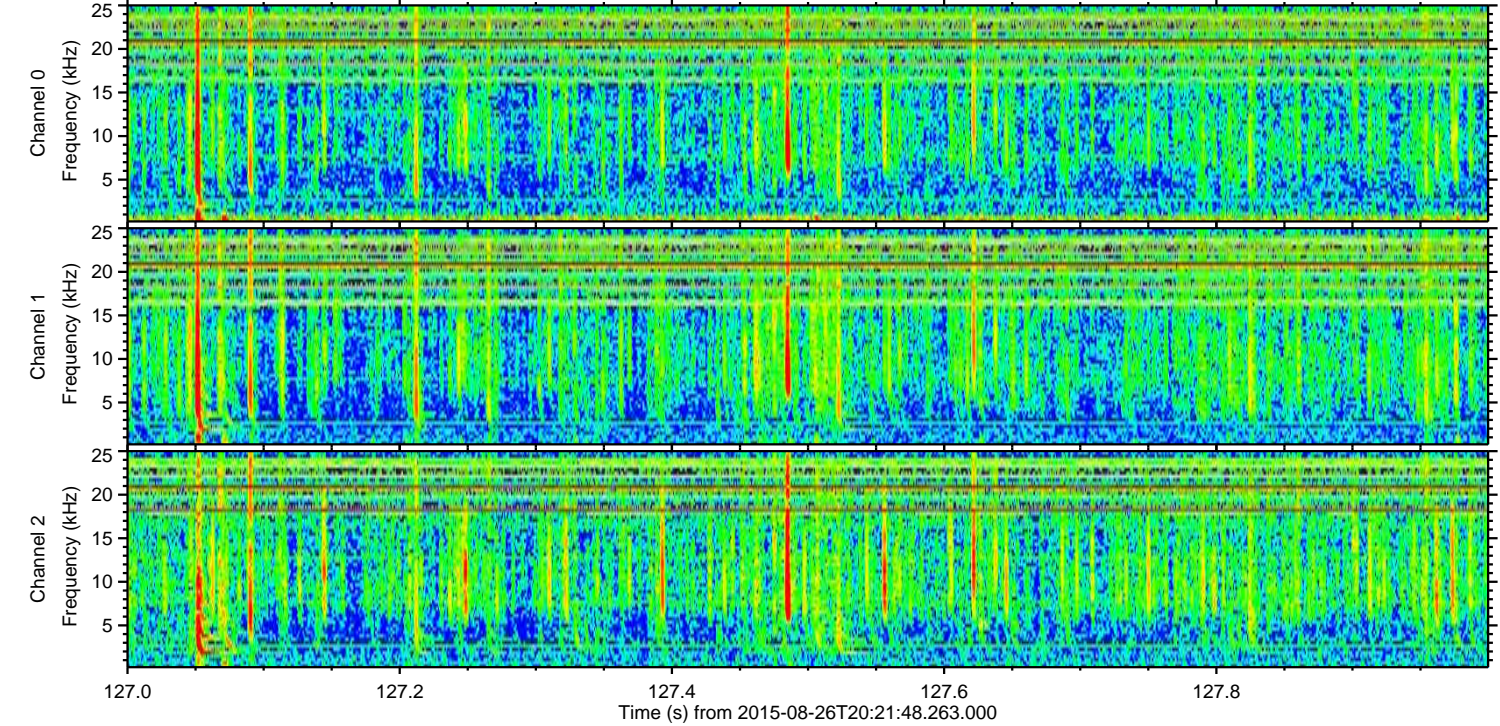
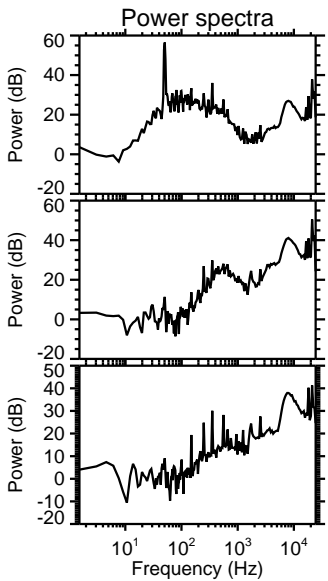
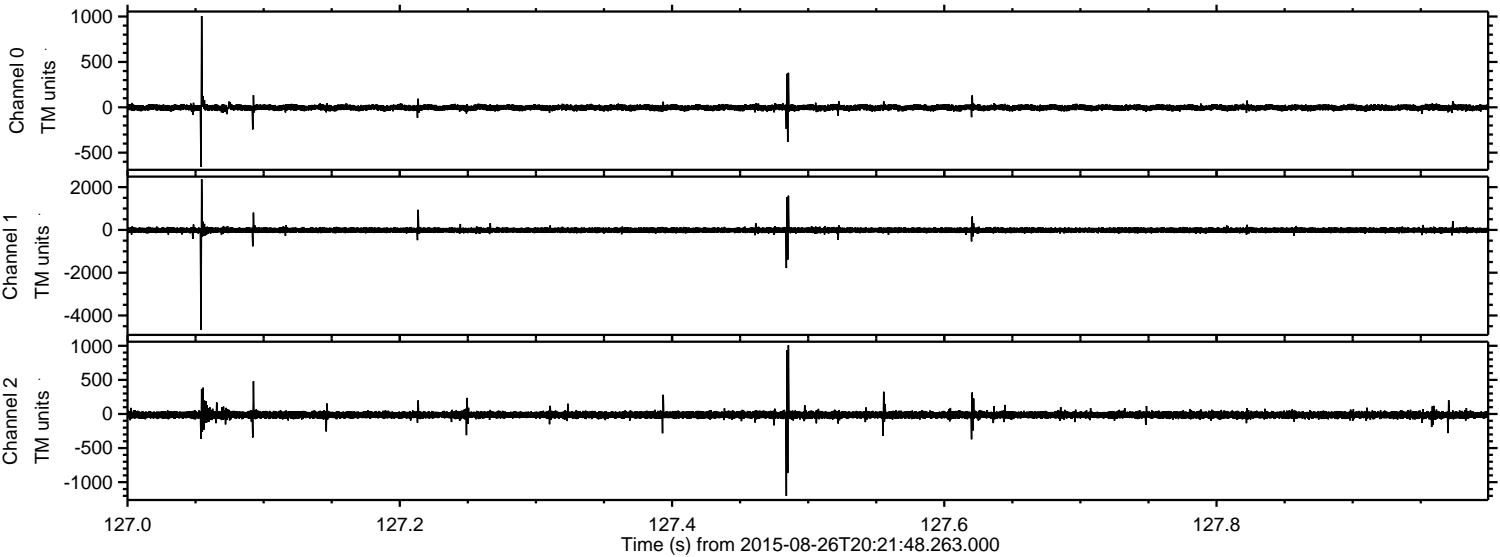
ELMAVAN 3D WAVEFORMS (Measured data sampled at 50 kHz) 51000 packets of 144 samples from 2015-08-26T20:21:48.263.000. Part 146/147

Processed Wed Oct 7 06:09:06 2015 by ELM ver.2012-10-06 from 001__elm20150826_202147__dat00.bin



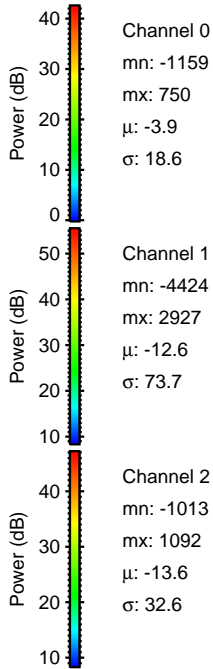
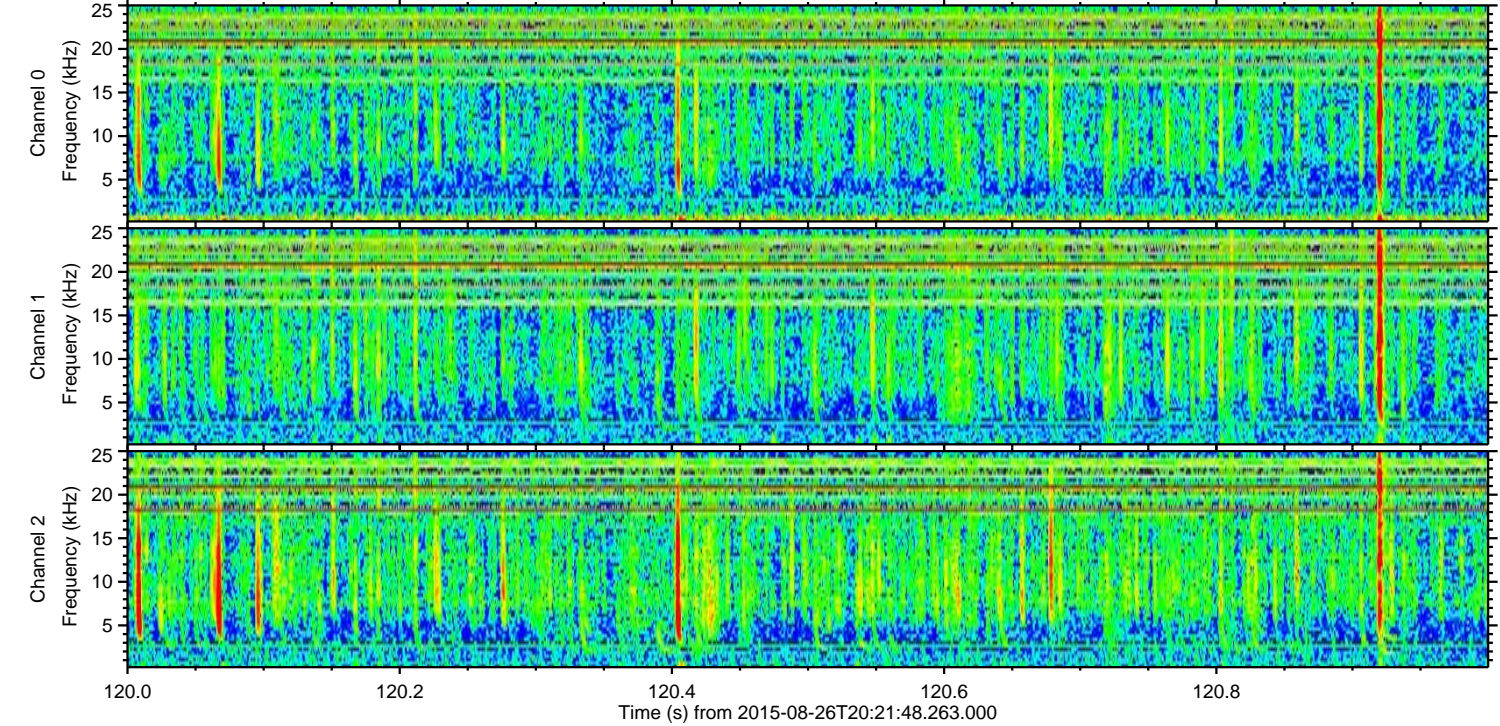
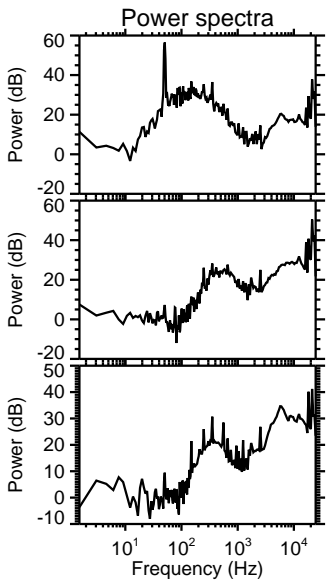
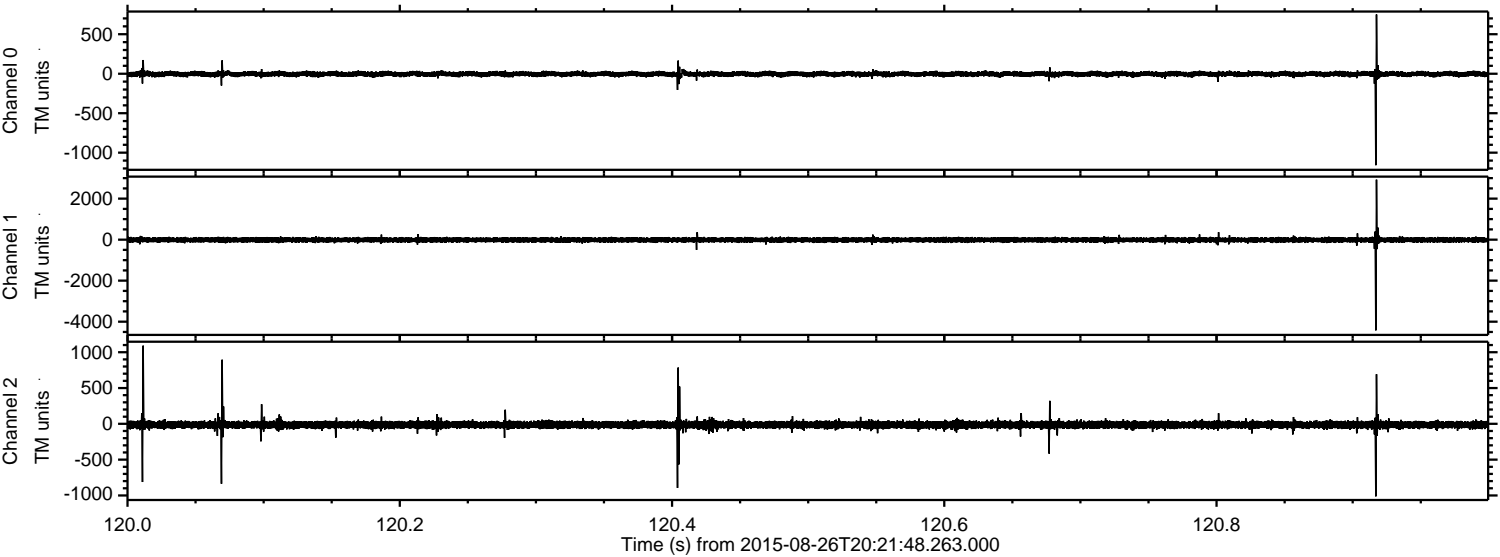
ELMAVAN 3D WAVEFORMS (Measured data sampled at 50 kHz) 51000 packets of 144 samples from 2015-08-26T20:21:48.263.000. Part 128/147

Processed Wed Oct 7 06:09:07 2015 by ELM ver.2012-10-06 from 001__elm20150826_202147__dat00.bin



ELMAVAN 3D WAVEFORMS (Measured data sampled at 50 kHz) 51000 packets of 144 samples from 2015-08-26T20:21:48.263.000. Part 121/147

Processed Wed Oct 7 06:09:08 2015 by ELM ver.2012-10-06 from 001__elm20150826_202147__dat00.bin

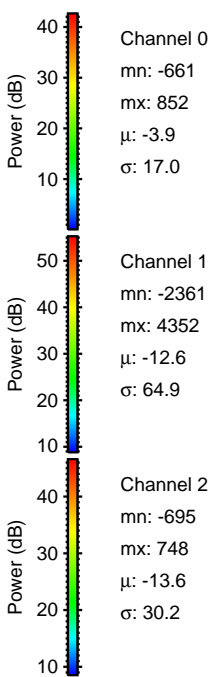
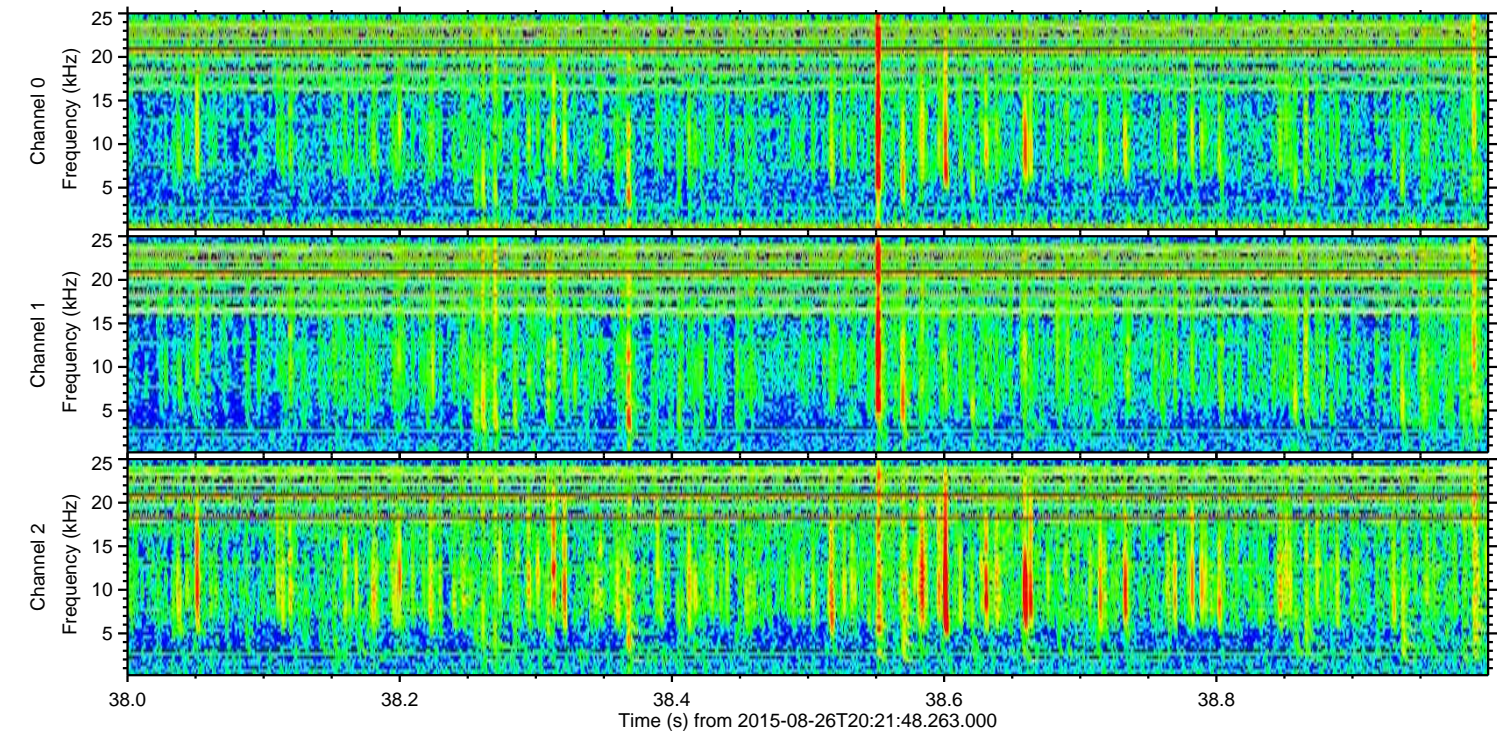
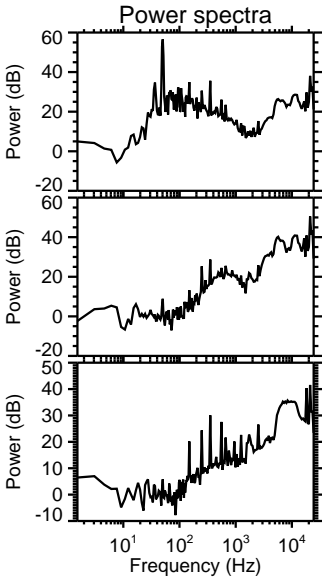
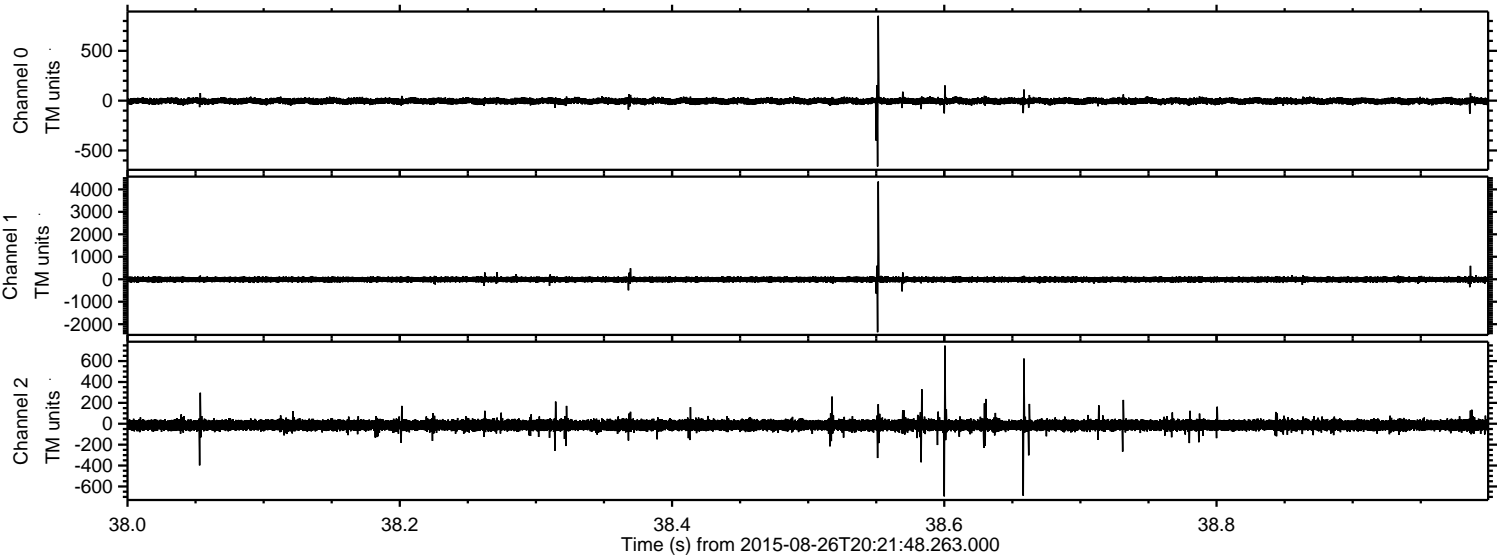


Channel 0
mn: -1159
mx: 750
 μ : -3.9
 σ : 18.6

Channel 1
mn: -4424
mx: 2927
 μ : -12.6
 σ : 73.7

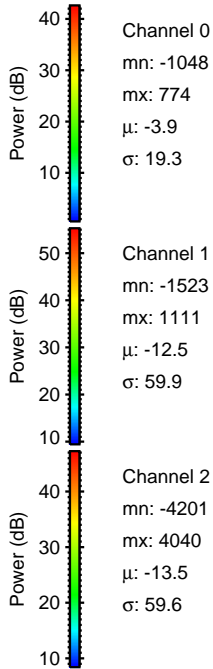
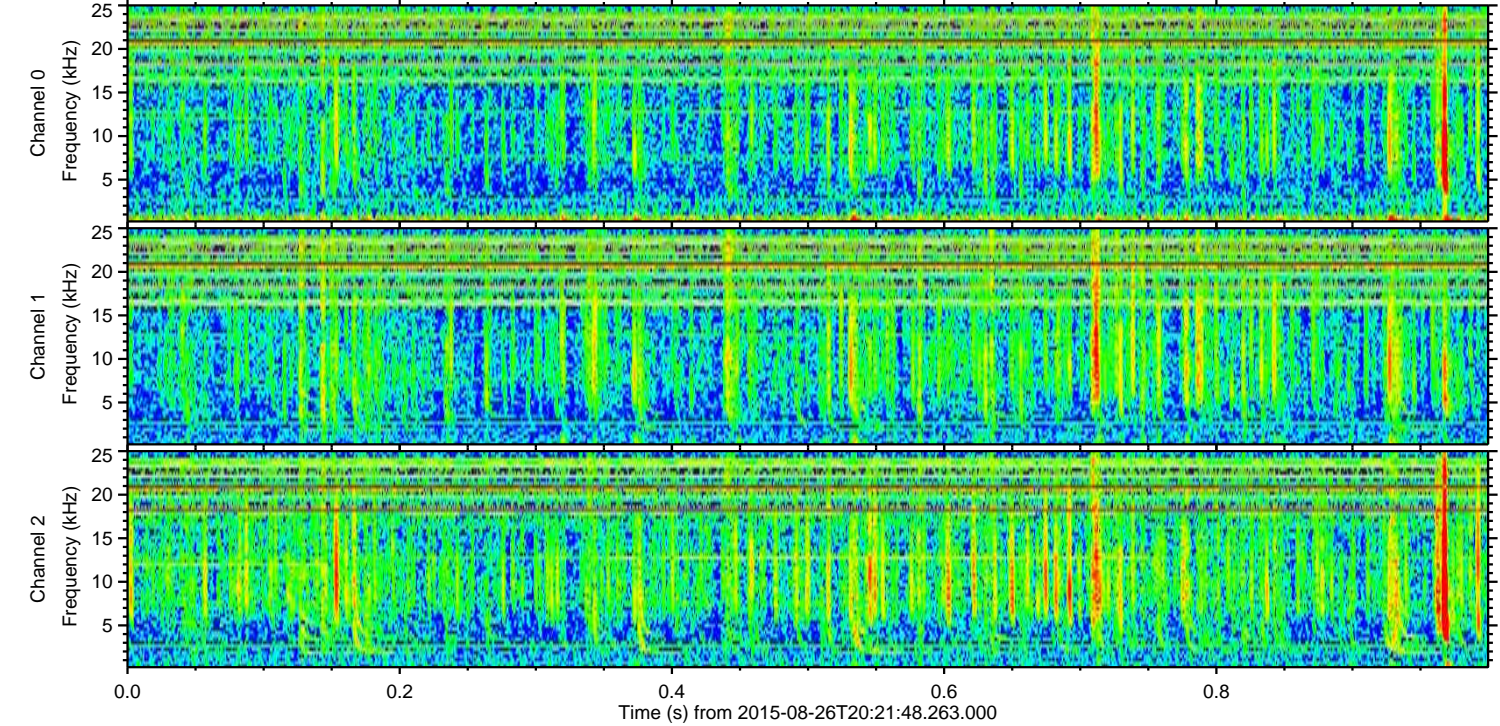
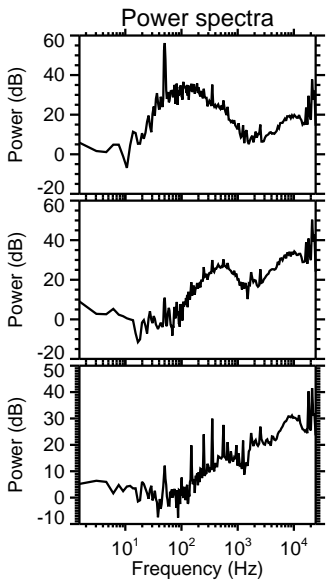
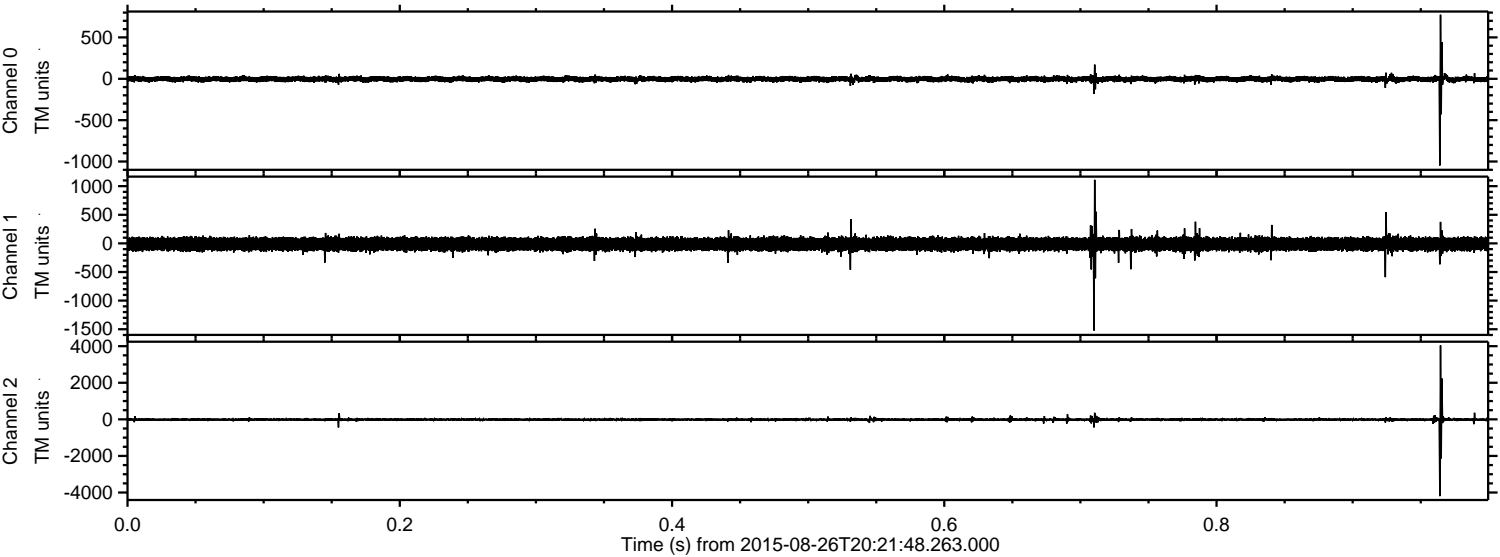
Channel 2
mn: -1013
mx: 1092
 μ : -13.6
 σ : 32.6

Processed Wed Oct 7 06:09:09 2015 by ELM ver.2012-10-06 from 001__elm20150826_202147__dat00.bin



ELMAVAN 3D WAVEFORMS (Measured data sampled at 50 kHz) 51000 packets of 144 samples from 2015-08-26T20:21:48.263.000. Part 1/147

Processed Wed Oct 7 06:09:10 2015 by ELM ver.2012-10-06 from 001__elm20150826_202147__dat00.bin



ELMAVAN 3D WAVEFORMS (Measured data sampled at 50 kHz) 51000 packets of 144 samples from 2015-08-26T20:21:48.263.000. Part 139/147

