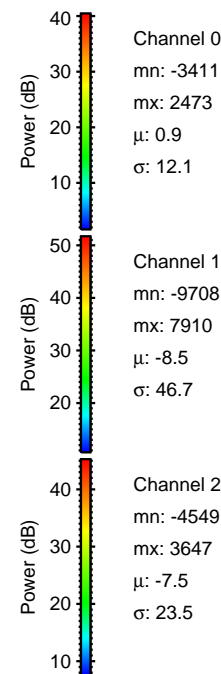
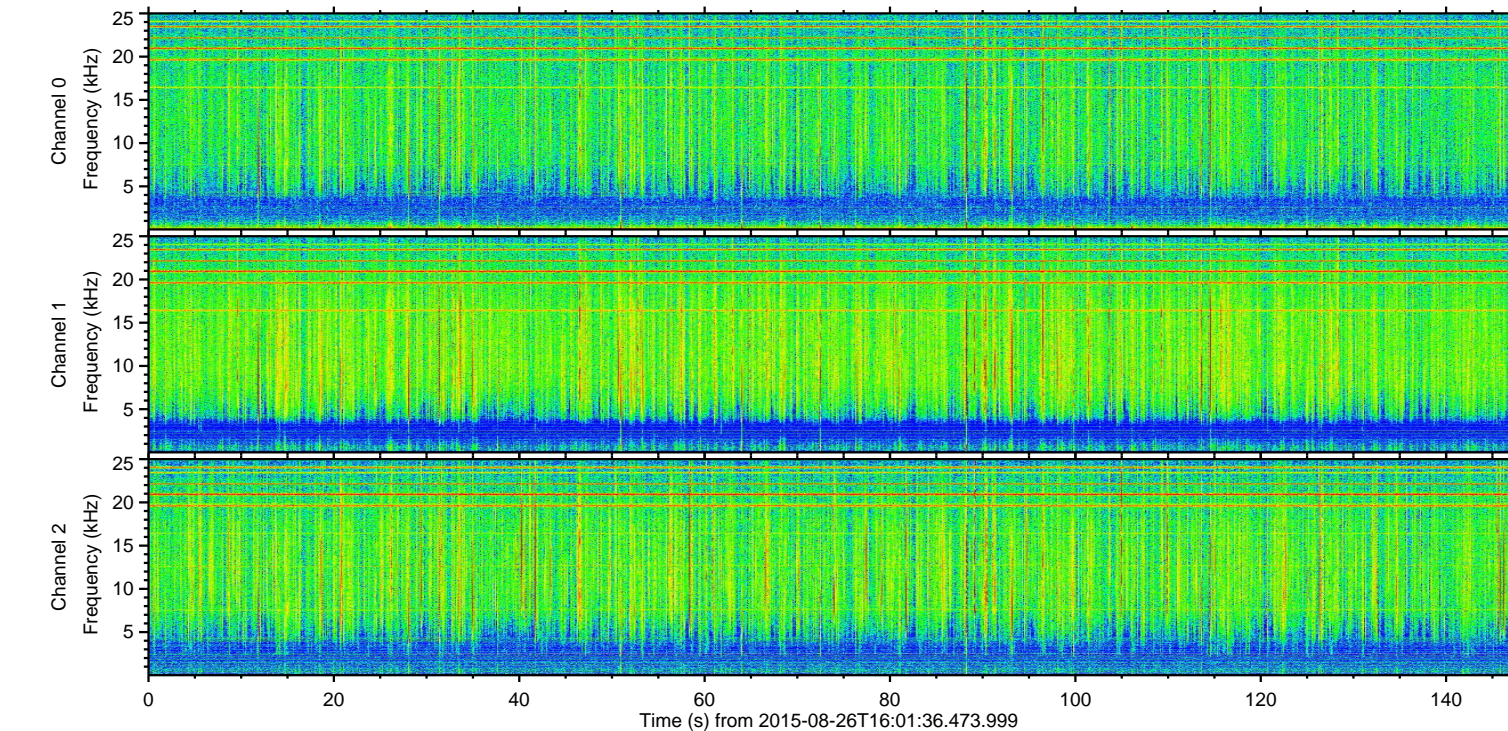
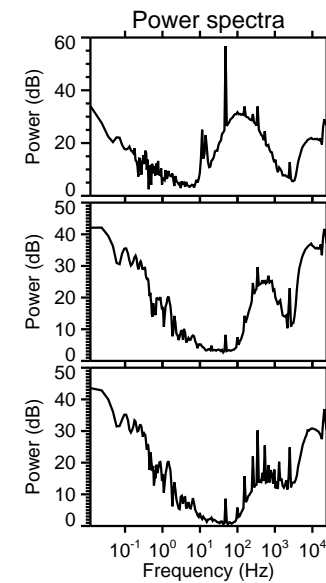
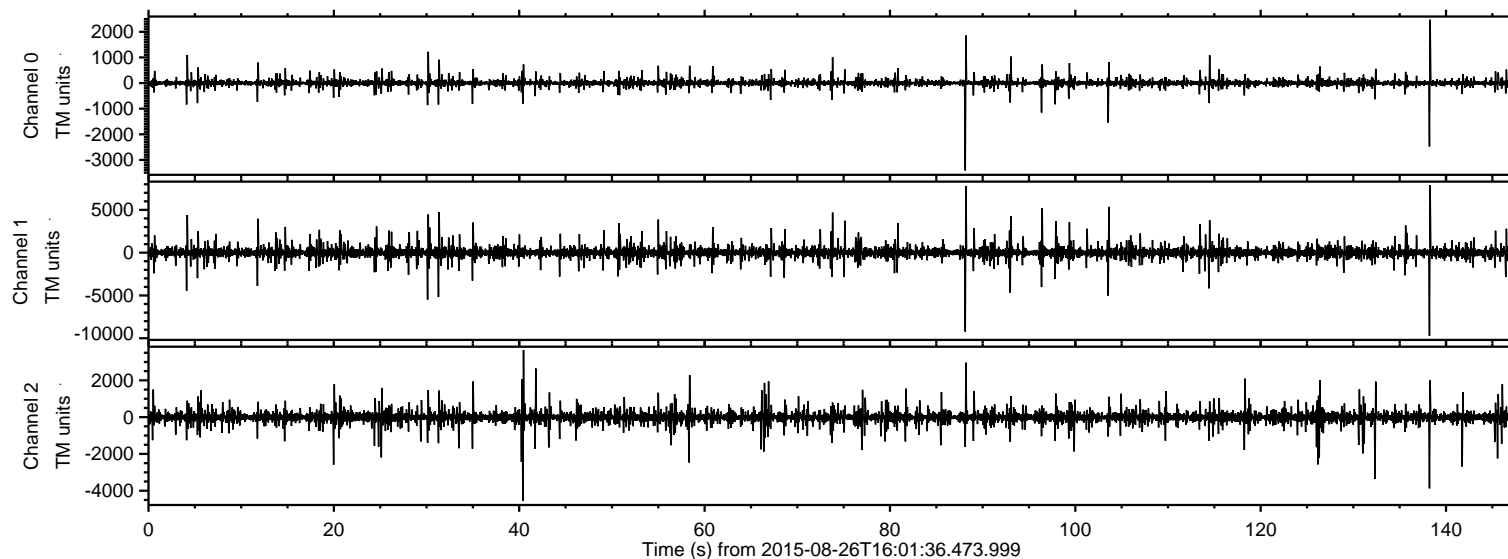


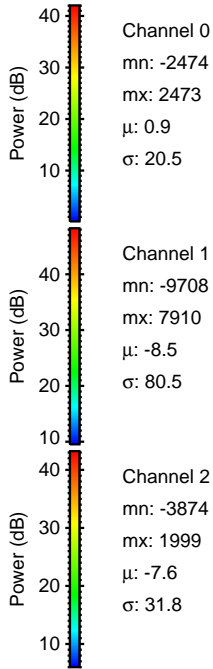
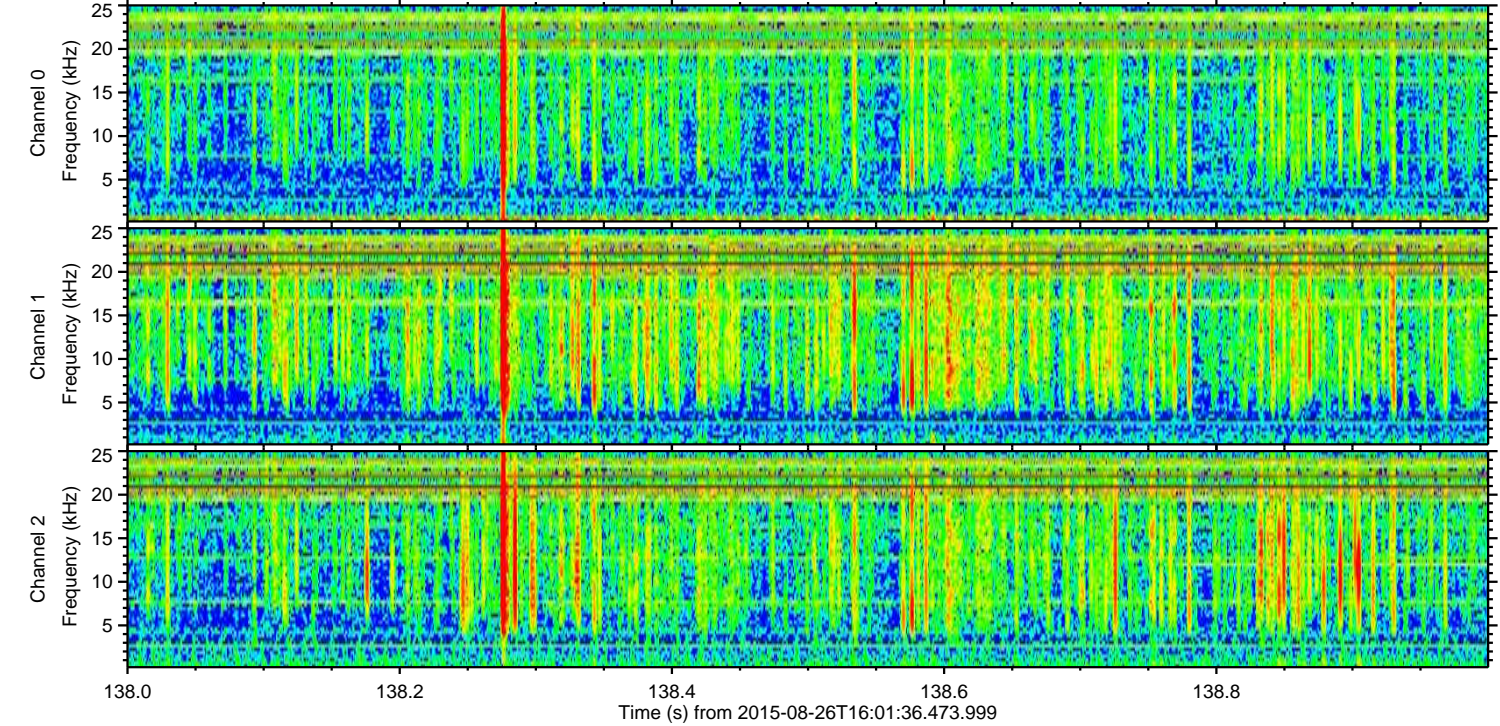
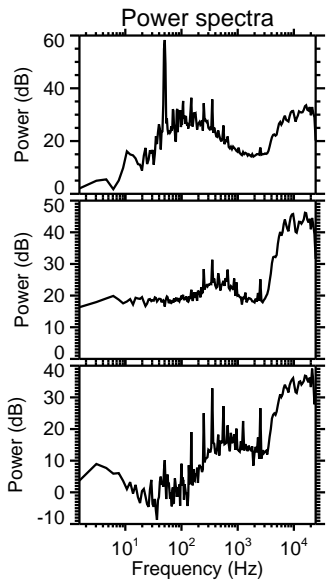
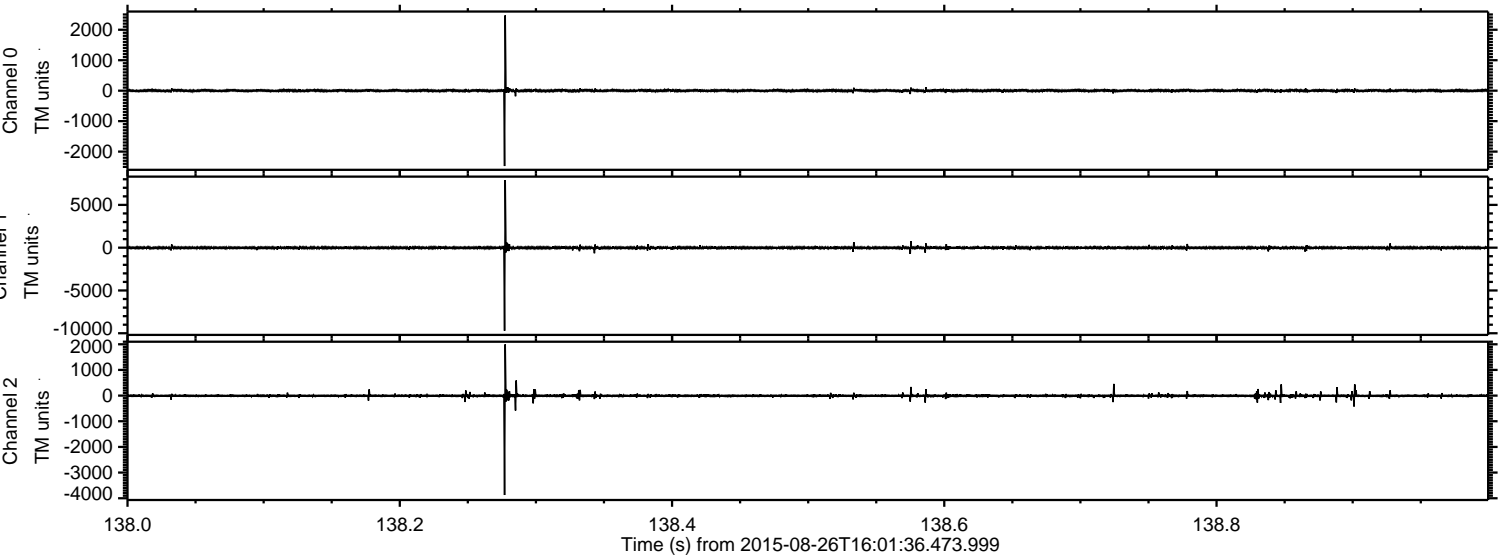
ELMAVAN 3D WAVEFORMS (Measured data sampled at 50 kHz) 51000 packets of 144 samples from 2015-08-26T16:01:36.473.999.

Processed Wed Oct 7 04:57:00 2015 by ELM ver.2012-10-06 from 001__elm20150826_160135__dat00.bin

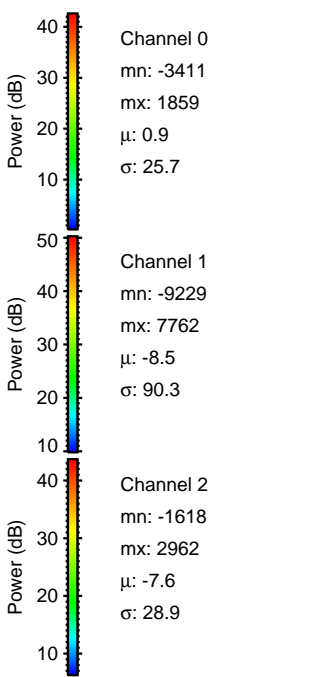
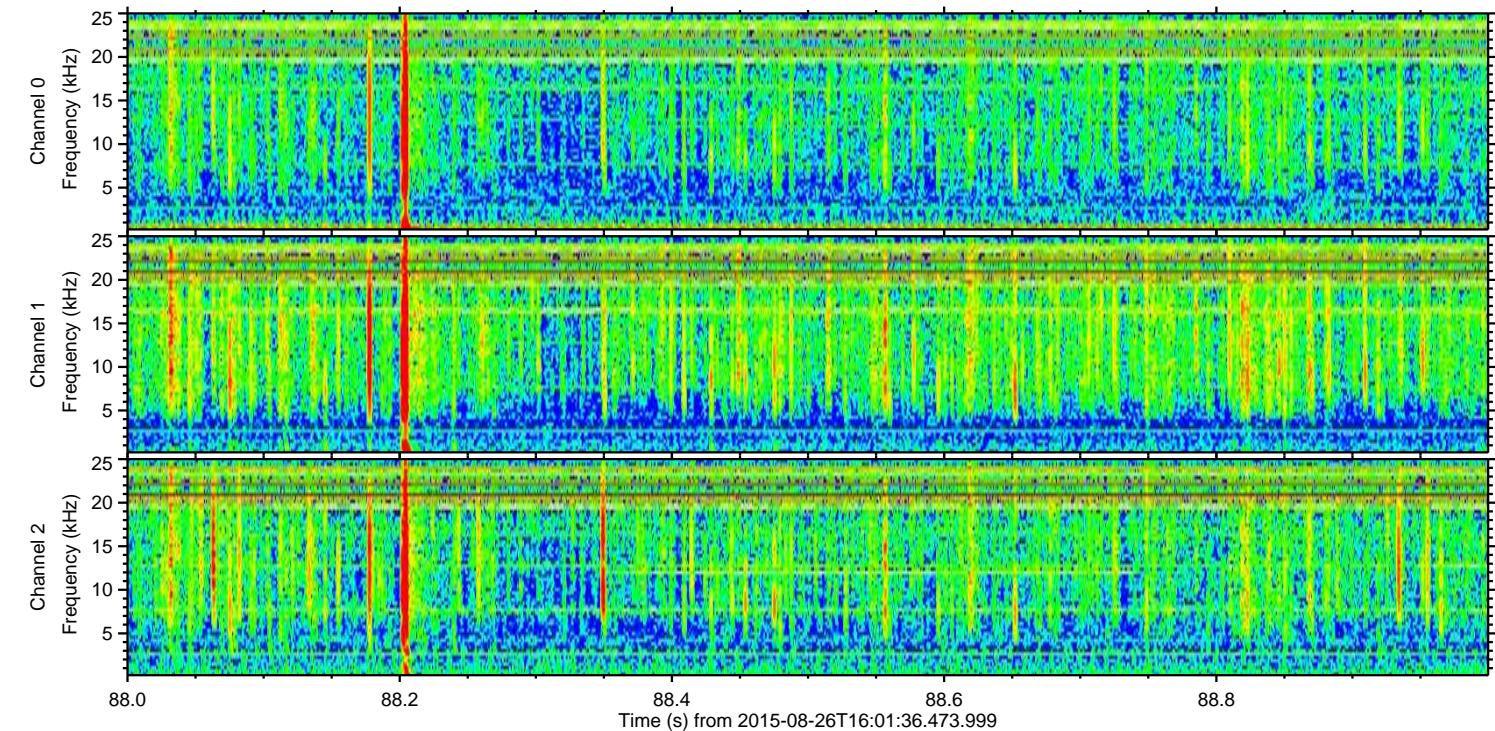
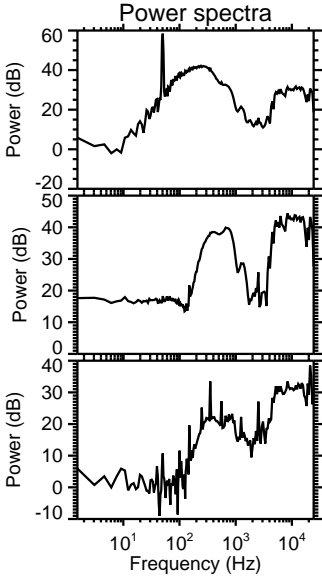
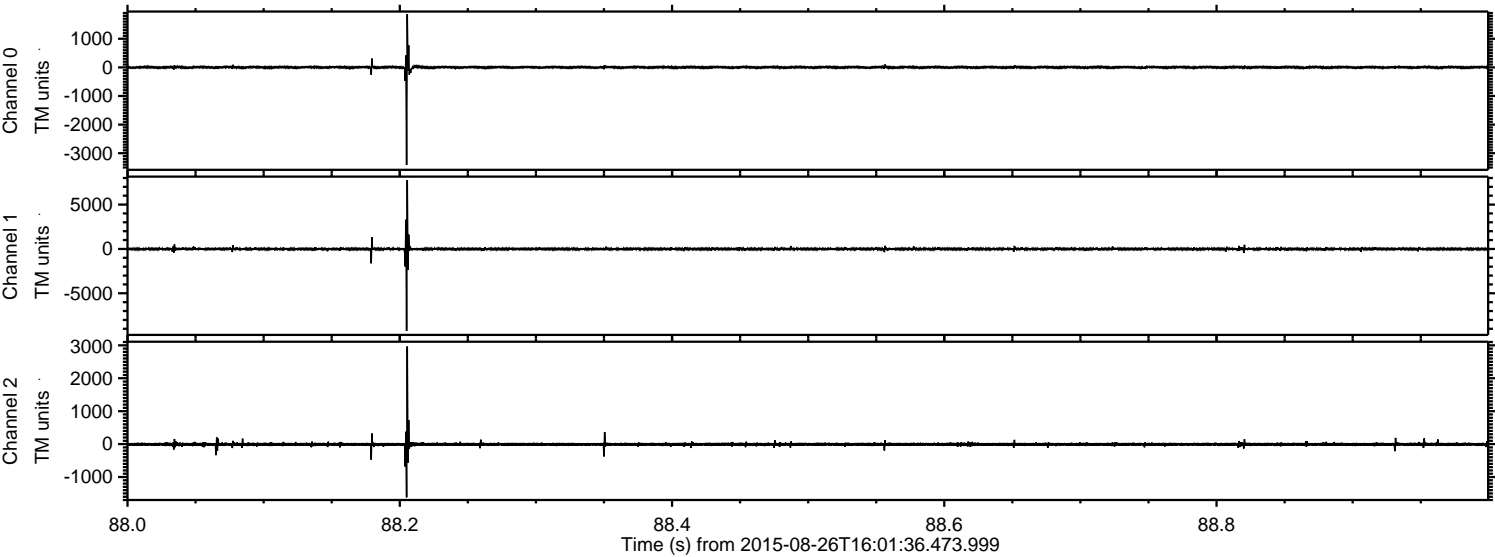


ELMAVAN 3D WAVEFORMS (Measured data sampled at 50 kHz) 51000 packets of 144 samples from 2015-08-26T16:01:36.473.999. Part 139/147

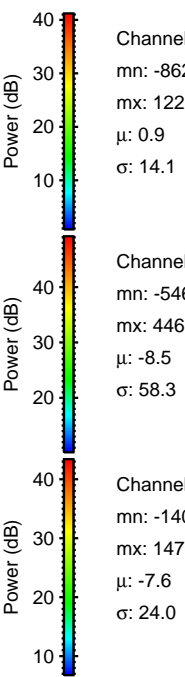
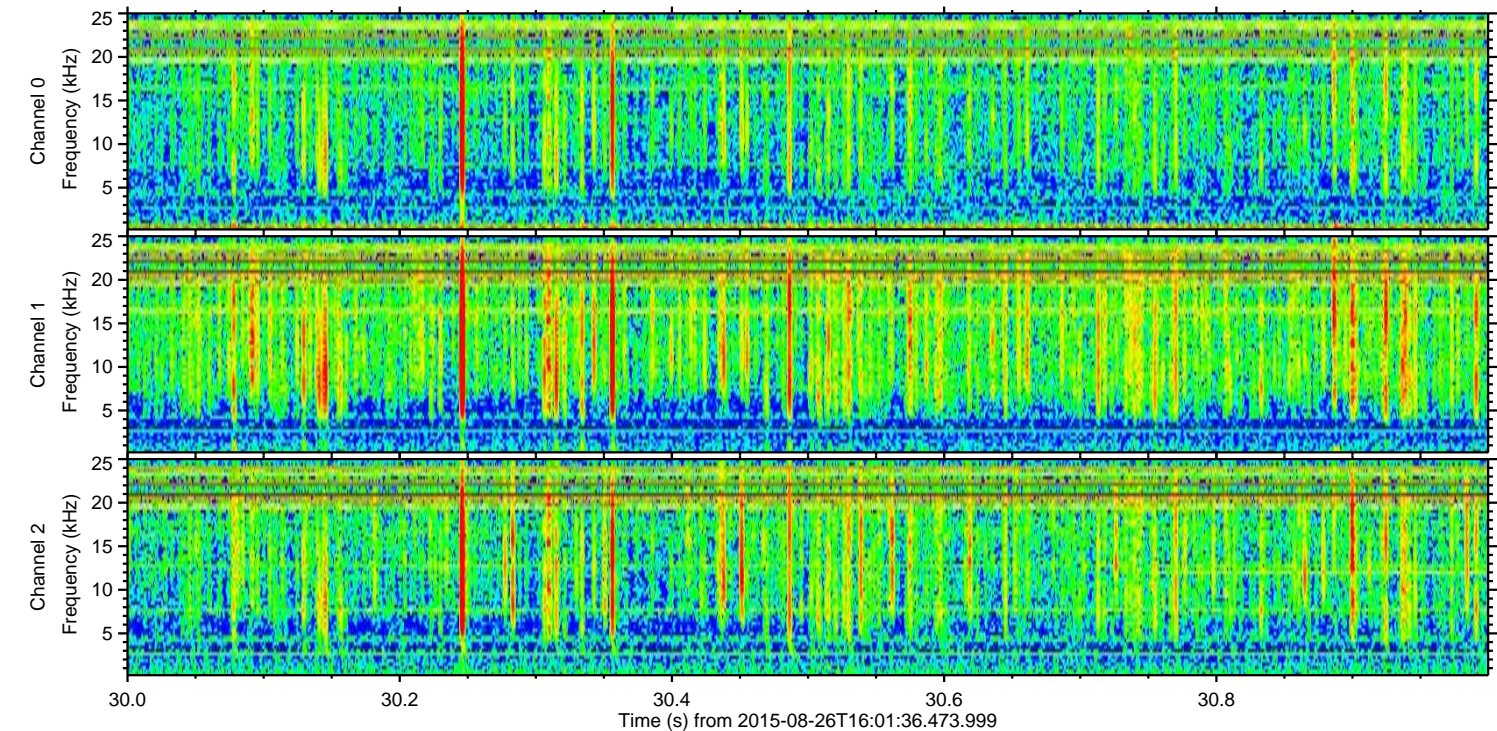
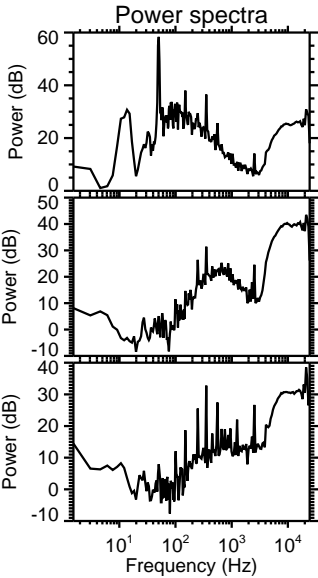
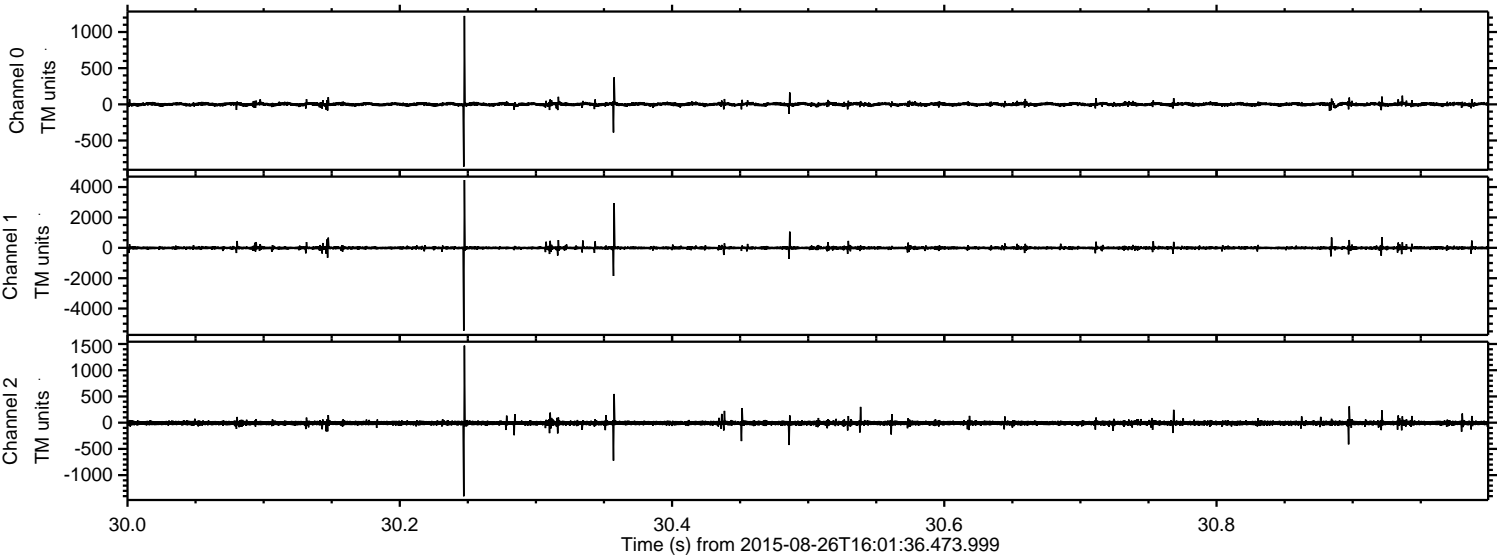
Processed Wed Oct 7 04:57:16 2015 by ELM ver.2012-10-06 from 001__elm20150826_160135__dat00.bin



Processed Wed Oct 7 04:57:17 2015 by ELM ver.2012-10-06 from 001__elm20150826_160135__dat00.bin

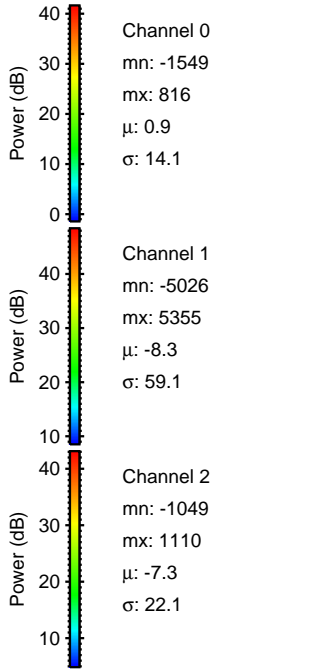
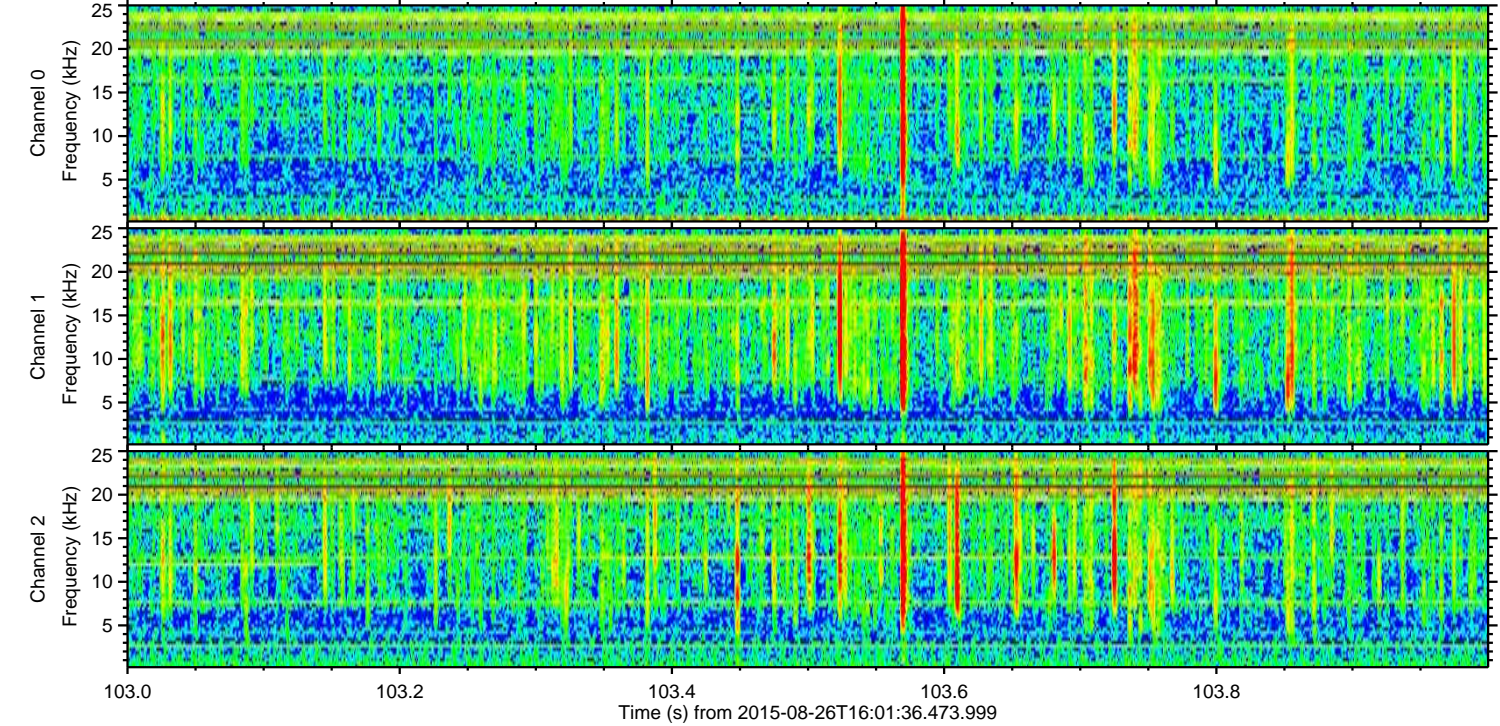
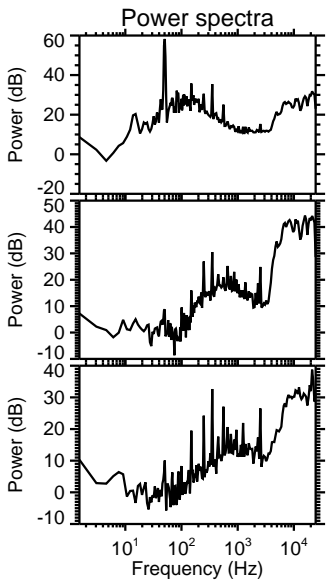
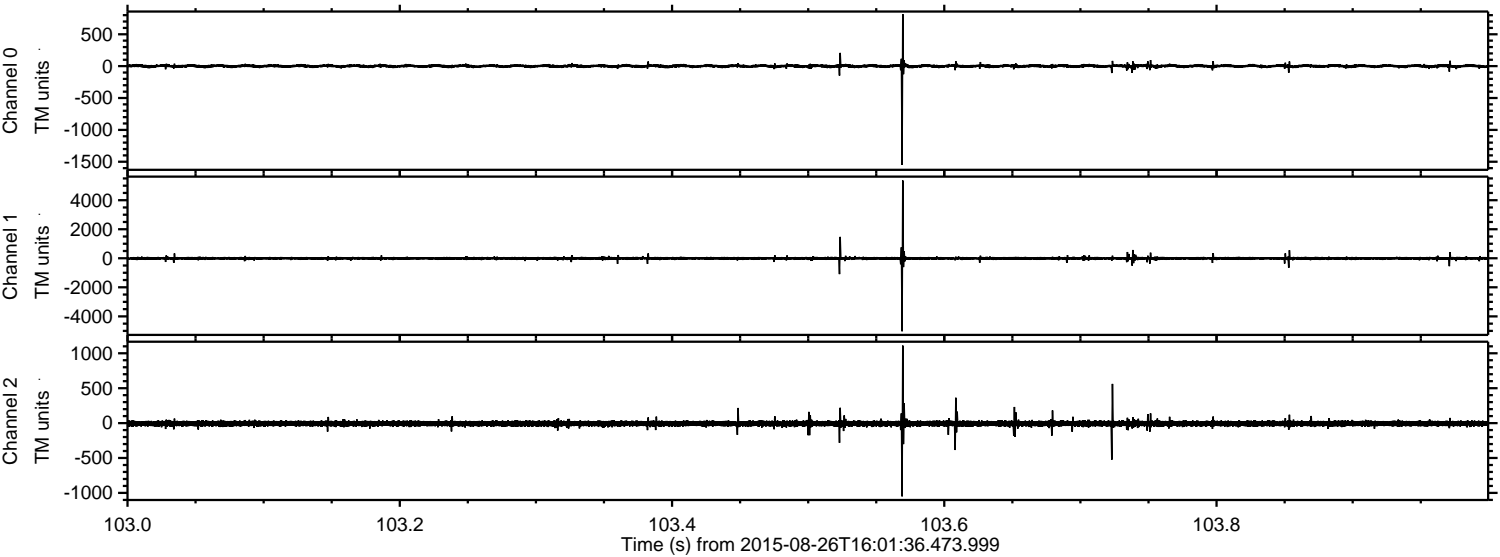


Processed Wed Oct 7 04:57:18 2015 by ELM ver.2012-10-06 from 001__elm20150826_160135__dat00.bin

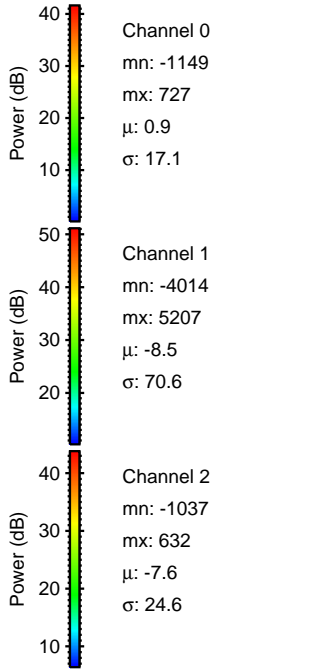
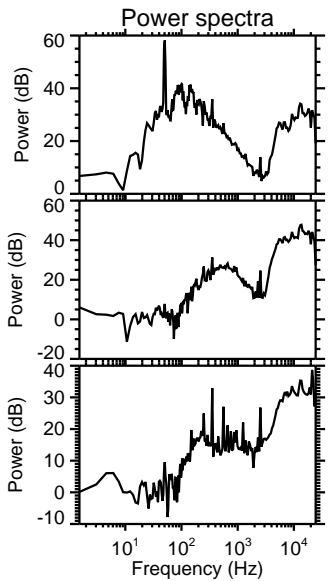
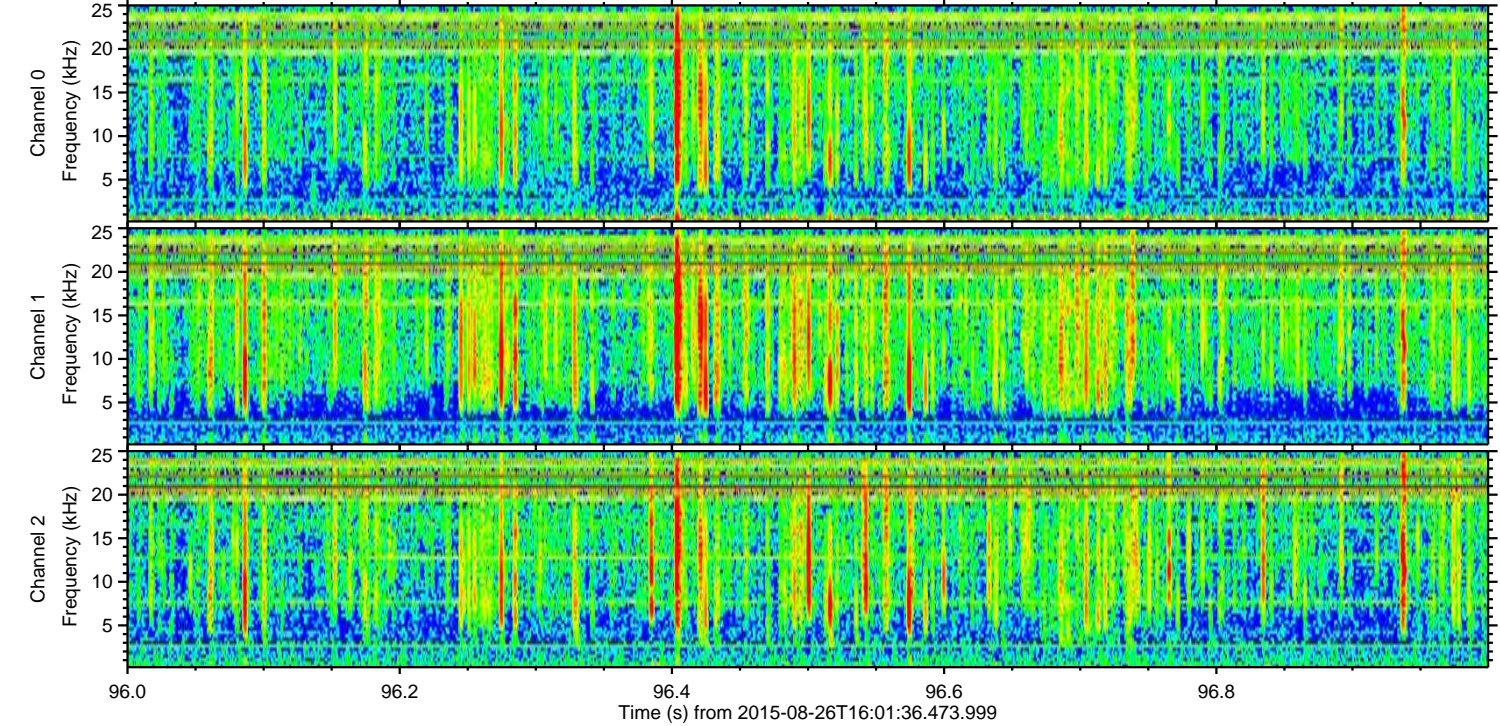
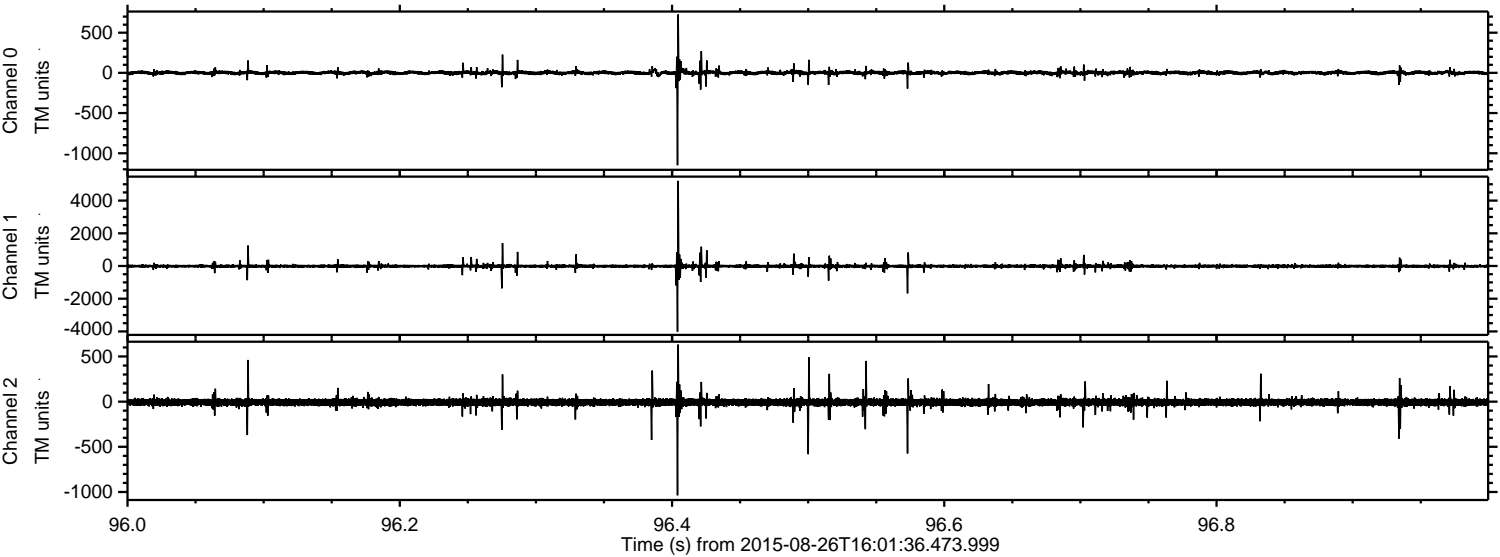


ELMAVAN 3D WAVEFORMS (Measured data sampled at 50 kHz) 51000 packets of 144 samples from 2015-08-26T16:01:36.473.999. Part 104/147

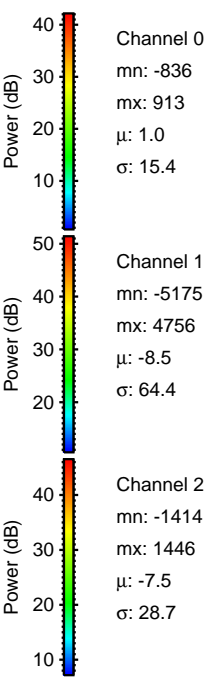
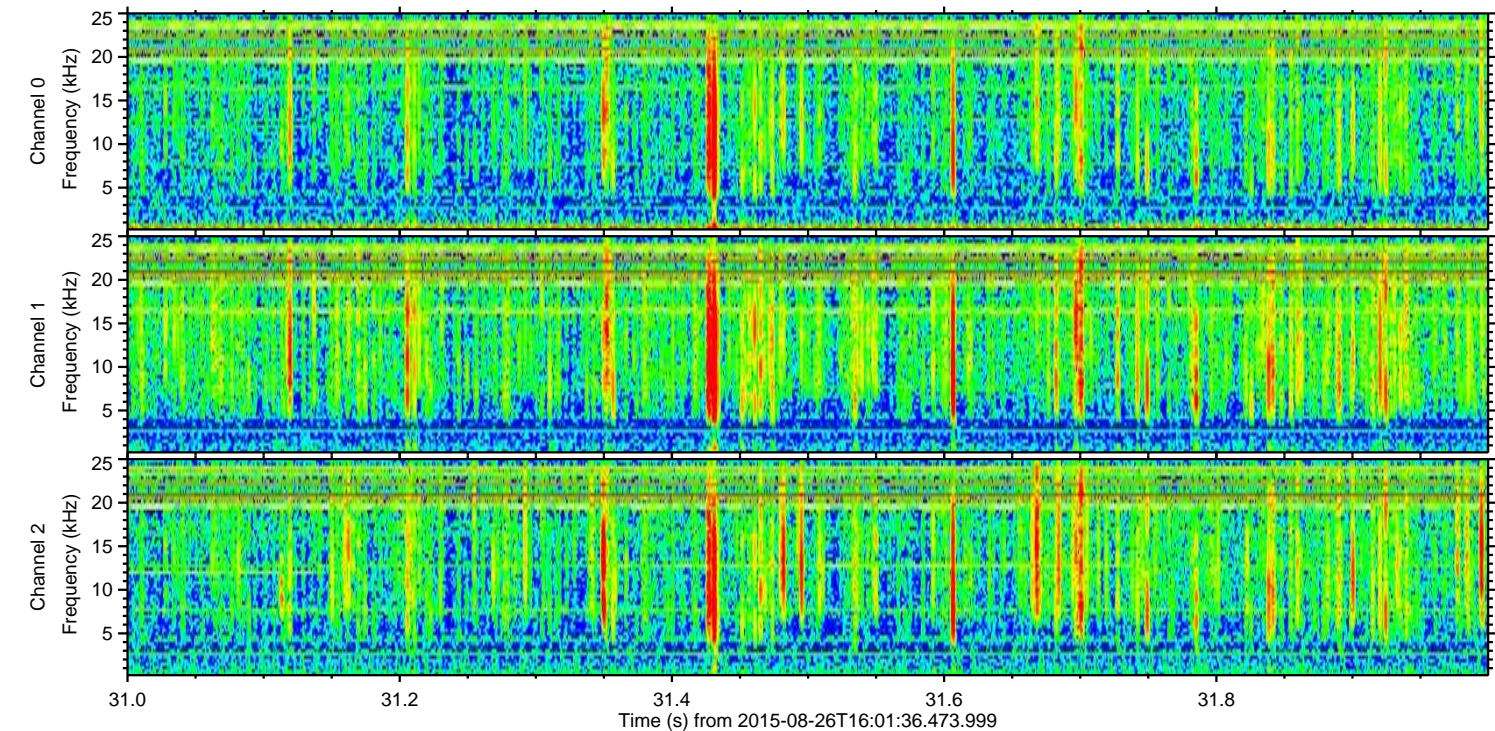
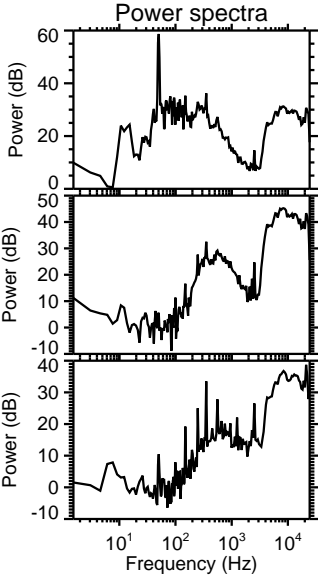
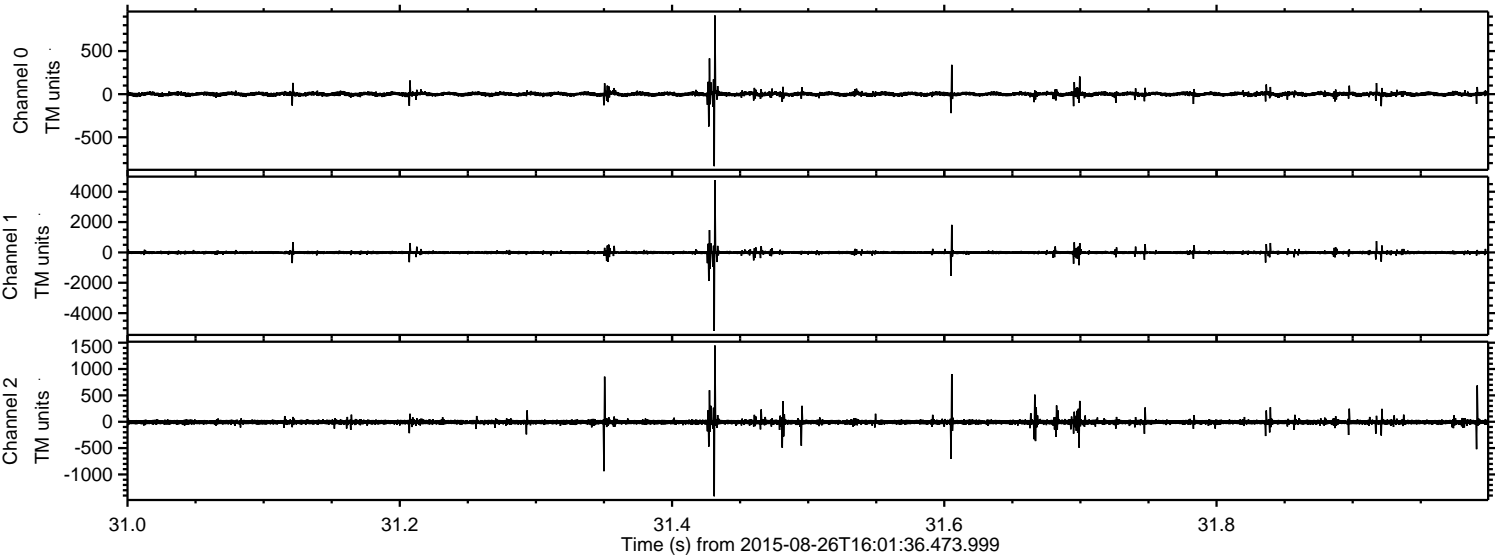
Processed Wed Oct 7 04:57:19 2015 by ELM ver.2012-10-06 from 001__elm20150826_160135__dat00.bin



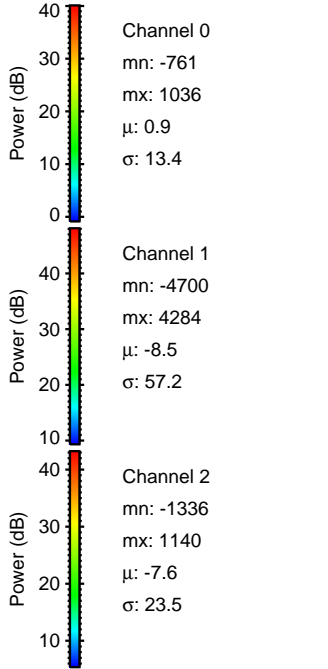
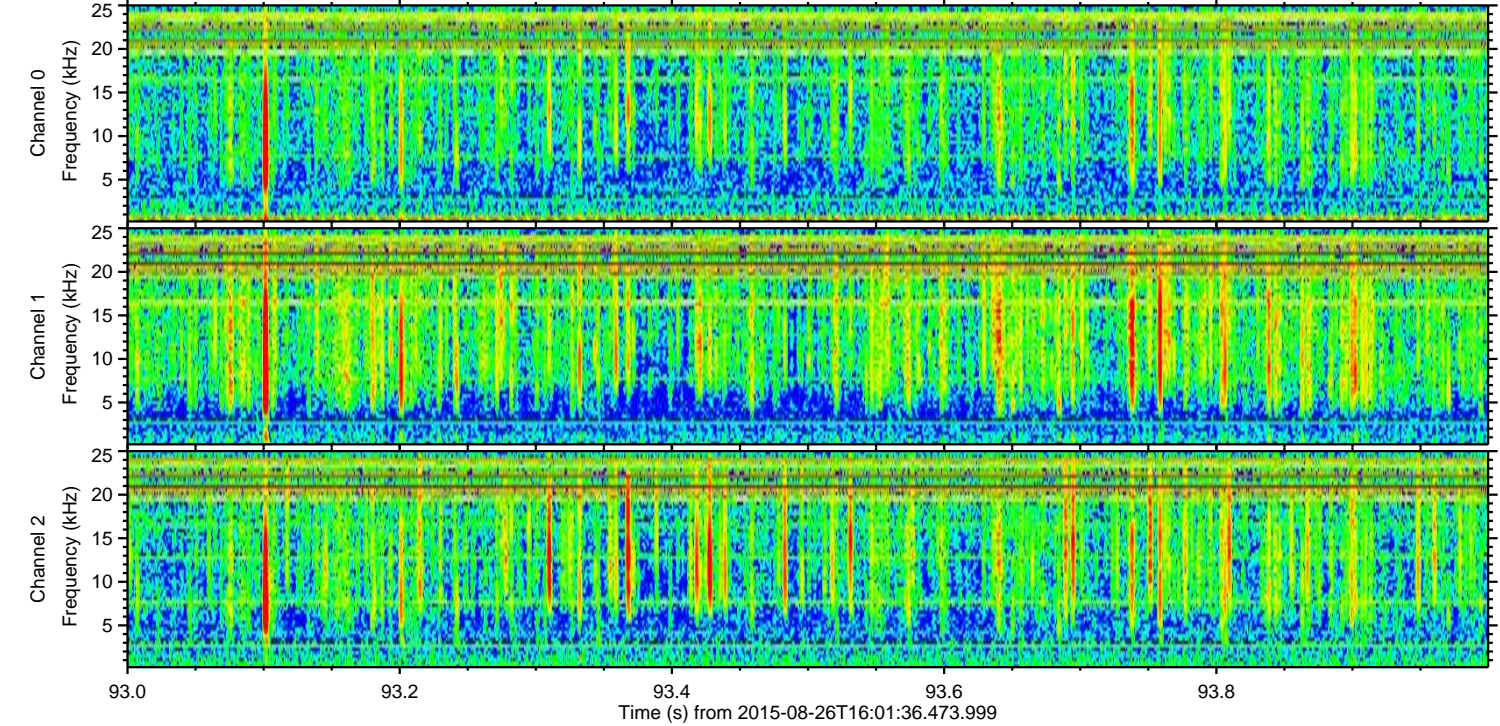
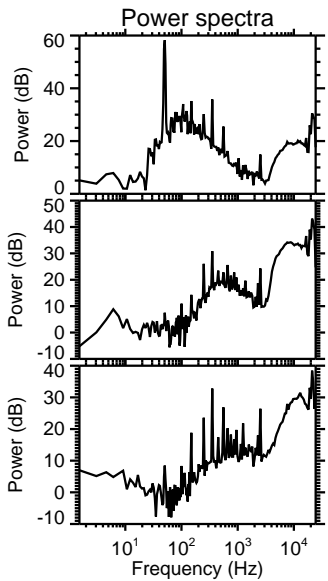
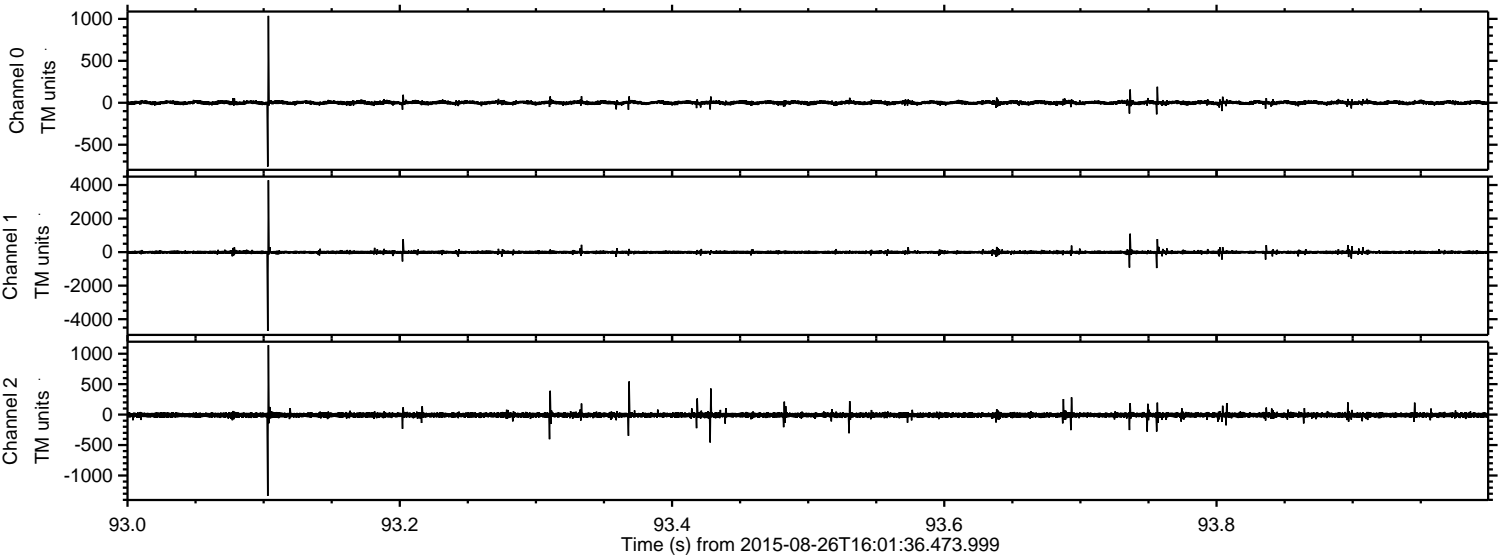
Processed Wed Oct 7 04:57:20 2015 by ELM ver.2012-10-06 from 001__elm20150826_160135__dat00.bin



Processed Wed Oct 7 04:57:21 2015 by ELM ver.2012-10-06 from 001__elm20150826_160135__dat00.bin

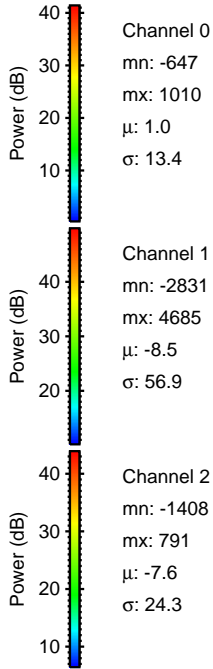
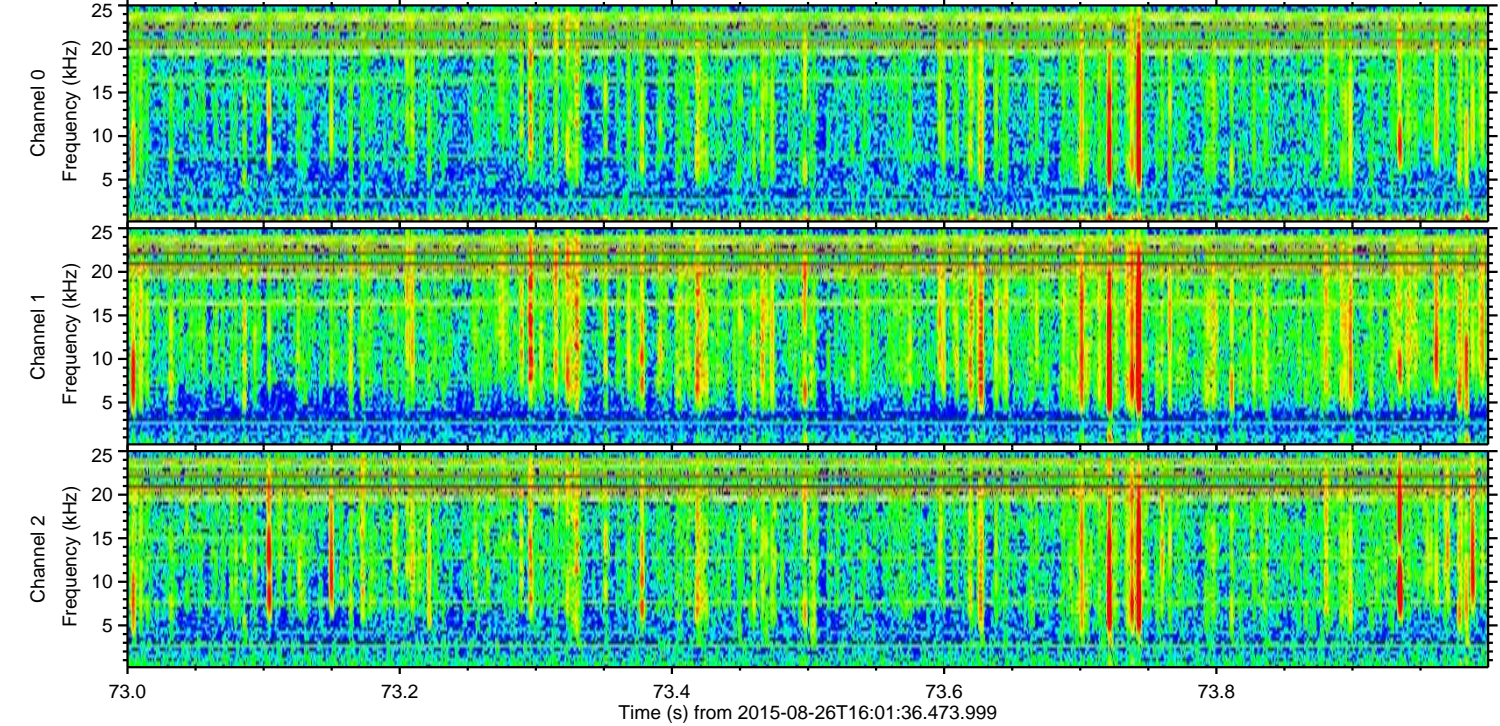
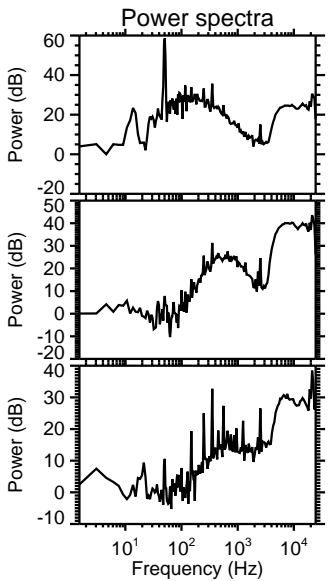
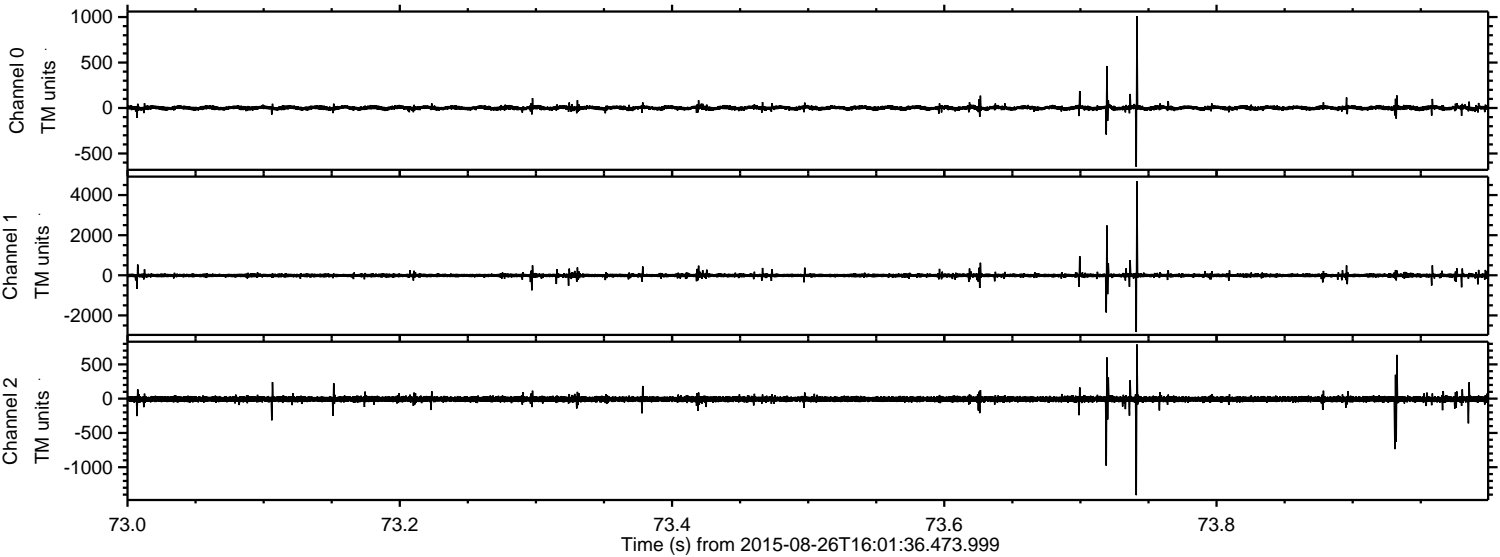


Processed Wed Oct 7 04:57:22 2015 by ELM ver.2012-10-06 from 001__elm20150826_160135__dat00.bin



ELMAVAN 3D WAVEFORMS (Measured data sampled at 50 kHz) 51000 packets of 144 samples from 2015-08-26T16:01:36.473.999. Part 74/147

Processed Wed Oct 7 04:57:23 2015 by ELM ver.2012-10-06 from 001__elm20150826_160135__dat00.bin

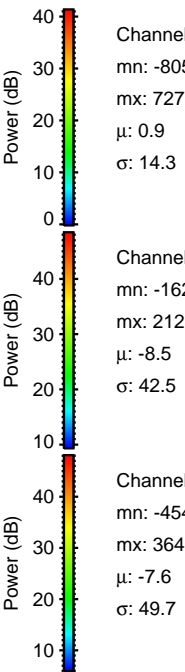
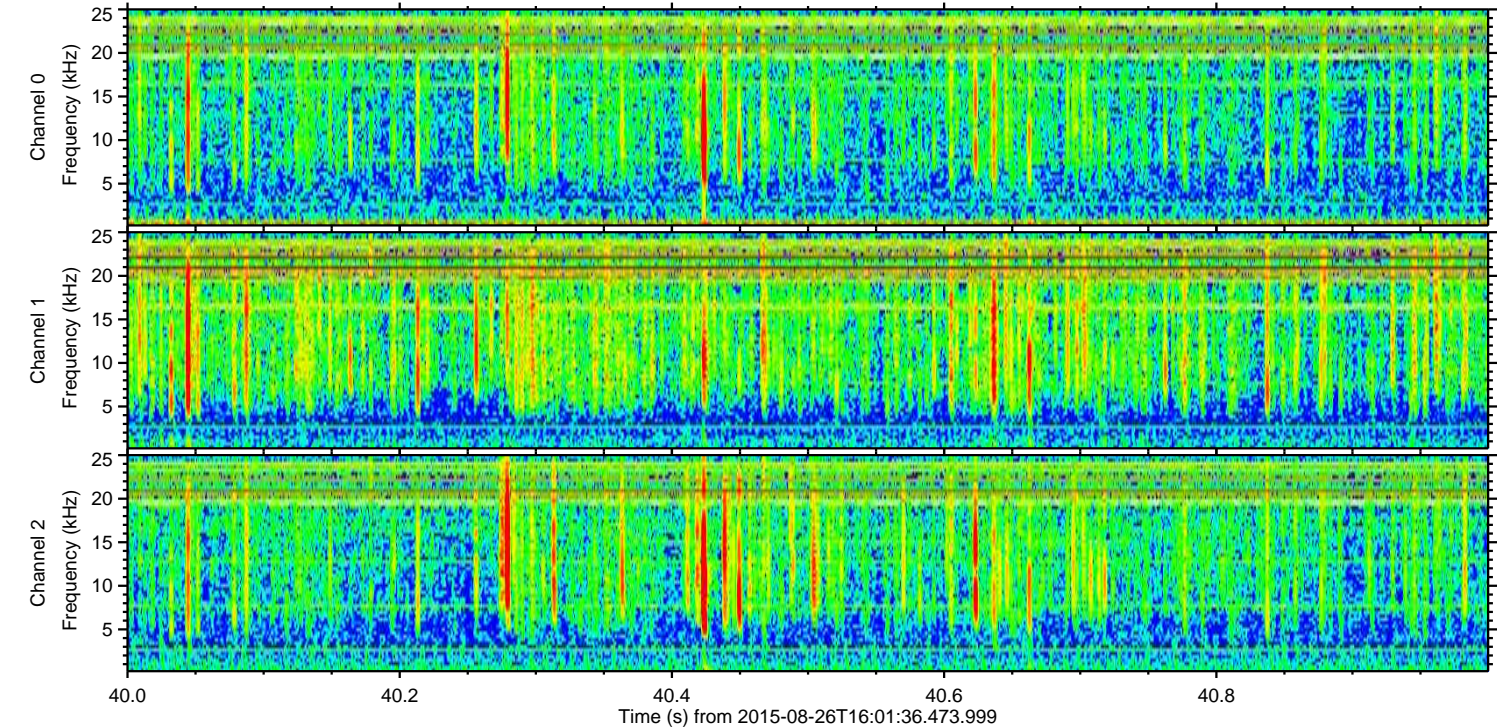
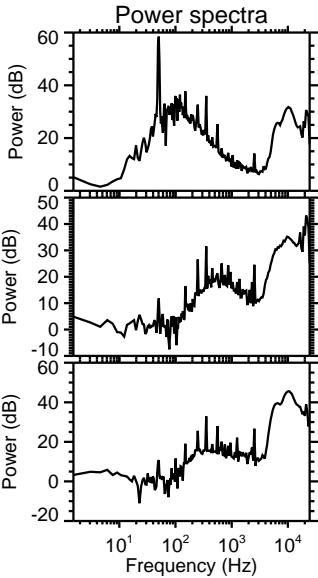
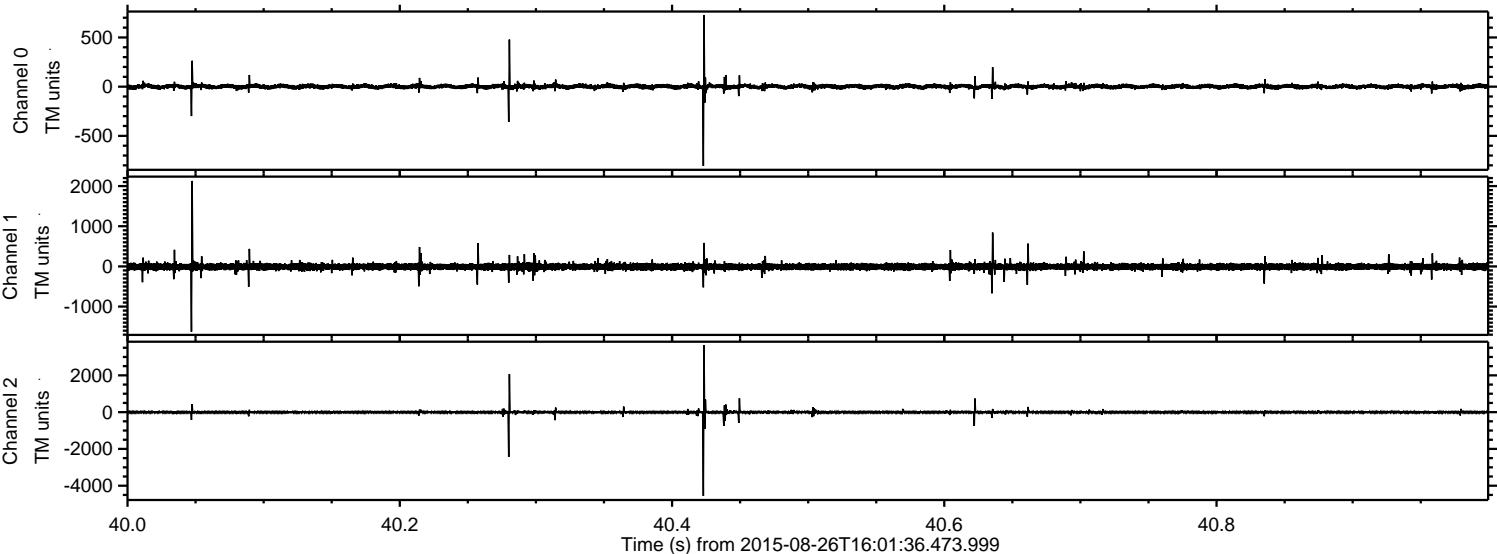


Channel 0
mn: -647
mx: 1010
 μ : 1.0
 σ : 13.4

Channel 1
mn: -2831
mx: 4685
 μ : -8.5
 σ : 56.9

Channel 2
mn: -1408
mx: 791
 μ : -7.6
 σ : 24.3

Processed Wed Oct 7 04:57:25 2015 by ELM ver.2012-10-06 from 001__elm20150826_160135__dat00.bin



Processed Wed Oct 7 04:57:26 2015 by ELM ver.2012-10-06 from 001__elm20150826_160135__dat00.bin

