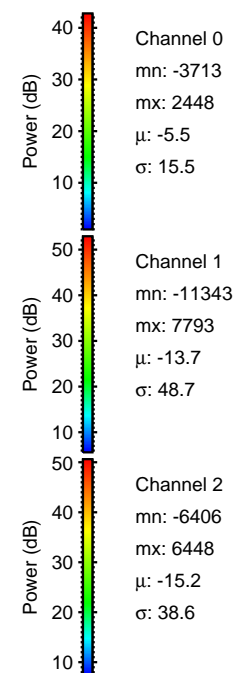
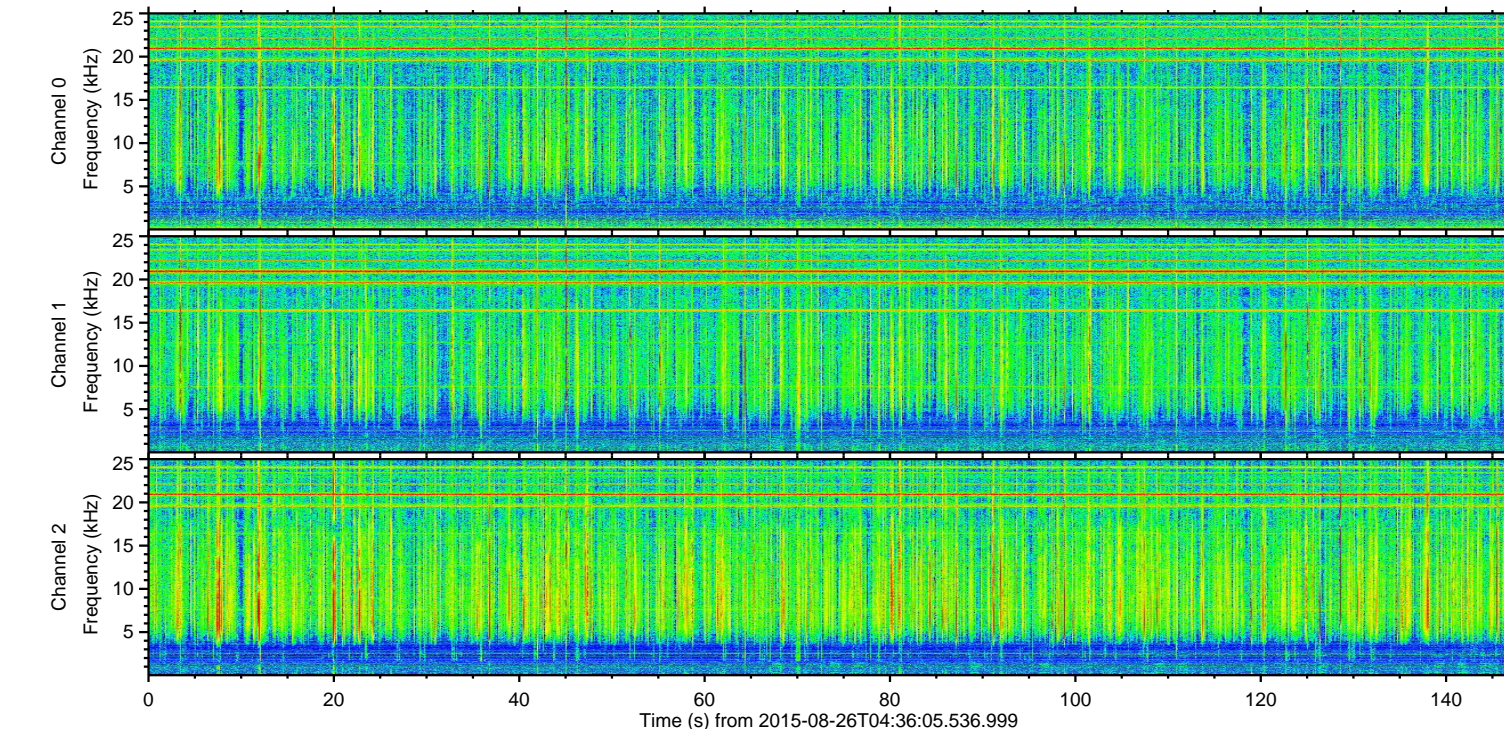
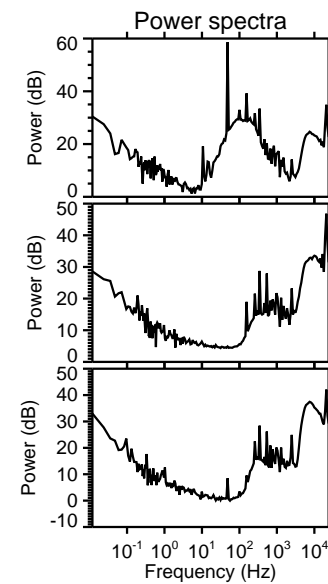
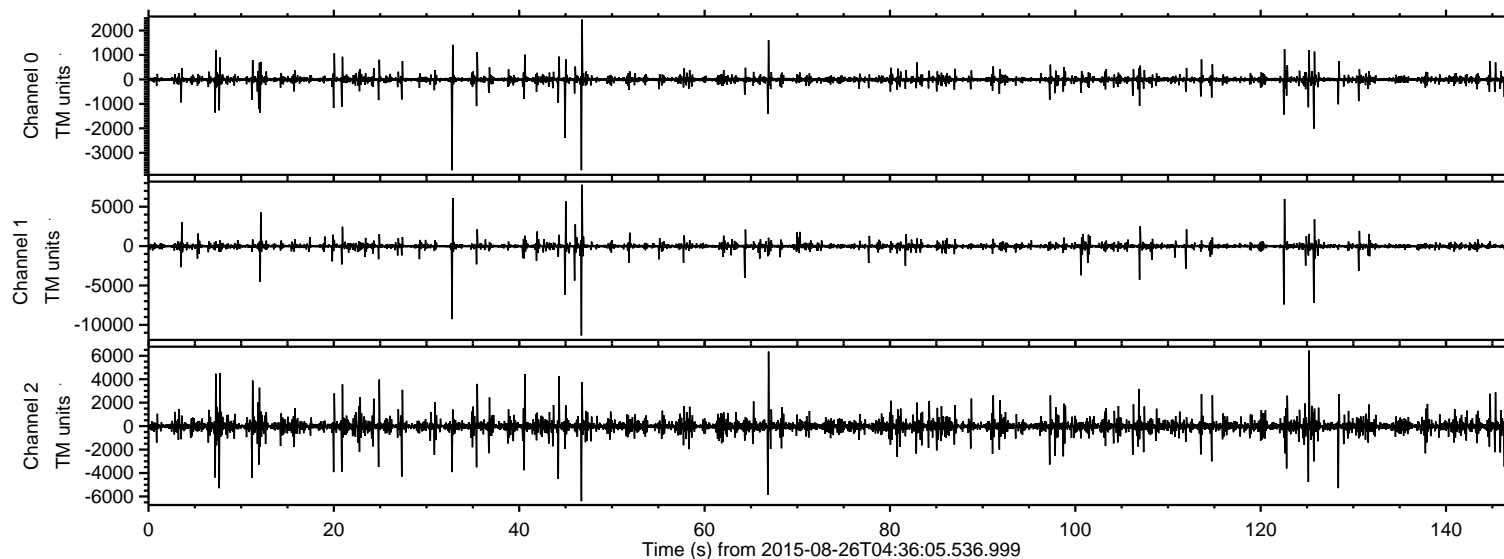


# ELMAVAN 3D WAVEFORMS (Measured data sampled at 50 kHz) 51000 packets of 144 samples from 2015-08-26T04:36:05.536.999.

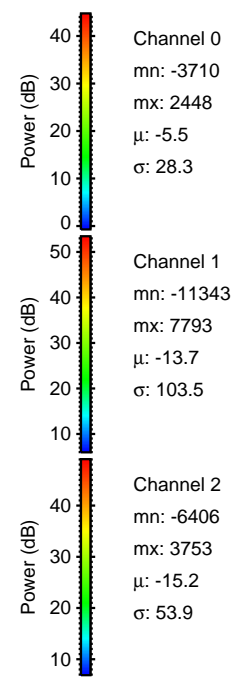
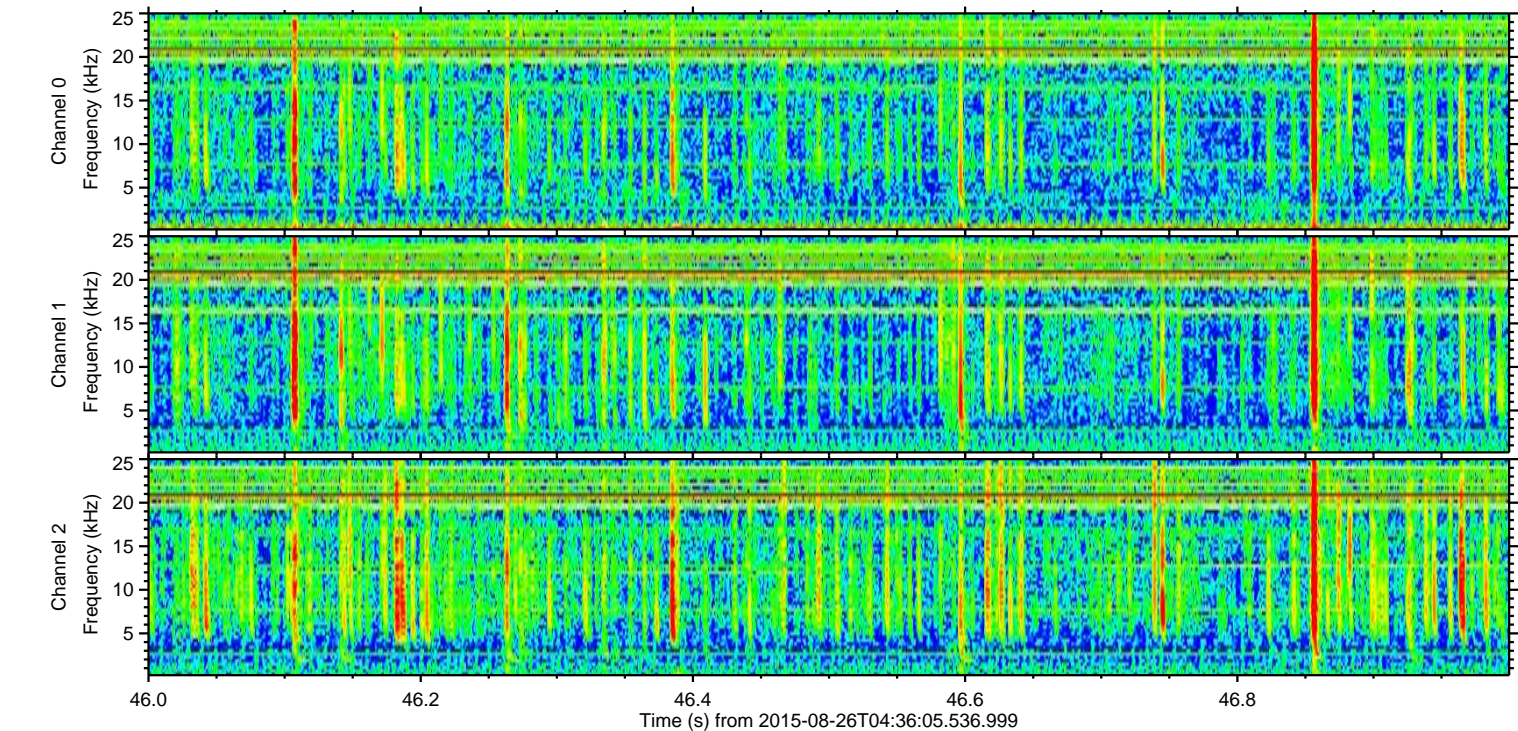
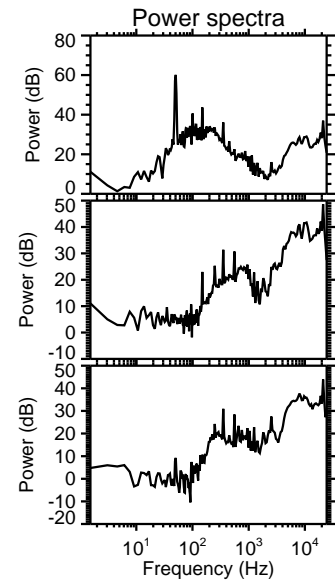
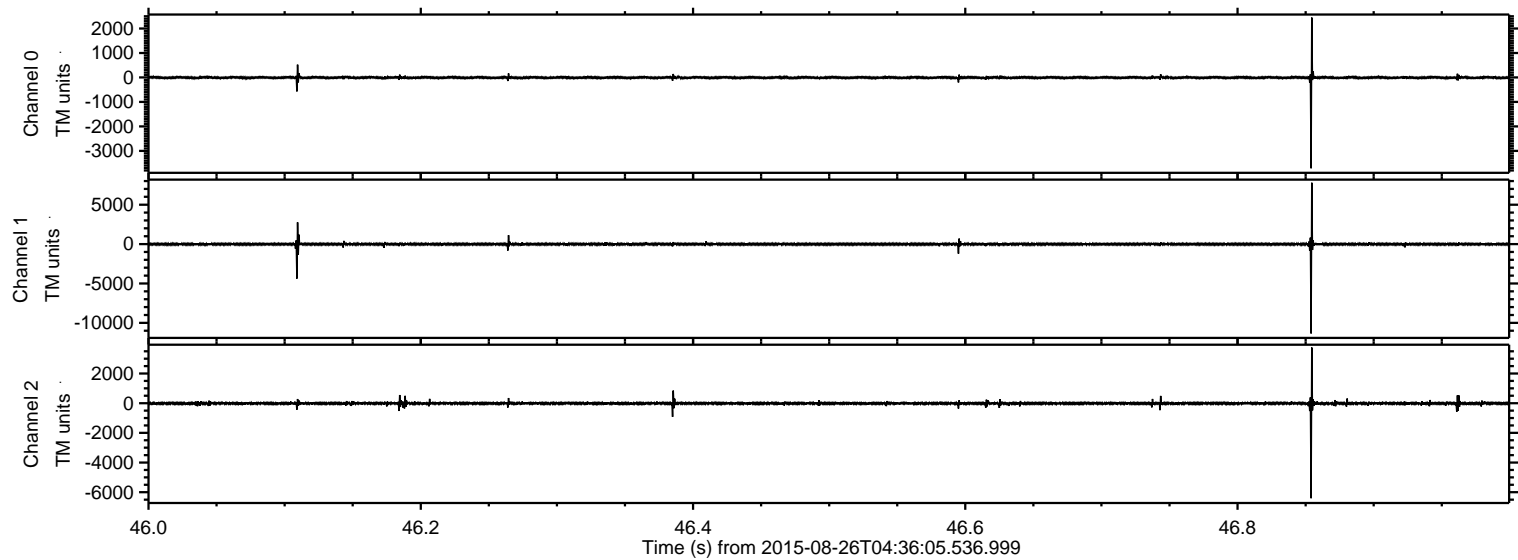
Processed Wed Oct 7 01:48:49 2015 by ELM ver.2012-10-06 from 001\_\_elm20150826\_043604\_\_dat00.bin





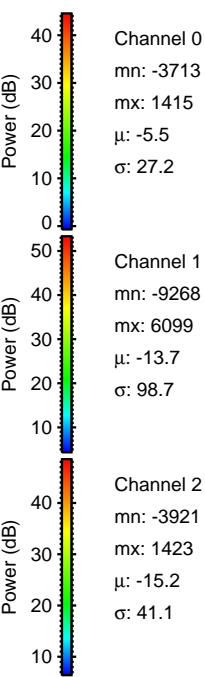
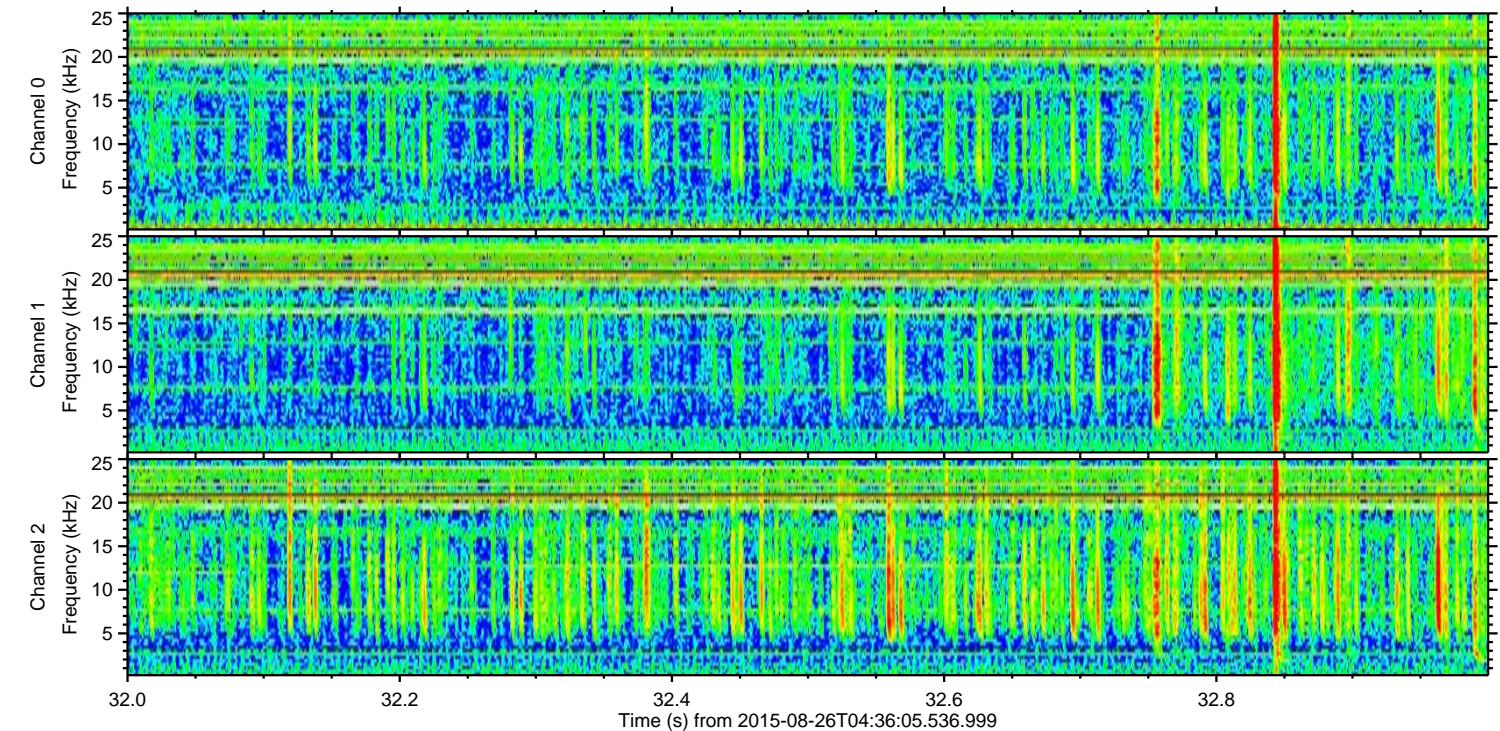
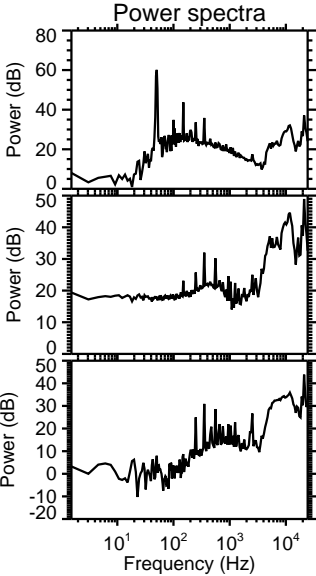
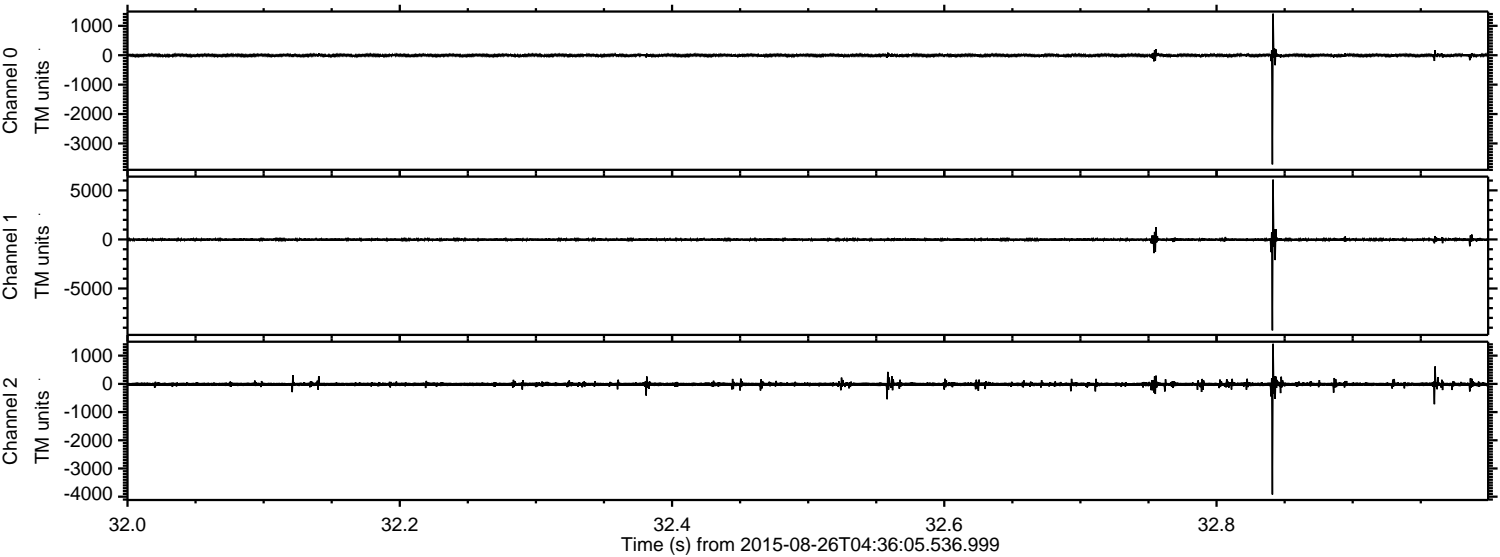
ELMAVAN 3D WAVEFORMS (Measured data sampled at 50 kHz) 51000 packets of 144 samples from 2015-08-26T04:36:05.536.999. Part 47/147

Processed Wed Oct 7 01:49:04 2015 by ELM ver.2012-10-06 from 001\_\_elm20150826\_043604\_\_dat00.bin





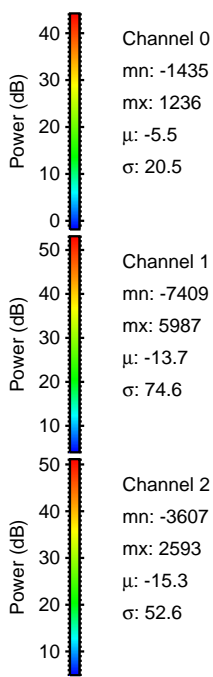
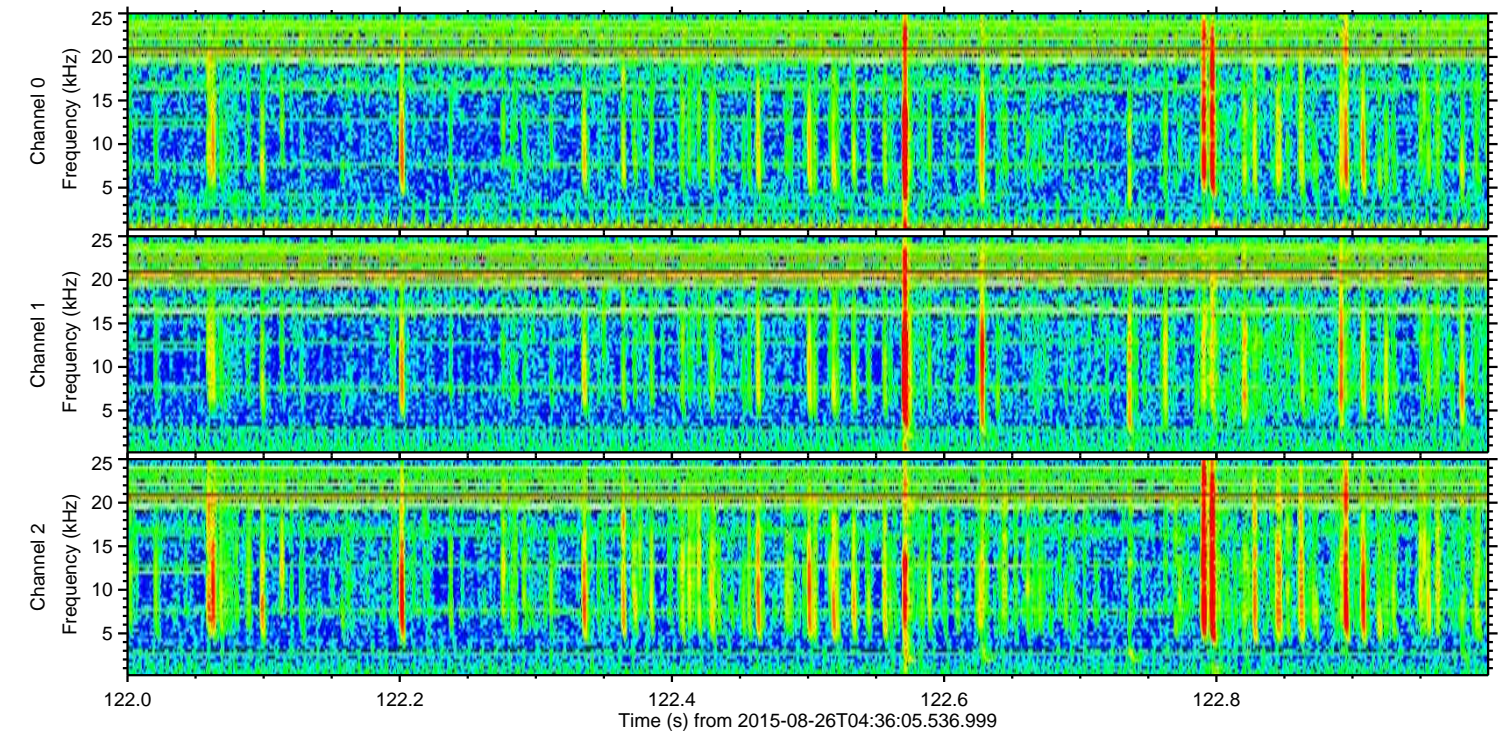
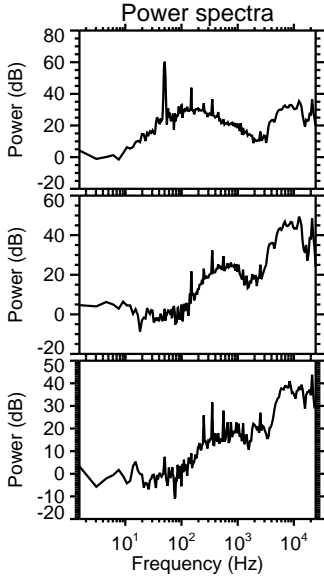
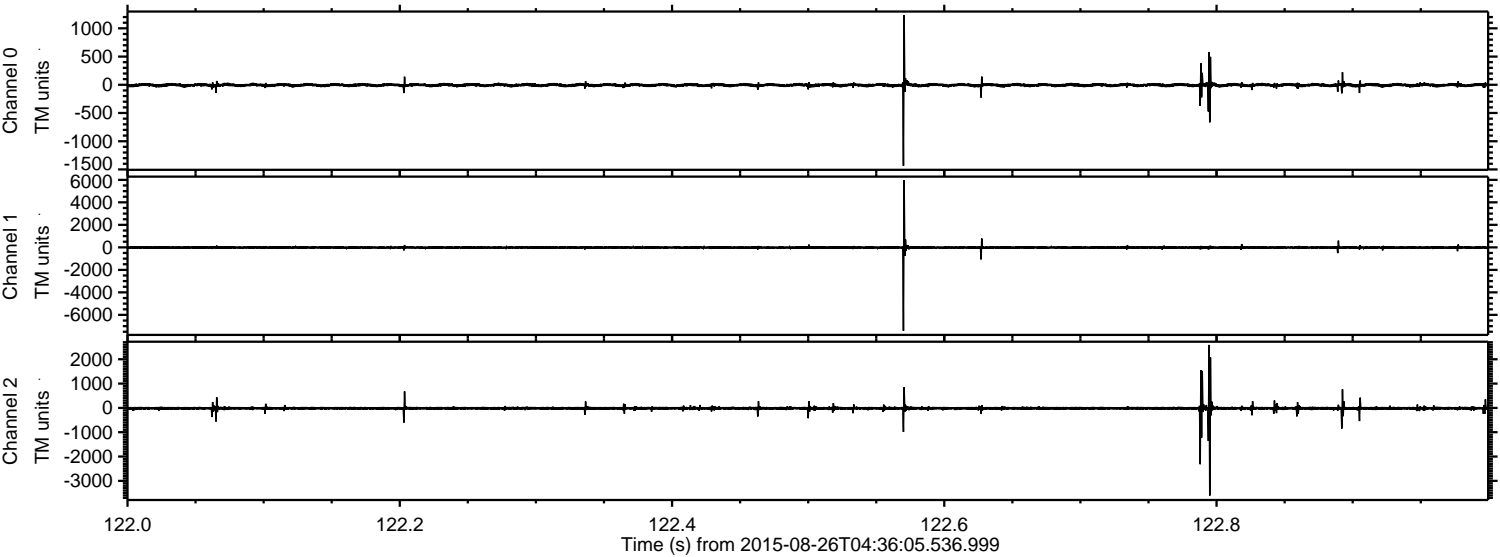
Processed Wed Oct 7 01:49:05 2015 by ELM ver.2012-10-06 from 001\_\_elm20150826\_043604\_\_dat00.bin





ELMAVAN 3D WAVEFORMS (Measured data sampled at 50 kHz) 51000 packets of 144 samples from 2015-08-26T04:36:05.536.999. Part 123/147

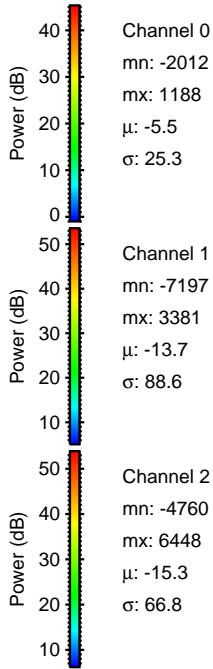
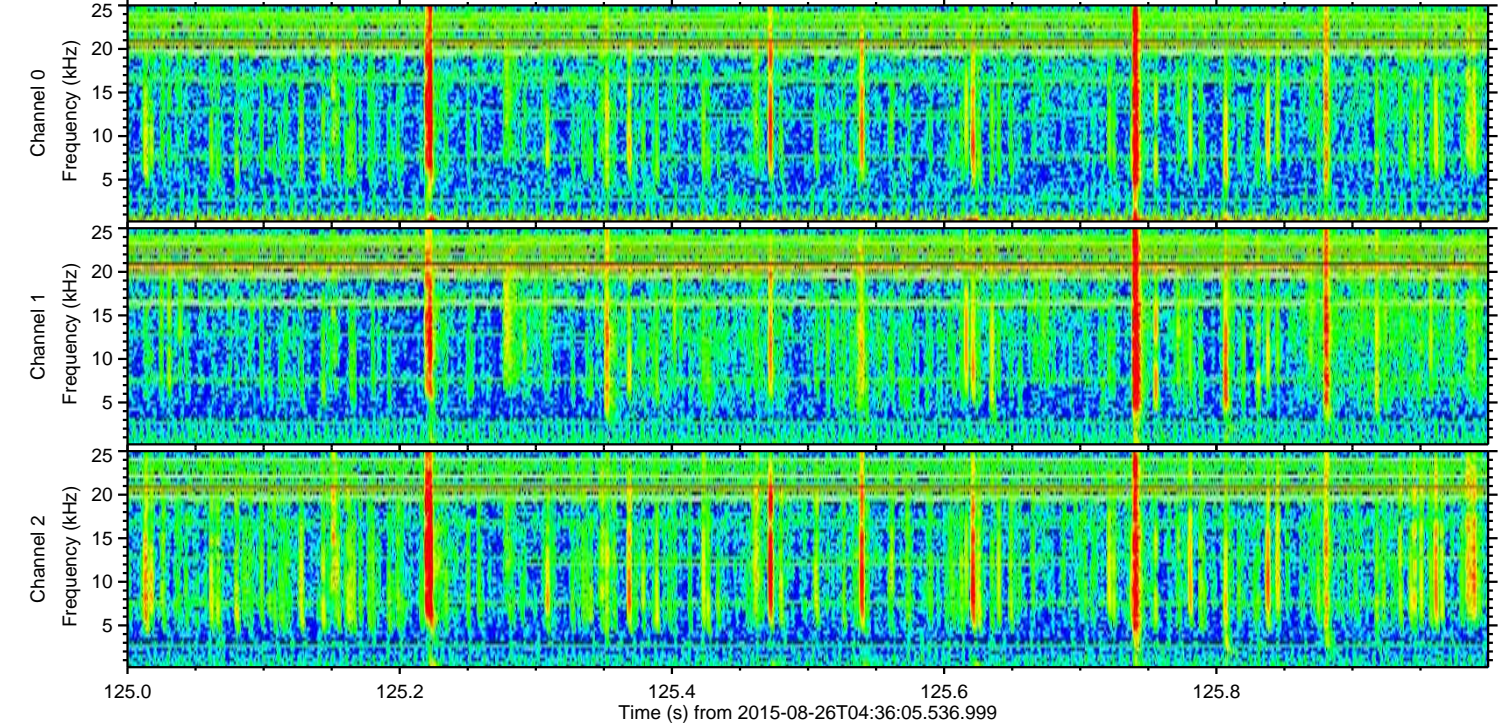
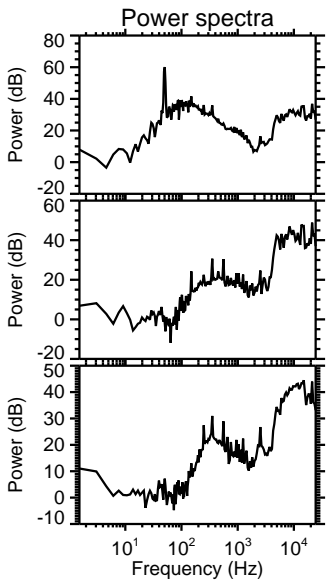
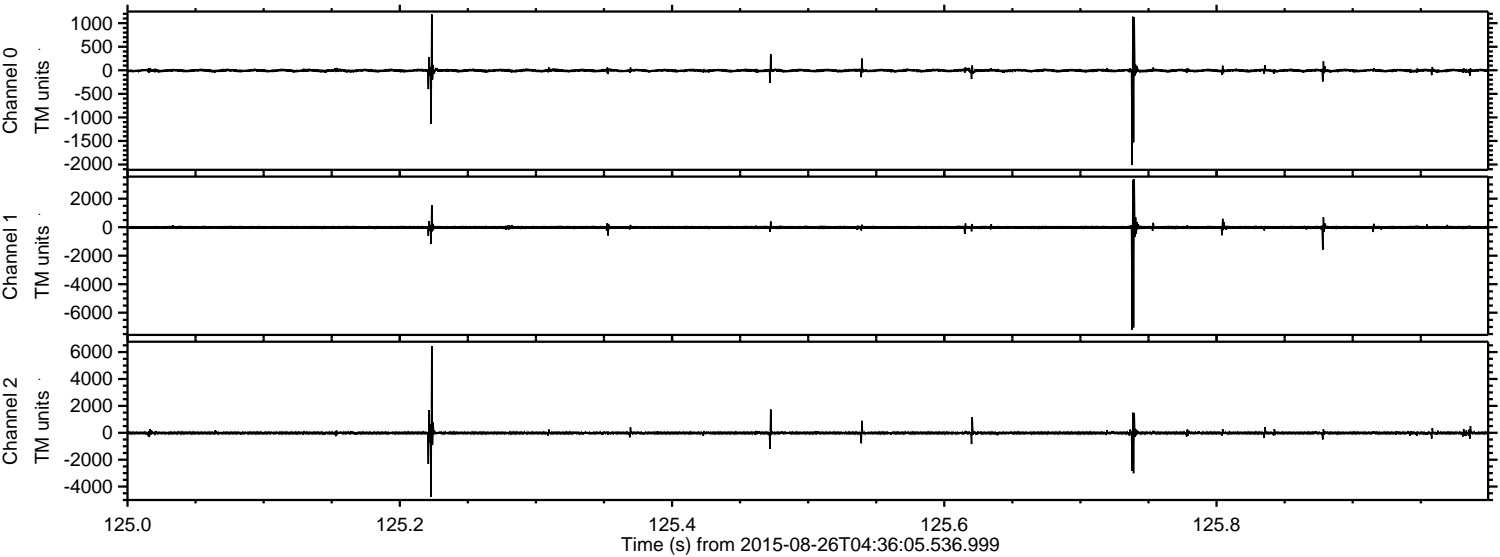
Processed Wed Oct 7 01:49:06 2015 by ELM ver.2012-10-06 from 001\_\_elm20150826\_043604\_\_dat00.bin





ELMAVAN 3D WAVEFORMS (Measured data sampled at 50 kHz) 51000 packets of 144 samples from 2015-08-26T04:36:05.536.999. Part 126/147

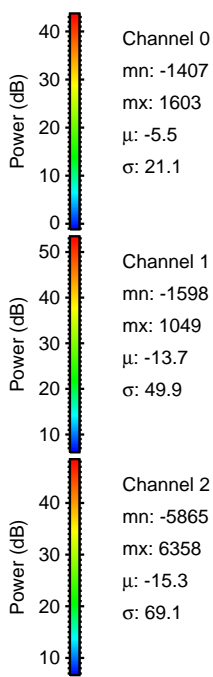
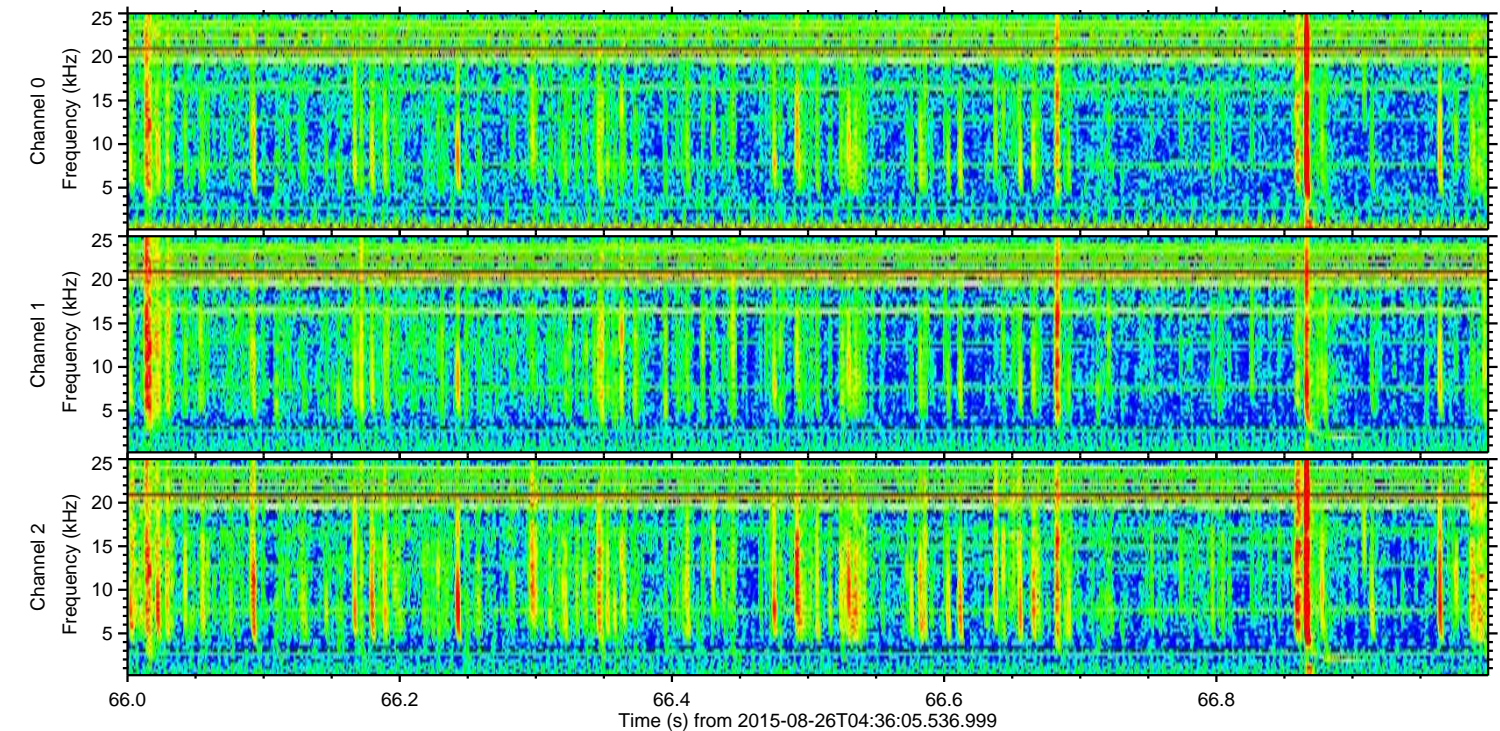
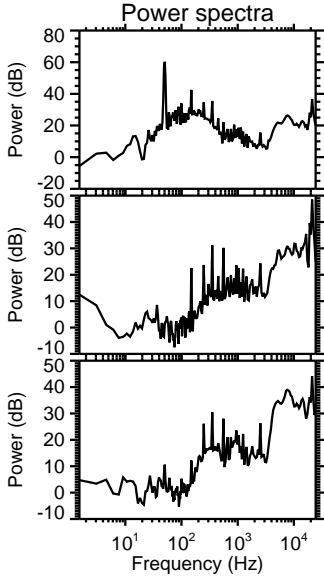
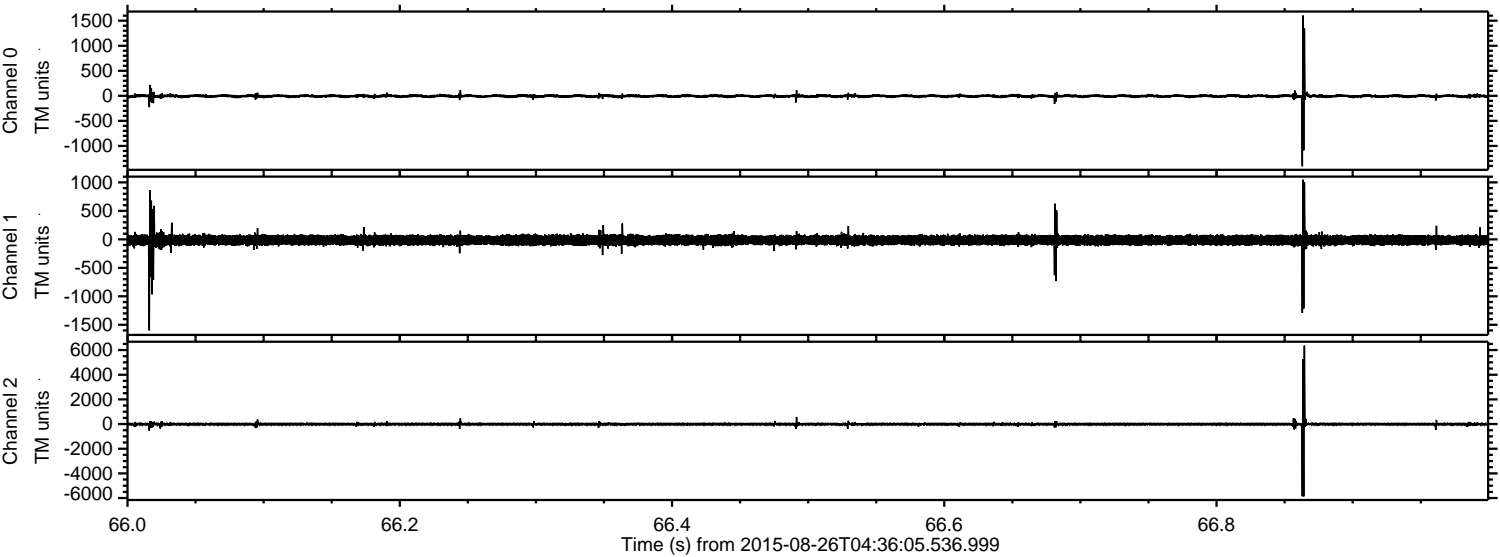
Processed Wed Oct 7 01:49:07 2015 by ELM ver.2012-10-06 from 001\_\_elm20150826\_043604\_\_dat00.bin





ELMAVAN 3D WAVEFORMS (Measured data sampled at 50 kHz) 51000 packets of 144 samples from 2015-08-26T04:36:05.536.999. Part 67/147

Processed Wed Oct 7 01:49:08 2015 by ELM ver.2012-10-06 from 001\_\_elm20150826\_043604\_\_dat00.bin



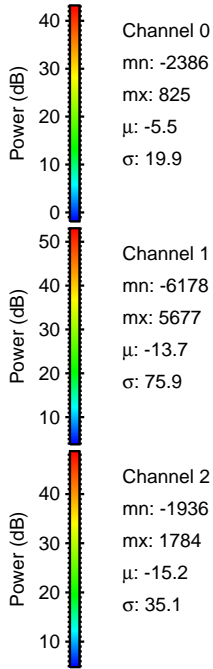
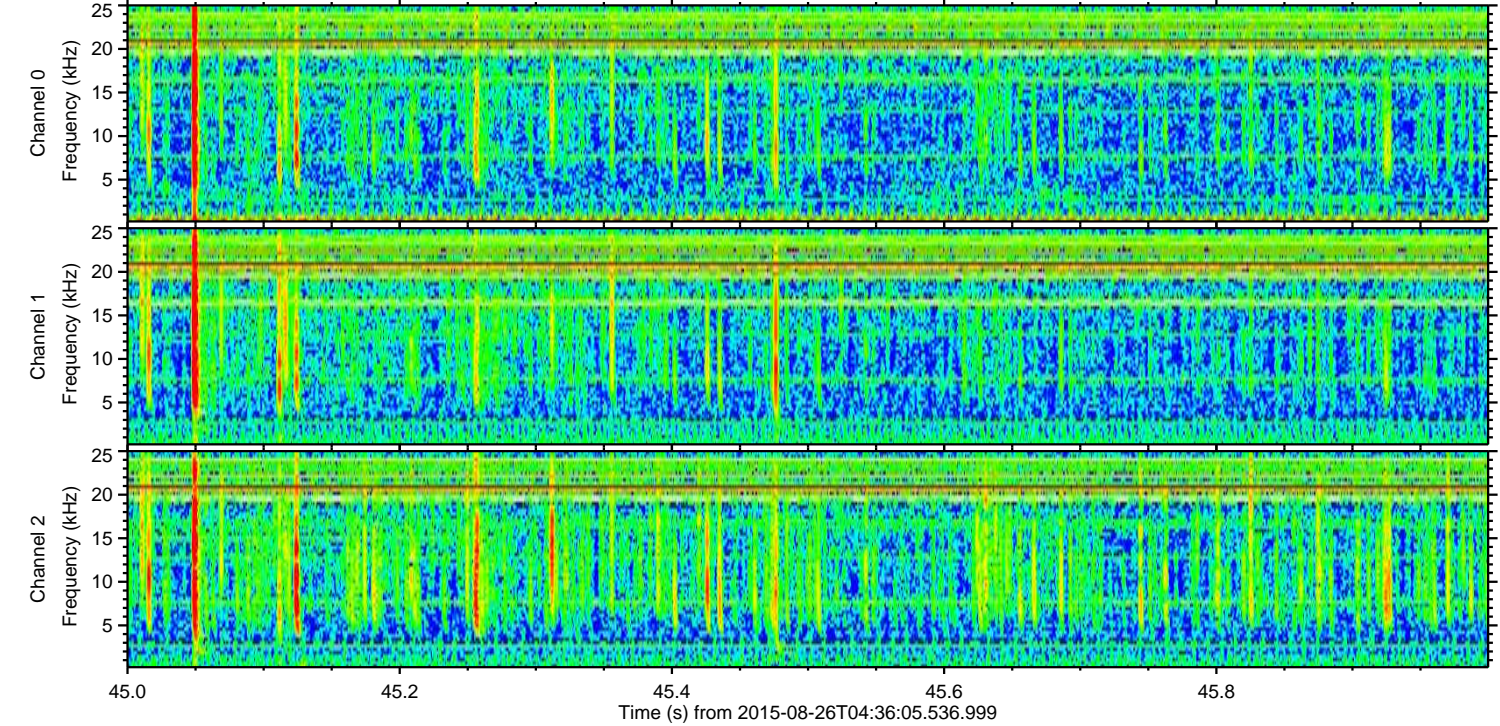
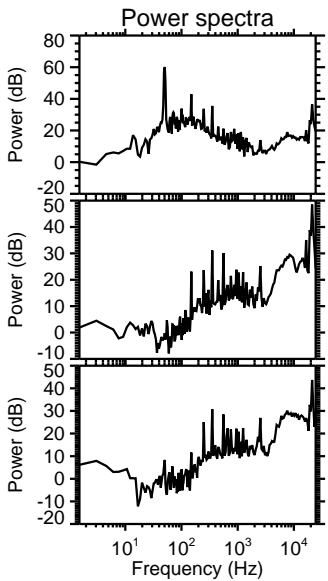
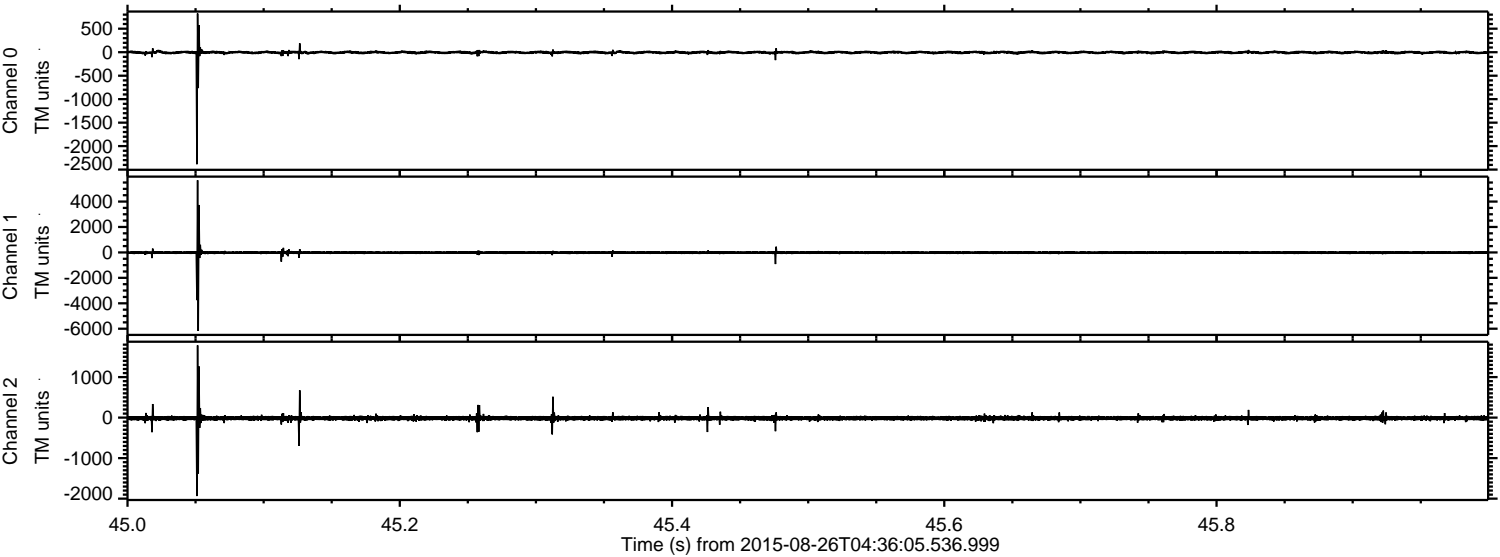
Channel 0  
mn: -1407  
mx: 1603  
 $\mu$ : -5.5  
 $\sigma$ : 21.1

Channel 1  
mn: -1598  
mx: 1049  
 $\mu$ : -13.7  
 $\sigma$ : 49.9

Channel 2  
mn: -5865  
mx: 6358  
 $\mu$ : -15.3  
 $\sigma$ : 69.1



Processed Wed Oct 7 01:49:09 2015 by ELM ver.2012-10-06 from 001\_\_elm20150826\_043604\_\_dat00.bin



Channel 0  
mn: -2386  
mx: 825  
 $\mu$ : -5.5  
 $\sigma$ : 19.9

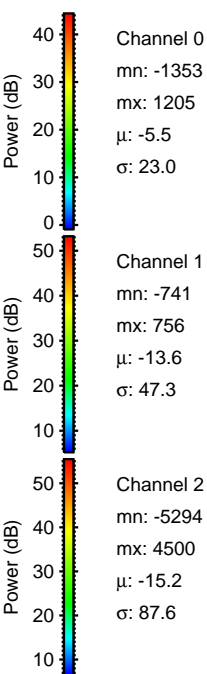
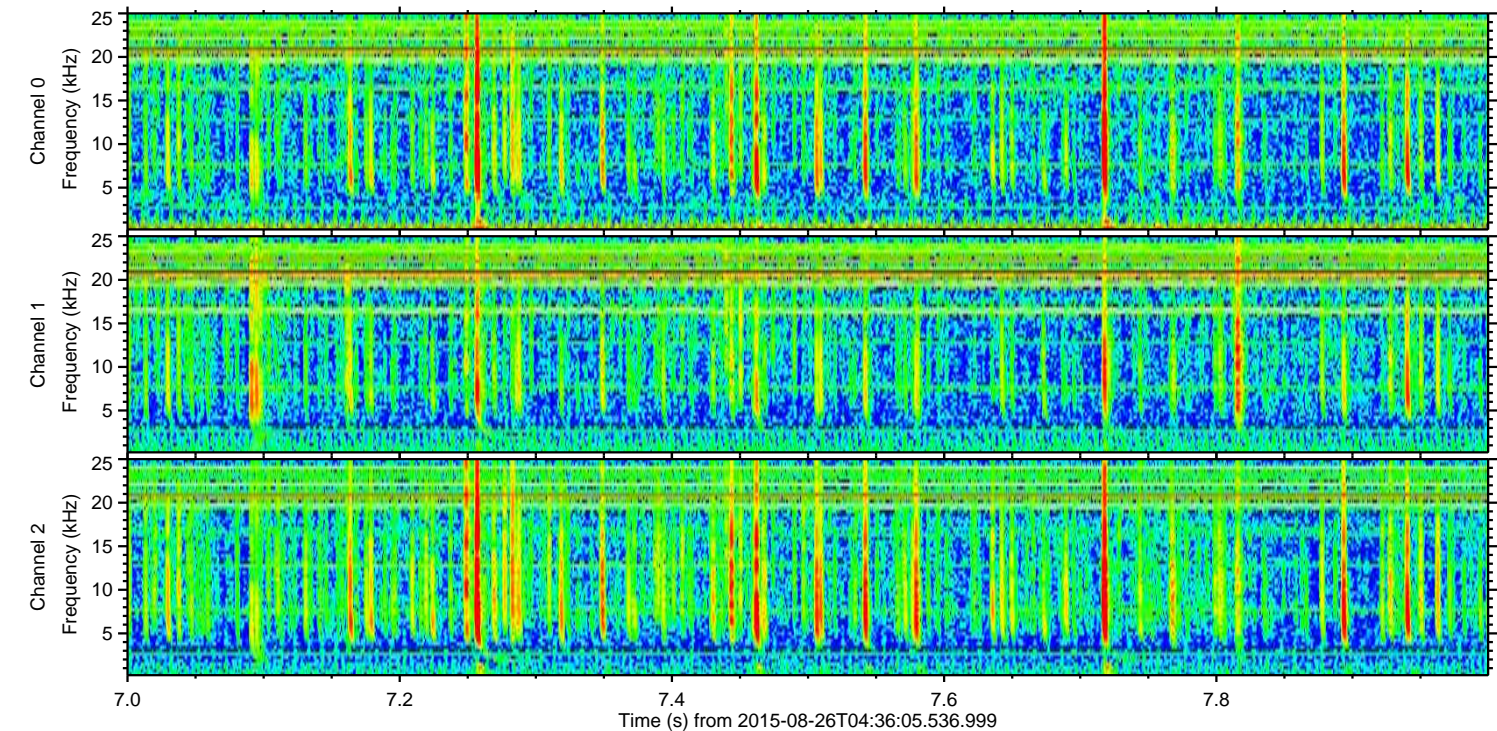
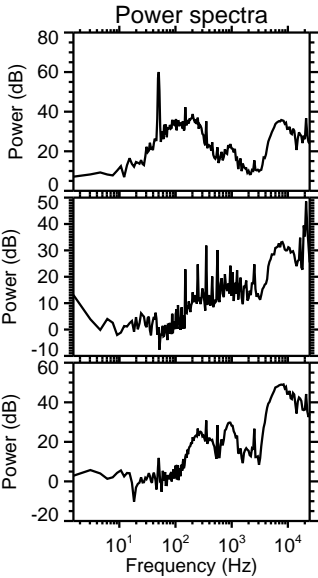
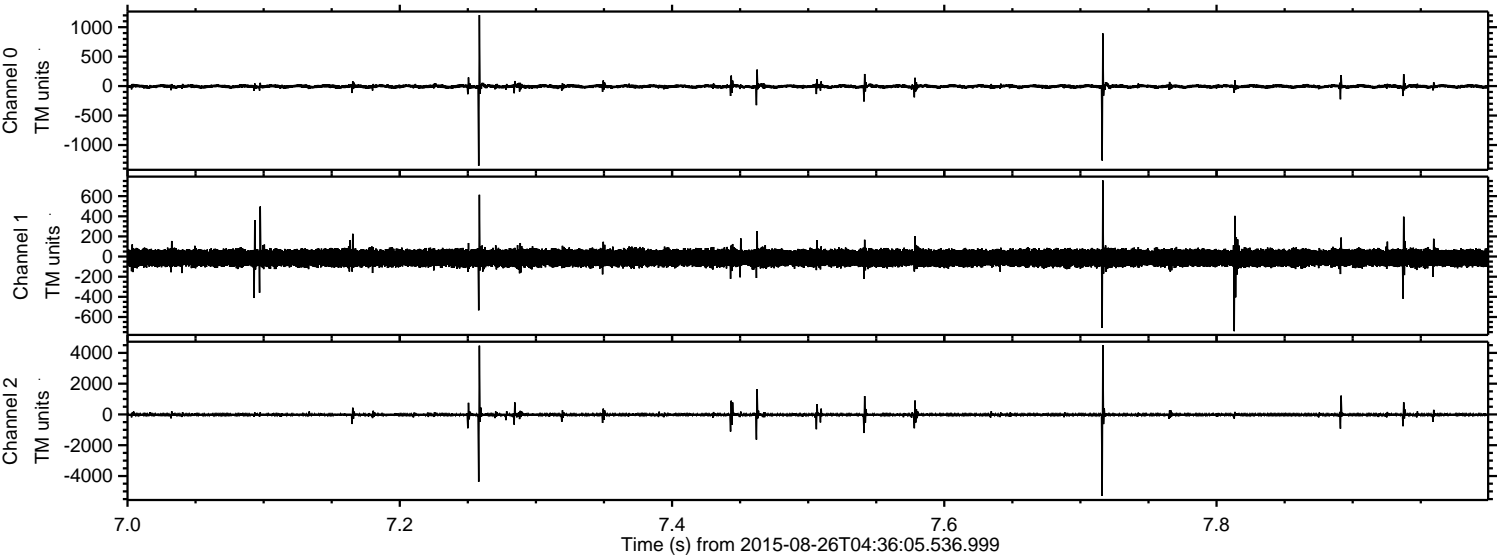
Channel 1  
mn: -6178  
mx: 5677  
 $\mu$ : -13.7  
 $\sigma$ : 75.9

Channel 2  
mn: -1936  
mx: 1784  
 $\mu$ : -15.2  
 $\sigma$ : 35.1



ELMAVAN 3D WAVEFORMS (Measured data sampled at 50 kHz) 51000 packets of 144 samples from 2015-08-26T04:36:05.536.999. Part 8/147

Processed Wed Oct 7 01:49:10 2015 by ELM ver.2012-10-06 from 001\_\_elm20150826\_043604\_\_dat00.bin



Channel 0  
mn: -1353  
mx: 1205  
 $\mu$ : -5.5  
 $\sigma$ : 23.0

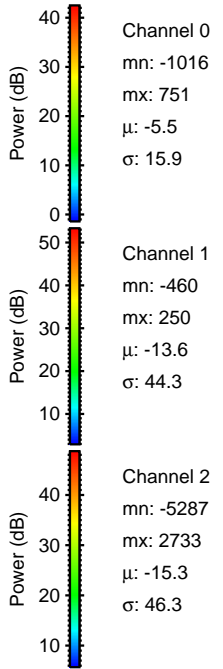
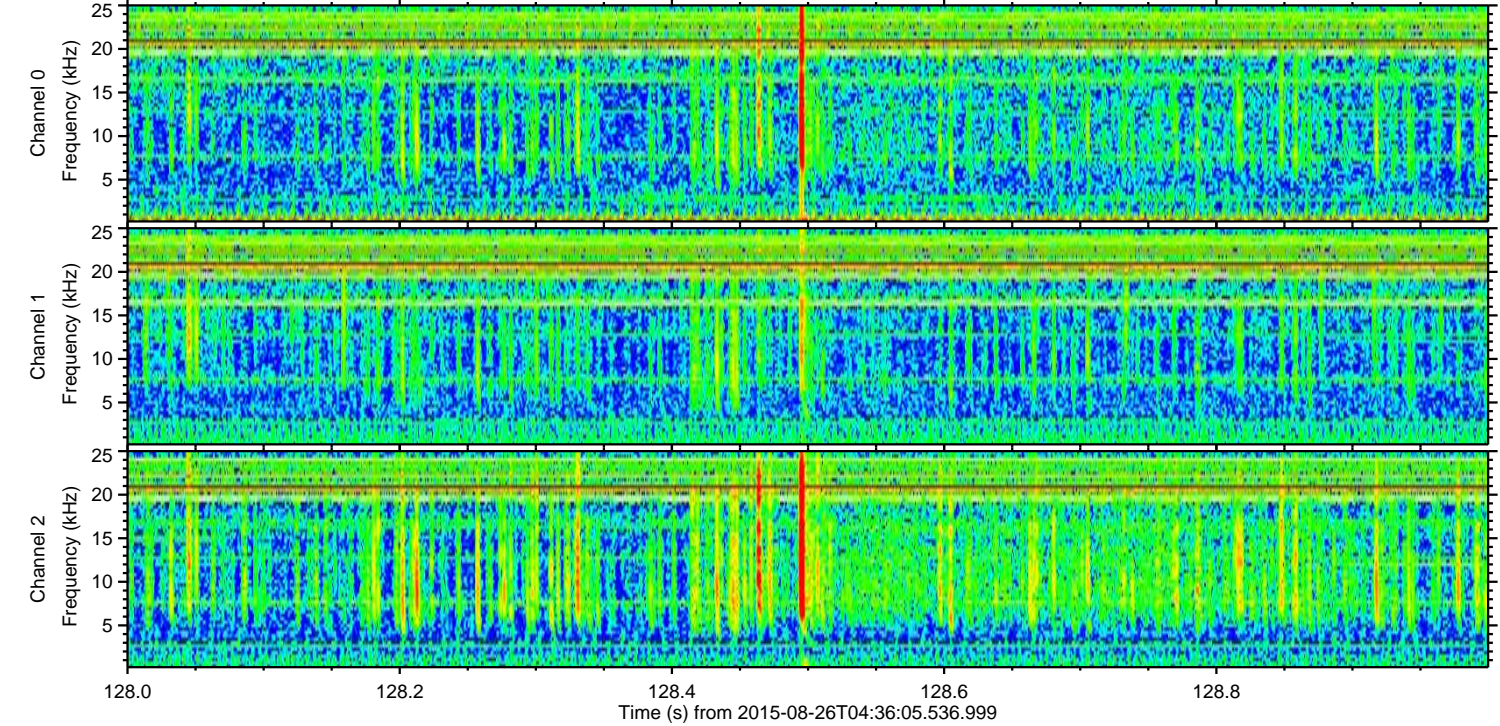
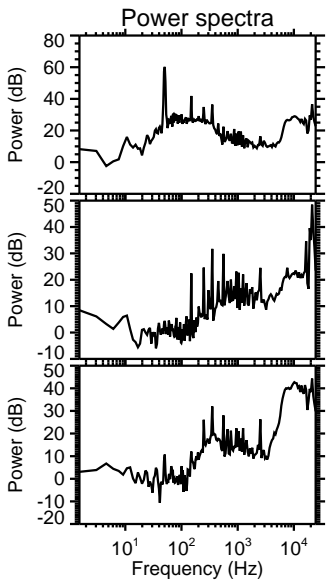
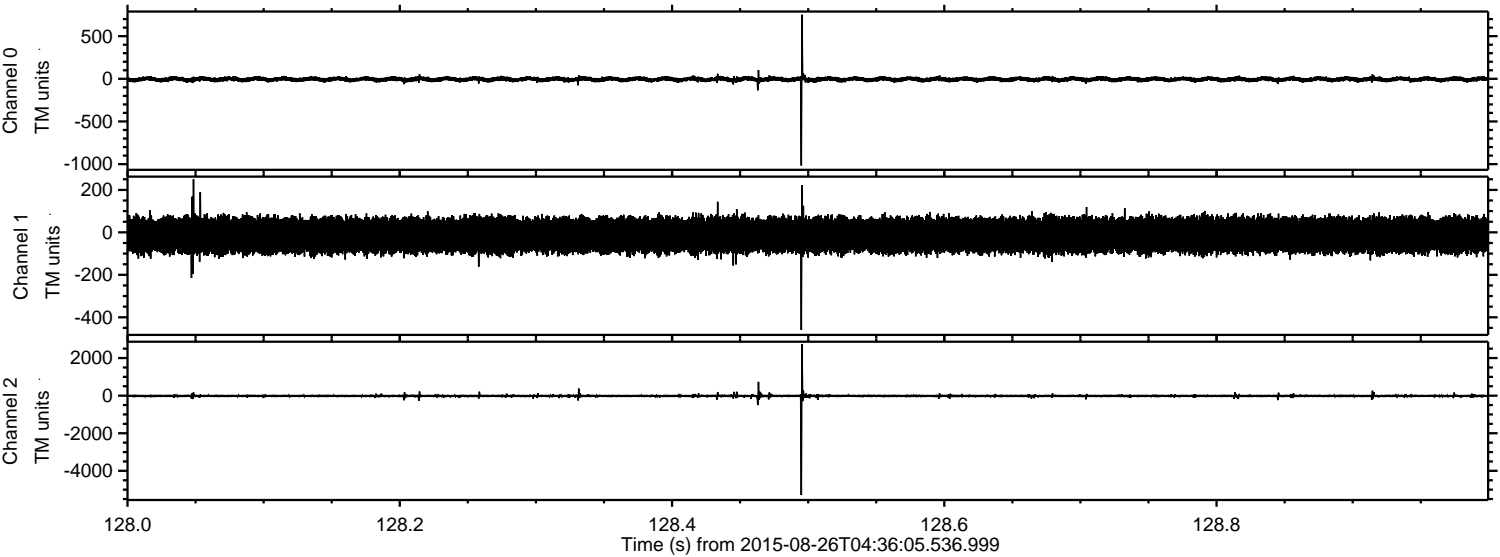
Channel 1  
mn: -741  
mx: 756  
 $\mu$ : -13.6  
 $\sigma$ : 47.3

Channel 2  
mn: -5294  
mx: 4500  
 $\mu$ : -15.2  
 $\sigma$ : 87.6



ELMAVAN 3D WAVEFORMS (Measured data sampled at 50 kHz) 51000 packets of 144 samples from 2015-08-26T04:36:05.536.999. Part 129/147

Processed Wed Oct 7 01:49:12 2015 by ELM ver.2012-10-06 from 001\_\_elm20150826\_043604\_\_dat00.bin





ELMAVAN 3D WAVEFORMS (Measured data sampled at 50 kHz) 51000 packets of 144 samples from 2015-08-26T04:36:05.536.999. Part 13/147

Processed Wed Oct 7 01:49:13 2015 by ELM ver.2012-10-06 from 001\_\_elm20150826\_043604\_\_dat00.bin

