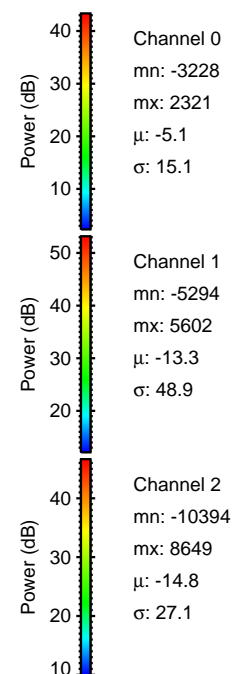
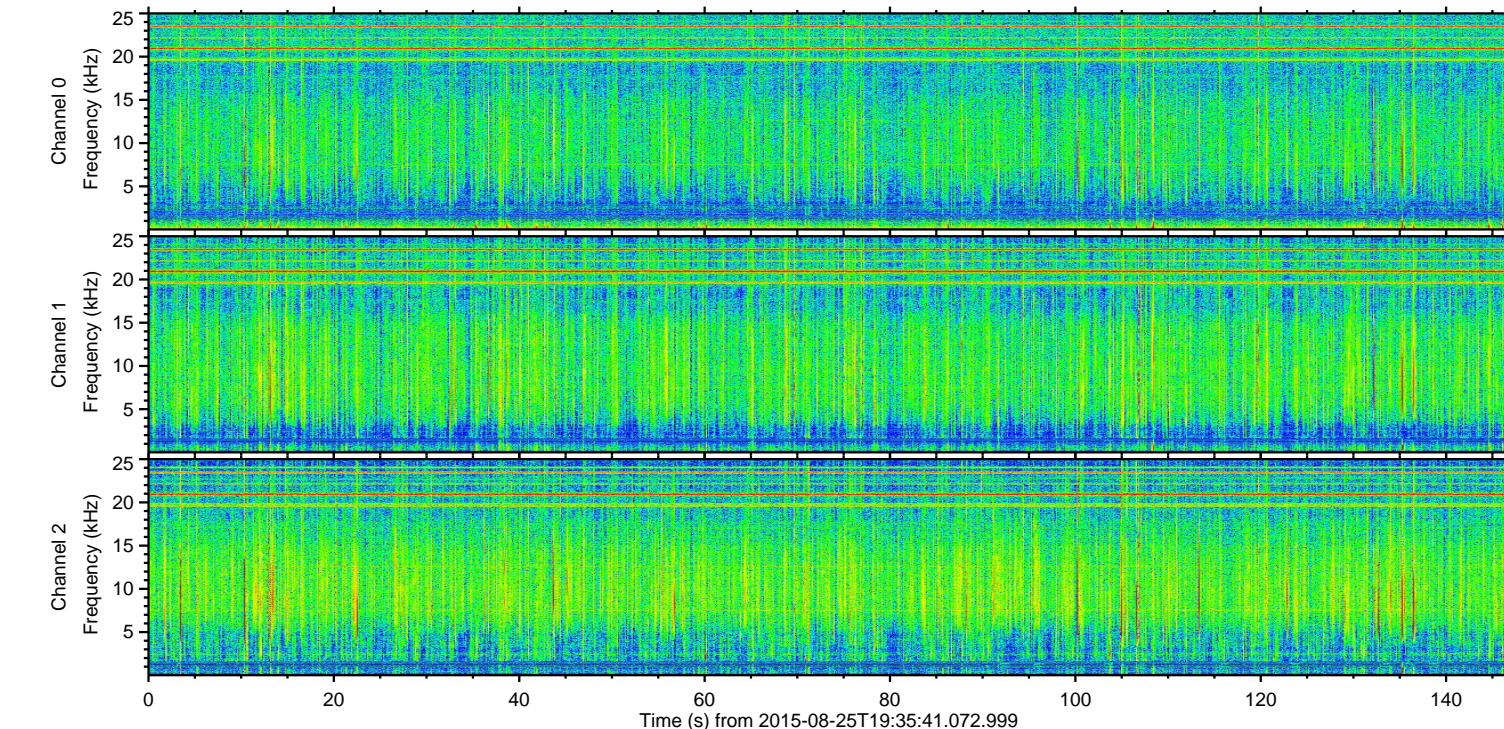
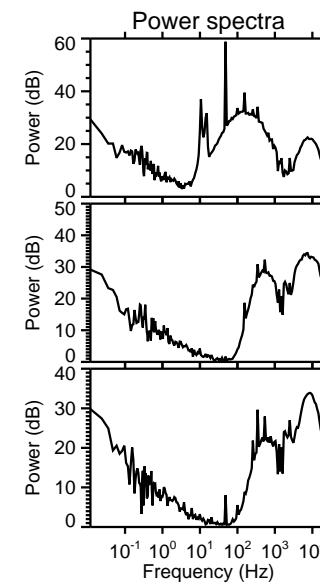
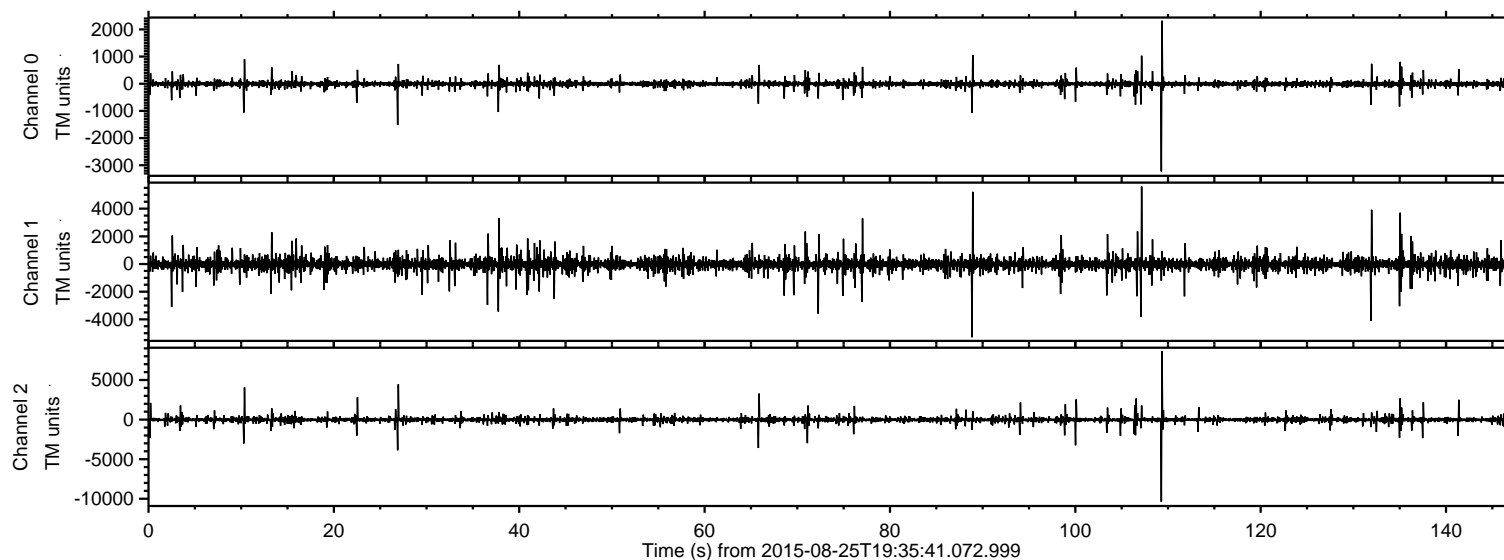


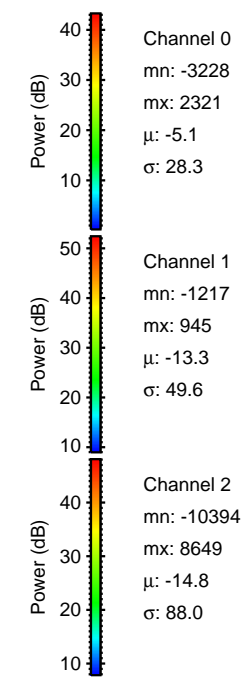
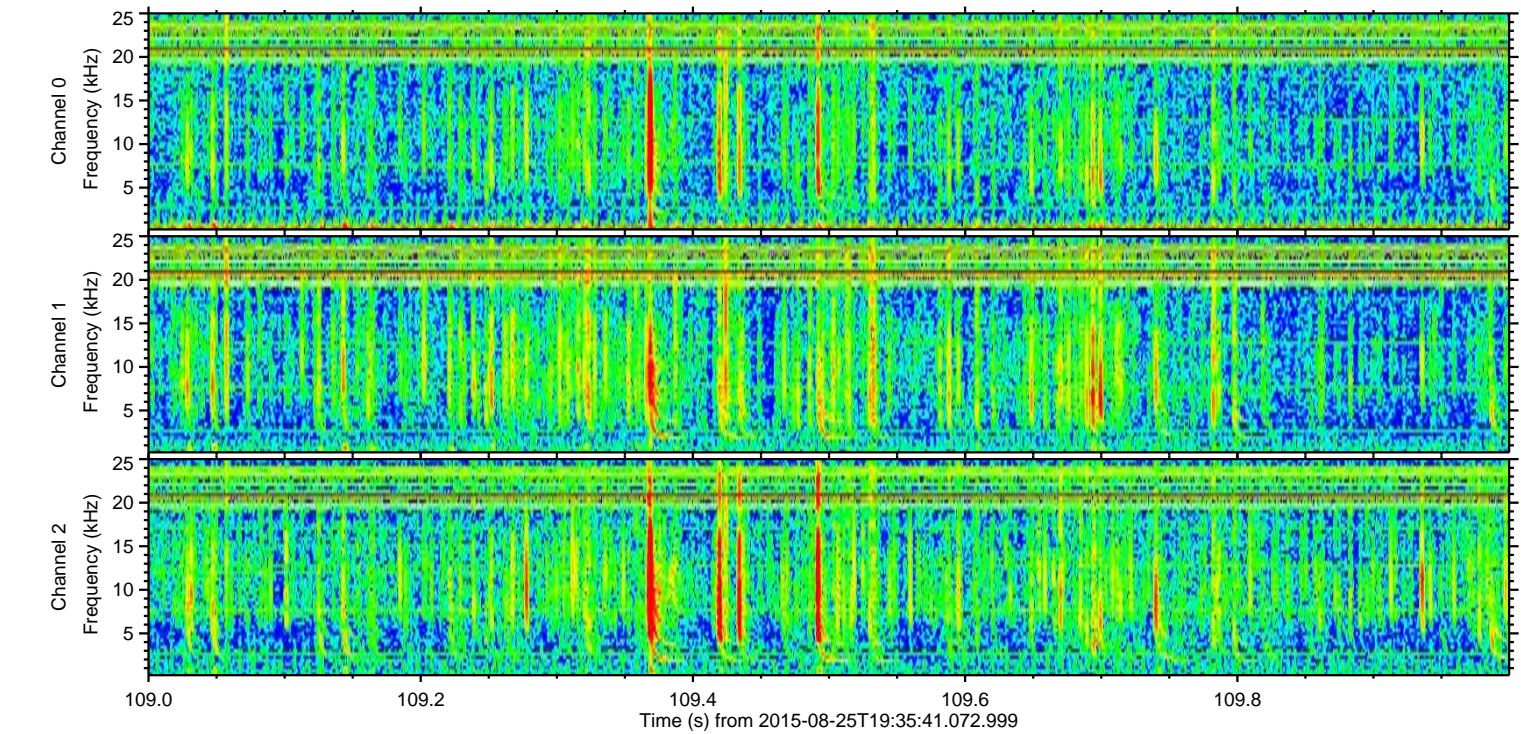
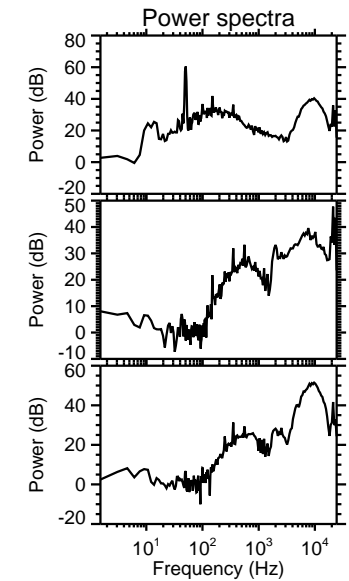
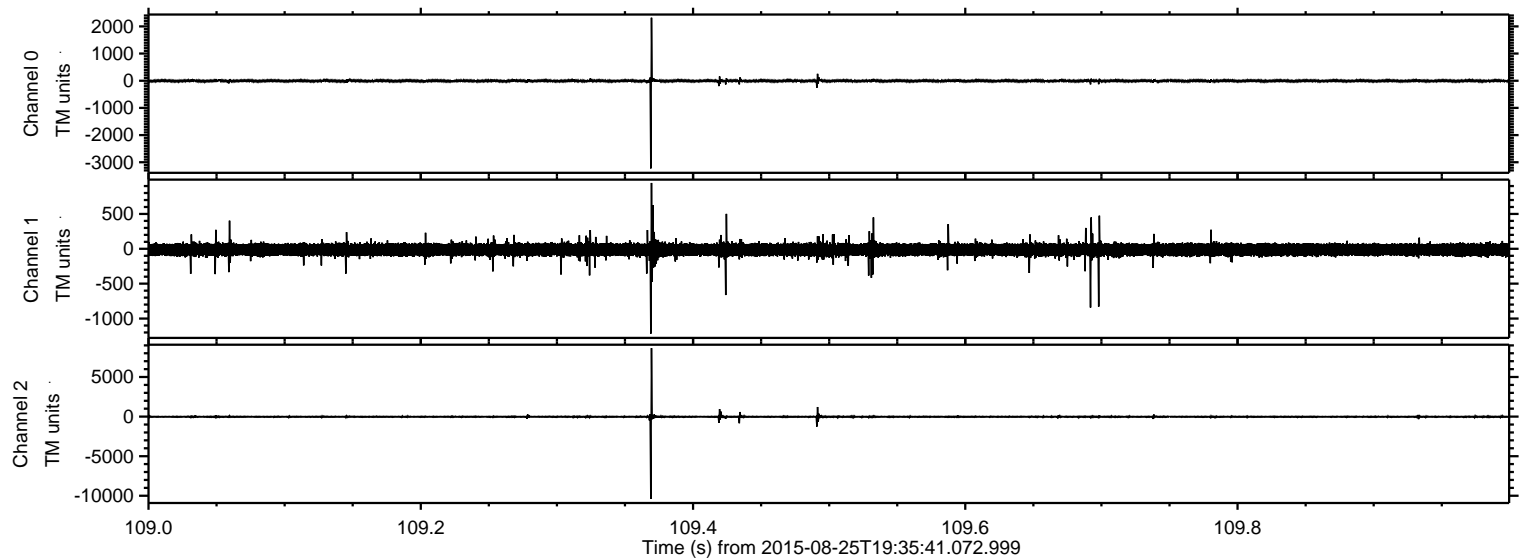
# ELMAVAN 3D WAVEFORMS (Measured data sampled at 50 kHz) 51000 packets of 144 samples from 2015-08-25T19:35:41.072.999.

Processed Tue Oct 6 23:18:39 2015 by ELM ver.2012-10-06 from 001\_\_elm20150825\_193540\_\_dat00.bin



ELMAVAN 3D WAVEFORMS (Measured data sampled at 50 kHz) 51000 packets of 144 samples from 2015-08-25T19:35:41.072.999. Part 110/147

Processed Tue Oct 6 23:18:55 2015 by ELM ver.2012-10-06 from 001\_\_elm20150825\_193540\_\_dat00.bin



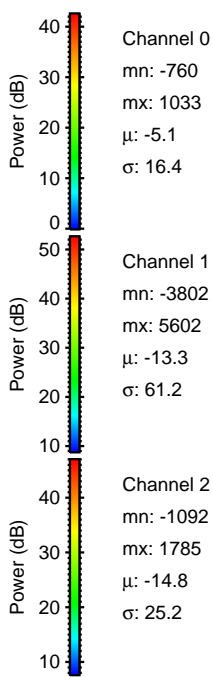
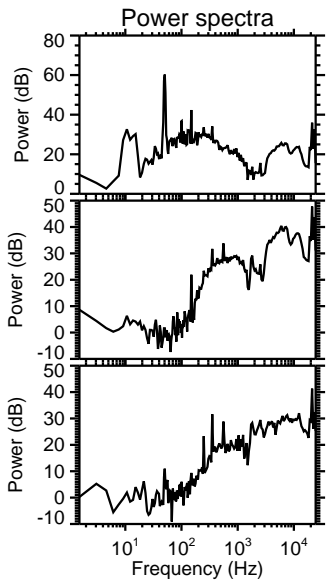
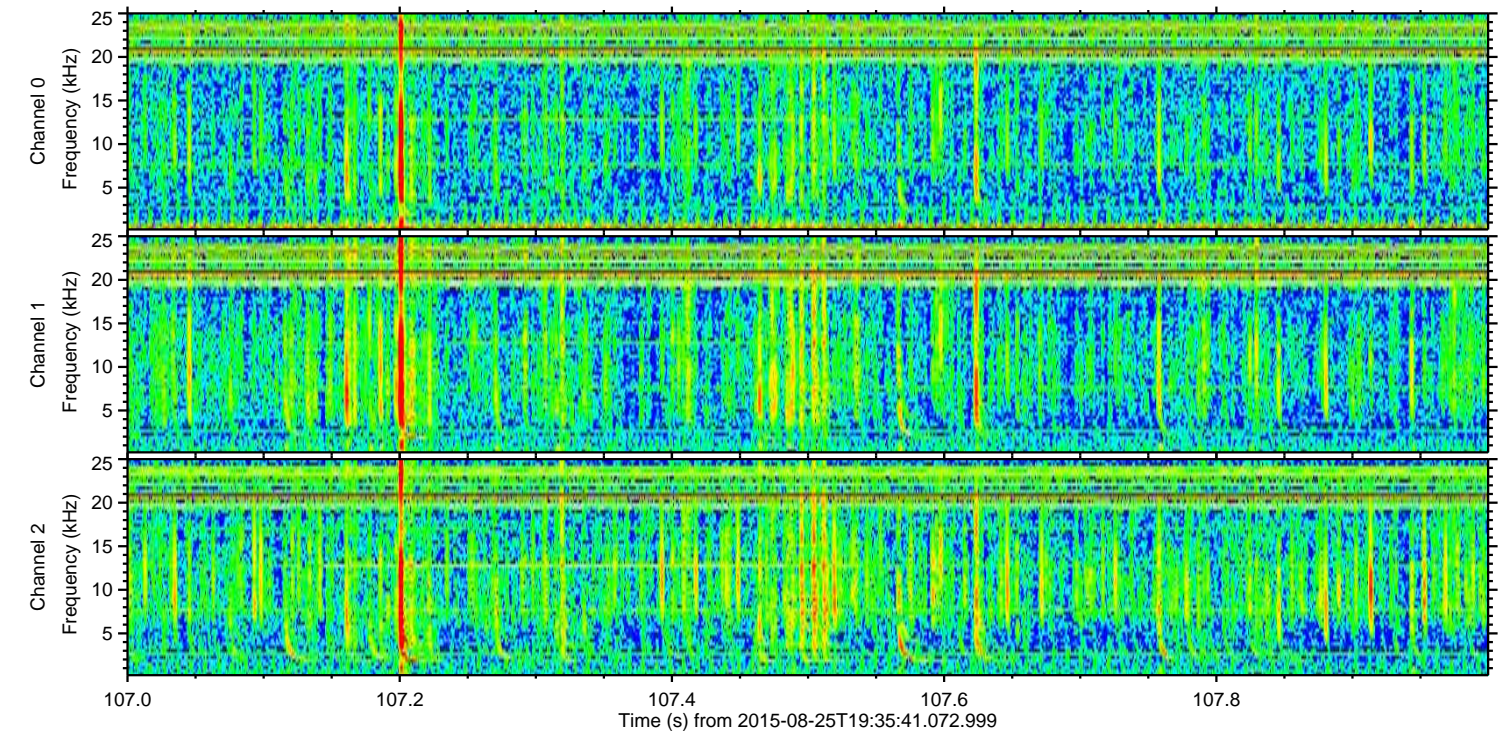
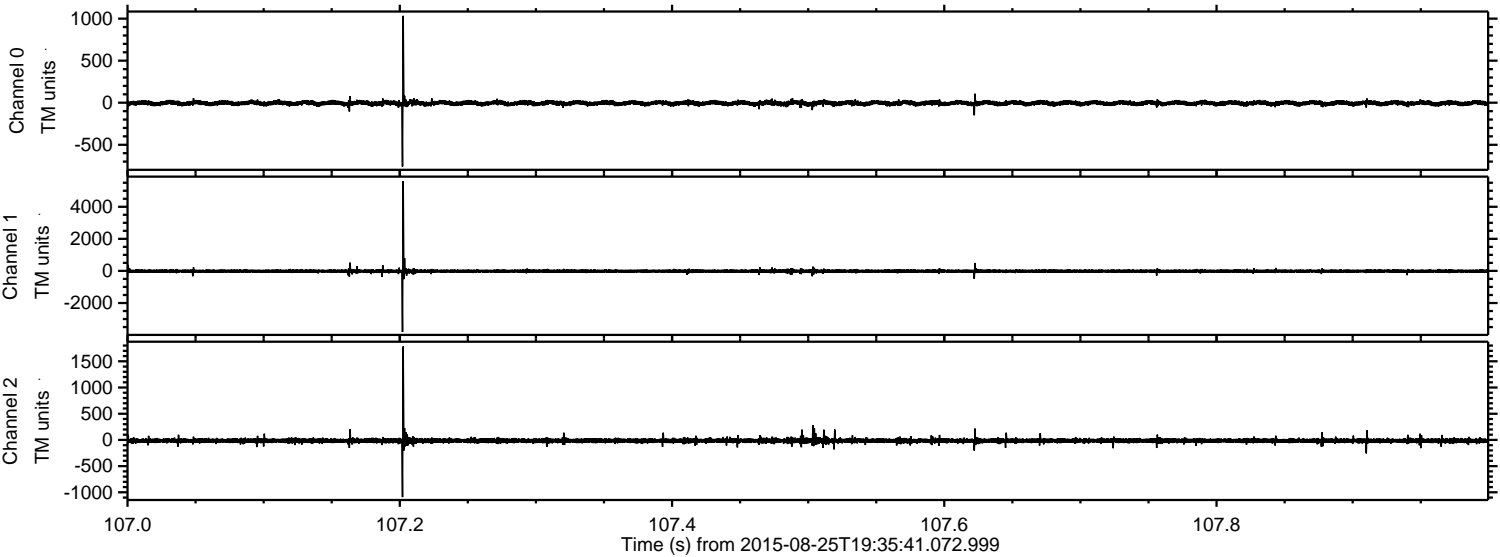
Channel 0  
mn: -3228  
mx: 2321  
 $\mu$ : -5.1  
 $\sigma$ : 28.3

Channel 1  
mn: -1217  
mx: 945  
 $\mu$ : -13.3  
 $\sigma$ : 49.6

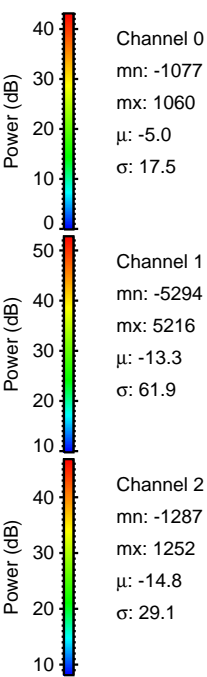
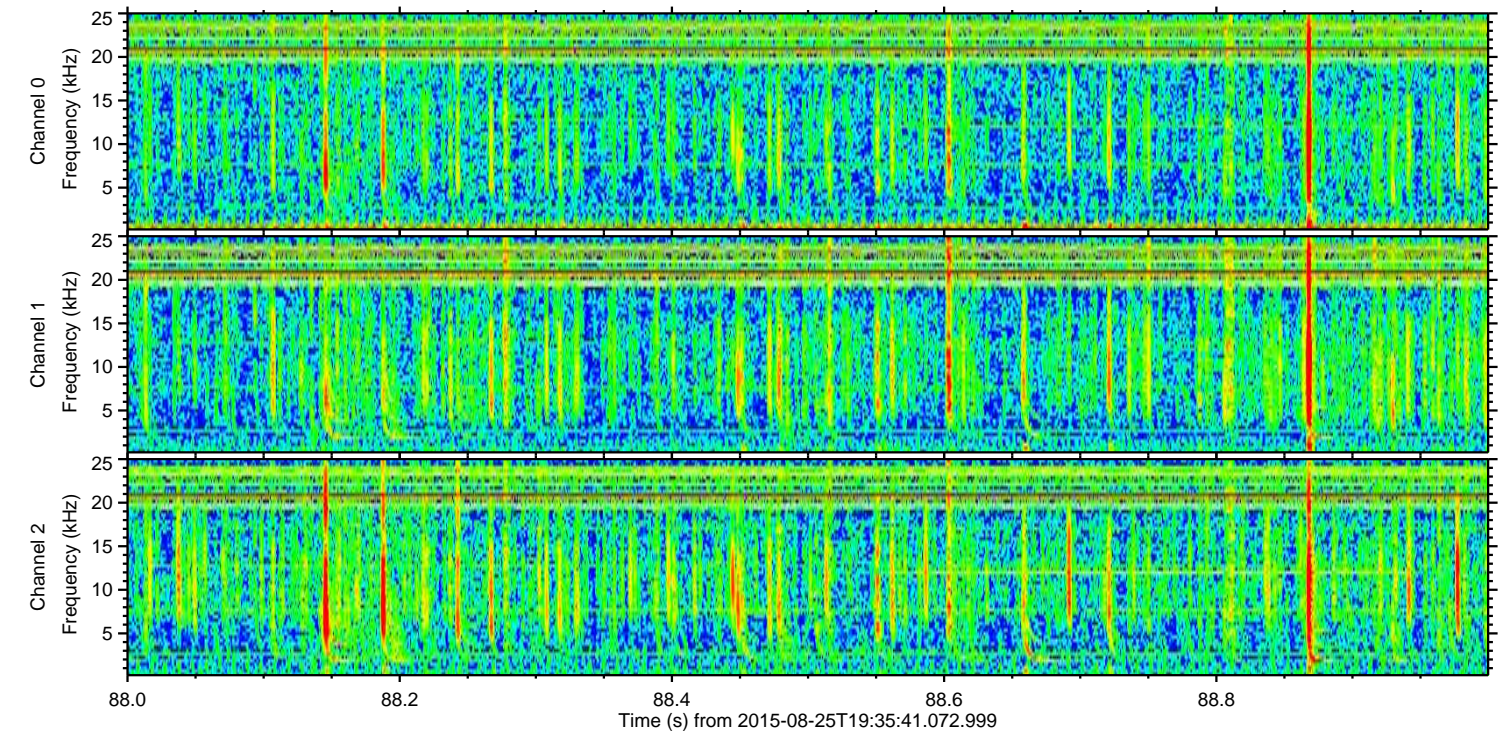
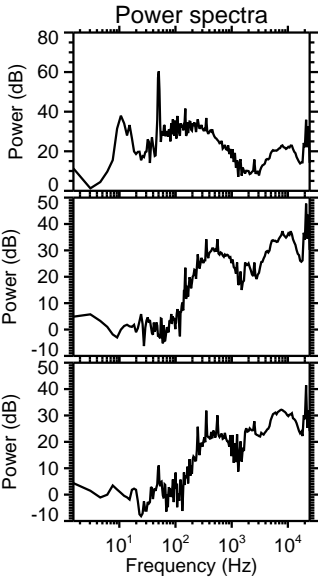
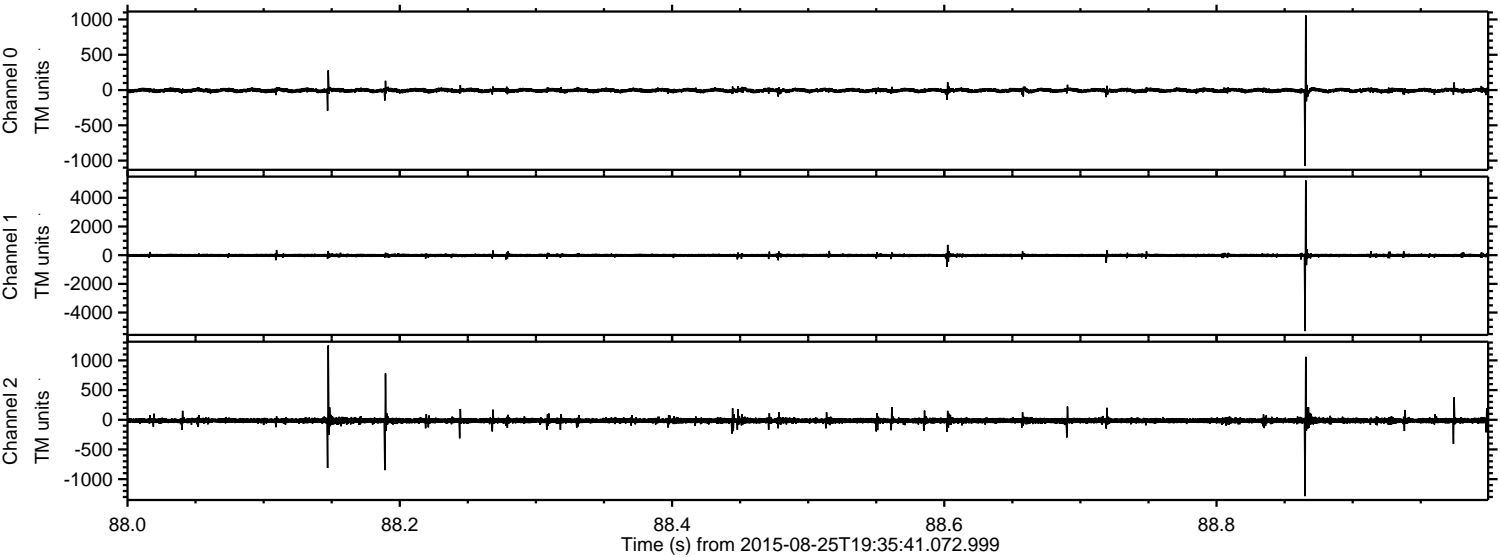
Channel 2  
mn: -10394  
mx: 8649  
 $\mu$ : -14.8  
 $\sigma$ : 88.0

ELMAVAN 3D WAVEFORMS (Measured data sampled at 50 kHz) 51000 packets of 144 samples from 2015-08-25T19:35:41.072.999. Part 108/147

Processed Tue Oct 6 23:18:56 2015 by ELM ver.2012-10-06 from 001\_\_elm20150825\_193540\_\_dat00.bin



Processed Tue Oct 6 23:18:58 2015 by ELM ver.2012-10-06 from 001\_\_elm20150825\_193540\_\_dat00.bin



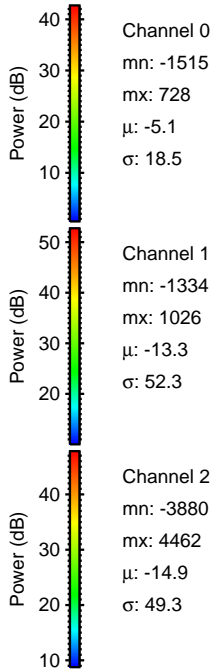
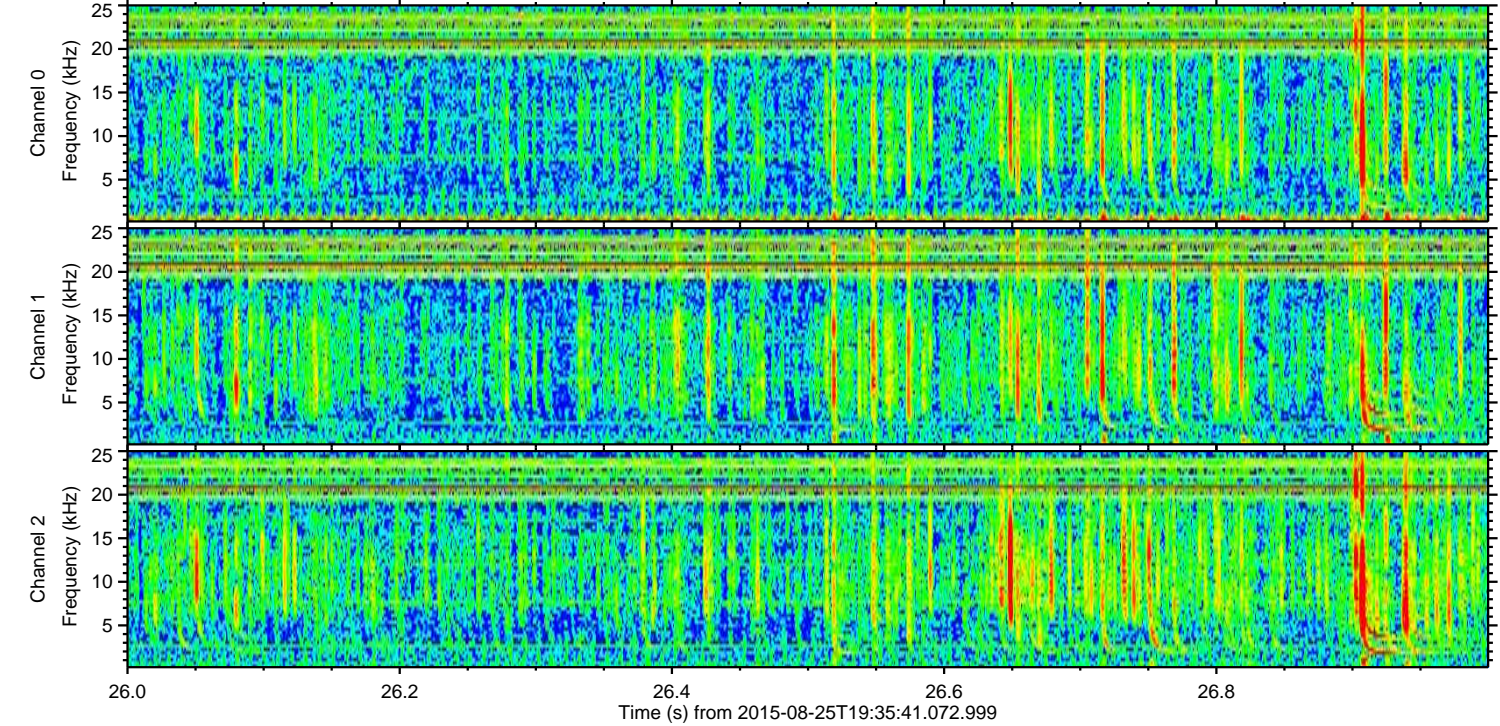
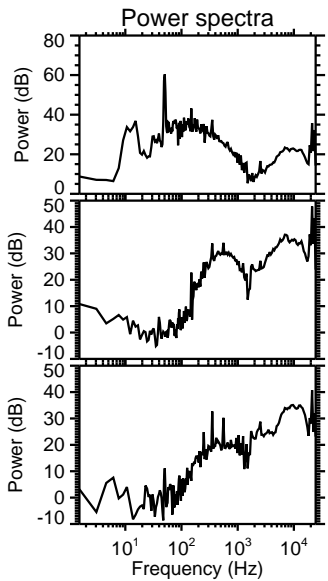
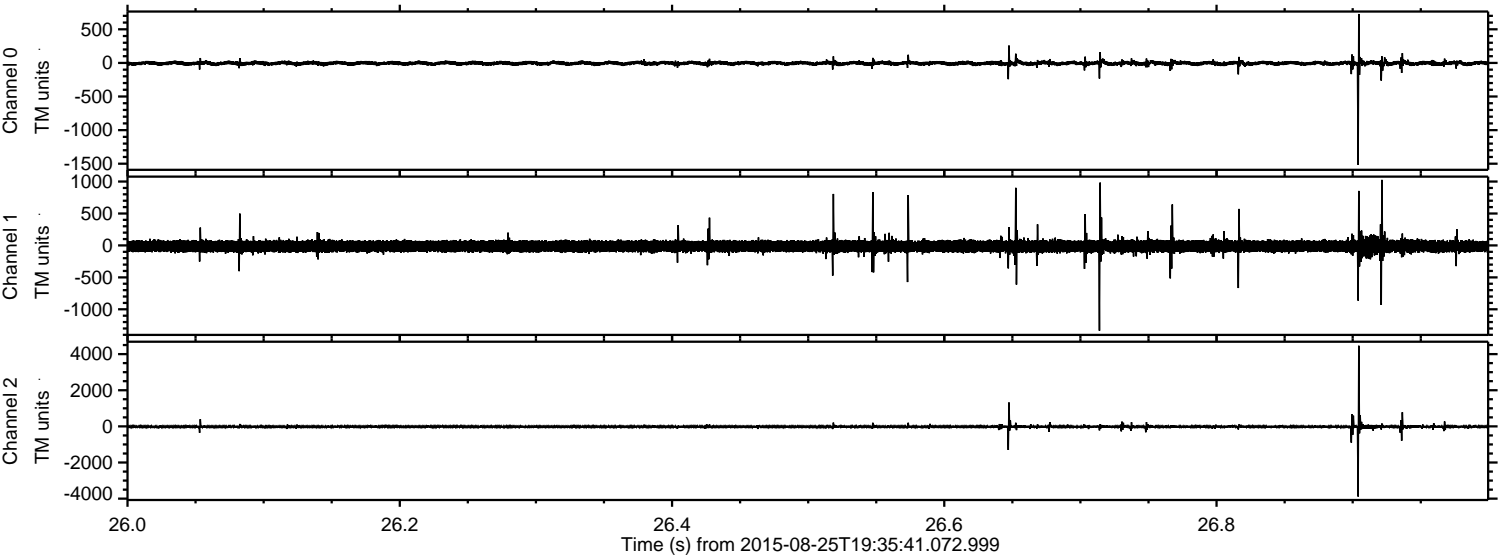
Channel 0  
mn: -1077  
mx: 1060  
 $\mu$ : -5.0  
 $\sigma$ : 17.5

Channel 1  
mn: -5294  
mx: 5216  
 $\mu$ : -13.3  
 $\sigma$ : 61.9

Channel 2  
mn: -1287  
mx: 1252  
 $\mu$ : -14.8  
 $\sigma$ : 29.1

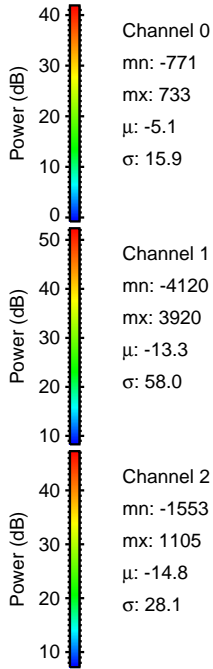
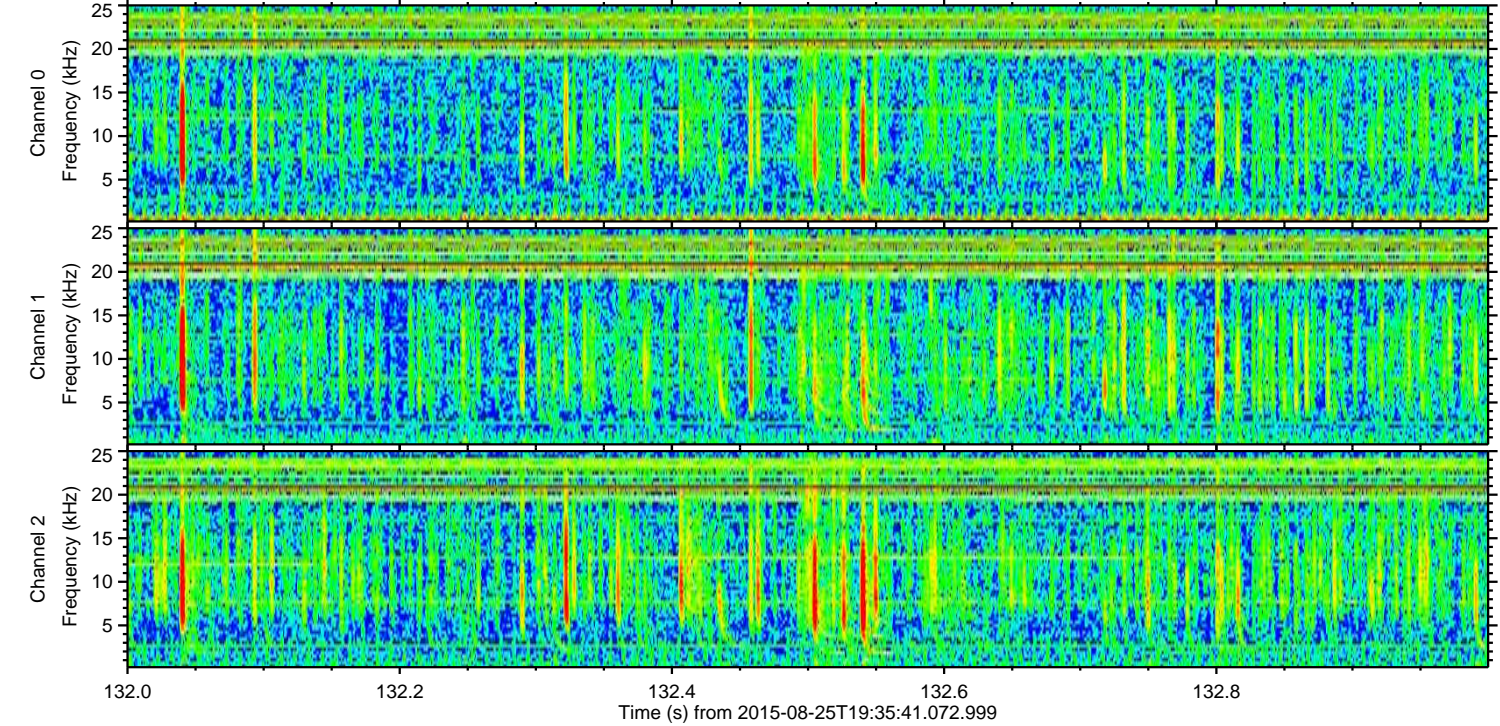
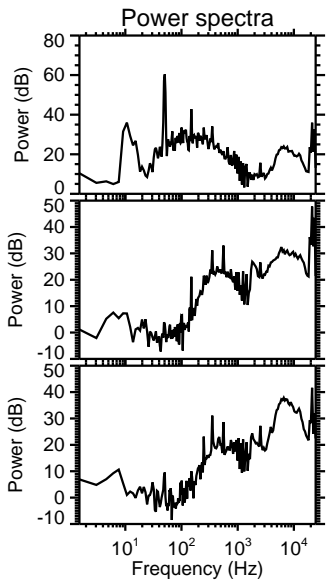
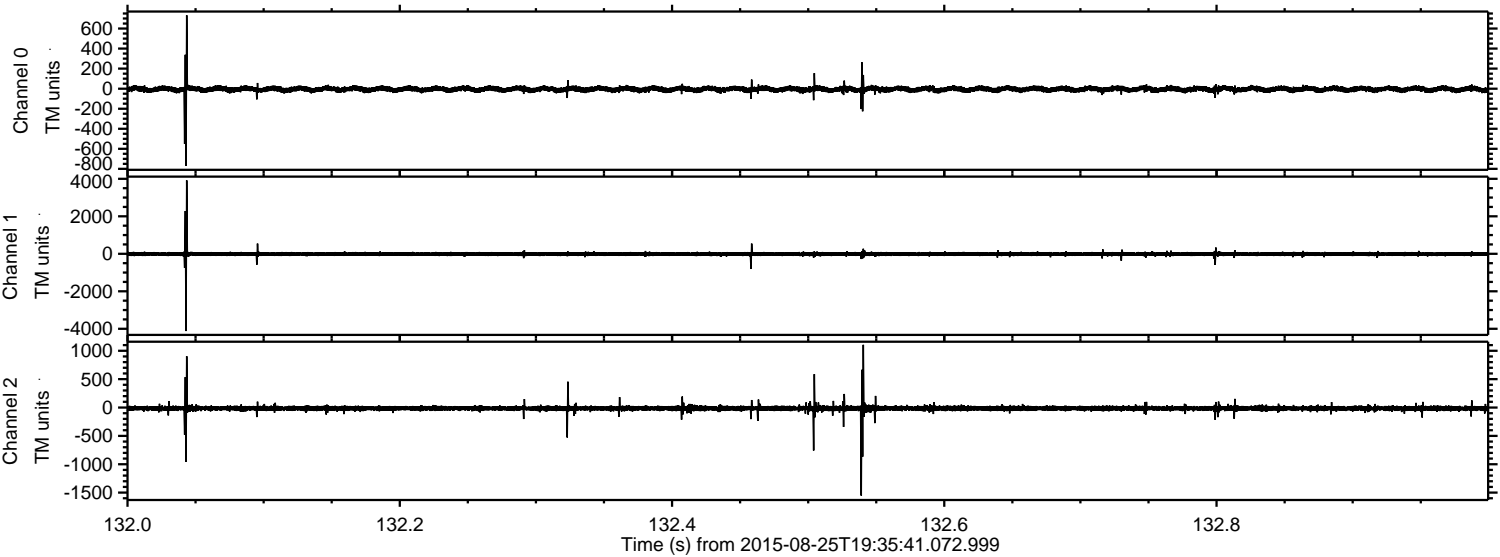
ELMAVAN 3D WAVEFORMS (Measured data sampled at 50 kHz) 51000 packets of 144 samples from 2015-08-25T19:35:41.072.999. Part 27/147

Processed Tue Oct 6 23:18:59 2015 by ELM ver.2012-10-06 from 001\_\_elm20150825\_193540\_\_dat00.bin



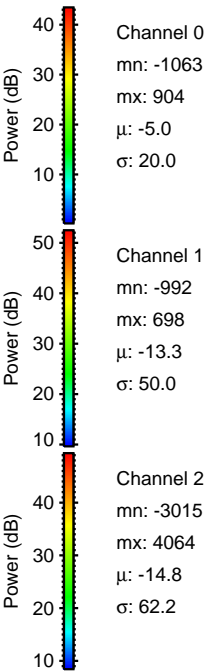
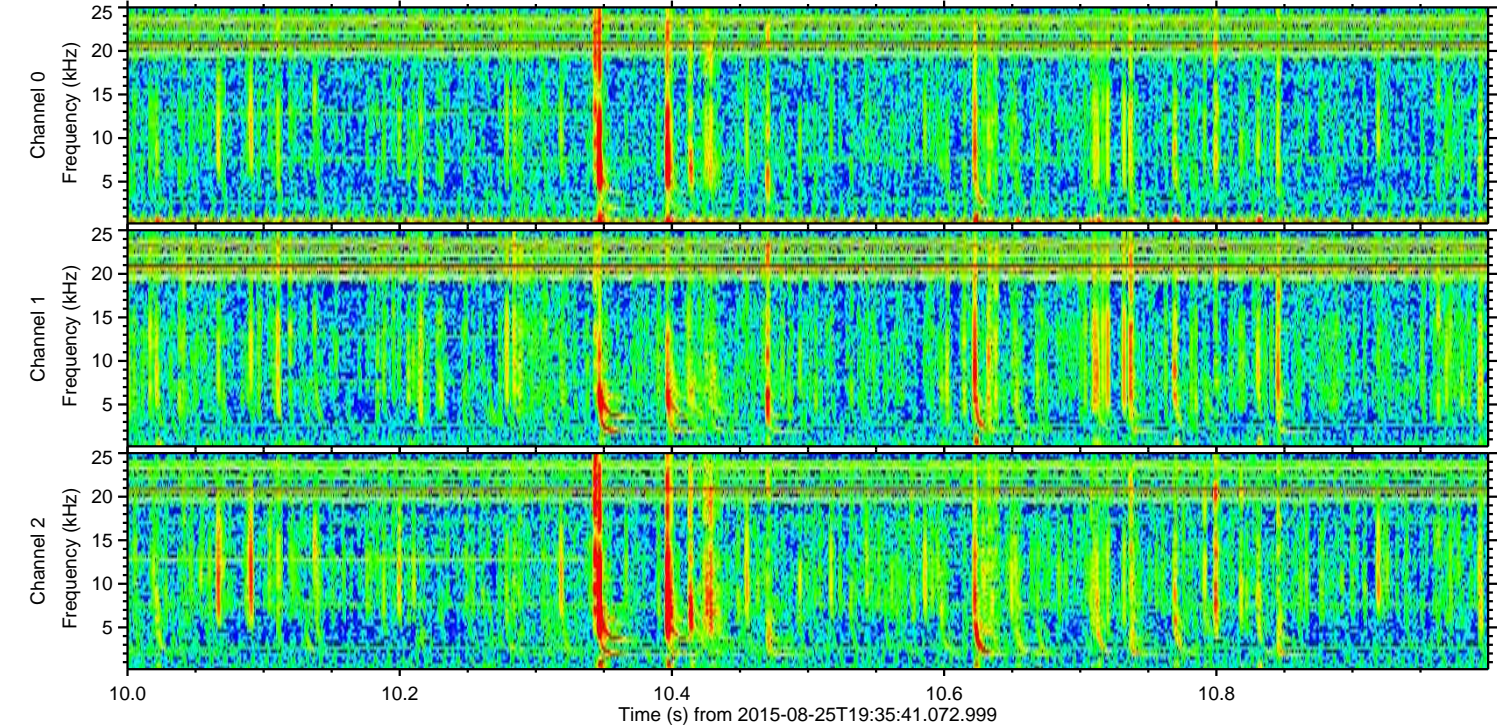
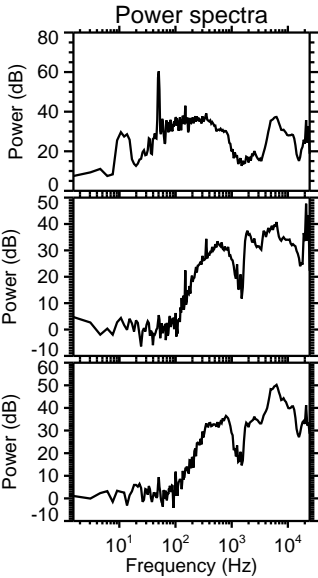
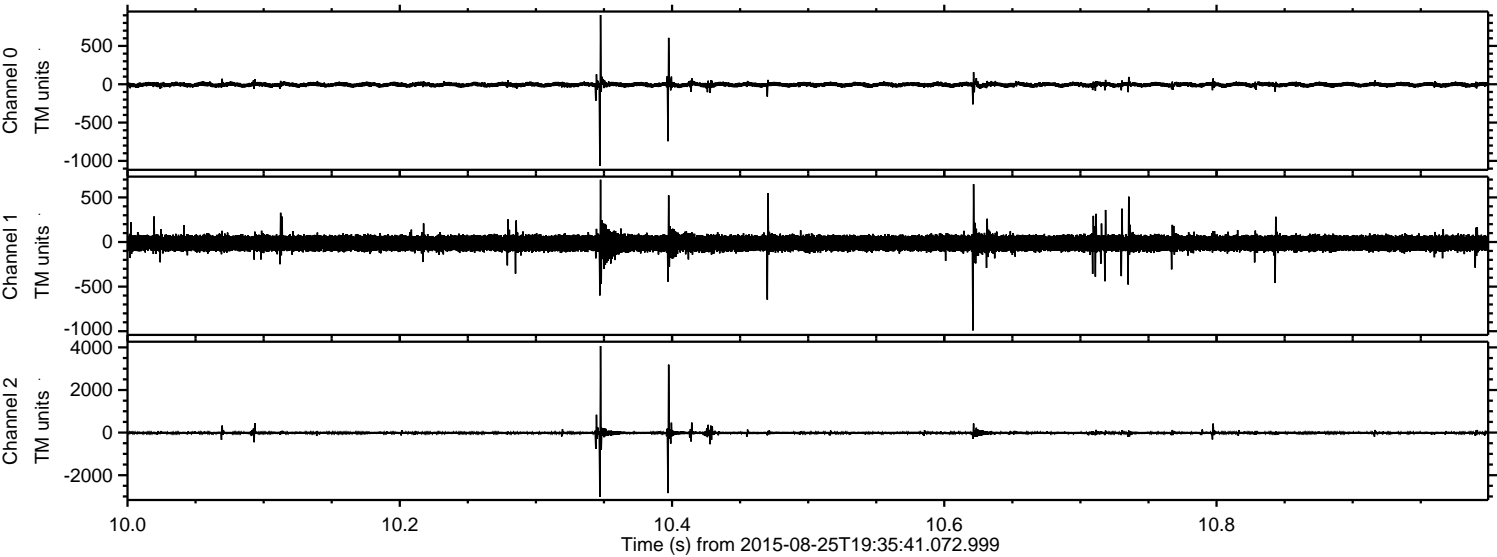
ELMAVAN 3D WAVEFORMS (Measured data sampled at 50 kHz) 51000 packets of 144 samples from 2015-08-25T19:35:41.072.999. Part 133/147

Processed Tue Oct 6 23:19:00 2015 by ELM ver.2012-10-06 from 001\_\_elm20150825\_193540\_\_dat00.bin



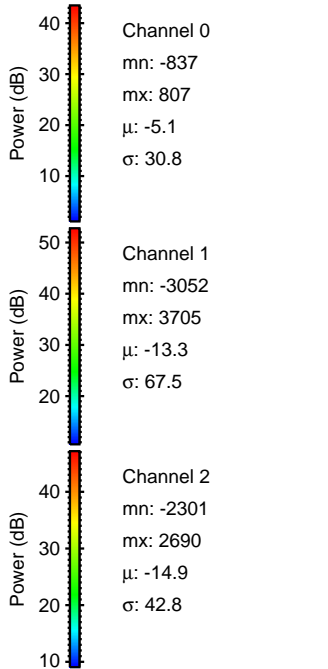
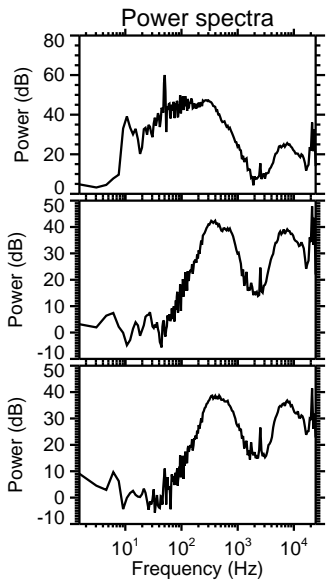
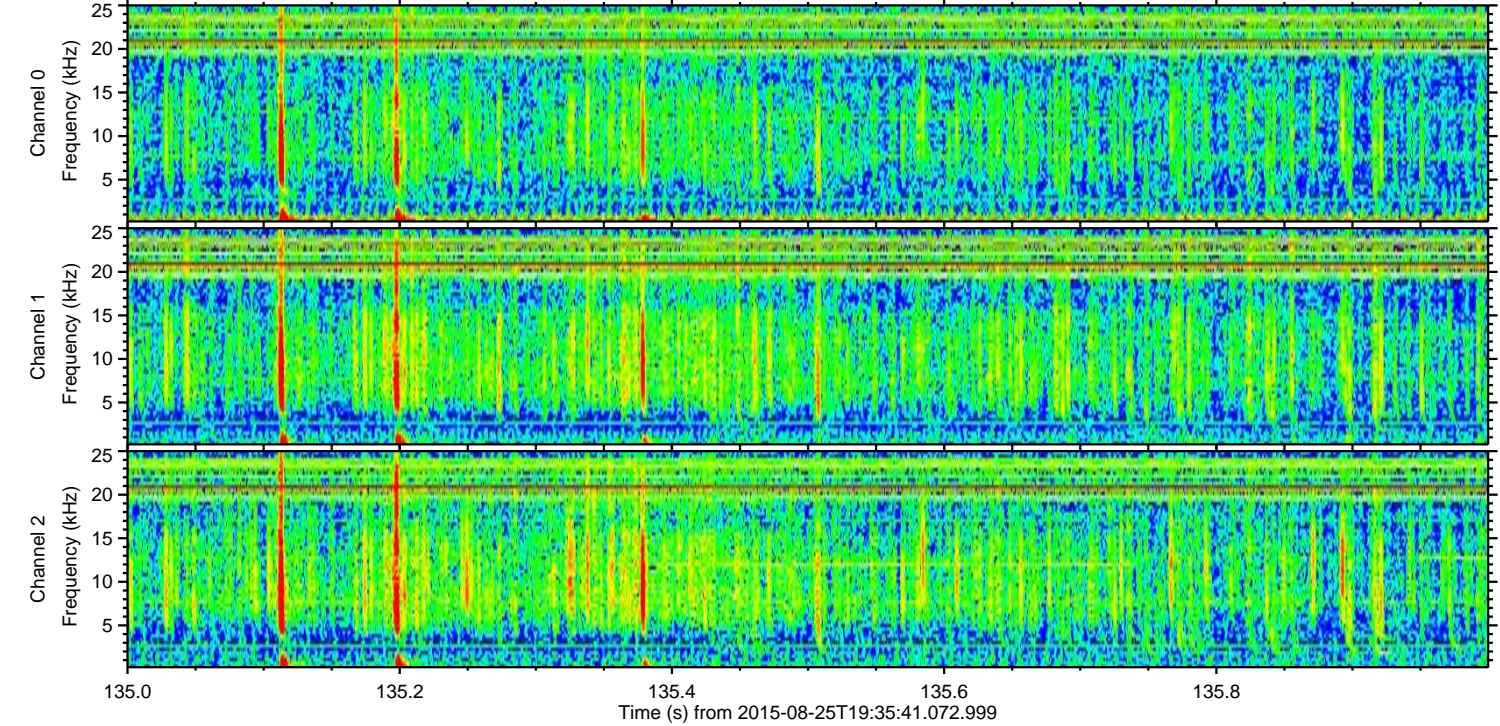
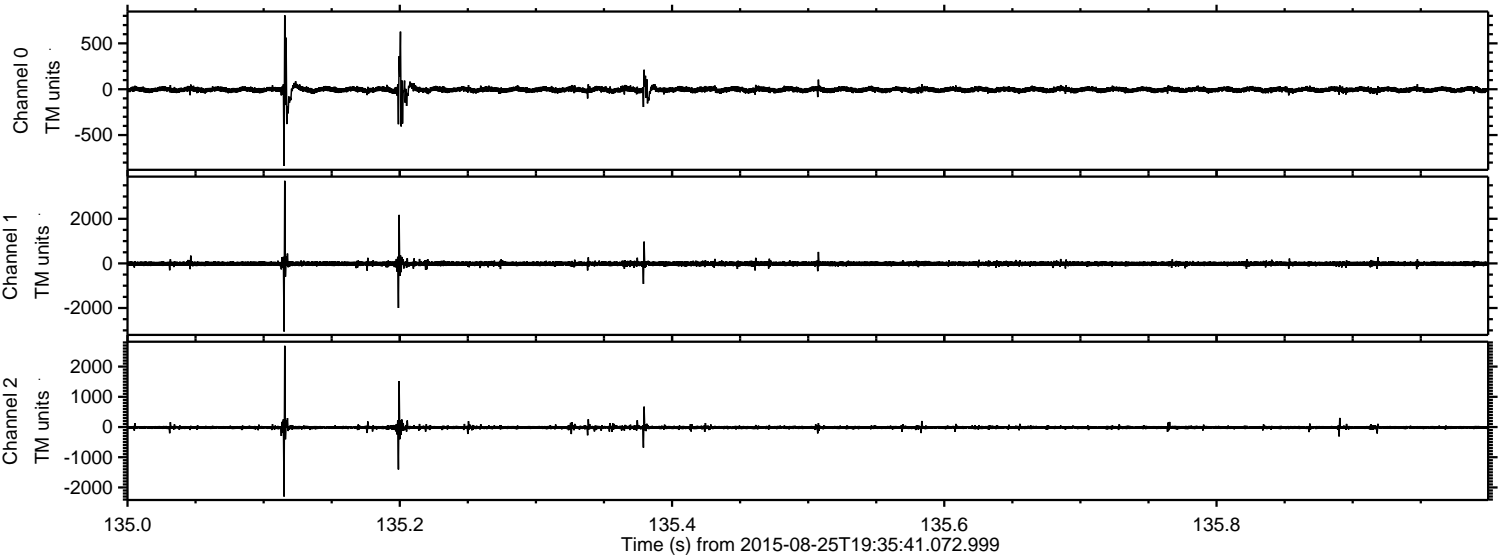
ELMAVAN 3D WAVEFORMS (Measured data sampled at 50 kHz) 51000 packets of 144 samples from 2015-08-25T19:35:41.072.999. Part 11/147

Processed Tue Oct 6 23:19:01 2015 by ELM ver.2012-10-06 from 001\_\_elm20150825\_193540\_\_dat00.bin

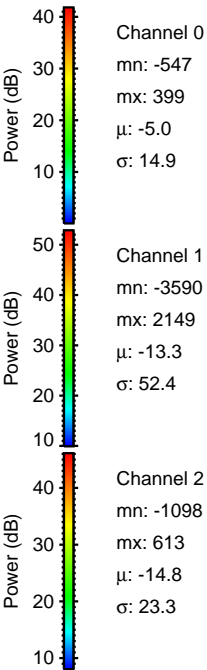
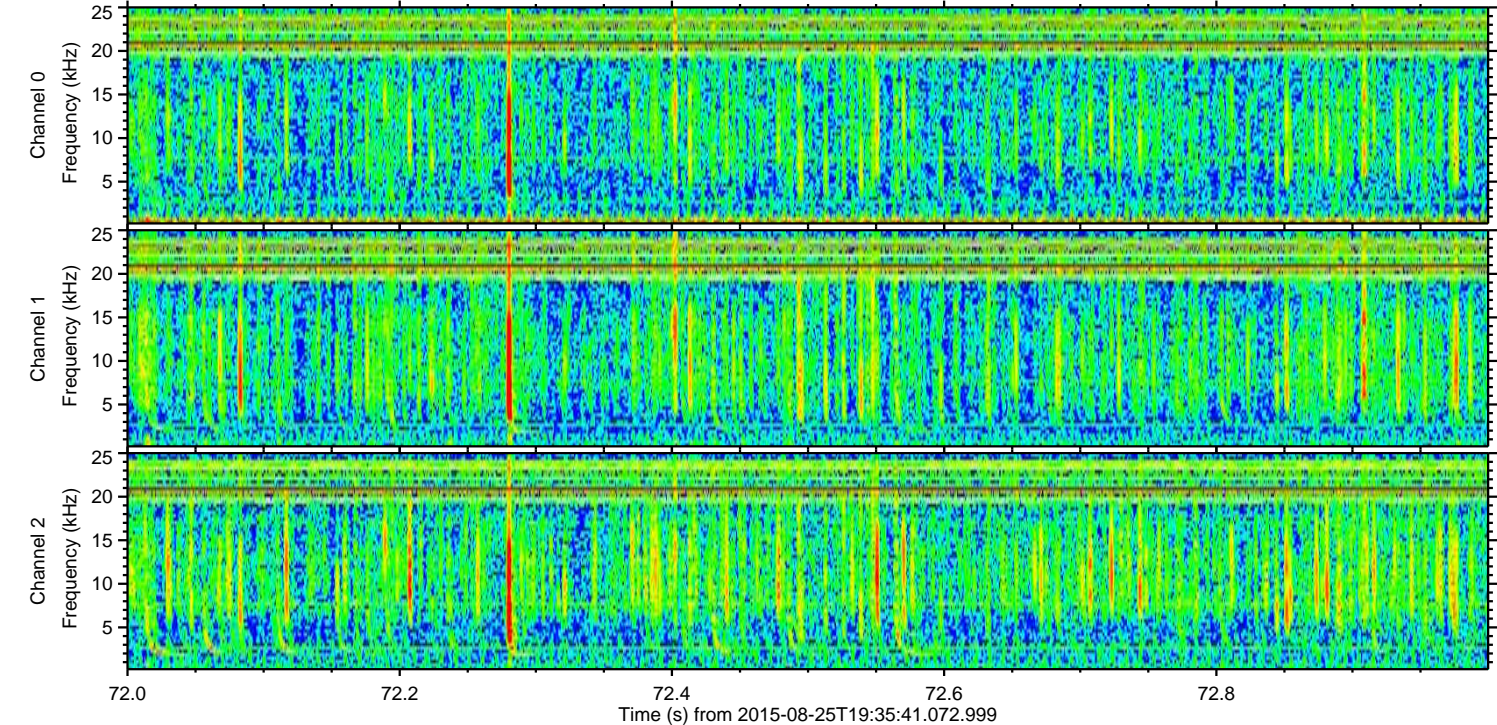
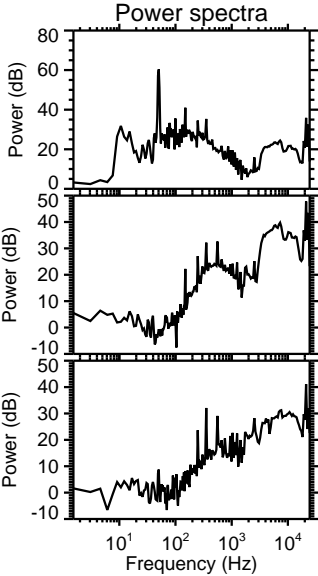
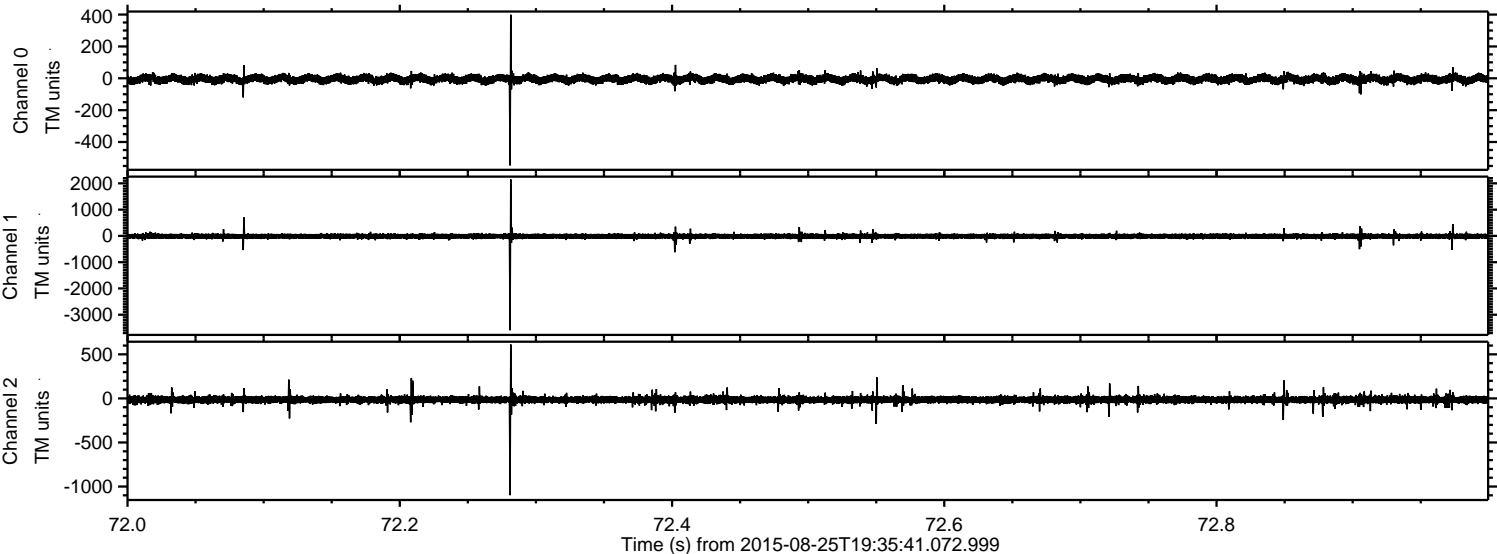


ELMAVAN 3D WAVEFORMS (Measured data sampled at 50 kHz) 51000 packets of 144 samples from 2015-08-25T19:35:41.072.999. Part 136/147

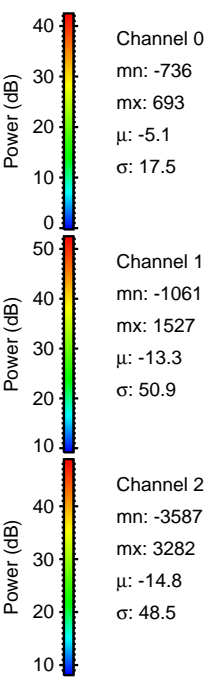
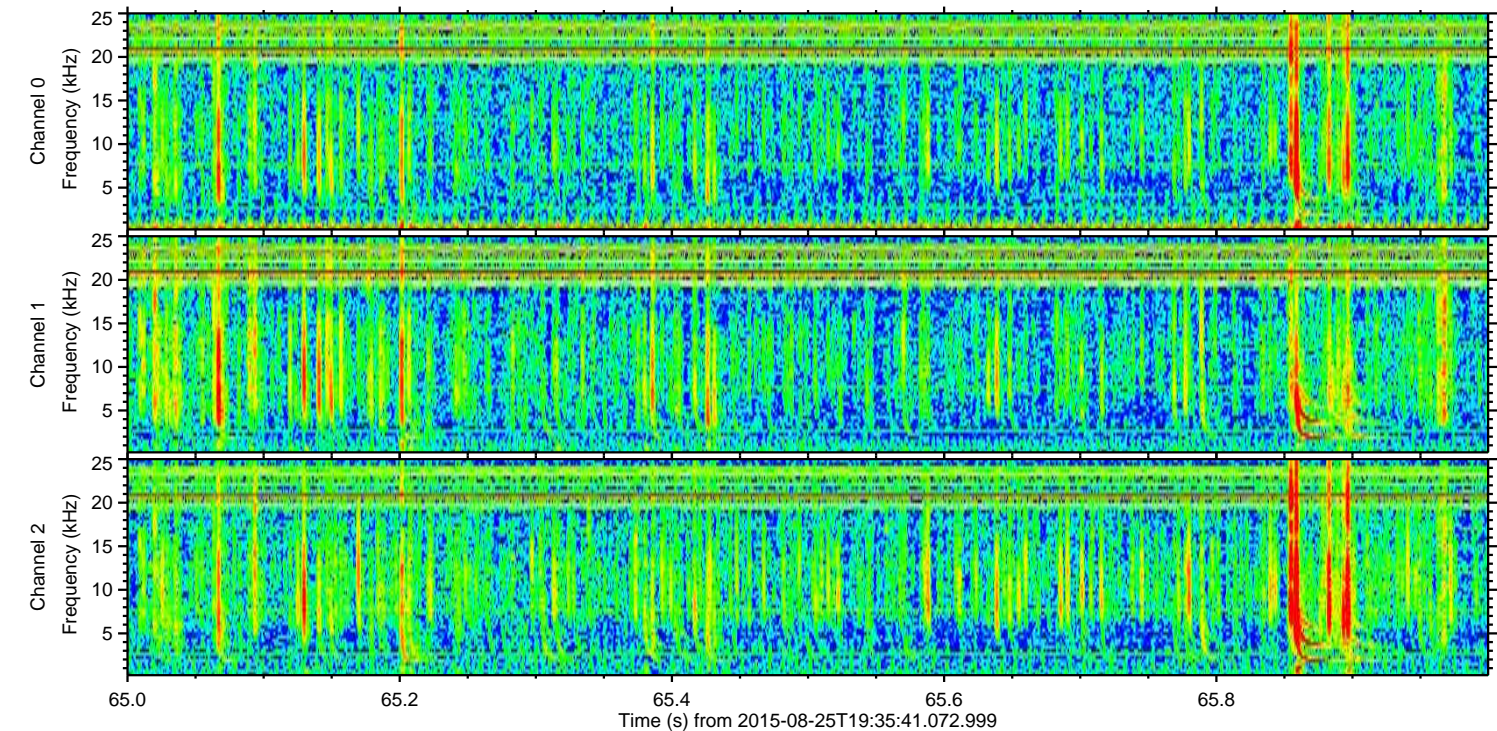
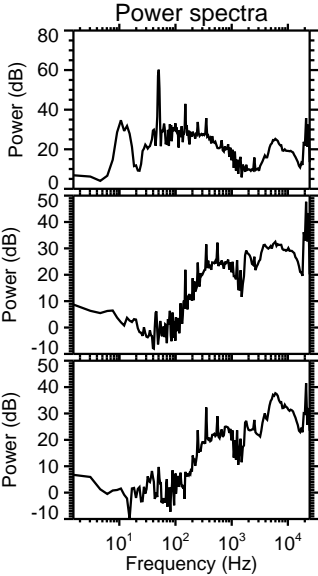
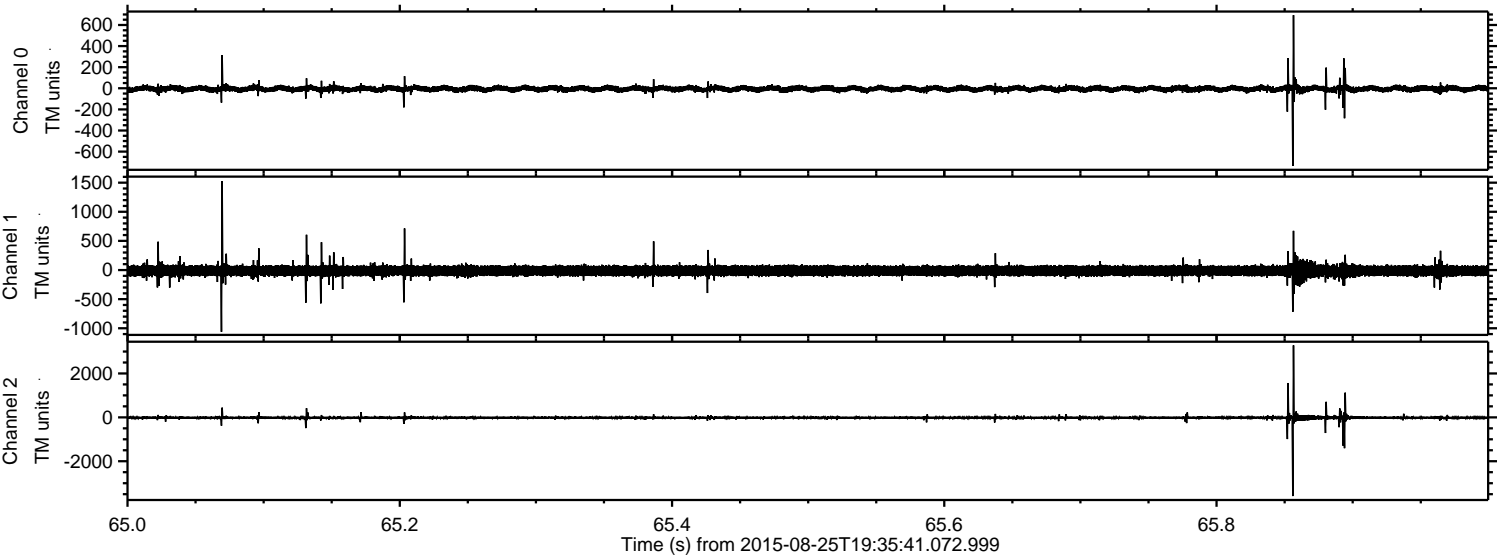
Processed Tue Oct 6 23:19:02 2015 by ELM ver.2012-10-06 from 001\_\_elm20150825\_193540\_\_dat00.bin



Processed Tue Oct 6 23:19:03 2015 by ELM ver.2012-10-06 from 001\_\_elm20150825\_193540\_\_dat00.bin



Processed Tue Oct 6 23:19:04 2015 by ELM ver.2012-10-06 from 001\_\_elm20150825\_193540\_\_dat00.bin



Channel 0  
mn: -736  
mx: 693  
 $\mu$ : -5.1  
 $\sigma$ : 17.5

Channel 1  
mn: -1061  
mx: 1527  
 $\mu$ : -13.3  
 $\sigma$ : 50.9

Channel 2  
mn: -3587  
mx: 3282  
 $\mu$ : -14.8  
 $\sigma$ : 48.5

Processed Tue Oct 6 23:19:05 2015 by ELM ver.2012-10-06 from 001\_\_elm20150825\_193540\_\_dat00.bin

