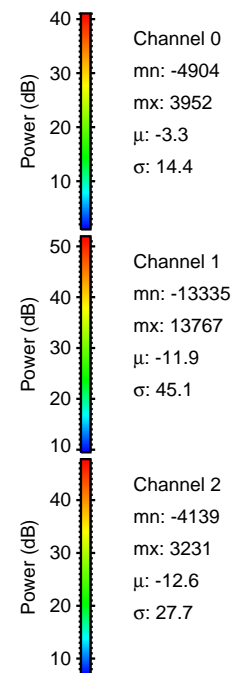
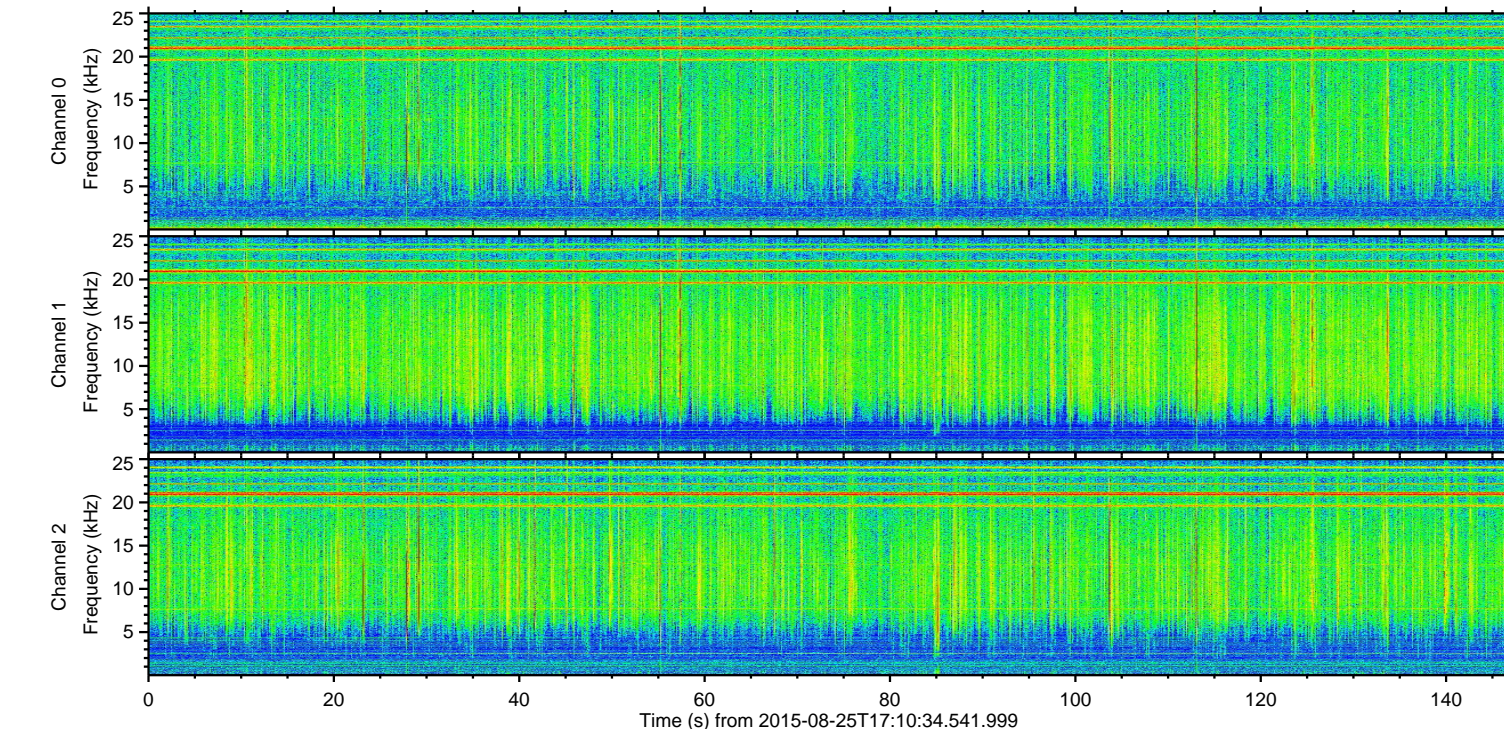
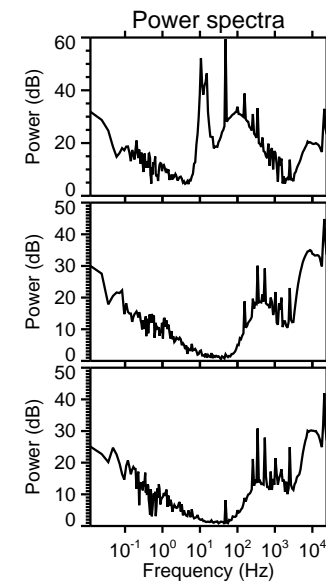
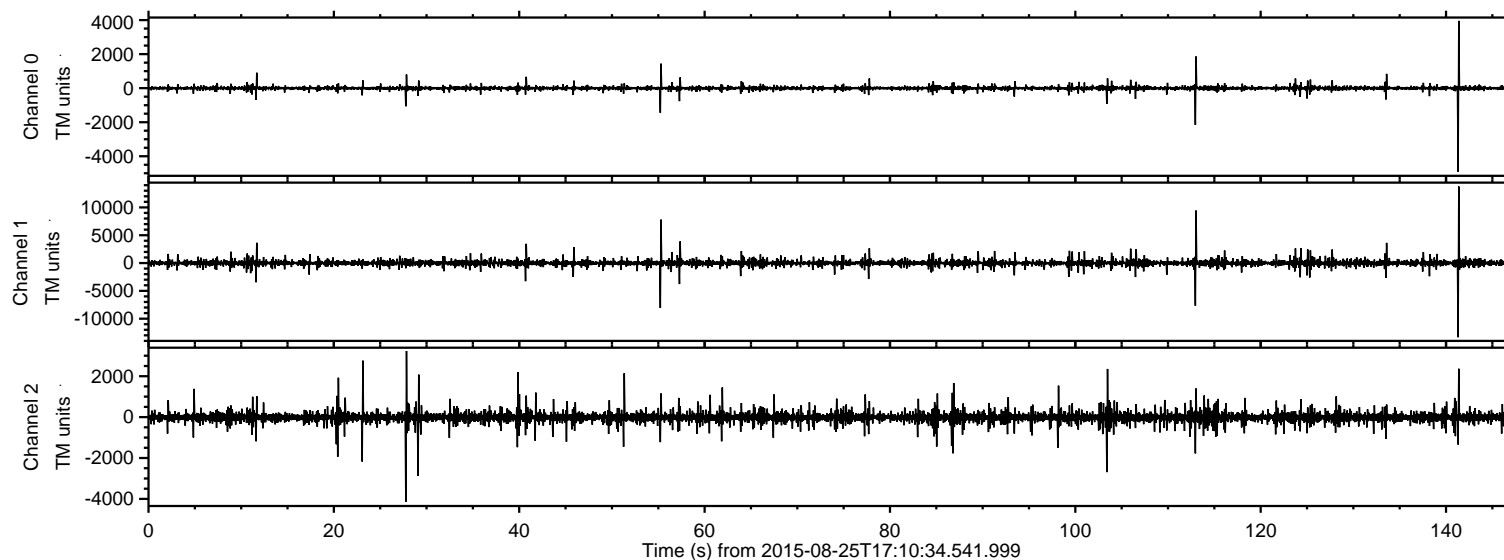


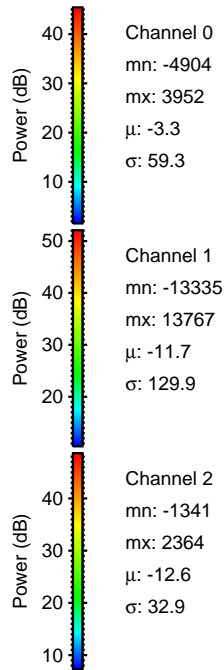
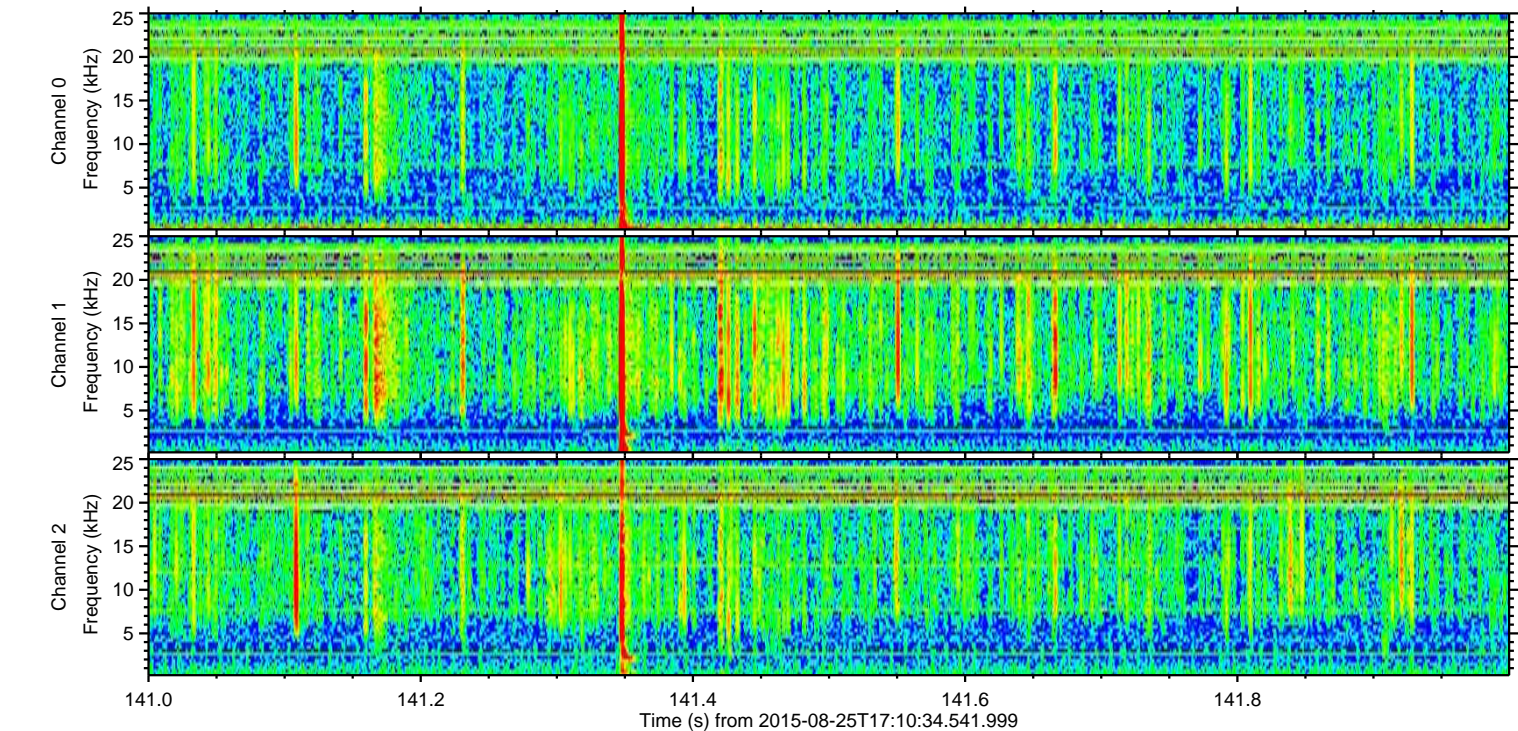
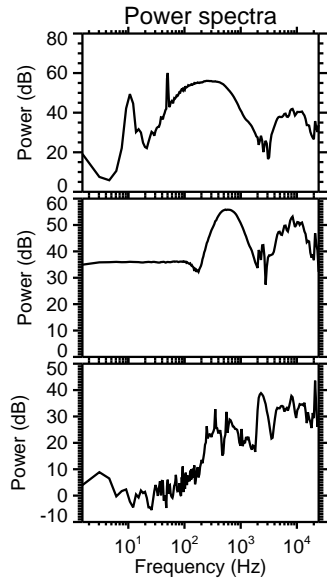
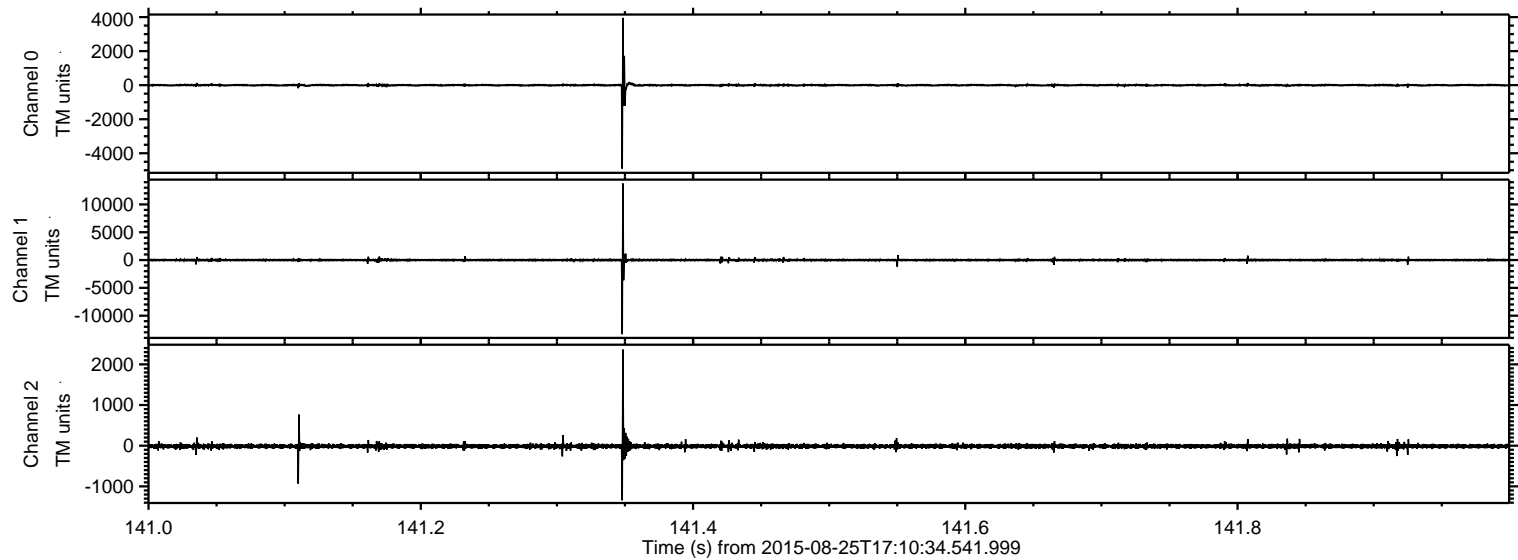
ELMAVAN 3D WAVEFORMS (Measured data sampled at 50 kHz) 51000 packets of 144 samples from 2015-08-25T17:10:34.541.999.

Processed Tue Oct 6 22:38:19 2015 by ELM ver.2012-10-06 from 001__elm20150825_171033__dat00.bin



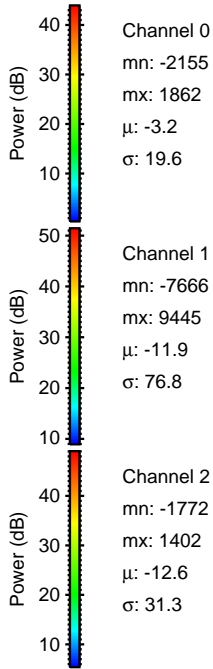
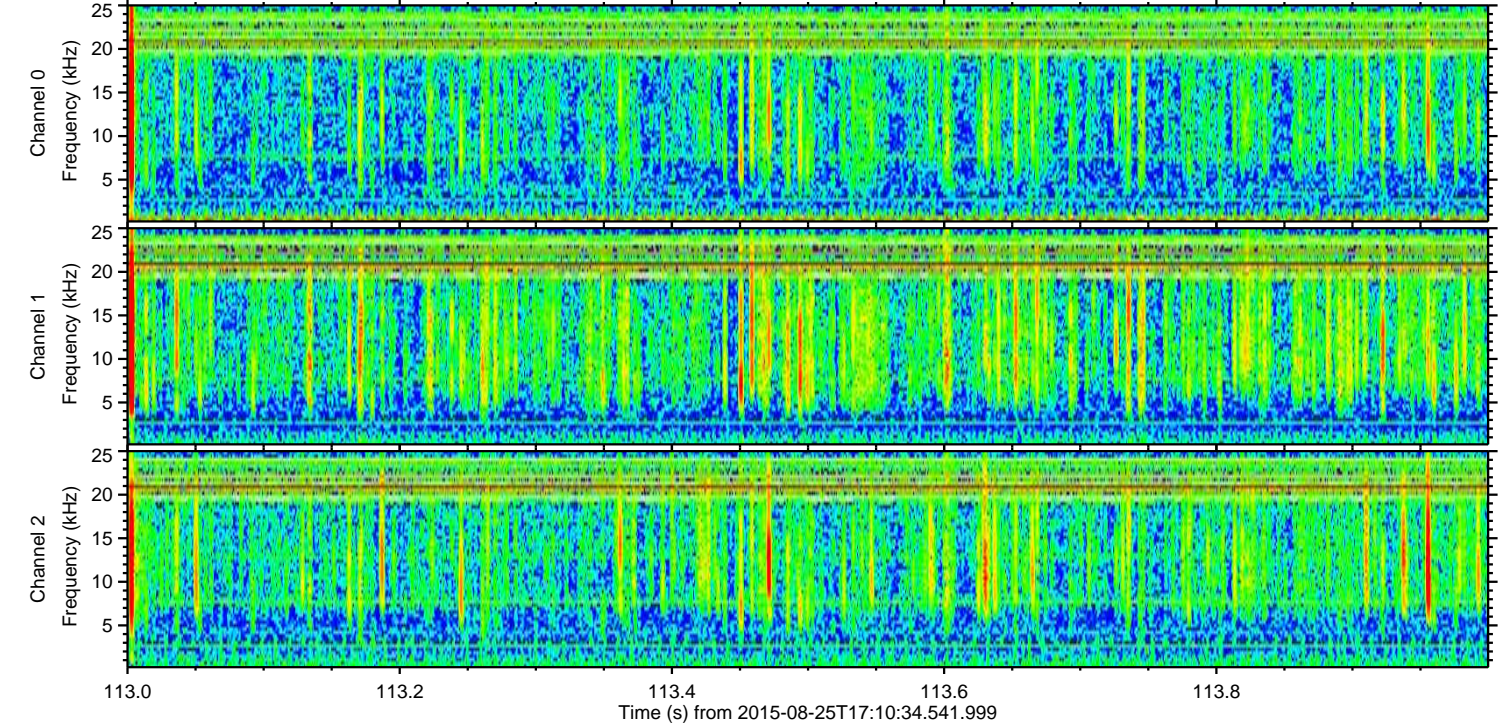
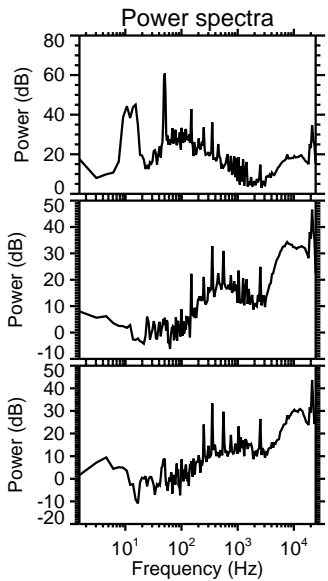
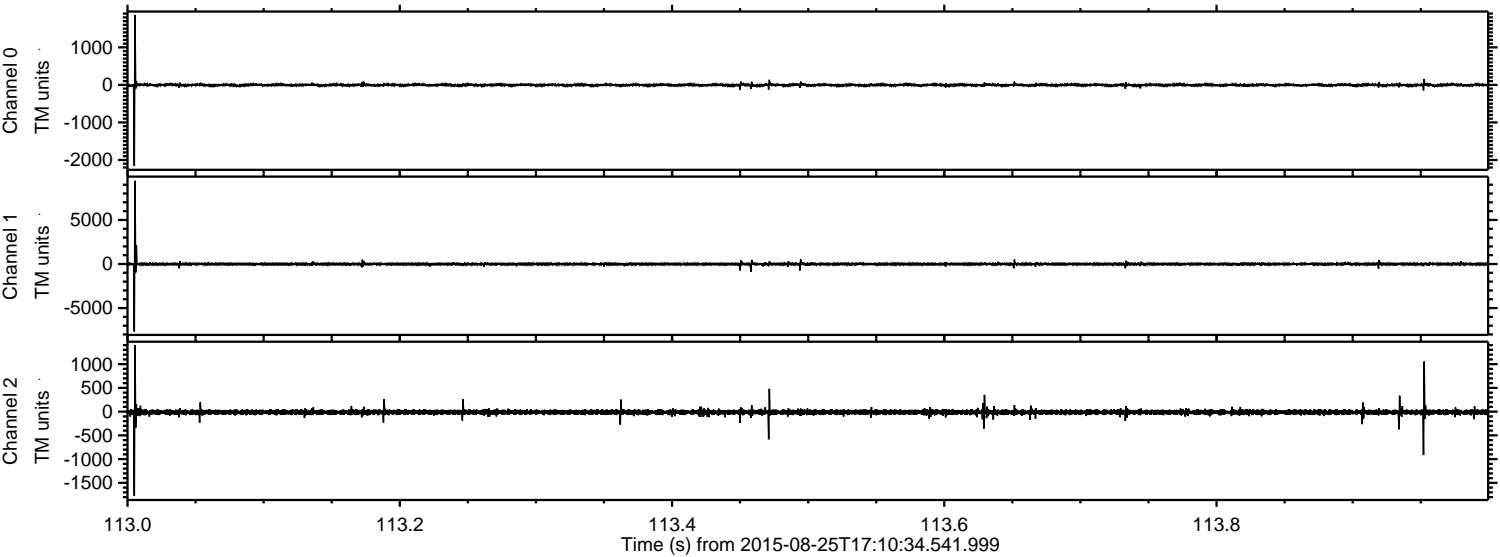
ELMAVAN 3D WAVEFORMS (Measured data sampled at 50 kHz) 51000 packets of 144 samples from 2015-08-25T17:10:34.541.999. Part 142/147

Processed Tue Oct 6 22:38:35 2015 by ELM ver.2012-10-06 from 001__elm20150825_171033__dat00.bin



ELMAVAN 3D WAVEFORMS (Measured data sampled at 50 kHz) 51000 packets of 144 samples from 2015-08-25T17:10:34.541.999. Part 114/147

Processed Tue Oct 6 22:38:36 2015 by ELM ver.2012-10-06 from 001__elm20150825_171033__dat00.bin

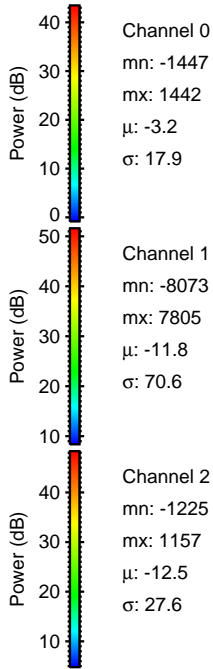
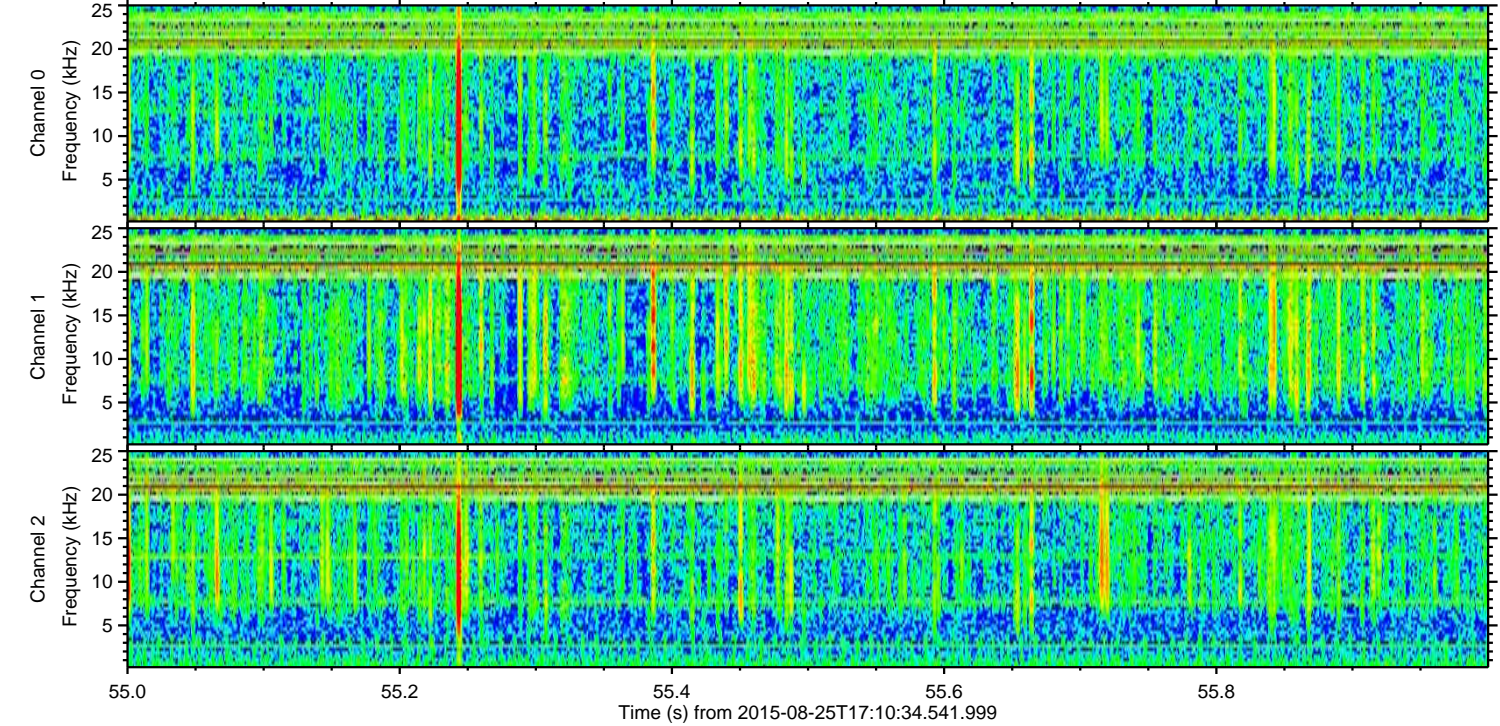
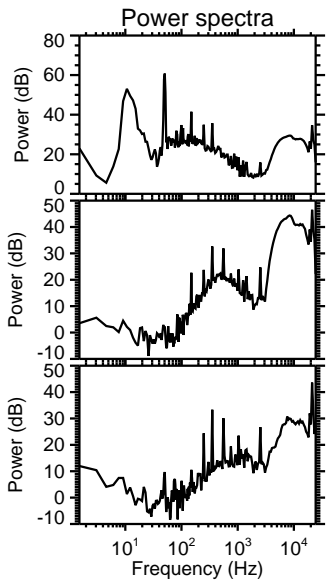
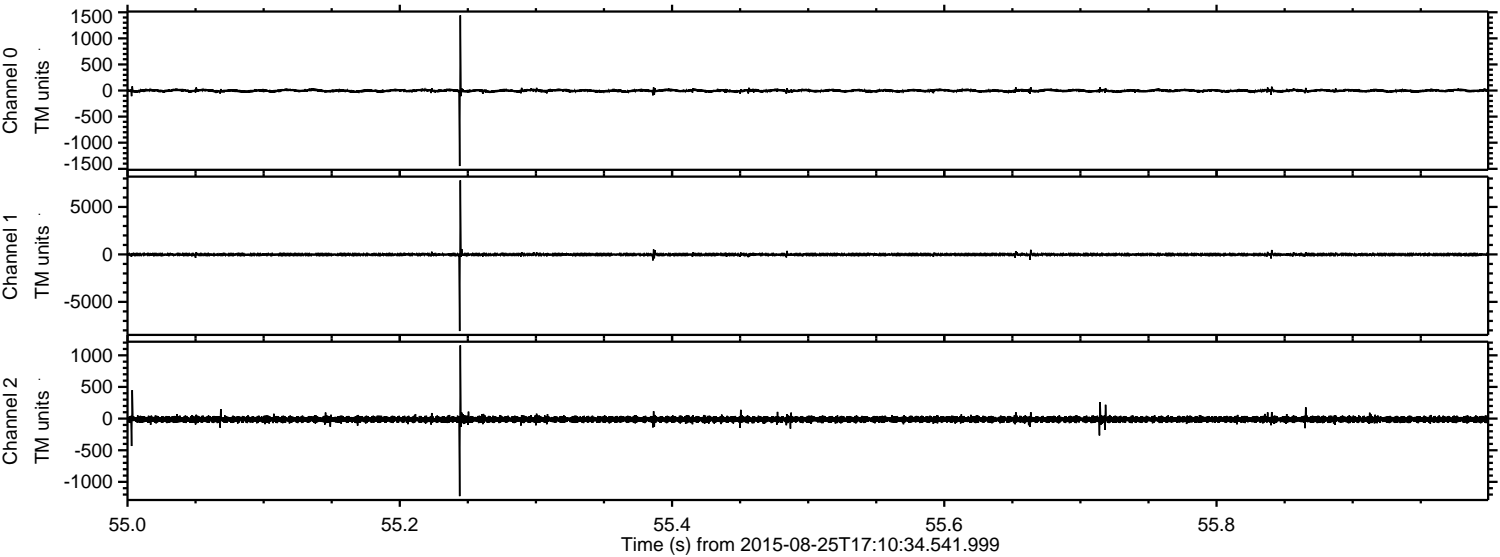


Channel 0
mn: -2155
mx: 1862
 μ : -3.2
 σ : 19.6

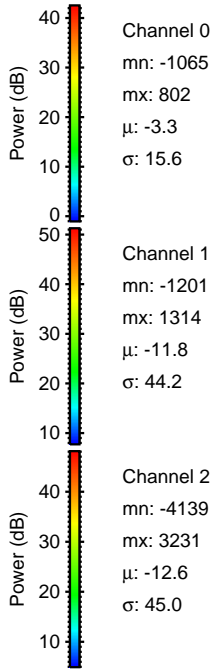
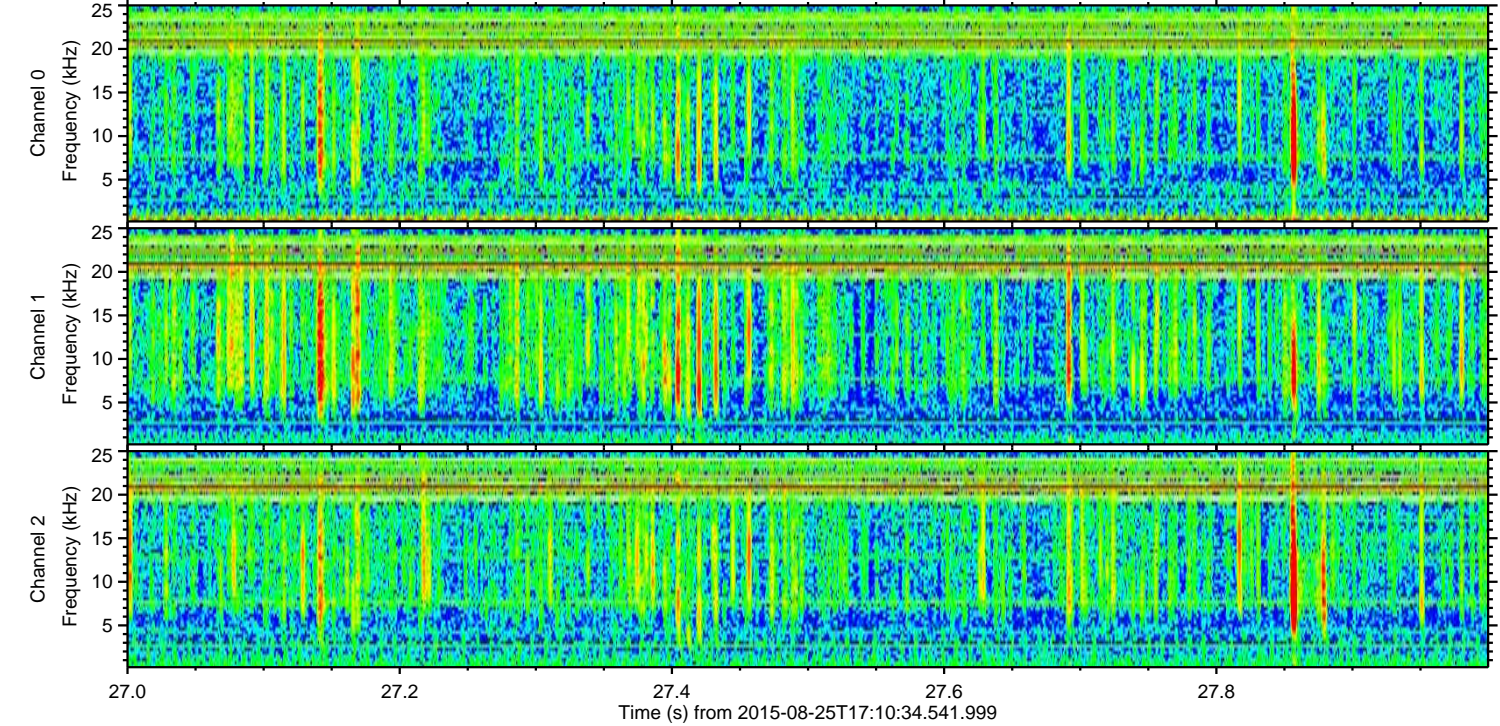
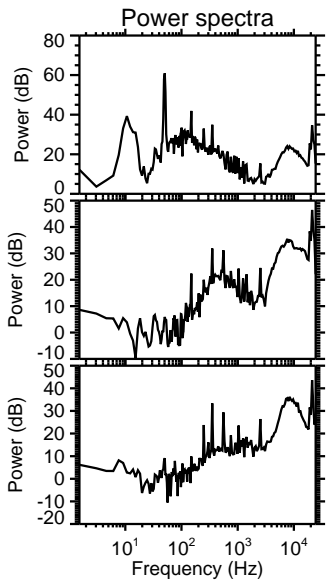
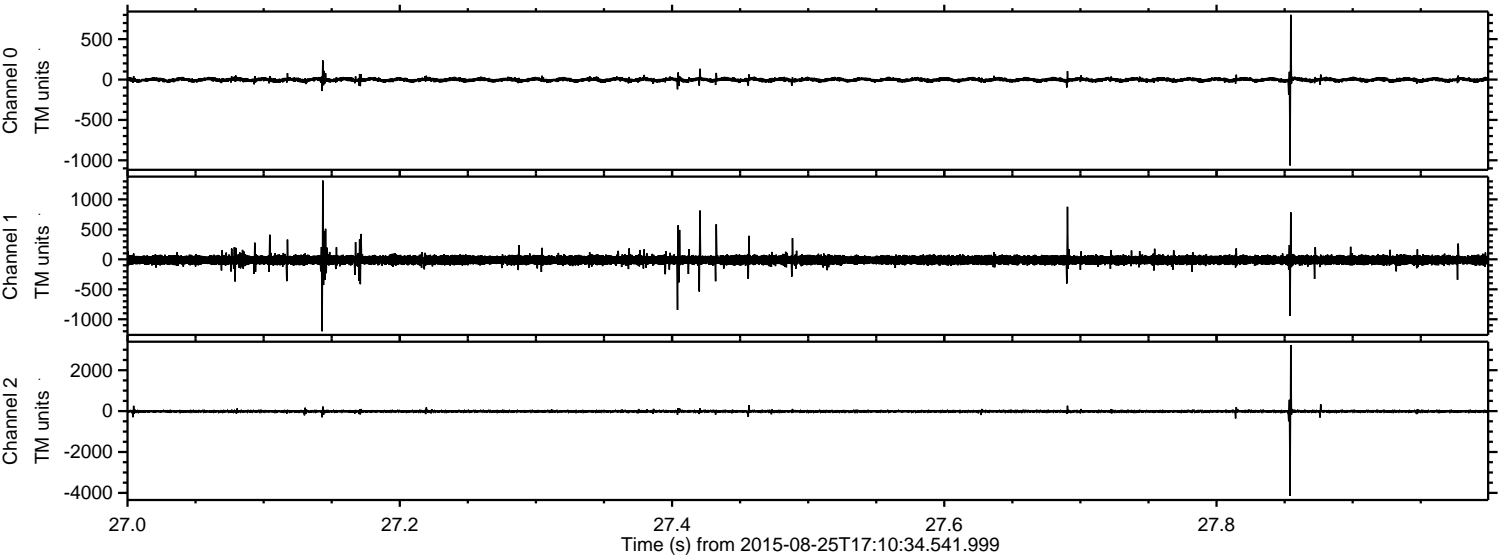
Channel 1
mn: -7666
mx: 9445
 μ : -11.9
 σ : 76.8

Channel 2
mn: -1772
mx: 1402
 μ : -12.6
 σ : 31.3

Processed Tue Oct 6 22:38:37 2015 by ELM ver.2012-10-06 from 001__elm20150825_171033__dat00.bin



Processed Tue Oct 6 22:38:38 2015 by ELM ver.2012-10-06 from 001__elm20150825_171033__dat00.bin

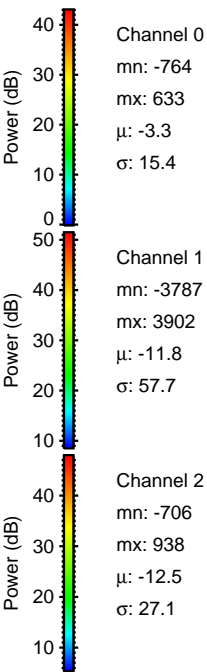
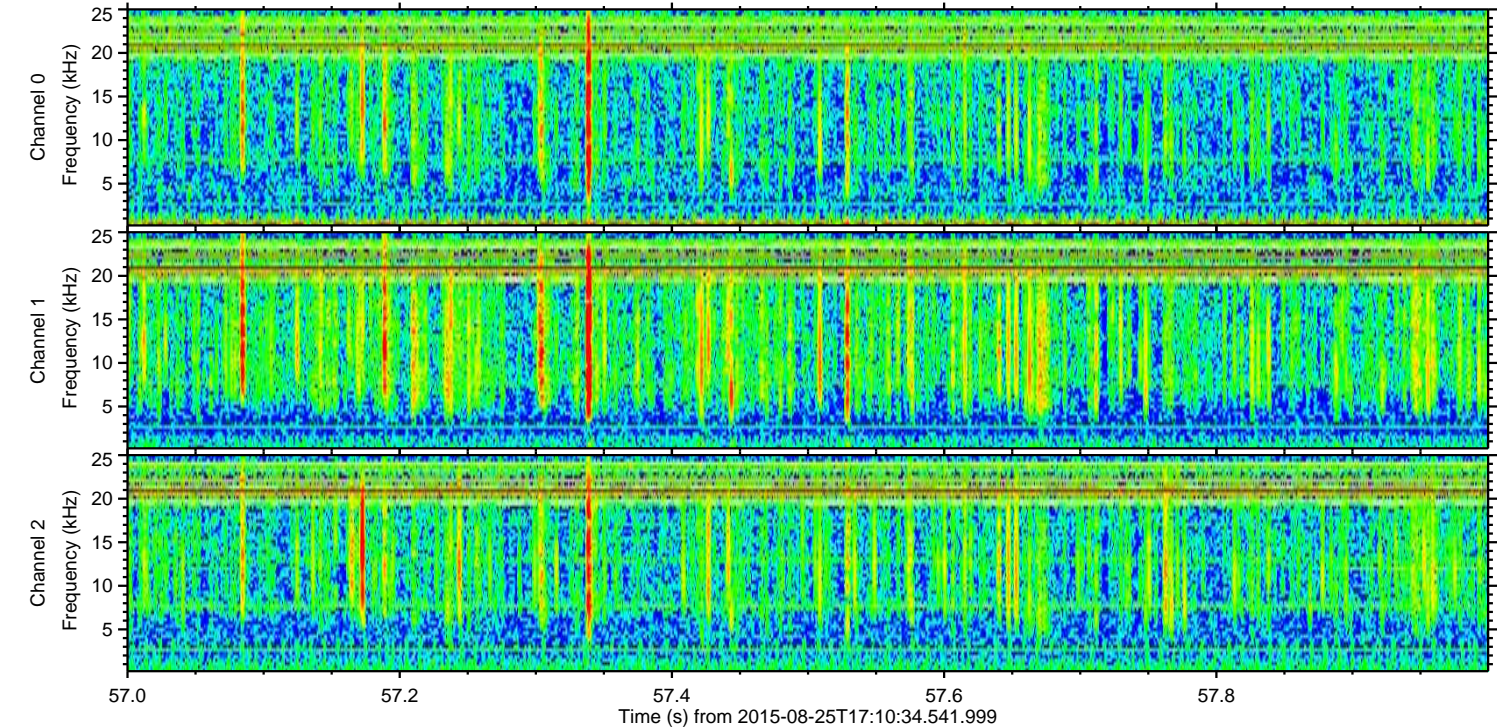
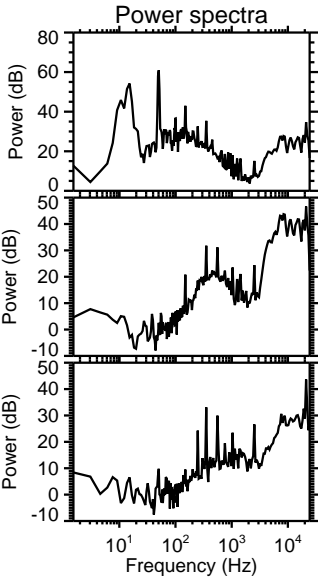
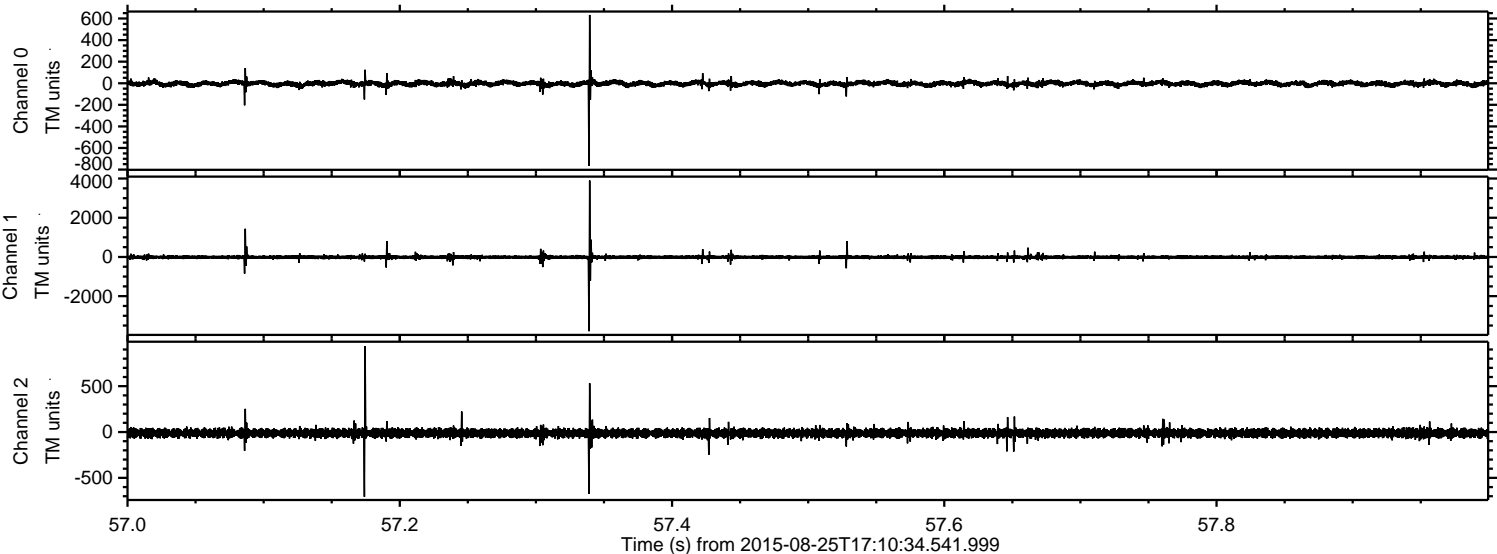


Channel 0
mn: -1065
mx: 802
 μ : -3.3
 σ : 15.6

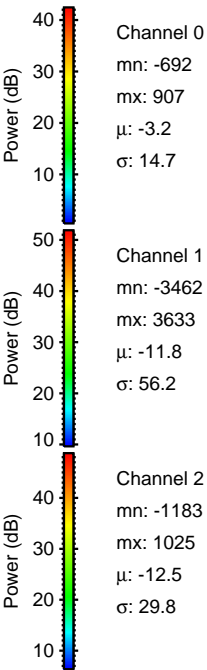
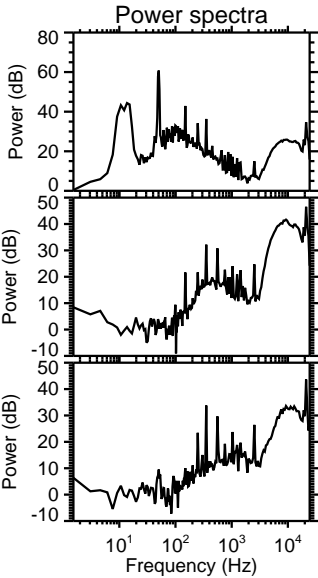
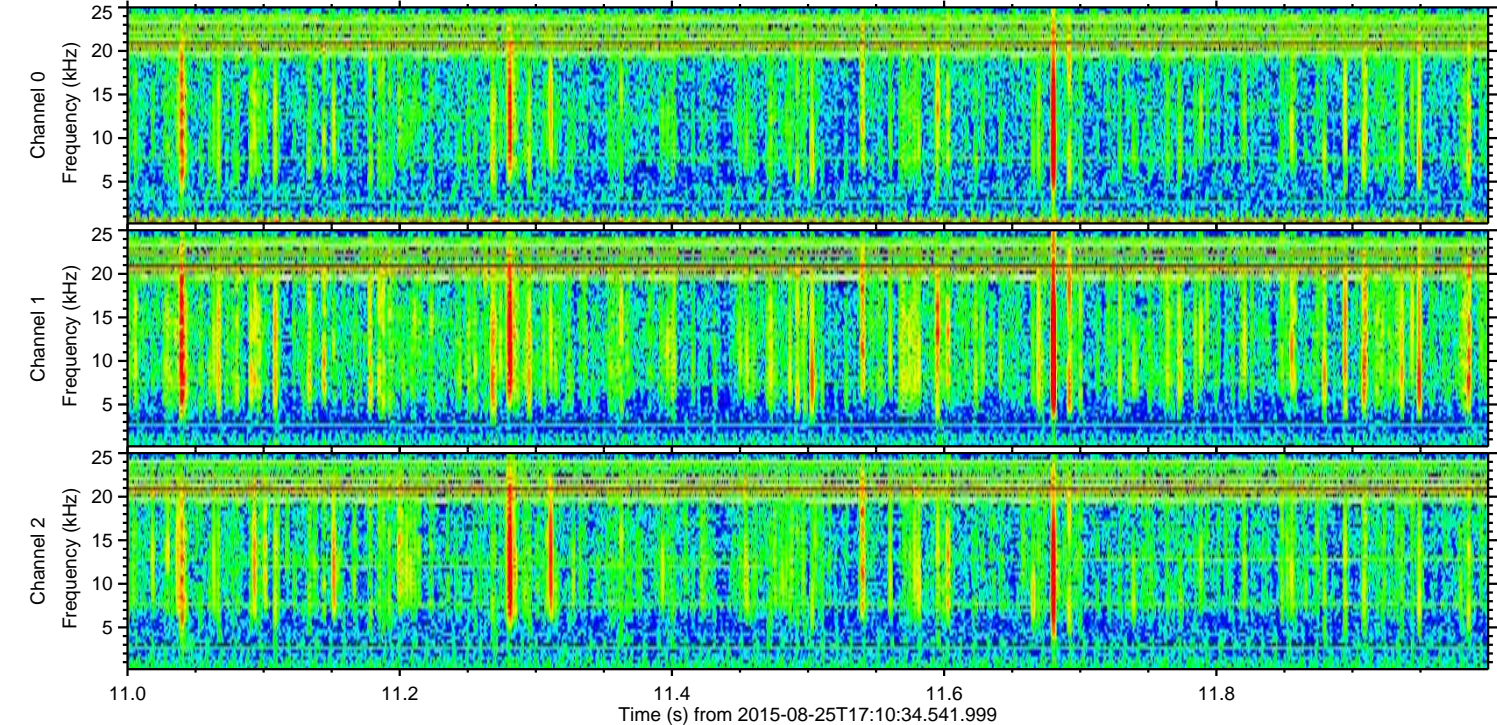
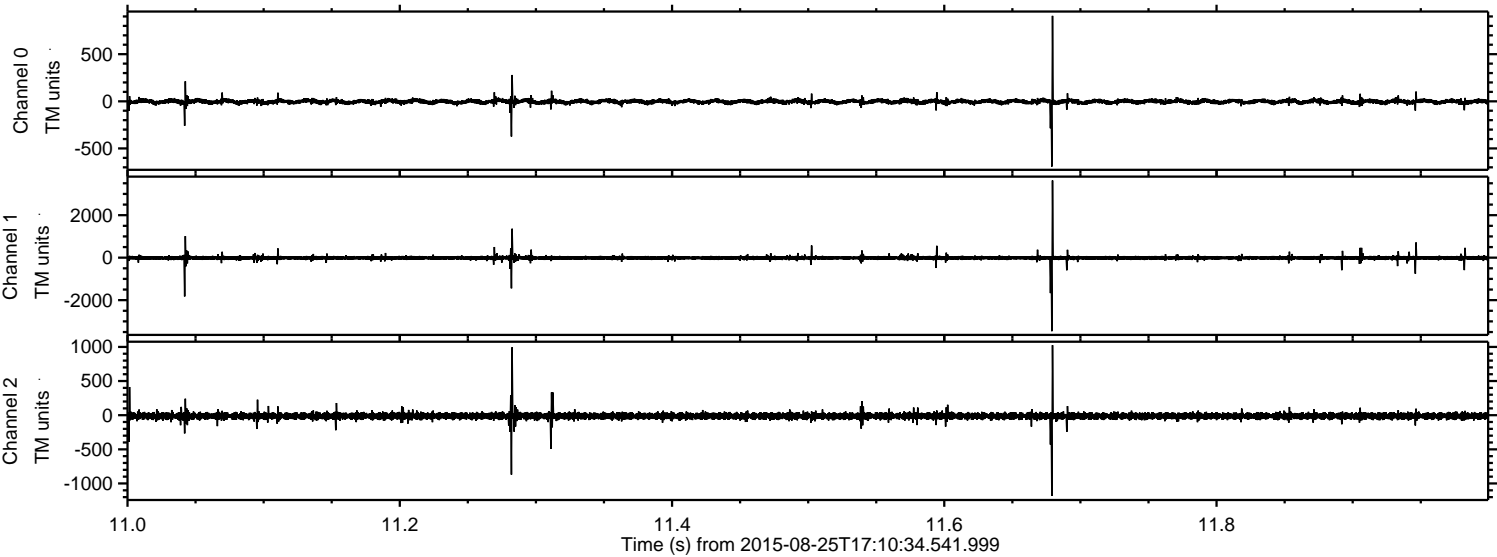
Channel 1
mn: -1201
mx: 1314
 μ : -11.8
 σ : 44.2

Channel 2
mn: -4139
mx: 3231
 μ : -12.6
 σ : 45.0

Processed Tue Oct 6 22:38:40 2015 by ELM ver.2012-10-06 from 001__elm20150825_171033__dat00.bin

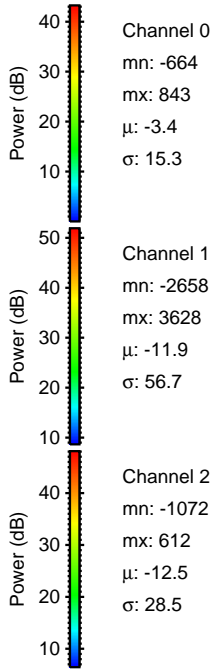
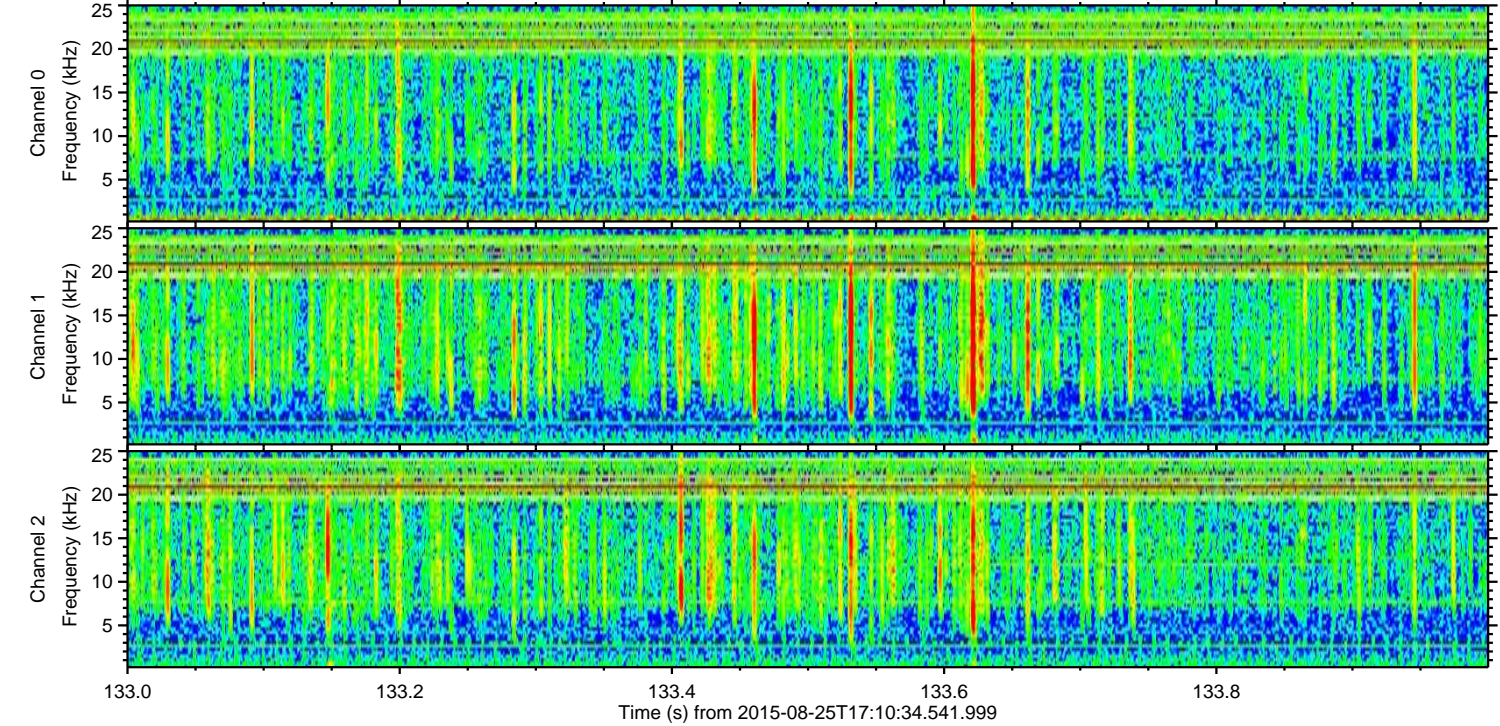
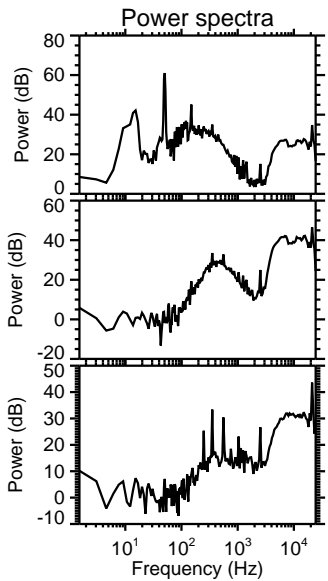
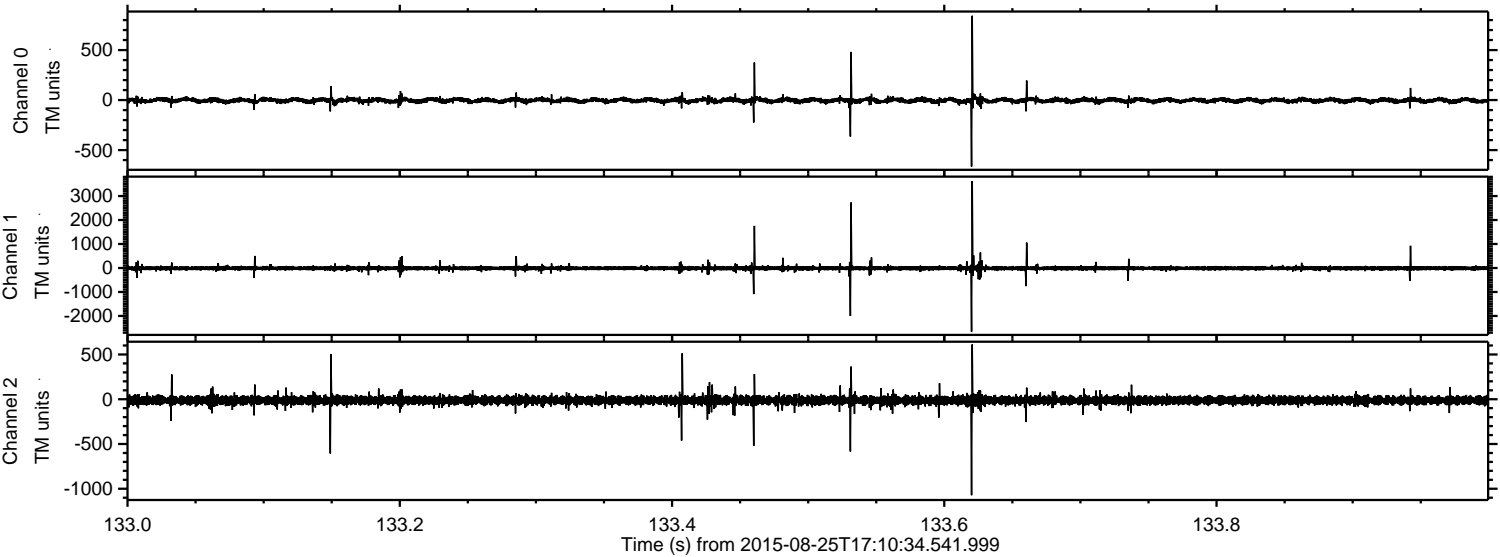


Processed Tue Oct 6 22:38:41 2015 by ELM ver.2012-10-06 from 001__elm20150825_171033__dat00.bin

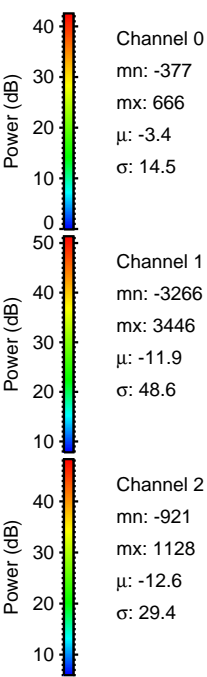
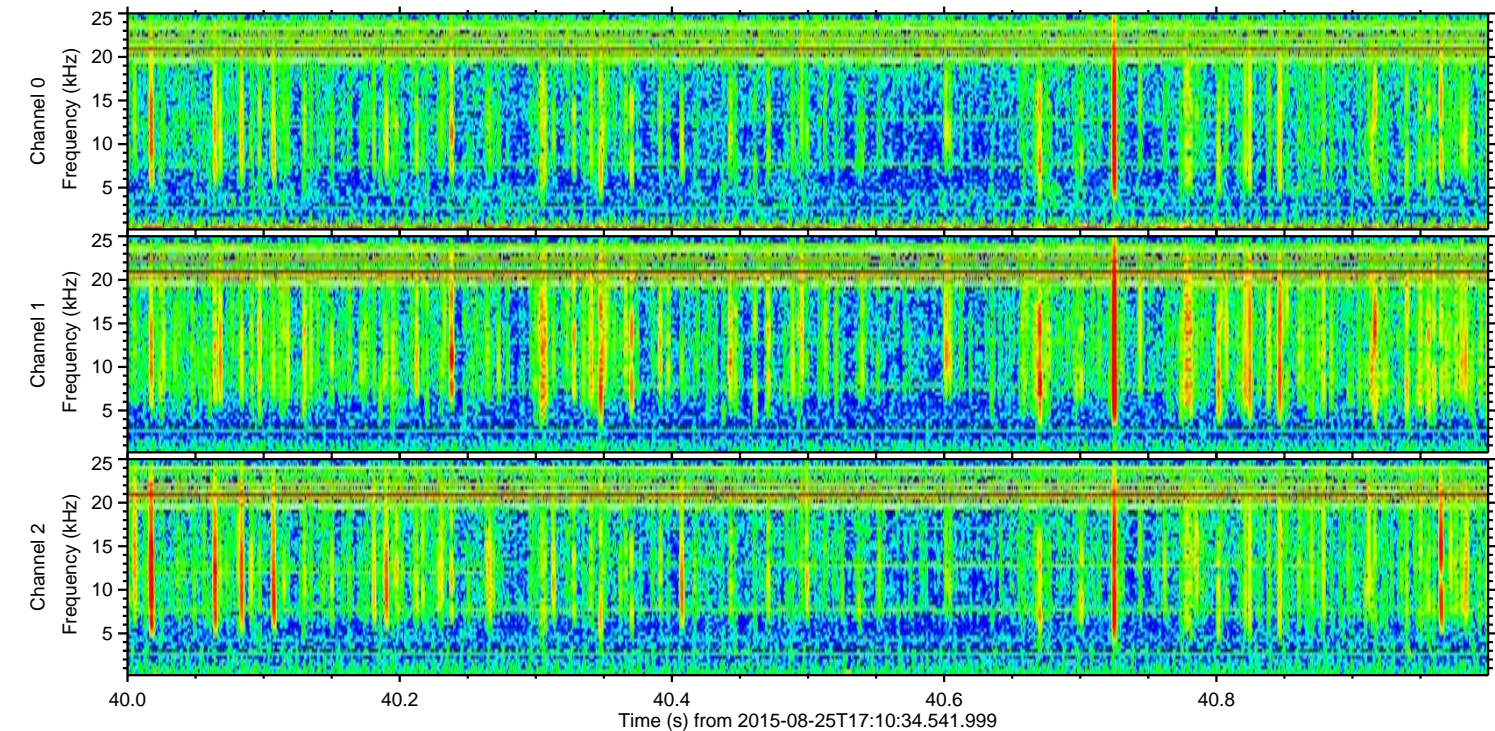
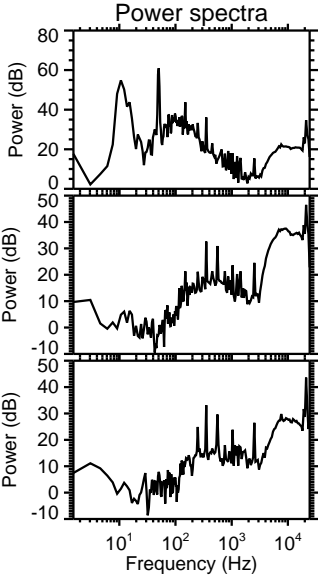
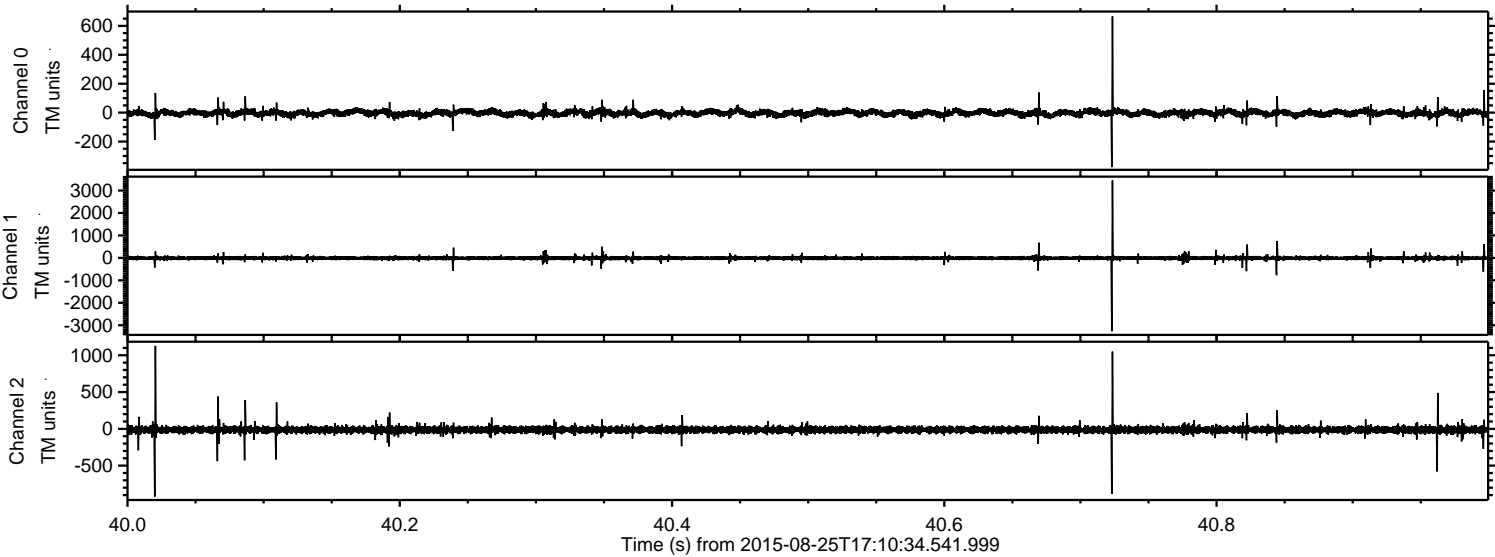


ELMAVAN 3D WAVEFORMS (Measured data sampled at 50 kHz) 51000 packets of 144 samples from 2015-08-25T17:10:34.541.999. Part 134/147

Processed Tue Oct 6 22:38:42 2015 by ELM ver.2012-10-06 from 001__elm20150825_171033__dat00.bin



Processed Tue Oct 6 22:38:43 2015 by ELM ver.2012-10-06 from 001__elm20150825_171033__dat00.bin

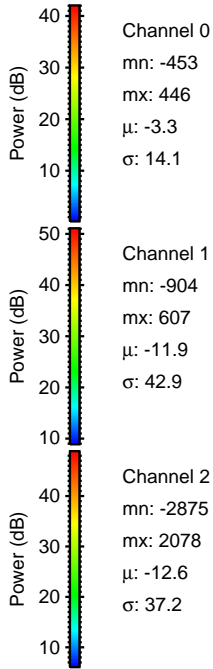
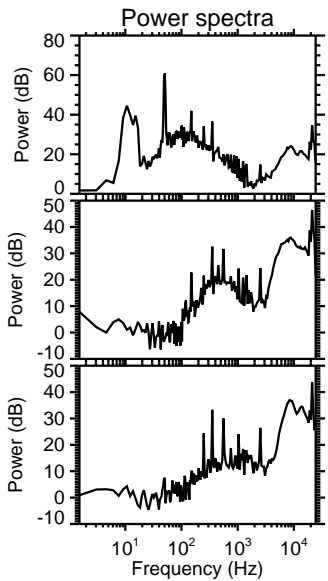
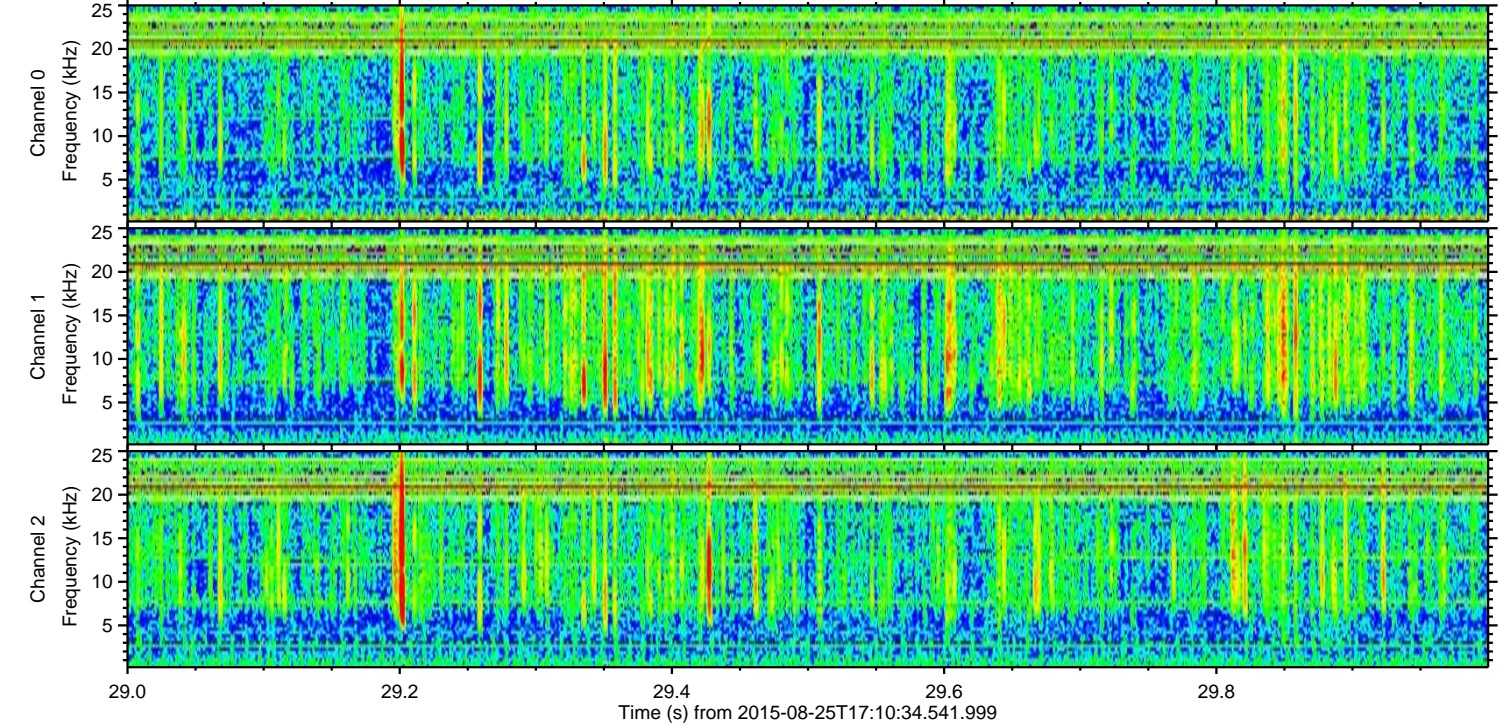
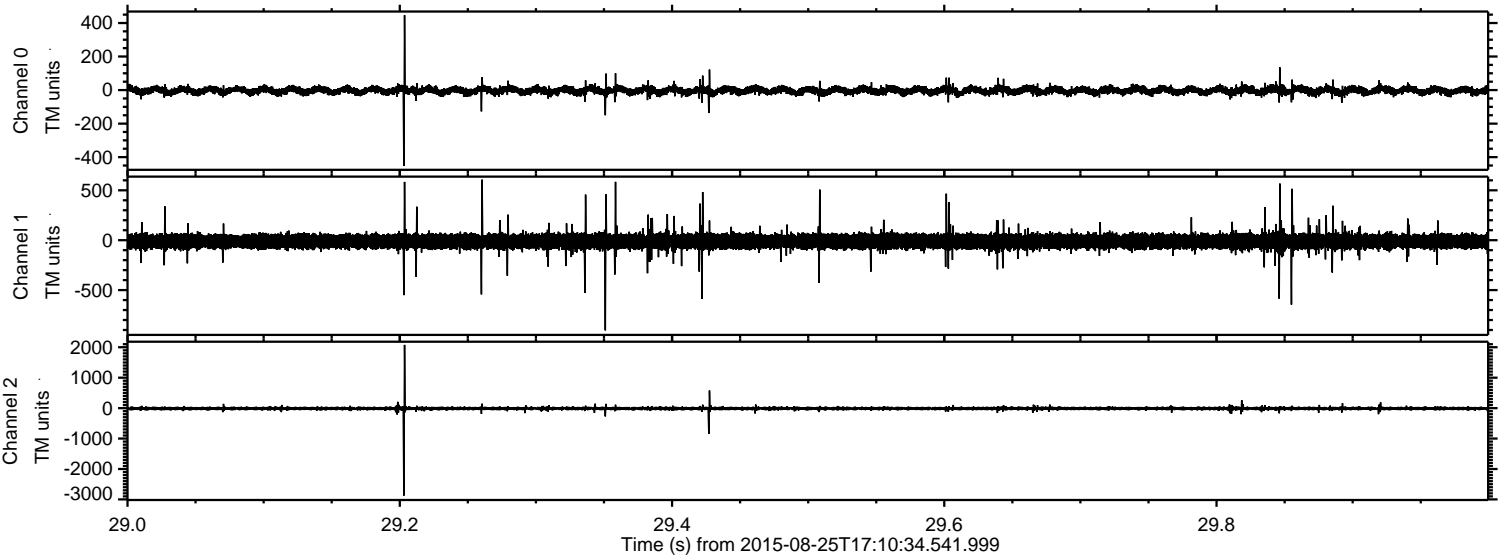


Channel 0
mn: -377
mx: 666
 μ : -3.4
 σ : 14.5

Channel 1
mn: -3266
mx: 3446
 μ : -11.9
 σ : 48.6

Channel 2
mn: -921
mx: 1128
 μ : -12.6
 σ : 29.4

Processed Tue Oct 6 22:38:44 2015 by ELM ver.2012-10-06 from 001__elm20150825_171033__dat00.bin



Processed Tue Oct 6 22:38:45 2015 by ELM ver.2012-10-06 from 001__elm20150825_171033__dat00.bin

