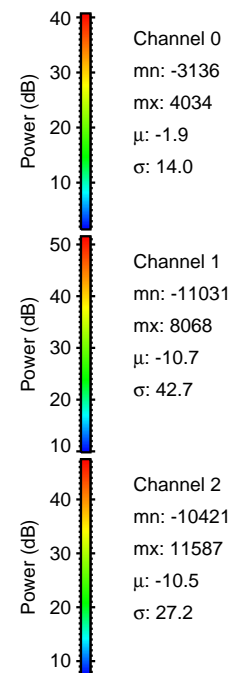
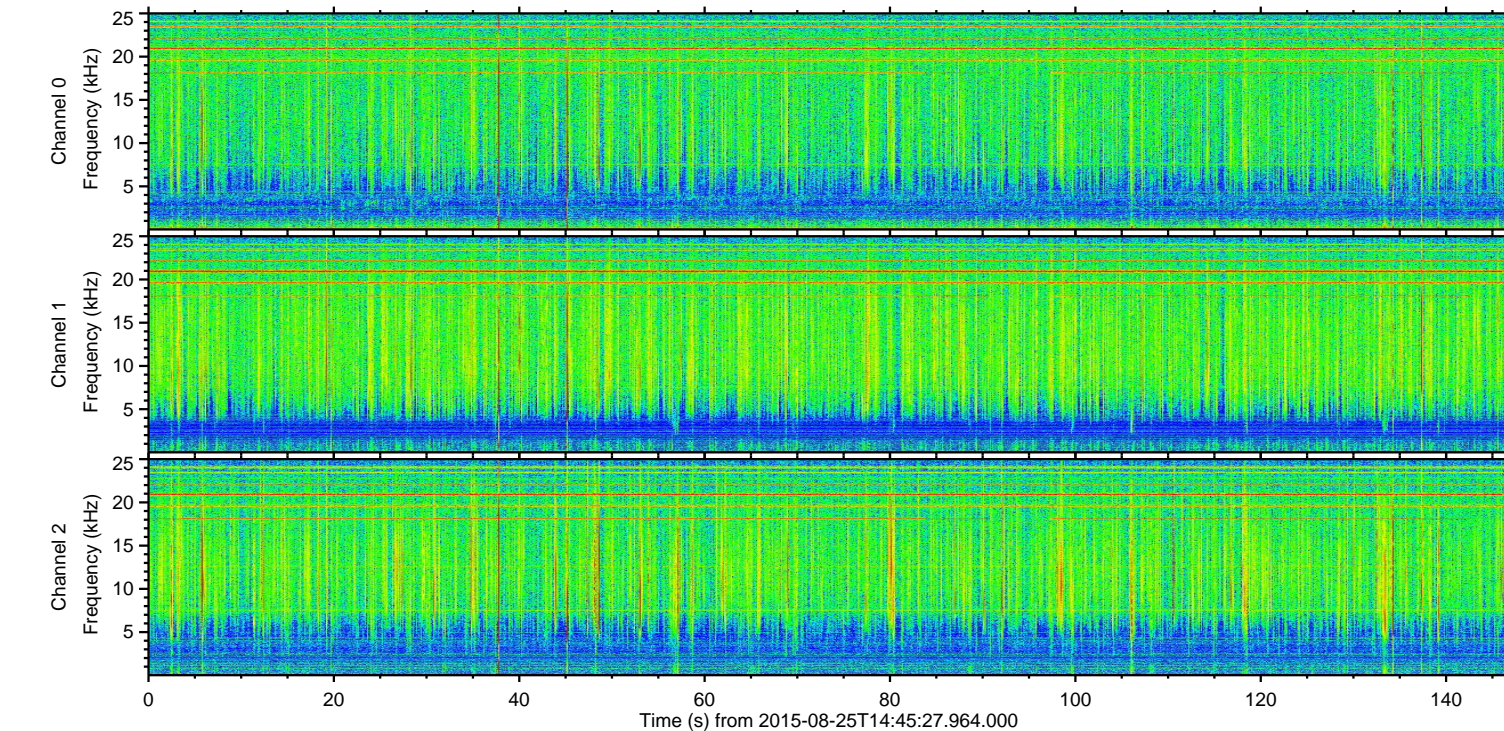
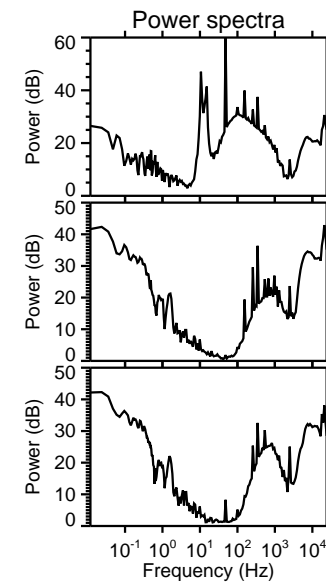
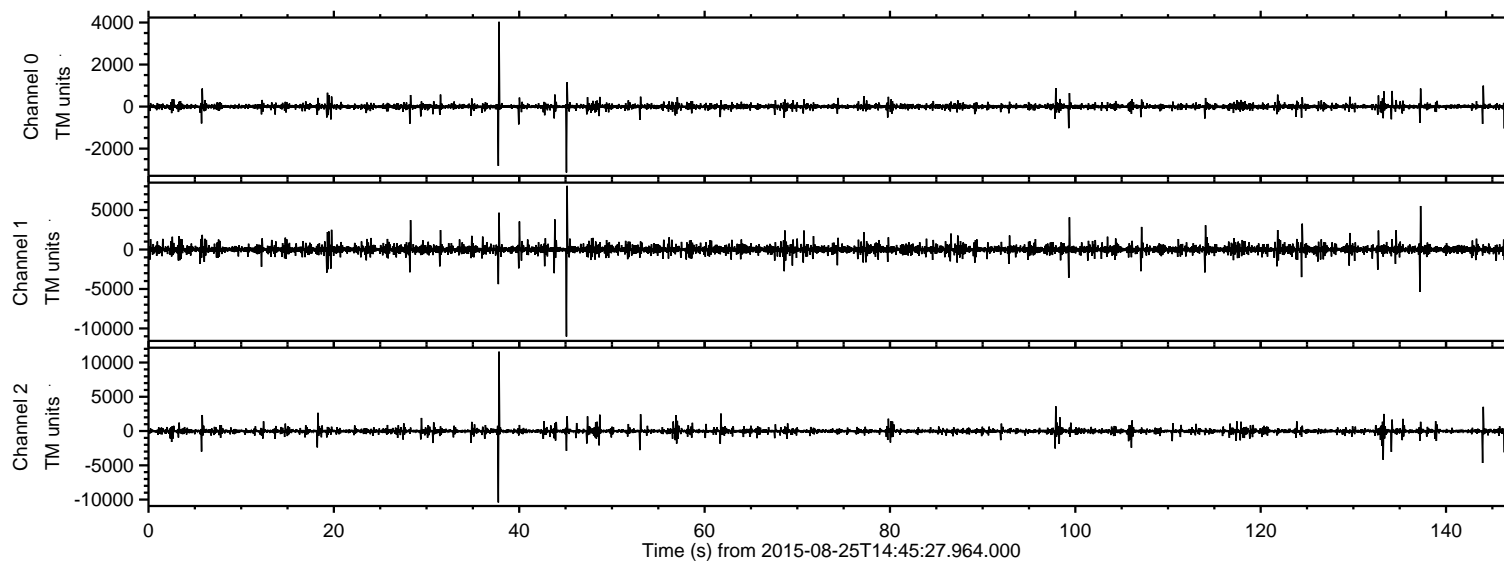
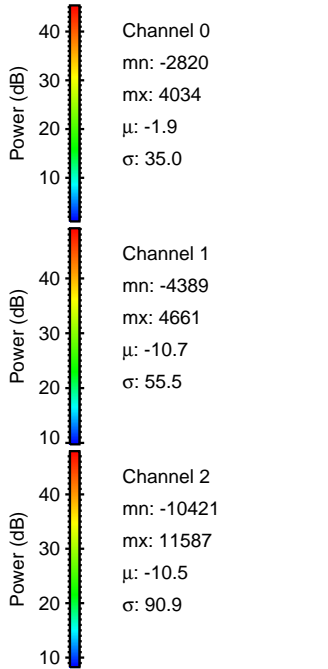
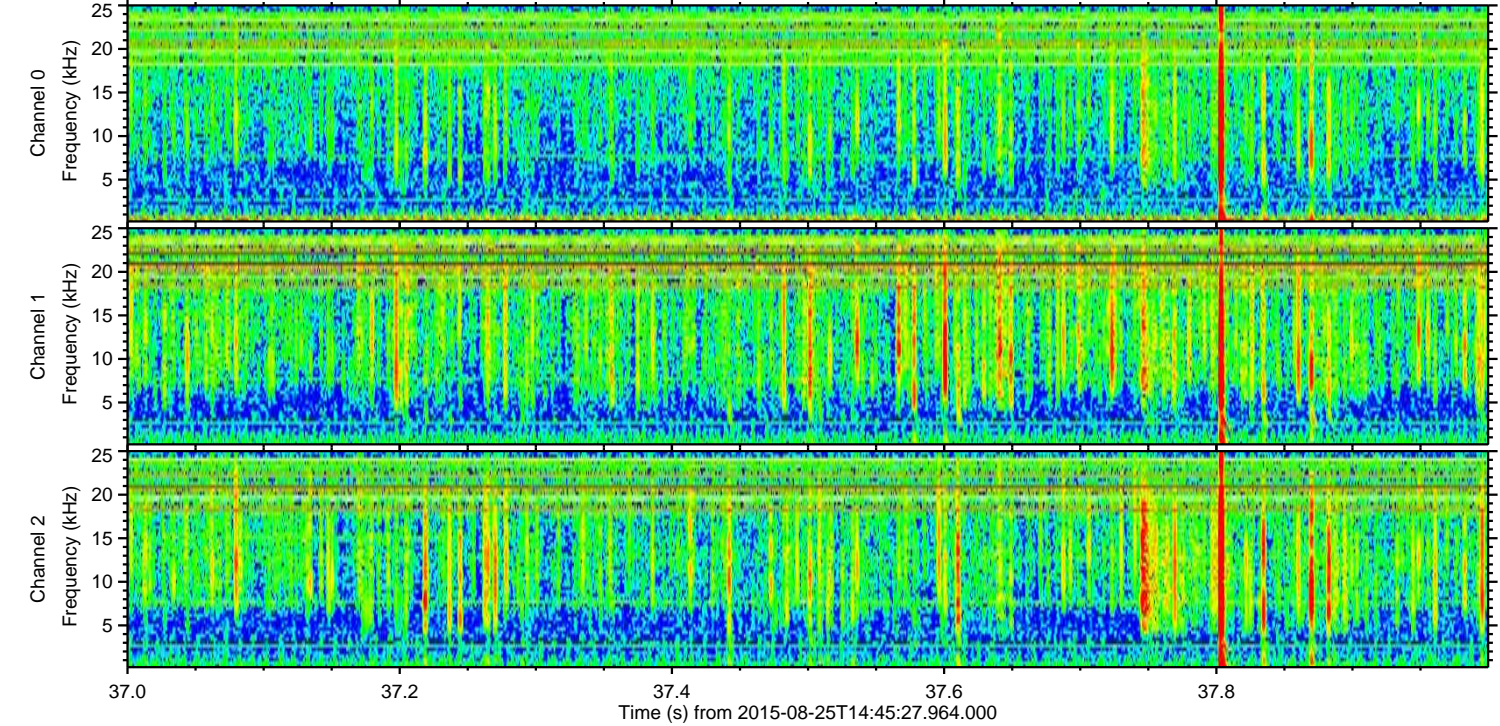
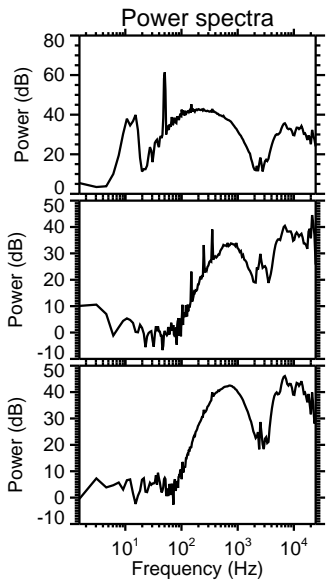
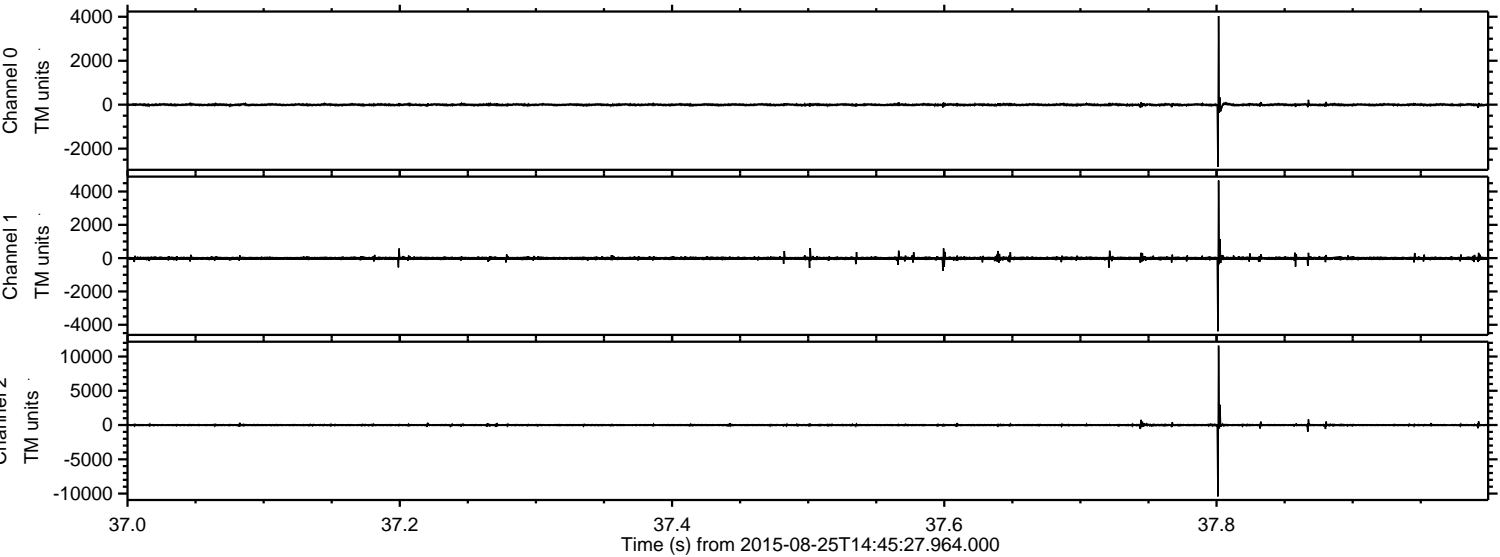


ELMAVAN 3D WAVEFORMS (Measured data sampled at 50 kHz) 51000 packets of 144 samples from 2015-08-25T14:45:27.964.000.

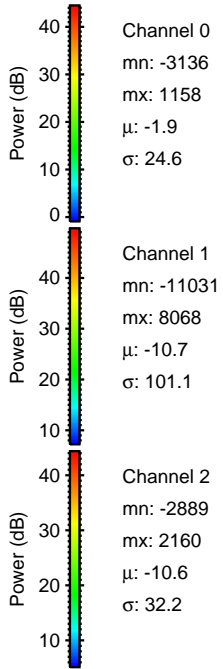
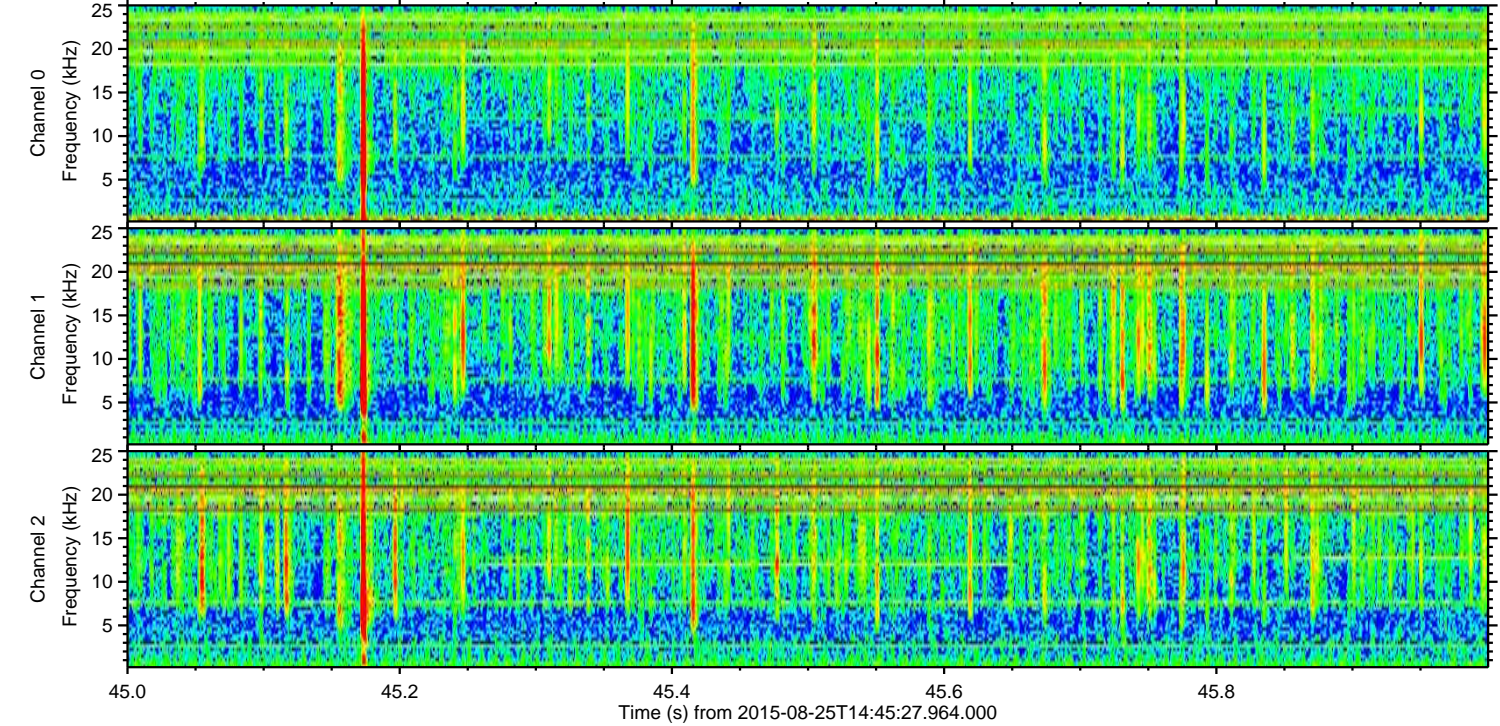
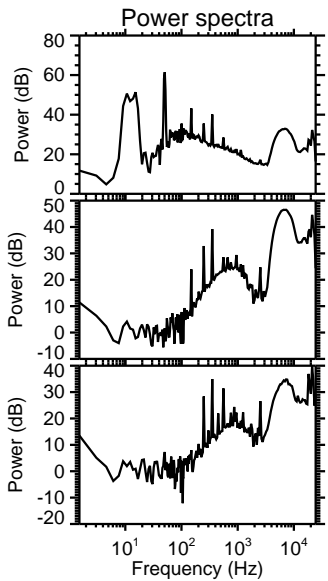
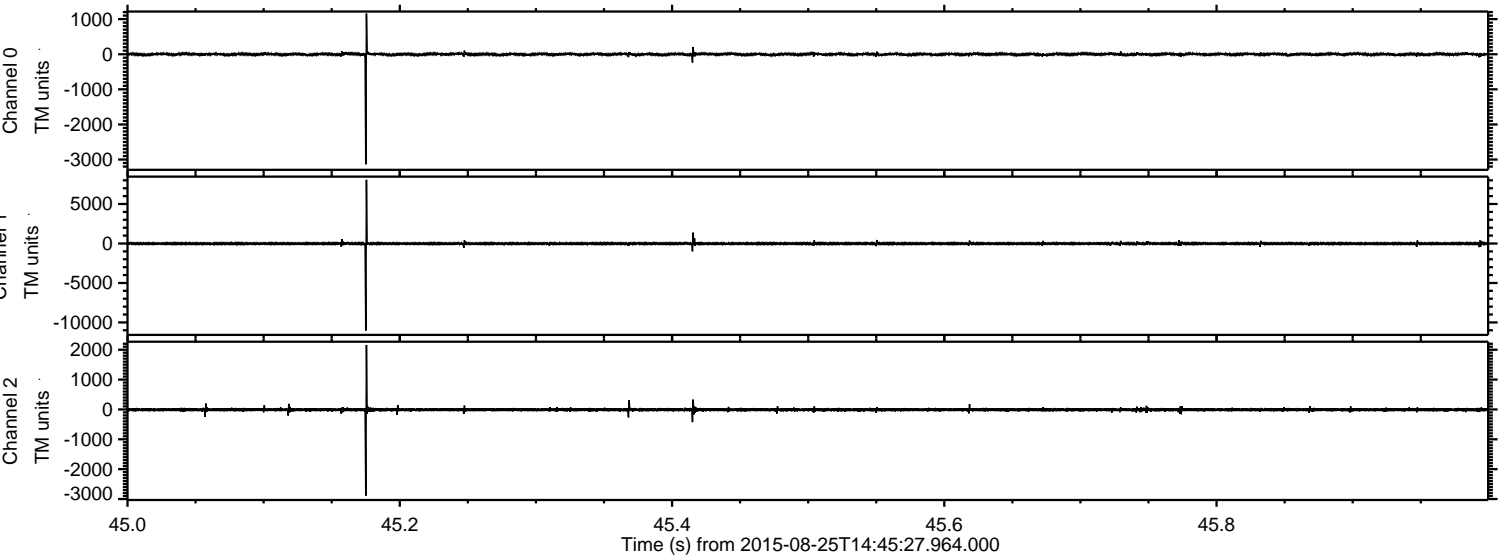
Processed Tue Oct 6 21:57:54 2015 by ELM ver.2012-10-06 from 001__elm20150825_144526__dat00.bin



Processed Tue Oct 6 21:58:10 2015 by ELM ver.2012-10-06 from 001__elm20150825_144526__dat00.bin

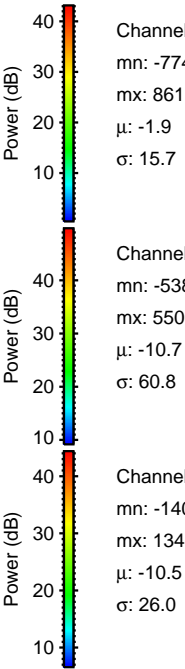
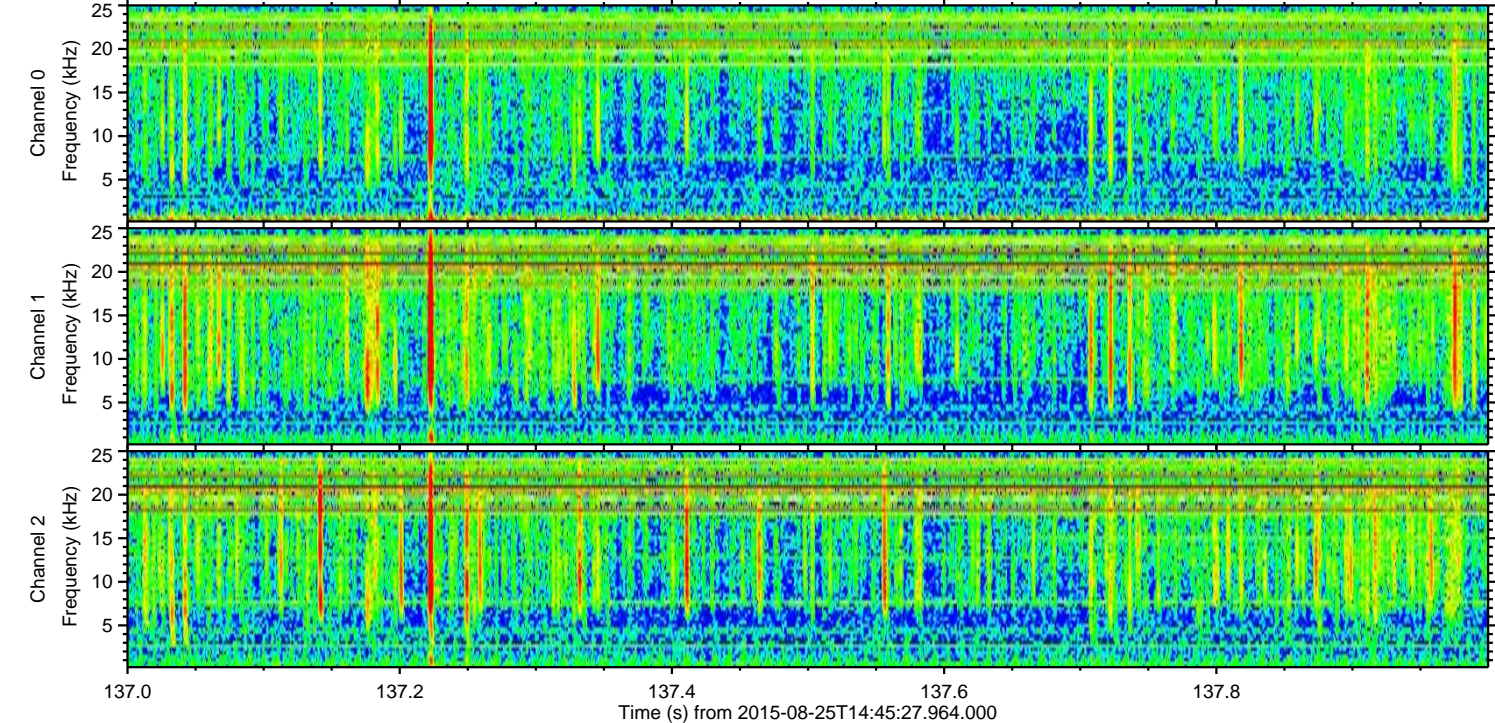
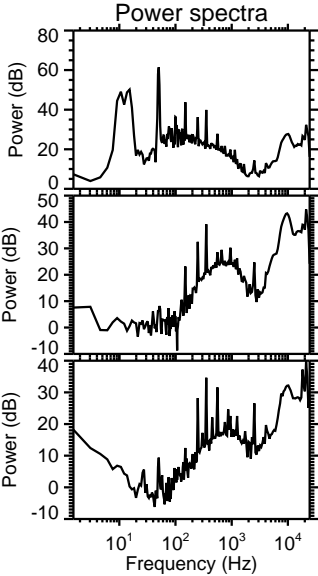
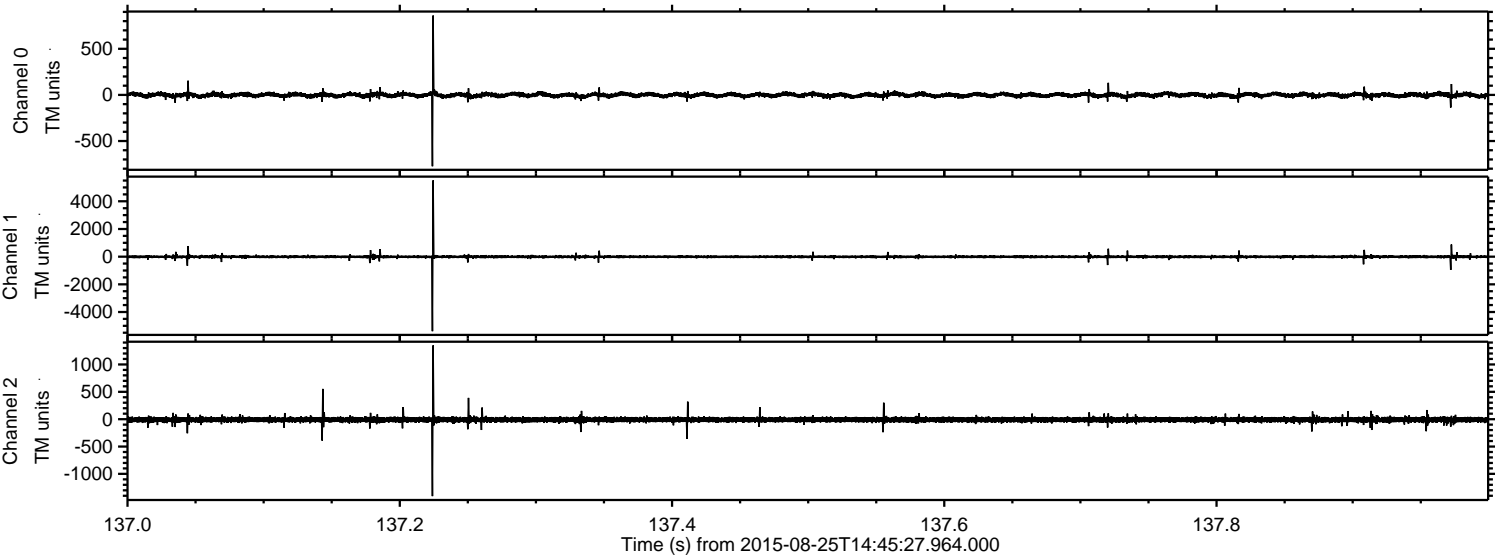


Processed Tue Oct 6 21:58:11 2015 by ELM ver.2012-10-06 from 001__elm20150825_144526__dat00.bin



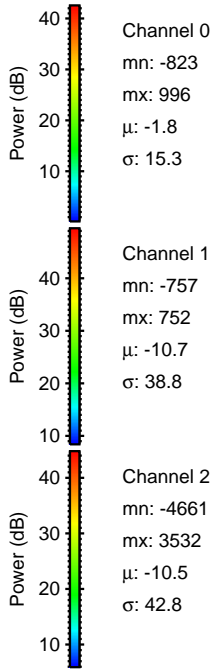
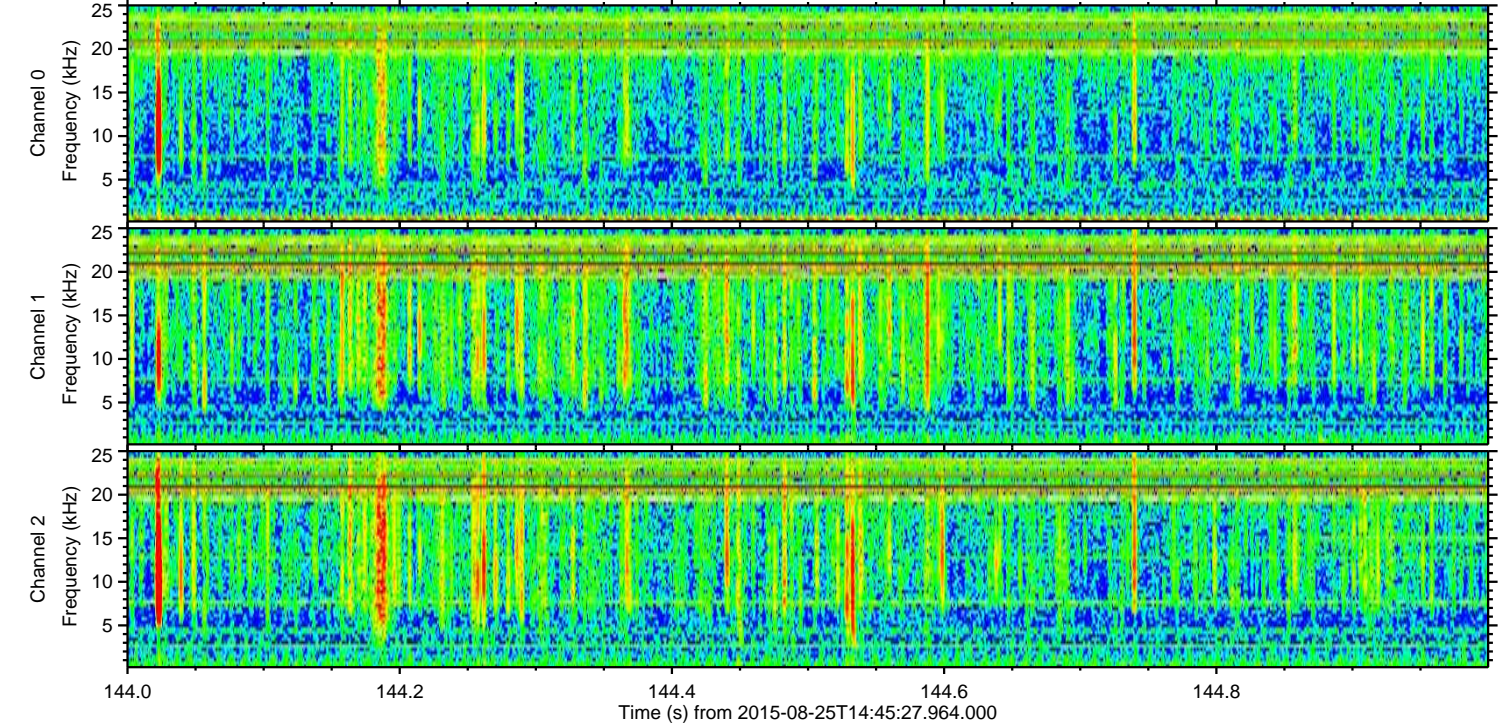
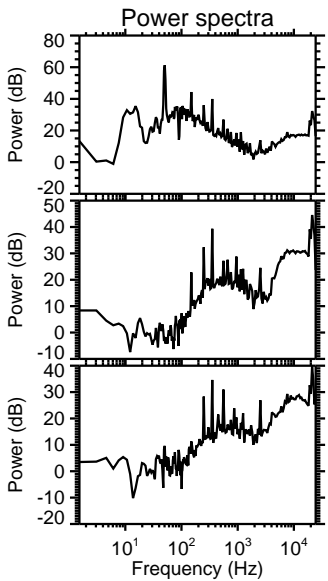
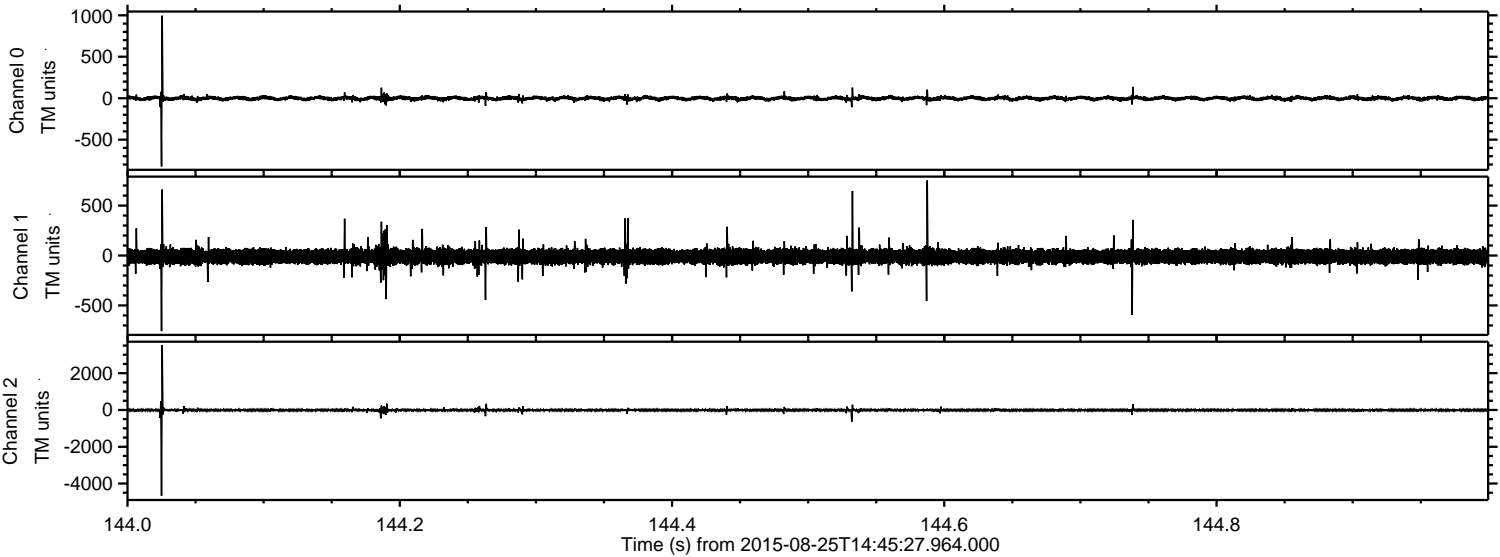
ELMAVAN 3D WAVEFORMS (Measured data sampled at 50 kHz) 51000 packets of 144 samples from 2015-08-25T14:45:27.964.000. Part 138/147

Processed Tue Oct 6 21:58:12 2015 by ELM ver.2012-10-06 from 001__elm20150825_144526__dat00.bin



ELMAVAN 3D WAVEFORMS (Measured data sampled at 50 kHz) 51000 packets of 144 samples from 2015-08-25T14:45:27.964.000. Part 145/147

Processed Tue Oct 6 21:58:13 2015 by ELM ver.2012-10-06 from 001__elm20150825_144526__dat00.bin



Power spectra

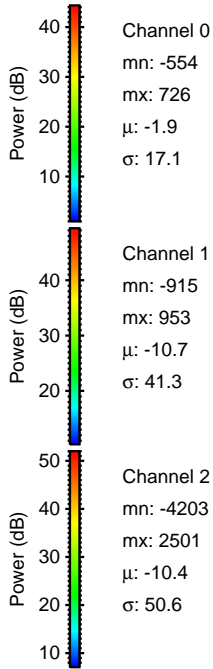
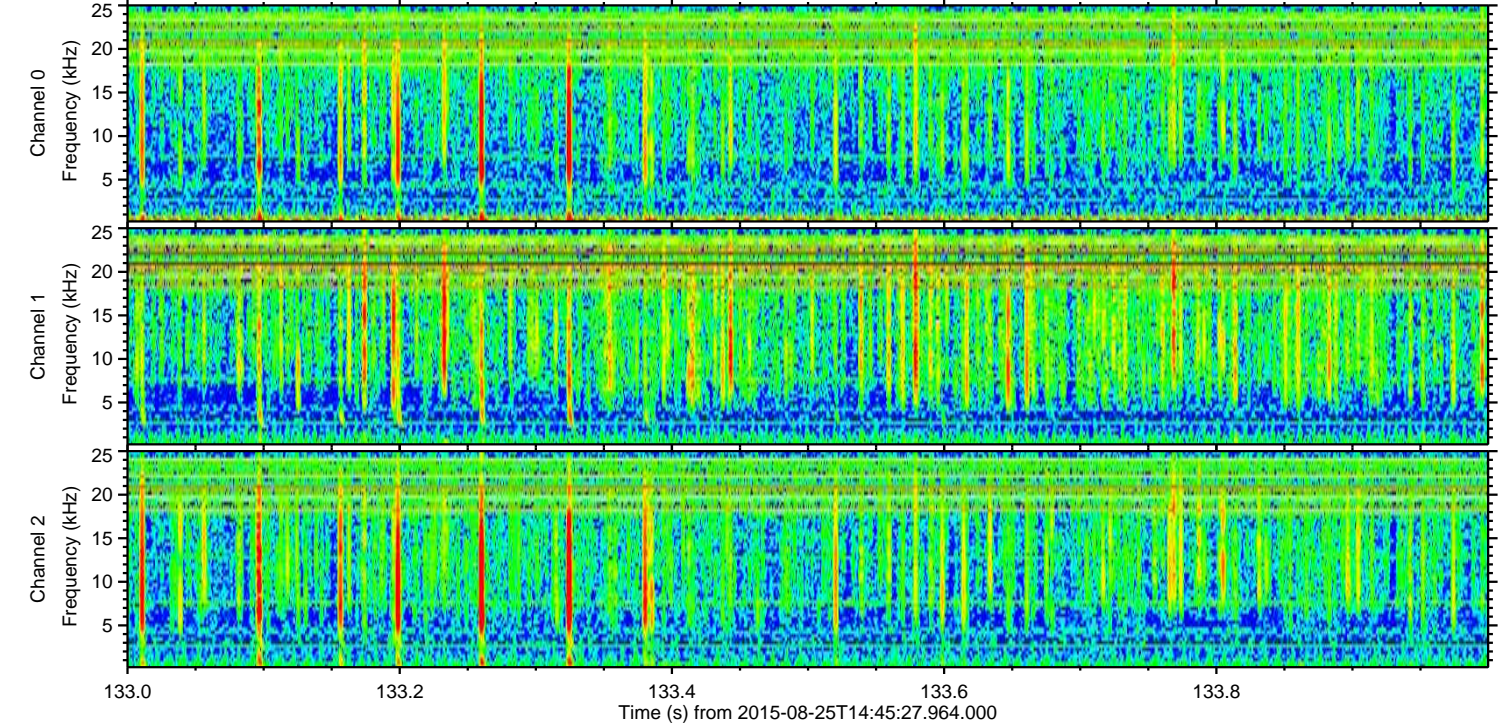
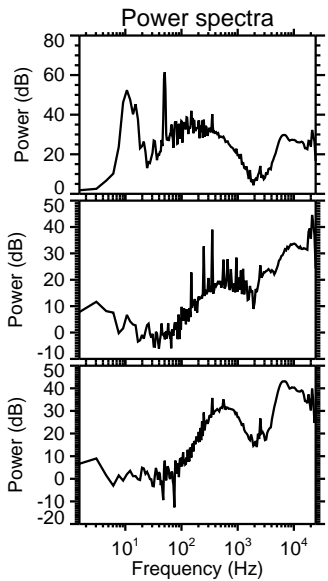
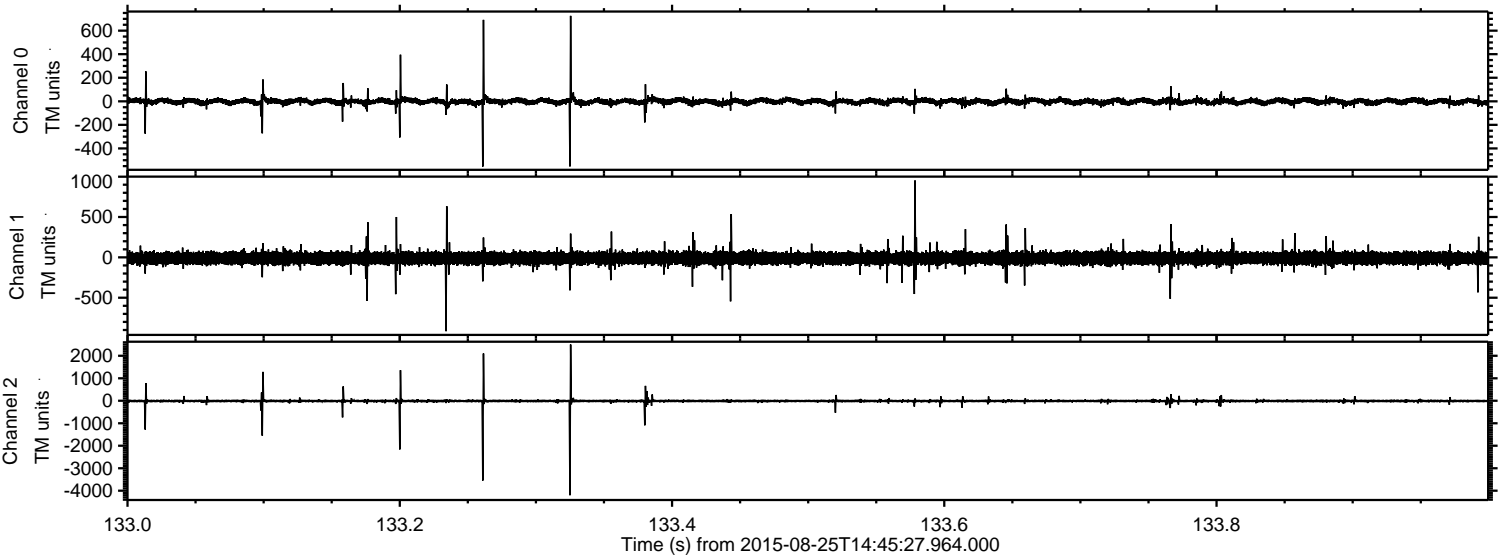
Channel 0
mn: -823
mx: 996
 μ : -1.8
 σ : 15.3

Channel 1
mn: -757
mx: 752
 μ : -10.7
 σ : 38.8

Channel 2
mn: -4661
mx: 3532
 μ : -10.5
 σ : 42.8

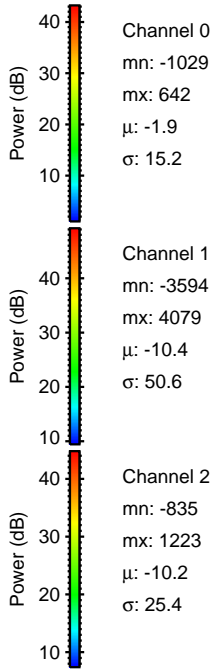
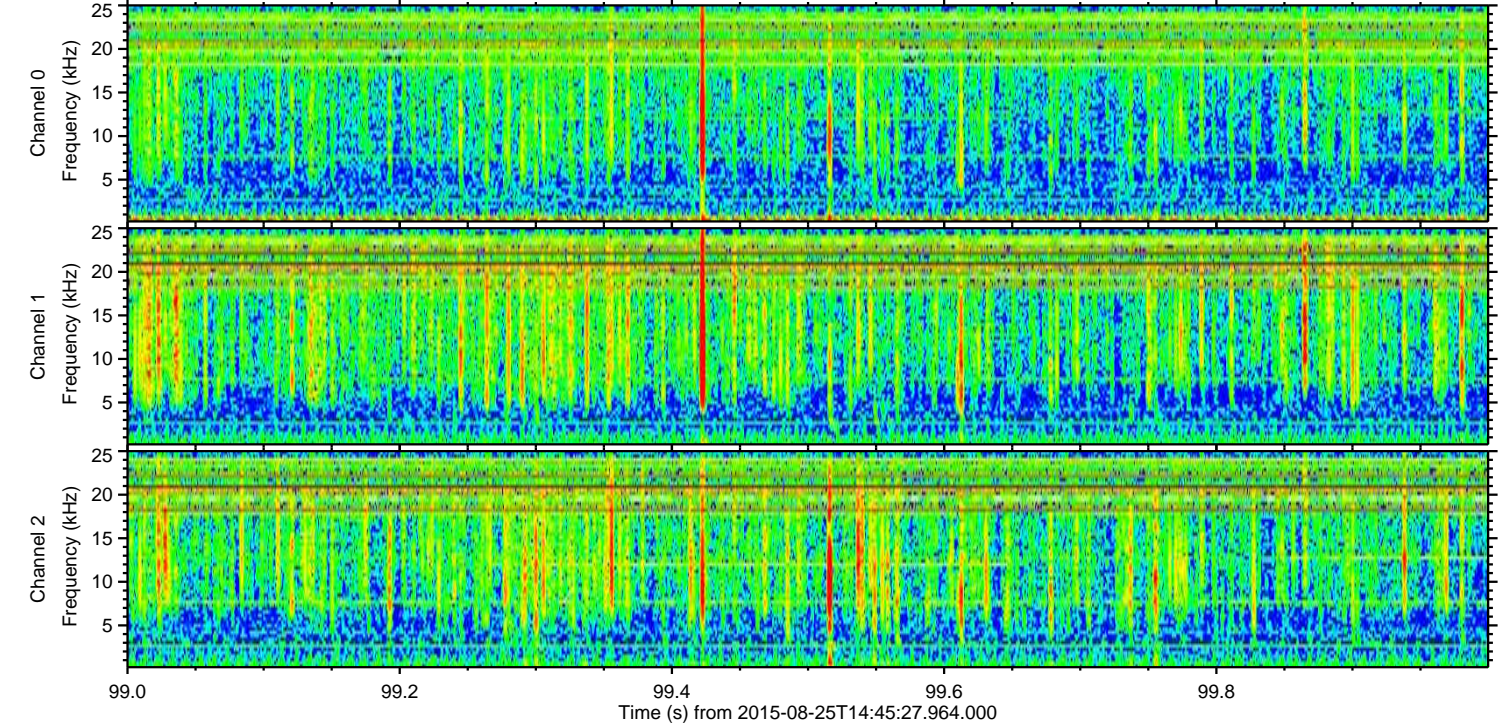
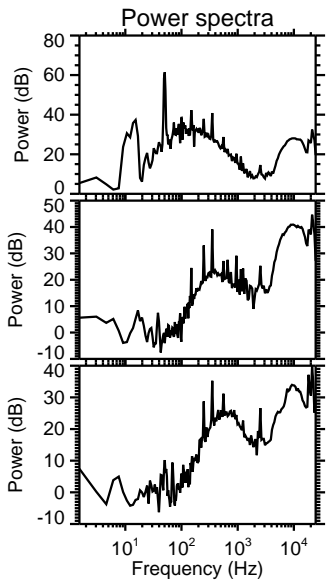
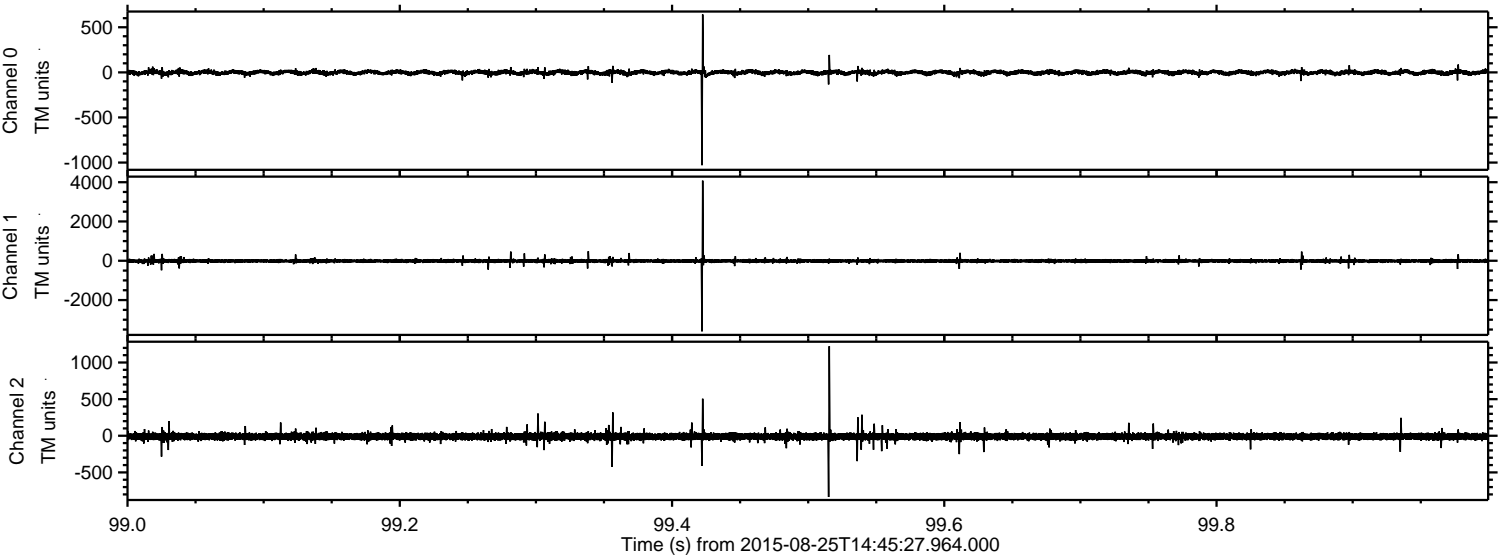
ELMAVAN 3D WAVEFORMS (Measured data sampled at 50 kHz) 51000 packets of 144 samples from 2015-08-25T14:45:27.964.000. Part 134/147

Processed Tue Oct 6 21:58:14 2015 by ELM ver.2012-10-06 from 001__elm20150825_144526__dat00.bin

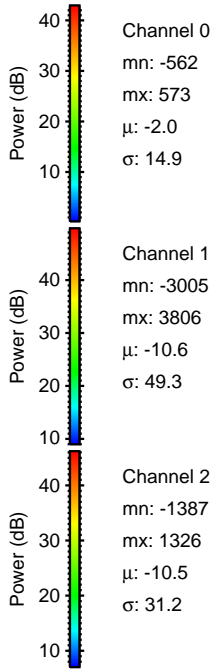
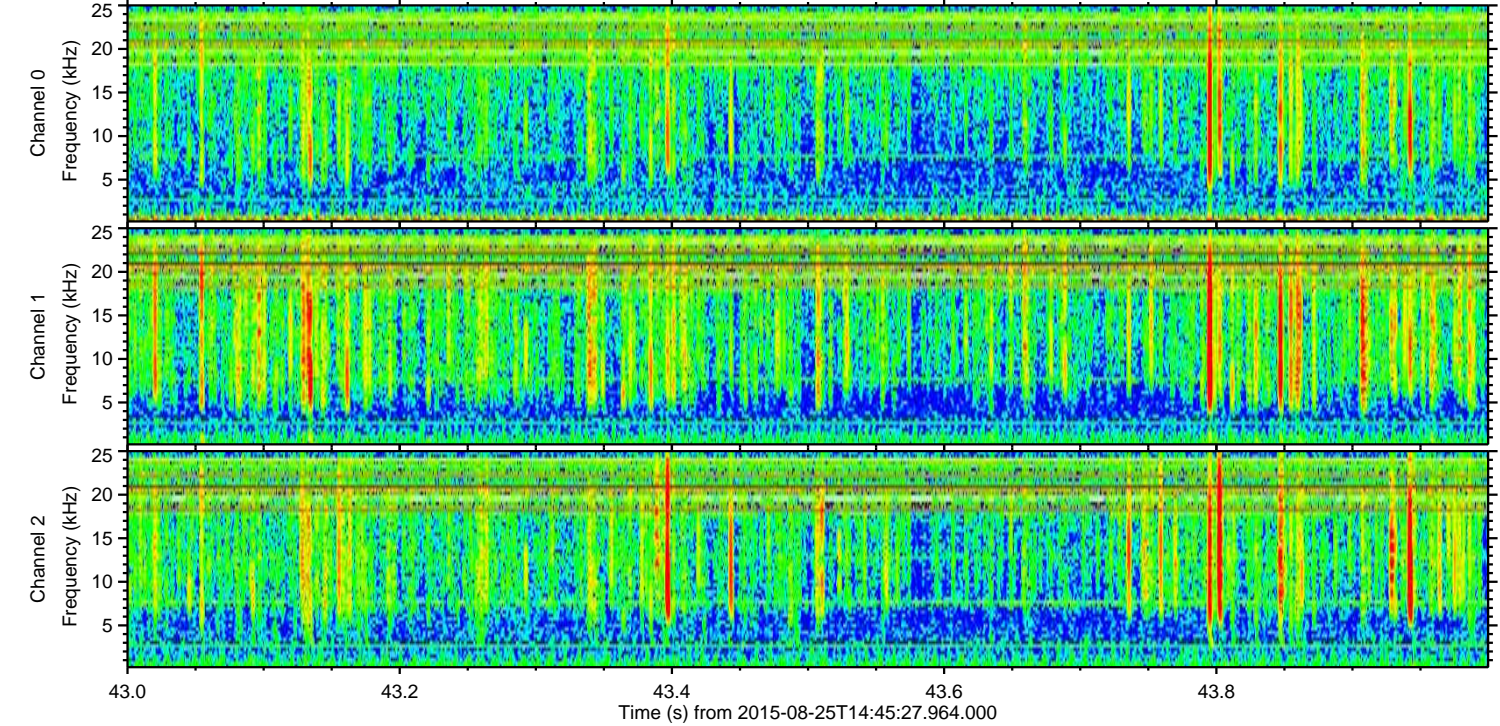
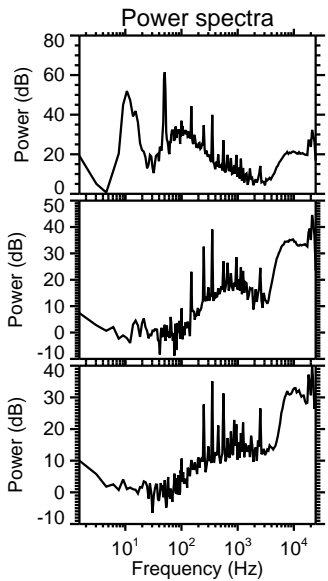
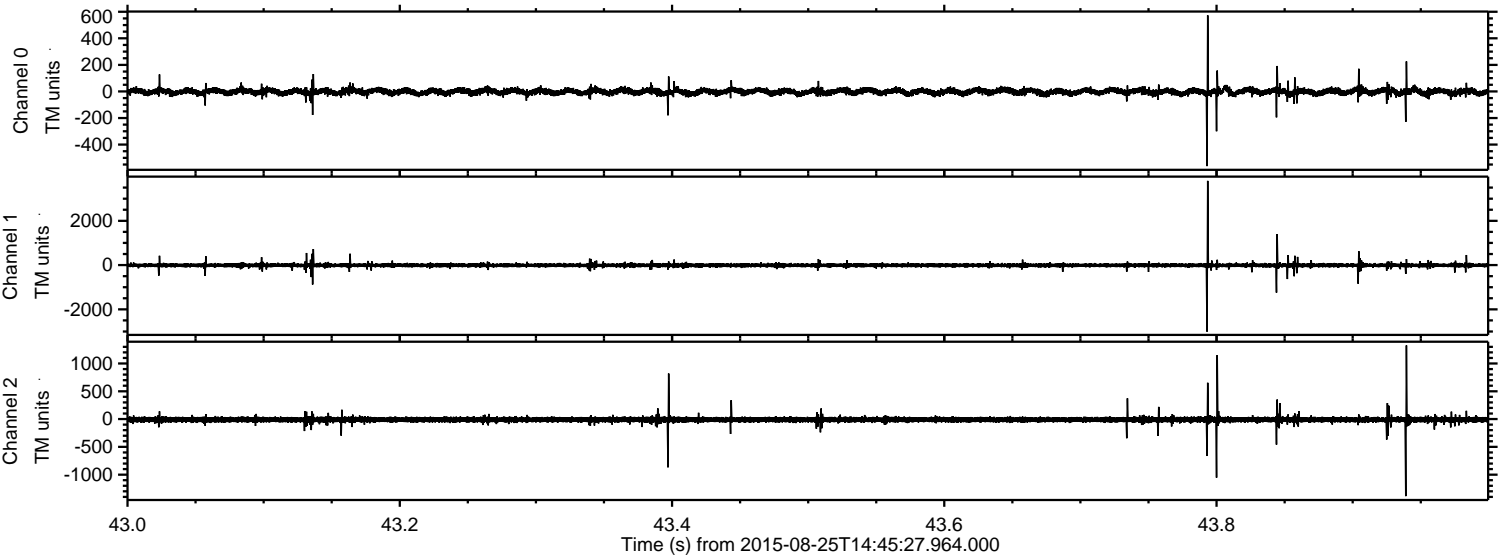


ELMAVAN 3D WAVEFORMS (Measured data sampled at 50 kHz) 51000 packets of 144 samples from 2015-08-25T14:45:27.964.000. Part 100/147

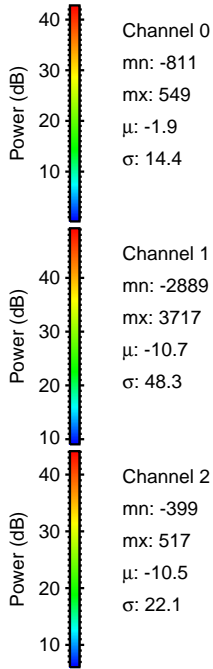
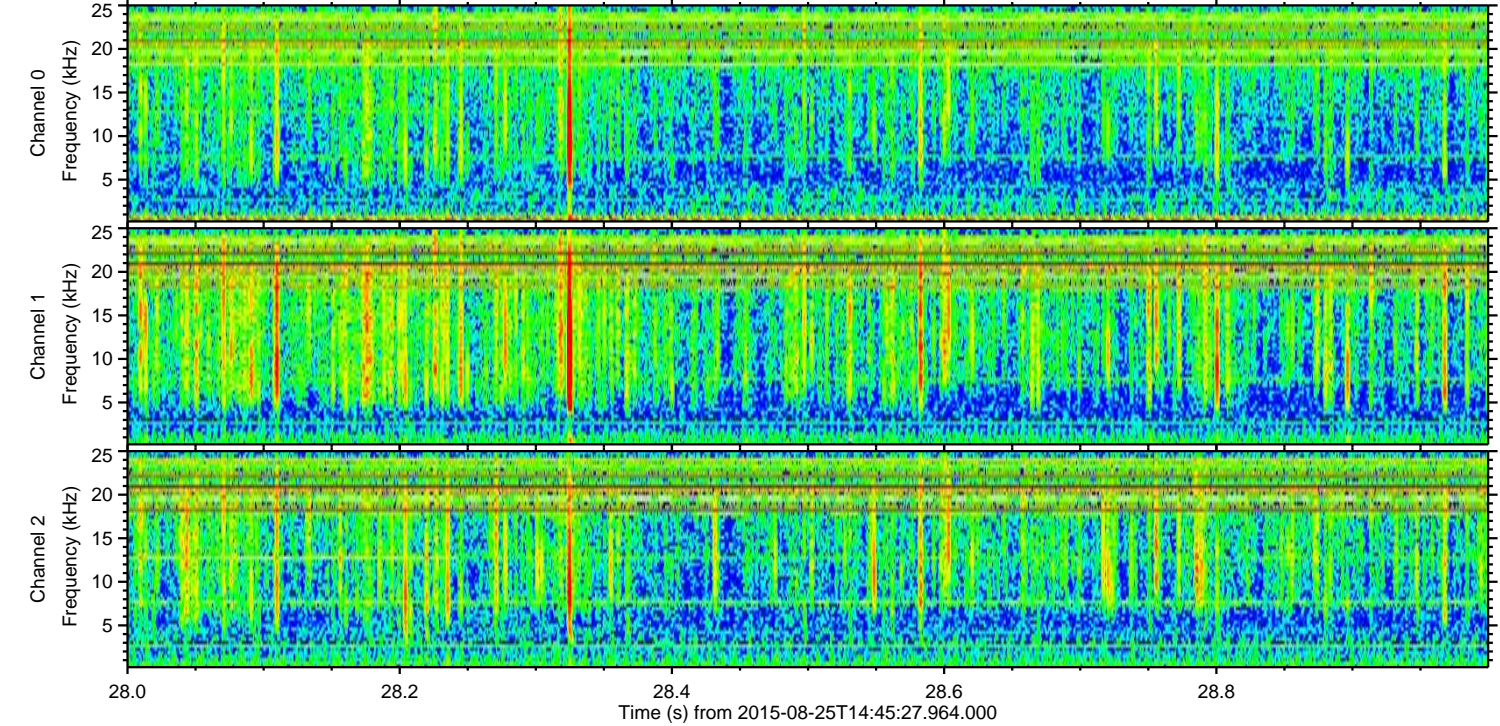
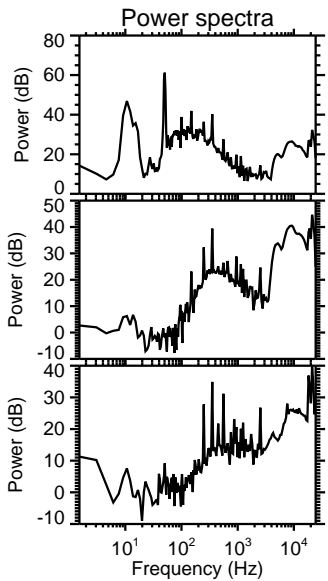
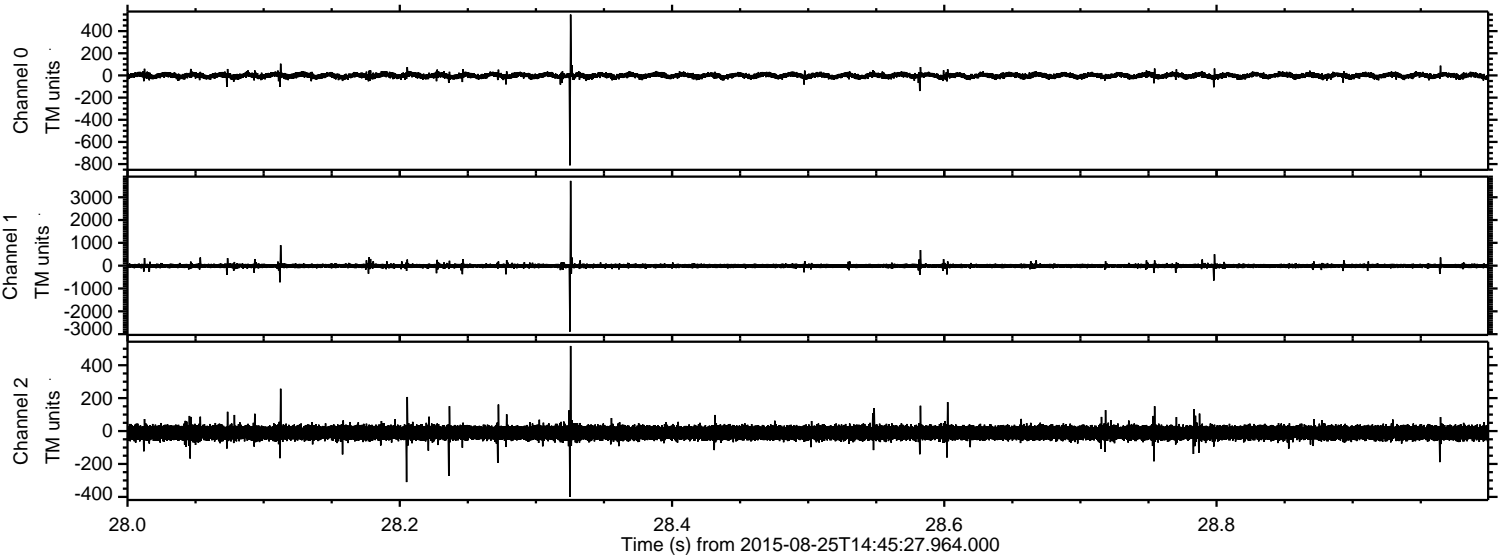
Processed Tue Oct 6 21:58:15 2015 by ELM ver.2012-10-06 from 001__elm20150825_144526__dat00.bin



Processed Tue Oct 6 21:58:16 2015 by ELM ver.2012-10-06 from 001__elm20150825_144526__dat00.bin



Processed Tue Oct 6 21:58:17 2015 by ELM ver.2012-10-06 from 001__elm20150825_144526__dat00.bin



Processed Tue Oct 6 21:58:18 2015 by ELM ver.2012-10-06 from 001__elm20150825_144526__dat00.bin

