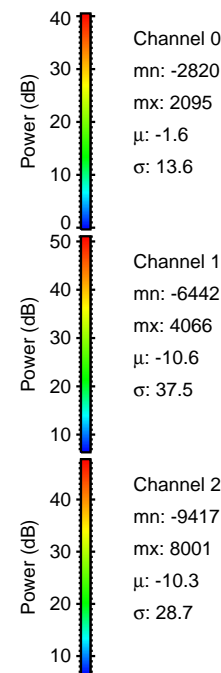
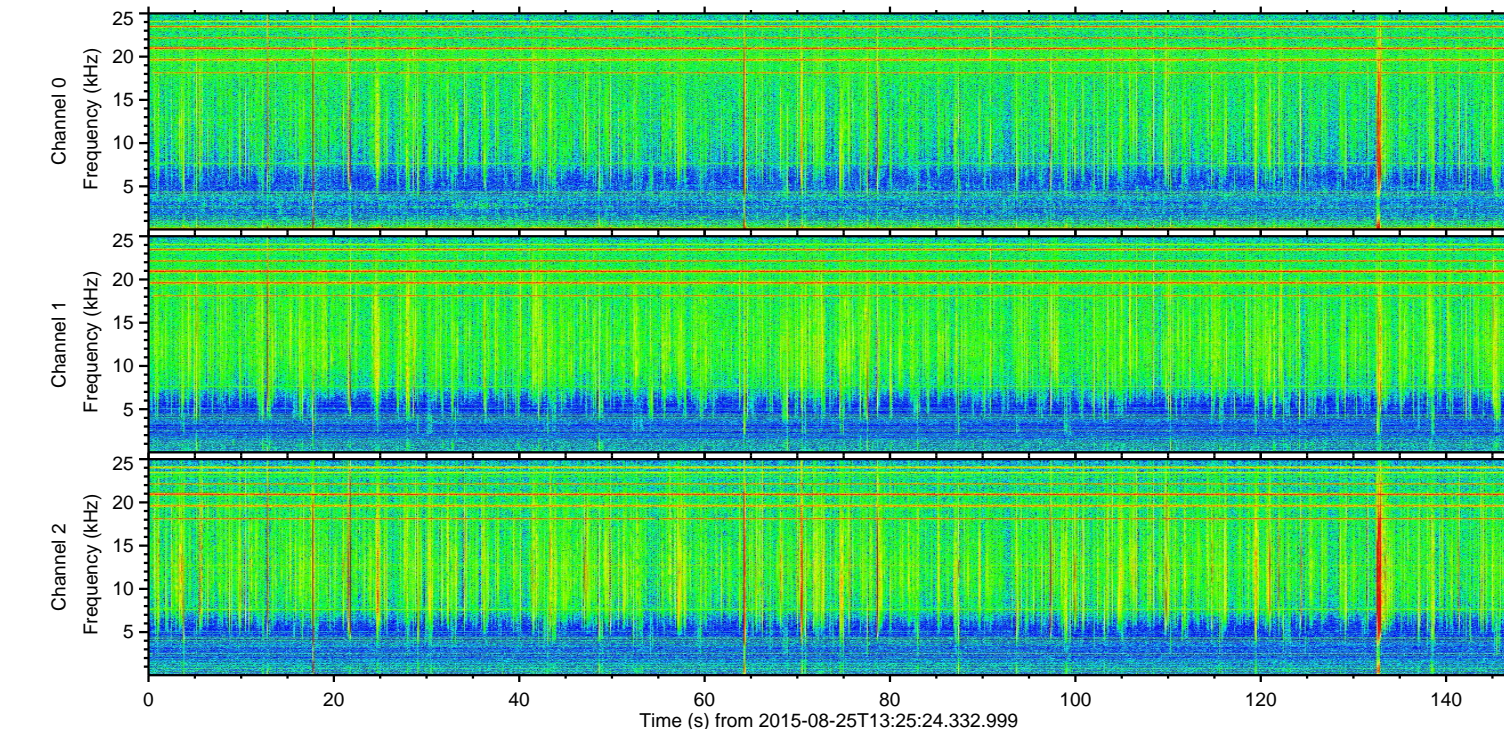
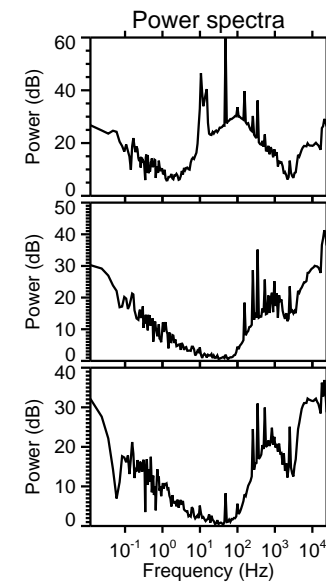
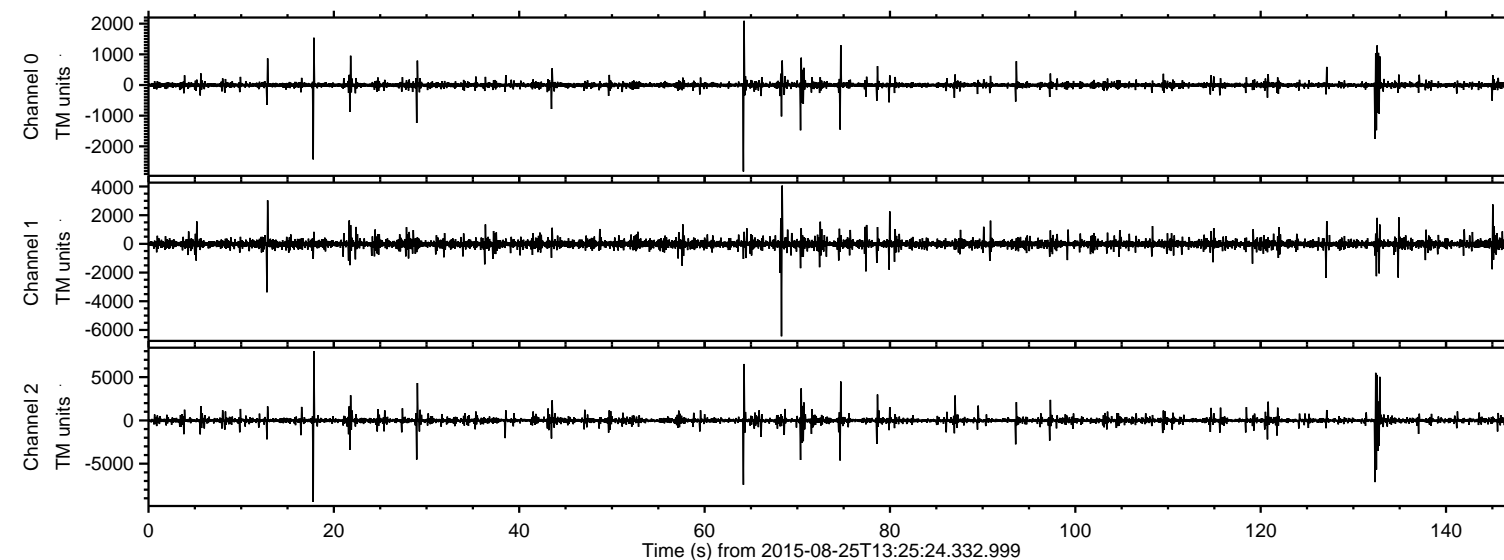


# ELMAVAN 3D WAVEFORMS (Measured data sampled at 50 kHz) 51000 packets of 144 samples from 2015-08-25T13:25:24.332.999.

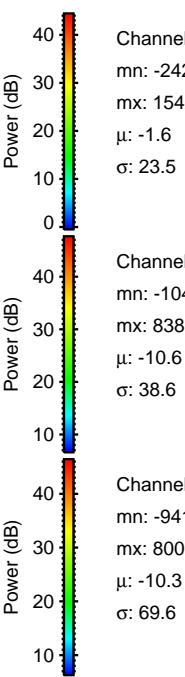
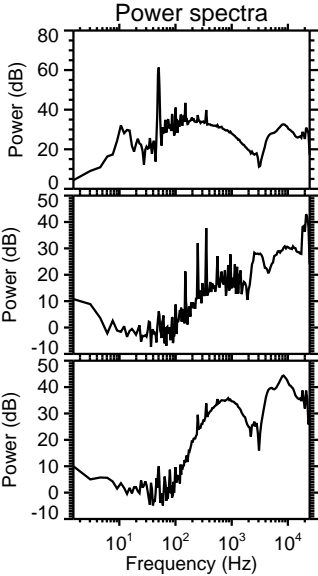
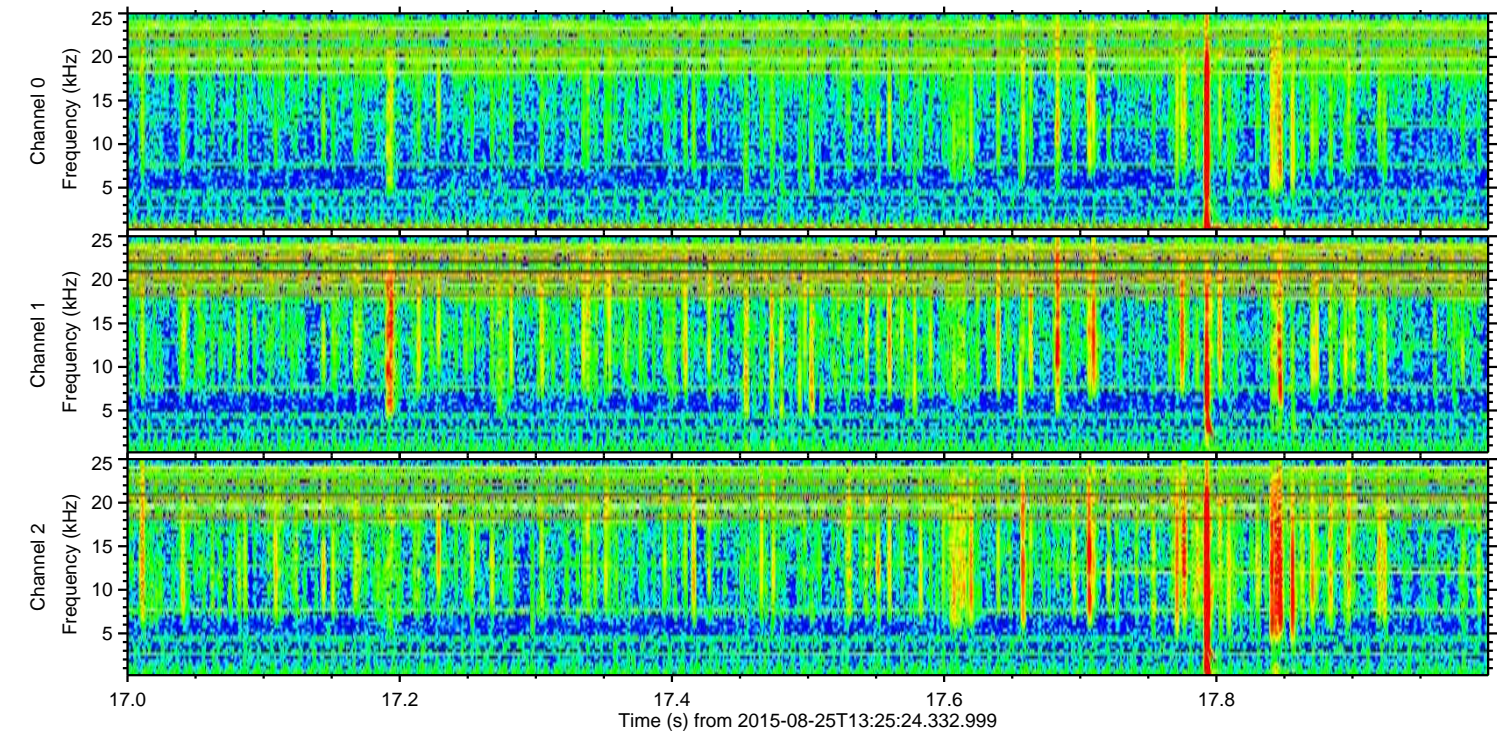
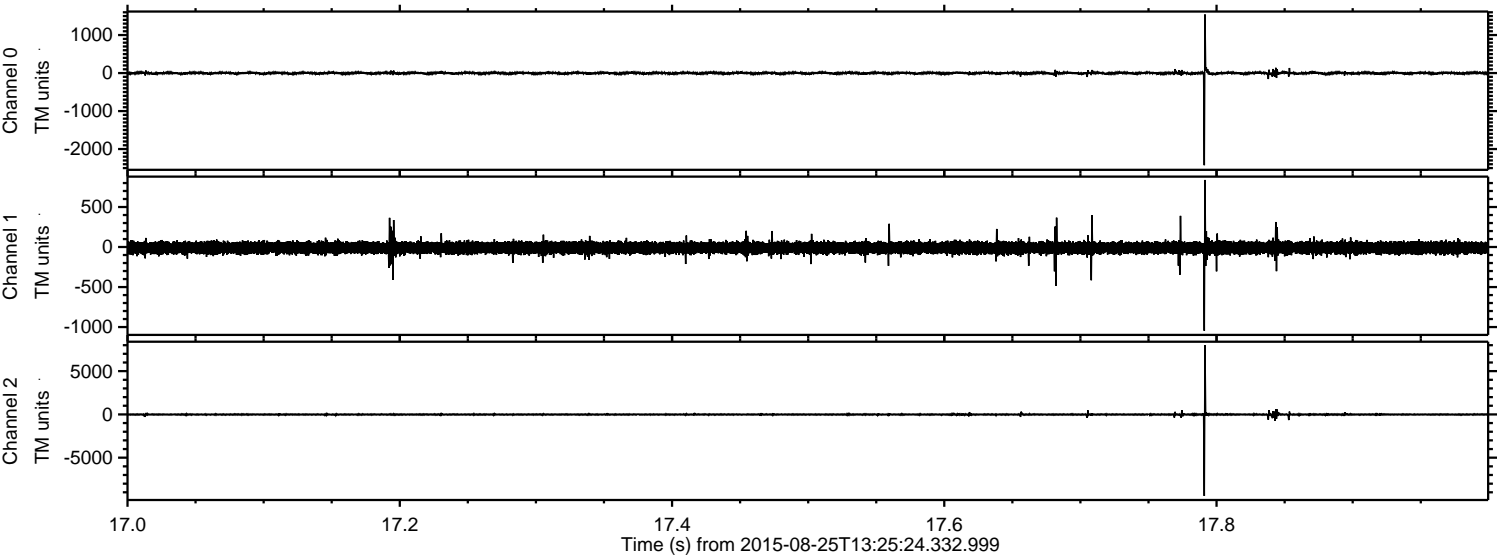
Processed Tue Oct 6 21:35:51 2015 by ELM ver.2012-10-06 from 001\_\_elm20150825\_132523\_\_dat00.bin





ELMAVAN 3D WAVEFORMS (Measured data sampled at 50 kHz) 51000 packets of 144 samples from 2015-08-25T13:25:24.332.999. Part 18/147

Processed Tue Oct 6 21:36:06 2015 by ELM ver.2012-10-06 from 001\_\_elm20150825\_132523\_\_dat00.bin



Channel 0

mn: -2425

mx: 1542

$\mu$ : -1.6

$\sigma$ : 23.5

Channel 1

mn: -1046

mx: 838

$\mu$ : -10.6

$\sigma$ : 38.6

Channel 2

mn: -9417

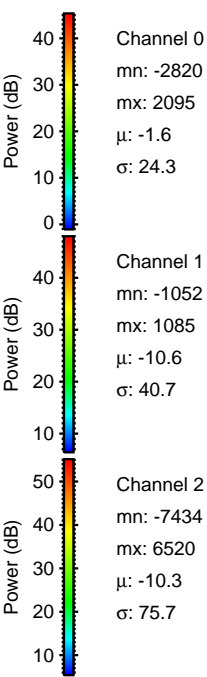
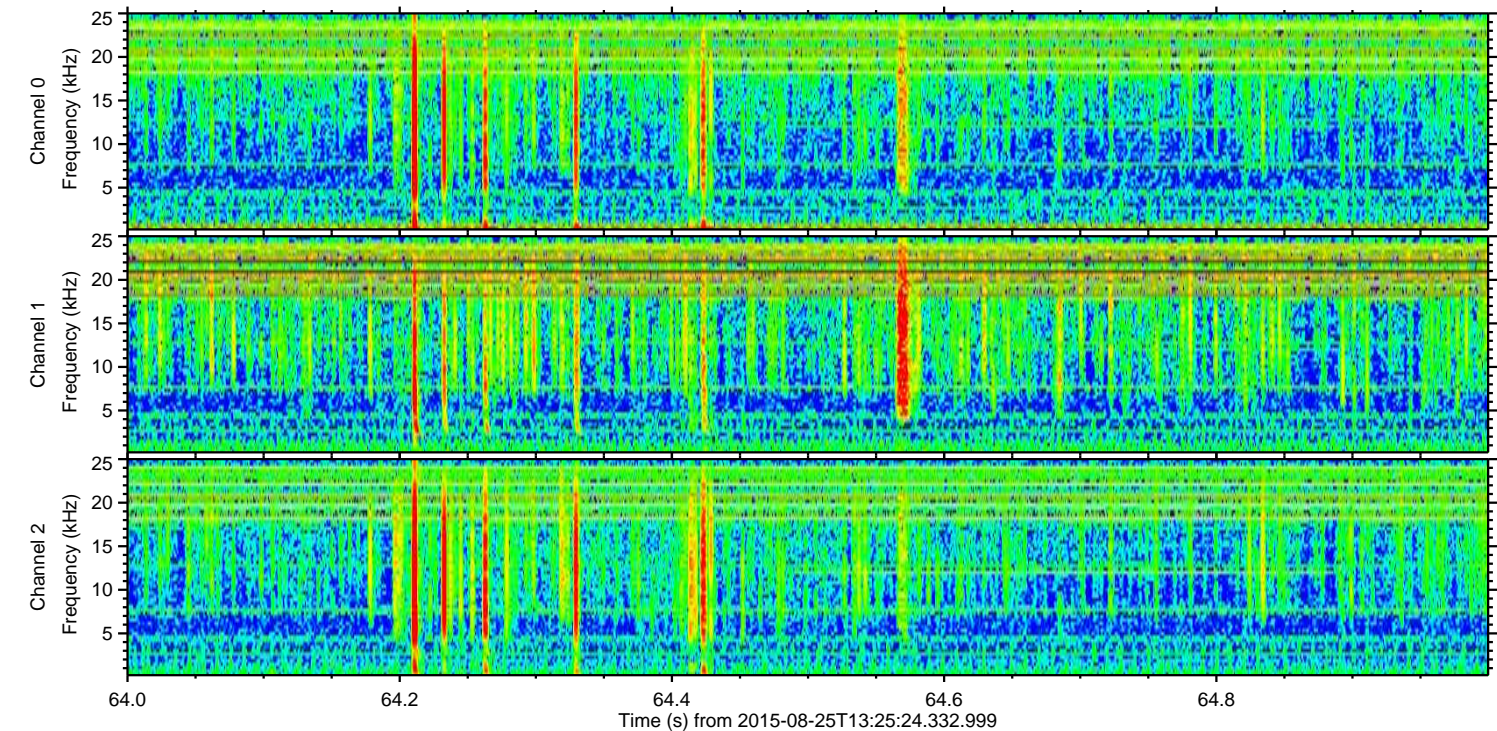
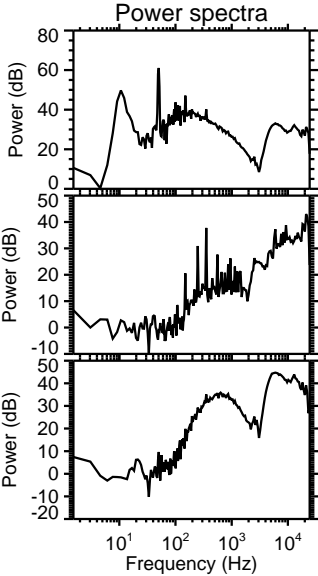
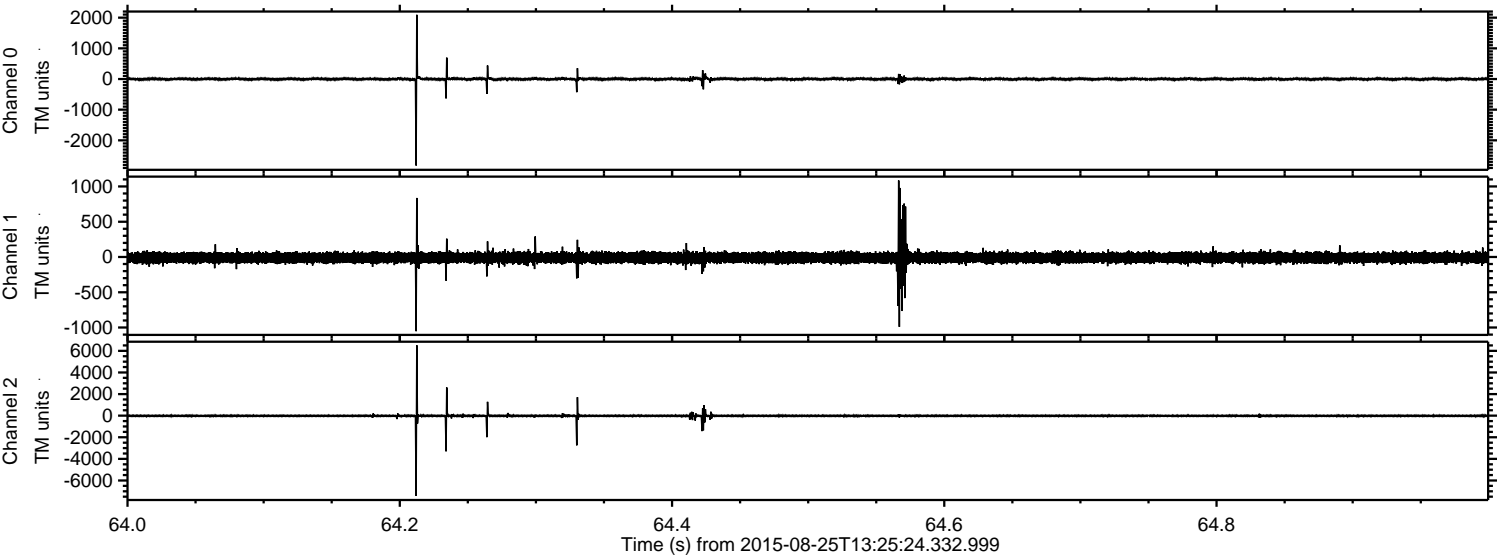
mx: 8001

$\mu$ : -10.3

$\sigma$ : 69.6



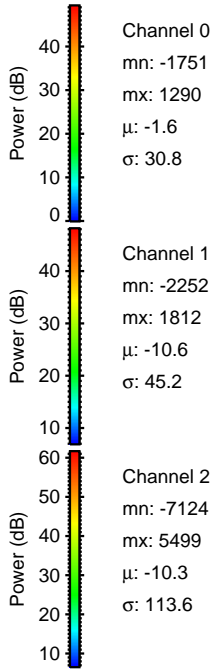
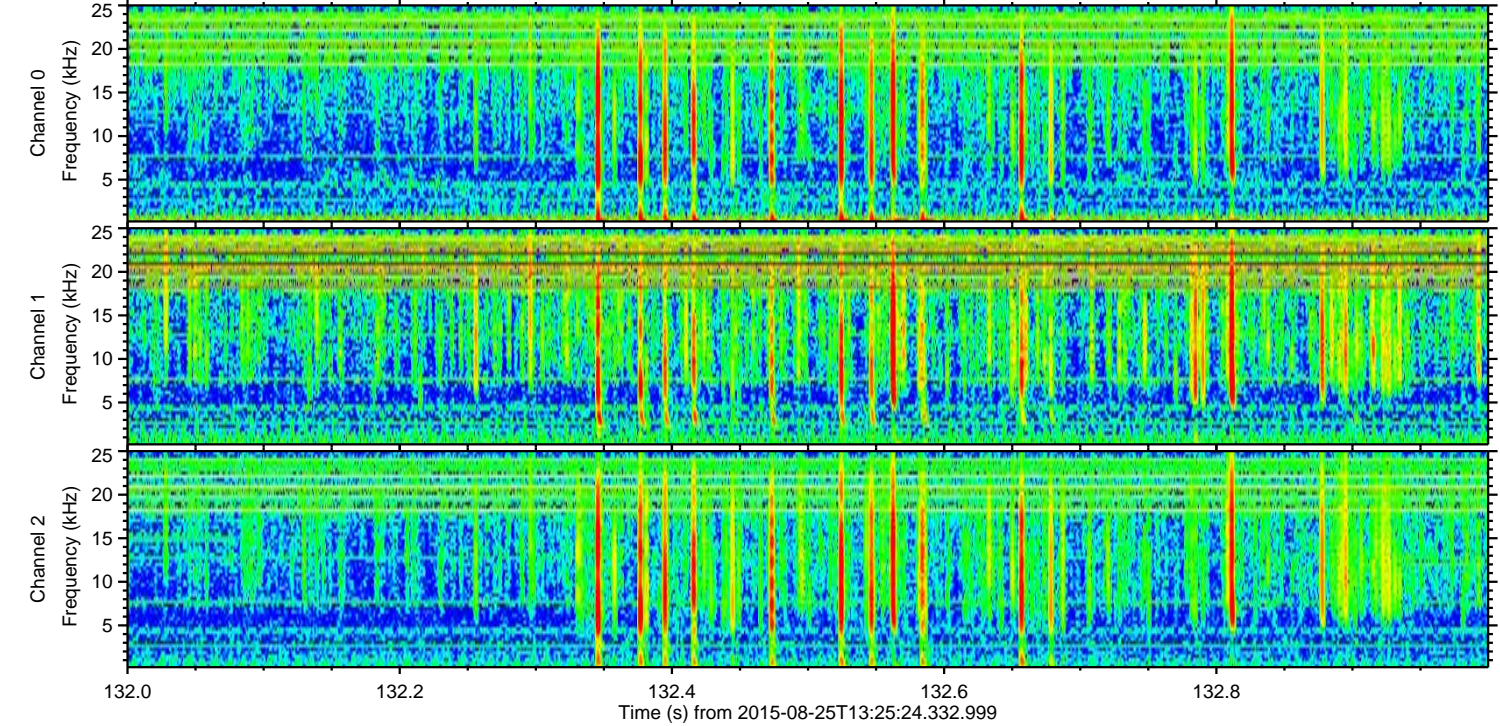
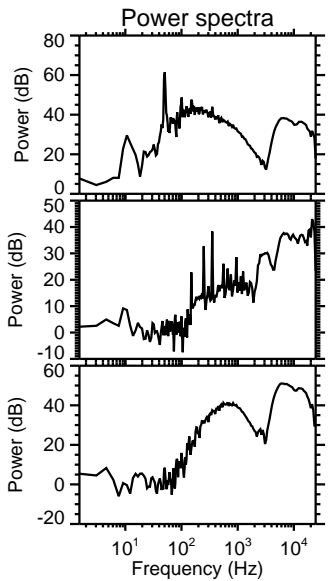
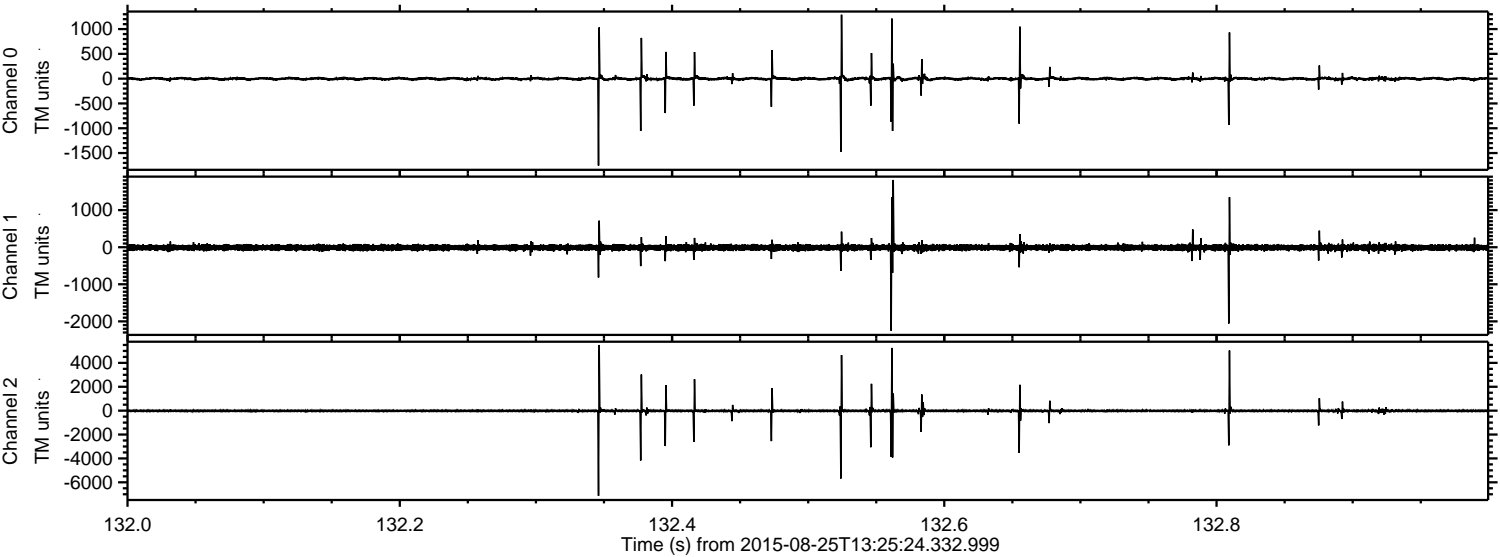
Processed Tue Oct 6 21:36:07 2015 by ELM ver.2012-10-06 from 001\_\_elm20150825\_132523\_\_dat00.bin





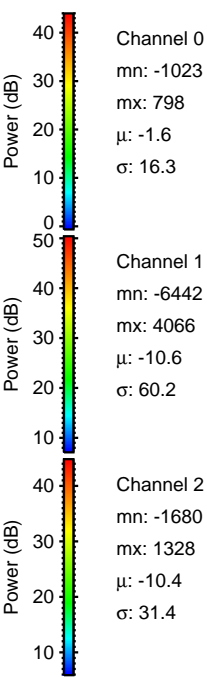
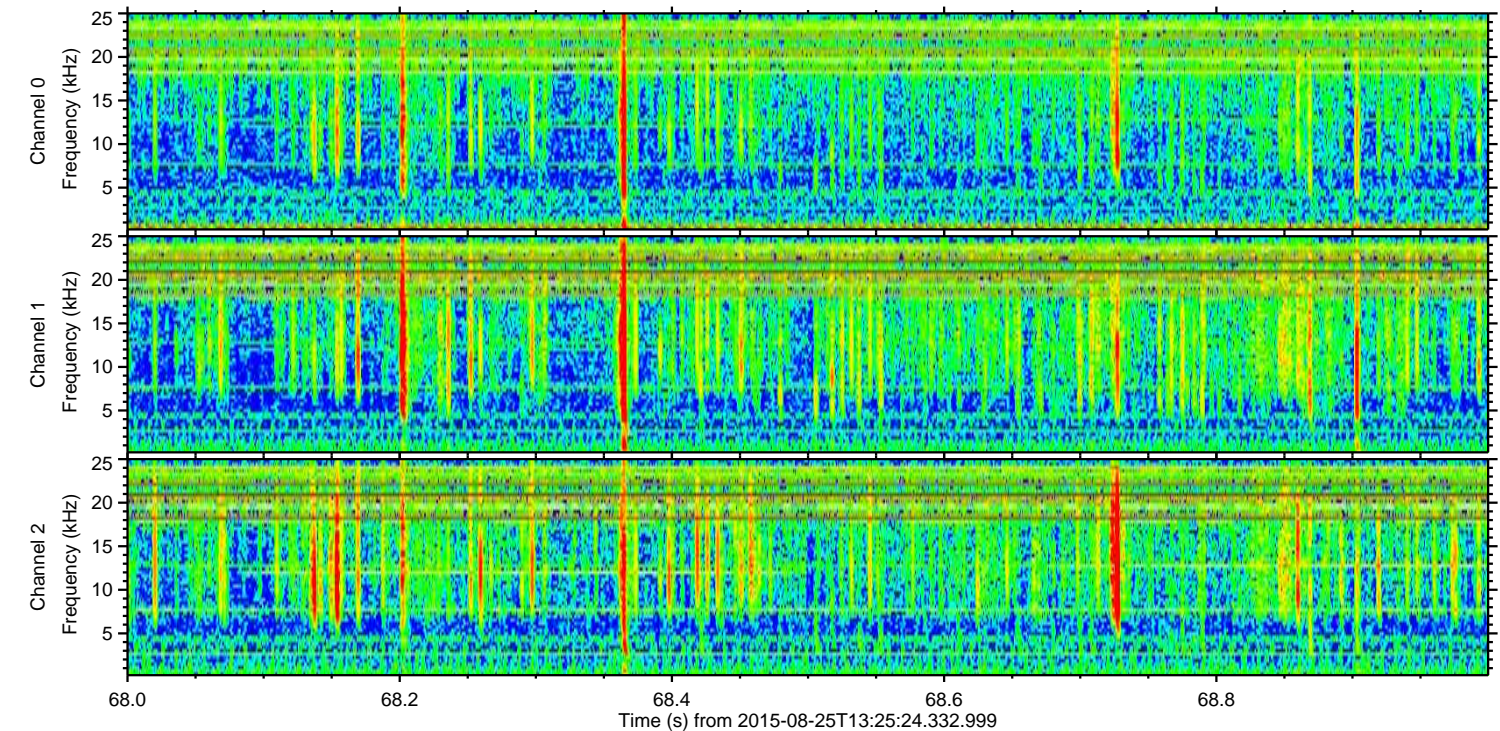
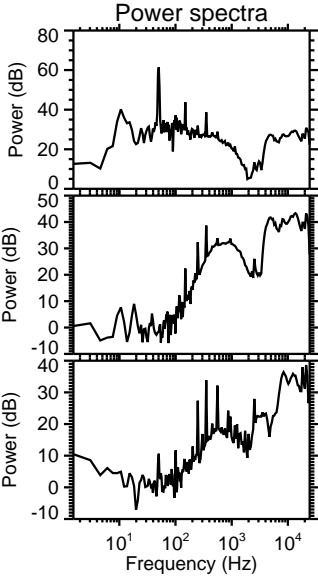
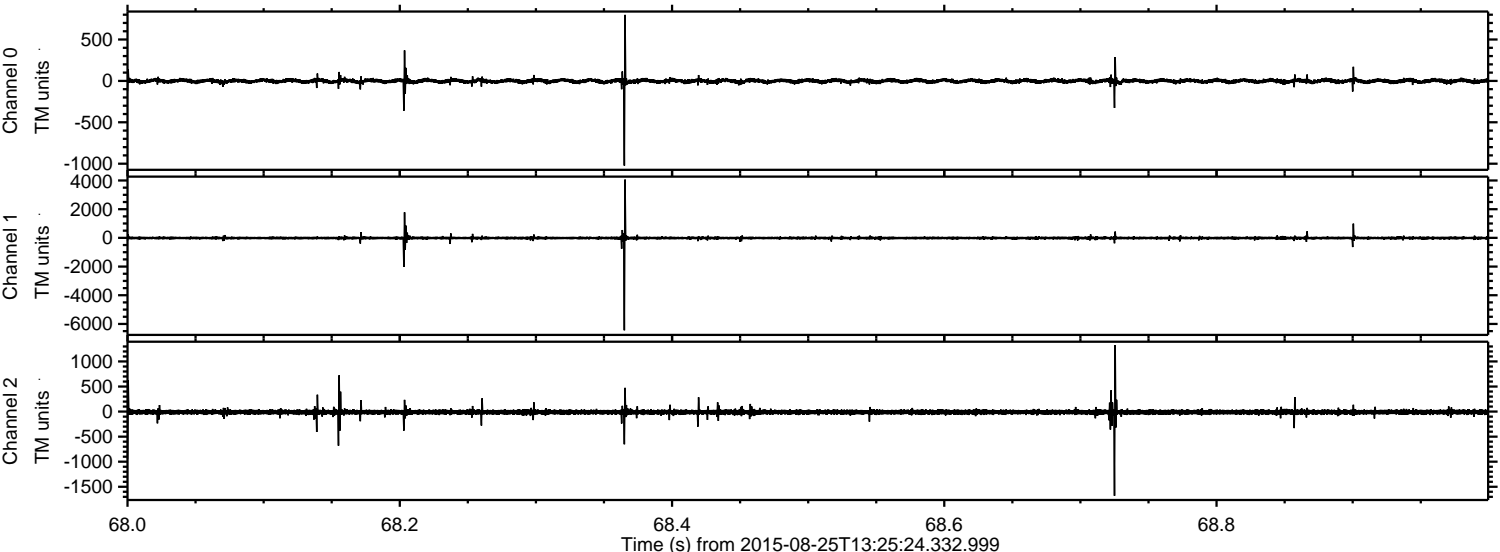
ELMAVAN 3D WAVEFORMS (Measured data sampled at 50 kHz) 51000 packets of 144 samples from 2015-08-25T13:25:24.332.999. Part 133/147

Processed Tue Oct 6 21:36:08 2015 by ELM ver.2012-10-06 from 001\_\_elm20150825\_132523\_\_dat00.bin





Processed Tue Oct 6 21:36:09 2015 by ELM ver.2012-10-06 from 001\_\_elm20150825\_132523\_\_dat00.bin



Channel 0  
mn: -1023  
mx: 798  
 $\mu$ : -1.6  
 $\sigma$ : 16.3

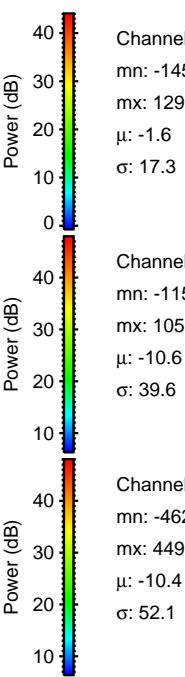
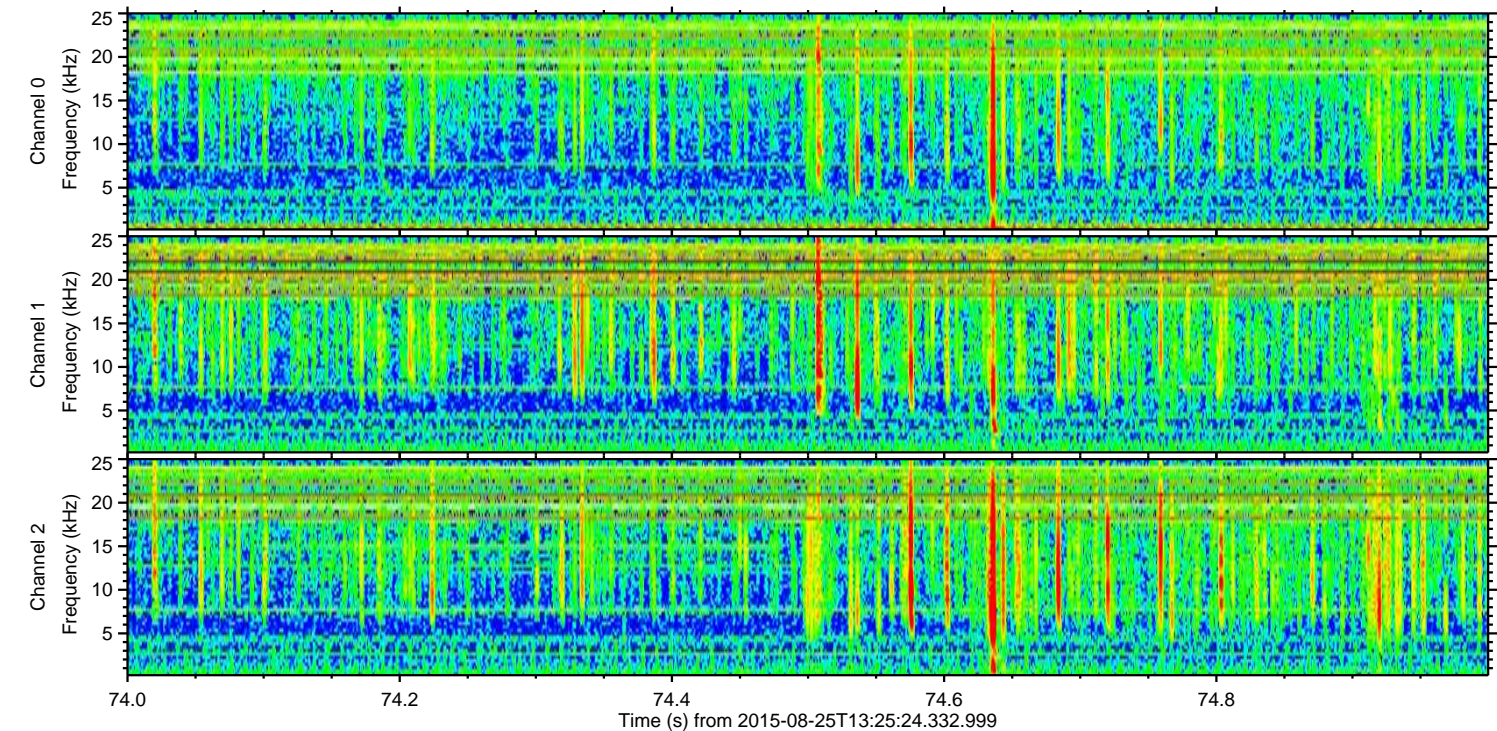
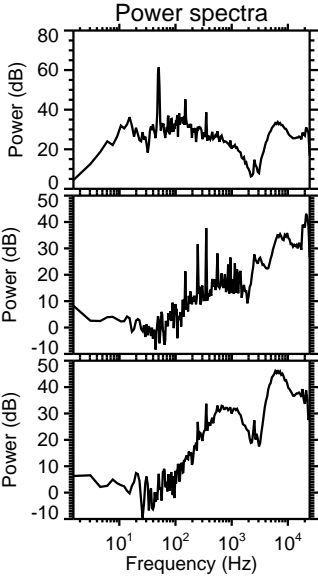
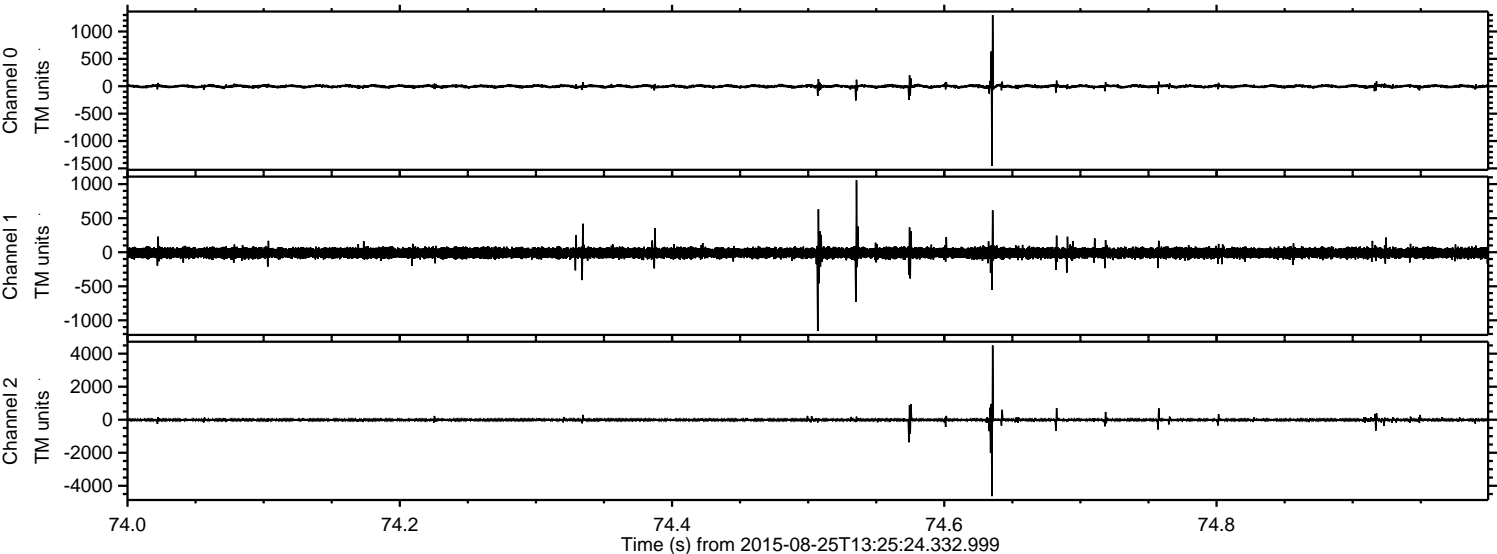
Channel 1  
mn: -6442  
mx: 4066  
 $\mu$ : -10.6  
 $\sigma$ : 60.2

Channel 2  
mn: -1680  
mx: 1328  
 $\mu$ : -10.4  
 $\sigma$ : 31.4



ELMAVAN 3D WAVEFORMS (Measured data sampled at 50 kHz) 51000 packets of 144 samples from 2015-08-25T13:25:24.332.999. Part 75/147

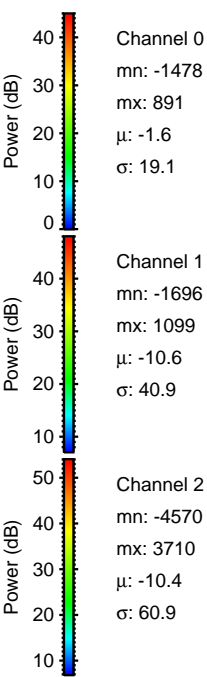
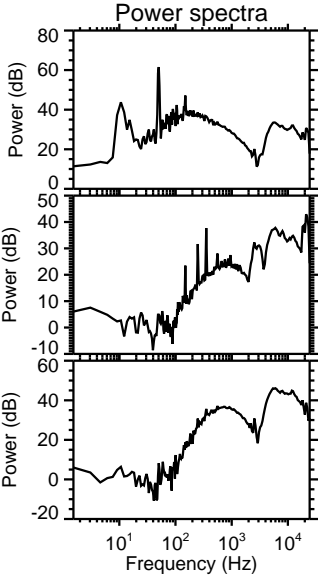
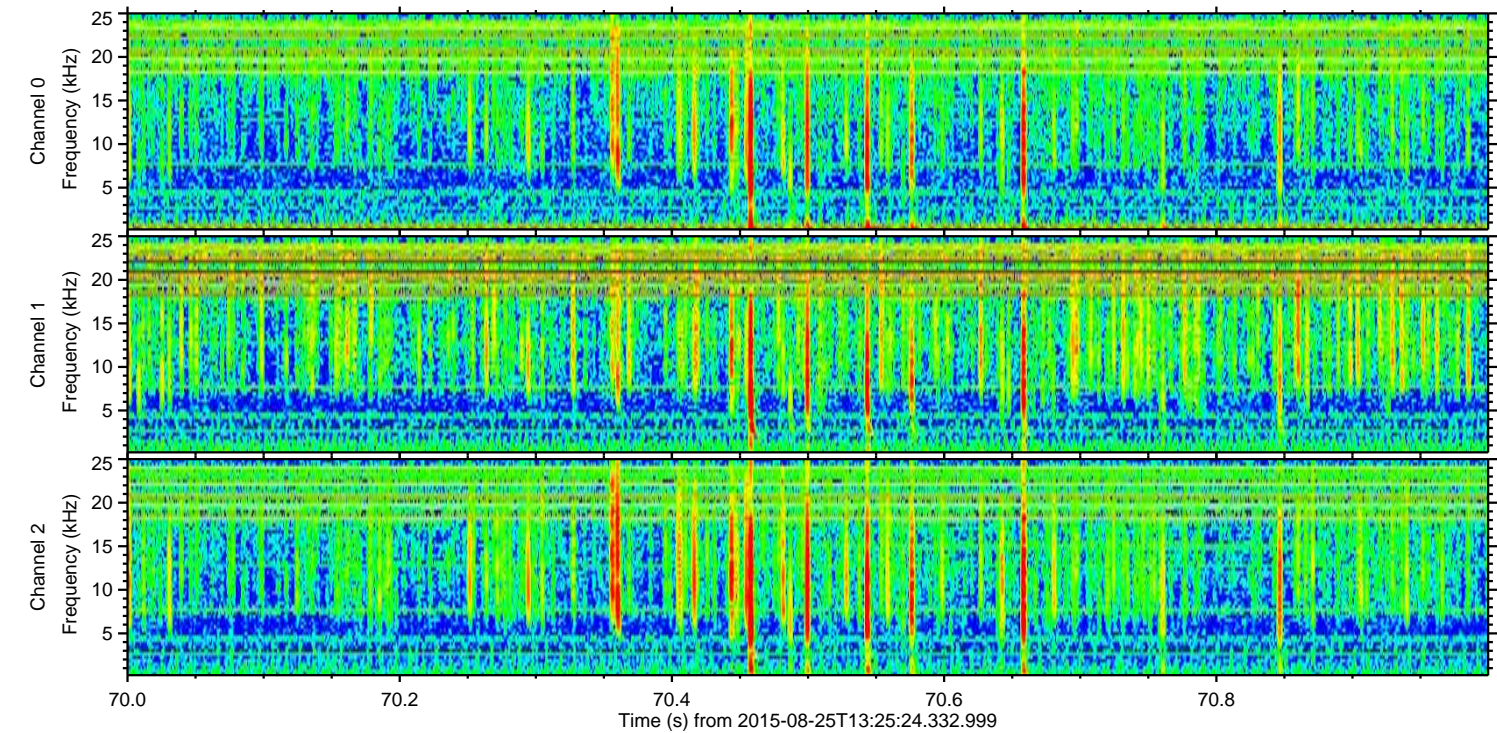
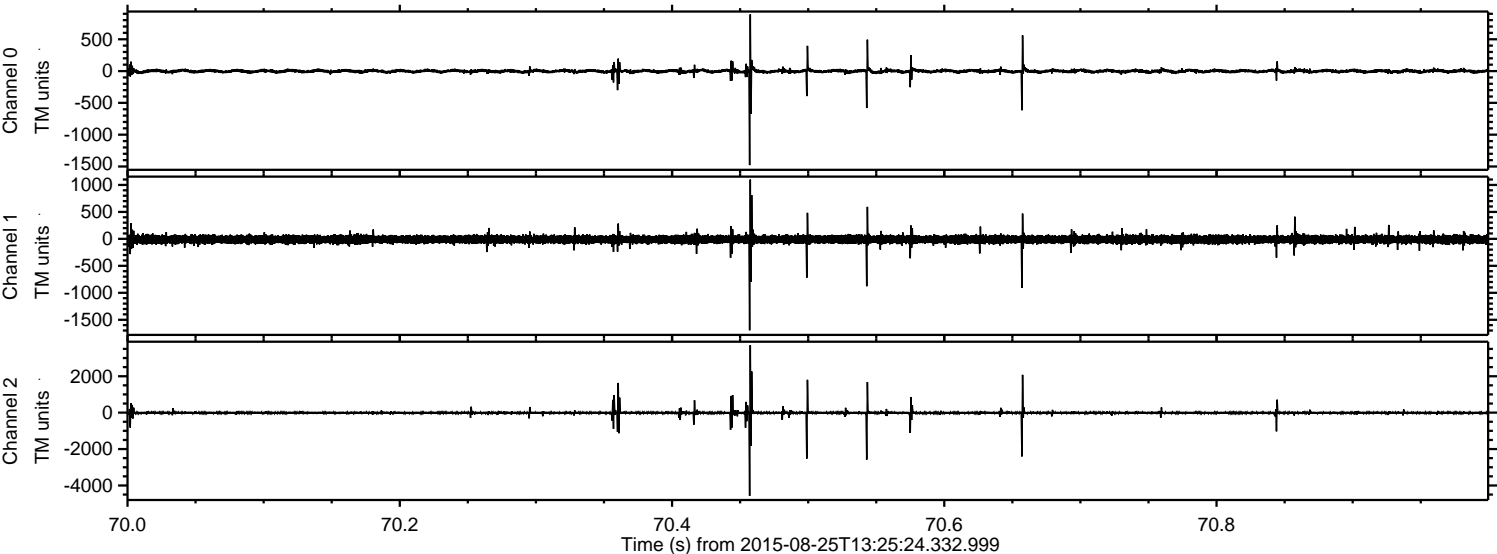
Processed Tue Oct 6 21:36:10 2015 by ELM ver.2012-10-06 from 001\_\_elm20150825\_132523\_\_dat00.bin





ELMAVAN 3D WAVEFORMS (Measured data sampled at 50 kHz) 51000 packets of 144 samples from 2015-08-25T13:25:24.332.999. Part 71/147

Processed Tue Oct 6 21:36:11 2015 by ELM ver.2012-10-06 from 001\_\_elm20150825\_132523\_\_dat00.bin



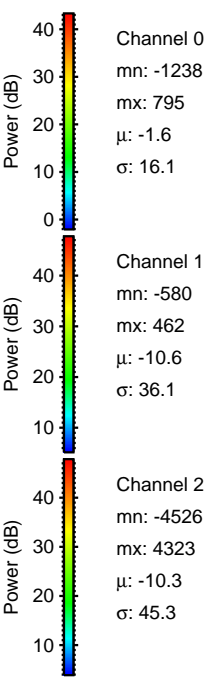
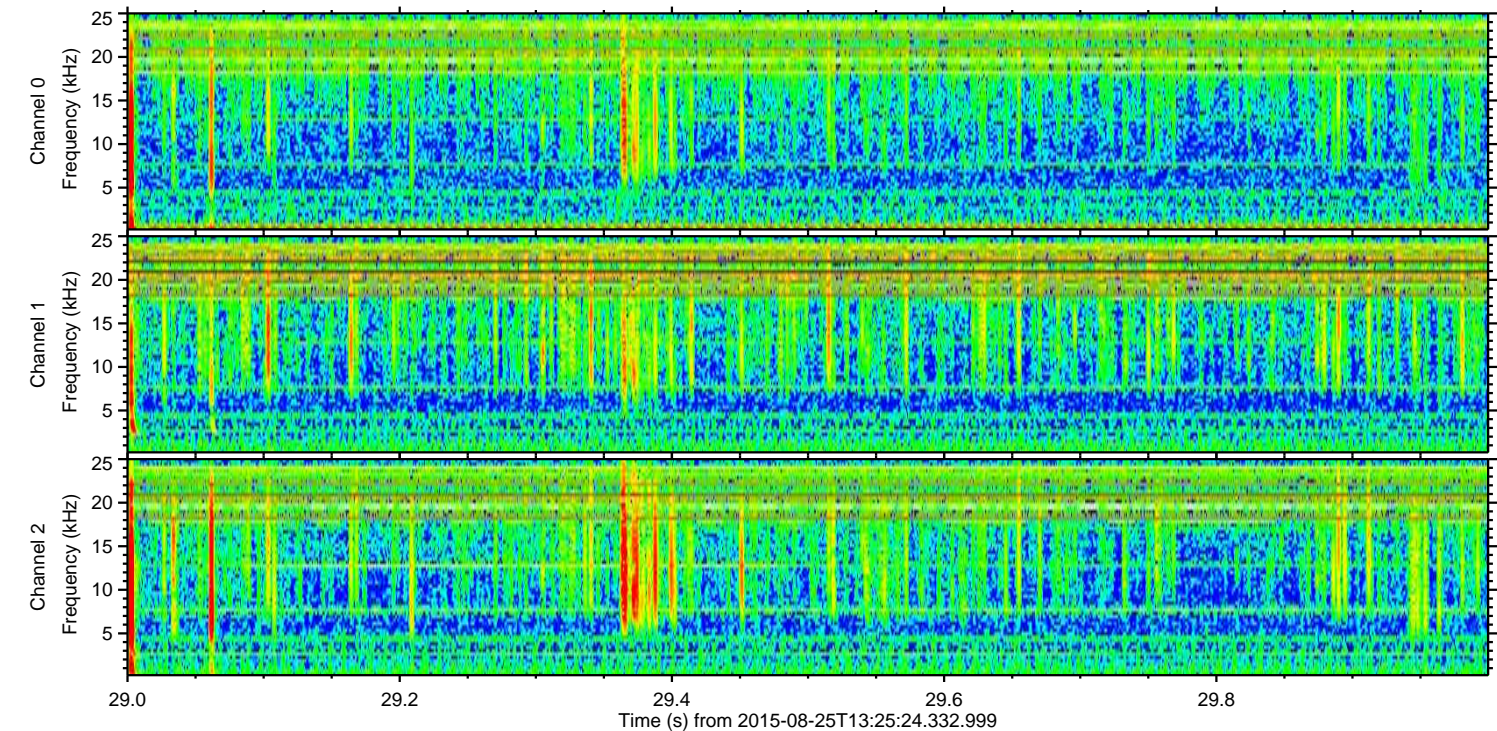
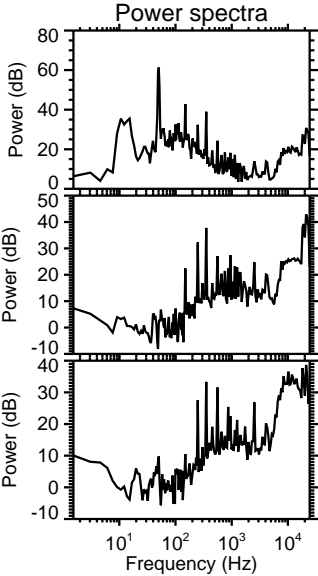
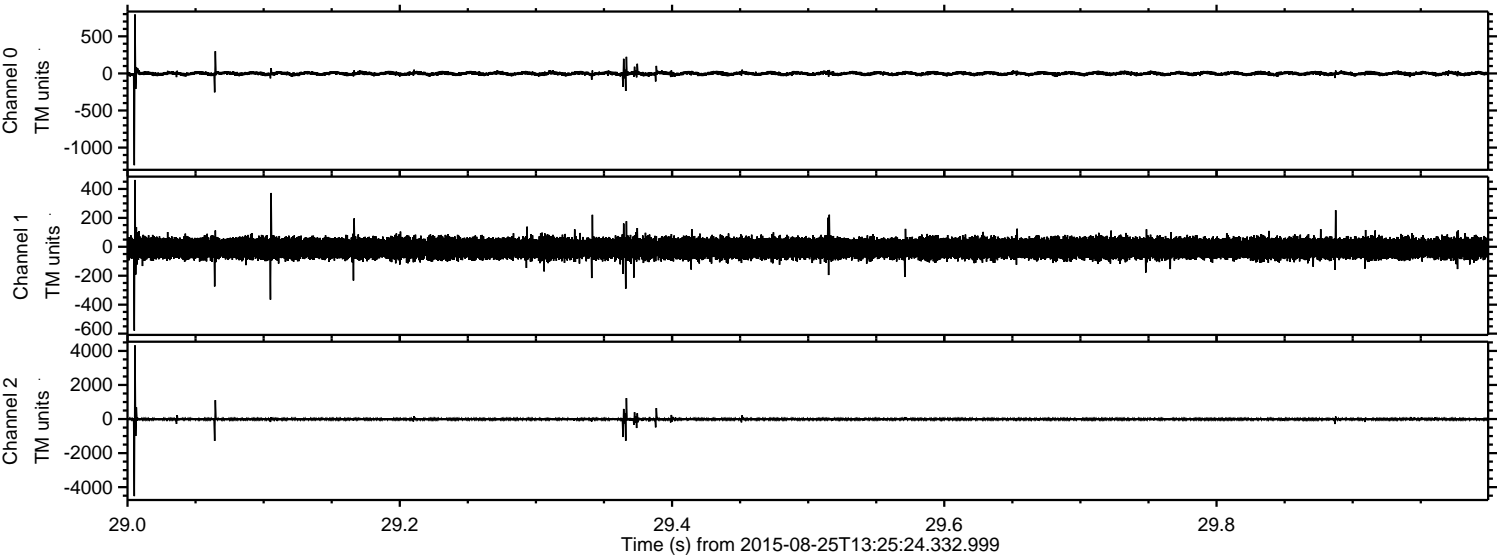
Channel 0  
mn: -1478  
mx: 891  
 $\mu$ : -1.6  
 $\sigma$ : 19.1

Channel 1  
mn: -1696  
mx: 1099  
 $\mu$ : -10.6  
 $\sigma$ : 40.9

Channel 2  
mn: -4570  
mx: 3710  
 $\mu$ : -10.4  
 $\sigma$ : 60.9

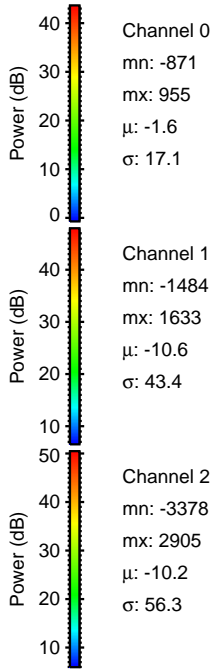
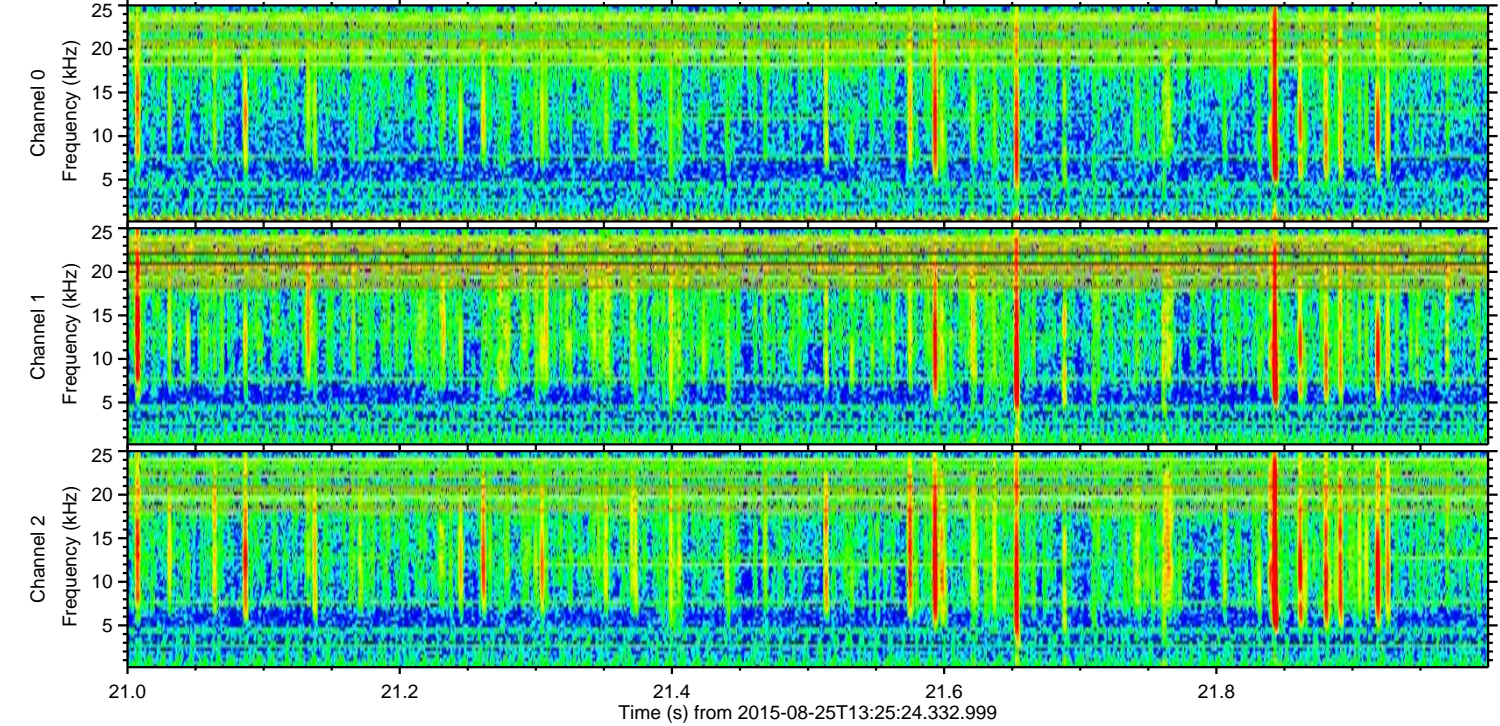
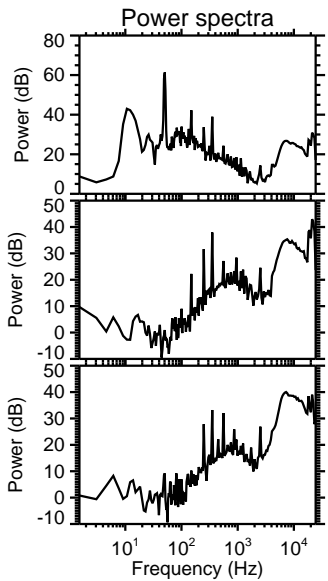
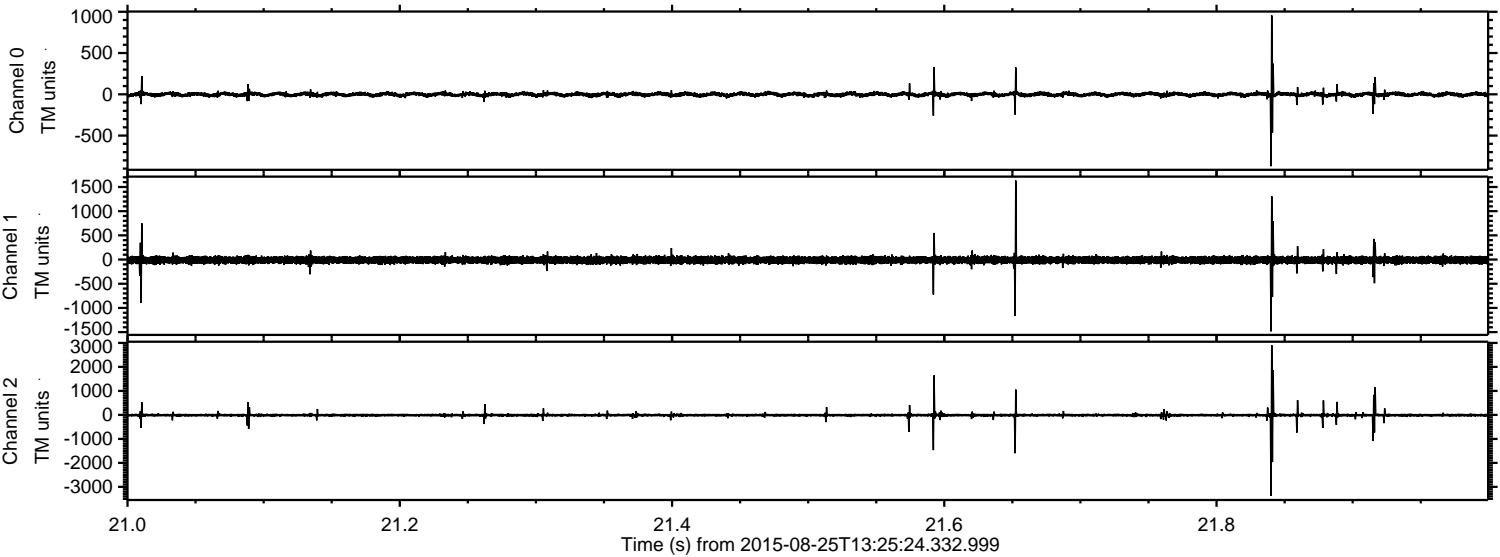


Processed Tue Oct 6 21:36:12 2015 by ELM ver.2012-10-06 from 001\_\_elm20150825\_132523\_\_dat00.bin





Processed Tue Oct 6 21:36:13 2015 by ELM ver.2012-10-06 from 001\_\_elm20150825\_132523\_\_dat00.bin



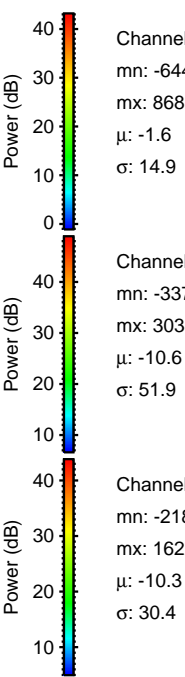
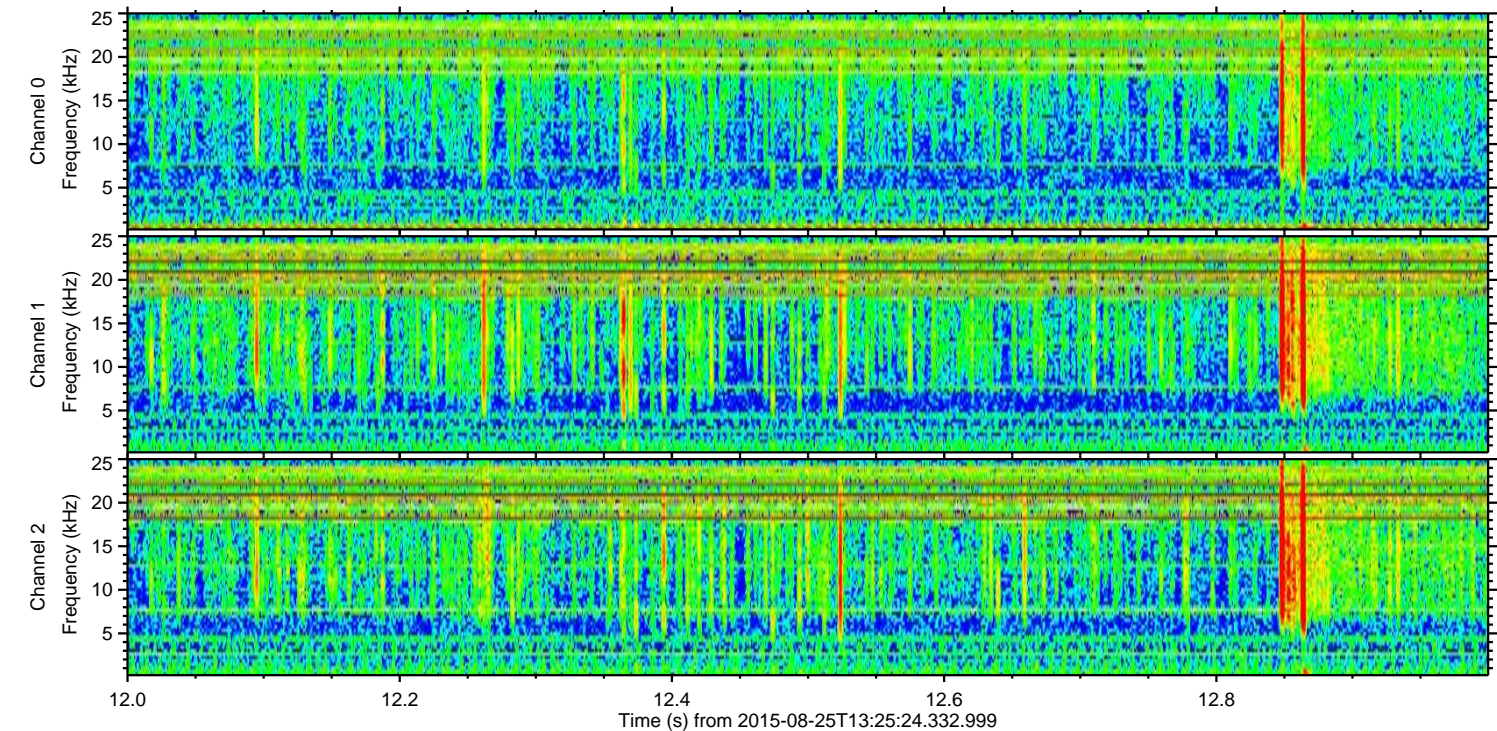
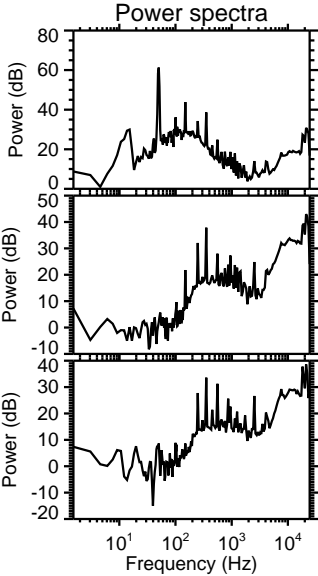
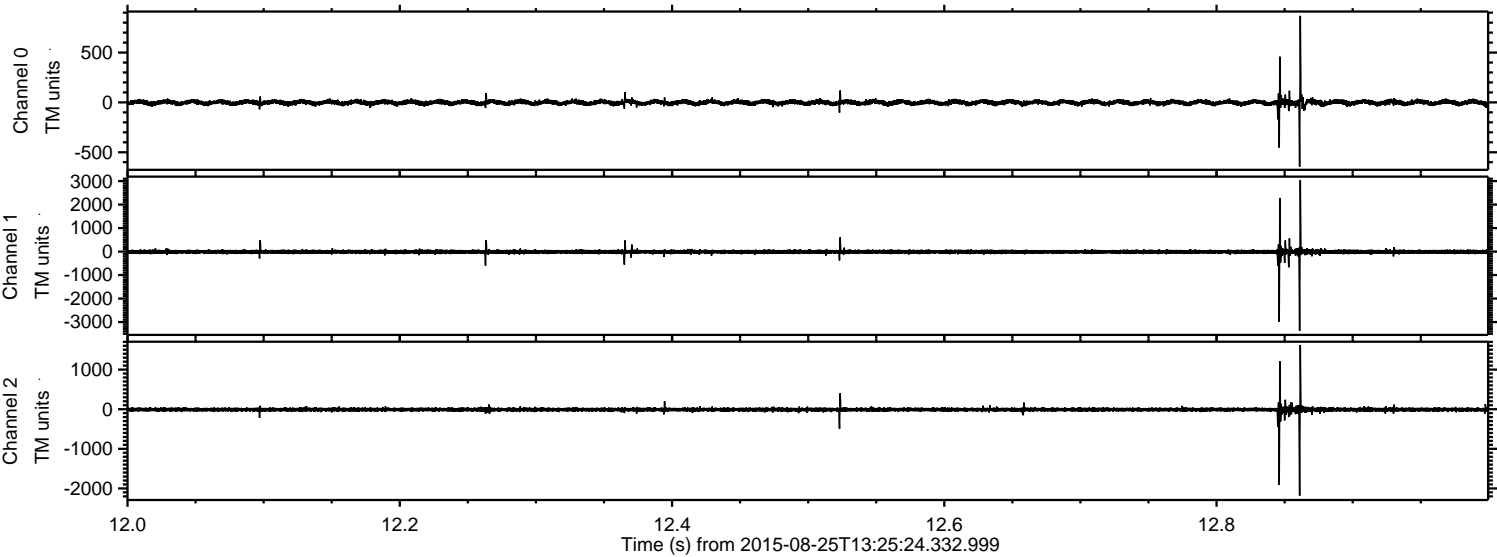
Channel 0  
mn: -871  
mx: 955  
 $\mu$ : -1.6  
 $\sigma$ : 17.1

Channel 1  
mn: -1484  
mx: 1633  
 $\mu$ : -10.6  
 $\sigma$ : 43.4

Channel 2  
mn: -3378  
mx: 2905  
 $\mu$ : -10.2  
 $\sigma$ : 56.3



Processed Tue Oct 6 21:36:14 2015 by ELM ver.2012-10-06 from 001\_\_elm20150825\_132523\_\_dat00.bin





Processed Tue Oct 6 21:36:15 2015 by ELM ver.2012-10-06 from 001\_\_elm20150825\_132523\_\_dat00.bin

