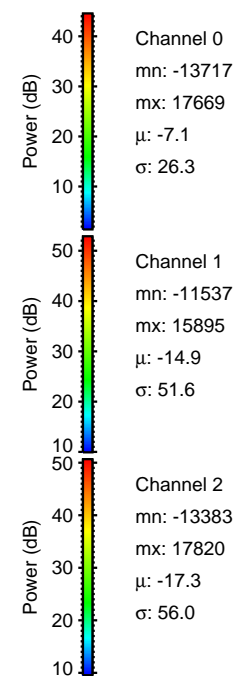
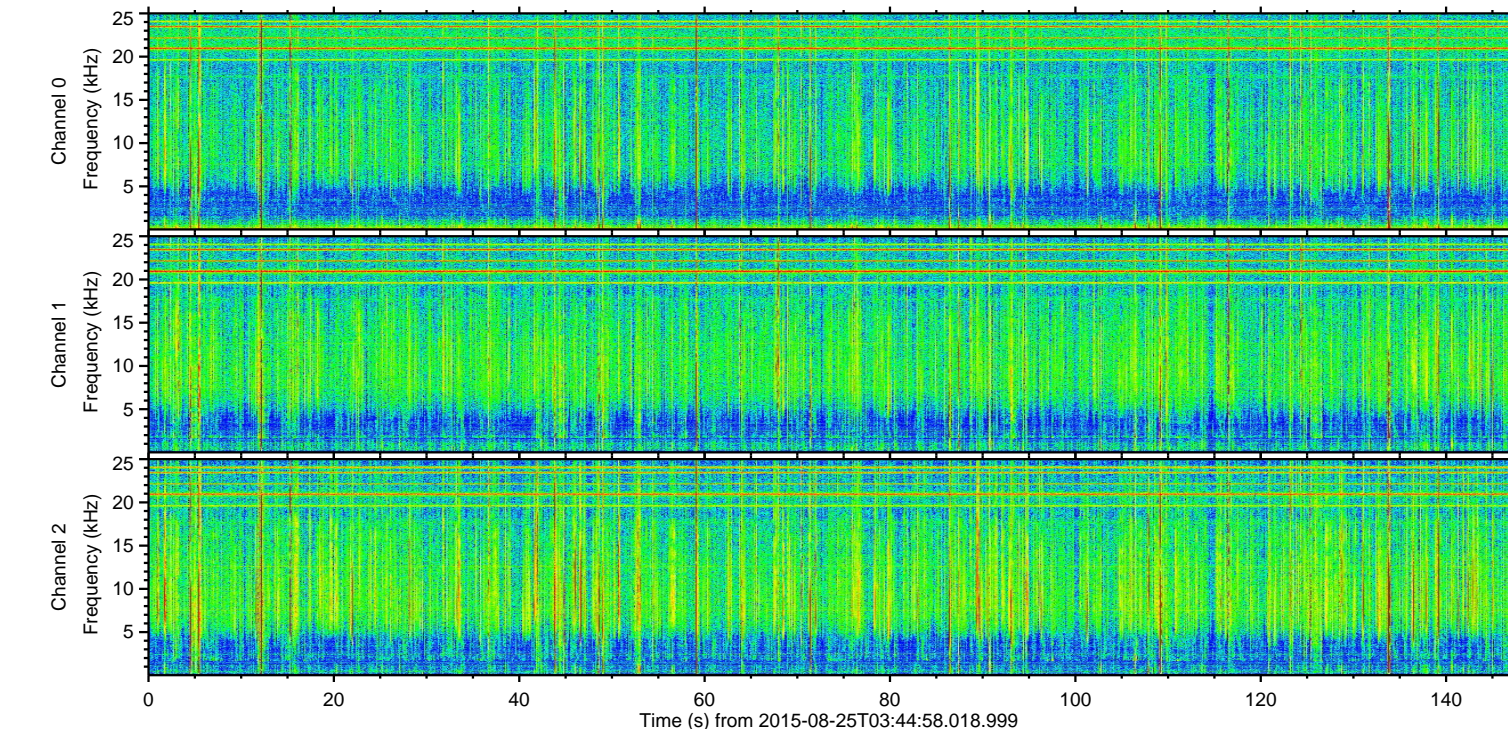
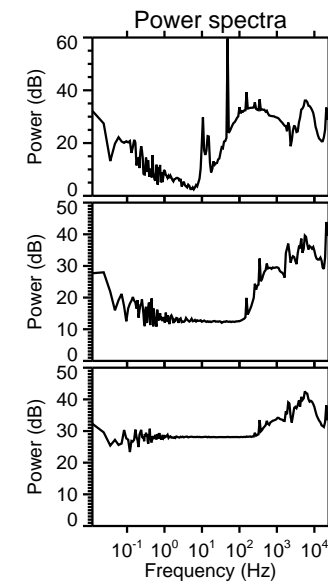
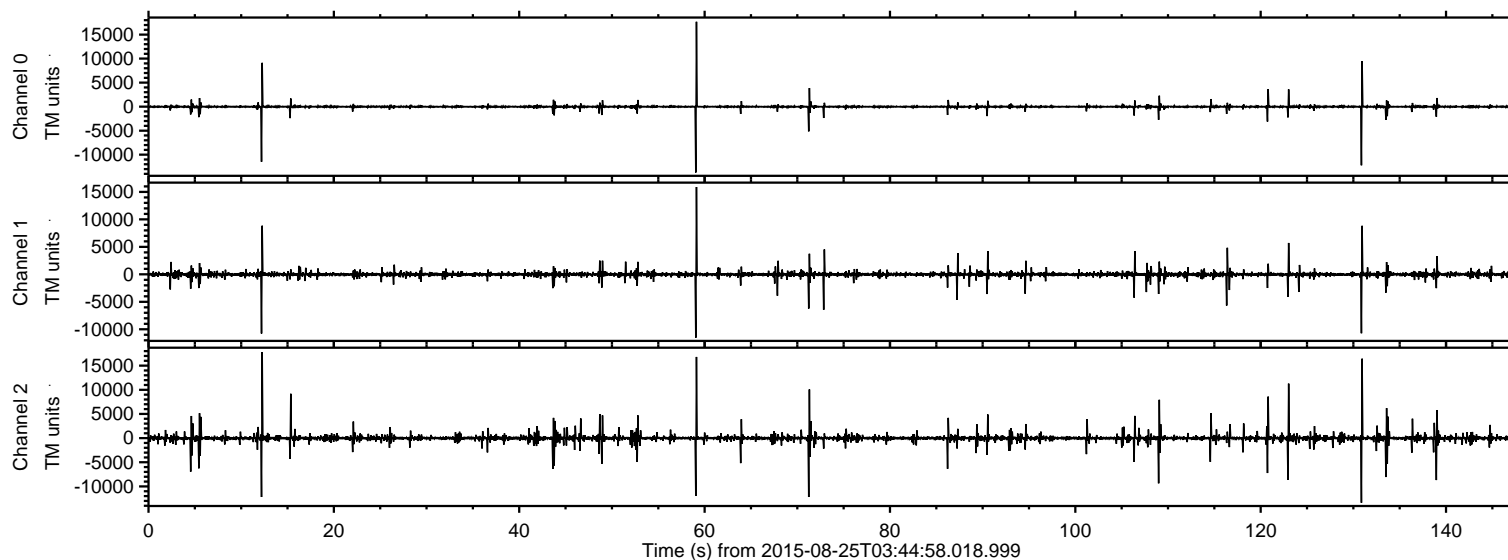


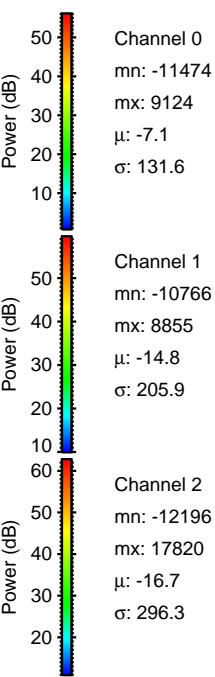
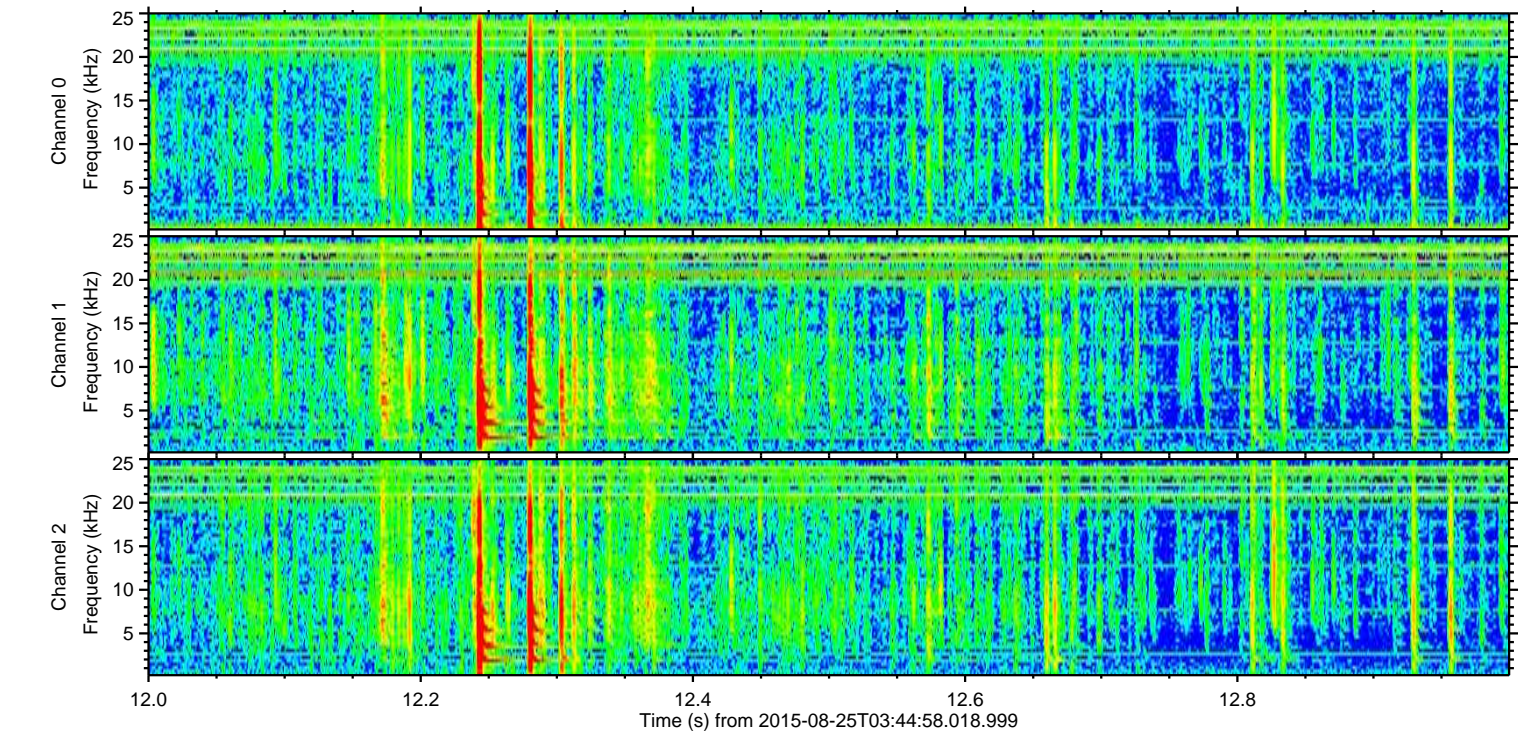
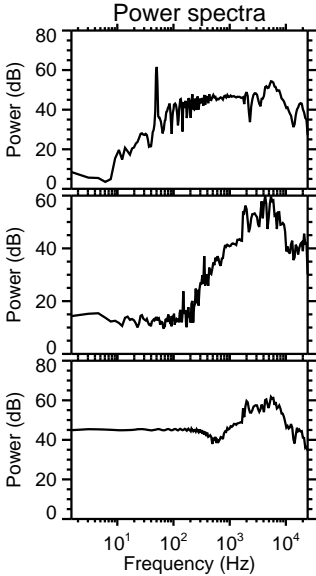
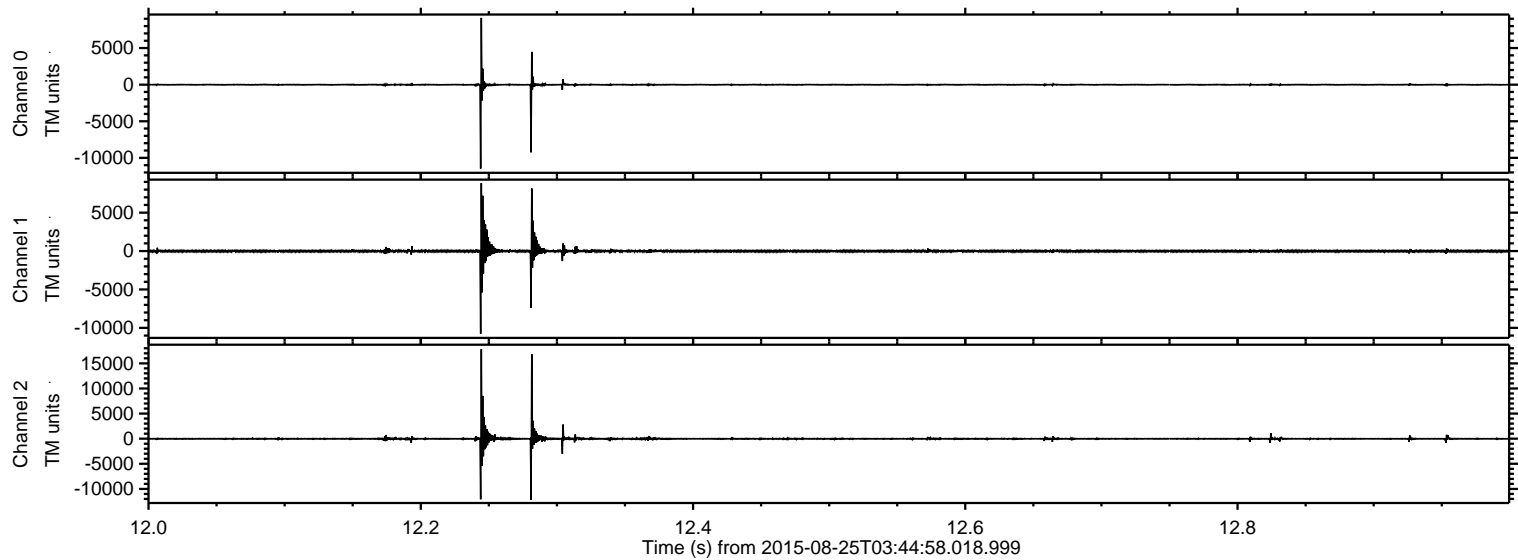
ELMAVAN 3D WAVEFORMS (Measured data sampled at 50 kHz) 51000 packets of 144 samples from 2015-08-25T03:44:58.018.999.

Processed Tue Oct 6 18:54:29 2015 by ELM ver.2012-10-06 from 001__elm20150825_034457__dat00.bin

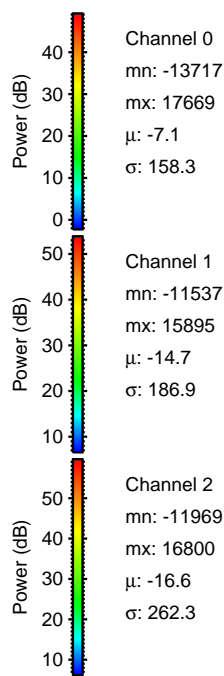
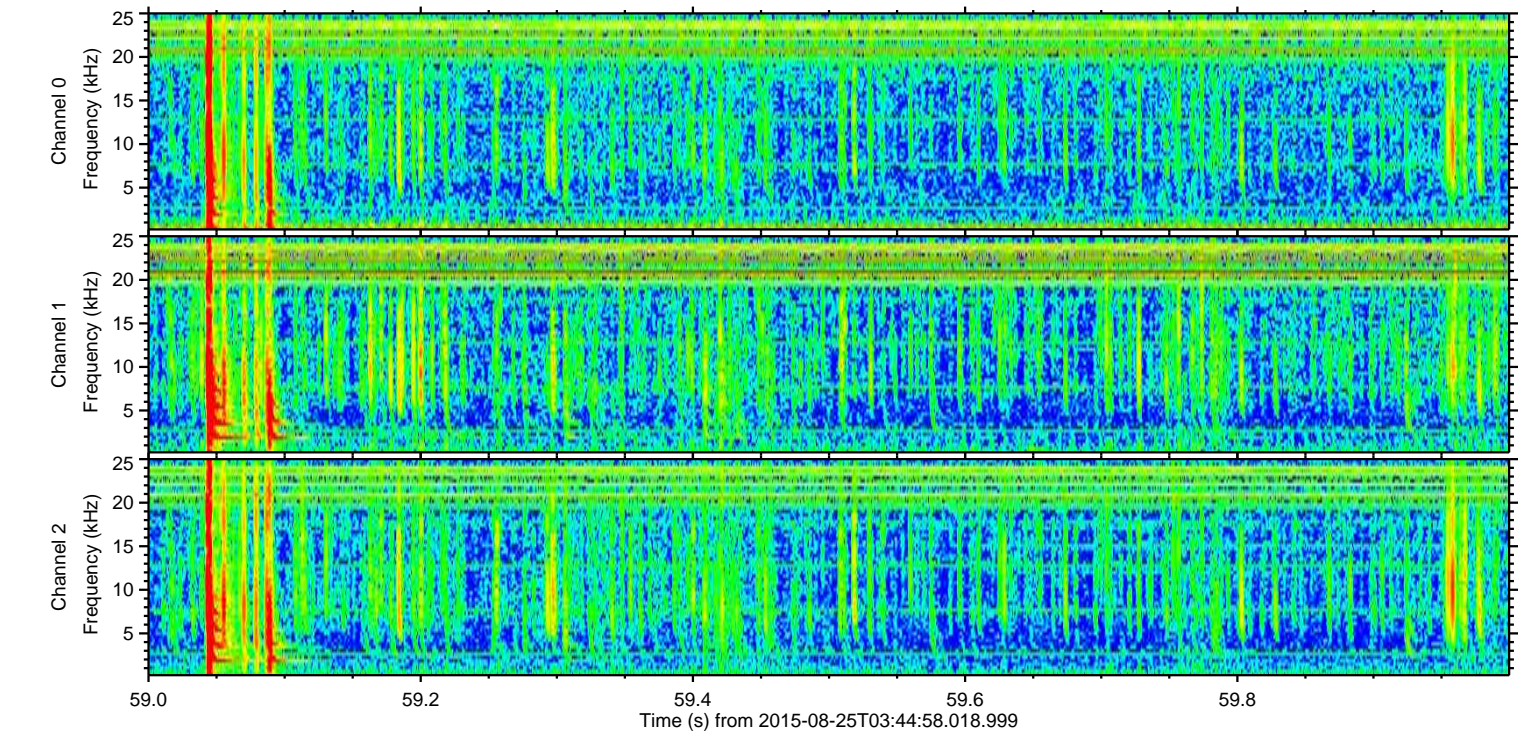
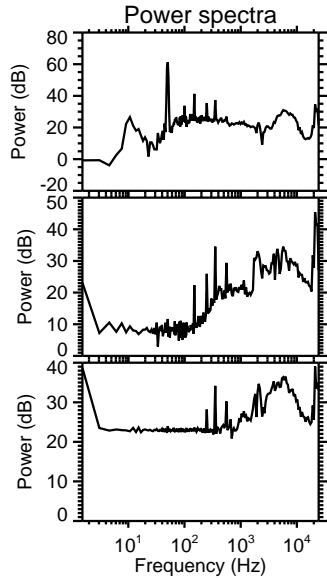
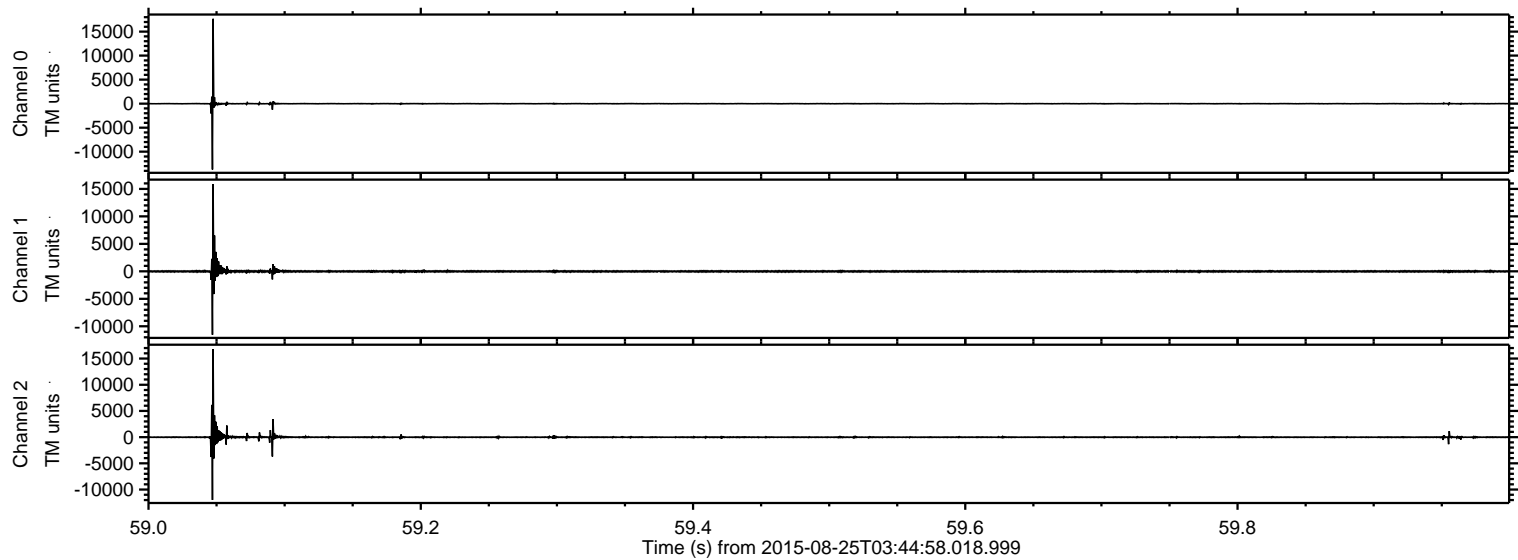


ELMAVAN 3D WAVEFORMS (Measured data sampled at 50 kHz) 51000 packets of 144 samples from 2015-08-25T03:44:58.018.999. Part 13/147

Processed Tue Oct 6 18:54:45 2015 by ELM ver.2012-10-06 from 001__elm20150825_034457__dat00.bin

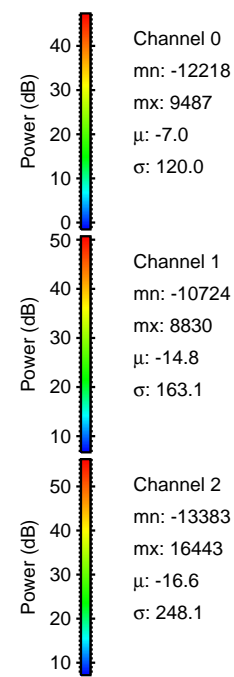
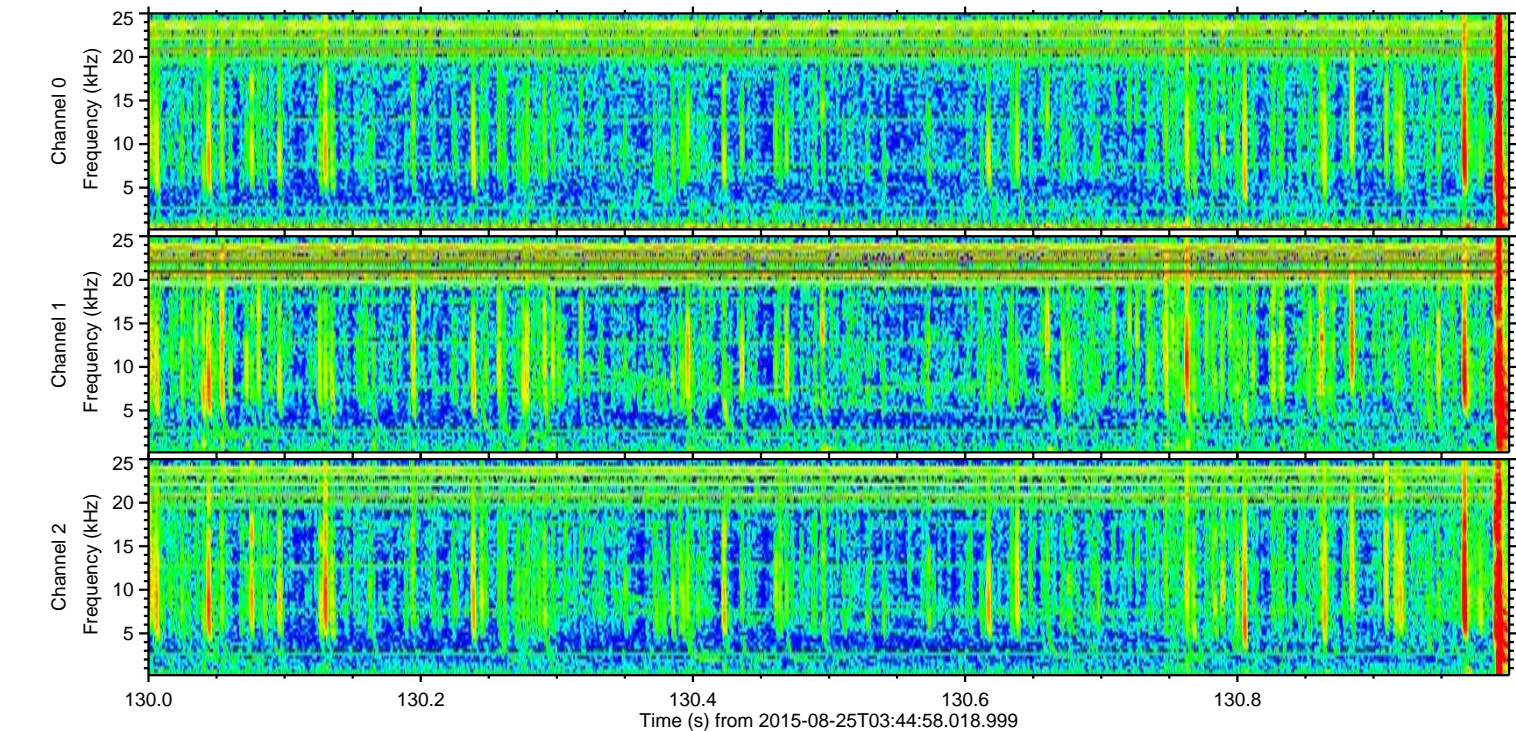
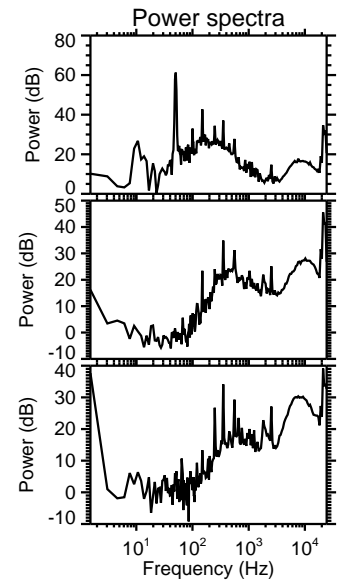
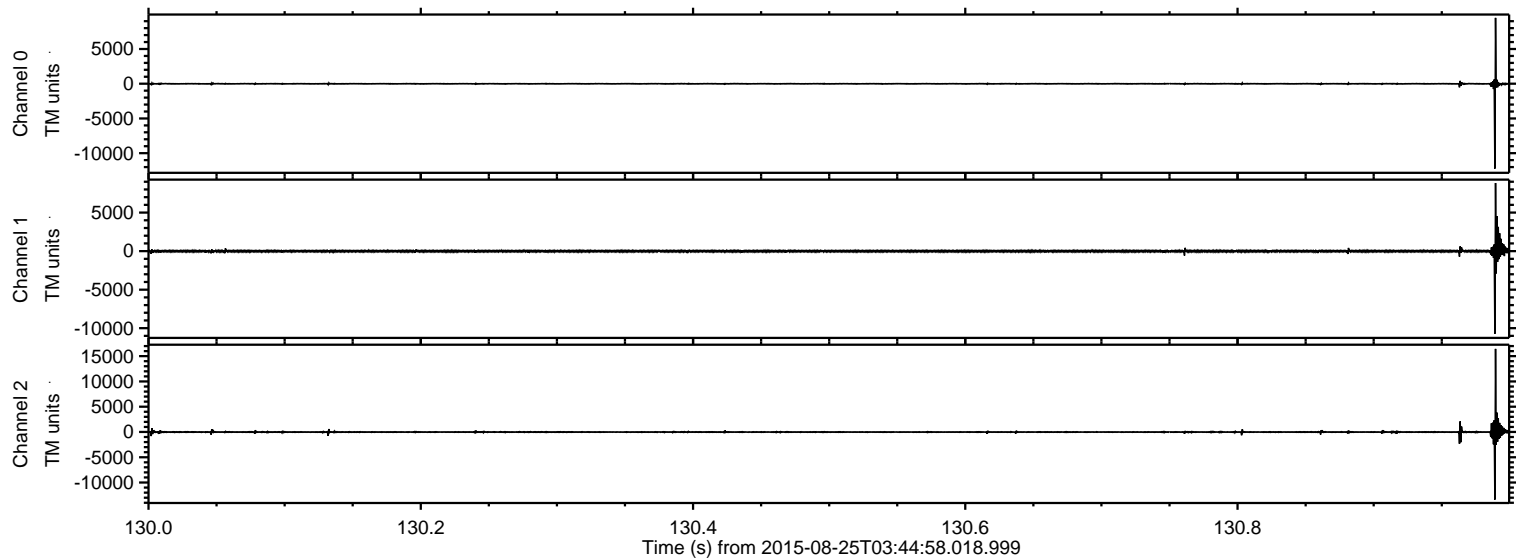


Processed Tue Oct 6 18:54:46 2015 by ELM ver.2012-10-06 from 001__elm20150825_034457__dat00.bin

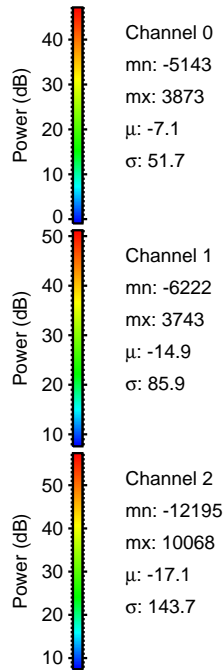
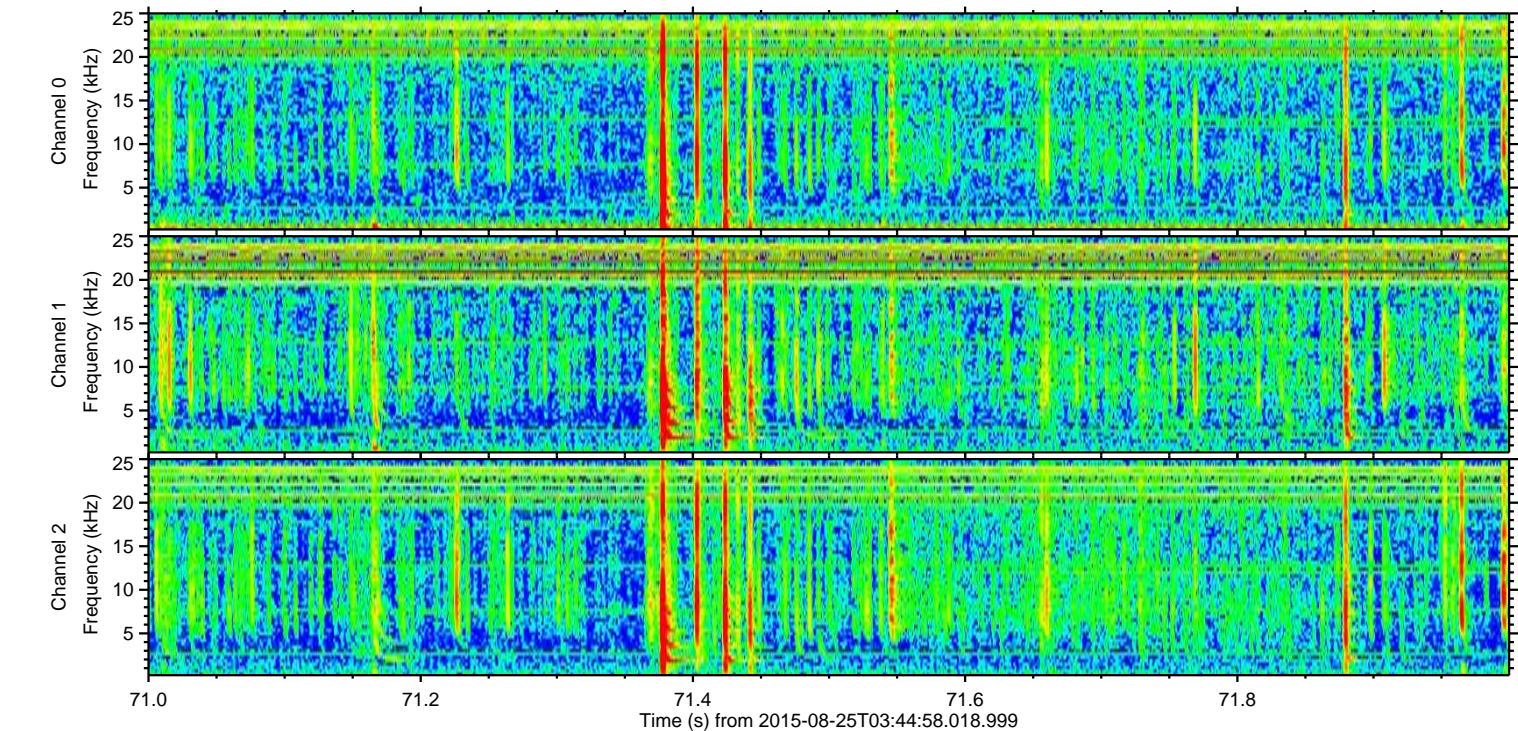
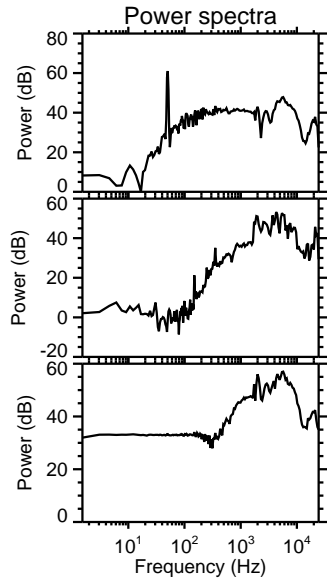
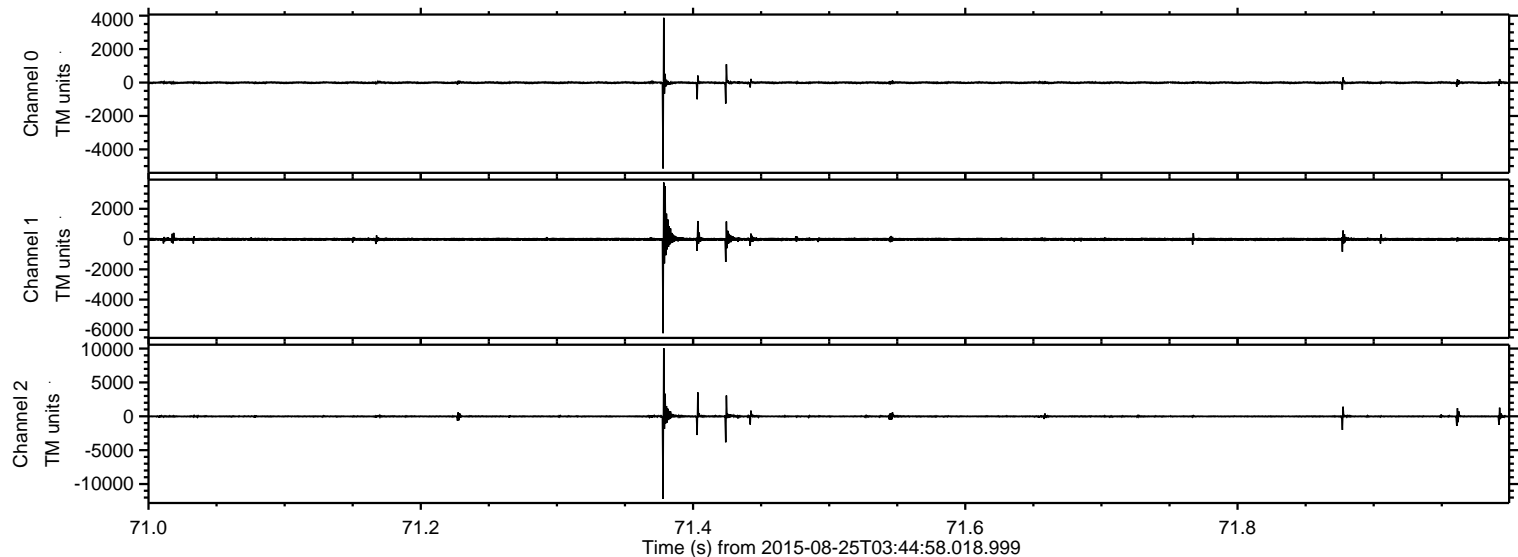


ELMAVAN 3D WAVEFORMS (Measured data sampled at 50 kHz) 51000 packets of 144 samples from 2015-08-25T03:44:58.018.999. Part 131/147

Processed Tue Oct 6 18:54:47 2015 by ELM ver.2012-10-06 from 001__elm20150825_034457__dat00.bin

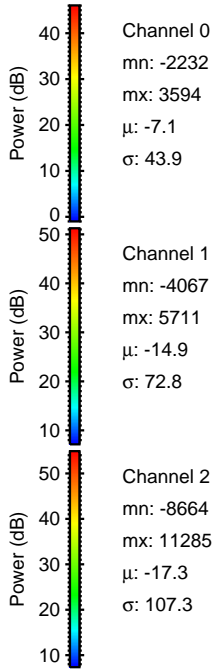
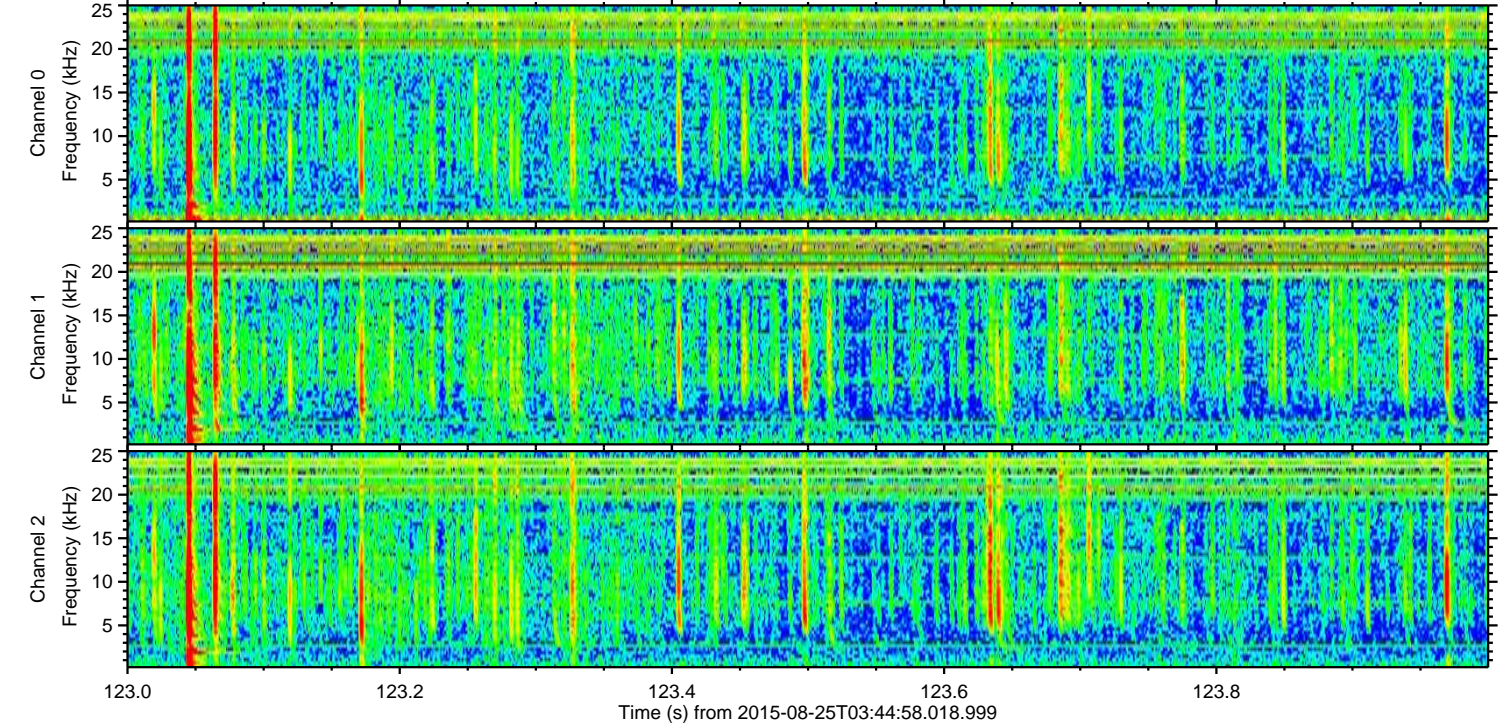
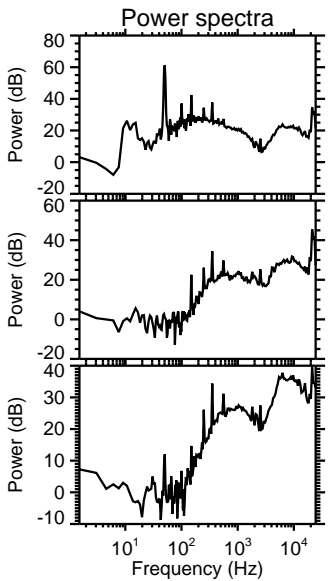
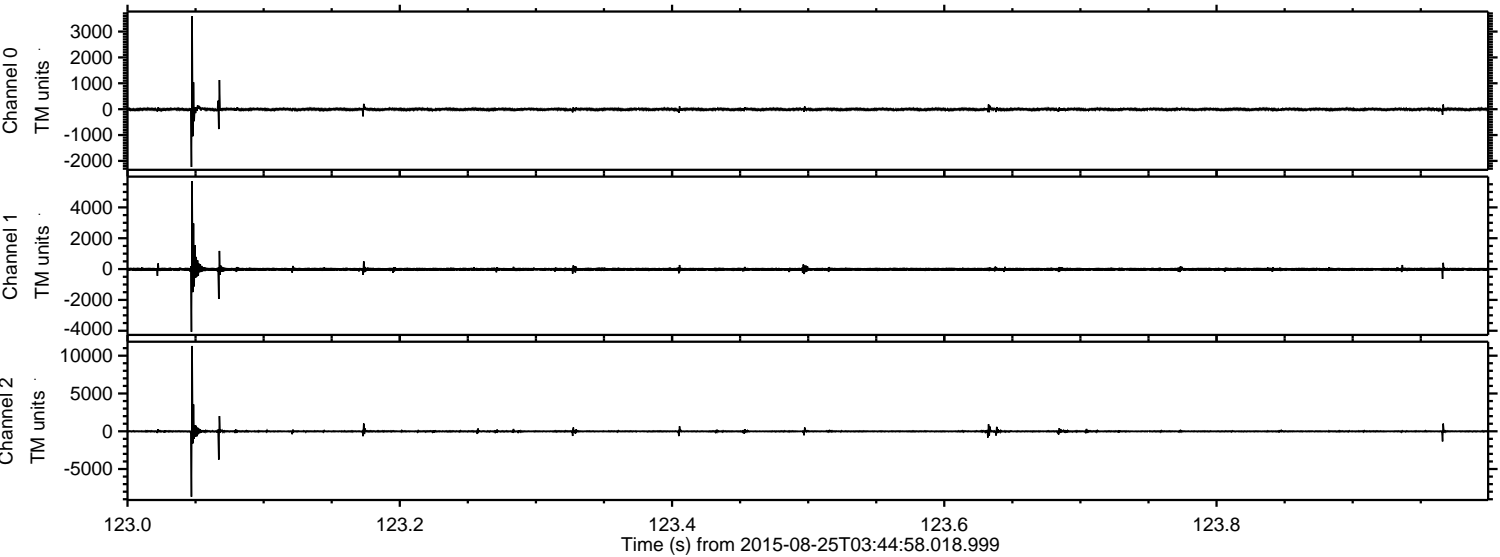


Processed Tue Oct 6 18:54:48 2015 by ELM ver.2012-10-06 from 001__elm20150825_034457__dat00.bin



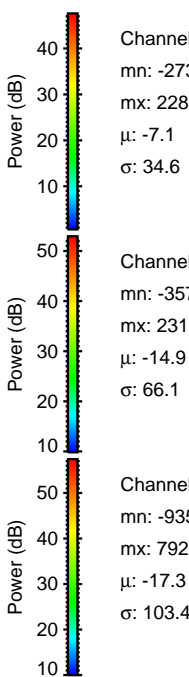
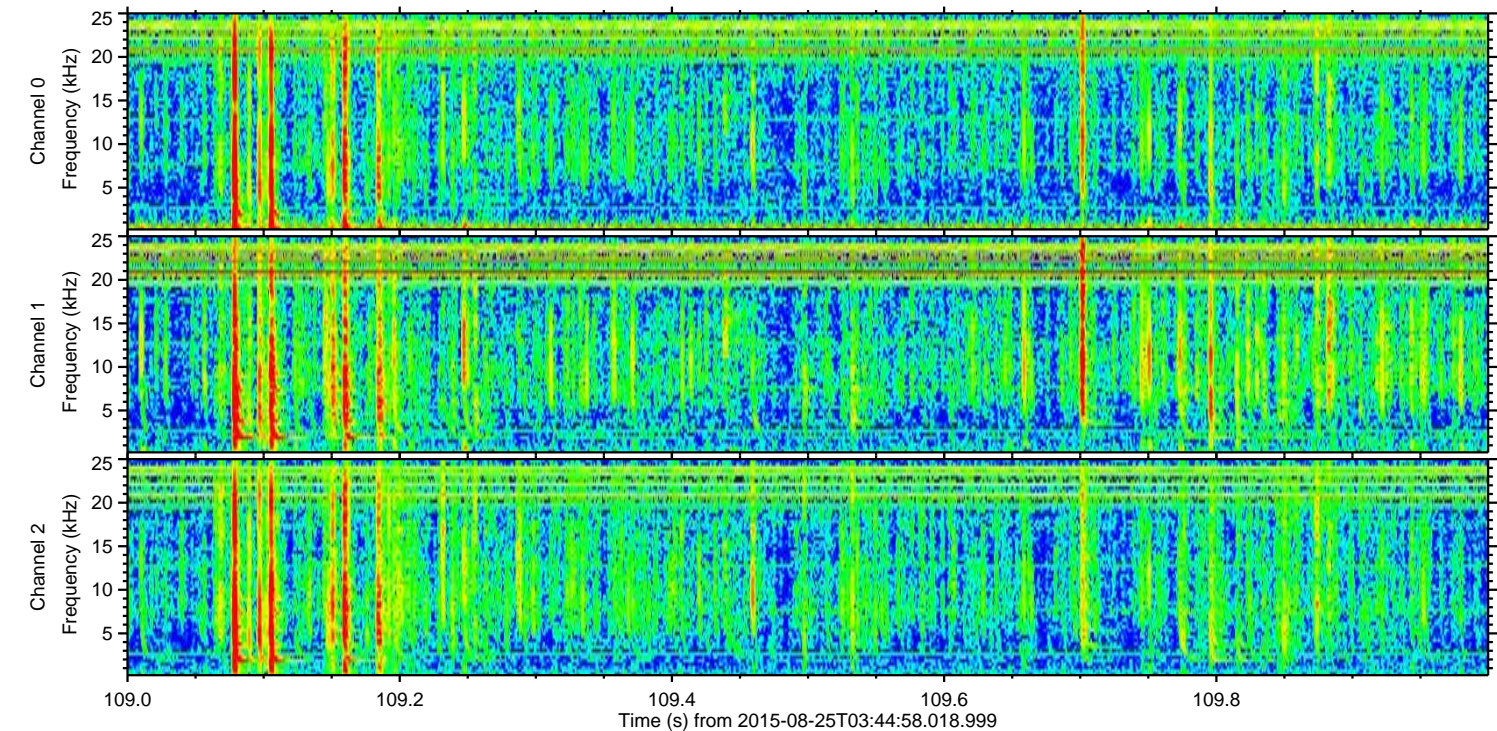
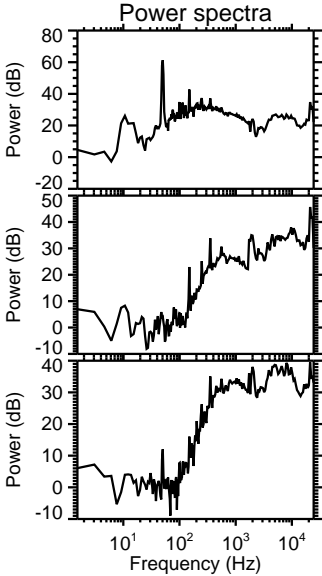
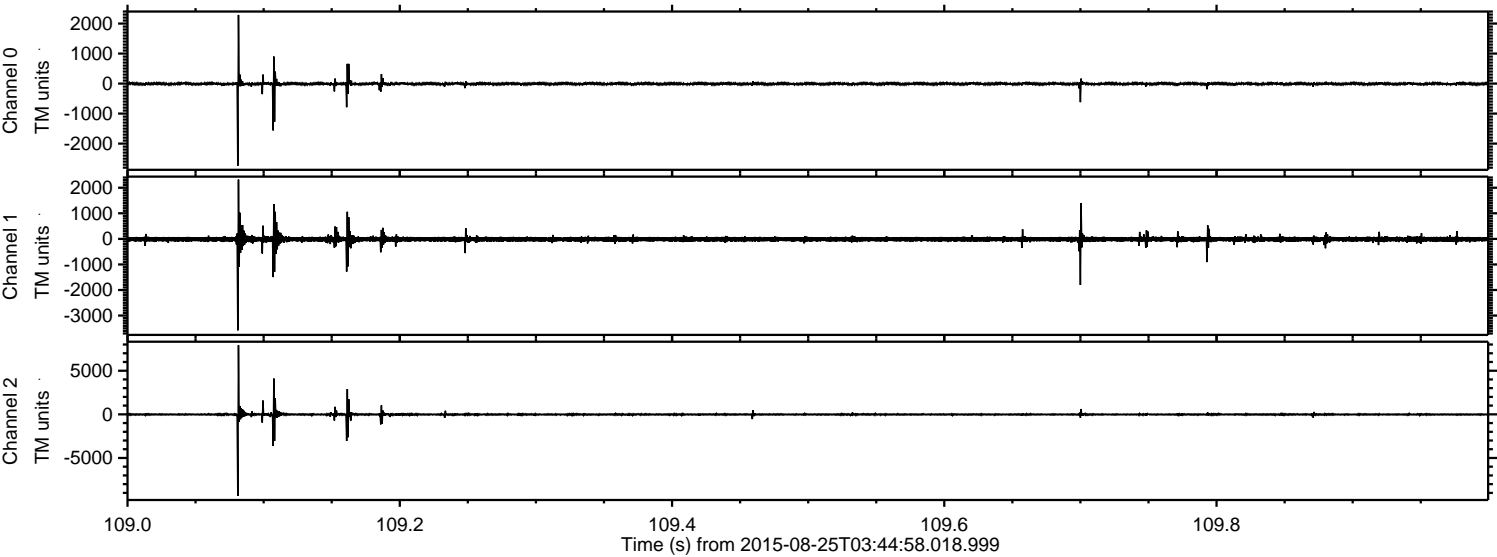
ELMAVAN 3D WAVEFORMS (Measured data sampled at 50 kHz) 51000 packets of 144 samples from 2015-08-25T03:44:58.018.999. Part 124/147

Processed Tue Oct 6 18:54:49 2015 by ELM ver.2012-10-06 from 001__elm20150825_034457__dat00.bin



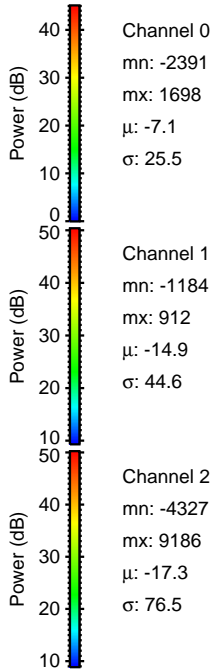
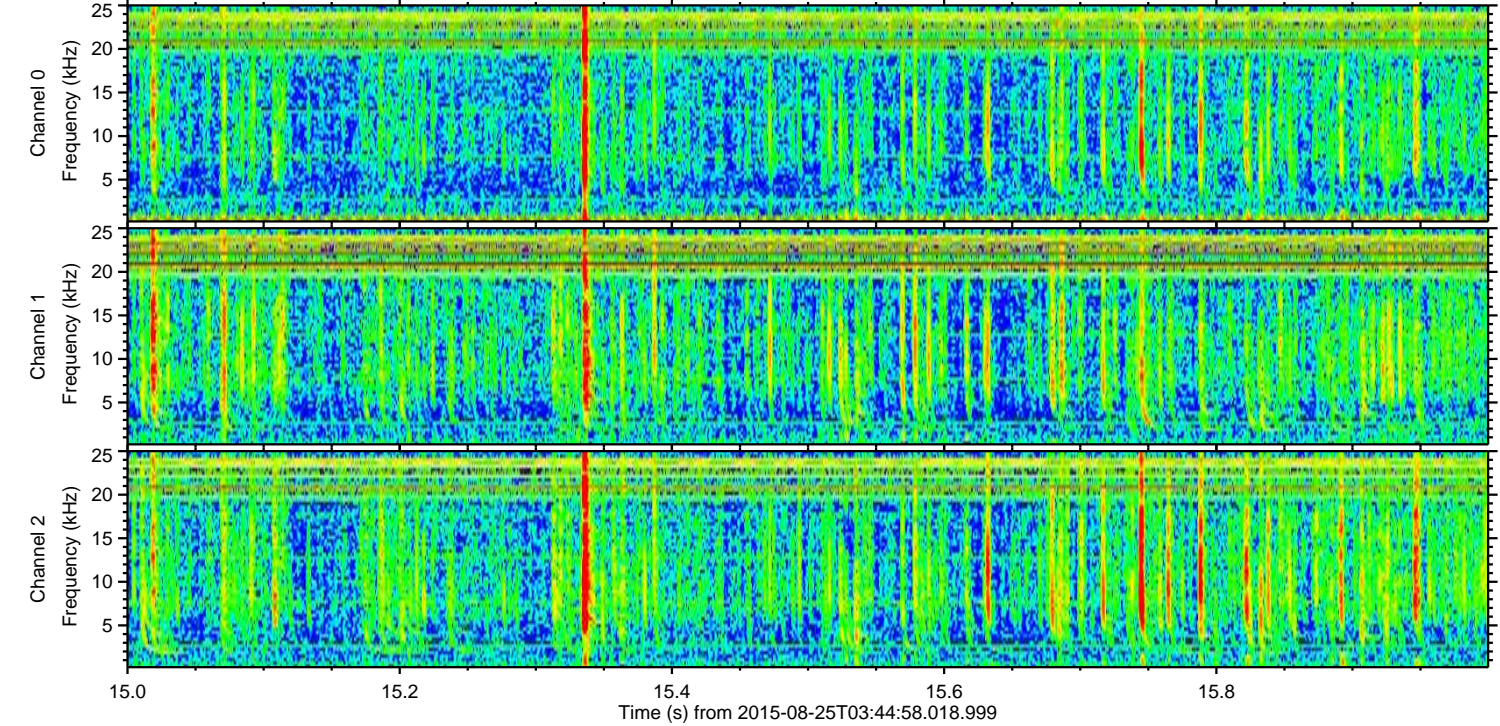
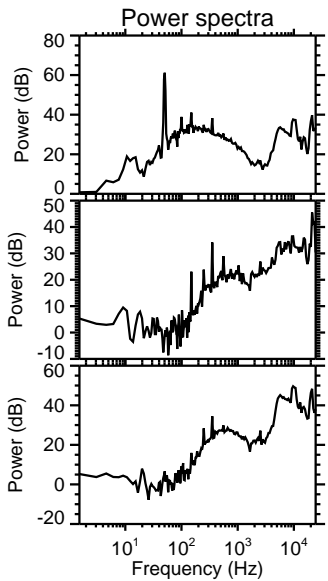
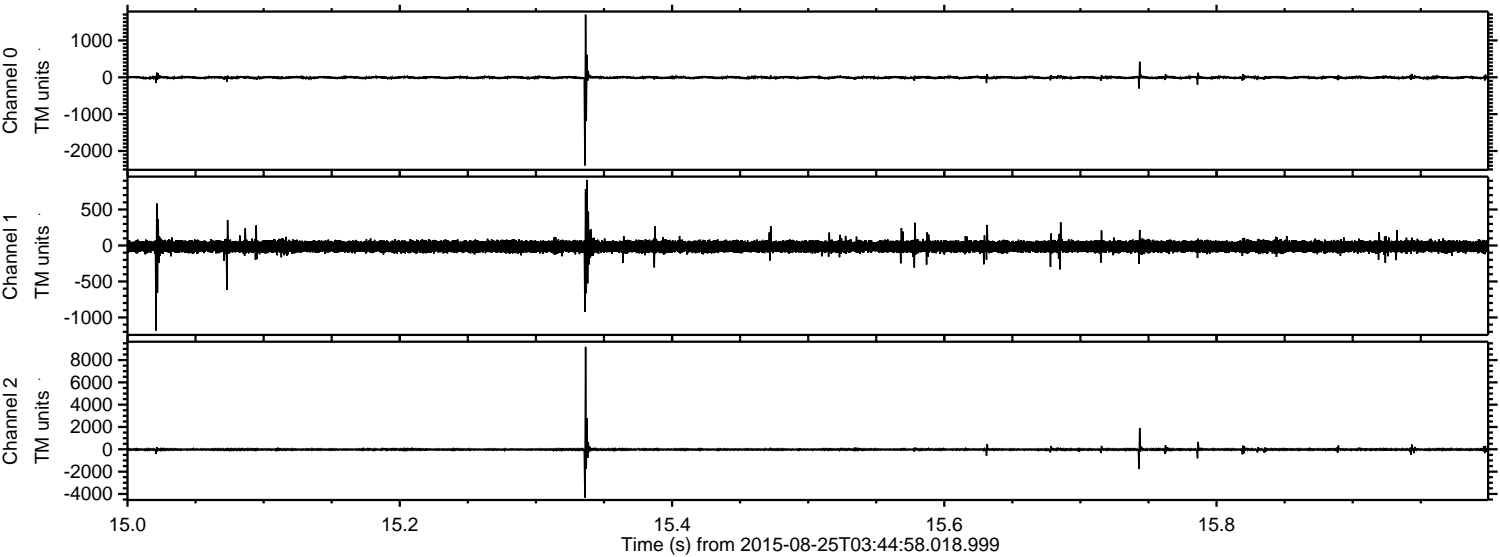
ELMAVAN 3D WAVEFORMS (Measured data sampled at 50 kHz) 51000 packets of 144 samples from 2015-08-25T03:44:58.018.999. Part 110/147

Processed Tue Oct 6 18:54:50 2015 by ELM ver.2012-10-06 from 001__elm20150825_034457__dat00.bin



ELMAVAN 3D WAVEFORMS (Measured data sampled at 50 kHz) 51000 packets of 144 samples from 2015-08-25T03:44:58.018.999. Part 16/147

Processed Tue Oct 6 18:54:51 2015 by ELM ver.2012-10-06 from 001__elm20150825_034457__dat00.bin



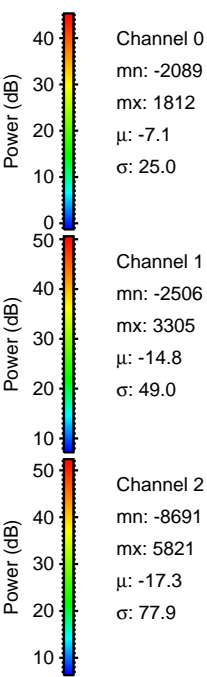
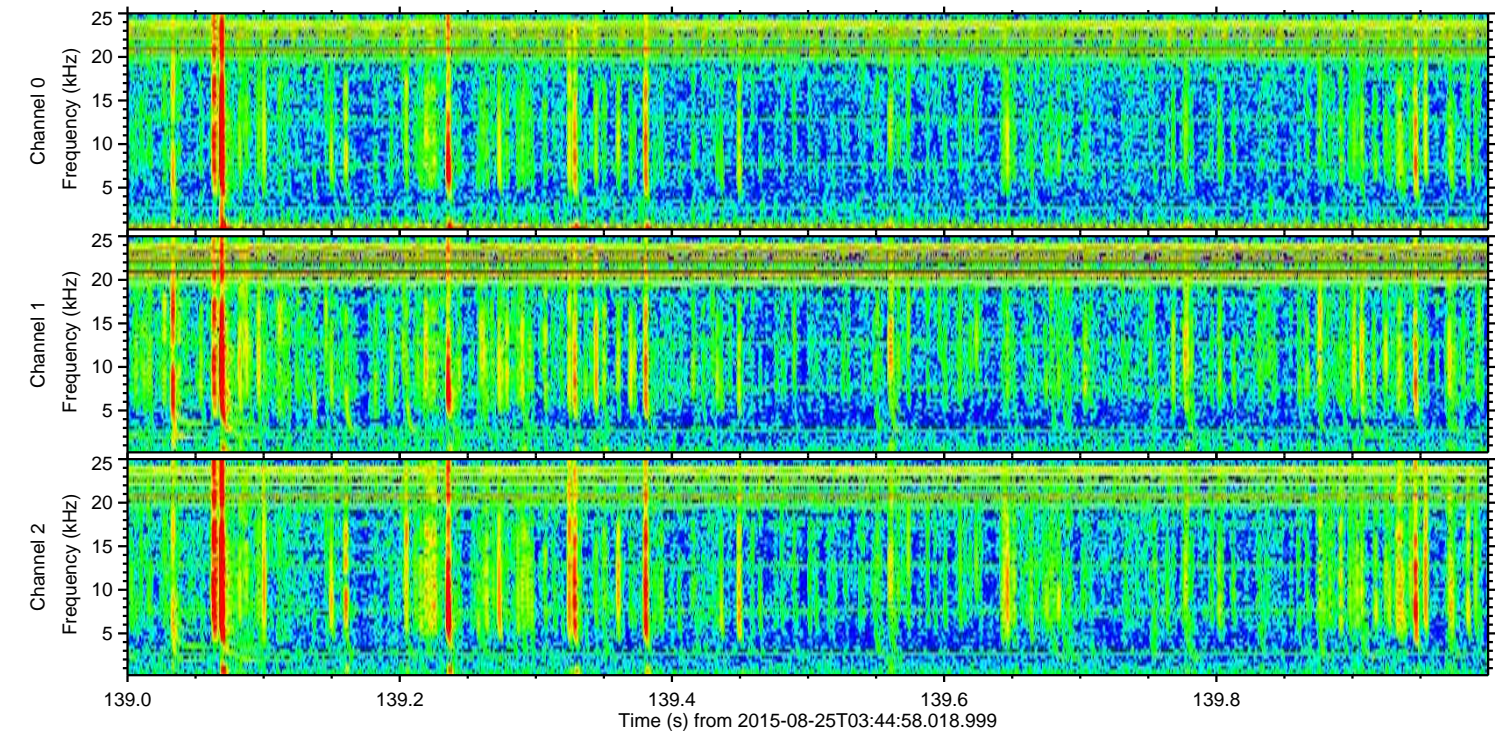
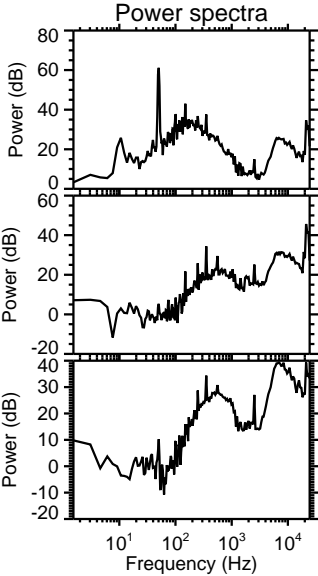
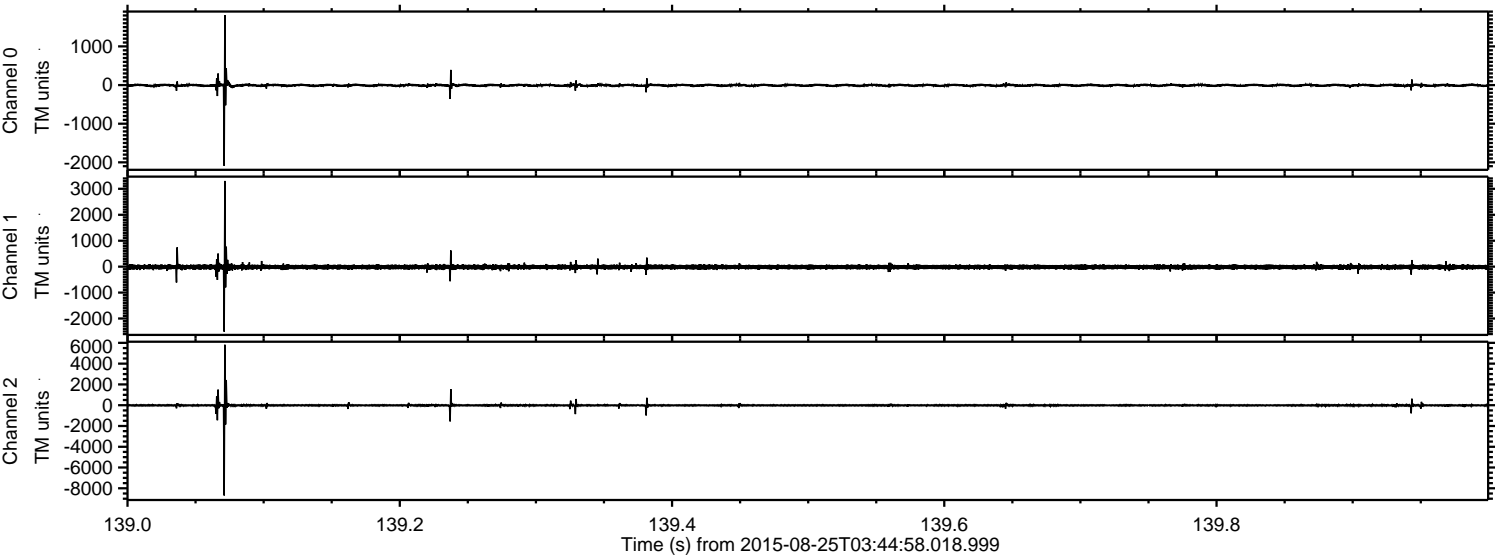
Channel 0
mn: -2391
mx: 1698
 μ : -7.1
 σ : 25.5

Channel 1
mn: -1184
mx: 912
 μ : -14.9
 σ : 44.6

Channel 2
mn: -4327
mx: 9186
 μ : -17.3
 σ : 76.5

ELMAVAN 3D WAVEFORMS (Measured data sampled at 50 kHz) 51000 packets of 144 samples from 2015-08-25T03:44:58.018.999. Part 140/147

Processed Tue Oct 6 18:54:53 2015 by ELM ver.2012-10-06 from 001__elm20150825_034457__dat00.bin



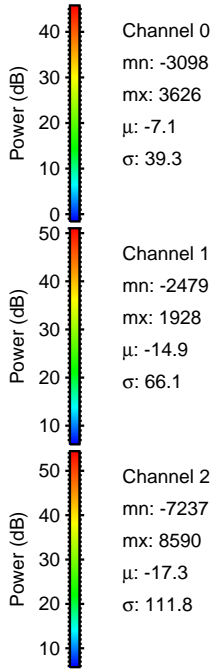
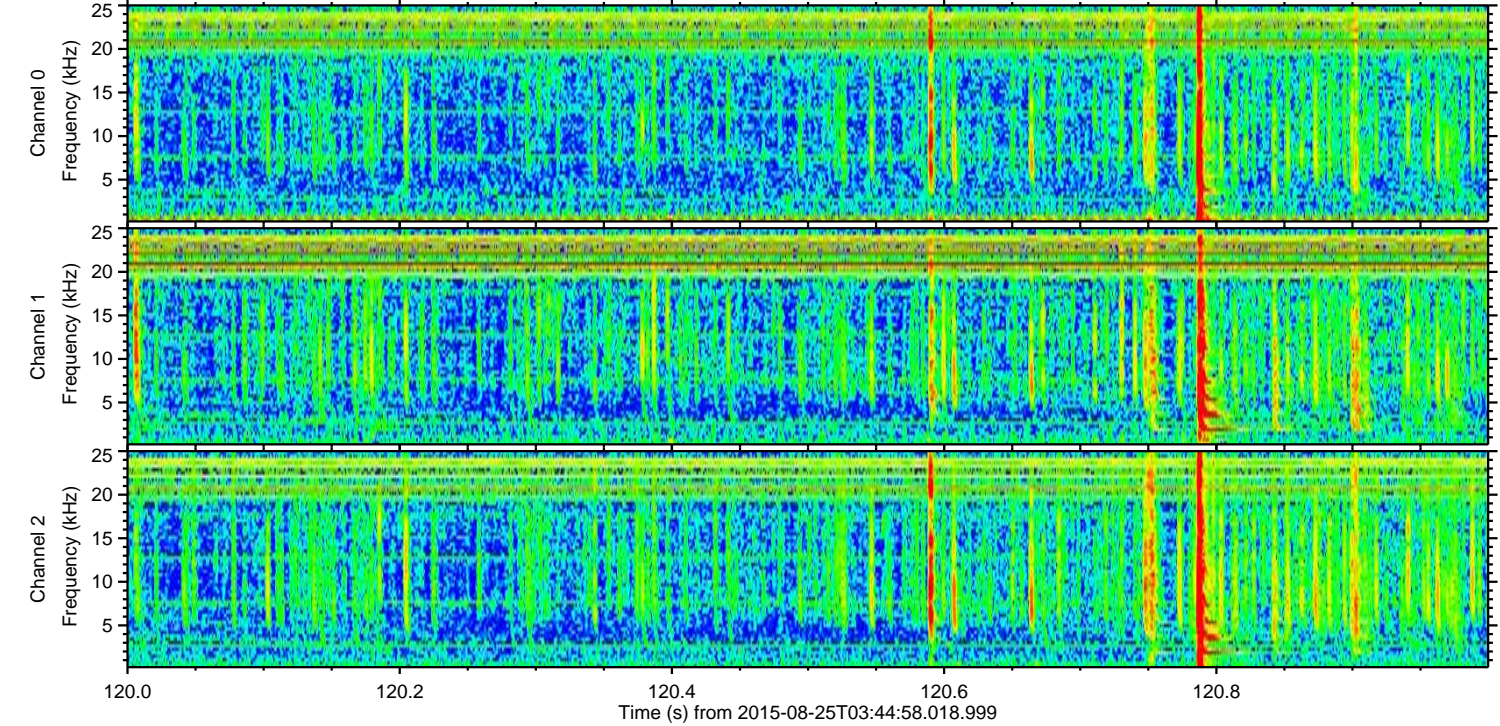
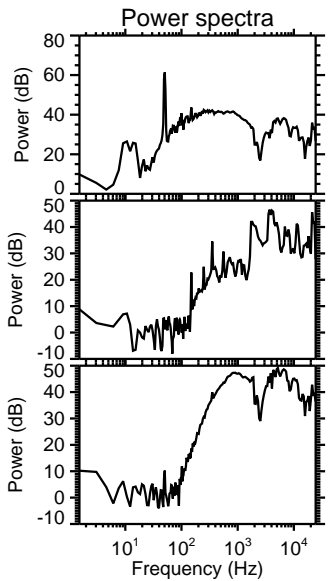
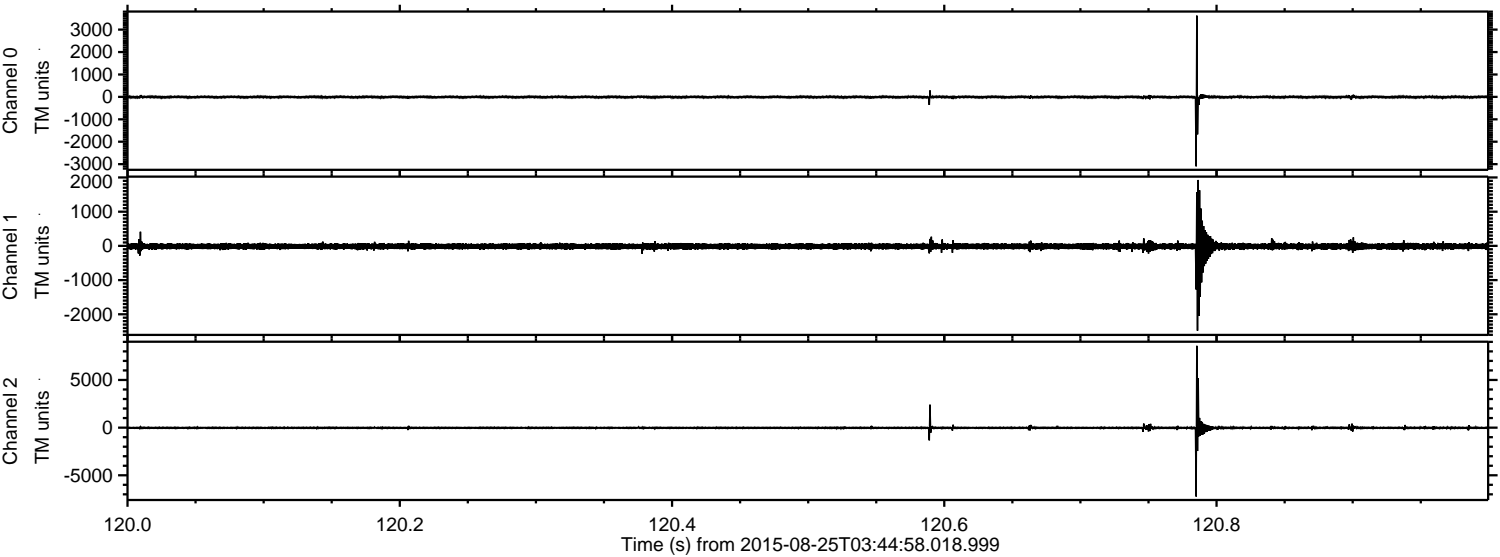
Channel 0
mn: -2089
mx: 1812
 μ : -7.1
 σ : 25.0

Channel 1
mn: -2506
mx: 3305
 μ : -14.8
 σ : 49.0

Channel 2
mn: -8691
mx: 5821
 μ : -17.3
 σ : 77.9

ELMAVAN 3D WAVEFORMS (Measured data sampled at 50 kHz) 51000 packets of 144 samples from 2015-08-25T03:44:58.018.999. Part 121/147

Processed Tue Oct 6 18:54:54 2015 by ELM ver.2012-10-06 from 001__elm20150825_034457__dat00.bin



Channel 0
mn: -3098
mx: 3626
 μ : -7.1
 σ : 39.3

Channel 1
mn: -2479
mx: 1928
 μ : -14.9
 σ : 66.1

Channel 2
mn: -7237
mx: 8590
 μ : -17.3
 σ : 111.8

