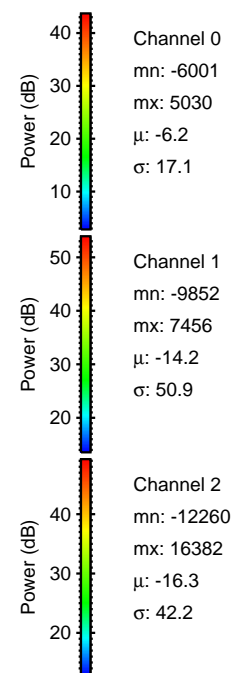
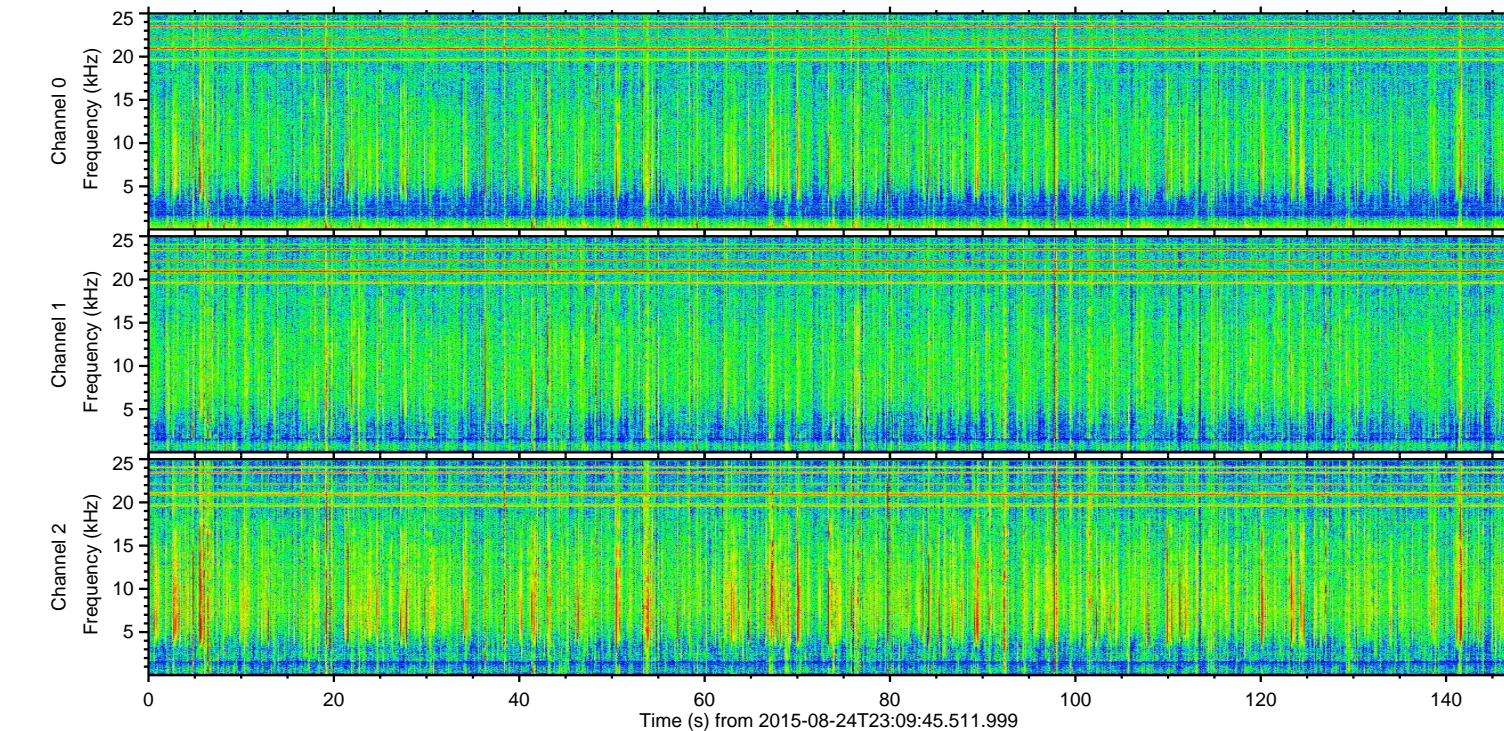
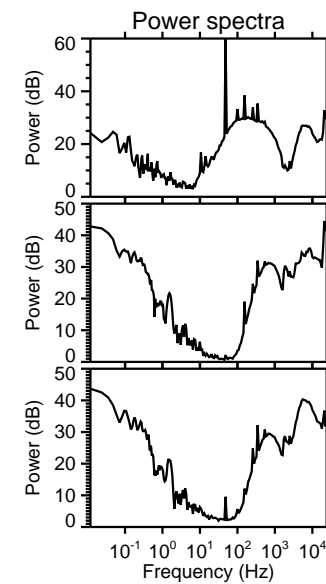
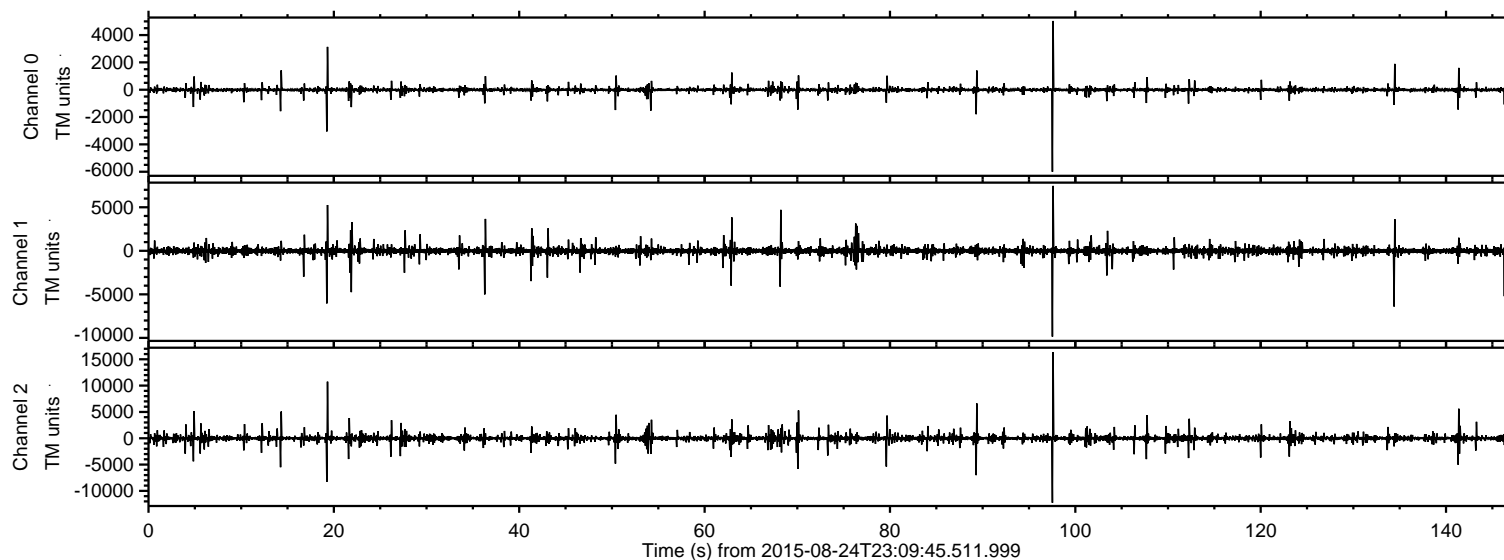


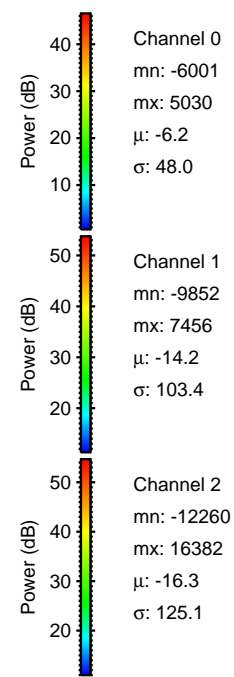
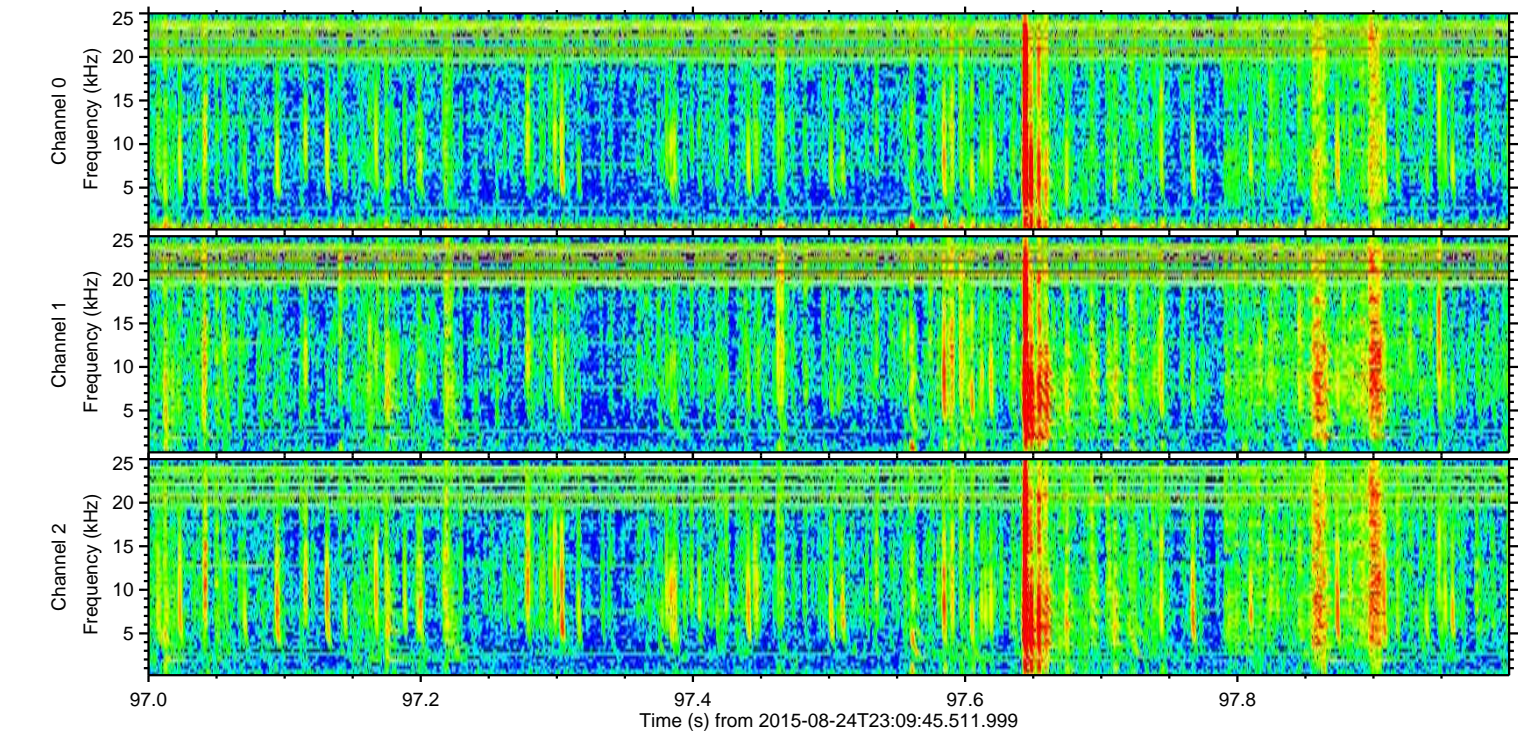
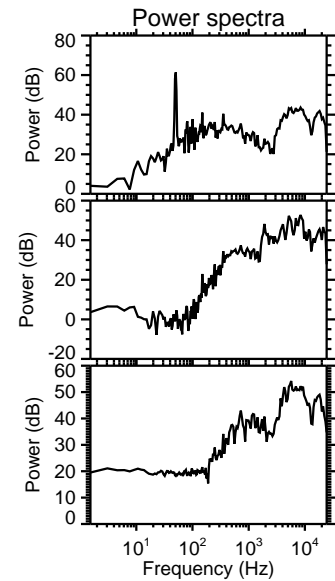
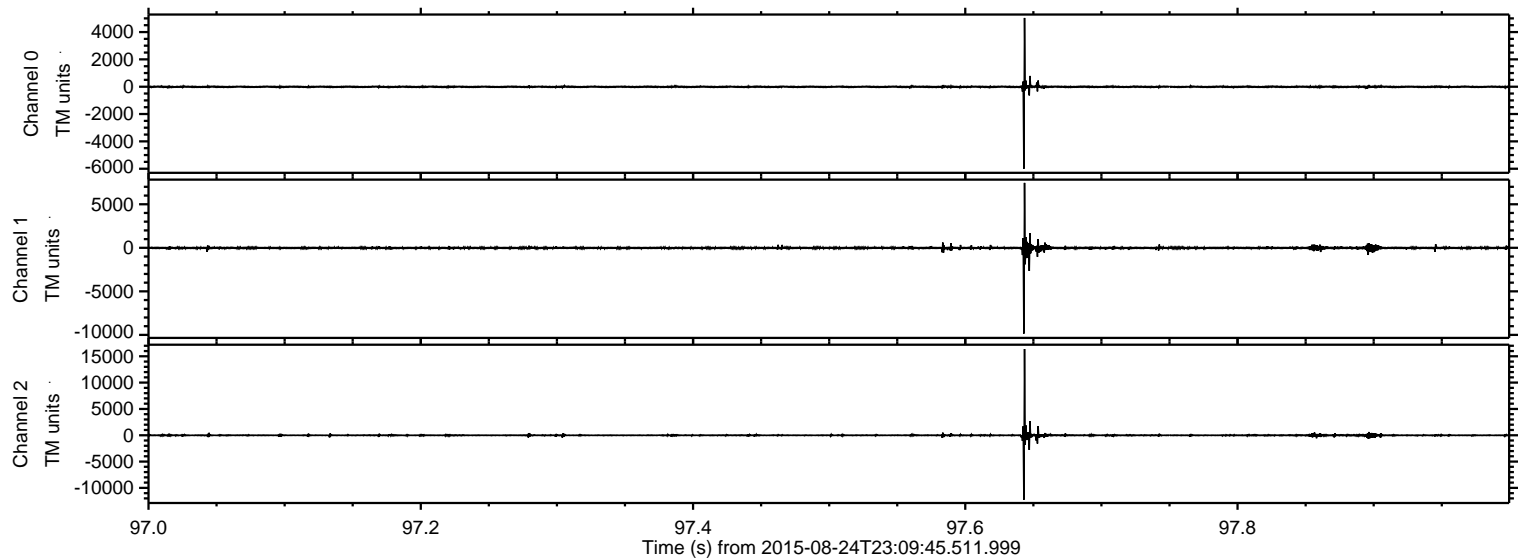
# ELMAVAN 3D WAVEFORMS (Measured data sampled at 50 kHz) 51000 packets of 144 samples from 2015-08-24T23:09:45.511.999.

Processed Tue Oct 6 17:36:34 2015 by ELM ver.2012-10-06 from 001\_\_elm20150824\_230944\_\_dat00.bin



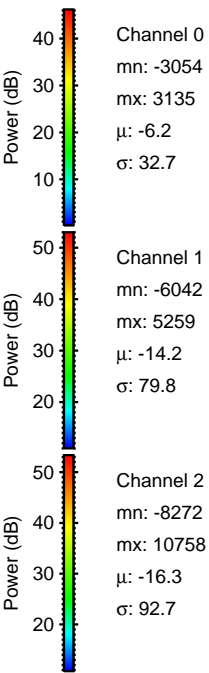
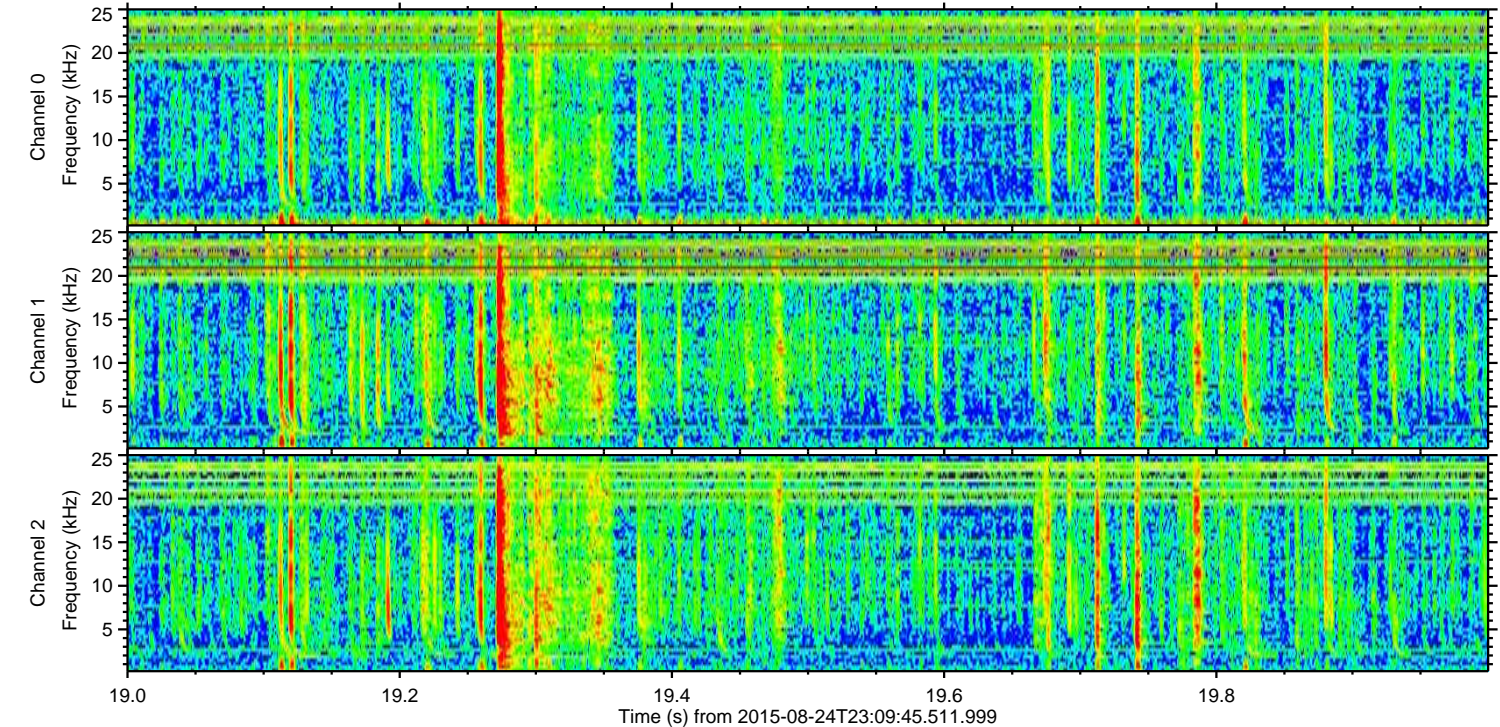
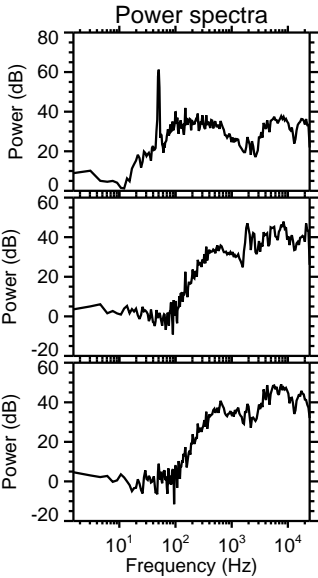
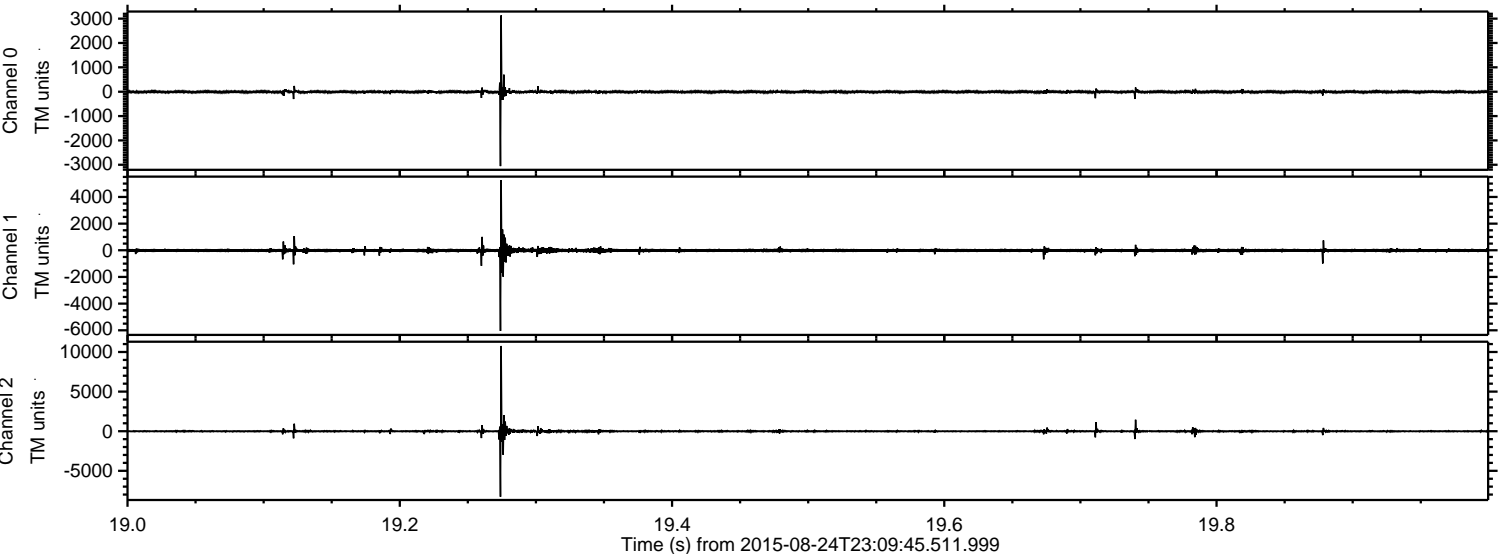


Processed Tue Oct 6 17:36:51 2015 by ELM ver.2012-10-06 from 001\_\_elm20150824\_230944\_\_dat00.bin



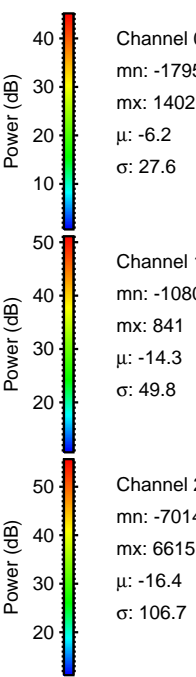
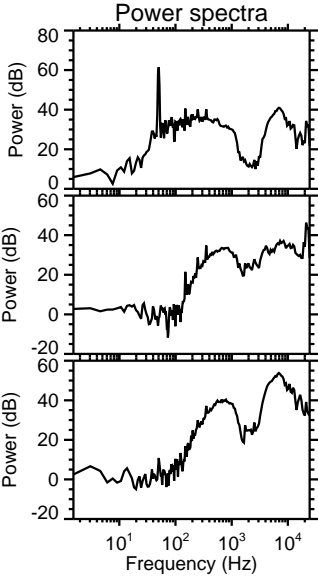
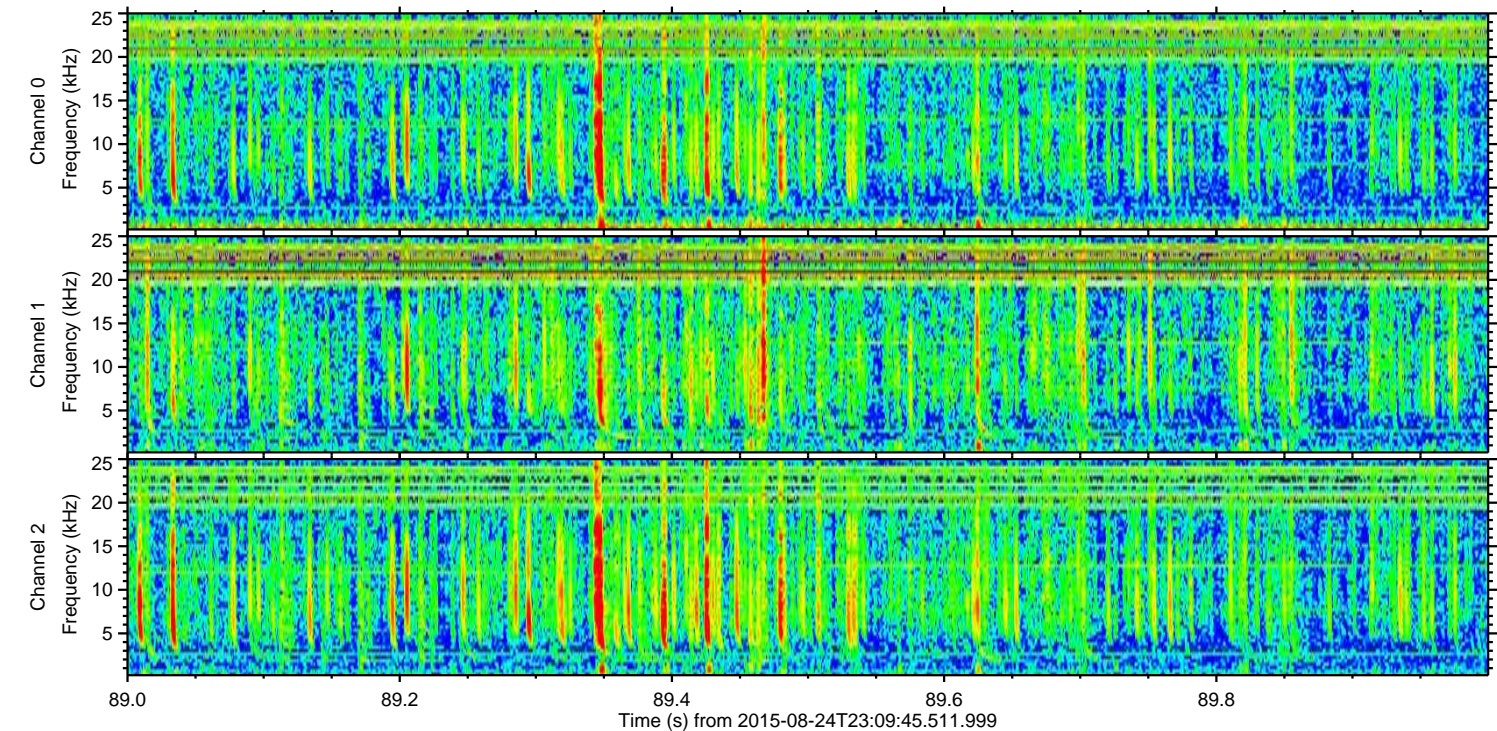
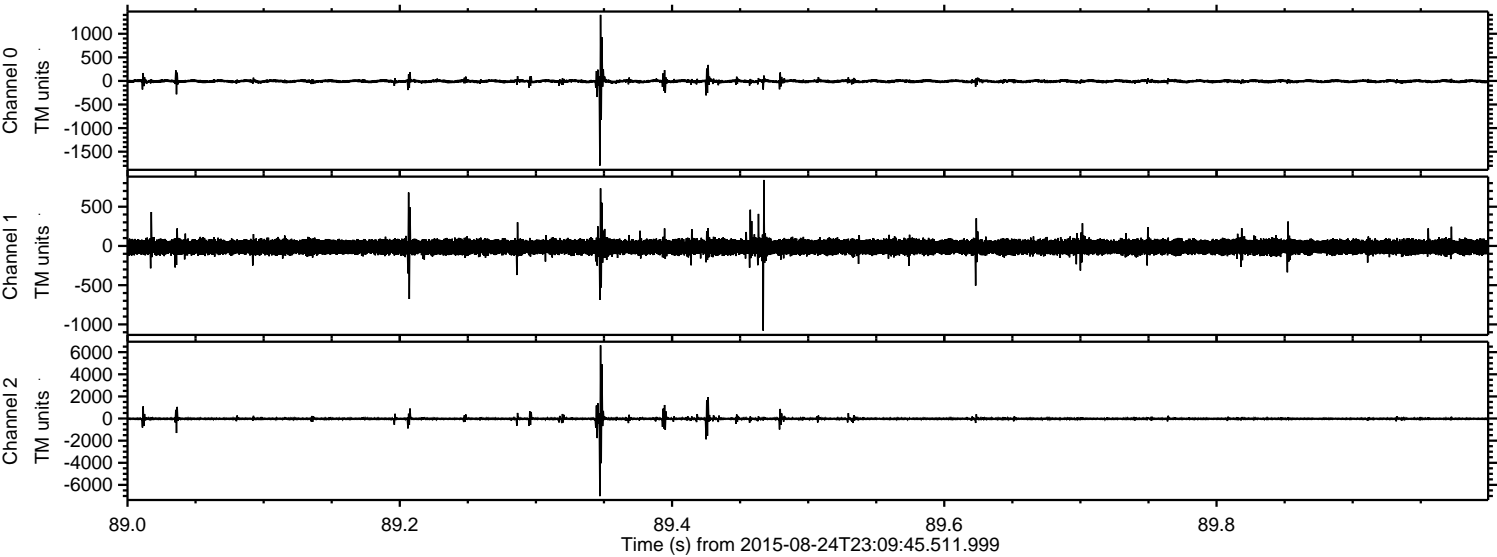


Processed Tue Oct 6 17:36:52 2015 by ELM ver.2012-10-06 from 001\_\_elm20150824\_230944\_\_dat00.bin





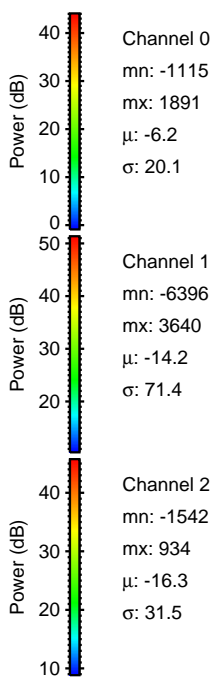
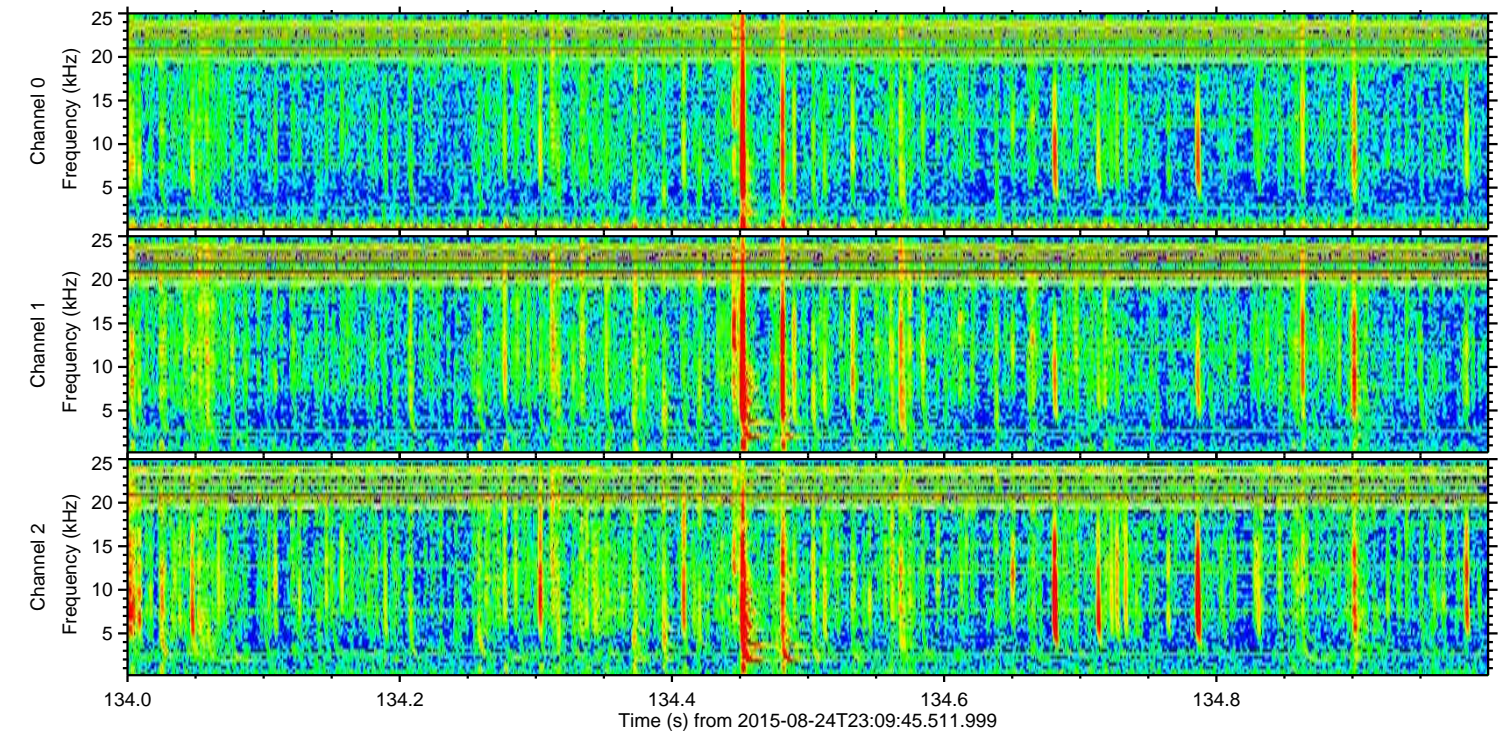
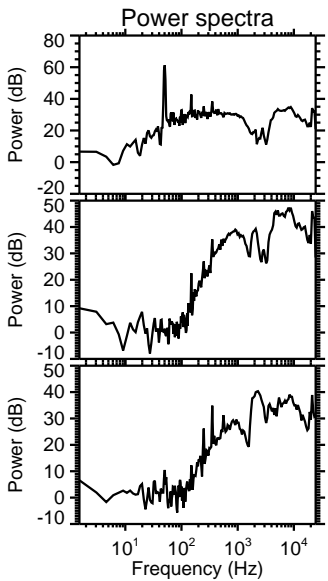
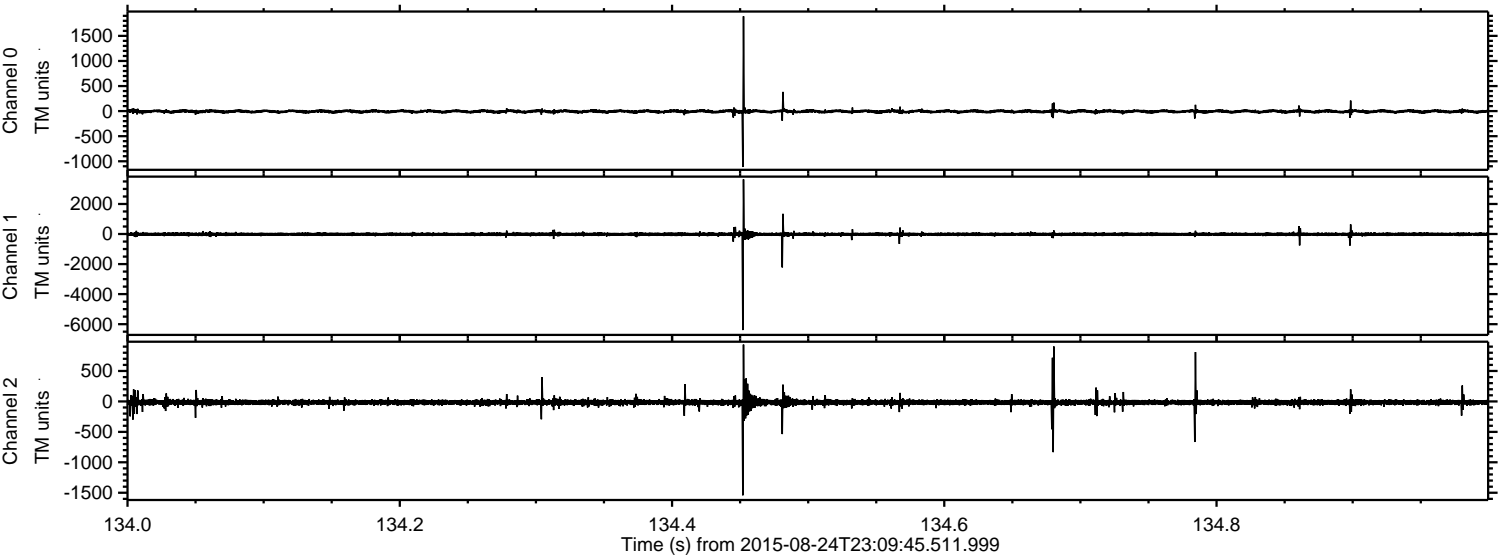
Processed Tue Oct 6 17:36:53 2015 by ELM ver.2012-10-06 from 001\_\_elm20150824\_230944\_\_dat00.bin





ELMAVAN 3D WAVEFORMS (Measured data sampled at 50 kHz) 51000 packets of 144 samples from 2015-08-24T23:09:45.511.999. Part 135/147

Processed Tue Oct 6 17:36:54 2015 by ELM ver.2012-10-06 from 001\_\_elm20150824\_230944\_\_dat00.bin



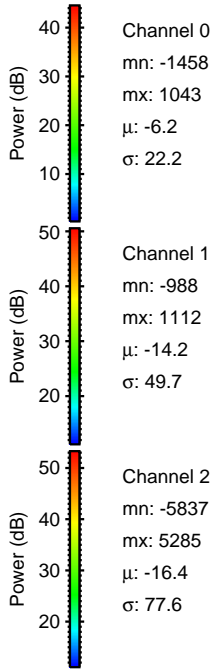
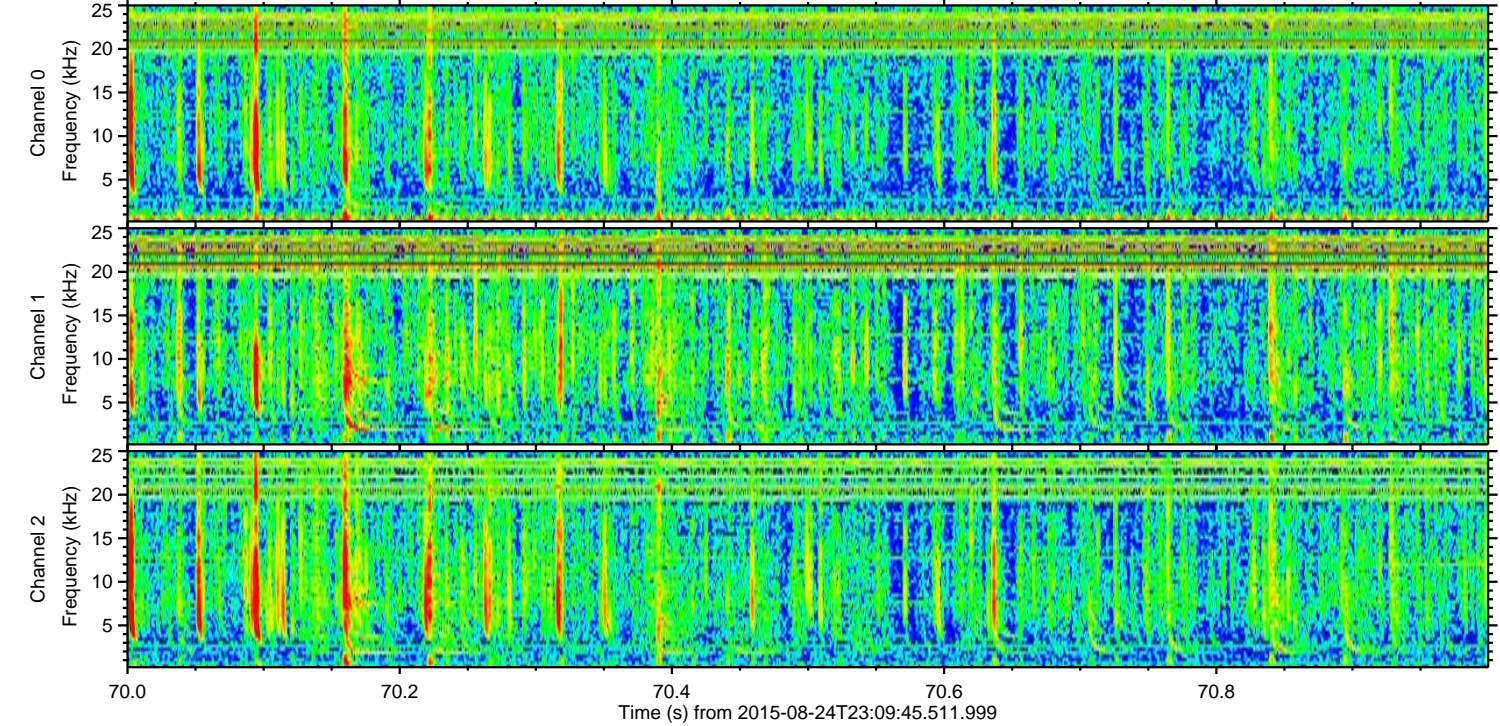
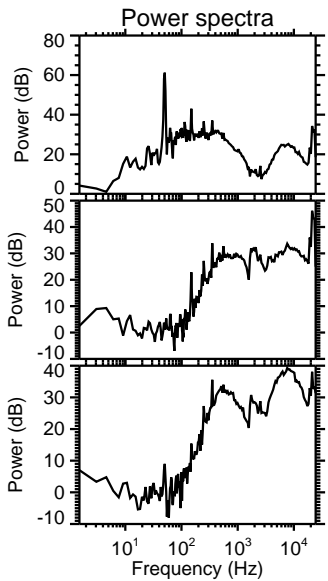
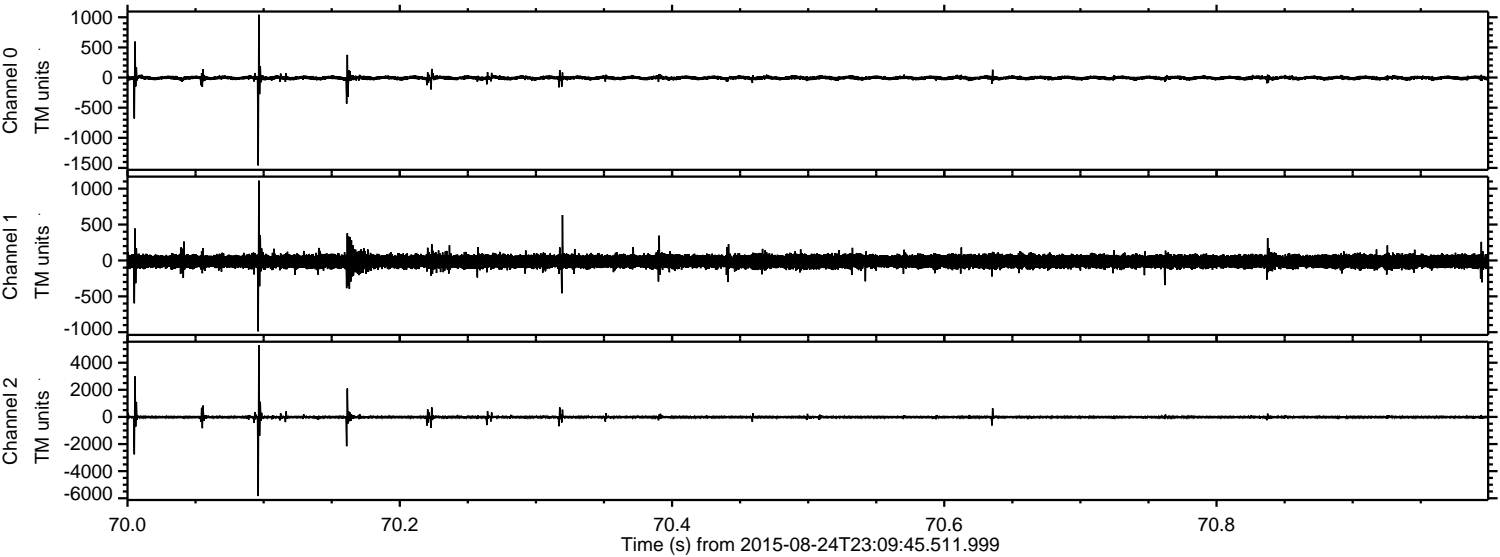
Channel 0  
mn: -1115  
mx: 1891  
 $\mu$ : -6.2  
 $\sigma$ : 20.1

Channel 1  
mn: -6396  
mx: 3640  
 $\mu$ : -14.2  
 $\sigma$ : 71.4

Channel 2  
mn: -1542  
mx: 934  
 $\mu$ : -16.3  
 $\sigma$ : 31.5



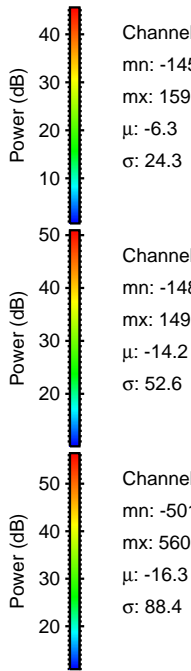
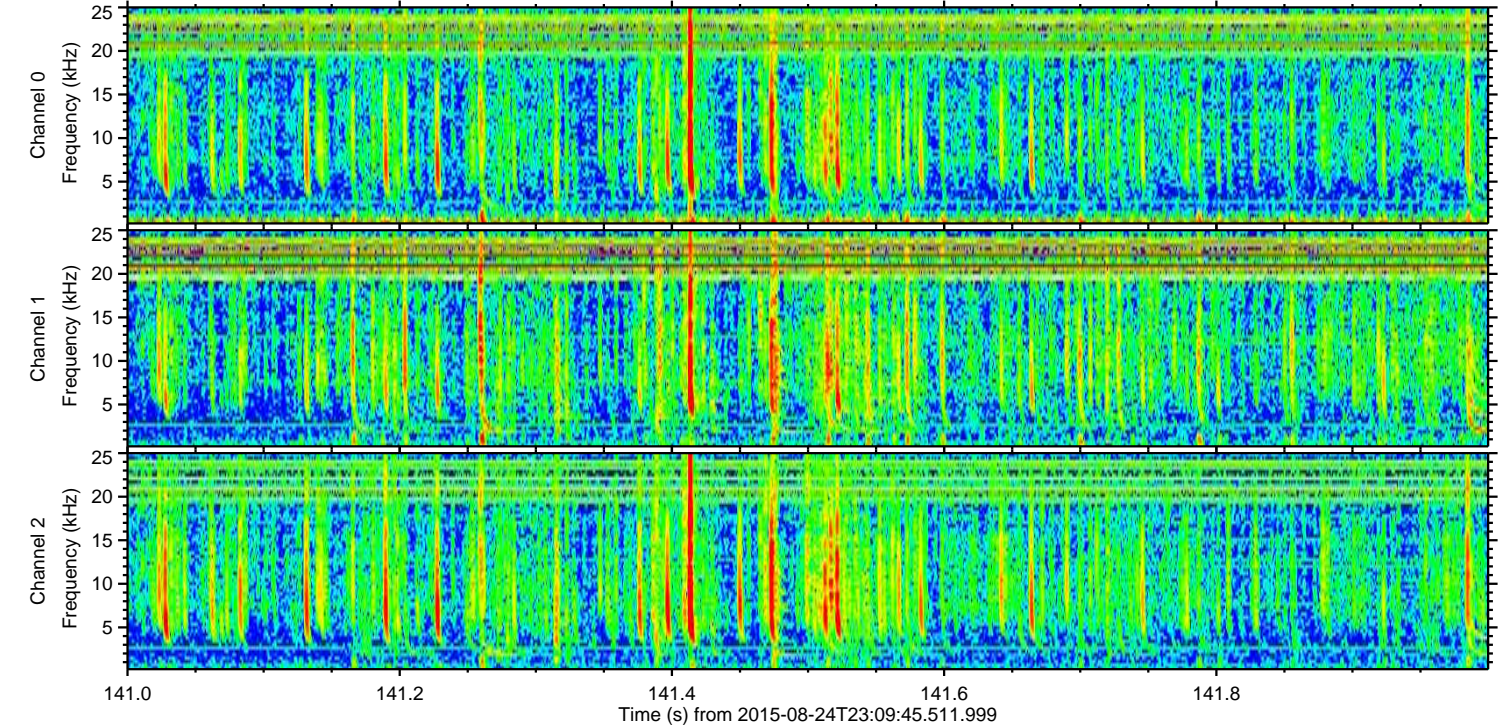
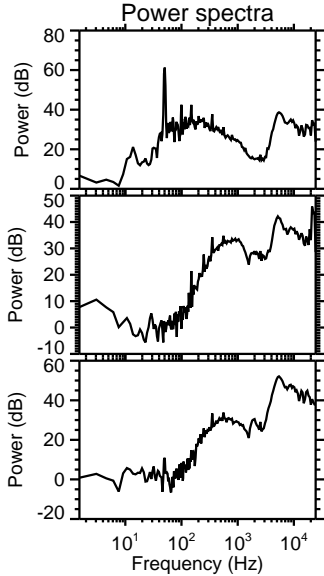
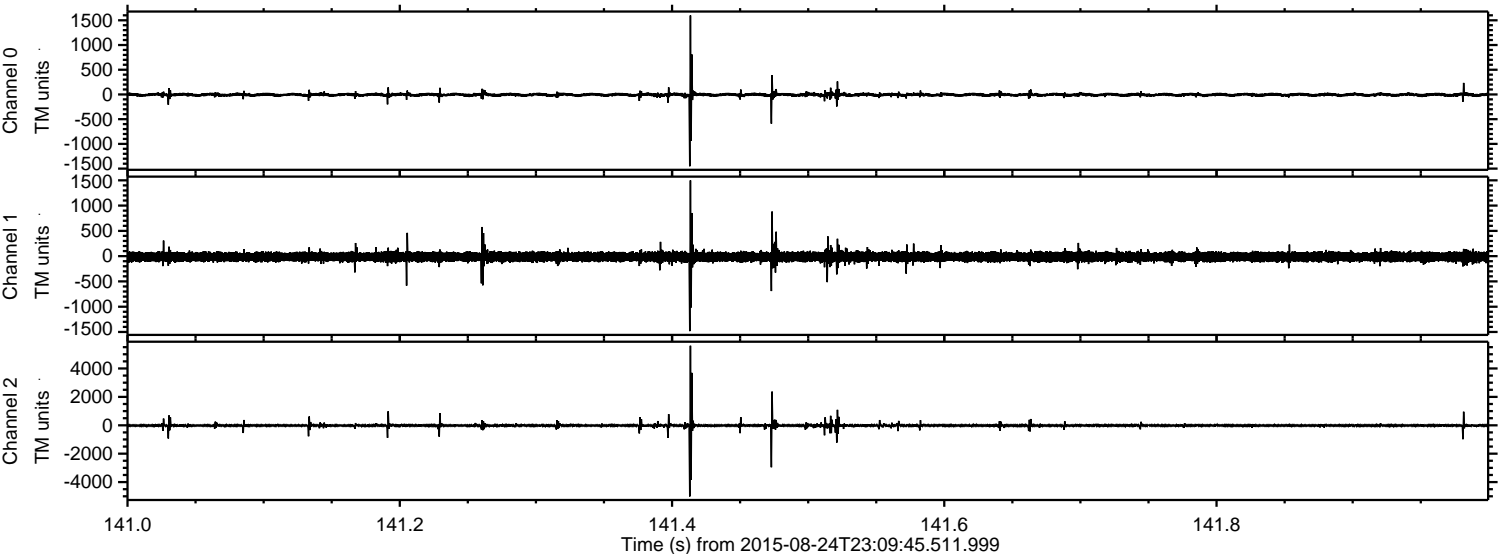
Processed Tue Oct 6 17:36:55 2015 by ELM ver.2012-10-06 from 001\_\_elm20150824\_230944\_\_dat00.bin





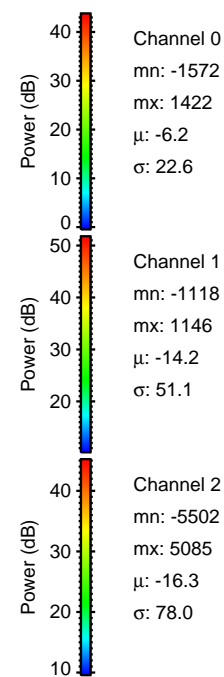
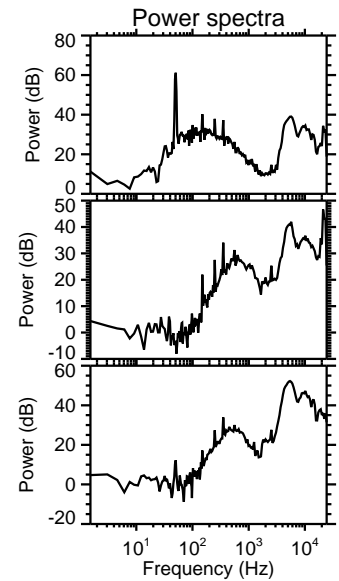
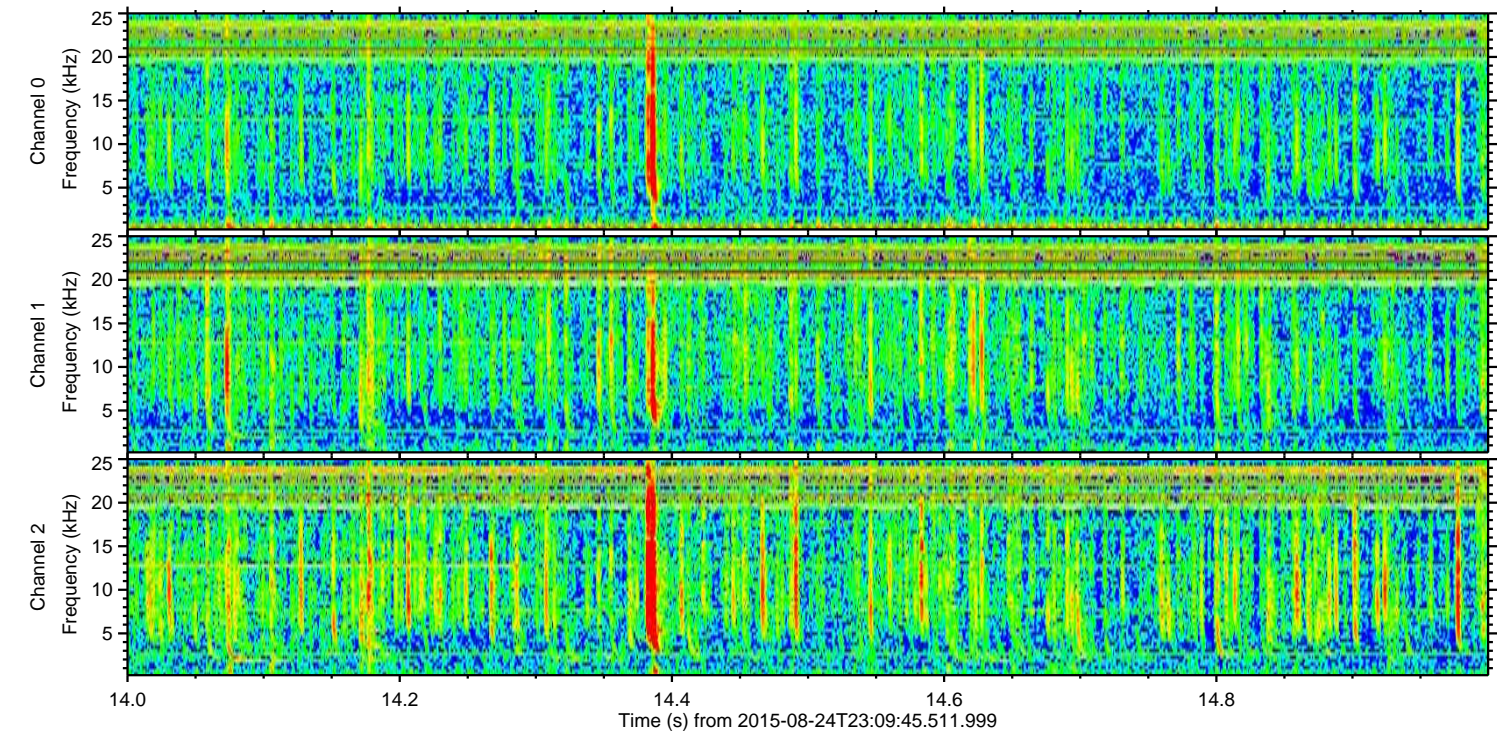
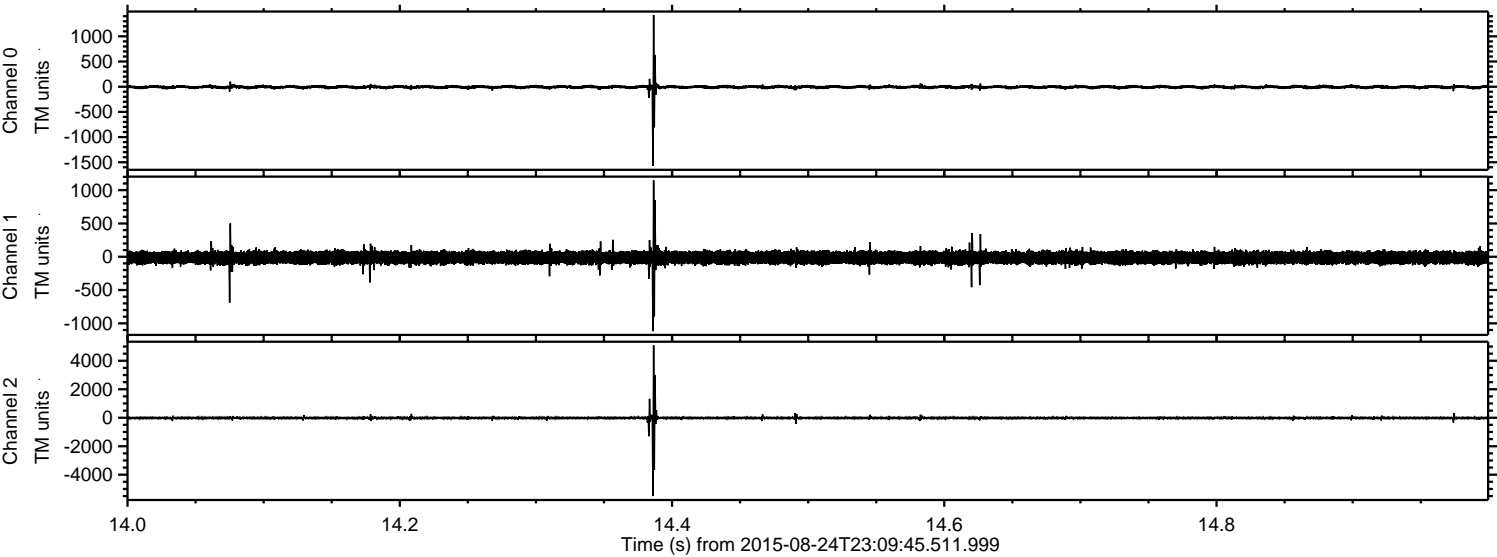
ELMAVAN 3D WAVEFORMS (Measured data sampled at 50 kHz) 51000 packets of 144 samples from 2015-08-24T23:09:45.511.999. Part 142/147

Processed Tue Oct 6 17:36:56 2015 by ELM ver.2012-10-06 from 001\_\_elm20150824\_230944\_\_dat00.bin



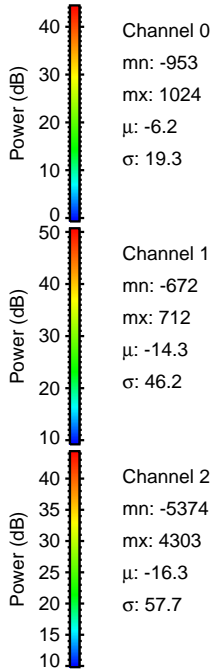
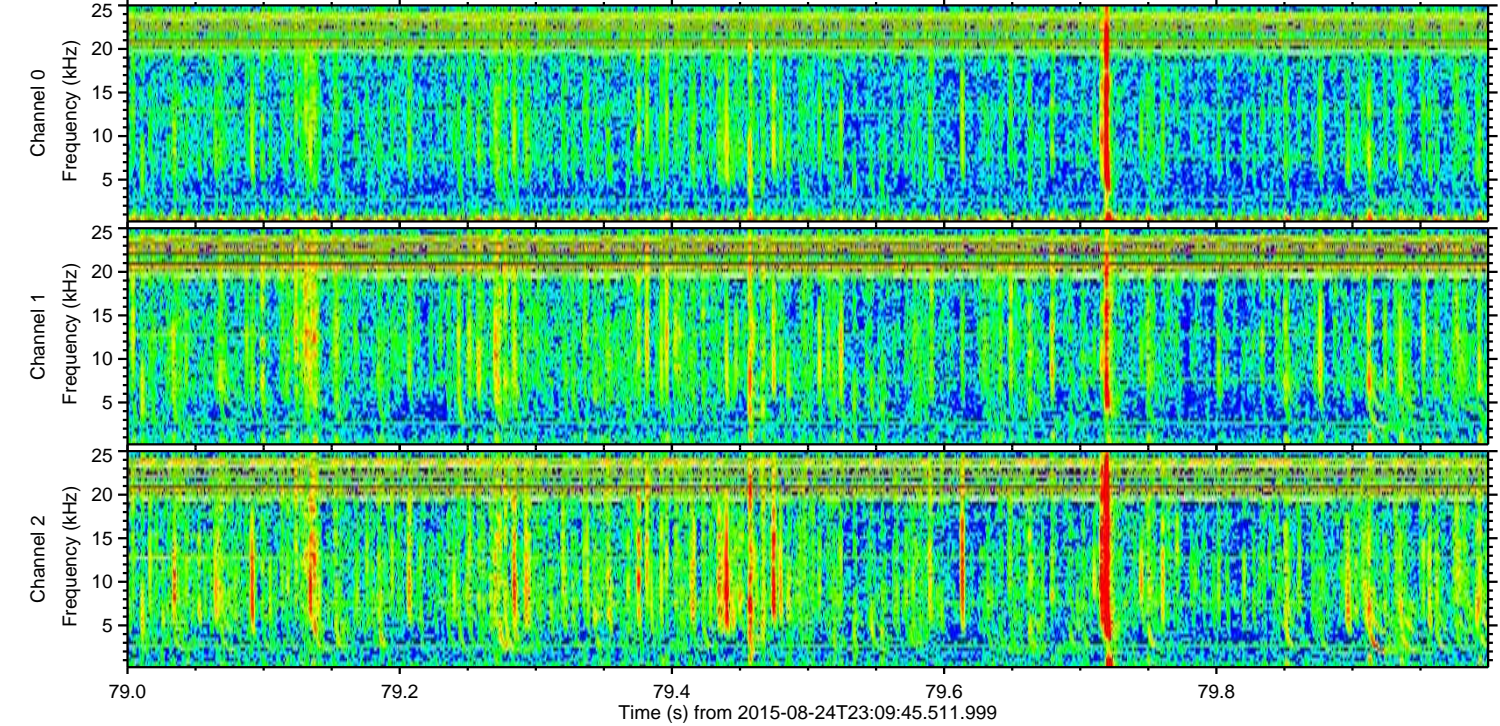
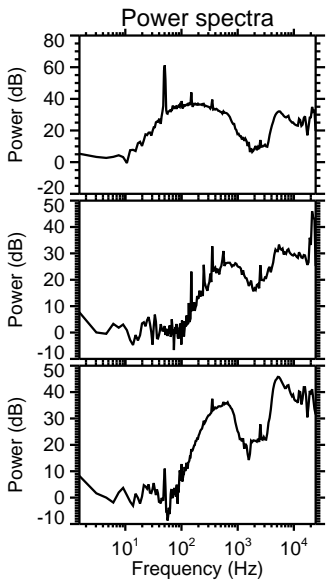
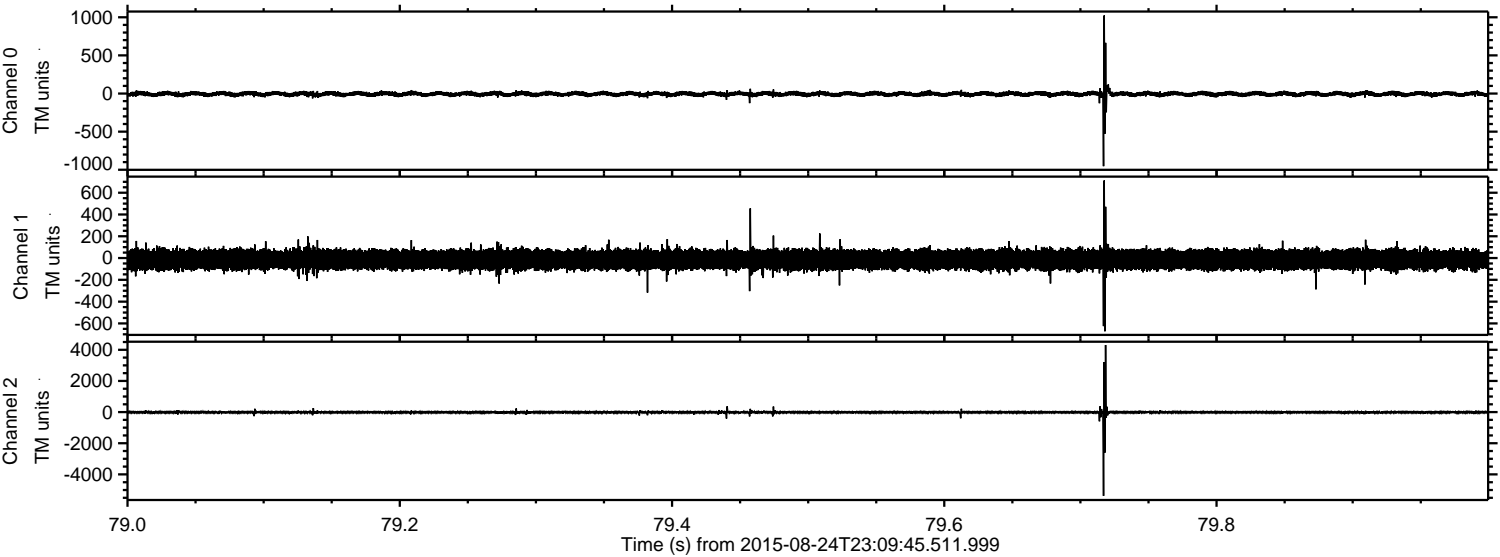


Processed Tue Oct 6 17:36:57 2015 by ELM ver.2012-10-06 from 001\_\_elm20150824\_230944\_\_dat00.bin



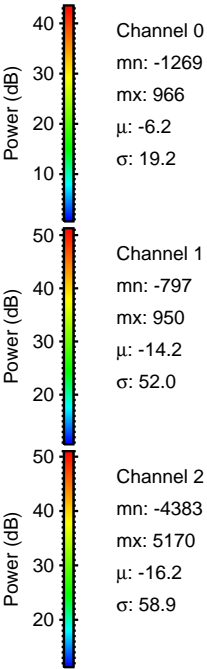
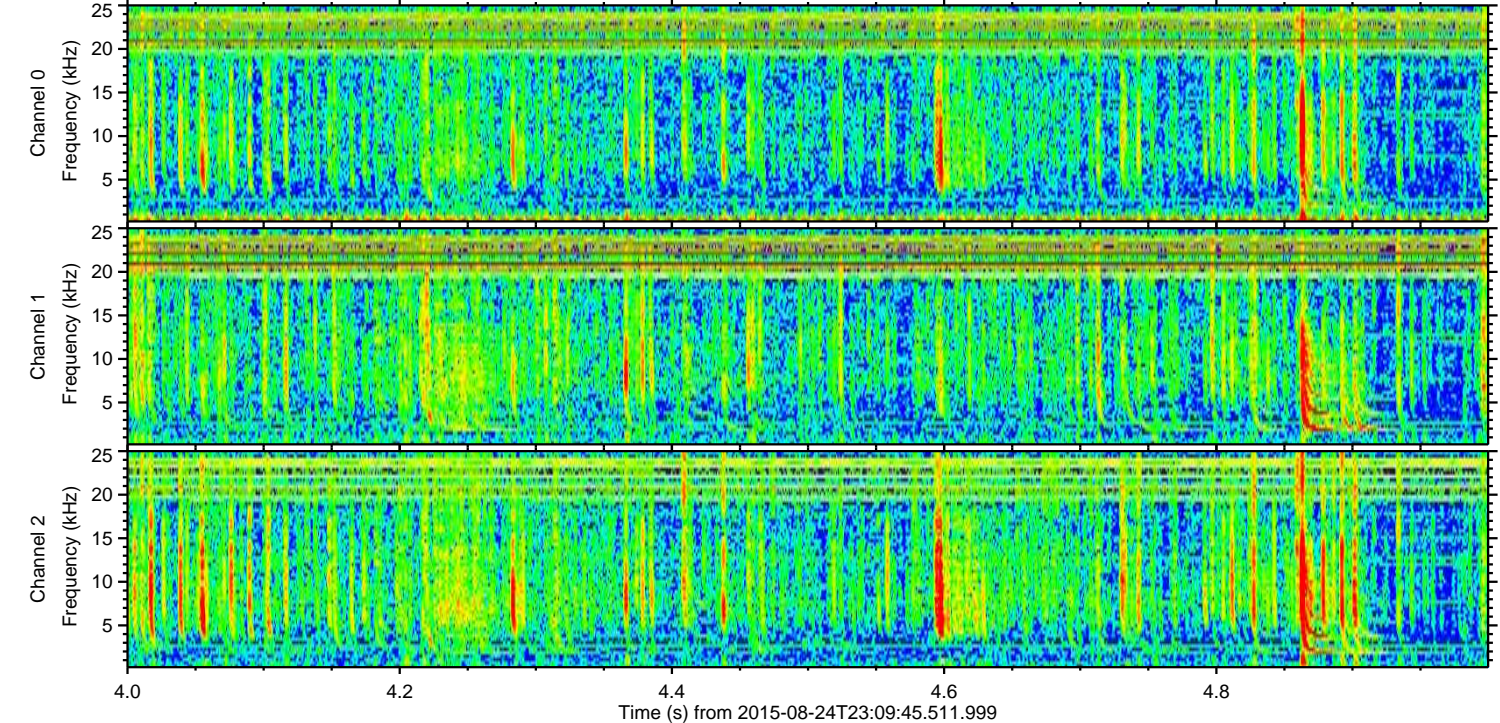
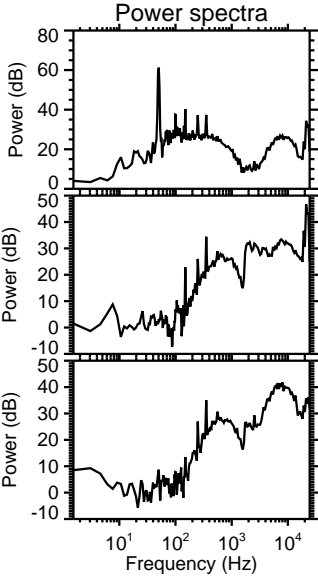
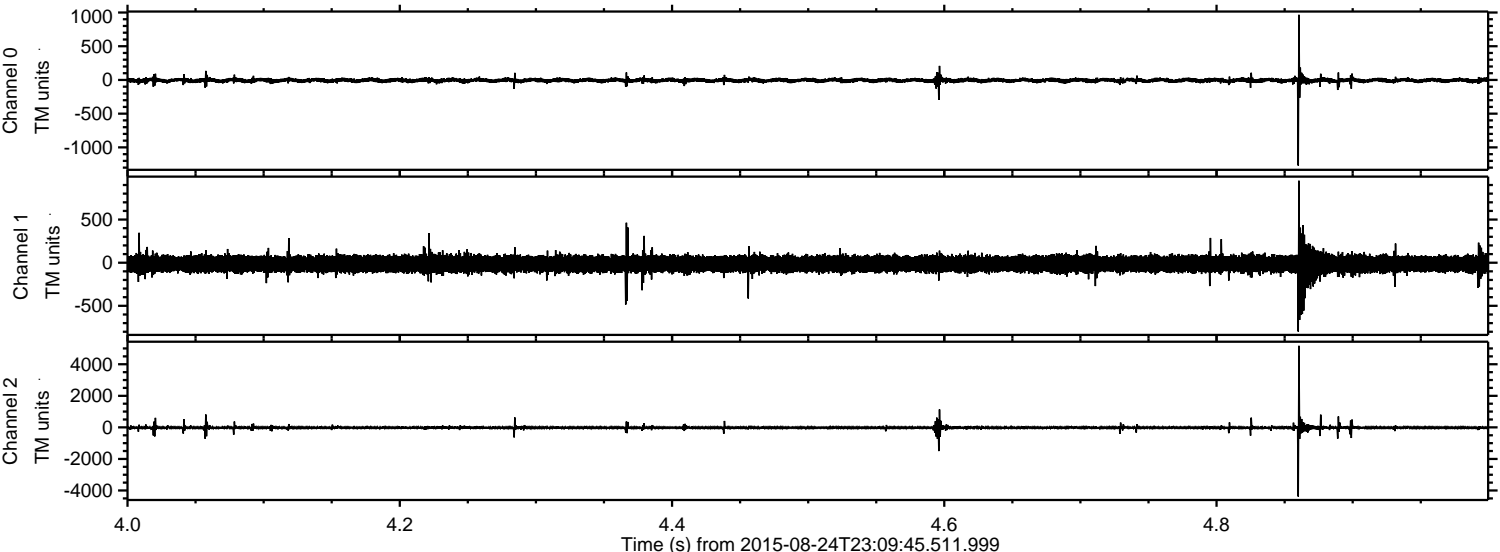


Processed Tue Oct 6 17:36:59 2015 by ELM ver.2012-10-06 from 001\_\_elm20150824\_230944\_\_dat00.bin





Processed Tue Oct 6 17:37:00 2015 by ELM ver.2012-10-06 from 001\_\_elm20150824\_230944\_\_dat00.bin





Processed Tue Oct 6 17:37:01 2015 by ELM ver.2012-10-06 from 001\_\_elm20150824\_230944\_\_dat00.bin

