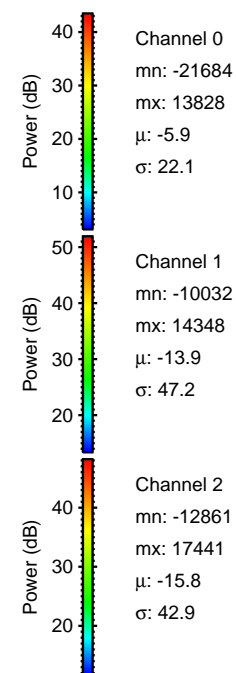
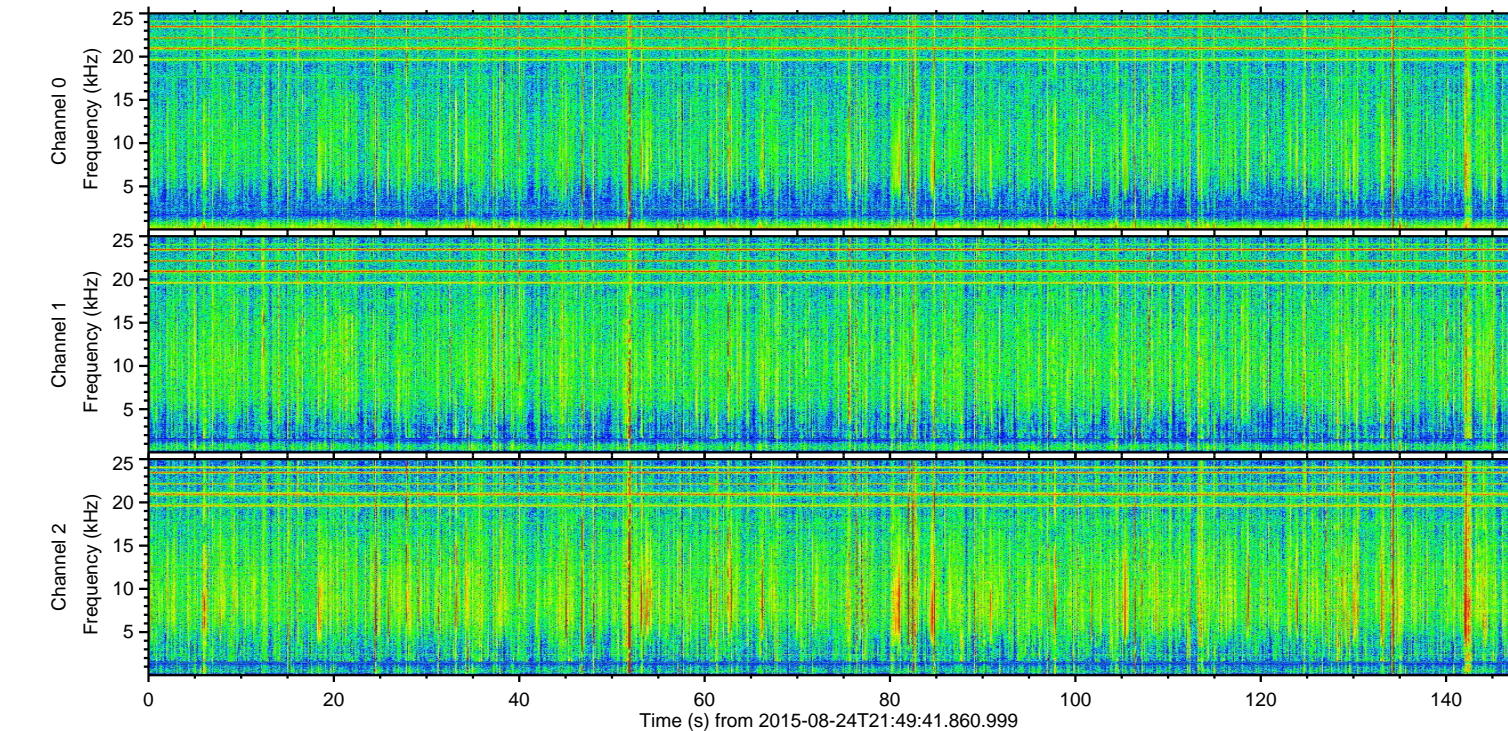
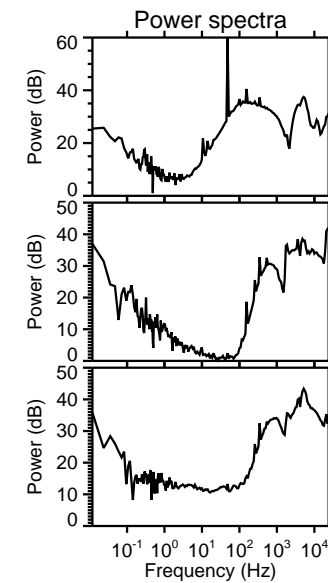
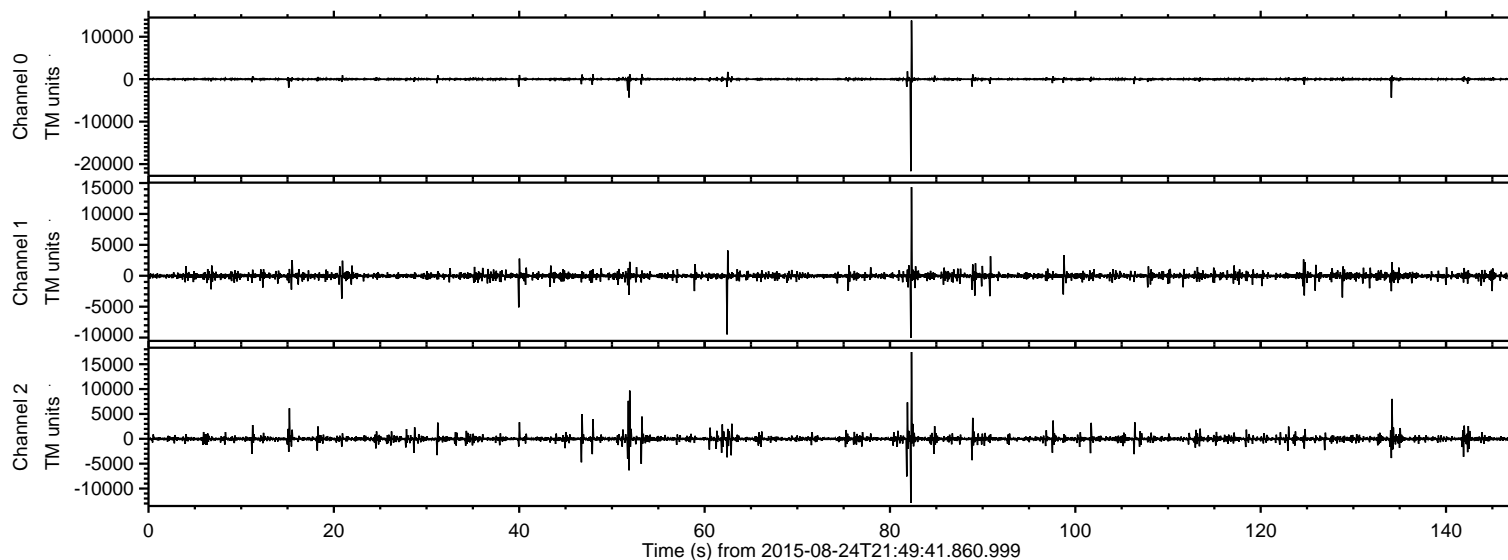


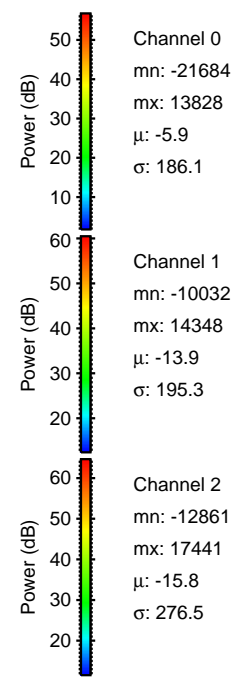
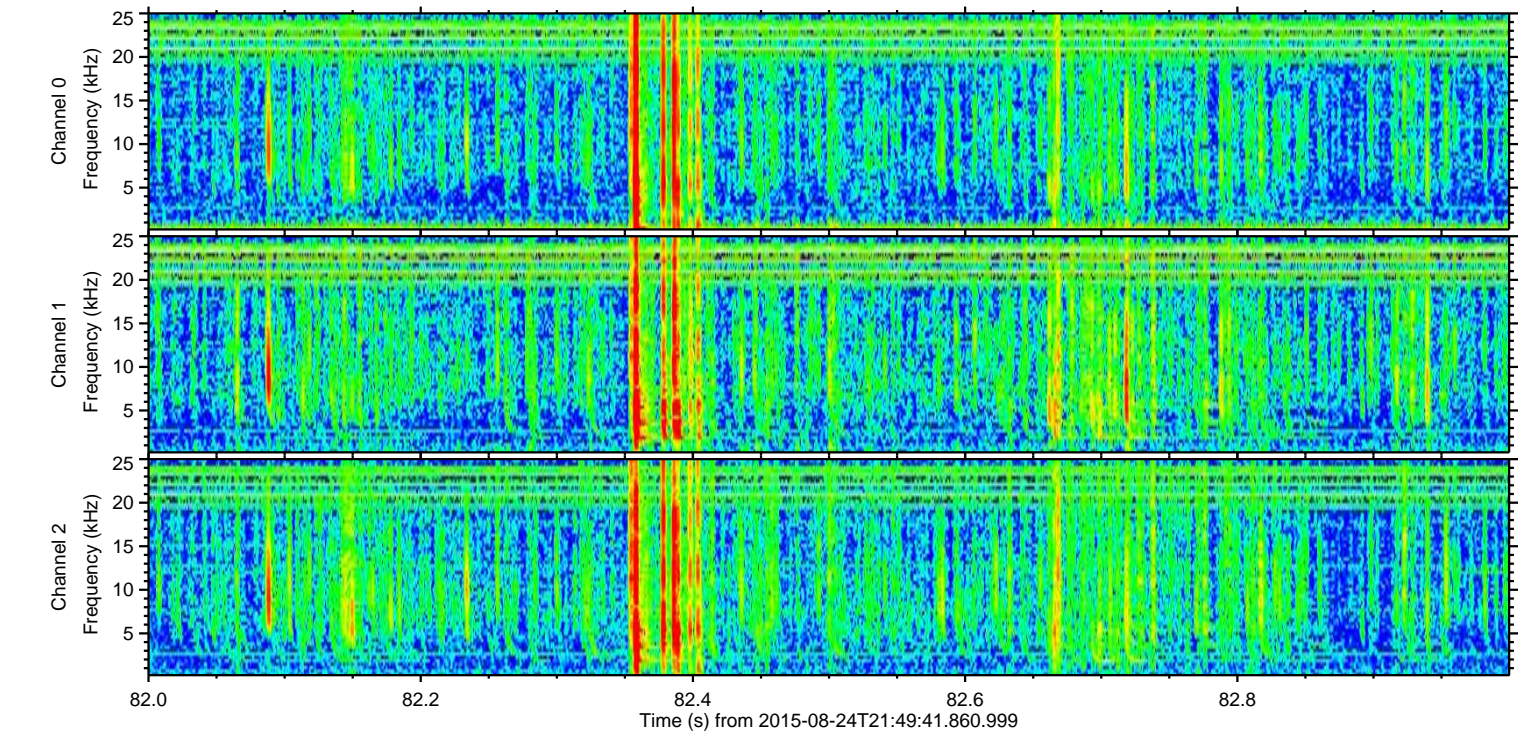
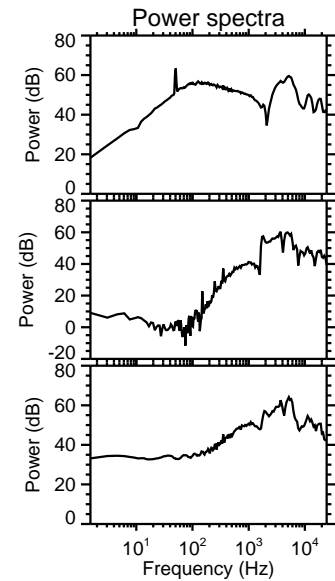
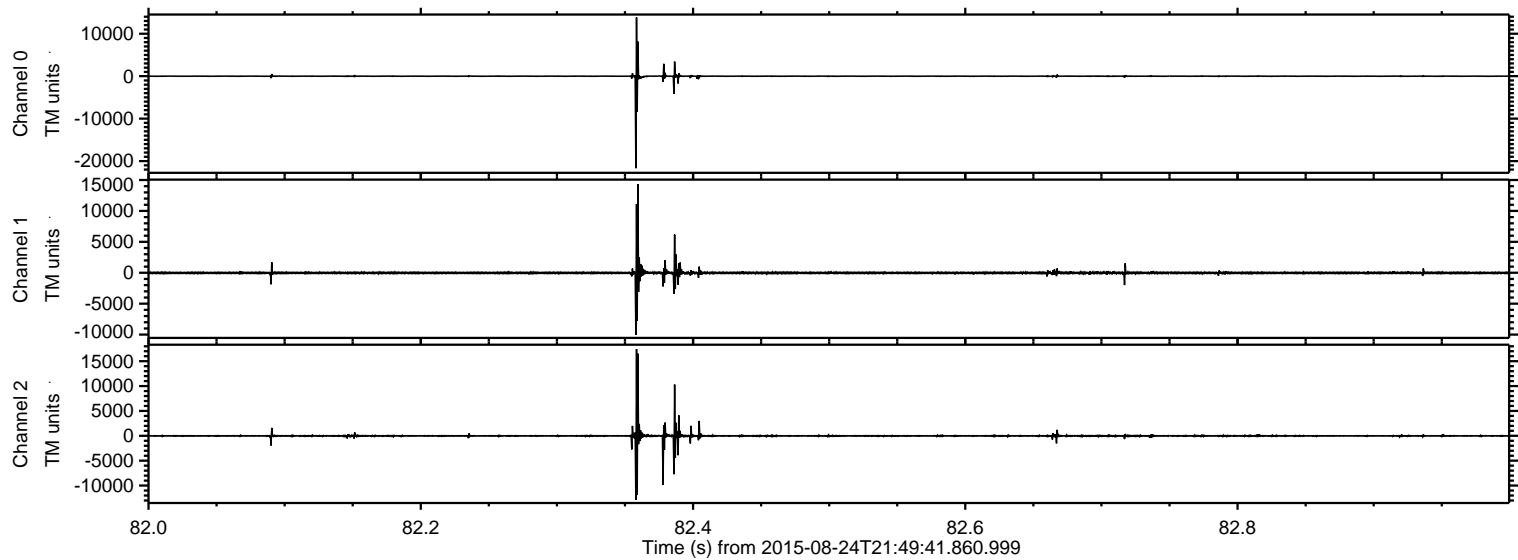
ELMAVAN 3D WAVEFORMS (Measured data sampled at 50 kHz) 51000 packets of 144 samples from 2015-08-24T21:49:41.860.999.

Processed Tue Oct 6 17:14:23 2015 by ELM ver.2012-10-06 from 001__elm20150824_214940__dat00.bin

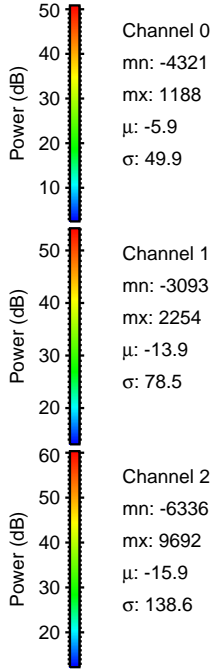
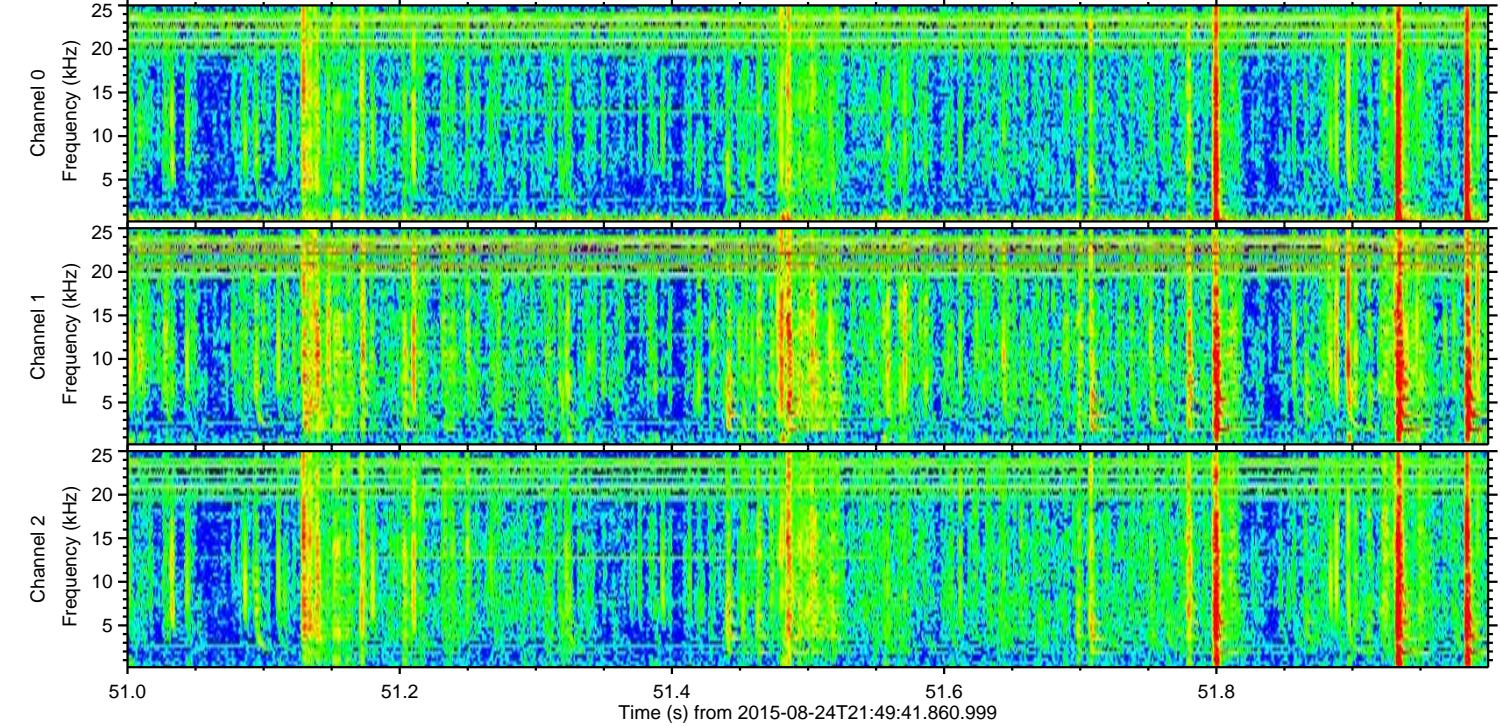
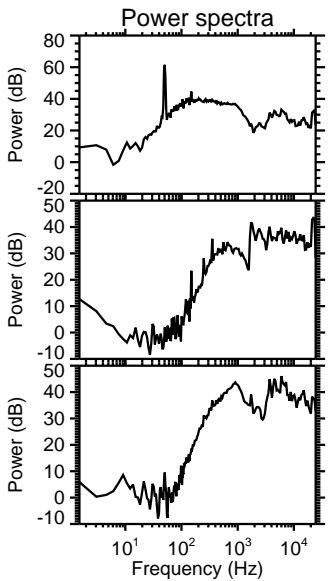
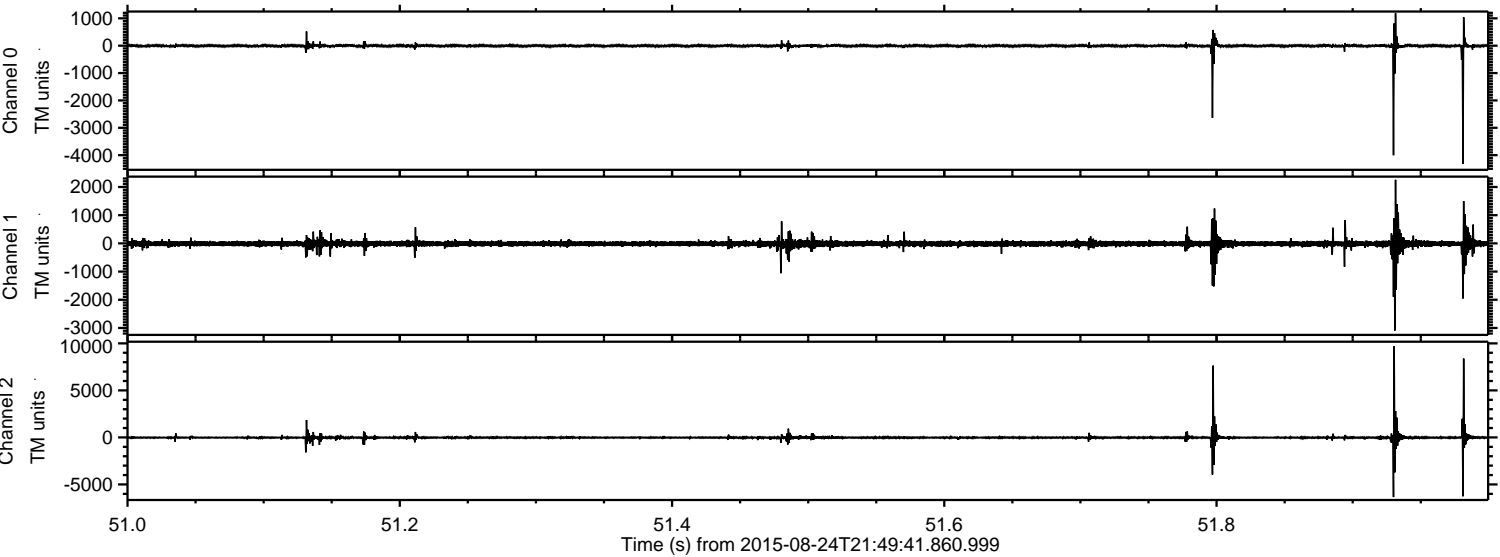


ELMAVAN 3D WAVEFORMS (Measured data sampled at 50 kHz) 51000 packets of 144 samples from 2015-08-24T21:49:41.860.999. Part 83/147

Processed Tue Oct 6 17:14:37 2015 by ELM ver.2012-10-06 from 001__elm20150824_214940__dat00.bin



Processed Tue Oct 6 17:14:38 2015 by ELM ver.2012-10-06 from 001__elm20150824_214940__dat00.bin

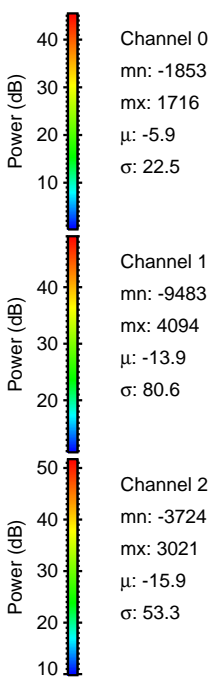
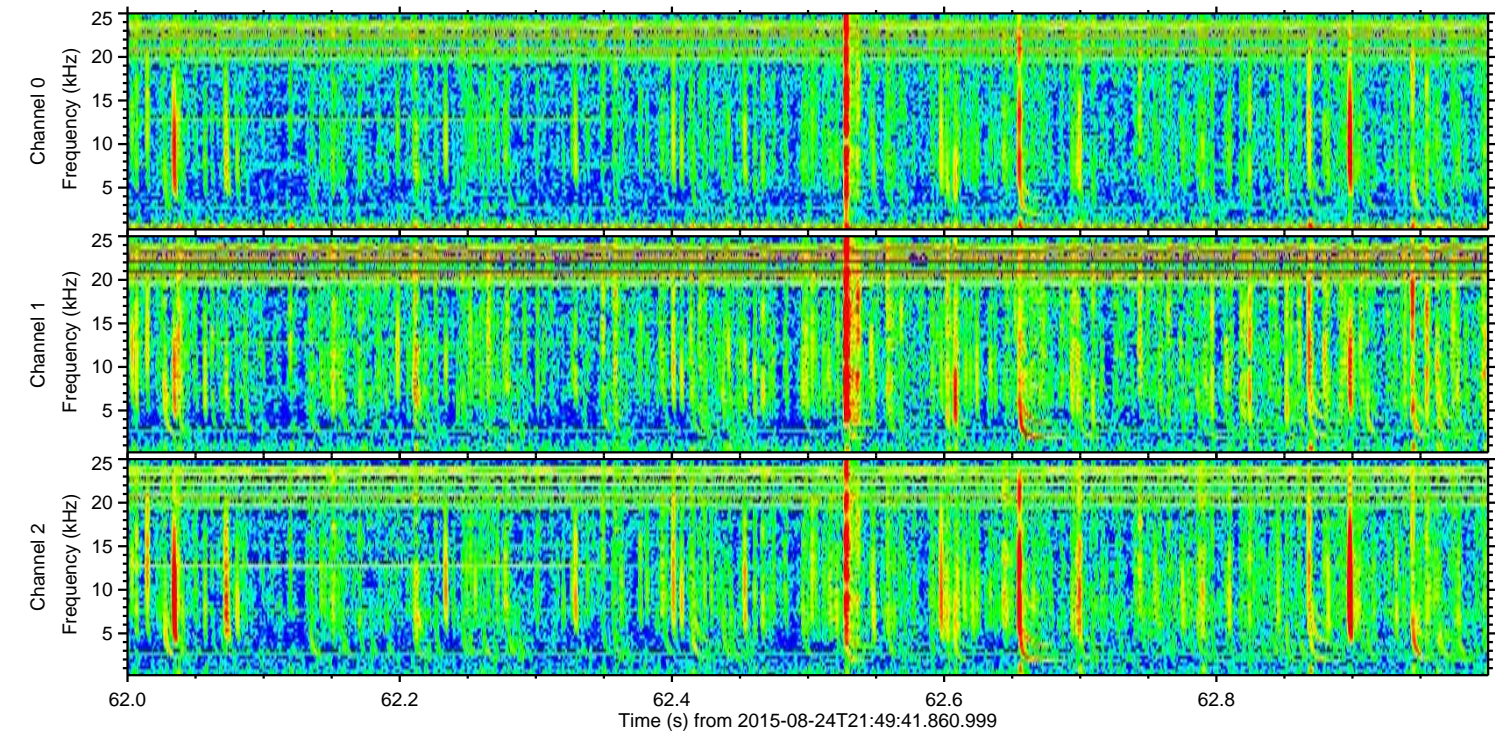
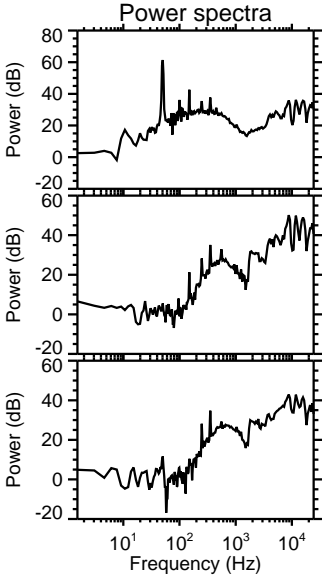
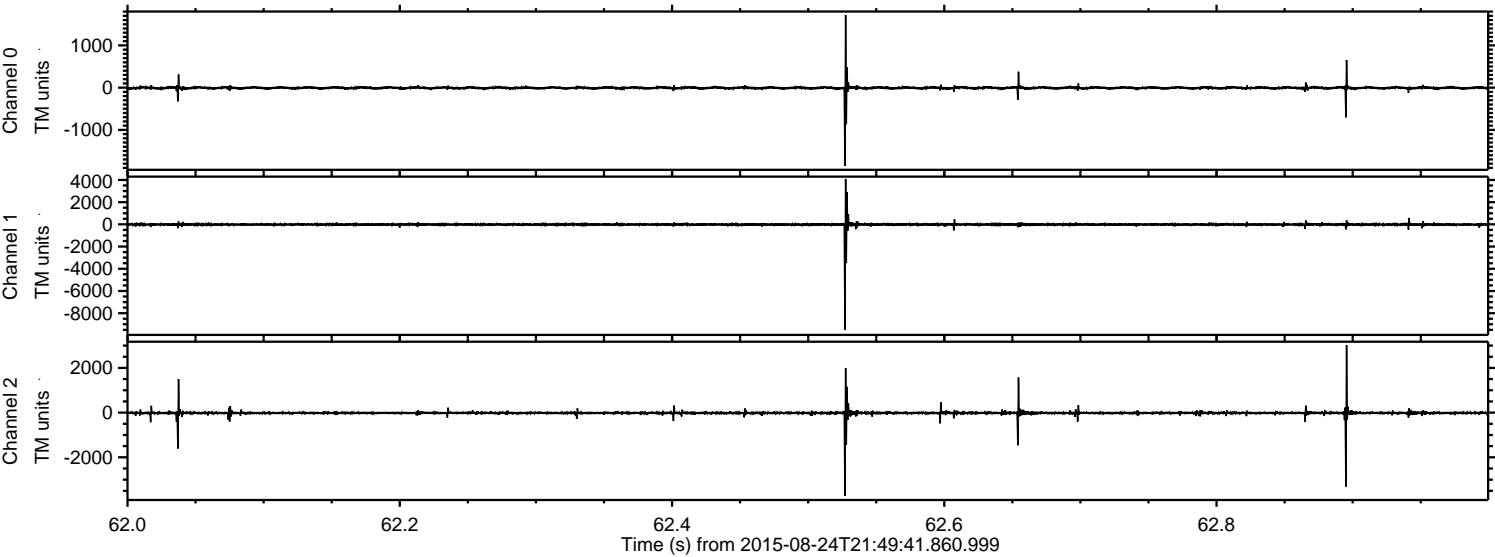


Channel 0
mn: -4321
mx: 1188
 μ : -5.9
 σ : 49.9

Channel 1
mn: -3093
mx: 2254
 μ : -13.9
 σ : 78.5

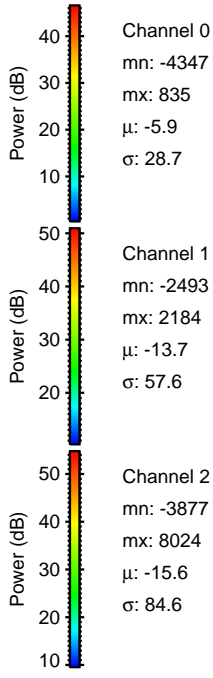
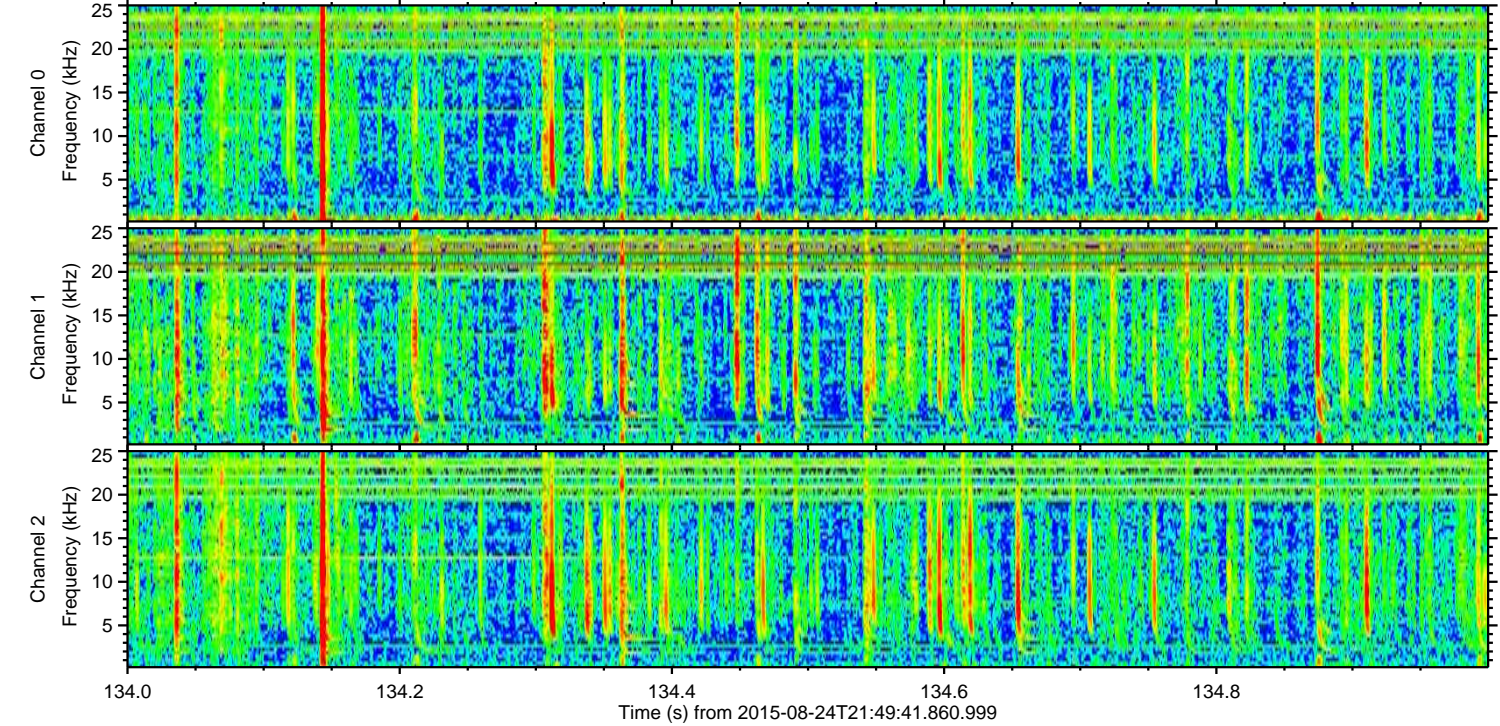
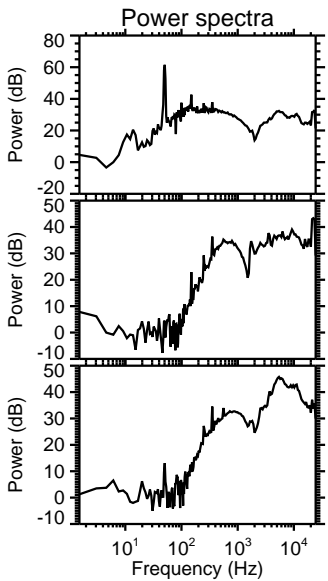
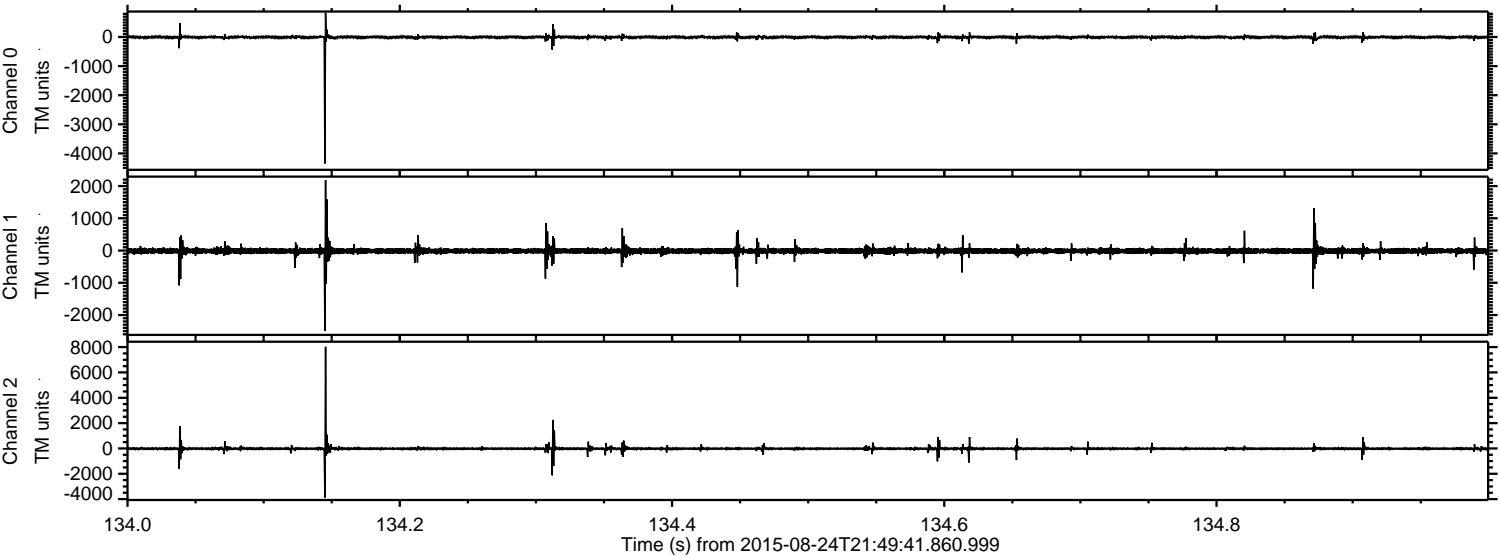
Channel 2
mn: -6336
mx: 9692
 μ : -15.9
 σ : 138.6

Processed Tue Oct 6 17:14:39 2015 by ELM ver.2012-10-06 from 001__elm20150824_214940__dat00.bin



ELMAVAN 3D WAVEFORMS (Measured data sampled at 50 kHz) 51000 packets of 144 samples from 2015-08-24T21:49:41.860.999. Part 135/147

Processed Tue Oct 6 17:14:40 2015 by ELM ver.2012-10-06 from 001__elm20150824_214940__dat00.bin



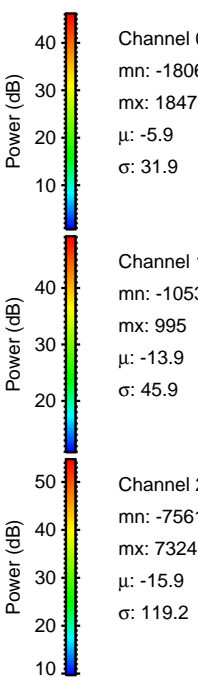
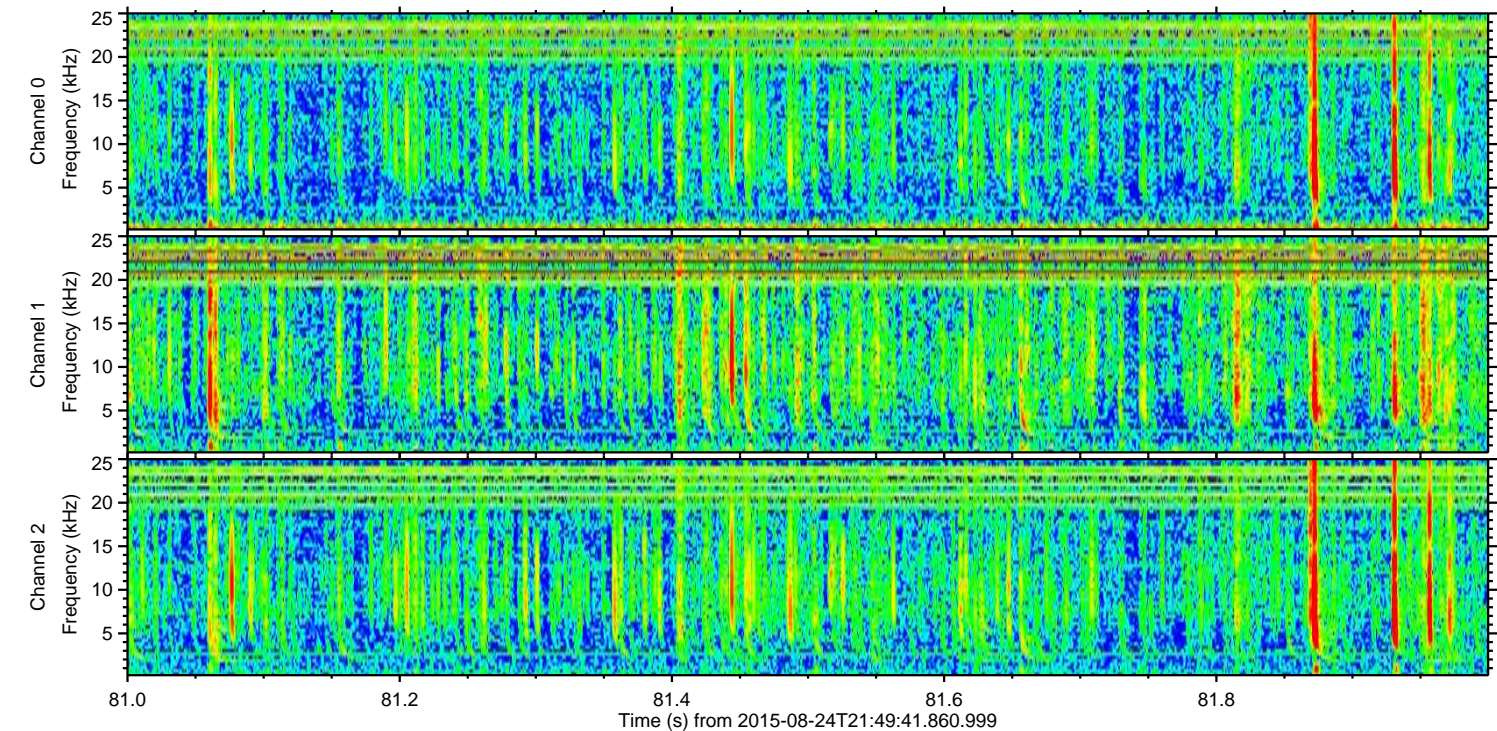
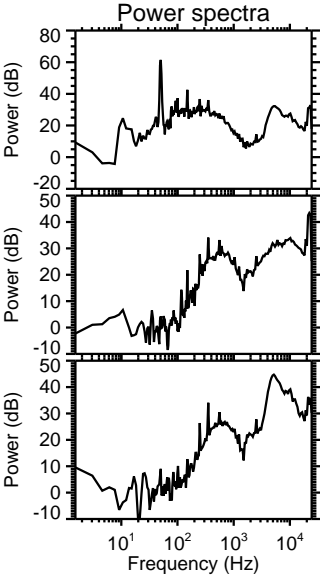
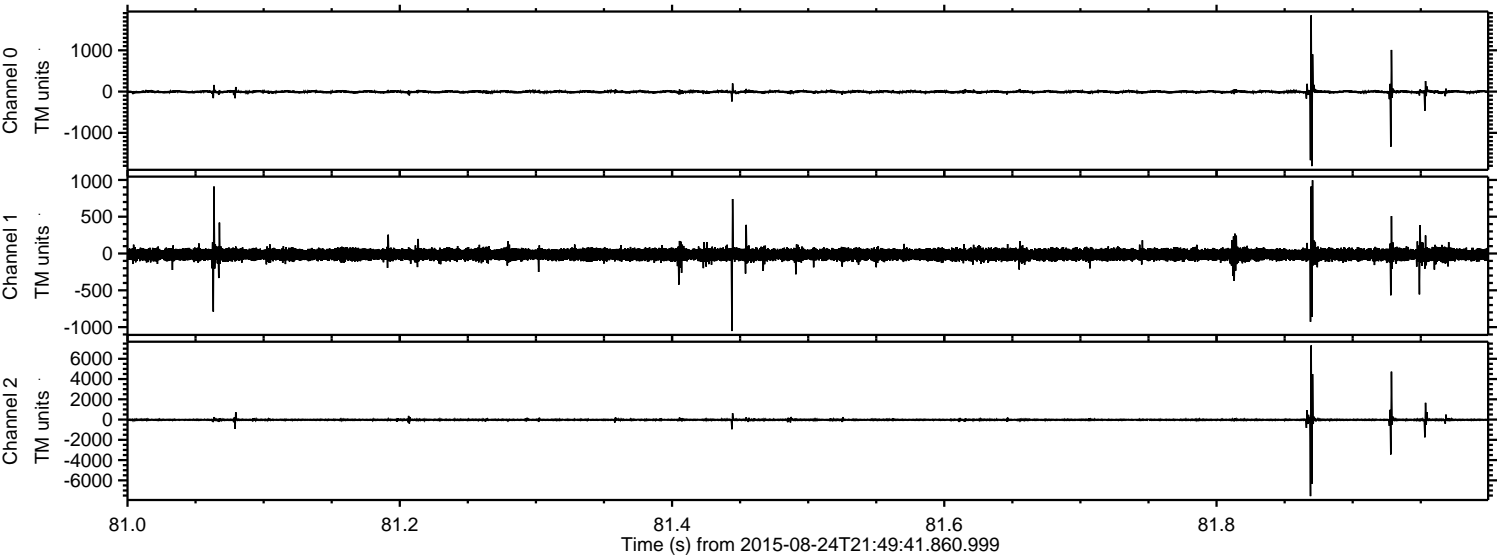
Channel 0
mn: -4347
mx: 835
 μ : -5.9
 σ : 28.7

Channel 1
mn: -2493
mx: 2184
 μ : -13.7
 σ : 57.6

Channel 2
mn: -3877
mx: 8024
 μ : -15.6
 σ : 84.6

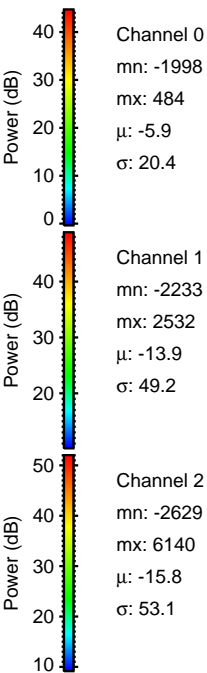
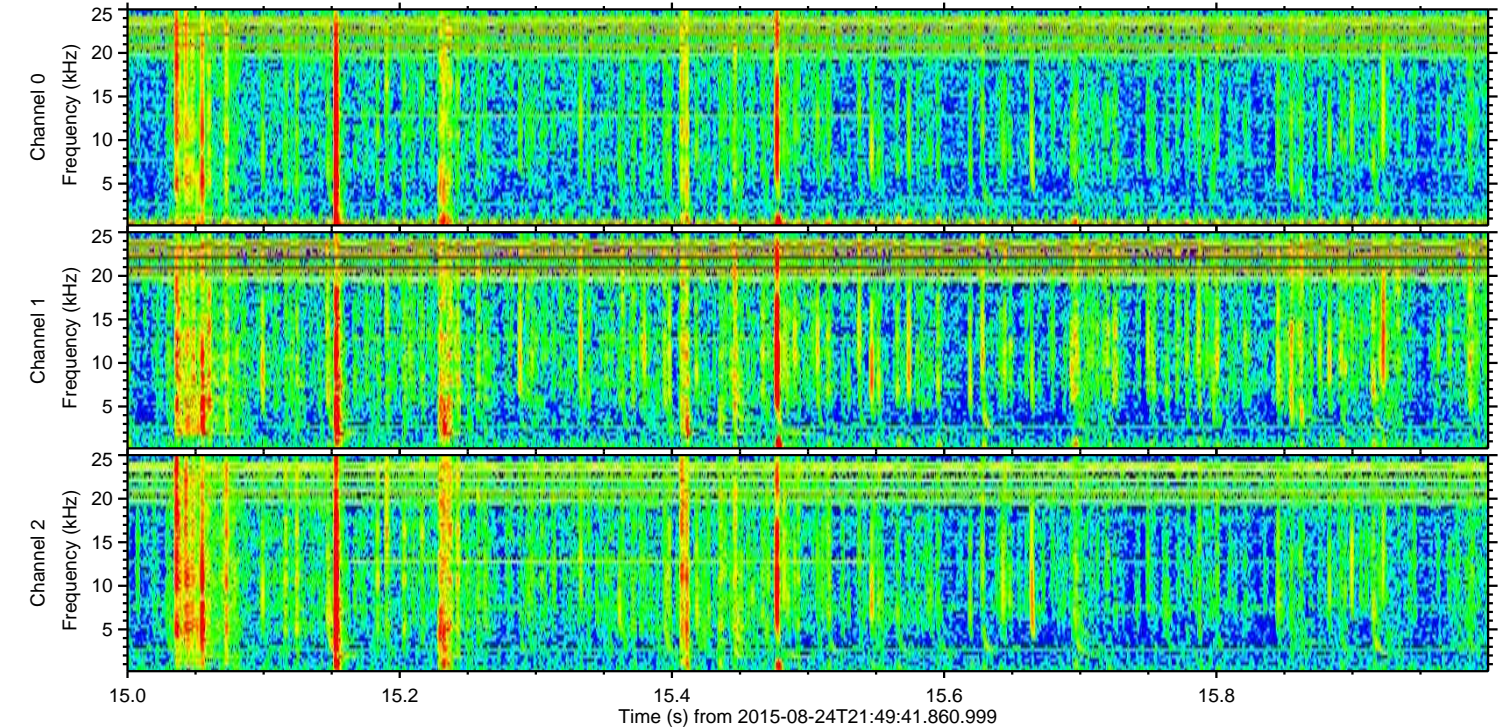
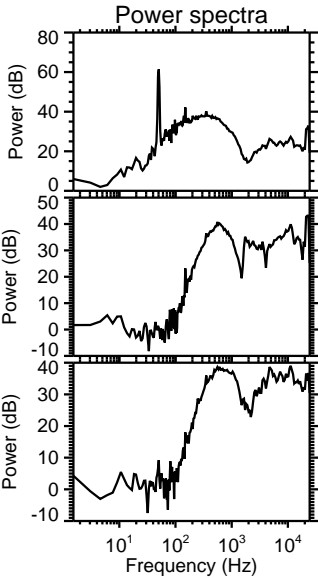
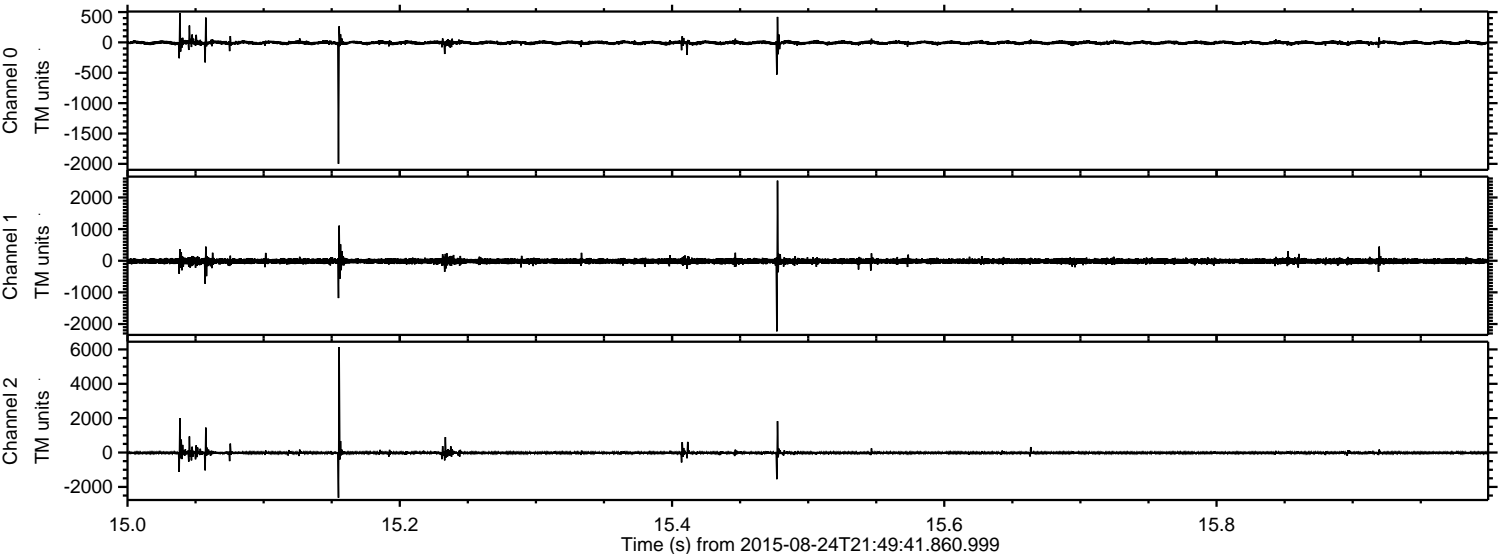
ELMAVAN 3D WAVEFORMS (Measured data sampled at 50 kHz) 51000 packets of 144 samples from 2015-08-24T21:49:41.860.999. Part 82/147

Processed Tue Oct 6 17:14:41 2015 by ELM ver.2012-10-06 from 001__elm20150824_214940__dat00.bin



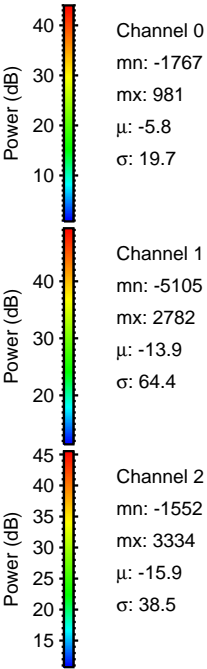
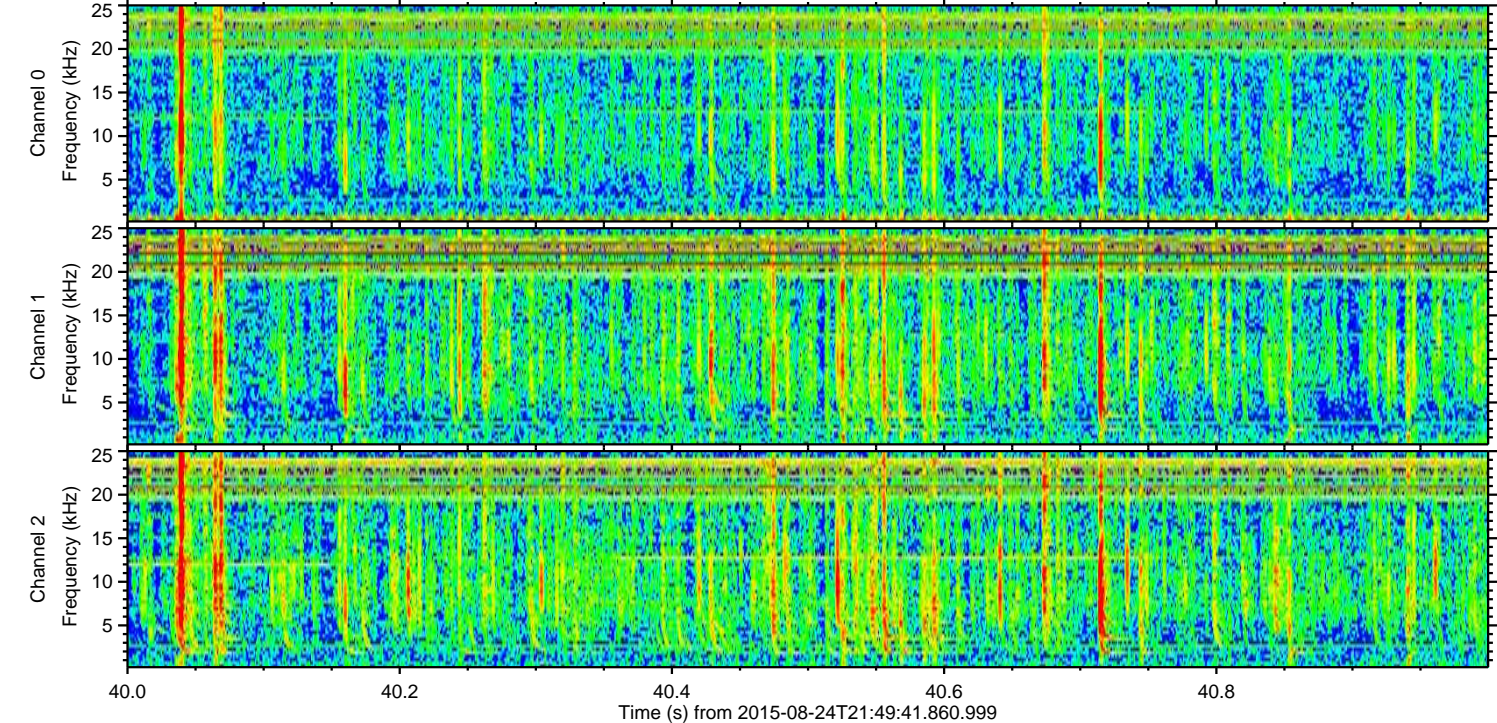
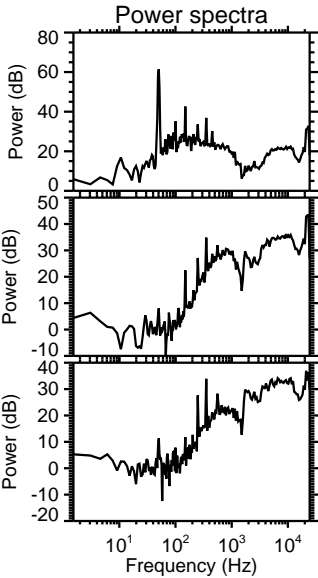
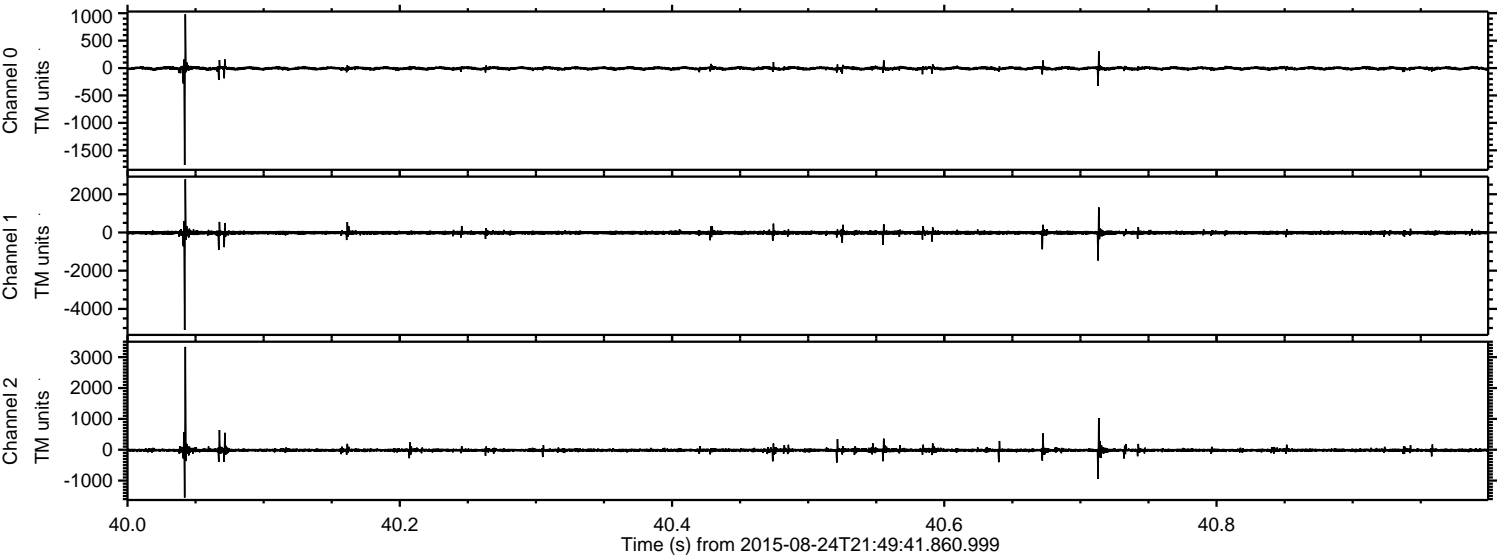
ELMAVAN 3D WAVEFORMS (Measured data sampled at 50 kHz) 51000 packets of 144 samples from 2015-08-24T21:49:41.860.999. Part 16/147

Processed Tue Oct 6 17:14:42 2015 by ELM ver.2012-10-06 from 001__elm20150824_214940__dat00.bin



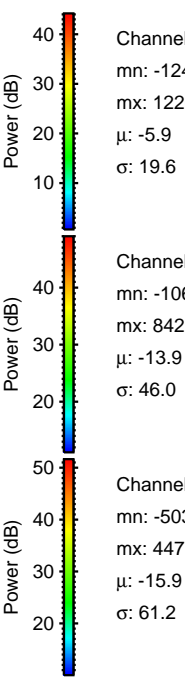
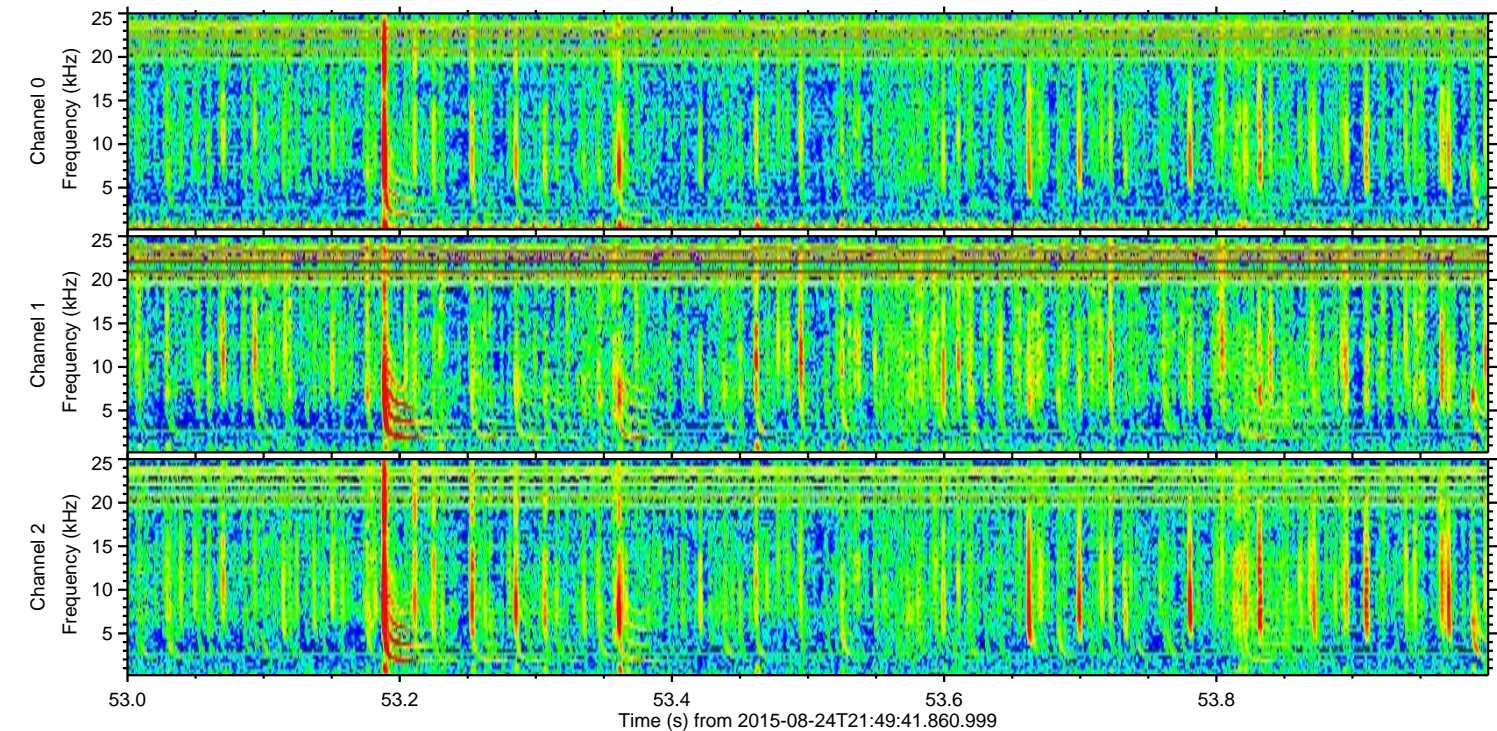
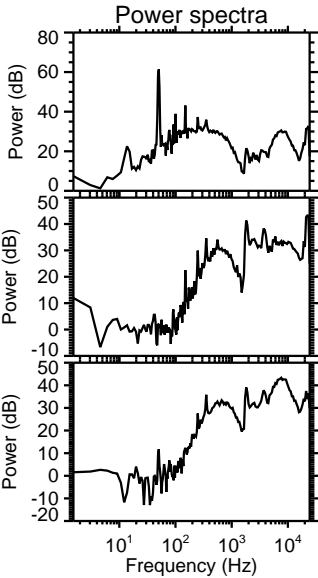
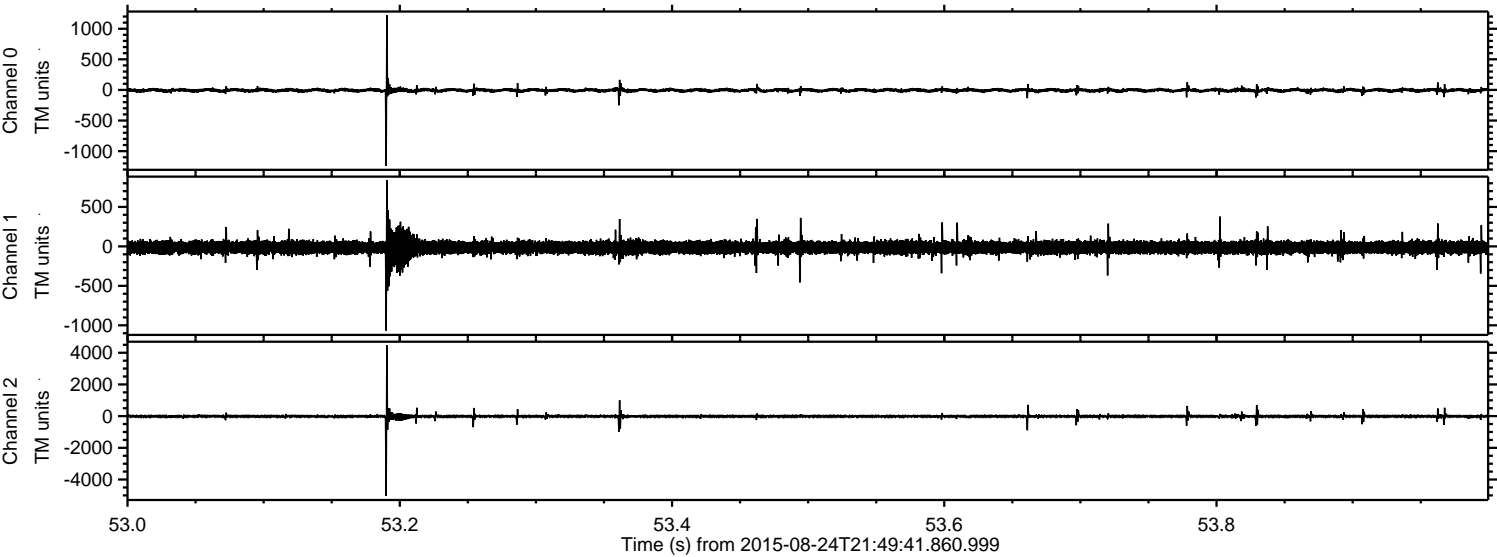
ELMAVAN 3D WAVEFORMS (Measured data sampled at 50 kHz) 51000 packets of 144 samples from 2015-08-24T21:49:41.860.999. Part 41/147

Processed Tue Oct 6 17:14:43 2015 by ELM ver.2012-10-06 from 001__elm20150824_214940__dat00.bin



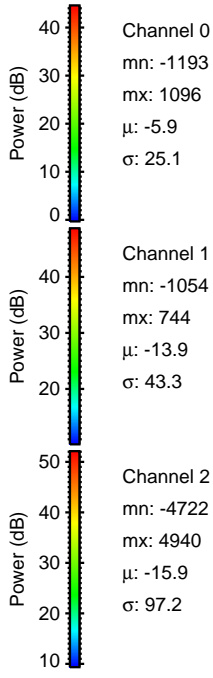
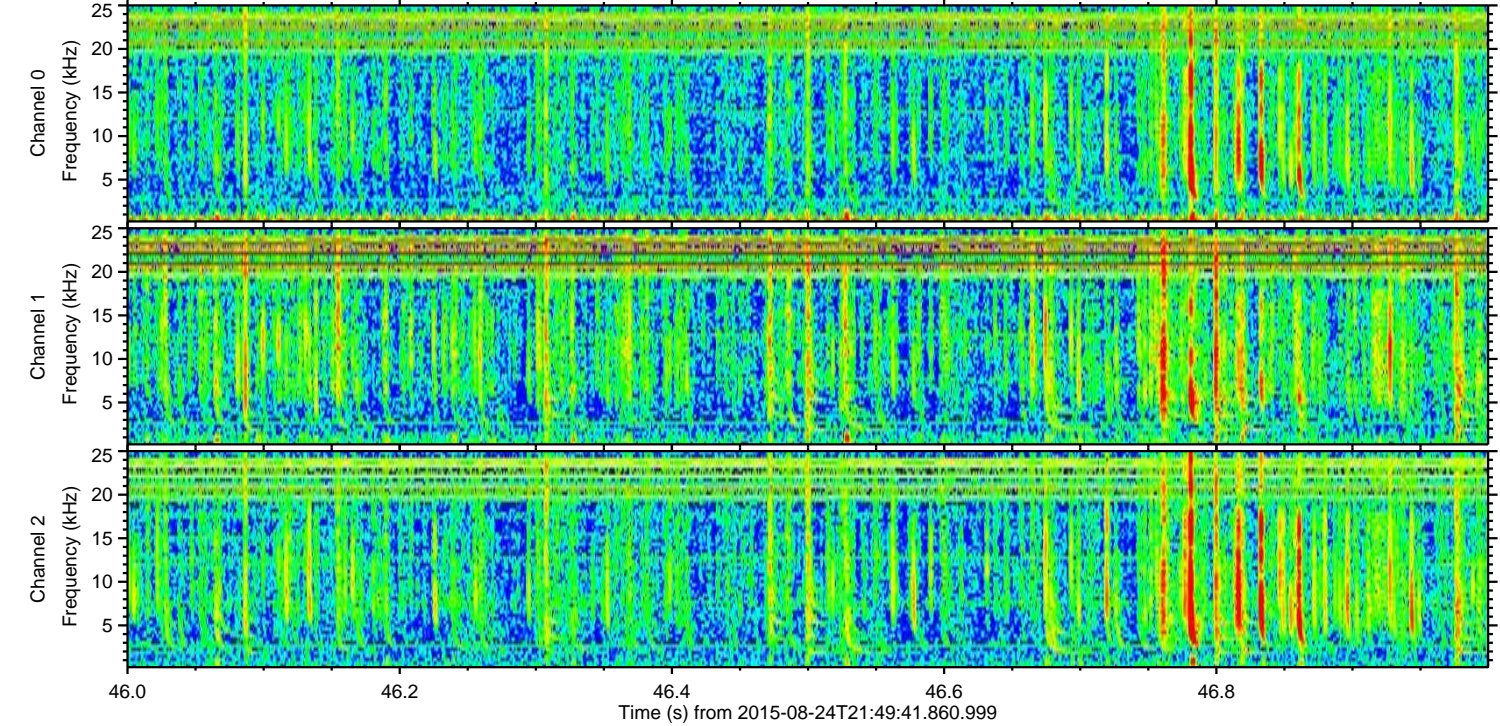
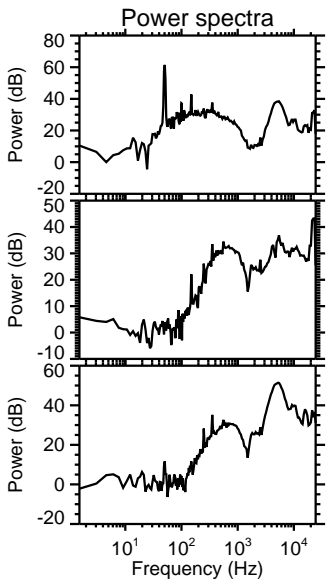
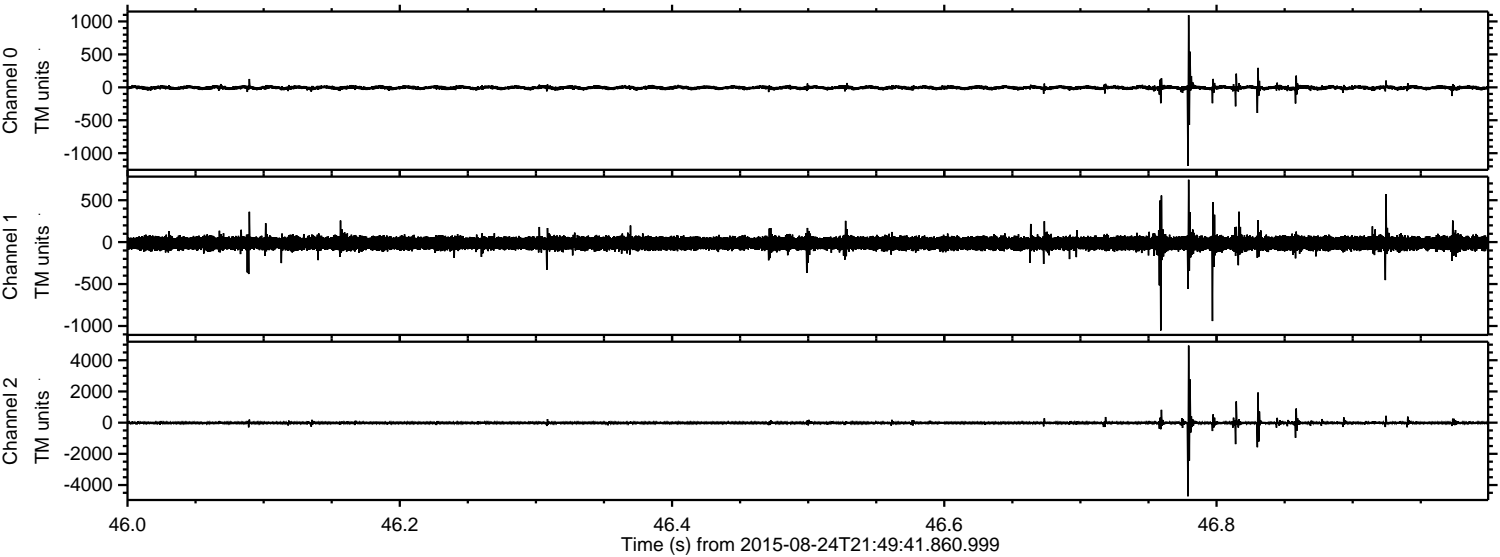
ELMAVAN 3D WAVEFORMS (Measured data sampled at 50 kHz) 51000 packets of 144 samples from 2015-08-24T21:49:41.860.999. Part 54/147

Processed Tue Oct 6 17:14:44 2015 by ELM ver.2012-10-06 from 001__elm20150824_214940__dat00.bin



ELMAVAN 3D WAVEFORMS (Measured data sampled at 50 kHz) 51000 packets of 144 samples from 2015-08-24T21:49:41.860.999. Part 47/147

Processed Tue Oct 6 17:14:45 2015 by ELM ver.2012-10-06 from 001__elm20150824_214940__dat00.bin



Channel 0
mn: -1193
mx: 1096
 μ : -5.9
 σ : 25.1

Channel 1
mn: -1054
mx: 744
 μ : -13.9
 σ : 43.3

Channel 2
mn: -4722
mx: 4940
 μ : -15.9
 σ : 97.2

Processed Tue Oct 6 17:14:47 2015 by ELM ver.2012-10-06 from 001__elm20150824_214940__dat00.bin

