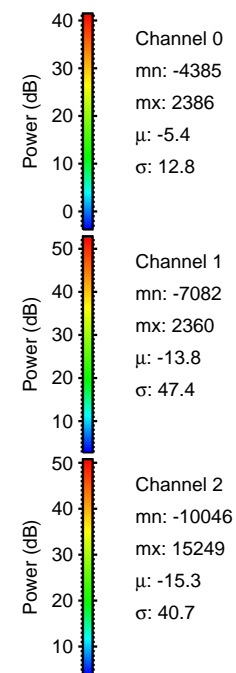
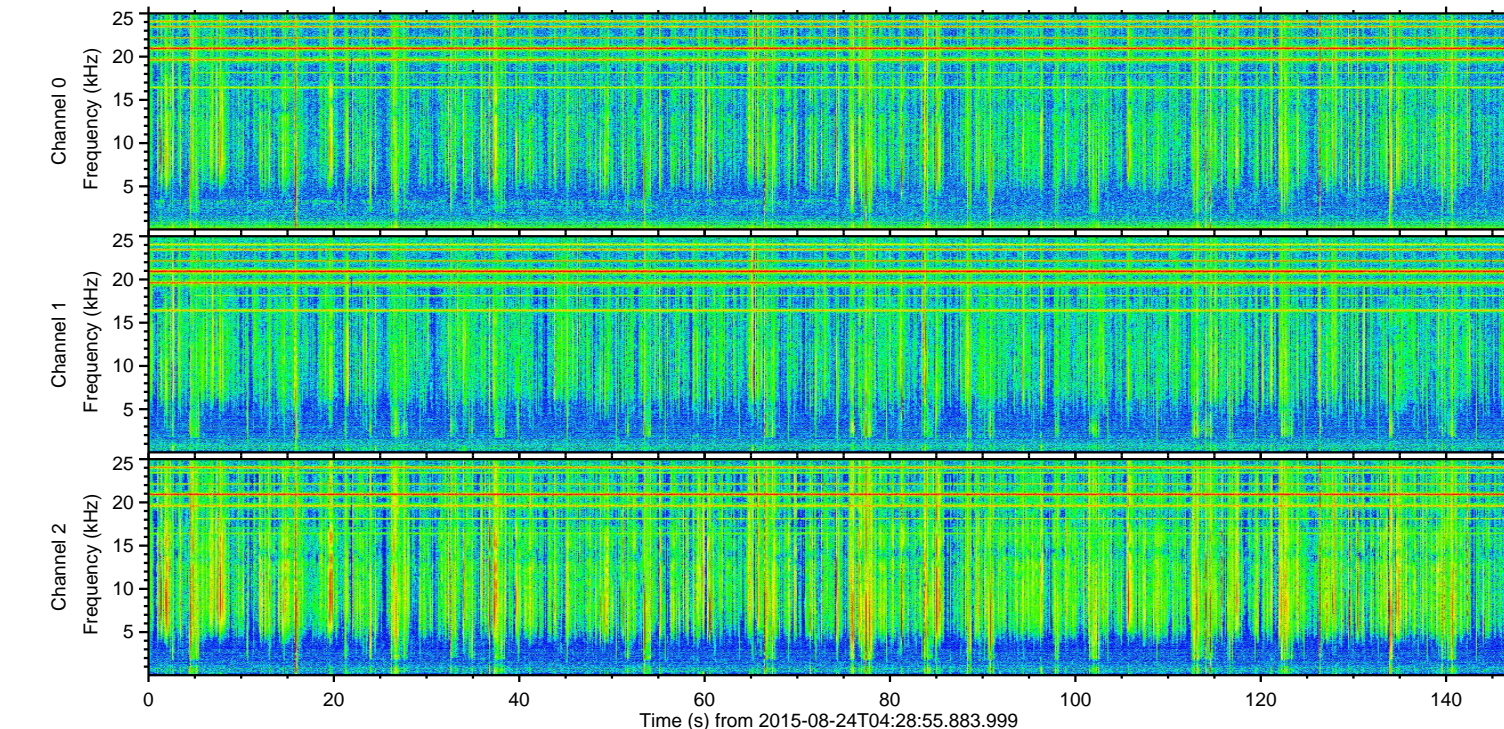
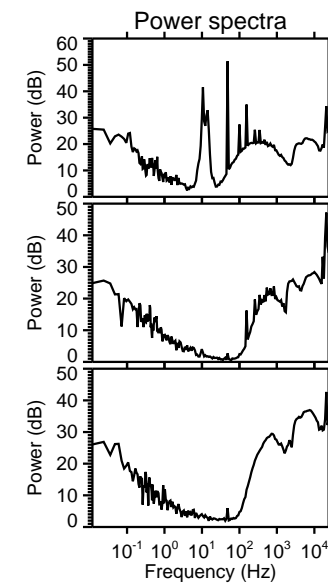
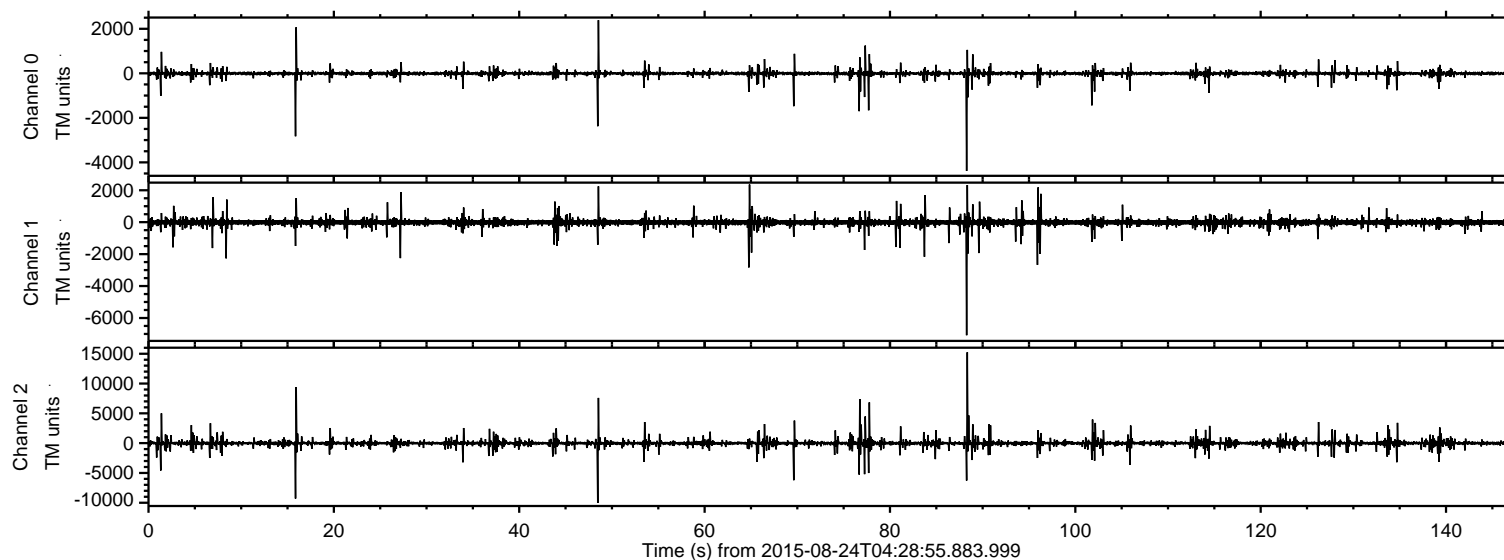


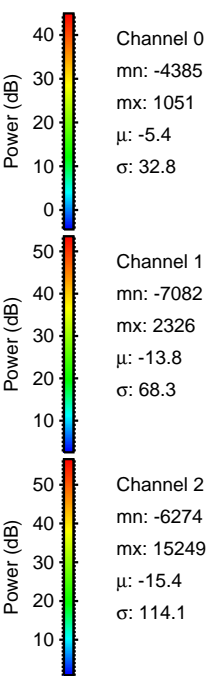
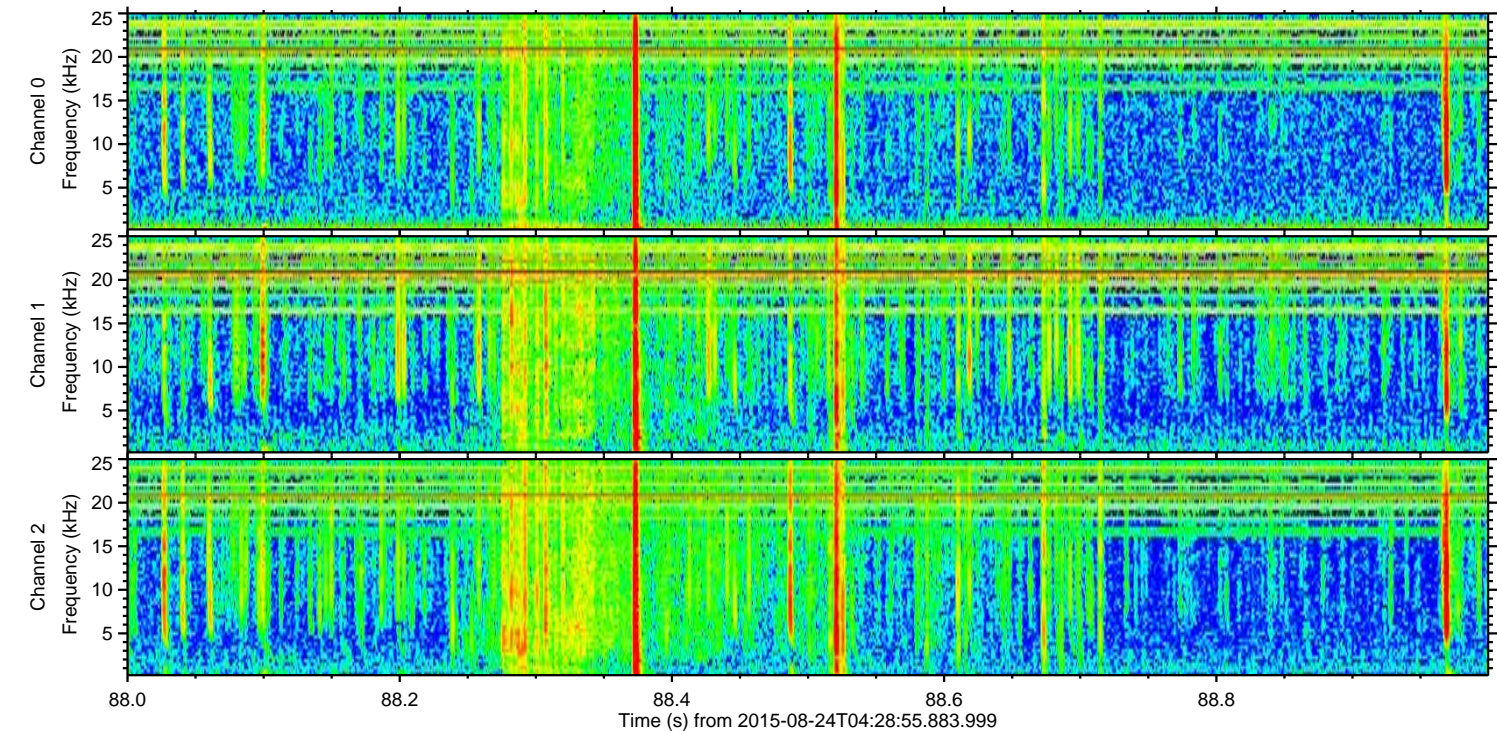
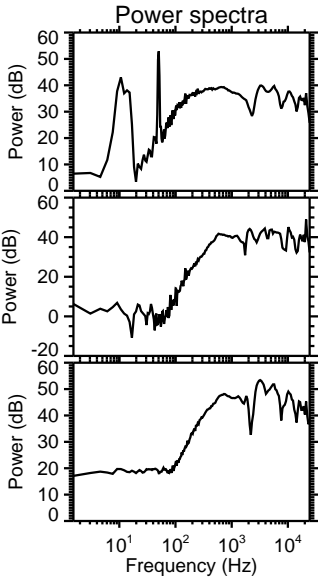
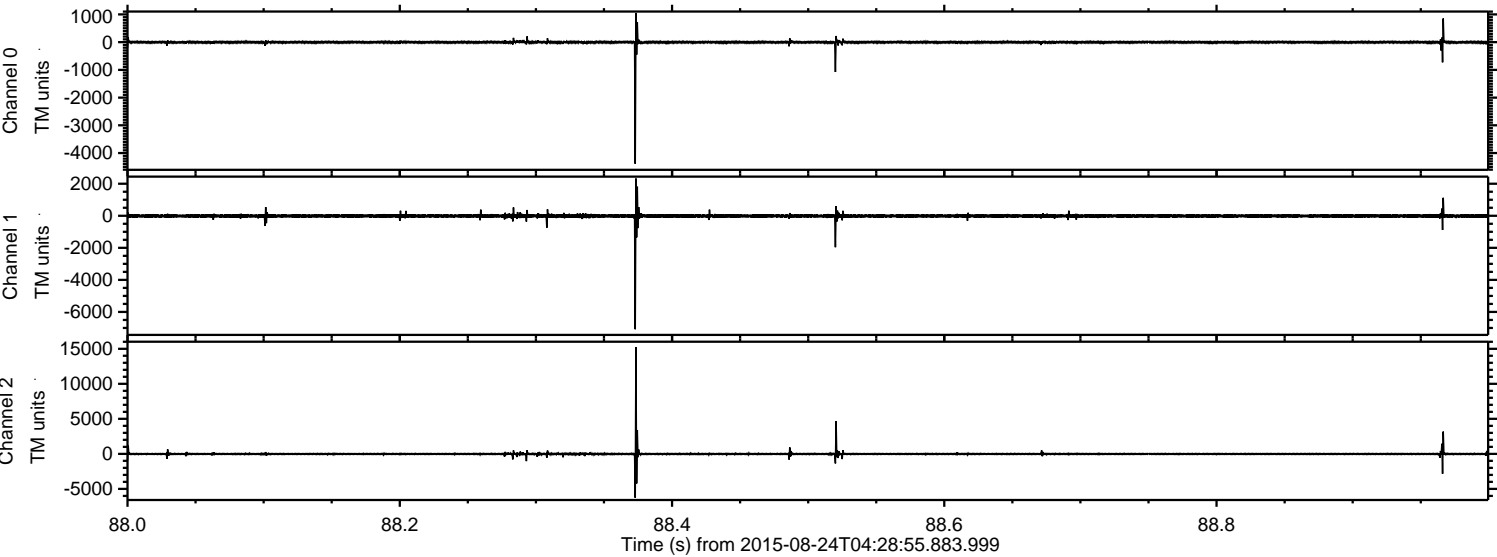
ELMAVAN 3D WAVEFORMS (Measured data sampled at 50 kHz) 51000 packets of 144 samples from 2015-08-24T04:28:55.883.999.

Processed Tue Oct 6 03:20:35 2015 by ELM ver.2012-10-06 from 001__elm20150824_042854__dat00.bin



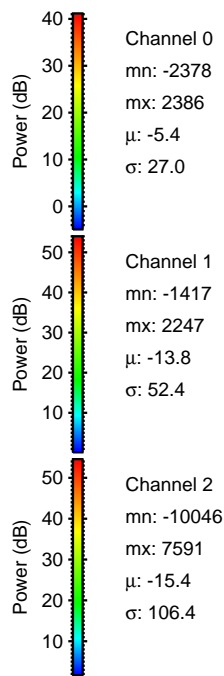
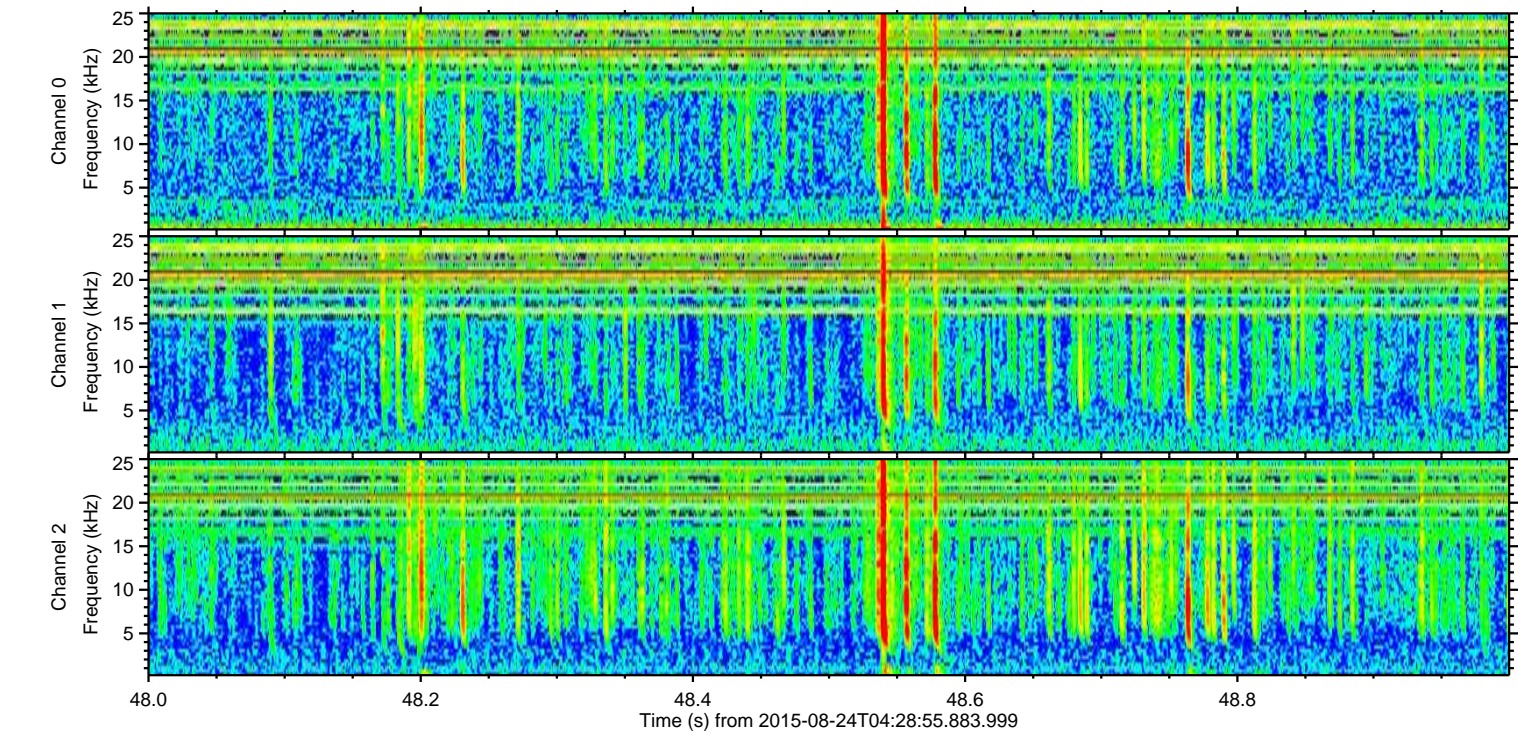
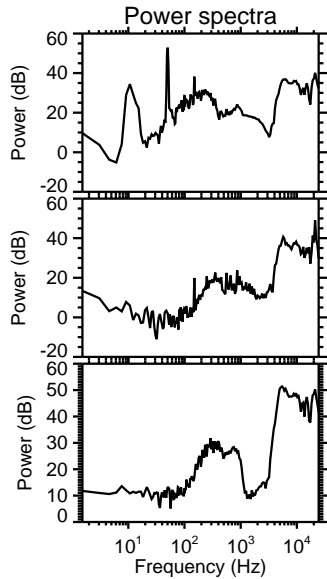
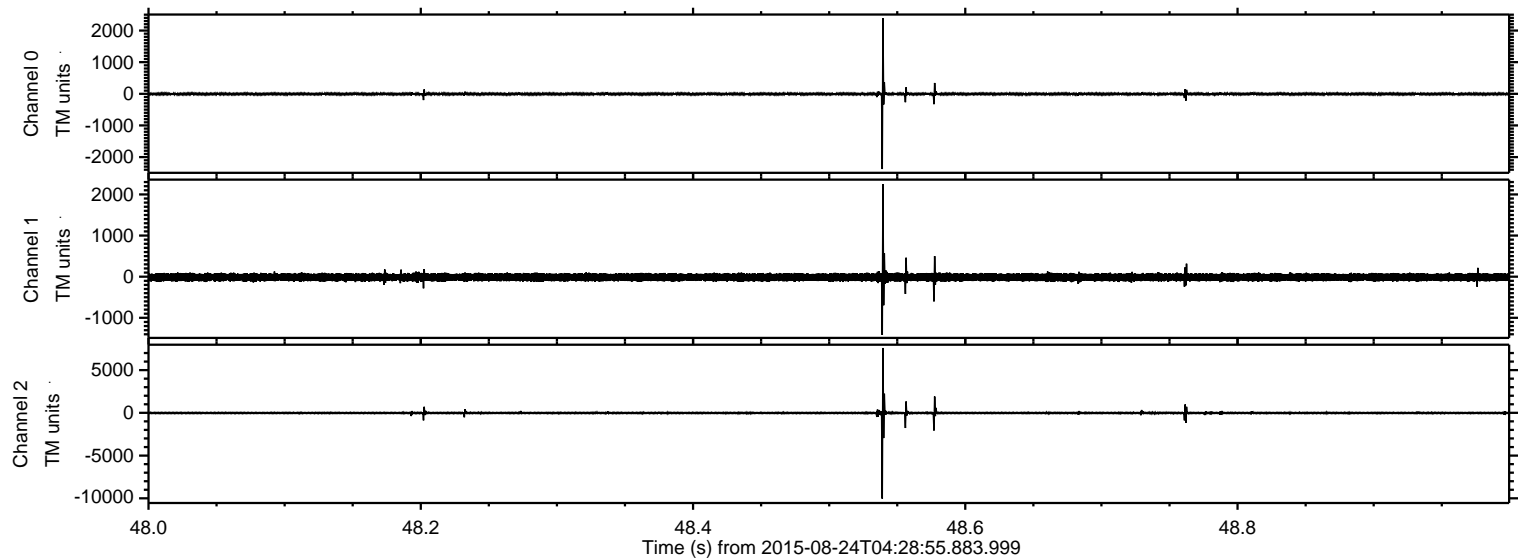
ELMAVAN 3D WAVEFORMS (Measured data sampled at 50 kHz) 51000 packets of 144 samples from 2015-08-24T04:28:55.883.999. Part 89/147

Processed Tue Oct 6 03:20:54 2015 by ELM ver.2012-10-06 from 001__elm20150824_042854__dat00.bin



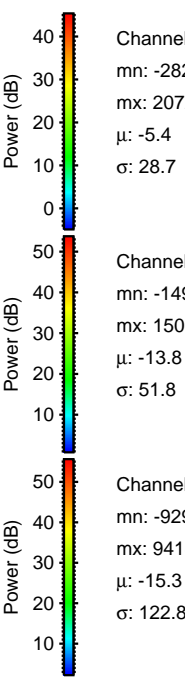
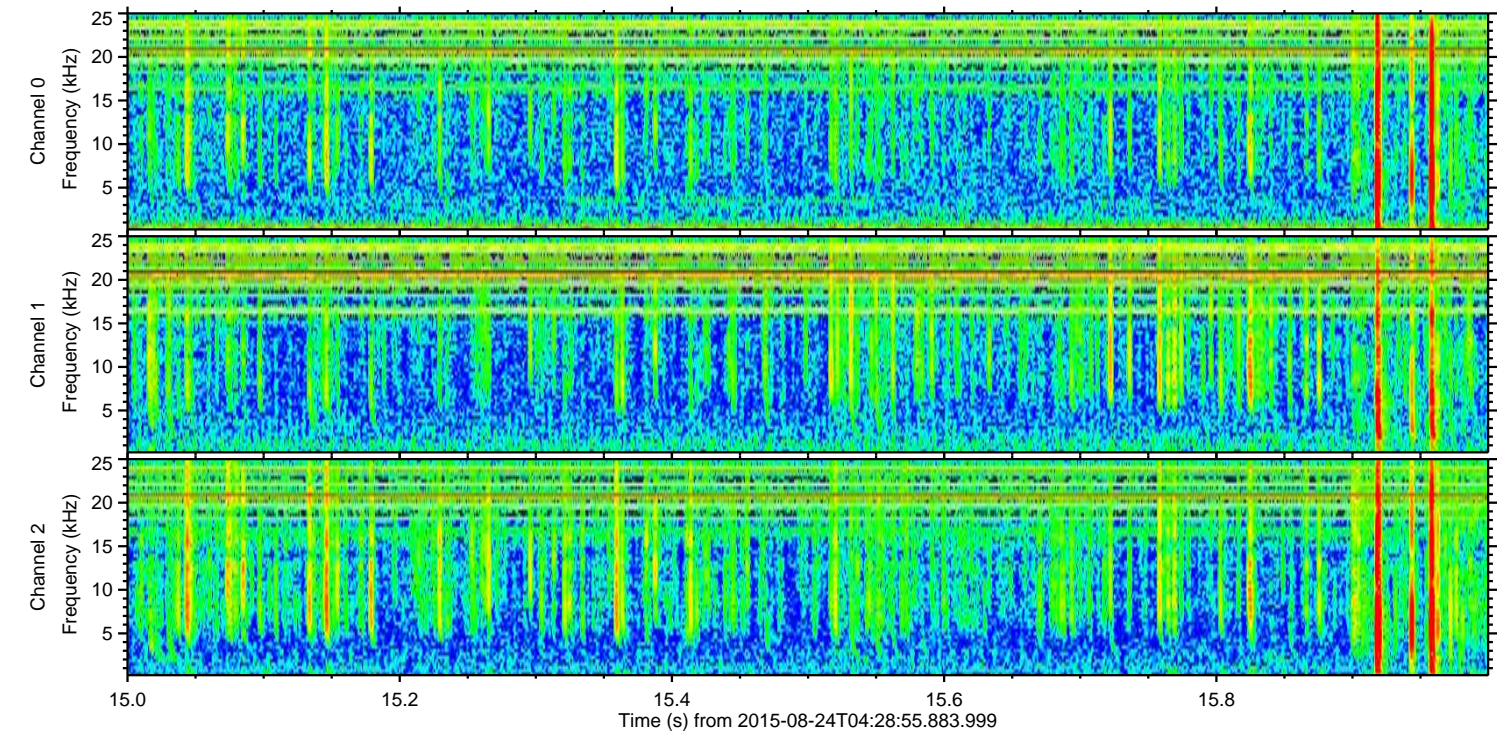
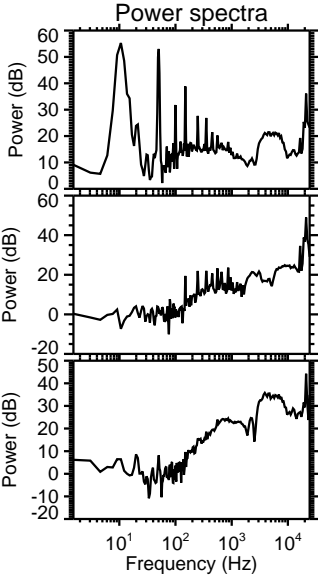
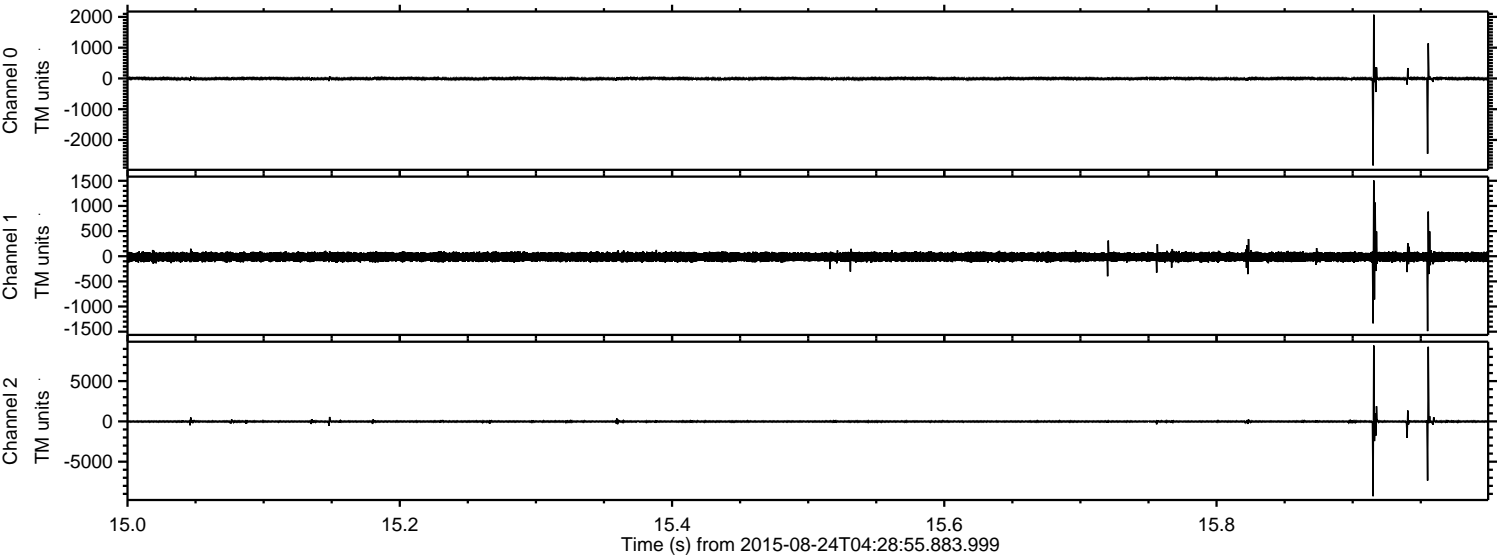
ELMAVAN 3D WAVEFORMS (Measured data sampled at 50 kHz) 51000 packets of 144 samples from 2015-08-24T04:28:55.883.999. Part 49/147

Processed Tue Oct 6 03:20:56 2015 by ELM ver.2012-10-06 from 001__elm20150824_042854__dat00.bin



ELMAVAN 3D WAVEFORMS (Measured data sampled at 50 kHz) 51000 packets of 144 samples from 2015-08-24T04:28:55.883.999. Part 16/147

Processed Tue Oct 6 03:20:58 2015 by ELM ver.2012-10-06 from 001__elm20150824_042854__dat00.bin



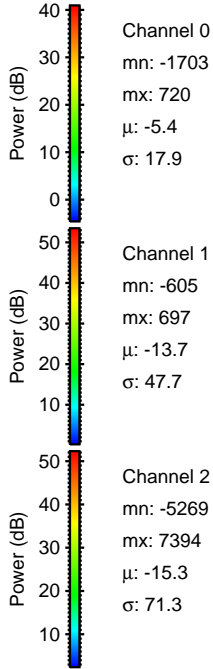
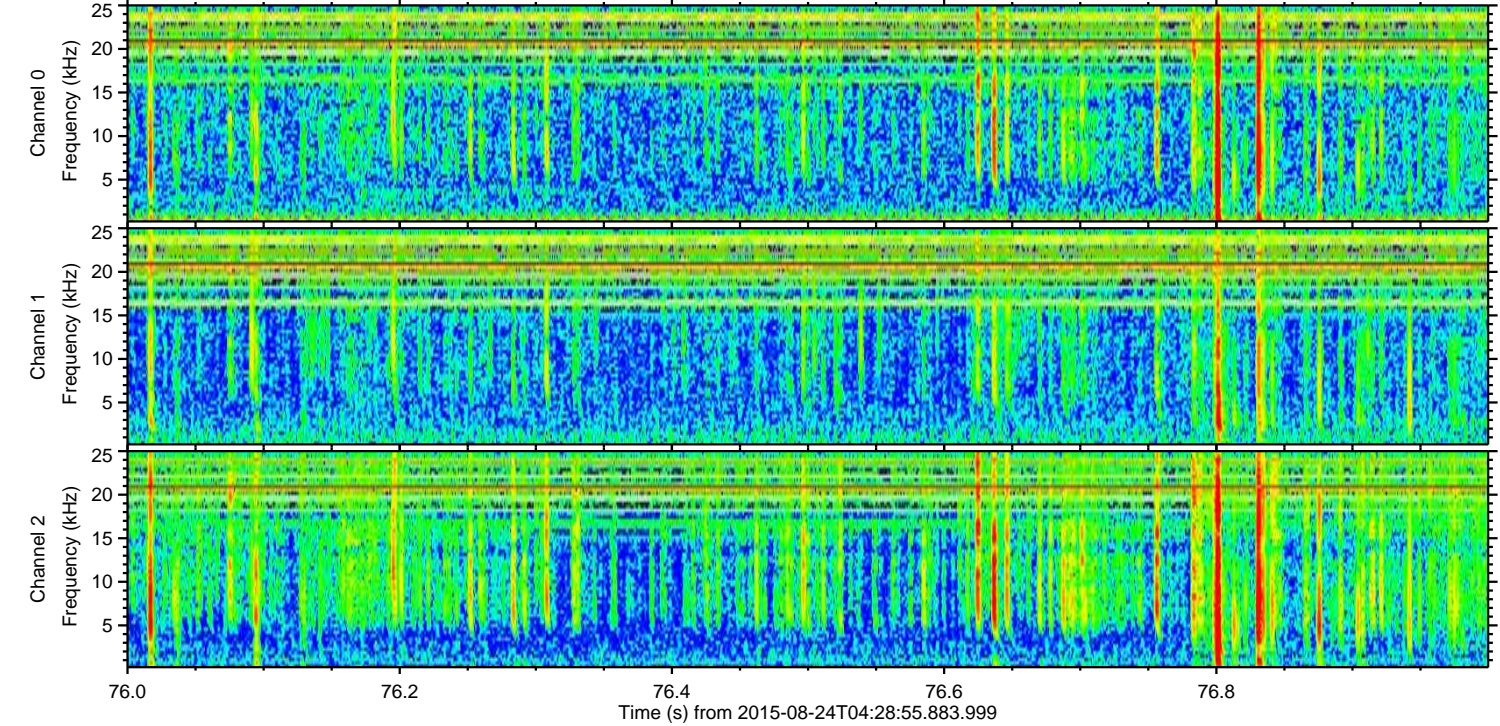
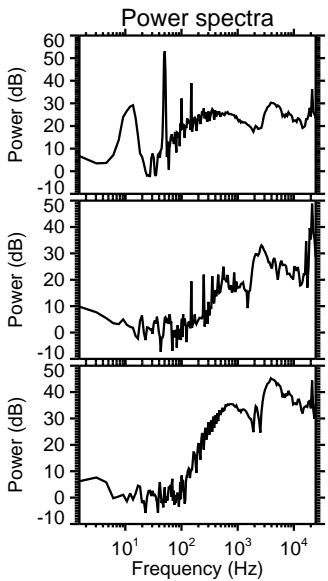
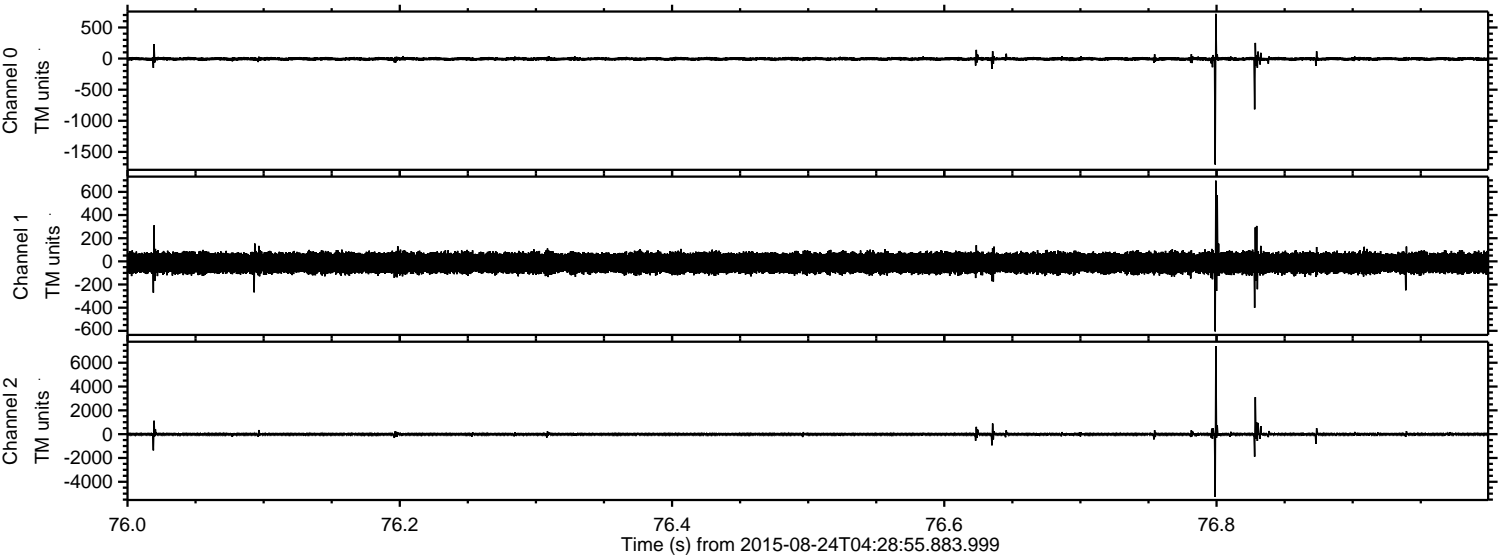
Channel 0
mn: -2829
mx: 2072
 μ : -5.4
 σ : 28.7

Channel 1
mn: -1490
mx: 1508
 μ : -13.8
 σ : 51.8

Channel 2
mn: -9291
mx: 9418
 μ : -15.3
 σ : 122.8

ELMAVAN 3D WAVEFORMS (Measured data sampled at 50 kHz) 51000 packets of 144 samples from 2015-08-24T04:28:55.883.999. Part 77/147

Processed Tue Oct 6 03:20:59 2015 by ELM ver.2012-10-06 from 001__elm20150824_042854__dat00.bin



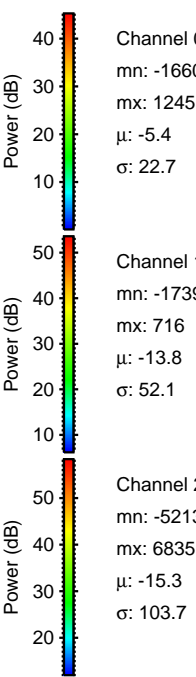
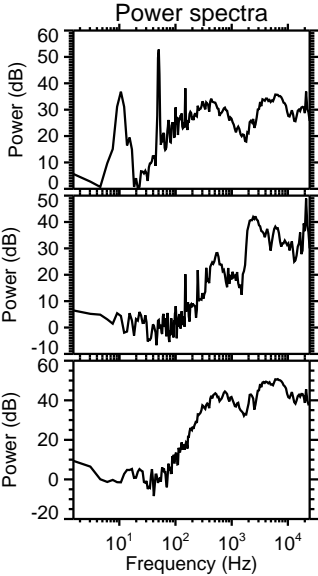
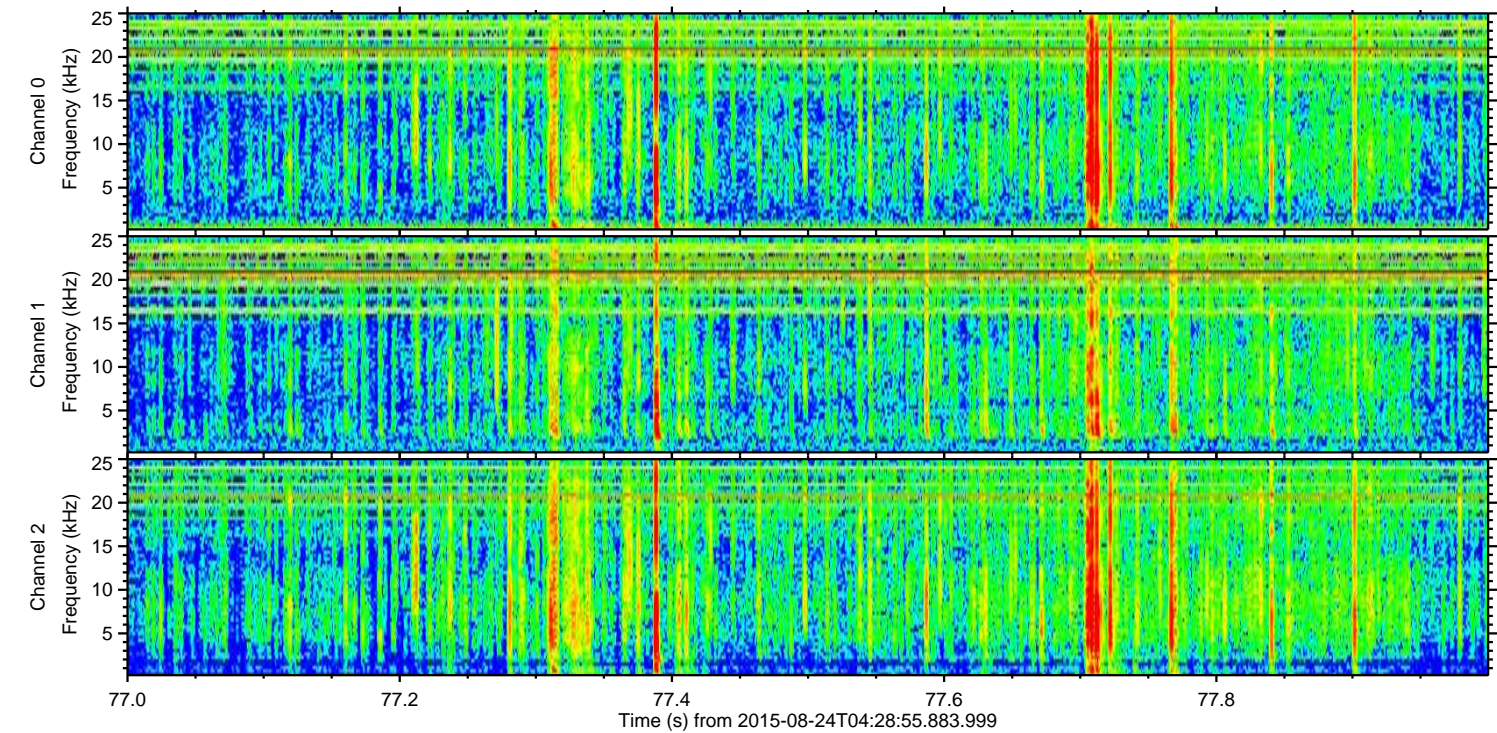
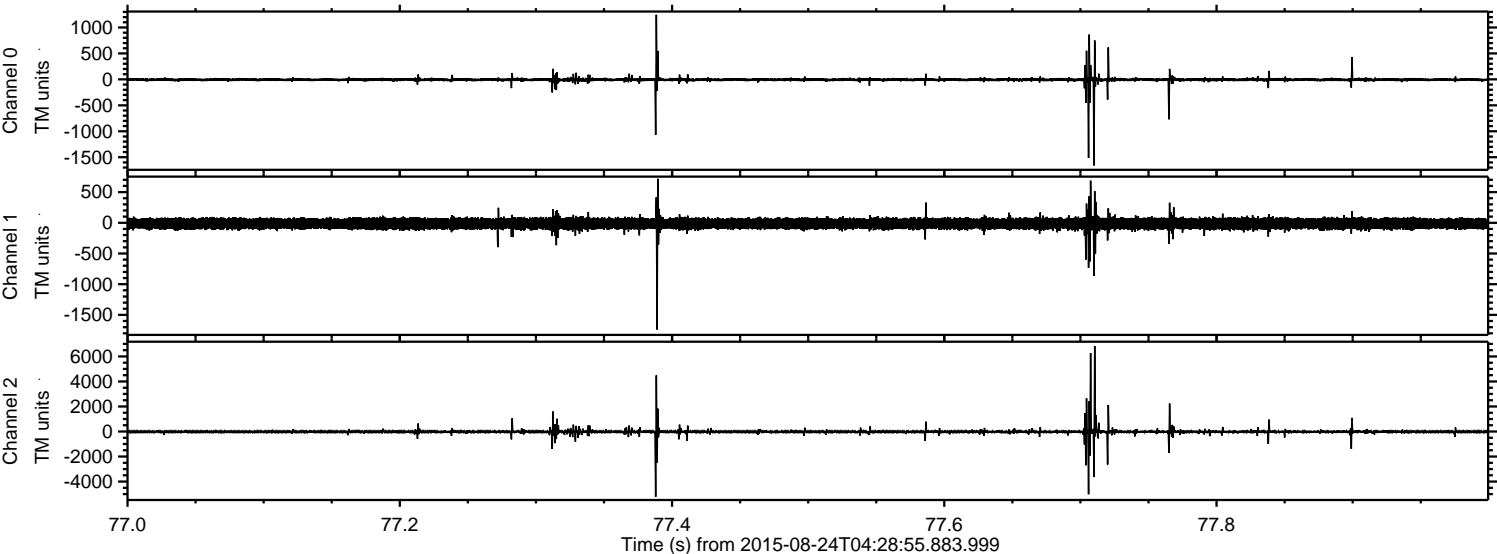
Channel 0
mn: -1703
mx: 720
μ: -5.4
σ: 17.9

Channel 1
mn: -605
mx: 697
μ: -13.7
σ: 47.7

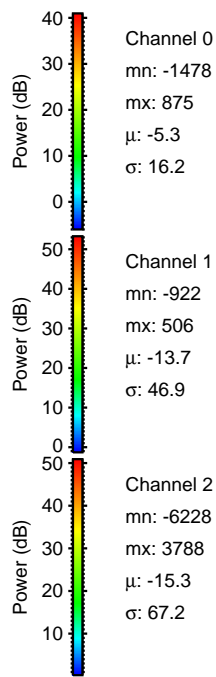
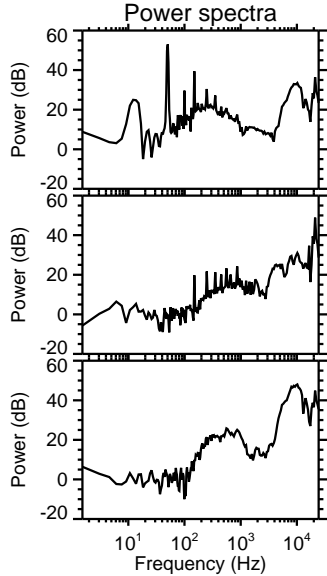
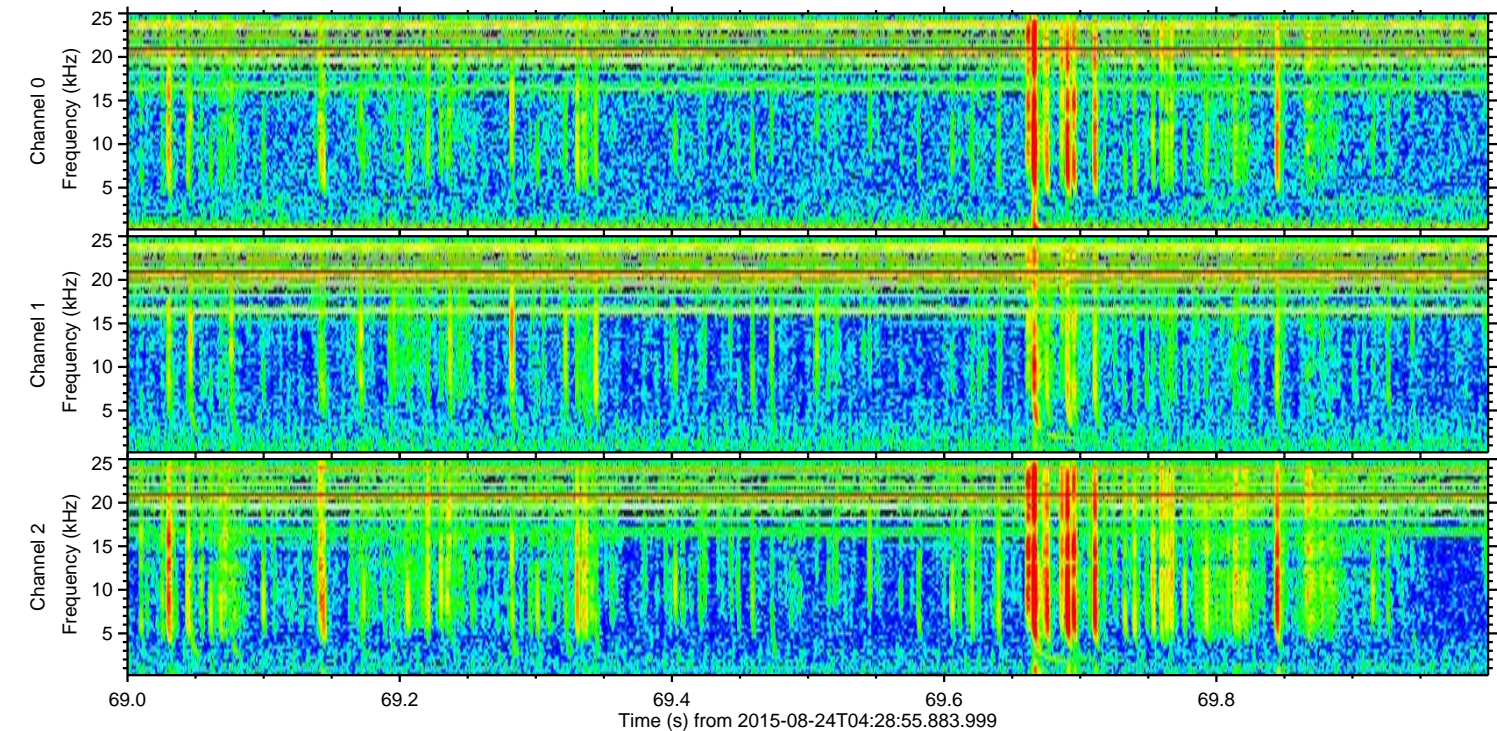
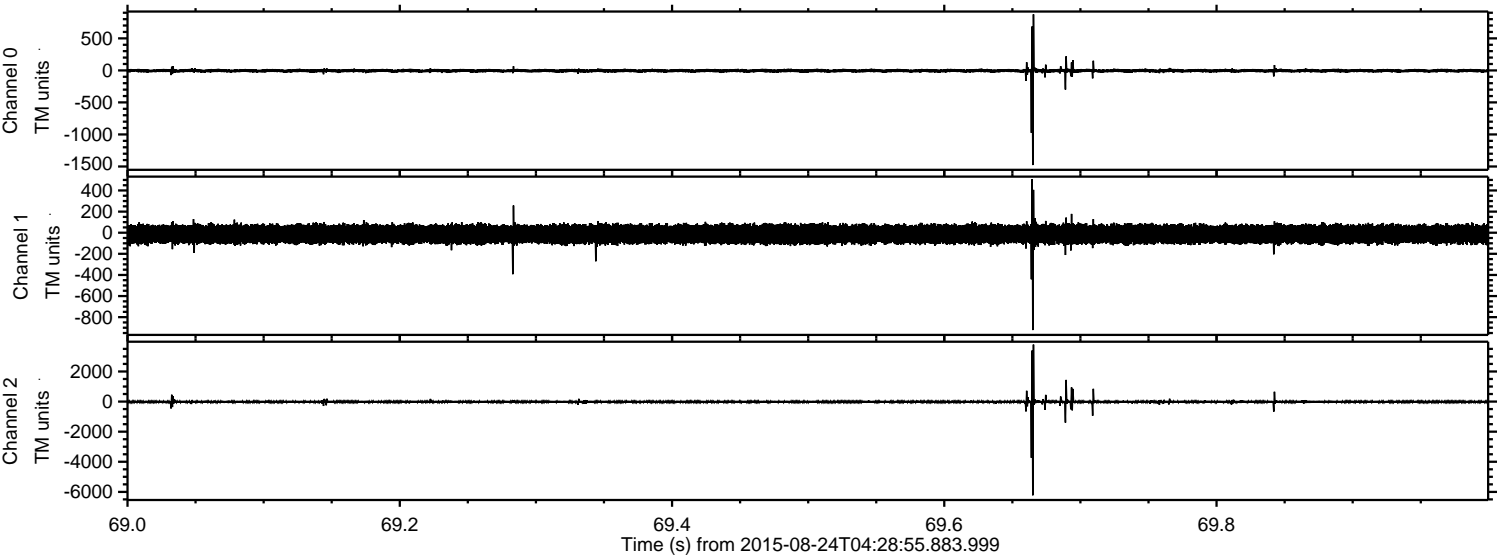
Channel 2
mn: -5269
mx: 7394
μ: -15.3
σ: 71.3

ELMAVAN 3D WAVEFORMS (Measured data sampled at 50 kHz) 51000 packets of 144 samples from 2015-08-24T04:28:55.883.999. Part 78/147

Processed Tue Oct 6 03:21:01 2015 by ELM ver.2012-10-06 from 001__elm20150824_042854__dat00.bin

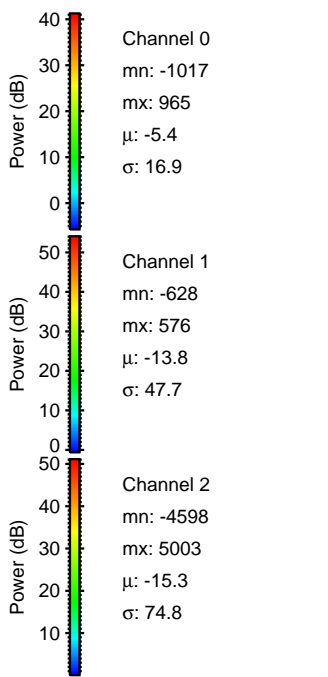
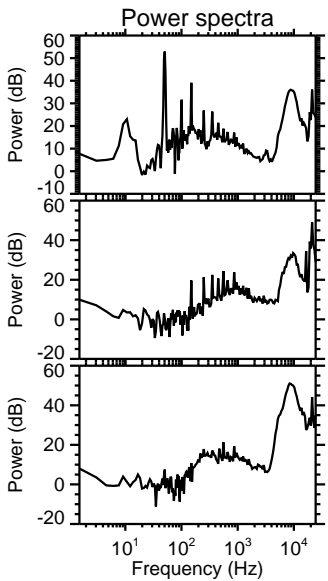
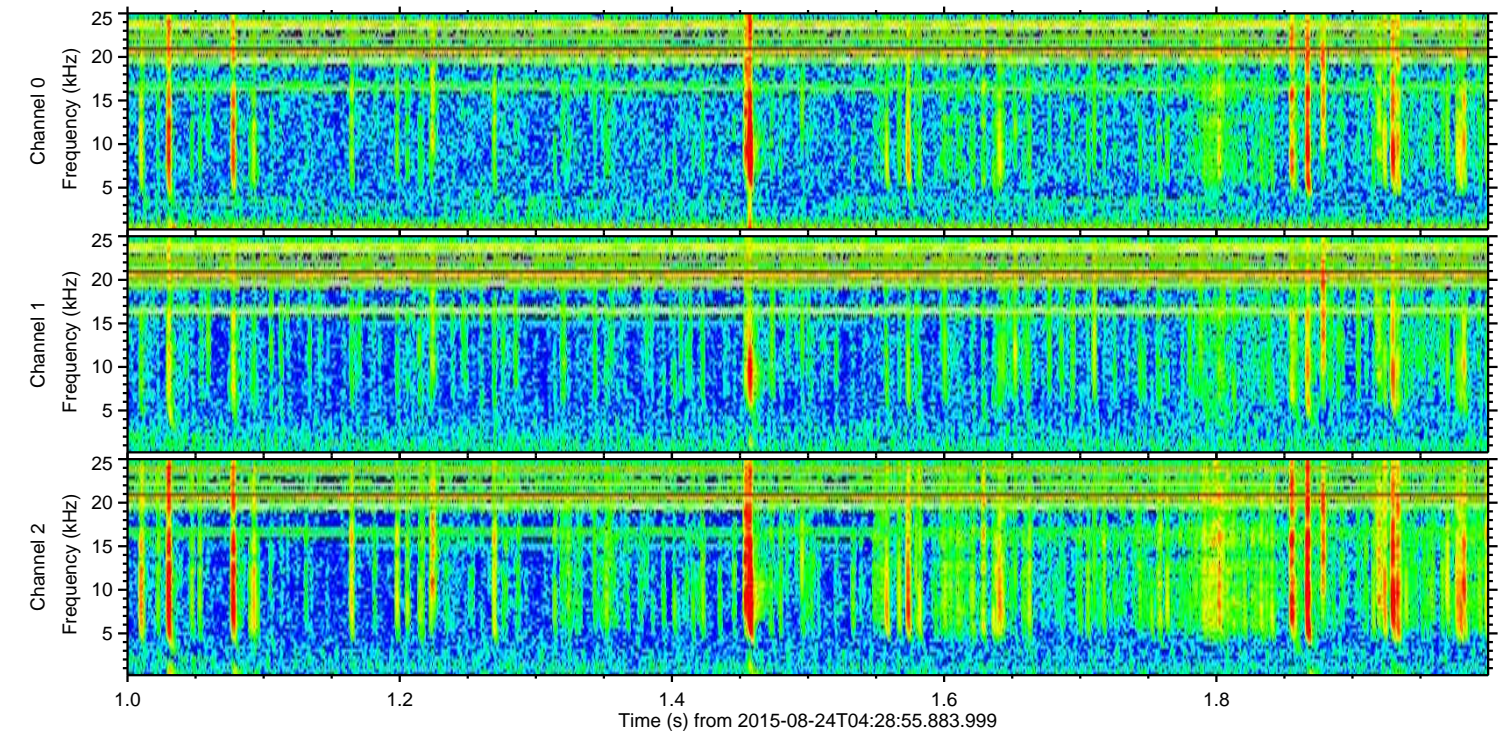
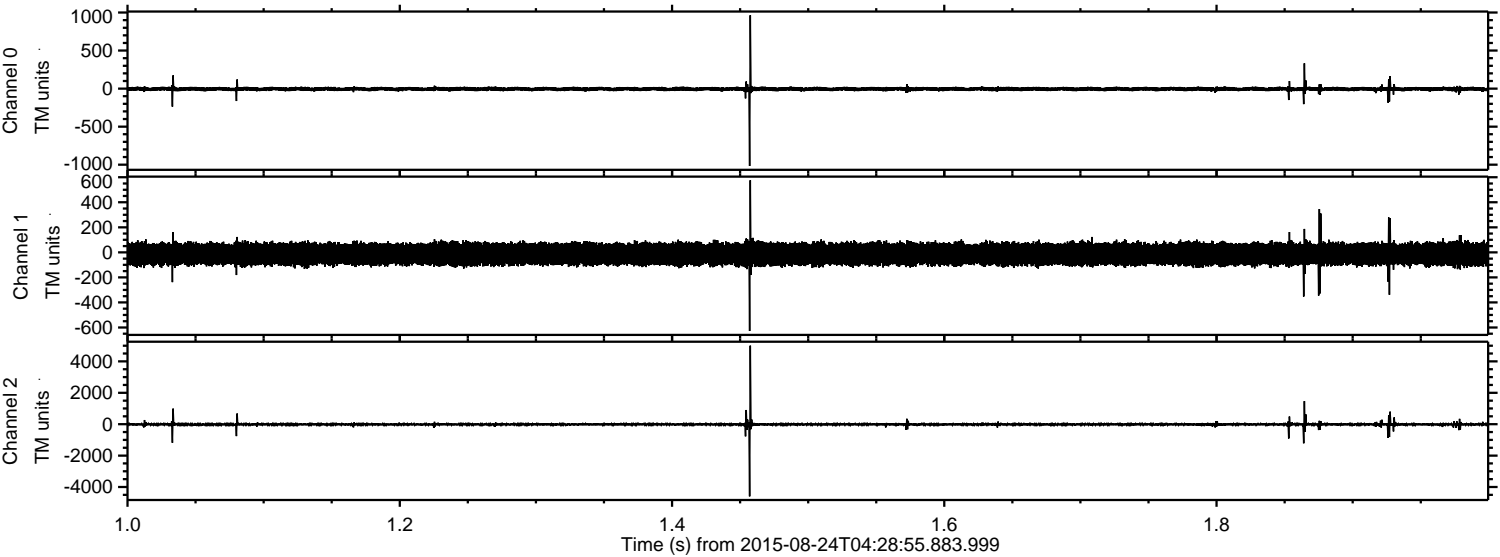


Processed Tue Oct 6 03:21:02 2015 by ELM ver.2012-10-06 from 001__elm20150824_042854__dat00.bin



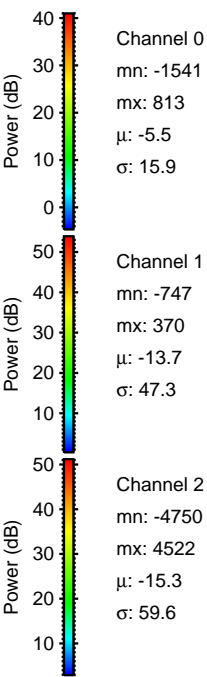
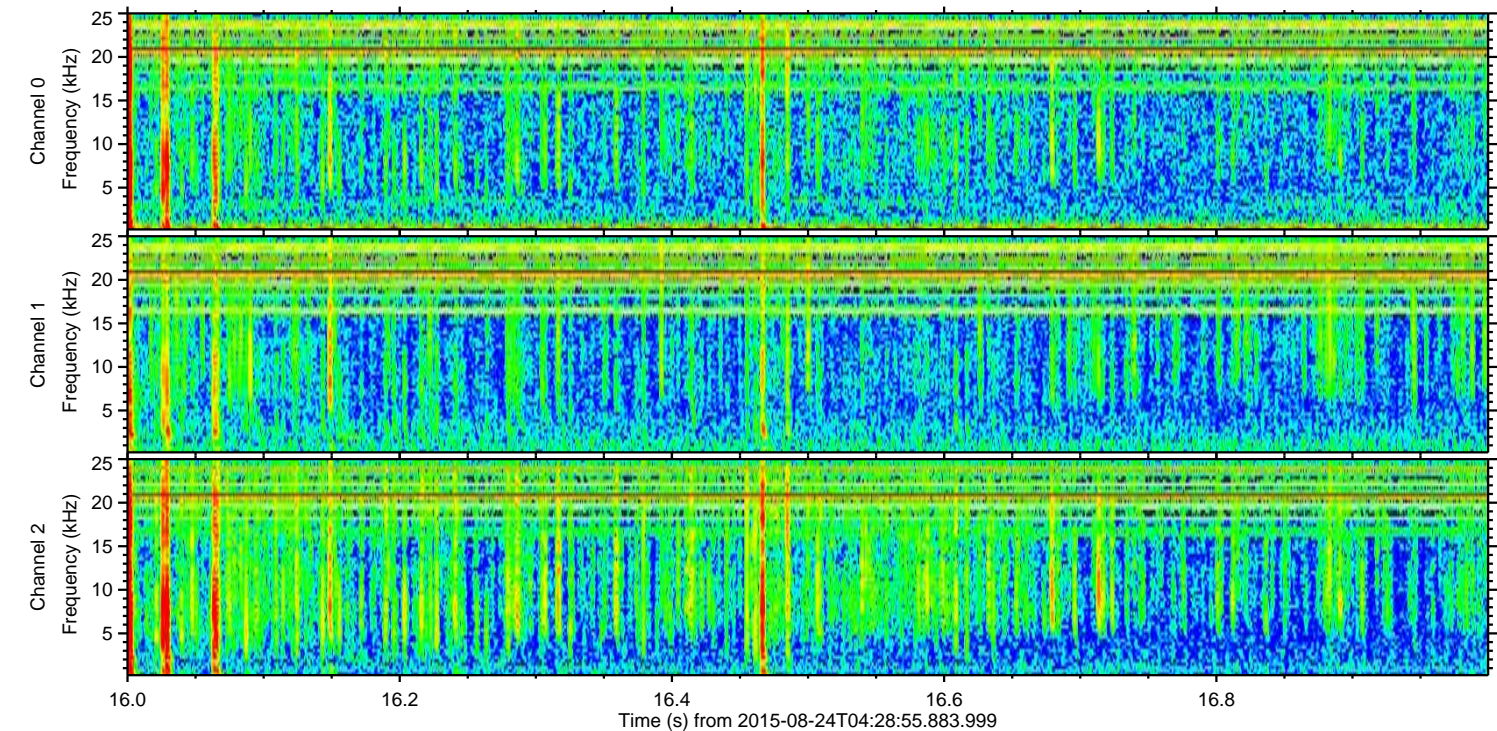
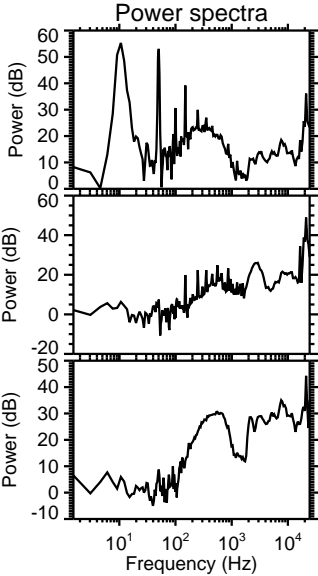
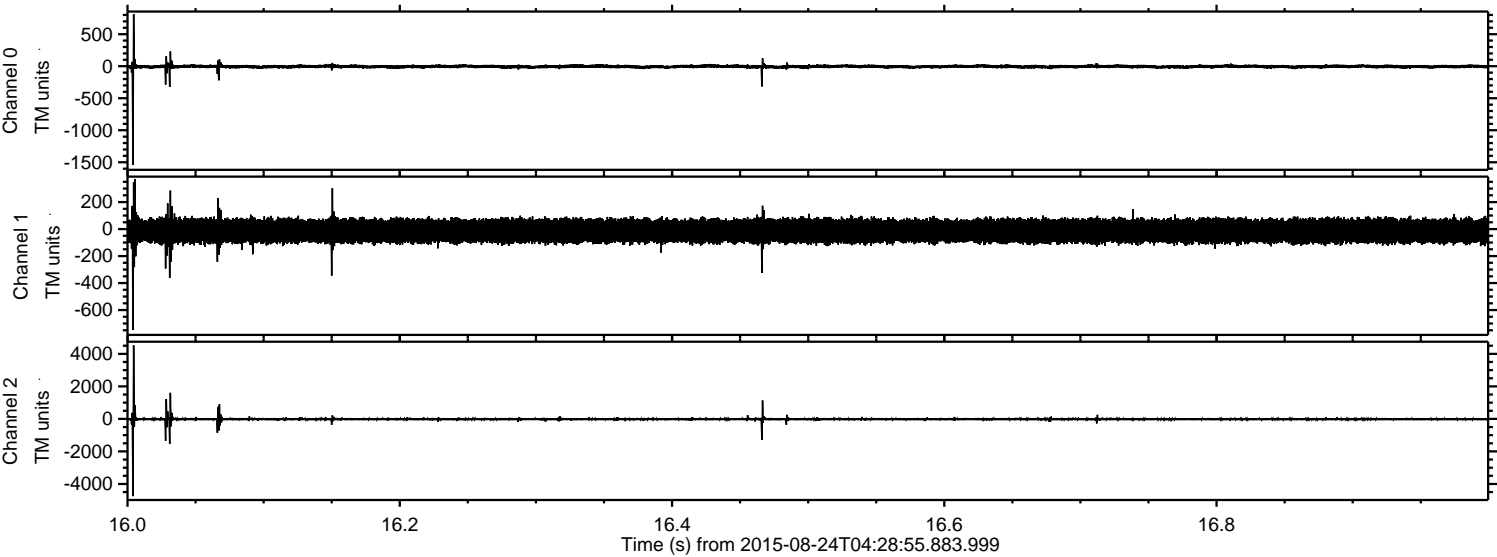
ELMAVAN 3D WAVEFORMS (Measured data sampled at 50 kHz) 51000 packets of 144 samples from 2015-08-24T04:28:55.883.999. Part 2/147

Processed Tue Oct 6 03:21:03 2015 by ELM ver.2012-10-06 from 001__elm20150824_042854__dat00.bin



ELMAVAN 3D WAVEFORMS (Measured data sampled at 50 kHz) 51000 packets of 144 samples from 2015-08-24T04:28:55.883.999. Part 17/147

Processed Tue Oct 6 03:21:04 2015 by ELM ver.2012-10-06 from 001__elm20150824_042854__dat00.bin



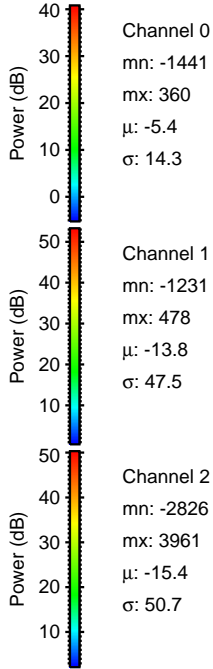
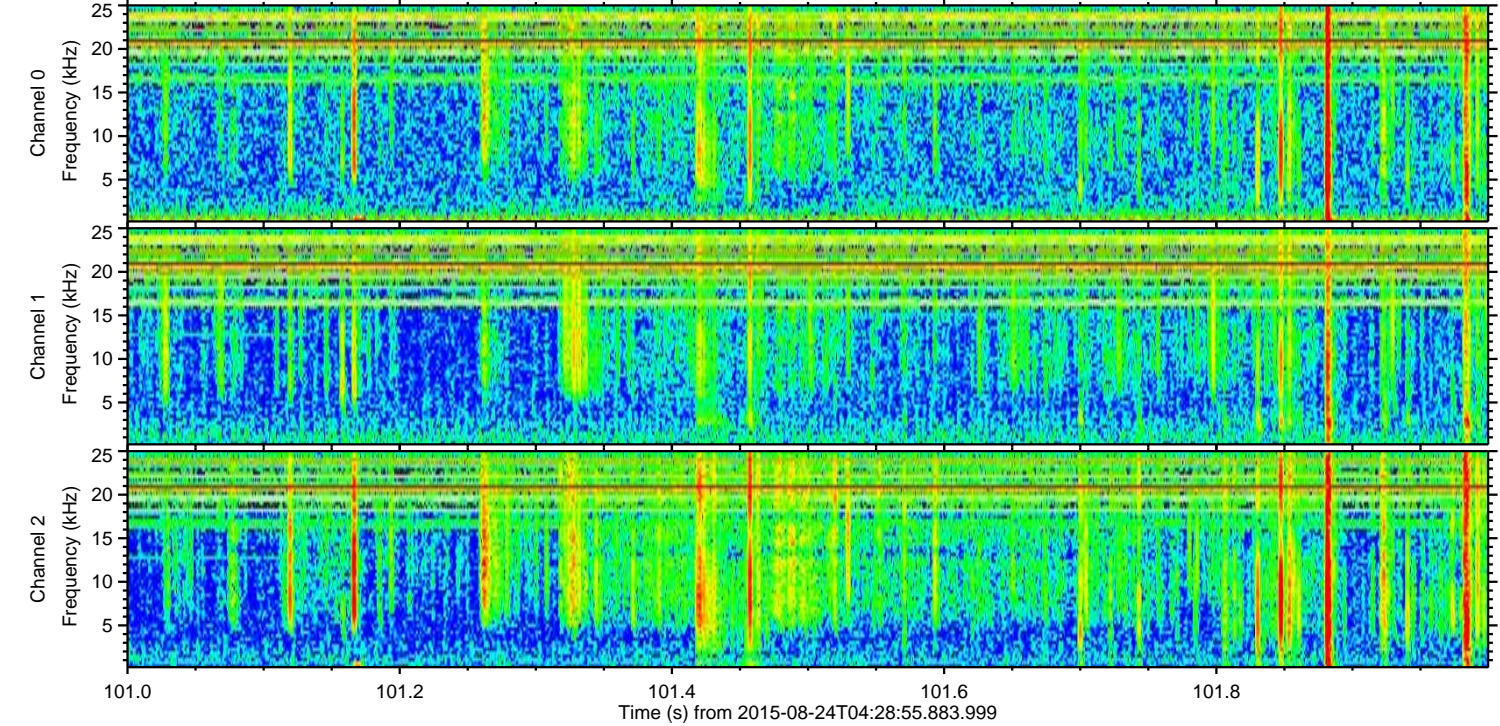
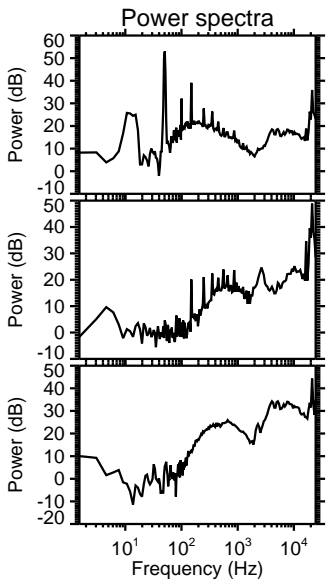
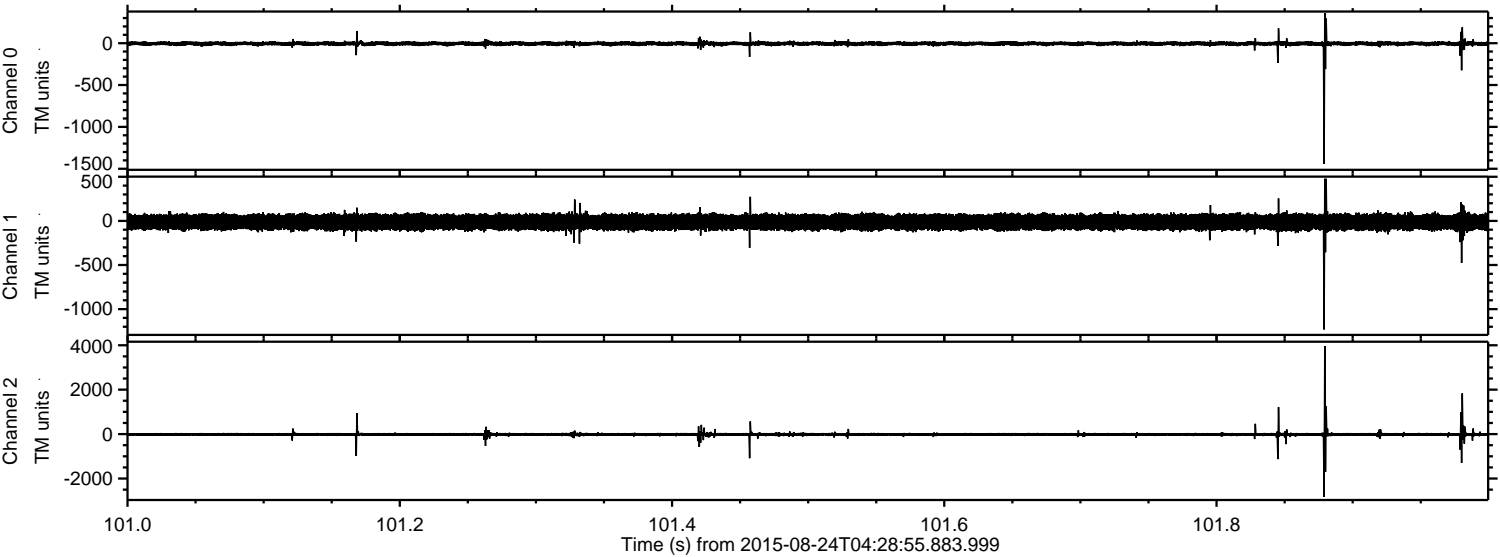
Channel 0
mn: -1541
mx: 813
 μ : -5.5
 σ : 15.9

Channel 1
mn: -747
mx: 370
 μ : -13.7
 σ : 47.3

Channel 2
mn: -4750
mx: 4522
 μ : -15.3
 σ : 59.6

ELMAVAN 3D WAVEFORMS (Measured data sampled at 50 kHz) 51000 packets of 144 samples from 2015-08-24T04:28:55.883.999. Part 102/147

Processed Tue Oct 6 03:21:05 2015 by ELM ver.2012-10-06 from 001__elm20150824_042854__dat00.bin



Processed Tue Oct 6 03:21:06 2015 by ELM ver.2012-10-06 from 001__elm20150824_042854__dat00.bin

