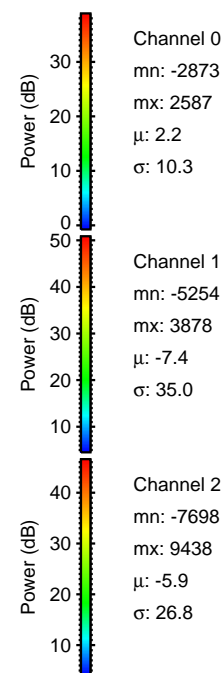
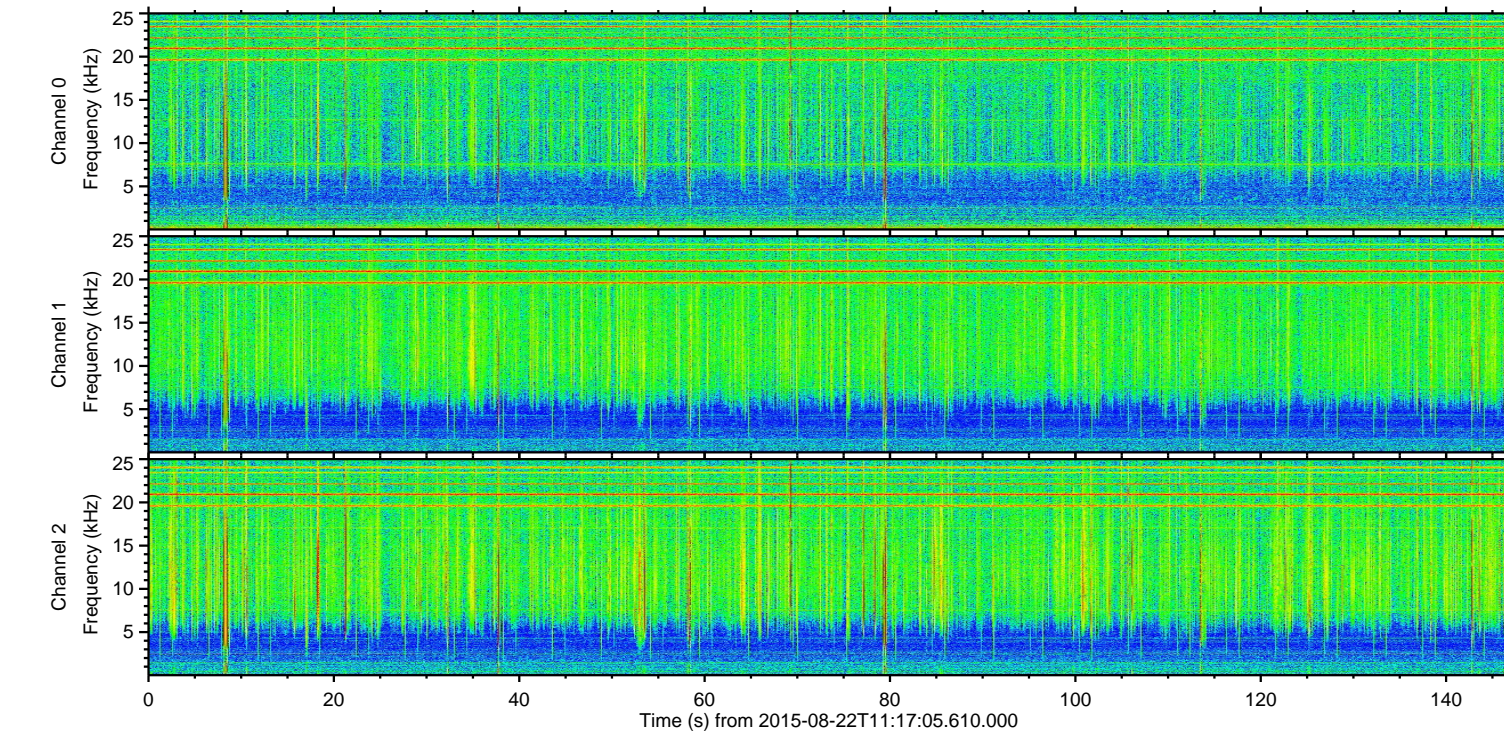
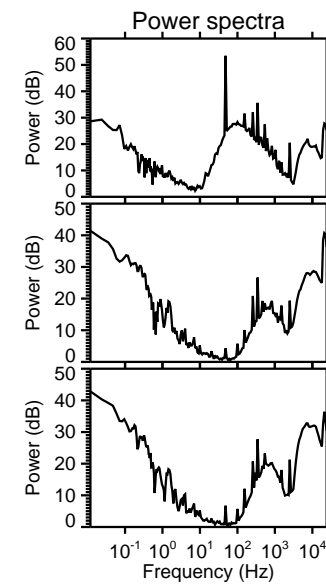
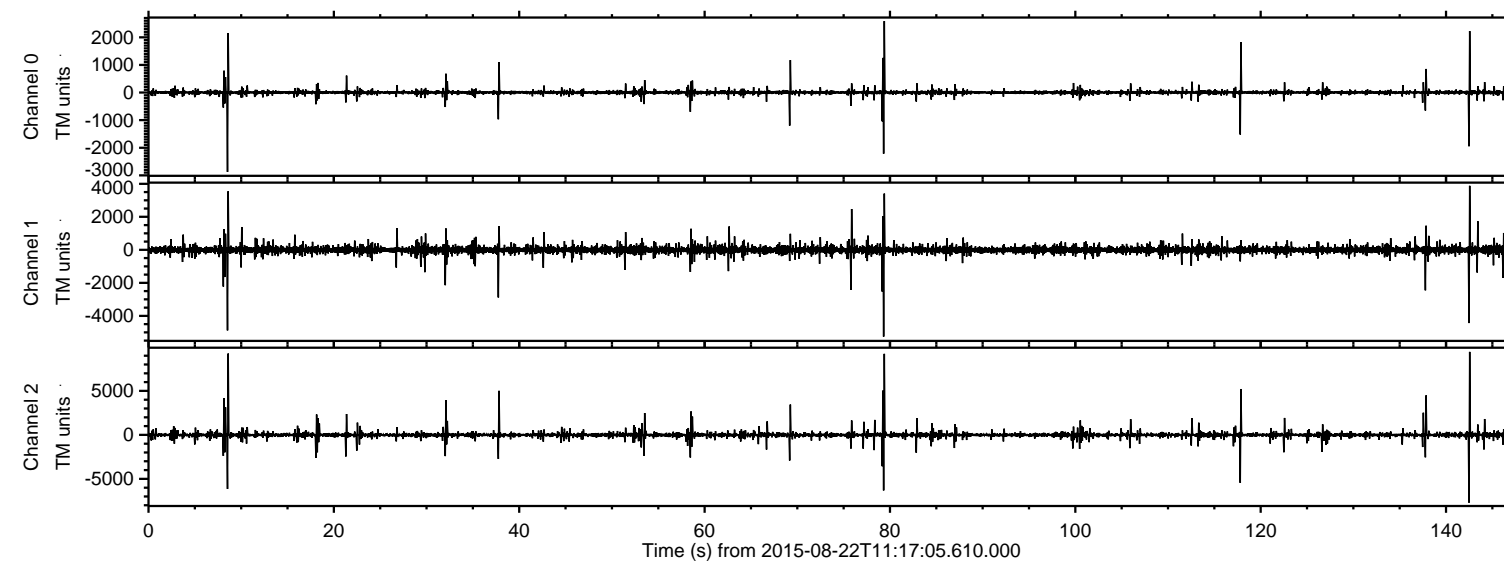


# ELMAVAN 3D WAVEFORMS (Measured data sampled at 50 kHz) 51000 packets of 144 samples from 2015-08-22T11:17:05.610.000.

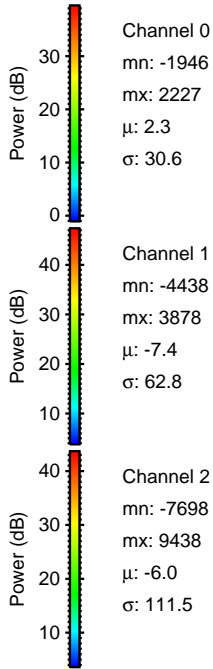
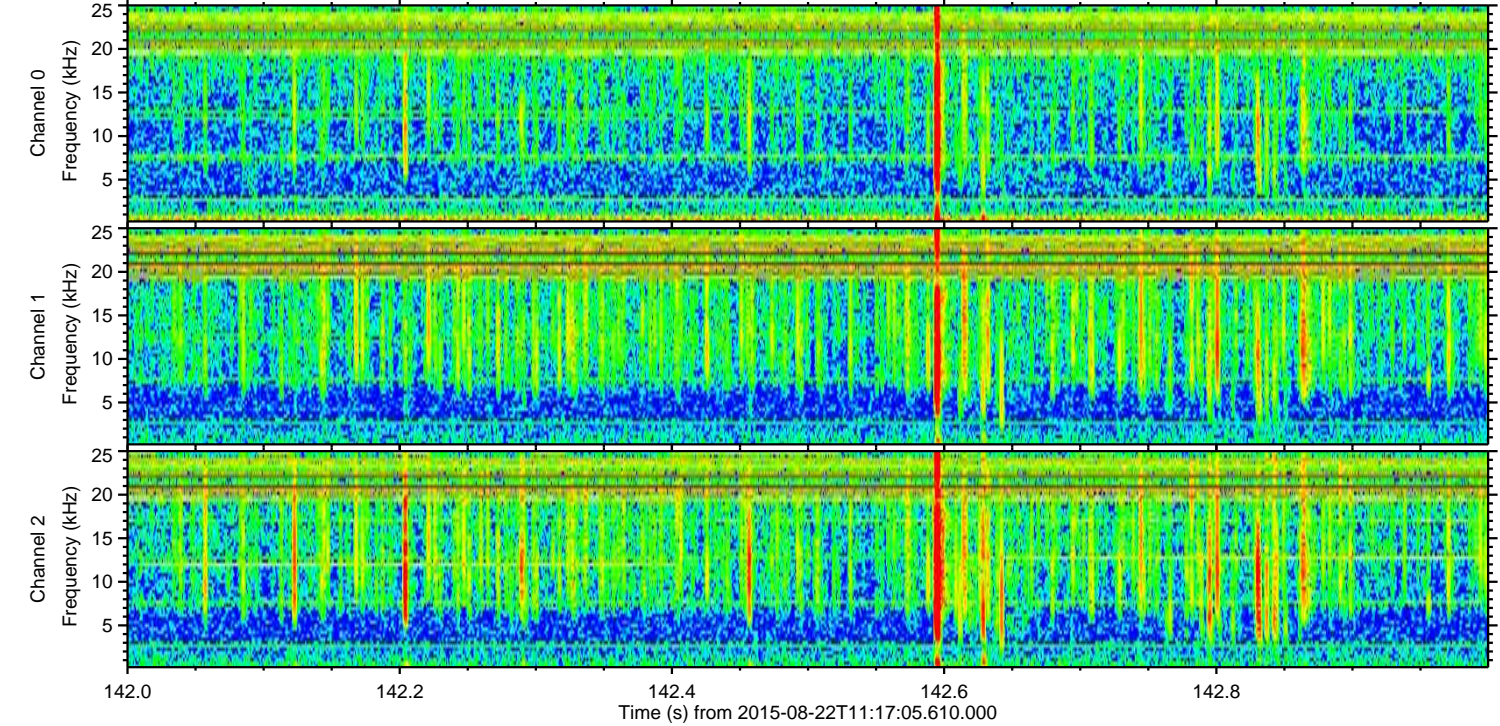
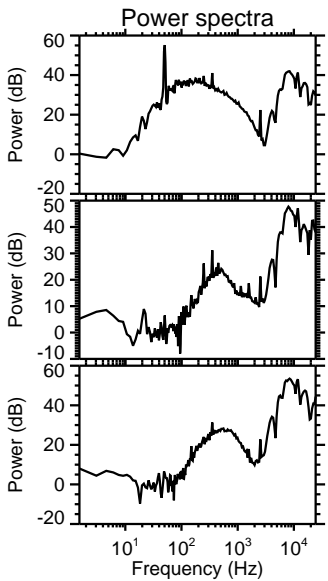
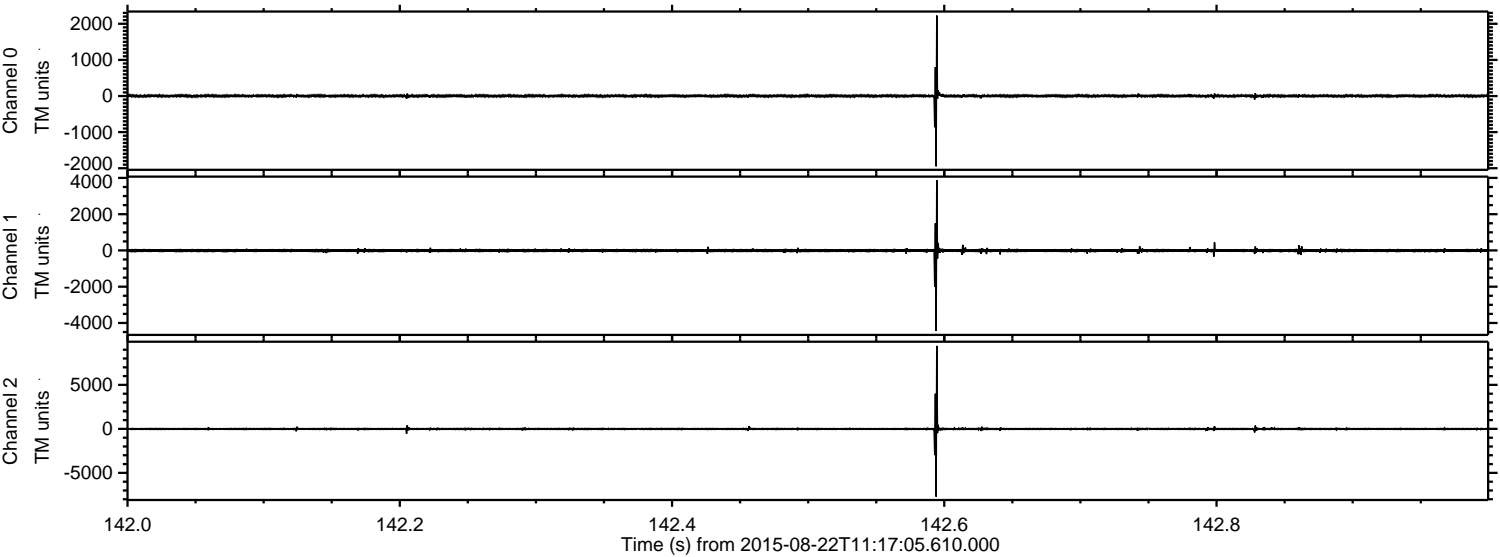
Processed Sat Aug 22 13:23:10 2015 by ELM ver.2012-10-06 from 001\_\_elm20150822\_111704\_\_dat00.bin





ELMAVAN 3D WAVEFORMS (Measured data sampled at 50 kHz) 51000 packets of 144 samples from 2015-08-22T11:17:05.610.000. Part 143/147

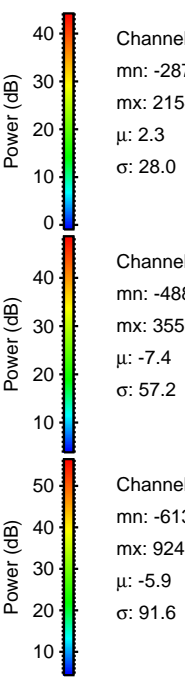
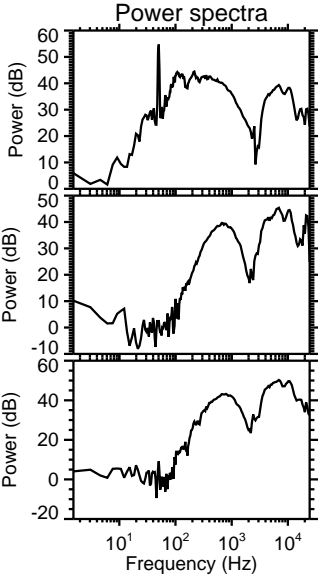
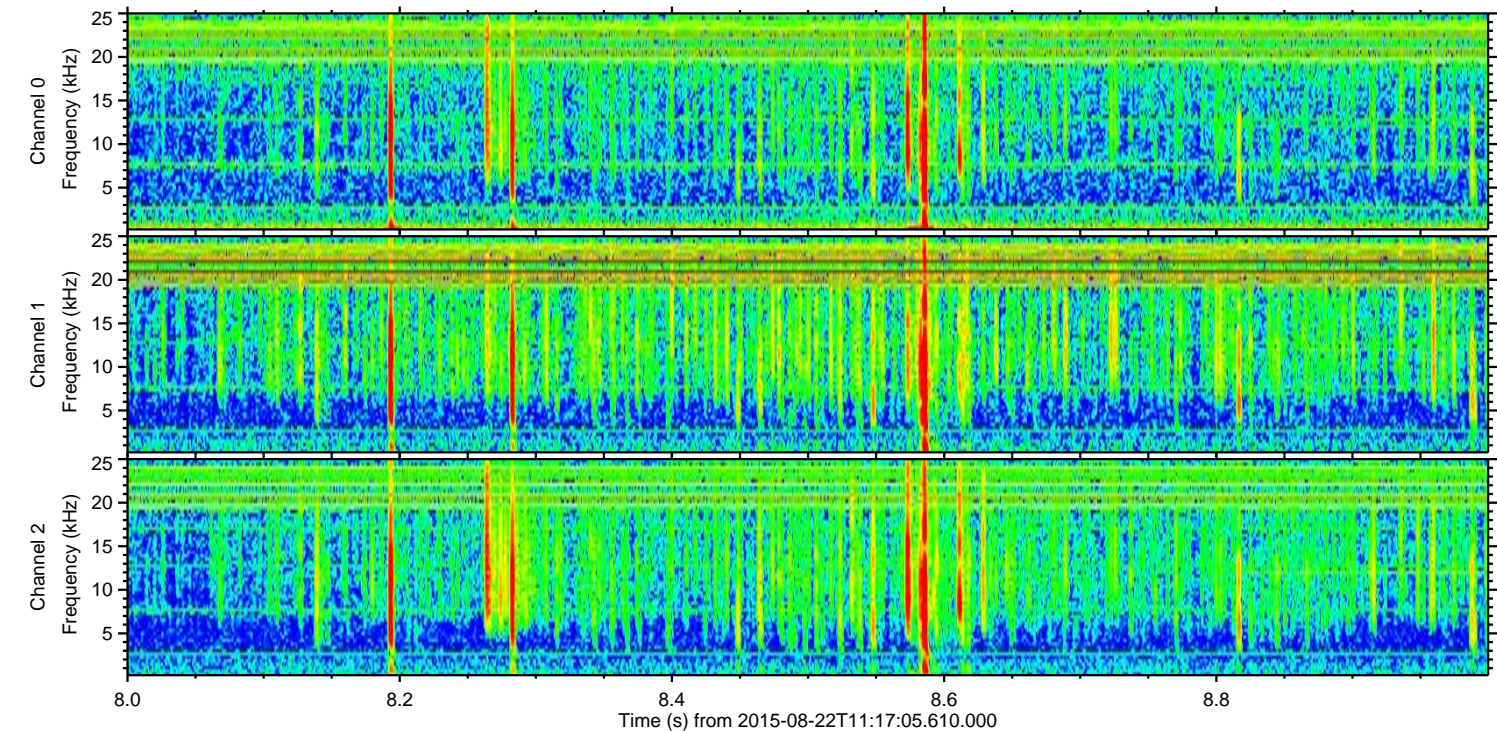
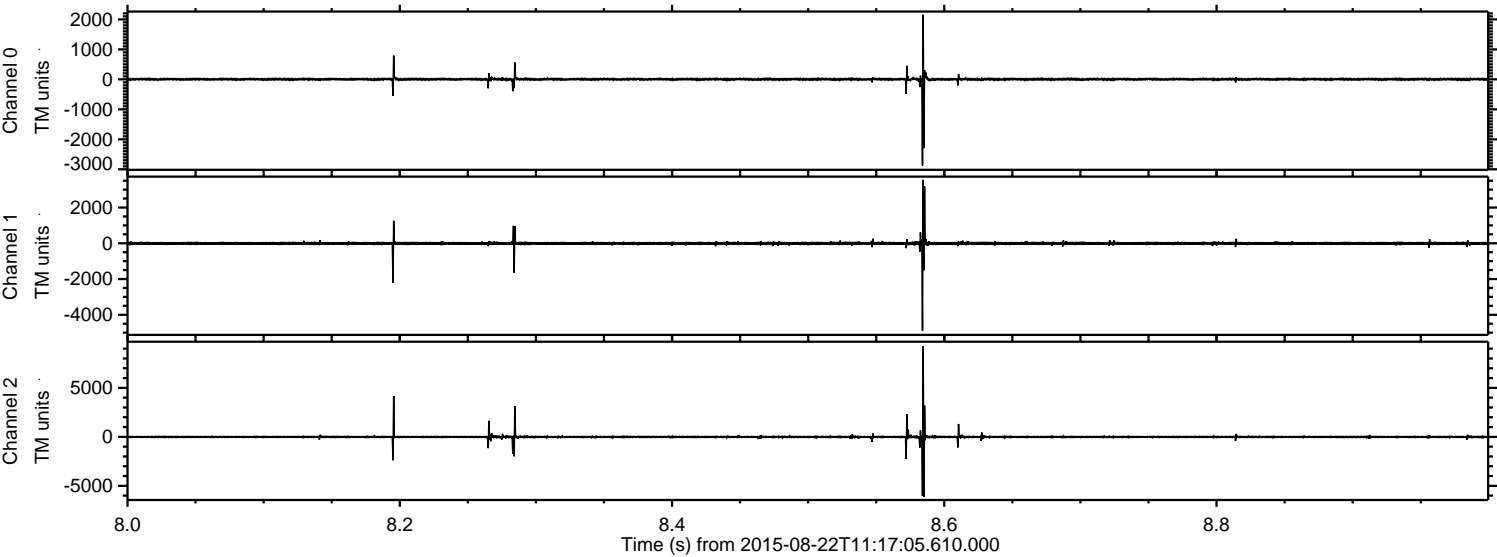
Processed Sat Aug 22 13:23:22 2015 by ELM ver.2012-10-06 from 001\_\_elm20150822\_111704\_\_dat00.bin





ELMAVAN 3D WAVEFORMS (Measured data sampled at 50 kHz) 51000 packets of 144 samples from 2015-08-22T11:17:05.610.000. Part 9/147

Processed Sat Aug 22 13:23:23 2015 by ELM ver.2012-10-06 from 001\_\_elm20150822\_111704\_\_dat00.bin



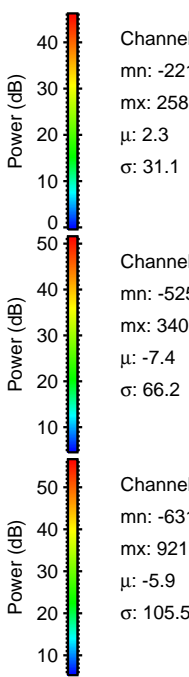
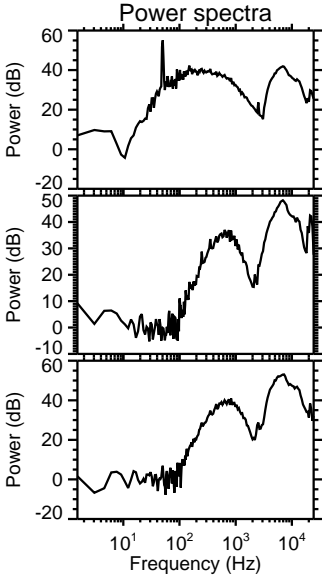
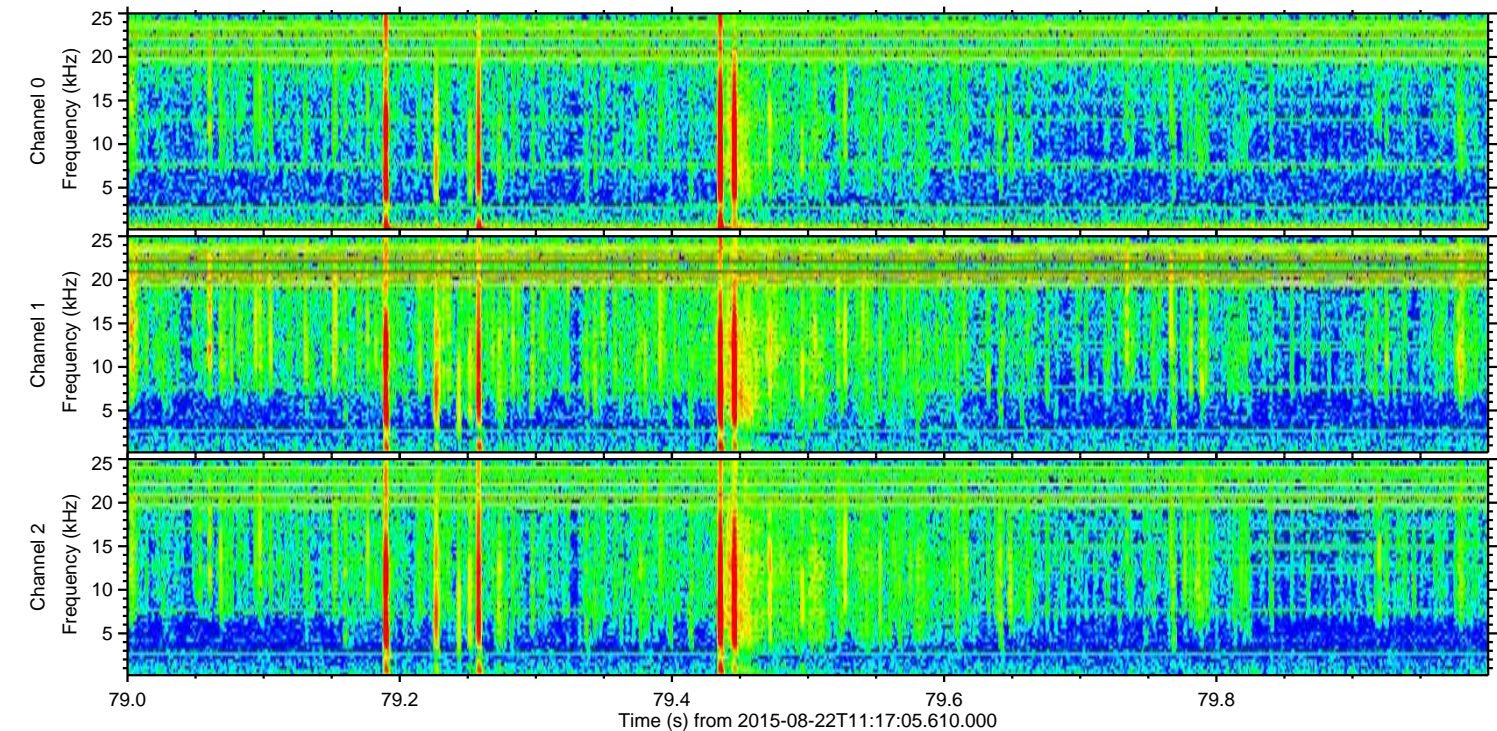
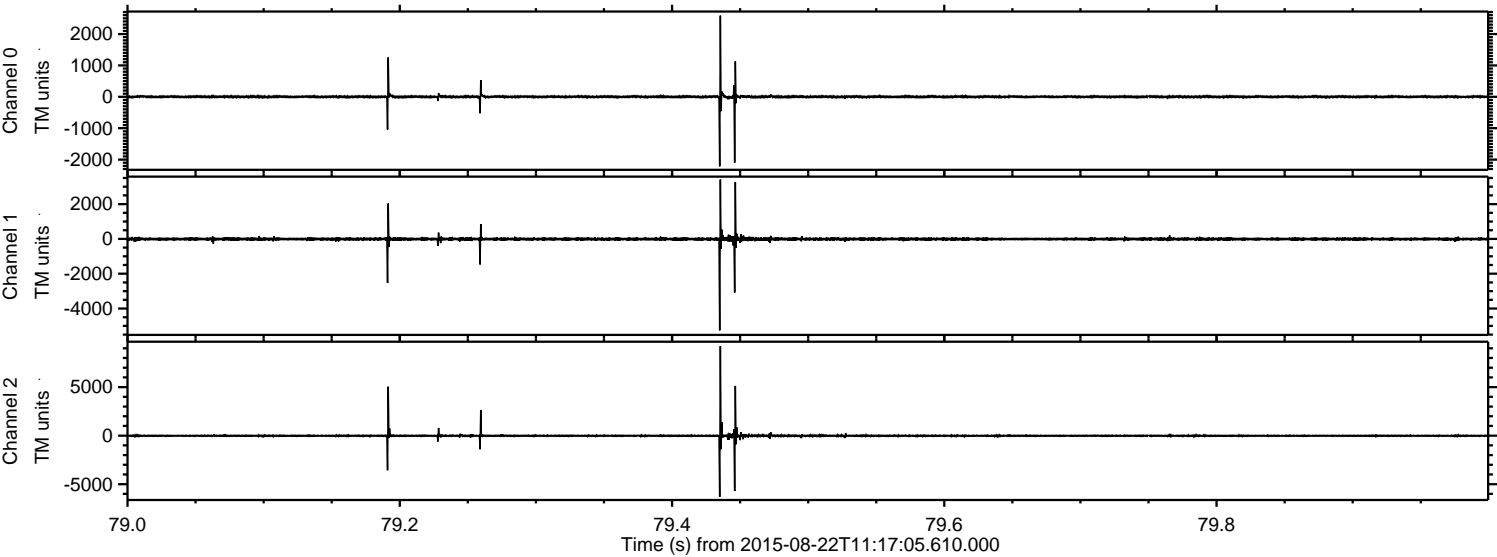
Channel 0  
mn: -2873  
mx: 2154  
 $\mu$ : 2.3  
 $\sigma$ : 28.0

Channel 1  
mn: -4882  
mx: 3550  
 $\mu$ : -7.4  
 $\sigma$ : 57.2

Channel 2  
mn: -6139  
mx: 9248  
 $\mu$ : -5.9  
 $\sigma$ : 91.6



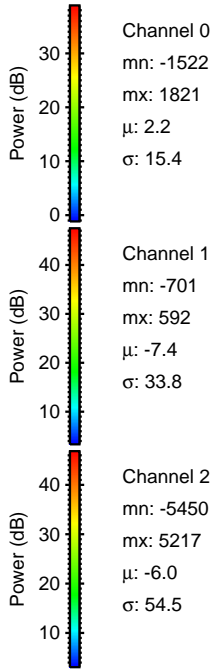
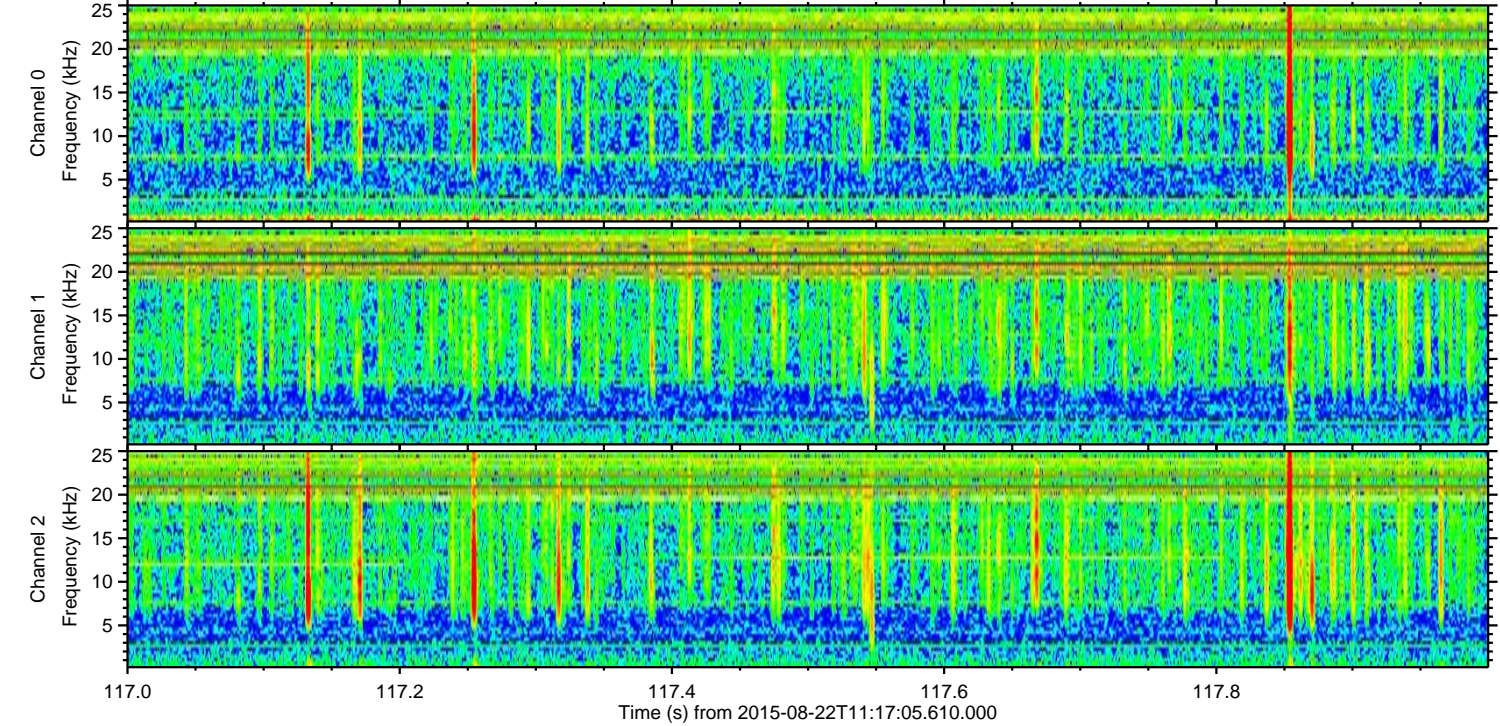
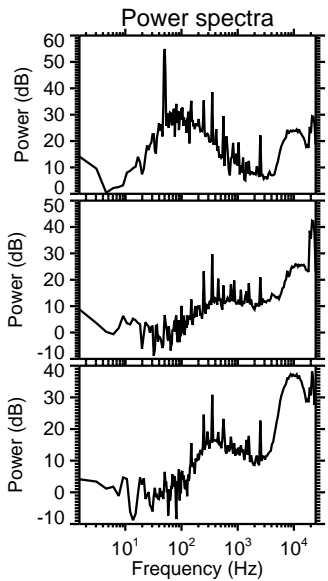
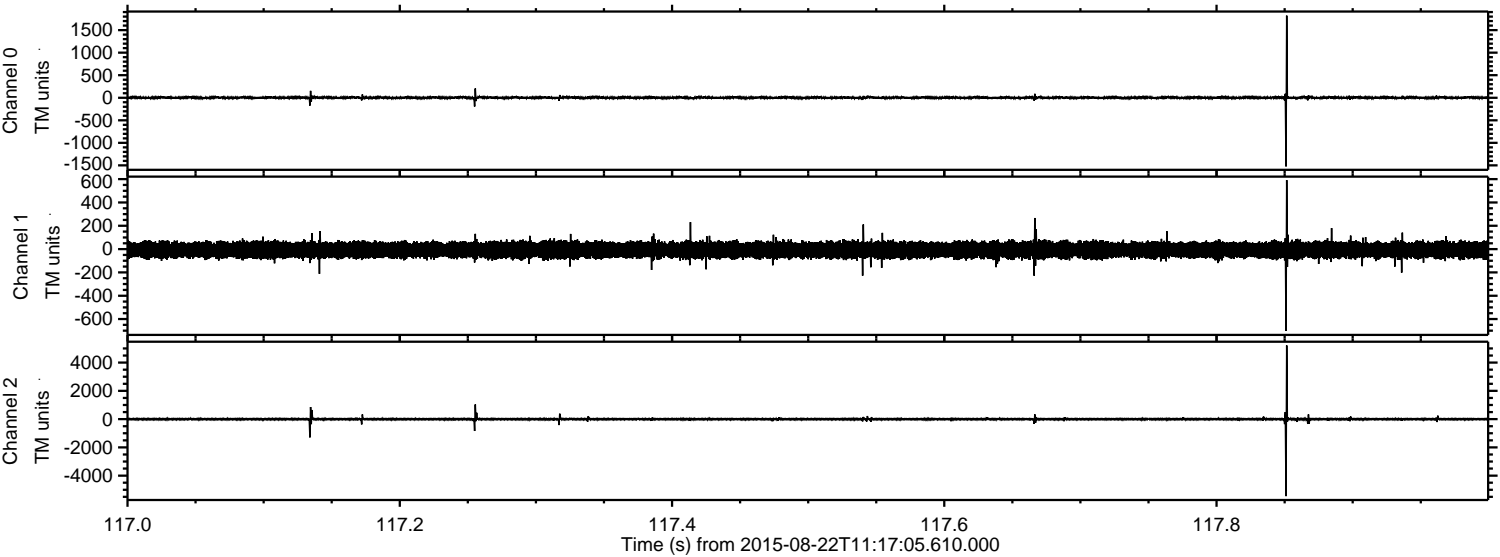
Processed Sat Aug 22 13:23:24 2015 by ELM ver.2012-10-06 from 001\_\_elm20150822\_111704\_\_dat00.bin





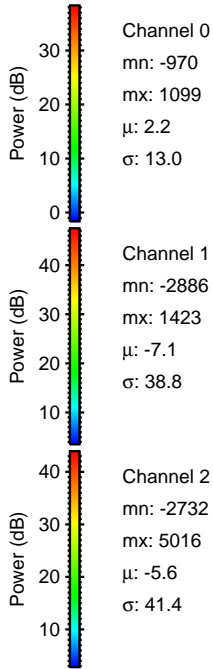
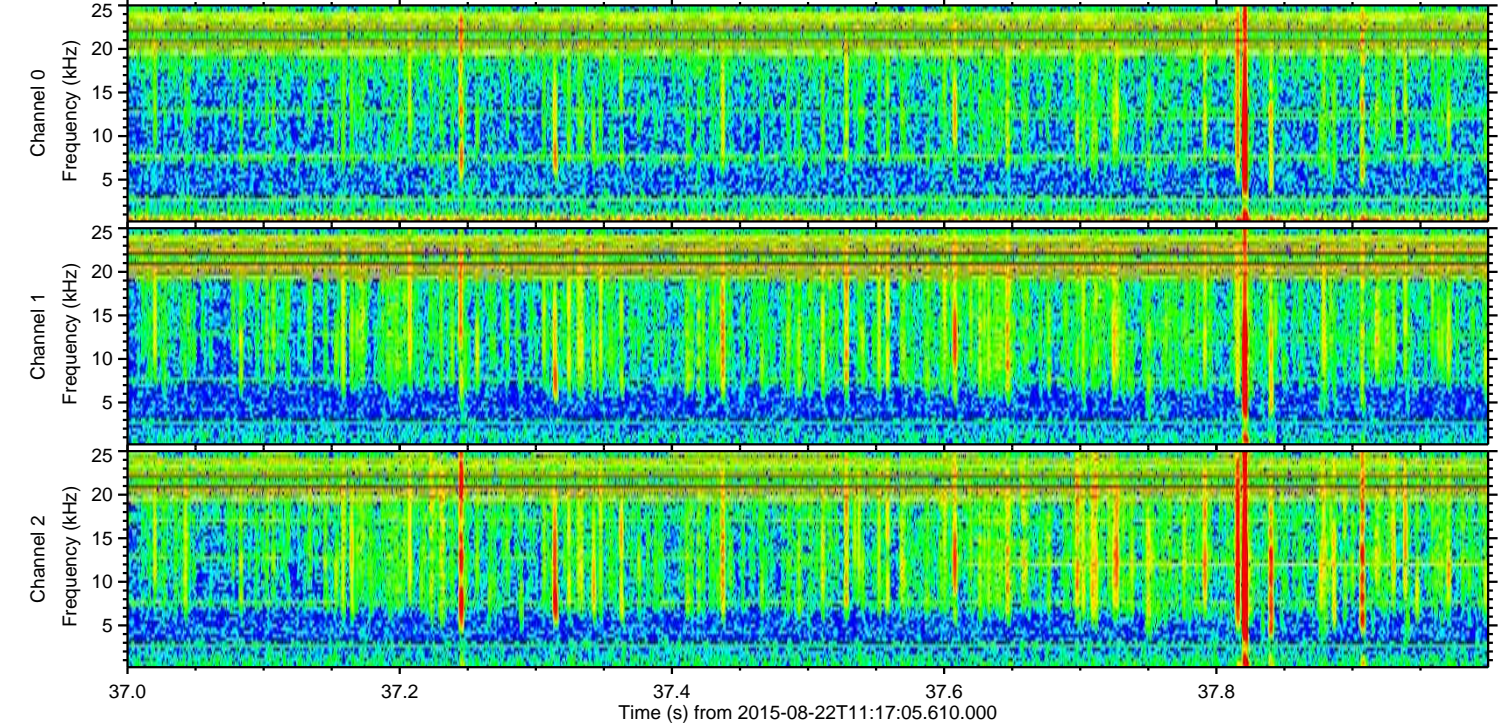
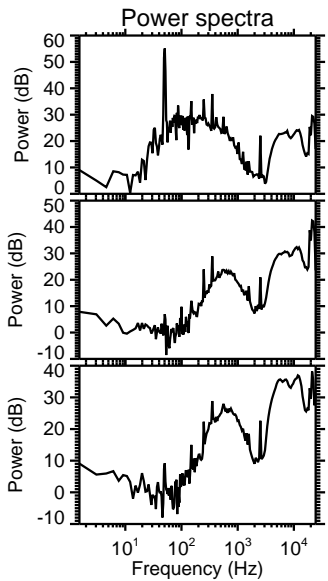
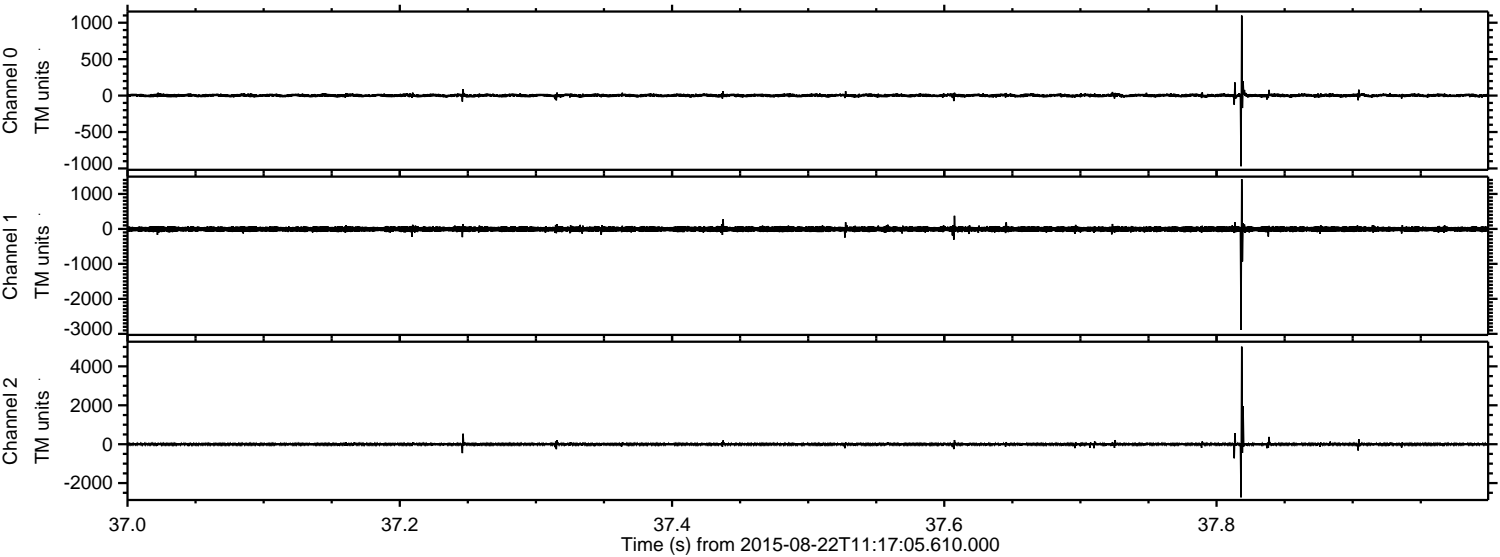
ELMAVAN 3D WAVEFORMS (Measured data sampled at 50 kHz) 51000 packets of 144 samples from 2015-08-22T11:17:05.610.000. Part 118/147

Processed Sat Aug 22 13:23:25 2015 by ELM ver.2012-10-06 from 001\_\_elm20150822\_111704\_\_dat00.bin





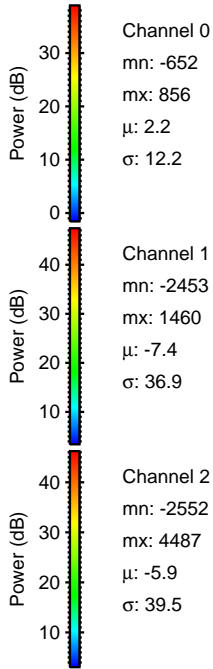
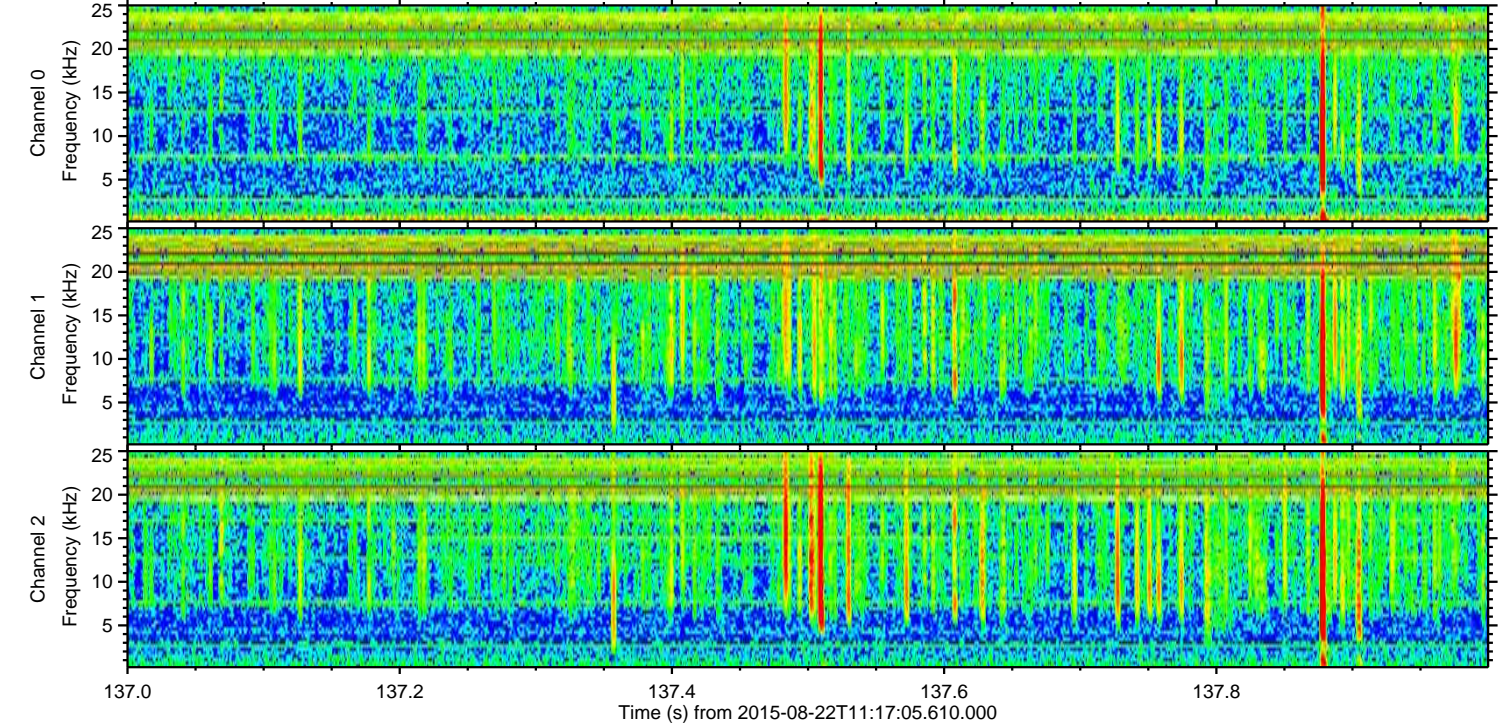
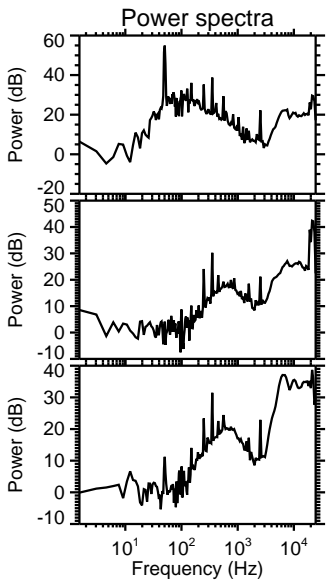
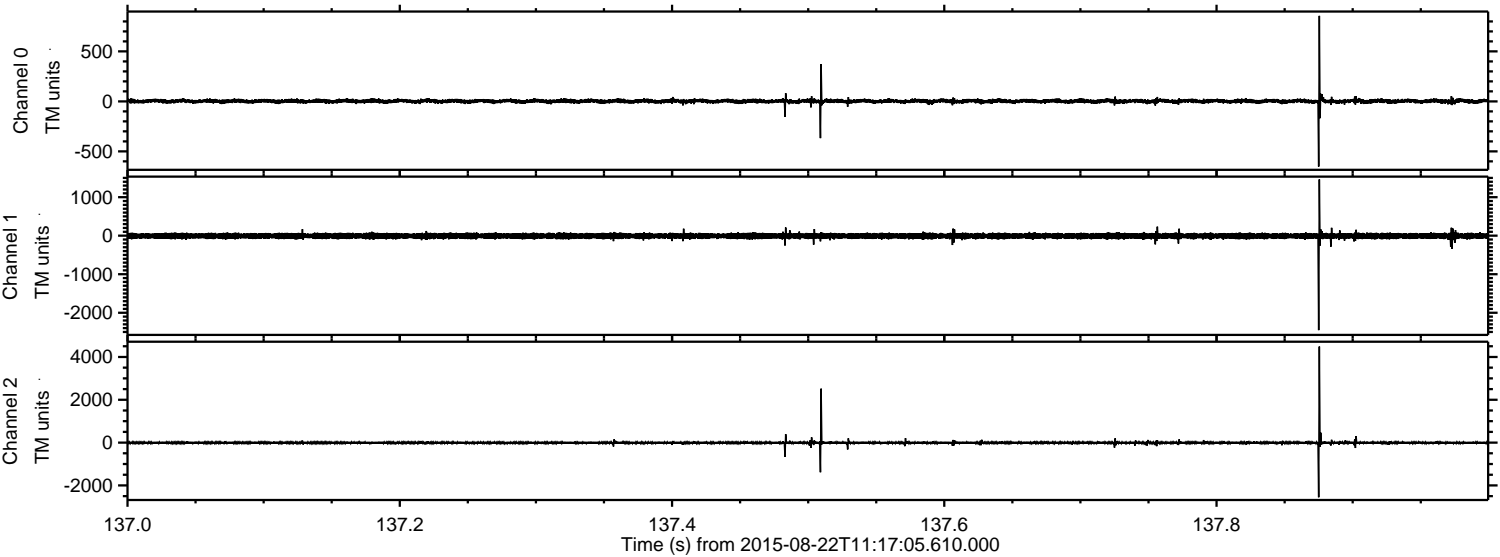
Processed Sat Aug 22 13:23:26 2015 by ELM ver.2012-10-06 from 001\_\_elm20150822\_111704\_\_dat00.bin





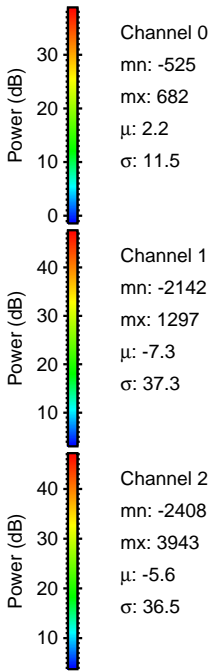
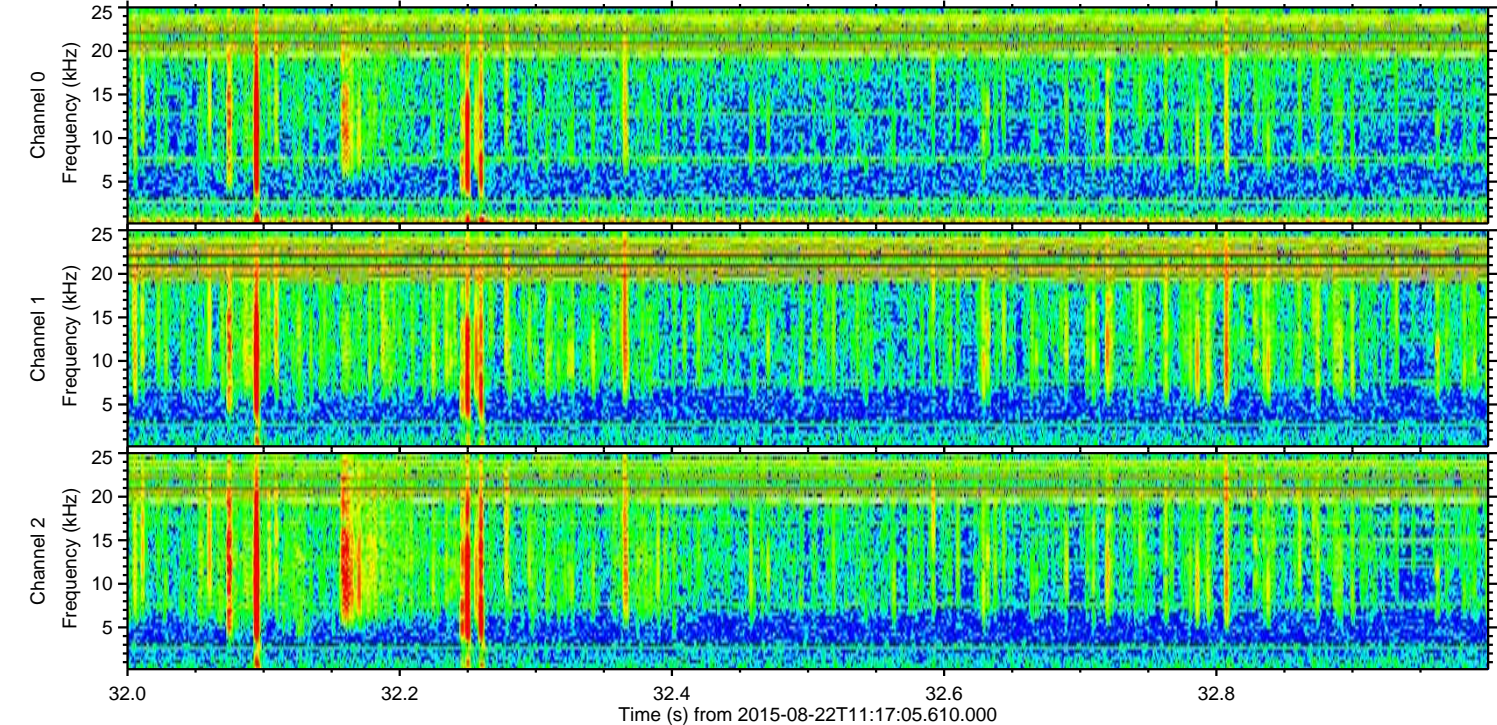
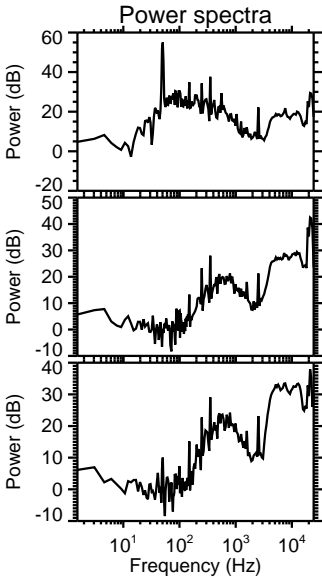
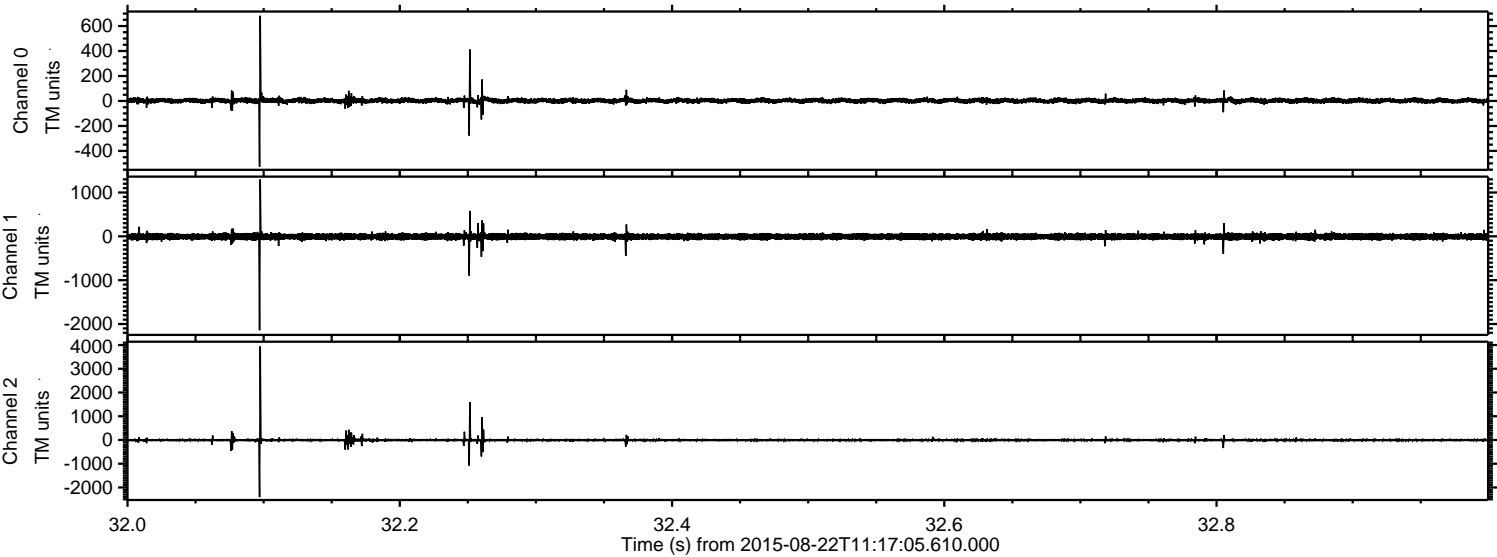
ELMAVAN 3D WAVEFORMS (Measured data sampled at 50 kHz) 51000 packets of 144 samples from 2015-08-22T11:17:05.610.000. Part 138/147

Processed Sat Aug 22 13:23:27 2015 by ELM ver.2012-10-06 from 001\_\_elm20150822\_111704\_\_dat00.bin



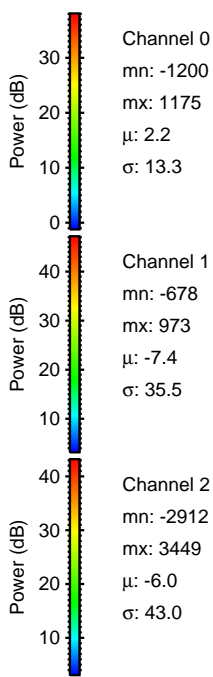
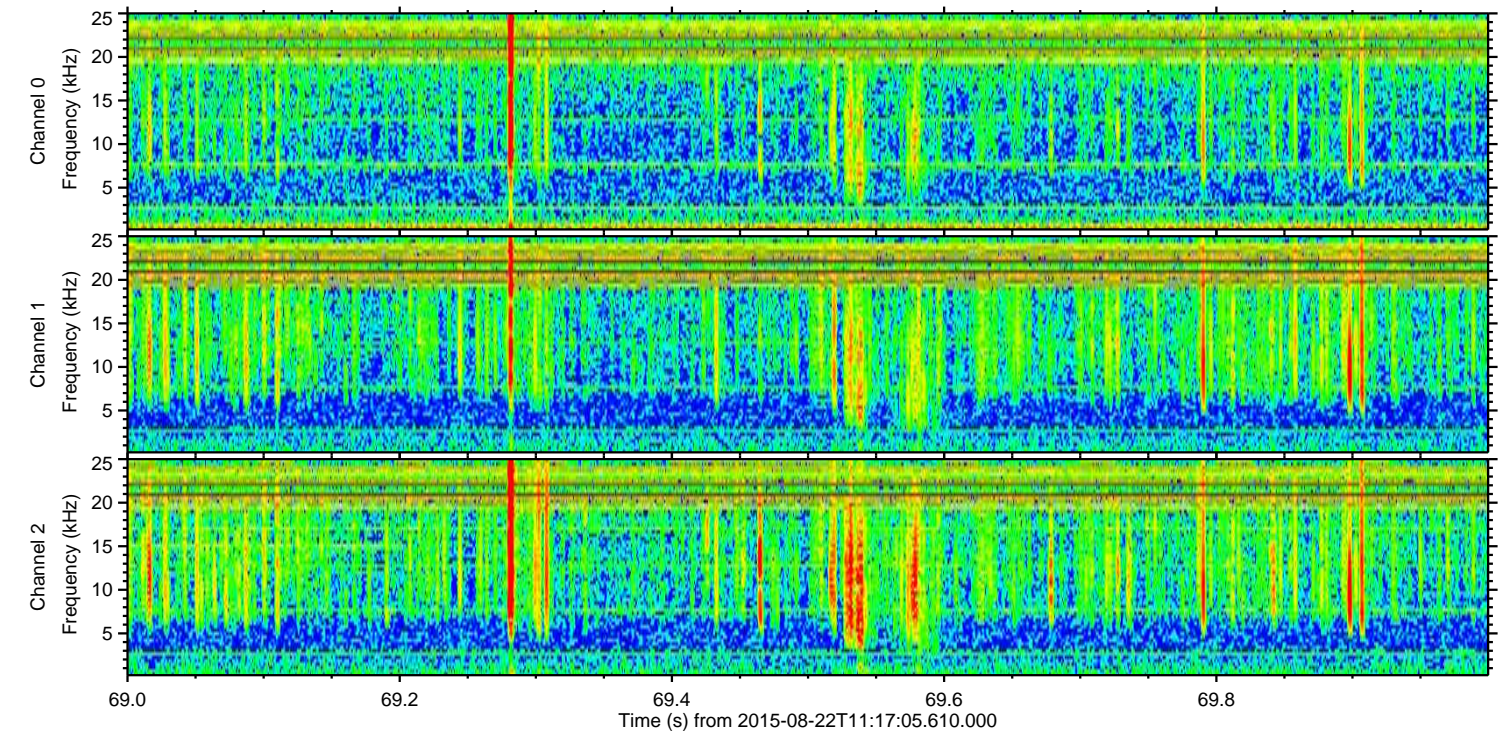
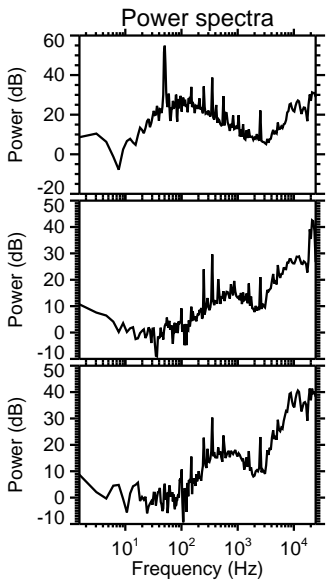
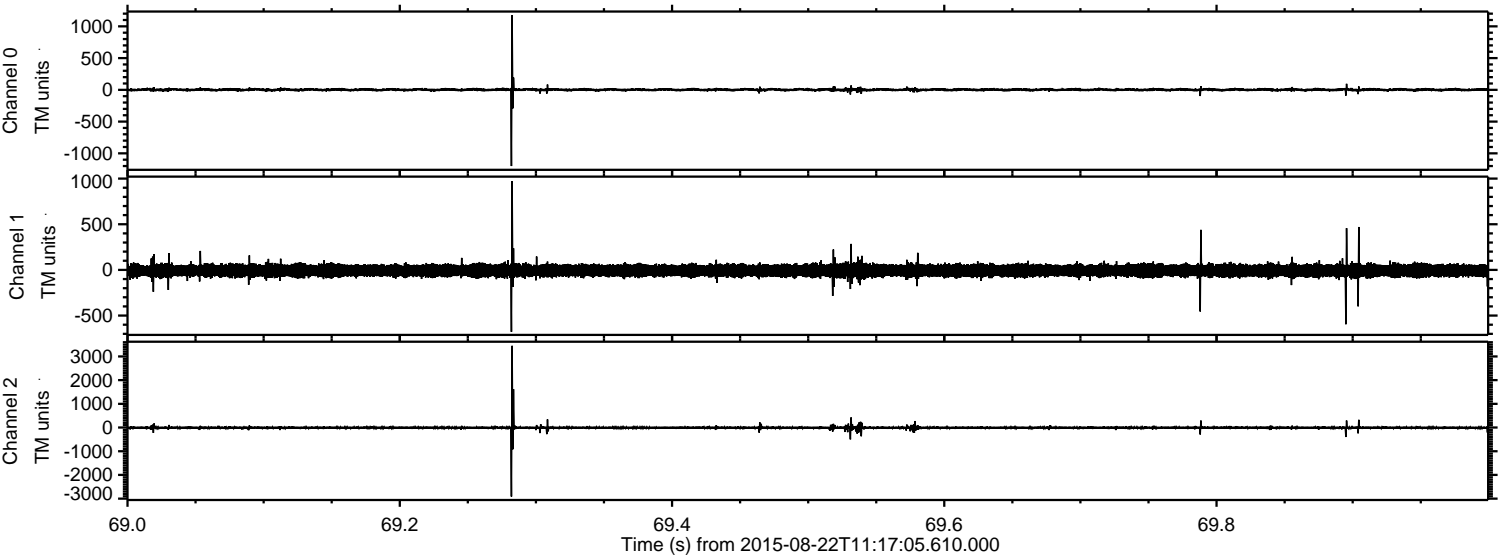


Processed Sat Aug 22 13:23:28 2015 by ELM ver.2012-10-06 from 001\_\_elm20150822\_111704\_\_dat00.bin





Processed Sat Aug 22 13:23:29 2015 by ELM ver.2012-10-06 from 001\_\_elm20150822\_111704\_\_dat00.bin



Channel 0  
mn: -1200  
mx: 1175  
 $\mu$ : 2.2  
 $\sigma$ : 13.3

Channel 1  
mn: -678  
mx: 973  
 $\mu$ : -7.4  
 $\sigma$ : 35.5

Channel 2  
mn: -2912  
mx: 3449  
 $\mu$ : -6.0  
 $\sigma$ : 43.0



Processed Sat Aug 22 13:23:29 2015 by ELM ver.2012-10-06 from 001\_\_elm20150822\_111704\_\_dat00.bin

