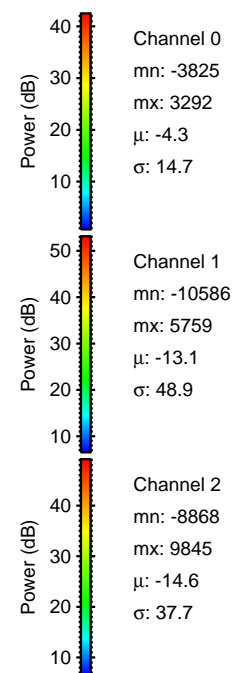
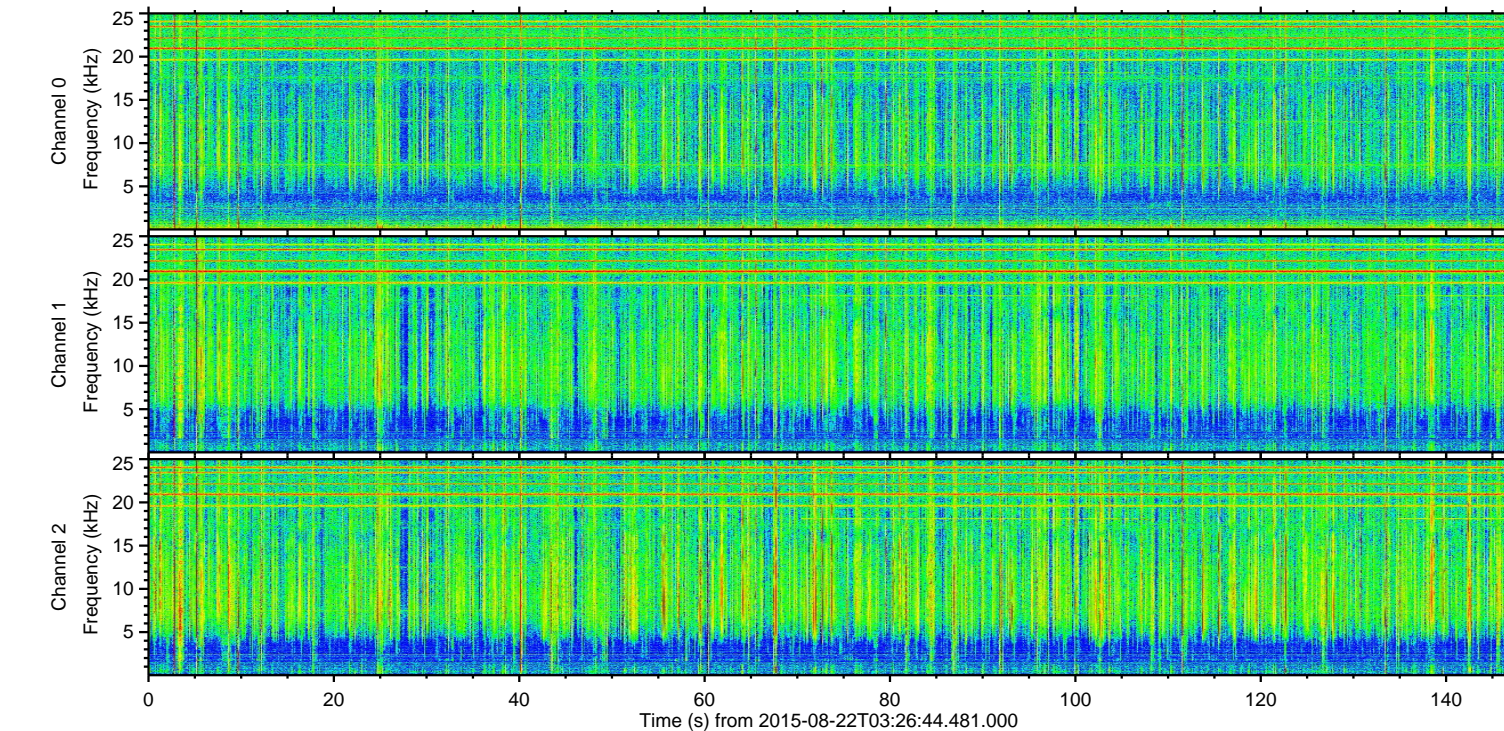
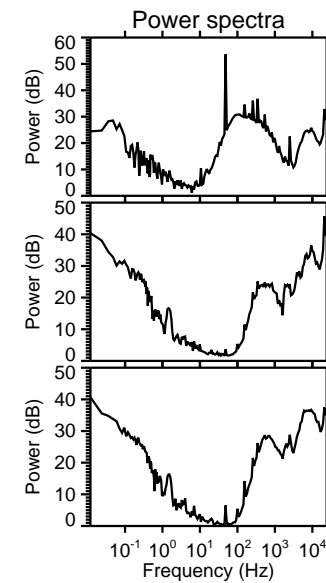
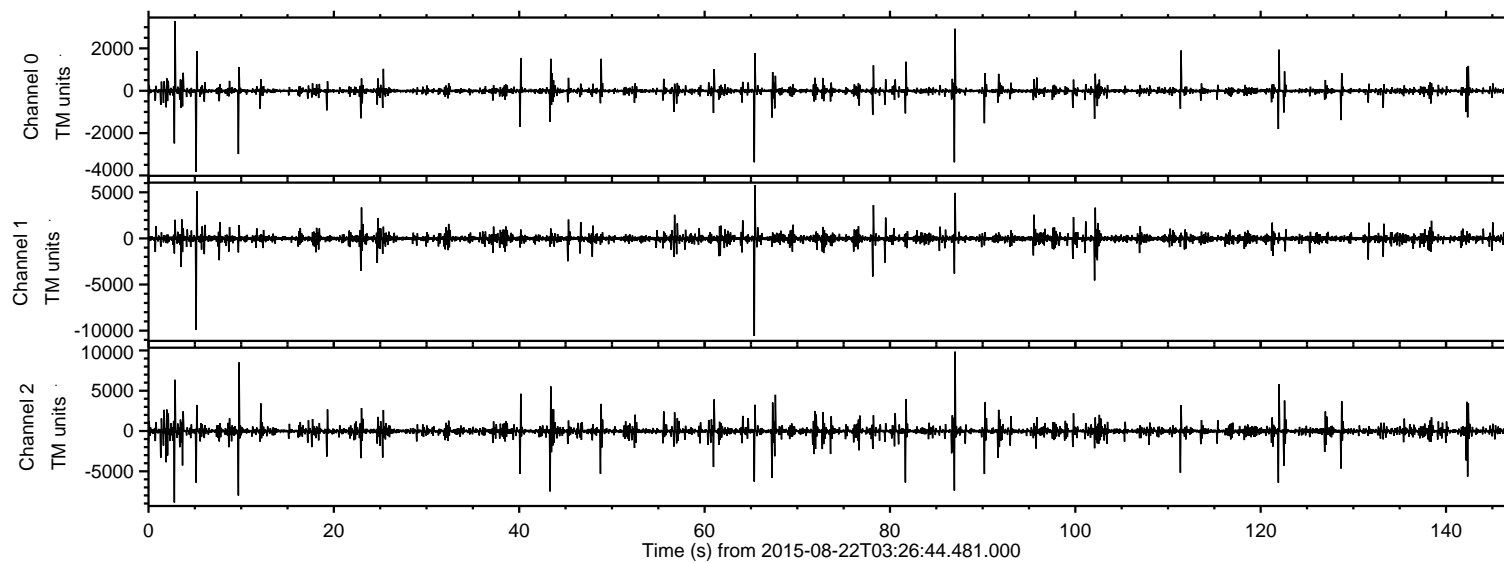
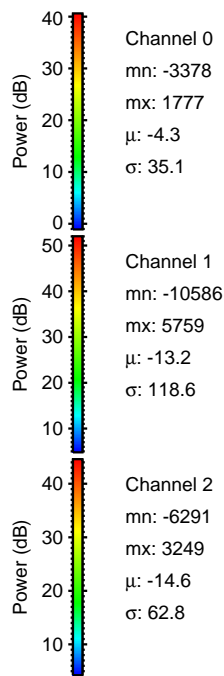
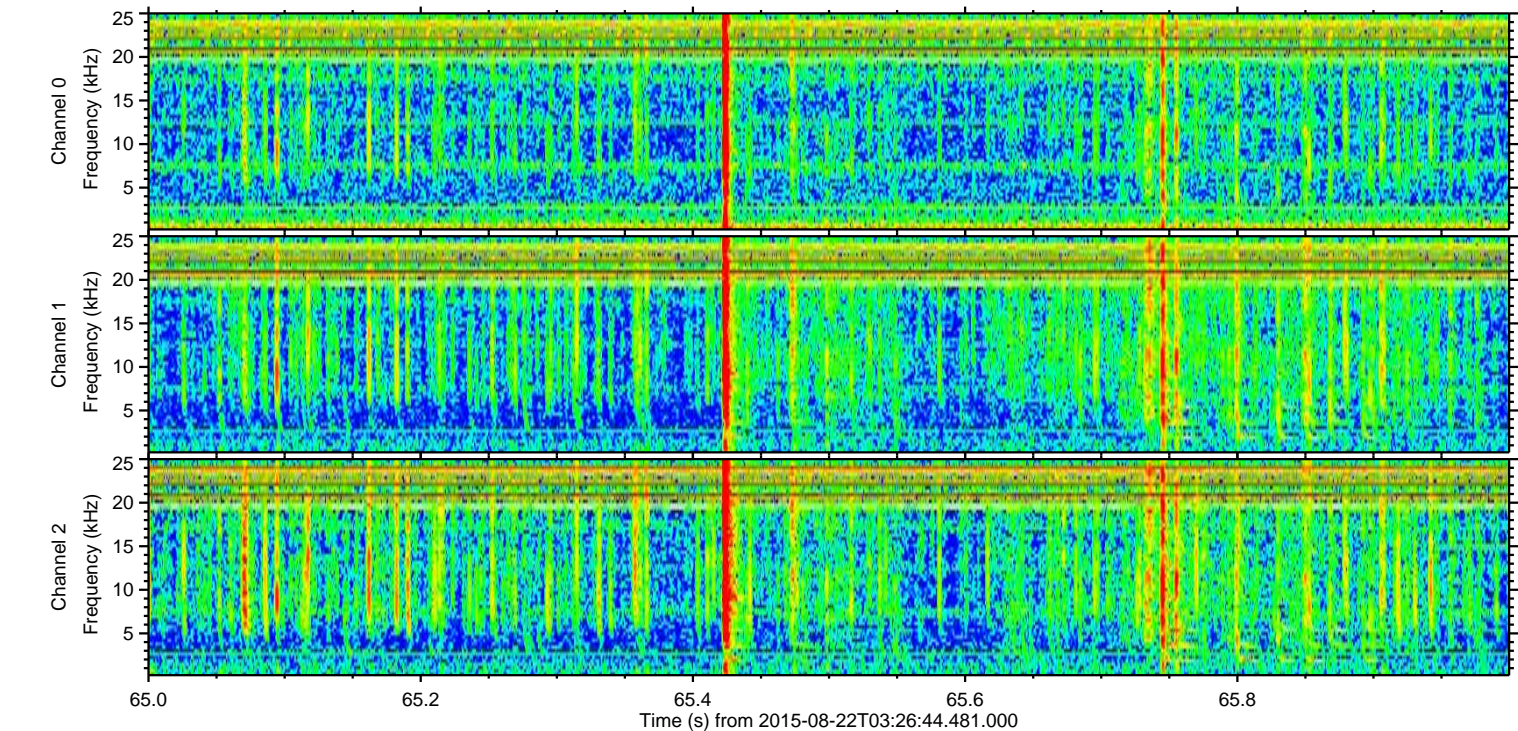
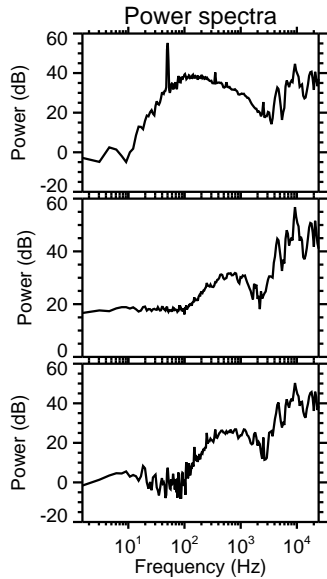
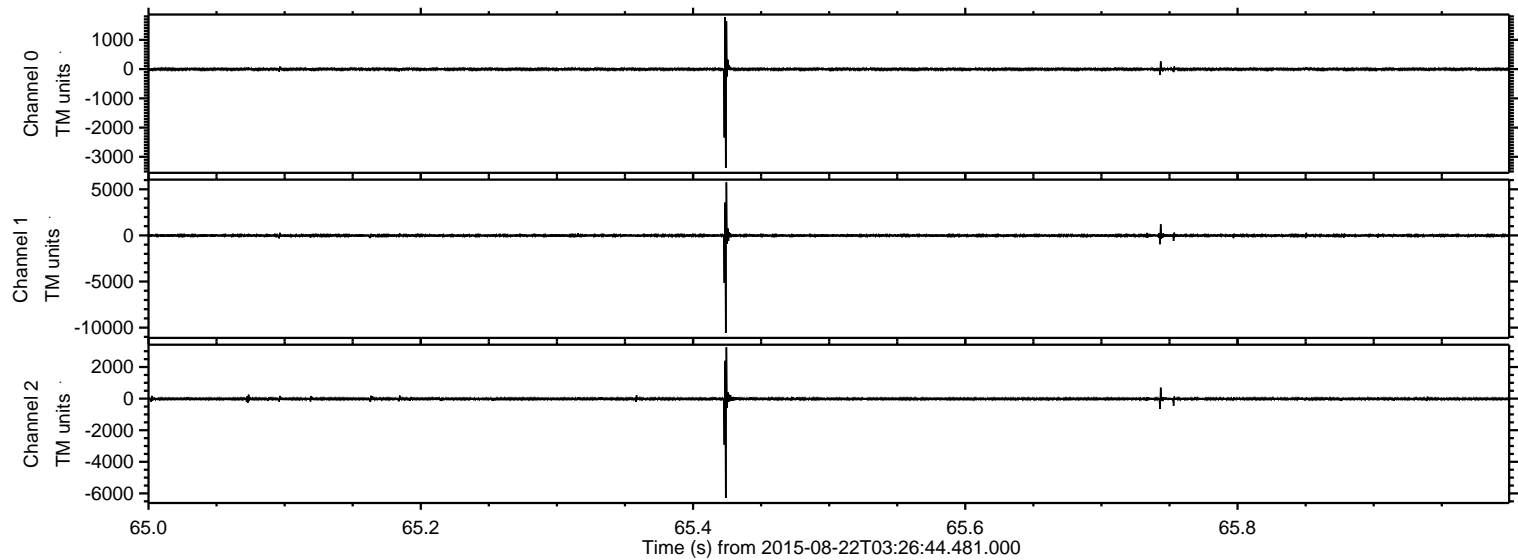


ELMAVAN 3D WAVEFORMS (Measured data sampled at 50 kHz) 51000 packets of 144 samples from 2015-08-22T03:26:44.481.000.

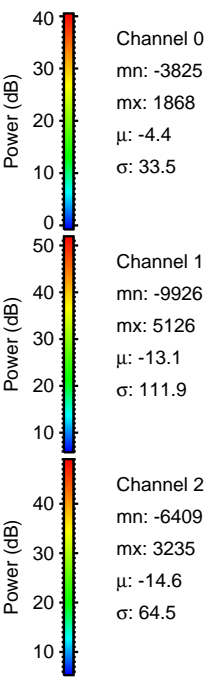
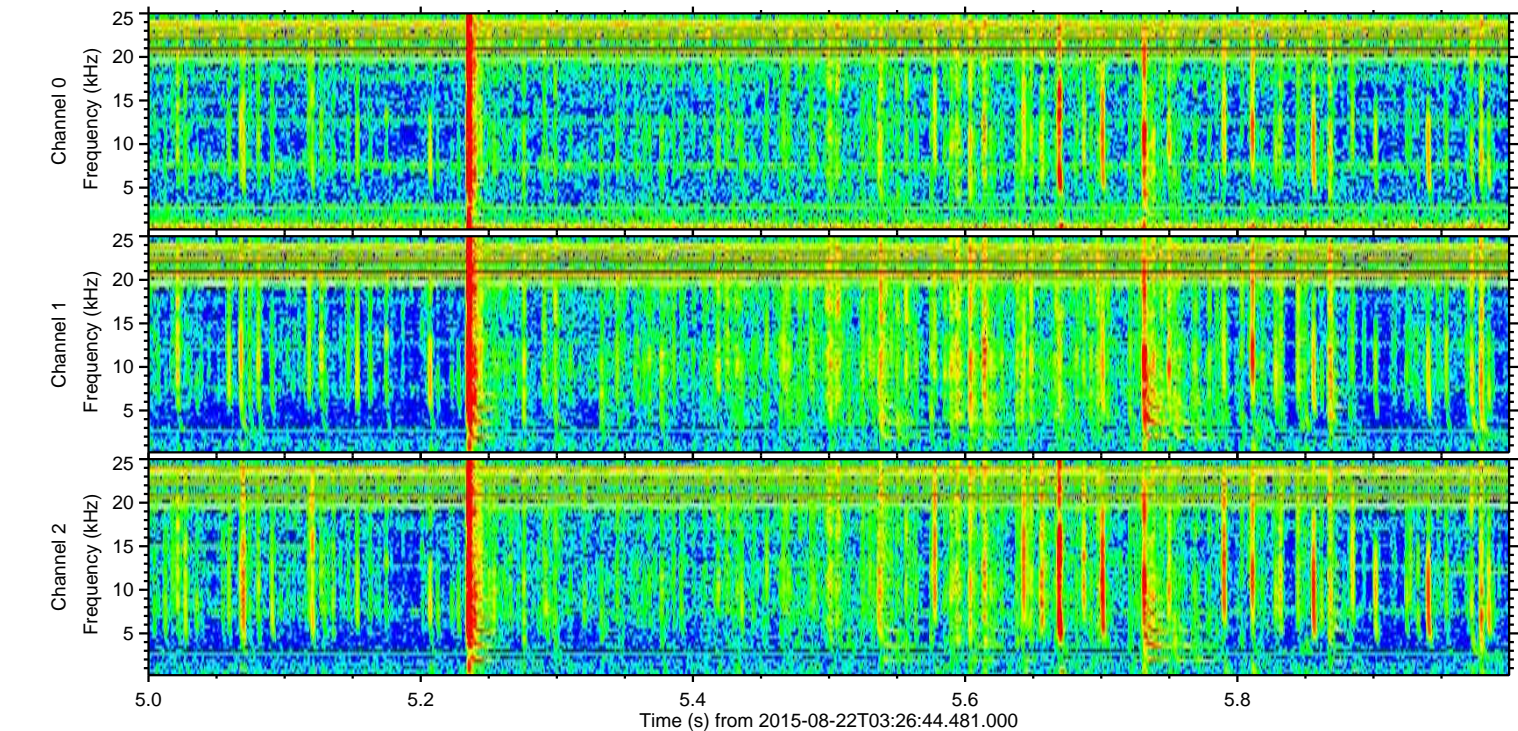
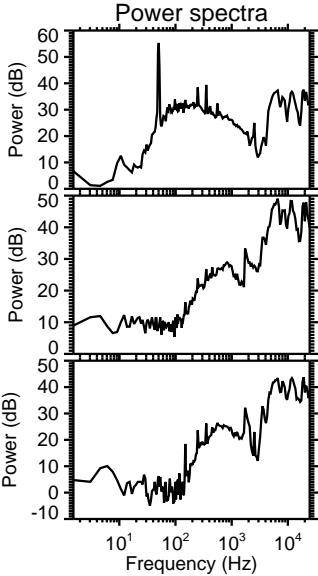
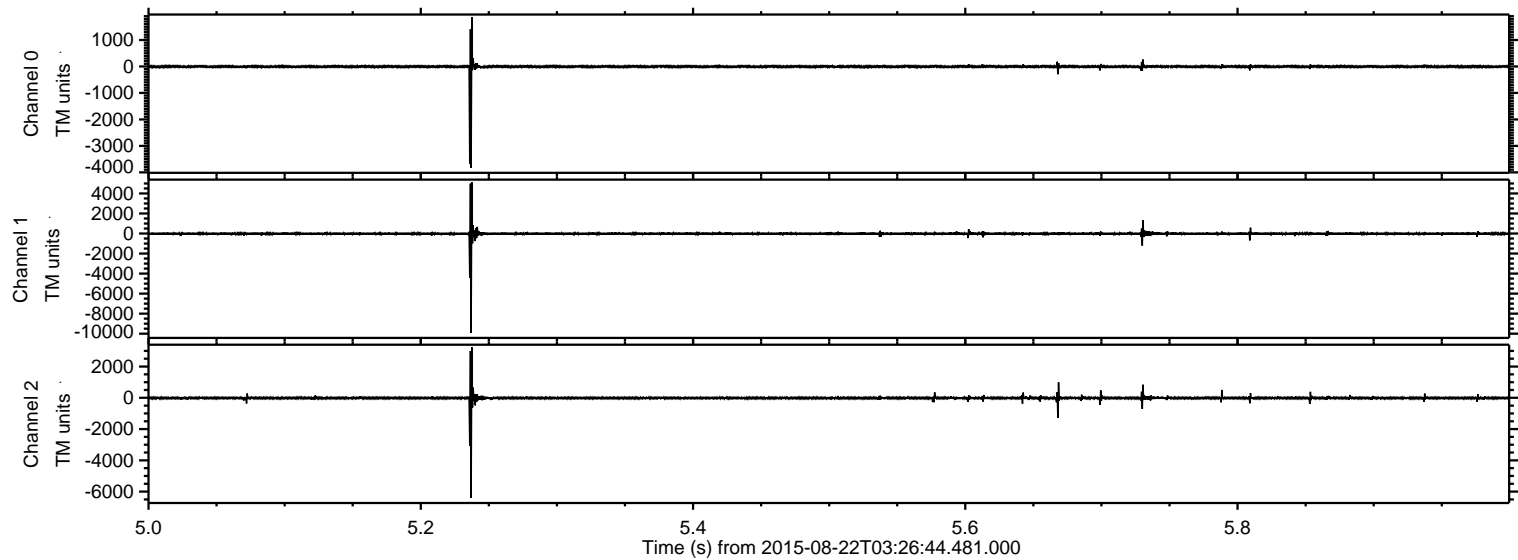
Processed Sat Aug 22 05:33:24 2015 by ELM ver.2012-10-06 from 001__elm20150822_032643__dat00.bin



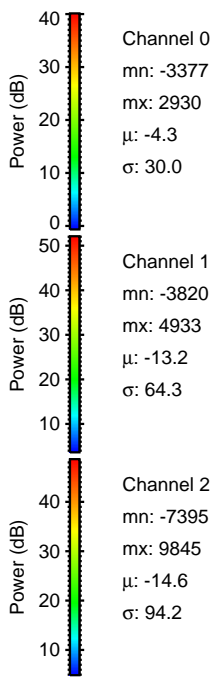
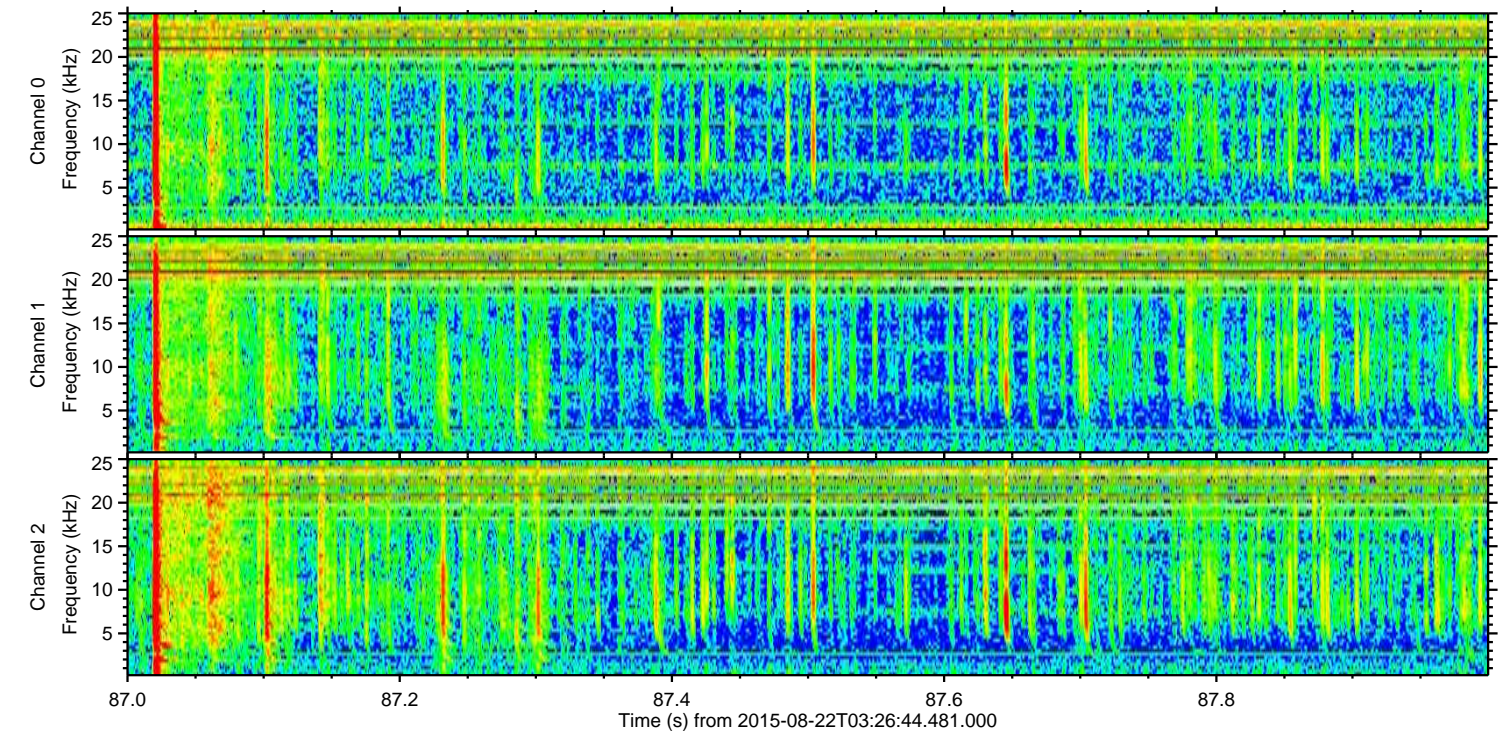
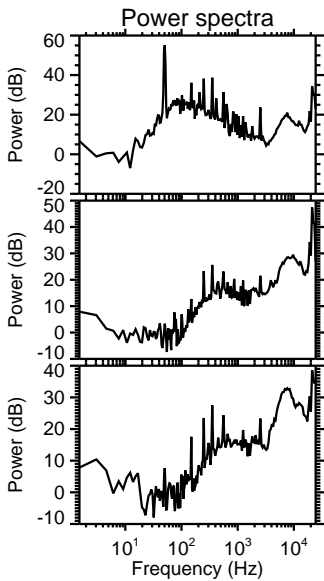
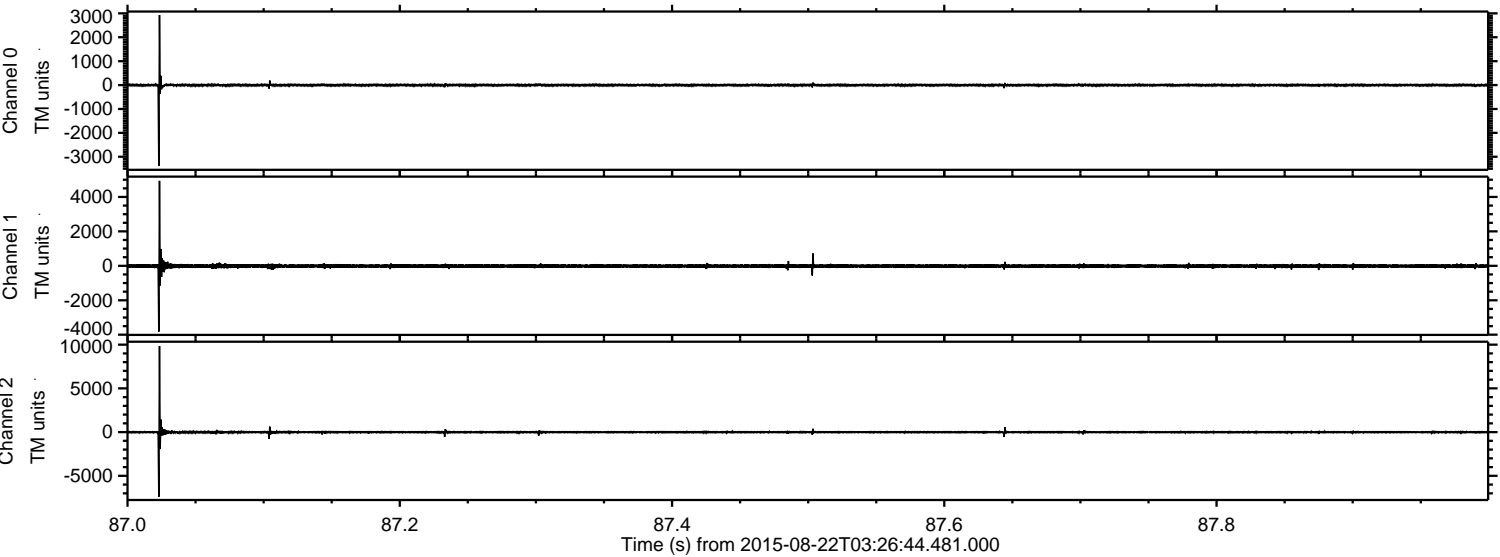
Processed Sat Aug 22 05:33:36 2015 by ELM ver.2012-10-06 from 001__elm20150822_032643__dat00.bin



Processed Sat Aug 22 05:33:37 2015 by ELM ver.2012-10-06 from 001__elm20150822_032643__dat00.bin



Processed Sat Aug 22 05:33:38 2015 by ELM ver.2012-10-06 from 001__elm20150822_032643__dat00.bin



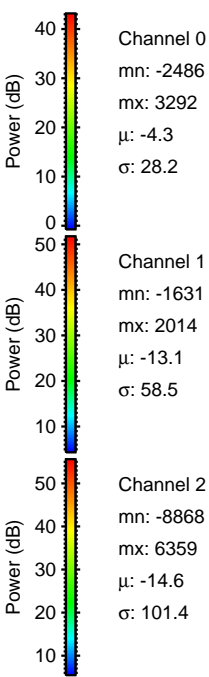
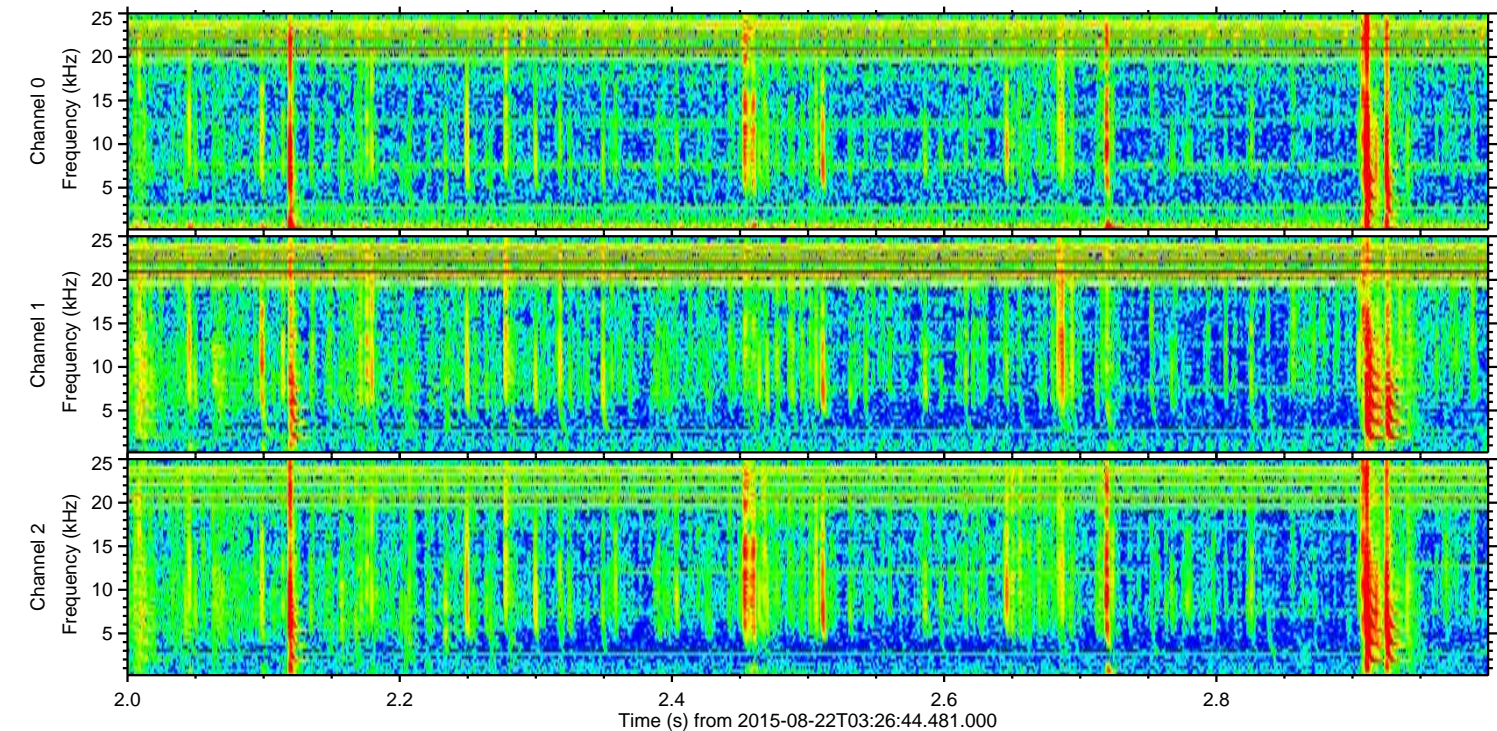
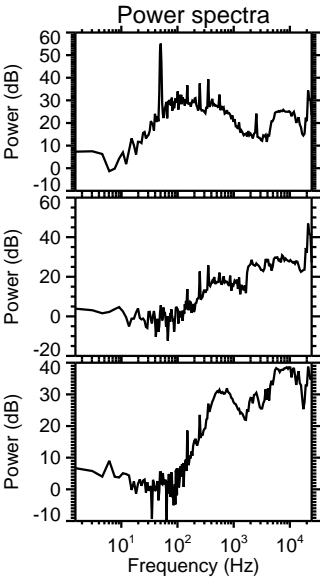
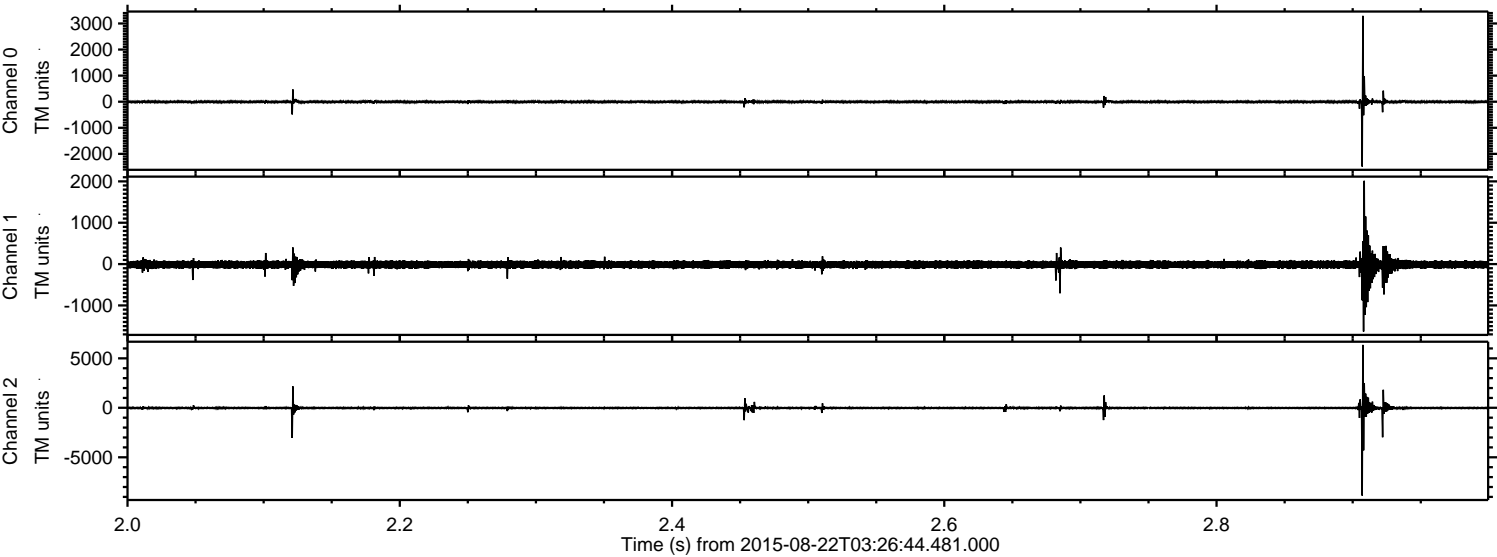
Channel 0
mn: -3377
mx: 2930
 μ : -4.3
 σ : 30.0

Channel 1
mn: -3820
mx: 4933
 μ : -13.2
 σ : 64.3

Channel 2
mn: -7395
mx: 9845
 μ : -14.6
 σ : 94.2

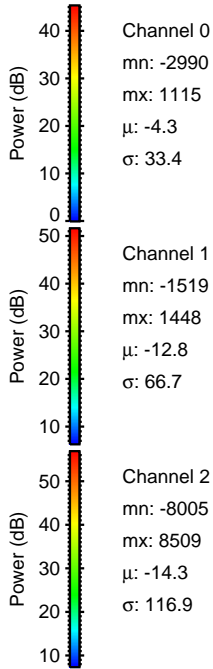
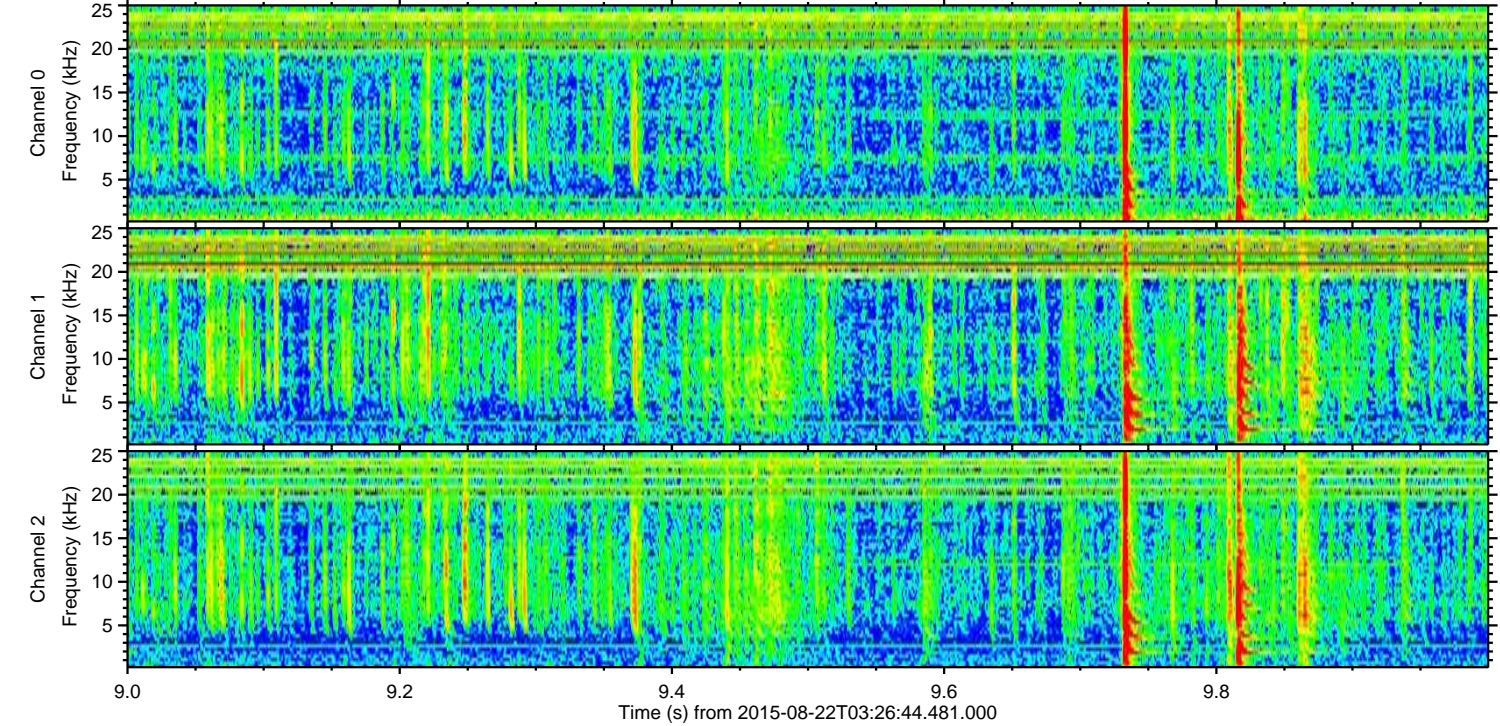
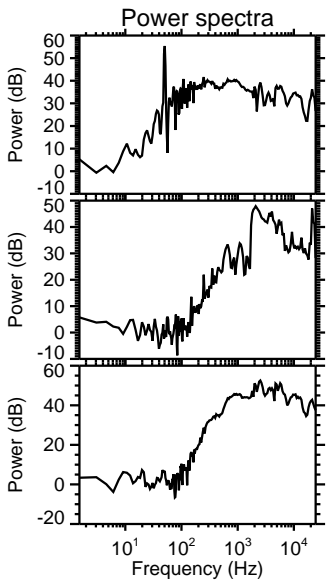
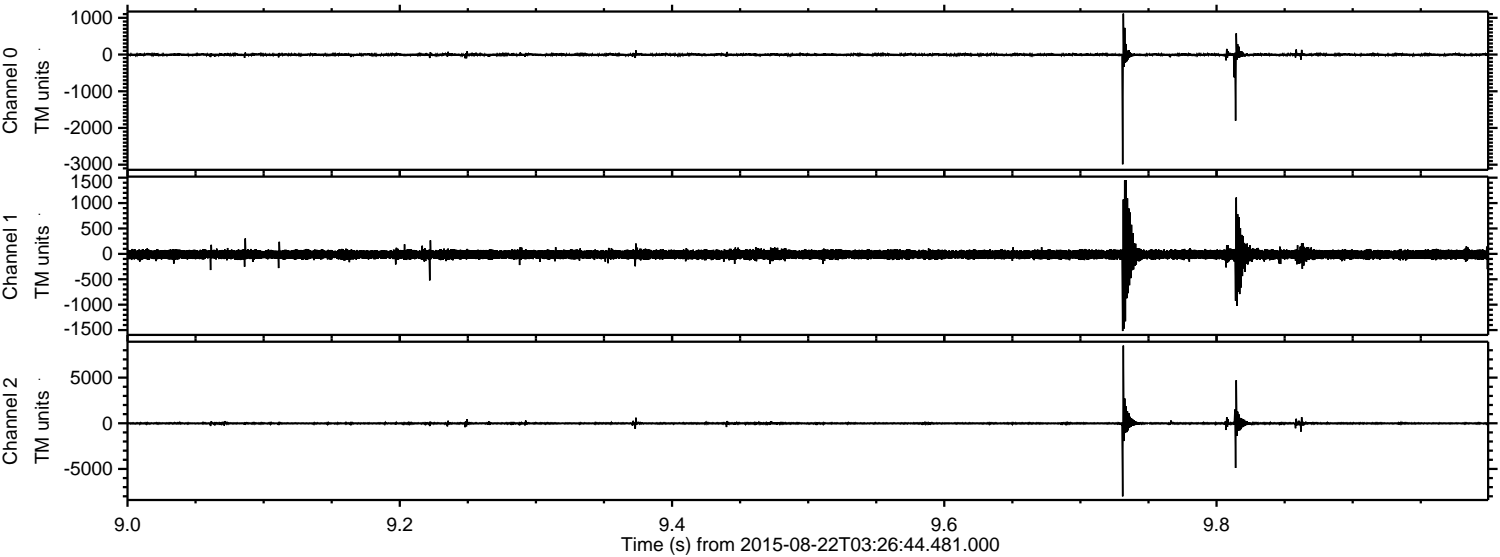
ELMAVAN 3D WAVEFORMS (Measured data sampled at 50 kHz) 51000 packets of 144 samples from 2015-08-22T03:26:44.481.000. Part 3/147

Processed Sat Aug 22 05:33:39 2015 by ELM ver.2012-10-06 from 001__elm20150822_032643__dat00.bin



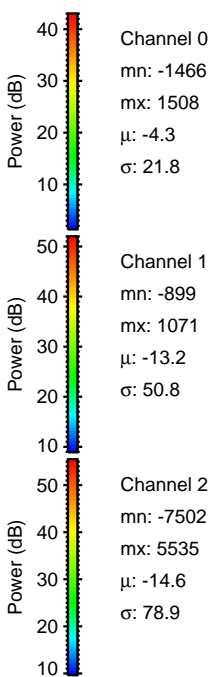
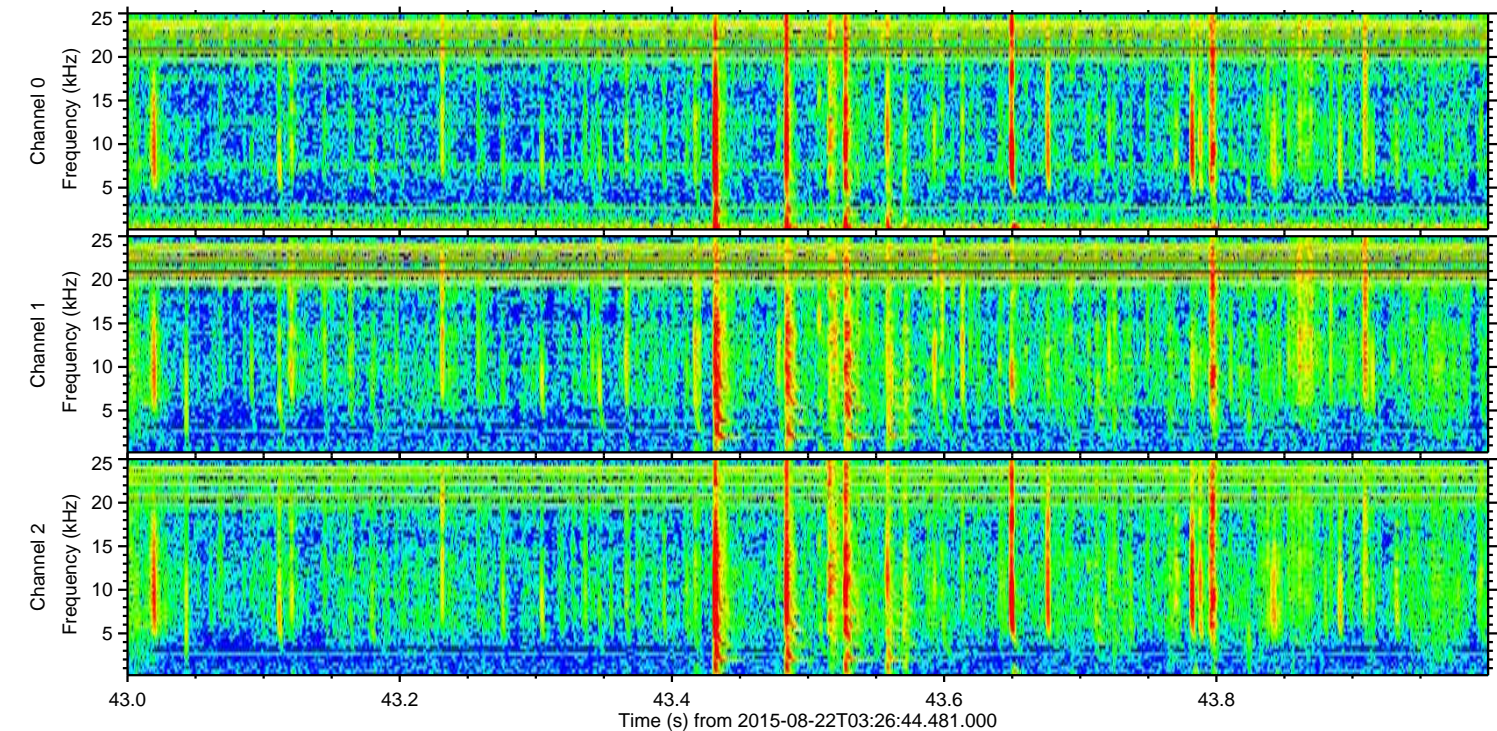
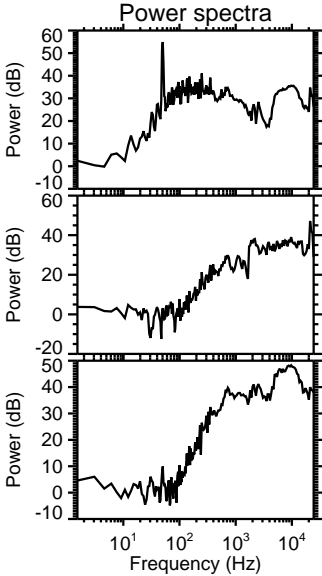
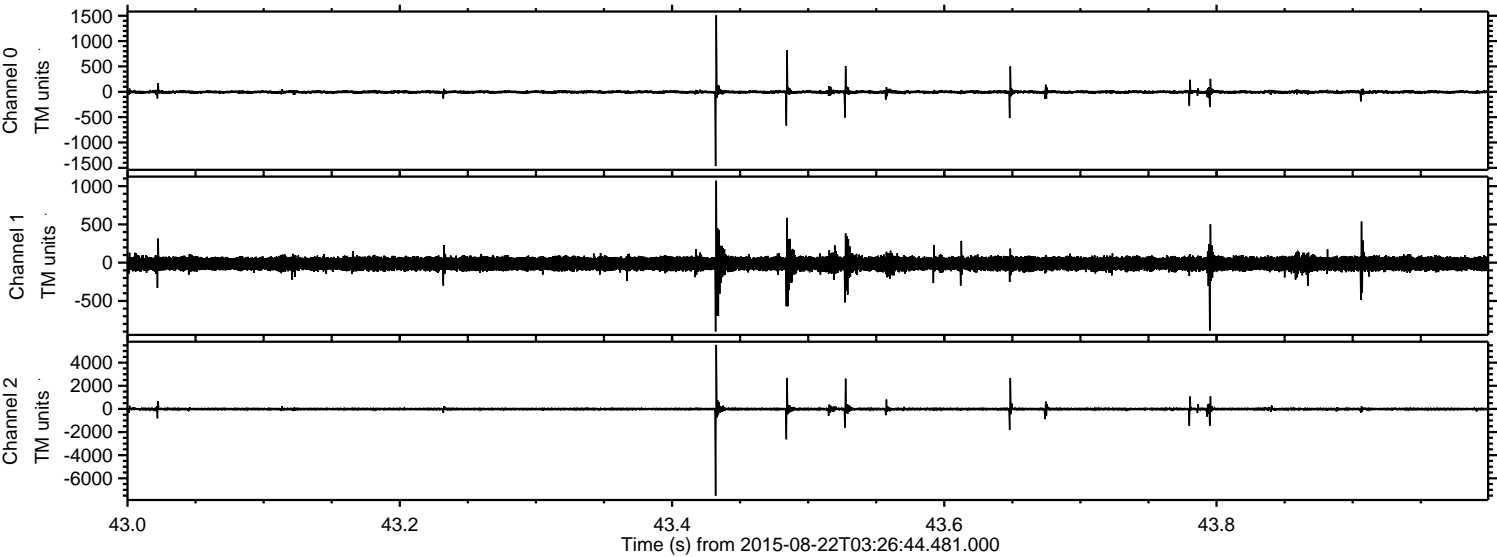
ELMAVAN 3D WAVEFORMS (Measured data sampled at 50 kHz) 51000 packets of 144 samples from 2015-08-22T03:26:44.481.000. Part 10/147

Processed Sat Aug 22 05:33:40 2015 by ELM ver.2012-10-06 from 001__elm20150822_032643__dat00.bin



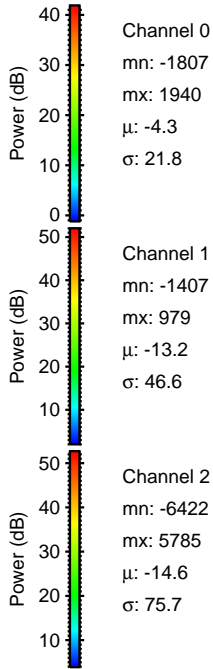
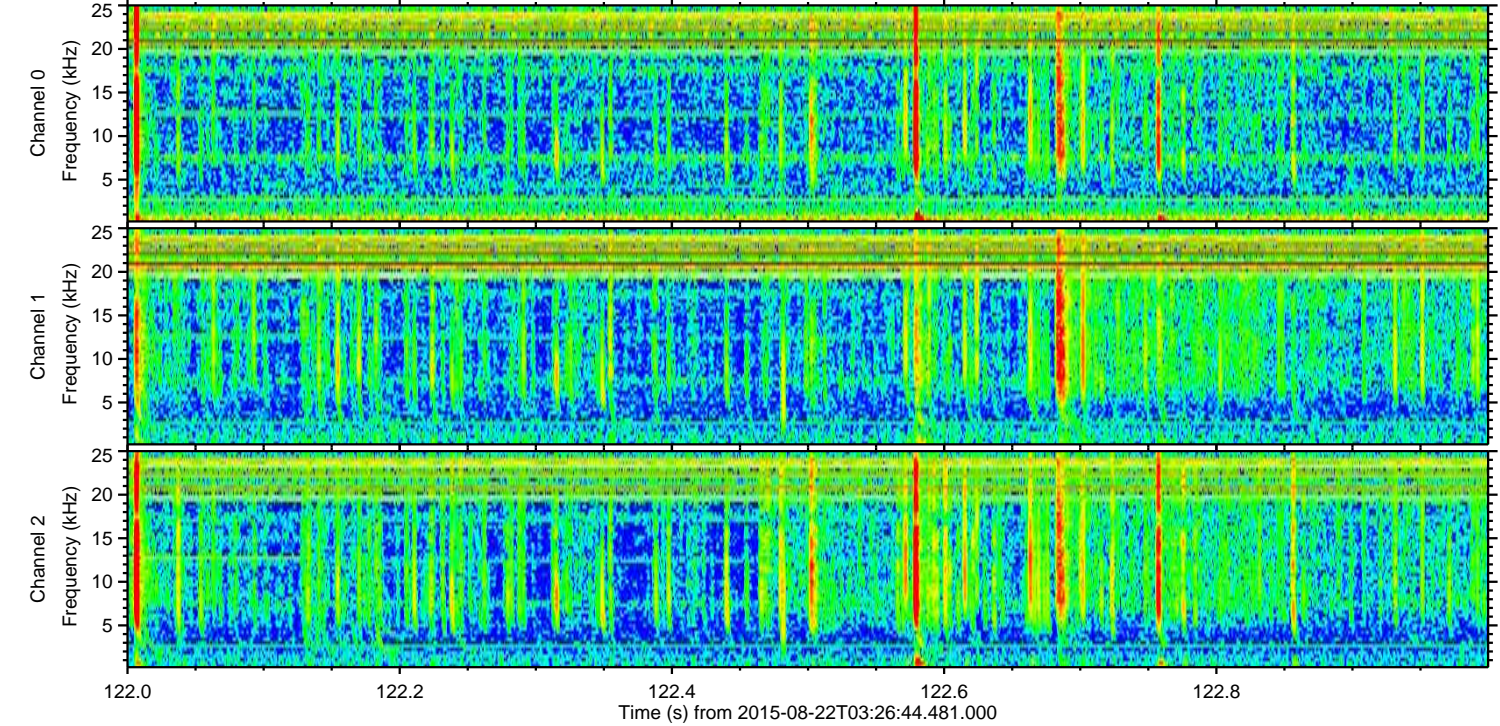
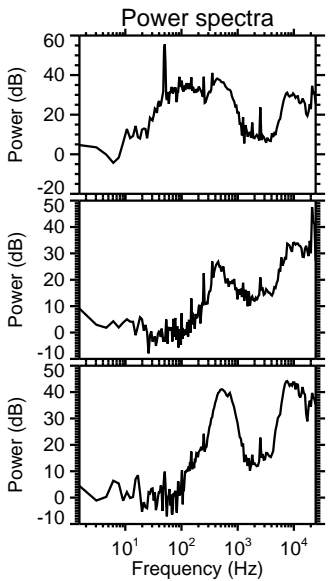
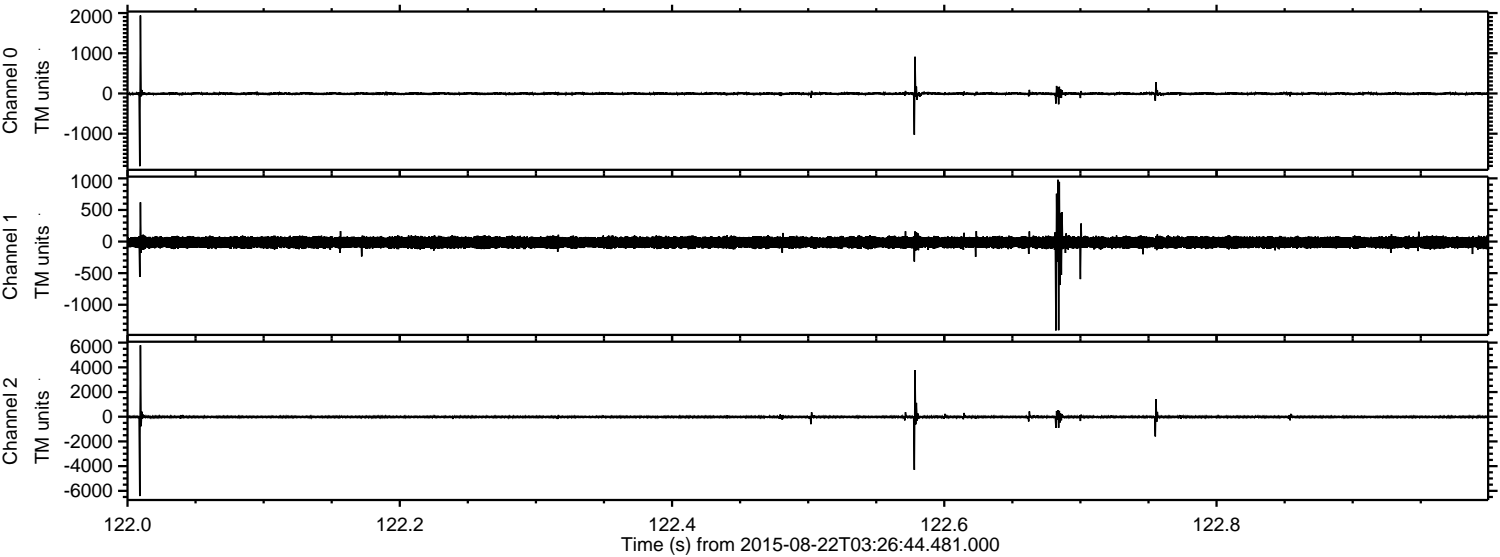
ELMAVAN 3D WAVEFORMS (Measured data sampled at 50 kHz) 51000 packets of 144 samples from 2015-08-22T03:26:44.481.000. Part 44/147

Processed Sat Aug 22 05:33:41 2015 by ELM ver.2012-10-06 from 001__elm20150822_032643__dat00.bin



ELMAVAN 3D WAVEFORMS (Measured data sampled at 50 kHz) 51000 packets of 144 samples from 2015-08-22T03:26:44.481.000. Part 123/147

Processed Sat Aug 22 05:33:42 2015 by ELM ver.2012-10-06 from 001__elm20150822_032643__dat00.bin

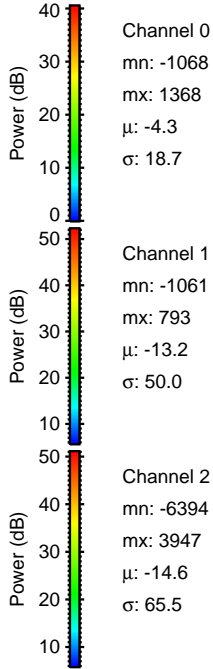
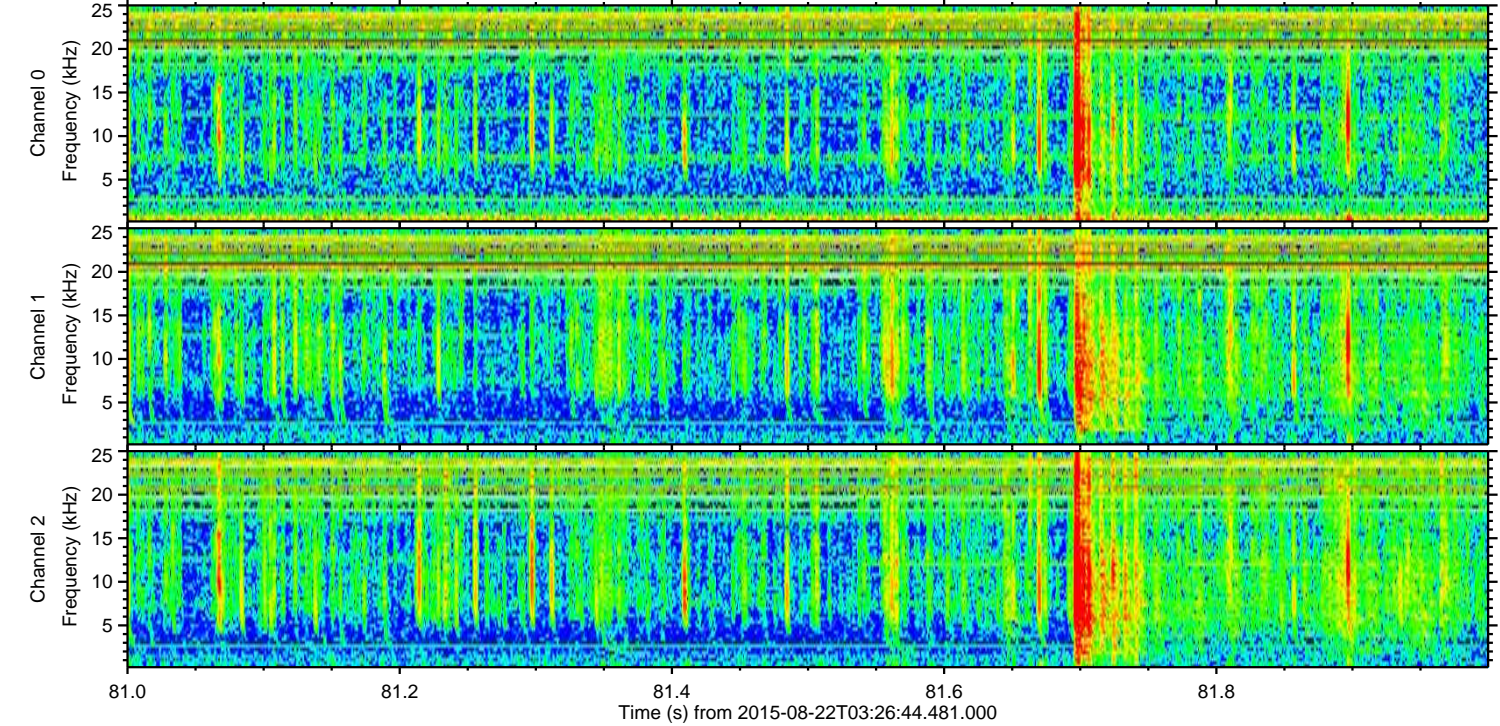
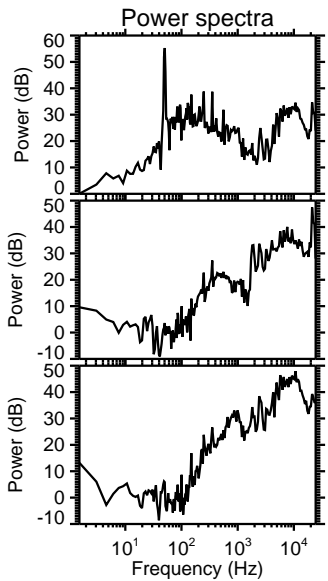
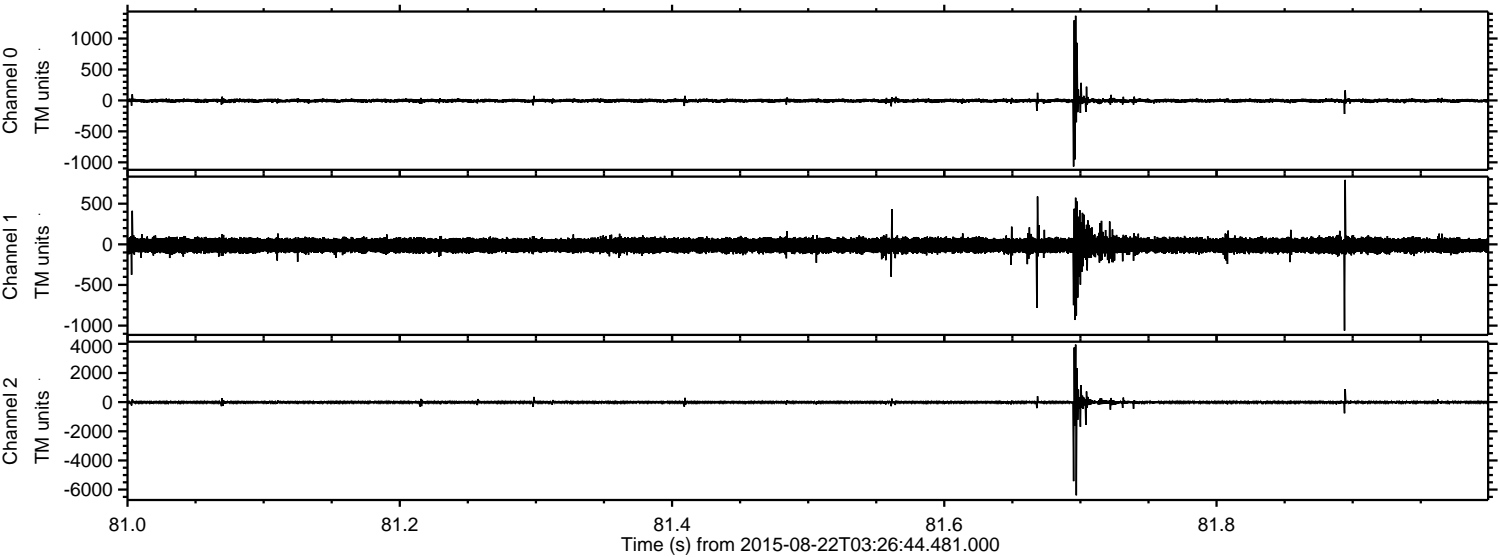


Channel 0
mn: -1807
mx: 1940
 μ : -4.3
 σ : 21.8

Channel 1
mn: -1407
mx: 979
 μ : -13.2
 σ : 46.6

Channel 2
mn: -6422
mx: 5785
 μ : -14.6
 σ : 75.7

Processed Sat Aug 22 05:33:43 2015 by ELM ver.2012-10-06 from 001__elm20150822_032643__dat00.bin

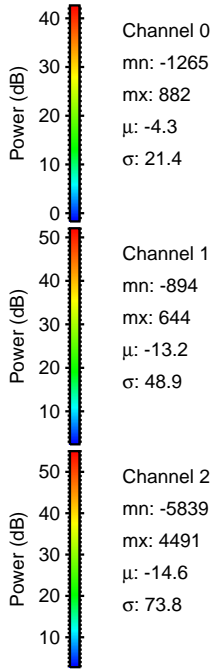
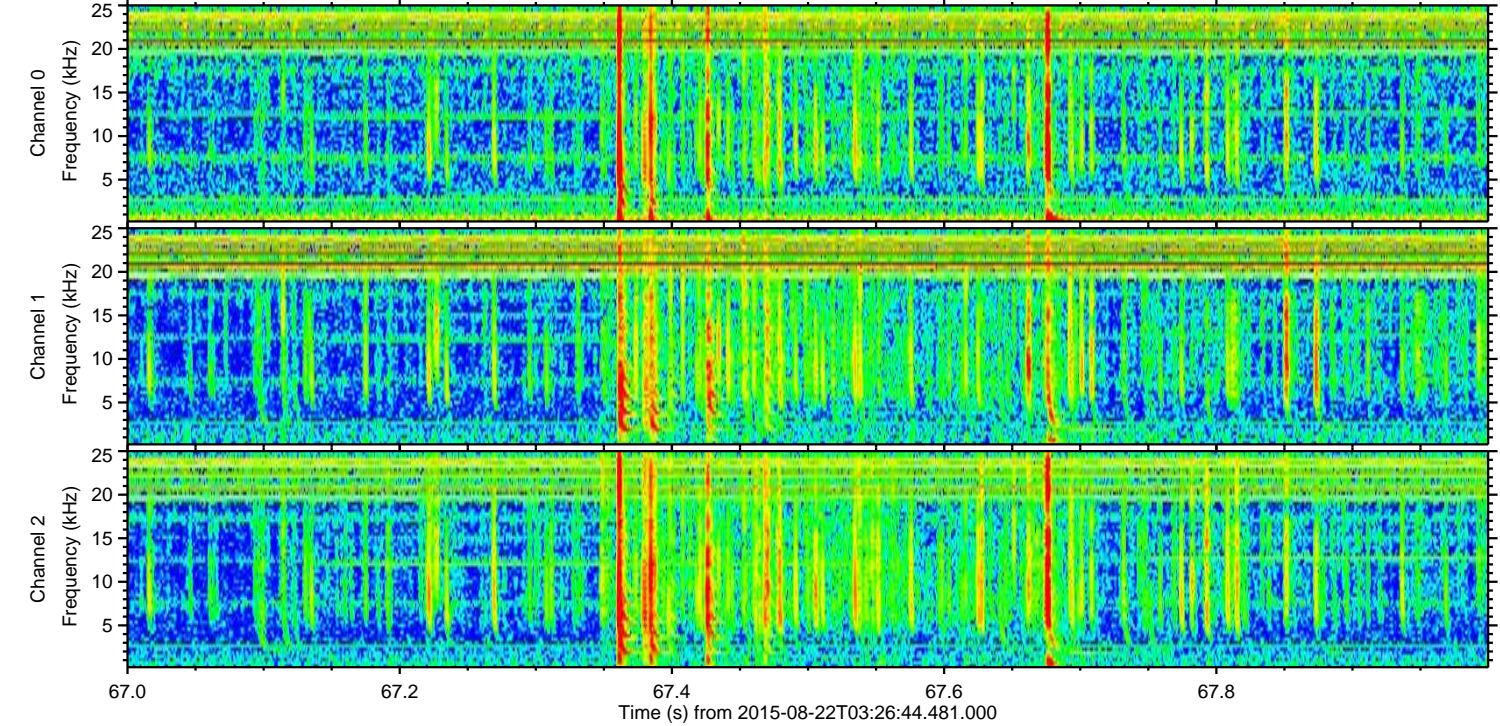
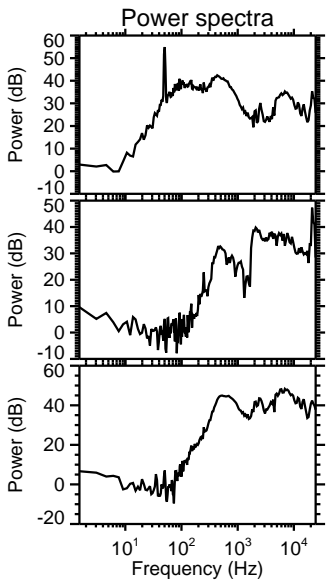
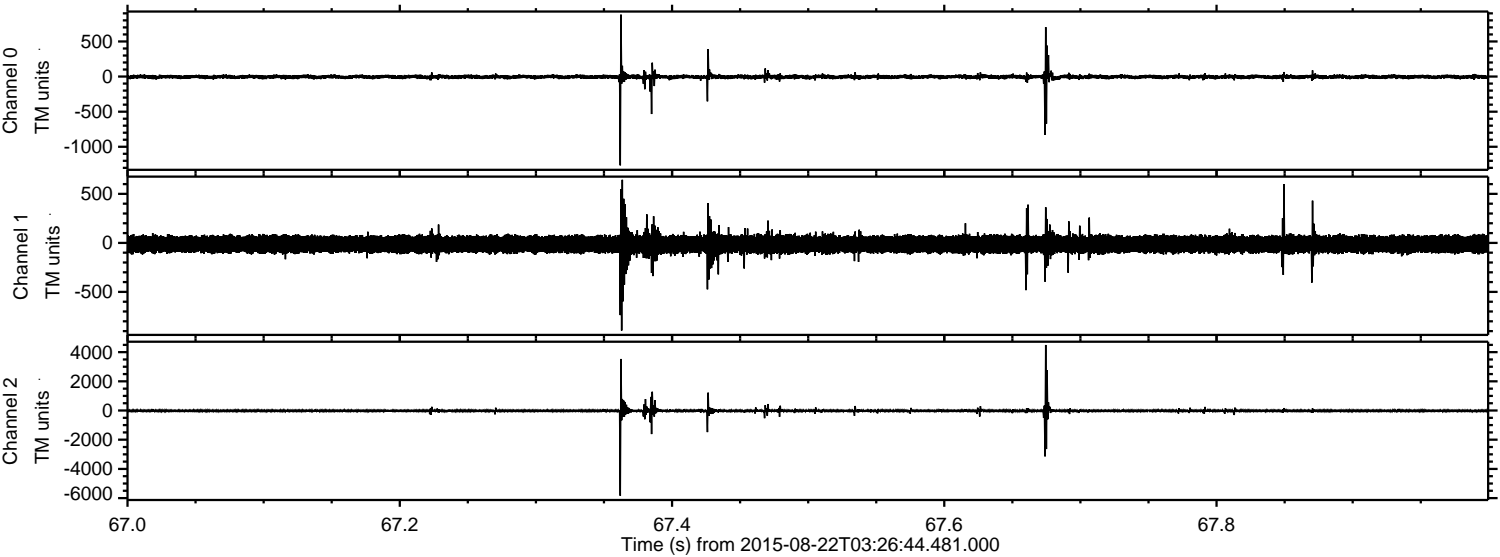


Channel 0
mn: -1068
mx: 1368
 μ : -4.3
 σ : 18.7

Channel 1
mn: -1061
mx: 793
 μ : -13.2
 σ : 50.0

Channel 2
mn: -6394
mx: 3947
 μ : -14.6
 σ : 65.5

Processed Sat Aug 22 05:33:43 2015 by ELM ver.2012-10-06 from 001__elm20150822_032643__dat00.bin



Processed Sat Aug 22 05:33:44 2015 by ELM ver.2012-10-06 from 001__elm20150822_032643__dat00.bin

