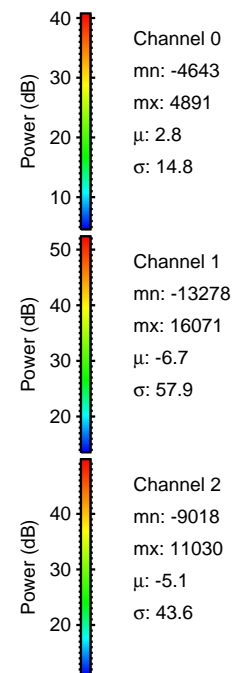
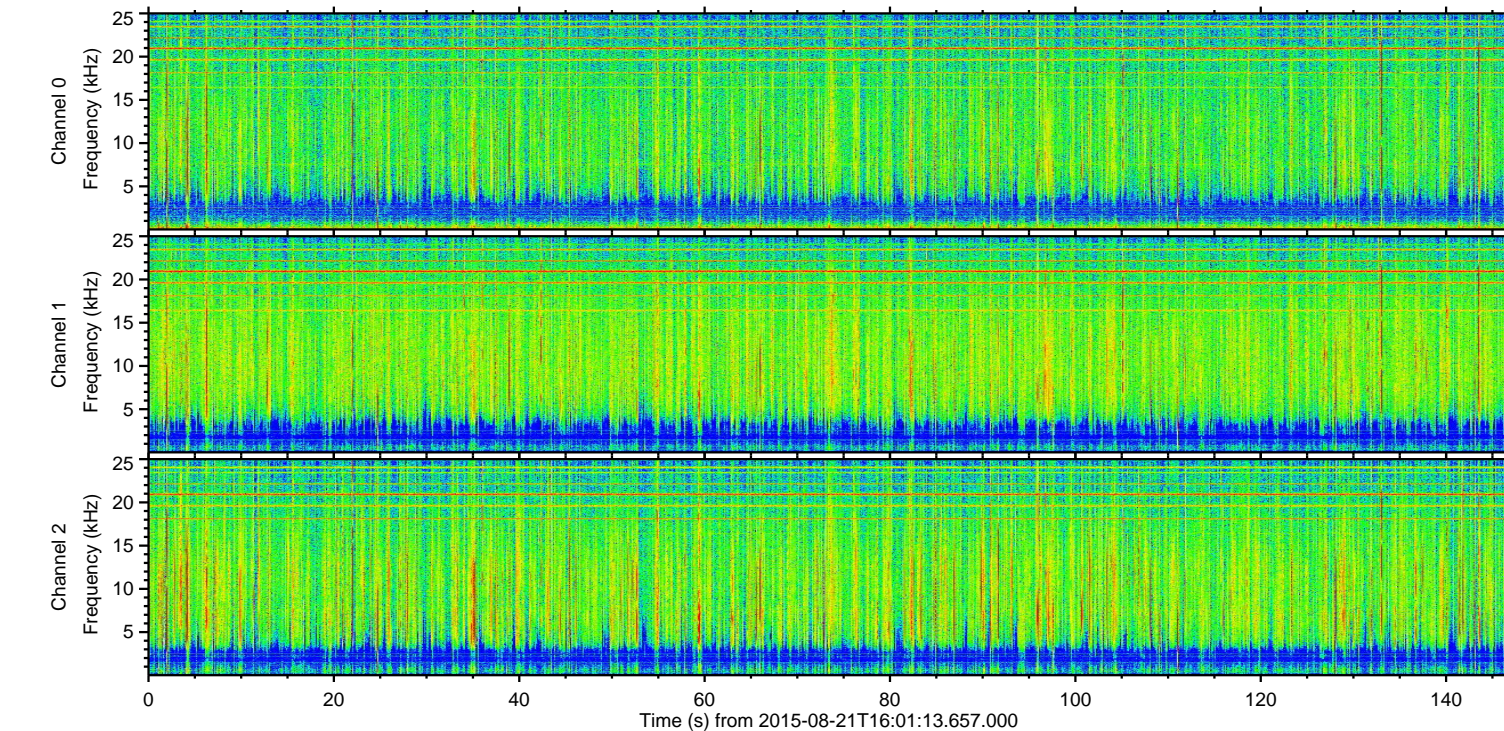
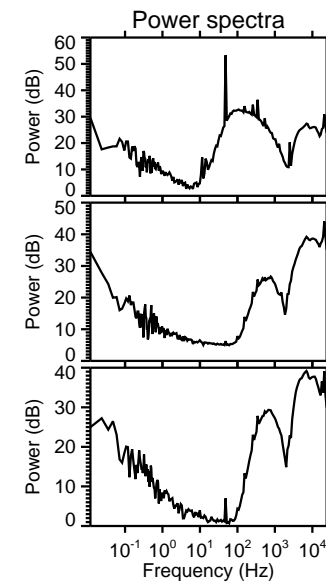
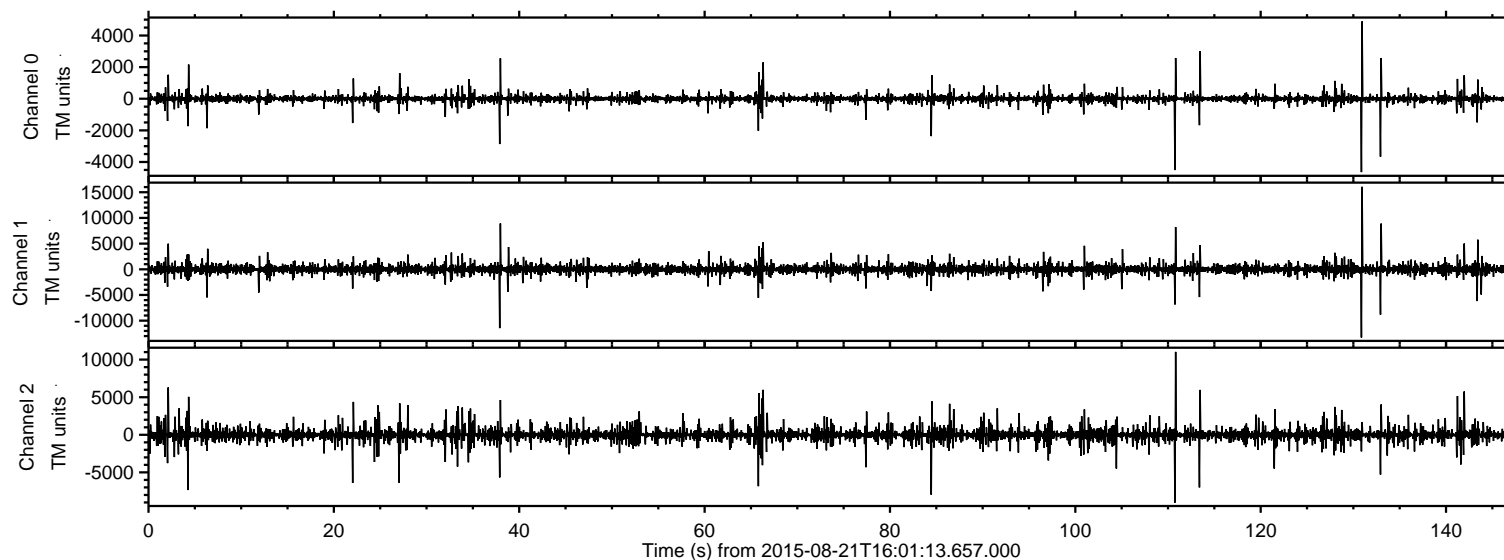


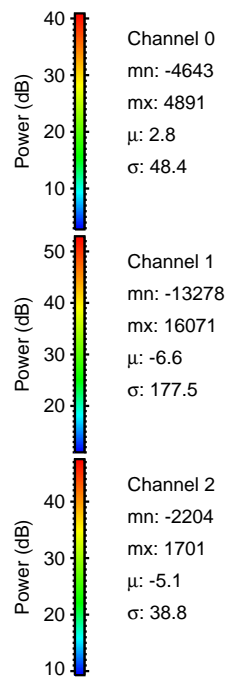
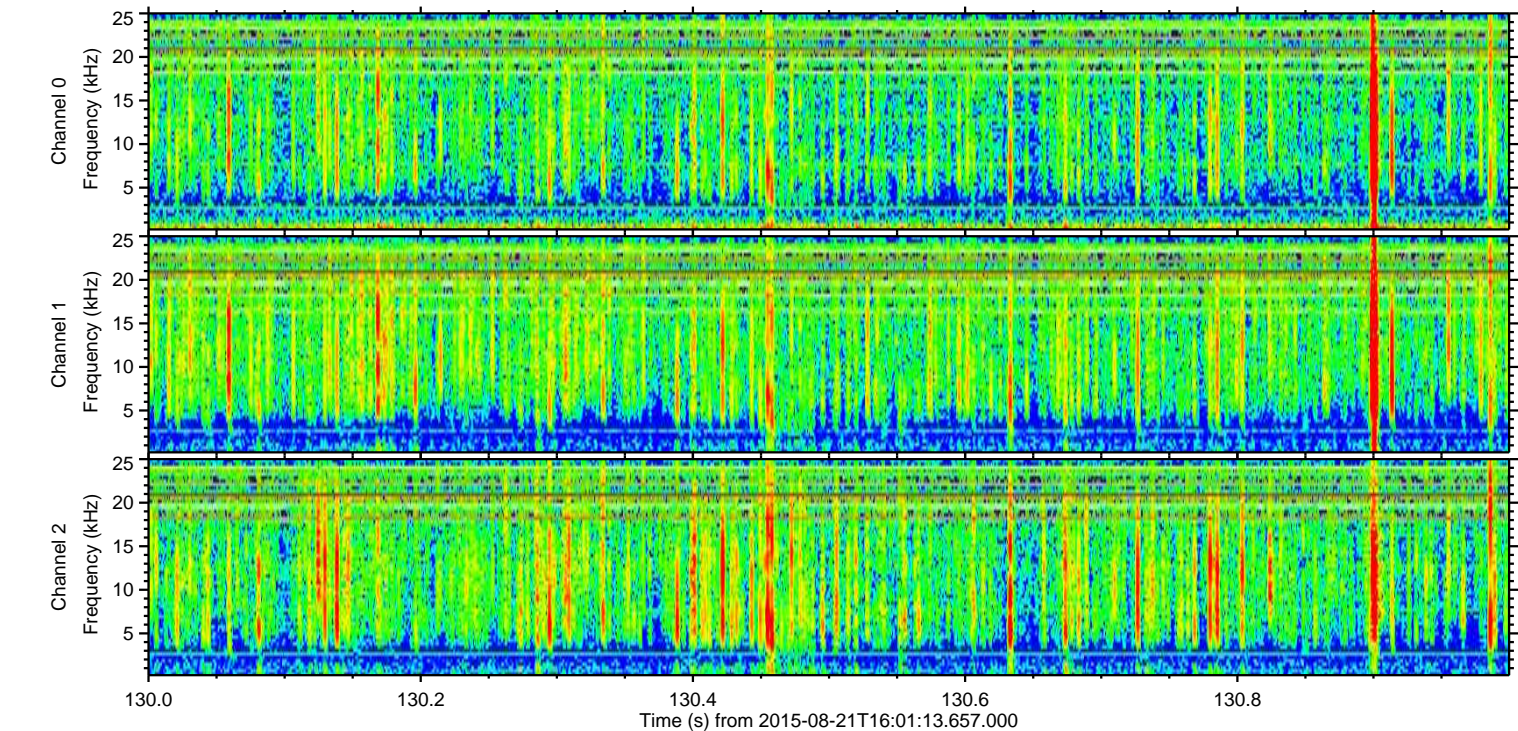
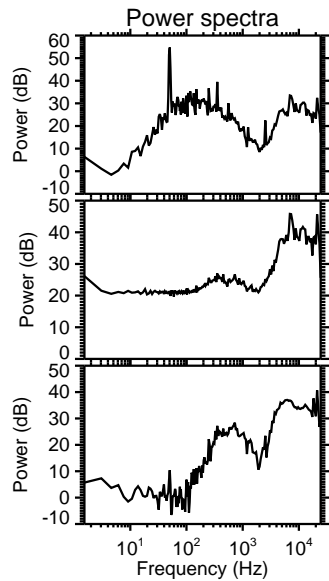
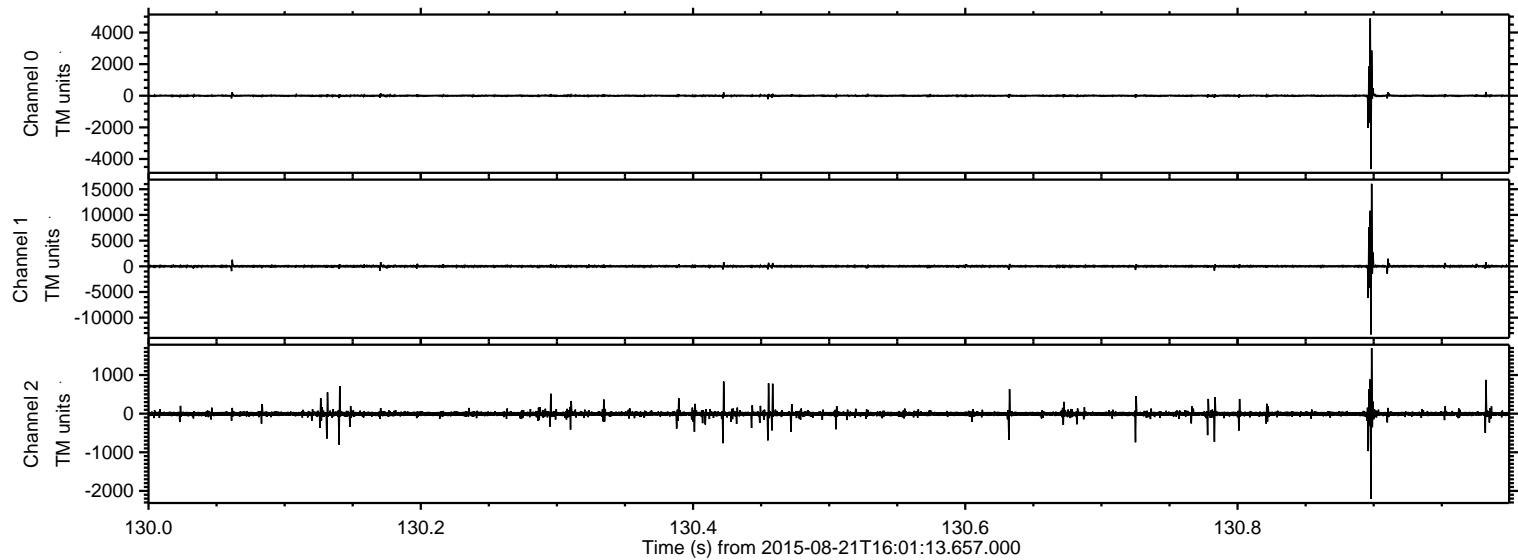
ELMAVAN 3D WAVEFORMS (Measured data sampled at 50 kHz) 51000 packets of 144 samples from 2015-08-21T16:01:13.657.000.

Processed Fri Aug 21 18:07:31 2015 by ELM ver.2012-10-06 from 001__elm20150821_160112__dat00.bin

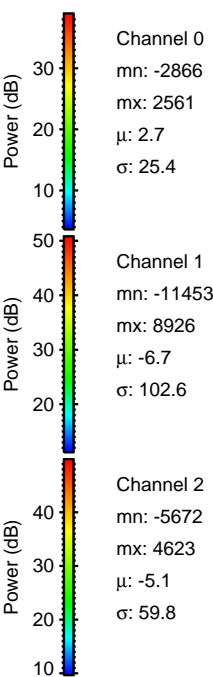
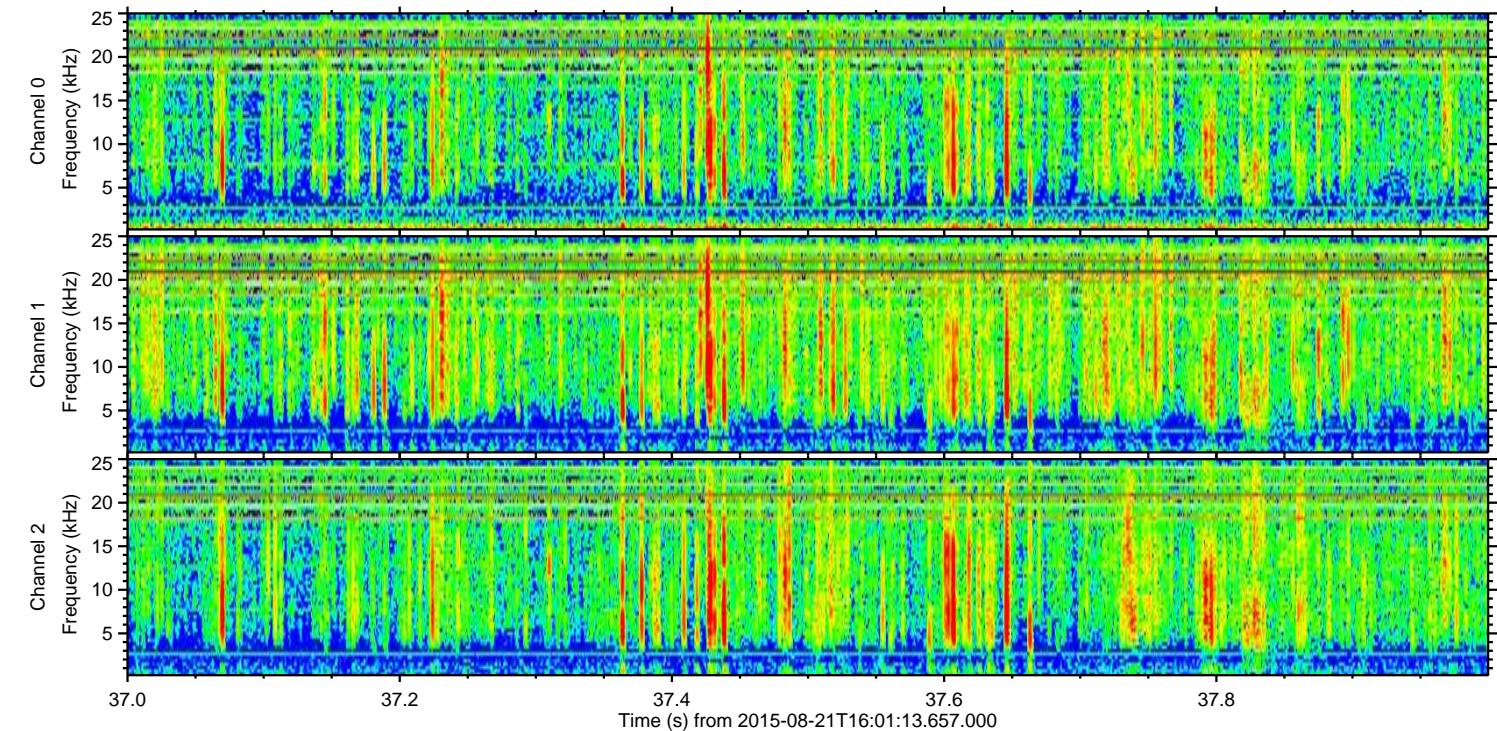
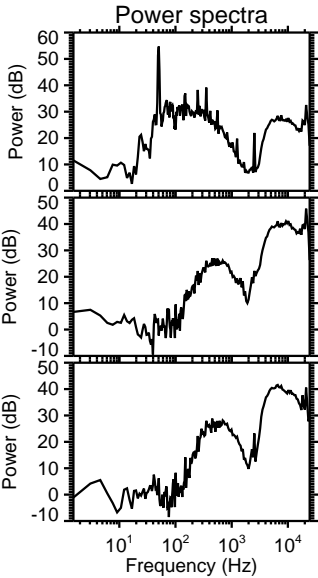
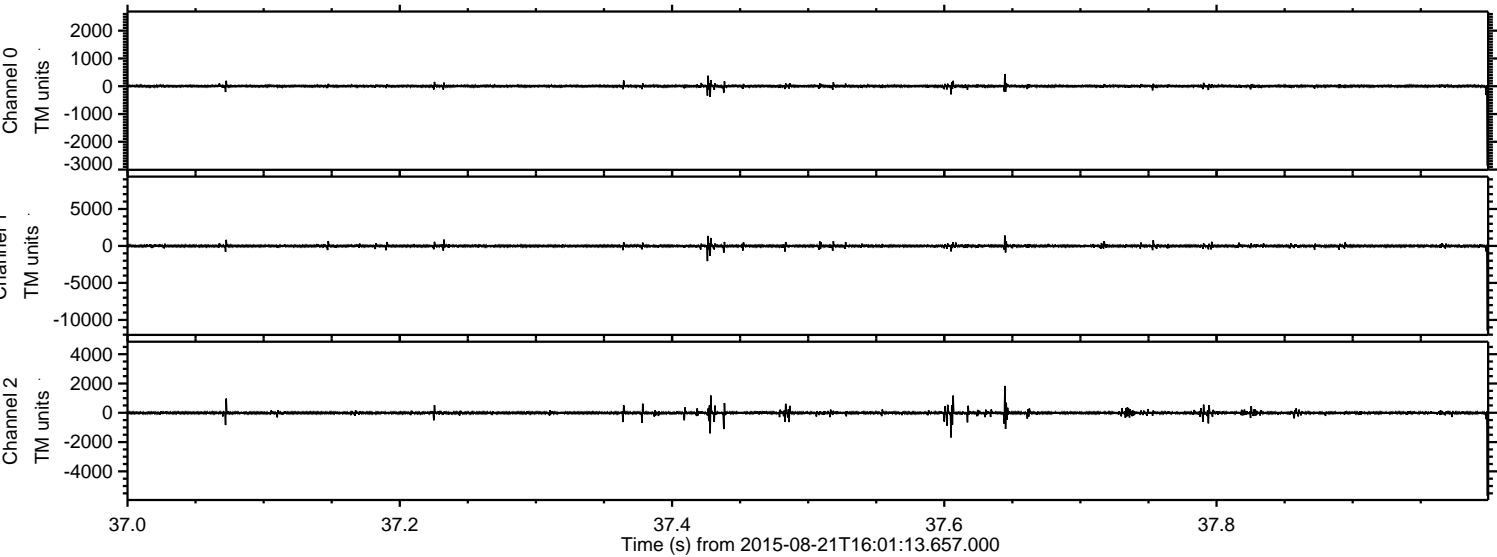


ELMAVAN 3D WAVEFORMS (Measured data sampled at 50 kHz) 51000 packets of 144 samples from 2015-08-21T16:01:13.657.000. Part 131/147

Processed Fri Aug 21 18:07:42 2015 by ELM ver.2012-10-06 from 001__elm20150821_160112__dat00.bin

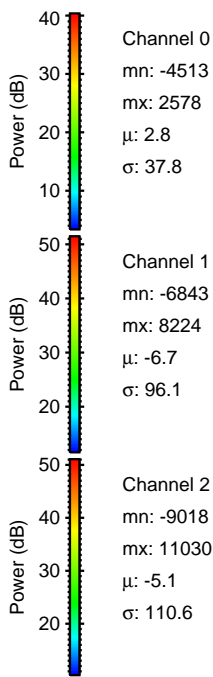
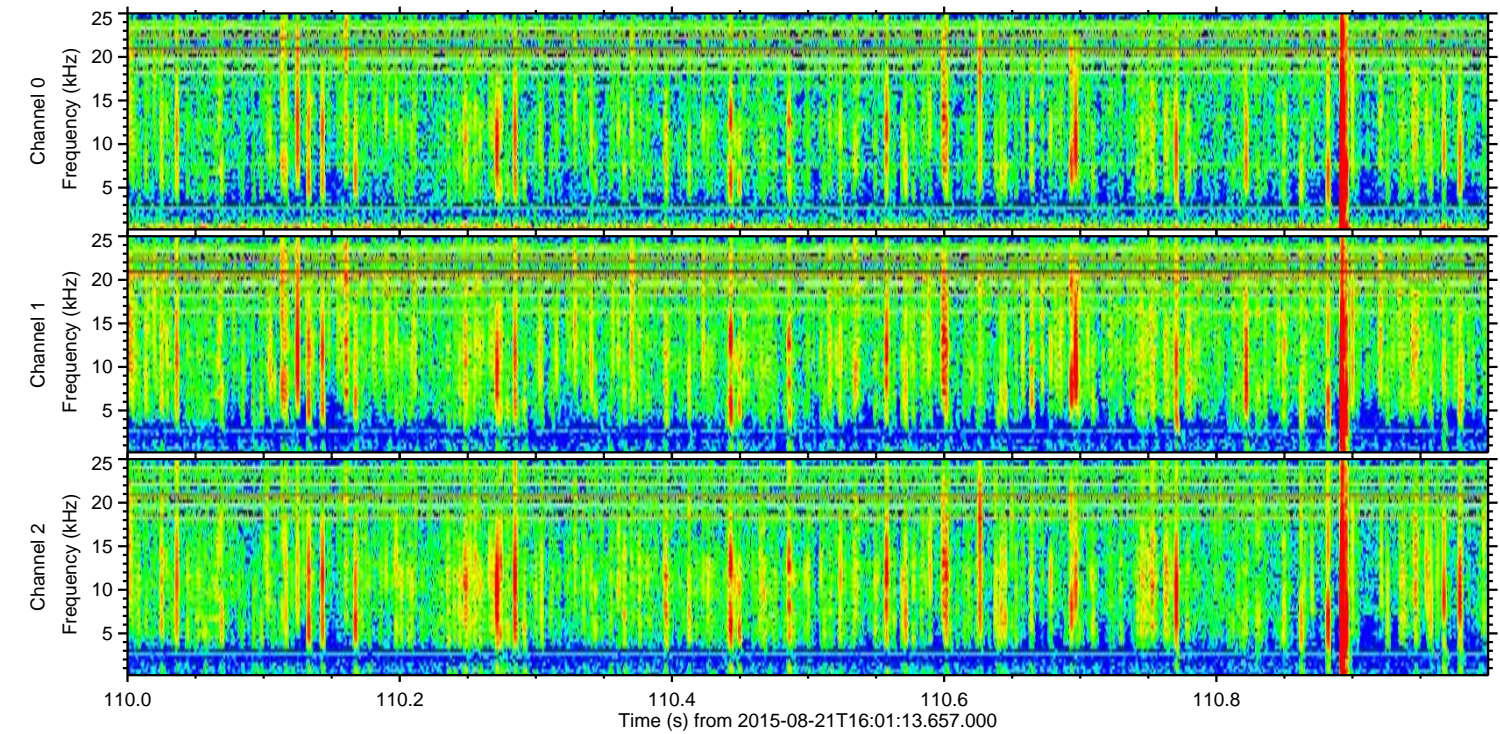
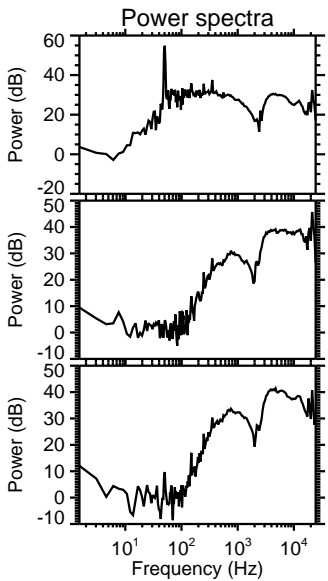
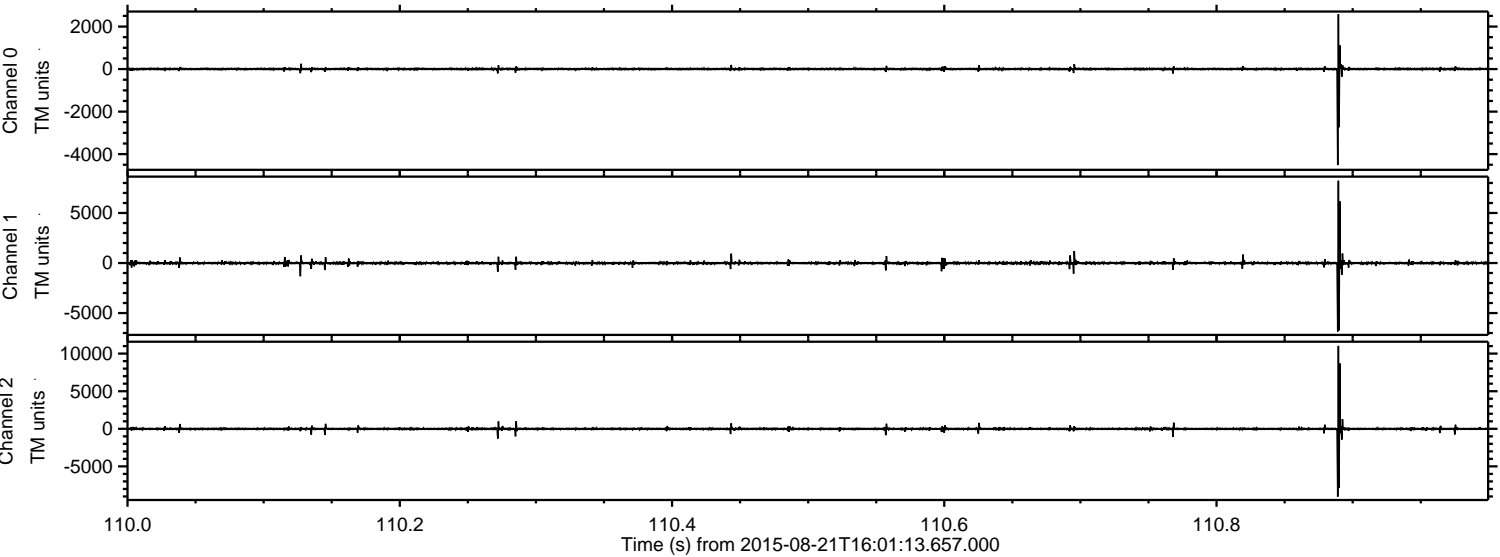


Processed Fri Aug 21 18:07:43 2015 by ELM ver.2012-10-06 from 001__elm20150821_160112__dat00.bin



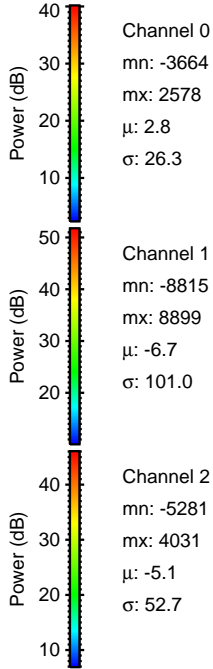
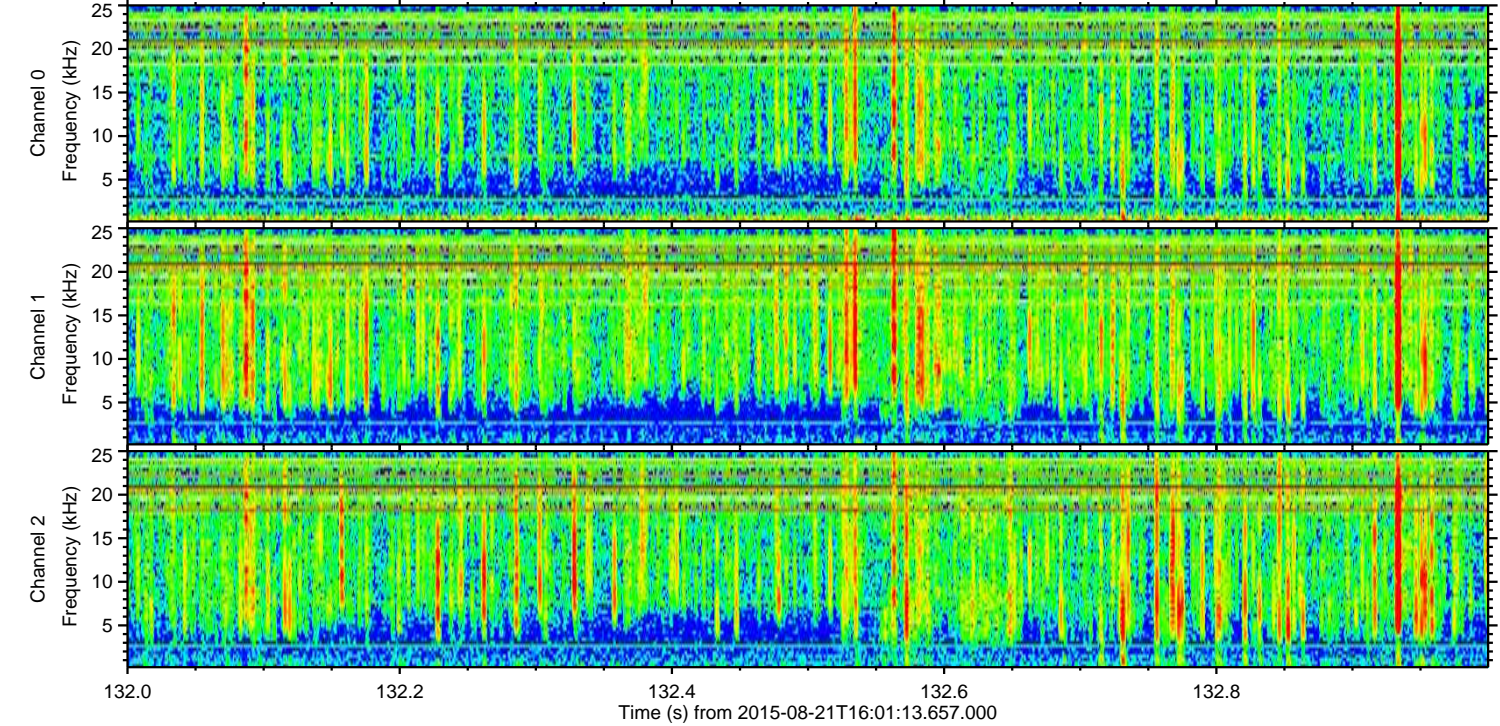
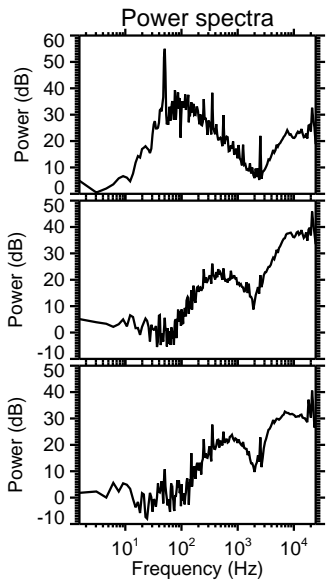
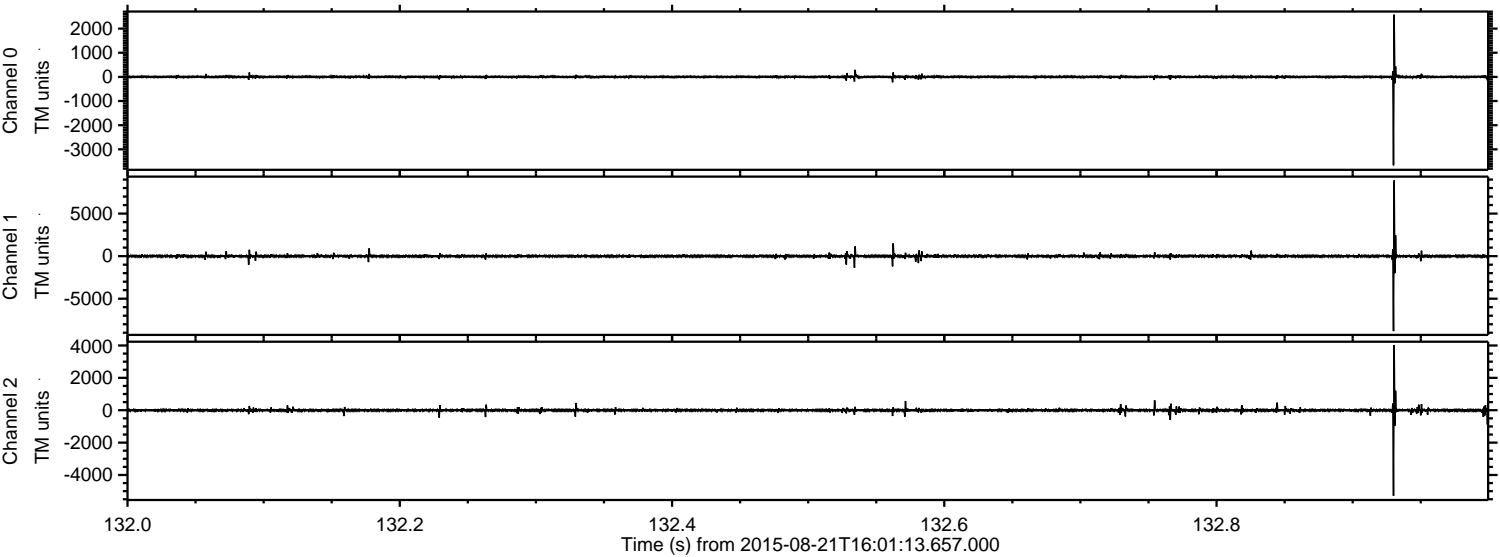
ELMAVAN 3D WAVEFORMS (Measured data sampled at 50 kHz) 51000 packets of 144 samples from 2015-08-21T16:01:13.657.000. Part 111/147

Processed Fri Aug 21 18:07:44 2015 by ELM ver.2012-10-06 from 001__elm20150821_160112__dat00.bin

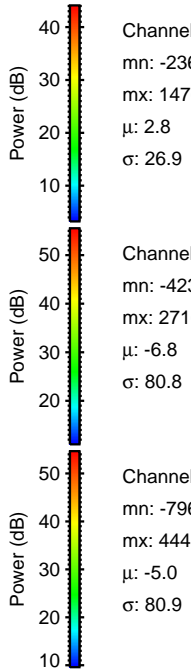
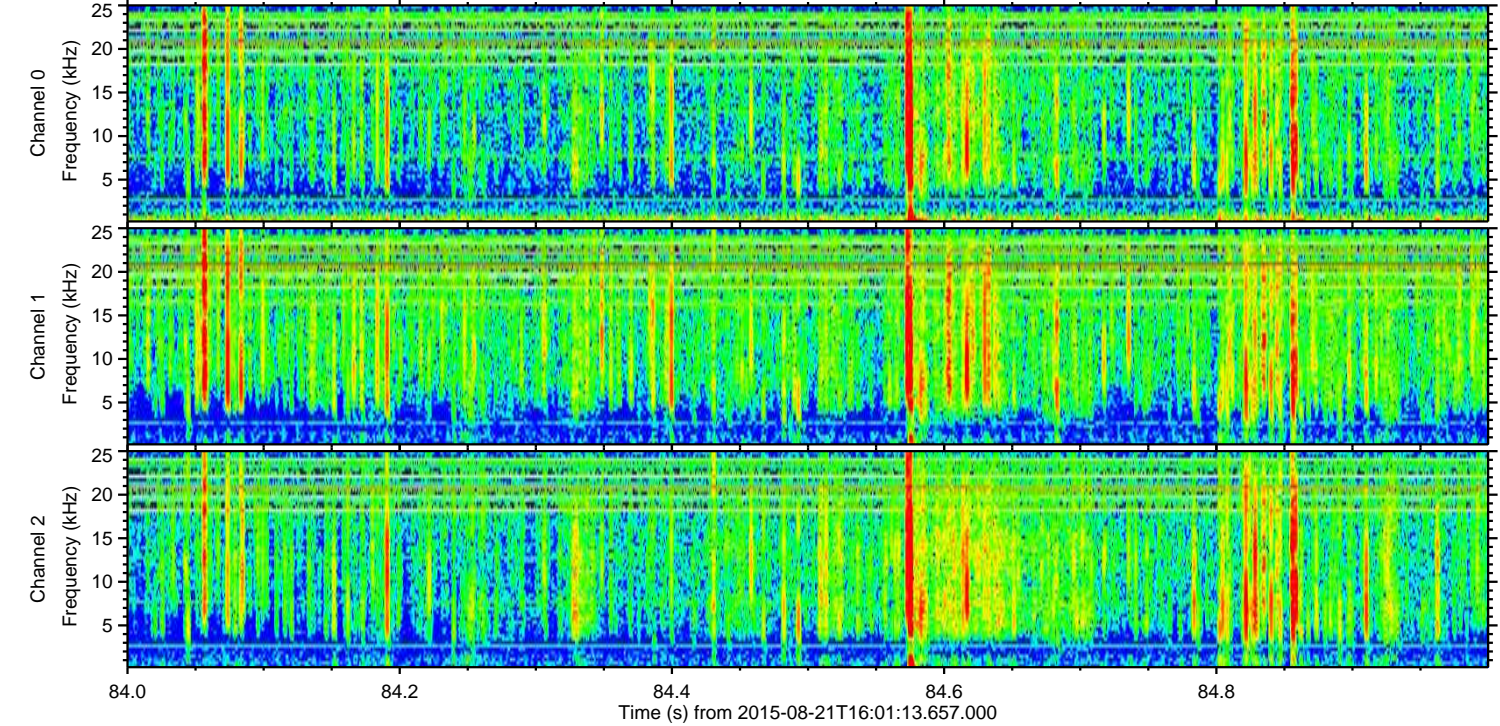
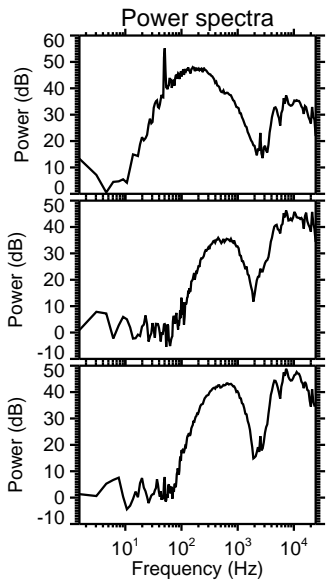
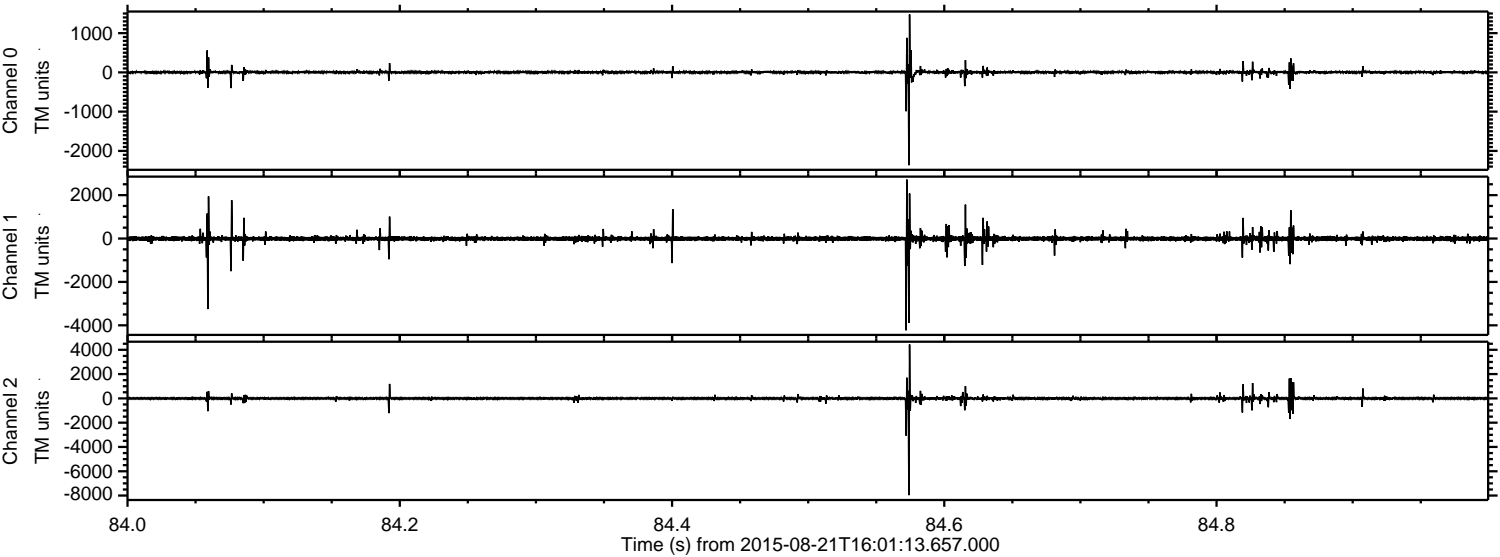


ELMAVAN 3D WAVEFORMS (Measured data sampled at 50 kHz) 51000 packets of 144 samples from 2015-08-21T16:01:13.657.000. Part 133/147

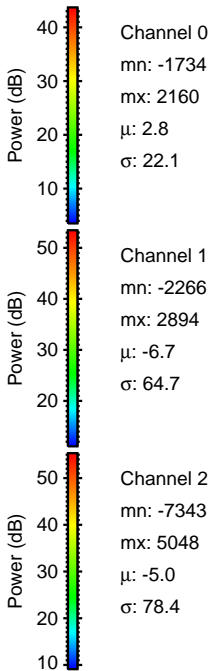
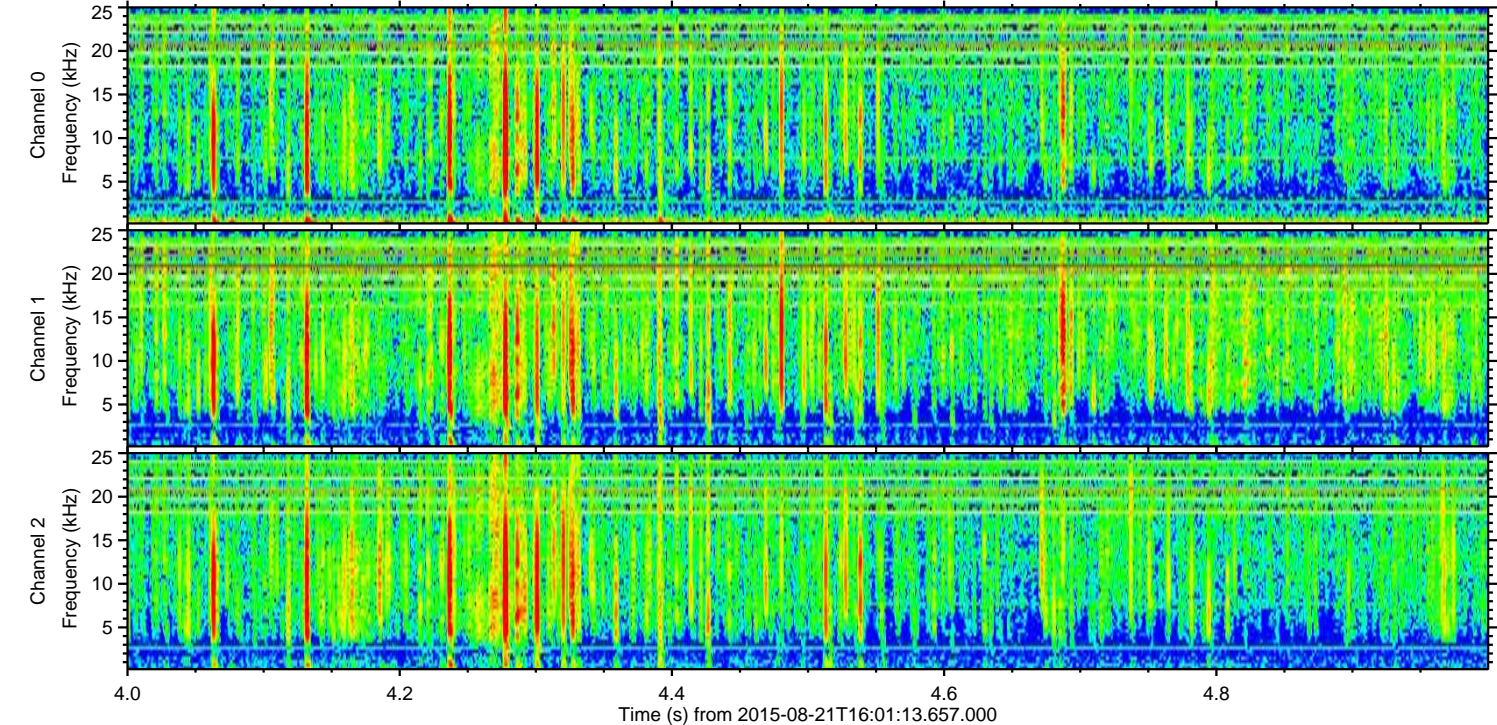
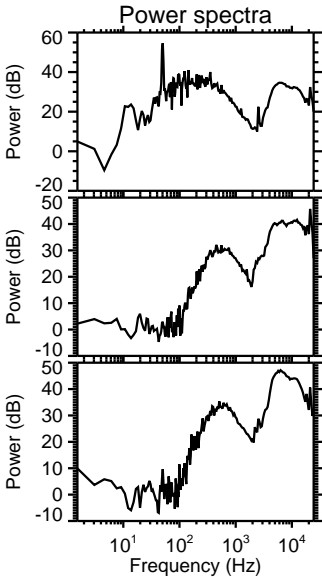
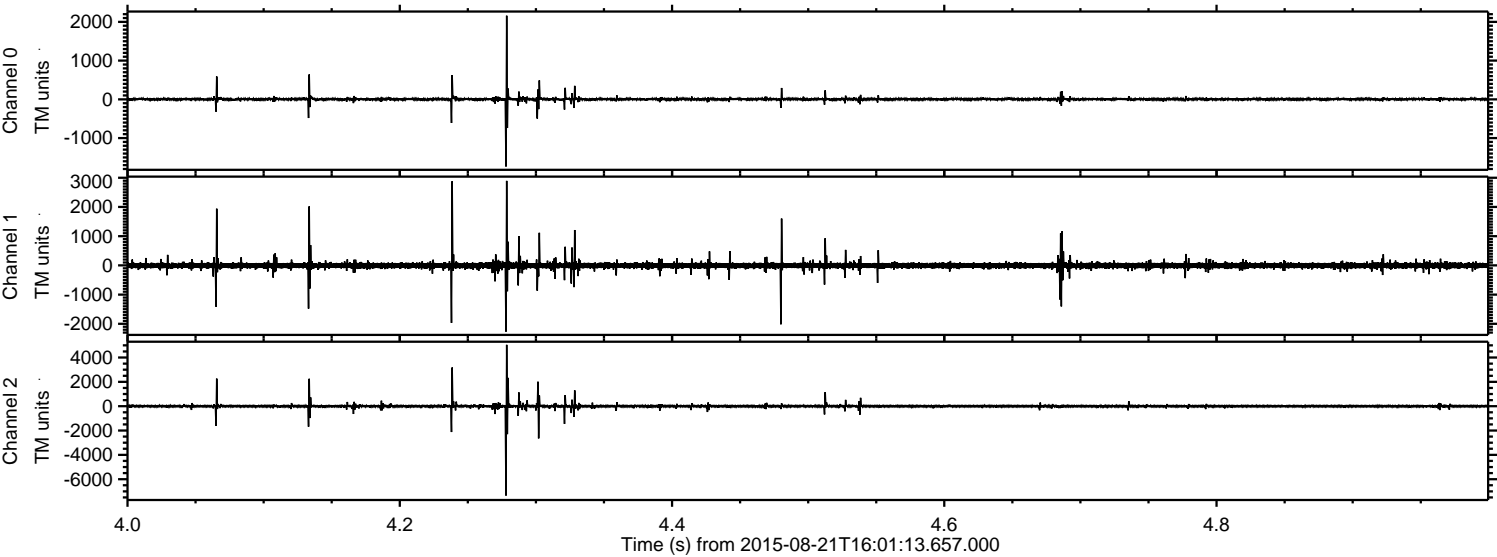
Processed Fri Aug 21 18:07:45 2015 by ELM ver.2012-10-06 from 001__elm20150821_160112__dat00.bin



Processed Fri Aug 21 18:07:46 2015 by ELM ver.2012-10-06 from 001__elm20150821_160112__dat00.bin

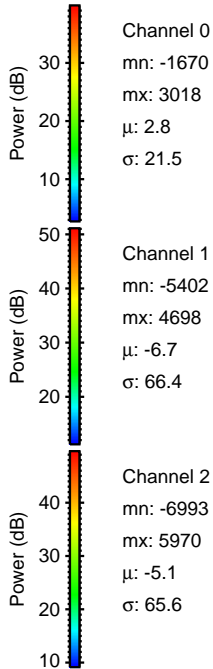
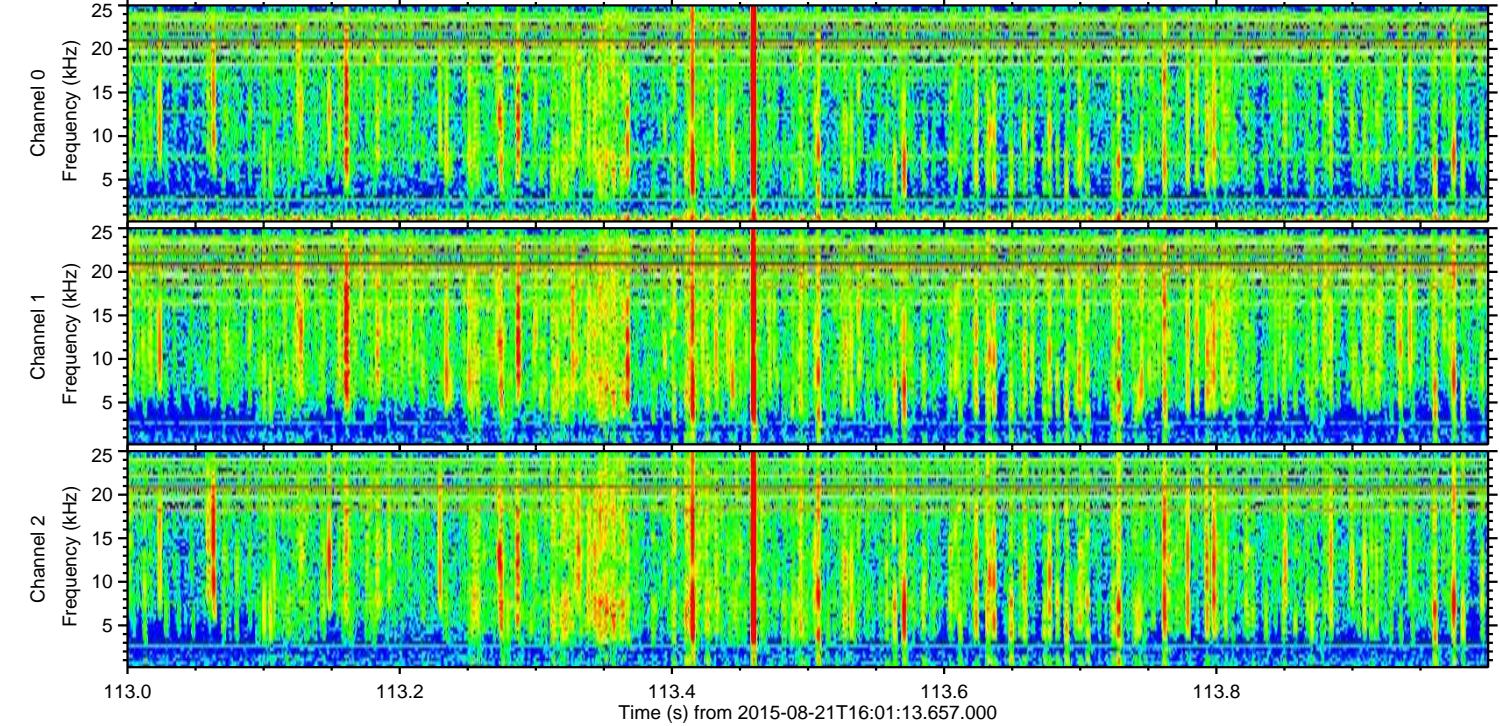
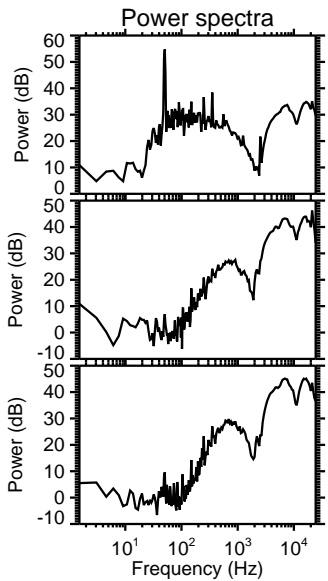
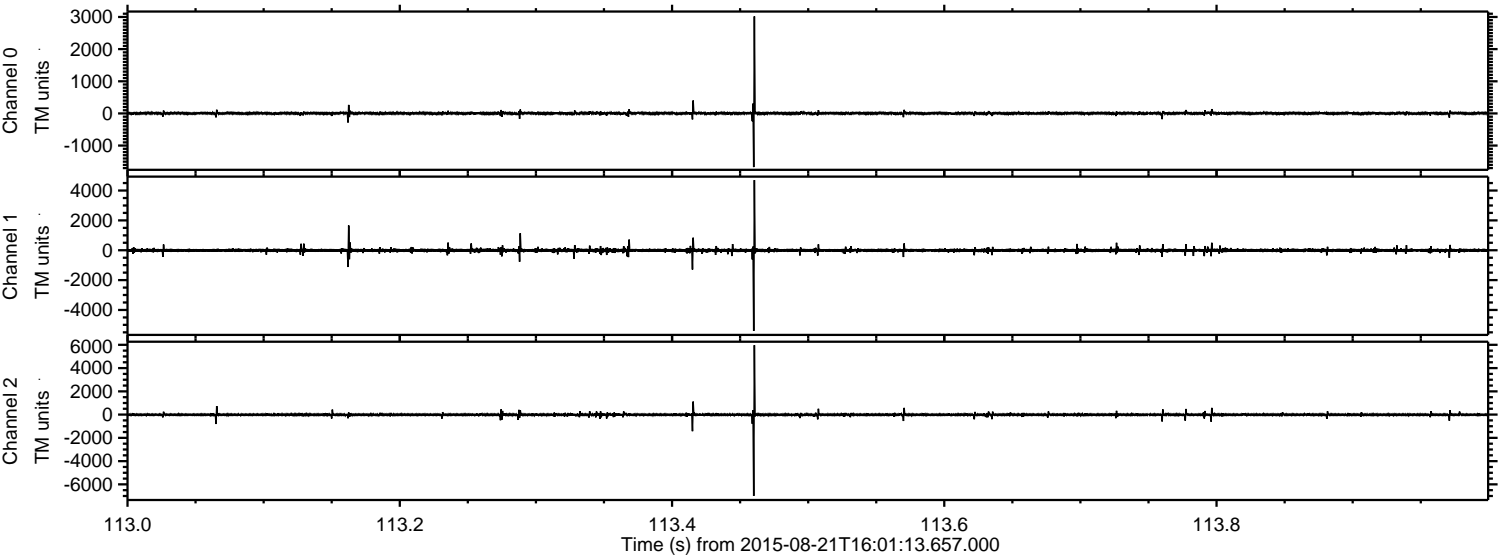


Processed Fri Aug 21 18:07:47 2015 by ELM ver.2012-10-06 from 001__elm20150821_160112__dat00.bin



ELMAVAN 3D WAVEFORMS (Measured data sampled at 50 kHz) 51000 packets of 144 samples from 2015-08-21T16:01:13.657.000. Part 114/147

Processed Fri Aug 21 18:07:48 2015 by ELM ver.2012-10-06 from 001__elm20150821_160112__dat00.bin

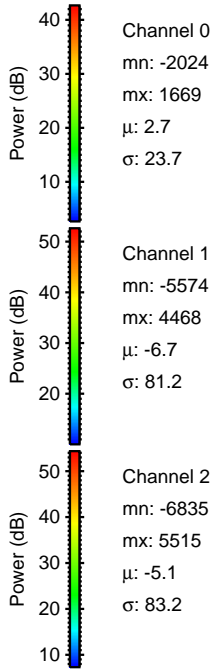
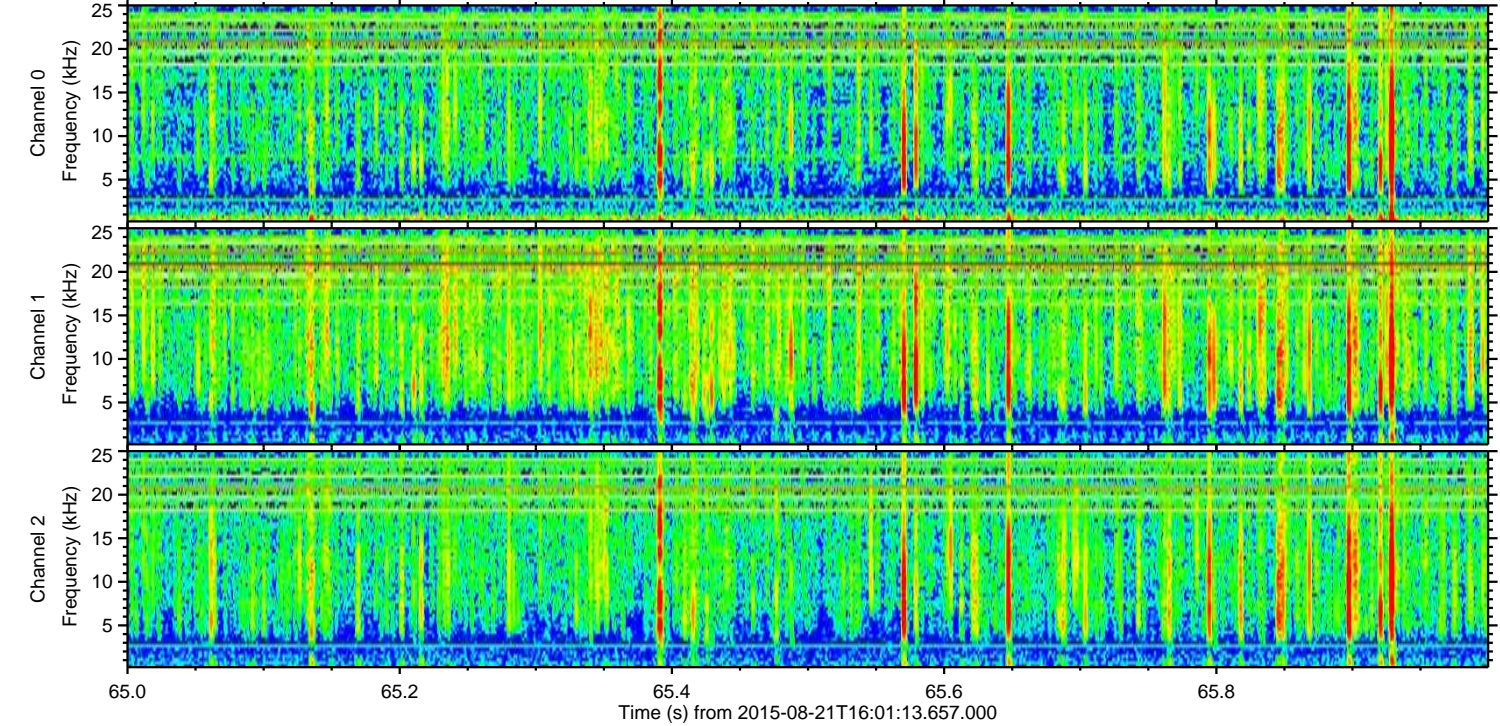
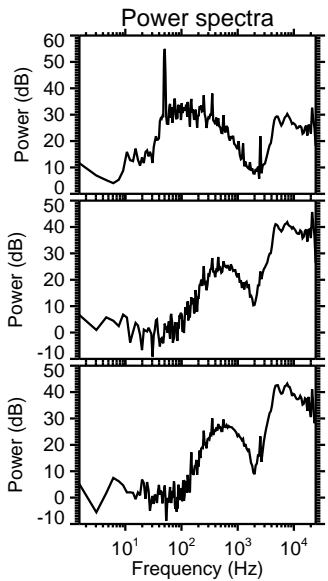
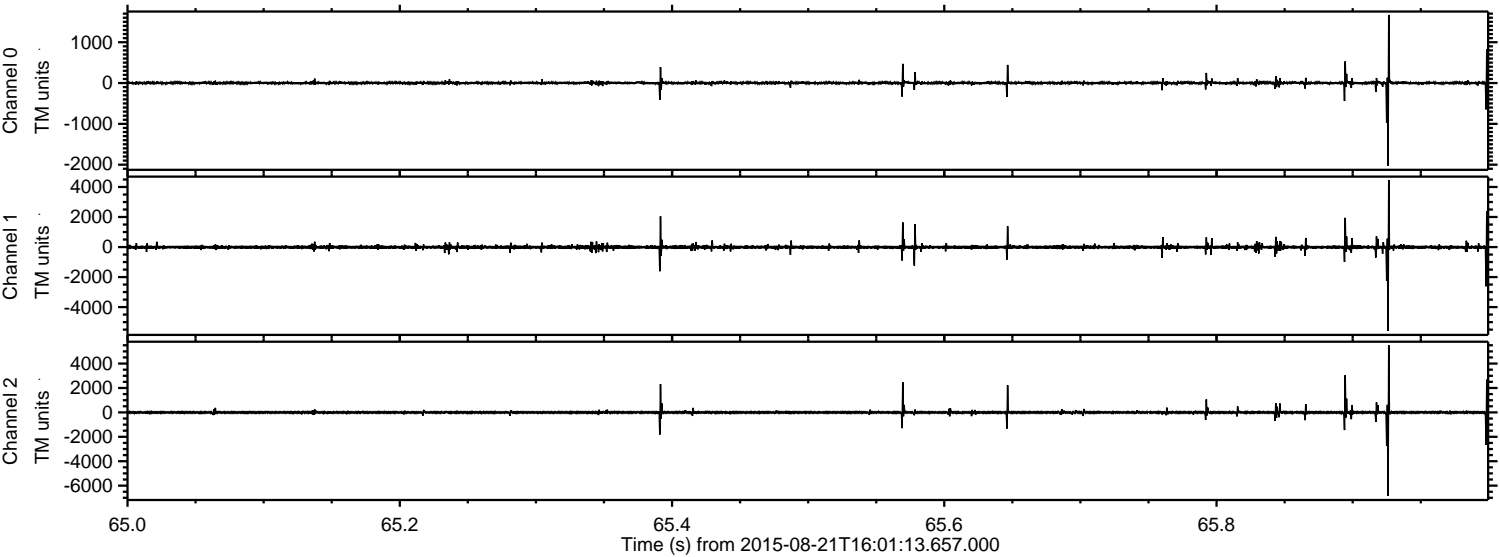


Channel 0
mn: -1670
mx: 3018
 μ : 2.8
 σ : 21.5

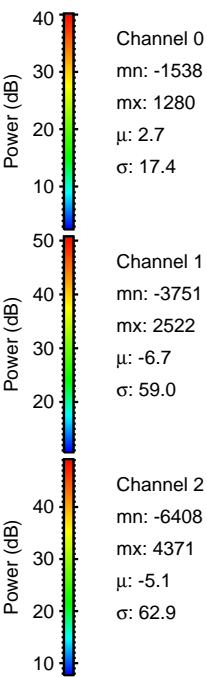
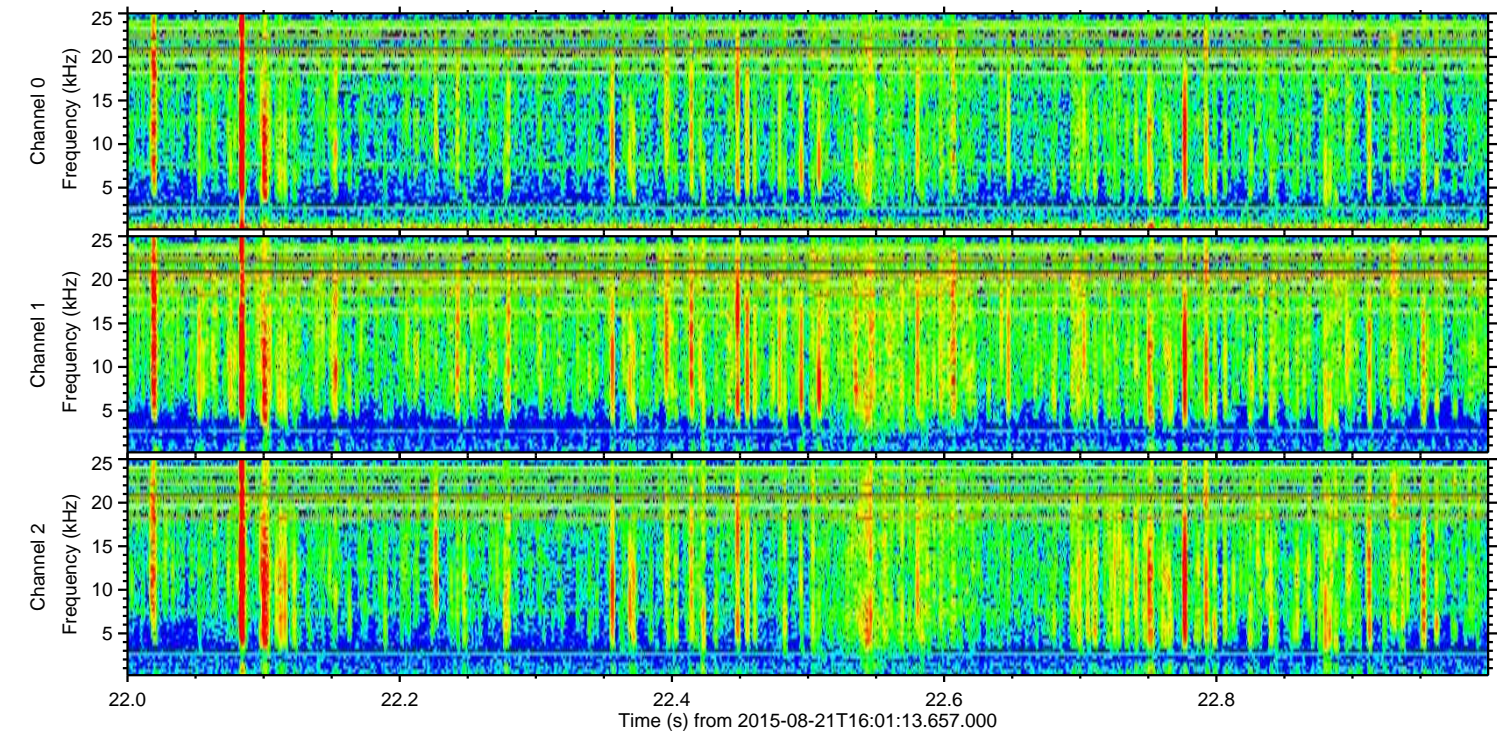
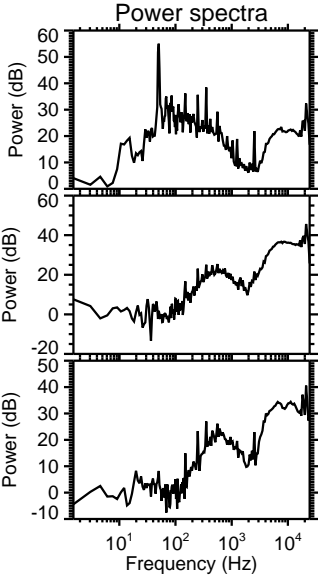
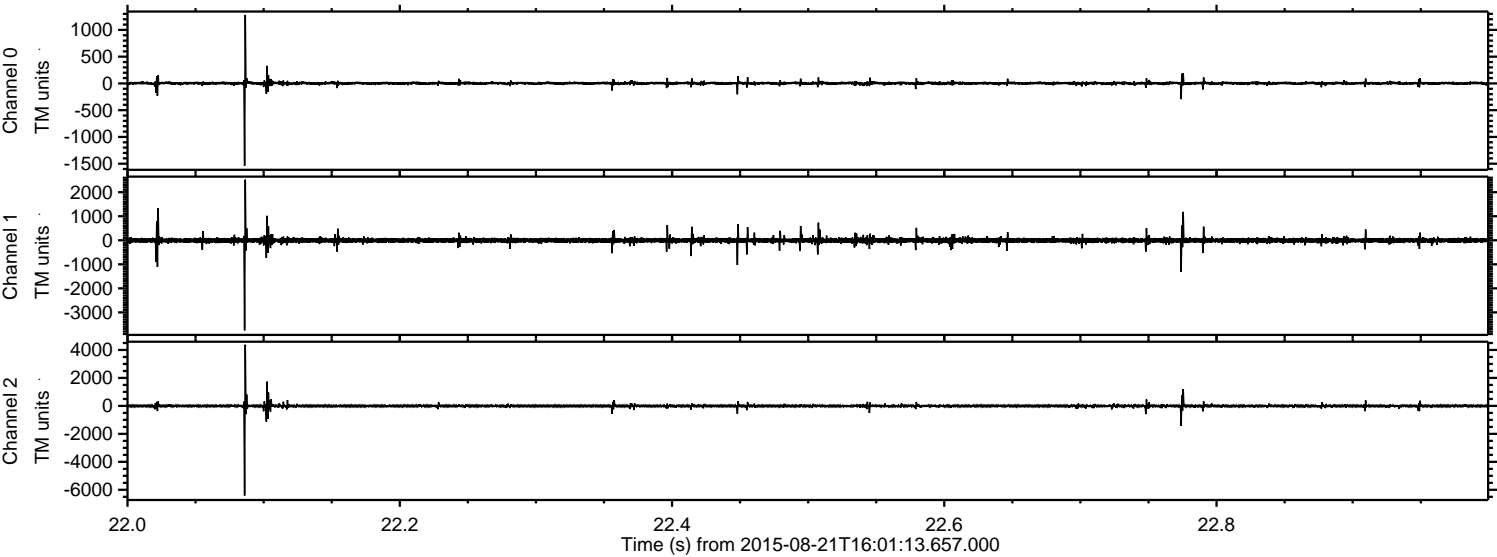
Channel 1
mn: -5402
mx: 4698
 μ : -6.7
 σ : 66.4

Channel 2
mn: -6993
mx: 5970
 μ : -5.1
 σ : 65.6

Processed Fri Aug 21 18:07:49 2015 by ELM ver.2012-10-06 from 001__elm20150821_160112__dat00.bin



Processed Fri Aug 21 18:07:50 2015 by ELM ver.2012-10-06 from 001__elm20150821_160112__dat00.bin



Processed Fri Aug 21 18:07:51 2015 by ELM ver.2012-10-06 from 001__elm20150821_160112__dat00.bin

