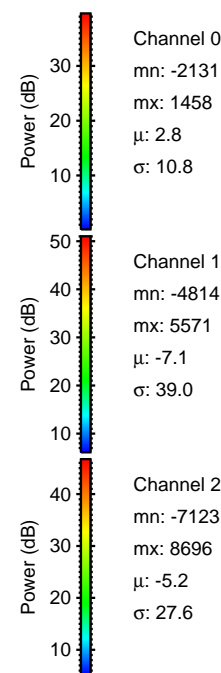
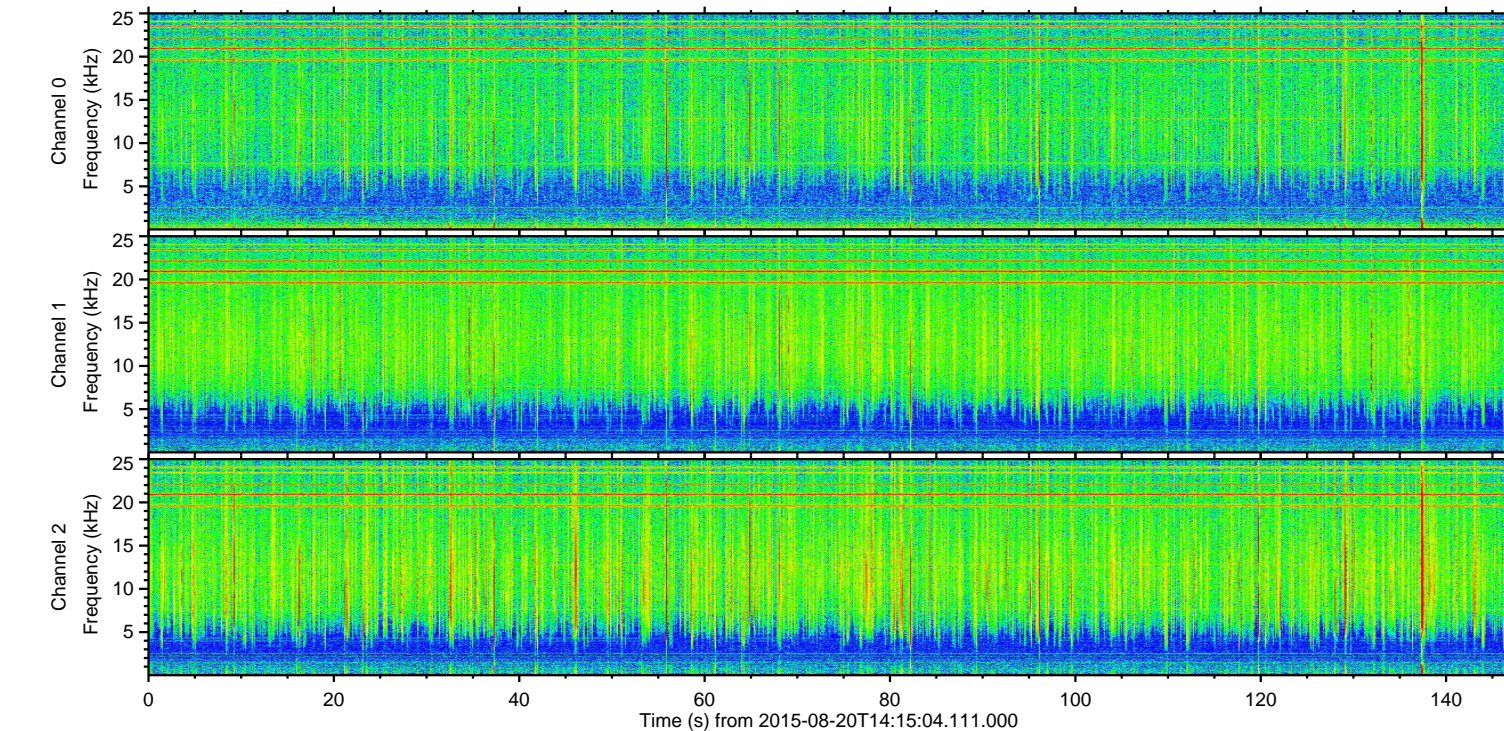
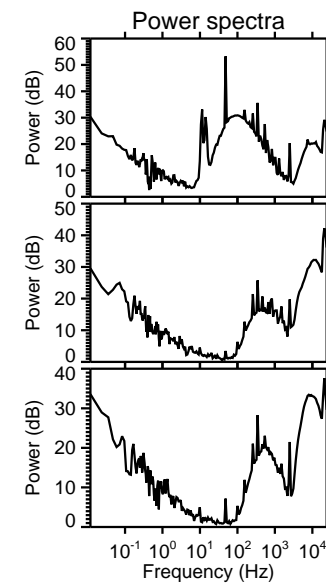
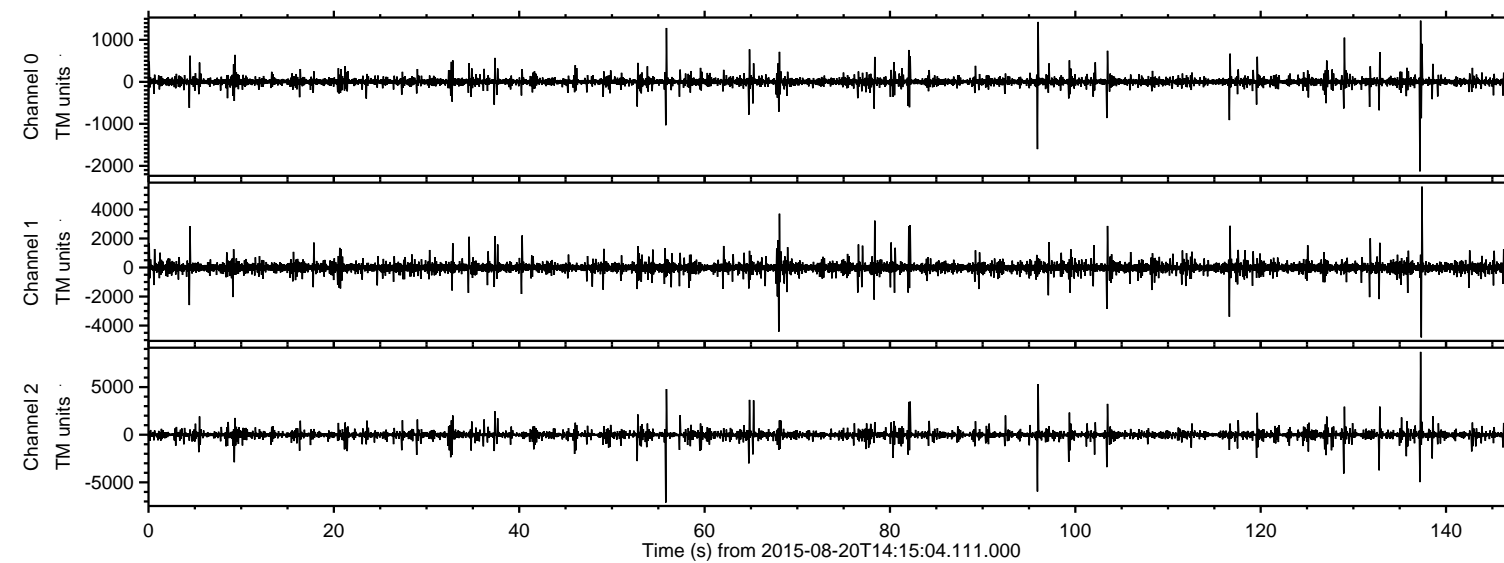


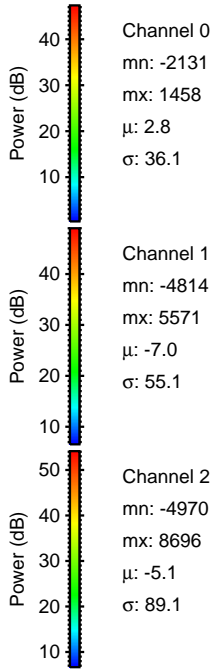
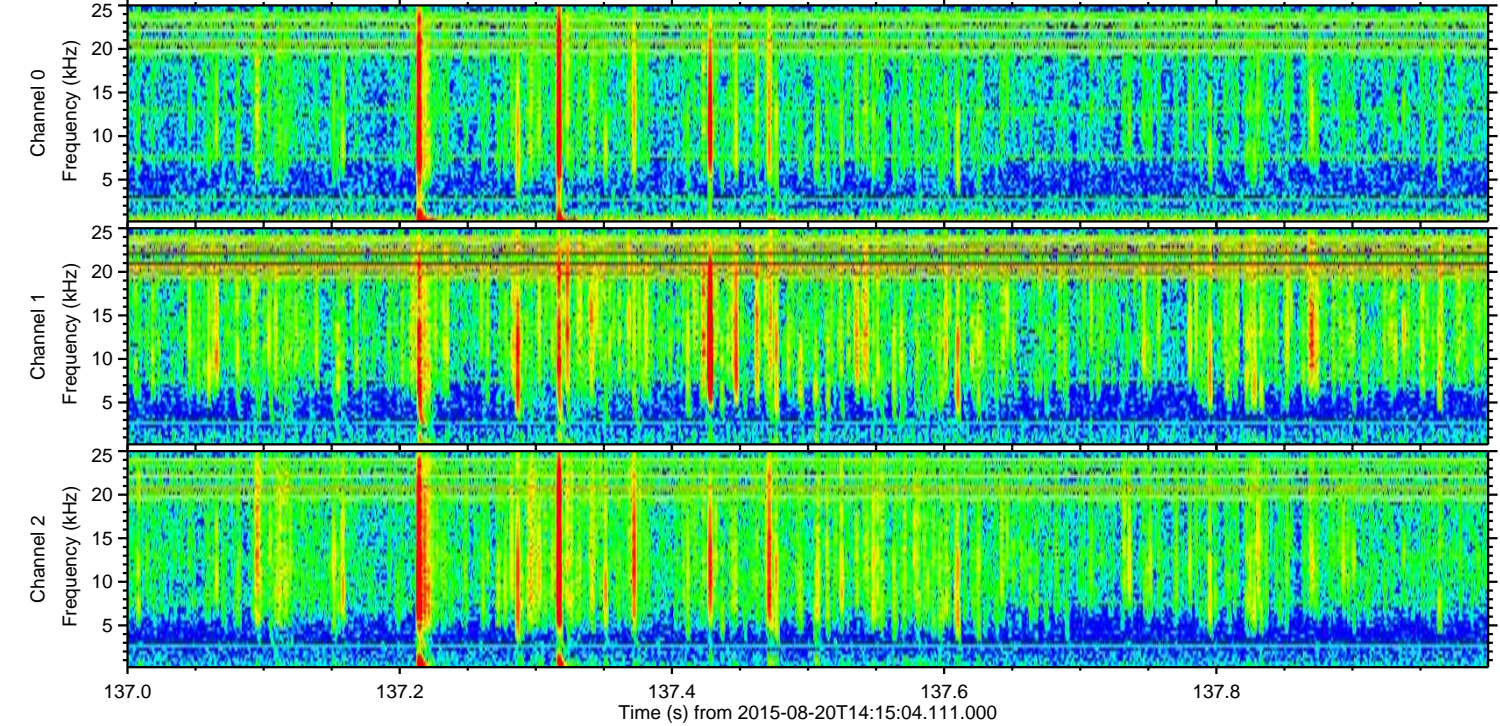
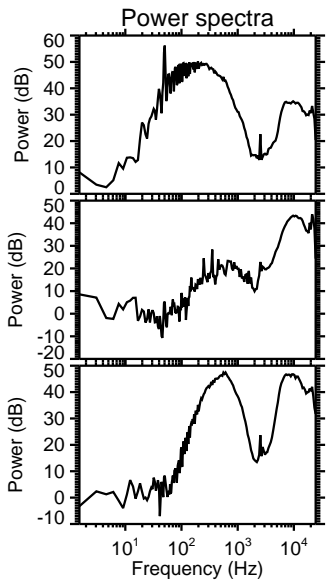
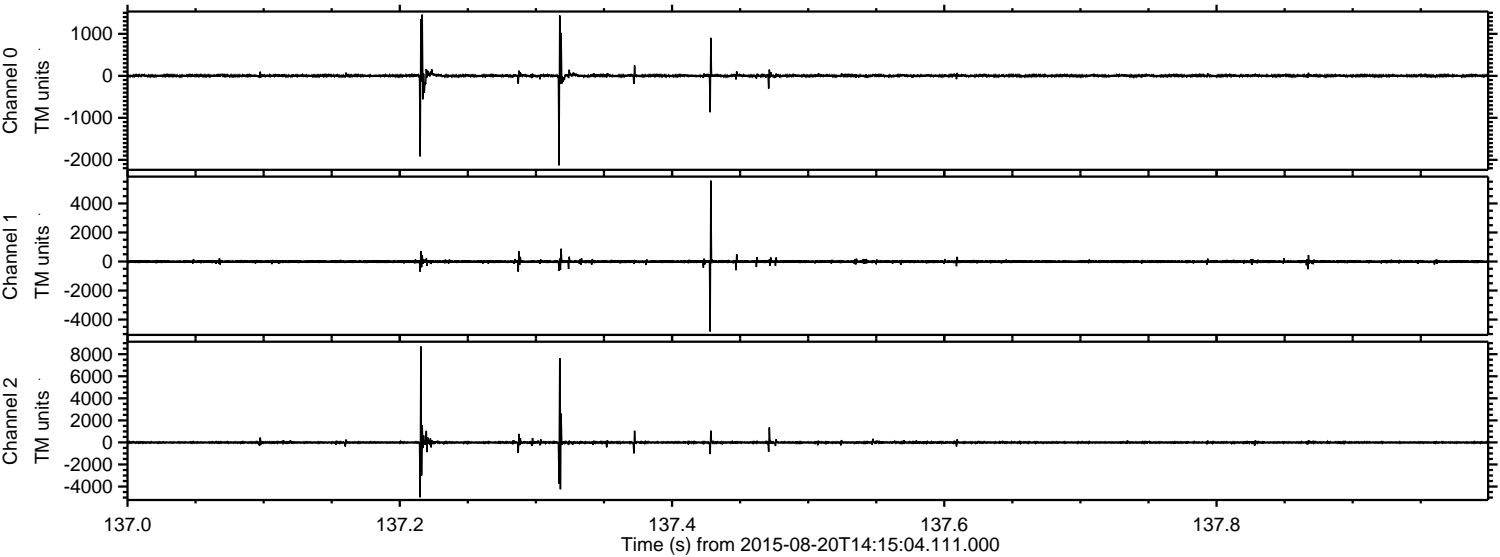
ELMAVAN 3D WAVEFORMS (Measured data sampled at 50 kHz) 51000 packets of 144 samples from 2015-08-20T14:15:04.111.000.

Processed Thu Aug 20 16:21:43 2015 by ELM ver.2012-10-06 from 001__elm20150820_141503__dat00.bin

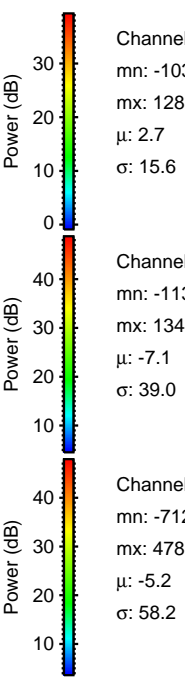
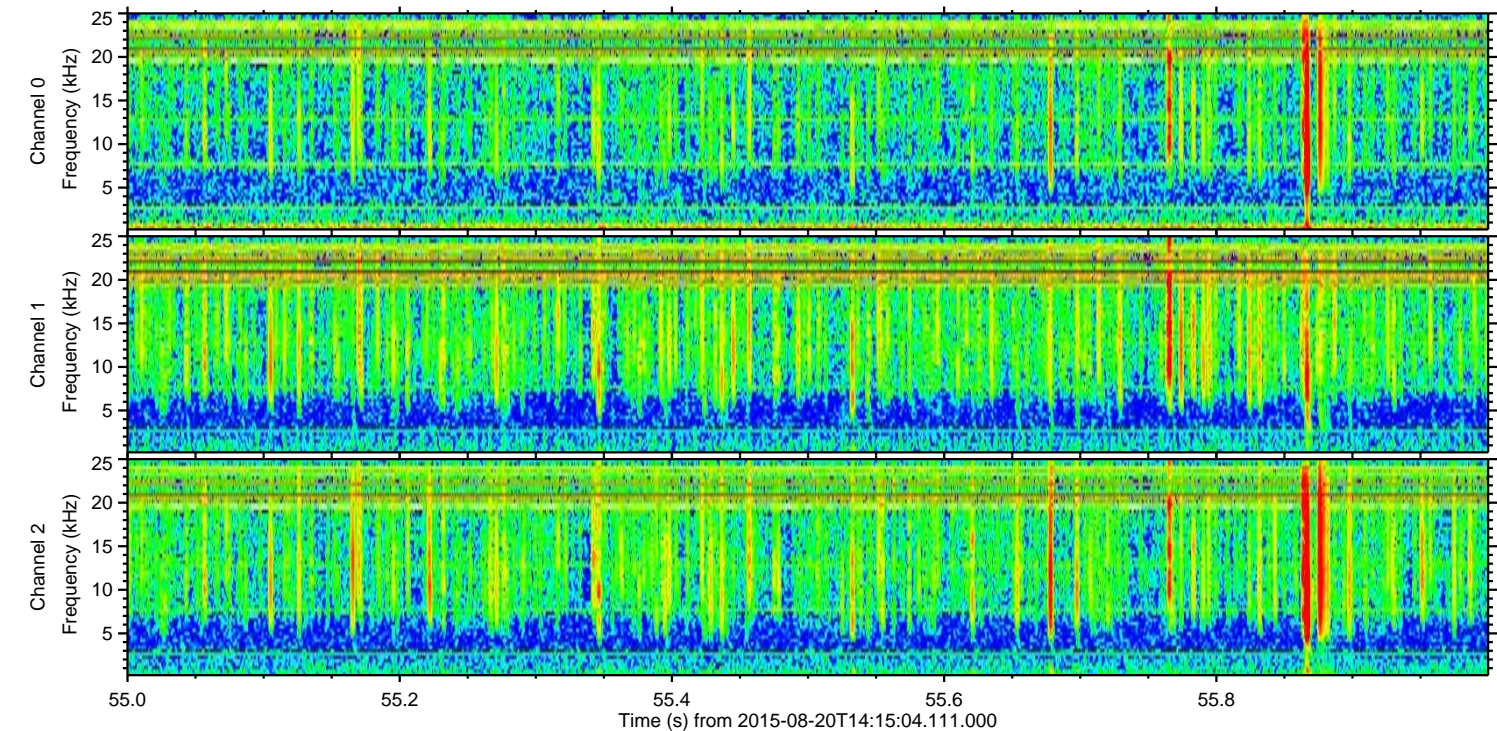
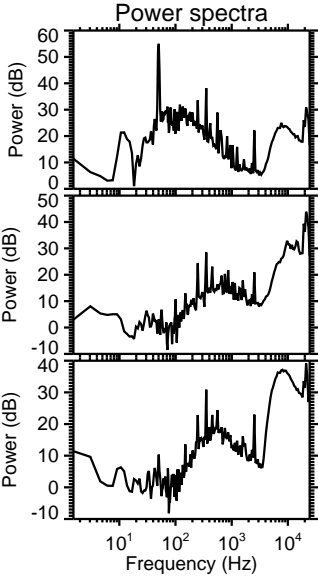
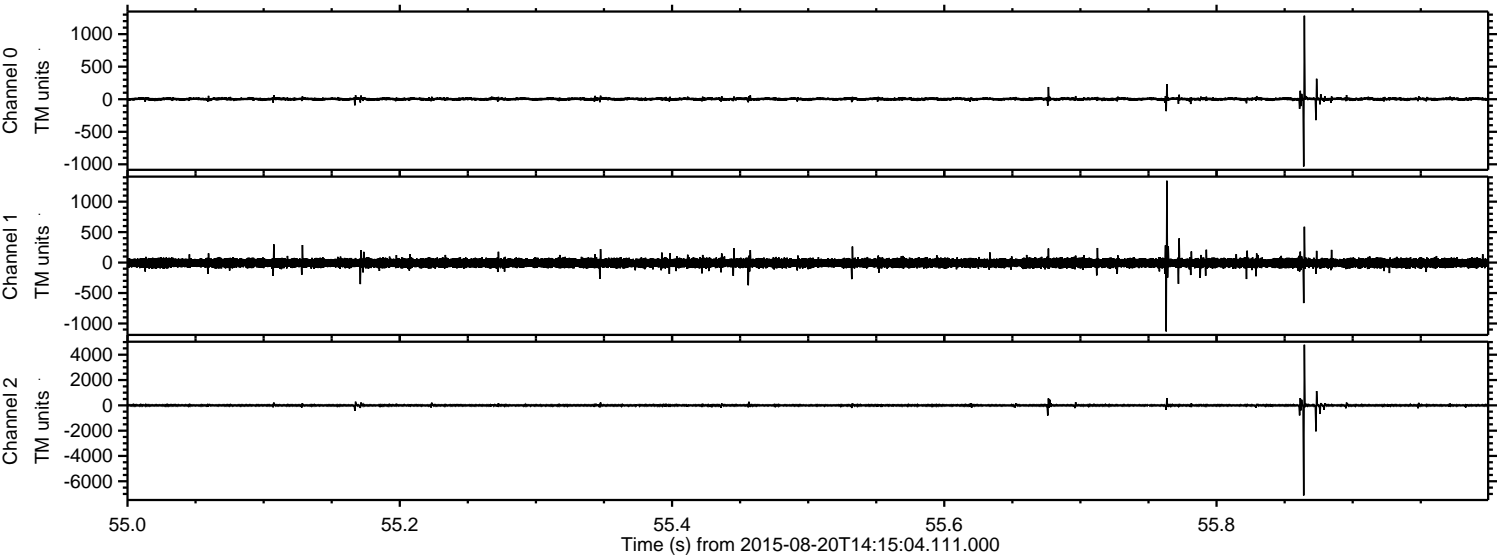


ELMAVAN 3D WAVEFORMS (Measured data sampled at 50 kHz) 51000 packets of 144 samples from 2015-08-20T14:15:04.111.000. Part 138/147

Processed Thu Aug 20 16:21:55 2015 by ELM ver.2012-10-06 from 001__elm20150820_141503__dat00.bin



Processed Thu Aug 20 16:21:56 2015 by ELM ver.2012-10-06 from 001__elm20150820_141503__dat00.bin

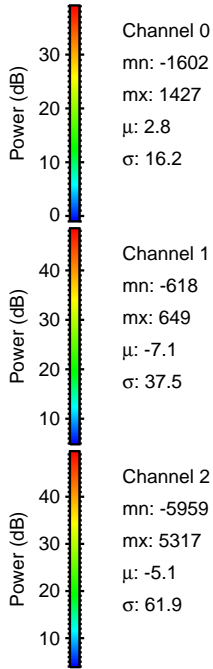
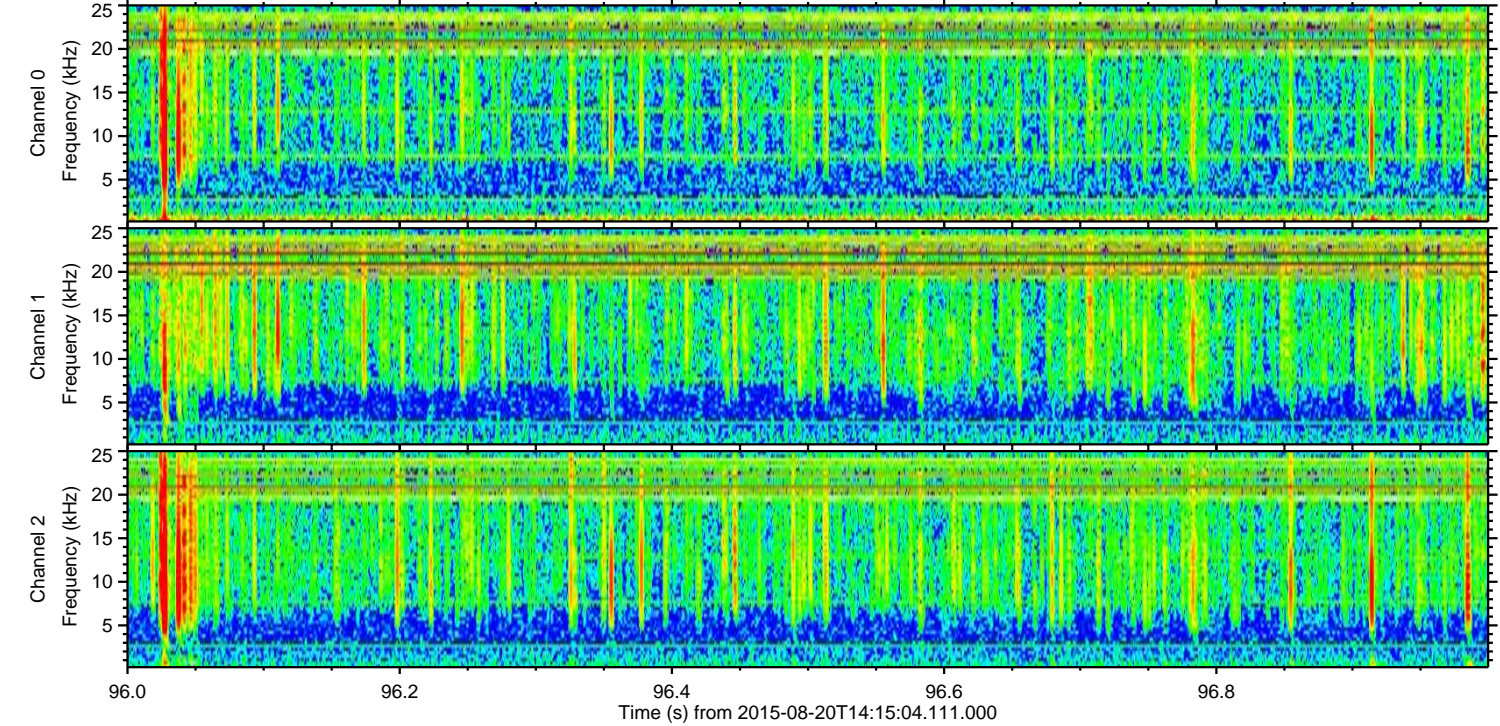
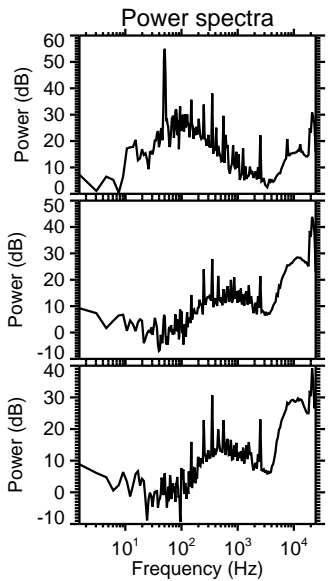
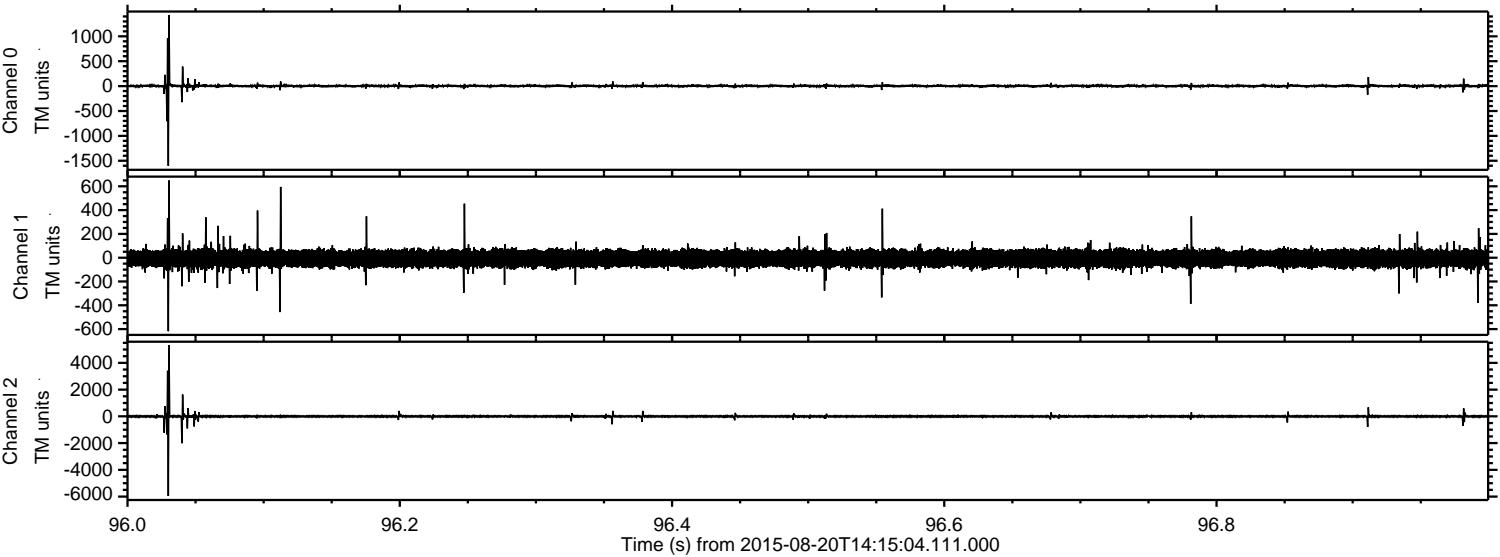


Channel 0
mn: -1033
mx: 1283
 μ : 2.7
 σ : 15.6

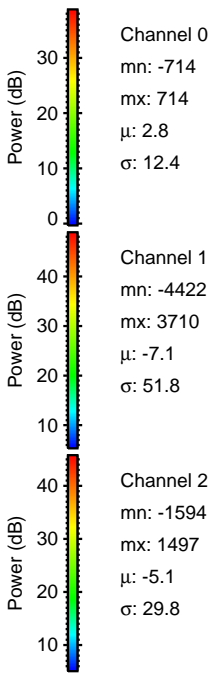
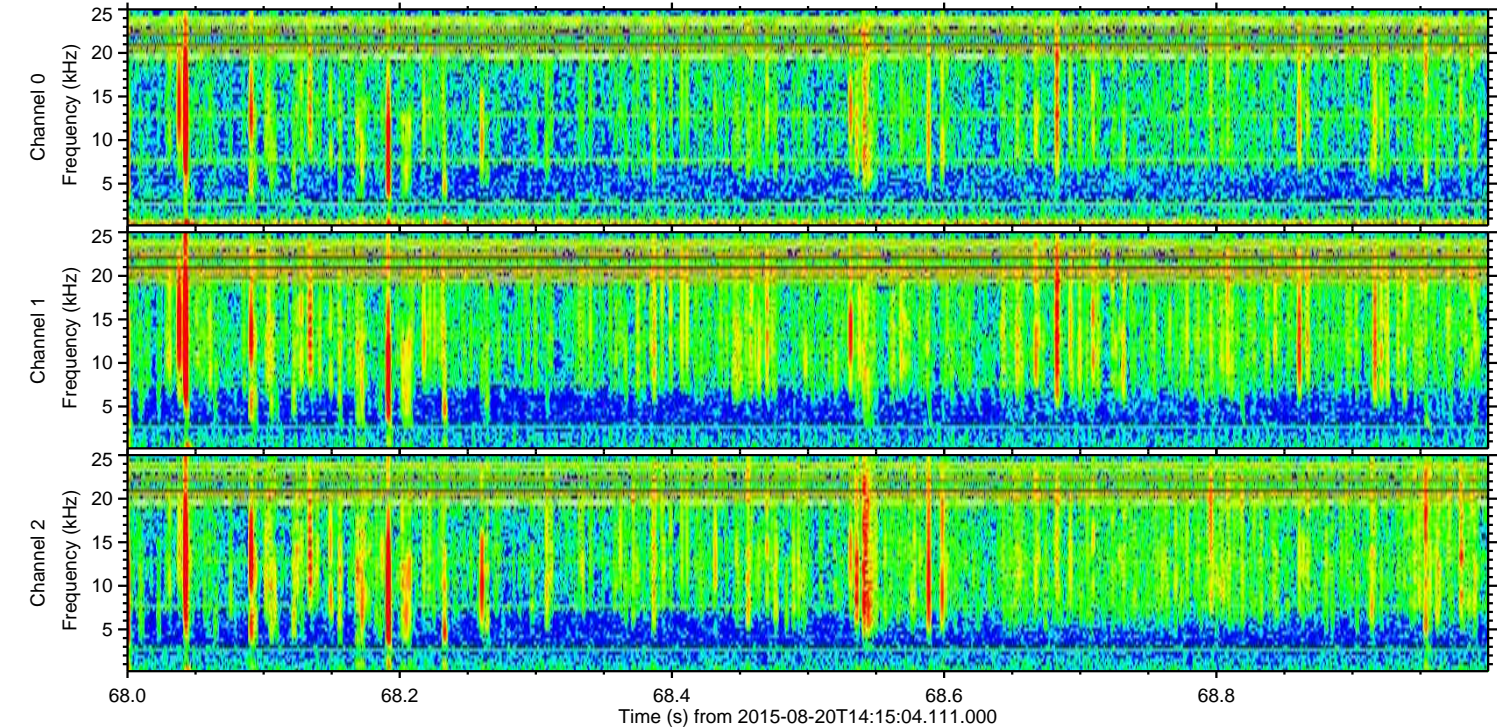
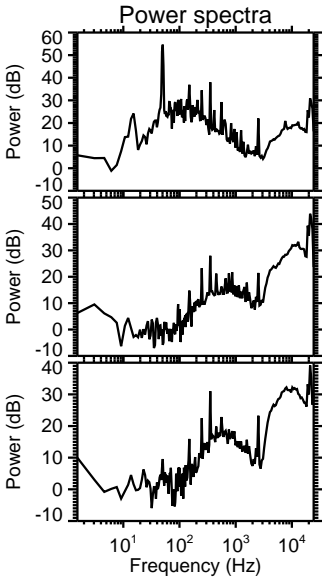
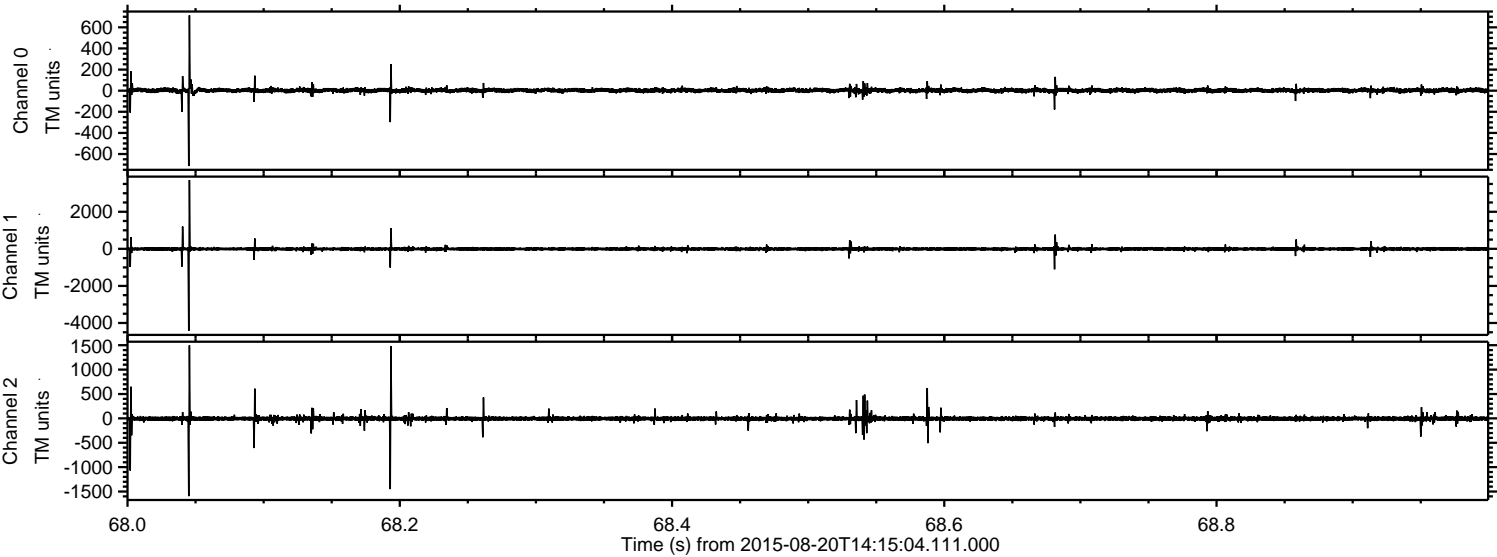
Channel 1
mn: -1131
mx: 1344
 μ : -7.1
 σ : 39.0

Channel 2
mn: -7123
mx: 4788
 μ : -5.2
 σ : 58.2

Processed Thu Aug 20 16:21:57 2015 by ELM ver.2012-10-06 from 001__elm20150820_141503__dat00.bin

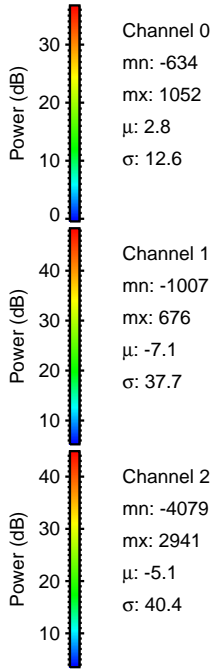
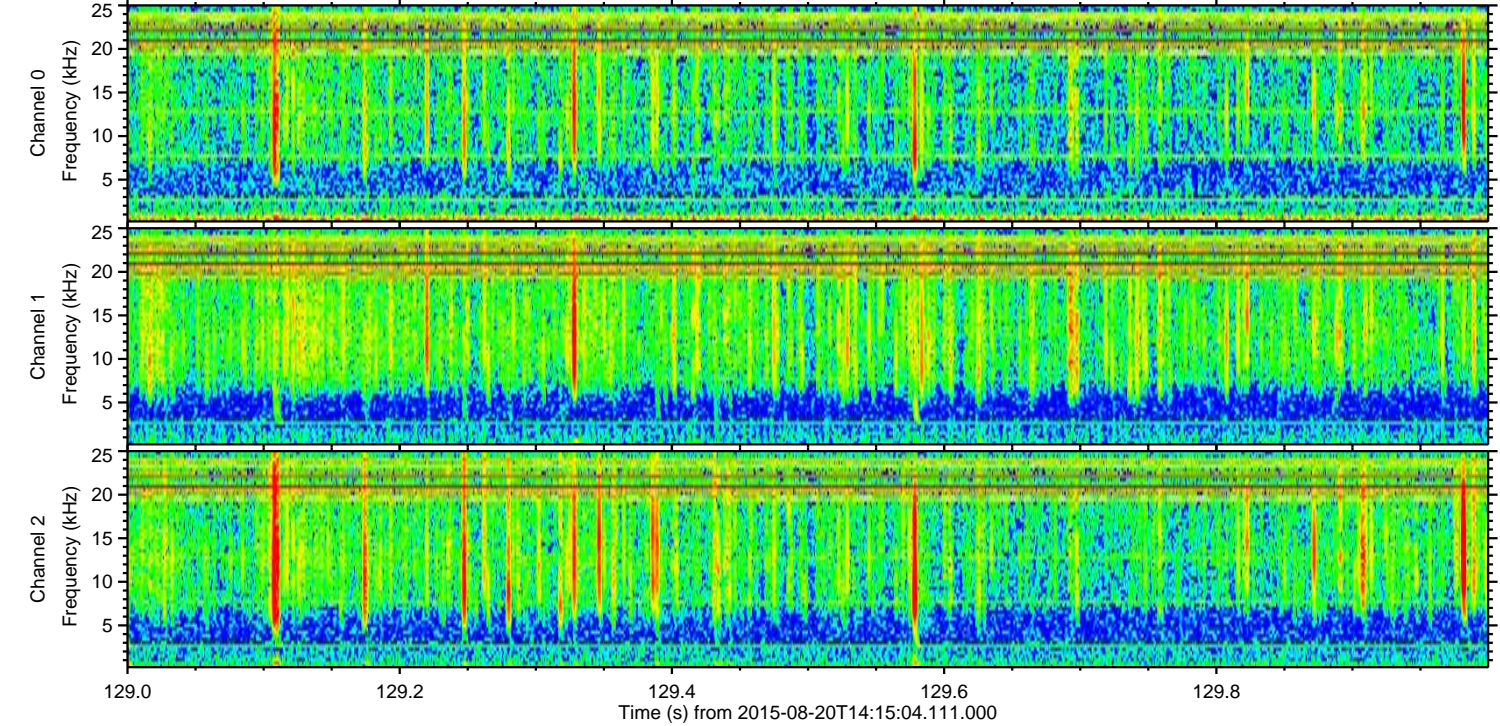
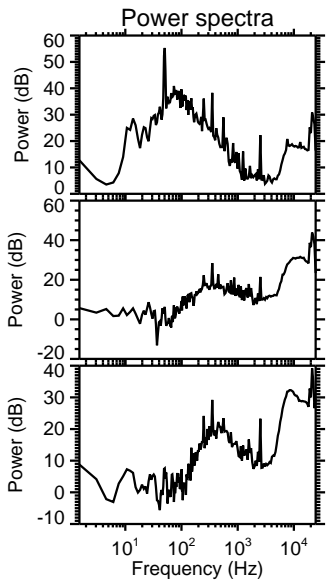
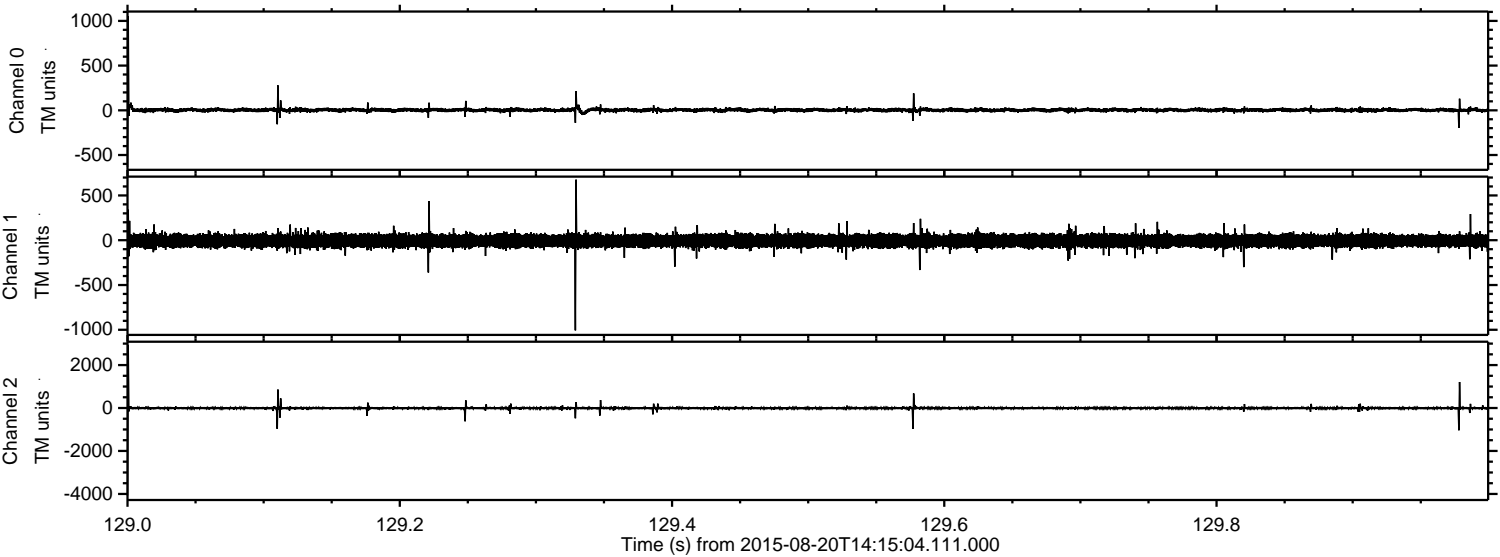


Processed Thu Aug 20 16:21:58 2015 by ELM ver.2012-10-06 from 001__elm20150820_141503__dat00.bin



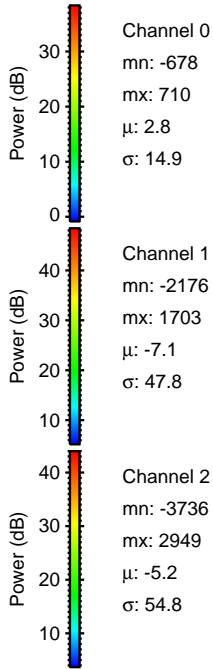
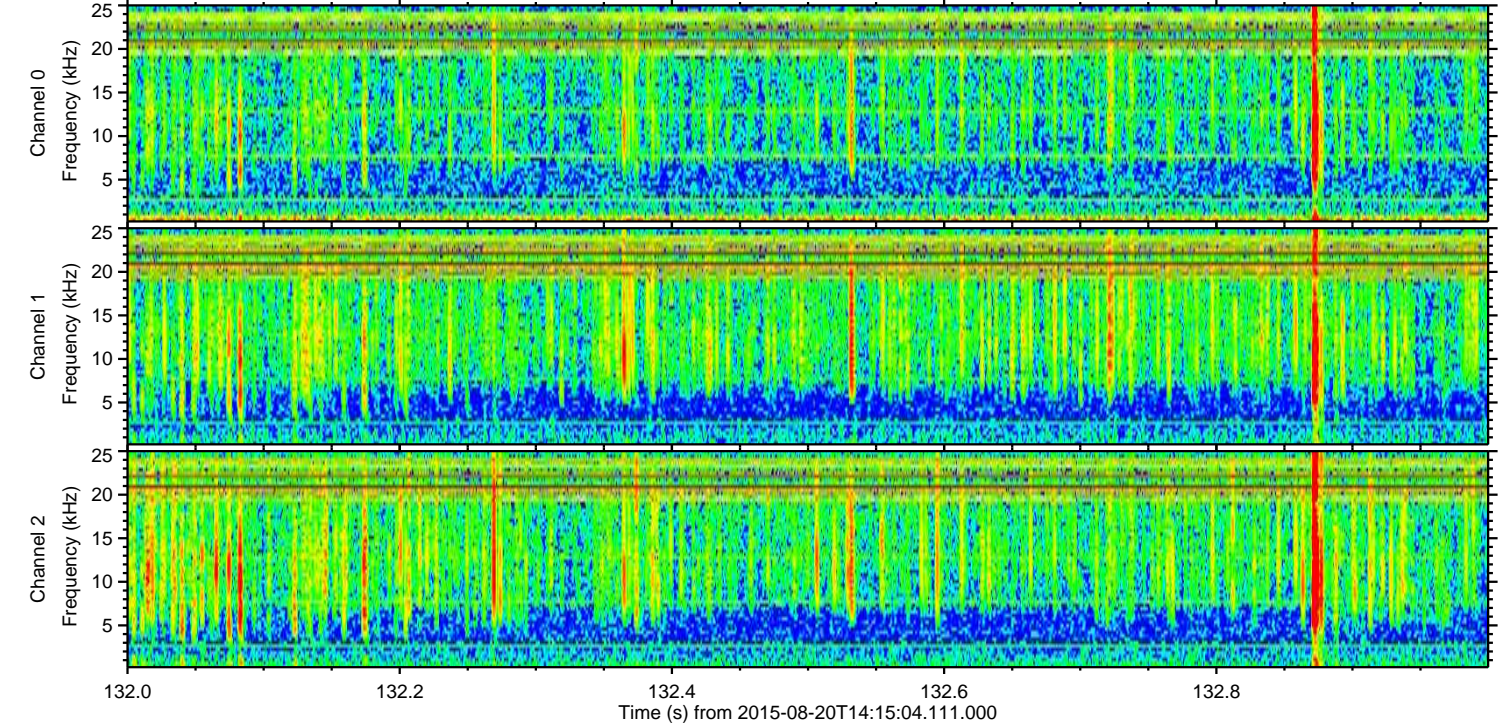
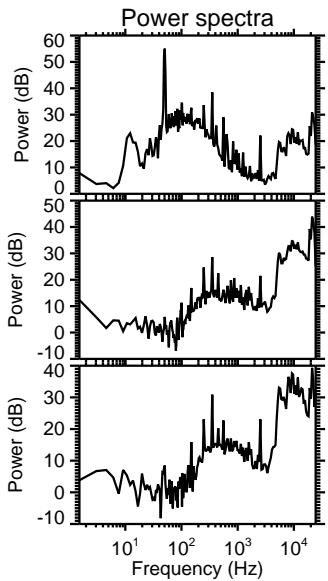
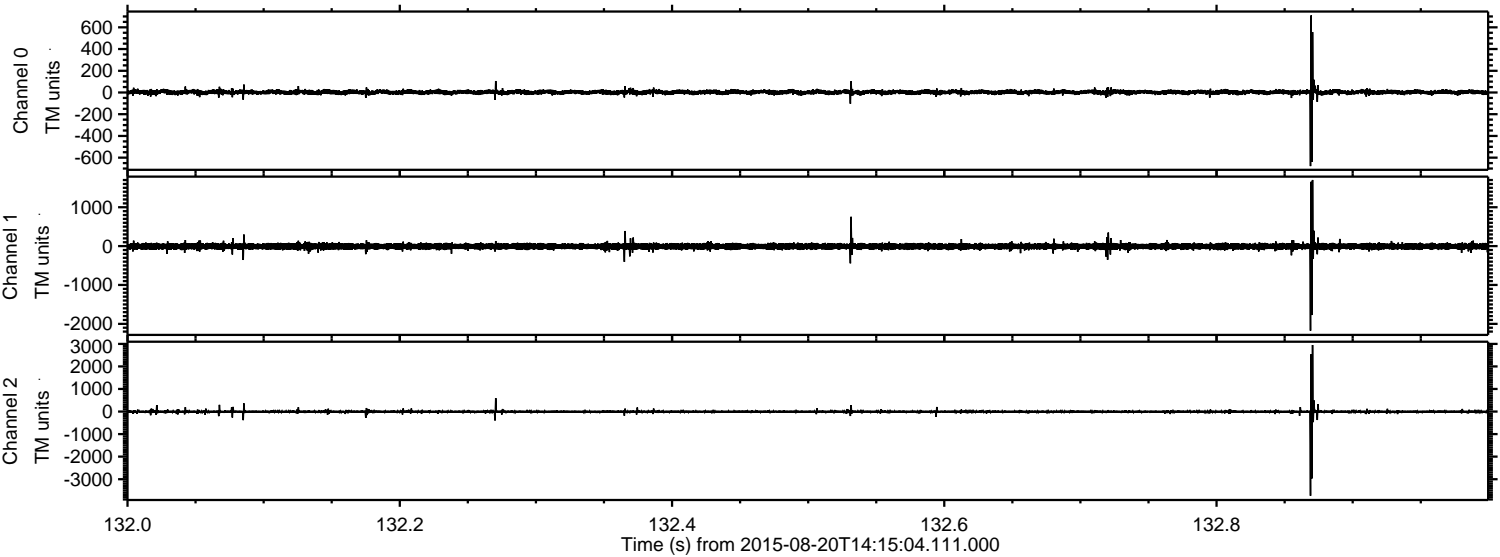
ELMAVAN 3D WAVEFORMS (Measured data sampled at 50 kHz) 51000 packets of 144 samples from 2015-08-20T14:15:04.111.000. Part 130/147

Processed Thu Aug 20 16:21:59 2015 by ELM ver.2012-10-06 from 001__elm20150820_141503__dat00.bin

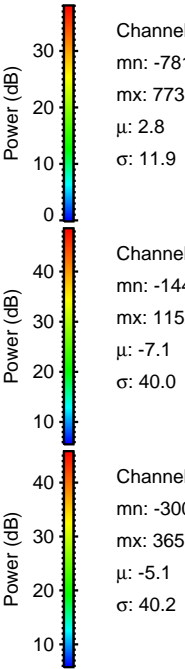
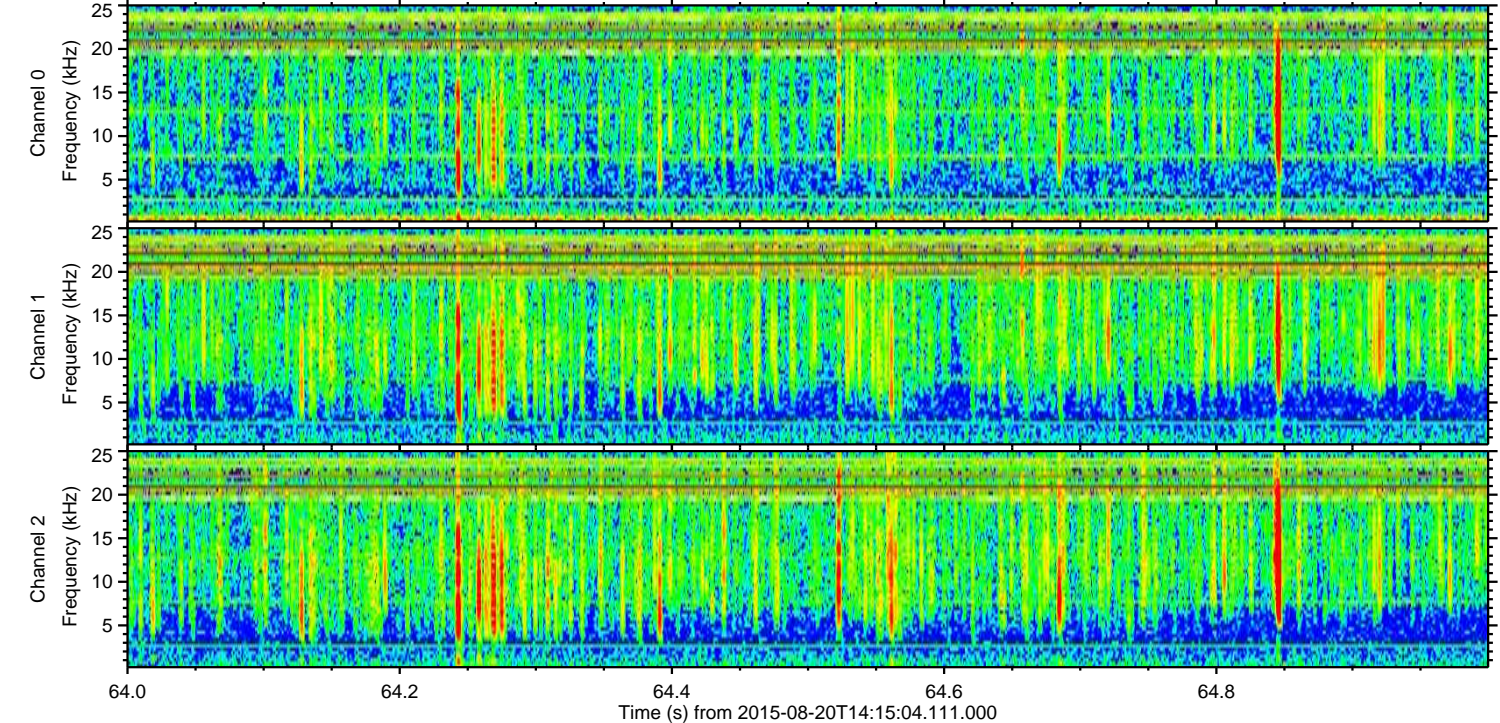
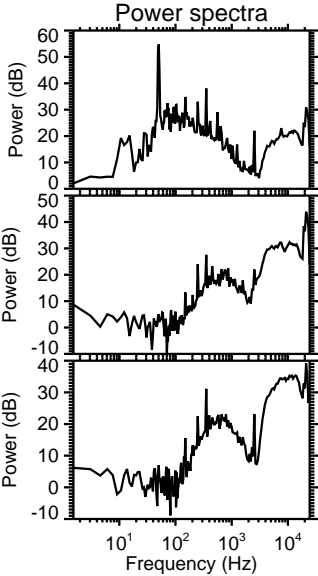
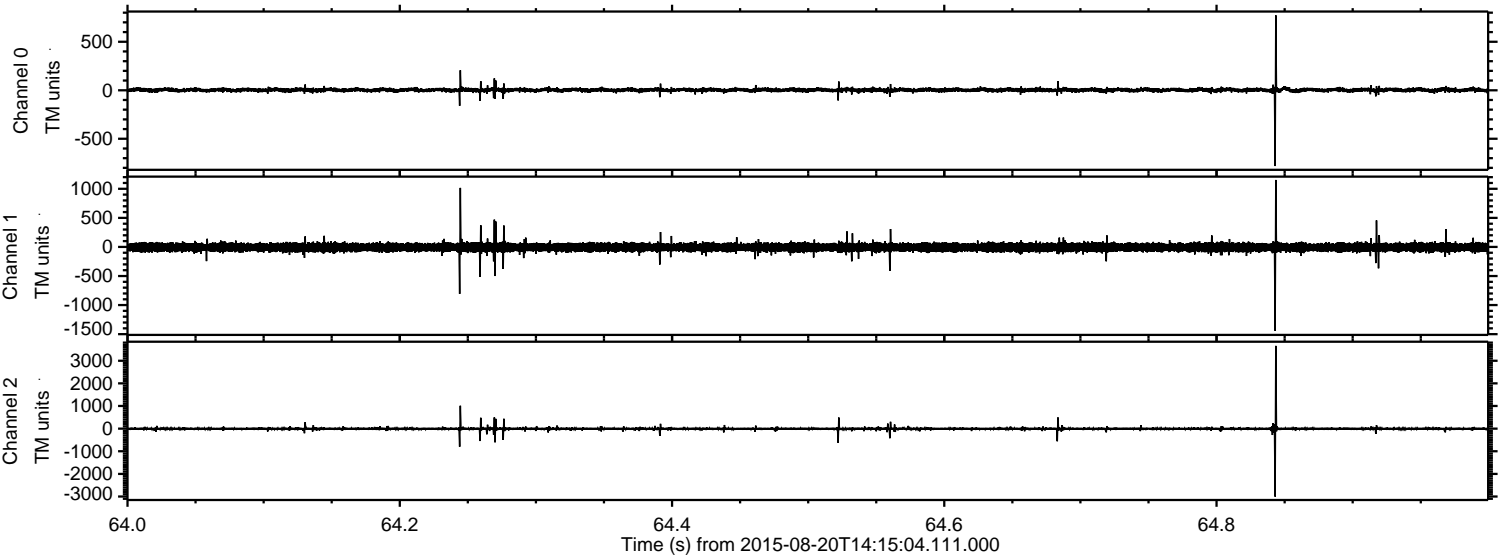


ELMAVAN 3D WAVEFORMS (Measured data sampled at 50 kHz) 51000 packets of 144 samples from 2015-08-20T14:15:04.111.000. Part 133/147

Processed Thu Aug 20 16:22:00 2015 by ELM ver.2012-10-06 from 001__elm20150820_141503__dat00.bin



Processed Thu Aug 20 16:22:01 2015 by ELM ver.2012-10-06 from 001__elm20150820_141503__dat00.bin

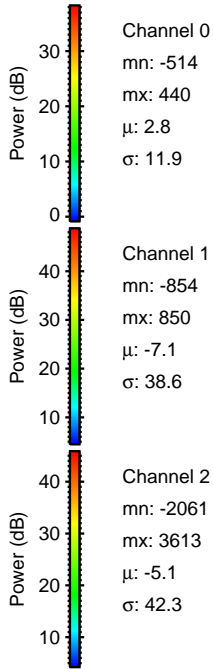
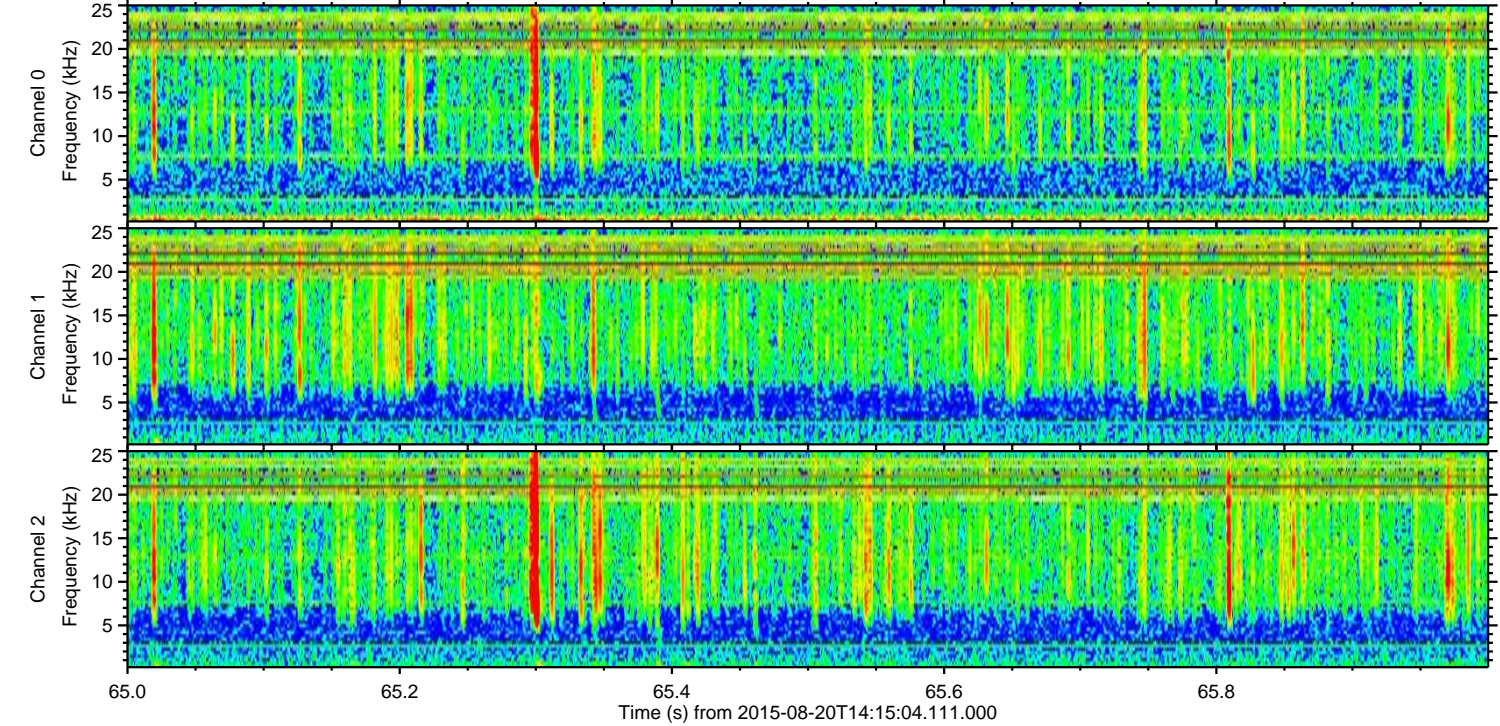
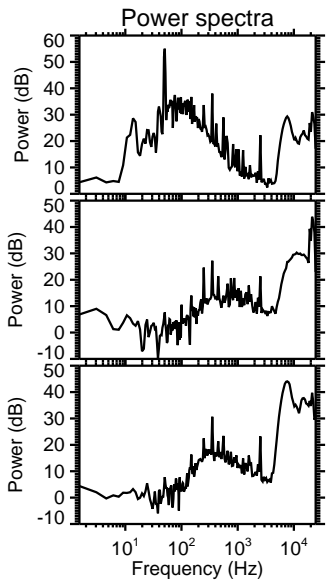
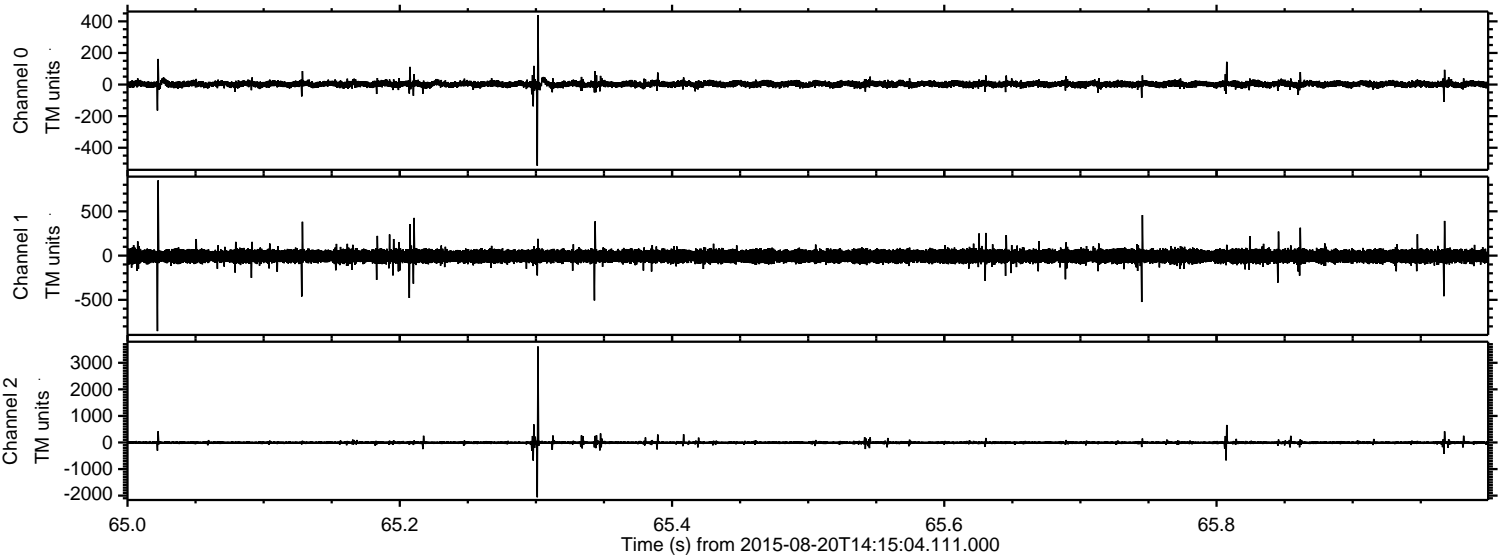


Channel 0
mn: -781
mx: 773
 μ : 2.8
 σ : 11.9

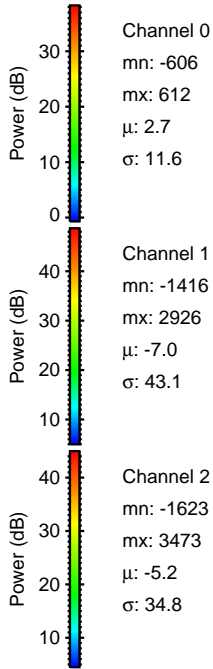
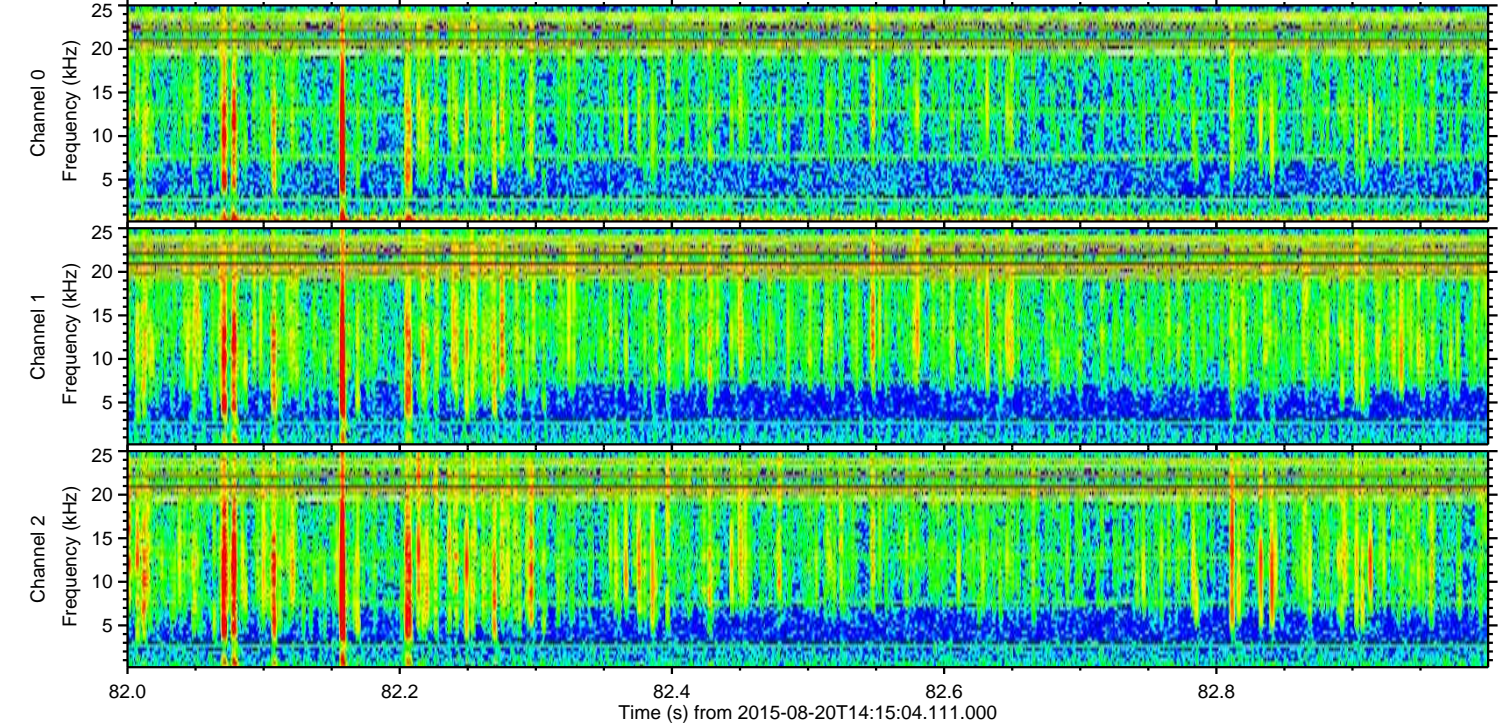
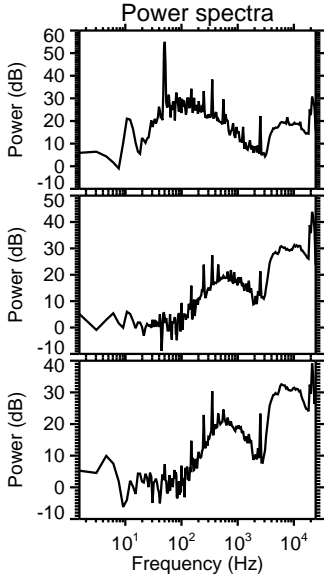
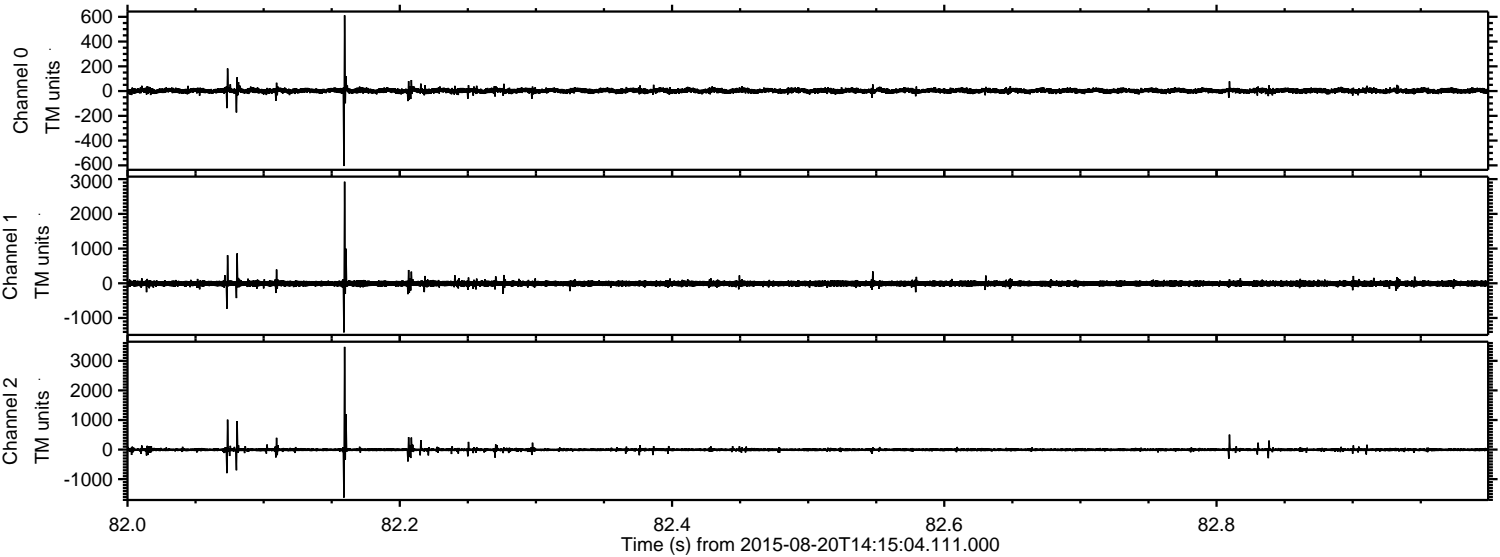
Channel 1
mn: -1441
mx: 1152
 μ : -7.1
 σ : 40.0

Channel 2
mn: -3002
mx: 3657
 μ : -5.1
 σ : 40.2

Processed Thu Aug 20 16:22:02 2015 by ELM ver.2012-10-06 from 001__elm20150820_141503__dat00.bin



Processed Thu Aug 20 16:22:03 2015 by ELM ver.2012-10-06 from 001__elm20150820_141503__dat00.bin



Processed Thu Aug 20 16:22:04 2015 by ELM ver.2012-10-06 from 001__elm20150820_141503__dat00.bin

