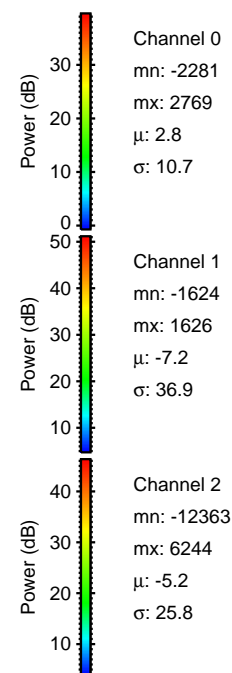
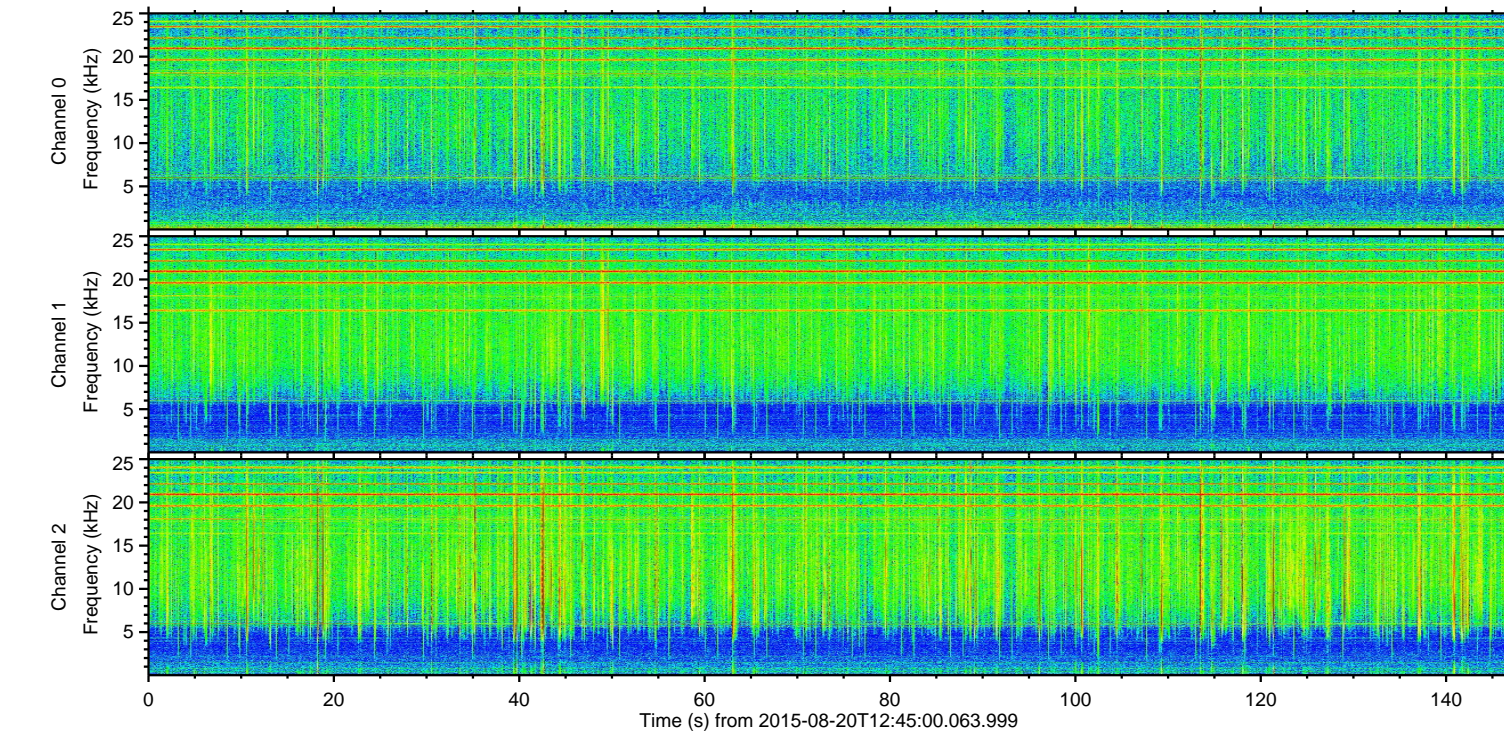
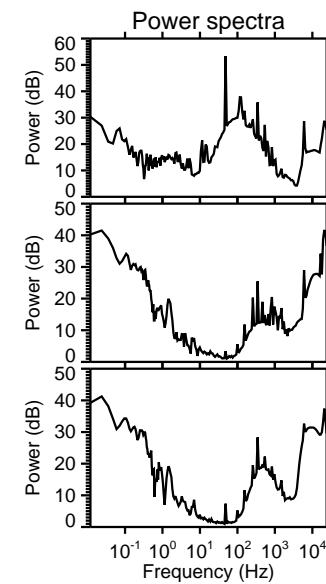
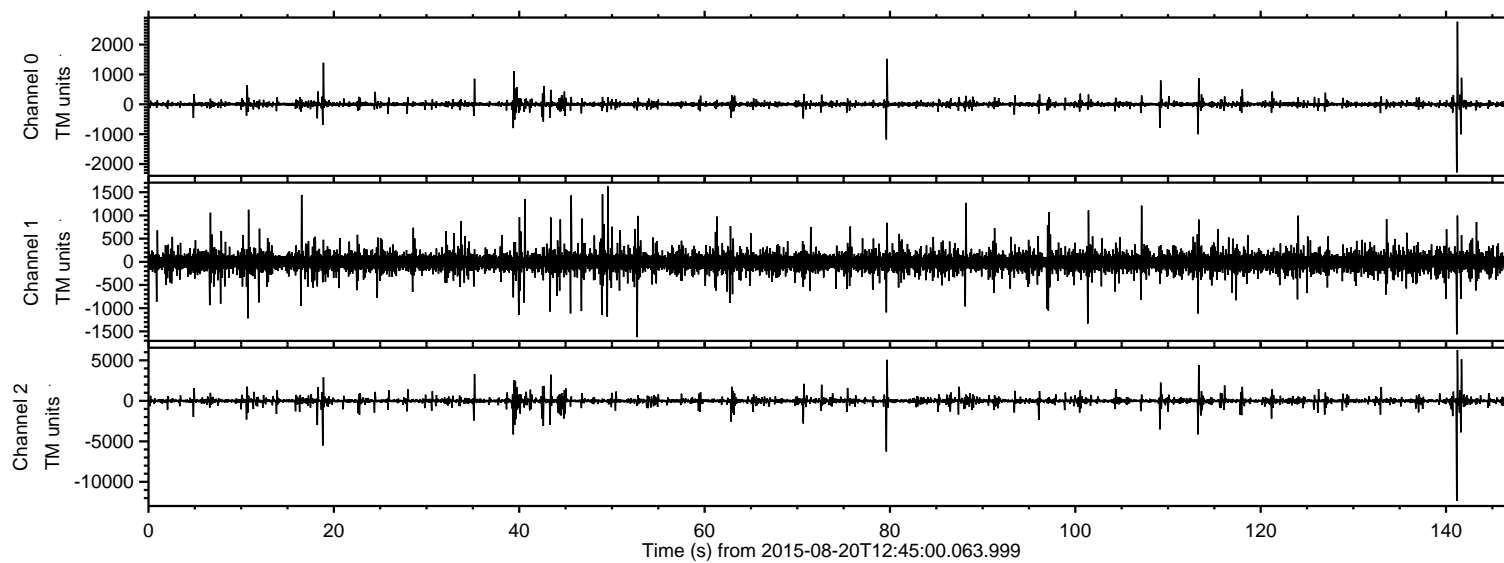


# ELMAVAN 3D WAVEFORMS (Measured data sampled at 50 kHz) 51000 packets of 144 samples from 2015-08-20T12:45:00.063.999.

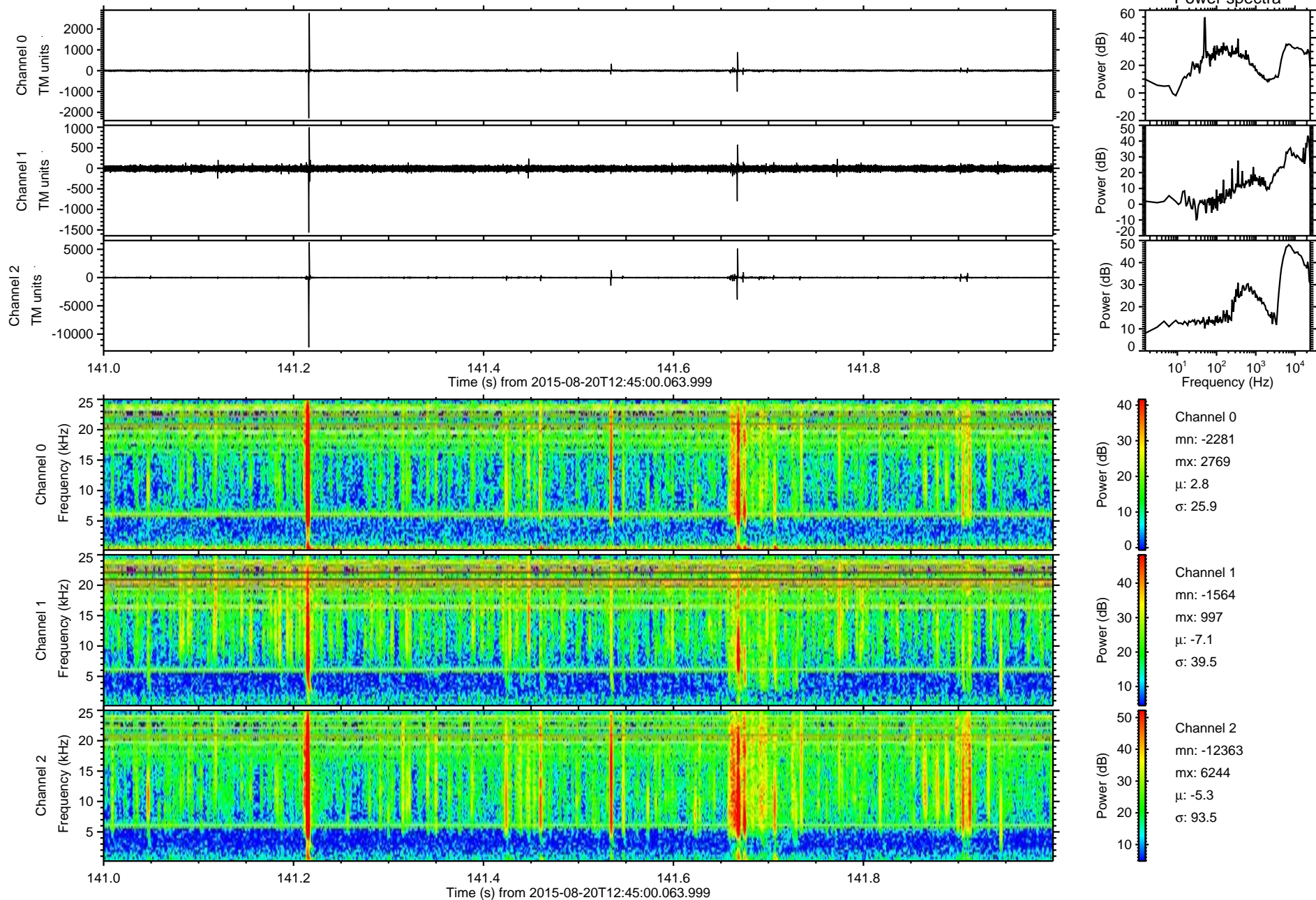
Processed Thu Aug 20 14:50:57 2015 by ELM ver.2012-10-06 from 001\_\_elm20150820\_124459\_\_dat00.bin





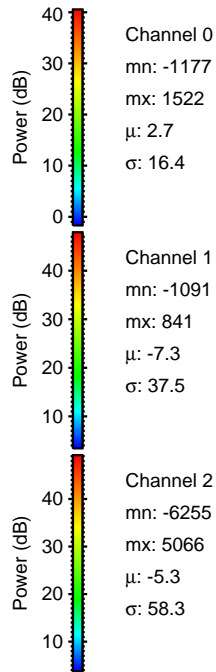
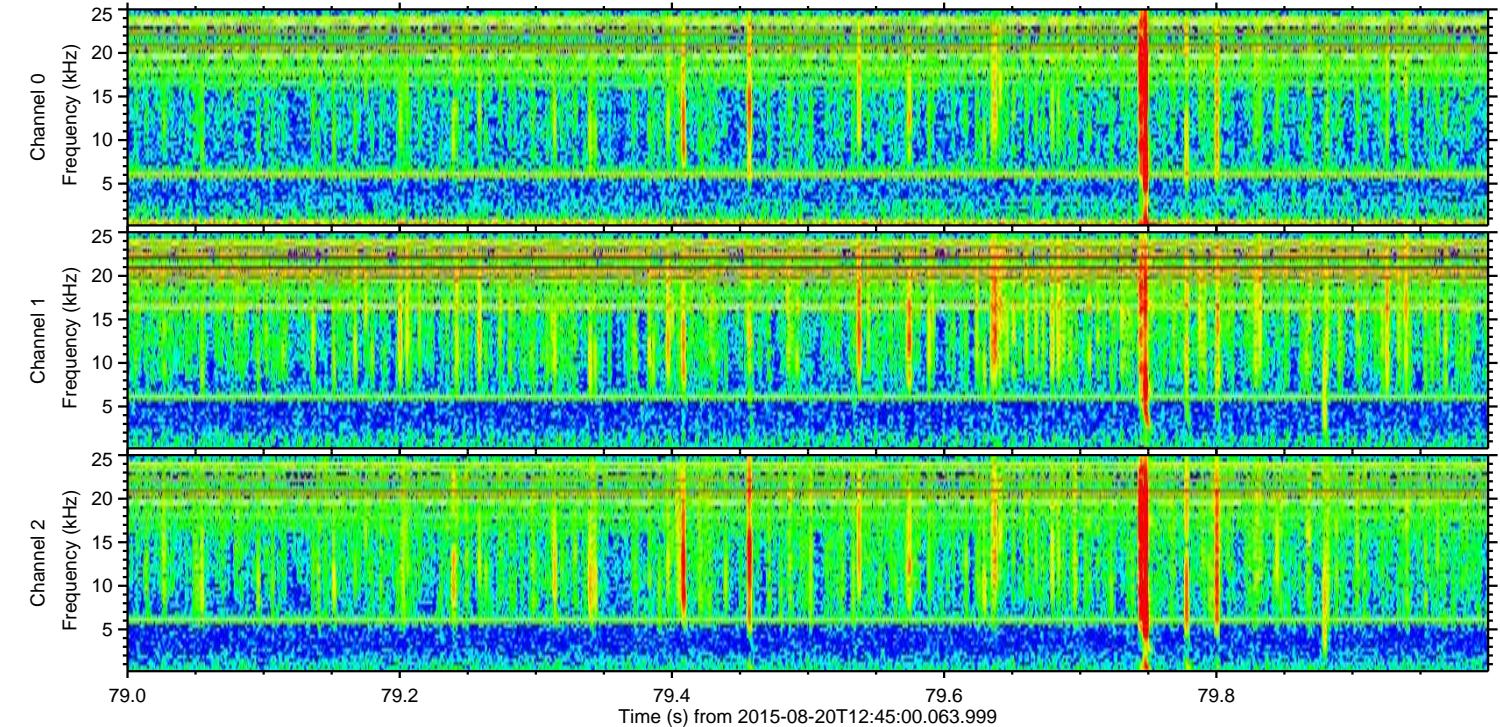
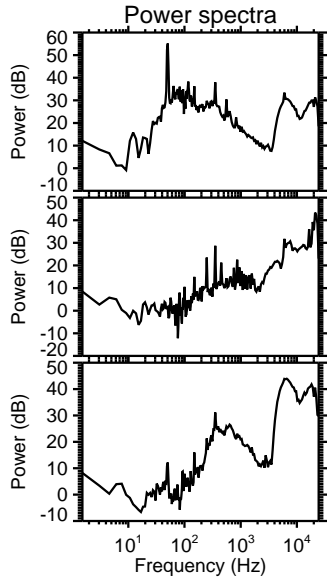
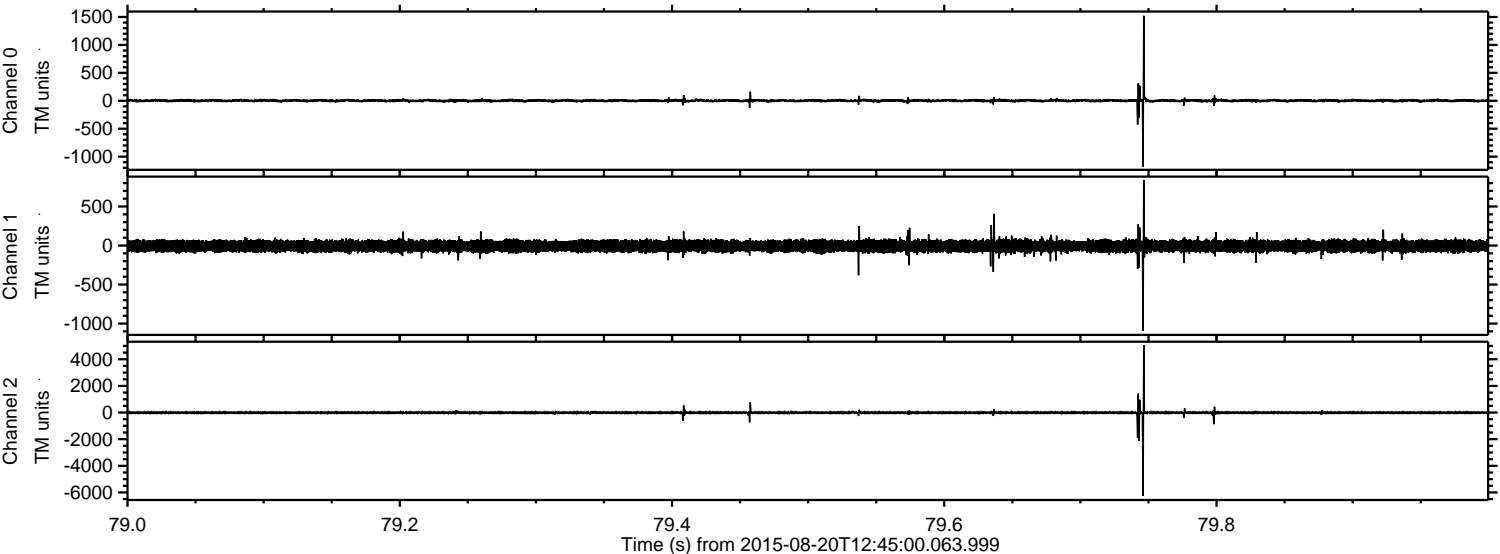
ELMAVAN 3D WAVEFORMS (Measured data sampled at 50 kHz) 51000 packets of 144 samples from 2015-08-20T12:45:00.063.999. Part 142/147

Processed Thu Aug 20 14:51:08 2015 by ELM ver.2012-10-06 from 001\_\_elm20150820\_124459\_\_dat00.bin



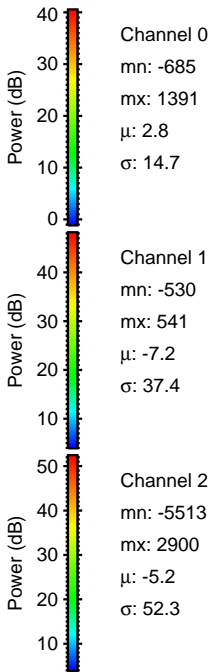
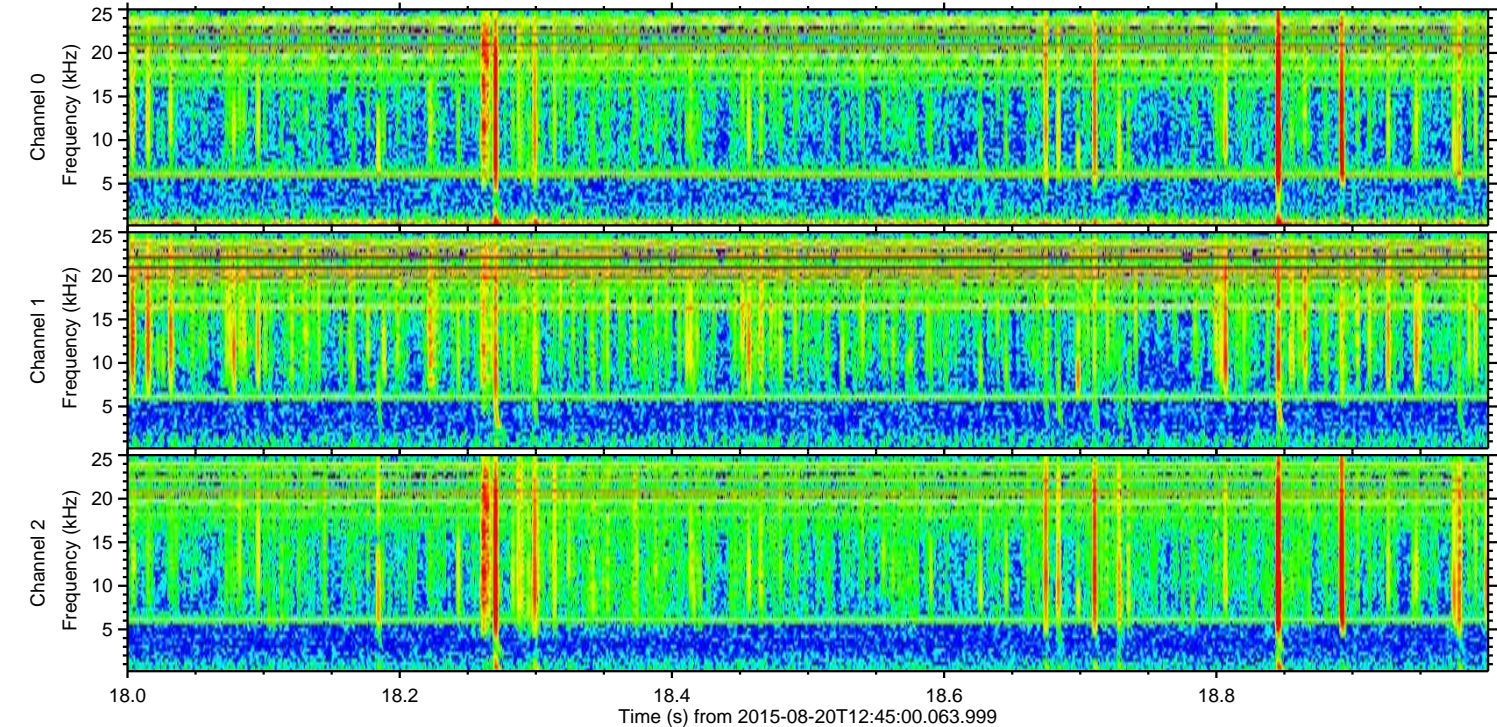
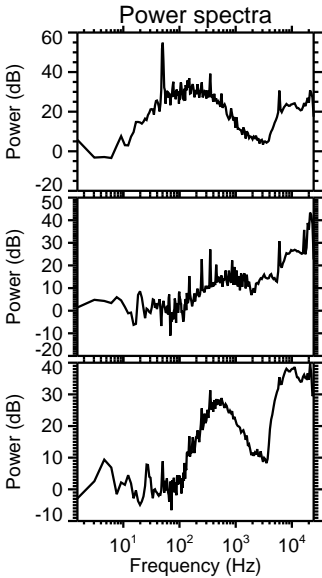
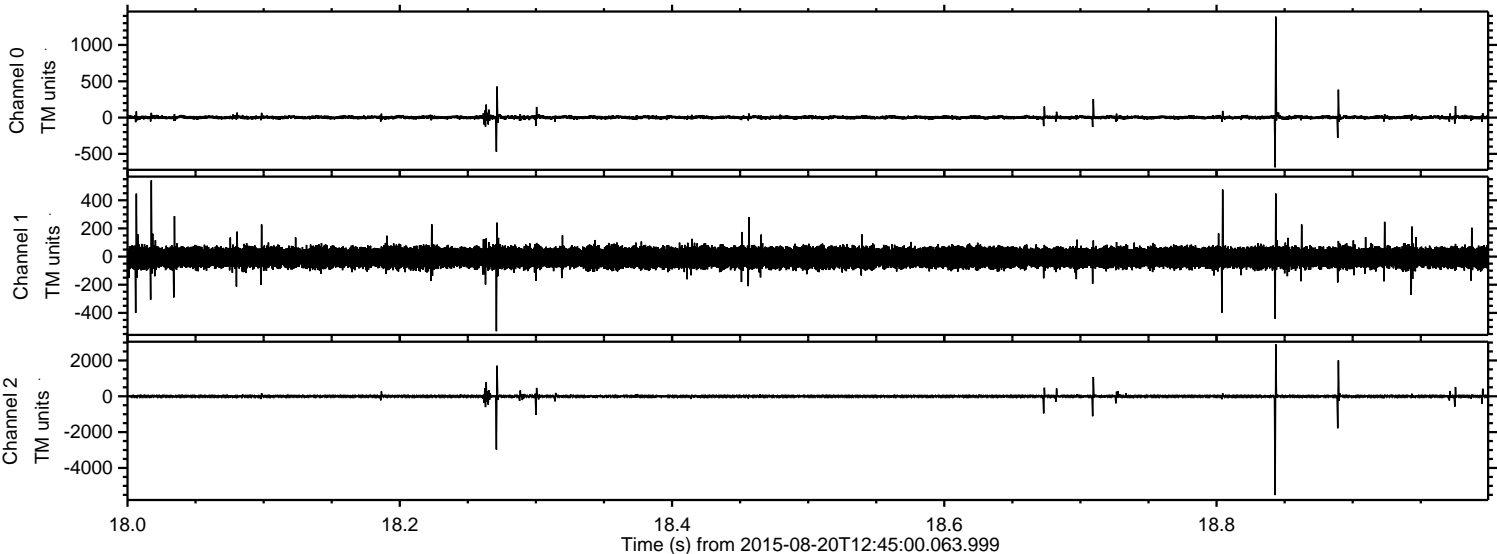


Processed Thu Aug 20 14:51:09 2015 by ELM ver.2012-10-06 from 001\_\_elm20150820\_124459\_\_dat00.bin





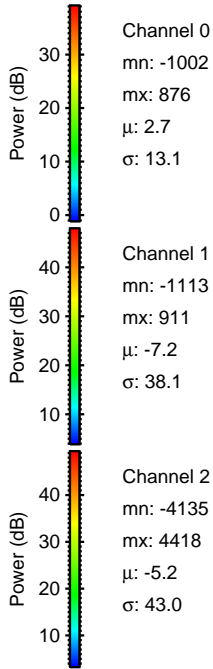
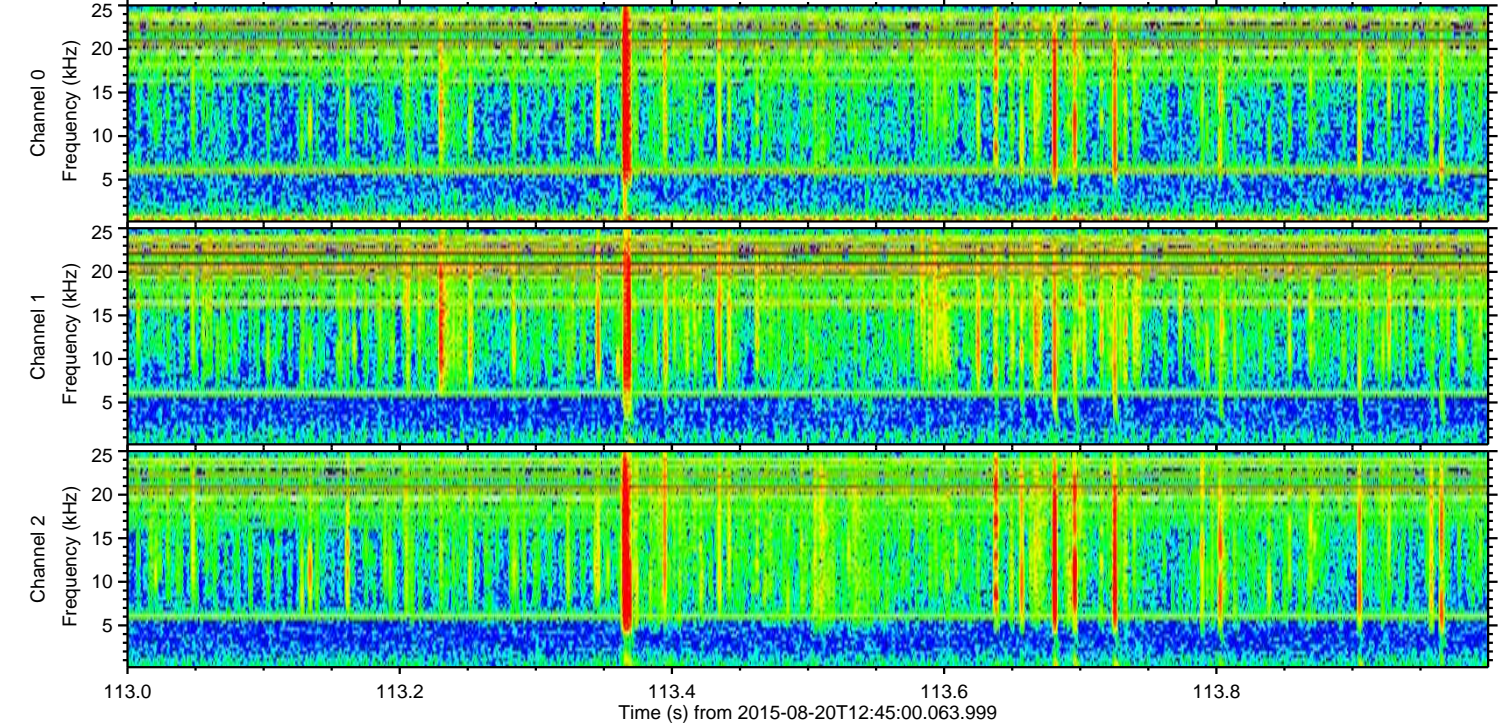
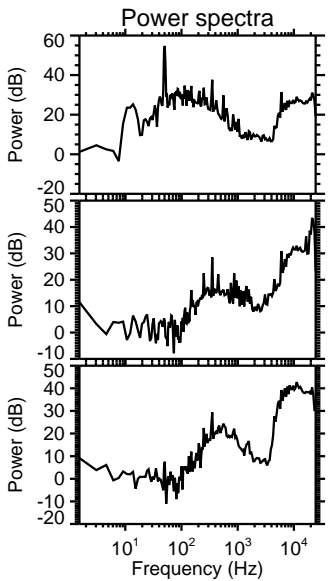
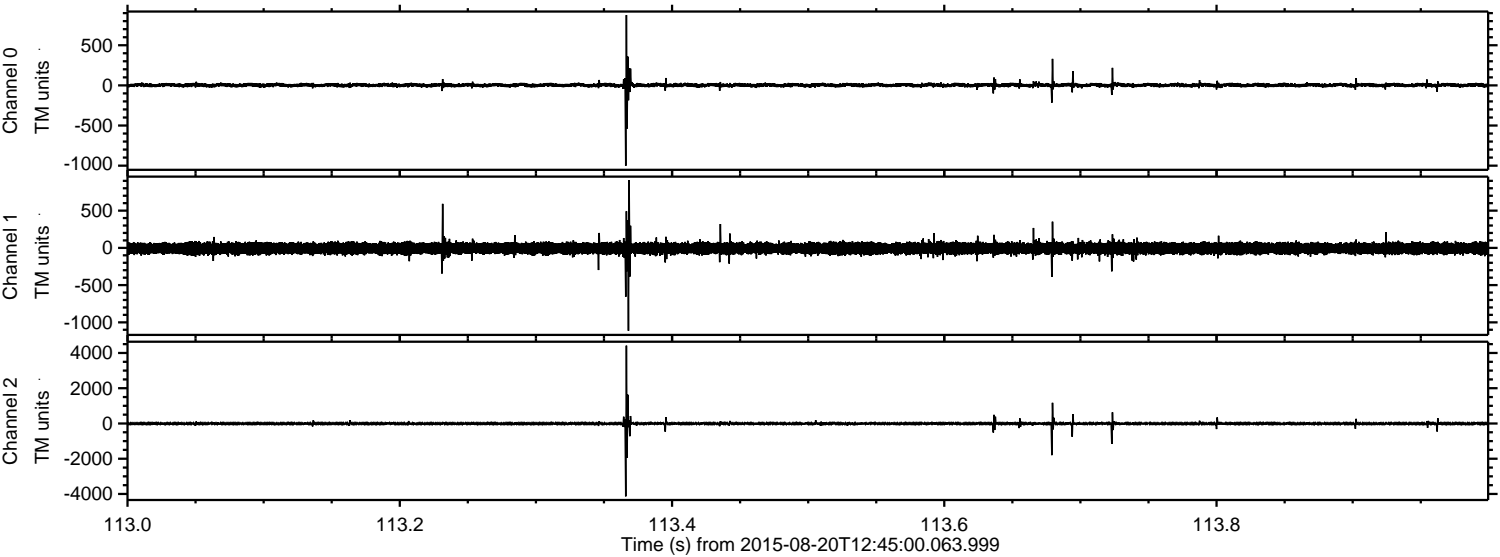
Processed Thu Aug 20 14:51:10 2015 by ELM ver.2012-10-06 from 001\_\_elm20150820\_124459\_\_dat00.bin





ELMAVAN 3D WAVEFORMS (Measured data sampled at 50 kHz) 51000 packets of 144 samples from 2015-08-20T12:45:00.063.999. Part 114/147

Processed Thu Aug 20 14:51:11 2015 by ELM ver.2012-10-06 from 001\_\_elm20150820\_124459\_\_dat00.bin



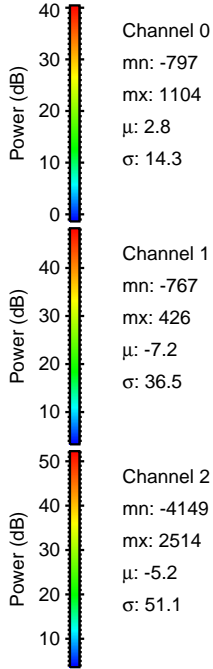
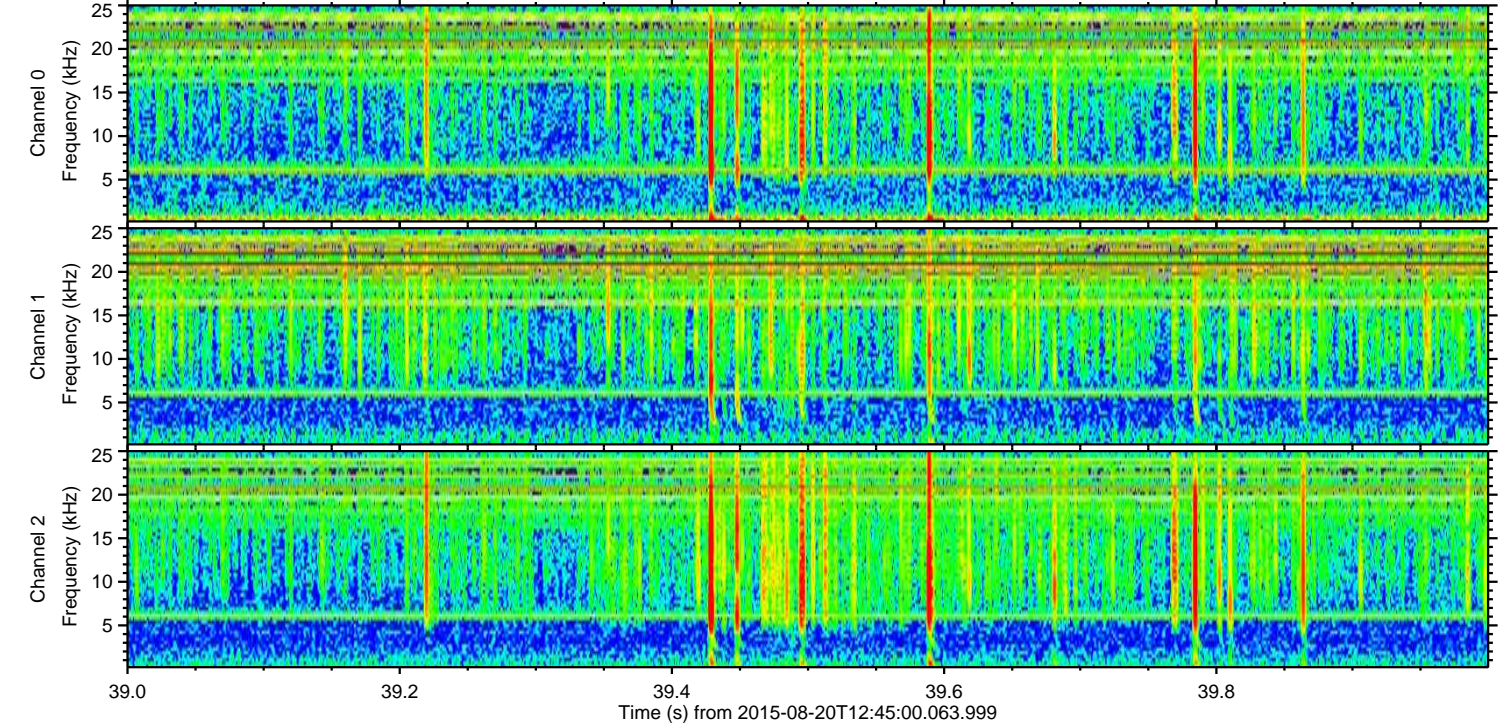
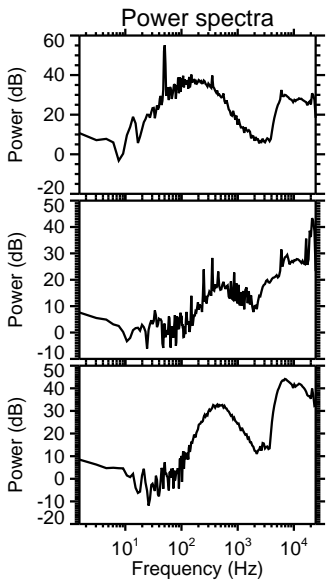
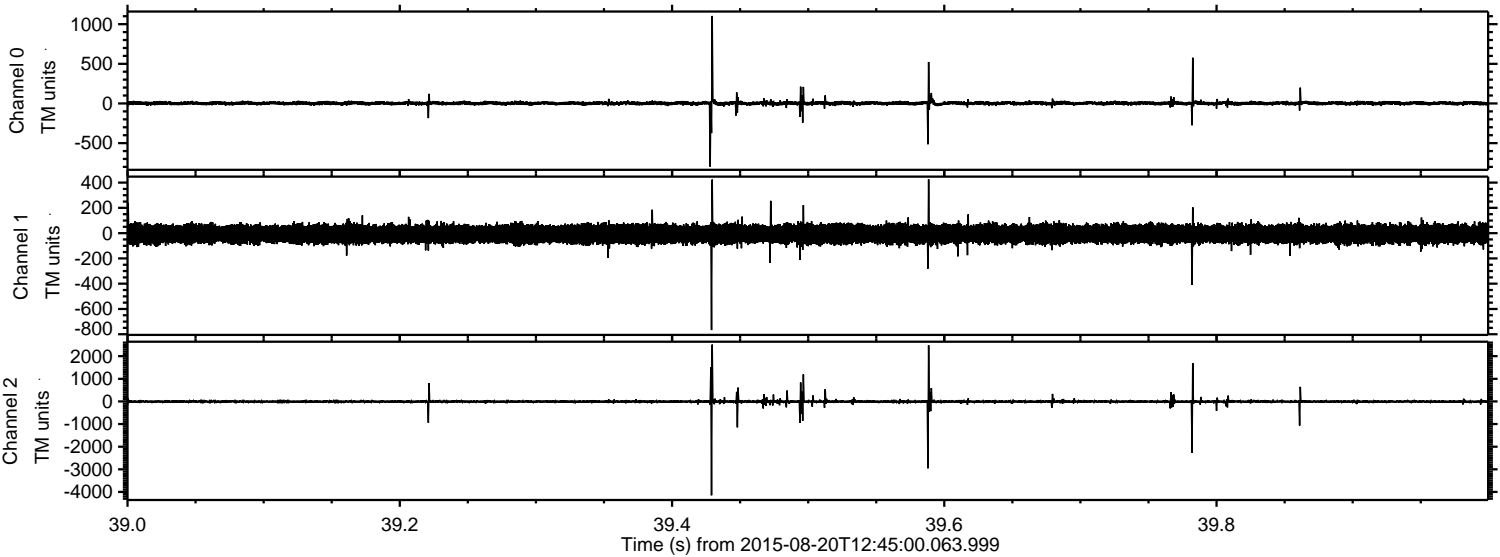
Channel 0  
mn: -1002  
mx: 876  
 $\mu$ : 2.7  
 $\sigma$ : 13.1

Channel 1  
mn: -1113  
mx: 911  
 $\mu$ : -7.2  
 $\sigma$ : 38.1

Channel 2  
mn: -4135  
mx: 4418  
 $\mu$ : -5.2  
 $\sigma$ : 43.0



Processed Thu Aug 20 14:51:12 2015 by ELM ver.2012-10-06 from 001\_\_elm20150820\_124459\_\_dat00.bin



Channel 0  
mn: -797  
mx: 1104  
 $\mu$ : 2.8  
 $\sigma$ : 14.3

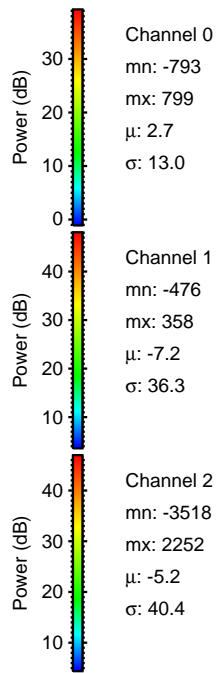
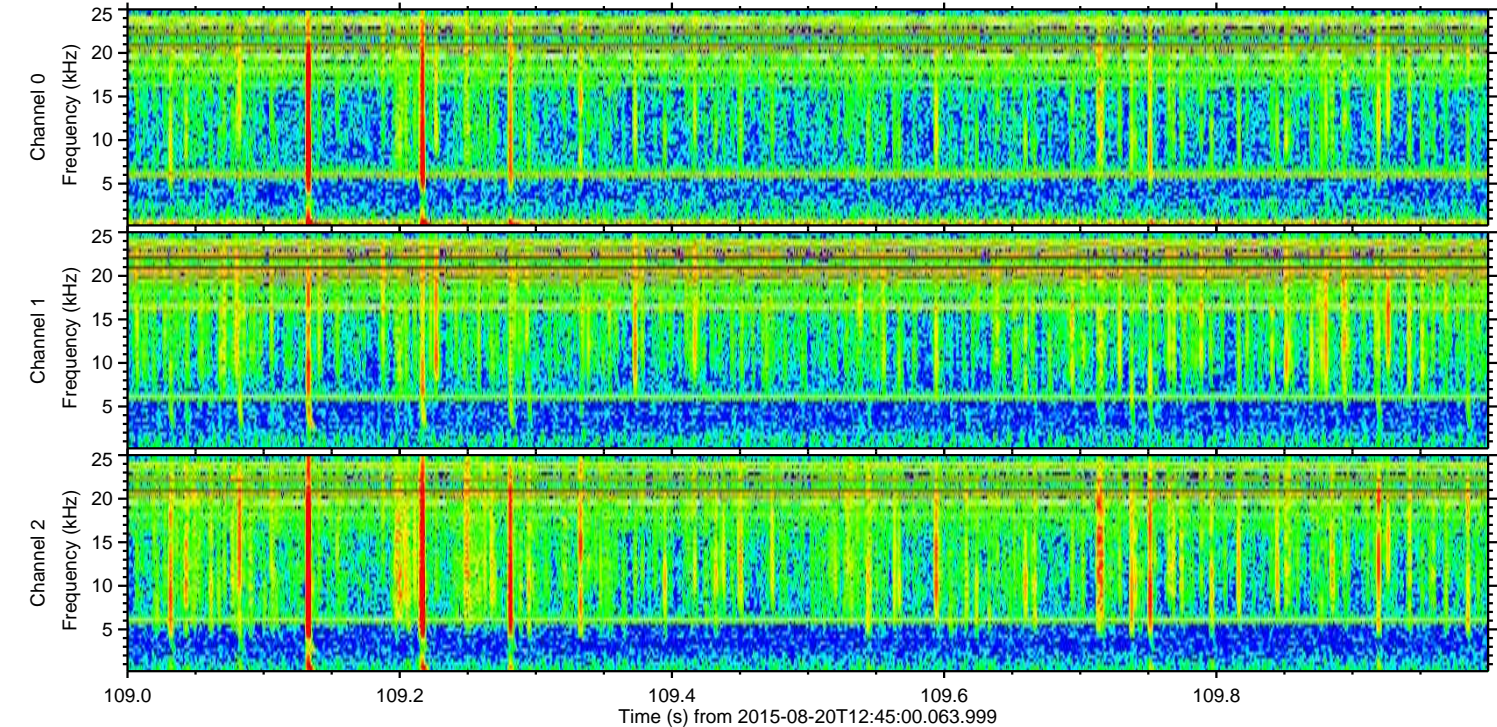
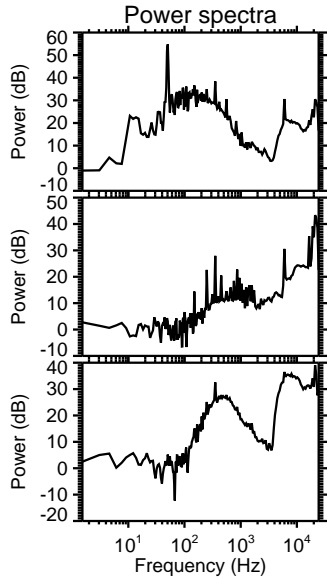
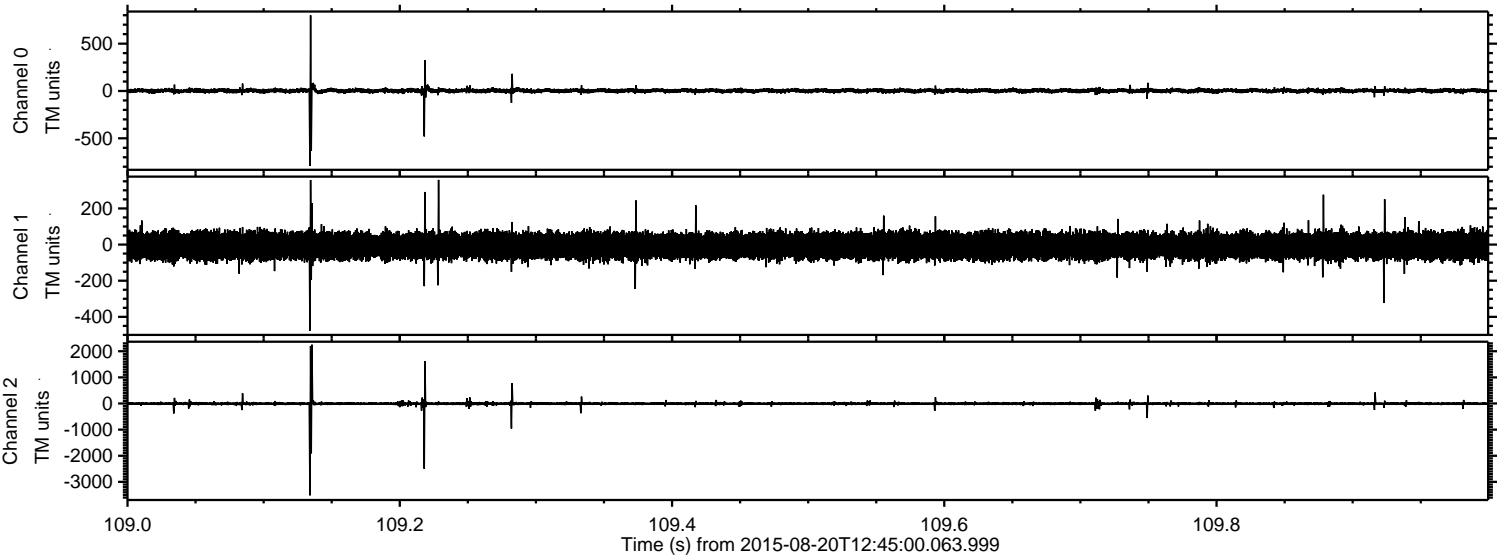
Channel 1  
mn: -767  
mx: 426  
 $\mu$ : -7.2  
 $\sigma$ : 36.5

Channel 2  
mn: -4149  
mx: 2514  
 $\mu$ : -5.2  
 $\sigma$ : 51.1



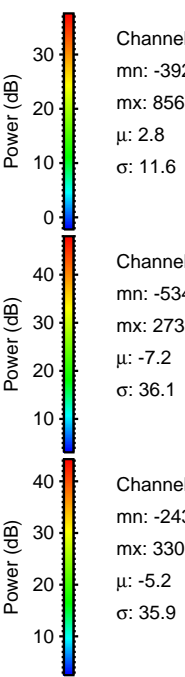
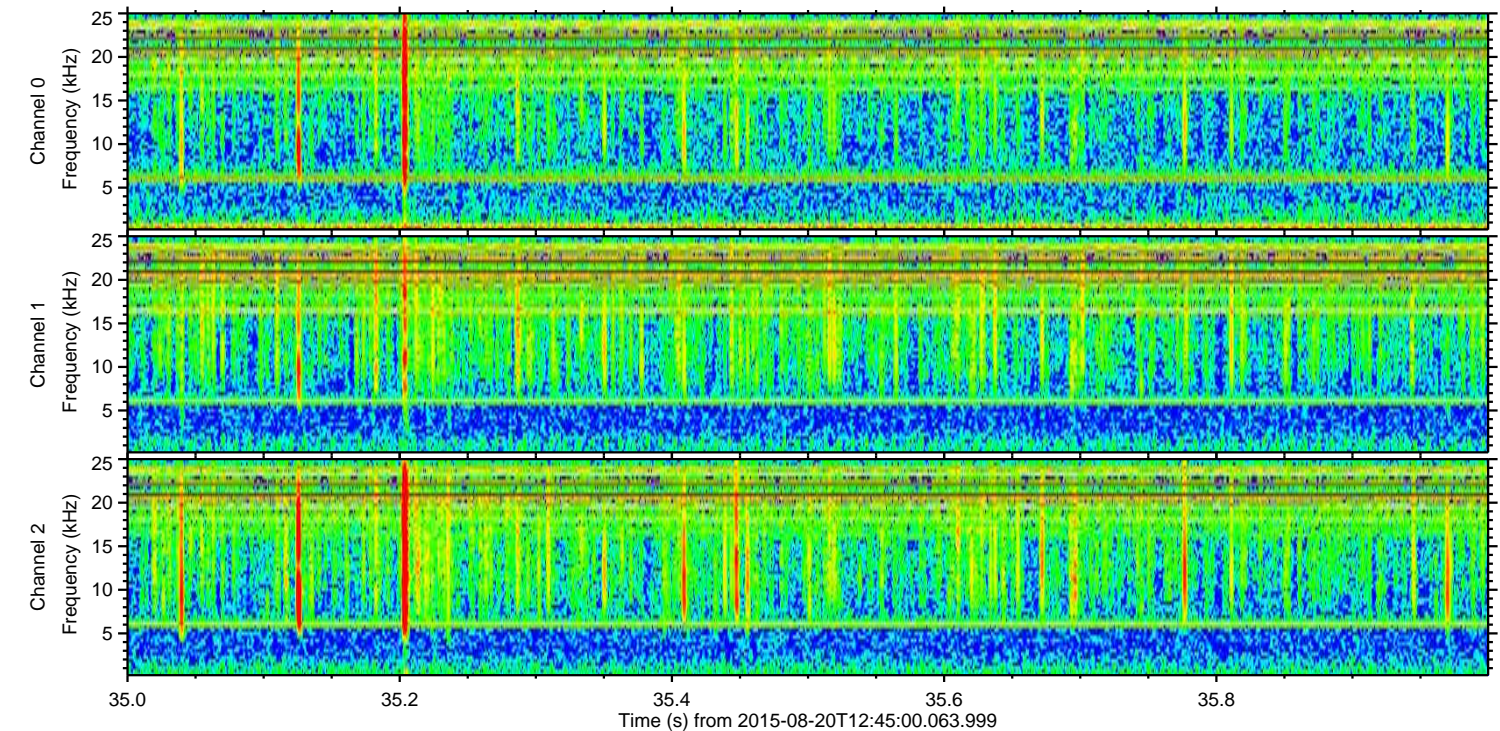
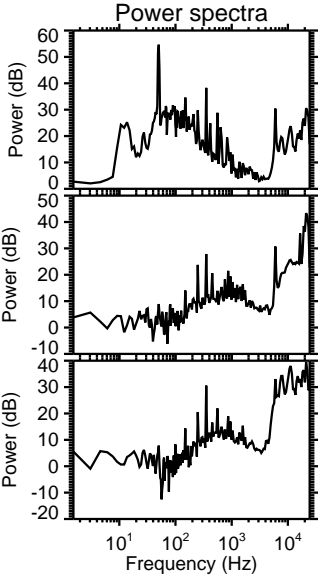
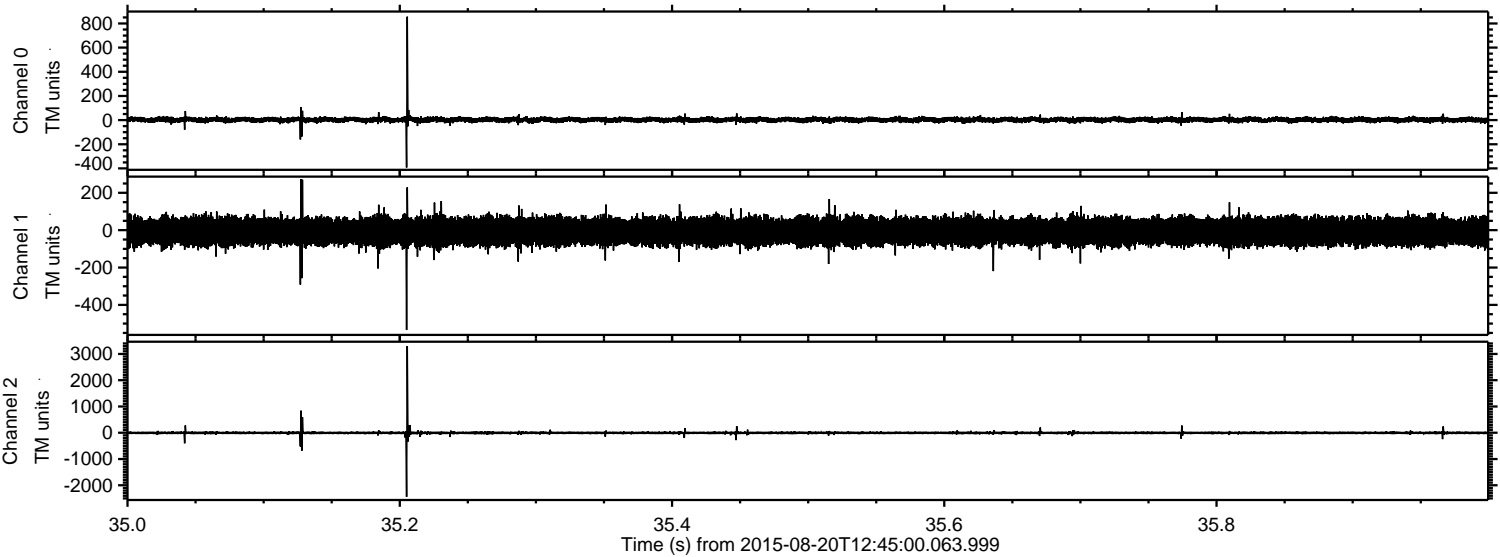
ELMAVAN 3D WAVEFORMS (Measured data sampled at 50 kHz) 51000 packets of 144 samples from 2015-08-20T12:45:00.063.999. Part 110/147

Processed Thu Aug 20 14:51:13 2015 by ELM ver.2012-10-06 from 001\_\_elm20150820\_124459\_\_dat00.bin





Processed Thu Aug 20 14:51:14 2015 by ELM ver.2012-10-06 from 001\_\_elm20150820\_124459\_\_dat00.bin



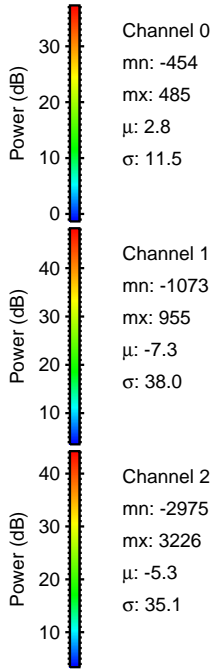
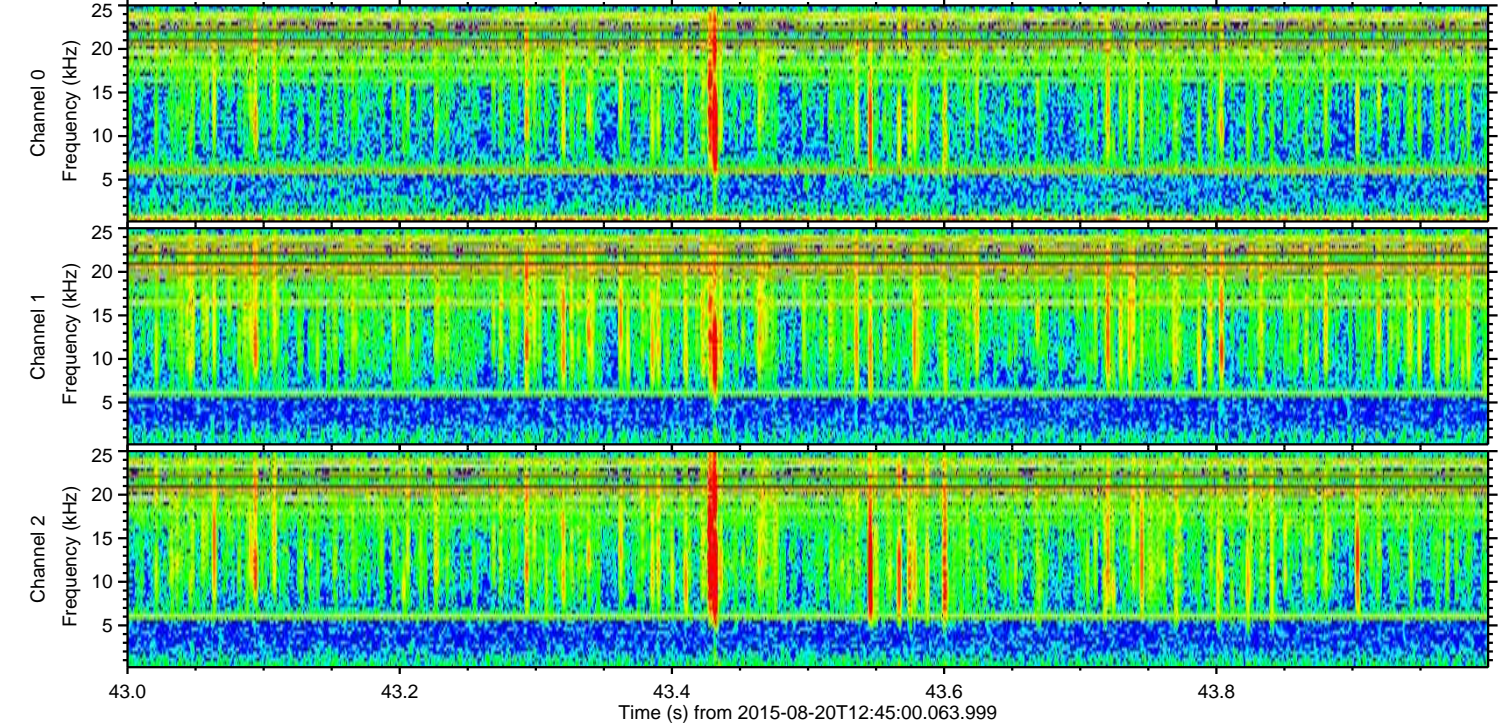
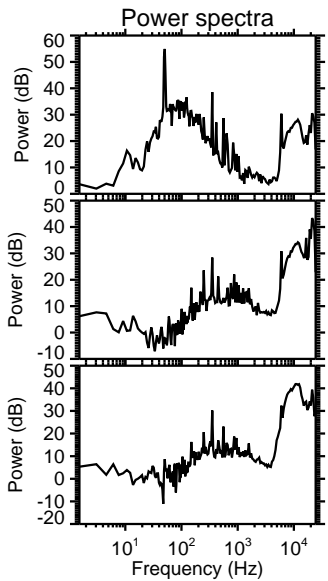
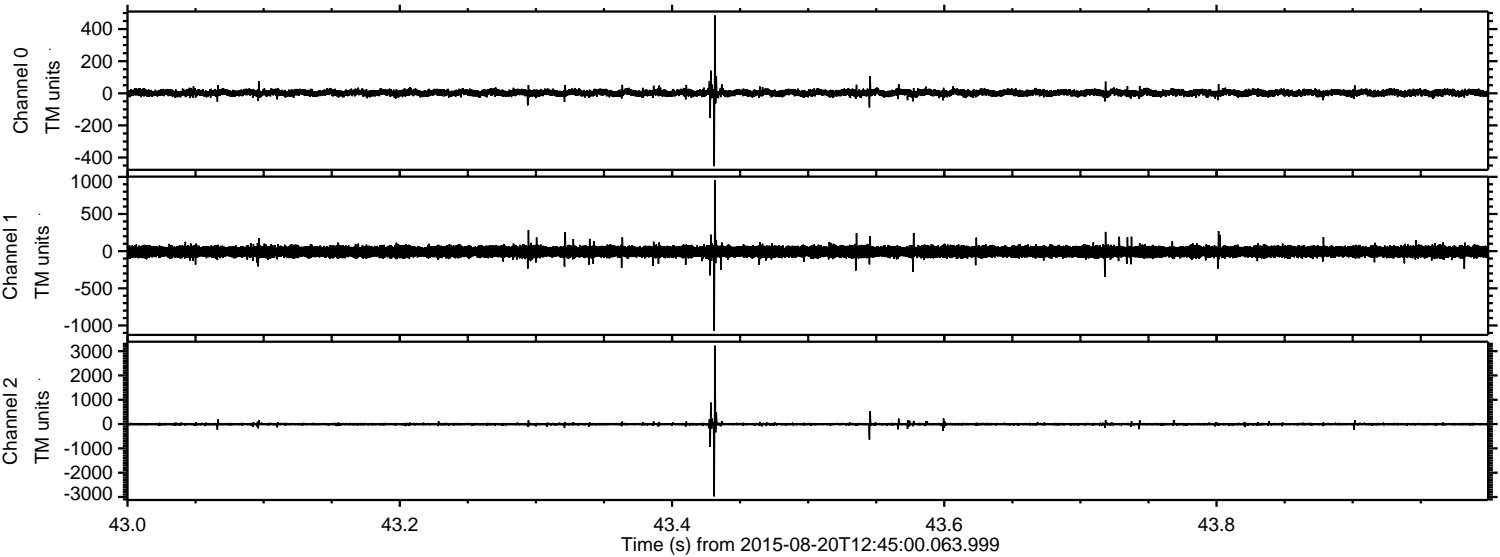
Channel 0  
mn: -392  
mx: 856  
 $\mu$ : 2.8  
 $\sigma$ : 11.6

Channel 1  
mn: -534  
mx: 273  
 $\mu$ : -7.2  
 $\sigma$ : 36.1

Channel 2  
mn: -2439  
mx: 3300  
 $\mu$ : -5.2  
 $\sigma$ : 35.9

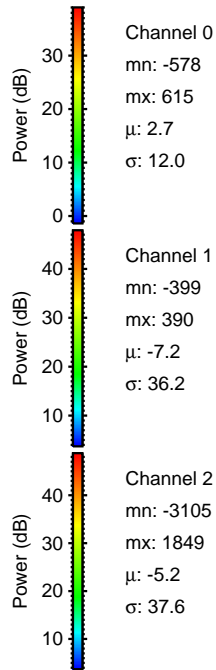
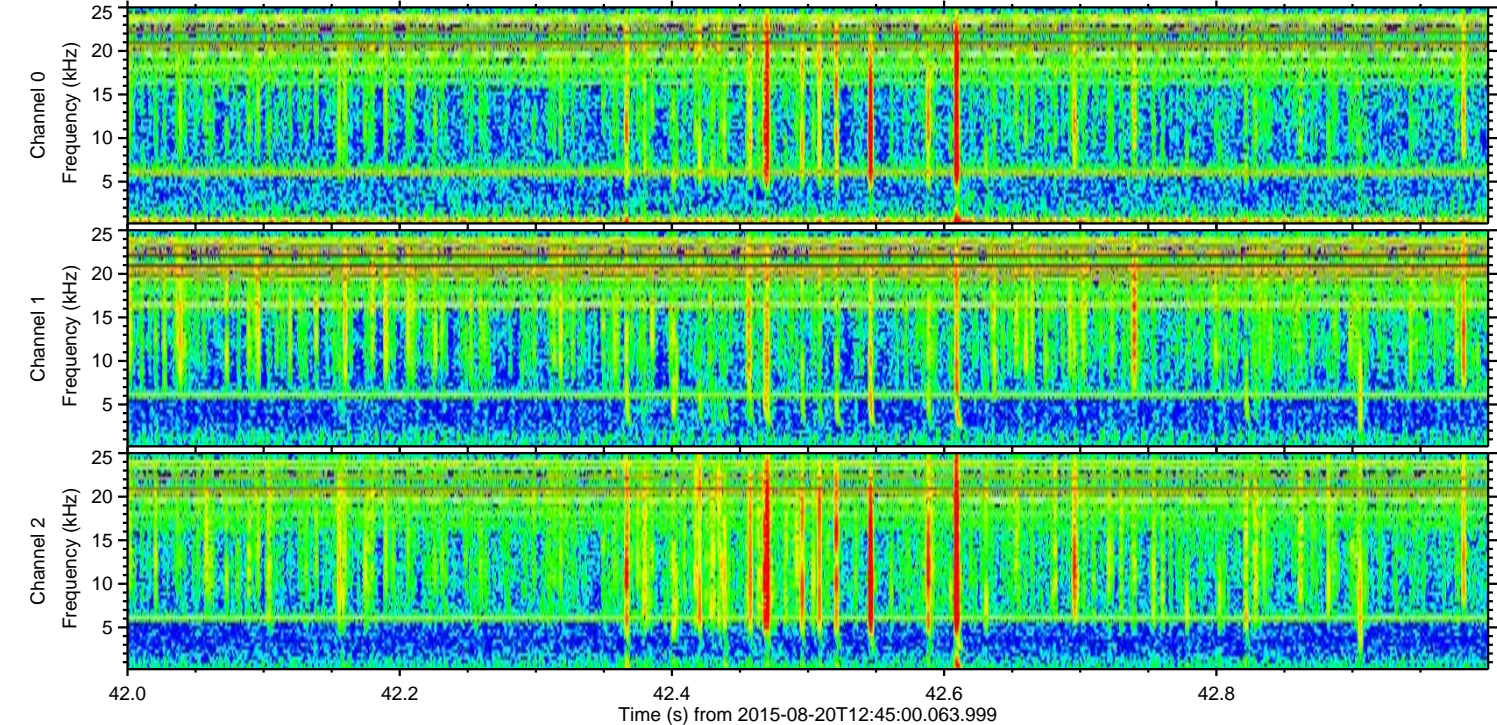
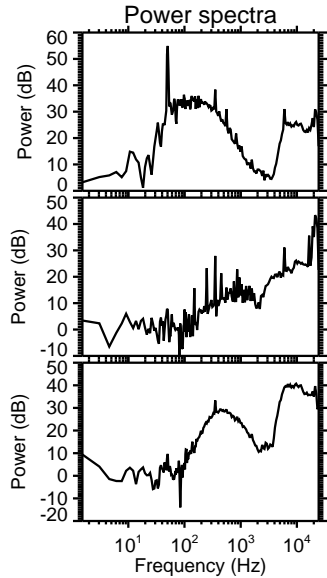
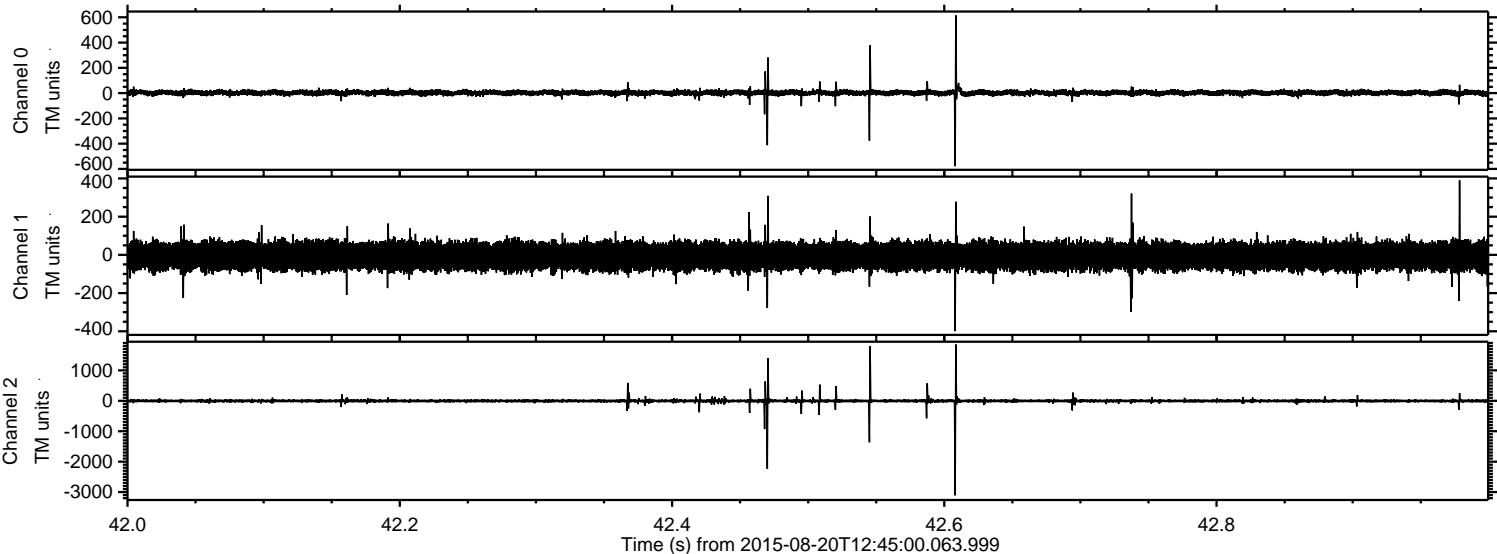


Processed Thu Aug 20 14:51:15 2015 by ELM ver.2012-10-06 from 001\_\_elm20150820\_124459\_\_dat00.bin





Processed Thu Aug 20 14:51:16 2015 by ELM ver.2012-10-06 from 001\_\_elm20150820\_124459\_\_dat00.bin





Processed Thu Aug 20 14:51:17 2015 by ELM ver.2012-10-06 from 001\_\_elm20150820\_124459\_\_dat00.bin

