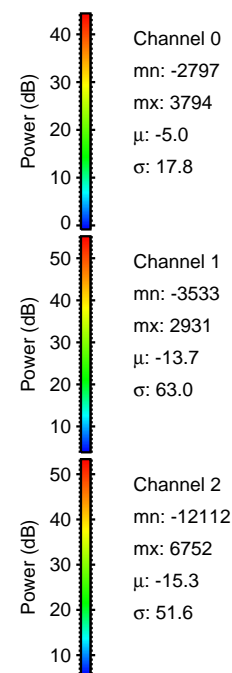
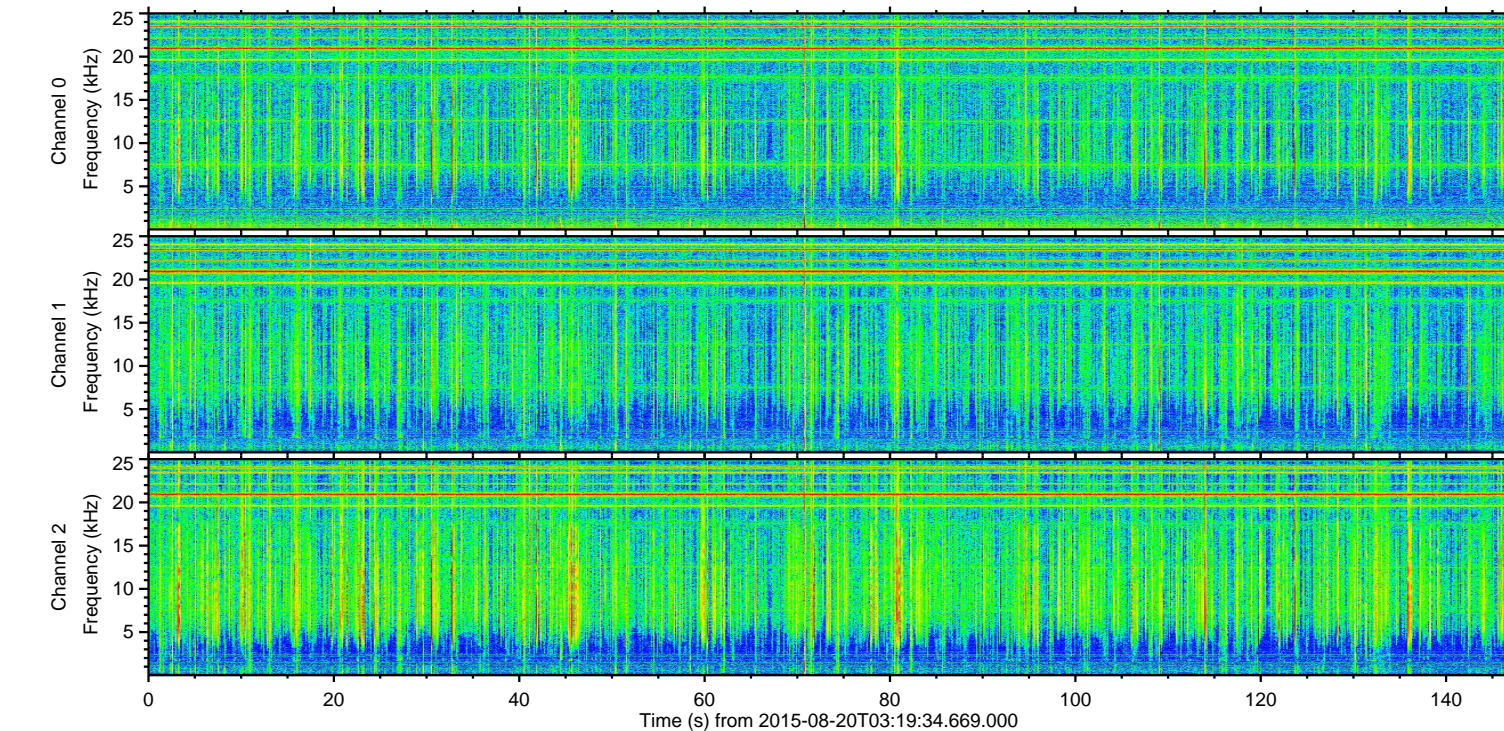
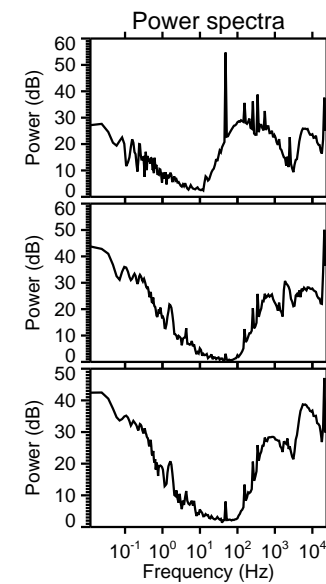
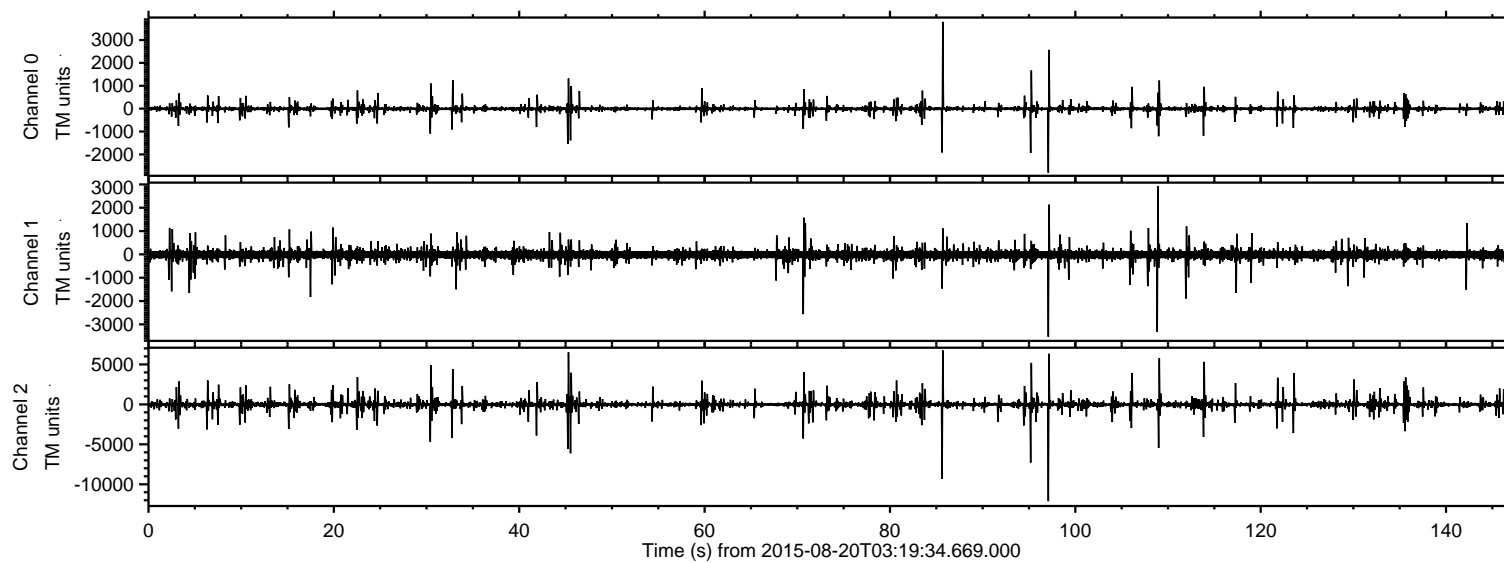


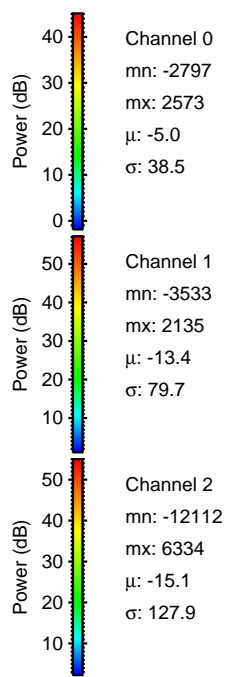
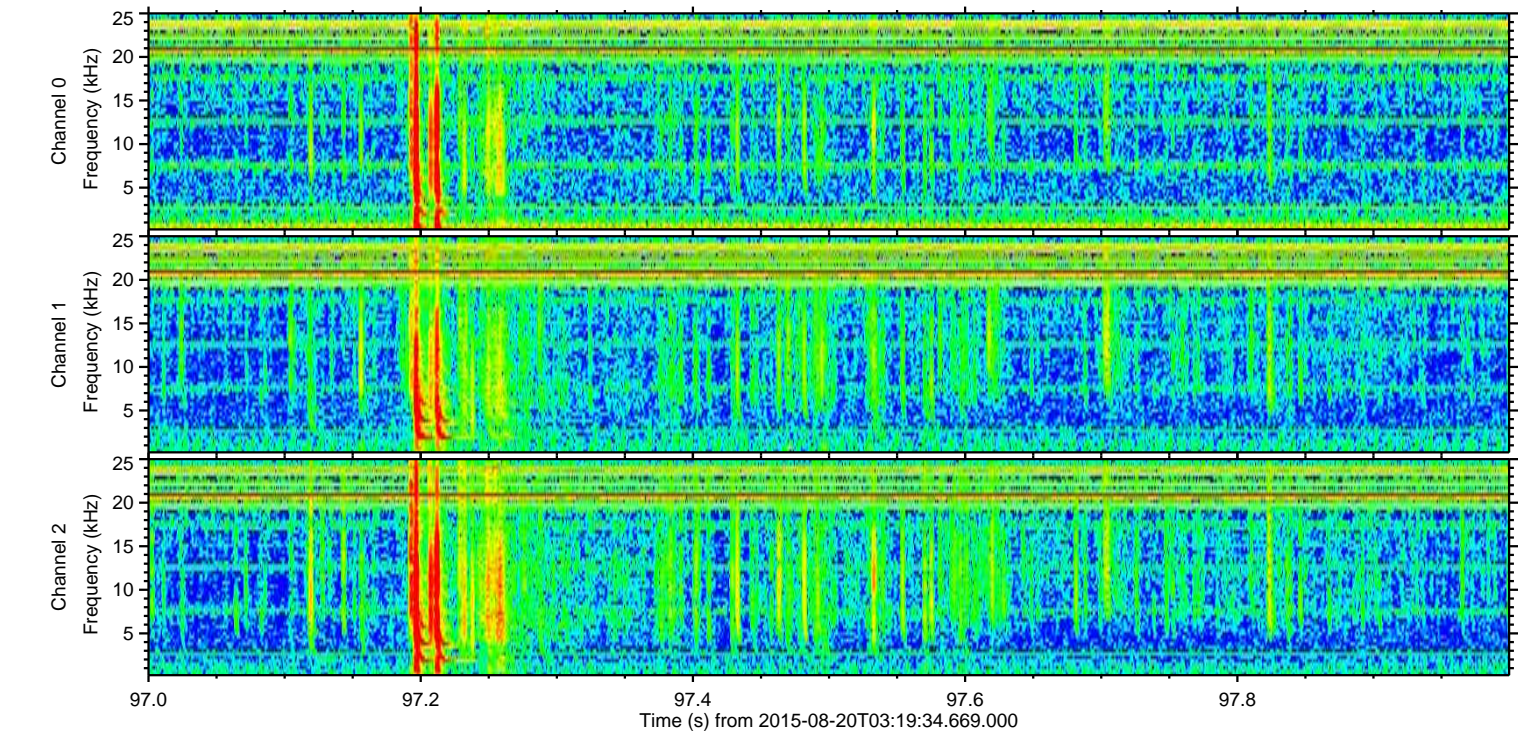
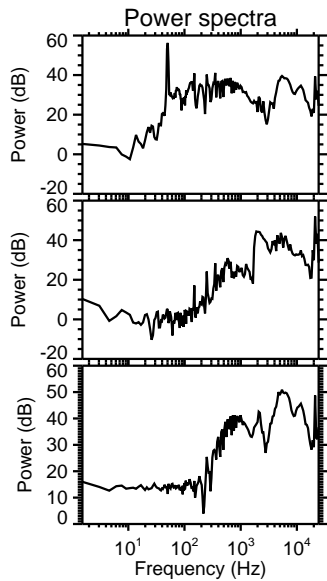
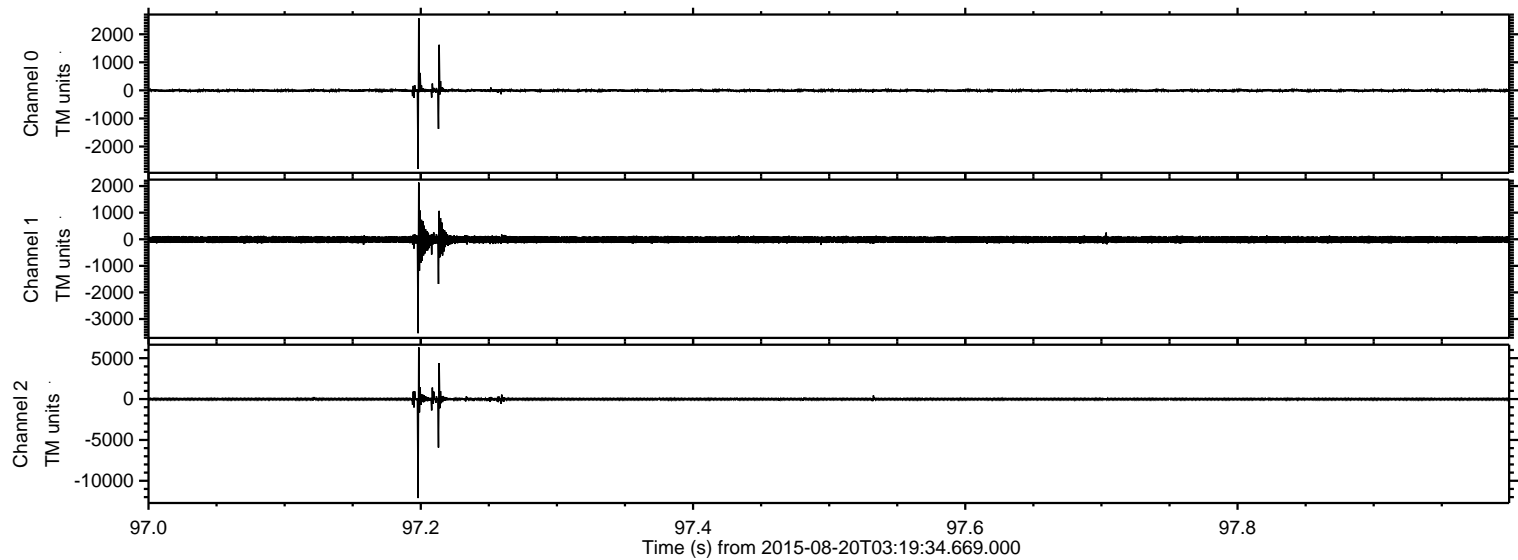
ELMAVAN 3D WAVEFORMS (Measured data sampled at 50 kHz) 51000 packets of 144 samples from 2015-08-20T03:19:34.669.000.

Processed Thu Aug 20 05:26:14 2015 by ELM ver.2012-10-06 from 001\_\_elm20150820\_031933\_\_dat00.bin



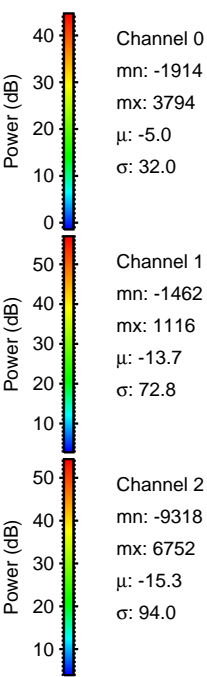
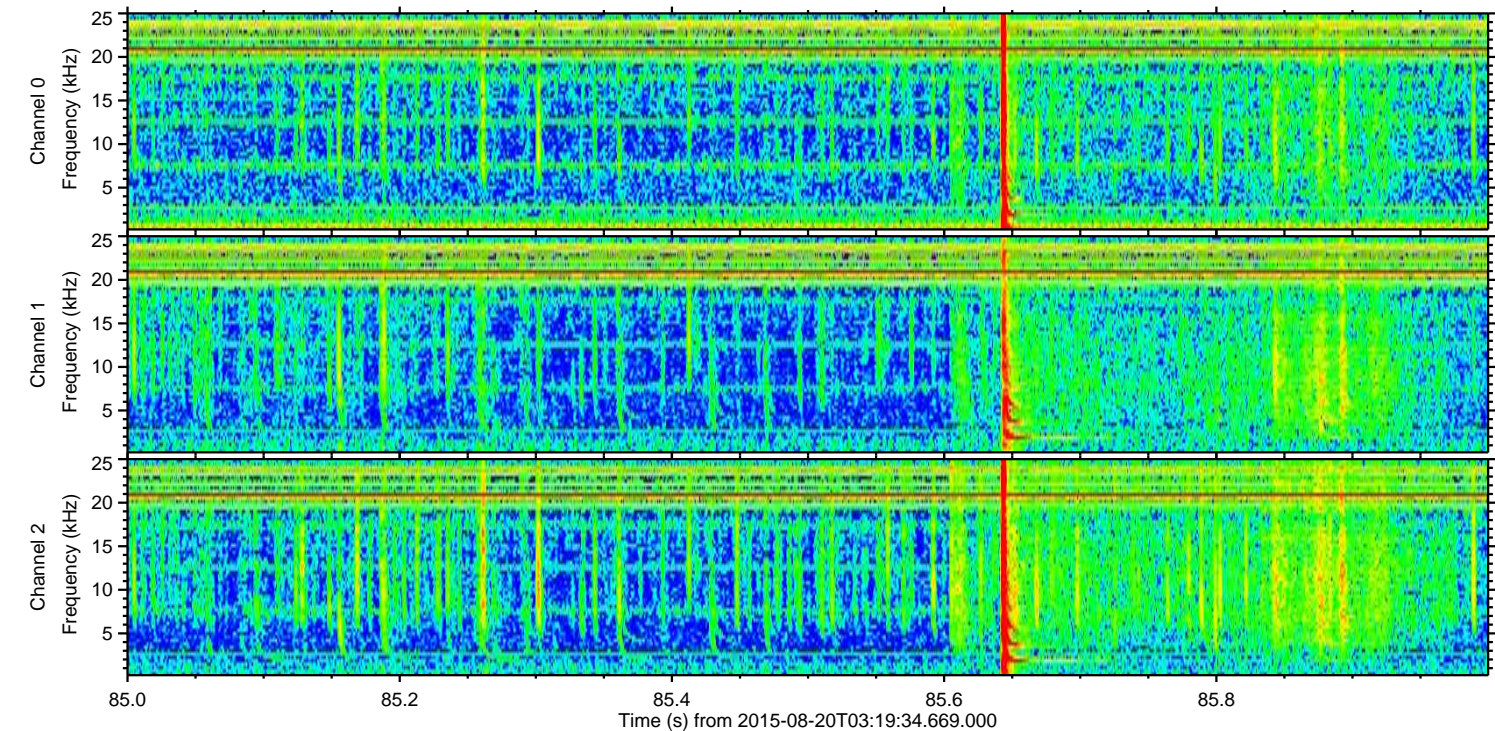
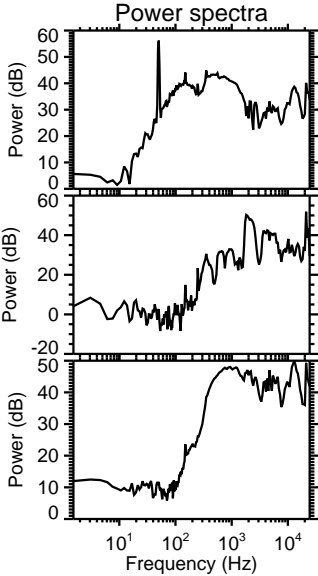
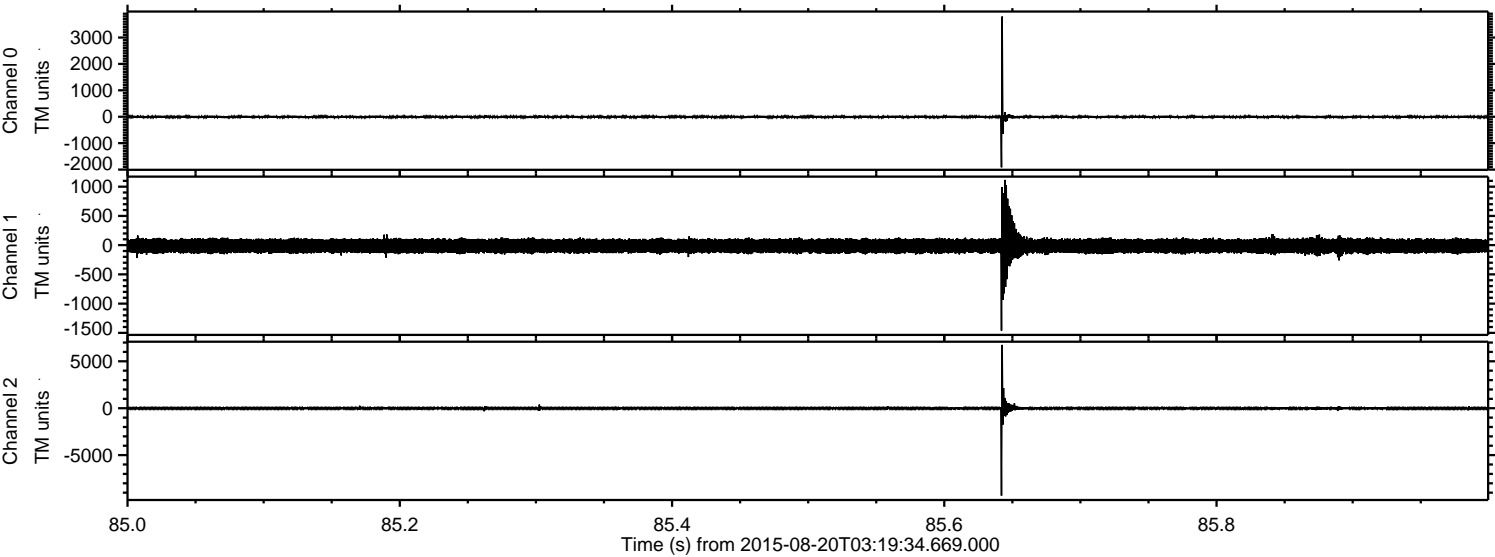


Processed Thu Aug 20 05:26:25 2015 by ELM ver.2012-10-06 from 001\_\_elm20150820\_031933\_\_dat00.bin



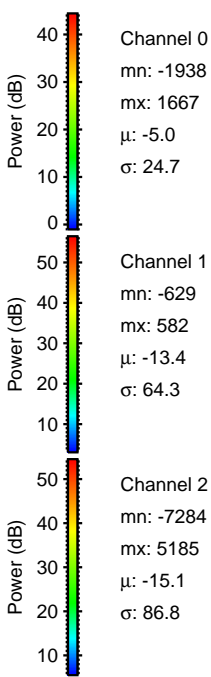
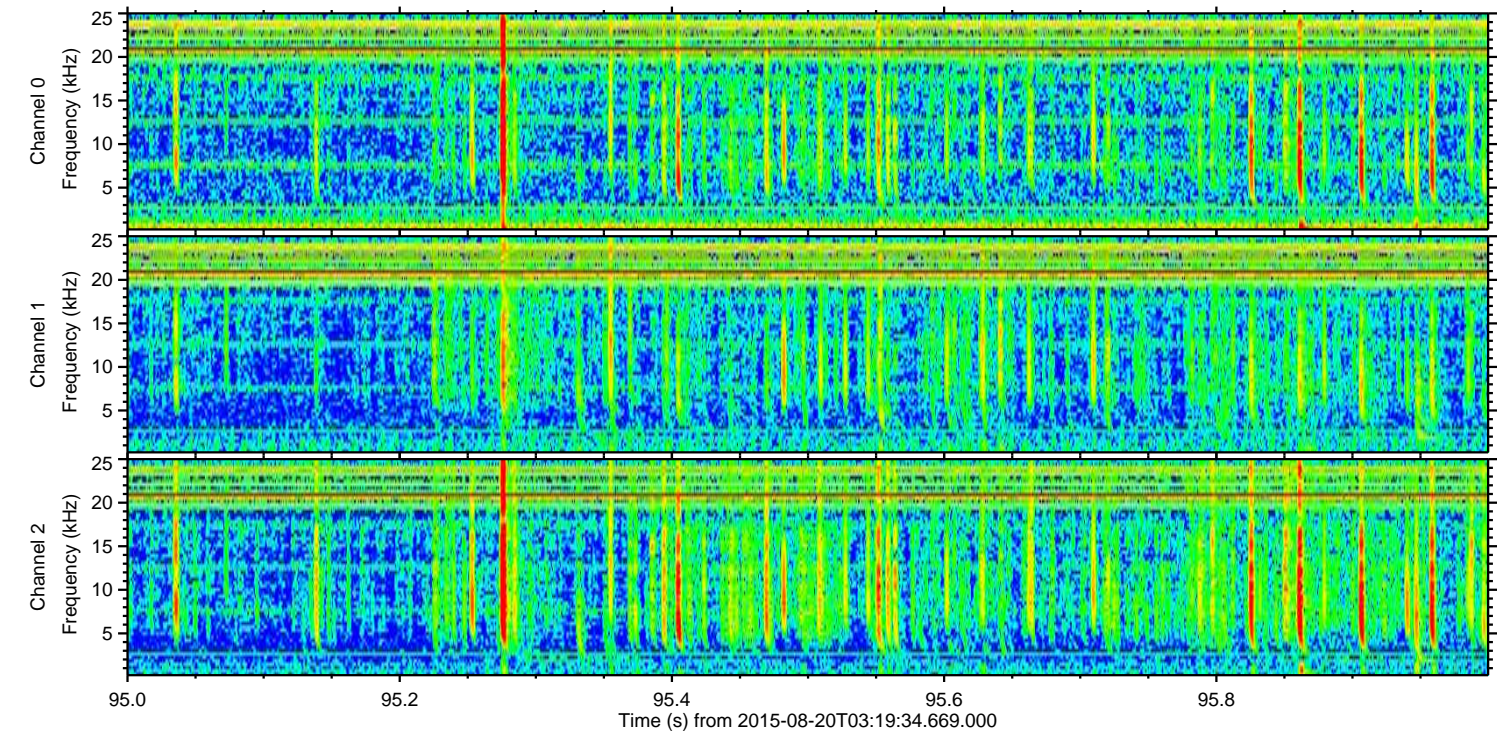
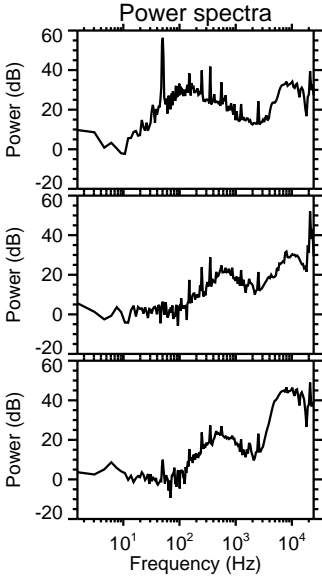
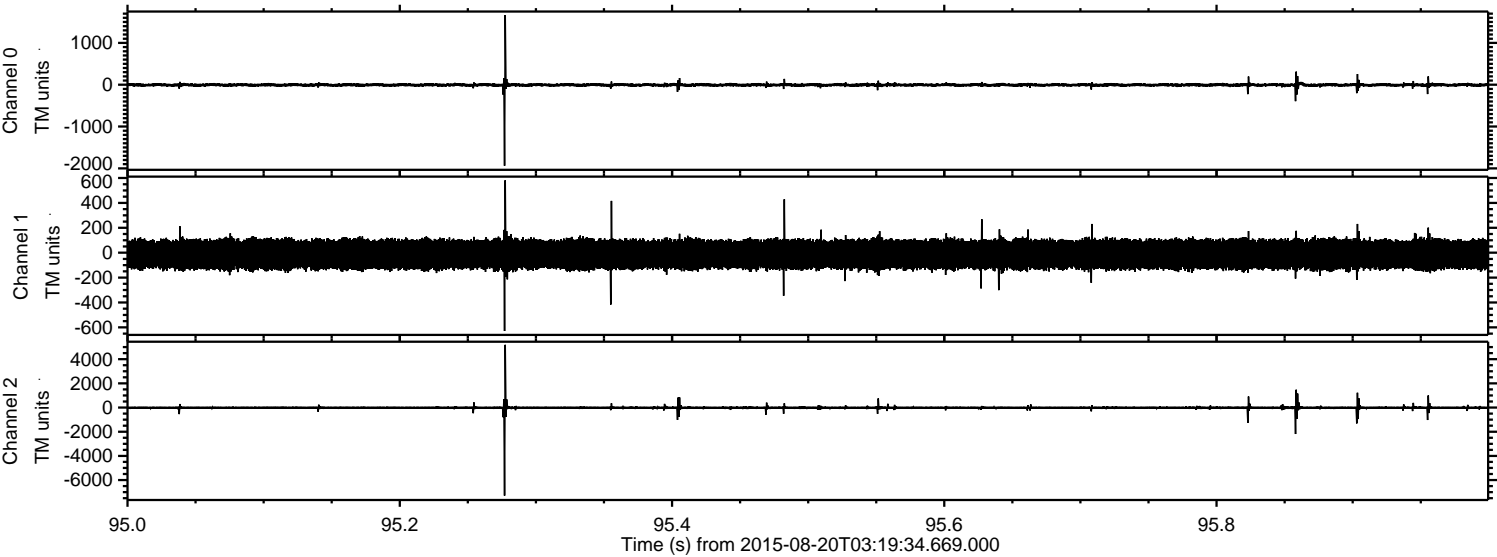


Processed Thu Aug 20 05:26:26 2015 by ELM ver.2012-10-06 from 001\_\_elm20150820\_031933\_\_dat00.bin





Processed Thu Aug 20 05:26:27 2015 by ELM ver.2012-10-06 from 001\_\_elm20150820\_031933\_\_dat00.bin



Channel 0  
mn: -1938  
mx: 1667  
 $\mu$ : -5.0  
 $\sigma$ : 24.7

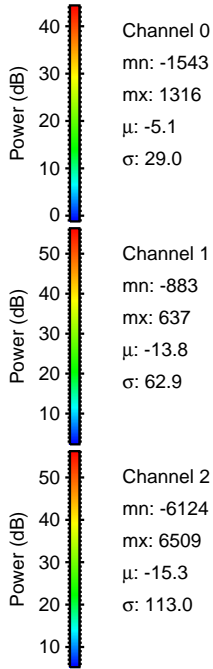
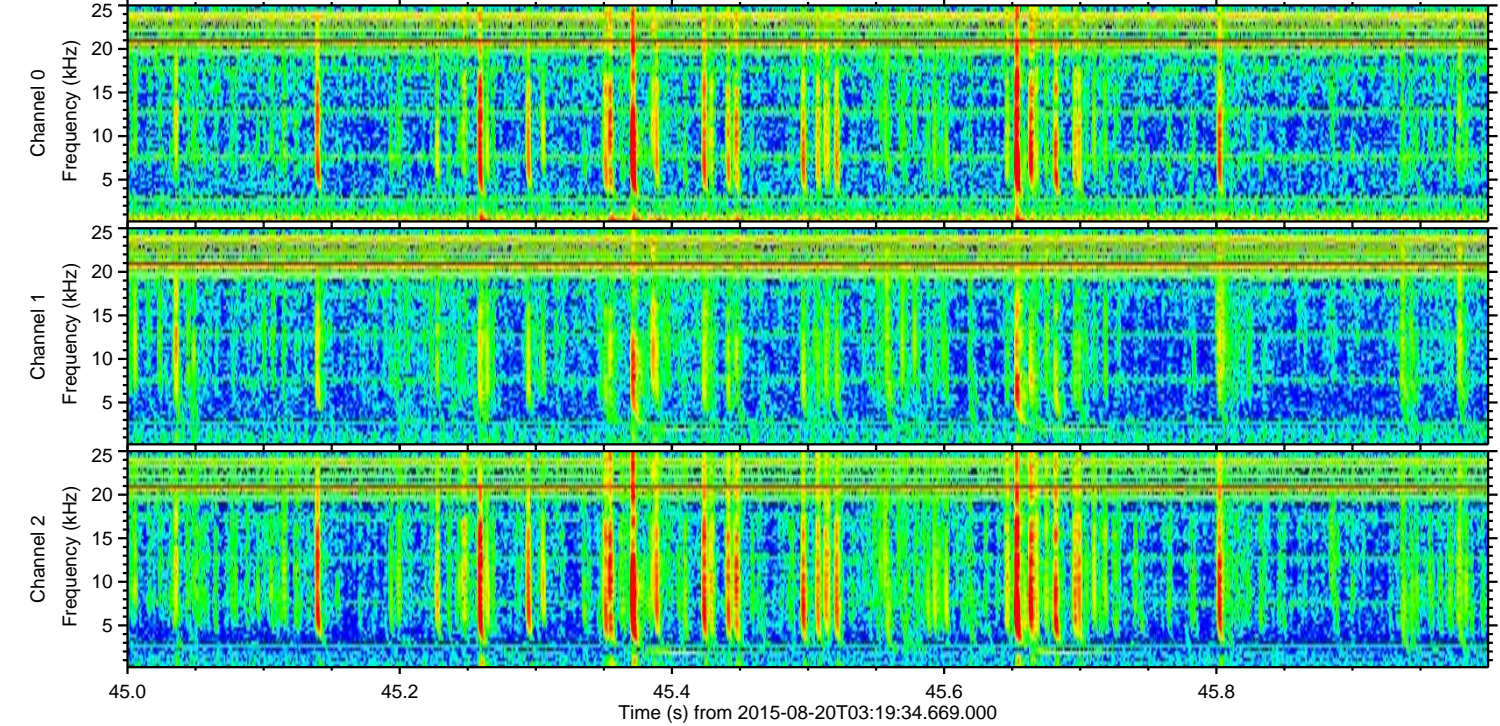
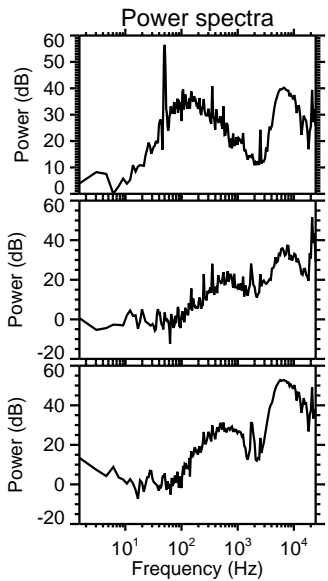
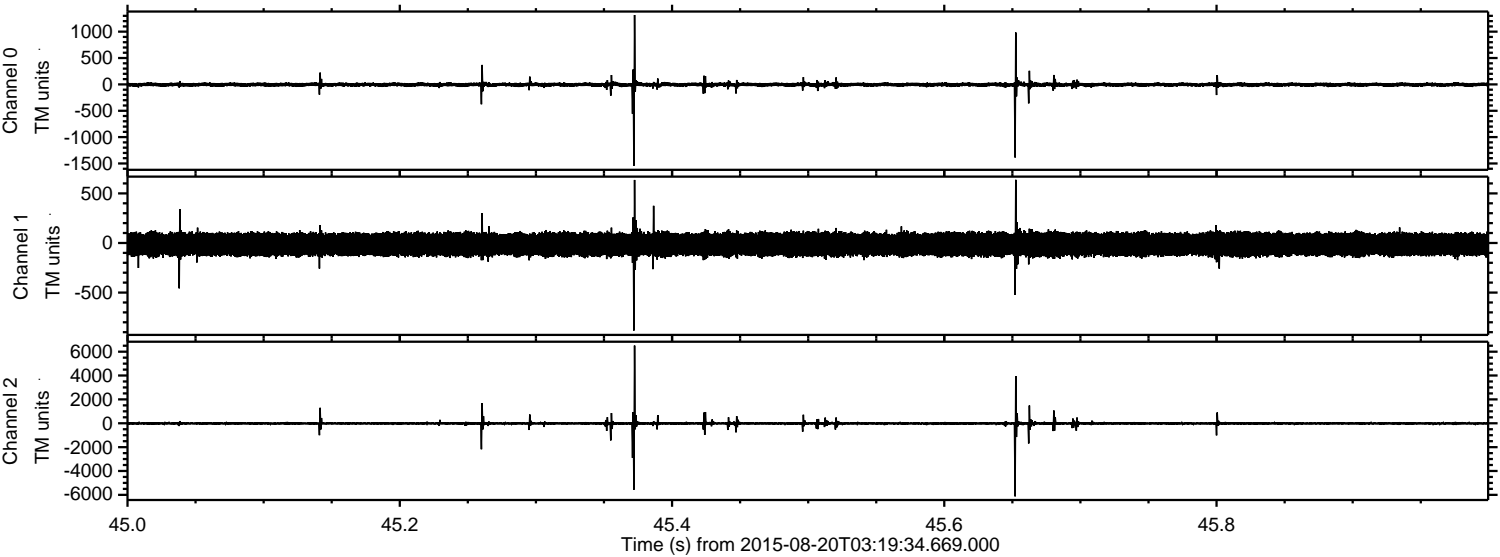
Channel 1  
mn: -629  
mx: 582  
 $\mu$ : -13.4  
 $\sigma$ : 64.3

Channel 2  
mn: -7284  
mx: 5185  
 $\mu$ : -15.1  
 $\sigma$ : 86.8



ELMAVAN 3D WAVEFORMS (Measured data sampled at 50 kHz) 51000 packets of 144 samples from 2015-08-20T03:19:34.669.000. Part 46/147

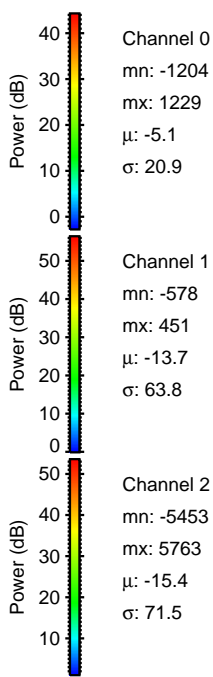
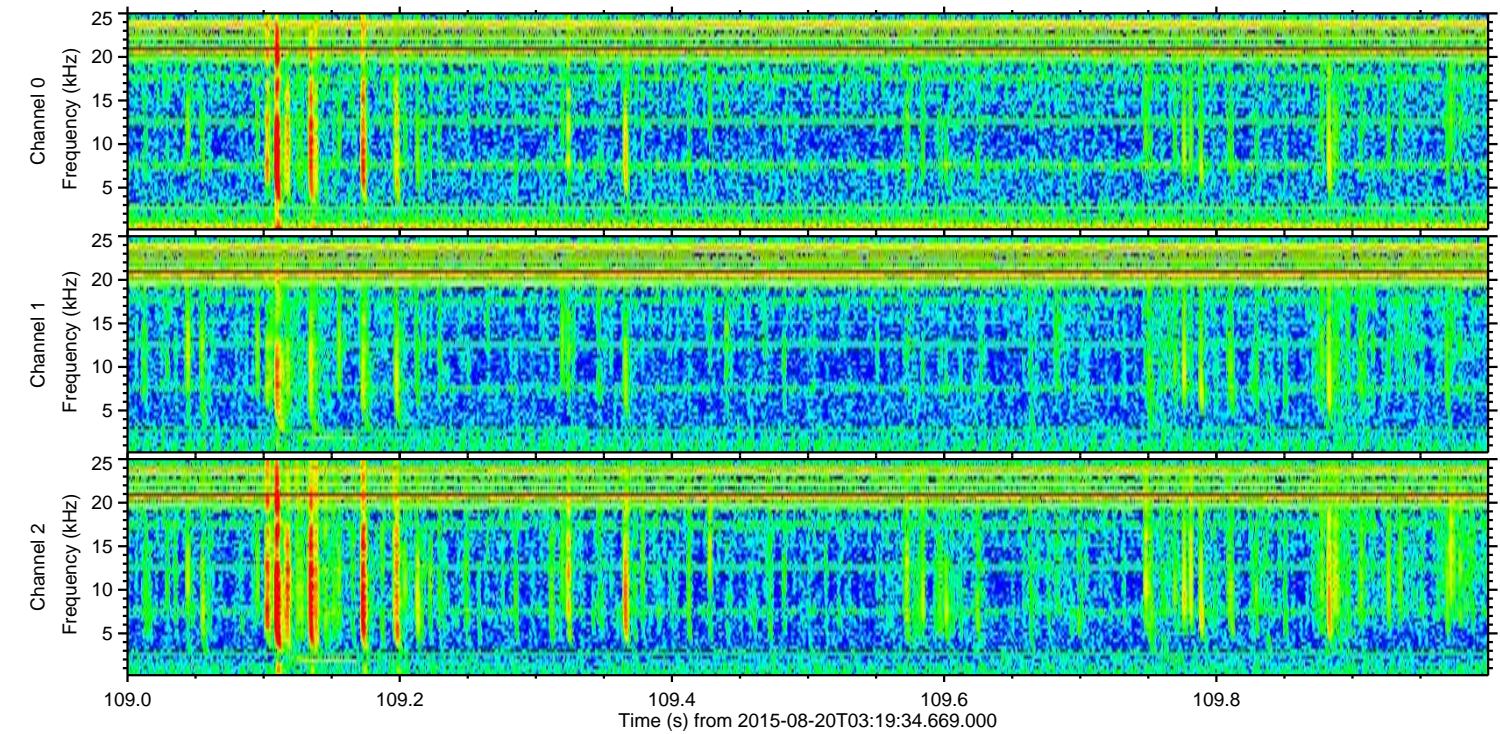
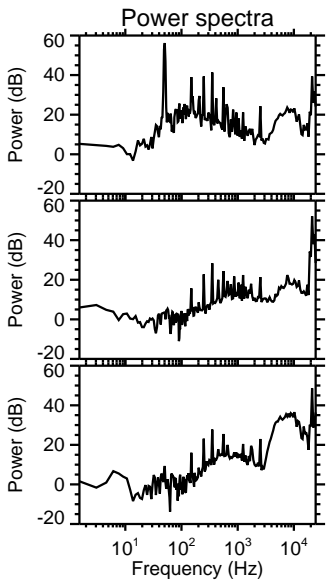
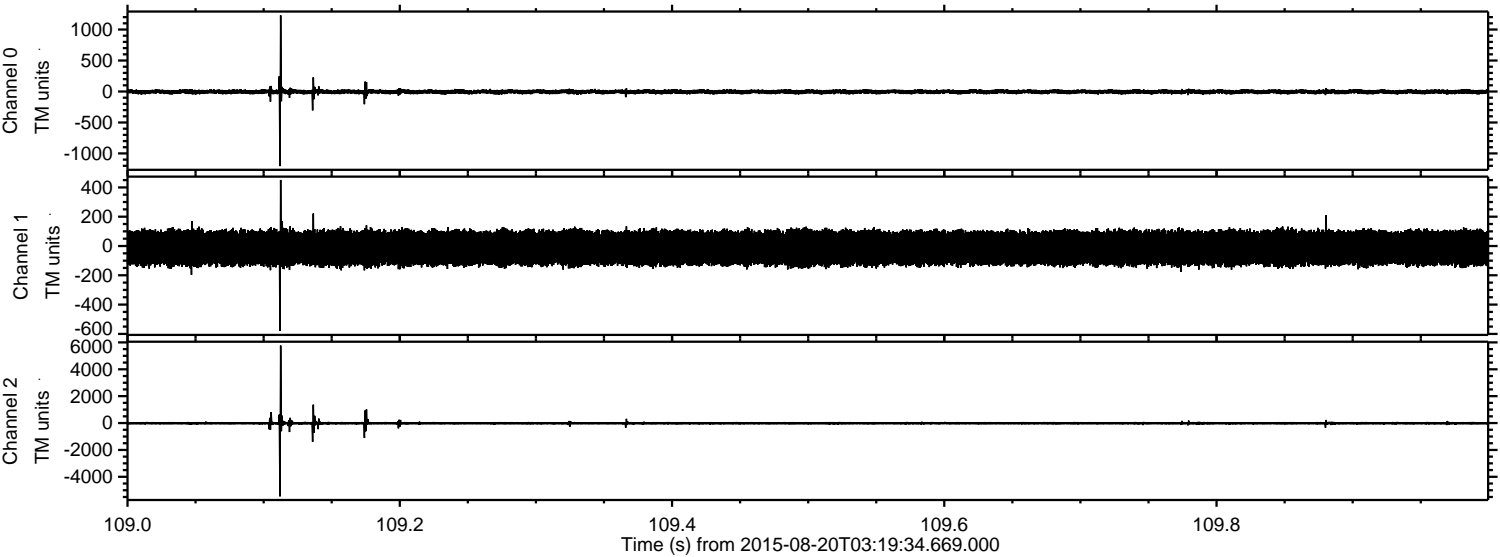
Processed Thu Aug 20 05:26:28 2015 by ELM ver.2012-10-06 from 001\_\_elm20150820\_031933\_\_dat00.bin





ELMAVAN 3D WAVEFORMS (Measured data sampled at 50 kHz) 51000 packets of 144 samples from 2015-08-20T03:19:34.669.000. Part 110/147

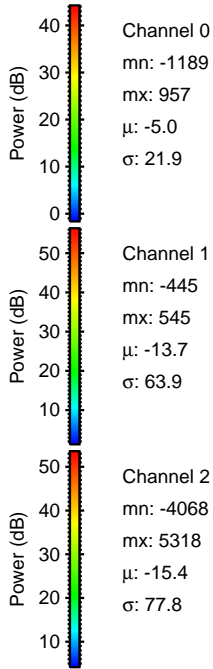
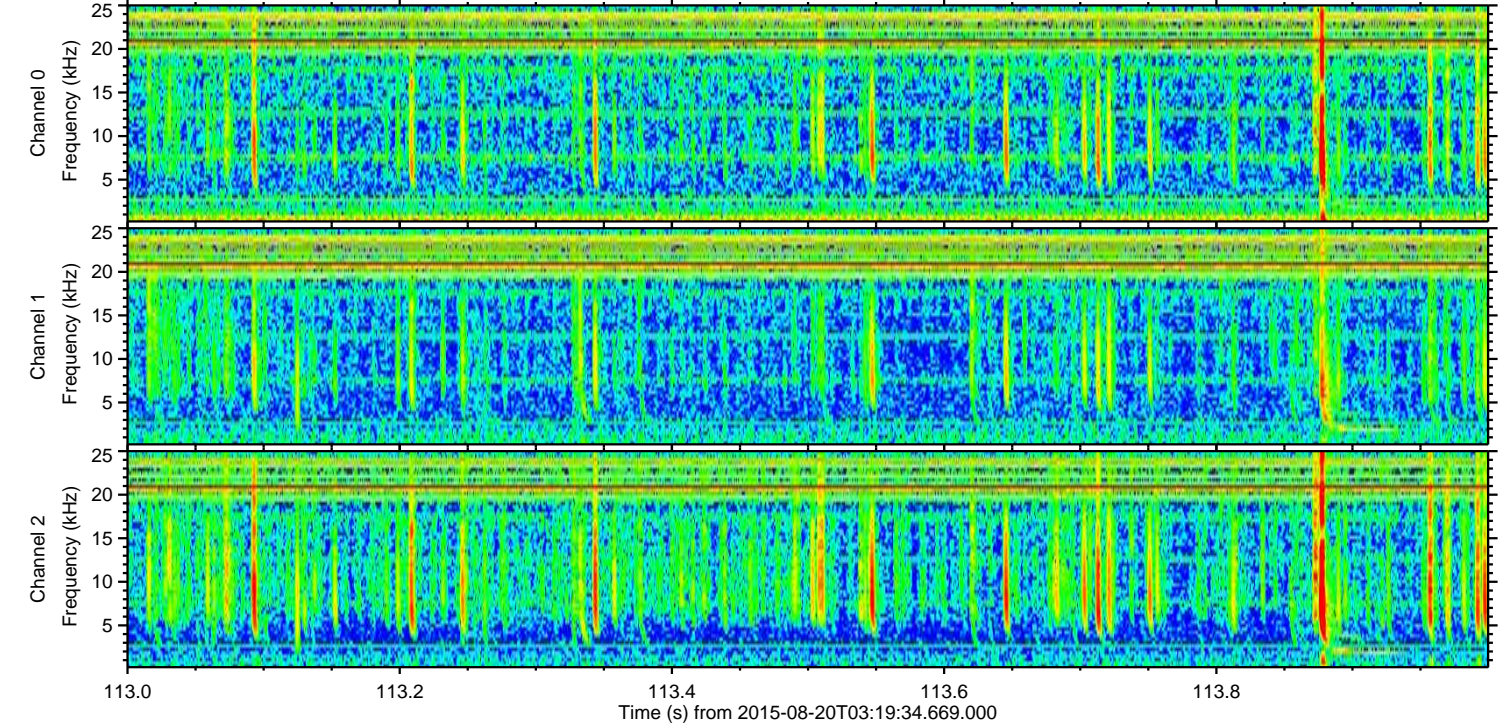
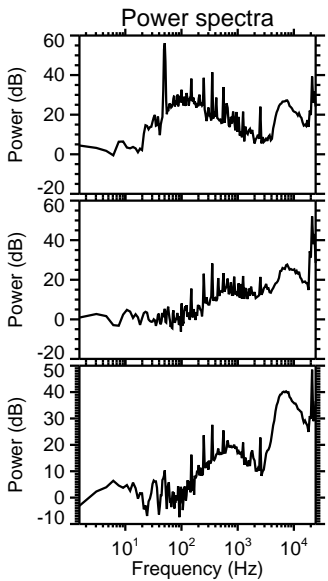
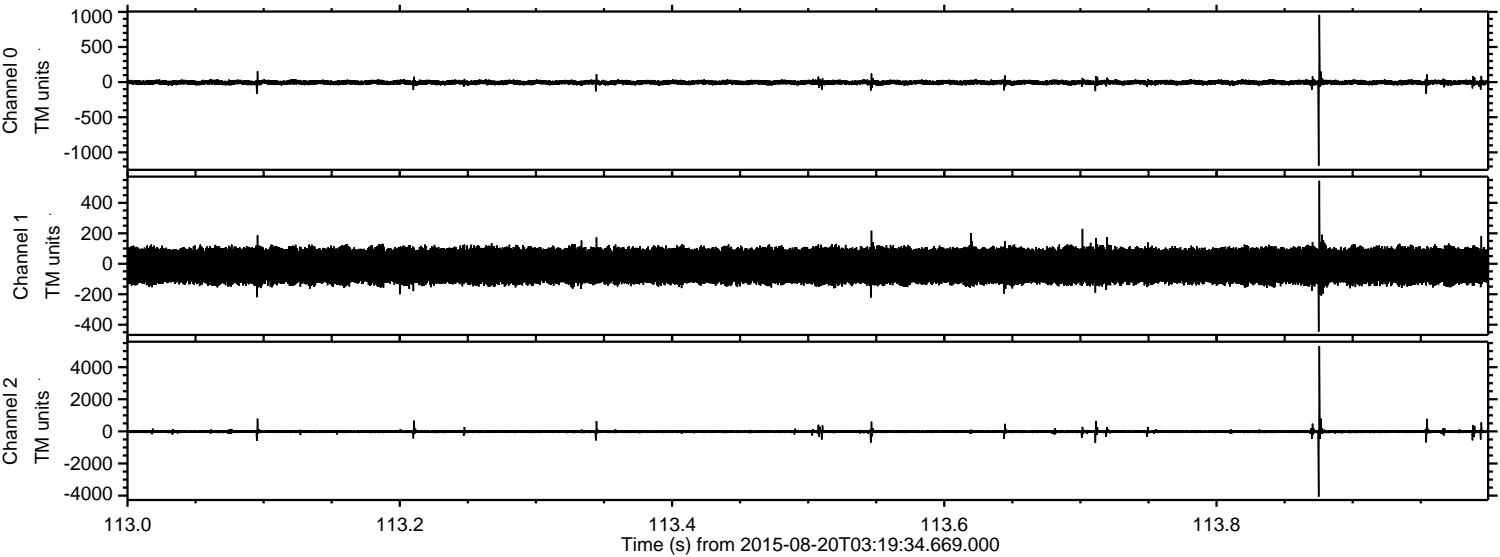
Processed Thu Aug 20 05:26:29 2015 by ELM ver.2012-10-06 from 001\_\_elm20150820\_031933\_\_dat00.bin





ELMAVAN 3D WAVEFORMS (Measured data sampled at 50 kHz) 51000 packets of 144 samples from 2015-08-20T03:19:34.669.000. Part 114/147

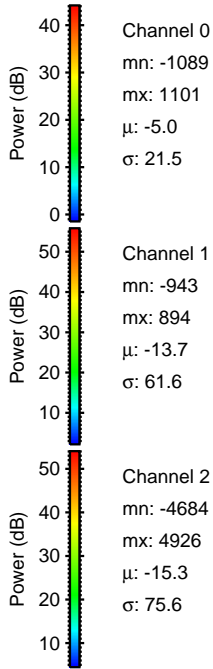
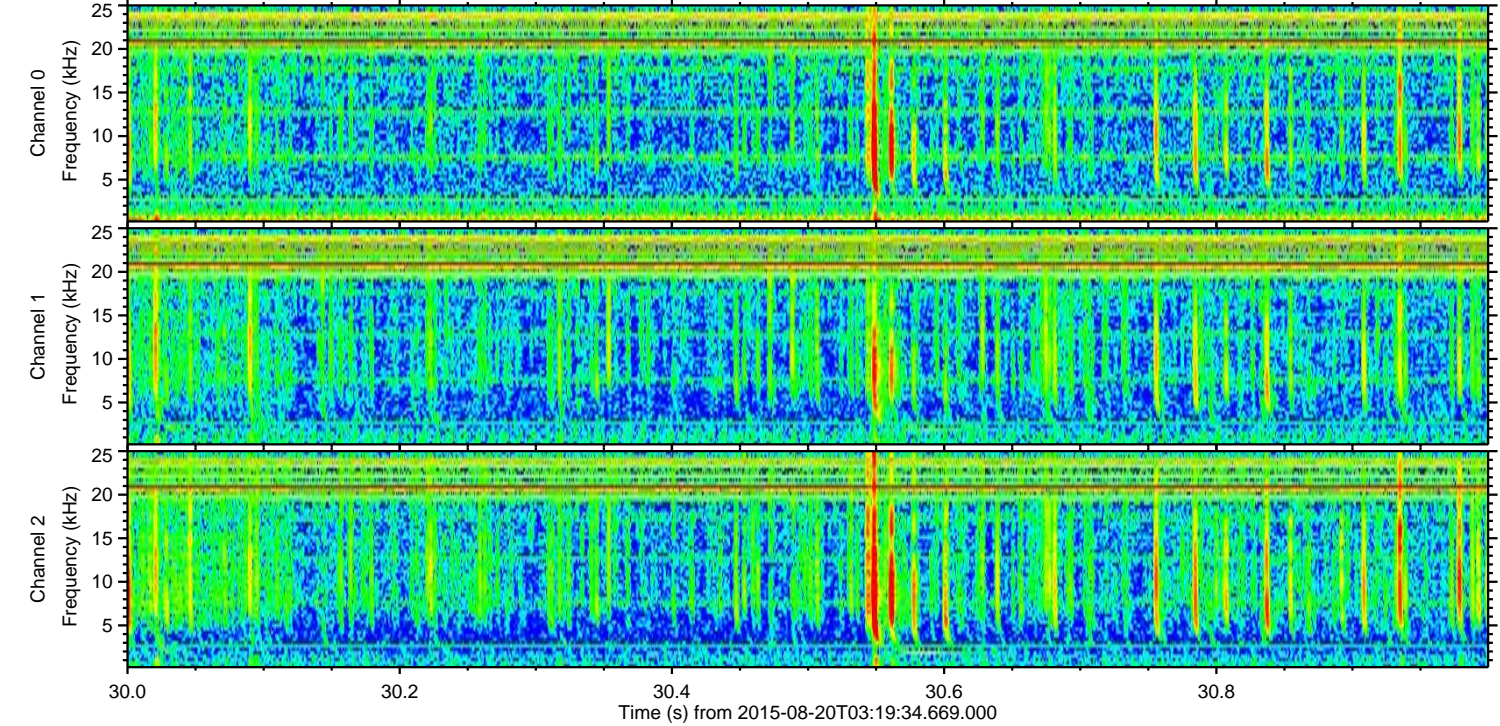
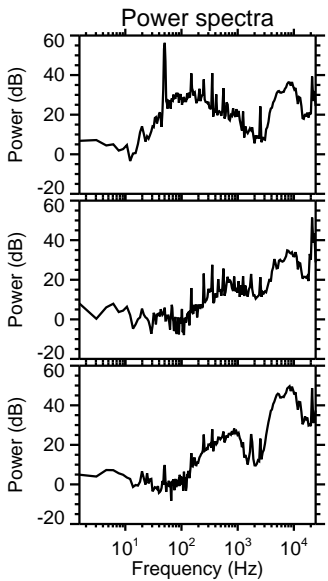
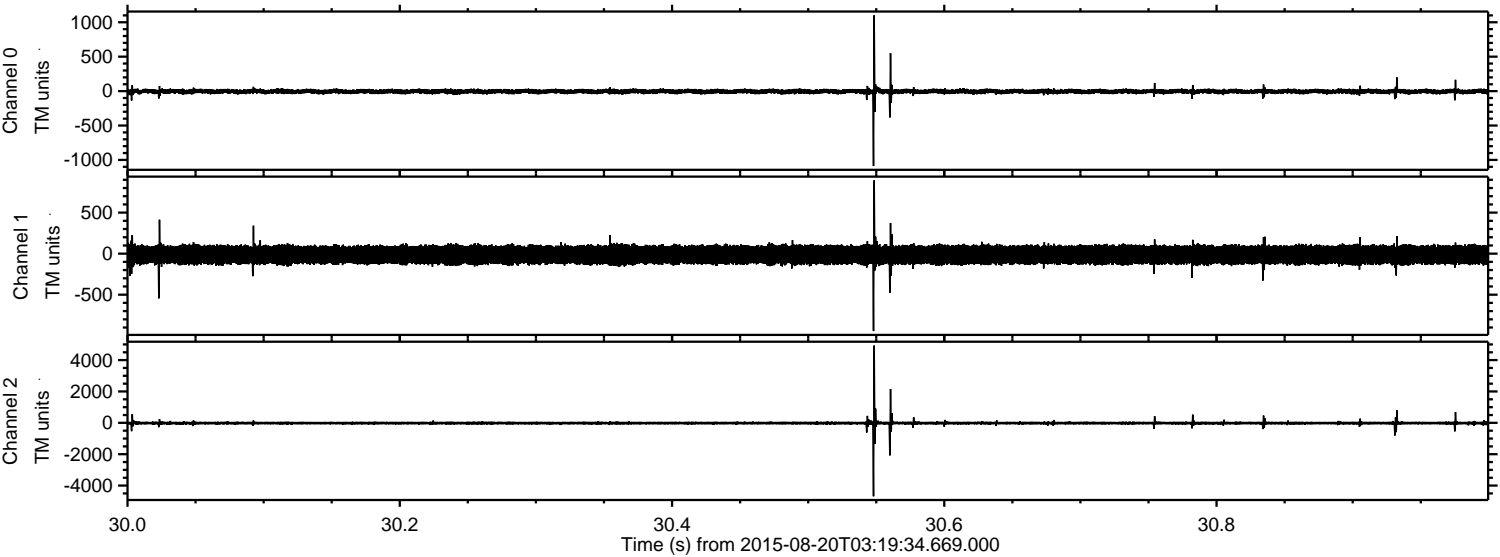
Processed Thu Aug 20 05:26:30 2015 by ELM ver.2012-10-06 from 001\_\_elm20150820\_031933\_\_dat00.bin





ELMAVAN 3D WAVEFORMS (Measured data sampled at 50 kHz) 51000 packets of 144 samples from 2015-08-20T03:19:34.669.000. Part 31/147

Processed Thu Aug 20 05:26:31 2015 by ELM ver.2012-10-06 from 001\_\_elm20150820\_031933\_\_dat00.bin



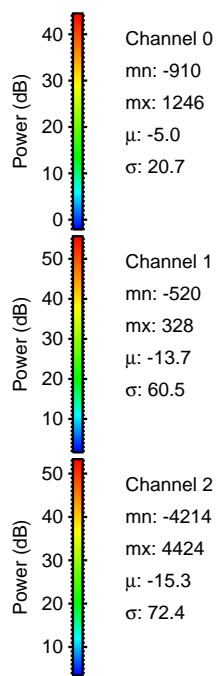
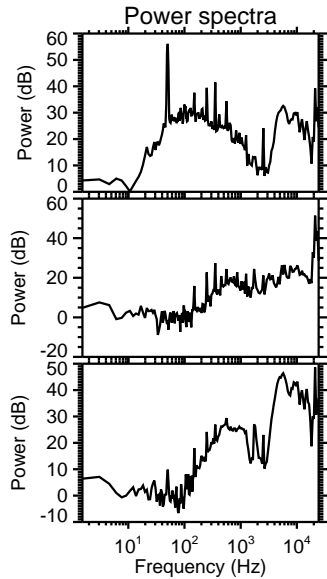
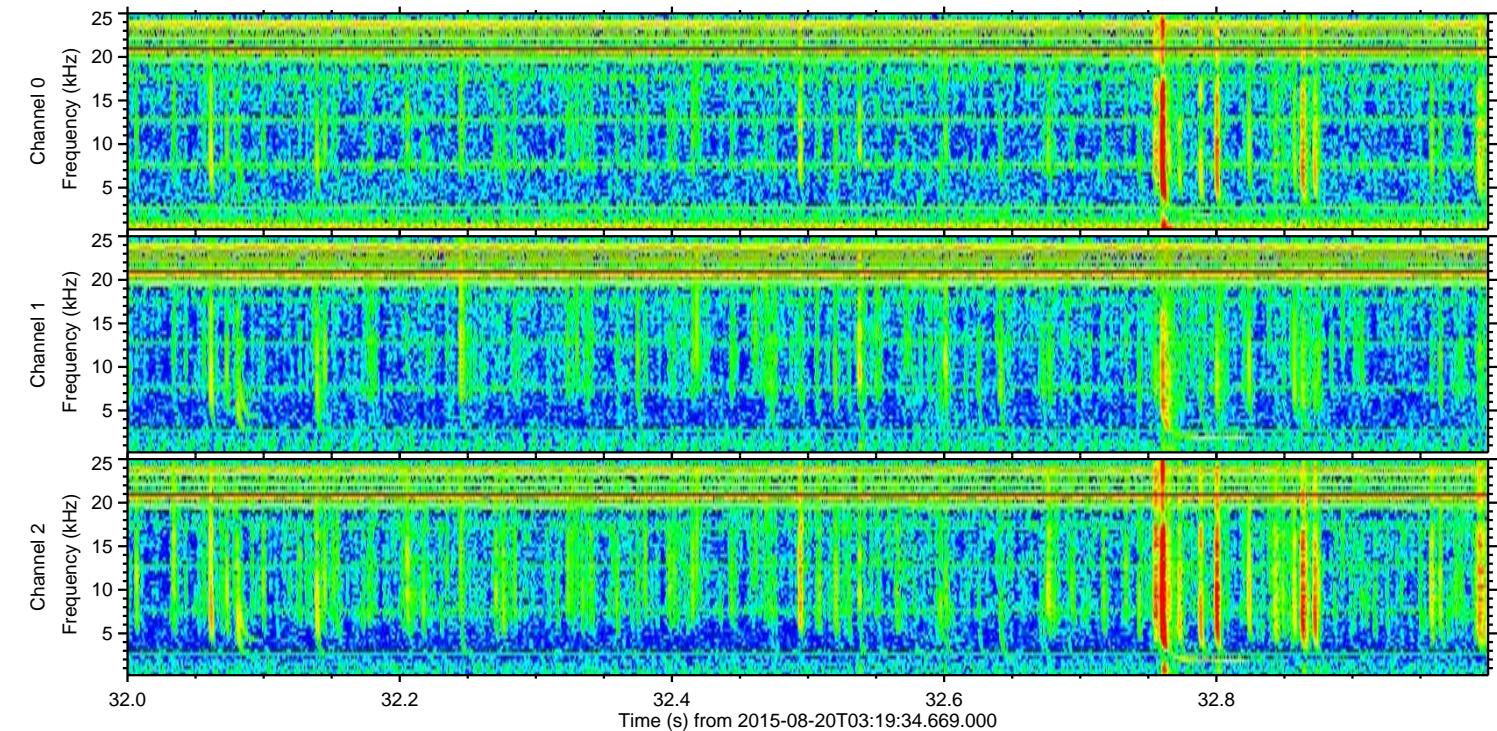
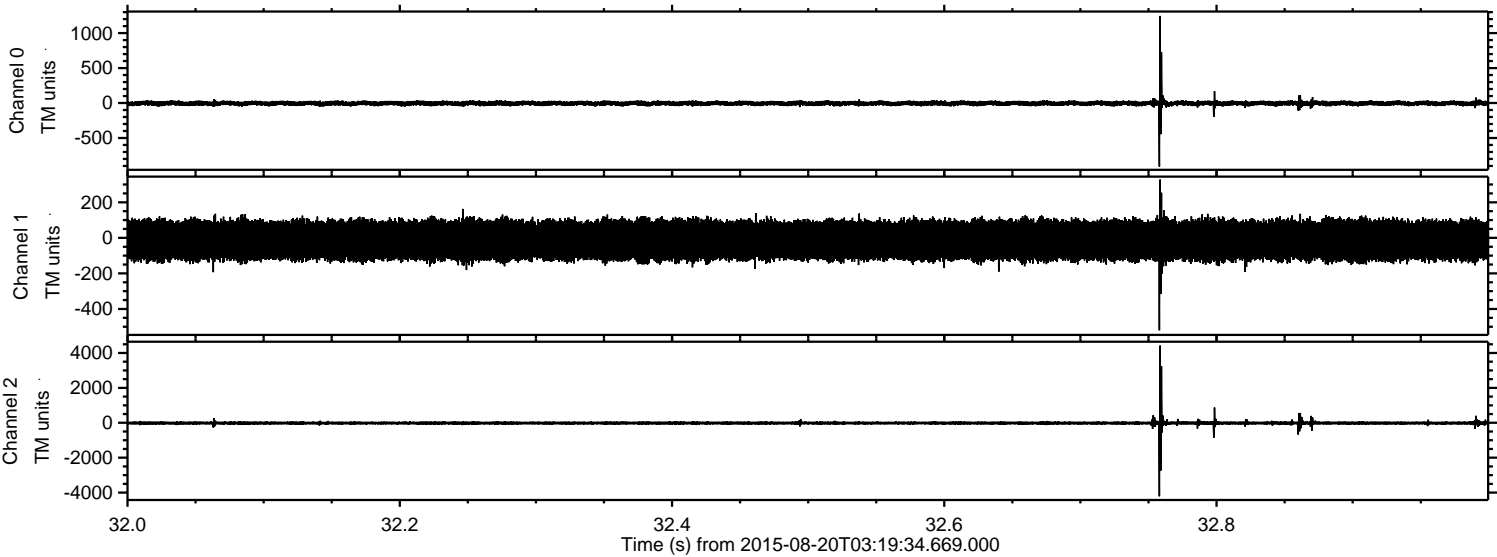
Channel 0  
mn: -1089  
mx: 1101  
 $\mu$ : -5.0  
 $\sigma$ : 21.5

Channel 1  
mn: -943  
mx: 894  
 $\mu$ : -13.7  
 $\sigma$ : 61.6

Channel 2  
mn: -4684  
mx: 4926  
 $\mu$ : -15.3  
 $\sigma$ : 75.6

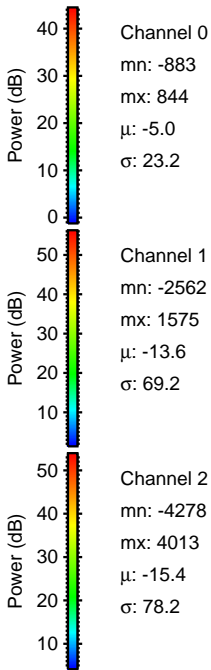
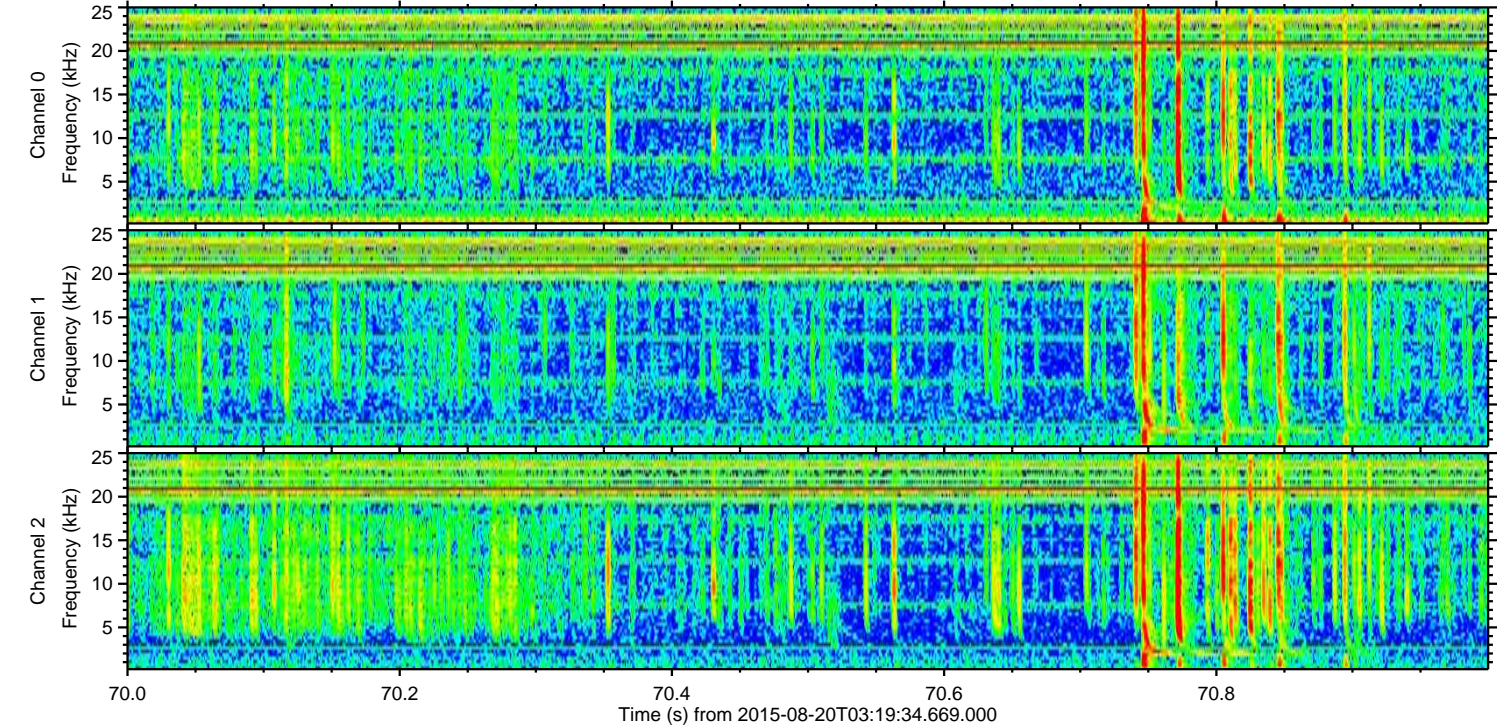
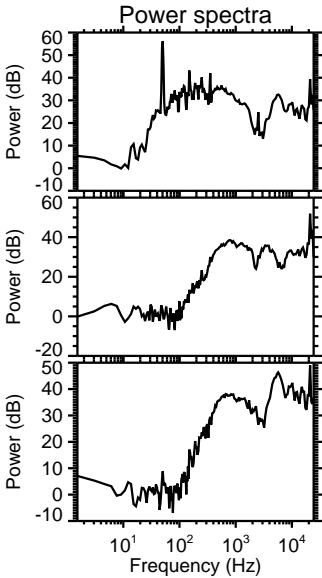
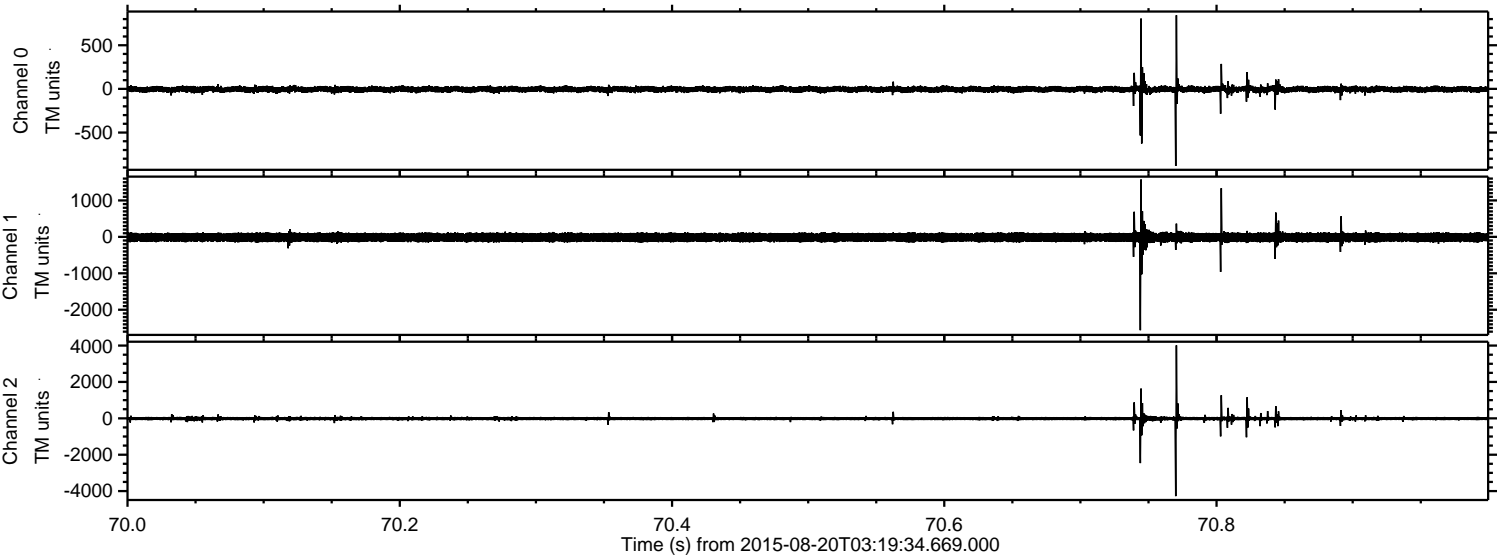


Processed Thu Aug 20 05:26:32 2015 by ELM ver.2012-10-06 from 001\_\_elm20150820\_031933\_\_dat00.bin





Processed Thu Aug 20 05:26:33 2015 by ELM ver.2012-10-06 from 001\_\_elm20150820\_031933\_\_dat00.bin





Processed Thu Aug 20 05:26:34 2015 by ELM ver.2012-10-06 from 001\_\_elm20150820\_031933\_\_dat00.bin

