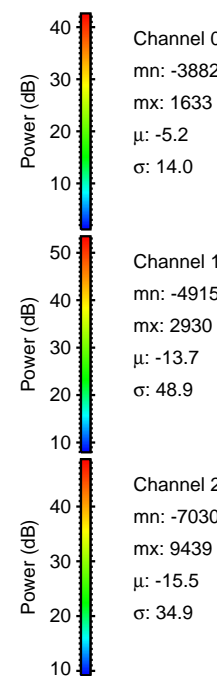
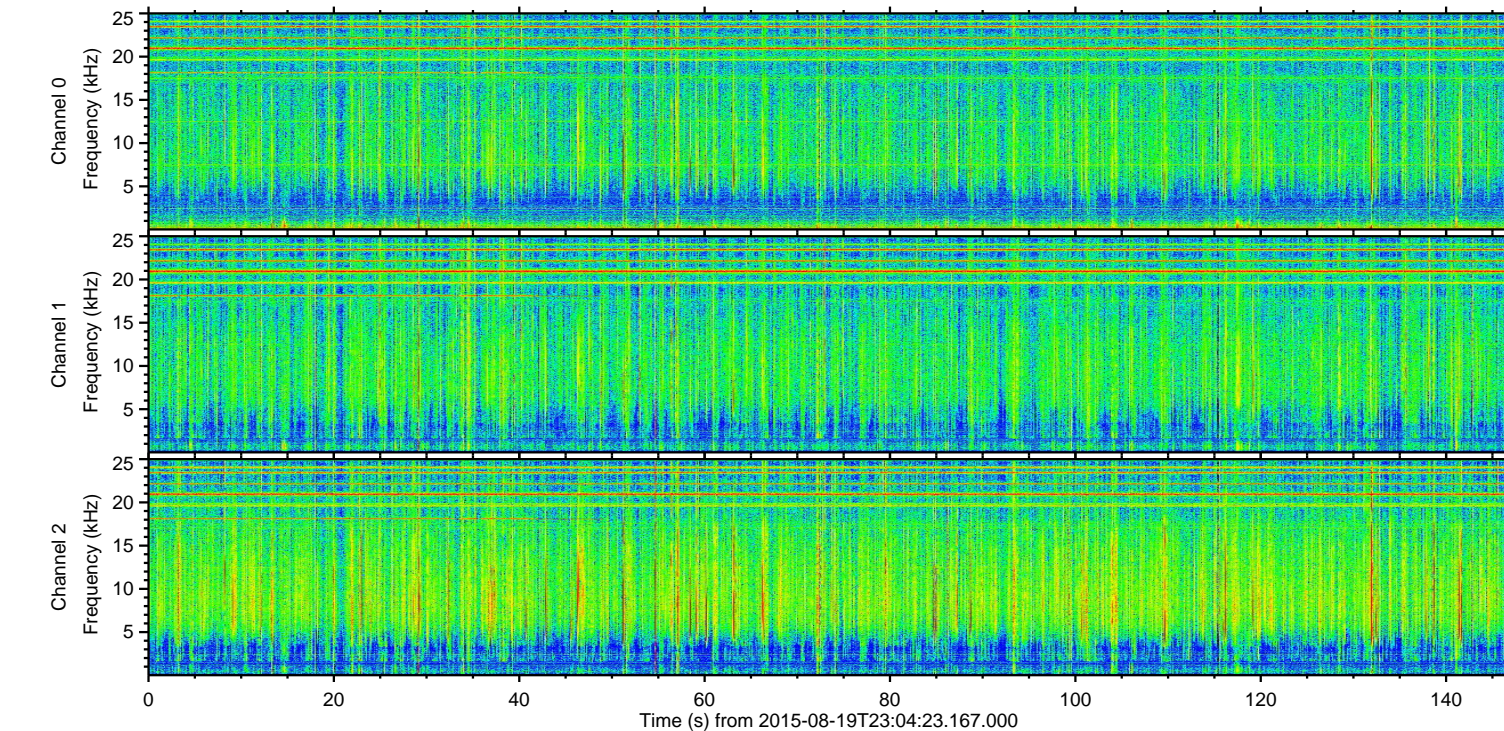
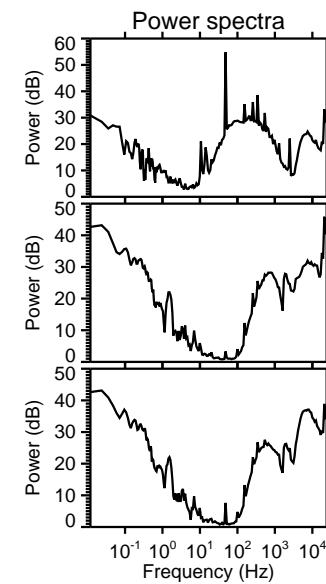
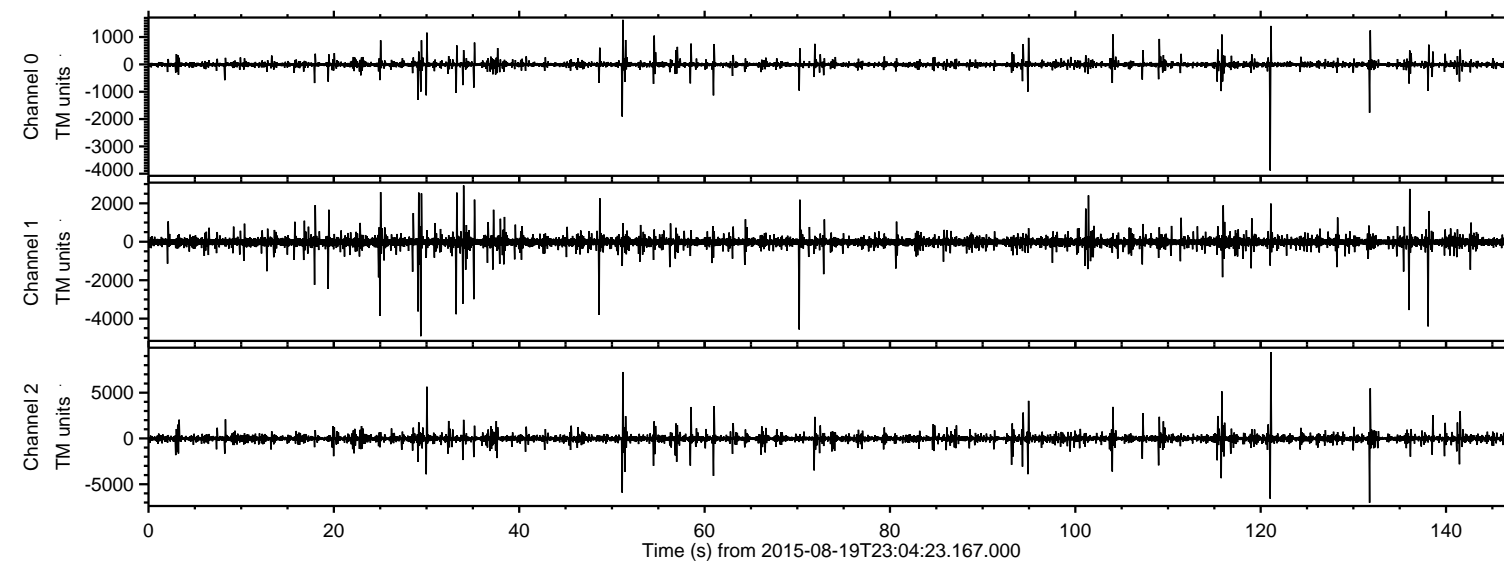


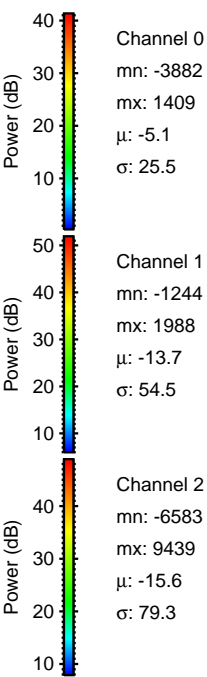
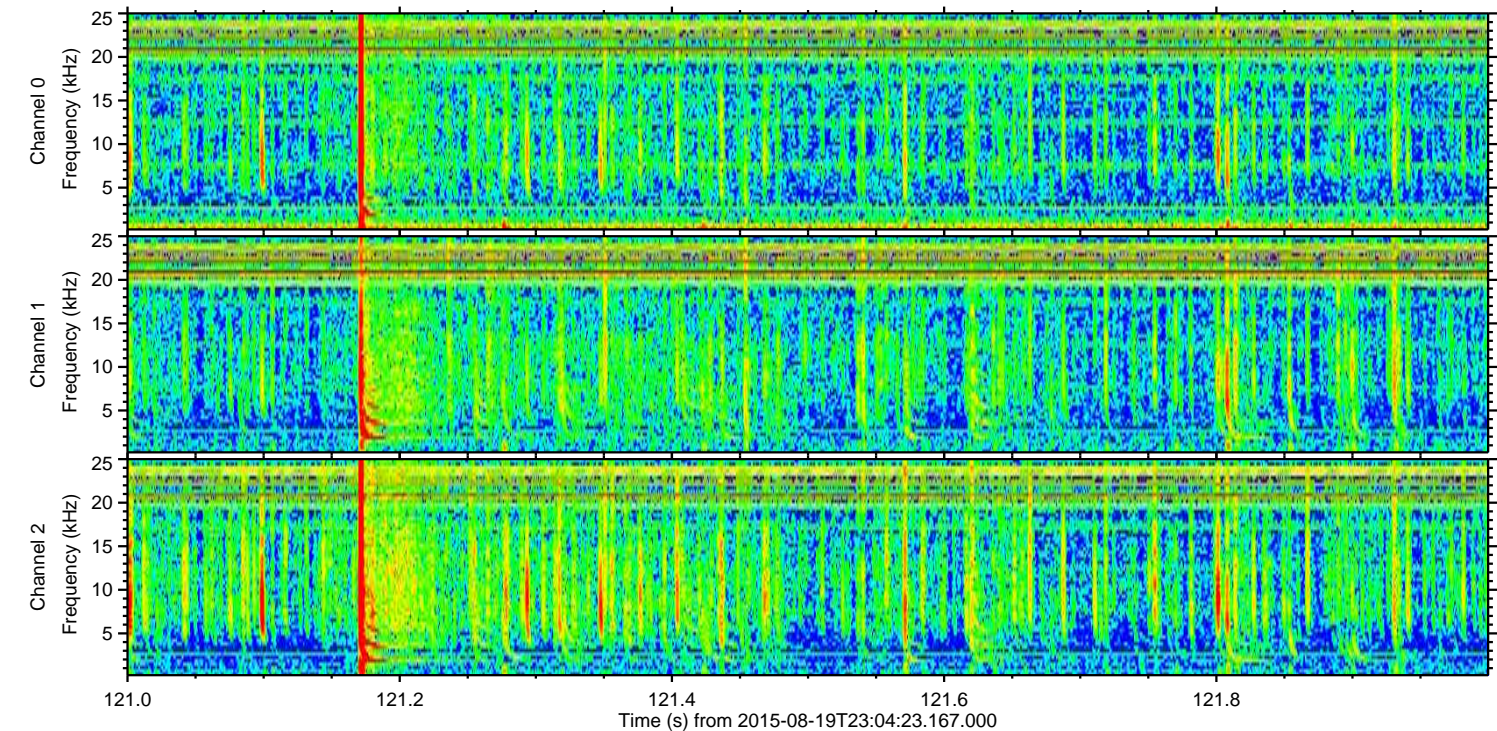
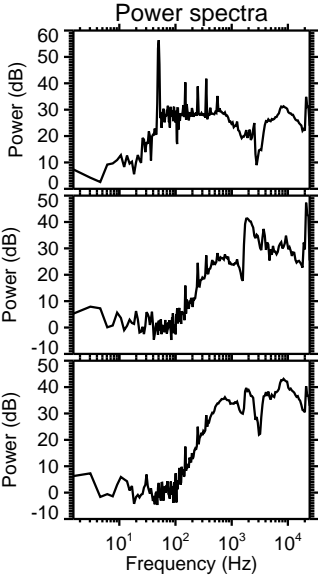
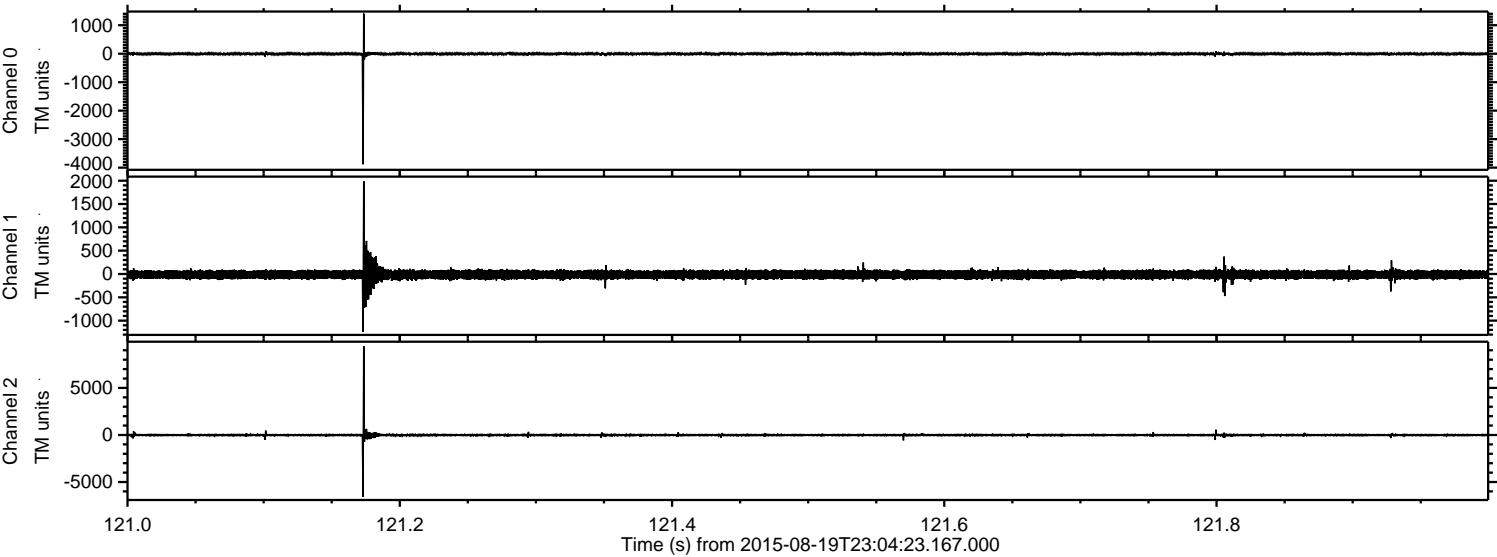
ELMAVAN 3D WAVEFORMS (Measured data sampled at 50 kHz) 51000 packets of 144 samples from 2015-08-19T23:04:23.167.000.

Processed Thu Aug 20 01:10:54 2015 by ELM ver.2012-10-06 from 001__elm20150819_230422__dat00.bin



ELMAVAN 3D WAVEFORMS (Measured data sampled at 50 kHz) 51000 packets of 144 samples from 2015-08-19T23:04:23.167.000. Part 122/147

Processed Thu Aug 20 01:11:06 2015 by ELM ver.2012-10-06 from 001__elm20150819_230422__dat00.bin

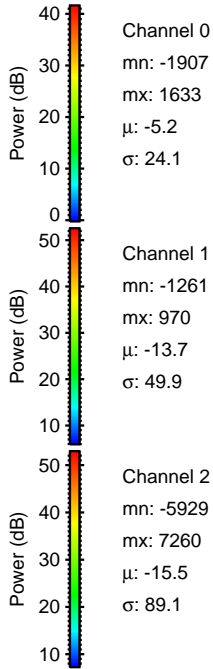
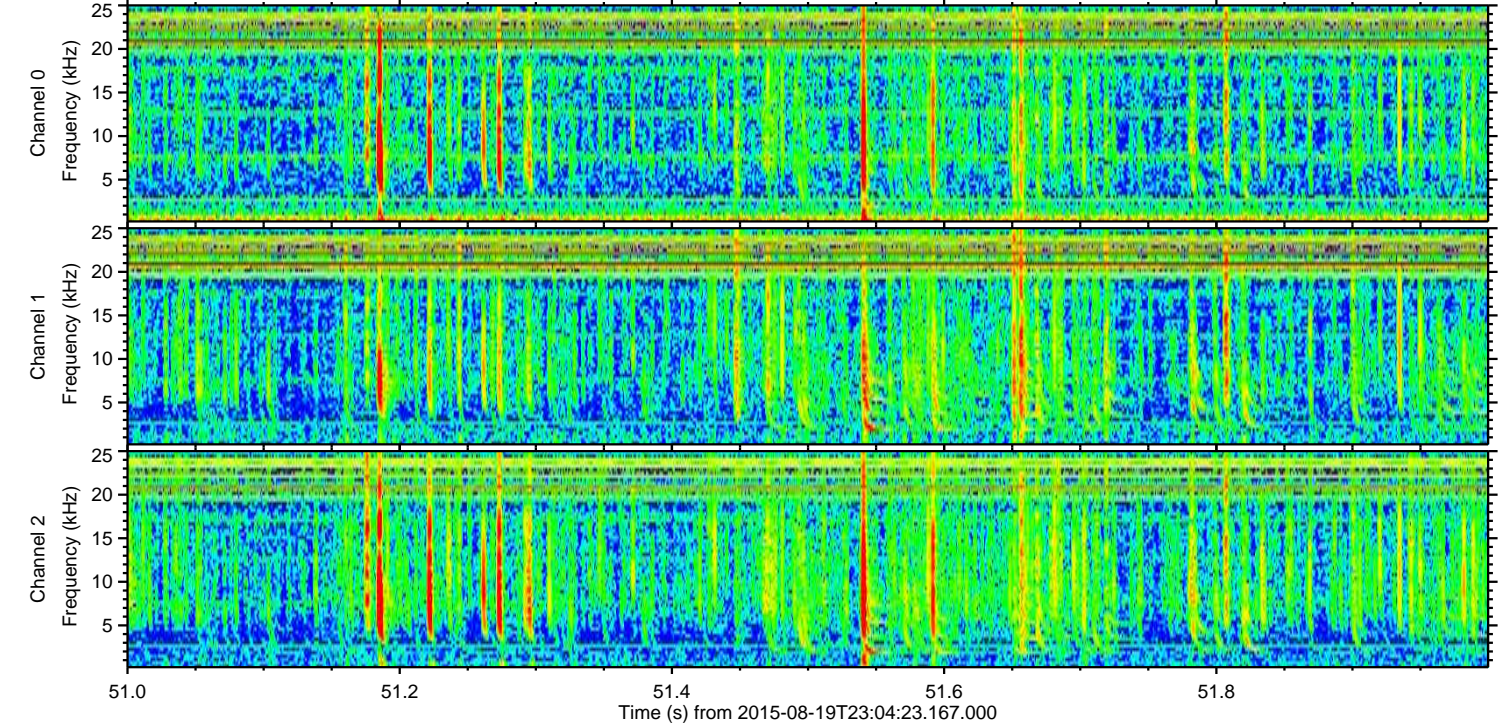
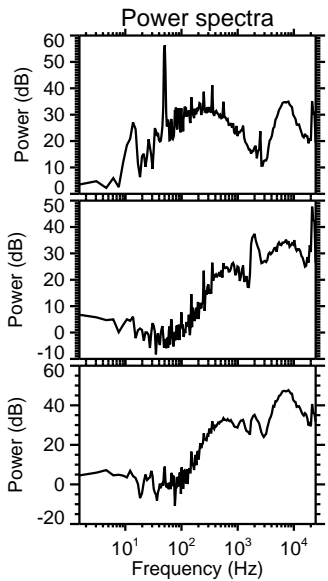
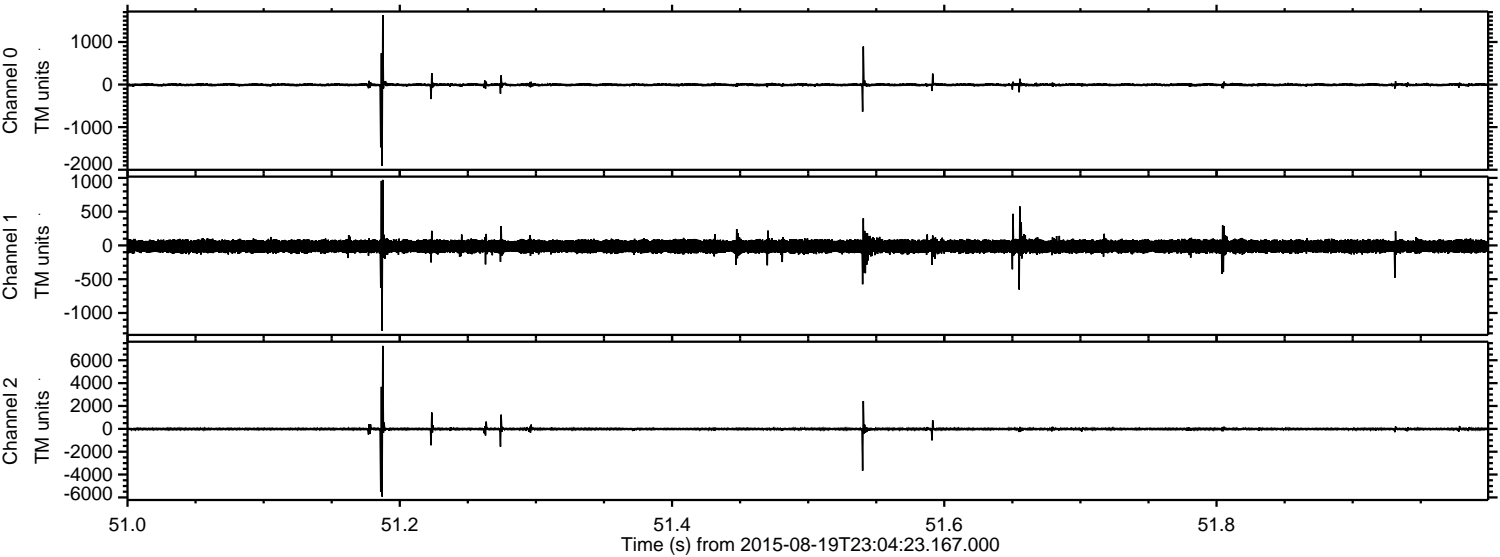


Channel 0
mn: -3882
mx: 1409
 μ : -5.1
 σ : 25.5

Channel 1
mn: -1244
mx: 1988
 μ : -13.7
 σ : 54.5

Channel 2
mn: -6583
mx: 9439
 μ : -15.6
 σ : 79.3

Processed Thu Aug 20 01:11:07 2015 by ELM ver.2012-10-06 from 001__elm20150819_230422__dat00.bin



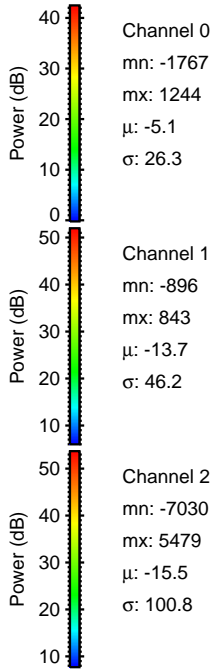
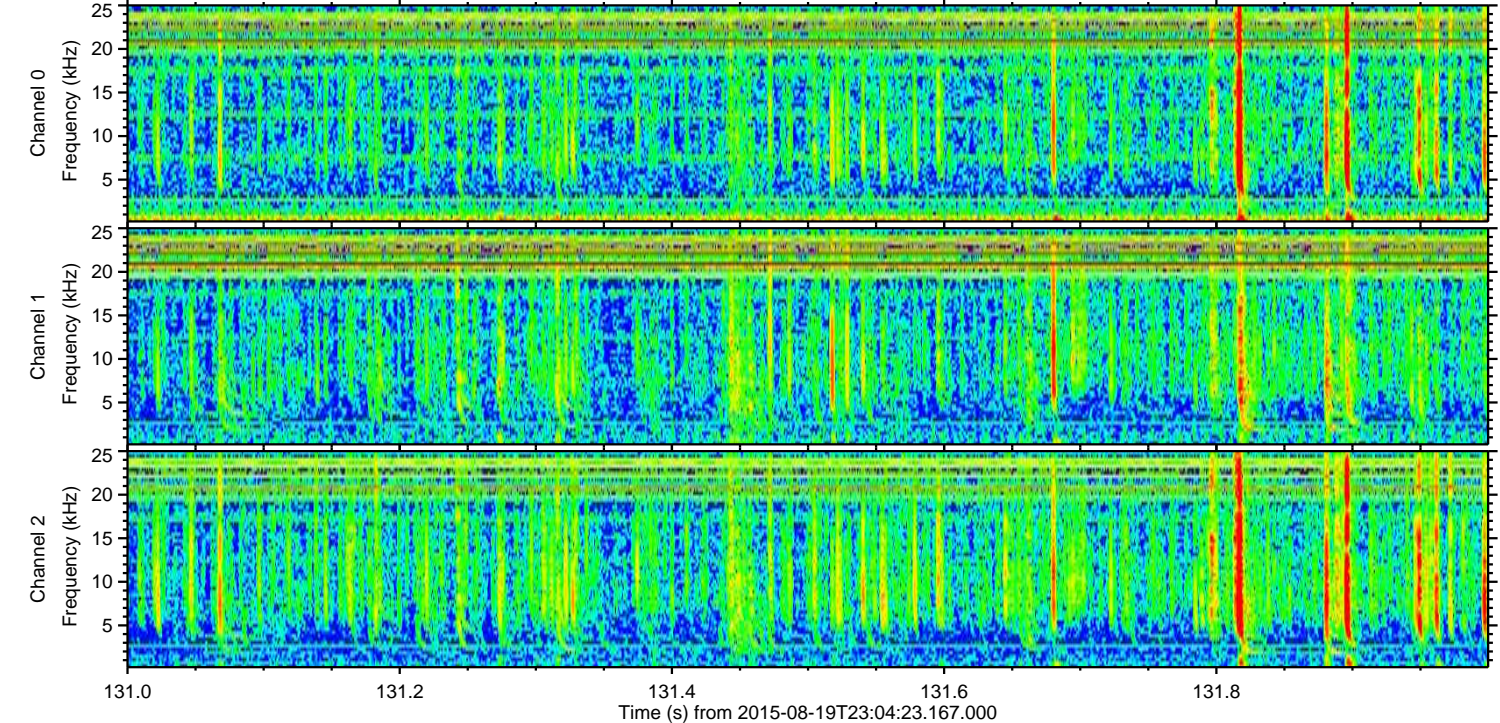
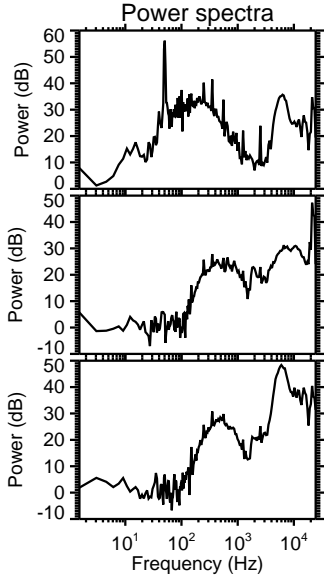
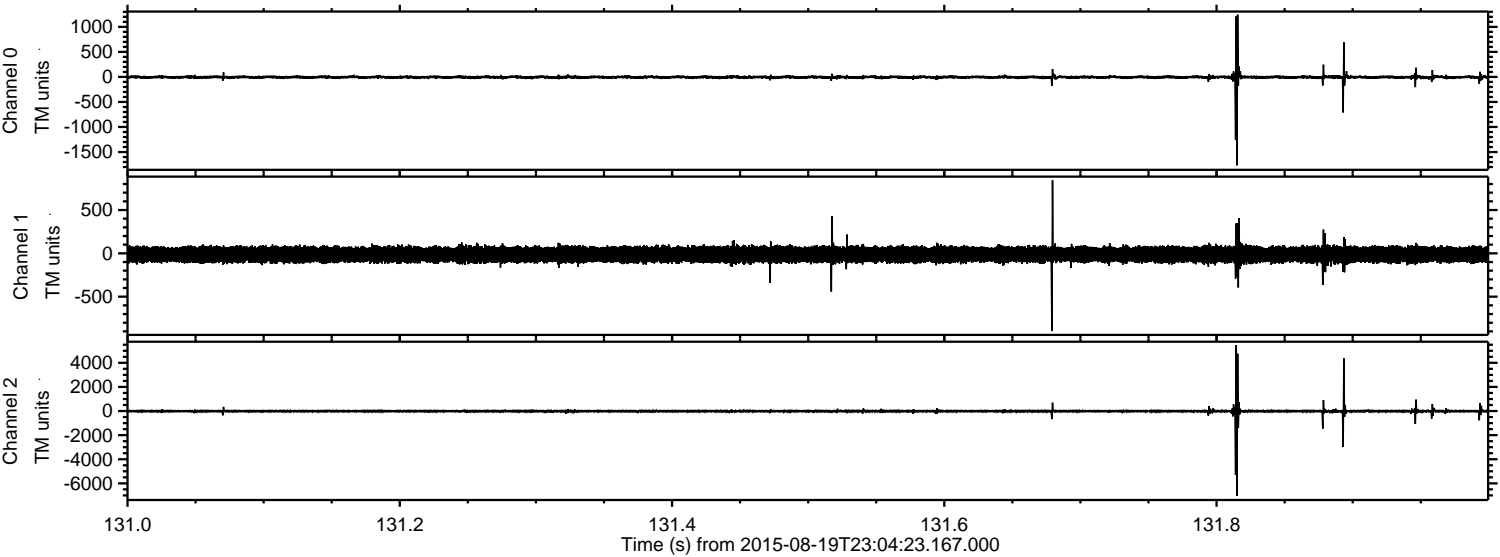
Channel 0
mn: -1907
mx: 1633
 μ : -5.2
 σ : 24.1

Channel 1
mn: -1261
mx: 970
 μ : -13.7
 σ : 49.9

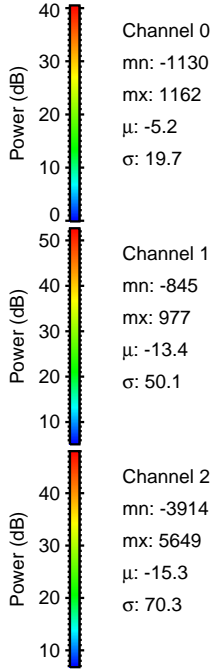
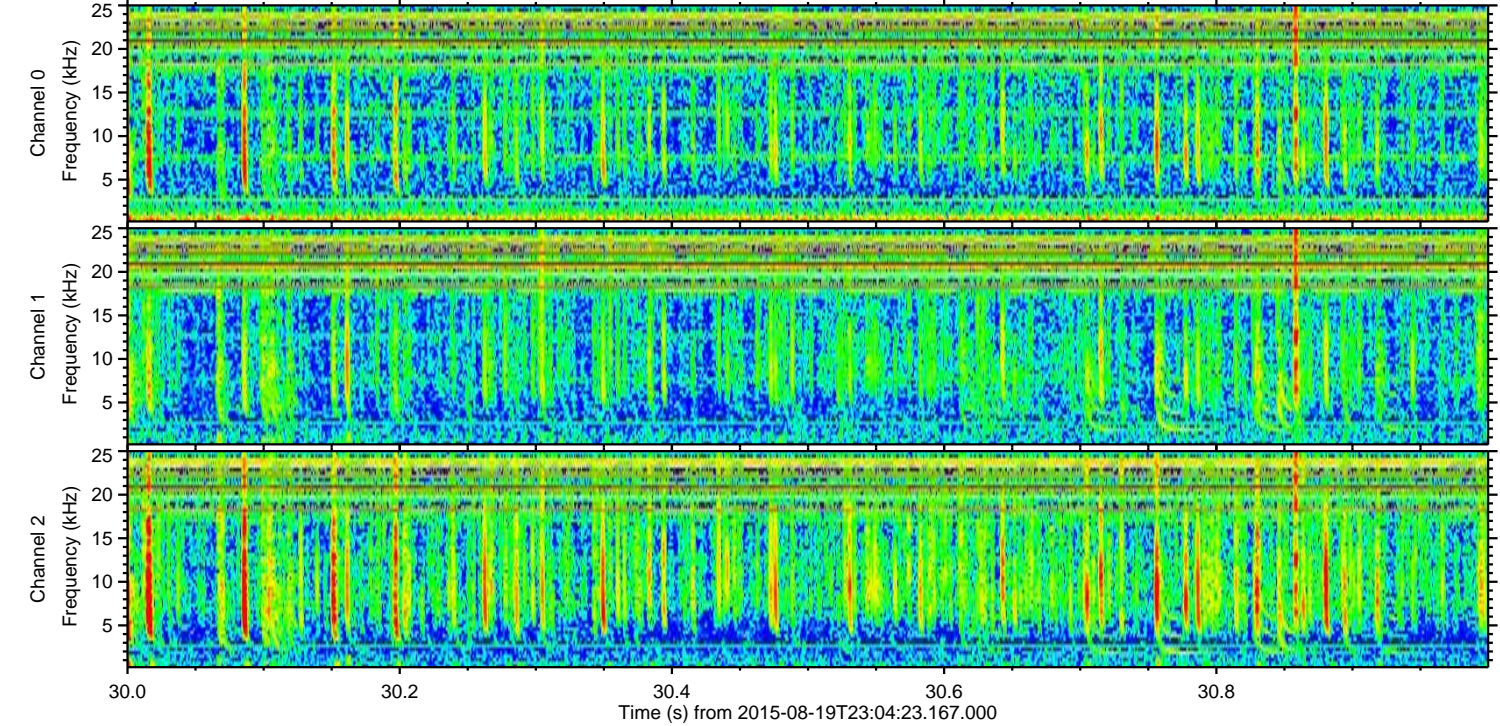
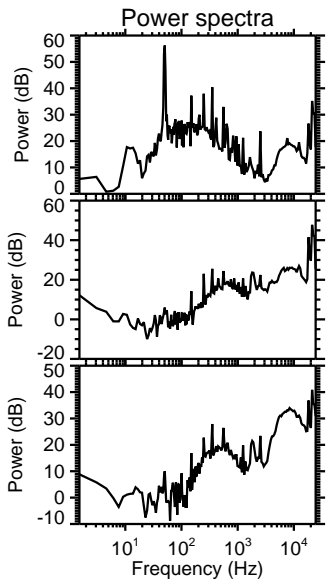
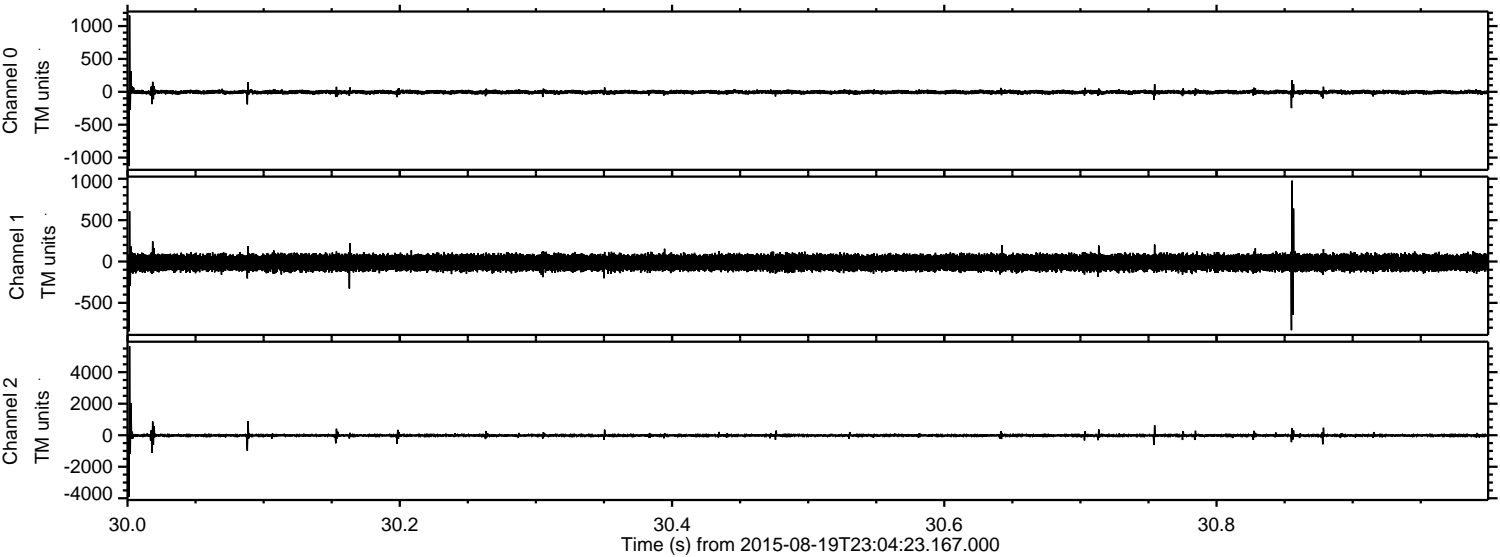
Channel 2
mn: -5929
mx: 7260
 μ : -15.5
 σ : 89.1

ELMAVAN 3D WAVEFORMS (Measured data sampled at 50 kHz) 51000 packets of 144 samples from 2015-08-19T23:04:23.167.000. Part 132/147

Processed Thu Aug 20 01:11:08 2015 by ELM ver.2012-10-06 from 001__elm20150819_230422__dat00.bin



Processed Thu Aug 20 01:11:09 2015 by ELM ver.2012-10-06 from 001__elm20150819_230422__dat00.bin



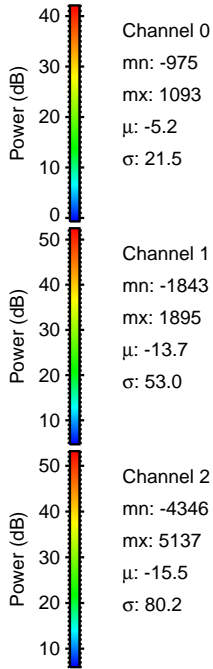
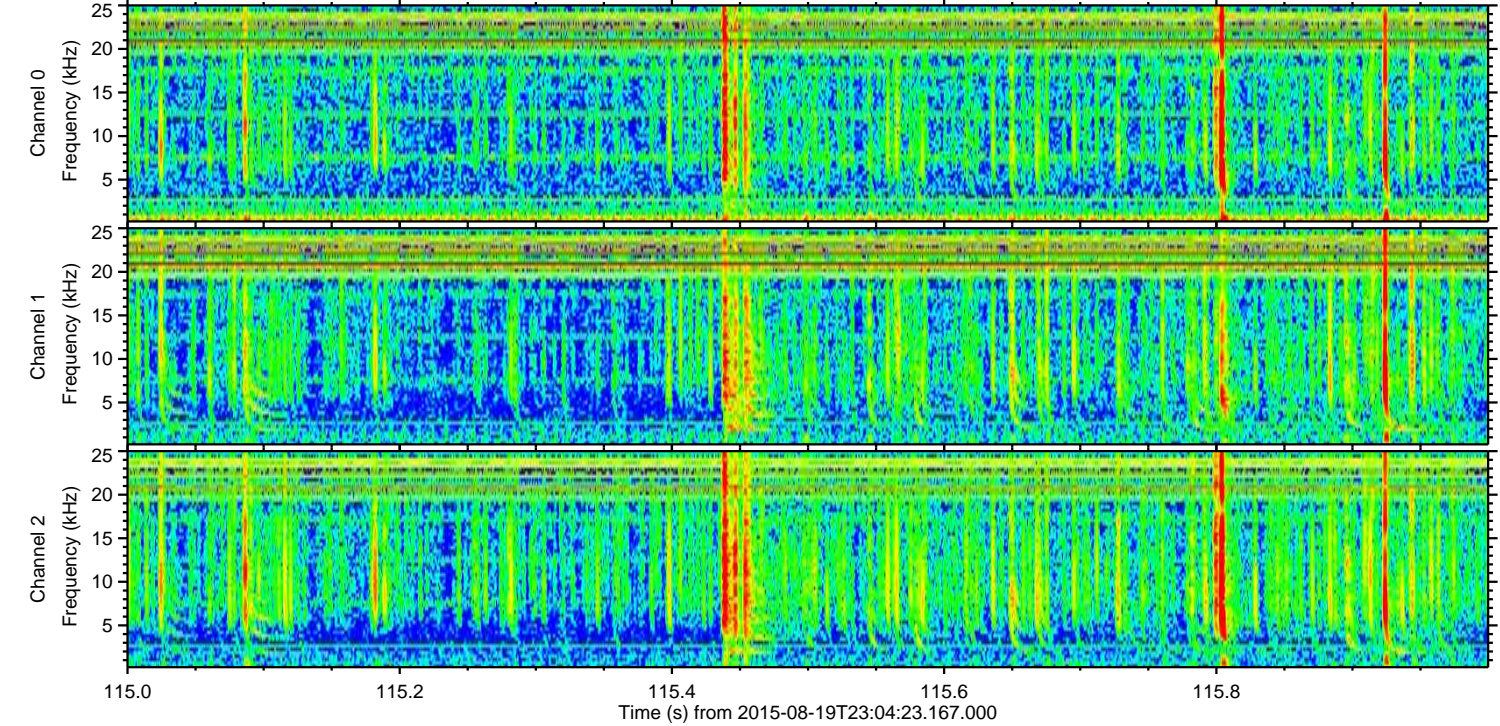
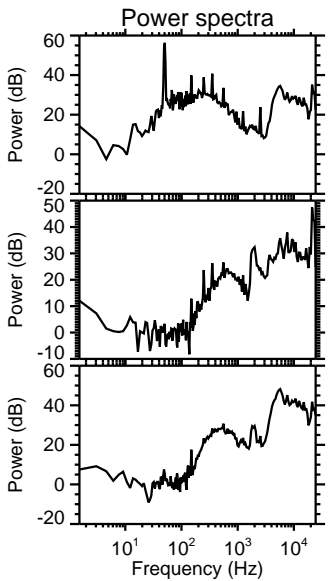
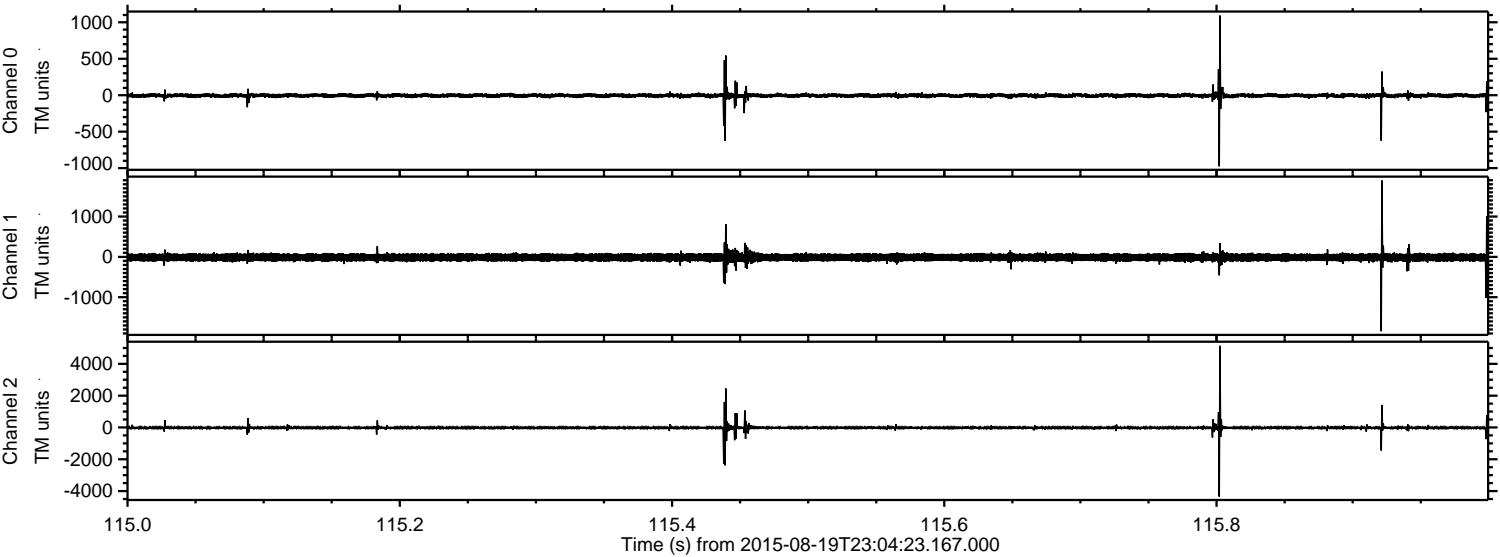
Channel 0
mn: -1130
mx: 1162
 μ : -5.2
 σ : 19.7

Channel 1
mn: -845
mx: 977
 μ : -13.4
 σ : 50.1

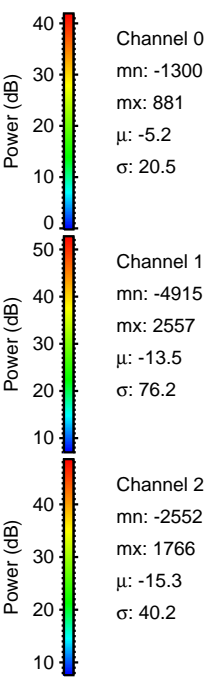
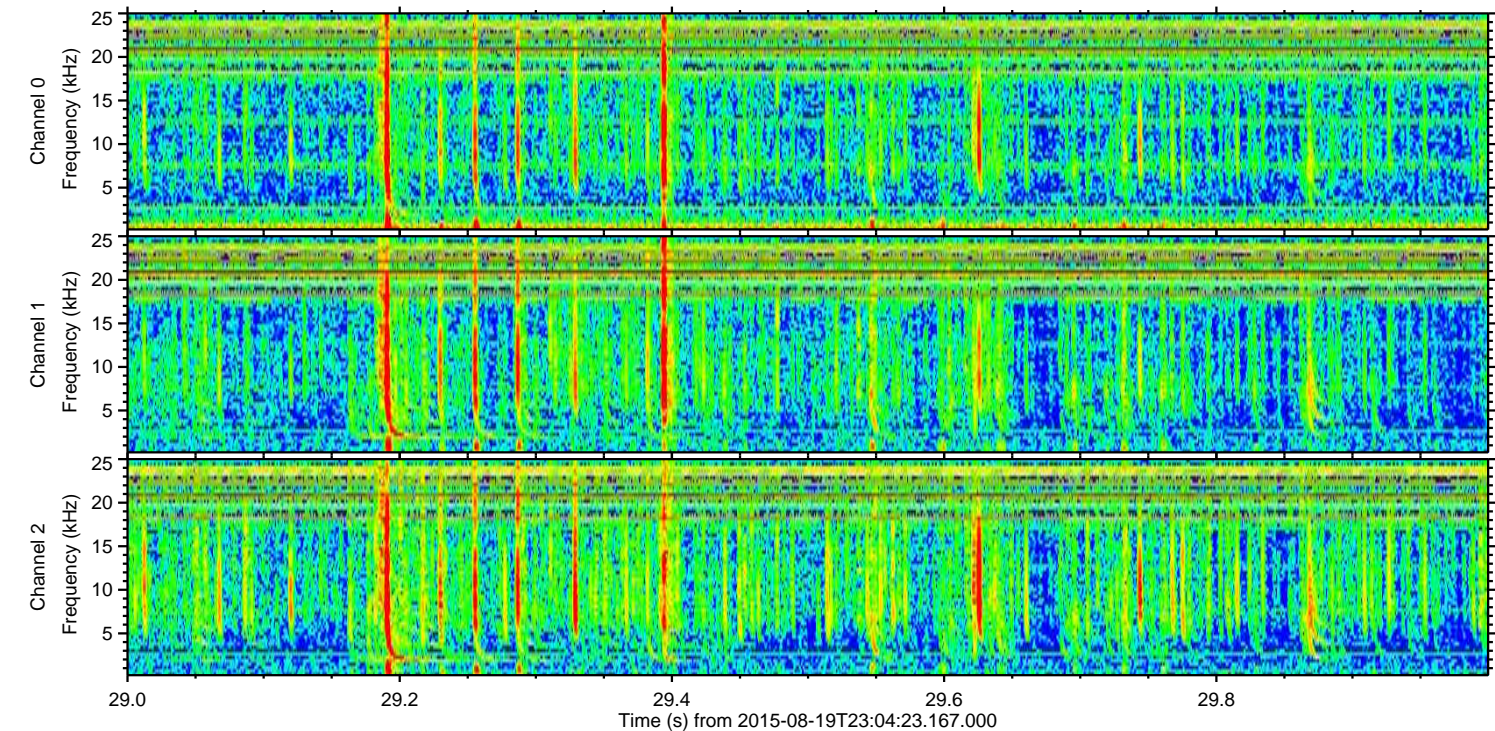
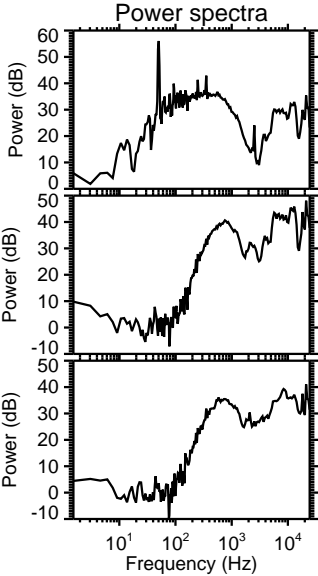
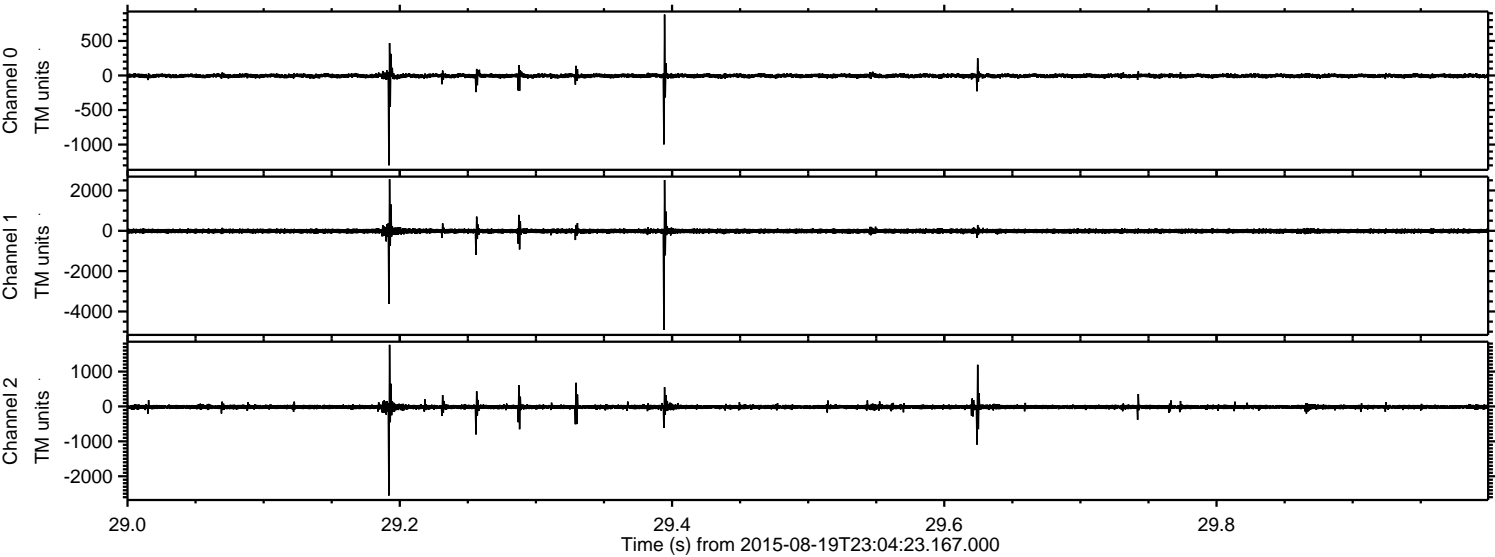
Channel 2
mn: -3914
mx: 5649
 μ : -15.3
 σ : 70.3

ELMAVAN 3D WAVEFORMS (Measured data sampled at 50 kHz) 51000 packets of 144 samples from 2015-08-19T23:04:23.167.000. Part 116/147

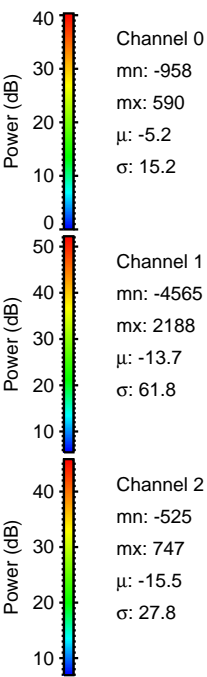
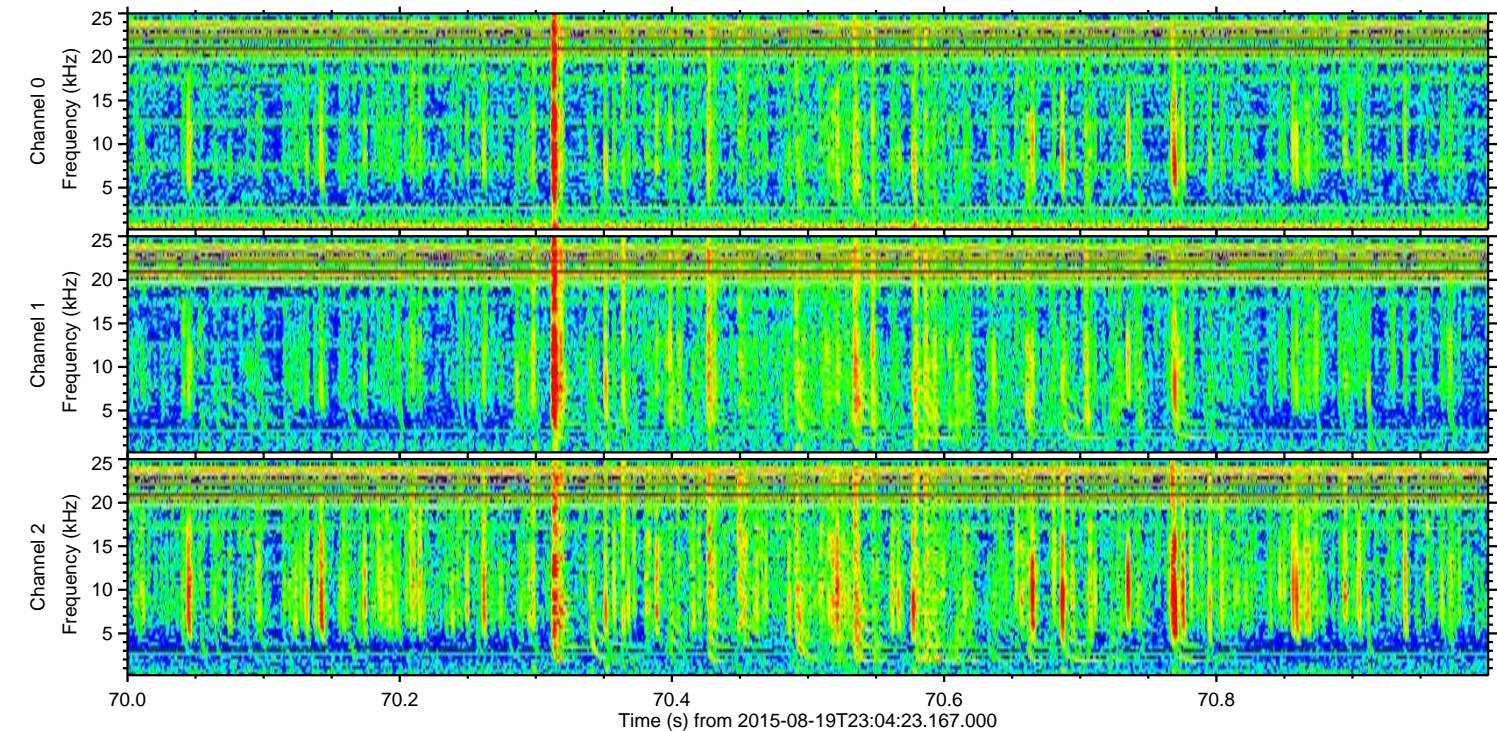
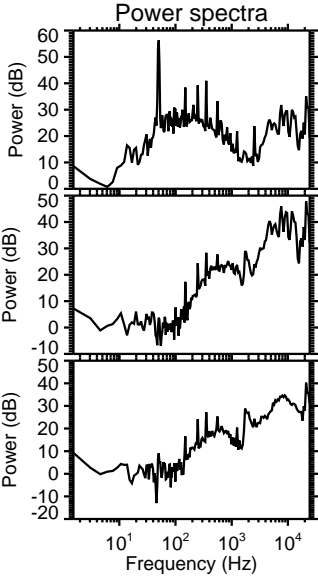
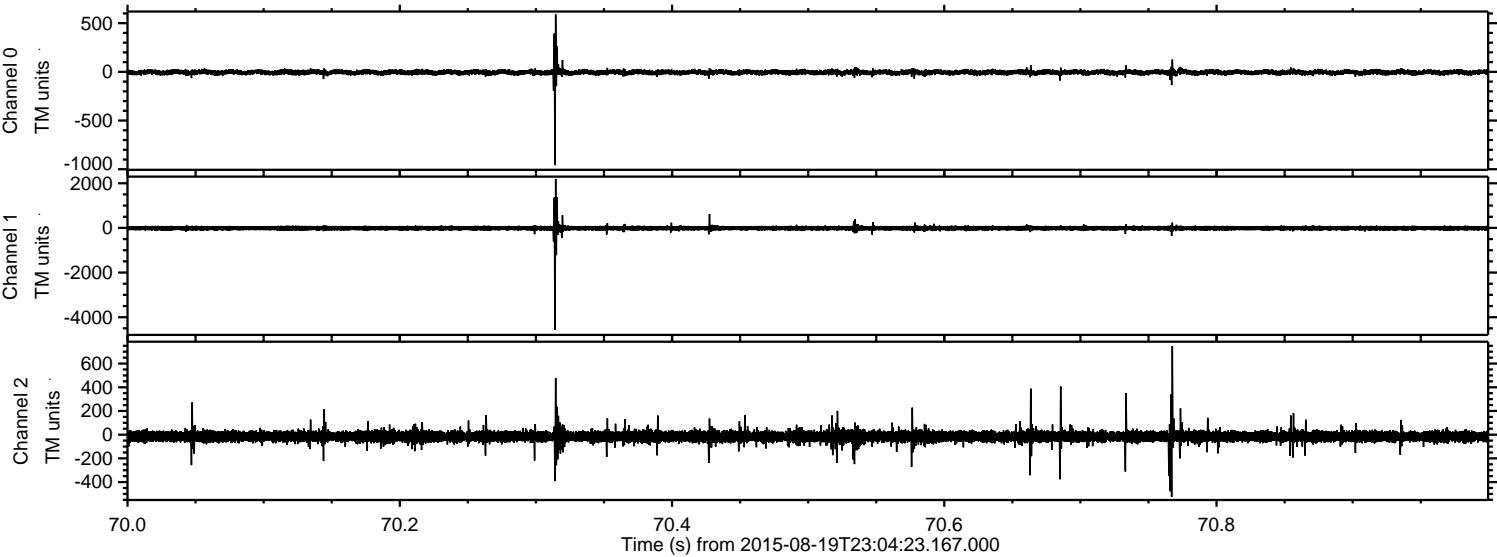
Processed Thu Aug 20 01:11:10 2015 by ELM ver.2012-10-06 from 001__elm20150819_230422__dat00.bin



Processed Thu Aug 20 01:11:11 2015 by ELM ver.2012-10-06 from 001__elm20150819_230422__dat00.bin

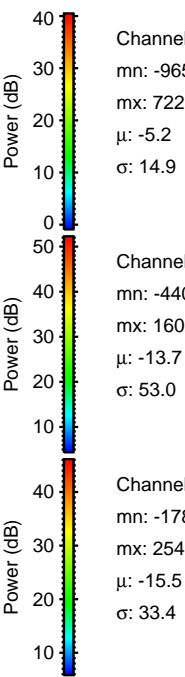
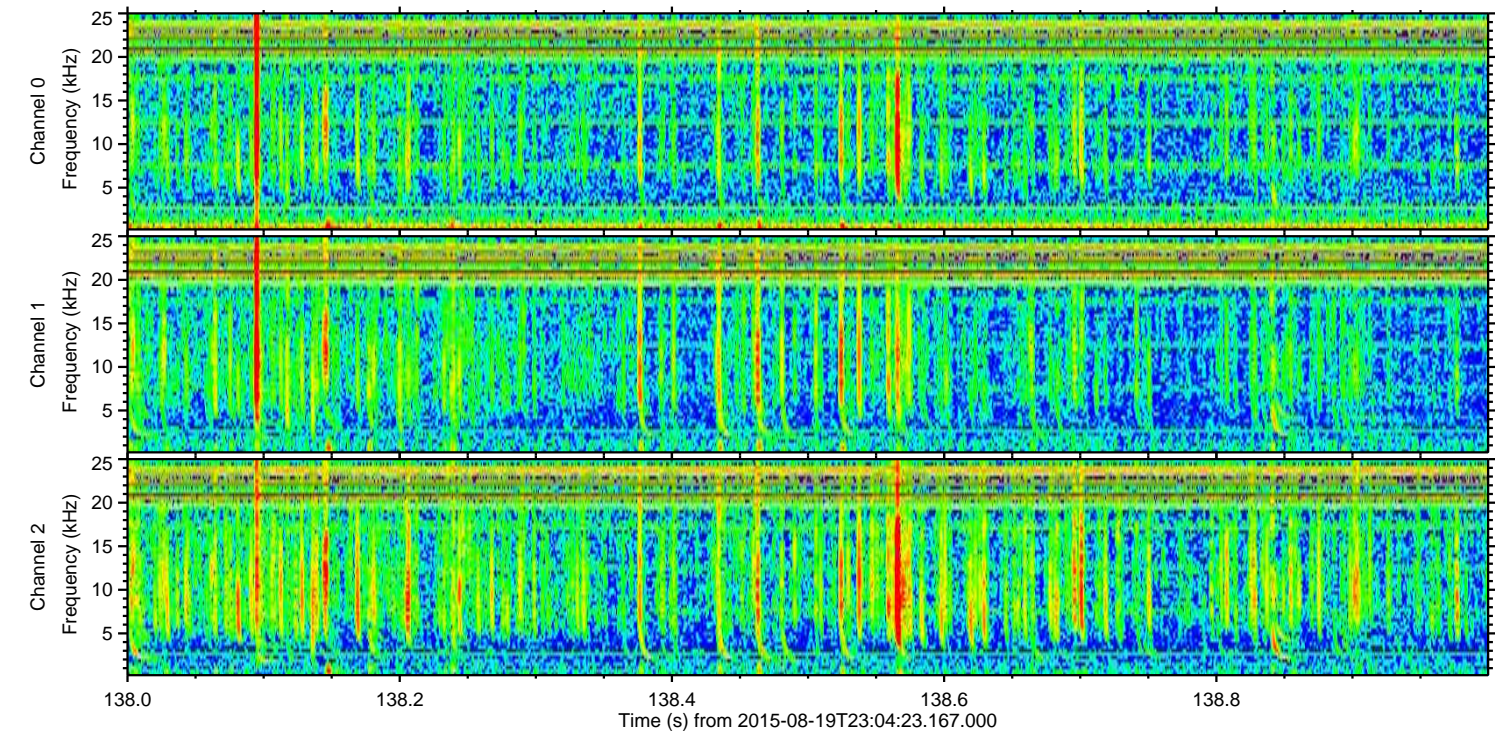
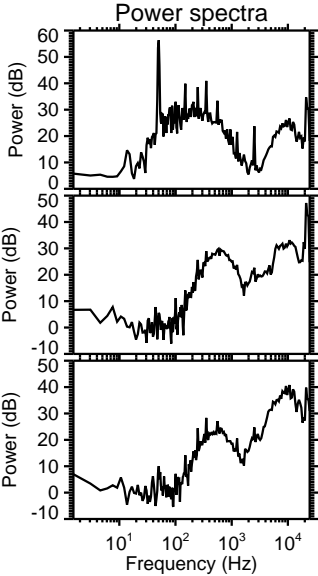
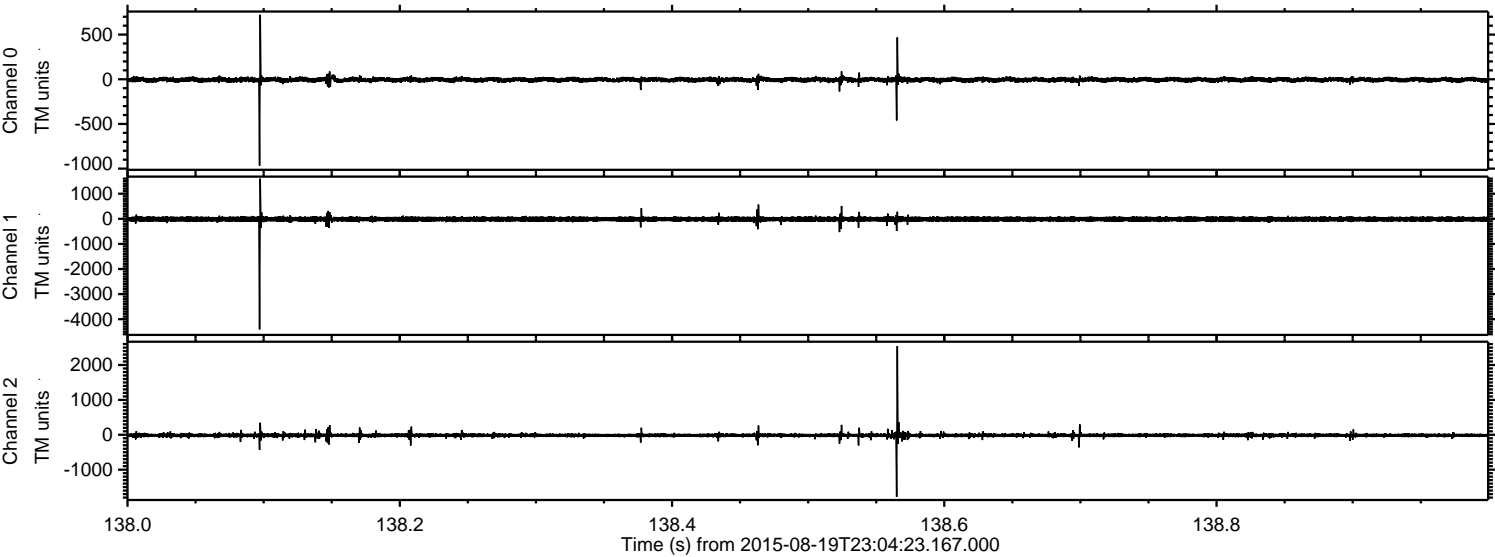


Processed Thu Aug 20 01:11:12 2015 by ELM ver.2012-10-06 from 001__elm20150819_230422__dat00.bin



ELMAVAN 3D WAVEFORMS (Measured data sampled at 50 kHz) 51000 packets of 144 samples from 2015-08-19T23:04:23.167.000. Part 139/147

Processed Thu Aug 20 01:11:13 2015 by ELM ver.2012-10-06 from 001__elm20150819_230422__dat00.bin

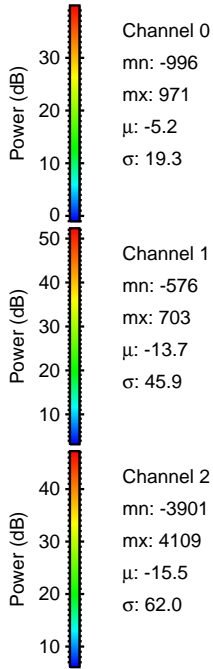
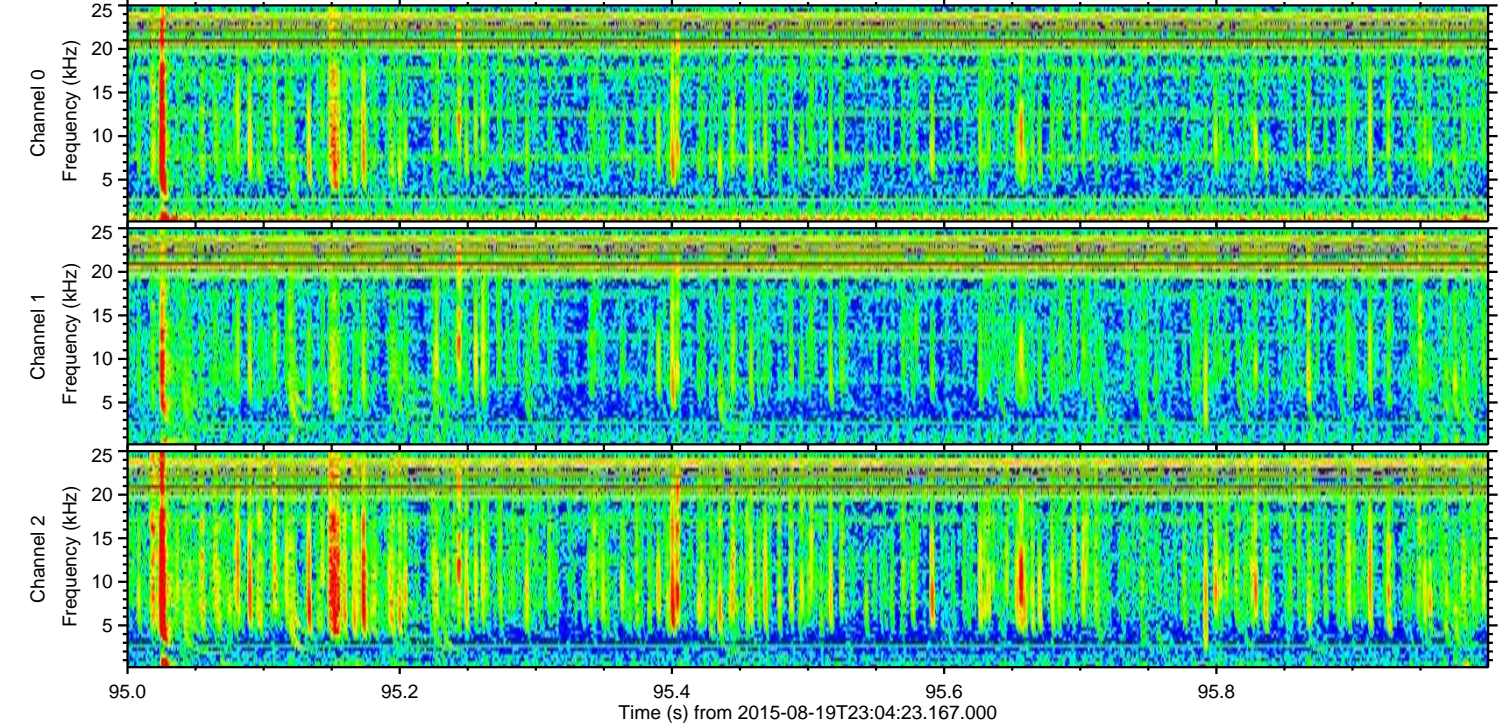
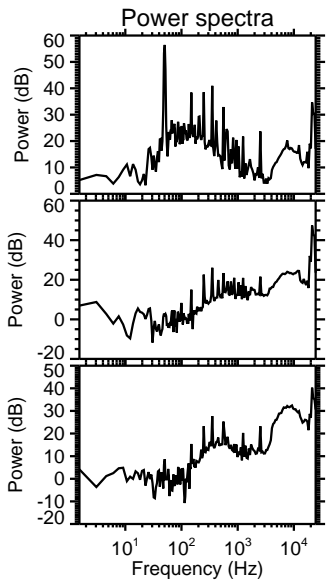
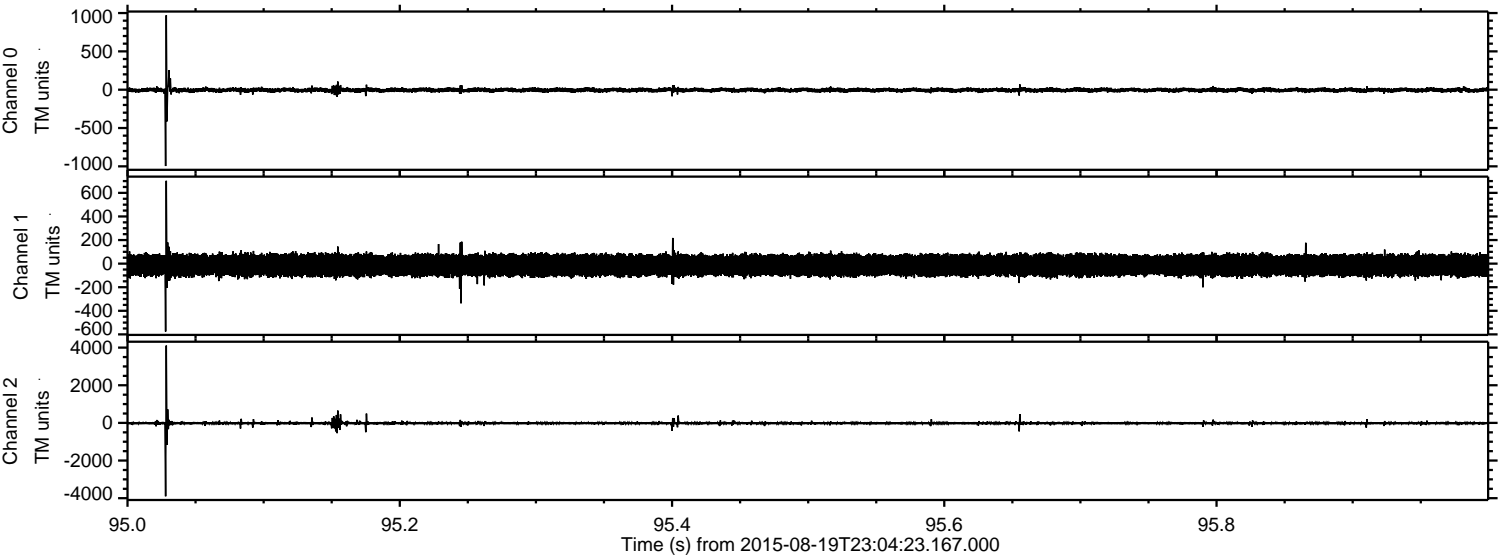


Channel 0
mn: -965
mx: 722
 μ : -5.2
 σ : 14.9

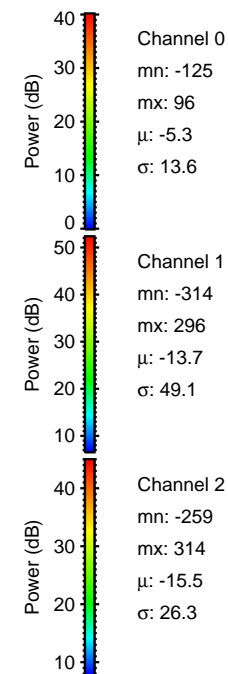
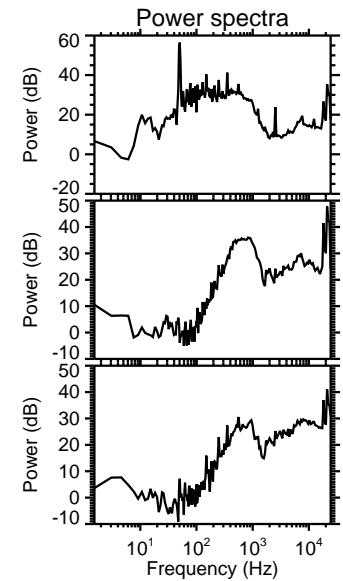
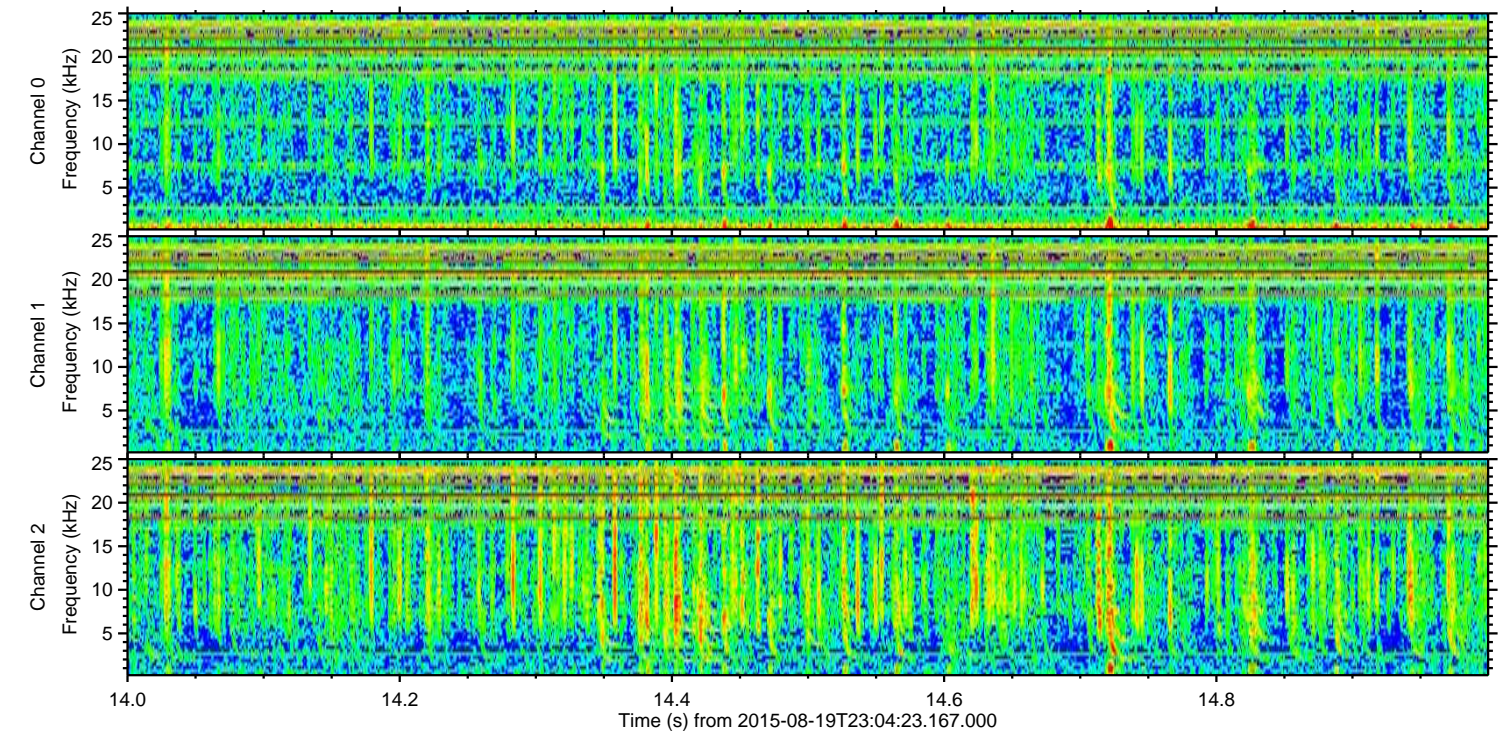
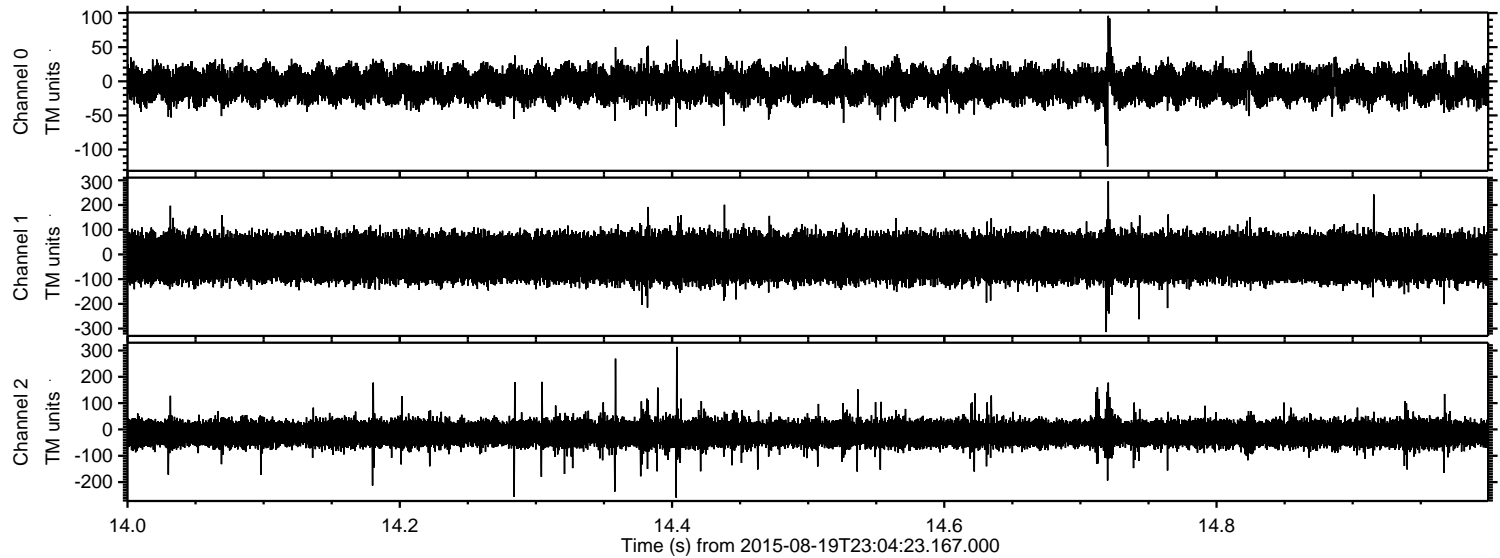
Channel 1
mn: -4407
mx: 1602
 μ : -13.7
 σ : 53.0

Channel 2
mn: -1781
mx: 2541
 μ : -15.5
 σ : 33.4

Processed Thu Aug 20 01:11:14 2015 by ELM ver.2012-10-06 from 001__elm20150819_230422__dat00.bin



Processed Thu Aug 20 01:11:15 2015 by ELM ver.2012-10-06 from 001__elm20150819_230422__dat00.bin



Channel 0
mn: -125
mx: 96
 μ : -5.3
 σ : 13.6

Channel 1
mn: -314
mx: 296
 μ : -13.7
 σ : 49.1

Channel 2
mn: -259
mx: 314
 μ : -15.5
 σ : 26.3