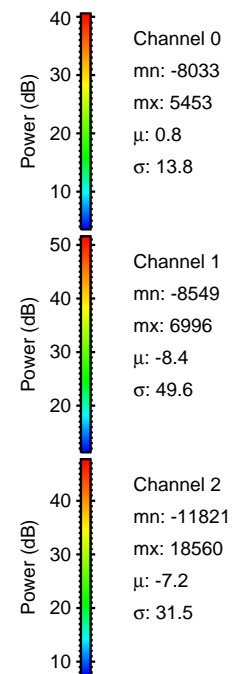
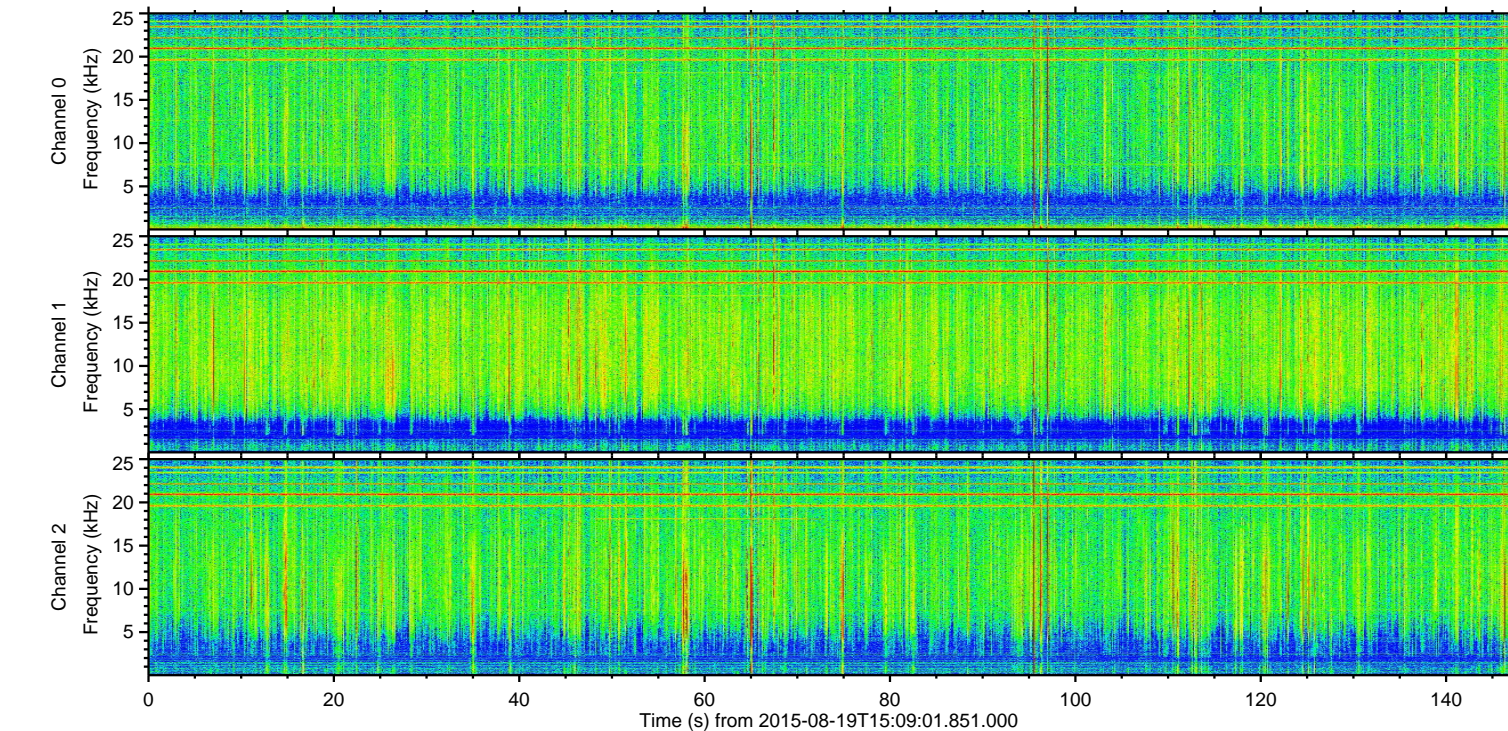
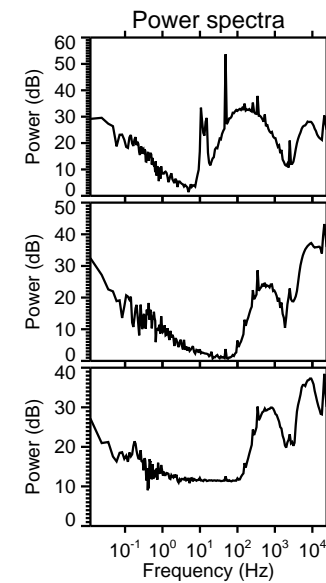
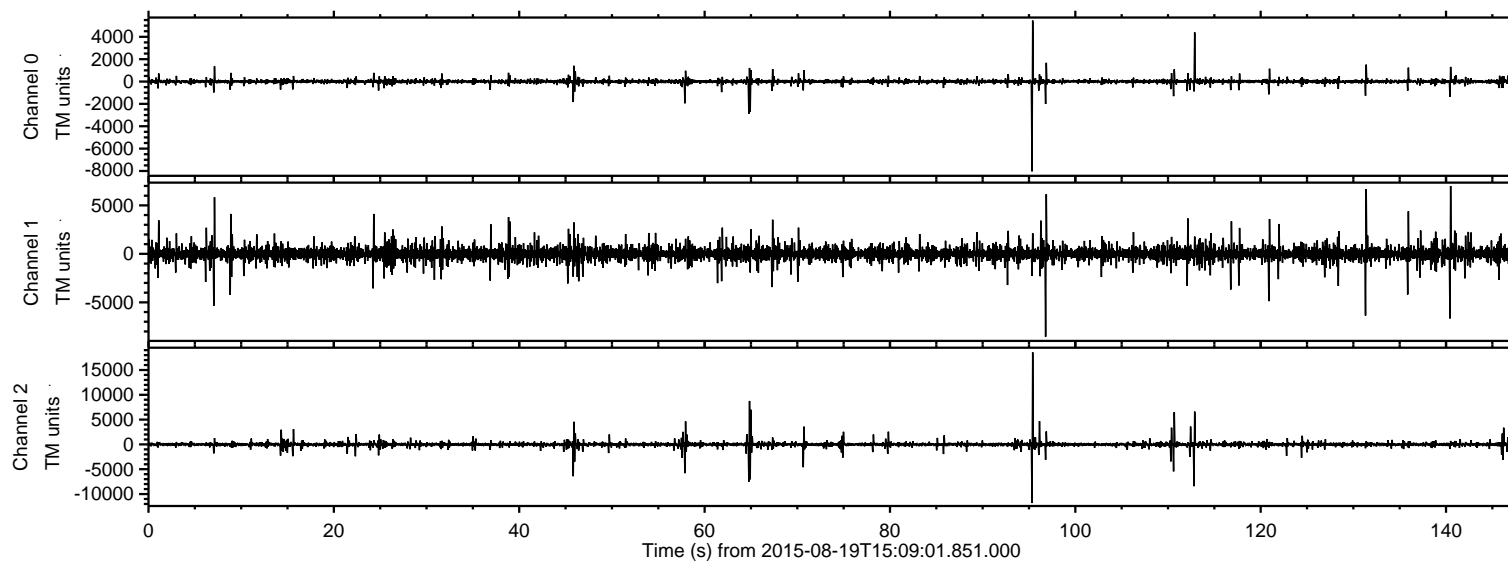
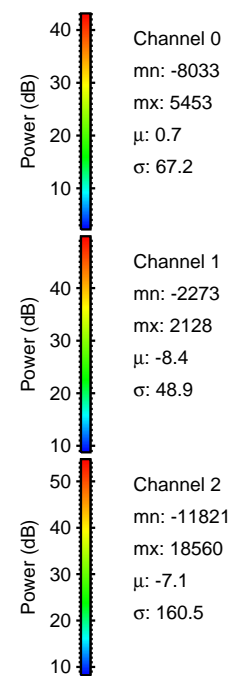
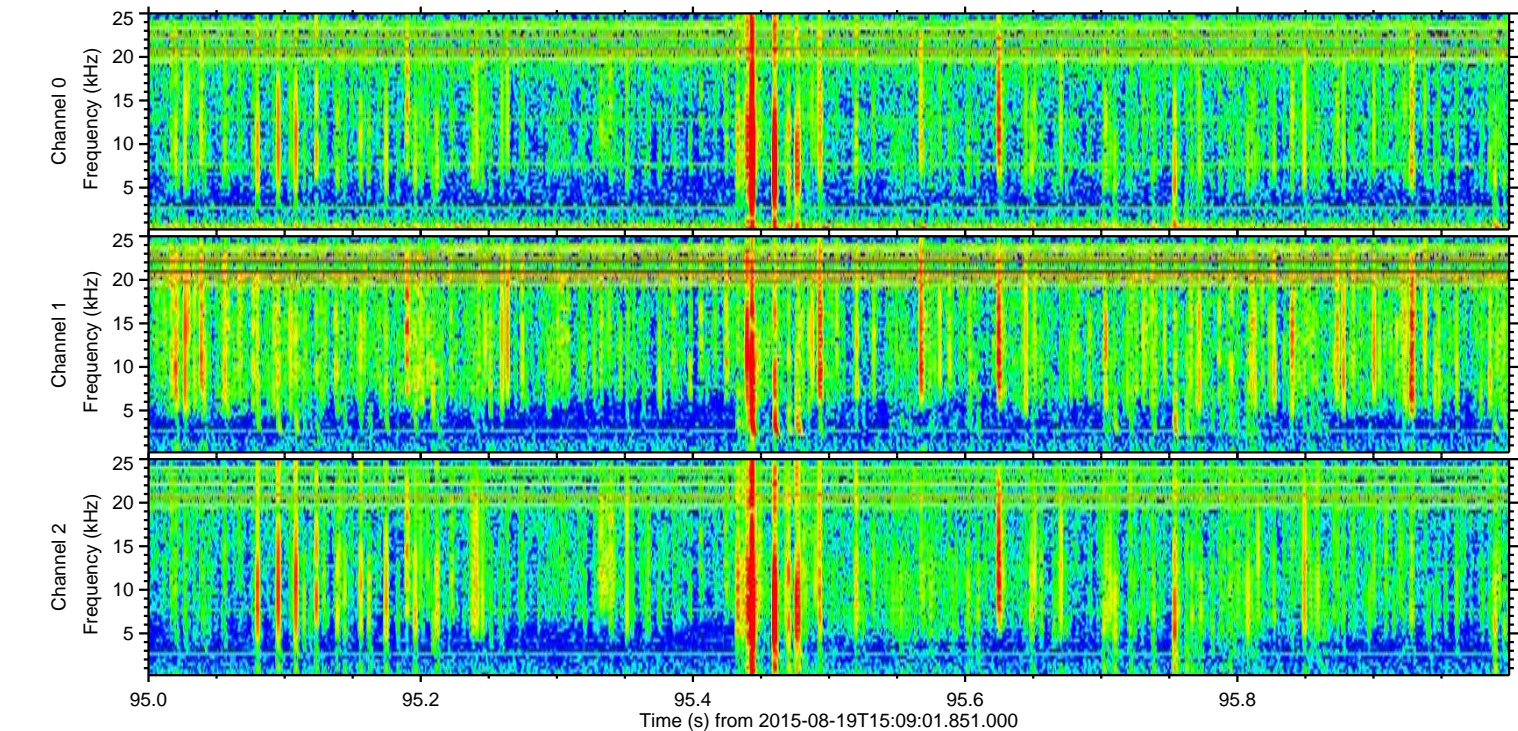
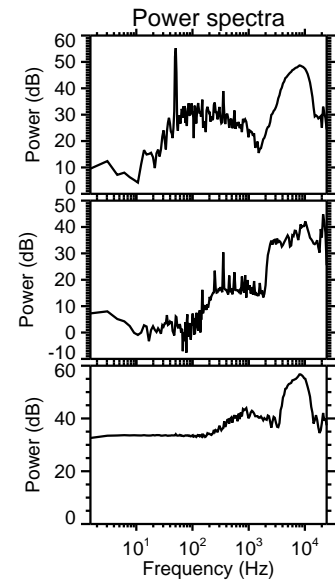
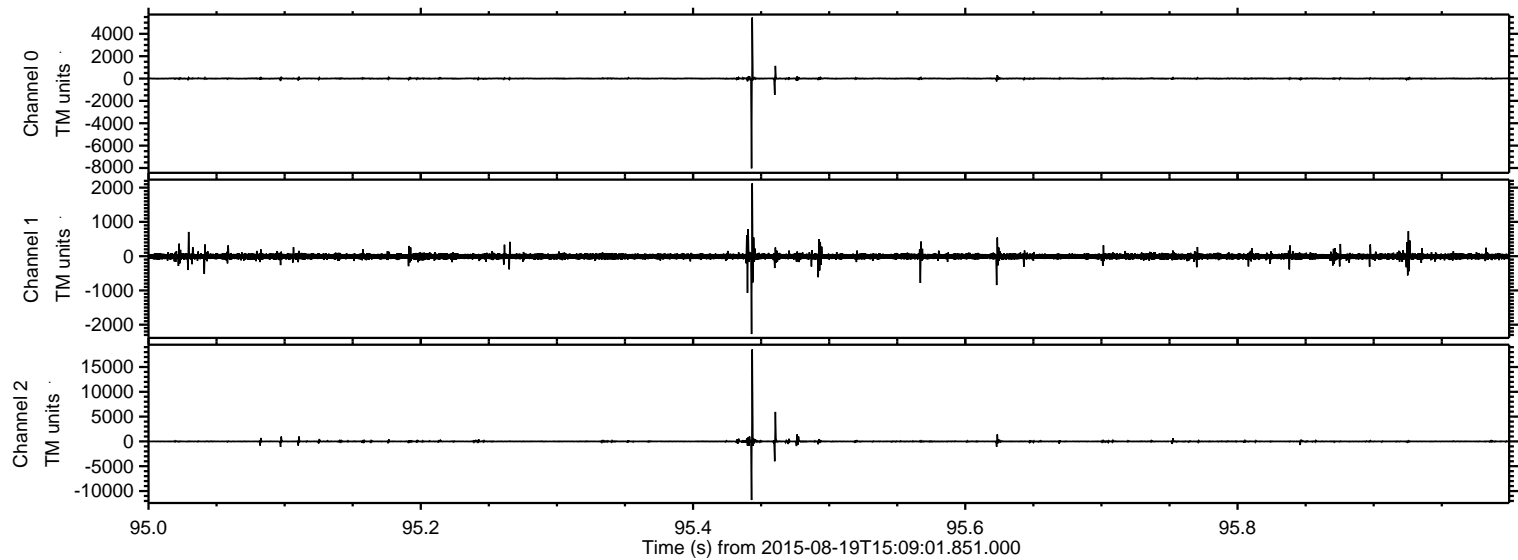


ELMAVAN 3D WAVEFORMS (Measured data sampled at 50 kHz) 51000 packets of 144 samples from 2015-08-19T15:09:01.851.000.

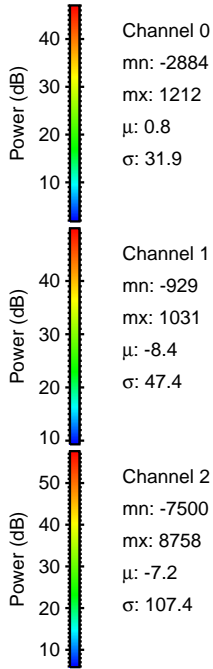
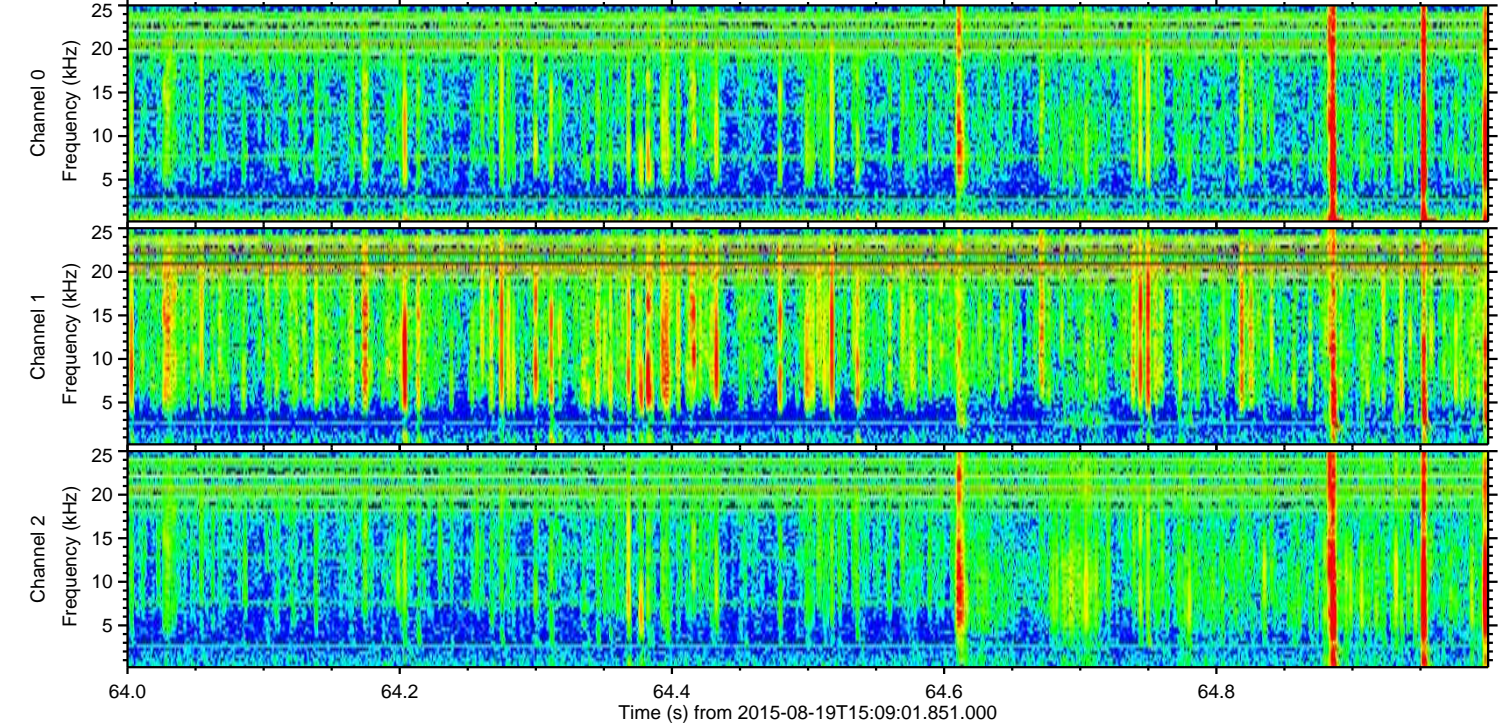
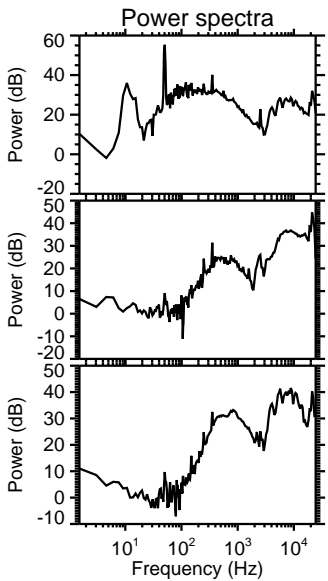
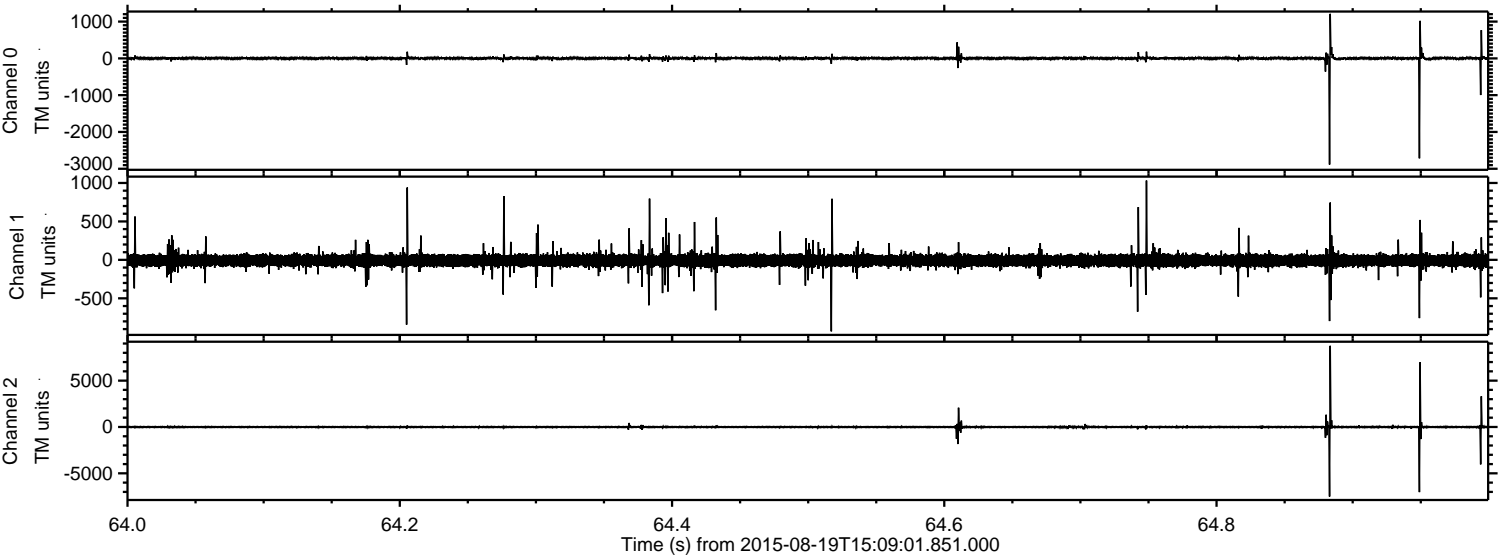
Processed Wed Aug 19 17:15:25 2015 by ELM ver.2012-10-06 from 001__elm20150819_150900__dat00.bin



Processed Wed Aug 19 17:15:36 2015 by ELM ver.2012-10-06 from 001__elm20150819_150900__dat00.bin



Processed Wed Aug 19 17:15:37 2015 by ELM ver.2012-10-06 from 001__elm20150819_150900__dat00.bin

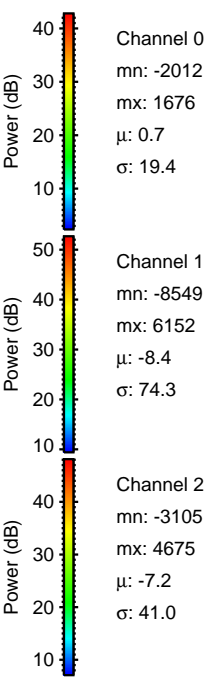
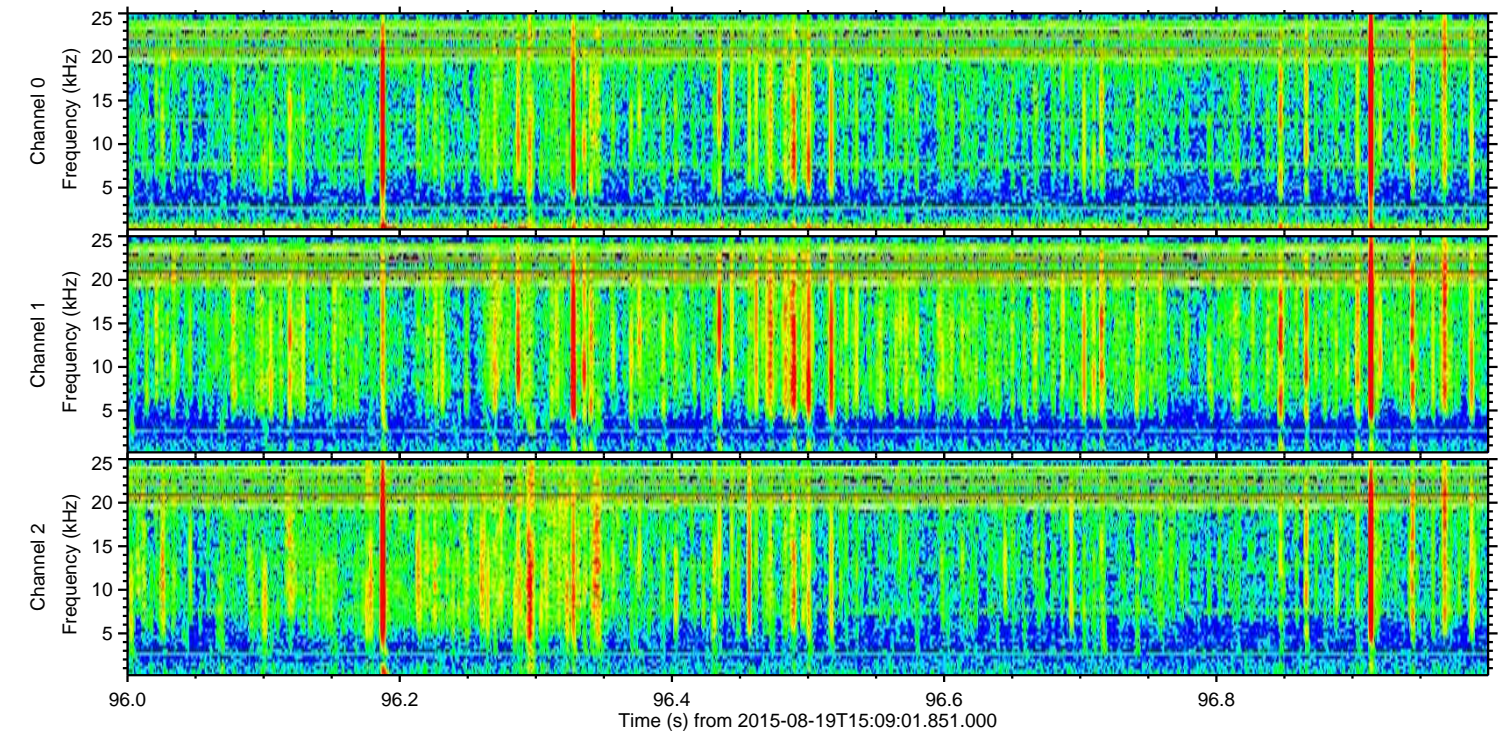
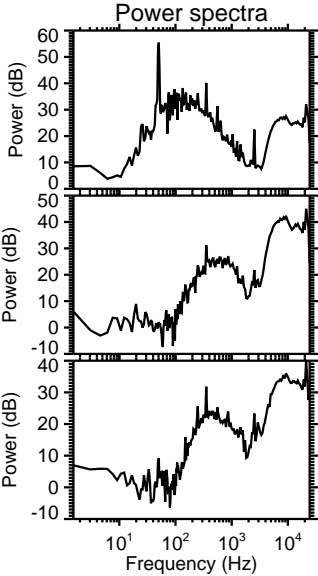
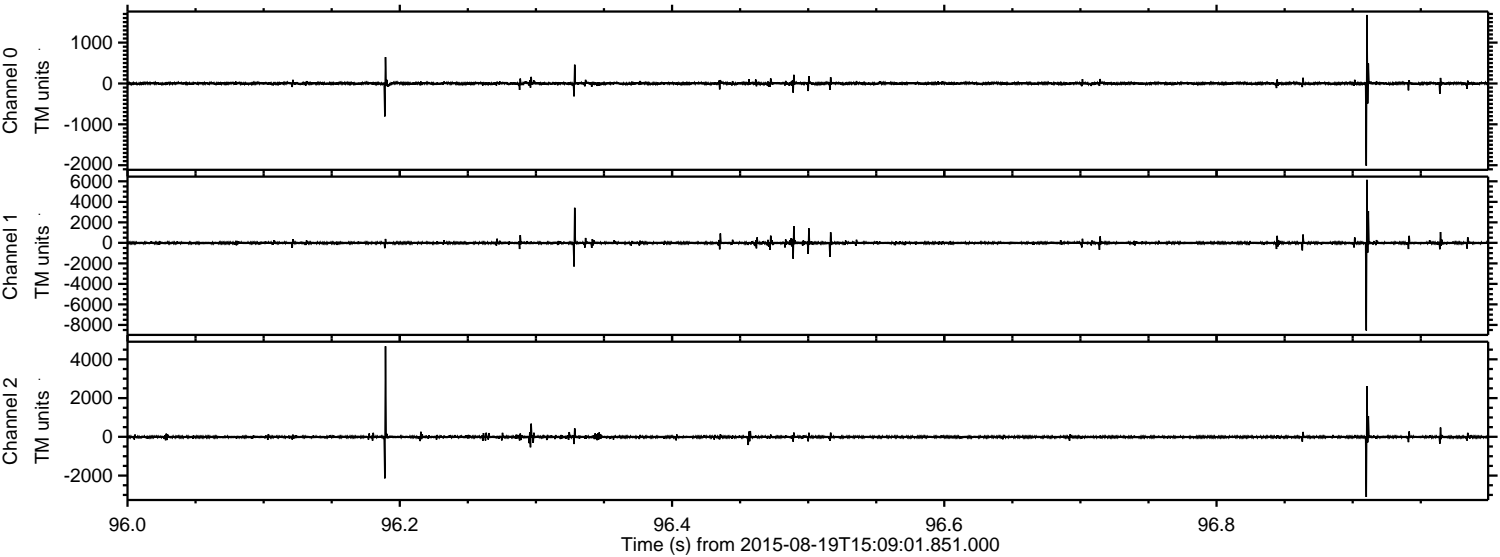


Channel 0
mn: -2884
mx: 1212
 μ : 0.8
 σ : 31.9

Channel 1
mn: -929
mx: 1031
 μ : -8.4
 σ : 47.4

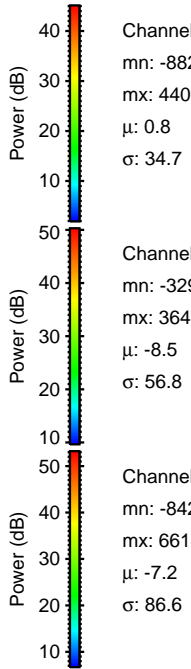
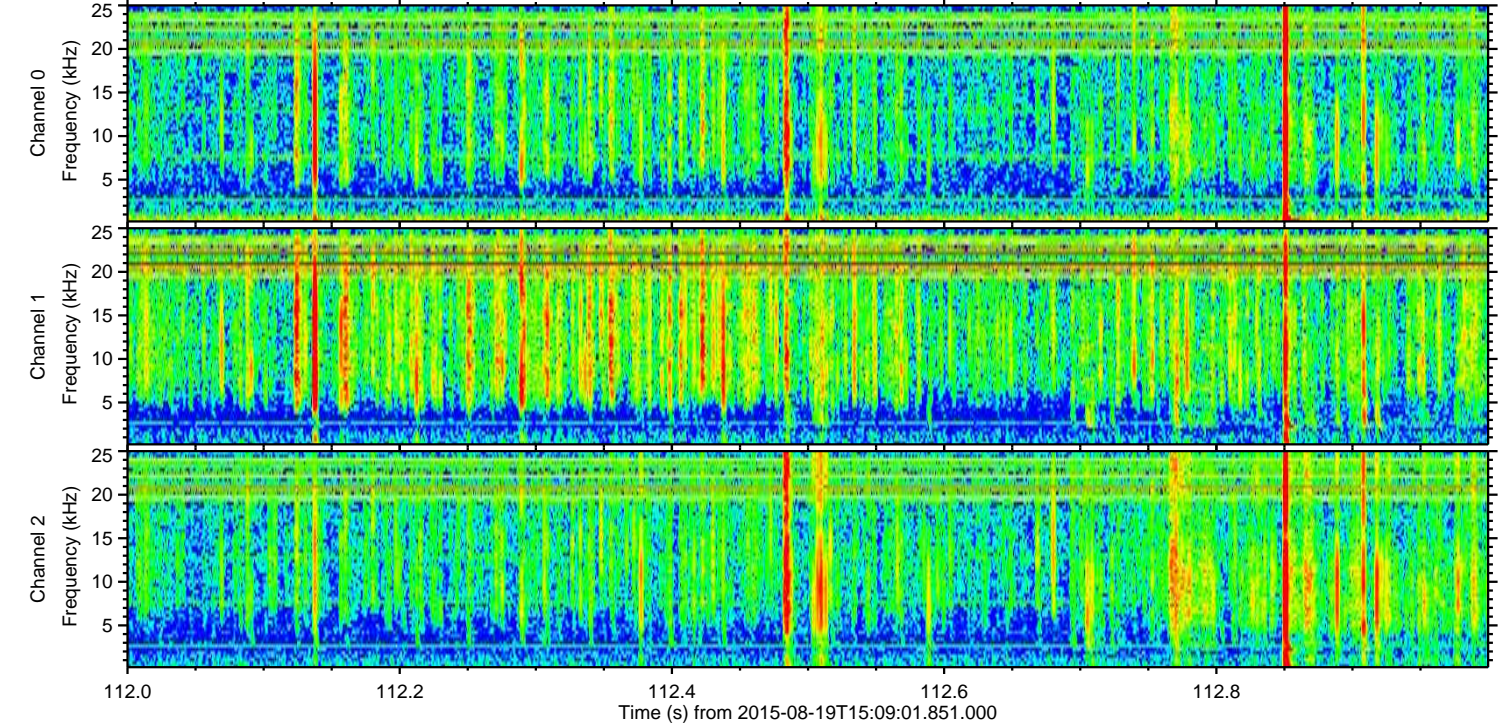
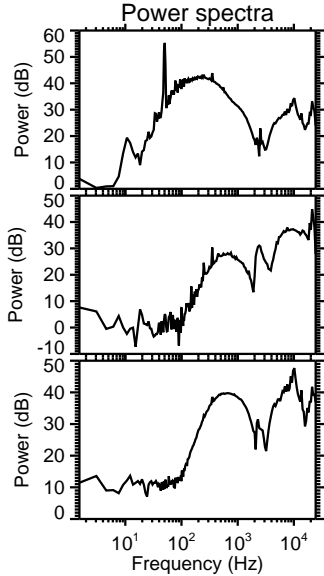
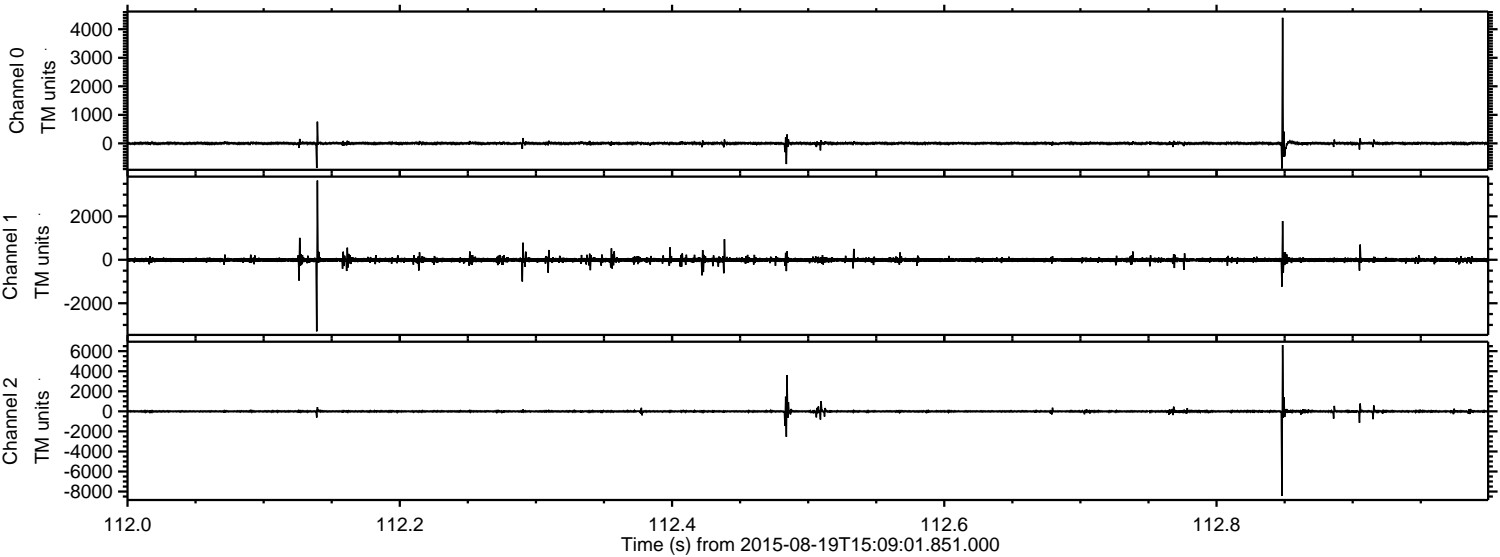
Channel 2
mn: -7500
mx: 8758
 μ : -7.2
 σ : 107.4

Processed Wed Aug 19 17:15:38 2015 by ELM ver.2012-10-06 from 001__elm20150819_150900__dat00.bin



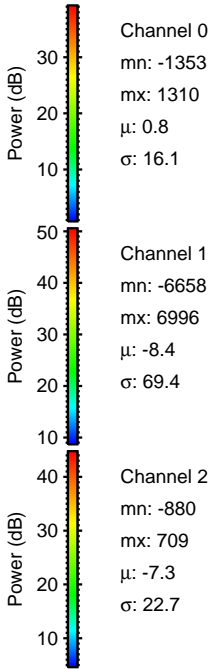
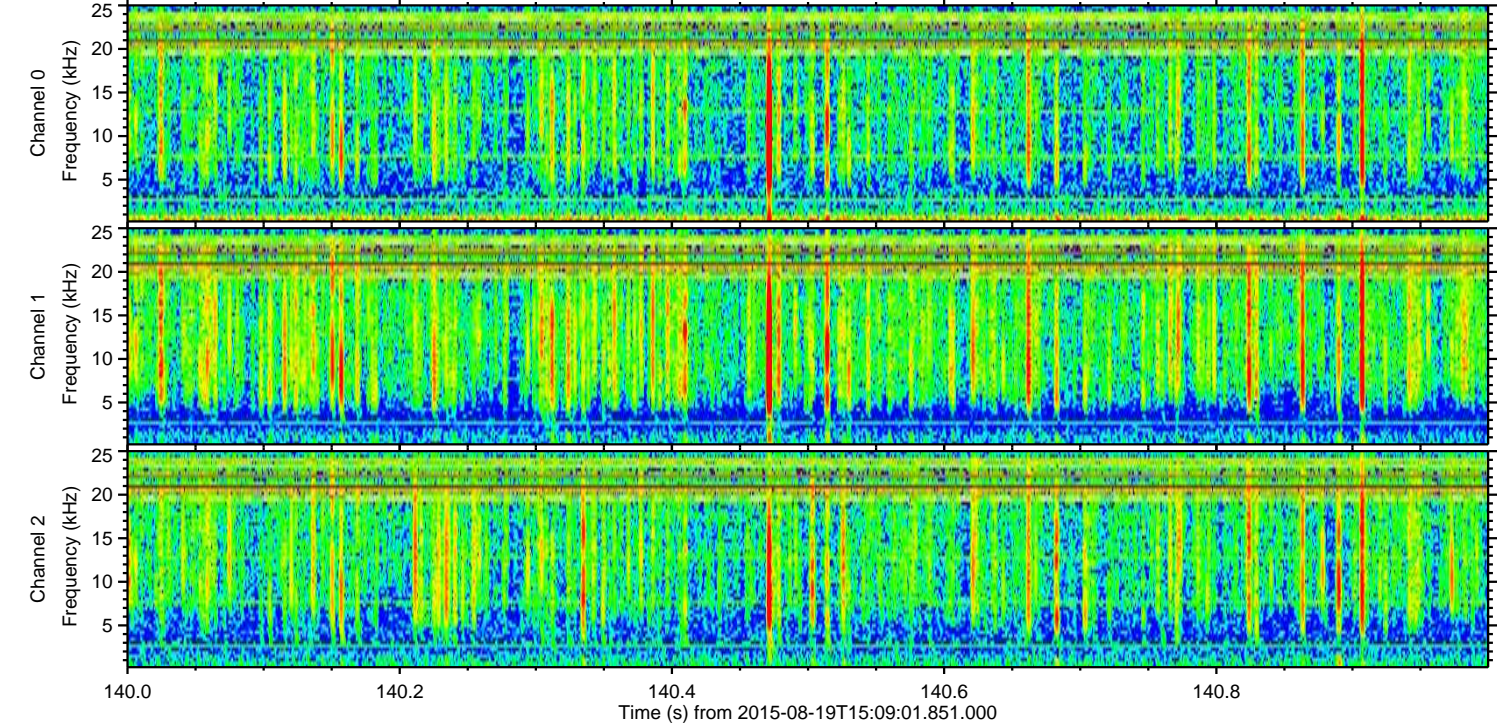
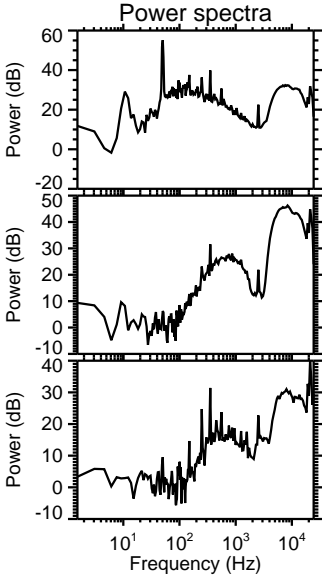
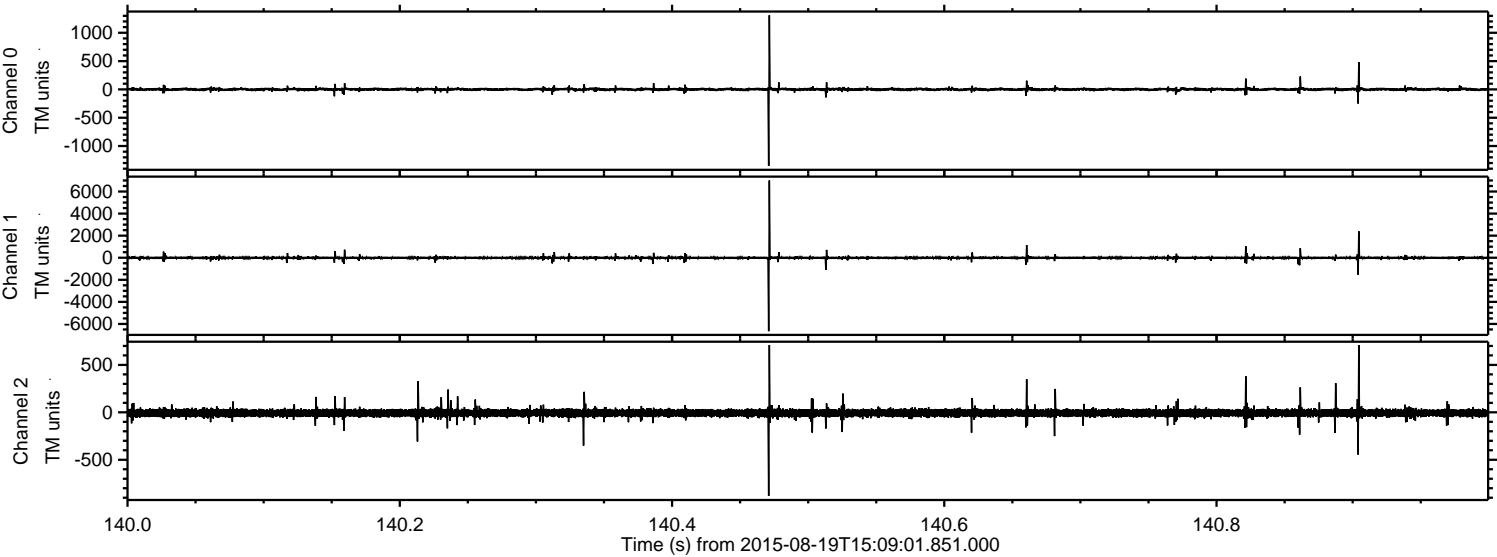
ELMAVAN 3D WAVEFORMS (Measured data sampled at 50 kHz) 51000 packets of 144 samples from 2015-08-19T15:09:01.851.000. Part 113/147

Processed Wed Aug 19 17:15:39 2015 by ELM ver.2012-10-06 from 001__elm20150819_150900__dat00.bin



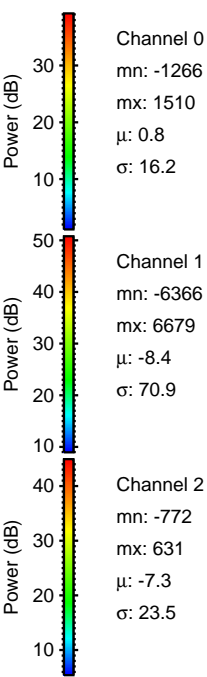
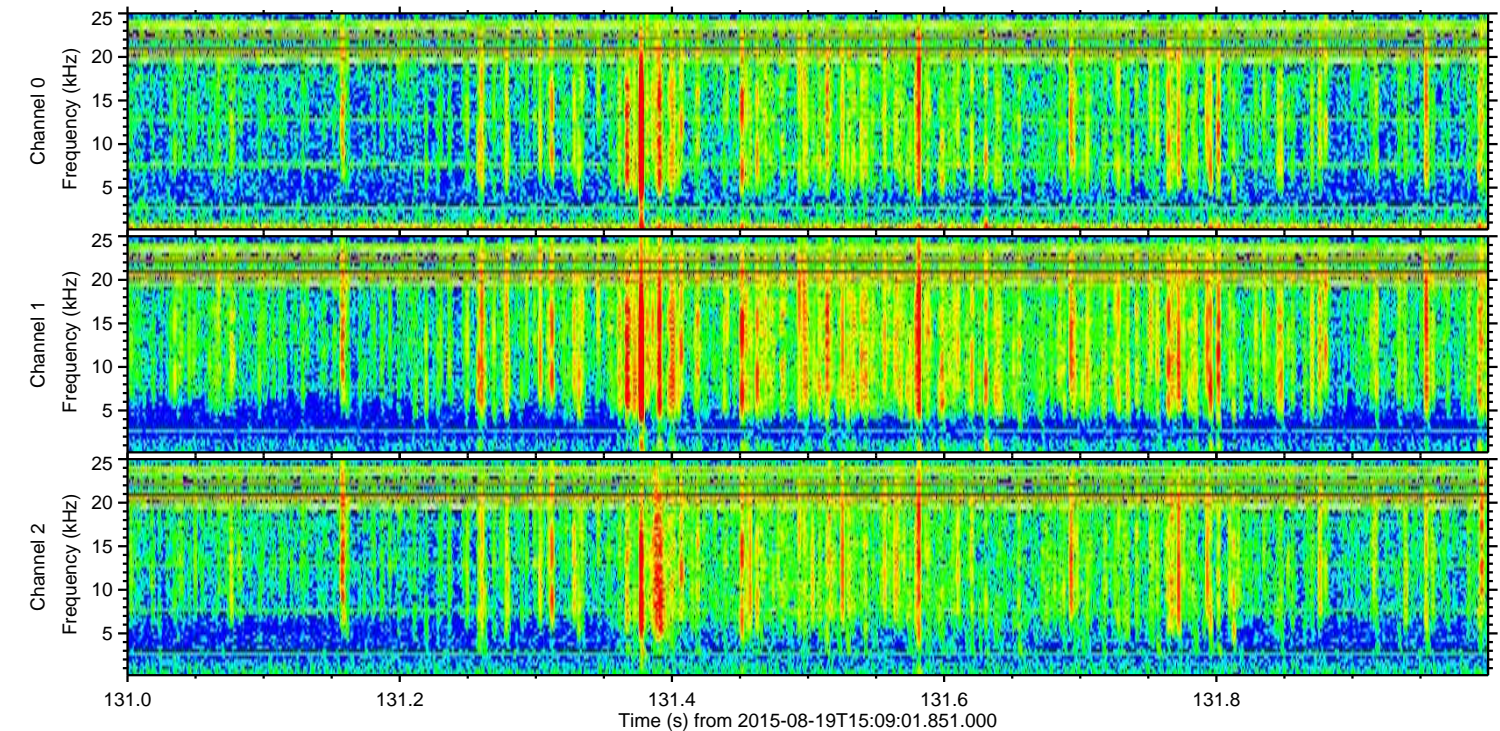
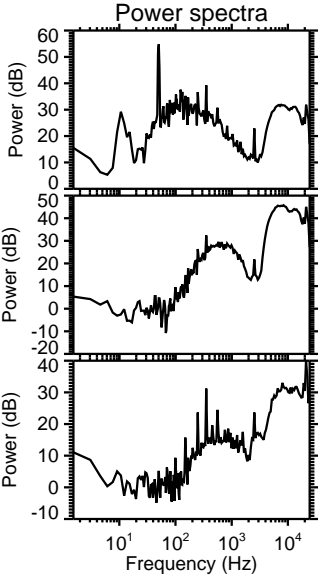
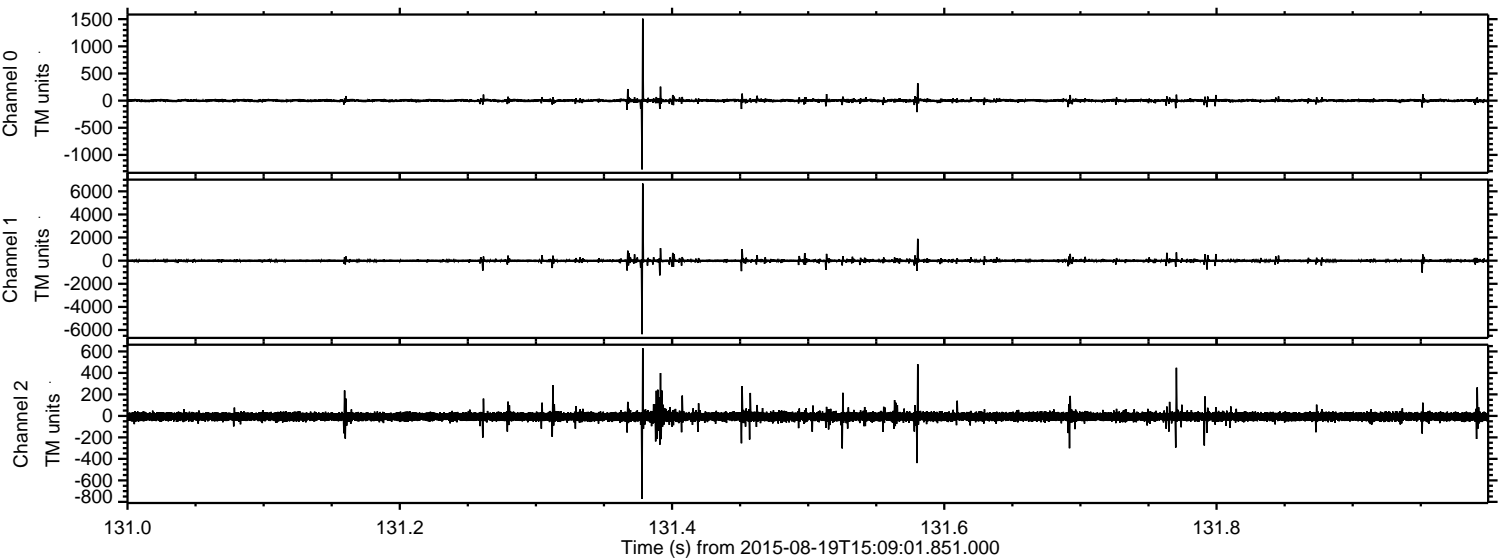
ELMAVAN 3D WAVEFORMS (Measured data sampled at 50 kHz) 51000 packets of 144 samples from 2015-08-19T15:09:01.851.000. Part 141/147

Processed Wed Aug 19 17:15:40 2015 by ELM ver.2012-10-06 from 001__elm20150819_150900__dat00.bin



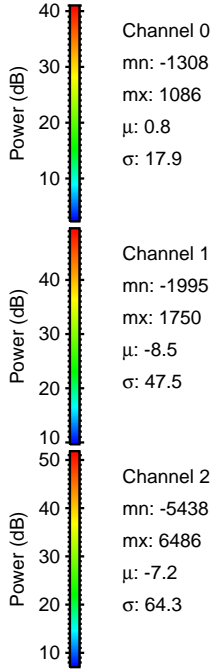
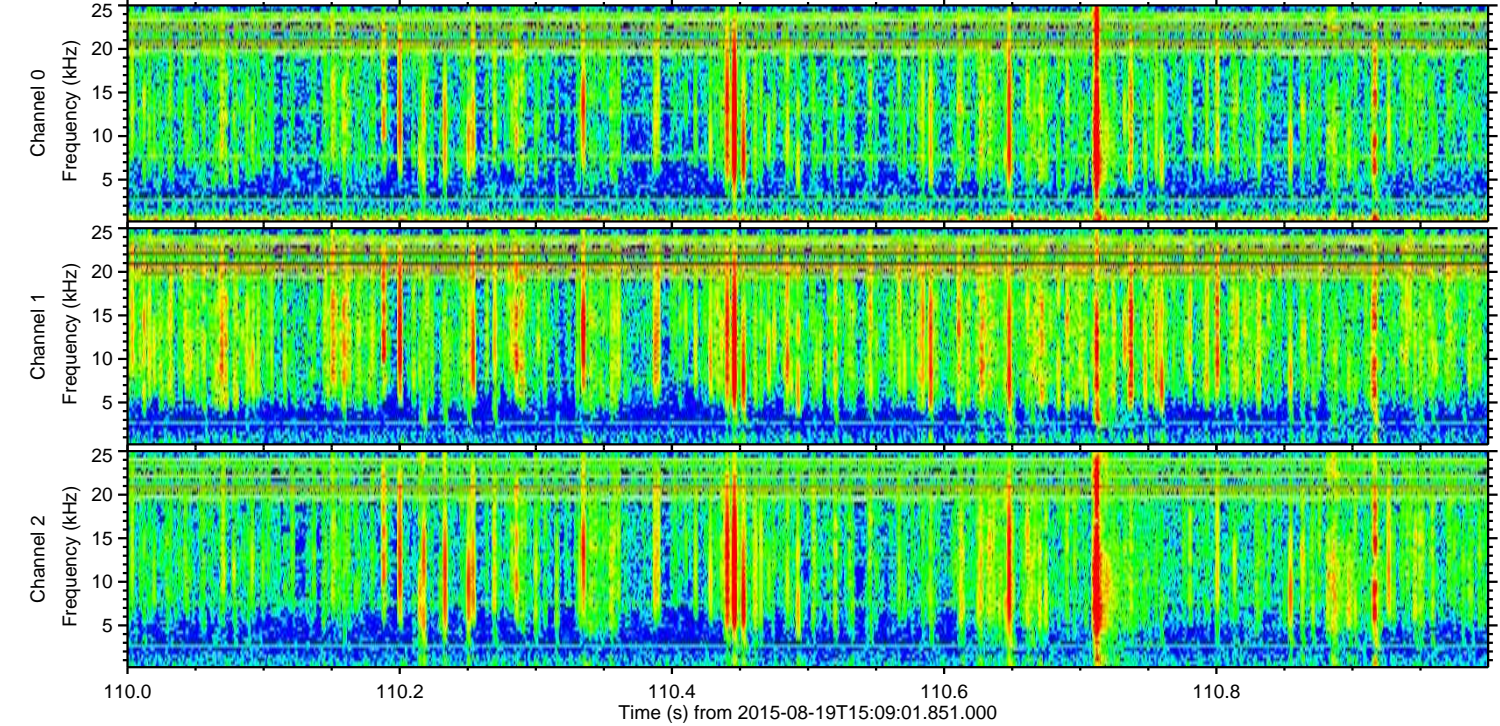
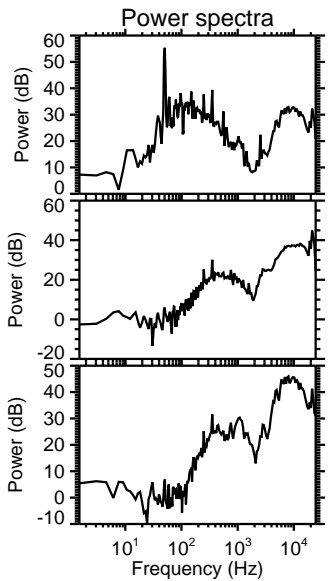
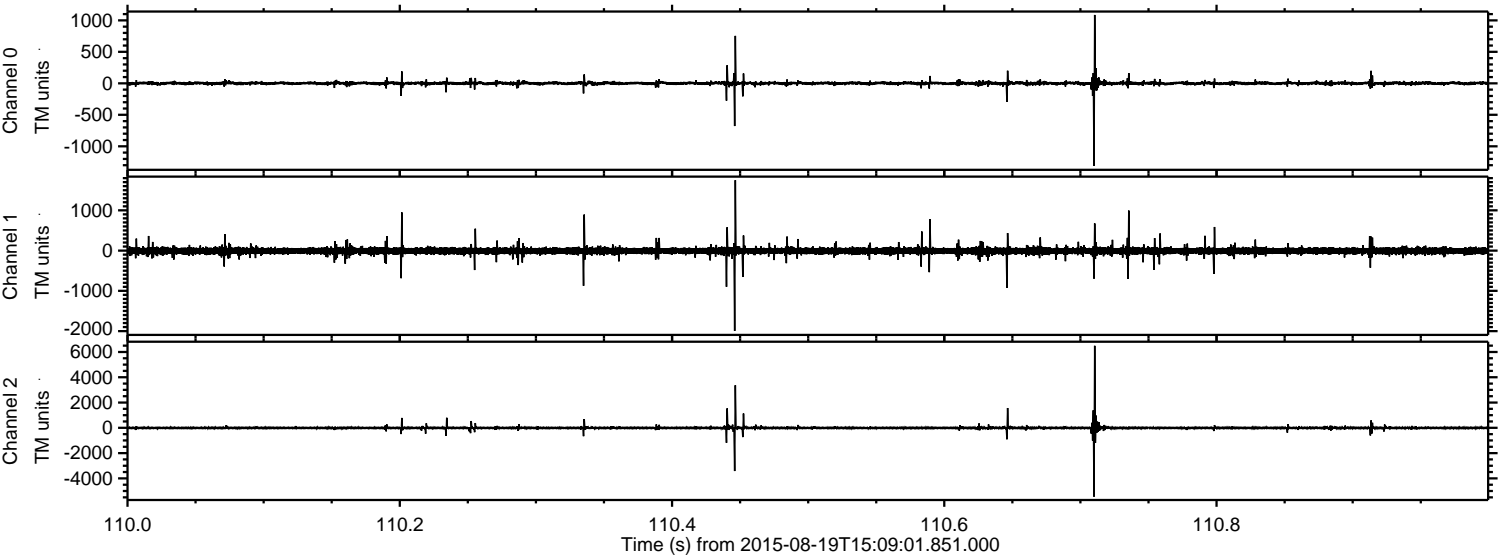
ELMAVAN 3D WAVEFORMS (Measured data sampled at 50 kHz) 51000 packets of 144 samples from 2015-08-19T15:09:01.851.000. Part 132/147

Processed Wed Aug 19 17:15:41 2015 by ELM ver.2012-10-06 from 001__elm20150819_150900__dat00.bin



ELMAVAN 3D WAVEFORMS (Measured data sampled at 50 kHz) 51000 packets of 144 samples from 2015-08-19T15:09:01.851.000. Part 111/147

Processed Wed Aug 19 17:15:42 2015 by ELM ver.2012-10-06 from 001__elm20150819_150900__dat00.bin

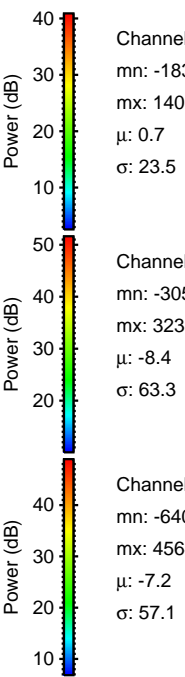
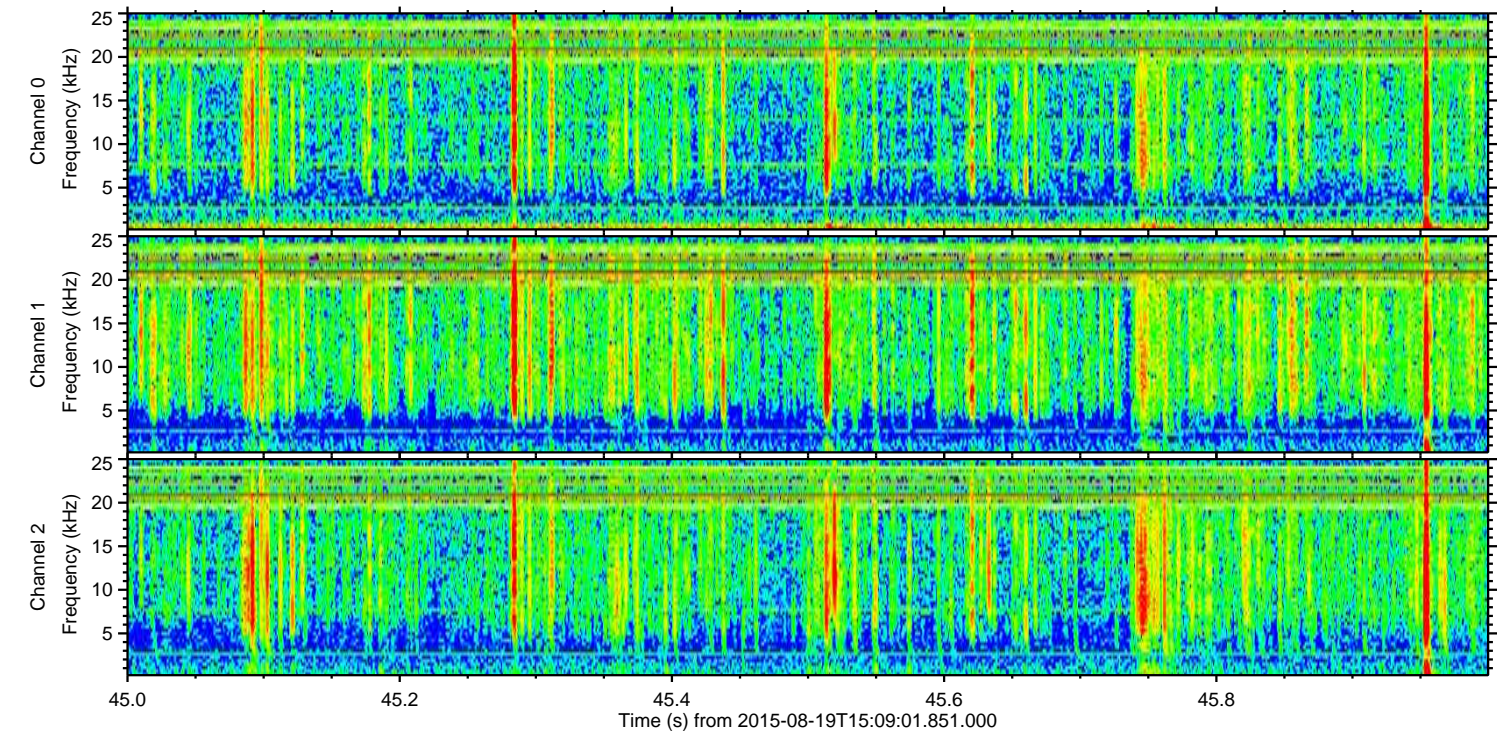
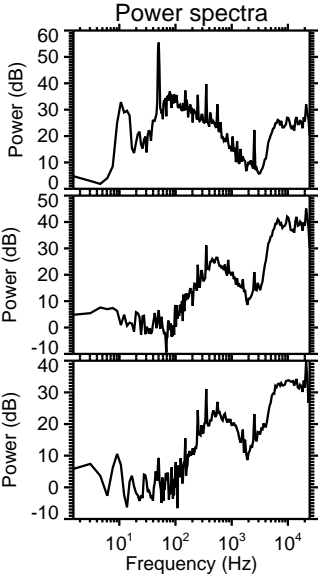
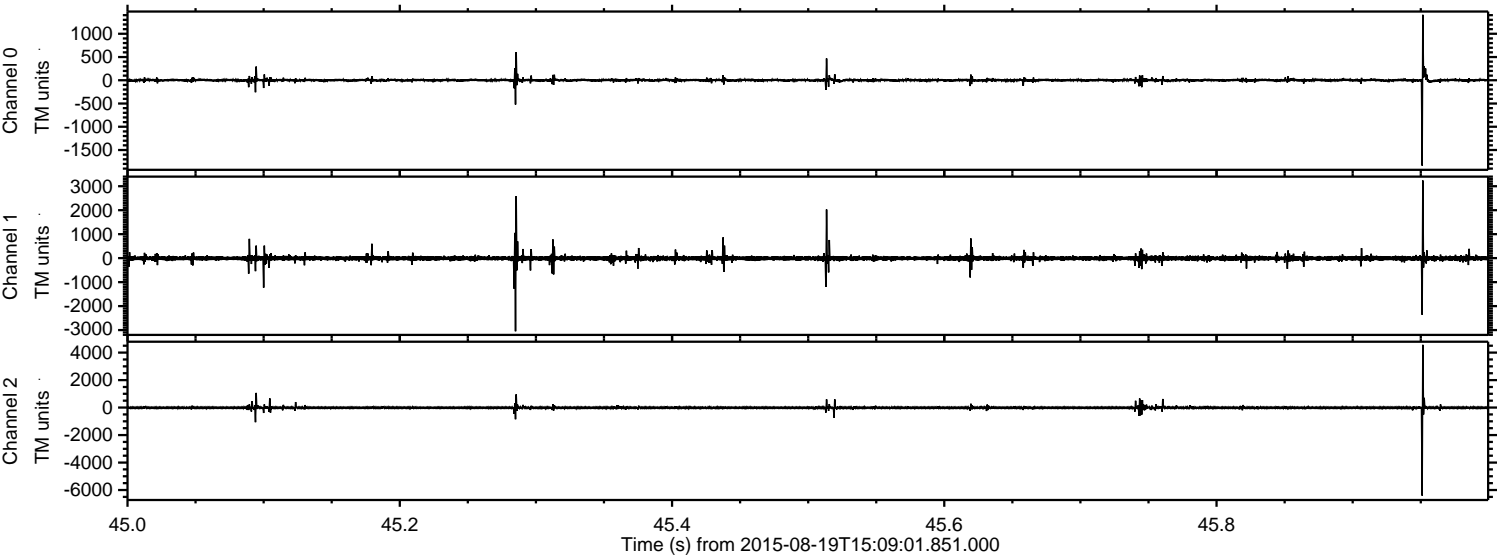


Channel 0
mn: -1308
mx: 1086
 μ : 0.8
 σ : 17.9

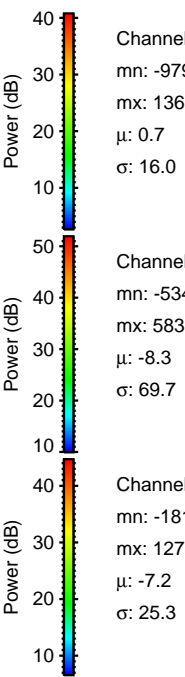
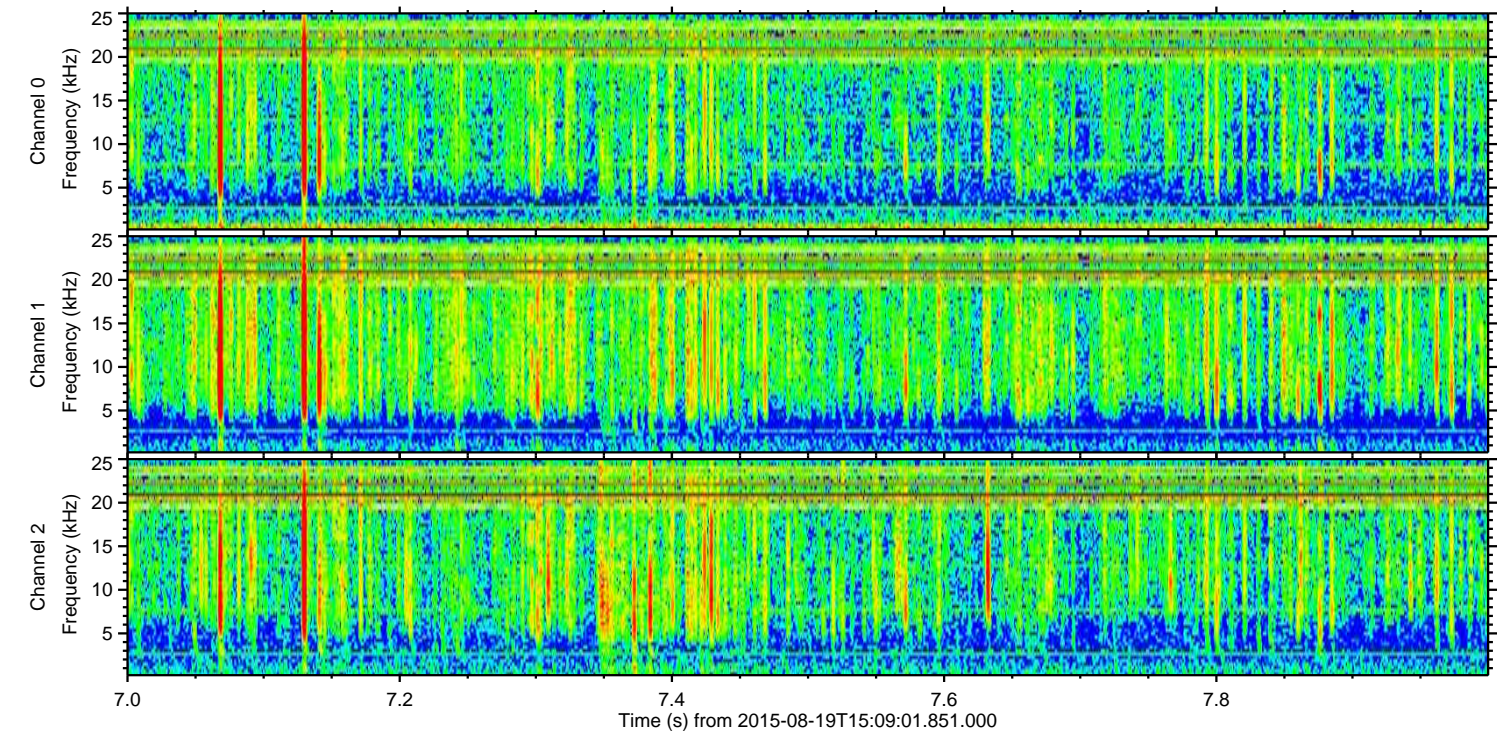
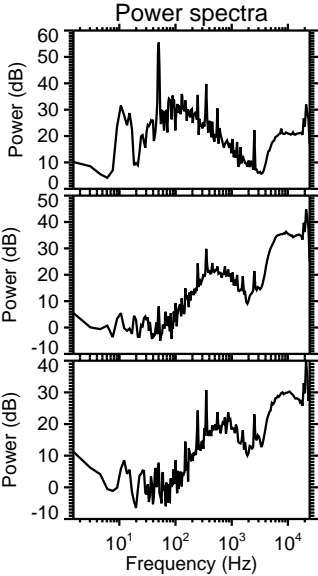
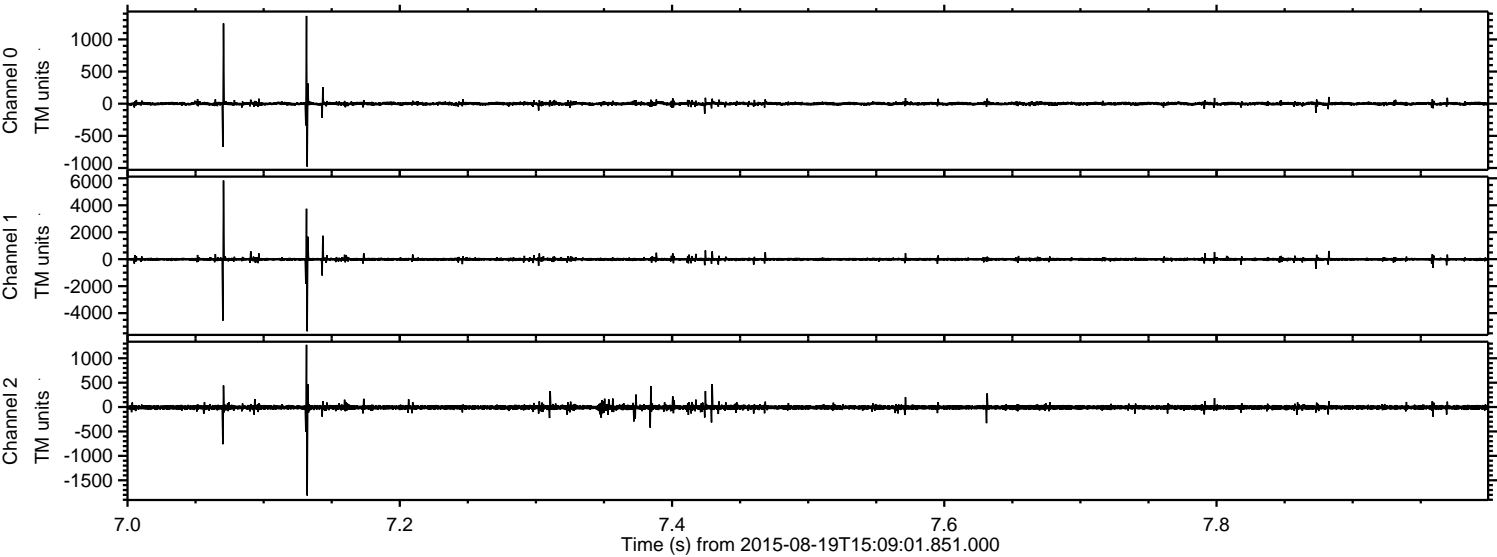
Channel 1
mn: -1995
mx: 1750
 μ : -8.5
 σ : 47.5

Channel 2
mn: -5438
mx: 6486
 μ : -7.2
 σ : 64.3

Processed Wed Aug 19 17:15:43 2015 by ELM ver.2012-10-06 from 001__elm20150819_150900__dat00.bin



Processed Wed Aug 19 17:15:44 2015 by ELM ver.2012-10-06 from 001__elm20150819_150900__dat00.bin



Processed Wed Aug 19 17:15:45 2015 by ELM ver.2012-10-06 from 001__elm20150819_150900__dat00.bin

