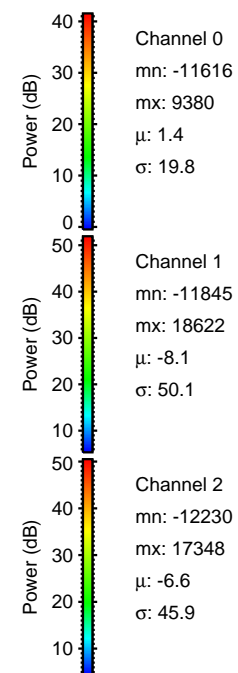
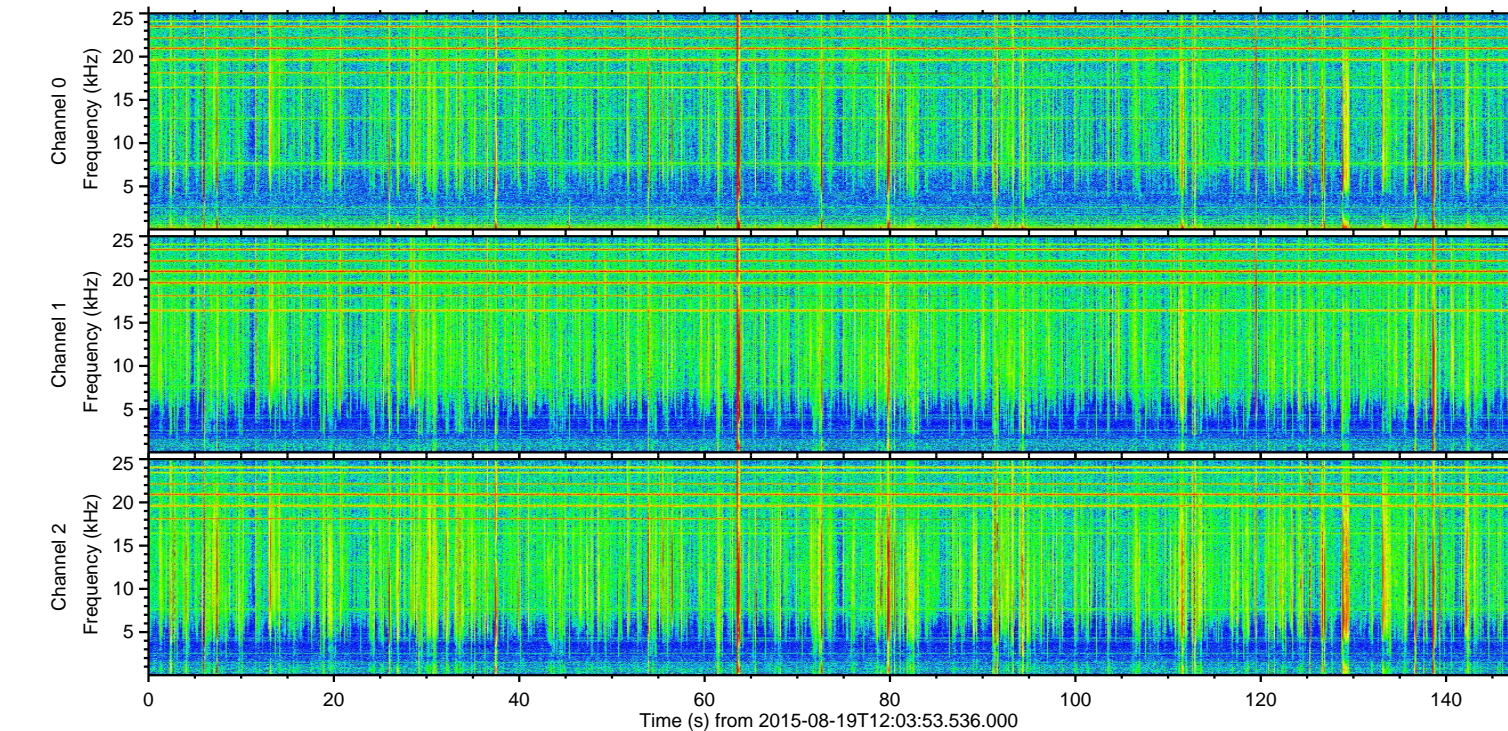
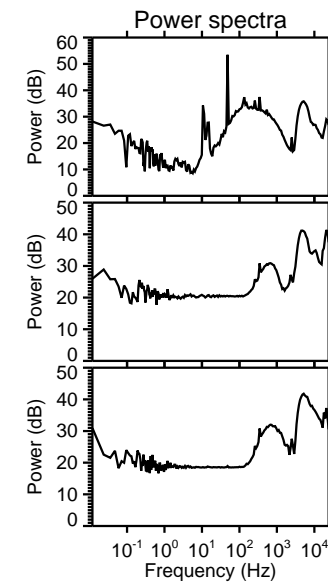
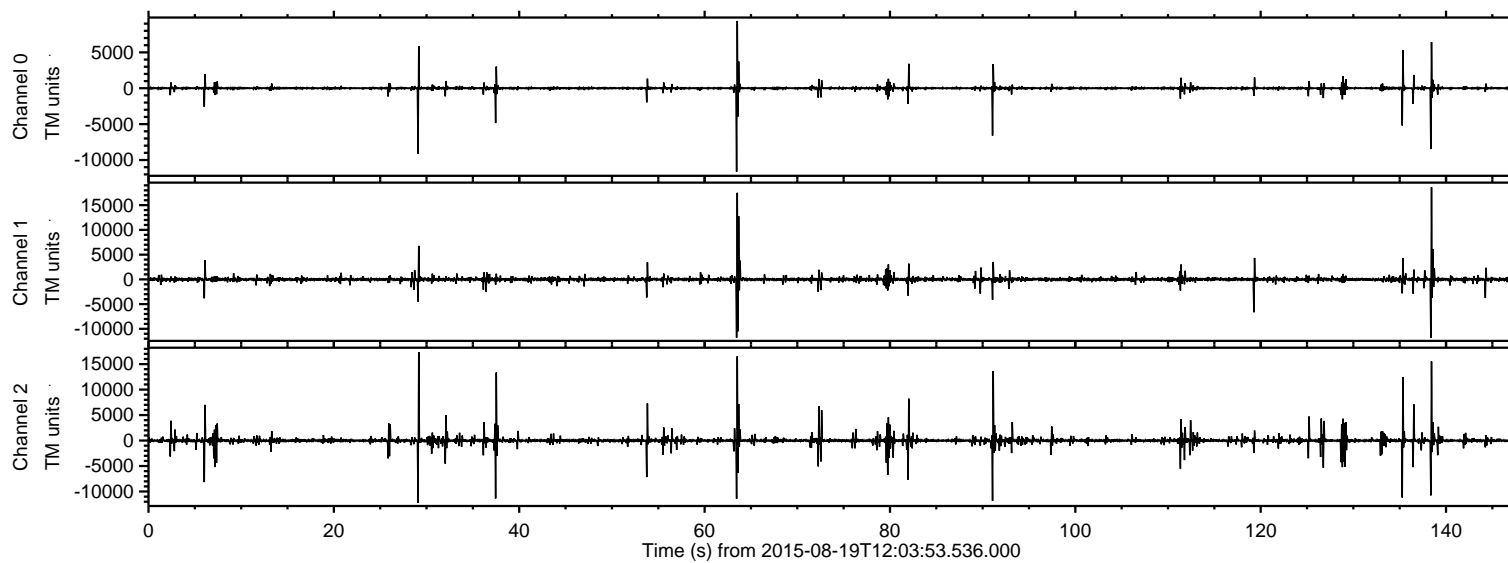


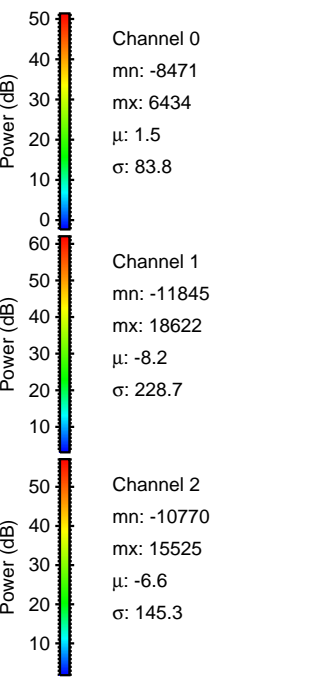
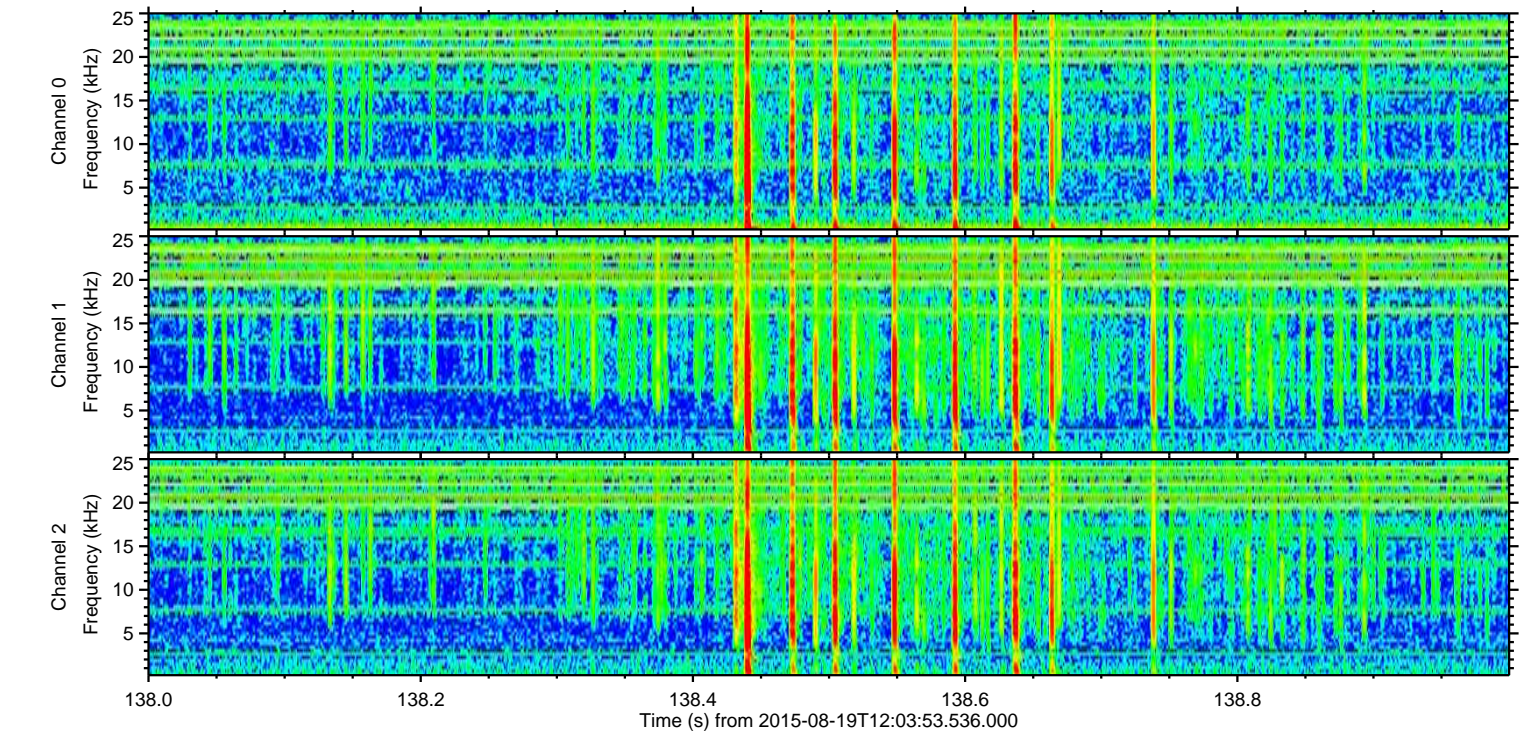
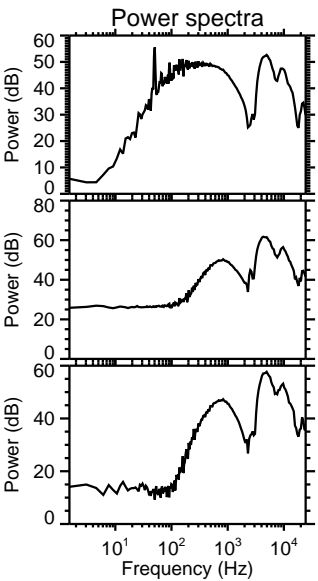
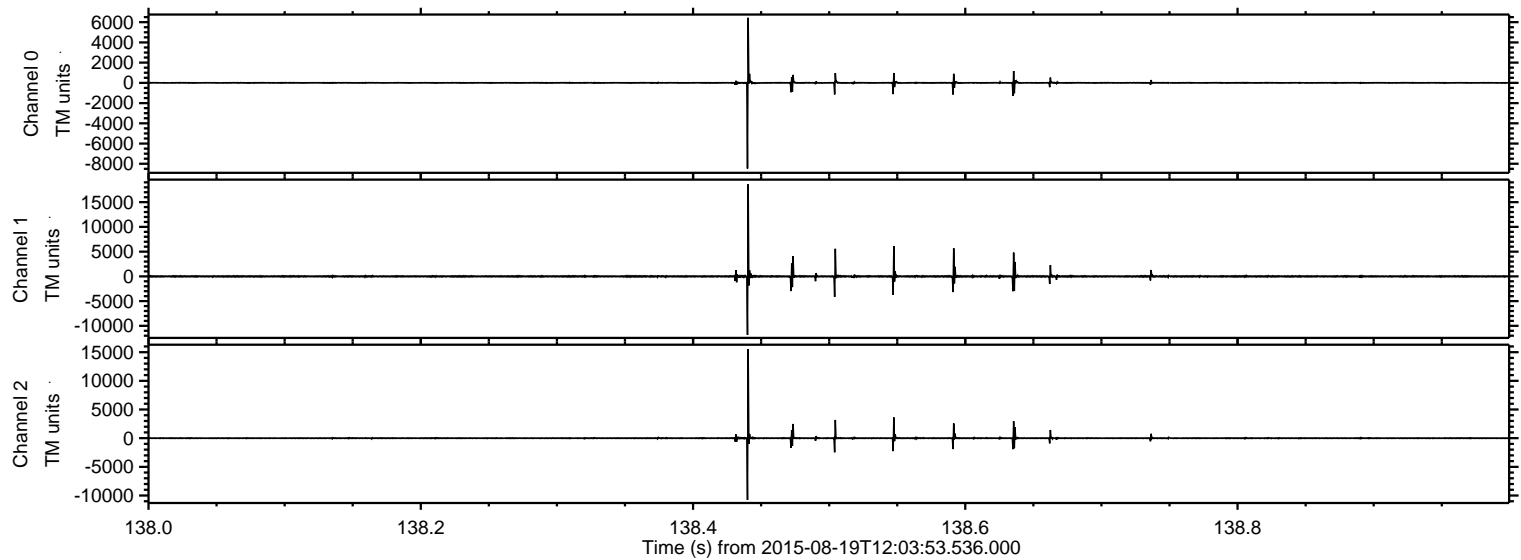
ELMAVAN 3D WAVEFORMS (Measured data sampled at 50 kHz) 51000 packets of 144 samples from 2015-08-19T12:03:53.536.000.

Processed Wed Aug 19 14:10:04 2015 by ELM ver.2012-10-06 from 001__elm20150819_120352__dat00.bin

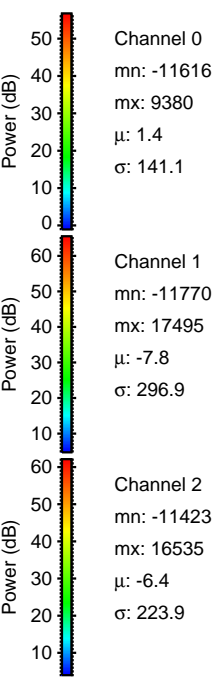
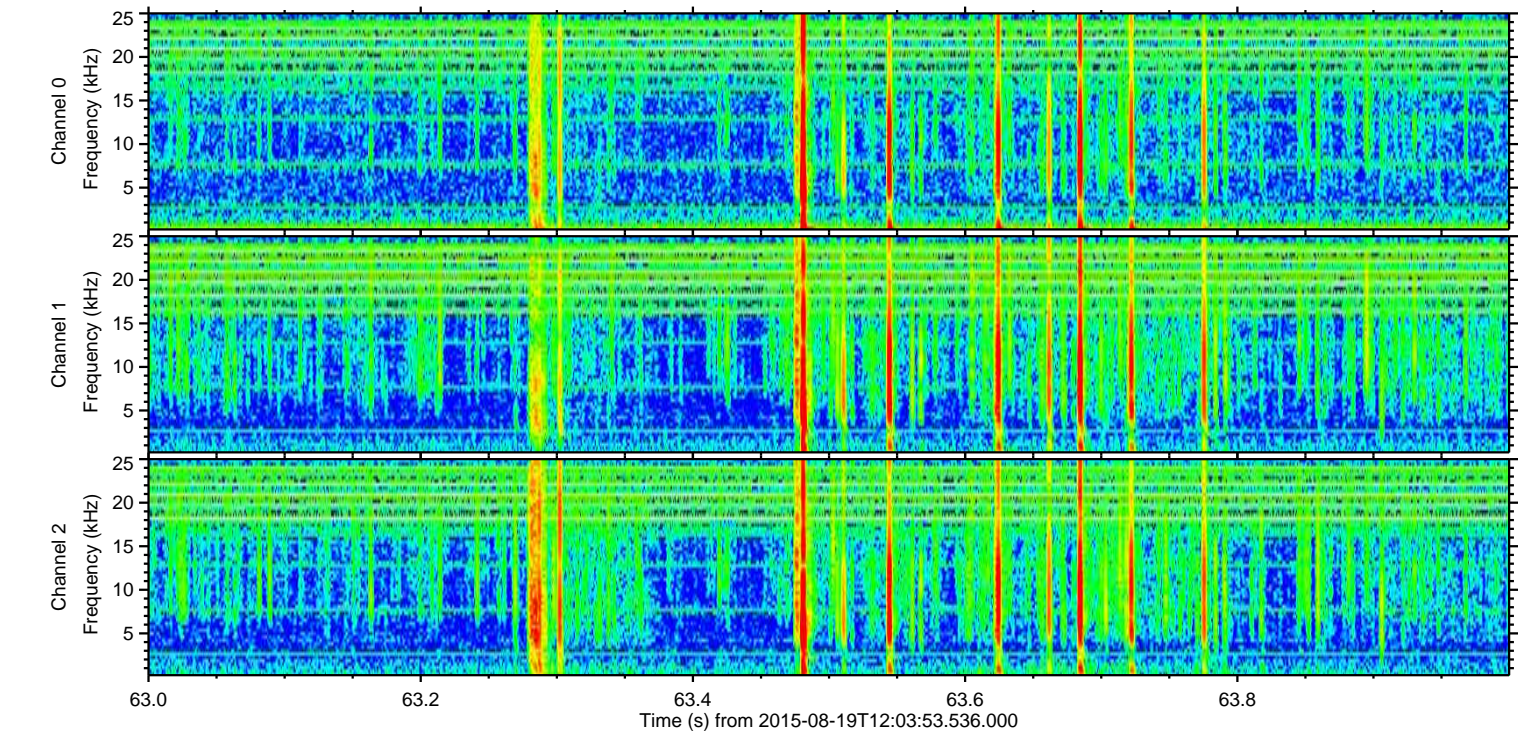
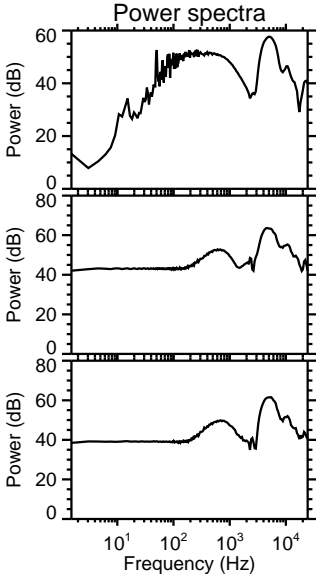
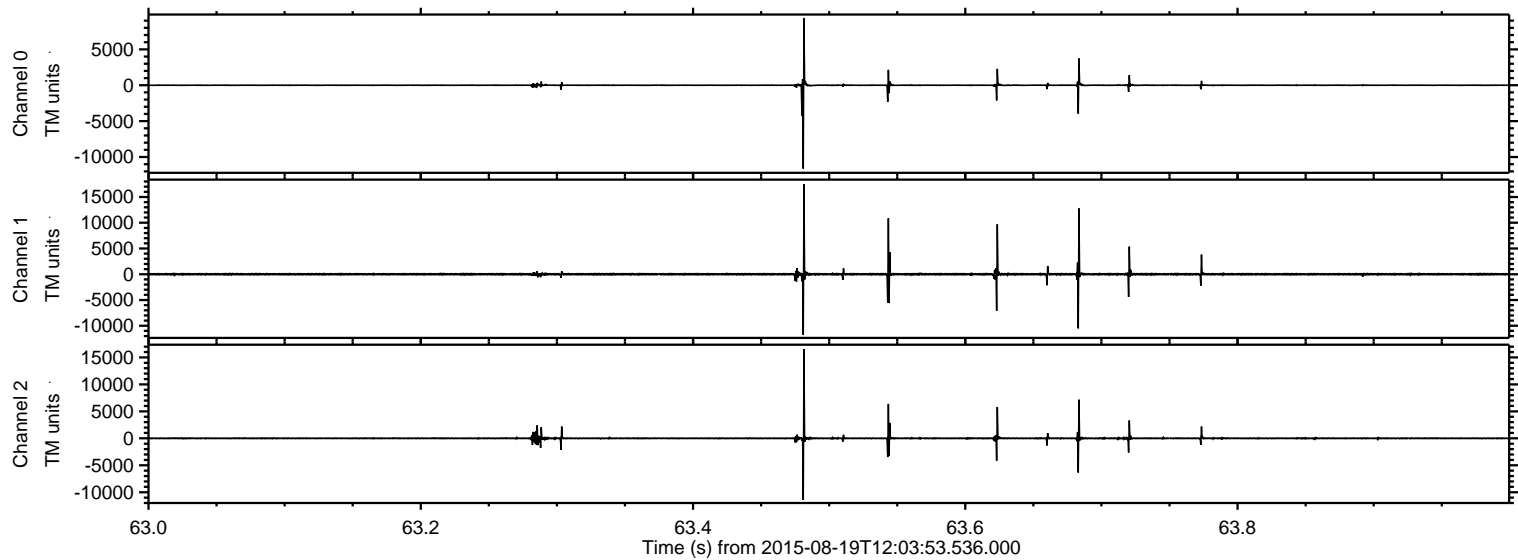


ELMAVAN 3D WAVEFORMS (Measured data sampled at 50 kHz) 51000 packets of 144 samples from 2015-08-19T12:03:53.536.000. Part 139/147

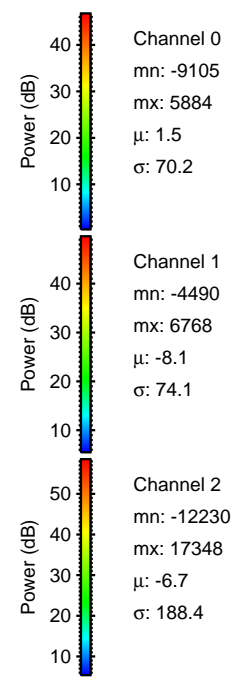
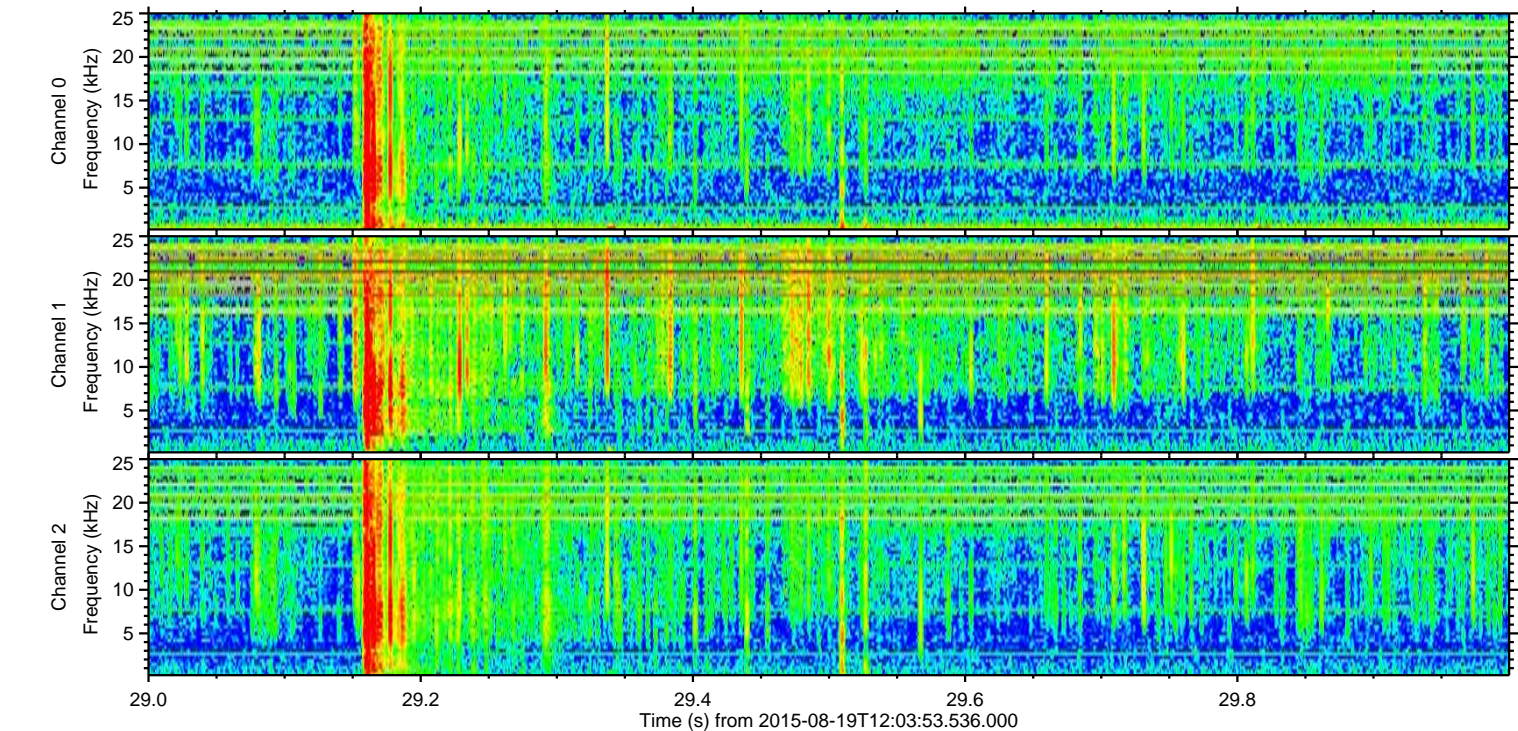
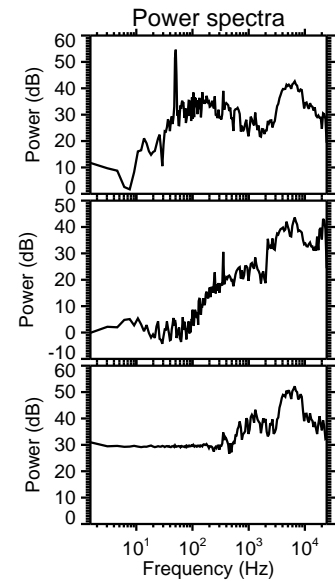
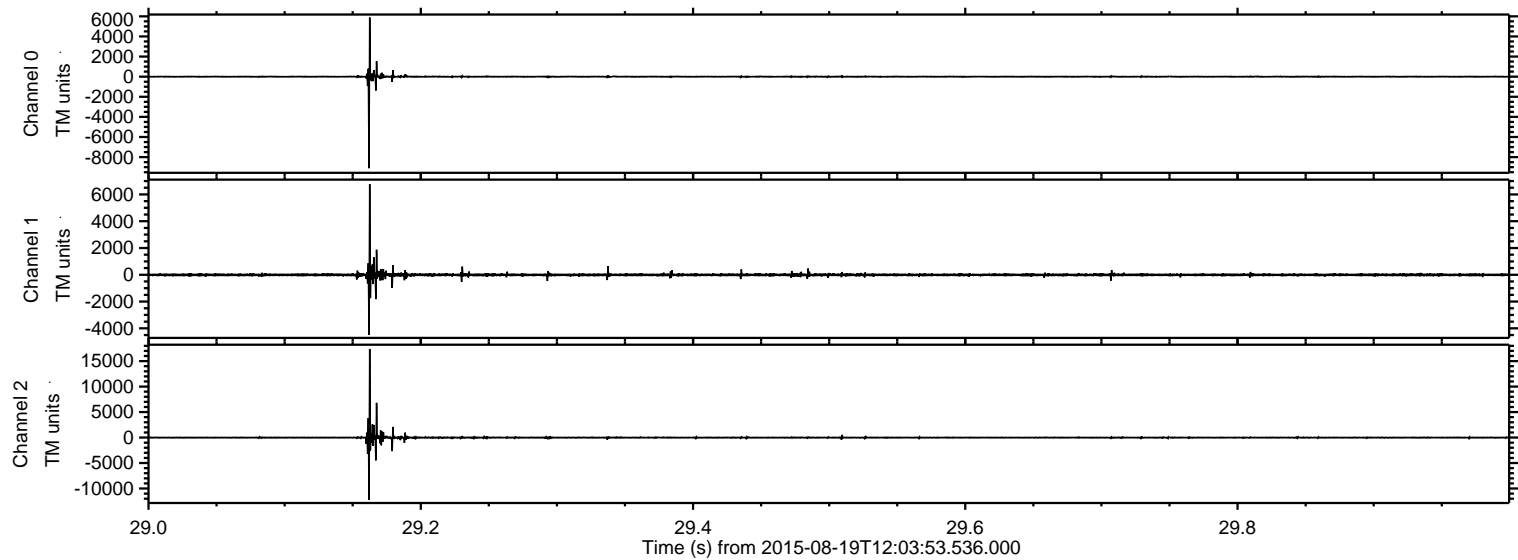
Processed Wed Aug 19 14:10:15 2015 by ELM ver.2012-10-06 from 001__elm20150819_120352__dat00.bin



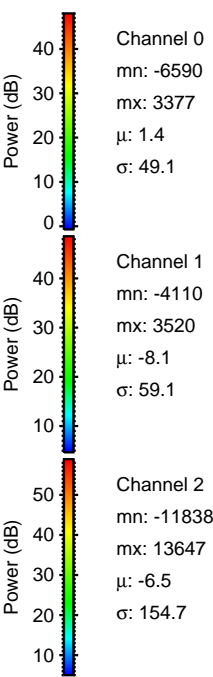
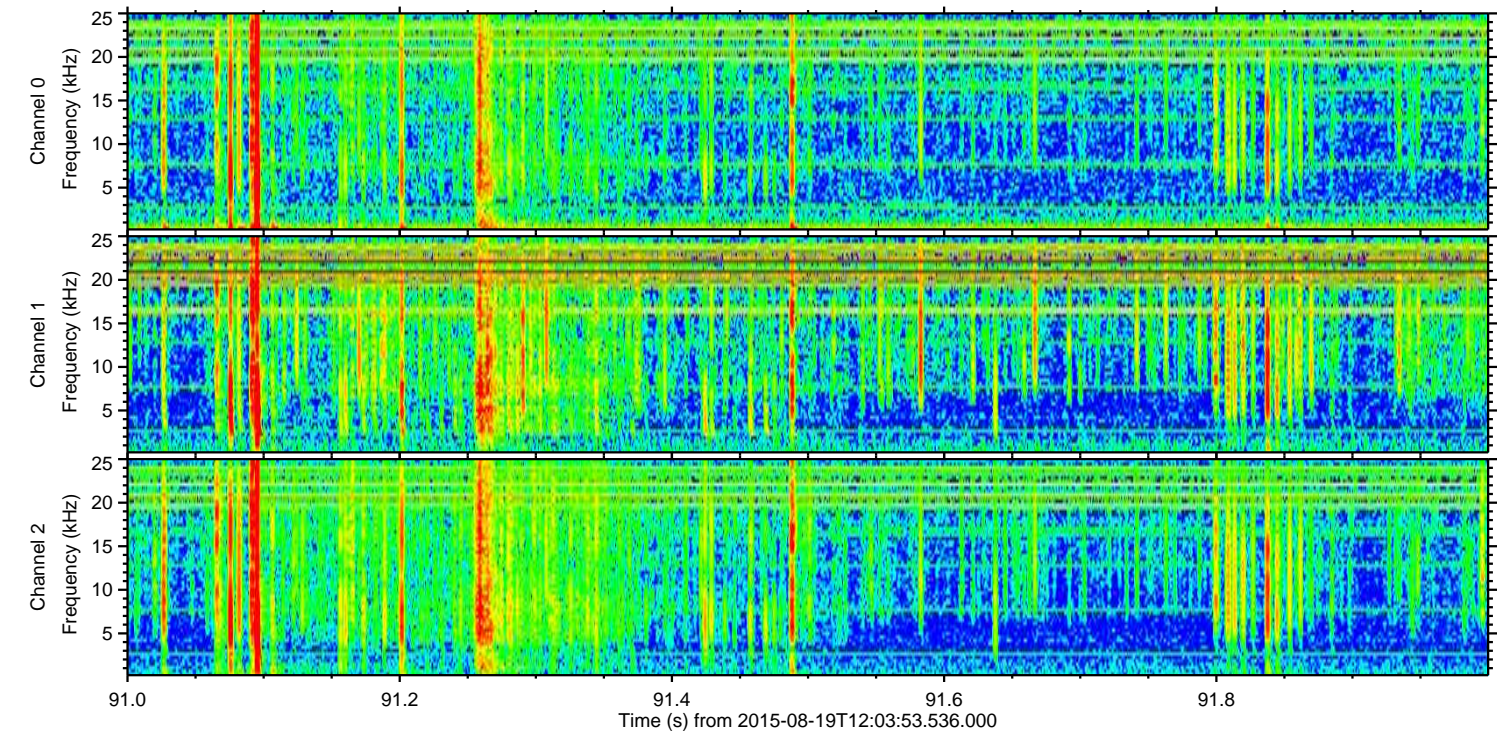
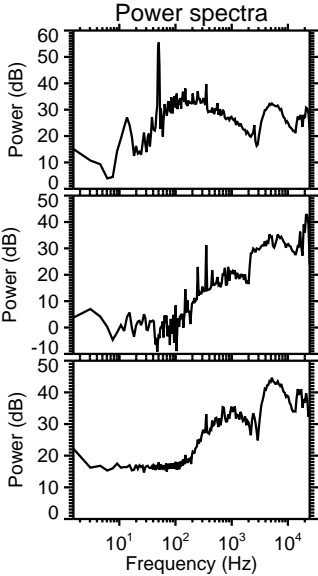
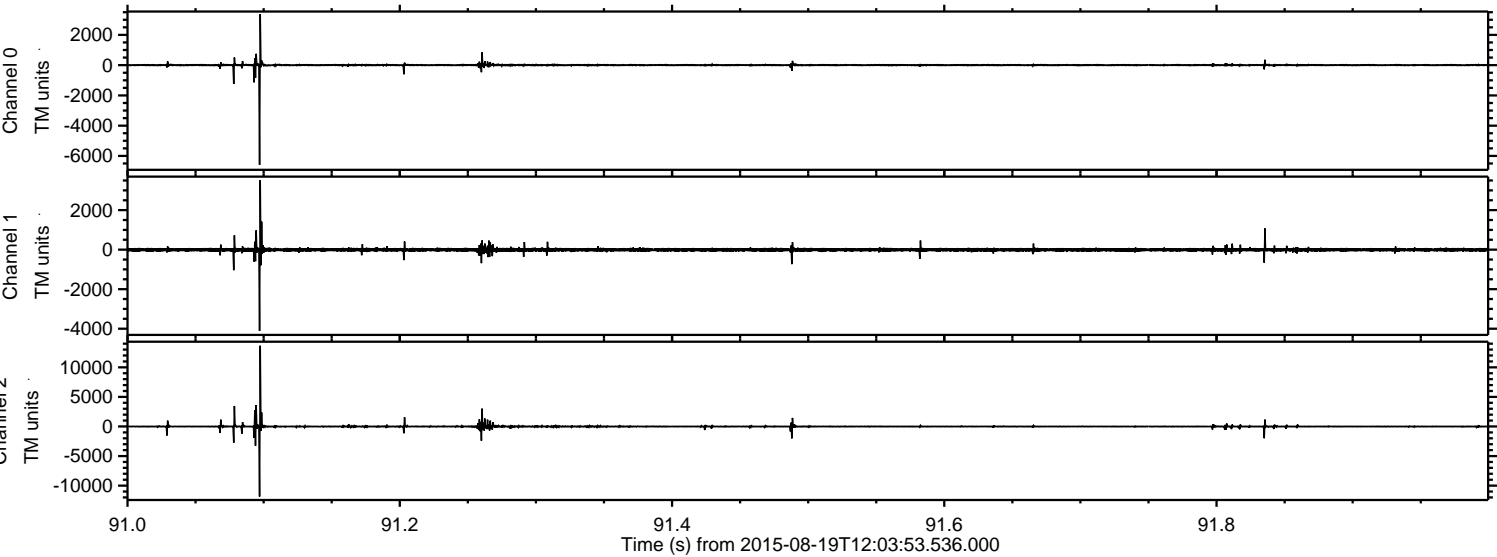
Processed Wed Aug 19 14:10:16 2015 by ELM ver.2012-10-06 from 001__elm20150819_120352__dat00.bin



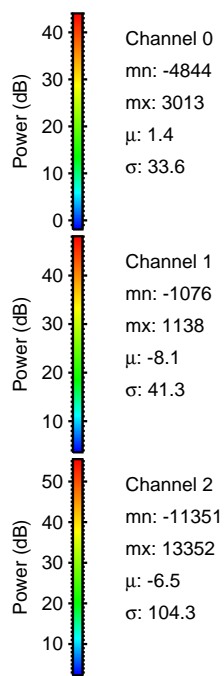
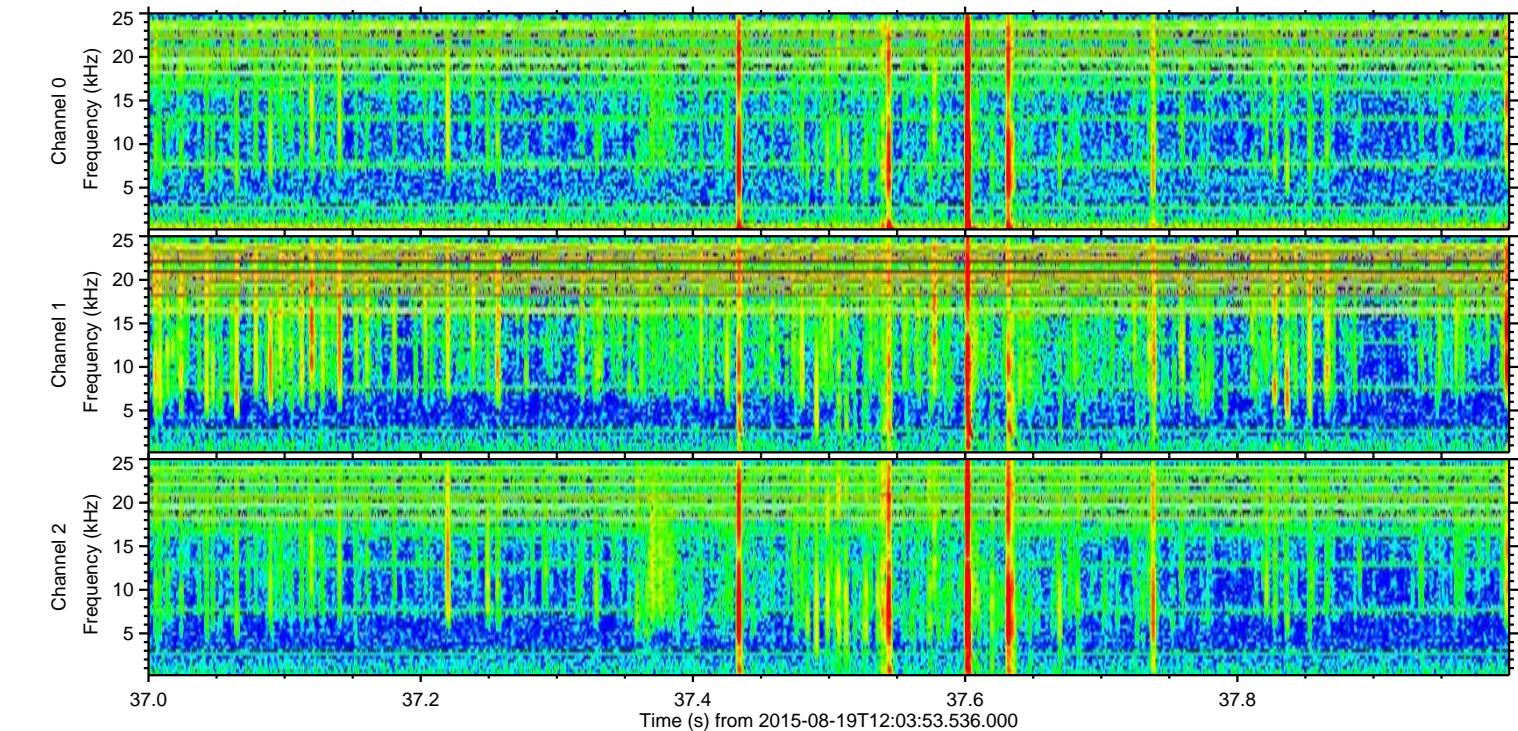
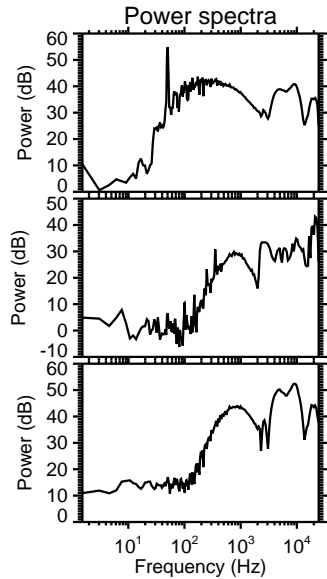
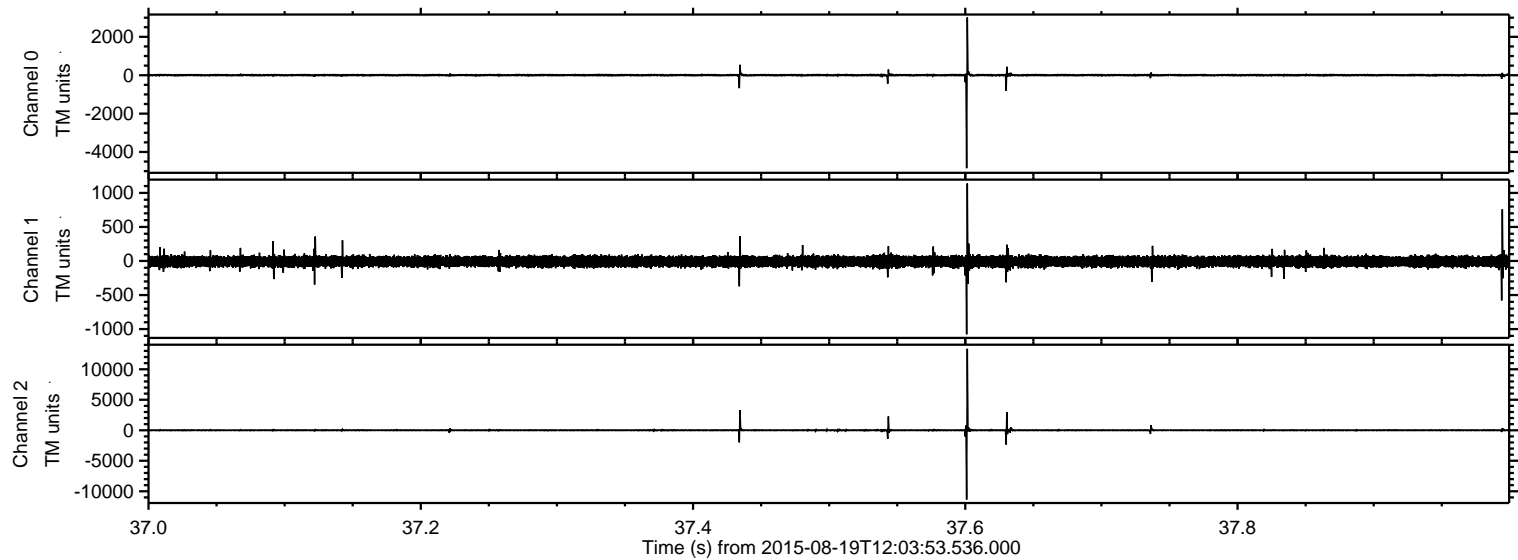
Processed Wed Aug 19 14:10:17 2015 by ELM ver.2012-10-06 from 001__elm20150819_120352__dat00.bin



Processed Wed Aug 19 14:10:18 2015 by ELM ver.2012-10-06 from 001__elm20150819_120352__dat00.bin

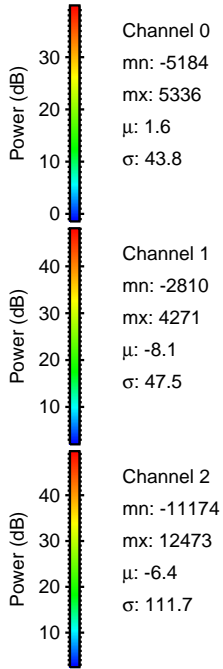
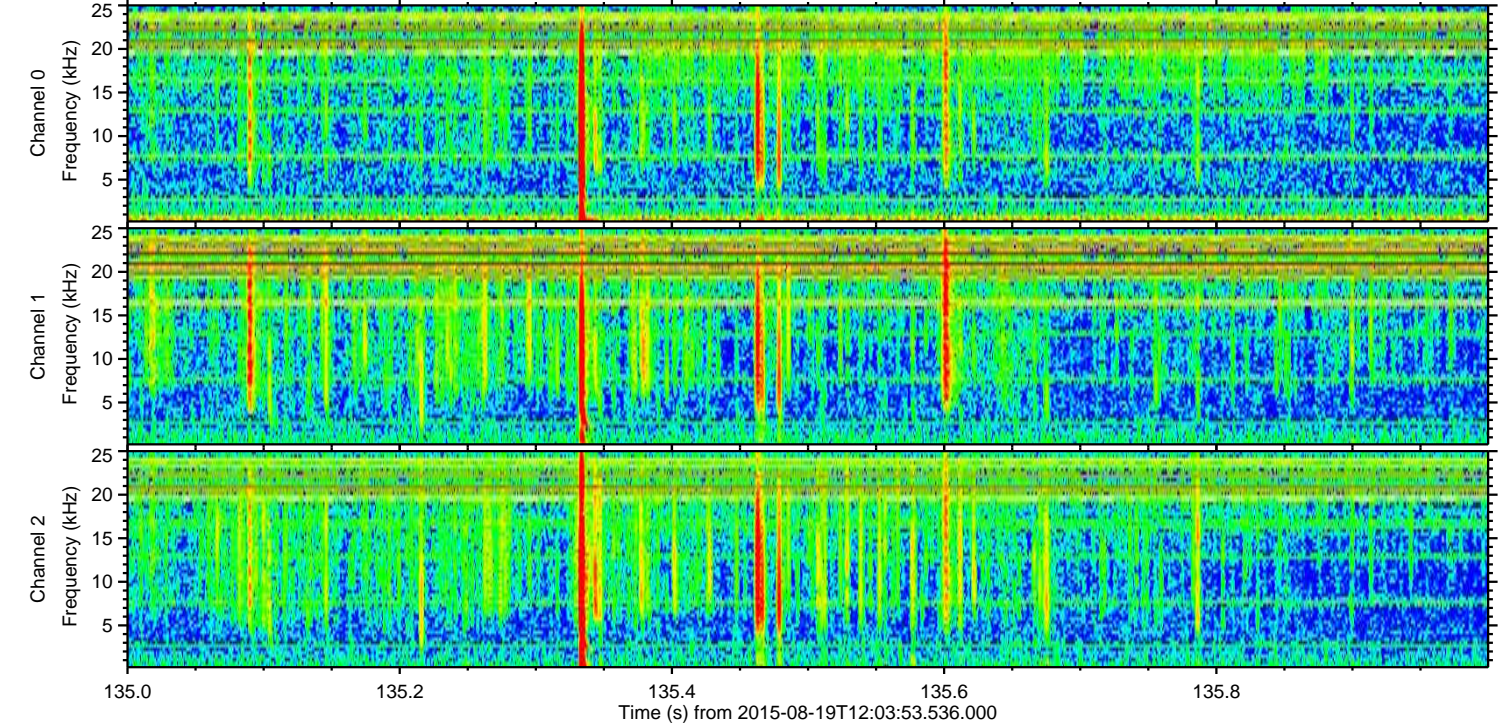
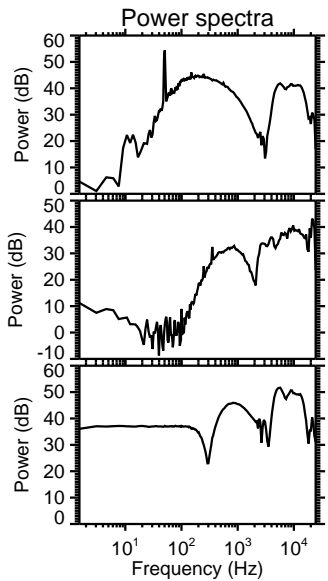
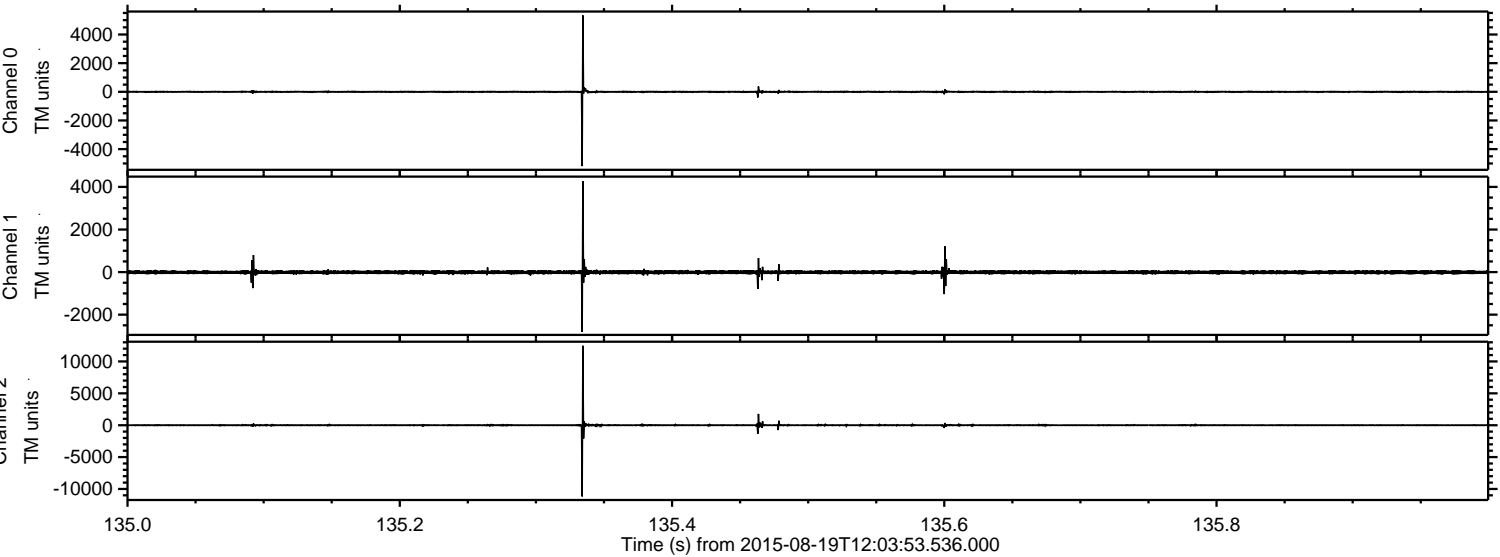


Processed Wed Aug 19 14:10:19 2015 by ELM ver.2012-10-06 from 001__elm20150819_120352__dat00.bin

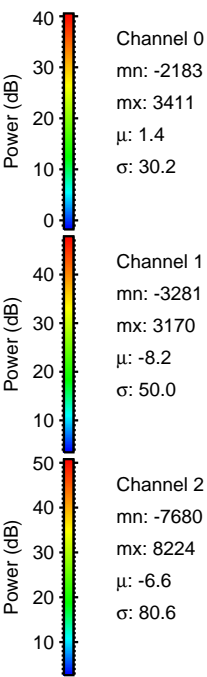
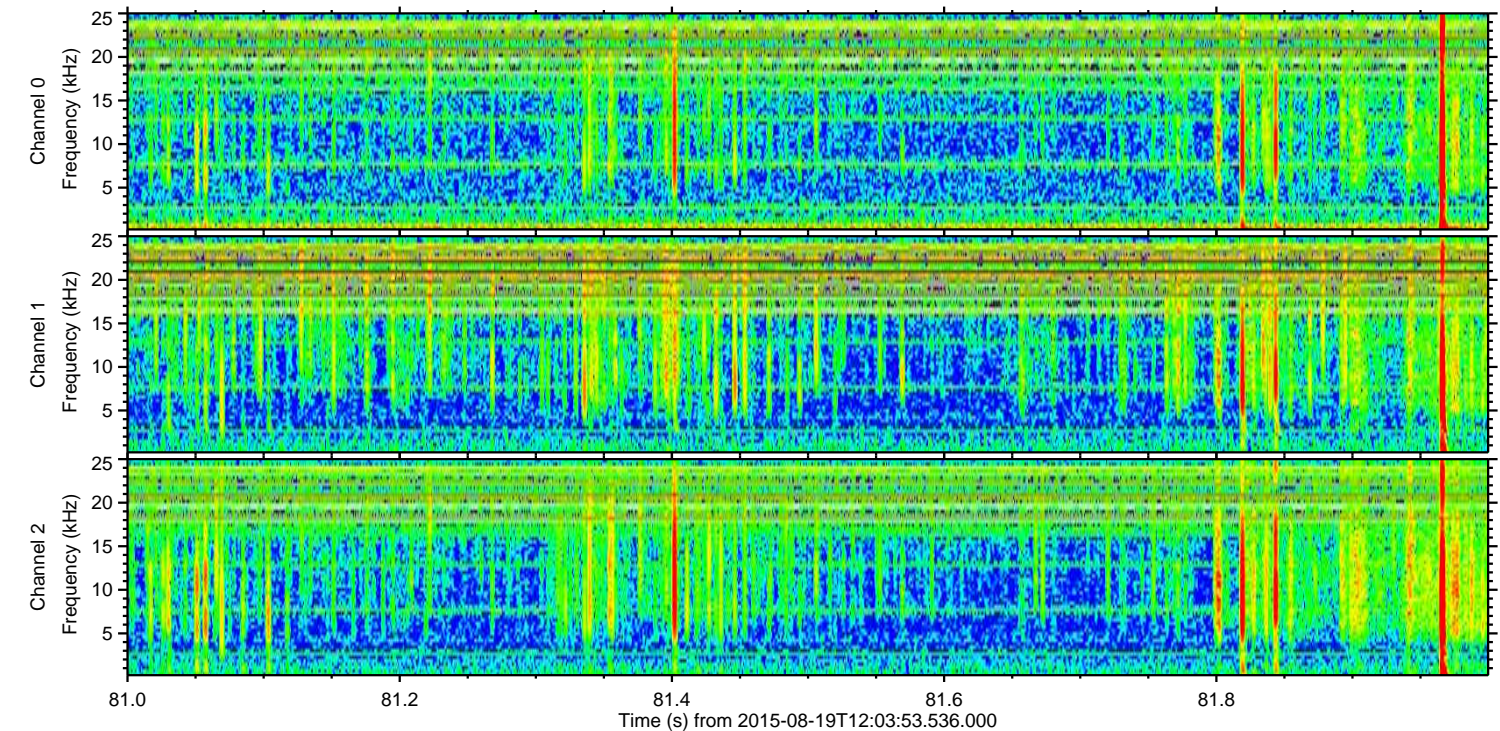
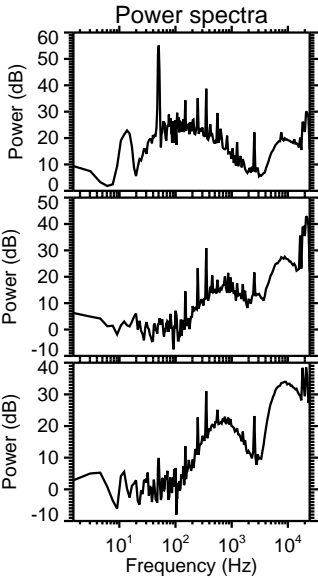
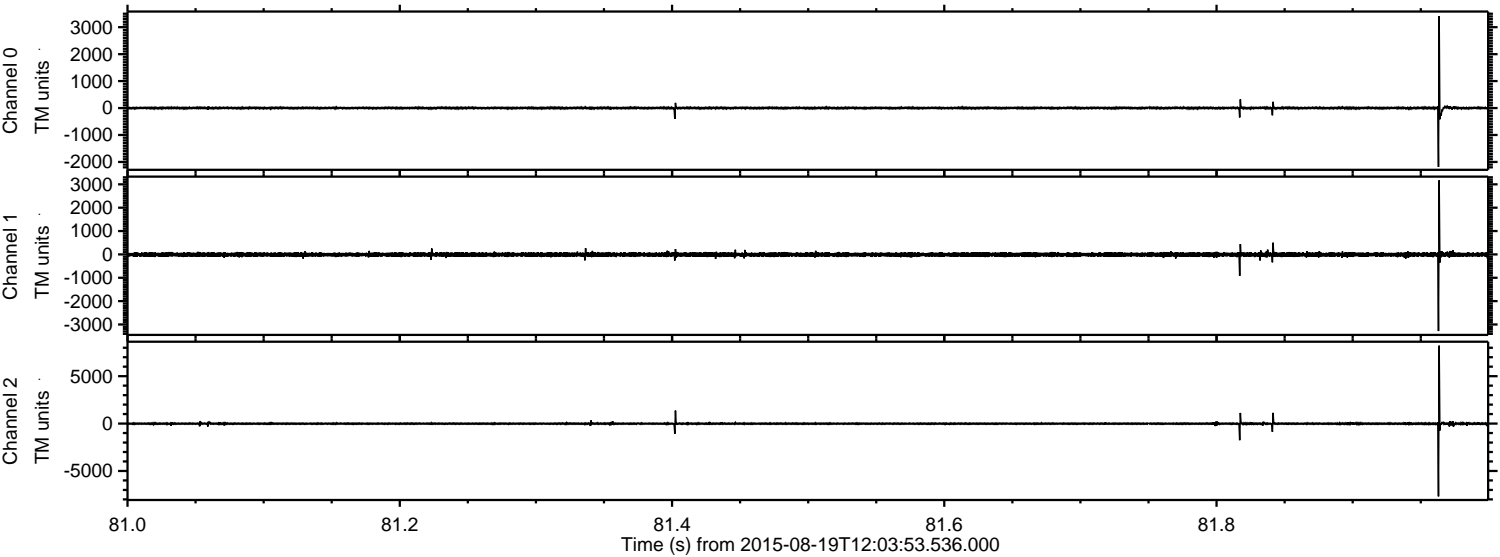


ELMAVAN 3D WAVEFORMS (Measured data sampled at 50 kHz) 51000 packets of 144 samples from 2015-08-19T12:03:53.536.000. Part 136/147

Processed Wed Aug 19 14:10:20 2015 by ELM ver.2012-10-06 from 001__elm20150819_120352__dat00.bin

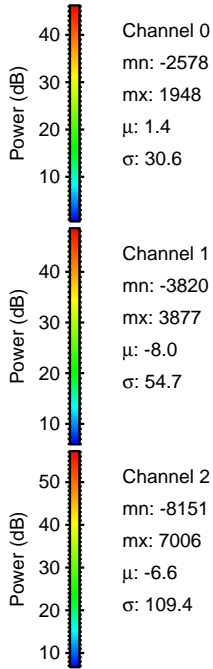
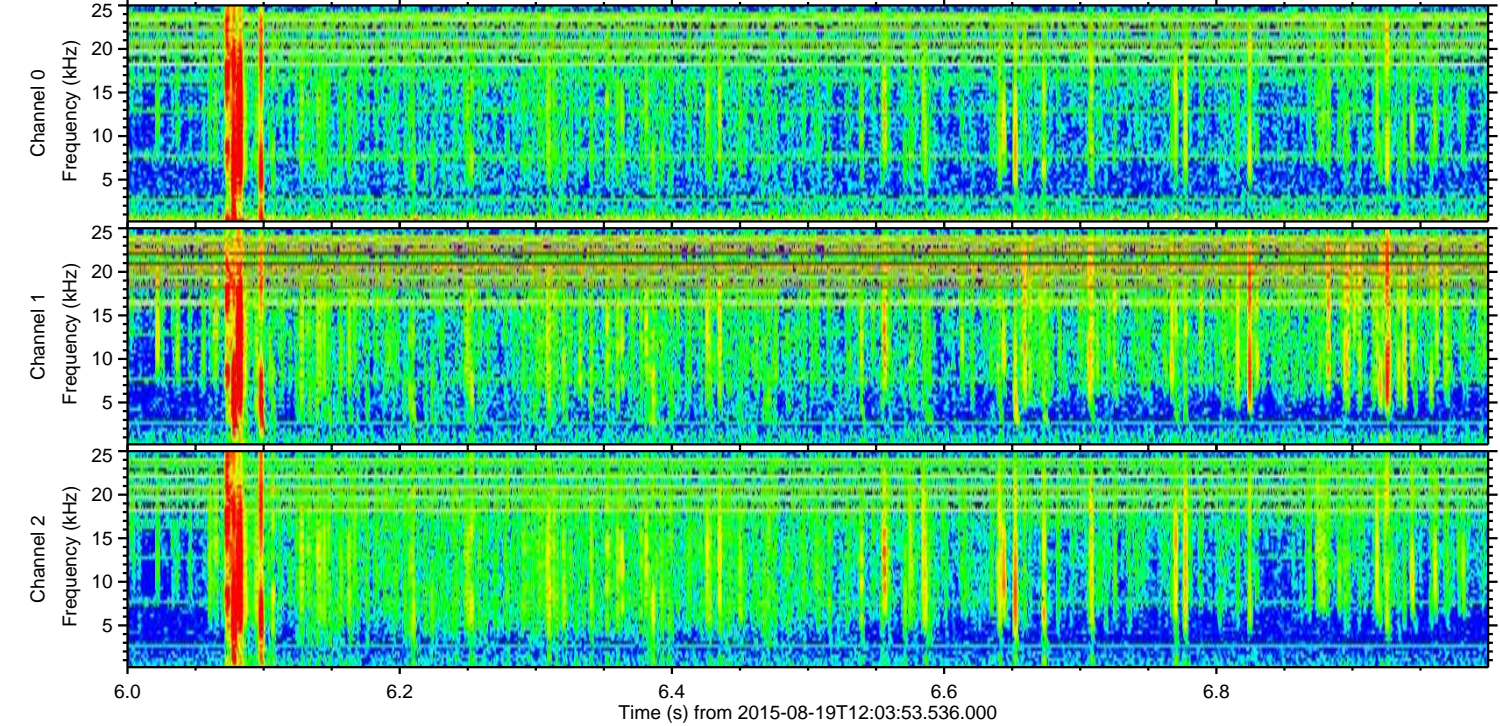
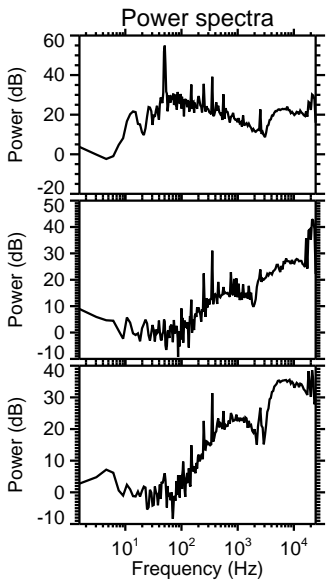
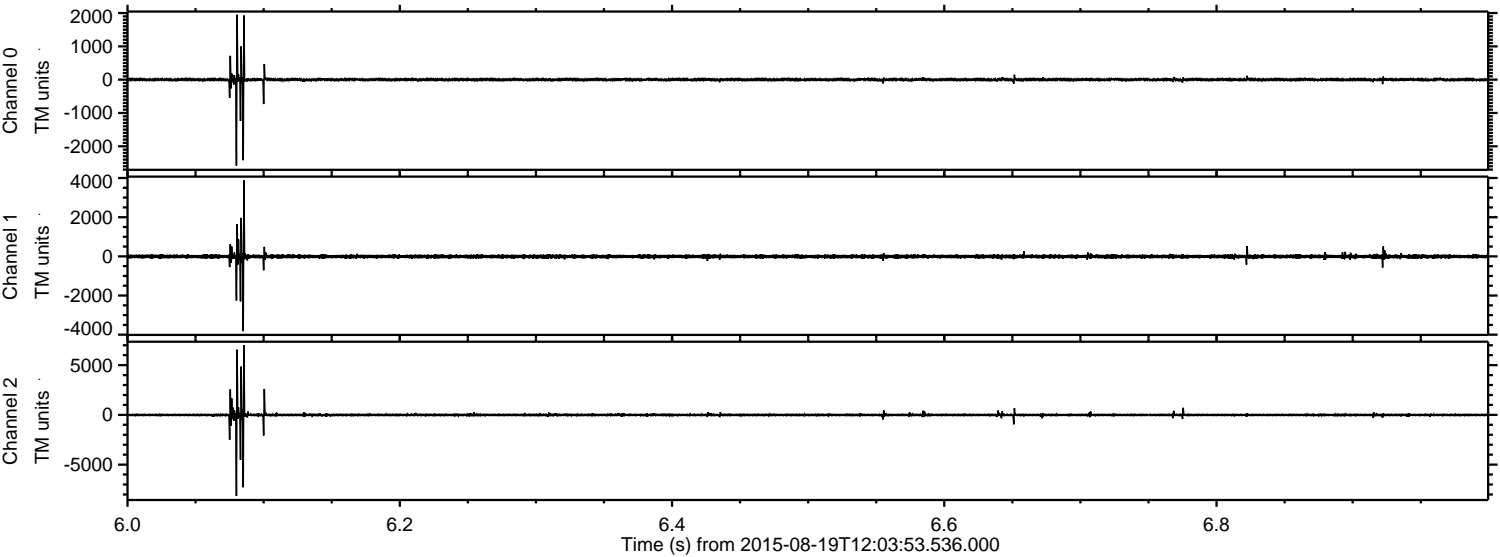


Processed Wed Aug 19 14:10:21 2015 by ELM ver.2012-10-06 from 001__elm20150819_120352__dat00.bin



ELMAVAN 3D WAVEFORMS (Measured data sampled at 50 kHz) 51000 packets of 144 samples from 2015-08-19T12:03:53.536.000. Part 7/147

Processed Wed Aug 19 14:10:22 2015 by ELM ver.2012-10-06 from 001__elm20150819_120352__dat00.bin



Channel 0
mn: -2578
mx: 1948
 μ : 1.4
 σ : 30.6

Channel 1
mn: -3820
mx: 3877
 μ : -8.0
 σ : 54.7

Channel 2
mn: -8151
mx: 7006
 μ : -6.6
 σ : 109.4

Processed Wed Aug 19 14:10:23 2015 by ELM ver.2012-10-06 from 001__elm20150819_120352__dat00.bin

