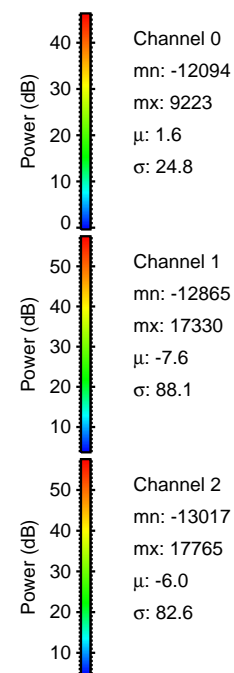
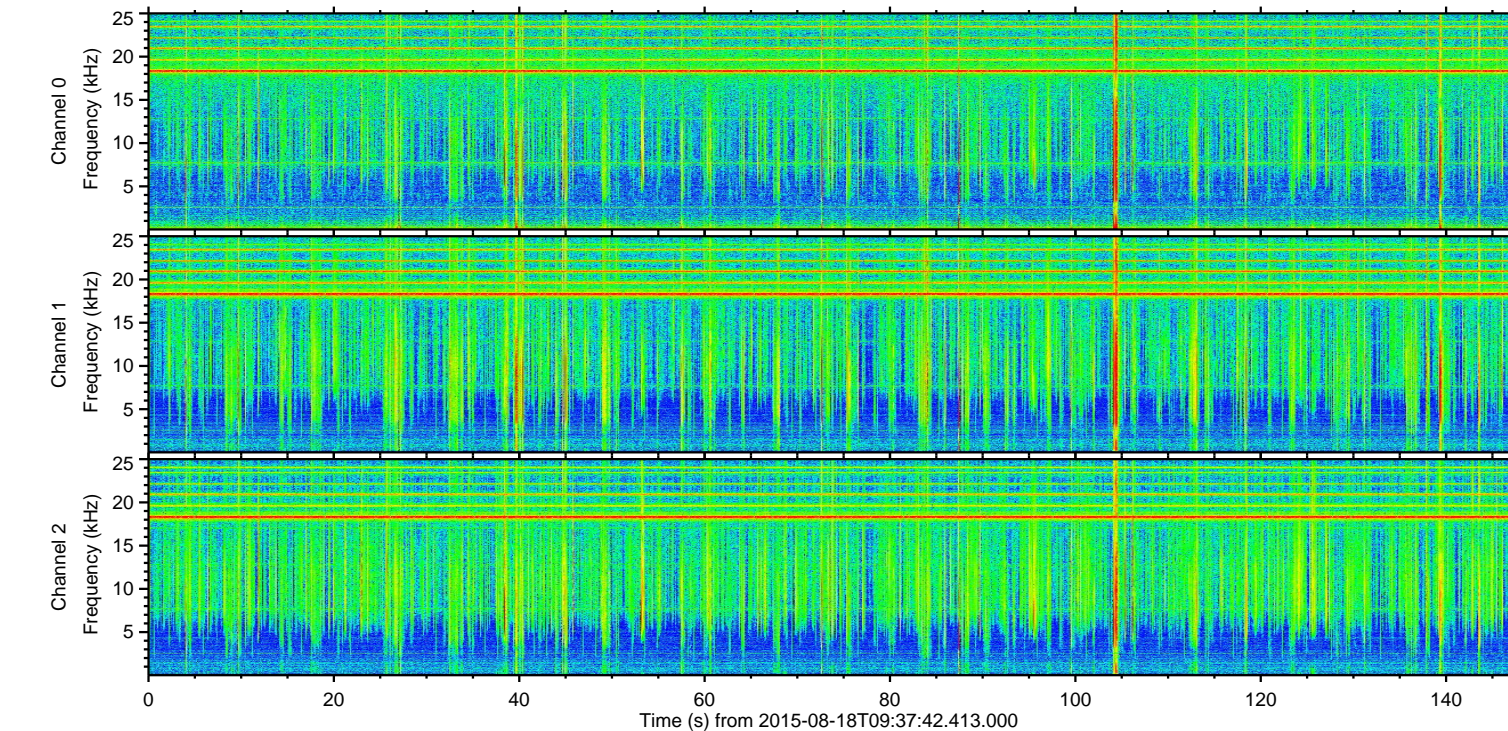
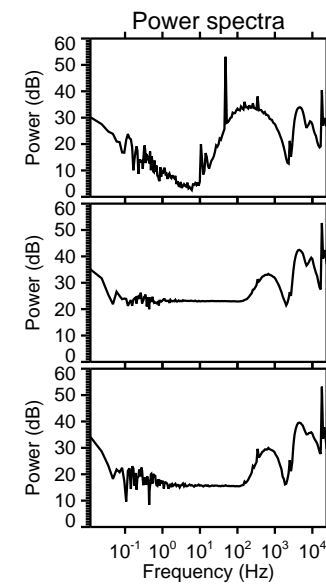
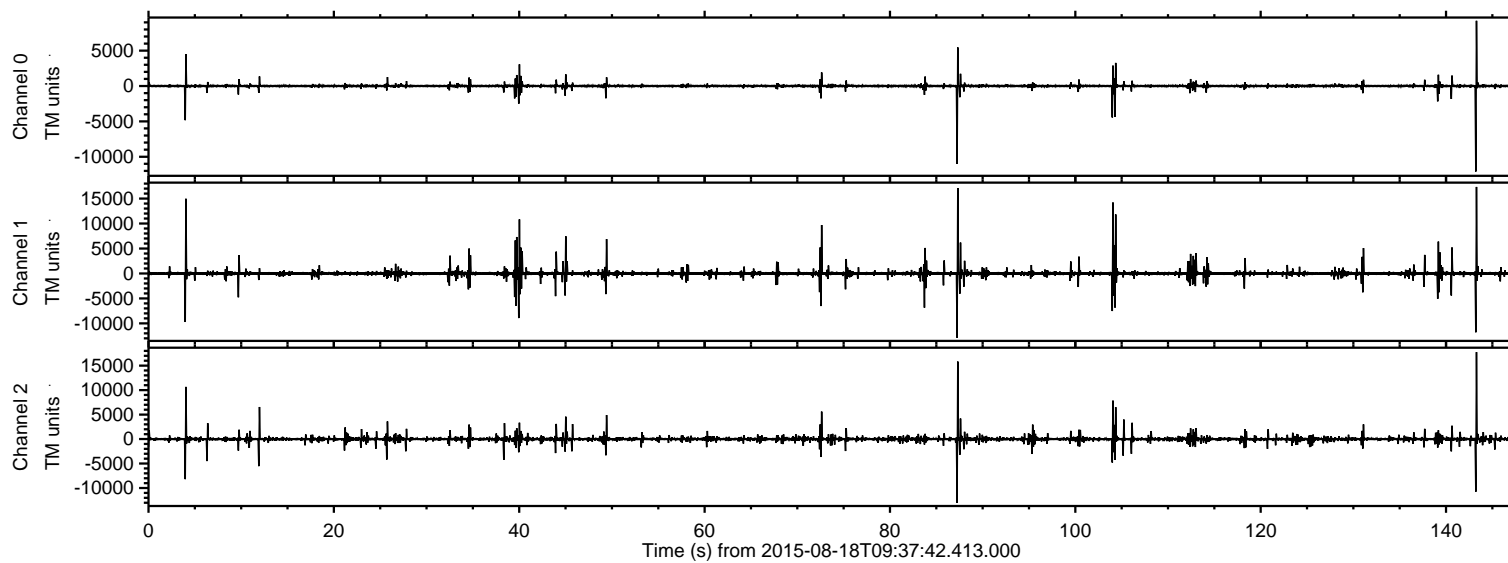


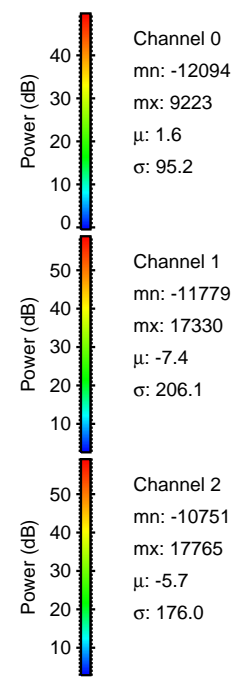
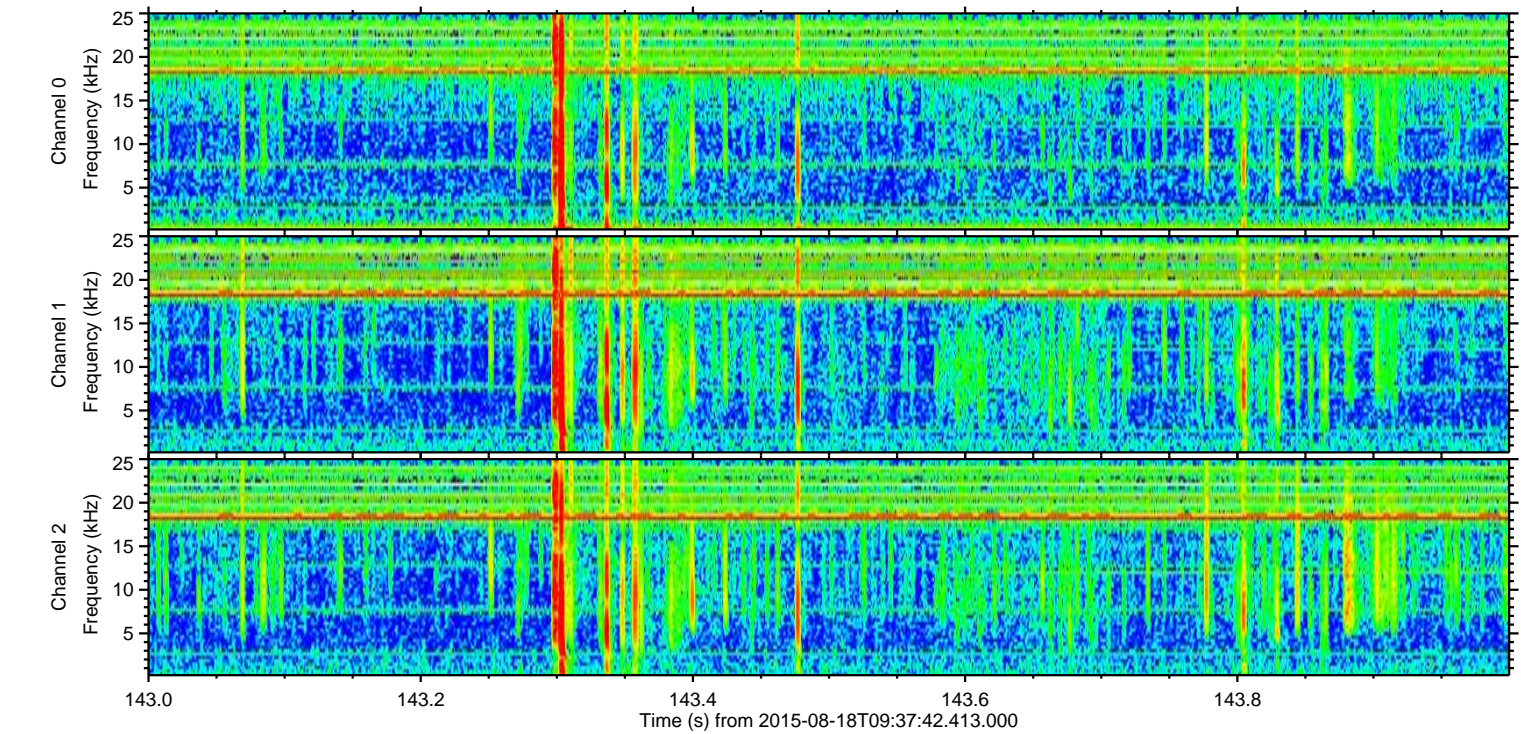
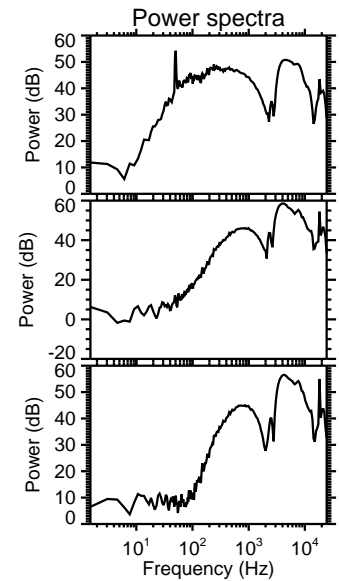
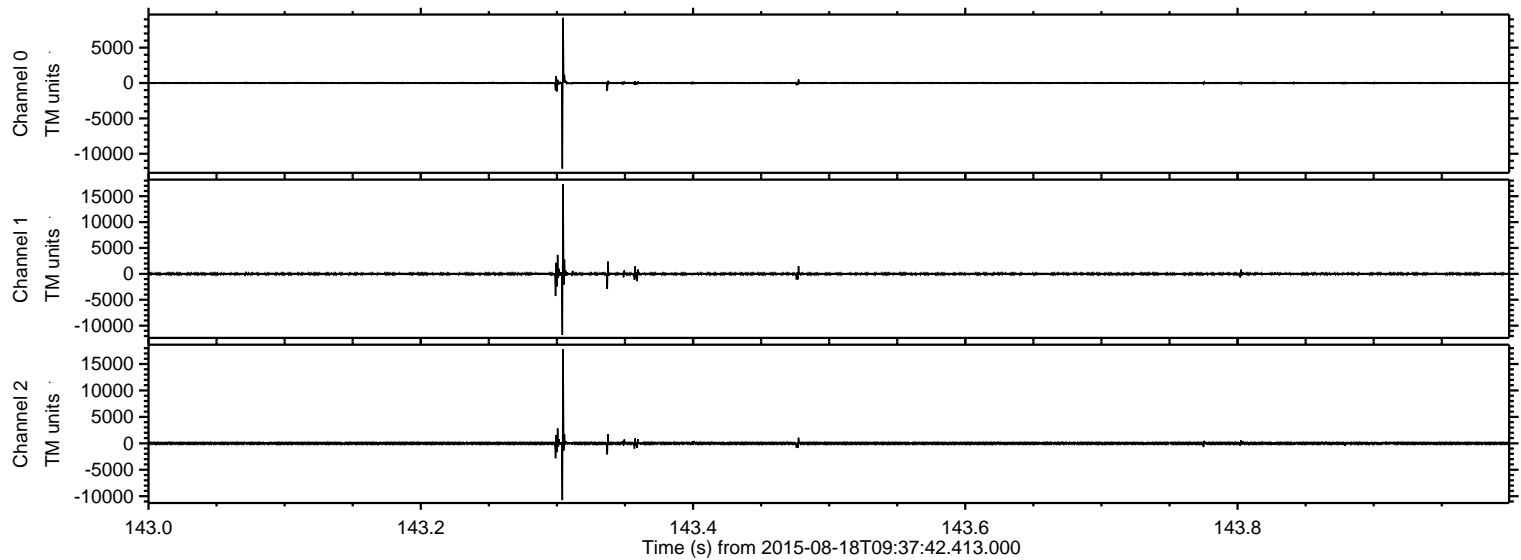
ELMAVAN 3D WAVEFORMS (Measured data sampled at 50 kHz) 51000 packets of 144 samples from 2015-08-18T09:37:42.413.000.

Processed Tue Aug 18 11:44:15 2015 by ELM ver.2012-10-06 from 001__elm20150818_093741__dat00.bin



ELMAVAN 3D WAVEFORMS (Measured data sampled at 50 kHz) 51000 packets of 144 samples from 2015-08-18T09:37:42.413.000. Part 144/147

Processed Tue Aug 18 11:44:27 2015 by ELM ver.2012-10-06 from 001__elm20150818_093741__dat00.bin

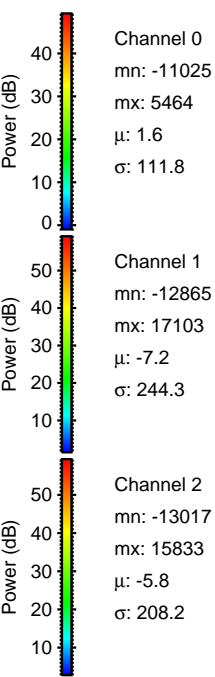
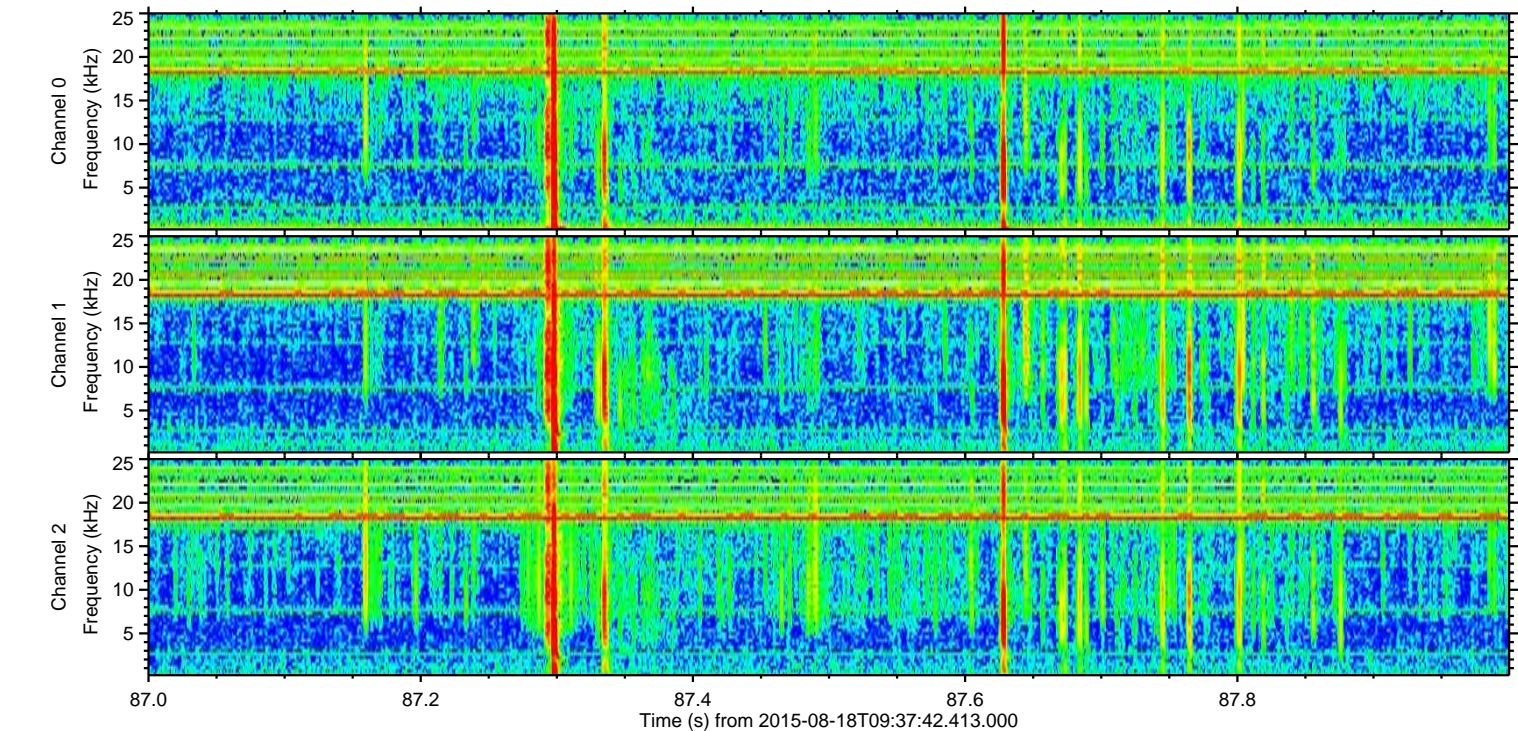
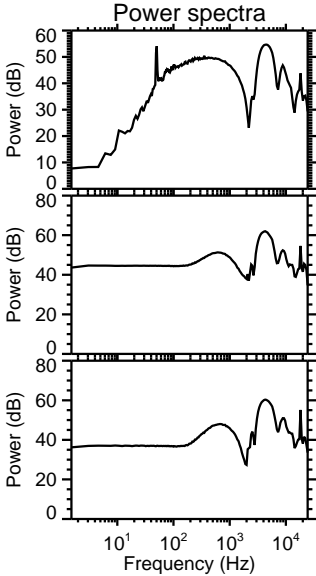
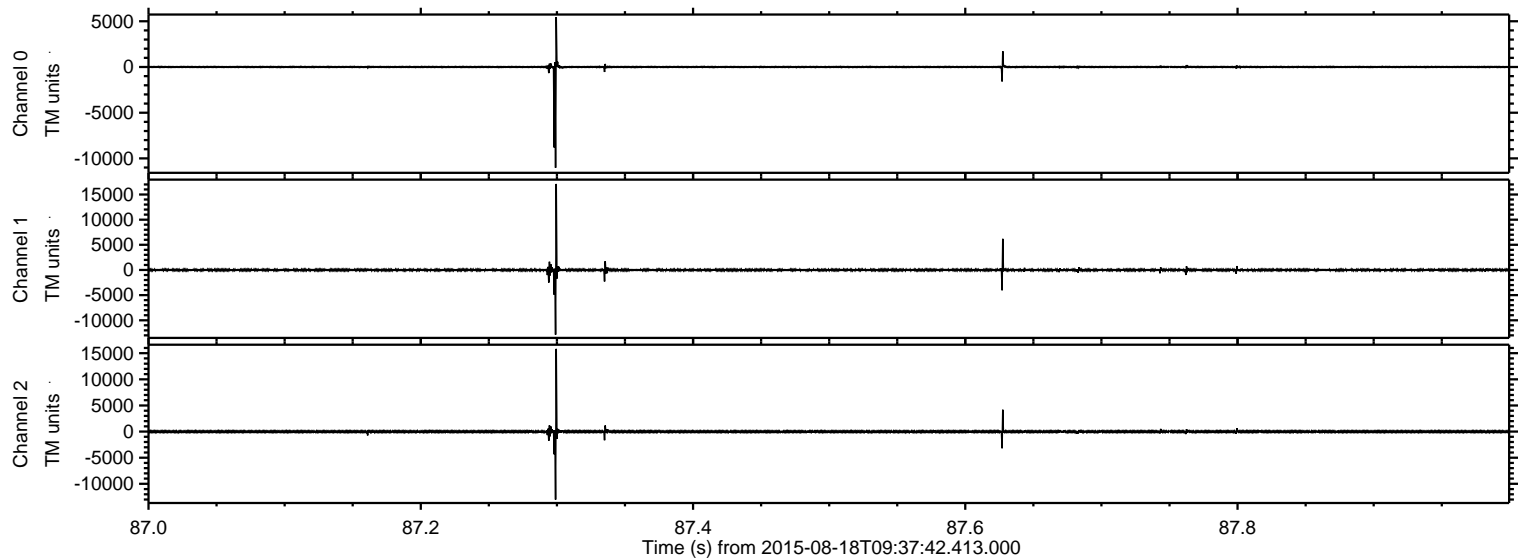


Channel 0
mn: -12094
mx: 9223
 μ : 1.6
 σ : 95.2

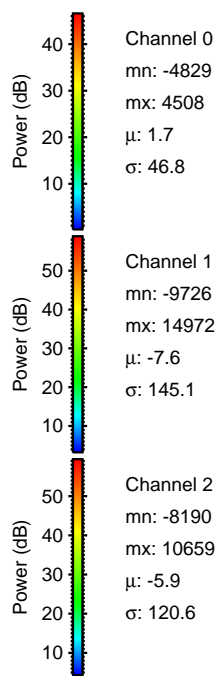
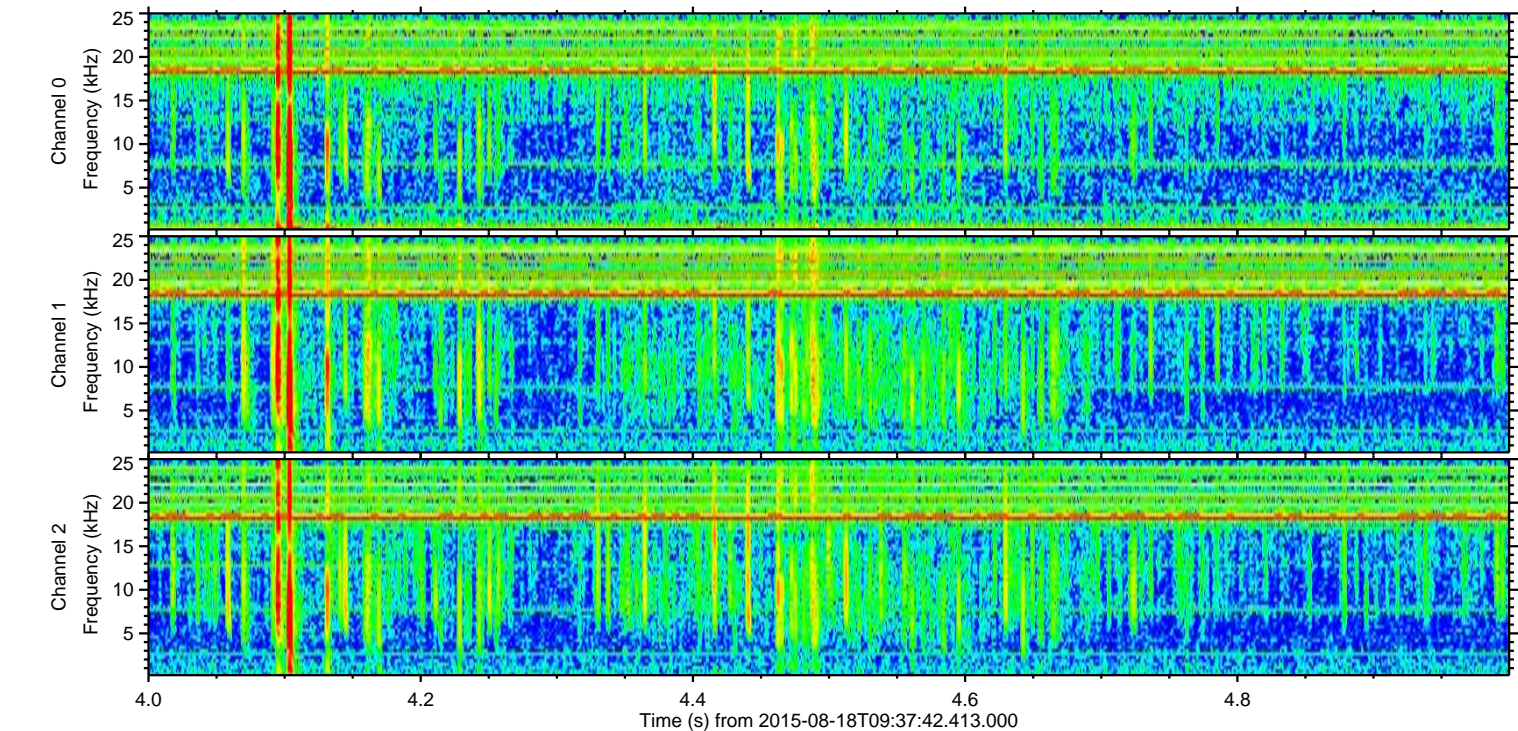
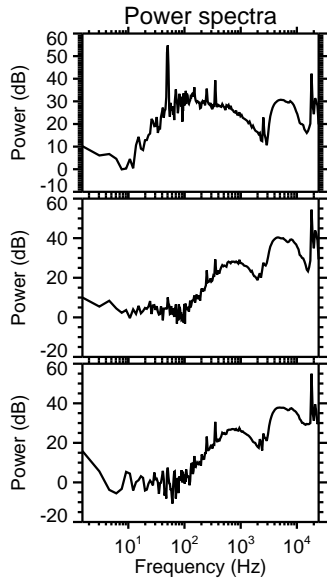
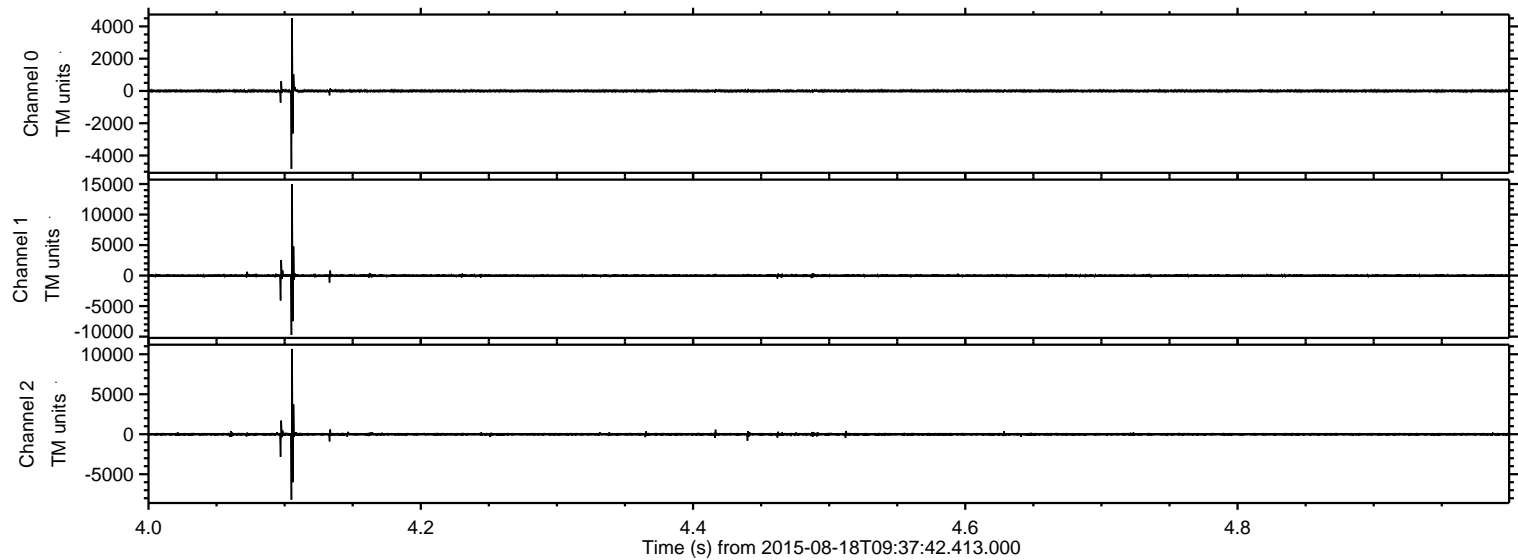
Channel 1
mn: -11779
mx: 17330
 μ : -7.4
 σ : 206.1

Channel 2
mn: -10751
mx: 17765
 μ : -5.7
 σ : 176.0

Processed Tue Aug 18 11:44:28 2015 by ELM ver.2012-10-06 from 001__elm20150818_093741__dat00.bin

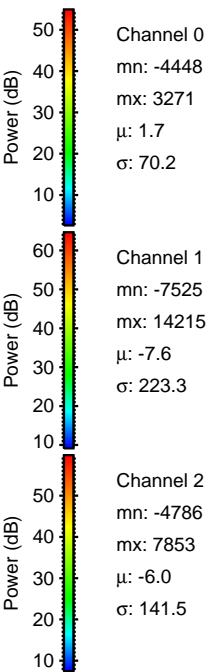
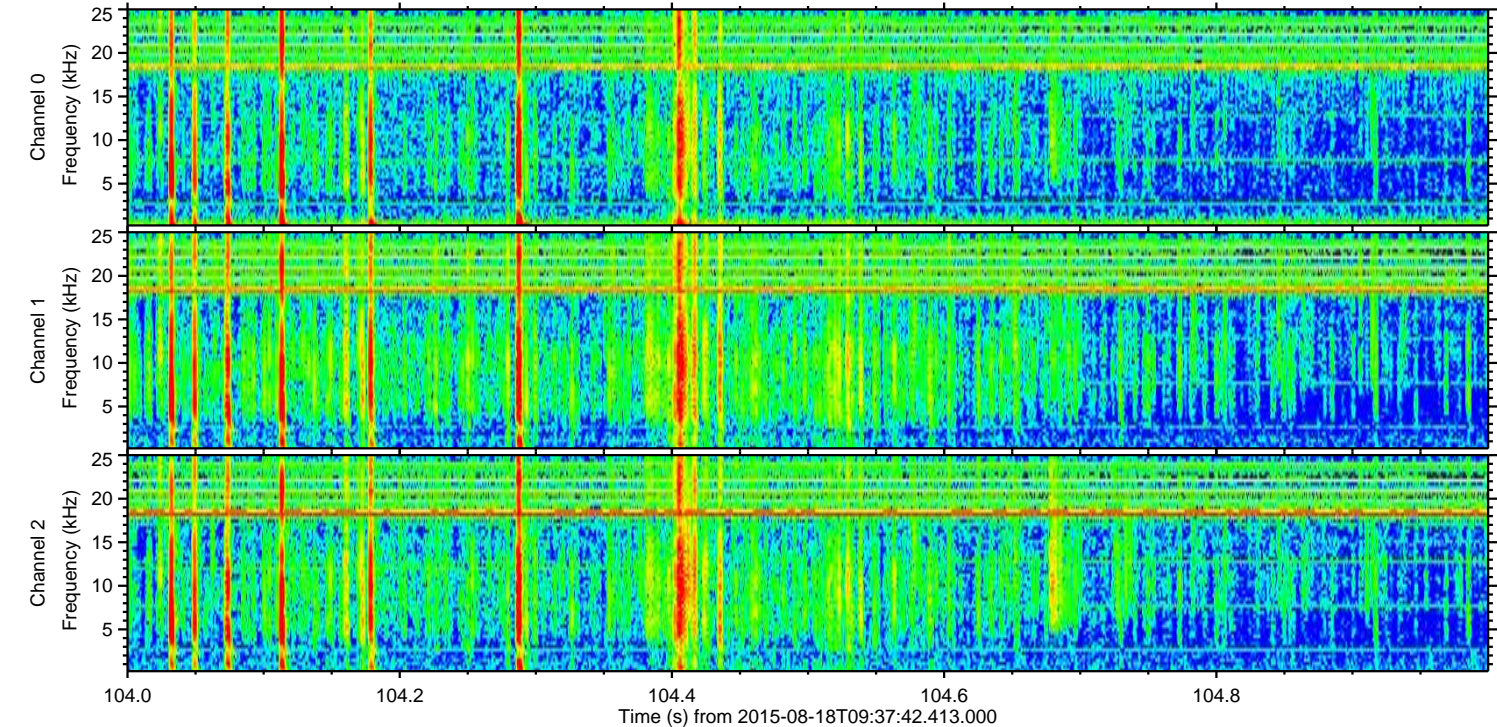
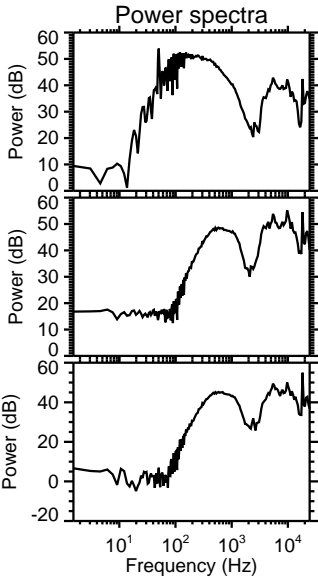
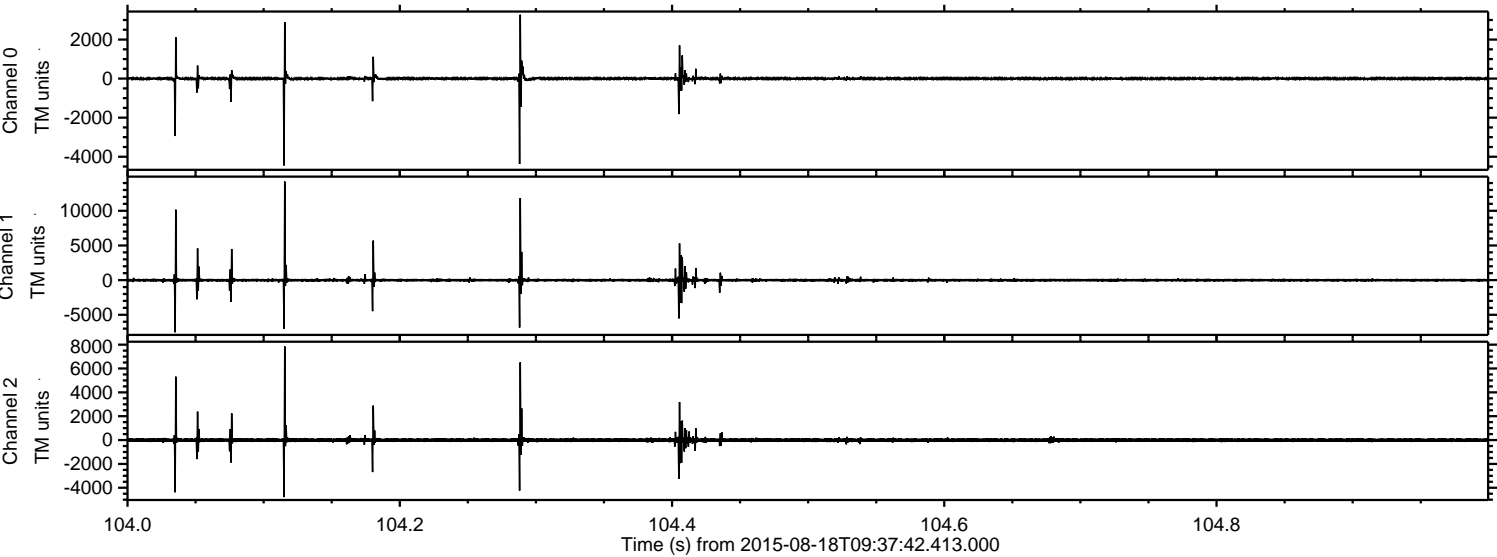


Processed Tue Aug 18 11:44:29 2015 by ELM ver.2012-10-06 from 001__elm20150818_093741__dat00.bin



ELMAVAN 3D WAVEFORMS (Measured data sampled at 50 kHz) 51000 packets of 144 samples from 2015-08-18T09:37:42.413.000. Part 105/147

Processed Tue Aug 18 11:44:30 2015 by ELM ver.2012-10-06 from 001__elm20150818_093741__dat00.bin



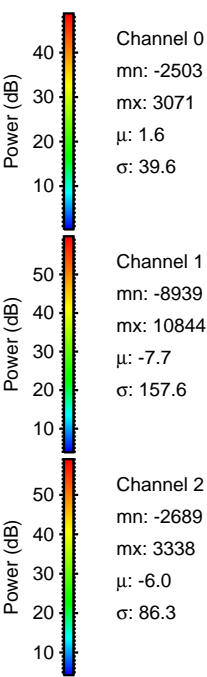
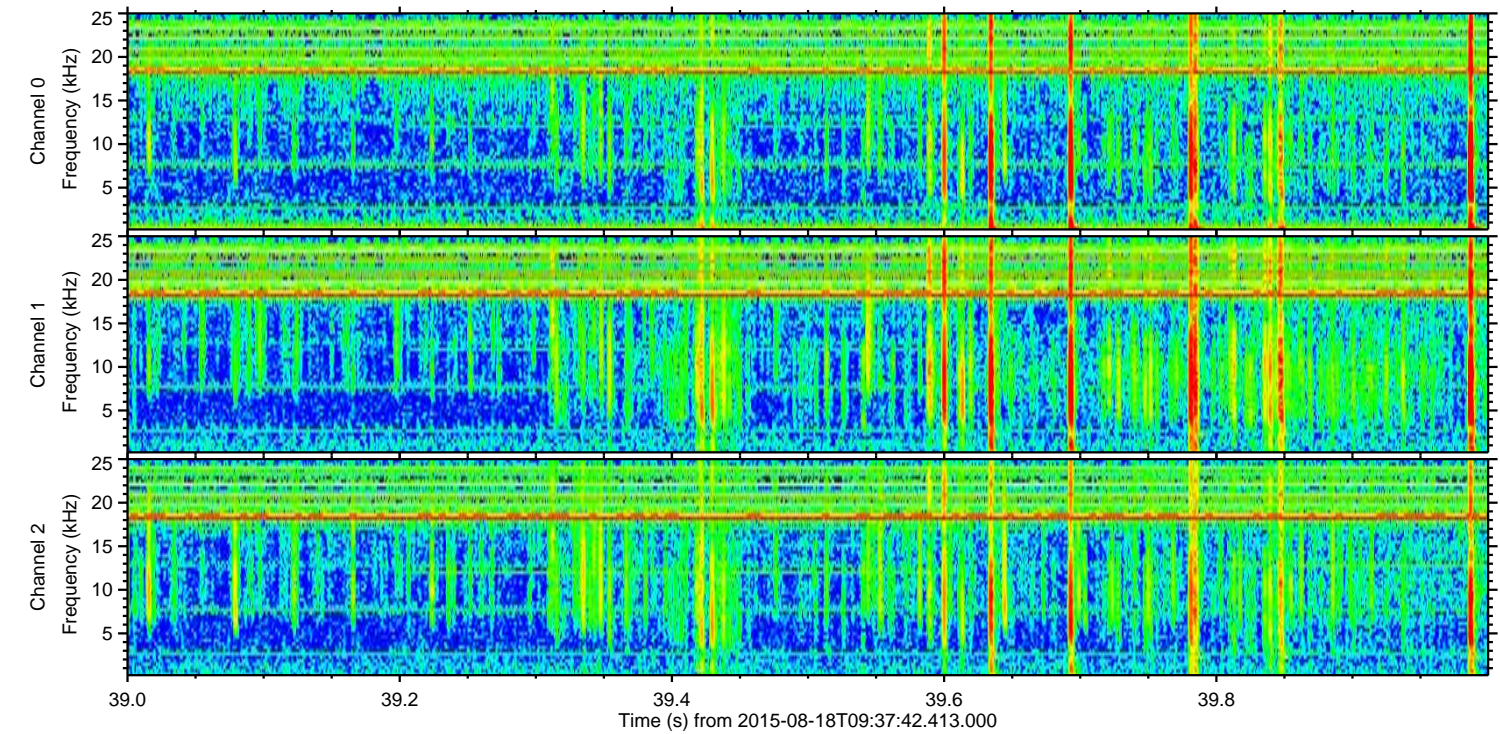
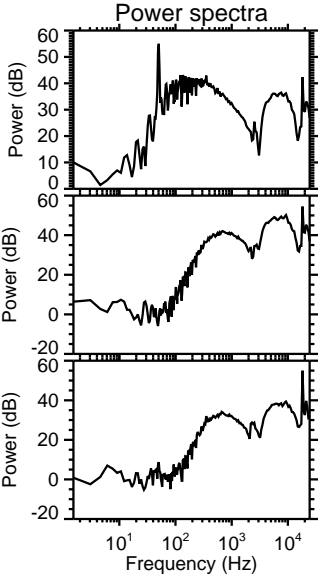
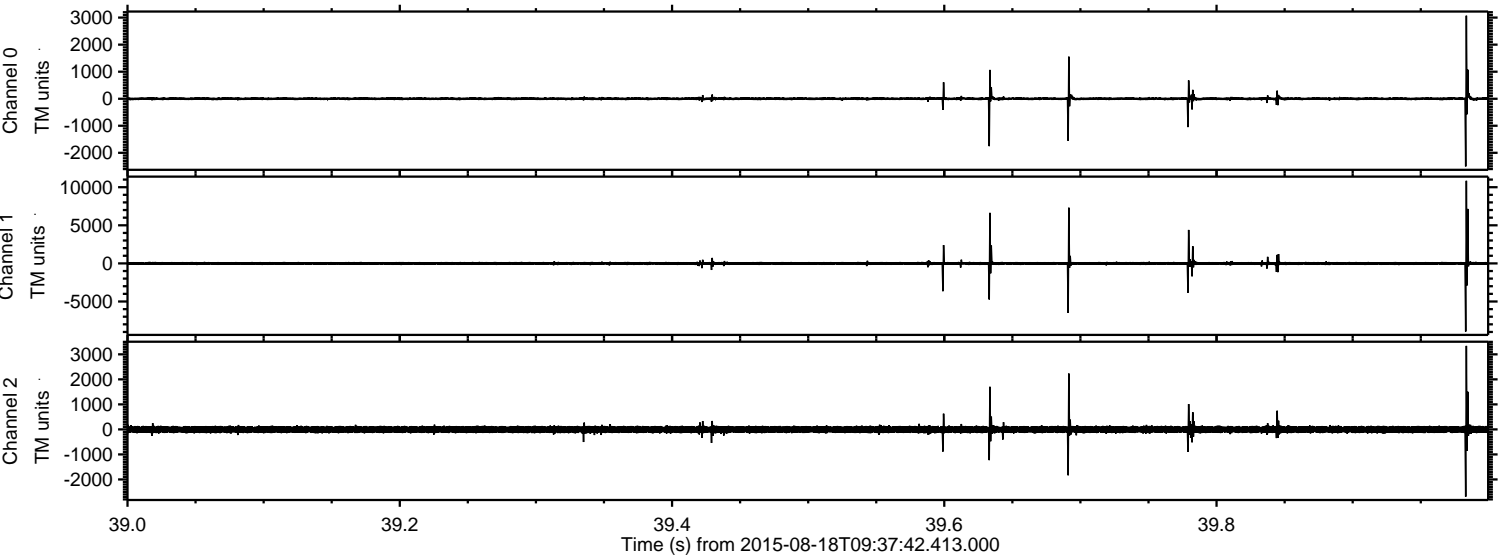
Channel 0
mn: -4448
mx: 3271
 μ : 1.7
 σ : 70.2

Channel 1
mn: -7525
mx: 14215
 μ : -7.6
 σ : 223.3

Channel 2
mn: -4786
mx: 7853
 μ : -6.0
 σ : 141.5

ELMAVAN 3D WAVEFORMS (Measured data sampled at 50 kHz) 51000 packets of 144 samples from 2015-08-18T09:37:42.413.000. Part 40/147

Processed Tue Aug 18 11:44:31 2015 by ELM ver.2012-10-06 from 001__elm20150818_093741__dat00.bin

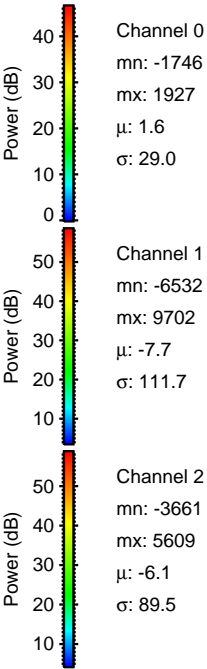
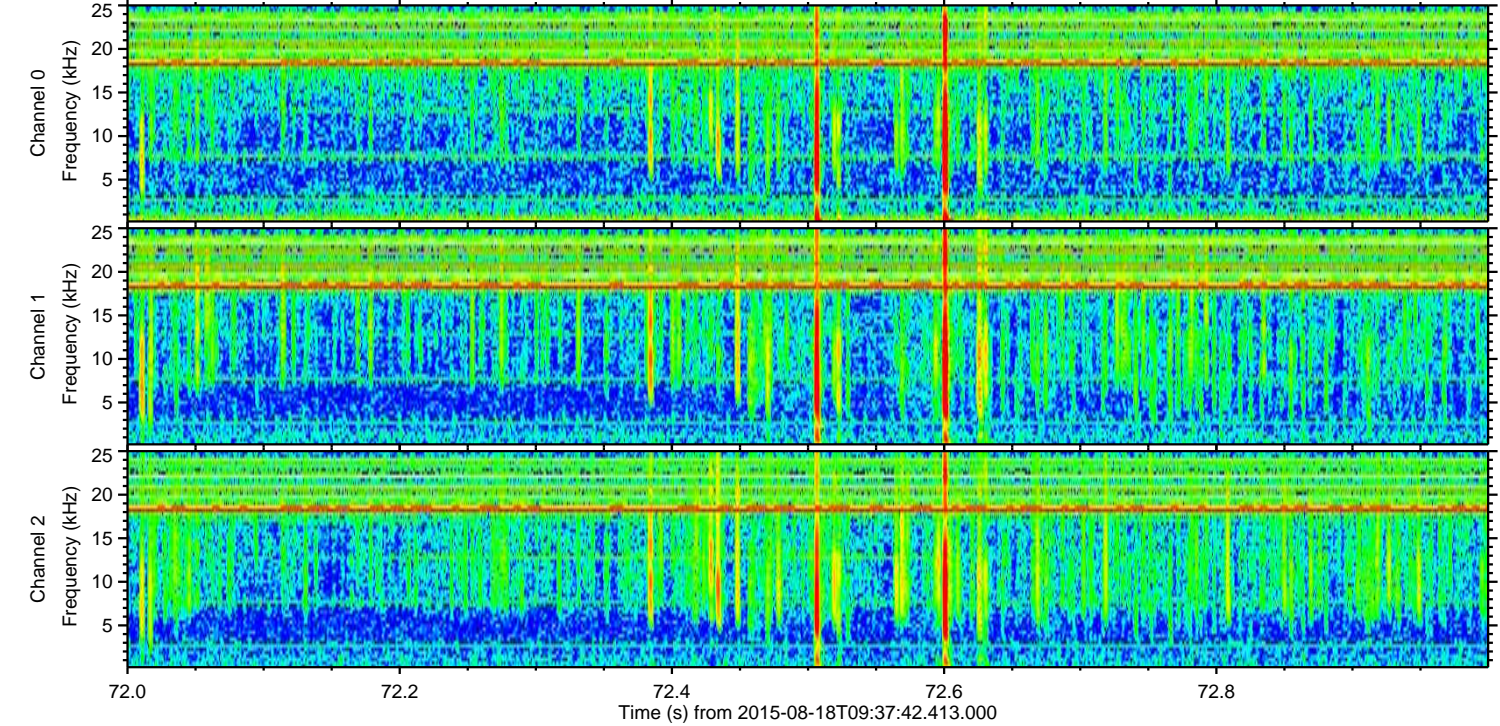
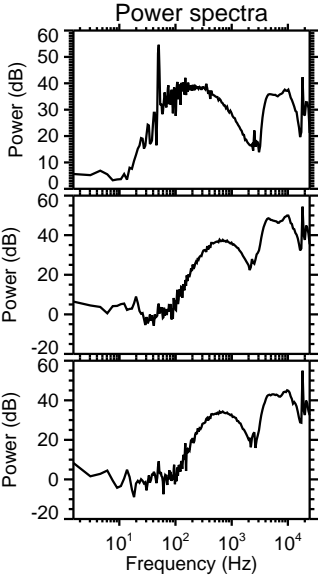
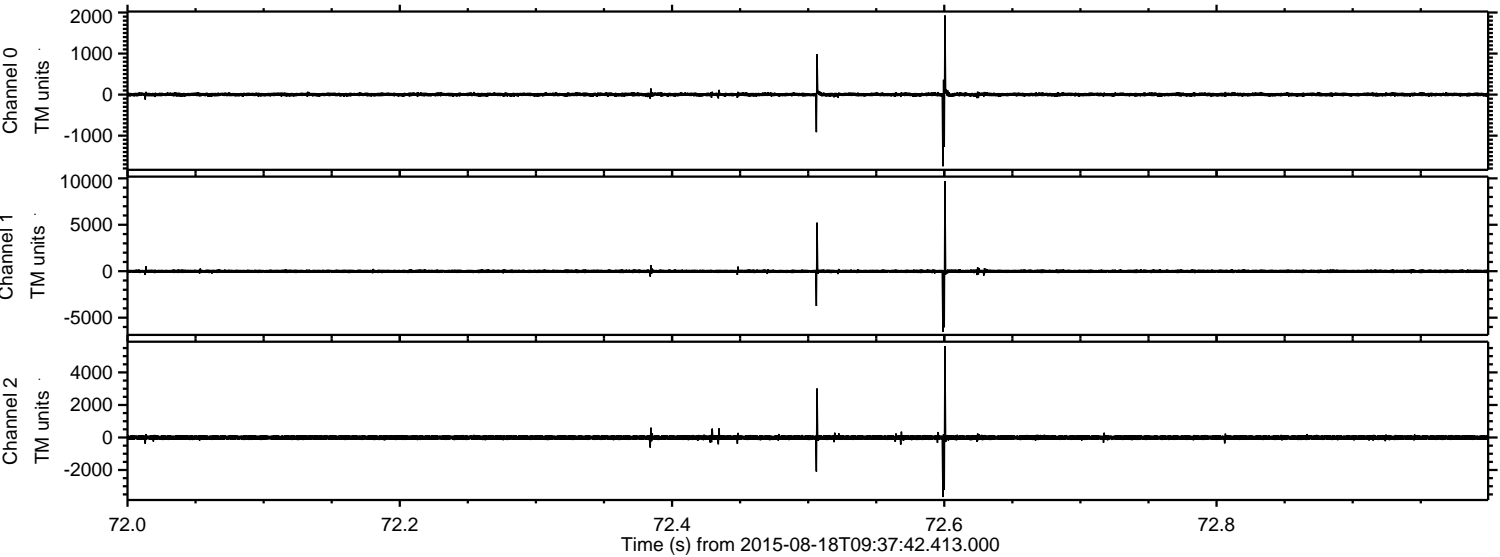


Channel 0
mn: -2503
mx: 3071
 μ : 1.6
 σ : 39.6

Channel 1
mn: -8939
mx: 10844
 μ : -7.7
 σ : 157.6

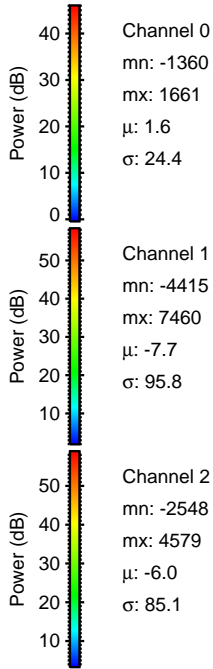
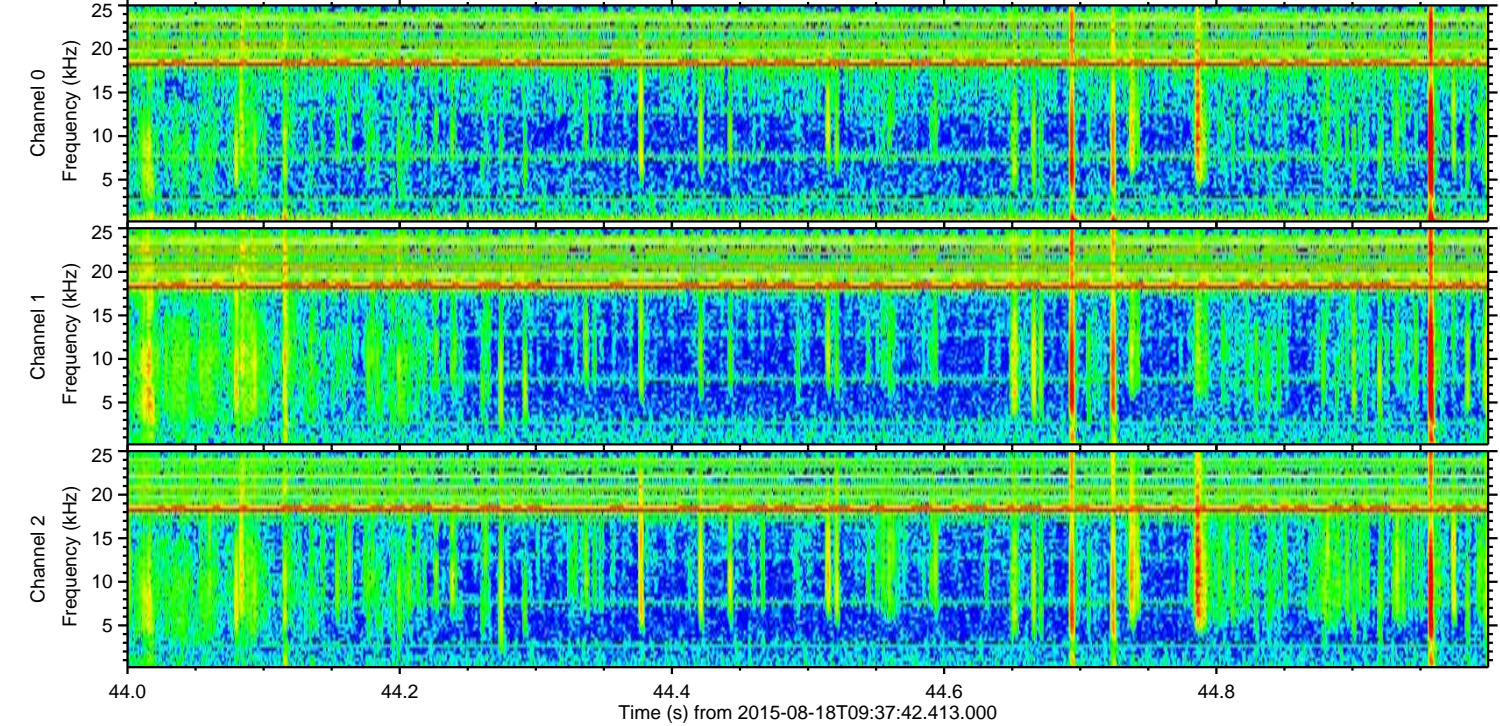
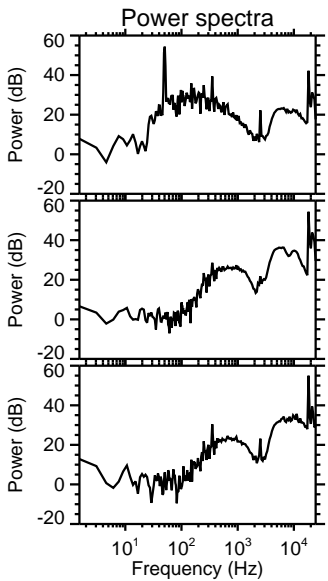
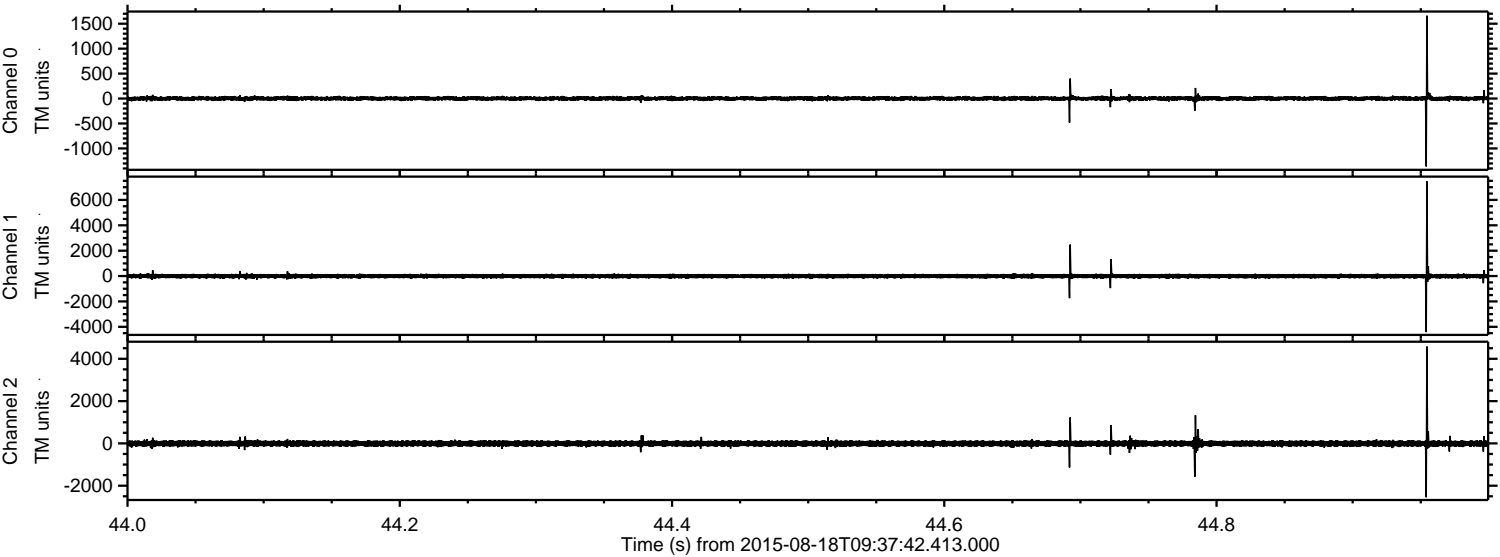
Channel 2
mn: -2689
mx: 3338
 μ : -6.0
 σ : 86.3

Processed Tue Aug 18 11:44:32 2015 by ELM ver.2012-10-06 from 001__elm20150818_093741__dat00.bin

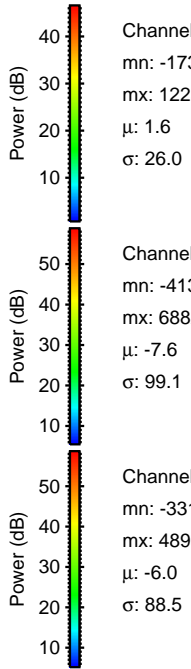
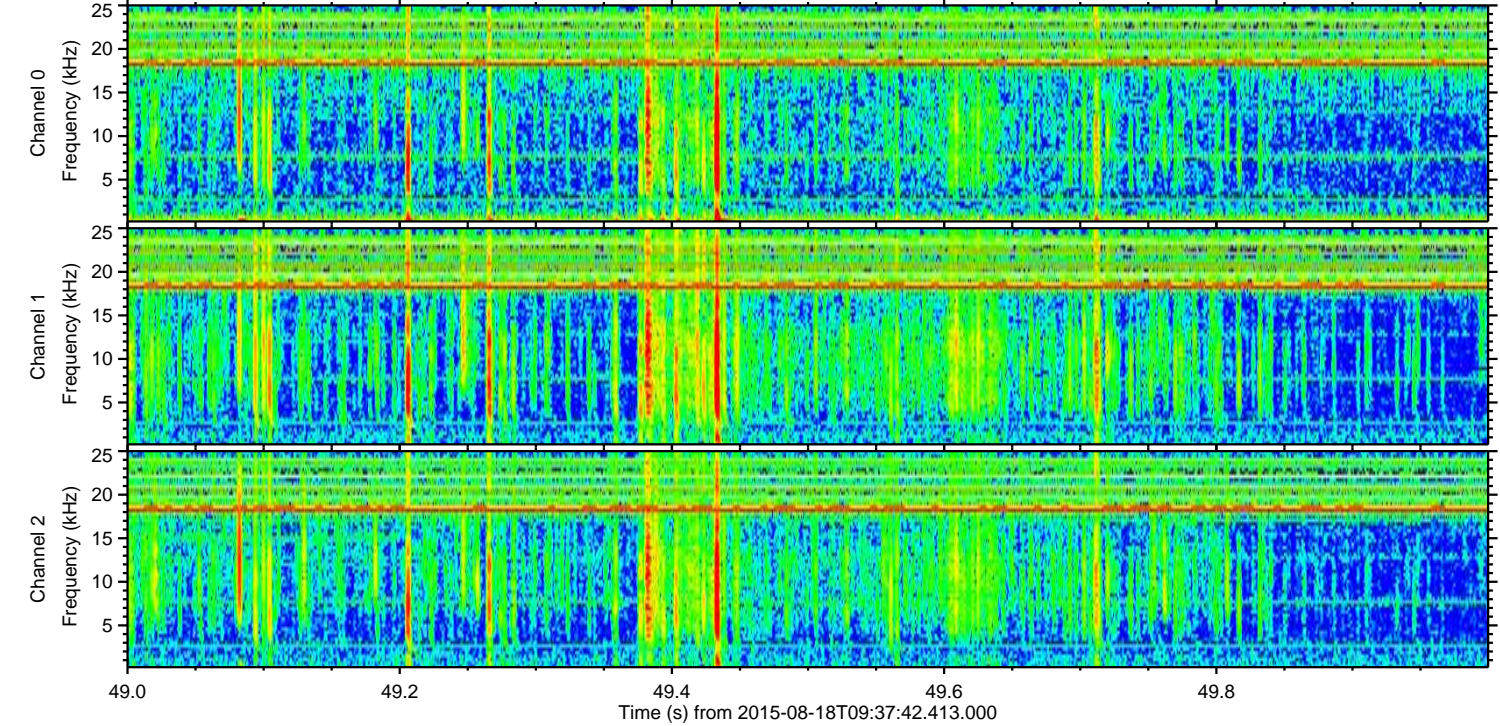
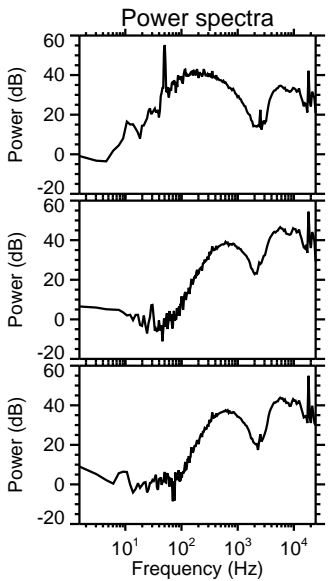
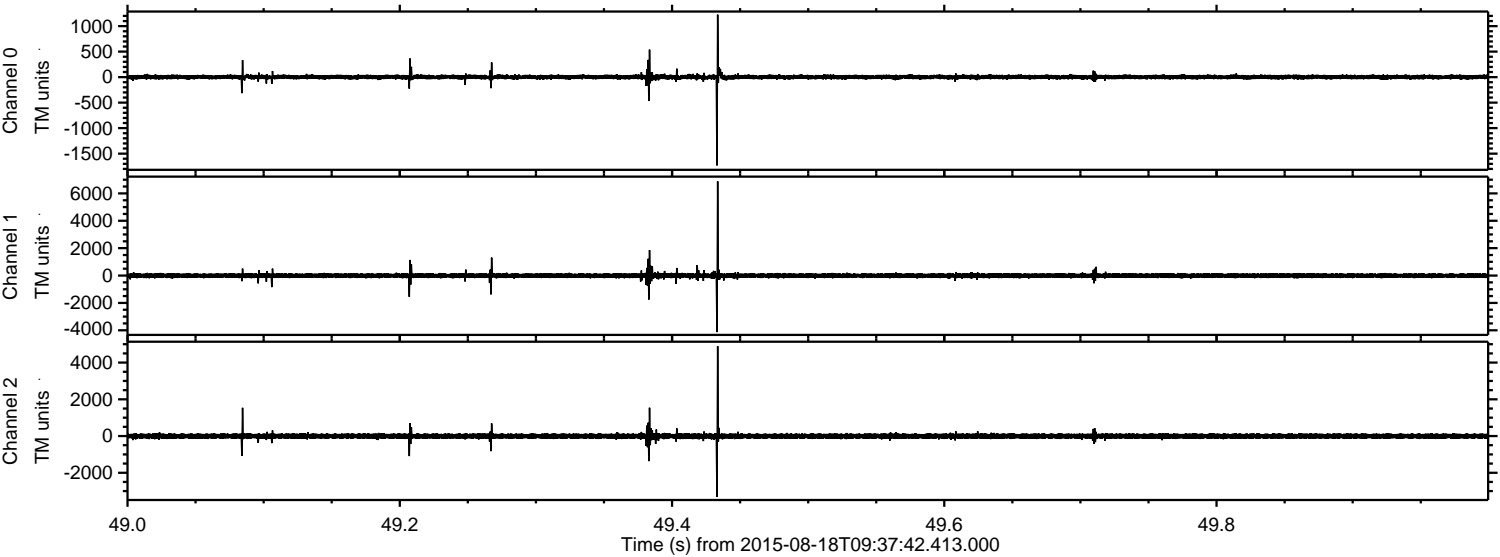


ELMAVAN 3D WAVEFORMS (Measured data sampled at 50 kHz) 51000 packets of 144 samples from 2015-08-18T09:37:42.413.000. Part 45/147

Processed Tue Aug 18 11:44:33 2015 by ELM ver.2012-10-06 from 001__elm20150818_093741__dat00.bin



Processed Tue Aug 18 11:44:34 2015 by ELM ver.2012-10-06 from 001__elm20150818_093741__dat00.bin



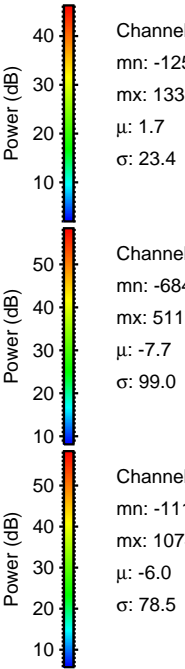
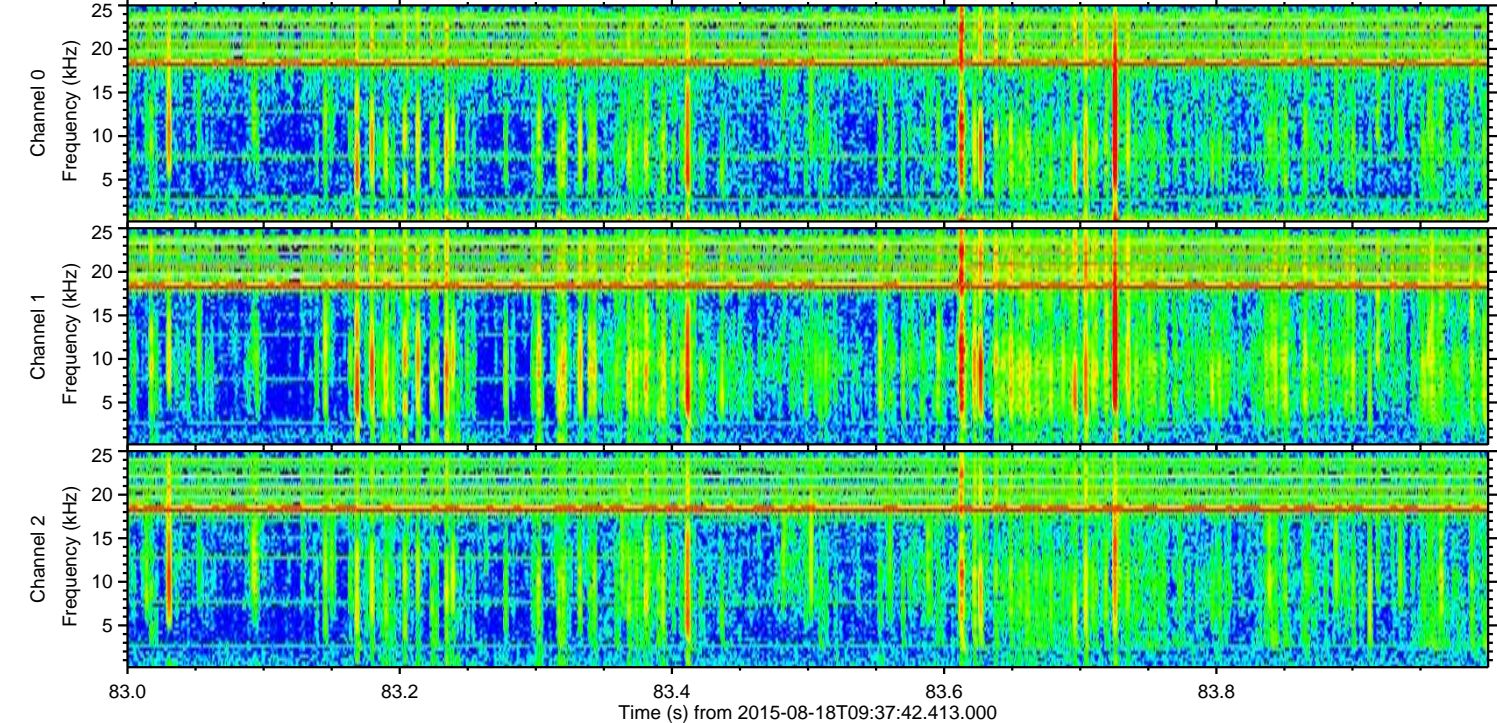
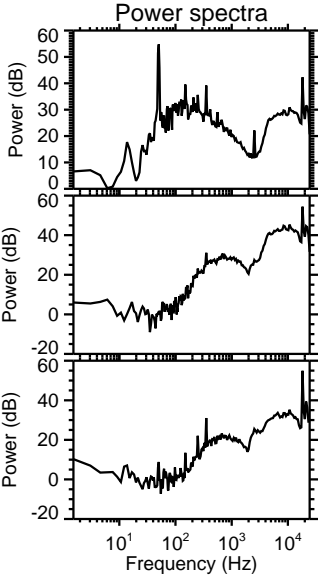
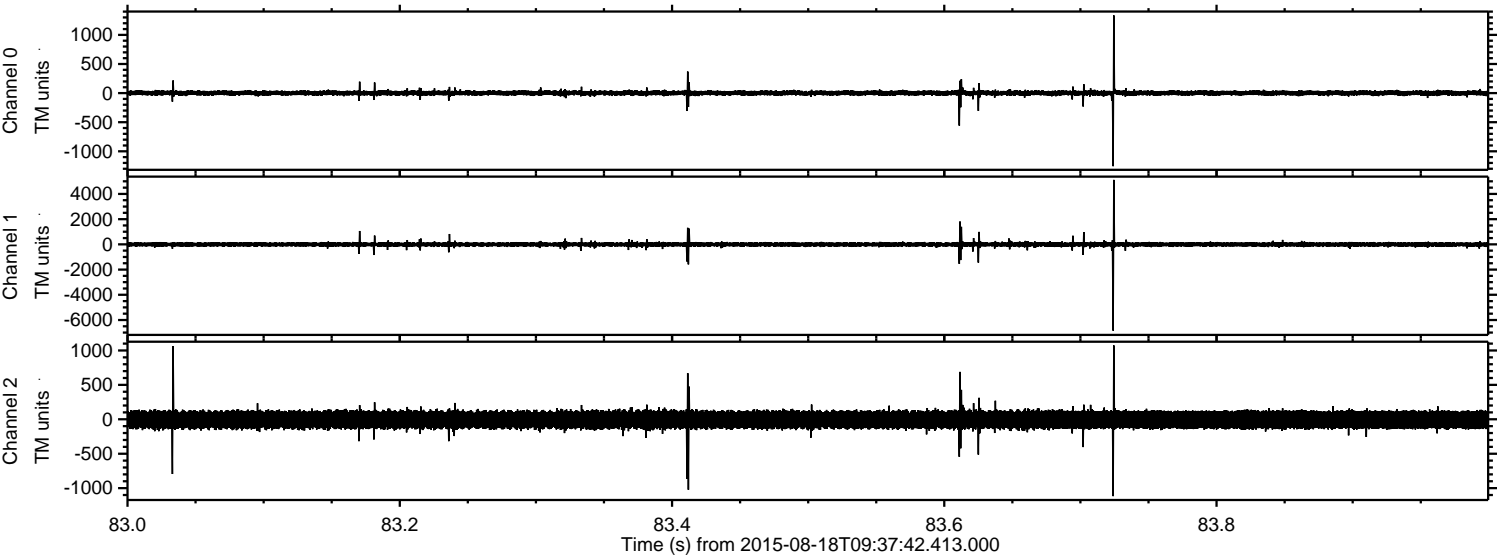
Channel 0
mn: -1731
mx: 1225
μ: 1.6
σ: 26.0

Channel 1
mn: -4131
mx: 6882
μ: -7.6
σ: 99.1

Channel 2
mn: -3318
mx: 4893
μ: -6.0
σ: 88.5

ELMAVAN 3D WAVEFORMS (Measured data sampled at 50 kHz) 51000 packets of 144 samples from 2015-08-18T09:37:42.413.000. Part 84/147

Processed Tue Aug 18 11:44:34 2015 by ELM ver.2012-10-06 from 001__elm20150818_093741__dat00.bin



ELMAVAN 3D WAVEFORMS (Measured data sampled at 50 kHz) 51000 packets of 144 samples from 2015-08-18T09:37:42.413.000. Part 2/147

Processed Tue Aug 18 11:44:35 2015 by ELM ver.2012-10-06 from 001__elm20150818_093741__dat00.bin

