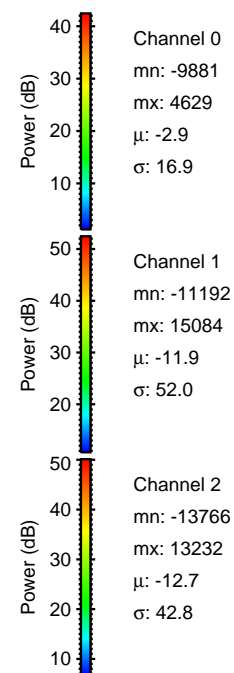
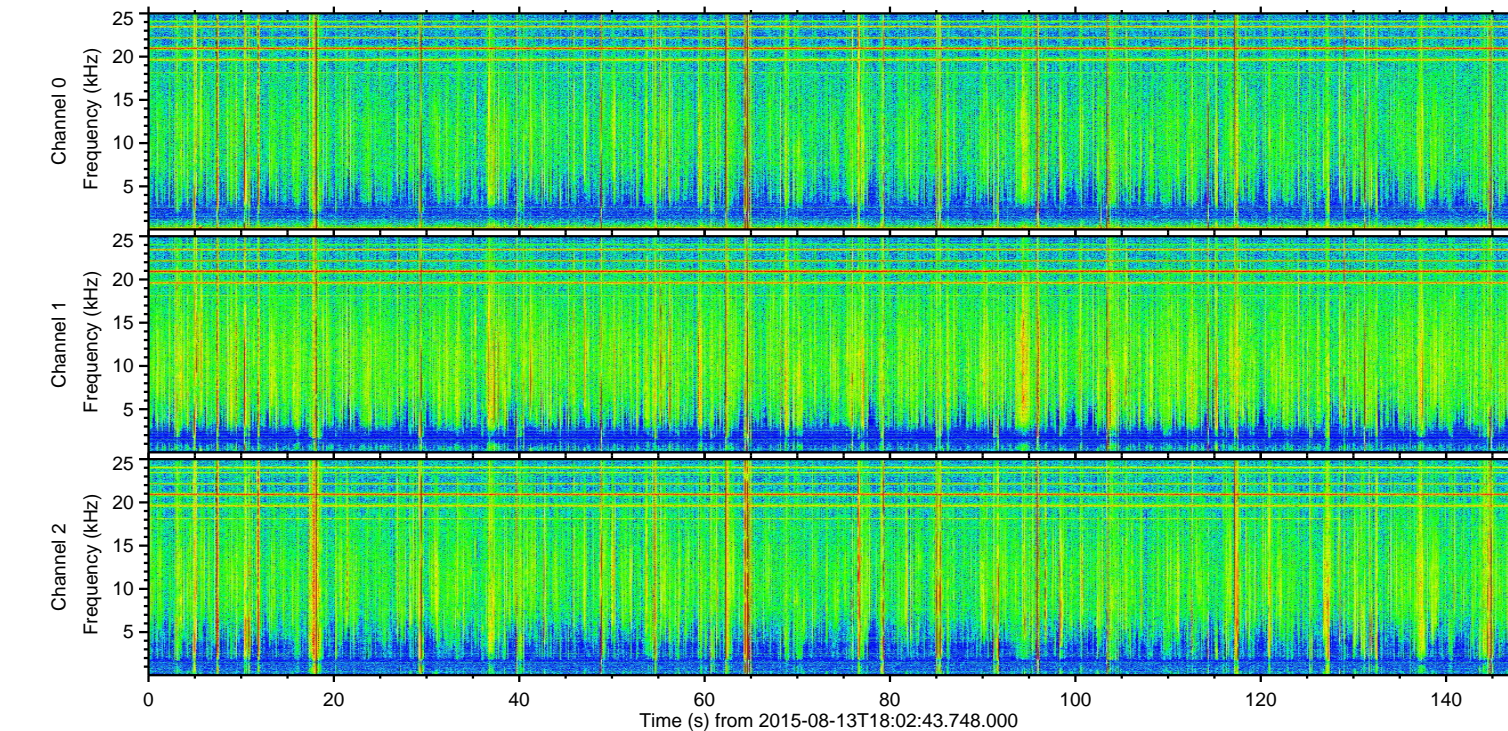
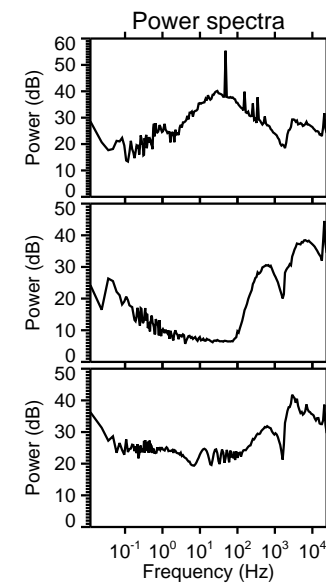
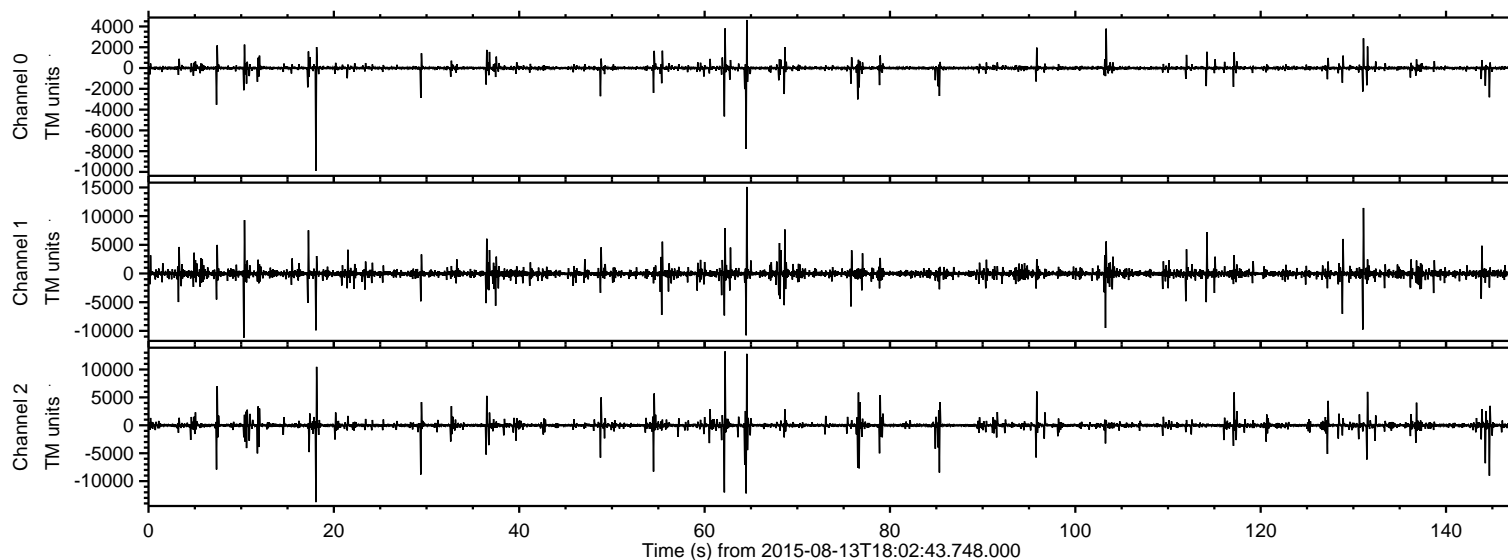
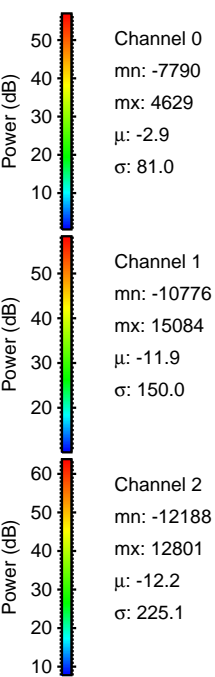
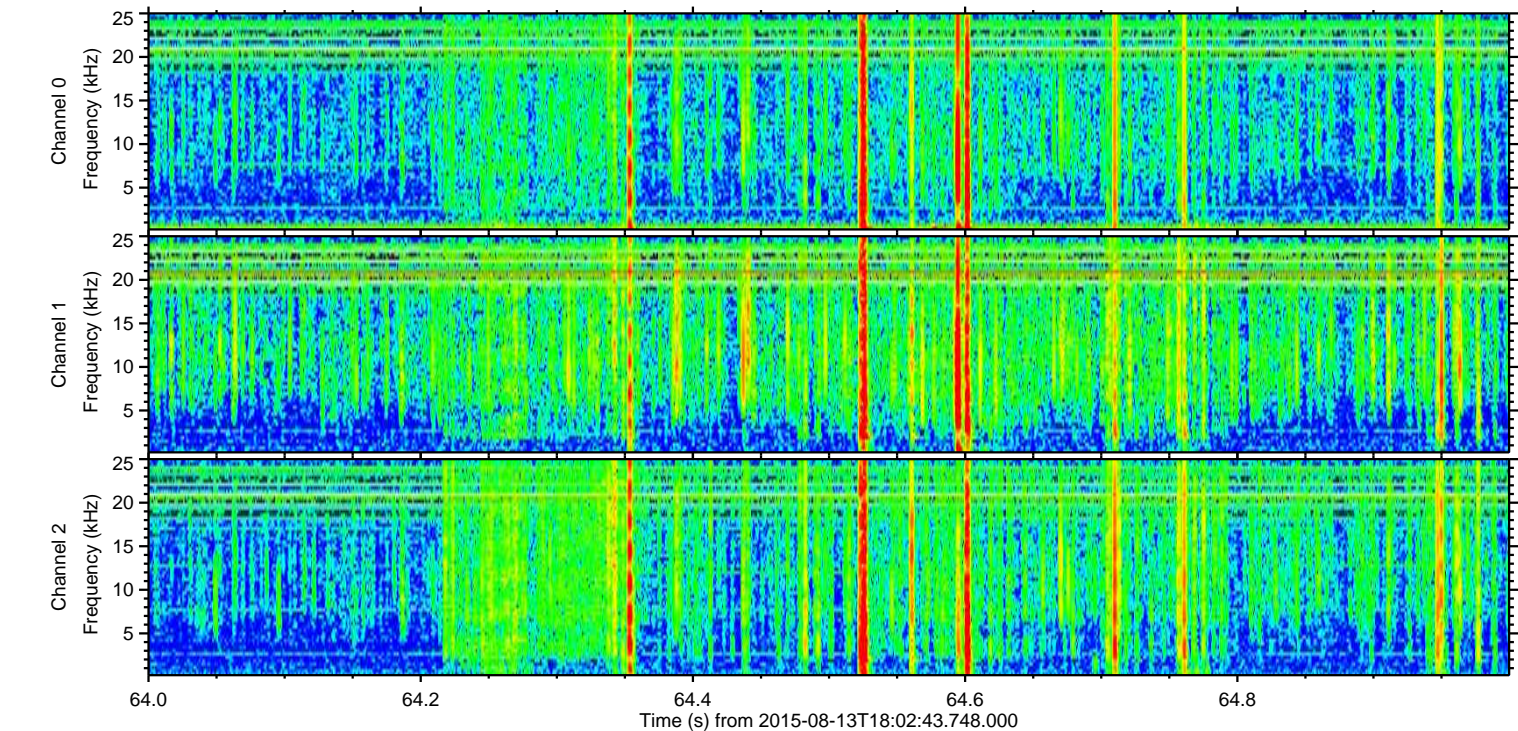
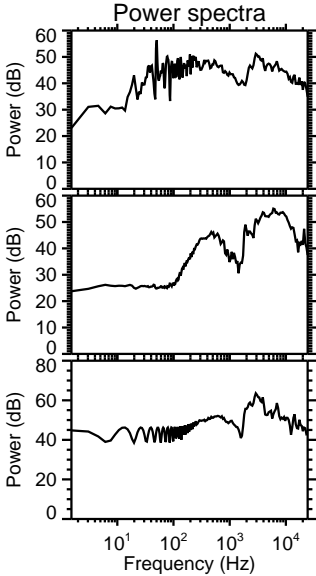
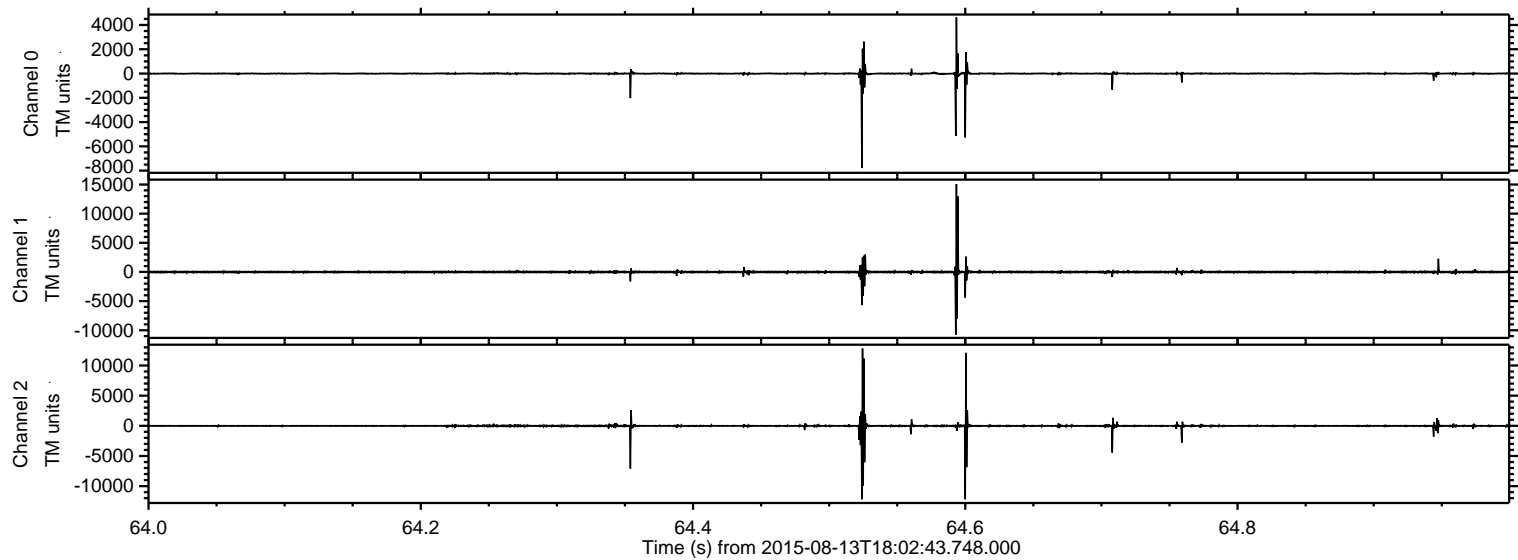


ELMAVAN 3D WAVEFORMS (Measured data sampled at 50 kHz) 51000 packets of 144 samples from 2015-08-13T18:02:43.748.000.

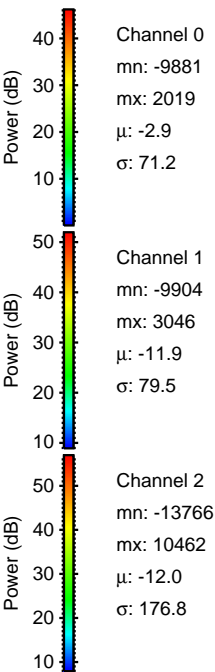
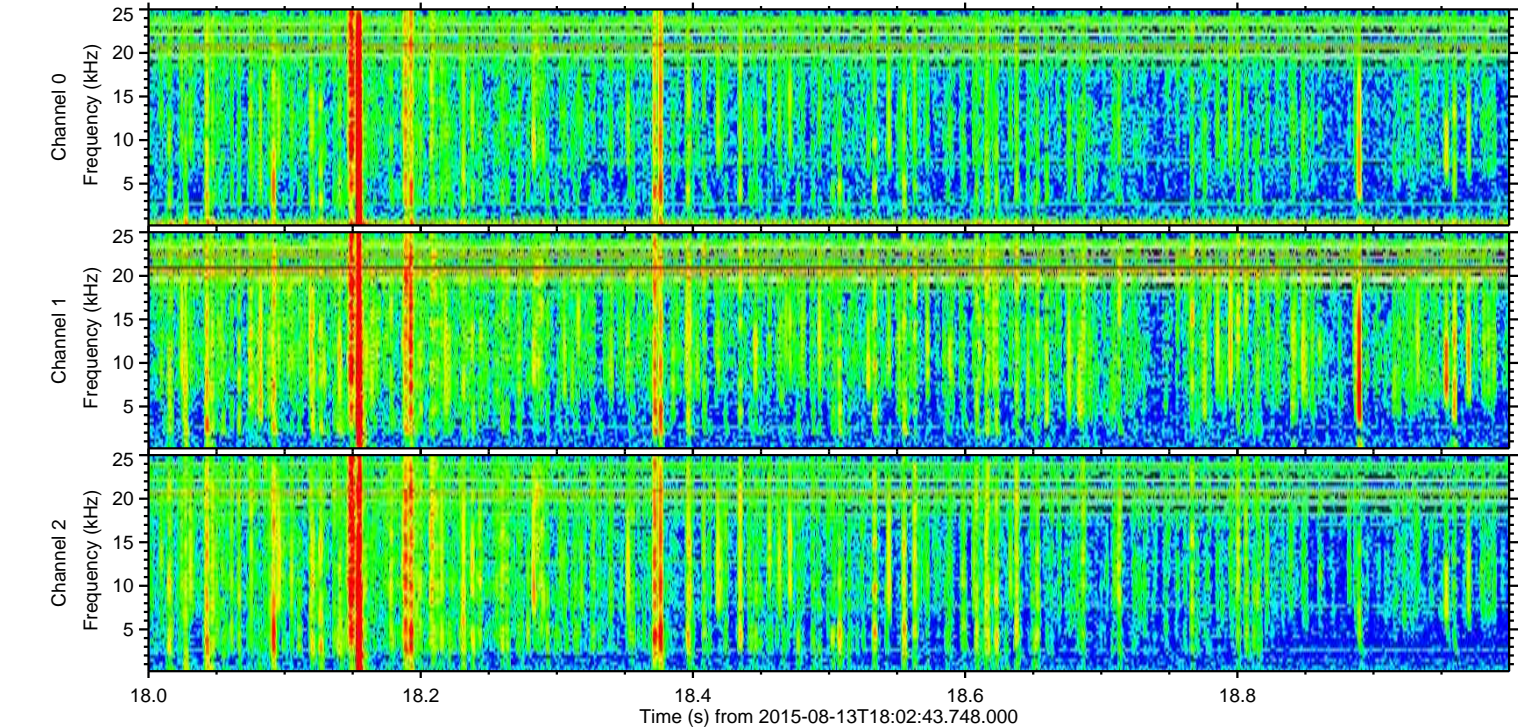
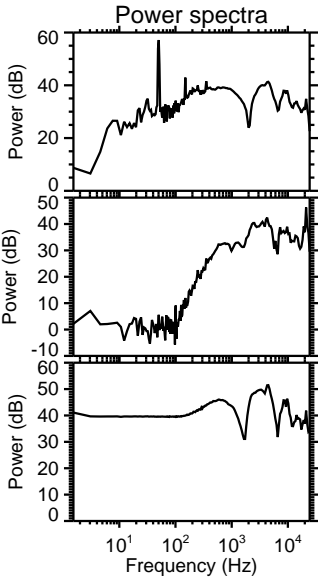
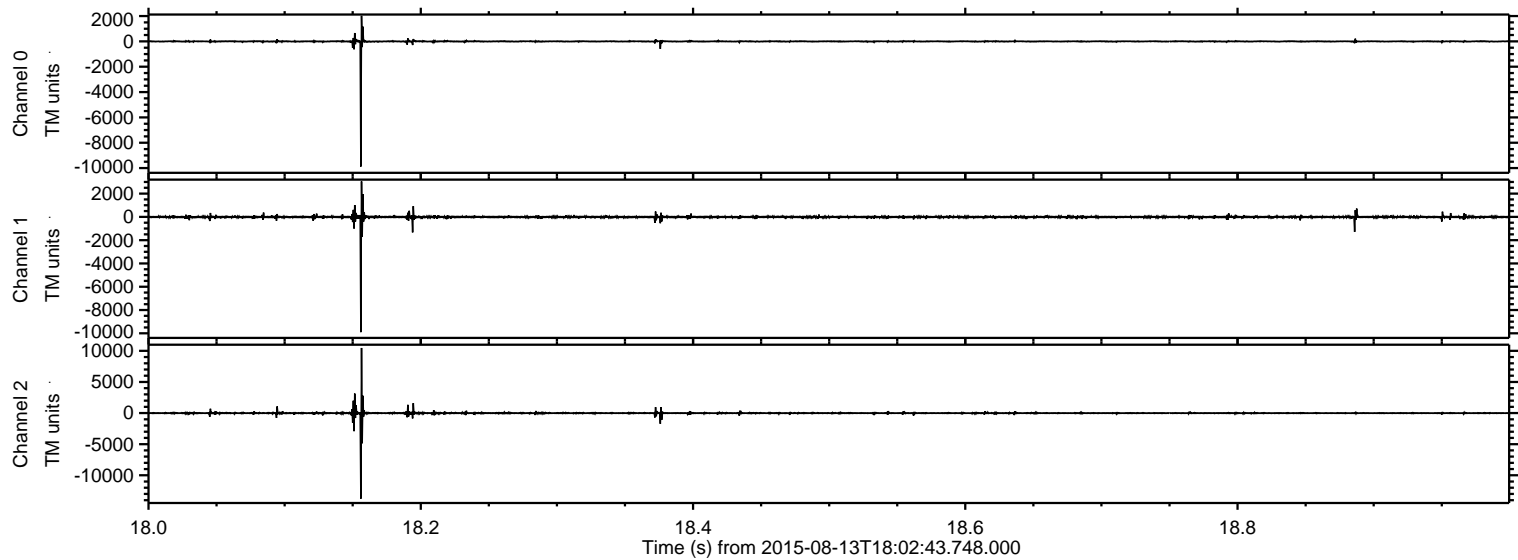
Processed Thu Aug 13 22:02:36 2015 by ELM ver.2012-10-06 from 001__elm20150813_180242__dat00.bin



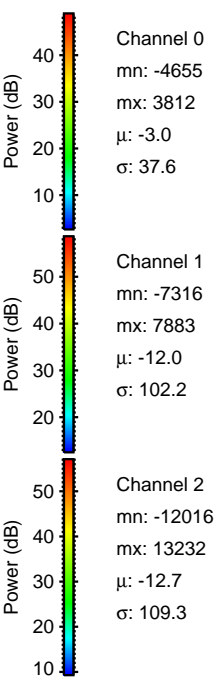
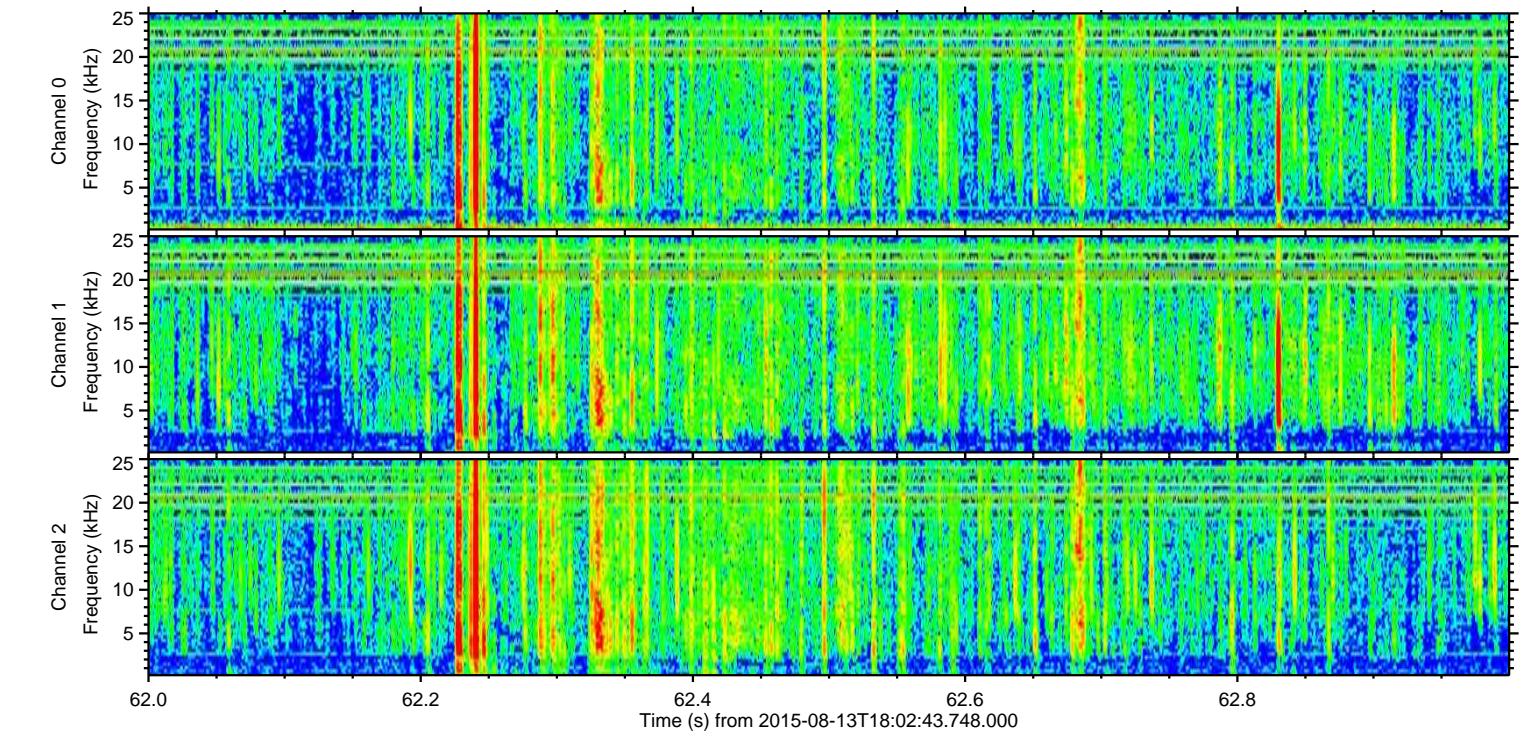
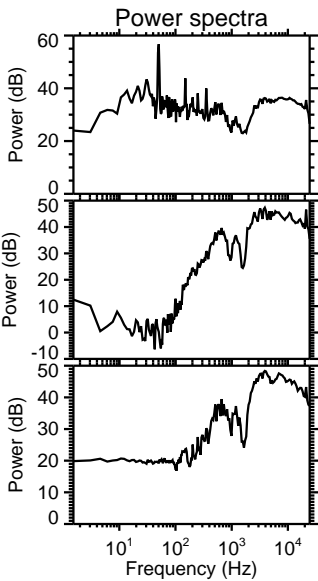
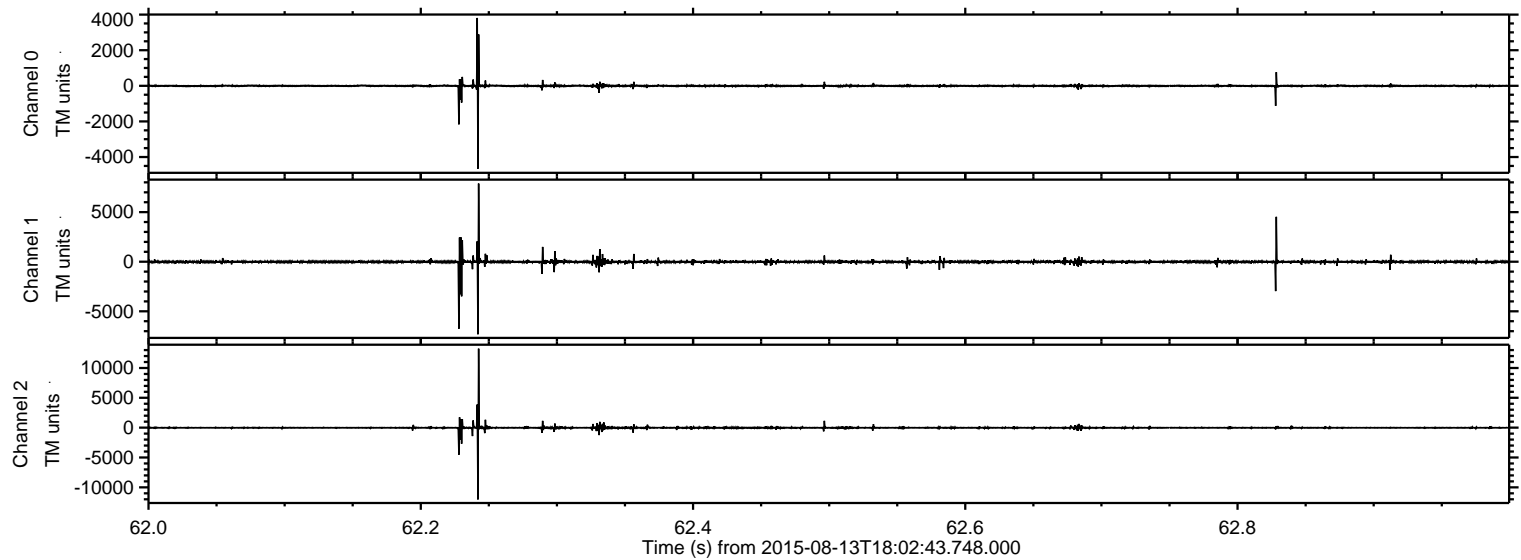
Processed Thu Aug 13 22:02:51 2015 by ELM ver.2012-10-06 from 001__elm20150813_180242__dat00.bin



Processed Thu Aug 13 22:02:52 2015 by ELM ver.2012-10-06 from 001__elm20150813_180242__dat00.bin

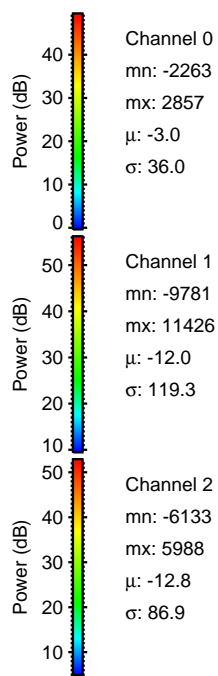
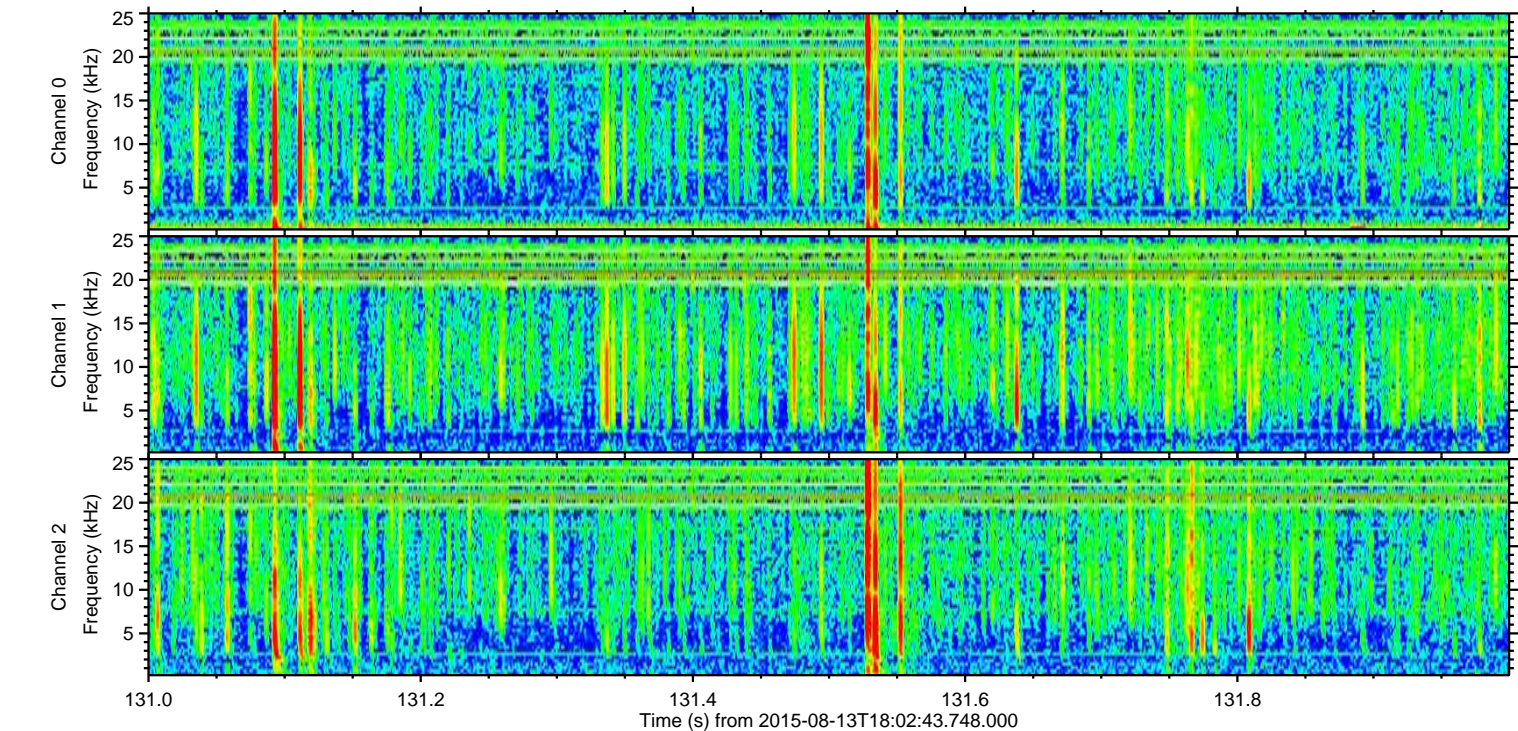
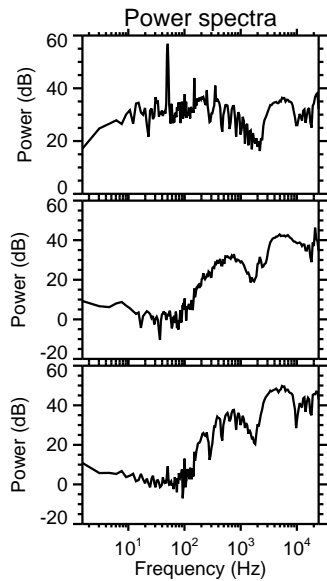
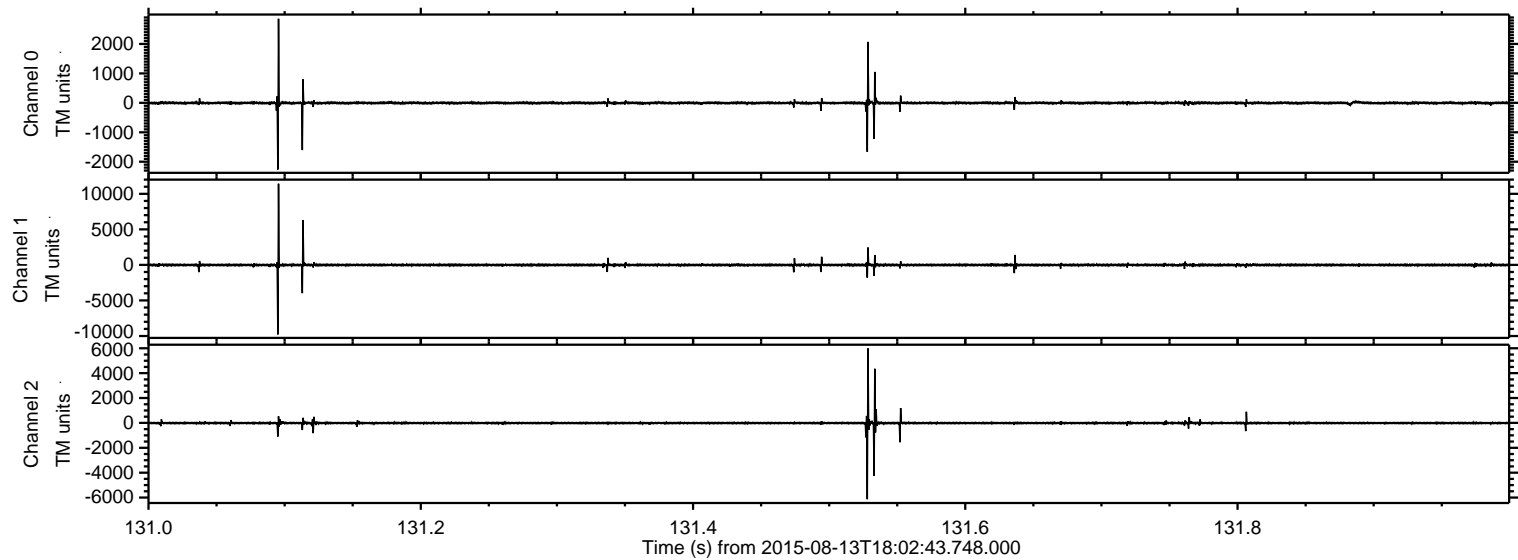


Processed Thu Aug 13 22:02:53 2015 by ELM ver.2012-10-06 from 001__elm20150813_180242__dat00.bin

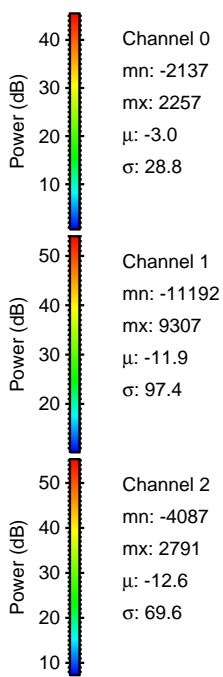
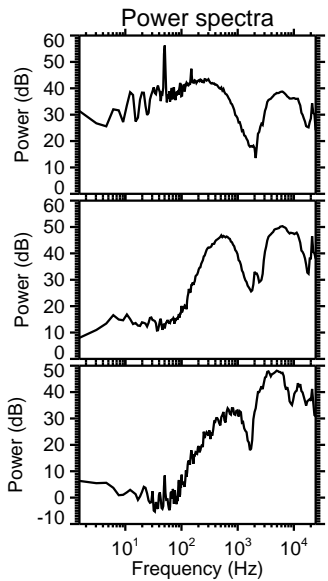
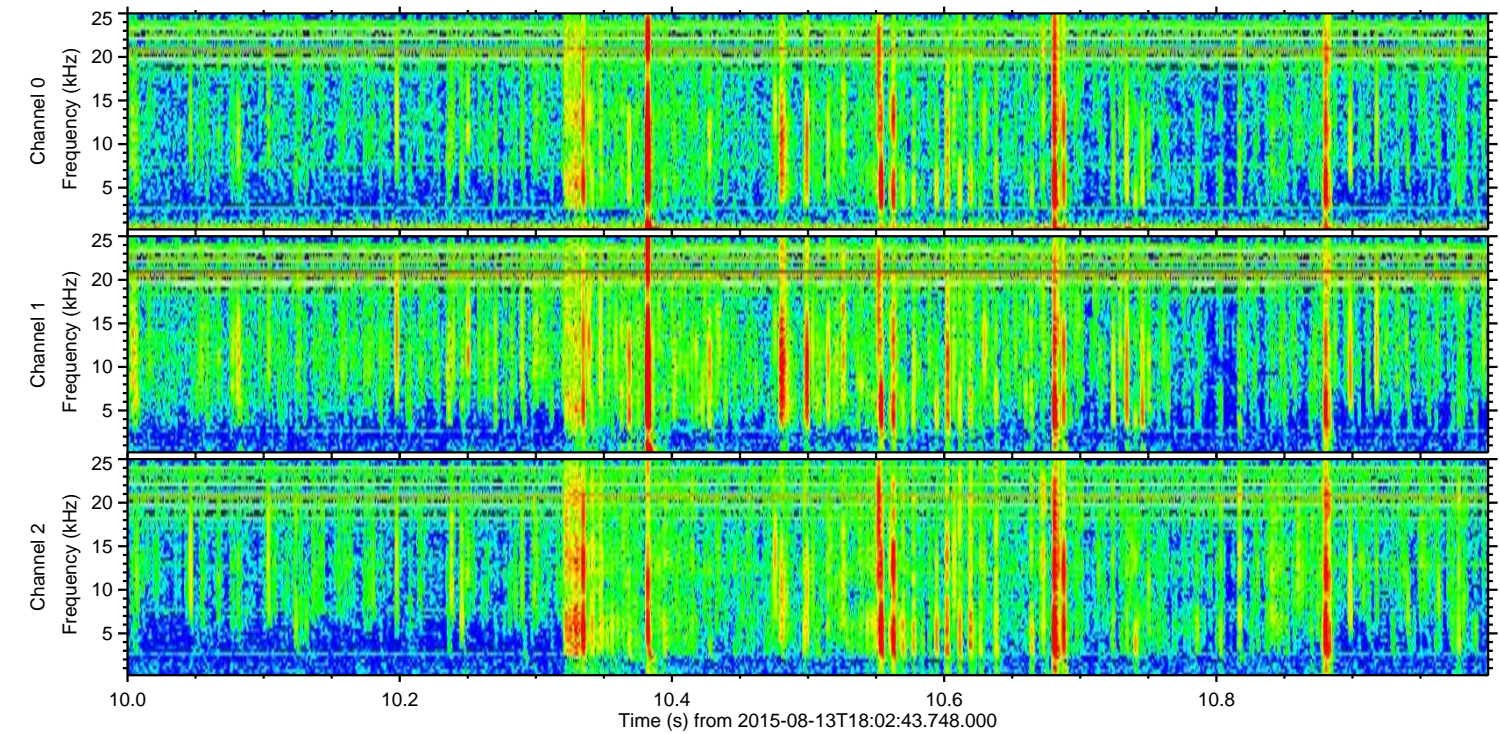
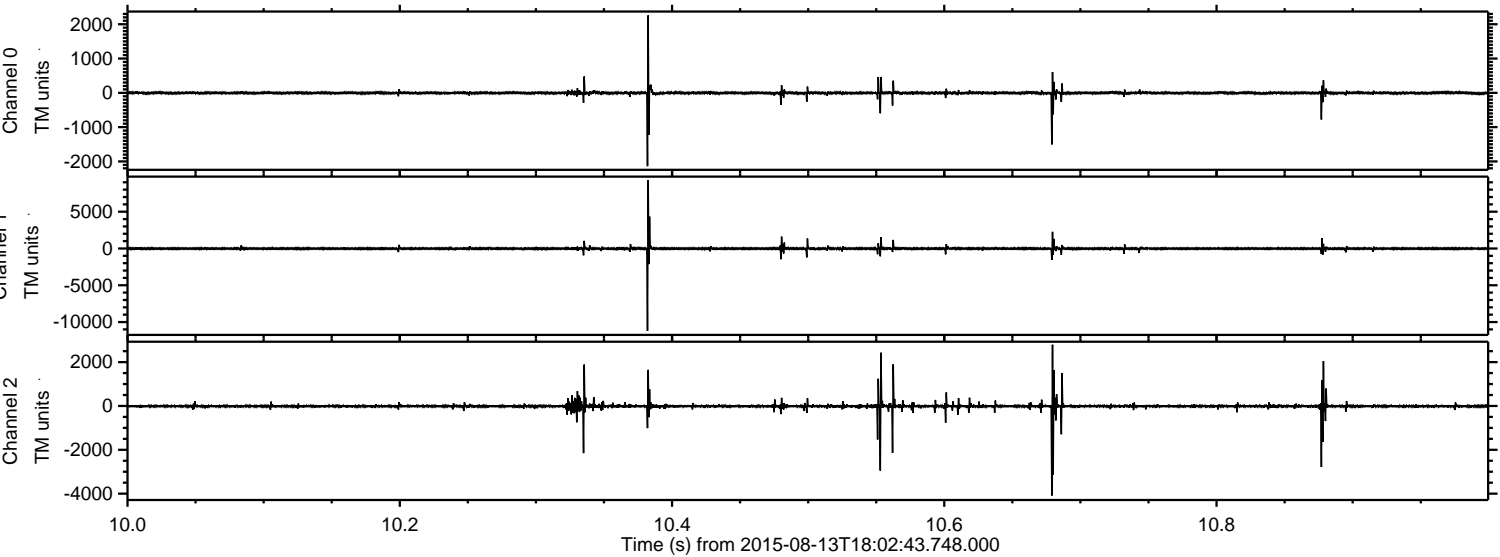


ELMAVAN 3D WAVEFORMS (Measured data sampled at 50 kHz) 51000 packets of 144 samples from 2015-08-13T18:02:43.748.000. Part 132/147

Processed Thu Aug 13 22:02:54 2015 by ELM ver.2012-10-06 from 001__elm20150813_180242__dat00.bin

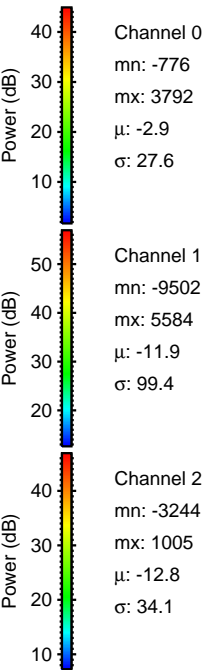
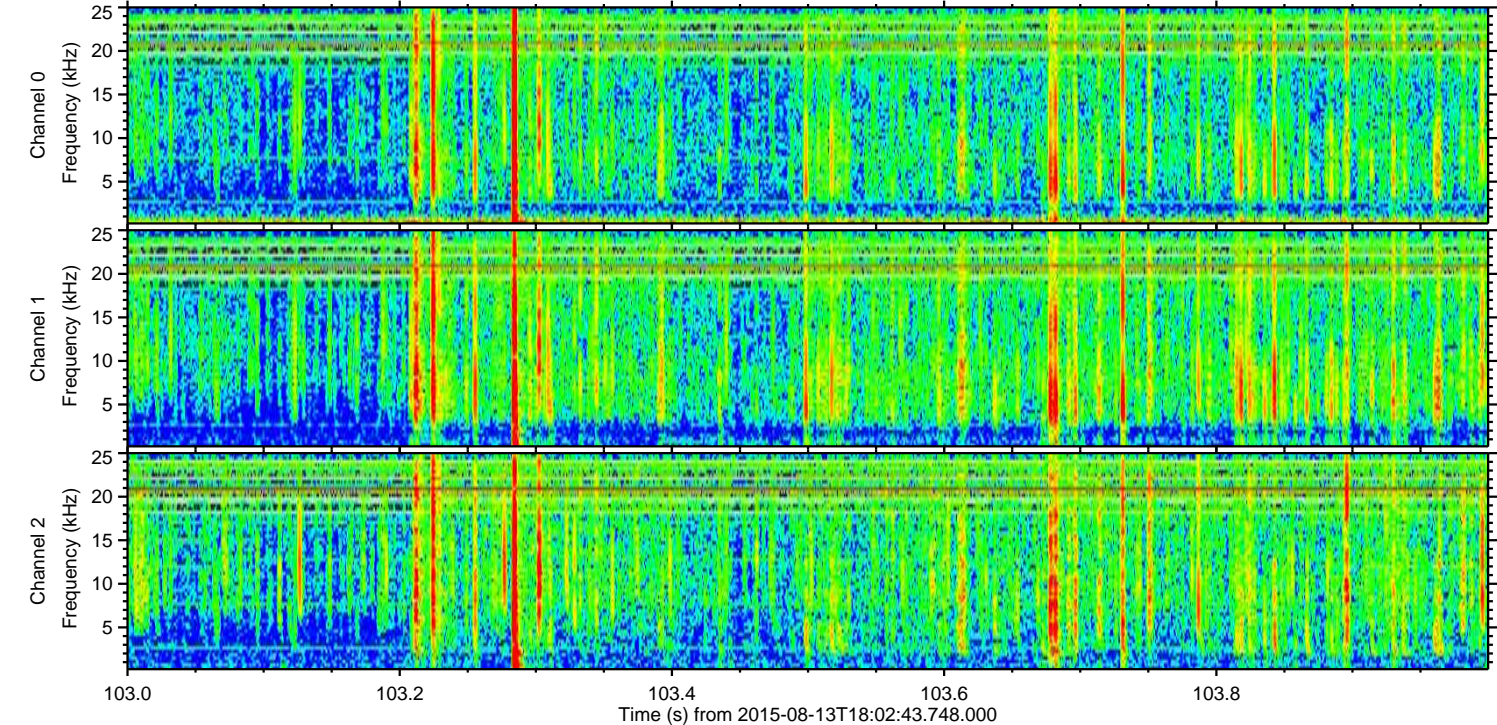
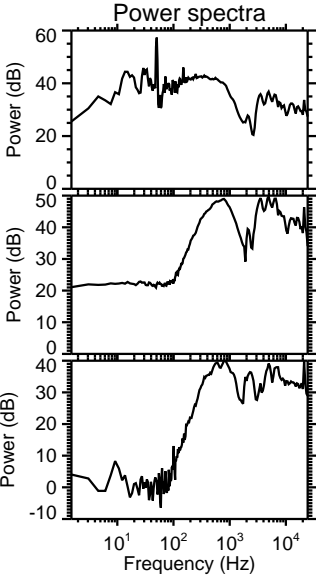
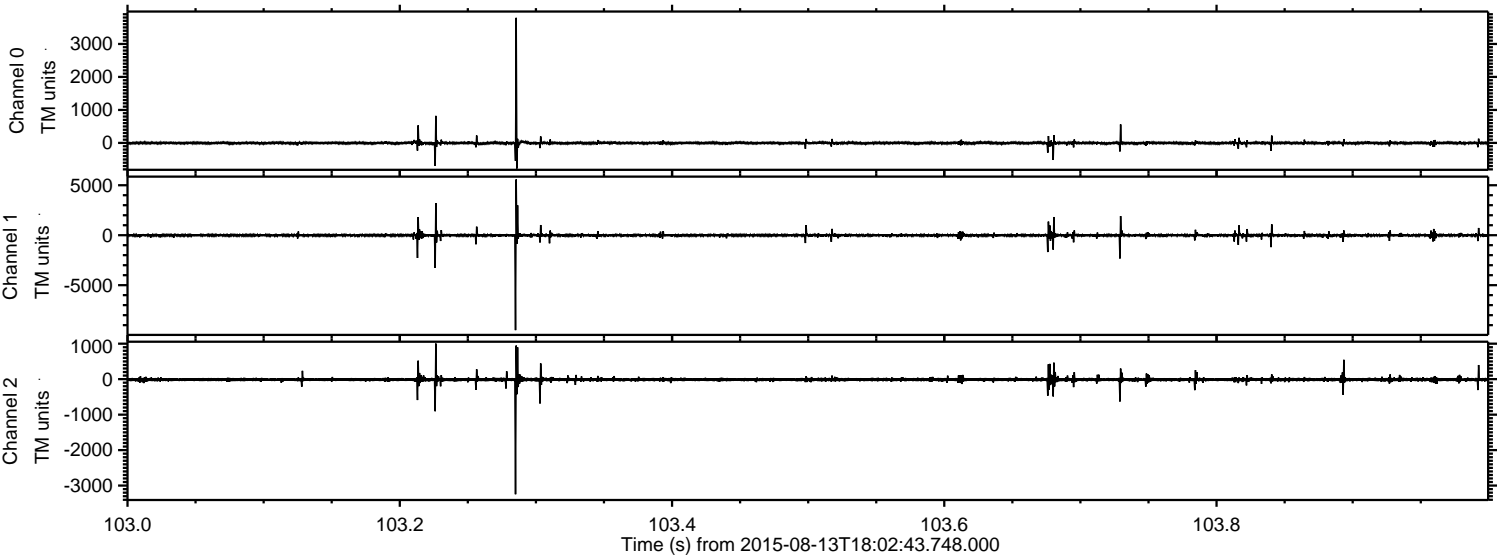


Processed Thu Aug 13 22:02:55 2015 by ELM ver.2012-10-06 from 001__elm20150813_180242__dat00.bin



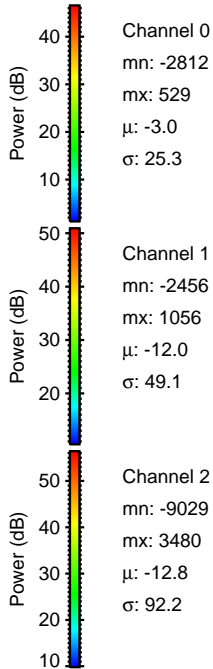
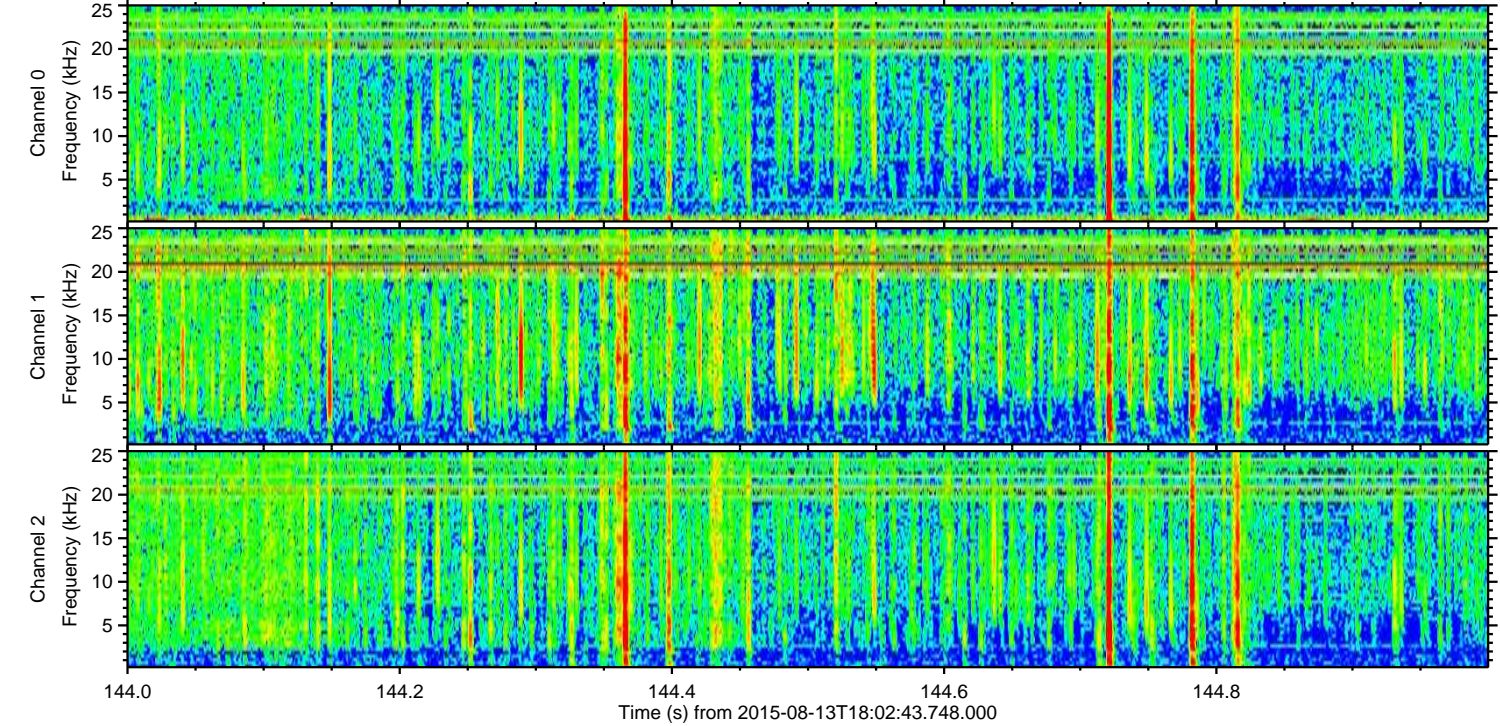
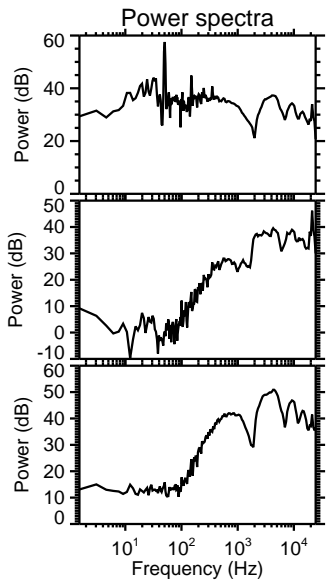
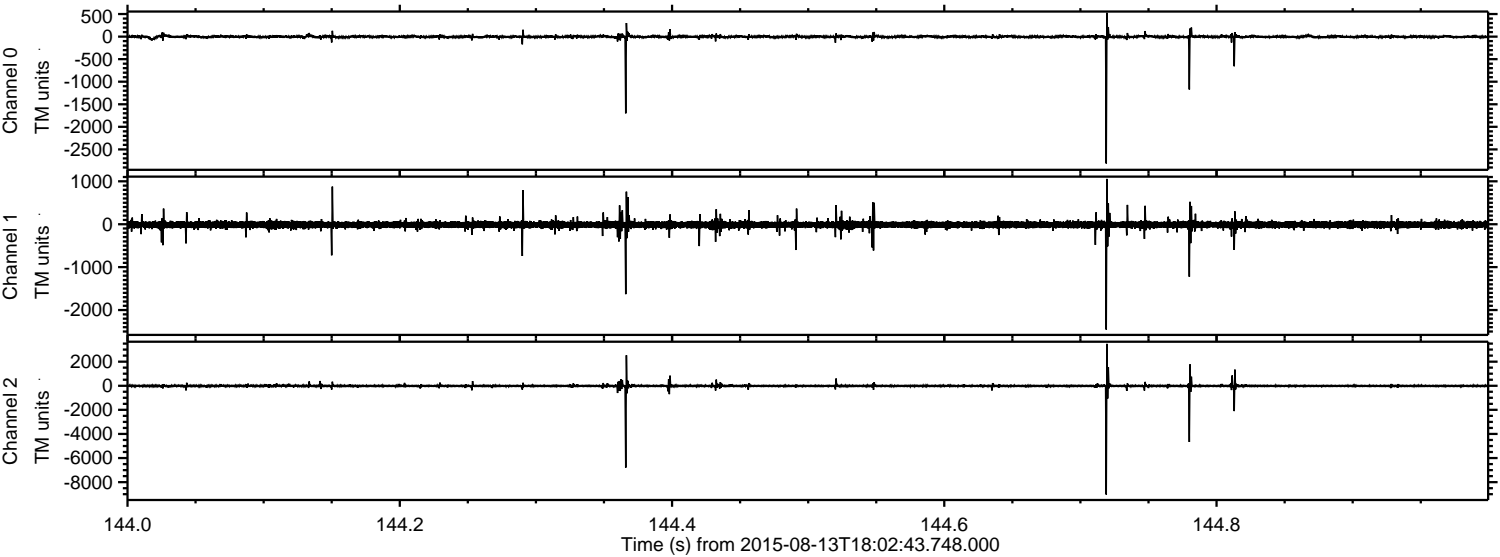
ELMAVAN 3D WAVEFORMS (Measured data sampled at 50 kHz) 51000 packets of 144 samples from 2015-08-13T18:02:43.748.000. Part 104/147

Processed Thu Aug 13 22:02:57 2015 by ELM ver.2012-10-06 from 001__elm20150813_180242__dat00.bin

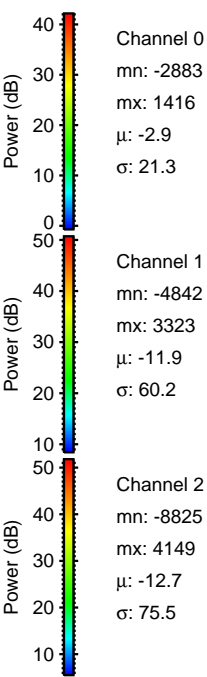
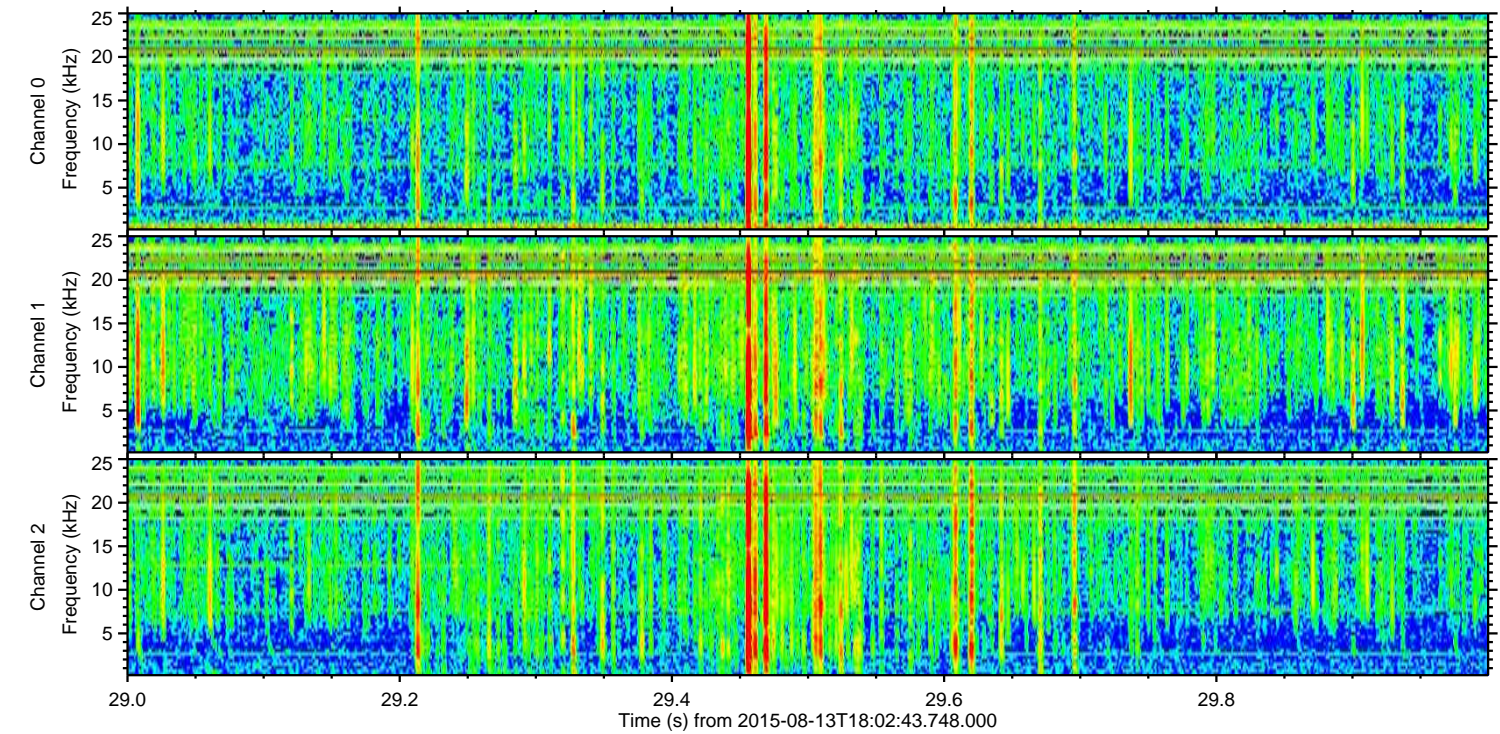
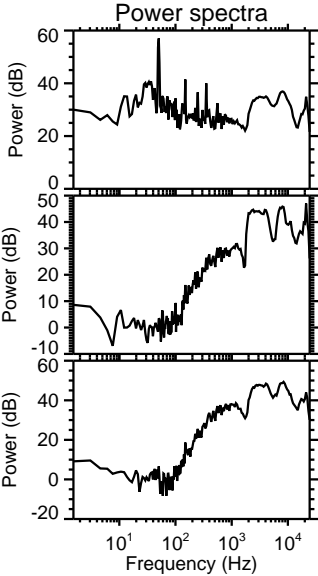
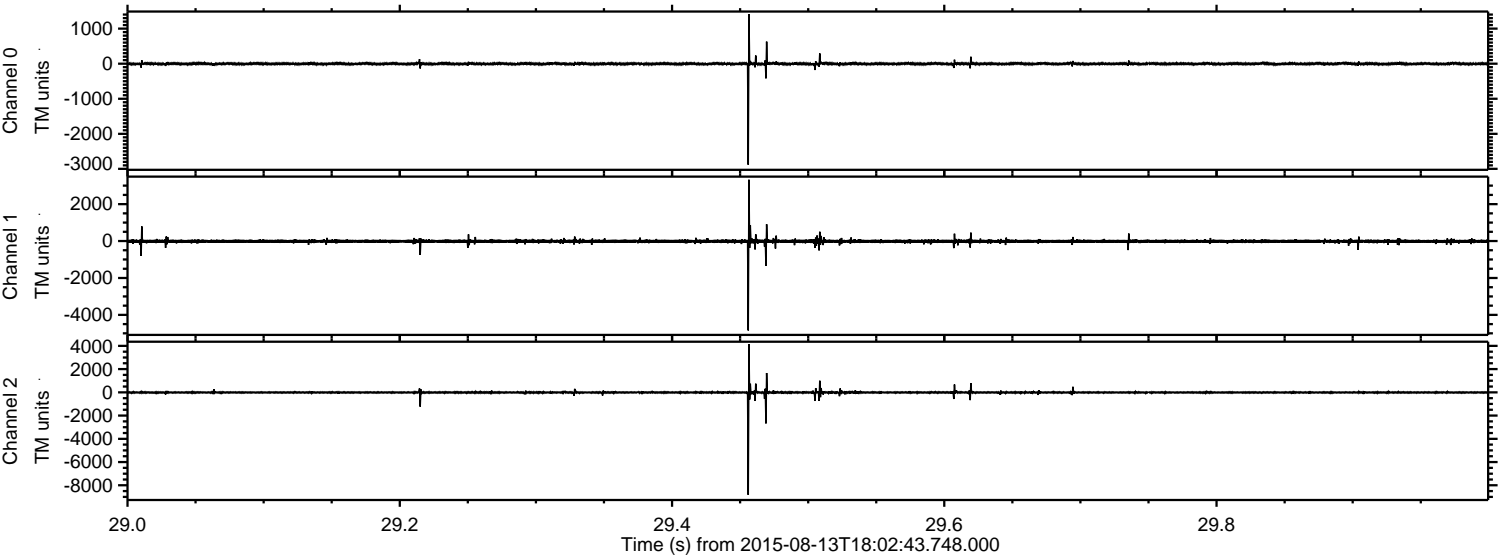


ELMAVAN 3D WAVEFORMS (Measured data sampled at 50 kHz) 51000 packets of 144 samples from 2015-08-13T18:02:43.748.000. Part 145/147

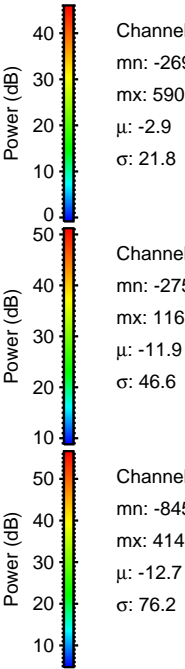
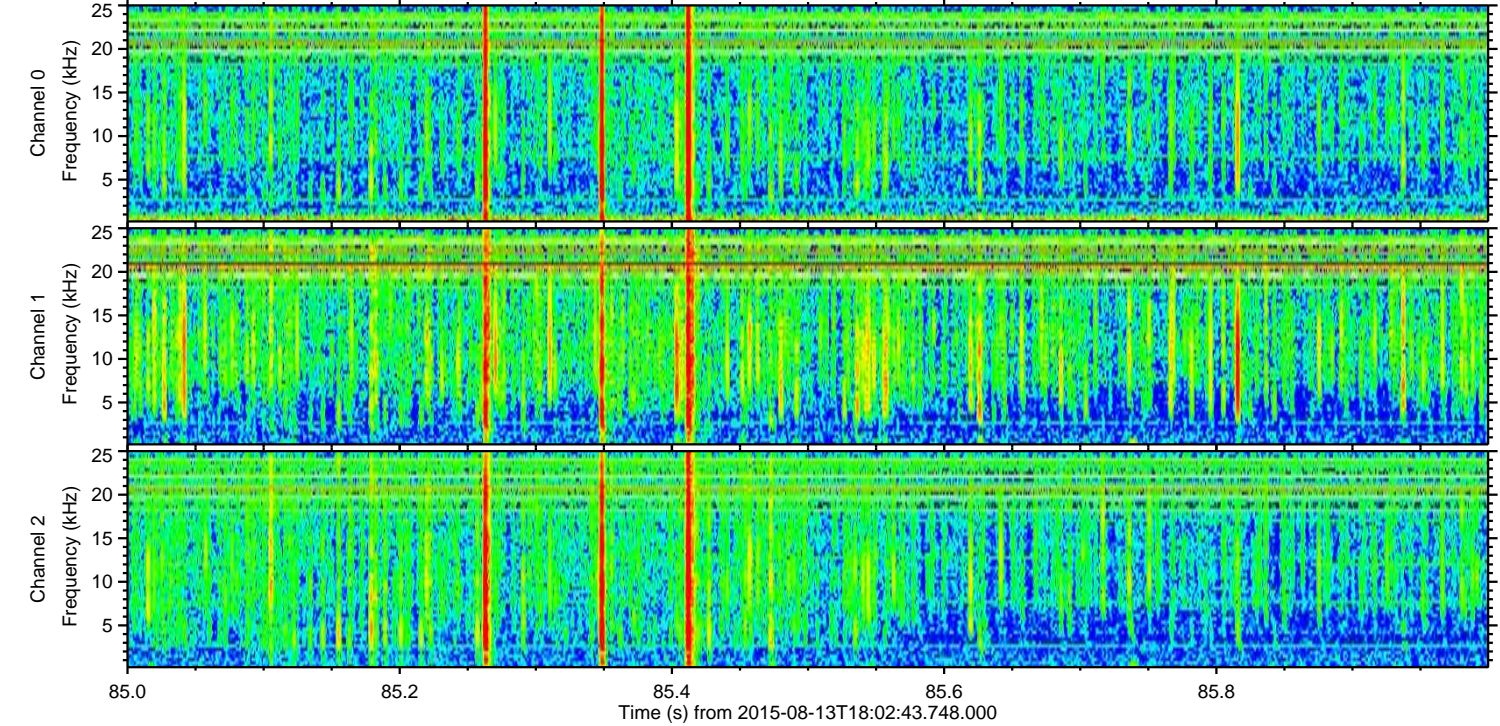
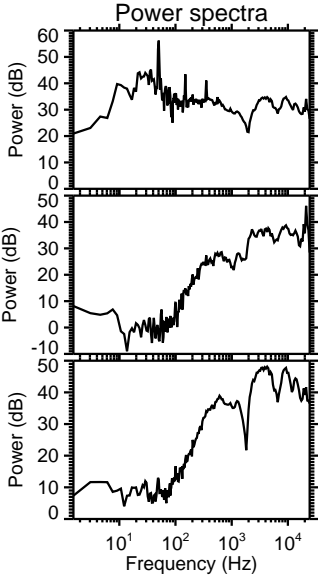
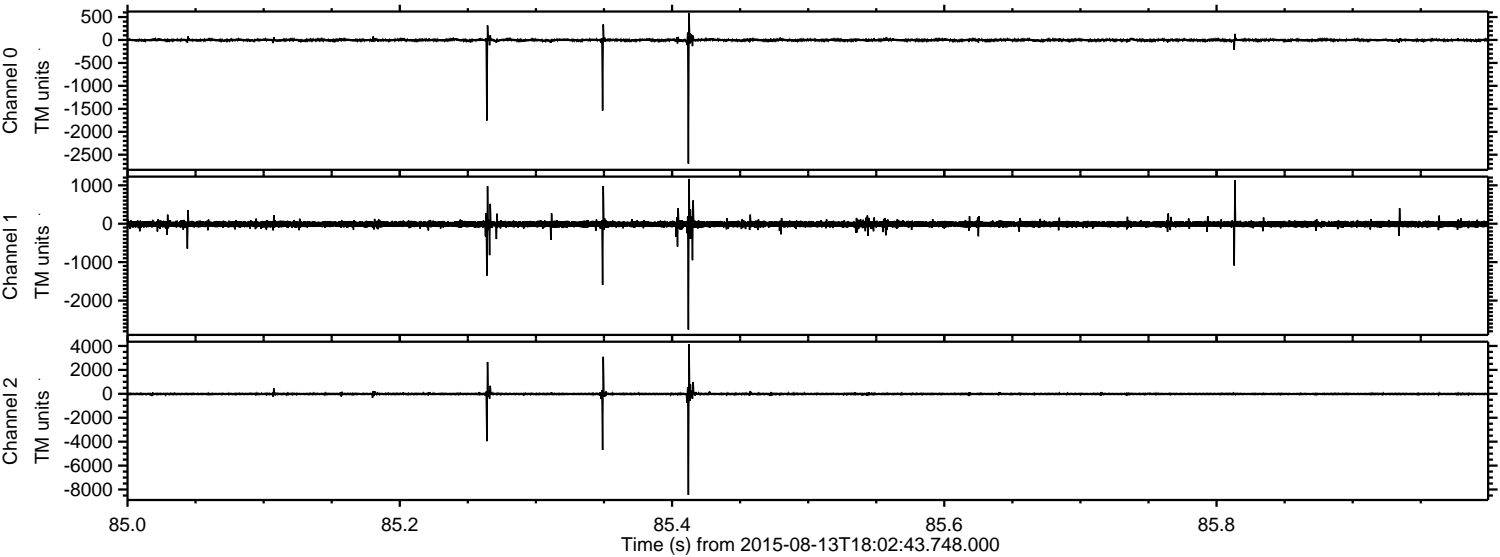
Processed Thu Aug 13 22:02:58 2015 by ELM ver.2012-10-06 from 001__elm20150813_180242__dat00.bin



Processed Thu Aug 13 22:02:59 2015 by ELM ver.2012-10-06 from 001__elm20150813_180242__dat00.bin



Processed Thu Aug 13 22:03:00 2015 by ELM ver.2012-10-06 from 001__elm20150813_180242__dat00.bin



Channel 0
mn: -2694
mx: 590
 μ : -2.9
 σ : 21.8

Channel 1
mn: -2756
mx: 1167
 μ : -11.9
 σ : 46.6

Channel 2
mn: -8453
mx: 4146
 μ : -12.7
 σ : 76.2

Processed Thu Aug 13 22:03:01 2015 by ELM ver.2012-10-06 from 001__elm20150813_180242__dat00.bin

