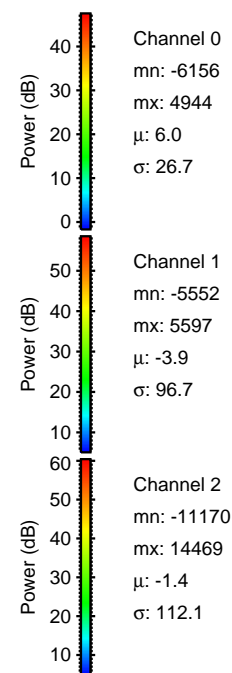
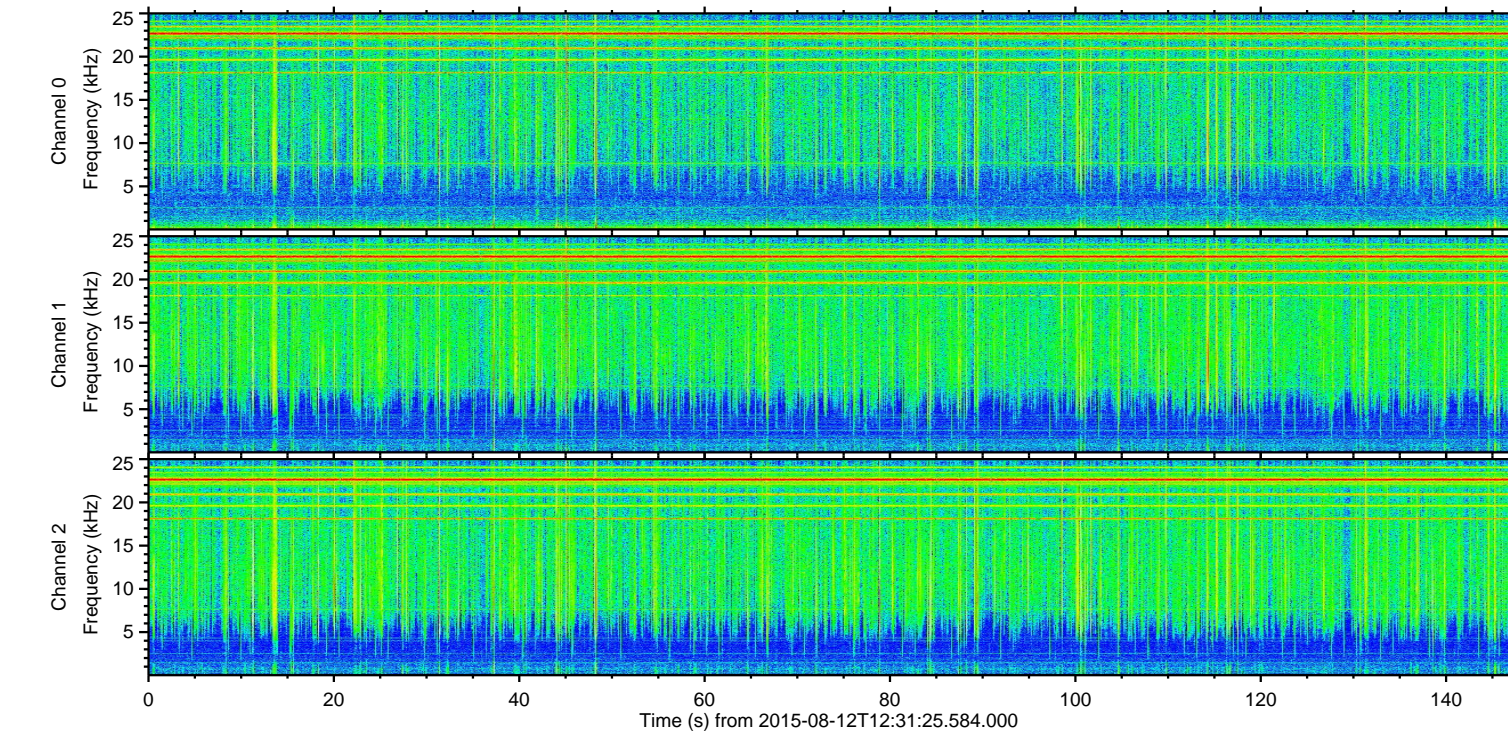
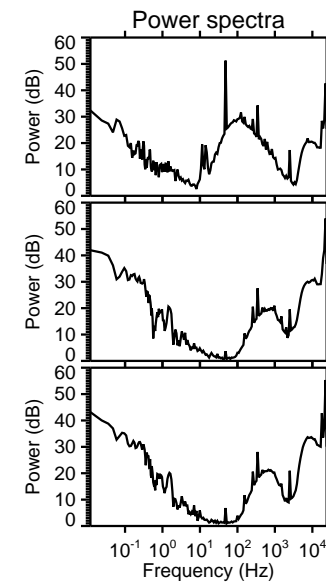
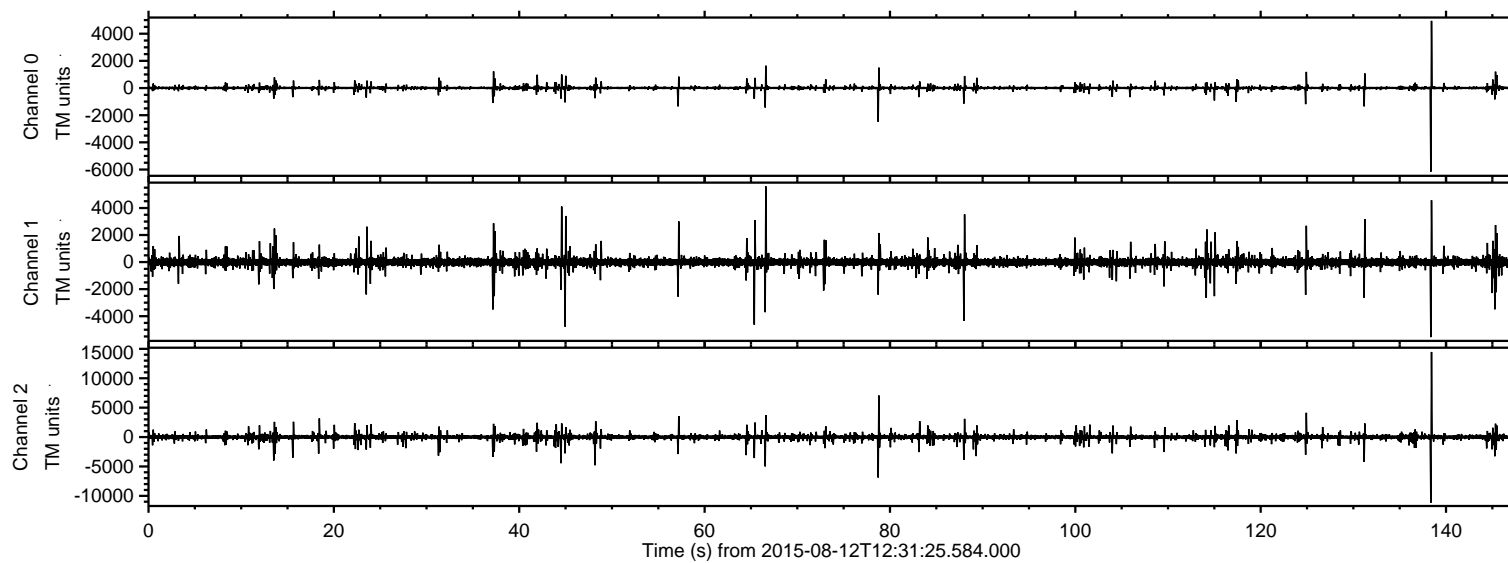


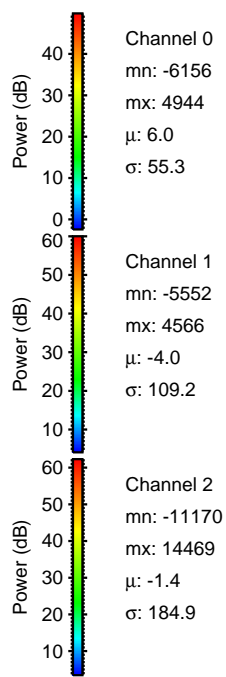
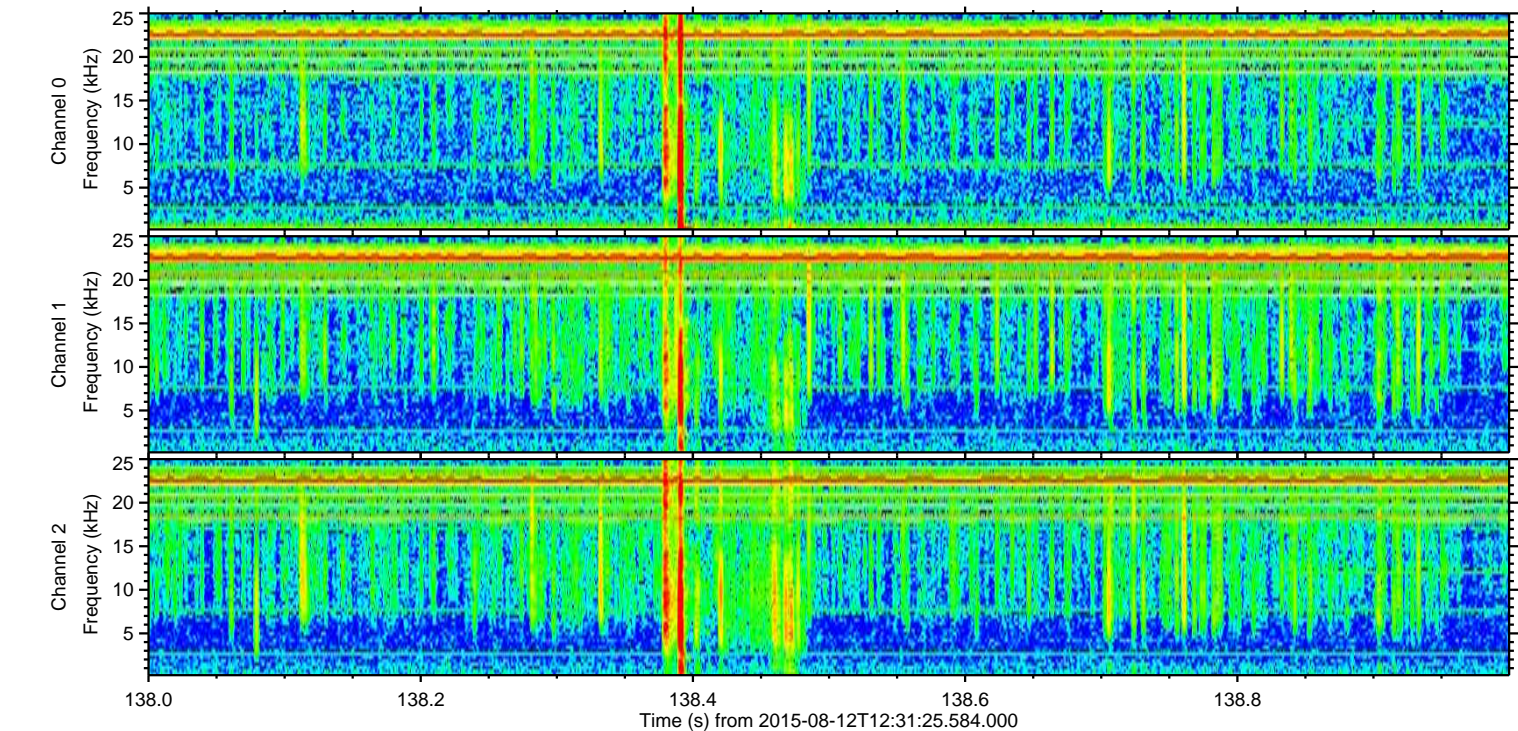
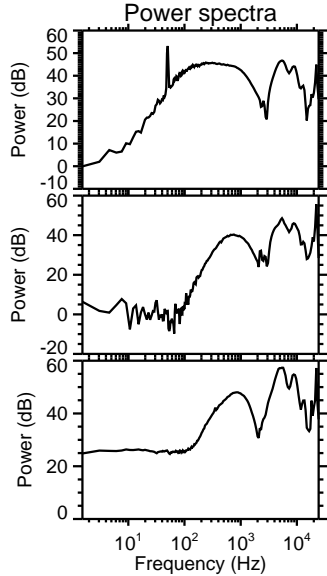
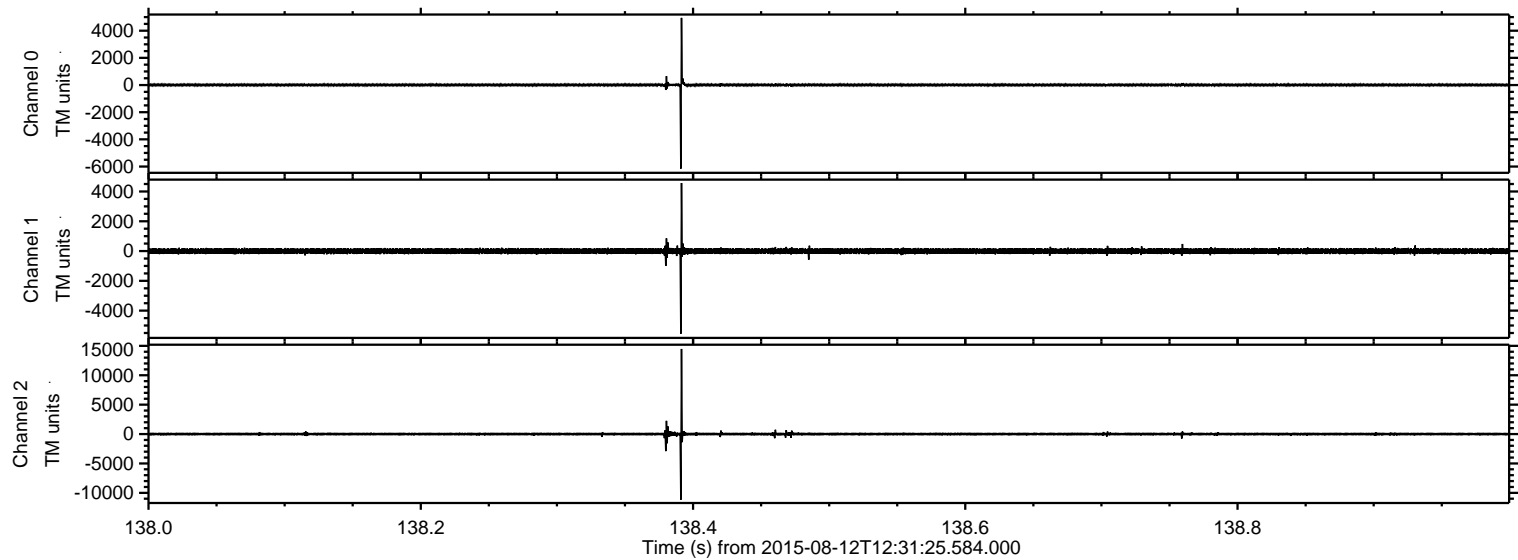
ELMAVAN 3D WAVEFORMS (Measured data sampled at 50 kHz) 51000 packets of 144 samples from 2015-08-12T12:31:25.584.000.

Processed Wed Aug 12 14:37:37 2015 by ELM ver.2012-10-06 from 001__elm20150812_123124__dat00.bin

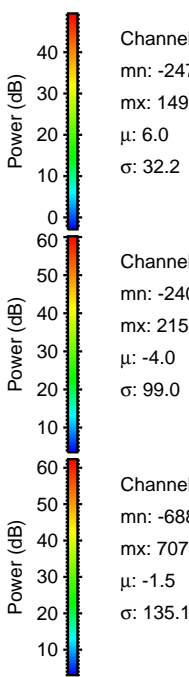
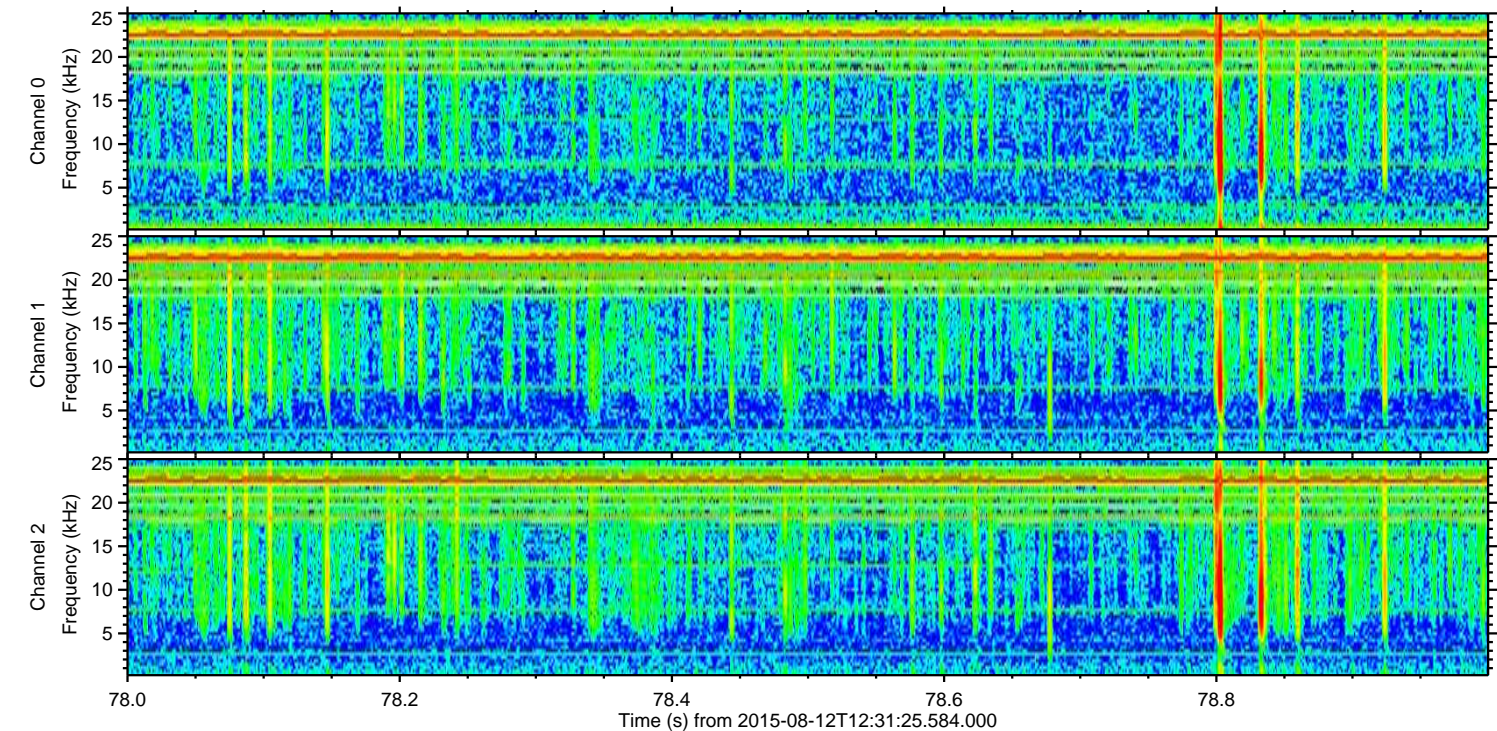
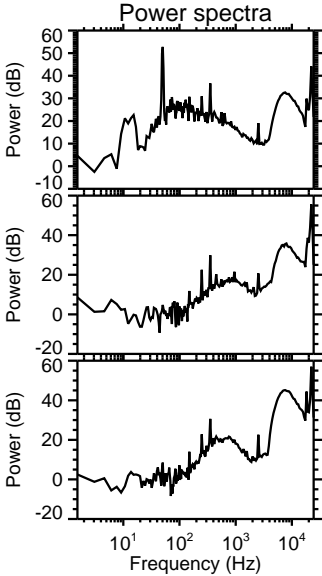
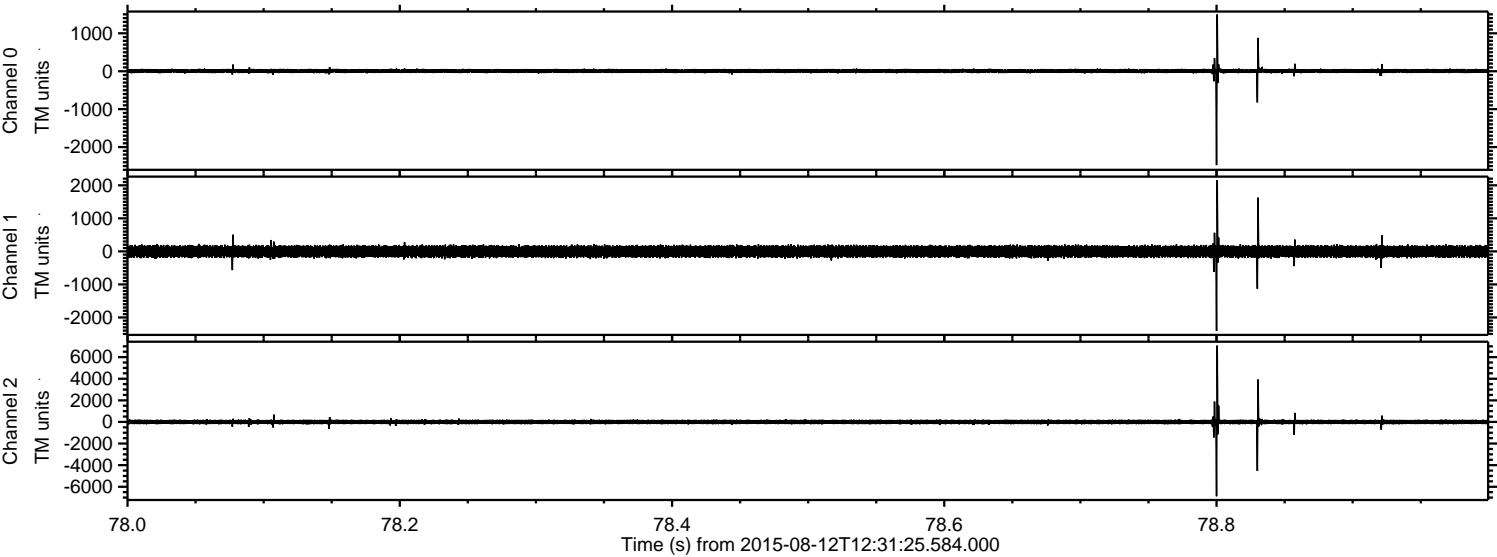


ELMAVAN 3D WAVEFORMS (Measured data sampled at 50 kHz) 51000 packets of 144 samples from 2015-08-12T12:31:25.584.000. Part 139/147

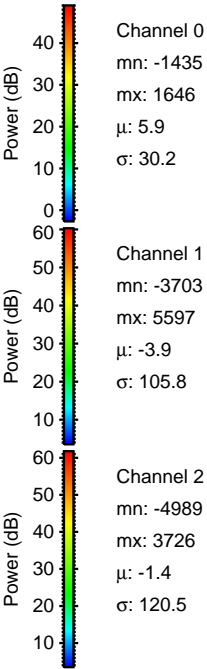
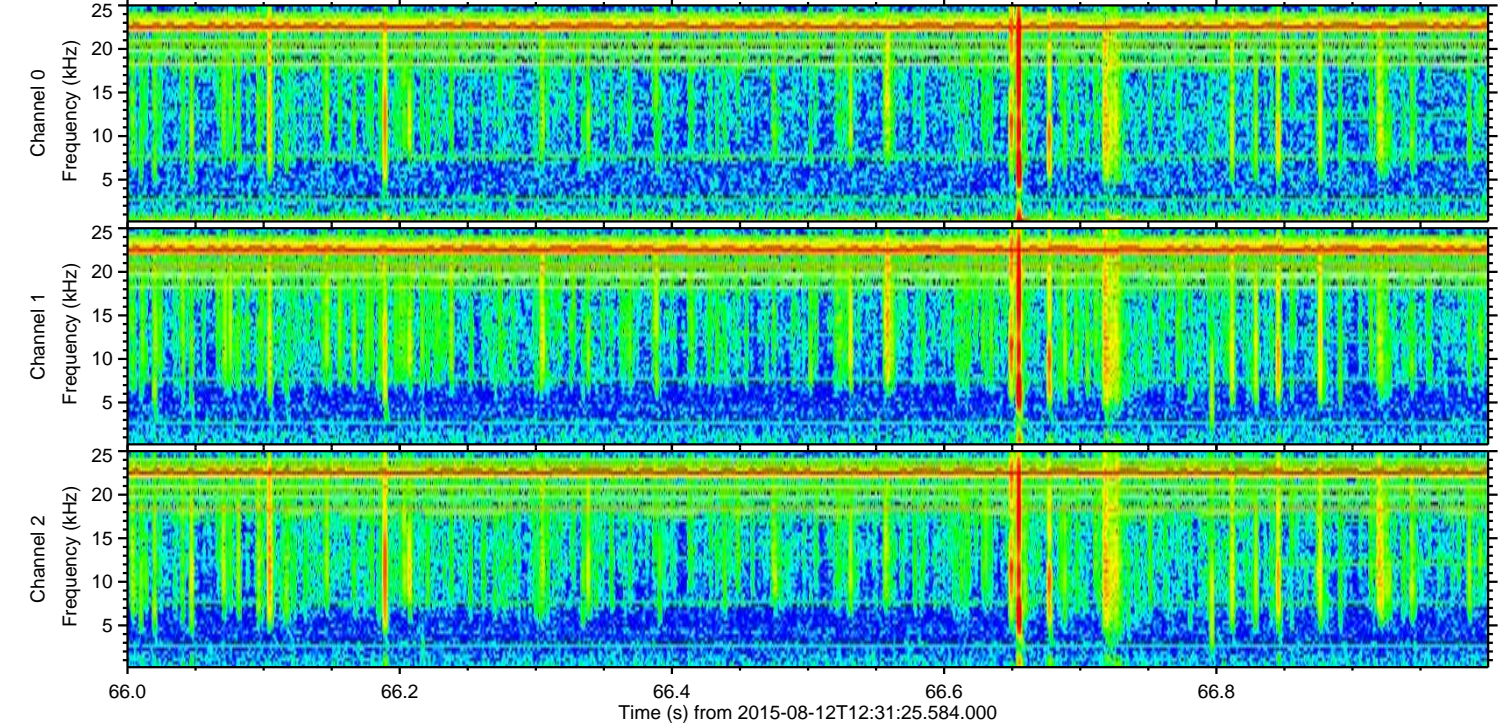
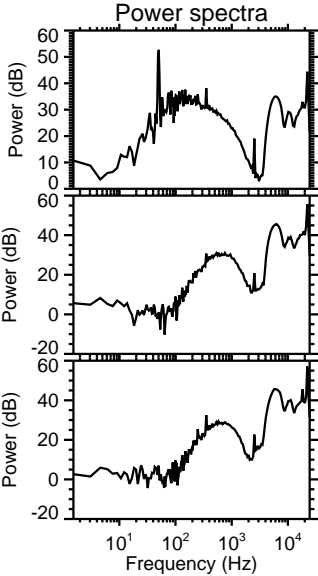
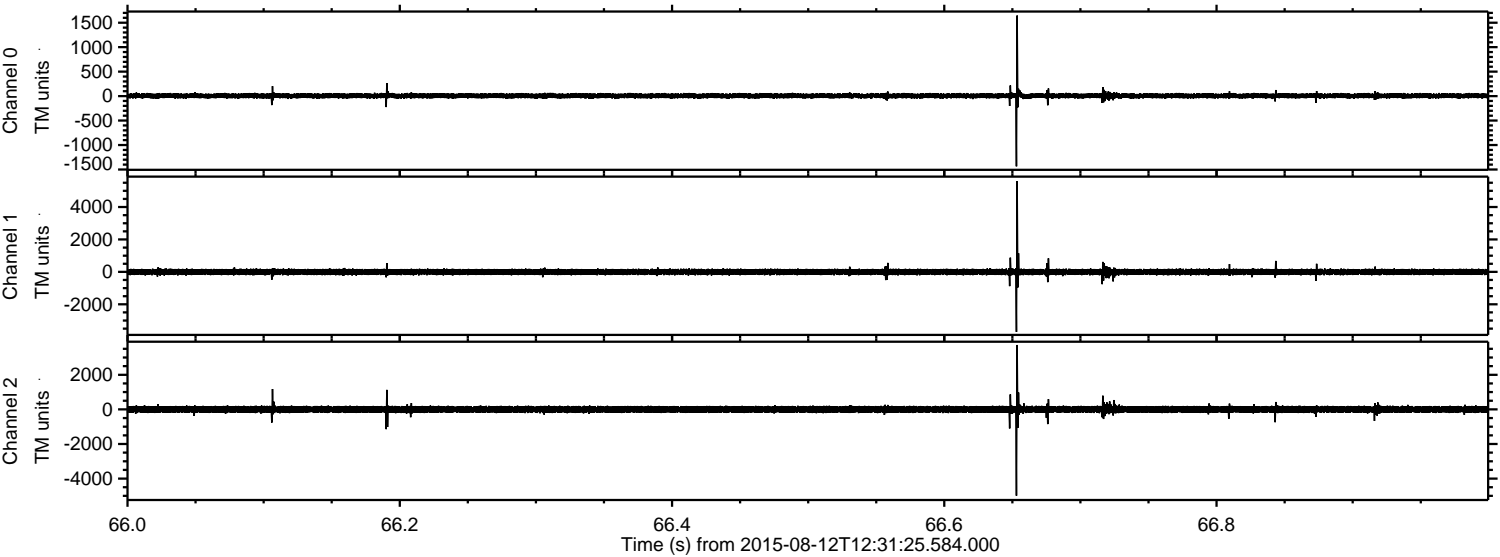
Processed Wed Aug 12 14:37:48 2015 by ELM ver.2012-10-06 from 001__elm20150812_123124__dat00.bin



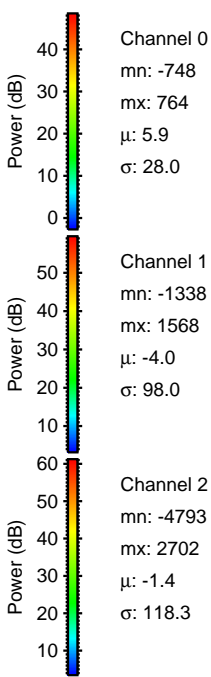
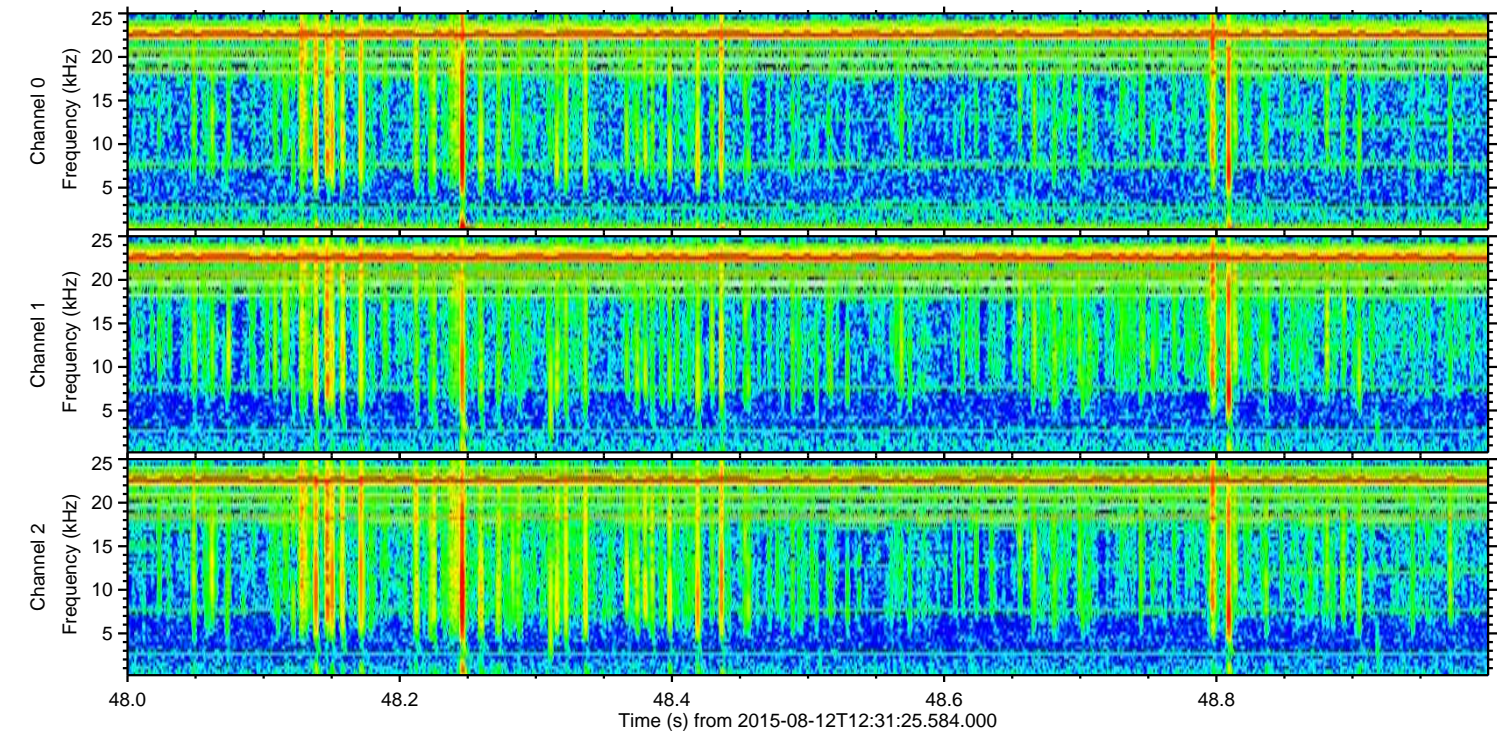
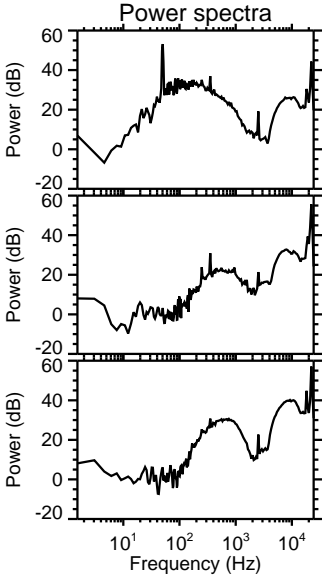
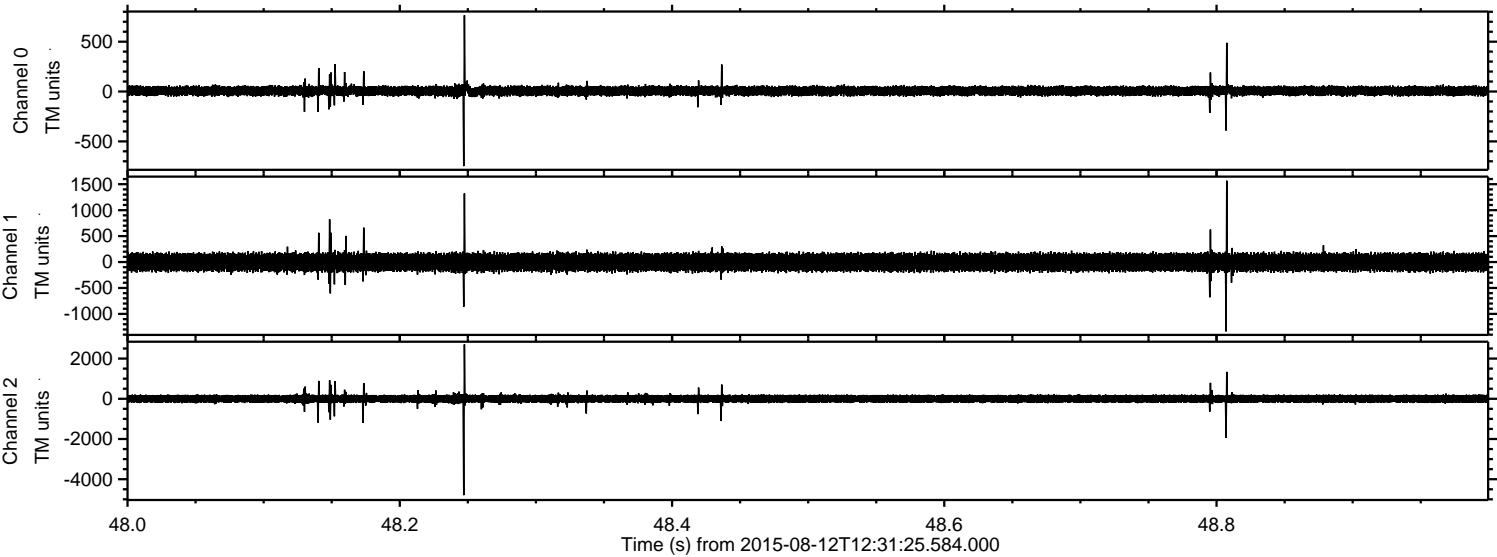
Processed Wed Aug 12 14:37:49 2015 by ELM ver.2012-10-06 from 001__elm20150812_123124__dat00.bin



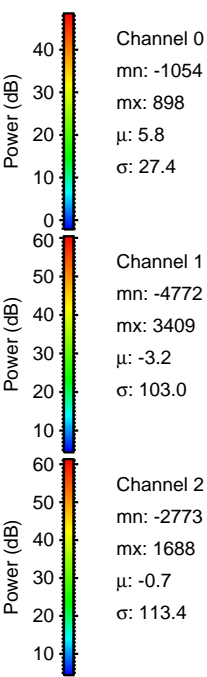
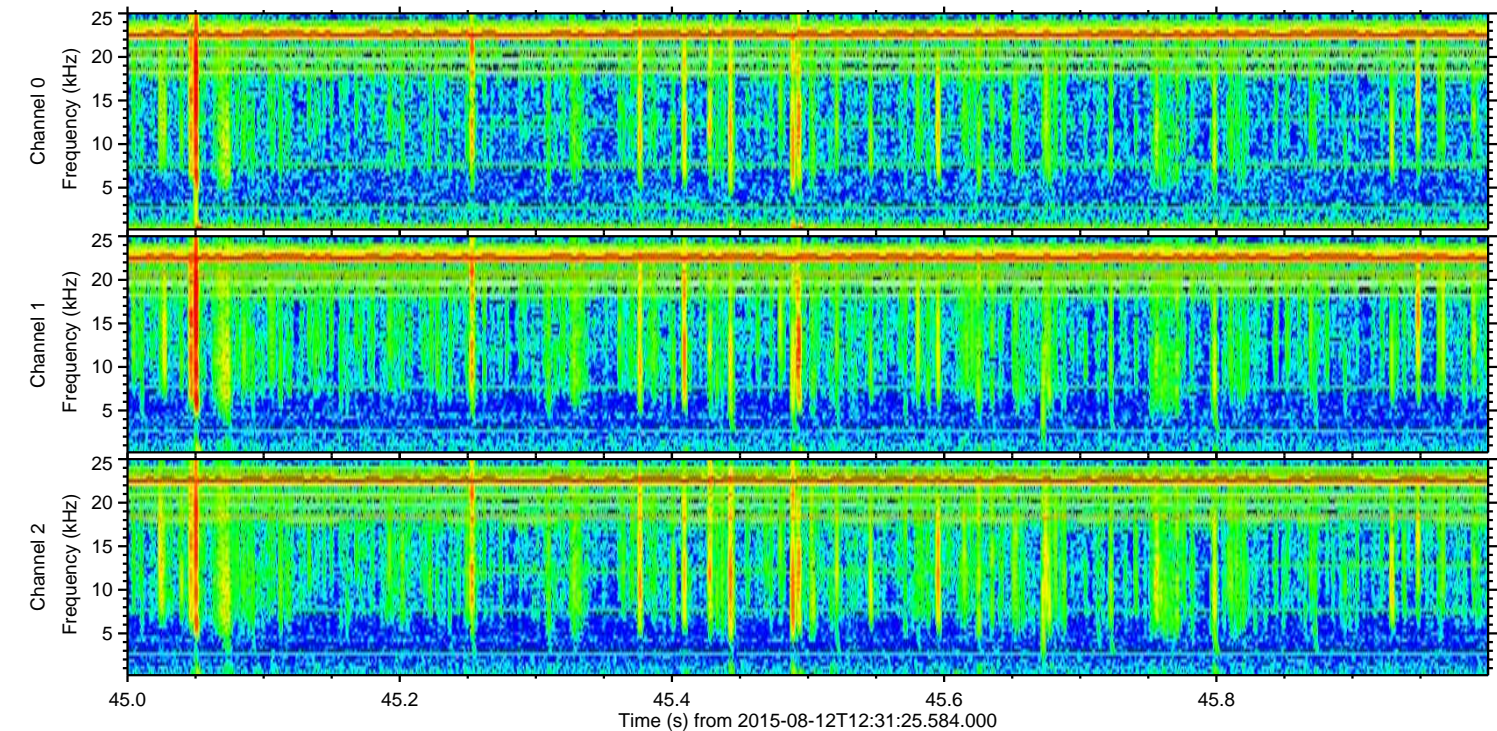
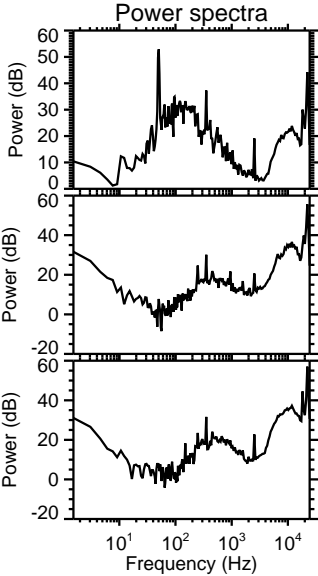
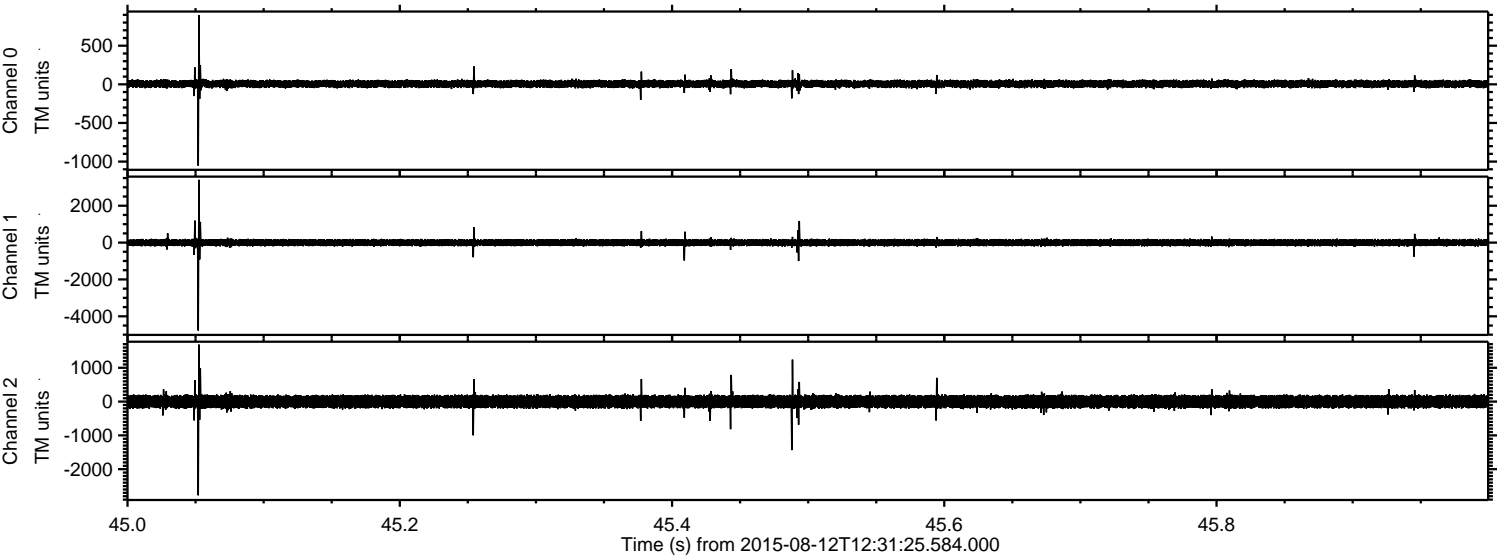
Processed Wed Aug 12 14:37:50 2015 by ELM ver.2012-10-06 from 001__elm20150812_123124__dat00.bin



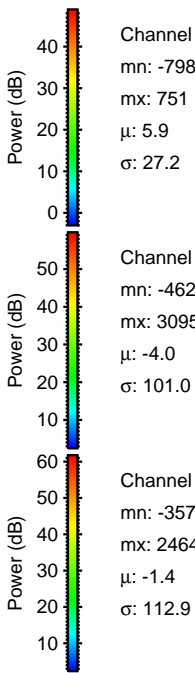
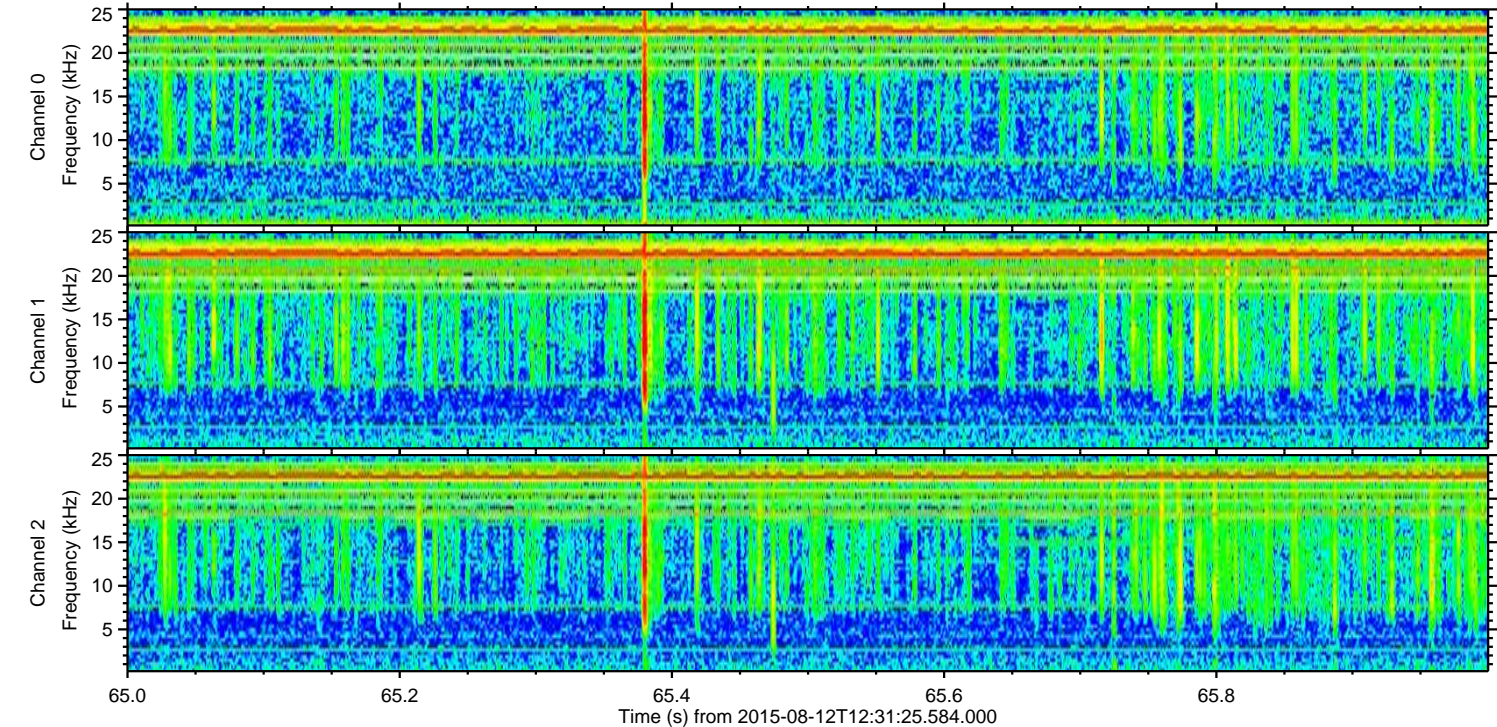
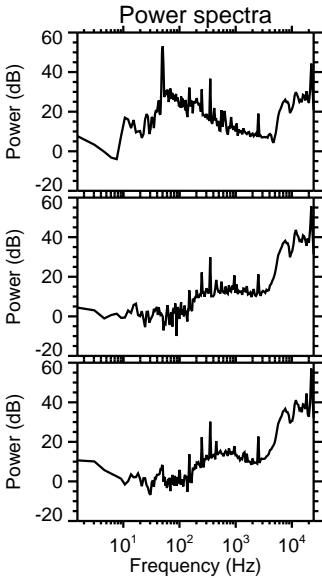
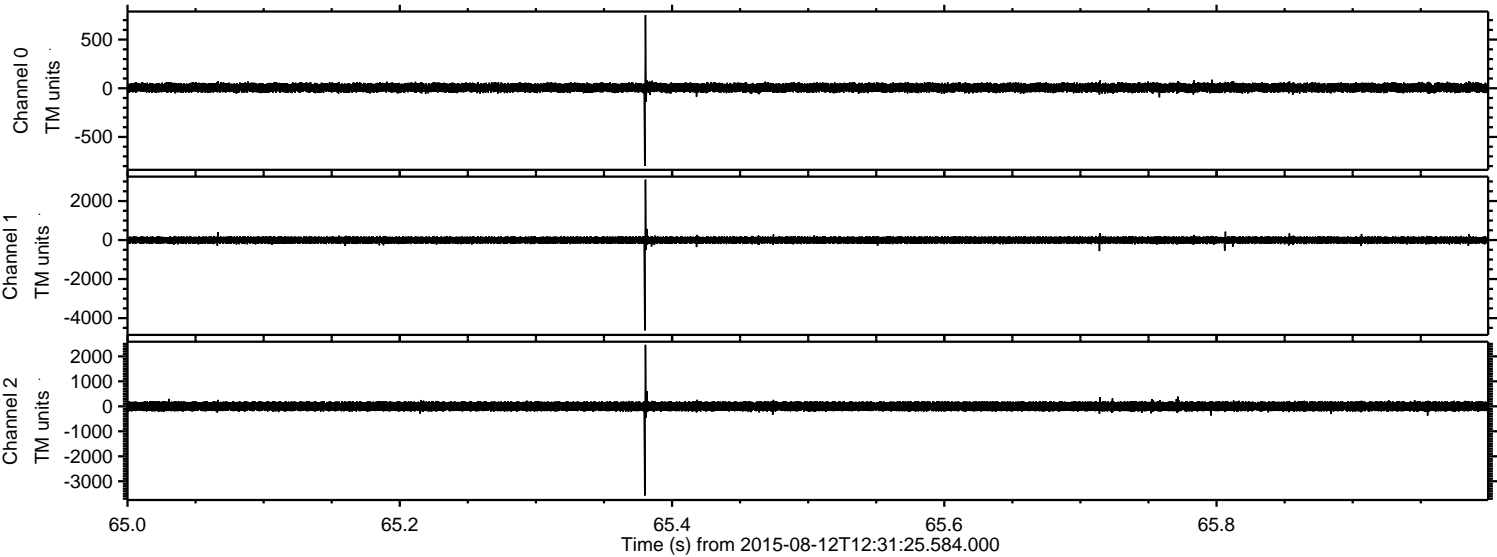
Processed Wed Aug 12 14:37:51 2015 by ELM ver.2012-10-06 from 001__elm20150812_123124__dat00.bin



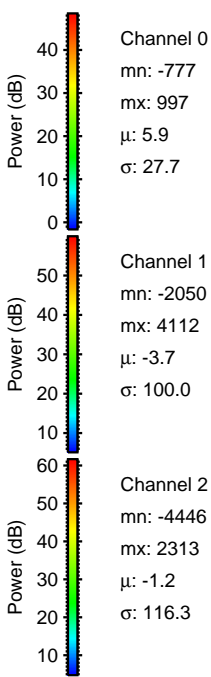
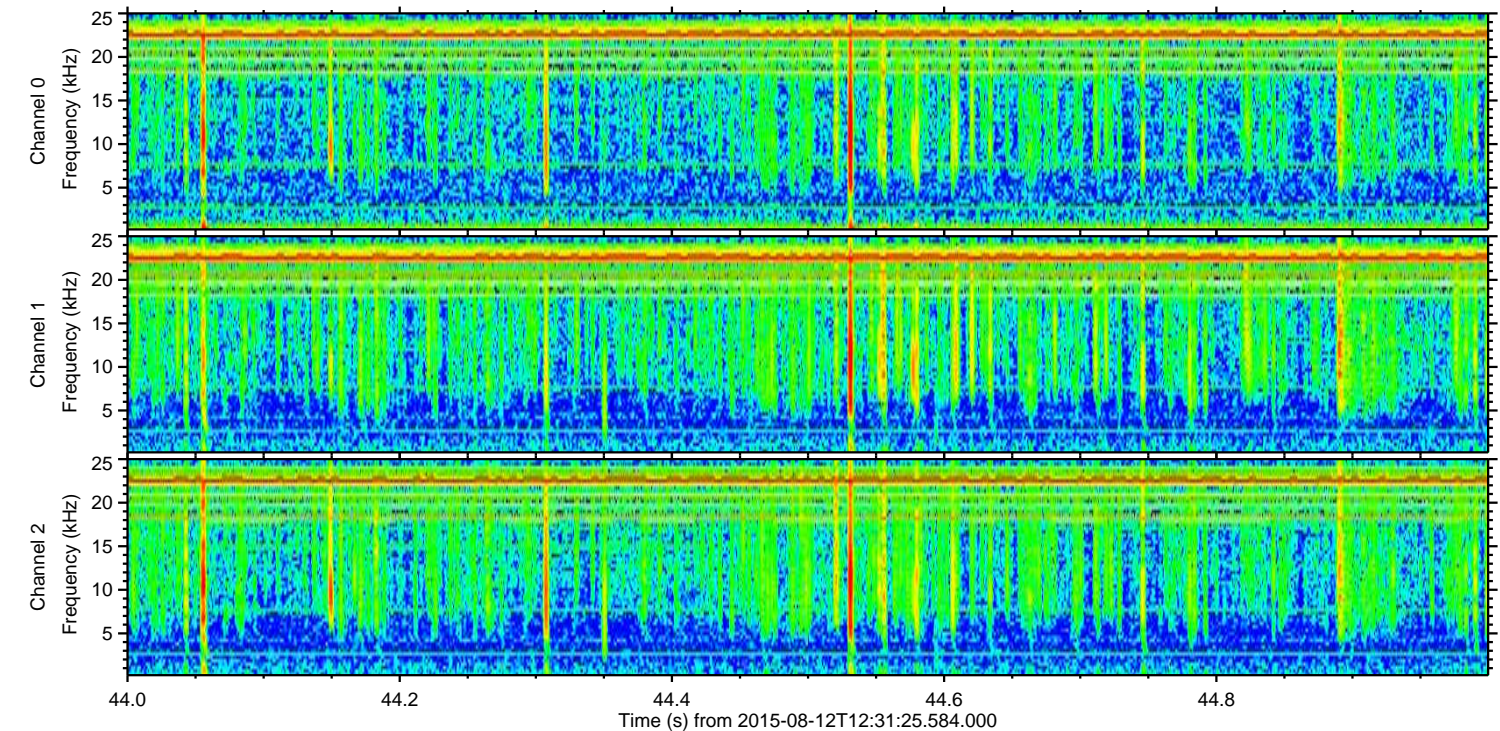
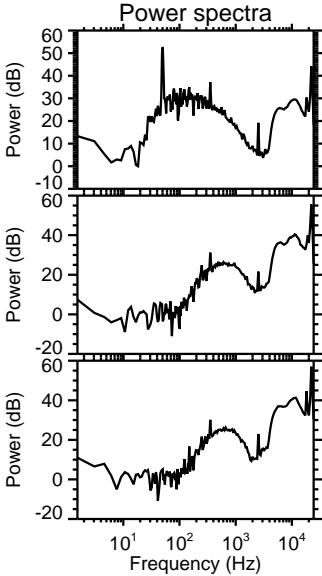
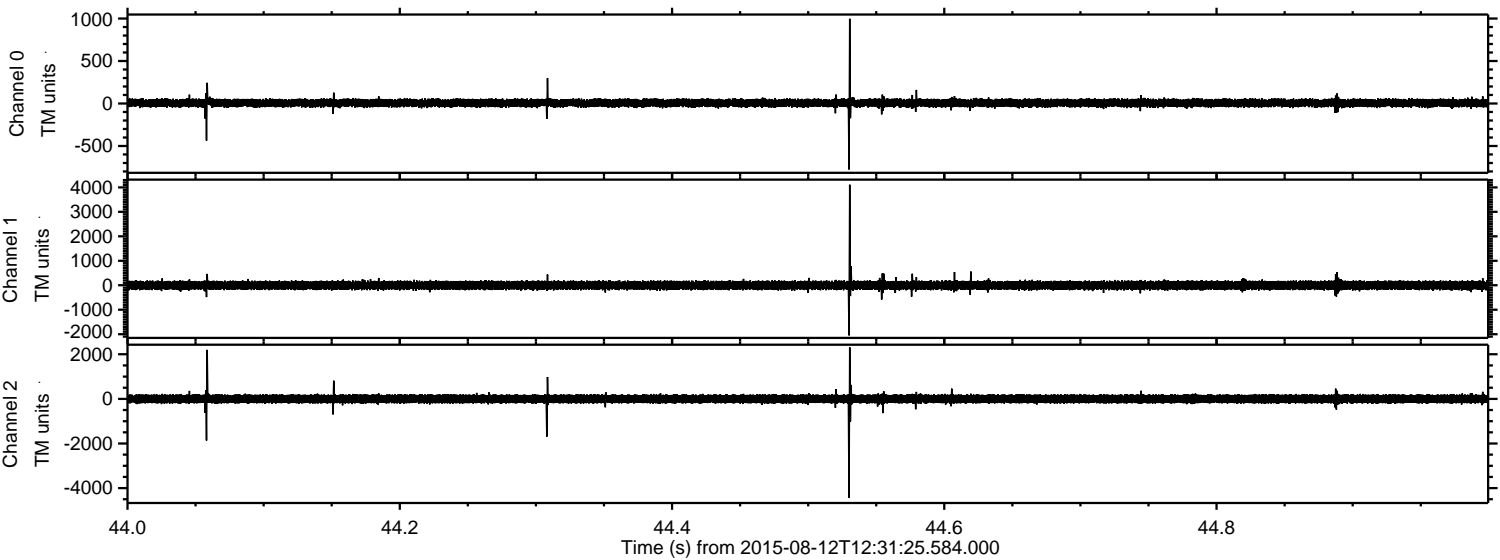
Processed Wed Aug 12 14:37:52 2015 by ELM ver.2012-10-06 from 001__elm20150812_123124__dat00.bin



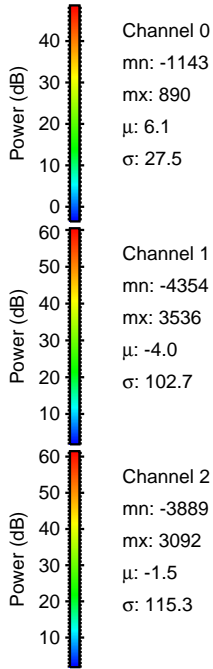
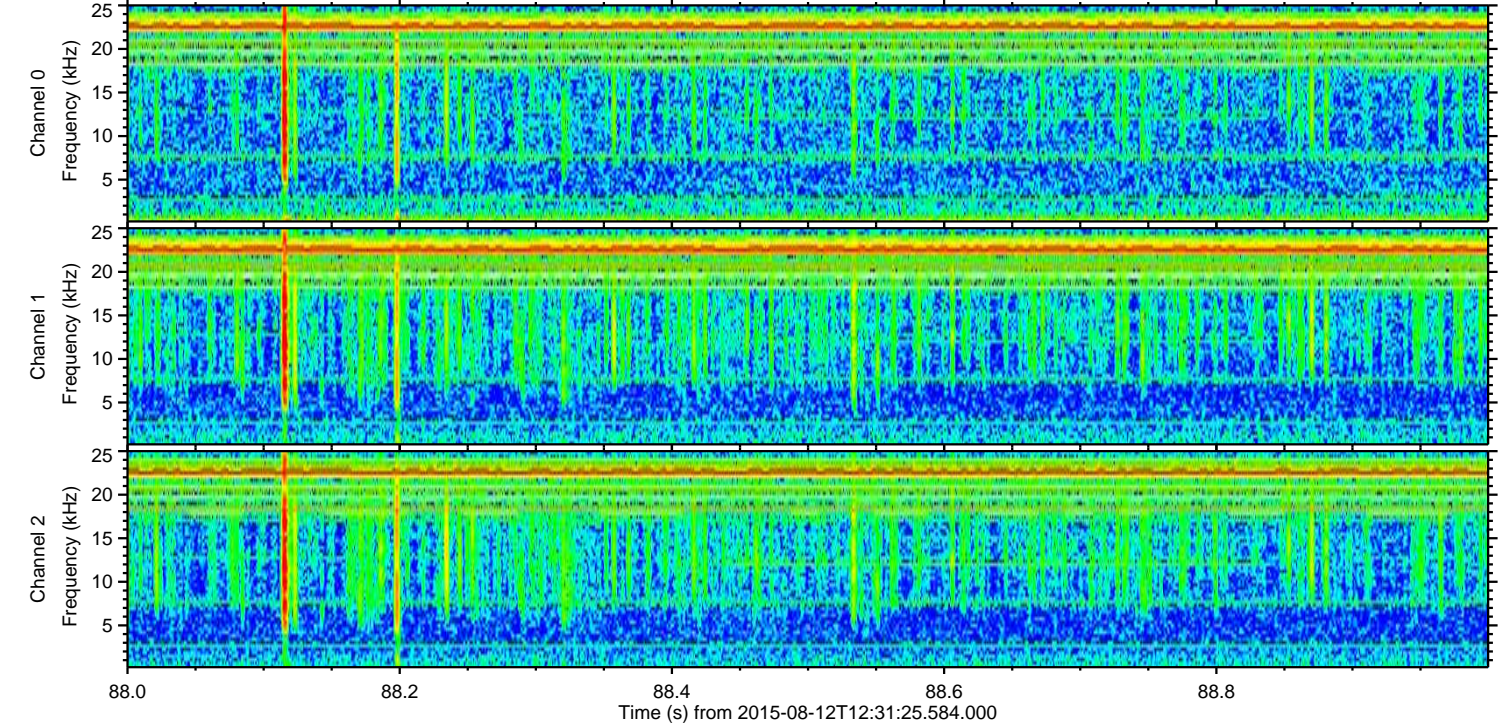
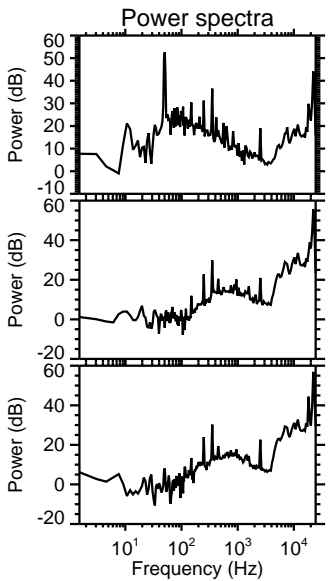
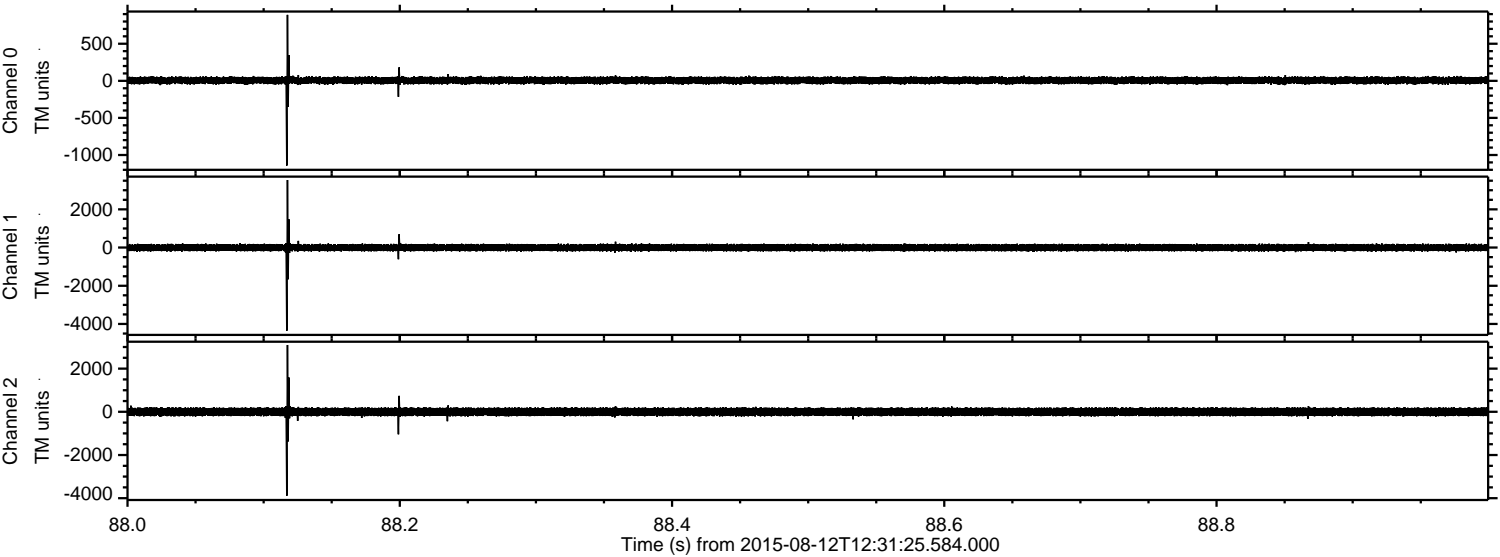
Processed Wed Aug 12 14:37:53 2015 by ELM ver.2012-10-06 from 001__elm20150812_123124__dat00.bin



Processed Wed Aug 12 14:37:54 2015 by ELM ver.2012-10-06 from 001__elm20150812_123124__dat00.bin

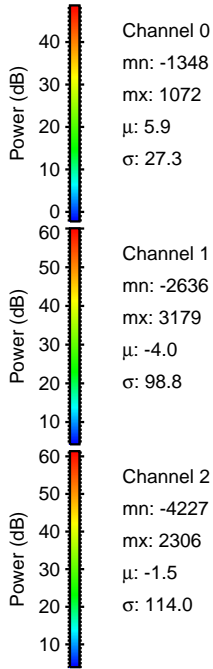
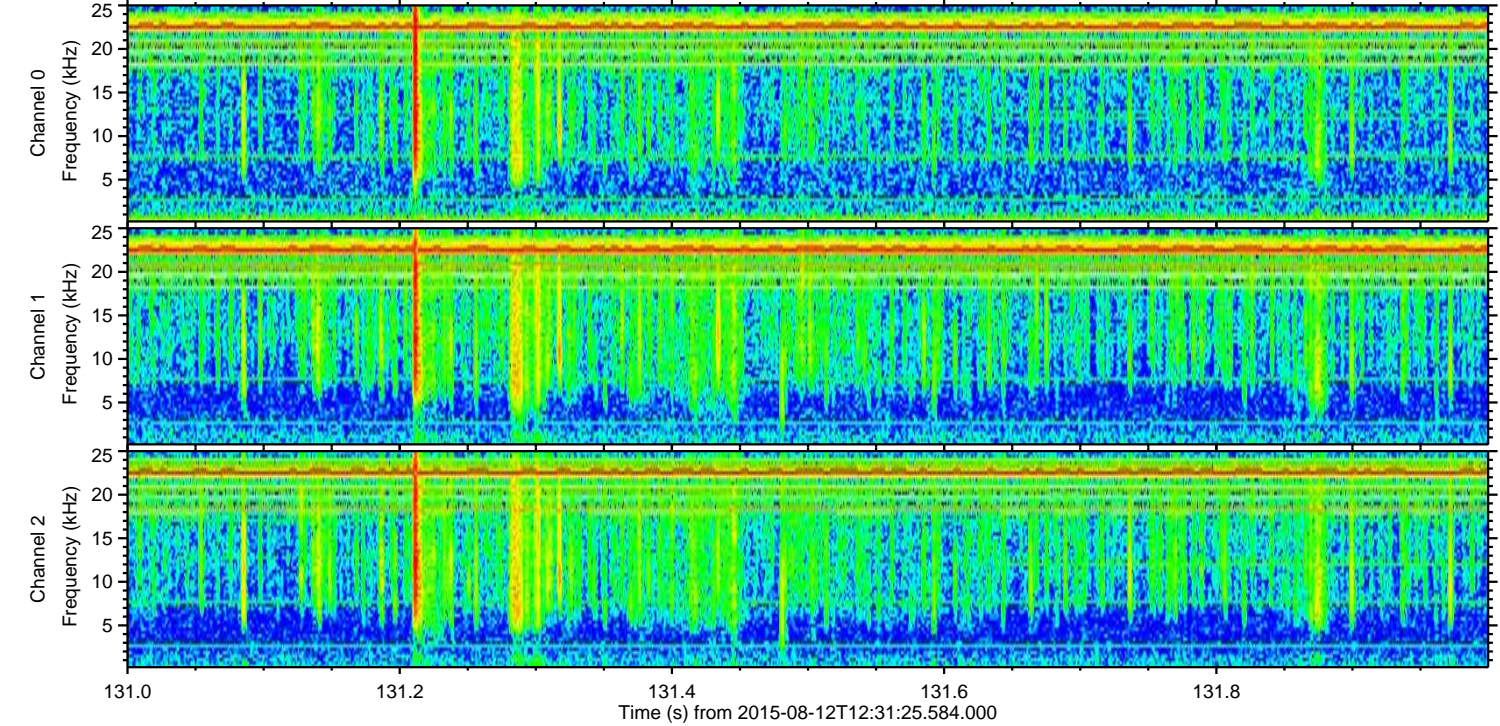
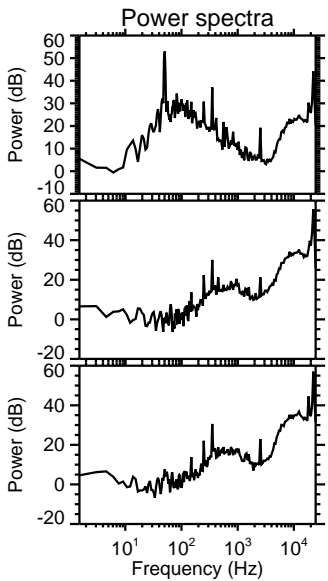
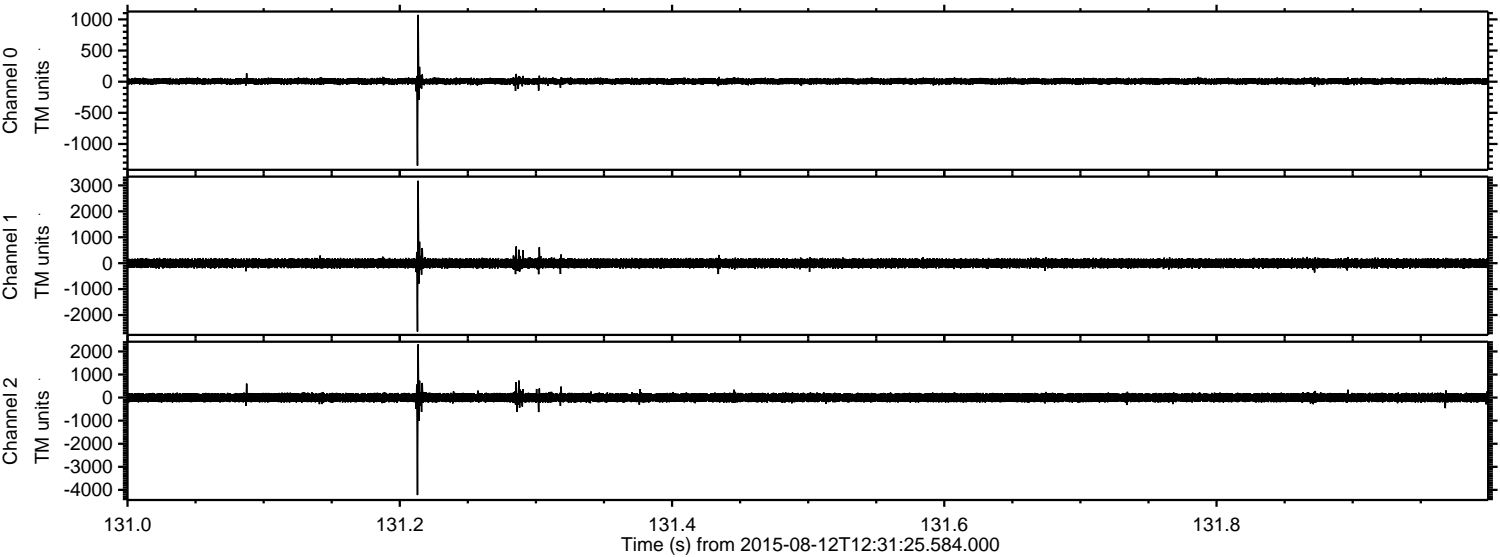


Processed Wed Aug 12 14:37:55 2015 by ELM ver.2012-10-06 from 001__elm20150812_123124__dat00.bin



ELMAVAN 3D WAVEFORMS (Measured data sampled at 50 kHz) 51000 packets of 144 samples from 2015-08-12T12:31:25.584.000. Part 132/147

Processed Wed Aug 12 14:37:56 2015 by ELM ver.2012-10-06 from 001__elm20150812_123124__dat00.bin



Channel 0
mn: -1348
mx: 1072
 μ : 5.9
 σ : 27.3

Channel 1
mn: -2636
mx: 3179
 μ : -4.0
 σ : 98.8

Channel 2
mn: -4227
mx: 2306
 μ : -1.5
 σ : 114.0

Processed Wed Aug 12 14:37:57 2015 by ELM ver.2012-10-06 from 001__elm20150812_123124__dat00.bin

