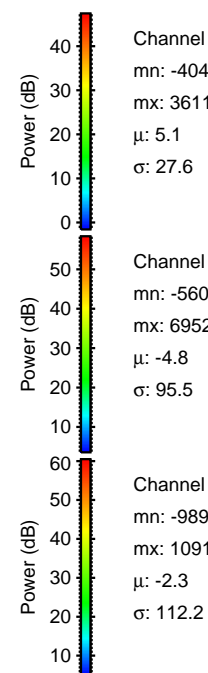
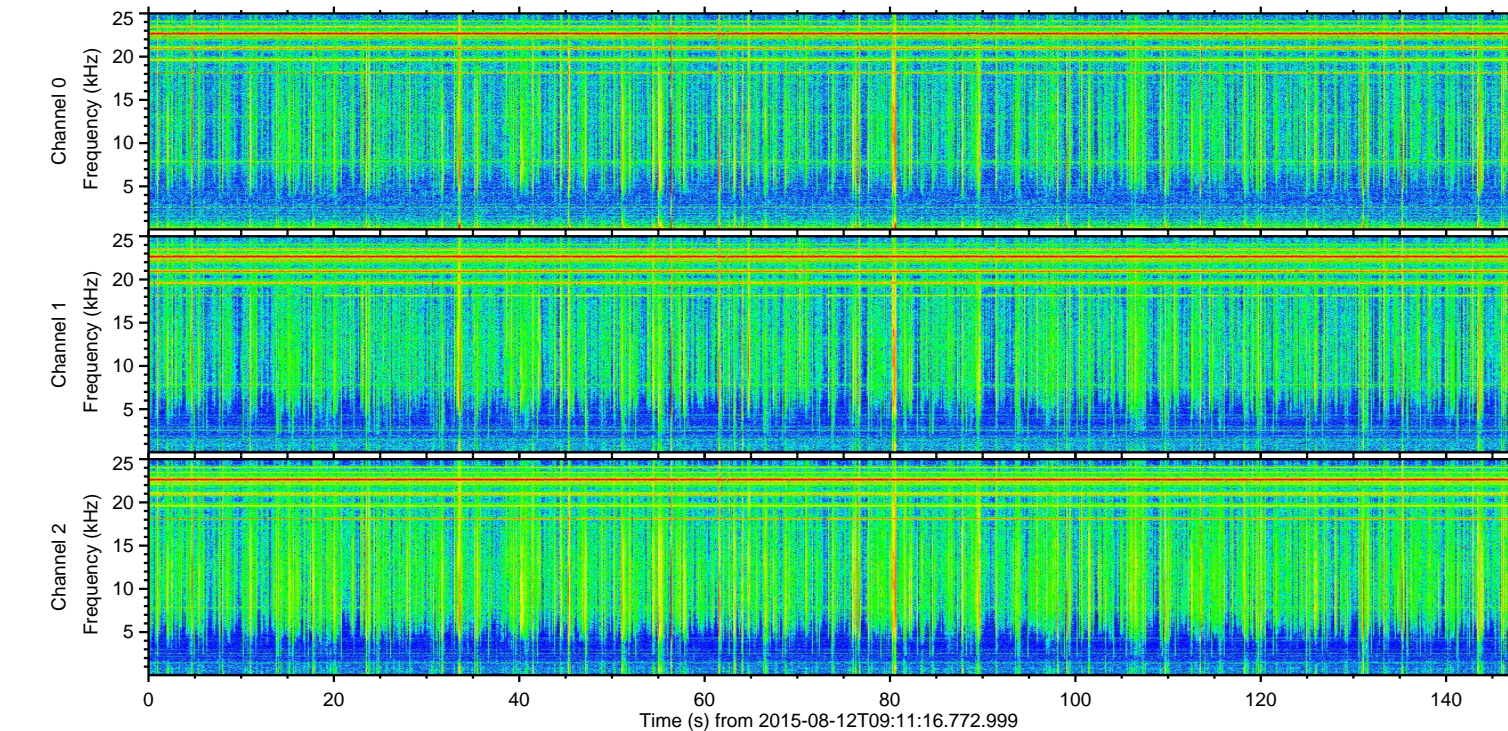
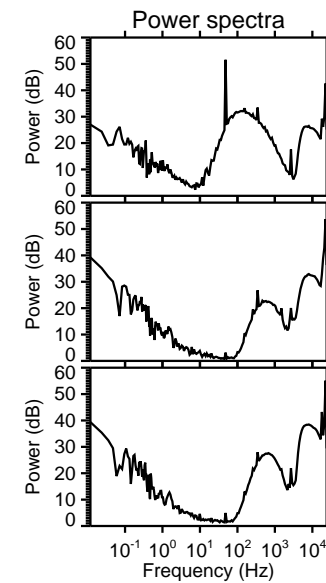
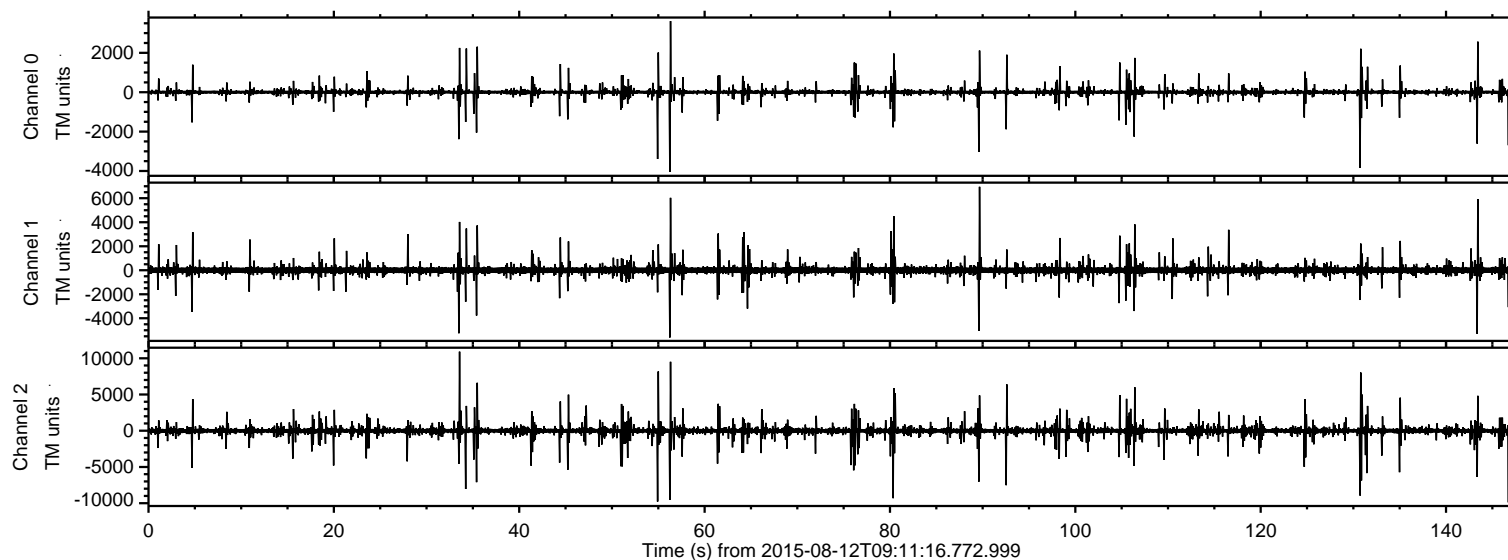


ELMAVAN 3D WAVEFORMS (Measured data sampled at 50 kHz) 51000 packets of 144 samples from 2015-08-12T09:11:16.772.999.

Processed Wed Aug 12 11:17:57 2015 by ELM ver.2012-10-06 from 001__elm20150812_091115__dat00.bin

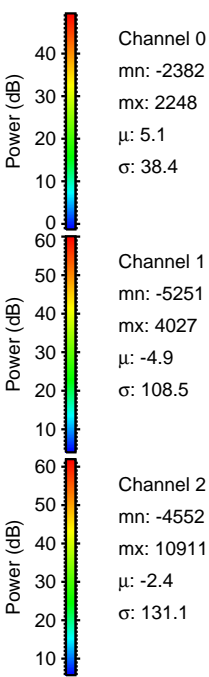
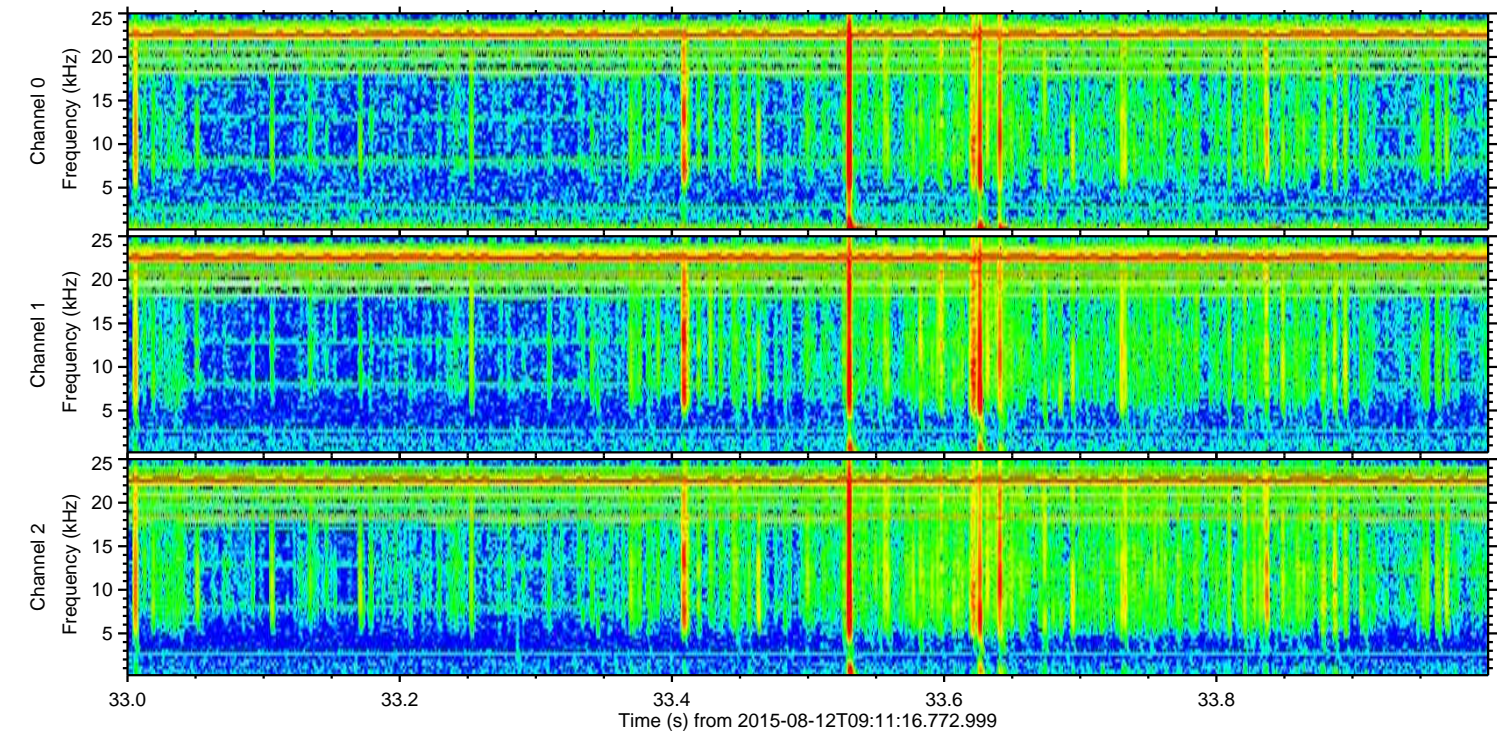
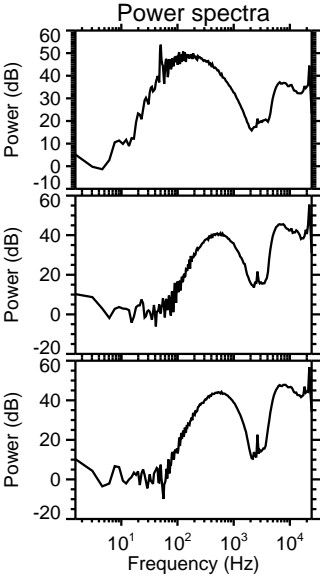
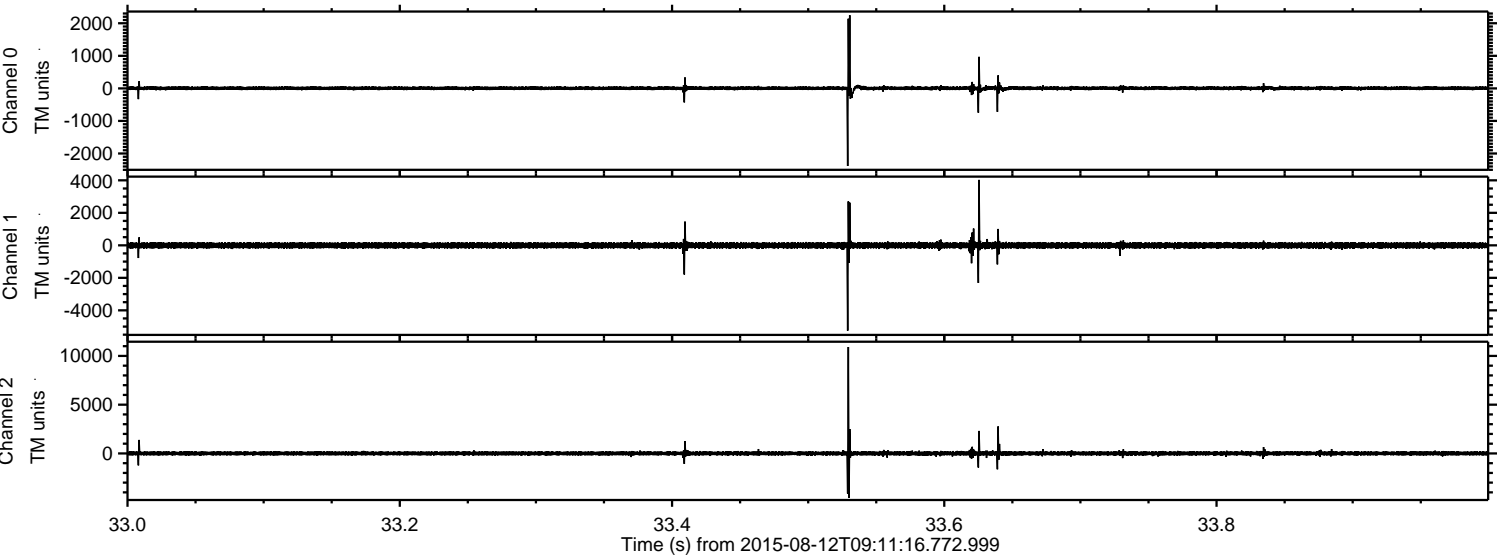


Channel 0
mn: -4043
mx: 3611
 μ : 5.1
 σ : 27.6

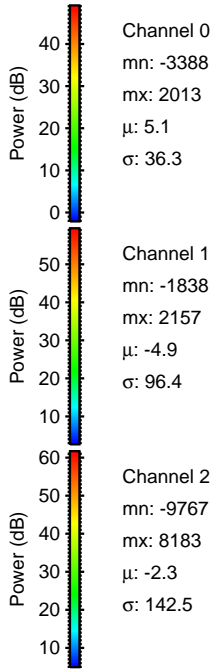
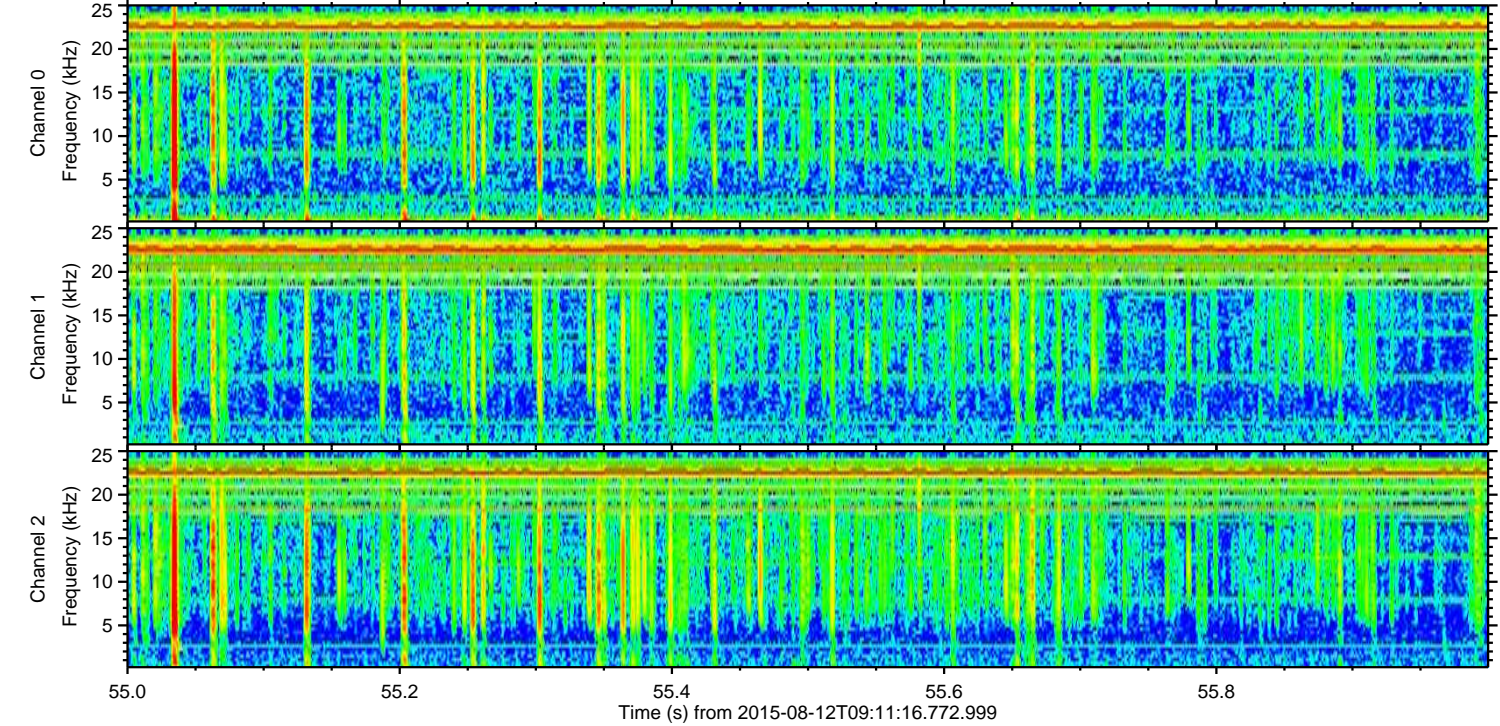
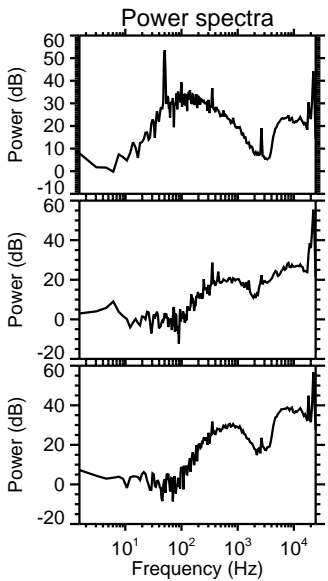
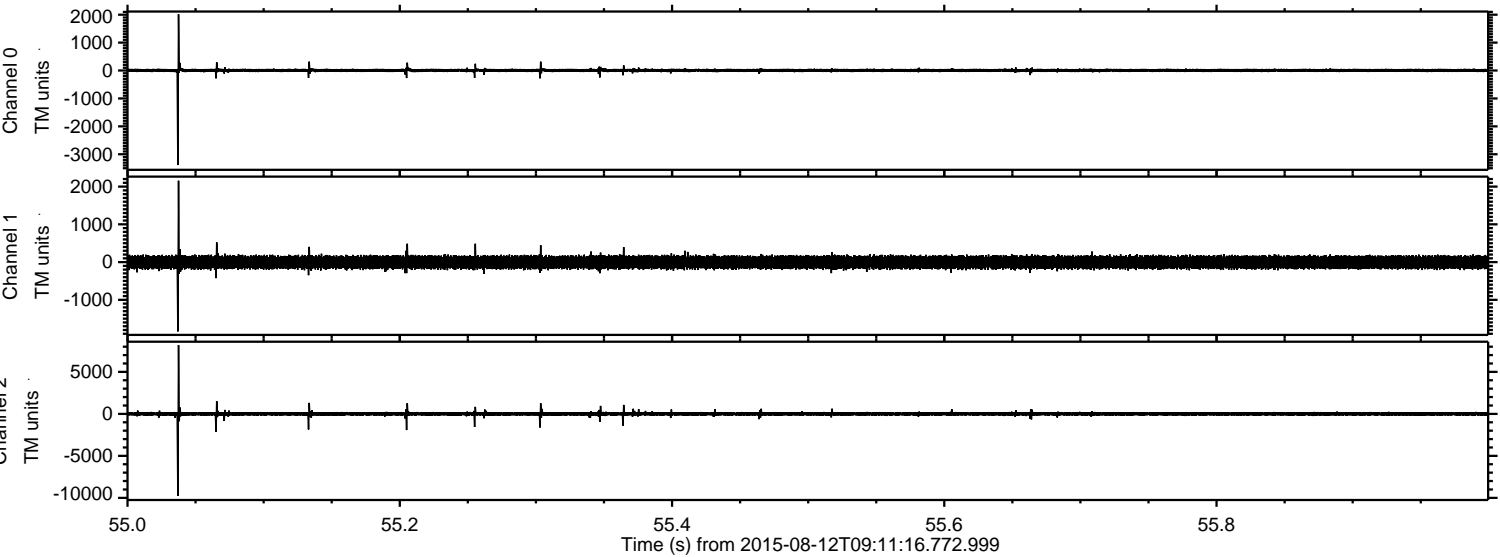
Channel 1
mn: -5606
mx: 6952
 μ : -4.8
 σ : 95.5

Channel 2
mn: -9892
mx: 10911
 μ : -2.3
 σ : 112.2

Processed Wed Aug 12 11:18:09 2015 by ELM ver.2012-10-06 from 001__elm20150812_091115__dat00.bin



Processed Wed Aug 12 11:18:10 2015 by ELM ver.2012-10-06 from 001__elm20150812_091115__dat00.bin



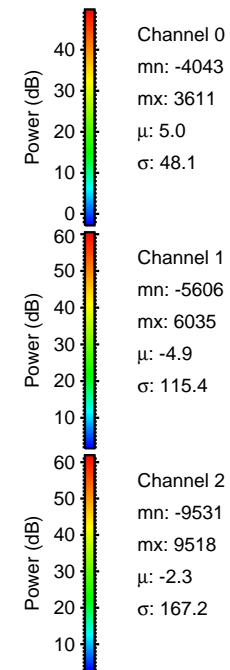
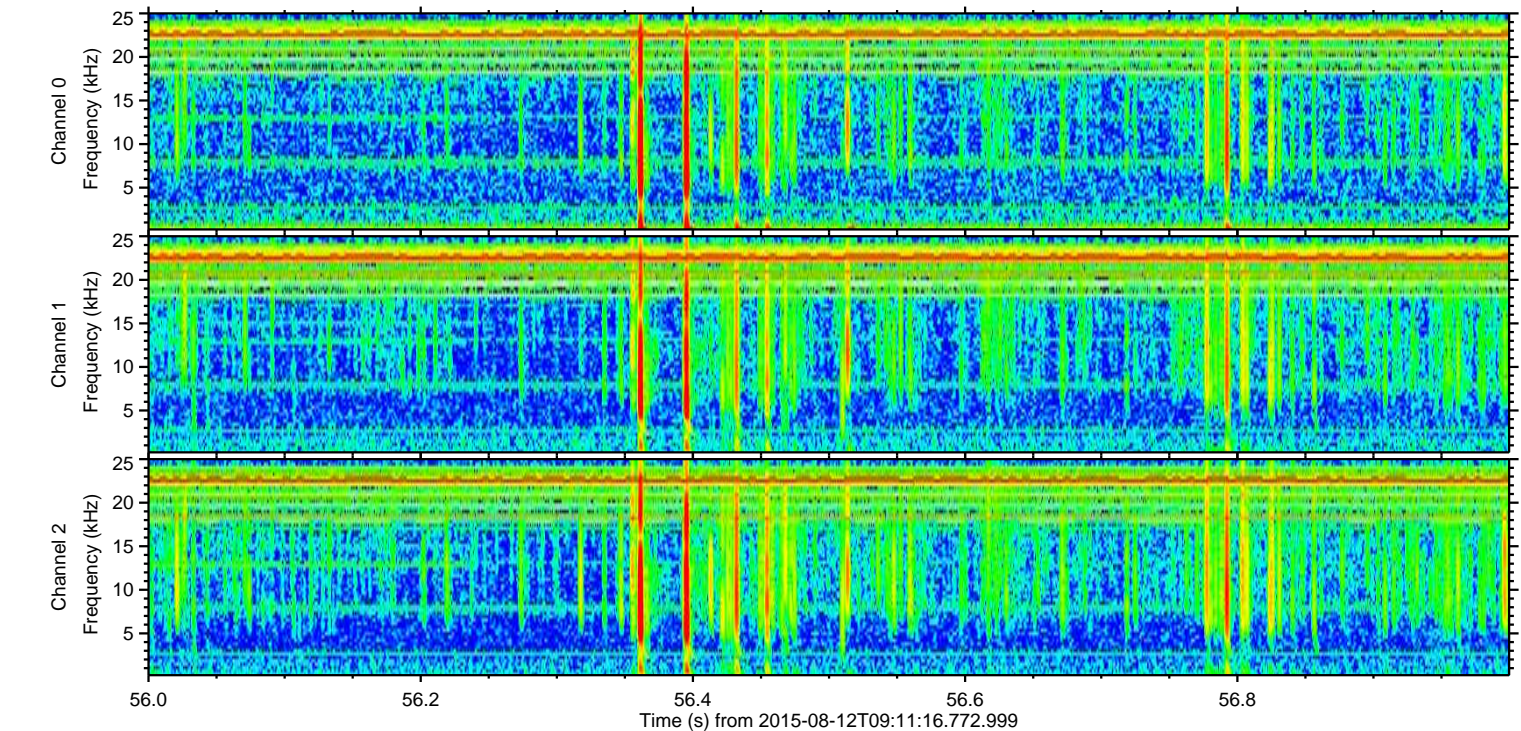
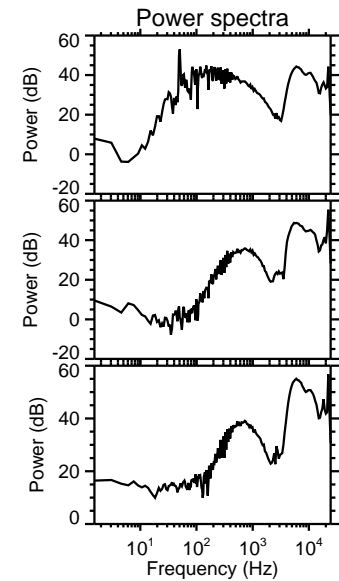
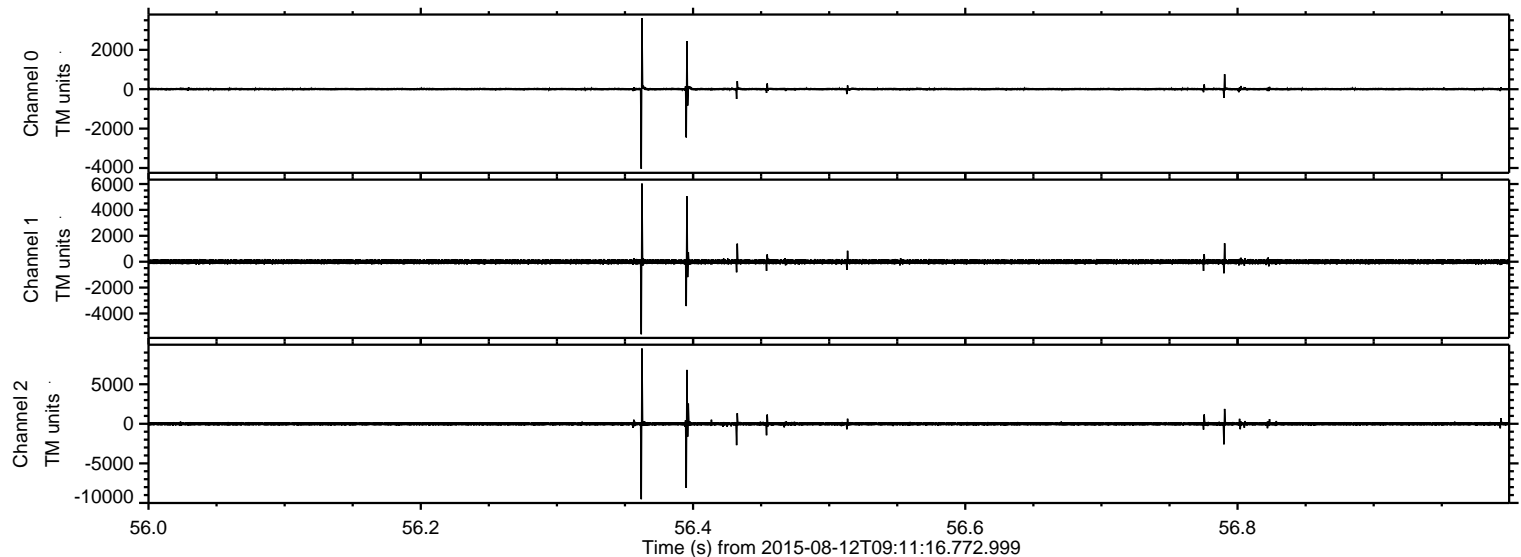
Channel 0
mn: -3388
mx: 2013
 μ : 5.1
 σ : 36.3

Channel 1
mn: -1838
mx: 2157
 μ : -4.9
 σ : 96.4

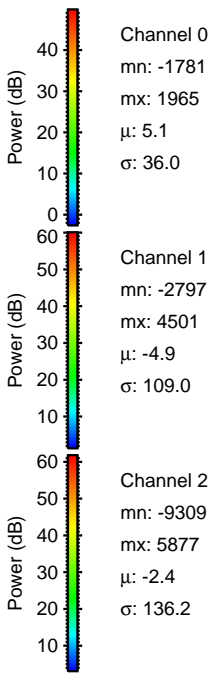
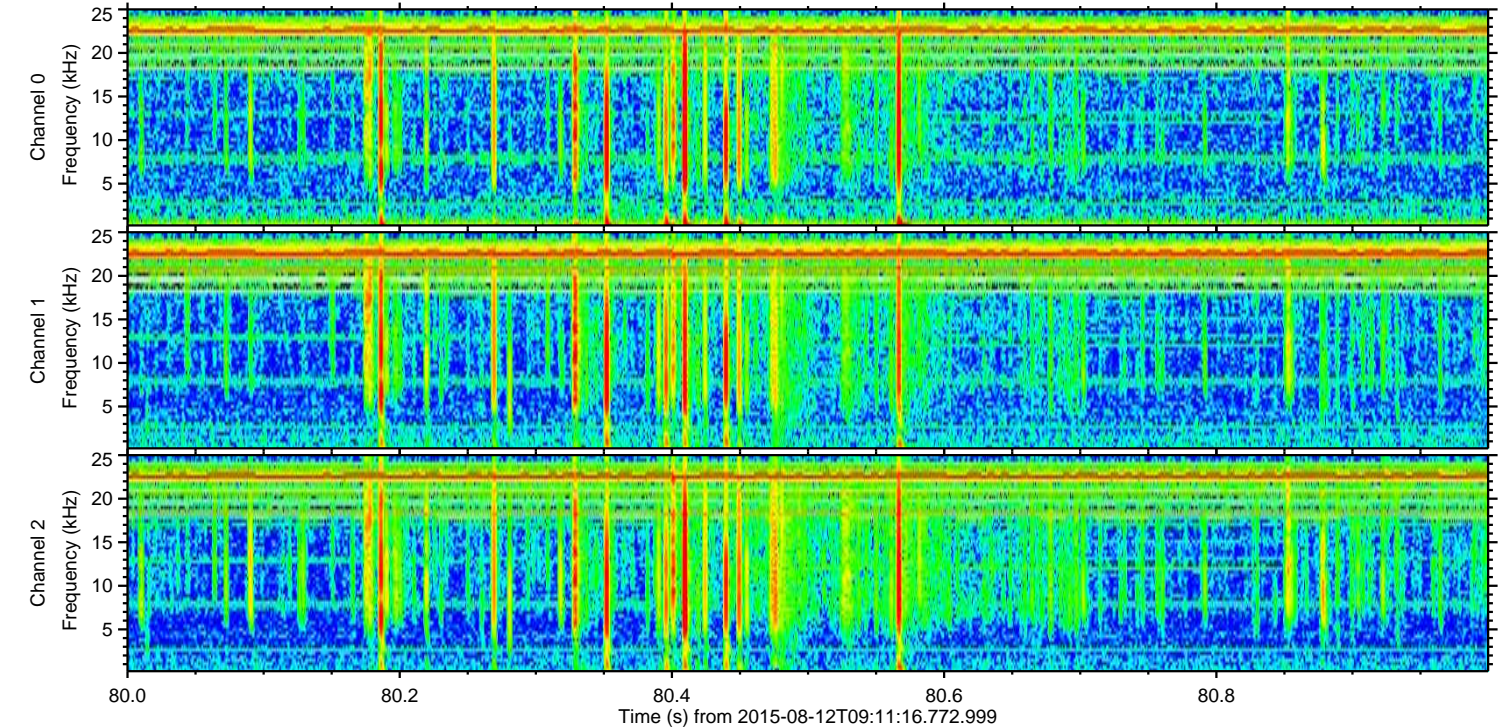
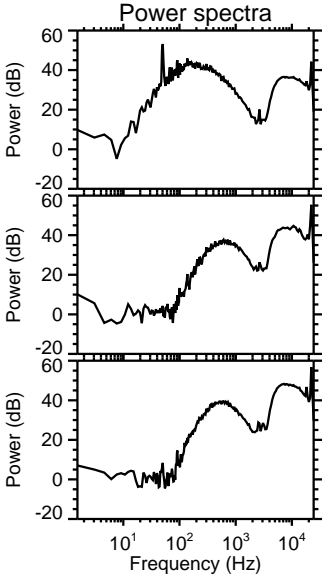
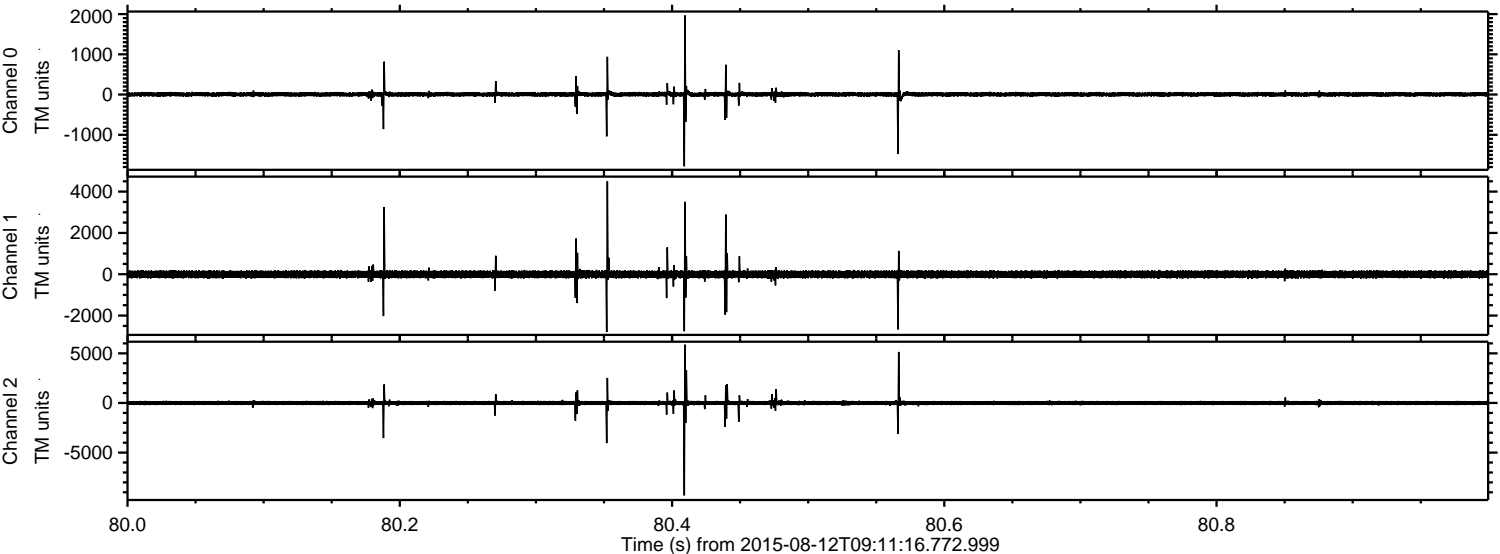
Channel 2
mn: -9767
mx: 8183
 μ : -2.3
 σ : 142.5

ELMAVAN 3D WAVEFORMS (Measured data sampled at 50 kHz) 51000 packets of 144 samples from 2015-08-12T09:11:16.772.999. Part 57/147

Processed Wed Aug 12 11:18:11 2015 by ELM ver.2012-10-06 from 001__elm20150812_091115__dat00.bin

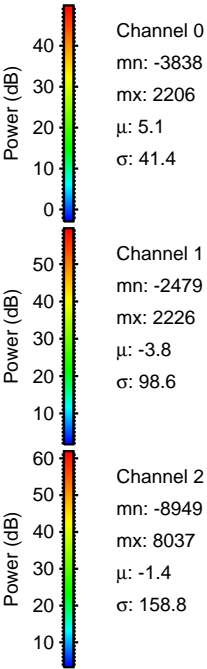
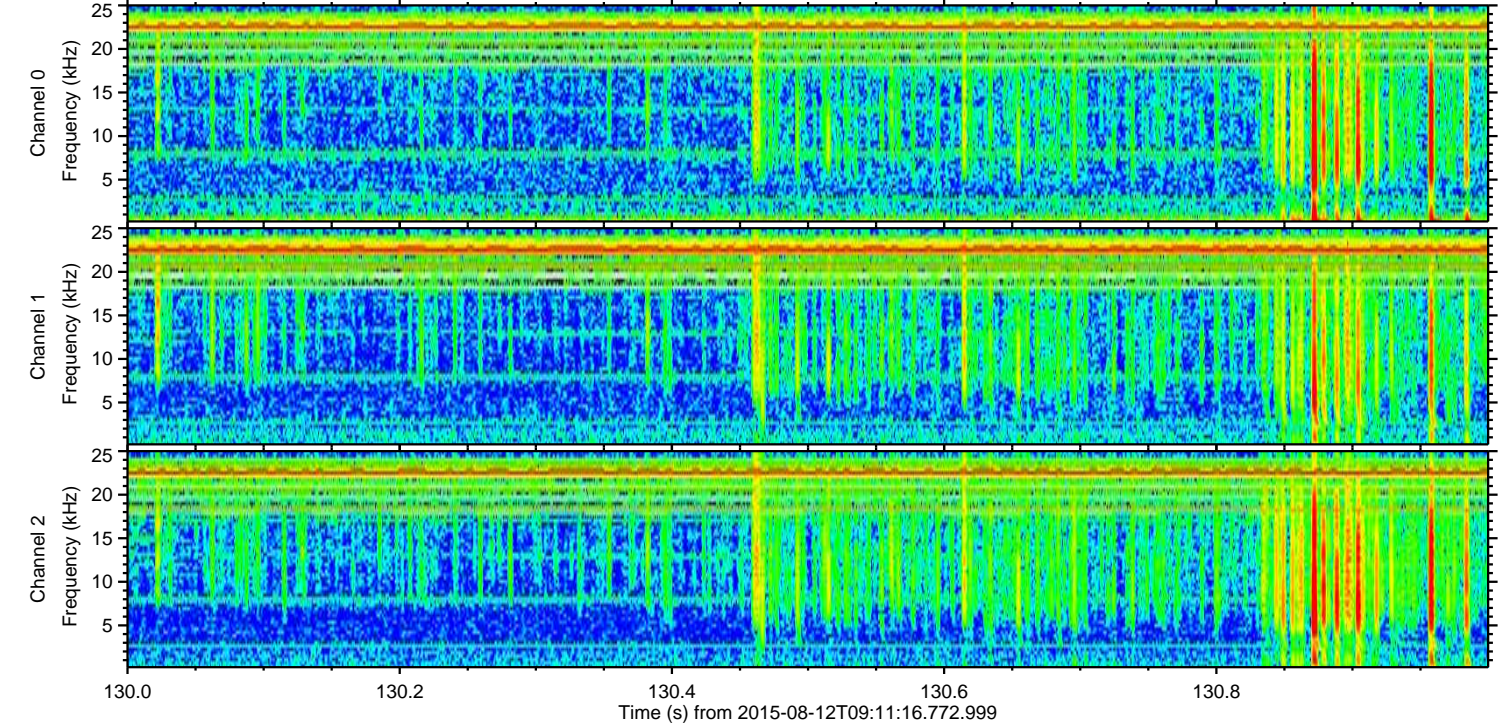
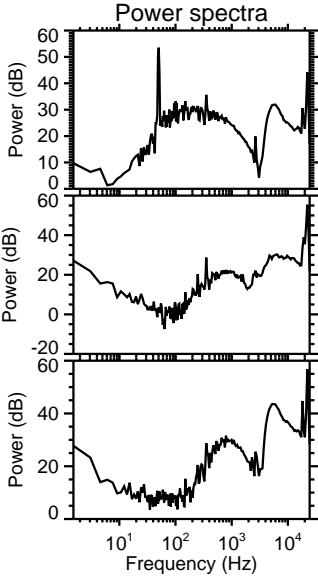
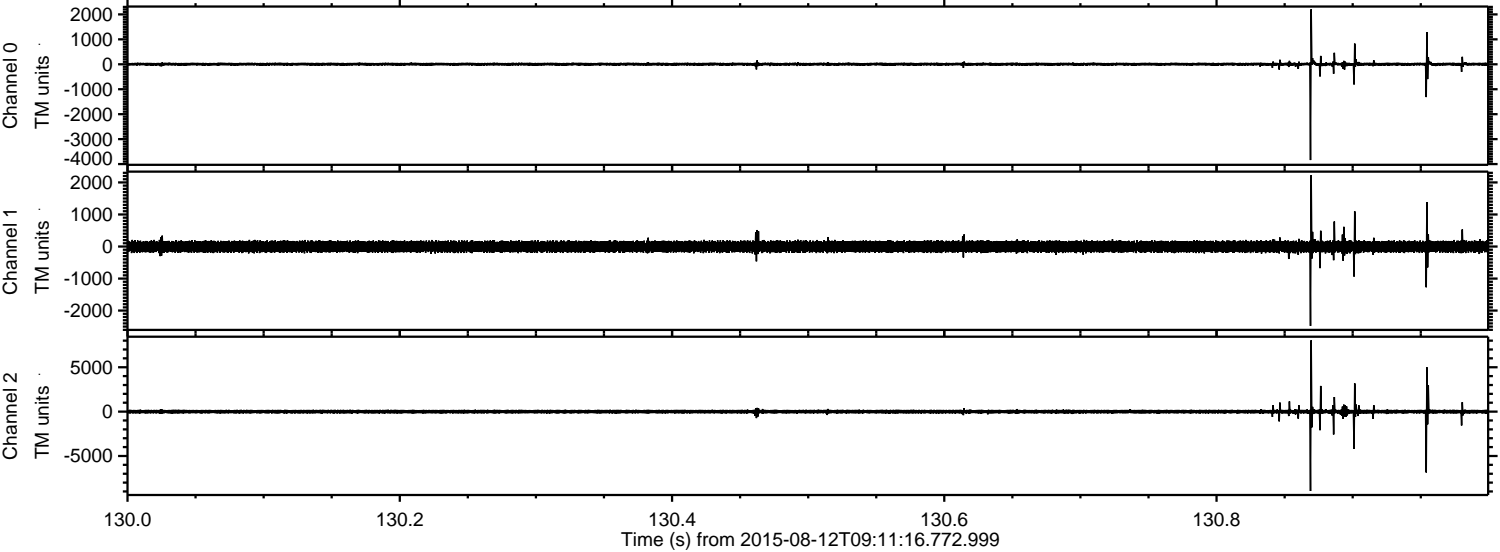


Processed Wed Aug 12 11:18:12 2015 by ELM ver.2012-10-06 from 001__elm20150812_091115__dat00.bin

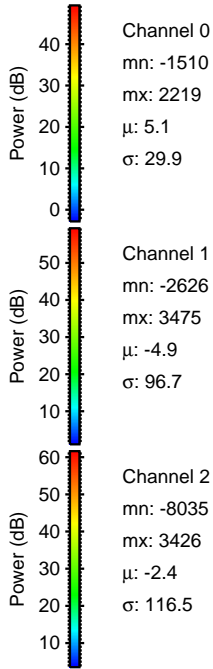
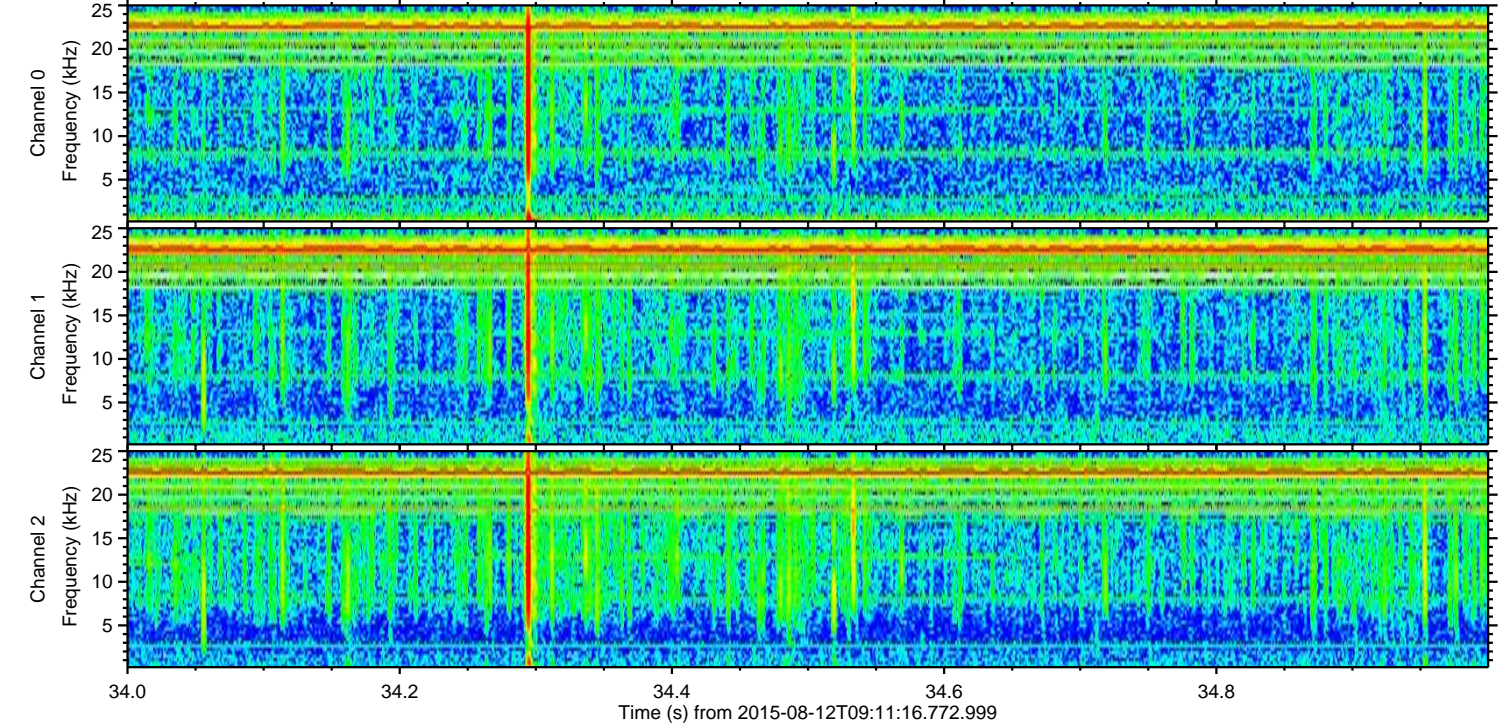
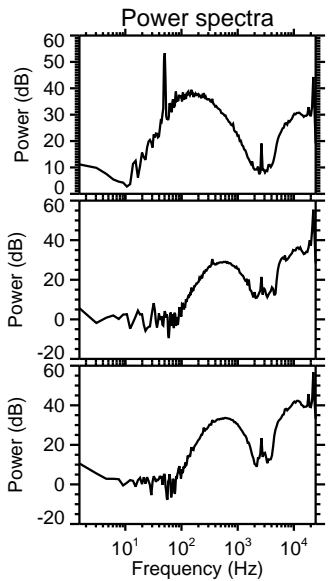
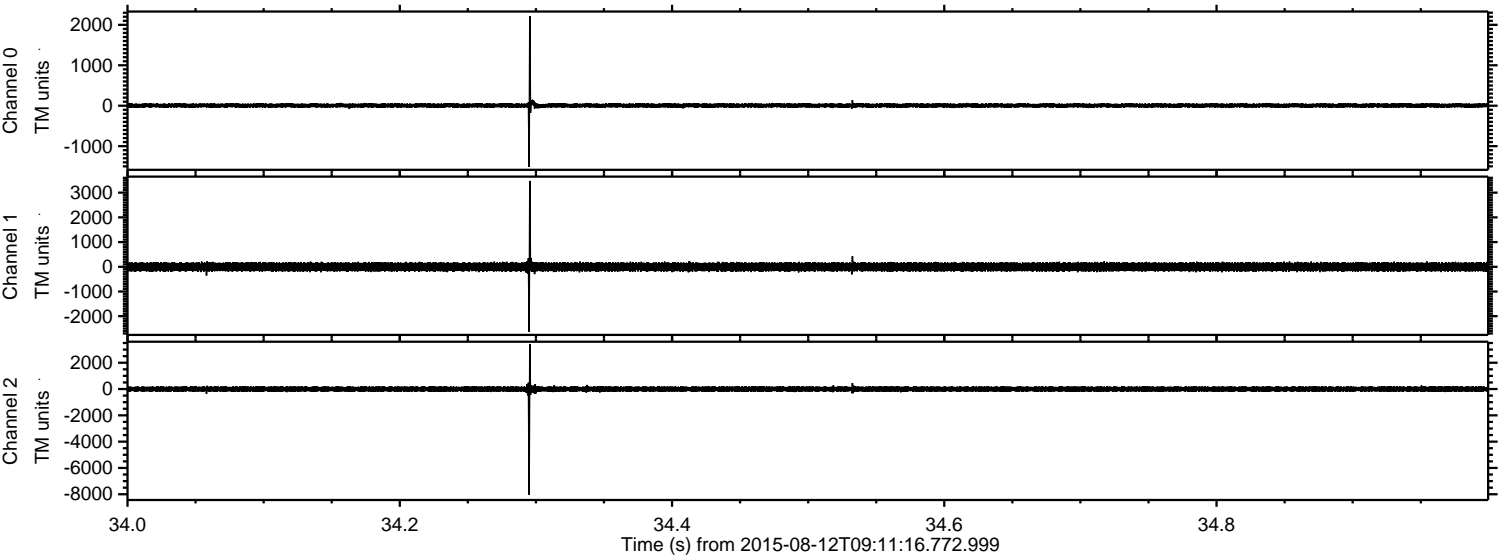


ELMAVAN 3D WAVEFORMS (Measured data sampled at 50 kHz) 51000 packets of 144 samples from 2015-08-12T09:11:16.772.999. Part 131/147

Processed Wed Aug 12 11:18:13 2015 by ELM ver.2012-10-06 from 001__elm20150812_091115__dat00.bin



Processed Wed Aug 12 11:18:14 2015 by ELM ver.2012-10-06 from 001__elm20150812_091115__dat00.bin

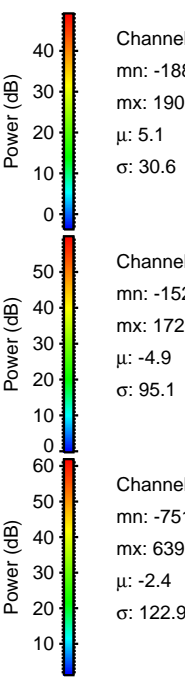
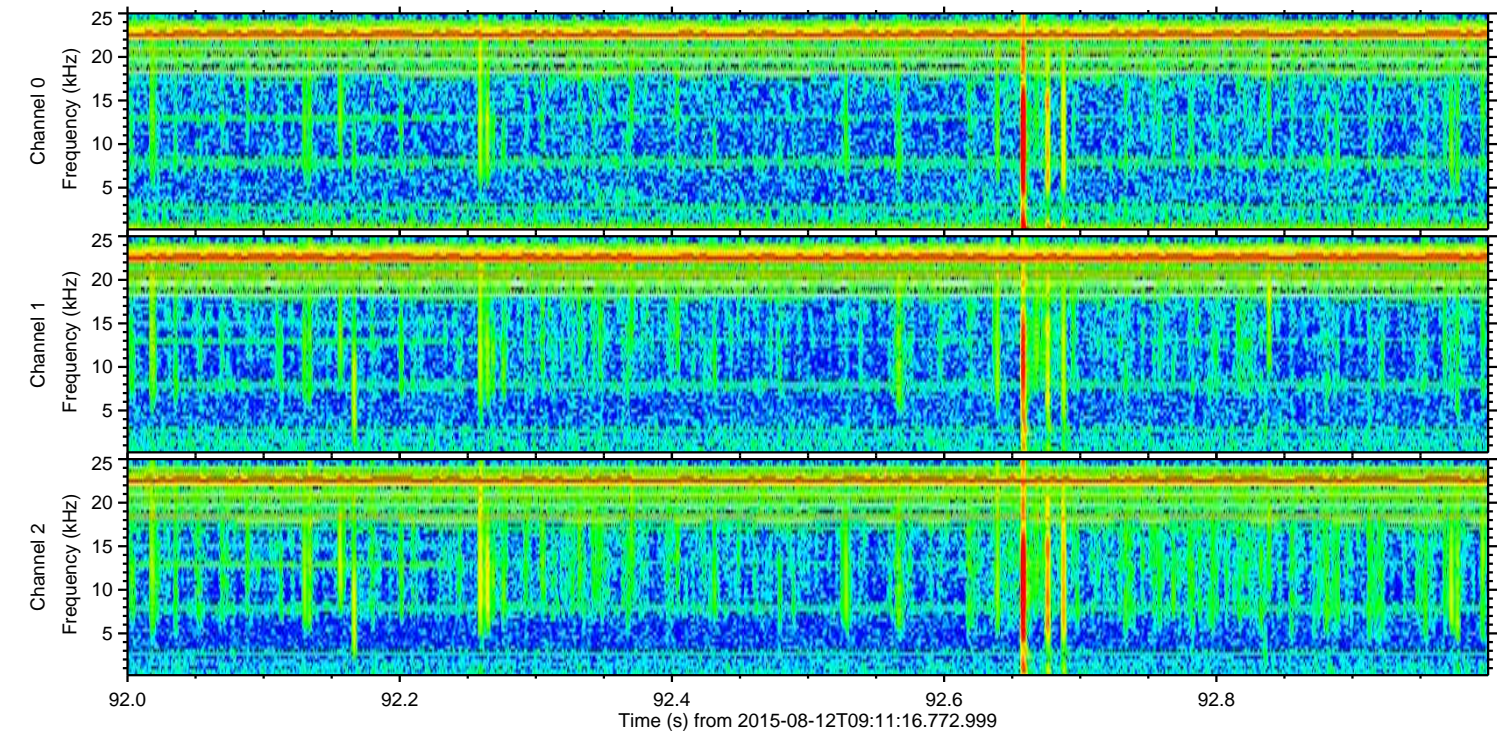
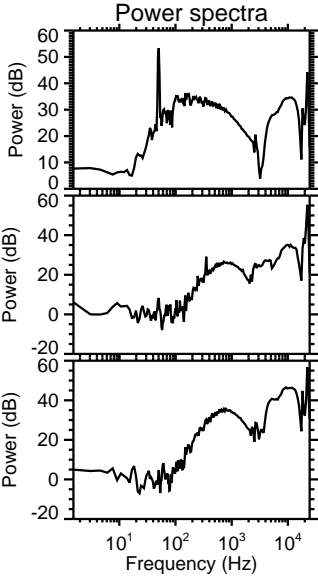
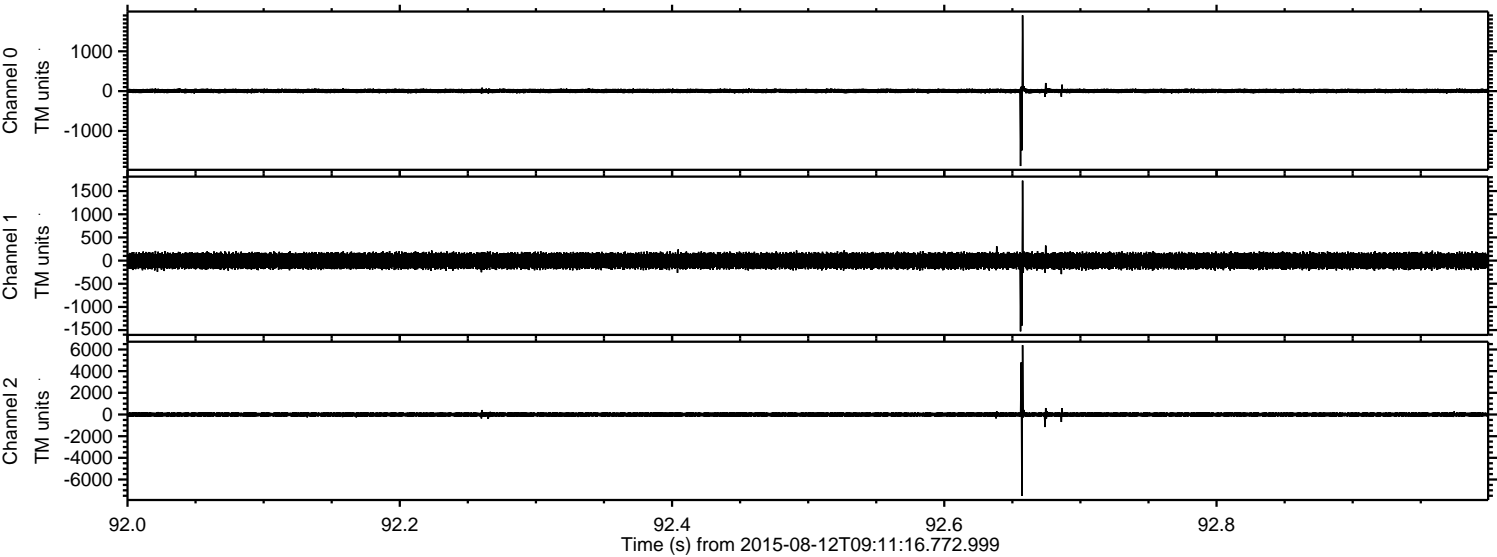


Channel 0
mn: -1510
mx: 2219
 μ : 5.1
 σ : 29.9

Channel 1
mn: -2626
mx: 3475
 μ : -4.9
 σ : 96.7

Channel 2
mn: -8035
mx: 3426
 μ : -2.4
 σ : 116.5

Processed Wed Aug 12 11:18:15 2015 by ELM ver.2012-10-06 from 001__elm20150812_091115__dat00.bin

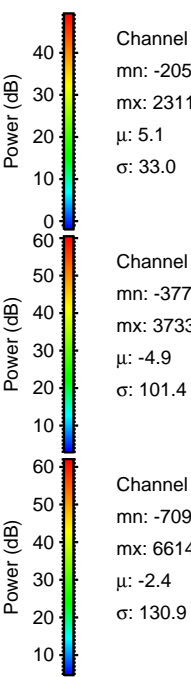
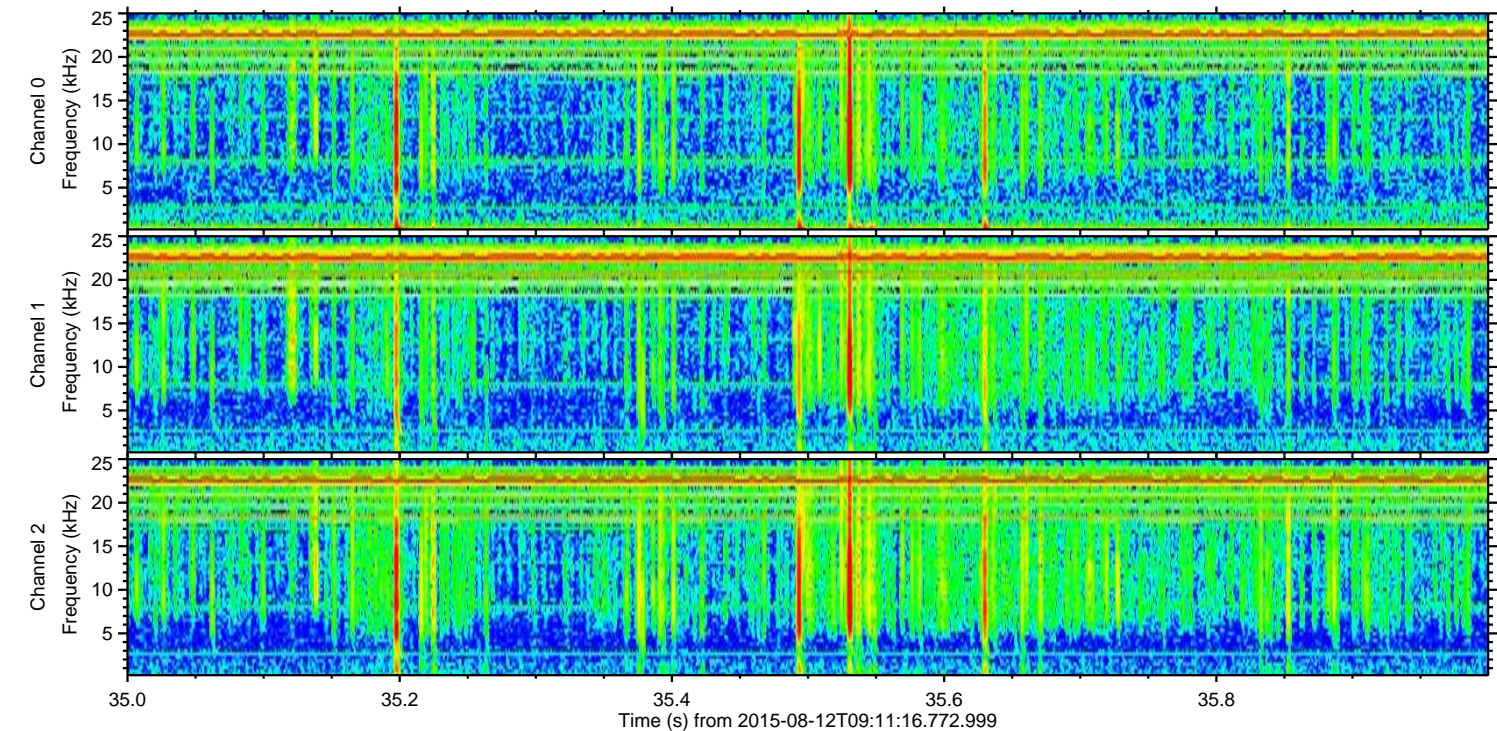
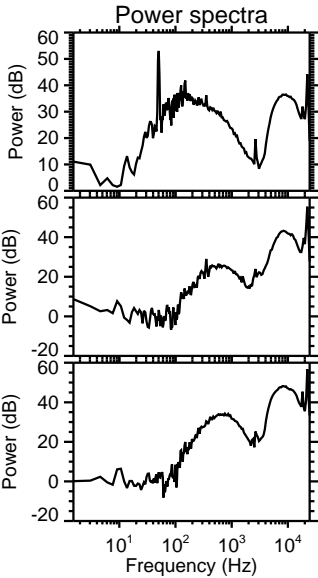
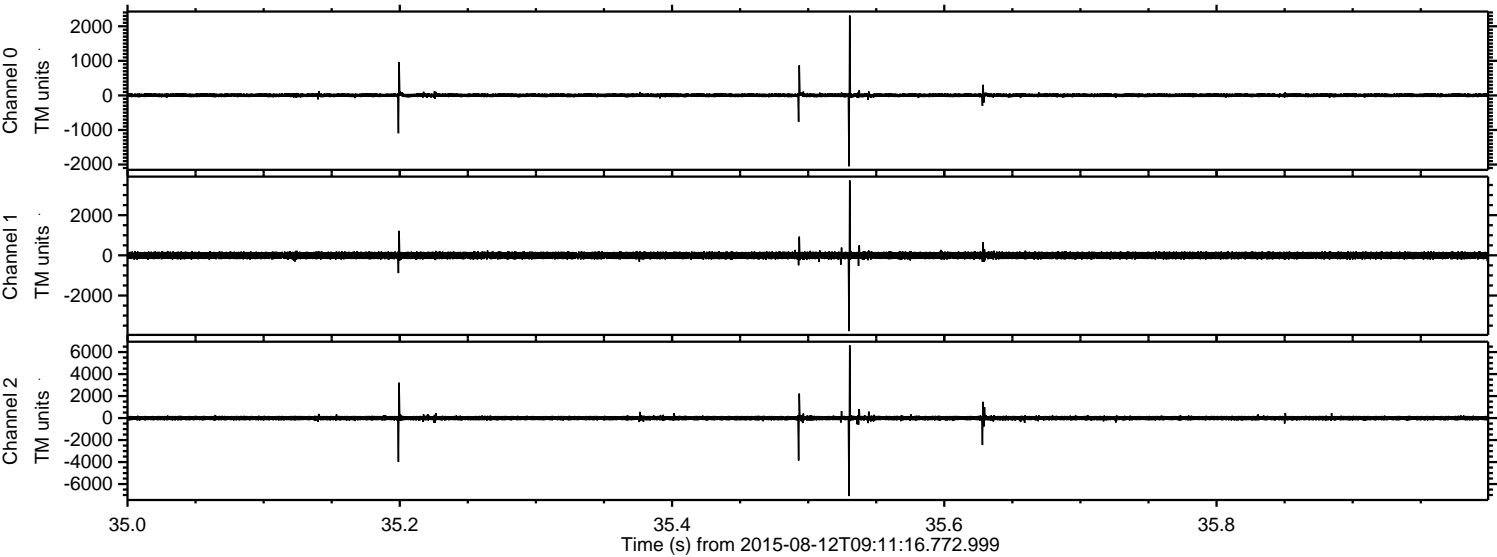


Channel 0
mn: -1882
mx: 1903
μ: 5.1
σ: 30.6

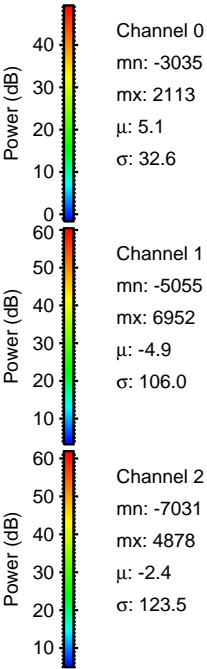
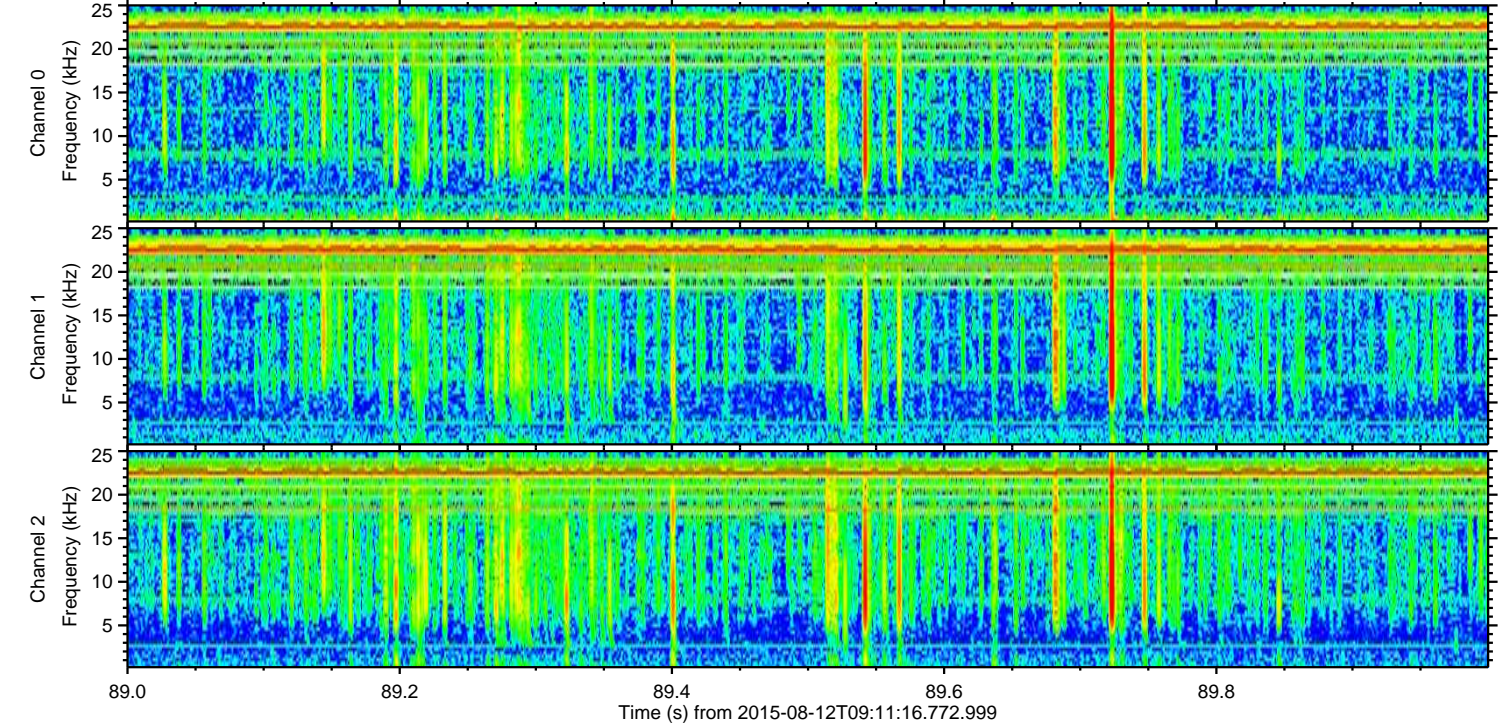
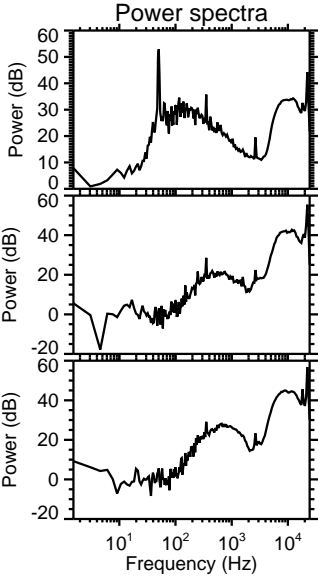
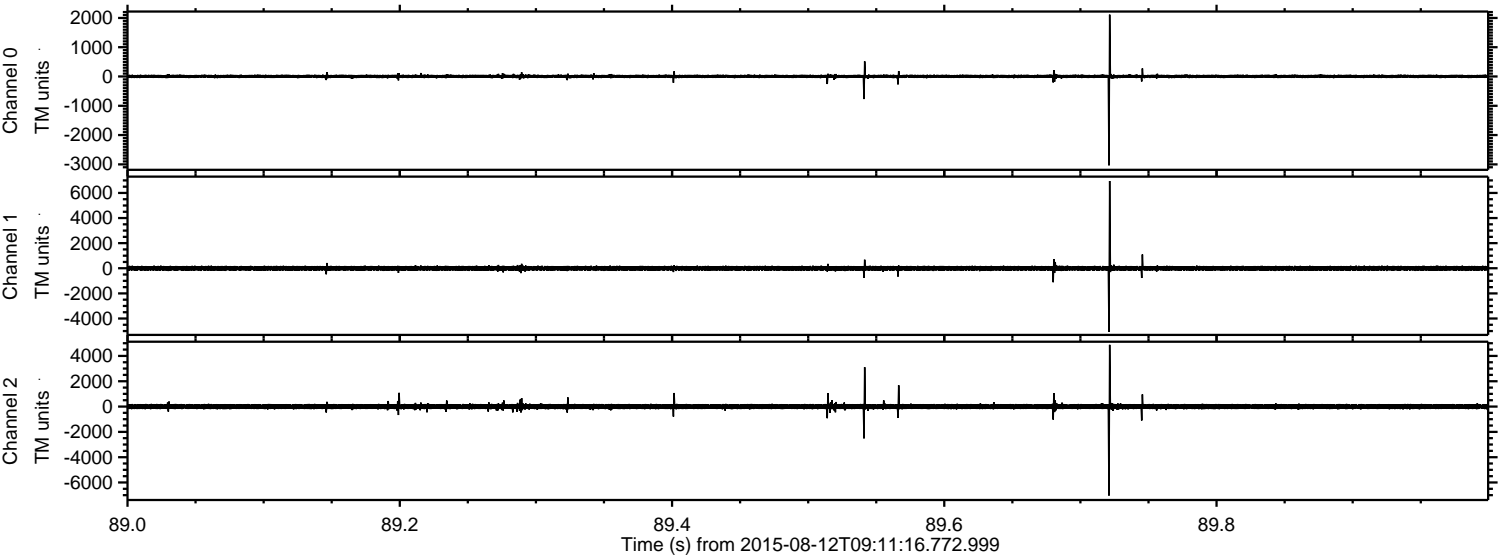
Channel 1
mn: -1528
mx: 1726
μ: -4.9
σ: 95.1

Channel 2
mn: -7514
mx: 6397
μ: -2.4
σ: 122.9

Processed Wed Aug 12 11:18:16 2015 by ELM ver.2012-10-06 from 001__elm20150812_091115__dat00.bin



Processed Wed Aug 12 11:18:17 2015 by ELM ver.2012-10-06 from 001__elm20150812_091115__dat00.bin



Channel 0
mn: -3035
mx: 2113
 μ : 5.1
 σ : 32.6

Channel 1
mn: -5055
mx: 6952
 μ : -4.9
 σ : 106.0

Channel 2
mn: -7031
mx: 4878
 μ : -2.4
 σ : 123.5

