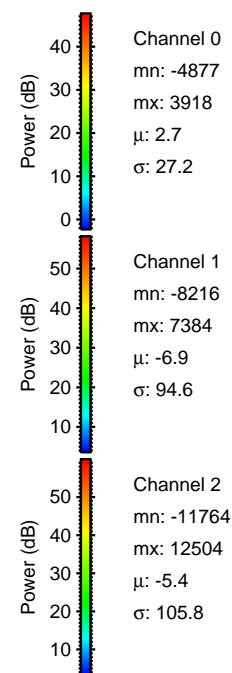
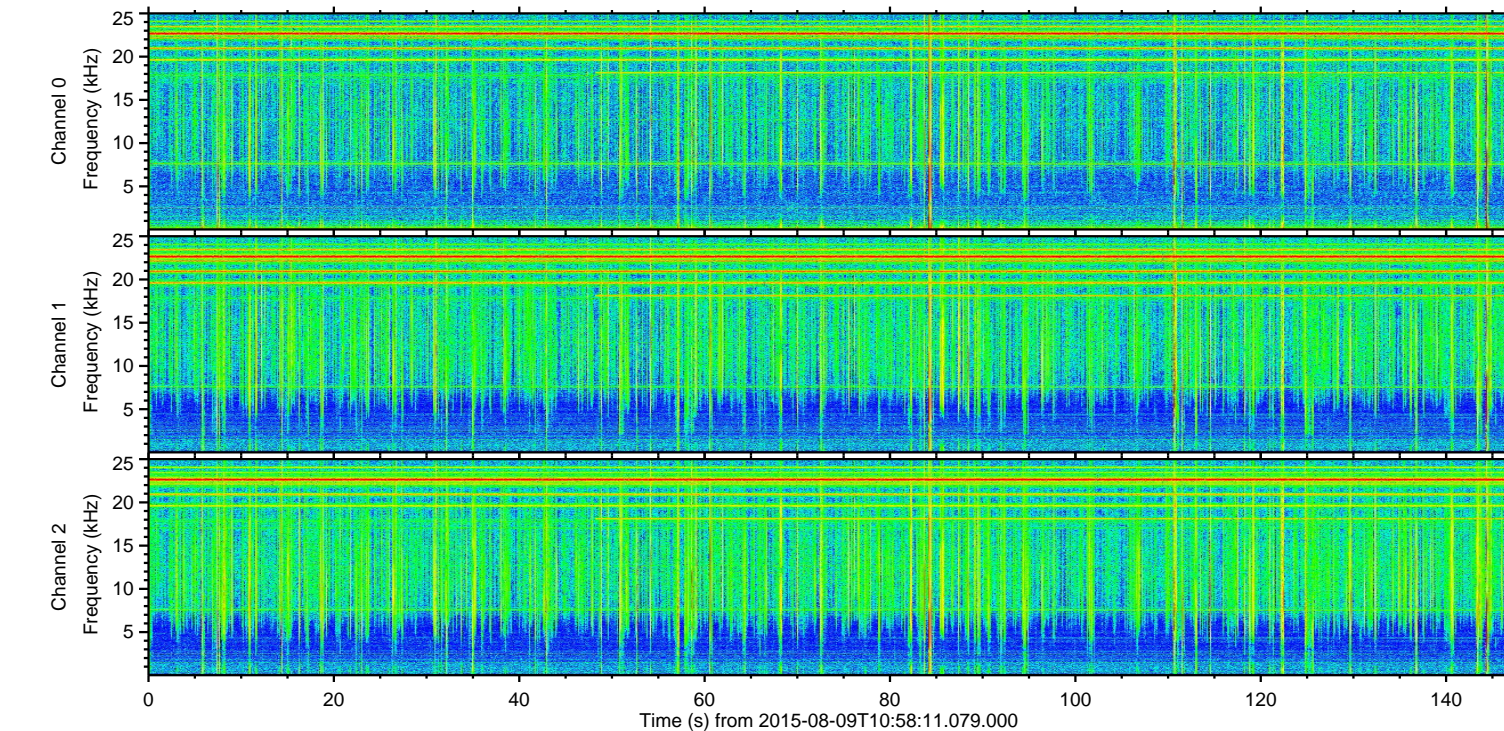
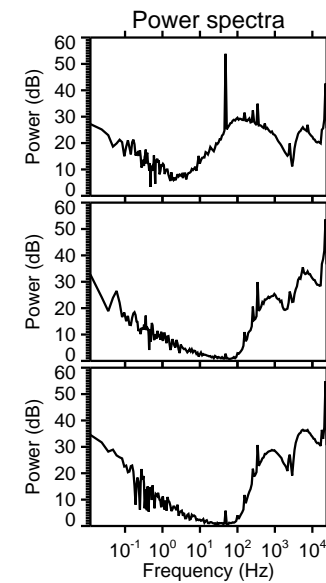
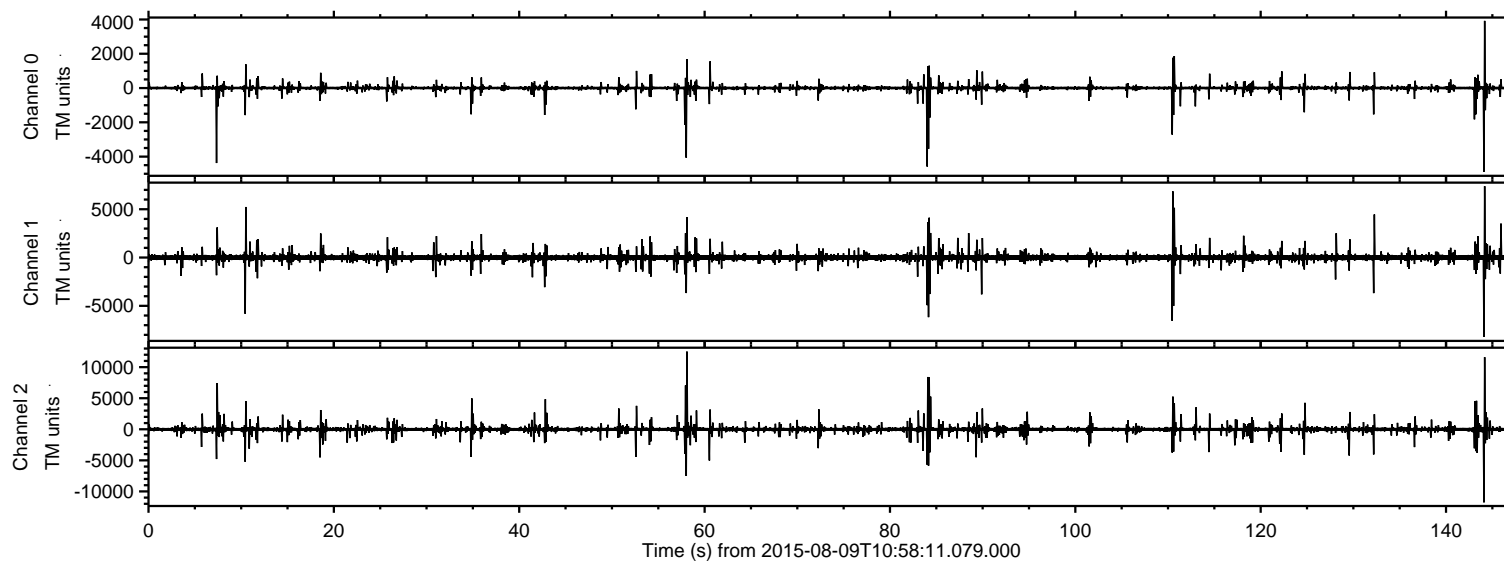


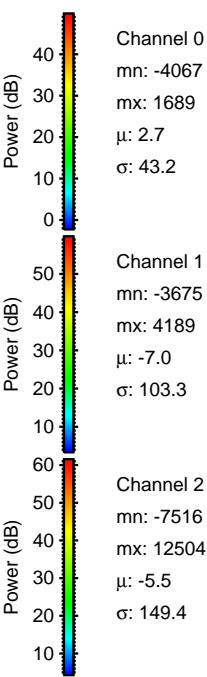
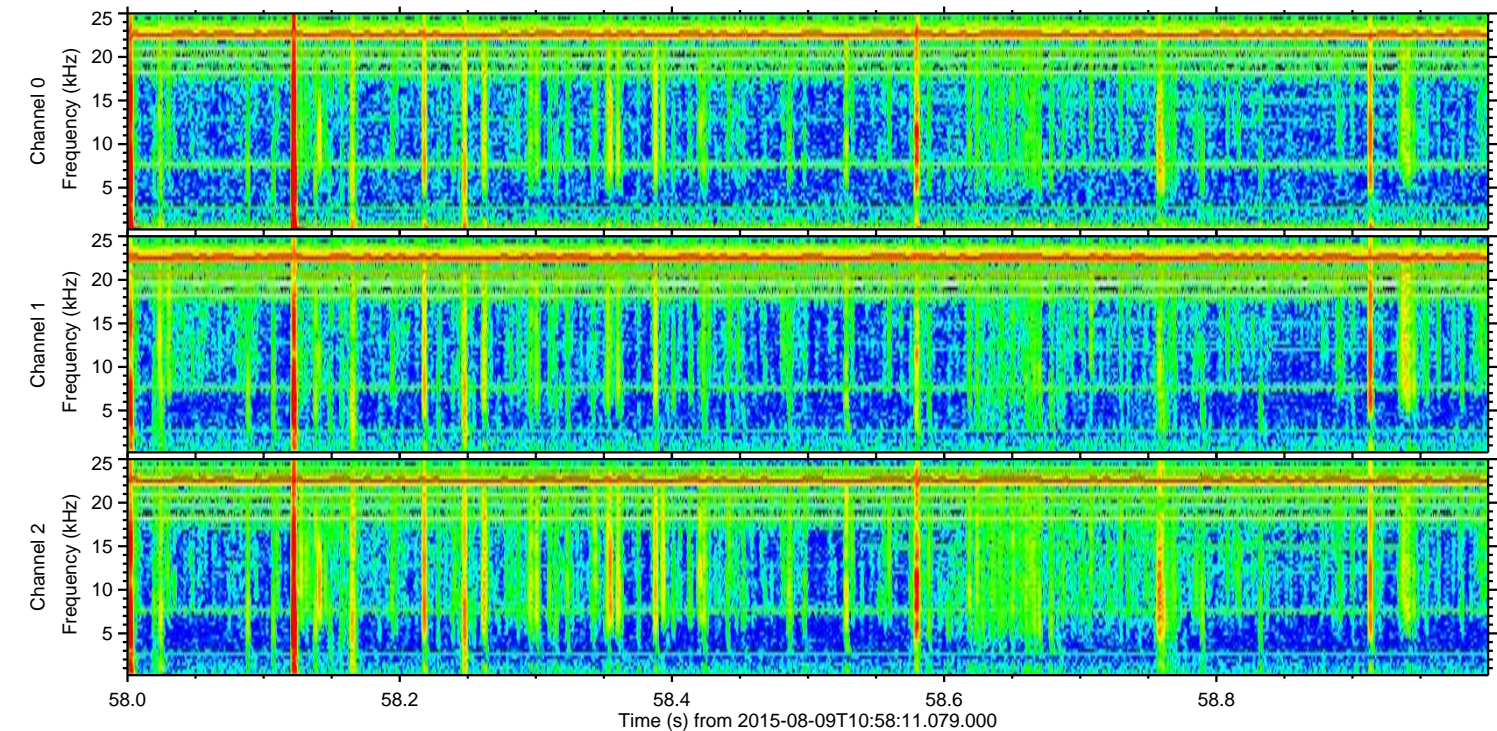
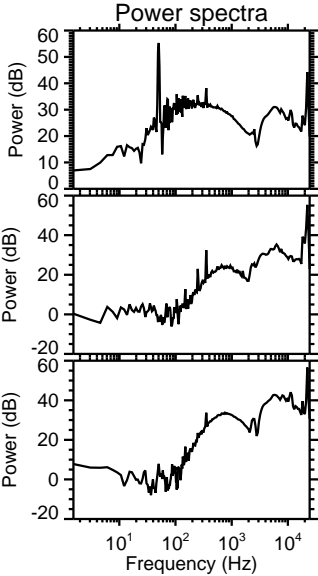
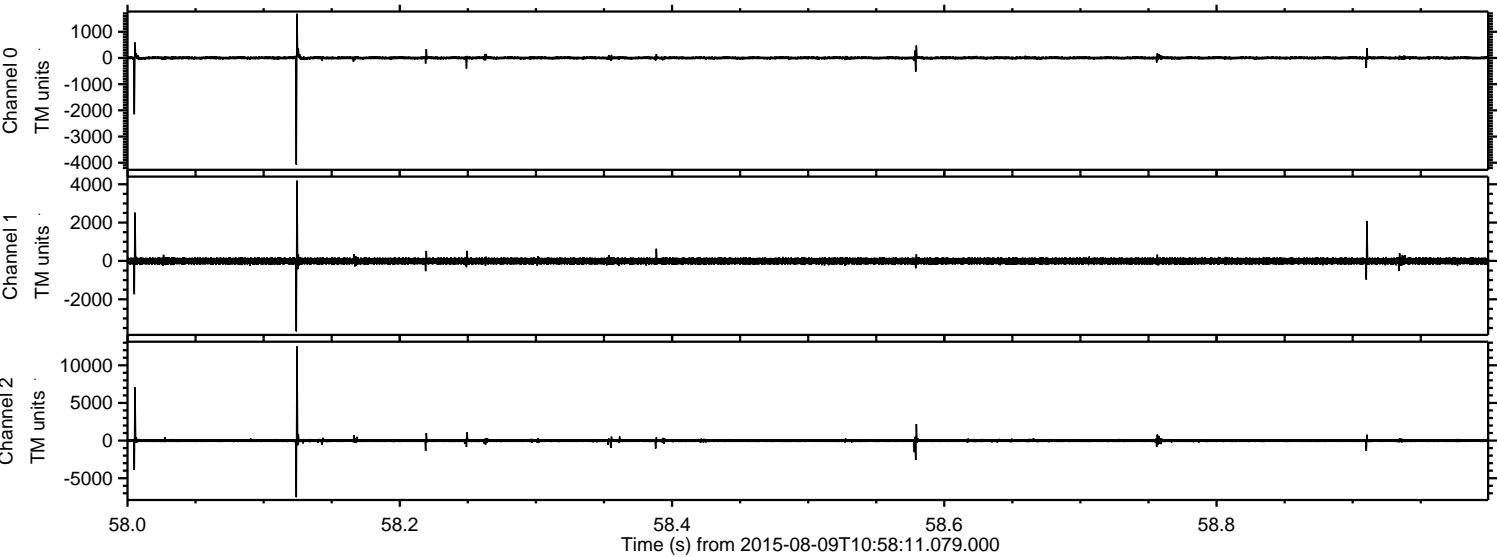
# ELMAVAN 3D WAVEFORMS (Measured data sampled at 50 kHz) 51000 packets of 144 samples from 2015-08-09T10:58:11.079.000.

Processed Sun Aug 9 13:04:20 2015 by ELM ver.2012-10-06 from 001\_\_elm20150809\_105810\_\_dat00.bin





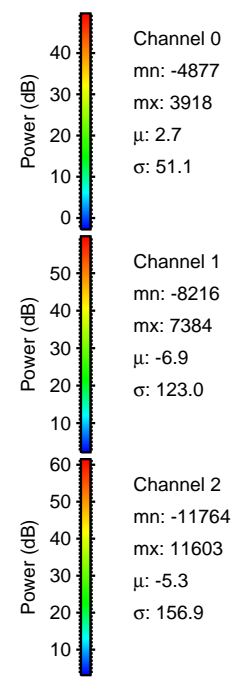
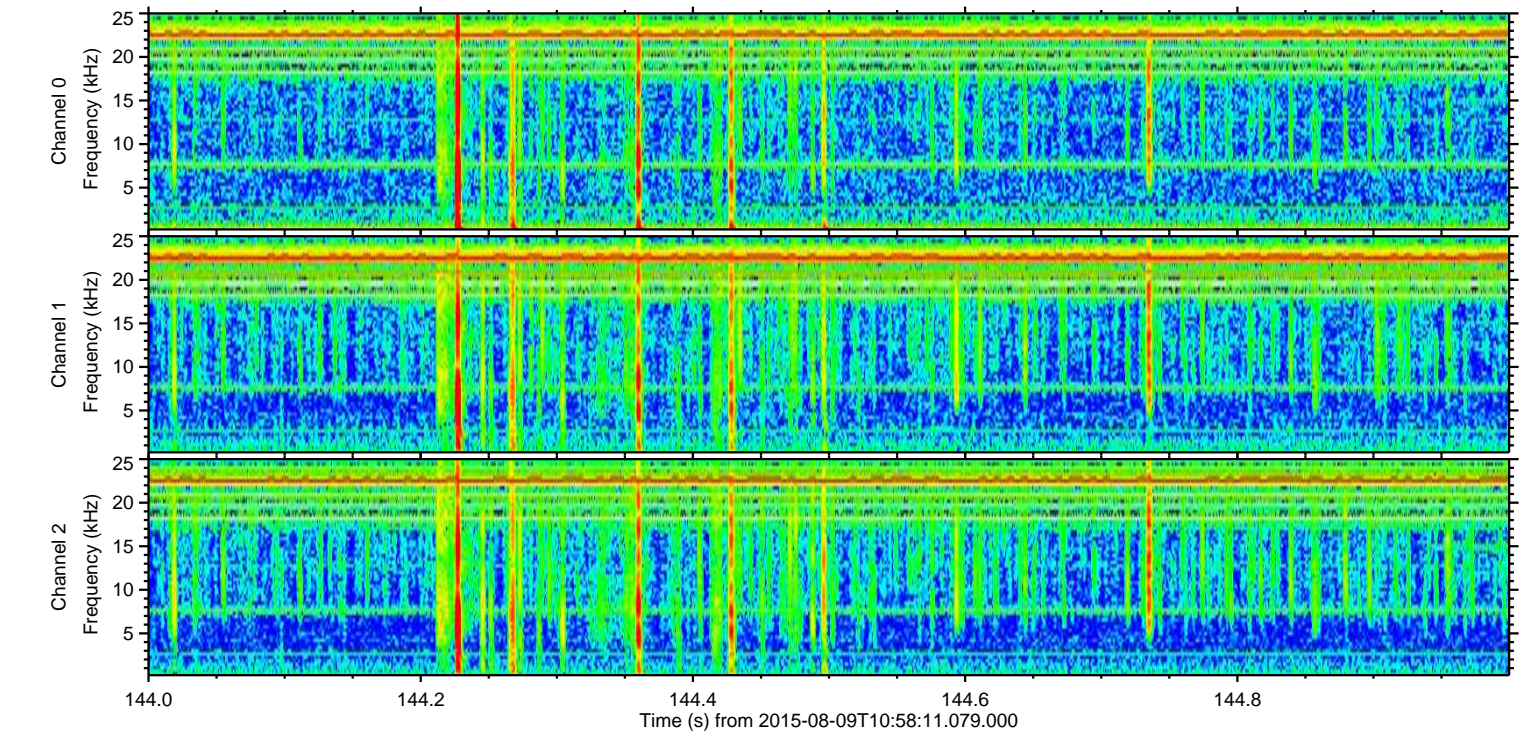
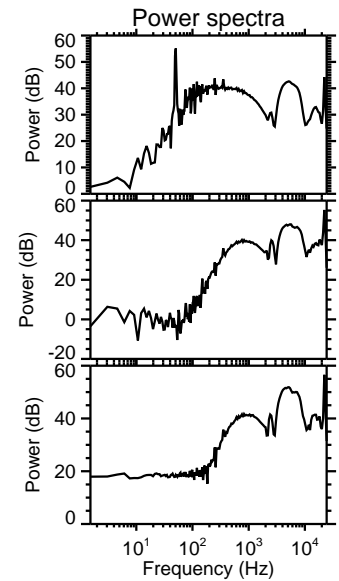
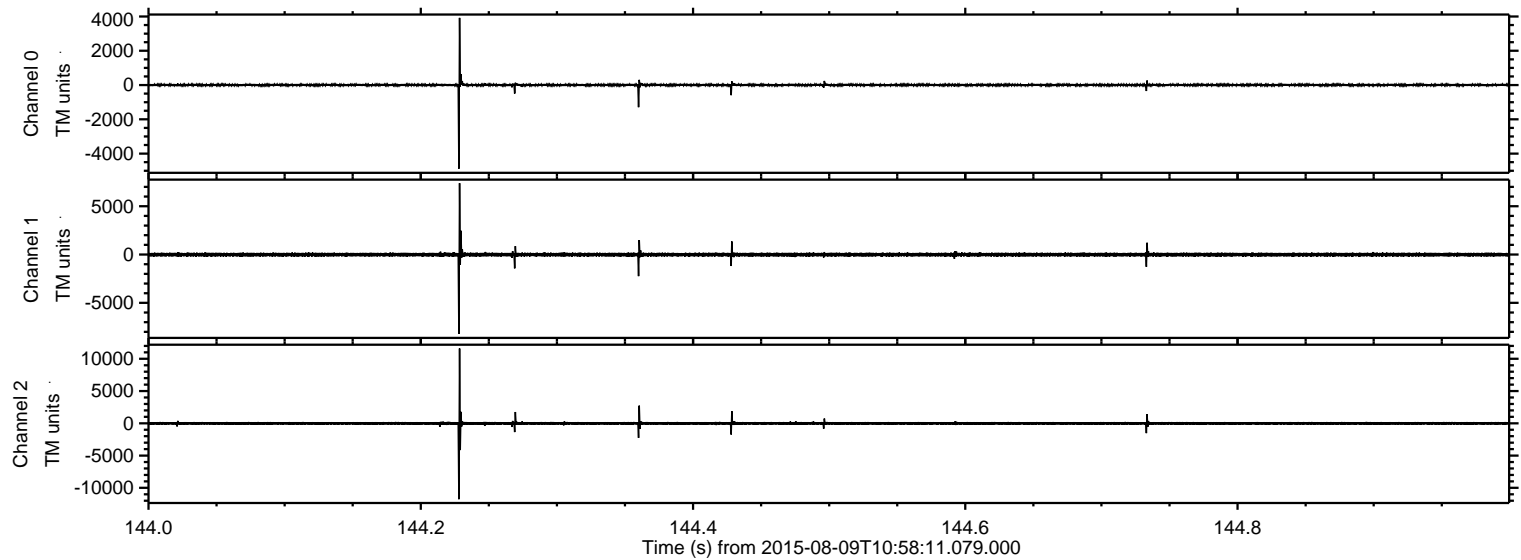
Processed Sun Aug 9 13:04:32 2015 by ELM ver.2012-10-06 from 001\_\_elm20150809\_105810\_\_dat00.bin





ELMAVAN 3D WAVEFORMS (Measured data sampled at 50 kHz) 51000 packets of 144 samples from 2015-08-09T10:58:11.079.000. Part 145/147

Processed Sun Aug 9 13:04:33 2015 by ELM ver.2012-10-06 from 001\_\_elm20150809\_105810\_\_dat00.bin

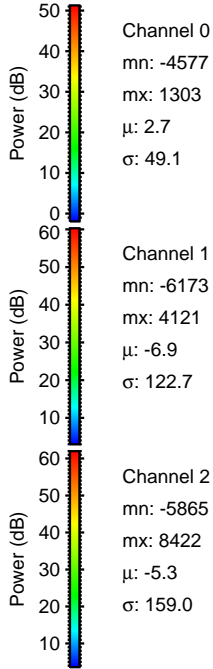
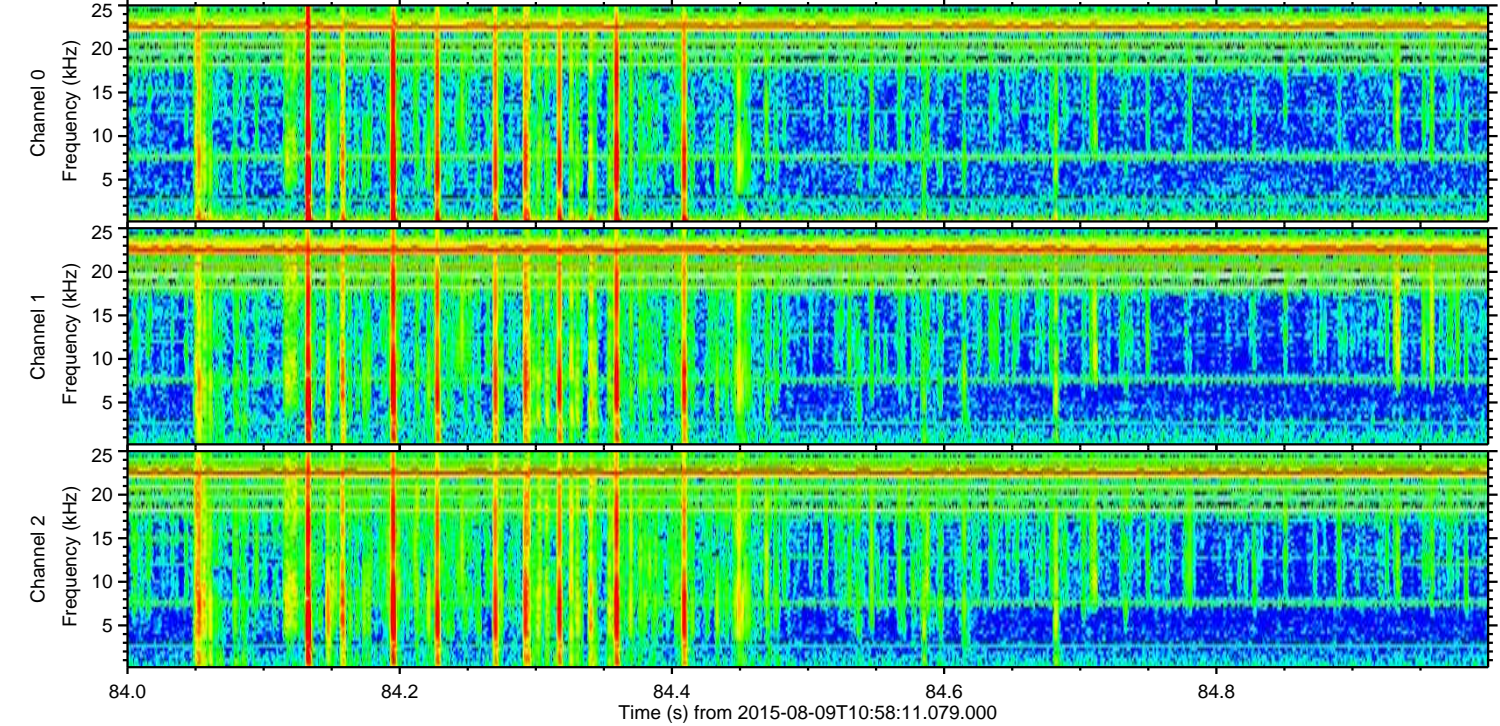
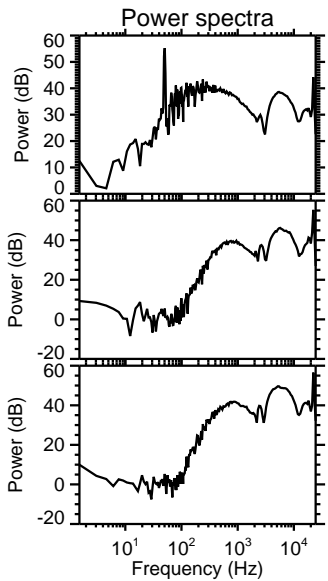
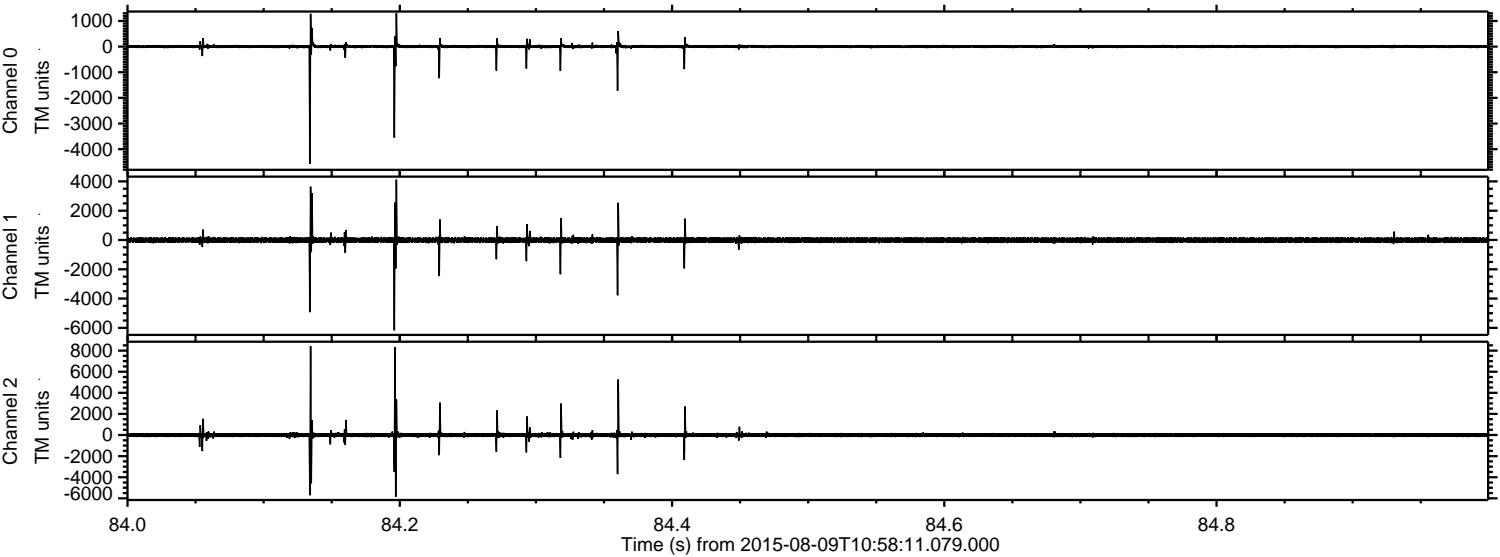


Channel 0  
mn: -4877  
mx: 3918  
 $\mu$ : 2.7  
 $\sigma$ : 51.1

Channel 1  
mn: -8216  
mx: 7384  
 $\mu$ : -6.9  
 $\sigma$ : 123.0

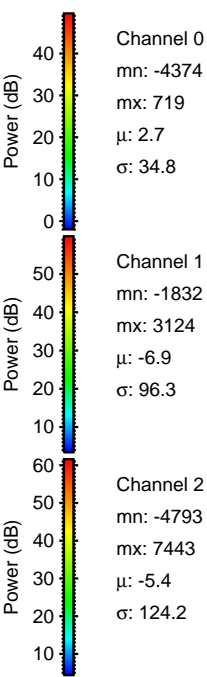
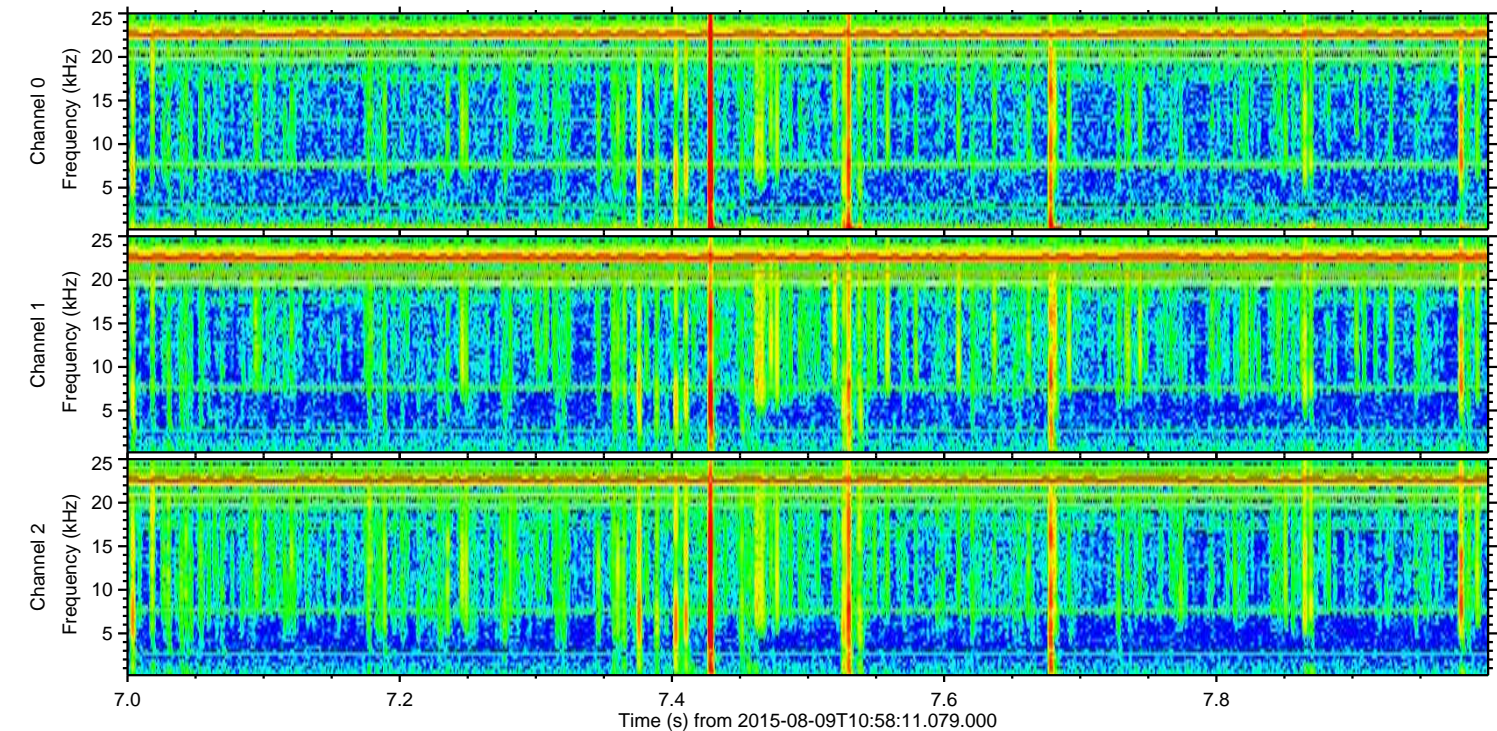
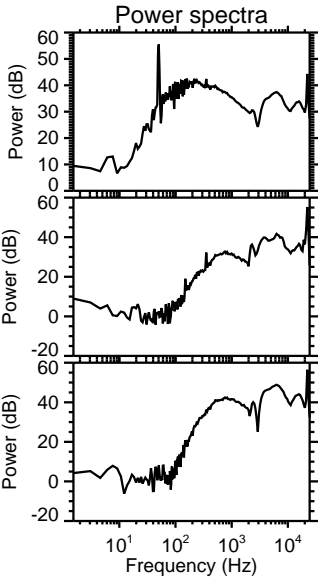
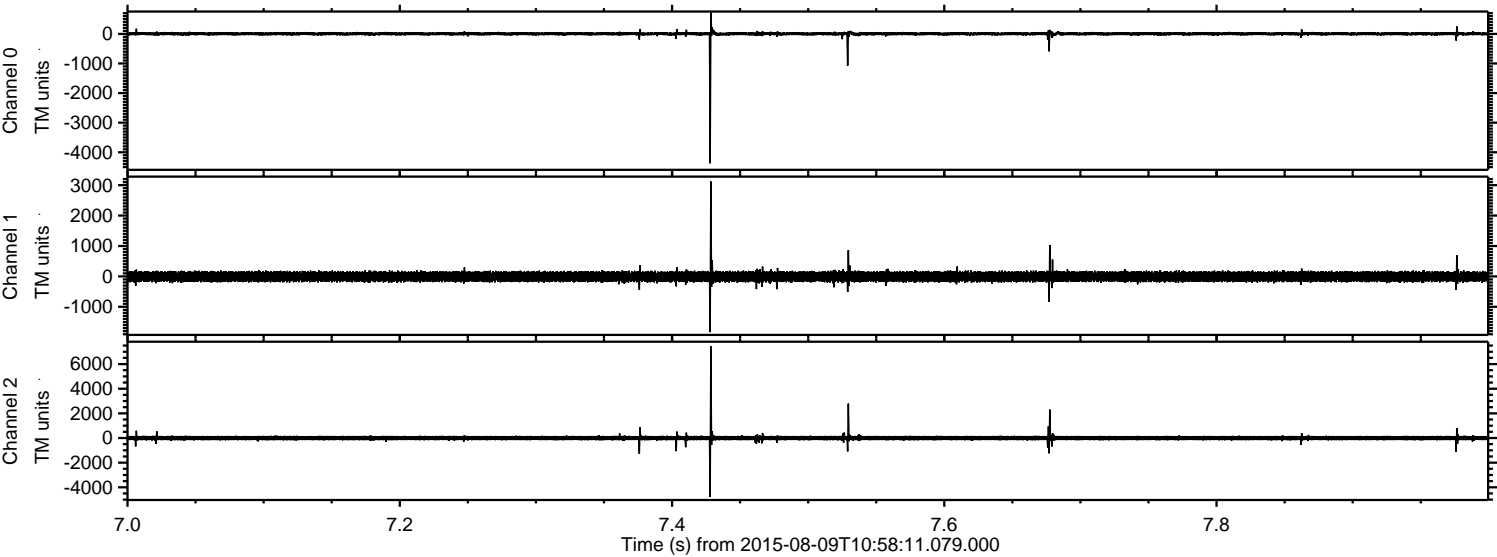
Channel 2  
mn: -11764  
mx: 11603  
 $\mu$ : -5.3  
 $\sigma$ : 156.9

Processed Sun Aug 9 13:04:34 2015 by ELM ver.2012-10-06 from 001\_\_elm20150809\_105810\_\_dat00.bin



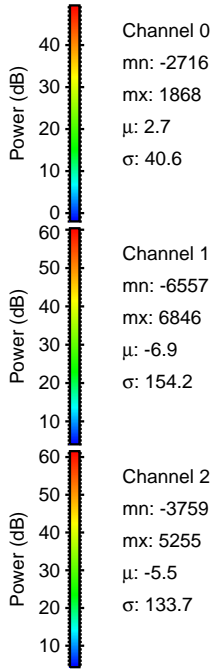
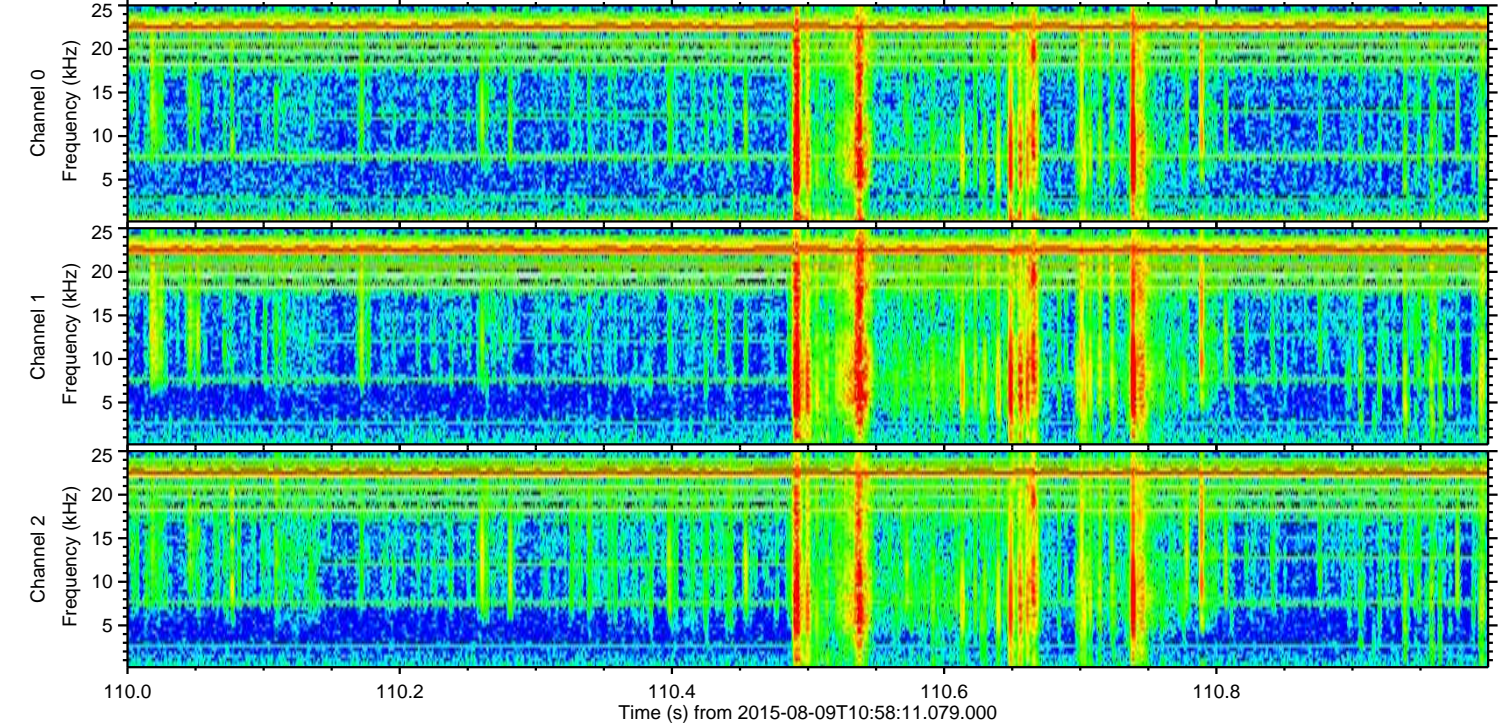
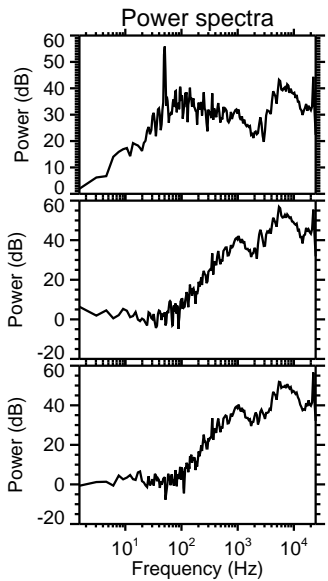
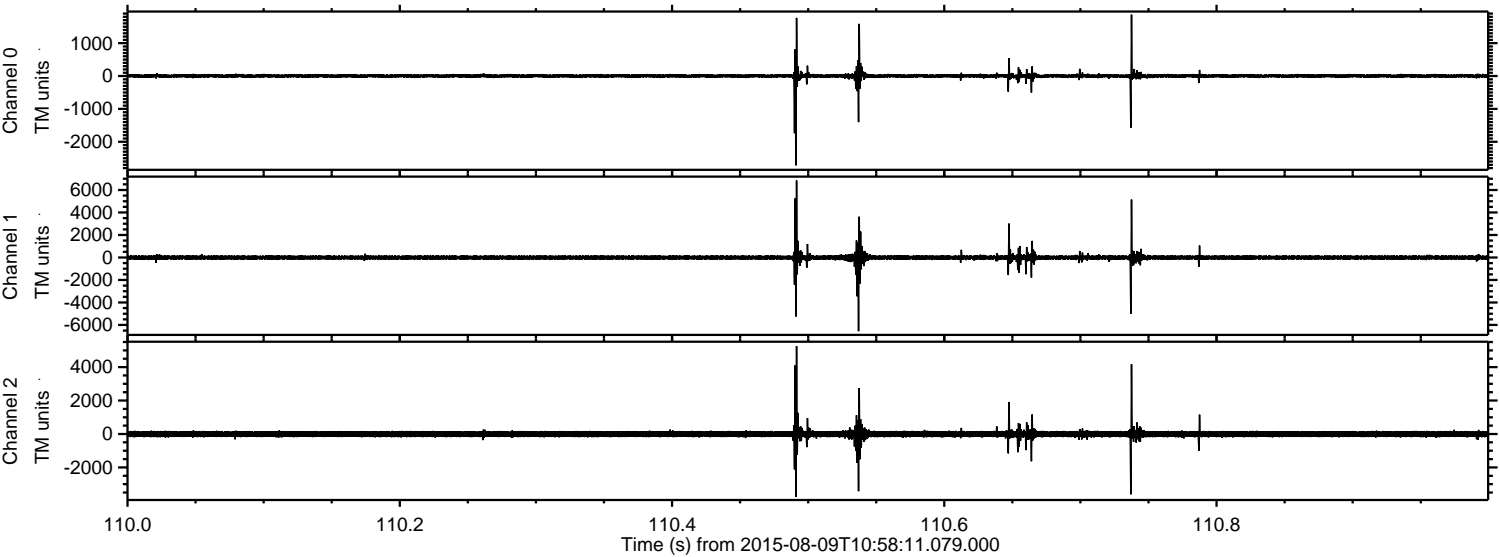


Processed Sun Aug 9 13:04:35 2015 by ELM ver.2012-10-06 from 001\_\_elm20150809\_105810\_\_dat00.bin



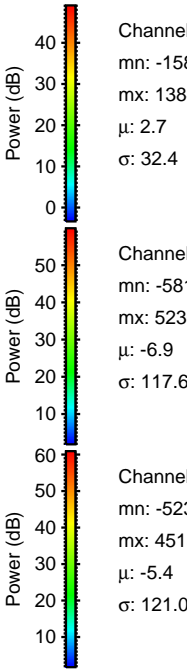
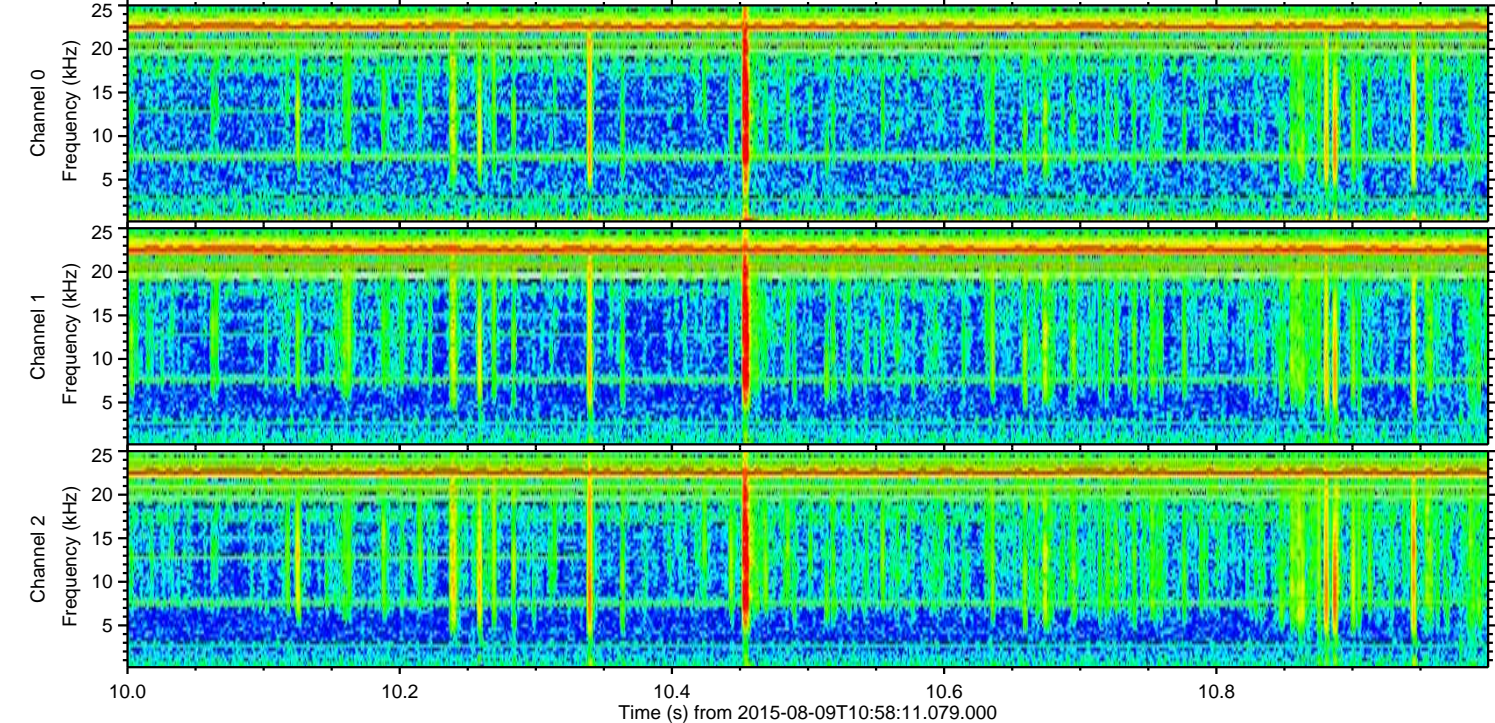
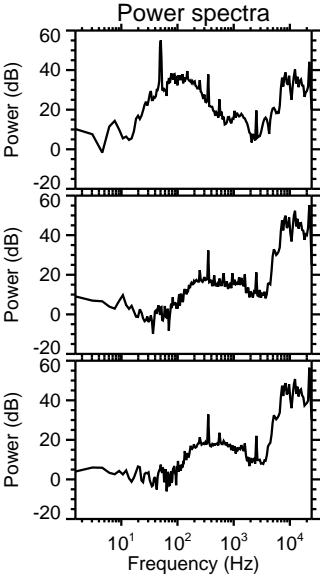
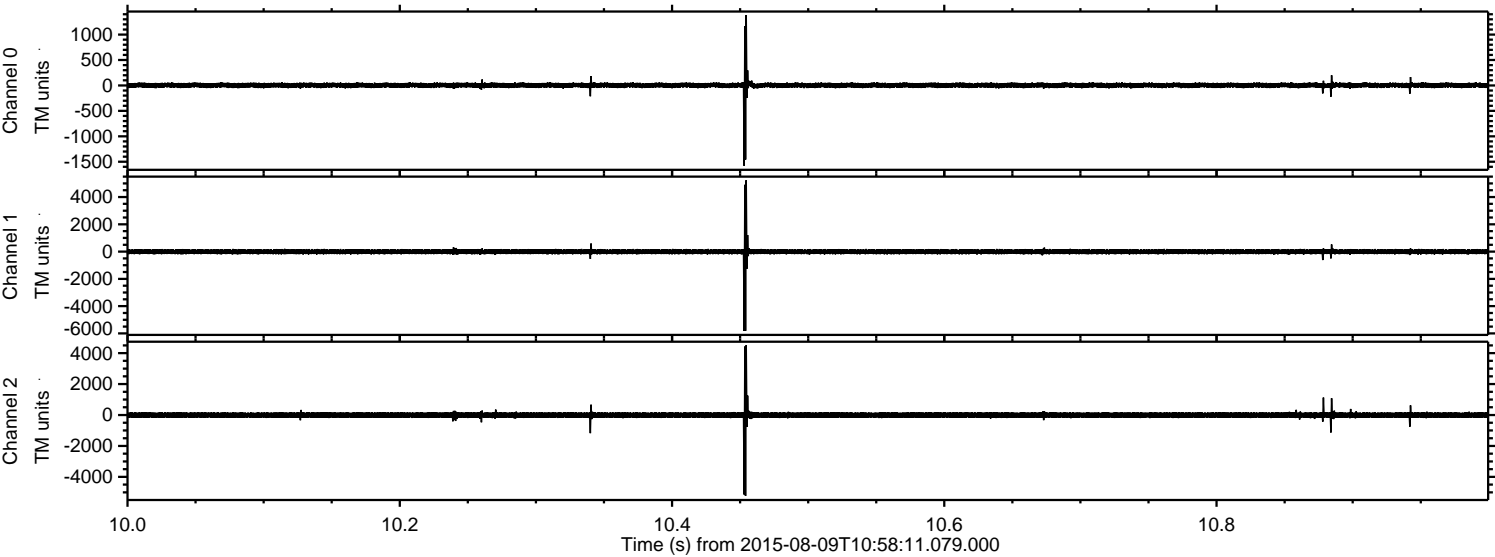
ELMAVAN 3D WAVEFORMS (Measured data sampled at 50 kHz) 51000 packets of 144 samples from 2015-08-09T10:58:11.079.000. Part 111/147

Processed Sun Aug 9 13:04:36 2015 by ELM ver.2012-10-06 from 001\_\_elm20150809\_105810\_\_dat00.bin



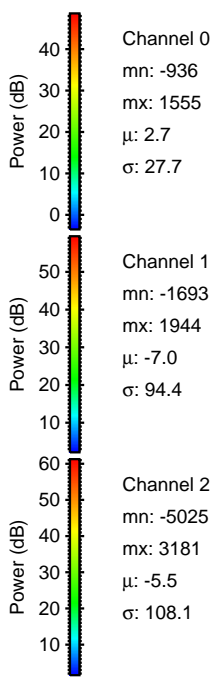
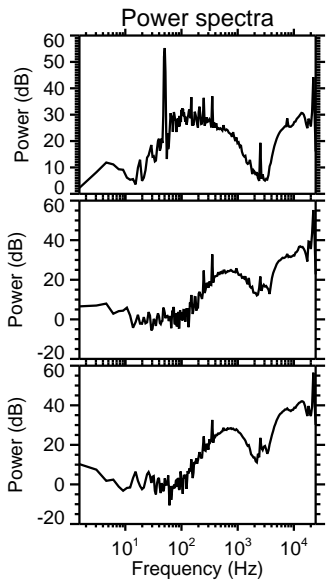
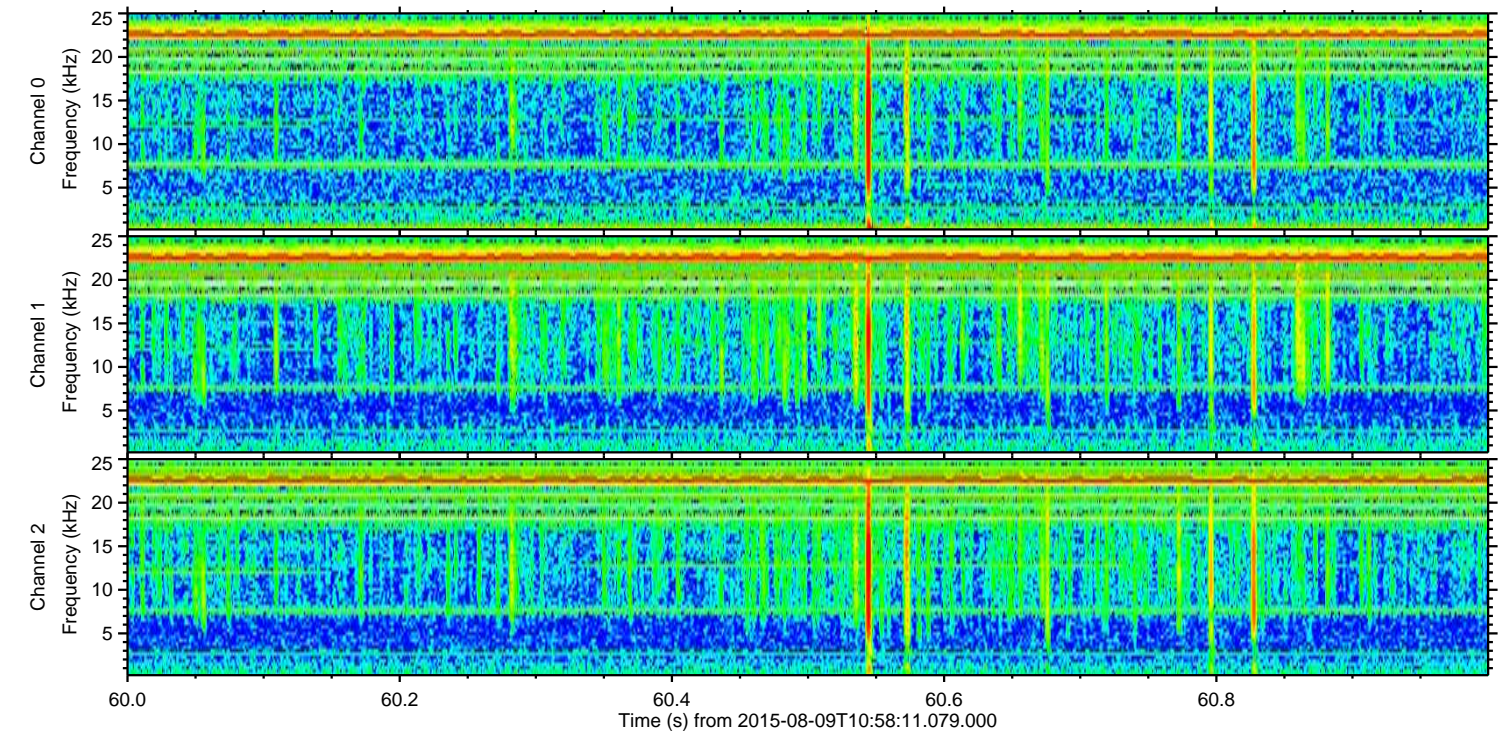
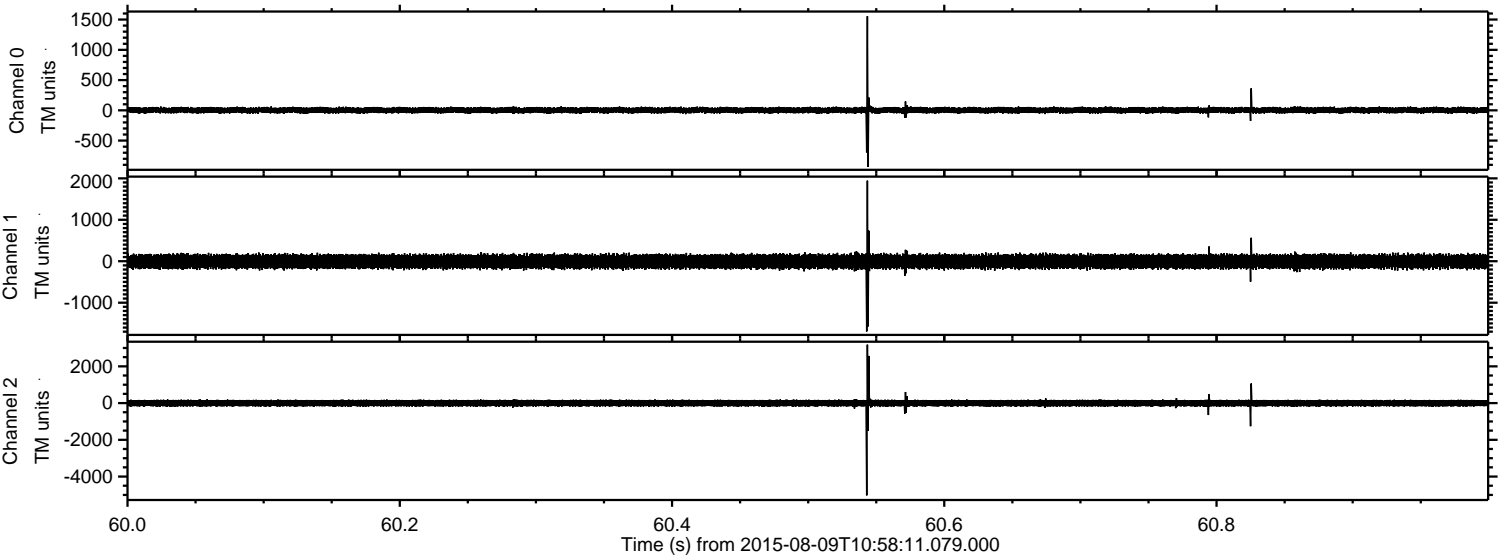


Processed Sun Aug 9 13:04:37 2015 by ELM ver.2012-10-06 from 001\_\_elm20150809\_105810\_\_dat00.bin





Processed Sun Aug 9 13:04:38 2015 by ELM ver.2012-10-06 from 001\_\_elm20150809\_105810\_\_dat00.bin



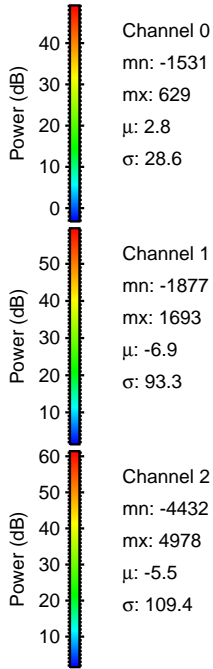
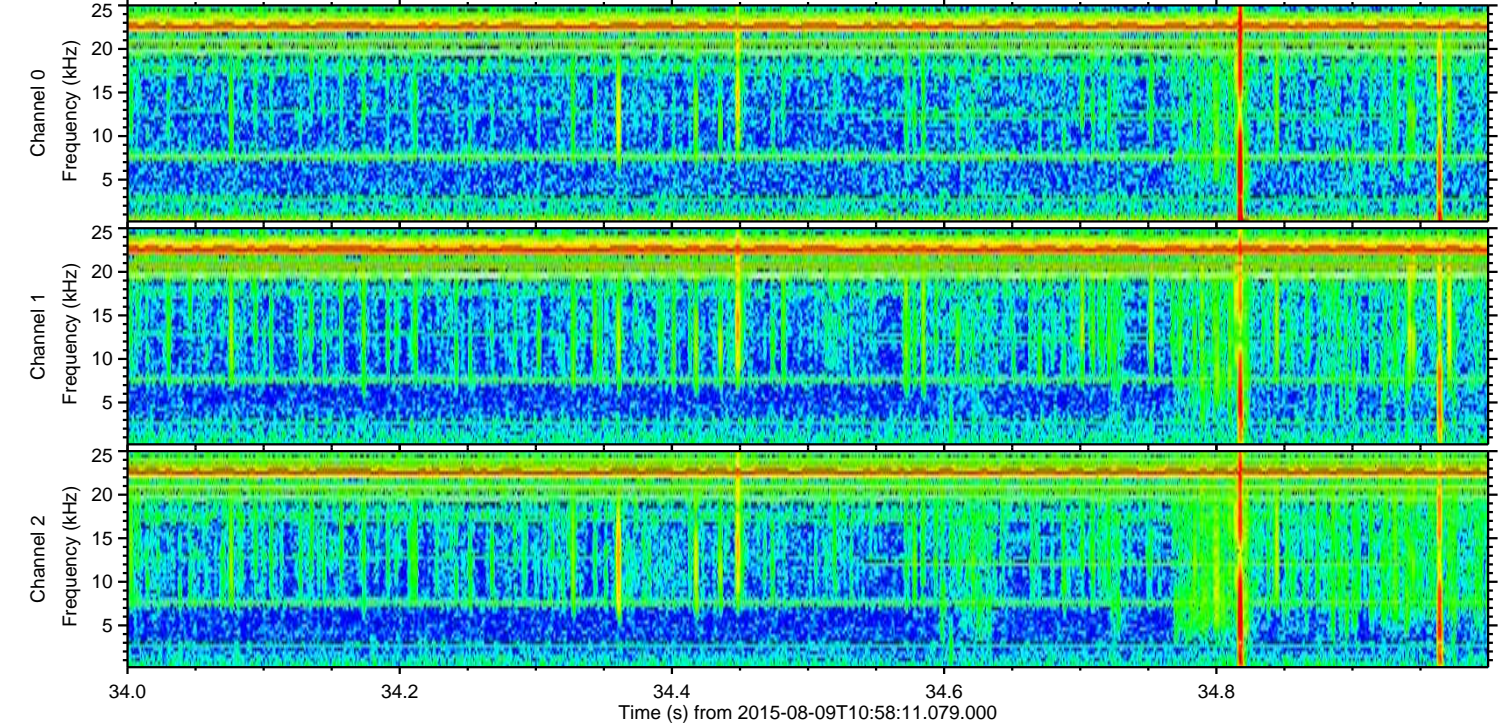
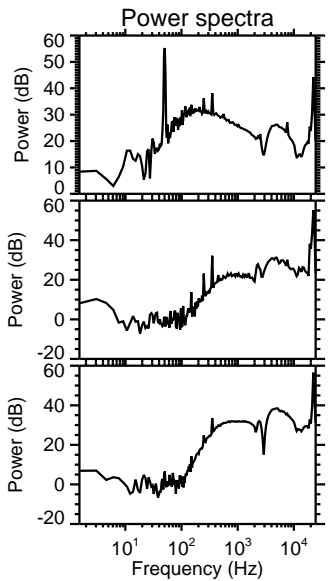
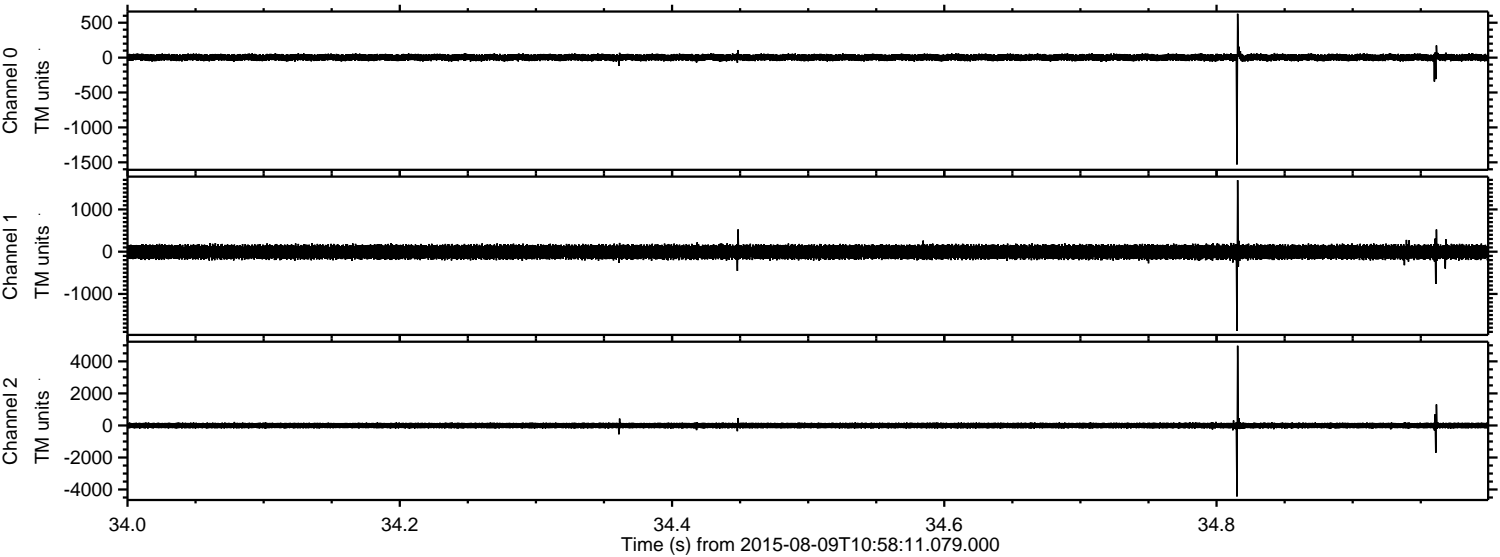
Channel 0  
mn: -936  
mx: 1555  
 $\mu$ : 2.7  
 $\sigma$ : 27.7

Channel 1  
mn: -1693  
mx: 1944  
 $\mu$ : -7.0  
 $\sigma$ : 94.4

Channel 2  
mn: -5025  
mx: 3181  
 $\mu$ : -5.5  
 $\sigma$ : 108.1

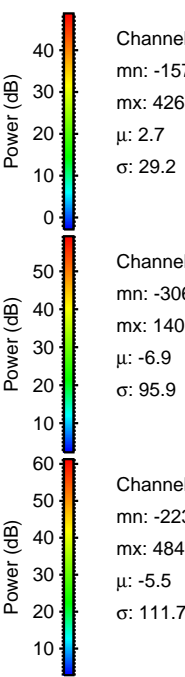
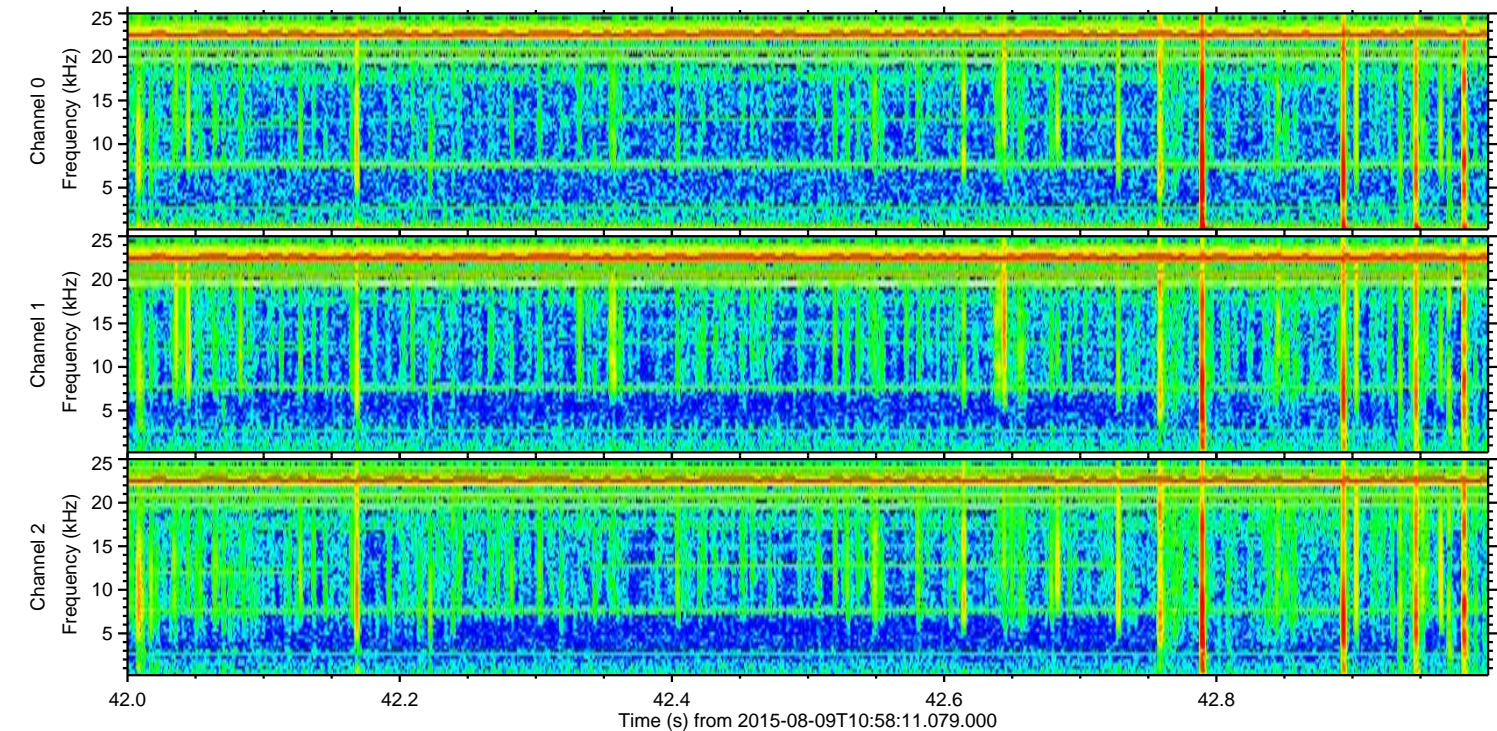
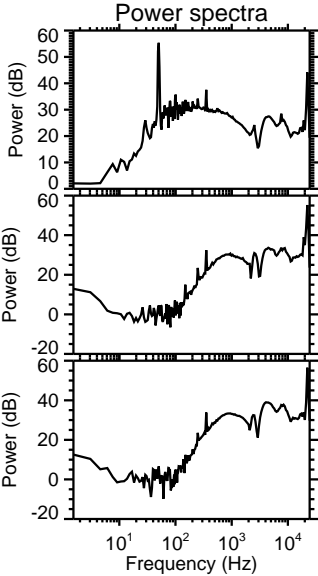
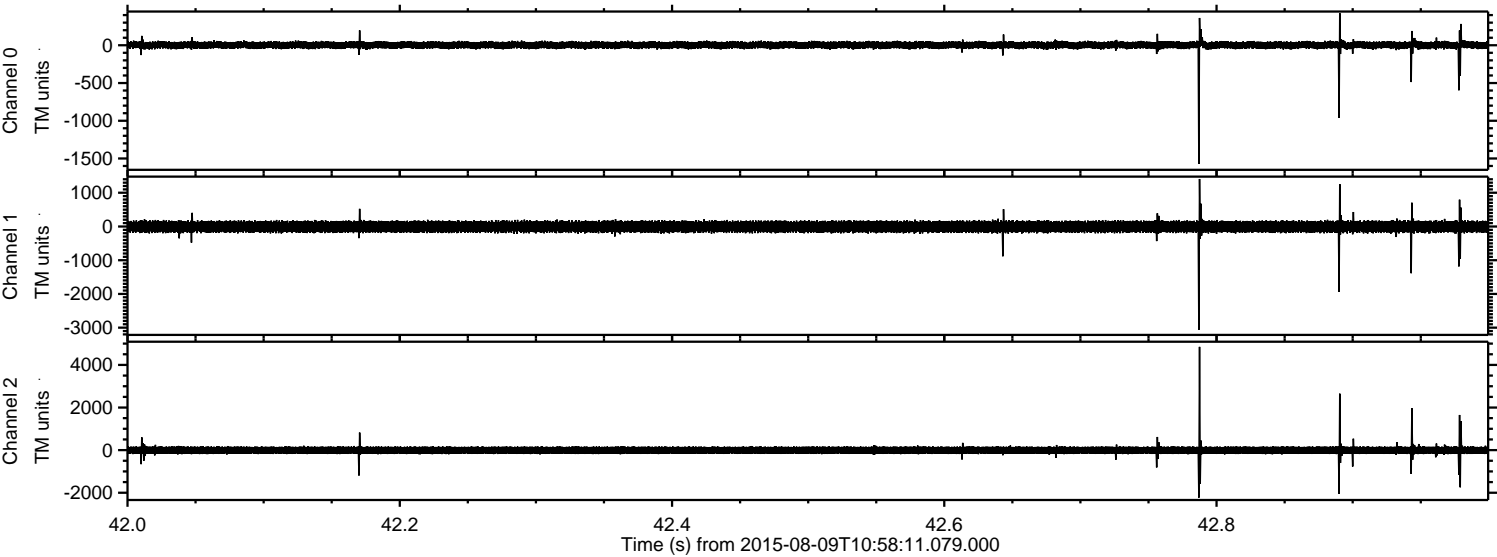


Processed Sun Aug 9 13:04:39 2015 by ELM ver.2012-10-06 from 001\_\_elm20150809\_105810\_\_dat00.bin





Processed Sun Aug 9 13:04:39 2015 by ELM ver.2012-10-06 from 001\_\_elm20150809\_105810\_\_dat00.bin



Channel 0  
mn: -1572  
mx: 426  
 $\mu$ : 2.7  
 $\sigma$ : 29.2

Channel 1  
mn: -3062  
mx: 1408  
 $\mu$ : -6.9  
 $\sigma$ : 95.9

Channel 2  
mn: -2230  
mx: 4847  
 $\mu$ : -5.5  
 $\sigma$ : 111.7



ELMAVAN 3D WAVEFORMS (Measured data sampled at 50 kHz) 51000 packets of 144 samples from 2015-08-09T10:58:11.079.000. Part 142/147

