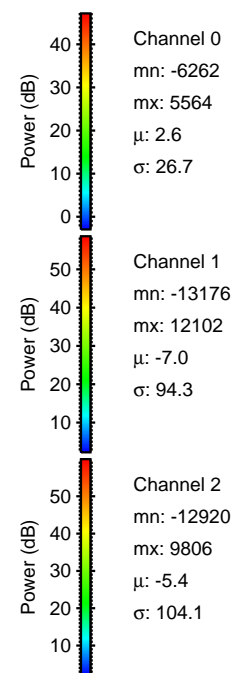
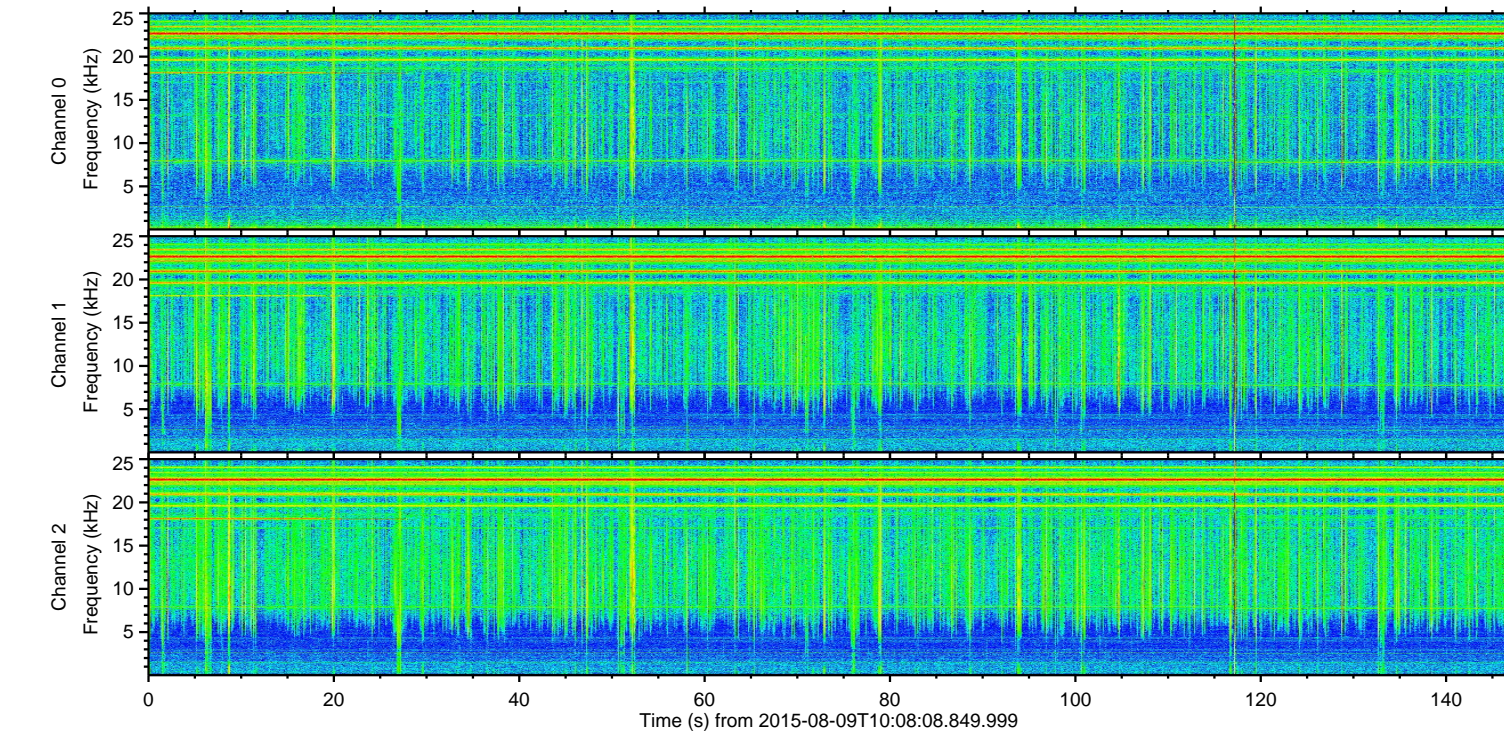
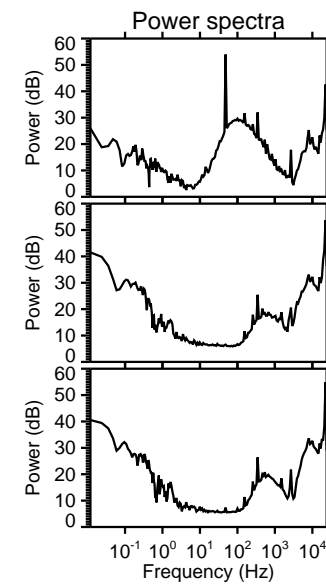
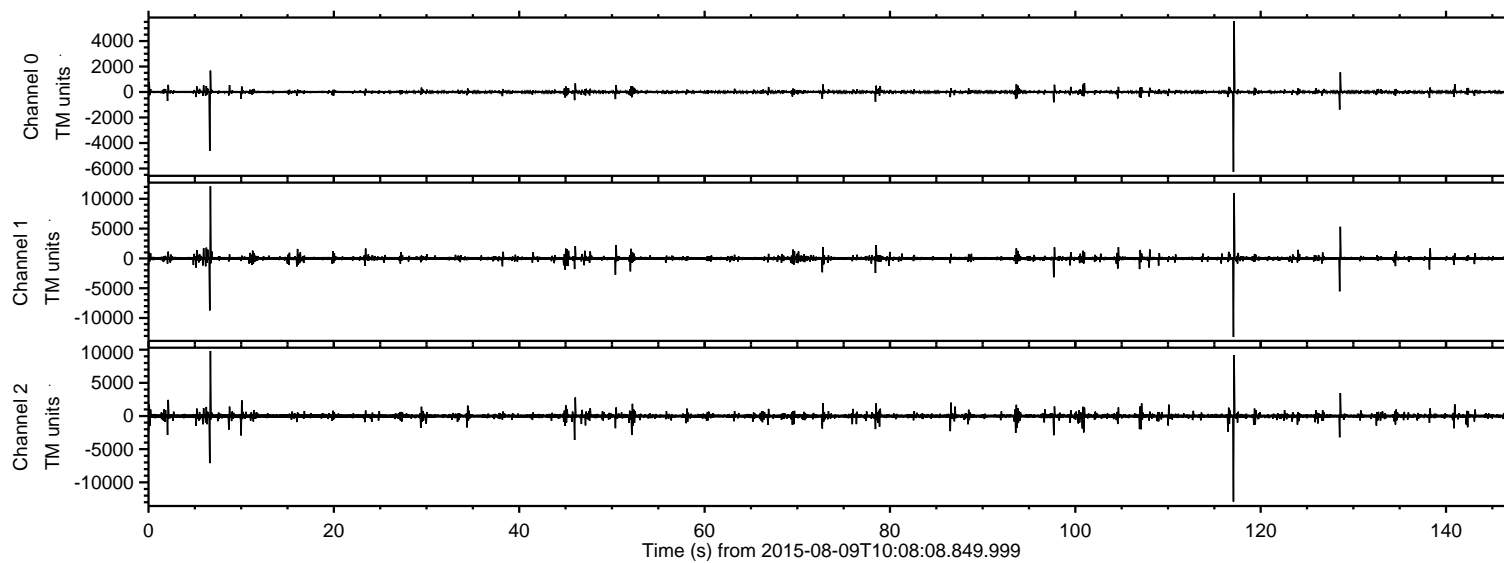


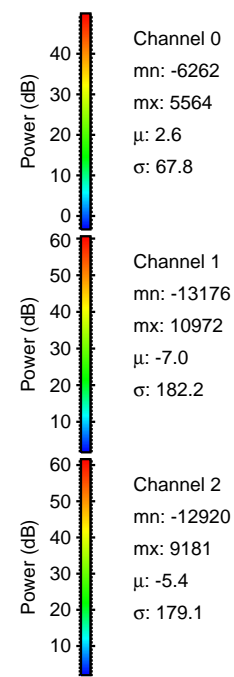
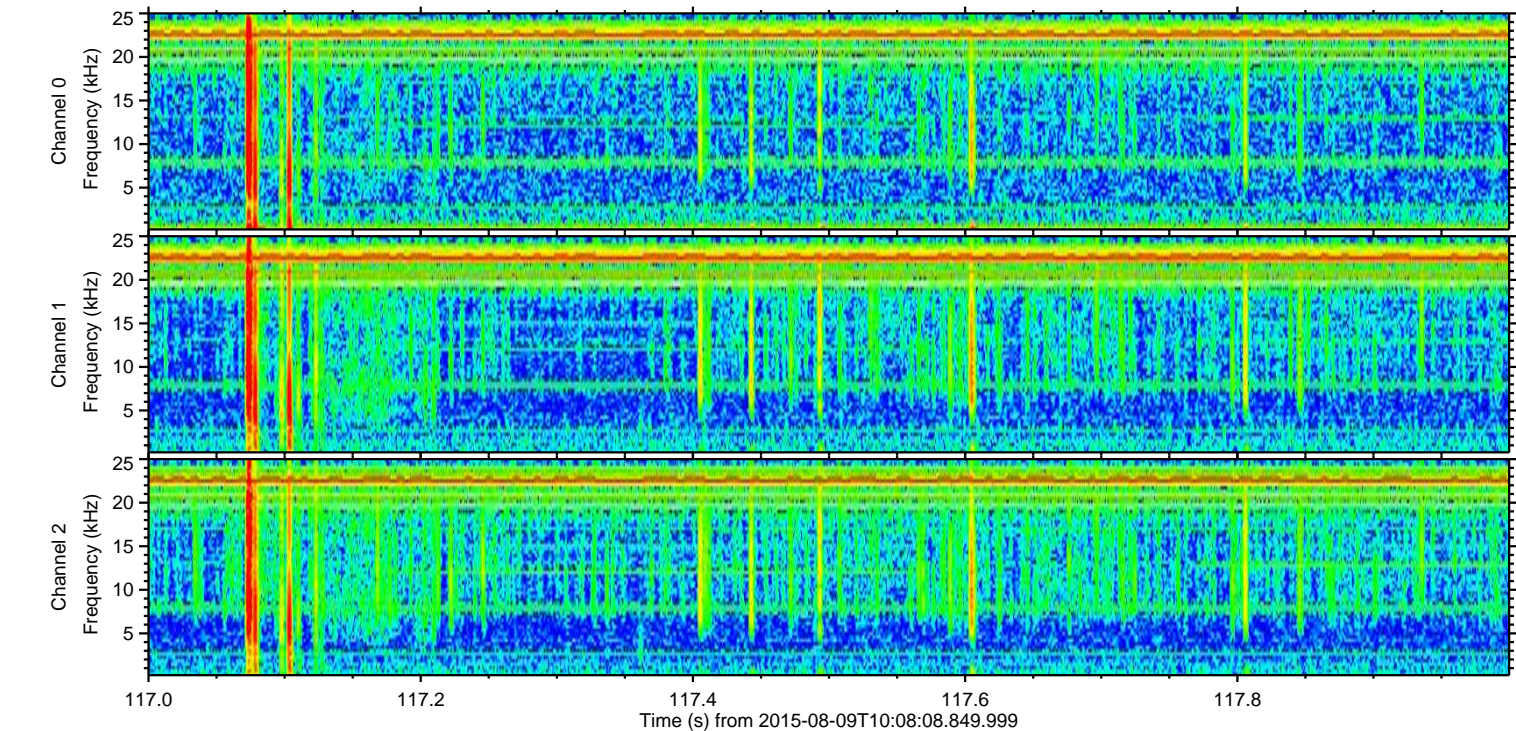
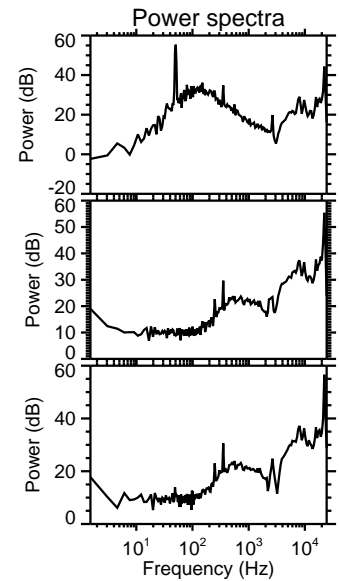
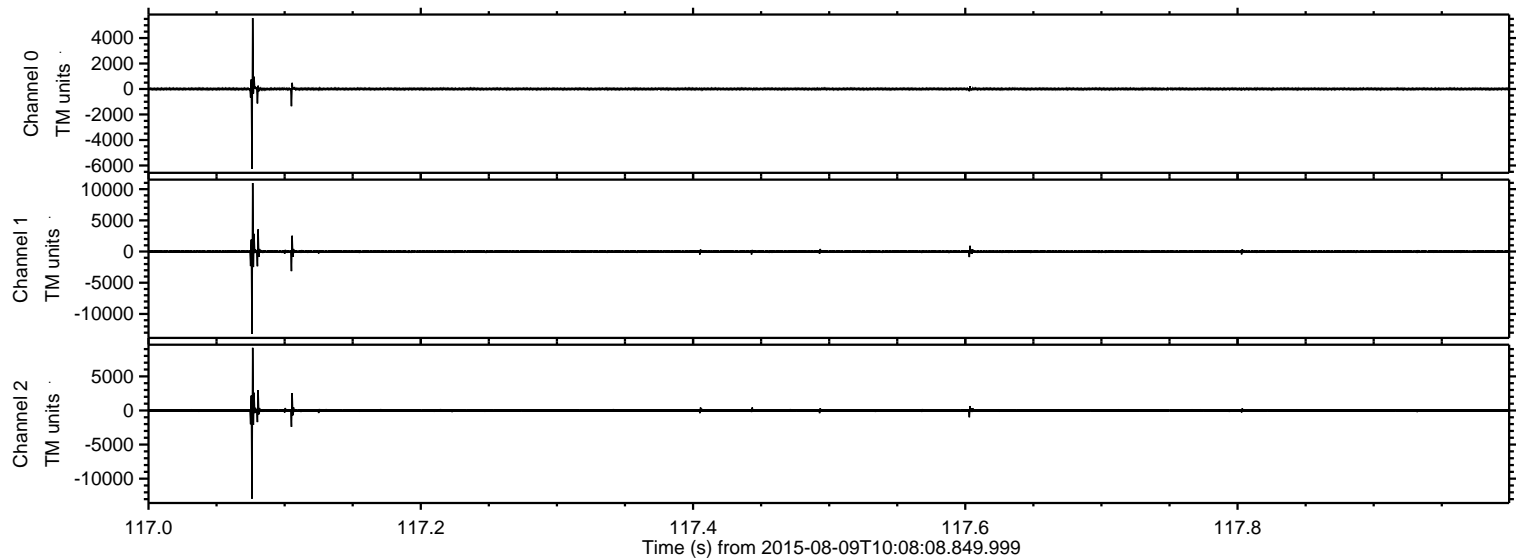
ELMAVAN 3D WAVEFORMS (Measured data sampled at 50 kHz) 51000 packets of 144 samples from 2015-08-09T10:08:08.849.999.

Processed Sun Aug 9 12:14:13 2015 by ELM ver.2012-10-06 from 001__elm20150809_100807__dat00.bin



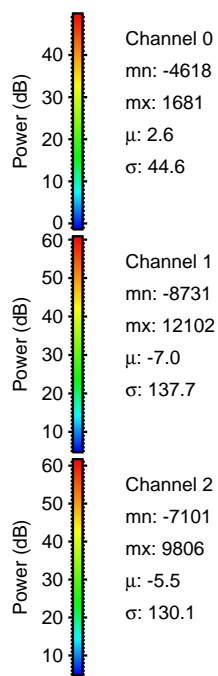
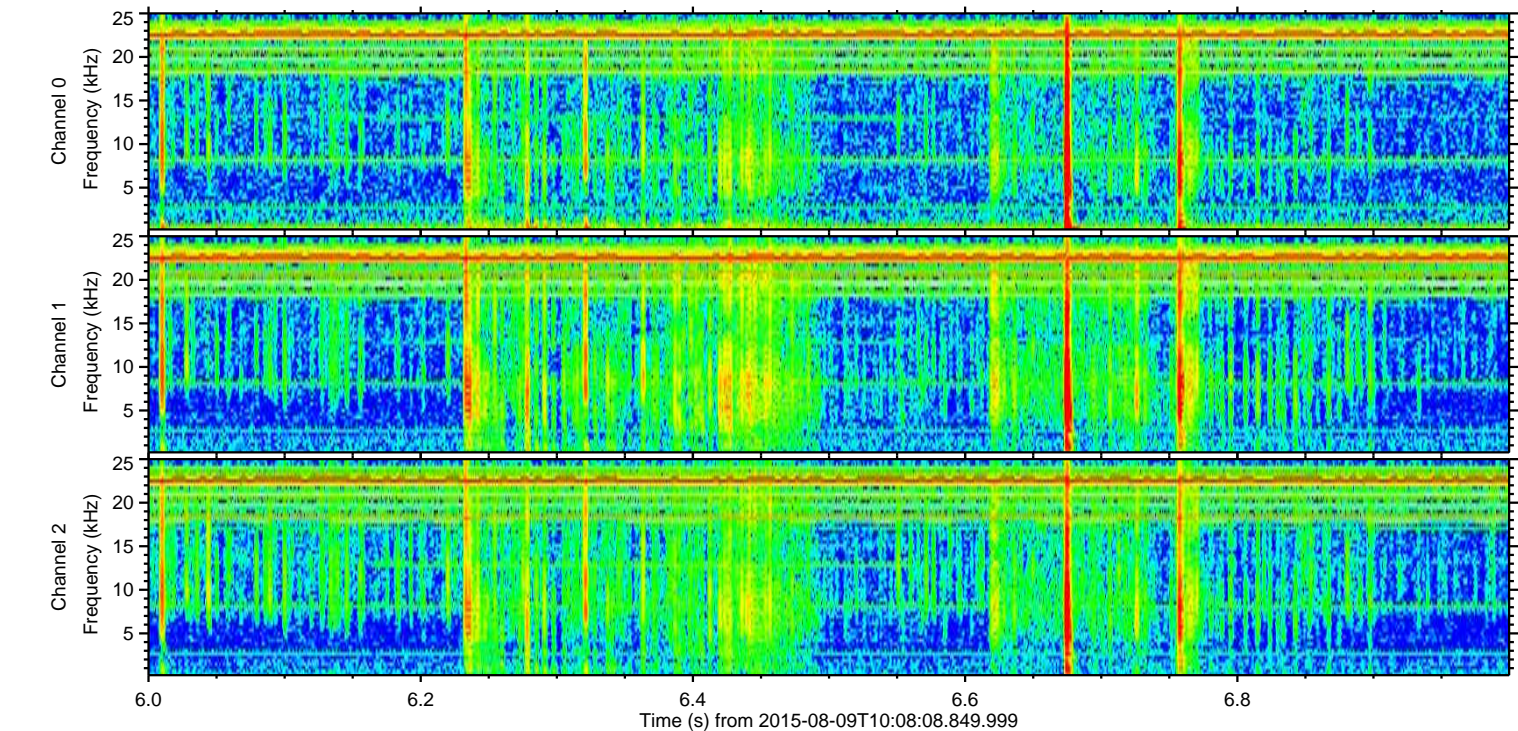
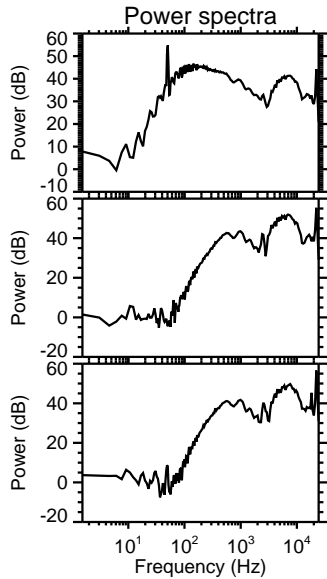
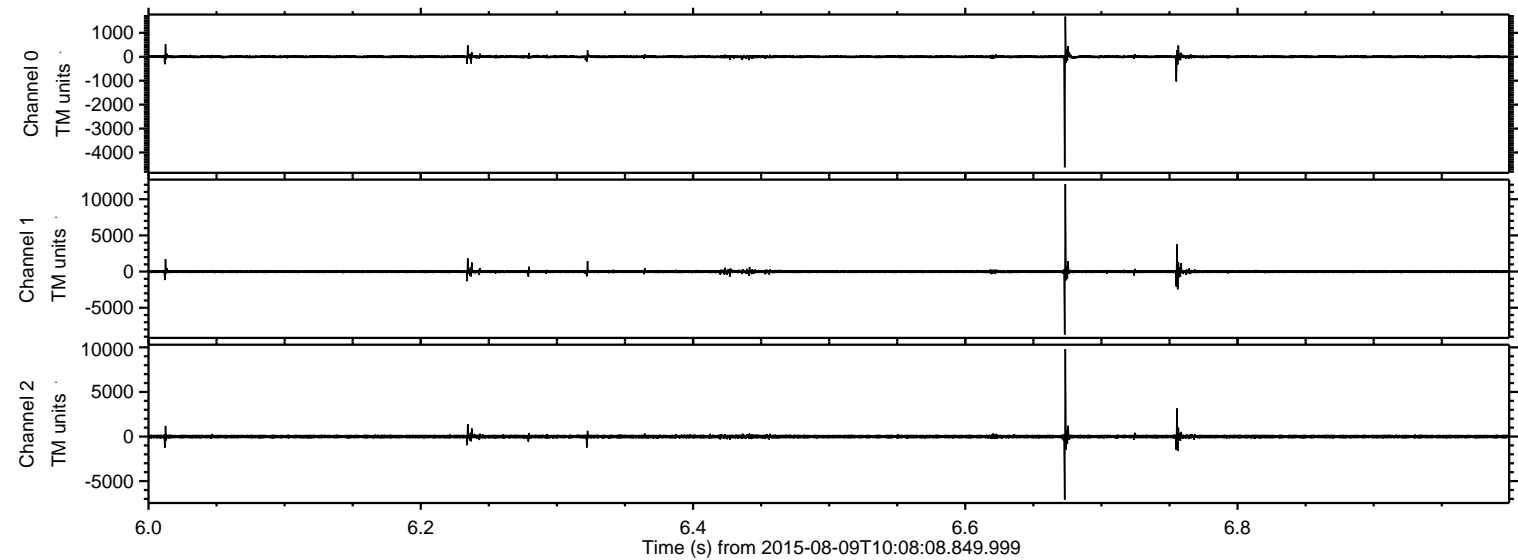
ELMAVAN 3D WAVEFORMS (Measured data sampled at 50 kHz) 51000 packets of 144 samples from 2015-08-09T10:08:08.849.999. Part 118/147

Processed Sun Aug 9 12:14:25 2015 by ELM ver.2012-10-06 from 001__elm20150809_100807__dat00.bin



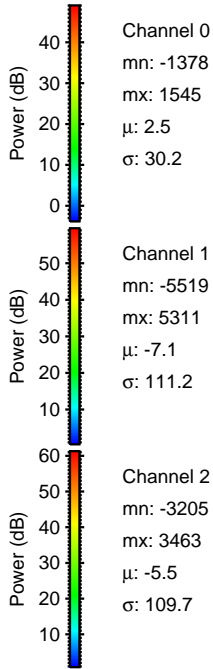
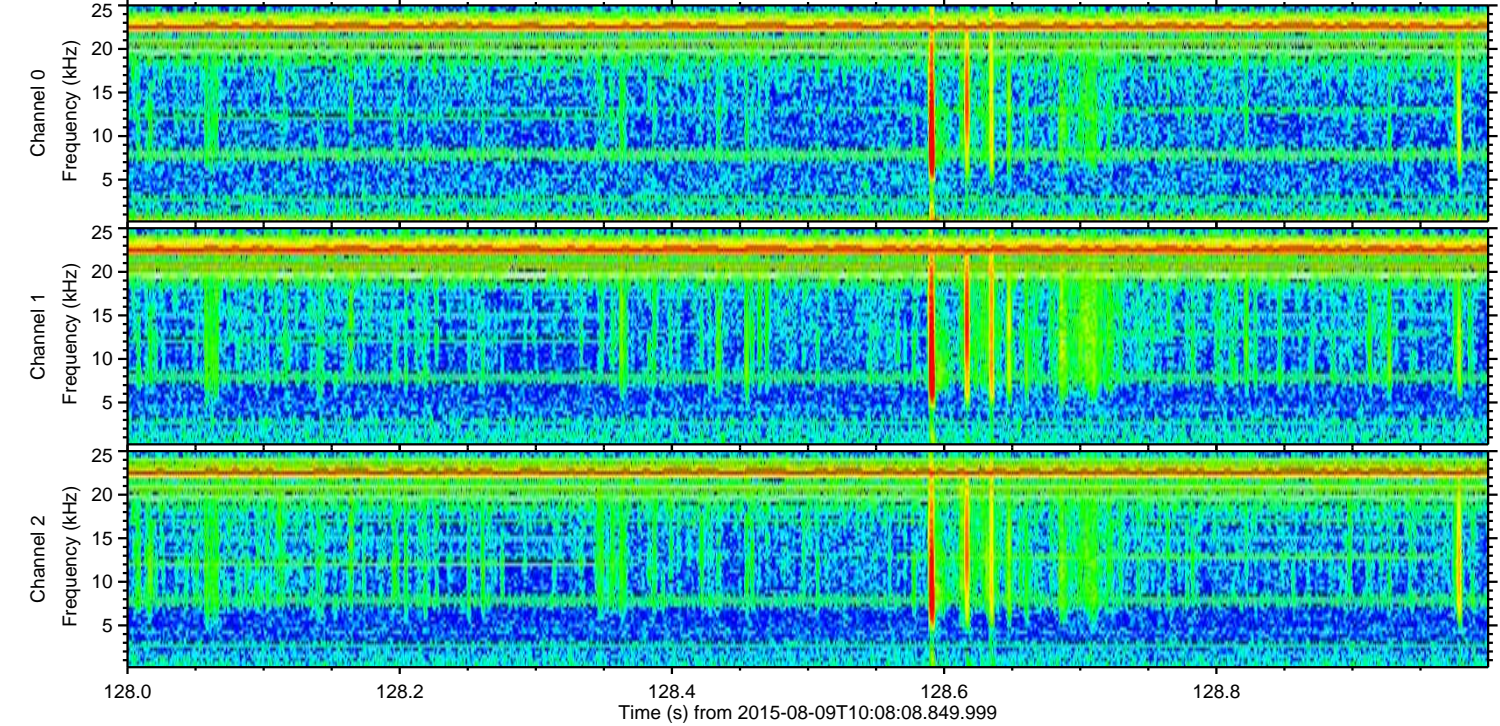
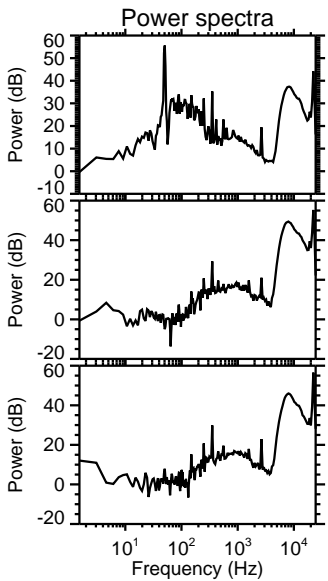
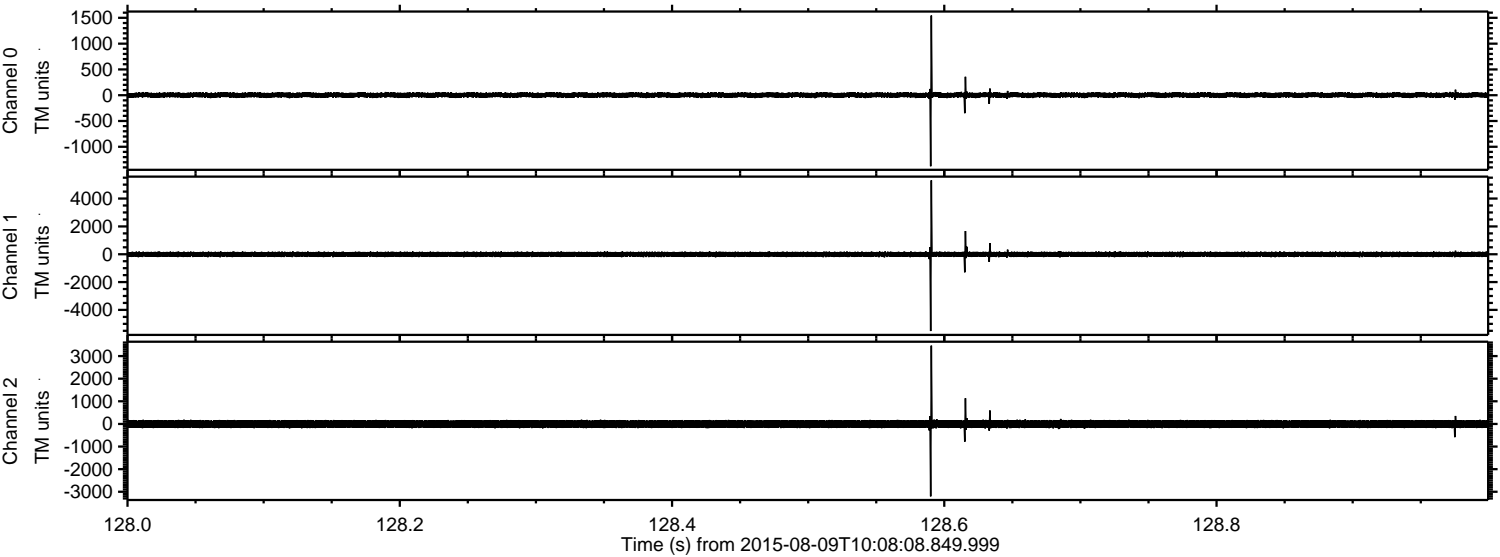
ELMAVAN 3D WAVEFORMS (Measured data sampled at 50 kHz) 51000 packets of 144 samples from 2015-08-09T10:08:08.849.999. Part 7/147

Processed Sun Aug 9 12:14:26 2015 by ELM ver.2012-10-06 from 001__elm20150809_100807__dat00.bin

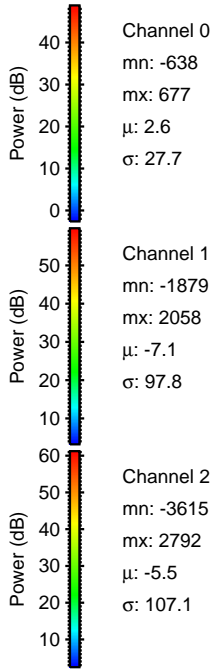
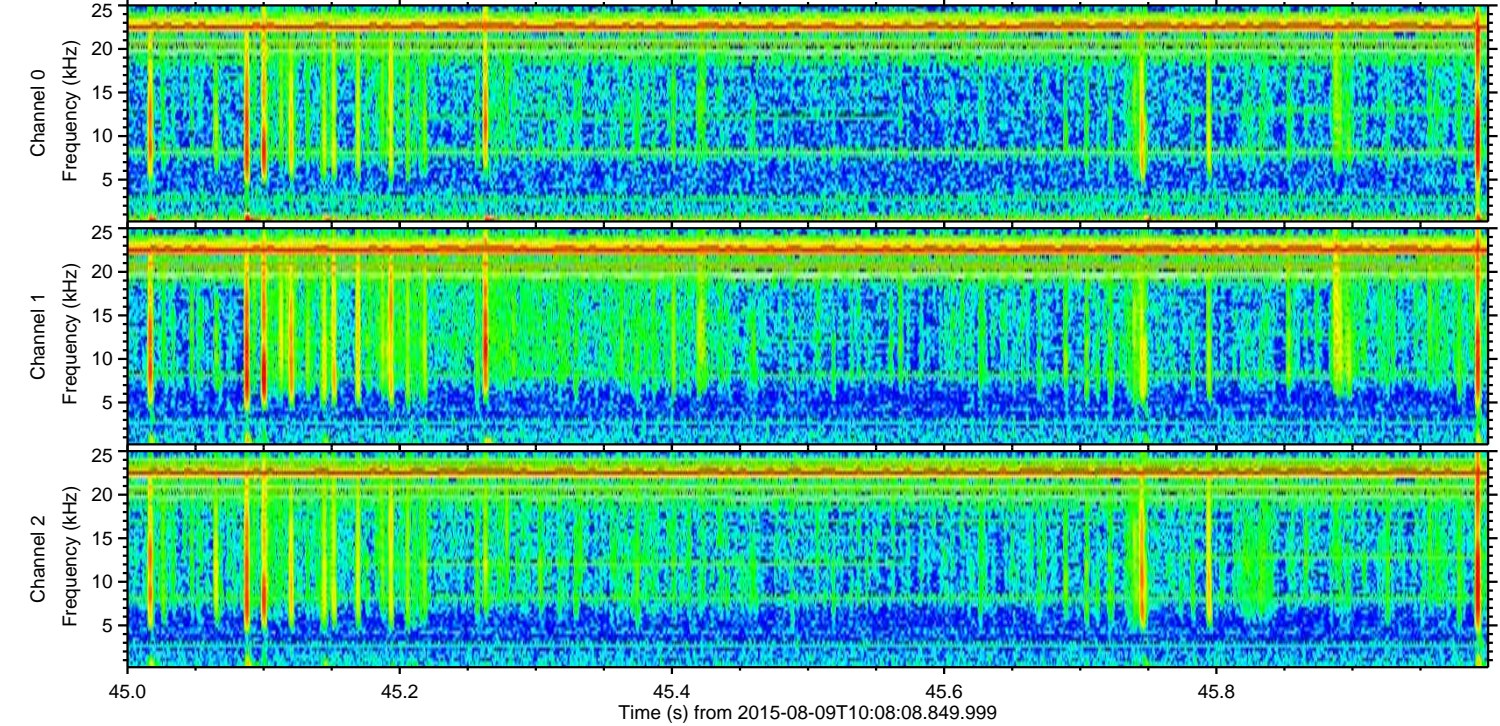
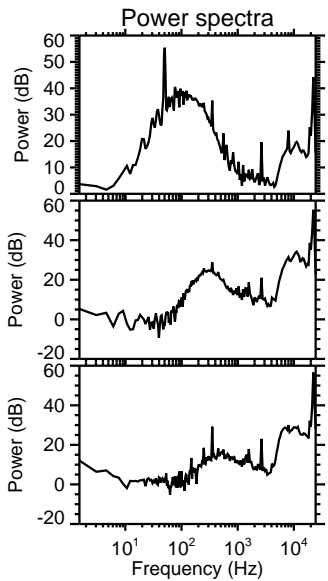
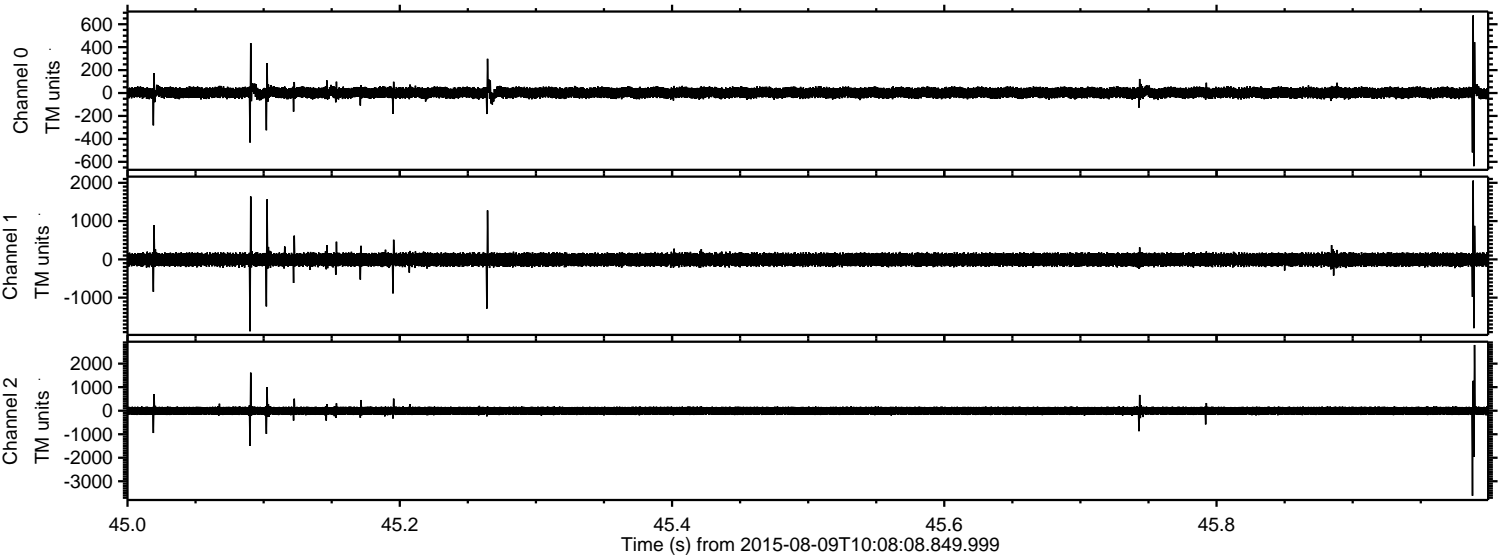


ELMAVAN 3D WAVEFORMS (Measured data sampled at 50 kHz) 51000 packets of 144 samples from 2015-08-09T10:08:08.849.999. Part 129/147

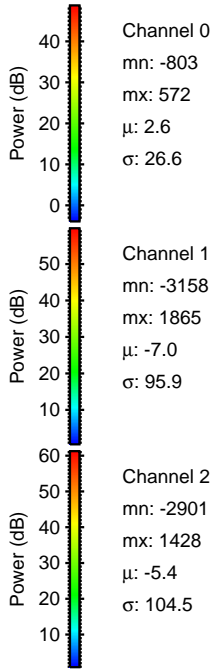
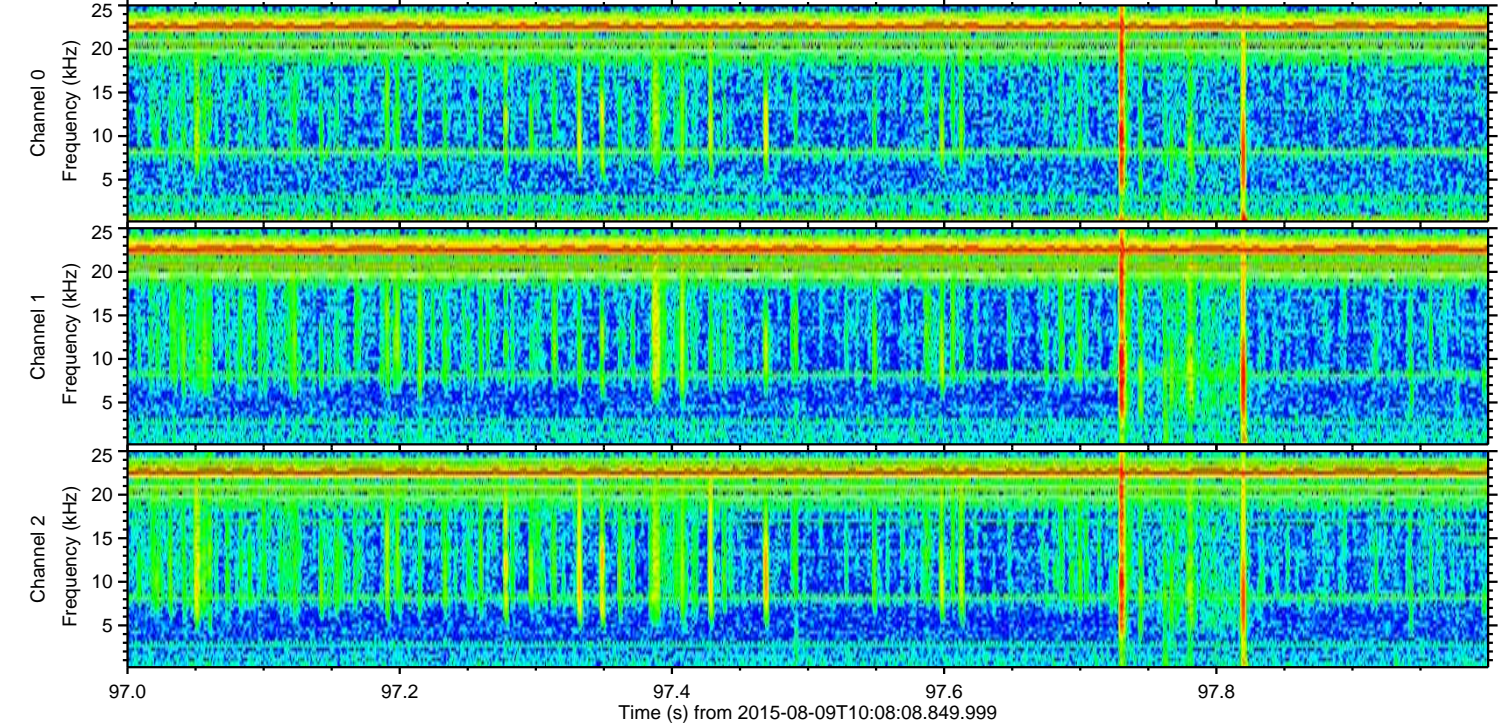
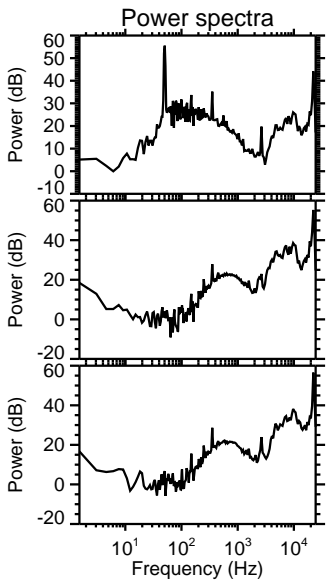
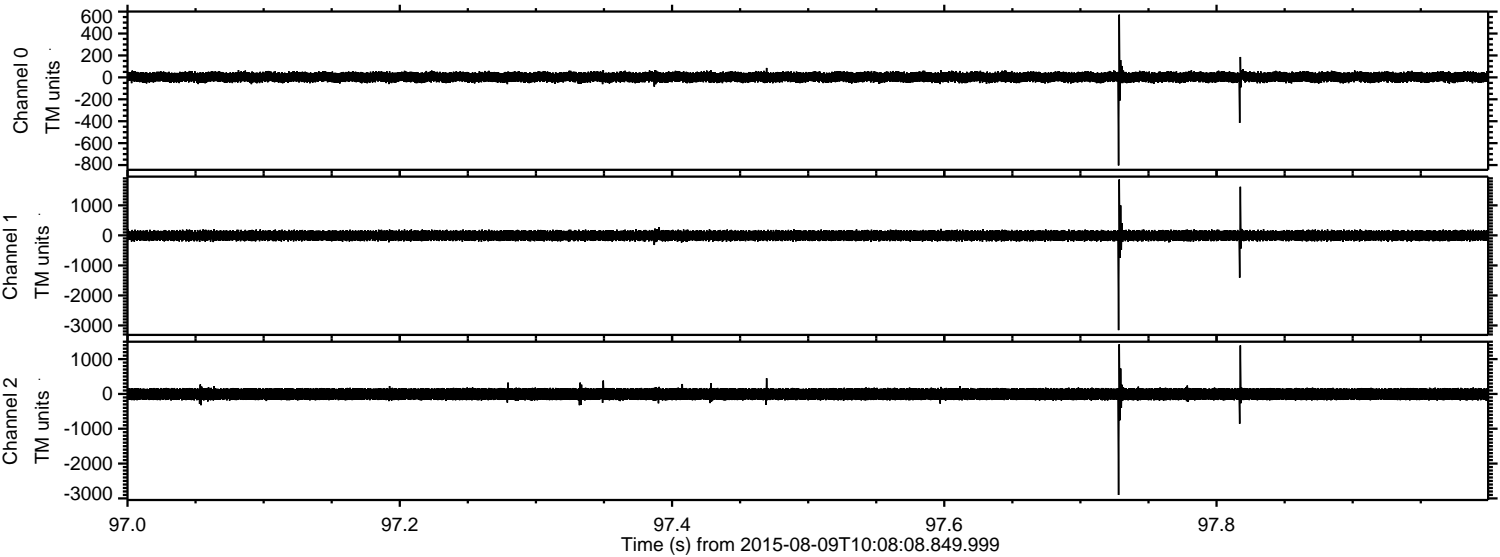
Processed Sun Aug 9 12:14:27 2015 by ELM ver.2012-10-06 from 001__elm20150809_100807__dat00.bin



Processed Sun Aug 9 12:14:28 2015 by ELM ver.2012-10-06 from 001__elm20150809_100807__dat00.bin

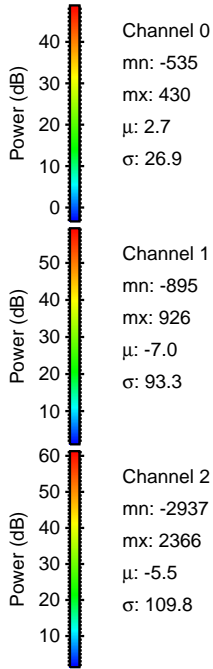
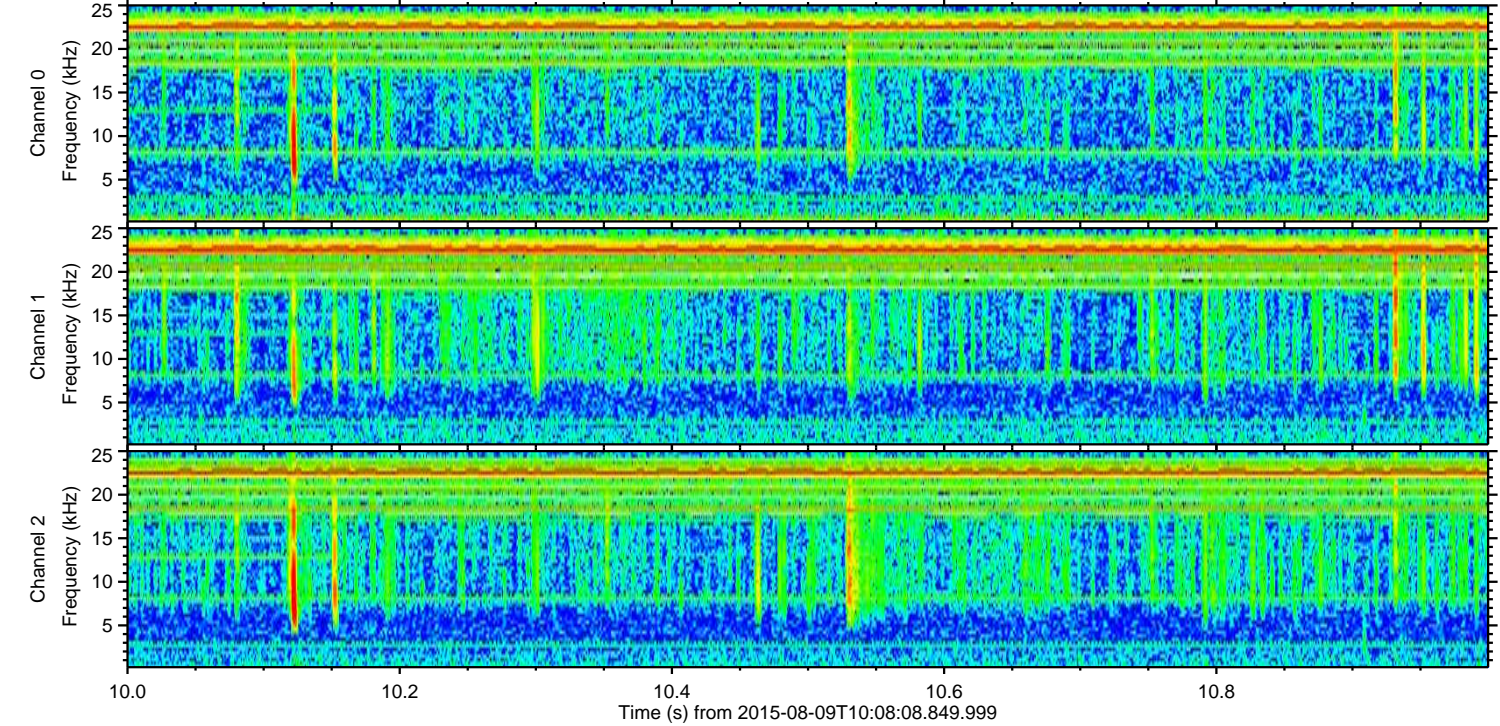
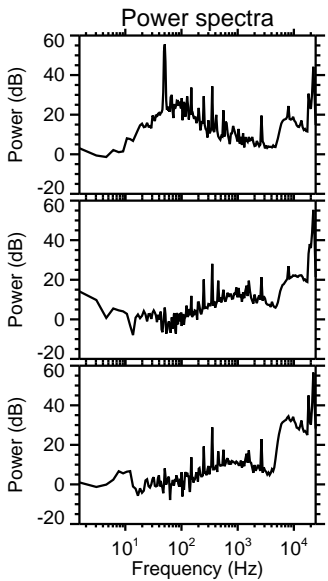
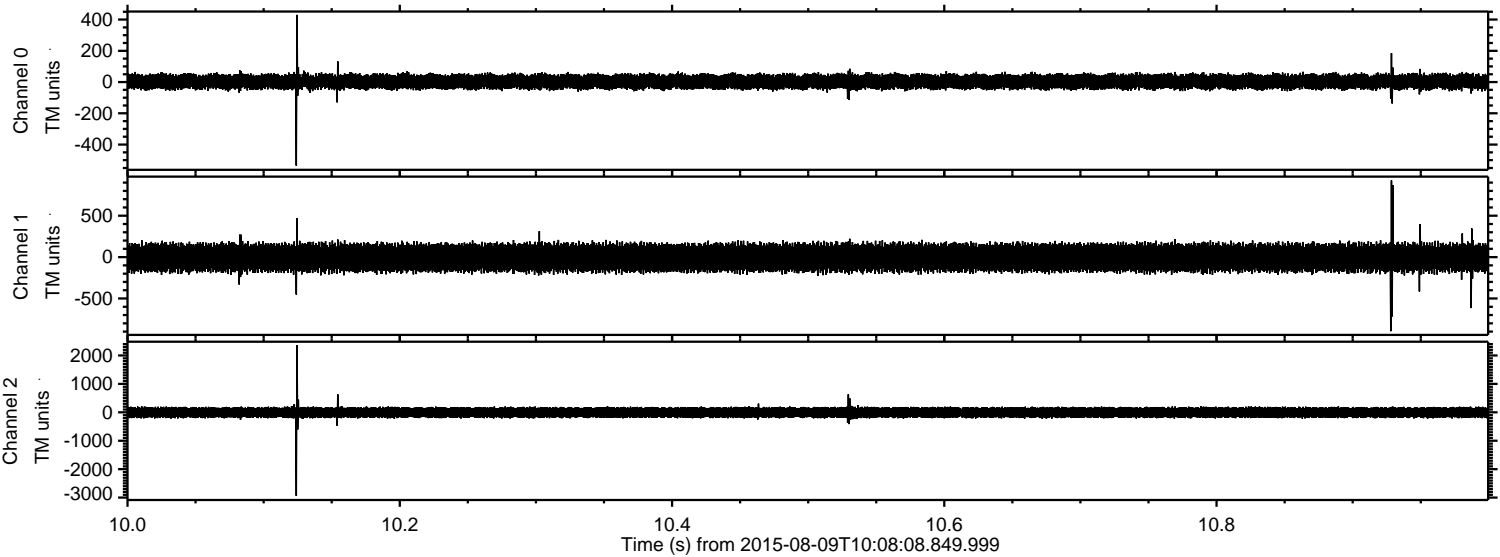


Processed Sun Aug 9 12:14:29 2015 by ELM ver.2012-10-06 from 001__elm20150809_100807__dat00.bin

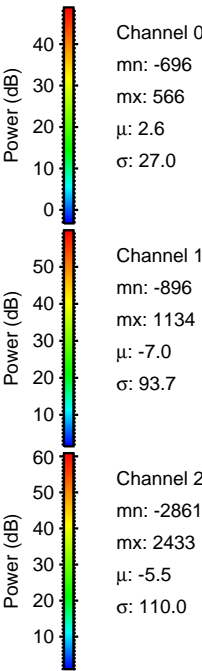
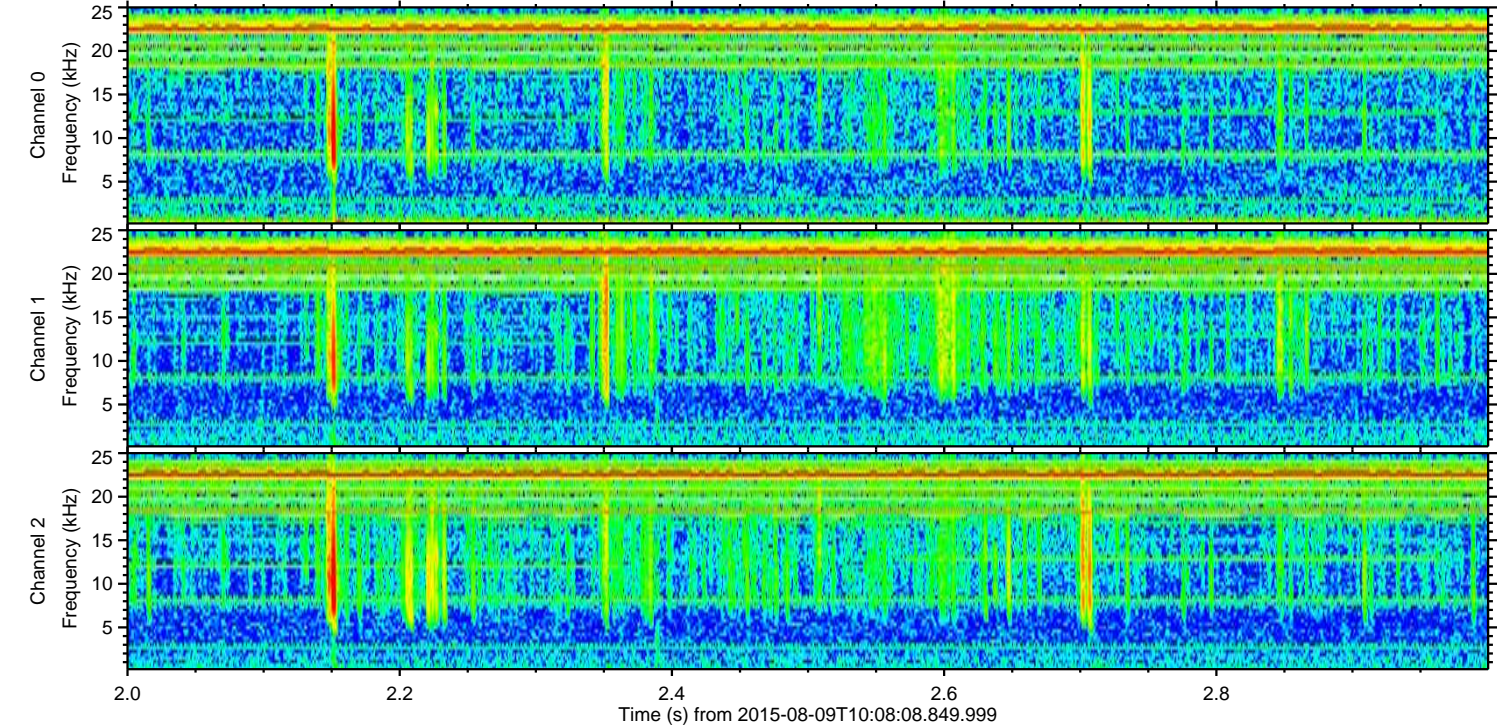
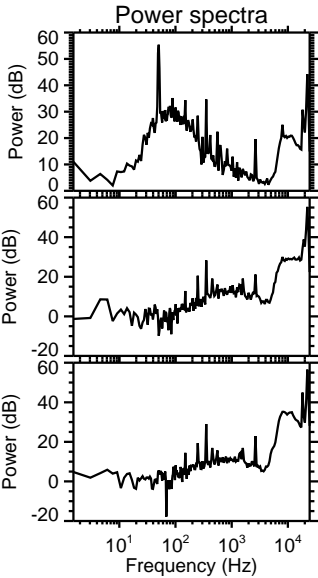
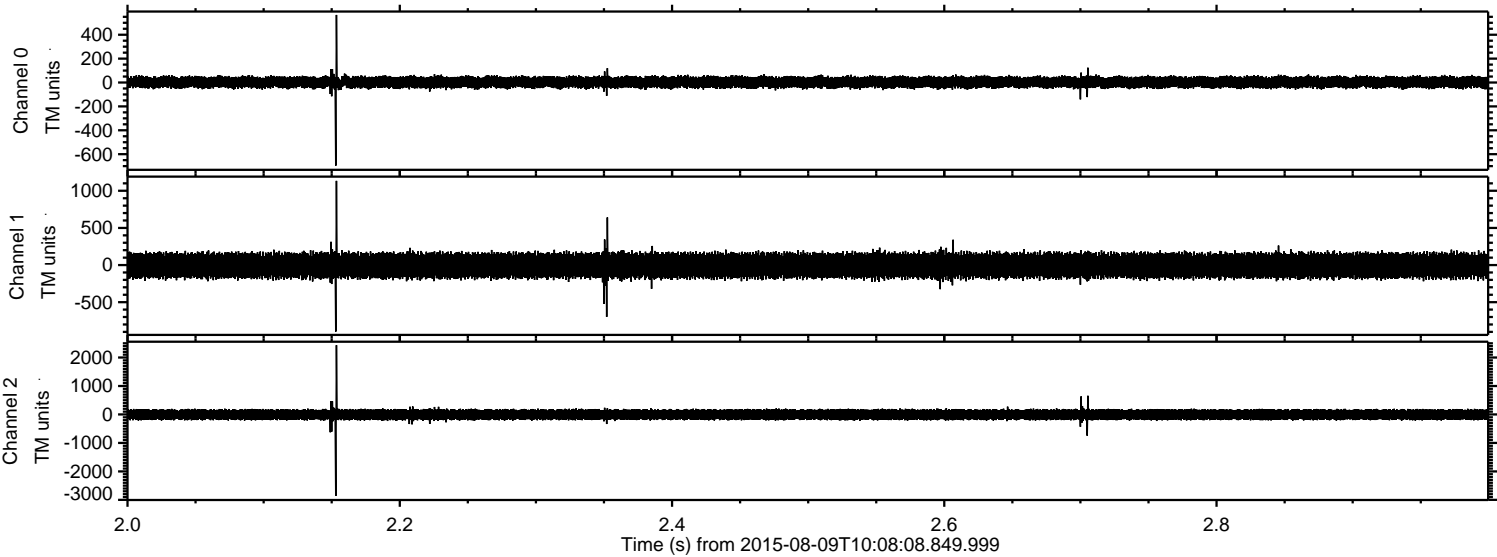


ELMAVAN 3D WAVEFORMS (Measured data sampled at 50 kHz) 51000 packets of 144 samples from 2015-08-09T10:08:08.849.999. Part 11/147

Processed Sun Aug 9 12:14:30 2015 by ELM ver.2012-10-06 from 001__elm20150809_100807__dat00.bin



Processed Sun Aug 9 12:14:31 2015 by ELM ver.2012-10-06 from 001__elm20150809_100807__dat00.bin

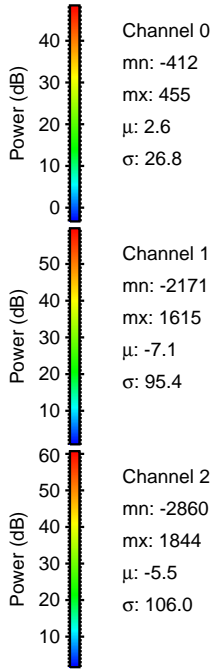
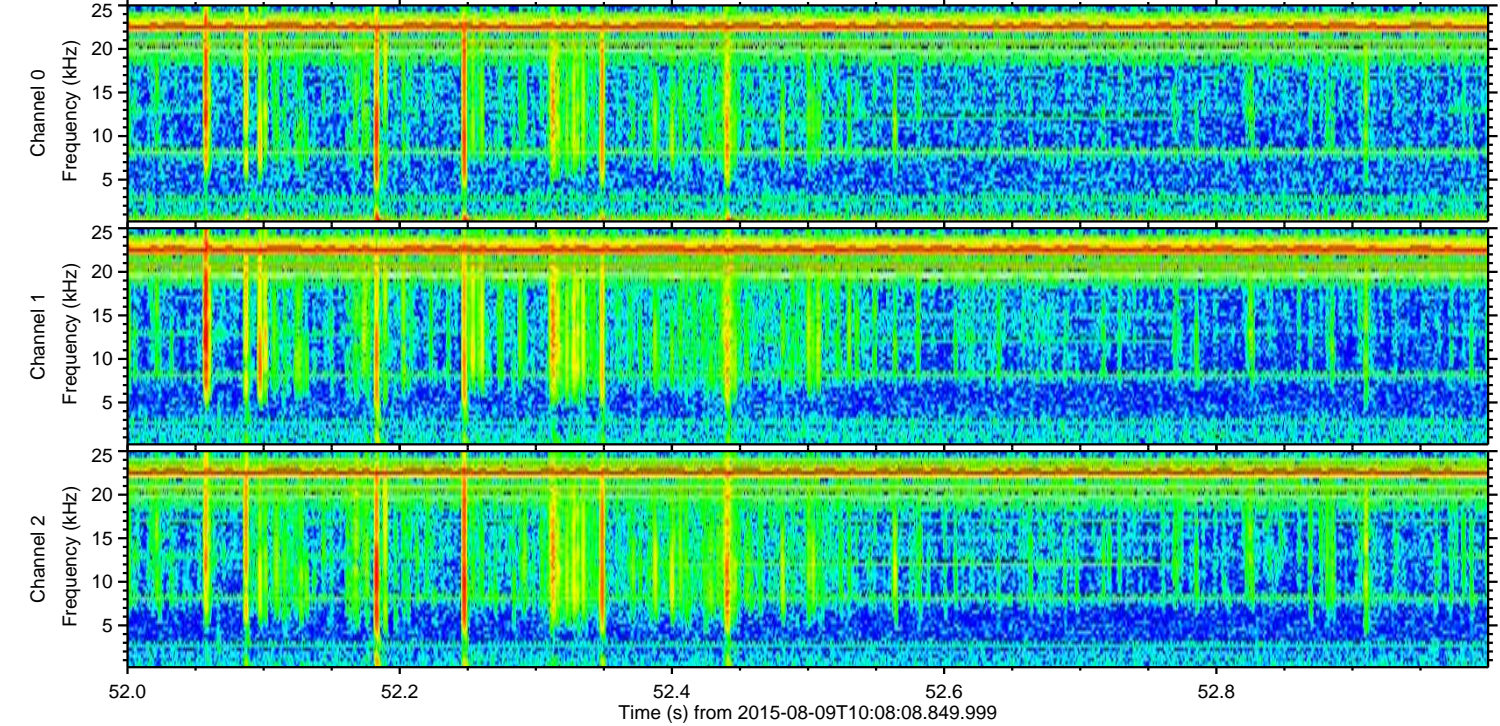
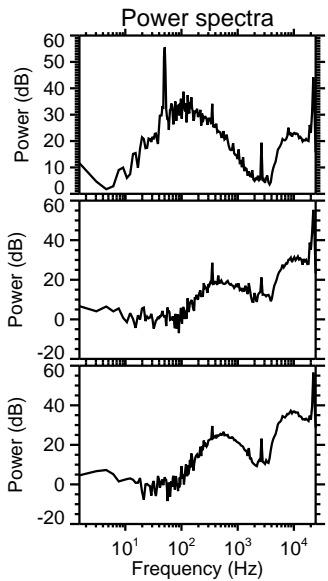
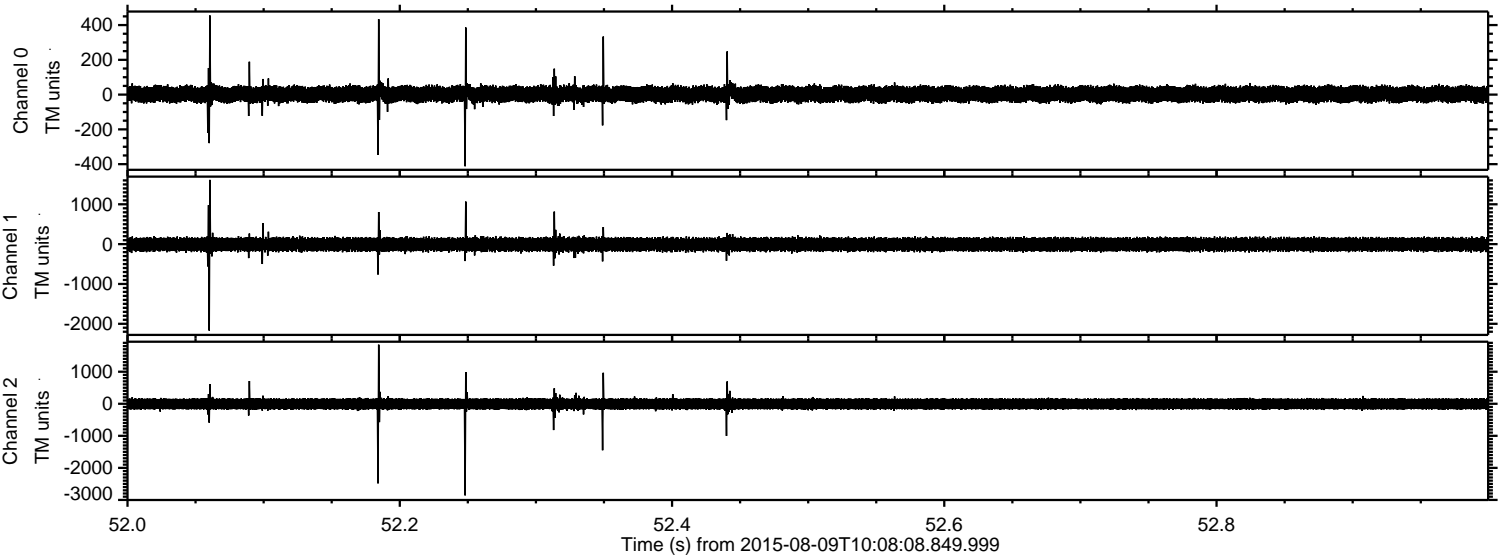


Channel 0
mn: -696
mx: 566
 μ : 2.6
 σ : 27.0

Channel 1
mn: -896
mx: 1134
 μ : -7.0
 σ : 93.7

Channel 2
mn: -2861
mx: 2433
 μ : -5.5
 σ : 110.0

Processed Sun Aug 9 12:14:32 2015 by ELM ver.2012-10-06 from 001__elm20150809_100807__dat00.bin

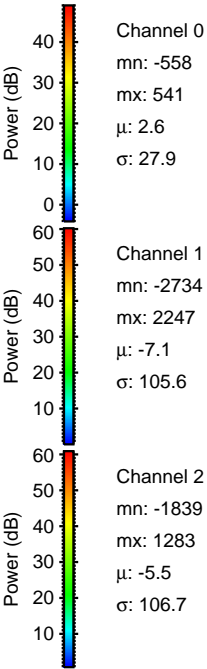
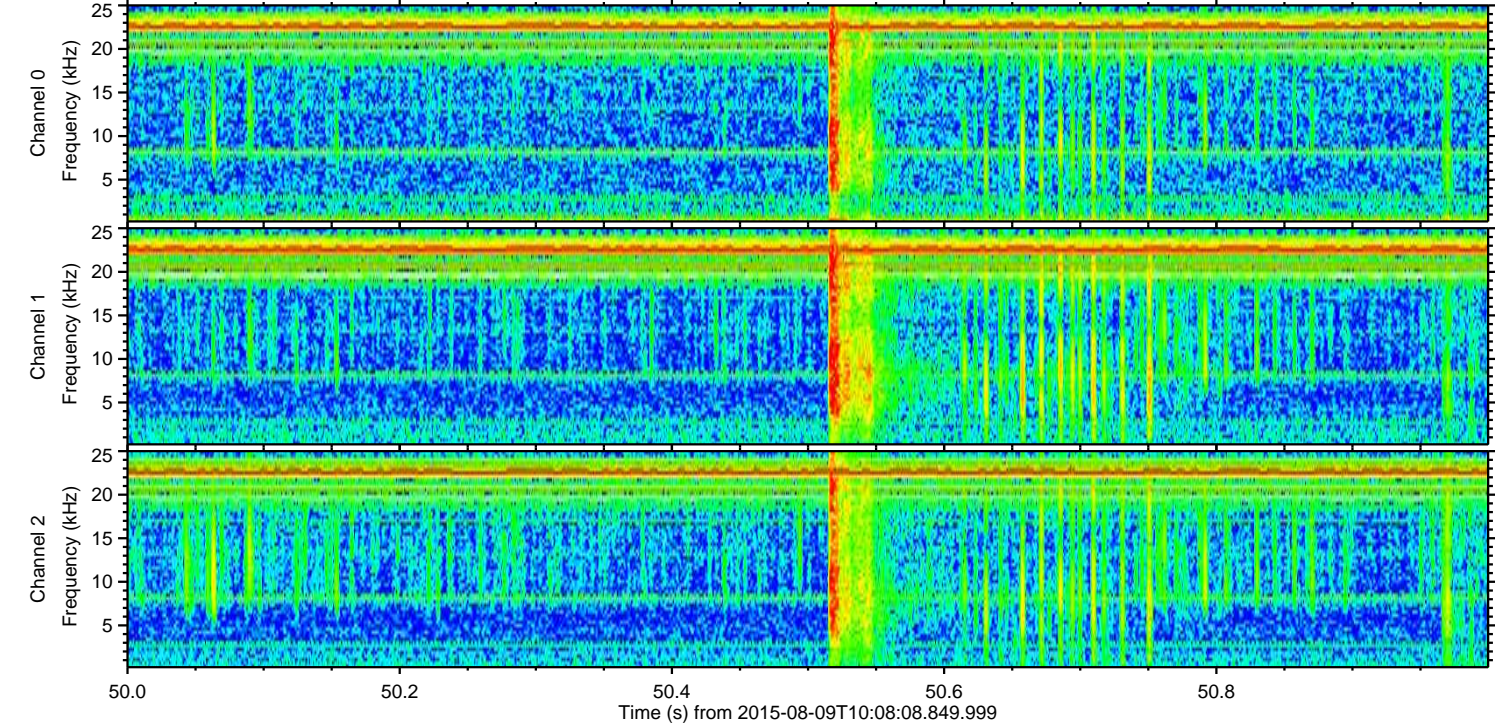
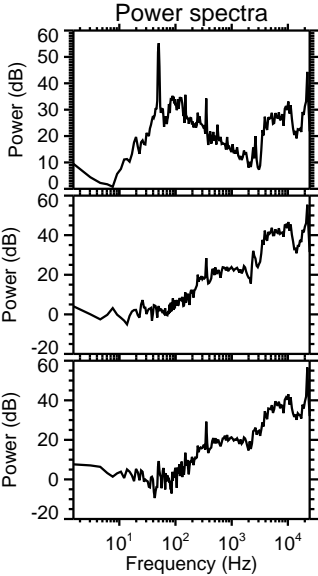
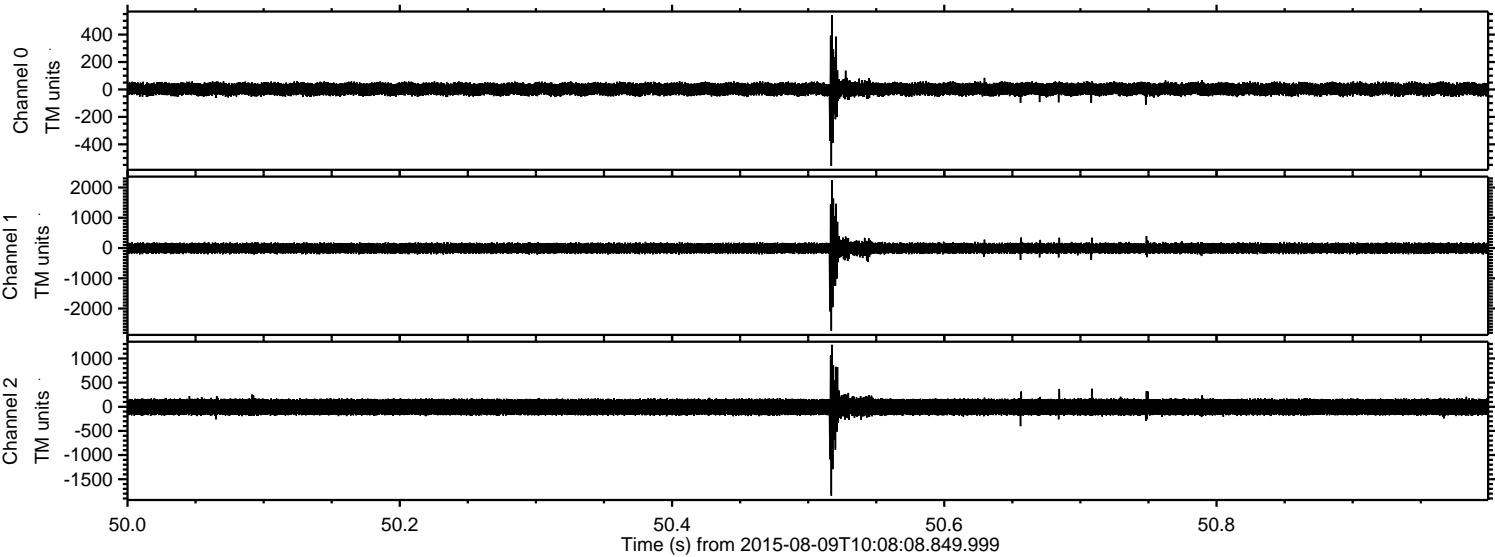


Channel 0
mn: -412
mx: 455
 μ : 2.6
 σ : 26.8

Channel 1
mn: -2171
mx: 1615
 μ : -7.1
 σ : 95.4

Channel 2
mn: -2860
mx: 1844
 μ : -5.5
 σ : 106.0

Processed Sun Aug 9 12:14:33 2015 by ELM ver.2012-10-06 from 001__elm20150809_100807__dat00.bin



Processed Sun Aug 9 12:14:34 2015 by ELM ver.2012-10-06 from 001__elm20150809_100807__dat00.bin

