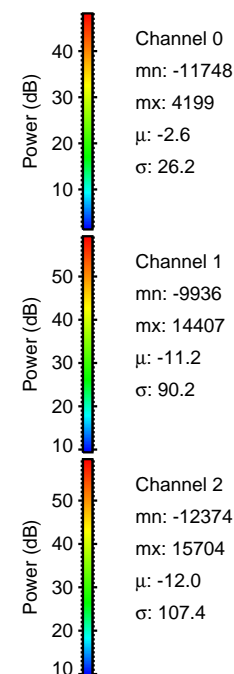
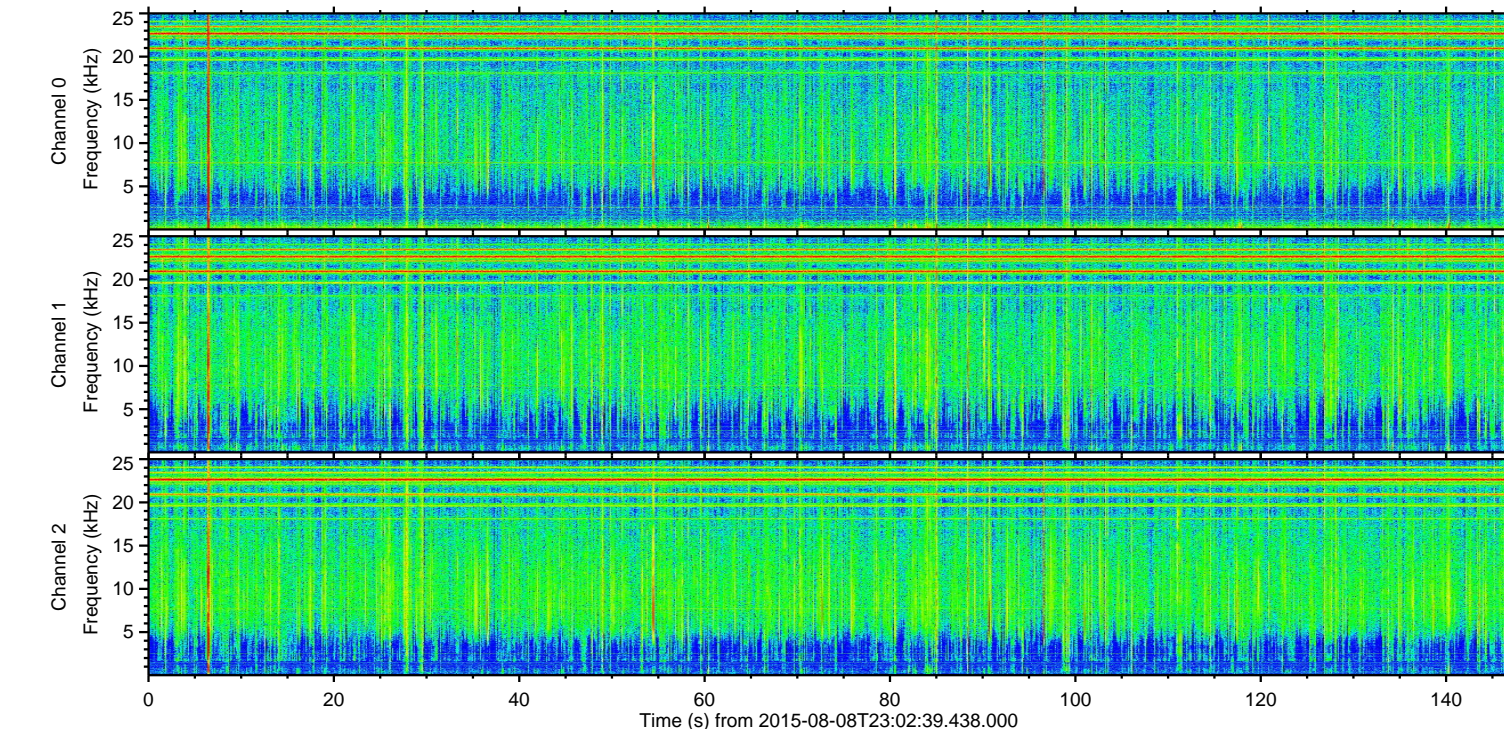
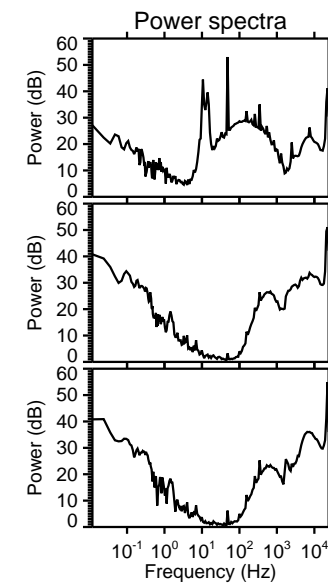
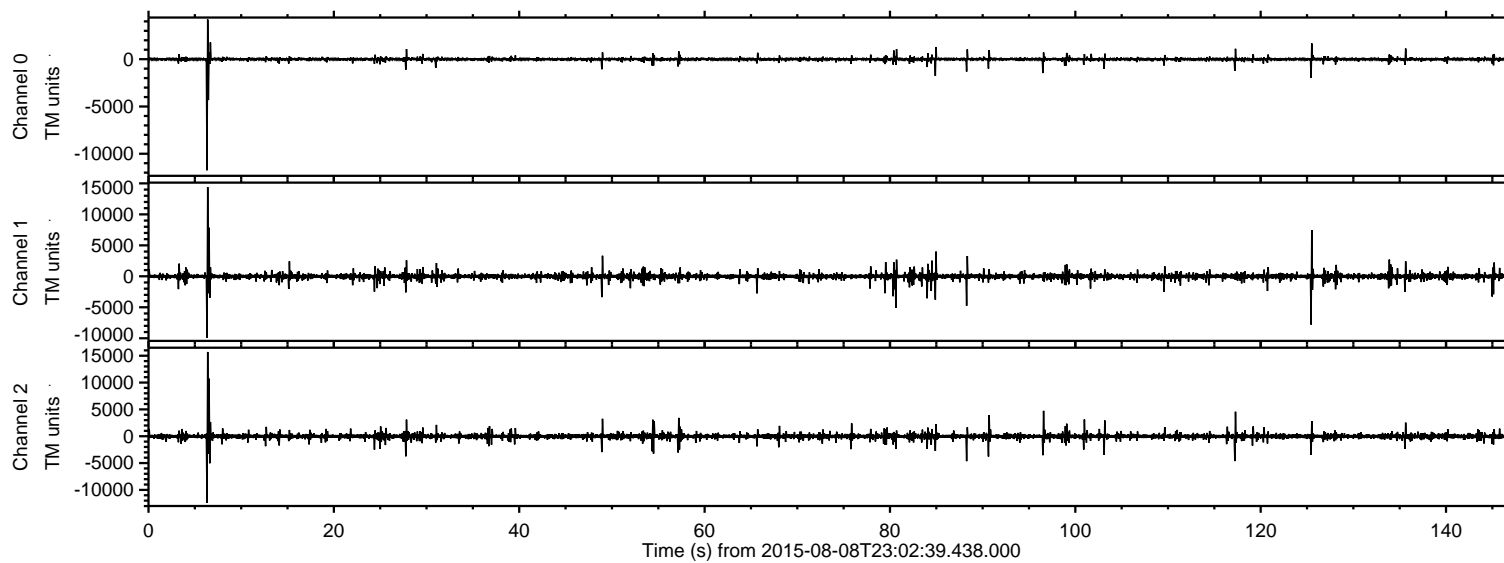
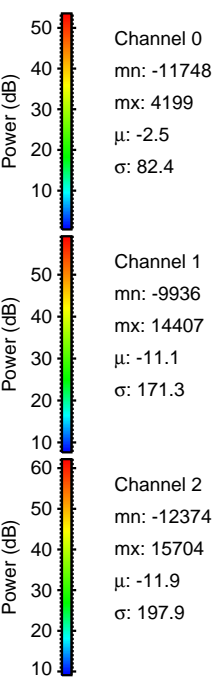
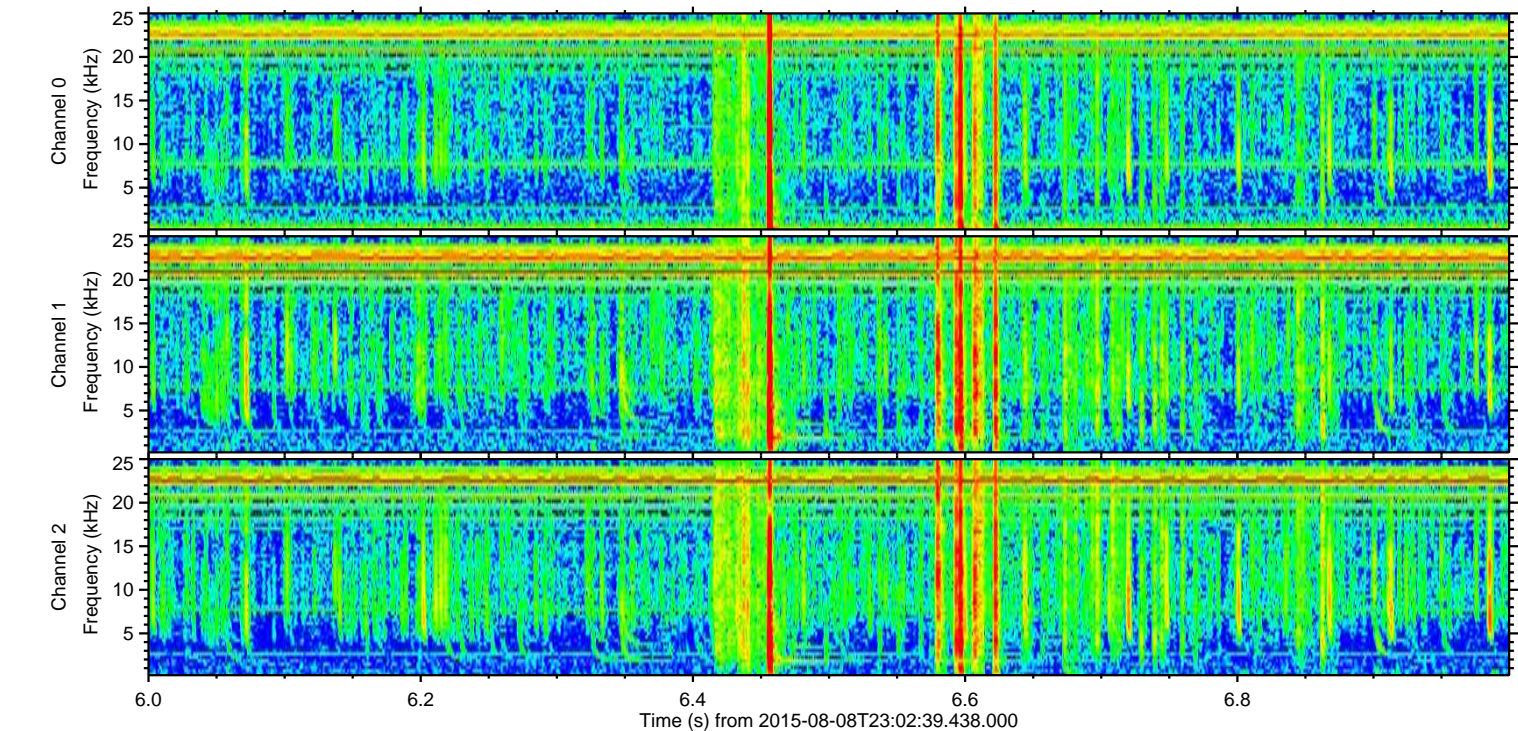
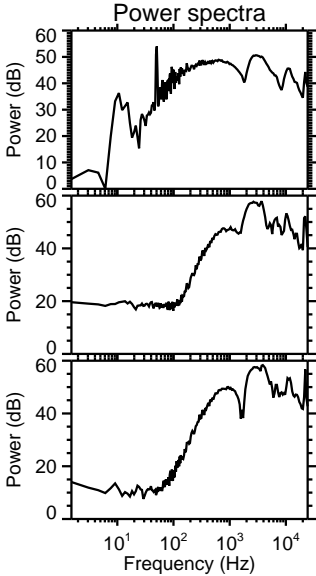
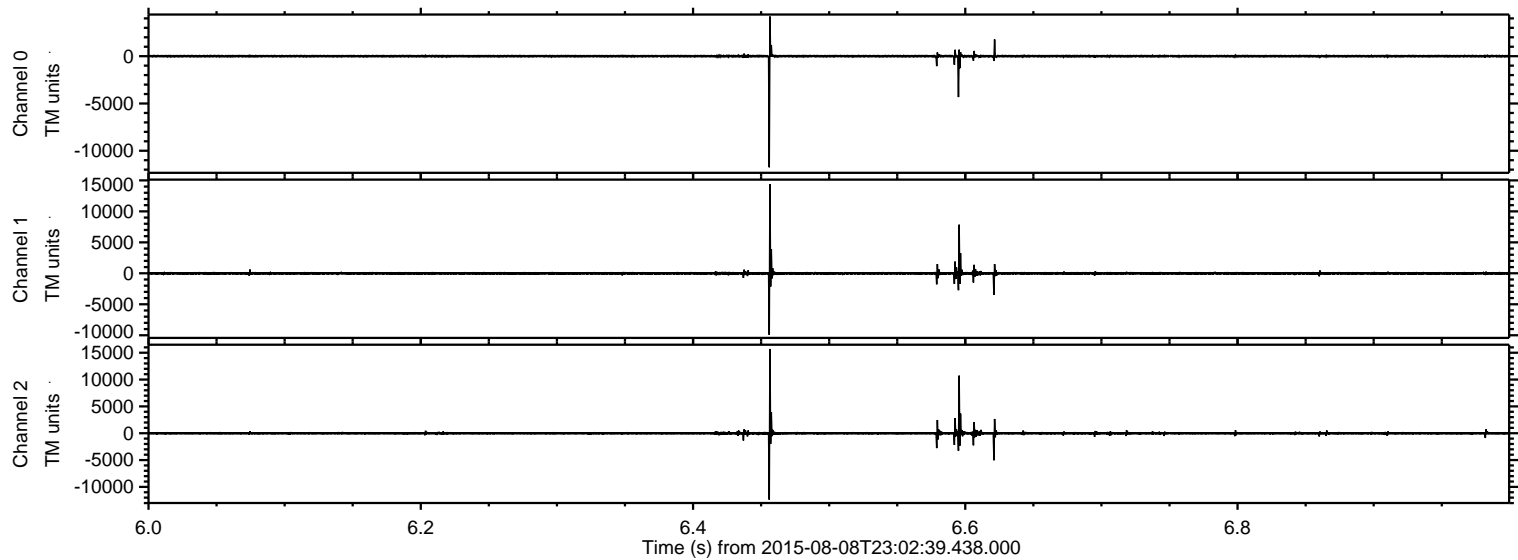


ELMAVAN 3D WAVEFORMS (Measured data sampled at 50 kHz) 51000 packets of 144 samples from 2015-08-08T23:02:39.438.000.

Processed Sun Aug 9 01:08:36 2015 by ELM ver.2012-10-06 from 001__elm20150808_230238__dat00.bin

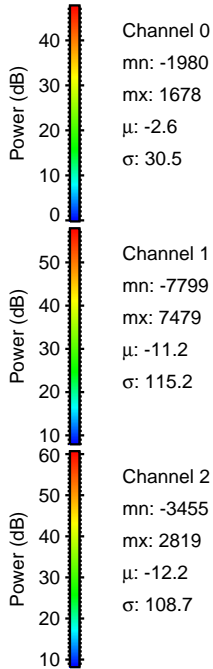
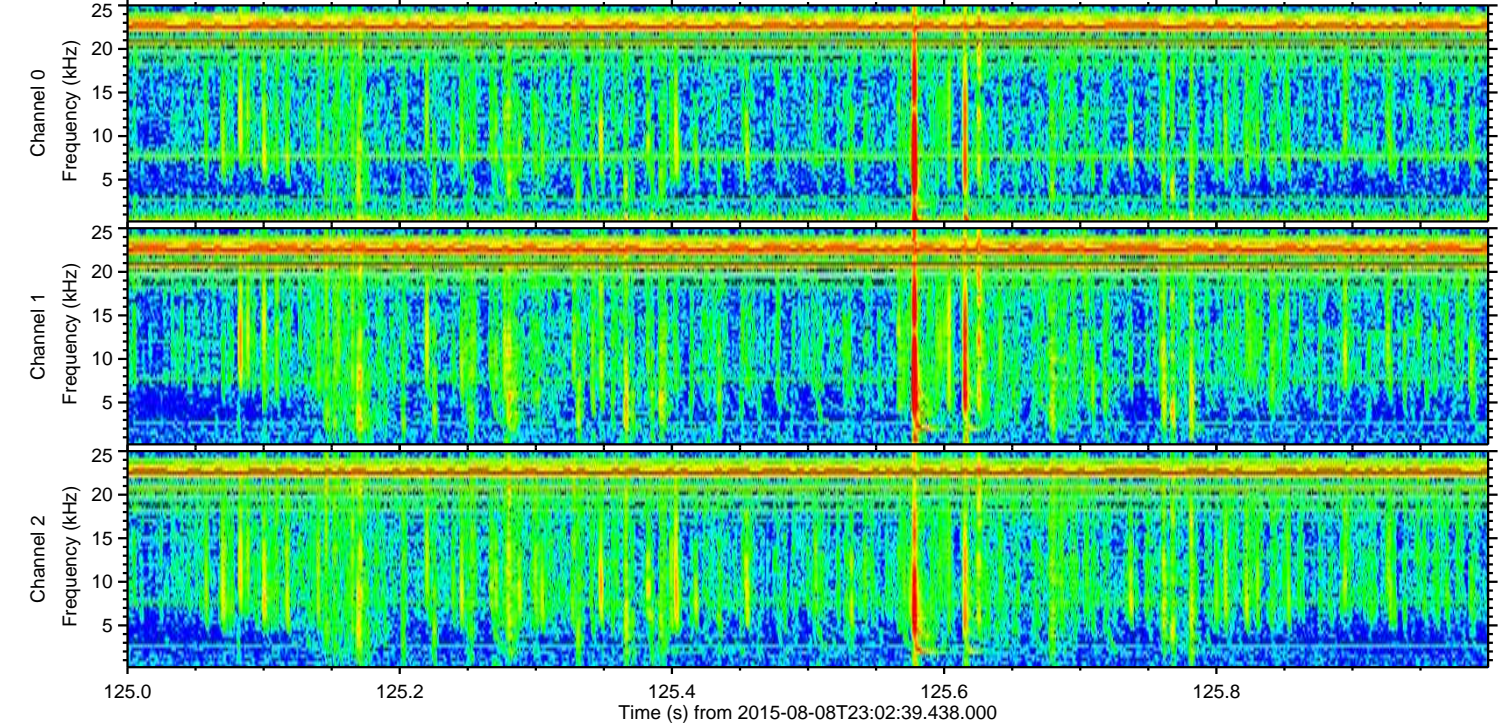
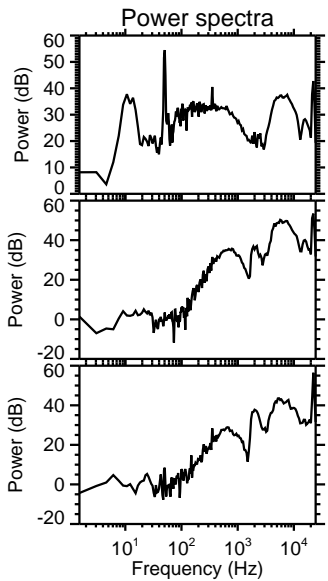
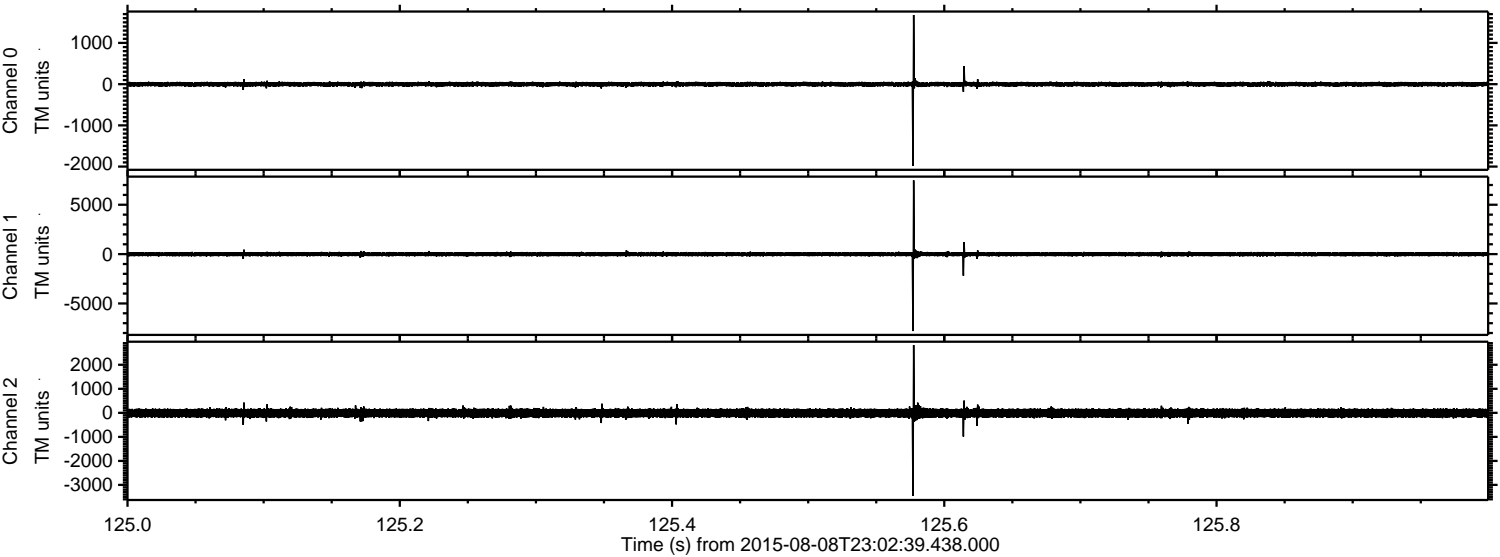


Processed Sun Aug 9 01:08:48 2015 by ELM ver.2012-10-06 from 001__elm20150808_230238__dat00.bin

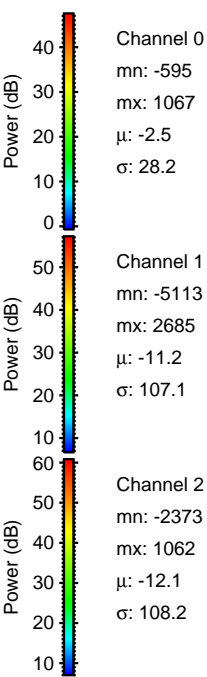
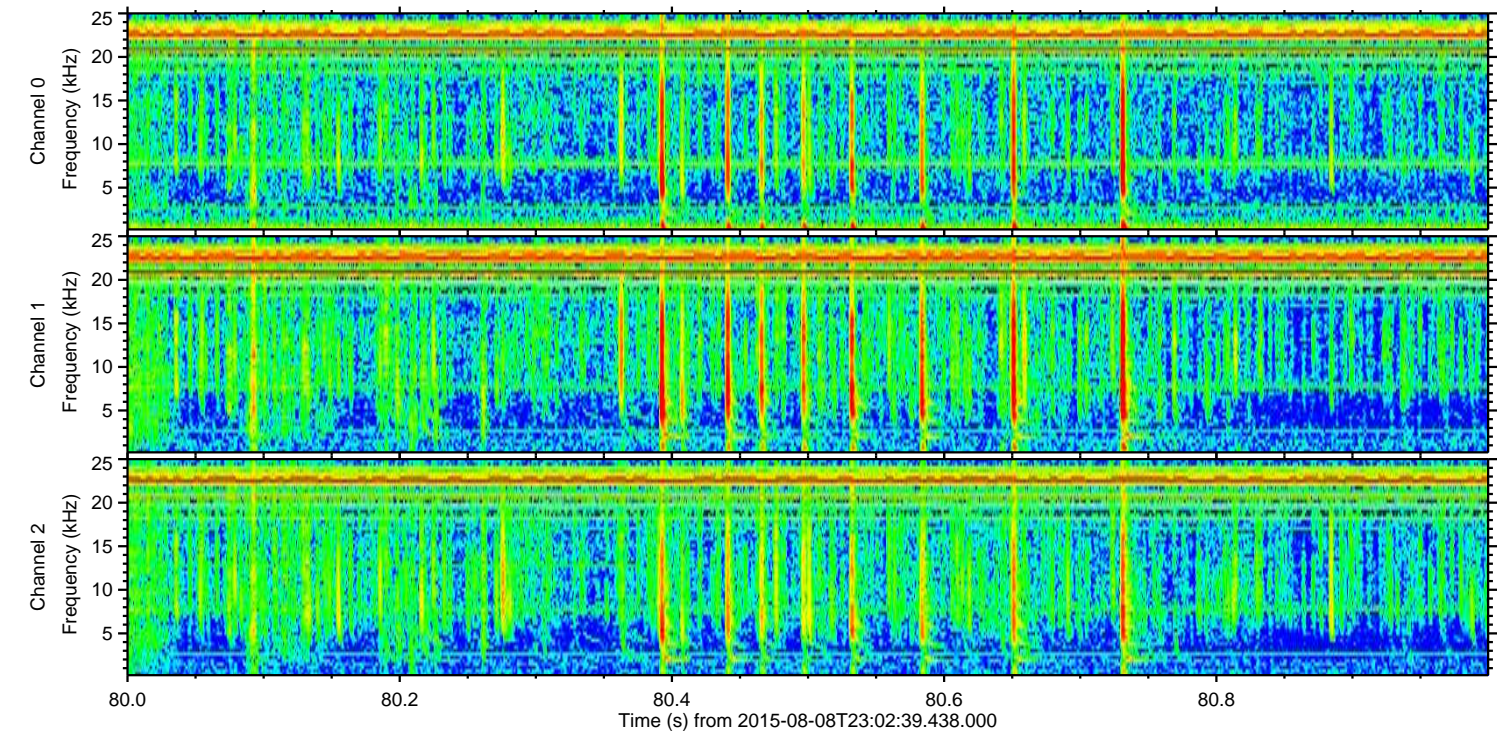
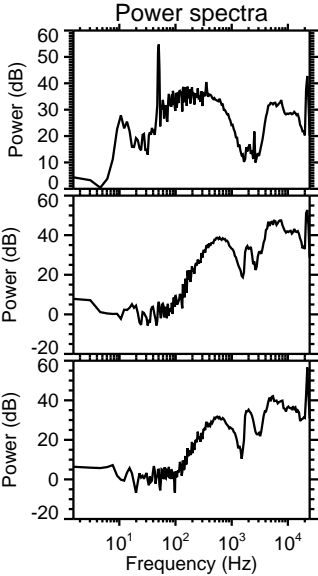
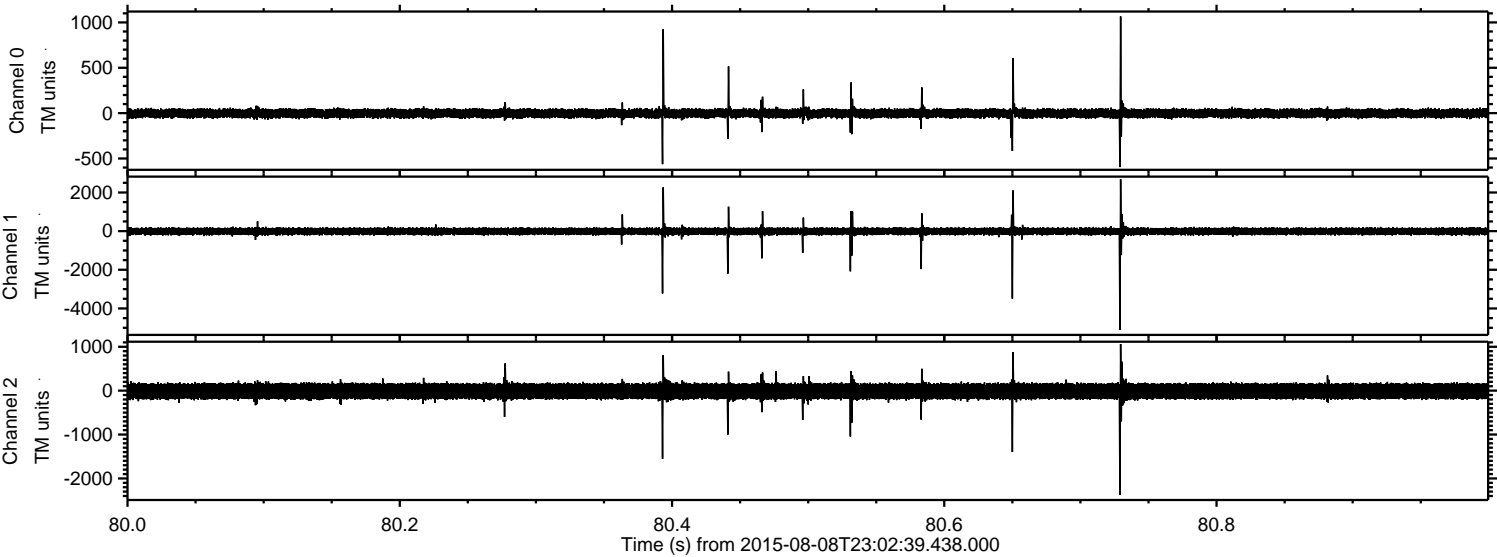


ELMAVAN 3D WAVEFORMS (Measured data sampled at 50 kHz) 51000 packets of 144 samples from 2015-08-08T23:02:39.438.000. Part 126/147

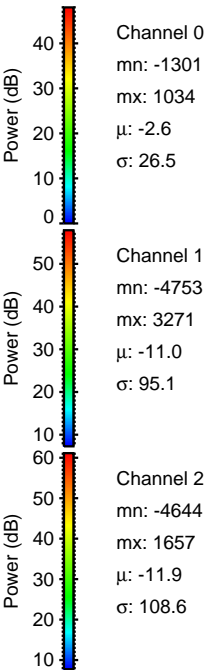
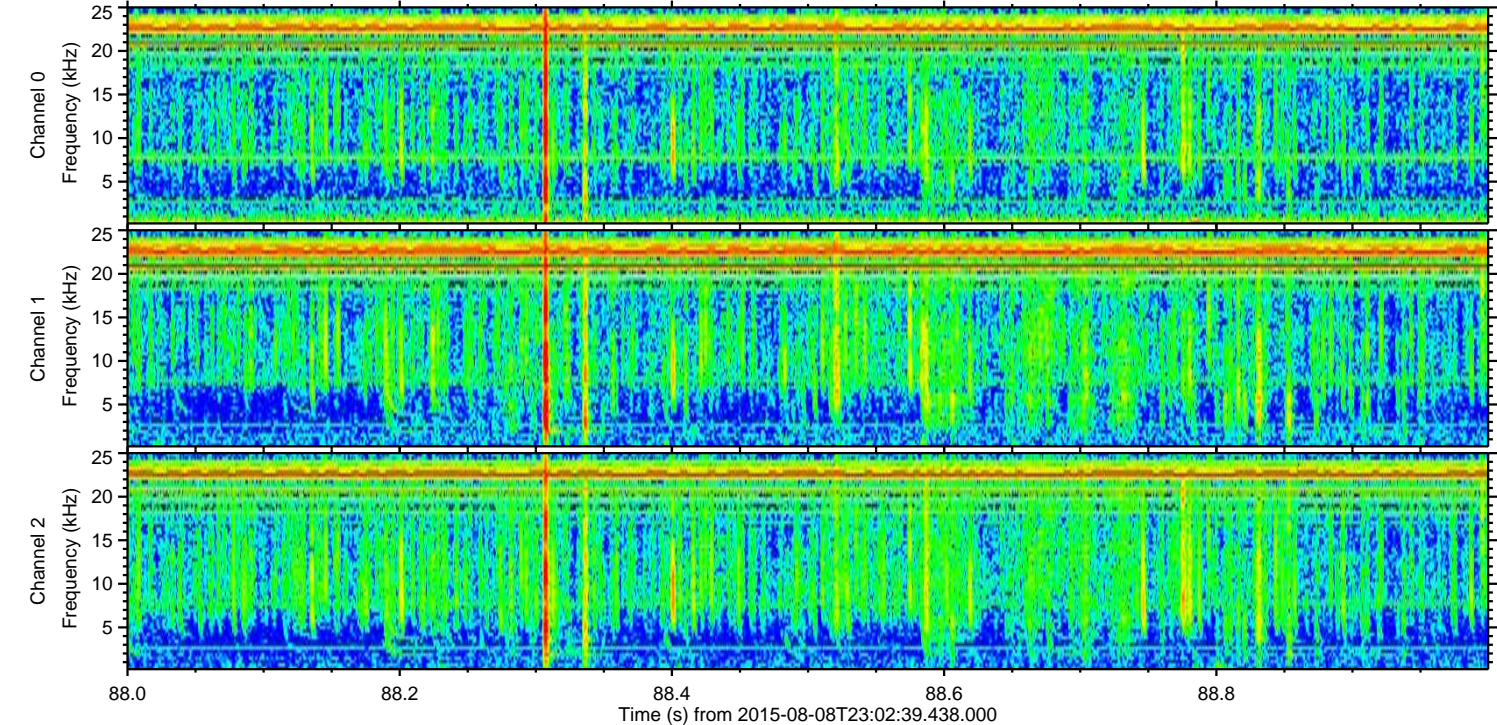
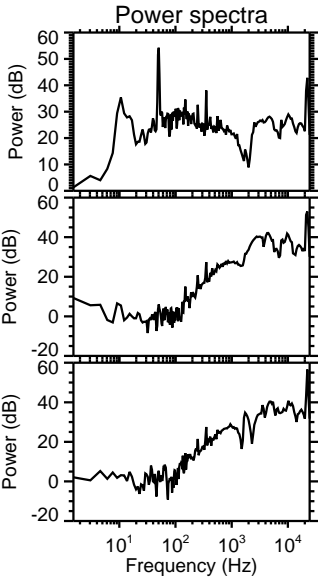
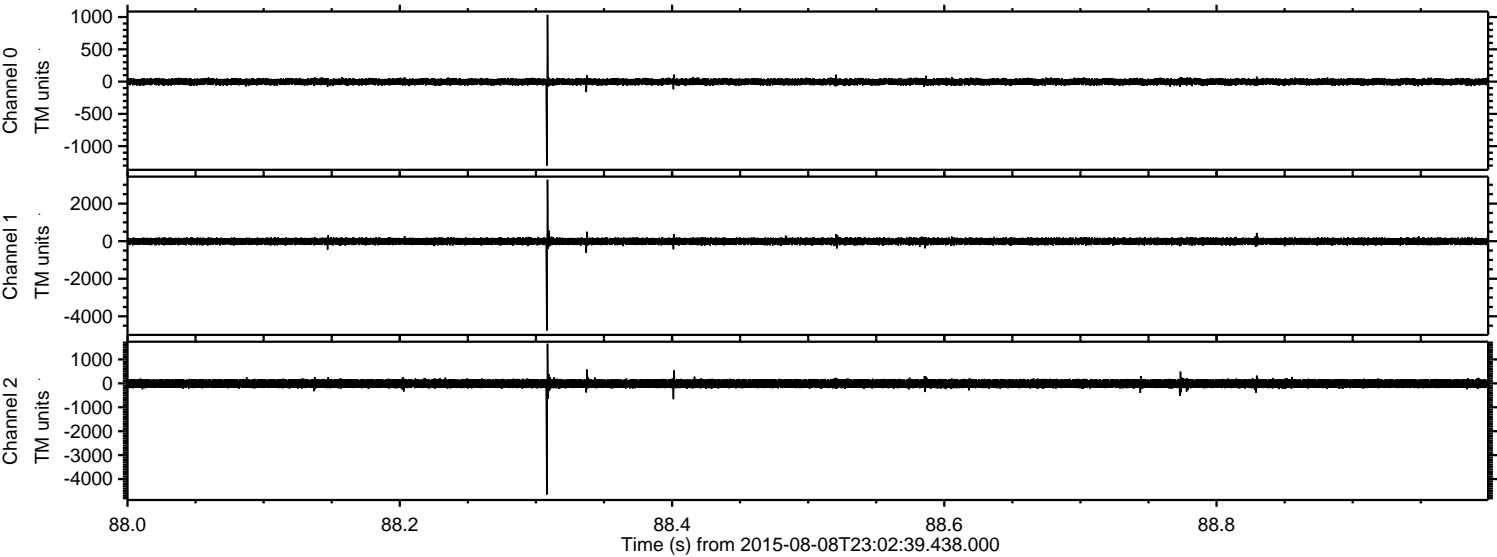
Processed Sun Aug 9 01:08:48 2015 by ELM ver.2012-10-06 from 001__elm20150808_230238__dat00.bin



Processed Sun Aug 9 01:08:49 2015 by ELM ver.2012-10-06 from 001__elm20150808_230238__dat00.bin

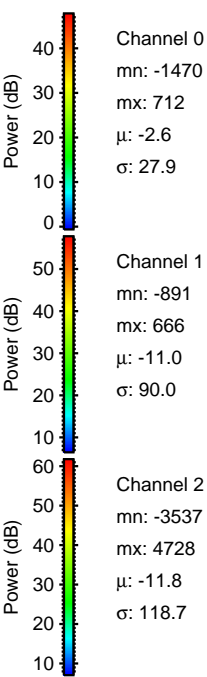
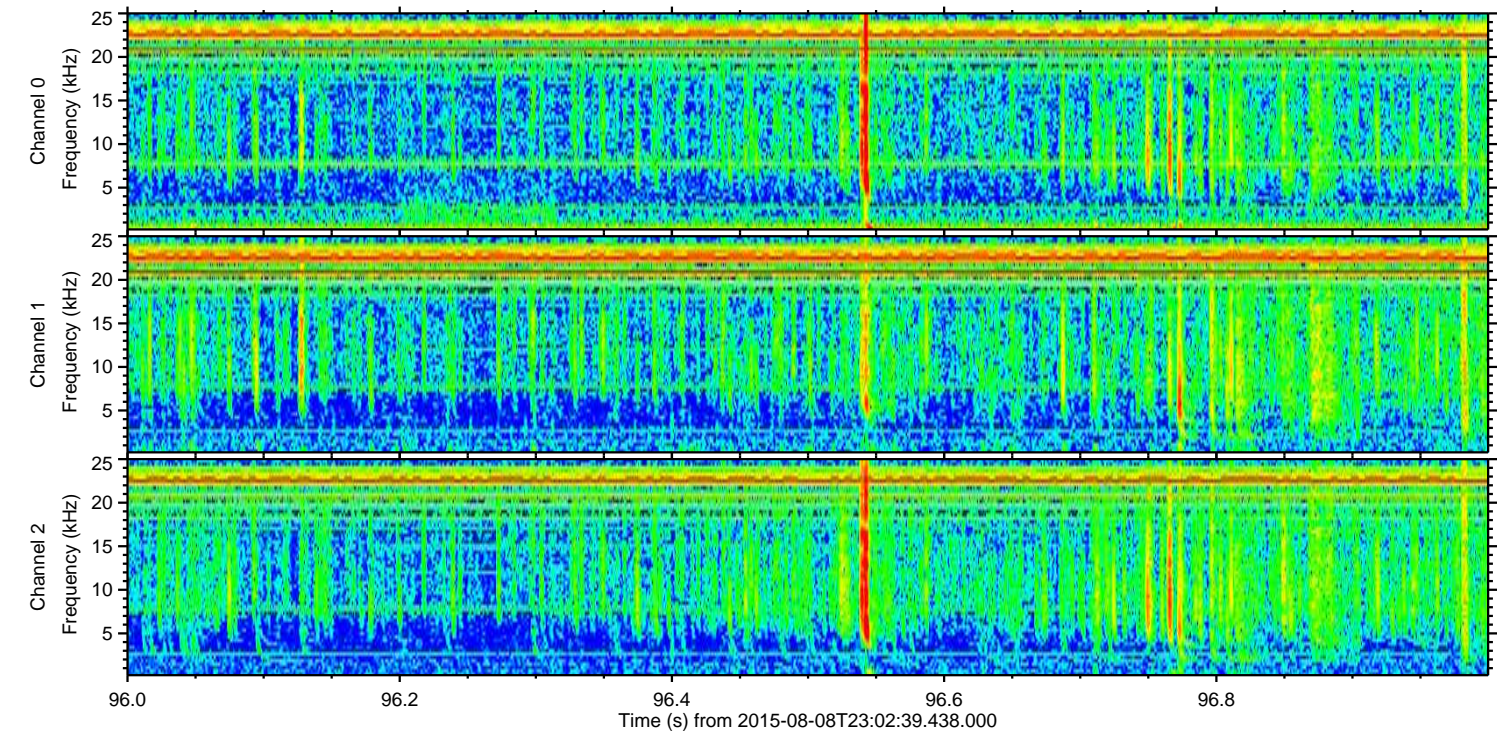
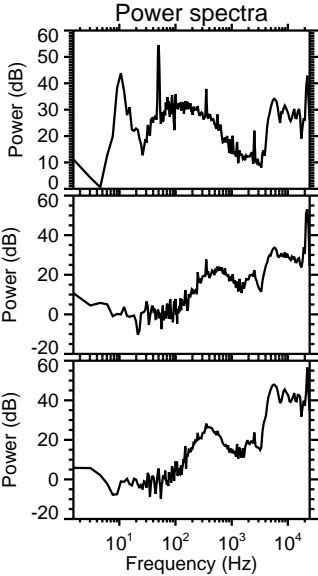
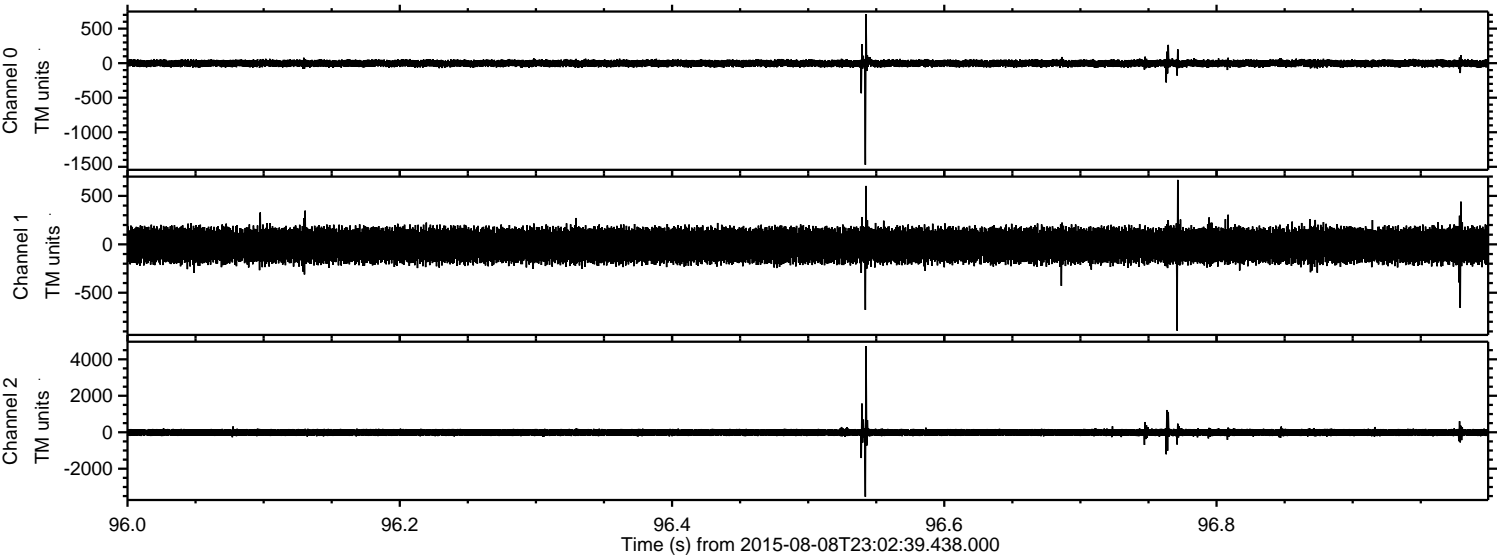


Processed Sun Aug 9 01:08:50 2015 by ELM ver.2012-10-06 from 001__elm20150808_230238__dat00.bin



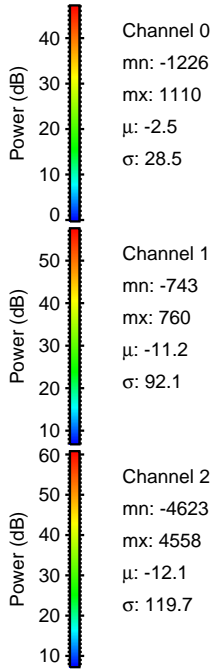
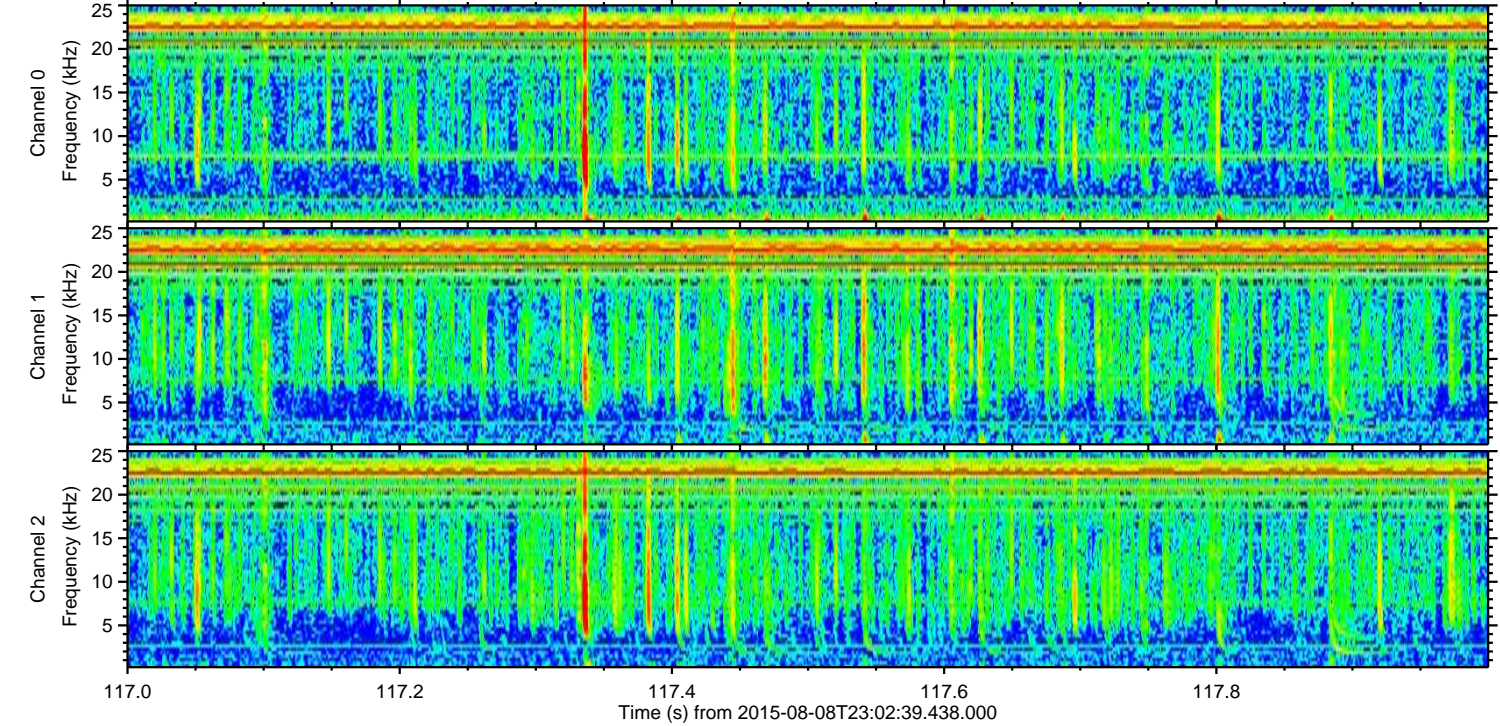
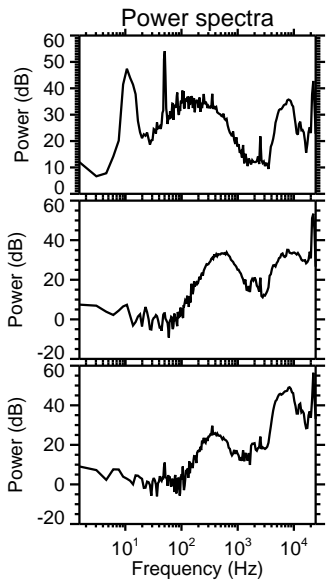
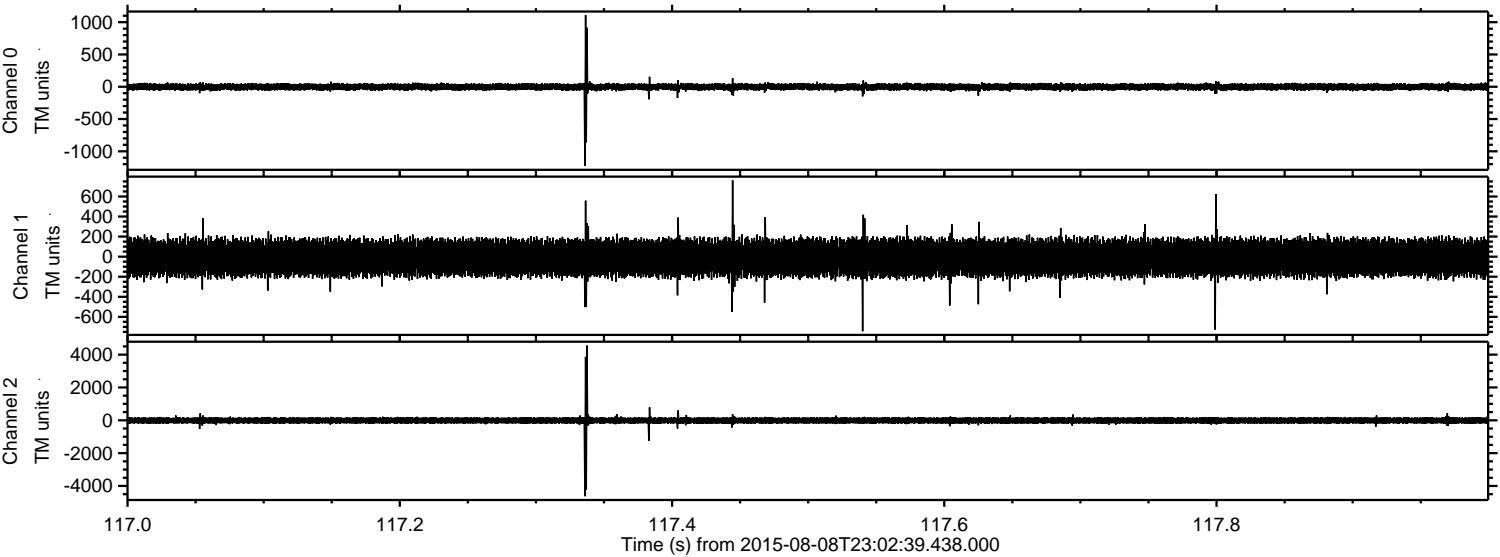
ELMAVAN 3D WAVEFORMS (Measured data sampled at 50 kHz) 51000 packets of 144 samples from 2015-08-08T23:02:39.438.000. Part 97/147

Processed Sun Aug 9 01:08:51 2015 by ELM ver.2012-10-06 from 001__elm20150808_230238__dat00.bin

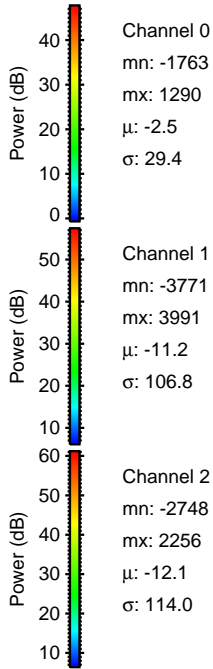
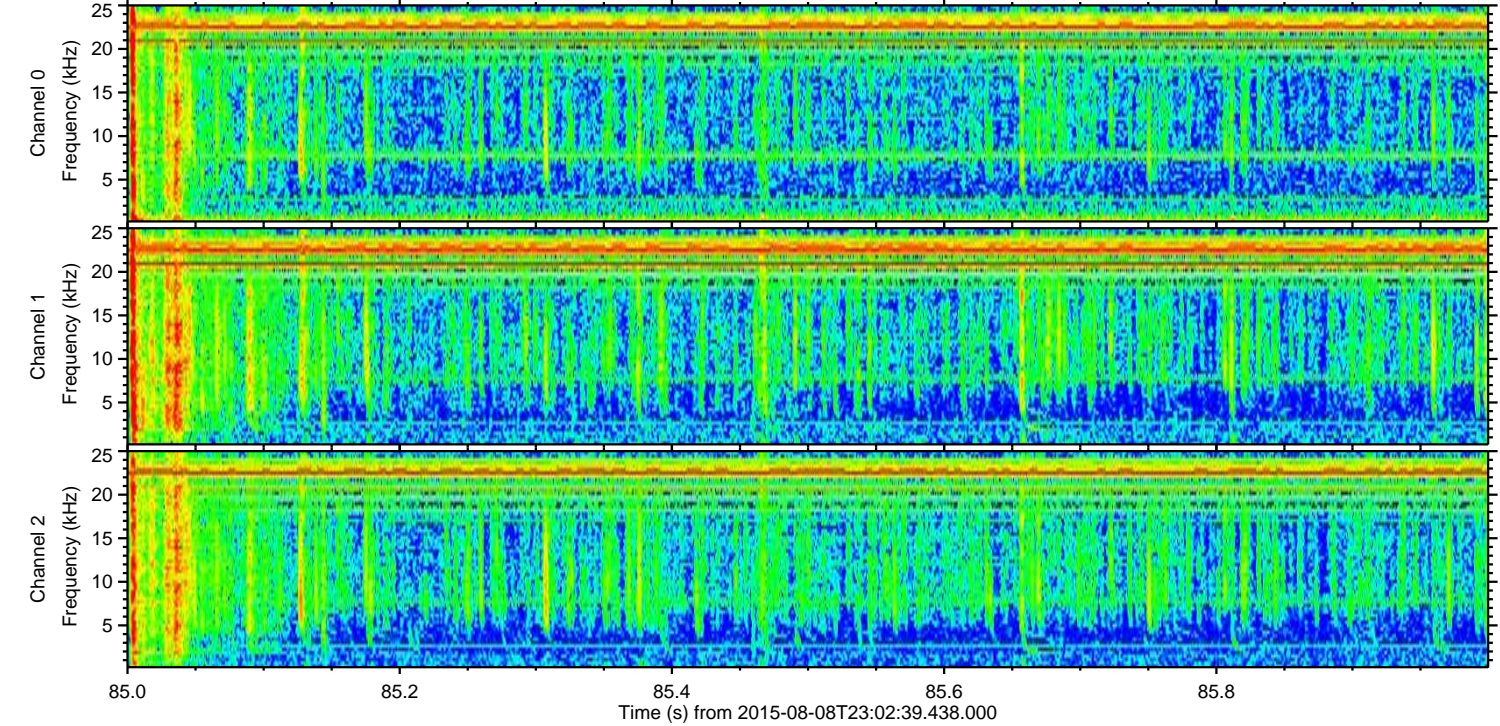
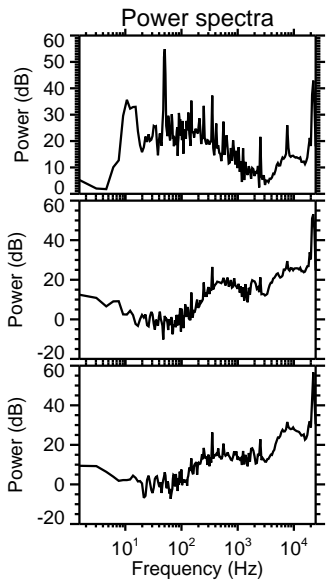
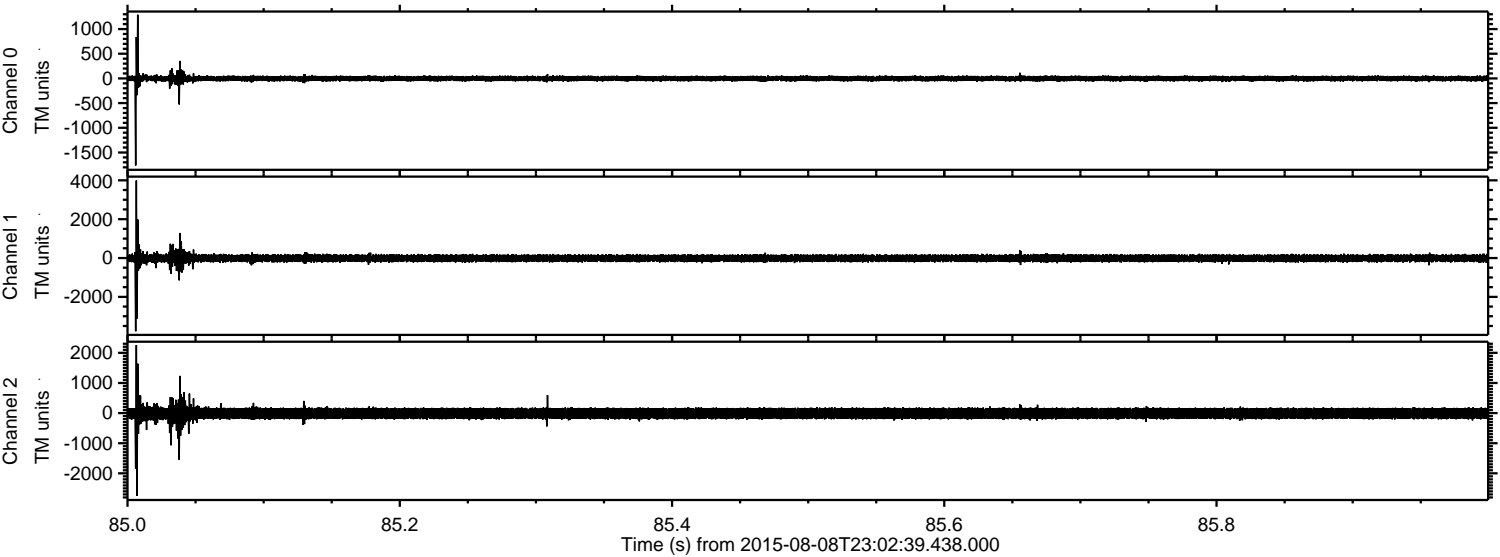


ELMAVAN 3D WAVEFORMS (Measured data sampled at 50 kHz) 51000 packets of 144 samples from 2015-08-08T23:02:39.438.000. Part 118/147

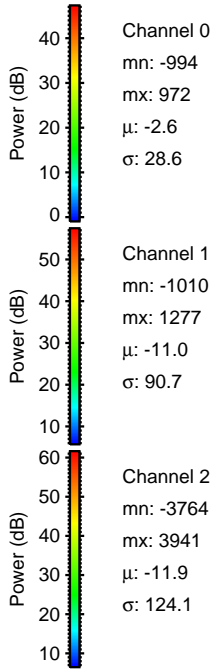
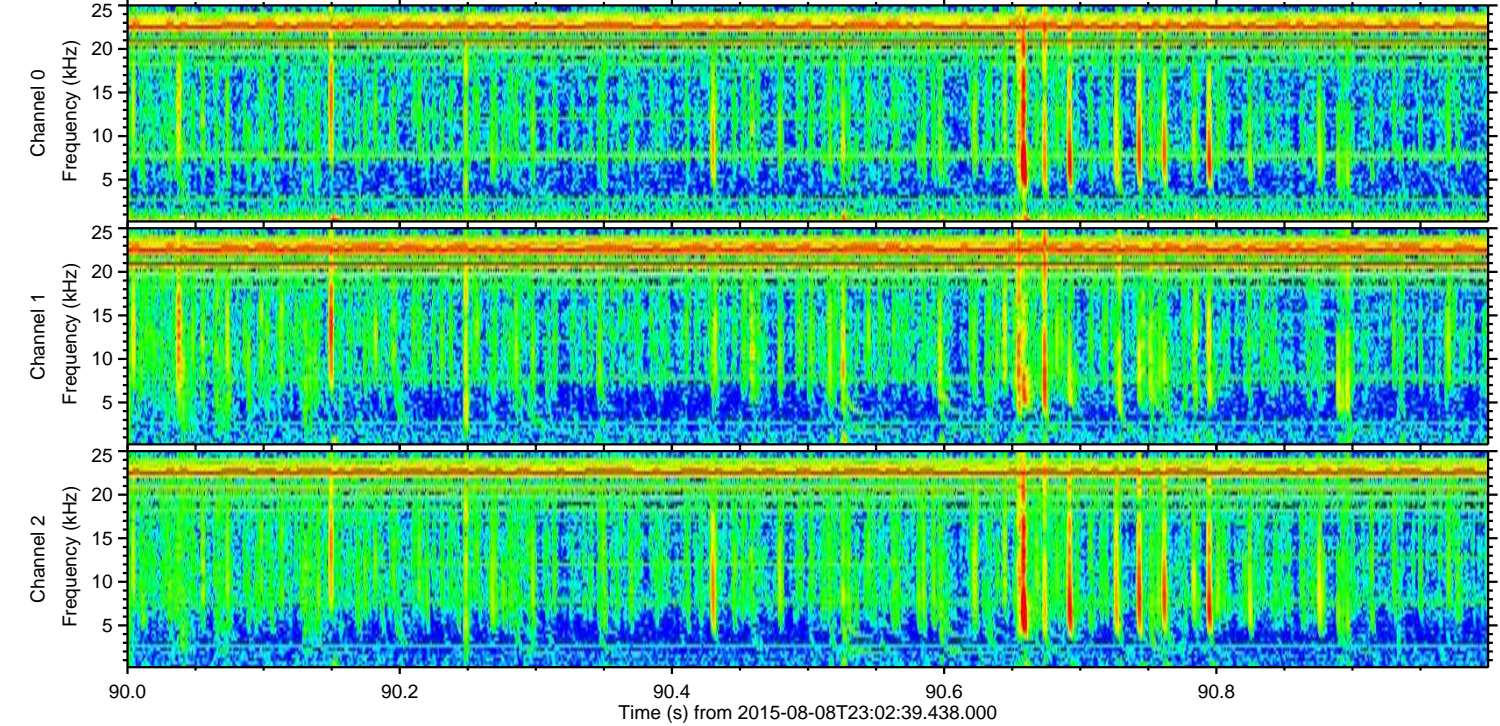
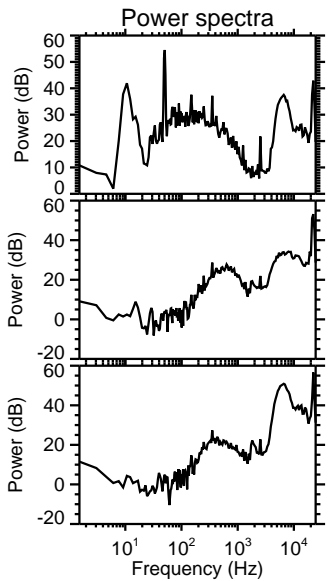
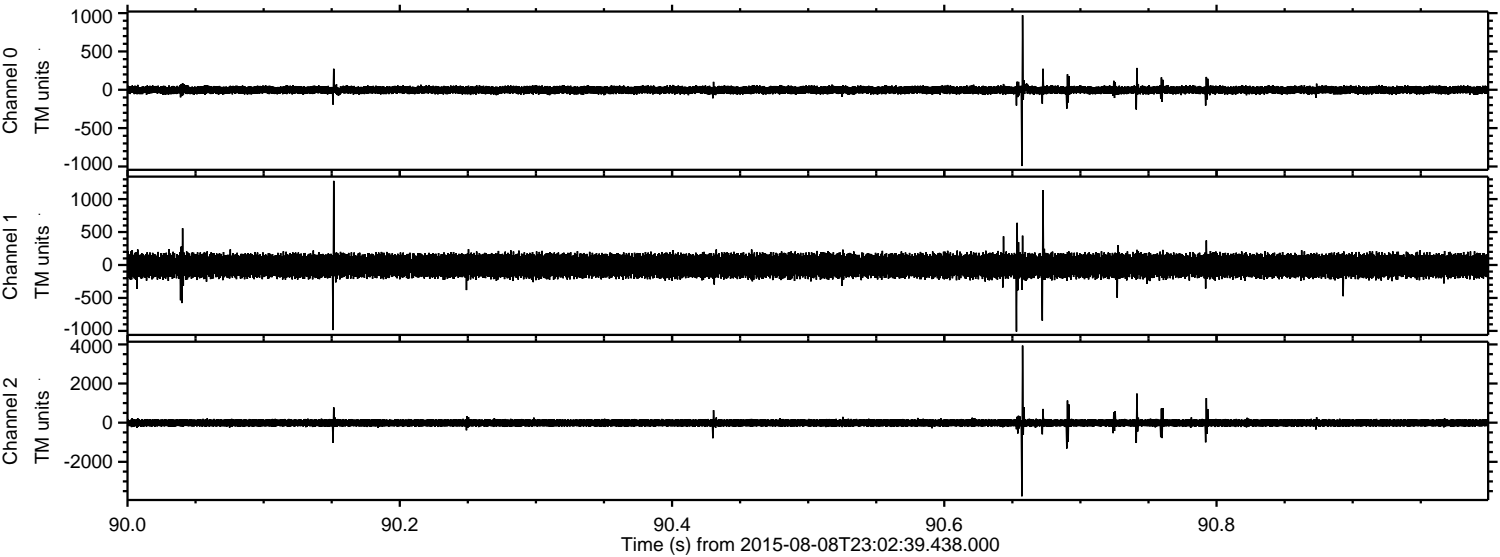
Processed Sun Aug 9 01:08:52 2015 by ELM ver.2012-10-06 from 001__elm20150808_230238__dat00.bin



Processed Sun Aug 9 01:08:53 2015 by ELM ver.2012-10-06 from 001__elm20150808_230238__dat00.bin



Processed Sun Aug 9 01:08:54 2015 by ELM ver.2012-10-06 from 001__elm20150808_230238__dat00.bin

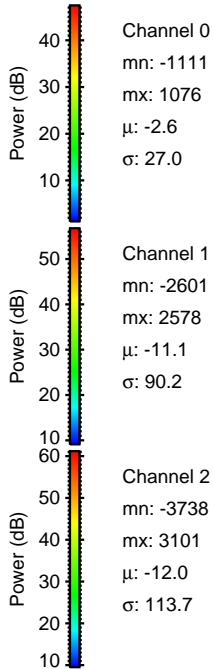
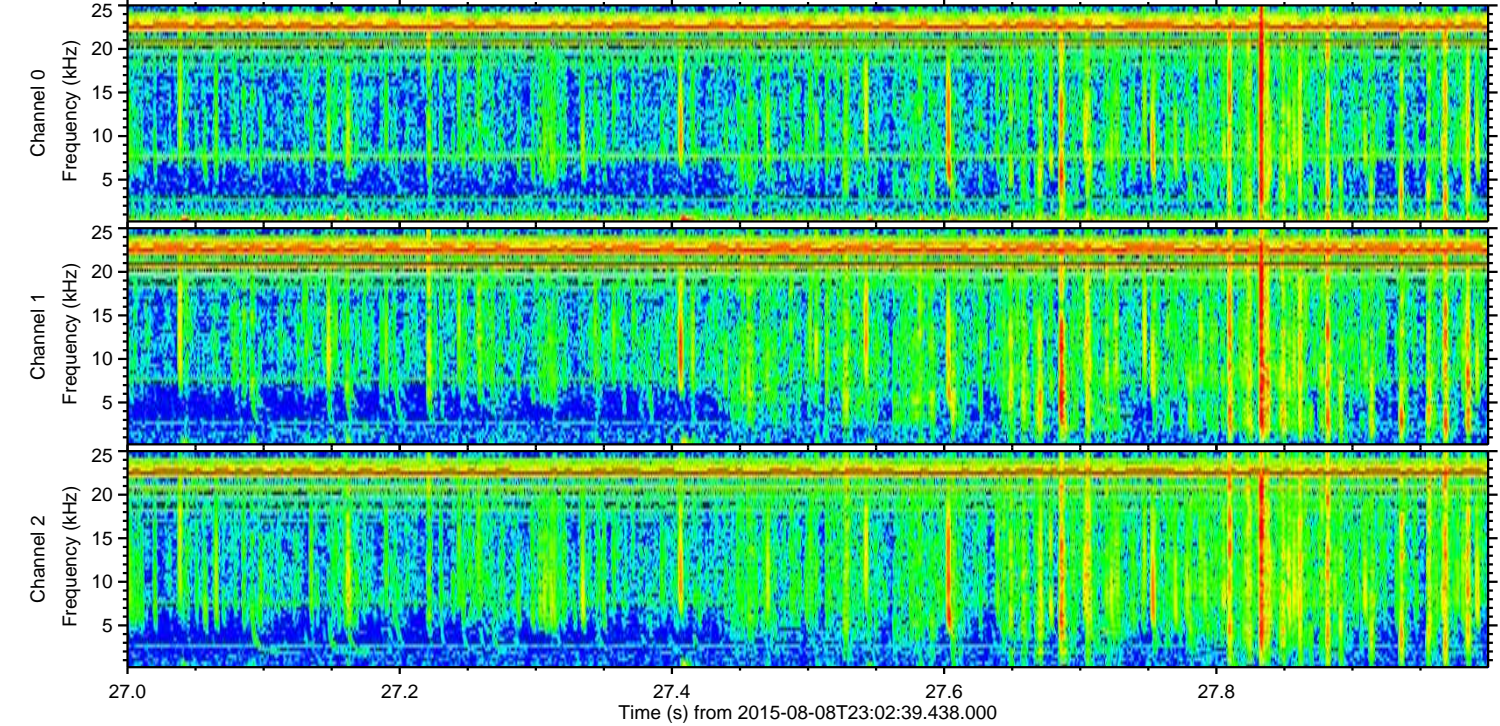
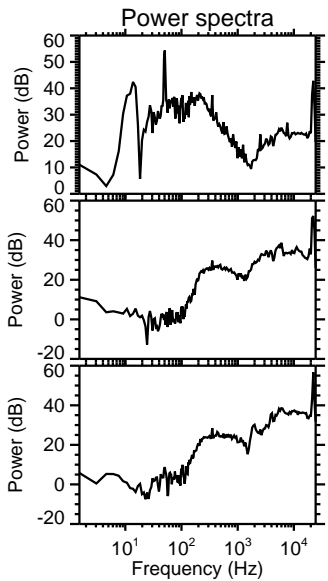
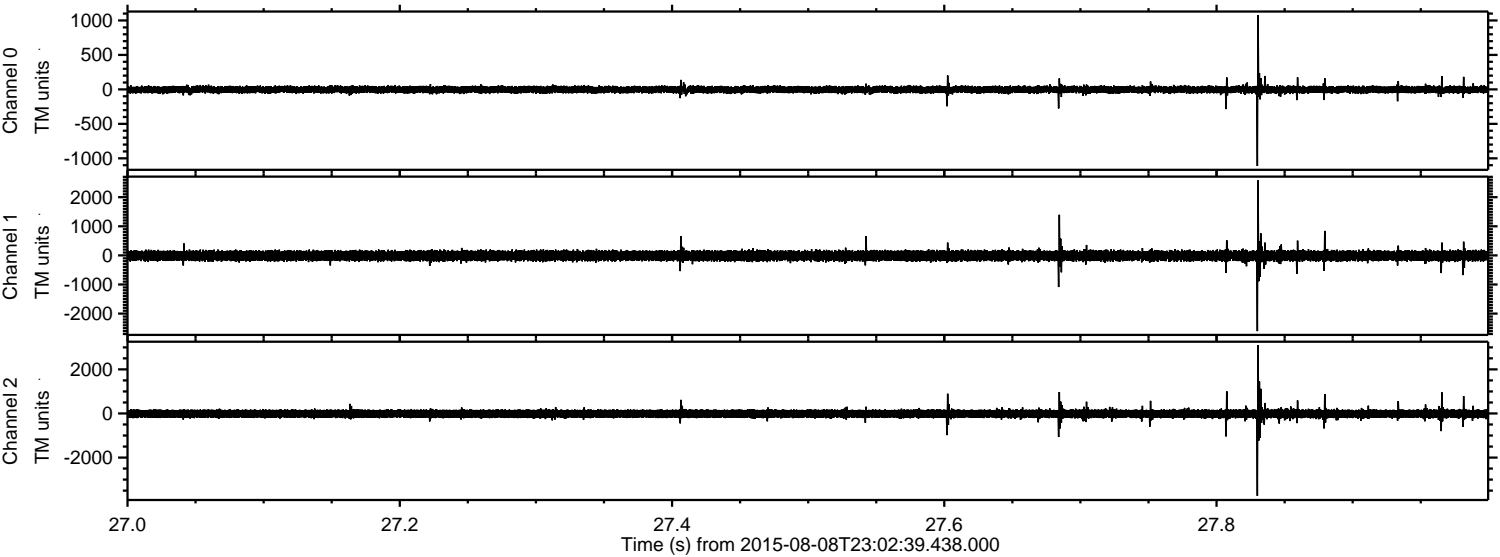


Channel 0
mn: -994
mx: 972
 μ : -2.6
 σ : 28.6

Channel 1
mn: -1010
mx: 1277
 μ : -11.0
 σ : 90.7

Channel 2
mn: -3764
mx: 3941
 μ : -11.9
 σ : 124.1

Processed Sun Aug 9 01:08:55 2015 by ELM ver.2012-10-06 from 001__elm20150808_230238__dat00.bin



Channel 0
mn: -1111
mx: 1076
 μ : -2.6
 σ : 27.0

Channel 1
mn: -2601
mx: 2578
 μ : -11.1
 σ : 90.2

Channel 2
mn: -3738
mx: 3101
 μ : -12.0
 σ : 113.7

Processed Sun Aug 9 01:08:56 2015 by ELM ver.2012-10-06 from 001__elm20150808_230238__dat00.bin

