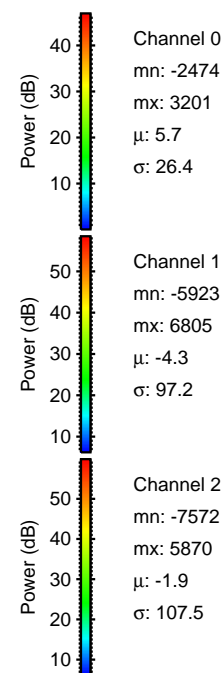
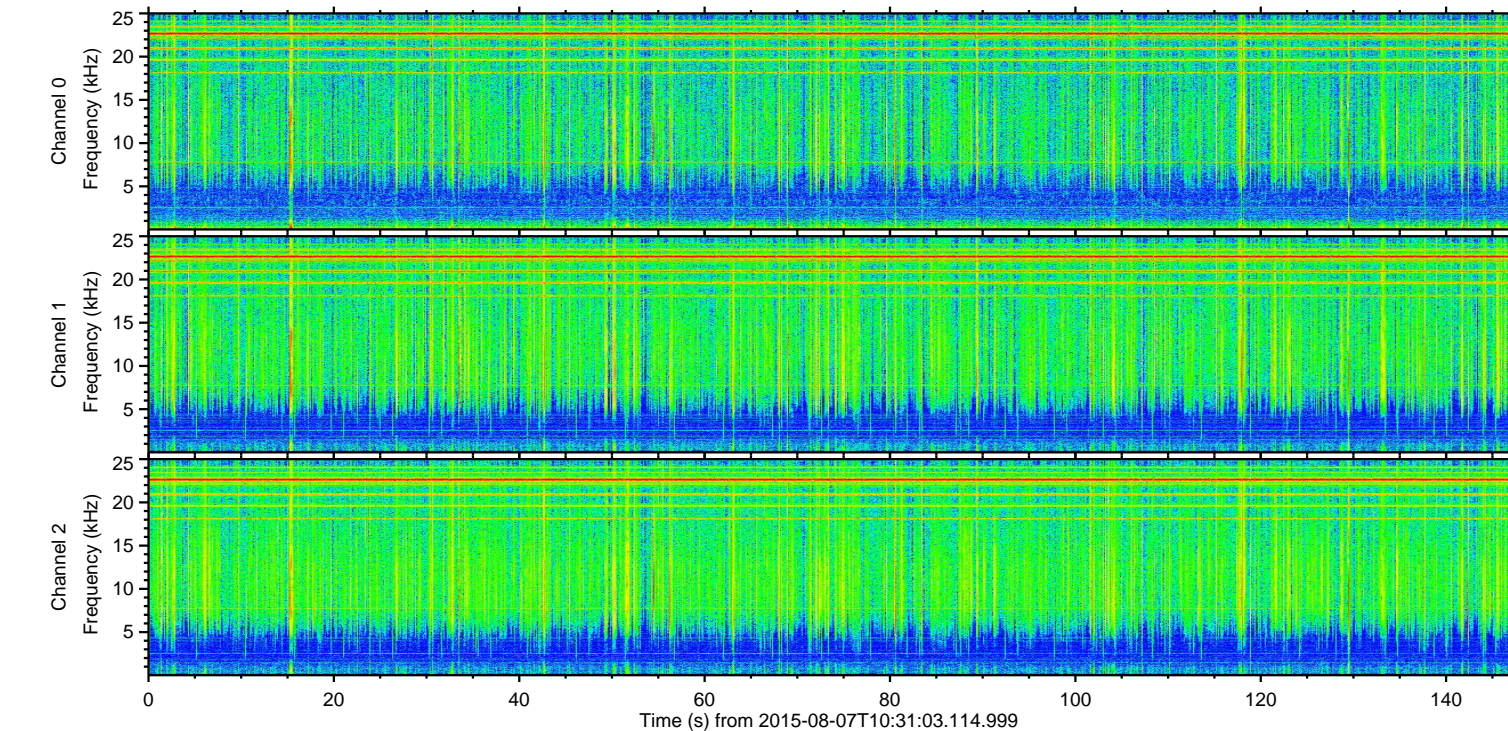
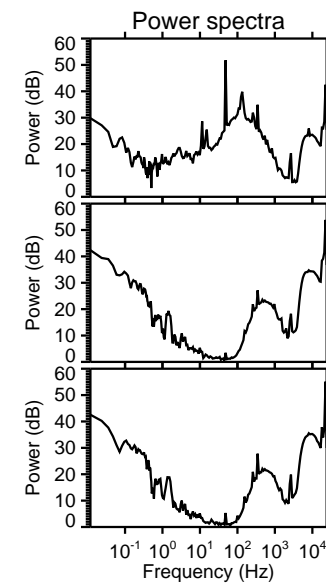
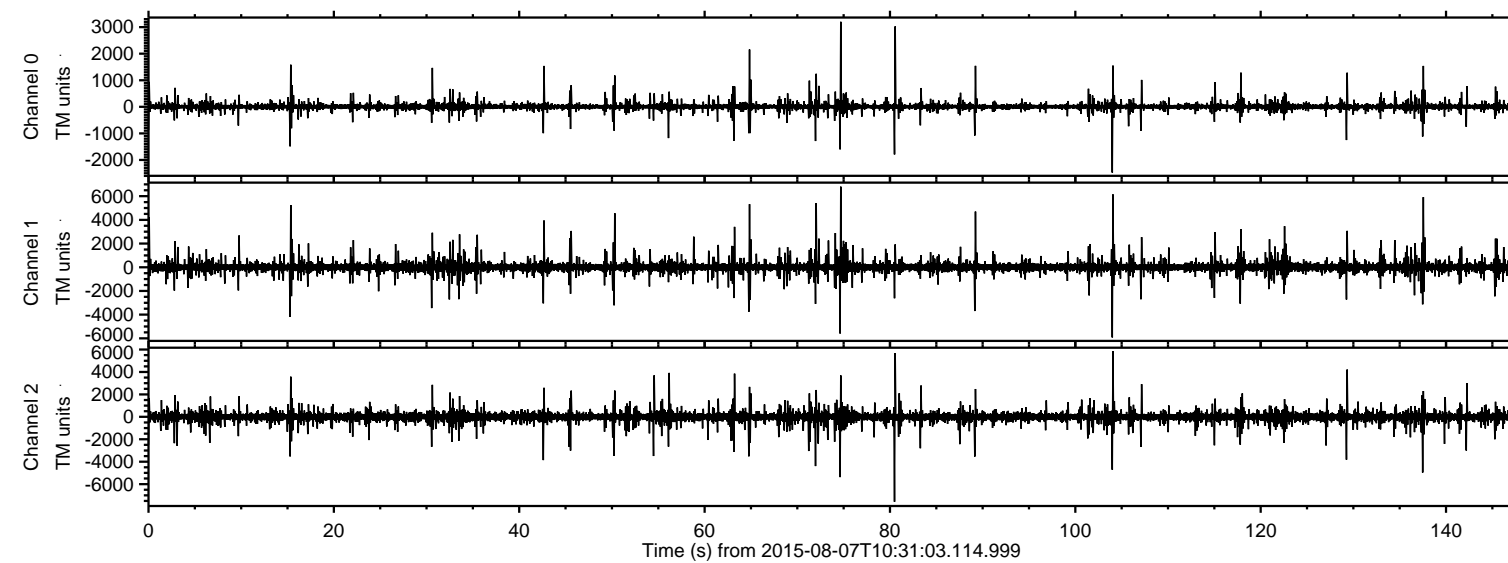
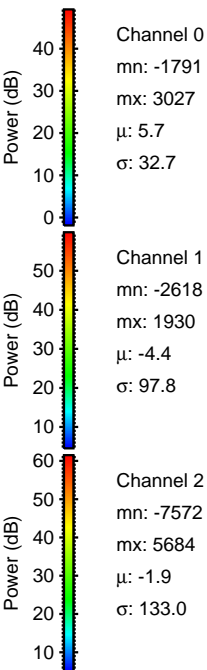
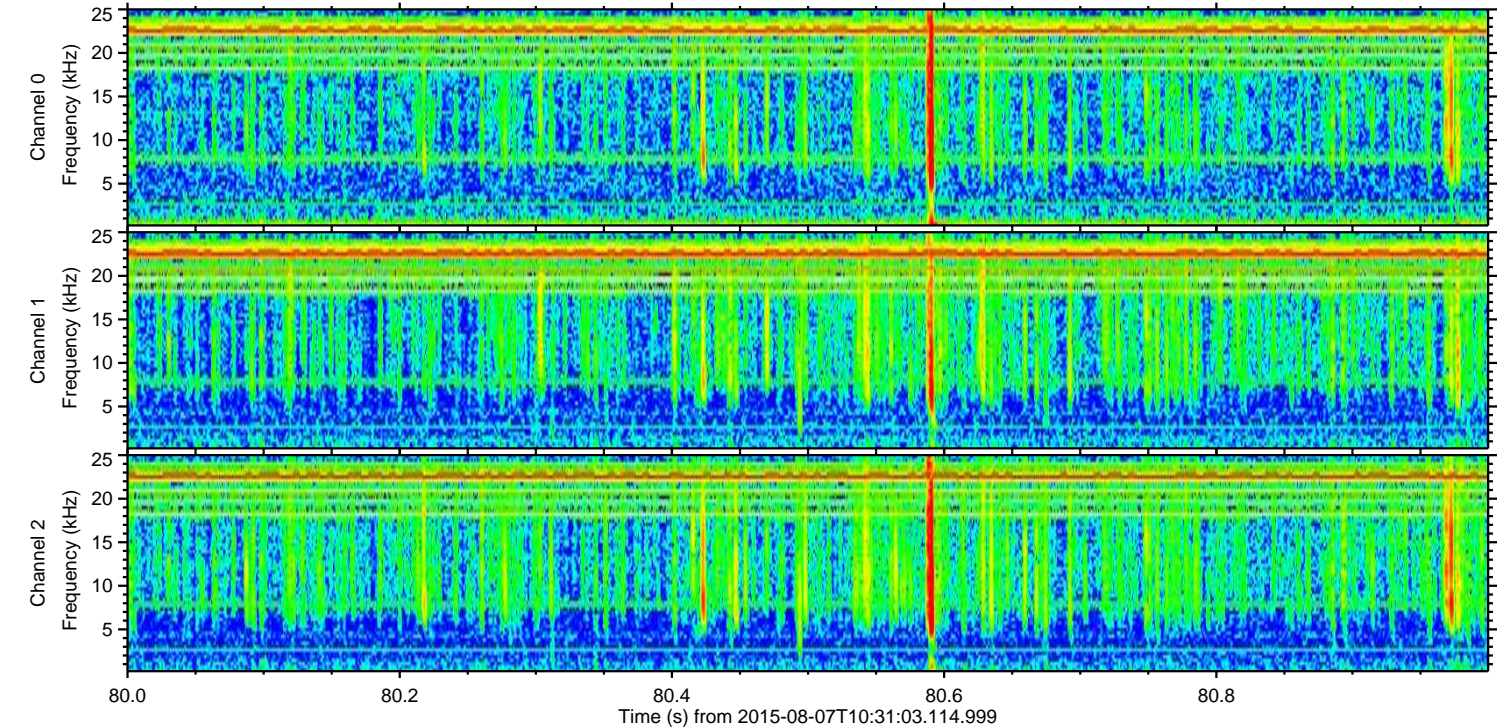
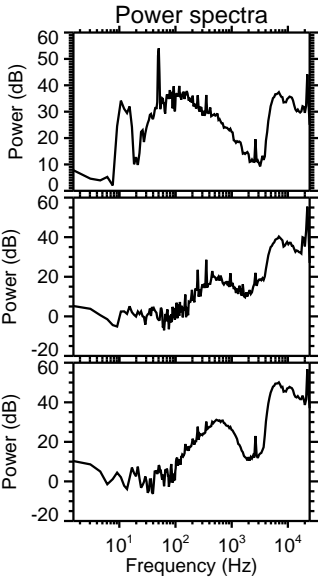
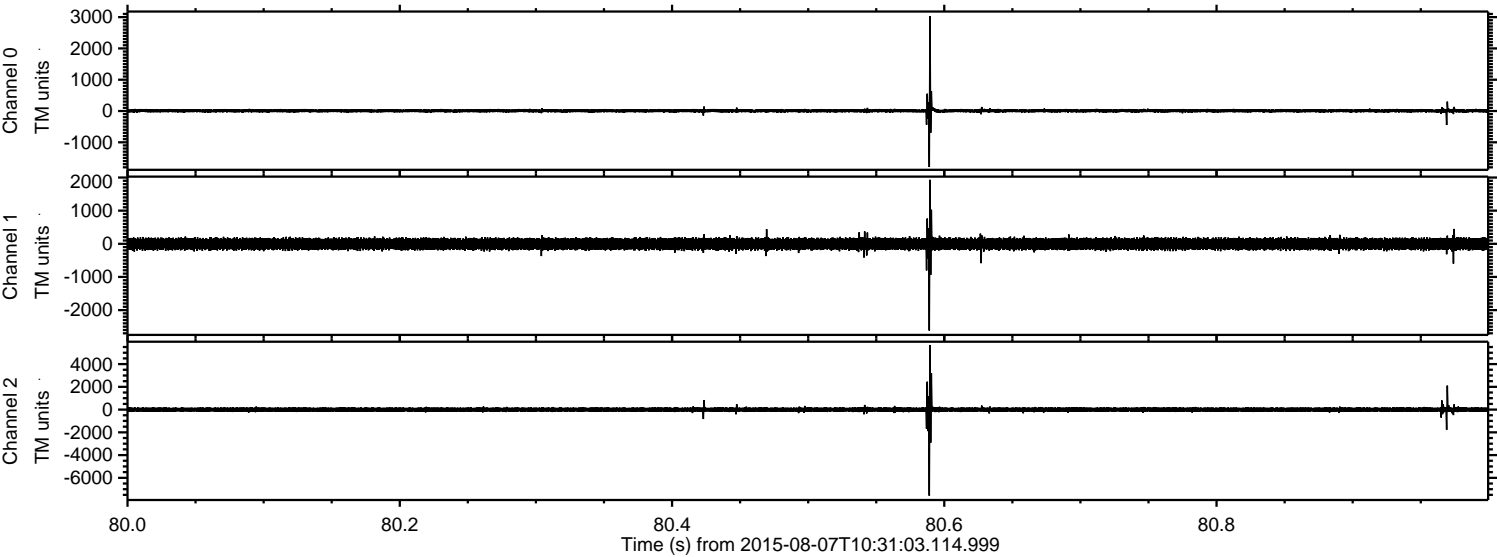


ELMAVAN 3D WAVEFORMS (Measured data sampled at 50 kHz) 51000 packets of 144 samples from 2015-08-07T10:31:03.114.999.

Processed Fri Aug 7 12:37:24 2015 by ELM ver.2012-10-06 from 001__elm20150807_103102__dat00.bin

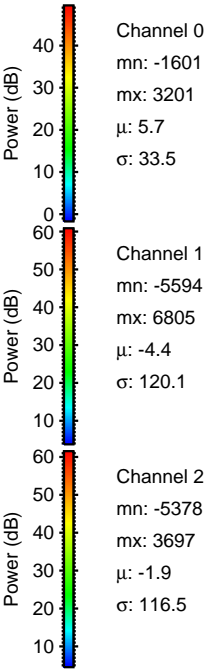
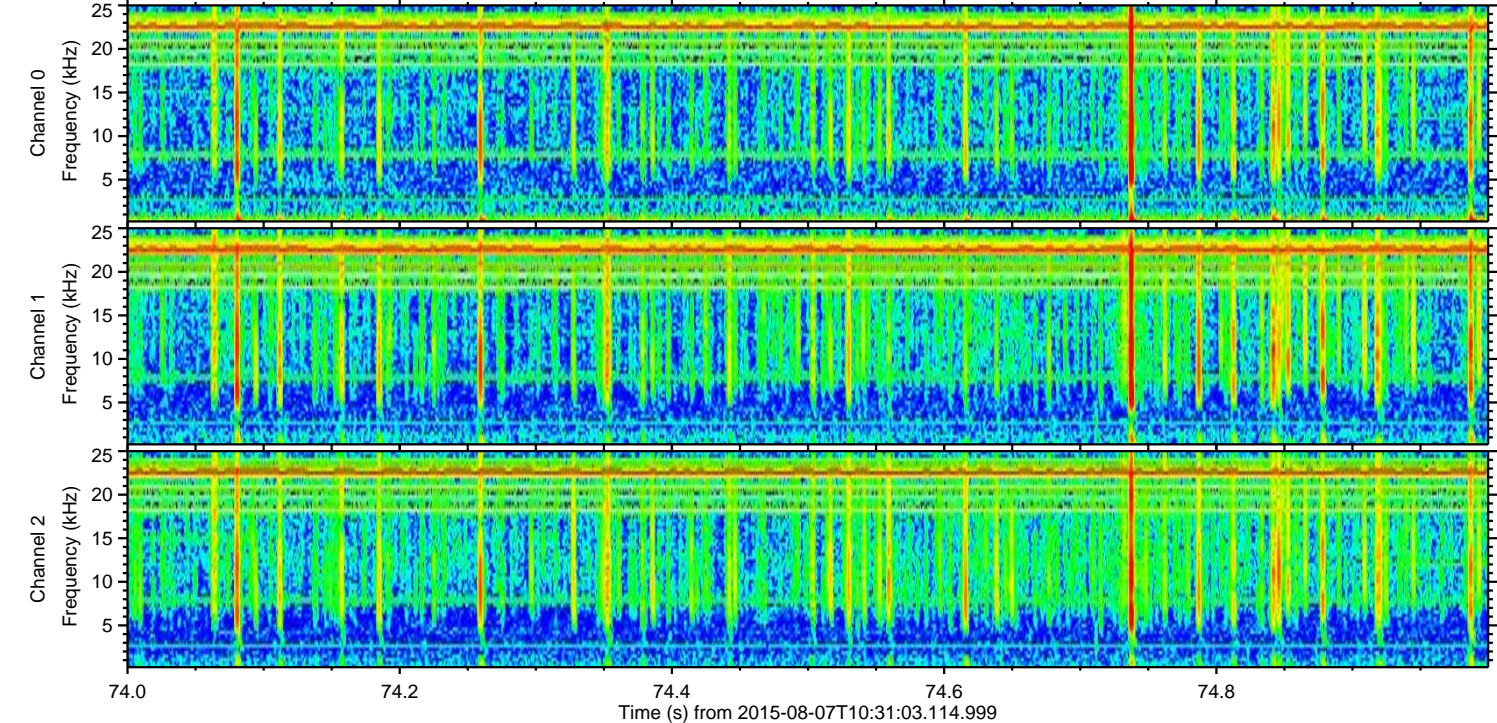
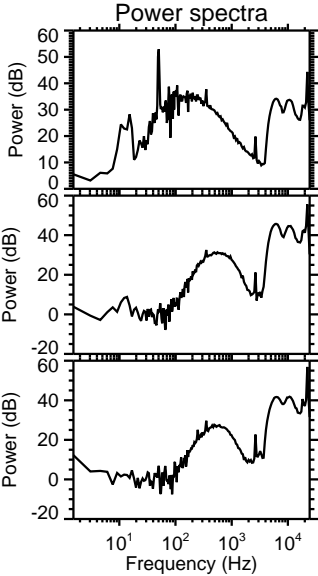
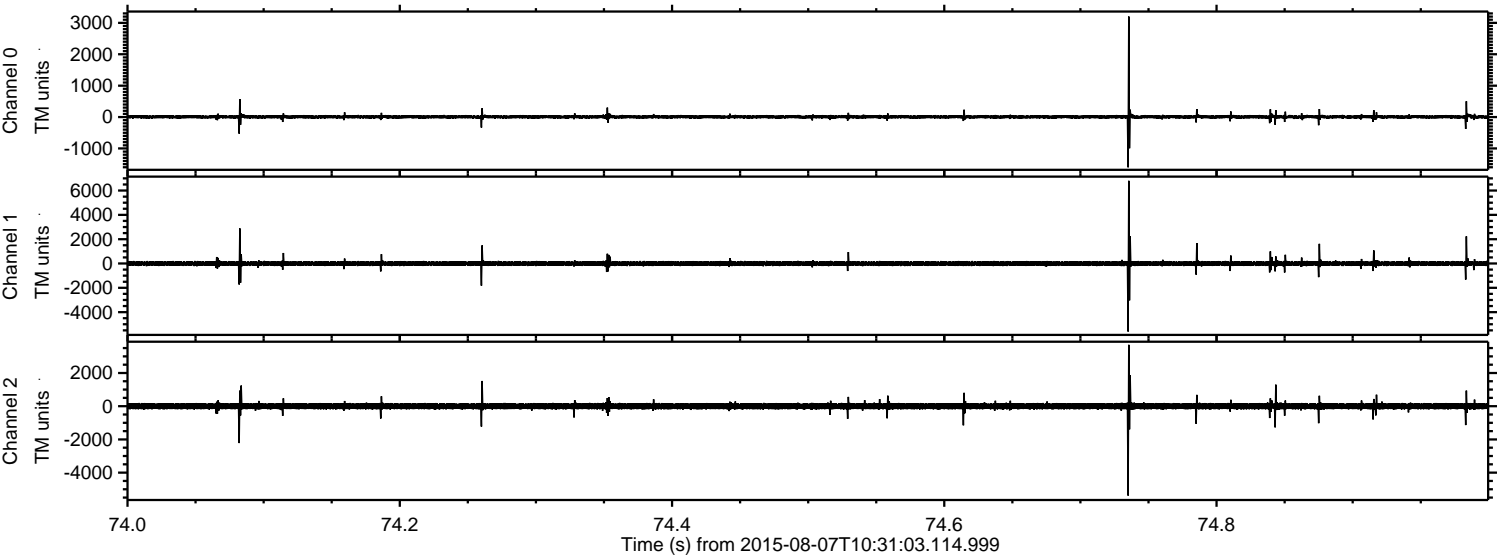


Processed Fri Aug 7 12:37:35 2015 by ELM ver.2012-10-06 from 001__elm20150807_103102__dat00.bin



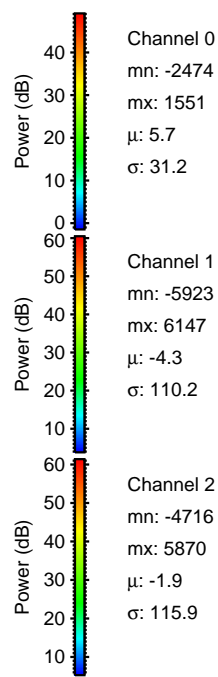
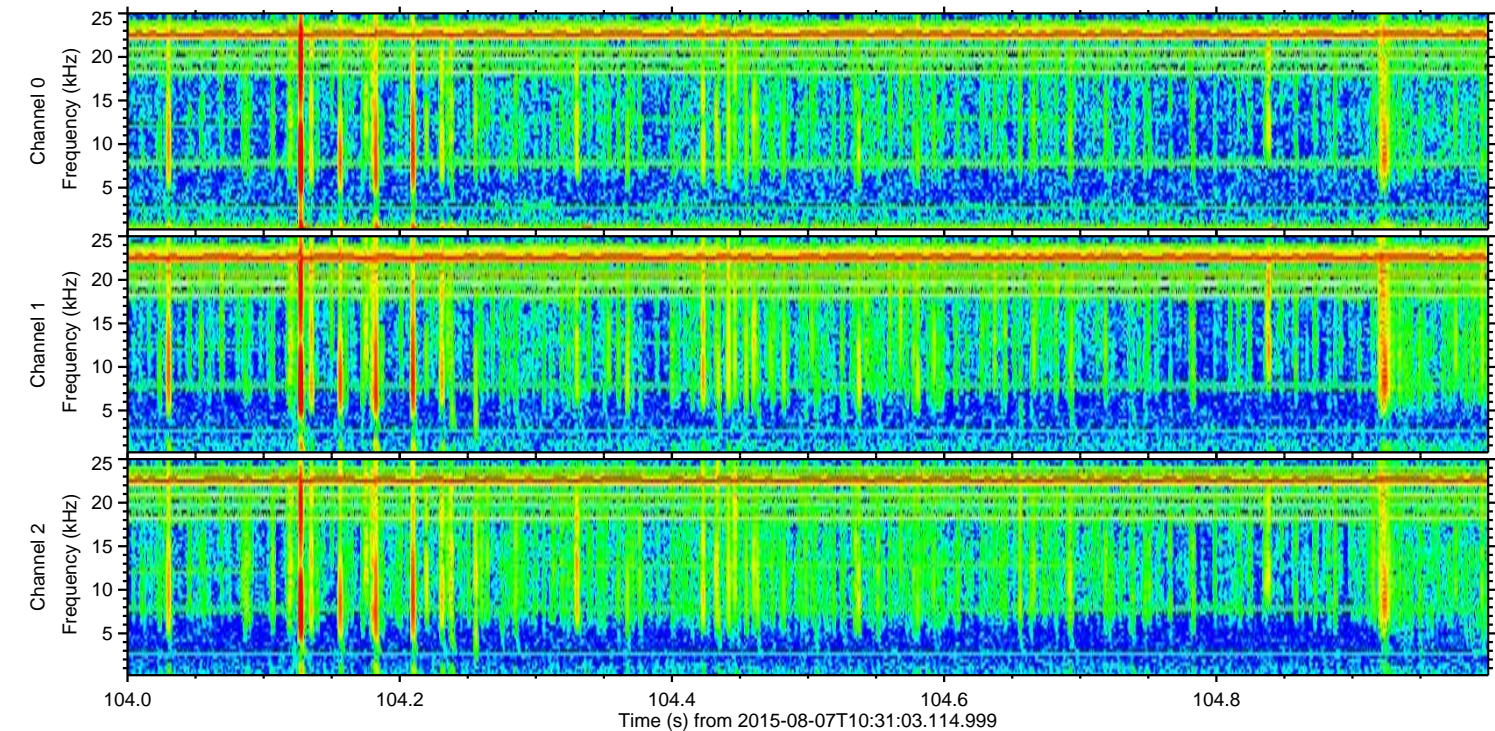
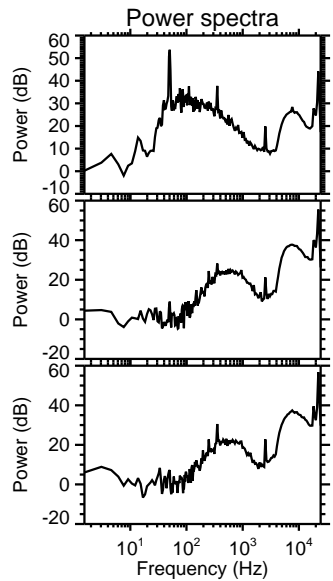
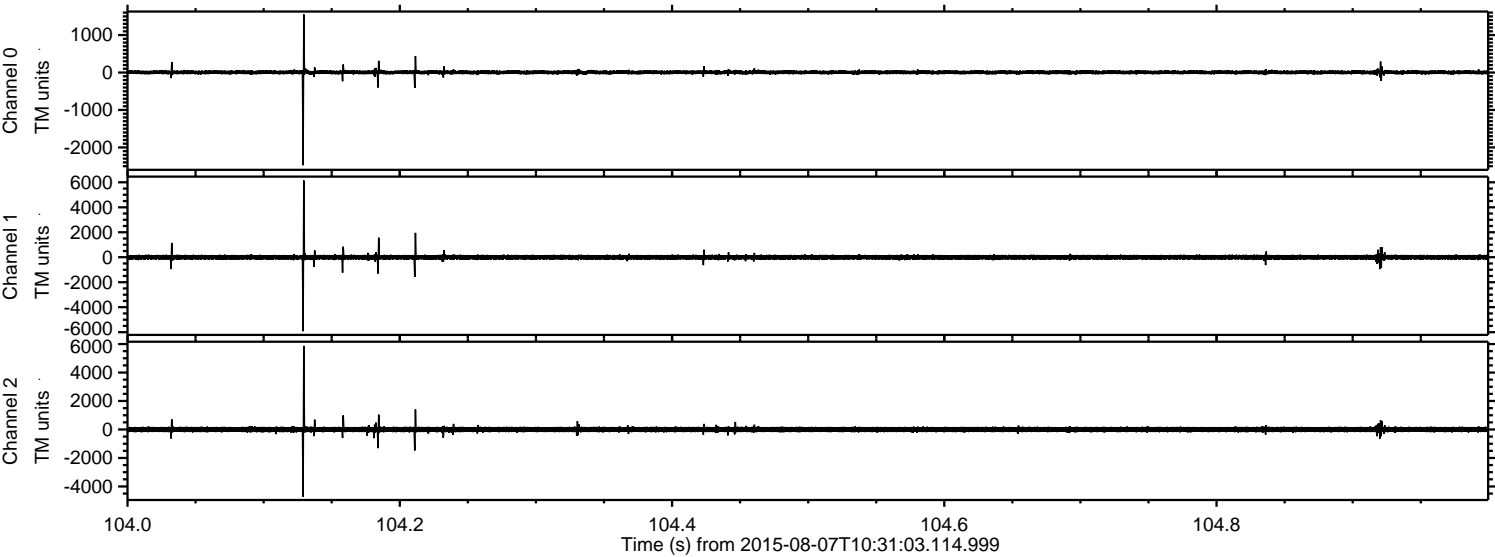
ELMAVAN 3D WAVEFORMS (Measured data sampled at 50 kHz) 51000 packets of 144 samples from 2015-08-07T10:31:03.114.999. Part 75/147

Processed Fri Aug 7 12:37:36 2015 by ELM ver.2012-10-06 from 001__elm20150807_103102__dat00.bin



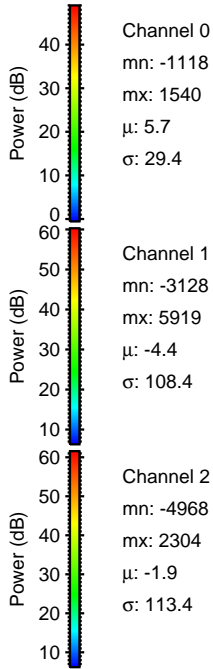
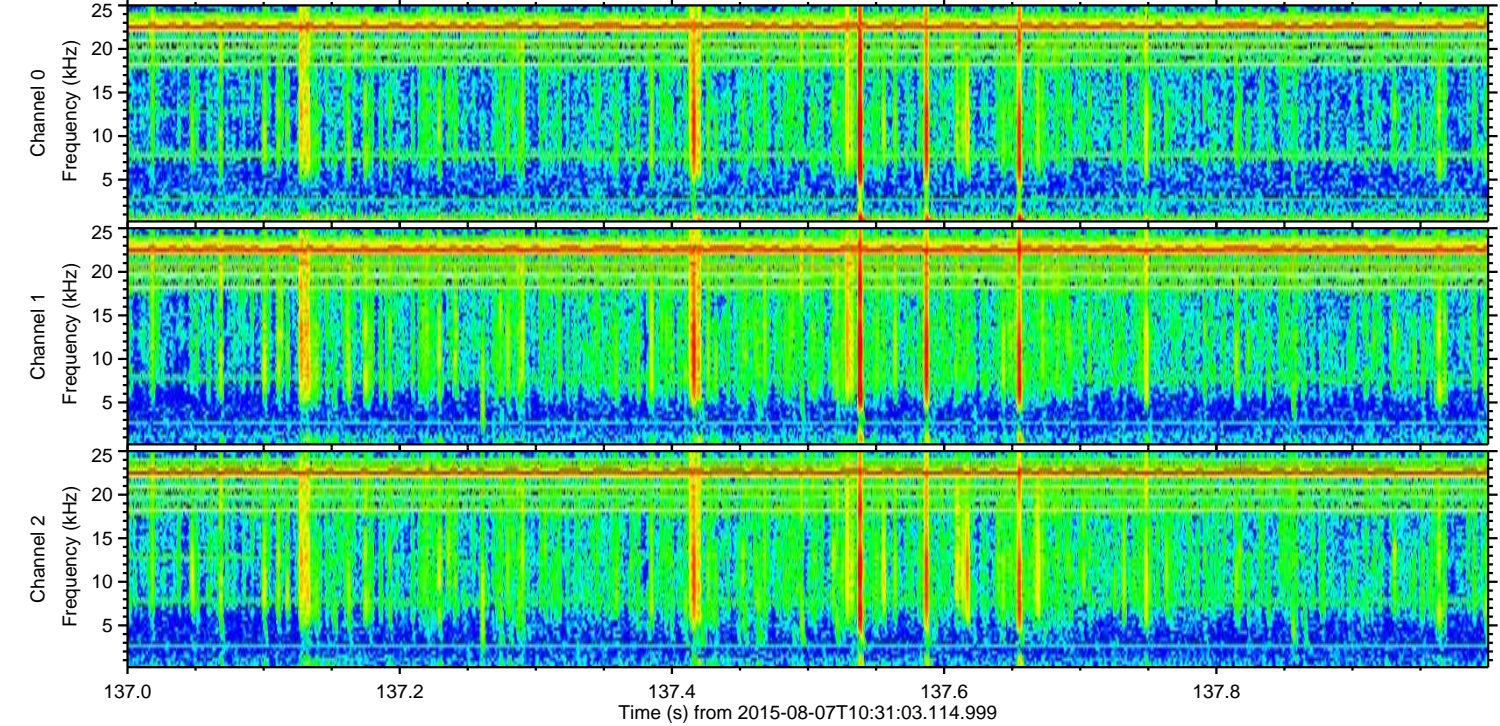
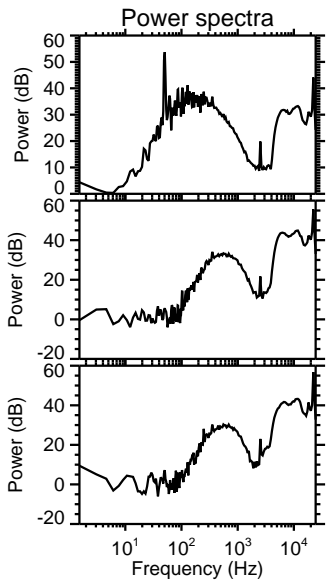
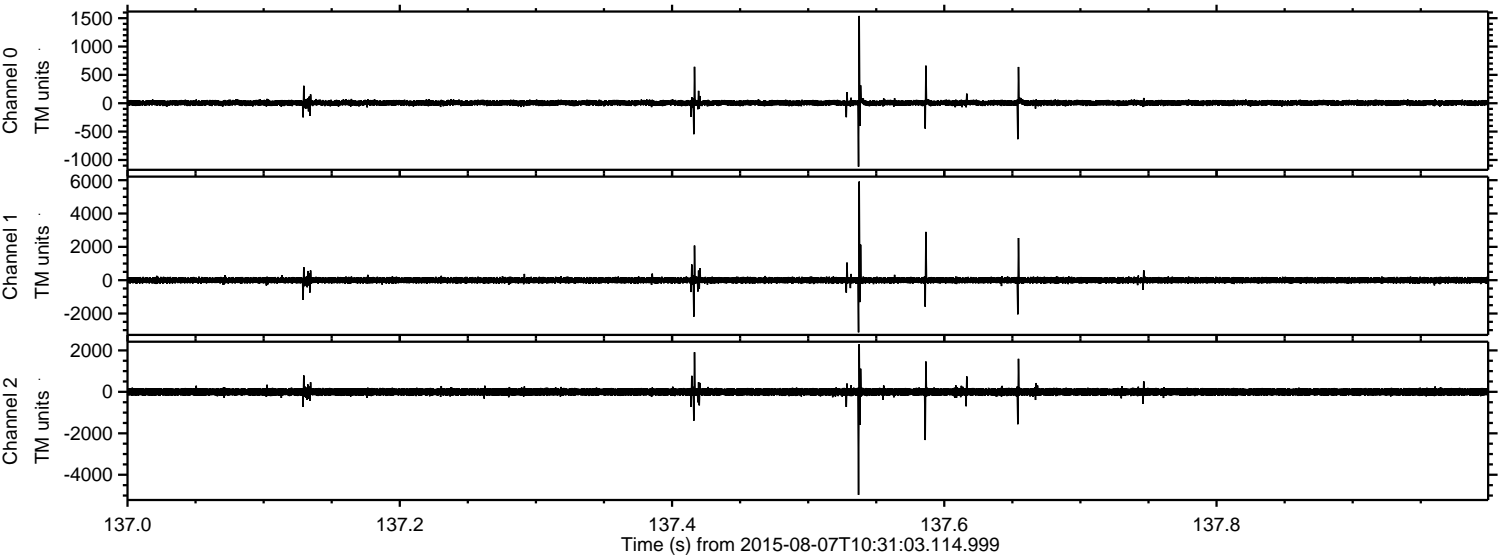
ELMAVAN 3D WAVEFORMS (Measured data sampled at 50 kHz) 51000 packets of 144 samples from 2015-08-07T10:31:03.114.999. Part 105/147

Processed Fri Aug 7 12:37:37 2015 by ELM ver.2012-10-06 from 001__elm20150807_103102__dat00.bin

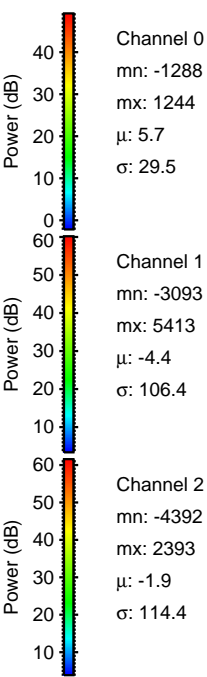
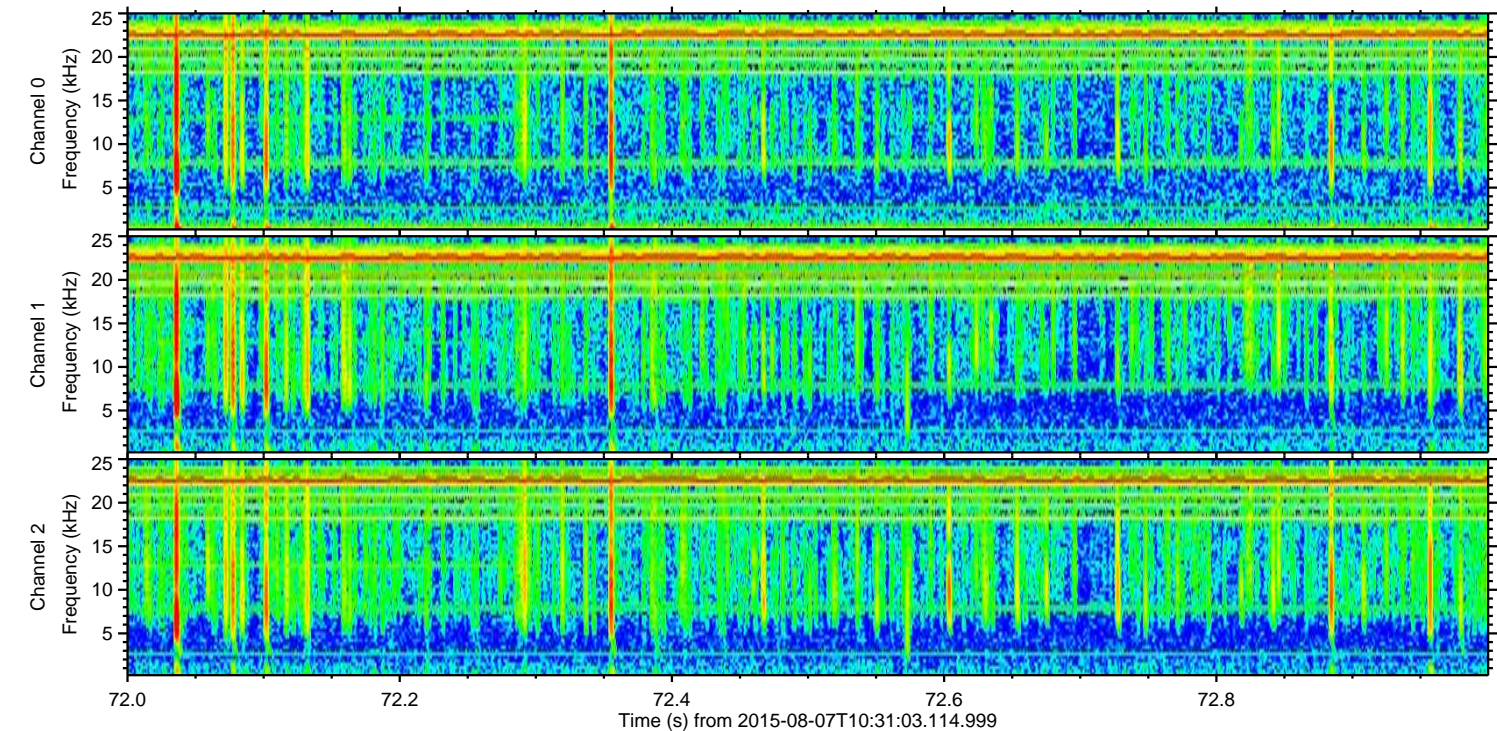
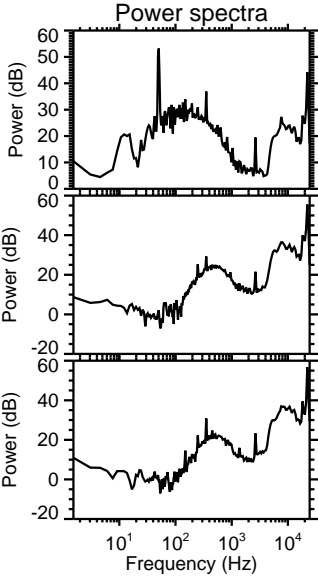
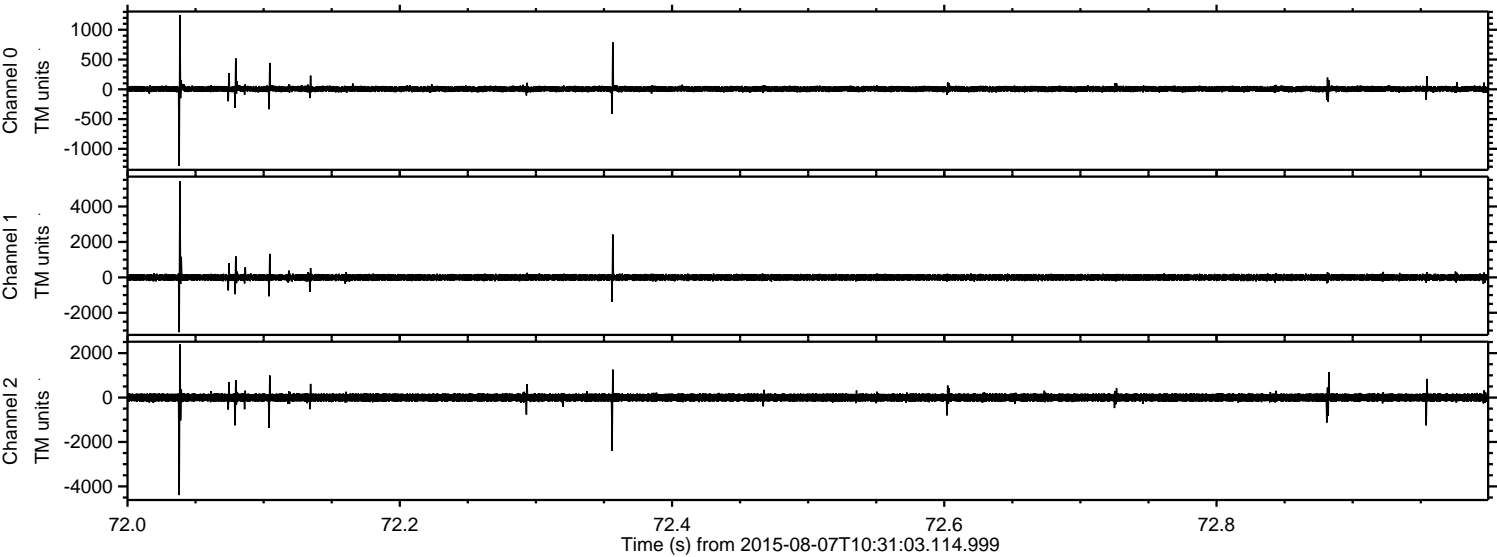


ELMAVAN 3D WAVEFORMS (Measured data sampled at 50 kHz) 51000 packets of 144 samples from 2015-08-07T10:31:03.114.999. Part 138/147

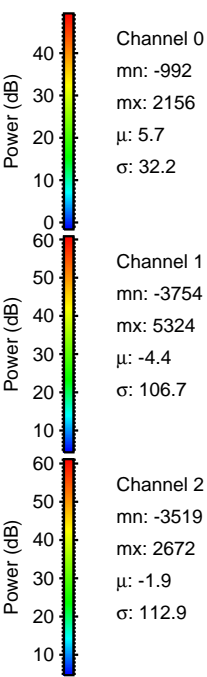
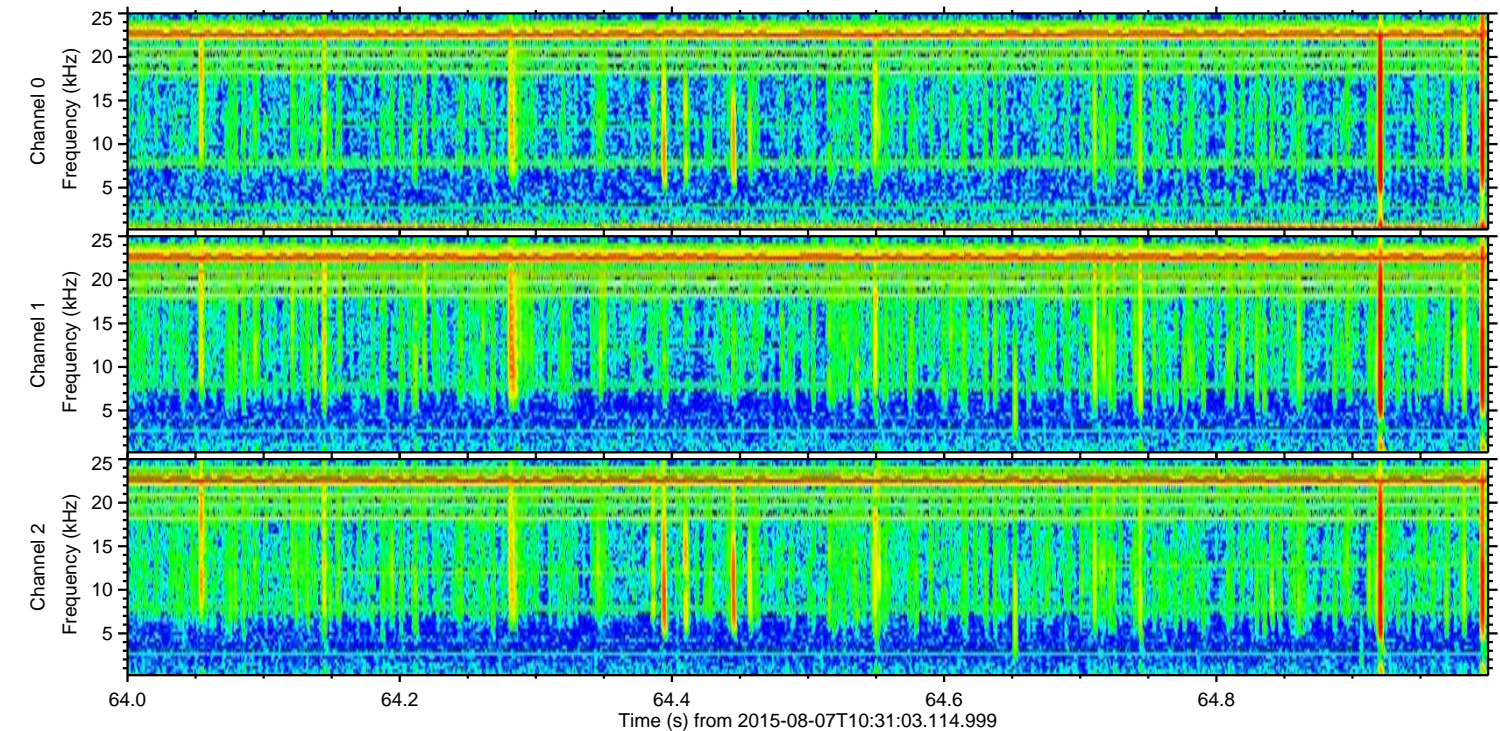
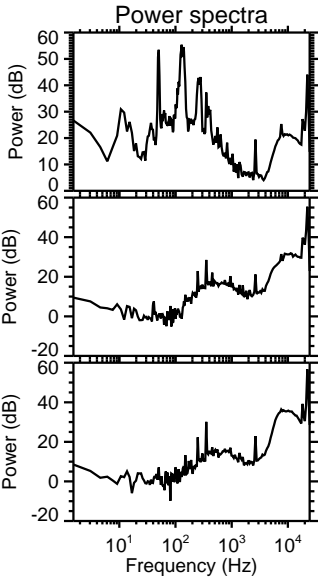
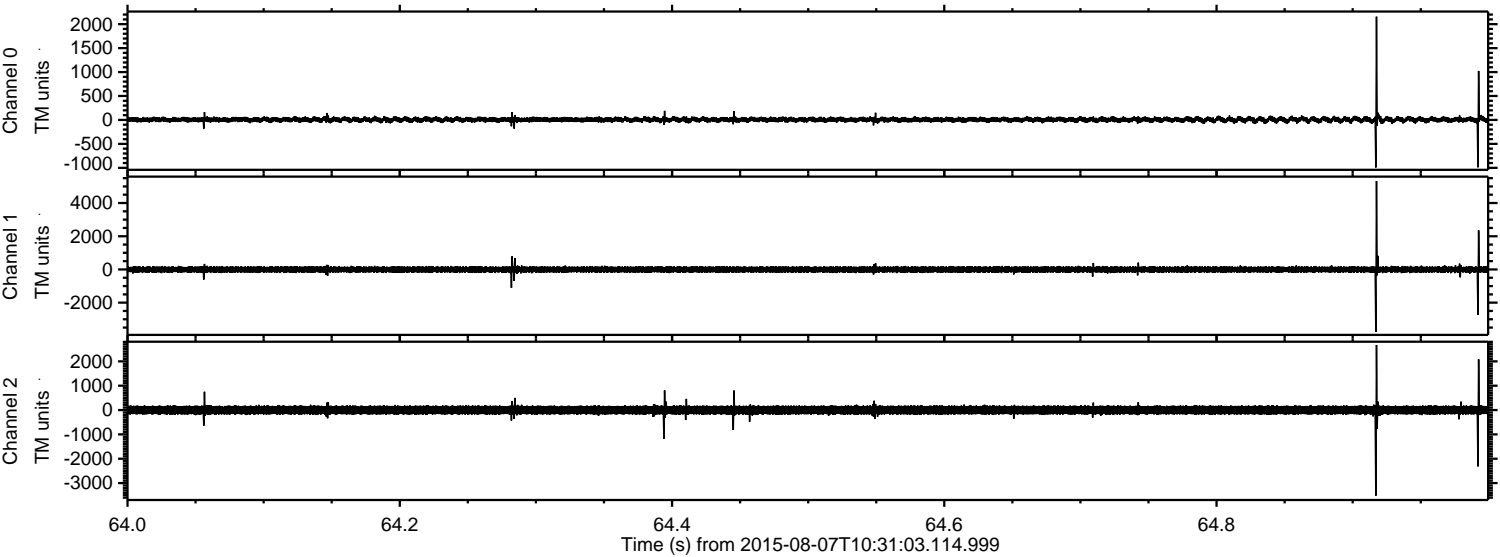
Processed Fri Aug 7 12:37:38 2015 by ELM ver.2012-10-06 from 001__elm20150807_103102__dat00.bin



Processed Fri Aug 7 12:37:39 2015 by ELM ver.2012-10-06 from 001__elm20150807_103102__dat00.bin

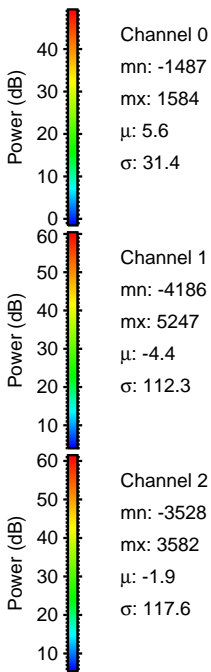
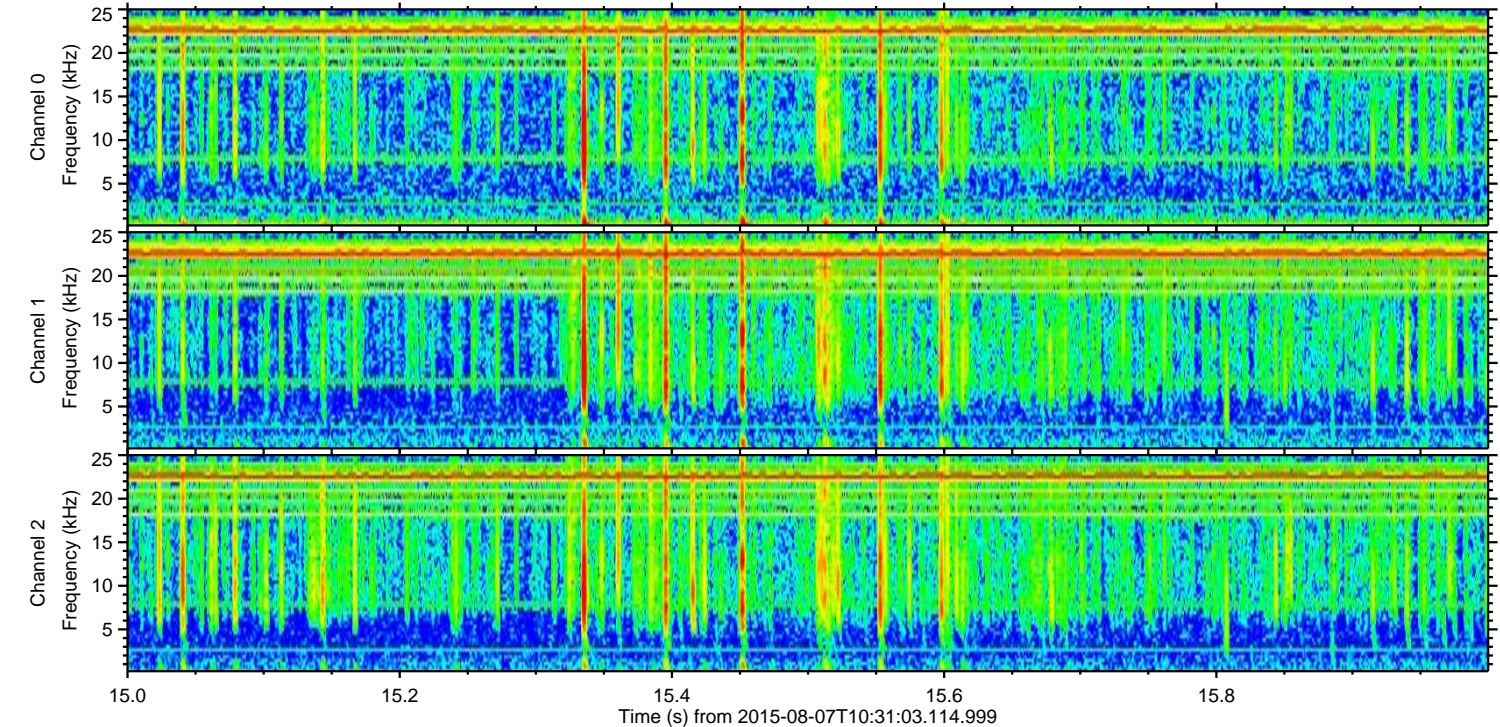
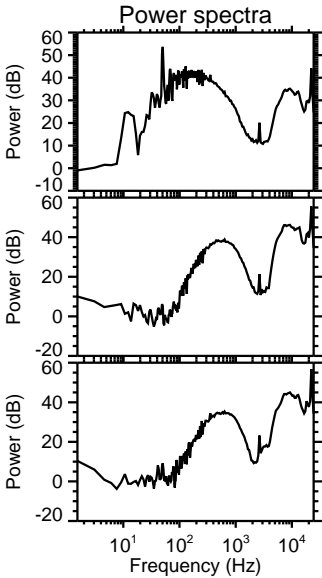
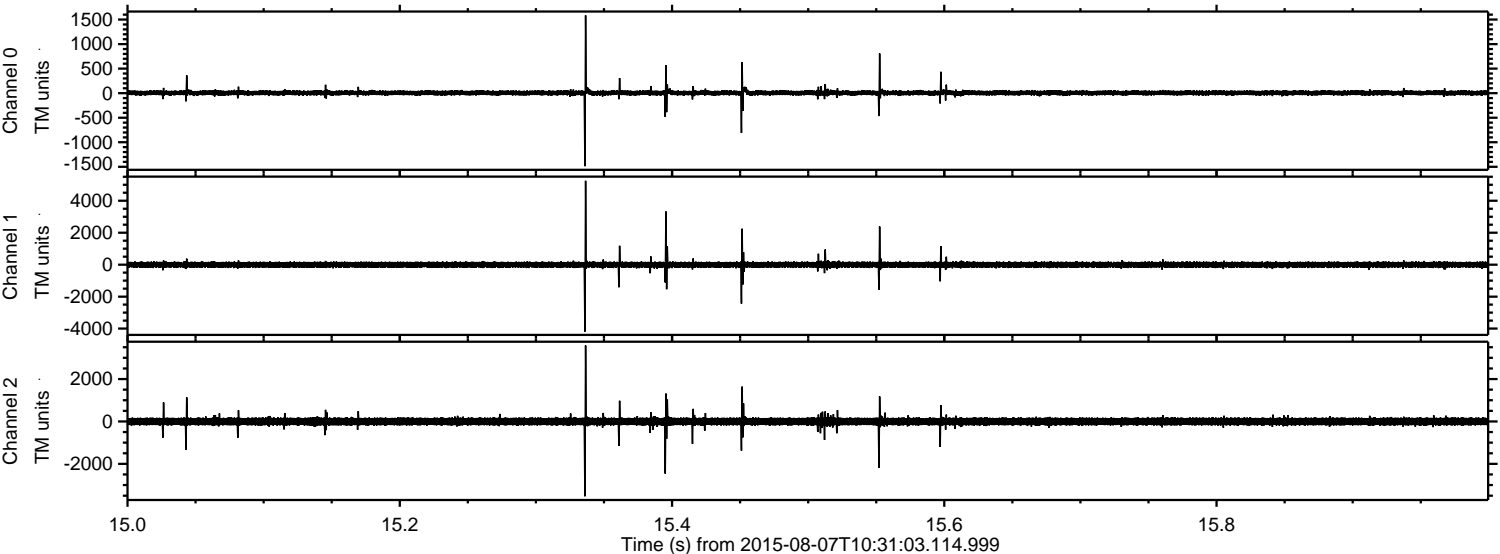


Processed Fri Aug 7 12:37:40 2015 by ELM ver.2012-10-06 from 001__elm20150807_103102__dat00.bin

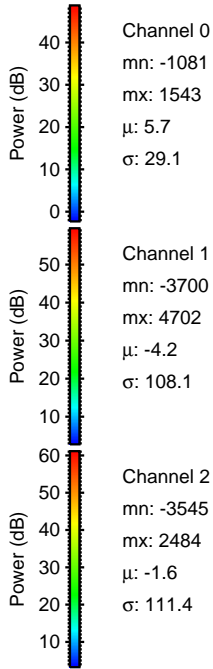
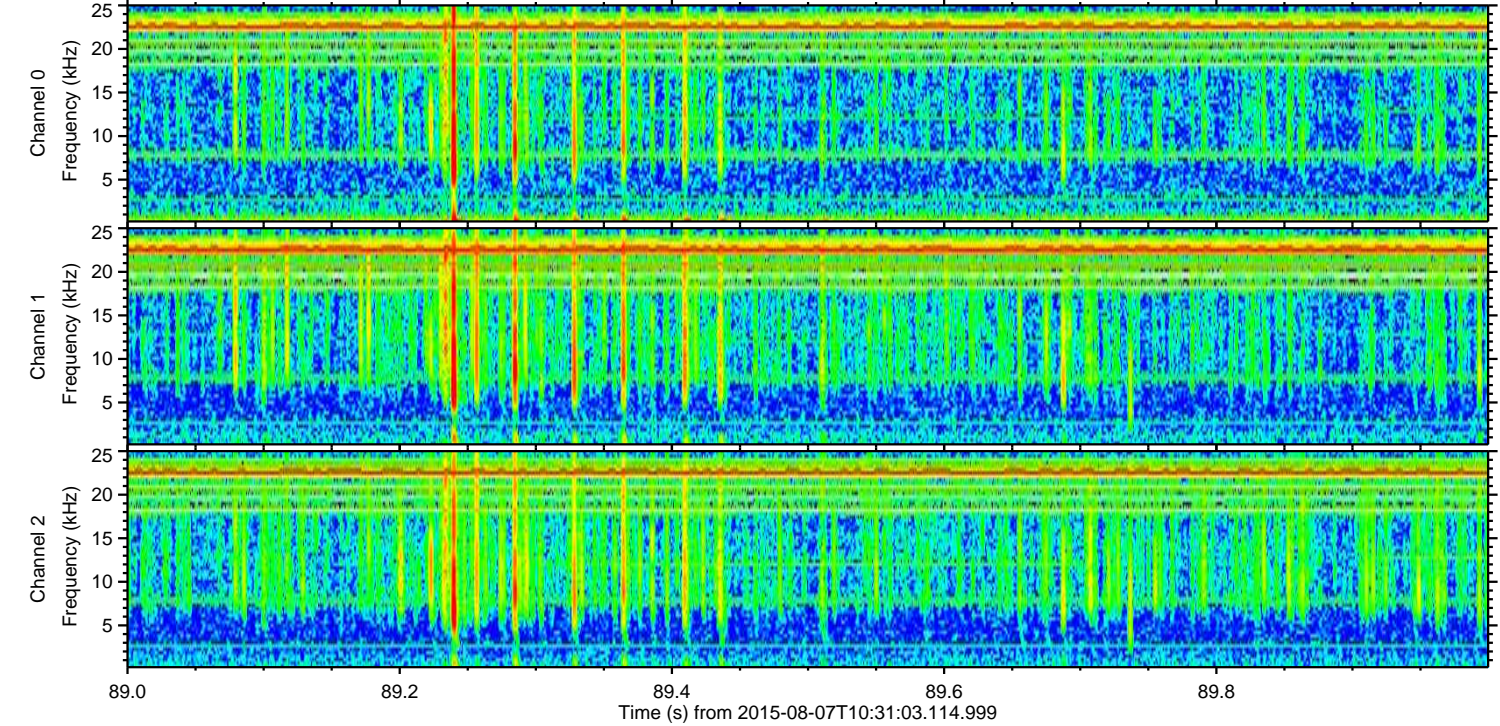
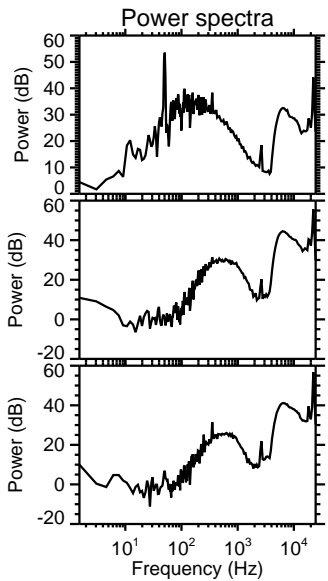
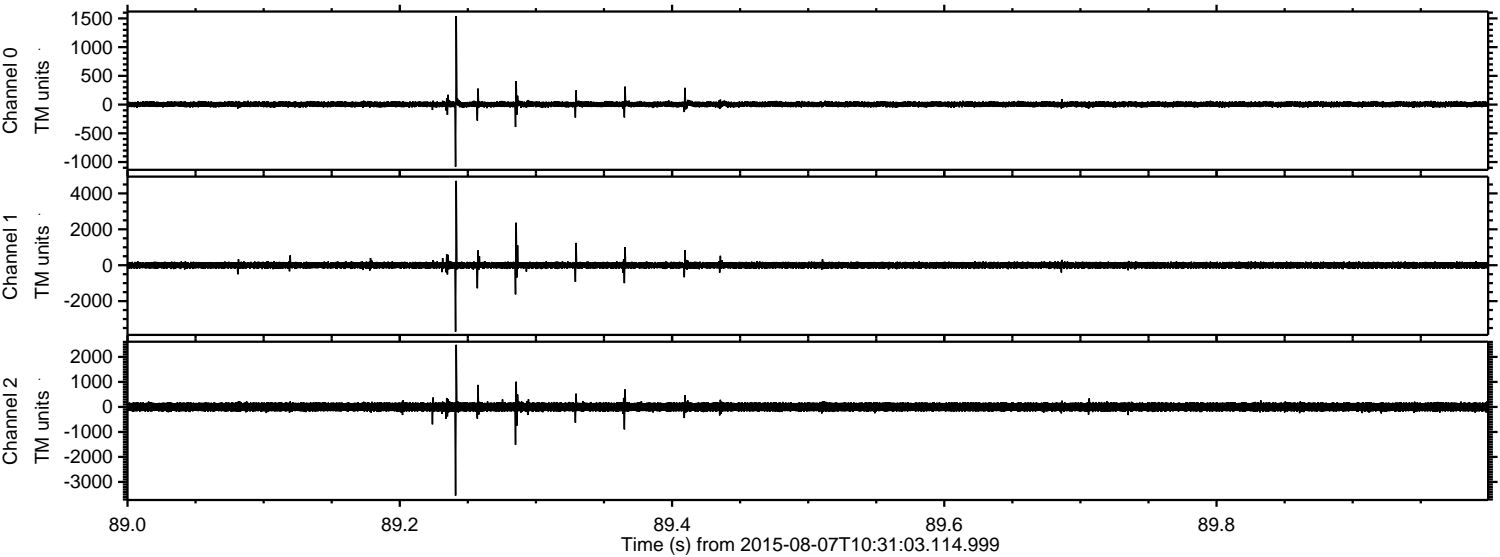


ELMAVAN 3D WAVEFORMS (Measured data sampled at 50 kHz) 51000 packets of 144 samples from 2015-08-07T10:31:03.114.999. Part 16/147

Processed Fri Aug 7 12:37:42 2015 by ELM ver.2012-10-06 from 001__elm20150807_103102__dat00.bin



Processed Fri Aug 7 12:37:43 2015 by ELM ver.2012-10-06 from 001__elm20150807_103102__dat00.bin



Channel 0
mn: -1081
mx: 1543
 μ : 5.7
 σ : 29.1

Channel 1
mn: -3700
mx: 4702
 μ : -4.2
 σ : 108.1

Channel 2
mn: -3545
mx: 2484
 μ : -1.6
 σ : 111.4

Processed Fri Aug 7 12:37:43 2015 by ELM ver.2012-10-06 from 001__elm20150807_103102__dat00.bin

