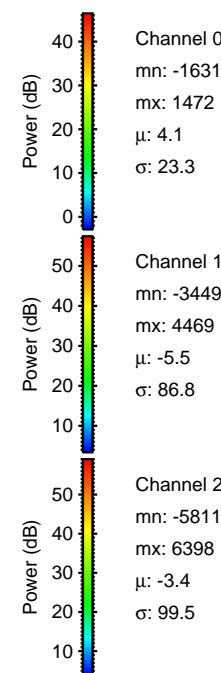
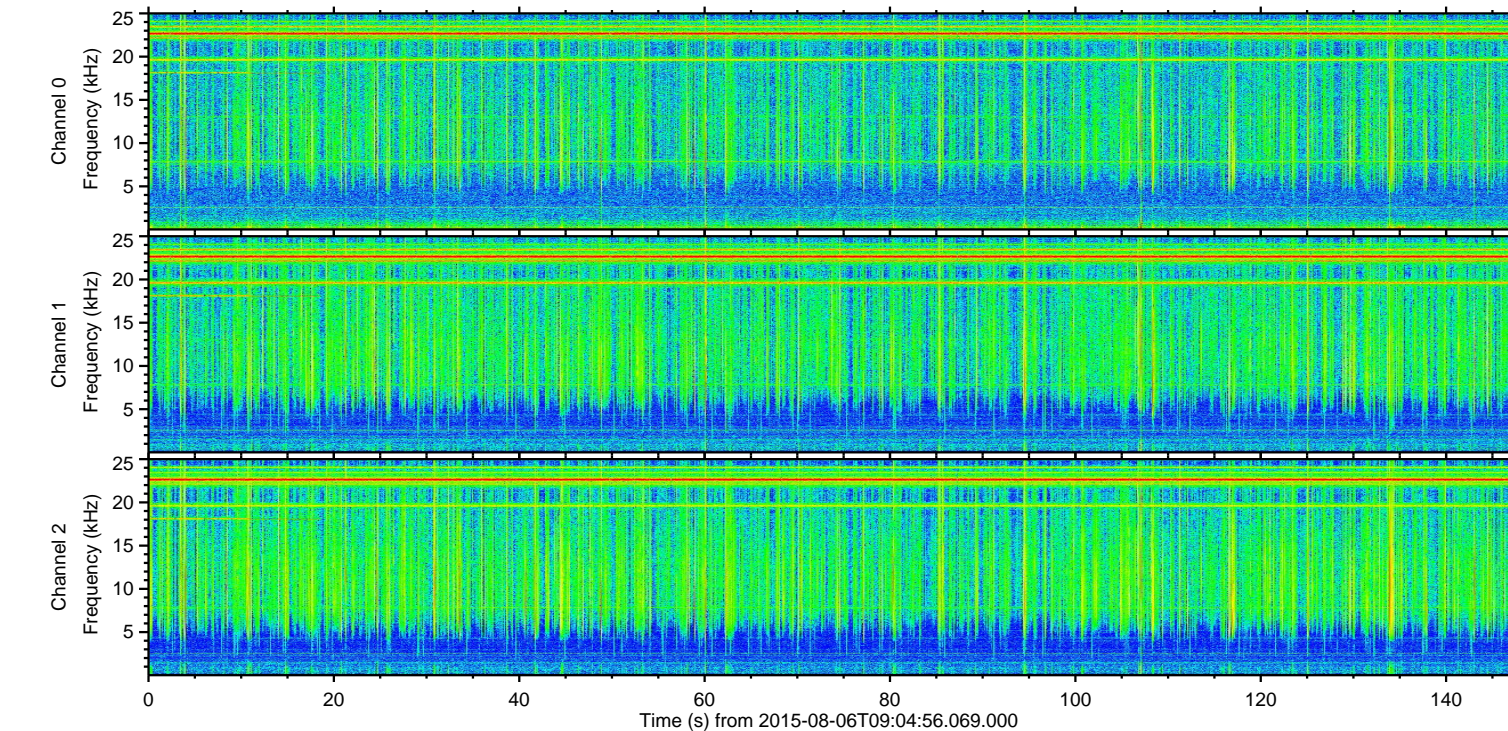
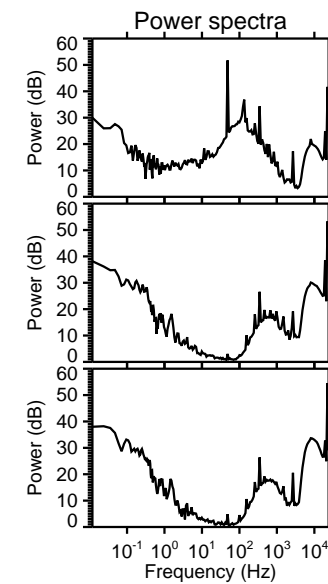
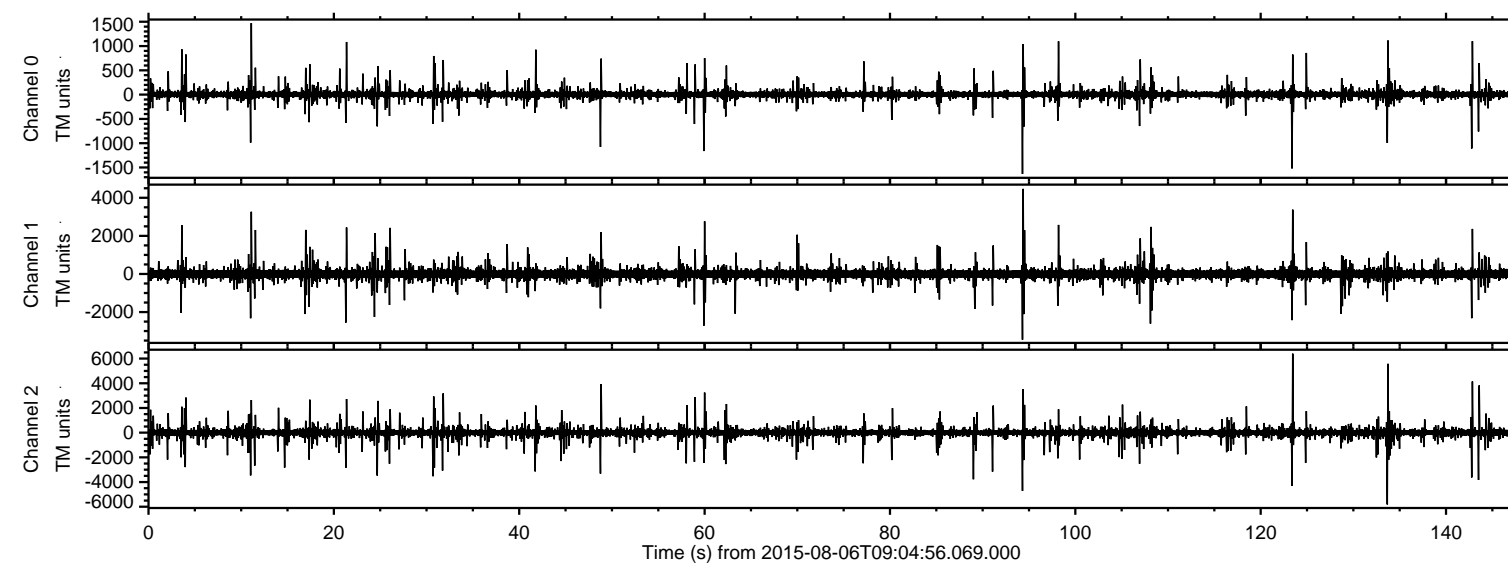


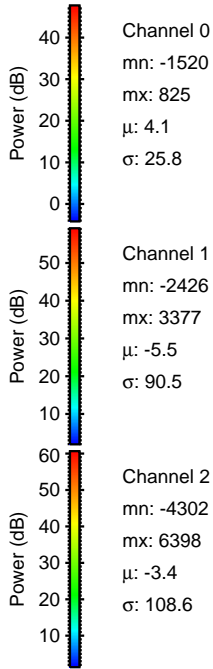
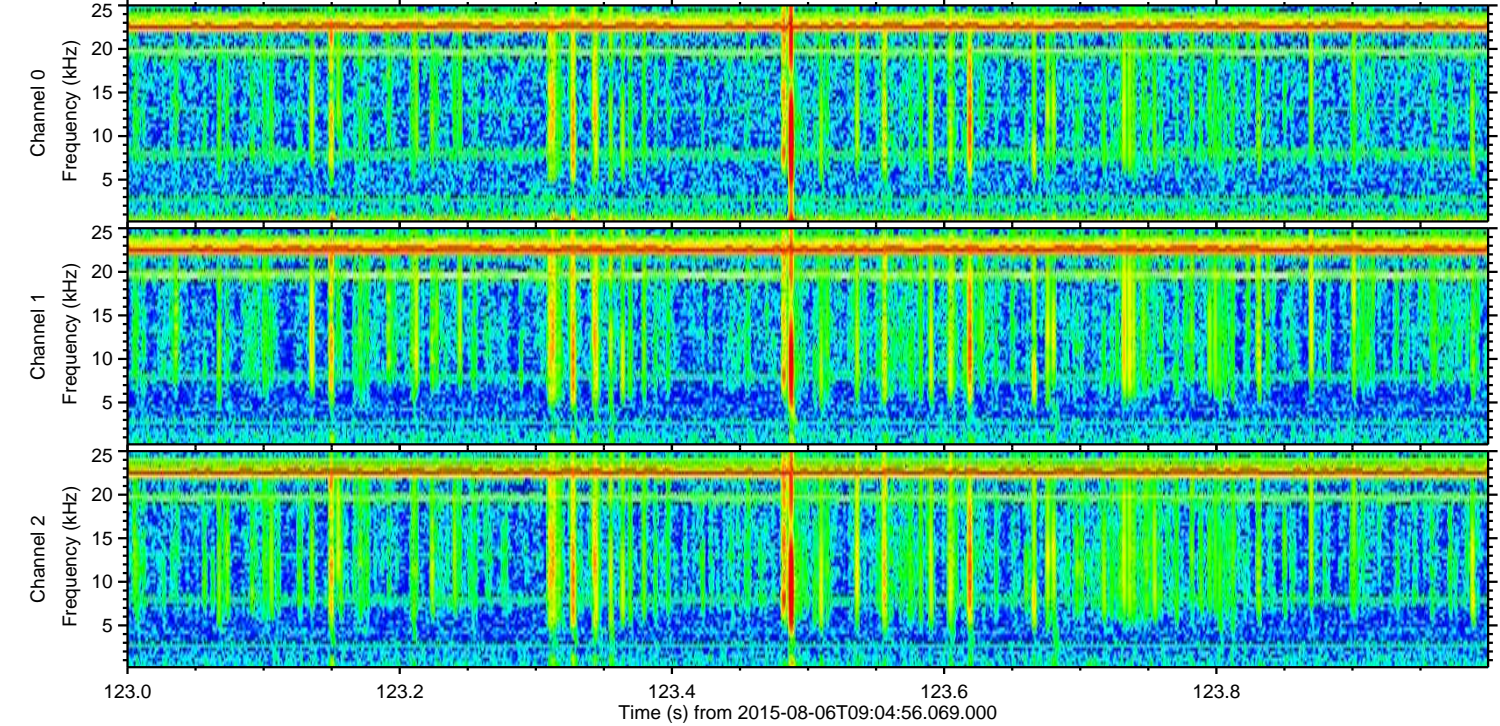
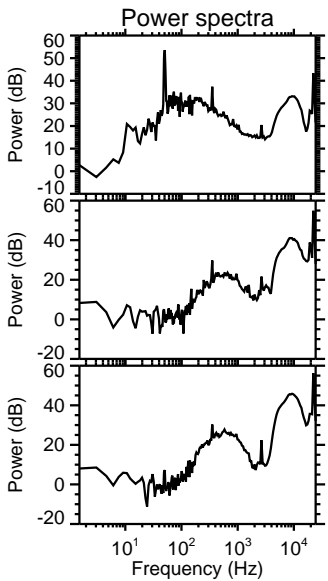
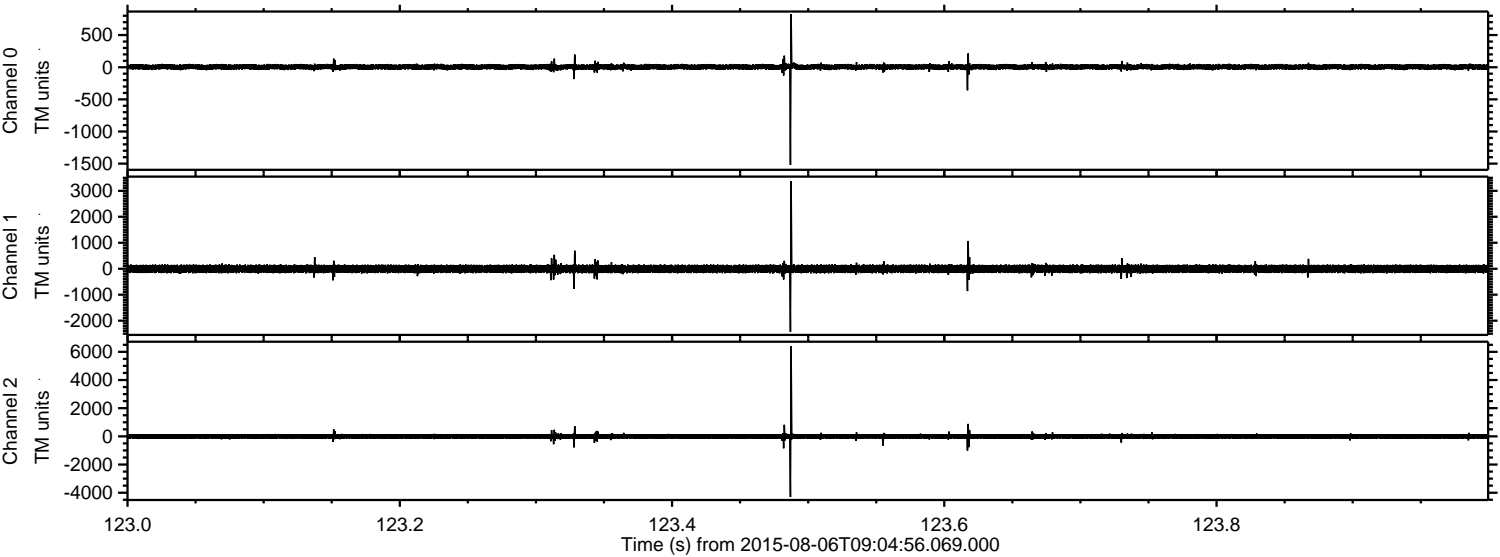
ELMAVAN 3D WAVEFORMS (Measured data sampled at 50 kHz) 51000 packets of 144 samples from 2015-08-06T09:04:56.069.000.

Processed Thu Aug 6 11:11:25 2015 by ELM ver.2012-10-06 from 001__elm20150806_090455__dat00.bin



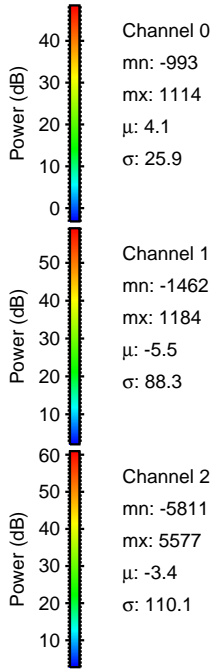
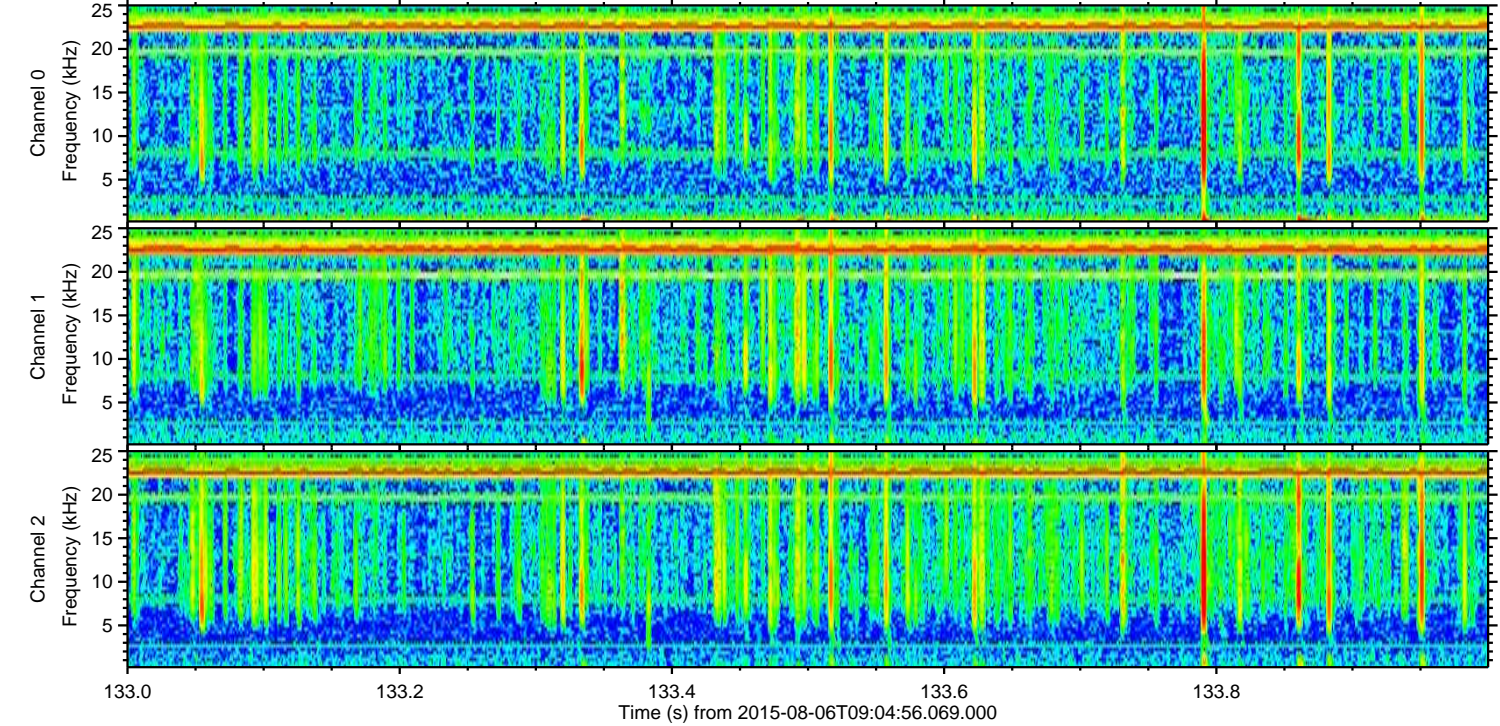
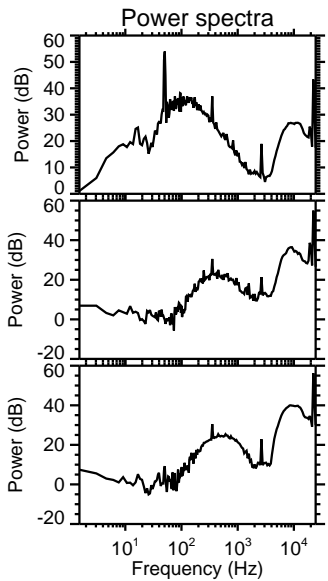
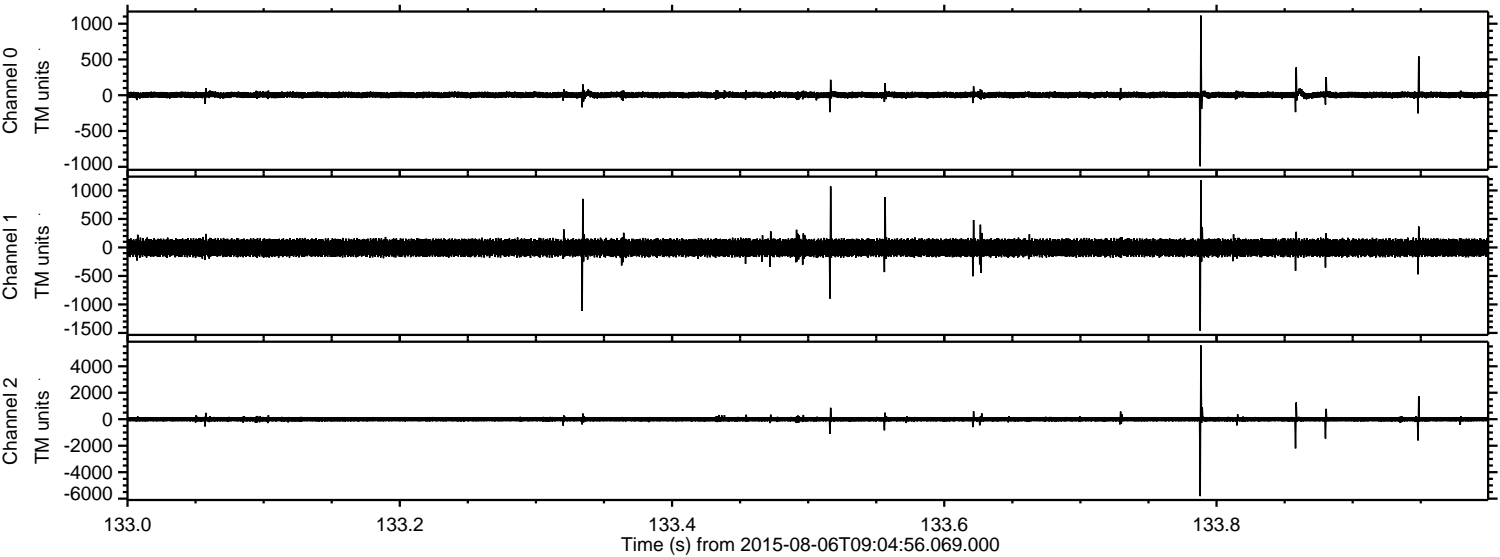
ELMAVAN 3D WAVEFORMS (Measured data sampled at 50 kHz) 51000 packets of 144 samples from 2015-08-06T09:04:56.069.000. Part 124/147

Processed Thu Aug 6 11:11:37 2015 by ELM ver.2012-10-06 from 001__elm20150806_090455__dat00.bin



ELMAVAN 3D WAVEFORMS (Measured data sampled at 50 kHz) 51000 packets of 144 samples from 2015-08-06T09:04:56.069.000. Part 134/147

Processed Thu Aug 6 11:11:38 2015 by ELM ver.2012-10-06 from 001__elm20150806_090455__dat00.bin

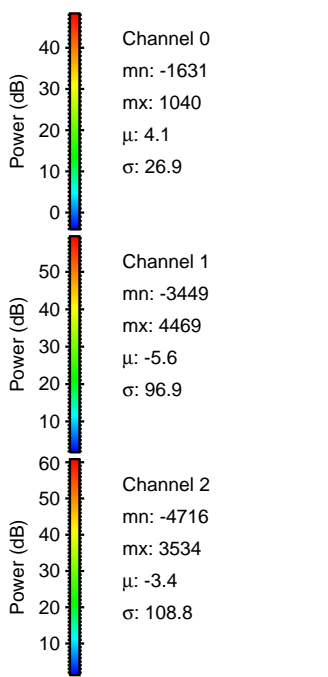
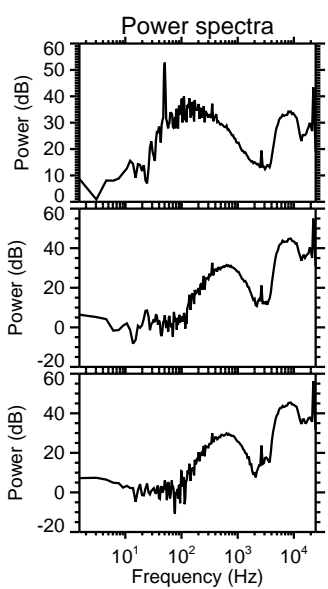
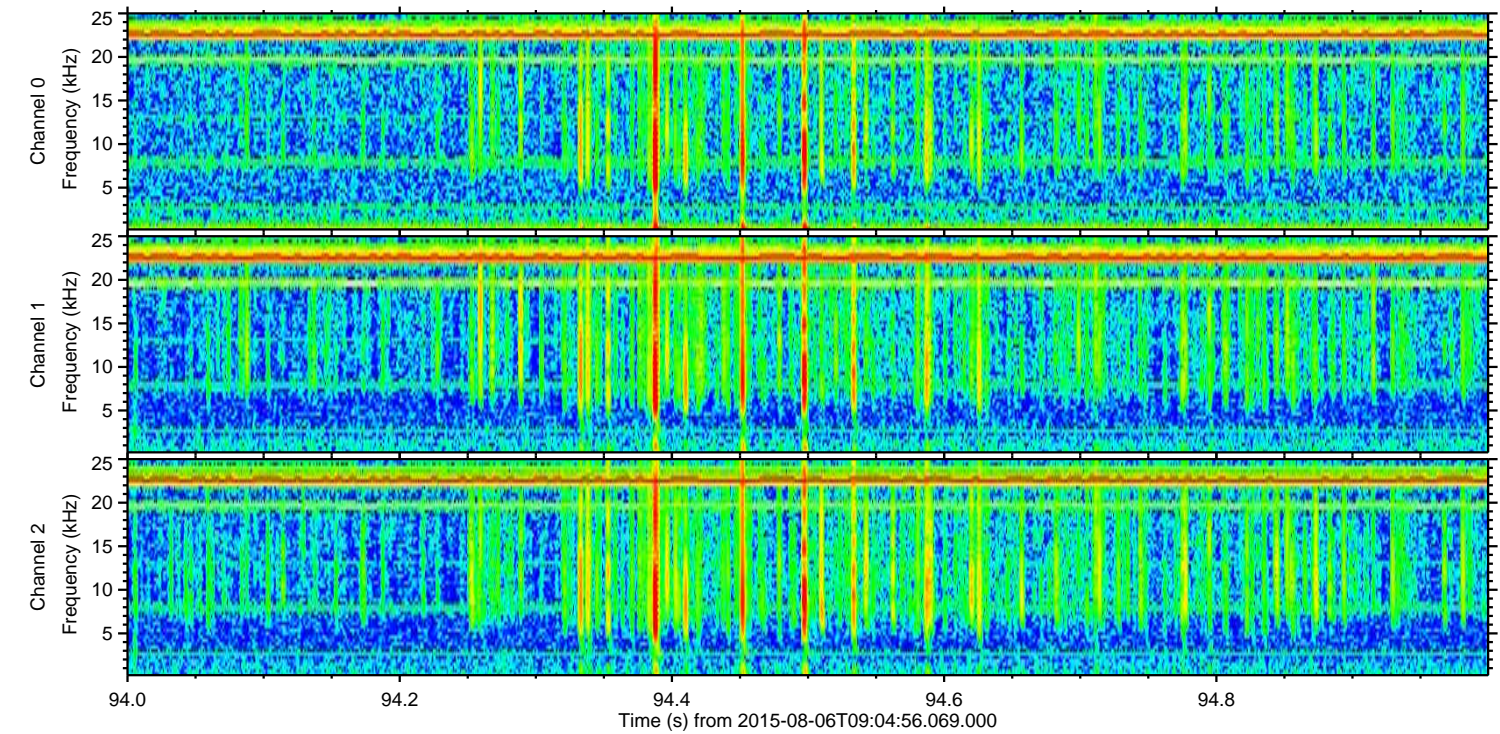
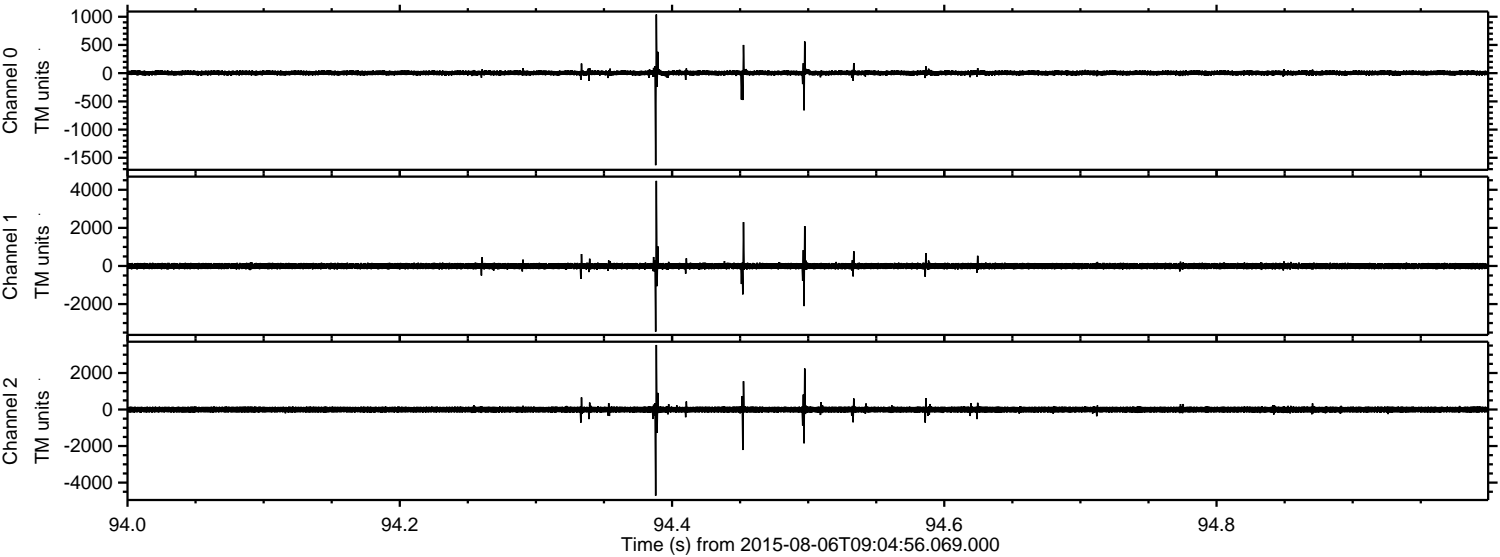


Channel 0
mn: -993
mx: 1114
 μ : 4.1
 σ : 25.9

Channel 1
mn: -1462
mx: 1184
 μ : -5.5
 σ : 88.3

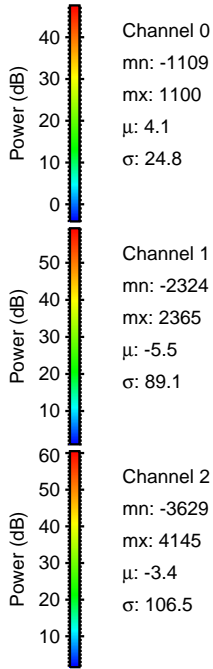
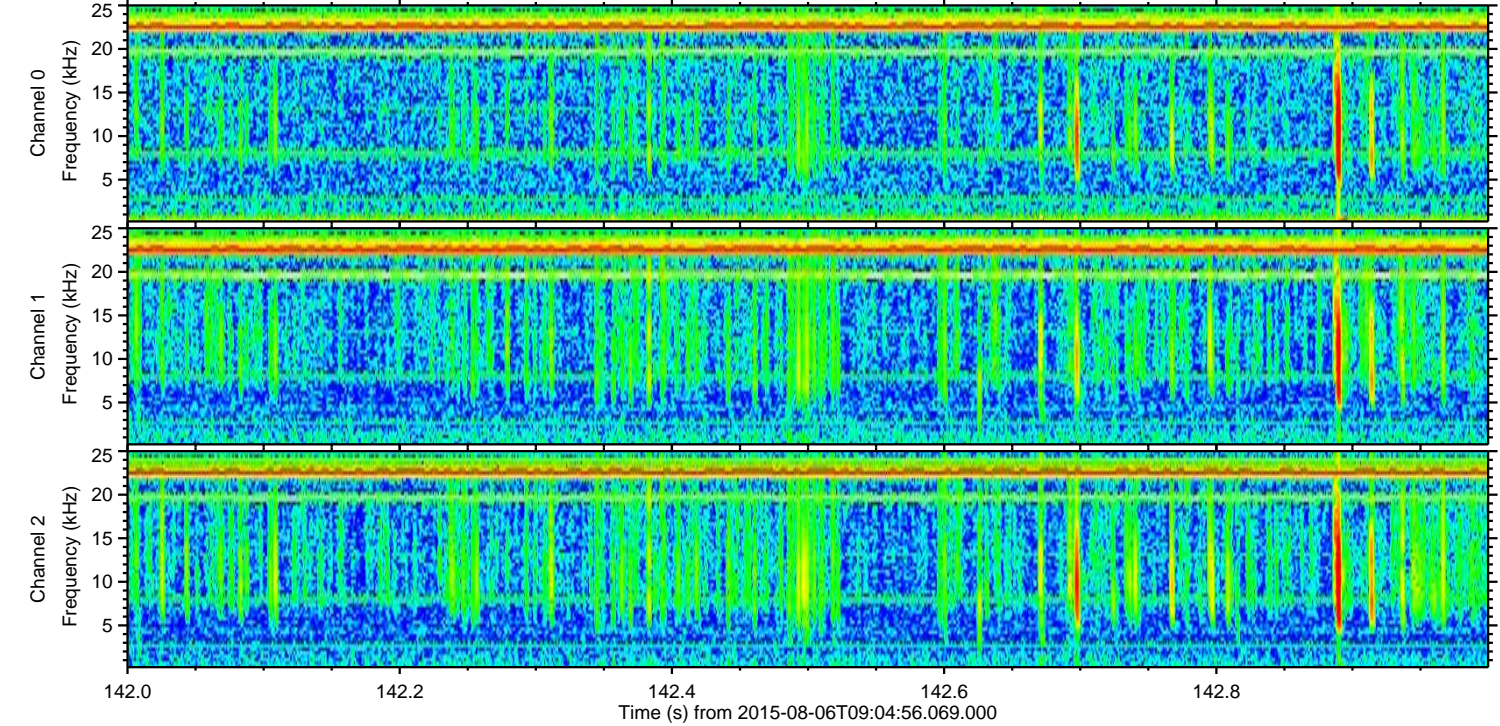
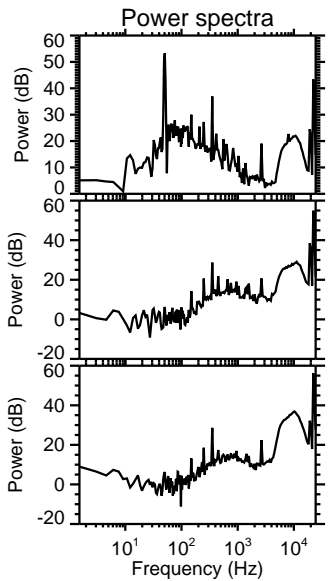
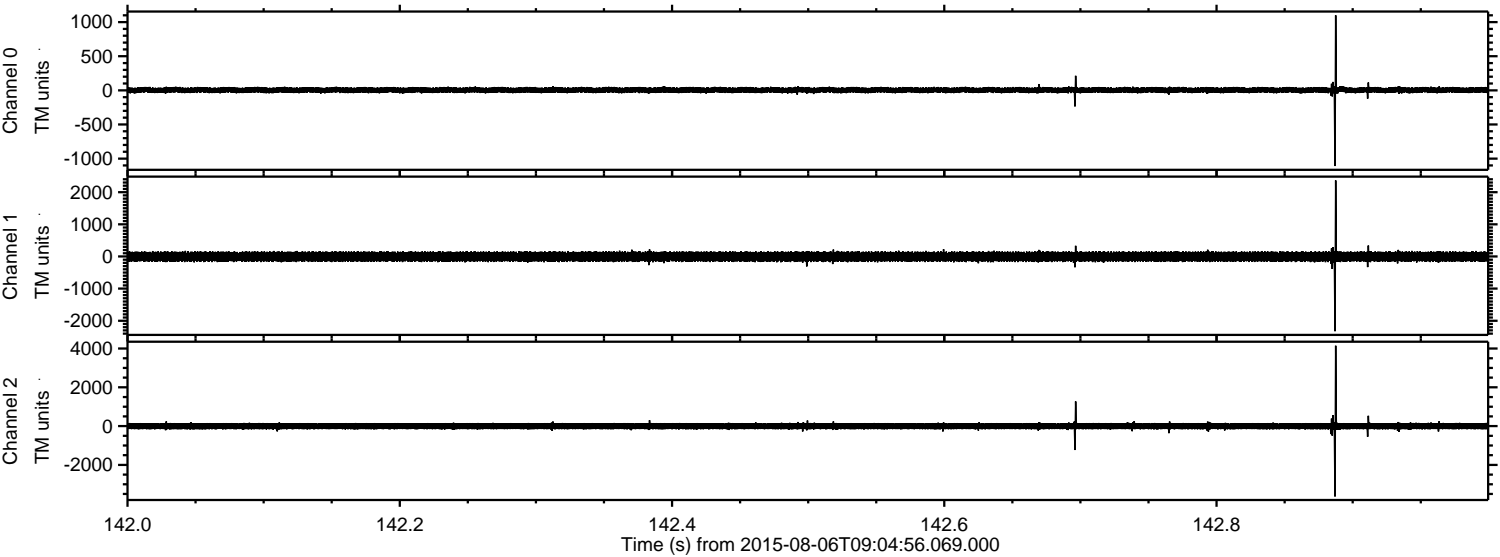
Channel 2
mn: -5811
mx: 5577
 μ : -3.4
 σ : 110.1

Processed Thu Aug 6 11:11:39 2015 by ELM ver.2012-10-06 from 001__elm20150806_090455__dat00.bin

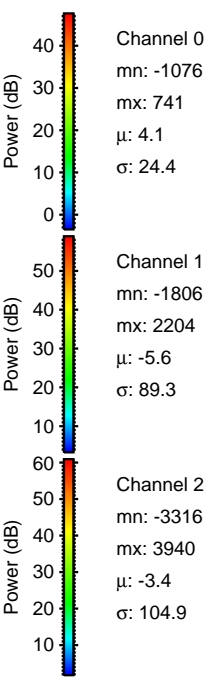
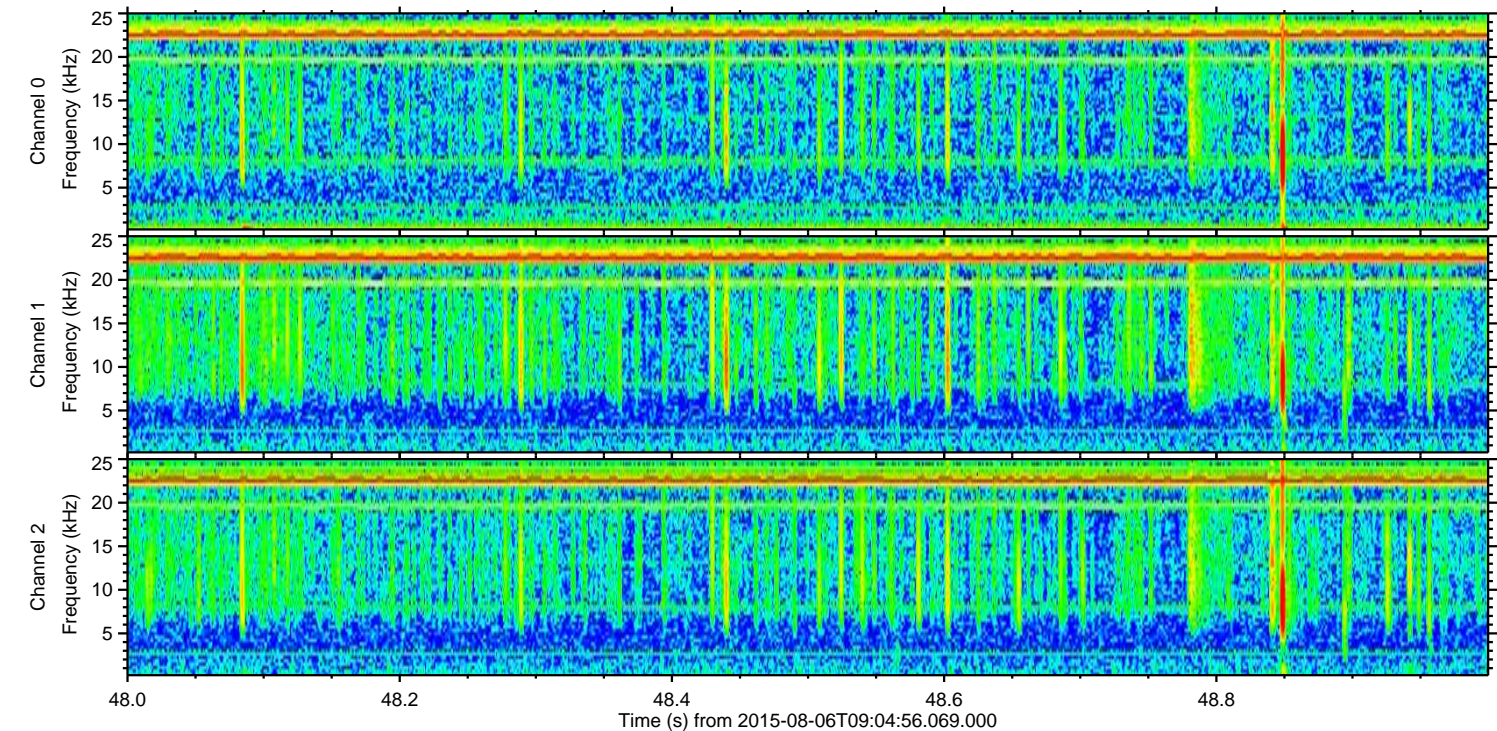
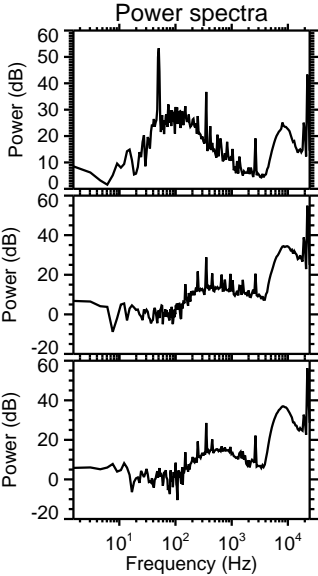
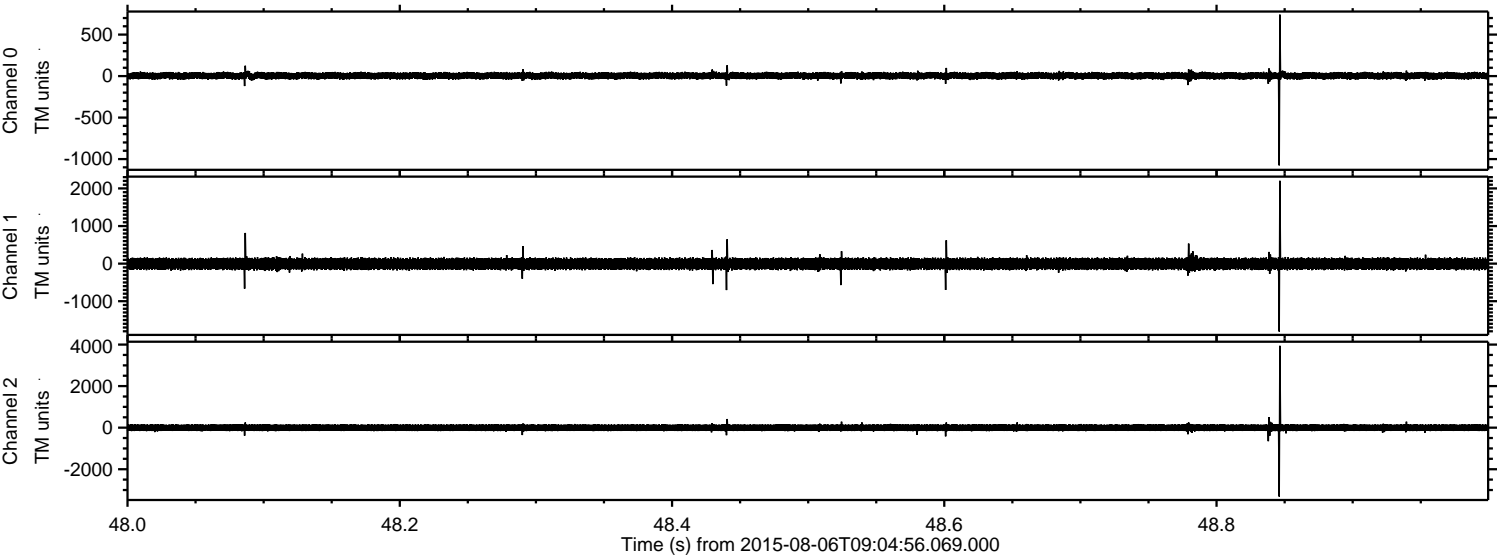


ELMAVAN 3D WAVEFORMS (Measured data sampled at 50 kHz) 51000 packets of 144 samples from 2015-08-06T09:04:56.069.000. Part 143/147

Processed Thu Aug 6 11:11:40 2015 by ELM ver.2012-10-06 from 001__elm20150806_090455__dat00.bin

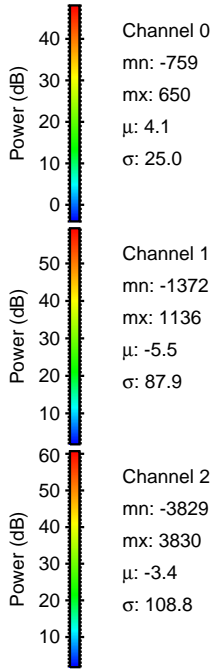
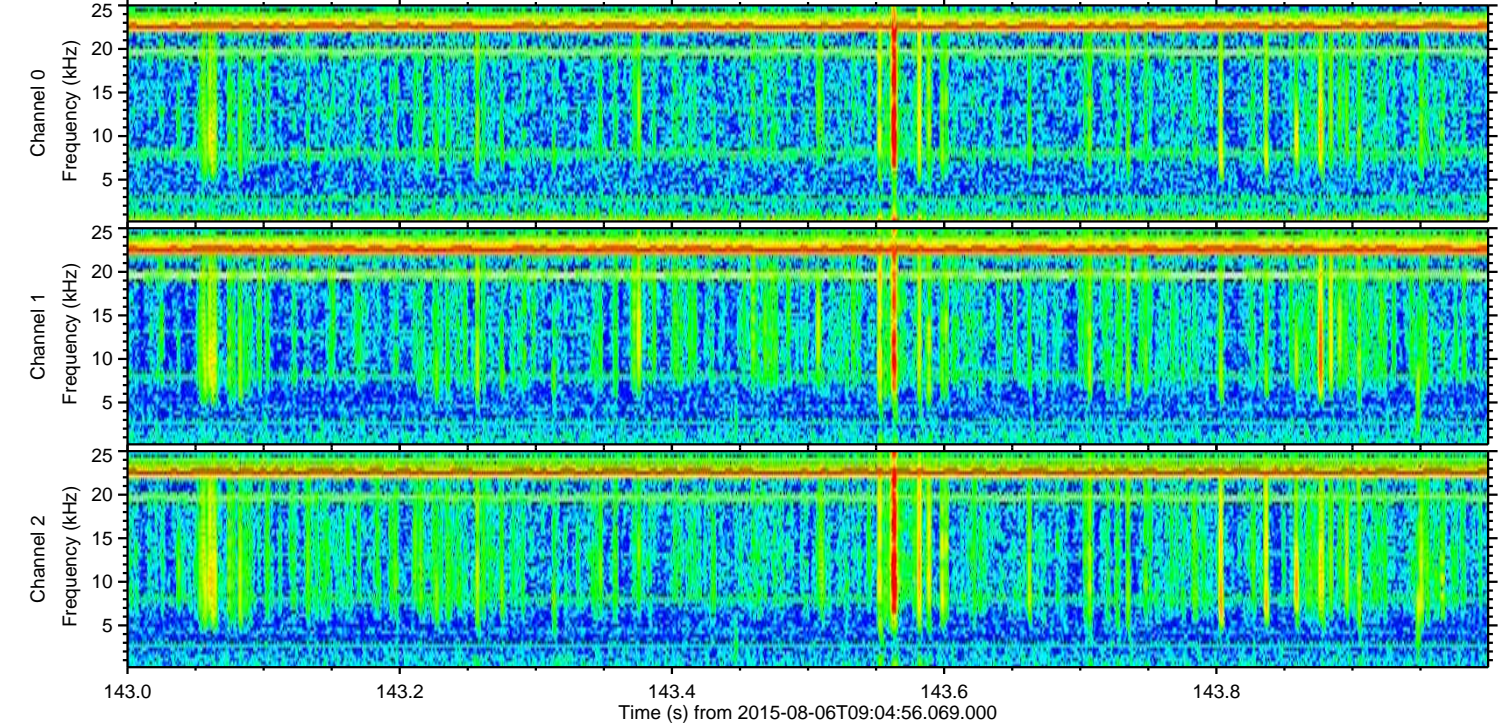
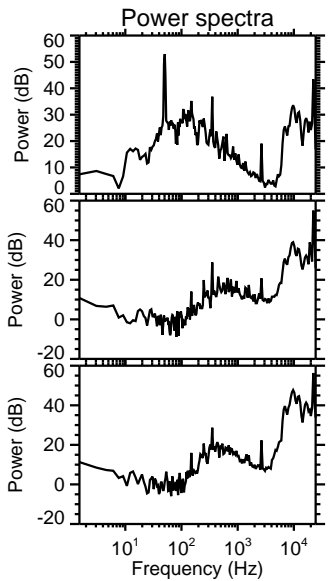
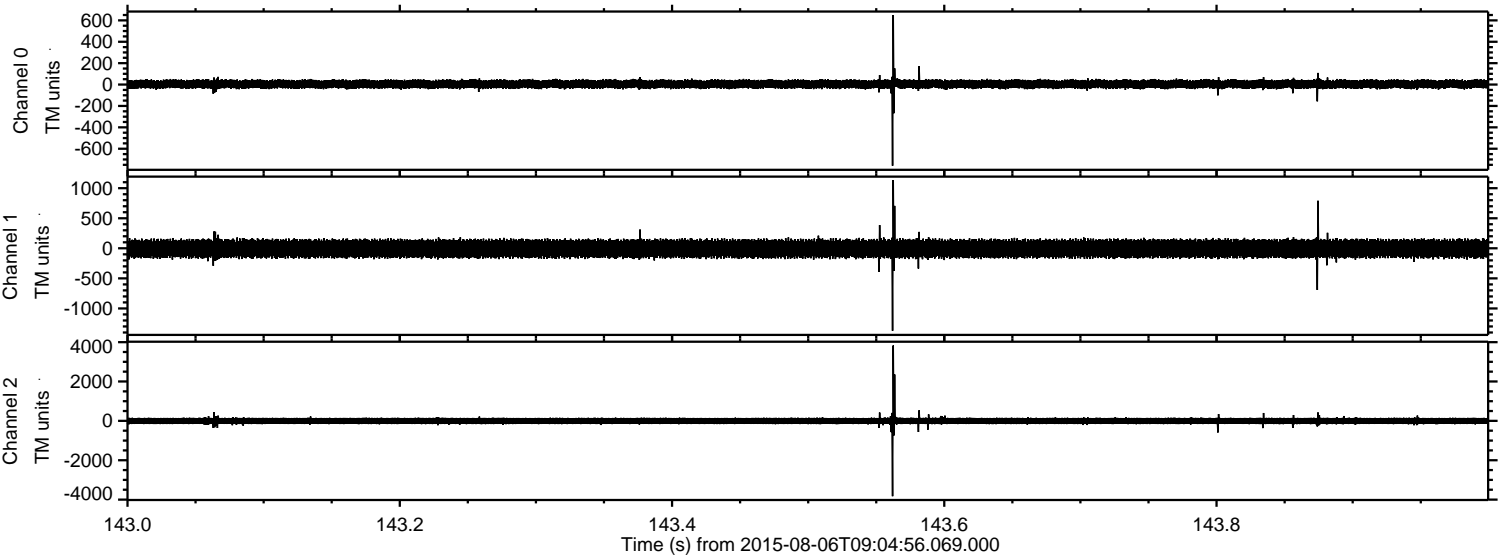


Processed Thu Aug 6 11:11:41 2015 by ELM ver.2012-10-06 from 001__elm20150806_090455__dat00.bin



ELMAVAN 3D WAVEFORMS (Measured data sampled at 50 kHz) 51000 packets of 144 samples from 2015-08-06T09:04:56.069.000. Part 144/147

Processed Thu Aug 6 11:11:42 2015 by ELM ver.2012-10-06 from 001__elm20150806_090455__dat00.bin

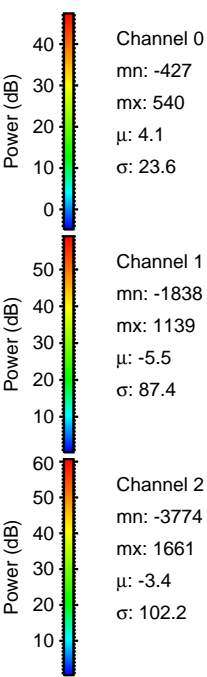
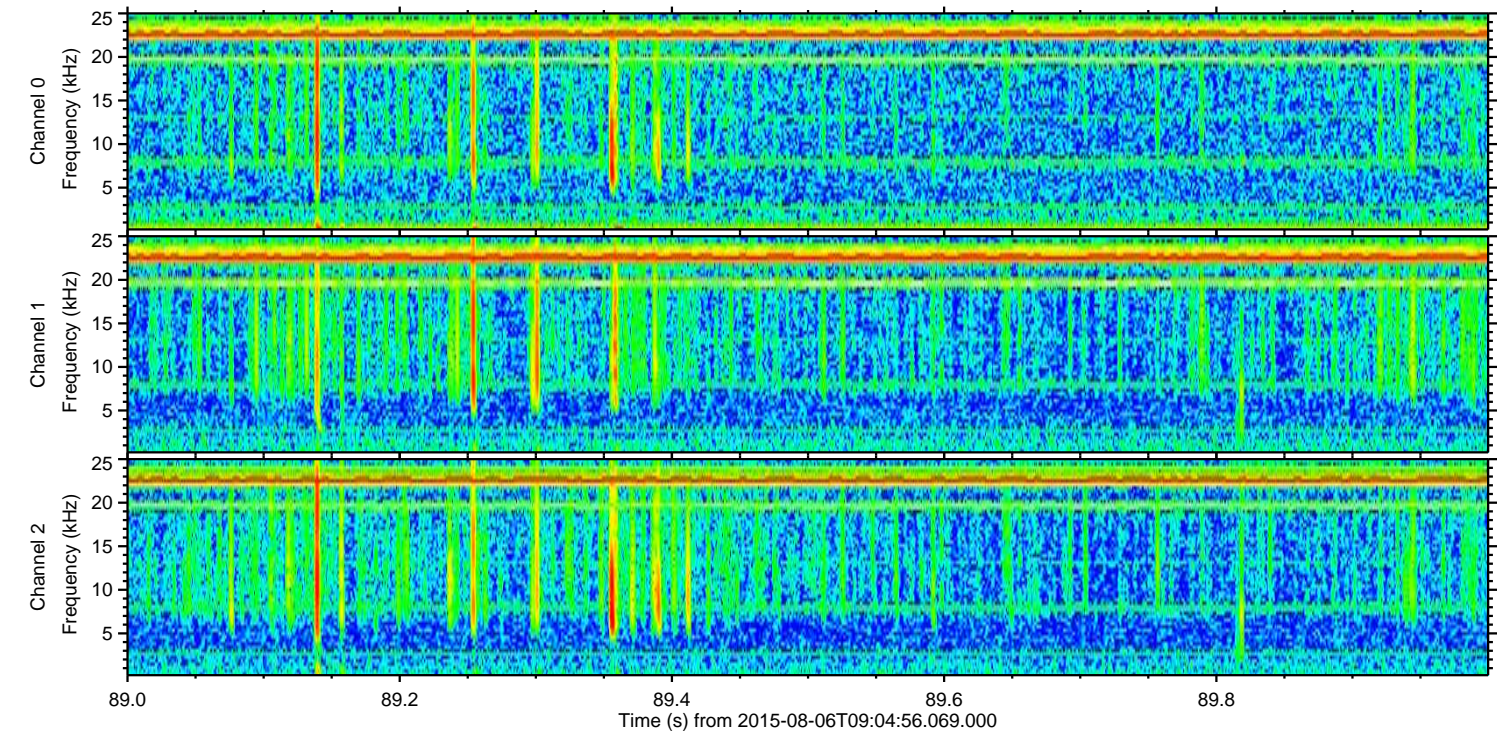
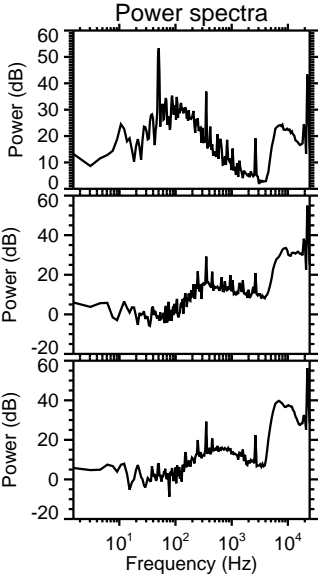
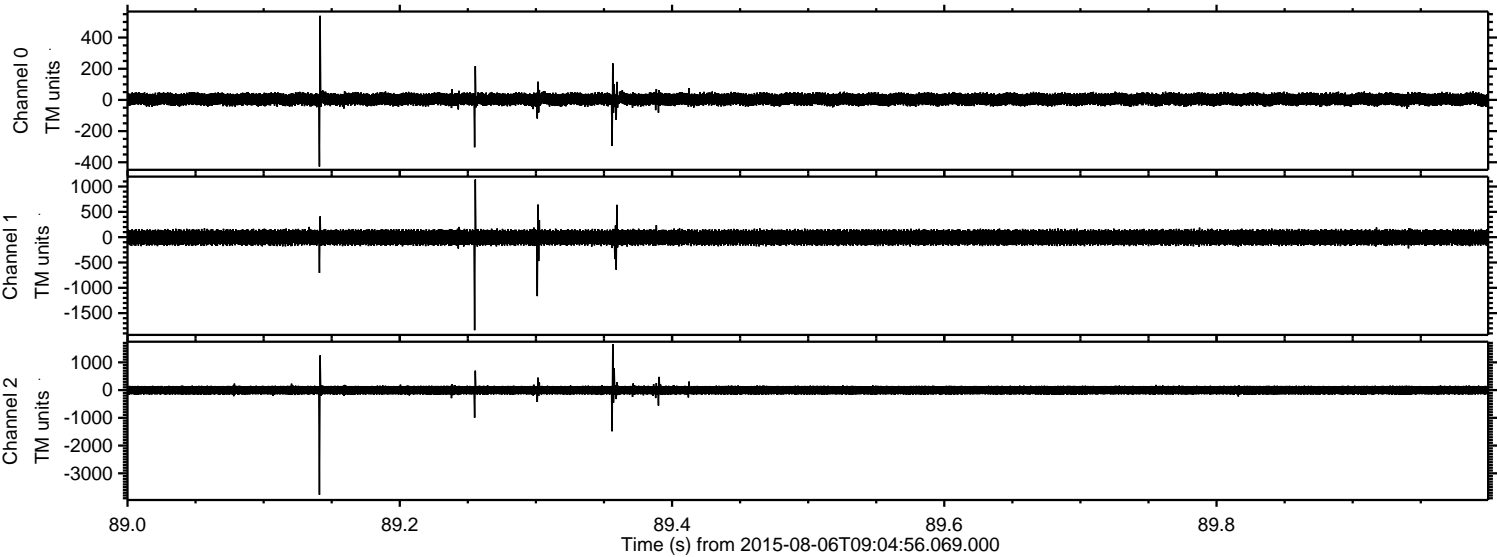


Channel 0
mn: -759
mx: 650
 μ : 4.1
 σ : 25.0

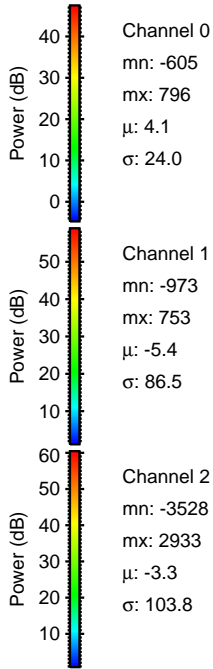
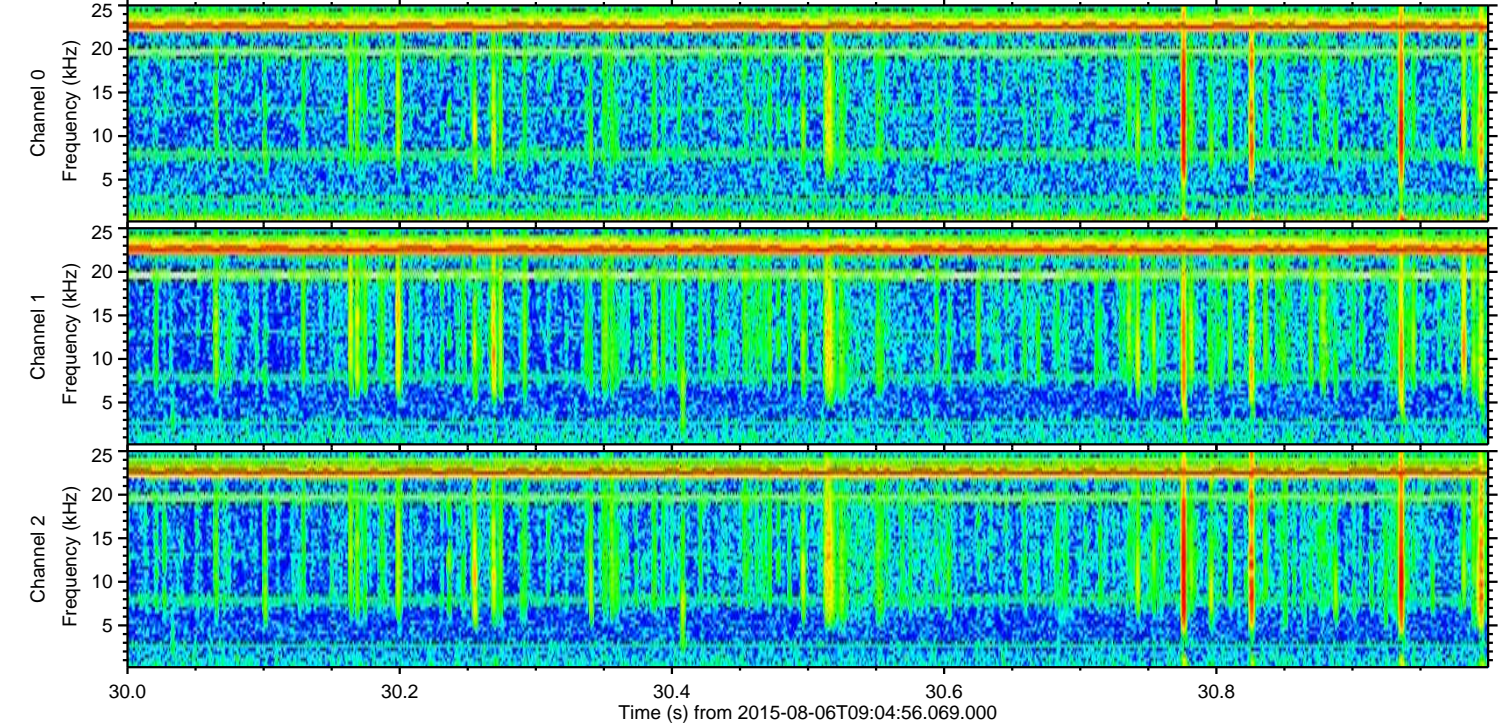
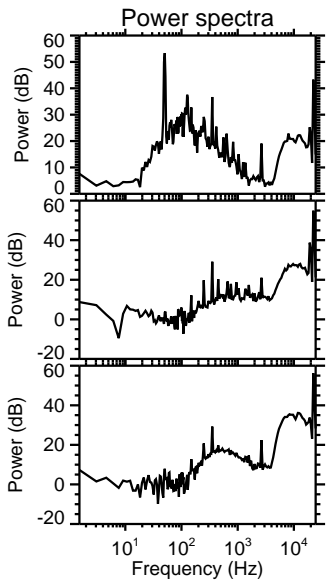
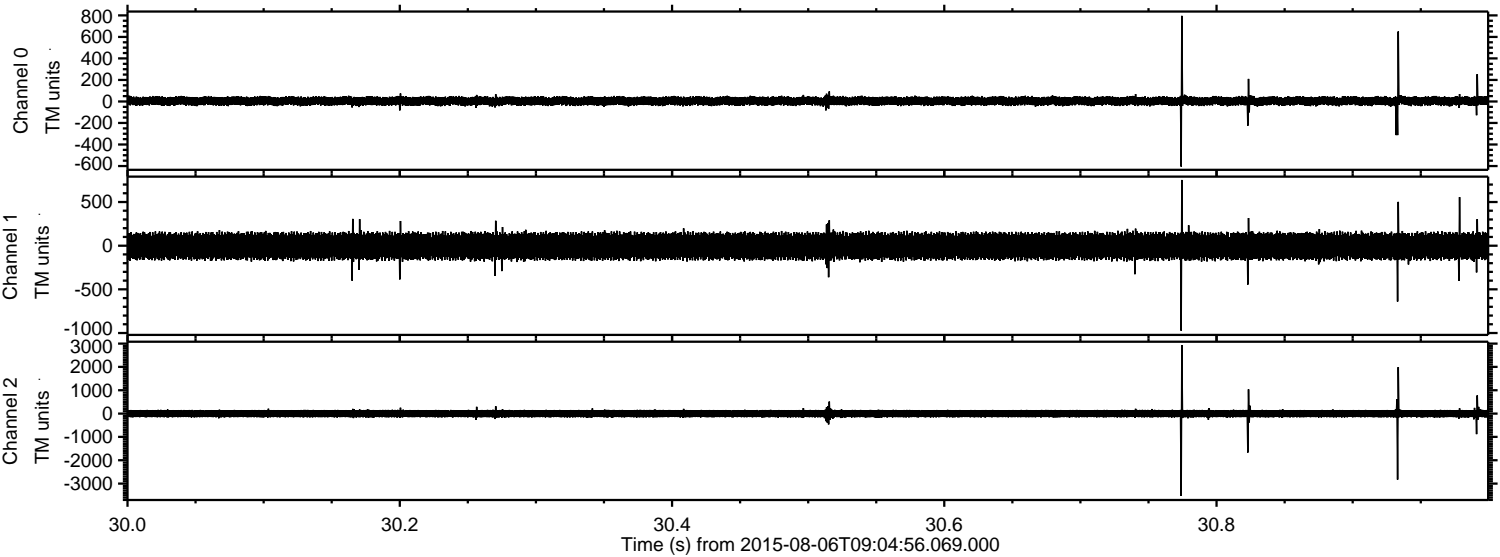
Channel 1
mn: -1372
mx: 1136
 μ : -5.5
 σ : 87.9

Channel 2
mn: -3829
mx: 3830
 μ : -3.4
 σ : 108.8

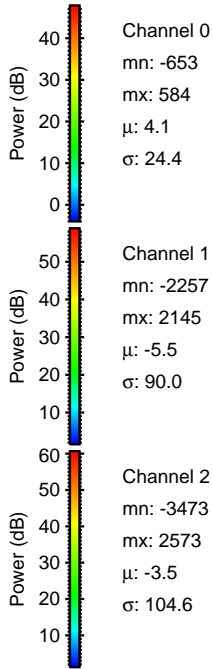
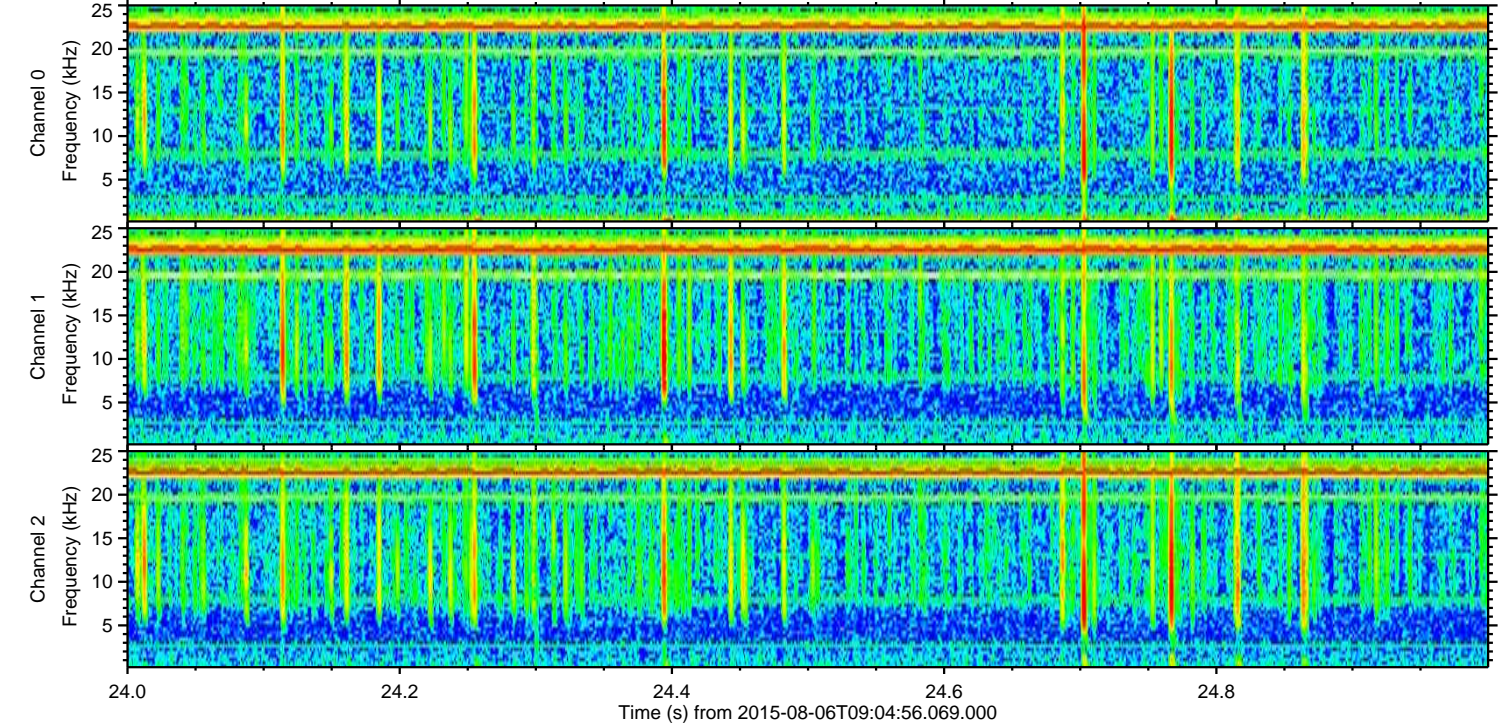
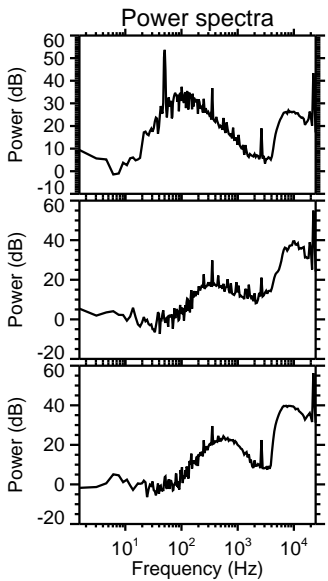
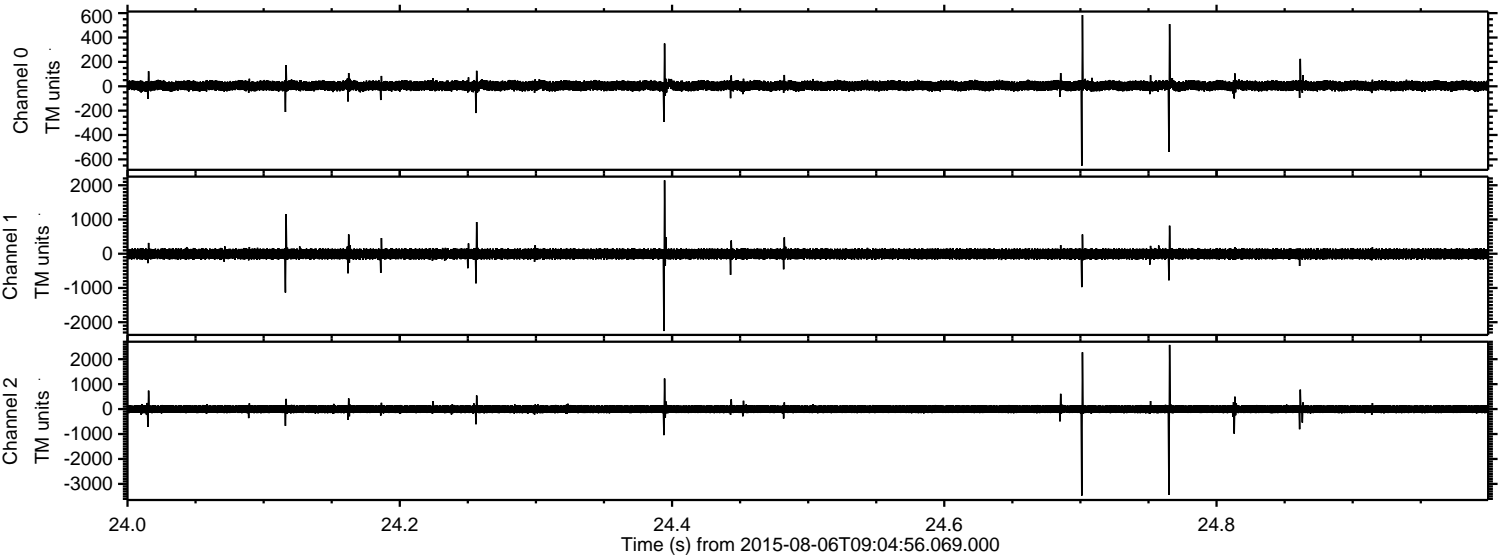
Processed Thu Aug 6 11:11:43 2015 by ELM ver.2012-10-06 from 001__elm20150806_090455__dat00.bin



Processed Thu Aug 6 11:11:44 2015 by ELM ver.2012-10-06 from 001__elm20150806_090455__dat00.bin



Processed Thu Aug 6 11:11:45 2015 by ELM ver.2012-10-06 from 001__elm20150806_090455__dat00.bin



Processed Thu Aug 6 11:11:46 2015 by ELM ver.2012-10-06 from 001__elm20150806_090455__dat00.bin

