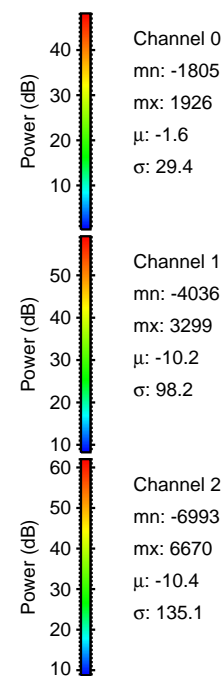
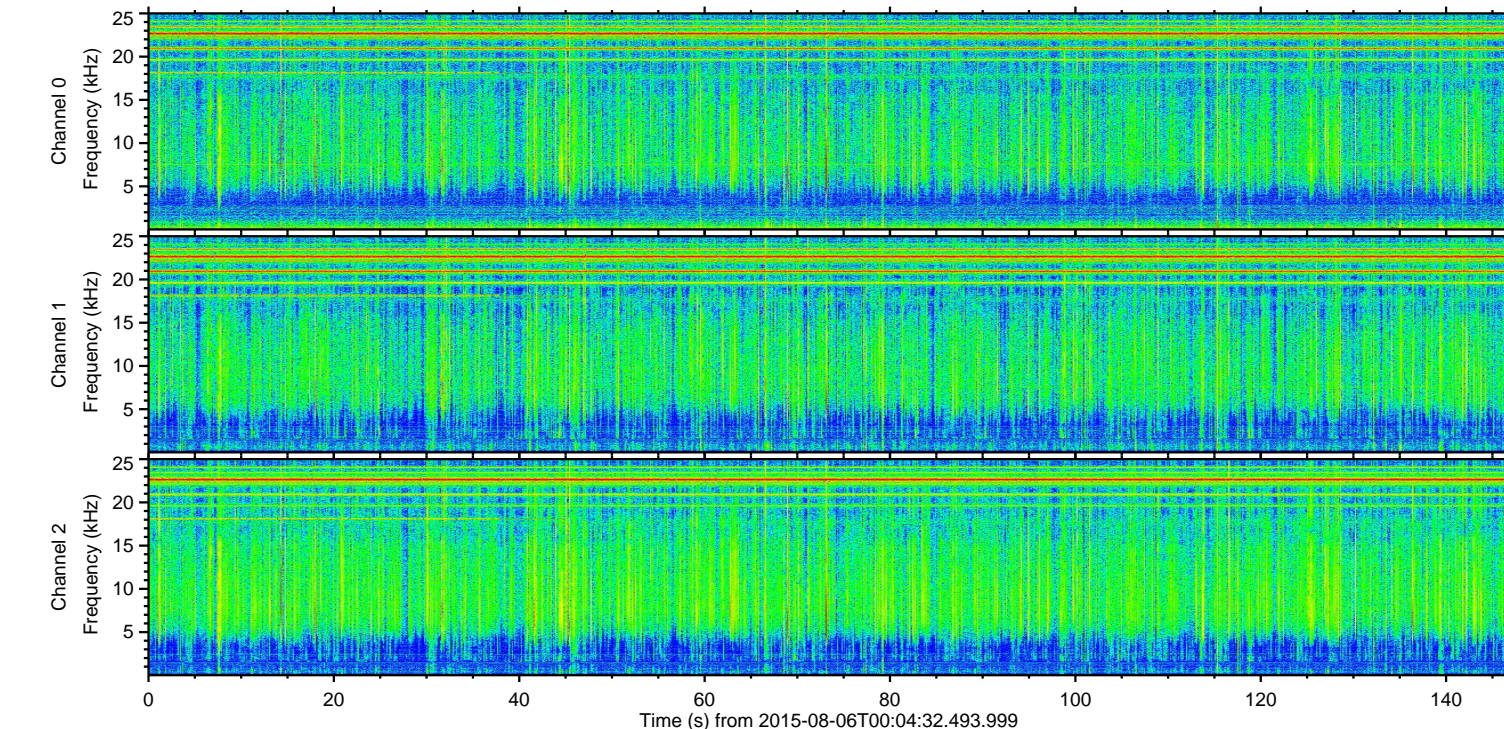
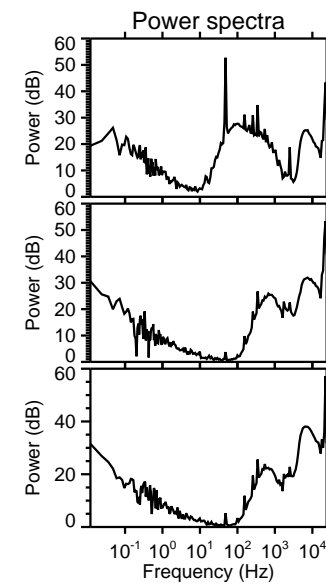
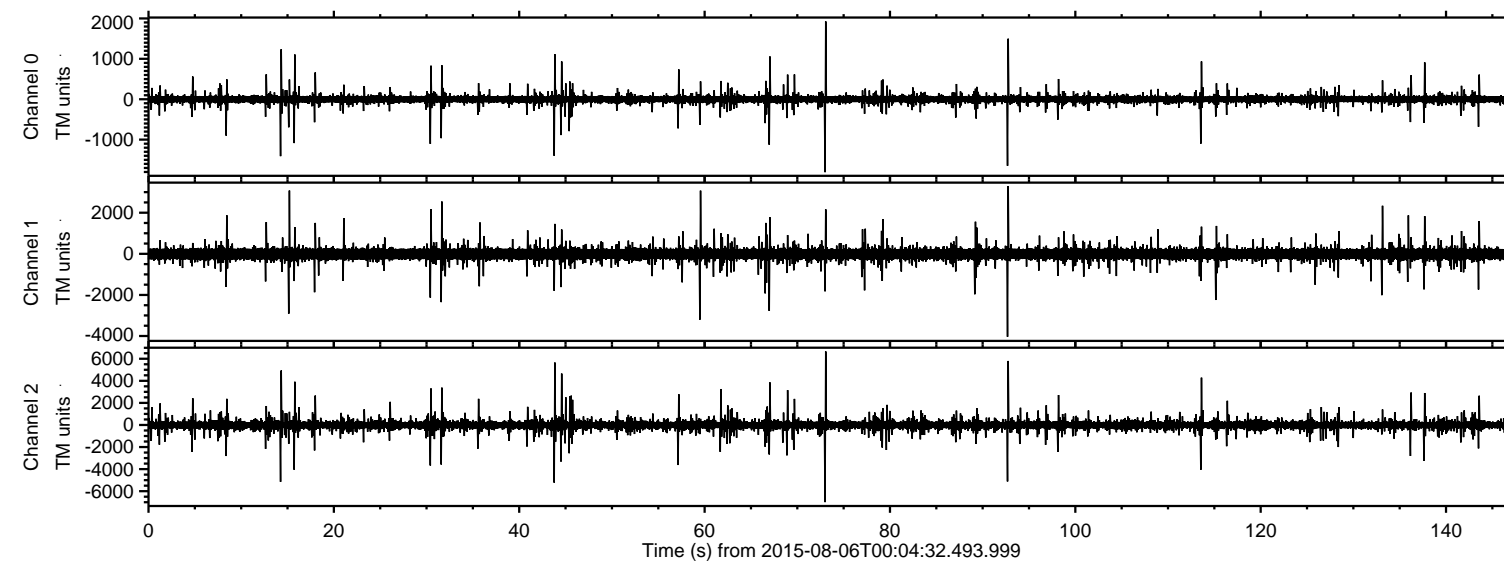
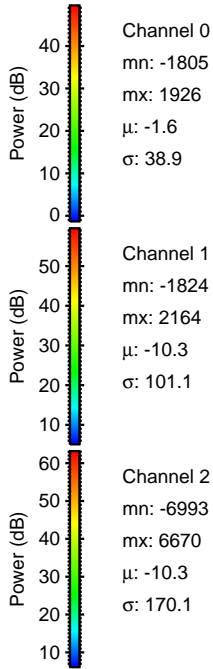
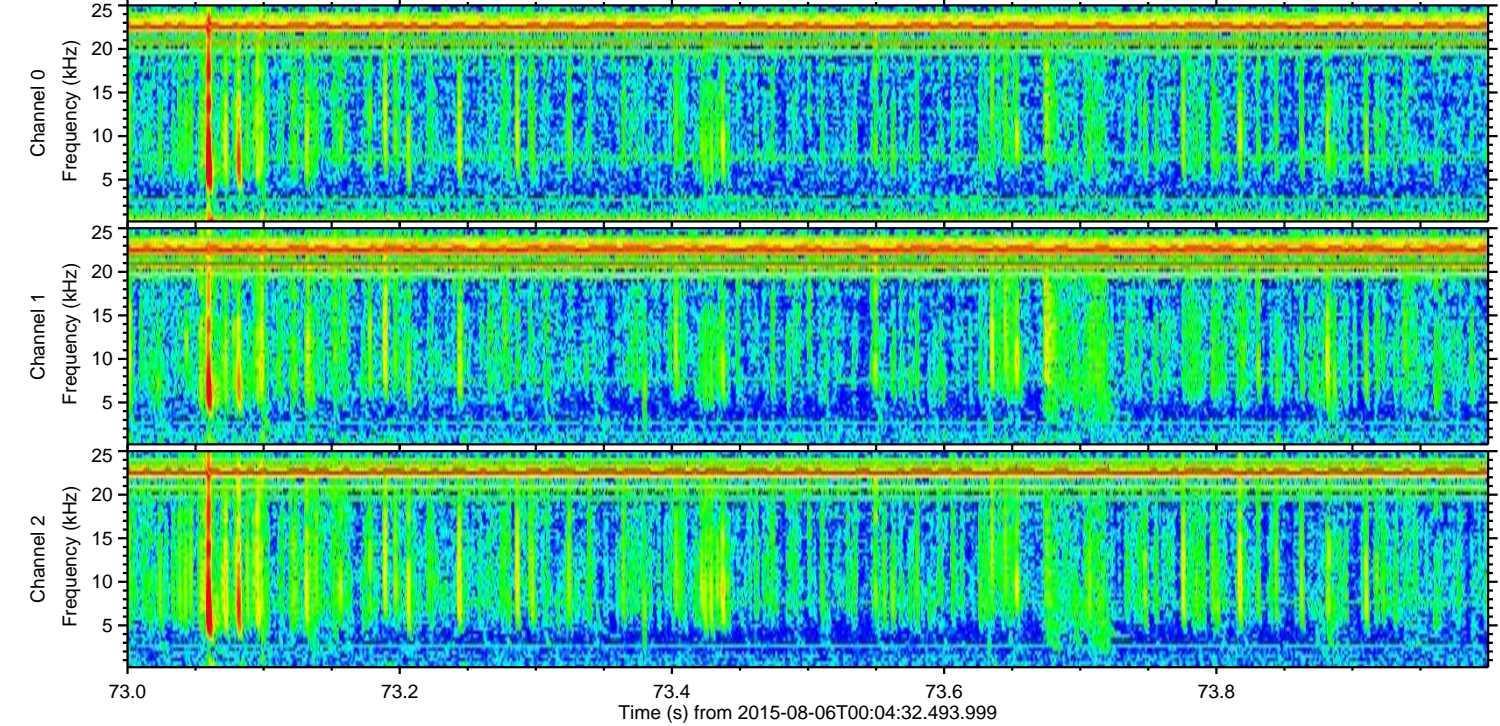
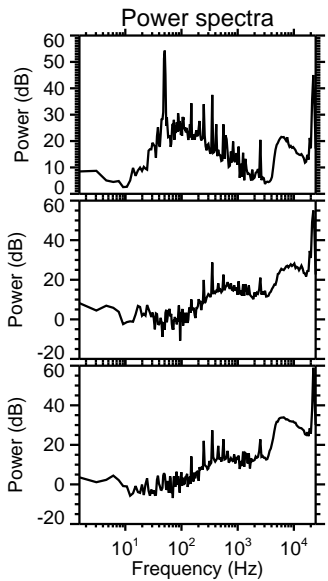
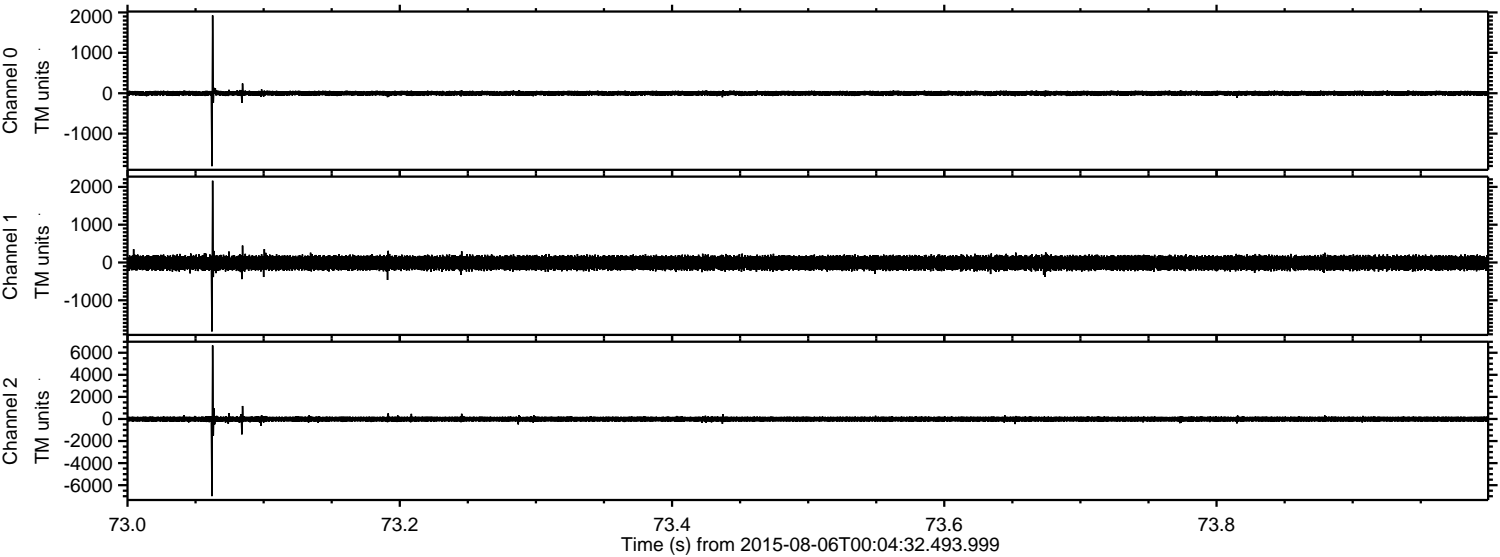


ELMAVAN 3D WAVEFORMS (Measured data sampled at 50 kHz) 51000 packets of 144 samples from 2015-08-06T00:04:32.493.999.

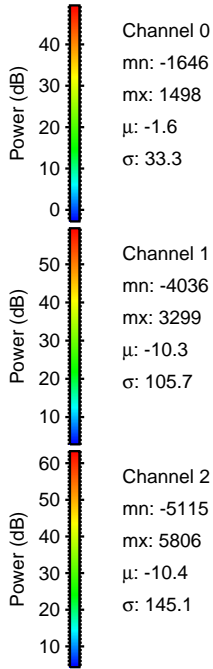
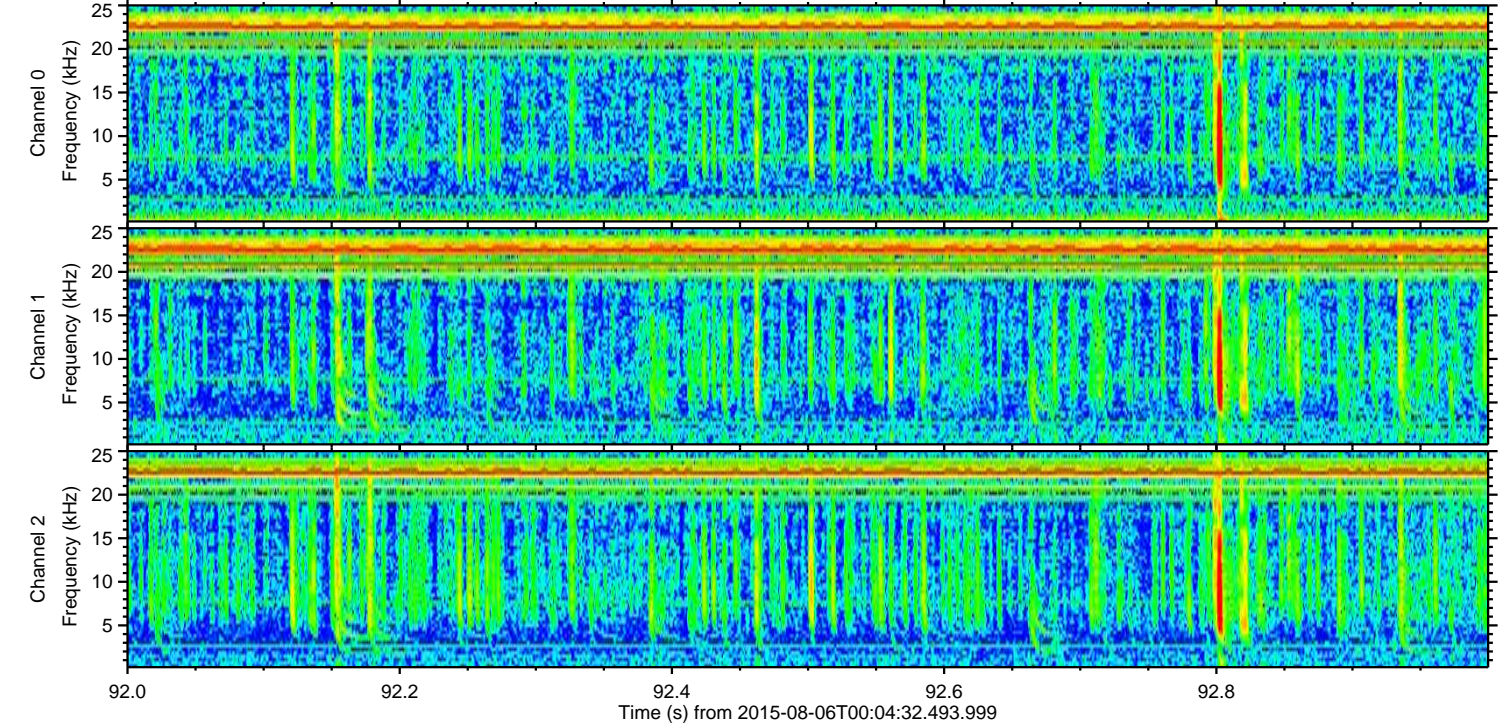
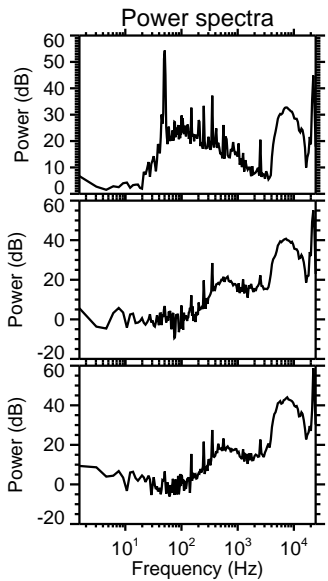
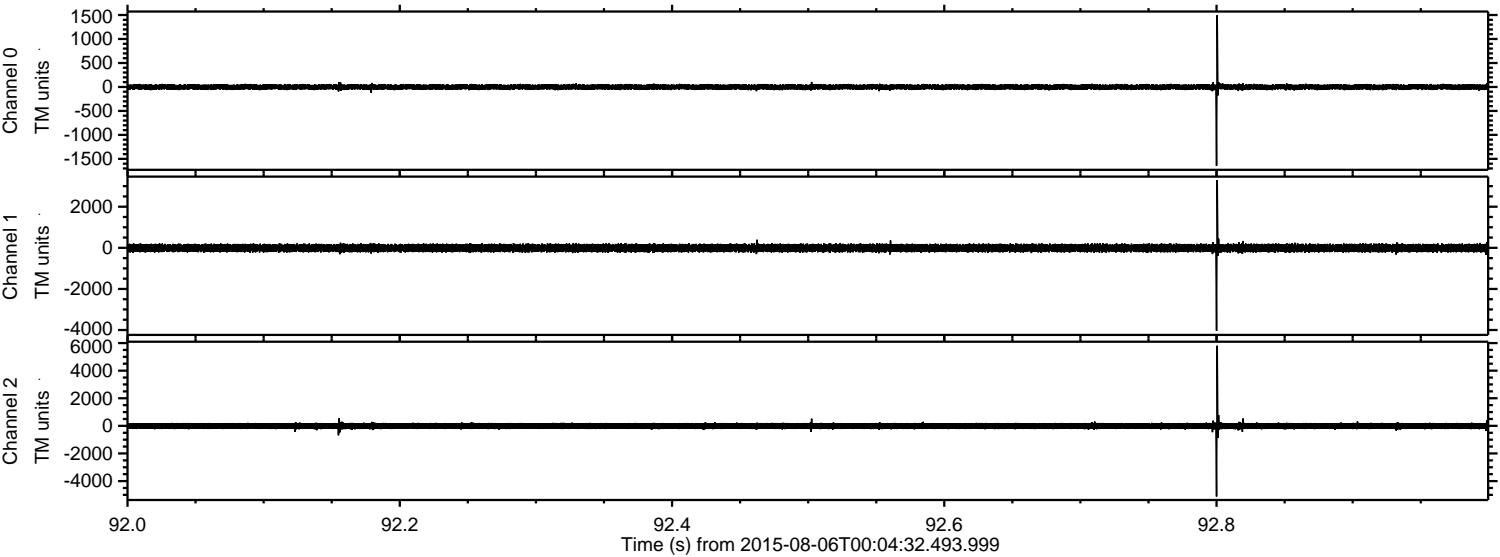
Processed Thu Aug 6 02:10:55 2015 by ELM ver.2012-10-06 from 001__elm20150806_000431__dat00.bin



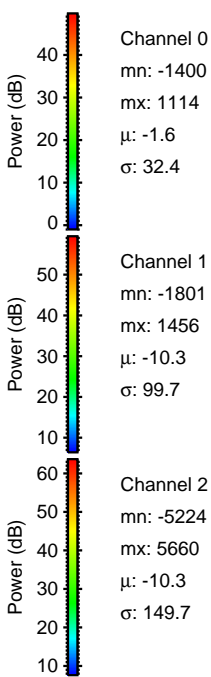
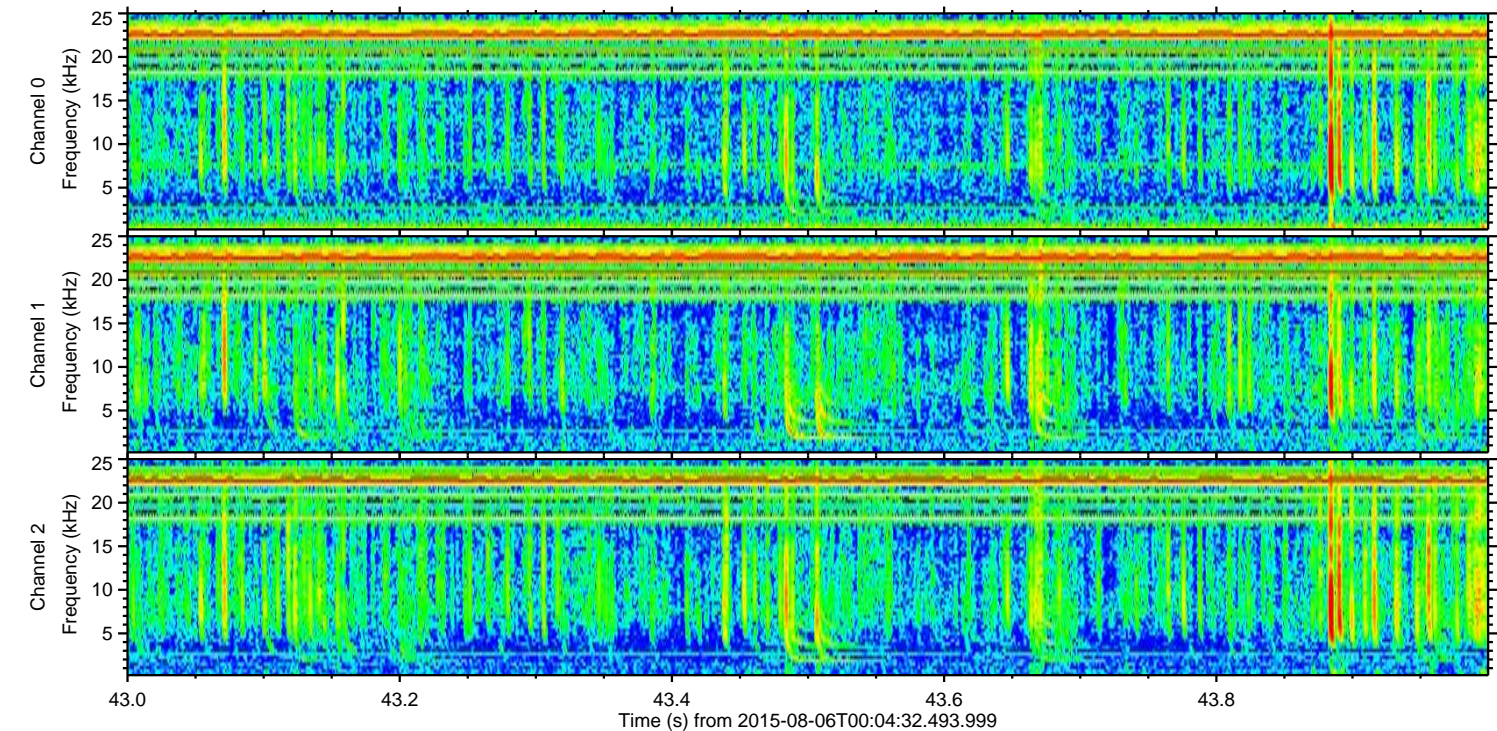
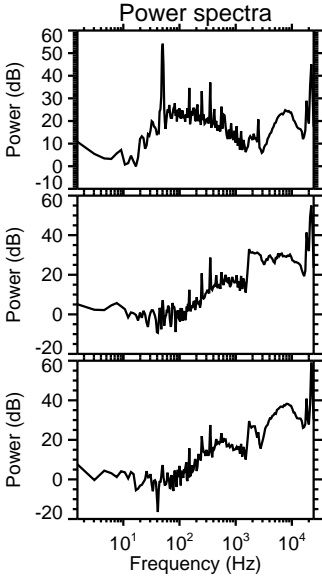
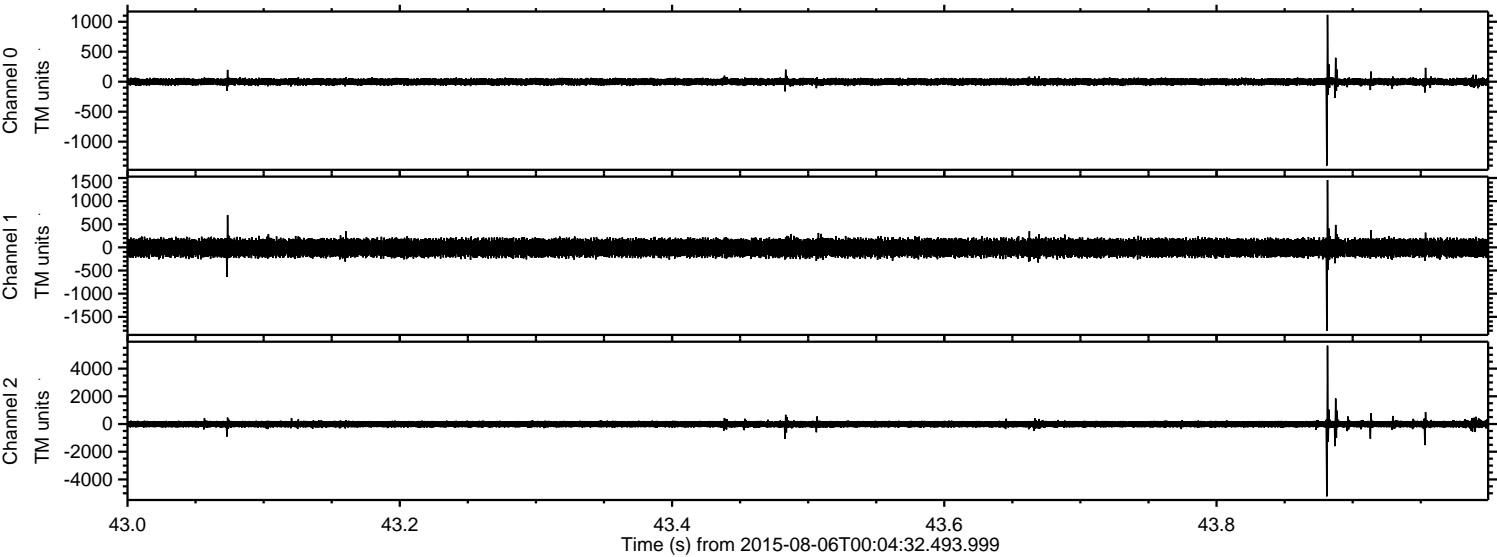
Processed Thu Aug 6 02:11:07 2015 by ELM ver.2012-10-06 from 001__elm20150806_000431__dat00.bin



Processed Thu Aug 6 02:11:08 2015 by ELM ver.2012-10-06 from 001__elm20150806_000431__dat00.bin



Processed Thu Aug 6 02:11:09 2015 by ELM ver.2012-10-06 from 001__elm20150806_000431__dat00.bin



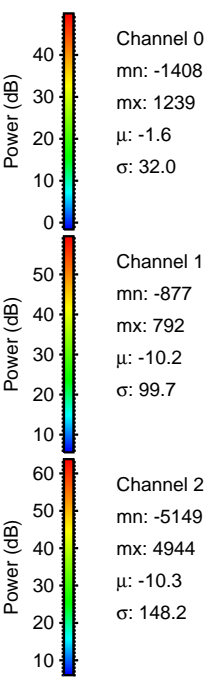
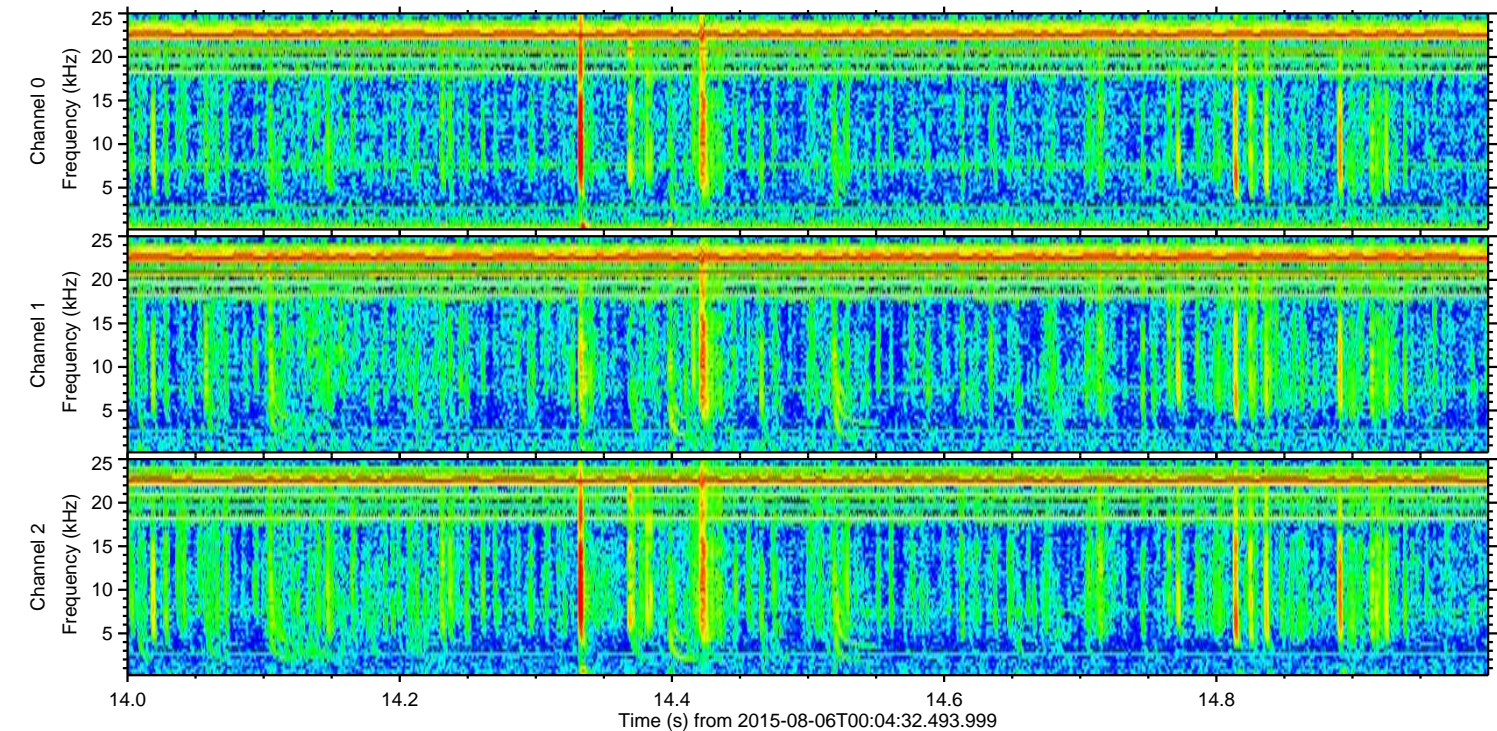
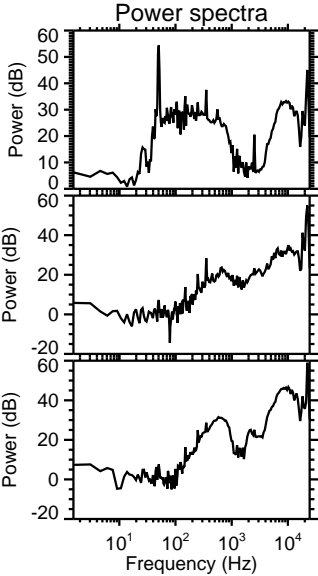
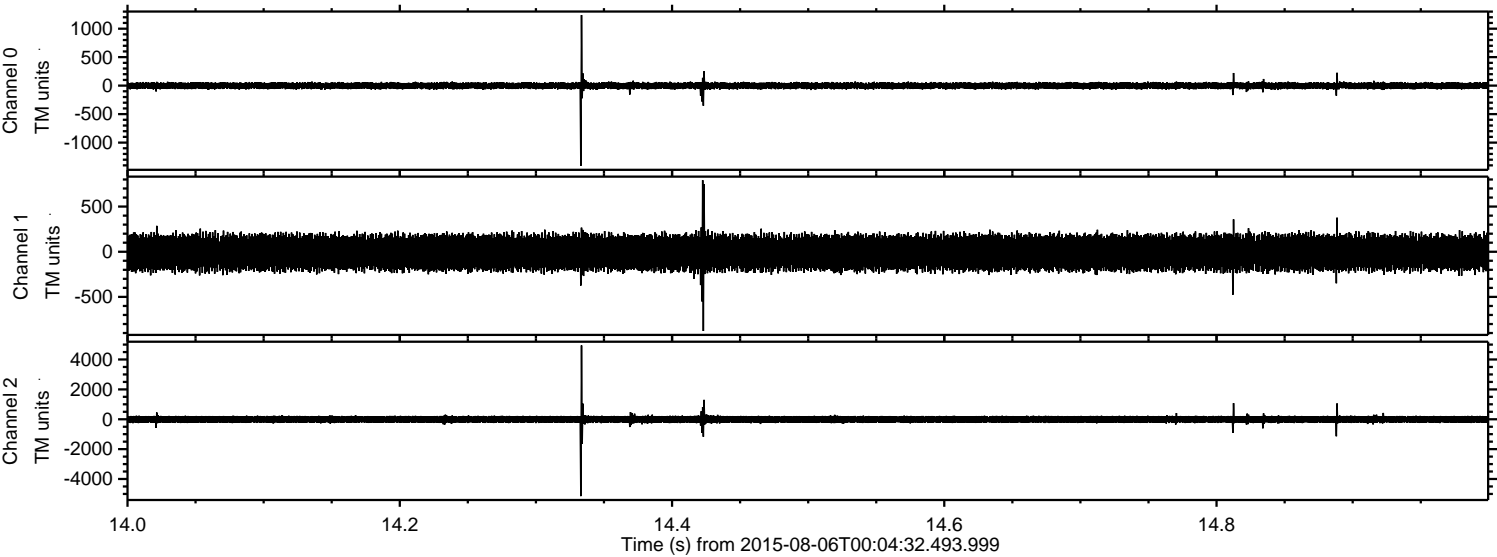
Channel 0
mn: -1400
mx: 1114
 μ : -1.6
 σ : 32.4

Channel 1
mn: -1801
mx: 1456
 μ : -10.3
 σ : 99.7

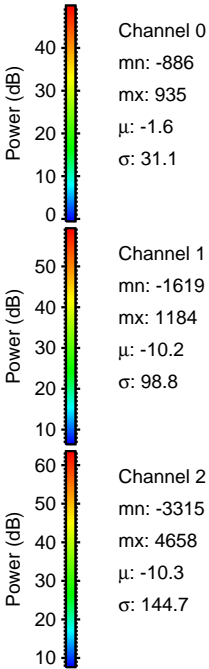
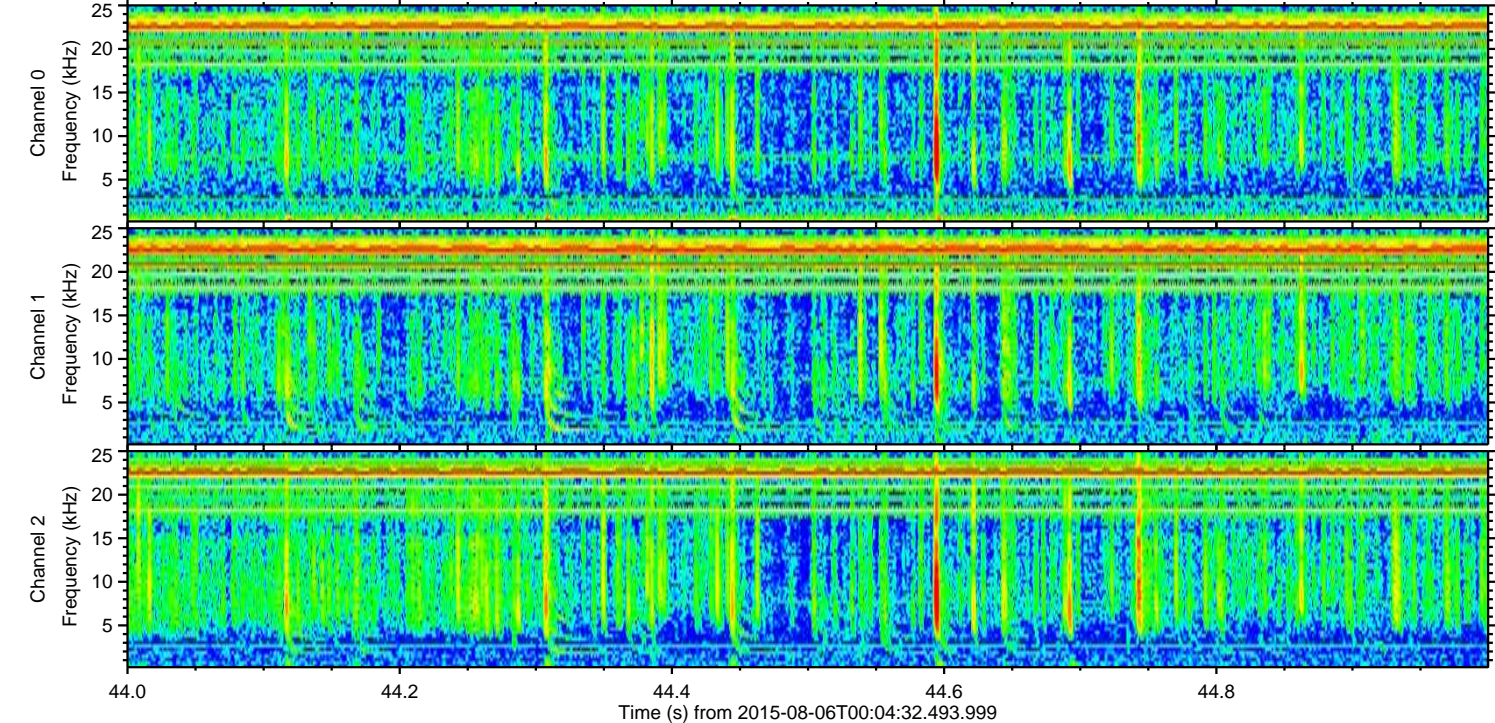
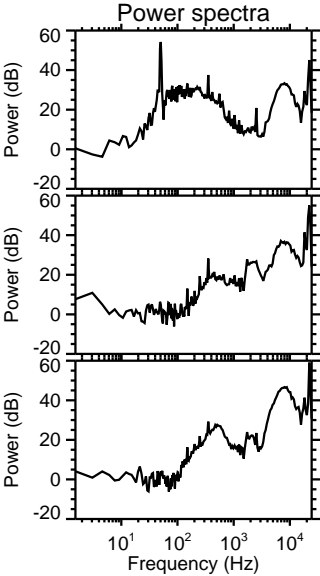
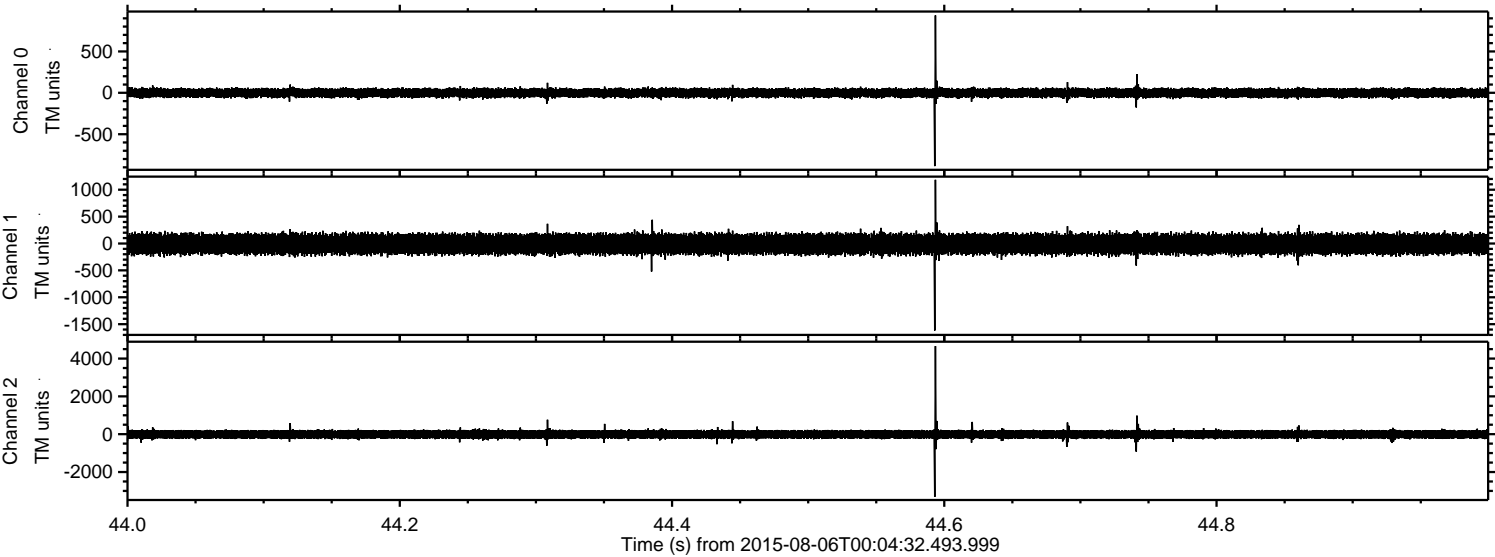
Channel 2
mn: -5224
mx: 5660
 μ : -10.3
 σ : 149.7

ELMAVAN 3D WAVEFORMS (Measured data sampled at 50 kHz) 51000 packets of 144 samples from 2015-08-06T00:04:32.493.999. Part 15/147

Processed Thu Aug 6 02:11:10 2015 by ELM ver.2012-10-06 from 001__elm20150806_000431__dat00.bin

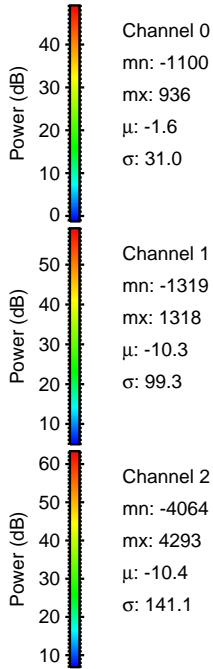
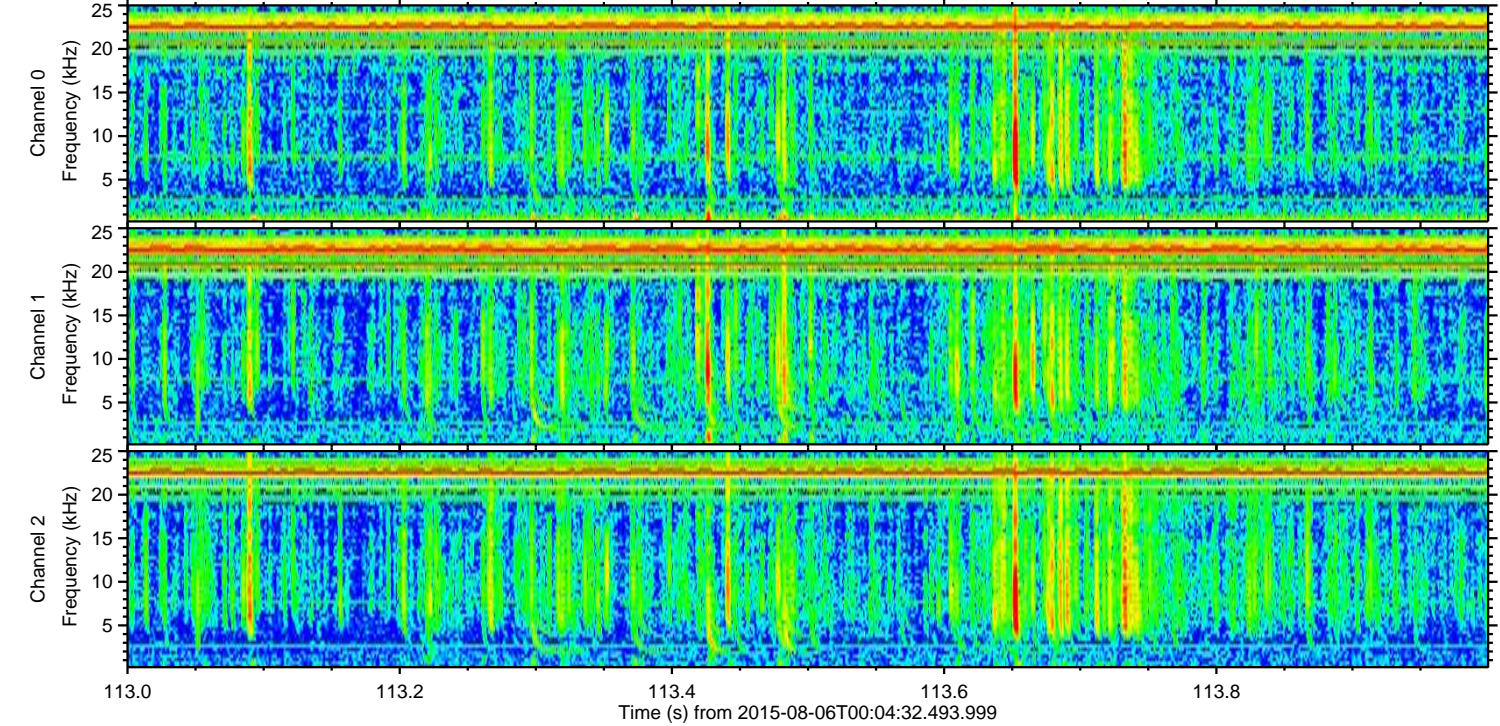
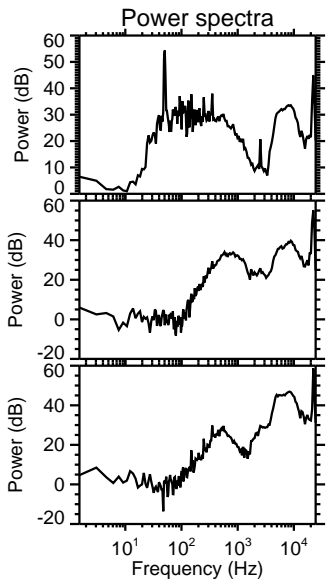
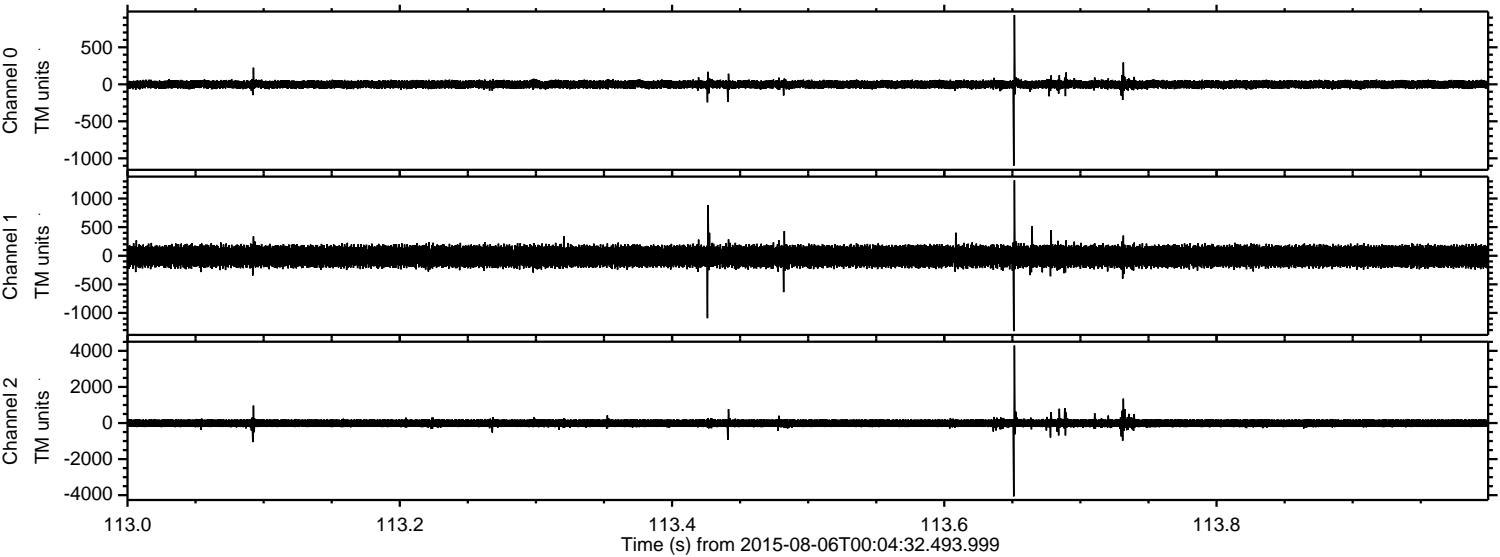


Processed Thu Aug 6 02:11:11 2015 by ELM ver.2012-10-06 from 001__elm20150806_000431__dat00.bin

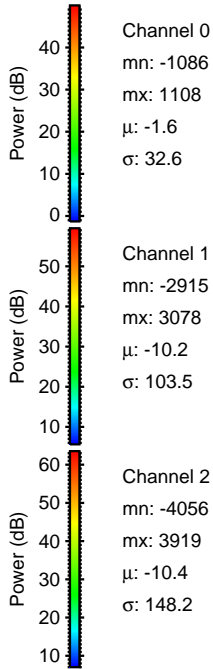
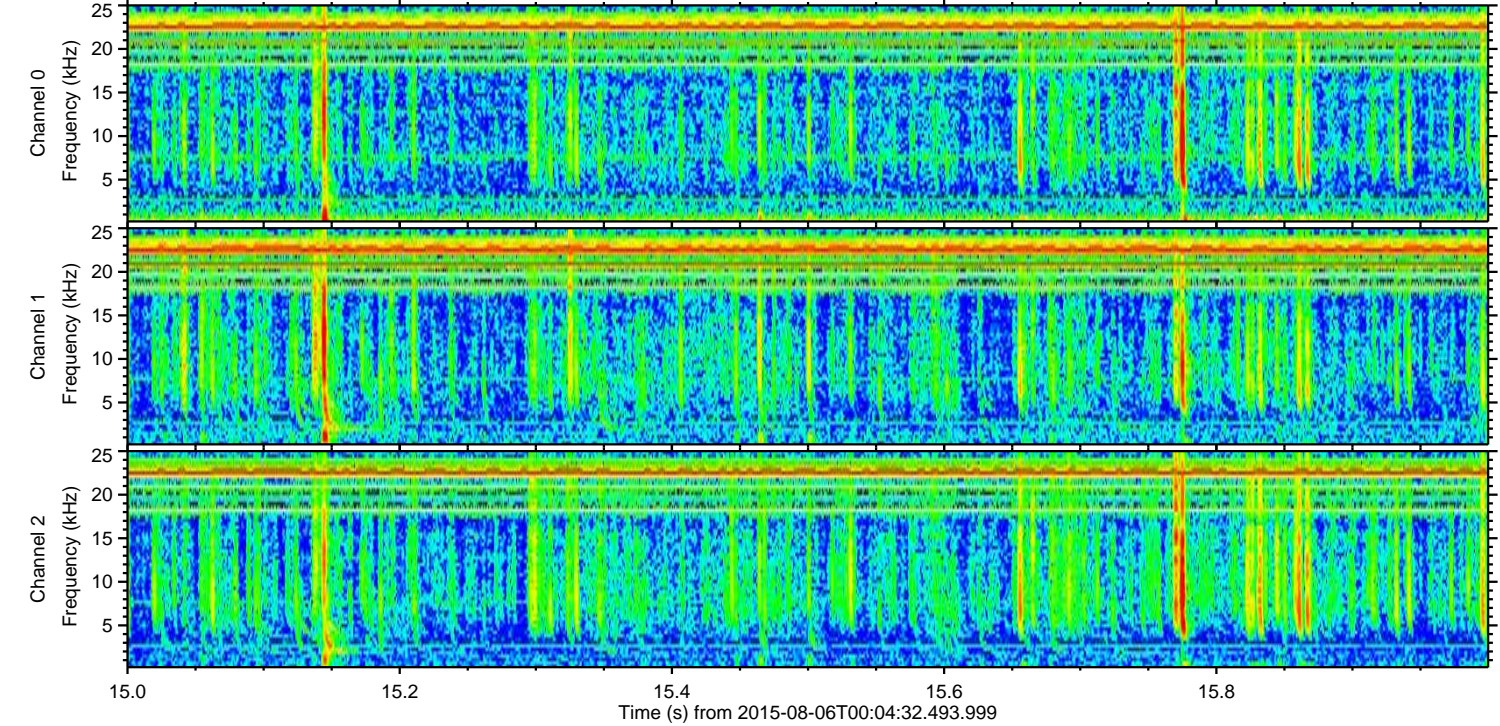
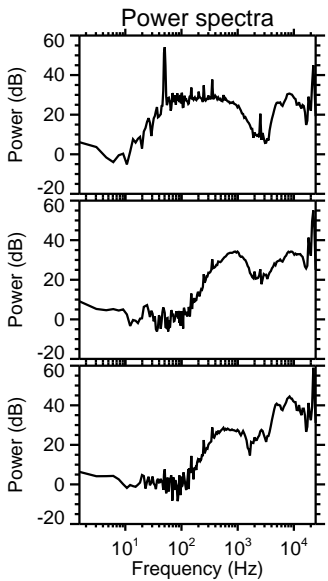
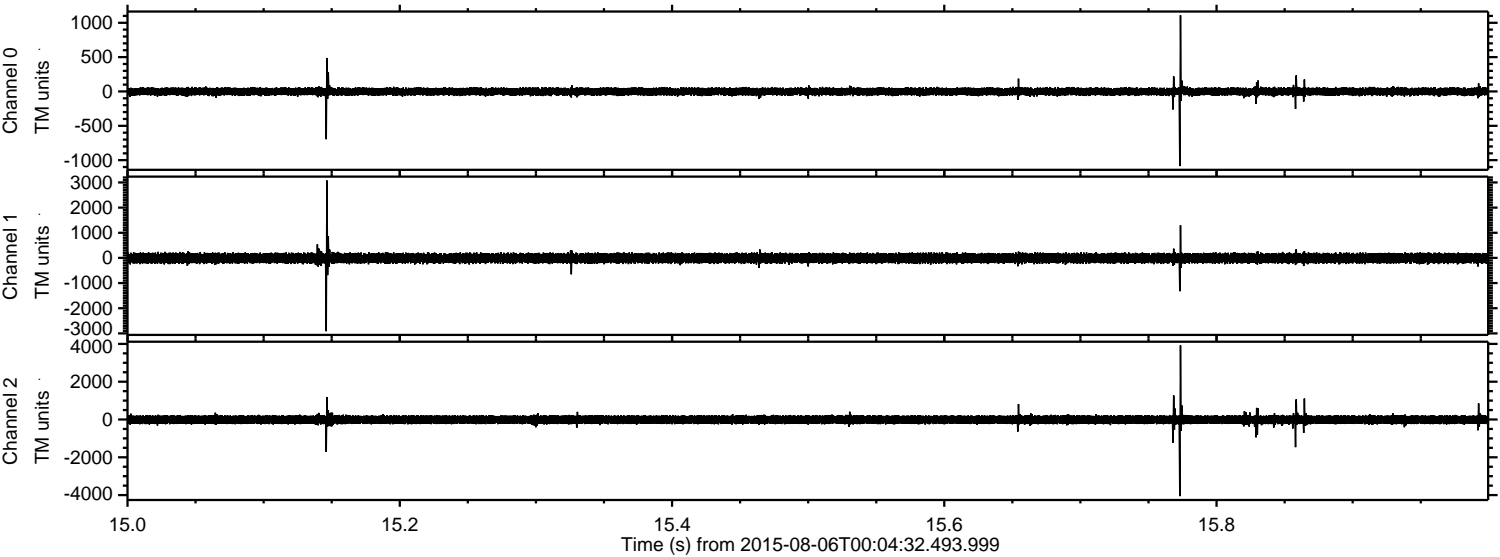


ELMAVAN 3D WAVEFORMS (Measured data sampled at 50 kHz) 51000 packets of 144 samples from 2015-08-06T00:04:32.493.999. Part 114/147

Processed Thu Aug 6 02:11:12 2015 by ELM ver.2012-10-06 from 001__elm20150806_000431__dat00.bin



Processed Thu Aug 6 02:11:13 2015 by ELM ver.2012-10-06 from 001__elm20150806_000431__dat00.bin

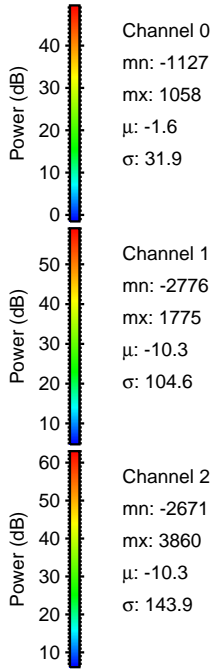
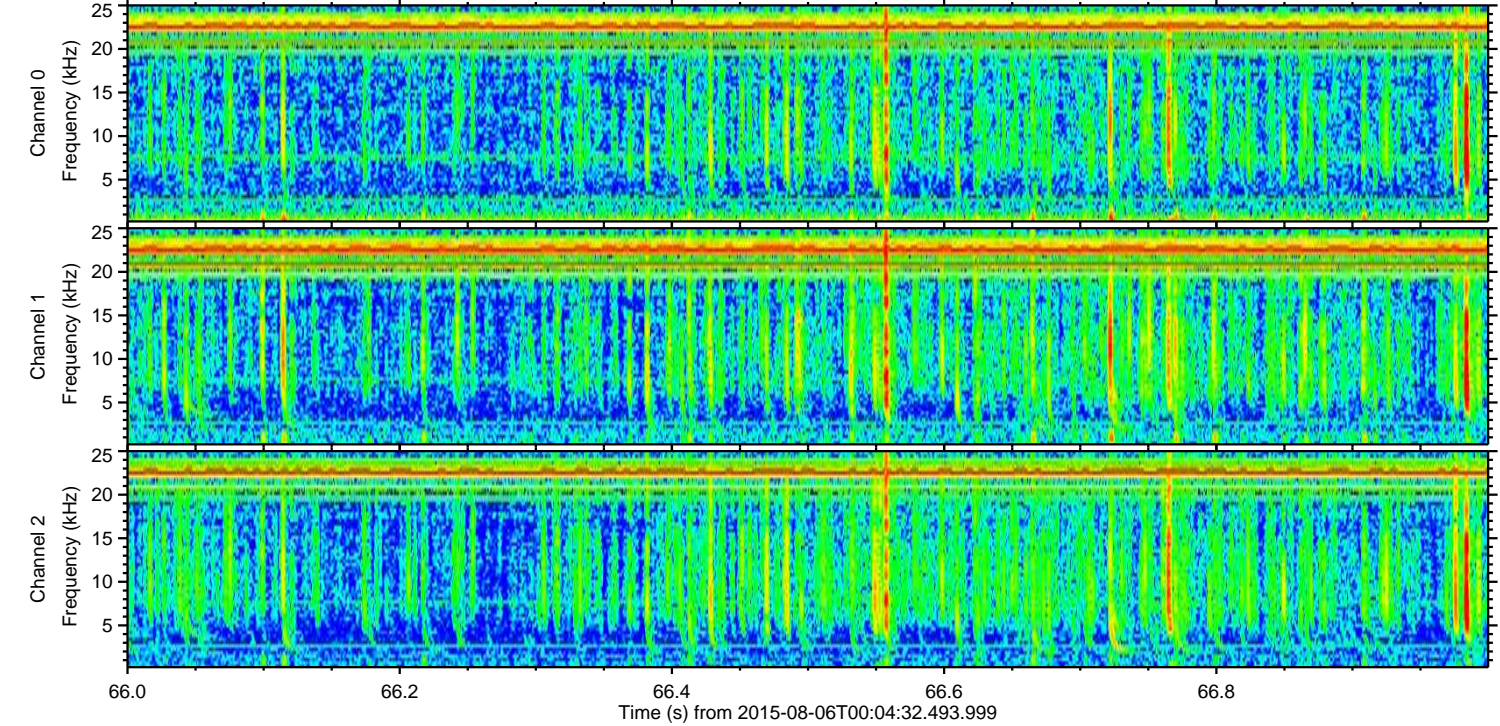
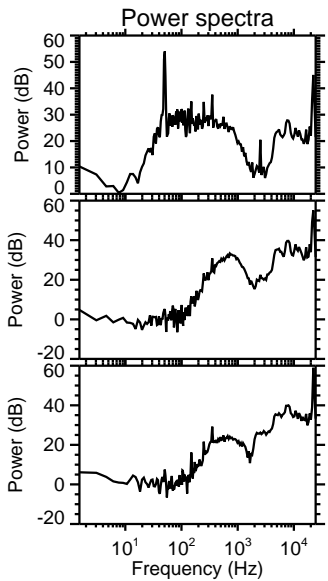
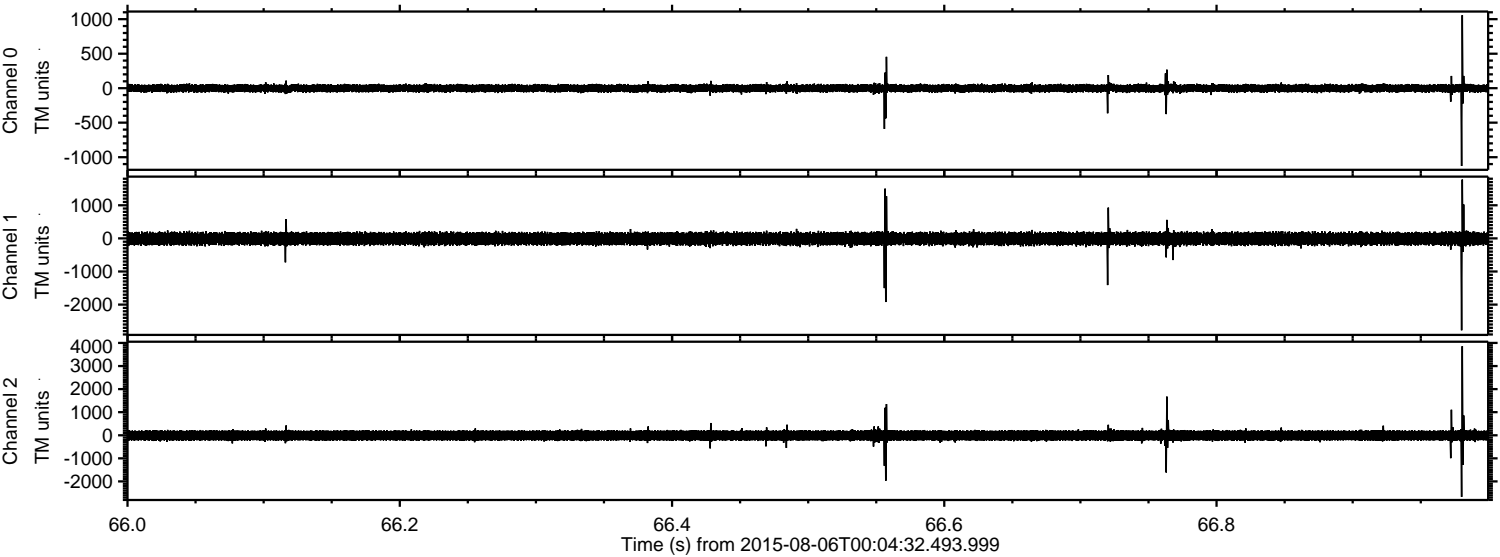


Channel 0
mn: -1086
mx: 1108
 μ : -1.6
 σ : 32.6

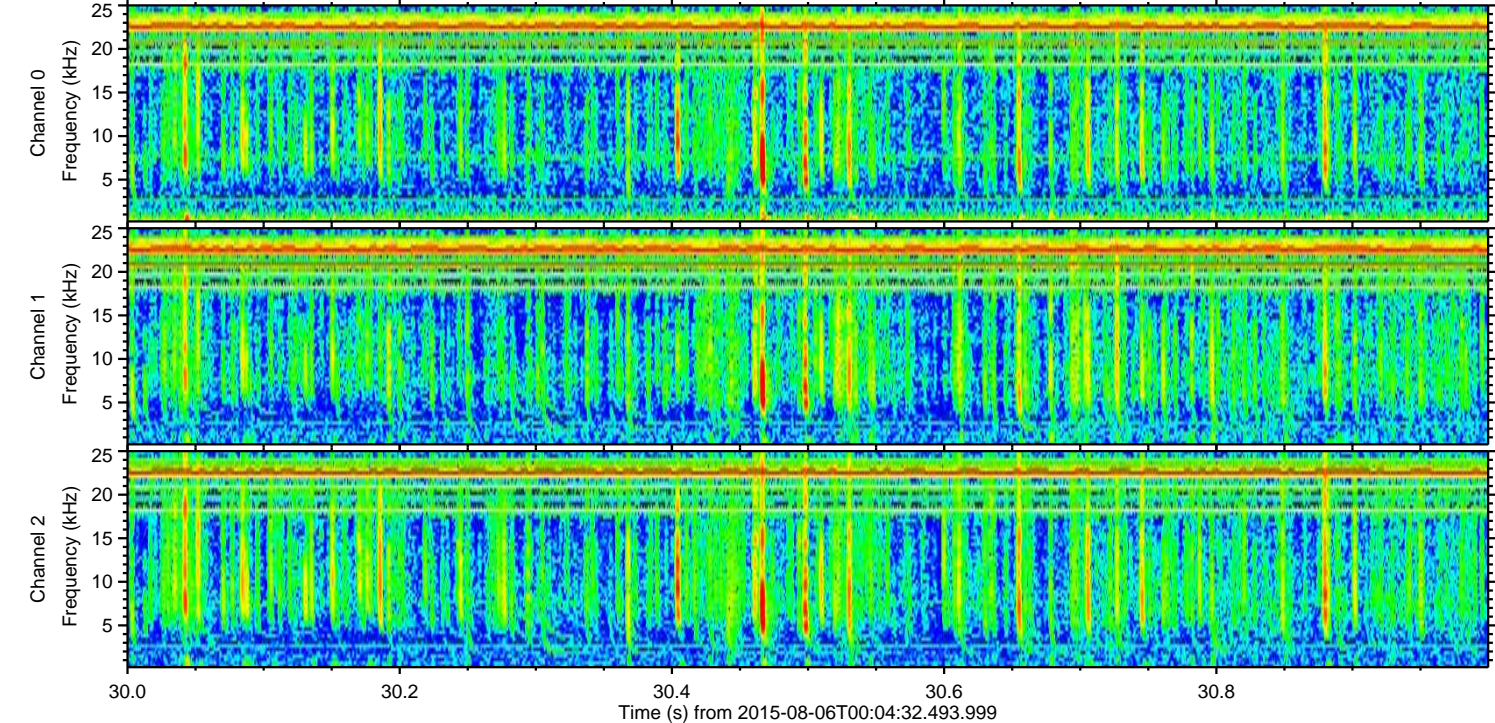
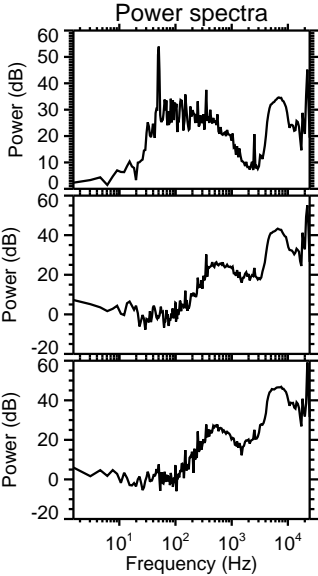
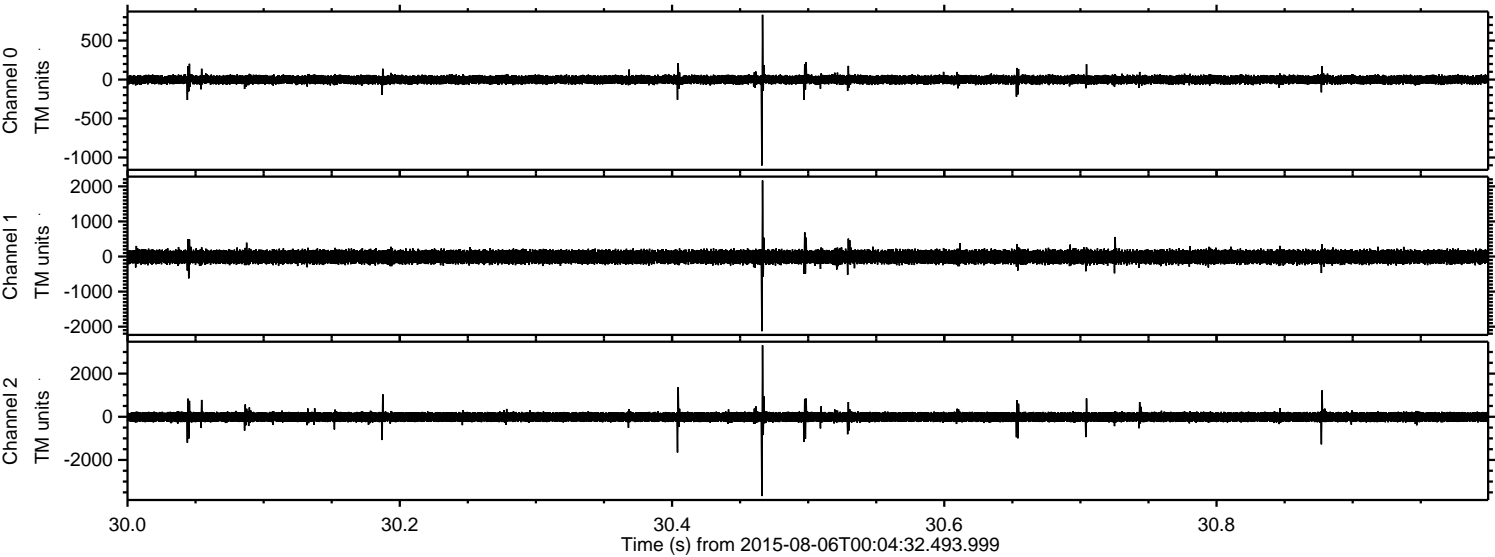
Channel 1
mn: -2915
mx: 3078
 μ : -10.2
 σ : 103.5

Channel 2
mn: -4056
mx: 3919
 μ : -10.4
 σ : 148.2

Processed Thu Aug 6 02:11:14 2015 by ELM ver.2012-10-06 from 001__elm20150806_000431__dat00.bin



Processed Thu Aug 6 02:11:15 2015 by ELM ver.2012-10-06 from 001__elm20150806_000431__dat00.bin



Channel 0
mn: -1103
mx: 831
 μ : -1.6
 σ : 31.9

Channel 1
mn: -2129
mx: 2170
 μ : -10.3
 σ : 103.5

Channel 2
mn: -3671
mx: 3312
 μ : -10.4
 σ : 146.8

Processed Thu Aug 6 02:11:16 2015 by ELM ver.2012-10-06 from 001__elm20150806_000431__dat00.bin

