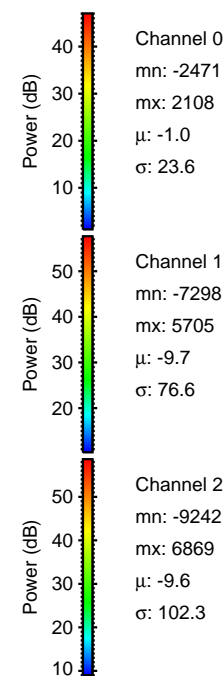
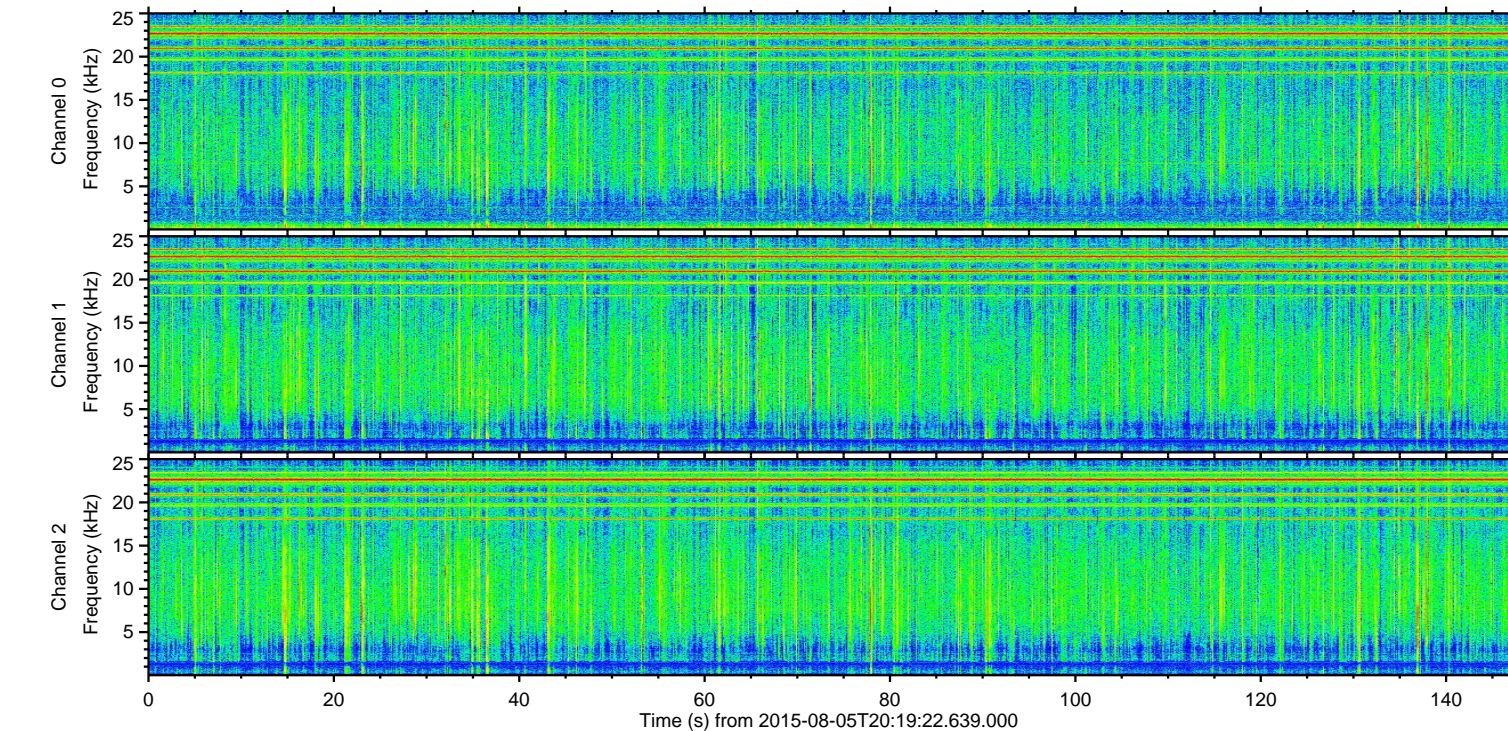
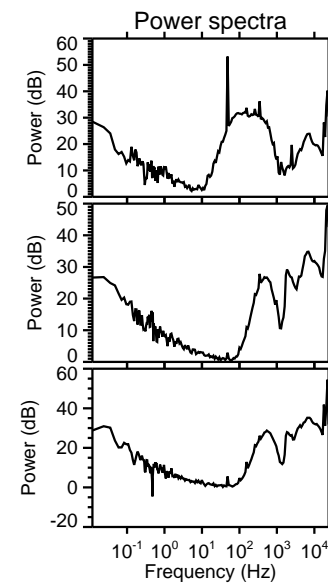
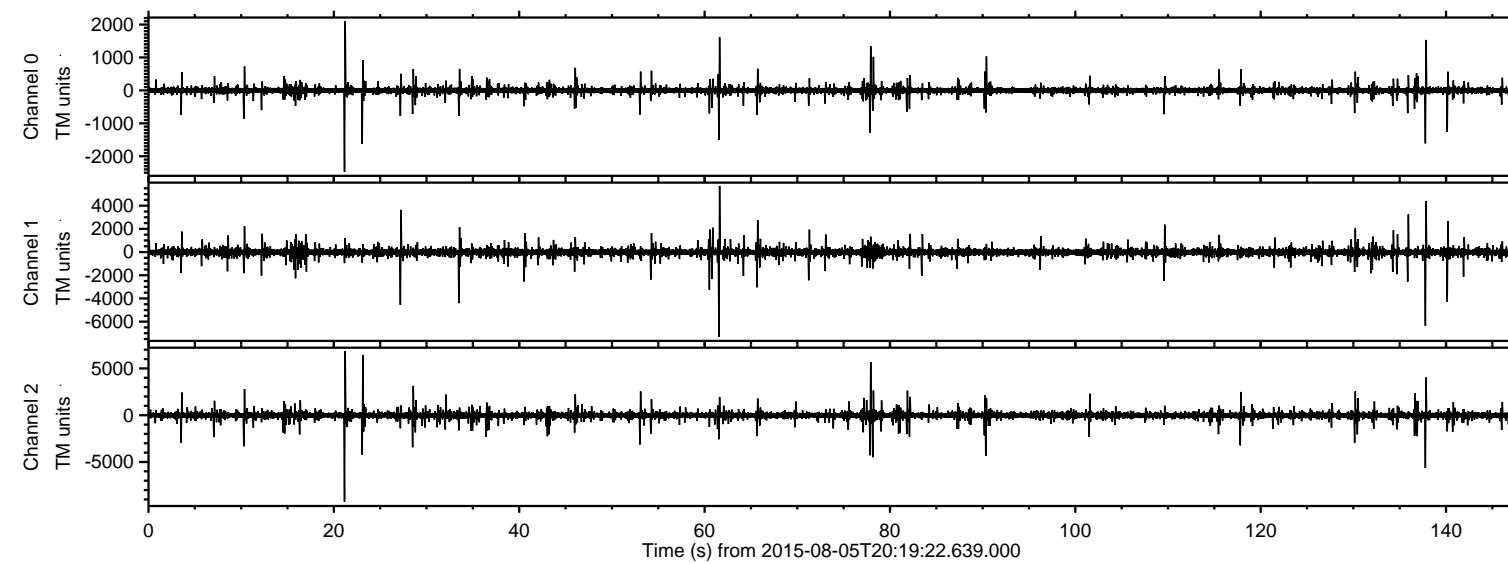


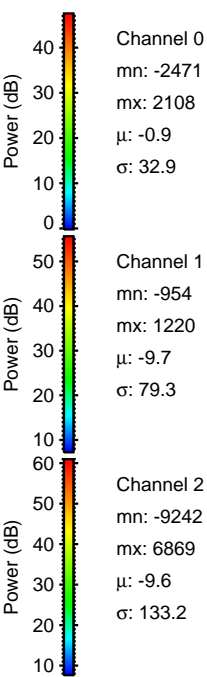
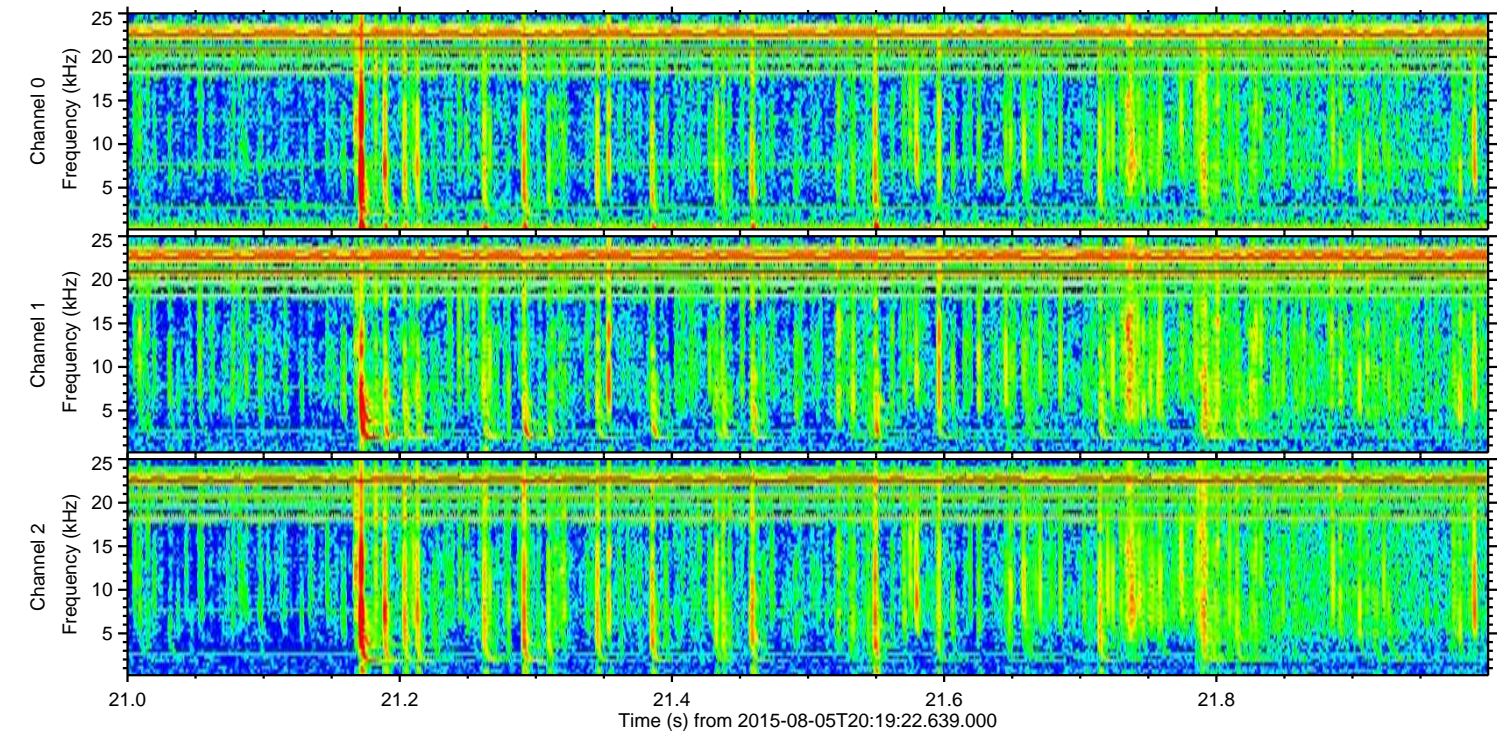
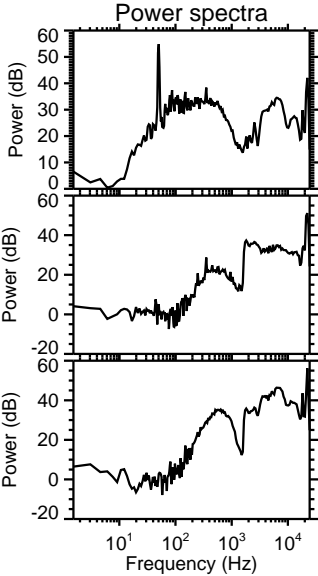
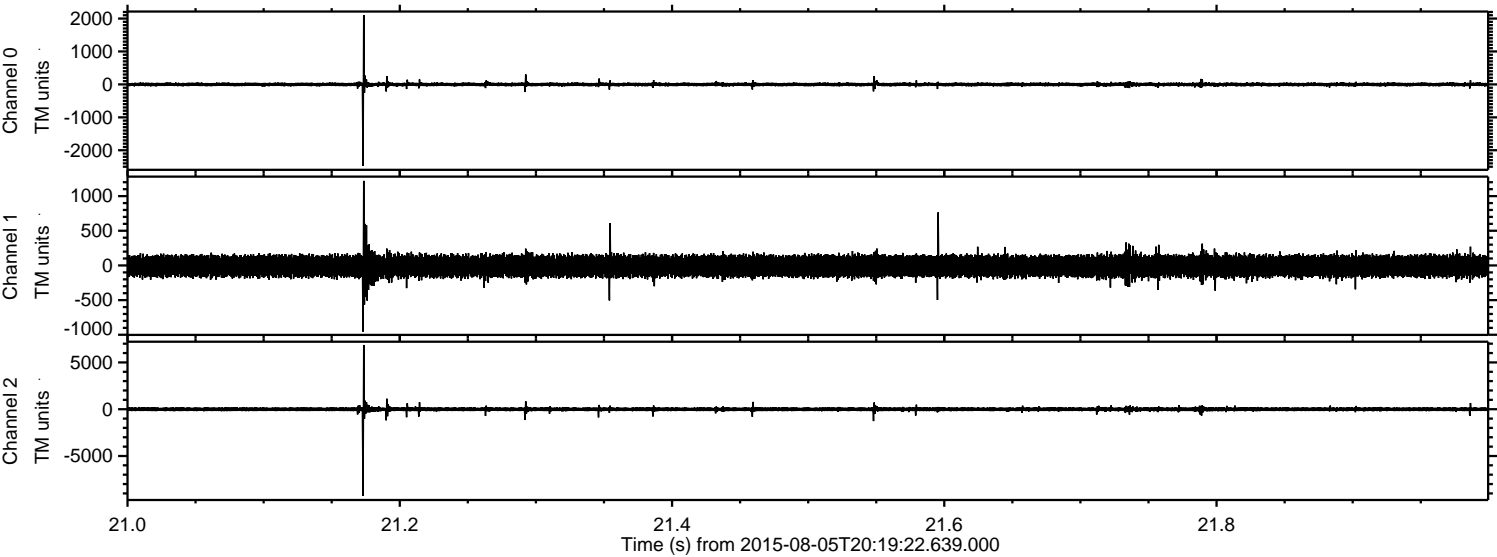
ELMAVAN 3D WAVEFORMS (Measured data sampled at 50 kHz) 51000 packets of 144 samples from 2015-08-05T20:19:22.639.000.

Processed Wed Aug 5 22:26:00 2015 by ELM ver.2012-10-06 from 001__elm20150805_201921__dat00.bin



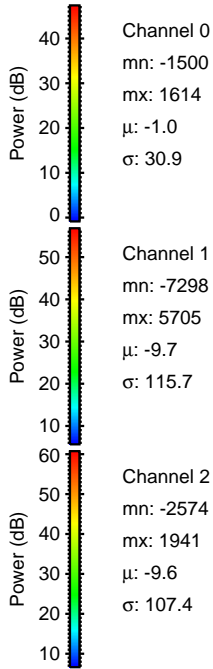
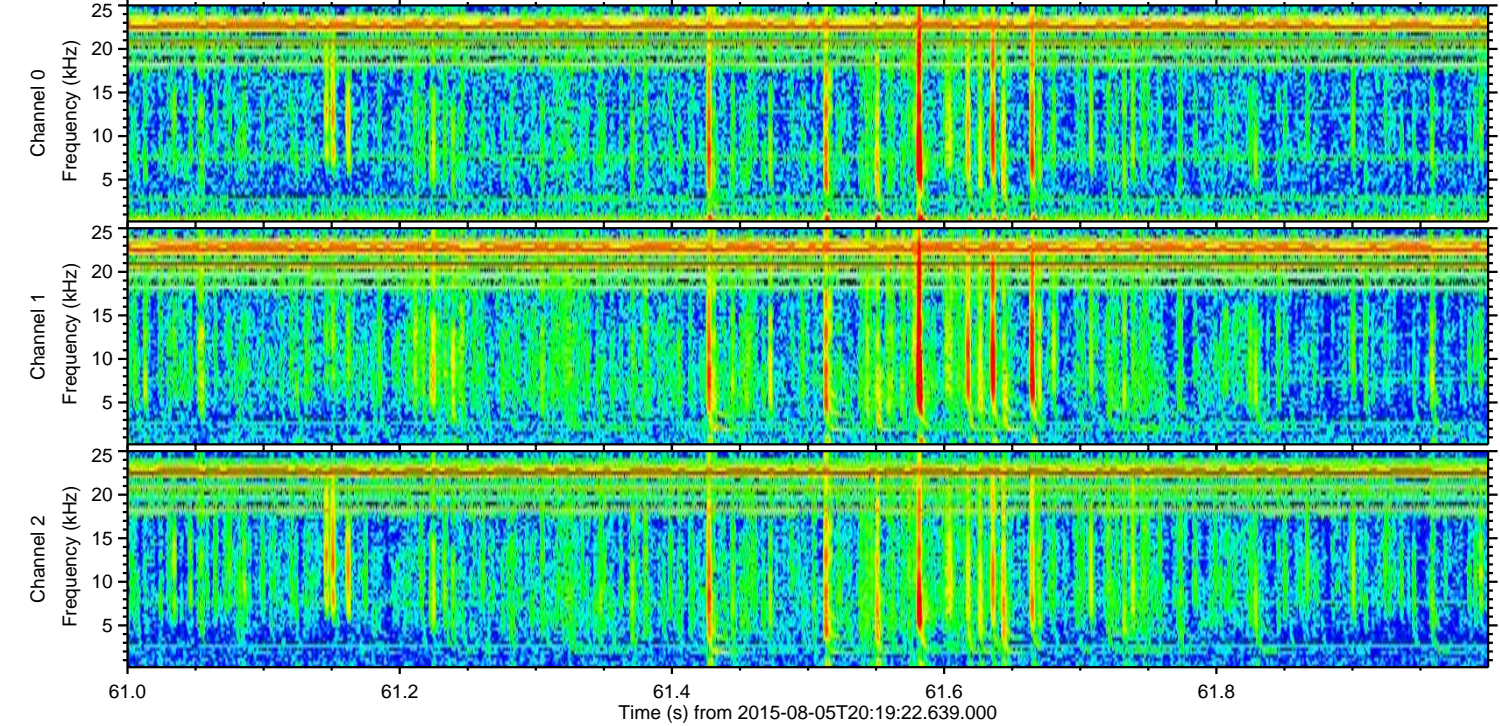
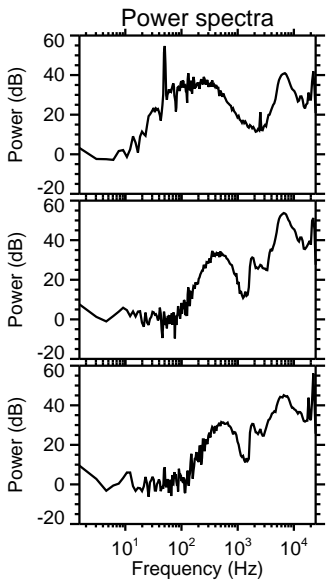
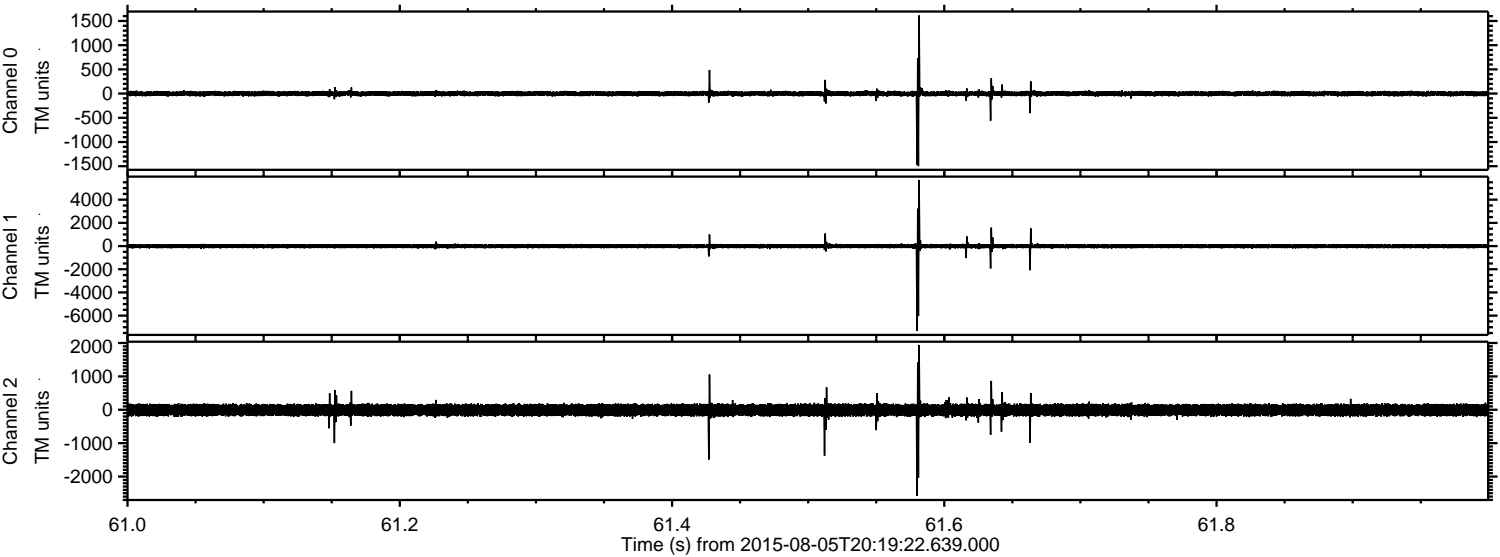
ELMAVAN 3D WAVEFORMS (Measured data sampled at 50 kHz) 51000 packets of 144 samples from 2015-08-05T20:19:22.639.000. Part 22/147

Processed Wed Aug 5 22:26:12 2015 by ELM ver.2012-10-06 from 001__elm20150805_201921__dat00.bin

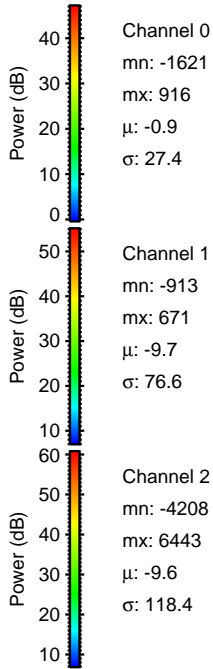
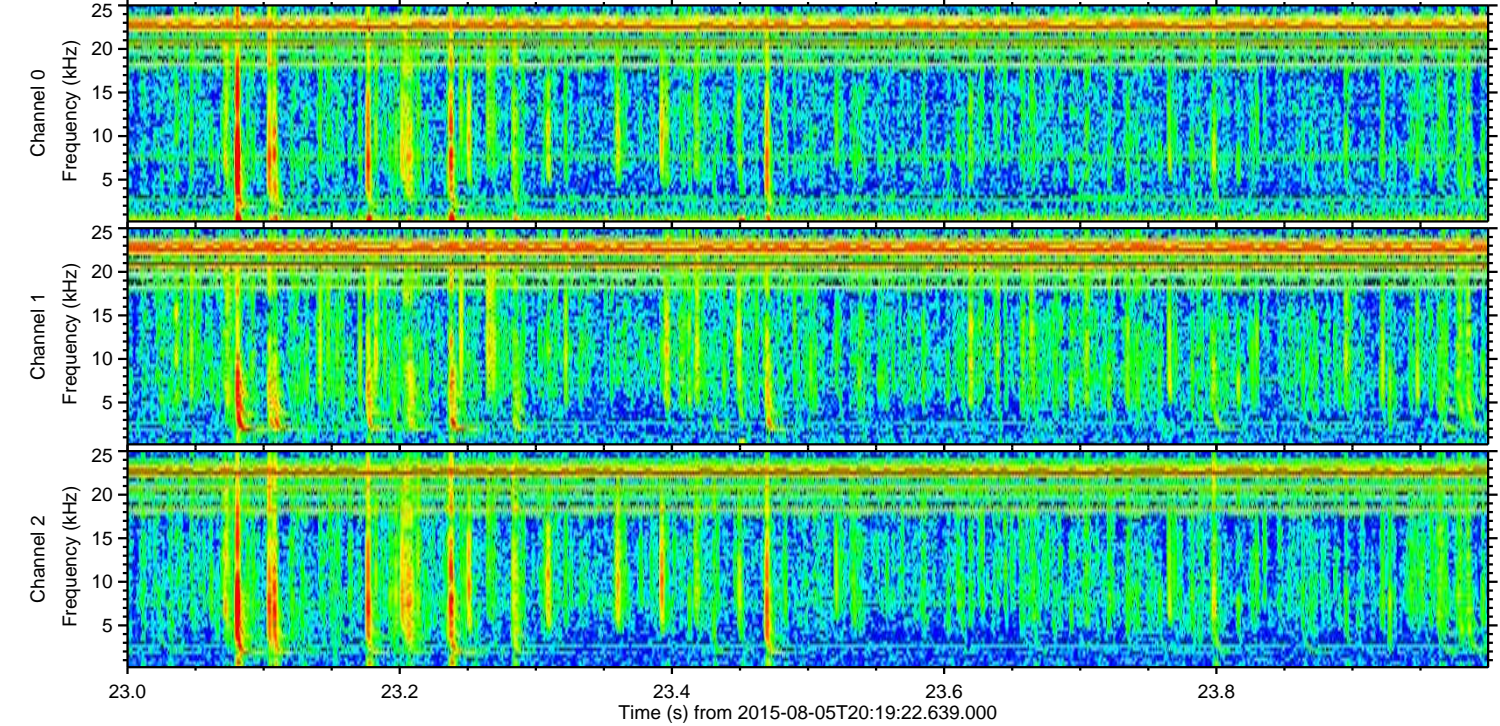
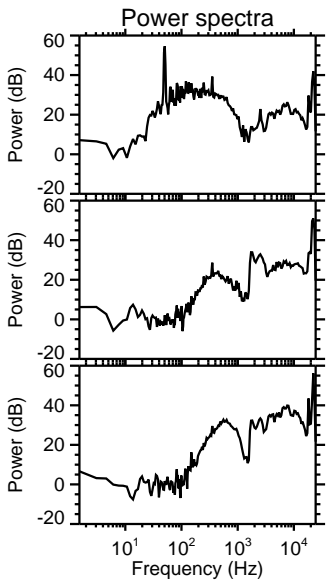
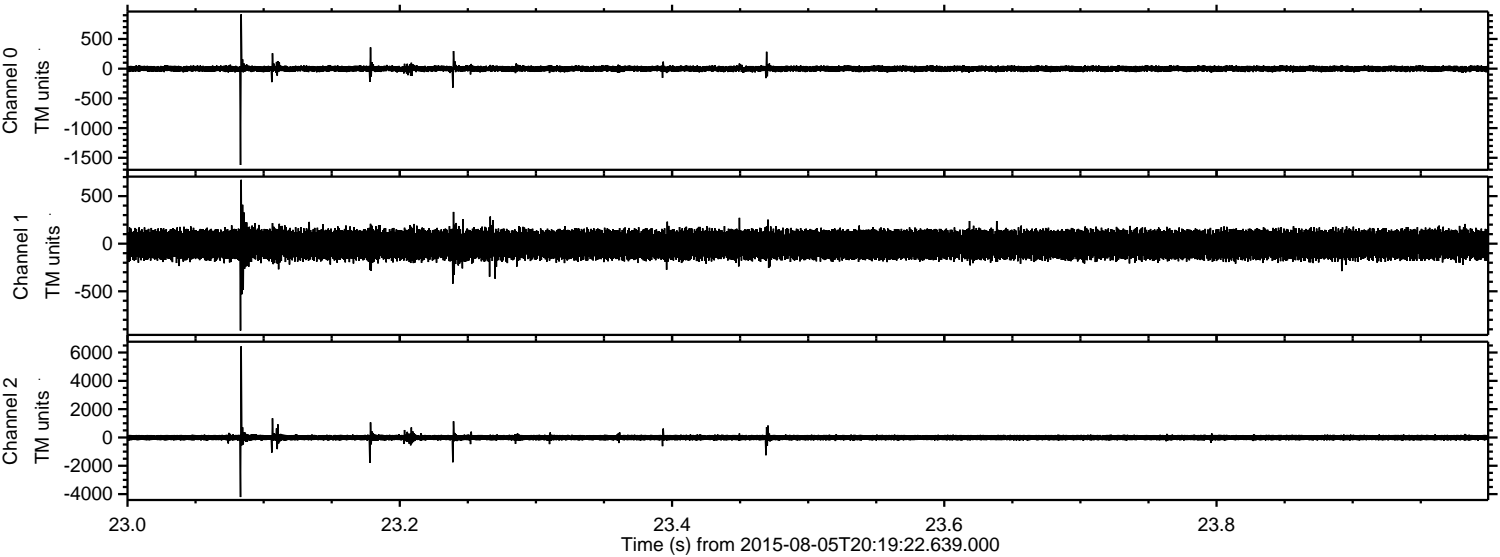


ELMAVAN 3D WAVEFORMS (Measured data sampled at 50 kHz) 51000 packets of 144 samples from 2015-08-05T20:19:22.639.000. Part 62/147

Processed Wed Aug 5 22:26:13 2015 by ELM ver.2012-10-06 from 001__elm20150805_201921__dat00.bin

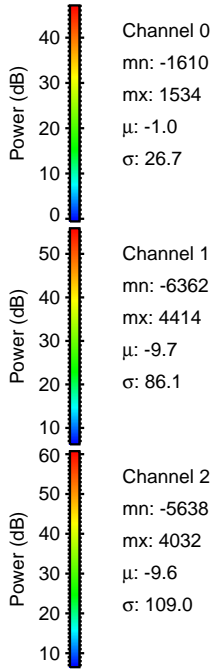
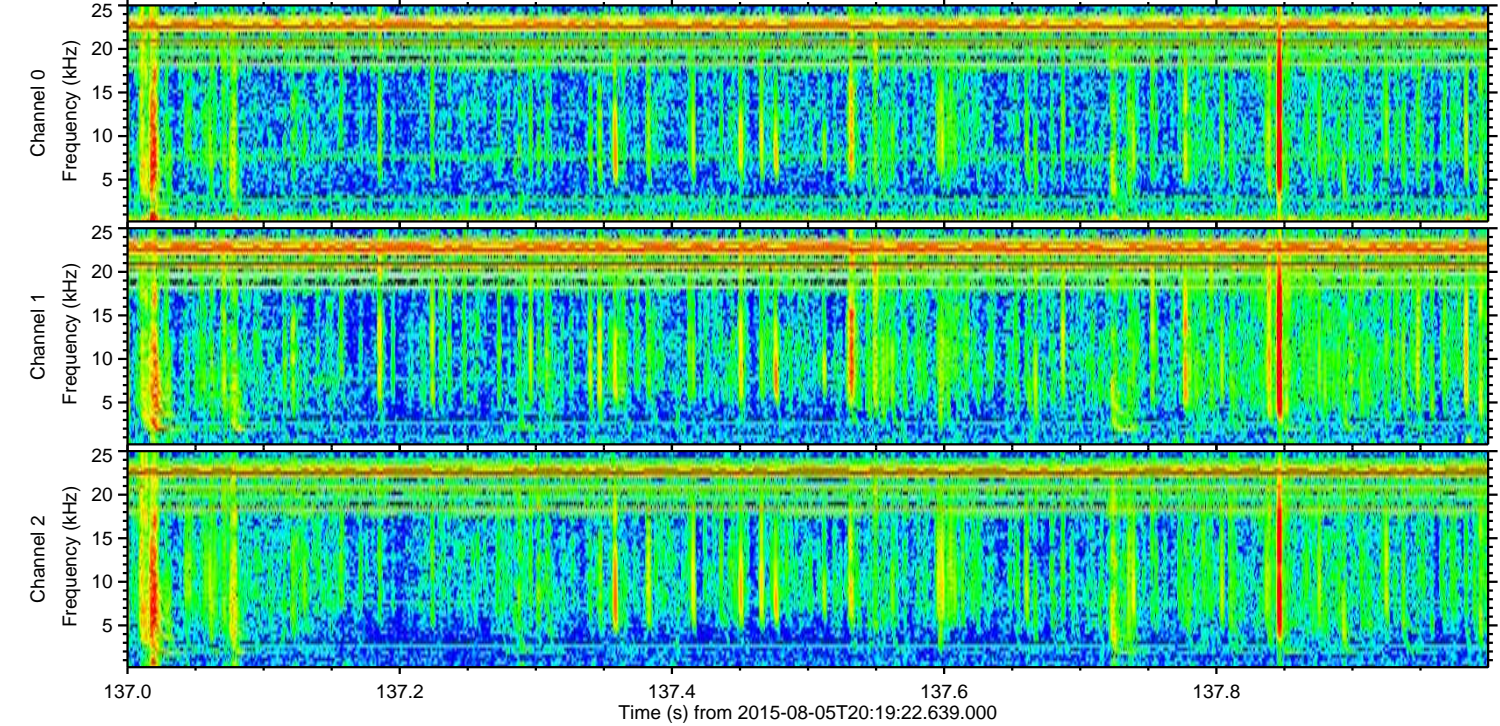
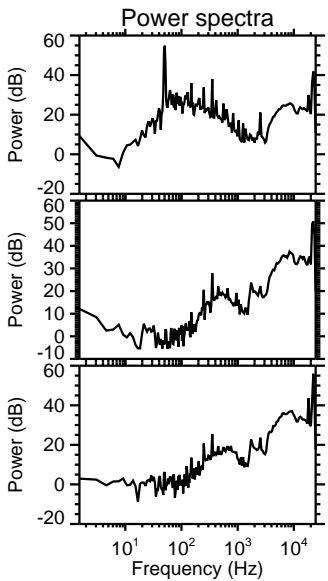
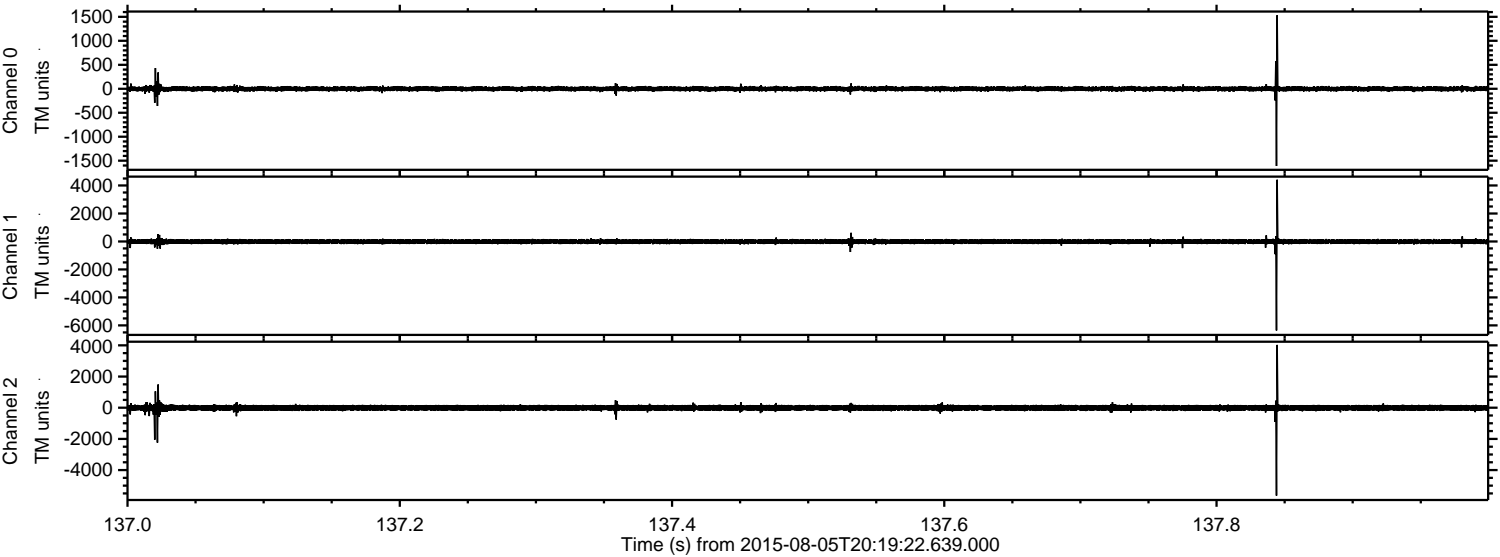


Processed Wed Aug 5 22:26:13 2015 by ELM ver.2012-10-06 from 001__elm20150805_201921__dat00.bin



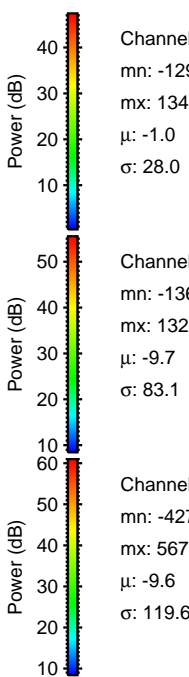
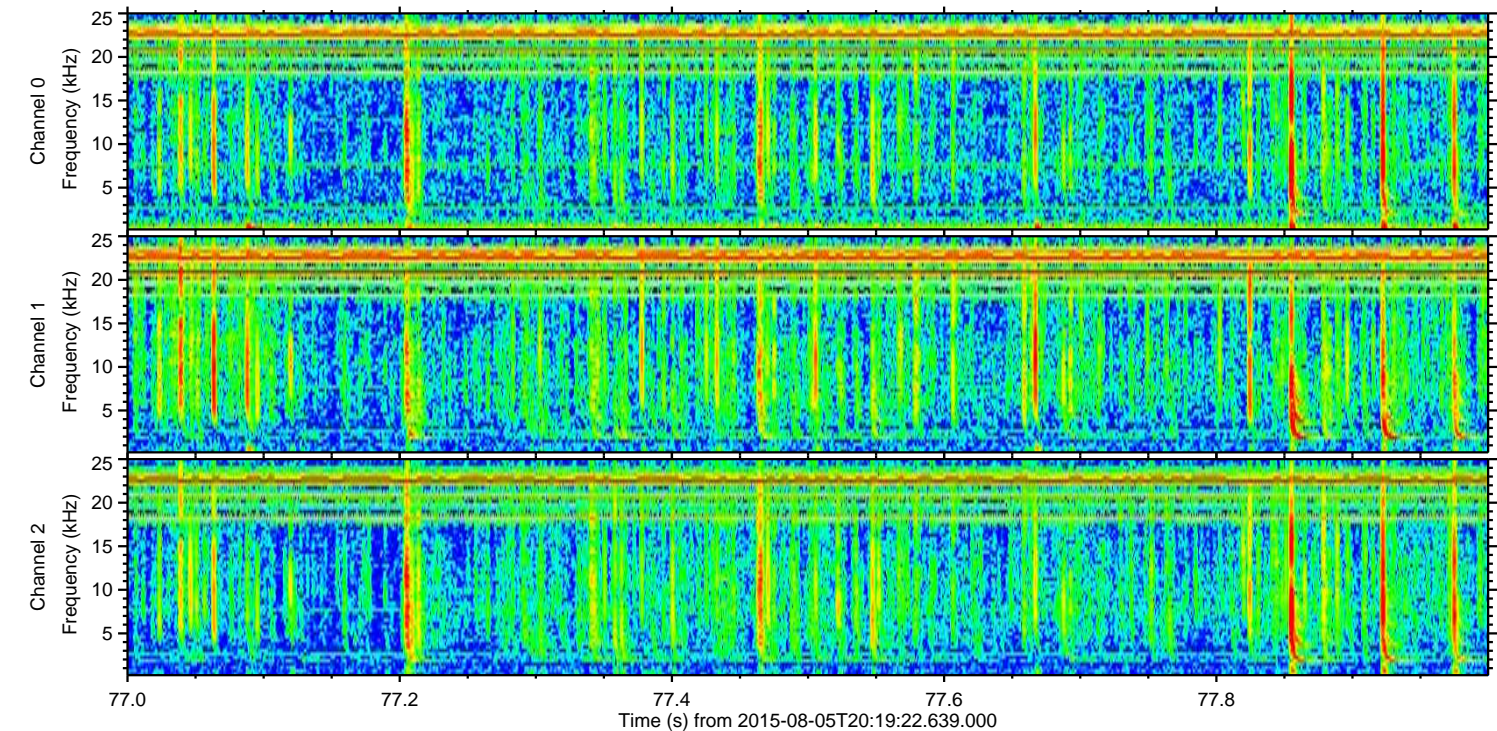
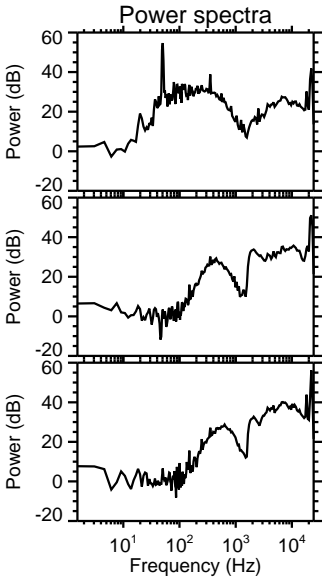
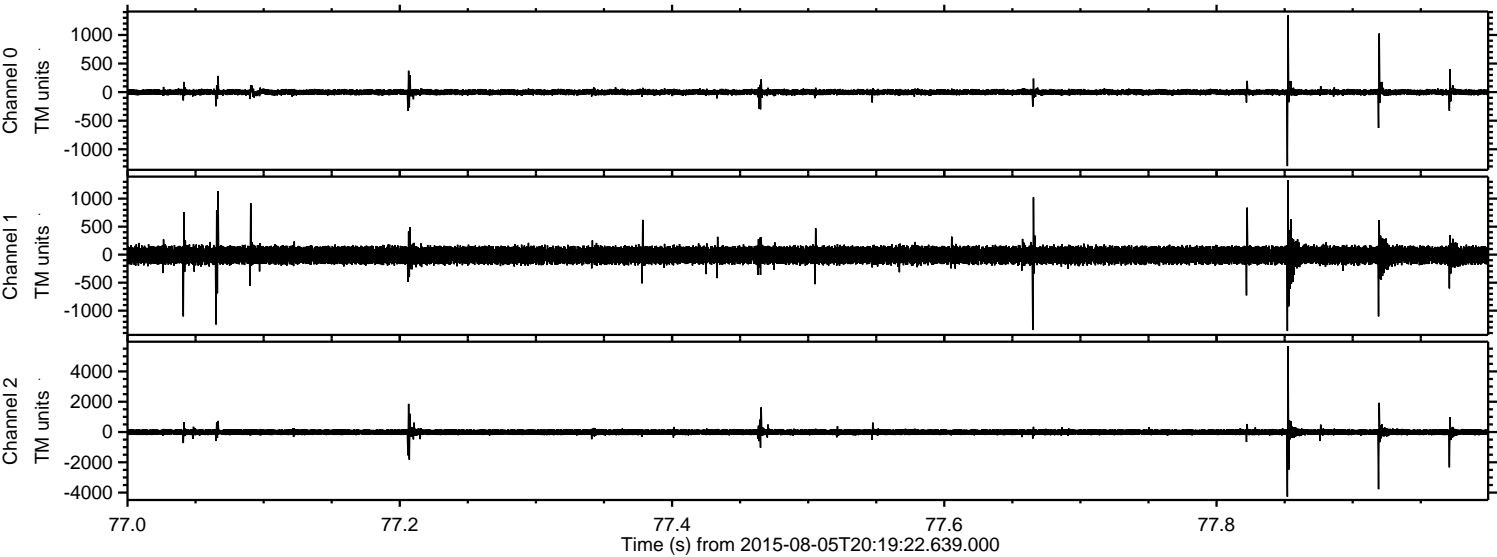
ELMAVAN 3D WAVEFORMS (Measured data sampled at 50 kHz) 51000 packets of 144 samples from 2015-08-05T20:19:22.639.000. Part 138/147

Processed Wed Aug 5 22:26:14 2015 by ELM ver.2012-10-06 from 001__elm20150805_201921__dat00.bin

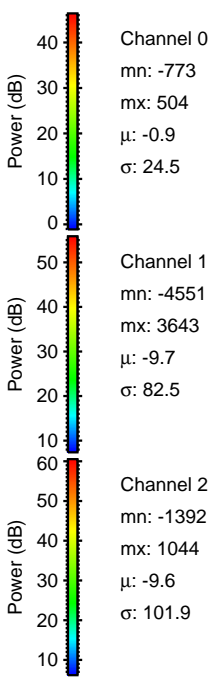
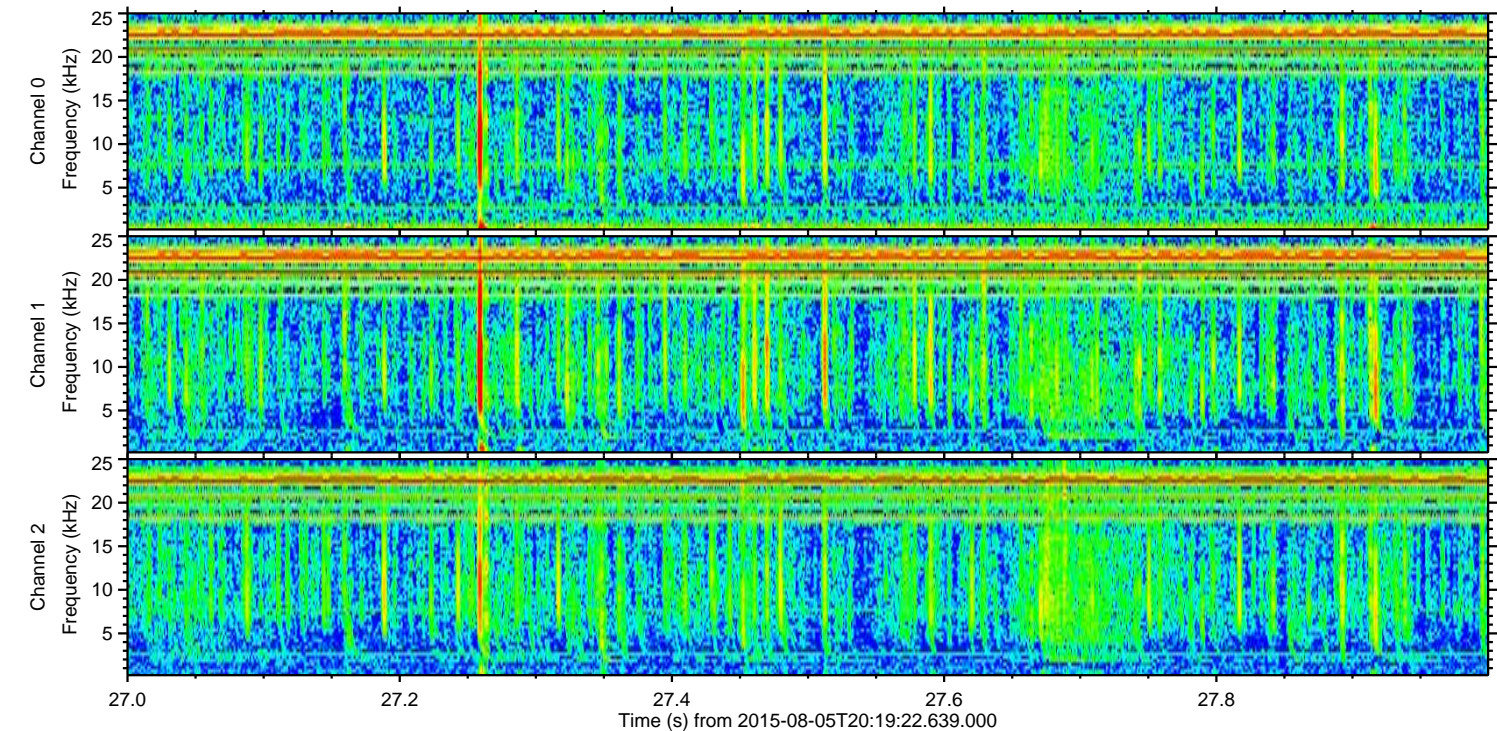
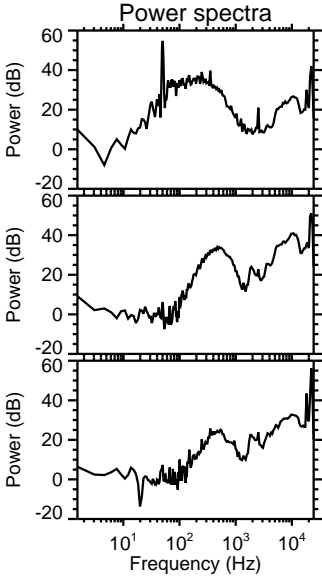
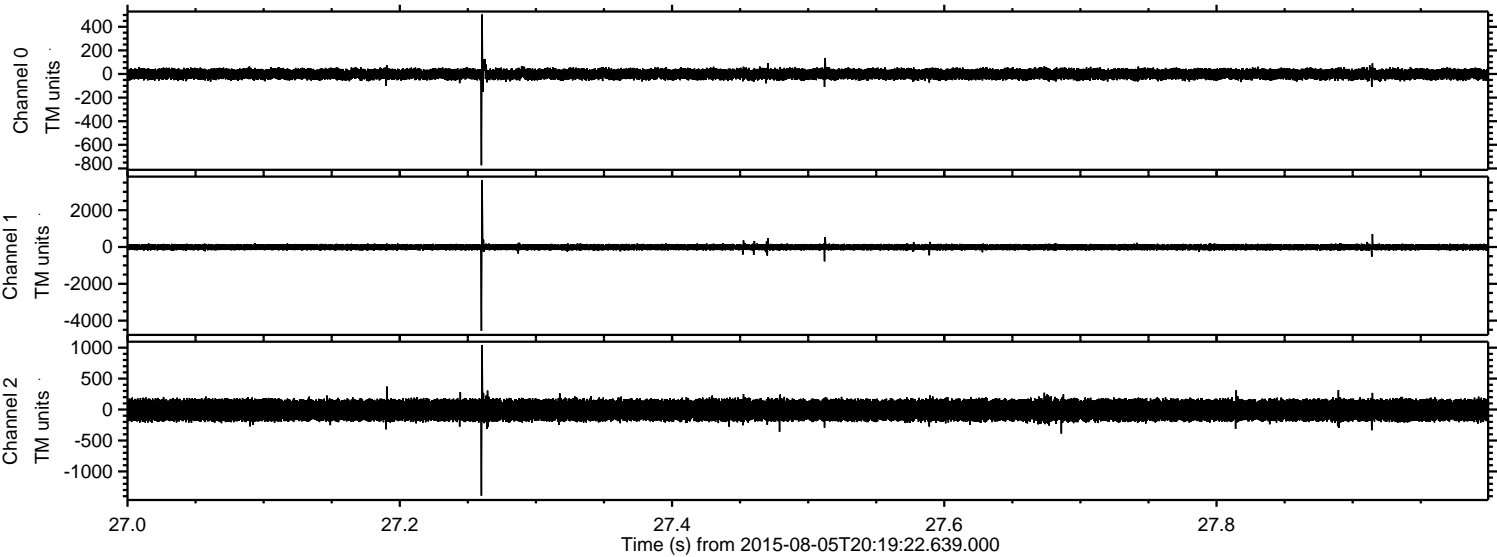


ELMAVAN 3D WAVEFORMS (Measured data sampled at 50 kHz) 51000 packets of 144 samples from 2015-08-05T20:19:22.639.000. Part 78/147

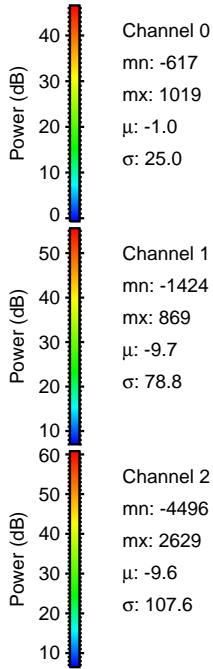
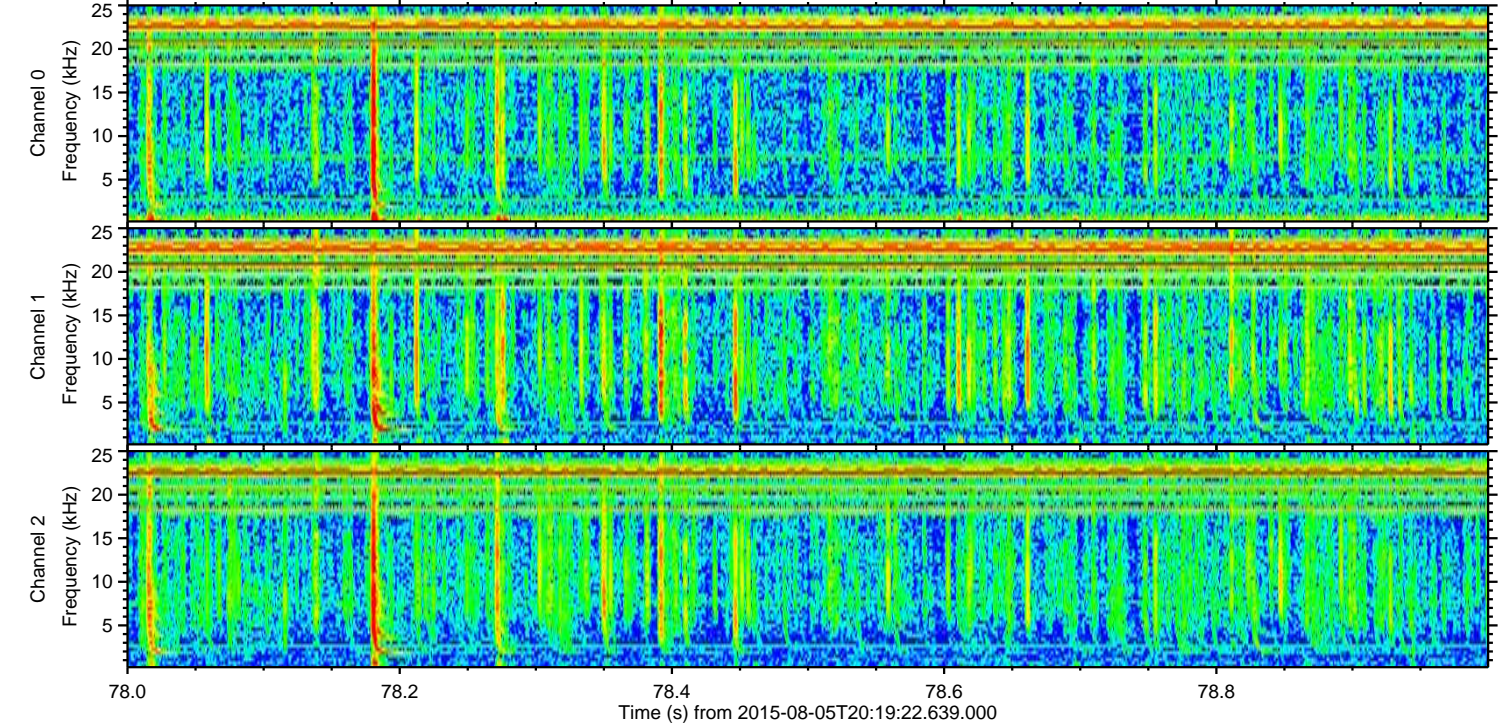
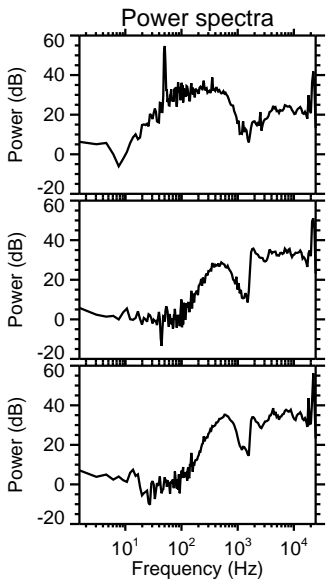
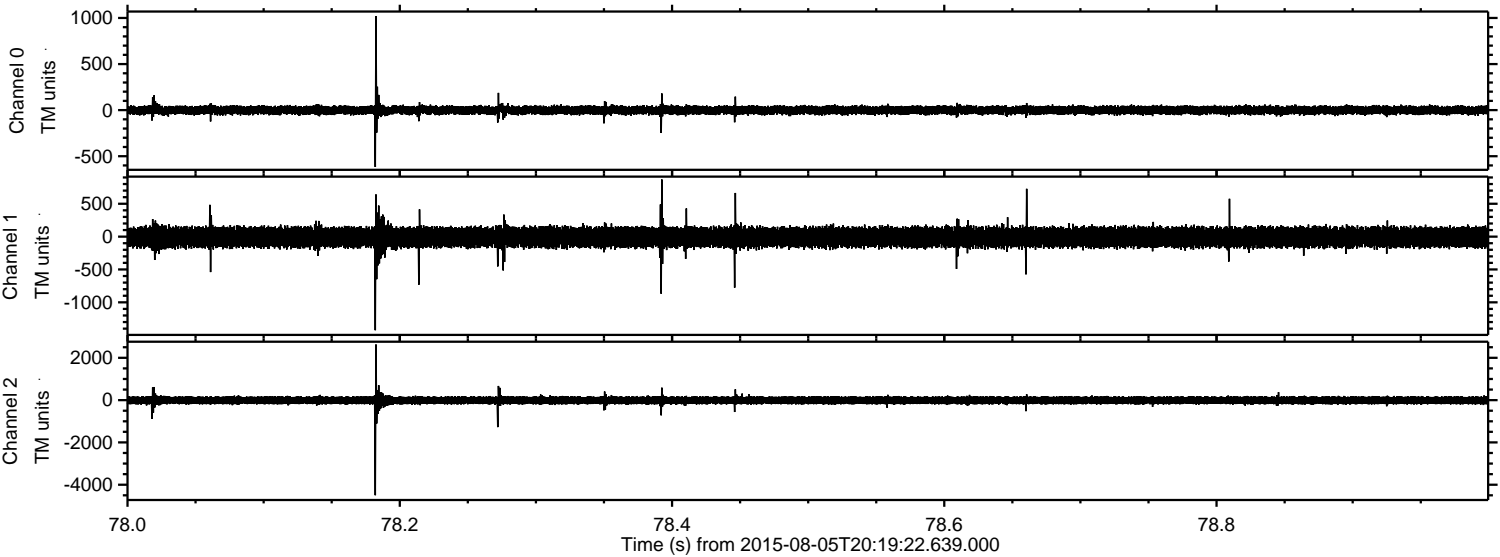
Processed Wed Aug 5 22:26:15 2015 by ELM ver.2012-10-06 from 001__elm20150805_201921__dat00.bin



Processed Wed Aug 5 22:26:16 2015 by ELM ver.2012-10-06 from 001__elm20150805_201921__dat00.bin



Processed Wed Aug 5 22:26:17 2015 by ELM ver.2012-10-06 from 001__elm20150805_201921__dat00.bin

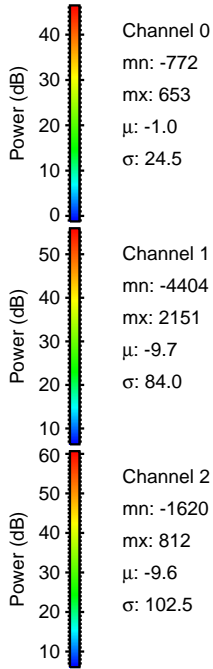
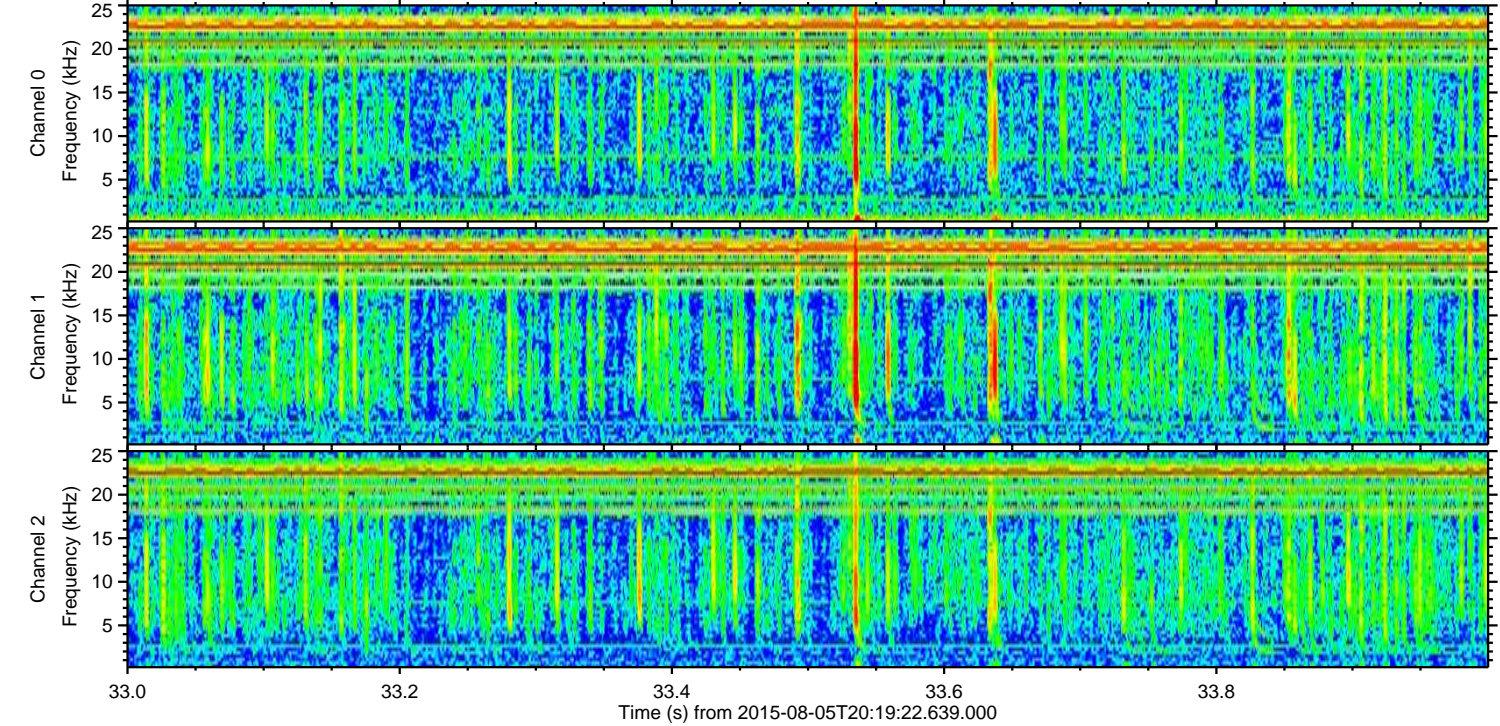
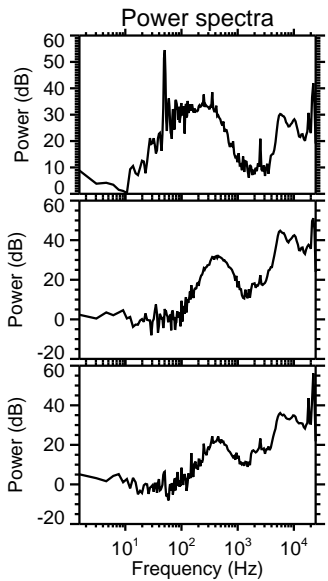
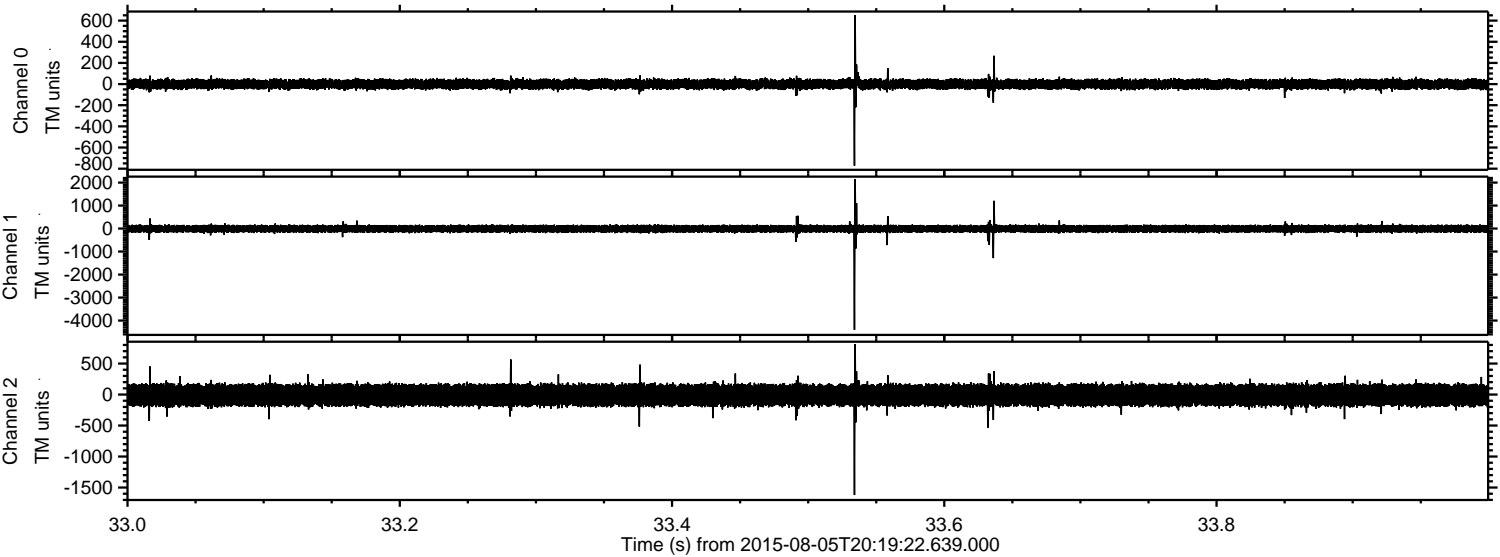


Channel 0
mn: -617
mx: 1019
 μ : -1.0
 σ : 25.0

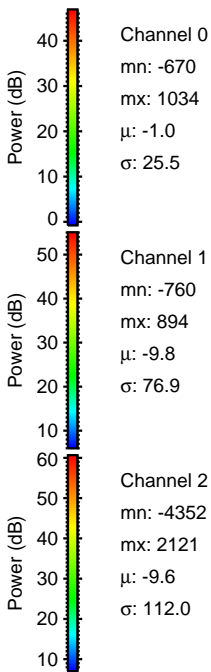
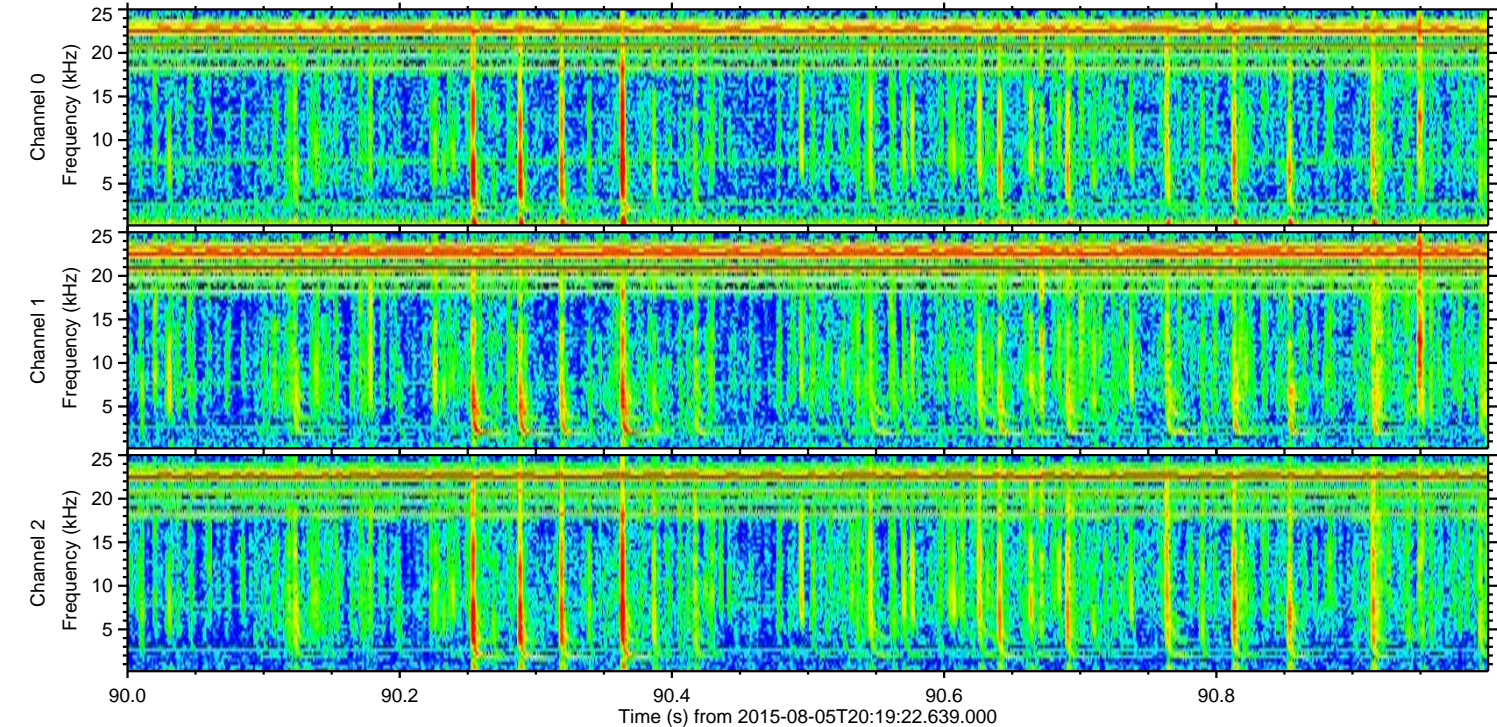
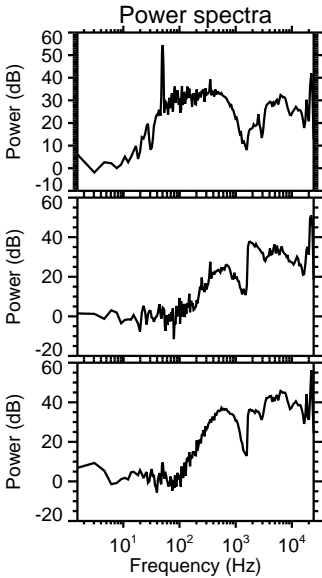
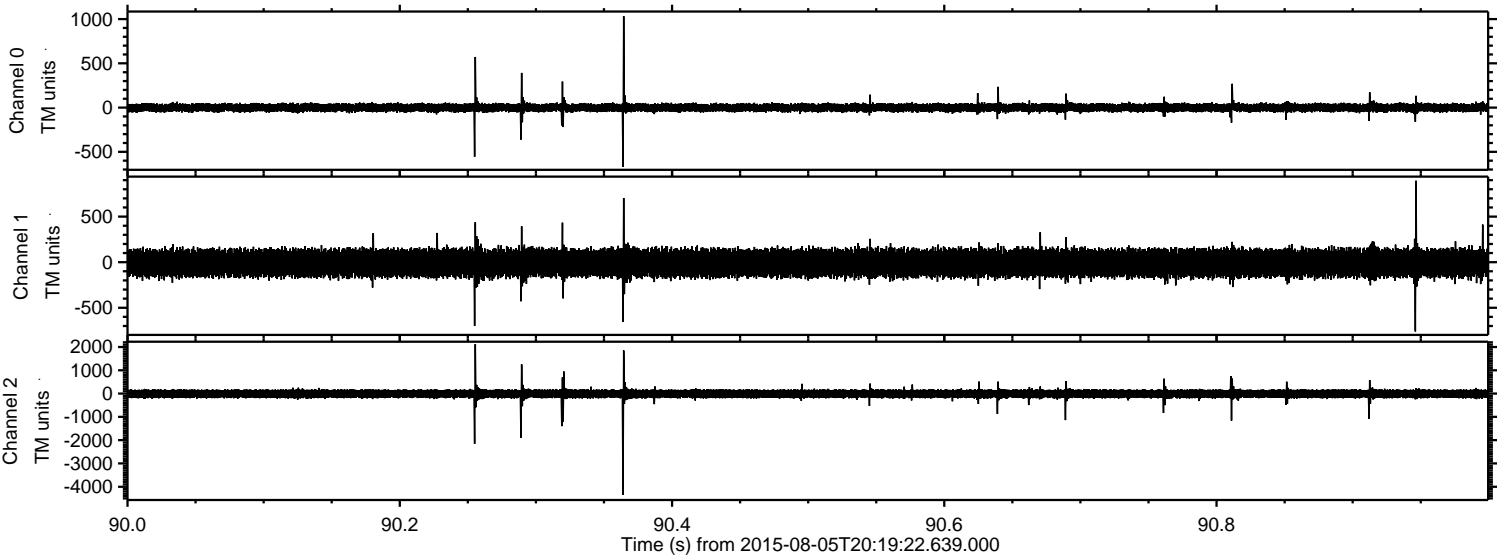
Channel 1
mn: -1424
mx: 869
 μ : -9.7
 σ : 78.8

Channel 2
mn: -4496
mx: 2629
 μ : -9.6
 σ : 107.6

Processed Wed Aug 5 22:26:18 2015 by ELM ver.2012-10-06 from 001__elm20150805_201921__dat00.bin



Processed Wed Aug 5 22:26:19 2015 by ELM ver.2012-10-06 from 001__elm20150805_201921__dat00.bin



Processed Wed Aug 5 22:26:20 2015 by ELM ver.2012-10-06 from 001__elm20150805_201921__dat00.bin

