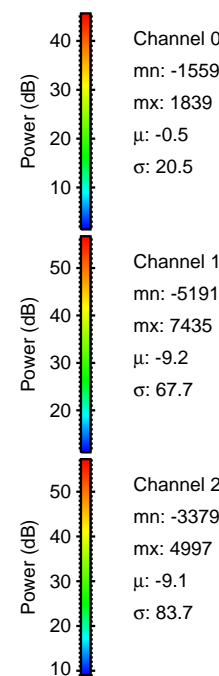
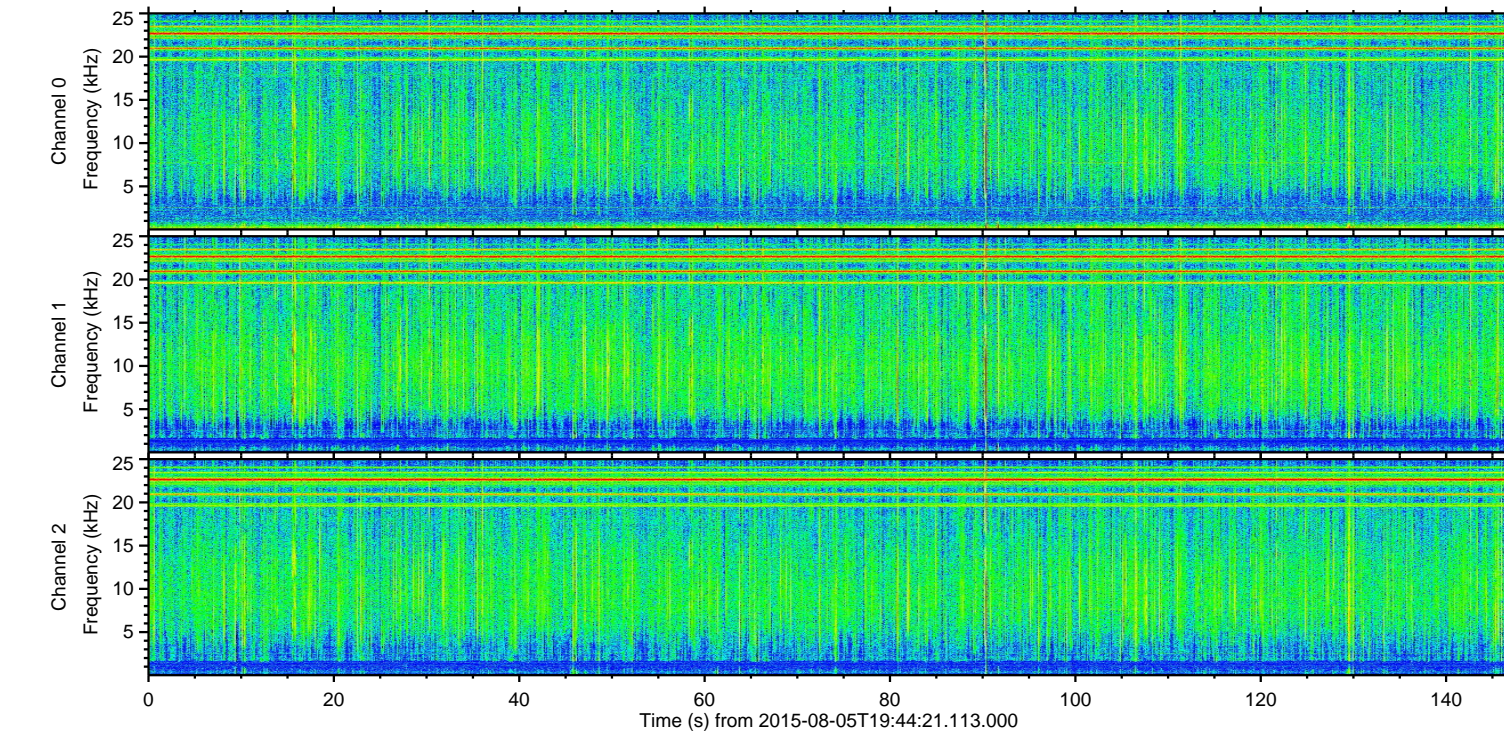
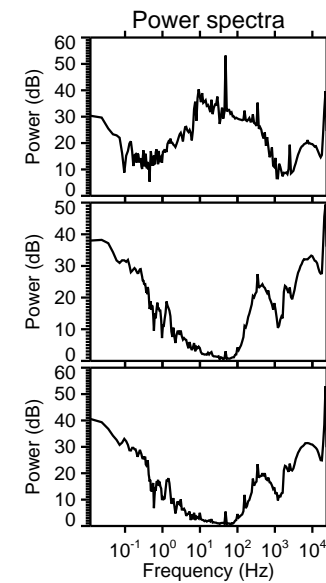
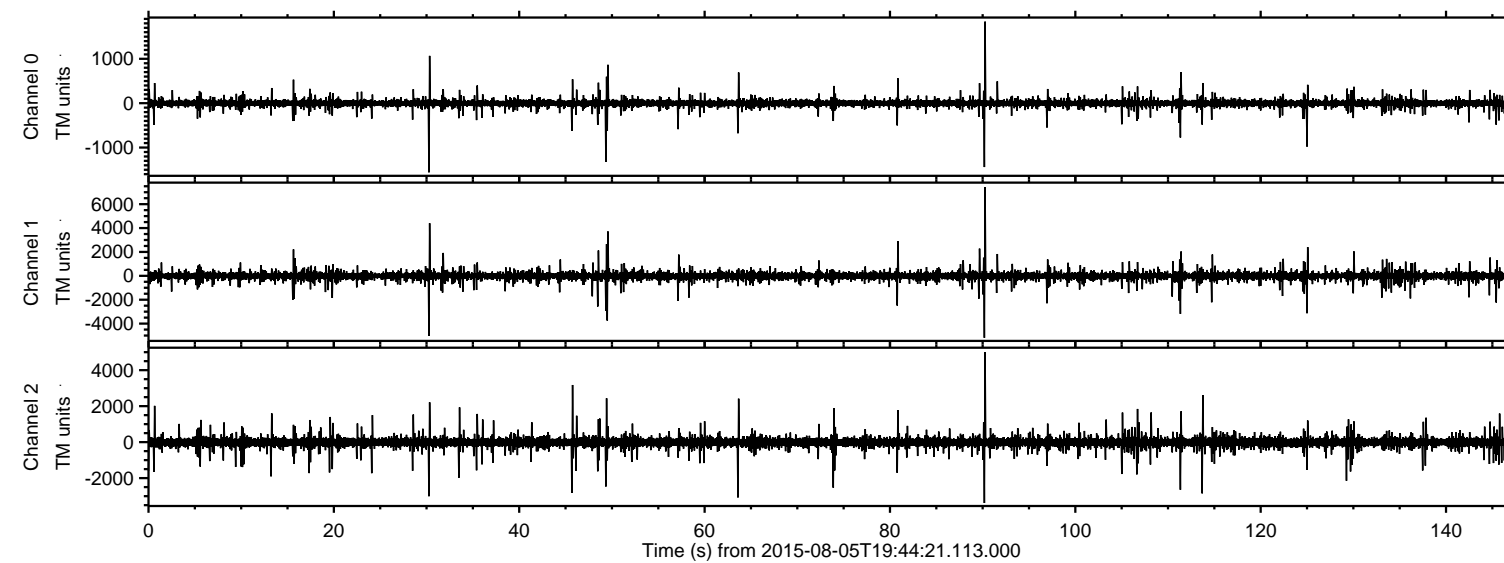
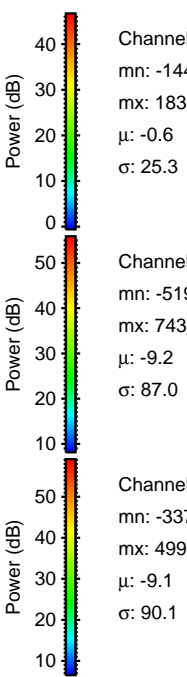
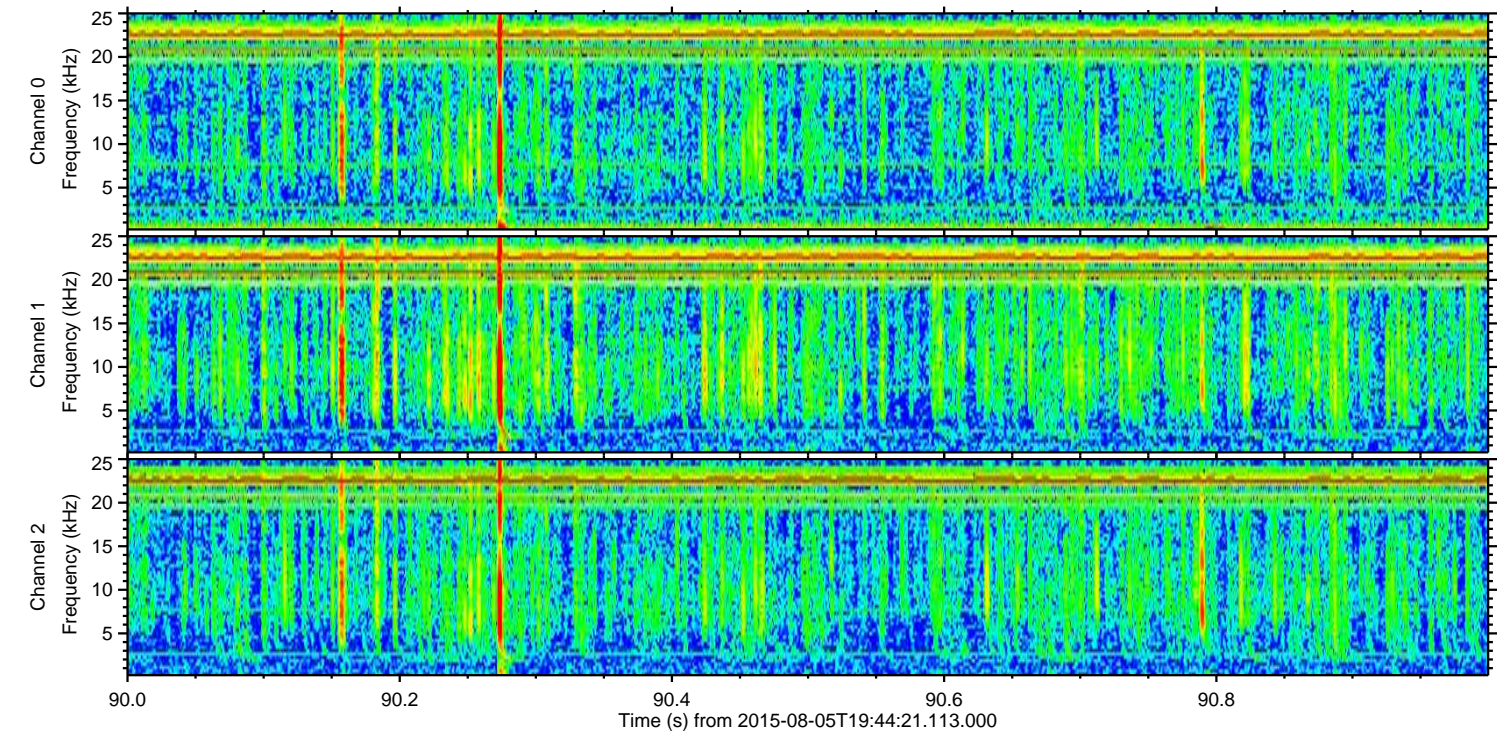
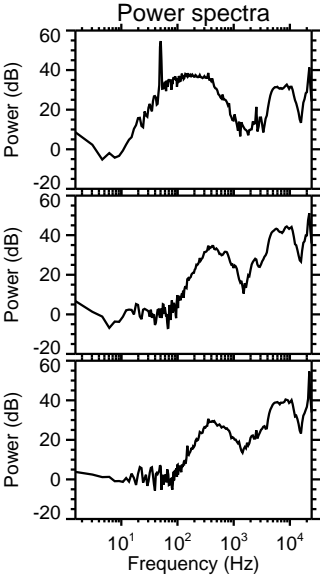
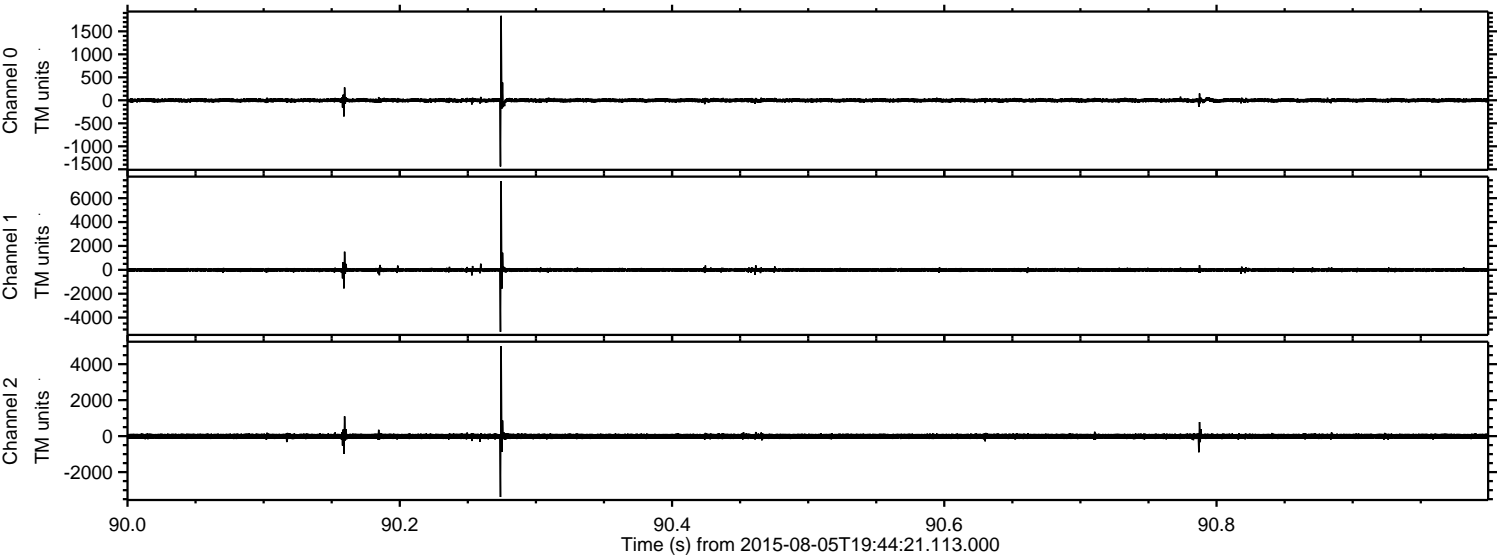


ELMAVAN 3D WAVEFORMS (Measured data sampled at 50 kHz) 51000 packets of 144 samples from 2015-08-05T19:44:21.113.000.

Processed Wed Aug 5 21:50:21 2015 by ELM ver.2012-10-06 from 001__elm20150805_194420__dat00.bin

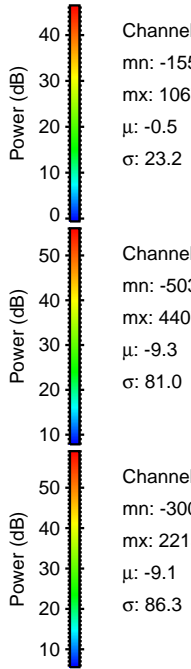
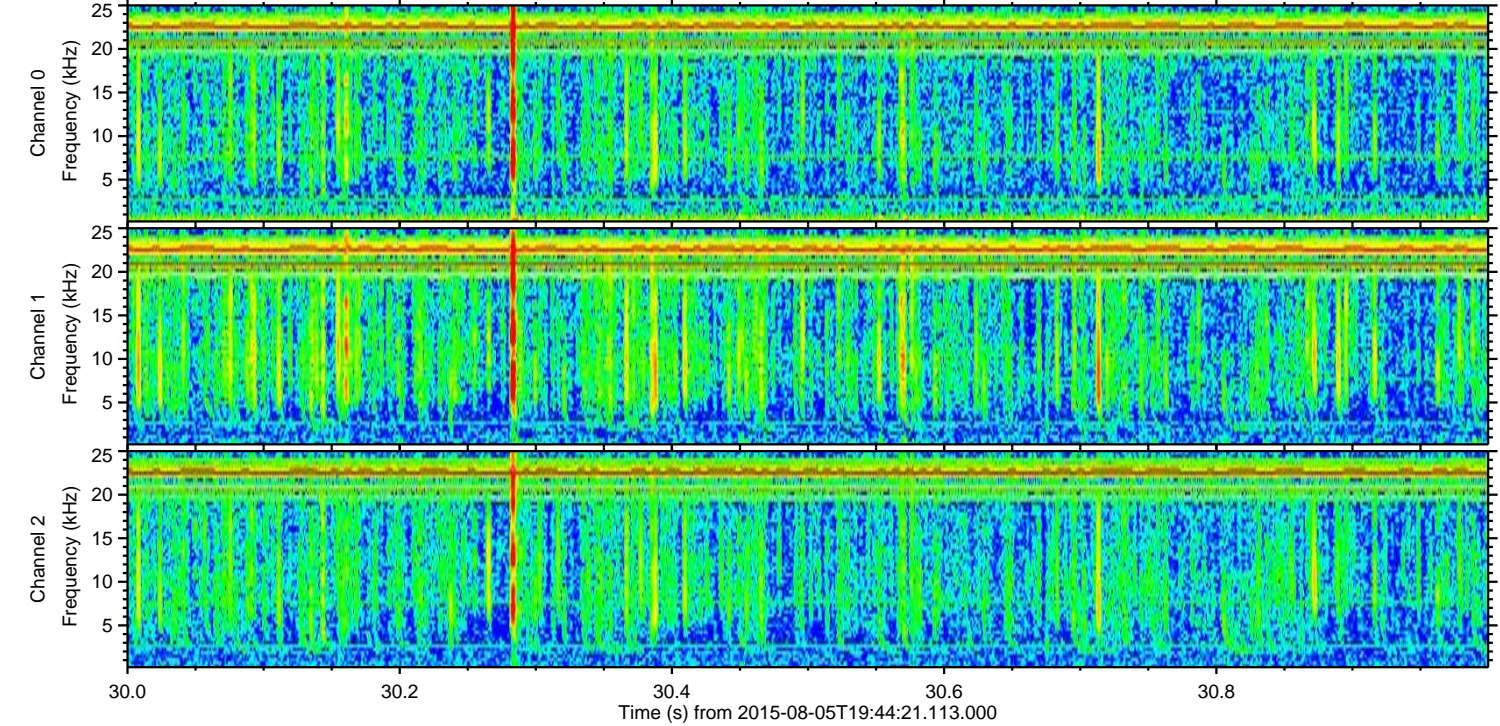
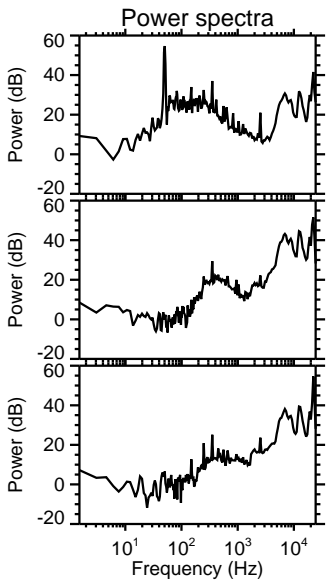
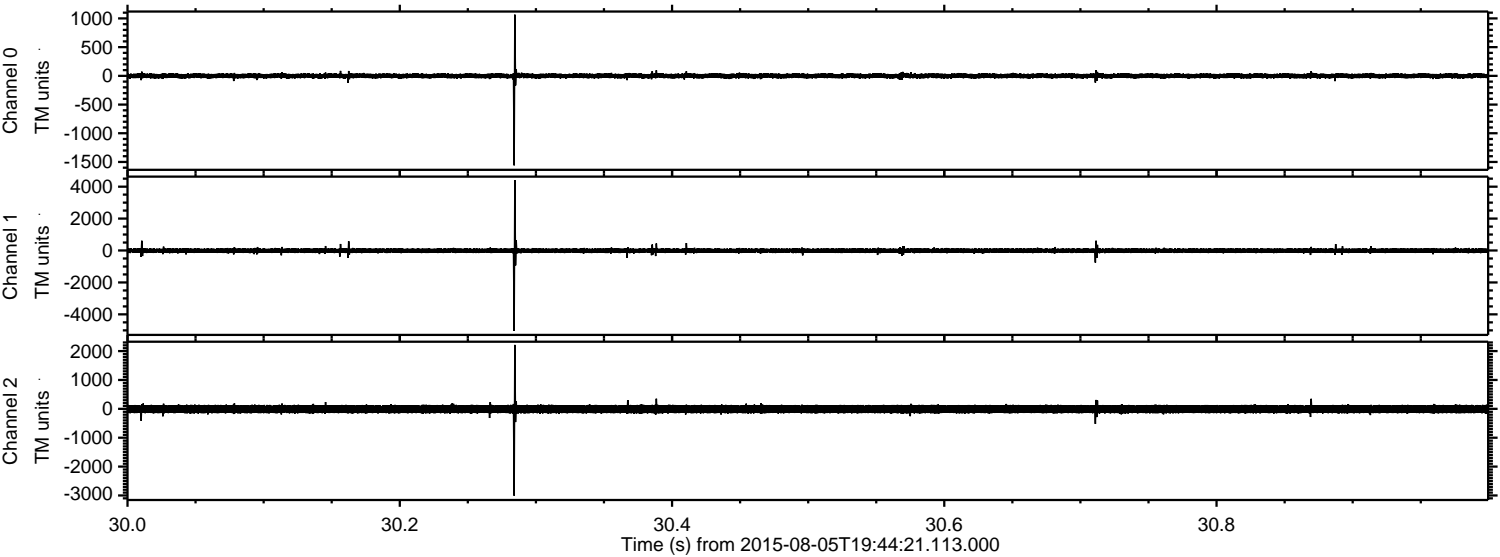


Processed Wed Aug 5 21:50:33 2015 by ELM ver.2012-10-06 from 001__elm20150805_194420__dat00.bin



ELMAVAN 3D WAVEFORMS (Measured data sampled at 50 kHz) 51000 packets of 144 samples from 2015-08-05T19:44:21.113.000. Part 31/147

Processed Wed Aug 5 21:50:34 2015 by ELM ver.2012-10-06 from 001__elm20150805_194420__dat00.bin



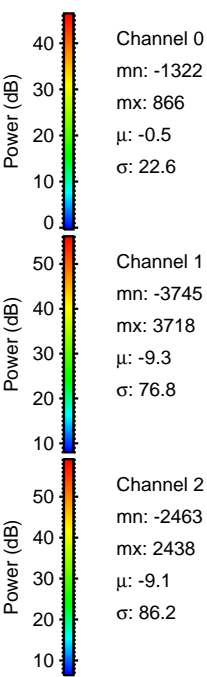
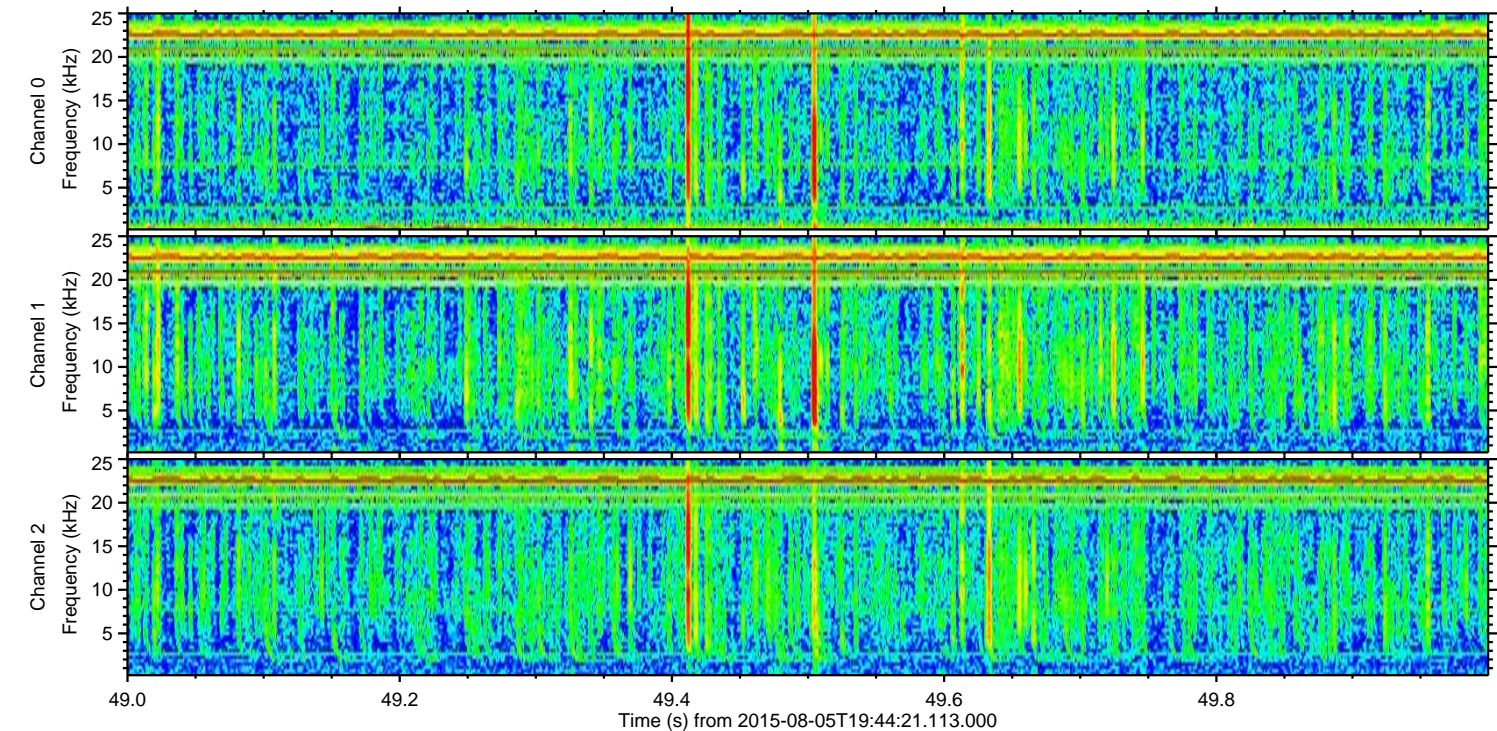
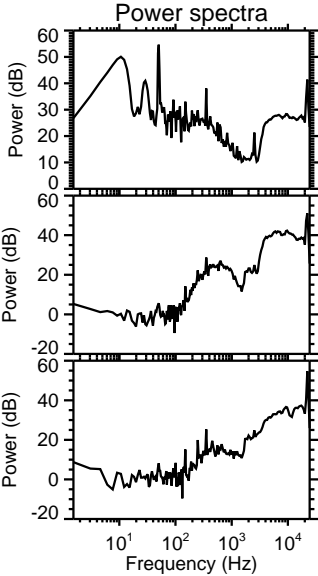
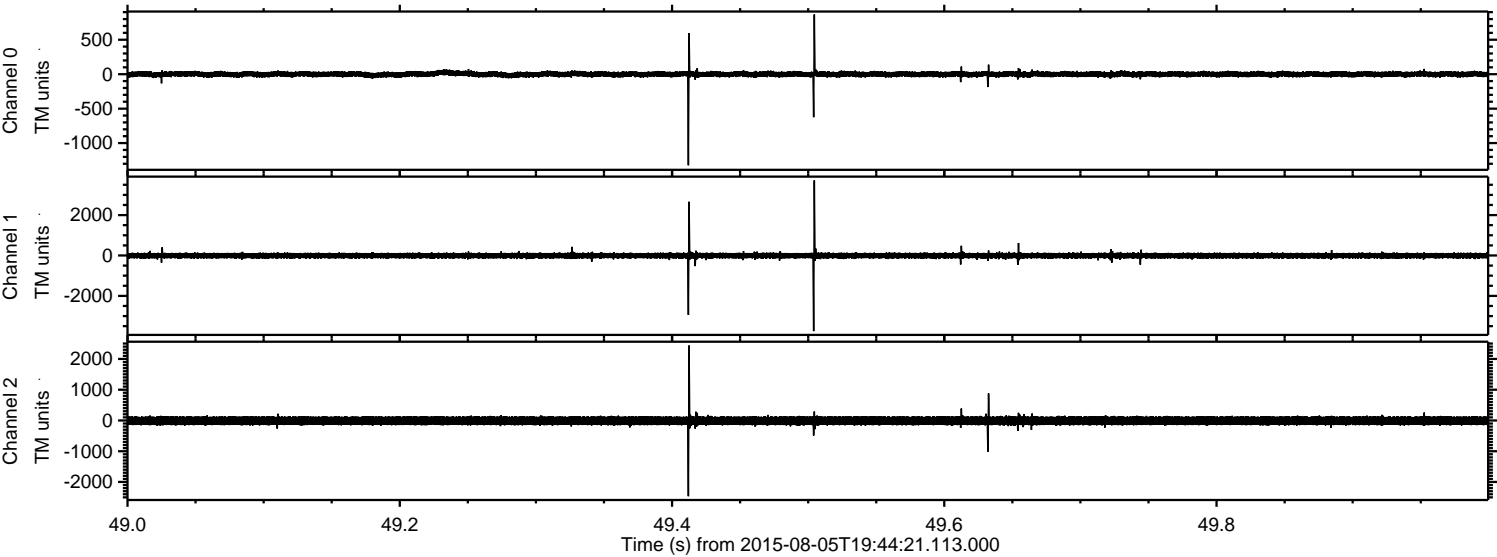
Channel 0
mn: -1559
mx: 1067
 μ : -0.5
 σ : 23.2

Channel 1
mn: -5034
mx: 4407
 μ : -9.3
 σ : 81.0

Channel 2
mn: -3006
mx: 2215
 μ : -9.1
 σ : 86.3

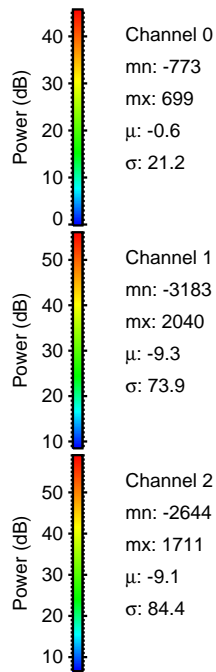
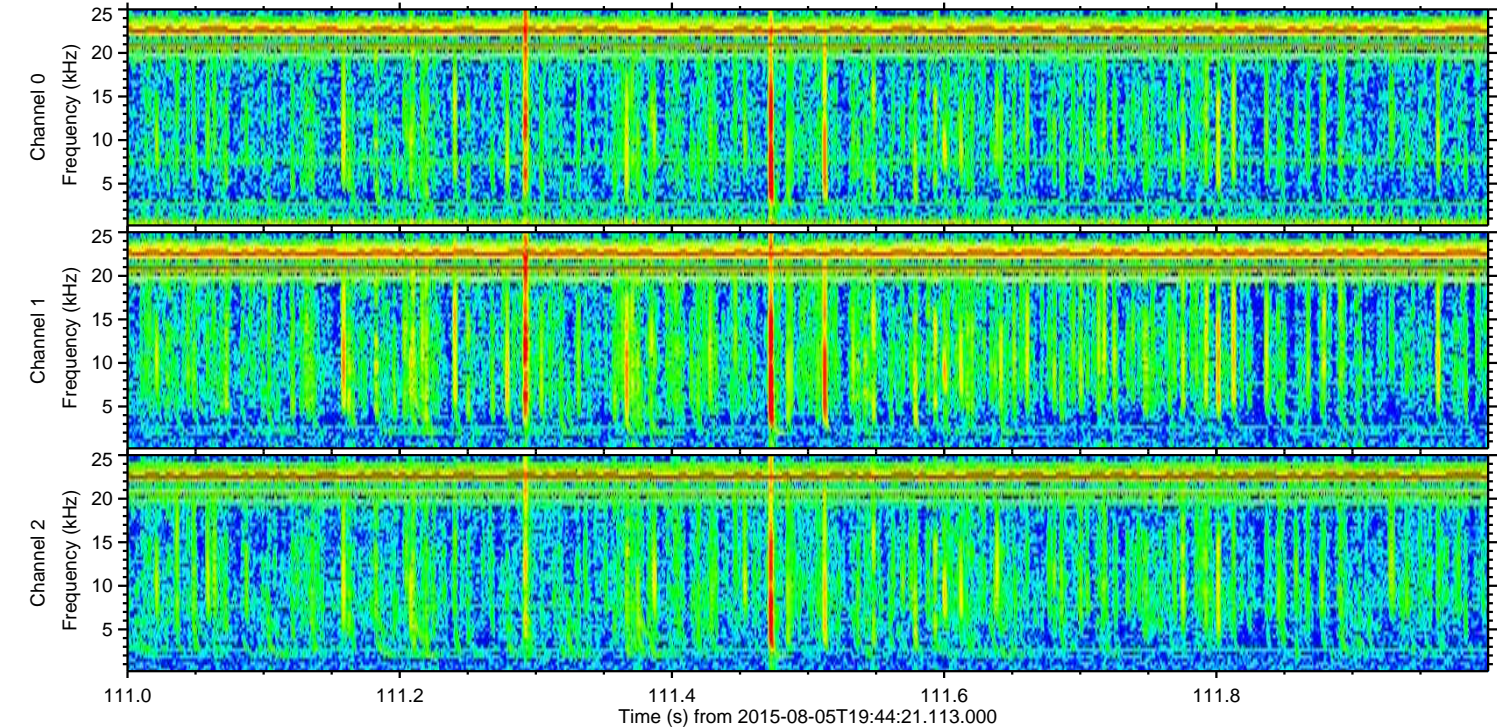
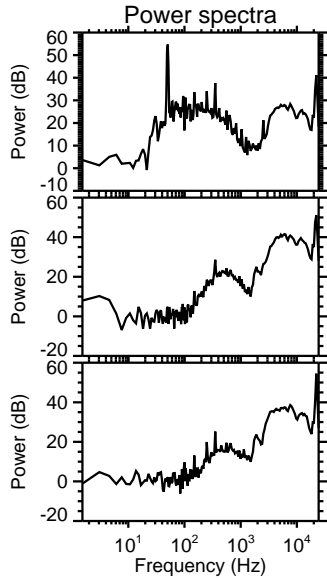
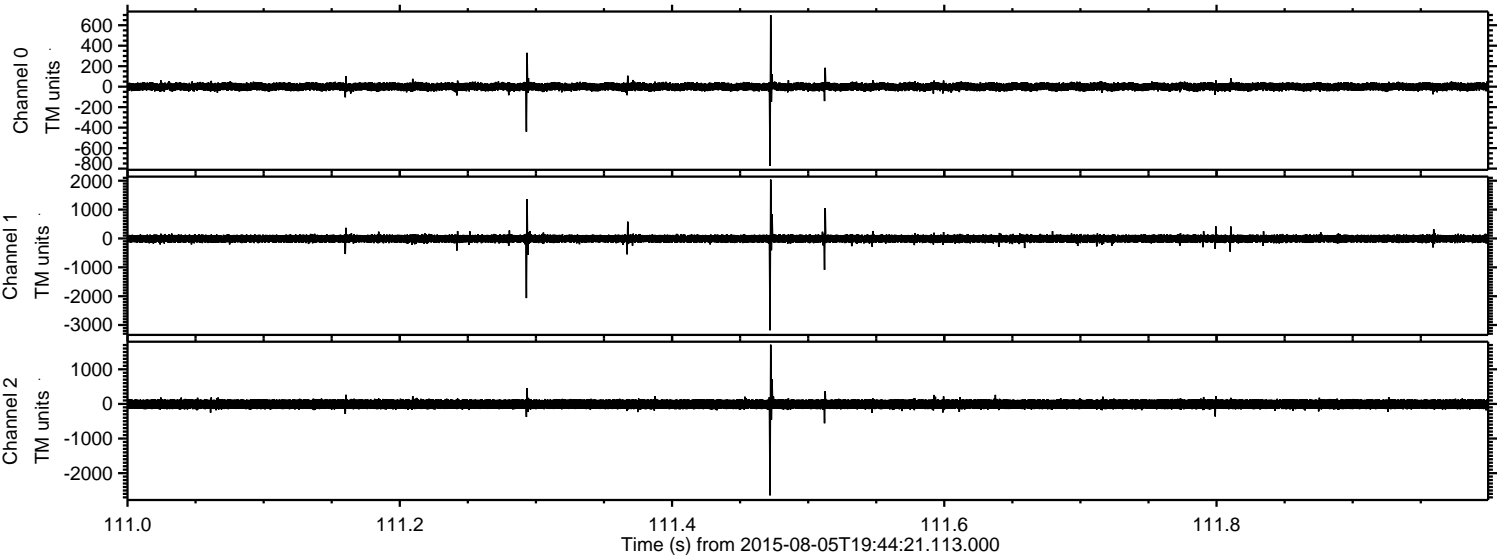
ELMAVAN 3D WAVEFORMS (Measured data sampled at 50 kHz) 51000 packets of 144 samples from 2015-08-05T19:44:21.113.000. Part 50/147

Processed Wed Aug 5 21:50:34 2015 by ELM ver.2012-10-06 from 001__elm20150805_194420__dat00.bin



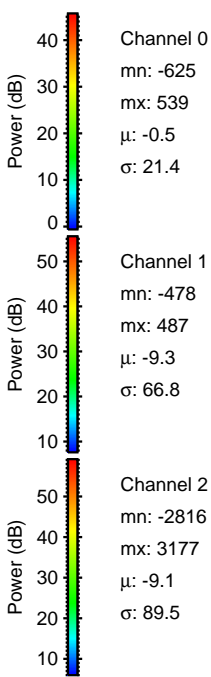
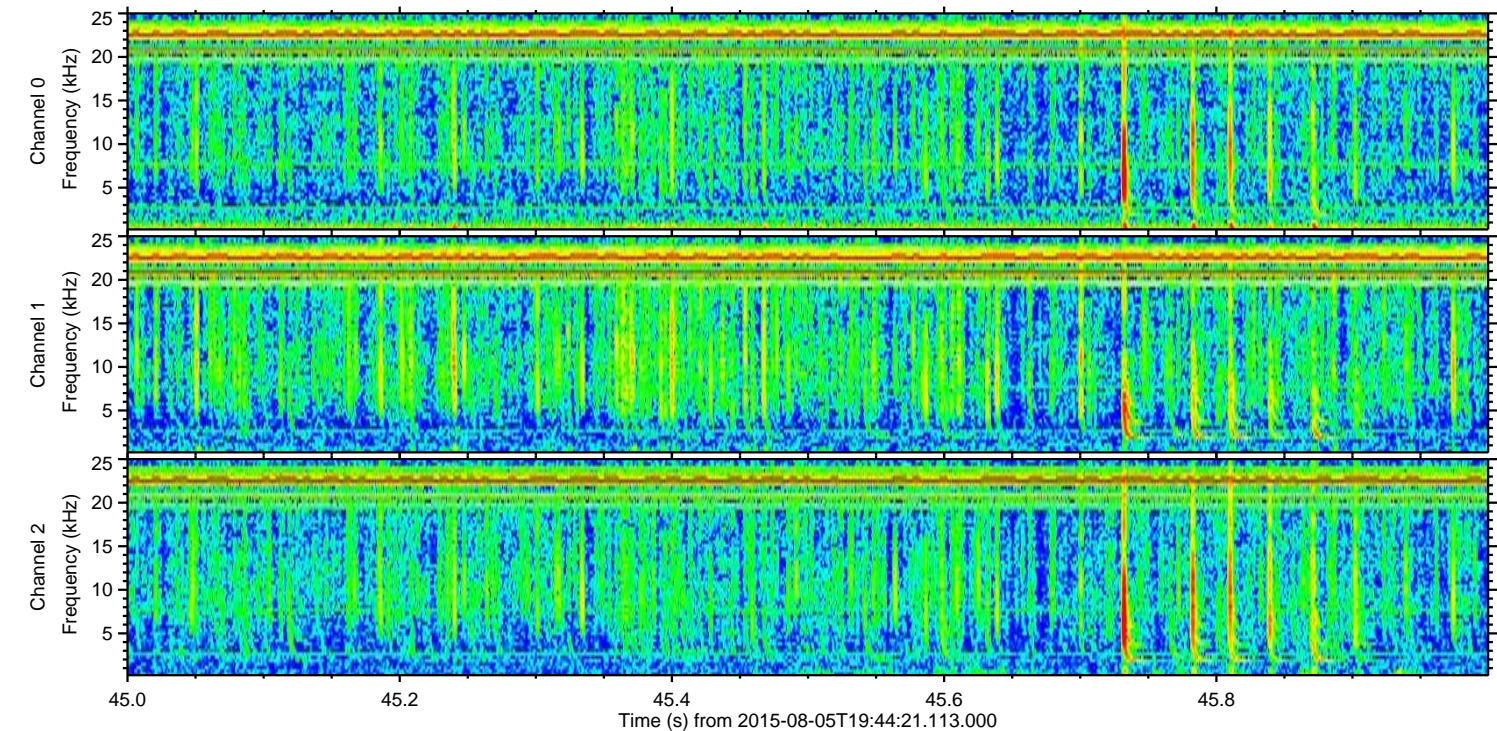
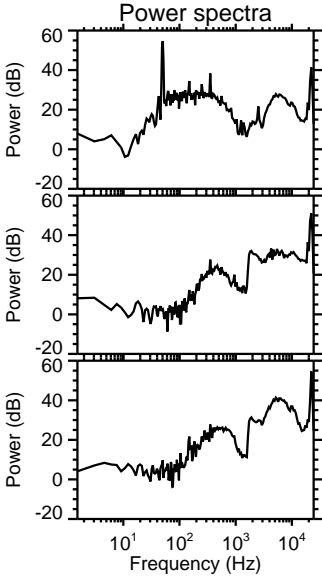
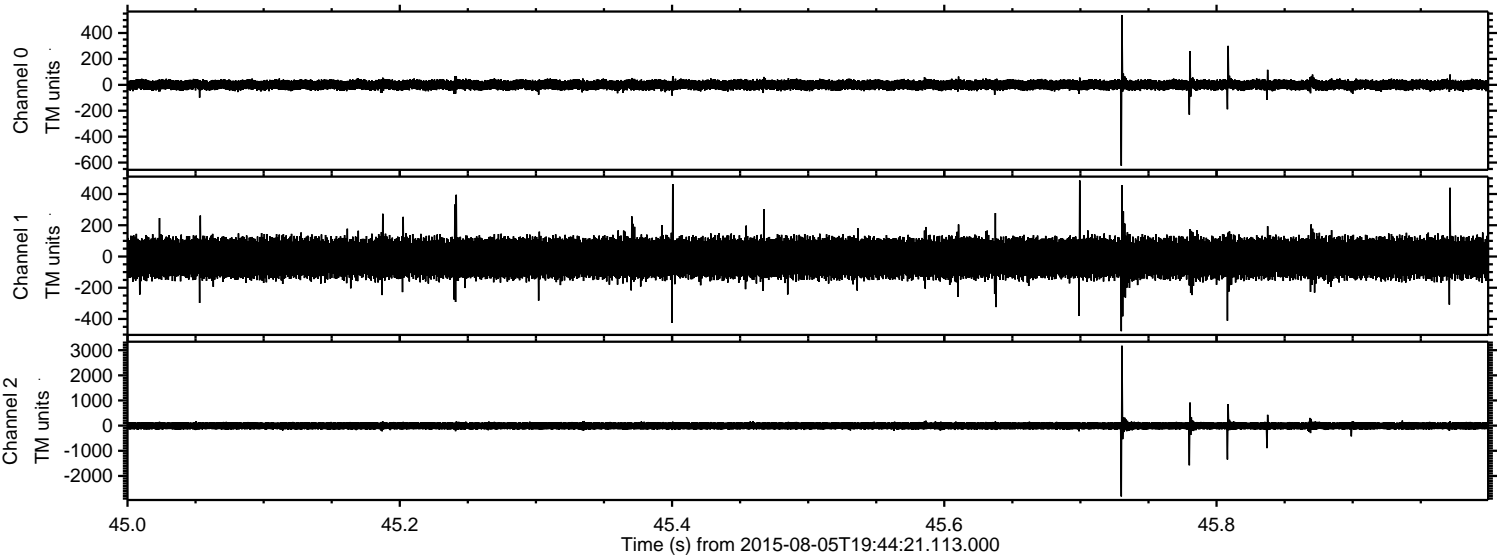
ELMAVAN 3D WAVEFORMS (Measured data sampled at 50 kHz) 51000 packets of 144 samples from 2015-08-05T19:44:21.113.000. Part 112/147

Processed Wed Aug 5 21:50:35 2015 by ELM ver.2012-10-06 from 001__elm20150805_194420__dat00.bin



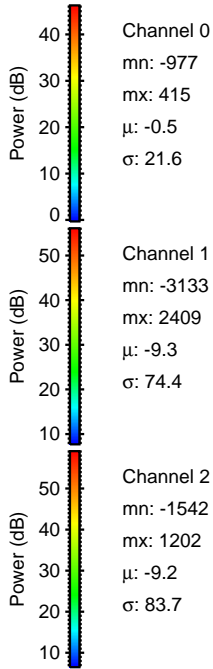
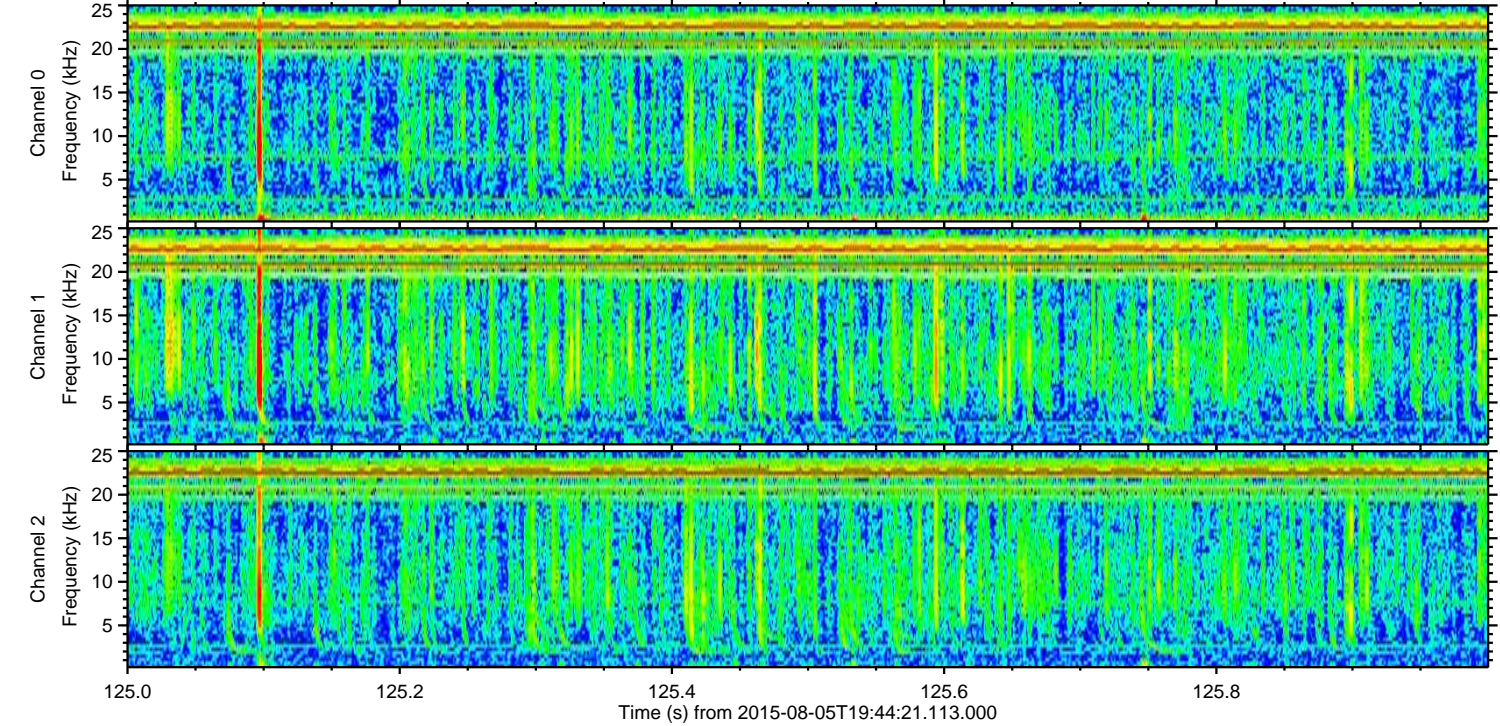
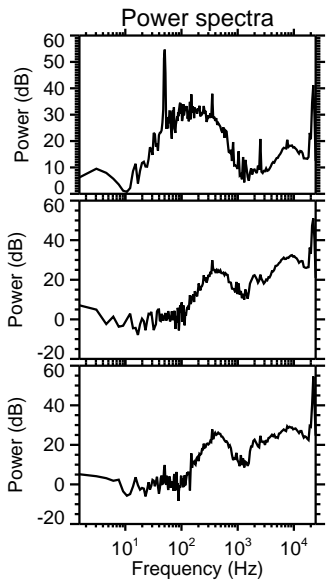
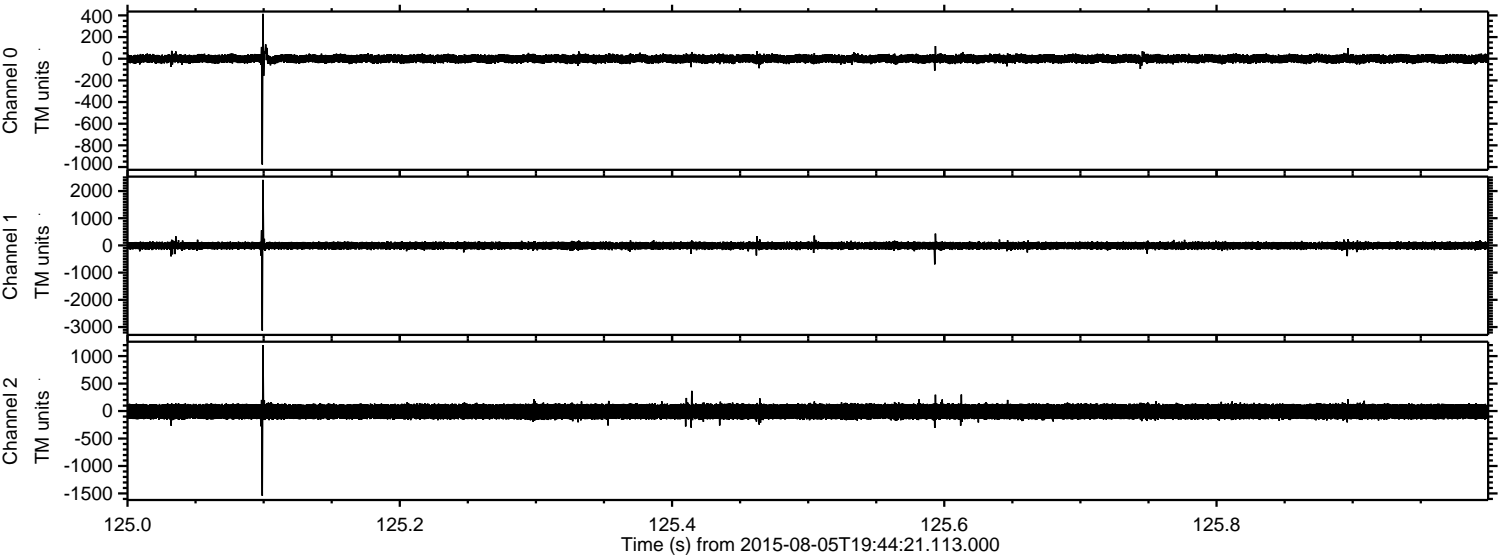
ELMAVAN 3D WAVEFORMS (Measured data sampled at 50 kHz) 51000 packets of 144 samples from 2015-08-05T19:44:21.113.000. Part 46/147

Processed Wed Aug 5 21:50:36 2015 by ELM ver.2012-10-06 from 001_elm20150805_194420__dat00.bin

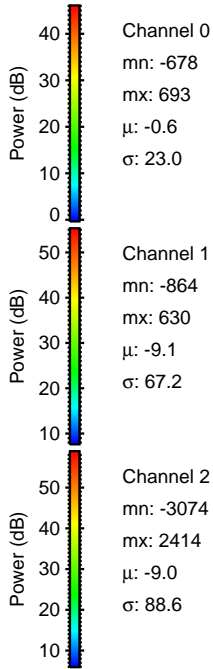
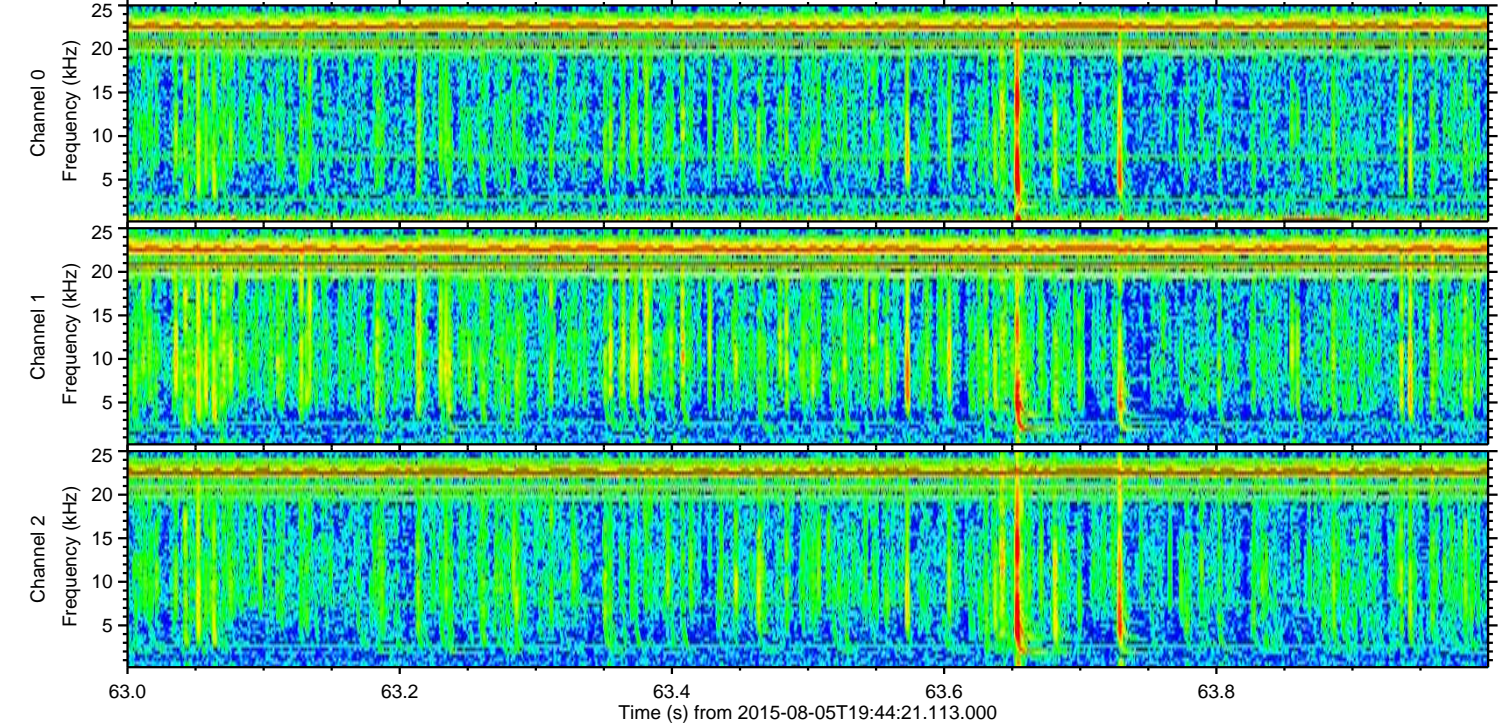
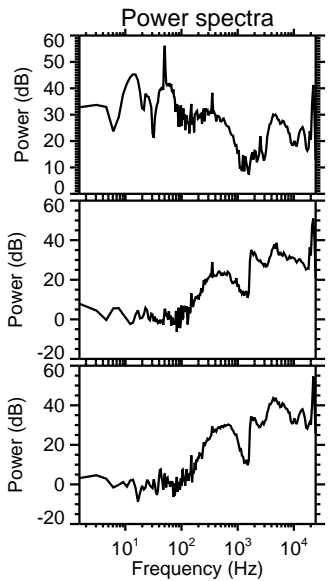
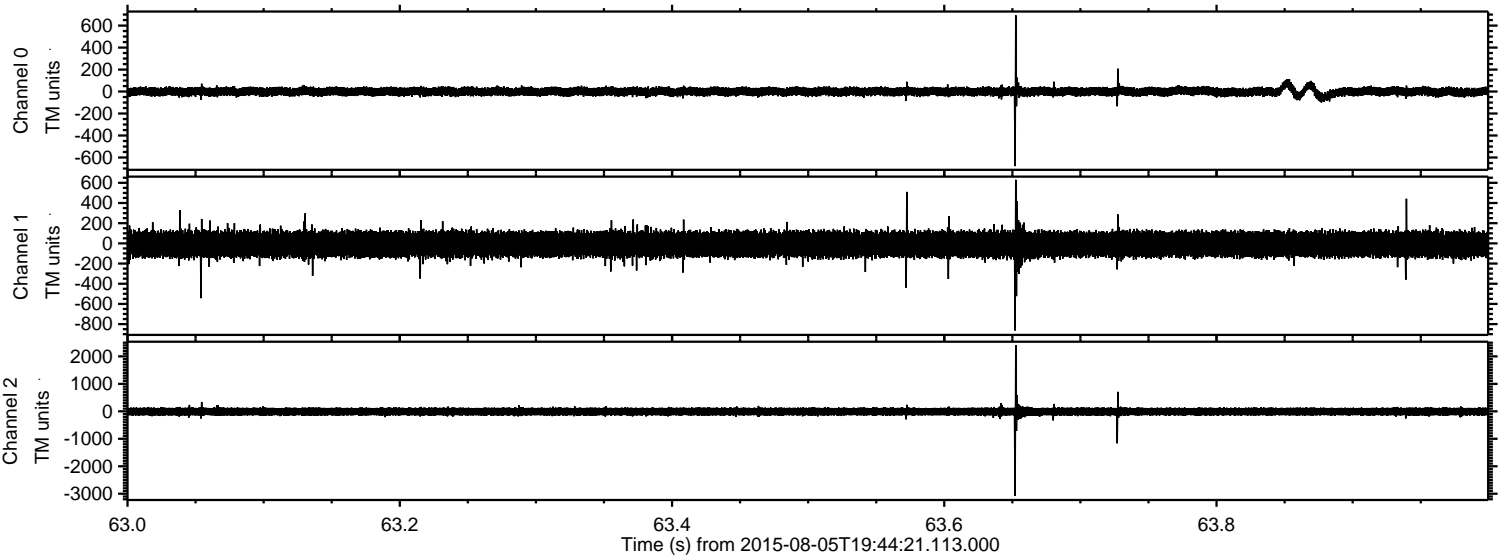


ELMAVAN 3D WAVEFORMS (Measured data sampled at 50 kHz) 51000 packets of 144 samples from 2015-08-05T19:44:21.113.000. Part 126/147

Processed Wed Aug 5 21:50:37 2015 by ELM ver.2012-10-06 from 001__elm20150805_194420__dat00.bin



Processed Wed Aug 5 21:50:38 2015 by ELM ver.2012-10-06 from 001__elm20150805_194420__dat00.bin

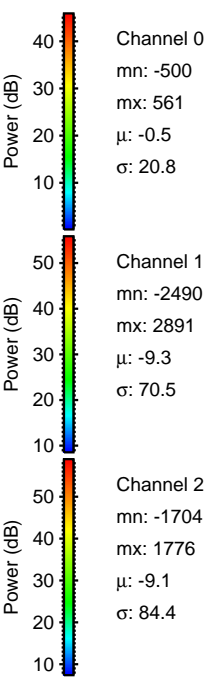
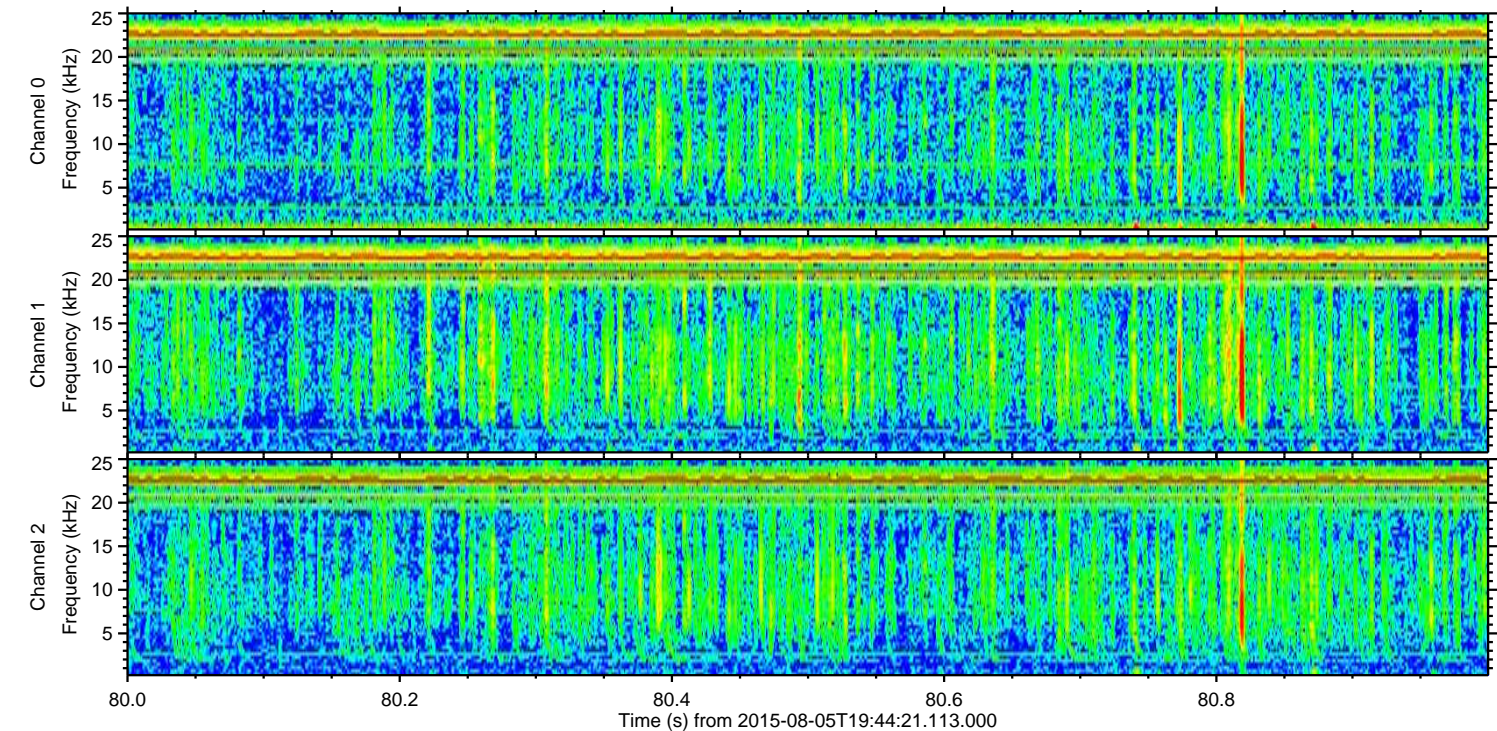
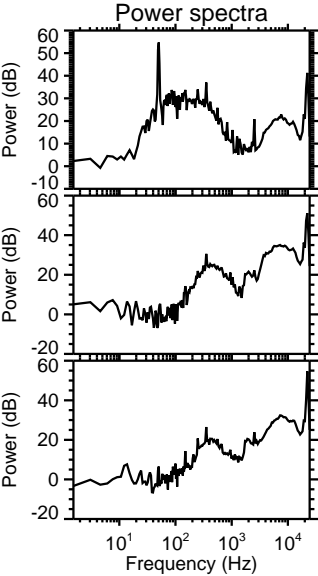
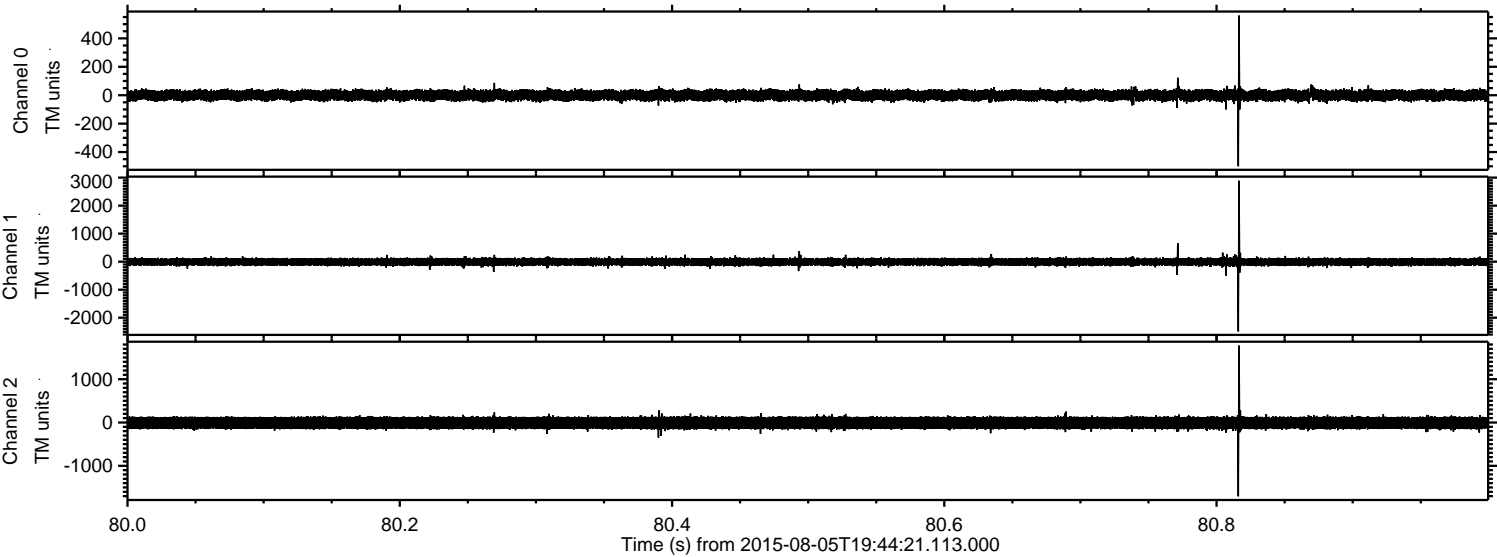


Channel 0
mn: -678
mx: 693
 μ : -0.6
 σ : 23.0

Channel 1
mn: -864
mx: 630
 μ : -9.1
 σ : 67.2

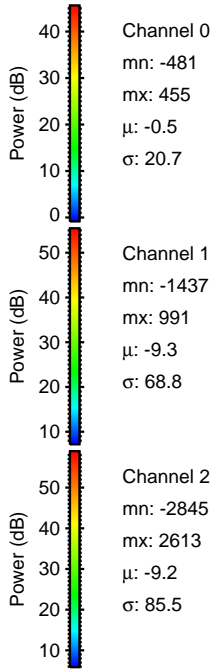
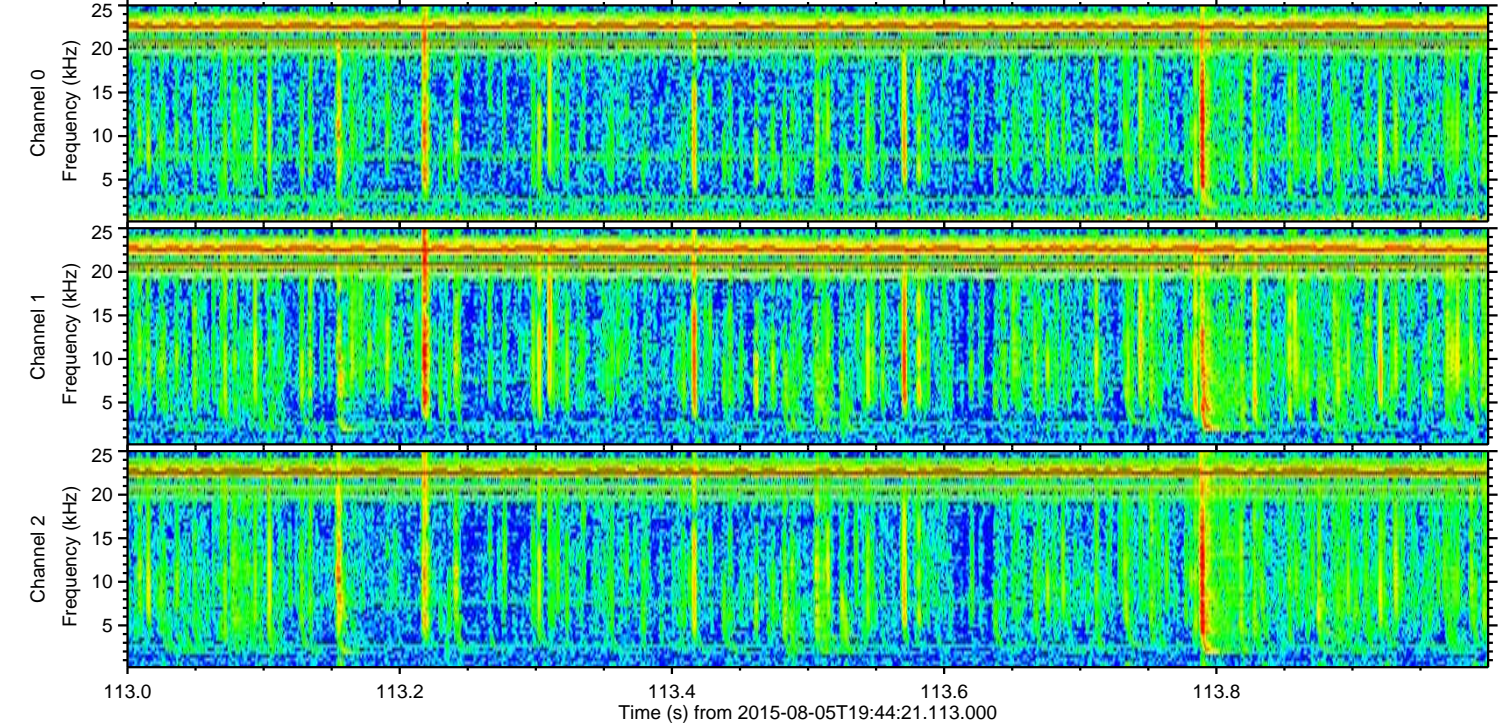
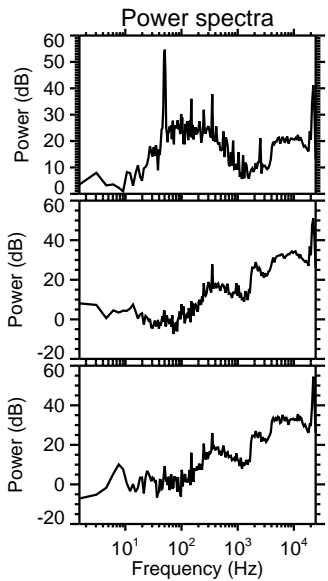
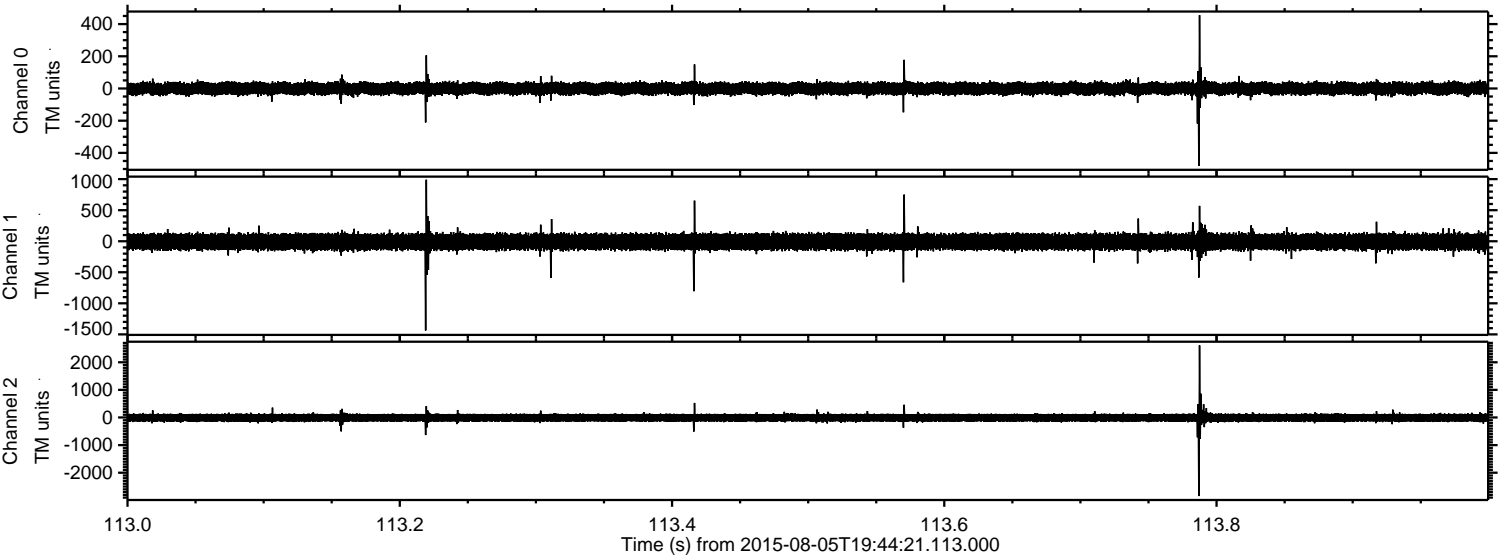
Channel 2
mn: -3074
mx: 2414
 μ : -9.0
 σ : 88.6

Processed Wed Aug 5 21:50:39 2015 by ELM ver.2012-10-06 from 001__elm20150805_194420__dat00.bin



ELMAVAN 3D WAVEFORMS (Measured data sampled at 50 kHz) 51000 packets of 144 samples from 2015-08-05T19:44:21.113.000. Part 114/147

Processed Wed Aug 5 21:50:40 2015 by ELM ver.2012-10-06 from 001__elm20150805_194420__dat00.bin



ELMAVAN 3D WAVEFORMS (Measured data sampled at 50 kHz) 51000 packets of 144 samples from 2015-08-05T19:44:21.113.000. Part 140/147

