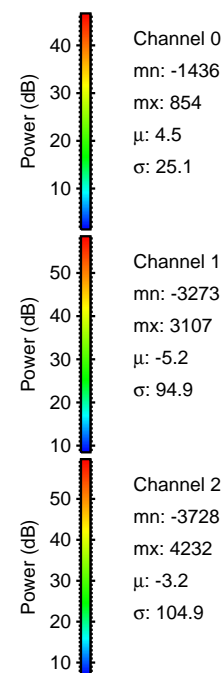
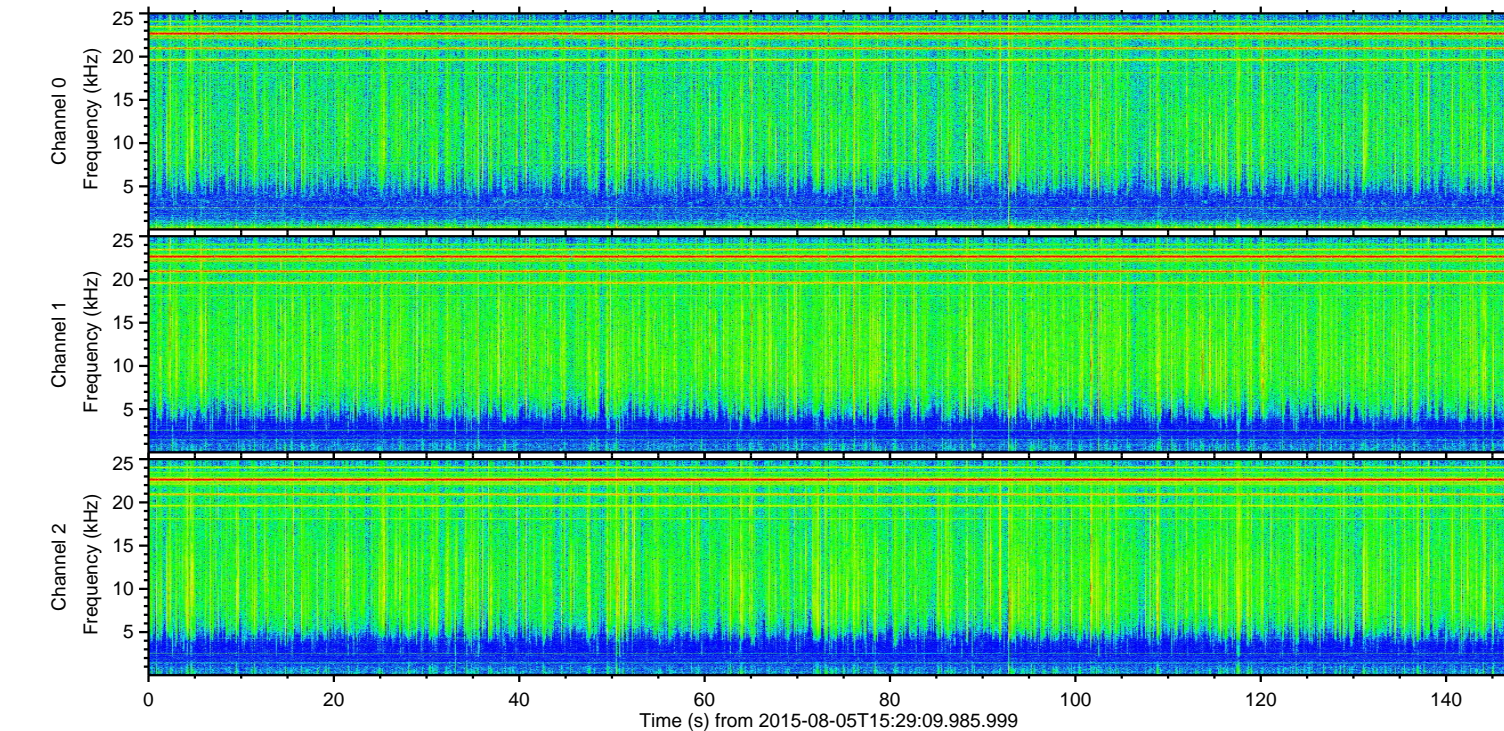
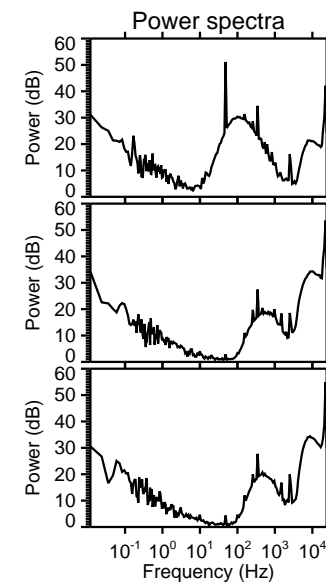
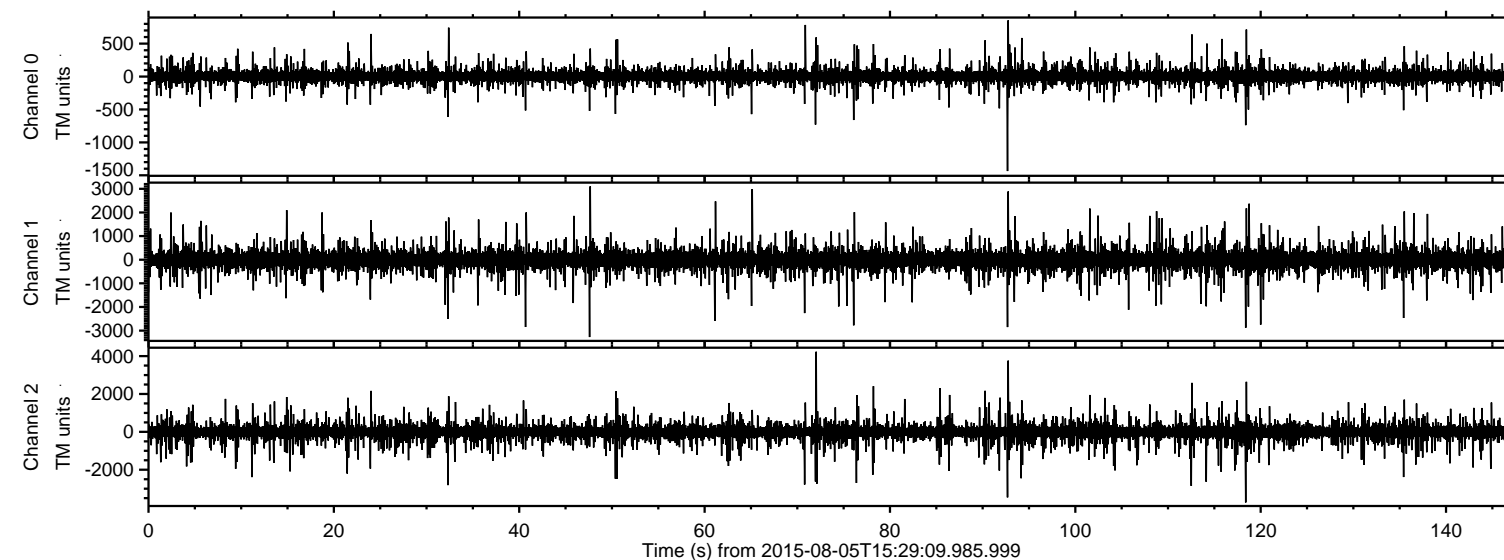
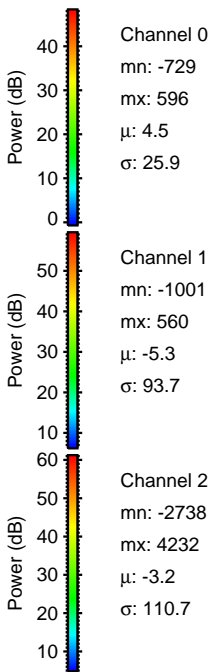
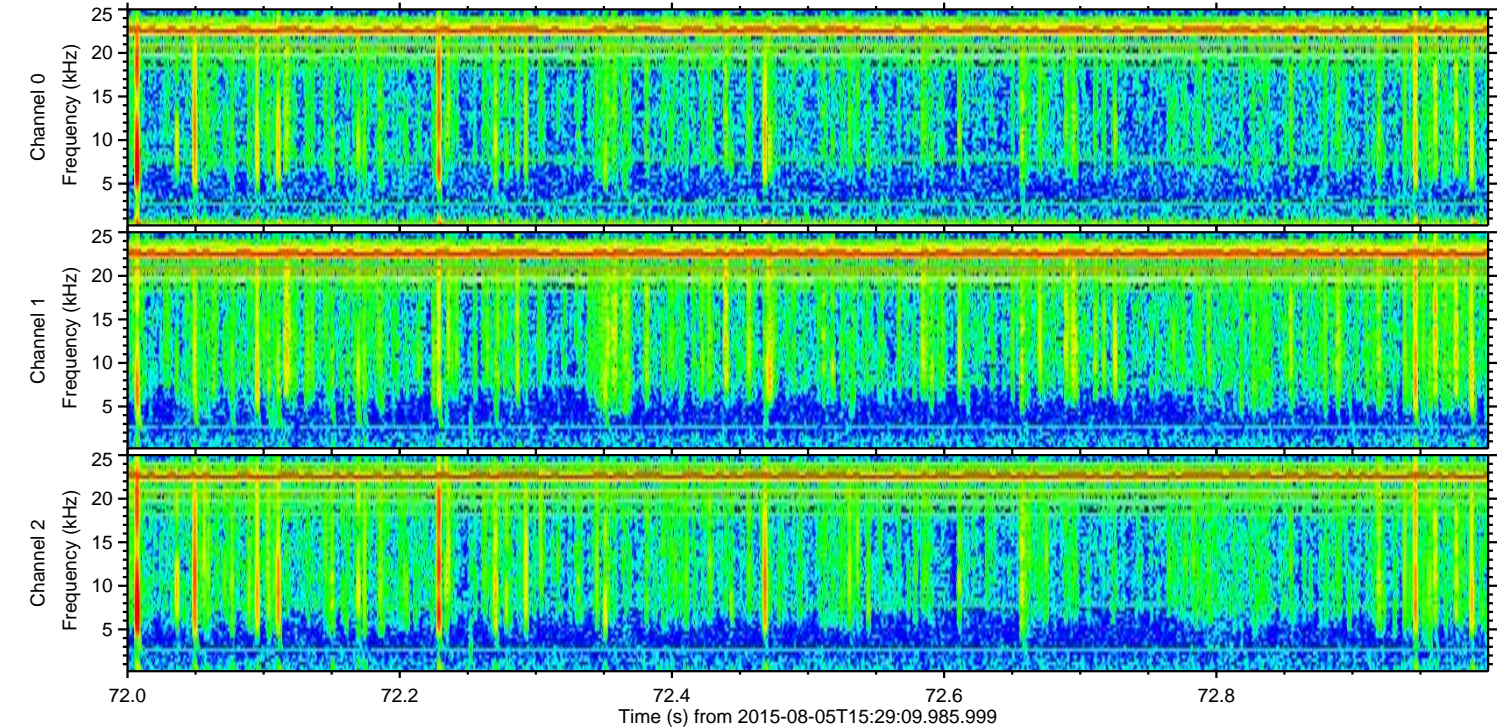
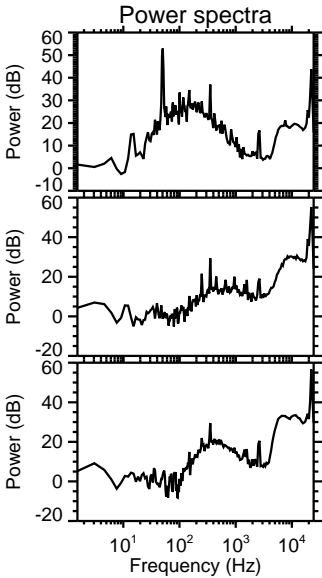
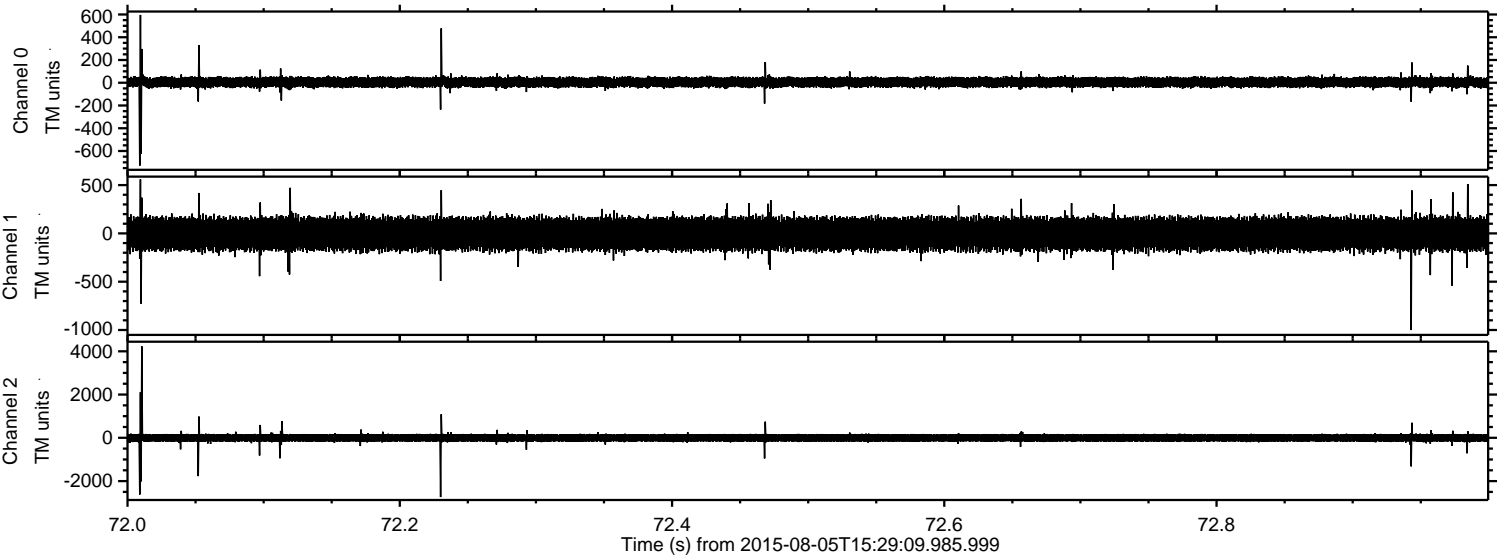


ELMAVAN 3D WAVEFORMS (Measured data sampled at 50 kHz) 51000 packets of 144 samples from 2015-08-05T15:29:09.985.999.

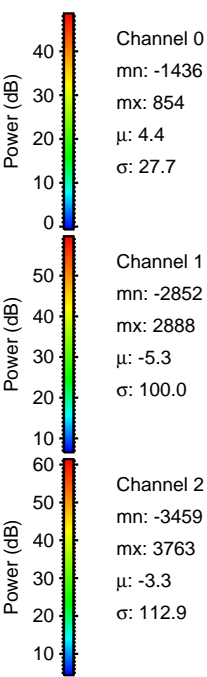
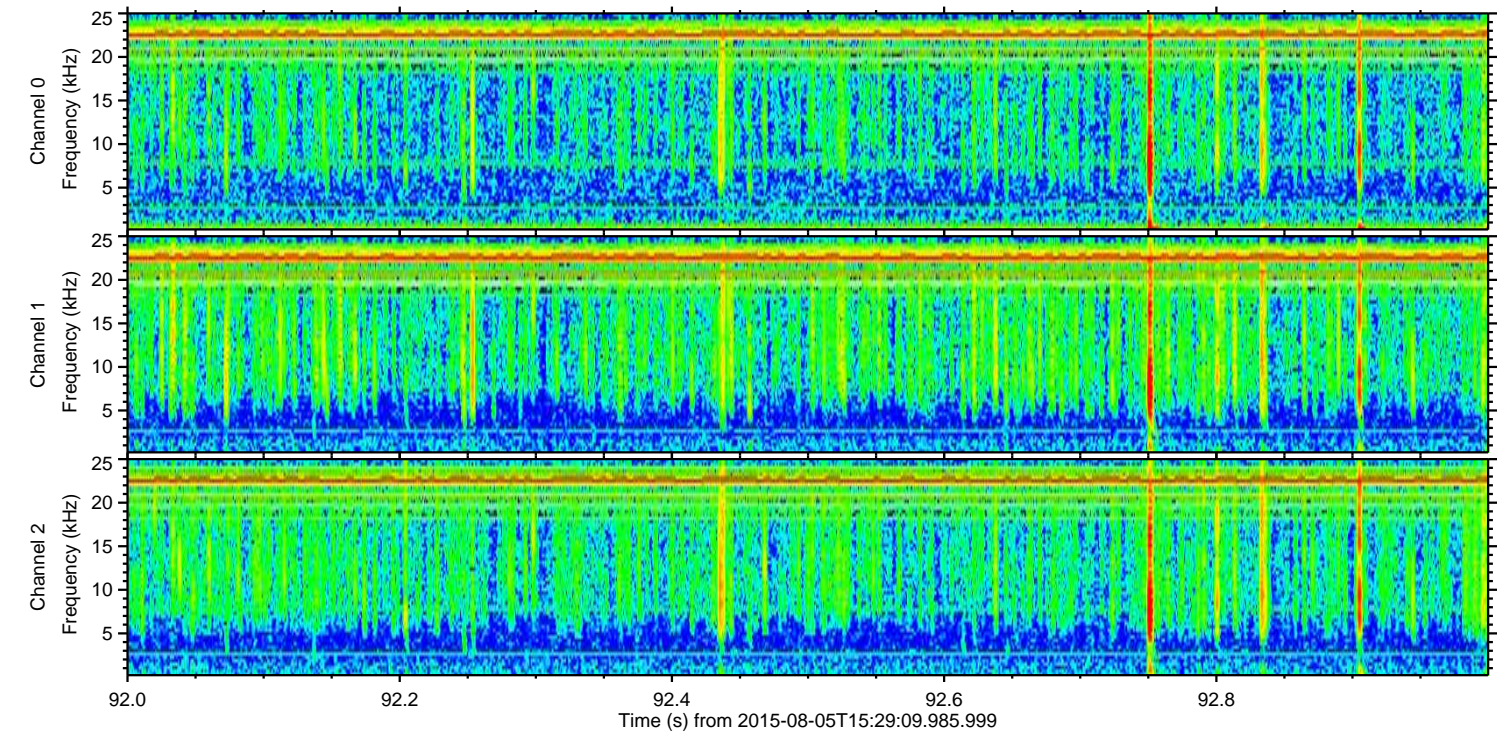
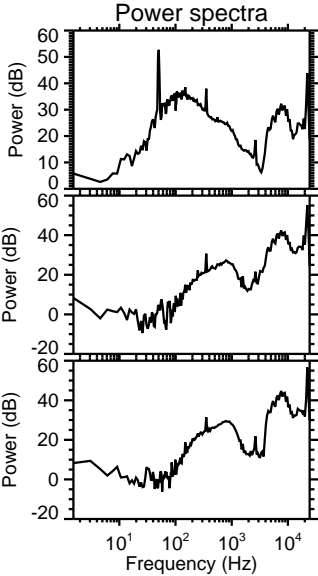
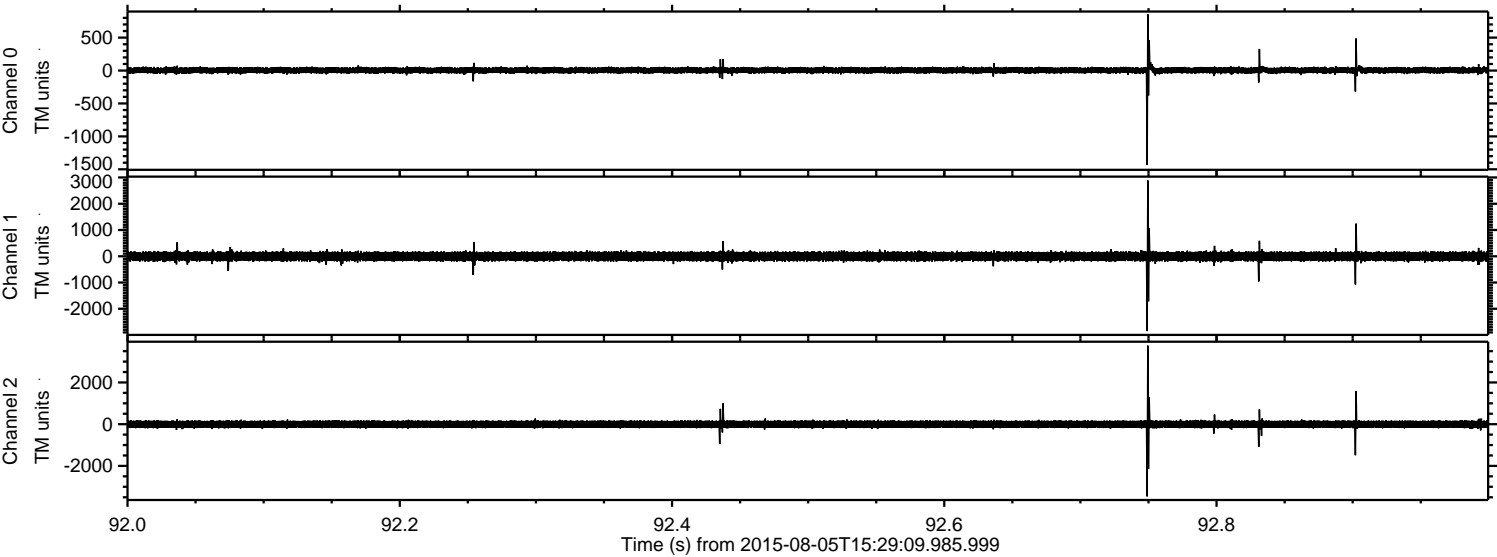
Processed Wed Aug 5 17:35:06 2015 by ELM ver.2012-10-06 from 001__elm20150805_152908__dat00.bin



Processed Wed Aug 5 17:35:18 2015 by ELM ver.2012-10-06 from 001__elm20150805_152908__dat00.bin

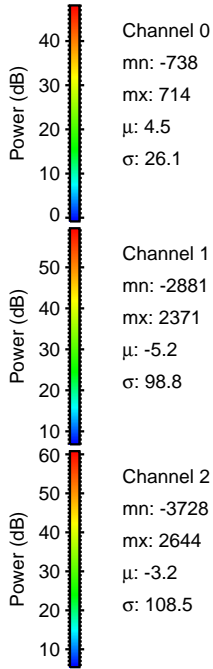
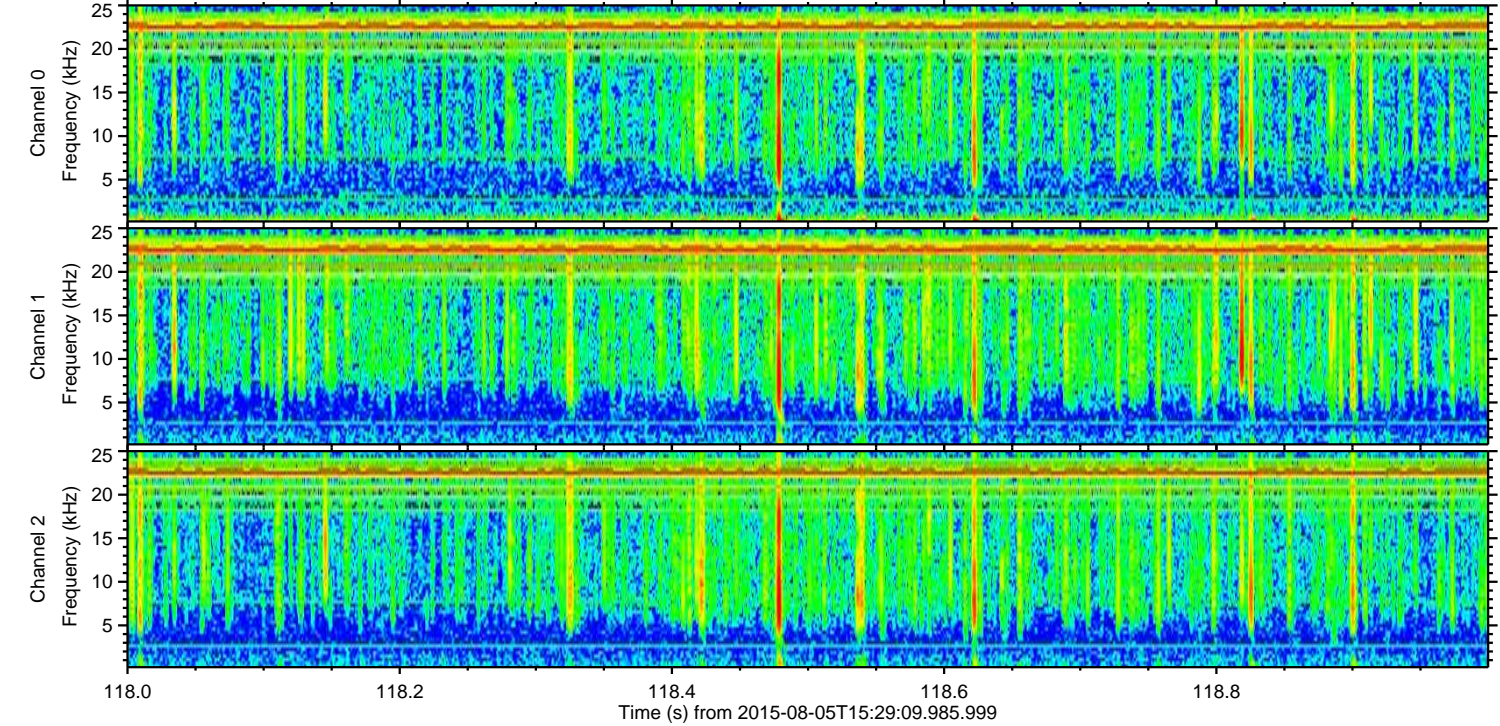
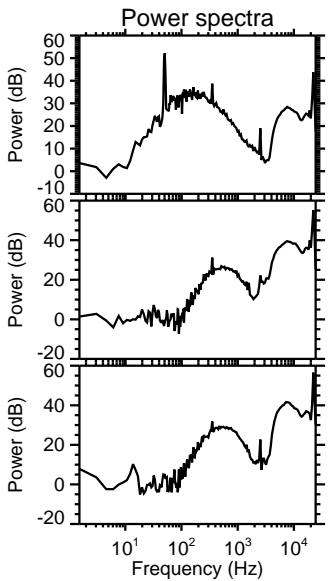
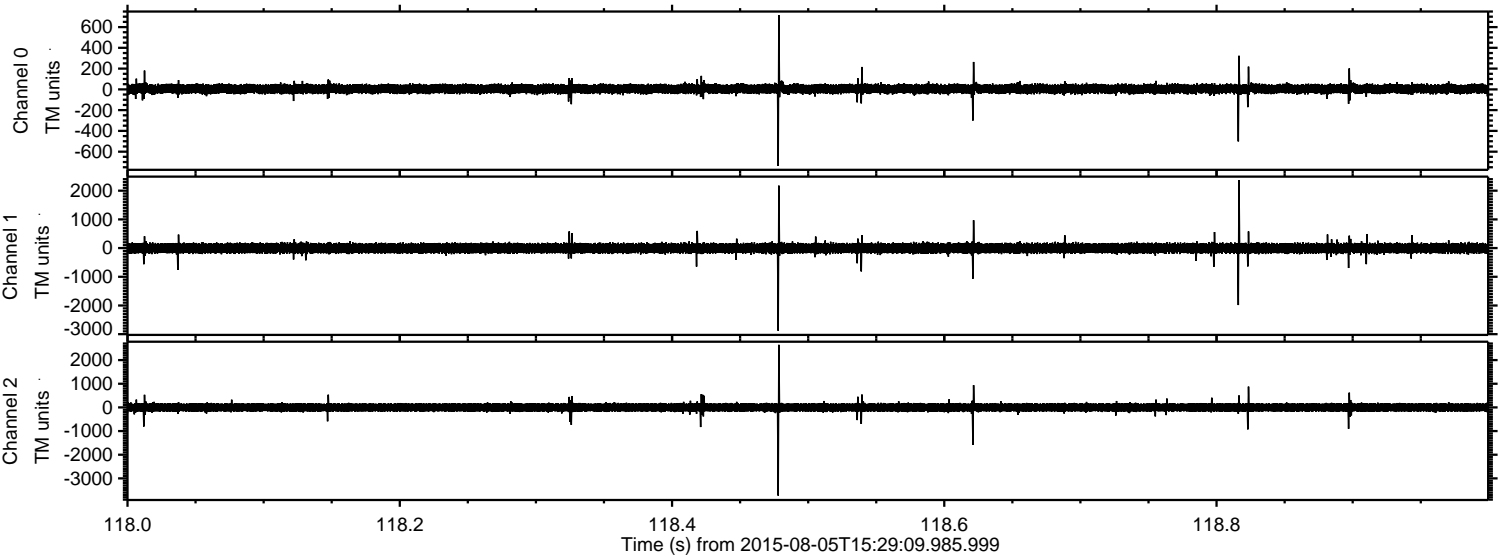


Processed Wed Aug 5 17:35:19 2015 by ELM ver.2012-10-06 from 001__elm20150805_152908__dat00.bin

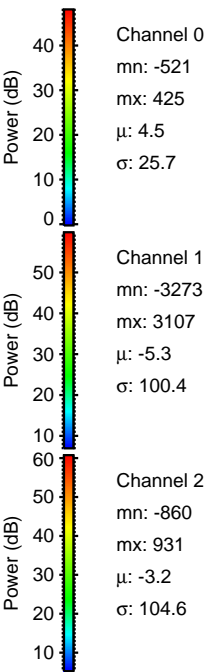
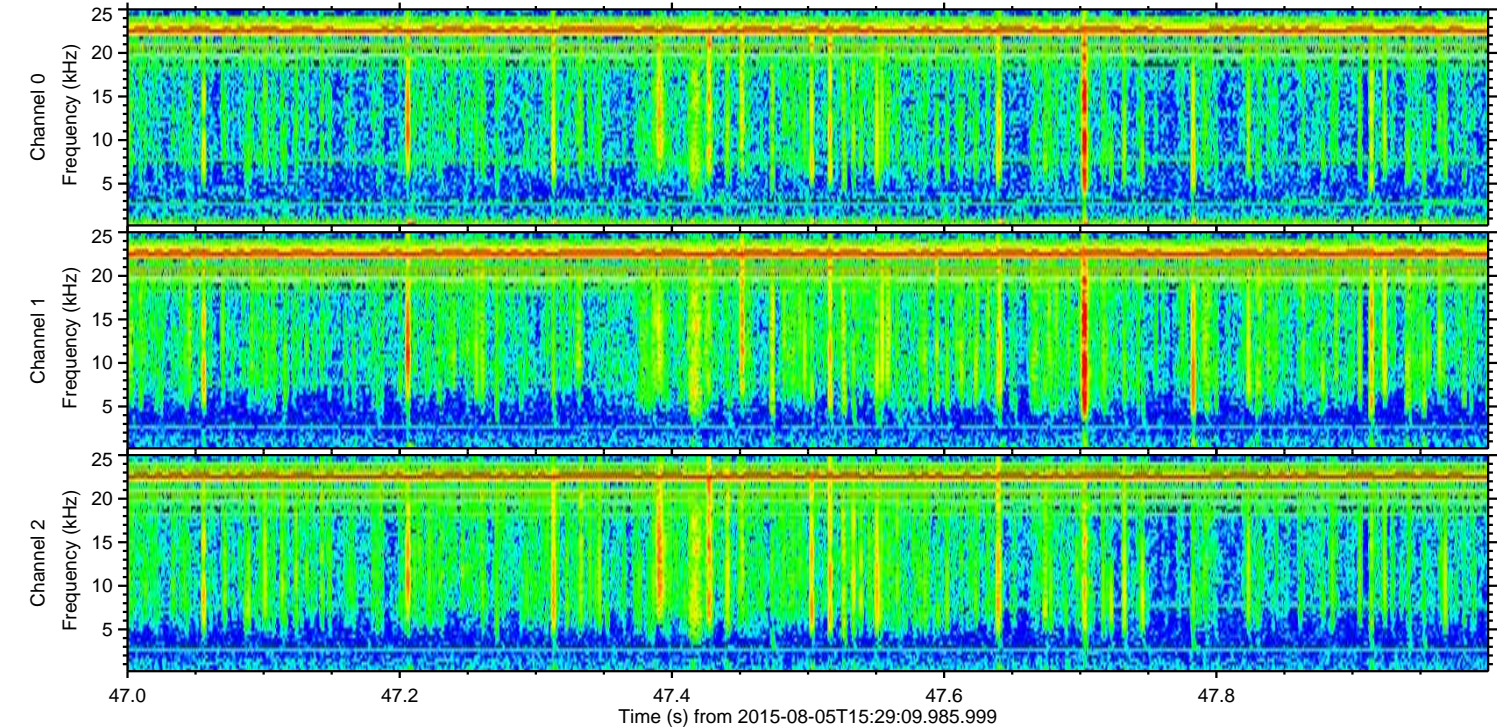
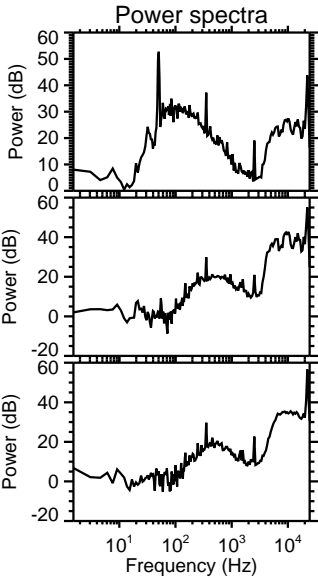
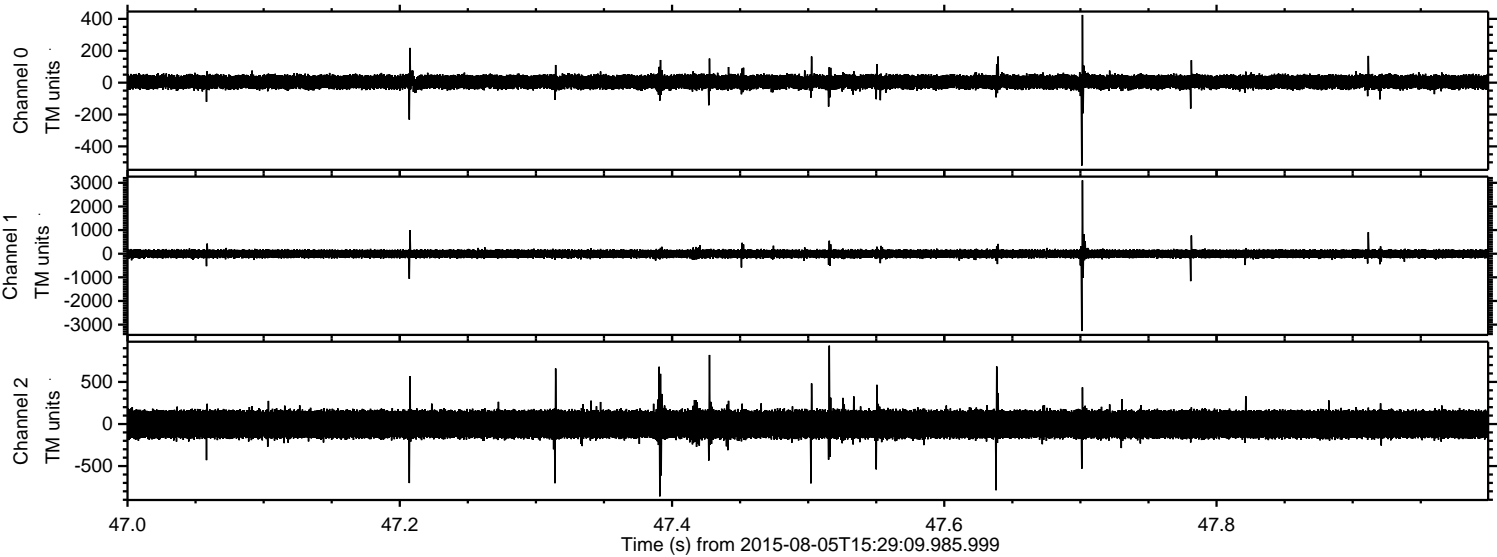


ELMAVAN 3D WAVEFORMS (Measured data sampled at 50 kHz) 51000 packets of 144 samples from 2015-08-05T15:29:09.985.999. Part 119/147

Processed Wed Aug 5 17:35:20 2015 by ELM ver.2012-10-06 from 001__elm20150805_152908__dat00.bin

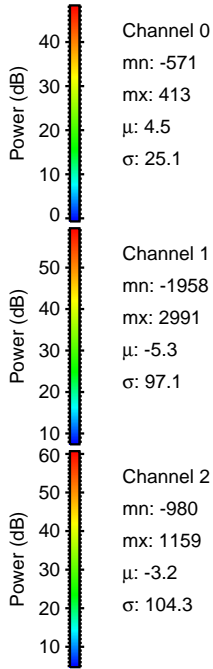
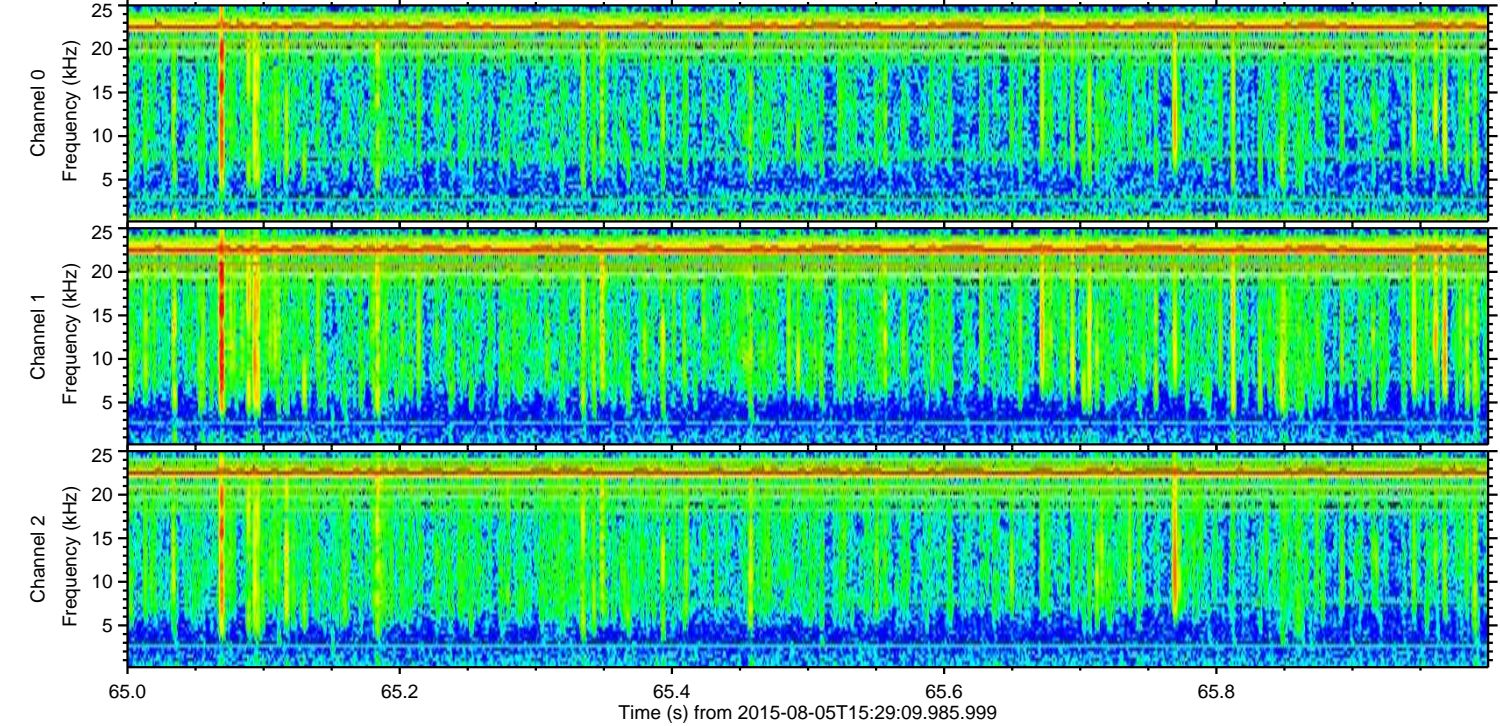
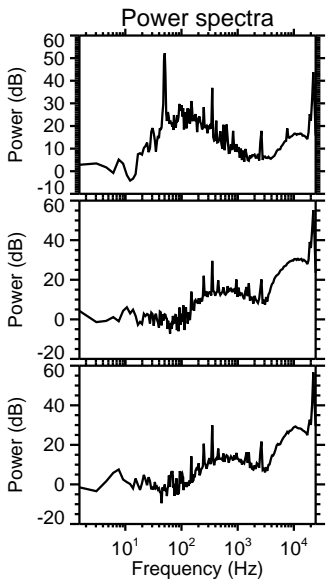
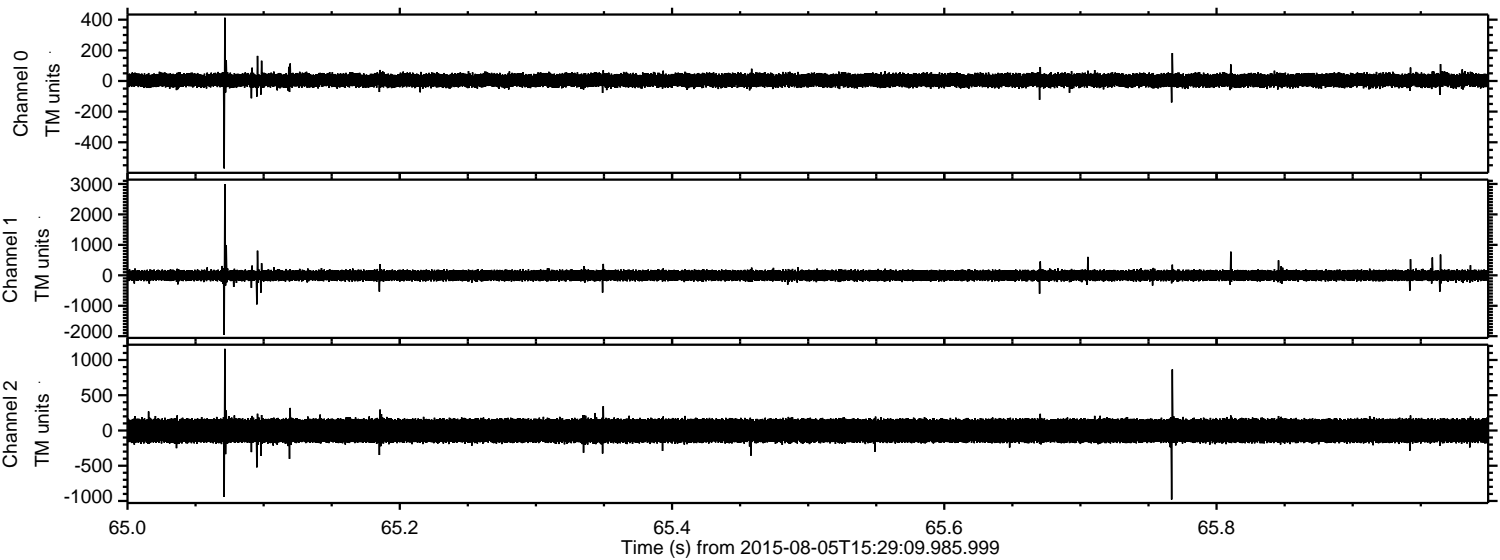


Processed Wed Aug 5 17:35:21 2015 by ELM ver.2012-10-06 from 001__elm20150805_152908__dat00.bin



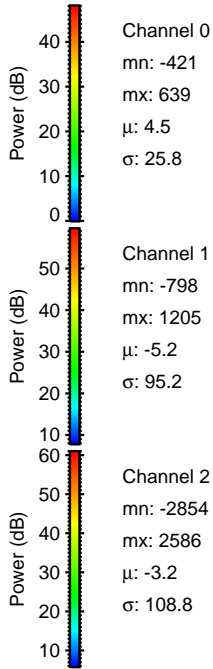
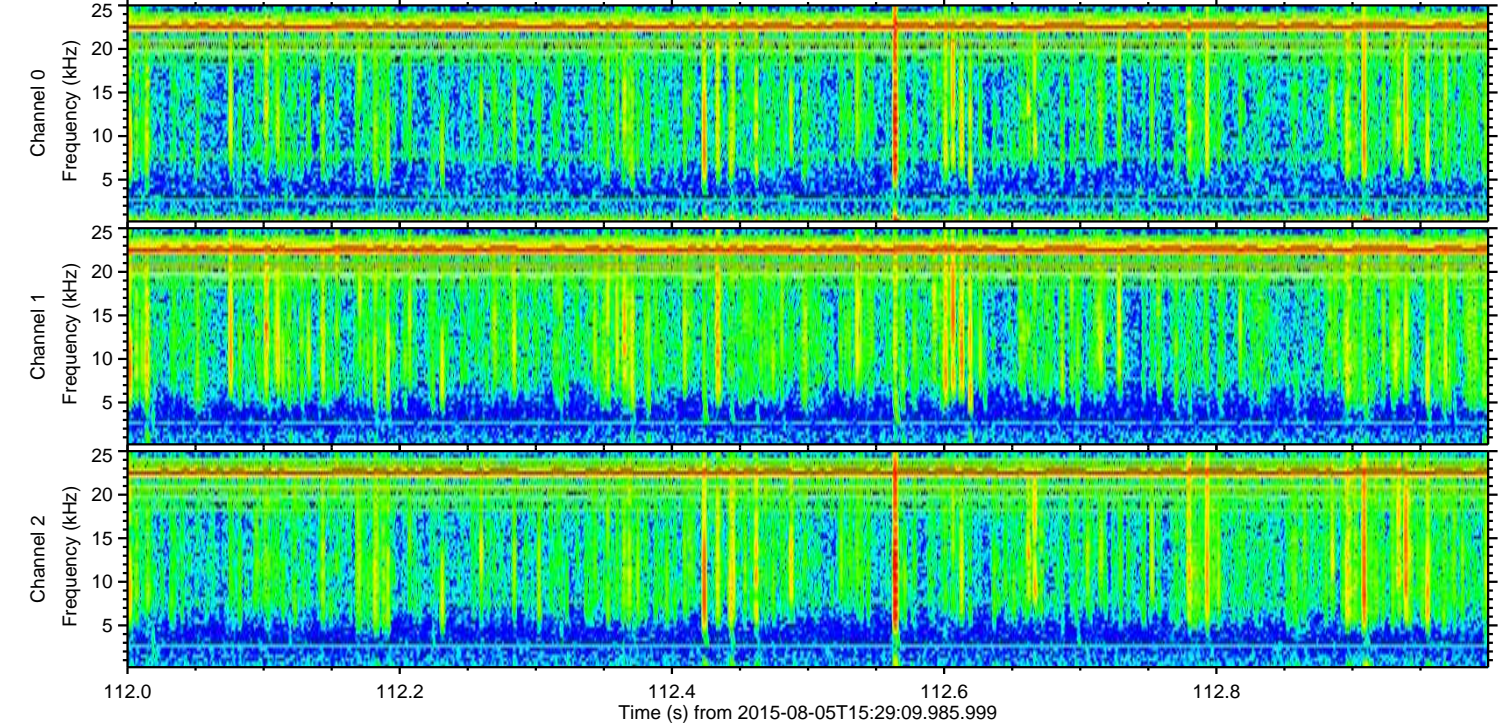
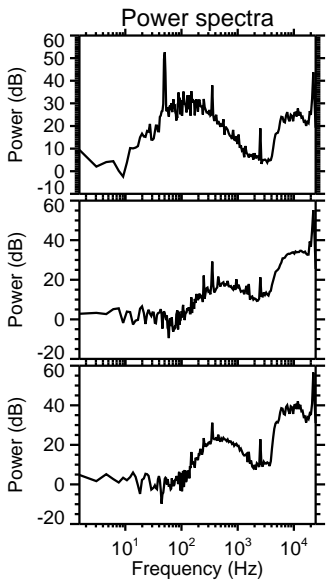
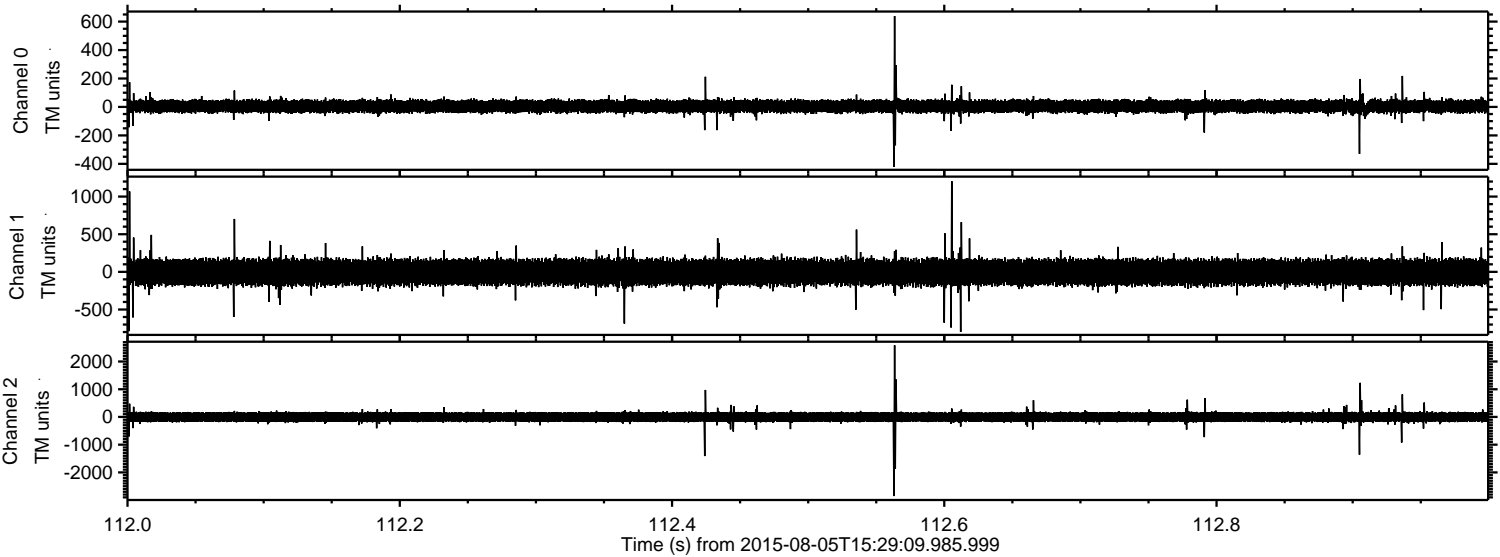
ELMAVAN 3D WAVEFORMS (Measured data sampled at 50 kHz) 51000 packets of 144 samples from 2015-08-05T15:29:09.985.999. Part 66/147

Processed Wed Aug 5 17:35:22 2015 by ELM ver.2012-10-06 from 001__elm20150805_152908__dat00.bin

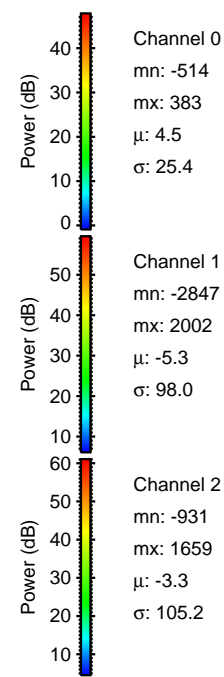
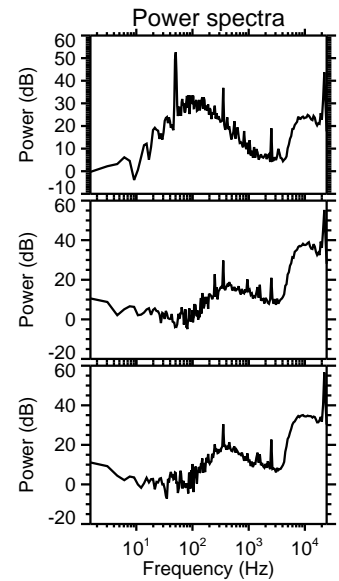
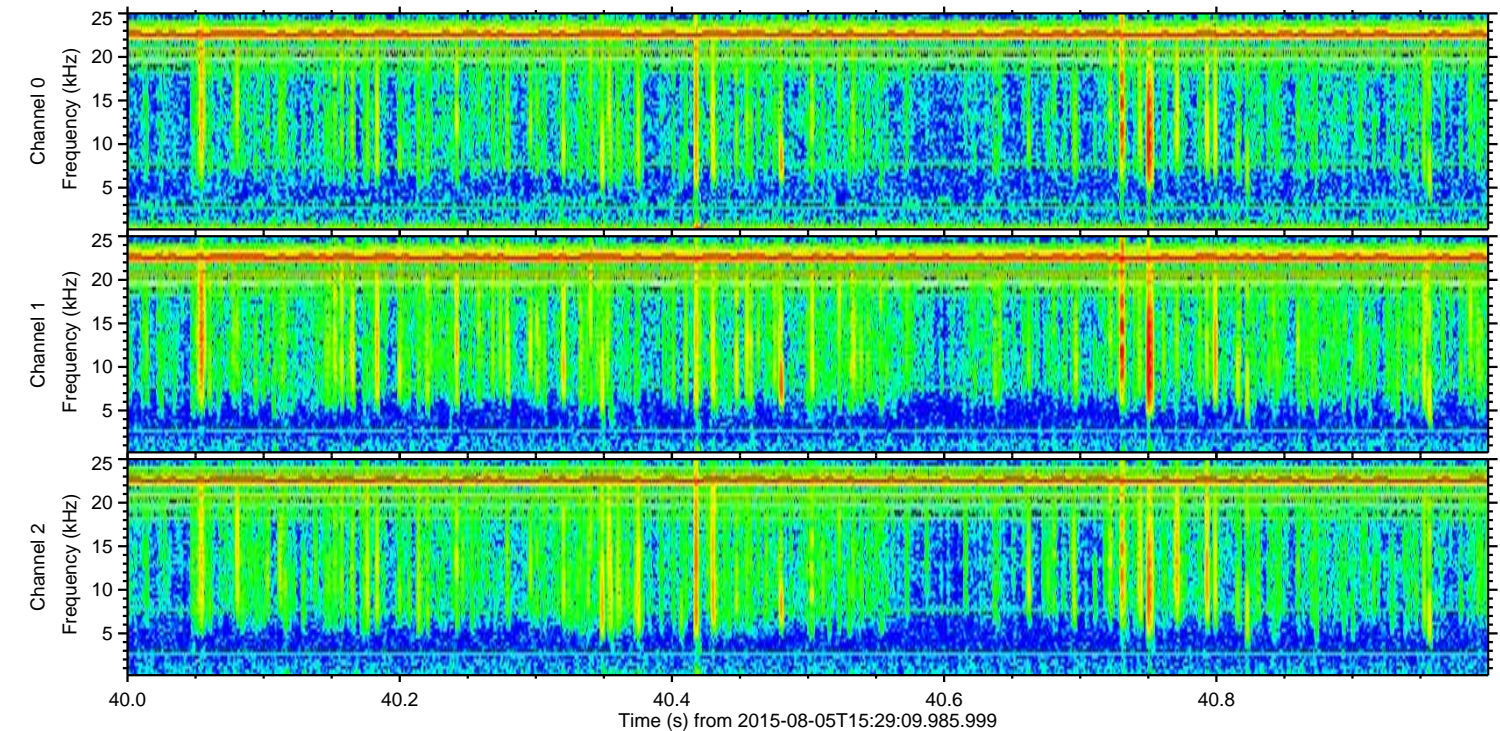
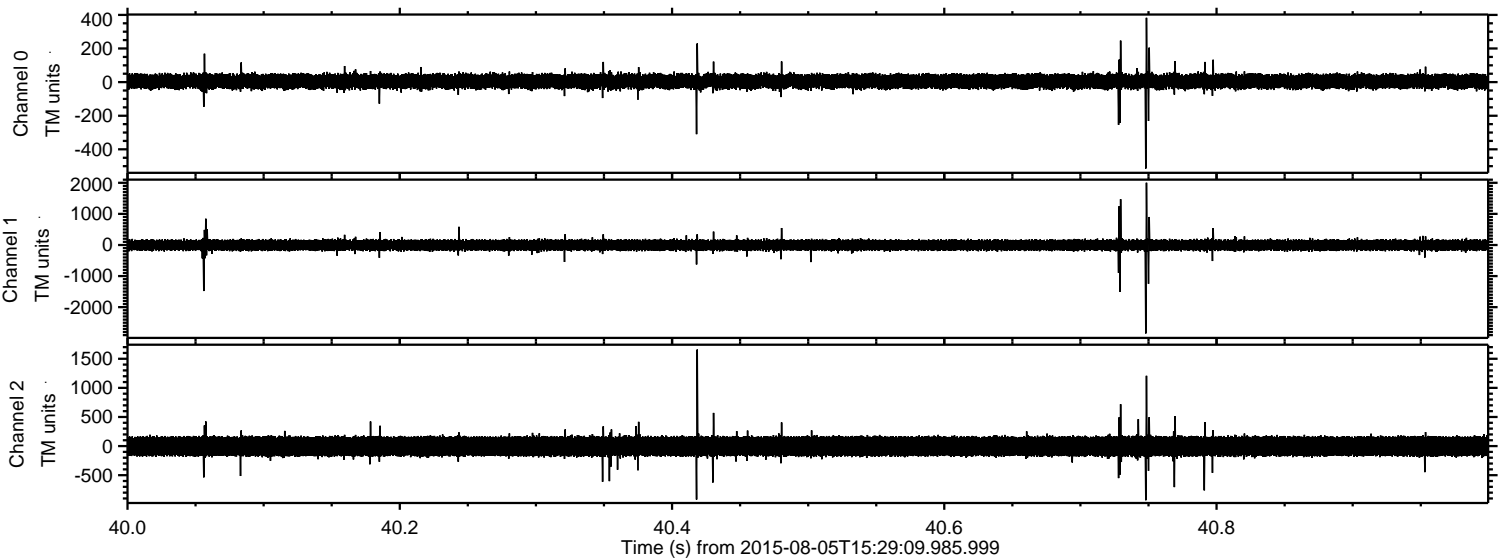


ELMAVAN 3D WAVEFORMS (Measured data sampled at 50 kHz) 51000 packets of 144 samples from 2015-08-05T15:29:09.985.999. Part 113/147

Processed Wed Aug 5 17:35:23 2015 by ELM ver.2012-10-06 from 001__elm20150805_152908__dat00.bin



Processed Wed Aug 5 17:35:24 2015 by ELM ver.2012-10-06 from 001__elm20150805_152908__dat00.bin

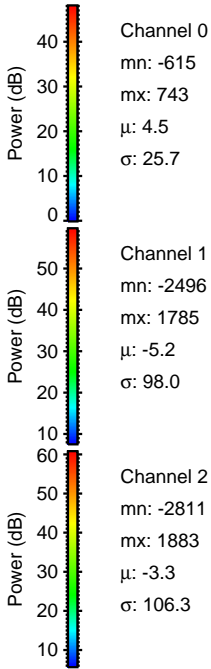
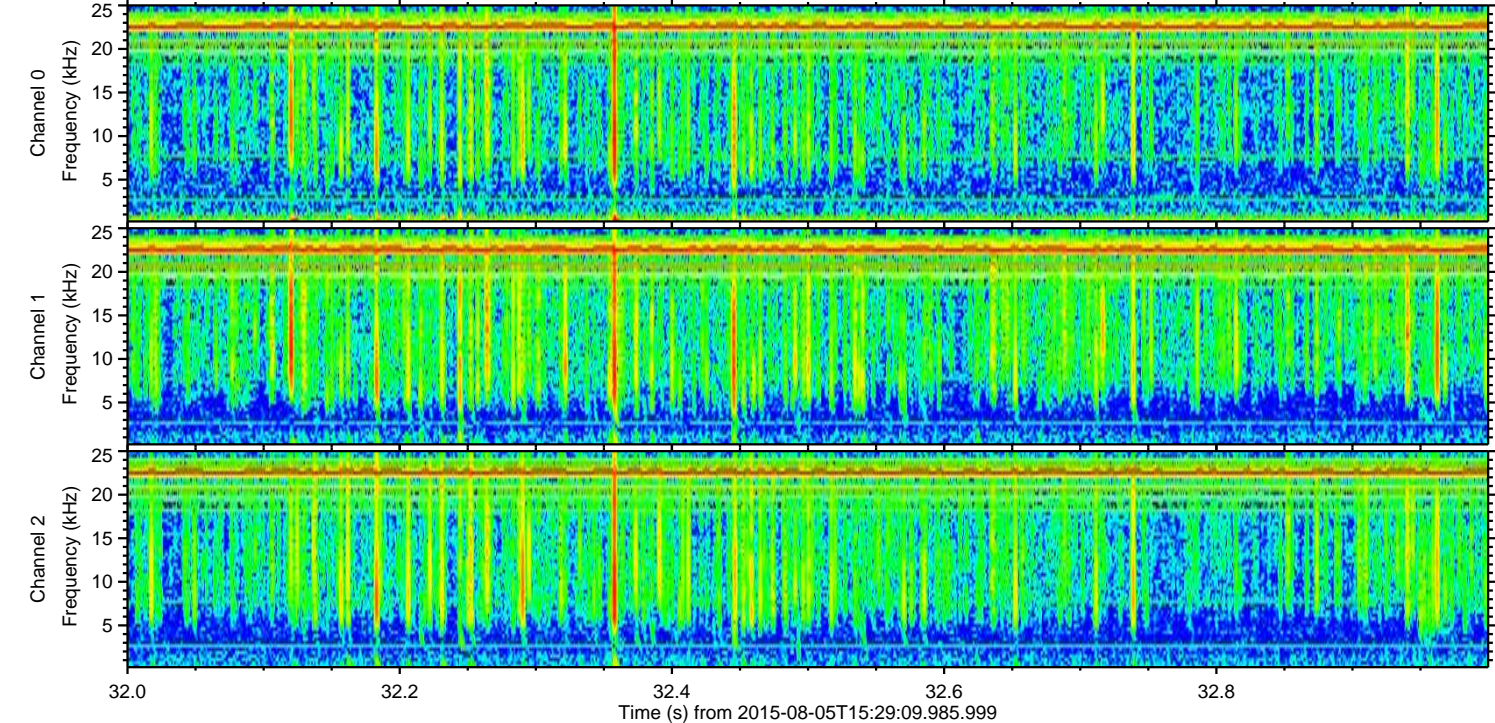
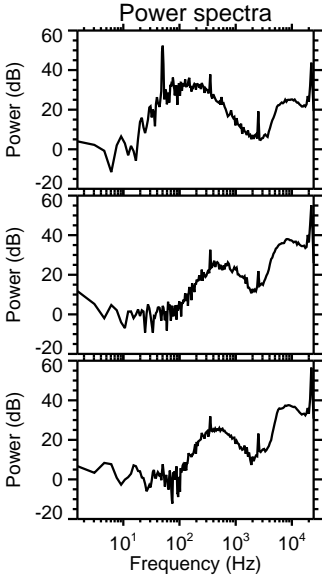
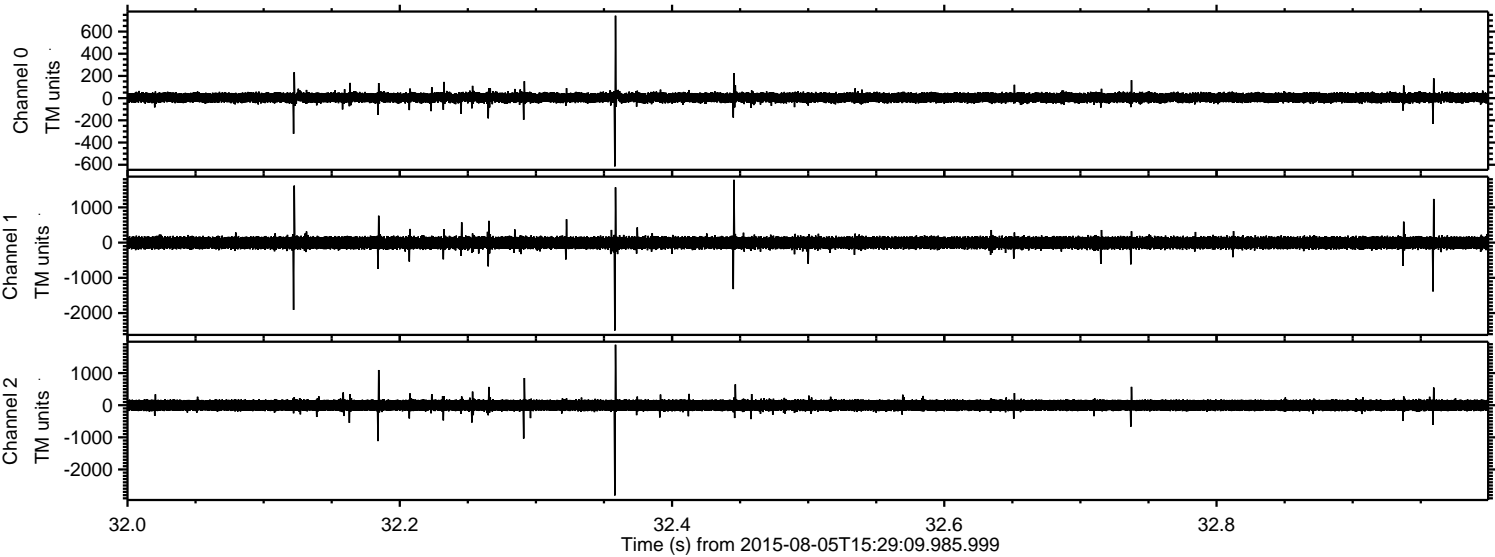


Channel 0
mn: -514
mx: 383
 μ : 4.5
 σ : 25.4

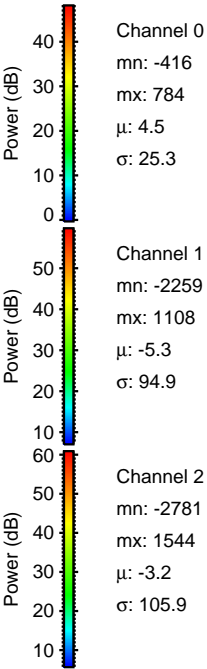
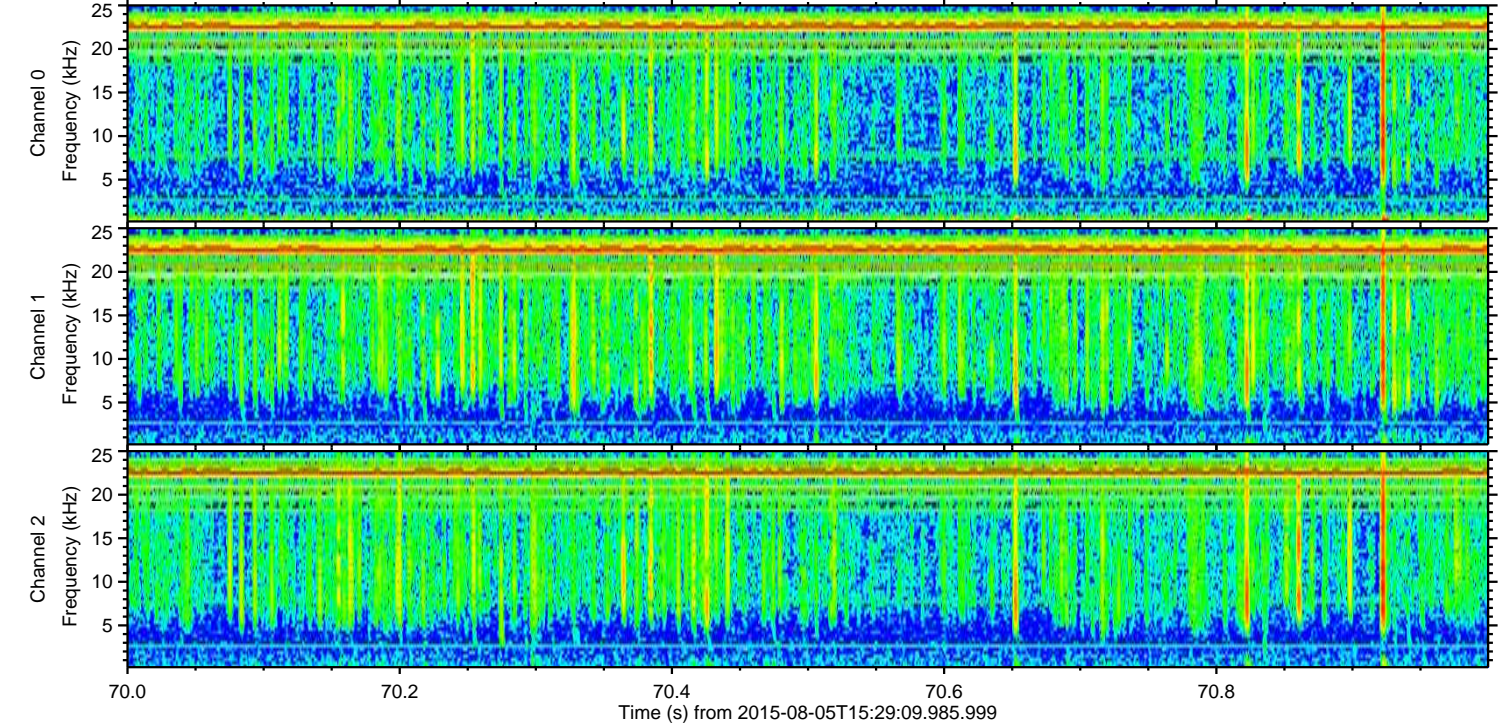
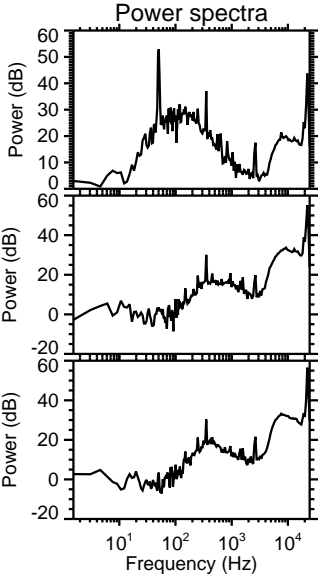
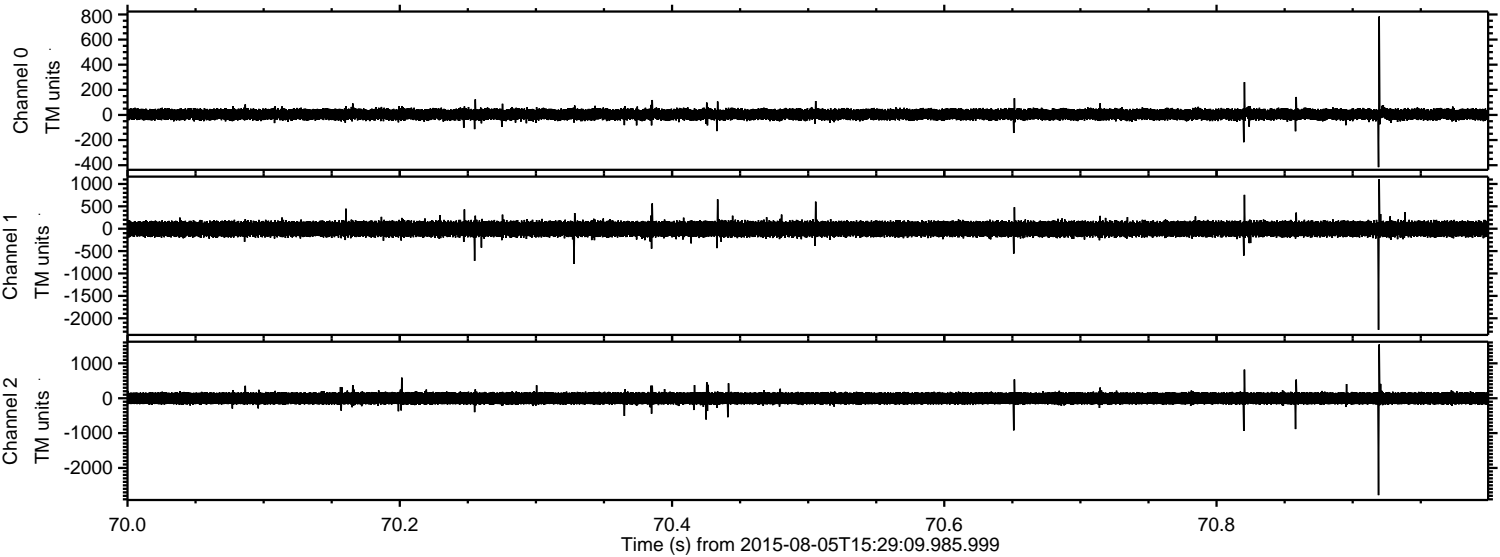
Channel 1
mn: -2847
mx: 2002
 μ : -5.3
 σ : 98.0

Channel 2
mn: -931
mx: 1659
 μ : -3.3
 σ : 105.2

Processed Wed Aug 5 17:35:25 2015 by ELM ver.2012-10-06 from 001__elm20150805_152908__dat00.bin



Processed Wed Aug 5 17:35:26 2015 by ELM ver.2012-10-06 from 001__elm20150805_152908__dat00.bin



Processed Wed Aug 5 17:35:27 2015 by ELM ver.2012-10-06 from 001__elm20150805_152908__dat00.bin

