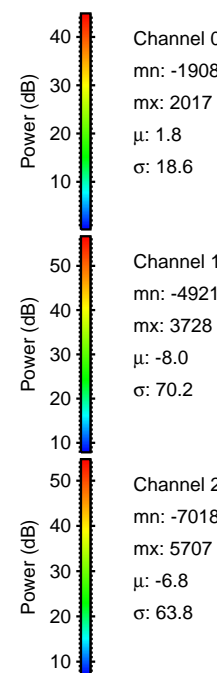
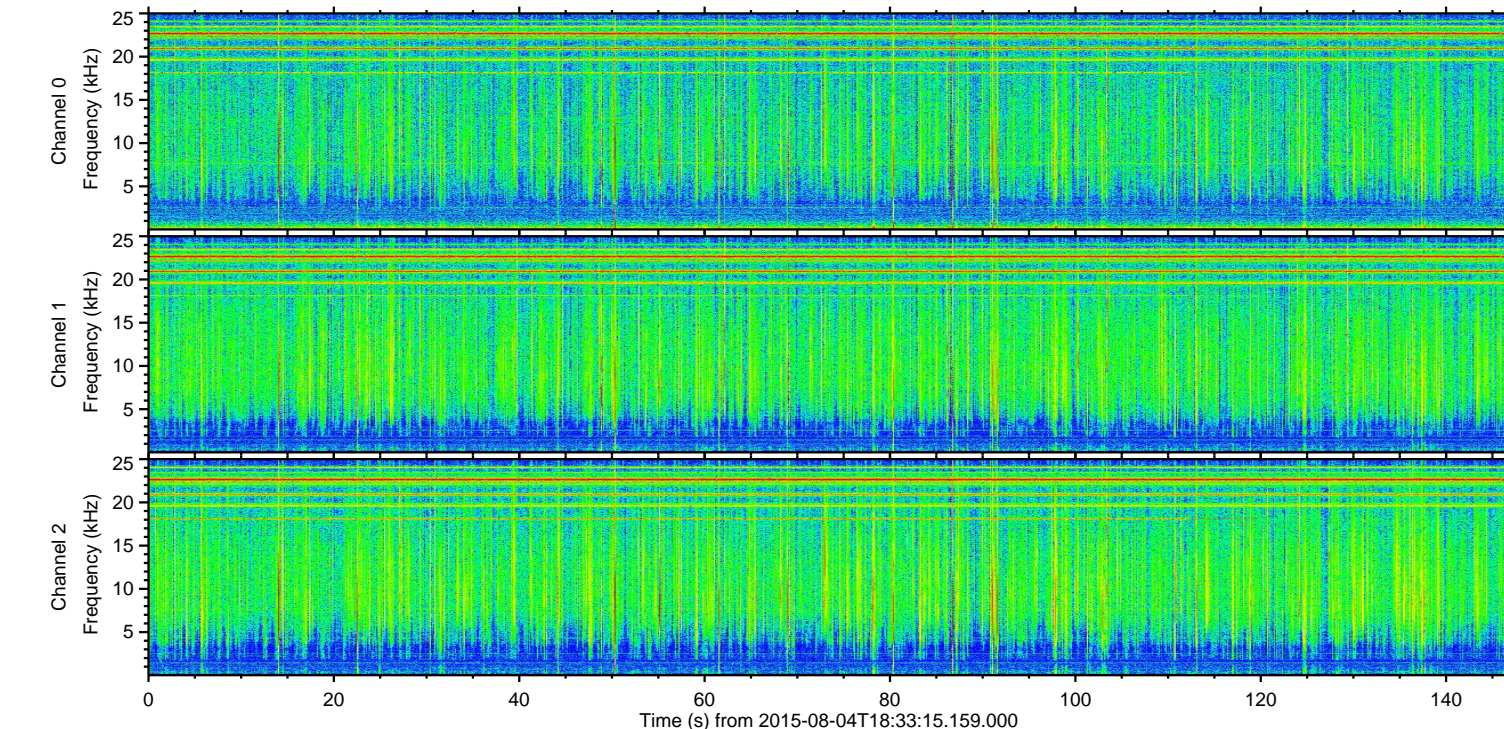
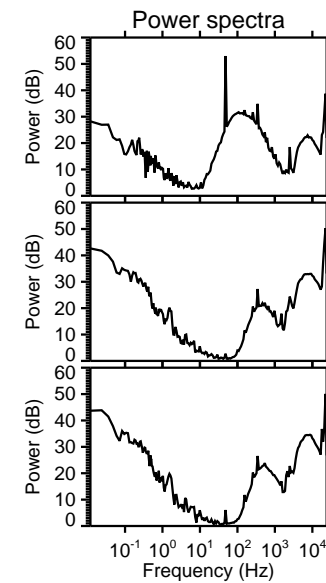
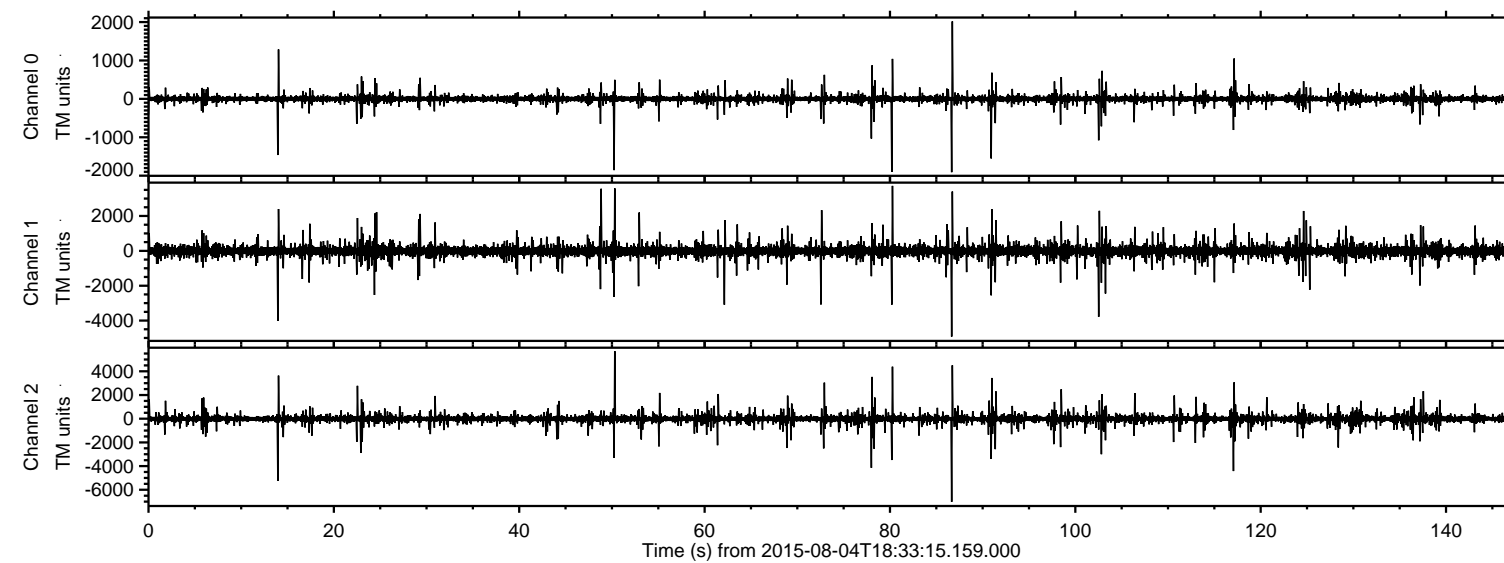


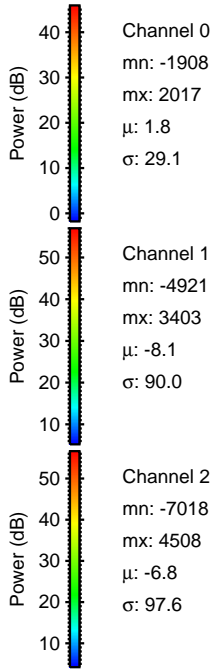
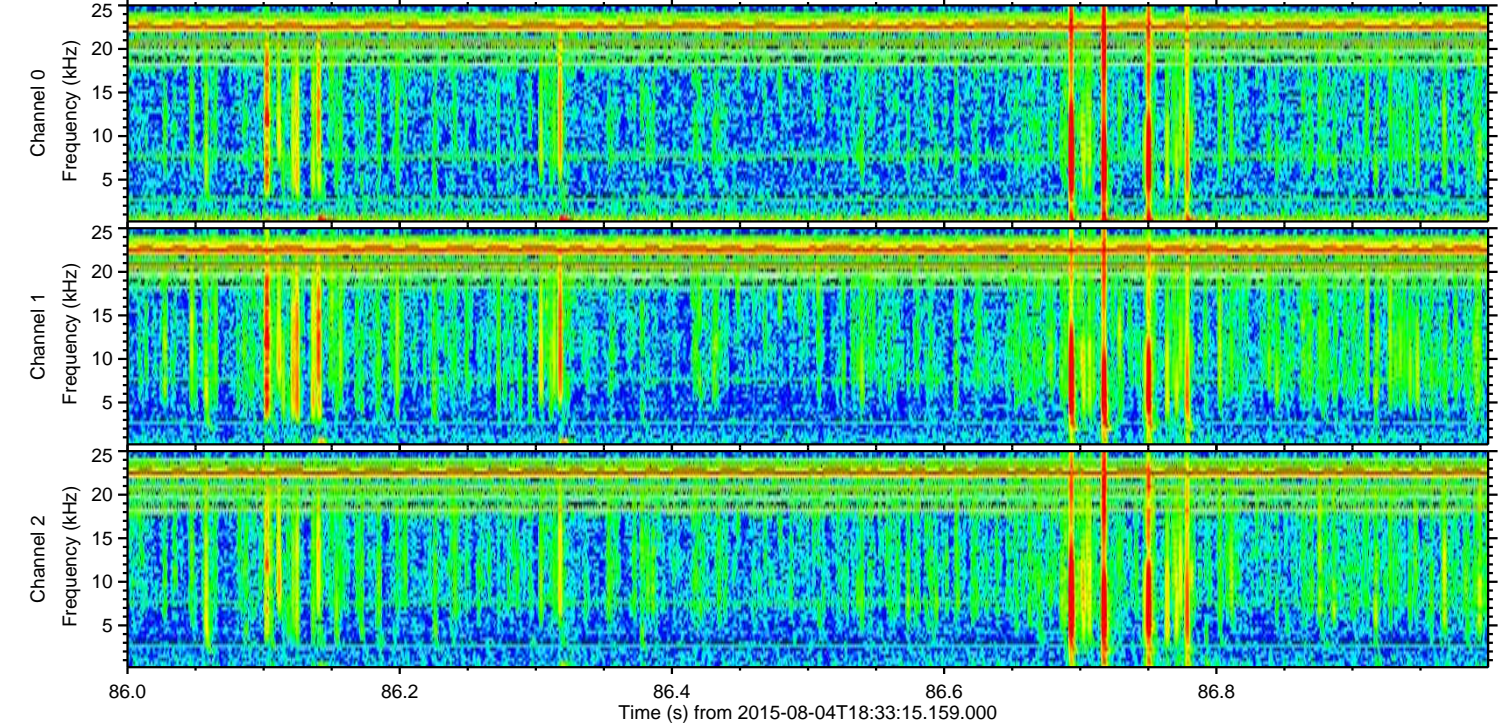
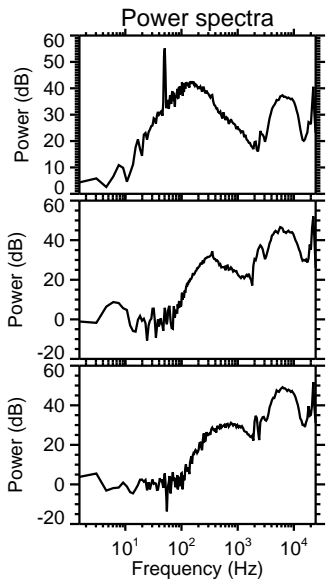
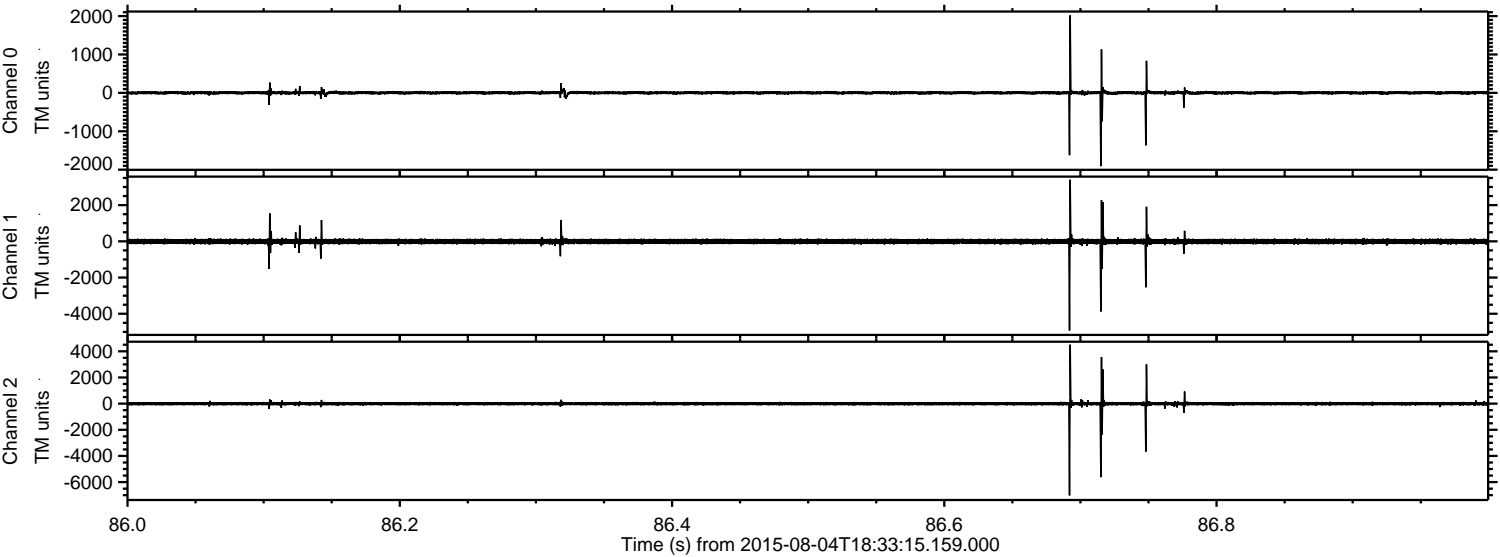
ELMAVAN 3D WAVEFORMS (Measured data sampled at 50 kHz) 51000 packets of 144 samples from 2015-08-04T18:33:15.159.000.

Processed Tue Aug 4 20:39:57 2015 by ELM ver.2012-10-06 from 001__elm20150804_183314__dat00.bin



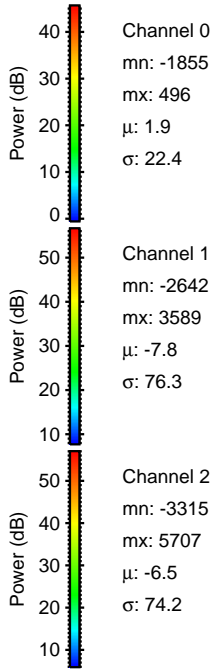
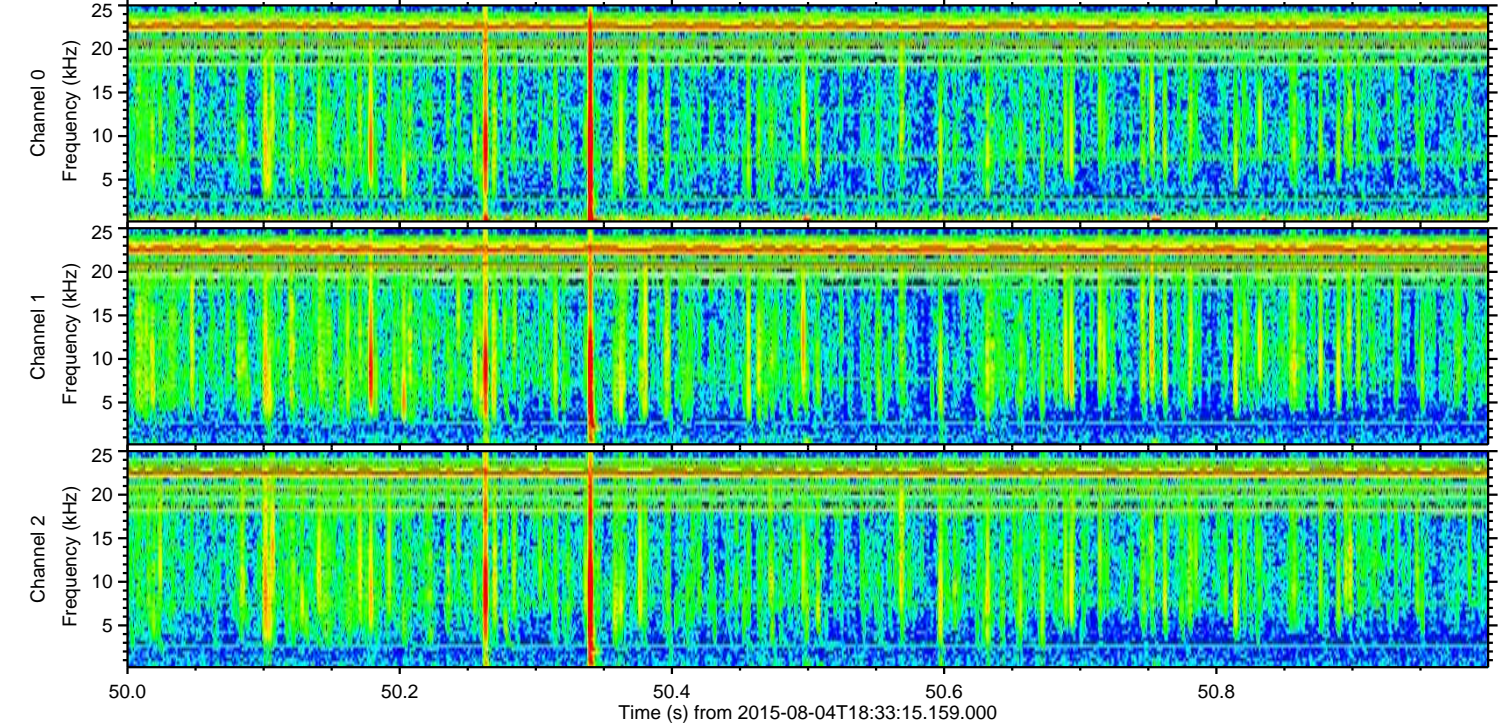
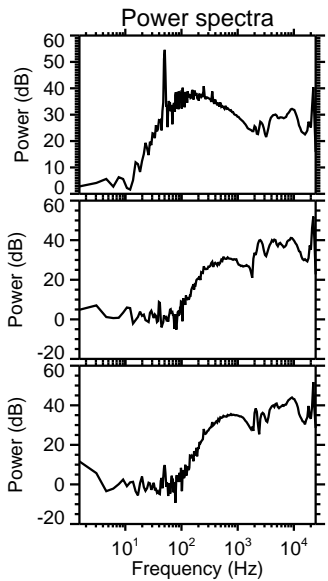
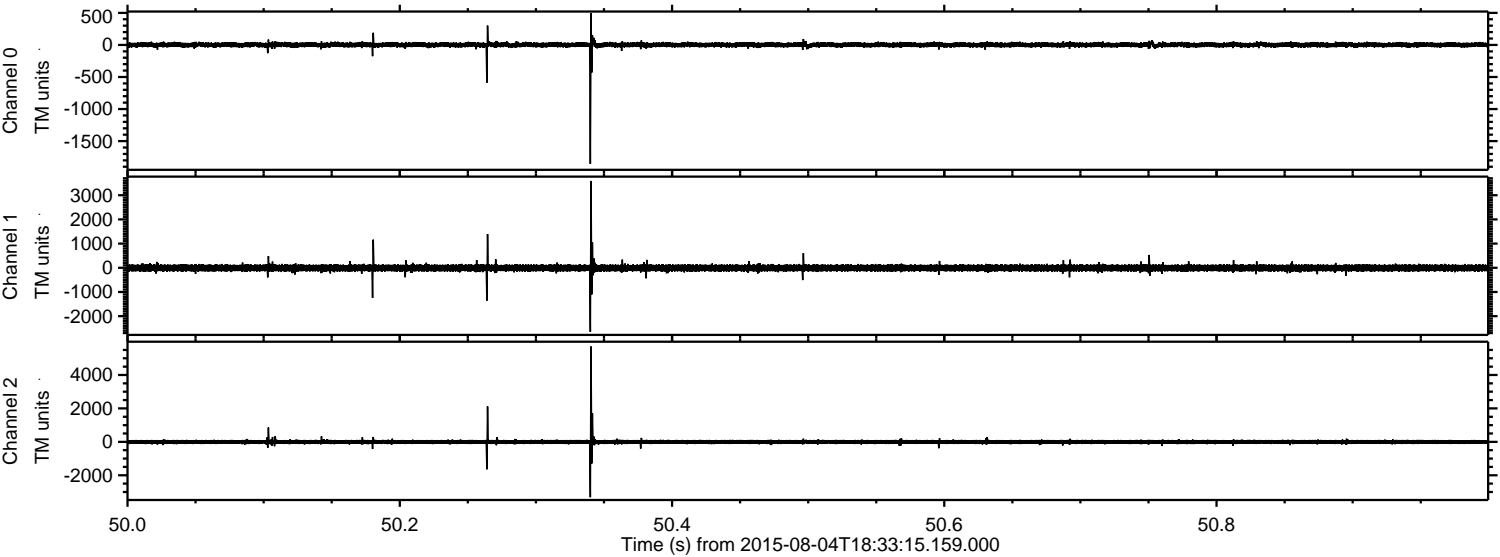
ELMAVAN 3D WAVEFORMS (Measured data sampled at 50 kHz) 51000 packets of 144 samples from 2015-08-04T18:33:15.159.000. Part 87/147

Processed Tue Aug 4 20:40:09 2015 by ELM ver.2012-10-06 from 001__elm20150804_183314__dat00.bin

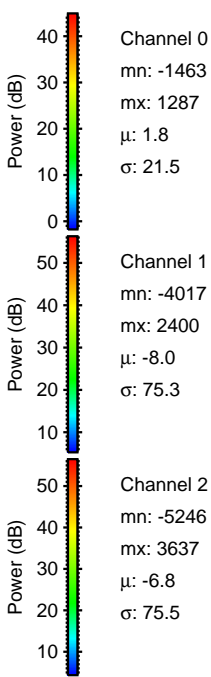
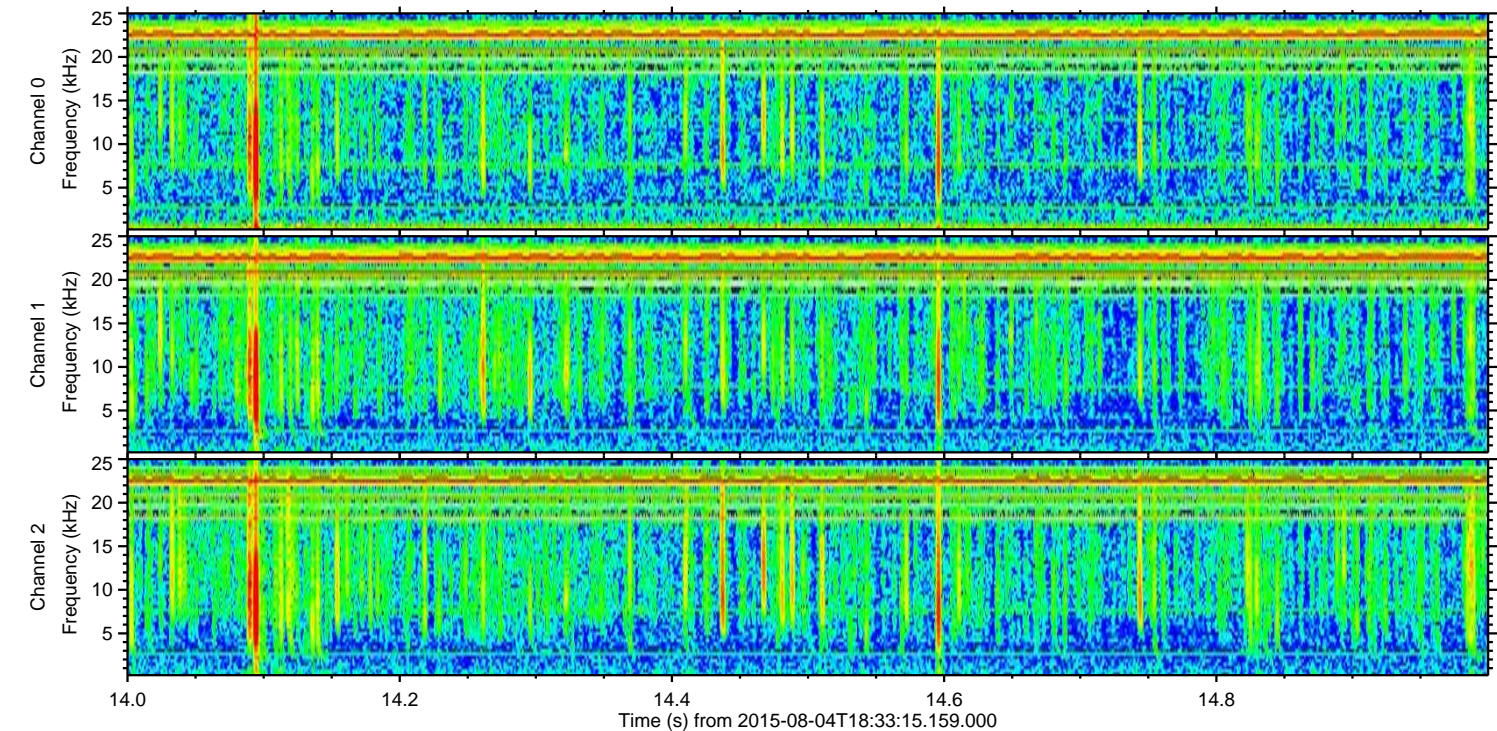
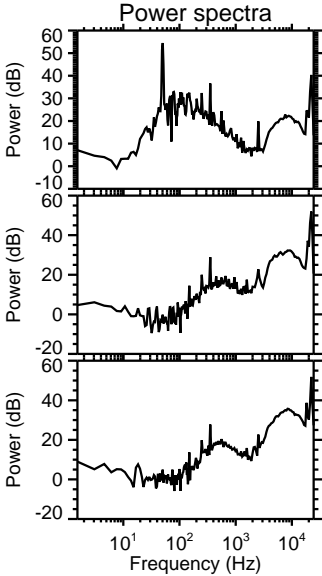
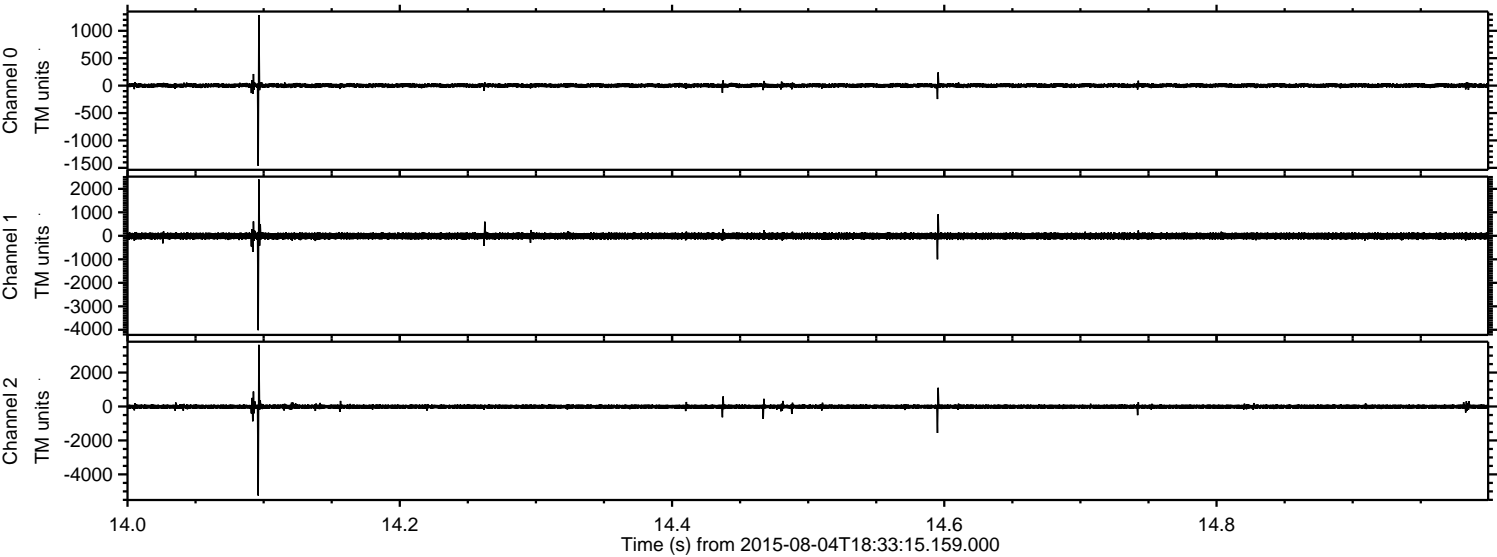


ELMAVAN 3D WAVEFORMS (Measured data sampled at 50 kHz) 51000 packets of 144 samples from 2015-08-04T18:33:15.159.000. Part 51/147

Processed Tue Aug 4 20:40:10 2015 by ELM ver.2012-10-06 from 001__elm20150804_183314__dat00.bin

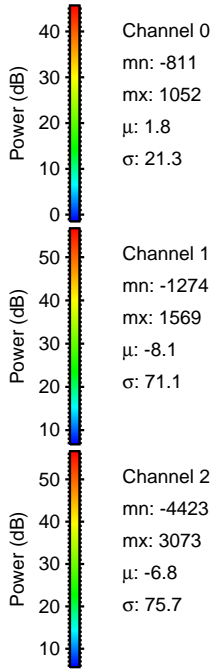
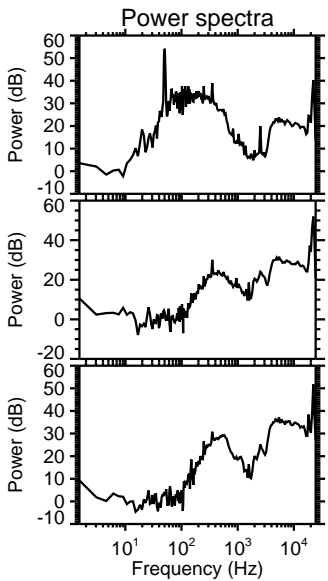
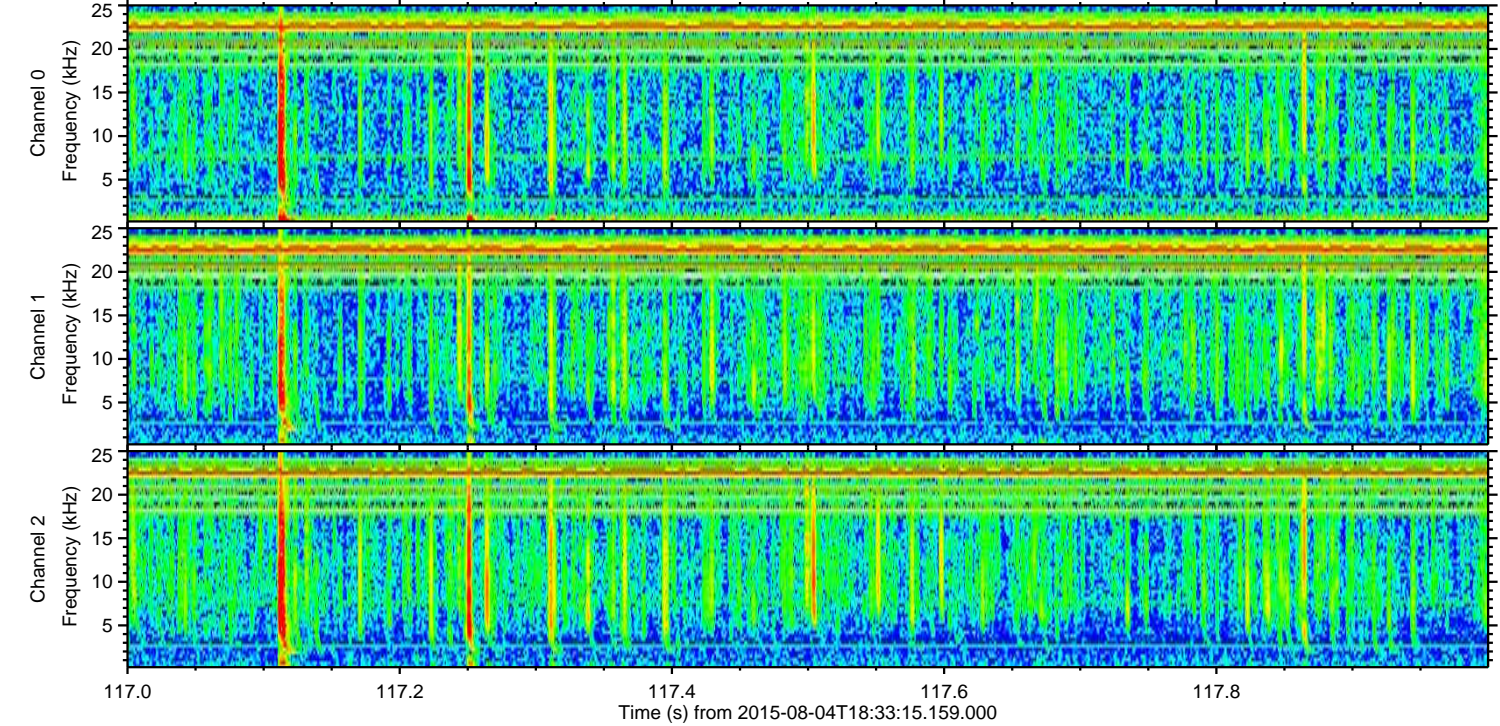
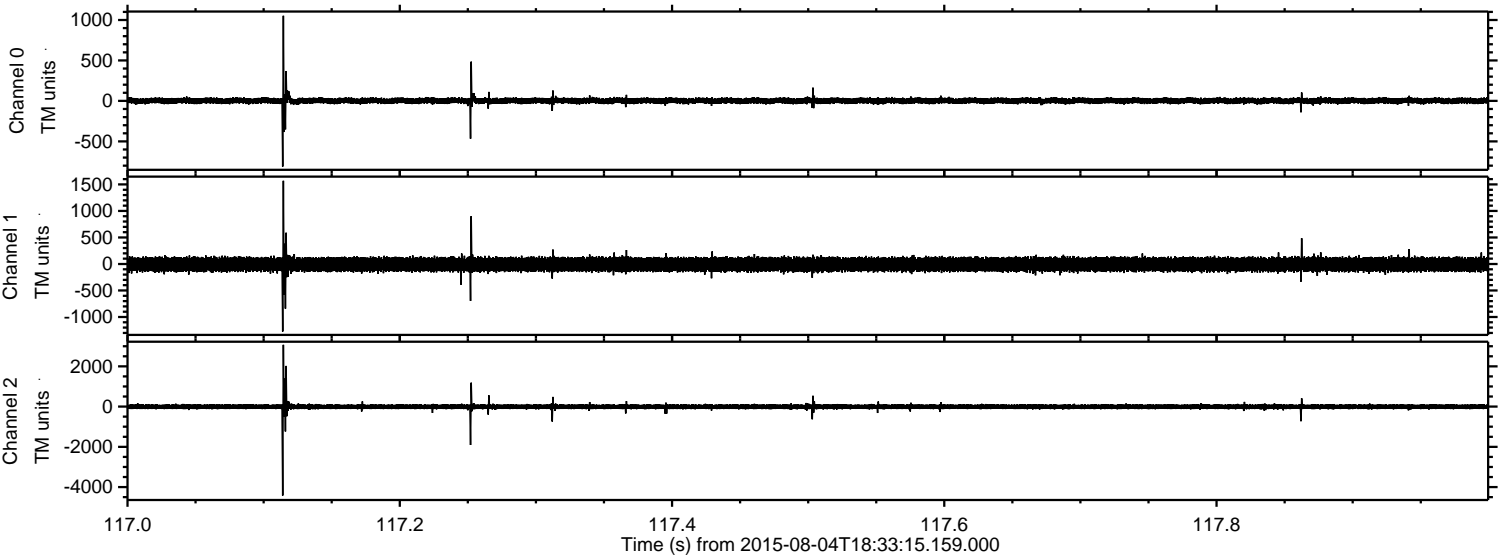


Processed Tue Aug 4 20:40:11 2015 by ELM ver.2012-10-06 from 001__elm20150804_183314__dat00.bin

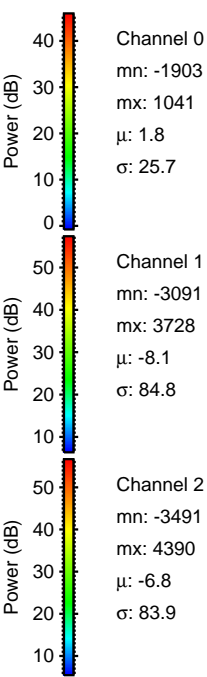
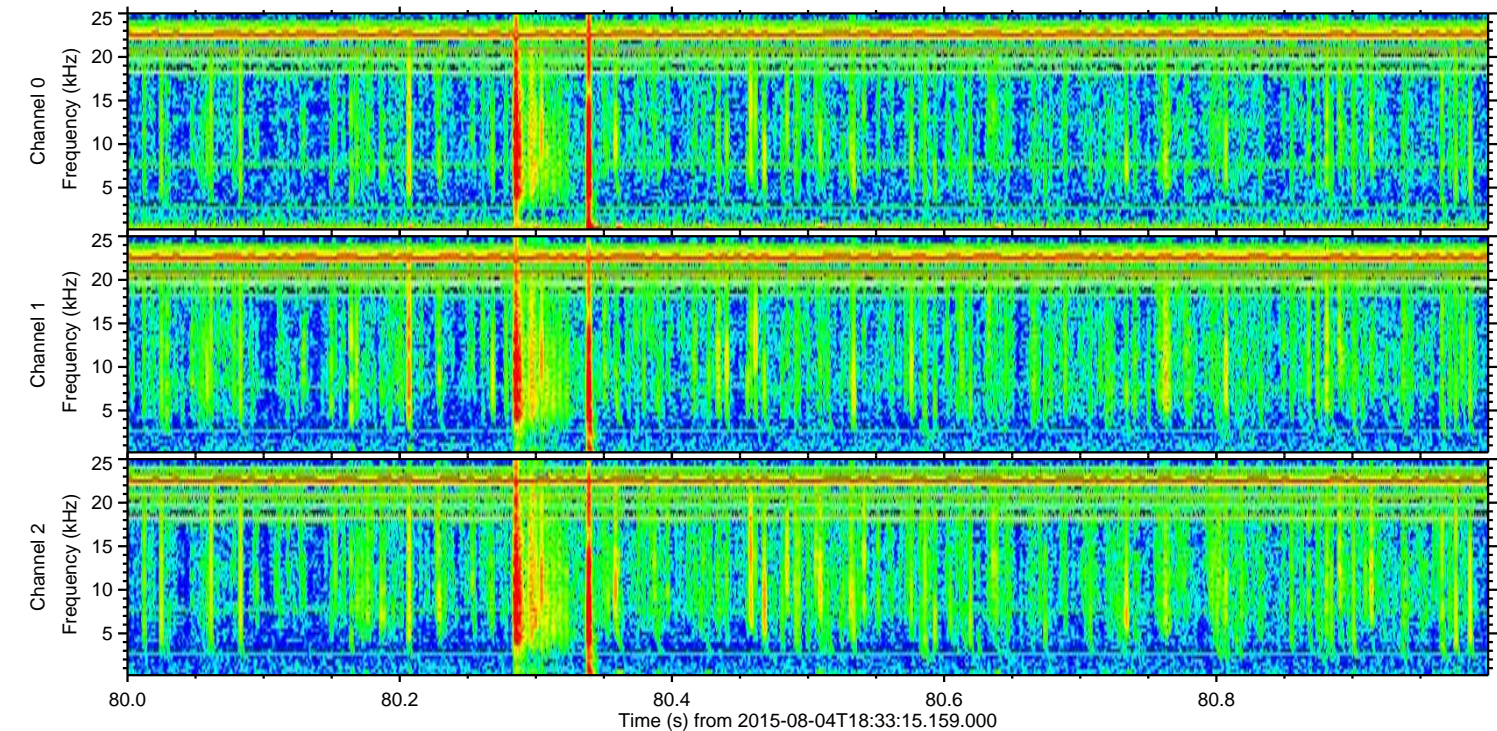
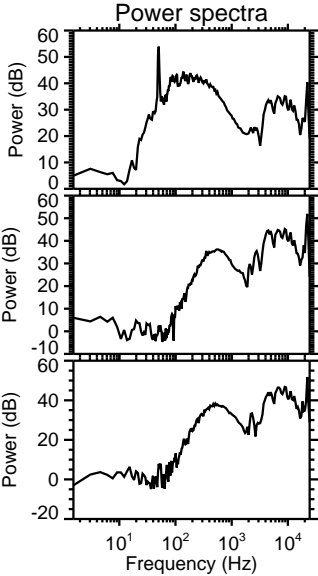
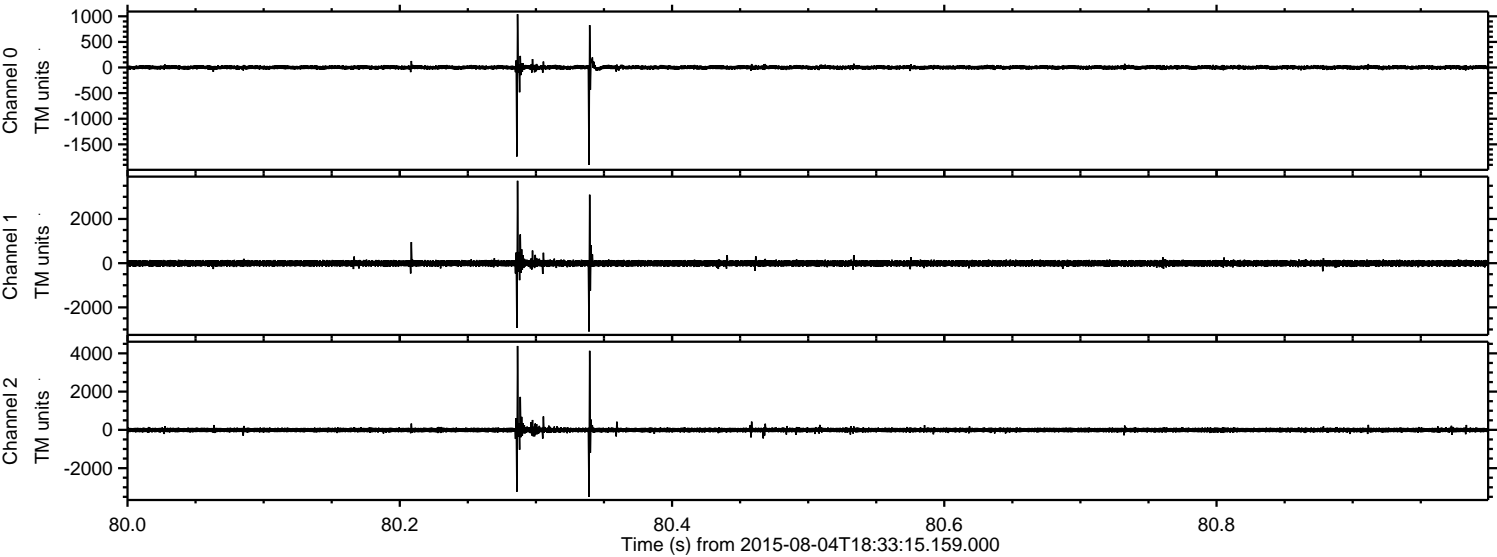


ELMAVAN 3D WAVEFORMS (Measured data sampled at 50 kHz) 51000 packets of 144 samples from 2015-08-04T18:33:15.159.000. Part 118/147

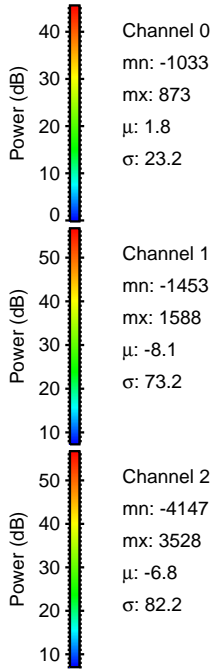
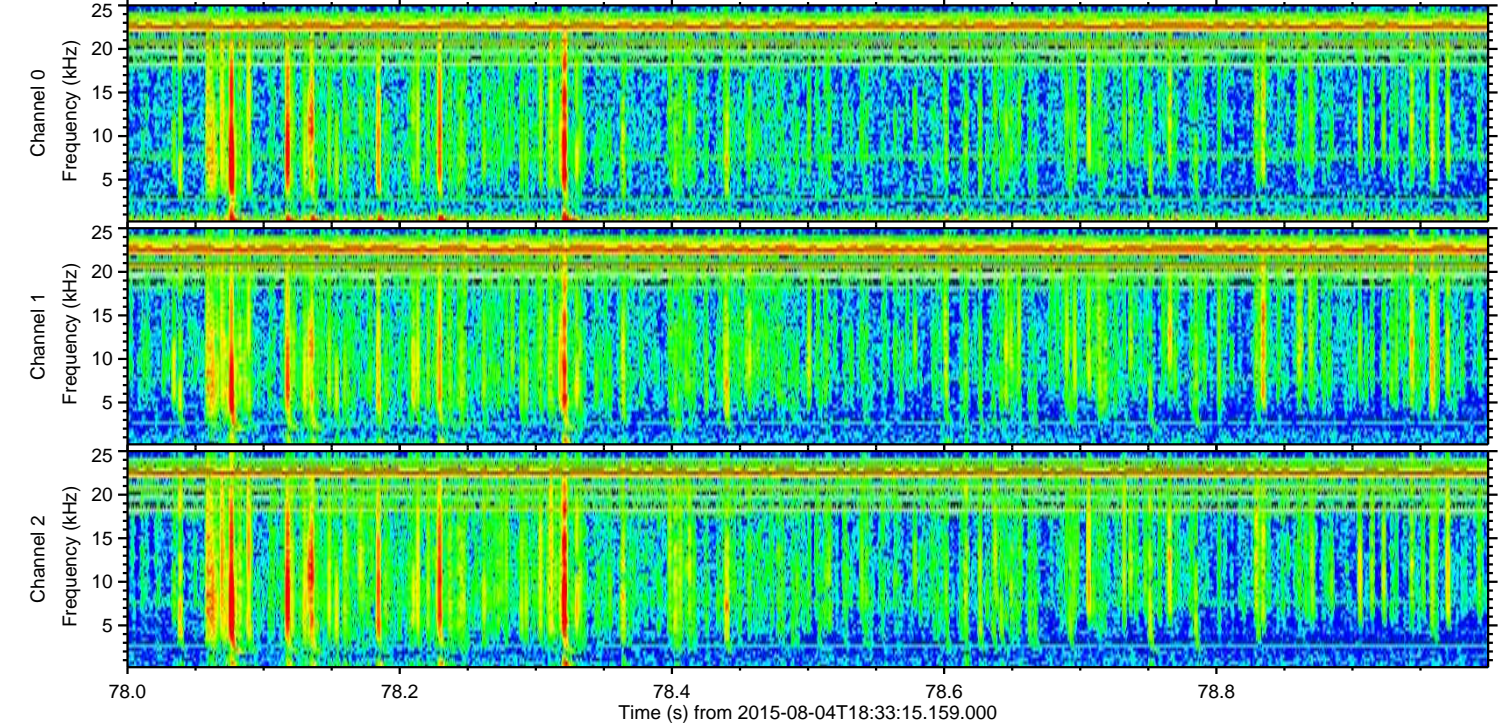
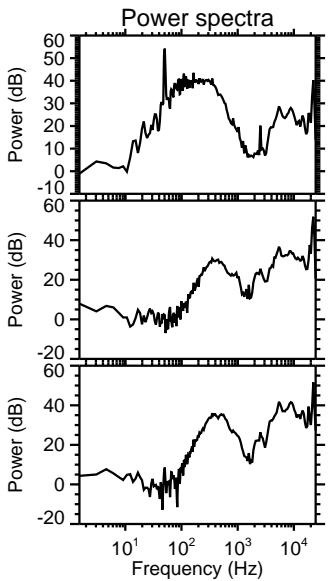
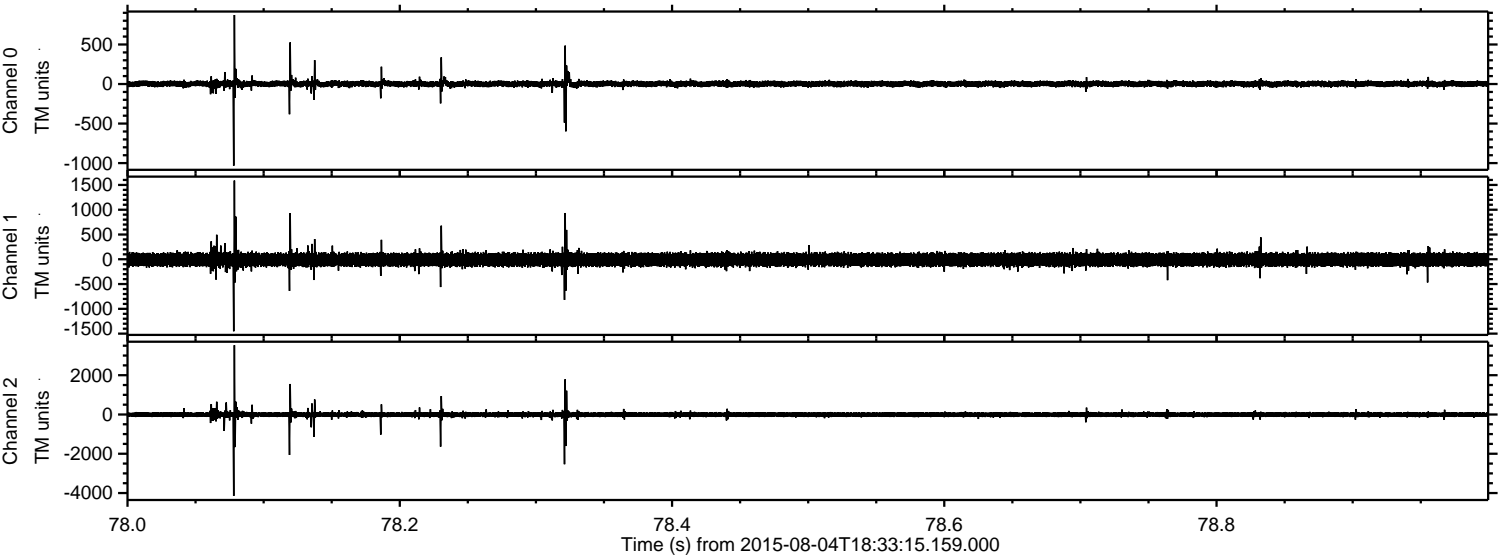
Processed Tue Aug 4 20:40:12 2015 by ELM ver.2012-10-06 from 001__elm20150804_183314__dat00.bin



Processed Tue Aug 4 20:40:13 2015 by ELM ver.2012-10-06 from 001__elm20150804_183314__dat00.bin

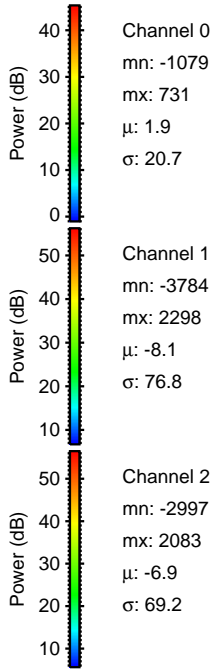
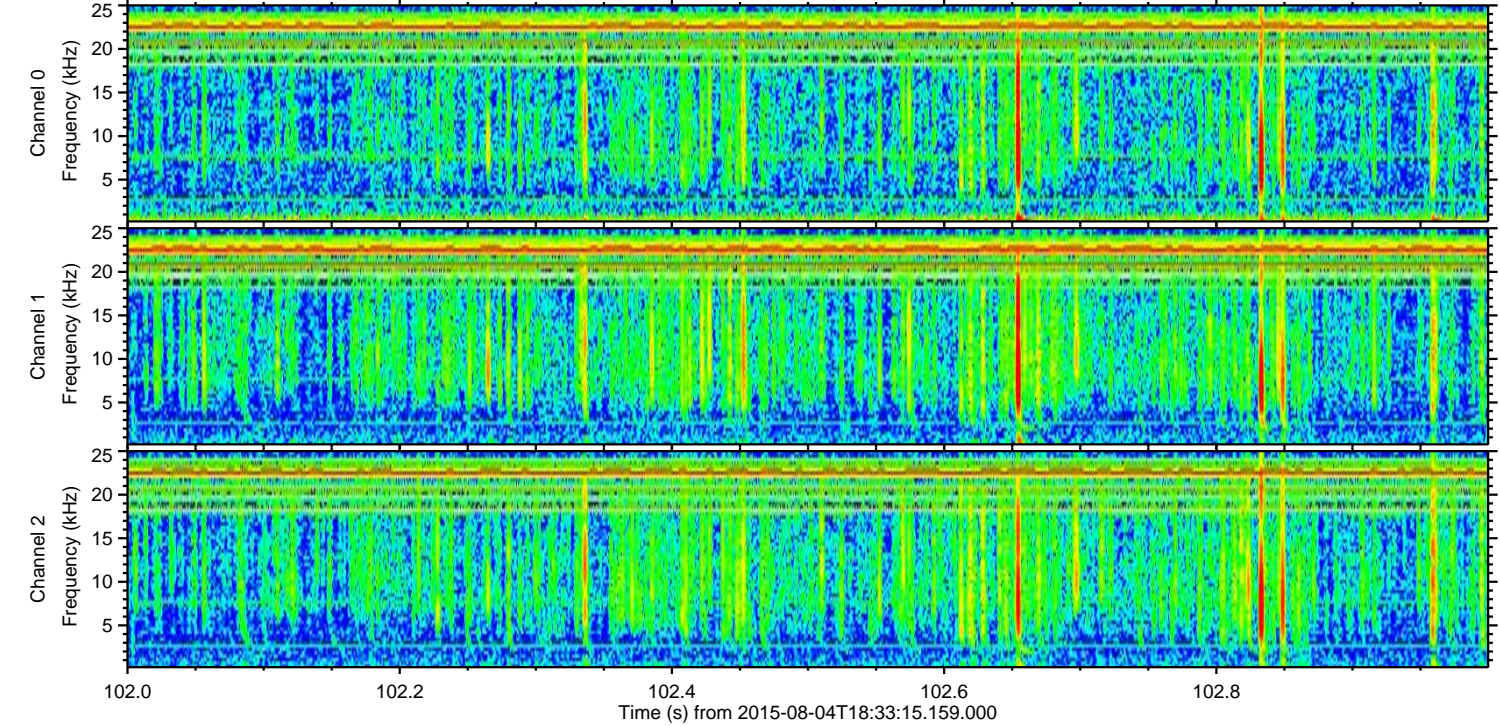
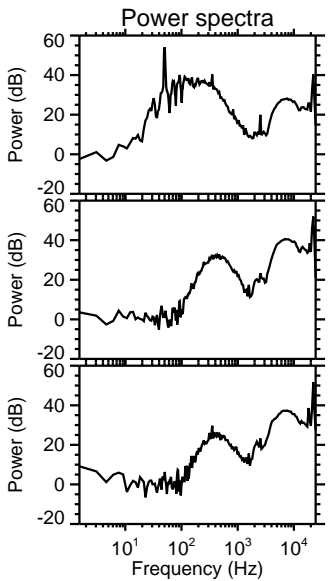
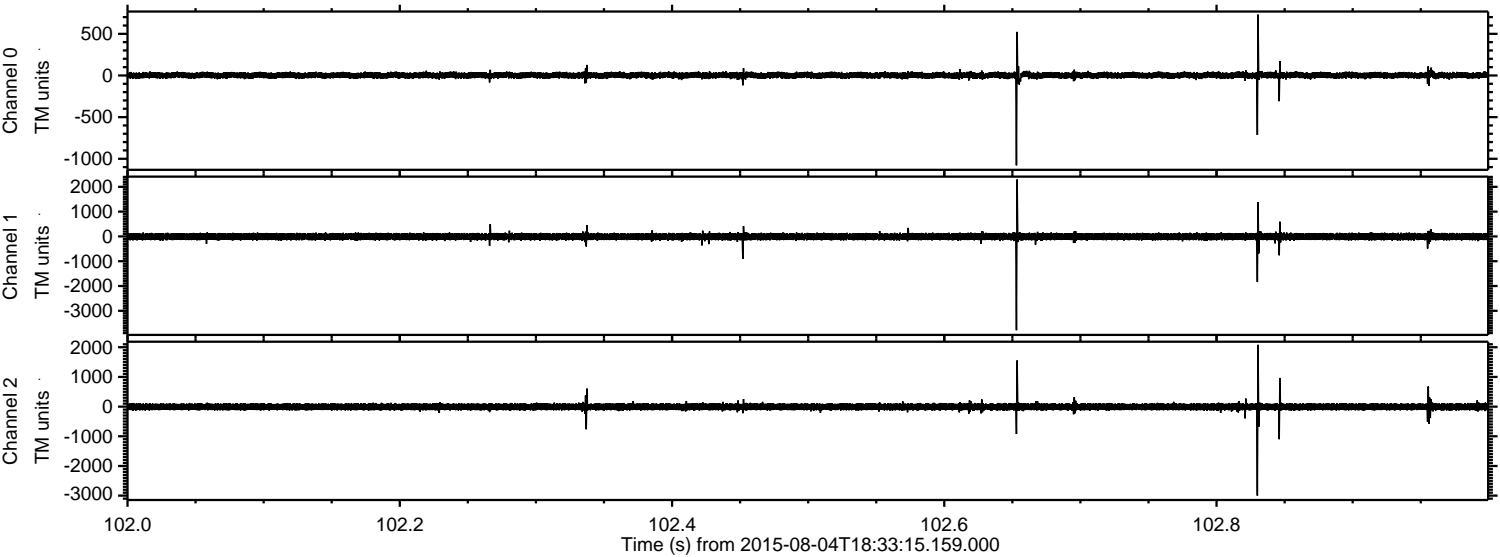


Processed Tue Aug 4 20:40:14 2015 by ELM ver.2012-10-06 from 001__elm20150804_183314__dat00.bin

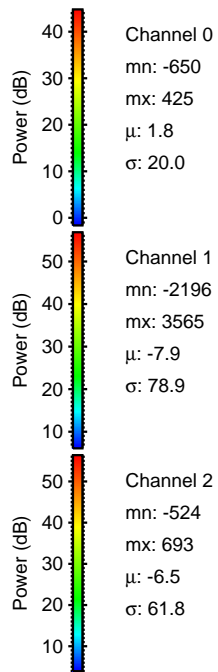
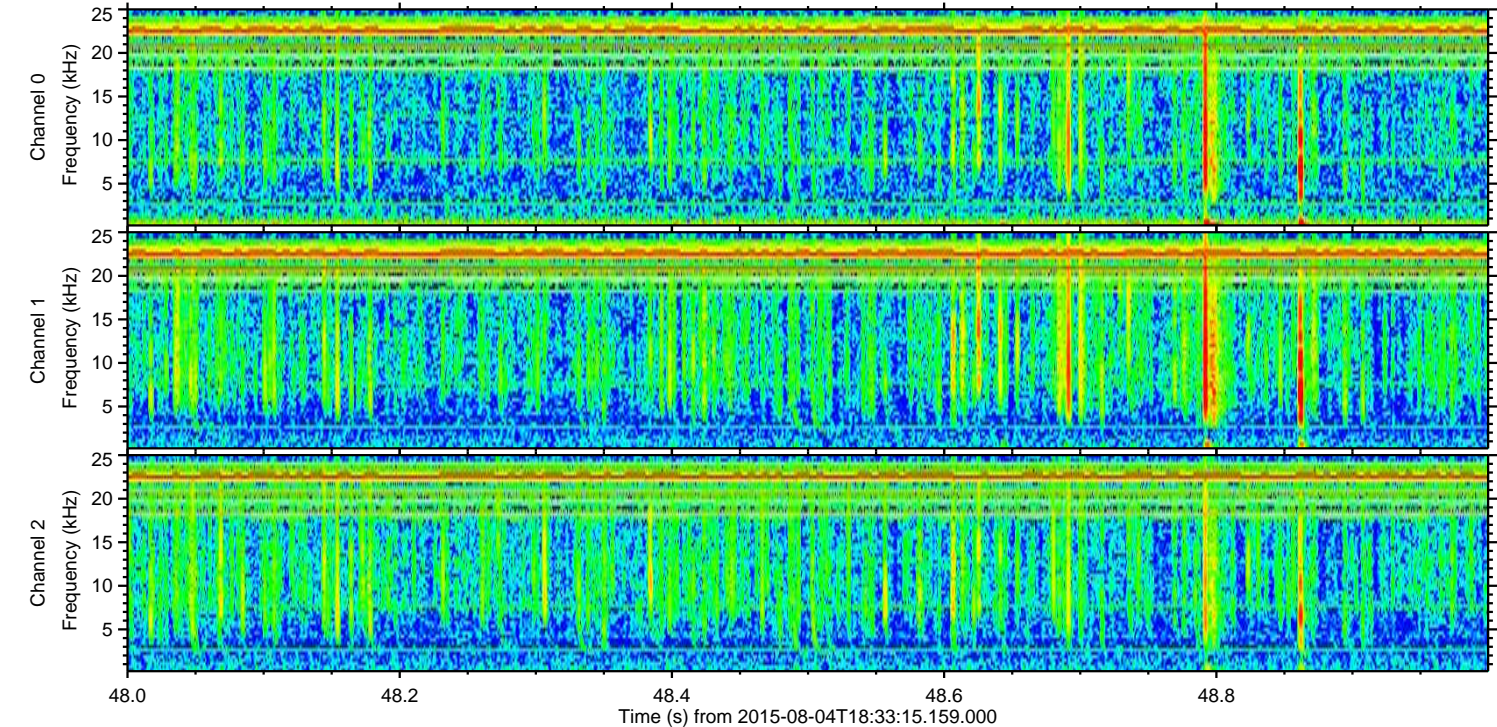
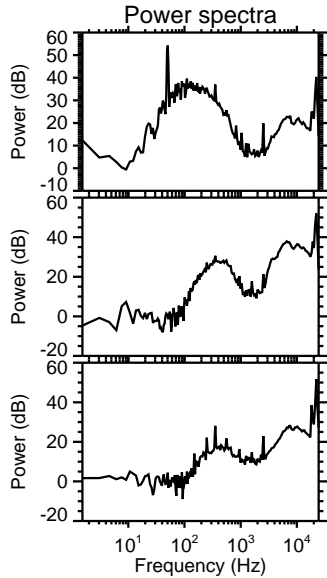
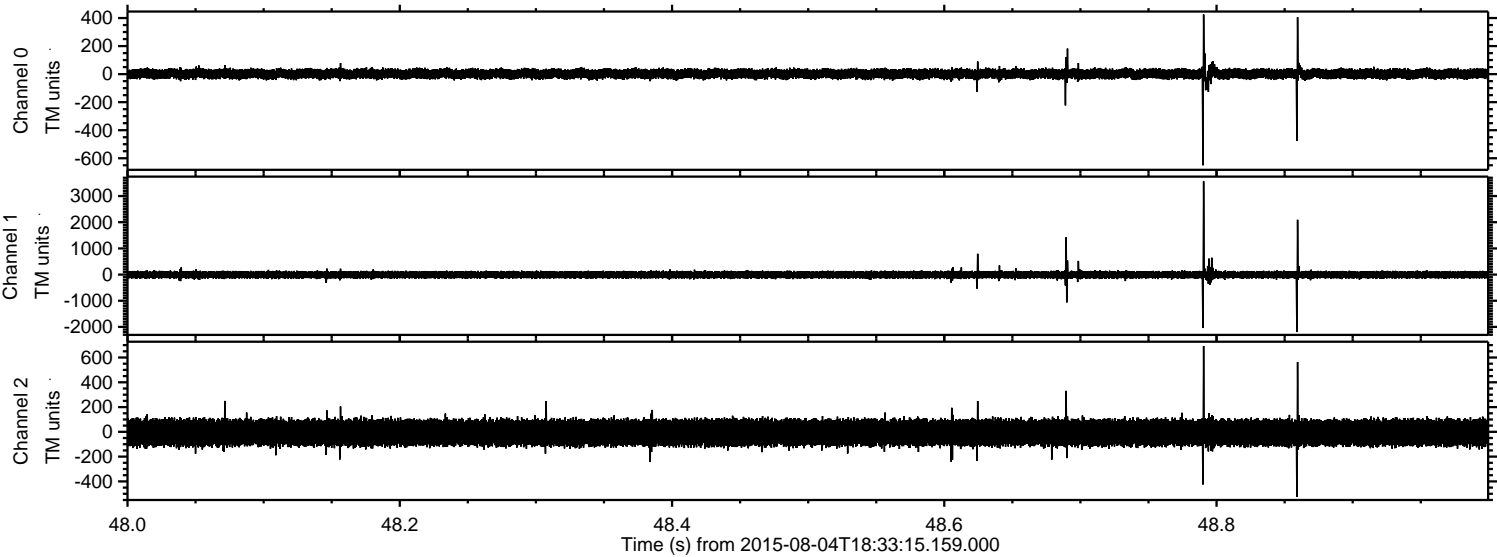


ELMAVAN 3D WAVEFORMS (Measured data sampled at 50 kHz) 51000 packets of 144 samples from 2015-08-04T18:33:15.159.000. Part 103/147

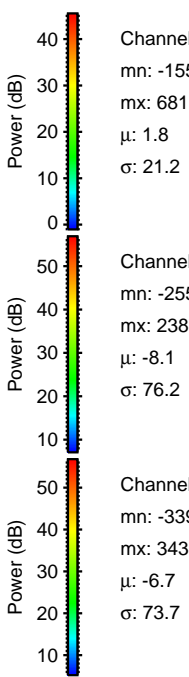
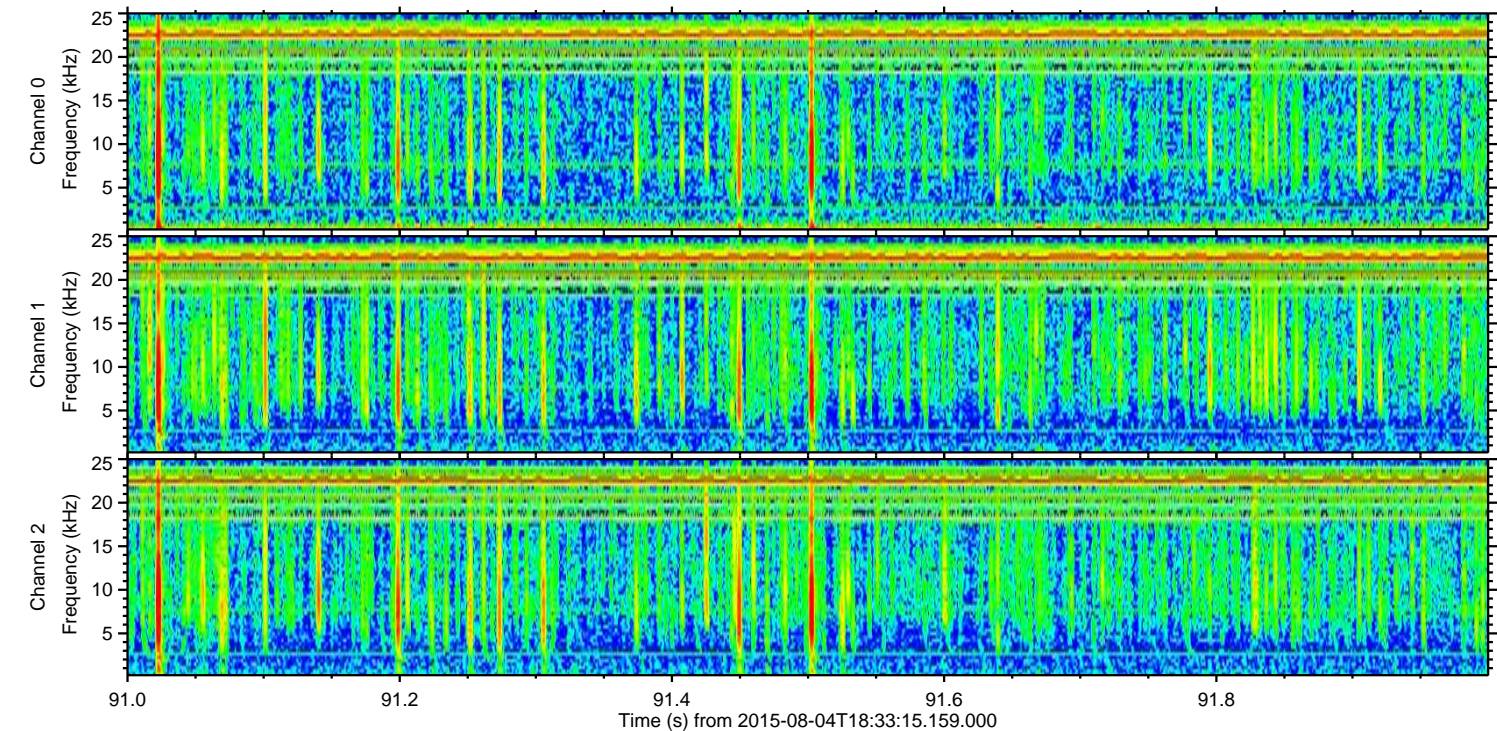
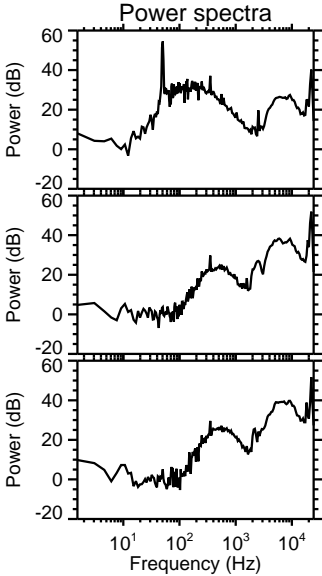
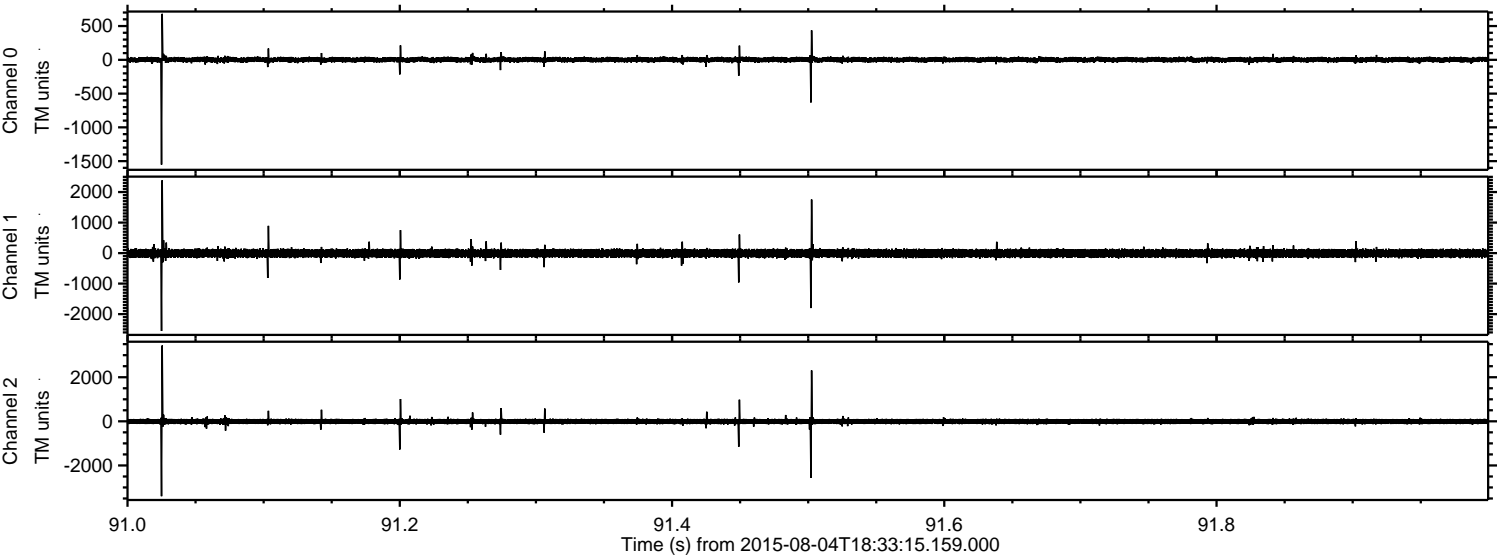
Processed Tue Aug 4 20:40:15 2015 by ELM ver.2012-10-06 from 001__elm20150804_183314__dat00.bin



Processed Tue Aug 4 20:40:15 2015 by ELM ver.2012-10-06 from 001__elm20150804_183314__dat00.bin



Processed Tue Aug 4 20:40:16 2015 by ELM ver.2012-10-06 from 001__elm20150804_183314__dat00.bin



Channel 0
mn: -1551
mx: 681
 μ : 1.8
 σ : 21.2

Channel 1
mn: -2554
mx: 2387
 μ : -8.1
 σ : 76.2

Channel 2
mn: -3398
mx: 3439
 μ : -6.7
 σ : 73.7

Processed Tue Aug 4 20:40:17 2015 by ELM ver.2012-10-06 from 001__elm20150804_183314__dat00.bin

