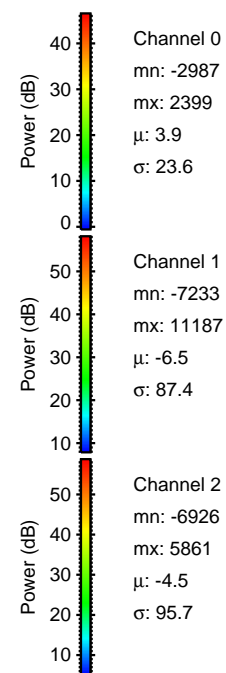
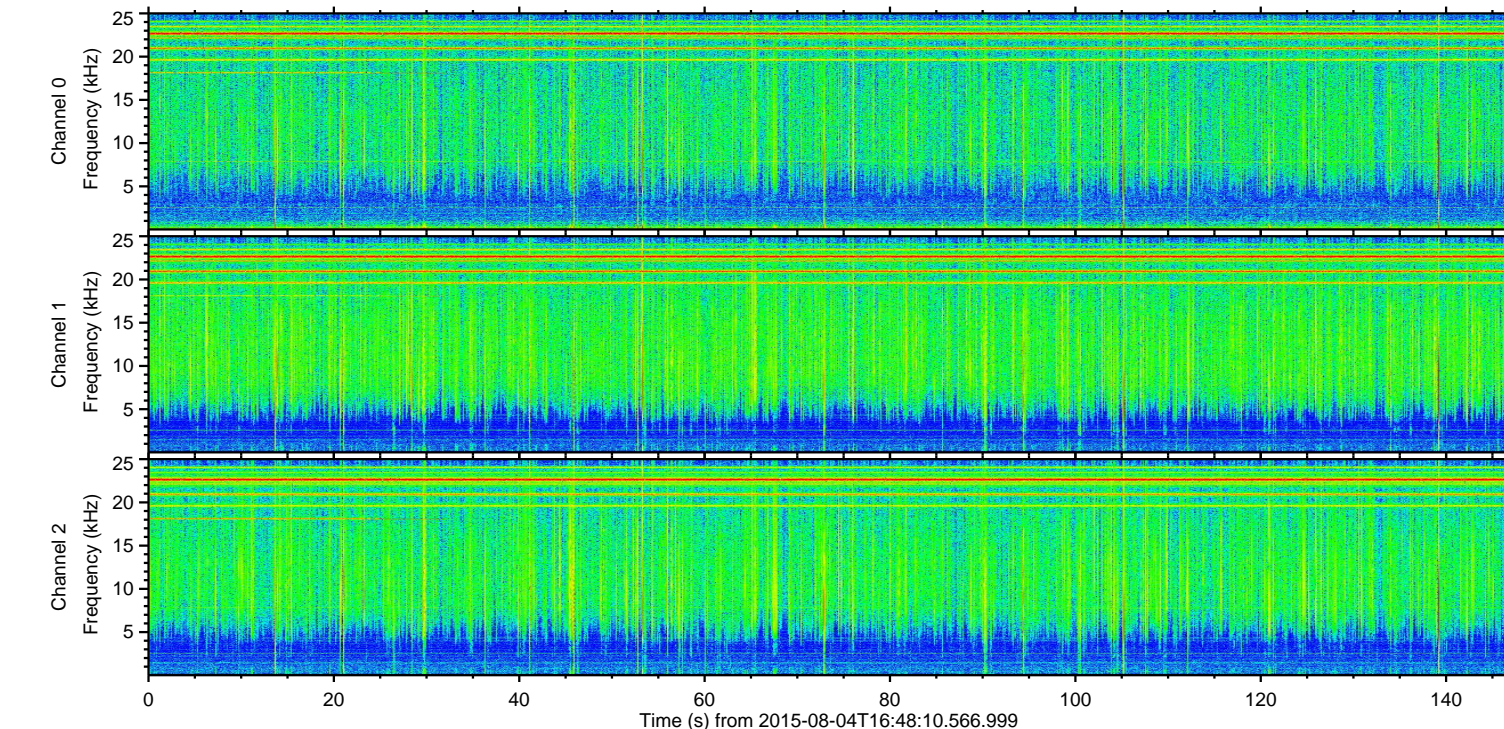
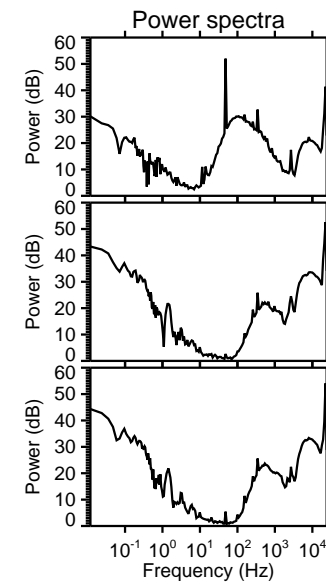
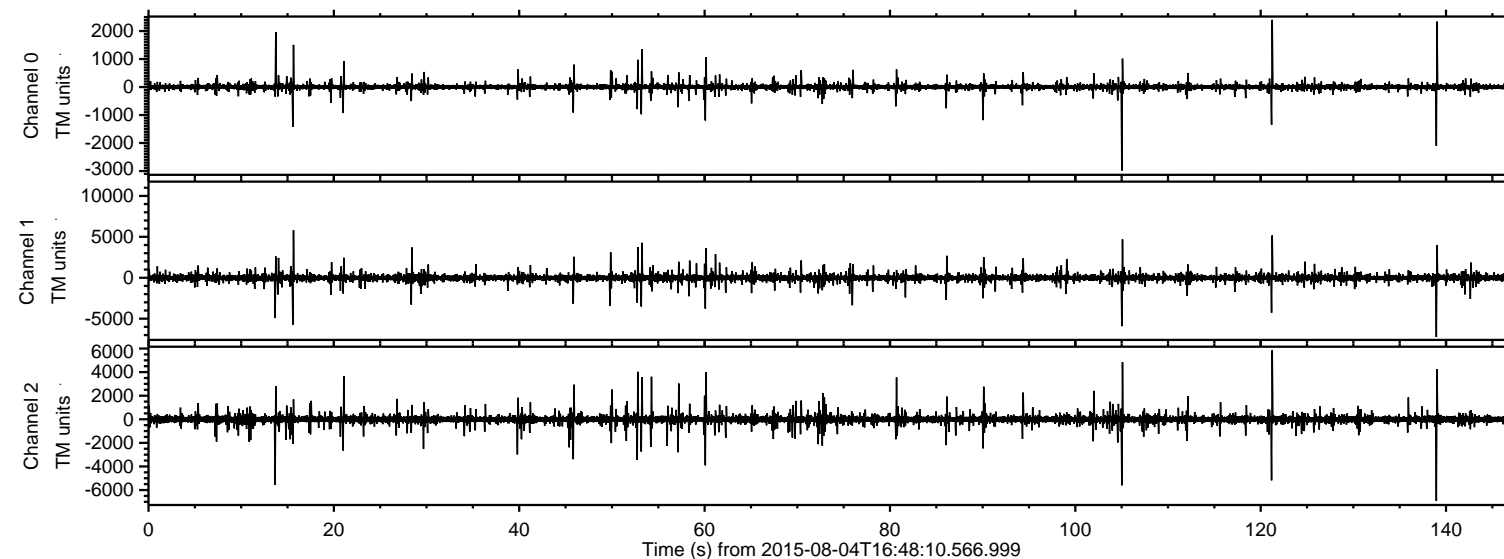


# ELMAVAN 3D WAVEFORMS (Measured data sampled at 50 kHz) 51000 packets of 144 samples from 2015-08-04T16:48:10.566.999.

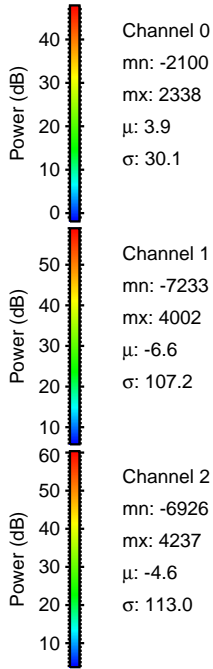
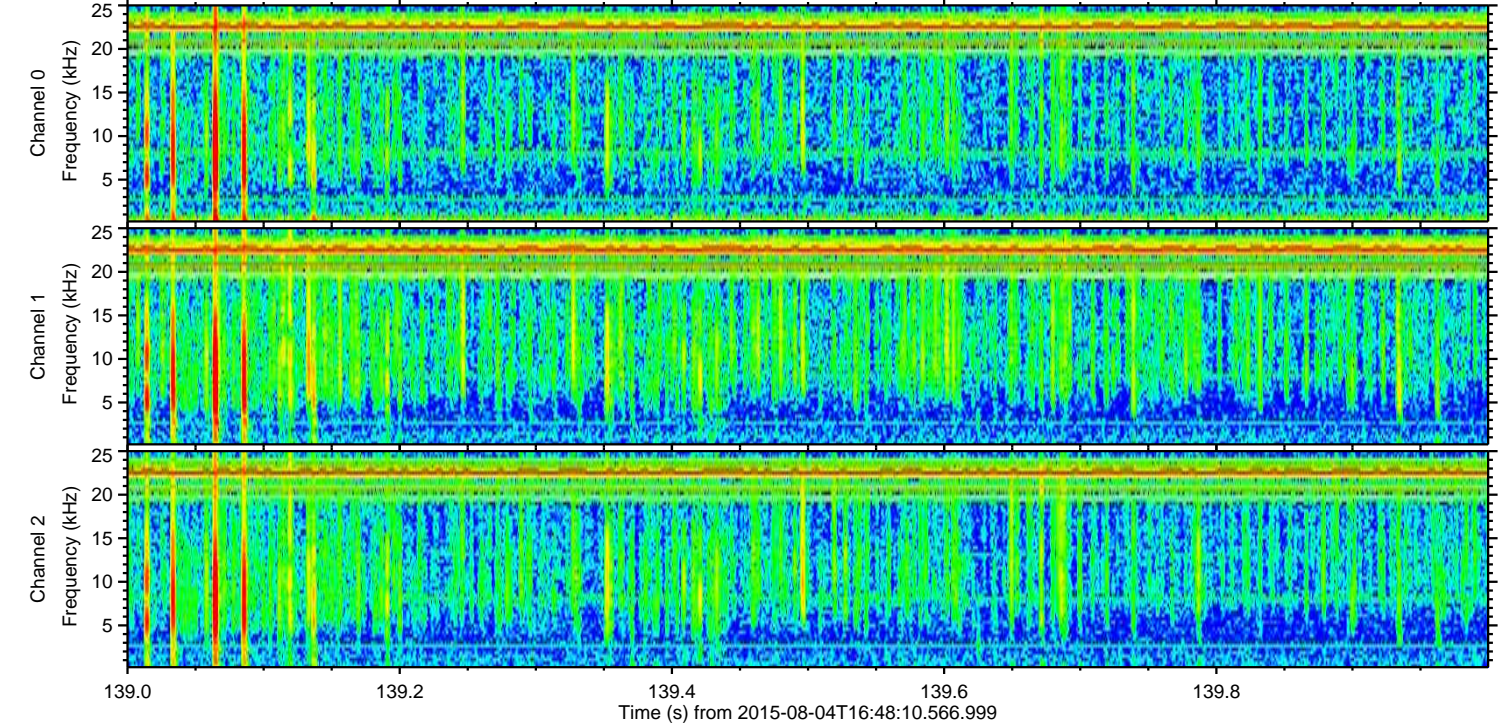
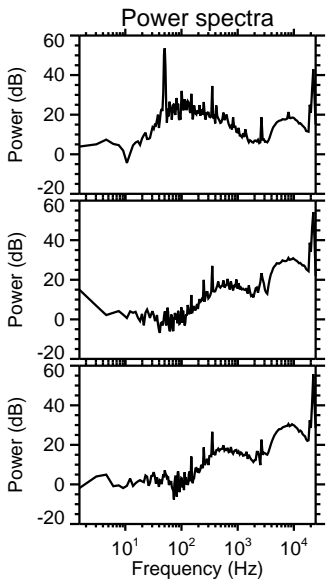
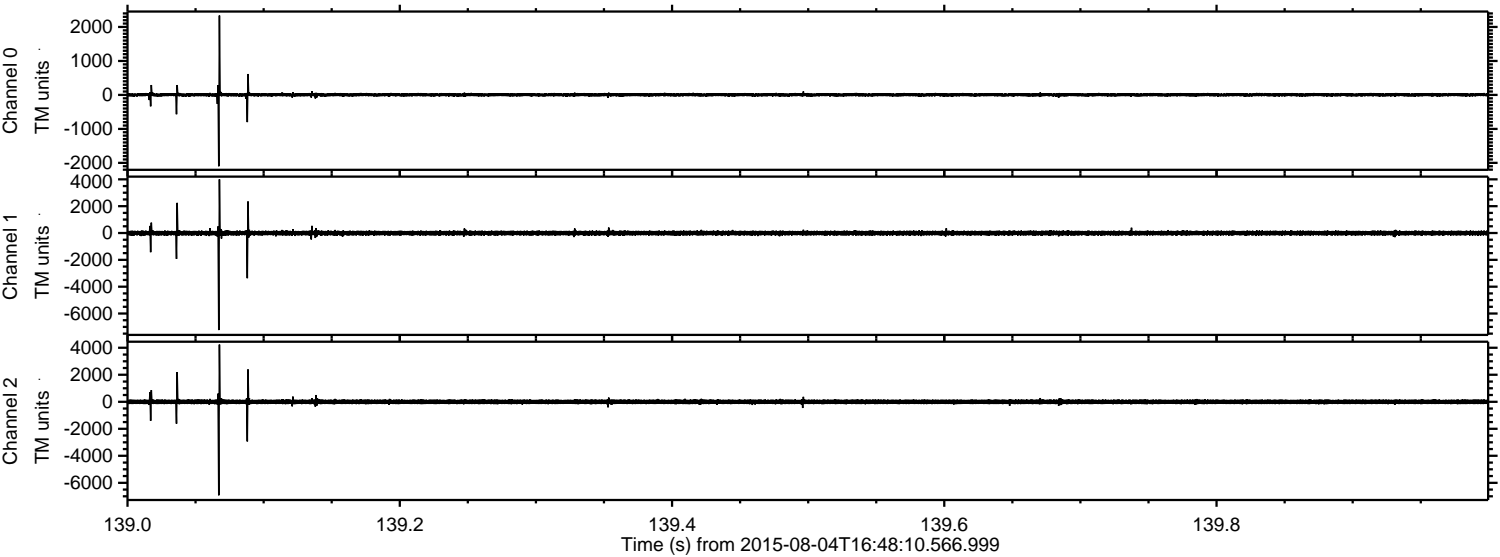
Processed Tue Aug 4 18:54:01 2015 by ELM ver.2012-10-06 from 001\_\_elm20150804\_164809\_\_dat00.bin





ELMAVAN 3D WAVEFORMS (Measured data sampled at 50 kHz) 51000 packets of 144 samples from 2015-08-04T16:48:10.566.999. Part 140/147

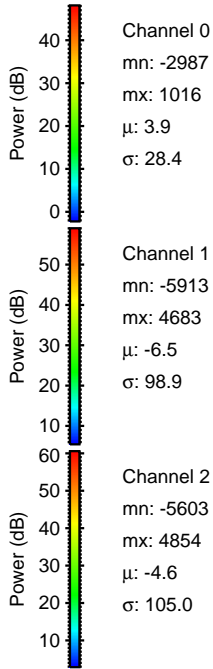
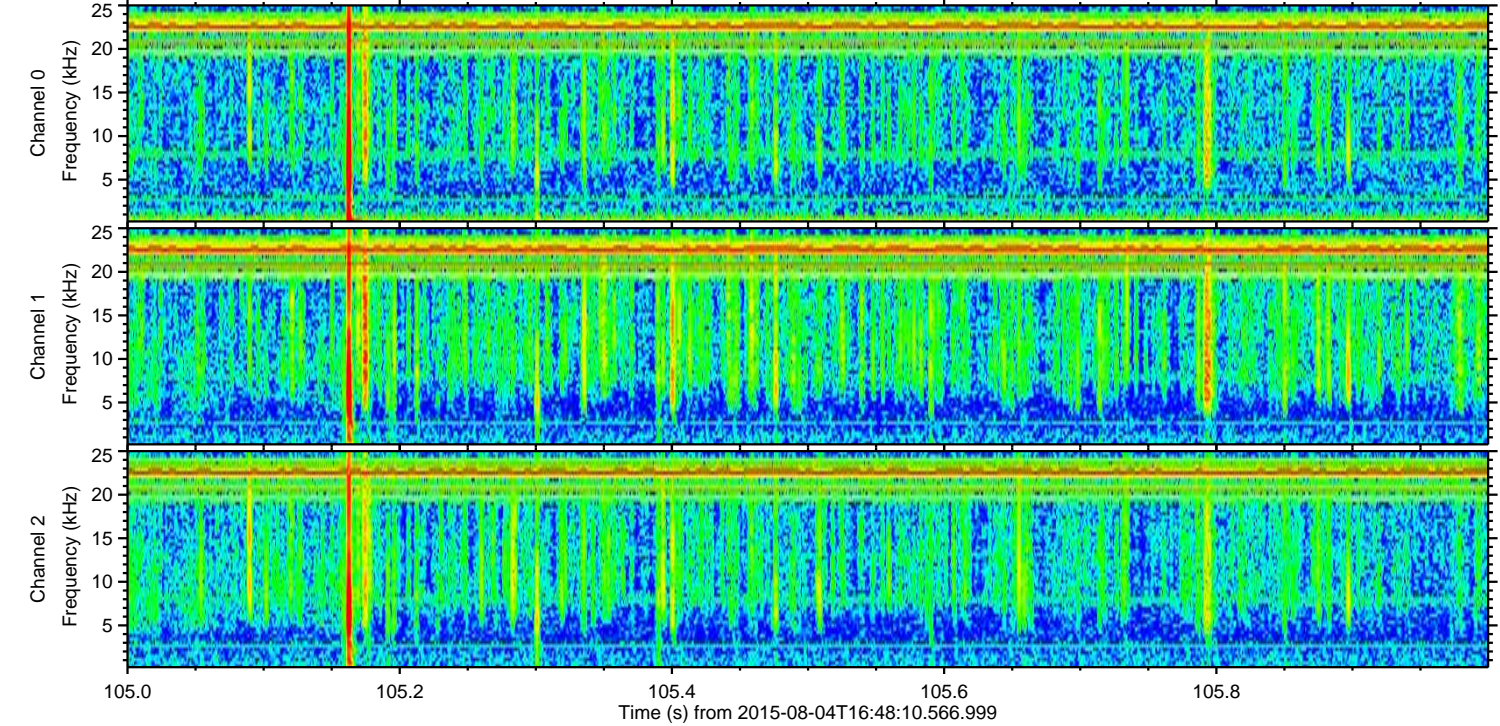
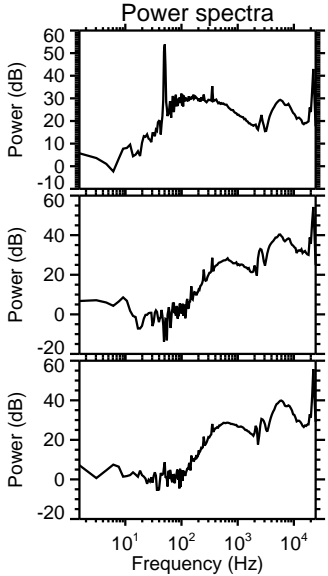
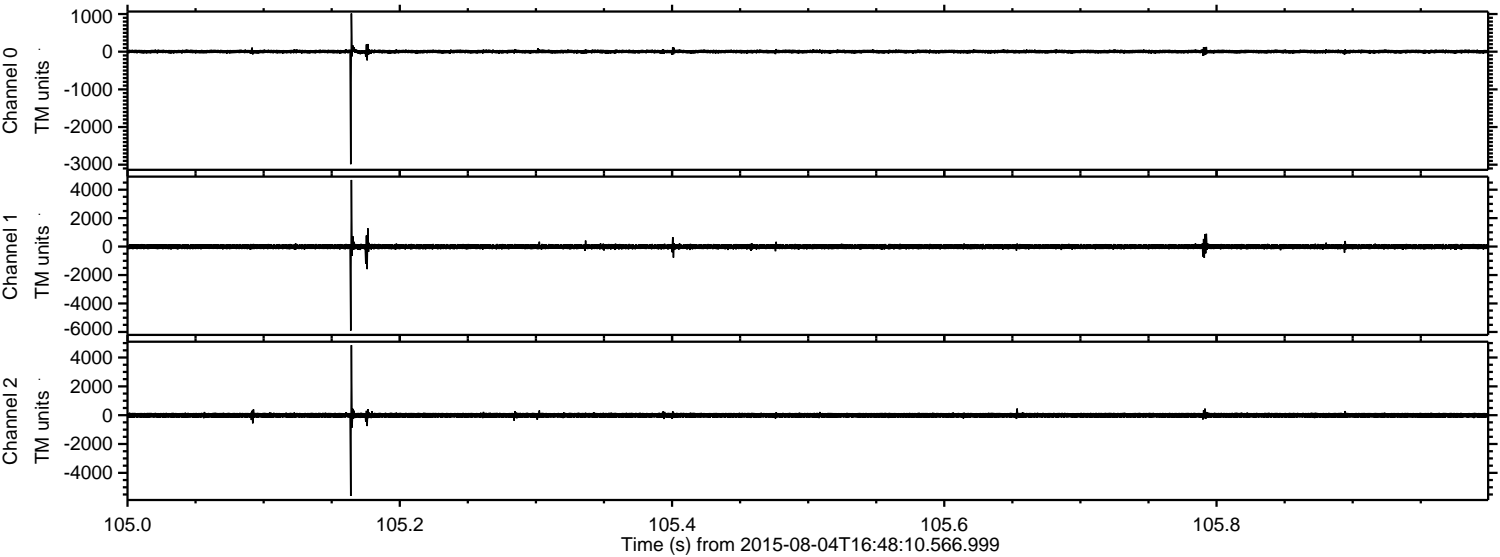
Processed Tue Aug 4 18:54:13 2015 by ELM ver.2012-10-06 from 001\_\_elm20150804\_164809\_\_dat00.bin





ELMAVAN 3D WAVEFORMS (Measured data sampled at 50 kHz) 51000 packets of 144 samples from 2015-08-04T16:48:10.566.999. Part 106/147

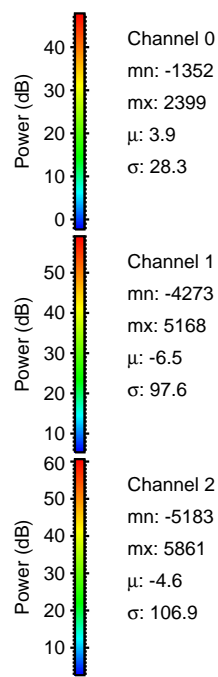
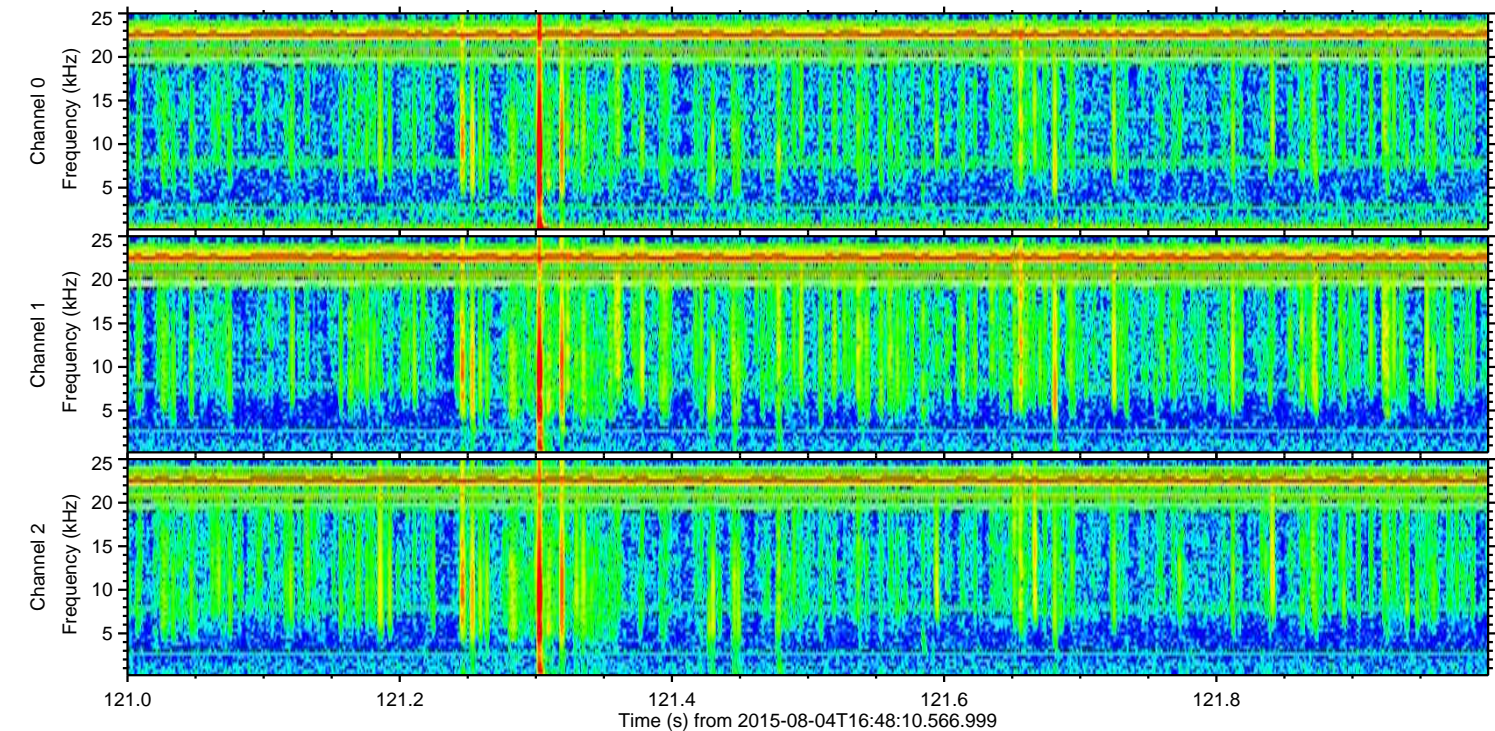
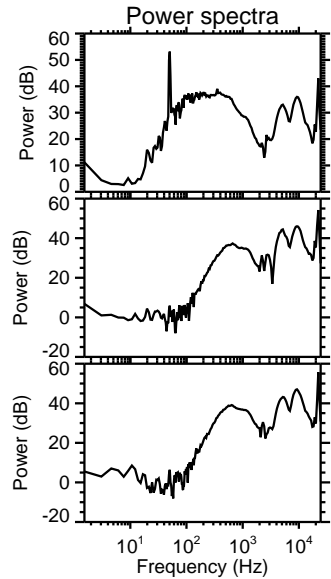
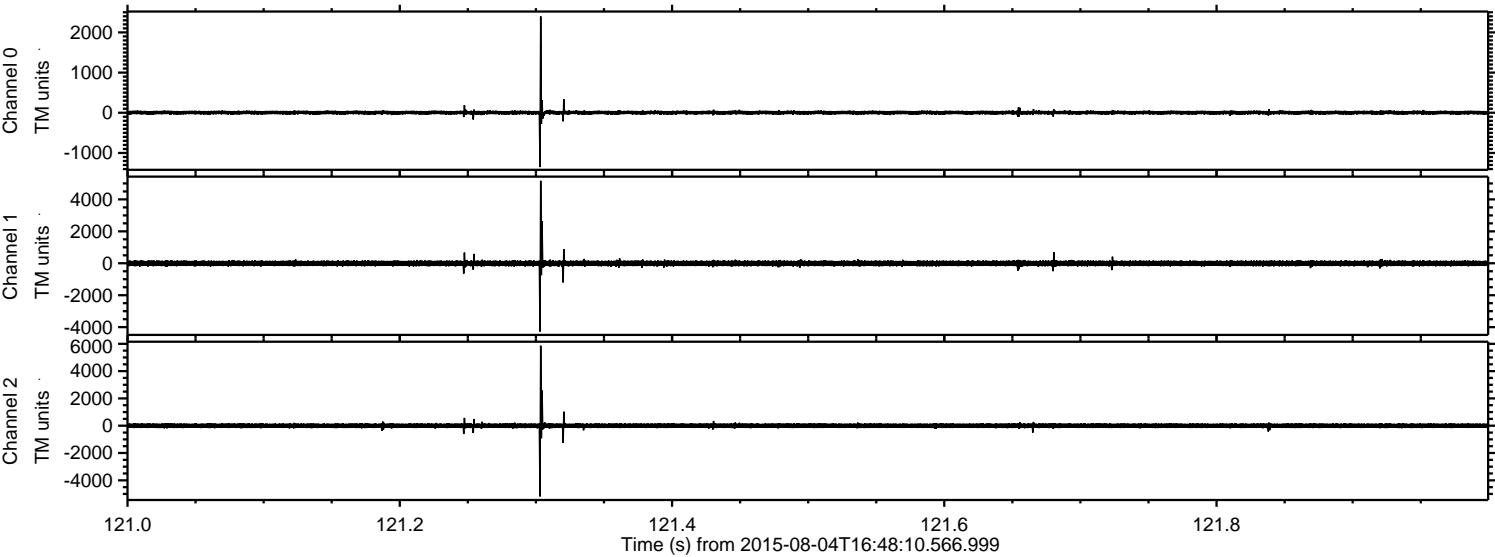
Processed Tue Aug 4 18:54:14 2015 by ELM ver.2012-10-06 from 001\_\_elm20150804\_164809\_\_dat00.bin





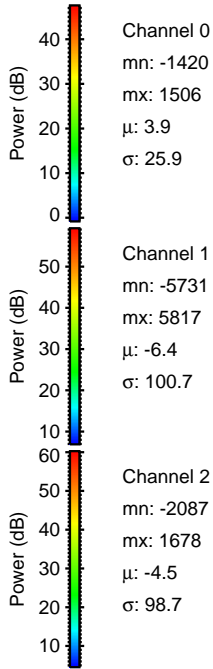
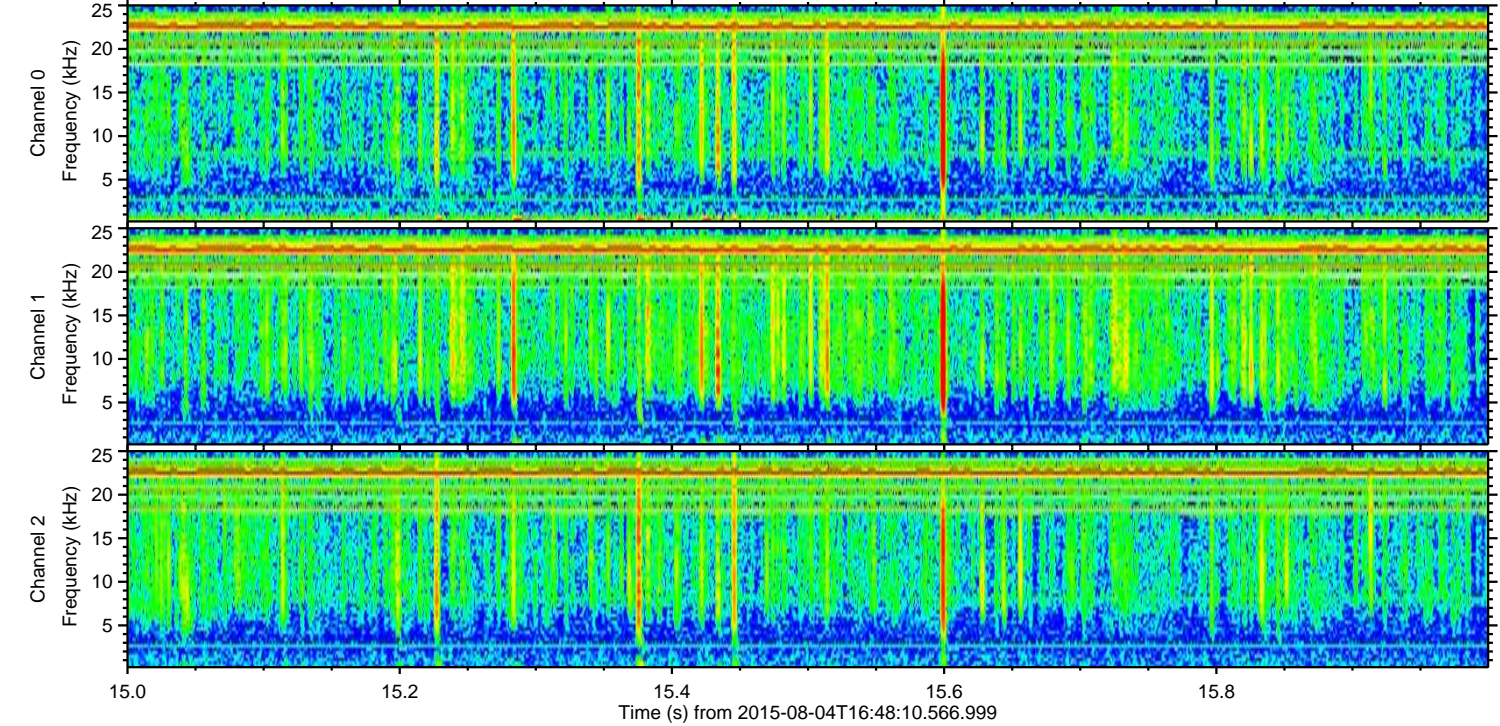
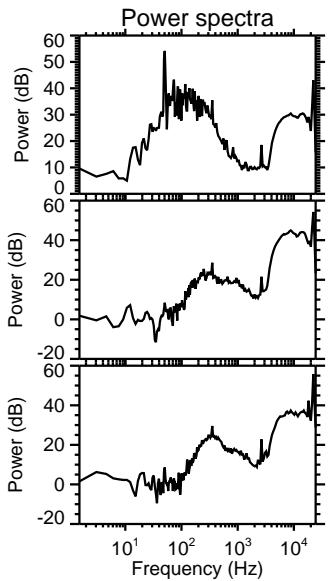
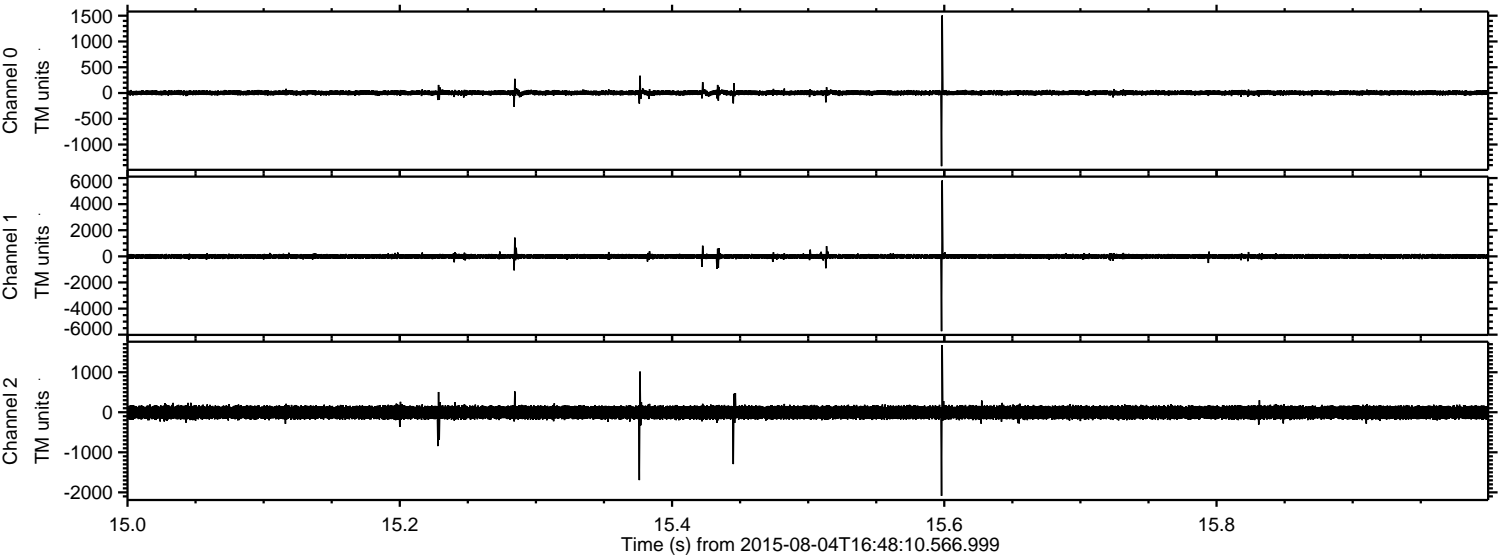
ELMAVAN 3D WAVEFORMS (Measured data sampled at 50 kHz) 51000 packets of 144 samples from 2015-08-04T16:48:10.566.999. Part 122/147

Processed Tue Aug 4 18:54:15 2015 by ELM ver.2012-10-06 from 001\_\_elm20150804\_164809\_\_dat00.bin



ELMAVAN 3D WAVEFORMS (Measured data sampled at 50 kHz) 51000 packets of 144 samples from 2015-08-04T16:48:10.566.999. Part 16/147

Processed Tue Aug 4 18:54:16 2015 by ELM ver.2012-10-06 from 001\_\_elm20150804\_164809\_\_dat00.bin



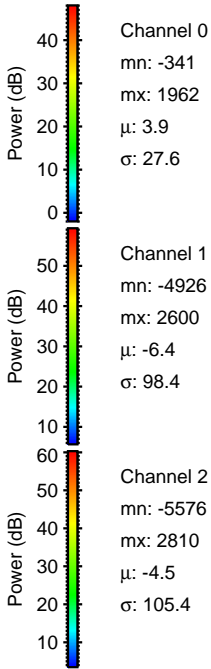
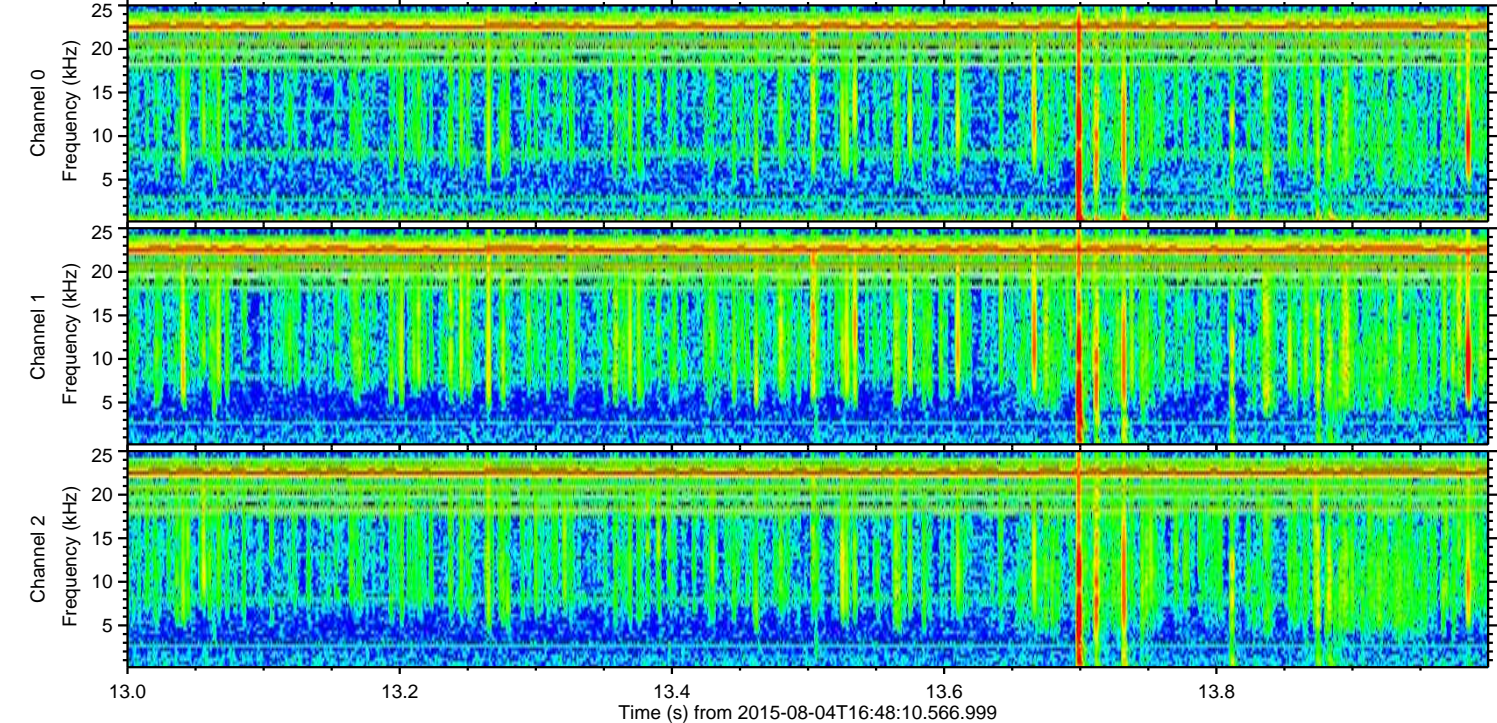
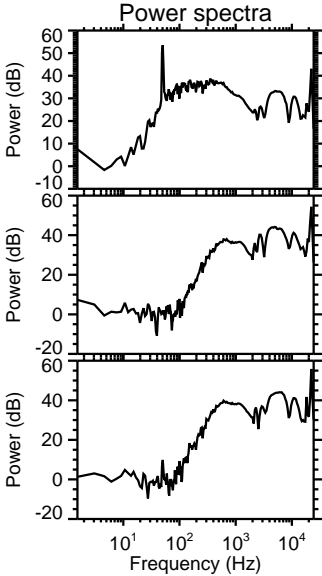
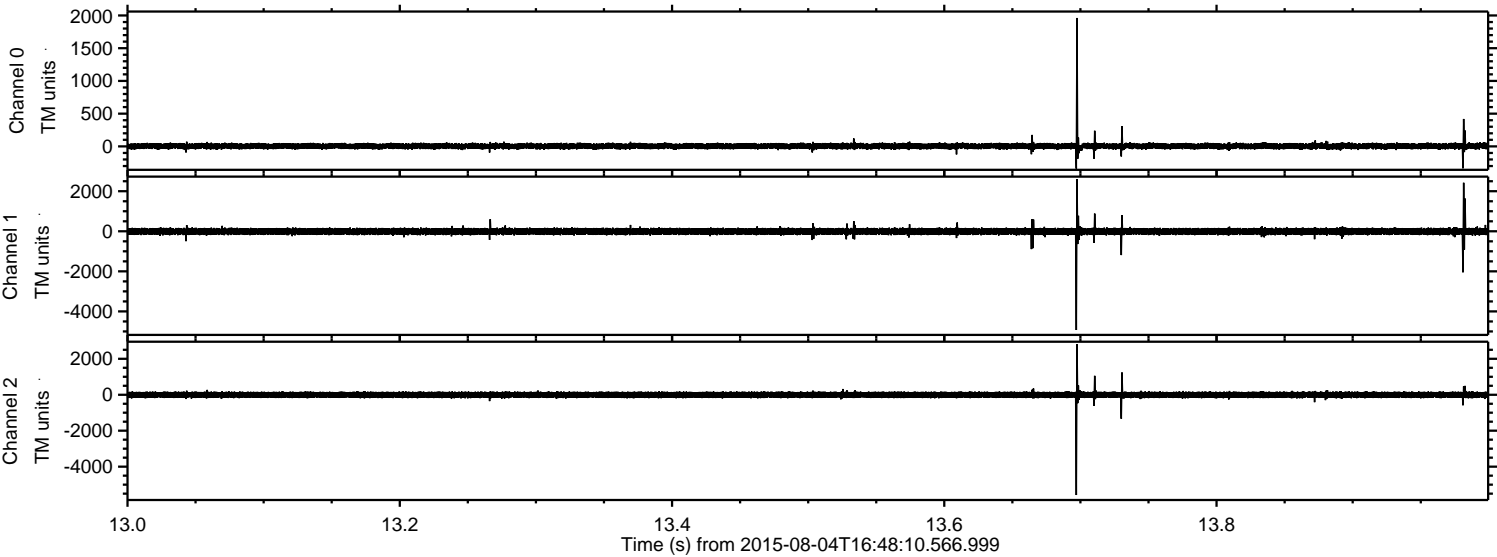
Channel 0  
mn: -1420  
mx: 1506  
 $\mu$ : 3.9  
 $\sigma$ : 25.9

Channel 1  
mn: -5731  
mx: 5817  
 $\mu$ : -6.4  
 $\sigma$ : 100.7

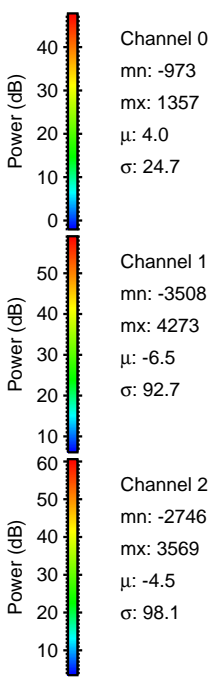
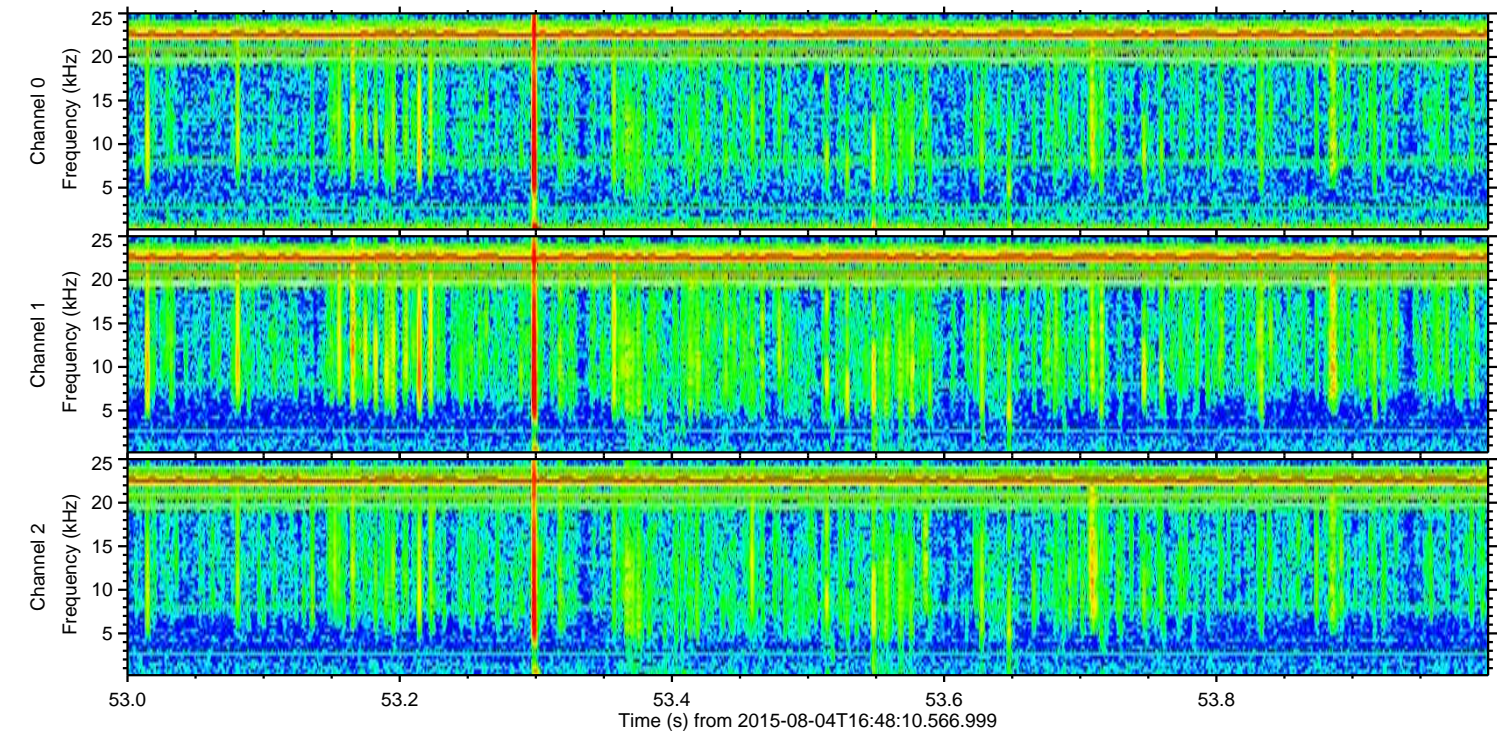
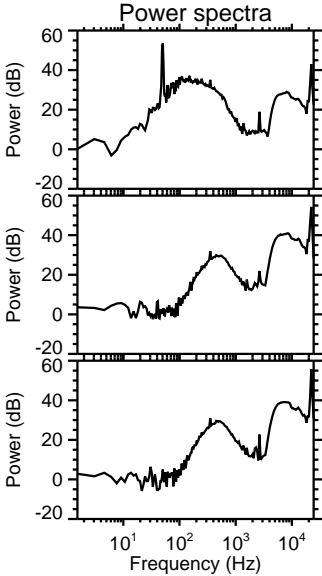
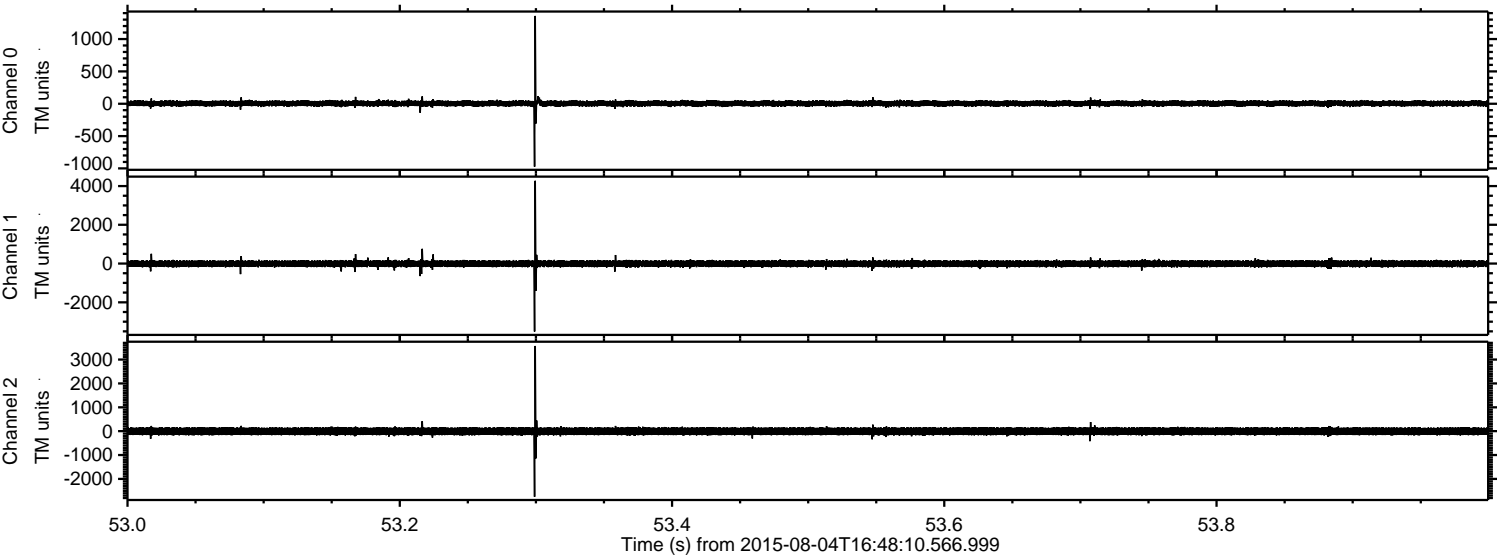
Channel 2  
mn: -2087  
mx: 1678  
 $\mu$ : -4.5  
 $\sigma$ : 98.7



Processed Tue Aug 4 18:54:17 2015 by ELM ver.2012-10-06 from 001\_\_elm20150804\_164809\_\_dat00.bin

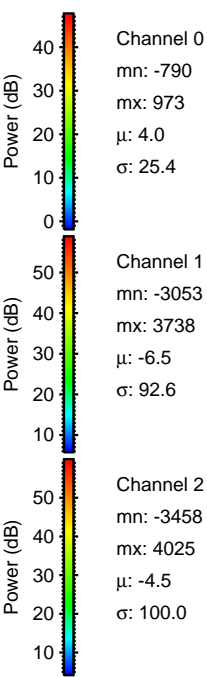
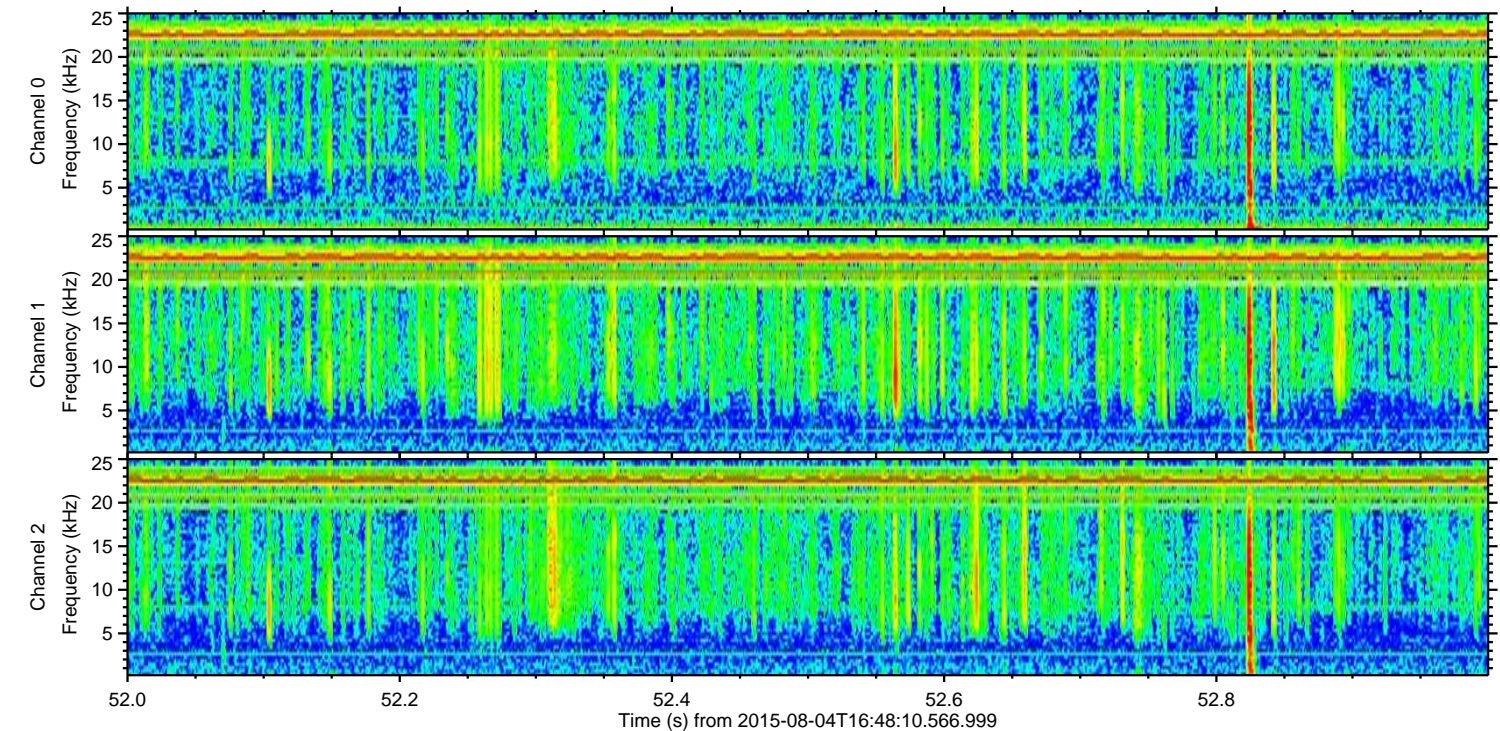
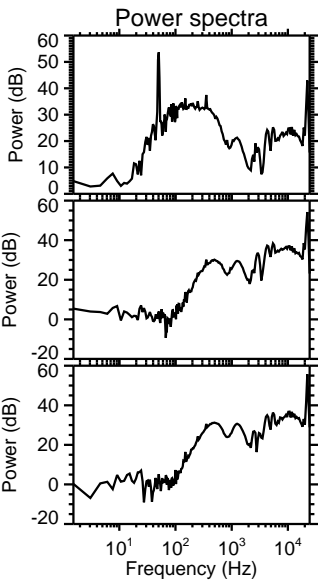
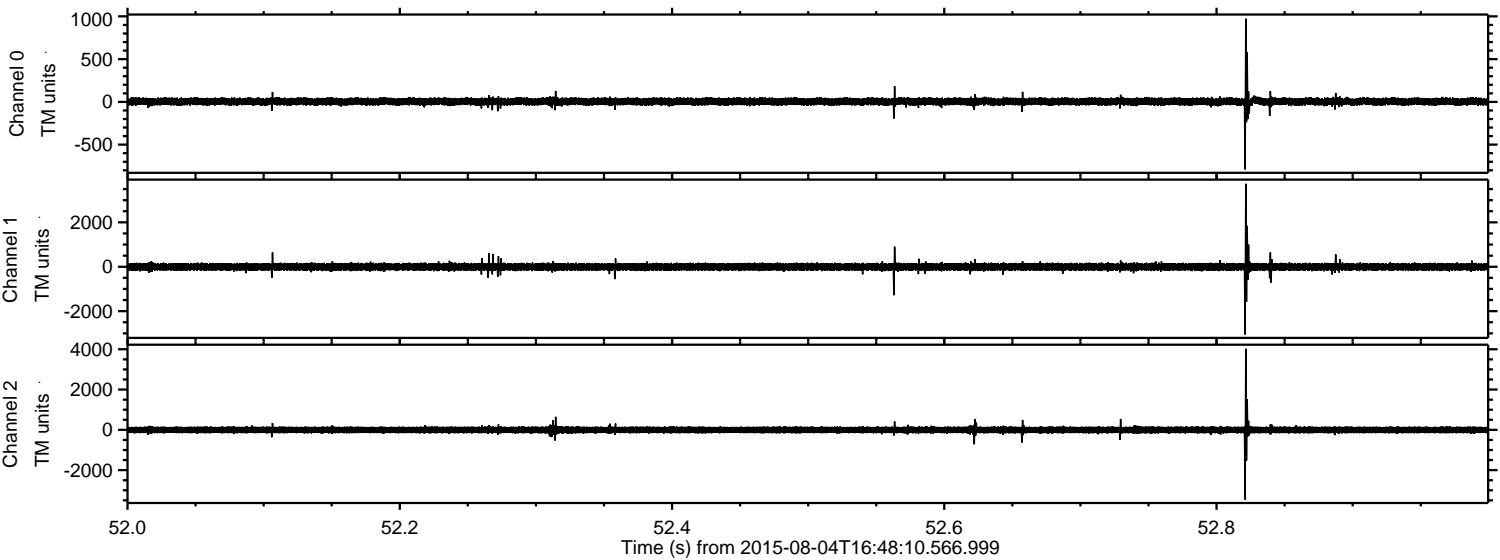


Processed Tue Aug 4 18:54:18 2015 by ELM ver.2012-10-06 from 001\_\_elm20150804\_164809\_\_dat00.bin





Processed Tue Aug 4 18:54:19 2015 by ELM ver.2012-10-06 from 001\_\_elm20150804\_164809\_\_dat00.bin



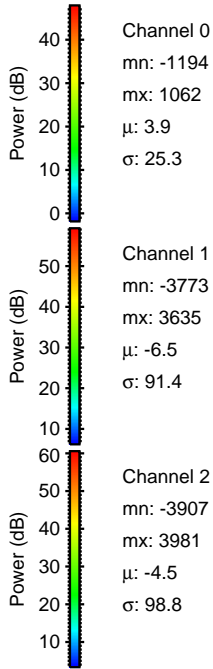
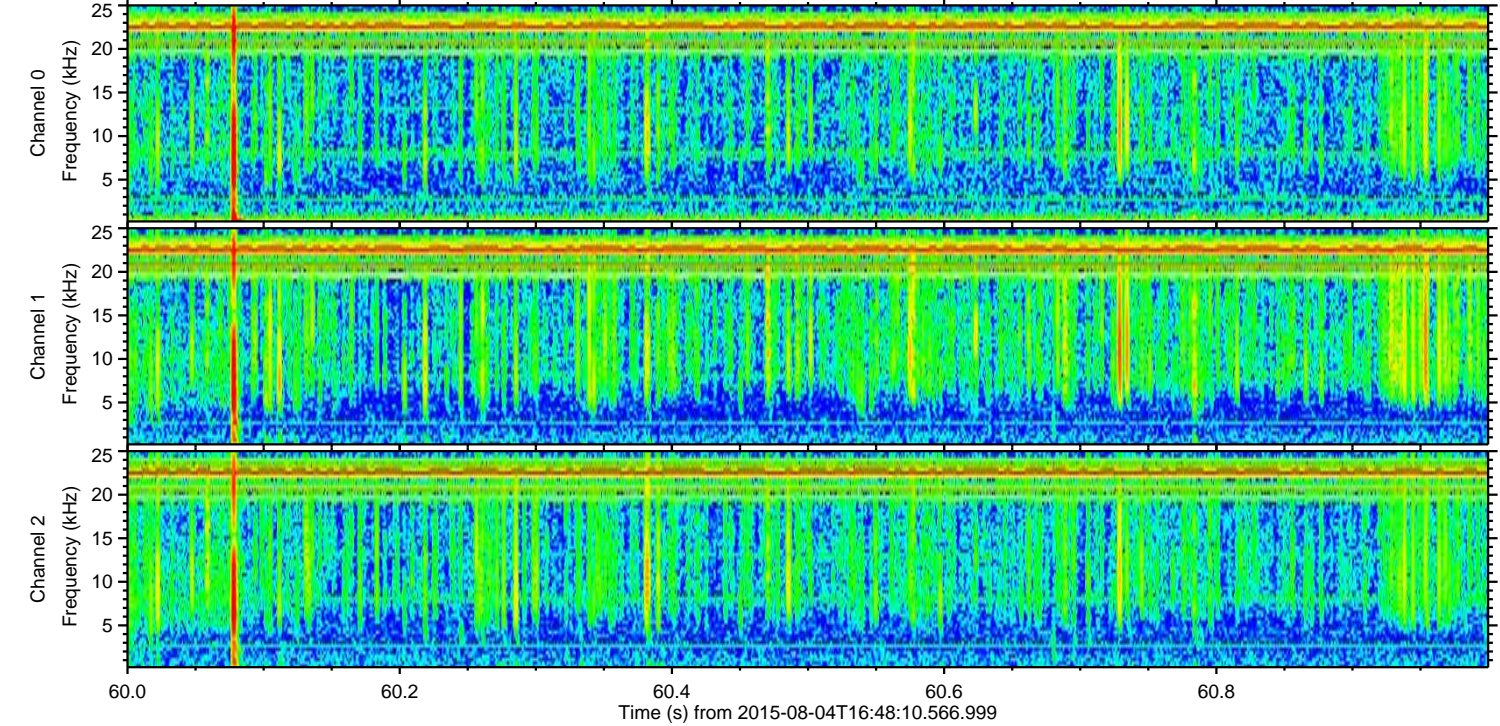
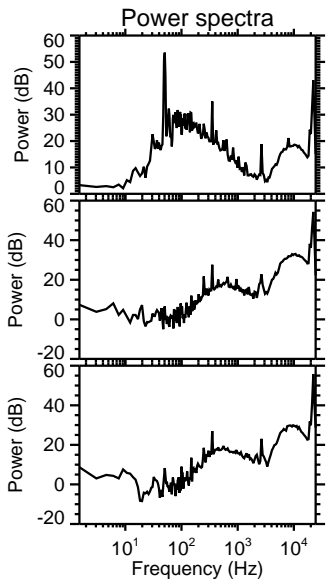
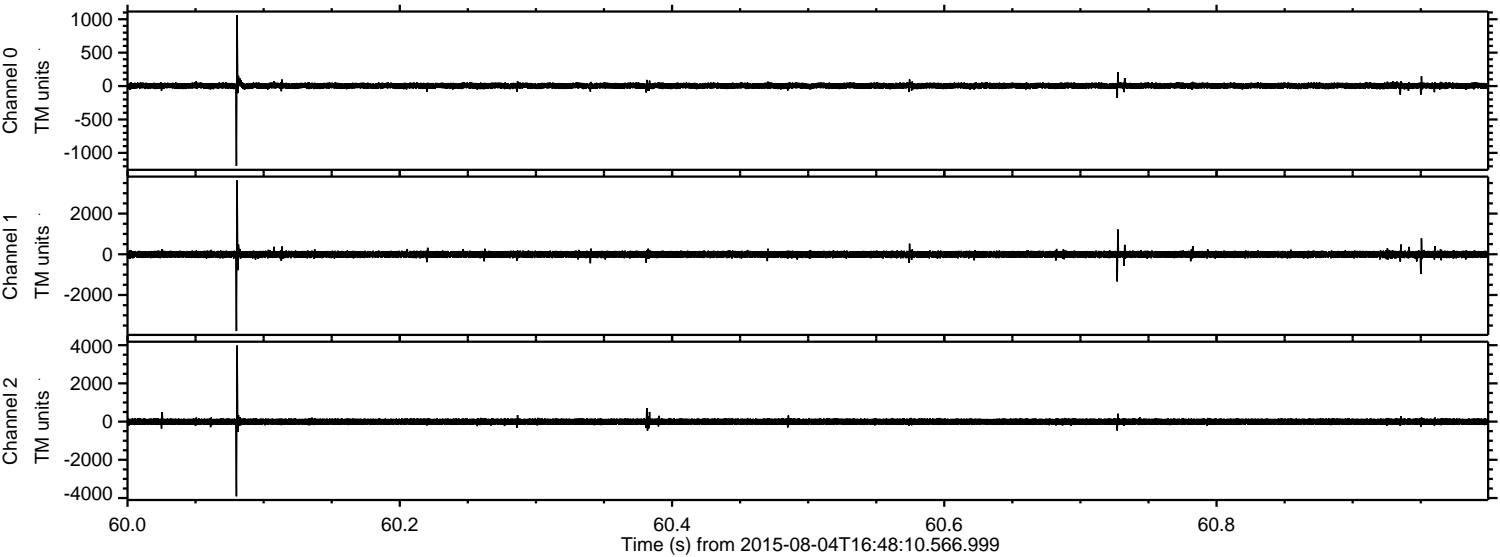
Channel 0  
mn: -790  
mx: 973  
 $\mu$ : 4.0  
 $\sigma$ : 25.4

Channel 1  
mn: -3053  
mx: 3738  
 $\mu$ : -6.5  
 $\sigma$ : 92.6

Channel 2  
mn: -3458  
mx: 4025  
 $\mu$ : -4.5  
 $\sigma$ : 100.0

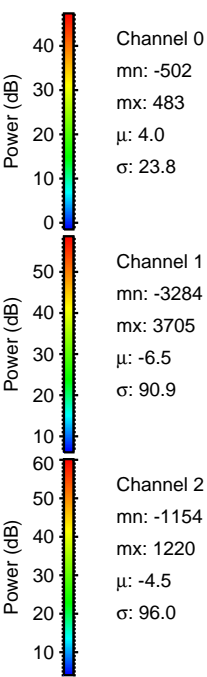
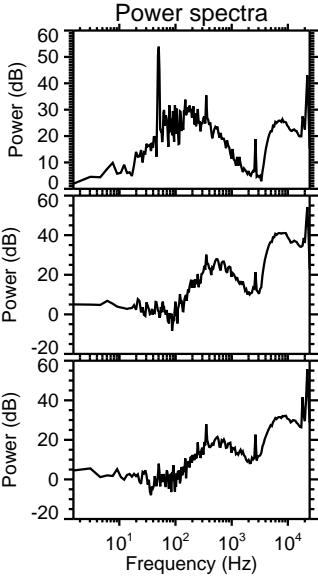
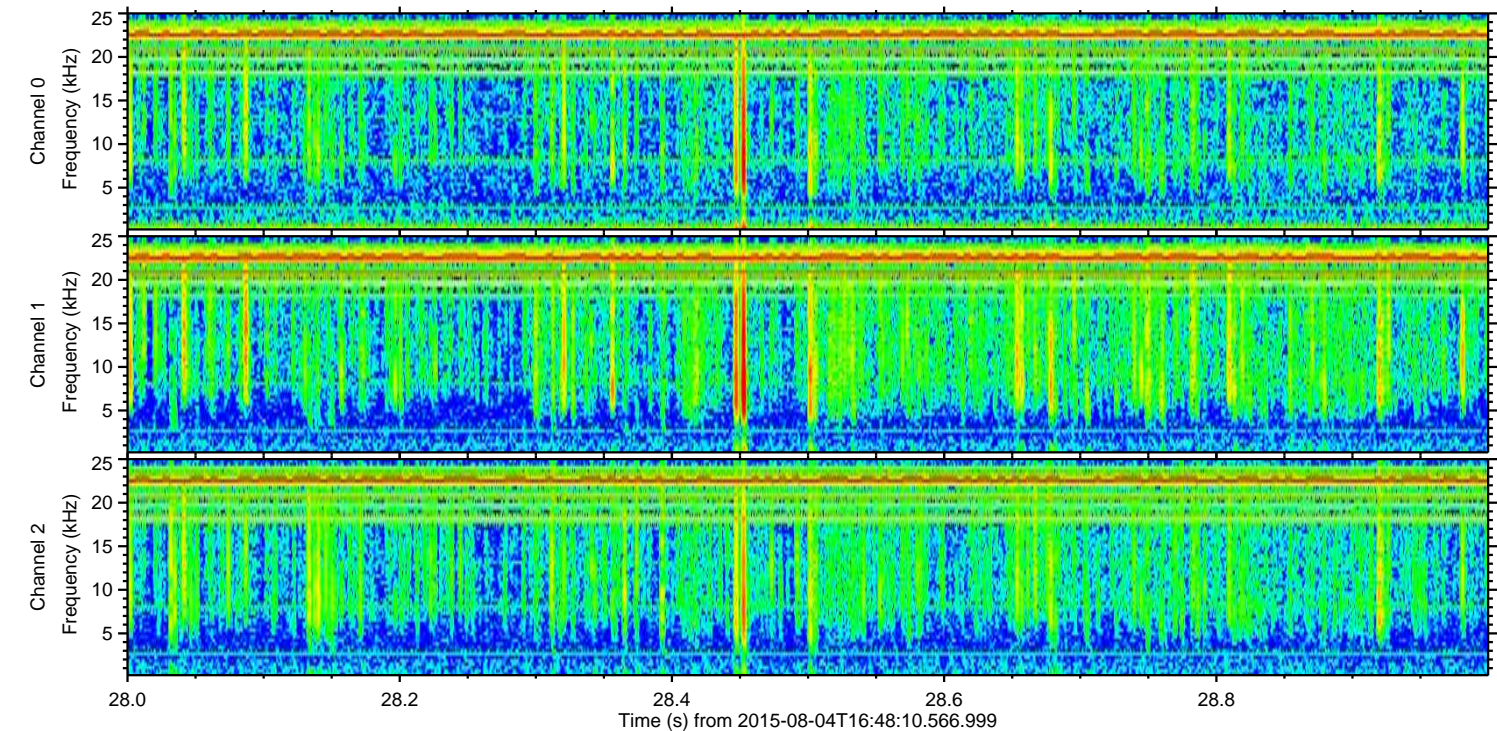
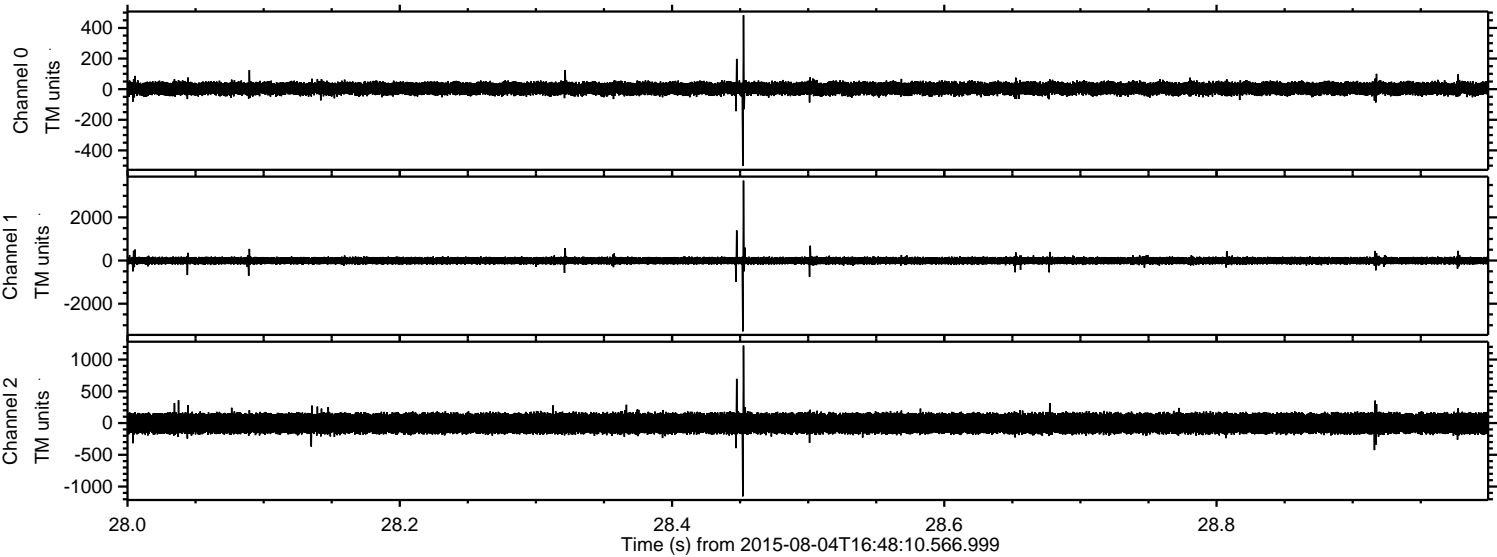


Processed Tue Aug 4 18:54:20 2015 by ELM ver.2012-10-06 from 001\_\_elm20150804\_164809\_\_dat00.bin





Processed Tue Aug 4 18:54:21 2015 by ELM ver.2012-10-06 from 001\_\_elm20150804\_164809\_\_dat00.bin





Processed Tue Aug 4 18:54:22 2015 by ELM ver.2012-10-06 from 001\_\_elm20150804\_164809\_\_dat00.bin

