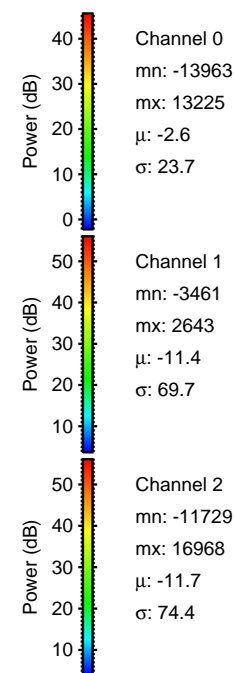
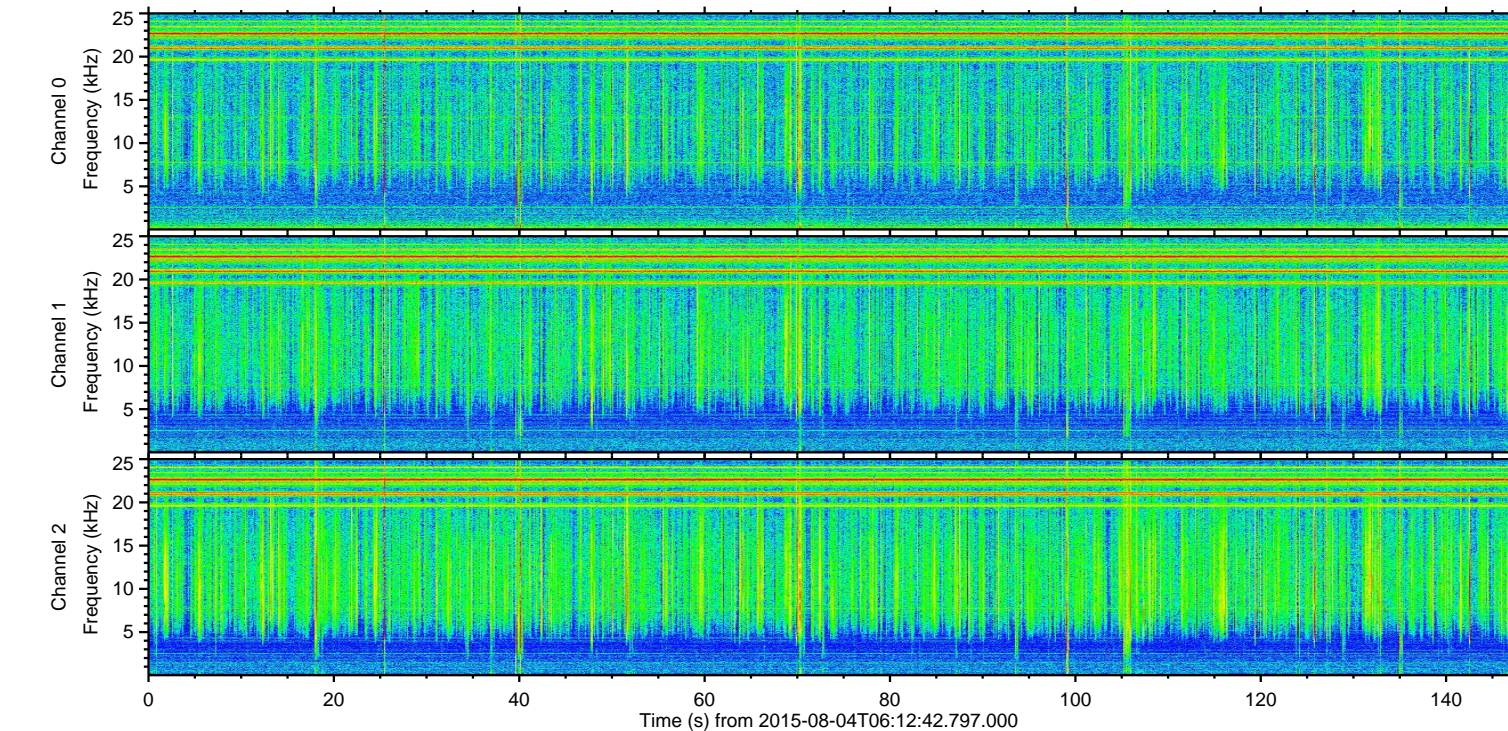
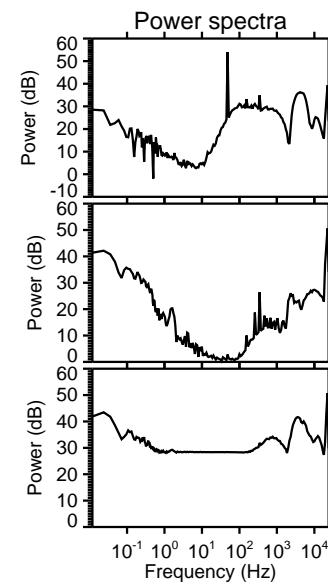
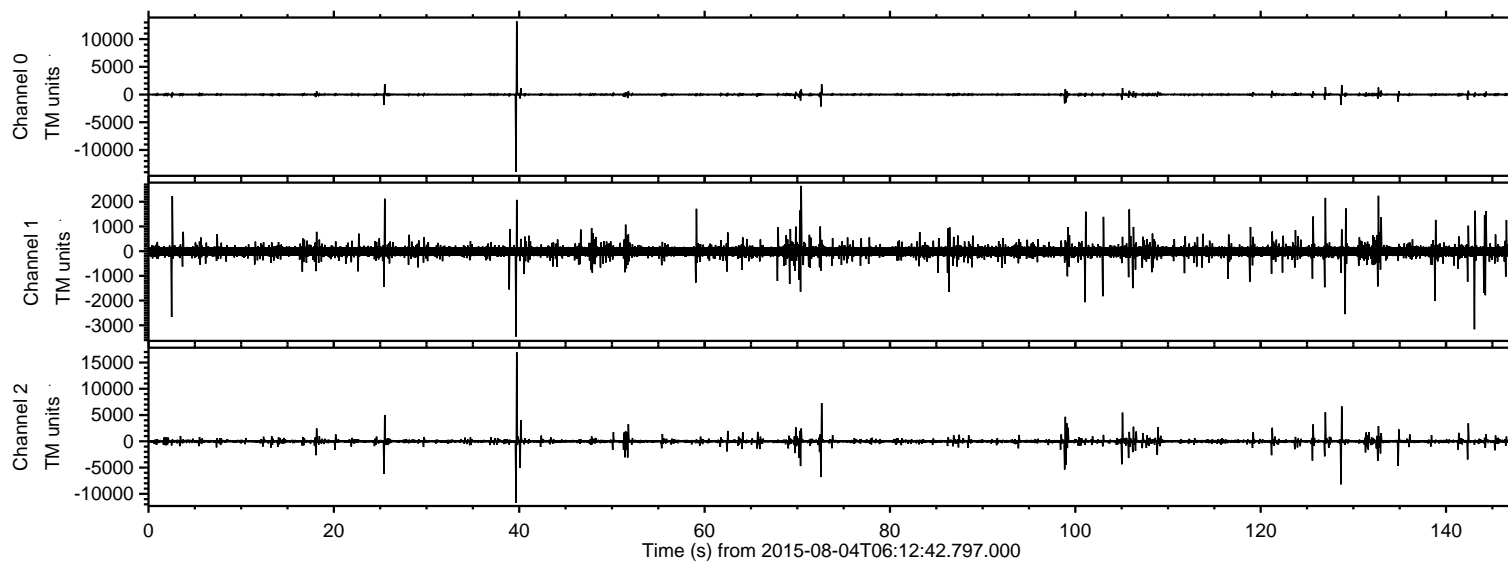
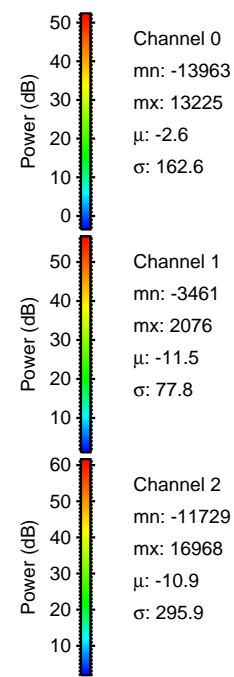
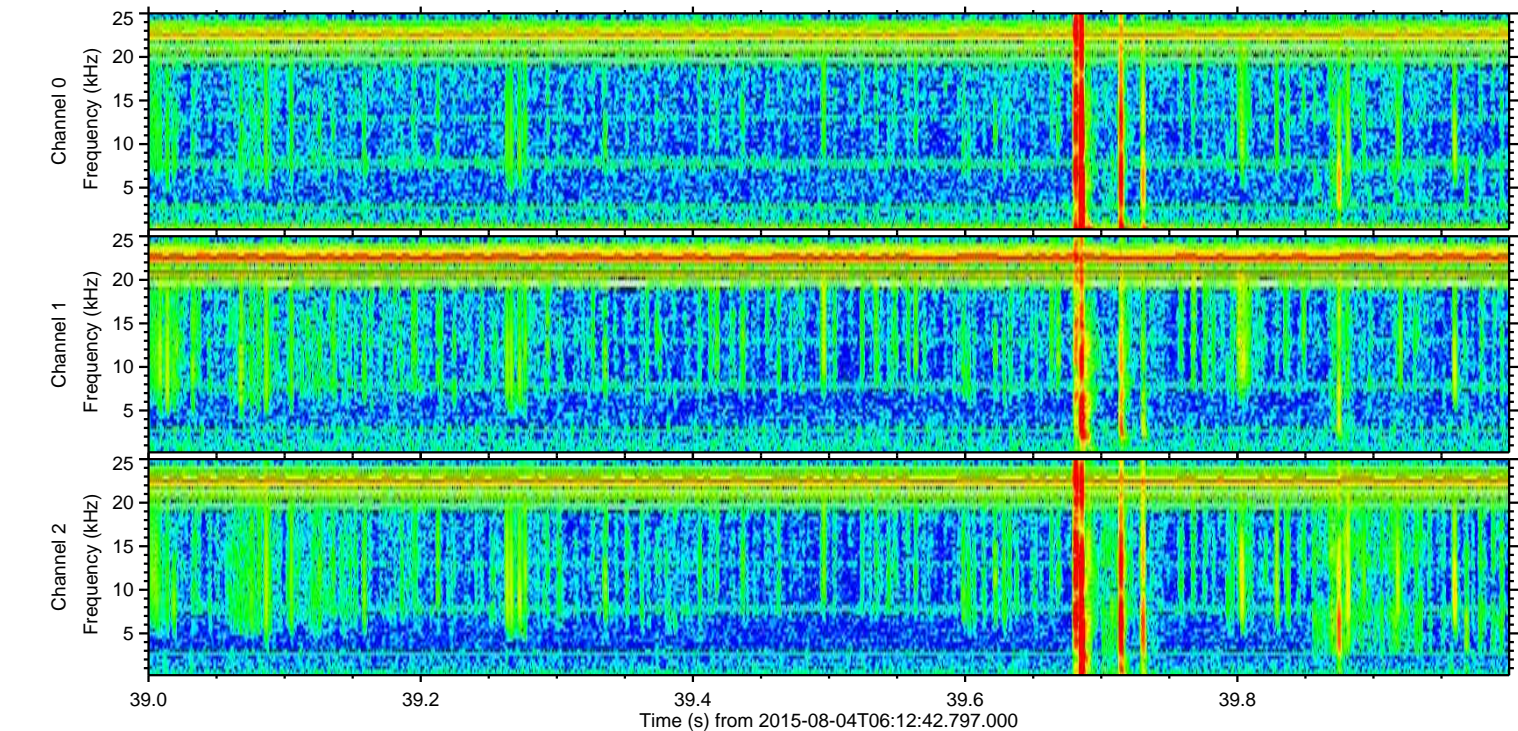
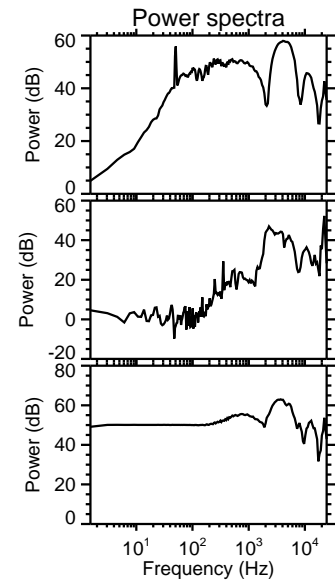
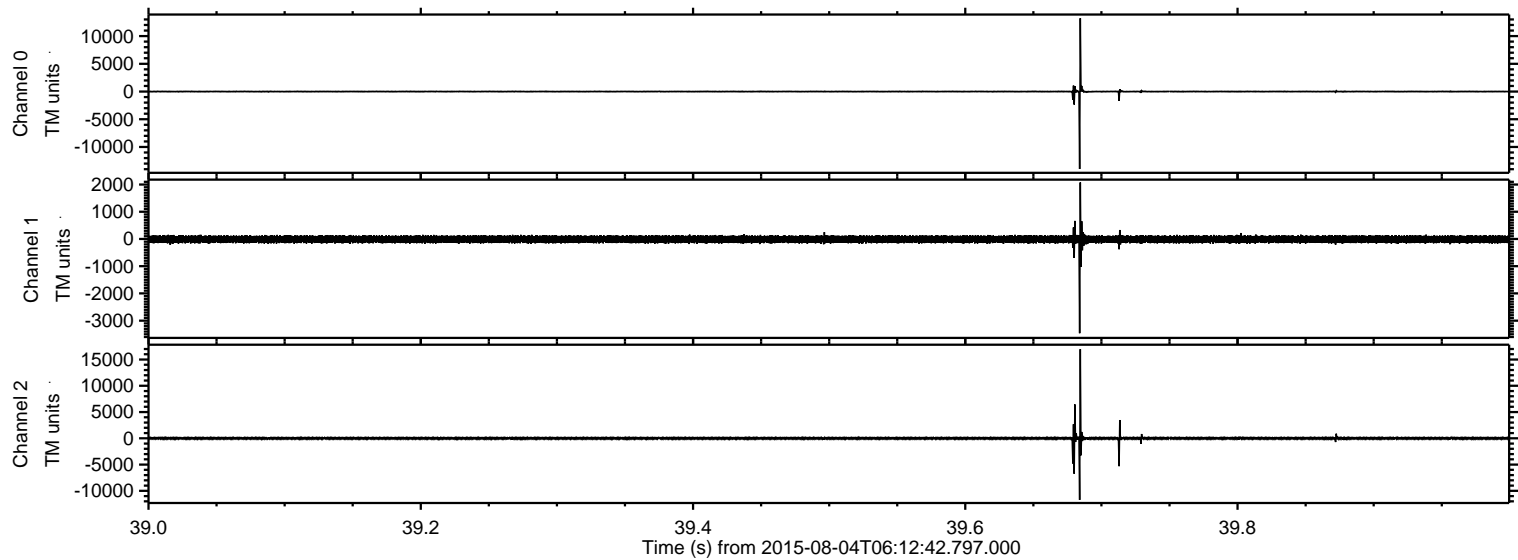


ELMAVAN 3D WAVEFORMS (Measured data sampled at 50 kHz) 51000 packets of 144 samples from 2015-08-04T06:12:42.797.000.

Processed Tue Aug 4 08:18:48 2015 by ELM ver.2012-10-06 from 001__elm20150804_061241__dat00.bin

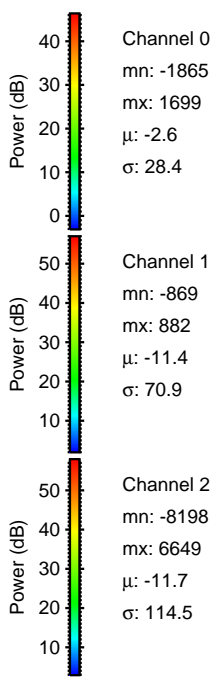
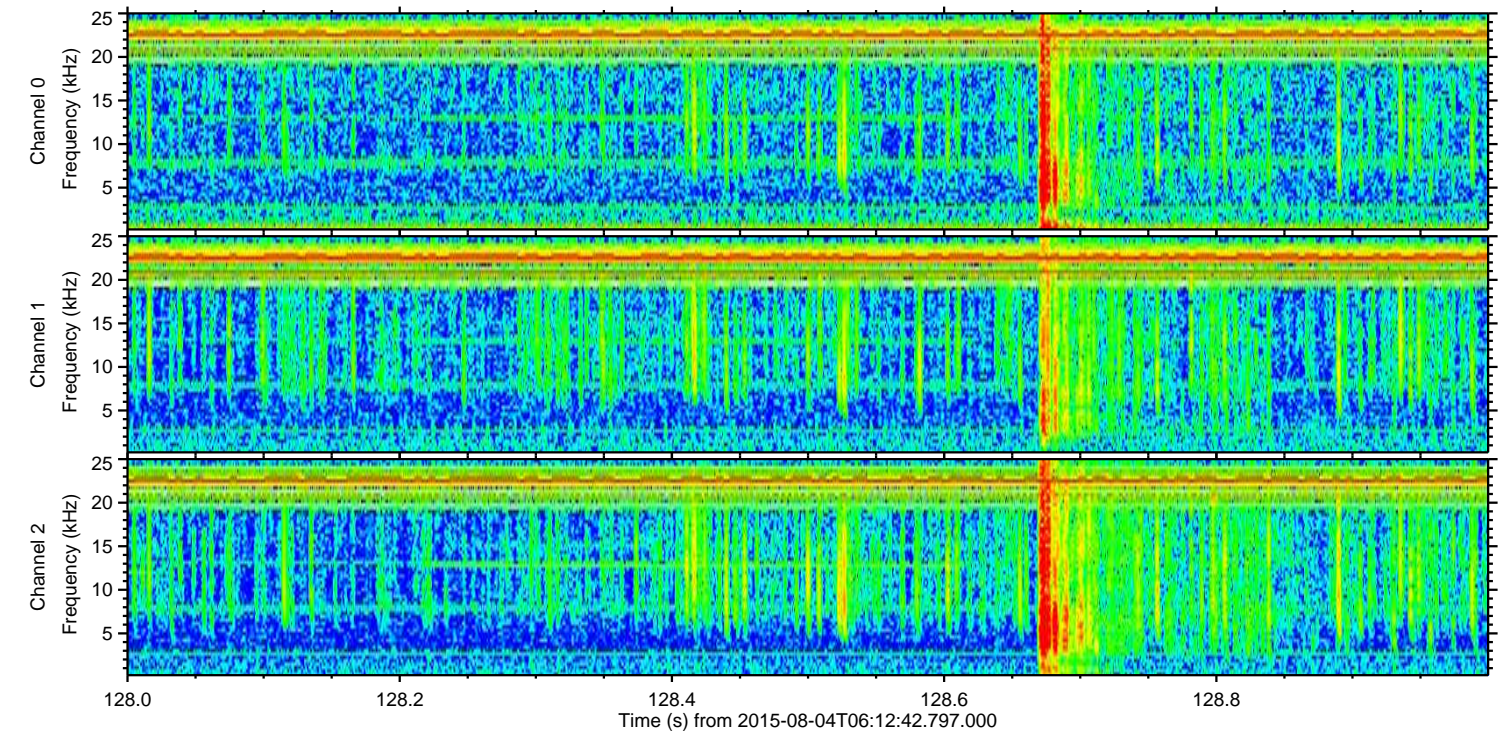
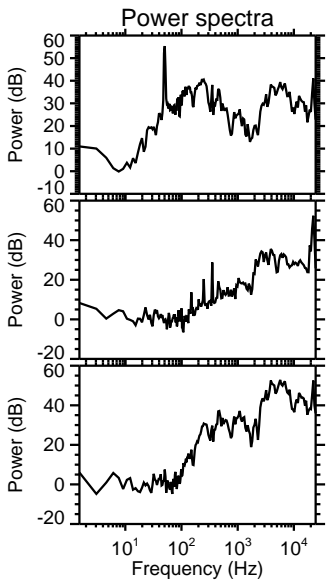
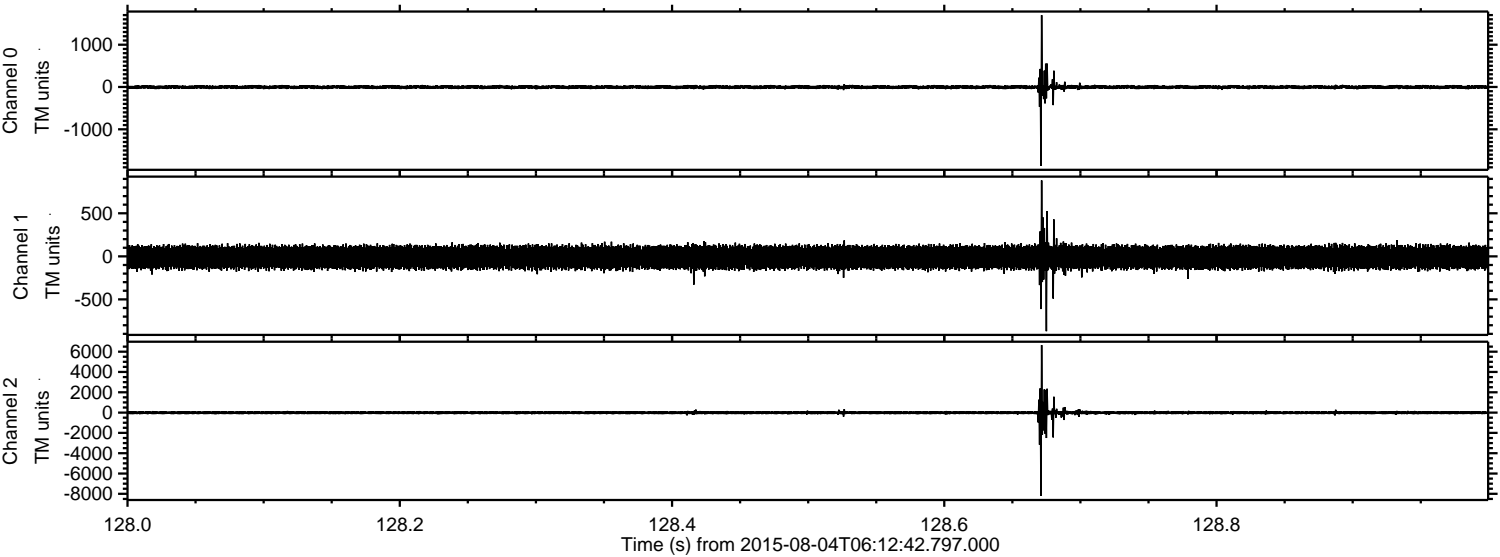


Processed Tue Aug 4 08:19:00 2015 by ELM ver.2012-10-06 from 001__elm20150804_061241__dat00.bin

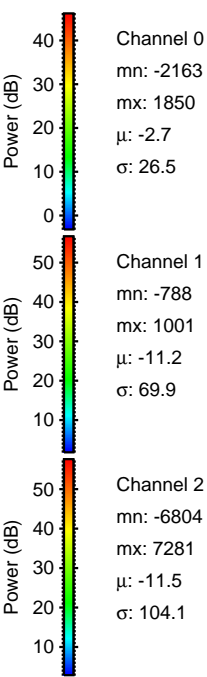
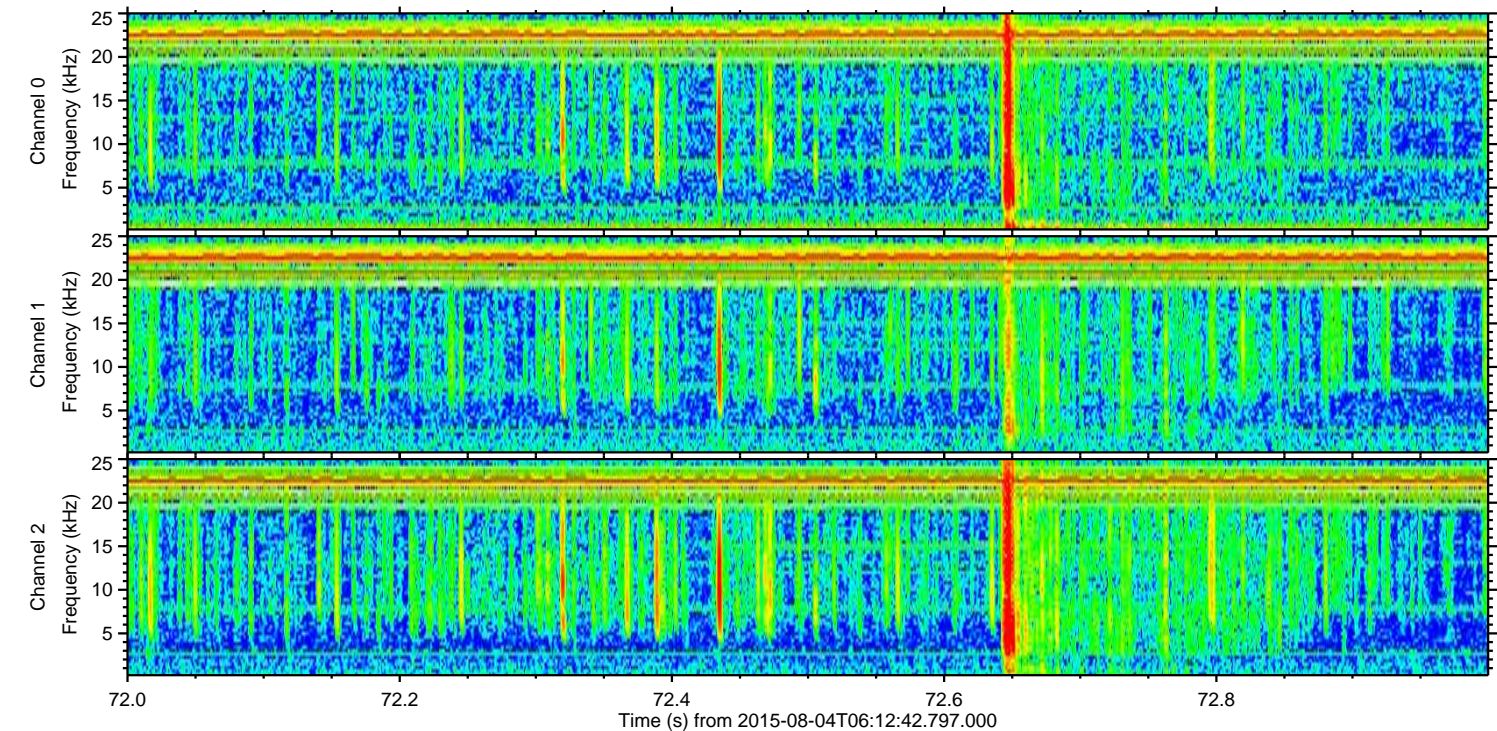
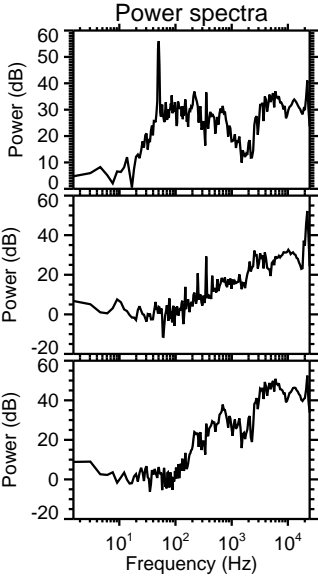
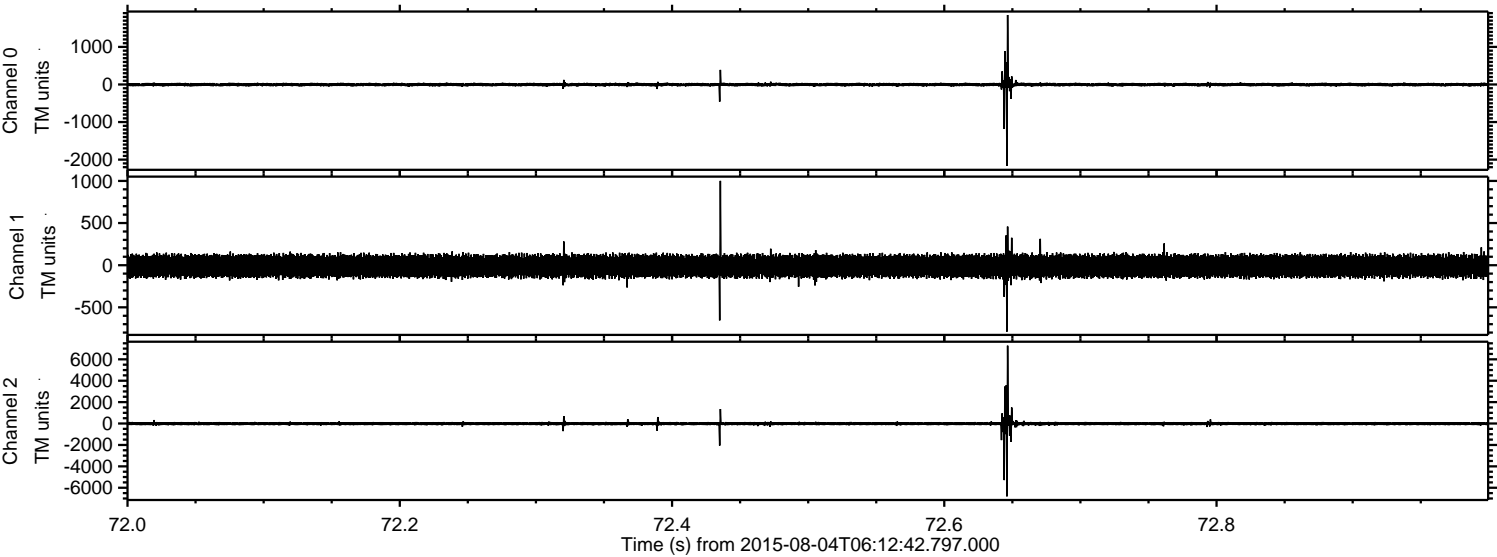


ELMAVAN 3D WAVEFORMS (Measured data sampled at 50 kHz) 51000 packets of 144 samples from 2015-08-04T06:12:42.797.000. Part 129/147

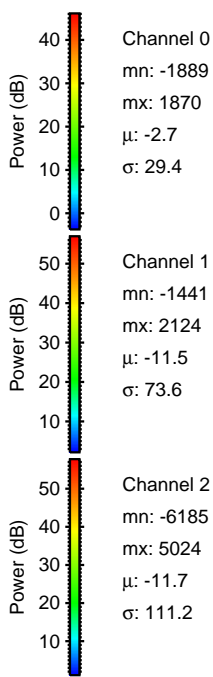
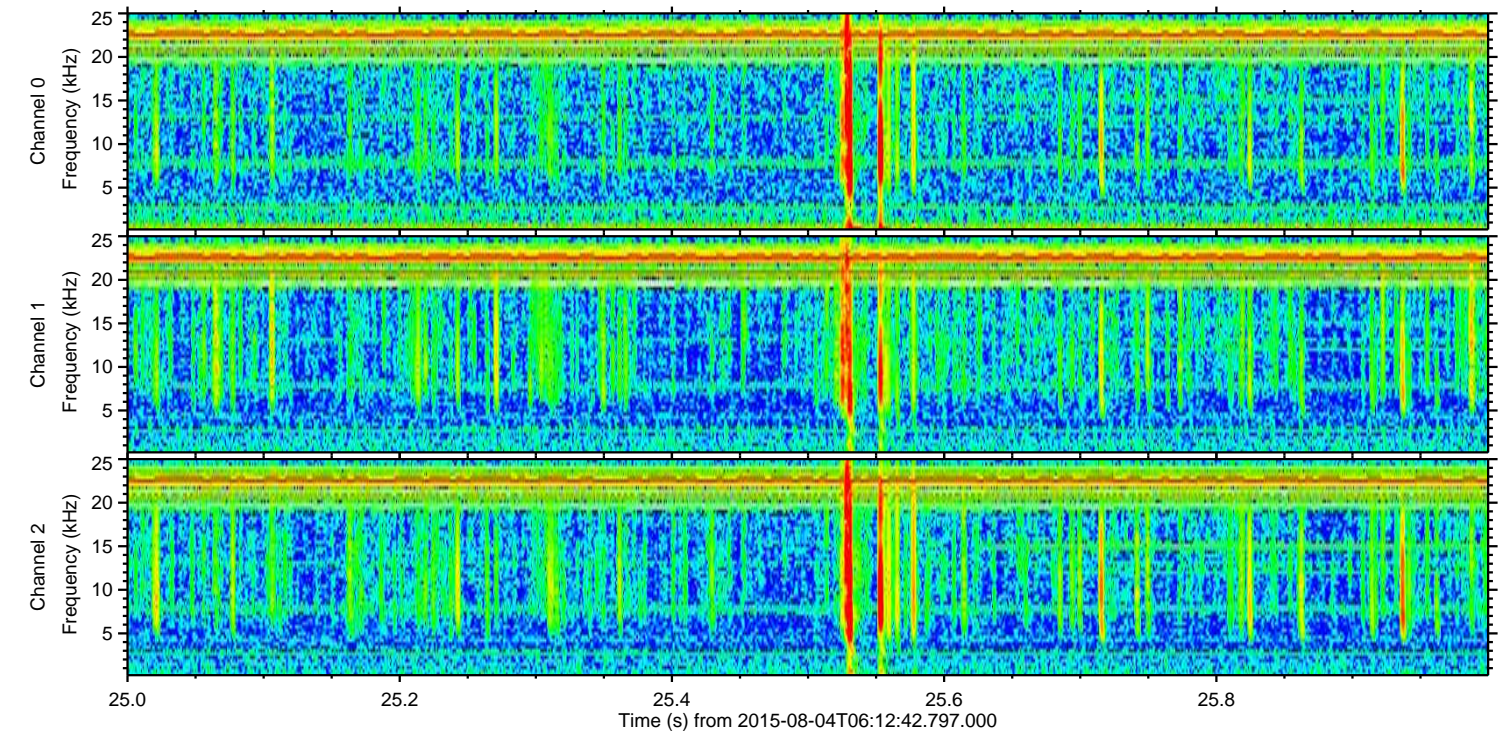
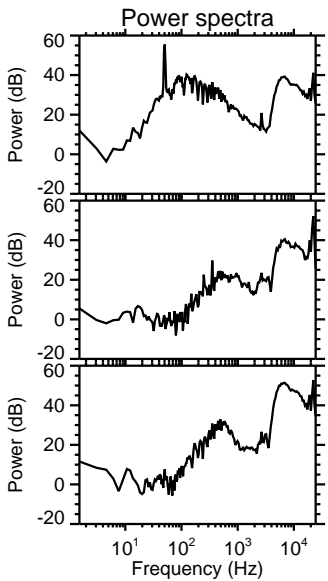
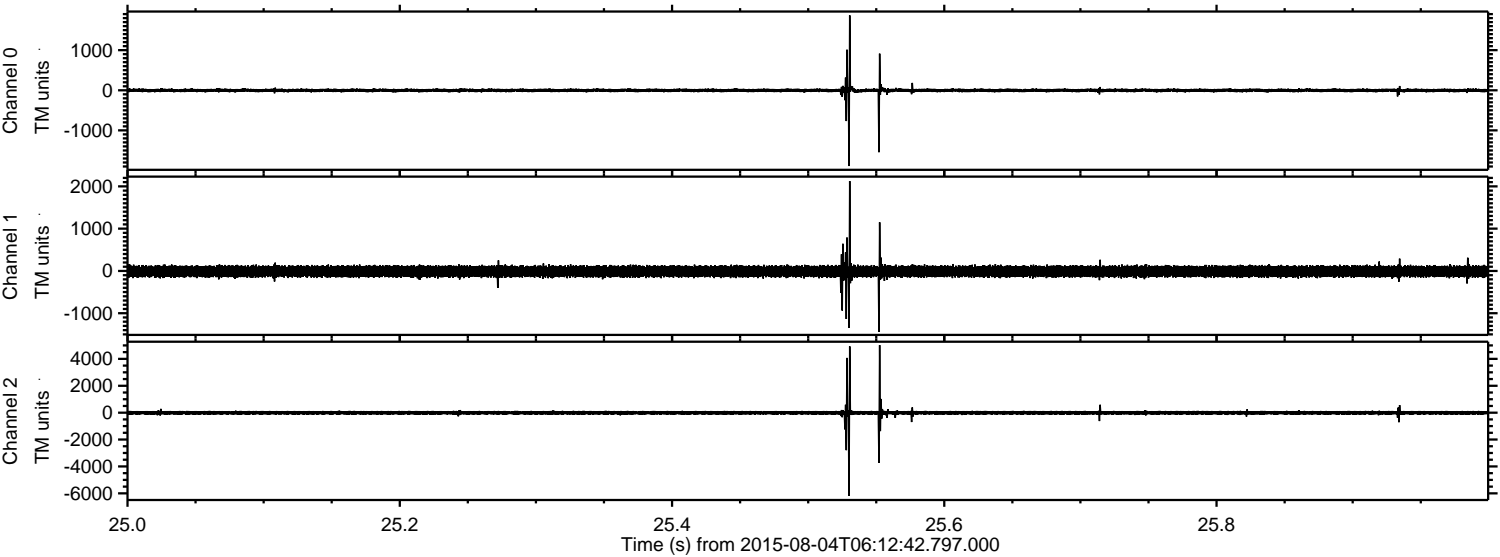
Processed Tue Aug 4 08:19:01 2015 by ELM ver.2012-10-06 from 001__elm20150804_061241__dat00.bin



Processed Tue Aug 4 08:19:02 2015 by ELM ver.2012-10-06 from 001__elm20150804_061241__dat00.bin

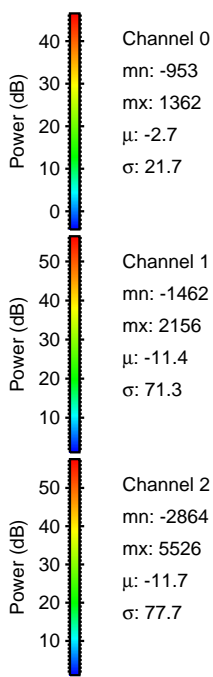
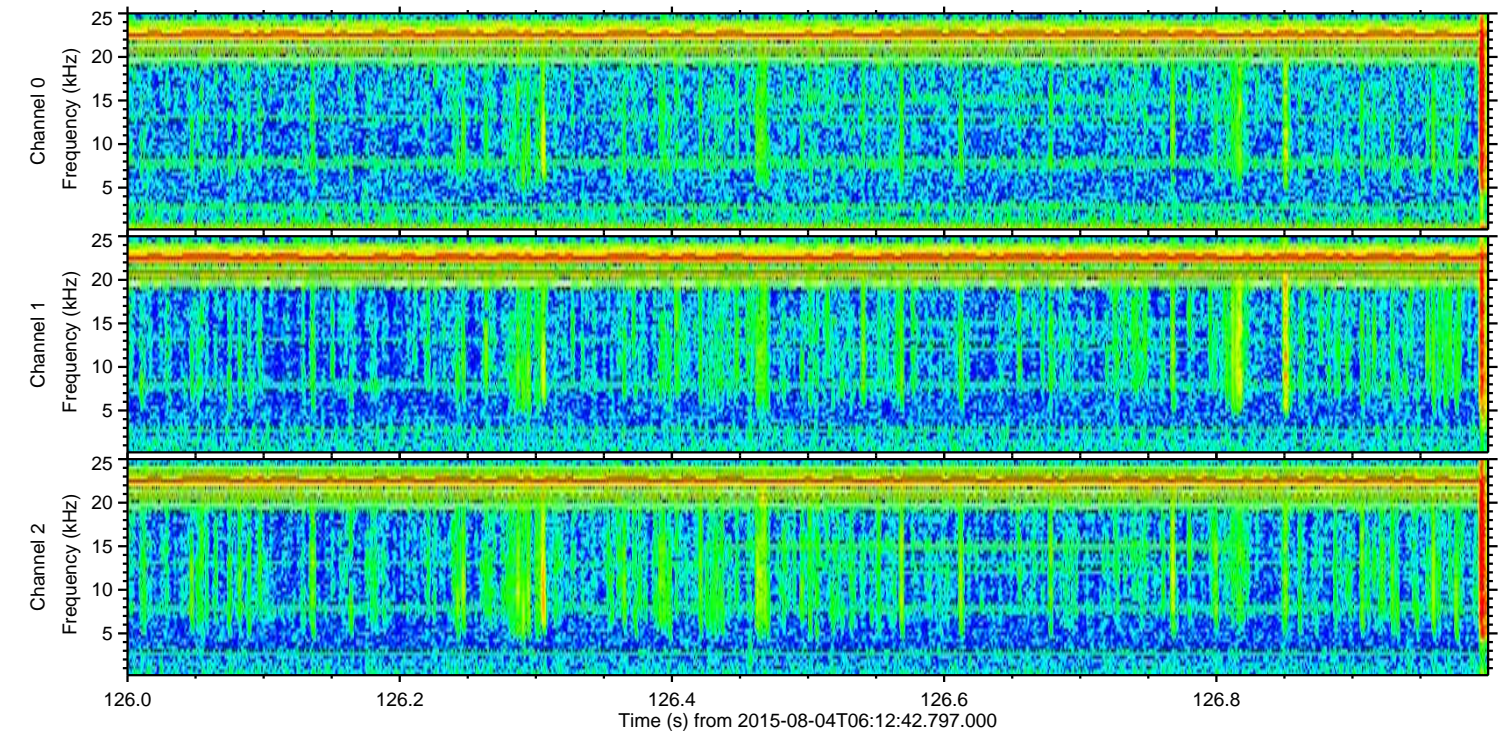
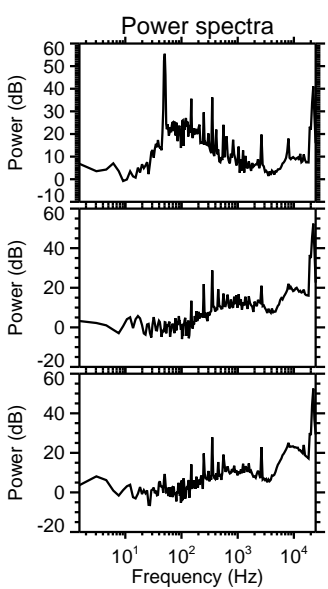
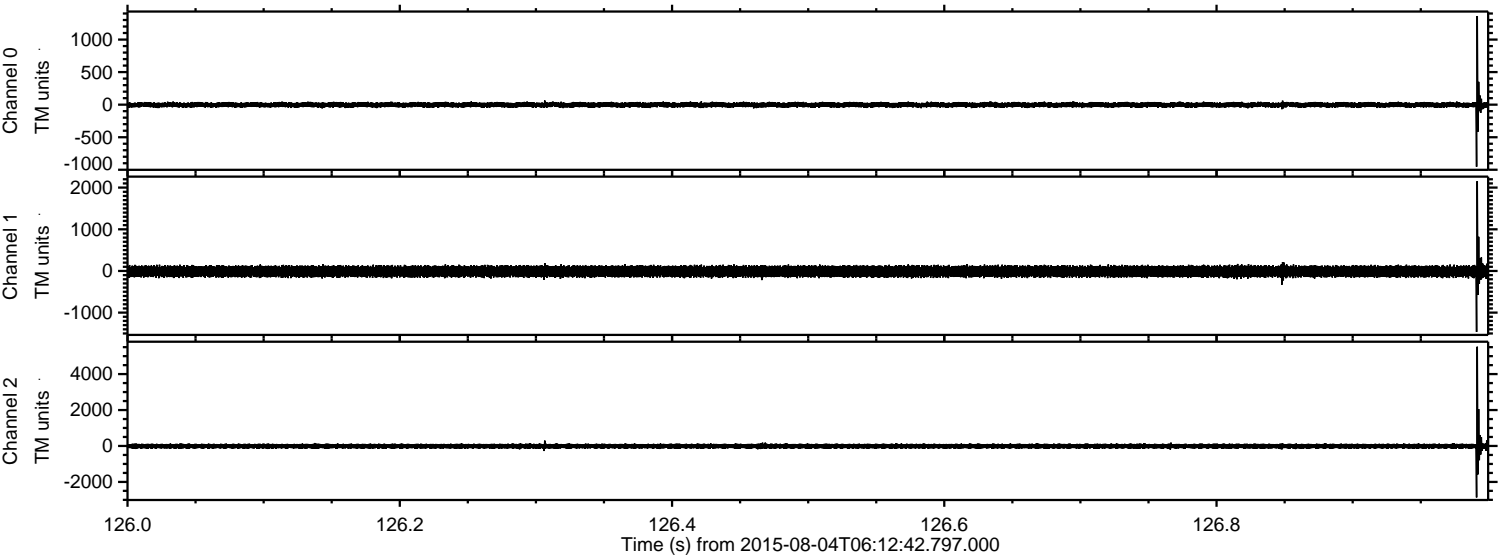


Processed Tue Aug 4 08:19:03 2015 by ELM ver.2012-10-06 from 001__elm20150804_061241__dat00.bin



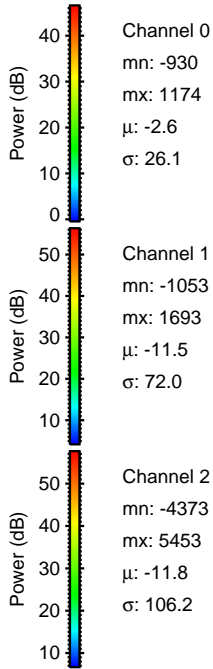
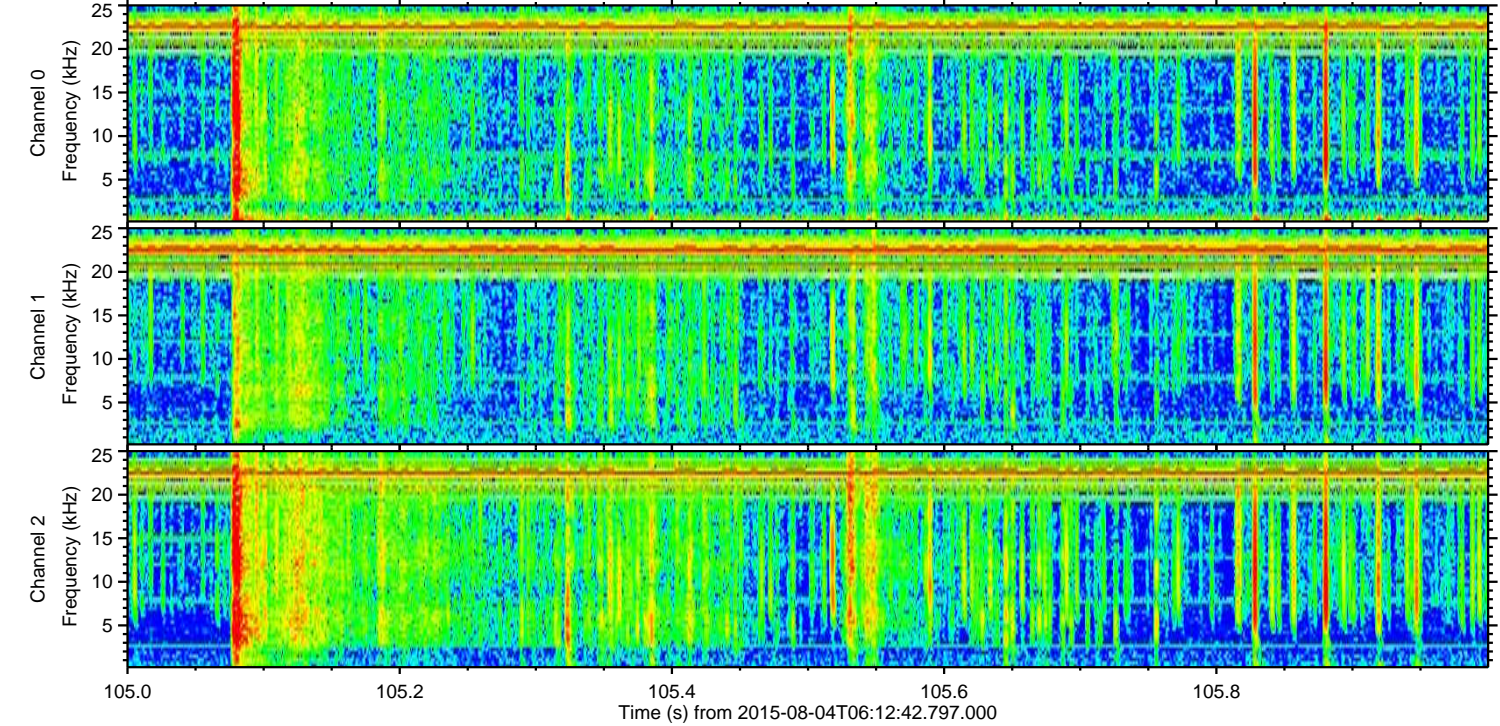
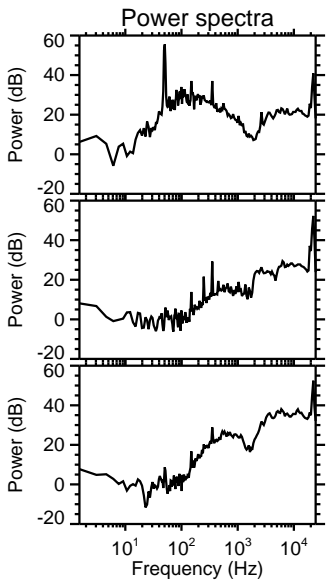
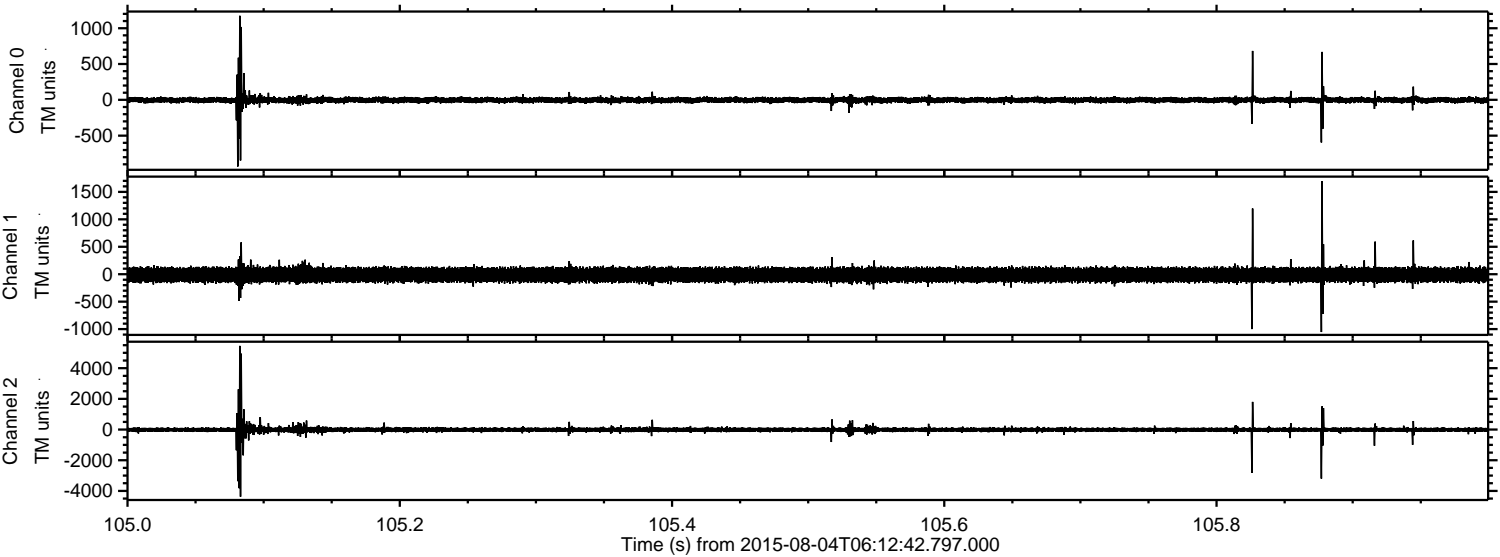
ELMAVAN 3D WAVEFORMS (Measured data sampled at 50 kHz) 51000 packets of 144 samples from 2015-08-04T06:12:42.797.000. Part 127/147

Processed Tue Aug 4 08:19:04 2015 by ELM ver.2012-10-06 from 001__elm20150804_061241__dat00.bin



ELMAVAN 3D WAVEFORMS (Measured data sampled at 50 kHz) 51000 packets of 144 samples from 2015-08-04T06:12:42.797.000. Part 106/147

Processed Tue Aug 4 08:19:05 2015 by ELM ver.2012-10-06 from 001__elm20150804_061241__dat00.bin

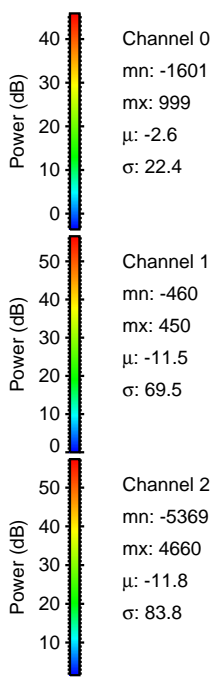
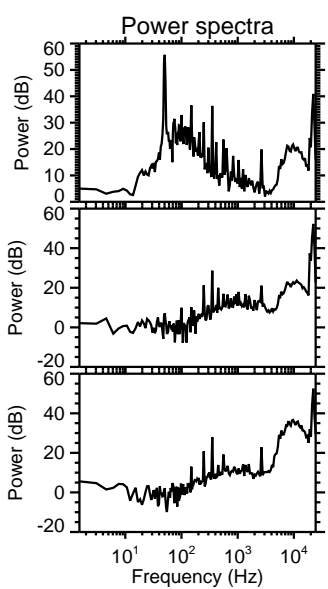
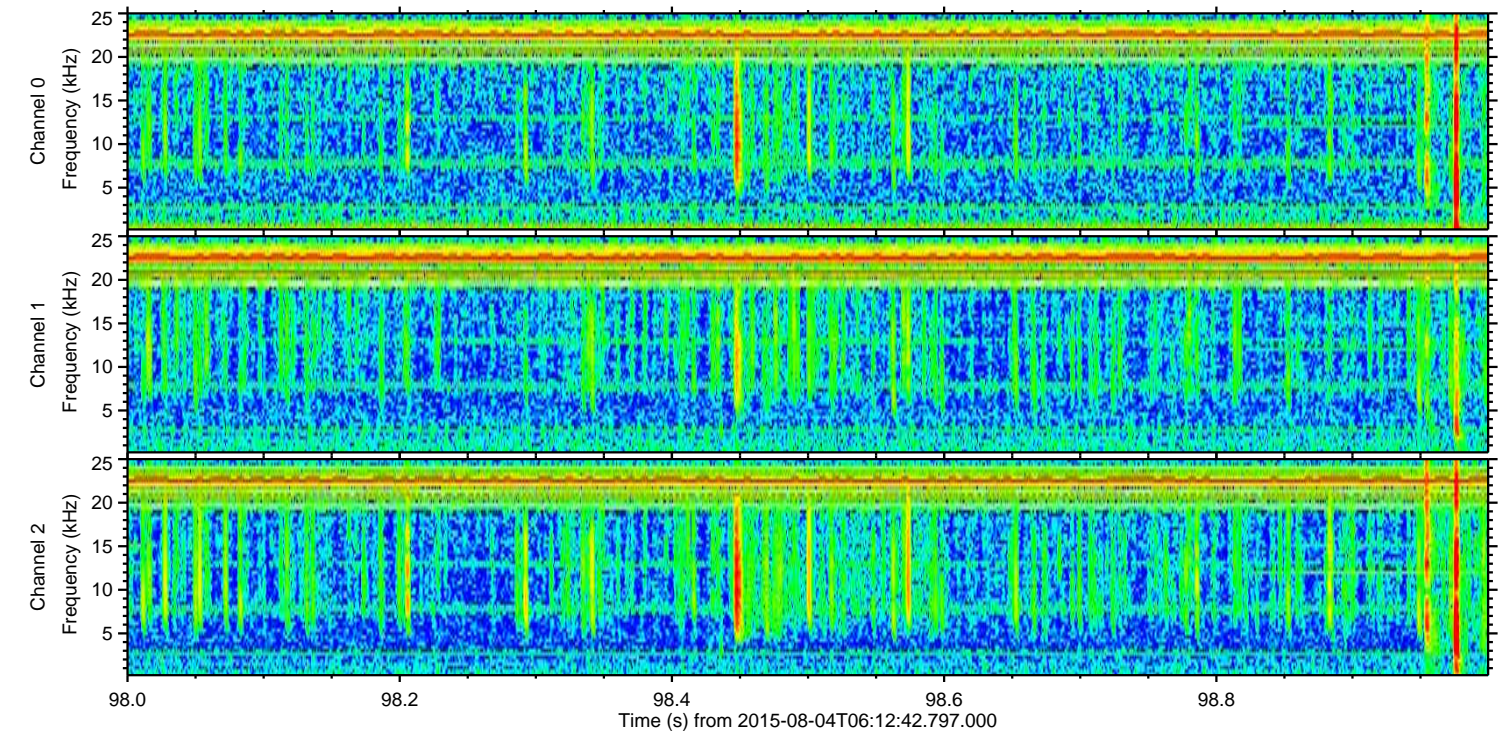
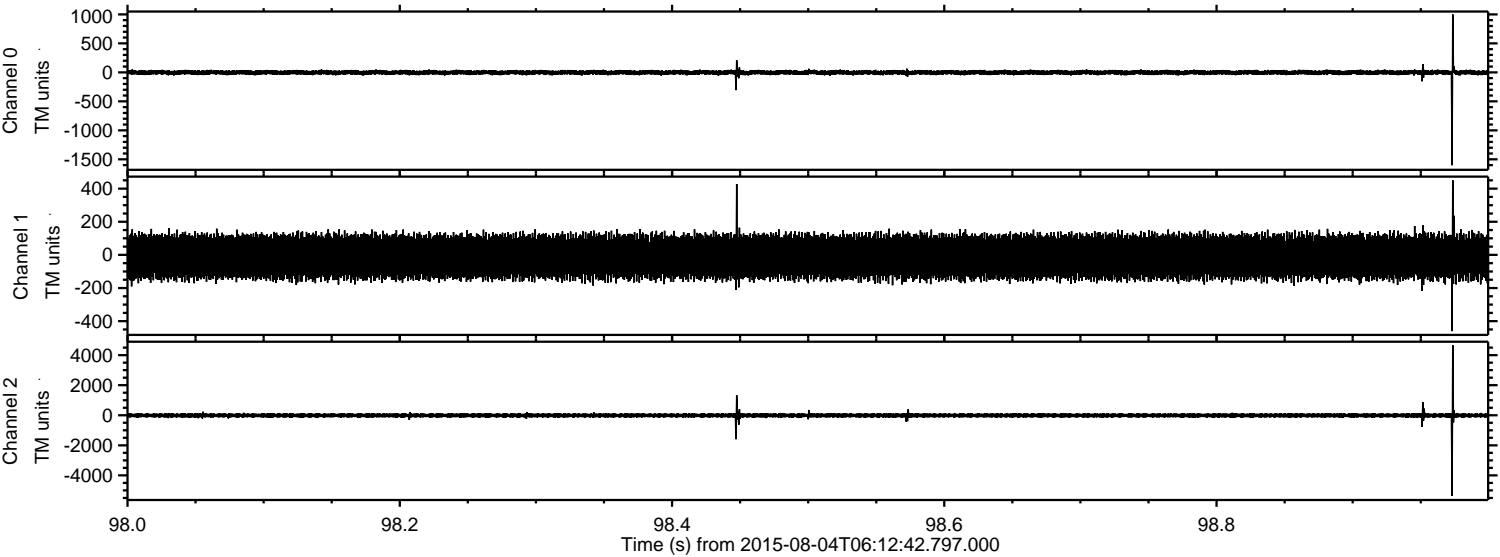


Channel 0
mn: -930
mx: 1174
 μ : -2.6
 σ : 26.1

Channel 1
mn: -1053
mx: 1693
 μ : -11.5
 σ : 72.0

Channel 2
mn: -4373
mx: 5453
 μ : -11.8
 σ : 106.2

Processed Tue Aug 4 08:19:06 2015 by ELM ver.2012-10-06 from 001__elm20150804_061241__dat00.bin

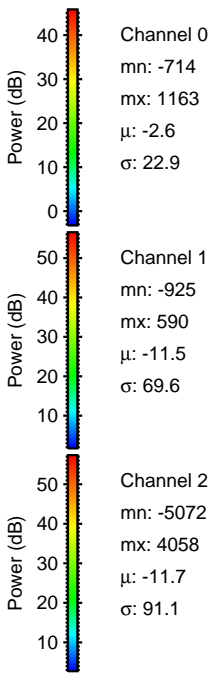
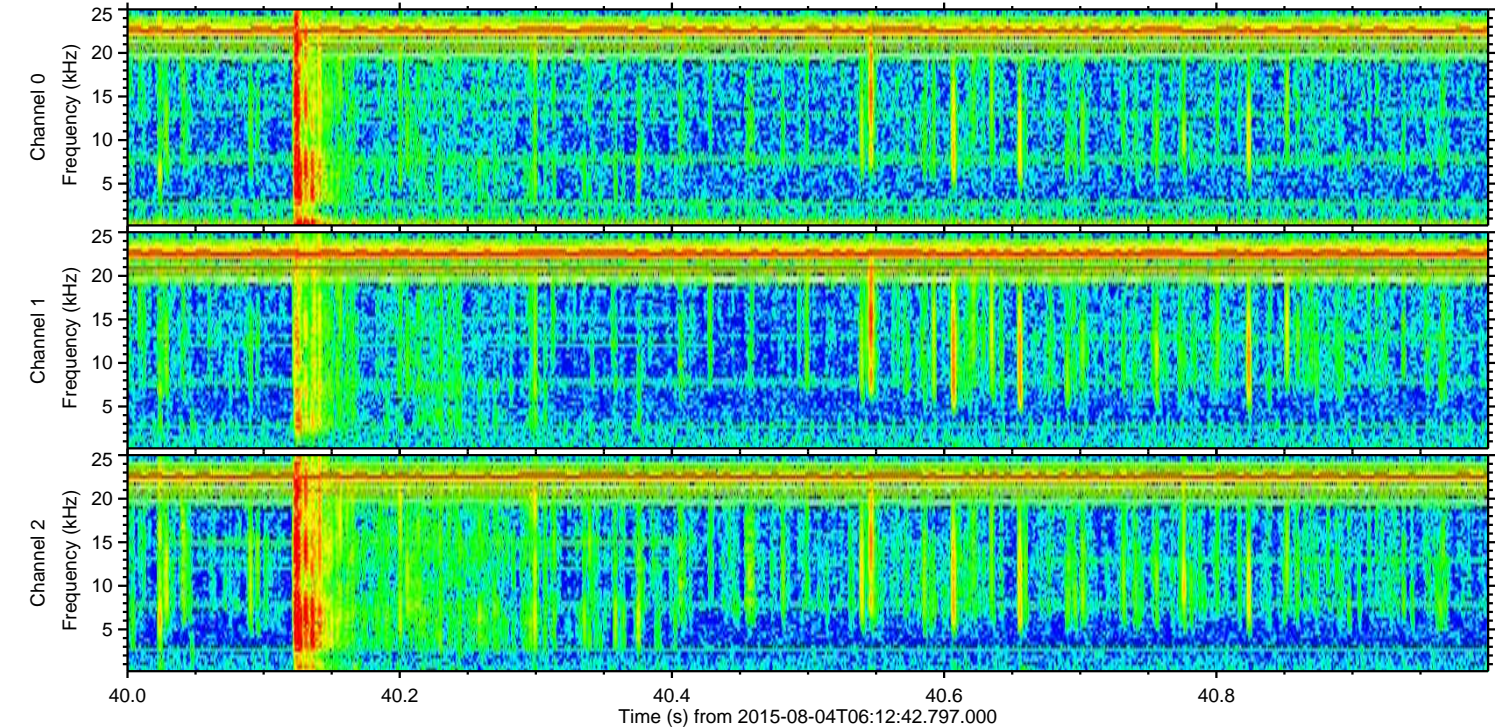
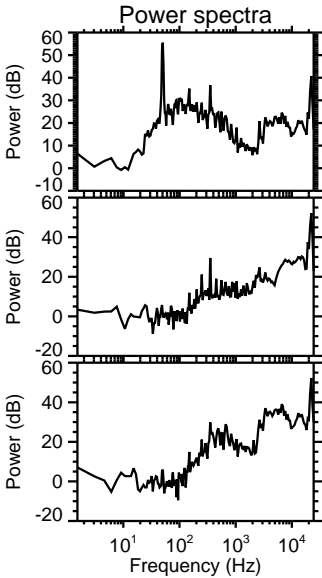
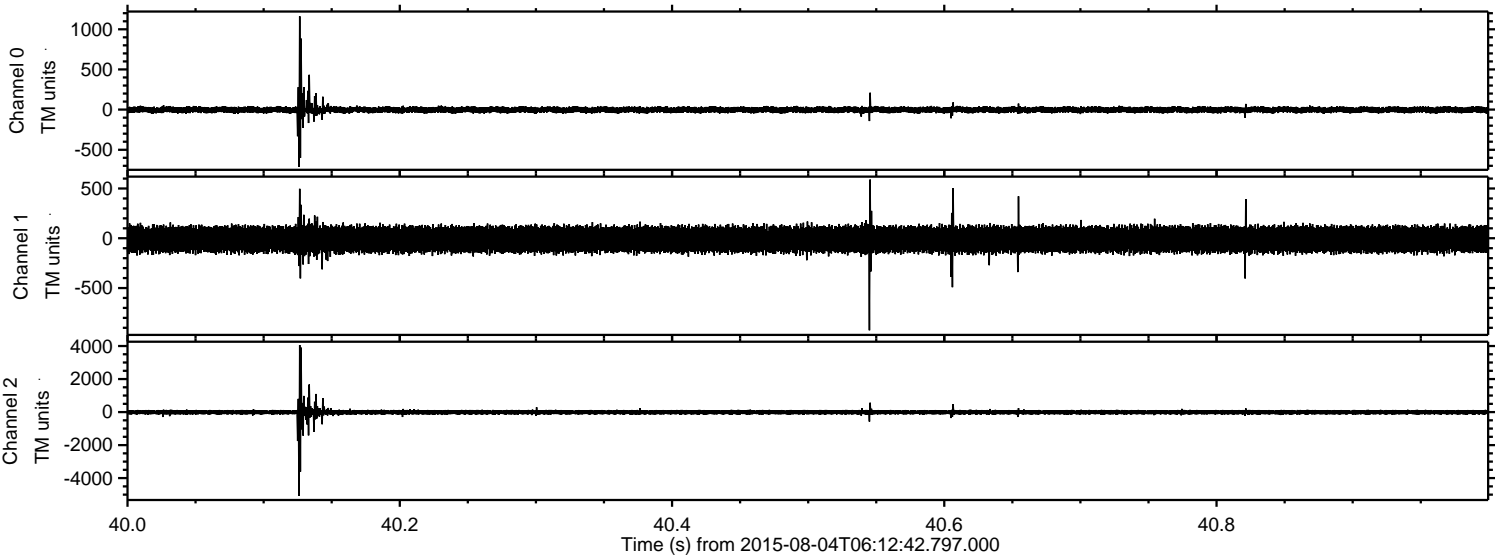


Channel 0
mn: -1601
mx: 999
 μ : -2.6
 σ : 22.4

Channel 1
mn: -460
mx: 450
 μ : -11.5
 σ : 69.5

Channel 2
mn: -5369
mx: 4660
 μ : -11.8
 σ : 83.8

Processed Tue Aug 4 08:19:07 2015 by ELM ver.2012-10-06 from 001__elm20150804_061241__dat00.bin



Processed Tue Aug 4 08:19:07 2015 by ELM ver.2012-10-06 from 001__elm20150804_061241__dat00.bin

