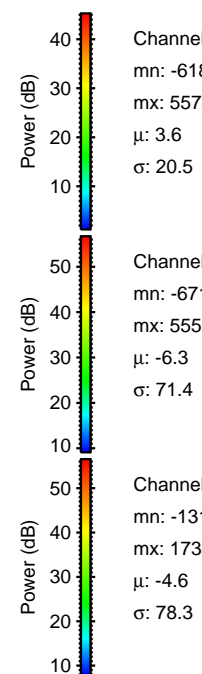
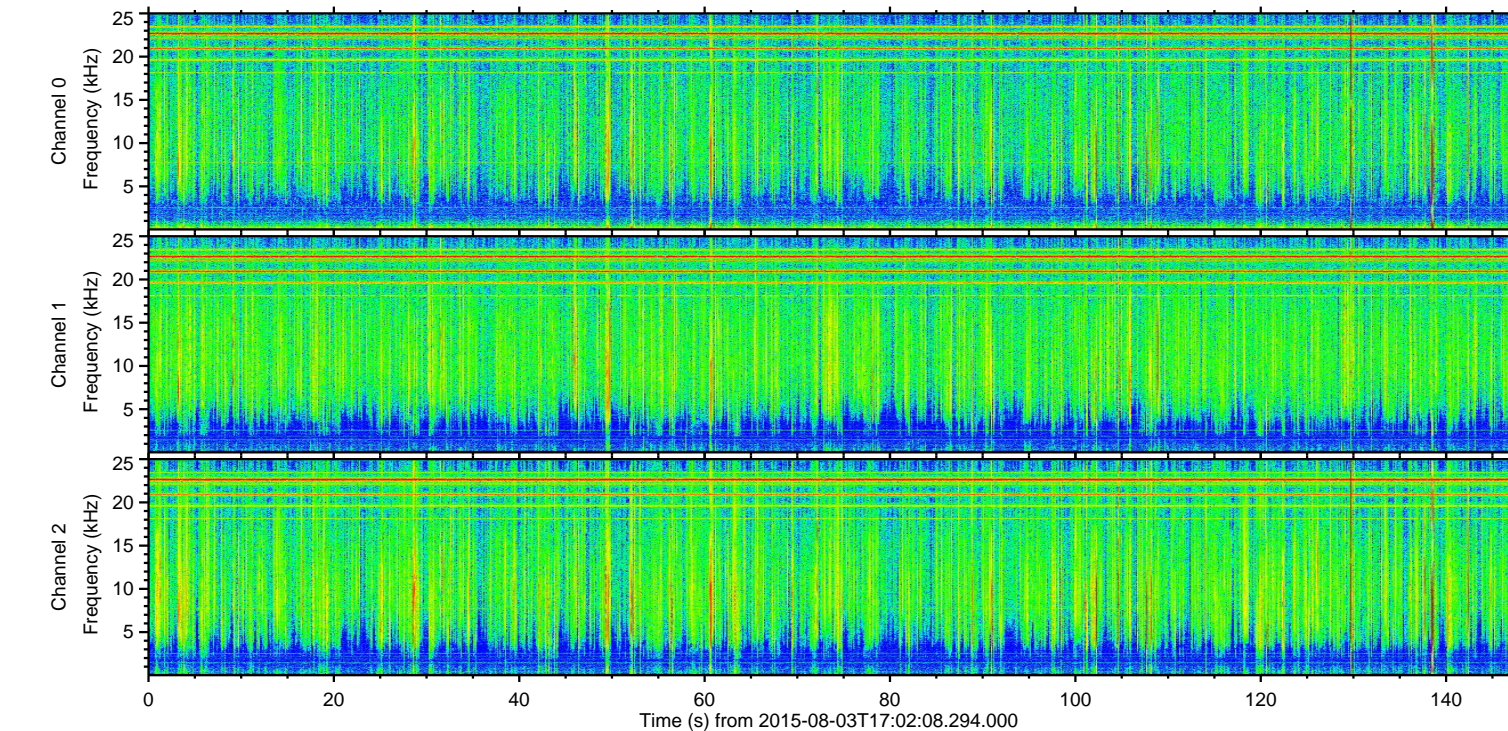
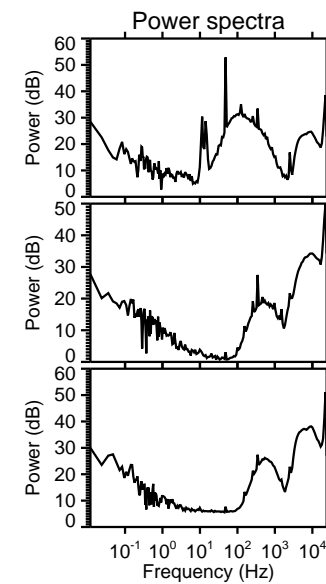
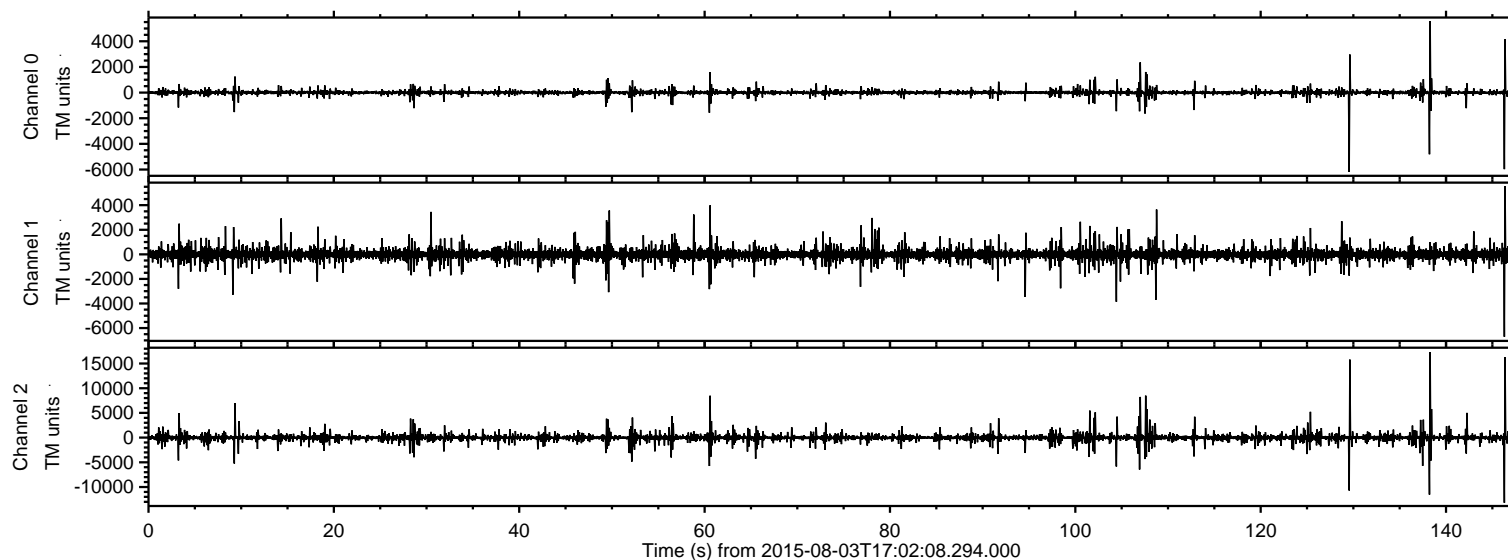


ELMAVAN 3D WAVEFORMS (Measured data sampled at 50 kHz) 51000 packets of 144 samples from 2015-08-03T17:02:08.294.000.

Processed Mon Aug 3 19:08:20 2015 by ELM ver.2012-10-06 from 001__elm20150803_170207__dat00.bin



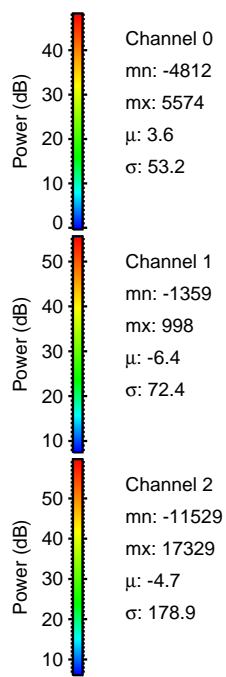
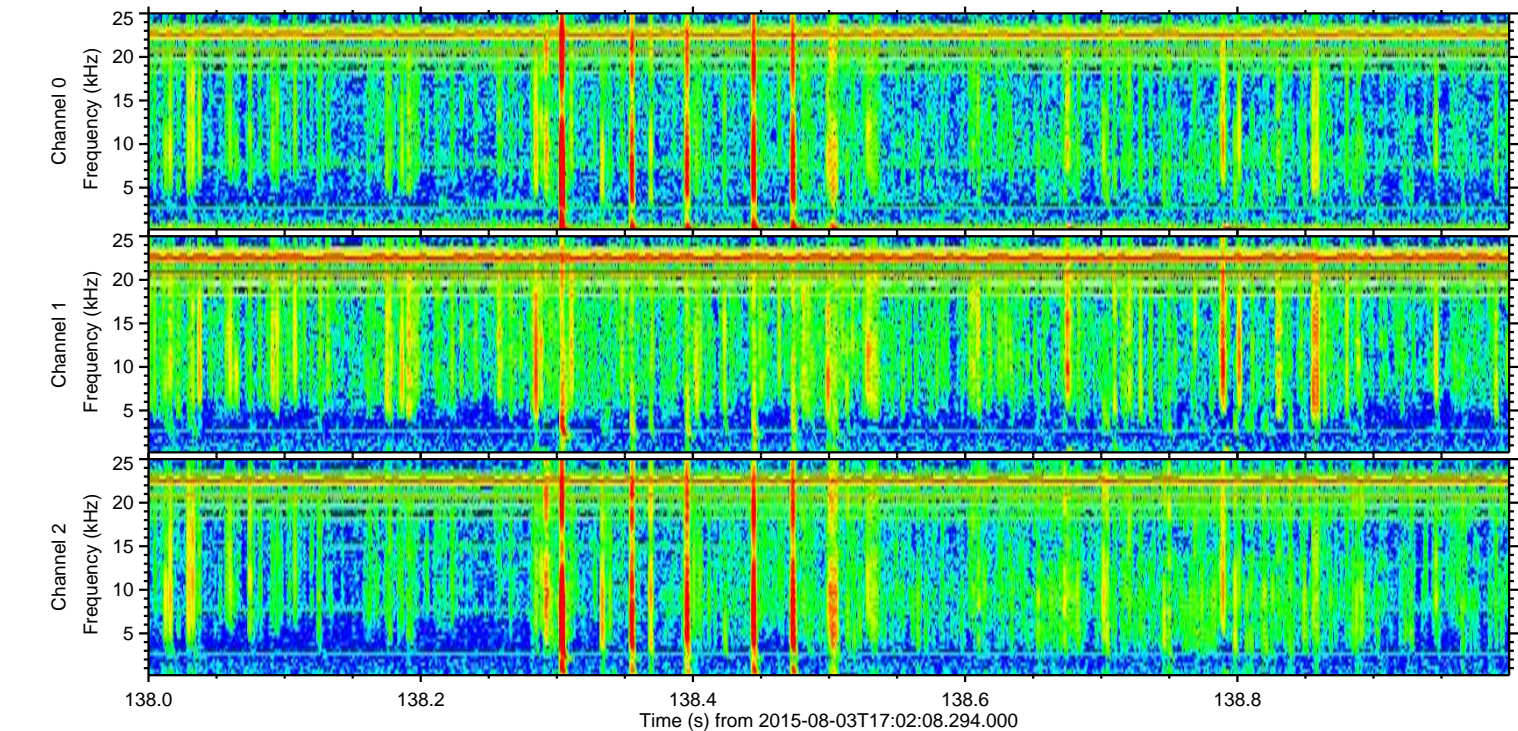
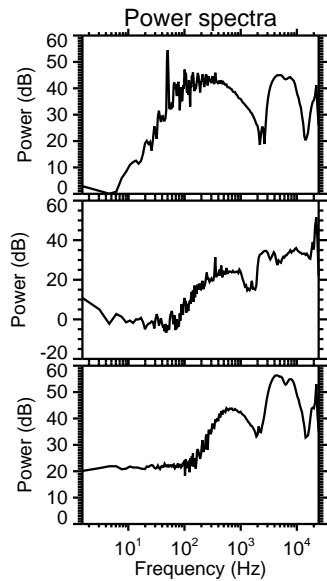
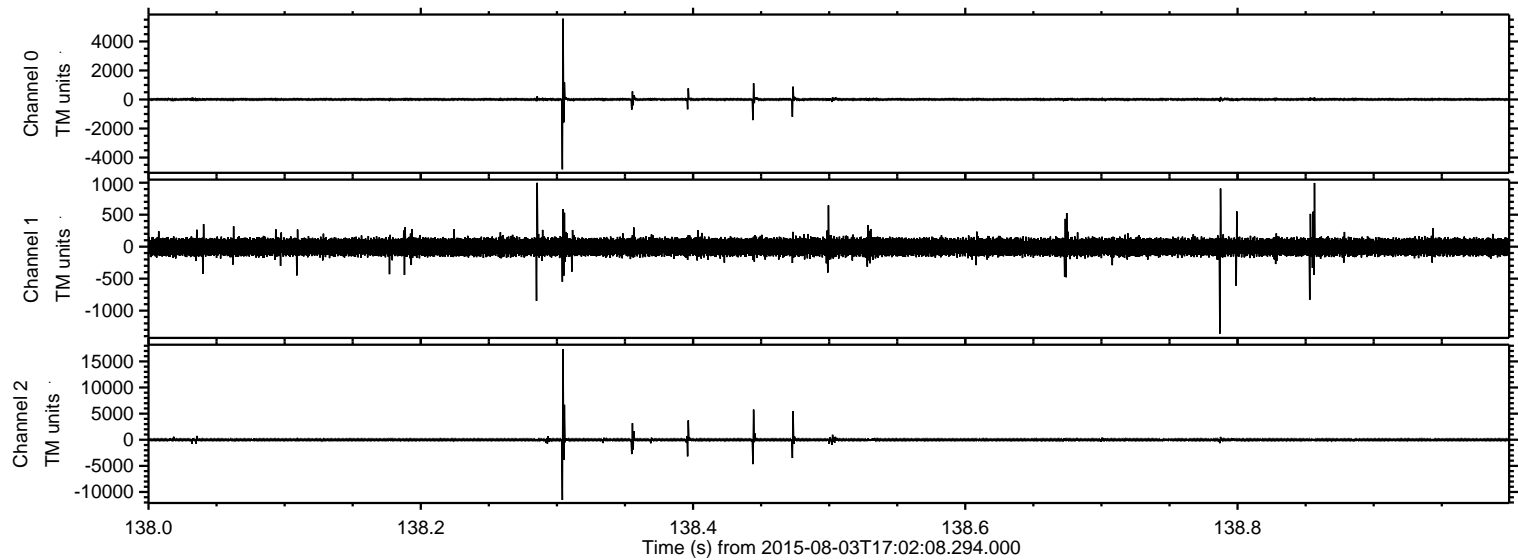
Channel 0
mn: -6182
mx: 5574
 μ : 3.6
 σ : 20.5

Channel 1
mn: -6710
mx: 5558
 μ : -6.3
 σ : 71.4

Channel 2
mn: -13187
mx: 17329
 μ : -4.6
 σ : 78.3

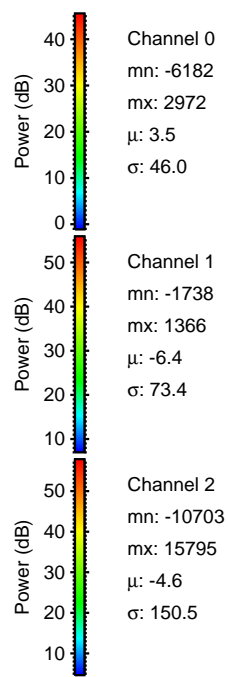
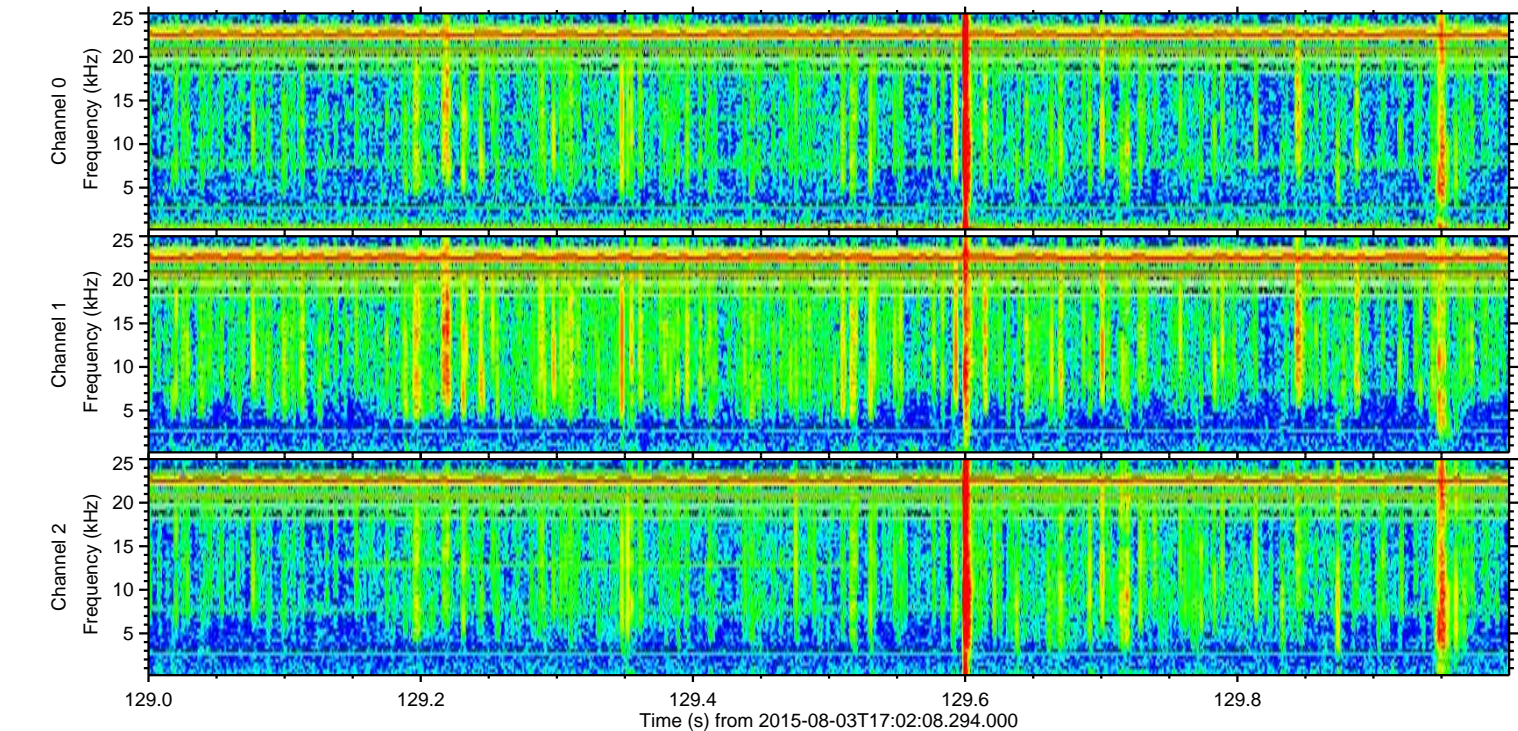
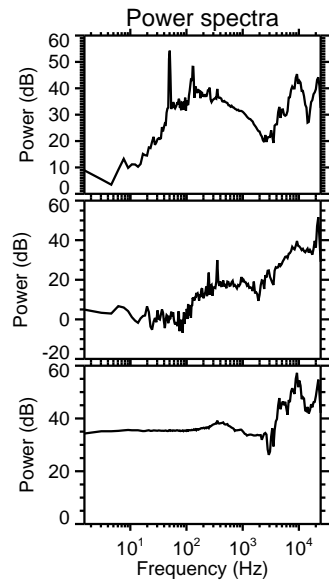
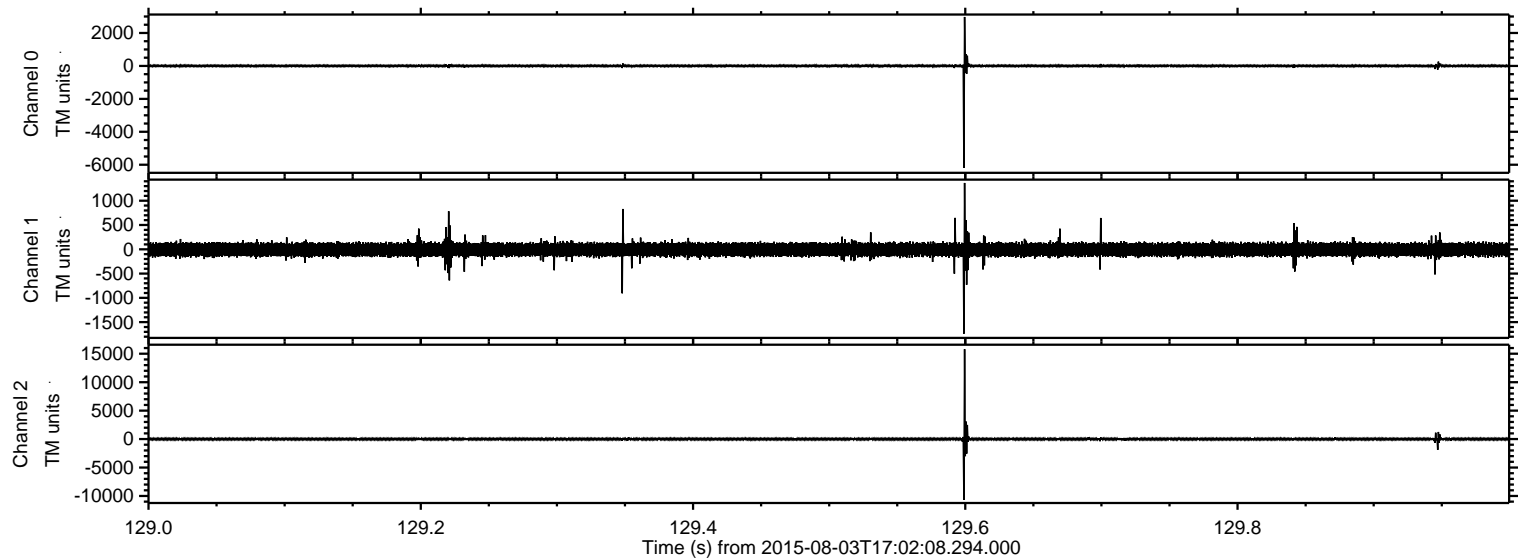
ELMAVAN 3D WAVEFORMS (Measured data sampled at 50 kHz) 51000 packets of 144 samples from 2015-08-03T17:02:08.294.000. Part 139/147

Processed Mon Aug 3 19:08:32 2015 by ELM ver.2012-10-06 from 001__elm20150803_170207__dat00.bin



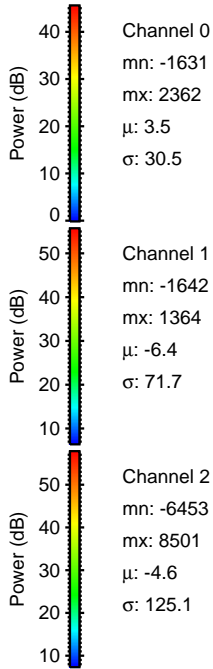
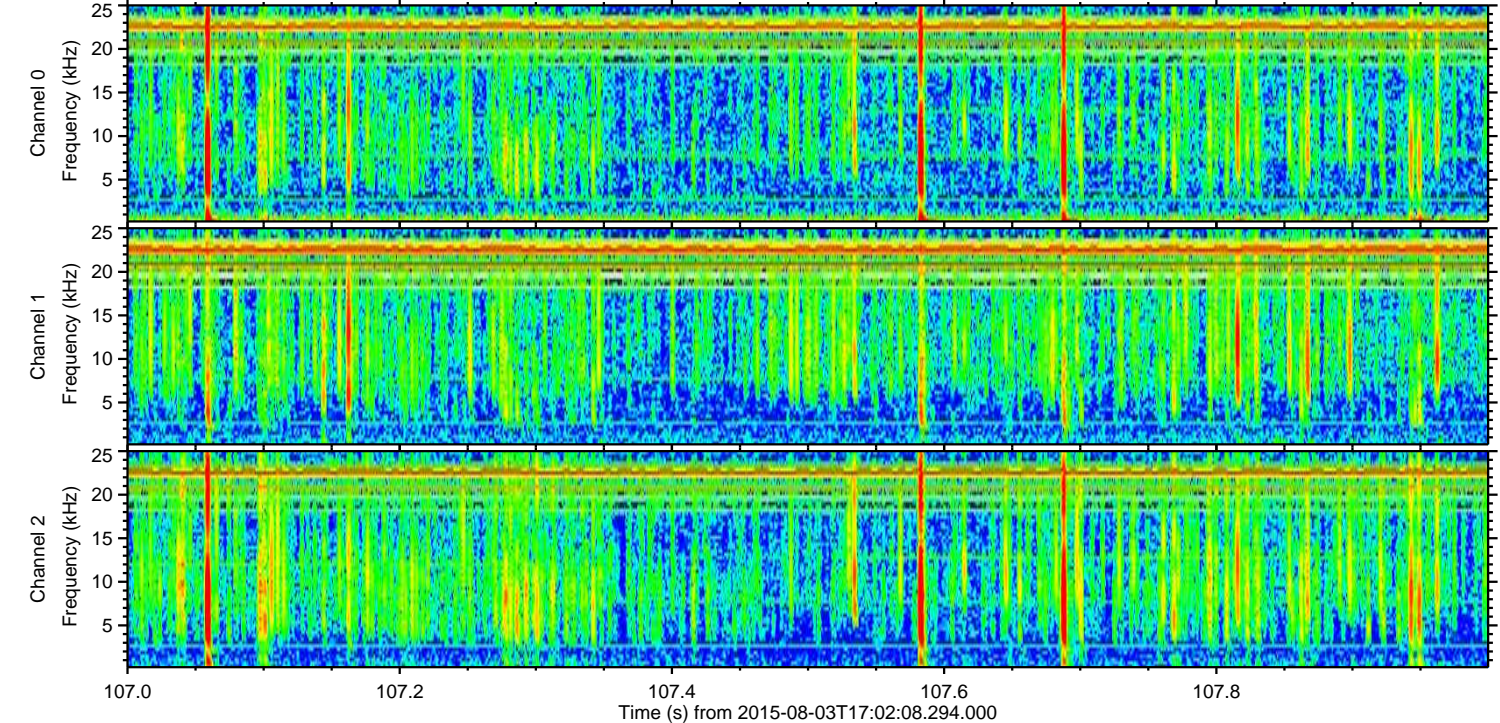
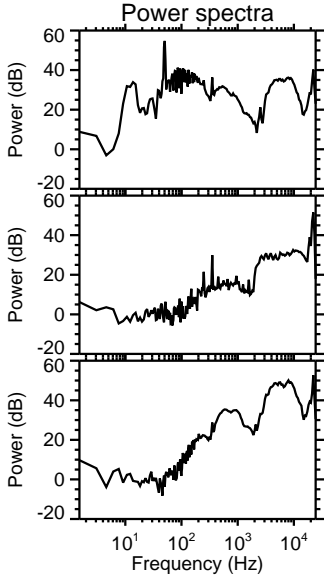
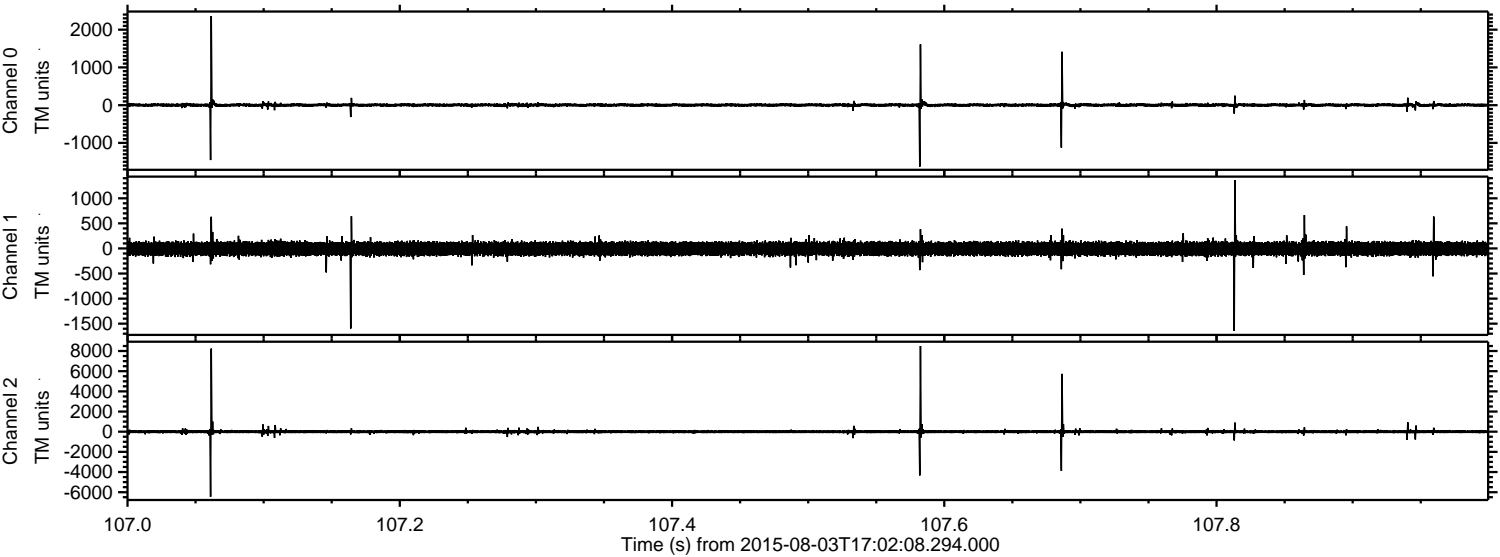
ELMAVAN 3D WAVEFORMS (Measured data sampled at 50 kHz) 51000 packets of 144 samples from 2015-08-03T17:02:08.294.000. Part 130/147

Processed Mon Aug 3 19:08:32 2015 by ELM ver.2012-10-06 from 001__elm20150803_170207__dat00.bin



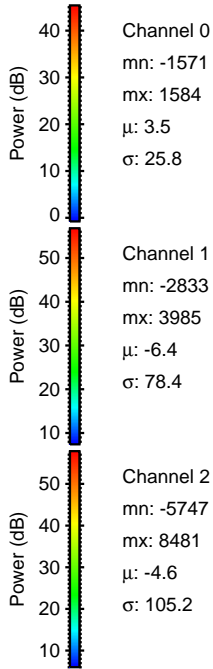
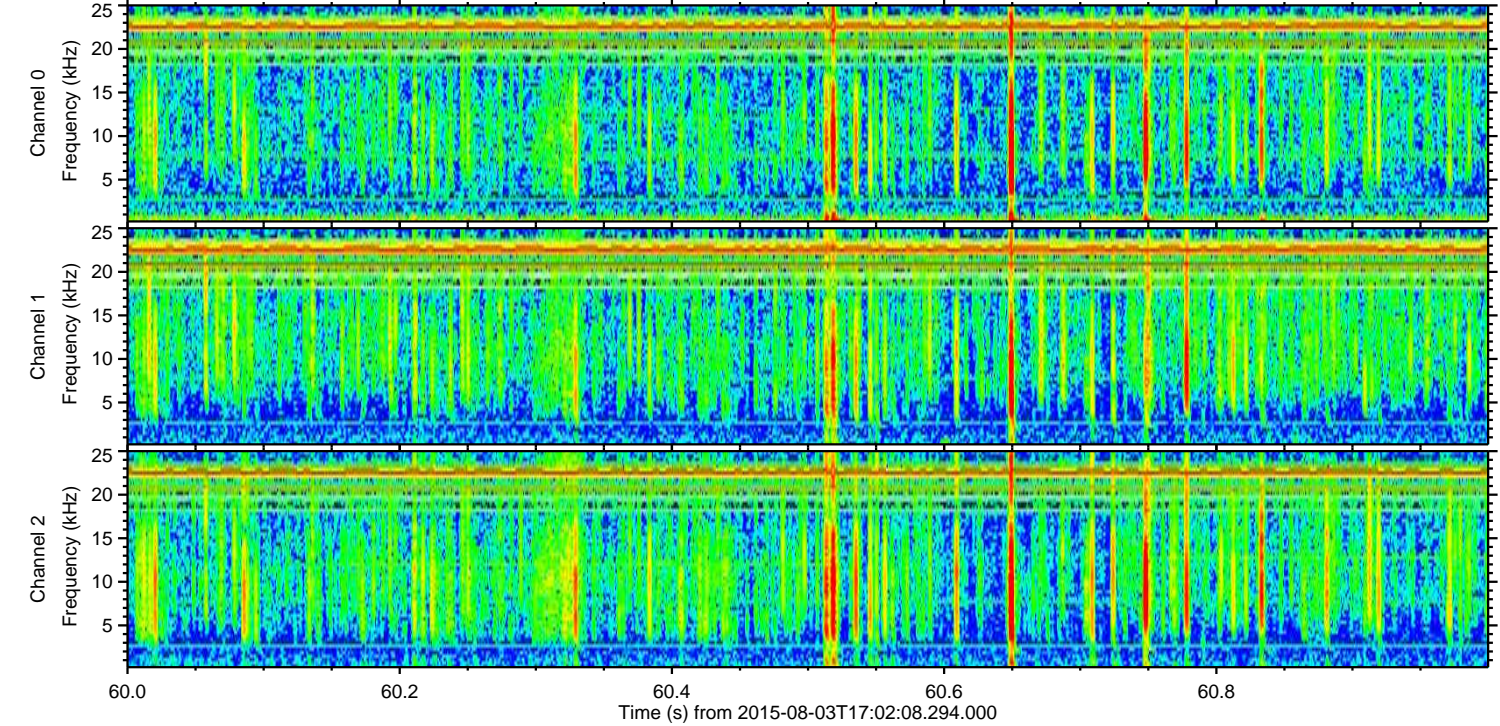
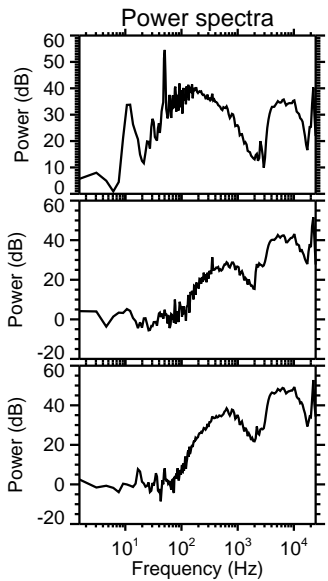
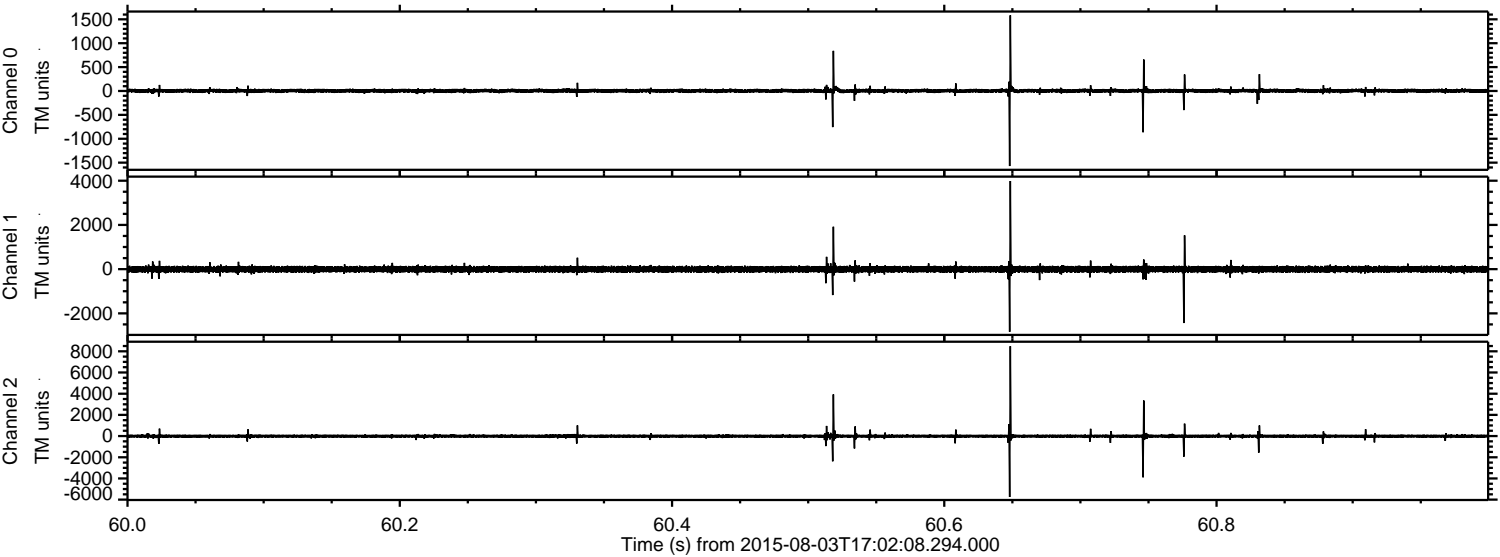
ELMAVAN 3D WAVEFORMS (Measured data sampled at 50 kHz) 51000 packets of 144 samples from 2015-08-03T17:02:08.294.000. Part 108/147

Processed Mon Aug 3 19:08:33 2015 by ELM ver.2012-10-06 from 001__elm20150803_170207__dat00.bin



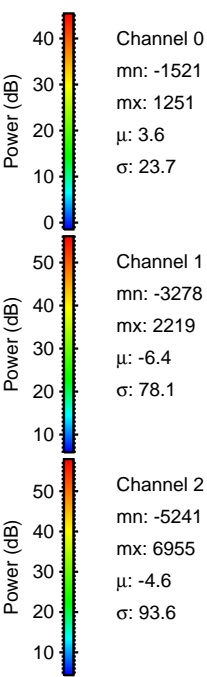
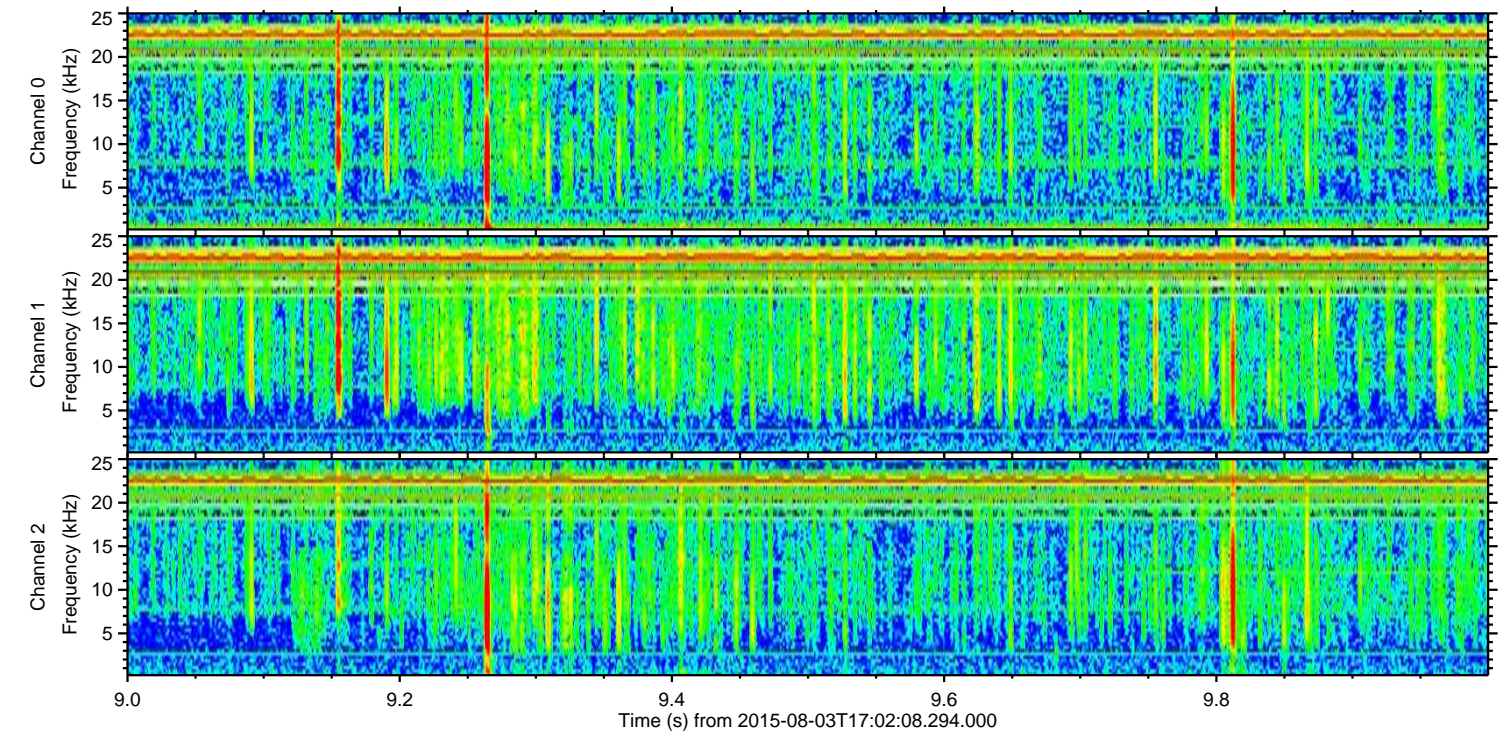
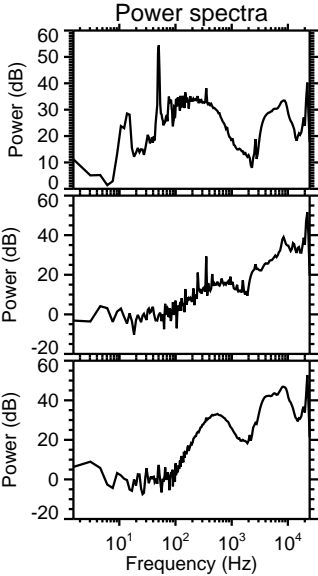
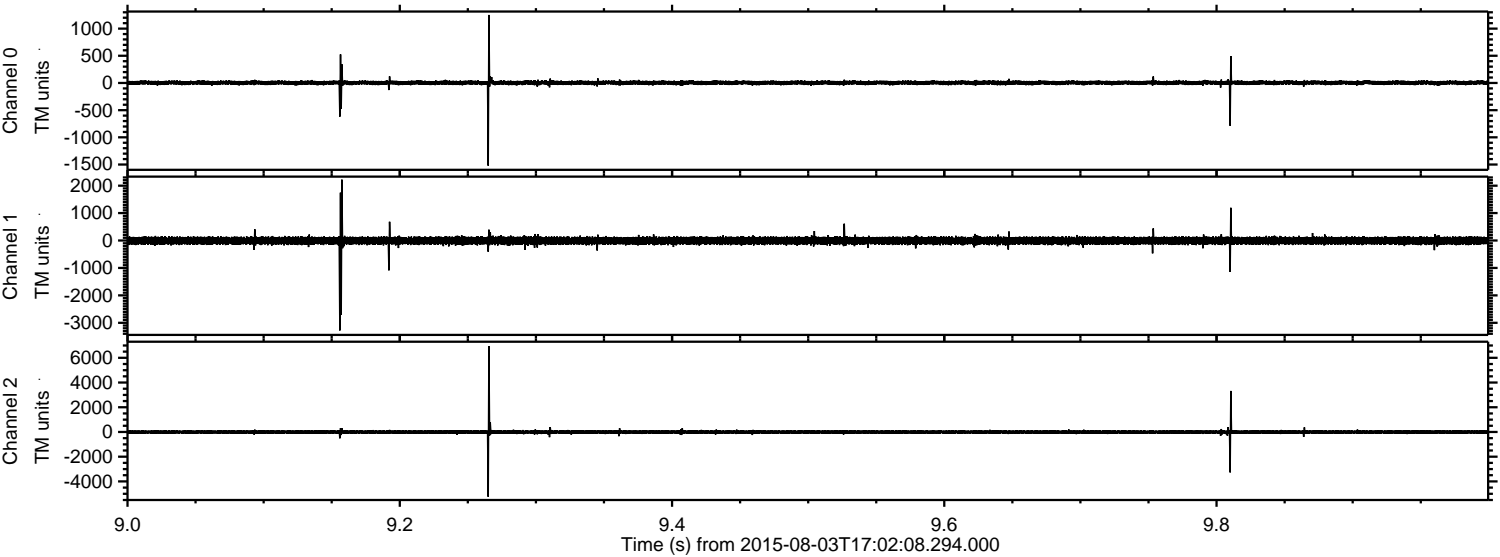
ELMAVAN 3D WAVEFORMS (Measured data sampled at 50 kHz) 51000 packets of 144 samples from 2015-08-03T17:02:08.294.000. Part 61/147

Processed Mon Aug 3 19:08:34 2015 by ELM ver.2012-10-06 from 001__elm20150803_170207__dat00.bin



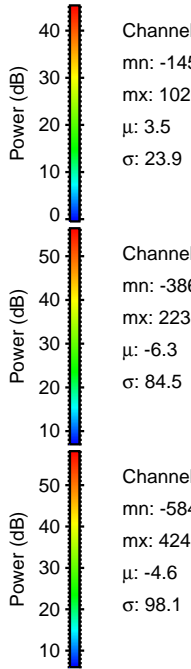
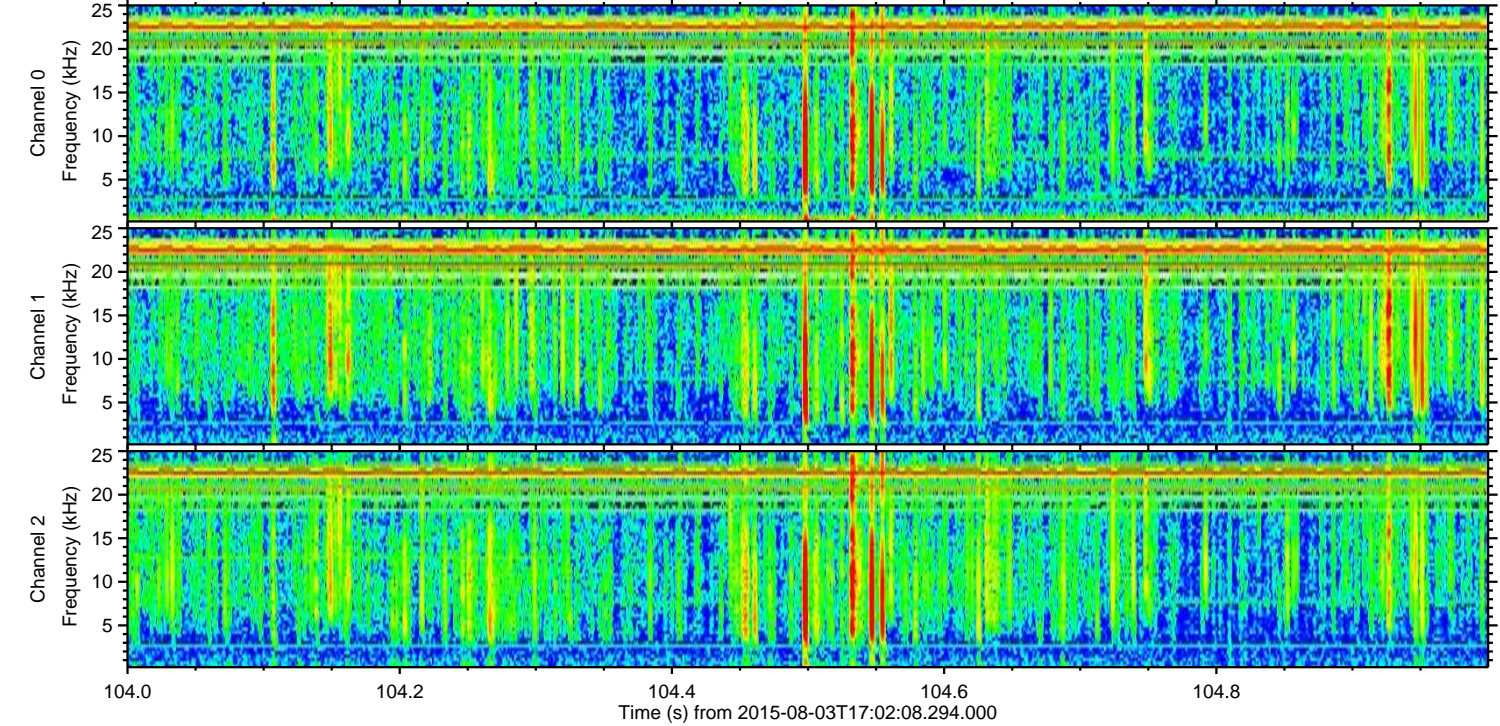
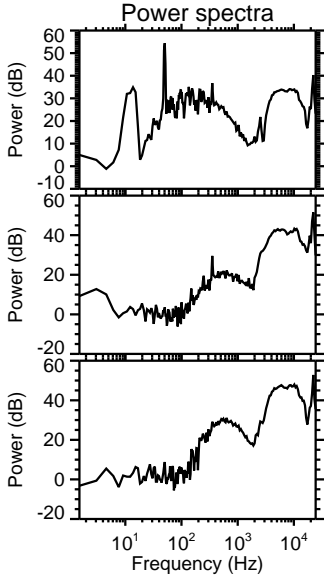
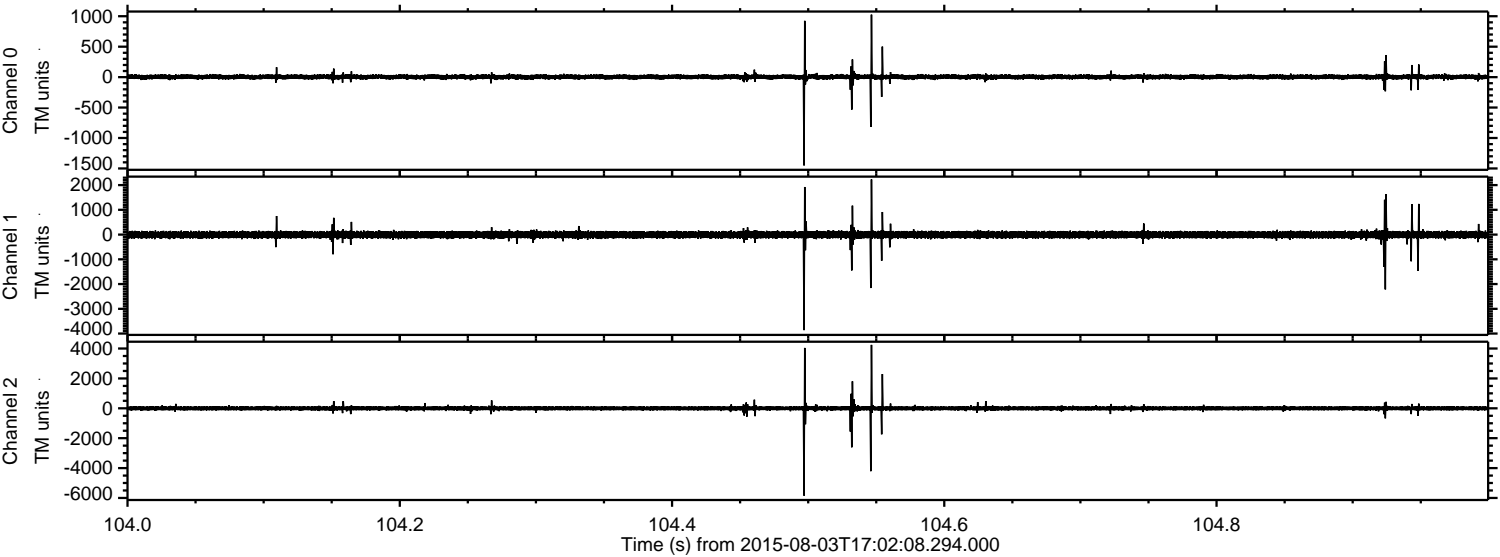
ELMAVAN 3D WAVEFORMS (Measured data sampled at 50 kHz) 51000 packets of 144 samples from 2015-08-03T17:02:08.294.000. Part 10/147

Processed Mon Aug 3 19:08:35 2015 by ELM ver.2012-10-06 from 001__elm20150803_170207__dat00.bin



ELMAVAN 3D WAVEFORMS (Measured data sampled at 50 kHz) 51000 packets of 144 samples from 2015-08-03T17:02:08.294.000. Part 105/147

Processed Mon Aug 3 19:08:36 2015 by ELM ver.2012-10-06 from 001__elm20150803_170207__dat00.bin



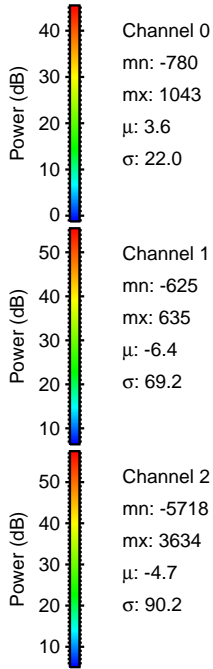
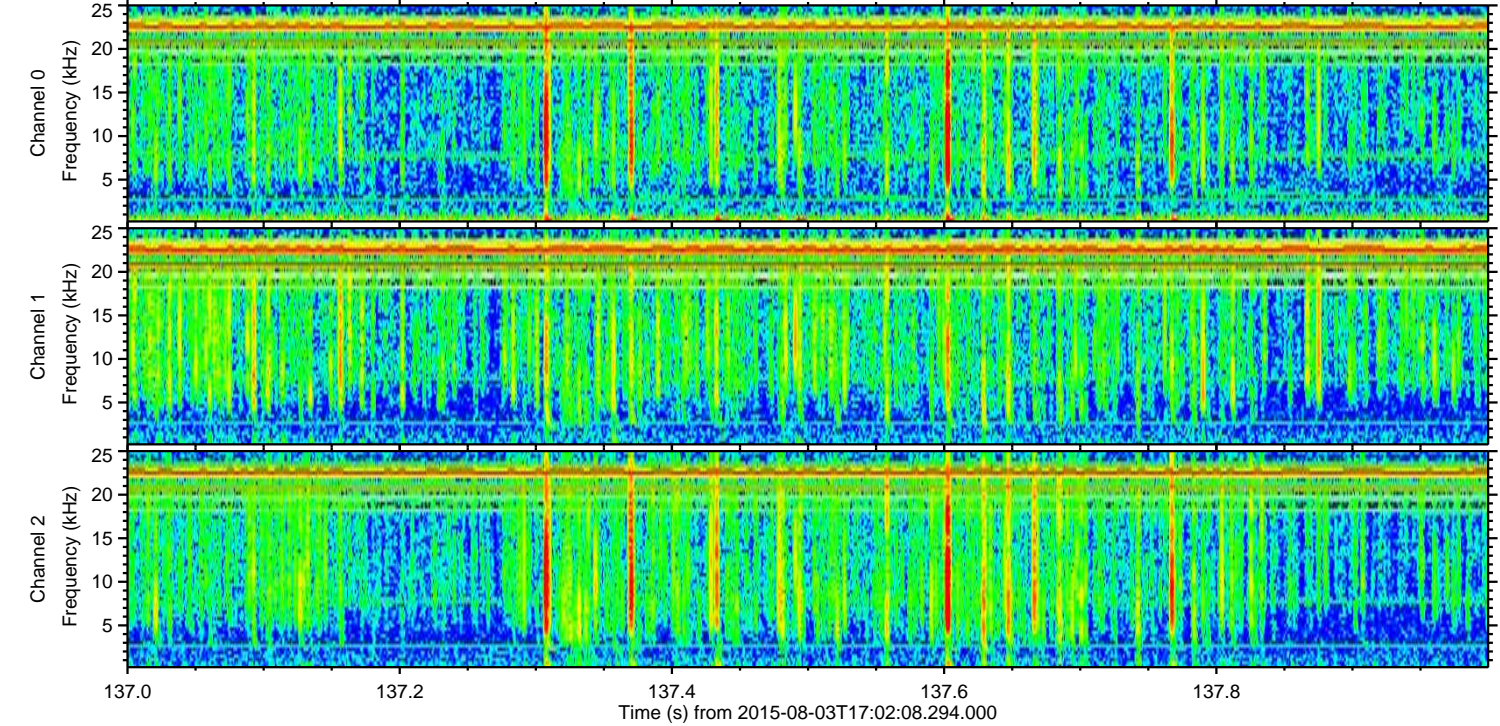
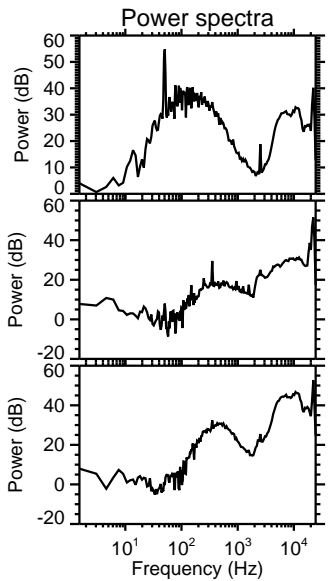
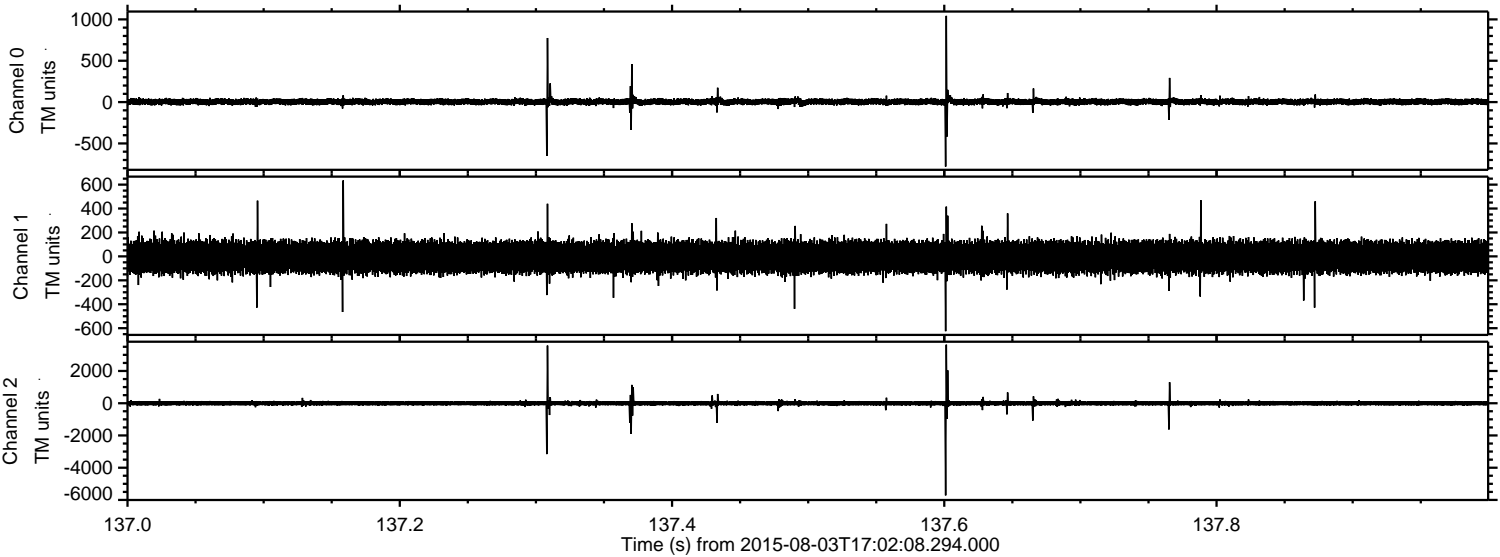
Channel 0
mn: -1450
mx: 1026
 μ : 3.5
 σ : 23.9

Channel 1
mn: -3861
mx: 2230
 μ : -6.3
 σ : 84.5

Channel 2
mn: -5844
mx: 4245
 μ : -4.6
 σ : 98.1

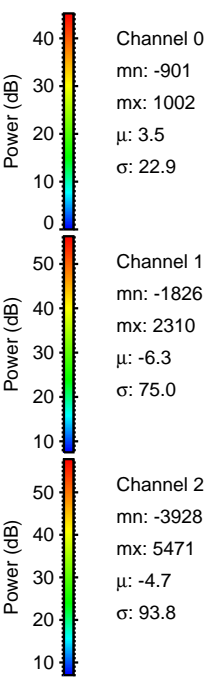
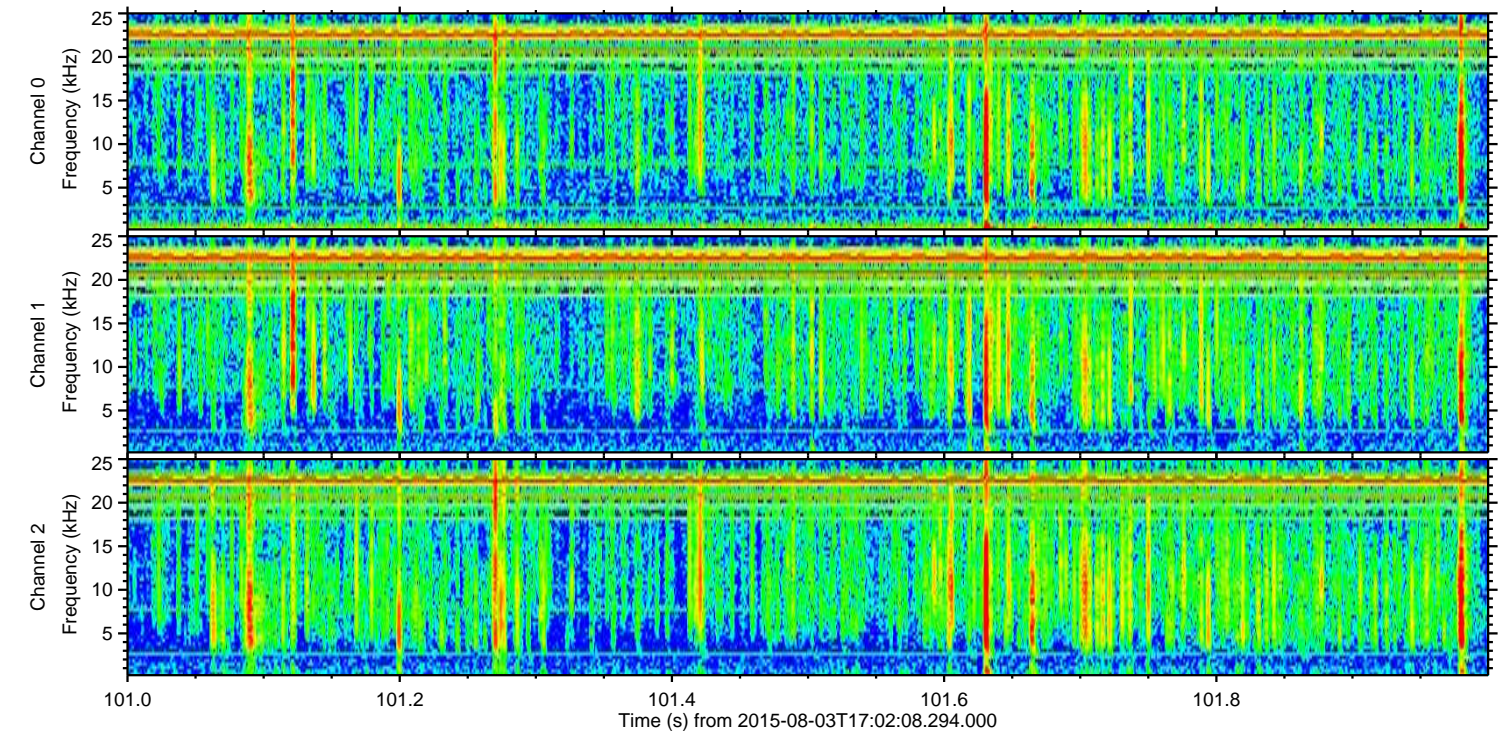
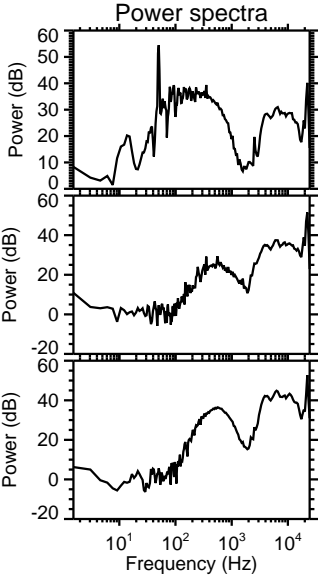
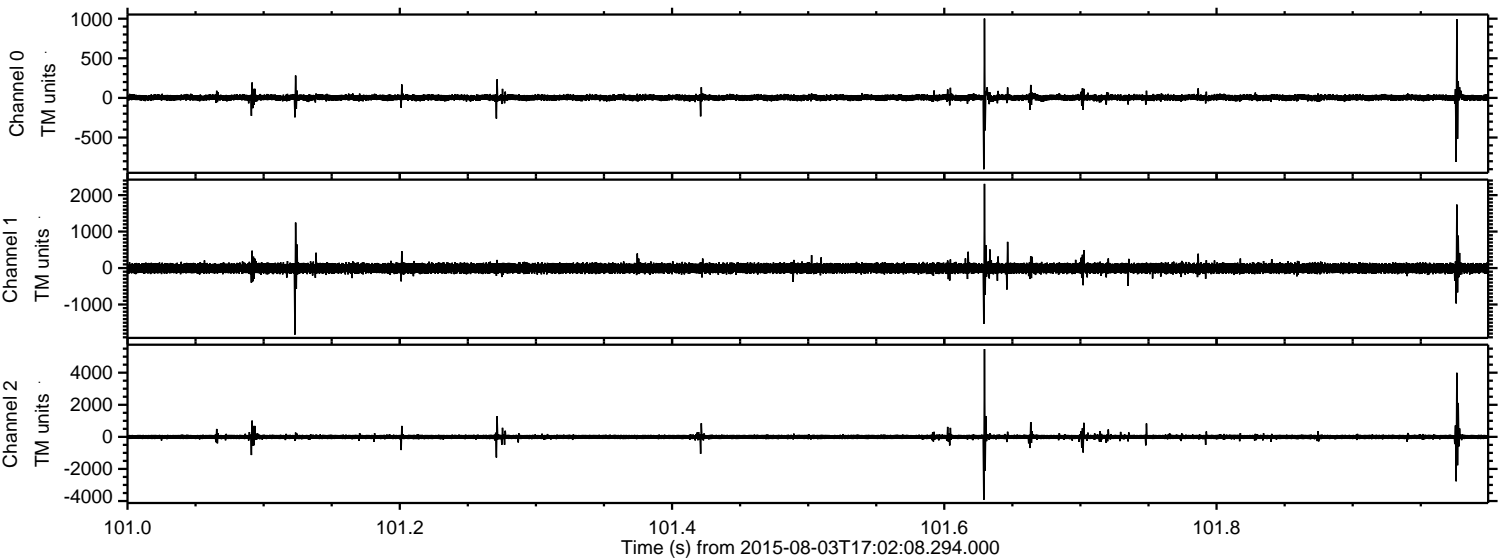
ELMAVAN 3D WAVEFORMS (Measured data sampled at 50 kHz) 51000 packets of 144 samples from 2015-08-03T17:02:08.294.000. Part 138/147

Processed Mon Aug 3 19:08:37 2015 by ELM ver.2012-10-06 from 001__elm20150803_170207__dat00.bin



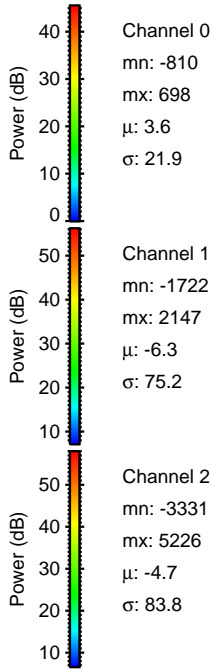
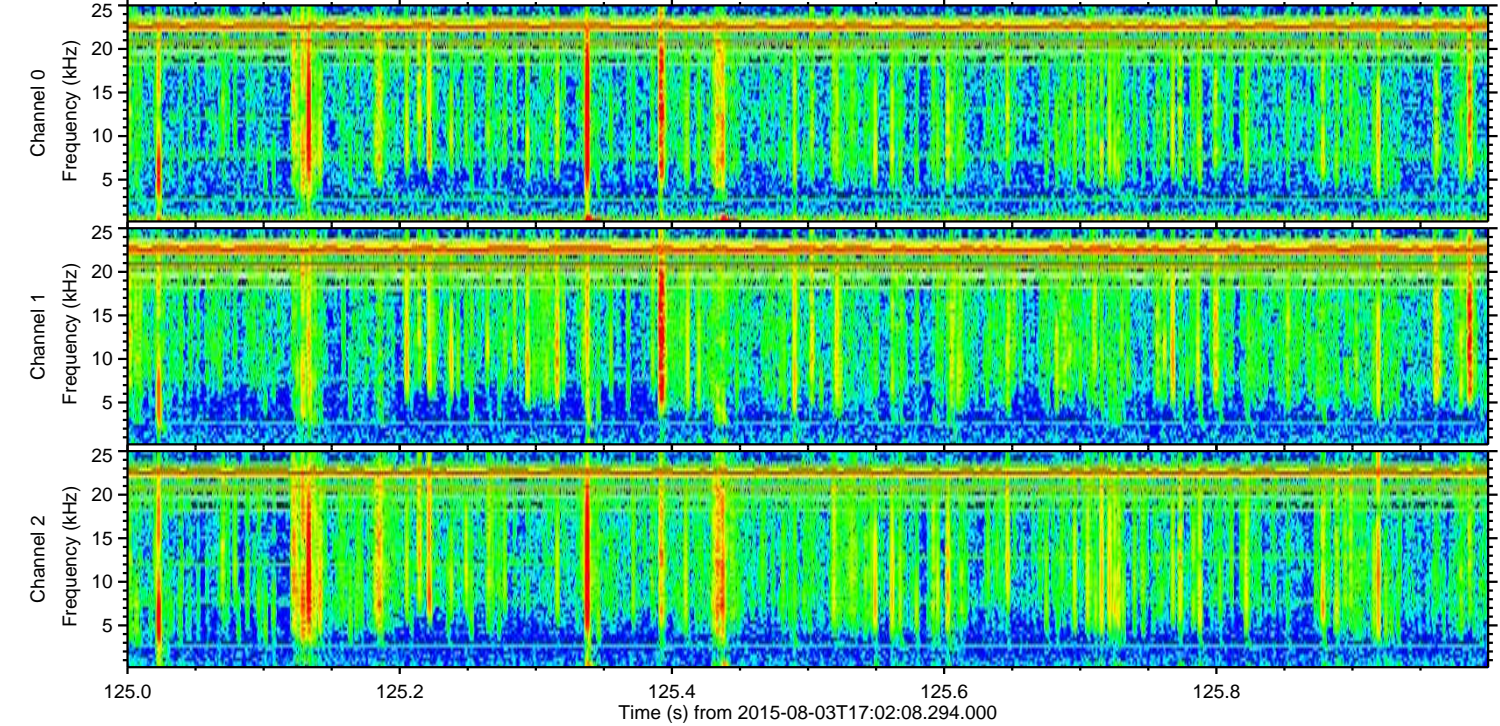
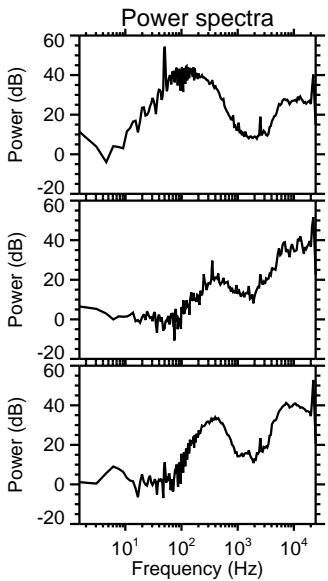
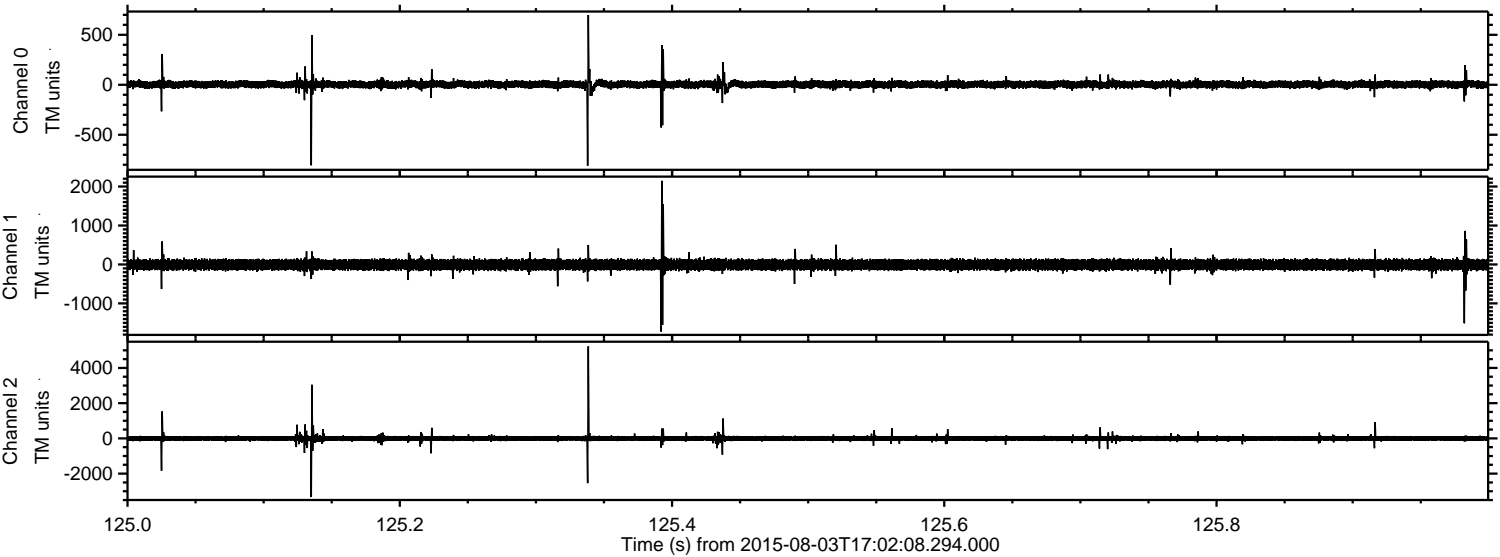
ELMAVAN 3D WAVEFORMS (Measured data sampled at 50 kHz) 51000 packets of 144 samples from 2015-08-03T17:02:08.294.000. Part 102/147

Processed Mon Aug 3 19:08:38 2015 by ELM ver.2012-10-06 from 001__elm20150803_170207__dat00.bin



ELMAVAN 3D WAVEFORMS (Measured data sampled at 50 kHz) 51000 packets of 144 samples from 2015-08-03T17:02:08.294.000. Part 126/147

Processed Mon Aug 3 19:08:39 2015 by ELM ver.2012-10-06 from 001__elm20150803_170207__dat00.bin



ELMAVAN 3D WAVEFORMS (Measured data sampled at 50 kHz) 51000 packets of 144 samples from 2015-08-03T17:02:08.294.000. Part 97/147

Processed Mon Aug 3 19:08:40 2015 by ELM ver.2012-10-06 from 001__elm20150803_170207__dat00.bin

