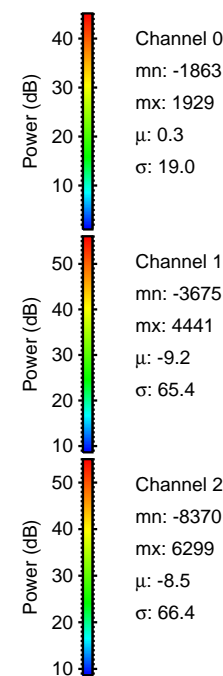
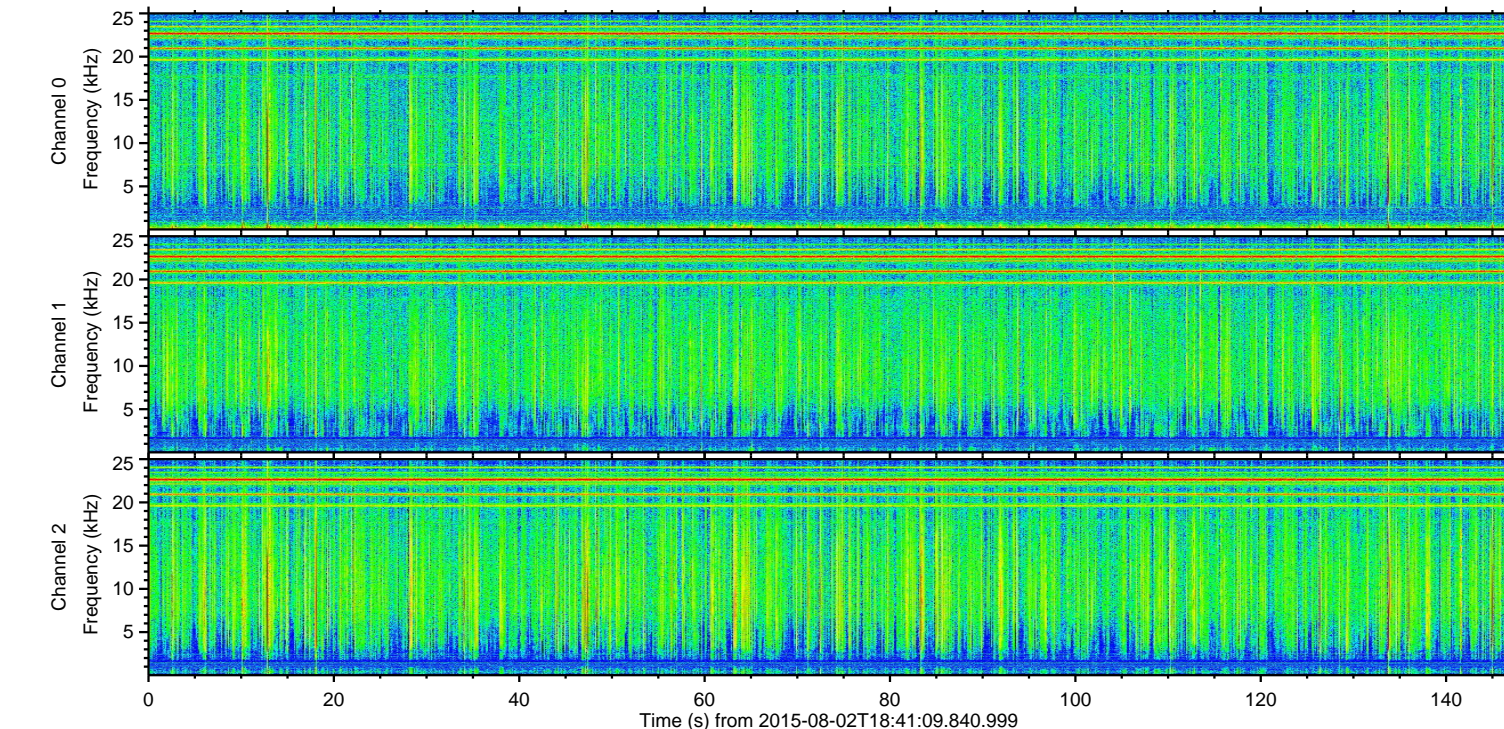
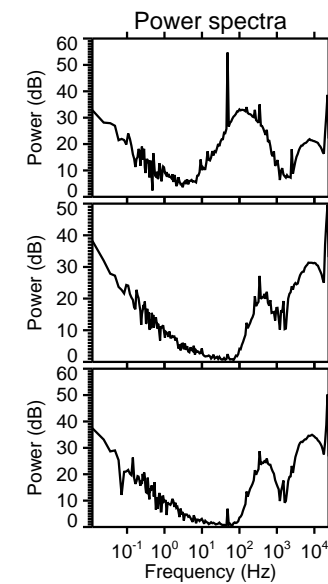
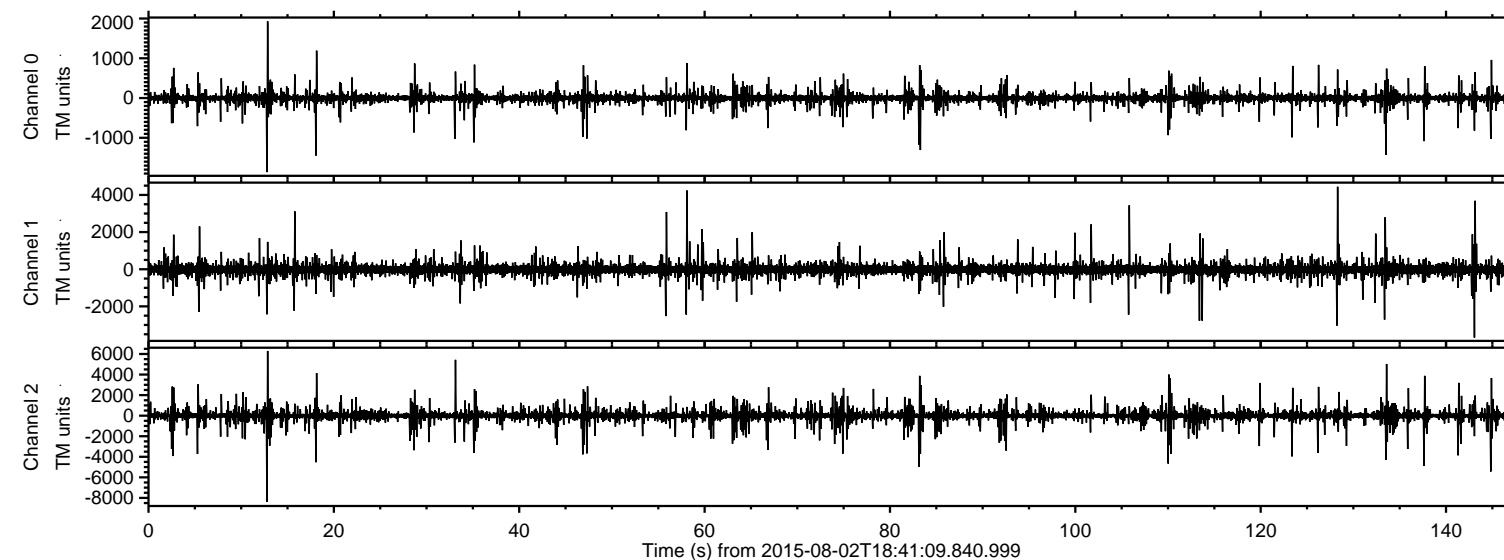


# ELMAVAN 3D WAVEFORMS (Measured data sampled at 50 kHz) 51000 packets of 144 samples from 2015-08-02T18:41:09.840.999.

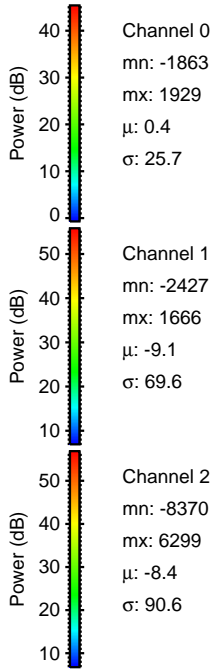
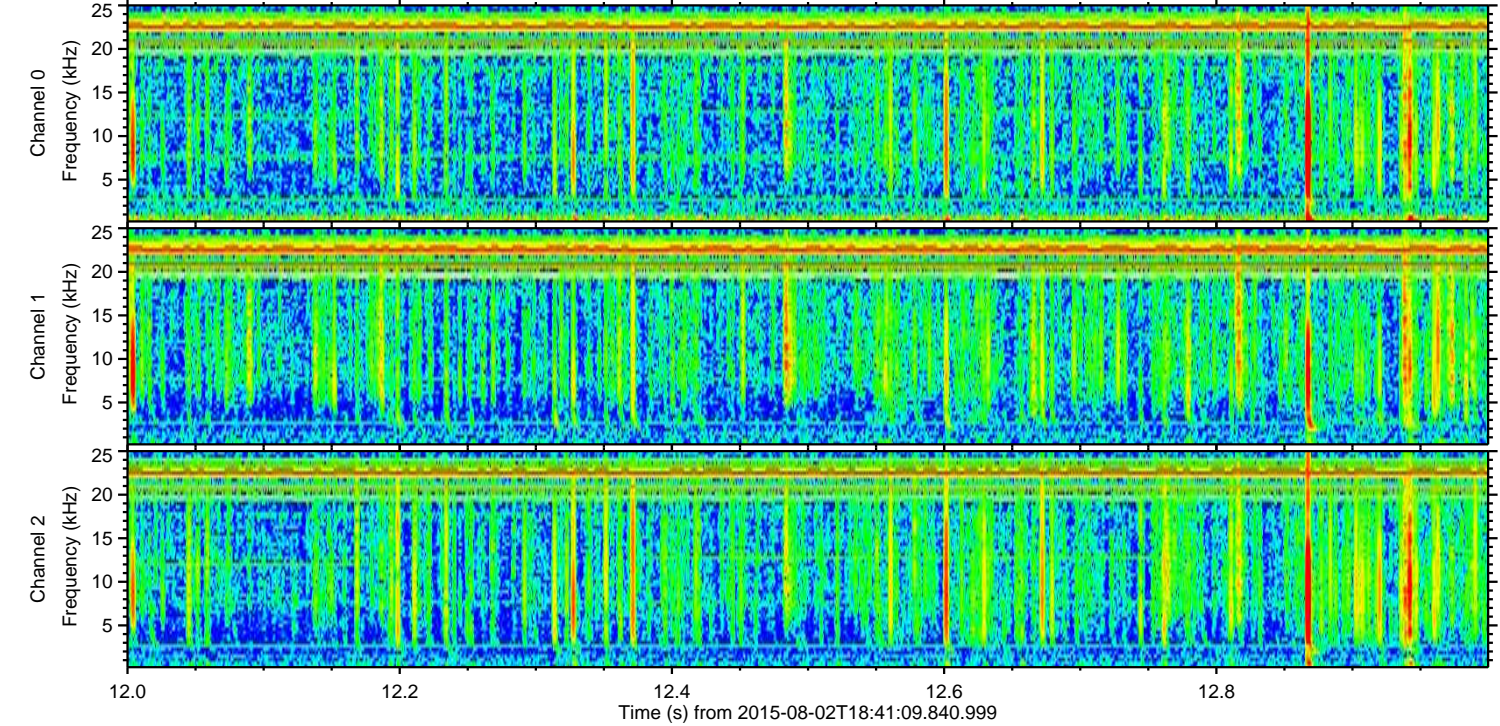
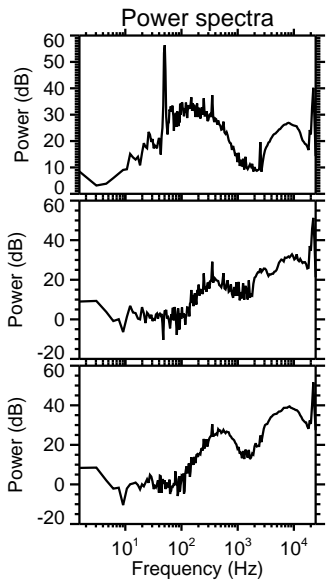
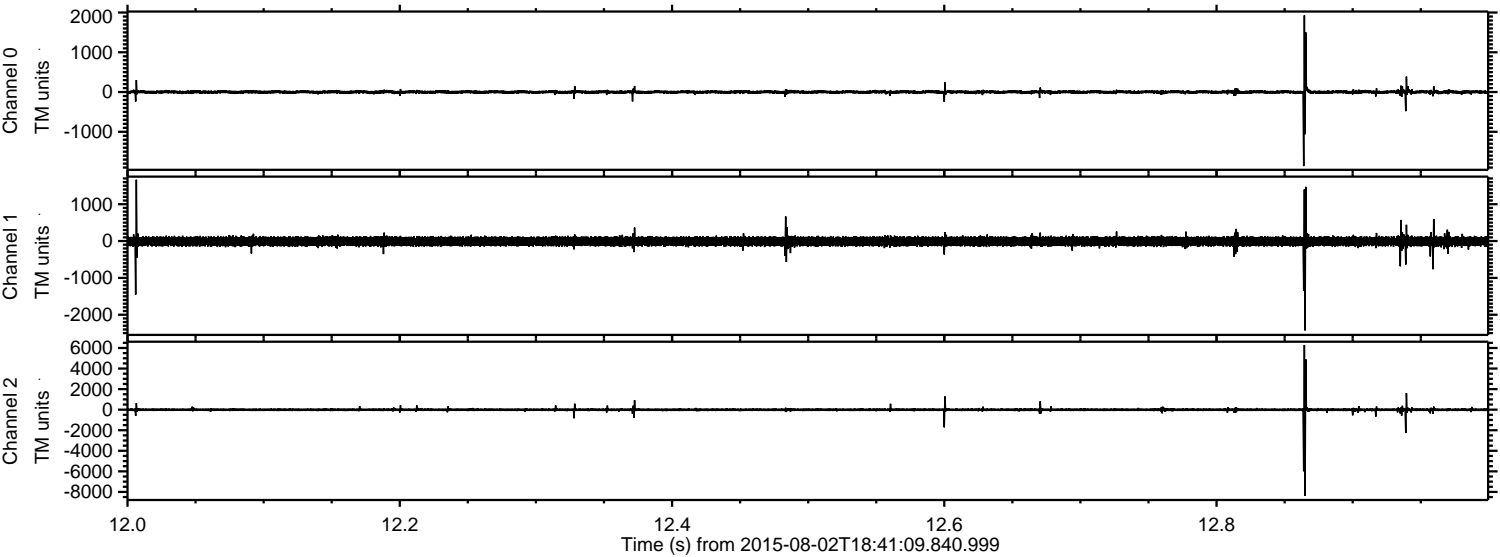
Processed Sun Aug 2 20:47:48 2015 by ELM ver.2012-10-06 from 001\_\_elm20150802\_184108\_\_dat00.bin





ELMAVAN 3D WAVEFORMS (Measured data sampled at 50 kHz) 51000 packets of 144 samples from 2015-08-02T18:41:09.840.999. Part 13/147

Processed Sun Aug 2 20:48:00 2015 by ELM ver.2012-10-06 from 001\_\_elm20150802\_184108\_\_dat00.bin



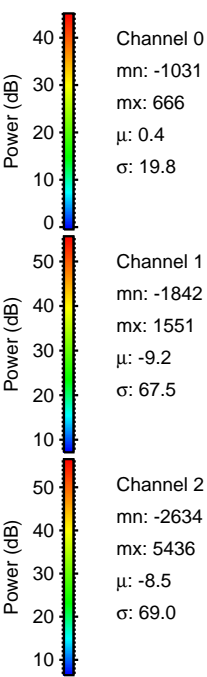
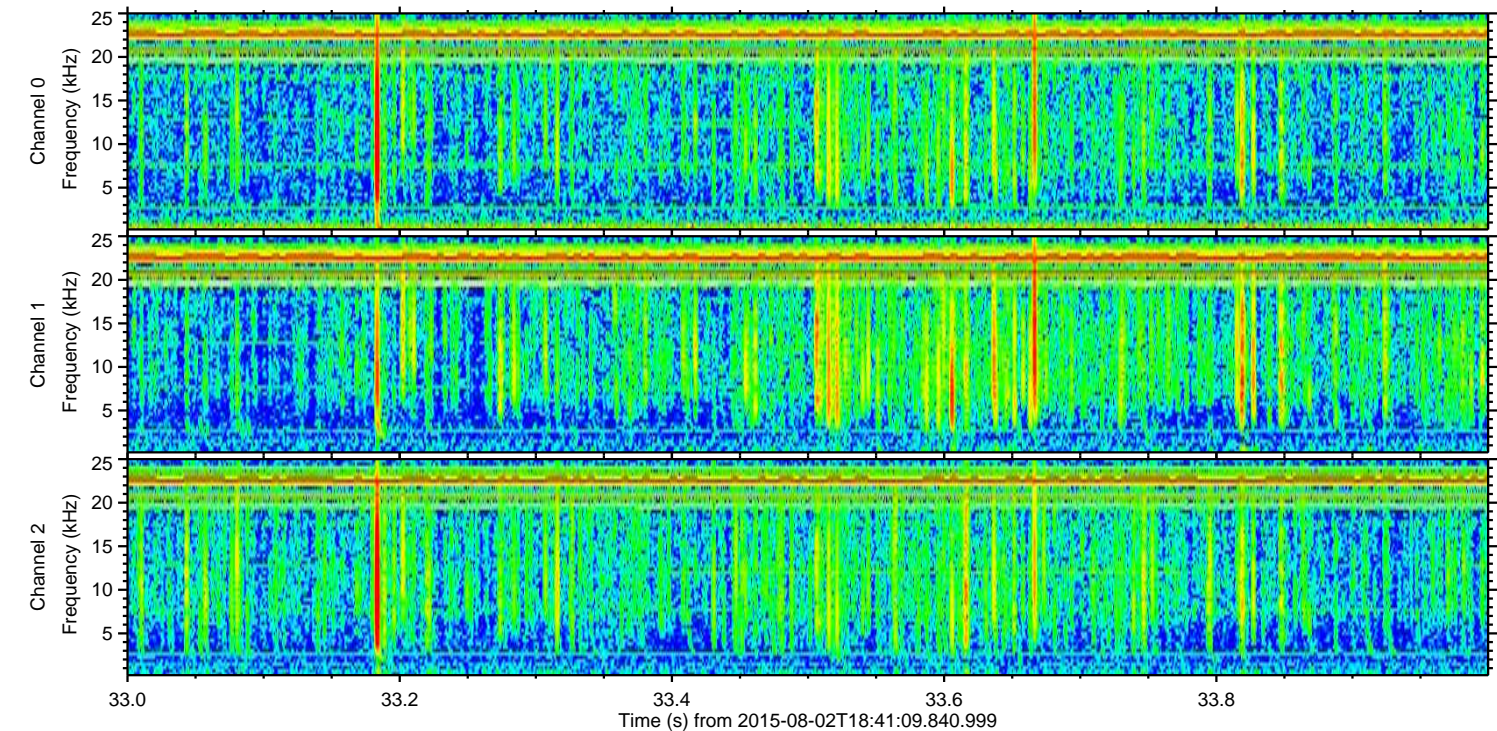
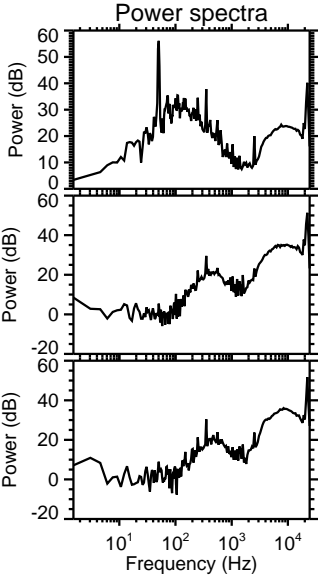
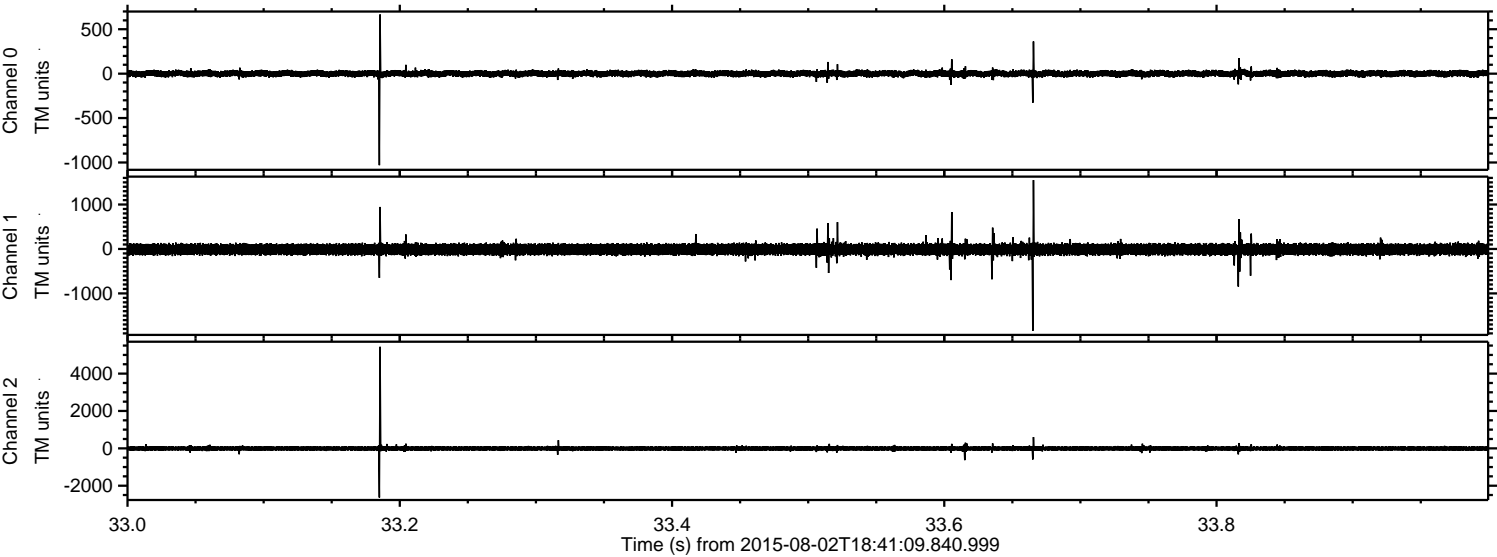
Channel 0  
mn: -1863  
mx: 1929  
 $\mu$ : 0.4  
 $\sigma$ : 25.7

Channel 1  
mn: -2427  
mx: 1666  
 $\mu$ : -9.1  
 $\sigma$ : 69.6

Channel 2  
mn: -8370  
mx: 6299  
 $\mu$ : -8.4  
 $\sigma$ : 90.6



Processed Sun Aug 2 20:48:00 2015 by ELM ver.2012-10-06 from 001\_\_elm20150802\_184108\_\_dat00.bin



Channel 0  
mn: -1031  
mx: 666  
 $\mu$ : 0.4  
 $\sigma$ : 19.8

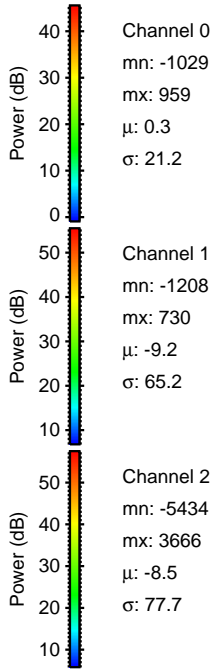
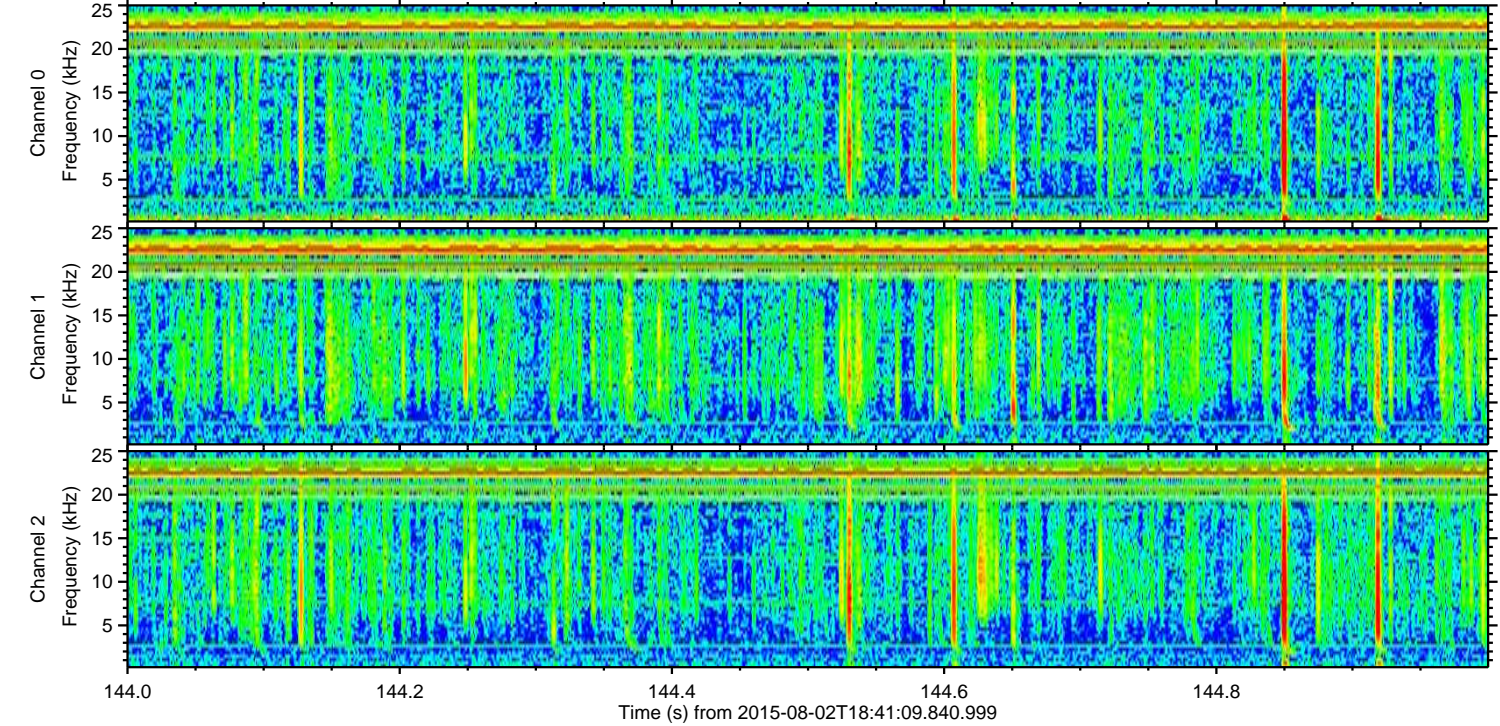
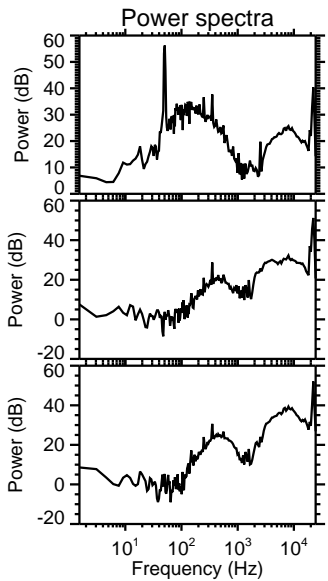
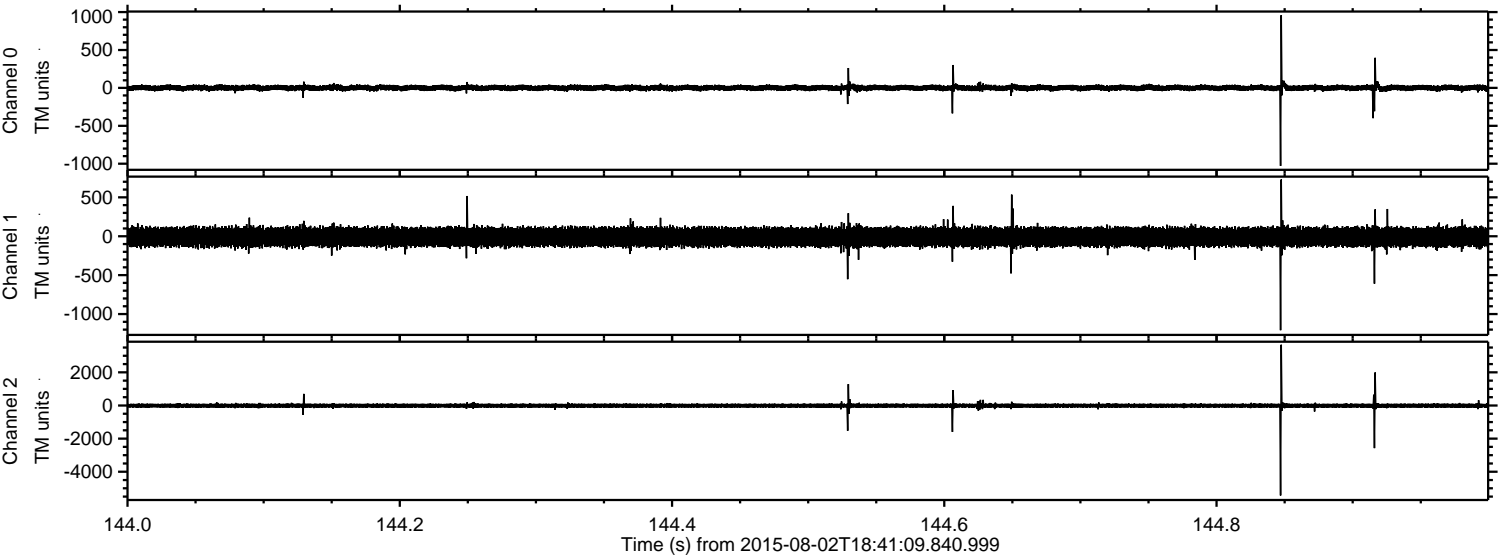
Channel 1  
mn: -1842  
mx: 1551  
 $\mu$ : -9.2  
 $\sigma$ : 67.5

Channel 2  
mn: -2634  
mx: 5436  
 $\mu$ : -8.5  
 $\sigma$ : 69.0



ELMAVAN 3D WAVEFORMS (Measured data sampled at 50 kHz) 51000 packets of 144 samples from 2015-08-02T18:41:09.840.999. Part 145/147

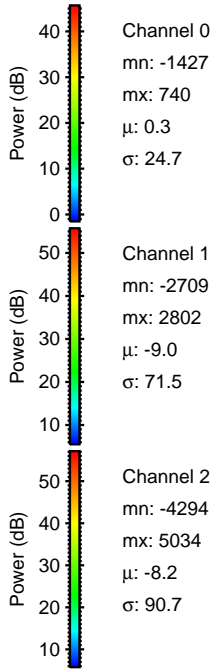
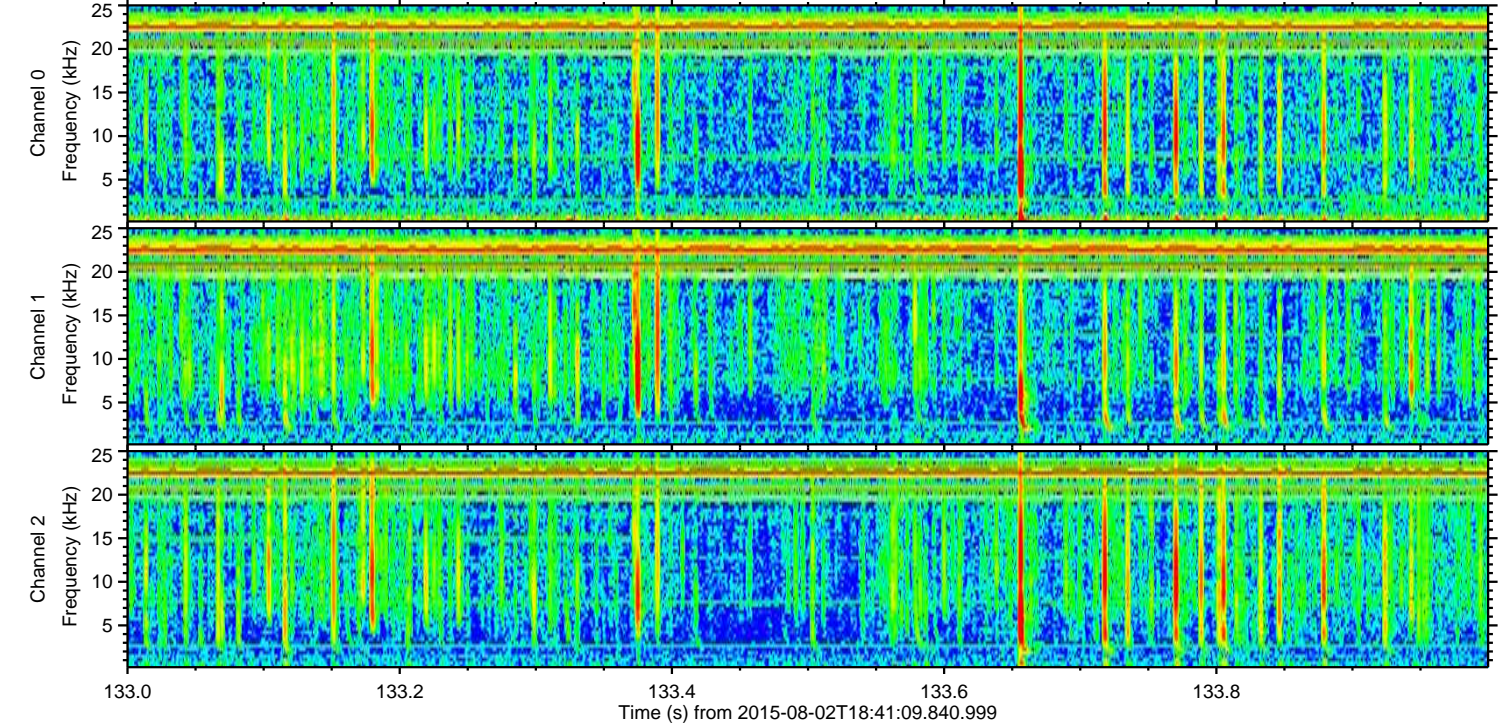
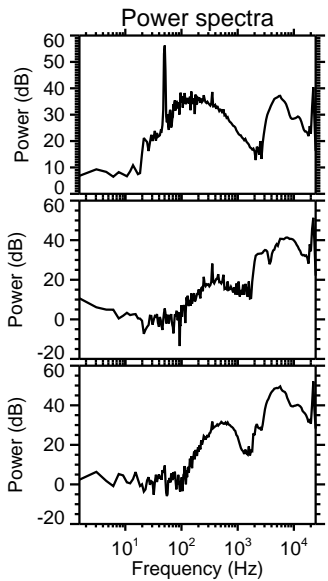
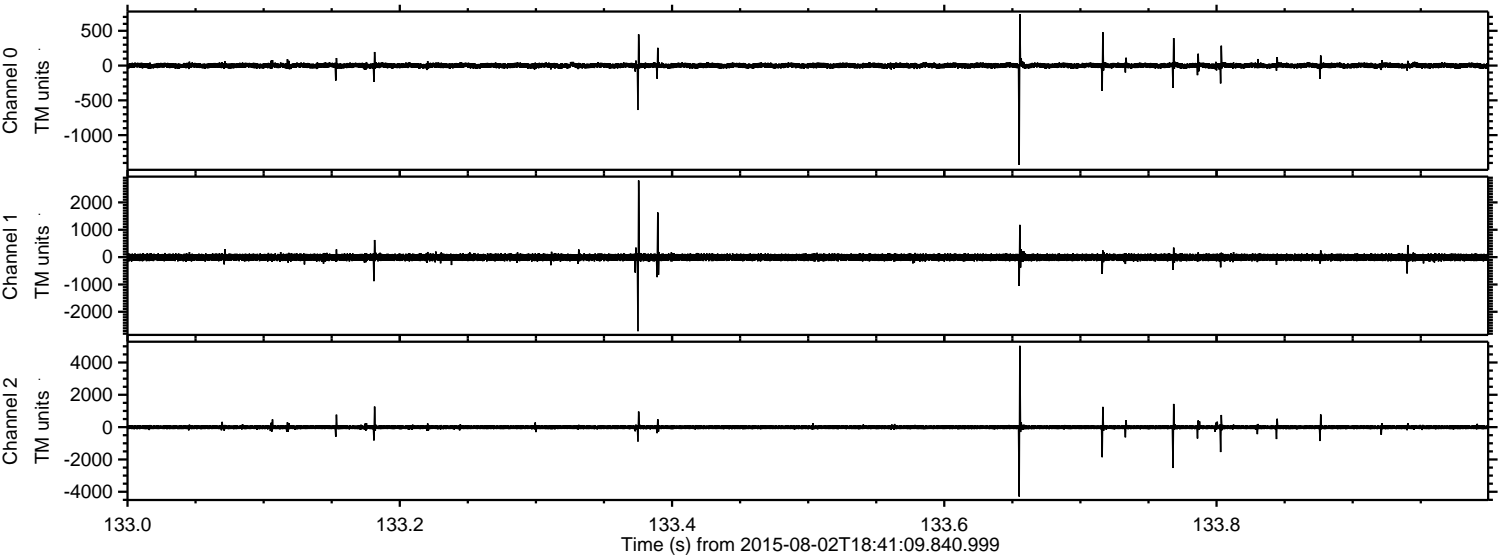
Processed Sun Aug 2 20:48:01 2015 by ELM ver.2012-10-06 from 001\_\_elm20150802\_184108\_\_dat00.bin





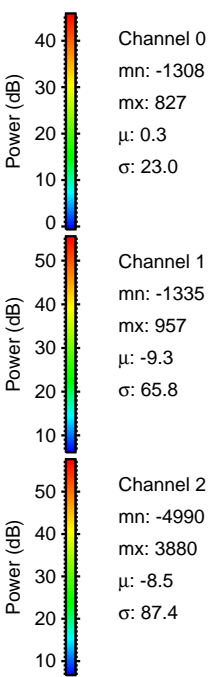
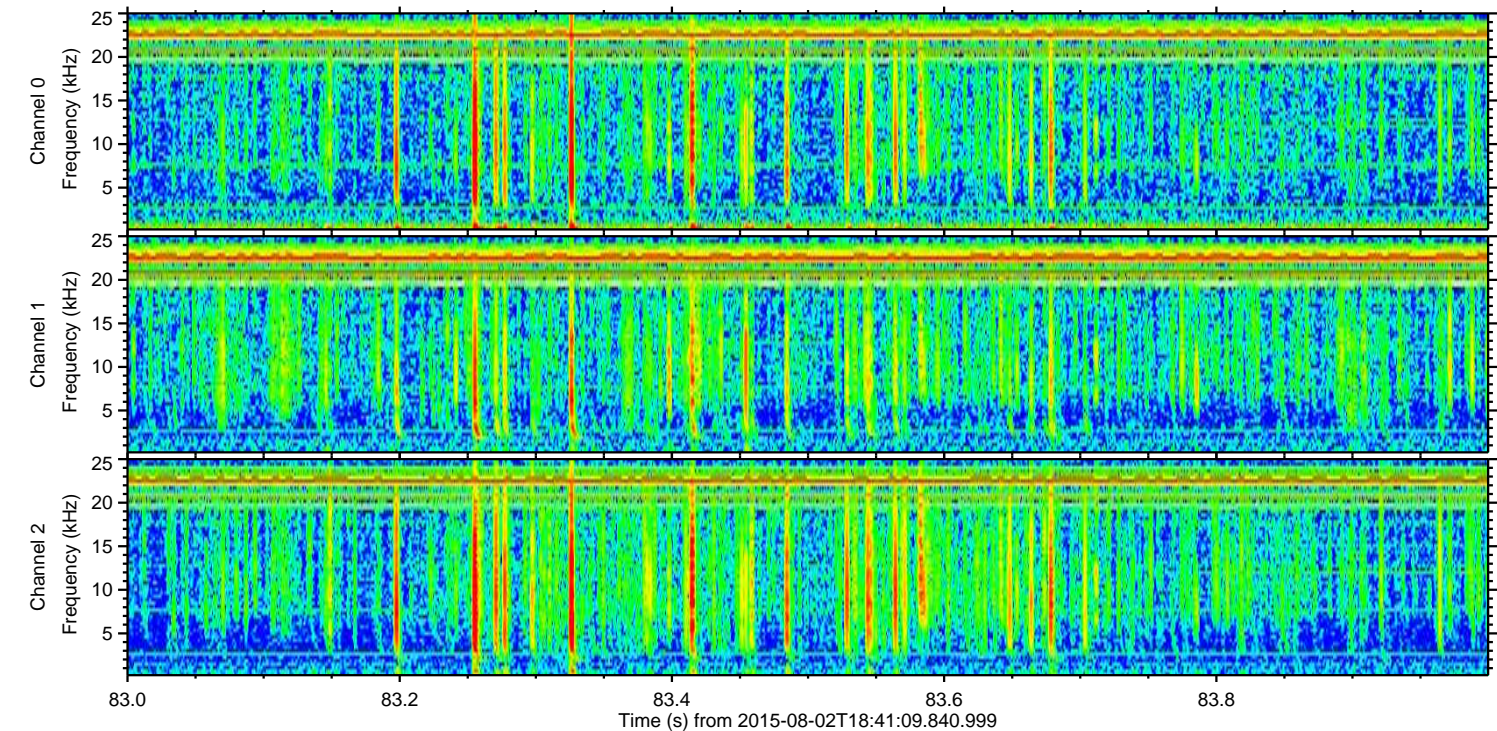
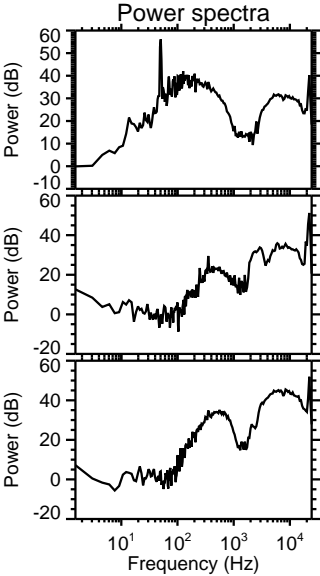
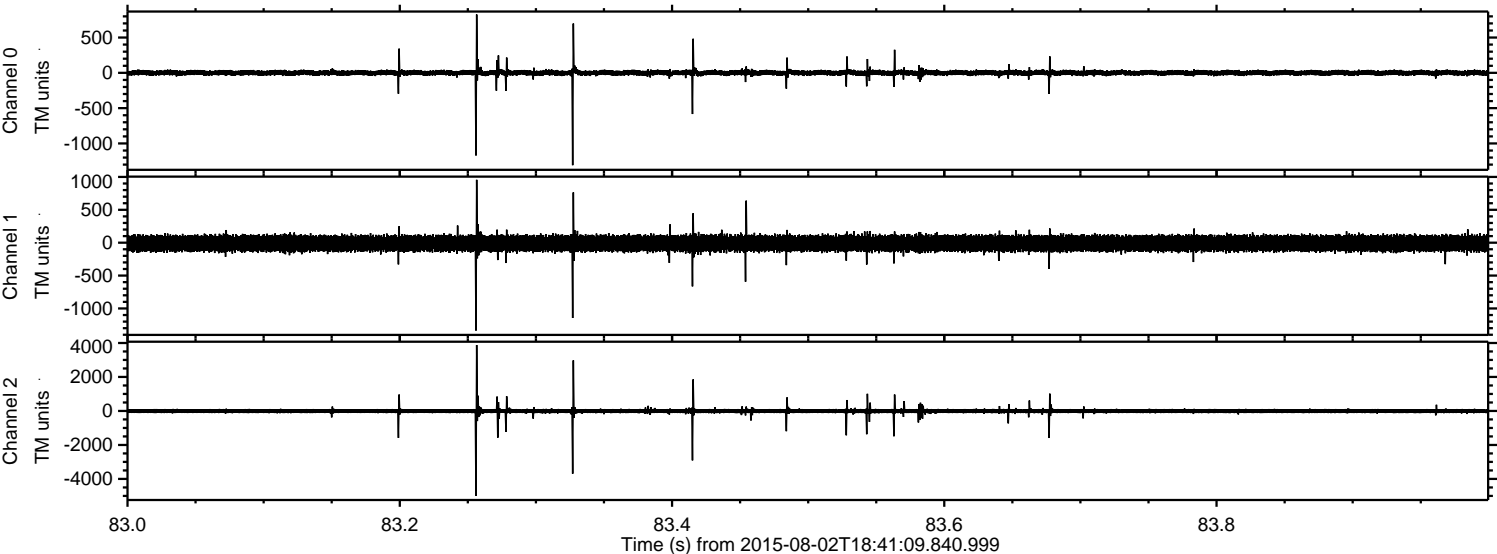
ELMAVAN 3D WAVEFORMS (Measured data sampled at 50 kHz) 51000 packets of 144 samples from 2015-08-02T18:41:09.840.999. Part 134/147

Processed Sun Aug 2 20:48:02 2015 by ELM ver.2012-10-06 from 001\_\_elm20150802\_184108\_\_dat00.bin





Processed Sun Aug 2 20:48:03 2015 by ELM ver.2012-10-06 from 001\_\_elm20150802\_184108\_\_dat00.bin



Channel 0  
mn: -1308  
mx: 827  
 $\mu$ : 0.3  
 $\sigma$ : 23.0

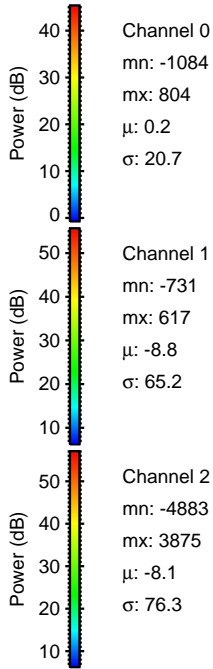
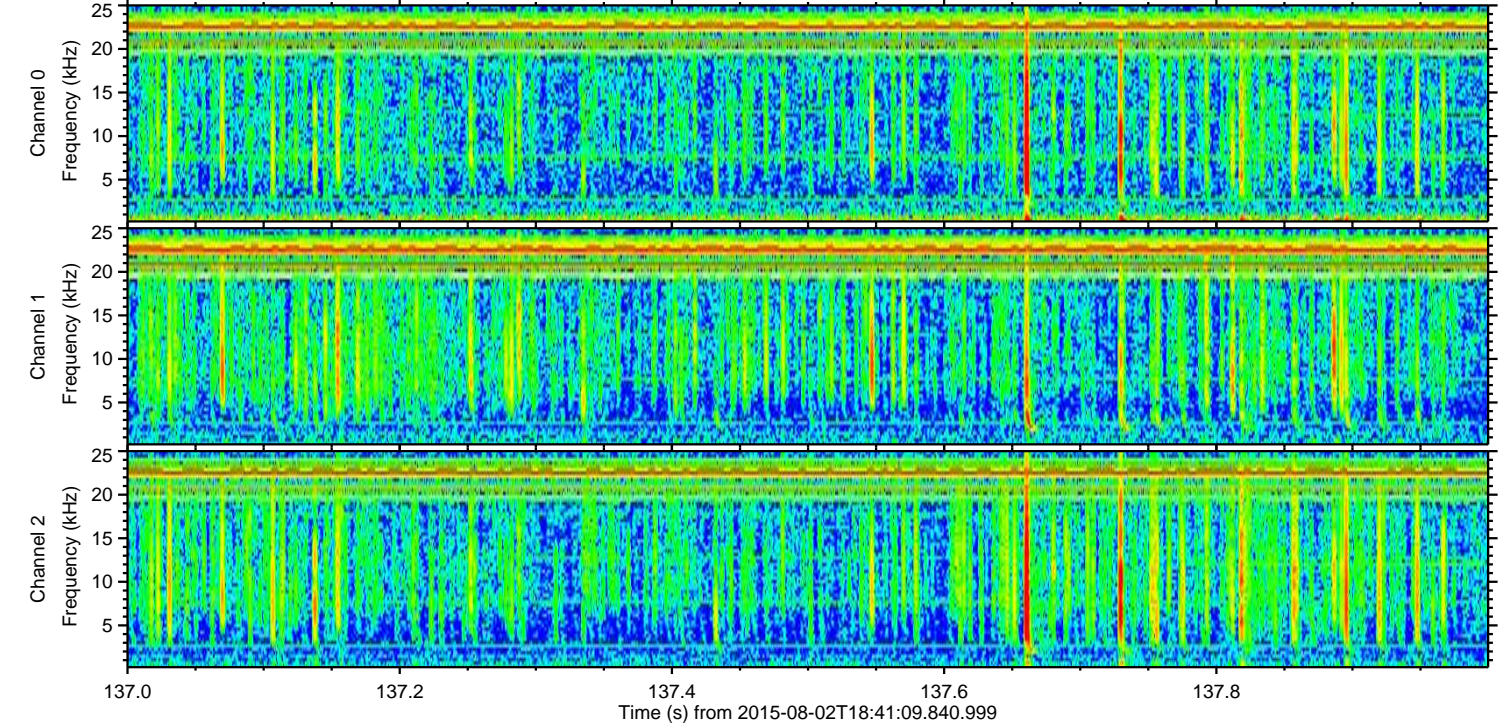
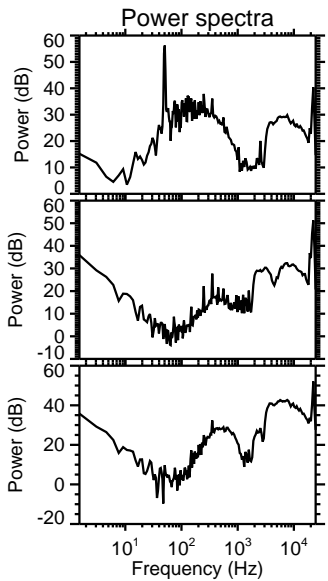
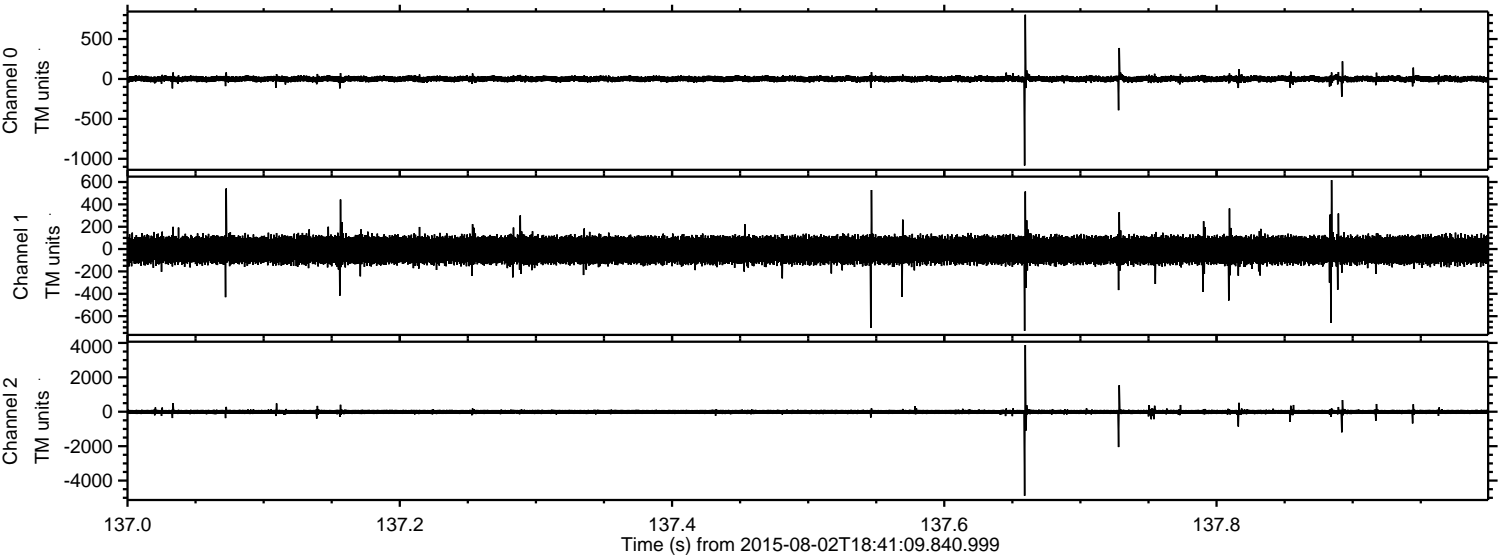
Channel 1  
mn: -1335  
mx: 957  
 $\mu$ : -9.3  
 $\sigma$ : 65.8

Channel 2  
mn: -4990  
mx: 3880  
 $\mu$ : -8.5  
 $\sigma$ : 87.4



ELMAVAN 3D WAVEFORMS (Measured data sampled at 50 kHz) 51000 packets of 144 samples from 2015-08-02T18:41:09.840.999. Part 138/147

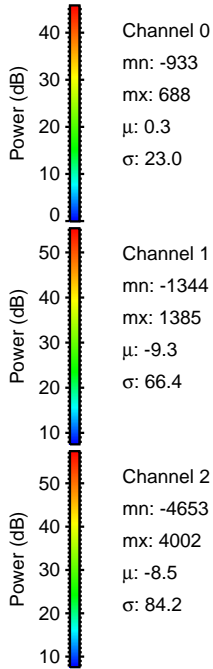
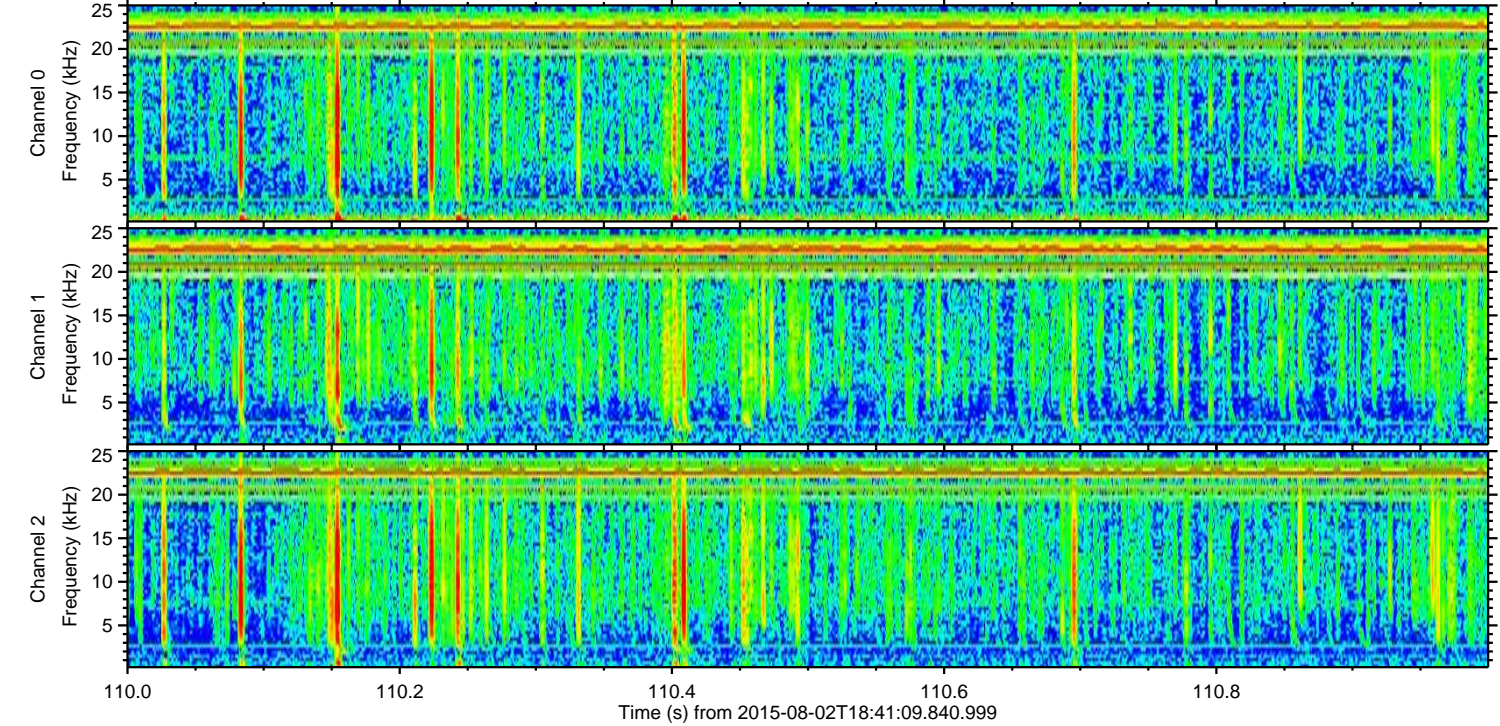
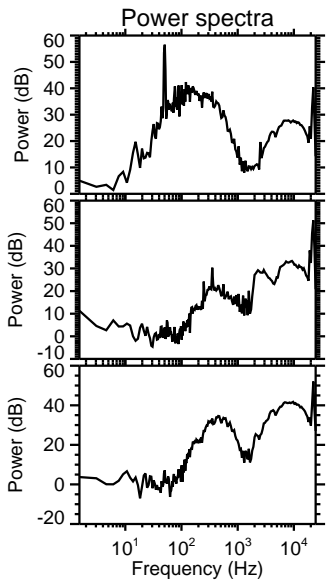
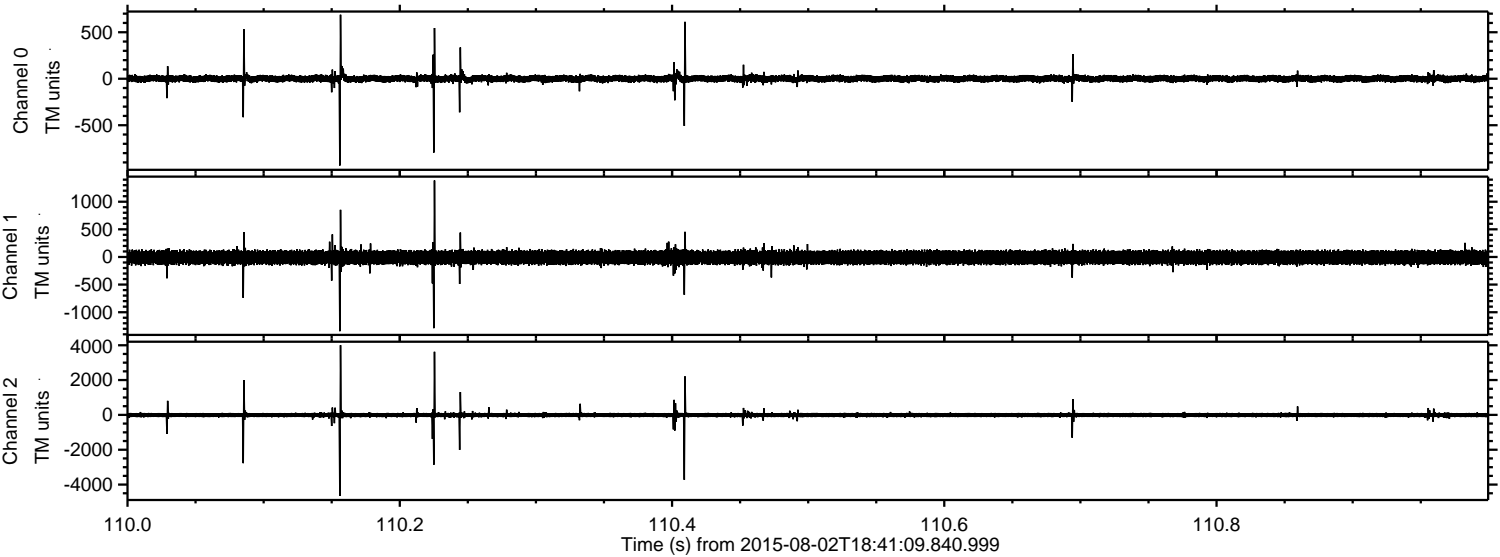
Processed Sun Aug 2 20:48:04 2015 by ELM ver.2012-10-06 from 001\_\_elm20150802\_184108\_\_dat00.bin





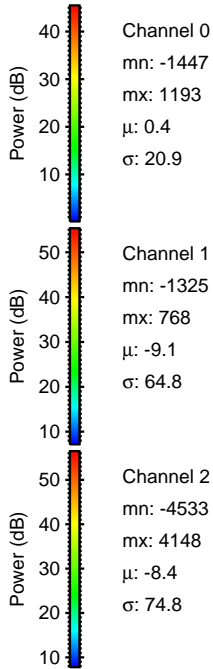
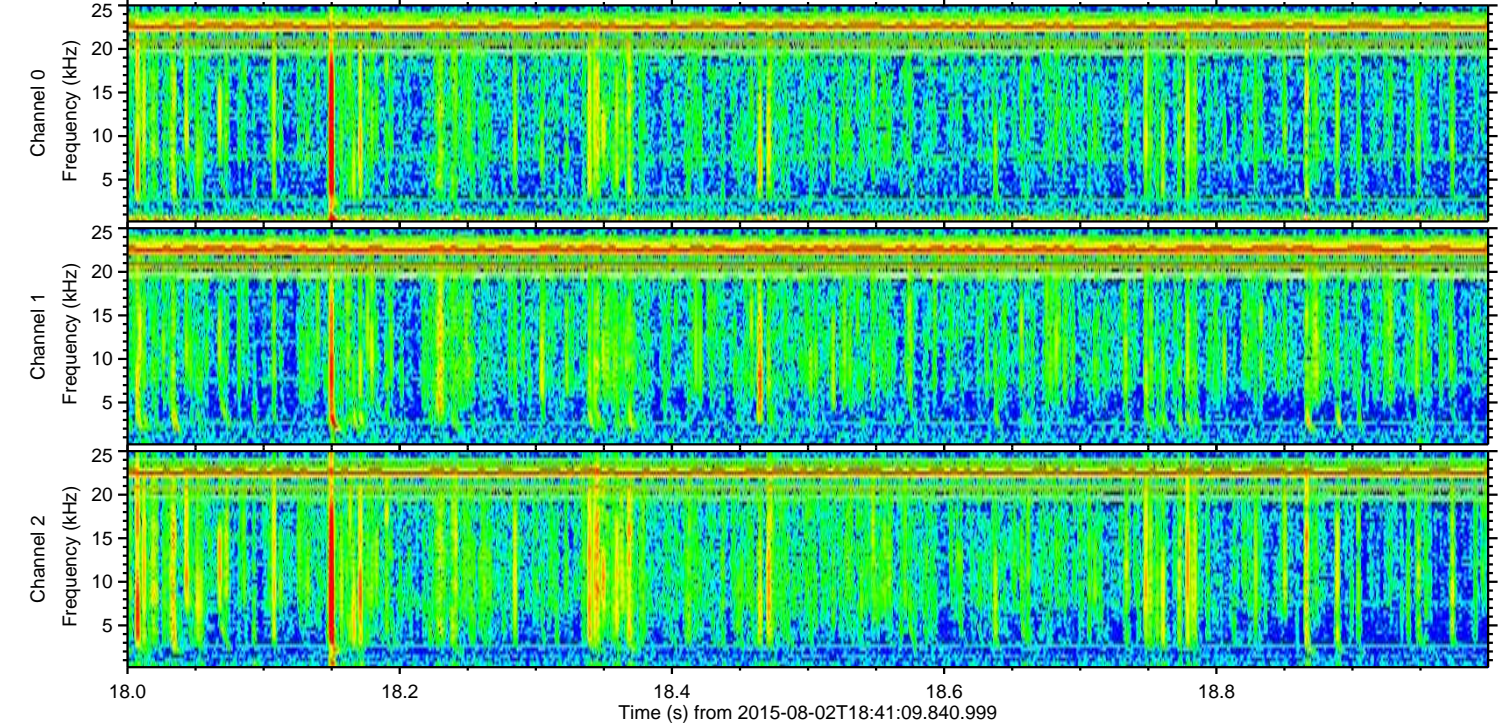
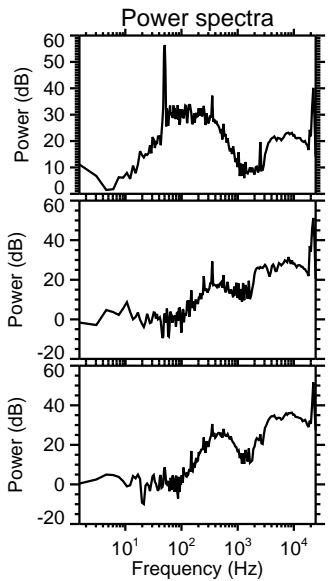
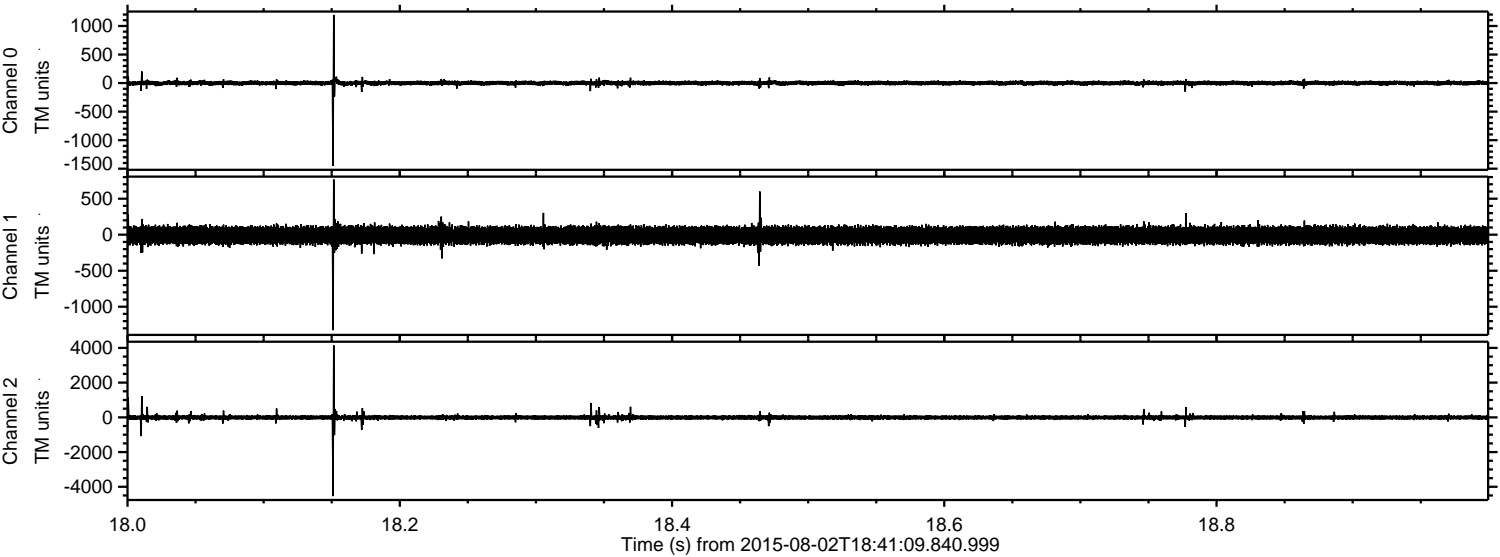
ELMAVAN 3D WAVEFORMS (Measured data sampled at 50 kHz) 51000 packets of 144 samples from 2015-08-02T18:41:09.840.999. Part 111/147

Processed Sun Aug 2 20:48:05 2015 by ELM ver.2012-10-06 from 001\_\_elm20150802\_184108\_\_dat00.bin





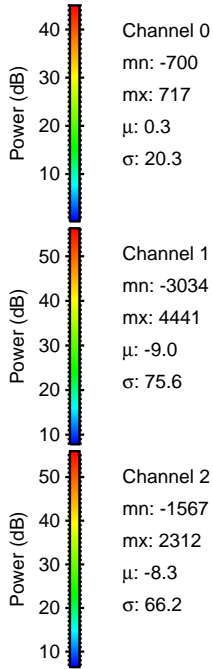
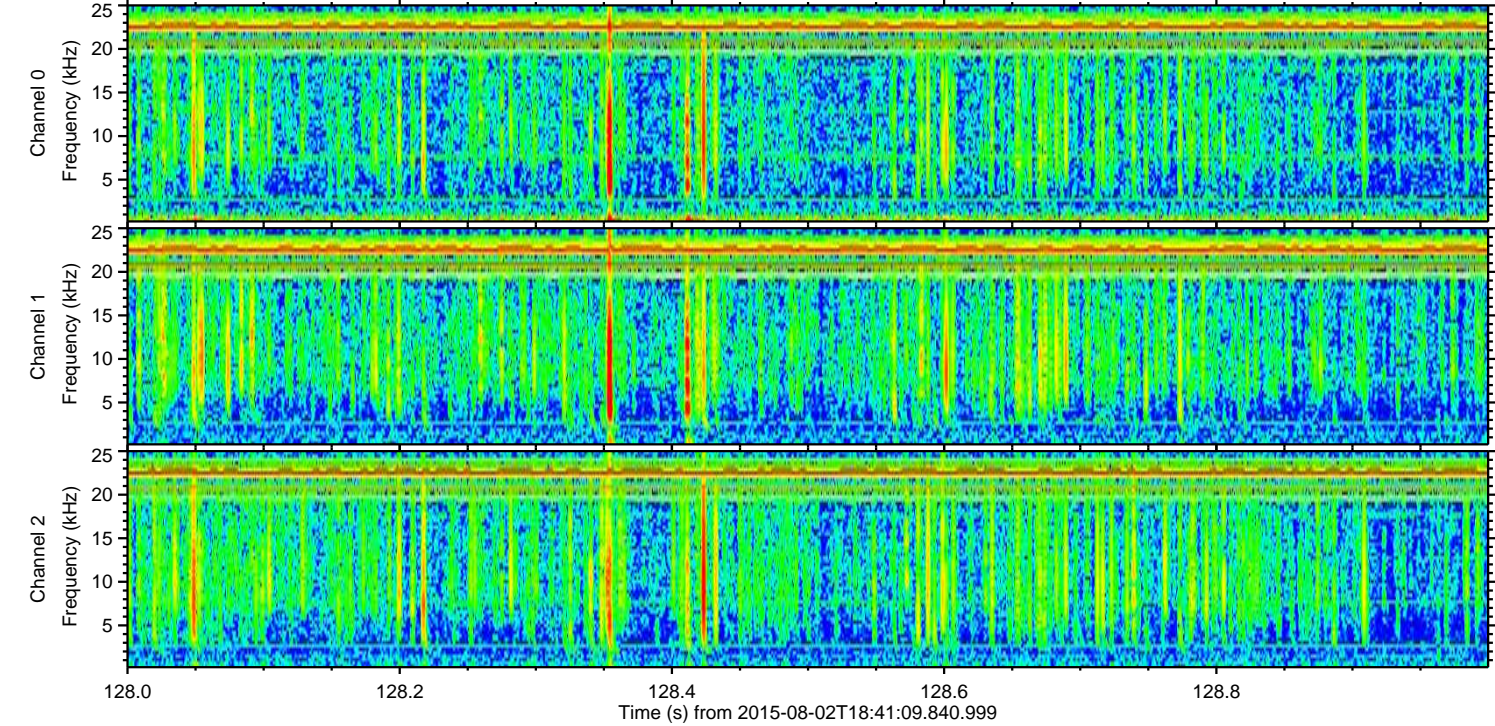
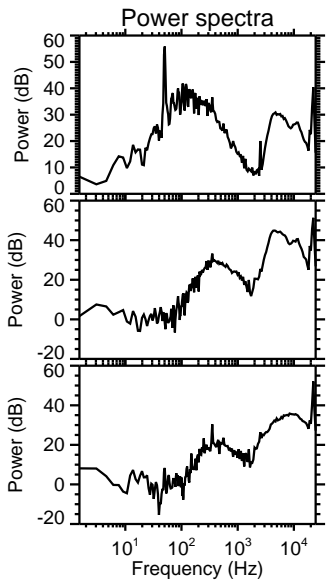
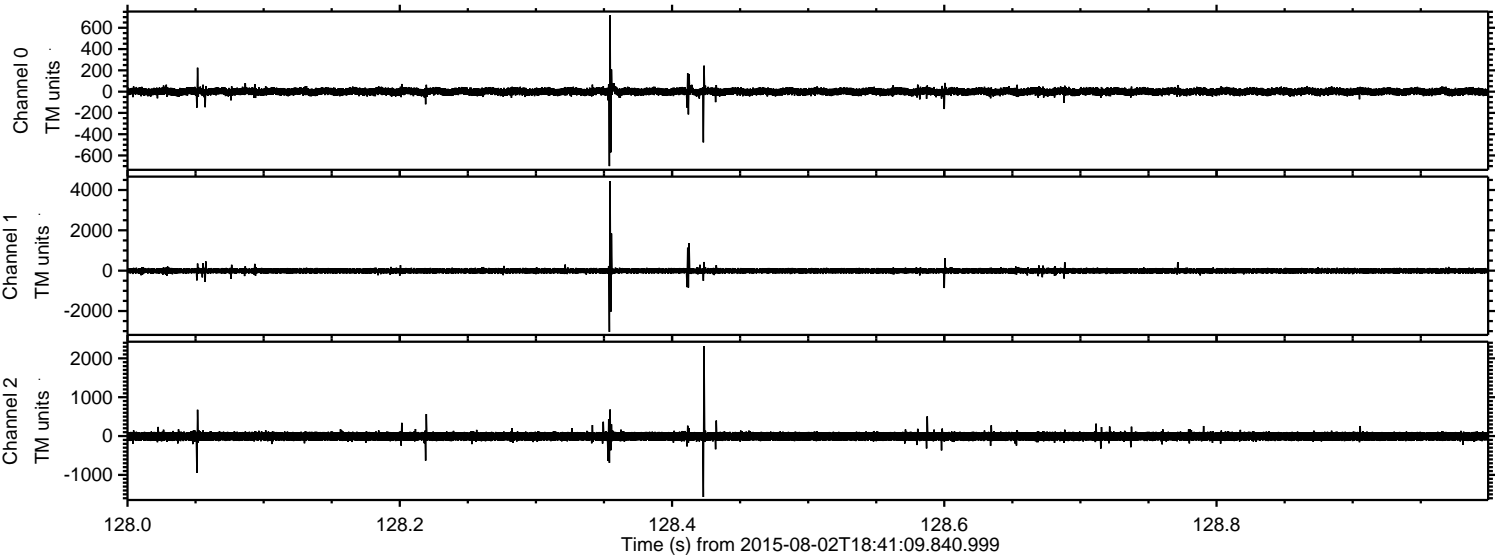
Processed Sun Aug 2 20:48:06 2015 by ELM ver.2012-10-06 from 001\_\_elm20150802\_184108\_\_dat00.bin





ELMAVAN 3D WAVEFORMS (Measured data sampled at 50 kHz) 51000 packets of 144 samples from 2015-08-02T18:41:09.840.999. Part 129/147

Processed Sun Aug 2 20:48:07 2015 by ELM ver.2012-10-06 from 001\_\_elm20150802\_184108\_\_dat00.bin





Processed Sun Aug 2 20:48:08 2015 by ELM ver.2012-10-06 from 001\_\_elm20150802\_184108\_\_dat00.bin

