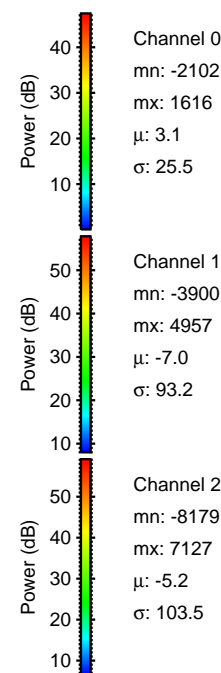
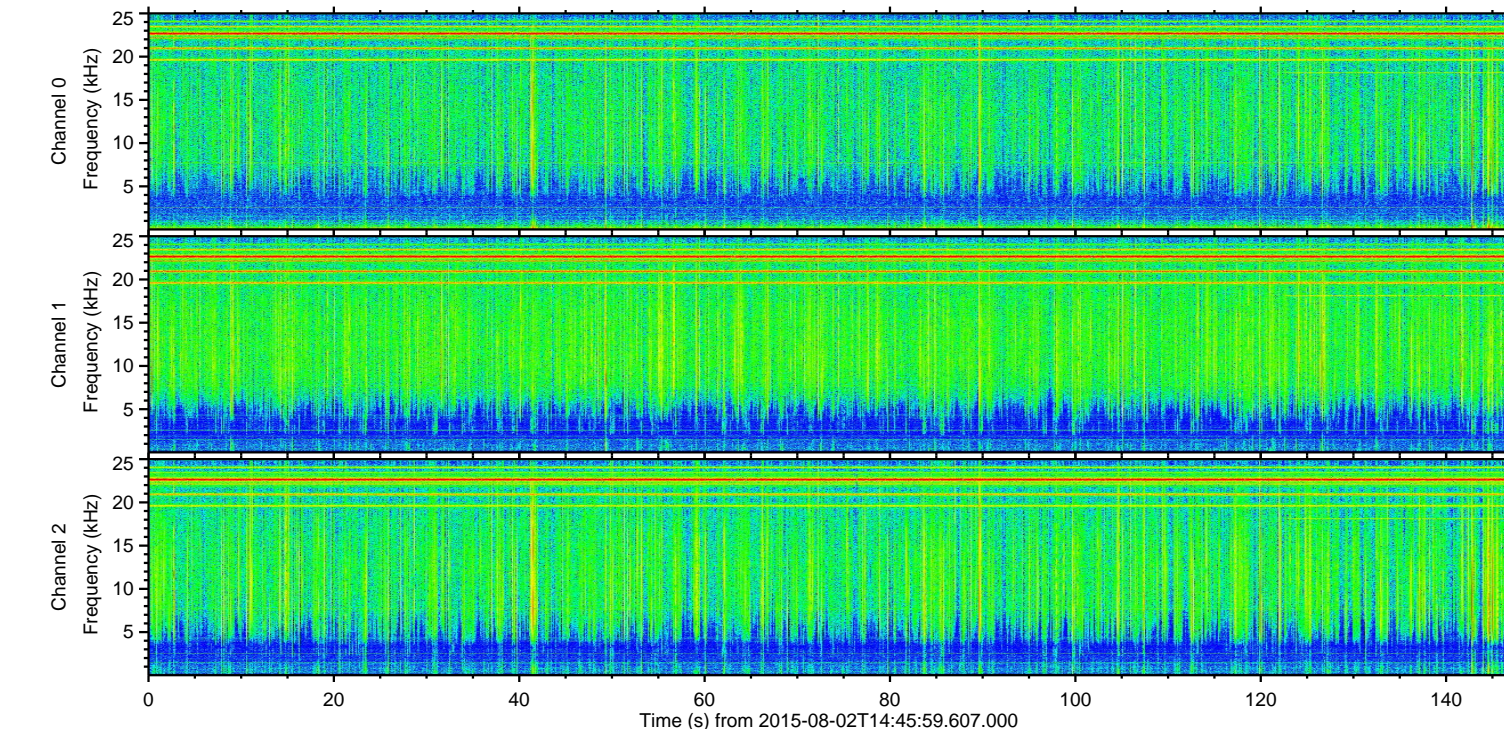
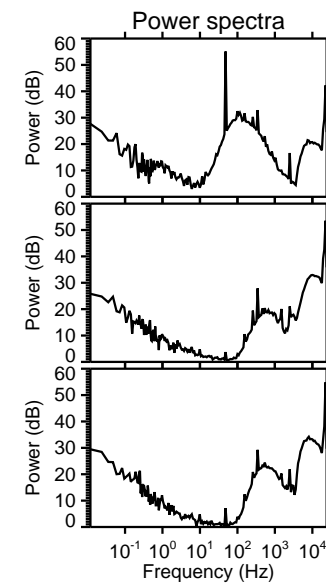
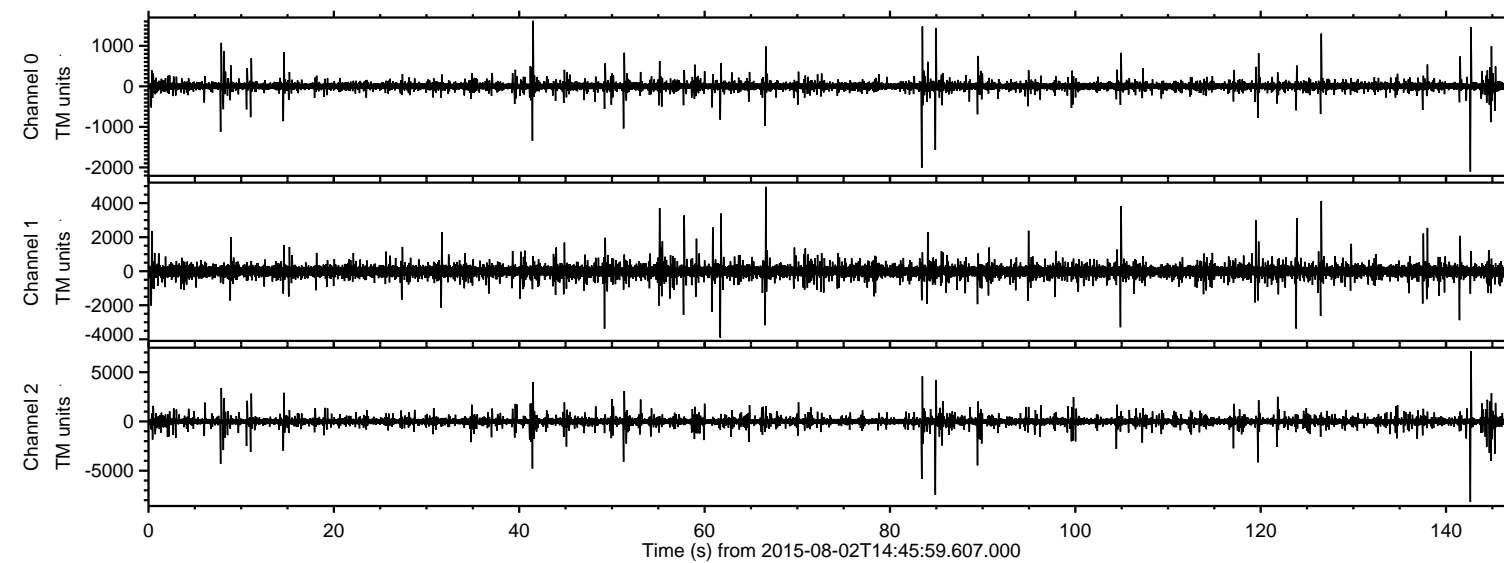


# ELMAVAN 3D WAVEFORMS (Measured data sampled at 50 kHz) 51000 packets of 144 samples from 2015-08-02T14:45:59.607.000.

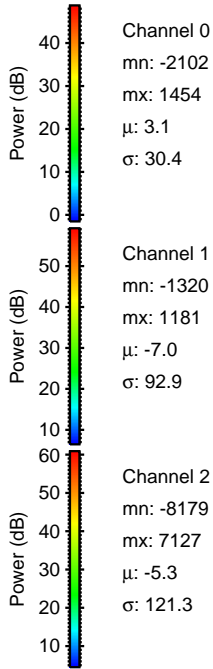
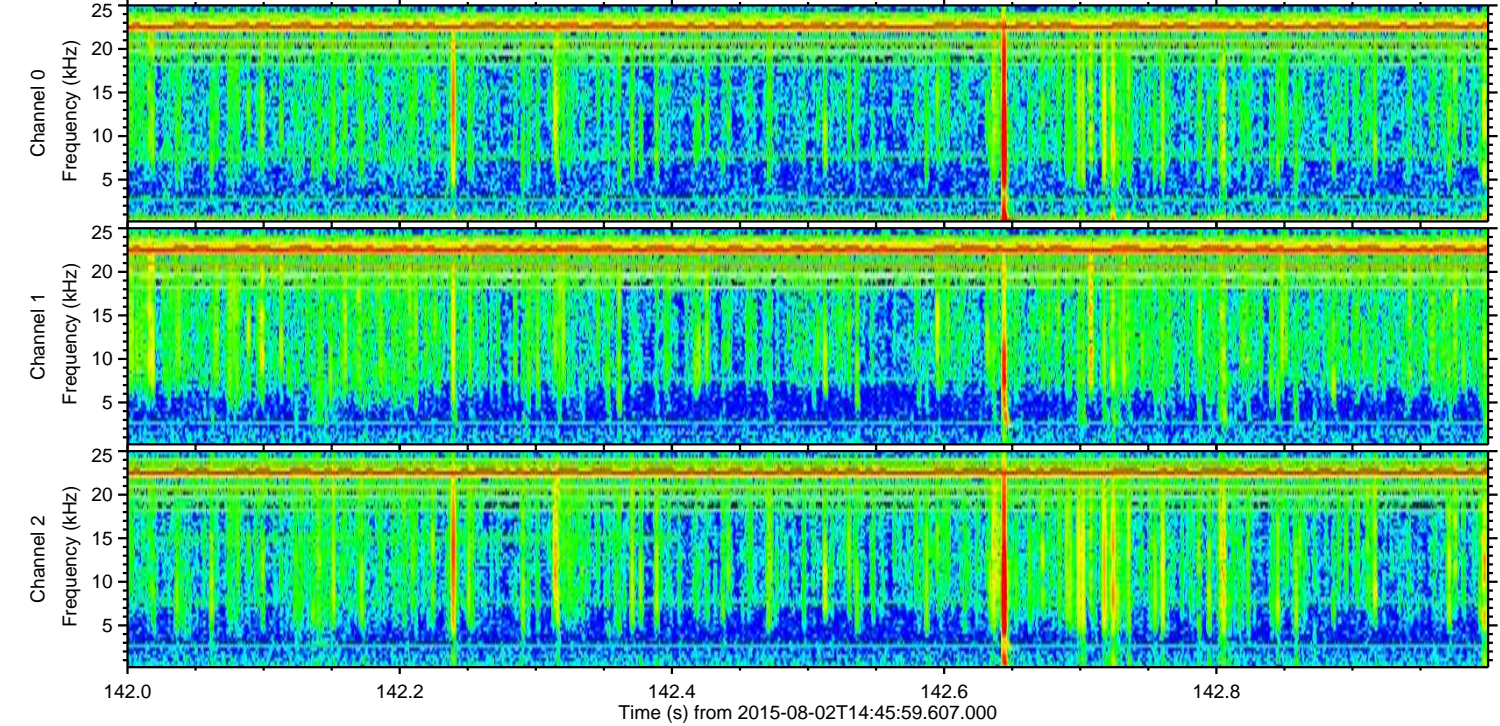
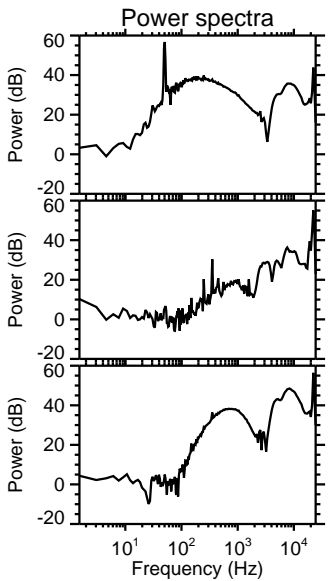
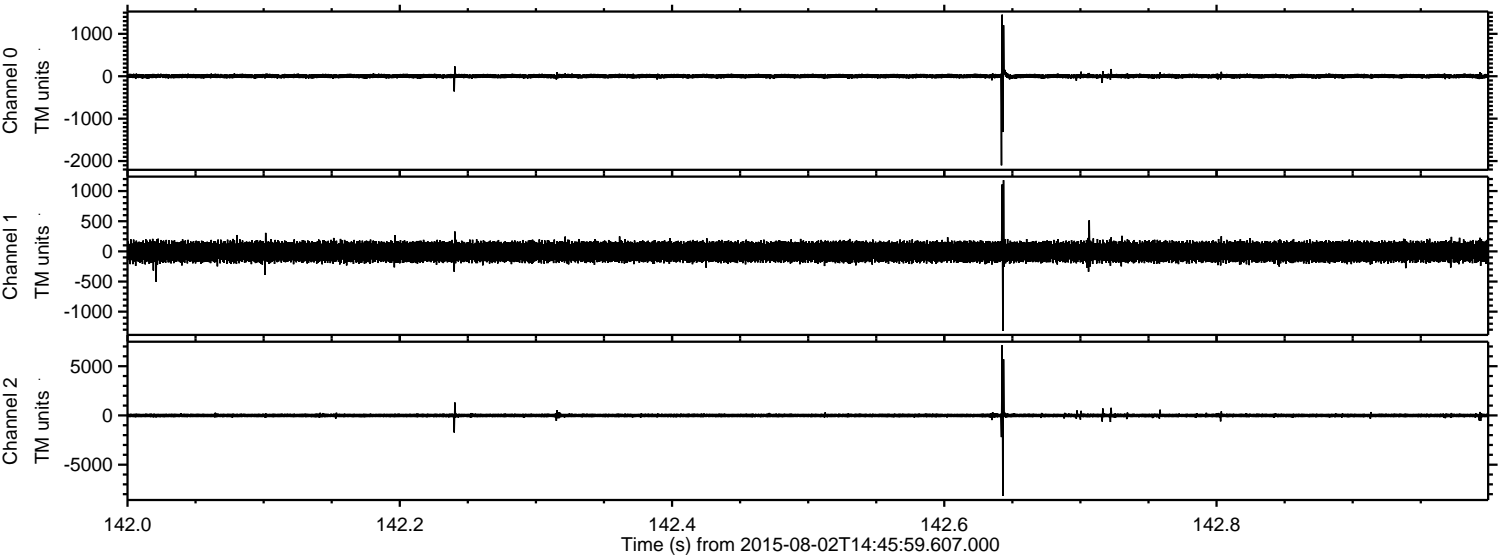
Processed Sun Aug 2 16:52:01 2015 by ELM ver.2012-10-06 from 001\_\_elm20150802\_144558\_\_dat00.bin





ELMAVAN 3D WAVEFORMS (Measured data sampled at 50 kHz) 51000 packets of 144 samples from 2015-08-02T14:45:59.607.000. Part 143/147

Processed Sun Aug 2 16:52:13 2015 by ELM ver.2012-10-06 from 001\_\_elm20150802\_144558\_\_dat00.bin

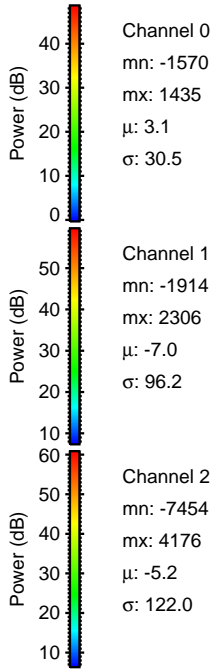
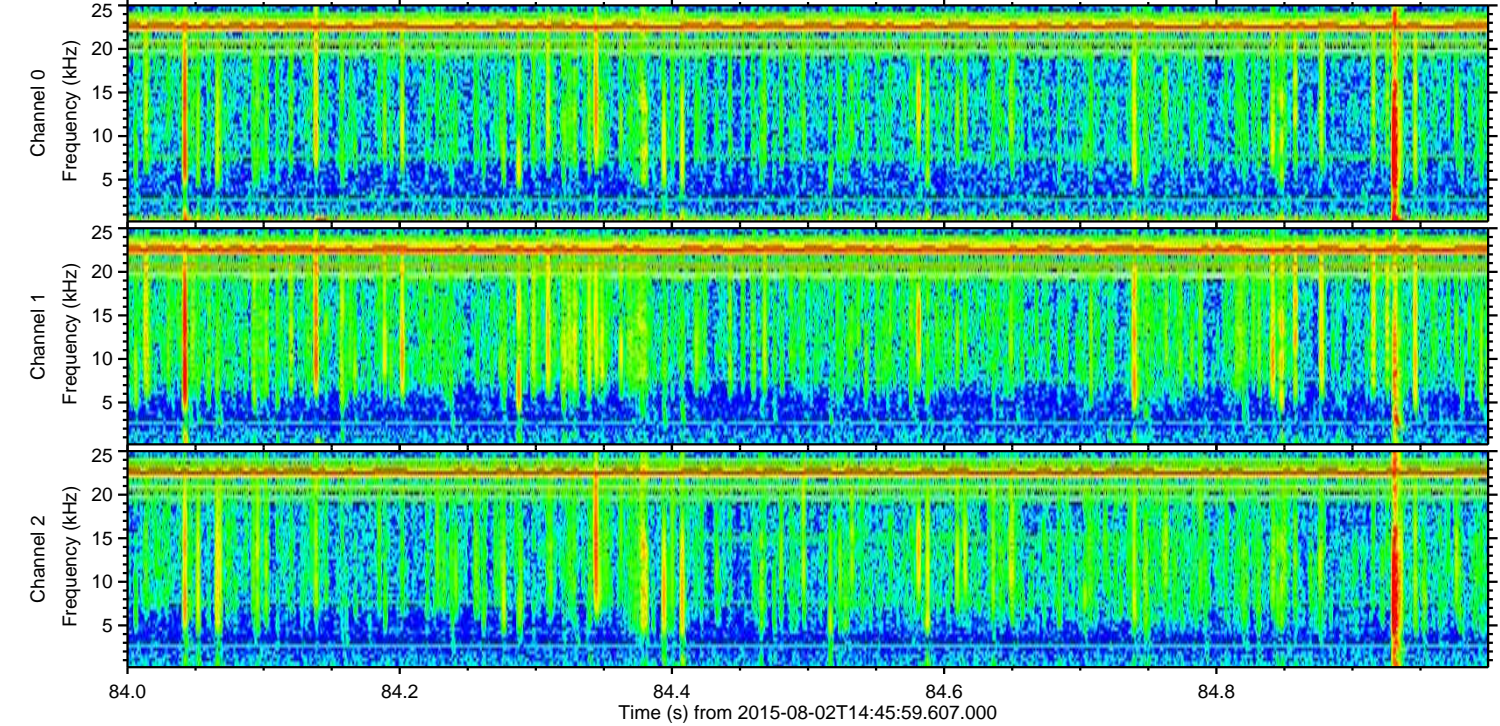
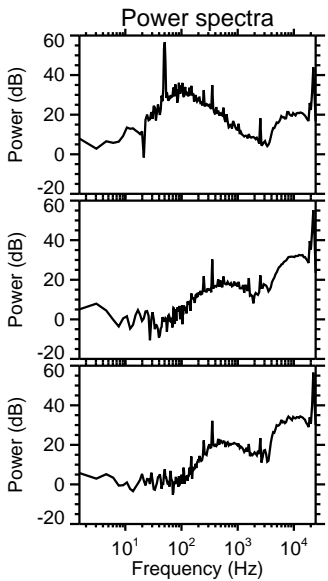
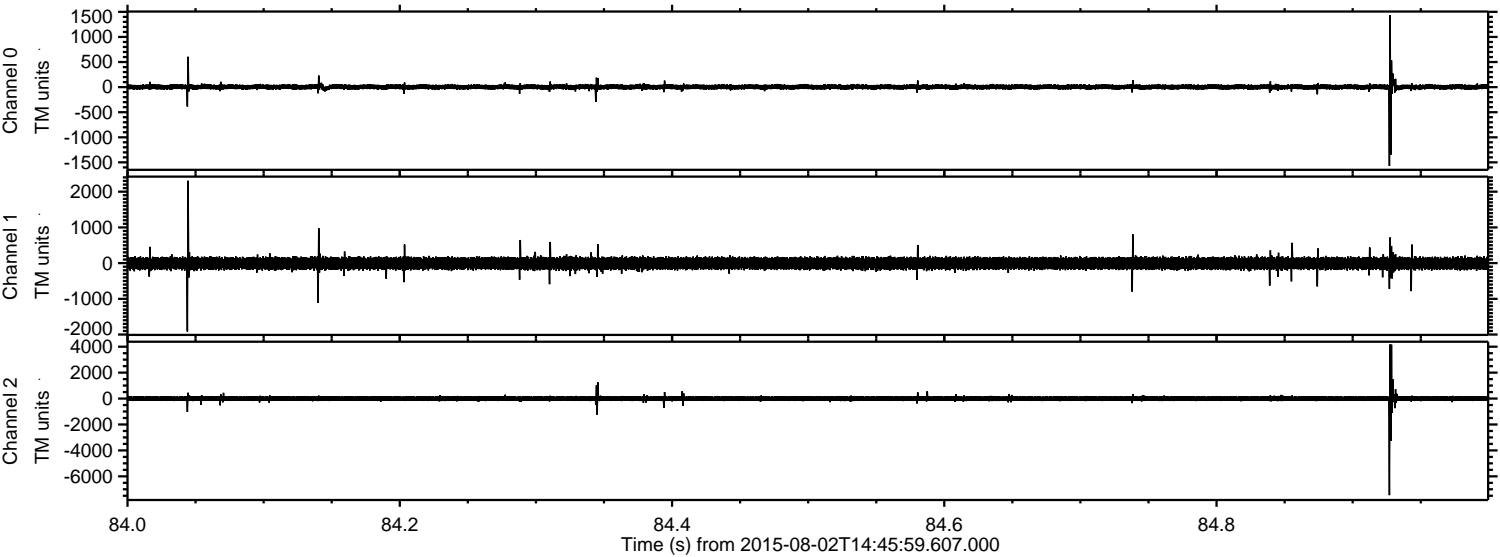


Channel 0  
mn: -2102  
mx: 1454  
 $\mu$ : 3.1  
 $\sigma$ : 30.4

Channel 1  
mn: -1320  
mx: 1181  
 $\mu$ : -7.0  
 $\sigma$ : 92.9

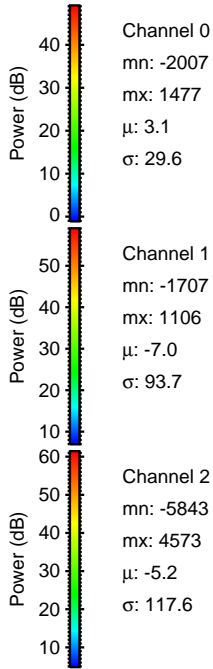
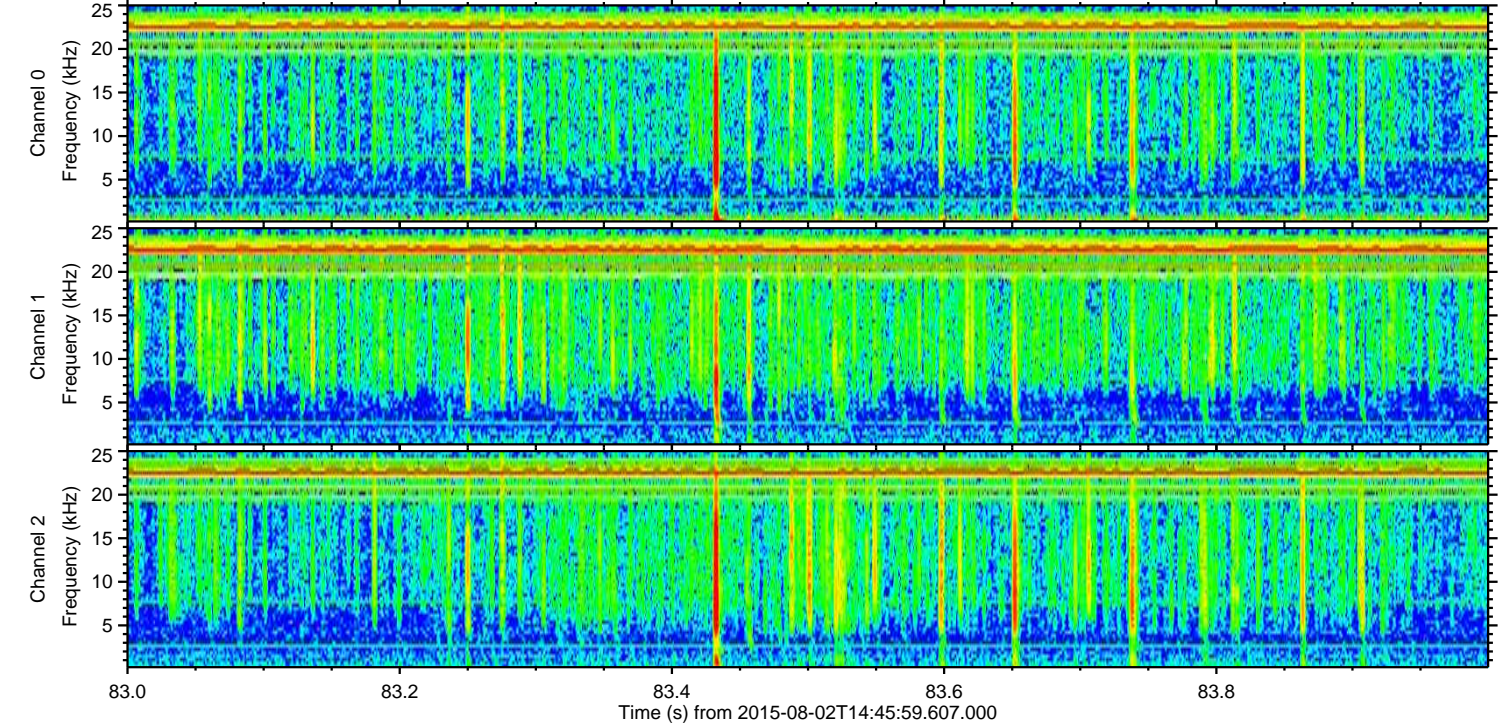
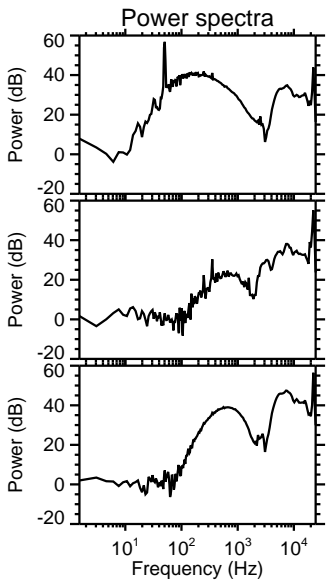
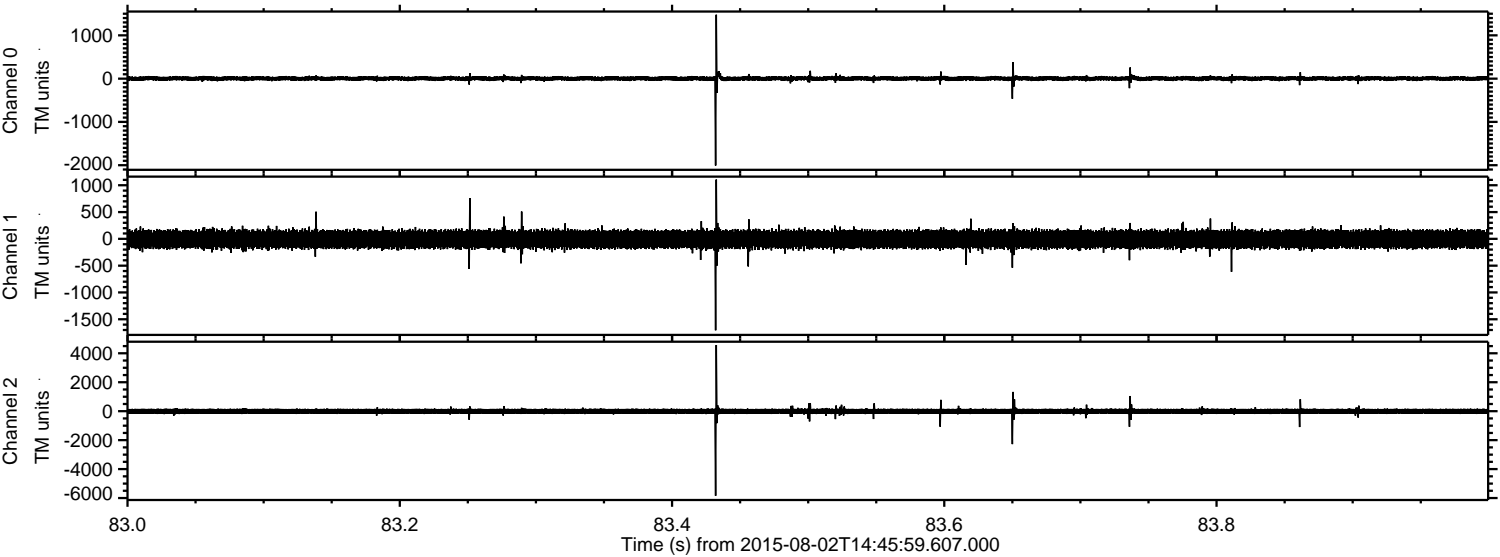
Channel 2  
mn: -8179  
mx: 7127  
 $\mu$ : -5.3  
 $\sigma$ : 121.3

Processed Sun Aug 2 16:52:14 2015 by ELM ver.2012-10-06 from 001\_\_elm20150802\_144558\_\_dat00.bin





Processed Sun Aug 2 16:52:15 2015 by ELM ver.2012-10-06 from 001\_\_elm20150802\_144558\_\_dat00.bin

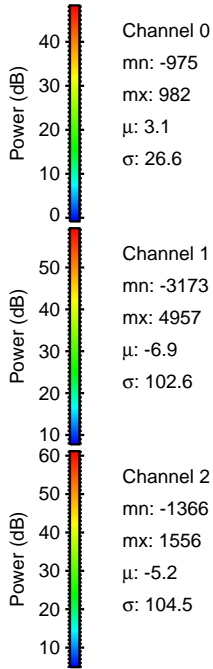
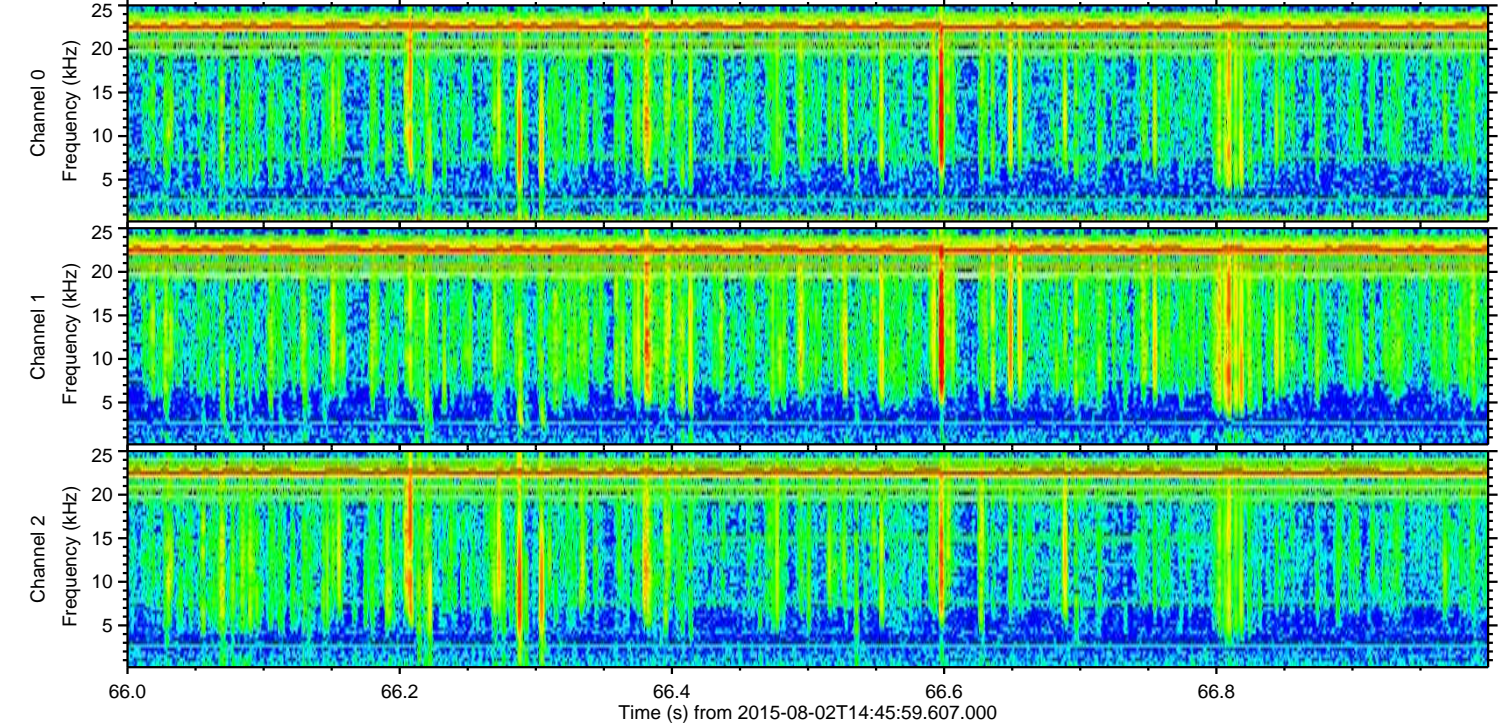
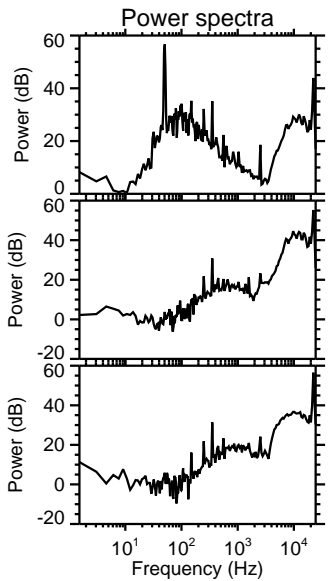
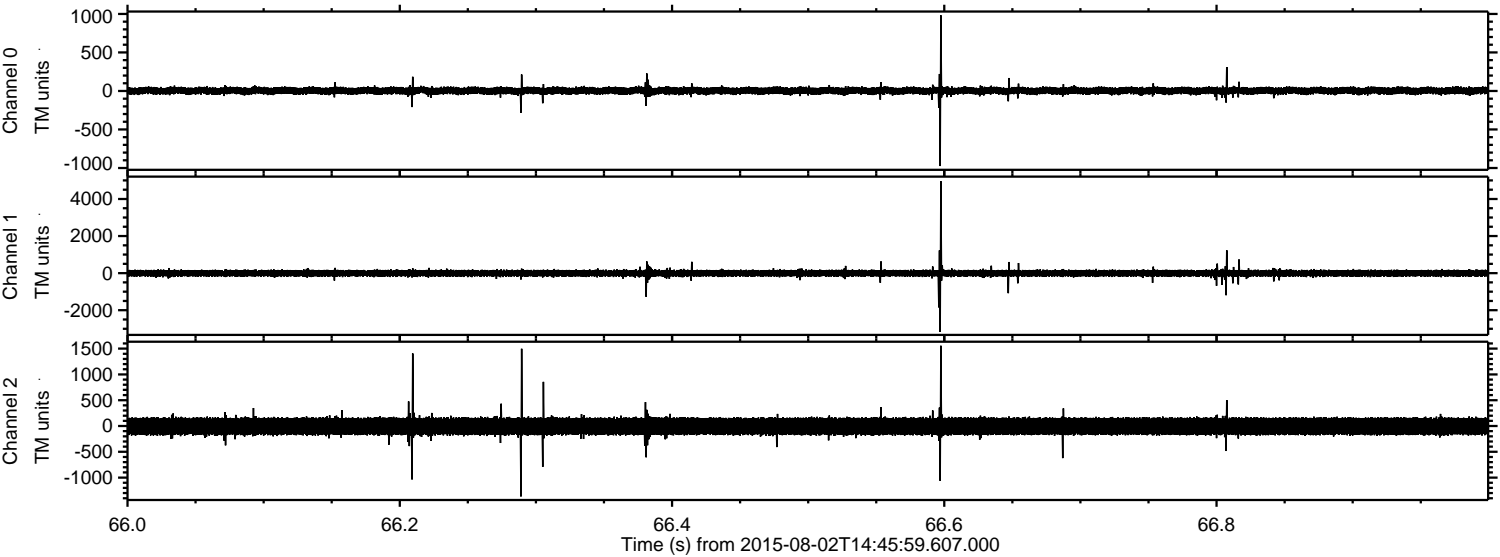


Channel 0  
mn: -2007  
mx: 1477  
 $\mu$ : 3.1  
 $\sigma$ : 29.6

Channel 1  
mn: -1707  
mx: 1106  
 $\mu$ : -7.0  
 $\sigma$ : 93.7

Channel 2  
mn: -5843  
mx: 4573  
 $\mu$ : -5.2  
 $\sigma$ : 117.6

Processed Sun Aug 2 16:52:16 2015 by ELM ver.2012-10-06 from 001\_\_elm20150802\_144558\_\_dat00.bin



Channel 0  
mn: -975  
mx: 982  
 $\mu$ : 3.1  
 $\sigma$ : 26.6

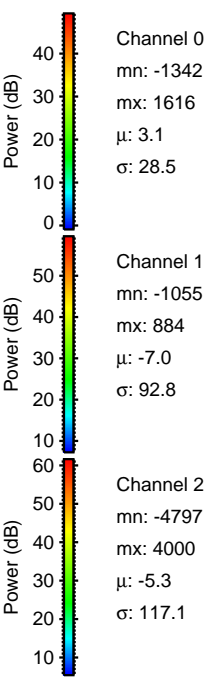
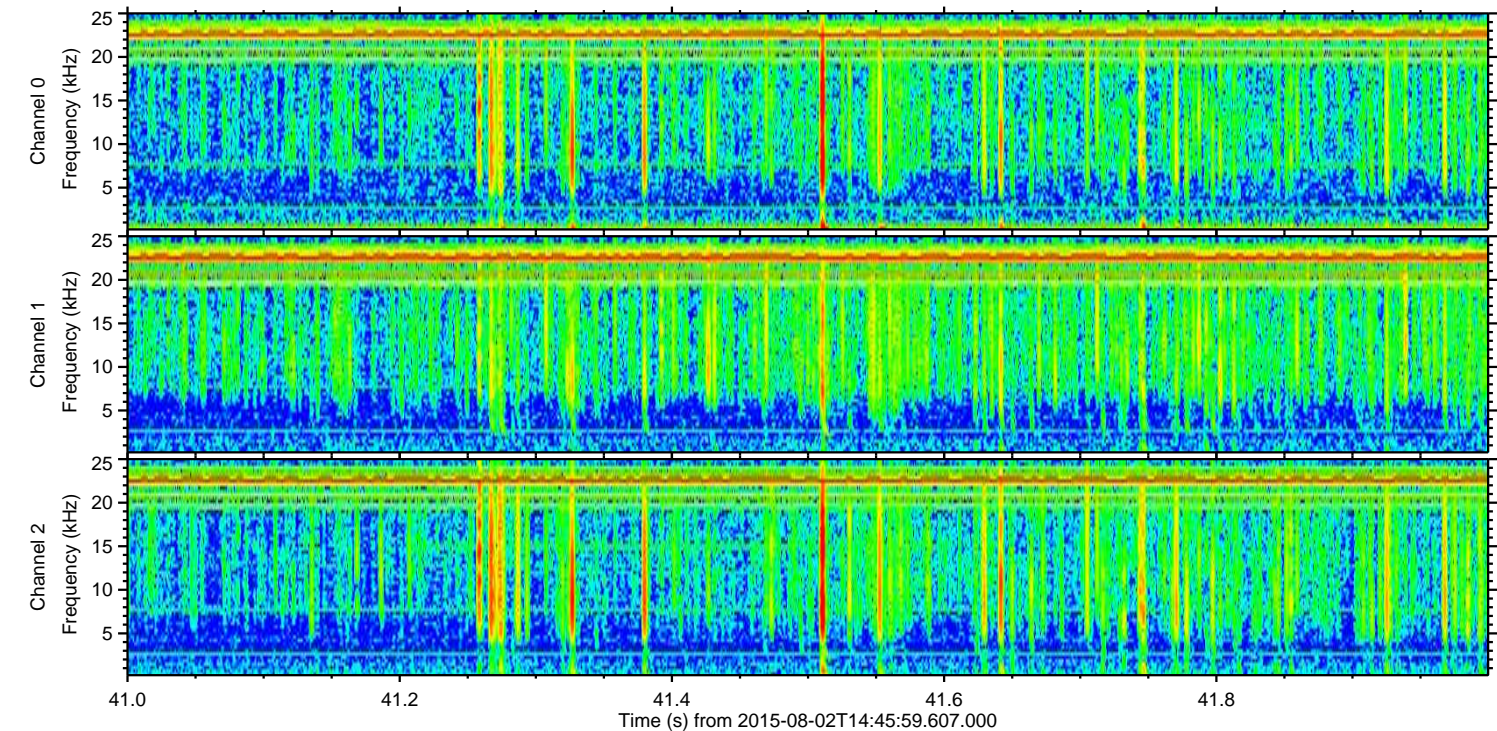
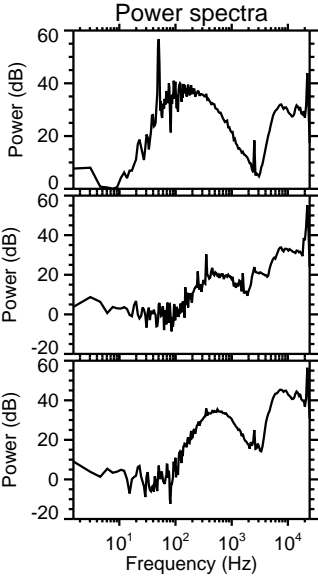
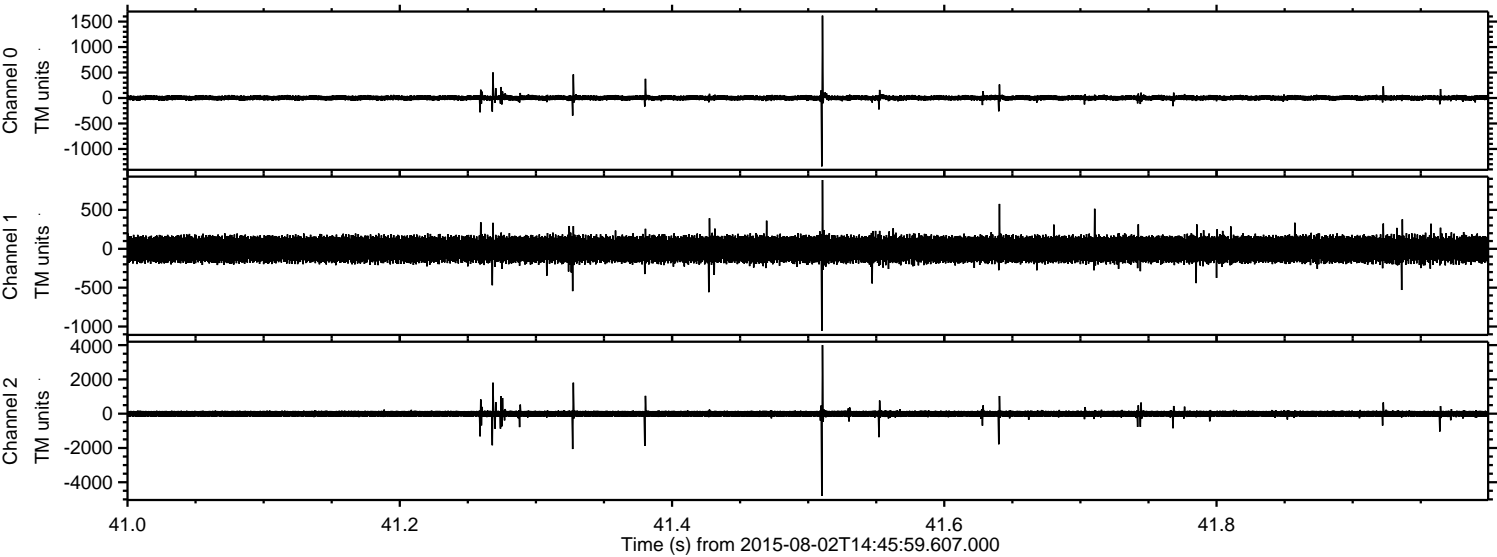
Channel 1  
mn: -3173  
mx: 4957  
 $\mu$ : -6.9  
 $\sigma$ : 102.6

Channel 2  
mn: -1366  
mx: 1556  
 $\mu$ : -5.2  
 $\sigma$ : 104.5

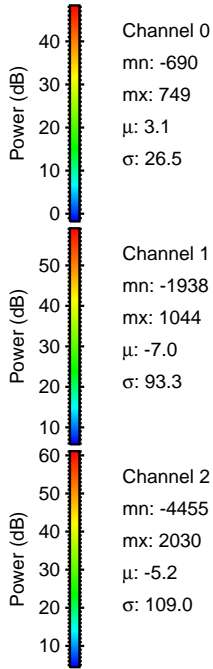
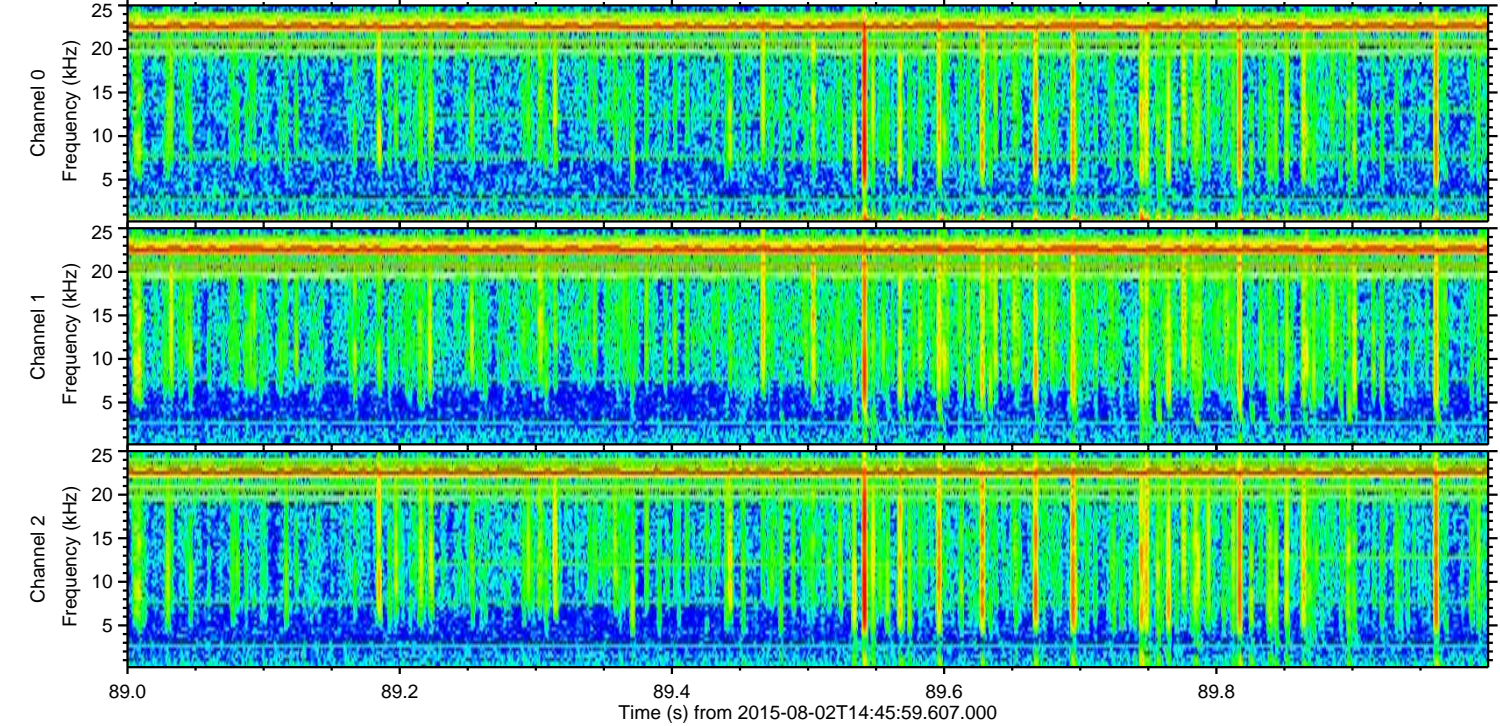
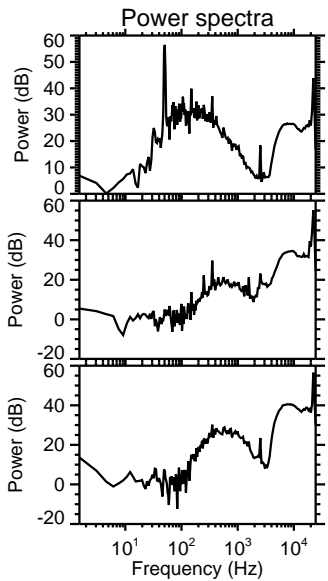
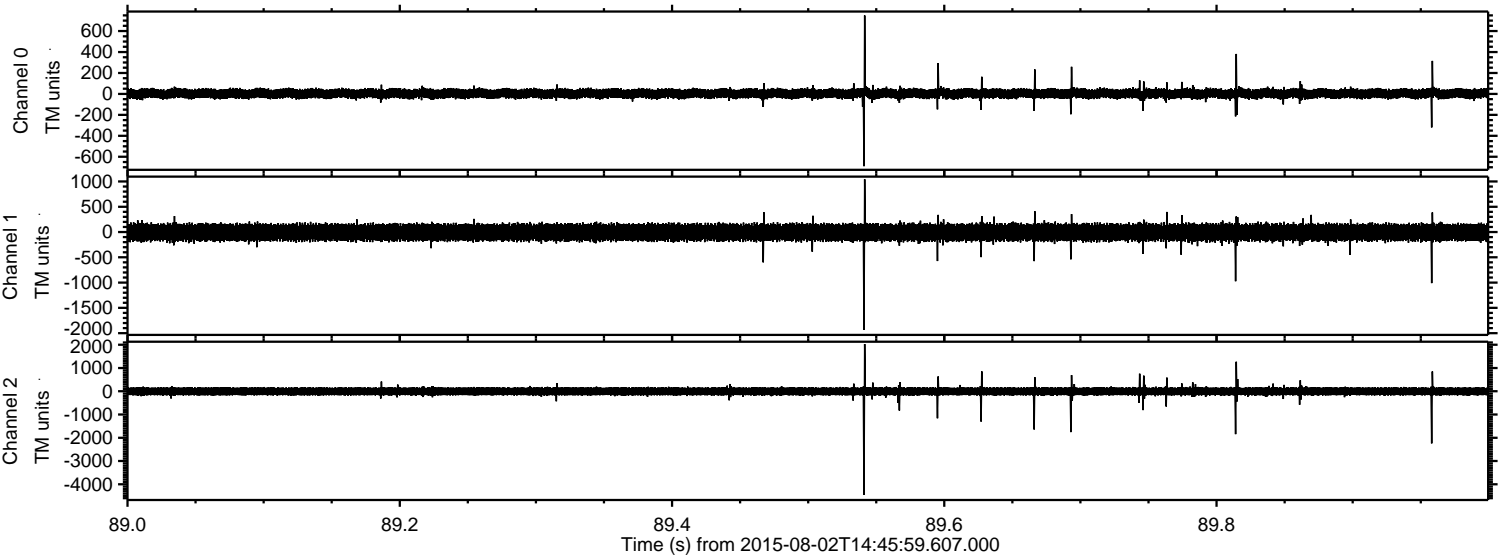


ELMAVAN 3D WAVEFORMS (Measured data sampled at 50 kHz) 51000 packets of 144 samples from 2015-08-02T14:45:59.607.000. Part 42/147

Processed Sun Aug 2 16:52:17 2015 by ELM ver.2012-10-06 from 001\_\_elm20150802\_144558\_\_dat00.bin



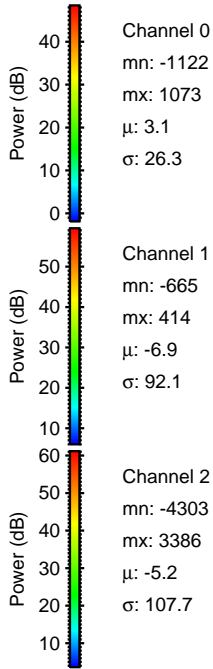
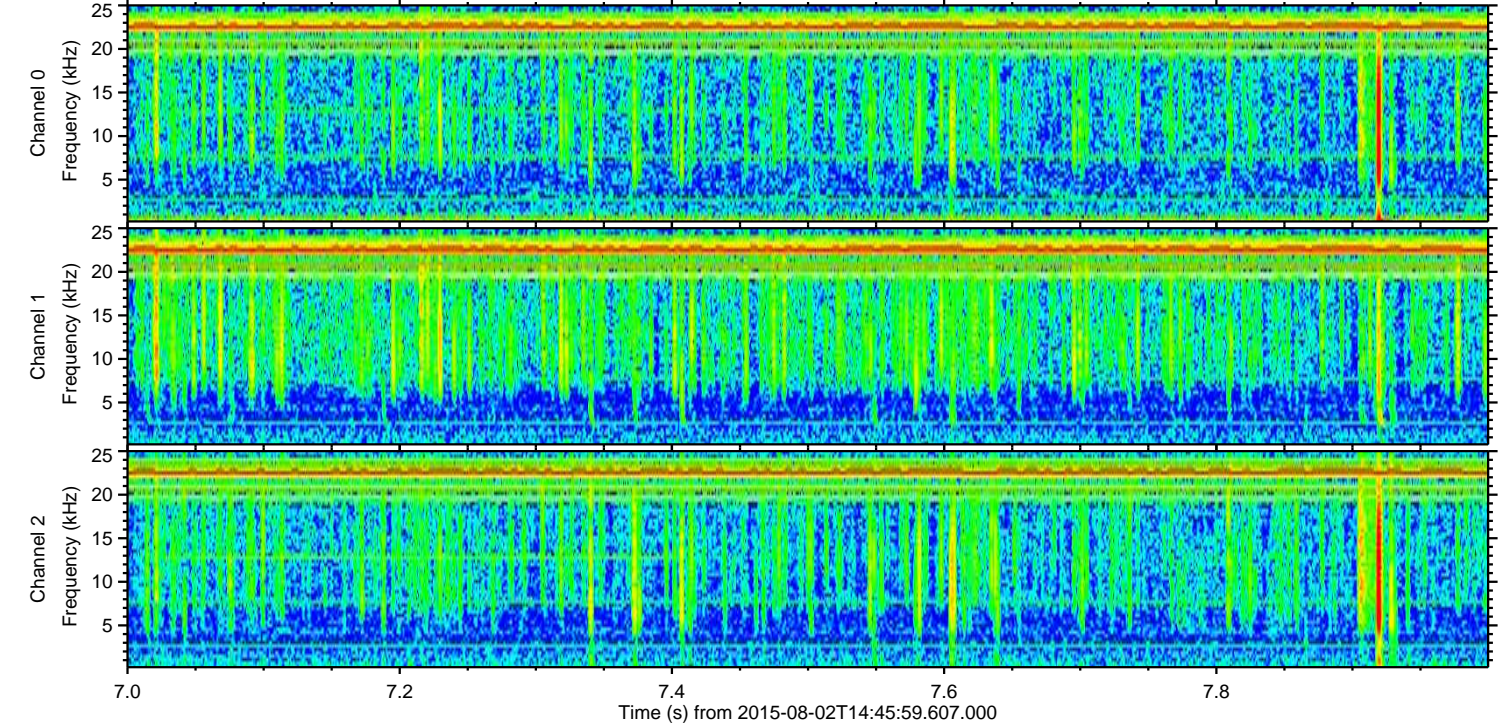
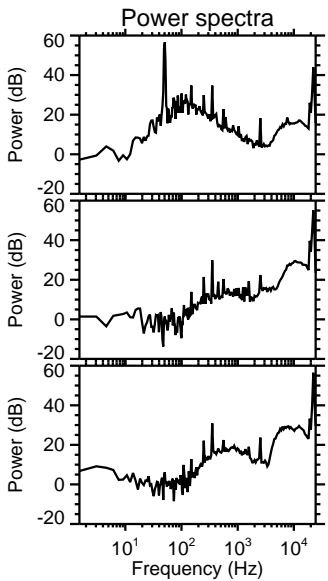
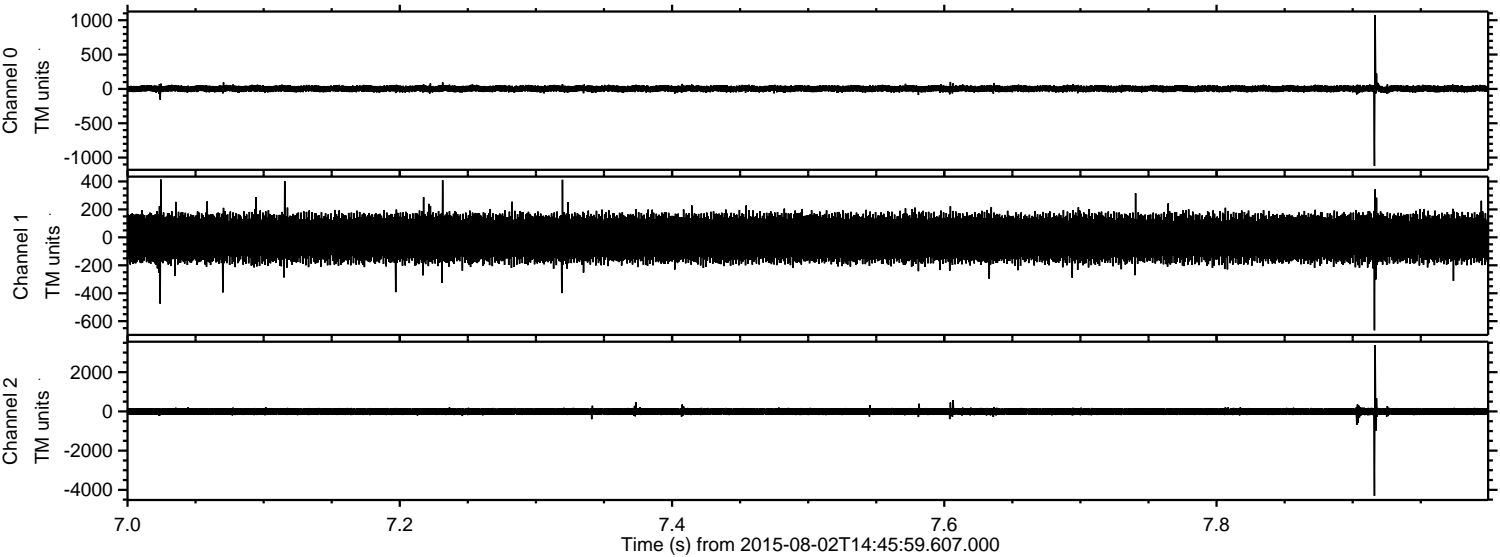
Processed Sun Aug 2 16:52:18 2015 by ELM ver.2012-10-06 from 001\_\_elm20150802\_144558\_\_dat00.bin





ELMAVAN 3D WAVEFORMS (Measured data sampled at 50 kHz) 51000 packets of 144 samples from 2015-08-02T14:45:59.607.000. Part 8/147

Processed Sun Aug 2 16:52:19 2015 by ELM ver.2012-10-06 from 001\_\_elm20150802\_144558\_\_dat00.bin



Channel 0  
mn: -1122  
mx: 1073  
 $\mu$ : 3.1  
 $\sigma$ : 26.3

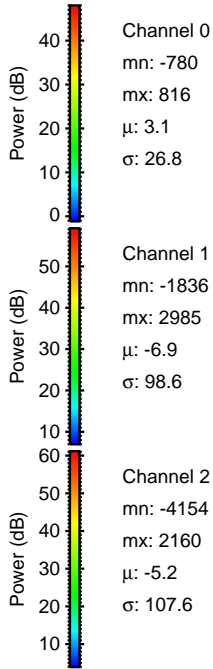
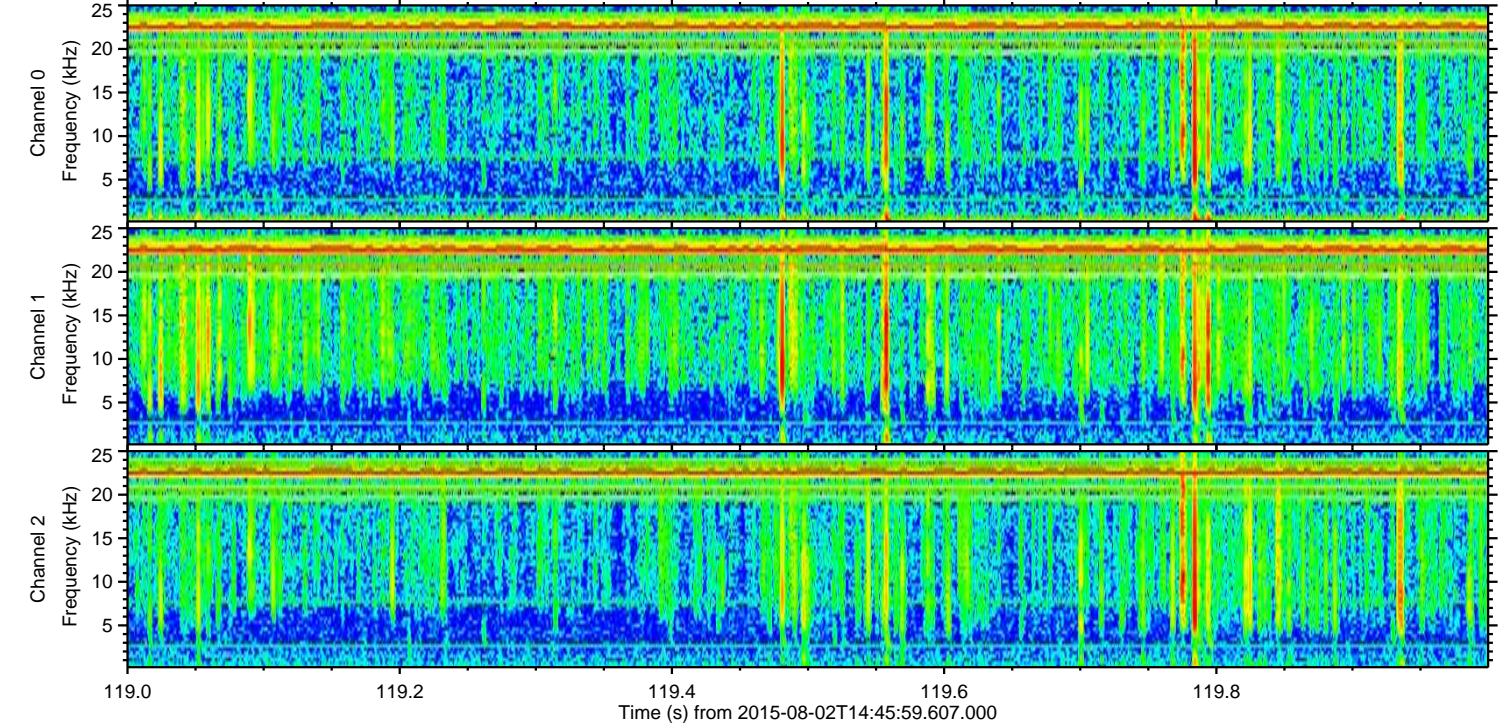
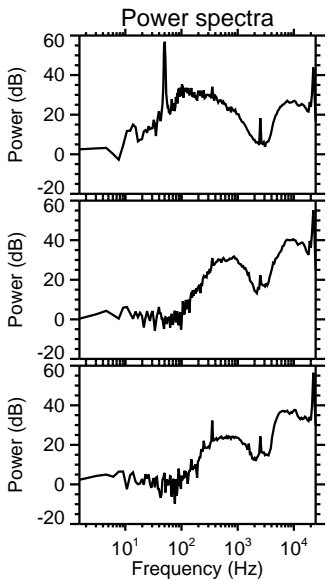
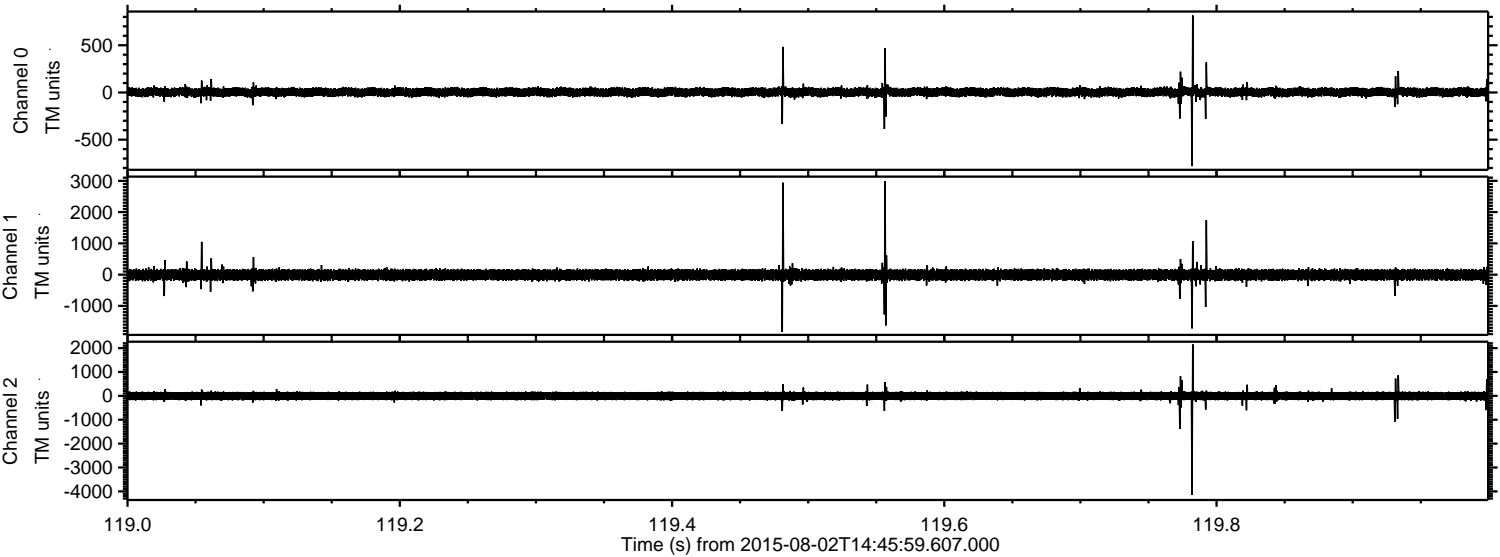
Channel 1  
mn: -665  
mx: 414  
 $\mu$ : -6.9  
 $\sigma$ : 92.1

Channel 2  
mn: -4303  
mx: 3386  
 $\mu$ : -5.2  
 $\sigma$ : 107.7



ELMAVAN 3D WAVEFORMS (Measured data sampled at 50 kHz) 51000 packets of 144 samples from 2015-08-02T14:45:59.607.000. Part 120/147

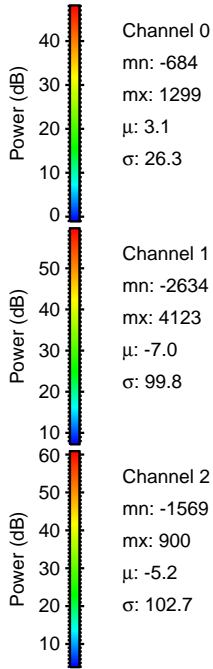
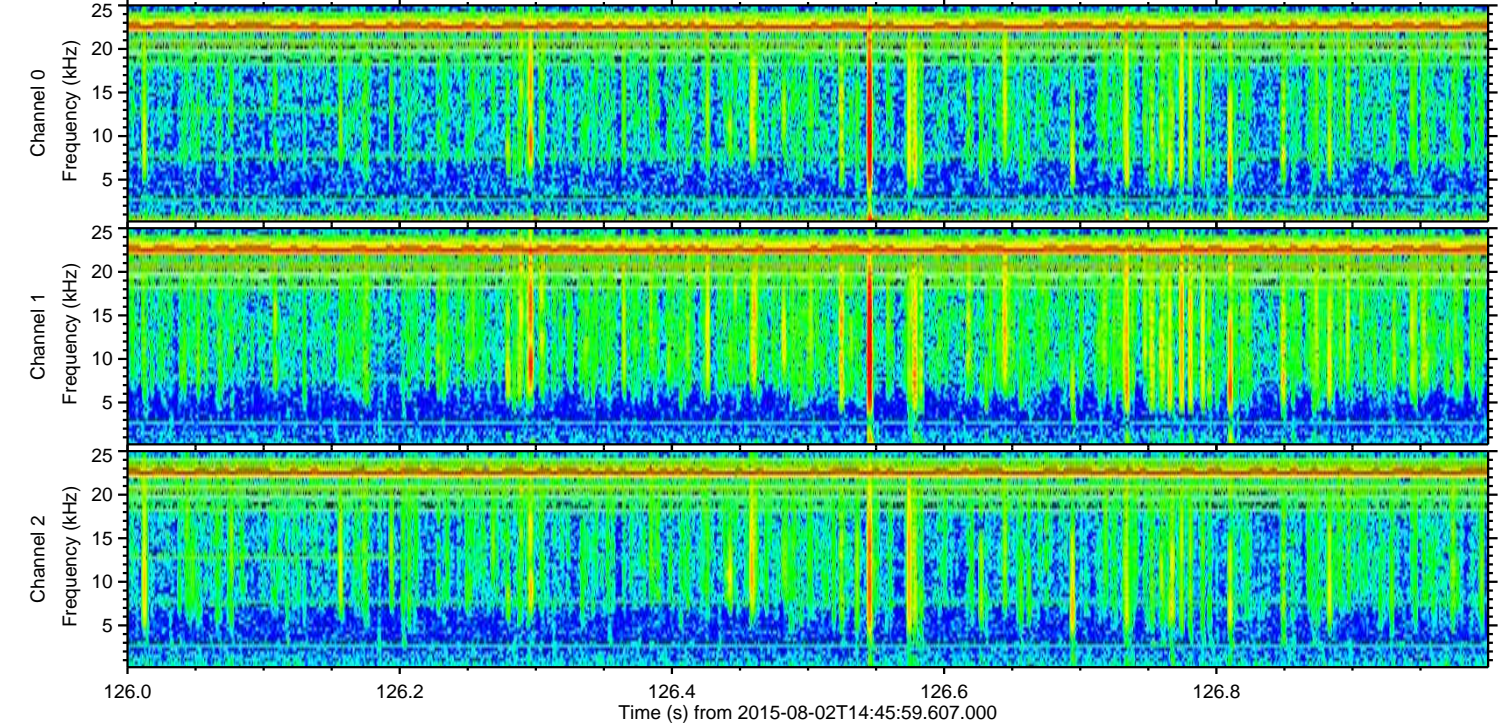
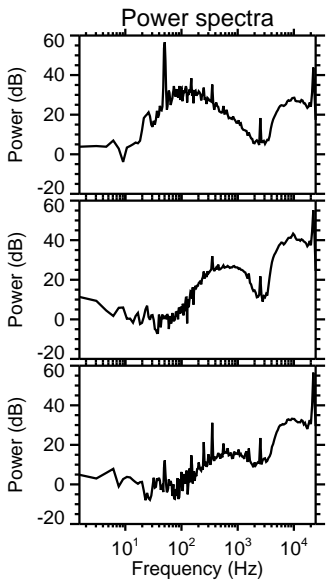
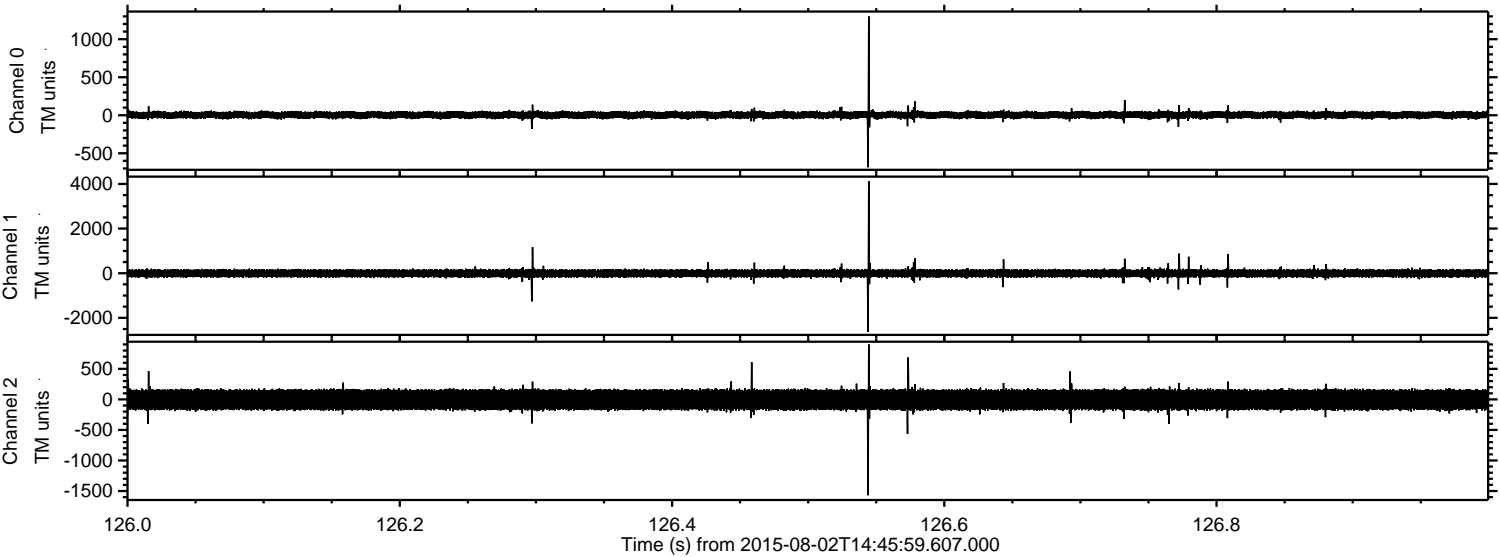
Processed Sun Aug 2 16:52:20 2015 by ELM ver.2012-10-06 from 001\_\_elm20150802\_144558\_\_dat00.bin





ELMAVAN 3D WAVEFORMS (Measured data sampled at 50 kHz) 51000 packets of 144 samples from 2015-08-02T14:45:59.607.000. Part 127/147

Processed Sun Aug 2 16:52:21 2015 by ELM ver.2012-10-06 from 001\_\_elm20150802\_144558\_\_dat00.bin



Channel 0  
mn: -684  
mx: 1299  
 $\mu$ : 3.1  
 $\sigma$ : 26.3

Channel 1  
mn: -2634  
mx: 4123  
 $\mu$ : -7.0  
 $\sigma$ : 99.8

Channel 2  
mn: -1569  
mx: 900  
 $\mu$ : -5.2  
 $\sigma$ : 102.7



Processed Sun Aug 2 16:52:22 2015 by ELM ver.2012-10-06 from 001\_\_elm20150802\_144558\_\_dat00.bin

