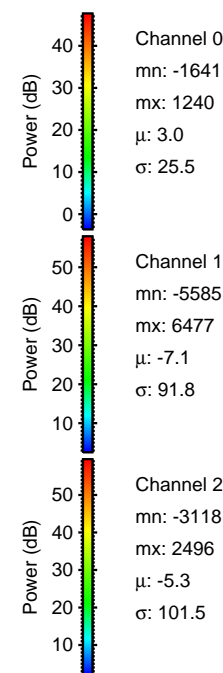
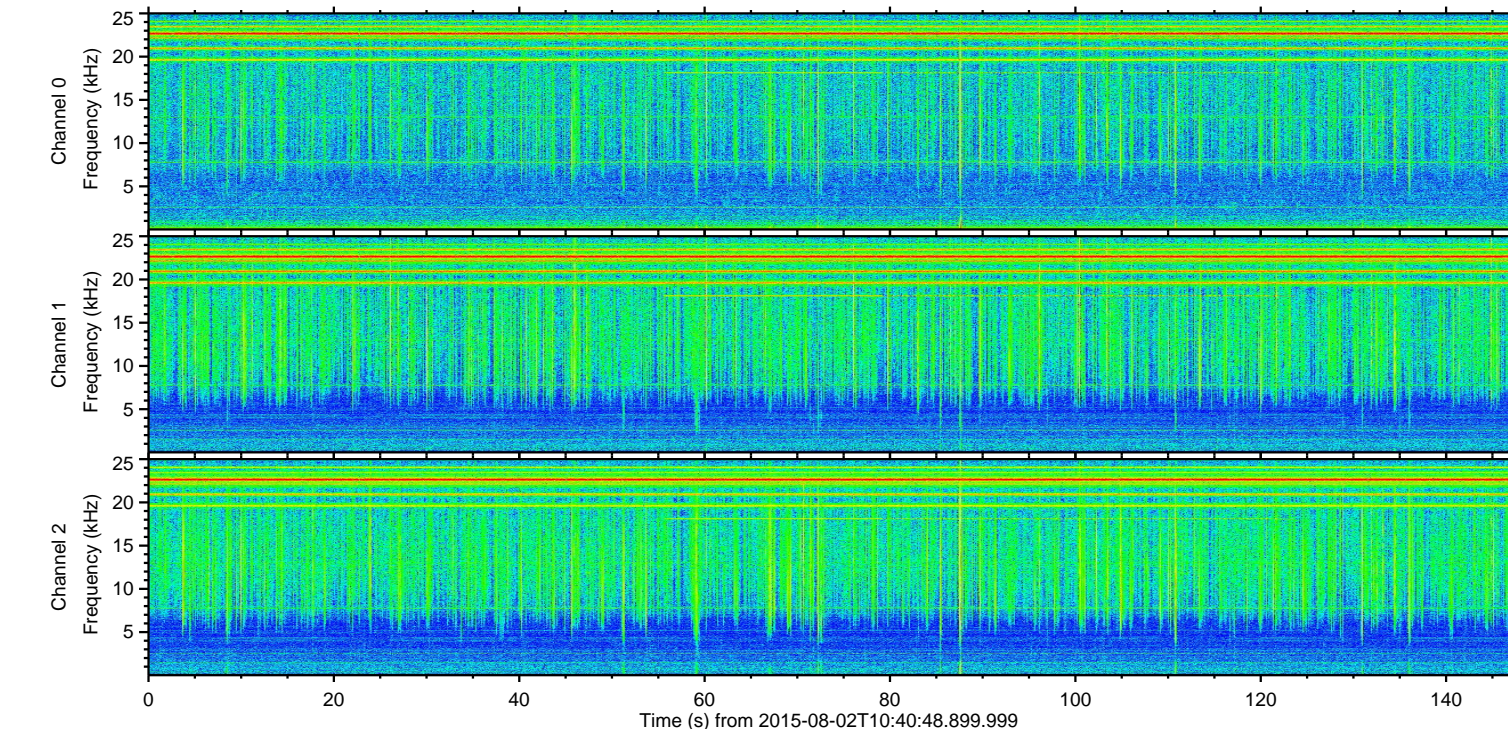
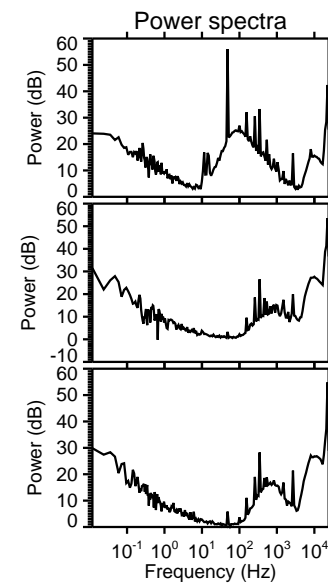
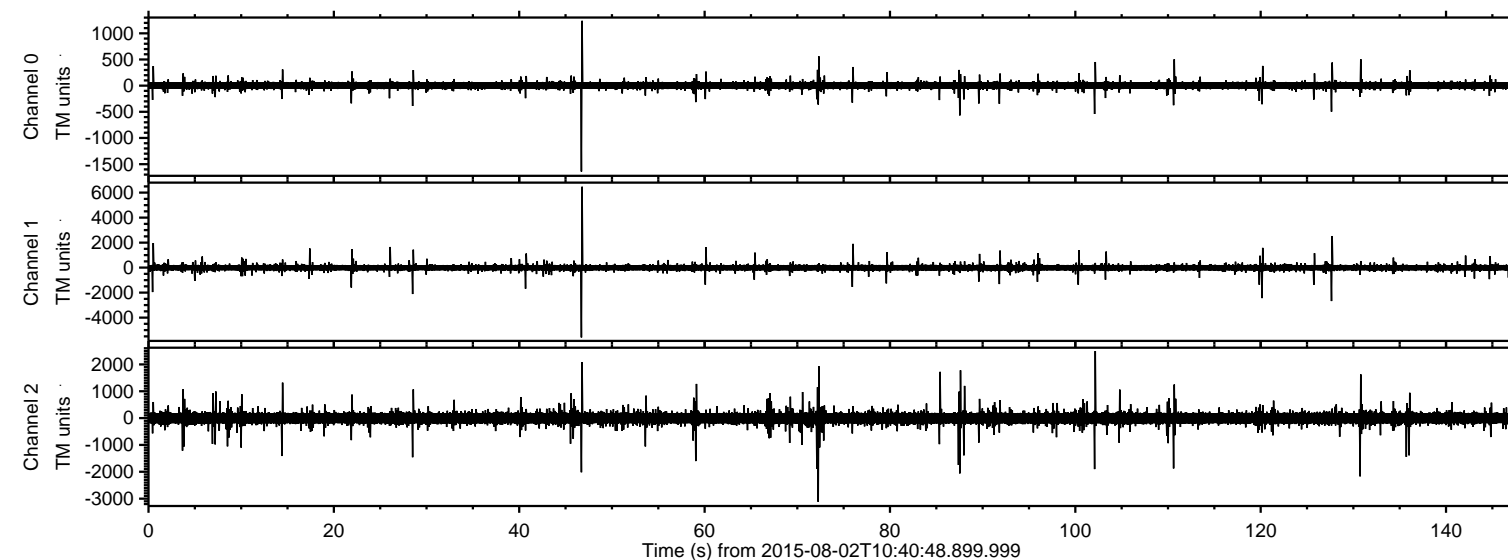


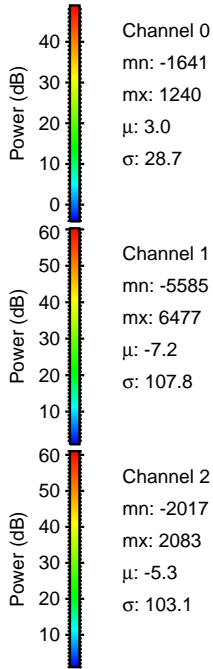
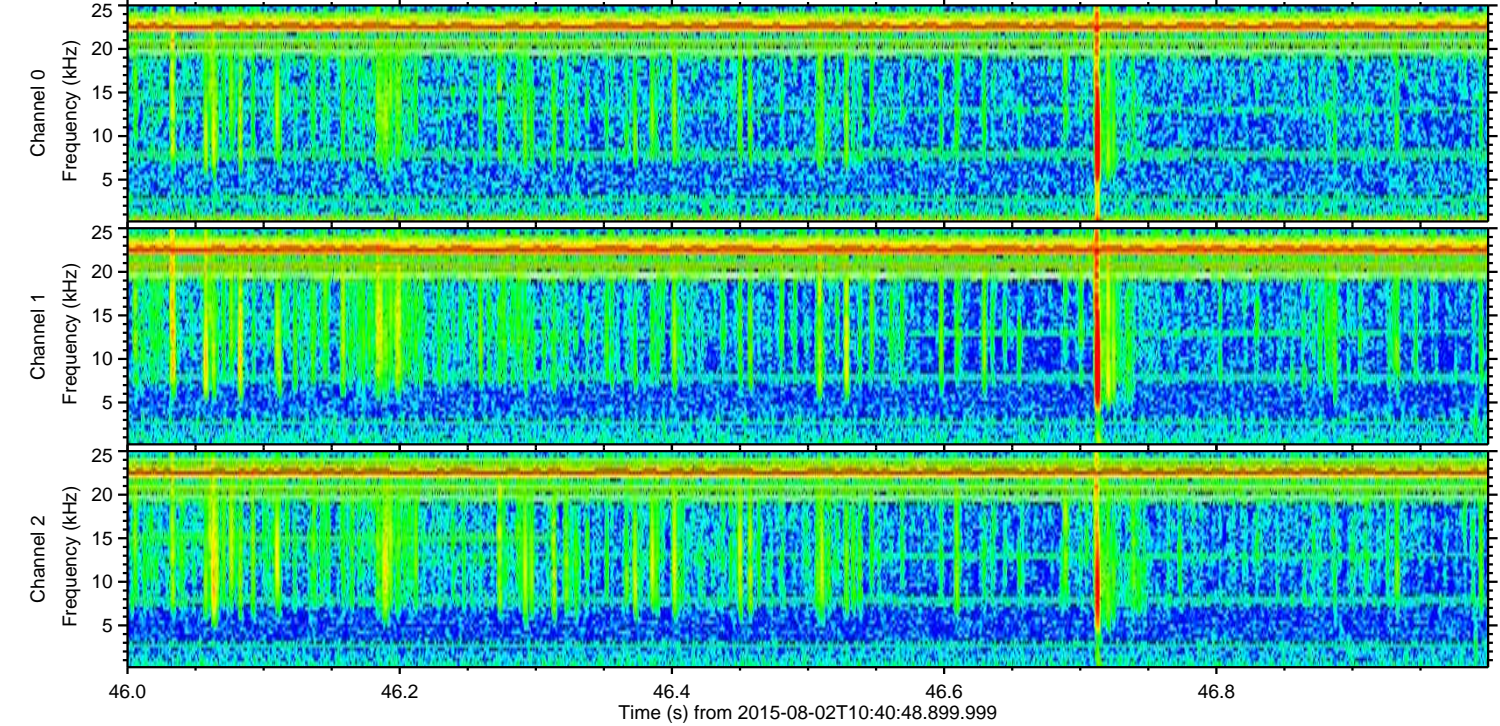
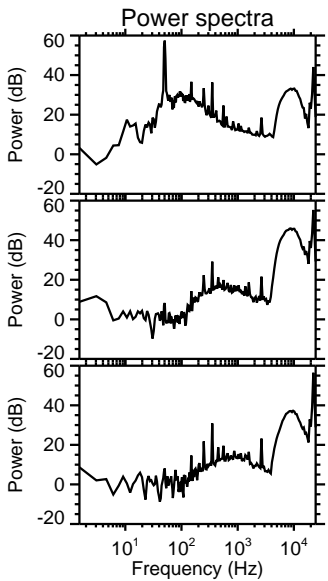
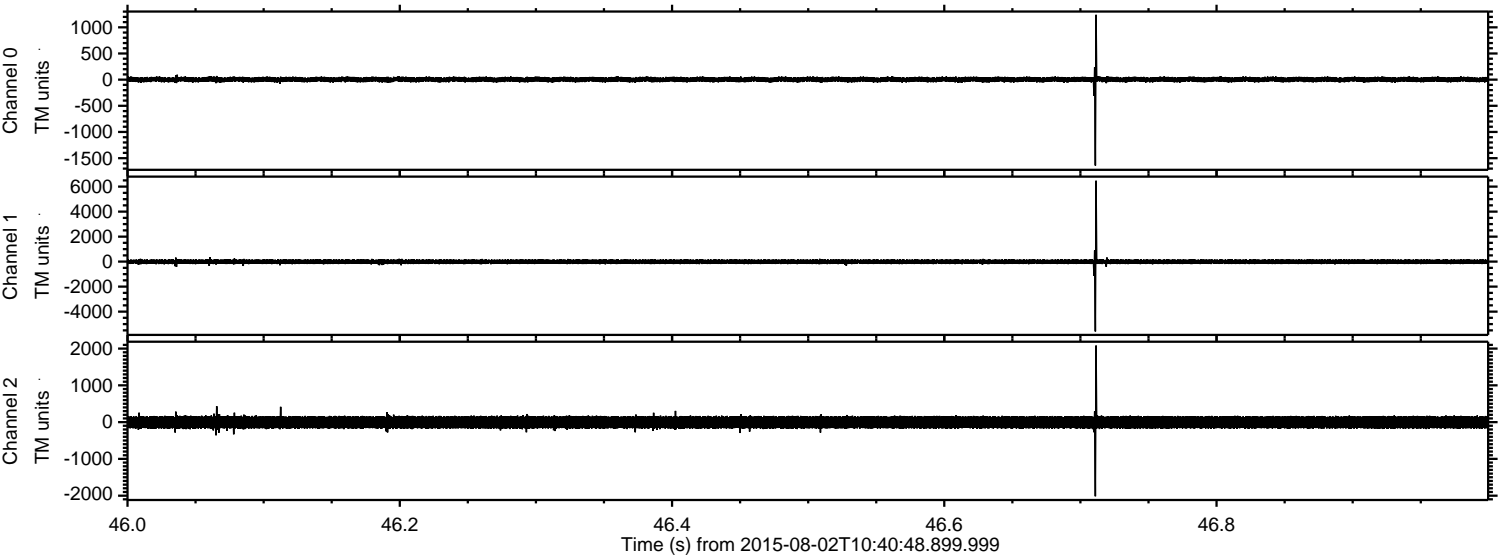
ELMAVAN 3D WAVEFORMS (Measured data sampled at 50 kHz) 51000 packets of 144 samples from 2015-08-02T10:40:48.899.999.

Processed Sun Aug 2 12:46:48 2015 by ELM ver.2012-10-06 from 001__elm20150802_104047__dat00.bin

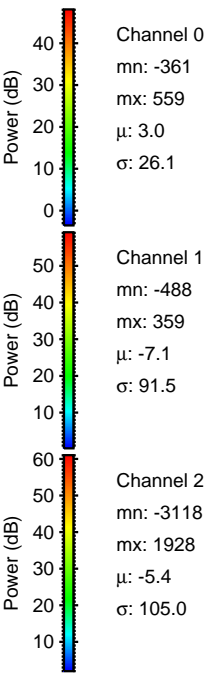
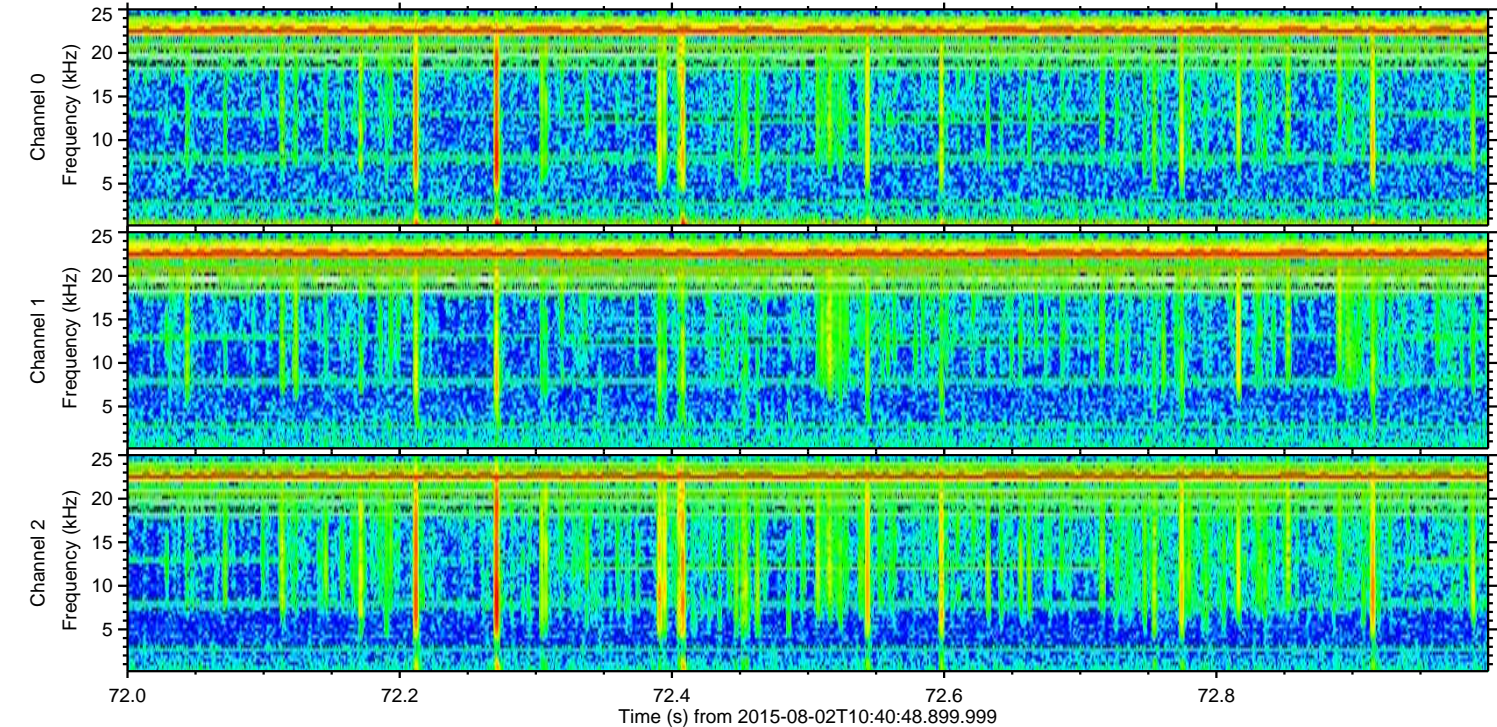
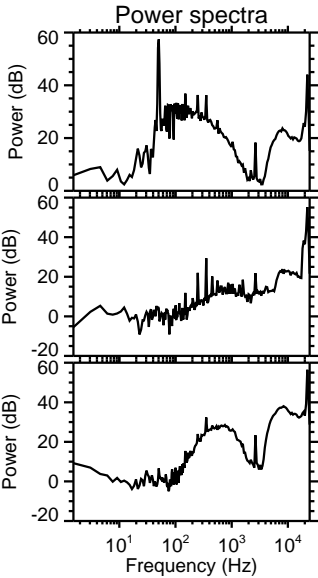
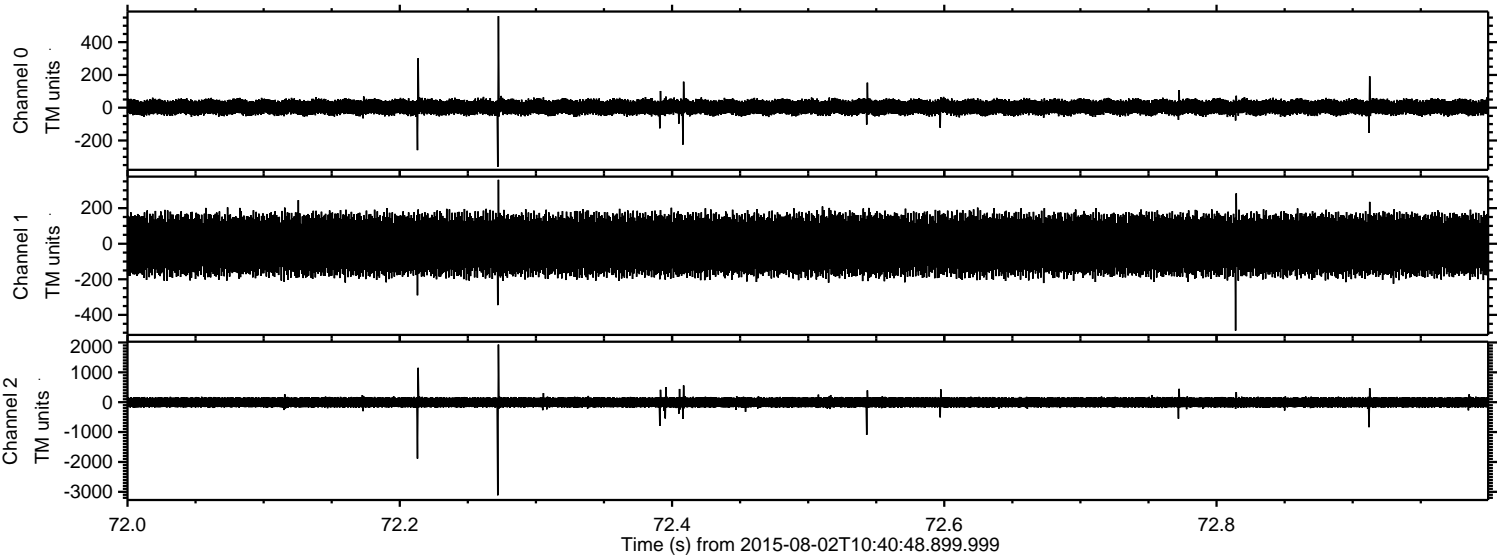


ELMAVAN 3D WAVEFORMS (Measured data sampled at 50 kHz) 51000 packets of 144 samples from 2015-08-02T10:40:48.899.999. Part 47/147

Processed Sun Aug 2 12:47:03 2015 by ELM ver.2012-10-06 from 001__elm20150802_104047__dat00.bin



Processed Sun Aug 2 12:47:04 2015 by ELM ver.2012-10-06 from 001__elm20150802_104047__dat00.bin



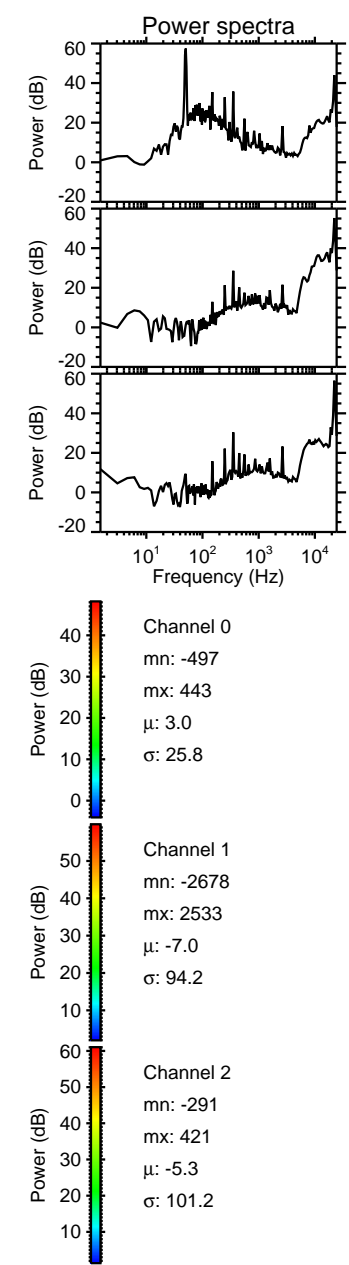
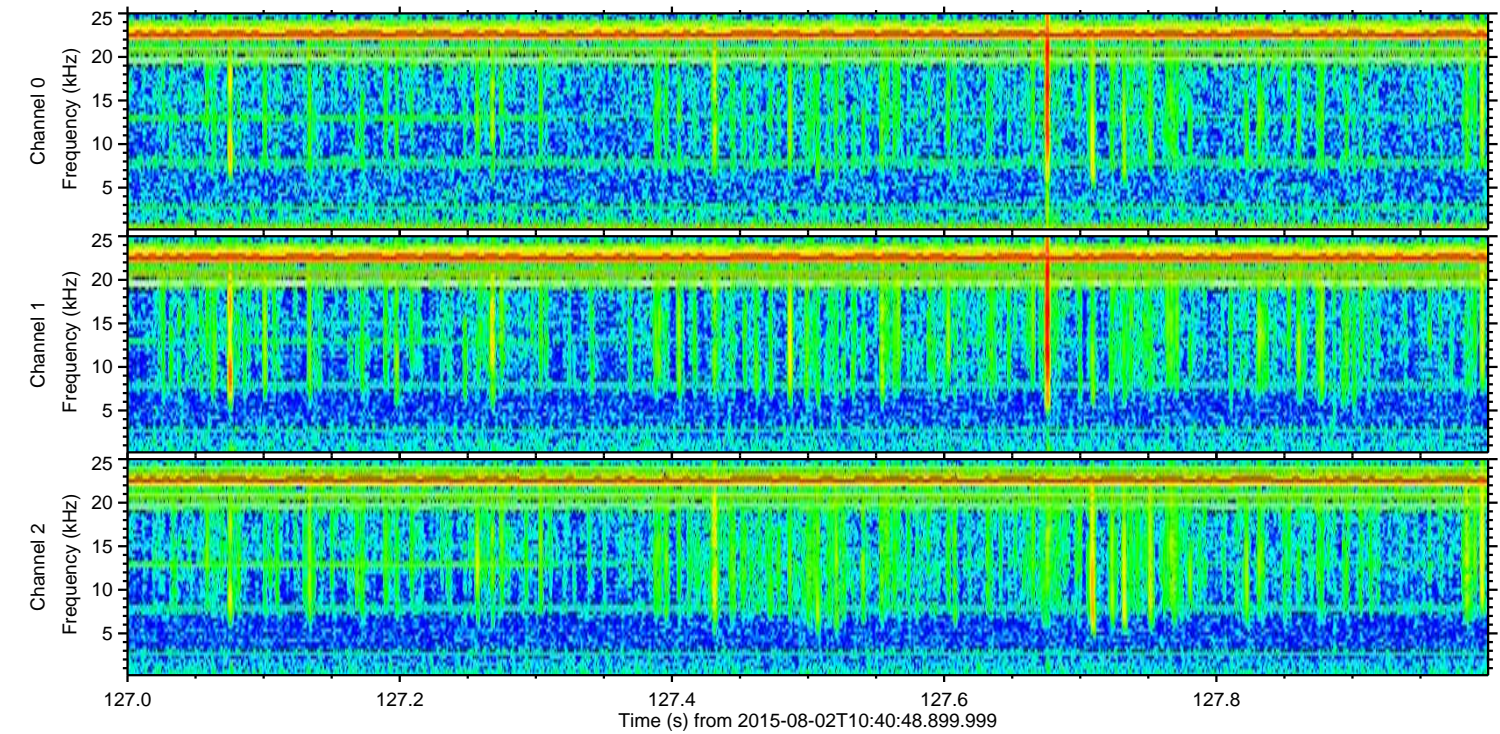
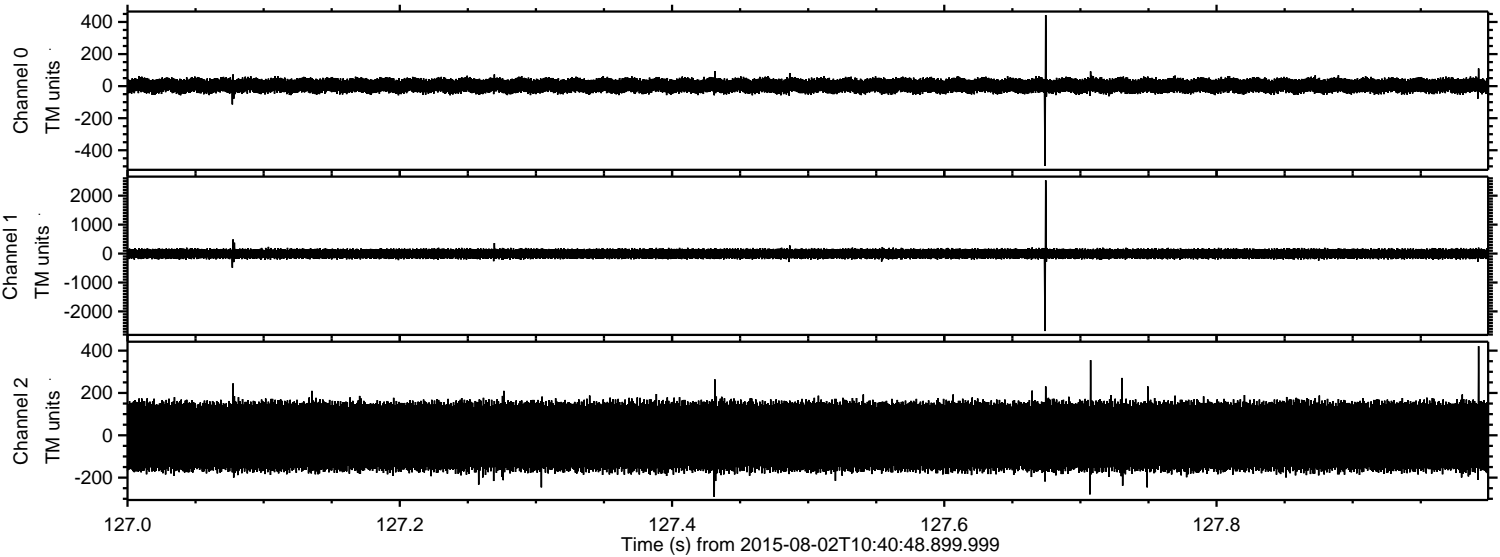
Channel 0
mn: -361
mx: 559
 μ : 3.0
 σ : 26.1

Channel 1
mn: -488
mx: 359
 μ : -7.1
 σ : 91.5

Channel 2
mn: -3118
mx: 1928
 μ : -5.4
 σ : 105.0

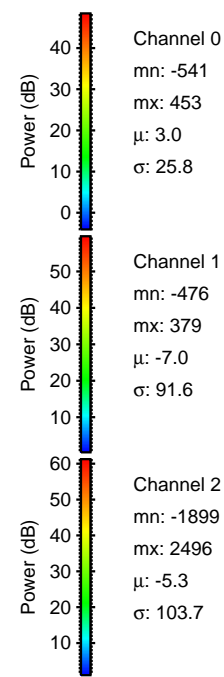
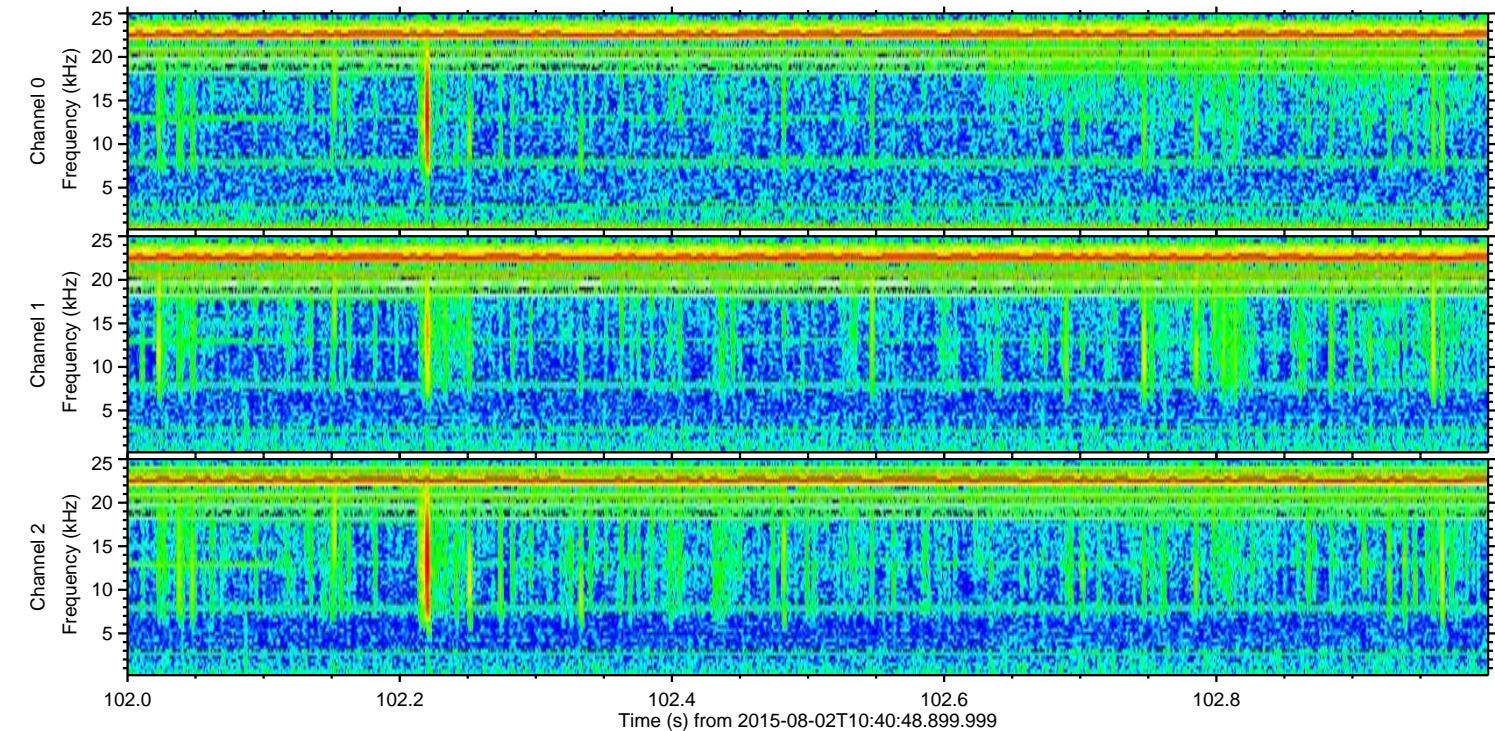
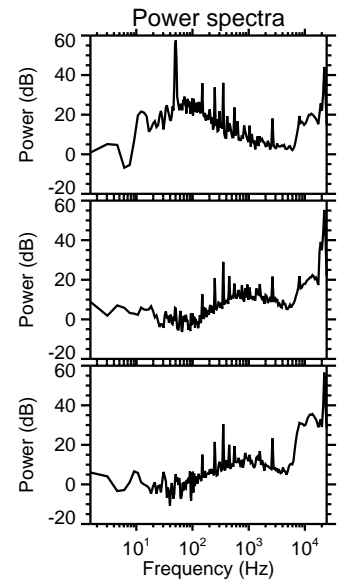
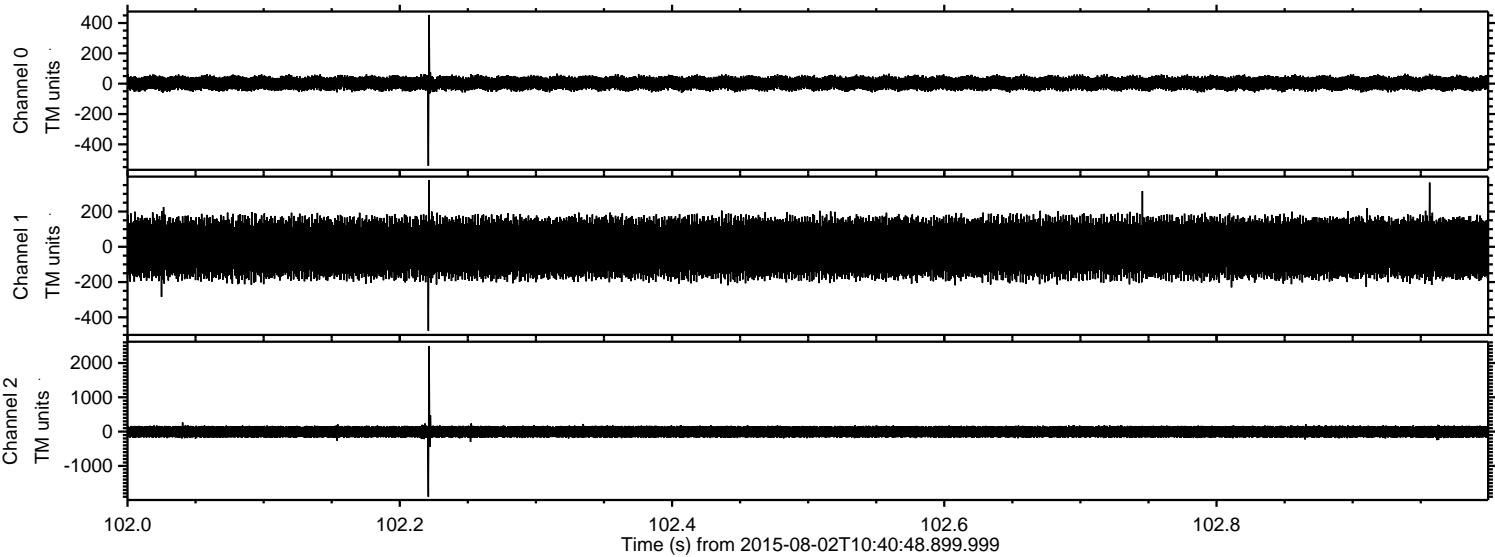
ELMAVAN 3D WAVEFORMS (Measured data sampled at 50 kHz) 51000 packets of 144 samples from 2015-08-02T10:40:48.899.999. Part 128/147

Processed Sun Aug 2 12:47:05 2015 by ELM ver.2012-10-06 from 001__elm20150802_104047__dat00.bin



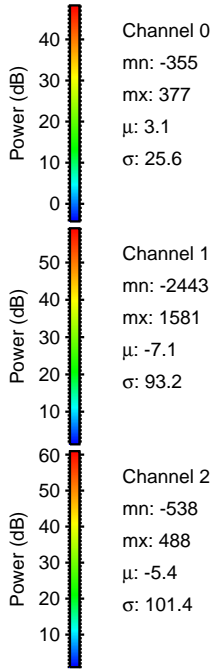
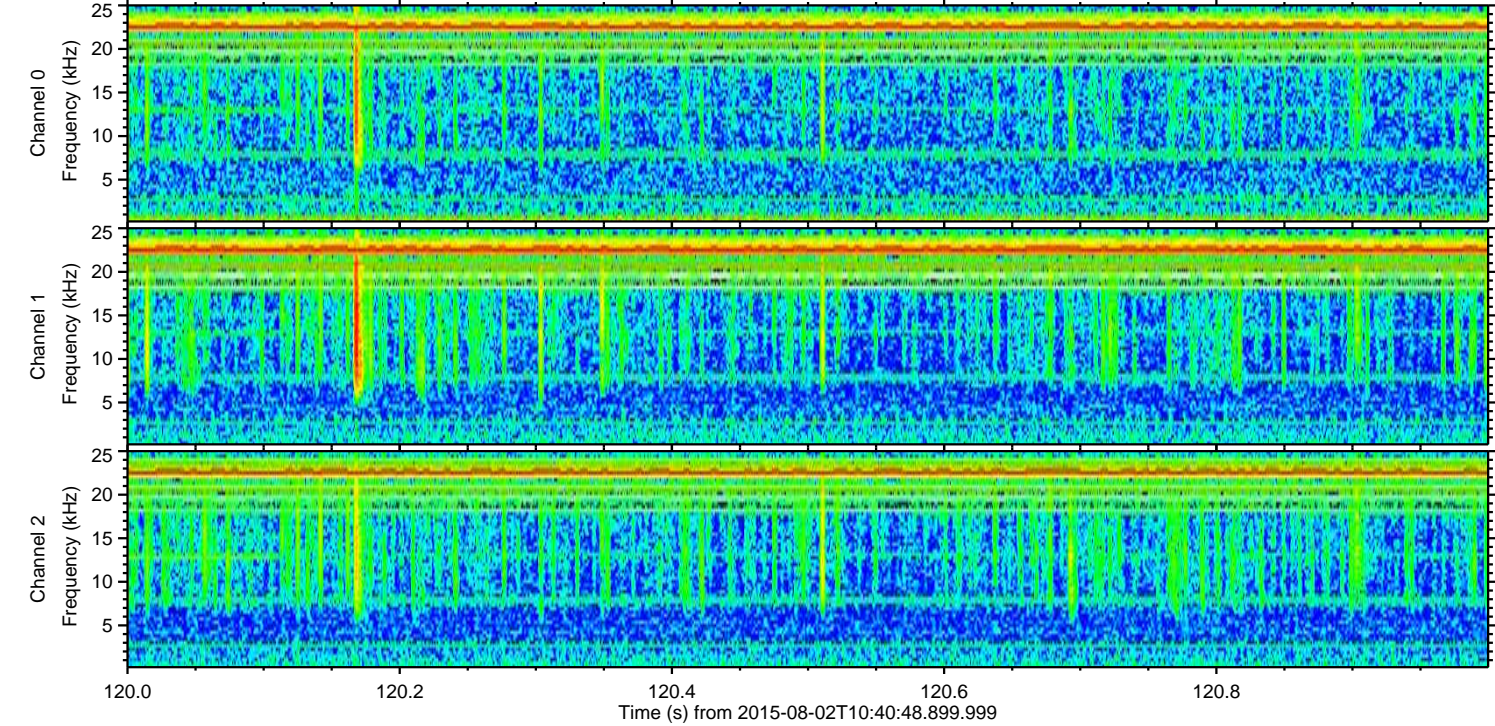
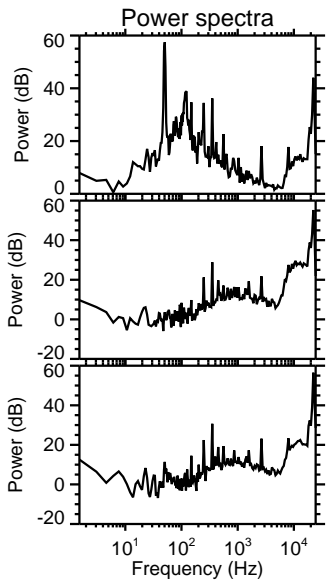
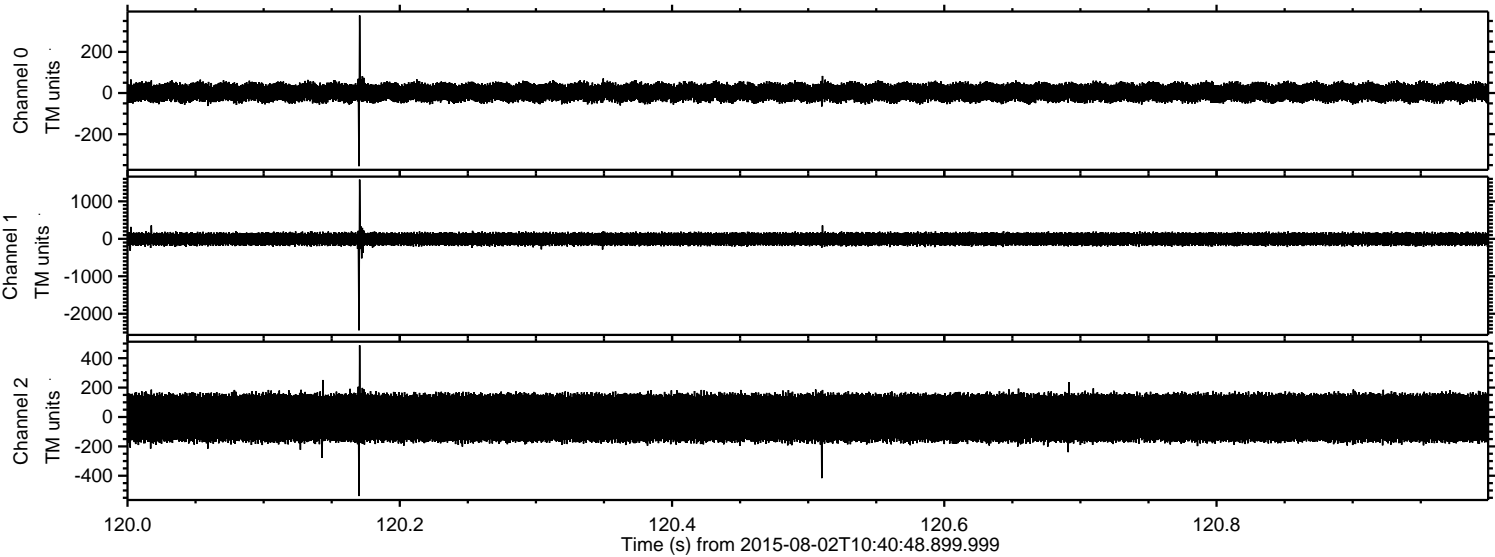
ELMAVAN 3D WAVEFORMS (Measured data sampled at 50 kHz) 51000 packets of 144 samples from 2015-08-02T10:40:48.899.999. Part 103/147

Processed Sun Aug 2 12:47:06 2015 by ELM ver.2012-10-06 from 001__elm20150802_104047__dat00.bin



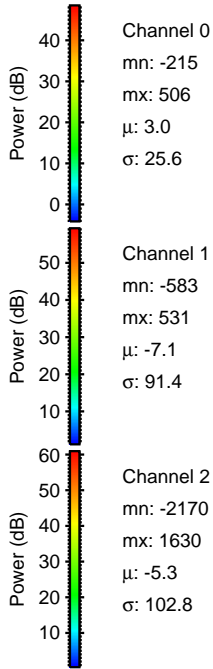
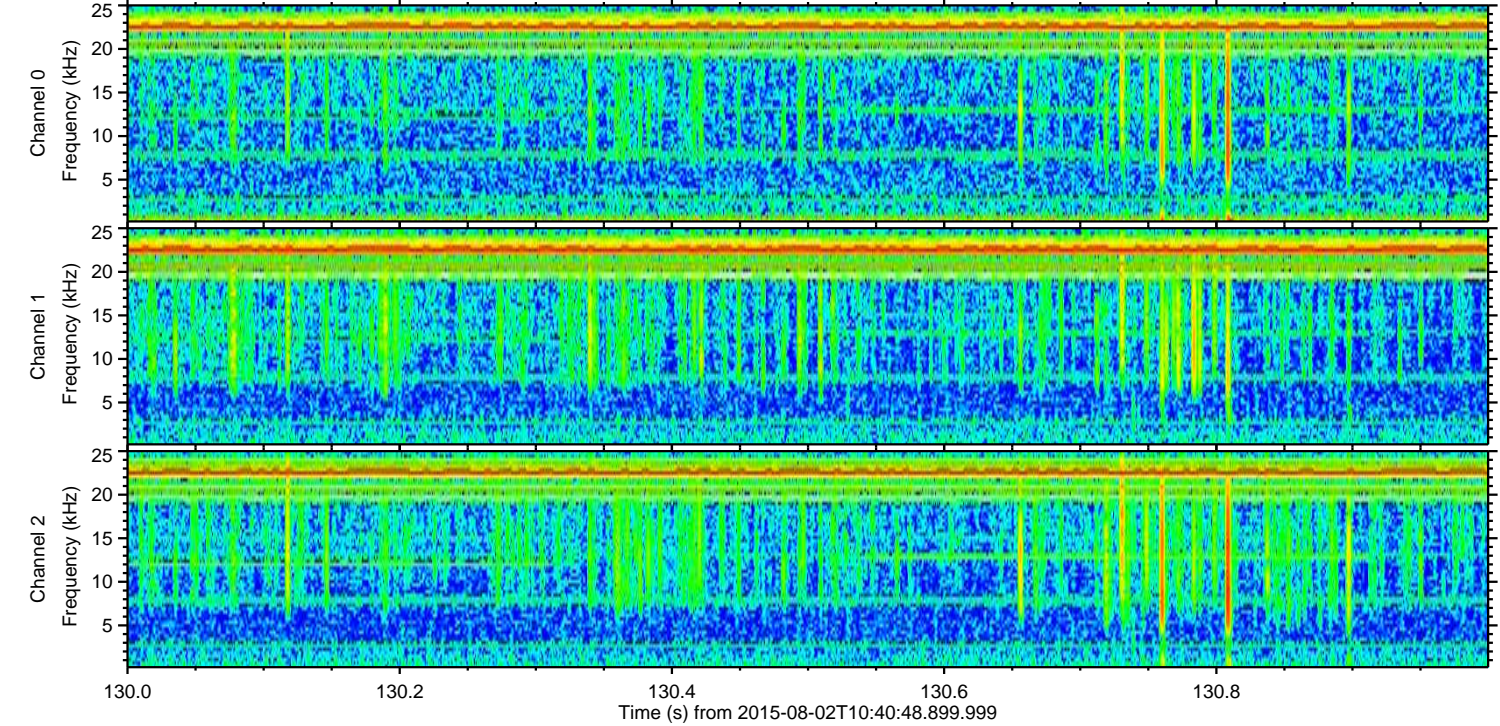
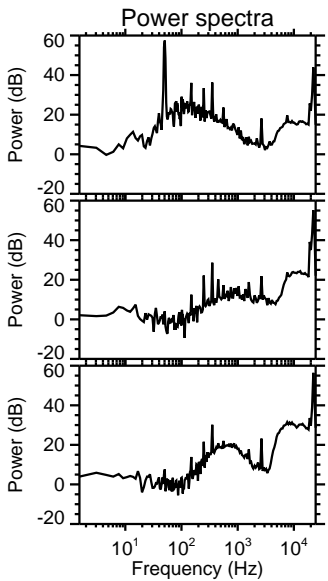
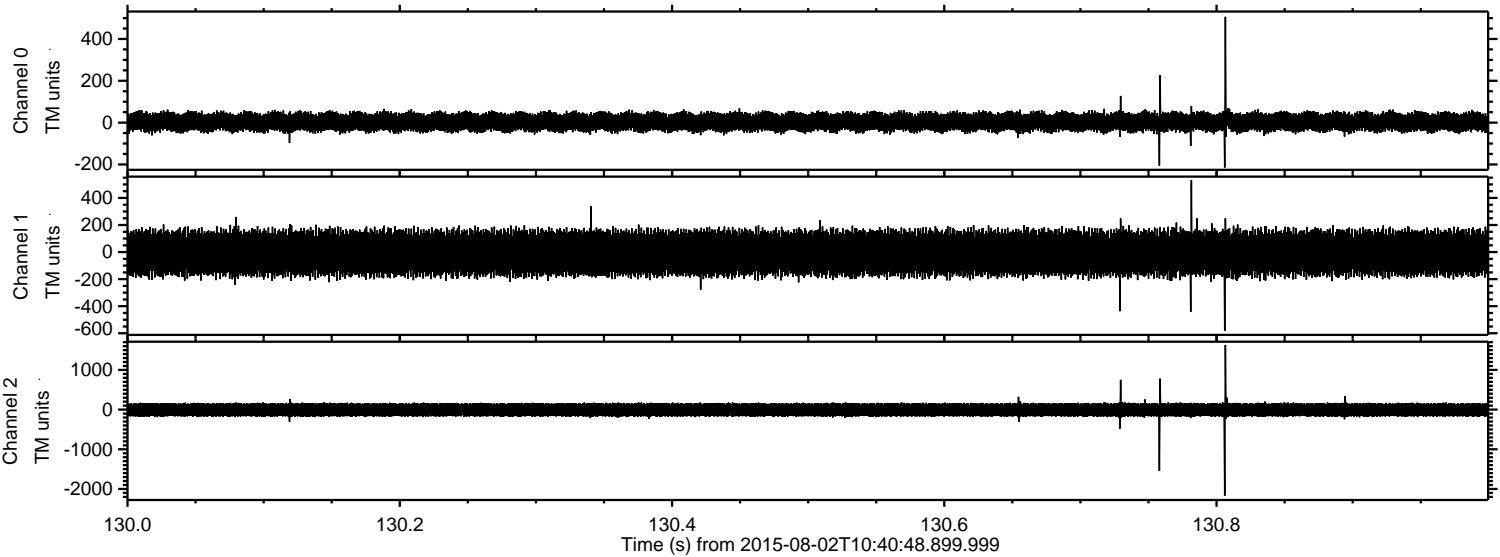
ELMAVAN 3D WAVEFORMS (Measured data sampled at 50 kHz) 51000 packets of 144 samples from 2015-08-02T10:40:48.899.999. Part 121/147

Processed Sun Aug 2 12:47:07 2015 by ELM ver.2012-10-06 from 001__elm20150802_104047__dat00.bin

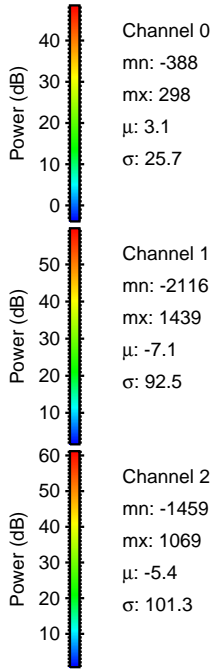
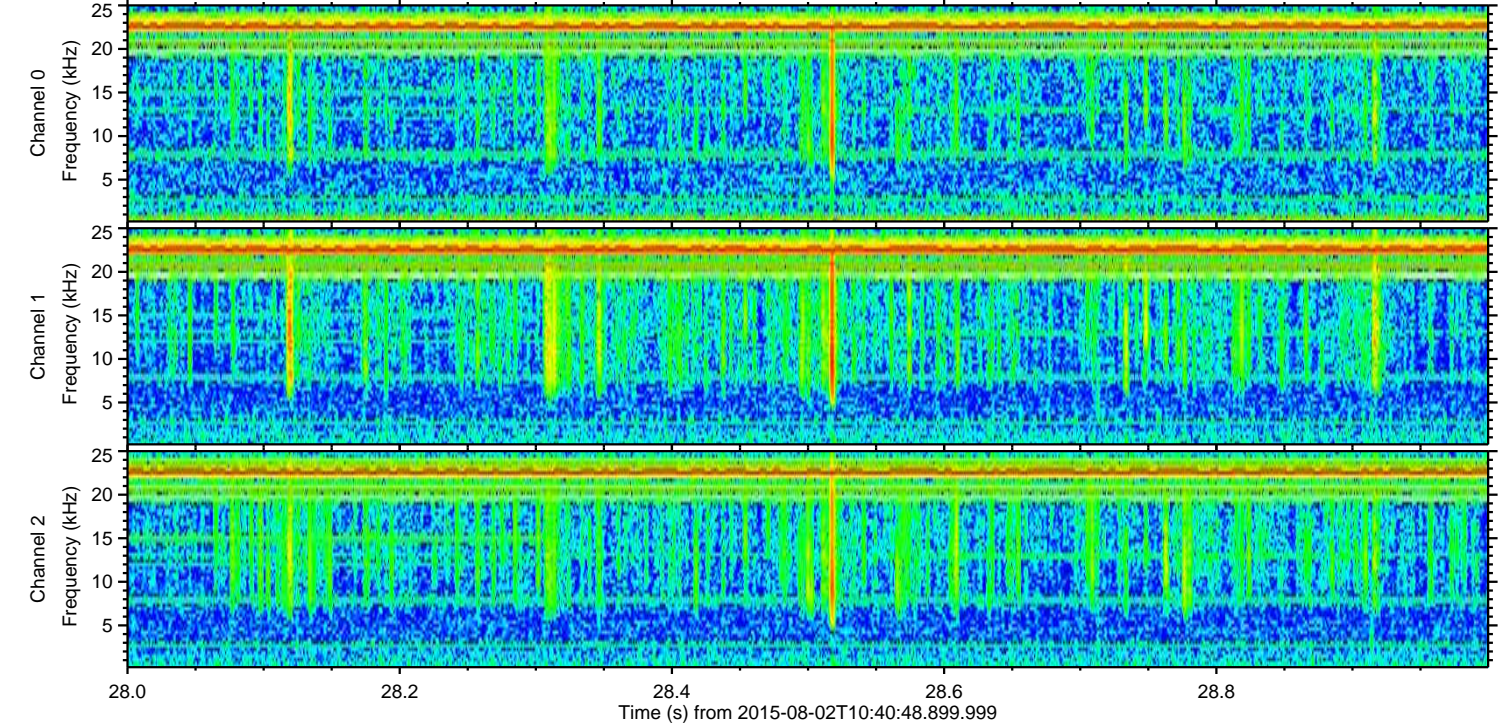
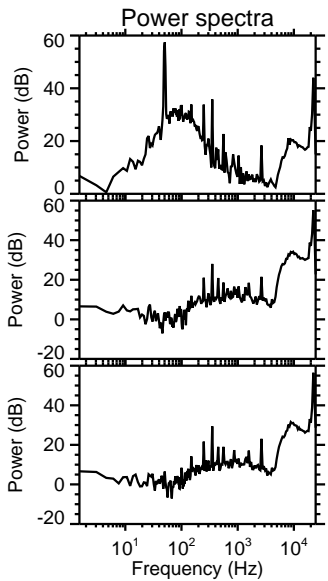
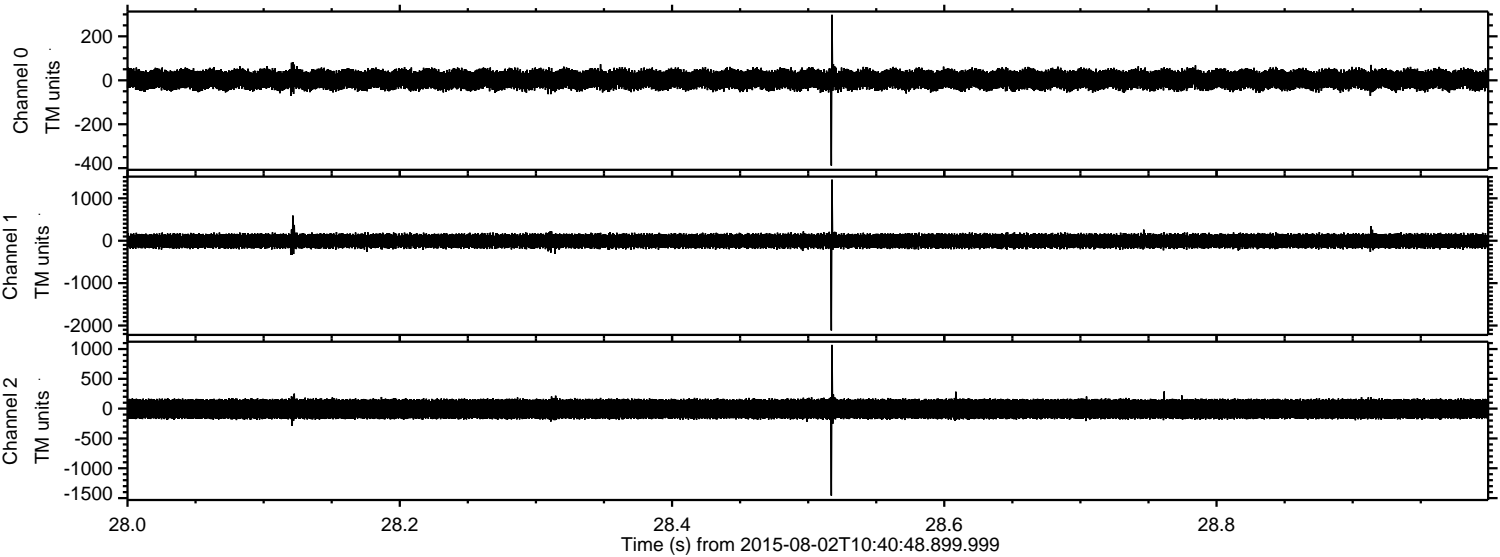


ELMAVAN 3D WAVEFORMS (Measured data sampled at 50 kHz) 51000 packets of 144 samples from 2015-08-02T10:40:48.899.999. Part 131/147

Processed Sun Aug 2 12:47:09 2015 by ELM ver.2012-10-06 from 001__elm20150802_104047__dat00.bin



Processed Sun Aug 2 12:47:10 2015 by ELM ver.2012-10-06 from 001__elm20150802_104047__dat00.bin



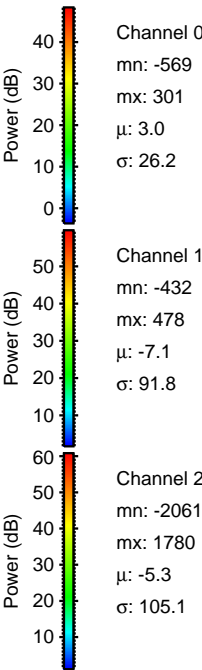
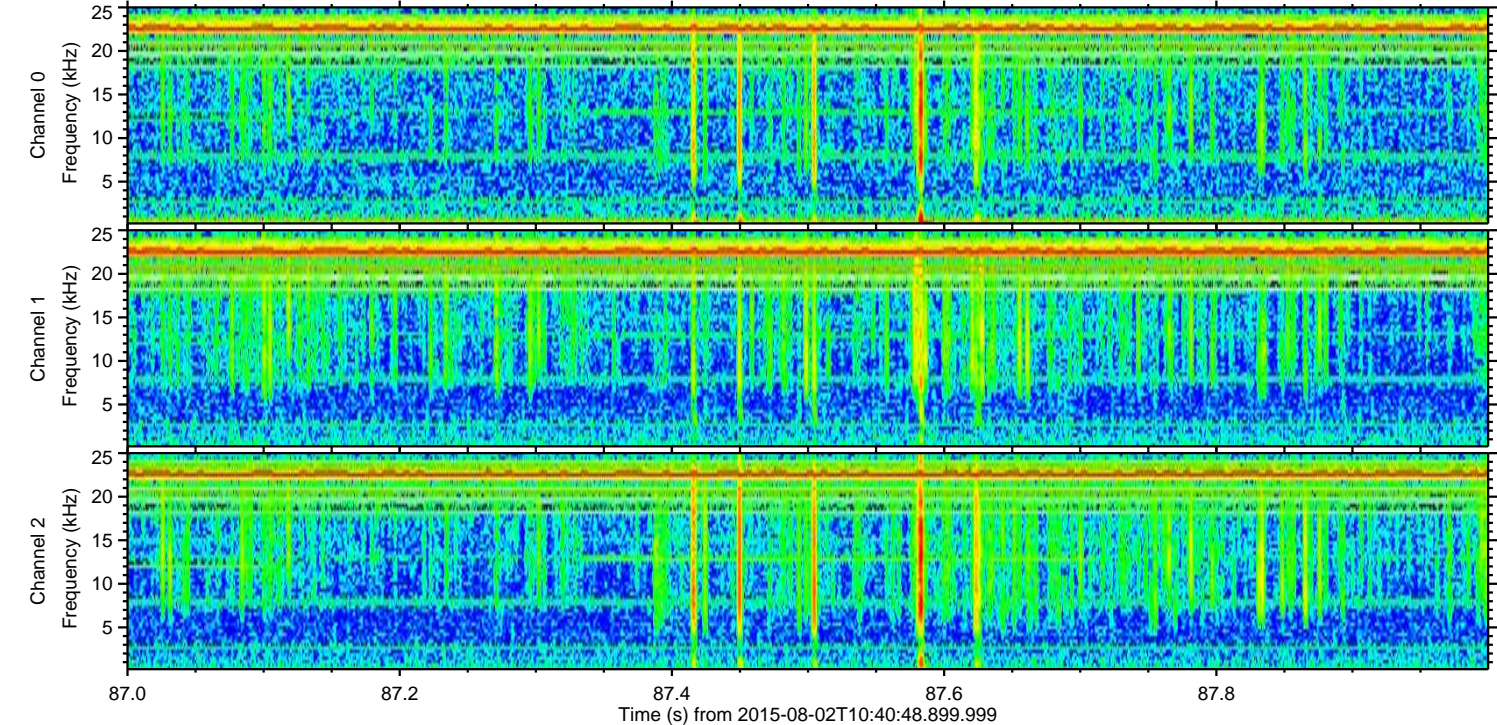
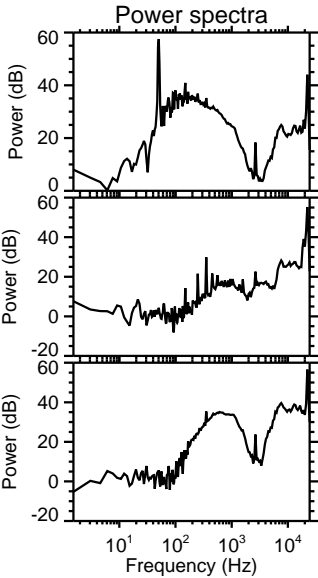
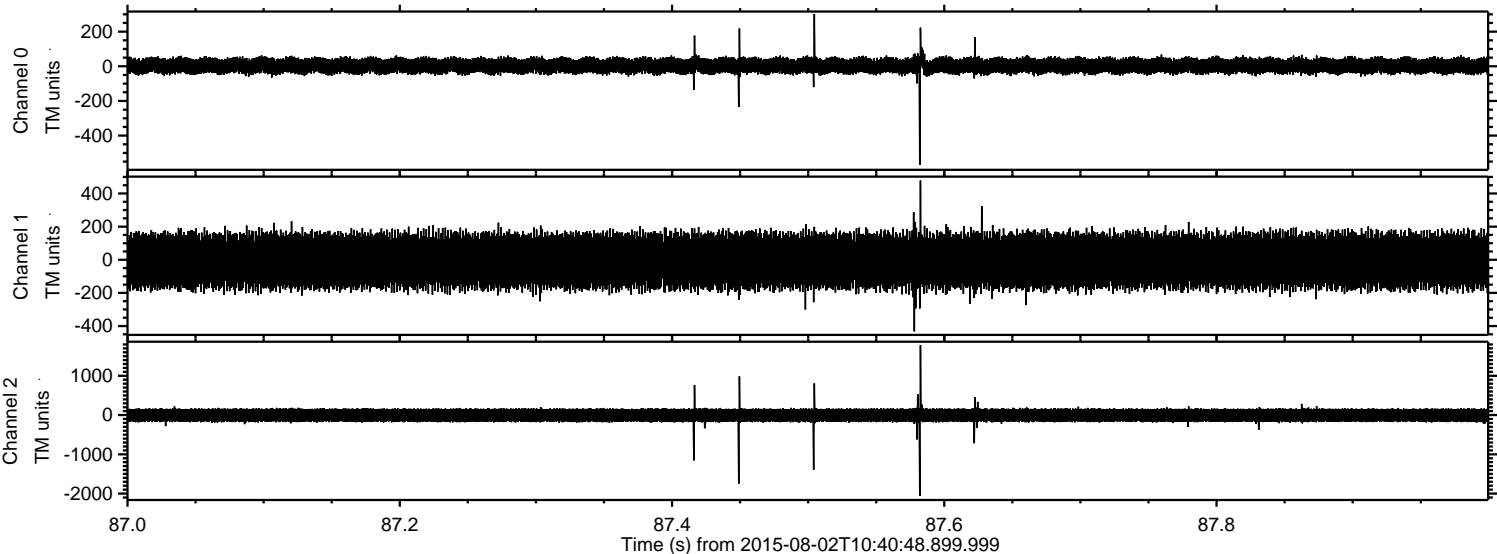
Channel 0
mn: -388
mx: 298
 μ : 3.1
 σ : 25.7

Channel 1
mn: -2116
mx: 1439
 μ : -7.1
 σ : 92.5

Channel 2
mn: -1459
mx: 1069
 μ : -5.4
 σ : 101.3

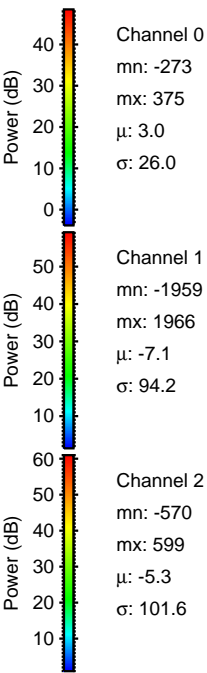
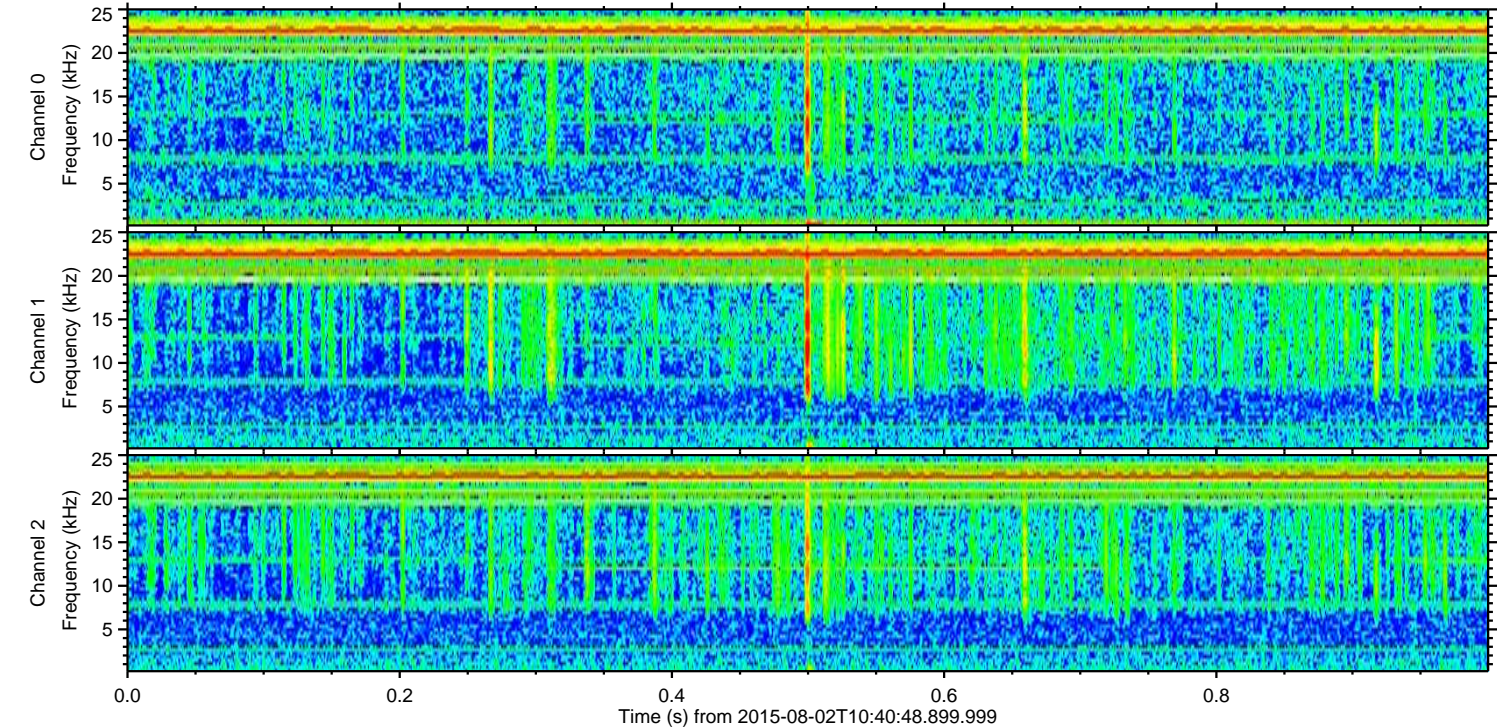
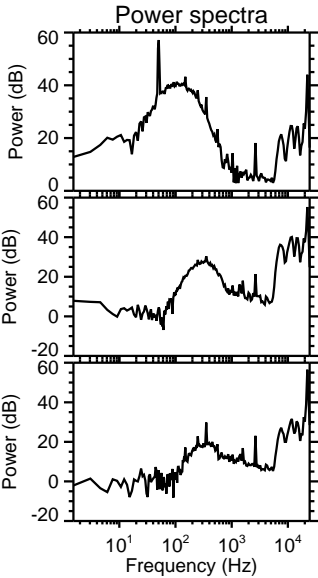
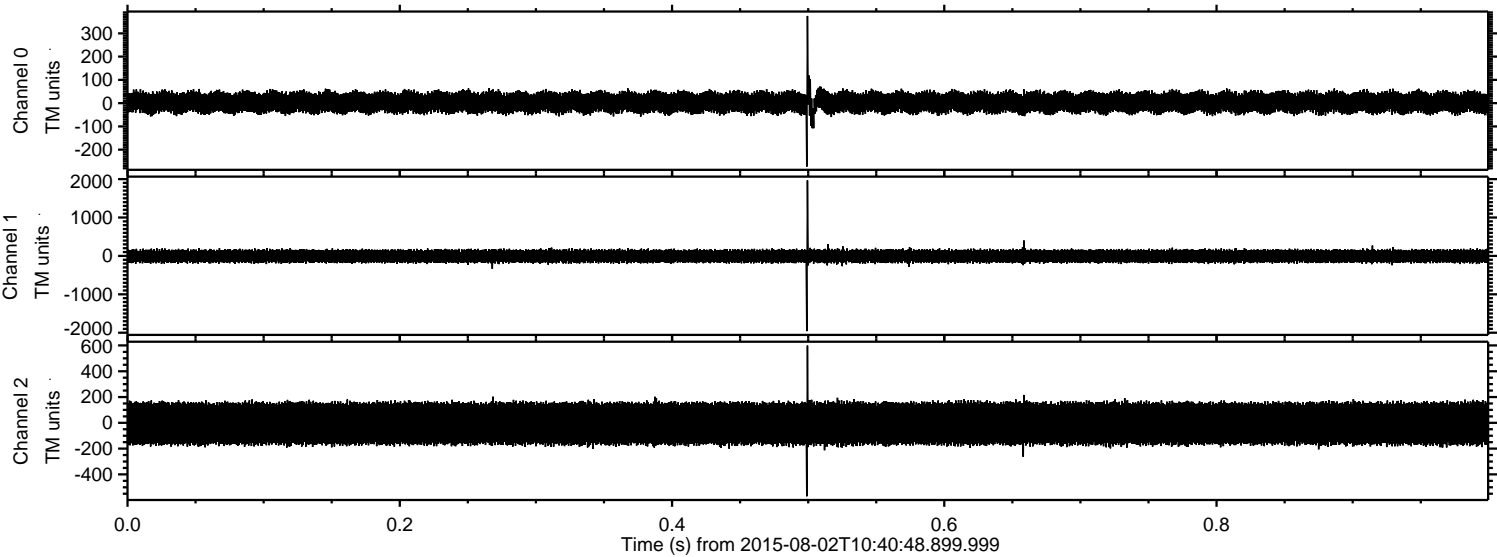
ELMAVAN 3D WAVEFORMS (Measured data sampled at 50 kHz) 51000 packets of 144 samples from 2015-08-02T10:40:48.899.999. Part 88/147

Processed Sun Aug 2 12:47:11 2015 by ELM ver.2012-10-06 from 001__elm20150802_104047__dat00.bin



ELMAVAN 3D WAVEFORMS (Measured data sampled at 50 kHz) 51000 packets of 144 samples from 2015-08-02T10:40:48.899.999. Part 1/147

Processed Sun Aug 2 12:47:12 2015 by ELM ver.2012-10-06 from 001__elm20150802_104047__dat00.bin



ELMAVAN 3D WAVEFORMS (Measured data sampled at 50 kHz) 51000 packets of 144 samples from 2015-08-02T10:40:48.899.999. Part 32/147

Processed Sun Aug 2 12:47:13 2015 by ELM ver.2012-10-06 from 001__elm20150802_104047__dat00.bin

