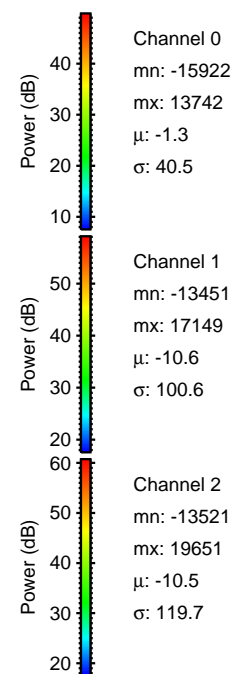
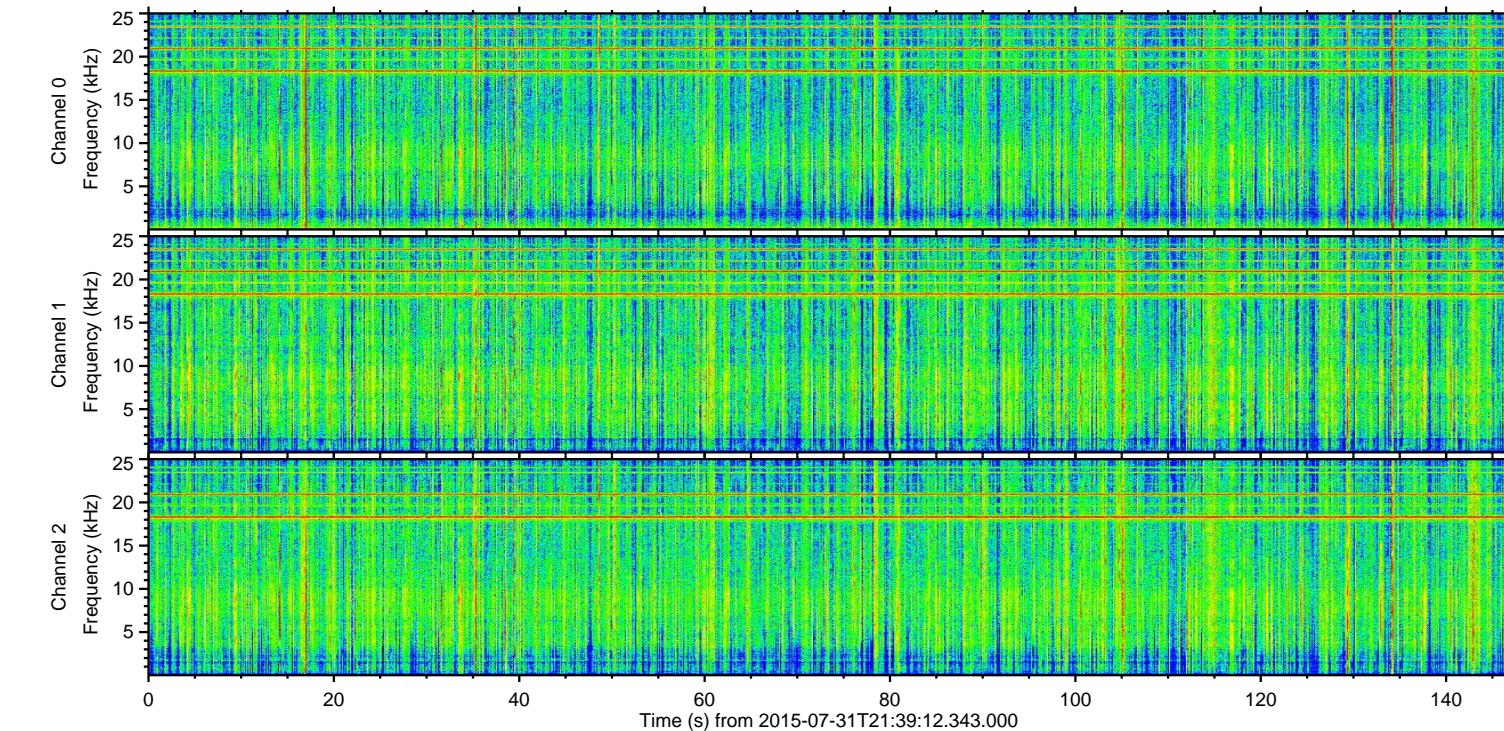
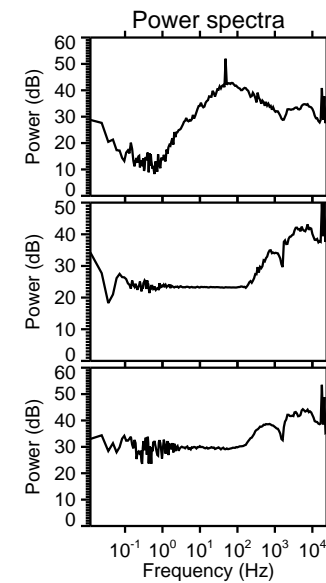
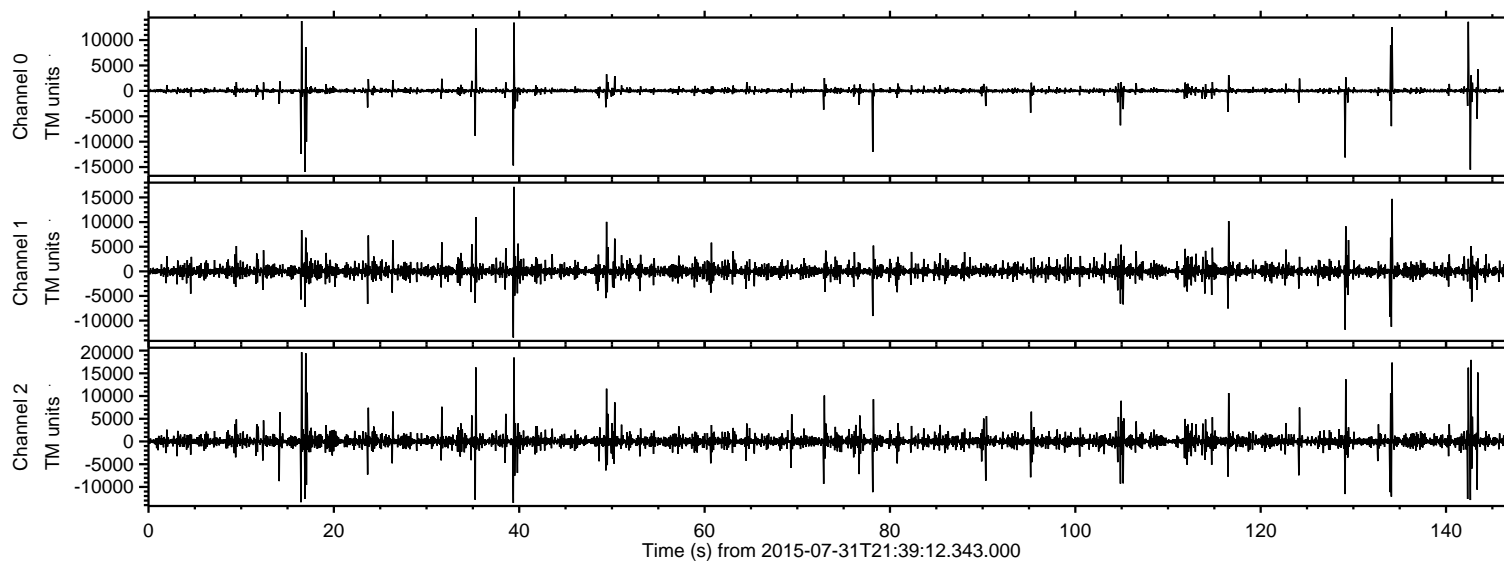


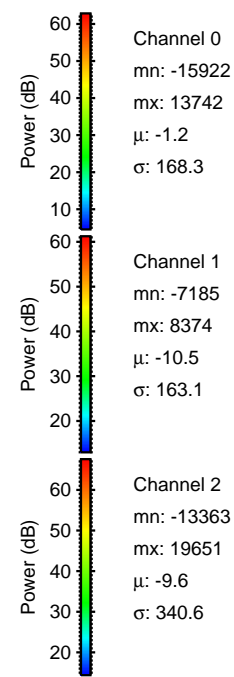
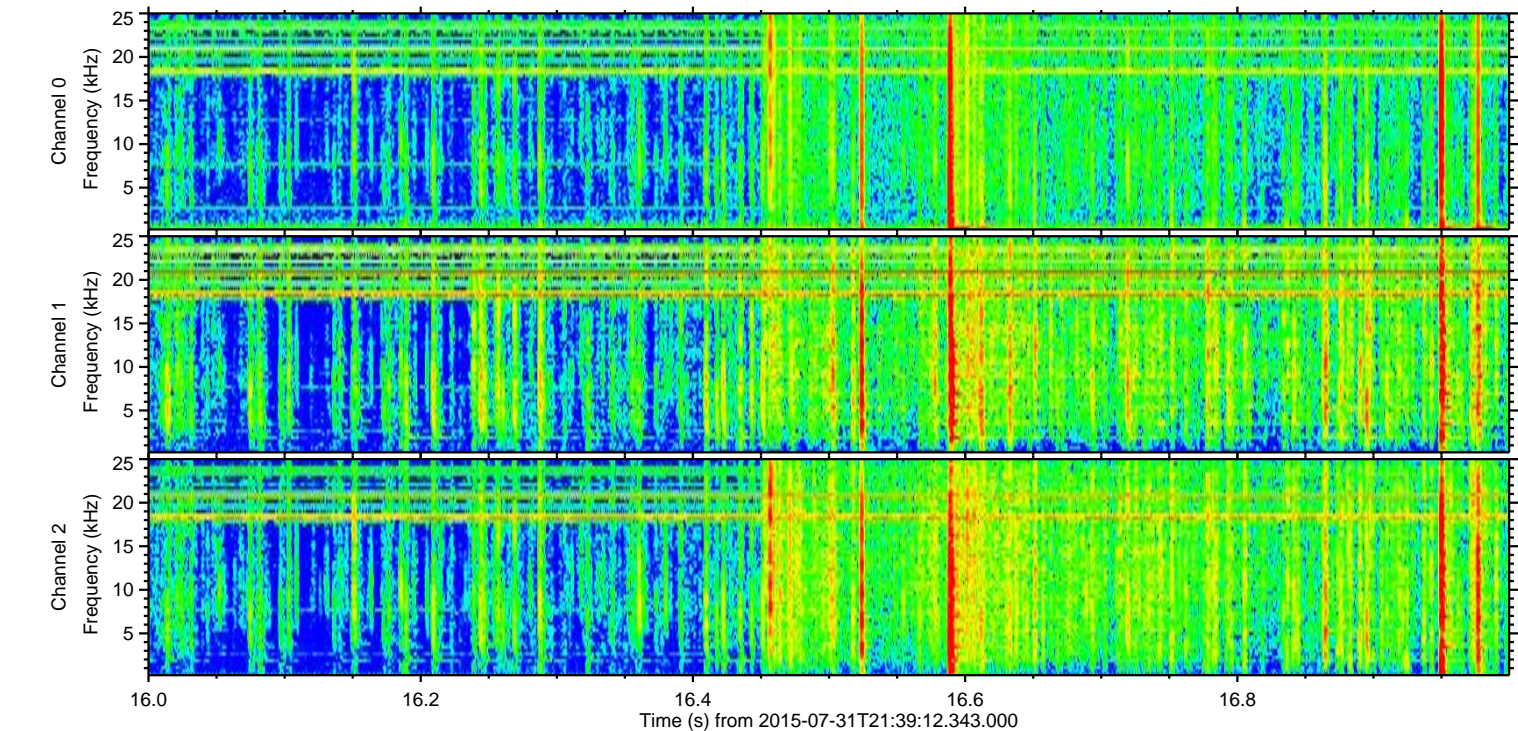
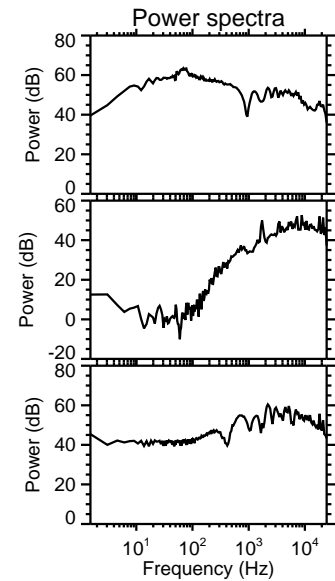
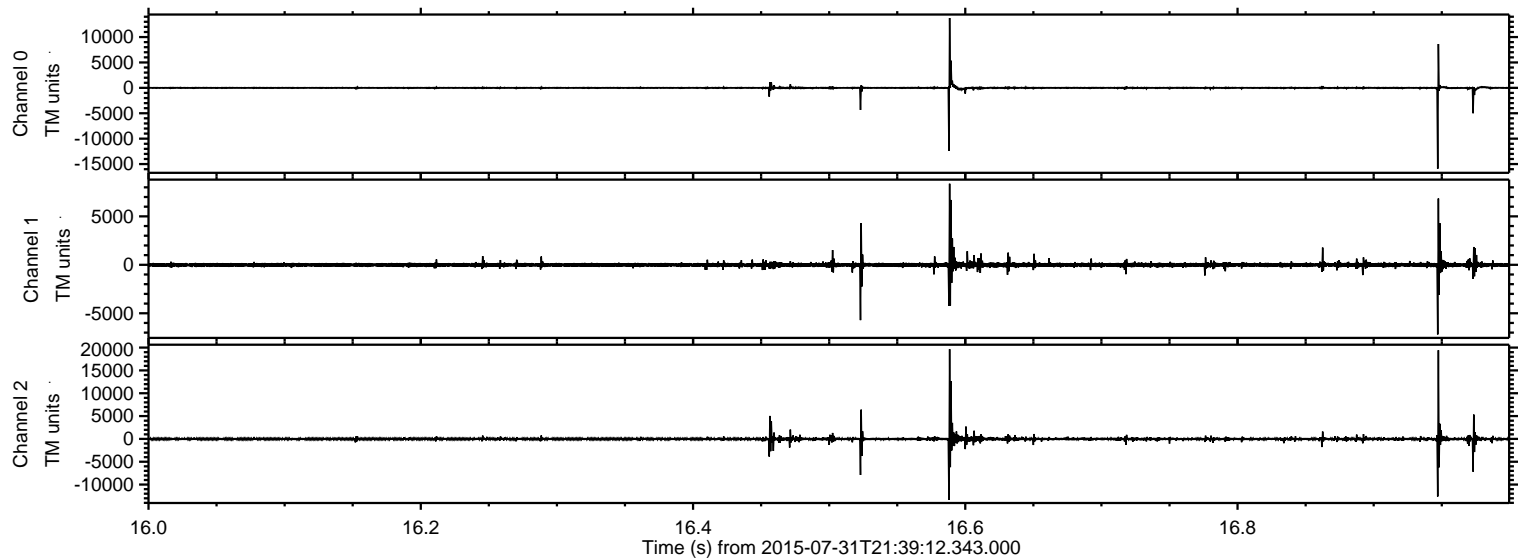
ELMAVAN 3D WAVEFORMS (Measured data sampled at 50 kHz) 51000 packets of 144 samples from 2015-07-31T21:39:12.343.000.

Processed Fri Jul 31 23:45:33 2015 by ELM ver.2012-10-06 from 001__elm20150731_213911__dat00.bin

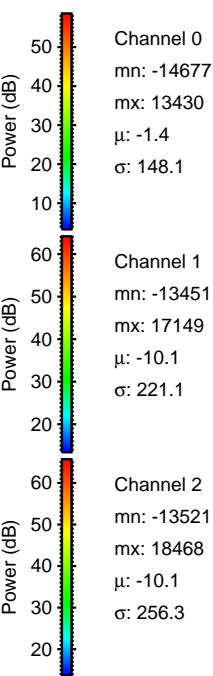
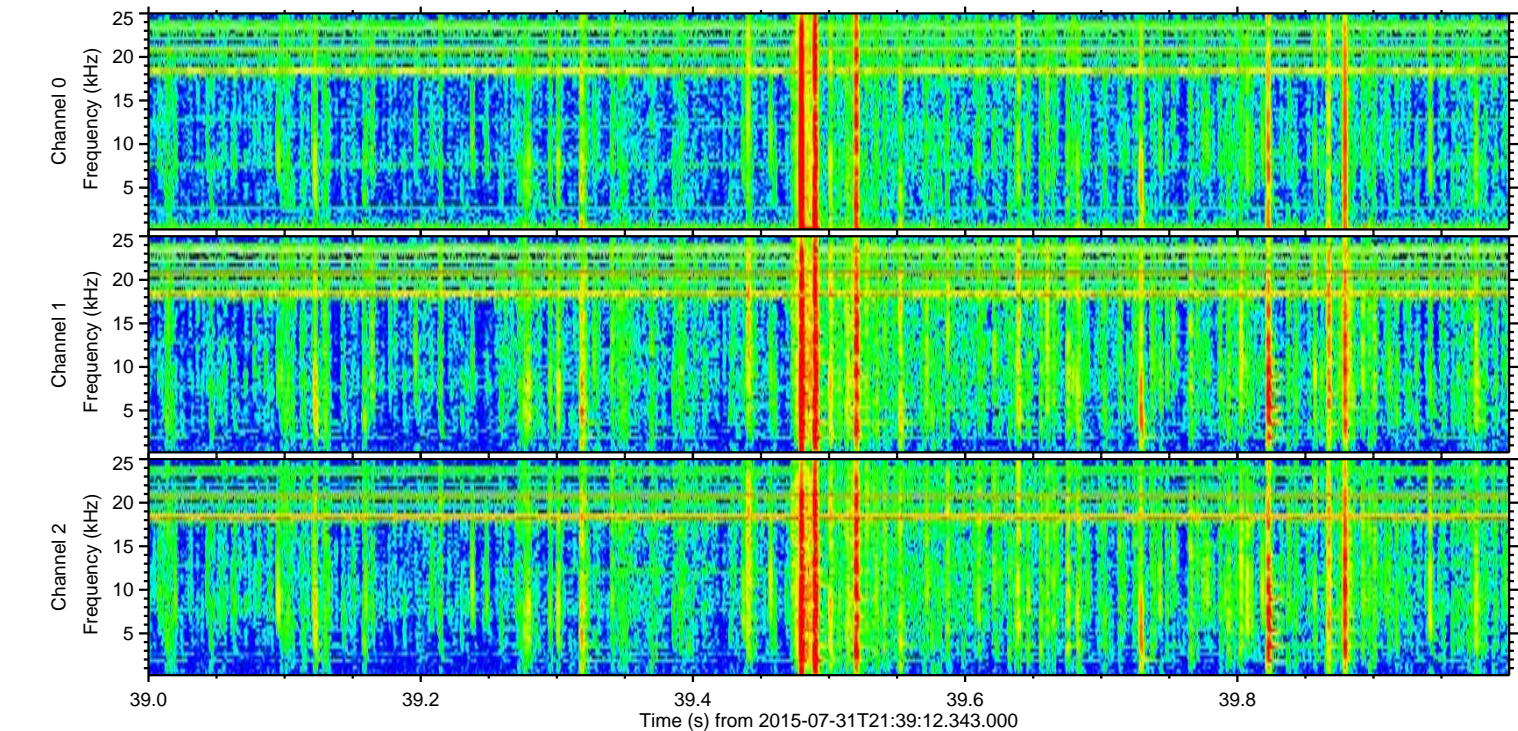
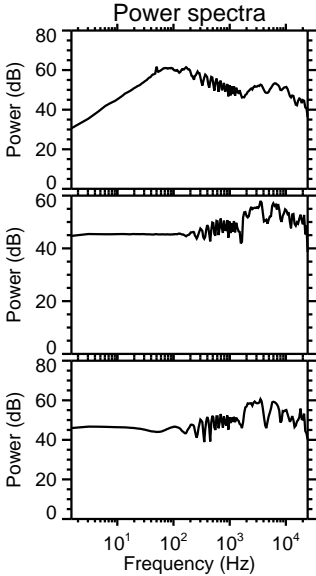
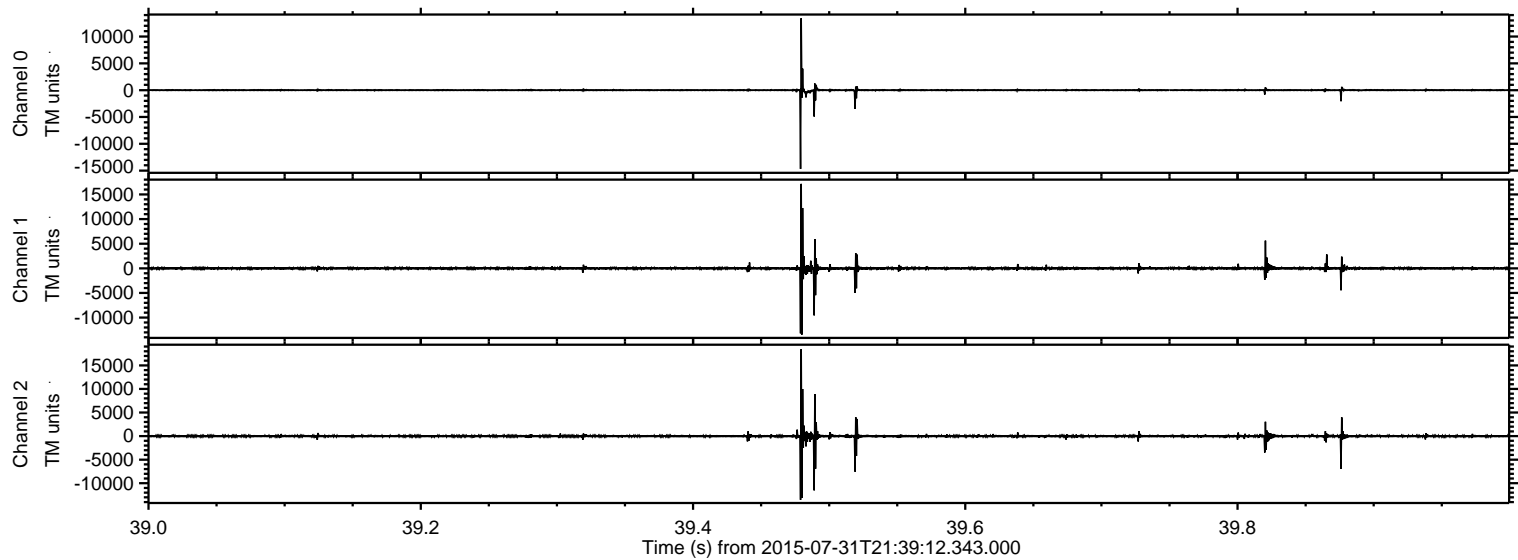


ELMAVAN 3D WAVEFORMS (Measured data sampled at 50 kHz) 51000 packets of 144 samples from 2015-07-31T21:39:12.343.000. Part 17/147

Processed Fri Jul 31 23:45:47 2015 by ELM ver.2012-10-06 from 001__elm20150731_213911__dat00.bin

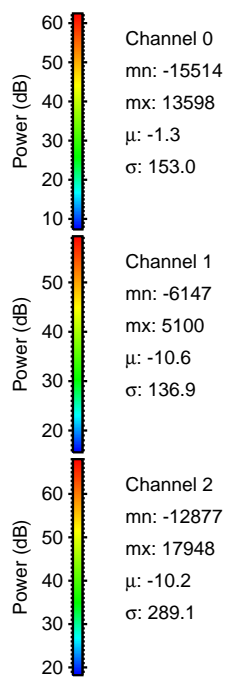
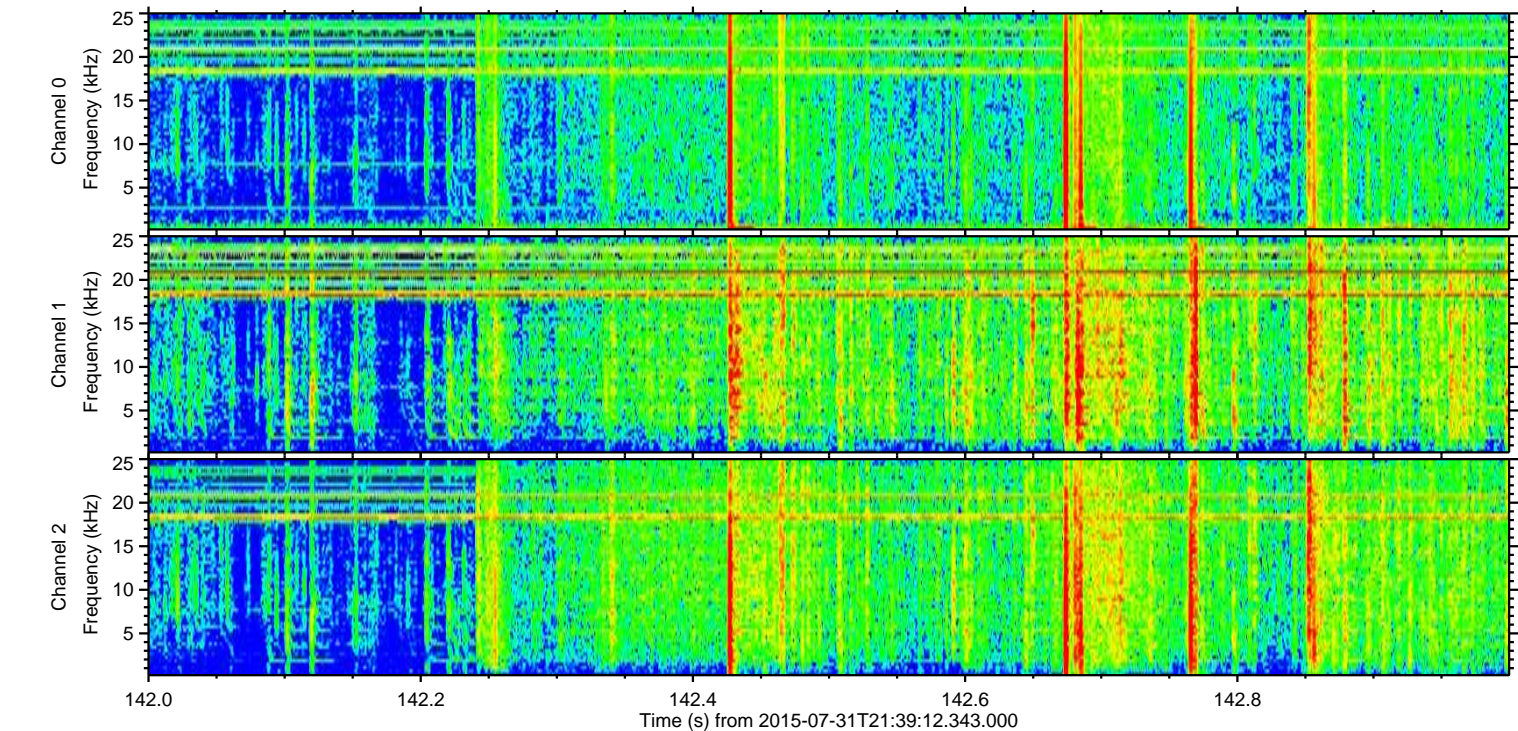
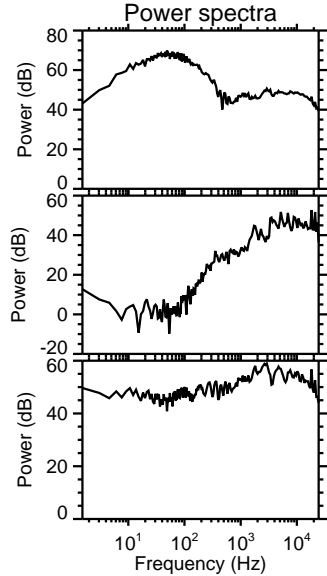
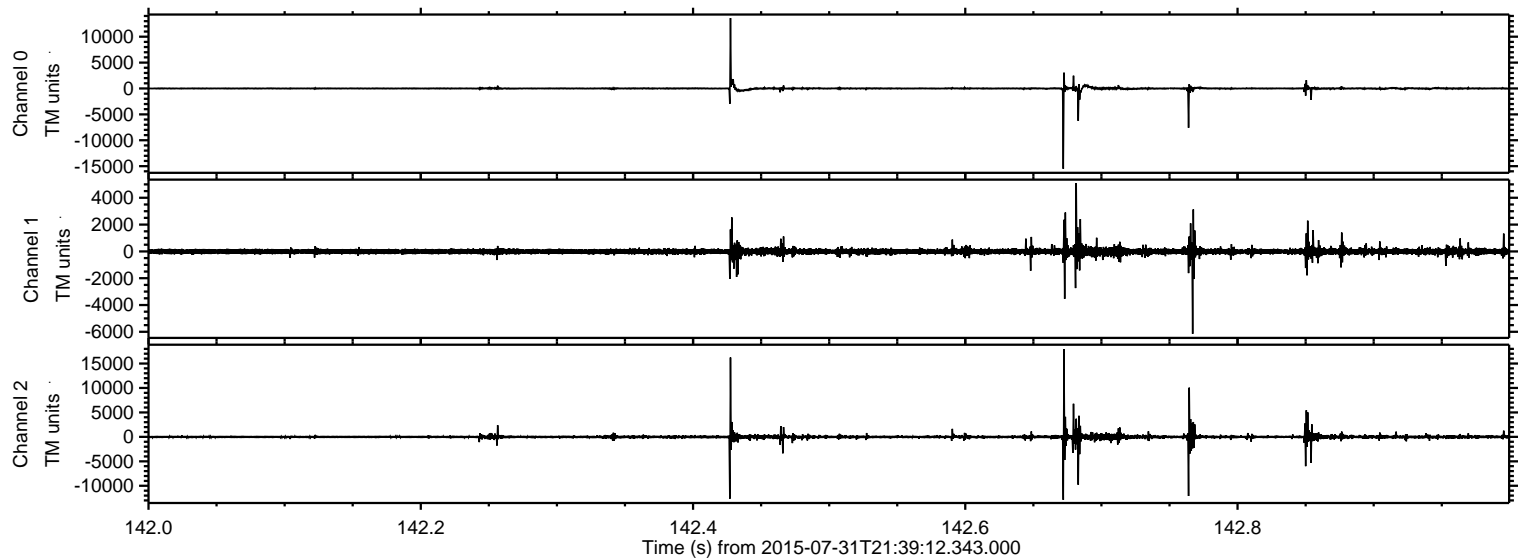


Processed Fri Jul 31 23:45:48 2015 by ELM ver.2012-10-06 from 001__elm20150731_213911__dat00.bin



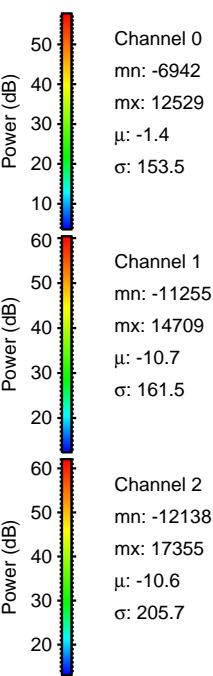
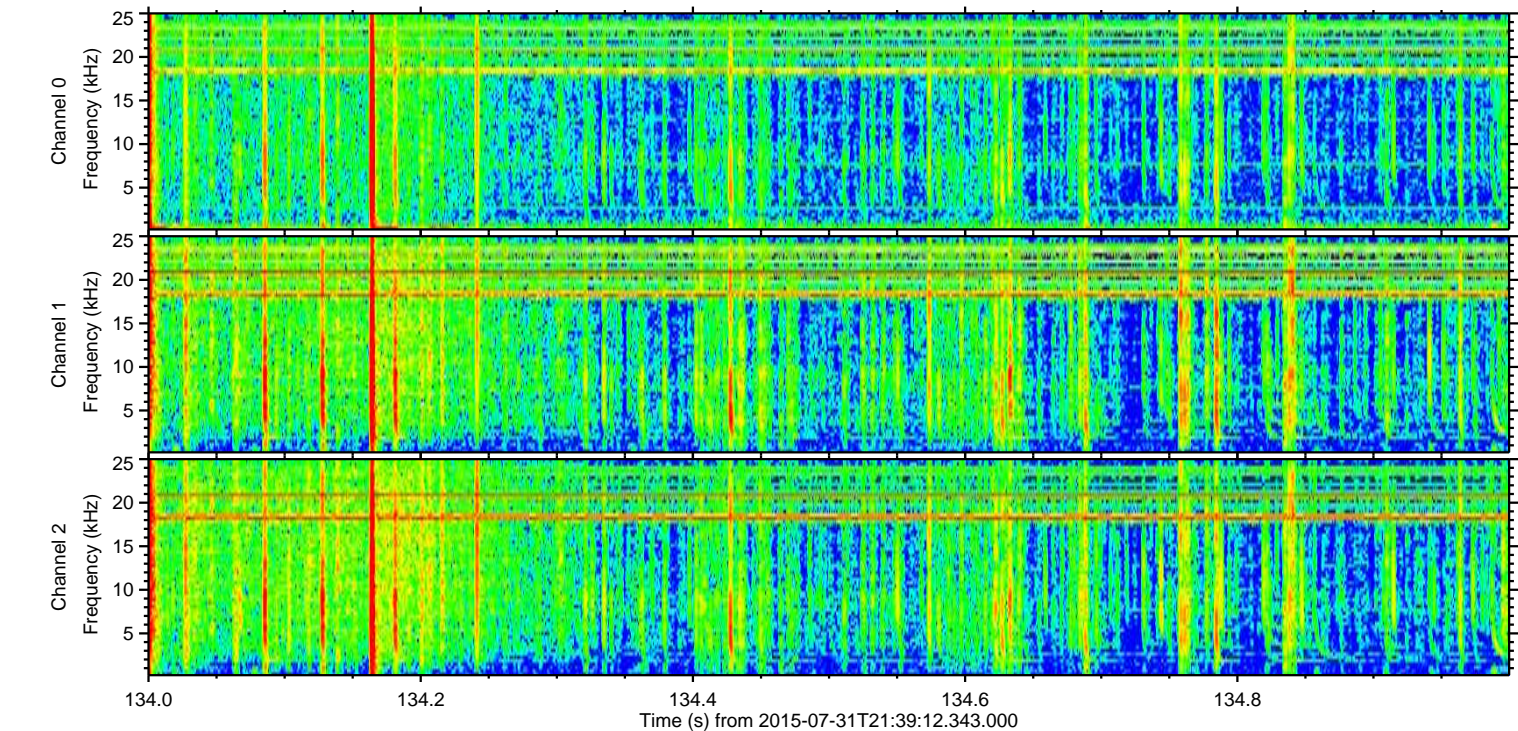
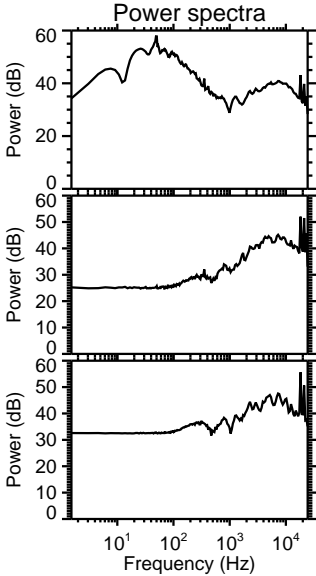
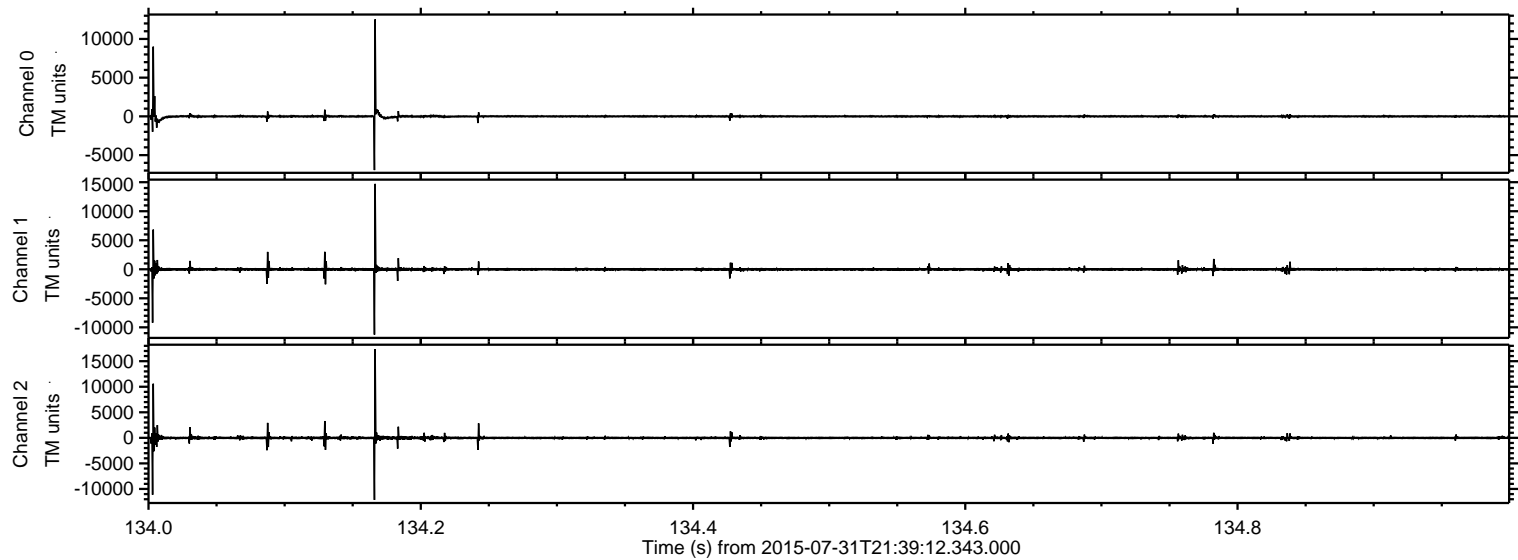
ELMAVAN 3D WAVEFORMS (Measured data sampled at 50 kHz) 51000 packets of 144 samples from 2015-07-31T21:39:12.343.000. Part 143/147

Processed Fri Jul 31 23:45:48 2015 by ELM ver.2012-10-06 from 001__elm20150731_213911__dat00.bin



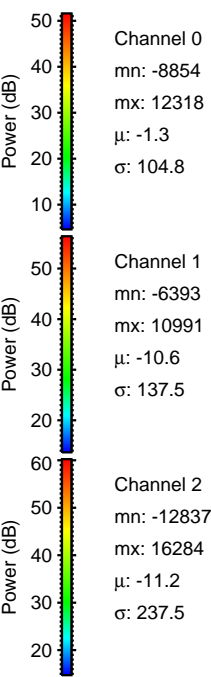
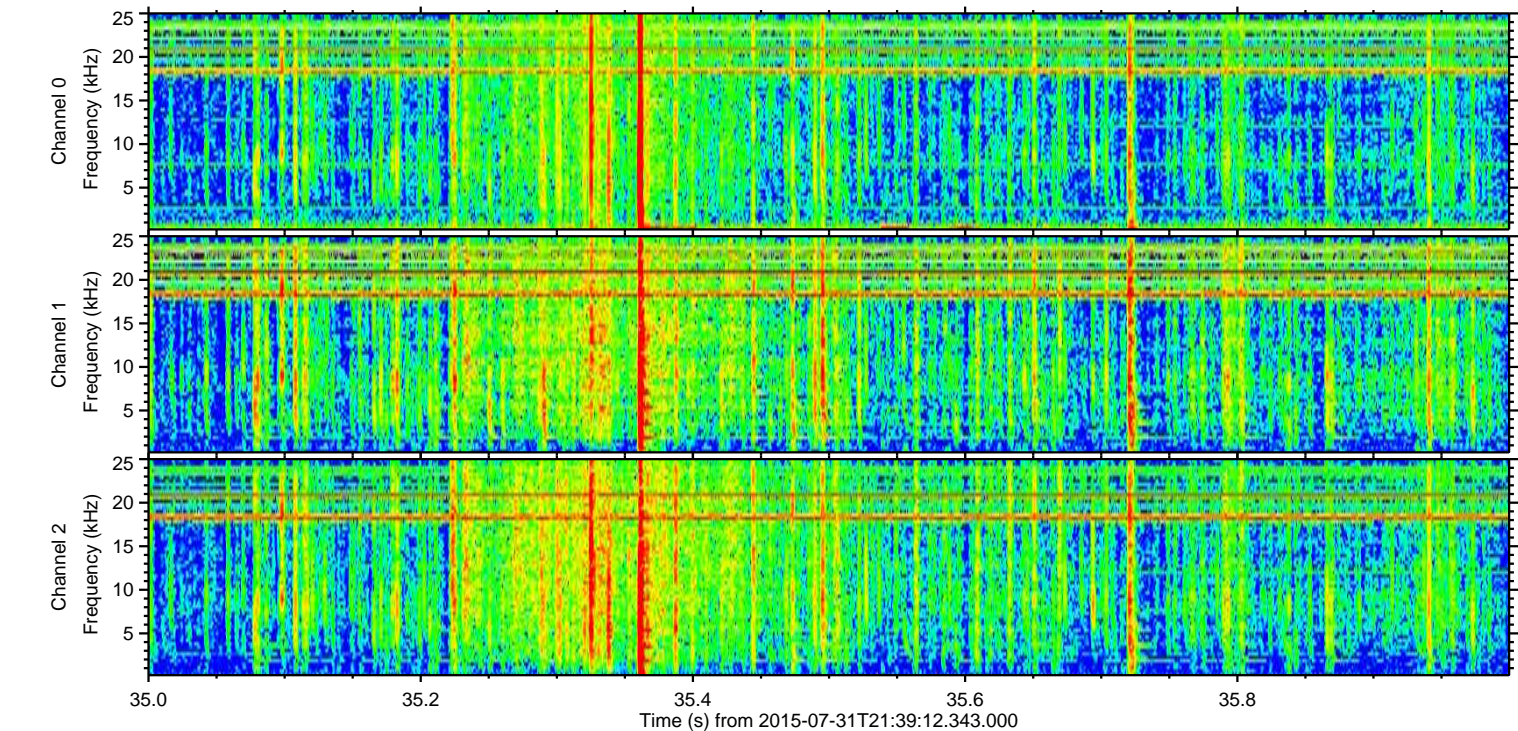
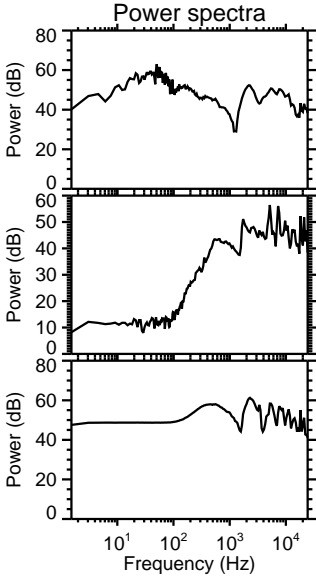
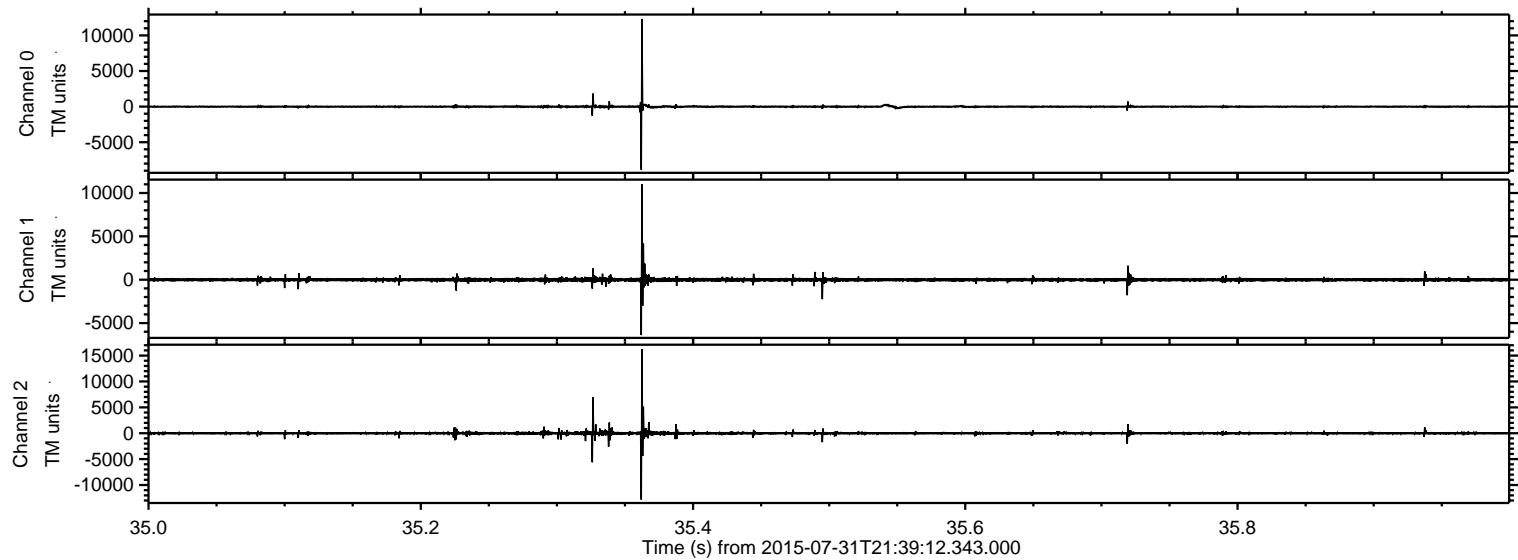
ELMAVAN 3D WAVEFORMS (Measured data sampled at 50 kHz) 51000 packets of 144 samples from 2015-07-31T21:39:12.343.000. Part 135/147

Processed Fri Jul 31 23:45:49 2015 by ELM ver.2012-10-06 from 001__elm20150731_213911__dat00.bin



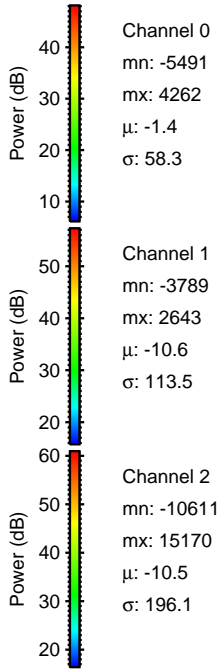
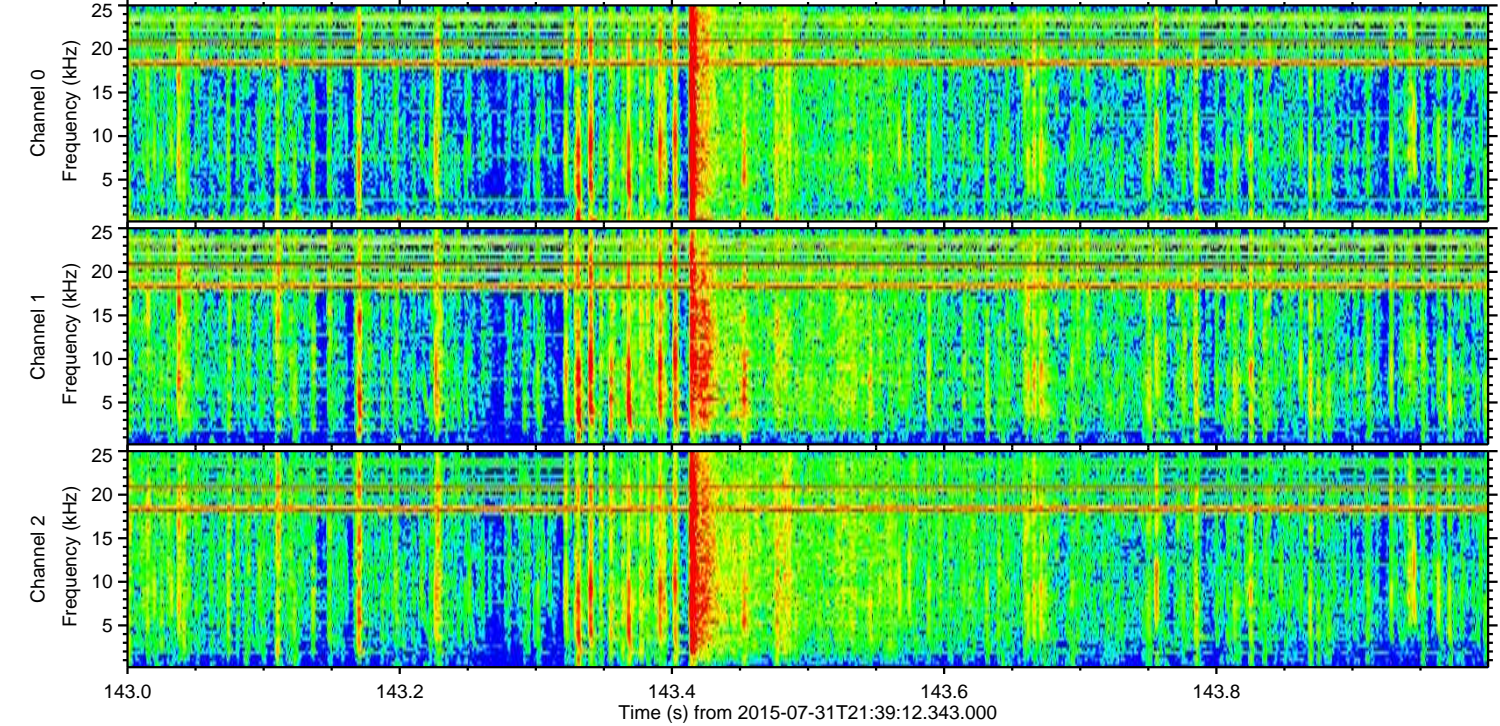
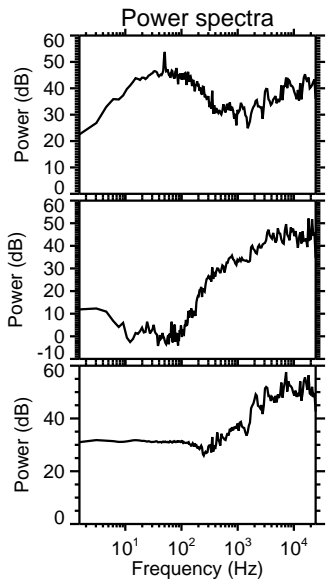
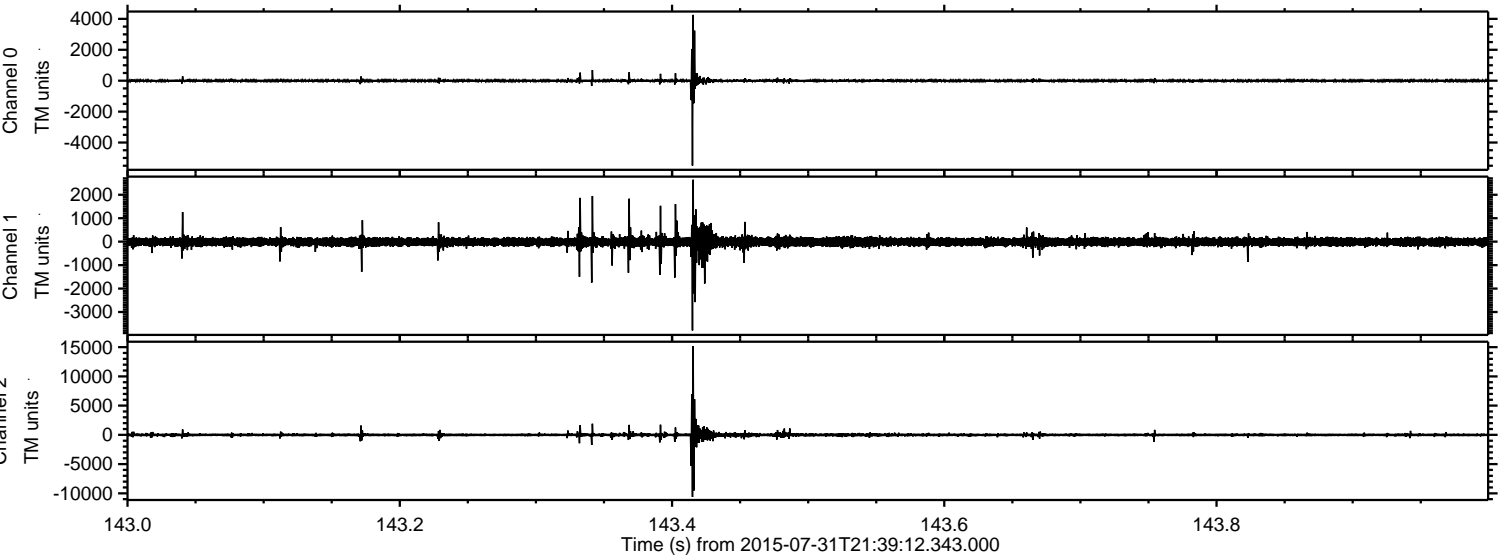
ELMAVAN 3D WAVEFORMS (Measured data sampled at 50 kHz) 51000 packets of 144 samples from 2015-07-31T21:39:12.343.000. Part 36/147

Processed Fri Jul 31 23:45:50 2015 by ELM ver.2012-10-06 from 001__elm20150731_213911__dat00.bin



ELMAVAN 3D WAVEFORMS (Measured data sampled at 50 kHz) 51000 packets of 144 samples from 2015-07-31T21:39:12.343.000. Part 144/147

Processed Fri Jul 31 23:45:51 2015 by ELM ver.2012-10-06 from 001__elm20150731_213911__dat00.bin

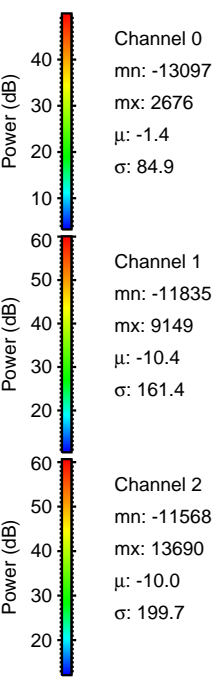
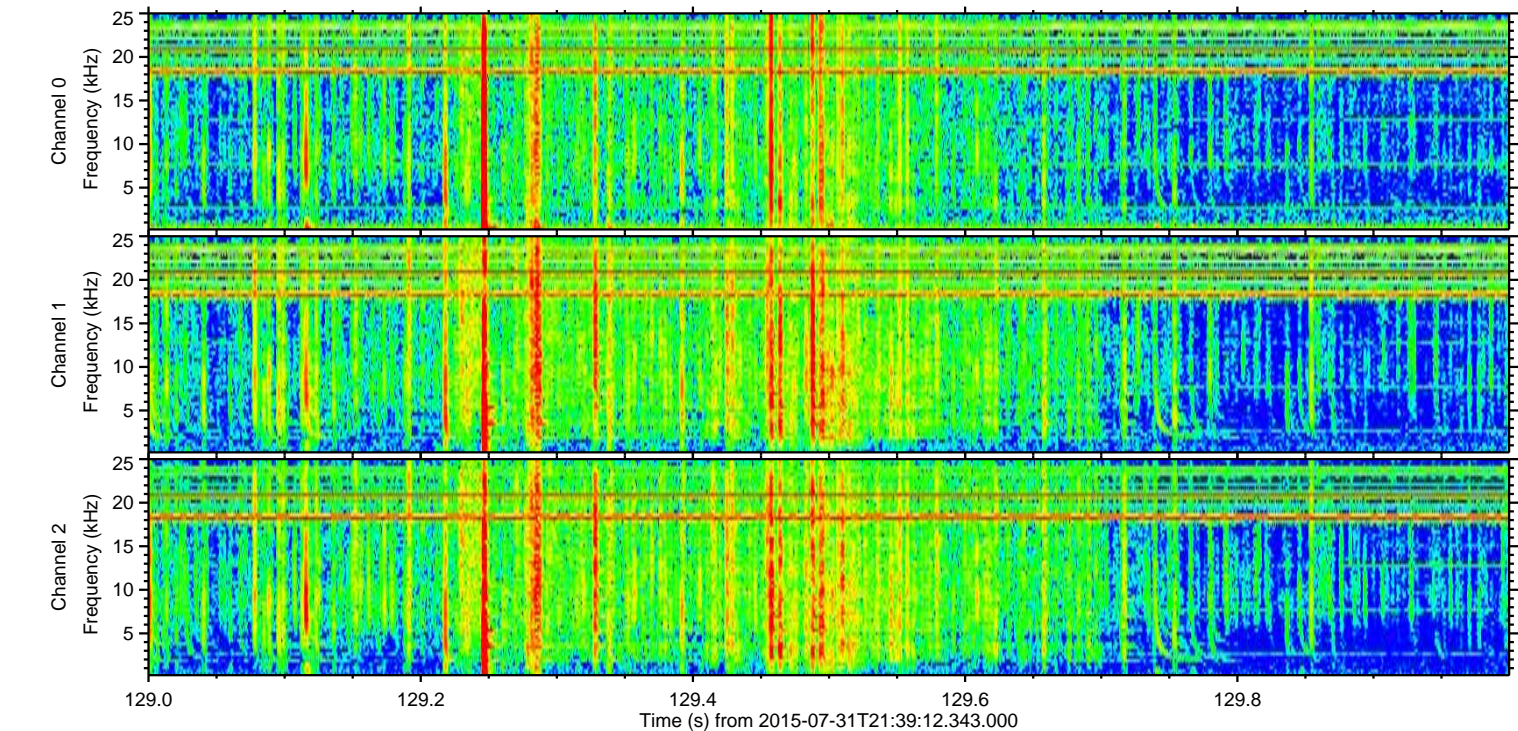
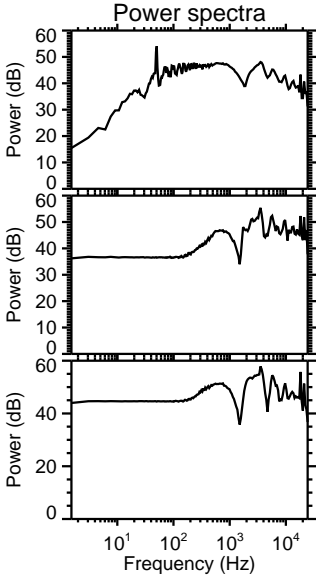
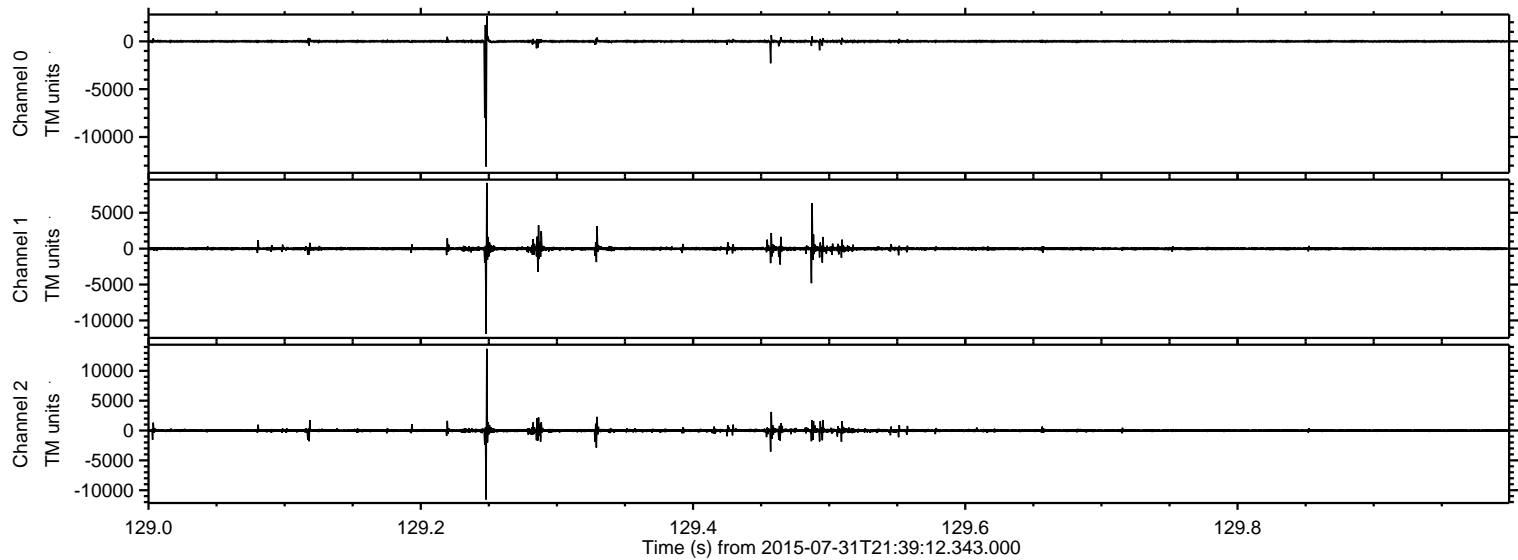


Channel 0
mn: -5491
mx: 4262
 μ : -1.4
 σ : 58.3

Channel 1
mn: -3789
mx: 2643
 μ : -10.6
 σ : 113.5

Channel 2
mn: -10611
mx: 15170
 μ : -10.5
 σ : 196.1

Processed Fri Jul 31 23:45:53 2015 by ELM ver.2012-10-06 from 001__elm20150731_213911__dat00.bin

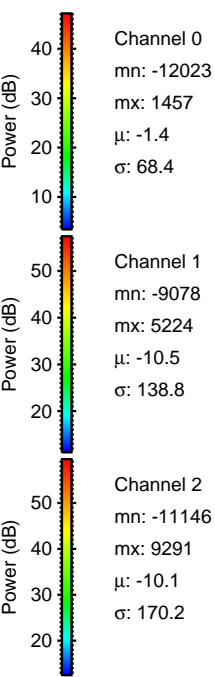
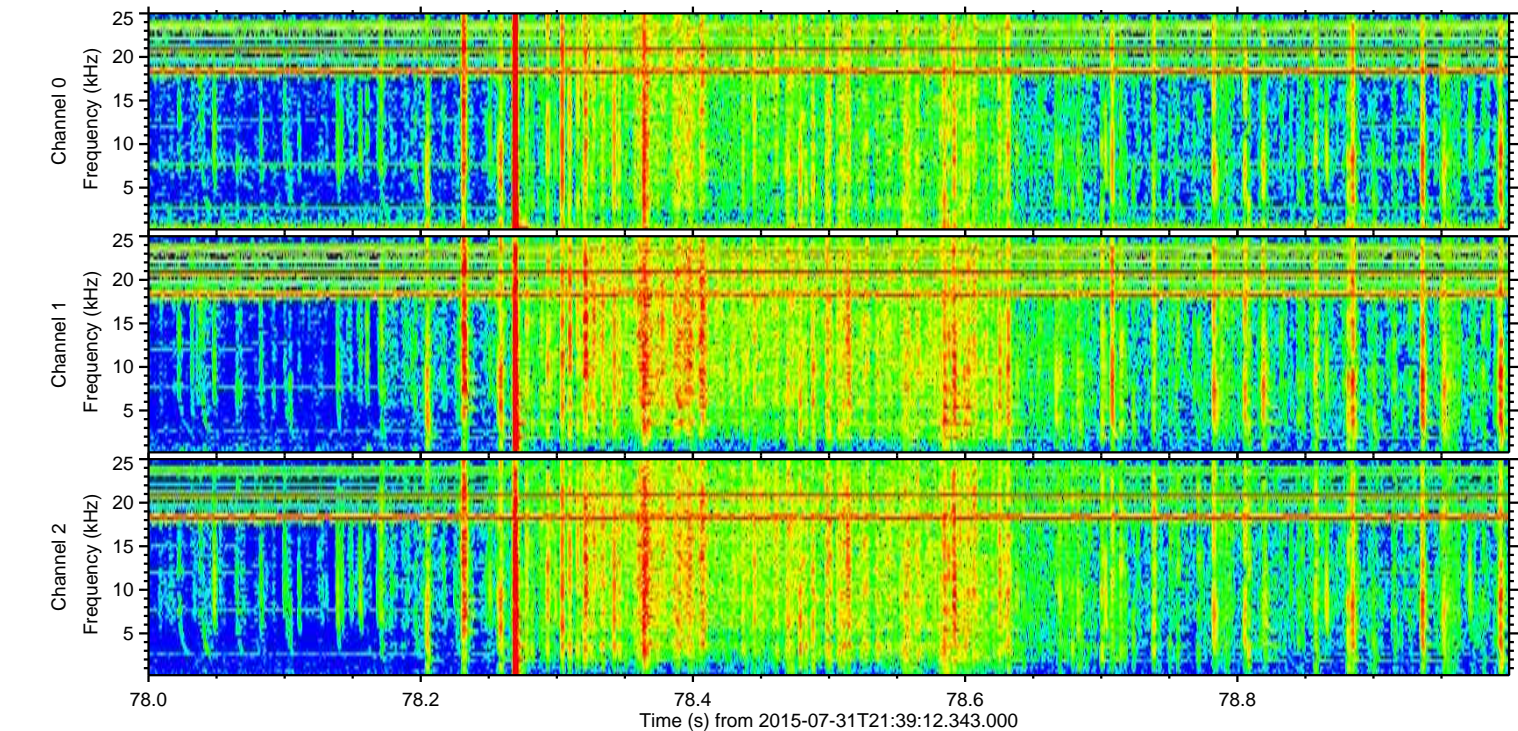
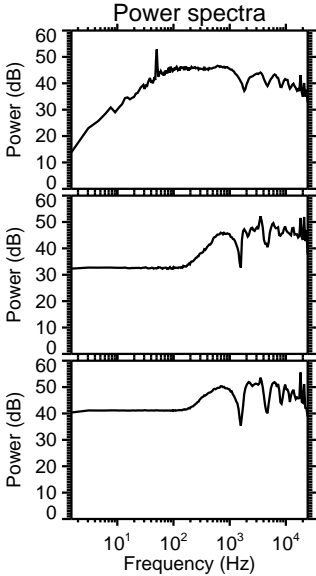
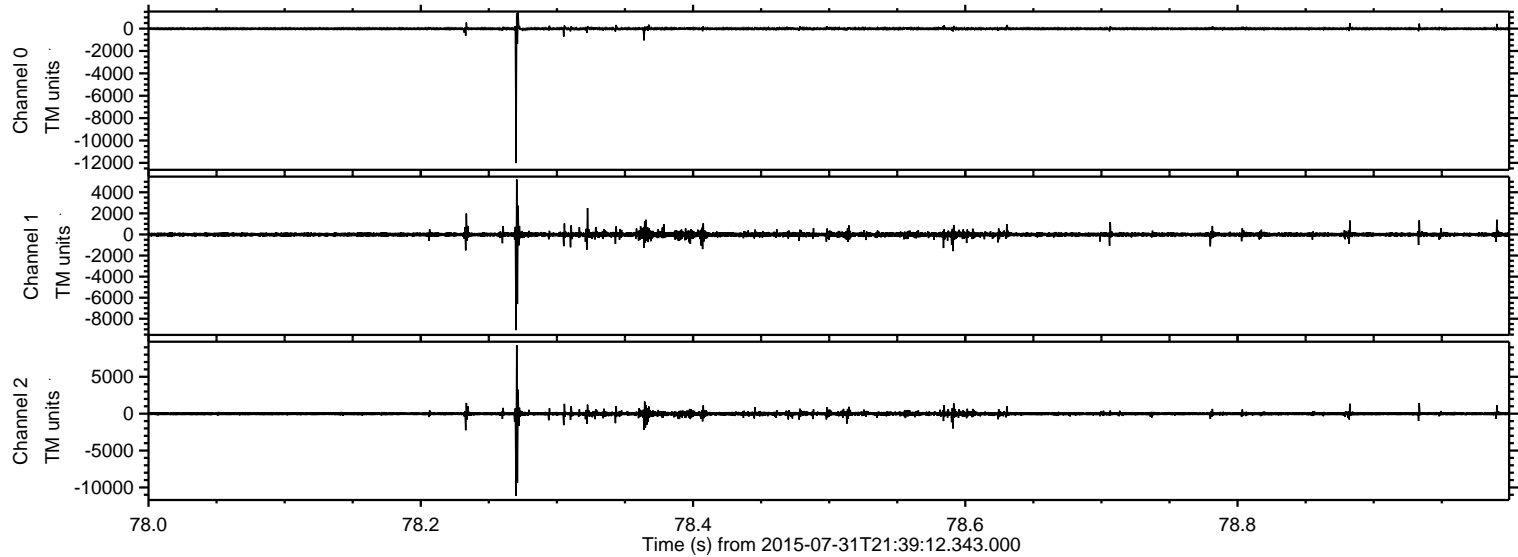


Channel 0
mn: -13097
mx: 2676
 μ : -1.4
 σ : 84.9

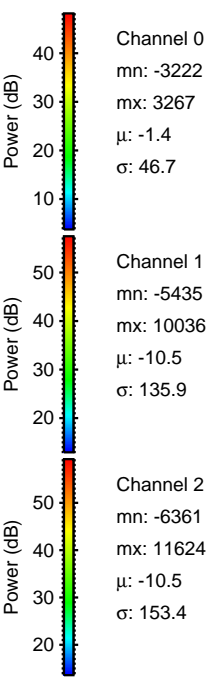
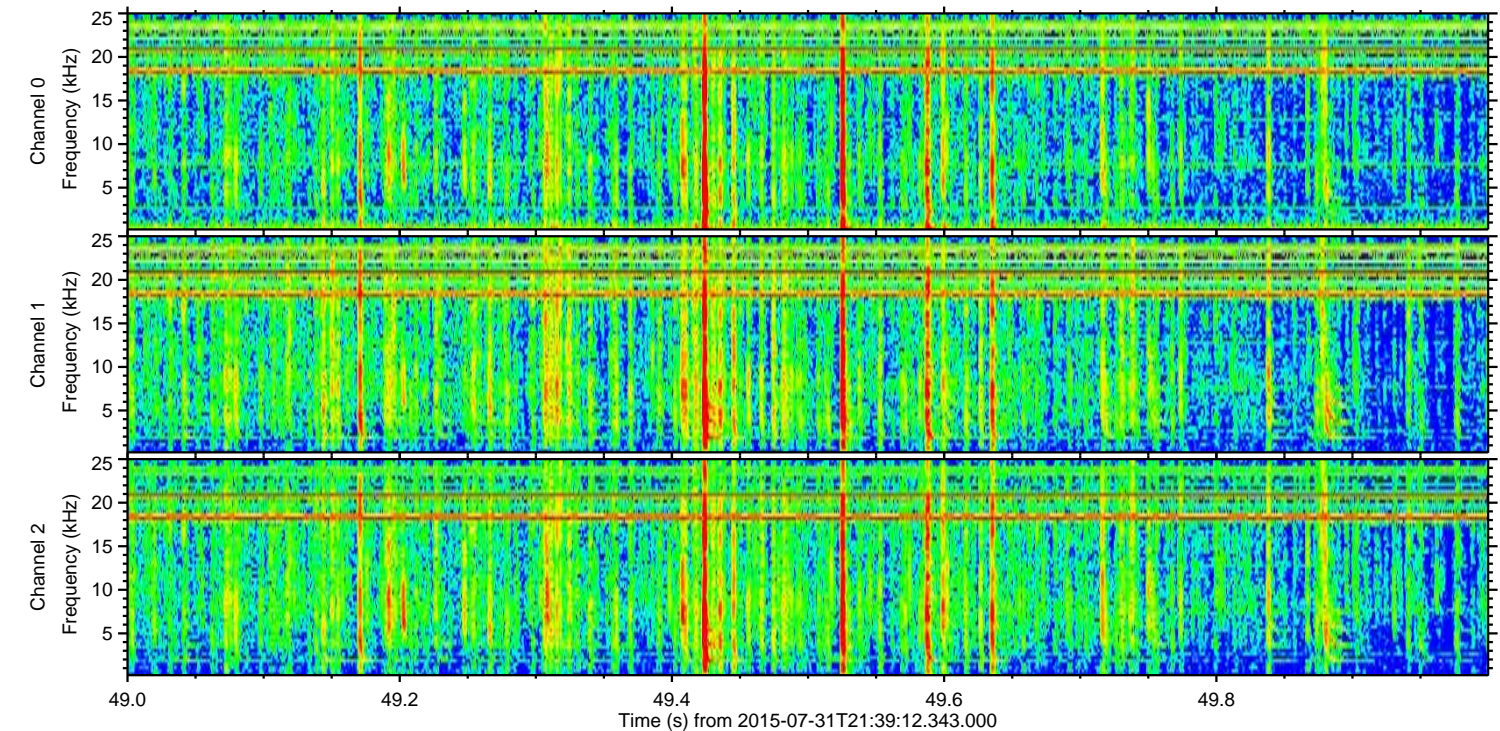
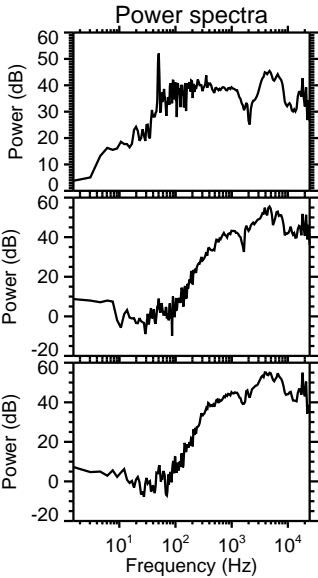
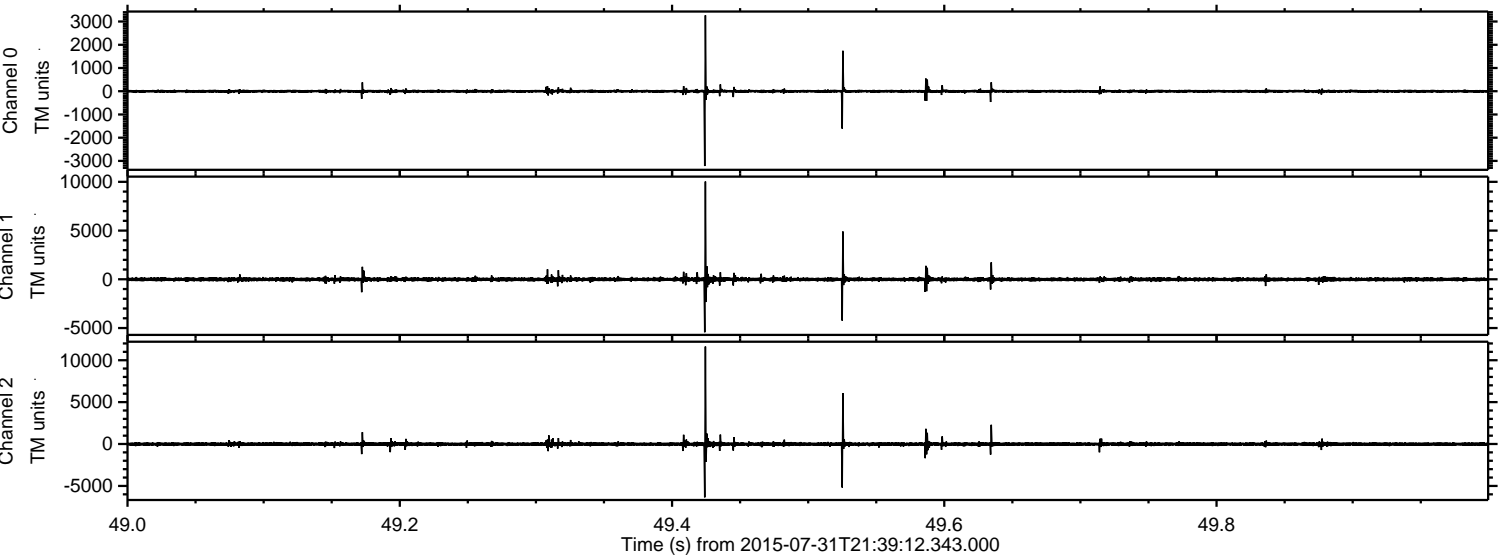
Channel 1
mn: -11835
mx: 9149
 μ : -10.4
 σ : 161.4

Channel 2
mn: -11568
mx: 13690
 μ : -10.0
 σ : 199.7

Processed Fri Jul 31 23:45:54 2015 by ELM ver.2012-10-06 from 001__elm20150731_213911__dat00.bin



Processed Fri Jul 31 23:45:56 2015 by ELM ver.2012-10-06 from 001__elm20150731_213911__dat00.bin



Processed Fri Jul 31 23:45:57 2015 by ELM ver.2012-10-06 from 001__elm20150731_213911__dat00.bin

