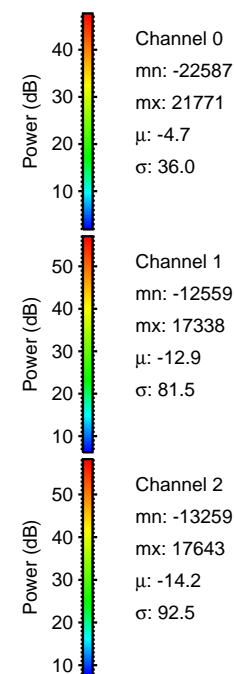
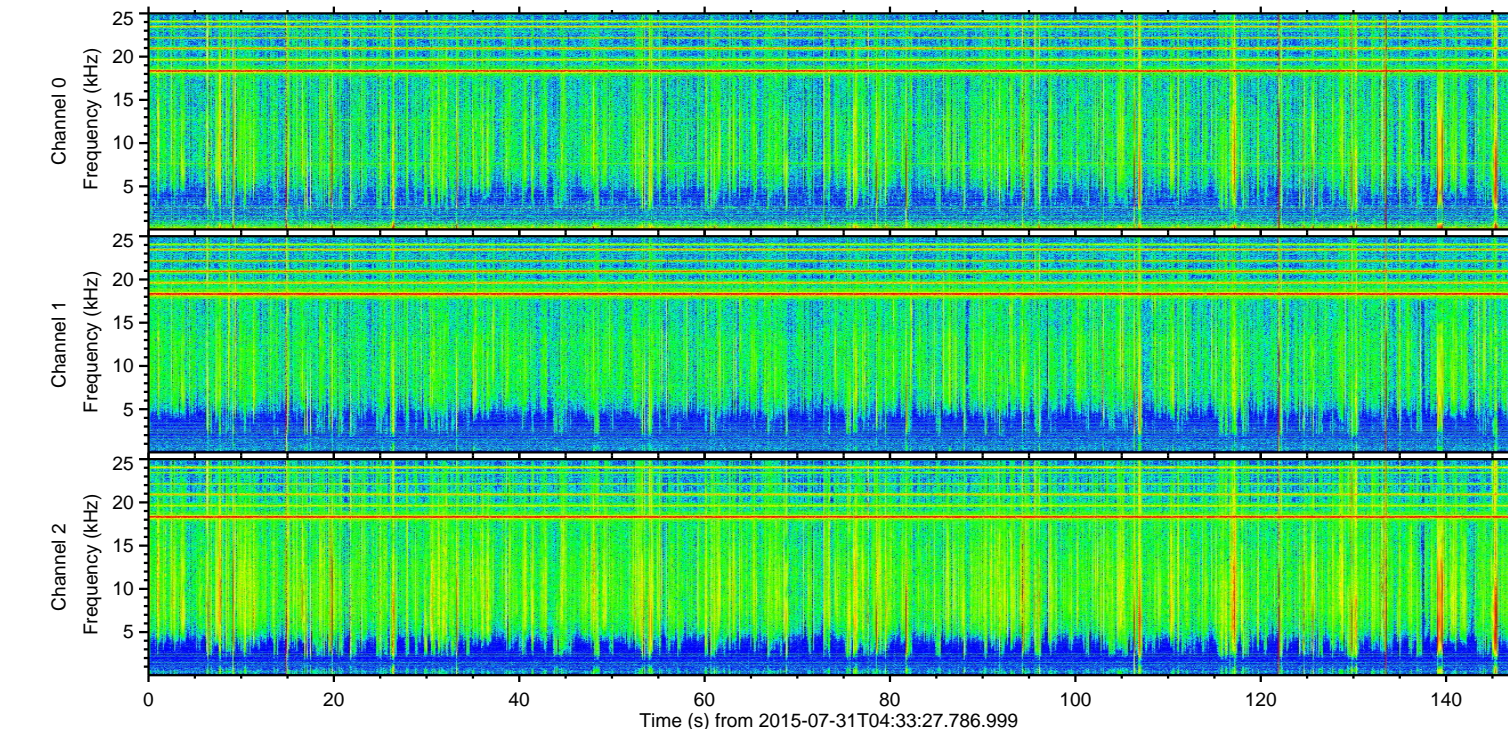
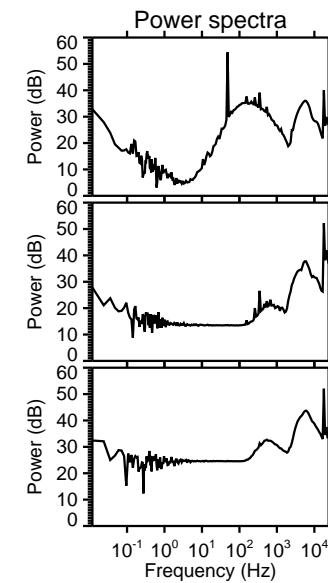
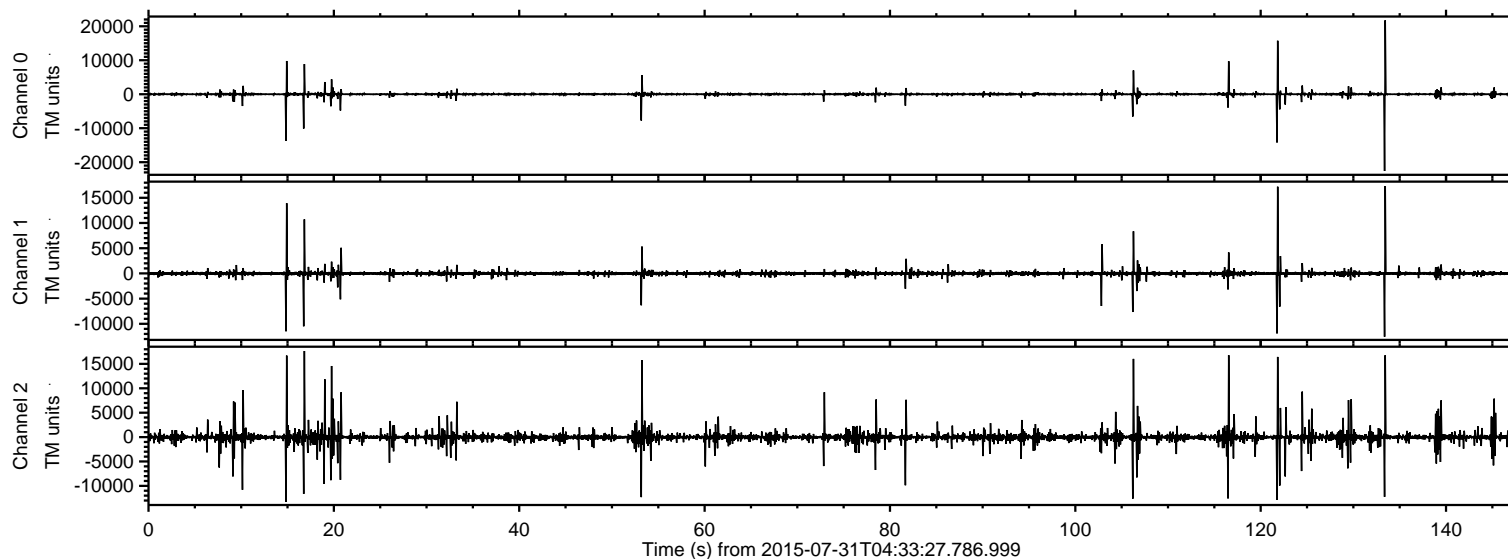


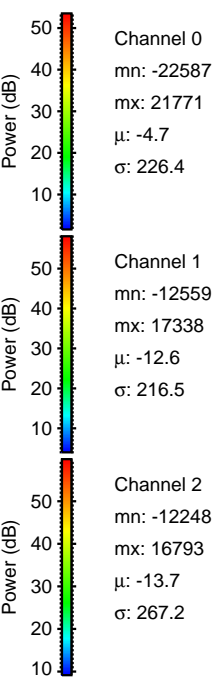
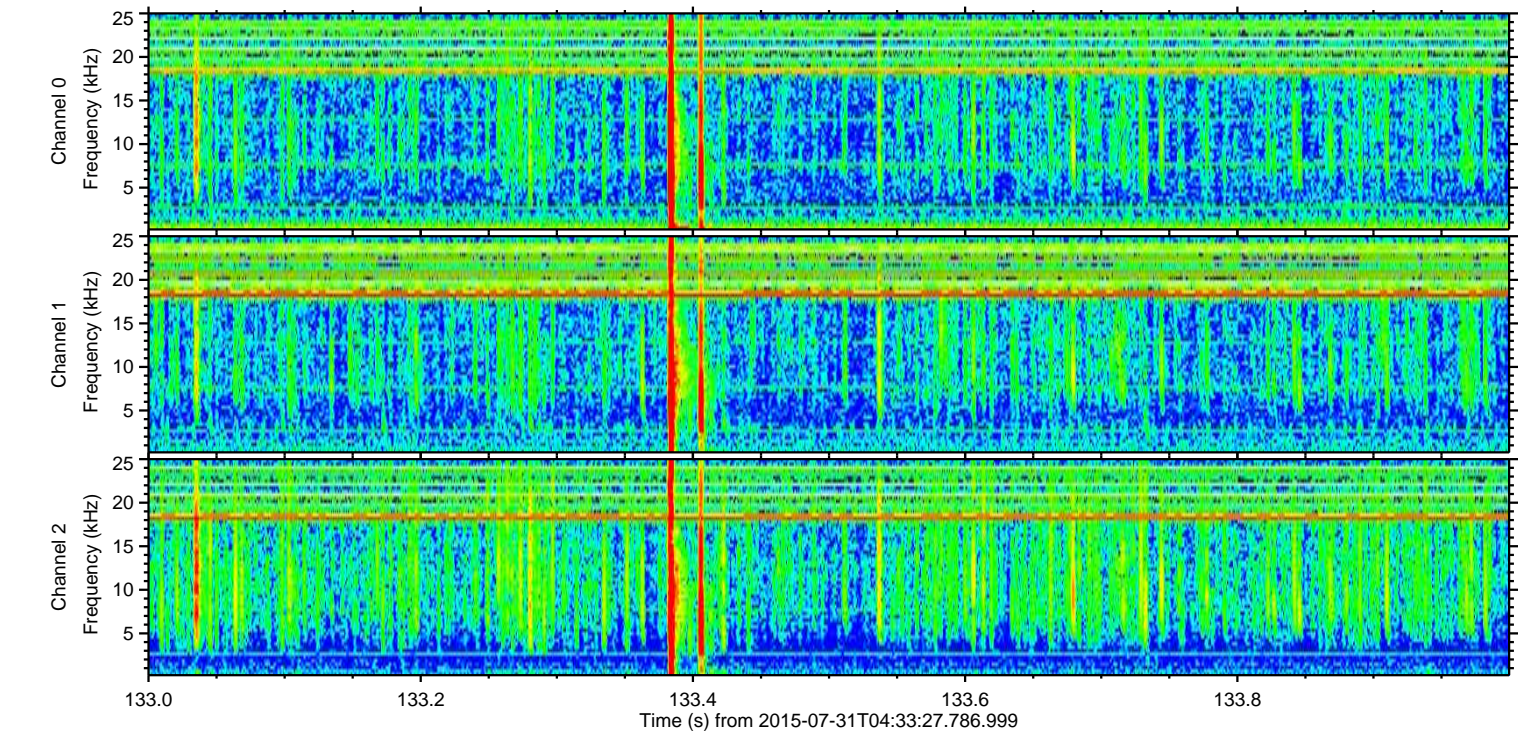
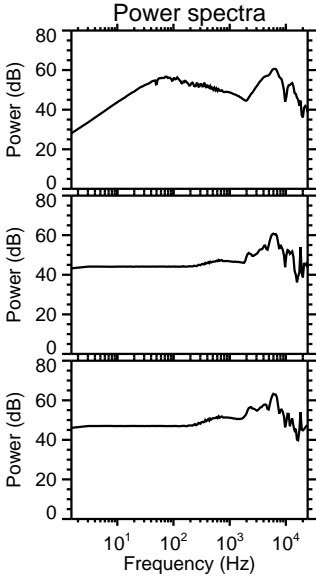
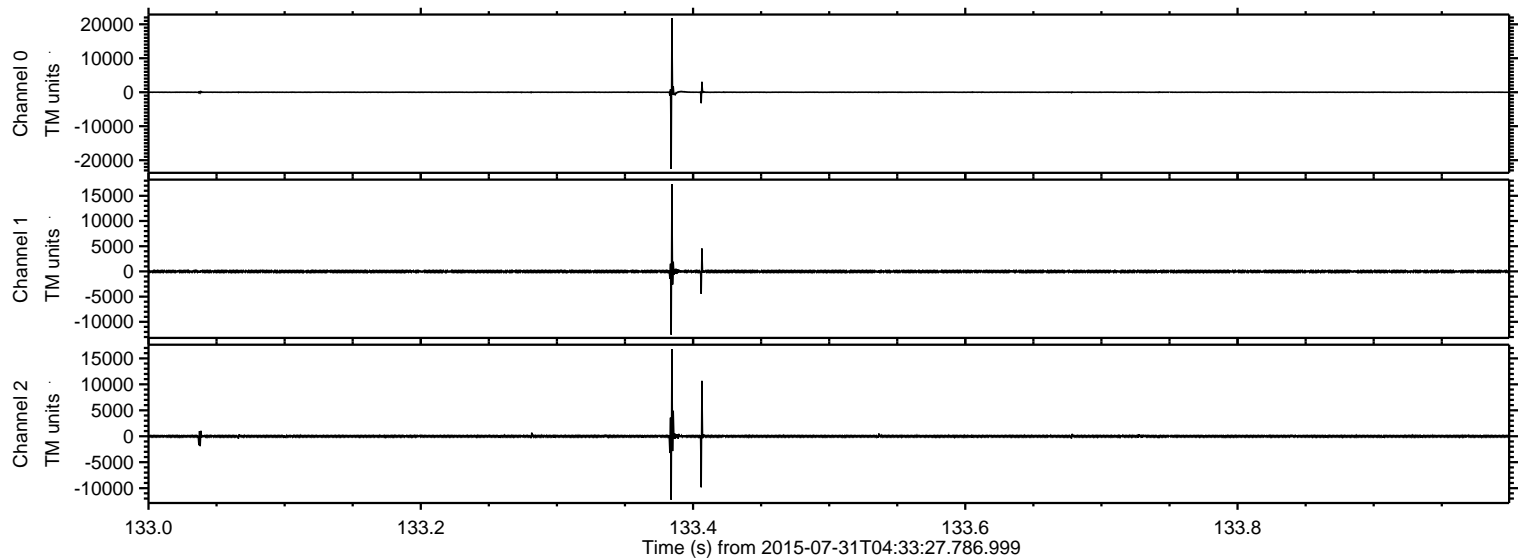
ELMAVAN 3D WAVEFORMS (Measured data sampled at 50 kHz) 51000 packets of 144 samples from 2015-07-31T04:33:27.786.999.

Processed Fri Jul 31 06:39:55 2015 by ELM ver.2012-10-06 from 001__elm20150731_043326__dat00.bin

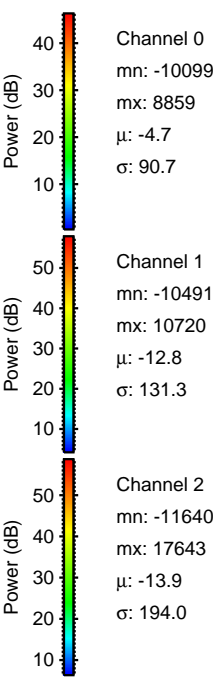
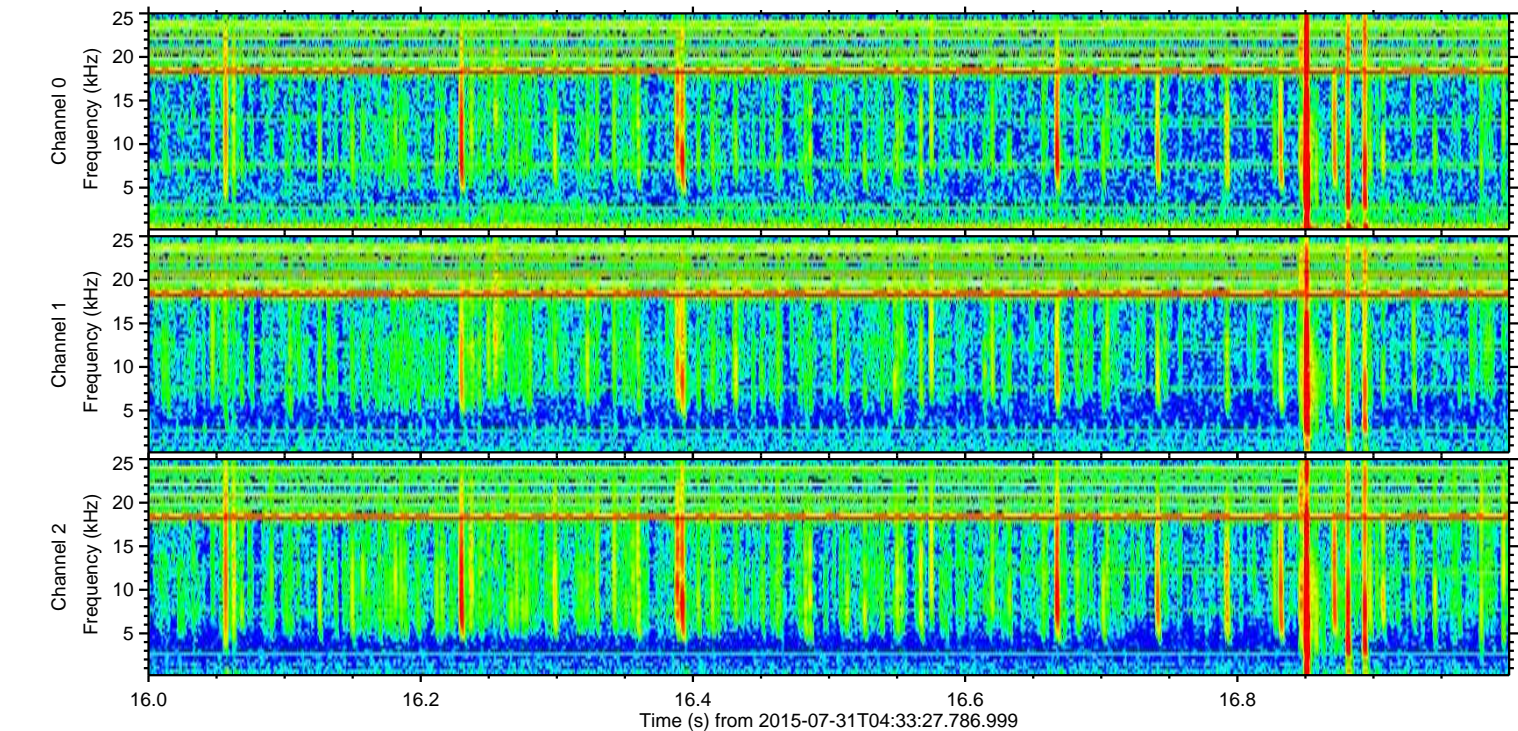
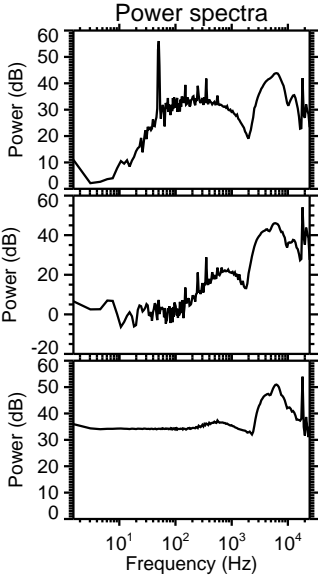
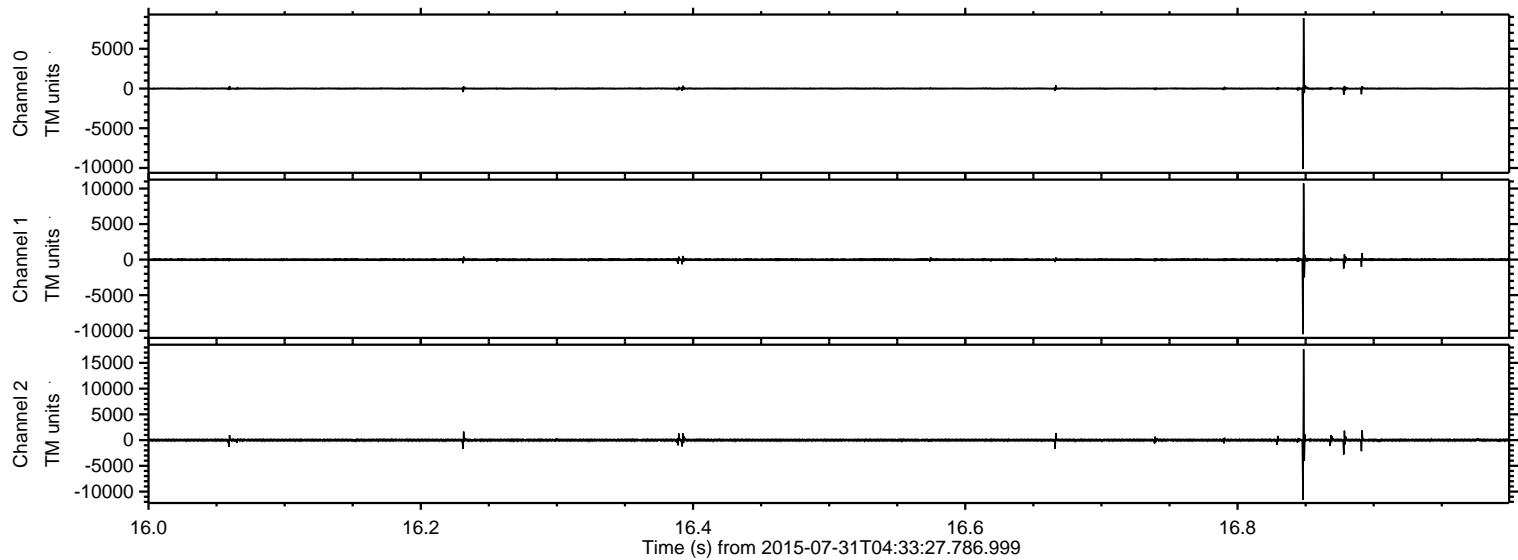


ELMAVAN 3D WAVEFORMS (Measured data sampled at 50 kHz) 51000 packets of 144 samples from 2015-07-31T04:33:27.786.999. Part 134/147

Processed Fri Jul 31 06:40:06 2015 by ELM ver.2012-10-06 from 001__elm20150731_043326__dat00.bin

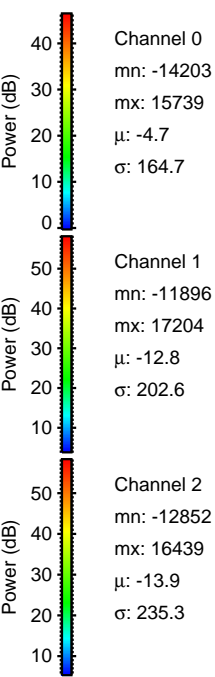
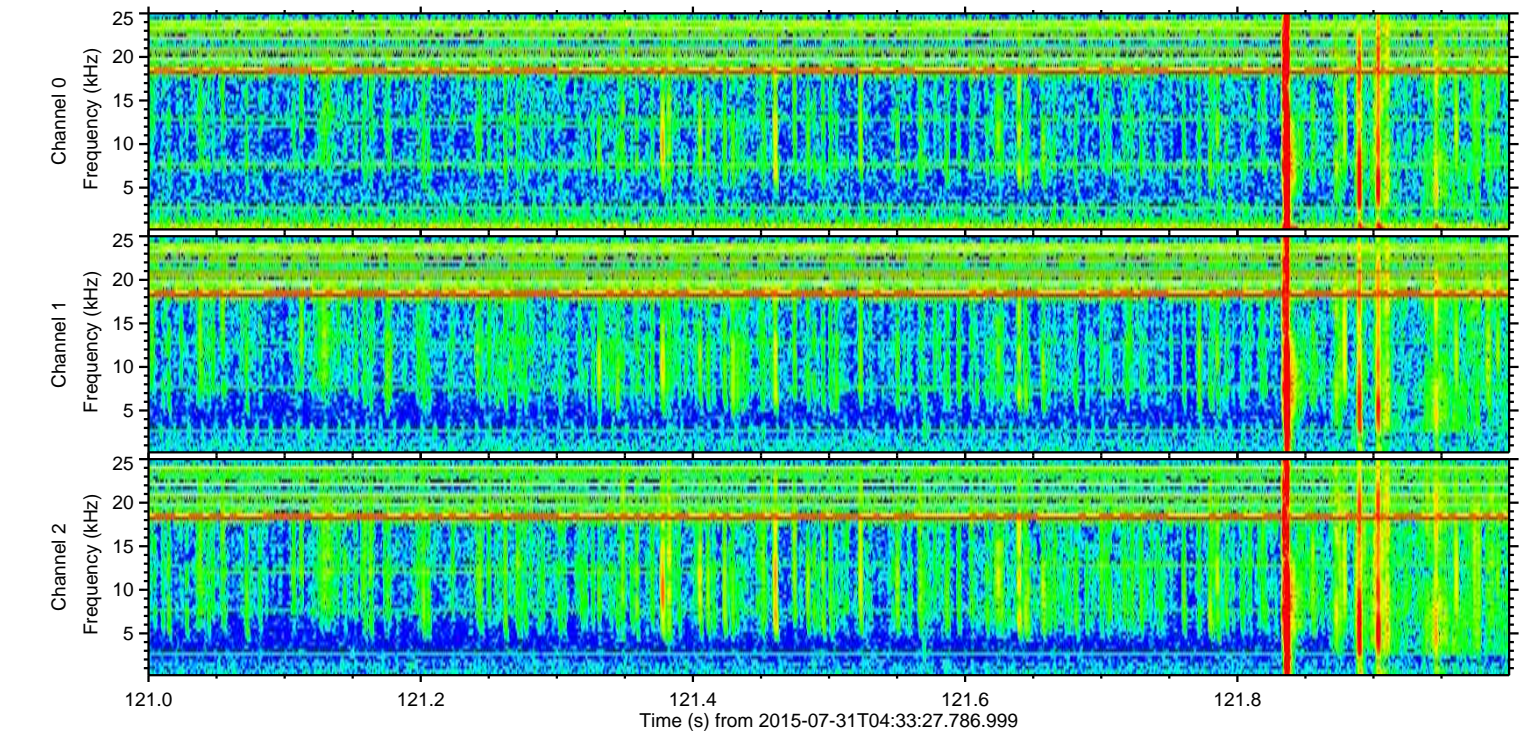
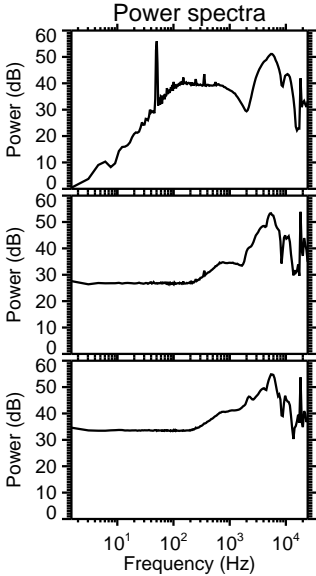
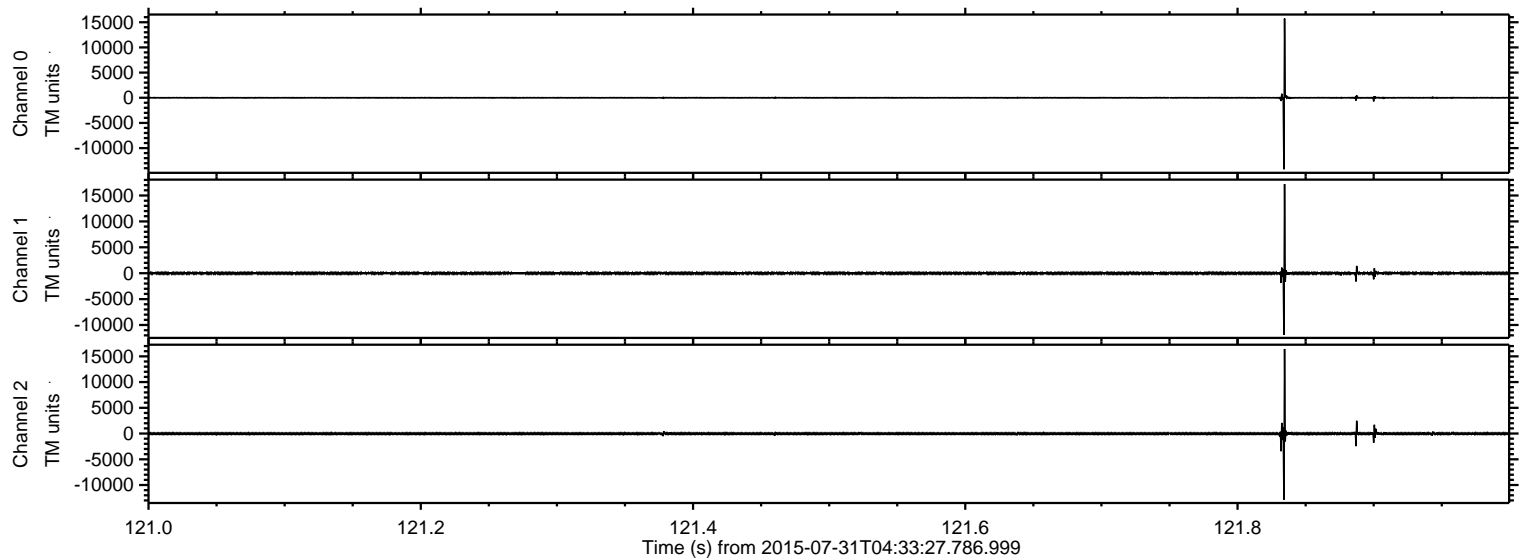


Processed Fri Jul 31 06:40:07 2015 by ELM ver.2012-10-06 from 001__elm20150731_043326__dat00.bin



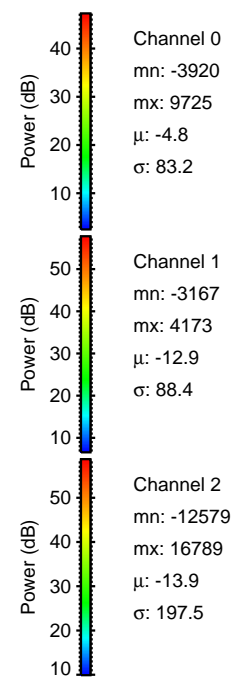
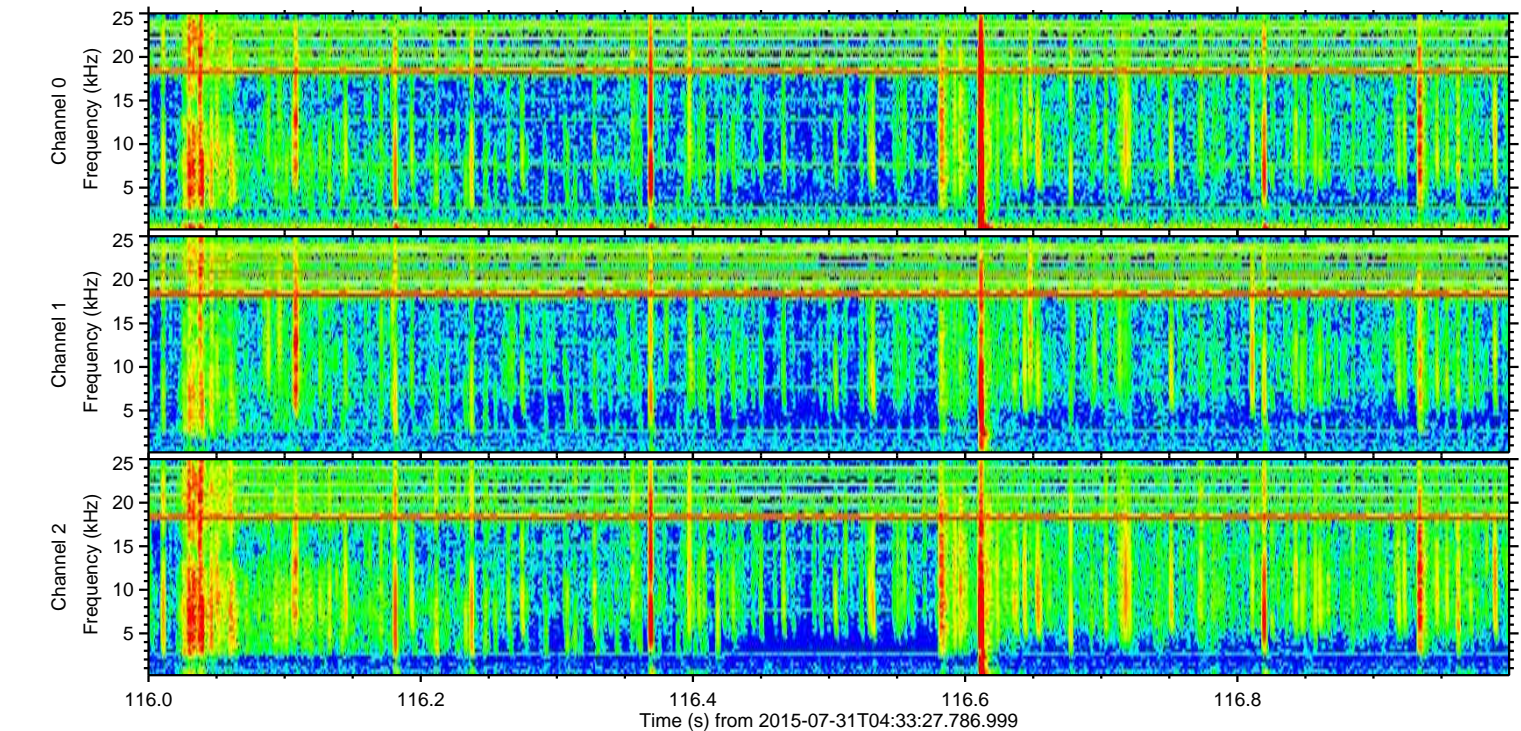
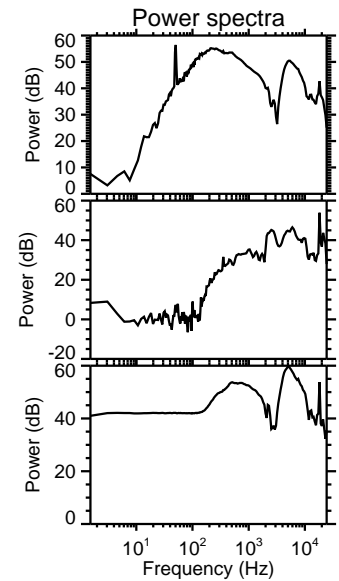
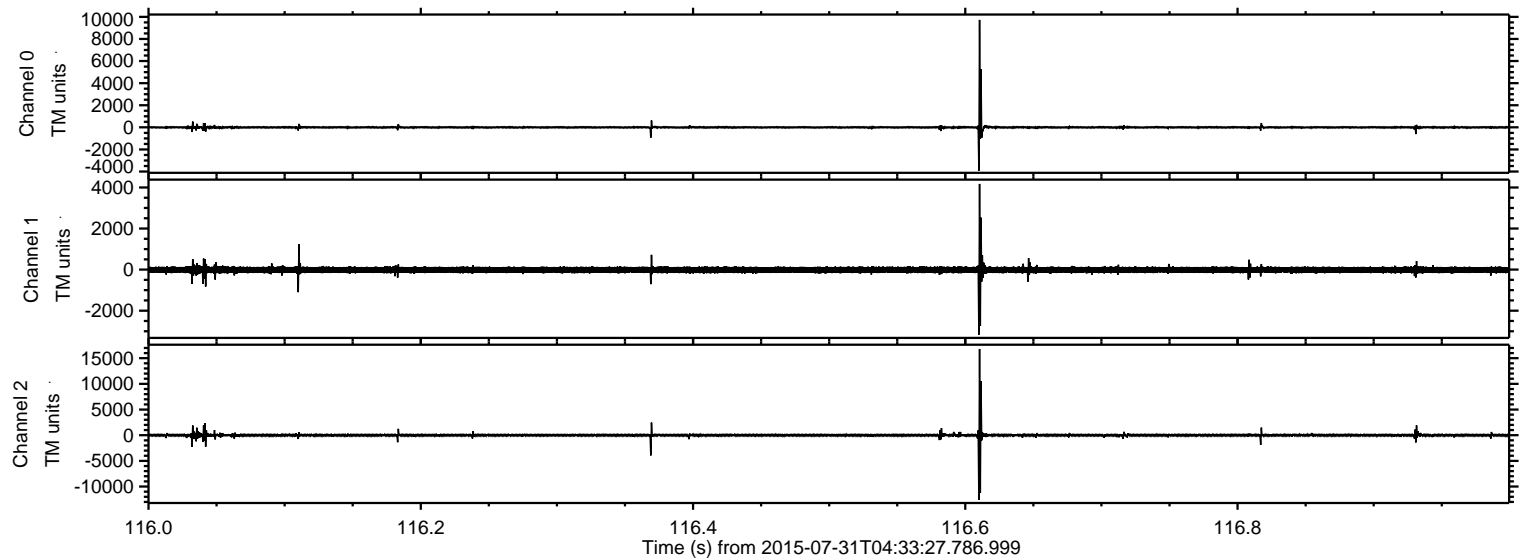
ELMAVAN 3D WAVEFORMS (Measured data sampled at 50 kHz) 51000 packets of 144 samples from 2015-07-31T04:33:27.786.999. Part 122/147

Processed Fri Jul 31 06:40:08 2015 by ELM ver.2012-10-06 from 001__elm20150731_043326__dat00.bin



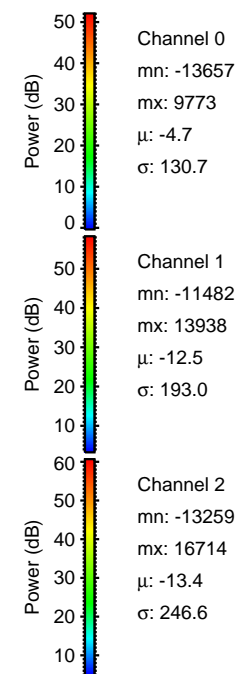
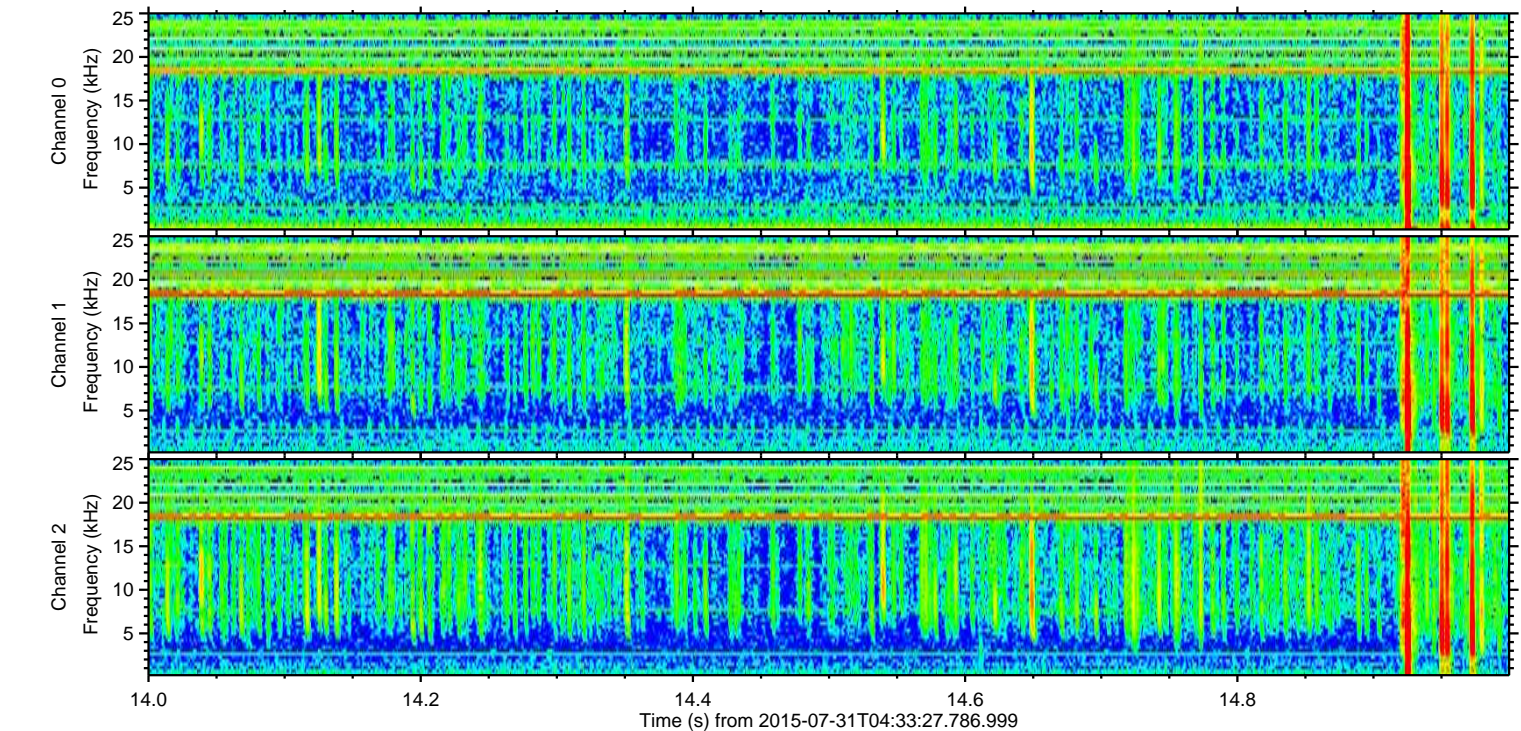
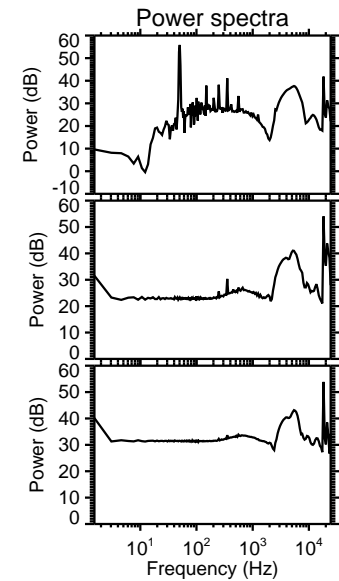
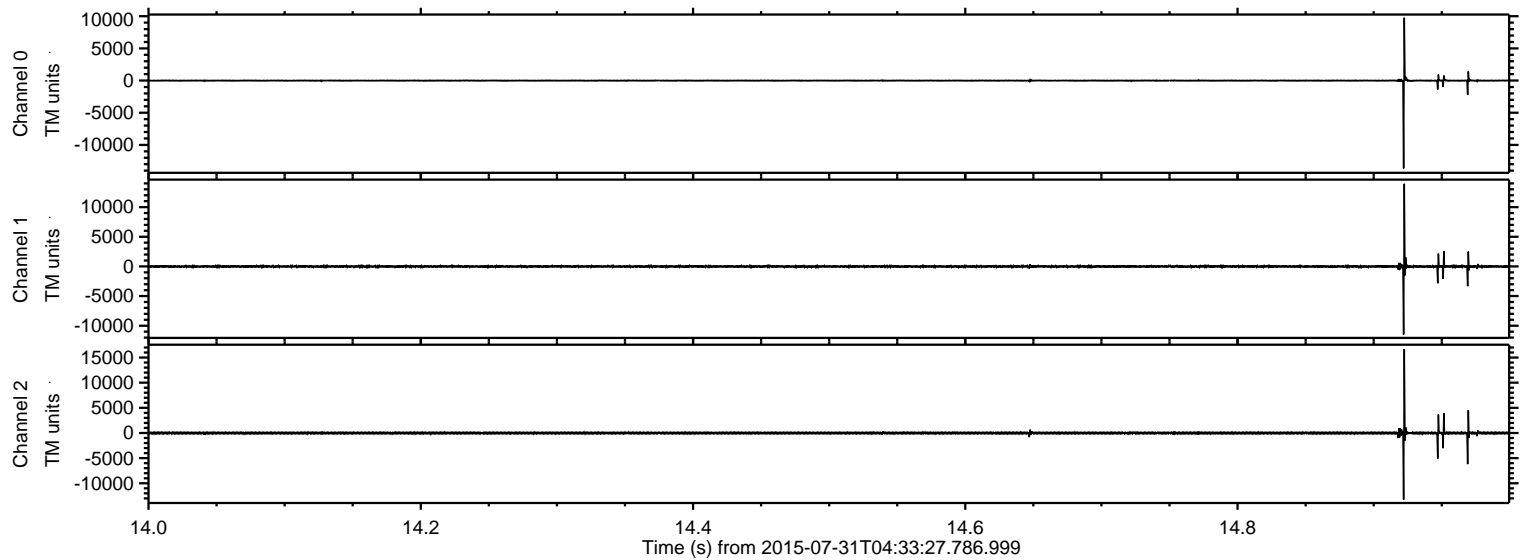
ELMAVAN 3D WAVEFORMS (Measured data sampled at 50 kHz) 51000 packets of 144 samples from 2015-07-31T04:33:27.786.999. Part 117/147

Processed Fri Jul 31 06:40:09 2015 by ELM ver.2012-10-06 from 001__elm20150731_043326__dat00.bin



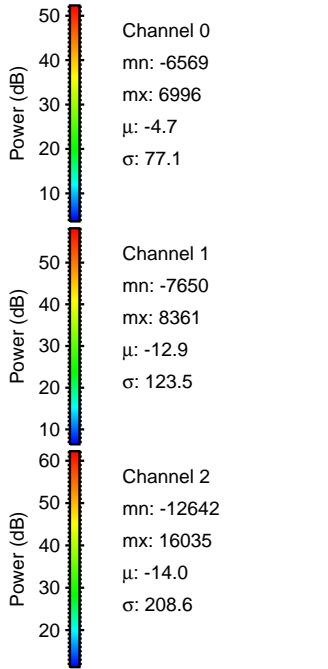
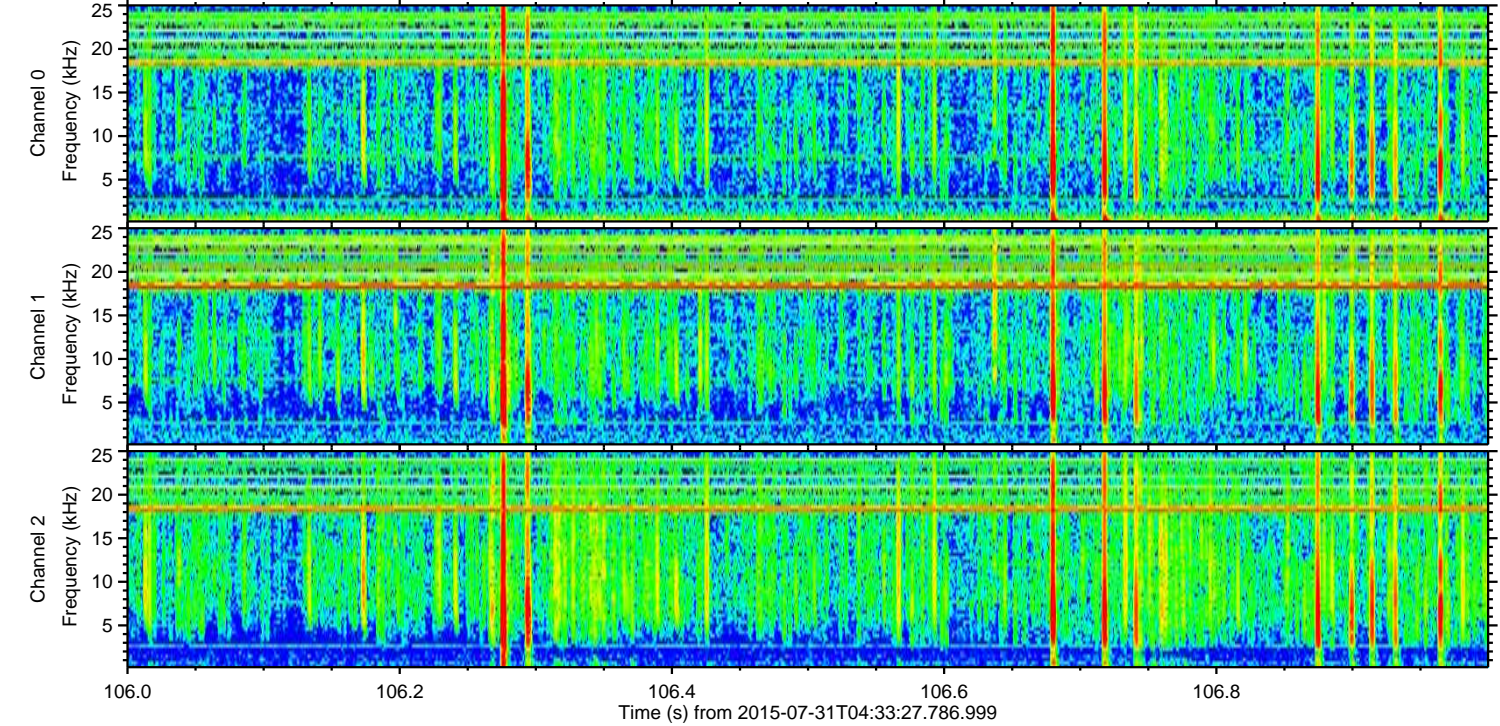
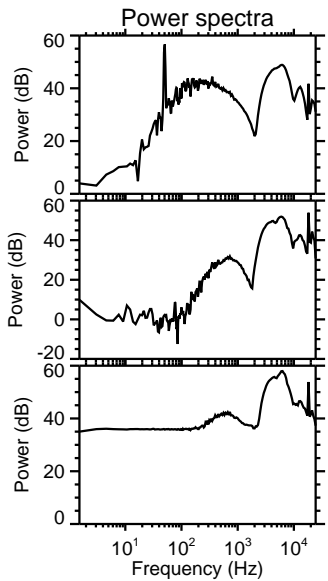
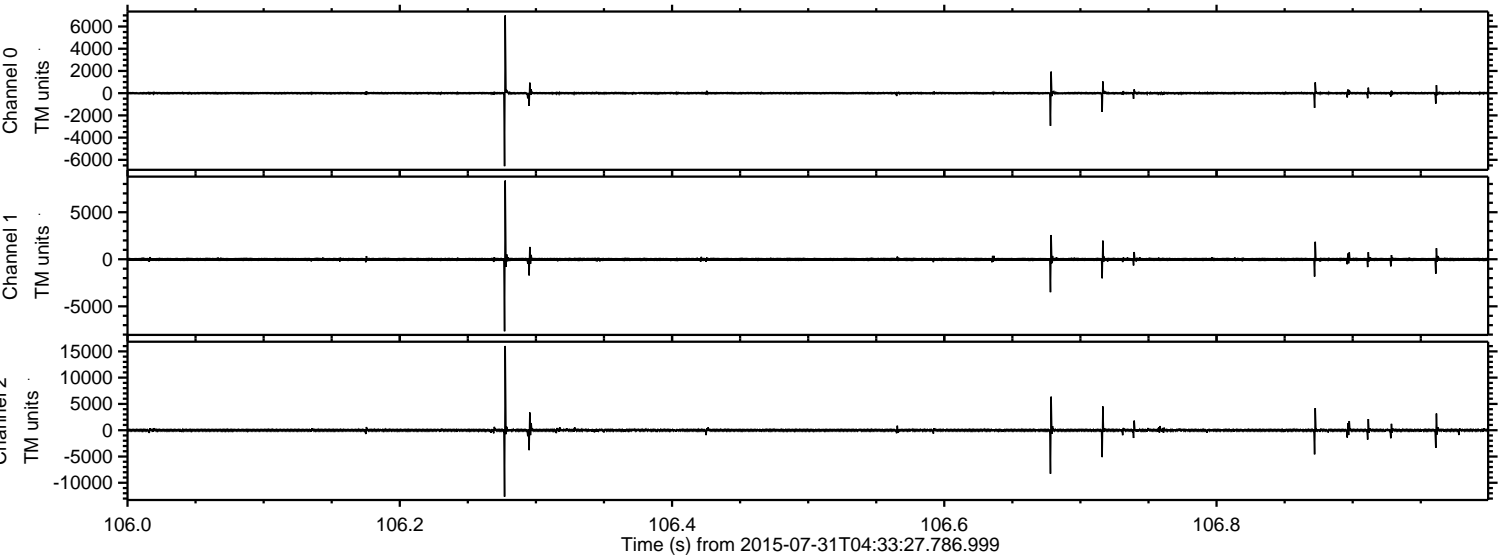
ELMAVAN 3D WAVEFORMS (Measured data sampled at 50 kHz) 51000 packets of 144 samples from 2015-07-31T04:33:27.786.999. Part 15/147

Processed Fri Jul 31 06:40:10 2015 by ELM ver.2012-10-06 from 001__elm20150731_043326__dat00.bin

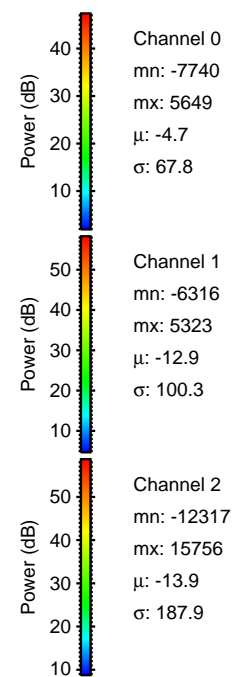
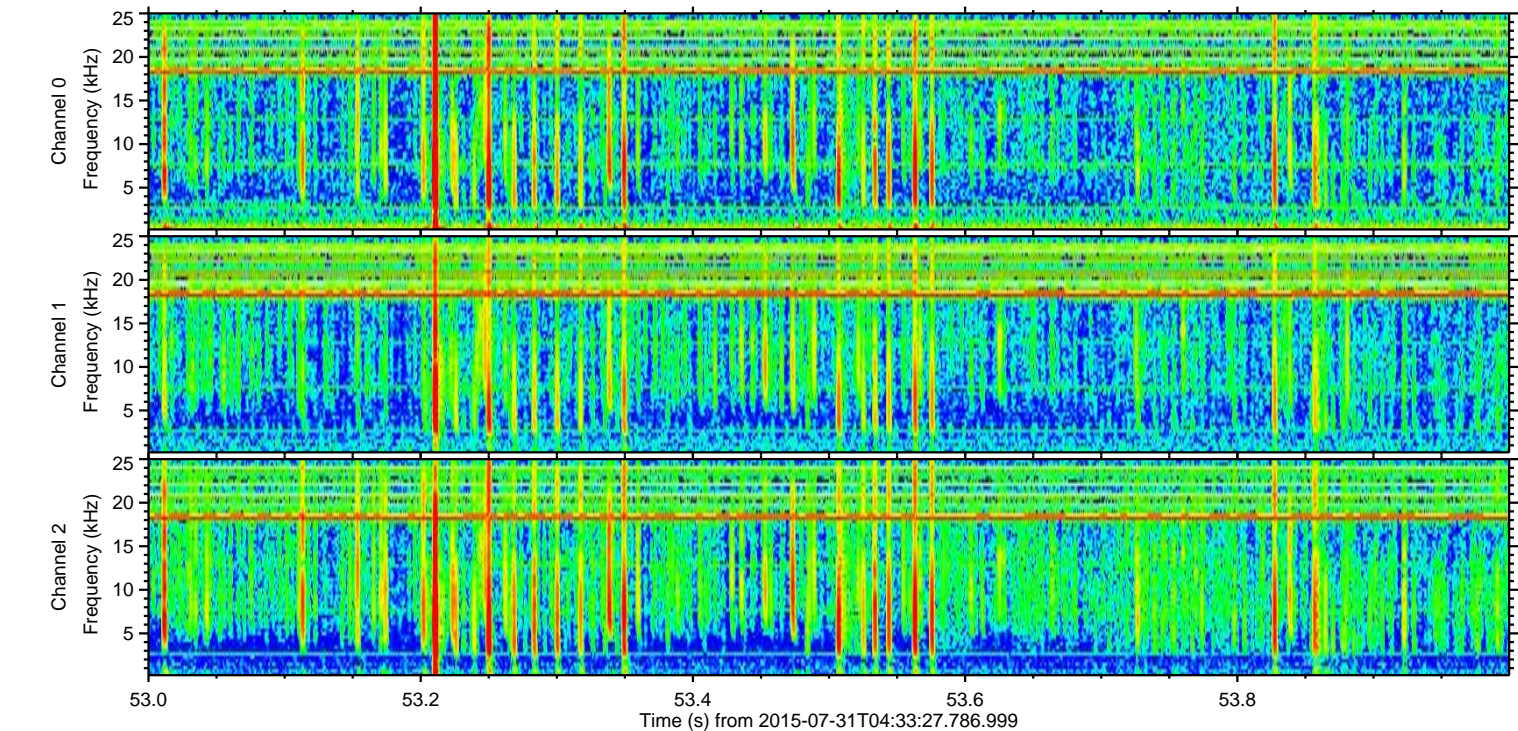
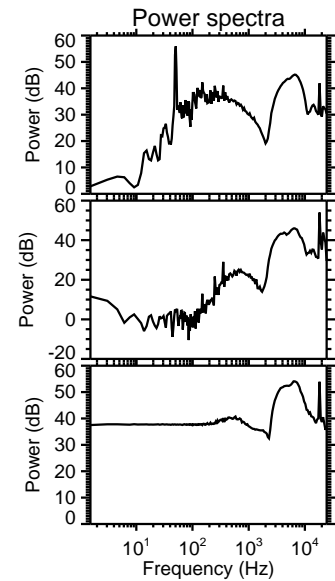
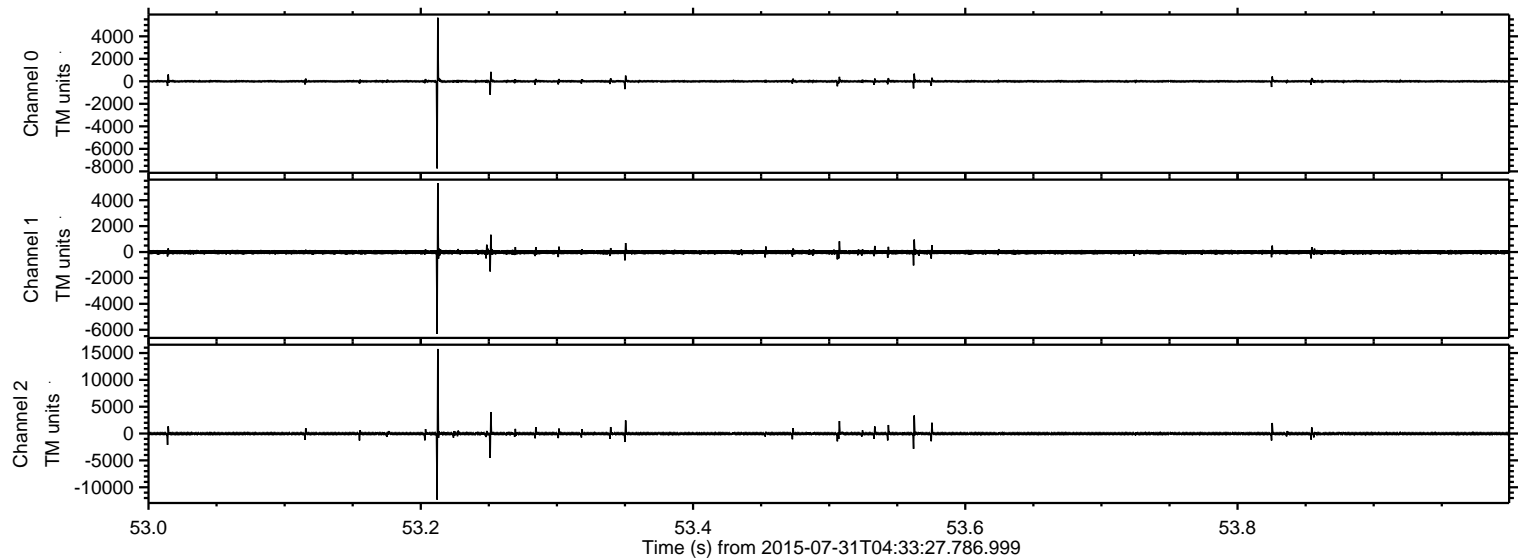


ELMAVAN 3D WAVEFORMS (Measured data sampled at 50 kHz) 51000 packets of 144 samples from 2015-07-31T04:33:27.786.999. Part 107/147

Processed Fri Jul 31 06:40:11 2015 by ELM ver.2012-10-06 from 001__elm20150731_043326__dat00.bin



Processed Fri Jul 31 06:40:12 2015 by ELM ver.2012-10-06 from 001__elm20150731_043326__dat00.bin

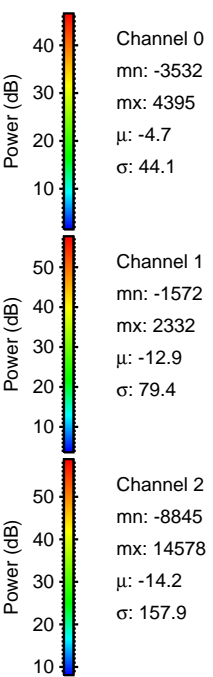
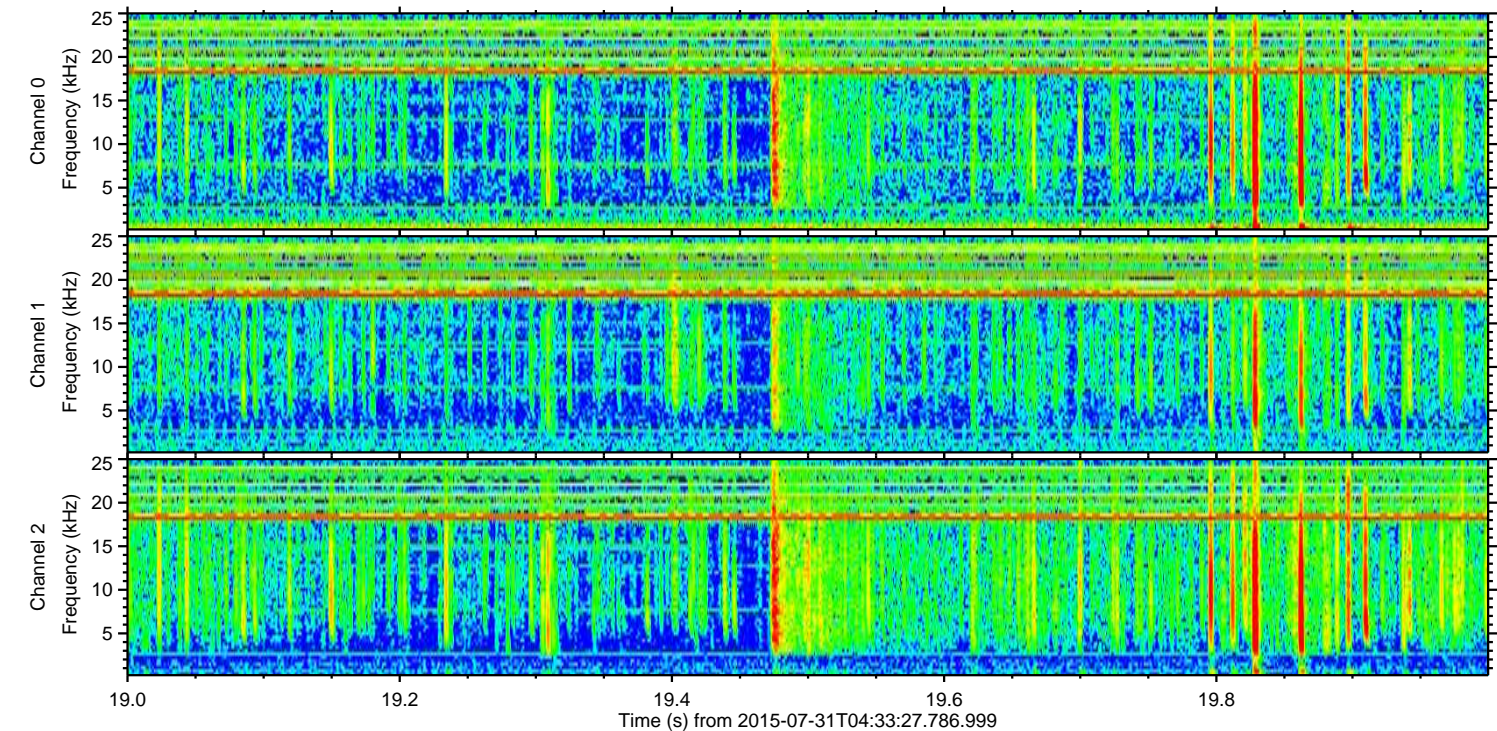
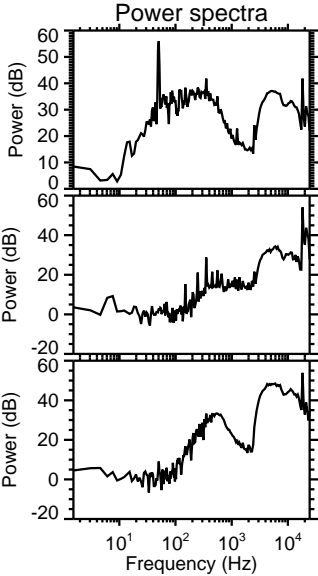
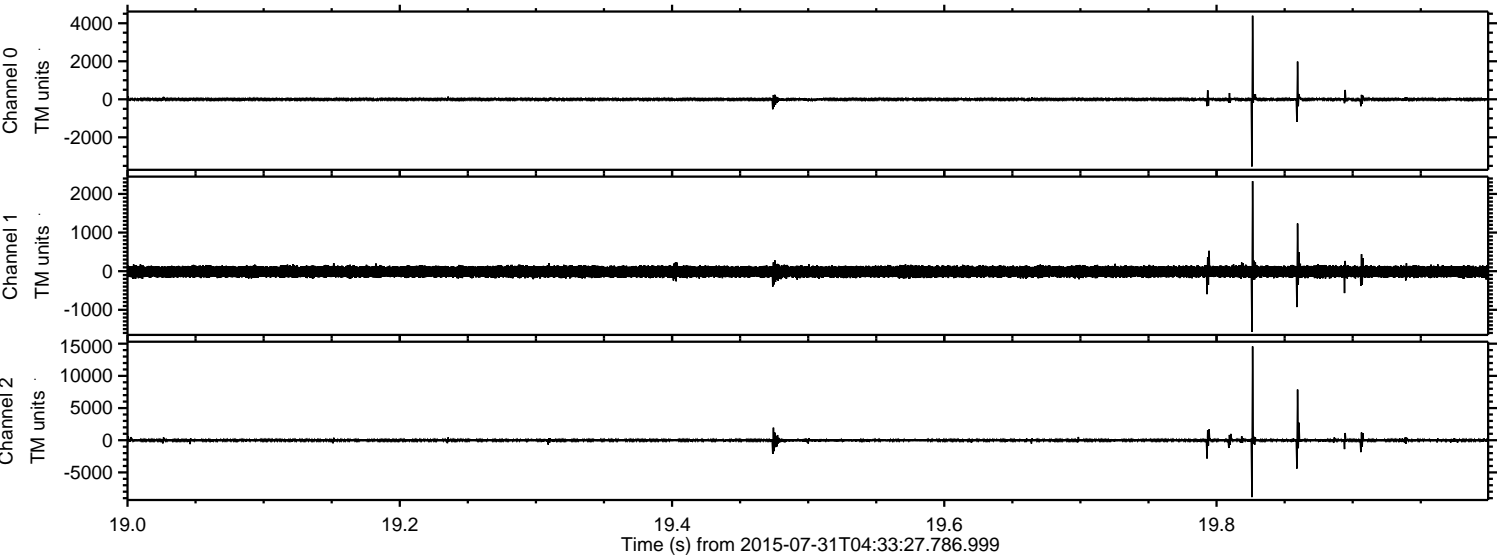


Channel 0
mn: -7740
mx: 5649
 μ : -4.7
 σ : 67.8

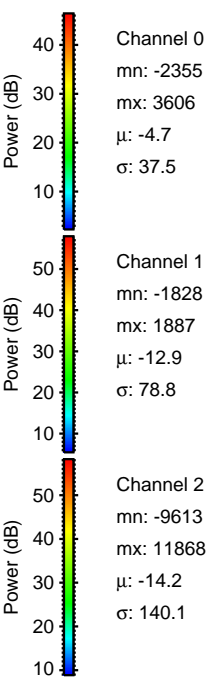
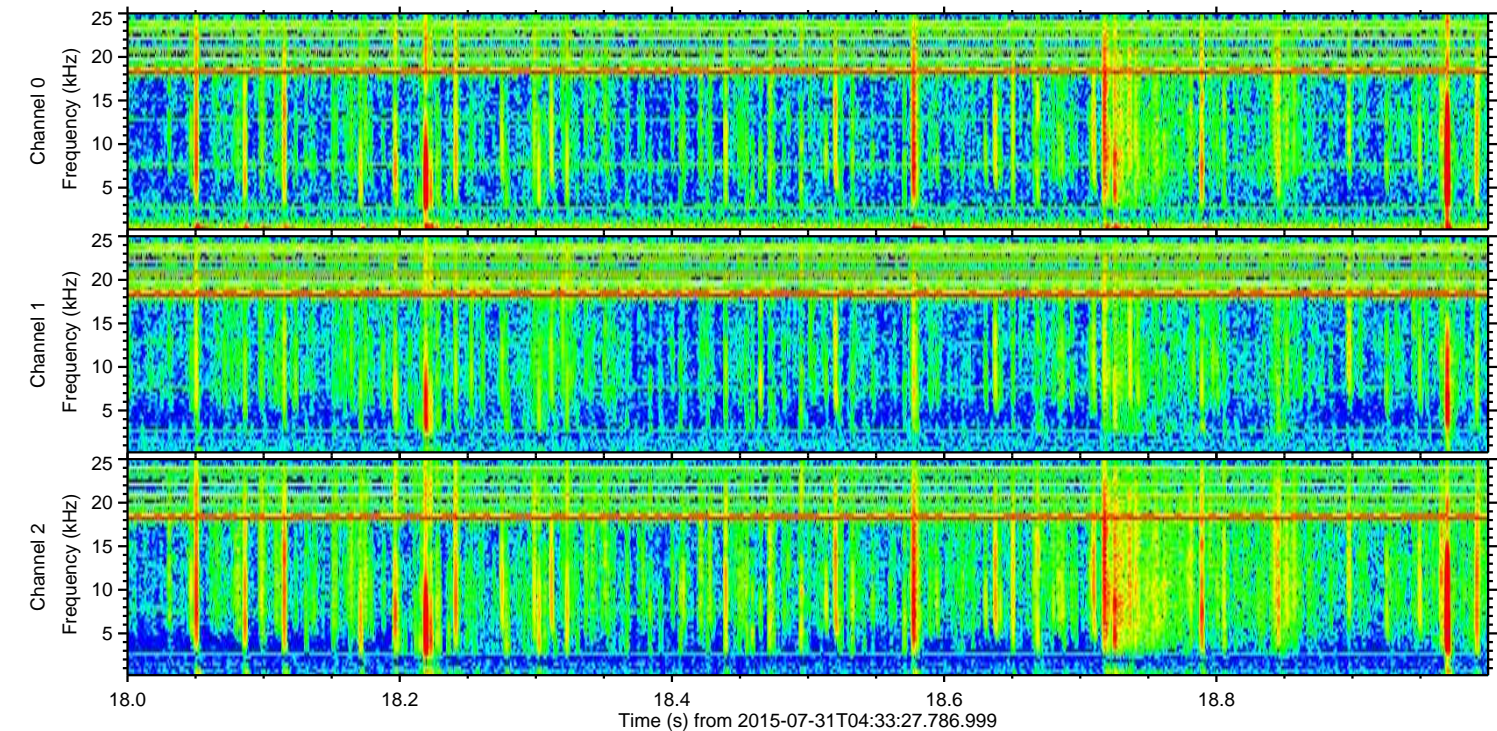
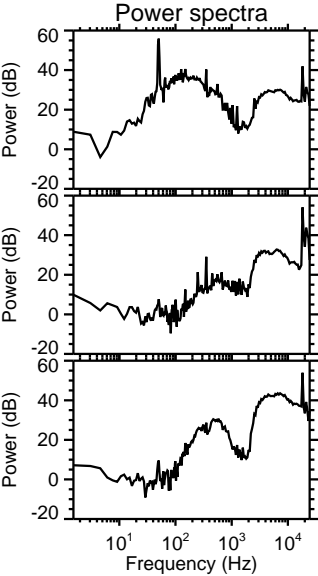
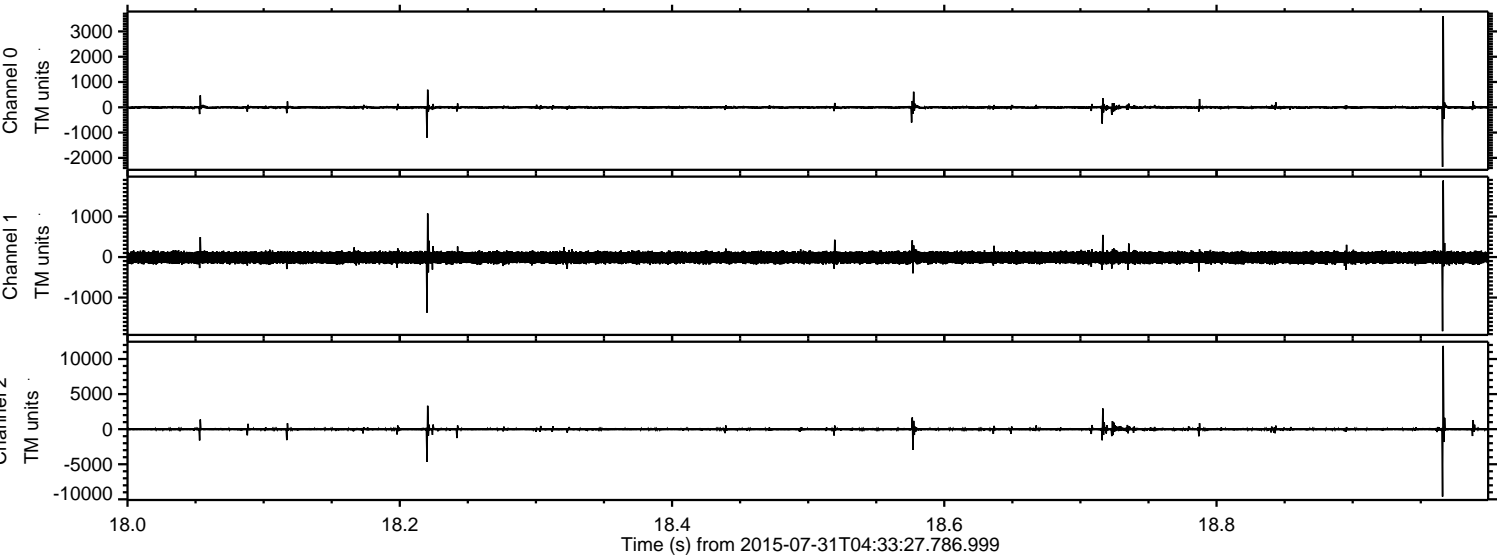
Channel 1
mn: -6316
mx: 5323
 μ : -12.9
 σ : 100.3

Channel 2
mn: -12317
mx: 15756
 μ : -13.9
 σ : 187.9

Processed Fri Jul 31 06:40:13 2015 by ELM ver.2012-10-06 from 001__elm20150731_043326__dat00.bin



Processed Fri Jul 31 06:40:14 2015 by ELM ver.2012-10-06 from 001__elm20150731_043326__dat00.bin



Processed Fri Jul 31 06:40:15 2015 by ELM ver.2012-10-06 from 001__elm20150731_043326__dat00.bin

