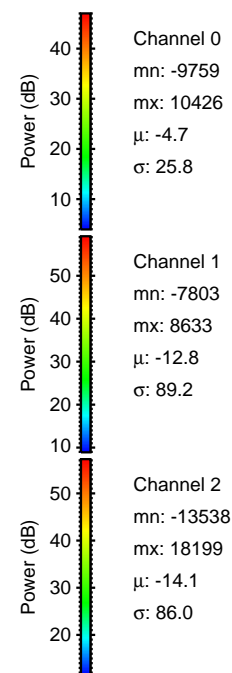
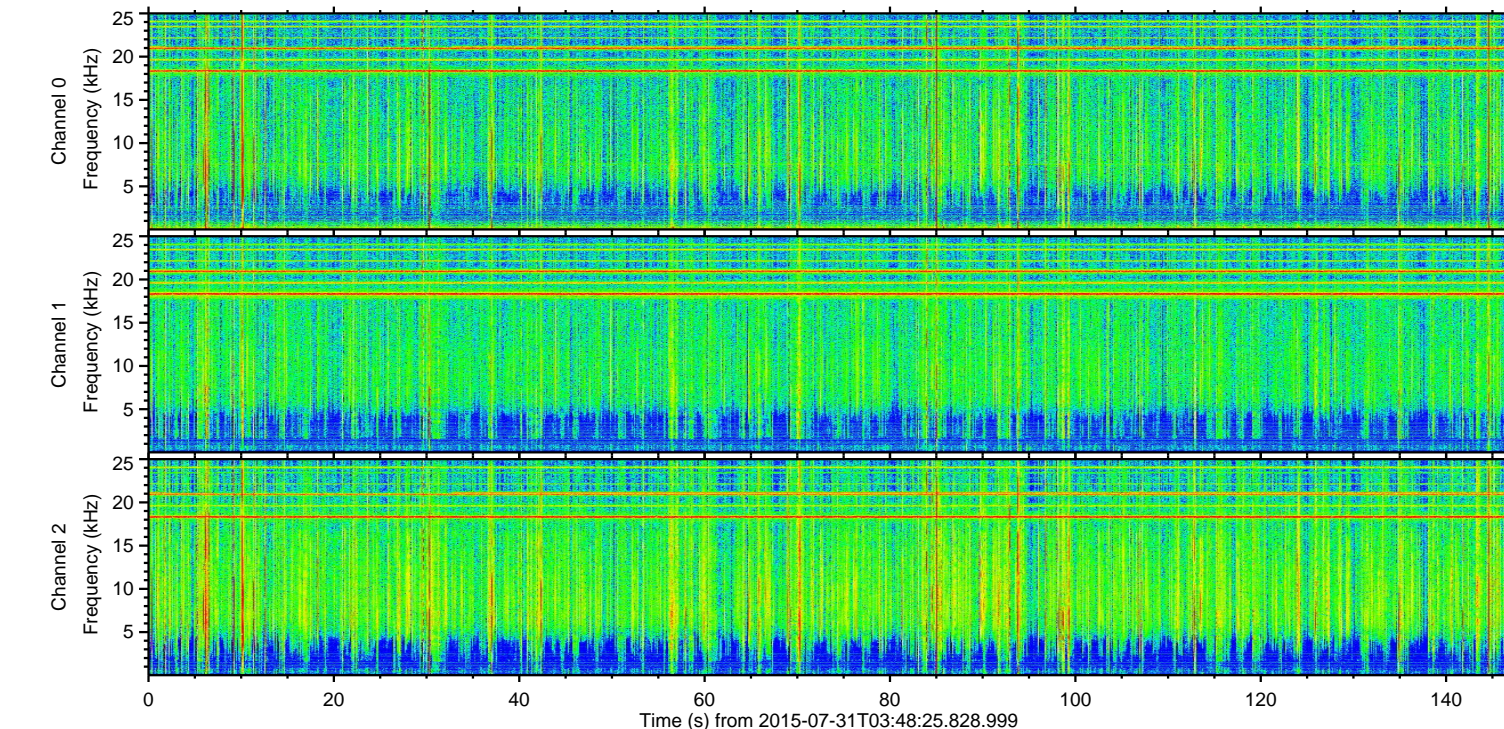
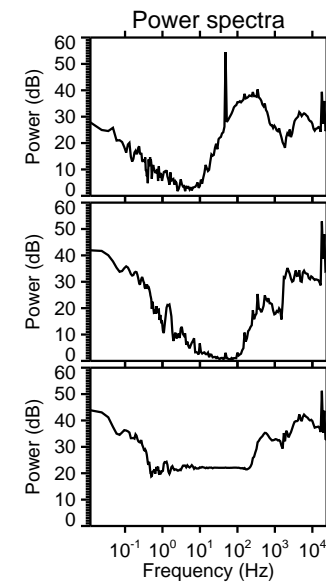
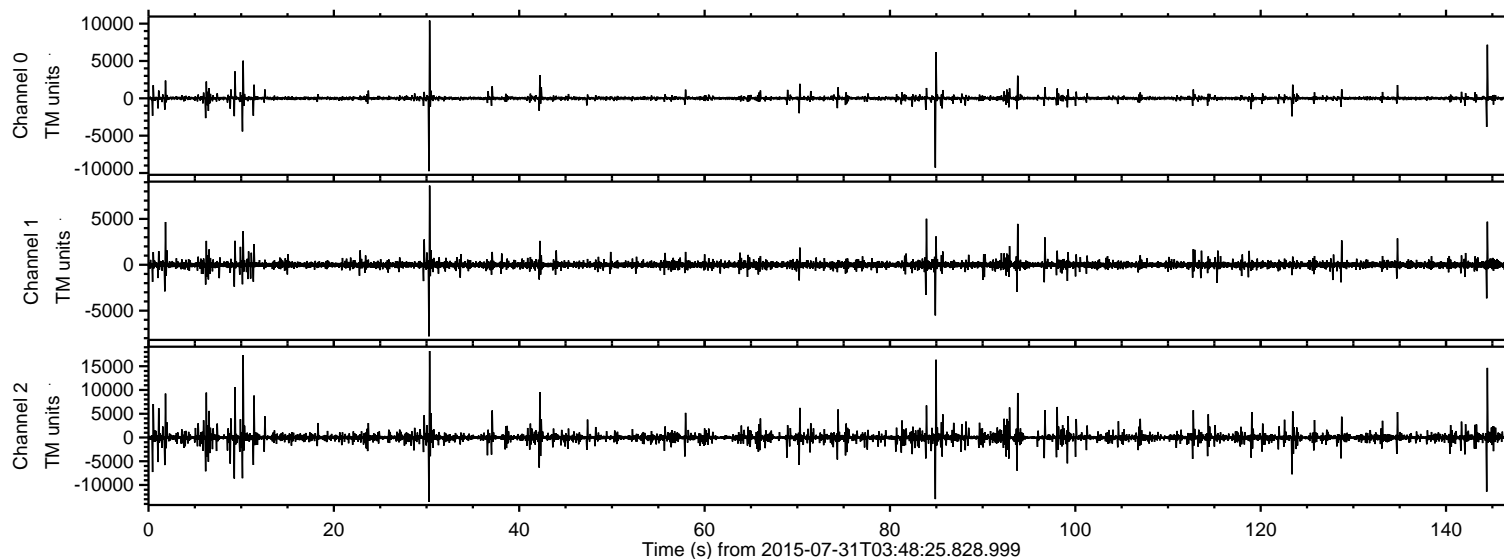


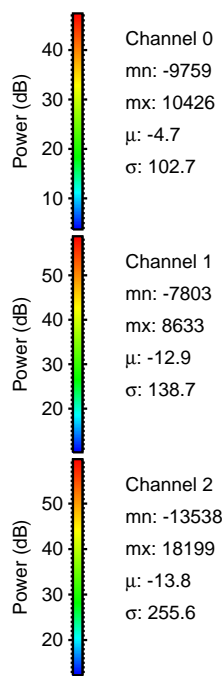
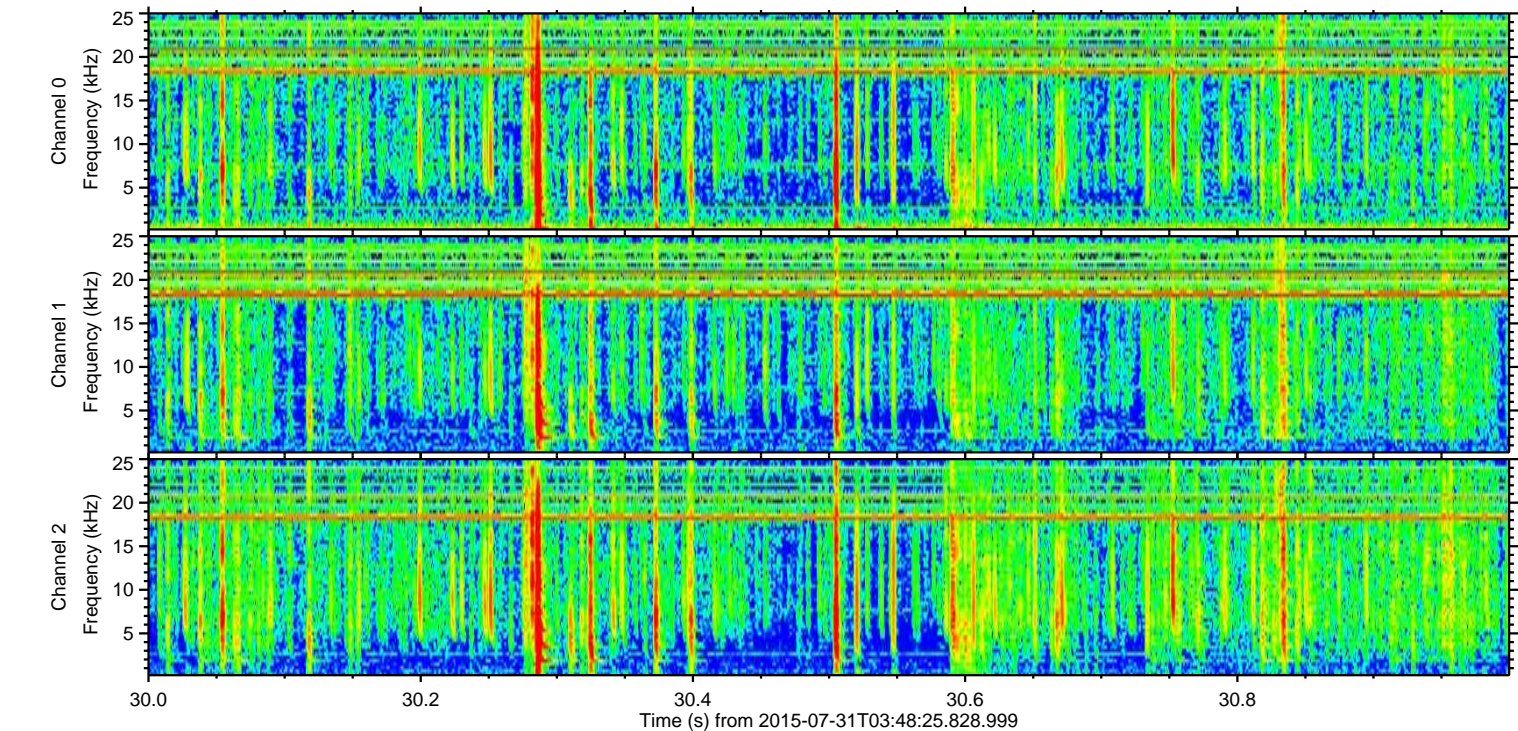
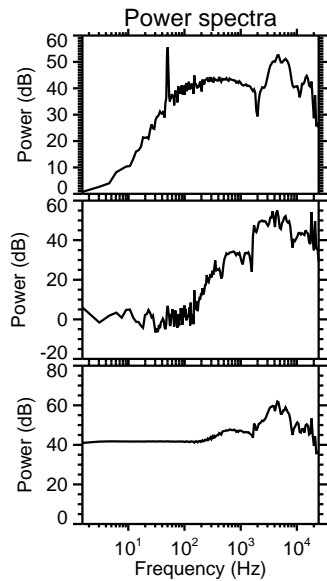
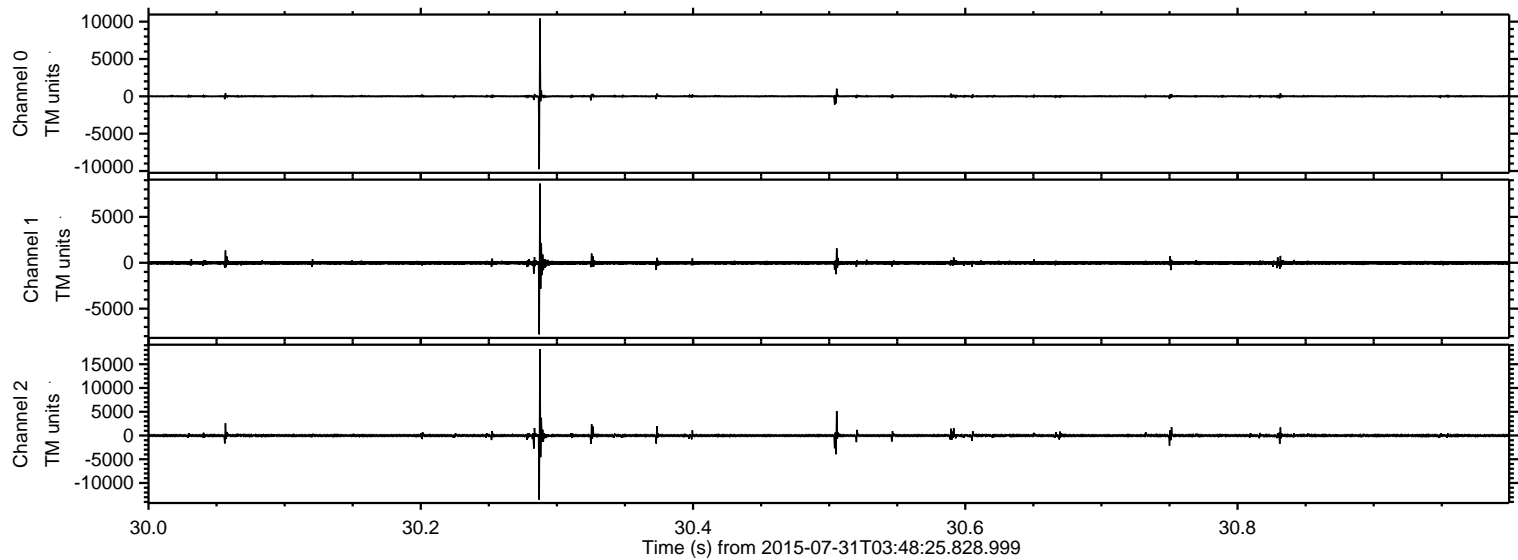
# ELMAVAN 3D WAVEFORMS (Measured data sampled at 50 kHz) 51000 packets of 144 samples from 2015-07-31T03:48:25.828.999.

Processed Fri Jul 31 05:55:09 2015 by ELM ver.2012-10-06 from 001\_\_elm20150731\_034824\_\_dat00.bin





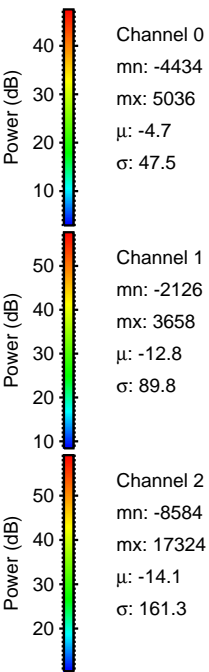
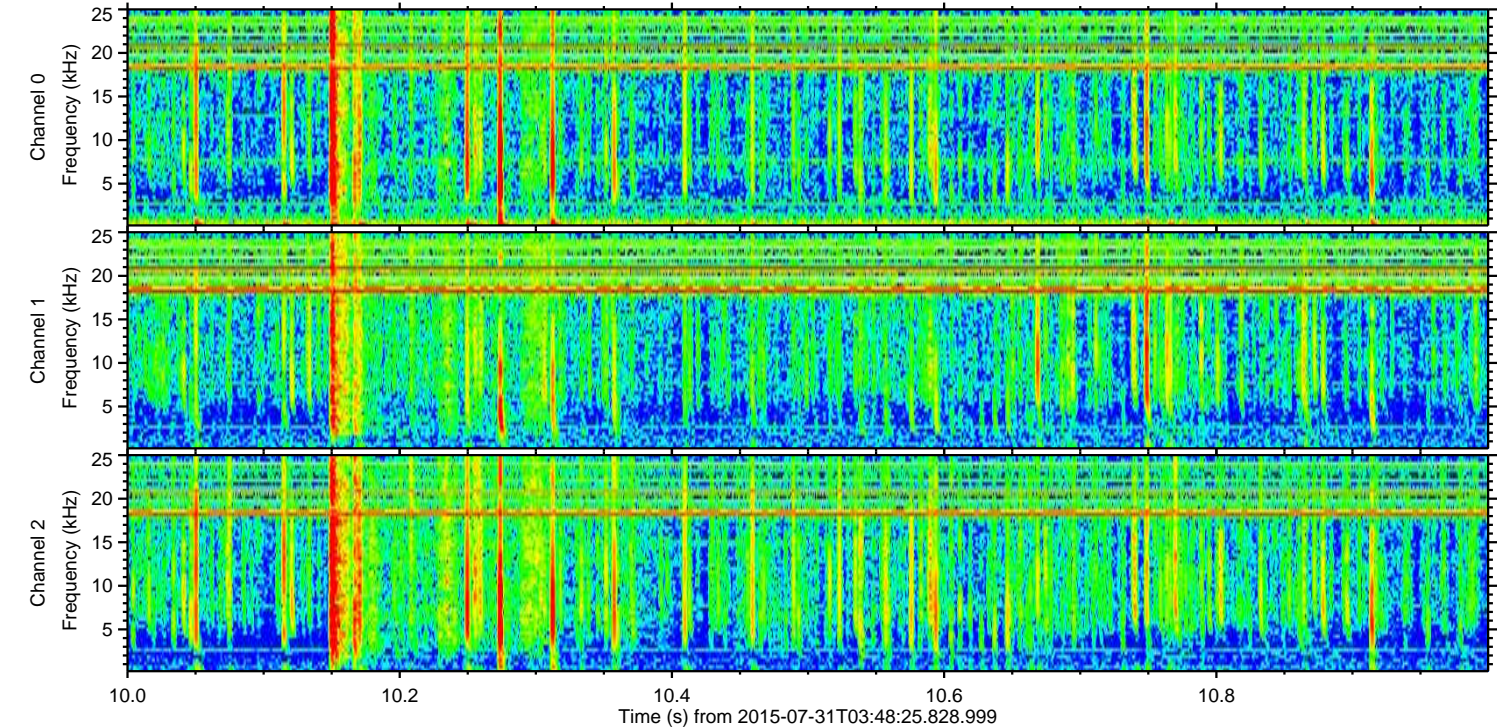
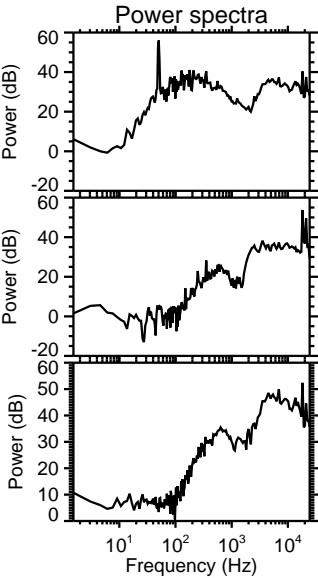
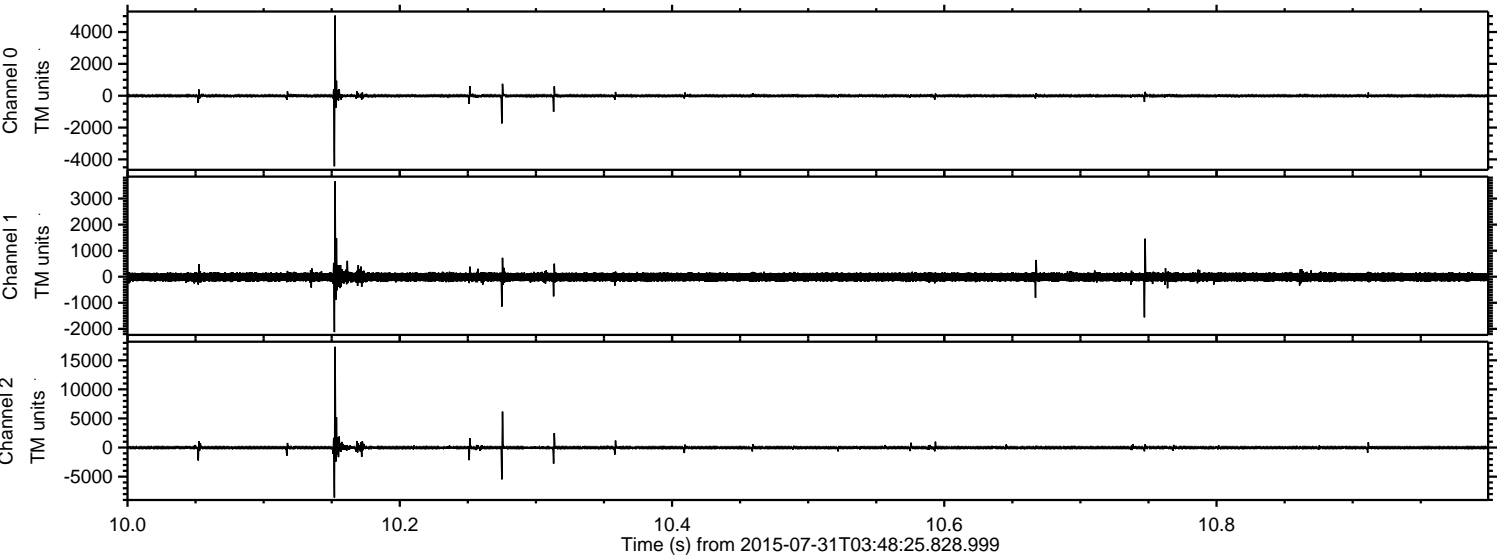
Processed Fri Jul 31 05:55:21 2015 by ELM ver.2012-10-06 from 001\_\_elm20150731\_034824\_\_dat00.bin





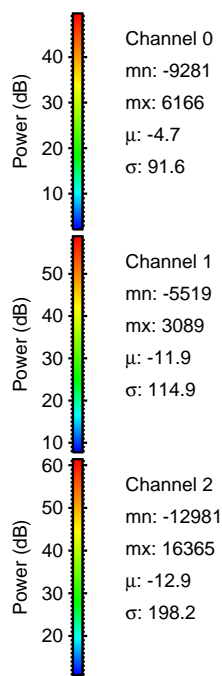
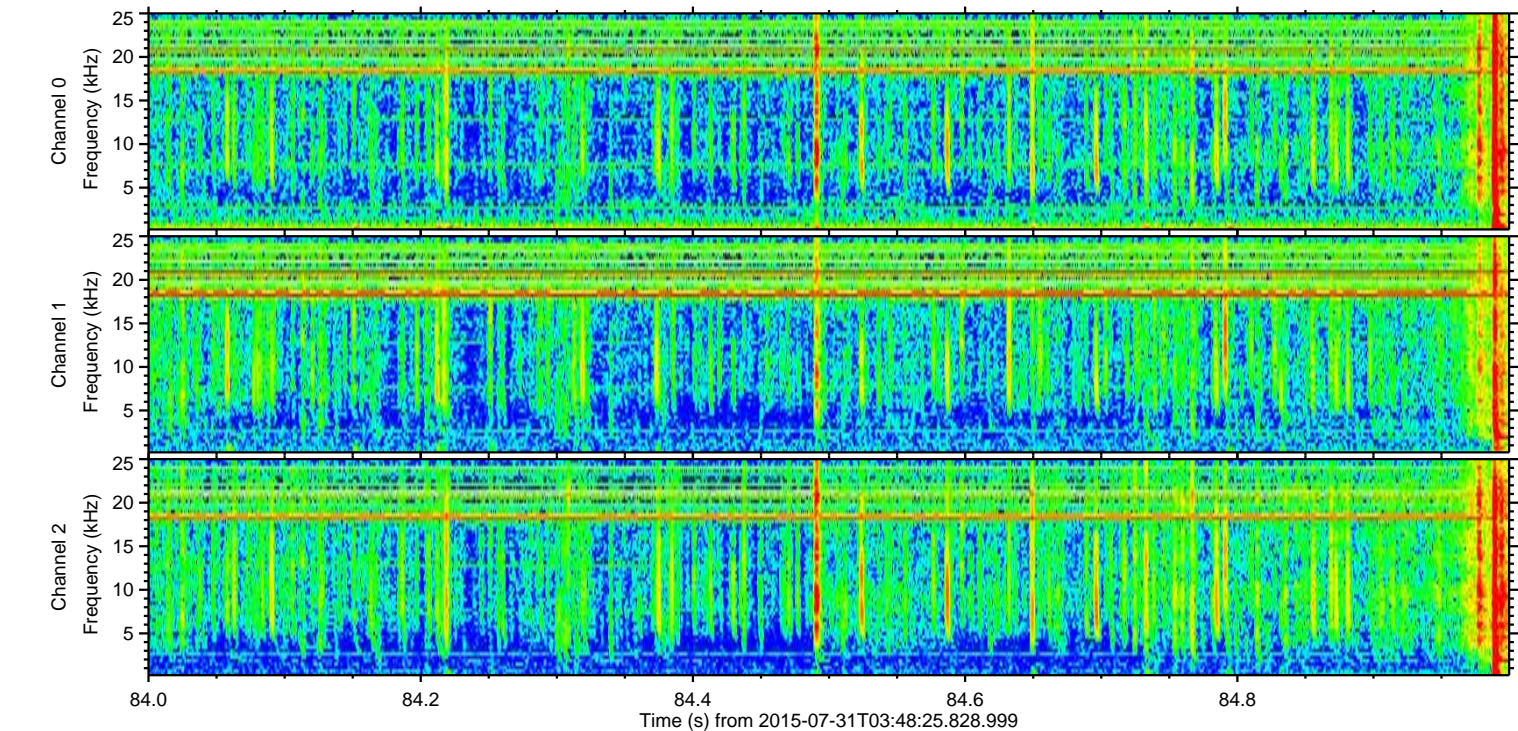
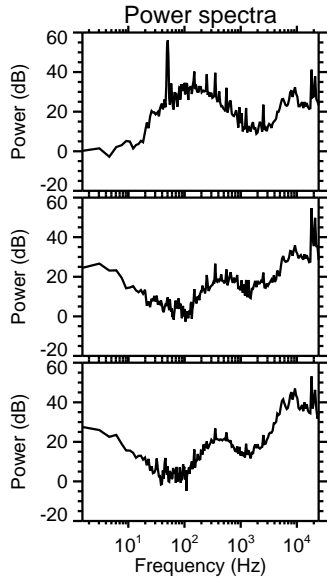
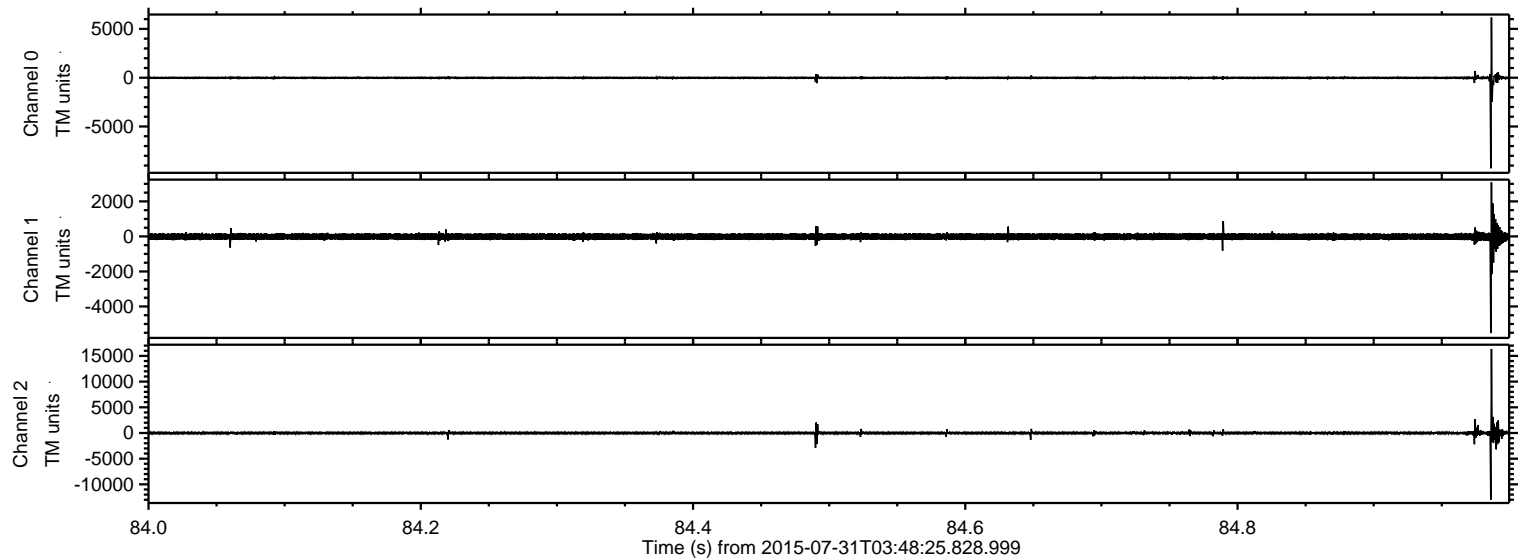
ELMAVAN 3D WAVEFORMS (Measured data sampled at 50 kHz) 51000 packets of 144 samples from 2015-07-31T03:48:25.828.999. Part 11/147

Processed Fri Jul 31 05:55:22 2015 by ELM ver.2012-10-06 from 001\_\_elm20150731\_034824\_\_dat00.bin





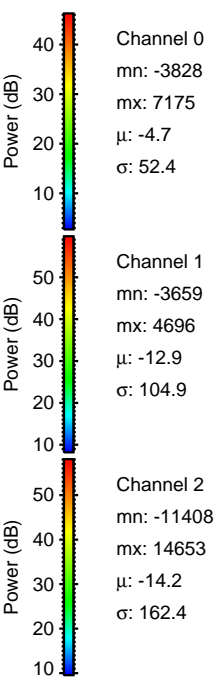
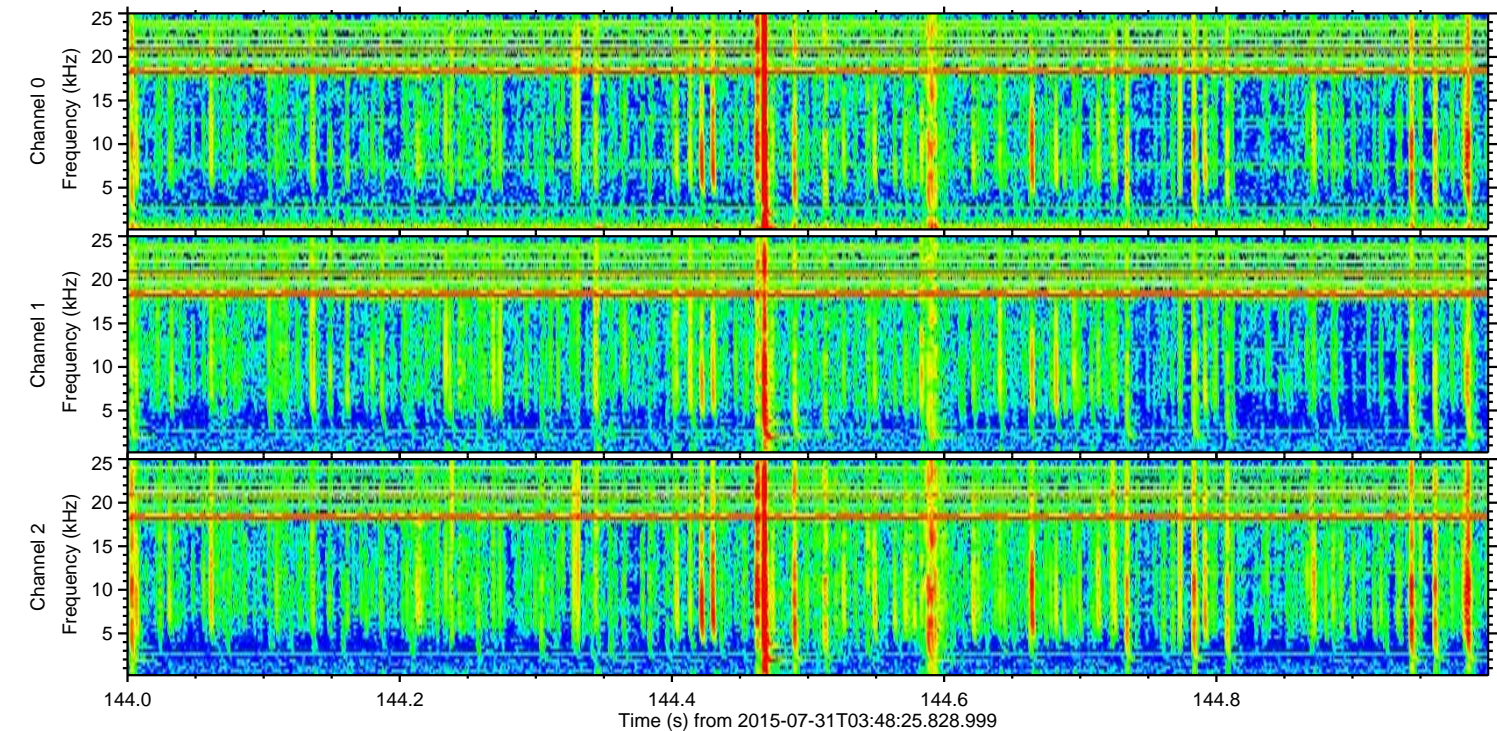
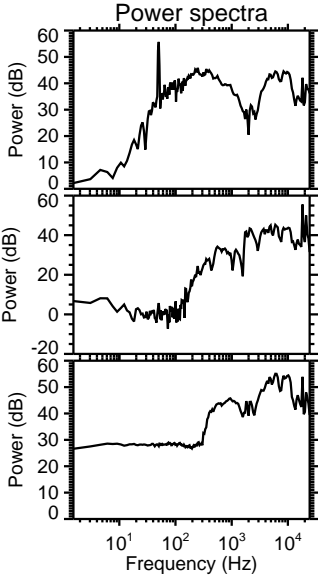
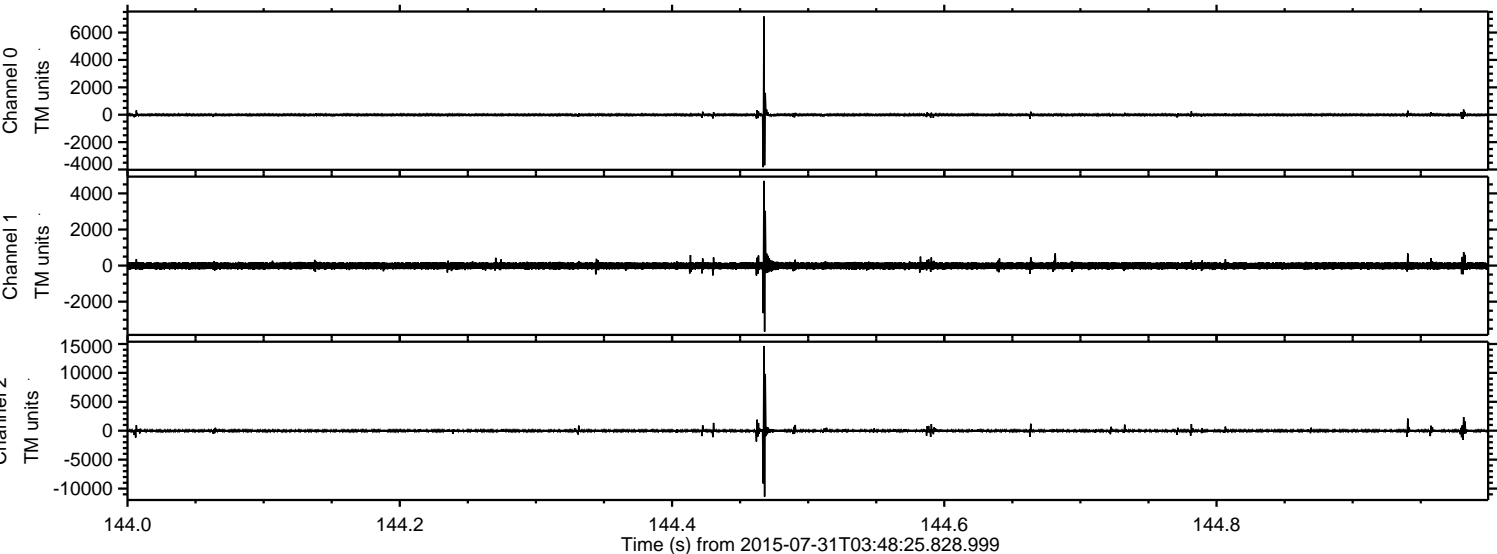
Processed Fri Jul 31 05:55:23 2015 by ELM ver.2012-10-06 from 001\_\_elm20150731\_034824\_\_dat00.bin





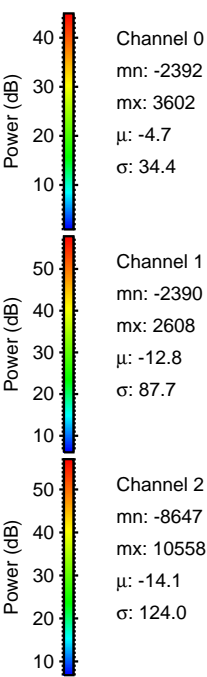
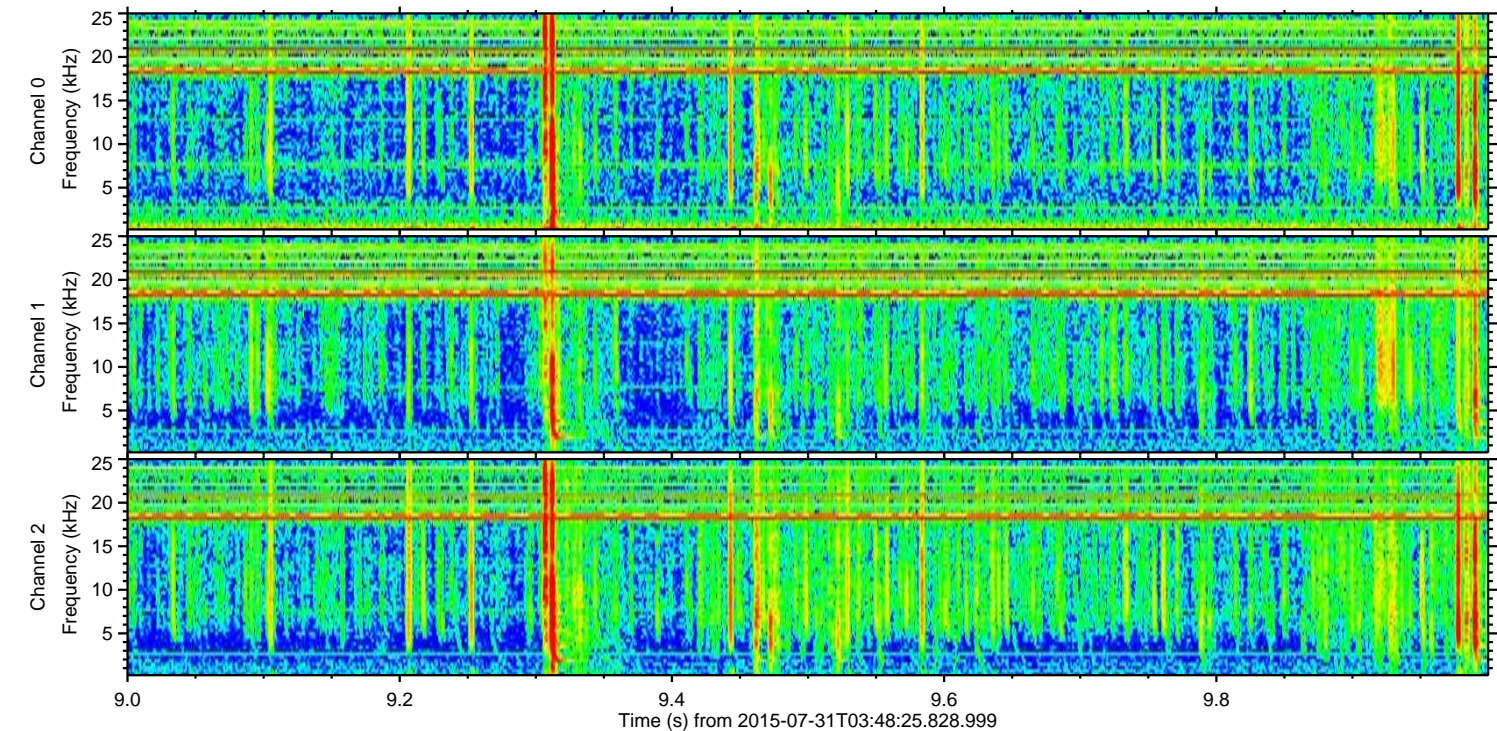
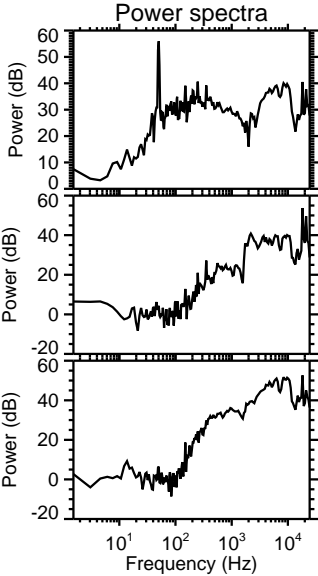
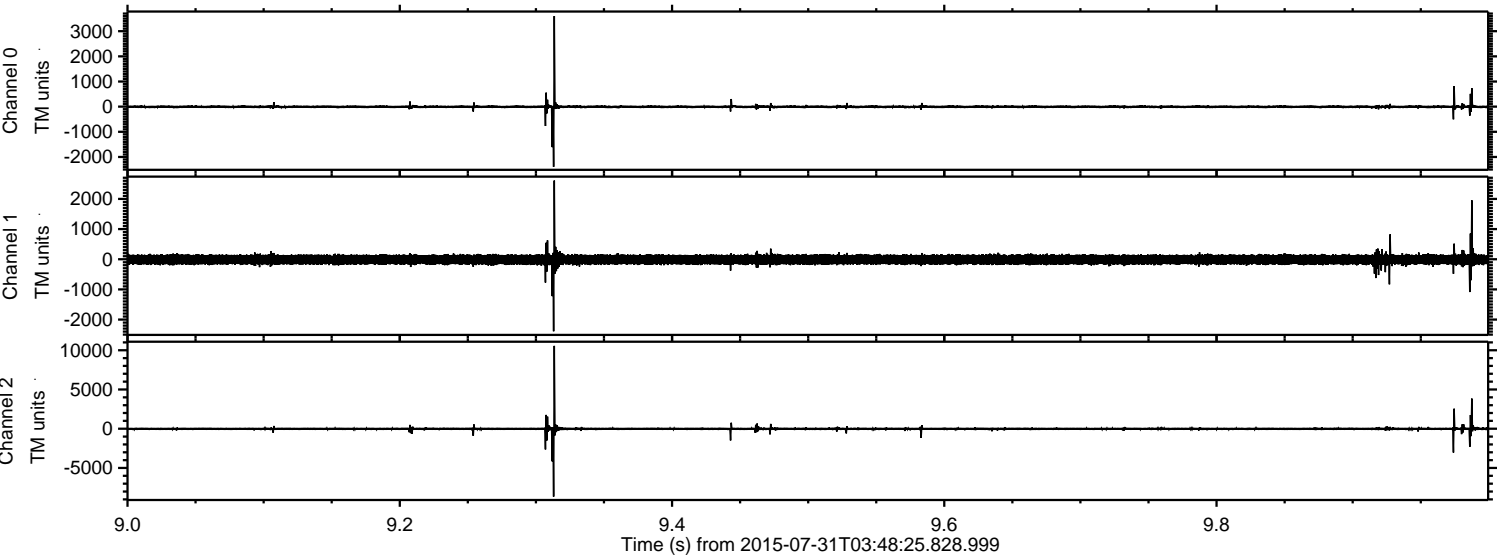
ELMAVAN 3D WAVEFORMS (Measured data sampled at 50 kHz) 51000 packets of 144 samples from 2015-07-31T03:48:25.828.999. Part 145/147

Processed Fri Jul 31 05:55:24 2015 by ELM ver.2012-10-06 from 001\_\_elm20150731\_034824\_\_dat00.bin



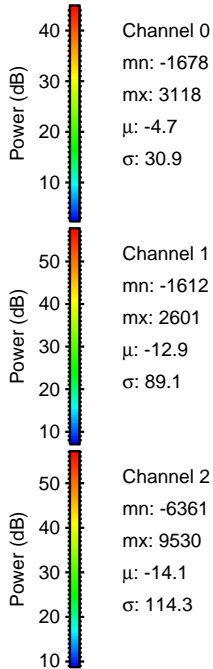
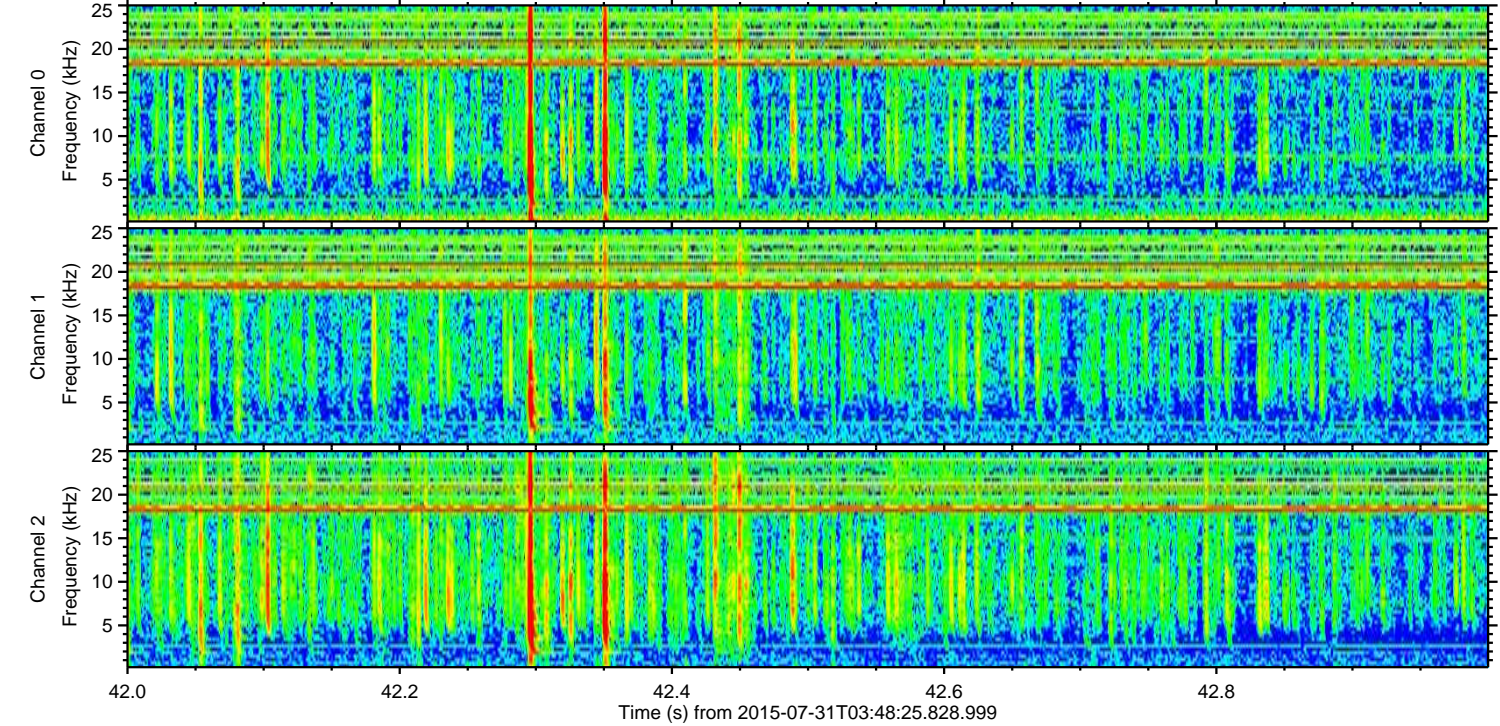
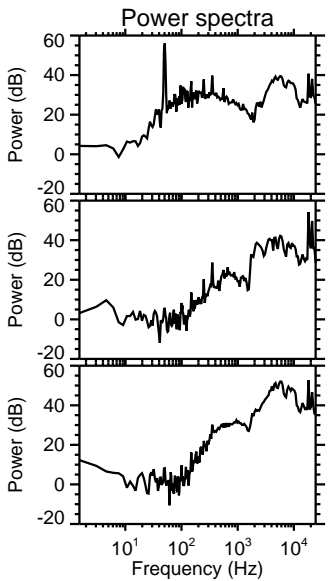
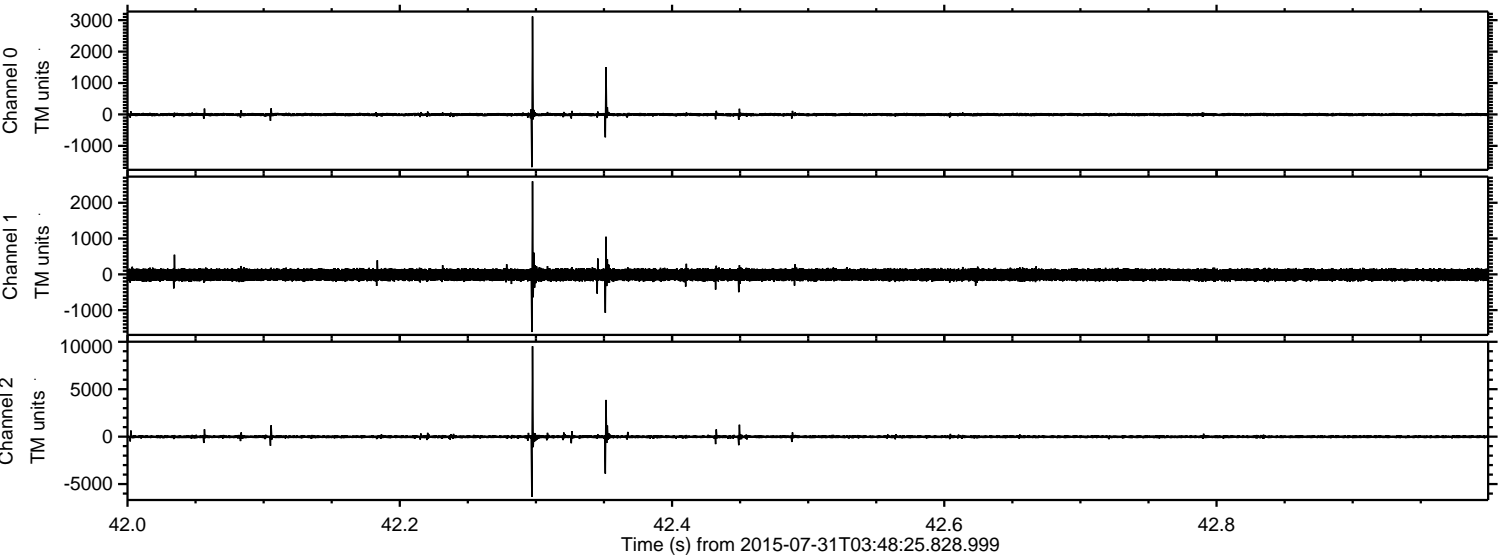


Processed Fri Jul 31 05:55:25 2015 by ELM ver.2012-10-06 from 001\_\_elm20150731\_034824\_\_dat00.bin





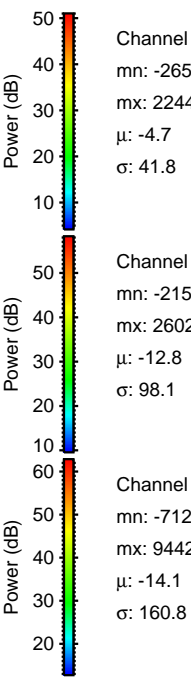
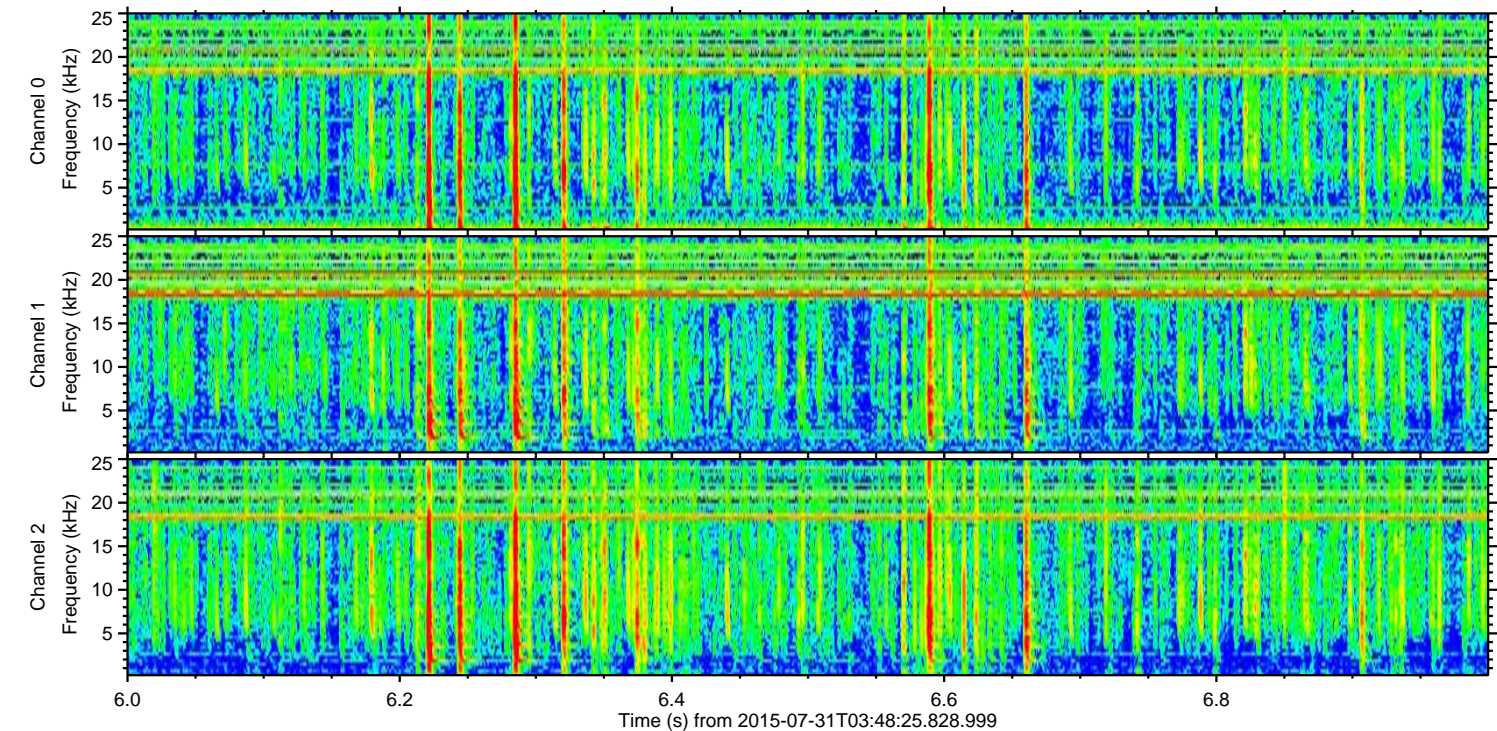
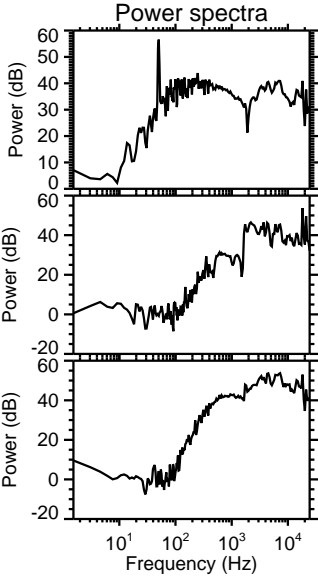
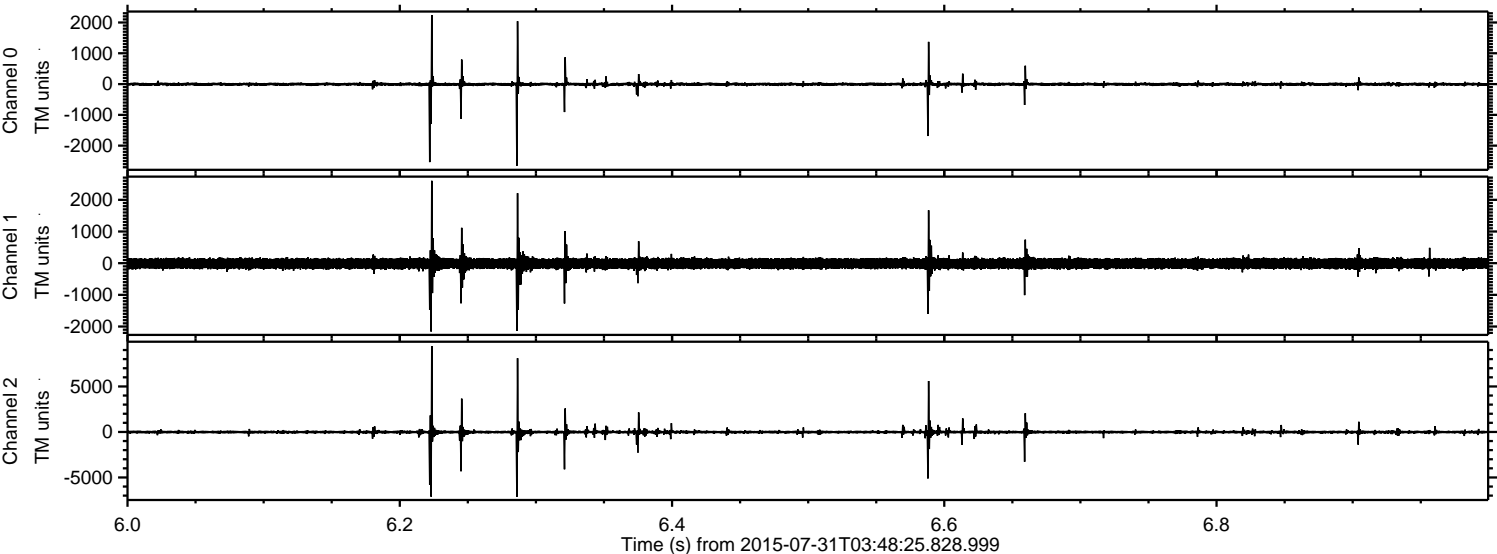
Processed Fri Jul 31 05:55:26 2015 by ELM ver.2012-10-06 from 001\_\_elm20150731\_034824\_\_dat00.bin





ELMAVAN 3D WAVEFORMS (Measured data sampled at 50 kHz) 51000 packets of 144 samples from 2015-07-31T03:48:25.828.999. Part 7/147

Processed Fri Jul 31 05:55:26 2015 by ELM ver.2012-10-06 from 001\_\_elm20150731\_034824\_\_dat00.bin



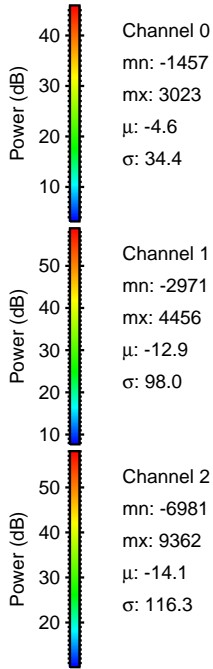
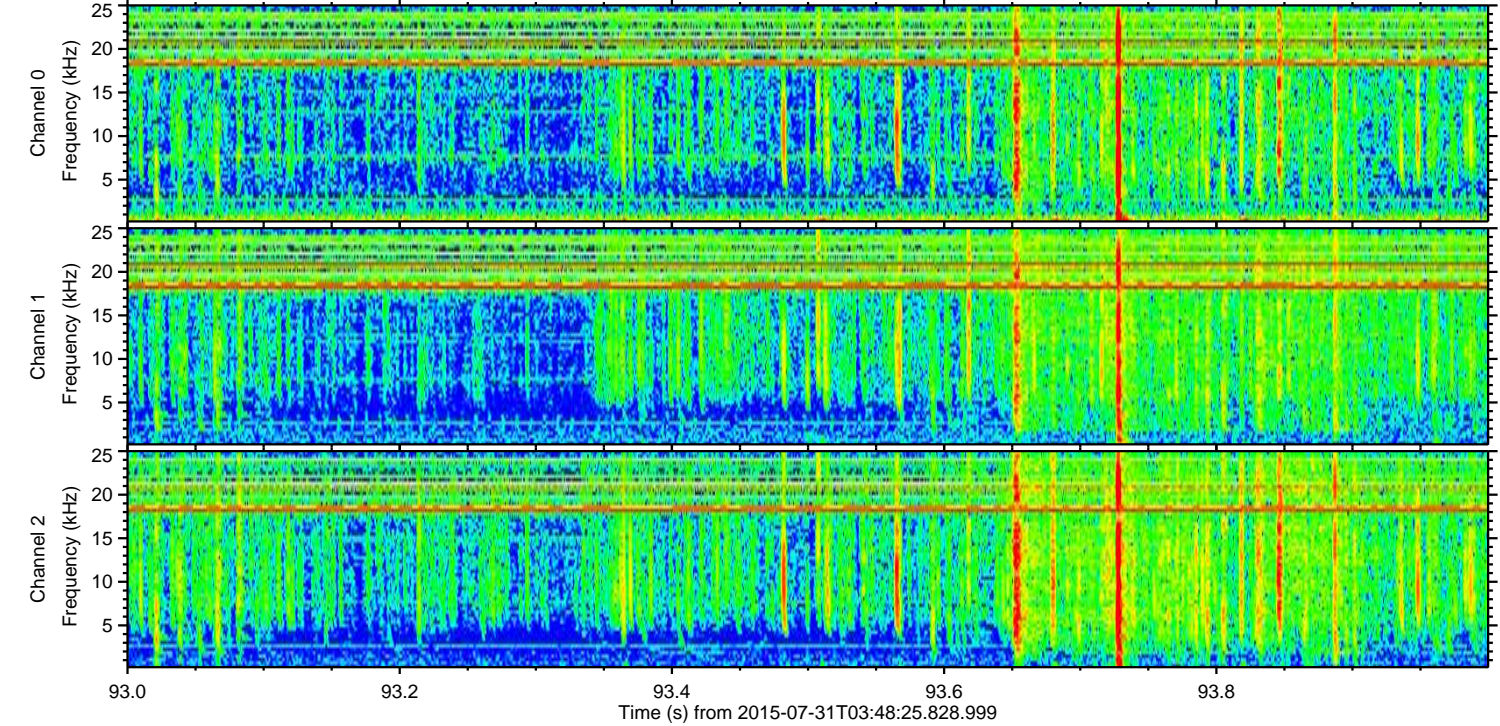
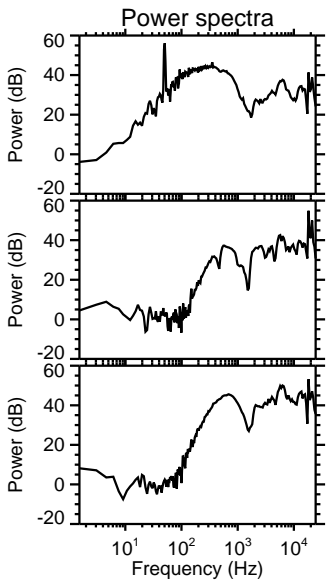
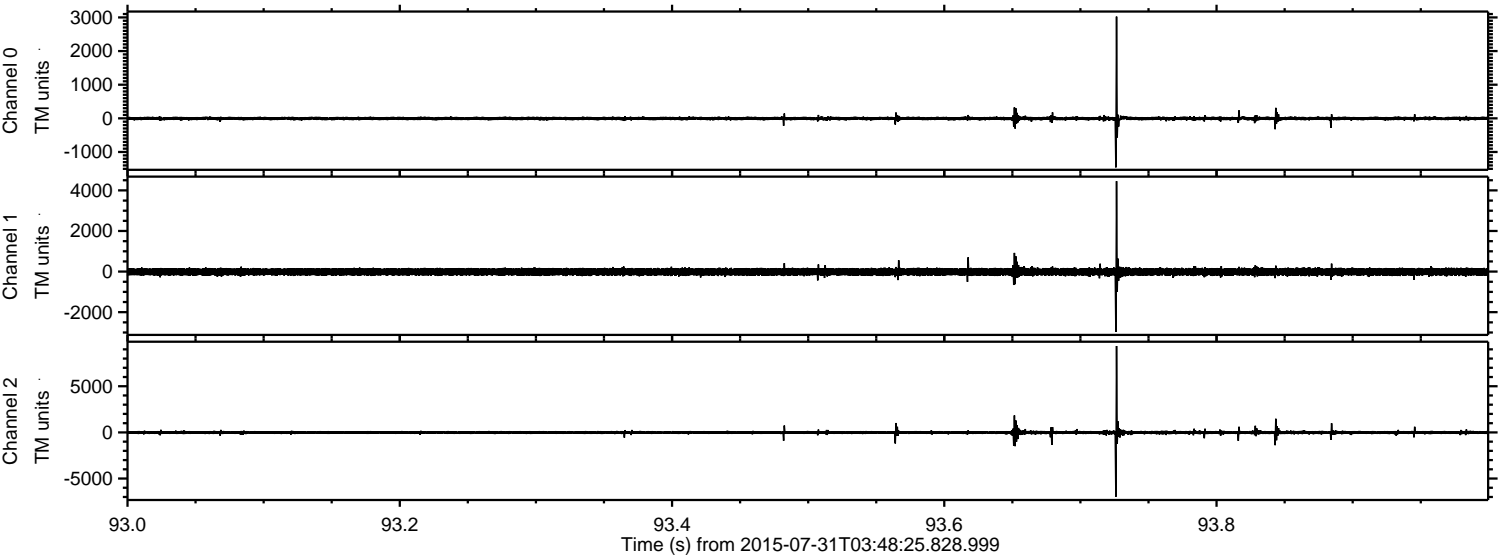
Channel 0  
mn: -2652  
mx: 2244  
 $\mu$ : -4.7  
 $\sigma$ : 41.8

Channel 1  
mn: -2157  
mx: 2602  
 $\mu$ : -12.8  
 $\sigma$ : 98.1

Channel 2  
mn: -7122  
mx: 9442  
 $\mu$ : -14.1  
 $\sigma$ : 160.8

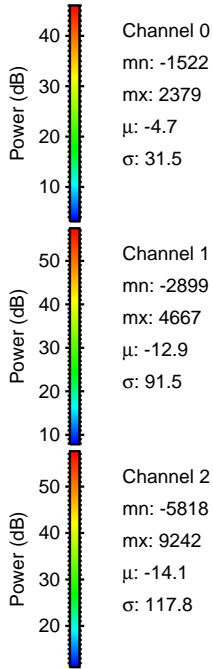
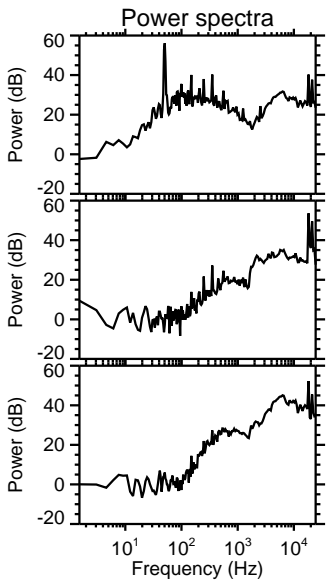
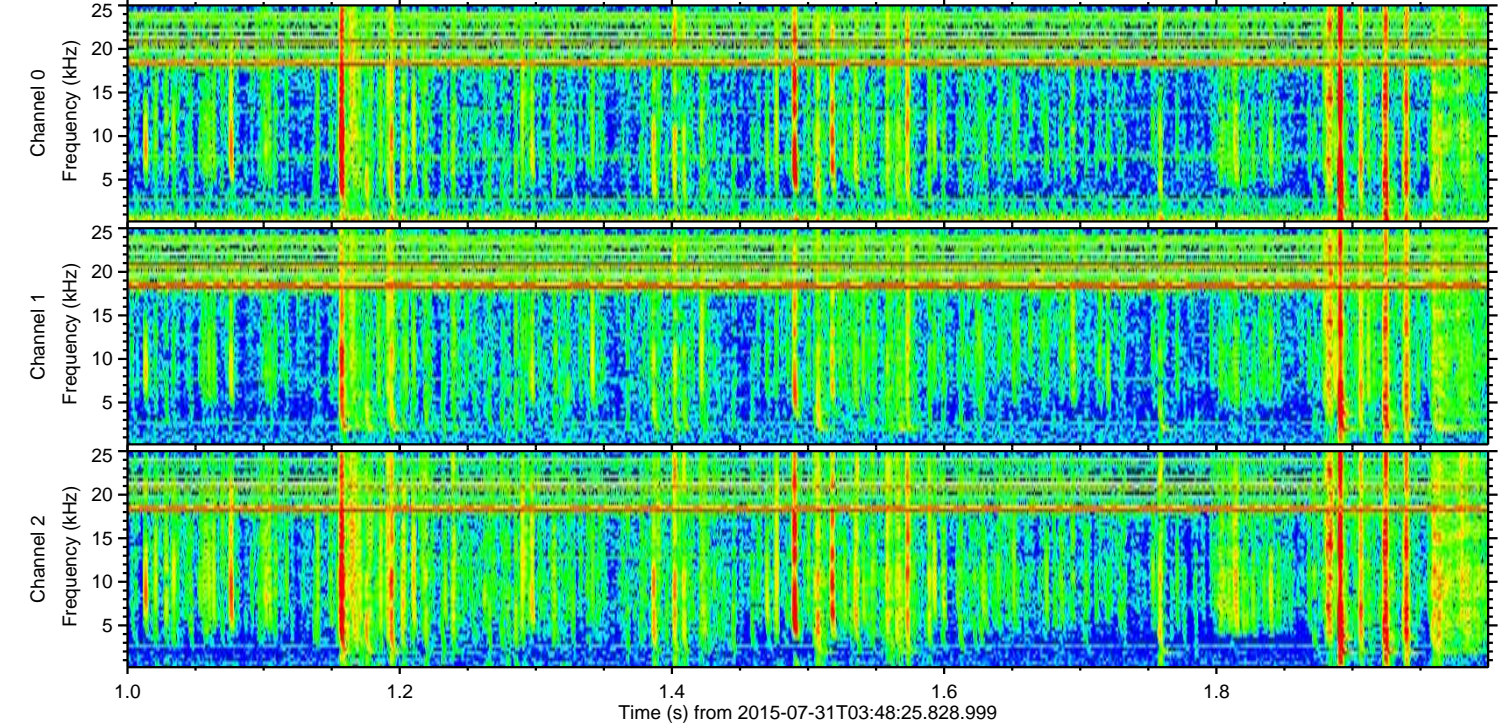
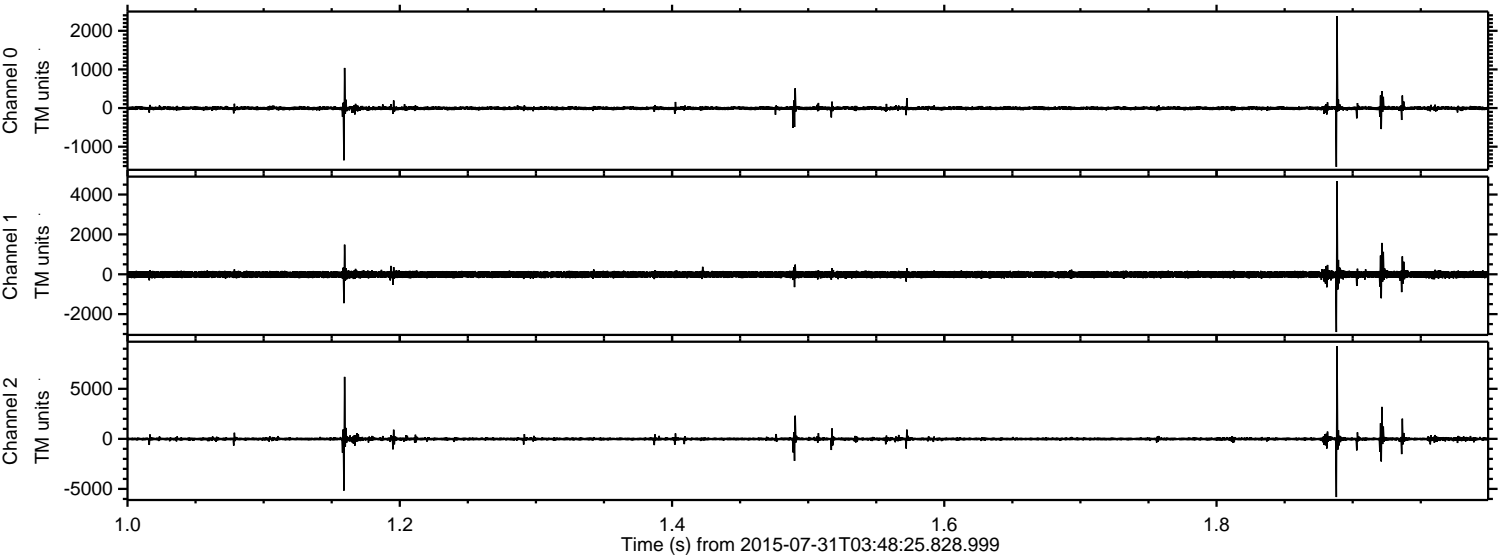


Processed Fri Jul 31 05:55:27 2015 by ELM ver.2012-10-06 from 001\_\_elm20150731\_034824\_\_dat00.bin





Processed Fri Jul 31 05:55:28 2015 by ELM ver.2012-10-06 from 001\_\_elm20150731\_034824\_\_dat00.bin





Processed Fri Jul 31 05:55:29 2015 by ELM ver.2012-10-06 from 001\_\_elm20150731\_034824\_\_dat00.bin

