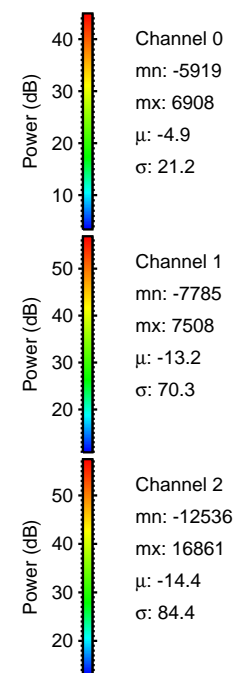
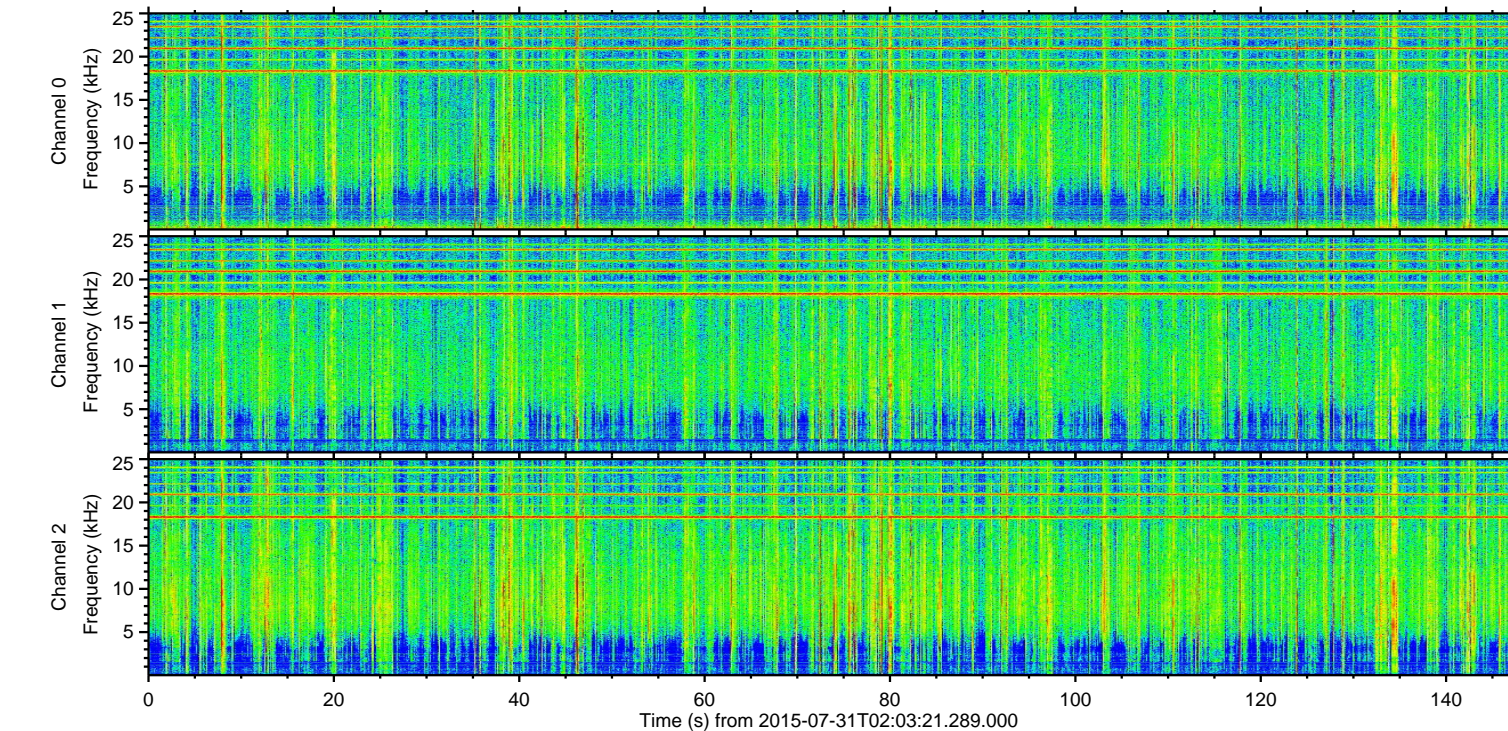
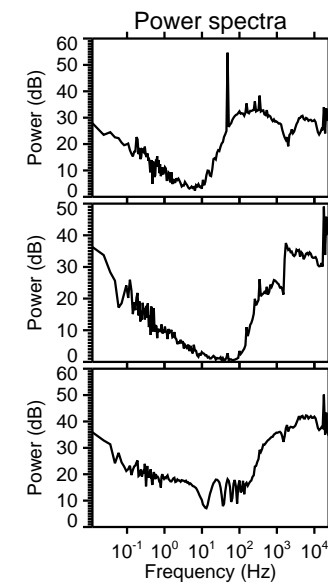
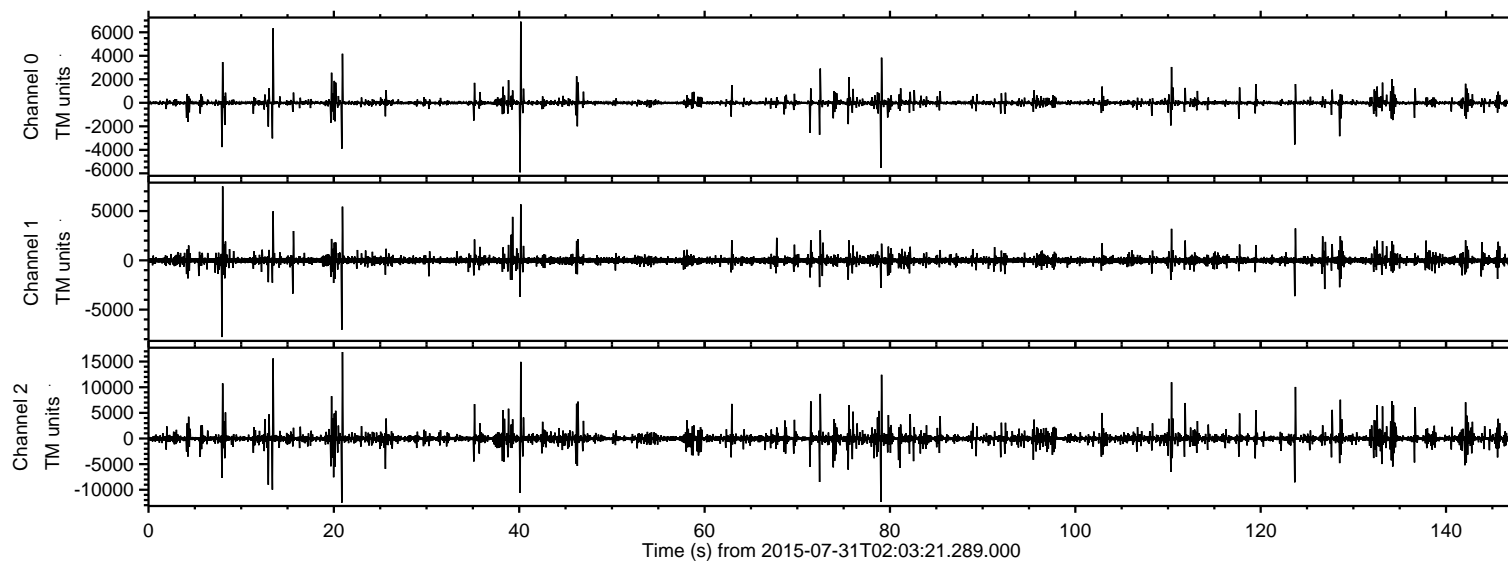


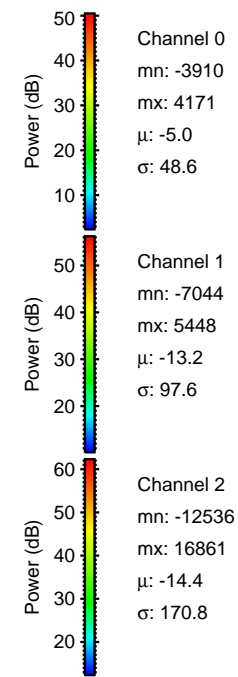
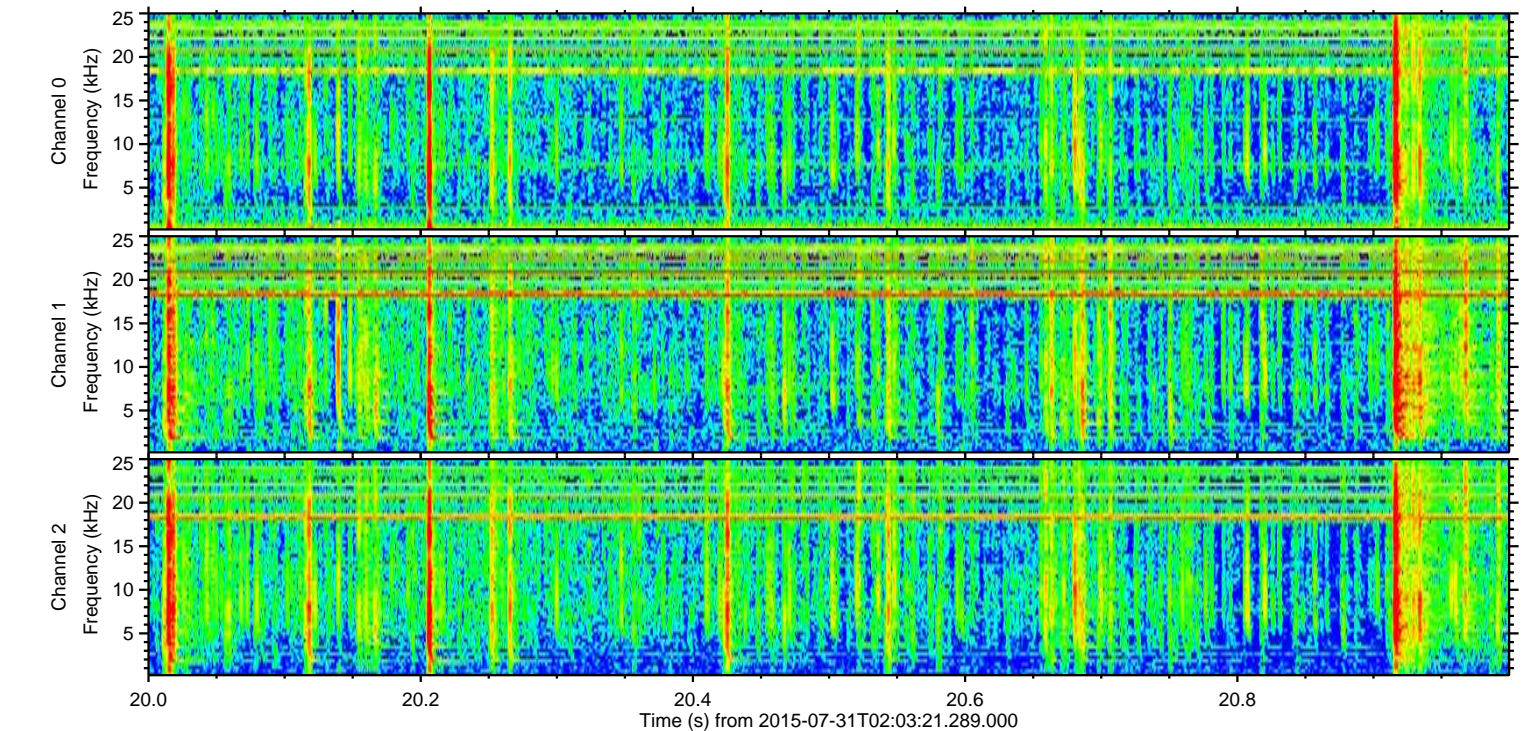
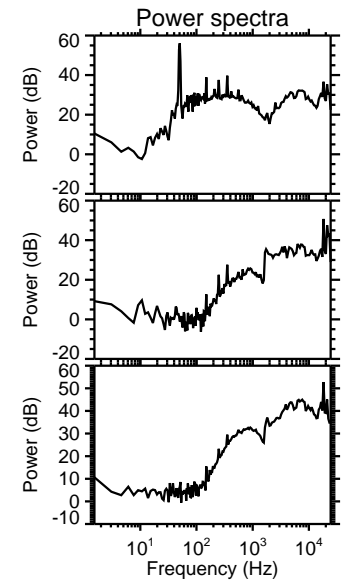
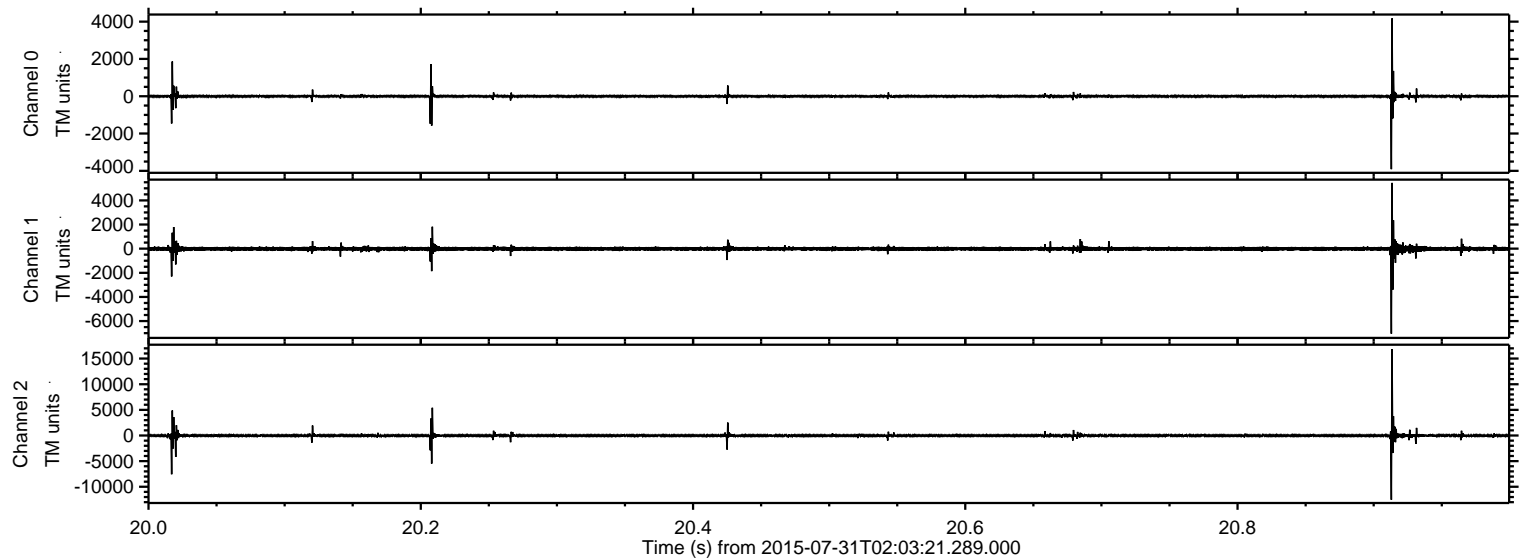
ELMAVAN 3D WAVEFORMS (Measured data sampled at 50 kHz) 51000 packets of 144 samples from 2015-07-31T02:03:21.289.000.

Processed Fri Jul 31 04:09:26 2015 by ELM ver.2012-10-06 from 001__elm20150731_020320__dat00.bin

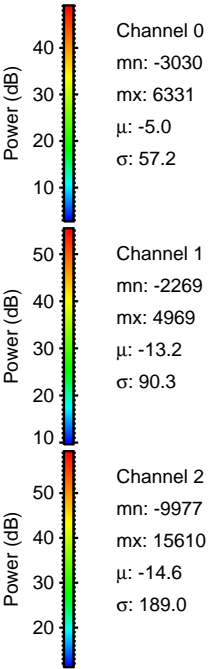
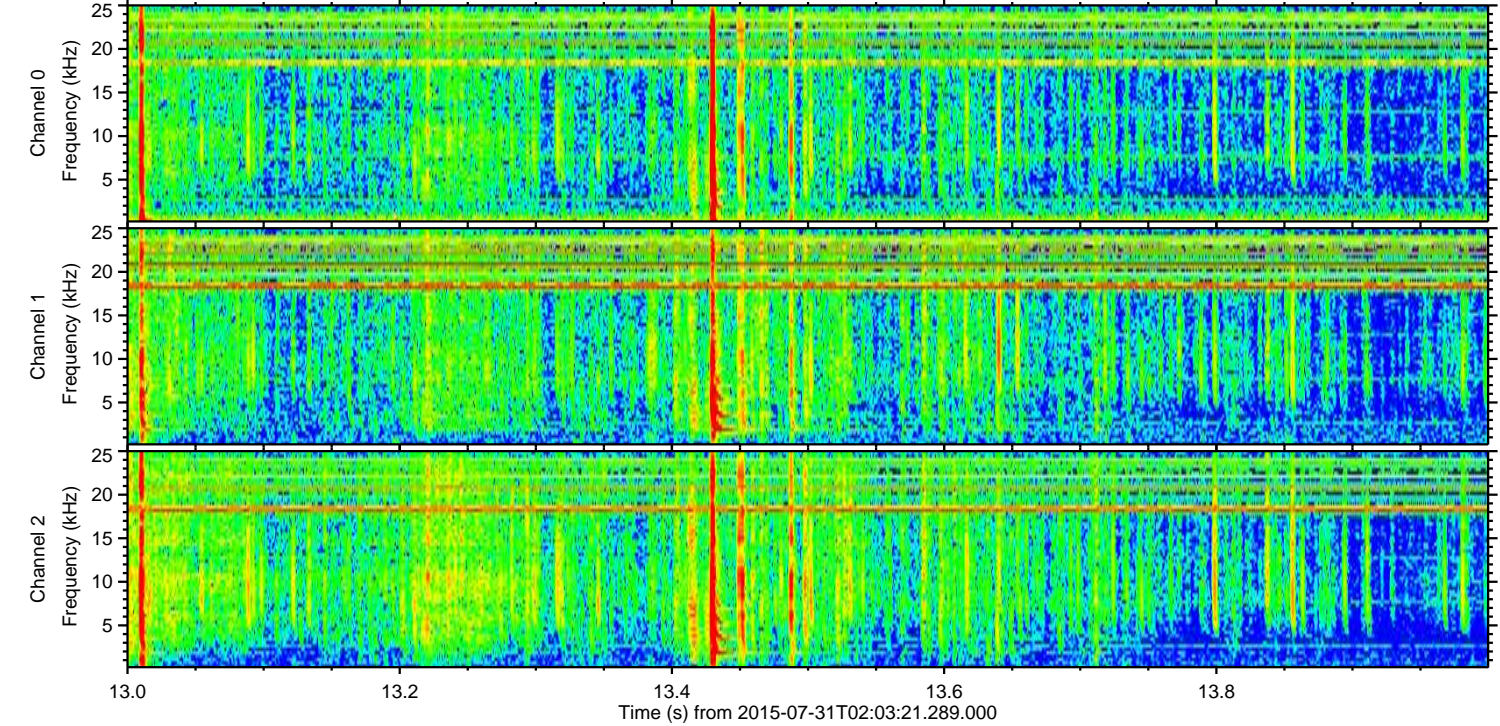
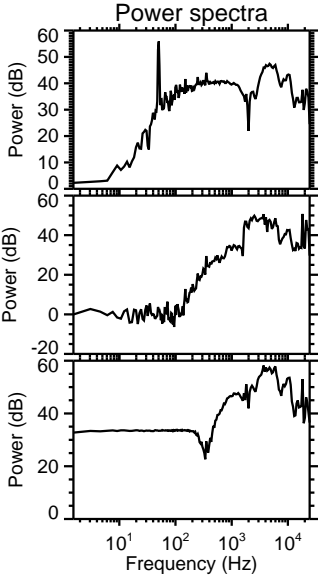
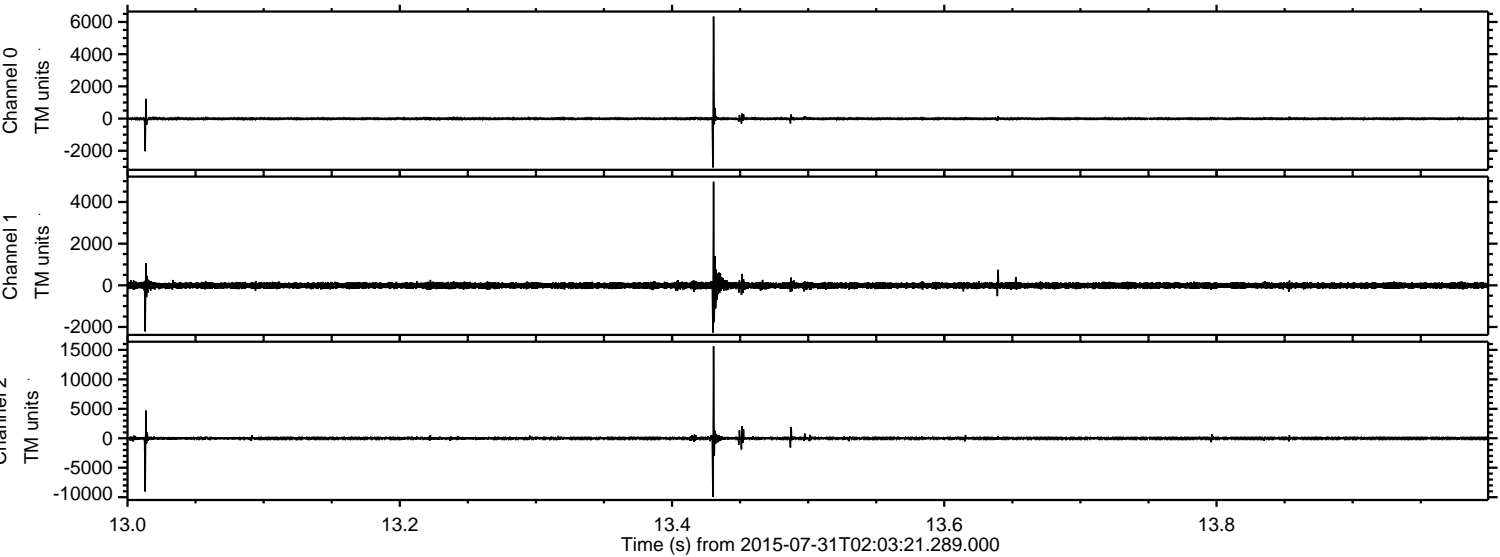


ELMAVAN 3D WAVEFORMS (Measured data sampled at 50 kHz) 51000 packets of 144 samples from 2015-07-31T02:03:21.289.000. Part 21/147

Processed Fri Jul 31 04:09:37 2015 by ELM ver.2012-10-06 from 001__elm20150731_020320__dat00.bin

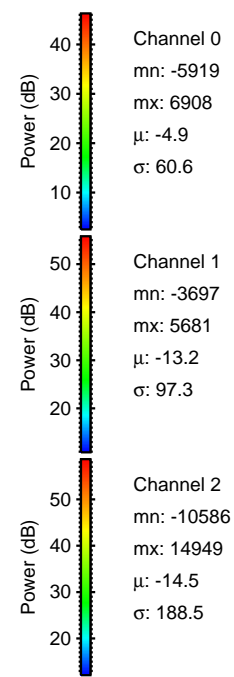
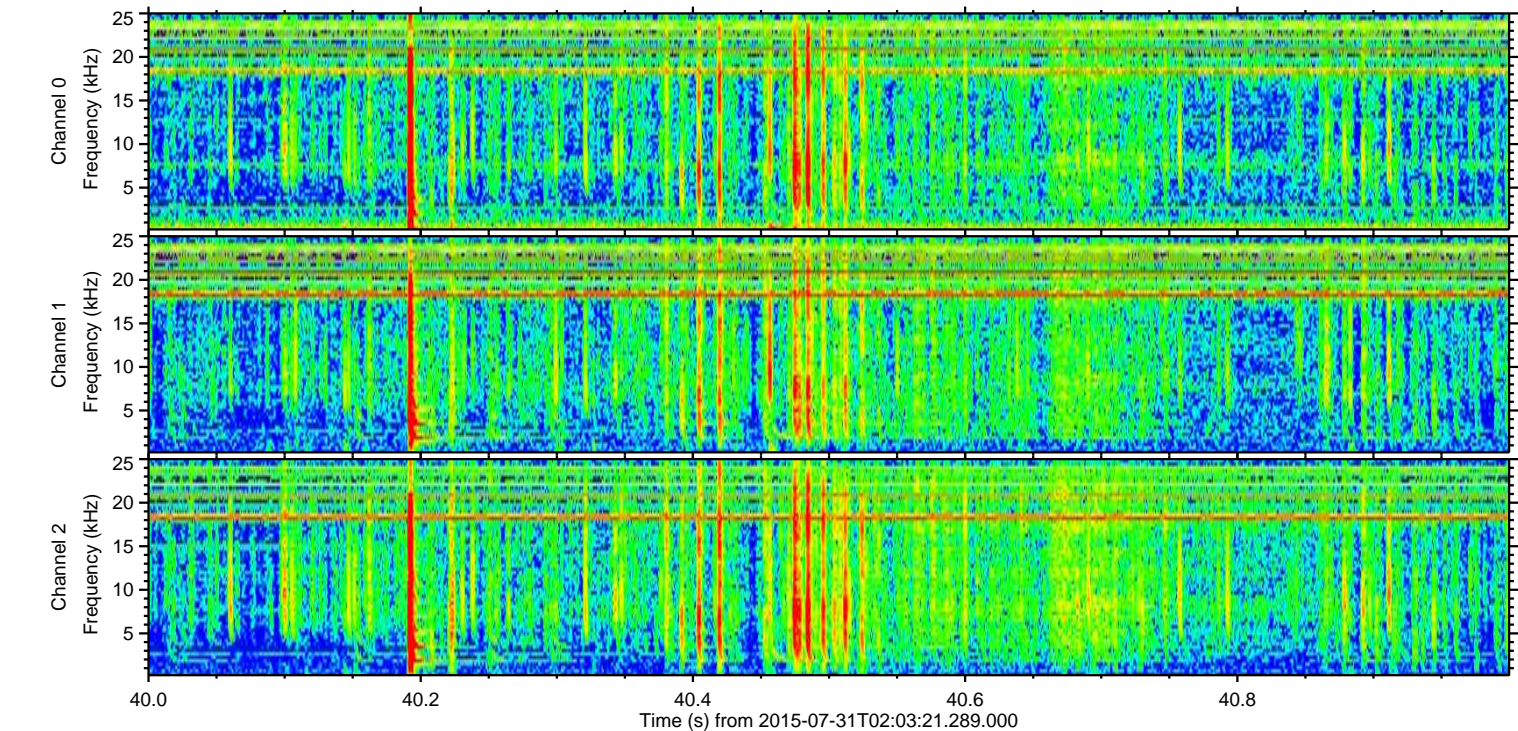
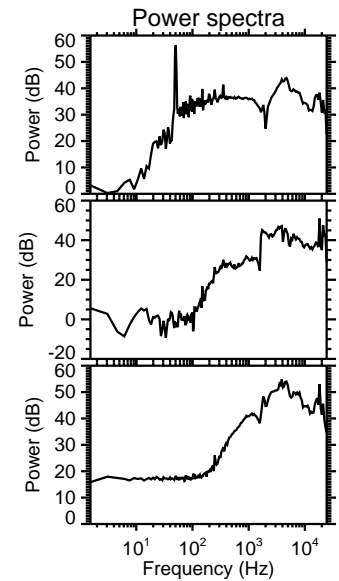
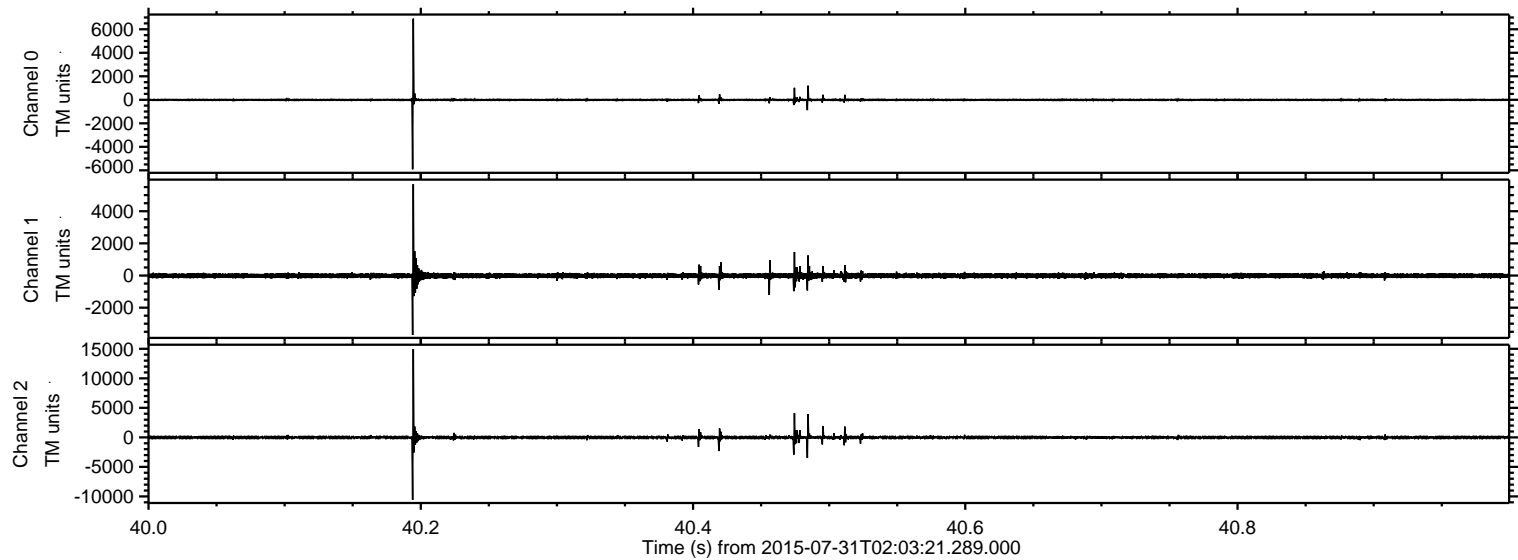


Processed Fri Jul 31 04:09:38 2015 by ELM ver.2012-10-06 from 001__elm20150731_020320__dat00.bin

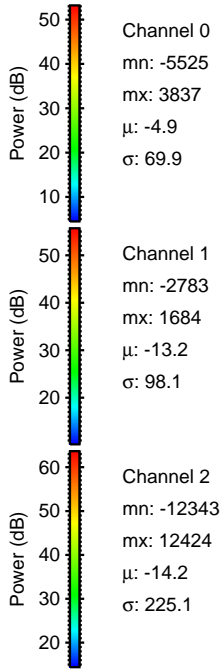
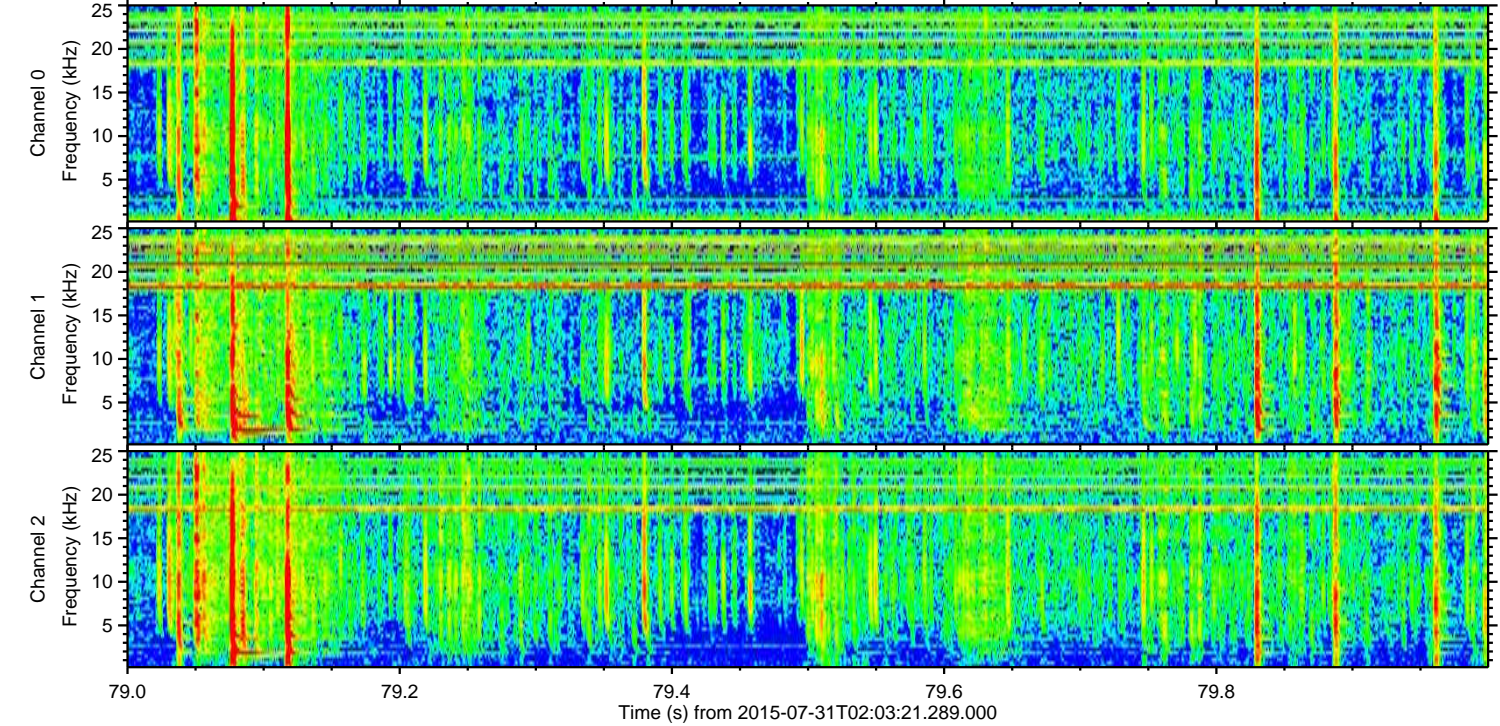
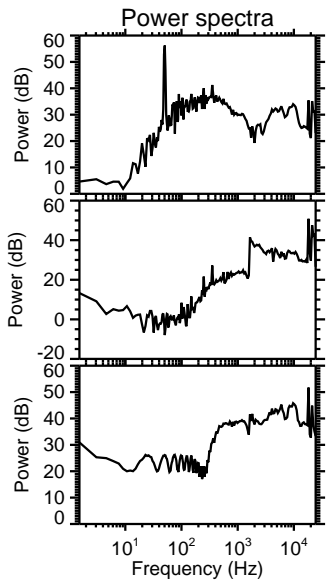
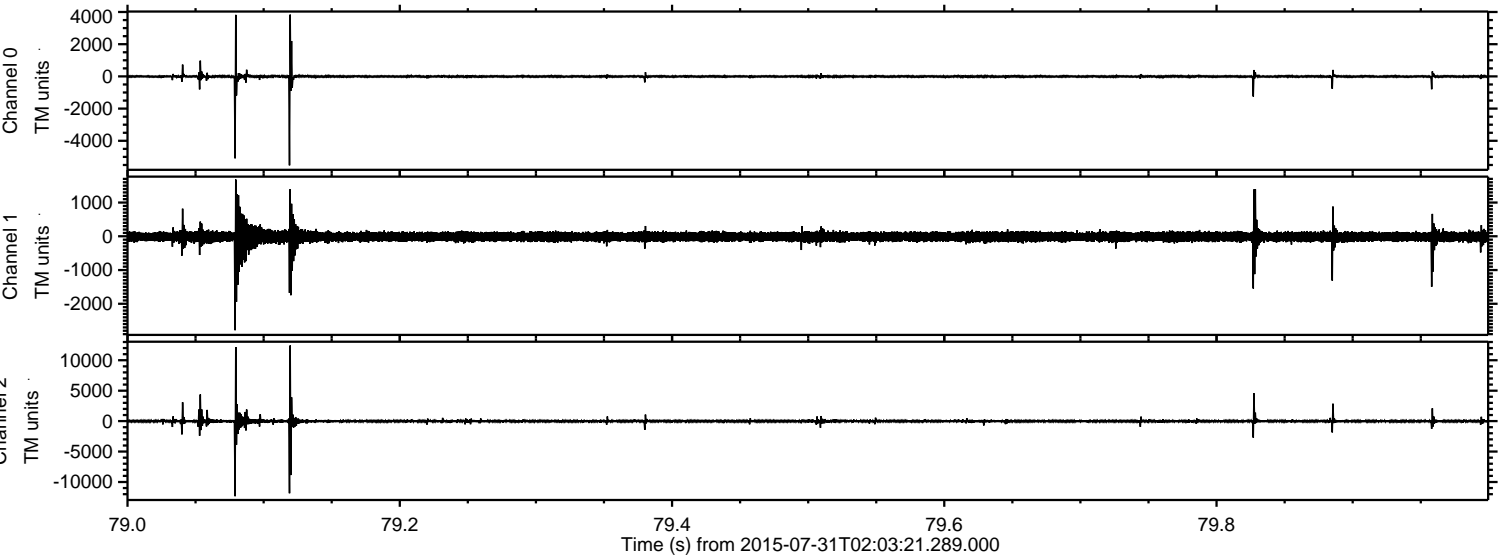


ELMAVAN 3D WAVEFORMS (Measured data sampled at 50 kHz) 51000 packets of 144 samples from 2015-07-31T02:03:21.289.000. Part 41/147

Processed Fri Jul 31 04:09:39 2015 by ELM ver.2012-10-06 from 001__elm20150731_020320__dat00.bin

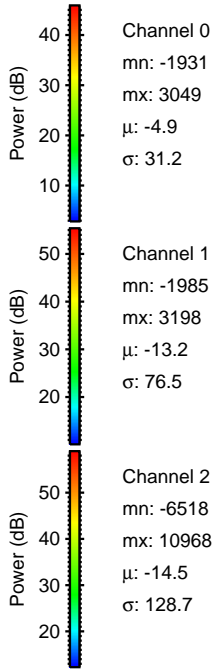
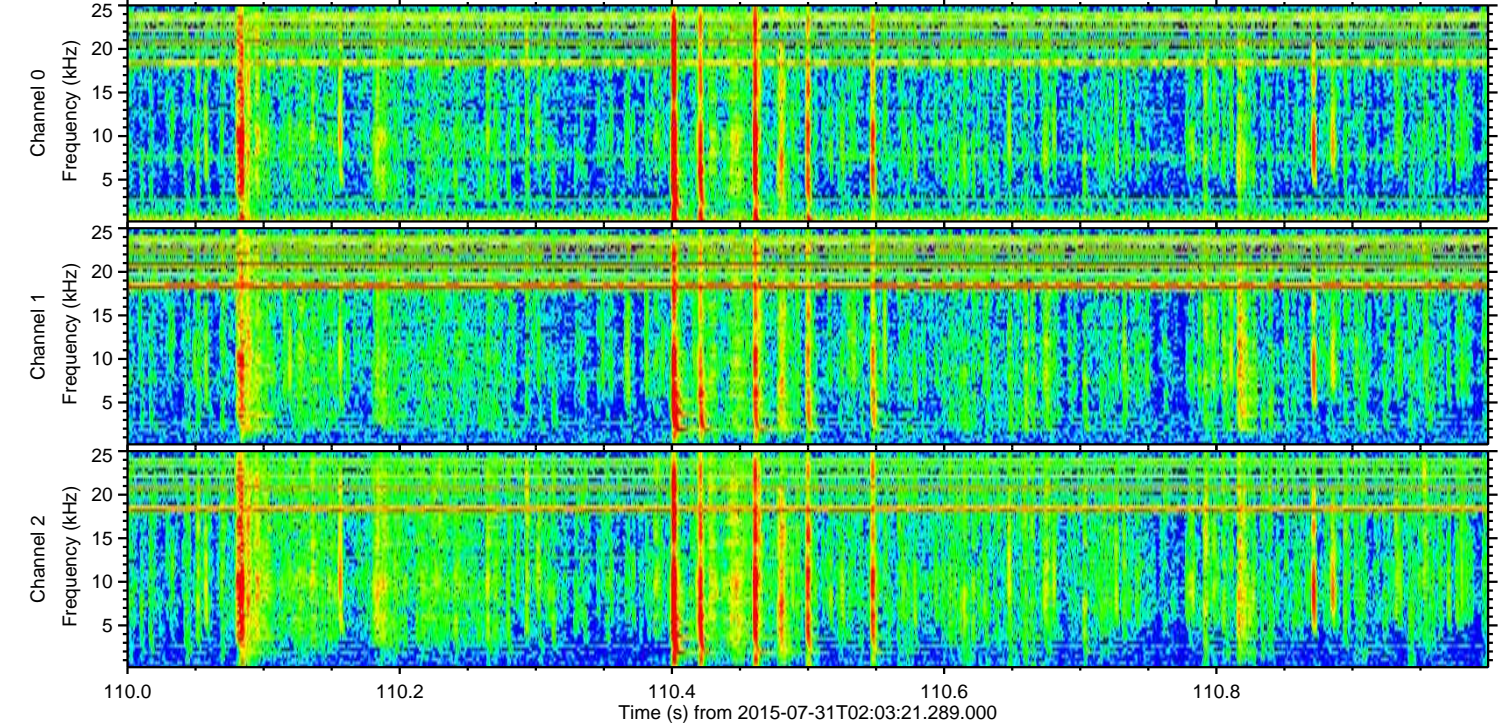
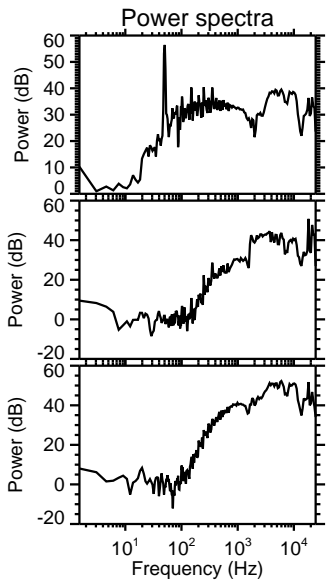
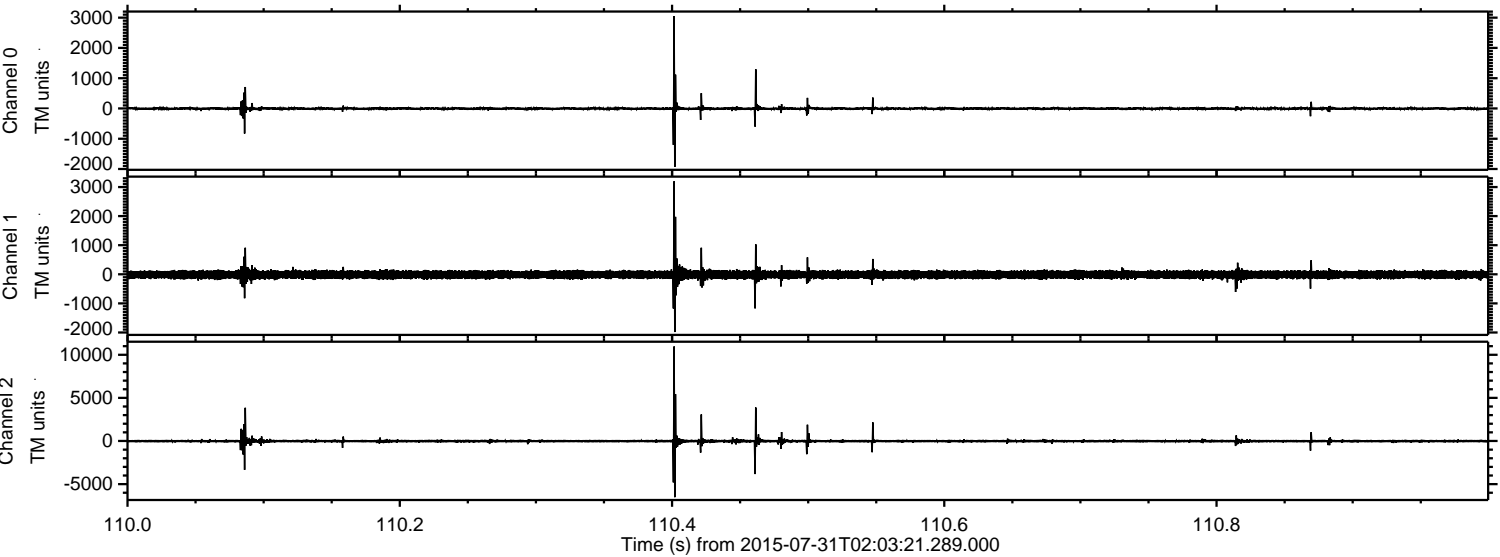


Processed Fri Jul 31 04:09:40 2015 by ELM ver.2012-10-06 from 001__elm20150731_020320__dat00.bin

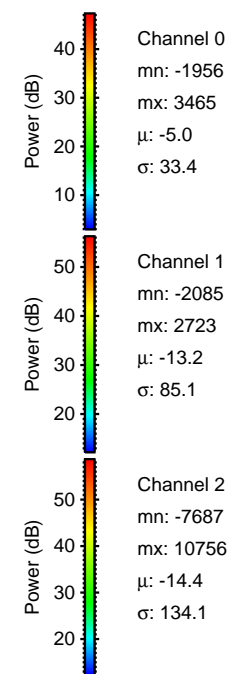
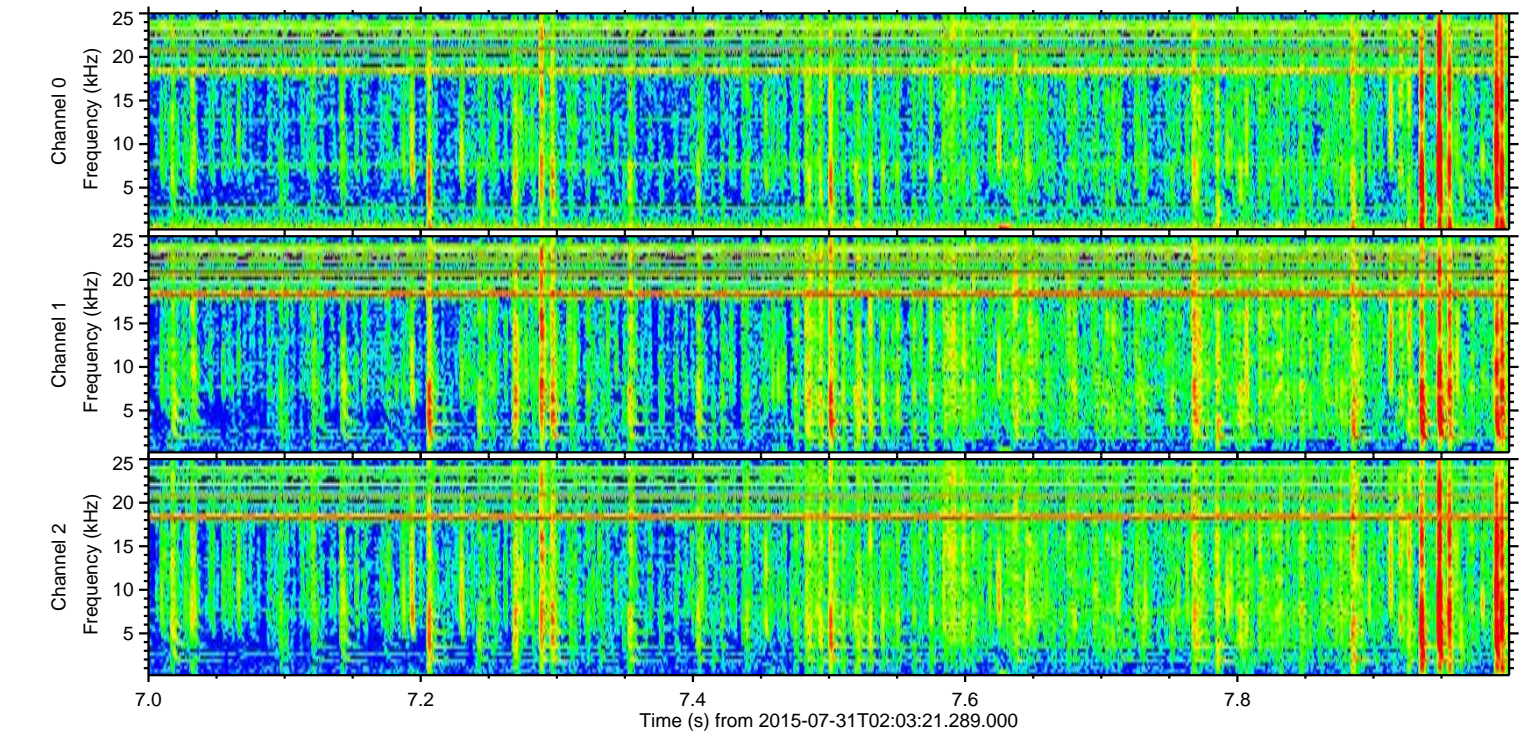
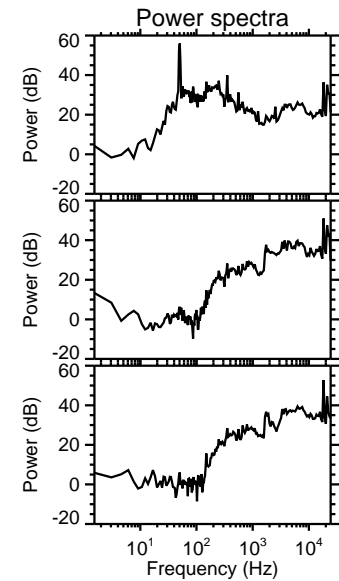
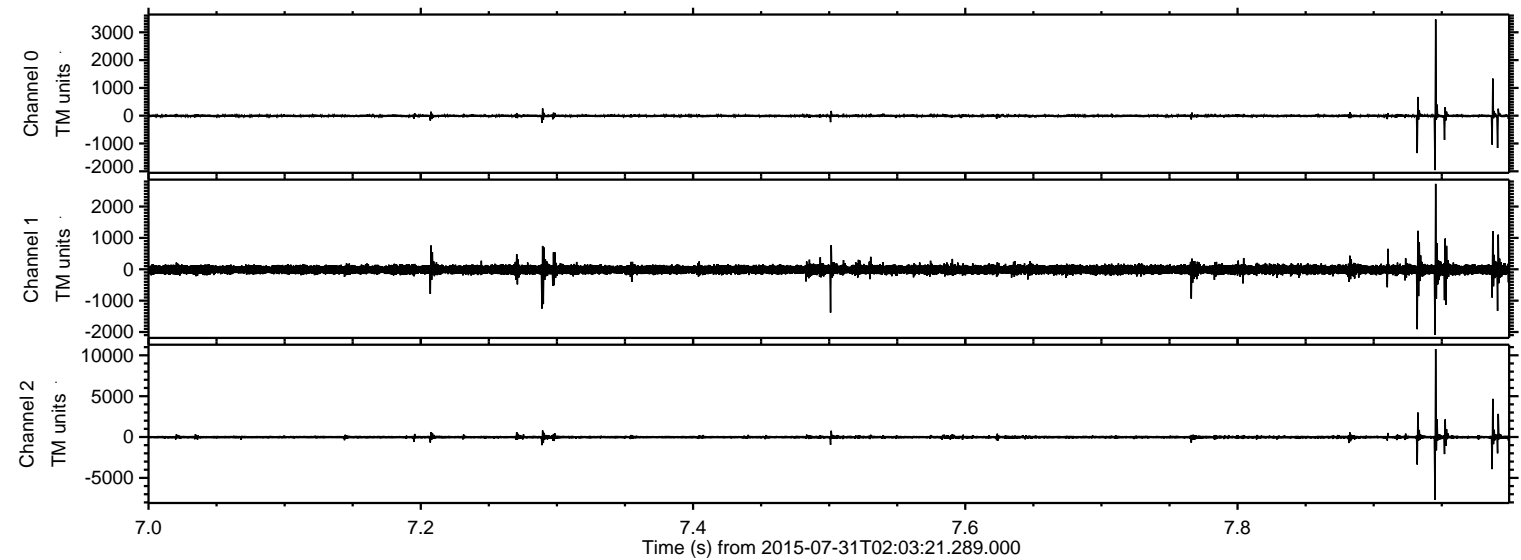


ELMAVAN 3D WAVEFORMS (Measured data sampled at 50 kHz) 51000 packets of 144 samples from 2015-07-31T02:03:21.289.000. Part 111/147

Processed Fri Jul 31 04:09:41 2015 by ELM ver.2012-10-06 from 001__elm20150731_020320__dat00.bin

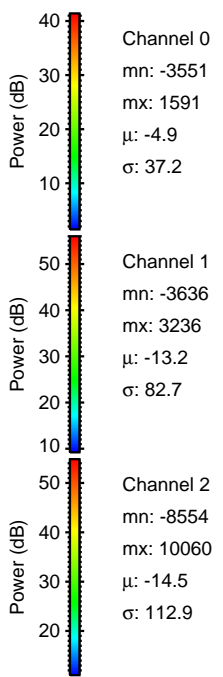
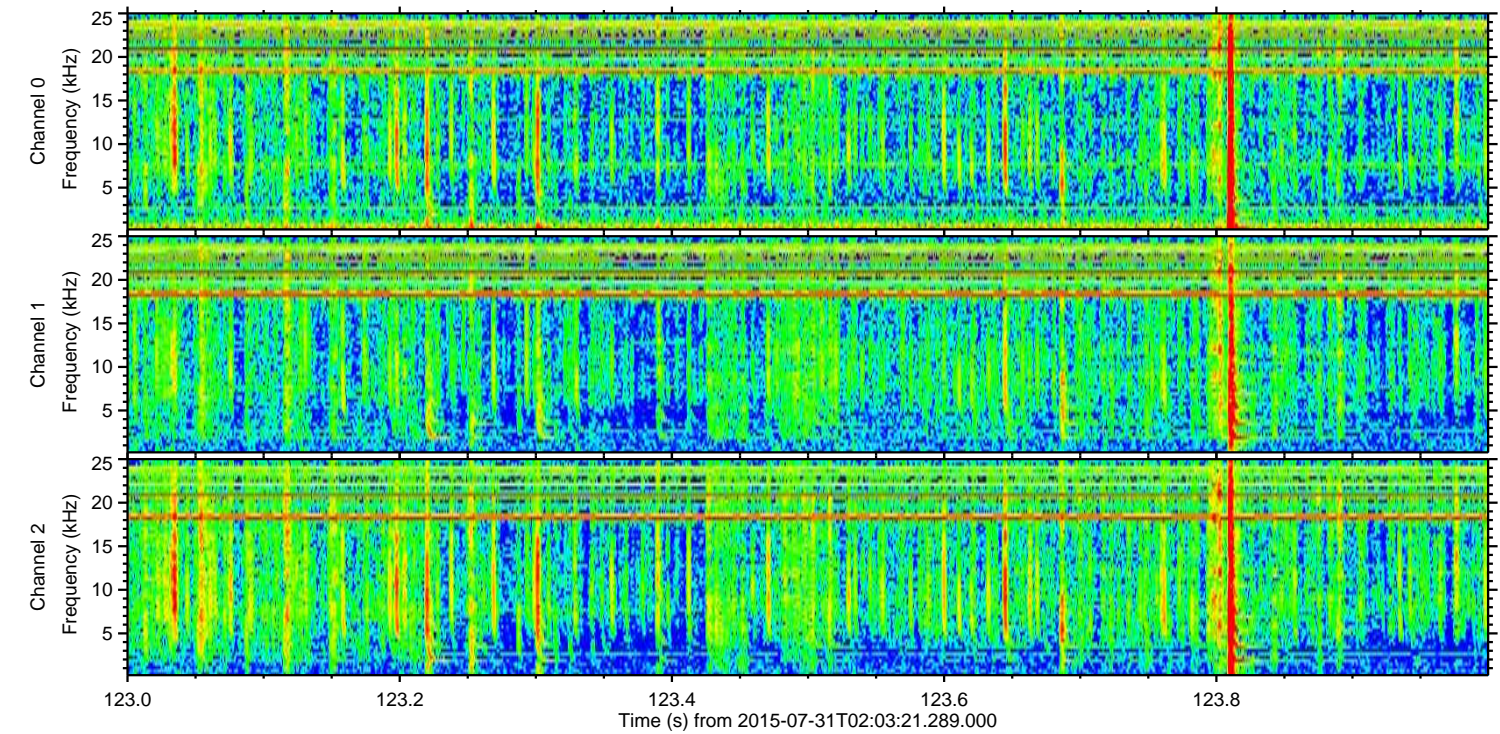
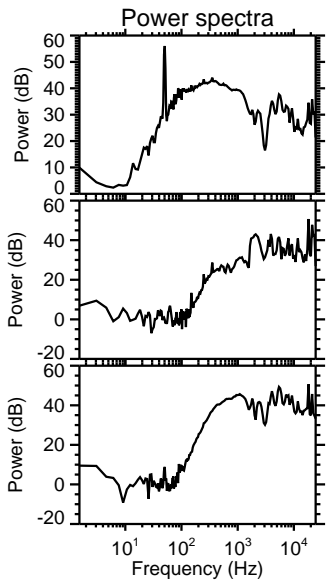
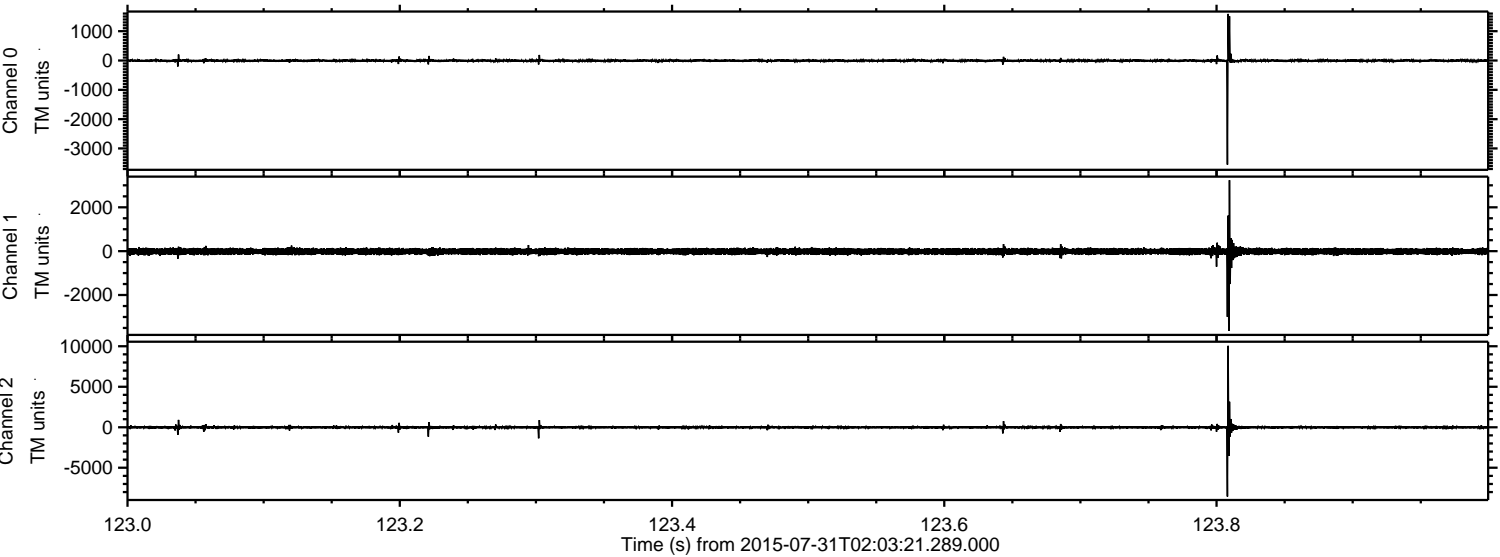


Processed Fri Jul 31 04:09:42 2015 by ELM ver.2012-10-06 from 001__elm20150731_020320__dat00.bin

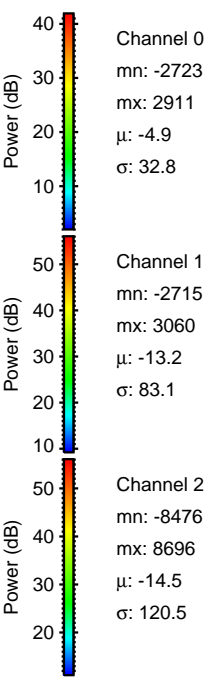
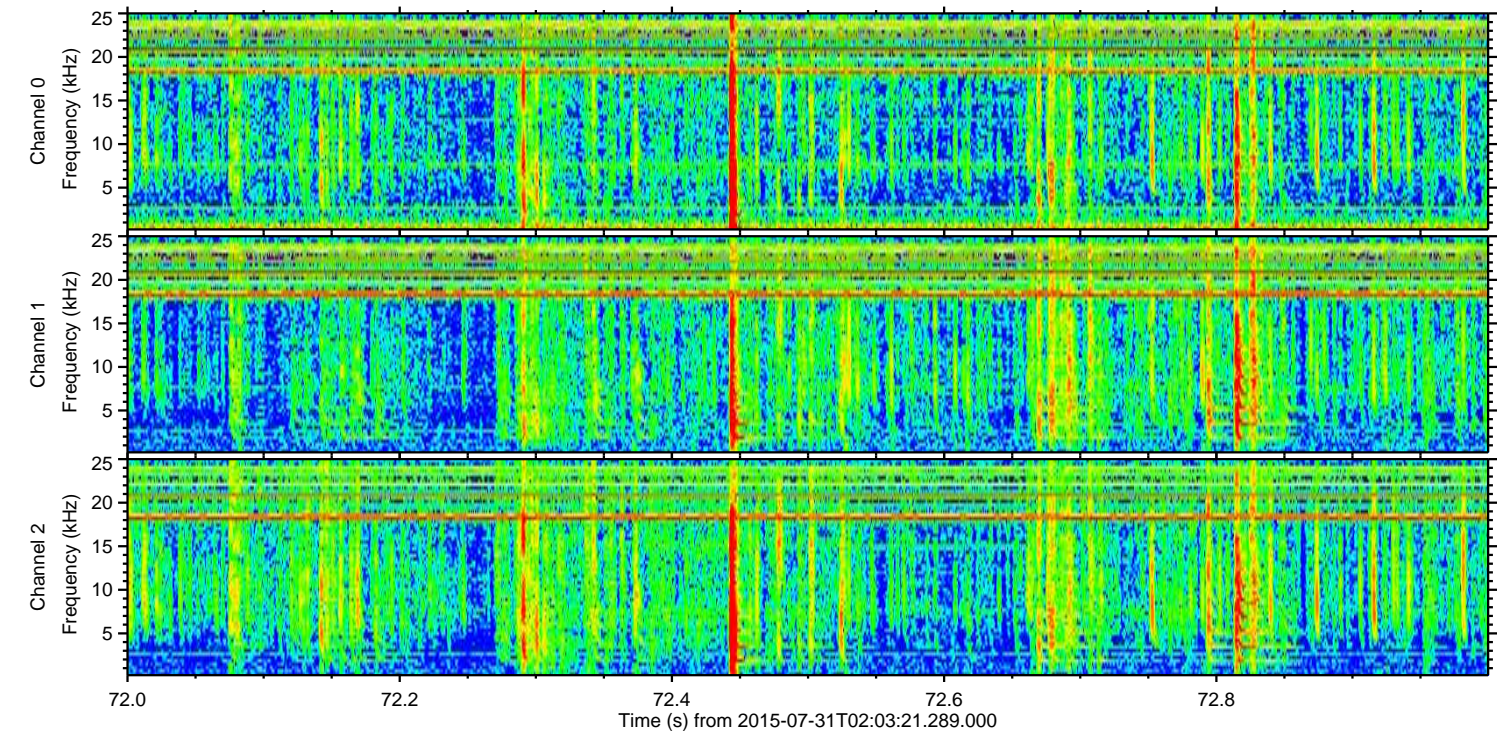
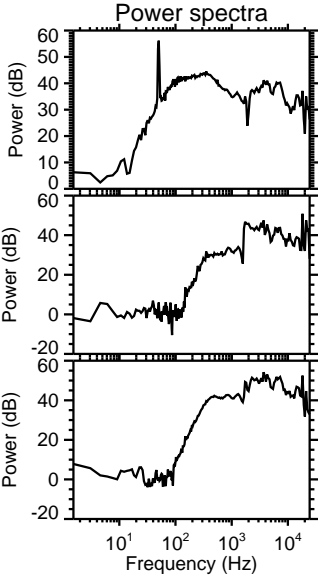
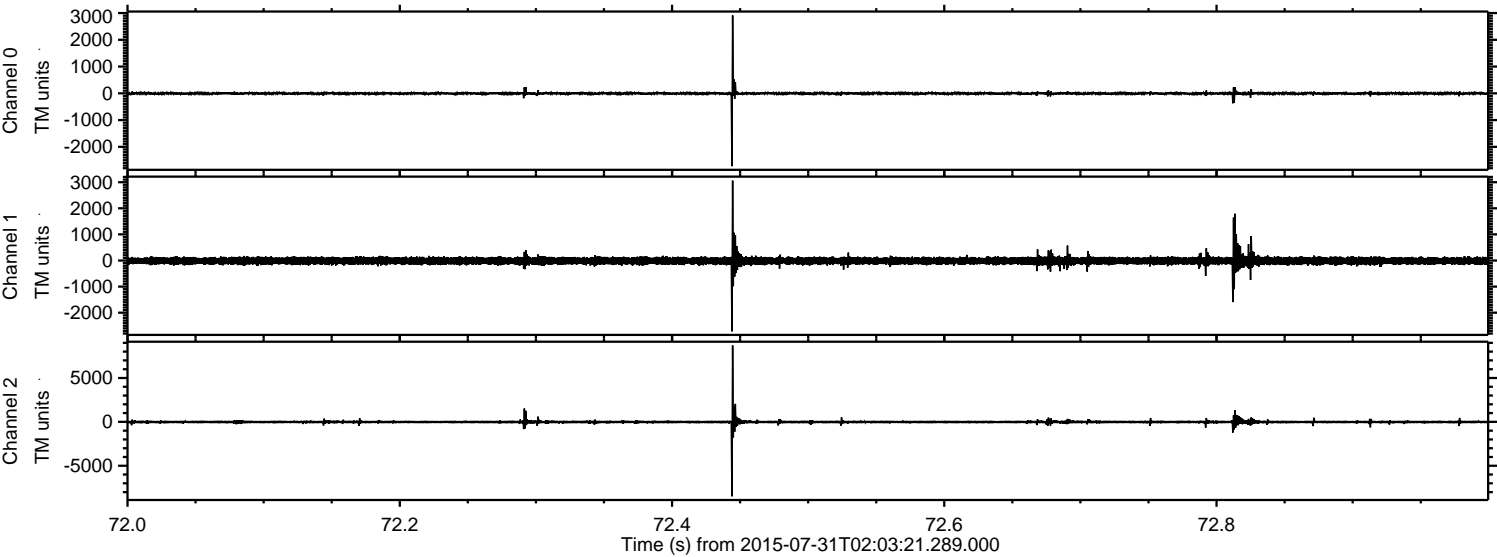


ELMAVAN 3D WAVEFORMS (Measured data sampled at 50 kHz) 51000 packets of 144 samples from 2015-07-31T02:03:21.289.000. Part 124/147

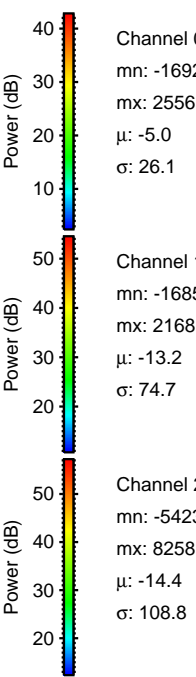
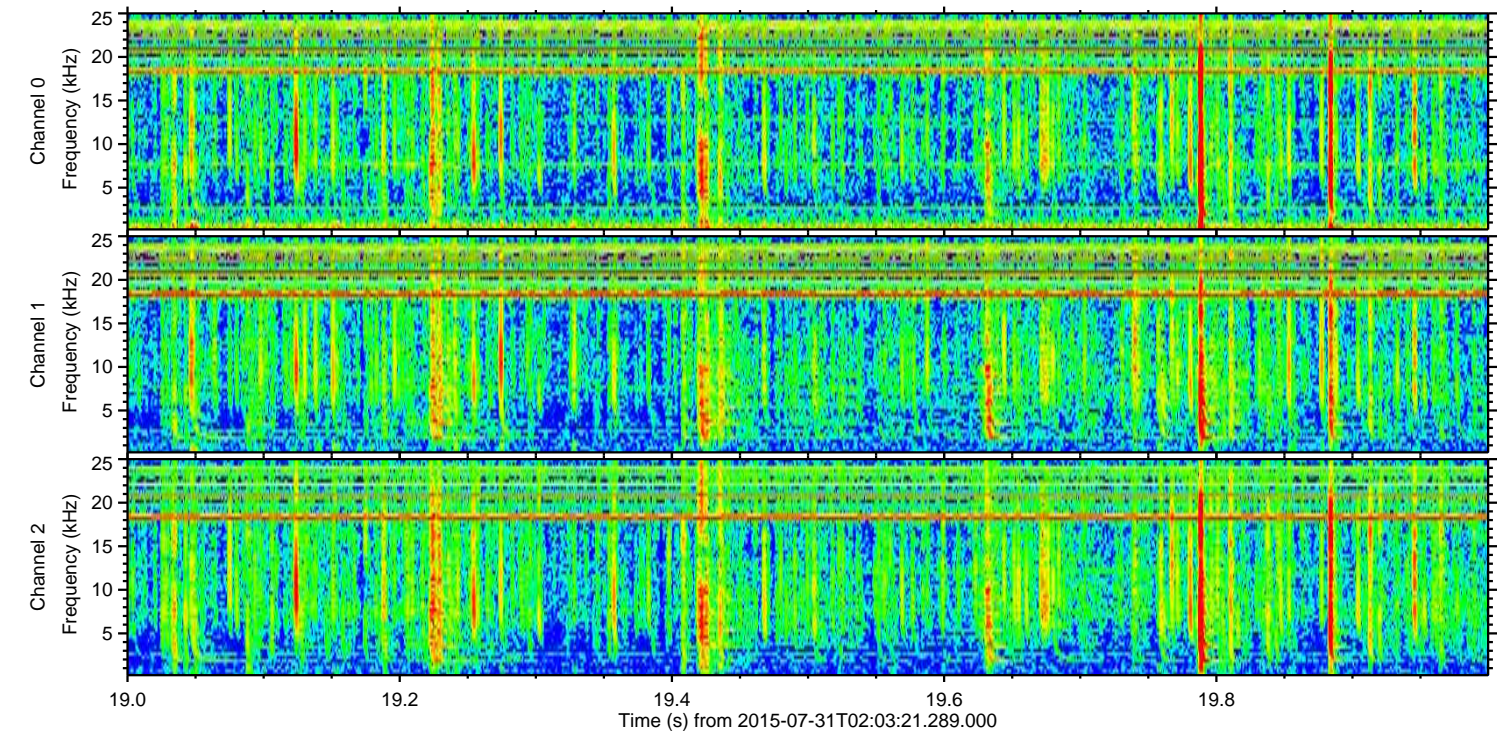
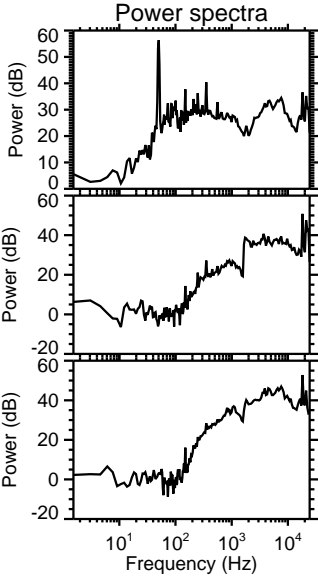
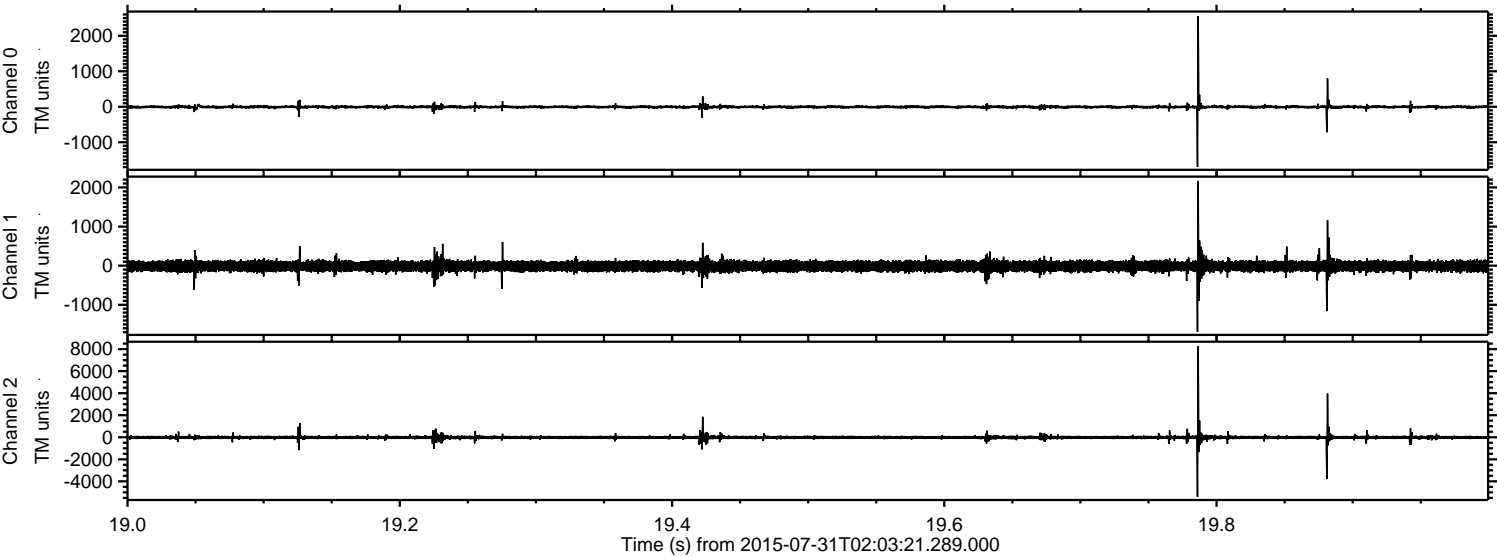
Processed Fri Jul 31 04:09:43 2015 by ELM ver.2012-10-06 from 001__elm20150731_020320__dat00.bin



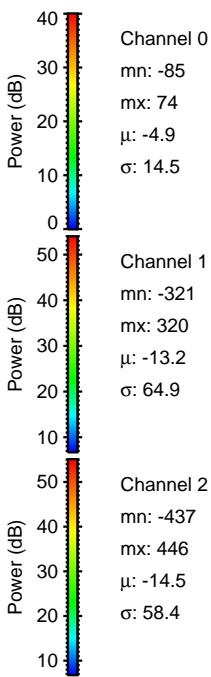
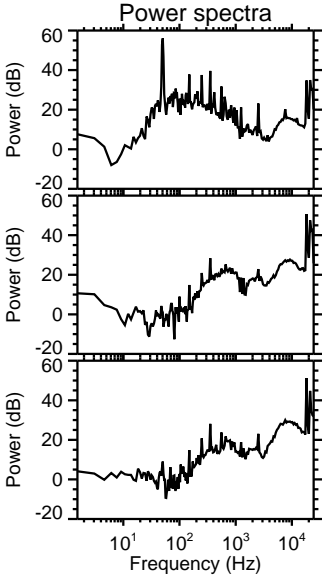
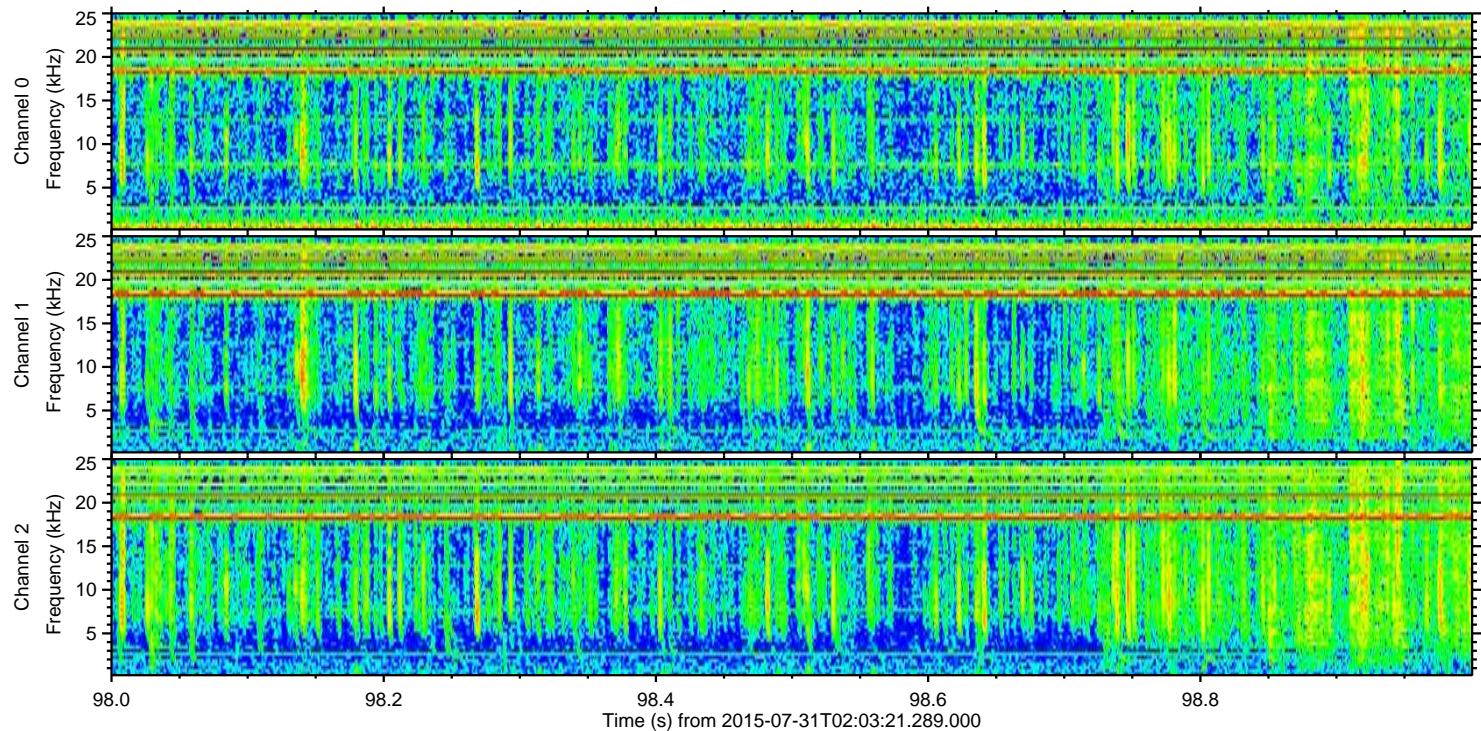
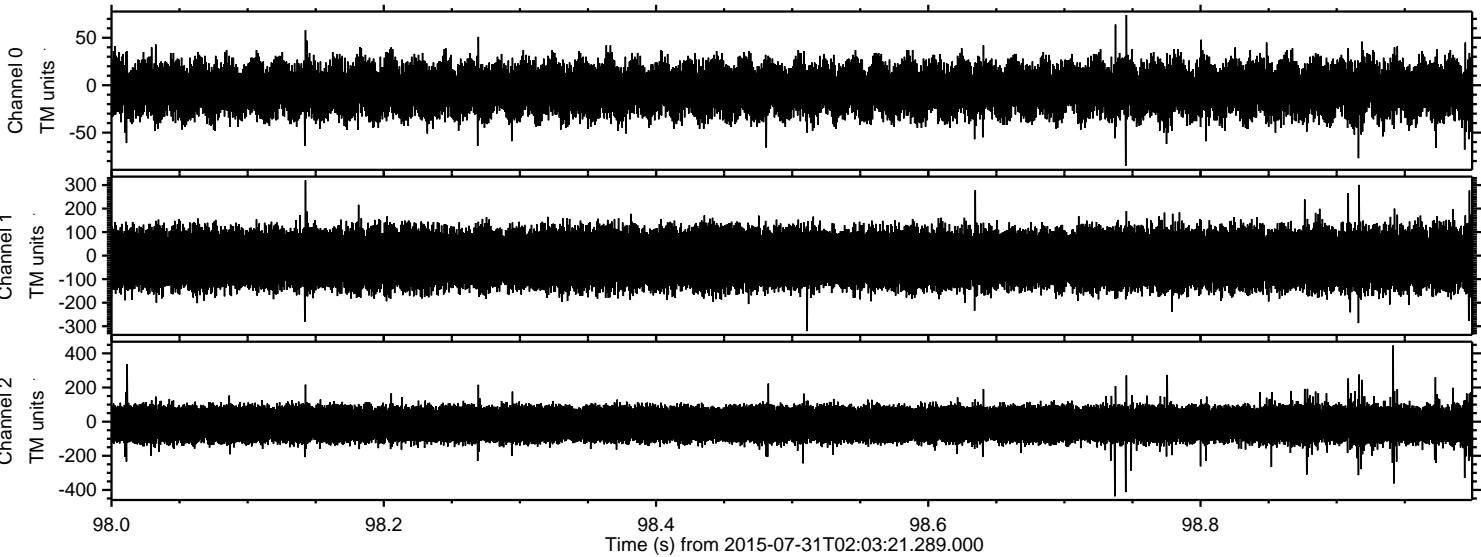
Processed Fri Jul 31 04:09:44 2015 by ELM ver.2012-10-06 from 001__elm20150731_020320__dat00.bin



Processed Fri Jul 31 04:09:45 2015 by ELM ver.2012-10-06 from 001__elm20150731_020320__dat00.bin



Processed Fri Jul 31 04:09:46 2015 by ELM ver.2012-10-06 from 001__elm20150731_020320__dat00.bin



Channel 0
mn: -85
mx: 74
 μ : -4.9
 σ : 14.5

Channel 1
mn: -321
mx: 320
 μ : -13.2
 σ : 64.9

Channel 2
mn: -437
mx: 446
 μ : -14.5
 σ : 58.4