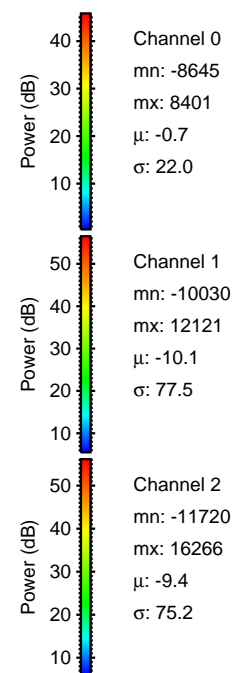
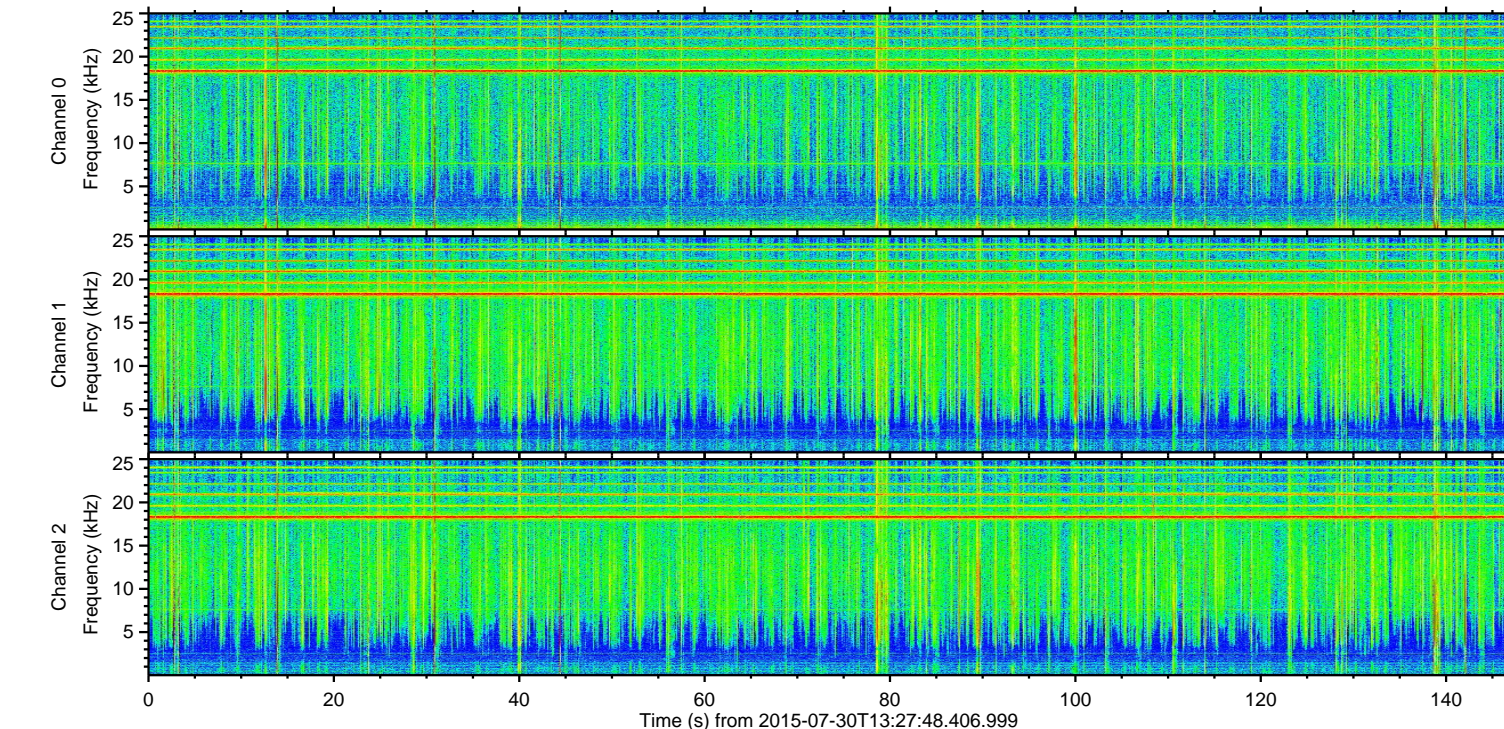
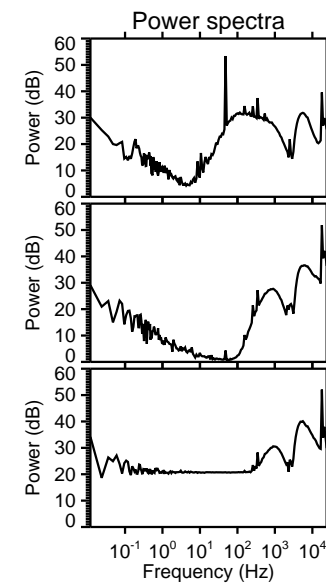
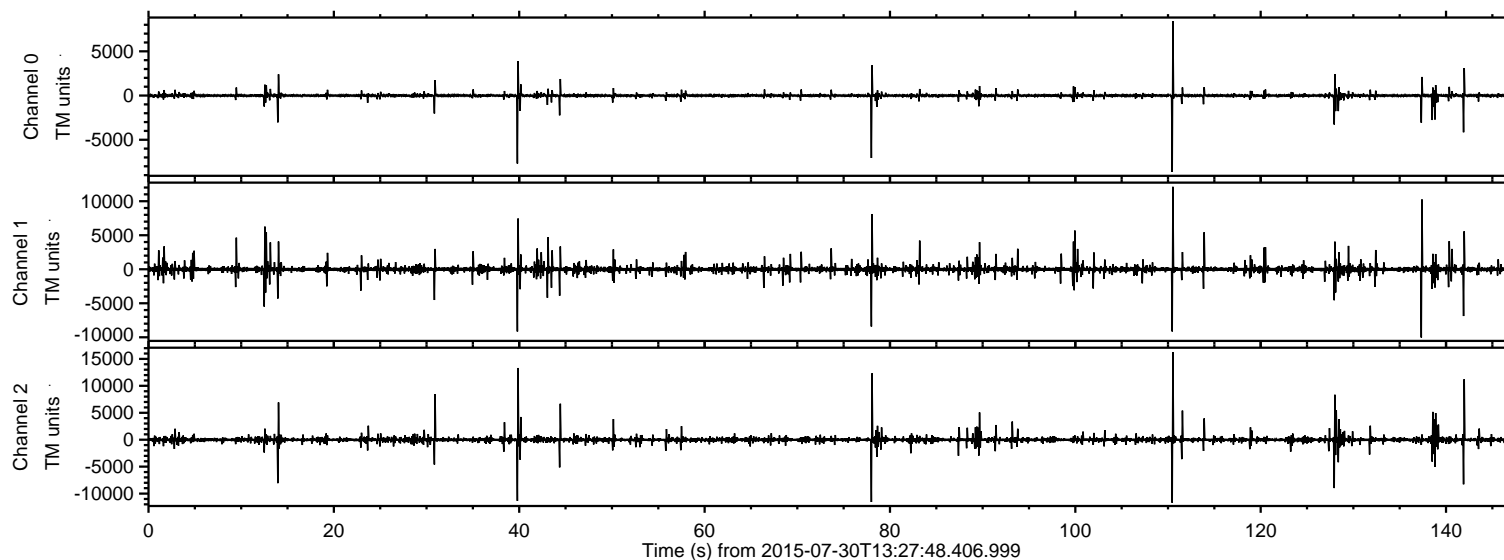


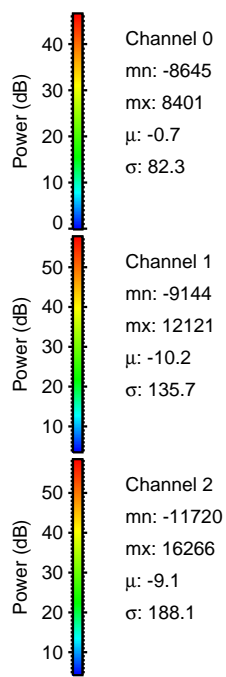
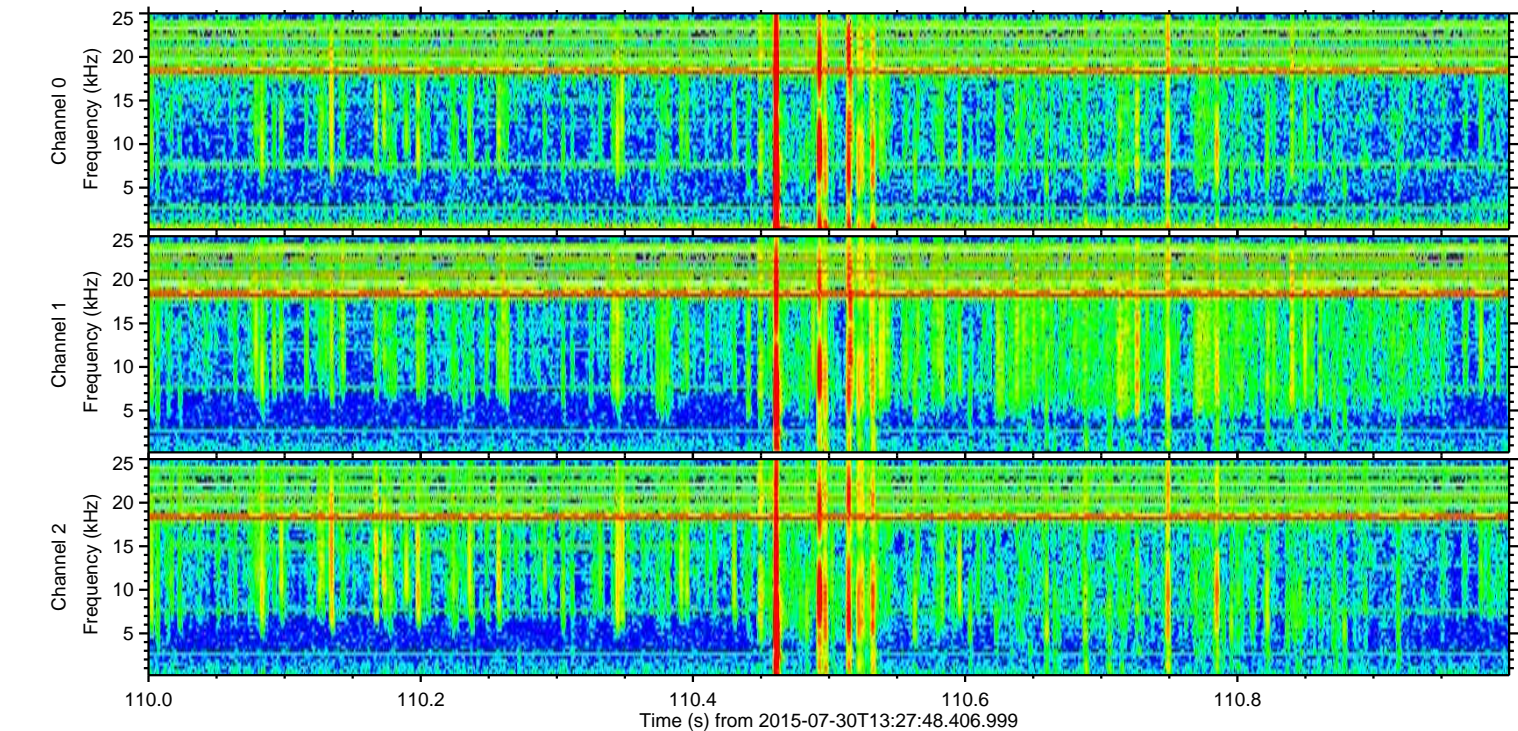
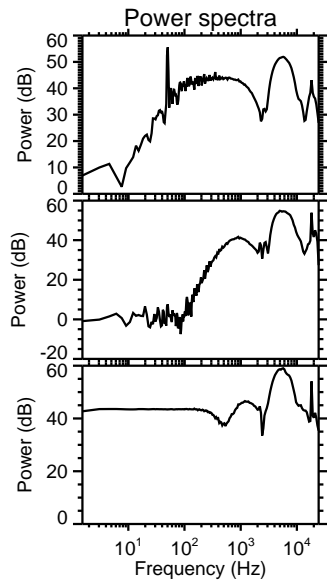
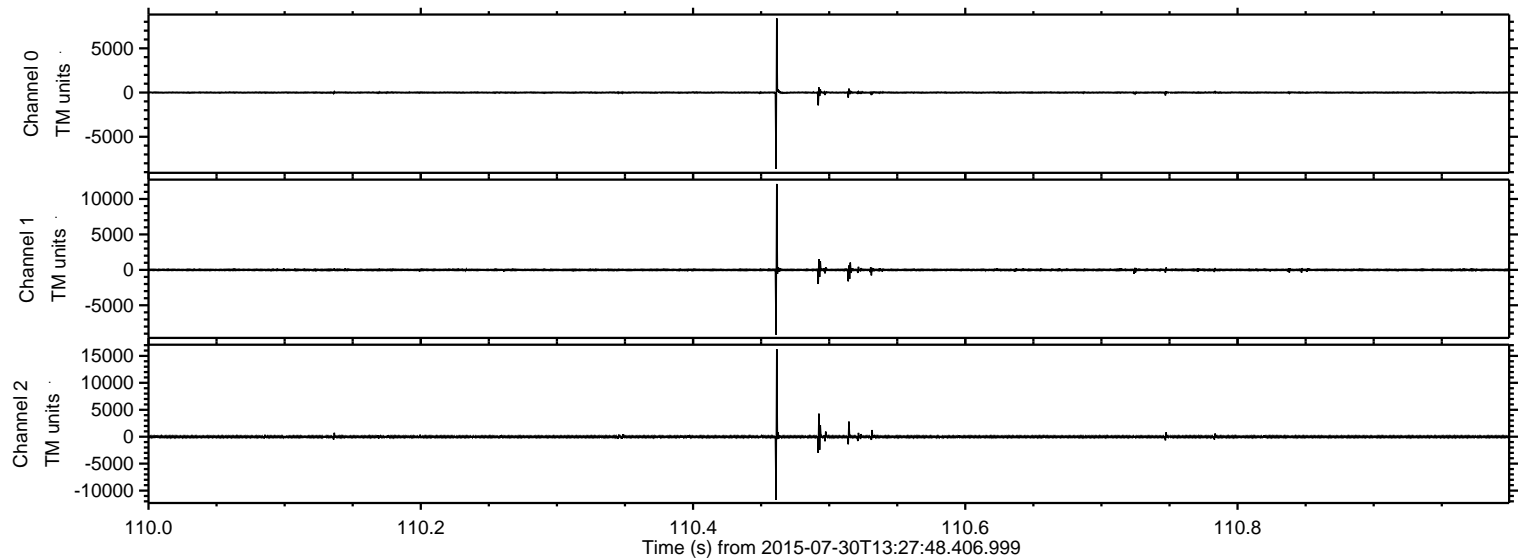
ELMAVAN 3D WAVEFORMS (Measured data sampled at 50 kHz) 51000 packets of 144 samples from 2015-07-30T13:27:48.406.999.

Processed Thu Jul 30 15:34:12 2015 by ELM ver.2012-10-06 from 001__elm20150730_132747__dat00.bin

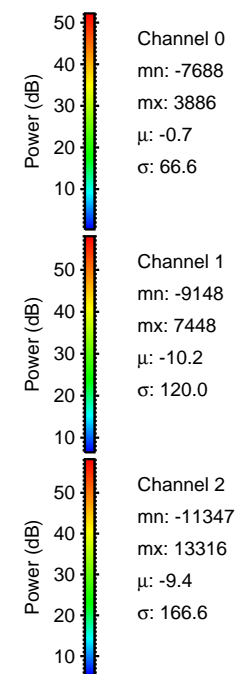
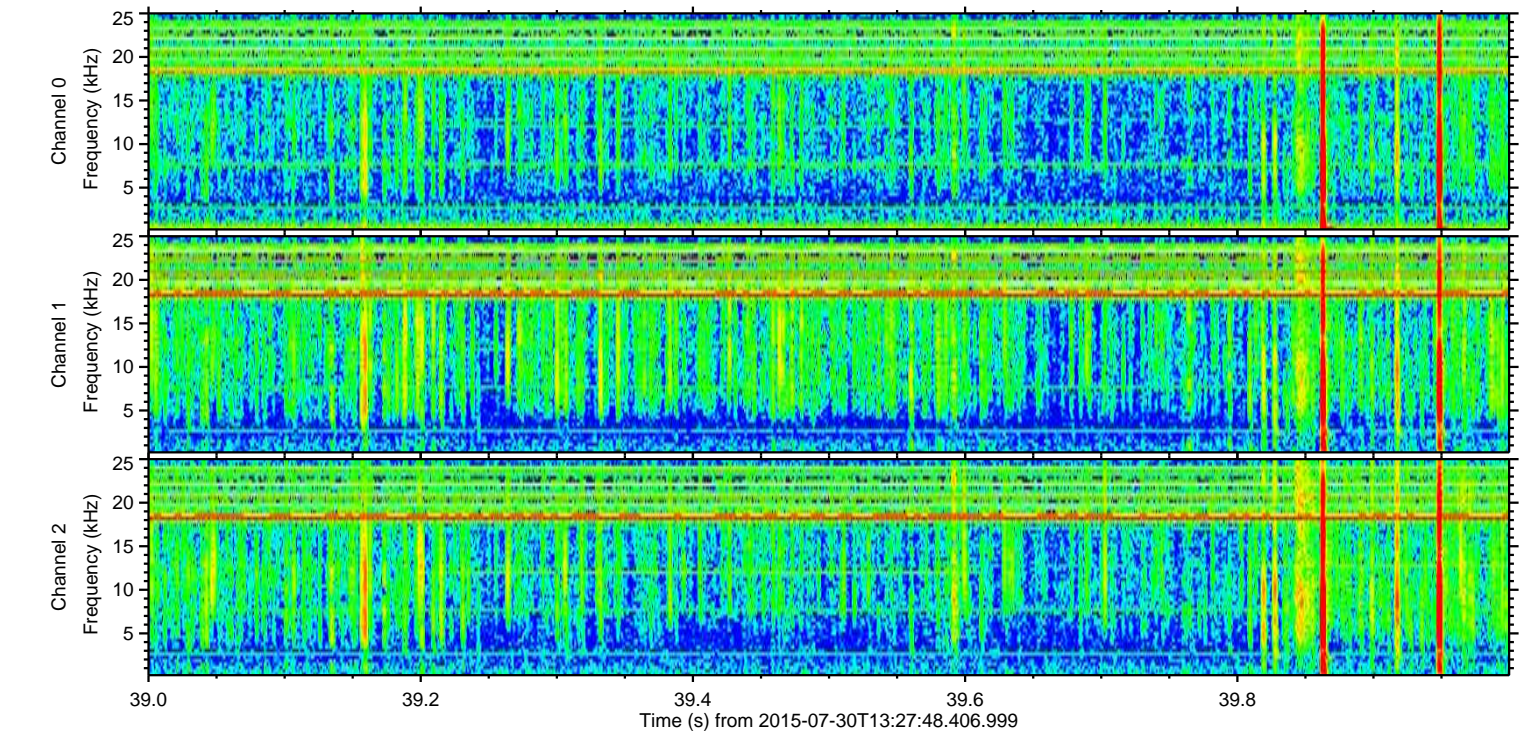
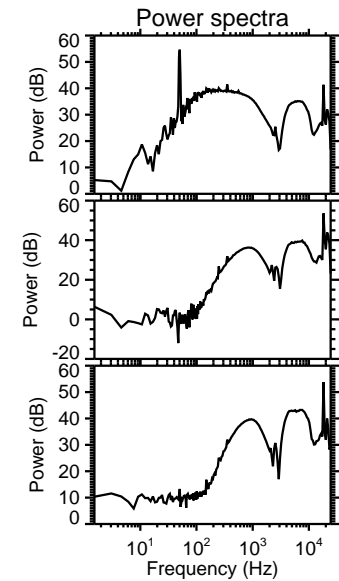
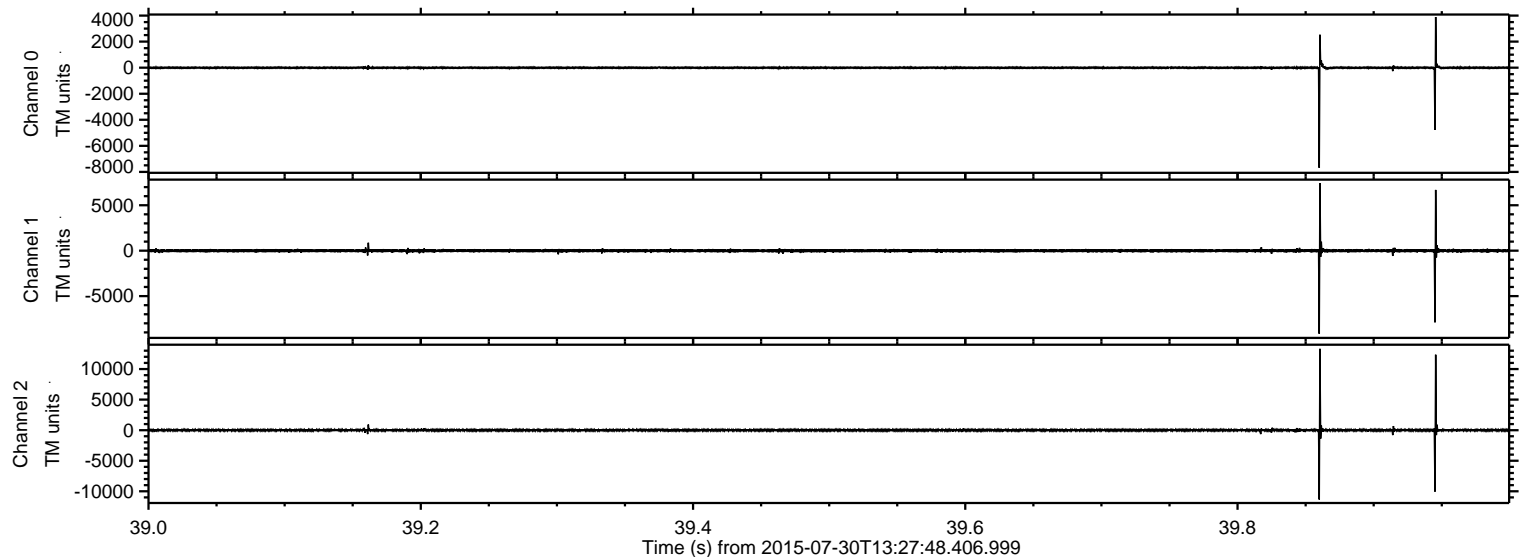


ELMAVAN 3D WAVEFORMS (Measured data sampled at 50 kHz) 51000 packets of 144 samples from 2015-07-30T13:27:48.406.999. Part 111/147

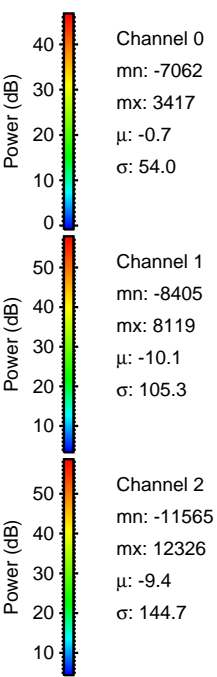
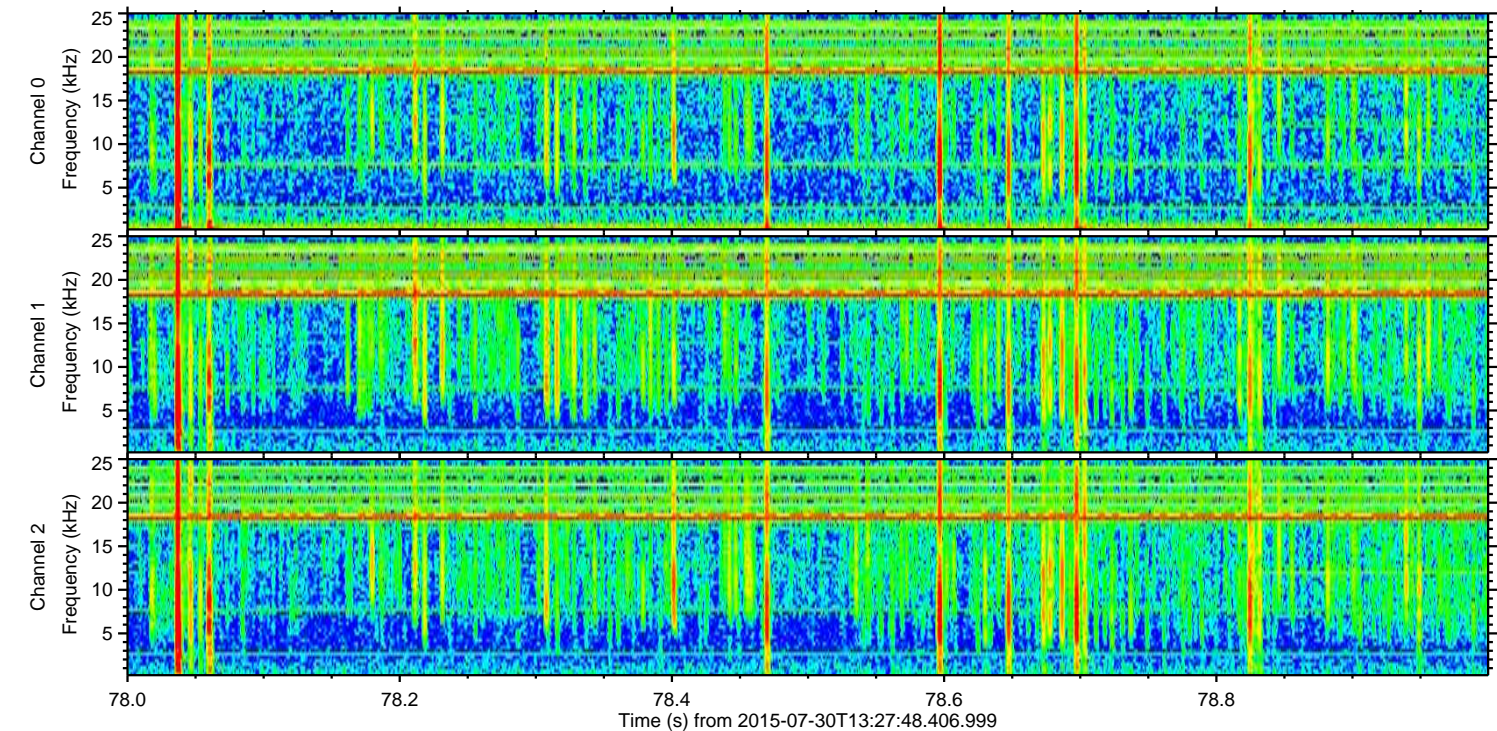
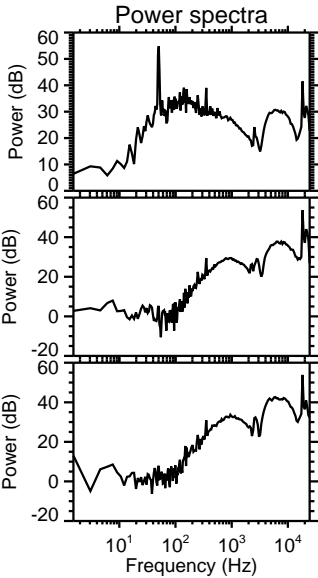
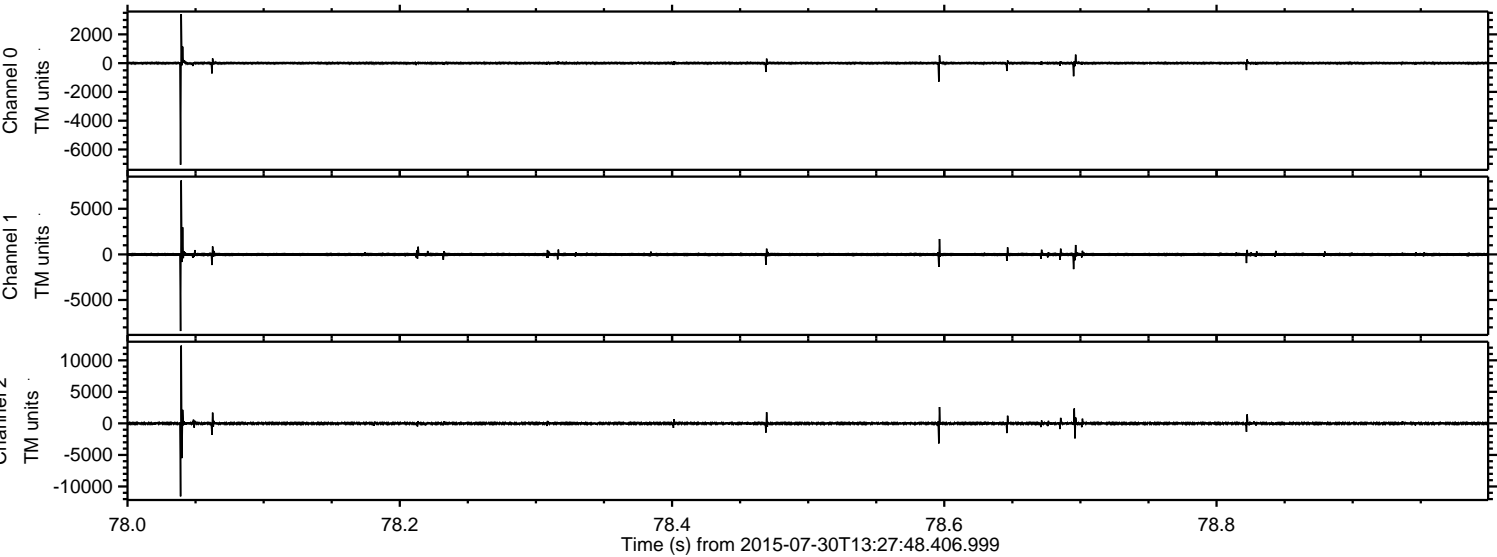
Processed Thu Jul 30 15:34:28 2015 by ELM ver.2012-10-06 from 001__elm20150730_132747__dat00.bin



Processed Thu Jul 30 15:34:29 2015 by ELM ver.2012-10-06 from 001__elm20150730_132747__dat00.bin

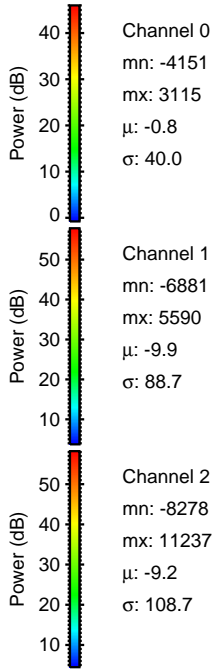
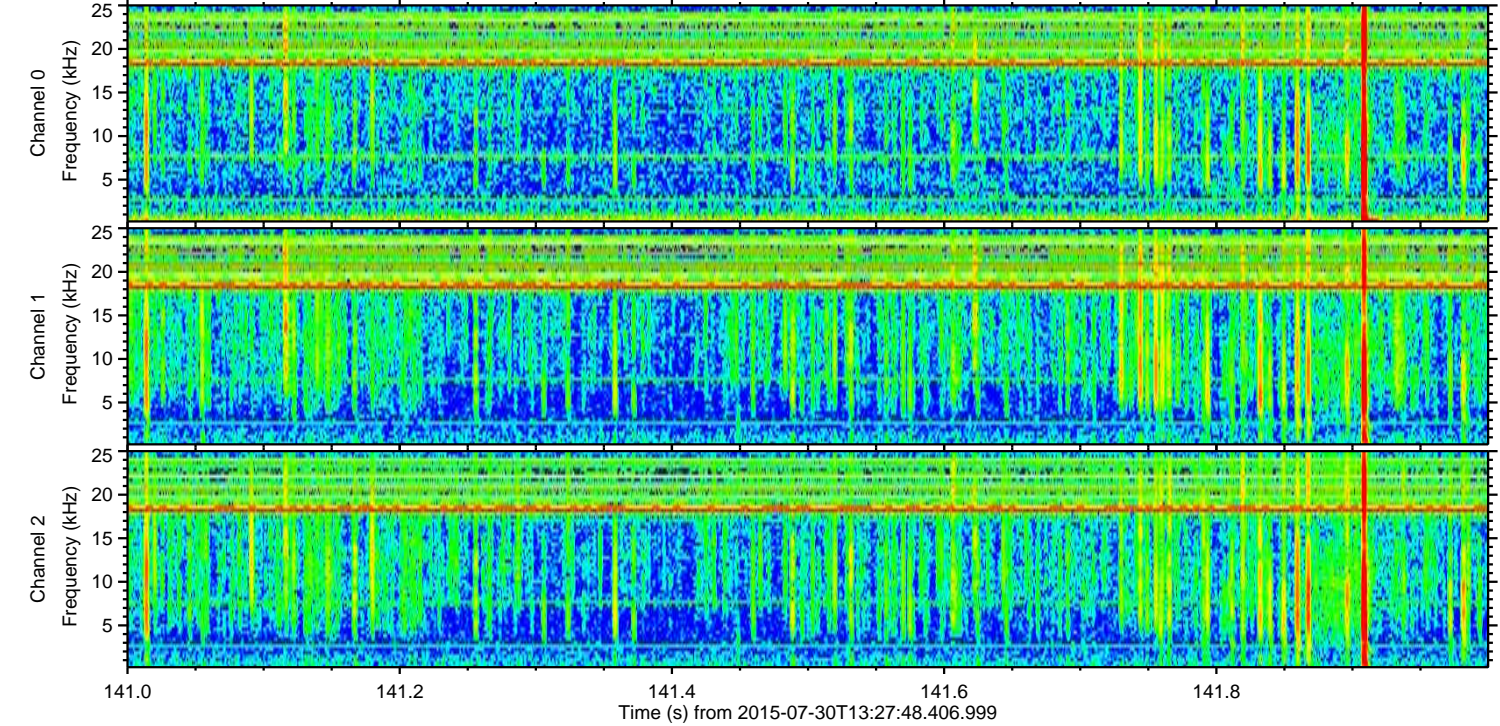
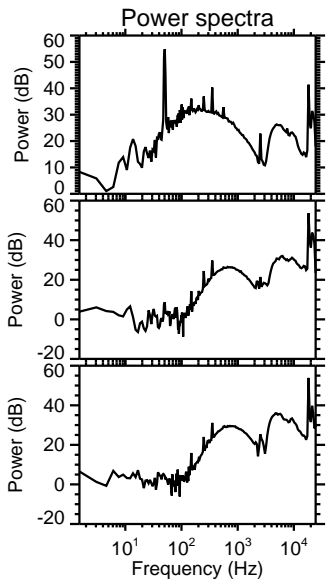
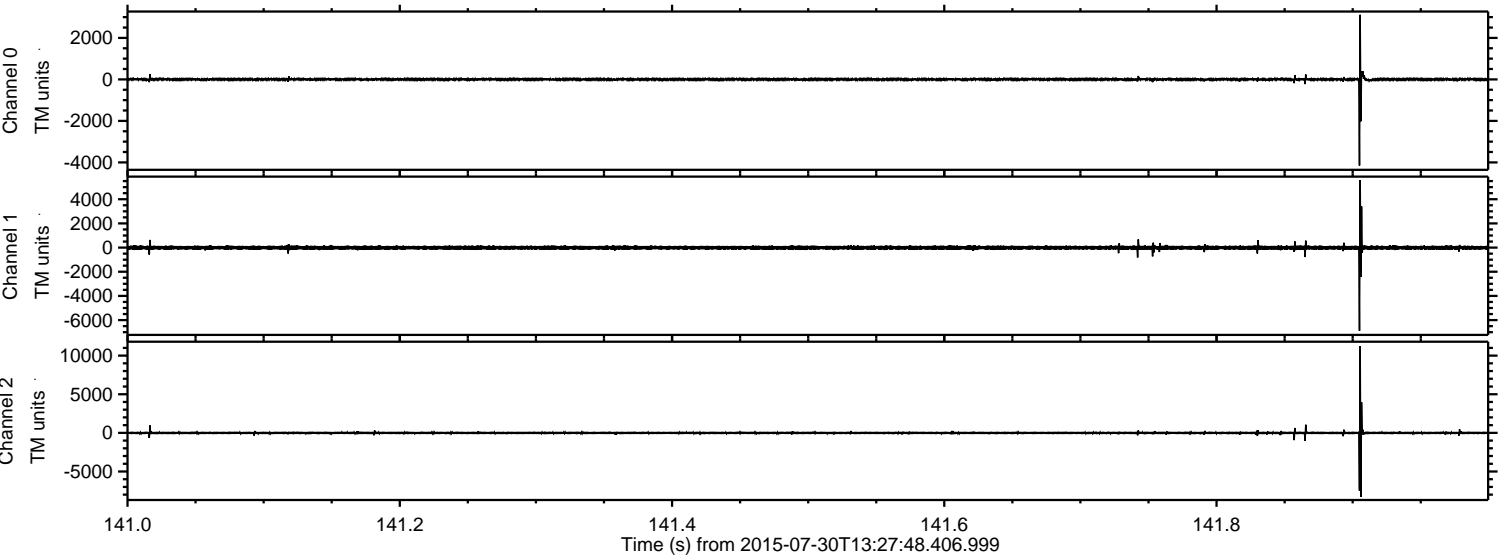


Processed Thu Jul 30 15:34:30 2015 by ELM ver.2012-10-06 from 001__elm20150730_132747__dat00.bin



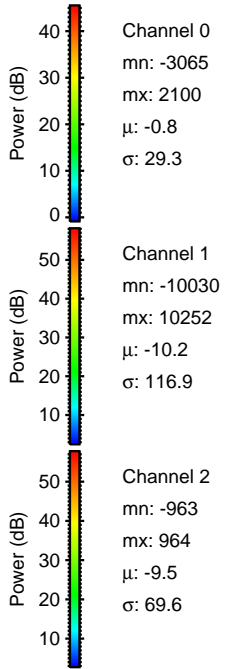
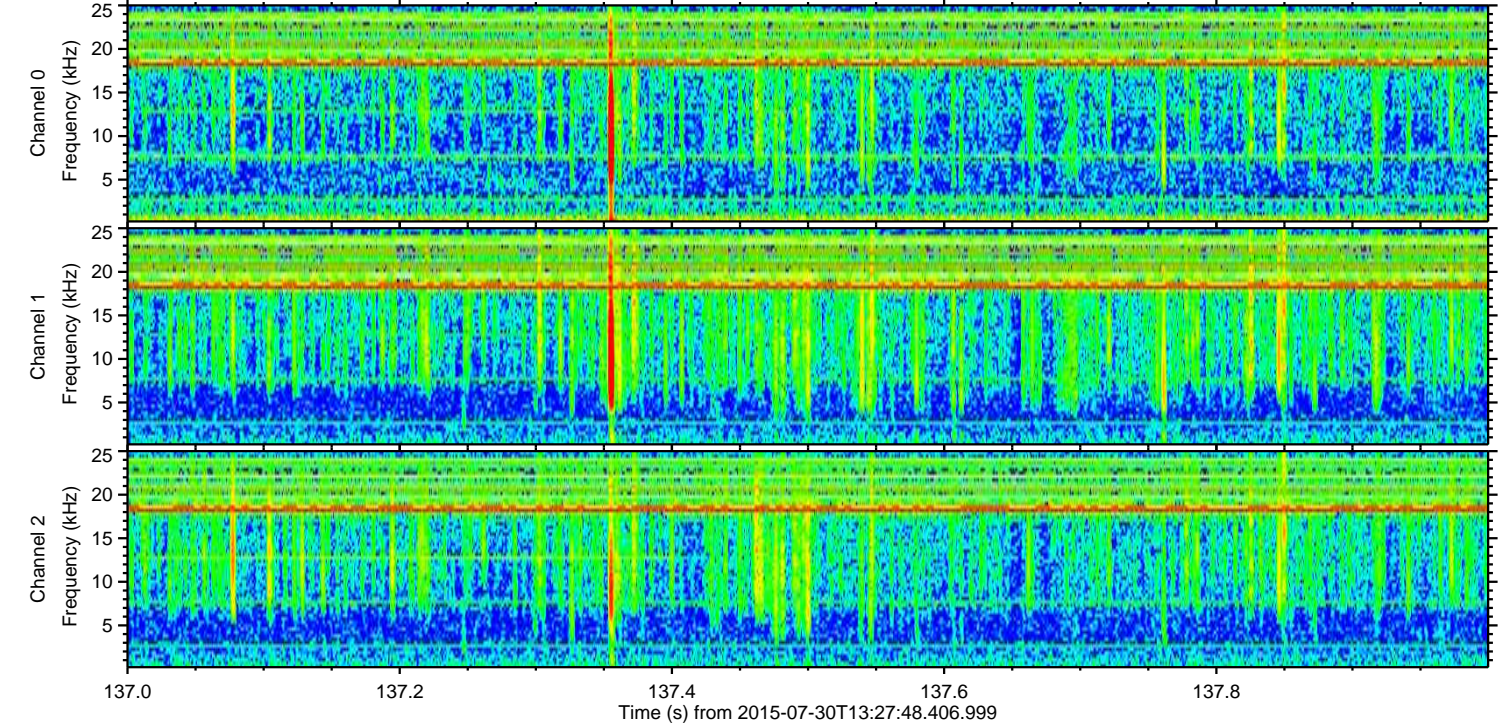
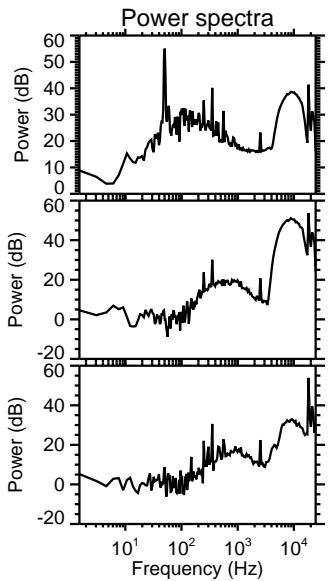
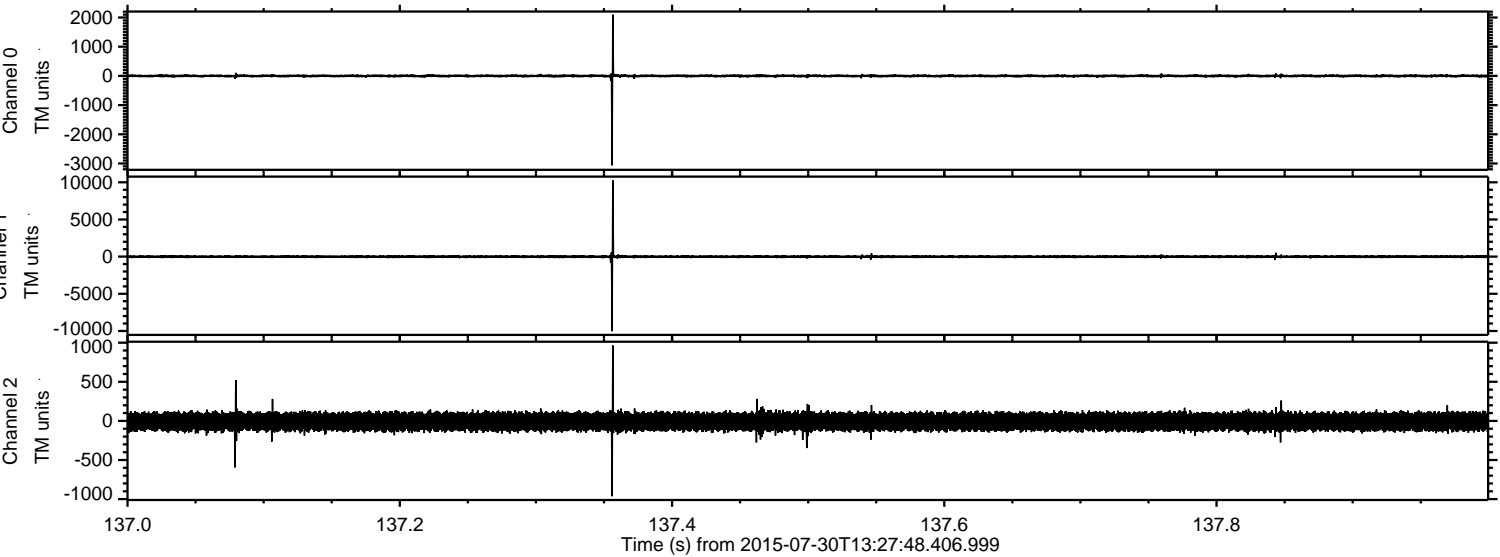
ELMAVAN 3D WAVEFORMS (Measured data sampled at 50 kHz) 51000 packets of 144 samples from 2015-07-30T13:27:48.406.999. Part 142/147

Processed Thu Jul 30 15:34:31 2015 by ELM ver.2012-10-06 from 001__elm20150730_132747__dat00.bin



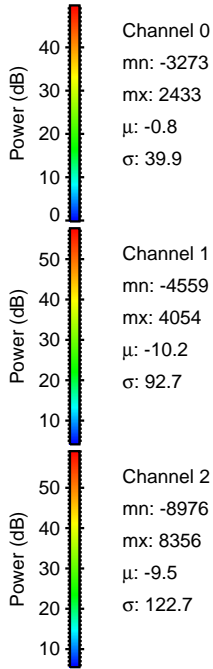
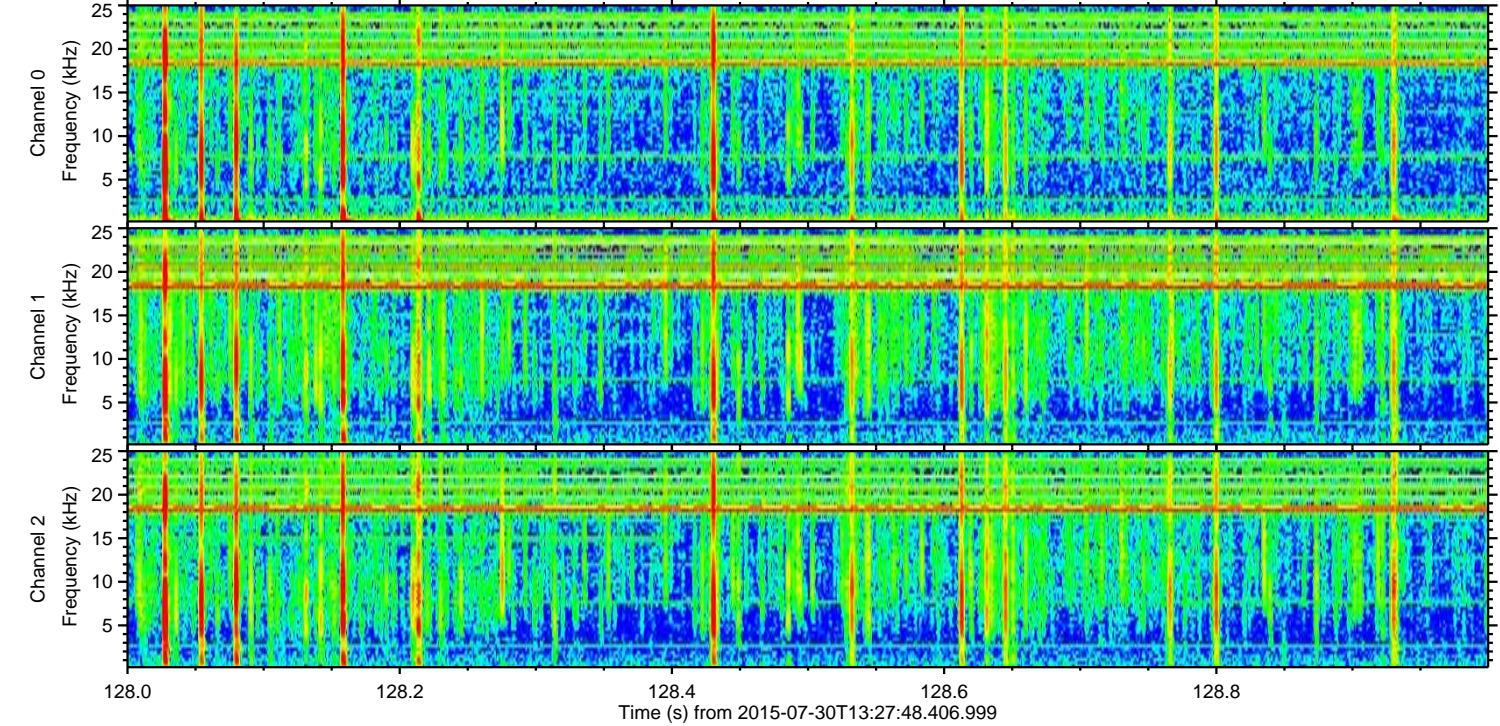
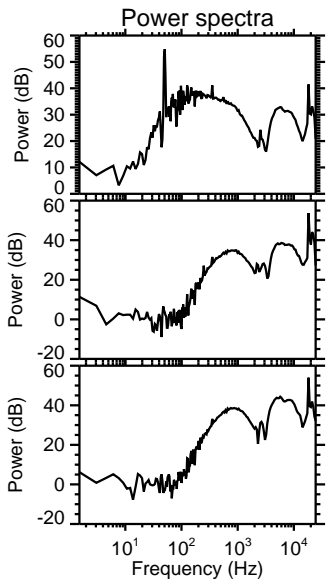
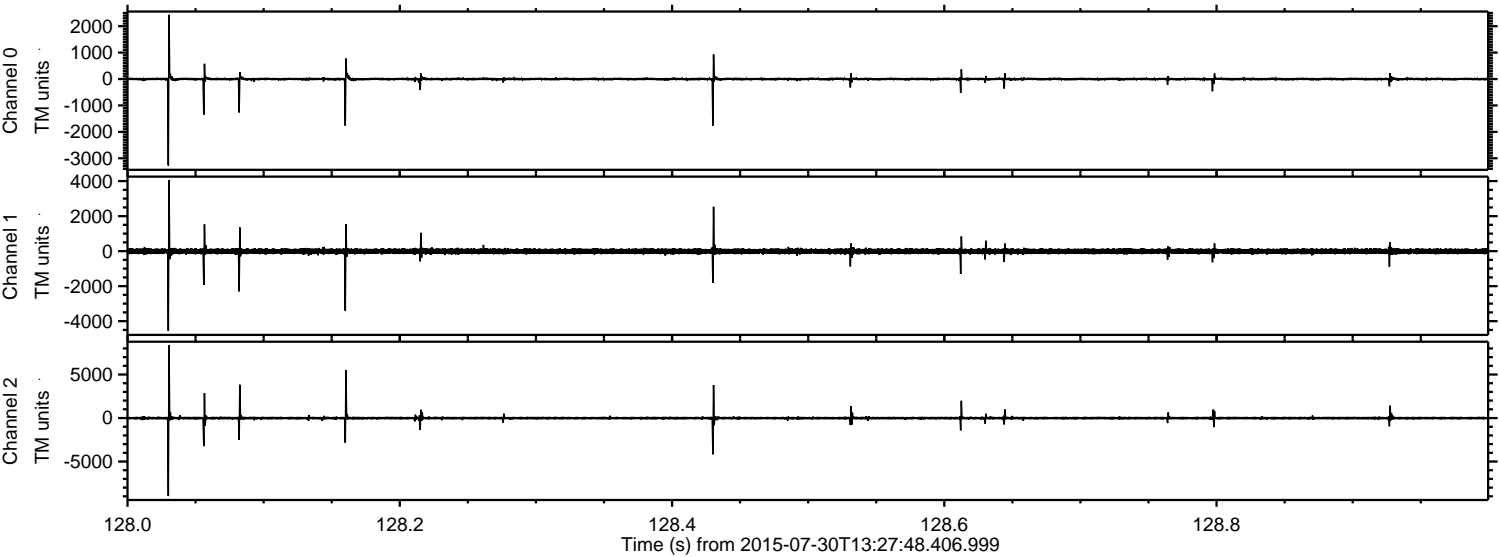
ELMAVAN 3D WAVEFORMS (Measured data sampled at 50 kHz) 51000 packets of 144 samples from 2015-07-30T13:27:48.406.999. Part 138/147

Processed Thu Jul 30 15:34:32 2015 by ELM ver.2012-10-06 from 001__elm20150730_132747__dat00.bin



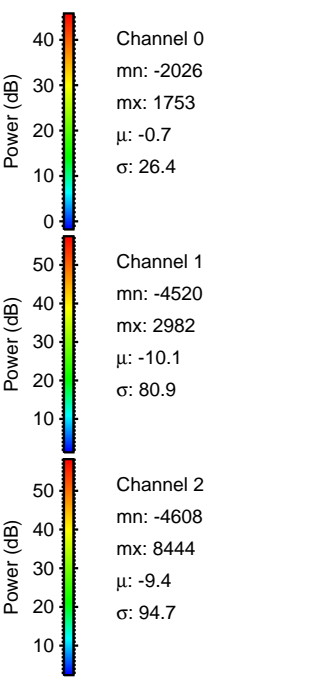
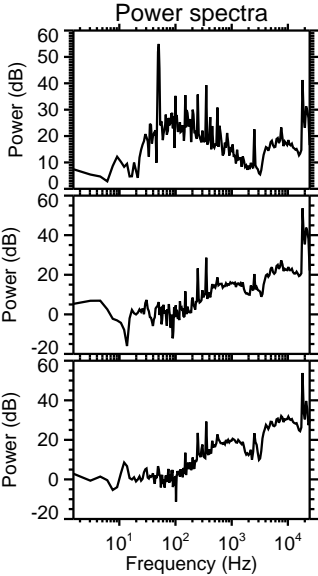
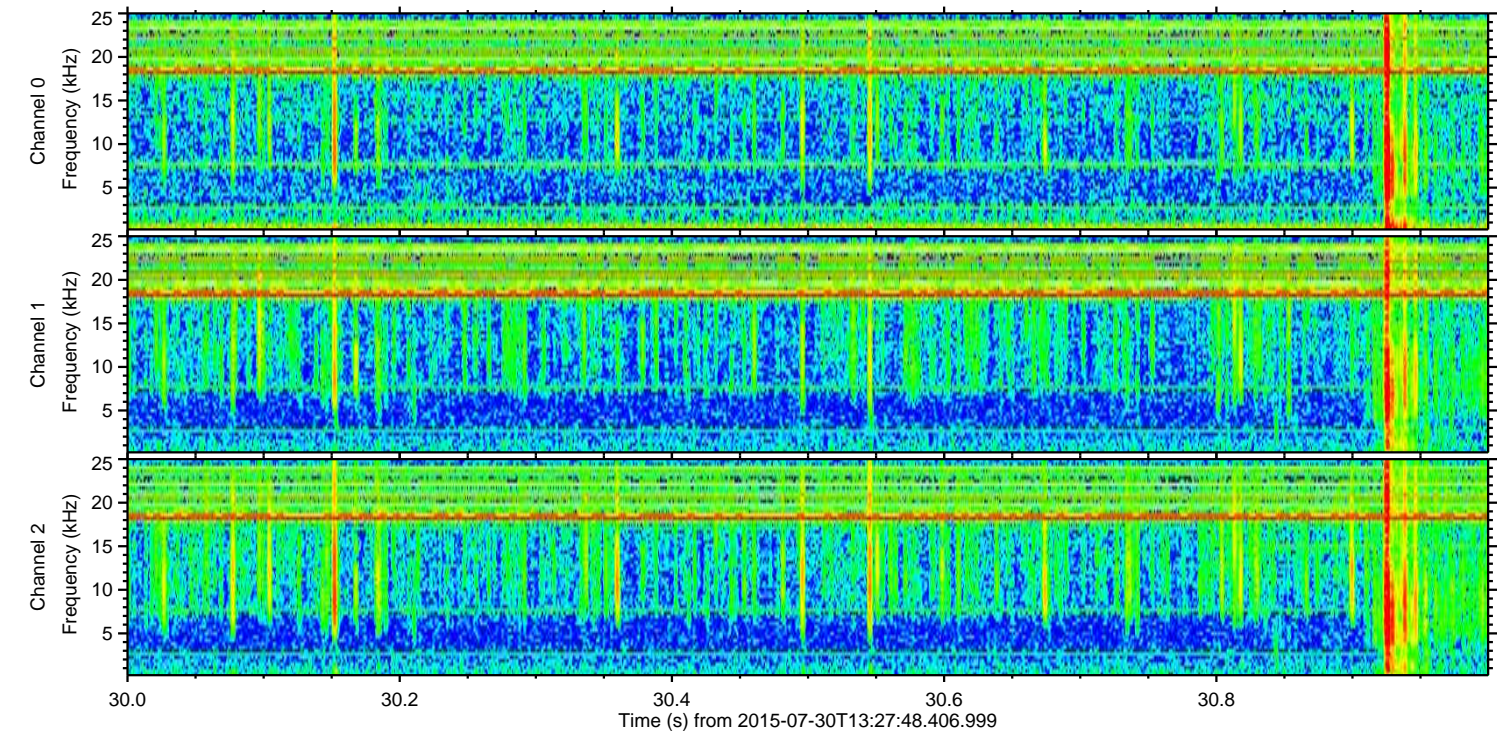
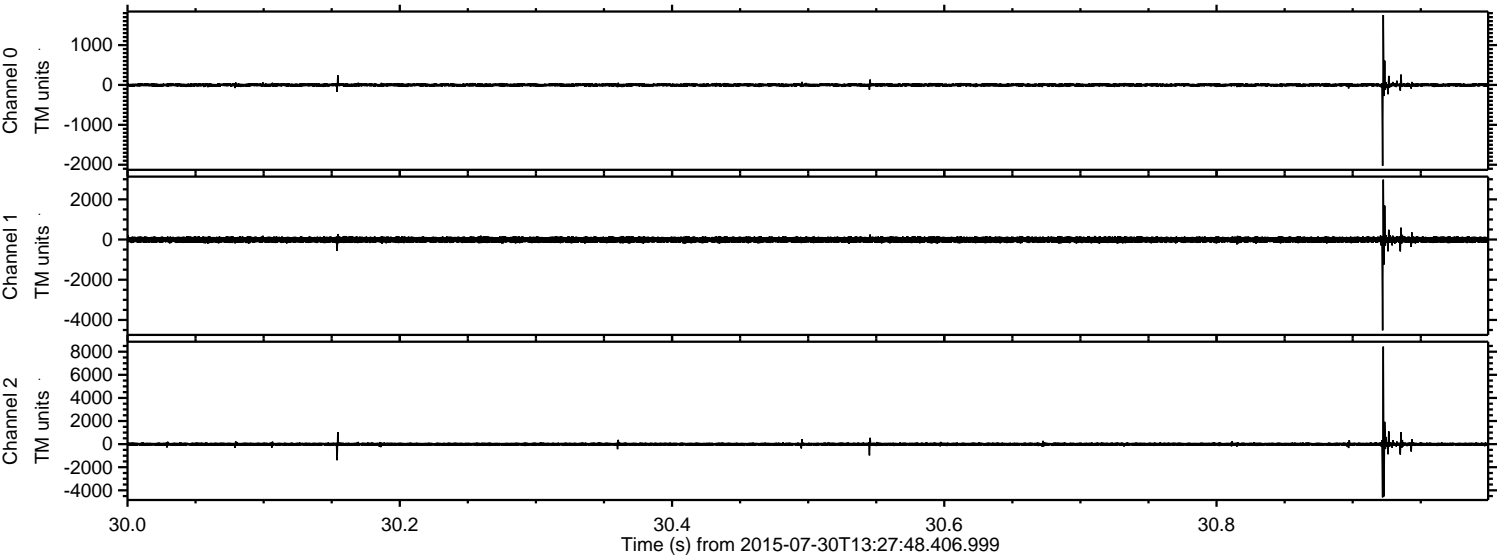
ELMAVAN 3D WAVEFORMS (Measured data sampled at 50 kHz) 51000 packets of 144 samples from 2015-07-30T13:27:48.406.999. Part 129/147

Processed Thu Jul 30 15:34:33 2015 by ELM ver.2012-10-06 from 001__elm20150730_132747__dat00.bin

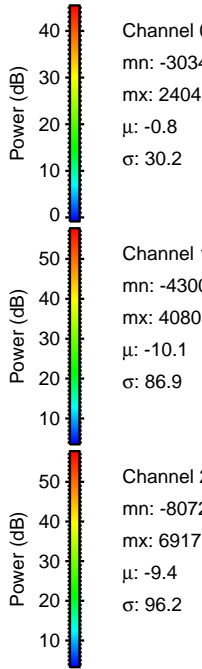
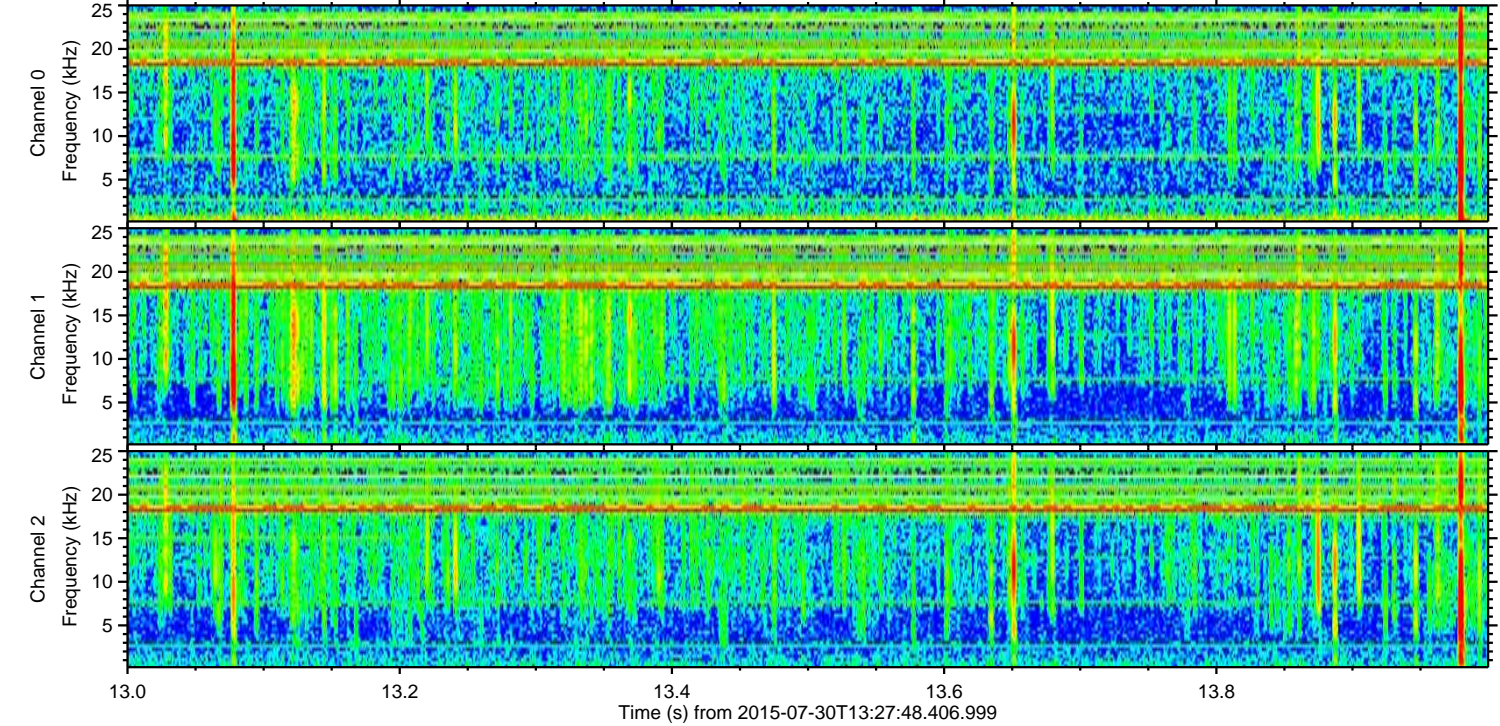
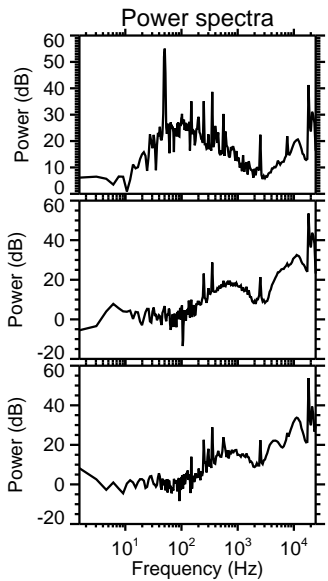
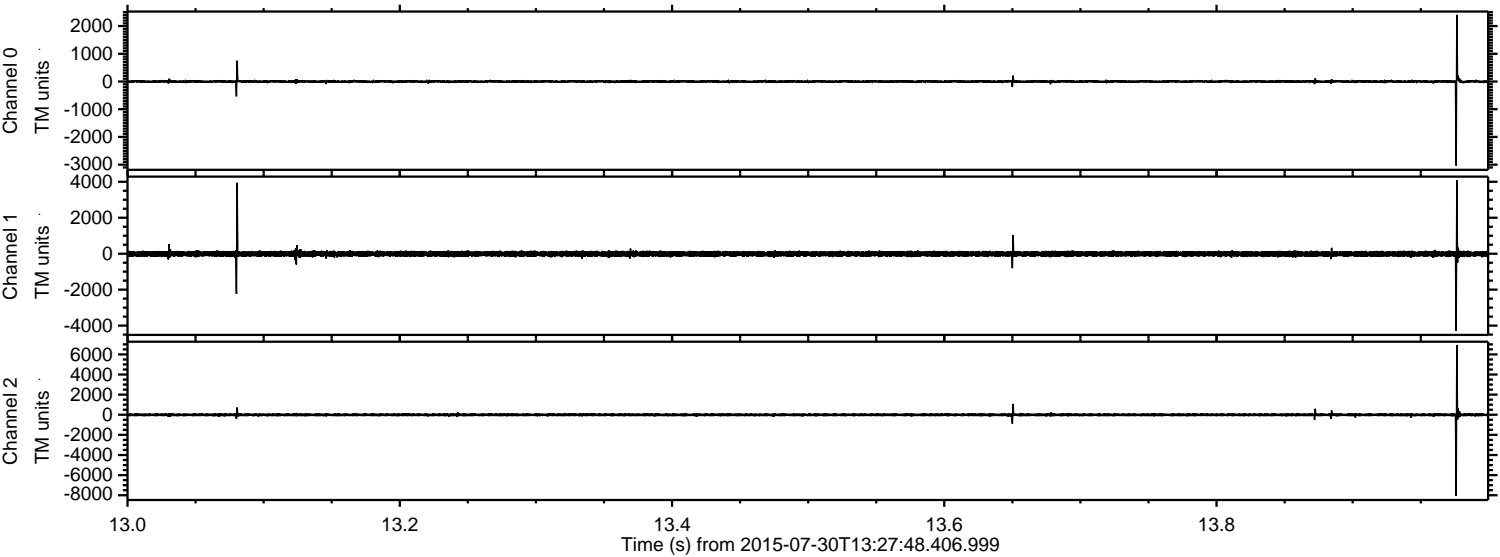


ELMAVAN 3D WAVEFORMS (Measured data sampled at 50 kHz) 51000 packets of 144 samples from 2015-07-30T13:27:48.406.999. Part 31/147

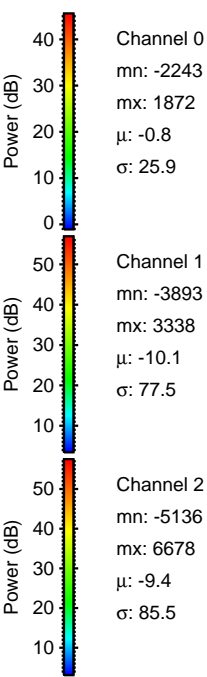
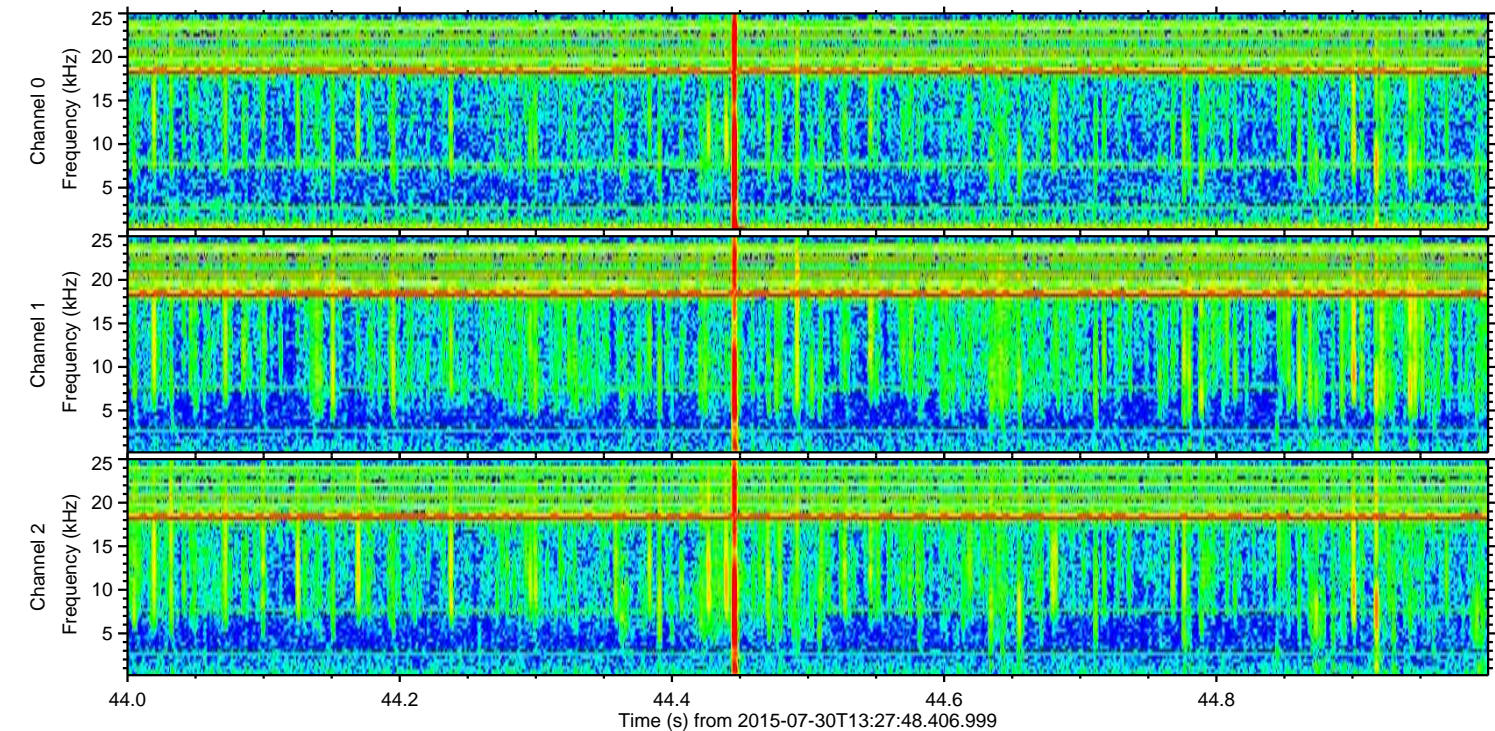
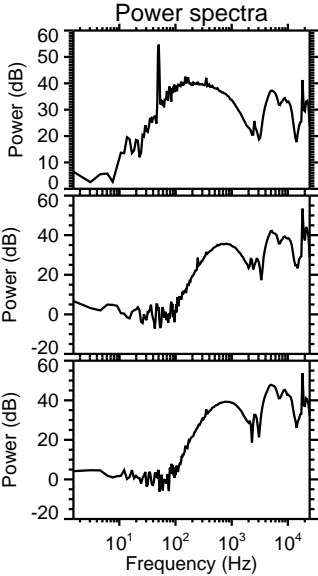
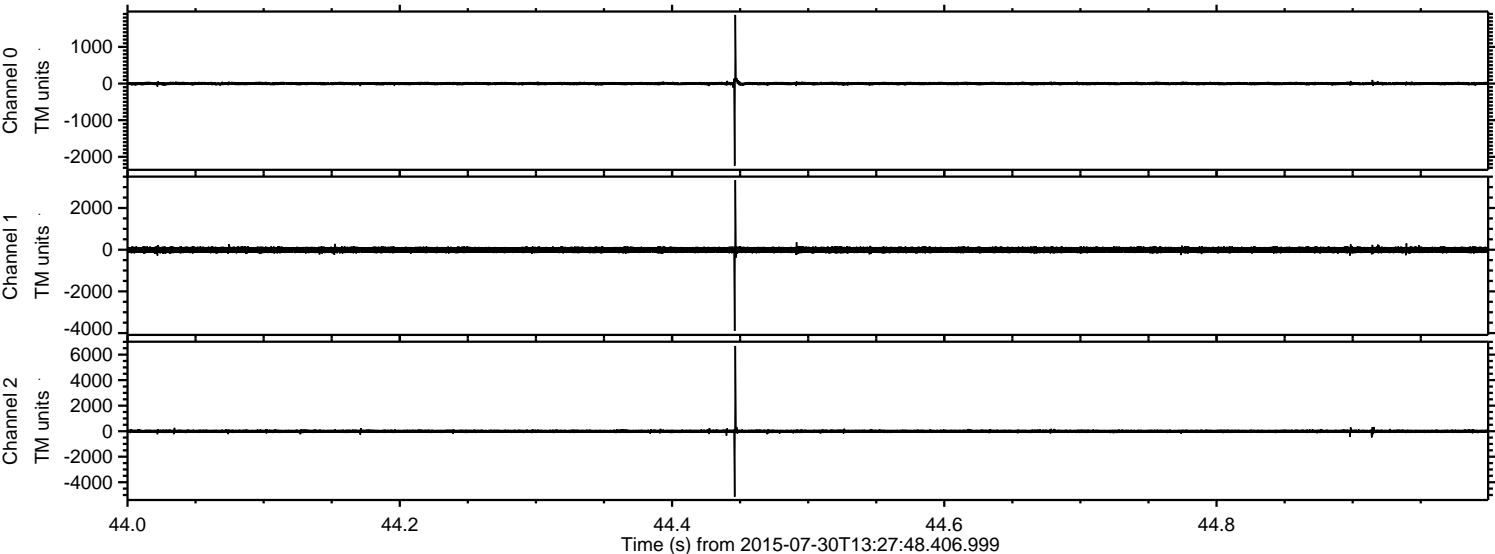
Processed Thu Jul 30 15:34:34 2015 by ELM ver.2012-10-06 from 001__elm20150730_132747__dat00.bin



Processed Thu Jul 30 15:34:35 2015 by ELM ver.2012-10-06 from 001__elm20150730_132747__dat00.bin



Processed Thu Jul 30 15:34:36 2015 by ELM ver.2012-10-06 from 001__elm20150730_132747__dat00.bin



Channel 0
mn: -2243
mx: 1872
 μ : -0.8
 σ : 25.9

Channel 1
mn: -3893
mx: 3338
 μ : -10.1
 σ : 77.5

Channel 2
mn: -5136
mx: 6678
 μ : -9.4
 σ : 85.5

Processed Thu Jul 30 15:34:37 2015 by ELM ver.2012-10-06 from 001__elm20150730_132747__dat00.bin

